

Historic, archived document

Do not assume content reflects current scientific knowledge, policies, or practices.

FARQUHAR'S Summer Bulletin 1924



Pot-Grown Strawberries
Perennial Flower Seeds
Greenhouse Plants
Bulbs for Forcing
Horticultural Requisites

R. & J. FARQUHAR CO.
6 South Market Street, Boston

R. & J. FARQUHAR COMPANY

6 South Market St., Boston

June 1, 1924

General Directions to Customers

PRICES AND TERMS. The prices on all merchandise quoted in this catalogue are based on Cash at time of purchase; the prices quoted are net. Parties who may desire to have a monthly account must furnish us with satisfactory trade references. All prices are subject to fluctuation without notice.

REMITTANCES. Remittances should be made either in the form of a Post-Office Money Order, Bank Draft, Registered Letter, or Express Money Order.

SEEDS, AND BULBS can now be sent by Parcel Post at the regular zone rates. *Fluids and poisonous insecticides are not mailable.*

WE DELIVER FREE IN THE UNITED STATES to any Post-Office, Railroad Express Office, or Station, at our option, all Vegetable and Flower Seeds at the packet, ounce, $\frac{1}{4}$ -pound, $\frac{1}{2}$ -pound and 1 pound prices, and also books. Purchaser pays transit charges on pints, quarts, pecks, bushels; also Farm Seeds, Bulbs and Plants, except where otherwise stated; Tools, Fertilizers, Insecticides, etc. If pints and quarts of Peas, Beans and Corn are wanted by Parcel Post, add postage at zone rates; mailing weight, 2 lbs. per quart.

RESPONSIBILITY. No salesman nor other employee of R. & J. Farquhar Company has authority to alter or modify any of the sales conditions in our catalogues. All sales are made subject to acceptance by the Company.

NON-WARRANTY. We do not give as to description, quality, productiveness or any other matter, any warranty, express or implied, of any seeds, bulbs, insecticides, fungicides, or fertilizers, which we send out, and we shall not be liable for any mistake made in filling of any order. If the purchaser does not accept the goods on these terms, they are at once to be returned.

R. & J. FARQUHAR COMPANY

FARQUHAR'S SELECTED VEGETABLE SEEDS for Summer planting

BEANS

- Improved Golden Wax.** A most valuable sort. Straight, flat, tender pods. Pt., 35 cts.; qt., 65 cts.; 4 qts., \$2.25.
- Wardwell's Kidney Wax.** Very long, tender flat pods; straight and very handsome. Pt., 40 cts.; qt., 75 cts.; 4 qts., \$2.75.
- Pencil Pod Black Wax.** Pods round, 6 inches long, light golden-yellow. Pt., 40 cts.; qt., 75 cts.; 4 qts., \$2.75.
- Farquhar's Plentiful.** (*Green podded.*) Long, succulent and stringless pods. Pt., 75 cts.; qt., \$1.50.
- Masterpiece** (*Green-podded.*) The plant is of robust growth and the long pods are straight, handsome and tender. Pt., 90 cts.; qt., \$1.50.
- Stringless Green Pod.** One of the best varieties, pods round, quite stringless, very crisp and tender. Pt., 35 cts.; qt., 65 cts.; 4 qts., \$2.25.
- Dwarf Horticultural.** One of the best Shell Beans; pods long and heavily splashed with crimson, very productive. Pt., 40 cts.; qt., 75 cts.; 4 qts., \$2.75.

BEETS

- Crosby's Egyptian.** Color deep crimson; smooth, sweet and tender. Pkt., 10 cts.; oz., 30 cts.; $\frac{1}{4}$ lb., 75 cts.; lb., \$2.50.
- Farquhar's Mid-Summer.** Dark crimson color, fine grained, and of delicious sweet flavor. Pkt., 10 cts.; oz., 35 cts.; $\frac{1}{4}$ lb., \$1.00; lb., \$3.50.
- Detroit Dark Red Turnip.** Deep crimson, tender and very sweet. Pkt., 10 cts.; oz., 25 cts.; $\frac{1}{4}$ lb., 75 cts.; lb., \$2.00.

CARROTS

- Earliest Scarlet French Forcing.** Small roundish roots, very early, valuable for forcing. Pkt., 15 cts.; oz., 40 cts.; $\frac{1}{4}$ lb., \$1.25; lb., \$4.50.
- Danvers Half-Long.** Best main crop variety; fine form and color; half-long with small tap-root; productive and keeps well. Pkt., 10 cts.; oz., 25 cts.; $\frac{1}{4}$ lb., 75 cts.

ENDIVE

- Farquhar's Winter Beauty.** Hardy, finely curled green leaves, easily blanched; one of the best. Pkt., 10 cts.; oz., 50 cts.; $\frac{1}{4}$ lb., \$1.50.
- Broad-Leaved Batavian.** (*Escarolle.*) Leaves long and broad, thick and succulent. One of the choicest salads. Pkt., 10 cts.; oz., 35 cts.; $\frac{1}{4}$ lb., \$1.00.

LETTUCE

- Black-Seeded Tennisball.** Excellent; forms a very fine head, compact, crisp, tender. Pkt., 10 cts.; oz., 25 cts.; $\frac{1}{4}$ lb., 75 cts.
- California Cream Butter.** Large, solid head; tinged brown, white inside. Pkt., 10 cts.; oz., 25 cts.; $\frac{1}{4}$ lb., 75 cts.
- Trianon Self-Closing Cos.** Leaves long, narrow, forming close upright heads. Pkt., 10 cts.; oz., 35 cts.; $\frac{1}{4}$ lb., \$1.00.

RADISH

- Farquhar's Nonpareil.** An excellent strain of small round, bright red radish. The flesh is pure white, crisp and tender. Pkt., 10 cts.; oz., 30 cts.; $\frac{1}{4}$ lb., \$1.00.
- Icele.** A long slender white radish with small top; flesh crisp and tender. Pkt., 10 cts.; oz., 30 cts.; $\frac{1}{4}$ lb., 80 cts.

SPINACH

- Farquhar's All Seasons.** Leaves rich, dark green, very thick and of splendid quality. Pkt., 5 cts.; oz., 15 cts.; $\frac{1}{4}$ lb., 35 cts.; lb., \$1.25.
- Round Thick-Leaved.** A standard sort; equally good for early Spring or Fall sowing; leaves are thick, succulent and tender. Pkt., 5 cts.; oz., 15 cts.; $\frac{1}{4}$ lb., 30 cts.; lb., \$1.00.

TURNIP

- Purple Top, White Flat, Strap-leaf.** A popular sort for early and Fall sowing; flesh white, tender and very sweet. Pkt., 10 cts.; oz., 20 cts.; $\frac{1}{4}$ lb., 40 cts.; lb., \$1.00.
- Farquhar's Model.** A very early and perfectly formed round white Turnip, solid and mild in flavor. Pkt., 10 cts.; oz., 25 cts.; $\frac{1}{4}$ lb., 75 cts.
- White Egg.** Oval or egg-shaped; smooth and fine-grained, flesh white; good for late crop. Pkt., 10 cts.; oz., 20 cts.; $\frac{1}{4}$ lb., 40 cts.; lb., \$1.00.

FARQUHAR'S POT-GROWN STRAWBERRY PLANTS

These are strong pot-grown plants, which can be safely shipped to any reasonable distance. If planted early, they will produce a large crop of fruit next year. All varieties offered are perfect flowering, needing no fertilization by another variety.

Cultural Directions. The Strawberry is easily cultivated: abundant crops can be obtained from a variety of soils, differing widely in character, from a light sand to a heavy clay. The best soil is a deep sandy loam, but any soil suited to the growth of ordinary field or garden crops may be trusted to successfully grow the Strawberry. The soil should be broken up and pulverized by spade-trenching or subsoil-plowing, enriching with good stable manure to a depth of fully two feet, the quantity of manure to be determined by the condition of the soil. The plants may be set in beds of three rows one foot apart and one foot distant in the rows, with a space of two and a half feet between the outside rows of adjoining beds left for a pathway. They may also be planted in single rows three feet apart and one foot apart in the rows.

FARQUHAR'S "SELECT" VARIETIES

Pot-grown plants of the following "Select Varieties," \$1.00 per doz.; \$7.00 per 100, \$60.00 per 1000 (250 or more at 1000 rate.) Delivery July, August and September.

EARLY

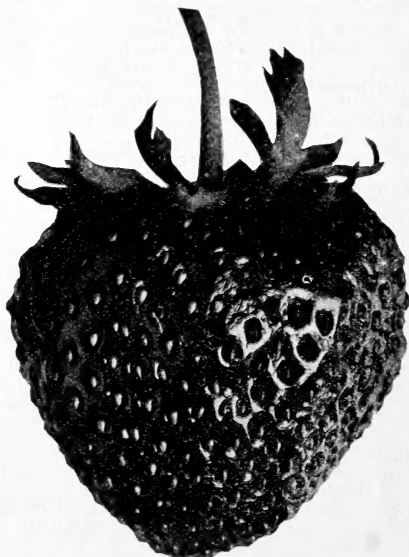
Arabine. Extra early; very large, bright red, of high quality, heavy cropper and vigorous grower.

Premier. A wonderfully productive and very early new variety. The mammoth berries are of beautiful form, rich bright red throughout and very delicious. An excellent keeper and fine for shipping.

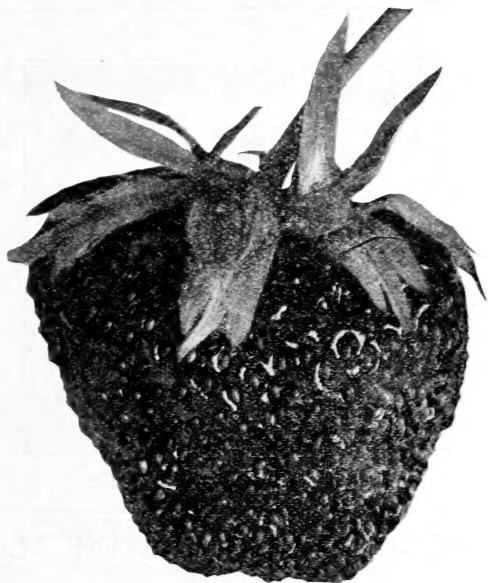
Excelsior. This is undoubtedly one of the finest early Strawberries; fruit is of attractive conical form, bright red in color, and of delicious, mildly acid flavor.

Glen Mary. Large conical berry, bright red in color, and finely flavored.

Senator Dunlap. The fruit is large, dark red clear to the center, of very rich flavor. Does not readily rot on the vines.



STRAWBERRY, GLEN MARY



STRAWBERRY, WILLIAM BELT

FARQUHAR'S "SELECT VARIETIES" (Continued)

MEDIUM.

Brandywine. A large heart-shaped berry, perfect in form, bright red in color, firm flesh, red to the center and of rich spicy flavor. A great cropper, especially on heavy soils, holds its fruit well up from the ground and generally succeeds everywhere.

Big Joe. A magnificent new Strawberry of robust growth and very prolific. The berries are light crimson in color, unusually large and of fine quality.

Marshall. The fruit of this remarkable sort is of enormous size, of handsome glossy dark crimson color, and of delicious flavor. It is one of the best midseason berries, either for private use or market. It is a vigorous grower and requires good soil and high cultivation. As it does not thrive in all soils, it should not be planted extensively until its adaptability is ascertained.

New York. One of the best sorts for Private or Market Gardens. The berries are large, of conical form; dark red; fine texture and of remarkable sweet flavor.

McAlpin. Very productive, and is considered by many growers to be one of the best of the newer introductions. The berries are scarlet in color, large and of luscious flavor.

LATE.

Gandy. This popular old variety is more largely grown than any other late sort. It is large, well formed, deep red and agreeably flavored; requires a fairly heavy soil.

Chesapeake. Vigorous grower with fruits of dark red color and rich spicy flavor.

Commonwealth. The latest of all Strawberries, bearing large conical crimson fruit, extremely sweet and of delicious flavor. It is solid, quite juicy, and productive.

William Belt. An exceptionally fine berry. In quality it heads the list. The large berries are glossy, deep red; late as Gandy.

Pot-grown plants of the above "Select Varieties" \$1.00 per doz., \$7.00 per 100, \$30.00 per 1000 (250 or over at 1000 rate.)

Delivery July, August and September.

"EVERBEARING" STRAWBERRIES

A fine late crop may be assured from this class of Strawberries by keeping the blossoms picked off the plants until July, and cutting away the runners during the summer.

Superb. This variety produces an abundance of fruit, deep red in color, of good size and flavor.

Progressive. One of the best of this class, the fruit being deep red, firm, and finely flavored.

Pot-grown plants of the above "Everbearing" Varieties \$1.25 per doz., \$8.00 per 100.



CYCLAMEN, FARQUHAR'S GIANT

GREENHOUSE and DECORATIVE PLANTS

ALAMANDA

Hendersoni. A strong-growing greenhouse climber, producing numerous large golden-yellow flowers; suitable for covering a trellis or the supports of a conservatory. \$2.00 each.

ARDISIA

Crenulata. Ornamental plants bearing clusters of bright red berries. Plants in 5-in. pots, \$2.50 each; \$27.00 per doz.

ASPARAGUS

Plumosus nanus. (*Climbing Lace Asparagus*). Bright green finely pinnated fern-like foliage; very lasting. Strong plants from 3-in. pots, 35 cts. each; \$3.50 per doz. 5-in. pots, 75 cts. each; \$7.50 per doz.

Sprengeri. The bright green feathery sprays are often three or four feet in length, of drooping habit; excellent for hanging pots and baskets; plants from 3-in. pots, 35 cts. each; \$3.50 per doz. 5-in. pots, 75 cts. each; \$7.50 per doz.

BEGONIAS.

(June and later delivery.)

Melior. A more vigorous type of the Lorraine. Plants from 2½-in. pots, \$7.50 per doz.; \$55.00 per 100. 3-in. pots, \$9.00 per doz.; \$65.00 per 100.

Mrs. J. A. Petersen. A striking variety of the Lorraine type with red foliage. The flowers are a brilliant deep pink in color and are produced in great profusion. Plants from 2½-in. pots, \$7.50 per doz. \$55.00 per 100. 3-in. pots, \$9.00 per doz.; \$65.00 per 100.

Luminosa. Deep scarlet flowers; foliage crimson-bronze. \$2.50 per doz., \$18.00 per 100.

BUDDLEIA

Farquharii. This new hybrid of our own introduction is a most valuable acquisition for the greenhouse or conservatory. The fragrant flowers are pale pink and are borne in cylindrical tail-like clusters during December and January. **Strong Plants,** 50 cts. each; \$5.00 per doz.

Hybrida, Eva Dudley. The flowers are of the most delicate lavender pink with intense orange centre. Apart from its good habit and free-growing and floriferous character, this new plant is remarkable for the delightful fragrance of its flowers. A single spray delightfully scents a whole room.. **Strong Plants,** 75 cts. each; \$7.50 per doz.

Asiatica. ("White flowered Winter Lilac.") An elegant pot plant suitable for general decorative purposes and cut flowers. Cultural requirements same as those of Chrysanthemum. Blossoms December to March; every shoot terminating in a slender tail of pure white, deliciously fragrant flowers. A notable acquisition. Plants from 3-in. pots, \$3.50 per doz.; \$25.00 per 100. 4-in. pots, \$5.00 per doz.

BOSTON, MASS.

CALCEOLARIA

Stewarti. A beautiful new variety of compact growth, bearing large sprays of bright yellow flowers. It is unsurpassed in its wealth of blooms, which are of long duration. A fine decorative plant, indispensable for the conservatory. Plants from 3½-in. pots, 75 cts. each; \$7.50 per doz.

CYCLAMEN

Farquhar's Giant. A superior strain producing large flowers of perfect form carried well above the handsome foliage; this strain first gained a national reputation of highest merit at the World's Columbian Exposition where they were awarded a Medal and Diploma as the finest there, a reputation which they have since maintained, easily holding first place at the important floricultural exhibitions of the country.

Giant White, Giant Crimson, Giant Pink, Giant Salmon, Salmon Scarlet, Giant Excelsior (white with scarlet base). Plants in 3½-in. pots, \$6.50 per doz.; \$45.00 per 100.

ERICA

Wilmoreana. Beautiful sprays of long bell-shaped delicate pink flowers. Plants from 2½-in. pots, 50 cts. each; \$5.00 per doz.

Melanthera. White flowers, tinged pink. Plants from 2½-in. pots. 50 cts. each; \$5.00 per doz.

DRACÆNA

Godseffiana. A distinct variety, forming compact graceful specimens; foliage dark green with irregular, creamy-white spots. 75 cts. and \$1.25 each.

Massangeana. Leaves green, striped yellow in centre. \$3.00 each.

Sanderiana. Graceful variety with glaucous green leaves edged with creamy-white border. \$1.00 each; \$10.00 per doz.

Terminalis. Foliage olive-green, striped with carmine and pink. Young leaves bright crimson. \$1.00 each.

Youngii. Foliage bright green when young, changing to metallic bronze. \$1.50 each.

GARDENIA

Veitchii. (*Cape Jessamine*.) Beautiful evergreen shrubs with pure white waxy flowers; very fragrant. One of the most beautiful and decorative plants. Strong plants in 2½-in. pots, 50 cts. each; \$5.00 per doz.



DRACAENA TERMINALIS

GREENHOUSE PLANTS (Continued)

POINSETTIAS

Single-flowering. (*June and later delivery.*) Plants in 2½-in. pots, \$2.00 per doz.; \$15.00 per 100. 3-in. pots (*July*), \$4.00 per doz.; \$30.00 per 100. 4-in. pots (*August*), \$7.00 per doz.; \$50.00 per 100.

CHRISTMAS PEPPERS

June and later delivery. Plants in 2½-in. pots, \$3.00 per doz.

PRIMULAS

Obeonica grandiflora. The plants are of compact growth and bloom profusely during the Winter. **White, Pink and Red.** \$3.00 per doz.

Chinensis. (*Chinese Primrose.*) An improved strain producing large trusses of bloom during the Winter. **White, Pink and Red.** \$3.00 per doz.

Malacoides. Flowers delicate lavender borne in whorls on long graceful spikes. \$3.00 per doz.

SOLANUM

capsicastrum, var. Dwarf Cleveland. (*Jerusalem Cherry.*) Ornamental plant with large bright red berries. Plants in 2½-in. pots. (*June and later delivery.*) \$3.00 per doz.

capsicastrum Golden Queen. Bright orange-yellow berries. Plants in 2½-in. pots. (*June and later delivery.*) \$3.00 per doz.

capsicastrum var. pendula. A drooping form of the "Cleveland Cherry." Plants in 2½-in. pots. (*June and later delivery.*) \$3.00 per doz.

FERNS.

Adiantum Farleyense Gloriosa. (*Glory of Moordrecht.*) This grand new variety is identical in appearance with the variety Farleyense, but has a stronger constitution, and can be grown under the same conditions as any ordinary *Maidenhair* sort. 4-in. pots, \$1.00 each; \$10.00 per doz.

Adiantum Hybridum. A very hardy variety of *Maidenhair Fern* with beautiful fronds. 3½-in. pots, 50 cts. each; \$5.00 per doz.; 5-in. pots, \$1.00 each; \$10.00 per doz.

Asplenium Nidus-Avis. (*Bird's Nest Fern.*) Fronds bright green, growing in a crown. \$2.50 each.

Cyrtomium Rochfordianum. (*New Crested Holly Fern.*) The foliage of this beautiful new fern is of a glossy dark green, the leaflets being waved or undulated on the edges, giving the plant a graceful appearance. \$1.50 each; \$15.00 per doz.

Nephrolepis exaltata Bostoniensis. (*Boston Sword Fern.*) One of the best Ferns for conservatory or window cultivation. Plants in 5-in. pots, \$1.25 each; \$12.00 per doz. 6-in. pots, \$1.75 each; \$18.00 per doz. **Larger Plants,** \$2.50 to \$7.50 each.

Nephrolepis exaltata "Roosevelt." This new variety resembles the Boston Fern in appearance, but produces more fronds, thus forming a bushier plant. The pinnæ are beautifully undulated, giving the long fronds a wavy appearance. Plants in 5-in. pots, \$1.25 each; \$12.00 per doz. 6-in. pots, \$1.75 each; \$18.00 per doz. **Larger Plants,** \$2.50 to \$7.50 each.

Nephrolepis Macawii. Very compact, graceful fronds attractively waved. 5-in. pots, \$1.25 each; \$12.00 per doz.; 6-in. pots, \$1.75 each; \$18.00 per doz. **Specimens,** \$2.50 each and upwards.

Nephrolepis Dwarf Boston. A beautiful compact form of the popular *Boston Sword Fern*. 5-in. pots, \$1.25 each; \$12.00 per doz. 6-in. pots, \$1.75 each; \$18.00 per doz.

Nephrolepis Whitmani. (*Ostrich Plume Fern.*) A beautiful crested fern with broad plume-like fronds. Plants in 5-in. pots, \$1.25 each; \$12.00 per doz.; 6-in. pots, \$1.75 each; \$18.00 per doz.

Miniature Ferns for Jardiniers. In variety. 2½-in. pots, \$1.75 per doz.; \$14.00 per 100.

PALMS.

Cocos Weddeliana. One of the finest Palms for table decoration. Plants in 2½-in. pots, 35 cts. each; \$3.50 per doz.; \$25.00 per 100. 3-in. pots, 50 cts. each; \$5.00 per doz.; \$35.00 per 100.

Kentia Belmoreana. Of the erect growing feather-leaved Palms this is the best adapted to house decoration and one of the most beautiful. The foliage is glossy dark green, the segments wide and gracefully recurved. Plants in 3-in. pots, 50 cts. each; \$5.00 per doz.; 4-in. pots, \$1.00 each; \$10.00 per doz.; 5-in. pots, \$2.00 each; \$22.00 per doz. *Made up plants,* \$5.00 to \$7.50 each.

Forsteriana. This variety is similar to K. Belmoreana, but of stronger growth, with broader and heavier foliage. Plants in 3-in. pots, 50 cts. each; \$5.00 per doz.; 4-in. pots, \$1.00 each; \$10.00 per doz.; 5-in. pots, \$2.00 each; \$22.00 per doz. *Made up plants,* \$5.00 to \$7.50 each.

FARQUHAR'S GOLD MEDAL BULBS For Forcing



EARLY WHITE ROMAN HYACINTHS

EARLY ROMAN HYACINTHS.

These beautiful Hyacinths are indispensable to the florist in his Autumn and Winter cut-flower work; while to the amateur they are among the most easily cultivated and most satisfactory of flowering bulbs. The white variety, if planted early in September and gently forced, will bloom in November; the others require from two or three weeks longer.

When grown in pots or pans they are most effective planted in groups of six or more bulbs in each.

White. Mammoth Bulbs. \$2.00 per doz.; \$15.00 per 100.

Extra Large Bulbs. \$1.75 per doz.; \$12.50 per 100.

POLYANTHUS NARCISSUS.

A very decorative class of bulbous plants for greenhouse and window cultivation, but not hardy out of doors in our climate. They may be easily and quickly forced; our florists frequently have them in bloom by Thanksgiving.

Early Large-Flowering Paper White. The earliest, largest and most vigorous form of the *Paper White*; the best of all for very early forcing; pure white.

Mammoth Bulbs. 85 cts. per doz.; \$6.00 per 100; \$58.00 per 1,000.

Extra Large Bulbs. 75 cts. per doz.; \$5.00 per 100; \$48.00 per 1,000.

Soleil d'Or. Yellow, with orange cup, an excellent forcing variety. \$1.35 per doz.; \$10.00 per 100.

NARCISSUS JONQUILLA OR JONQUILS

The delicately graceful forms, delicious fragrance and deep yellow color of their blossoms have made the Jonquils favorites. Plant six or eight bulbs in a six-inch bulb pan, covering the crowns half an inch.

Rugulosus. Rich yellow; very fragrant; the largest Jonquil; fine for cutting. \$6.00 per 100; \$55.00 per 1000.

Campernelle. Large, deep yellow flowers, excellent for cutting. \$6.00 per 100; \$55.00 per 1000.

LARGE TRUMPET DAFFODILS (*Narcissus Ajax*.)

Trumpet or crown as long as, or longer than the perianth segments.

Duke of Bedford. A magnificent new bi-color of immense size and substance. White perianth and long wide-mouthed trumpet of deep yellow. 60 cts. each; \$6.00 per doz.

Emperor. Immense flower; trumpet clear golden-yellow; perianth deep primrose, often three-and-a half inches across; fine forcing sort. \$9.00 per 100; \$86.00 per 1000.

Empress. Very large, reflexed, rich yellow trumpet, broad white perianth of great substance; one of the finest Daffodils; forces well. \$9.00 per 100; \$86.00 per 1000.

Glory of Noordwijk. Large pure yellow trumpet, perianth sulphur-yellow. A magnificently proportioned flower. \$1.15 per doz.; \$9.00 per 100.

Glory of Leiden. Clear yellow; one of the largest of the Giant Trumpet varieties. A fine exhibition sort. Awarded first-class certificate, R. H. S. London. \$8.50 per 100; \$80.00 per 1000.

Golden Spur. Very large and fine flower; immense golden trumpet reflexed at the lip; perianth very broad; a splendid forcing variety. \$7.50 per 100; \$70.00 per 1000.

Henry Irving. A noble flower of rich golden-yellow; trumpet large and wide, recurved at the lip; petals of the perianth broad and overlapping; very handsome. \$8.00 per 100; \$75.00 per 1000.

King Alfred. The finest yellow Daffodil; enormous flowers of deep golden-yellow throughout. \$3.00 per doz.; \$22.00 per 100.

Madame de Graaff. The largest and finest White Trumpet Daffodil. The trumpet on opening is pale primrose, but the whole flower soon becomes pure white. It is excellent for forcing in pans. \$9.00 per 100.

Madame Plomp. Large pure white perianth; golden-yellow trumpet; very large, well-formed flowers. \$8.00 per 100.

Maximus, or Hale's Beaten Gold. Large, fragrant flowers of pure golden-yellow. \$8.00 per 100; \$75.00 per 1000.

Olympia. Perianth light chrome-yellow; trumpet deep chrome-yellow. A very large flower of remarkable substance; fine exhibition sort. \$2.50 per doz.; \$20.00 per 100.

Princeps Maximus. A favorite forcing sort. It is very early, of good substance, and keeps well when cut. The trumpet is of large size and deep yellow; perianth pale primrose. Splendid for forcing and cutting. \$7.00 per 100; \$65.00 per 1000.

Silver Spur. A new variety blooming as early as Golden Spur, but resembling *Empress* in color, form and constitution. \$12.00 per 100.

Spring Glory. A fine flower with broad white perianth and large trumpet of deep chrome yellow; a strong grower. \$3.00 per doz.; \$24.00 per 100.

Spurius. One of the finest Trumpet Daffodils, self-colored; clear yellow; large wide-mouth trumpet; excellent forcing and bedding sort. \$6.00 per 100; \$55.00 per 1000.

Trumpet Major. (*Dutch Grown*.) Trumpet and perianth deep golden-yellow; very effective. The most popular Daffodil for both forcing and bedding. \$6.00 per 100; \$55.00 per 1000.

Vanilla. Large, bold, yellow trumpet and sulphur-yellow perianth; very tall. Flowers have the odor of vanilla. \$11.00 per 100.

Victoria. Bold, erect, clear yellow trumpet of large size, and beautifully frilled at the mouth; perianth creamy-white, broad and of good substance. \$7.50 per 100; \$72.00 per 1000.

Van Waveren's Giant. The largest of all trumpets; flowers of immense size. Perianth primrose and of campanulate form, trumpet bright yellow with large, open mouth. \$3.50 per doz.; \$25.00 per 100.

Weardale Perfection. A strikingly beautiful bi-color Daffodil, with large, white perianth and soft, primrose trumpet of immense size. Blooms have been exhibited measuring 5 inches across. \$4.00 per doz.; \$30.00 per 100.

NARCISSUS POETICUS (True Poet's Narcissi.)

These "Poet's" Daffodils all have snowy-white perianth and flattened yellow crown more or less deeply colored with scarlet or crimson.

Poeticus. (*Pheasant's Eye* or *Poet's Narcissus*.) Pure white with red crown; very fragrant; excellent for forcing and cutting. For naturalizing in woodlands and wild gardens this is one of the very best sorts; it is perfectly hardy and will thrive in almost any situation where not exposed to high winds. 60 cts. per doz.; \$4.50 per 100; \$42.00 per 1000.

King Edward. (*Almira*.) Broad, pure white perianth with cup canary-yellow, with orange-scarlet crown. \$1.15 per doz.; \$9.00 per 100.

Glory of Lisse. An improved form of *Poeticus ornatus*; an unusually fine flower. \$1.25 per doz.; \$10.00 per 100.

Ornatus. Large symmetrical flowers; broad white perianth with red crown; very early; beautiful and valuable for forcing and cutting. 60 cts. per doz.; \$4.50 per 100; \$42.00 per 1000.

BARRII DAFFODILS (*Narcissus Barrii*)

SHORT-CUPPED OR STAR NARCISSI.

Cup or crown measuring less than one-third the length of the perianth segments.

Conspicuous. Large, broad spreading perianth, primrose-yellow; crown yellow, conspicuously edged with orange-scarlet; unexcelled for cutting and lasts long in water after being cut. 75 cts. per doz.; \$5.50 per 100; \$52.00 per 1000.

Firebrand. Creamy-white; fiery-red cup. \$1.10 per doz.; \$8.50 per 100.

Lady Godiva. Perianth white, cup large and heavily stained; bright orange-scarlet; large, handsome flower. \$1.15 per doz.; \$8.50 per 100.

LEEDSII DAFFODILS (*Narcissus Leedsii*)

EUCHARIS FLOWERED OR SILVER-WHITE FRAGRANT STAR NARCISSI.

Comprising all the chalice-cupped and short-cupped Narcissi having white perianth and cup or crown of white, cream or pale yellow.

Minnie Hume. Large white perianth; spreading cup, passing from lemon to white. 75 cts. per doz.; \$5.00 per 100; \$48.00 per 1000.

Mrs. Langtry. A lovely free-blooming Daffodil which should be largely grown out of doors. The flowers have a broad white perianth, with the cup white or pale primrose. 75 cts. per doz.; \$5.00 per 100; \$48.00 per 1000.

White Lady. A charming flower with a broad white perianth of perfect form; cup very pale canary-yellow and beautifully frilled; a grand cutting variety and lasts long in water after being cut. \$1.10 per doz.; \$8.00 per 100.

DOUBLE DAFFODILS OR NARCISSI.

Von Sion. (*Telamonious Plenus*.) The renowned "Old Double Yellow Daffodil." Flowers deep golden-yellow; large and very decorative; the most extensively grown of all Daffodils for florists' use. They are seen to great advantage when planted in clumps in permanent borders or shrubberies, where they can be left undisturbed for several years.

Double Nosed Bulbs, extra large. \$1.00 per doz.; \$7.50 per 100; \$72.00 per 1000.

Single Nosed Bulbs, extra large. 85 cts. per doz.; \$6.00 per 100; \$58.00 per 1000.

Alba Plena Odorata. (*Double Poet's* or *Gardenia-flowered Narcissus*.) Large double pure white flowers, in sweetness and purity rivalling Gardenia blossoms; valuable for cutting. 75 cts. per doz.; \$5.00 per 100; \$48.00 per 1000.

Incomparabilis Plenus. (*Butter and Eggs*.) Large double, yellow flowers, with orange centre; excellent for forcing, for Winter cutting and for Spring flowering in the open ground. 85 cts. per doz.; \$6.00 per 100.

Orange Phoenix. (*Eggs and Bacon*.) Large, double white flowers, with rich orange segments in the centre; very effective and desirable for both forcing and outdoor planting. \$1.00 per doz.; \$8.00 per 100.

FARQUHAR'S SINGLE EARLY TULIPS.

- Cottage Maid.** Lovely rose-pink, shaded with white; excellent for forcing and bedding. \$6.00 per 100; \$58.00 per 1000.
- Gold Finch.** A pure golden-yellow form of Yellow Prince; forces easily and early and stands well when cut. \$6.00 per 100; \$58.00 per 1000.
- Golden Queen.** Pure yellow; very large flower. A grand new sort. \$6.00 per 100; \$58.00 per 1000.
- Joost van Vondel White.** (*Lady Boreel.*) The largest and most beautiful pure white sort, excellent for bedding and forcing, two or three days later than other Single Early Tulips. \$6.00 per 100; \$55.00 per 1000.
- Keizerskroon.** (*Grand Duc.*) Crimson-scarlet bordered with clear yellow; large and very beautiful; one of the very best Tulips. \$6.00 per 100; \$58.00 per 1000.
- La Reine.** (*Queen Victoria.*) A charming flower, white, lightly shaded with rose; splendid for both bedding and forcing. \$3.50 per 100; \$32.00 per 1000.
- Pink Beauty.** A lovely new sort, glowing rose-pink, outer petals flushed white. \$11.00 per 100.
- Prince of Austria.** Rich orange-red; fine bedder; sweet scented. \$5.50 per 100; \$52.00 per 1000.
- Proserpine.** Brilliant carmine-rose; very large blooms, often two on stem; a gorgeous Tulip, lasting long in bloom. \$8.50 per 100; \$80.00 per 1000.
- Vermilion Brilliant.** Dazzling scarlet; one of the best red sorts for both forcing and bedding. \$8.00 per 100; \$78.00 per 1000.

FARQUHAR'S GIANT DARWIN TULIPS.

- Bartigon.** Magnificent variety with large flowers of fiery red with a white base. \$7.00 per 100; \$68.00 per 1000.
- Clara Butt.** Exquisite shade of clear pink, flushed salmon-rose; a large flower of remarkable beauty. The finest Darwin of its color. \$3.75 per 100; \$35.00 per 1000.
- Erguste.** Pale violet, flushed silvery-white, inside dark violet with white base. Excellent for borders. \$5.00 per 100; \$48.00 per 1000.
- Farncombe Sanders.** Fiery rosy-scarlet, with white centre marked blue. One of the finest red varieties. \$6.00 per 100; \$58.00 per 1000.
- Gretchen.** (*Margaret.*) Delicate flesh-pink, showing deeper pink, inside centre white, marked blue. A very attractive flower of delicate color. \$3.75 per 100; \$35.00 per 1000.
- Madame Krelage.** Beautiful deep rose margined pale silvery-rose; large flower. \$6.00 per 100; \$55.00 per 1000.
- Pride of Haarlem.** One of the largest Tulips grown and of excellent form; color, brilliant rosy-carmine, with bright blue base. \$5.00 per 100; \$48.00 per 1000.
- Rev. H. Ewbank.** Vivid heliotrope, shaded with lilac; very large and striking flower. \$5.00 per 100; \$48.00 per 1000.
- Wm. Copeland.** (*Sweet Lavender.*) Bright violet; beautiful forcer. \$6.00 per 100; \$58.00 per 1000.

LILIES FOR FORCING.

If wanted by mail, add 5 cents each.

The bulbs may be potted from August onward in a compost of equal parts turfy loam, leaf mold, rotten cow manure and sand. It is best to start them in pots not exceeding twice their own diameter, in which they may remain until started eight inches or more. They should be transferred then to larger pots in which to bloom, exercising great care not to disturb the roots or break away the soil from about them, and setting them considerably deeper in the larger pots.

LILIUM CANDIDUM. (*Ascension or Madonna Lily.*)

These are grown for us in France, and are the large variety, with pure white flowers; excellent both for forcing and open garden.

Mammoth Bulbs. 40 cts each; \$4.25 per doz.; \$32.00 per 100.

Extra Large Bulbs. 30 cts. each; \$3.25 per doz.; \$25.00 per 100.

LILIUM HARRISSI. (*The Bermuda Easter Lily.*)

Choice, thoroughly ripened bulbs, from the finest stock in Bermuda.

Extra Large Bulbs. 7 to 9 in. circ., 60 cts. each; \$6.00 per doz.; \$48.00 per 100.

Mammoth Bulbs. 9 to 11 in. circ., \$1.00 each; \$10.00 per doz.; \$80.00 per 100.

LILIUM LONGIFLORUM. (*Japan Grown.*)

Giganteum. The flowers of this type are of a large size, perfect in form and of superior substance; stems marked black. 9 to 10 in. circ., \$6.00 per doz.; \$42.00 per 100.

Formosum. An early flowering type, blooming as early as the Harrisii. 9 to 10 in. circ. \$7.50 per doz.; \$60.00 per 100.

MISCELLANEOUS BULBS.

ANEMONES.

None of the Spring flowers surpass the Anemone in brilliancy of color and profusion of bloom. They are very lasting and popular for cut flower use and for table decoration. Plant in October or November, six roots in a six-inch pot or bulb pan covering them one inch. They may be kept in a cellar or frame protected from frost until Spring when they may be placed in the greenhouse or window to bloom.

St. Brigid. (*Irish Anemone.*) Semi-double flowers in shades of scarlet, blue and purple, excellent for cutting. \$6.00 per 100; \$55.00 per 1000.

Single de Caen. (*Giant French Poppy-flowered Anemone.*) Large flowers of brilliant and varied colors. \$5.00 per 100; \$48.00 per 1000.

CHIONODOXAS. (Glory of the Snow.)

One of the most beautiful dwarf blue Spring flowers resembling those of *Scilla siberica* but larger, slightly taller and more handsome. The chionodoxa is very hardy, thriving in any ordinary garden soil and in almost any situation. The bulbs continue to flower from year to year. It is most satisfactory for wild garden and woodland planting, also excellent for forcing.

Gigantea. Large blooms of soft gray-blue. \$4.50 per 100; \$42.00 per 1000.

Lucillæ. Bright sky-blue flowers, with large white centres. \$3.00 per 100; \$28.00 per 1000.

CALLA LILIES (Richardia.)

The Godfrey. A new ever-blooming variety, producing large white and slightly fragrant flowers. The plant is of dwarf compact habit with dark green leaves. 40 cts. each; \$4.50 per doz.; \$35.00 per 100.

White Calla. (*R. Æthiopica.*) The *Lily-of-the-Nile* is too well known to require any description. In Winter it is one of the best window plants. **Mammoth Roots.** 40 cts. each; \$4.00 per doz.; \$30.00 per 100.

Extra Size Roots 30 cts. each; \$3.00 per doz.; \$22.00 per 100.

Elliottiana. (*The Golden Calla.*) The flowers are of the same form and size as the White Calla, but are pure golden-yellow color. The foliage is delicately spotted white (*November delivery.*) 50 cts. each; \$5.00 per doz.

FREESIAS.

The gracefully branched, fragrant flowers are of long duration, and being freely produced are profitable for commercial purposes, and satisfactory to amateurs. If planted early they may be had in bloom by Christmas. Plant eight or ten bulbs in a six-inch bulb pan, covering them one inch.

Purity. Mammoth Bulbs. Snowy white. 75 cts. per doz.; \$5.00 per 100; \$45.00 per 1000.

Extra Large Bulbs 50 cts. per doz.; \$3.75 per 100; \$35.00 per 1000.

Large Bulbs 35 cts. per doz.; \$2.50 per 100; \$22.00 per 1000.

General Pershing. One of the finest of the new colored Freesias: color a clear carmine-pink with white throat. Very decorative and a strong grower, 85 cts. per doz.; \$6.00 per 100;

Giant Golden Yellow. Very attractive, \$1.35 per doz.; \$10.00 per 100.

FRITILLARIAS.

Exceedingly pretty, dwarf, Spring-flowering plants, with large pendant, bell-shaped flowers of white, yellow, brown and purple, usually striped or mottled. They are desirable for both house and garden cultivation. Out-of-doors the bulbs should be planted four inches deep; they are quite hardy.

Meleagris Finest Mixed. (*Guinea-Hen Flower.*) \$5.00 per 100; \$45.00 per 1000.

Imperialis Mixed. (*Crown Imperials.*) Hardy border plants of stately growth, producing whorls of pendant bell-shaped blossoms. They are very effective and if left undisturbed for years will flower abundantly. Plant 8 inches deep. 35 cts. each; \$3.00 per doz.; \$20.00 per 100.

GRAPE HYACINTHS. (Muscari.)

Very hardy, dwarf, Spring-flowering bulbs succeeding in almost any situation, and suitable for edgings and clumps in shrubbery and hardy perennial beds. They also produce a splendid effect and thrive planted in the grass in the same manner as Crocuses. -They are also excellent for pot culture.

Blue Grape Hyacinths. \$2.50 per 100; \$22.00 per 1000.

White Grape Hyacinths. \$4.00 per 100; \$35.00 per 1000.

Heaveny Blue Grape Hyacinths. A new type with large flowers of rich bright blue; desirable for cutting or for massing in the garden or border. \$3.50 per 100; \$32.00 per 1000.

OXALIS.

Lovely little bulbous plants for hanging pots and baskets. The bulbs should be planted an inch deep, six or eight in a 5-inch pot. They need a sunny situation.

Bermuda Buttercup. Flowers clear yellow; very beautiful, 50 cts. per doz.; \$3.50 per 100.

Bowell. Large rosy-crimson flowers and handsome foliage. 50 cts. per doz.; \$3.50 per 100.

Grand Duchess Oxalis. These Californian varieties are most desirable for window culture, blooming all Winter. The plants are of dwarf habit, producing exquisite flowers on long stems.

White, Pink and Lavender. 40 cts. per doz.; \$3.00 per 100.

RANUNCULUS.

Gorgeous dwarf flowers, easily grown in pots for winter-blooming, or in cold-frames for Spring; About 8 roots in a six inch bulb-pan; should be covered one inch. The colors vary from white, yellow, crimson, purple to almost black.

Giant Double French, Mixed. \$6.00 per 100; \$55.00 per 1000.

SCILLAS.

Extremely hardy, early-flowering bulbs thriving in any situation and worthy of general cultivation. The bulbs *S. siberica* should be planted three inches deep; those of *campanulata* and *nutans* four or five inches deep.

Siberica (*Amæna* or *Præcox*.) Flowers charming bright blue, of compact growth five to six inches high; beautiful in combination with snowdrops or Crocuses, also excellent for forcing in pans. If grown in masses their flowers fairly carpet the ground. \$5.00 per 100; \$45.00 per 1000.

Campanulata Blue. A beautiful Spring-flowering bulb producing bright blue bell-shaped flowers. One of the finest bulbs for naturalizing. Height 1 ft. \$4.00 per 100; \$38.00 per 1000.

Campanulata Rose. Delicate rose-pink. \$5.00 per 100; \$45.00 per 1000.

Campanulata White. Pure White, waxy bells. \$4.00 per 100; \$38.00 per 1000.

Campanulata Excelsior. Deep blue; large bells. \$6.00 per 100; \$55.00 per 1000.

Nutans Cœrulea. (*The Bluebell* or *Hyacinth of English Woods*.) Elegant spikes of bright blue hyacinth-like flowers. Height 1 ft. \$3.50 per 100; \$32.00 per 1000.

Nutans alba. Pure white. \$4.00 per 100; \$38.00 per 1000.

Nutans Rosea. Pink. \$4.00 per 100; \$38.00 per 1000.

SNOWDROPS. (Galanthus.)

These well-known favorites are among the hardiest and earliest of Spring flowers. The bulbs should be planted three inches deep; they thrive in almost any soil and situation.

Single Snowdrops. White. \$4.00 per 100; \$38.00 per 1000.

SPRING SNOWFLAKE. (Leucojum.)

Beautiful, fragrant white flowers of drooping habit, produced on long stems. Easily naturalized and quite hardy. \$6.00 per 100.

WINTER ACONITE. (Eranthis Hyemalis.)

The earliest Spring flower; the large golden yellow Buttercup-like blossoms often expanding in the snow; height six inches. \$2.50 per 100; \$22.00 per 1000.

FARQUHAR'S SUPERB PANSY SEEDS

CULTURE OF PANSIES

Pansies thrive best in a cool, moist, but well drained soil, enriched with well rotted barnyard manure or fine ground bone. The finest blooms are to be obtained by sowing in July or August giving the plants protection during Winter, when they will bloom profusely the following Spring and Summer.

3085	FARQUHAR'S FINEST SHOW STRAIN, MIXED. A superb mixture of the largest and best types in an immense variety of brilliant colors.	Pkt.
	$\frac{1}{4}$ oz., \$3.50; $\frac{1}{2}$ oz., \$2.00; packet of about 250 seeds,	.50
3090	FARQUHAR'S FINEST SHOW STRAIN, MIXED. Second size packet of about 100 seeds	.25
3095	FARQUHAR'S FRAME GIANTS. The finest strain known, the flowers being of perfect form and richest colors. For frame culture this mixture is unexcelled, producing flowers of great size and perfection: equally good out of doors	$\frac{1}{2}$ oz., \$3.00; 1.00
3096	FARQUHAR'S ORCHID-FLOWERED MIXED. This race embraces many interesting combinations of color varying from pale primrose to orange, pale mauve, also through the various shades of rose	$\frac{1}{2}$ oz., \$1.50; .25
3100	SPECIAL MIXTURE. Embracing the leading strains, all grown by specialists and including the finest colors and markings in endless variety. This mixture is extensively used by florists. Oz., \$6.00; $\frac{1}{4}$ oz., \$1.75;	.25
3105	CASSIER'S GIANT MIXTURE. An excellent strain for outdoor or greenhouse cultivation. The plants are of sturdy growth, producing large round flowers, beautifully blotched	$\frac{1}{4}$ oz., \$2.00; .25
3106	BUGNOT'S LARGE BLOTCHED. Finely formed flowers of rich and brilliant colors	$\frac{1}{4}$ oz., \$2.00; .25
3108	CHOICE MIXTURE. In splendid variety. $\frac{1}{4}$ oz., .75;	.10

FARQUHAR'S REGAL GIANTS.

A remarkable strain of Giant Pansies producing flowers of mammoth size on long strong stems.

		Pkt.
3112	Prince Henry. Dark Blue	.25
3114	Madame Perret Improved. Wine colors, edged white	.25
3115	Purple.	.25
3116	Parisian Yellow. Pure yellow	.25
3118	Black Mastodon. Velvety-black	.25
3122	Meteor. Wine-red	.25
3123	Bronze	.25
3124	Snowdrift. Pure white	.25
3125	Regal Giant Mixed.	.25
	Each of the above varieties and mixed.	$\frac{1}{2}$ oz. \$1.25
3126	Collection of 6 Varieties "Regal Pansies" one packet of each, our selection.	1.25

GIANT OR TRIMARDEAU.

3130	Cornflower. Ultramarine blue; the finest dark blue	.15
3135	Queen of the Blues. Lavender	.15
3140	Golden Gem. Pure yellow	.15
3145	Snow Queen. Pure white	.15
3150	Golden Yellow with Dark Eye	.15
3155	King of the Blacks. Coal black	.15
3160	Lord Beaconsfield. Violet; shaded white	.15
3165	White with Violet Eye	.15
3180	Trimardeau Mixed. Fine assortment of colors	.15

Each of the above varieties and mixed, $\frac{1}{4}$ oz., \$1.50; $\frac{1}{2}$ oz., 85 cts.

TUFTED PANSIES. (*Viola cornuta*.)

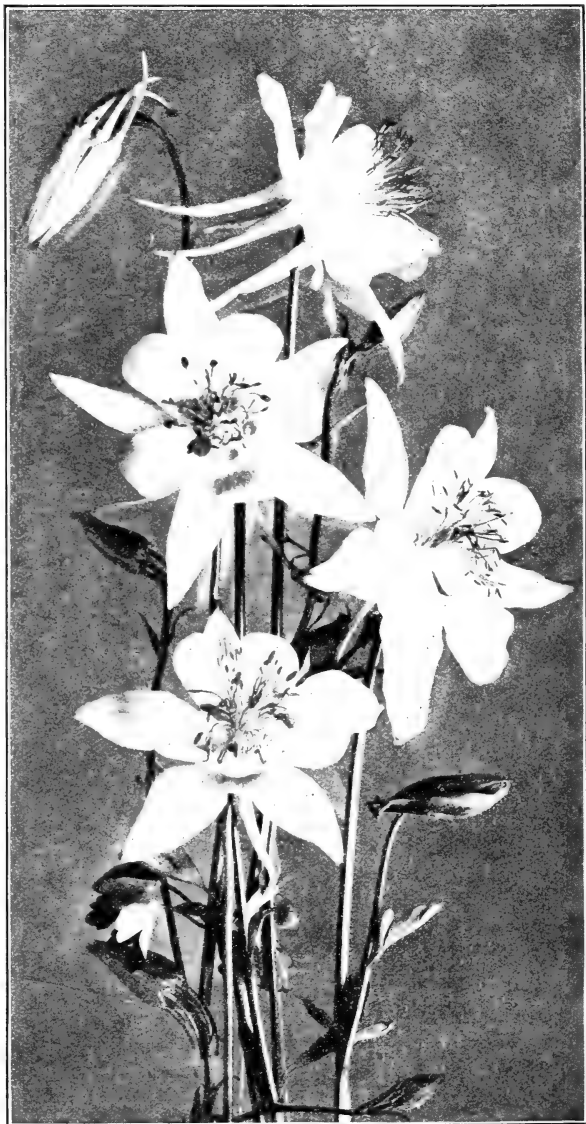
Free-blooming plants for partially-shaded beds and borders.

3275	Admiration. Rich dark blue	$\frac{1}{4}$ oz., \$1.50; .15
3280	Blue Perfection. Mauve, yellow eye	" 1.75; .15
3285	grandiflora lutea. Golden-yellow flowers	" 1.50; .15
3290	Mauve Queen. Light blue	" 1.75; .15
3295	Pink. A new and pleasing shade	" 1.50; .15
3300	Papilio. A lovely violet-lilac; very free	" 1.50; .15
3305	White Perfection. Snowy white	" 1.50; .15
3310	Tufted Mixed. All colors	" 1.00; .10

FARQUHAR'S HARDY PERENNIAL FLOWER SEEDS

FOR COMPLETE LIST SEE OUR GARDEN ANNUAL.

Hardy perennials are easily raised from seeds; the simplest method is to sow them in a frame, protecting the seedlings as they appear above ground from the sun. The soil should be kept evenly moist but not saturated. Transplant the seedlings once or twice if necessary to prevent crowding.



AQUILEGIA FARQUHAR'S LONG SPURRED HYBRIDS
(For Description see next page.)

BOSTON, MASS.

ACHILLEA (*Milfoil or Yarrow.*)

- 5920 **ageratum.** A most desirable variety, with bright golden-yellow flowers, sweetly scented. June to August. 1½ ft. ¼ oz., .50; .15
 5925 **ptarmica, The Pearl.** One of the finest perennials, blooming all Summer; the flowers are borne in clusters on long stems, and are of purest white. 1½ ft. ¼ oz., \$1.50; .25

ACONITUM. (*Monkshood.*)

Hardy perennials with showy spikes of hood-shaped flowers; valuable for planting in shady beds or borders.

- 5935 **napellus.** Large dark blue flowers. August and September. 3 ft. ¼ oz., .75; .15
 5946 **Wisoni.** Light blue flowers in large trusses; very late. 4 ft. ¼ oz., .25

ADONIS.

- 5955 **vernalis.** One of the best Spring flowering perennials; large yellow blossoms. 1 ft. ¼ oz., .75; .10

AGROSTEMMA (*Mullein Pink*)

- 5965 **coronaria atrosanguinea.** An old-fashioned perennial with silvery-white foliage and dark crimson flowers; June to August. 2 ft. ¼ oz., .50; .10
 5970 **coronaria alba.** Similar to the preceding; with white flowers. ¼ oz., .50; .10
 5972 **Flos-Jovis.** (*Flower of Jove.*) Deep pink. 1 ft. ¼ oz., .50; .10
 5975 **hybrida Walkeri.** Large bright pink flowers; June to August. 2 ft. ¼ oz., .75; .15

ALYSSUM.

- 5985 **saxatile compactum.** (*Gold Dust.*) Valuable hardy perennial of spreading growth, producing masses of bright yellow flowers in Spring. 9 in. ¼ oz., .35; .10
 5990 **saxatile Silver Queen.** A new variety with lovely pale lemon-colored blossoms. 9 in. ¼ oz., .75; .25
 5995 **rostratum.** Bright golden-yellow flowers; June. ¼ oz., .50; .15

ANCHUSA.

- 6006 **italica Dropmore Variety.** A grand improvement on the type. The plants are more vigorous in growth with larger flowers of a lovely shade of gentian blue; June to September. 3 to 4 ft. ¼ oz., .50; .25
 6008 **italica Opal.** Large pale blue flowers; very beautiful. June to August. 3 to 4 ft. ¼ oz., \$1.00; .25

ANTHEMIS.

- 6015 **tinctoria Kelwayi.** A greatly improved strain of this handsome perennial with bright yellow daisy-like flowers; June to September. 1½ ft. ¼ oz., .40; .10

ANTHERICUM (*St. Bruno's Lily.*)

- 6025 **lilliastrum Farquhar's Giant.** A beautiful plant with narrow grass-like foliage and long spikes of bloom. The flowers are white with a green spot on each petal; May and June ¼ oz., \$1.00; .25

AQUILEGIA (*Columbine.*)

- 6030 **Farquhar's Giant Long-spurred Hybrids.** These Hybrids comprise the best and brightest colors as well as many new and beautiful combinations of charming and striking contrasts in the same flower. This strain includes shades of blue, lavender, pink, scarlet, yellow and white, of the large-flowered and long-spurred forms. 2 ft. ¼ oz., \$1.50; .50
 6032 **Selected Hybrids Mixed.** A beautiful strain of Columbines comprising many colors. ¼ oz., \$1.00; .25
 6035 **alpina.** Deep blue, useful for rockeries. 1 ft. ¼ oz., .50; .15
 6040 **Californica hybrida.** Petals golden-yellow, sepals and spurs crimson; magnificent. 2 ft. ¼ oz., \$1.00; .25
 6045 **canadensis.** The small scarlet and yellow native species. ¼ oz., .75; .15
 6050 **Chrysantha.** Pale yellow, long-spurred flowers. 2 ft. ¼ oz., \$1.50; .15
 6055 **chrysantha grandiflora alba.** Beautiful pure white, long spurs. 2 ft. ¼ oz., \$1.00; .25
 6060 **cœrulea.** (*Rocky Mountain Columbine.*) Exquisite variety with pale blue and white flowers, long spurs. 3 ft. ¼ oz., \$1.50; .25
 6065 **cœrulea white.** (*Rocky Mountain White Columbine.*) The best long-spurred white ¼ oz., \$1.50; .25
 6067 **Farquhar's Pink.** Beautiful pink long-spurred flowers. 3 ft. ¼ oz., \$1.50; .25

AQUILEGIA (*Continued on next page*)

AQUILEGIA (*Continued*)

- 6070 **glandulosa.** Dark blue with white corolla; flowers 3 in. across. A superb sort. 1 ft. Pkt. .25
 6075 **haylodgensis.** (*Cærulea hybrida.*) Large-flowered hybrids with long spurs; shades of blue, white and yellow. 3 ft. $\frac{1}{8}$ oz., .75; .20
 6095 **Skinneri.** (*Mexican Columbine.*) Large scarlet and yellow flowers; long spurs. 2 ft. $\frac{1}{8}$ oz., \$1.00; .25
 6115 **Farquhar's Double Hybrids Mixed.** Our selection, contains only the finest forms of the double Columbine. $\frac{1}{8}$ oz., \$1.00; .25
 6120 **Single Mixed.** In great variety . . . $\frac{1}{4}$ oz., \$1.00; .10
 6125 **Collection of 6 Varieties Separate.** Our selection, 1.00

ARABIS (*Rock Cress.*)

- 6130 **alpina.** Very early-flowering hardy perennial with erect spikes of pure white flowers; valuable for edgings and rockeries. 6 to 9 in. Oz., \$1.50; $\frac{1}{4}$ oz., .50; .10

ARMERIA (*Thrift or Sea Pink*).

- 6135 **formosa.** A pretty edging plant with deep pink flowers; May to September. 1 ft. $\frac{1}{4}$ oz., .60; .10

ASCLEPIAS (*Butterfly-weed*).

- 6145 **tuberosa.** One of the finest native perennials with compact umbels of brilliant orange-red flowers. Invaluable for border or shrubbery groups; July and August. 2 ft. $\frac{1}{8}$ oz., .75; .15

ASPHODELUS.

- 6165 **luteus.** Effective plant with tall spikes of fragrant yellow, lily-like flowers. 2 ft. $\frac{1}{4}$ oz., .60; .15

ASTERS. (*Michaelmas Daisy*).

These showy hardy perennials are easily raised from seeds and if sown from May to July, are likely to bloom the following Autumn.

- 6170 **alpinus.** Purple, large yellow centre. 1 ft. $\frac{1}{4}$ oz., .75; Pkt. .15
 6180 **Bessarabicus.** Large purple flowers. 2 ft.15
 6185 **Novæ Angliæ.** Mixed. 4 ft.15
 6190 **ptarmicoides.** Distinct variety with pure white flowers; useful for cutting. 1½ ft. $\frac{1}{8}$ oz., .75; .15
 6195 **sub-cæruleus.** A grand species from India, with giant flowers mauve-colored with bold orange centre, borne on long straight stems. The flowers are from two to three inches in diameter, and the plants commence blooming very early in the season. 2 ft. $\frac{1}{8}$ oz., \$1.00; .25
 6205 **New Hybrids Mixed.** Many beautiful shades. 2 to 3 ft. $\frac{1}{8}$ oz., \$1.00; .25

AUBRETIA.

- 6210 **deltoidea grandiflora.** Very compact, flowers lavender blue; Spring flowering. 4 in.25
 6215 **Leichtlinii.** Dwarf hardy perennial suitable for rockeries and herbaceous borders. Flowers a pretty shade of deep rose; May. 4 in.25

BAPTISIA. (*False Indigo*).

- 6220 **australis.** A strong growing plant producing spikes of pea-shaped blue flowers six inches in length. June and July. 2½ ft. $\frac{1}{4}$ oz., .75; .10

BOCCONIA. (*Plume Poppy*).

- 6225 **japonica.** A noble hardy perennial, with large glaucous leaves and tall flower stems with terminal panicles of white flowers. Useful for planting as a background in large beds. July and Aug. 6 to 8 ft. $\frac{1}{4}$ oz., .35; .10

BOLTONIA.

- 6230 **asteroides.** One of the showiest of our native perennials closely resembling and allied to the hardy Asters; flowers pure white. Aug. and Sept. 6 ft.25
 6235 **latisquama.** Flowers pink, slightly tinged with lavender; finest of the section. Aug. and Sept. 5 ft.25

CALLIRHOE. (*Poppy Mallow*).

- 6245 **verticillata.** Elegant hardy Mallow of easy culture and spreading growth, blooming all Summer; large crimson Linum-like flowers. 1½ ft. $\frac{1}{4}$ oz., .50; .15

CAMPANULA. (*Bell-Flower*).

All the species of Campanula are elegant when in bloom and are worthy of being largely grown. It is best to sow these two classes in June or July for plants to bloom the next Summer.

CAMPANULA (*Continued on next page.*)

BOSTON, MASS.

CAMPANULA, PERENNIAL VARIETIES.

6250	carpatia. (<i>Carpathian Blue Bell.</i>) Neat hardy perennial growing in compact tufts; flowers clear blue; in bloom all Summer; splendid for mixed borders. 8 in. Pkt.	
		$\frac{1}{4}$ oz., .75; .10
6255	carpatia alba. (<i>White Carpathian Bell.</i>) White.	
		$\frac{1}{4}$ oz., .75 .10
6260	glomerata. (<i>Clustered Bell-flower.</i>) Dense clusters of funnel-shaped violet-blue flowers. July and Aug. 1½ ft.	
		$\frac{1}{8}$ oz., \$1.00; .15
6262	glomerata dahurica. Deep violet-blue, large truss. 1½ ft.	
		$\frac{1}{8}$ oz., \$1.00; .15
6265	grandis. (<i>Great Bell-flower.</i>) Large saucer-shaped violet blue flower. 1½ ft.25
6268	lactiflora cœrulea. A handsome variety, with flowers in loose heads, pale lilac, shaded white; July and August. 3 ft.25
		$\frac{1}{8}$ oz., \$1.00; .25
6275	macrantha. Purplish-blue; large flowers. 2 ft.10
		$\frac{1}{2}$ oz., .35; .10
6290	persicifolia grandiflora Blue. One of the finest Campanulas, with large, bright blue-cup-shaped flowers. June and July. 2 ft.25
		$\frac{1}{8}$ oz., \$1.25; .25
6295	persicifolia grandiflora White. Erect spikes of snow white flowers25
		$\frac{1}{8}$ oz., \$1.25; .25
6300	persicifolia mixed. Shades of blue and white.25
		$\frac{1}{8}$ oz., \$1.25; .25
6302	Pyraversi. A new hybrid with bell-shaped flowers of lavender blue with indigo centres. 3 ft.25
6310	pyramidalis. (<i>The Chimney Campanula.</i>) Stately hardy perennial producing large blue flowers in abundance; very handsome as a border plant or grown in pots for conservatory decoration. 4 ft.15
		$\frac{1}{8}$ oz., .75; .15
6315	pyramidalis alba. White15
		$\frac{1}{8}$ oz., .60; .15

CANTERBURY BELLS. (*Campanula medium.*)

Showy hardy biennials, growing in pyramidal form and bearing many large, bell-shaped flowers; very effective in mixed borders and shrubberies. 2½ ft. Seedlings raised in June or July bloom the following Summer.

6325	Farquhar's Prize Mixed. A combination of the finest colors including single, and cup-and-saucer varieties.	Pkt.
		$\frac{1}{4}$ oz., \$1.00; .25

SINGLE CANTERBURY BELLS. (*Campanula medium.*)

6330	Pink.	6335	Mauve.	6340	Blue.
6345	White.			6355	Mixed.
	Each of the above varieties and mixture. $\frac{1}{4}$ oz., .60; .10				

DOUBLE CANTERBURY BELLS.

6360	Blue.	6365	White.	Each,	$\frac{1}{4}$ oz., \$1.00; .15
6370	Pink, $\frac{1}{4}$ oz., \$1.25; pkt., .15.	6375	Mixed.	$\frac{1}{4}$ oz., \$1.00; .15	

CUP AND SAUCER CANTERBURY BELLS.

(*Campanula medium Calcanthema.*)

6380	Pink. A charming color.				
6385	Blue.	6390	Mauve.	6395	White.
		6400	Mixed.		
	Each of the above colors and mixture, $\frac{1}{8}$ oz., \$1.00; .15				
6405	Collection of 8 varieties Canterbury Bells Separate, our selection				
					.75

CANDYTUFT.

Free-flowering dwarf perennials blooming in early Spring; suitable for rock-work and the edges of herbaceous borders.

6410	gibraltarica. White, shaded with pink. 1 ft. Pkt.	
		$\frac{1}{8}$ oz., .60; .15
6415	sempervirens. A very hardy variety, with glossy, deep green foliage which is evergreen; flowers white. Valuable for Spring gardens or rockeries. $\frac{1}{4}$ oz., \$1.25; .15	

HARDY CARNATIONS. (*Spice-pinks.*)

A delightful class of fragrant hardy plants blooming profusely during May and June. They are indispensable for the hardy border and for cutting. It is advisable to protect them with a light covering of pine boughs or coarse straw during Winter. 1 to 2 ft. Pkt.

6425	Grenadin Scarlet. Double flowers, early, 2 ft.25
6430	Grenadin White. 2 ft.25
6435	Farquhar's Prize Strain Mixed. Our Prize Strain is particularly adapted to garden planting and includes only the best types in a great variety of colors.25
		$\frac{1}{4}$ oz., \$1.50; .25

HARDY CARNATIONS (*Continued on next page*)

R. & J. FARQUHAR COMPANY

HARDY CARNATIONS (Continued).				Pkt.
6440	Fine Mixed.	1/4 oz., \$1.25;		10
6445	plumarius cyclope Double Mixed. A charming race of double Pheasant-Eye Pinks. Very fragrant and hardy			25
6450	plumarius Double Mixed. (Pheasant-Eye Pink.)	1/8 oz., \$1.00;		25
6452	plumarius Single Mixed.			15
6455	plumarius Scoticus. (Paisley Pink.) This race of Scotch pinks is quite as much in favor for Winter forcing as for border cultivation. The flowers have the strongest spice fragrance.			25
CENTAUREA				
6475	babylonica. A most desirable hardy perennial with showy yellow flowers. 3 ft.	1/4 oz., .50;		10
6485	montana. Large blossoms of deep purple; very showy; July and Aug. 2 ft.	1/4 oz., .75;		15
CERASTIUM. (Snow in Summer.)				
6495	tomentosum. The foliage of this hardy perennial is perfectly white and its dense matted growth makes it valuable for edgings and rockeries. 4 inches.			15
CHEIRANTHUS. (Siberian Wallflower.)				
6498	Allioni. An exceedingly showy rock and border plant; flowers bright orange. Continues in bloom all Summer if the seed pods are removed. 1 foot.	1/4 oz., \$1.00;		25
CHELONE.				
6503	hybrida Torreyi. Extremely showy bedding plant, with brilliant scarlet flowers. June to Aug. 2 ft.	1/8 oz., .75;		15
6504	hybrida mixed. The colors vary from light pink to deep red and violet. 2 ft.	1/8 oz., .50;		15
CHRYSANTHEMUM.				
6510	Shasta Daisy. A large free-blooming hybrid from California; flowers white. 2 ft.			15
6520	maximum. (Ox-Eye Daisy.) Hardy Daisy with large white flowers; excellent for cutting. 3 ft.	1/4 oz., .50;		15
COREOPSIS. (Calliopsis.)				
Sow in June or July protecting the plants with coarse straw or pine boughs during Winter. 3 ft.				
6530	grandiflora. Bright golden-yellow flowers. 3 to 4 inches in diameter	1/4 oz., .50;		10
6540	lanceolata. Rich golden yellow	1/4 oz., .60;		15
DAISY. (Bellis Perennis fl. pl.)				
Favorite Spring-flowering perennials, producing charming effects when planted in masses, or in combination with Pansies, Forget-Me-Nots, or Silene. Sow in July or August in cold frames and plant them out the following April. 4 inches.				
6546	Farquhar's Giant Double Pink. A magnificent strain of English Daisy producing flowers nearly twice as large as the old variety. The plants are of robust growth.	1/8 oz., \$1.50;		25
6547	Farquhar's Giant Double White. A companion to the preceding with white flowers.	1/8 oz., \$1.50;		25
6548	Farquhar's Giant Quilled Red. Bright red; very attractive			25
6550	Farquhar's Double White.	1/8 oz., \$1.00;		15
6552	Farquhar's Double Red.			25
6555	Farquhar's Double Pink.	1/8 oz., \$1.00;		15
6560	Farquhar's Double Mixed.	1/8 oz., \$1.00;		15
DELPHINIUM. (Larkspur.)				
The Perennial Larkspurs are perfectly hardy and can be grown with ease in any garden. When sown in April or May they will usually bloom in September; they may also be sown in June or July to bloom the following season. 1 1/2 to 4 ft.				
6561	hybridum Farquhar's Improved Mixed. A very beautiful strain with large handsome flower spikes. It also includes seeds saved from some of the finest named varieties. The colors vary from pearly white to lavender and from soft azure blue to rich indigo.	1/8 oz., \$1.00;		50
6562	hybridum, Light Blue Shades Mixed. A very beautiful large-flowered strain including various shades of light blue. Very showy when planted in masses.	1/4 oz., \$1.50;		25
6565	Selected Hybrids Mixed. A splendid mixture of large-flowering hybrids varying in color from pale blue to deep purple.	1/4 oz., \$1.25;		25
6566	Bella Donna. A grand border plant of branching habit; producing numerous spikes of large single flowers of a clear turquoise-blue. 4 ft.	1/8 oz., \$1.25;		25
DELPHINIUM (Continued on next page)				

BOSTON, MASS.

DELPHINIUMS (Continued)

6567	King of Delphiniums.	Rich gentian-blue with white eye. 4 ft. $\frac{1}{8}$ oz., \$1.50;	Pkt. .25
6569	Queen Wilhelmina.	Beautiful spikes of soft blue	.25
6570	cardinale.	Bright scarlet with yellow centre. 3 ft.	.20
6585	chinensis.	Azure blue. $1\frac{1}{2}$ ft. $\frac{1}{4}$ oz., .75;	.10
6590	chinensis White.	$\frac{1}{4}$ oz., .75;	.10
6595	chinensis. Mixed.	Shades of blue and white $\frac{1}{4}$ oz., .60;	.10
6600	elatum. (Bee Larkspur.)	Rich blue shades, with black centre. 4 ft.	.15
6602	Bellamosum.	Rich deep blue flowers of the Belladonna type. $\frac{1}{8}$ oz., \$1.25;	.25
6605	formosum.	Splendid dark blue with white eye. 3 ft. $\frac{1}{4}$ oz., 1.00;	.10
6610	formosum cœlestinum.	Very beautiful large pale-blue flowers. 3 ft. $\frac{1}{8}$ oz., \$1.00;	.25

DIANTHUS.

6640	deltoides. (Maiden Pink.)	Trailing variety; flowers pink with dark circle. 6 inches $\frac{1}{8}$ oz., .60;	.15
6645	deltoides alba.	White. 8 inches $\frac{1}{8}$ oz., .60;	.15

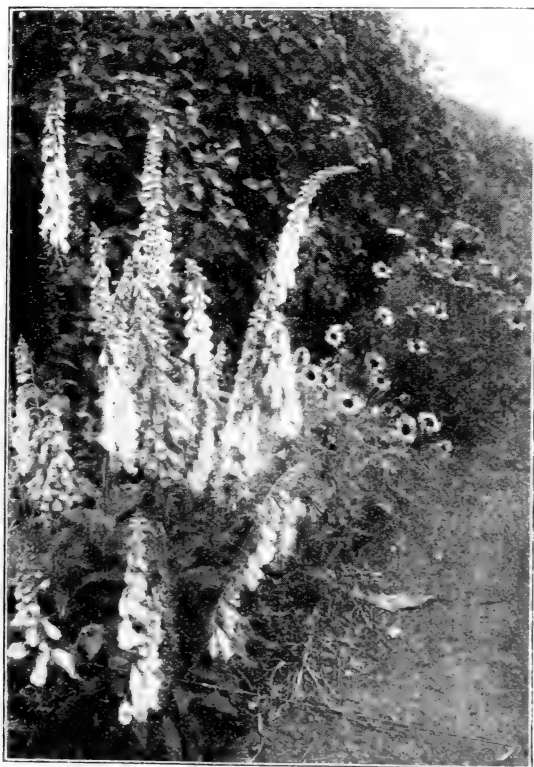
DICTAMNUS. (Gas-plant.)

6655	fraxinella.	Handsome spikes of reddish flowers, fragrant foliage. 3 ft. $\frac{1}{4}$ oz., .35;	.10
6660	fraxinella alba.	Pure white. $\frac{1}{4}$ oz., .50;	.15

DIGITALIS. (Foxglove.)

6665	Farquhar's Superb Mixed.	Includes all the finest colors in great variety; June and July. 3 to 4 ft. Oz., \$2.00; $\frac{1}{4}$ oz., .60;	.25
6667	Farquhar's Superb Mixed.	Small packet	.10

DIGITALIS (Continued on next page.)



DIGITALIS FARQUHAR'S SUPERB MIXTURE

R. & J. FARQUHAR COMPANY

DIGITALIS (Continued.)

6670	gloxinæflora mixed.	Flowers spotted in the throat.	Pkt.
		$\frac{1}{4}$ oz., .50;	.10
6675	gloxinæflora rosea.	Delicate pink	$\frac{1}{4}$ oz., .60; .15
6680	grandiflora.	Pale yellow; flowers small	$\frac{1}{4}$ oz., .35; .10
6685	Ivery's Spotted.	Beautiful spotted flowers of various colors.	$\frac{1}{4}$ oz., .50; .10
6690	monstrosa mixed.	The tall spikes have a monstrous saucer-shaped terminal flower	$\frac{1}{4}$ oz., .75; .15
6695	purpurea.	Common red Foxglove	$\frac{1}{4}$ oz., .35; .10
6700	purpurea alba.	White	$\frac{1}{4}$ oz., .50; .15
6702	purpurea rosea.	Pink	$\frac{1}{4}$ oz., .50; .15
6705	Mixed.	Various colors	$\frac{1}{4}$ oz., .50; .10
	EDELWEISS. (<i>Gnaphalium leontopodium.</i>)		
6730	The interesting white-leaved plant, so eagerly sought by tourists in the Swiss Alps, easily grown in gardens; hardy perennial. 6 in.		
			.25

ERYSIMUM.

6765	pulchellum.	Dwarf perennial with pale yellow flowers; desirable for Spring gardening; May. 6 in.	$\frac{1}{4}$ oz., .40; .10
------	--------------------	--	-----------------------------

EUPATORIUM.

6770	ageratoides.	A valuable border plant with tiny white flowers in dense heads; 3 ft.	.10
6775	Fraseri.	Fine perennial, producing clusters of white flowers; fine for cutting; August and September. 2 ft.	$\frac{1}{8}$ oz., .50; .15

GAILLARDIA Grandiflora. (Blanket Flower.)

These are handsome Summer and Autumn flowering plants, quite hardy and easily grown. It is advisable to mulch them with straw during Winter. 3 ft. Pkt.

6785	New Hybrids Mixed.	Yellow and red.	$\frac{1}{4}$ oz., .50; .15
6790	maxima.	Pure yellow; flowers very large.	$\frac{1}{4}$ oz., .40; .10

GEUM.

6835	atrosanguineum.	Large double crimson flowers; valuable for cutting; July to September. 2 ft.	.20
6840	coccineum.	Bright orange-scarlet; single	.10
6842	coccineum fl. pl. Mrs. J. Bradshaw.	One of the finest recent introductions. The flowers are very large, quite double and of the brightest scarlet; in bloom all Summer. 1½ ft.	$\frac{1}{8}$ oz., .75; .25

GYPSOPHILA.

6895	repens.	A pretty trailing plant, fairly smothered with tiny white flowers.	$\frac{1}{8}$ oz., .50; .15
6900	paniculata.	Small white flowers in light panicles; extensively used in bouquets; July and August. 2 ft.	$\frac{1}{4}$ oz., .50; .10
6902	paniculata fl. pl.	Double white flowers in racemes; valuable for bouquets. About half the seedlings produce double flowers.	.25

HESPERIS.

6935	matronalis. Purple.	(Rocket.) Spring-flowering herbaceous perennial, fragrant. 3 ft.	$\frac{1}{4}$ oz., .40; .10
6940	White.	Beautiful as a cut flower	$\frac{1}{4}$ oz., .35; .10
6945	Dwarf White.	Very early. 1 ft.	$\frac{1}{4}$ oz., .50; .15

HEUCHERA.

6950	sanguinea.	Compact hardy perennial producing erect spikes of vivid crimson flowers; July and August. 1 ft.	.25
------	-------------------	---	-----

HIBISCUS. (Mallow.)

Showy plants of vigorous growth, producing large, handsome flowers from July to September. They are especially suitable for mixed beds or borders where massive effects are desired. 2 to 5 ft.

6955	Crimson Eye.	An excellent plant for lawn groups and borders; blooming the first season from seed in the open ground. Flowers pure white, with crimson centre. 4 ft.	$\frac{1}{4}$ oz., .40; .10
------	---------------------	--	-----------------------------

moscheutos. (*Swamp Mallow.*) None of the hardy Hibiscus are more useful and beautiful than our native Swamp Mallows. They begin to bloom in July and continue to September, producing flowers like Single Hollyhocks, but much larger. They are excellent for moist places, but succeed in any good soil. 4 ft.

6970	Roseus.	Large pink flowers.	$\frac{1}{4}$ oz., .40; .15
6975	palustris roseus.	Light pink flowers.	$\frac{1}{4}$ oz., .25; .10

BOSTON, MASS.

HOLLYHOCK.

Hollyhocks succeed best in rich, well-drained soil. They should be lightly protected during Winter with pine boughs, coarse straw, or other mulch not liable to rot. Seeds sown in June or July produce fine plants for blooming the following Summer. Hardy biennials.

- 6980 **Double Special Mixture.** A greatly improved strain of this popular plant.
 6985 **Double Crimson.** 6990 **Double Pink.**
 6995 **Double Salmon.** 7000 **Double Purple.**
 7005 **Double White.** 7010 **Double Yellow.** Pkt.
 Each of the above colors and Special Mixture,
 Oz. \$2.50; $\frac{1}{4}$ oz., .75; .15

- 7020 **Collection of 6 Varieties, separate**75
SINGLE VARIETIES.

- 7025 **Pink.** 7030 **Salmon.** 7035 **White.**
 7040 **Crimson.** 7045 **Scarlet.**
 Each of the above colors ... $\frac{1}{4}$ oz., .75; .15
 7060 **Single Mixed.** ... $\frac{1}{4}$ oz., .50; .10
 7065 **Allegheny Mixed.** Single and semi-double fringed flowers. $\frac{1}{4}$ oz., .50; .10

HONESTY. (*Lunaria biennis*.)

- 7070 **Mixed colors.** Hardy biennial flowering the first year from seeds if sown early; flowers purple or white, followed by round seed vessels of silvery appearance highly prized for Winter decoration. 2 ft. $\frac{1}{4}$ oz., .50; .10

LATHYRUS latifolius. (*Perennial Pea*.)

Magnificent hardy perennial climbers with white, pink and crimson pea-shaped flowers in clusters. They are excellent vines for covering old stumps and fences as they bloom all Summer. 6 ft. Pkt.

- 7090 **White.** Charming as a cut flower ... $\frac{1}{4}$ oz., .50; .10
 7095 **Giant White.** A giant form of the preceding with flowers of the purest white ... $\frac{1}{4}$ oz., \$1.25; .25
 7100 **Pink Beauty.** Bright rosy-pink ... $\frac{1}{4}$ oz., .50; .10
 7105 **Splendens.** Rosy-carmine in large clusters. $\frac{1}{4}$ oz., .50; .10
 7110 **Mixed.** ... $\frac{1}{4}$ oz., .40; .10

LAVENDULA (*Sweet Lavender*.)

- 7115 **vera.** Ornamental plant bearing long spikes of very fragrant blue flowers; should be extensively grown. $1\frac{1}{2}$ ft. .15

LINUM. (*Flax*.)

- 7130 **flavum.** (*Golden Flax*.) Flowers golden-yellow; free-blooming. 1 ft.15
 7135 **perenne, Blue.** Showy variety, suitable for borders; June to August. $1\frac{1}{2}$ ft. ... $\frac{1}{4}$ oz., .35; .10
 7140 **perenne, White.** ... $\frac{1}{4}$ oz., .35; .10

LOBELIA.

- 7145 **cardinalis.** (*Cardinal Flower*.) A native species, succeeding best in rather moist situations; flowers intense scarlet; August to October. 2 ft. $\frac{1}{8}$ oz., \$1.00; .25

LUPINS. (*Lupinus*.)

Beautiful Spring-blooming plants with long spikes of pea-shaped flowers. 2 to 3 ft. Pkt.

- 7165 **polyphyllus, Blue.** ... Oz., .75; .10
 7170 **White.** ... Oz., .75; .10
 7175 **Rose.** Immense spikes of soft pink flowers. $\frac{1}{4}$ oz., .50; .15
 7178 **Moerheimi.** An exceedingly handsome variety producing long spikes of pink and white flowers, which are invaluable for table decoration.25
 7180 **Mixed.** ... Oz., .75; .10
 7185 **arboreus.** Bright yellow, fragrant flowers; requires protection in Winter. 3 ft. ... $\frac{1}{4}$ oz., .50; .15
 7190 **Snow Queen.** Magnificent variety with long spikes pure white flowers. 3 to 4 ft. ... $\frac{1}{4}$ oz., .75; .25

LYCHNIS.

Profuse-blooming hardy perennials, remarkable for the brilliancy of their flowers; excellent for massing in large beds and borders.

- 7192 **Arkwrightii.** Handsome new hybrids resulting from a cross between *L. chalcedonica* and *L. Haageana*. The plants are of strong growth and very free-flowering. Includes many distinct and attractive shades of color. 2 ft.25
 7195 **chalcedonica.** (*Jerusalem Cross*.) Large scarlet flower heads. June and July. 2 ft. ... $\frac{1}{4}$ oz., .50; .10
 7200 **chalcedonica alba.** Flowers white. ... $\frac{1}{4}$ oz., .50; .10
 7205 **Flos Cuculi.** (*Cuckoo Flower or Ragged Robin*.) Bright red, fringed flowers. 2 ft.15
 7215 **Haageana hybrida, mixed.** Very large-flowered sort; colors varying from white to pink and deep red. 2 ft. ... $\frac{1}{8}$ oz., .30; .10
 7225 **viscaria splendens.** Scarlet. $1\frac{1}{2}$ ft. ... $\frac{1}{8}$ oz., .30; .10

R. & J. FARQUHAR COMPANY

LYTHRUM

Pkt.

- 7240 **roseum superbum.** (*Loose Strife.*) A strong growing plant, thriving in any good soil. Erect spikes of bright rose-colored flowers. July to Sept. 4 ft. $\frac{1}{8}$ oz., .40; .15

MALVA. (*Musk Mallow.*)

- 7250 **moschata.** Flowers rose-colored, blooming the first season if sown early. 2 ft. $\frac{1}{4}$ oz., .50; .10

- 7255 **moschata alba.** Pure white flowers.10

MYOSOTIS. (*Forget-me-not.*)

Most of the Forget-me-nots will bloom the first year from seed if sown early. If sown in July or August in shaded frames fine plants will be obtained for Spring blooming. They are beautiful planted in combination with Spring Bulbs, Daisies, Arabis, or Golden Alyssum.

- 7280 **alpestris Victoria.** The plants are of dwarf compact growth with long sprays of bright blue flowers, produced in dense umbels. 6 in. $\frac{1}{4}$ oz., \$1.25; .15

- 7285 **White.** Large white flowers. $\frac{1}{4}$ oz., .75; .10

- 7290 **Pink.** Fine bedding variety. $\frac{1}{4}$ oz., .75; .10

- 7292 **Farquhar's Indigo Blue.** A lovely shade. $\frac{1}{4}$ oz., \$1.25; .15

- 7295 **Farquhar's Royal Blue.** Flowers deep indigo blue borne on long sprays; fine for cutting. $\frac{1}{4}$ oz., \$1.25; .15

- 7296 **Farquhar's Pillar.** A charming free-flowering variety of upright or pillar-like growth and bearing bright blue flowers in profusion throughout the Summer. If sown during February or March the plants will bloom the same season. One of the finest for cut bloom. $\frac{1}{8}$ oz., .75; .15

- 7298 **palustris semperflorens.** (*Water Forget-me-not.*) Large bright blue flowers; blooms all Summer $\frac{1}{8}$ oz., \$1.00; .25

- 7302 **palustris grandiflora.** Large deep blue flowers borne on long stems. $\frac{1}{8}$ oz., \$1.00; .15

- 7306 **Ruth Fischer.** Very large pale blue flowers; plants compact.25

GENOTHERA. (*Evening Primrose.*)

Beautiful hardy plants of easy cultivation which ought to be generally grown. The flowers are freely produced and the plants continue in bloom throughout the entire Summer. They succeed best in a light soil.

- 7318 **Afterglow.** Clear yellow with bright red calyx. The flowers remain expanded in brightest sunshine15

- 7320 **Fraseri.** Attractive perennial with large yellow flowers. 1 $\frac{1}{2}$ ft. $\frac{1}{8}$ oz., .75; .15

- 7330 **Lamarckiana.** Enormous yellow flowers, three to four inches in diameter; very free-flowering. 3 ft. $\frac{1}{4}$ oz., .50; .10

- 7335 **missouriensis.** A prostrate growing variety with large flowers of a bright yellow color, suitable for large herbaceous borders.15

- 7340 **Youngi.** A very showy variety producing large bright yellow flowers the entire Summer. 3 ft.15

PENTSTEMON.

A beautiful class of perennials either for the hardy border or rock garden; June to August. Pkt.

- 7380 **diffusus.** Violet blue flower; free blooming15

- 7400 **pubescens.** Rosy-purple. 1 $\frac{1}{2}$ ft.10

- 7402 **pulchellum.** Mixed Colors.15

- 7410 **spectabilis.** Flowers blue and red, very beautiful15

PHYSOSTEGIA. (*False Dragon-head.*)

- 7420 **virginica.** One of the most beautiful of our Summer flowering border plants. The delicate pink flowers are carried on long stems and are much esteemed for cutting; July and August. 3 ft. $\frac{1}{4}$ oz., .75; .10

- 7425 **virginica grandiflora alba.** Large white flowers. $\frac{1}{4}$ oz., \$1.00; .15

PLATYCODON. (*Japanese Balloon Flower.*)

- 7430 **grandiflora.** A most desirable perennial of erect bushy growth and bearing a profusion of large bell-shaped flowers of deep blue; May to Oct. 2 ft. $\frac{1}{4}$ oz., \$1.00; .10

- 7435 **grandiflora alba.** White form of the preceding. $\frac{1}{4}$ oz., \$1.00; .10

- 7440 **Mariesi.** Dwarf variety of compact habit; flowers rich violet. 1 ft. $\frac{1}{4}$ oz., \$1.25; .15

POLEMONIUM

- 7445 **cœruleum grandiflorum.** (*Jacob's Ladder or Greek Valerian.*) Hardy perennial with deeply cut foliage and clusters of handsome blue flowers; June and July. 2 ft. $\frac{1}{4}$ oz., .75; .10

- 7450 **grandiflorum album.** Pure white $\frac{1}{4}$ oz., \$1.00; .15

BOSTON, MASS.

POPPY. (*Papaver*.)

All perennial Poppies may be sown from June to July to bloom the following Summer.

Alpine Poppy. (*Papaver Alpinum*.) Charming dwarf Pkt.

Poppies with delicate flowers including yellow, white, scarlet and pink. 1 ft.

7475 **Mixed.**15

ICELAND POPPY. (*Papaver nudicaule*.)

This beautiful species will bloom the first season if sown early in Spring. Its delicate form and bright colors render it desirable as a border plant and exquisite for cutting. 1 ft.

7480 **Farquhar's Superb Mixed.** Shades of yellow, scarlet Pkt. and white. $\frac{1}{4}$ oz., \$1.25; .25

7482 **Giant Art Shades.** Brilliant colors; Beautifully frilled and fluted25

7485 **Bright Yellow.**7490 **Pure White.**

7495 **Orange-scarlet.**7501 **Mixed.**

Each of the above colors and mixed. $\frac{1}{4}$ oz., \$1.00; .15

ORIENTAL POPPY. (*Papaver Orientale*.)

The most gorgeous of all the Poppies. 3 ft.

7510 **orientale.** Brilliant orange-scarlet with black spots; very early; May to July. 3 ft. $\frac{1}{4}$ oz., .60; .10

7515 **orientale hybrids.** Immense flowers, many of them larger than *Orientele*, the colors varying from blush white to orange and deep red. 3 ft. $\frac{1}{4}$ oz., \$1.00; .15

7516 **Mrs. Perry.** An attractive shade of salmon-rose.25

7520 **Beauty of Livermere.** Crimson with black blotch.25

POTENTILLA

7535 **Miss Willmott.** A charming plant for the border or rockery; flowers are clear rose-pink. 1 ft.25

7540 **Double Hybrids Mixed.** Splendid hardy perennials with ornamental foliage and brilliant flowers, chiefly shades of yellow and red, borne in great profusion; June to August. 2 ft.25

7545 **Single Mixed.** Various shades of yellow and brown10

PRIMULA, or *Primrose*.

7550 **acaulis. Farquhar's Hybrids Mixed.** A greatly improved strain with flowers of large size containing many bright and beautiful colors. $\frac{1}{8}$ oz., \$2.00; .25

7555 **Yellow.** (*Yellow English Primrose*.) The best sort for forcing and bunching for corsage bouquets. $\frac{1}{8}$ oz., \$1.25; .25

POLYANTHUS. (*Primula elatior*.)

7565 **Farquhar's Giant Fancy Mixed.** The colors range from white to deep maroon; the yellow, rose and crimson shades being particularly fine. These larger forms are desirable for Winter flowering in the conservatory as well as for bedding out in Spring. 9 in. $\frac{1}{8}$ oz., \$2.00; .25

7570 **Giant White.** Pkt., .25 7575 **Giant Yellow.**25

7580 **Giant Blue.** Pkt., .50 7585 **Giant Crimson.**25

7590 **Gold-laced.** Flowers of brilliant colors with distinct yellow edges $\frac{1}{8}$ oz., \$1.00; .15

7595 **Mixed.** $\frac{1}{4}$ oz., \$1.50; .10

PRIMULA.

7600 **auricula Choice Mixed.** A lovely race of Primroses with large umbels of velvety flowers in many beautiful colors, chiefly yellow, crimson, maroon and purple, frequently edged with gray or green.25

7605 **japonica Mixed.** One of the finest Primroses for the garden, producing several whorls of large flowers, on erect stems, varying from white to crimson. $1\frac{1}{2}$ ft. *The seeds germinate slowly and unevenly.* $\frac{1}{8}$ oz., \$1.25; .15

PYRETHRUM.

Very handsome herbaceous perennials. The flowers are of brilliant colors and very lasting; June. 2 ft.

7625 **Roseum. Double Hybrids Mixed.** Beautiful, aster-like flowers ranging in color from white to brilliant rose and crimson $\frac{1}{8}$ oz., \$2.50; .25

7630 **Roseum. Single Hybrids Mixed.** Daisy-like flowers of brilliant colors with yellow centres. $\frac{1}{4}$ oz., \$1.75; .15

SCABIOSA.

7685 **caucasica.** Magnificent perennial with beautiful large, light blue flowers; June to August. 2 ft. $\frac{1}{4}$ oz., \$1.75; .15

7690 **caucasica alba.** A pure white form of the preceding.25

7695 **japonica.** A hardy variety from Japan of bushy growth; flowers lavender blue. 2 ft.25

R. & J. FARQUHAR COMPANY

SEDUM.

- 7700 **acre.** Trailing plant forming a regular green carpet;
flowers bright yellow. 4 in.15

STATICE.

- | | | | | |
|------|-------------------|---------------------|---|----|
| 7740 | incana. | Dwarf Mixed. | A charming variety of <i>Sea</i>
<i>Lavender</i> . Esteemed for bouquets. 1½ ft. | 10 |
| 7742 | Gmelini. | | Large panicles of violet-blue flowers; June to
September. 1½ ft. | 15 |
| 7745 | latifolia. | | Lavender-blue flowers. 2 ft. | 10 |

STOKESIA.

- | | | | | |
|------|---------------------|---|------------------|-----|
| 7750 | cyanea. | This splendid hardy perennial bears from July to October a number of large, light blue flowers resembling semi-double Asters. | 1/4 oz., \$1.00; | .15 |
| 7752 | cyanea alba. | A pure white form of the preceding. | 1/4 oz., \$1.00; | .15 |

SWEET WILLIAM. (*Dianthus Barbatulus.*)

Showy hardy biennials of easiest culture; admirable for clumps among shrubs or borders. $1\frac{1}{2}$ ft.

SINGLE VARIETIES.

- | | | | |
|------|---|----------------------------|-----|
| 7768 | Farquhar's Giant Mixed. A magnificent strain of this popular plant with very large flowers, and containing many attractive shades. | $\frac{1}{4}$ oz., .75; | .25 |
| 7770 | Superb Mixed. In great variety. | $\frac{1}{4}$ oz., .50; | .10 |
| 7775 | Farquhar's Pink Beauty. Salmon | $\frac{1}{4}$ oz., \$1.00; | .15 |
| 7776 | Farquhar's Scarlet Beauty. Bright scarlet | $\frac{1}{8}$ oz., .75; | .25 |
| 7780 | Dark Crimson. Rich dark shade. | $\frac{1}{8}$ oz., .50; | .10 |
| 7785 | White. Excellent for cut flowers. | $\frac{1}{4}$ oz., .50; | .10 |
| 7790 | Giant Auricula-Eyed. Various colors with clearly defined eyes. | $\frac{1}{4}$ oz., .50; | .10 |
| 7800 | Double Fine Mixed. | $\frac{1}{4}$ oz., .75; | .15 |

THERMOPSIS.

- 7815 **caroliniana.** A tall growing hardy perennial with clover-like leaves, and magnificent spikes of golden-yellow pea-shaped flowers. June. 5 ft. 15

TRITOMA.

- | | | | |
|------|----------------------------|--|-----|
| 7820 | hybrida Express. | The earliest of all the Tritomas, producing an abundance of elegant orange-scarlet flowers. 3 to 4 ft. | .15 |
| 7825 | uvaria grandiflora. | Scarlet and orange-yellow flowers. Aug. to Oct. 4 ft. $\frac{1}{4}$ oz., \$1. 00; | .15 |
| 7826 | Stark's Hybrids. | A new perpetual-flowering race, which blooms from June to October. The colors embrace yellows and salmons to deep crimson. Height, 2 to 4 feet. | .25 |

TROLLIUS.

- 7830 **europæus.** (*Globe Flower.*) A large-flowered variety of the buttercup with bright yellow globular flowers. 2 ft. $\frac{1}{8}$ oz., .50; .15

VALERIAN.

- | | | | | | | |
|------|---------------|--------------------------------|---|--------------------|------|-----|
| 7845 | Red. | (<i>Valeriana Rubra.</i>) | Old-fashioned perennial,
adapted to wild gardens or large rockeries. | 2 ft. | ... | ... |
| | | | | $\frac{1}{4}$ oz., | .30; | .10 |
| 7850 | White. | A white form of the preceding. | | $\frac{1}{4}$ oz., | .25; | .10 |

VERONICA. (*Speedwell.*)

Elegant hardy perennials of easy culture and thriving in any good soil. Pkt.

- | | | | | | |
|------|--------------------|--------------------------------------|-------|-----|-----|
| 7870 | longifolia. | Long spikes of rich blue flowers. | 2 ft. | ... | .10 |
| 7885 | spicata. | Showy spikes of bright blue flowers. | | ... | .15 |

WALLFLOWER.

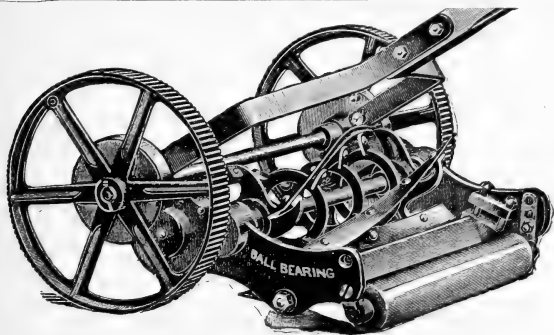
Half-hardy perennials of delicious fragrance. If sown in June and July will bloom the following Spring and early Summer.

SINGLE VARIETIES.

- | | | | |
|------|--|-------------------------|-----|
| 7915 | Blood Red. Rich color. | $\frac{1}{4}$ oz., .50; | .10 |
| 7920 | Primrose Yellow Fine light shade. | $\frac{1}{4}$ oz., .50; | .10 |
| 7925 | Mixed. Shades of yellow and red. | $\frac{1}{4}$ oz., .40; | .10 |

DOUBLE VARIETIES.

- 7935 **Double Mixed.** Splendid branching varieties.
 $\frac{1}{2}$ oz.. \$1.00; .25



TOWNSEND'S VICTORY LAWN MOWER

LAWN MOWERS

THE VICTORY BALL-BEARING HAND LAWN MOWER.

The perfection of Lawn Mower construction, and is without doubt one of the best machines on the market. Positively the best materials and workmanship are used in the production of these mowers. 10-inch wheel, four-bladed reel, construction light; easily run and almost silent.

14-in.	16-in.	18-in.	20-in.
\$18.00	\$20.00	\$22.00	\$25.00

Metal Bottom Grass Catcher, for any size "Victory" Mower (extra), \$2.00.

TOWNSEND'S "FLYER."

This gem of lawn mower construction is built to meet the demand for a low-priced *ball-bearing* mower. Made of the best materials. The strongest and lightest running mower of its class. 16 in., \$14.00; 18 in., \$15.00.

PHILADELPHIA LAWN MOWERS.

STYLE A. 4 Blades, 10-inch wheel, 6½-inch Cylinder, Train of 3 Gears, Double Ratchet, making both wheels drivers.

One of the lightest draft mowers manufactured. For parks and cemeteries where mowers are in use every day this style will be found very durable.

15-inch, \$24.00; 17-inch, \$26.00

Philadelphia Grass Collector. (Extra.) 15-inch, \$3.00; 17-inch, \$3.50.

STYLE K. ROLLER BEARING. 5 Blades, 10-in. Wheel, 6½ in. Cylinder, Single Pinion, Geared on Both Sides.

For all-round general purposes, this is one of the best style mowers on the market. With its high wheels it runs light, and five knives it cuts smooth and even, with the principles of construction so evenly balanced that it has the greatest amount of durability.

14-inch, \$20.00; 16-inch, \$22.00; 18-inch, \$24.00

Philadelphia Grass Collector. (Extra.) 14-inch, \$3.00; 16-inch, \$3.25; 18-inch, \$3.50.

PENNSYLVANIA GOLF MOWER.

This mower is especially adapted for golf links, tennis courts and bowling greens. **6 Blades, wheels 8-inch, 5½-inch cylinder. Plain Bearing.**

16-in., \$27.00; 18-in., \$29.00.

"EASY" BORDER MOWER.

Self Adjusting Ball Bearings. This mower is so constructed that it will cut Borders, Mounds, Terraces, close to Walls and Fences and all kinds of uneven surfaces with the same ease and efficiency as the smoother lawns. 12-inch, \$23.00; 14-inch, \$26.00.

TOWNSEND'S GLEANER. (*Ball Bearing.*) For finishing or trimming lawns and borders. Much quicker and better than finishing by hand. This machine will cut close to shrubbery, buildings or curbing. Made with four blades of crucible steel. Cuts 8-inch swath. Price, \$10.00 each.

COLDWELL'S LAWN TRIMMER. Invaluable for trimming the edges of lawns, flower beds, shrubbery and places that cannot be reached with a Lawn Mower. It cuts 8 inches in width. Price, \$12.00 each.

Grass Catcher, "Simplex." The Simplex Catcher will fit every style of mower and consists of a galvanized iron bottom with canvas sides and back. The 16-inch will fit all sizes from 12 to 16. 20-inch all sizes from 18 to 22. Each, \$2.00.

LAWN SPRINKLERS

Cyclone. Three whirling arms. \$2.25 each.

Enterprise. This Sprinkler may be easily moved over the lawn without turning off the water. \$8.00 each.

Fountain. Made of heavy brass. \$1.25 each.

Rain King. Revolving or stationary spray; all parts, except the base, are made entirely of brass. Nozzles turn in any direction. \$3.50 each.

Stearns Reversible. This Sprinkler is suitable for use with either high or low water pressure. \$1.35 each.

Peacock Sprinkler. Mounted on two wheels at one end and a single stand at the other. It can easily be moved without turning off the water. Throws a gentle rain from sprays that spread themselves out like a peacock's tail. No moving parts to wear or stick. Length 12½ feet. Price, \$15.75.

Peacock Sprinkler, Junior. It differs only from the preceding in being shorter and with five nozzle clusters spaced 18 inches apart, instead of 24 inches and being mounted on skids instead of wheels. Length 7½ ft. Price, \$9.00.

Skinner System Complete Garden Lines. In 50 feet lengths, including wooden posts. Price, \$25.00.

Campbell Oscillating Irrigator. Can be adjusted to throw the water to both sides, or on one side only. Price, 5-ft. section, \$10.00; 10-ft. section, \$18.00.

Campbell Turbo-Irrigator. This machine is made entirely of brass, simple in design and very efficient for sprinkling large areas. Complete with tripod. \$18.00.

Water Fan. No. 5. Length 21 inches. Waters a rectangular area up to 12 x 60 feet. Price, \$15.00.

Wilgus. Throws a wide circle of water. 75 cts. each.

SPRAYERS

Paragon Sprayer No. 3. Mounted on a strong metal truck. The galvanized iron tank holds 12 gallons. All liquid passes through the automatic, self-cleaning strainer before entering the pump, and cannot clog the nozzle when spraying. Each pump is equipped with 10 feet of rubber hose, extension pipe 7½ feet and 2 spraying nozzles. Price complete, \$25.00.

Paragon Sprayer No. 1. The mechanical construction is the same as in No. 3, and is equipped with a 6-gallon tank, 5 feet of rubber hose, 5 feet extension pipe and 2 spraying nozzles. Price, \$17.50.

Auto Spray No. 1 B. With auto-pop nozzle. A compressed air sprayer which, when properly charged by a few strokes of the plunger will operate automatically for five to ten minutes. Made of solid brass throughout. Price, \$10.00.

Perfection Jr. Sprayer. A compressed air sprayer made of galvanized steel, with all brass pump and automatic nozzle. Holds 2½ gallons. Price, \$5.50 each.

Farquhar's Bucket Spray Pump. A strong and durable hand pump with all brass working parts. It is double acting and has a large air chamber which ensures a continuous stream of fine spray. Price complete, with hose and Bordeaux nozzle, \$7.50.

The Aquapult Hand Force Pump. Strong and durable; not liable to get out of order. A handy bucket spraying pump for garden, greenhouse and orchard use. \$8.00 each.

Compressed Air Atomizer. A compressed air hand sprayer which delivers a continuous mist-like spray, and can be used in applying insecticides, etc. One quart size, \$1.50 each.

Faultless Sprayer. Throws a spray as fine as mist. \$1.25 each.

Continuous Atomizer. Operates continuously and throws a fine mist spray. \$1.50.

Pump, Kinney's Atomizer. Used to distribute liquid fertilizer or to mix or temper hot and cold water under water pressure. Connect between sections of hose and lower it into the barrel. \$3.00 each.

PLANET JR. FARM AND GARDEN TOOLS

No. 17. SINGLE WHEEL HOE.

Equipment: One pair 6-inch hoes, three steel cultivator teeth, one large garden plow. Price, \$9.00.

No. 12. DOUBLE WHEEL HOE.

Equipment: One pair of 6-inch hoes, two pairs of hollow steel cultivator teeth, one pair of plows, one pair of leaf lifters. Price, \$13.00.

No. 14. DOUBLE AND SINGLE WHEEL DISC HOE, CULTIVATOR AND PLOW.

Equipment: One set of disc hoes, one pair plows, one pair 3-prong cultivator teeth, two leaf lifters. Price, \$15.00.

GARDEN REQUISITES.

ADJUSTABLE HAND-CART AND LEAF-RACK TRUCK.

This useful combination Truck is adjustable to either the Hand-cart Box or Leaf-rack. It is of sturdy construction, designed to be handled readily by one man. It will be found invaluable about the garden for the removal of dead leaves and other debris and will prove useful for innumerable other purposes.

The wide, flat tires of the iron wheels tend to keep the loaded truck from sinking into soft ground.

Price, Adjustable Truck equipped with iron wheels, 2½ inch tires, \$16.00; equipped with iron wheels, 3½ inch tires, \$18.00. Hand-cart Box, \$6.50. Leaf-rack, \$14.00.

CUT FLOWER BOXES.

			Doz.	100
Silver Gray.				
1A.	3¼ x 19 x 5 inches	...	\$0.85	\$6.00
2A.	4 x 28 x 8 inches	...	2.25	18.00
3A.	6 x 22 x 8 inches	...	1.75	13.00
Silver Gray, Extra Heavy.				
1B.	4 x 24 x 8 inches	...	\$1.65	\$12.00
2B.	5 x 28 x 8 inches	...	2.25	16.00
3B.	6 x 36 x 12 inches	...	3.50	26.00

Corrugated. Extra Heavy.

Size C.—30 x 12 x 7 inches	...	6.00
Size D.—36 x 12 x 9 inches	...	7.00

Forks, Small Hand. 3 prong. 50 cts. each.

Forks, Hay. Handle, 5 feet, 3 tines. \$1.25 each.

Forks, Spading. 4 tine, wood D handle, strap ferrule. \$2.25 each.

Forks, Spading, Ladies'. 4 tine, D Handle. \$1.25 each.

Gloves. Men's Pruning Gauntlets, \$3.50.

RUBBER HOSE. In 25 and 50-Foot Lengths.

Farquhar's Reliable. Does not kink when bent at sharp angles and is exceedingly light and flexible. It combines great strength and durability. Price ¾-inch, 22 cts. per foot; ½-inch, 20 cts. per foot, couplings included.

Farquhar's Extra. Strong and durable. Price, ¾-inch, 6-ply, 20 cts. per foot; ½-inch, 3-ply, 16 cts. per foot, couplings included.

Electric. This new ½-inch hose is considered by many to be the best all-around garden size. Extremely light and easily handled. Will deliver practically as much water as ¾-inch hose. Price, 3-ply, 24 cts. per foot, couplings included.

Hose Washers. 10 cts. per doz.; 75 cts. per 100.

HOSE MENDERS.

Electric Tape for Mending Hose. Coil, 25 cts.; large coil, 50 cts.

Hose Menders, Cooper. Made in ½ and ¾ inch diameter and three inches long. \$1.25 per doz.

Hose Menders, Clincher. ½ inch and ¾ inch, 12 cts. each; \$1.25 per doz.

Hose Clamps, Bull Dog. Fastens with screws, ½ inch and ¾ inch. 10 cts. each; 75 cts. per doz.

Hose Couplings. ½ inch and ¾ inch. Per set, 30 cts.

Siamese Coupling. For connecting two leads of hose. 75 cts. each.

Hose Reel. All Iron. A substantial hose reel for the garden and lawn. This reel is light in weight with high wheels, and constructed entirely of wrought iron pipe and malleable iron; almost indestructible. No. 10, capacity 100 feet, price, \$6.00. No. 20, capacity 150 feet, price, \$7.00.

Hoes, English or Dutch Scuffle. Handled, 4 inch, \$1.50; 5 inch, \$1.60; 6 inch, \$1.75; 7 inch, \$2.00; 8 inch, \$2.25.

Hoes, Field Socket. 7 inch, \$1.25 each; 8 inch, \$1.35.

Knives, Grass Edging, American, with handle, \$1.50.

Knives, Grass Edging, English, with handle, \$3.00.

Melon Nets. For supporting fruit. \$3.50 per doz.; \$28.00 per 100.

NOZZLES.

Bordeaux Nozzle. A fine Nozzle for spraying liquid insecticides. \$1.75 each; by mail, \$1.85.

Fairy. Will throw a spray or single stream. \$1.25 each.

Farquhar's Spraying Nozzle. Made of very heavy brass. 3-inch, \$1.25; 4-inch, \$1.50.

Grading Spray Hose Nozzle. For lawn, or garden, this Nozzle is superior to all others. 85 cts. each; by mail, 90 cts.

Shut-off Connection for Farquhar Nozzle. \$1.25 each.

Stott Nozzle. For greenhouse spraying. \$1.75 each.

Vermorel Nozzle. Improved. Fitted for ½-inch male end pipe, each, \$1.50.

R. & J. FARQUHAR COMPANY

Oil, Lubricating, for Lawn Mowers, etc. Quart, 50 cts; gallon, \$1.50; Steel Oilers for applying lubricating oil, 60 cts. each. Copper Oilers, \$1.25 each.

Rakes, Steel Garden and Lawn. Long Teeth. 12 teeth, \$1.20; 14 teeth, \$1.30; 16 teeth, \$1.40; 18 teeth, \$1.50 each.

Rakes, Steel Garden and Lawn. Short Teeth. 14 teeth, \$1.50; 16 teeth, \$1.60; 18 teeth, \$1.75.

Rakes, Hay. Wooden; 3 bow; 14 teeth, \$1.10 each.

Rakes, Lawn. Wooden, 3 bow, 24 teeth, \$1.20 each.

Rake Teeth. 20 cts. per doz.; \$1.25 per 100.

Roffea. 30 cts. per lb; 5 lbs., \$1.35.

Raphia Tape. Per reel of 250 yards, \$1.50.

Scissors, Pole Flower Gatherer. Price without pole, \$2.50.

Scissors, Florists' Snips. \$1.50.

Scythe, Solid Steel. \$2.00 each.

Scythe, Broad English or Lawn. \$3.50 each.

Scythe, The Waldron. Solid Steel (English), \$3.50.

Scythe, Bush. \$2.25 each.

Scythe Snaths. \$1.75 each. **Bush S. Snaths.** \$1.85 each.

Scythe Rifles. 30 cts. each.

Scythe Stones, Genuine Welsh. 75 cts. each.

Scythe Stones, Carborundum. 50 cts. each; \$5.50 per doz.

Scythe Stones, Silver Grit. 20 cts. each; \$2.00 per doz.

Shears, Grass, with Long Handles, English. For cutting the edges of grass borders. Blade, 8-in., \$5.25; 9-in. \$6.00; 10-in. \$6.50;

Shears, Grass. English. 5½-in., \$3.50; 8-in., \$4.00; 9-in., \$4.50; 10-in., \$5.00.

Shears, Grass, Ridal's Pattern. Blade, 9 inches, \$7.50.

Shears, Hedge Notched. English, Blade, 8-in., \$3.50; 9-in., \$4.50; 10-in., \$5.50.

Shears, Grass or Sheep. English, 7-in., \$2.25.

Shears, Grass or Sheep. True Vermonter. \$1.50.

Sickles or Grass Hooks. English, \$1.25.

Sickles, American. \$1.00 each.

Silkaline, Green Thread. Largely used for tying in bouquet work. Fine, medium or coarse. Spools, 40 cts. each; box of eight spools, \$3.00.

Spades, Merchants'. No. 2, D handle, \$2.00.

Spades, Ames' Best. No. 2, D handle, \$2.50.

Stakes Garden, Square, Green Painted, Tapering.

Ft.	Doz.	100	Ft.	Doz.	100
1½	\$.30	\$2.00	3½	\$1.25	\$8.50
2	.50	3.50	4	1.75	11.00
2½	.75	5.00	5	2.35	16.00
3	1.00	7.00	6	2.75	18.00

Stakes, Square, Green Painted, Tapering, Extra Heavy Black Points.

Ft.	Doz.	100	Ft.	Doz.	100
4	\$2.75	\$18.00	6	\$4.00	\$28.00
5	3.50	25.00			

Stakes, Round, Green Painted, Tapering, Light.

Ft.	Doz.	100	Ft.	Doz.	100
1½	\$0.35	\$2.00	3½	\$1.25	\$9.00
2	.60	4.00	4	1.50	11.00
2½	.75	5.50	5	2.00	14.00
3	1.10	7.50			

Stakes, Round, Green, Painted, Heavy.

Ft.	Doz.	100	Ft.	Doz.	100
3	\$1.50	\$11.00	5	\$2.60	\$18.00
3½	1.75	13.00	6	3.25	24.00
4	2.25	15.00			

Stakes, Unpainted, Square, Hardwood.

Ft.	100	1000	Ft.	100	1000
2	\$0.60	\$4.50	4	\$1.25	\$9.00
3	1.00	7.00	5	1.75	14.00

Stakes, Chinese Cane. These canes are strong and durable and will be found very satisfactory where light supports are required. Length 6 feet. 85 cts. per doz.; \$6.00 per 100.

Stakes, Green Bamboo. Light.

	100	1000		100	1000
1½ ft.	\$1.25	\$9.00	3 ft.	\$1.80	\$17.00
2 "	1.30	12.00	3½ "	2.20	20.00
2½ "	1.40	13.00	5 "	3.00	28.00

TRELLISES.

If Trellises are to be shipped by Freight or Express, add 15% to cover cost of packing.

Trellis, Fan for Vines. Made of wood and rattan and painted green.

High	Wide	Each	Doz.	High	Wide	Each	Doz.
1½ ft.	7 in.	\$0.40	\$4.50	4 ft.	27 in.	\$2.00	\$22.00
2 "	10 "	.50	5.50	5 "	32 "	2.50	28.00
2½ "	13 "	.75	8.50	6 "	38 "	3.00	34.00
3 "	16 "	1.25	13.50	7 "	42 "	3.25	37.00
3¼ "	21 "	1.50	16.00	8 "	46 "	3.50	40.00

Trellis, Lattice. This style is built to meet a growing demand for a plain yet substantial plant support which will be in harmony with the present day architecture. This trellis is offered in only one width, but other sizes can be built to order.

High	Wide	Each	Doz.	High	Wide	Each	Doz.
6 ft.	18 in.	\$3.00	\$30.00	10 ft.	18 in.	\$5.00	\$50.00
8 "	18 "	4.00	40.00	12 "	18 "	6.00	60.00

Trellis, Veranda, for Vines.

Made of wood and rattan and painted green.

High	Wide	Each	Doz.	High	Wide	Each	Doz.
2 ft.		\$1.00	\$11.00	8 ft.	28 in.	\$5.00	\$52.00
3 "		1.40	13.50	9 "	18 "	4.50	45.00
4 "		1.75	18.00	10 "	20 "	5.00	52.00
5 "	18 in.	2.50	24.00	10 "	31 "	6.50	66.00
6 "	18 "	3.00	30.00	11 "	20 "	5.25	60.00
6 "	28 "	3.75	40.00	12 "	20 "	6.00	66.00
7 "	18 "	3.50	39.00	12 "	36 "	7.50	82.00
8 "	18 "	4.00	42.00				

Trellis, Wire Garden Arch. Green painted, ¾-in. rods, 7 feet high, 1 foot wide, span 4 feet. Each \$10.00. Larger sizes made to order.

Trellis, "Two Barrel Hoop" Tomato. \$2.25 per doz.

Trellis, Wood Tomato. These are made of neatly finished hard wood. Height, two and one-half feet. One and one-half feet square at top, one foot at bottom. \$3.50 per doz.

Trellis Wire, Pæony. Jackson Pattern. \$7.50 per doz.

Trowels, Garden, Extra Forged Steel. Solid steel blade and shank. 6-in., \$1.00 each; 7-in., \$1.25 each.

TUBS, CEDAR PLANT.

For Ferns, Palms, and other large plants. Made of thick cedar nicely painted green. Outside measurements.

No.	Diam.	Height	Price	No.	Diam	Height	Price
2	26 in.	20 in.	\$12.00	6	18½ in.	15 in.	\$4.50
3	24 "	18½ "	8.25	7	17 "	14 "	3.65
4	22 "	17 "	6.50	8	16 "	13 "	3.25
5	20 "	16 "	5.50	9	14 "	12 "	2.75
				10	12 "	9½ "	2.00

TUBS, RICHMOND CEDAR. Strongly made of selected white cedar and bound with electric-welded wire; painted green. Without handles.

No.	Diameter	Each	No.	Diameter	Each
6	11 in.	\$1.35	10	15 in.	\$2.50
7	12 "	1.65	11	16 "	3.25
8	13 "	2.00	12	17 "	3.50

Twine. Heavy and Light Parcelling. 35 cts. per ball; \$4.00 per doz.

Twine, Green. Large balls, 75 cts. each.

Twine, Soft. For tying vines, etc., very strong. 3 and 5-ply. Large Balls, 35 cts. each; \$3.75 per doz.

WATERING POTS, Galvanized Iron, Wotherspoon's. Made from best quality iron and heavily galvanized after being made. Two copper-faced roses go with each pot for fine and coarse watering. 4 quarts, \$4.00; 6 quarts, spout 21 inches long, \$5.00; 8 quarts, spout 23 inches long, \$5.50; 10 quarts, spout 25 inches long, \$6.00; 12 quarts, spout 25 inches long, \$6.50. **Extra Roses, 75 cts. each.**

Galvanized Iron, French Pattern. With brass bale handle. 8 quarts, \$5.50; 10 quarts, \$6.75.

Haw's Pattern, English. This pattern will not slop over and is made with a fine rose for watering seed pans or beds. 3 quarts, \$5.00; 6 quarts, \$7.00.

Weeder and Cultivator. Norcross. 50 cts., \$1.00, \$1.25 each.

Weeder, Excelsior Hand. 20 cts. each. By mail, 25 cts.

Weeder, Hazeltine. 50 cts. each. By mail, 55 cts.

Weeder, Cleveland. Useful tool for large weeds, handle 3½ ft., \$1.25 each.

Weeder, Eureka. 3 forged steel prongs. 60 cts. each. Long handle, 85 cts. each.

INSECTICIDES AND FUNGICIDES.

(Poisons and Fluids are not Mailable)

- Ace-Hy.** A contact spray especially effective against *Pear Psylla* and all sucking insects that are injurious to fruit trees. Qt., \$2.75.
- Aphine.** A contact spray for killing red spider, thrip, white and green fly. Price, pint, 75 cts.; quart, \$1.25; gallon, \$3.50.
- Arsenate of Lead. (Powdered.)** A remedy for the Elm Tree Beetle, Gypsy Moth, Brown Tail Moth, etc. It adheres well to the foliage and does not readily wash off with the rain. Price, $\frac{1}{2}$ lb., 35 cts.; 1 lb., 50 cts.; 5 lbs., \$2.25; 10 lbs., \$3.75; 25 lbs., \$8.00; 50 lbs., \$16.00; 100 lbs., \$30.00.
- Arsenate of Lead. (Paste.)** 1 lb., 40 cts.; 5 lbs., \$1.75; 10 lbs., \$3.25; 25 lbs., \$6.25; 50 lbs., \$10.50; 100 lbs., \$18.00.
- Atomic Sulphur.** A complete fungicide equally effective on Apples, Plums and Peaches against brown-rot, scab, etc. Lb., 35 cts.; 5 lbs., \$1.50.
- "Black Leaf 40."** (*Sulphate of Nicotine.*) A concentrated liquid for use in destroying Green Aphis and Thrips. Price, 1-oz. bottle, 35 cts.; $\frac{1}{2}$ lb., \$1.25; 2 lbs., \$3.50; 10 lbs., \$13.50.
- Bordeaux Mixture. (Powder.)** Ready for use by simply adding water. An indispensable fungicide for black rot, mildew, rust and scab on fruit trees and plants. Price, lb., 40 cts.; 5 lbs., \$1.85; 10 lbs., \$3.50; 25 lbs., \$8.00.
- Bordeaux Mixture. (Paste.)** Price, 1 qt., 60 cts.; 1 gal., \$1.50; 5 gals., \$6.50.
- Bug Death.** A non-poisonous powder to be applied dry or mixed with water and sprayed on the plants. It is death to the potato, squash and cucumber bugs, currant and tomato worms. It is best applied dry with a duster or bellows at the rate of about 12 lbs. per acre. Price, 1 lb., 20 cts.; 3 lbs., 50 cts.; 5 lbs., 80 cts.; $12\frac{1}{2}$ lbs., \$1.75; 100 lbs., \$11.00. **Dickey Shaker**, for applying above, 60 cts. each.
- Copper Solution.** A highly concentrated liquid fungicide for plants affected with rot, blight or scab, and is frequently used for late spraying when fruit is nearly mature. It can also be used for the blight on Asters, Hollyhocks and Larkspurs. Price, per quart, \$1.50; gallon, \$4.00.
- Dalmation or Persian Insect Powder.** One of the best insecticides for all insects. Lb., \$1.25.
- Flower of Sulphur.** Price, 1 lb., 15 cts.; 5 lbs., 60 cts.; 10 lbs., \$1.00.
- Formaldehyde.** This solution is used to prevent fungoid diseases such as potato scab, grain smut, etc. The dilution for most purposes is 1 pound Formaldehyde to 15 or 20 gallons of water; 1 to 2 gallons of solution is required to treat each bushel of potatoes. Price, 1 lb., liquid, 65 cts.; 9 lbs., liquid, \$4.50.
- Fungine.** A remedy for mildew, rust, wilt, bench rot and other blights affecting flowers, fruits and vegetables. It is equally effective under glass and out-of-doors. A sulphur composition which diluted with water contains no sediment and does not stain the foliage. One gallon makes fifty gallons spraying material. Half pint, 50 cts.; pint, 75 cts.; quart, \$1.25; gallon, \$3.50.
- Grape Dust. Hammond's.** Very effective in destroying mildews and in preventing blights in greenhouse or in the open. Price, 5-lb. package, \$1.00.
- Hellebore Powder, White.** Price, $\frac{1}{2}$ lb., 40 cts.; 1 lb., 65 cts.
- Herbicide Weed Exterminator.** Perfectly odorless. An occasional application will keep gutters, paths and roadways clear of weeds, poison ivy, grasses, mosses, dandelions, burdocks, etc. $\frac{1}{2}$ gallon, \$1.20; 1-gallon cans, \$2.00; in 5-gallon kegs, sufficient to make 200 gallons of liquid, \$8.00; in 10-gallon kegs, sufficient to make 400 gallons of liquid, \$15.00.
- Imperial Soap Spray.** The base of this spray is a soap containing vegetable poisons and particularly effective against red spider on the fruit, the rhododendron fly, and insects affecting the rose. Price, 1 pint, 65 cts.; 1 quart, \$1.00; 1 gallon, \$3.00; 5 gallons, \$11.00; 10 gallons, \$19.00.
- Kerosene Emulsion. (Liquid.)** Price, 1 quart, 75 cts.; 1 gallon \$2.25; 5 gallons, \$8.50.
- Lemon Oil Company's Standard Insecticide.** Destroys scale, thrip, mealy bug, red spider, black and green fly. Price, $\frac{1}{2}$ pint, 40 cts.; 1 pint, 75 cts.; 1 quart, \$1.15; $\frac{1}{2}$ gallon, \$2.00; 1 gallon, \$3.50.
- Melrosine.** A contact insecticide which kills the destructive *Rose-bug*, and at the same time is effective against many sucking insects. Price, pt., \$1.00; qt., \$1.75; $\frac{1}{2}$ gal., \$3.25; gal. \$6.00.

INSECTICIDES (Continued).

- Nikoteen.** A powerful, highly concentrated solution of Tobacco Extract, containing a large amount of pure Nicotine. Invaluable for fumigation or spraying. Price per bottle, \$2.50.
- Nico-Fume.** A tobacco-paper Insecticide, for fumigating greenhouses. "Nico-fume" furnishes the easiest method of fumigation ever devised. Tins containing 24 sheets, \$1.25; 144 sheets, \$5.50; 288 sheets, \$10.00.
- Nico-Fume, Liquid.** A tobacco solution used for spraying or vaporizing. Price, $\frac{1}{4}$ lb. tin, 75 cts.; 1 lb., \$2.25; 4 lbs., \$8.00; 8 lbs., \$15.00.
- Para-dichlorobenzene.** A *Peach-borer* control, much more effective than the old method of digging out the borer by hand. It can be used on Peach-trees over four years old, but should on no account be used on Apple-trees. Lb. 40 cts.; 5 lbs., \$1.75.
- Pyrox, Bowker's.** Does all that Arsenate of Lead will do, besides protecting trees, shrubs, vegetables and plants against fungus diseases: one application answering both purposes, saving labor and expense. All ready to use by adding water. Price, 1 lb., 50 cts.; 5 lbs., \$2.25; 10 lbs., \$3.75; 25 lbs., \$7.50; 50 lbs., \$14.00; 100 lbs., \$24.00.
- Slug Shot.** A popular non-poisonous powder, easily distributed by a duster, bellows, or in water by spraying. An effectual remedy for potato bugs, slugs, worms, caterpillars, green and black flies infesting vegetables and other plants. Price, 1-lb. carton, 25 cts.; 5-lb. package, 65 cts.; 10 lbs., \$1.25.
- Sulpho-Tobacco Soap.** A popular insecticide for the amateur, quickly exterminating all insect life on plants and flowers in and out of doors. Price, 3-ounce cake, 10 cts.; 8-ounce cake, 20 cts.
- Tanglefoot.** A perfect safeguard for trees and shrubs against gypsy and brown-tail moths and other creeping insects. Price, 1 lb., 60 cts.; 5 lbs., \$2.75; 10 lbs., \$5.25; 25 lbs., \$11.00.
- Tobacco Dust.** For green and black aphids, fleas, etc.; also prevents insects in the ground and around the roots. Price, 1 lb., 15 cts.; 5 lbs., 50 cts.; 10 lbs., 90 cts.; 100 lbs., \$6.00.
- Tobacco Dust for Fumigating.** Price, 10 lbs., 90 cts.; 25 lbs., \$1.75; 100 lbs., \$6.50.
- Tobacco Stems.** Price, barrel bag, \$1.50; bale or case, 4 cts. per lb.
- Vermine.** A soil sterilizer and germicide for all soil vermine, such as cut, eel, wire and grub worms, slugs, root lice, maggots and ants. Used in the greenhouse, garden and field. One part Vermine to four hundred parts water, thoroughly soaking the ground, does its work effectively and protects your crops and lawns against the ravages under the soil. Price, gill, 25 cts.; half pint, 40 cts.; pint, 75 cts.; quart, \$1.25; gallon, \$3.50.
- Wilson's O. K. Plant Spray.** A contact spray for Roses, Chrysanthemums, Evergreens, and all plants affected with scale or insects under glass or outside. Price, gallon, \$3.00; 5 gallons, \$10.00.
- X. L. all Liquid Insecticide.** The famous English patented preparation; kills mealy bug, red spider, and all insect pests. The perfect insecticide for spraying; goes further than any other. Price, pint, \$1.50; quart, \$3.00; $\frac{1}{2}$ gallon, \$5.50; gallon, \$10.50.
- X. L. all Vaporizing Compound.** An English patent claimed to be the most easy, effectual and cheapest method of fumigating greenhouses and frames ever invented. Sufficient for 10,000 cubic feet, \$3.25 per bottle; 20,000 cubic feet, \$6.00 per bottle.
- Vaporizing Fumigator and Lamp,** for above, complete, \$1.75.

HIGH GRADE FERTILIZERS.

All prices quoted on Fertilizers are net and include delivery to any Freight station in Boston. Prices subject to change without notice.

FARQUHAR'S LAWN AND GARDEN DRESSING.

A good Fertilizer for all garden and farm crops, dry and fine as meal. The mixture is in good mechanical condition so that it can be applied conveniently by any one. For lawns it is most excellent, being not a stimulant merely, but a plant food of lasting, enriching properties. When forming a new lawn use from 800 to 1000 lbs. per acre. Quantity required for renovating an old lawn; 400 to 500 lbs. per acre.

Price, per ton, \$70.00; 500 lbs., \$18.50; 100 lbs., \$4.00; 50 lbs., \$2.50; 25 lbs., \$1.50; 10 lbs., 90 cts.

Farquhar's Fine Ground Bone. This is made from the best quality of bone, finely pulverized by improved machinery. It is far superior to some ground bone in the market, which is often composed of refuse bones from which the plant good has been largely removed in manufacturing glue and other products. Price, per ton, \$60.00; 500 lbs., \$16.00; 100 lbs., \$3.50; 50 lbs., \$2.00; 25 lbs., \$1.25; 10 lbs., 70 cts.

FERTILIZERS (Continued on next page)

FERTILIZERS (*Continued*)

Inch Bone. The very best fertilizer for grape vines, fruit trees, shrubs, and trees of all kinds. The pieces of bone vary from one-fourth inch to one inch in size. Should be used at setting out, mixed with the soil to the depth of a foot or more. (*Price on application.*)

Flour of Bone. A finely pulverized powder, excellent as a top dressing for growing plants in the greenhouse. Price per 100 lbs., \$5.00.

Clay's Fertilizer. A lasting, productive, economical fertilizer for all horticultural purposes. A reliable vitalizing medium for conservatory, greenhouse and garden. Original bags, 112 lbs., \$15.00; 56 lbs., \$8.00; 28 lbs., \$5.00; 14 lbs., \$2.75; 7 lbs., \$1.75.

CANADA HARDWOOD ASHES.

Ashes contain potash and lime, which are essential, not only as plant food, but also as sweeteners of the soil and solvents of other plant food ingredients. 100-lb. bag, \$2.75; ton, \$45.00. *In car-load lots, minimum 20 tons at \$40.00 per ton in bulk delivered at any freight station in Massachusetts, Vermont, New Hampshire, Rhode Island, Connecticut.*

LAND LIME .

This lime is specially prepared for use on the soil and is essential as a plant food and as a corrective for improper condition of the soil. It also acts as a neutralizer for acid soils. *Quantity Required:* Heavy soils, 2000 to 6000 lbs. per acre. Light sandy soils, 1000 to 3000 lbs. per acre, according to their apparent need. Price, per 100-lb. bag, \$1.35; 500 lbs., \$6.50; ton, \$20.00. In lots of 3 tons or over \$19.00 per ton.

SHEEP MANURE.

A soluble plant-food highly recommended for all purposes where a first-class fertilizer is required. It is a pure, natural manure, and has long been recognized as one of the most beneficial. As a top-dressing for lawns it is unequalled. For lawns it should be used at the rate of 500 to 800 pounds per acre. As a fertilizing agent for plants indoors and in the open garden, it is one of the very best. Price, ton, \$55.00; 100 lbs., \$3.00; 50 lbs., \$1.85; 25 lbs., \$1.35; 10 lbs., 70 cts.; 5 lbs., 40 cts.

Thomson's Grapevine, Plant and Vegetables Manure. This manure is a perfect food for the grapevine and other fruits under glass; also vegetables and other plants in the garden. *Quantity Required: Grapevine Border.*—For making up a border, $\frac{1}{2}$ cwt. to the ton of loam; for surface dressing, 2 lbs. per square yard, applied early in the season and 1 lb. per square yard after grapes are thinned; mix with a little fine soil when roots are quite near the surface; if not very near the surface sprinkle the manure on and fork it in. In both cases give a slight watering. See that the thorough watering of the borders is done some time previous to the top dressing. **Peaches, Nectarines, Figs.**—For borders for peaches, nectarines, figs, etc.; $\frac{1}{4}$ cwt. to the ton of loam. Original bags, 112 lbs., \$15.00; 56 lbs., \$8.50; 28 lbs., \$4.50; 14 lbs., \$2.50; 7 lbs., \$1.50.

Thomson's Special Topdressing Manure. This Special Manure is meant to be used as an additional stimulant during the growing season. A heaped dessert spoonful will be sufficient for a 10-inch pot, sprinkled over the surface of the soil, and watered in with tepid water. This may be given three times during the growing season. 56 lbs., \$8.00; 28 lbs., \$4.50; 14 lbs., \$2.75; 7 lbs., \$1.75.

Scotch Soot. A fertilizer and fungicide. One of the best remedies and preventatives for mildew, when mixed with sulphur, at the rate of two-thirds soot and one-third sulphur. As a fertilizer it promotes growth, and heightens color of foliage and flower. Sold only in original bags of about 100 lbs. Price 7 cts. per lb. (*By freight only.*)

Blood Tankage. Ammonia 12%. Original bags only, 167 lbs., \$9.00 per bag.

Fine Ground Nova Scotia Plaster. Original bags only, 200 lbs., \$3.00 per bag.

Fine Ground Tankage. 9 per cent. Ammonia; 20 per cent. Bone Phosphate of Lime. Original bags only, 167 lbs., \$7.50 per bag.

Muriate of Potash. Original bags of 200 lbs., \$8.00; 100 lbs., \$4.25; 10 lbs., 70 cts.

Nitrate of Soda. 100 lbs., \$6.00; 50 lbs., \$3.25; 25 lbs., \$2.00; 10 lbs., 85 cts. Larger quantities, prices on application.

High Grade Acid Phosphate. 16 per cent. Available Phosphoric Acid. Price per ton, \$36.00; 100 lbs., \$2.25.

Sulphate of Potash. High Grade. Price, \$6.00 per 100 lbs.; 25 lbs., \$1.75; 10 lbs., 90 cts.

Sulphate of Ammonia. Price, 100 lbs., \$7.00; 25 lbs., \$2.00; 10 lbs., \$1.00.

Cotton Seed Meal. Price, 100 lbs., \$5.00.

