



Keeping Our
Eyes On
The Prize

BY REV. DR. JAMES H. JOHNSON



(A) The Men's Basketball Team in the spotlight on Awards Day!!!!



(B) They were all innocent at one time.



(F) Jimonique Simpson, Miss JSU, alongside Dr. Lloyd V. Hackley, our Chancellor.



(G) Plant a little tree to keep the hope alive.



(H) Shaunette, Helenea and Chico are doing it up live!!!!!!!!!!



(K) Now if I could just keep balanced.....



(L) Totally hidden camera, huh???? I see ya!!!!!!!!!!



(M) And here he is, our SGA President, Hollywood!!!!!!!!!!



(C) Oooh, Ooohh Look!!!! Ahhhhh!!!!!!

(D) I lost my books and financial aid didn't come through!!!!!!!!!!!!!!

(E) The present Miss FSU, Jimonique Simpson and the former Miss FSU, Tonya Smith, along with Chancellor Lloyd V. Hackley



(J) The beautiful ladies of the First Annual Miss FSU Pageant flanked by Mrs. Esquiline, Mrs. Olivia Chavis and The Honorable First Lady Mrs. Brenda Hackley

(J) After the Pageant Reception at the Rudolph Jones Student Center



(M) Our queens, past and present, at the After the Pageant Reception

(O) Kenneth Hawkins and his featured works at his Senior Art Show

(P) Me Me, I won, I'm the best.

1

1992 FAYETTEVILLIAN

FSU

FAYETTEVILLE STATE UNIVERSITY

1200 MURCHISON ROAD

NEWBOLD STATION

FAYETTEVILLE, NC 28307

VO

TABLE OF CONTENTS

STUDENT LIFE	25
SPORTS	76
PEOPLE	102
ORGANIZATIONS	160

BOARD OF TRUSTEES



L-R McEachern, Hines-Spencer, Williams, Patterson, Griffin, Bondshu, Bruce Pulliam.



Hector McEachern



Robert Griffin



Jesse Williams



Laurens Bondshu

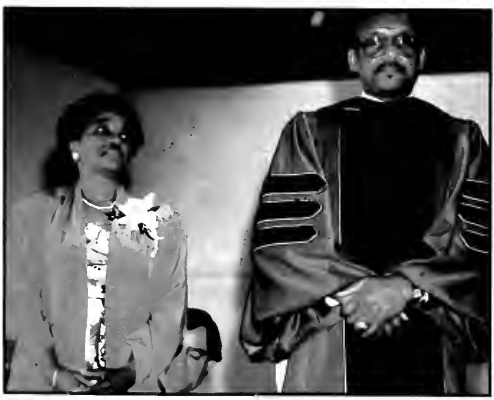


James Patterson



LaGray Hines-Spencer

CHANCELLOR AND MRS. LLOYD V. (VIC) HACKLEY



CHANCELLOR LLOYD V. (VIC) HACKLEY AND FRIENDS



CHANCELLOR LLOYD V. (VIC) HACKLEY AND THE FSU STUDENTS



YEARBOOK MESSAGE FOR 1992

Greetings

Congratulations on a stellar year at Fayetteville State University. I know that this yearbook will recall the highlights of the year and remind you of your contributions to the University through your own achievements.

During the past academic year, Fayetteville State received widespread recognition for our improvements and accomplishments. This was due to the commitment of our student body, faculty and staff, and the citizens in this community. Through your commitment to excellence in education, you have made your mark on the University and have assisted in our record setting position.

I have come to know many of you personally, and it gives me great pride to witness the successes you've achieved. I see the excitement, pride, and loyalty in the eyes of our students every day. We believe in you, and you believe in yourselves.

Your hard work and dedication will benefit your fellow students who will maintain the high standards that you have set. I pray that each of you will leave Fayetteville State with an understanding of the importance of your education and the responsibility of commitments when you return to your communities.

I wish our senior class good fortune and Godspeed as you leave Fayetteville State University to share your skills and talents with the world. Fayetteville State will always be here for you and we look forward to seeing you as alumni.

To the undergraduate students, I am eager to see you back on campus in the fall, and continuing the remarkable accomplishments you have already begun at FSU.

Sincerely,

Lloyd V. Hackley

Lloyd V. Hackley
Chancellor

VICE CHANCELLORS



Benson Otovo
VICE CHANCELLOR OF BUSINESS AFFAIRS



Leo Edwards
VICE CHANCELLOR OF ACADEMIC AFFAIRS



Denise Mahone
VICE CHANCELLOR OF UNIVERSITY ADVANCEMENT



Harry Ghee
VICE CHANCELLOR OF STUDENT AFFAIRS

FSU TEACHER OF THE YEAR 1991-1992



Dr. Kosterman is an Assistant Professor in the School of Education. She received a BA in Art and English at Methodist College, M.Ed. in Psychology and Special Education at Duke University and also a Ed.D. in Reading and Special Education at Duke University. She has participated in numerous educational conferences, seminars, and workshops in the Cumberland, Brunswick, Johnston, Simpson, Harnett and Moore County School Systems. She is a member of numerous committees, clubs, and honor societies, including, co-counselor of Kappa Delta Pi Honor Society. She has written many grants and articles for publication. She is a Fayetteville native and she is married to Dr. Jay Kosterman III. She is also the mother of three children, Cory, Charlotte and Joseph.

DR. CATHY BUTLER KOSTERMAN

M I S S
A L U M N I
C A R O L E
B A T T L E
C O L E Y



Carole Battle Coley



Carol Battle Coley, a member of the Phi Kappa Phi Honor Society, was crowned Miss Battle of the South in 1957. She is a graduate of the University of Mississippi and is currently employed at the University of Mississippi. She is also a member of the Phi Kappa Phi Honor Society and the Phi Kappa Phi Chapter at the University of Mississippi. She is a member of the Phi Kappa Phi Chapter at the University of Mississippi and is currently employed at the University of Mississippi. She is also a member of the Phi Kappa Phi Honor Society and the Phi Kappa Phi Chapter at the University of Mississippi.



A NIGHT WITH MISS ALUMNI



ALUMNI CONVOCATION AND AWARDS DAY

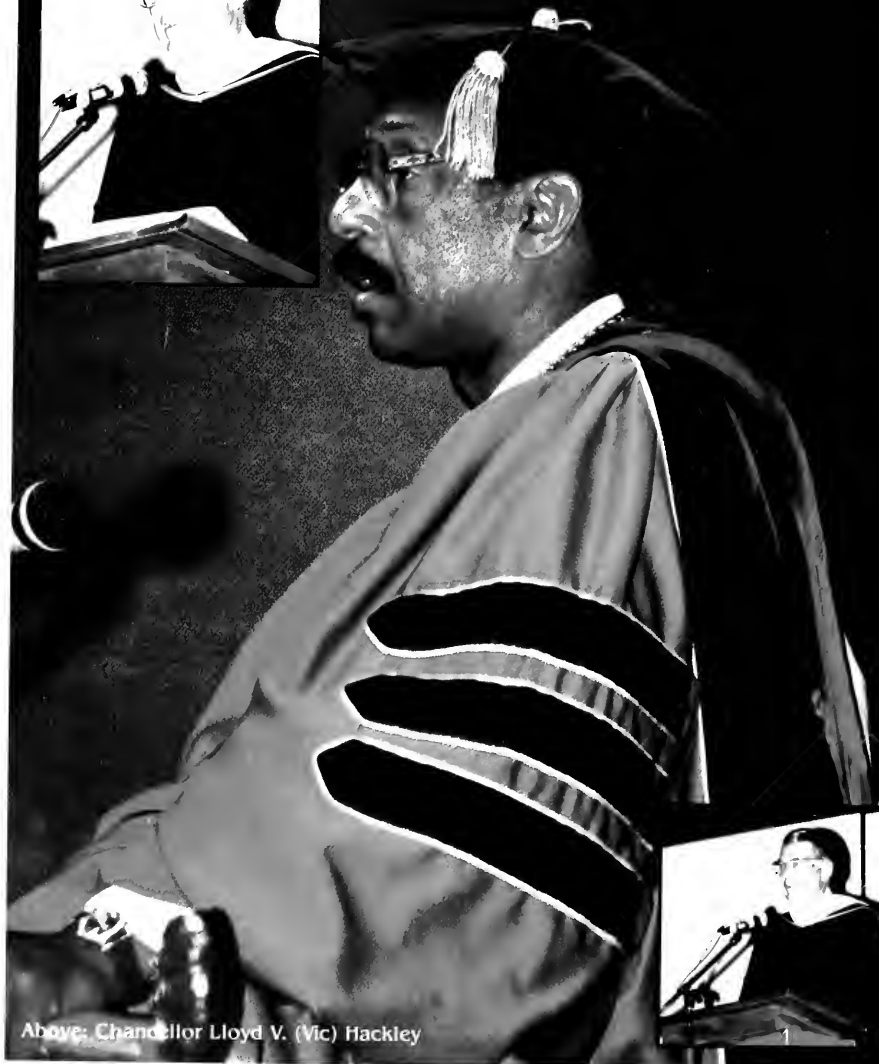


FOUNDERS DAY 1991 AT FAYETTEVILLE STATE UNIVERSITY



FALL CONVOCATION 1991 AT FAYETTEVILLE STATE UNIVERSITY

To Left: Mr. C.D. Spangler, Jr., President University of North
Carolina System



Above: Chancellor Lloyd V. (Vic) Hackley

1991-1992 STUDENT GOVERNMENT ASSOCIATION



Hollywood Haywood



Anthony Kallil

The SGA represents unity at the Maricopa campus.

Mark Baldwin



Dexter McKee



PRESIDENT - Hollywood Haywood
VICE PRESIDENT - Anthony Kallil
BUSINESS MANAGER - Mark Baldwin
PROGRAM DIRECTOR - Dexter McKee

MISS FAYETTEVILLE STATE UNIVERSITY
JIMONIQUE SIMPSON



M I S S F A Y E T T E V I L L E S T A T E U N I V E R S I T Y



Jimonique Simpson, a Senior is majoring in Political Science. Her Ambition is to go to Law School and her pastime is tap dancing.



RENAISSANCE A Brand New Day



Oh?? For me??? Shirley Jackson, Miss FSU Contestant, makes her entrance into the Miss FSU Pageant Reception.

Songstress, Desiree McCormick spell-bounds the audience with her rendition of Home, by Stephanie Mills.

Two Beauties of FSU. Former Miss FSU, Tonya Smith and the current Miss FSU, Jimonique SImpson, graciously pose for the camera.

Volleyball Anyone??? Miss Second Runner Up, Tracey Jackson models her attire for the sportswear category.



MISS HOMECOMING — ANGELA BROADWATER





Debra Wells
MISS WILLIAMS HALL



Katossa Richardson
MISS ILLUSION MODELING CLUB



Vernika Jones
MISS HOMECOMING CANDIDATE



Crystal Tohen
MISS FSU PEP CLUB



Toyarna Way
MISS WILMINGTON, CHARLOTTE CLUB



Audra Henry
MISS COLLEGIATE SECRETARY



Shirley Long
MISS NEW RESIDENCE HALL



Camilla Clayton
MISS JOYNER HALL



Patrice Stewart
MISS DELTA SIGMA THETA



Priscilla Autry
MISS HARRIS HALL



Linda Murrell
MISS ZETA PHI BETA



Sharon Canty
MISS ELEMENTARY EDUCATION



Natalie Tillman
MISS YOUNG DEMOCRATS



Sophia Moore
MISS HOMECOMING CANDIDATE



Lawanda Sellers
MISS HOMECOMING CANDIDATE



Christy Gillespie
MISS FUTURE ALUMNI



Raquel Robertson
MISS SIGMA GAMMA RHO



Katrina Heath
MISS ALPHA PHI ALPHA



Margaret Mathewson
MISS KAPPA ALPHA PSI



Laura Lewis
MISS PHYSICAL EDUCATION



Johnette Henderson
MISS SOCIOLOGY CLUB



Lolita Burney
MISS CHEERLEADER



Samantha McLeod
MISS DEBATE CLUB



Tabatha Haskins
MISS CONCERT CHOIR



Tracie McEachern
MISS FRESHMAN



Terri Hunter
MISS PSYCHOLOGY CLUB



Neda Williams
MISS SPEECH CLUB



Erica Cureton
MISS FSU MARCHING BAND



Keshia Devane
MISS BRYANT HALL



Ivana Johnson
MISS UPWARD BOUND



Cortina Pearson
MISS PANHELLENIC COUNCIL



Helenea Dawson
MISS HOOD HALL



Lynada Murray
MISS VANCE HALL



Aljanal Hamer
MISS FSU GOSPEL CHOIR



Tawana Wilson-Carr
MISS PHI BETA LAMBDA



Bayyinah McGregor
MISS YEARBOOK



Angela Tatum
MISS FIRST RUNNER UP



Demetrias Owens
MISS TAU BETA SIGMA



Maria Flowers
MISS ALPHA KAPPA MU



Alicia Brown
MISS PHI BETA SIGMA



Monique Kendall
MISS SNAE



Chalissa Moore
MISS SOPHOMORE



Tracy Henry
MISS SMITH HALL



Carolyn Bowen
MISS KAPPA KAPPA PSI



Shecna Johnson
MISS ALPHA KAPPA ALPHA

MISS RUDOLPH JONES STUDENT CENTER DENISE DARDEN



Here She Is!!! Isn't she lovely!!! Miss RJSC — she just loves the outdoors !!!!!



MISS CALENDAR GIRL FELICIA MOSELY



STUDENT



LIFE

E-LV 91'

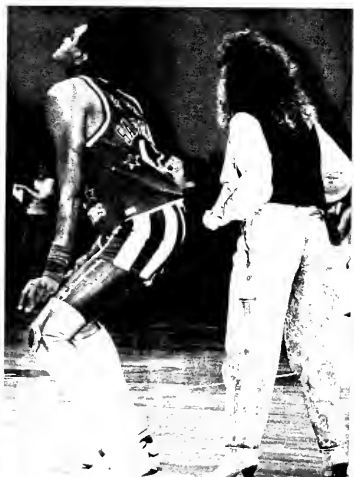
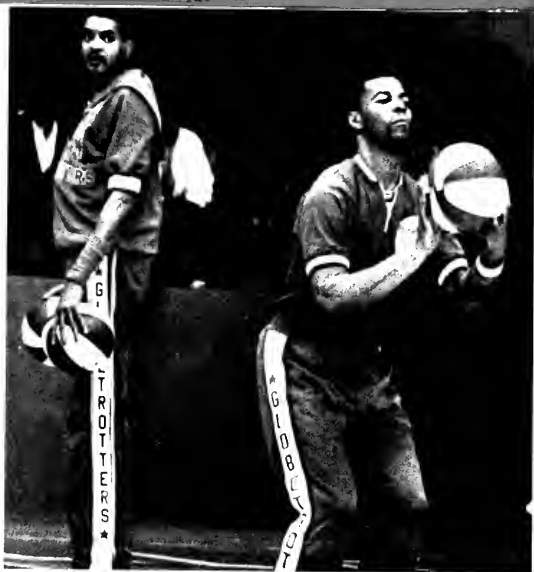
THERE ARE JOYFUL
MOMENTS AT
FSU ALSO!!!



ARLINDA PEACE
MISS JANUARY



THE HARLEM
GLOBETROTTERS KEEPING
THE SPIRIT ALIVE!!!!!!





Cassandra Joyner becomes acquainted with Yolanda King.



Ms. Smith accompanies Yolanda while she signs autographs.



Ms. King enjoys viewing an excellent portrait of her done by a friend of Barbara Beebe, standing with Ms. King.





TYLISHA L. MACK
MISS FEBRUARY





Alex Haley takes time to pose for a picture with Dennis R. McNair.



Haley makes comments at the press conference.



Haley relaxes at the press conference.





Frederick the Great has a brief conversation with Dr. Monroe.



Frederick the Great is in a jolly mood as he speaks with Dr. Monroe and Dr. Friedman.



MISS BLACK NORTH CAROLINA



LaShawna Fitzpatrick

MISS MARCH



We present to you Miss March, none other than Ms. Helenea Dawson. A native of Fayetteville, it is only natural that Helenea would be one of Fayetteville State University's Calendar Girls for the year 1991-1992.



TERTAMAC GROSVENOR AT FSU



FSU PRESENTS "MOURNIN" BY



C
L
A
R
I
C
E



T
A
Y
L
O
R

MISS APRIL



We present to you the lovely, MISS APRIL, Melody Clay. She is a drum major in the FSU Marching Band and is involved in numerous activities. She is also a very outgoing young lady.



JESTER HAIRSTON AT FAYETTEVILLE STATE UNIVERSITY



Jester Hairston, well-known personality, "ROLLY" in the television show AMEN, gives the choir a few words of inspiration. He and the choir present one of the best concerts ever given at FSU.



An Afternoon of the Arts featured Hairston at 4:00 p.m. at Fayetteville State University on April 21, 1991 at Seabrook Auditorium. He conducted a combined choir of over 100 people, including the FSU Choir and also community singers.





FSU'S CALENDAR GIRL
PAGEANT 1991



Miss Tylisha Mack looks lovely in her stylish after-five attire as her escort glides with her along the runway.

MISS MAY



Miss May, Cortina Pearson, is a student here at Fayetteville State University. She is very active in many activities here on the campus. She is a member of Zeta Phi Beta Sorority Inc., the FSU Marching Band, and also a member of the Panhellenic Council.

OUR LEADERS OF TODAY



The Honorable William H. Gray
President and Chief Executive Officer
United Negro College Fund

Dr. Paul M. Carter
Member, FSU Board of Trustees



Dr. Lloyd V. Hackley
Chancellor

Dr. Kathy Butler-Kosterman, Chief Marshall
1991-92 Recipient of Teacher of the Year Award



Mr. David G. Martin, Jr.
Secretary of the University
General Administration

Rev. Cureton L. Johnson
Pastor, First Baptist Church



DECEMBER GRADUATION 1991



GRADUATION GOES ON



MISS JUNE KATHY BROWN



We present to you MISS JUNE, KATHY BROWN, who is a student here at Fayetteville State University. She has a sister that also attends FSU and is MISS JULY. Kathy is a lovely young lady, who is very outgoing. She is a lady who will always get what she wants out of life.

THE DECLARATION OF BEAUTY
MISS JULY, ALICIA BROWN



Let the fireworks go!!!! Alicia Brown, Miss July, is running this show!!!! She shows us how to have fun and also how to portray the serious mode of our lives. Isn't she lovely!!!!!!

MISS AUGUST



We present to you Miss August, Brenda Winfrey. She is just one of the lovely ladies who support Fayetteville State University as shown by her participation in the Miss Calendar Girl pageant.



MISS SEPTEMBER



We present to you, Miss September, Denise Darden. She is Ms. Rudolph Jones Student Center as well as being a Calendar Girl. She was involved in the Miss Homecoming Pageant and she is a member of Zeta Phi Beta Sorority Inc.

ELECTION AT FSU



Election time at Fayetteville State University is a very exciting, but serious, event. This is the time when the students must select individuals who they feel will represent them well as a student body. All the excitement includes the gathering in the Rudolph Jones Student Center of all the student body to hear the speeches of the people competing to represent the student body. This is a time when you have to put friendships aside and select the best individual for the job whether it be your friend or not.



Many students gather in the student center in order to participate in the elections. They chat among themselves to see who other students feel are qualified to fill each position. The students at FSU have a tough choice to make this year!!!!

MISS SEPTEMBER



We would like to present to you the lovely and enchanting MISS SEPTEMBER, Tina Hines. Tina is just one of the many visions of loveliness on the FSU campus. She is a very active student, and she uses her time wisely. She is one lady who set her goals, and she will accomplish what she sets out to do.

FSU'S 1991-1992 HOMECOMING BALL





T
H
I
S
O
N
E
'
S
F
O
R
Y
O
U
F
S
U



Broncos Bucking at the Homecoming Dance



Hollywood is swinging!



SGA Business Manager, Mark Baldwin, chills with the Ladies of Bronco Lounge.



The Broncos Bury Johnson C. Smith



We're here to mourn the passing of JCS. um.



"I just loved the man," hollers out one of the many lovers.



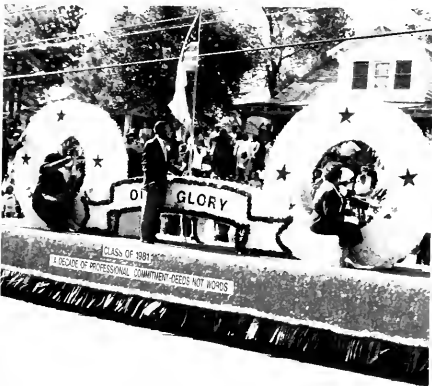
Sabrina grieves her loss.



Amateur Night at FSU's Seabrook Auditorium



FSU's 1991-1992 HOMECOMING PARADE





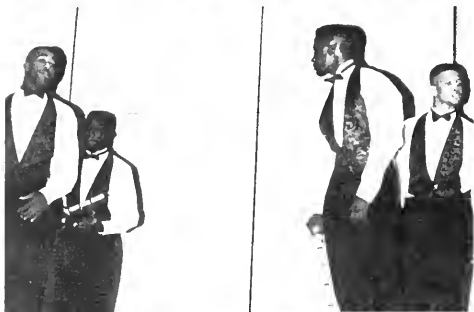
THE DELIVERY OF FSU'S HOMECOMING GAME BALL





FSU'S HOMECOMING GAME 1991





KEEPING IN STEP WITH THE GREEKS

FSU'S FELLOWSHIP SERVICE



THE FSU CAMPUS ALUMNI TOUR 1991





M I S S A L U M N I C O R O N A T I O N A N D B A L L

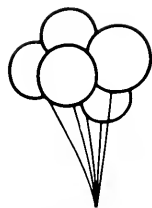
A
N
I
G
H
T
O
F
H
O
N
O
R
A
N
D
E
L
E
G
A
N
C
E



RECEPTION FOR ALUMNI AND FRIENDS



ALUMNI SCHOLARSHIP DANCE



ALUMNI FELLOWSHIP BREAKFAST



MISS NOVEMBER



We present to you, MISS NOVEMBER, Millie Spruill. She is a student here at FSU and she is involved in many activities on the campus. Millie is a lady who knows what she wants and takes a chance to be successful when there is an offer.



THE RUDOLPH JONES STUDENT CENTER

GETS INTO THE SPIRIT OF GIVING



Mr. Moore gets into the spirit of the Thanksgiving Season.

Mr. Jones refills the horn of plenty for the students. Thanksgiving is the time to remember all the good fortune that we have and it is a time to give to the less fortunate of our world. It is a time to make someone else's life a little easier.

MISS DECEMBER



We present to you Miss August, Ms. Fetlicia Mosley. Isn't she a lovely sight to behold!!! As well as being Miss August, she is also Miss Calendar Girl 1991-1992.



Christmas is always a joyous time of the year. It is filled with the cheer of the season and with the joy of giving. Christmas is the time of the year that we all gather with our friends and family to talk of things old and things to come. We should always be friendly and courteous to everyone throughout the year and not just on Christmas, because you never know whom you are going to need in the future.

A
F
R
O
T
C



M
I
L
I
T
A
R
Y

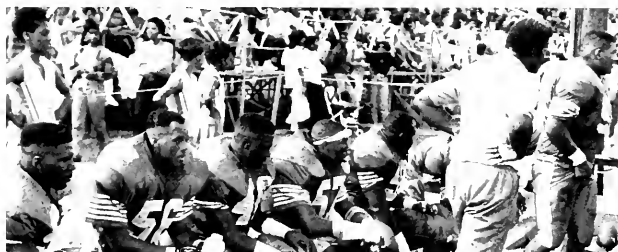
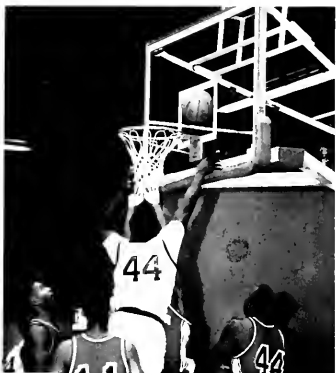


B
A
L
L



FSU'S AFROTC BALL GOES ON







SPORTS

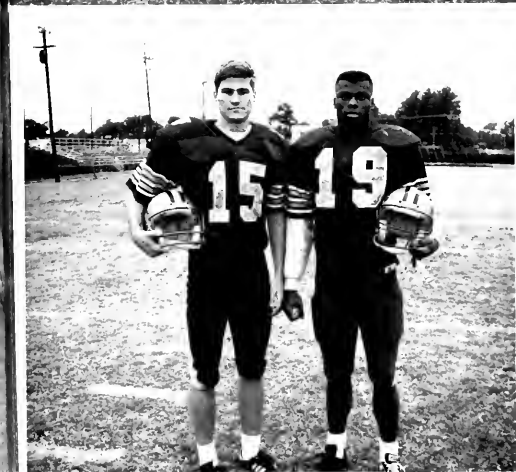


E-LUV 91

T
H
E
B
R
O
N
C
O
P
O
S
S
E
K
I
C
K
I
N
G
L
I
V
E



THE POSSE CONTINUES THE STRIVE





THE BRONCO POSSE ALIVE AND KICKIN'

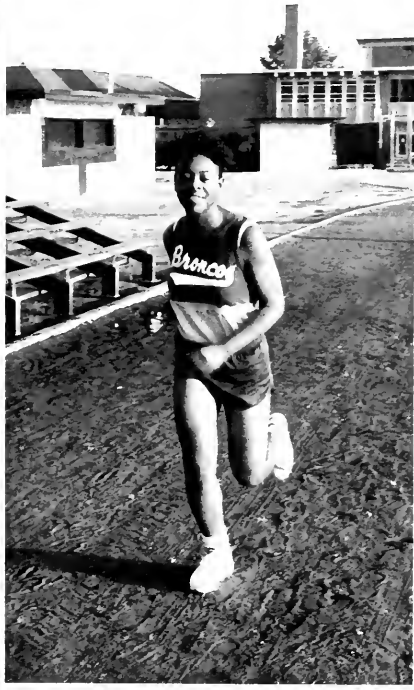
1991 Date		Opponent	Site	1992 Date		Opponent	Site
August	31			August	29		A
September	7			September	5	ESCU	A
September	14	ESCU	PCC	September	12		A
September	21	Elon	A	September	19	NSU	A
September	28			September	26	WSSU	A
October	5	WSSU	H	October	3	NCCU	H
October	12	NCCU	A	October	10		
October	19	VSU	A	October	17	VSU	H
October	26	JCSU	H**	October	24	JCSU	A
November	2	NSU	H	October	31		H
November	9	LC	A	November	7	LC	H

F
S
U
'
S

C
R
O
S
S

C
O
U
N
T
R
Y

T
E
A
M



C
R
O
S
S

C
O
U
N
T
R
Y

T
E
A
M

W
I
T
H

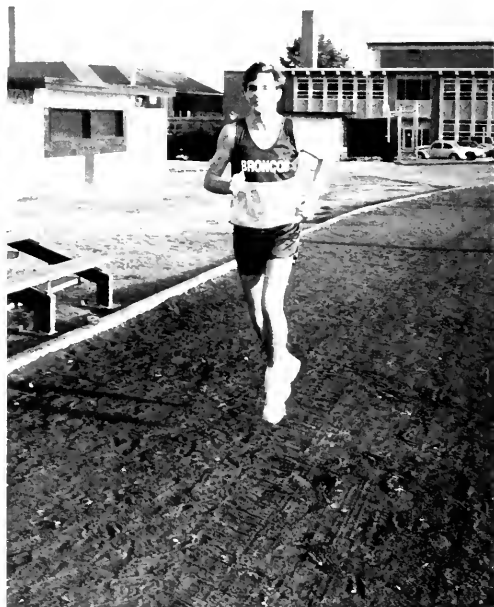
T
H
E
I
R

E
Y
E
S

O
N

T
H
E

P
R
I
Z
E

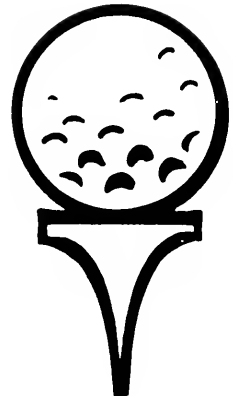


Members of our Cross Country team do a lot, and sometimes they don't get the recognition they deserve. Even though they don't receive much in the way of support, they do have their eyes on the prize.

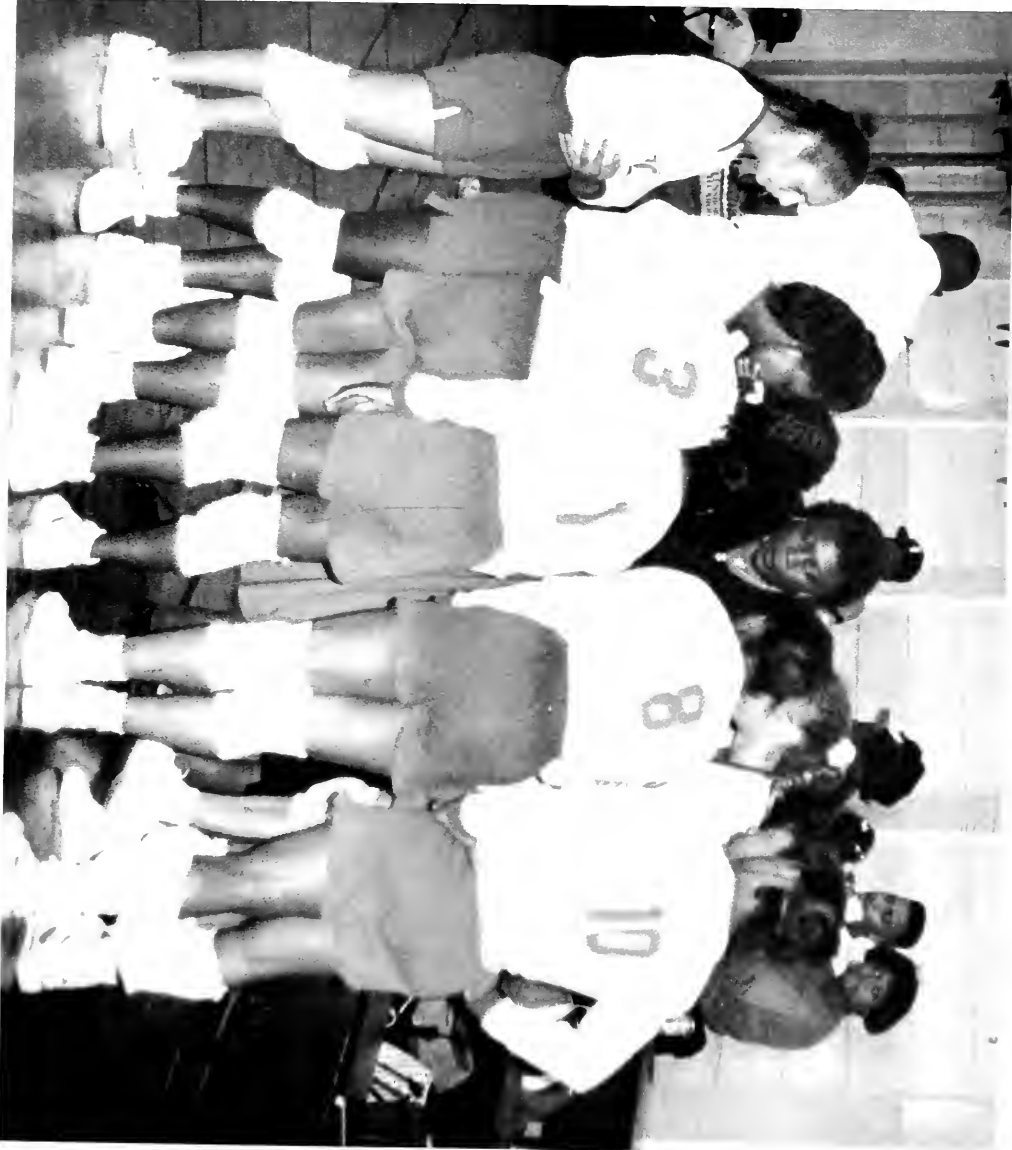


SPRING GOLF SCHEDULE

March	1, 2, 3	Greensboro College	Greensboro, NC
March	12, 13, 14	Florida A & M	Tallahassee, Fla
March	29, 30, 31	Carson-Newman	Jefferson City, TN
April	3, 4, 5	South Carolina State	Orangeburg, SC
April	6, 7	Pembroke State	Pembroke, NC
April	16, 17, 18	CIAA Tournament	Raleigh, NC
May	17, 18, 19	National Minority Championship	Cleveland, OH



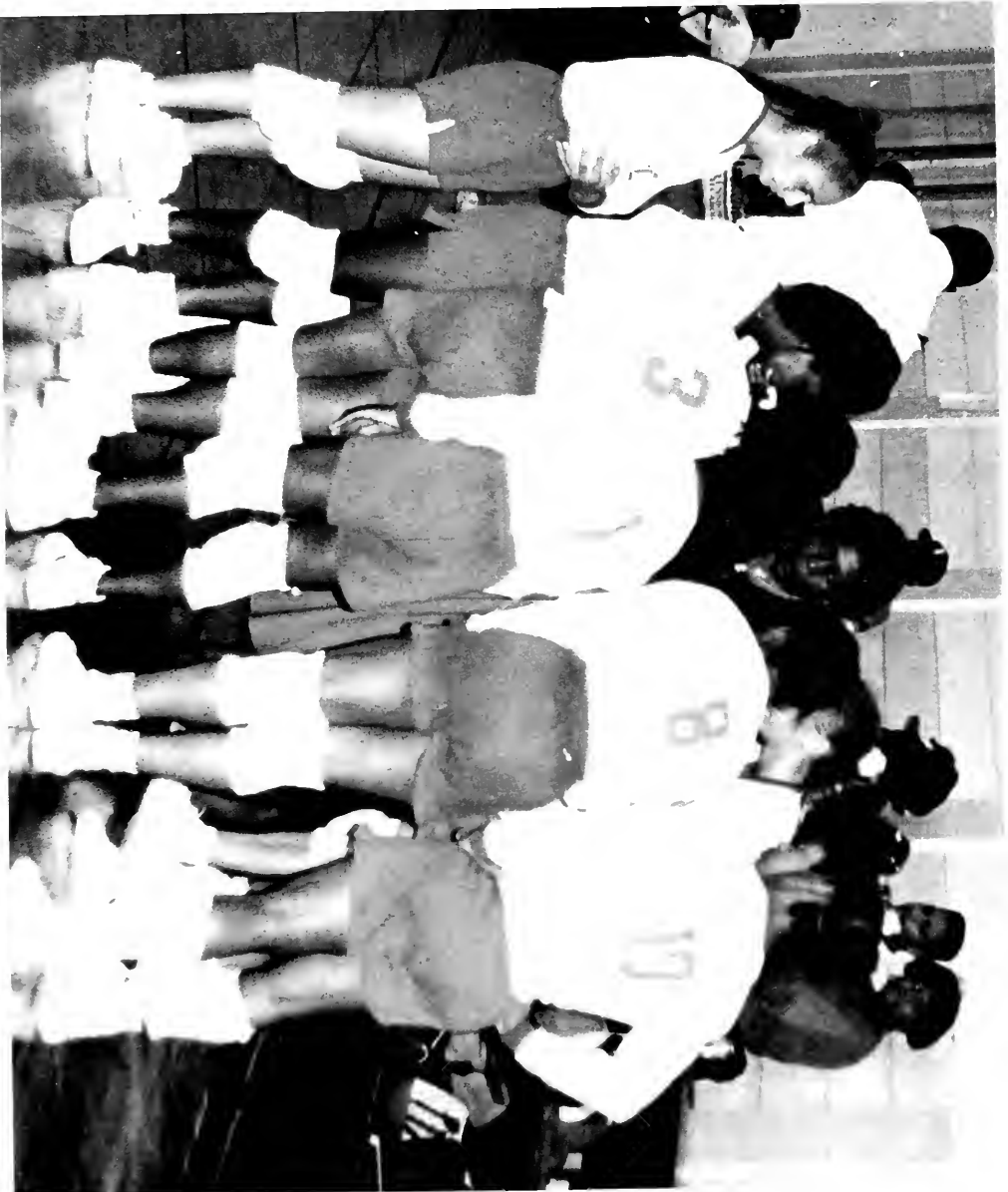
FAYETTEVILLE STATE UNIVERSITY



LADY BRONCOS' VOLLEYBALL TEAM

FAYETTEVILLE
STATES
VOLLEYBALL
TEAM





F S U , S M A L E B A S K E T B A L L T E A M



Y O U , V E G O T T H E R I G H T O N E B A B Y



#	NAME	Ht	Wgt	Class	Pos	High School
11	Emmanuel Calloway	5-7	150	Sr.	G	Howard High
12	Byron Davis	6-3	190	Jr.	G	Olympic High
14	Breyon Frescott	5-7	150	So.	G	A.C. Flora
20	Carl Chasten	6-2	178	Jr.	F	Southern Wayne
21	Fredd Sapp	6-1	185	So.	G	Pine Forest
23	Alton Walker	6-5	185	So.	F	E.E. Smith
30	Vernon Broughton	6-7	245	Jr.	F	Cainhy High
32	Doug Elliott	6-7	195	Jr.	F	Cape Fear
33	Elgin Zaal	6-5	180	Sr.	G	Netherland
34	Derrick Hawkins	6-6	200	So.	F	Vance Sr. High
35	Chris Waters	6-11	215	Jr.	F	Ribault
40	Mike Baskerville	6-6	190	So.	F	Vance Sr. High
42	James Allen	6-5	175	Sr.	F	Pine Forest
44	Danny Muldrow	6-5	210	So.	F	New Hanover
54	Tim Robinson	6-9	235	Fr.	F	E.A. Laney
55	Travis Spells	6-5	210	Sr.	F	Goldsboro High

Mascot: Broncos
 Colors: Royal/White
 Chancellor: Dr. Lloyd V. Hackley
 Director of Athletics: Dr. Ralph E. Burns
 Sports Information Director: Garrett Davis
 Head Coach: Jeff Capel
 Associate Head Coach: Mark Cline
 Assistant Coaches: Keith Hughes & Phil Hart
 1990-91 Record: 15-13



Fayetteville State University Men's Basketball Schedule 1991-92

Date	Opponent	Site	Time
November			
23 Saturday	Norfolk State	Fayetteville, NC	3:00pm
27 Wednesday	Hampton	Hampton, VA	7:30pm
30 Saturday	Bowie	Fayetteville, NC	3:00pm
December			
2 Monday	Virginia State	Richmond, VA	7:30pm
6 Friday	ECSU Tournament	Elizabeth City, NC	tba
7 Saturday	ECSU Tournament	Elizabeth City, NC	tba
13 Friday	Valdosta St. Tourney	Valdosta, GA	tba
14 Saturday	Valdosta St. Tourney	Valdosta, GA	tba
16 Monday	Paine College	Augusta, GA	tba
18 Wednesday	Augusta College	Augusta, GA	7:30pm
January			
2 Thursday	Western Carolina	Cullowhee, NC	tba
4 Saturday	Paine College	Fayetteville, NC	3:00pm
6 Monday	St. Augustine	Raleigh, NC	7:30pm
9 Thursday	Virginia Union	Fayetteville, NC	7:30pm
11 Saturday	NCCU	Fayetteville, NC	3:00pm
13 Monday	Pembroke State	Fayetteville, NC	7:30pm
16 Thursday	St. Pauls	Fayetteville, NC	7:30pm
18 Saturday	Livingstone	Salisbury, NC	7:30pm
23 Thursday	St. Augustine	Fayetteville, NC	7:30pm
25 Saturday	Shaw	Raleigh, NC	7:30pm
27 Monday	Winston-Salem	Winston-Salem, NC	7:30pm
30 Thursday	Johnson C. Smith	Fayetteville, NC	7:30pm
FEBRUARY			
1 Saturday	NCCU	Durham, NC	7:30pm
5 Wednesday	Livingstone	Fayetteville, NC	7:30pm
*8 Saturday	Shaw	Fayetteville, NC	8:00pm
15 Saturday	Johnson C. Smith	Charlotte, NC	7:30pm
19 Wednesday	Winston-Salem	Fayetteville, NC	7:30pm
23-29 Sun-Sat	CIAA Tournament	Richmond, VA	tba

Head Coach: Jeff Capel





LADY BRONCOS' BASKETBALL TEAM



FAYETTEVILLE STATE UNIVERSITY
1991-92 WOMEN'S BASKETBALL SCHEDULE

DATE	OPPONENT	SITE	TIME
November			
22 Friday	Johnson C. Smith	Charlotte, NC	8:00 pm
23 Saturday	Invitational	Charlotte, NC	TBA
27 Wednesday	Hampton	Hampton, VA	5:30 pm
30 Saturday	Bowie	Fayetteville, NC	1:00 pm
December			
2 Monday	Virginia State	Petersburg, VA	5:30 pm
4 Wednesday	Elizabeth City Methodist	Elizabeth City, NC	7:00 pm
14 Saturday		Fayetteville, NC (Away)	2:00 pm
January			
6 Monday	St. Augustine	Raleigh, NC	5:30 pm
9 Thursday	Virginia Union	Fayetteville, NC	5:30 pm
11 Saturday	N.C. Central	Fayetteville, NC	1:00 pm
14 Tuesday	Norfolk State	Fayetteville, NC	7:00 pm
16 Thursday	St. Paul's College	Fayetteville, NC	5:30 pm
18 Saturday	Livingstone	Salisbury, NC	5:30 pm
23 Thursday	St. Augustine	Fayetteville, NC	5:30 pm
25 Saturday	Shaw	Raleigh, NC	5:00 pm
27 Monday	Winston-Salem	Winston-Salem, NC	5:30 pm
30 Thursday	Johnson C. Smith	Fayetteville, NC	5:30 pm
February			
1 Saturday	N.C. Central	Durham, NC	5:30 pm
5 Wednesday	Livingstone	Fayetteville, NC	5:30 pm
8 Saturday	Shaw	Fayetteville, NC	5:30 pm
13 Saturday	Methodist	Fayetteville, NC	7:00 pm
19 Wednesday	Winston-Salem	Fayetteville, NC	5:30 pm
23-29 Sun-Sat	CIAA Tournament	Richmond, VA	TBA



FAYETTEVILLE STATE UNIVERSITY
 LADY BRONCOS SOFTBALL SCHEDULE
 1992

March

3 Tuesday	Shaw University	Fayetteville, NC	1:00 PM
6 Friday	Elizabeth City	Fayetteville, NC	3:00 PM
18 Wednesday	NC A&T	Fayetteville, NC	1:00 PM
21 Saturday	Raleigh Tourney	Raleigh, NC	
22 Sunday	Raleigh Tourney	Raleigh, NC	
23 Monday	Livingstone	Fayetteville, NC	3:00 PM
24 Tuesday	Methodist	Fayetteville, NC	1:00 PM
25 Wednesday	NCCU	Fayetteville, NC	1:00 PM
26 Thursday	NC A&T	Greensboro, NC	1:00 PM
28 Friday	WSSU	Fayetteville, NC	1:00 PM
30 Monday	Pembroke State	Pembroke, NC	2:30 PM
31 Tuesday	NCCU	Durham, NC	1:00 PM

APRIL

10 Friday	St. Augustine	Raleigh, NC	2:00 PM
11 Saturday	JCSU	Fayetteville, NC	1:00 PM

LADY BRONCOS SOFTBALL TEAM



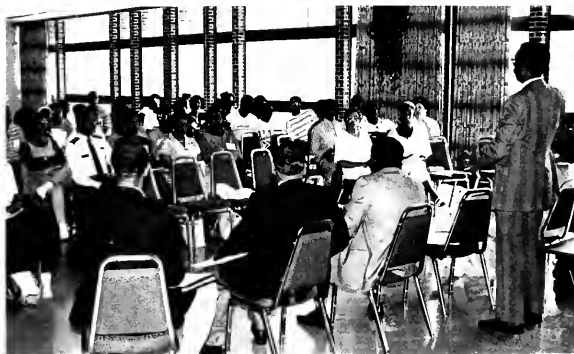
FSU'S SUPPORT HELP



FSU'S SUPPORT HELP



FRESHMAN ORIENTATION



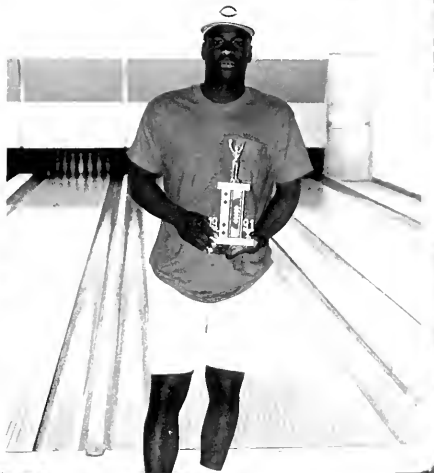
FRESHMAN ORIENTATION



FSU'S BOWLING TOURNAMENT



CHILLIN'—FSU STYLE

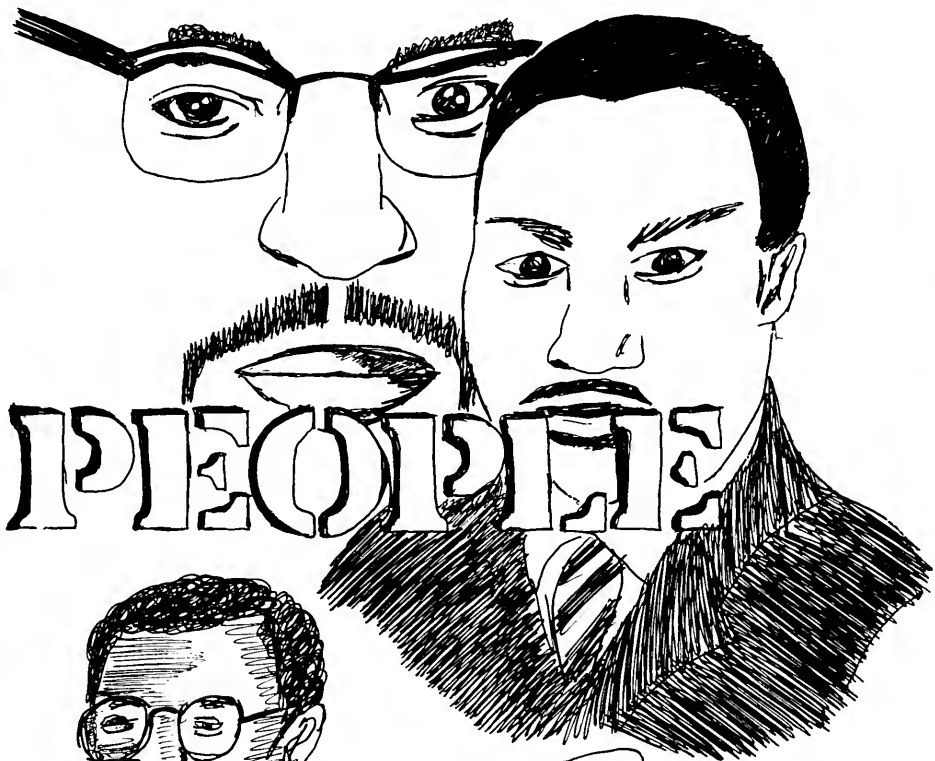


F
S
U
,
S
C
H
E
E
R
L
E
A
D
E
R
S









FAYETTEVILLE STATE UNIVERSITY'S DEANS



Dr. Bertha Miller
School Of Education



Dr. LaDelle Olion
Graduate Studies

Dr. Assad Tavakoli
School Of Business and Economics



Dr. Jon Young
College Of Arts and Sciences



ADMINISTRATIVE STAFF



Kay B. Webb
EXECUTIVE ASSISTANT AND
LEGAL COUNCIL



Winnie Best
CLERK STENOGRAPHER

Barbara Whitfield
SECRETARY



Dawn Ring
SECRETARY





MENTORS' PICNIC

Dr. Hackley and several mentors enjoy the feast of the first MENTORS' PICNIC.

Mr. Darlington assists students in finding their mentors'.

So, this is FSU!!! Two students discuss the University and the picnic.

If you ever need me, I'm here!! Dr. Murthy shares his aspirations with his advisee.



THE 1991 MENTORS PICNIC HELD AT FAYETTEVILLE STATE UNIVERSITY



Welcome to FSU!!! Freshman students enjoy hot dogs and drinks during the MENTORS' PICNIC.

Mrs. Owens helps two students locate their advisors.

This was a great idea!!! More freshman students enjoy the MENTORS' PICNIC.

Three fellow Broncos chat about the day's events and their goals for the semester.

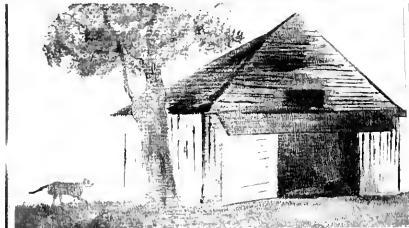
THE CHANCELLOR'S ACADEMIC DINNER



THE ACADEMIC DINNER CONTINUES



THE ARTS OF FSU



THE NEW SCHOOL OF



BUSINESS AND ECONOMICS

SCHOOL OF EDUCATION





Booker T. Anthony
Thomas Bacote
Francis Baird
Roy Barrett



Grace Black
Kwame Boakye-Sarpong
Ralph Burns
Maceo Esquin



Sin-Chu Fawkes
Don Fawkes
Barry Haber
Richard Hadley



Hstaofen Hemstock
Elnore Hill
DeField Holmes
Eleanor Howell



James Howell
Robert James
Harvey Jenkins
Lonnell Johnson

Richard Jones
Wanda Kendrick
William Lawrence
Shia Liu



John Marshall
Soni Martin
Michelle McIver-Bell
Norma McLaughlin



Bill McMullin
Masila Mytisia
Alexander Nakireru
Frank Palmieria



William Reed
Edith Tabb
Assad Tavokoli
Tommy Thomas



Kwaku Twumasi-Ankrah
Rose Vaughn
Floyd Waddle
Harmon Watson





Frank Whaley
Clarence White
Izola Young
Syed Yunus



The Faculty members here at Fayetteville State University try to look out for the students and also try to help them receive the best education possible from the University. Our Faculty members devote a lot of time and effort into supporting the Institution and also the people who look up to them ... THE STUDENTS!!!!!!!!!!!!



Francis Allsbrook
 Lenora Baldwin
 Tony Baldwin
 Sylvia Bordeaux



Jeannette Braggs
 Reginald Buckman
 Monroe Burk
 Alade Burton



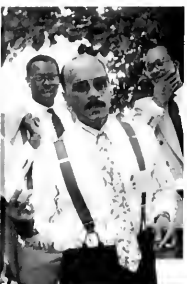
Ralph Burwell
 Rosemary Byrd
 Gene Carroway
 Geraldine Carter



Eloise Cave
 Anna Chao
 Peggy Clarke
 Olga Clarke



Viazadora Crawford
 Karel Cummings
 Charles Darlington
 Pat Darlington





Lorenzo Fairley
Gloria Ford
Hosea Givens
Stevan Godette



Bette Harris
Kaye Harvey
Andrea Hill
Roosevelt Holmes



Phyllis Horton-Bell
Iris Hunt-Smith
Pamela James
Jean Johnson



Rachel Johnson
Linda Jones
Lisa Lawrence-Hudson
Coach Lensy

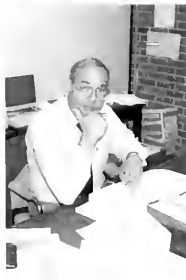


Don Lloyd
Mabel Mayle
Rachelle McCallum
Ellen McEachern

Maria McLamb
Willie McIntyre
Lula McNeill
Debra McPherson



Terry Merit
Shirley Neill
Rose Perry-Flatt
Dianne Forter



Jerry Pratt
Annette Proctor
Jean Reed
Yvonne Robinson



Joseph Ross
Patricia Simmons
Coach Simon
Marian Smith



Sandra Smith
Walter Smith
Gail Taylor
Annette Thomas





Wilma Thorpe
Laverne Walker
Debra Wash
Evelyn Washington



Lafue Williams
Jerry Williams
Elois Wingfield



THE POWER OF
THE PHYSICAL
PLANT WORKERS





T
H
E
P
H
Y
S
I
C
A
L
P
L
A
N
T
I
N
M
O
T
I
O
N

THE SENIOR CLASS OF 1991

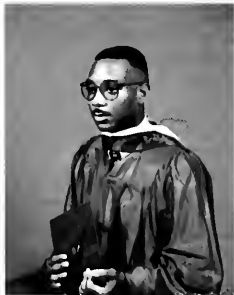
"Keeping Our Eyes On The Prize"



The Seniors, all through their struggles to get a higher education, never take their eyes off of the final "PRIZE." An education is a great thing to have, because no matter what you are bound to, YOU ARE BOUND TO NEED AN EDUCATION!!!!!! An education is a prize that no one can ever take away from a person.



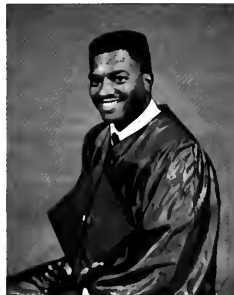
W. Hollywood Haywood
Biology/Chemistry
Bronx, New York



Anthony M. Ratliff
Education
Laurinburg, NC



Mark Baldwin
Psychology
Raleigh, NC



Dexter McRae
Biology/Chemistry
Fayetteville, NC



Anthony D. Allsbrook
Criminal Justice



Angela R. Autry
Political Science



Marian Baggett
Business Administration



Gerlean Baker
Business Administration



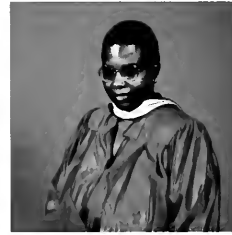
Barbara Banks
Business Administration



Angela Barnes
Sociology/Social Work



Anthony Barnes
Visual Art/Math



Barbara Beebe
Criminal Justice



Godfrey Bell
Criminal Justice



Jeffrey Blackwell
Accounting



Kimberly Bridgers
Sociology



Kathy Brown
Business Administration



Sean Bryant
Business Administration



Tonya Bryant
Elementary Education



Tonya Burns
Sociology



Sythe Cameron
Speech/Theatre



Norma Campbell
Business Administration



Jeffrey M. Capel
Criminal Justice/Pol. Science



Tamana W. Carr
Business Administration



Adrian Carver
Visual Art



Barbara Cayruth
Psychology/Social Work



Camilla Clayton
Business Administration



Anora Coley
Business Administration



Vallerie Cooper
Business Administration



Peggy Devane
Middle Grades Education



Stephen C. Eddings
Criminal Justice/Sociology



Sharon D. Edwards
Criminal Justice



Viola Edwards
Business Administration



Broderick Ellis
Business Adm./Marketing



A. Michael Esteban
Criminal Justice



Patricia L. Felton
English Education



Maria Flowers
Criminal Justice



Gilbert Foust
History



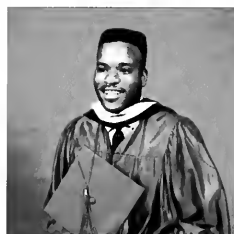
Thomas Fowler
Geography



Shunda Gamble
Criminal Justice



Wanda Gatlin
Criminal Justice



Leonard Grisham
Criminal Justice



Susan Hall
English



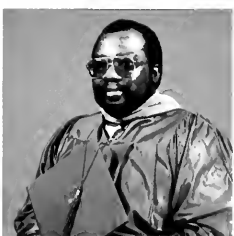
Veronica Hall
Chemistry



Carolyn Harley
Criminal Justice



Henry Harris
Criminal Justice



James Harrison
Business Administration



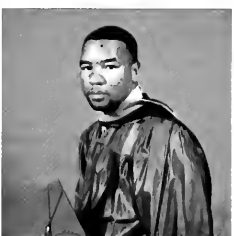
Crystal Hines
Speech Communications



Cheryel Hinkle
Business Administration



Toreia Isler
Sociology



William Jackson
Business Administration



Gwendolyn Johnson
Business Administration



Harold Johnson
Business Administration



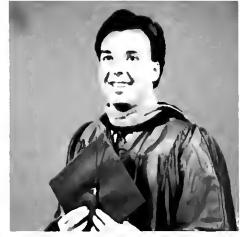
Michael H. Johnson
English Education



Kimberly Jones
Business Management



Sabrina Y. King
Accounting



Darrel Knause
Accounting



Stacey Knause
Accounting



Jacqueline C. Lawrence
Business Administration



Malinda Leak
Business Administration



Tracy Lewis
Education



Lillie Lockamy
Criminal Justice



Krystal T. Lucas
Sociology



Kaydra S. Mack
Business Admin./Marketing



Kema Mainor
Elementary Education/His.



Marry M. Marsh
English Language/Literature



Anthony McCollum
English Education



Peggy McCormick
Criminal Justice



Edward L. McKeller
Sociology



Teresa McLean
Sociology/Social Work



Samantha Y. McLeod
Elementary Education



Angela W. Milbourne
Criminal Justice



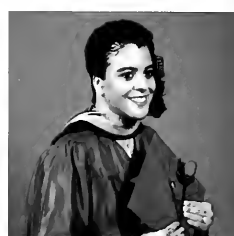
Vernell T. Milon
Sociology



Anthony Moore
Speech Communications



Sophia Moore
Criminal Justice



Ursula C. Moore
Business Administration



Dwight Morrisey
Criminal Justice



Frances Morrisey
Criminal Justice



Hazel Moseley
Business Administration



Cassandra D. Musgraves
Busi. Admin./Management



Shanelle L. Norris
Accounting



Denise Parker
Math/Computer Science



Lori A. Pillaro
Criminal Justice



Phyllissia Redmond
Elementary Ed./Economics



Trina Rhodes
Crim. Justice/Bus. Admin.



Raquel Robertson
Bus. Admin./Management



Venetta Robinson
Business Administration



Troy Russell
Psychology



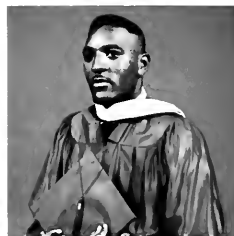
Iris Sherrod
Bus. Admin./Management



Jimonique Simpson
Political Science



Randy Smith
Criminal Justice



Lindell Spearman
Criminal Justice



Nita Speights
Criminal Justice



Leslie Spruill
Sociology



Ricky D. Stewart
Criminal Justice



Barbara Streeter
Mathematics Education



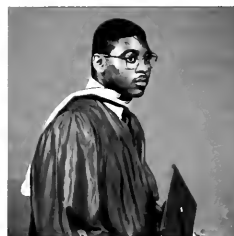
Carolyn B. Tedder
Criminal Justice



Patrice Terrel
Criminal Justice



Tammy A. Terry
Visual Art



Rodney Tucker
Geography



Lisa Walker
Sociology



Raymond Ward
Business Administration



Richard Ward
Business Administration



Janet Warden
Math/Computer Science



Vanessa Washington
Math/Computer Science



Tara Whitfield
Business Administration



Darwin Williams
Criminal Justice



Sekeethia Williams
Business Administration



Brenda Winfrey
Math Education



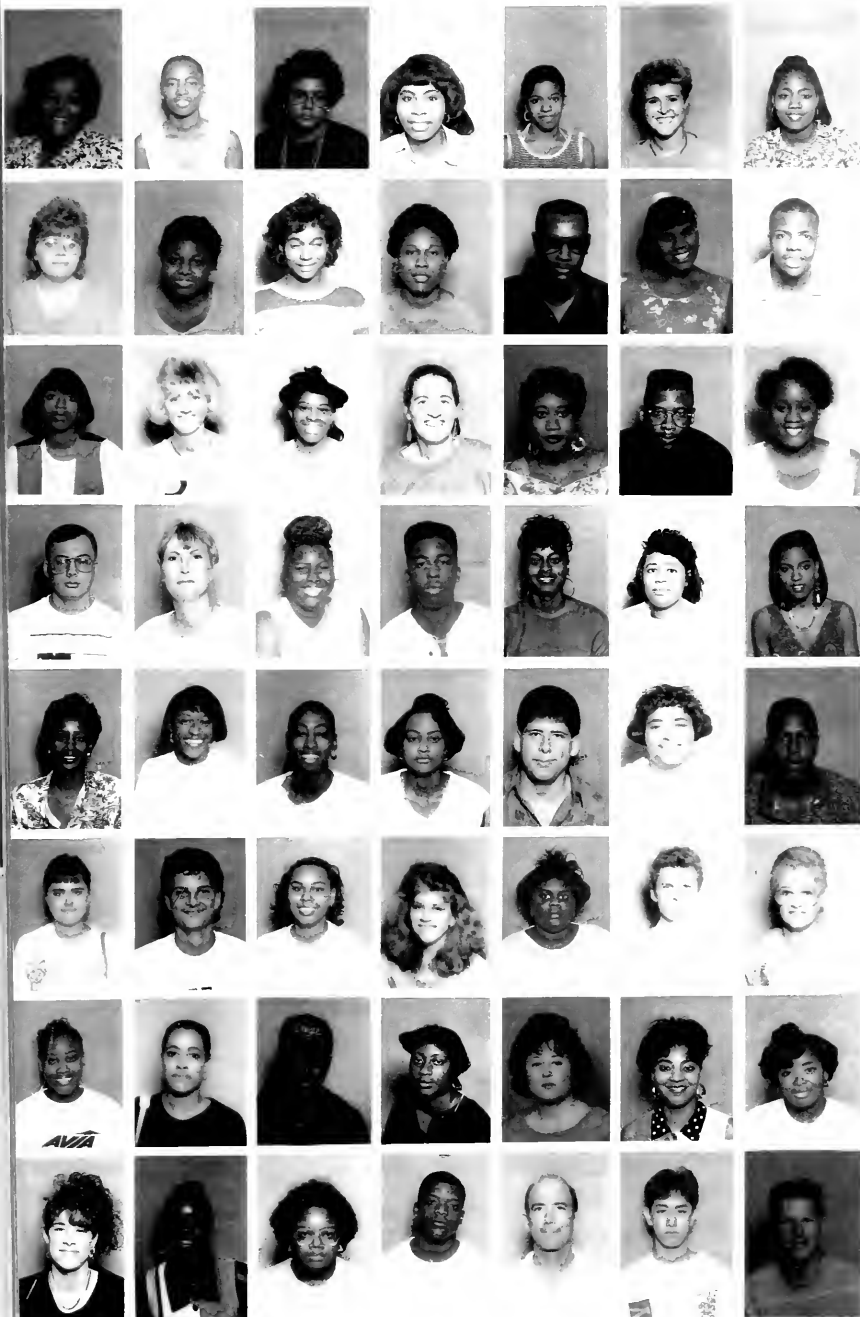
Cassandra Worrells
Elementary Education/History



Cheryl Wyatt
English Education



Brian Wylie
Social Studies/History



Gina Acosta
Lateisha Adams
Lena Adams
Mara Adams
Reina Adams
Dawn Adcox
Tonya Addison

Amy Aguirre
Swana Aikes
Kimberly Alderman
Cynthia Alexander
Harold Alexander
Lisa Alford
James Allen

Michelle Allen
Judy Allison
James Alston
Janet Ambrose
Tiffany Andrews
Cornelius Anderson
Bernadette Anderson

Anthony Archer
Merry Arnett
Deaidra Arthur
Charles Artis
Monica Artis
Fleshette Askew
Kimberly Ashton

Sandra Ashe
Patricia Atkinson
Angela Autry
Priscilla Autry
William Autry
Norvel Bacote
Anthony Abiley

Robin Balir
Neil Baggett
Cynthia Baker
Melanie Baker
Monica Baker
Rory Baker
Bonita Baldwin

Maeronda Banks
Valoria Banks
Darren Barbet
Sella Barber
Teresa Barber
Pamela Bardett
Angela Barnes

Gretchen Barnes
Kaira Barnes
Shannon Barnes
Rodney Barnes
Robert Barnhart
Bernard Barram
Weldon Barrett

Marietta Barr
 Michael Baskerville
 Byron Bass
 Christen Bass
 Damon Battle
 Gerald Battle
 Wanda Battle



Racquel Baxter
 Jenny Bayles
 George Beamon
 Felicia Beard
 Donna Beasley
 Teyka Beatty
 Johnnie Beecham



Monique Belcher
 Susan Belk
 Alyscia Bell
 Melissa Bell
 Katrina Bennett
 William Bennett
 Charlene Benson



Sonya Benson
 Cathy Benton
 Brenda Berry
 John Berry
 Jennifer Best
 Melody Best
 Bobbie Billing



Lisa Bird
 Jacques Bitting
 Clifford Bivins
 Regina Blak
 Steven Black
 Yolanda Black
 Kate Blackburn



Dora Blackmore
 Patricia Blais
 Anthony Blakeney
 Jeffery Blackwell
 Karen Blackwell
 Barbara Blanks
 Kim Bloomfield



Kimberly Blount
 Deidra Blue
 Kimberly Blue
 Tonyesia Blue
 Young Blue
 Consola Boone
 Rose Bonavia



Harwood Bond
 Aretha Bonds
 Reba Bowman
 Guadalupe Boyle
 Brenda Boxkin
 Kenalia Brady
 William Brady





Debra Branchie
 Gladys Breedlove
 Cassandra Brewington
 Lesley Brickhouse
 Glona Bridges
 William Bridges
 Joanne Bright



Vicky Brigman
 Angela Brinkley
 Michael Broodhurst
 Demetrius Brooks
 Vernon Broughton
 Beth Brown
 David Brown



Deborah Brown
 Gary Brown
 Genyatte Brown
 Jacquelyn Brown
 Kathy Brown
 Mary Brown
 Michelle Brown



Lassandra Brown
 Rosalyn Brown
 Aric Bryan
 Adrienne Bryant
 Allison Bryant
 John Bryant
 Tonya Bryant



John Bryd
 Phyllis Buie
 Kelly Bulla
 Neller Burgess
 Maria Burgos
 Wanda Burke
 Terry Burks



Cletas Burns
 Dorlisa Burns
 Kevin Burny
 Victoria Burton
 Tisha Bush
 Lynn Busson
 Reginald Batler



Frank Buttis
 Jesse Butts
 Phillip Cain
 Darrell Caldwell
 Renee Caldwell
 Frank Campbell
 Stacy Campbell



Vonda Campbell
 Ralph Camus
 Jeffery Capet
 Michelle Carey
 Pochetta Carroll
 Tracey Carroll
 Tawana Carr

Nemiah Carteen
Crystal Carlton
Charles Carter
Joann Carter
Maurice Cater
Sally Carter
Terri Carter



Travis Carter
Stacy Carthon
Guy Carton
Patrick Carver
Travis Carver
Jerry Cashwell
Karen Cashwell



Jewel Caston
Susan Caudle
Michael Cavanaugh
Stephen Charles
Bonita Chambers
Michael Chambers
Milton Chambers



Sylvia Chance
Christopher Chapman
Doris Chapman
Natasha Chapman
Ericka Charleston
Carl Chasten
Cornell Chasten



Dean Checknita
Avice Chesney
Erik Chisholm
Sandra Christian
Capricia Clark
Chris Clark
Ingrid Clark



Sherri Clark
Camilla Clayton
Chantay Claudie
Shannon Cleage
John Clech
Michelle Clemm
Terrell Cline



Judy Cliver
Barbara Closson
Freda Coates
Crystal Coleman
Davian Coleman
Tina Coleman
Luis Columna



Joz Comer
Susan Comer
Sharon Conley
Deborah Cook
Renita Cook
Sherri Cook
Valerie Cooper





Sherry Coriander
James Corner
Leslie Cothran
Retonia Cotton
Marie Council
Sharon Council
Andre Covas



Daphne Cox
Wanda Cox
John Craddock
Leo Crawford
Robert Criss
David Crockdell
Affion Crockett



Nicole Cromartic
Linda Crosby
Pat Cummings
George Cyle
Sherrri Dale
Nikki Daly
Anthony Daniels



Kenneth Daniels
Debra Davidson
Byron Davis
Carolyn Davis
Deitric Davis
Jimmie Davis
Lasandra Davis



Merry Davis
Helenea Dawson
Jewel Dawson
Lydia Day
Chuckie Daylin
Ladonna Deaver
Michelle Deach



Lori Degie
Lori Degreee
Jill Demino
Kim Dennington
Tom Derkins
Consola Devane
Corey Devane



Kesha Devane
Theresa Dice
Renae Diekerson
Rob Dobberton
Bonita Doby
Haffy Dowless
Carlus Downey



Traci Drake
Raymond Duffy
Carolyn Dunston
Katrine Dunston
Jason Durant
Lou Dwyer
Verdell Eaford

Patricia Easterwood
Annette Eckmier
Patricia Edge
Tiffany Edge
Stephen Eddings
Joyce Edmonds
David Edwards



Elizabeth Edwards
Eugene Edwards
Marcus Edwards
Robin Edwards
Doug Elliott
Aeris Ellis
Broderick Ellis



Katherin Ellis
Rhonda Ellison
Bonnie Elsey
Janice English
Ron Euar
Dawn Evans
John Evans



Rhea Evans
Ronnie Evans
Lisa Faison
Tony Faison
Wanda Faison
Danielle Faulkner
Maria Fearrington



Lori Featherson
Barbara Feemster
Patricia Felton
Selena Fennell
Catherine Ferguson
Elizabeth Ferguson
Solomon Ferrell



Ivy Ferron
Kristal Fields
Carol Fisher
Iginia Fitzpatrick
Lashawana Fitzpatrick
Candace Fitts
Erica For Bess



Jamie Ford
Terry Ford
Ramona Foster
William Foster
Reginald Foushee
Gilbert Foust
Gwendolyn Fowler



Julia Fowler
Christopher Fox
Phylle Foxwell
Deirose Francis-Dyett
Marie Francis
Cathy Frankie
Katrina Frayer





Marian Frazier
 Teresa Frazier
 Traylor Frazier
 Derrick Freeman
 Ronda Freeman
 Frederick Fritz
 James Frye



Cheryl Fuller
 Gladys Fulton
 Trudy Furtado
 Lelia Futrell
 Teresa Galloway
 James Gant
 Perez Gatling



Jeff Garrett
 Carla Gibbs
 Laconia Gibbs
 Cindy Gibson
 Tara Gibson
 Jenitta Giles
 Jamie Gilliland



George Gilmore
 Tangela Glenn
 Carlton Graham
 Frederick Graham
 Josephine Graham
 Ulice Graham



Willie Grainger
 Tamara Grant
 Tammy Graves
 Zacues Gray
 Ronald Greene
 Tiffany Griffin
 Gregory Griffinth



Jamie Grimes
 Felicia Godfrey
 Terri Gormely
 Lisa Goosley
 Deborah Guyton
 Asmau Habeesullah
 Demetrius Haddock



Cedric Hagett
 Roy Hagglock
 Terrence Hair
 Anthony Haire
 Jeanna Hairr
 Nicole Hairston
 Tinnette Hales



Alton Hall
 Larry Hall
 Susan Hall
 Kevin Hallington
 Ed Holloway
 Clay Hamilton
 Tracy Hamline

Devonne Hammond
David Hanna
Nicole Hardison
Kelli Hargrove
Angela Harkness
Carolyn Harley
Danice Harloe



Sandra Harper
Barry Harris
Beth Harris
Dalvin Harris
Everard Harris
Henry Harris
Juanicia Harris



Marchelle Harris
Ronnie Harris
Sabrina Harris
William Harris
Julia Harrison
Ladonna Harrison
Lee Hart



Easley Harvin
Melvin Harvye
Tabatha Haskins
Tesaunus Hatch
Ezra Hatcher
Joe Hawkins
Michelle Hawkins



Susan Hawkins
Alicia Hayes
Phyllis Heath
Jamesenia Hedapeth
Clarence Henderson
Johnelle Henderson
Michael Hendricks



Gloria Henry
Ken Henry
Ricardo Henderson
Danell Hernandez
Tracy Hermon
Katherine Herring
Tia Hews



Wanda Highsmith
Vivian Hilbraid
Barbara Hill
Damell Hill
John Hill
Marcia Hill
Samantha Hill



Sharona Hill
Sherrie Hill
Ulric Hill
Crystal Hines
James Hinkle
Danny Hinnant
Denice Hinton





Felicia Hinton
Yoshii Hisano
Amanda Hobbs
Kevin Hobbs
Consuela Hodge
Alexander Hodges
Richelle Hoffeck



Kim Hoffman
Najma Hogan
Napoleon Hogan
Donna Hogge
Lalon Hollere
Gwen Holley
June Holshouser



Joey Holt
Darrie Horne
William Horton
Maurice Housselet
Candace Howard
Leslie Howard
Michelle Howard



Paula Howard
Cynthia Hoyum
Debra Hudson
Jeannie Hudson
Keith Hughes
Michelle Hughes
Robert Hughes



Walter Huie
Autry Humphrey
Kathy Humphrey
Albria Hunt
Derrick Hunt
Gladys Hunt
Uzzie Hunter



Freddie Hurns
Mikal Husamudeen
Eunice Hymn
Otis Ifill
Elizabeth Iijima
Jacqueline Ingram
Kowaski Ingram



Roger Ison
Alexis Jackson
Angelica Jackson
Carla Jackson
Darlene Jackson
Stanley Jackson
Tracey Jackson



William Jackson
Leila James
Mary James
Wilbert James
William Jameson
Gregory Jankowall
Anthony Jenkins

Ronnie Jenkins
 Tyrone Jennings
 Glen Jerigan
 Brenda Johnson
 Frank Johnson
 Kimber Johnson
 James Johnson



Jeremy Johnson
 Leon Johnson
 Marilyn Johnson
 Melaniel Johnson
 Micah Johnson
 Pamela Johnson
 Paul Johnson



Regina Johnson
 Savita Johnson
 Shermaine Johnson
 Simone Johnson
 Beathe Jones
 Curtis Jones
 Debra Jones



Delda Jones
 Derick Jones
 Gertrude Jones
 Joyce Jones
 Kimberly Jones
 Russell Jones
 Teresa Jones



Vernessa Jones
 Vernika Jones
 Victor Jones
 Michelle Joseph
 Daniel Joyner
 Rodney Jozio
 Gabrielle Judkins



Lashone Juff
 Margaretta Kanair
 Paul Karbley
 Shyanne Kassidi
 Kimberly Katzen
 Beulah Keel
 Peggy Kelly



Fonita Kendall
 Deidre Keyes
 Eric Kim
 Rhonda Kimble
 Sabrina King
 Donna Kirk
 Arion Kirven



Thomas Knuckles
 Patricia Kokoszka
 Lisa Konchel
 Jeff Korwin
 Steven Kunkel
 William Kurnegar
 Donna Kurzendoelcer





Deborah Kurzendo
 Albert Lafferre
 Barbara Lajava
 Amy Langston
 Daisy Land
 Charles Landt
 Fredericka Lainer



Kathleen Lanus
 Richard Lashley
 Amy Lawrence
 Veronica Lawrence
 Karla Lazaro
 Kendar Leach
 Rhonda Leach



Ronnie Leach
 Regina Leak
 Phyllis Leconte
 Dana Lederer
 Fayedra Lee
 Paul Lee
 Tara Lee



Veronica Lee
 Romona Leedy
 Judy Leese
 Kimbill Leggett
 Teresa Leigh
 Janulyn Lennon
 Eddie Lesane



Isabella Lewers
 Jeanette Lewis
 Charles Lewis
 Levell Lewis
 Mai-Lan Lewis
 Michael Lewis
 Pamela Lewis



Sharon Lewis
 Khadah Lindsay
 Bobby Little
 Nelson Little
 Wendy Little
 Tonya Little
 Alfred Locklear



Kechier Lofton
 Mattie Logan
 Jamie Long
 Lora Long
 Shirley Long
 Roger Lou
 Leon Love



Joann Lucas
 Krystal Lucas
 Phillip Lyde
 James Lyons
 Moses Lyons
 Lawrence Lytt
 Paula Mack

Oneaka Mack
Tylisha Mack
Mark Macklin
Maria Madigan
Della Mainor
Kema Mainor
Shelia Mainor



Angela Malkin
Rennee Malloy
Scott Maloney
Dwayne Manning
Susan Manuel
Travis Manuel
Marcus Mansfield



Rodney Mapp
Rosalie Marquiz
Leon Marsey
Marny Marsh
James Marshall
Thomas Marshall
Josephine Marshall



David Martin
Michael Martin
Norma Martin
Sandra Martin
Gabrielle Mason
Kelly Mason
Hezekiah Massey



Felicia Matthews
Katie Matthews
Katina Matthews
Linda Matthews
David Maulby
Ashley Mayfield
John Mayhet



Demetria McAllister
Roger McAllister
Rosa McAllister
Alice McBride
Amanda McBride
Shawna McCaden
Cleopatra McCall



Leander McCall
Natasha McCall
Nicole McCallum
LeJune McCarley
Shawn McCarty
Nigel McCauley
Kathy McGuire



Bonnie McGrady
Sterlin McGlain
Shelby McIntrye
Carol McIver
Susan McKellar
Hedy McKenzie
Patrick McKoy





Lee McKoy
Trictine McKoy
Judi McLamb
John McLaughlin
Allyn McLean
Davey McLean
Lenny McLean



Stanley McLean
Virginia McLeod
Kurt McManus
Sandi McManus
Gerald McMillian
Ozella McMillian
Patricia McMillian



Roslyn McMillian
Racella McNair
Stephanie McNair
Channie McNeill
Hollie McNeill
Maketa McNeill
Synthesis McNeill



Corlis McPhatter
Mary McPaul
Roosevelt McPherson
Rachel McQueen
Ann McRae
Pamela McRae
Vivian McRae



Kathy McSwain
Spencer Mear
Sahib Medina
Daphne Medley
Sharon Meeks
Pamela Melvin
Vera Melvin



Yolnada Melvin
Sheon Mendoza
Manuel Moreno
Angela Merisa
Barget Michael
Willie Milcey
Carson Miller



James Miller
Janie Miller
Janice Miller
William Miller
Margaret Mills
Christopher Mitchell
Maria Mitchell



Marus Mitchell
Rebecca Mitchell
Sandra Mitchell
Tatilla Mitchell
Heather Mylse
Daniel Moldion
Yolunda Monk

Patrick Mourin
 Don Monroe
 Rebecca Montaldo
 Benetta Moore
 Chalissa Moore
 Chawanda Moore
 Cora Moore



Davio Moore
 Donald Moore
 Frank Moore
 Wayne Moore
 Donnell Moose
 Hector Morales
 MaryAnn Moreno



Alexis Morgan
 Frances Morisey
 Alesia Mourning
 Rachel Morris
 Mesha Morrison
 Rhonda Morrison
 Felicia Mosley



Melissa Moss
 Annie Mott
 Erica Mott
 Danny Moyers
 Hans Muller
 Barry Mung
 Elana Murchison



Cindy Murphy
 Johnathan Murphy
 Tammy Murphy
 Dwight Murray
 Kynole Murray
 Lynada Murray
 Paul Murray



Lynda Murrell
 Gina Myers
 Guaron Nealy
 Bruce Nebo
 Monica Negron
 Canandia Nellon
 Gale Nelson



Earl Newell
 Jennifer Newly
 Joseph Newton
 Fannie Nichols
 Tonya Noland
 Shanelle Norris
 Barbara Nubin



Candy Nunnery
 Dorothy Nunnery
 Ellis Nunnery
 Faith Paige
 Victor Paige
 Diane Papron
 Mary Pail





Crystal Parker
 Kathy Farker
 Michael Farker
 Shaun Farker
 Tezra Farker
 Yatashie Parker
 Melvin Parks



Nicole Parks
 George Pasley
 Elizabeth Passacantando
 Howard Pate
 Lillian Pate
 Patsy Paulett
 Pamela Payne



Wayna Payne
 Lanetta Payton
 Arlinda Peace
 Melissa Pearsall
 Major Peavy
 Audria Pendergrass
 Reginald Peppers



Sharon Perkins
 Kimberly Perry
 Donald Peter
 Colethia Pettiford
 Joseph Petty
 Kelly Phillips
 Stephanie Phillips



Pamela Pickett
 Rene Pierre-Coats
 Wanda Pipkin
 Craven Pittman
 Hope Pittman
 Kamesha Pittman
 Larry Pittman



Tony Pitts
 Daniel Poindexter
 Rene Poole
 Mary Porter
 Andrew Powell
 Terrell Powell
 Laura Powers



Alvin Pratt
 Calvin Pratt
 Breyon Prescott
 Alsaprina Pressley
 Terrence Pressley
 Marvin Pretin
 D'Allen Pretlow



Karen Price
 Jenny Price
 Ivan Fride
 Erica Fridgen
 Robert Fridgen
 Roosevelt Fridgen
 R.B. Frudhom

Thelma Pruitt
Gerald Puckett
Arthur Pulley
Michael Quinn
JoAnn Raeford
Sandra Ralph
Cassandra Ratliff



Angela Raven
Cheryl Ray
Ellen Ray
Jeffrey Ray
Karsten Ray
Tychimeria Ray
Wanetta Ray



Phyllissia Reedman
John Reed
Susan Reed
Jacqueline Reid
Anthony Rel
Alton Reynolds
Janique Reynolds



Raymond Reynolds
Yakima Rhinehart
April Rhodes
Brenda Rhodes
Quanetta Rhodes
Edna Richardson
Katossa Richrdson



Barbara Ridgell
Dennis Rigans
Ronald Ritchey
Melissa Ritche
James Rittenhouse
Herbert Rivers
Luberta Rivers



Jessica Robinson
Michelle Robinson
Timothy Robinson
Denise Rodgers
Roseanna Rodriguez
Armstead Rogers
Larry Rogers



Raymond Ward
Richard Ward
James Warner
Alana Warren
Michael Warren
Aros Washington
Botina Washington



Cheryl Washington
Demity Washington
Kenneth Washington
Christopher Waters
Shelby Watford
Alicia Watkins
Lisa Watkins





Katrina Russell
 Kimberly Russell
 Carmen Rutka
 Gerald Tabor
 Treava Tann
 Signe Tanner
 Clarence Taylor



Preston Taylor
 Gloria Tengre
 Richard
 Tiffany Tew
 Joyce Theisan
 Arthur Thomas
 David Thomas



Steven Thomas
 Tracie Thomas
 Barbara Thompson
 Delma Thompson
 Janie Thompson
 Russell Thompson



JoAnn Tillman
 Natalie Tillman
 Monica Tombin
 Vaughan Tompkins
 Crystal Totten
 Stefanie Treisar
 Judith Truman



Migeya Tucker
 Susie Tucker
 Alton Walker
 Letitia Walker
 Lonnie Walker
 Patricia Walker



Mary Wallace
 David Wall
 Larry Wall
 Toyarna Well
 Amy Walters
 Margaret Ward
 Michelle Ward



Fachie Romar
 Peter Rosa
 Roberta Rose
 Curtis Rotan
 Alexandria Roud
 Roy Rouden
 Frances Royal



Matthew Royal
 Deborah Royal
 Elfreda Rucker
 Thereselee Rudium
 Kim Rueda
 Del Ruff
 Darlene Russell

Michael Watkins
 Mitchell Watkins
 Alice Watson
 Ferrence Watson
 Jacqueline Weathersby
 Karen Weaver
 Clarence Webb



William Weber
 Laura Weeks
 Lisa Wehand
 Angela White
 Betty White
 Dawn White
 Edward White



Lynn White
 Reginald White
 Robert White
 Nicole Whitfield
 Tara Whitfield
 Michael Whitmore
 Harold Wiggins



Jenny Wiggins
 Lamar Wiggins
 Carletta Wiggleton
 Stephanie Willard
 Alvia Williams
 Angela Williams
 Brian Williams



Cassandra Williams
 Claudette Williams
 Deidra Williams
 Demeterial Williams
 Erika Williams
 Fredrick Williams
 Foster Williams



Janice Williams
 Janita Williams
 Joyce Williams
 Krystal Williams
 Linda Williams
 Lisa Williams
 Michael Williams



Michelle Williams
 Mita Williams
 Nicole Williams
 Shaun Williams
 Sonja Williams
 Tammy Williams
 James Williamson



Patricia Williamson
 Brenda Willis
 Mona Willis
 Anne Wilson
 Claude Wilson
 Gary Wilson
 Jeff Wilson





Mona Wilson
Stephanie Wilson
Throne Wilson
Veronica Wiper
Andrew Winston
Kimberly Winters
Brian Witten



Alice Wolfe
William Wolfe
Tacuma Womble
Paris Wood
Scott Wood
William Wood
Kelvin Woodson



Johnathan Worden
Zandra Worsley
Krista Worthington
Jeremy Wright
Joseph Wright
Frank Wyde
Cherylle Wyatt



Sharon Yeager
Elgin Zaal
Mark Zamperion
Mark Zimmerman





As Editor-in-Chief of the Fayettevillian for the year 1991-1992, I hope that you, the Fayetteville State University Family, find this publication to be a very enjoyable one. A lot of hard work has gone into the publication of the history of Fayetteville State University for the year 1991-1992. I hope this publication will give you an overall view of the many activities and events that have taken place at the University.

I would like to thank my staff members for the time that they took out of their busy schedules to help in the production of a quality product. I would also like to thank the staff of the Rudolph Jones Student Center for their support. To Mr. McNair, I would like to say that it has been a pleasure to work by his side and learn his trade as a photographer. It has been a pleasure to assist you, the Fayetteville State University Family, as well.

As a May 1992 graduate, I would like to say to my class members, congratulations for a job well done and to the underclassmen, I would like to say keep striving to be your best and give it your all; someday it will pay off.

Now my staff and I would like to present to you for the year 1991-1992 "KEEPING OUR EYES ON THE PRIZE."

Sincerely,

TAMMY ANN TERRY
EDITOR-IN-CHIEF

I would like to give special thanks to Miss Marny Marsh for her help with the typing for the publication.





YEARBOOK ADMINISTRATIVE COMMITTEE

- Mr. Benson Otovo
Vice Chancellor of Student Affairs
- Ms. Laurens Cook-Burgess
Director of Development
- Dr. Lonnell Johnson
Asst. Professor — Dept. of English
- Dr. Robert James
Title III Coordinator
- Dr. Harvey Jenkins
Associate Professor — Department of
Fine Arts & Communication
- Dr. Ophelia Holmes
Asst. Professor — Dept. of English
(Pictured)



Dear Broncos,

As the advisor for the Fayettevillian for the year 1991-1992, I would like to say that it has been a pleasure to work with the students who have dedicated a lot of time and effort into the production of this publication.

I would also like to thank Mr. Joe Hughes who has worked with the staff. He was very patient and supportive. A special thank-you goes out to the administrative staff who worked right along with the staff and me.

My message to the students is "Keep Your Eyes On the Prize," never look down, and always have confidence in yourself.

Dennis R. McNair



YEARBOOK UNDERGRADUATE STAFF

- Tammy Terry
- Marry Marsh
- Allen Lacewell
- Cassandra Ratliff
- Trudy Fields
- Hollie McNeill
- Eric Thomas
- Alvin Ladson
- Teresa Melvin
- Nicole Thompson

DANNY GLOVER

T
H
E

M
A
N
Y

F
A
C
E
S

O
F



G
L
O
V
E
R

A
N
D

F
R
I
E
N
D
S



PAMELA D. REED AS



About the Performer

PAMELA D. REED

A native North Carolinian, Pamela has spent the past 18 years experimenting, developing, performing and showcasing her own brand of theatre while living in New York, Boston, Miami, Jamaica (West Indies), and London, England.

Acting is not Pamela's only forte. She is a dancer, singer, choreographer, storyteller, writer, producer, and director as well. She landed a part in the film "Crazy People," starring Dudley Moore and Barbra Streisand, which was released in spring 1990. She performed backup vocals on recordings by reggae super stars Bob Marley, Jimmy Cliff and Lee "Scratch" Perry, and was the other half of the unique duo "Lull Experiences" with Auna Lewis. In 1984, Pamela was commissioned by the New York Shakespeare Festival to write "The Three Nineteen Affair," a 10-minute reggae musical. She also has her own traveling theatre company, "Pamela's Portable Stage."

Pamela's formal training was at the N.C. School of the Arts in Winston-Salem (B.F.A.) and at Master's College, London, in both modern and classical theatre.

As Visiting Artist for Southeastern Community College, Pamela provides free workshops, performances, and masterclasses for schools, churches, and civic and cultural groups throughout Columbus County. The Visiting Artist program is sponsored by the N.C. Arts Council in conjunction with the community college system to encourage and promote an appreciation of the arts.

FAYETTEVILLE STATE UNIVERSITY
Division of Student Affairs

Fayetteville State University is a constituent member of The University of North Carolina



LI'L LIZA JANE

FSU'S CANDLE LIGHT MARCH



THE VICTORY IS OURS

CHANCELLOR'S BLACK HISTORY



MONTH KICK-OFF

Chancellor's List - Fall Semester, 1991

(Students with a GPA of 3.75 & above)

Congratulations to these outstanding Students!

- Duane D. Alexander
Susan A. Altobello
Cornelius Anderson
Radclyffe A. Antoine
*Lisbeth Arboleda
Anthony J. Archer
Merry P. Arnett
Monica D. Austin
Keisha M. Aytch
William C. Autry
*Deborah M. Babcock
Robert N. Baggett
Patricia Bailey
Melanie B. Baker
Pamela G. Barcliff
Valerie V. Barrett
*Christine B. Bass
*Valoria C. Bass
*George A. Beamon
*Anne S. Beatty
Barbara L. Beebe
Kelvin D. Bell
*David K. Bender
Timothy C. Bentley
*Teresa V. Berlin
*Carin L. Berry
*Ricky A. Bland
Kimberly C. Bloomfield
Stephanie F. Boardman
*John M. Boxrucker
Sonia P. Brinson
Leo Brown
Regina N. Brown
*Regina N. Brown
*Kevin L. Burney
Willie Byrom
*LaTonya P. Carroll
*Adrian L. Carver
*Stephanie E. Castillo
Christopher D. Chapman
*Ericka L. Charleston
*Owen E. Clark
*John E. Cleckner, II
Alvin Coldtrain
Sherry A. Coleman
*Sylvia L. Collins
*Katherine A. Colwell
*Deborah K. Conary
Lisa L. Coulter
*Daphne L. Cox
*Tony F. Craddock
*Janice W. Daniels
*Bobbi L. DeBruer
Peggy A. Devane
Michelle A. Dech
Bobby J. Dixon
Traci D. Drake
Shelley B. Dunkle
*Glenna L. Duren
Patricia H. Easterwood
*Eleanor Edgerton-Taylor
*Ronnie D. Evans
*Elizabeth H. Ferguson
- Robert E. Ferguson
*Trudy L. Fields
Marie M. Flanagan
*Linda B. Fleck
*Pamela M. Flournoy
*Anne Fogleman
Debra F. Fore
*Thomas L. Fowler
Rupert Fox
Cathy S. Frankie
*Christina M. Franks
*Amy K. Furtado
Hazel M. Gainey
*Angela P. Garland
Thomas D. Garner
*Tonya V. Garrett
*Kenneth A. Gates
*Russell P. Gatling
*Lisa A. Goosley
*Tamara K. Grant
*Lynn G. Greenup
*Susan J. Hall
*Melanie J. Hamblin
Raymond J. Harrison
*Pamela A. Hart
Kevin R. Hobbs
Wayne L. Hodges
James D. Hopper
David R. Horne
*Tina M. Howerton
*Adele F. Hubbard
Debra J. Hudson
Kathy S. Humphrey
Derryk D. Hunt
Roger N. Ison
Michelle R. Jackson
Richard Jacobsmeyer, Jr.
*Gregory C. Jankowiak
*Timothy A. Jessie
Lea S. Jimmerson
*Albert S. Johnson
*Eros T. Johnson
*James H. Johnson
Jennifer D. Johnson
Agnes W. Jones
Christopher A. Jones
Julia J. Joshi
*Karen P. Keegan
*Bernice R. Kidd
Deanne N. King
*Jenny L. King
*Donna M. Kirk
*Patricia A. Kokoszka
*Robert C. Kotin
*Steven A. Kunkel
Kevin R. Kurinec
*Donna R. Kurzendoerfer
Theresa A. Laakko
*Judy L. Lambert
Catherine H. Lanford
*Raylene B. Latham
*James F. Lay
Melinda K. Leak
- *Linda F. Lee
*Romona A. Leedy
*Theresa K. Lester
*Tracy Lewis
Jennifer J. Lockamy
*Alfred W. Locklear
*Annmarie S. Locklear
*David G. Lopez
*Abraham Loudermill
*Krystal T. Lucas
*James S. Maloney
*Mary Catherine Marinich
Karin E. Markert
David A. Martin
*Michelle H. Martin
*Patricia A. Masters
Janet S. Matney
*Kenneth E. Matthews
*Kynota N. McCall-Murray
Karen M. McCauley
Angela McClary
Pamela J. McDaniel
*Barbara C. McDonald
*Yimiya C. McDougald
*Sheryl J. McGriff
*Patrick F. McKay
*Mary D. McLamb
Sara L. McLamb
Michelle D. McLaughlin
Shawnette McLaughlin
Sheila M. McMurray
*James H. Miller
*Janiece L. Miller
*Lori B. Miller
Karl Molnar
*Earl J. Moniz
Sophia D. Moore
*Hector E. Morales
Amy M. Morgia
Christopher Mori
*Danny L. Moyers
Christina M. Muirhead
*Tammera J. Munnerly
*Jackelin E. Murillo
Lisa S. Nance
Kathy L. Nazionale
*Monica L. Negron
*John D. Newman
*Karen L. Owens
Carol H. Page
Tina Pardonche
*Stephanie K. Pass
*Gregory L. Peele
*Thomas R. Perkins
Lori A. Pillaro
Stephanie A. Plumley
*Dolores B. Poston
James N. Prevatt, Jr.
Derrick L. Purcell
*Patience L. Ramirez
*Valerie D. Randall
*Harlan D. Reeves
*Christine E. Rexroat
- Linda A. Ridall
Jonathan D. Robbins
Elizabeth F. Roberts
Delia J. Robinson
Vanetta L. Robinson
*Carolyn M. Rodriguez
*Jennifer L. Rucker
*Darlene E. Russell
Patricia A. Sada
Andrew M. Sapp
*Amanda B. Schenk
Patricia Scott-Cummings
Vinod Sekhri
*Sandra S. Shaffer
William P. Shanahan
*Cathleen S. Sherritt
Janet L. Shuey
Qurratu'l-Ayn A. Simerly
Kim T. Simmons
Beverly A. Simpson
*Timothy A. Sirois
Mark A. Smith
Ladena P. Spencer
Tamala D. Spencer
*Frances M. Spivey
Kathryn S. Sporer
*Janet L. Stallings
*Kimberly W. Staton
*Candi C. Stevens
*Seth S. Stevens
Anthony D. Sullins
*Bonnie L. Tabb
*Lee V. Talton
*Tammy A. Terry
*Patton W. Thomas
*Joyce H. Torres
*Dorothy J. Travis
*Jenny E. Underwood
*Karen G. VanBuren
*Pamela W. Villegas
*Lisa Gail Walker
Randy L. Wallace
Tiffany M. Warren
*Mitchell O. Watkins
Donald A. Watson
Karen M. Weaver
Mary V. Weger
Roxie C. Wells
Johanna R. Weyant
*Wendy J. Whitford
*Jacqueline D. Wicks
*David M. Wiggins
Carolyn A. Williams
*Deborah H. Williams
*Kenneth J. Williams
Leslie A. Williams
Neda Y. Williams
Tammy J. Williams
*Iverdelle Willis
Stephanie M. Wilson
*Kimberly H. Winters

NOTE: Asterisk indicates a GPA of 4.0.

THE MEMBERS OF

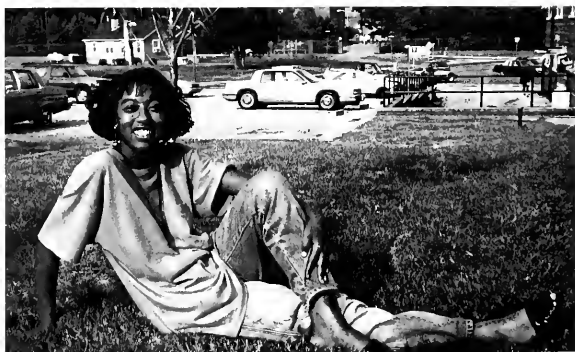


KAPPA DELTA PI

KAPPA DELTA PI



THE HEALTH EDUCATION CLUB



ALPHA KAPPA MU



TAU BETA SIGMA



FSU Counseling Center Helps Students Bury Alcohol During Alcohol Awareness Week



FSU'S FIRST HONORARY RA DINNER



PRESENTING THE GOLDEN VOICES OF FSU



STUDENTS AT WORK AND RELAXING



A F R O T C
D E T A C H M E N T
6 0 7
D I N I N G
O U T



AFRICAN AMERICANS IN THE US MILITARY



SPONSORED BY AFROTC DETACHMENT 607

FSU'S MARCHING BRONCOS



FSU'S PEP CLUB





F
S
U
'
S

A
T
H
L
E
T
I
C

D
E
P
T
.

THE MATHEMATICS AND COMPUTER SCIENCE CLUB



Mathematics and Computer Science Club
Fayetteville State University



Mathematics and Computer Science Club
Fayetteville State University



THE FACULTY AND STUDENTS

COMMITTING TO GETTING THE JOB DONE



F
S
U

K
E
E
P
I
N
G

F
I
T

W
I
T
H

P
H
Y
S
I
C
A
L

E
D
U
C
A
T
I
O
N

FSU'S NATURAL SCIENCE CLUB



FSU'S FUTURE ALUMNI



FSU'S WRITERS CLUB



FSU ALL-STAR GAMES



FSU'S ILLUSION MODELING CLUB



FRESHMAN CLASS PRESIDENT

YAKIMA

SIMONÉ
RHINEHART

OFFICERS NOT PICTURED

VICE PRESIDENT — WAYNE HODGES, SECRETARY — SHAWNNA
McCADDEN, TREASURER — MONICA AUSTIN and PARLIAMEN-
TARIAN — JASON PIERRE





THE MEN OF GROOVE PHI GROOVE



GET INTO THEIR
MIX



The men of Groove Phi Groove are back this year in full effect and they want you to come and celebrate with them. They want everyone to know that they are alive and kickin'.





G
R
O
O
V
I
N
G



W
I
T
H

T
H
E



B
E
S
T

THE LADIES OF CLASS

A
L
P
H
A

K
A
P
P
A

A
L
P
H
A



ALPHA PHI ALPHA

T
H
E
M
E
N
W
H
O
C
O
M
E
F
I
R
S
T



The Alpha Kappa Alpha Sorority, Inc. was founded in 1908 at Howard University in Washington, D.C. Our colors are Apple Green and Salmon Pink. The motto of the Sorority is, "By Merit and by Culture." Our brothers are the men of Alpha Phi Alpha Fraternity, Inc.





Alpha Phi Alpha, the first Greek-letter fraternity, was founded December 4, 1906, at Cornell University, Ithaca, NY by seven men: H. A. Callis, C. H. Chapman, E. K. Jones, G. B. Kelly, N. A. Murray, R. H. Ogle, and V. W. Tandy. Since then, over 100,000 men have passed through our ranks in chapters throughout the U.S. and abroad. Our fraternity consists of such notable brothers as Andrew Young, Thurgood Marshall, Ebony/Jet Publisher, John H. Johnson, and late brothers such as Martin Luther King, Jr., Jesse Owens, and Duke Ellington. Some of our national projects include the Boy Scouts, Teen Pregnancy, Education, and Voter Registration.



THE LADIES OF ELEGANCE

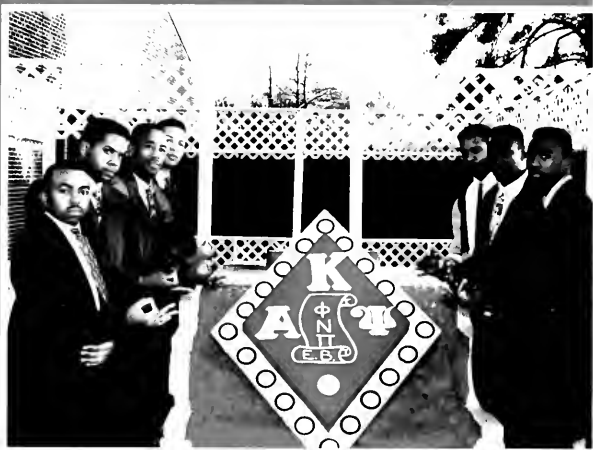
S
I
G
M
A

G
A
M
M
A

R
H
O



THE DEBONAIR MEN OF KAPPA ALPHA PSI

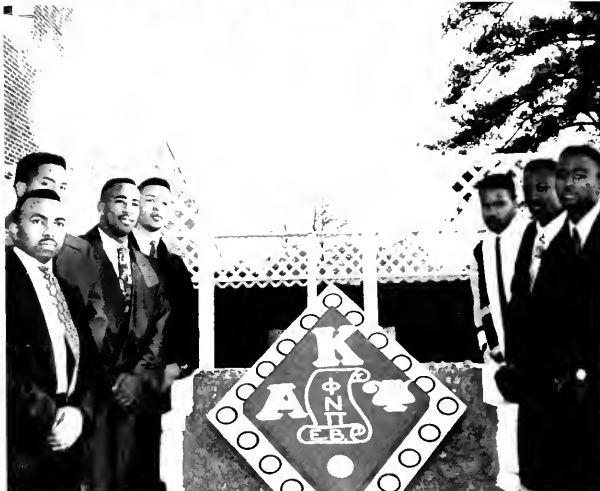




THE LADIES OF SIGMA GAMMA RHO



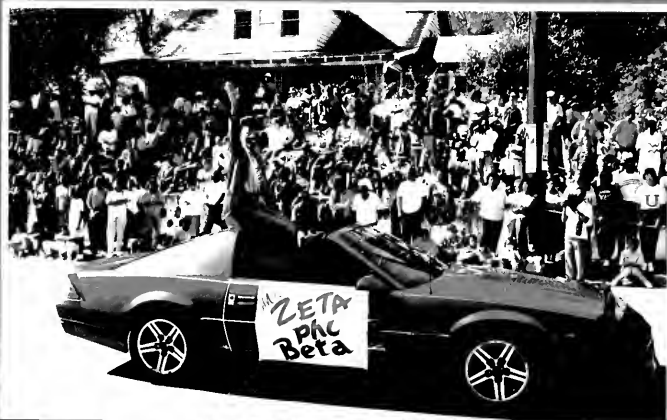
Sigma Gamma Rho Sorority was founded November 12, 1922, when the first chapter, Alpha Chapter, was organized at Butler University in Indianapolis, Indiana by seven school teachers: Nannie Mae Johnson, Mary Lou Little, Vivian White Marbury, Bessie Martin, Cubena McClure, Hattie Mae Redford and Dorothy Whiteside. Sigma Gamma Rho Sorority, Inc. is a nonprofit, collegiate Sorority dedicated to the encouragement and promotion of high scholastic attainment, community service and improvement of the quality of our lives and the society in which we live. Its slogan, "Greater Service, Greater Progress," serves as a foundation for its objectives and activities. The Sorority also stresses "Quality and not Quantity."



Kappa Alpha Psi Fraternity, Inc. was founded January 5, 1911 at Indiana State University. "THE DREAM" of Elder Watson Diggs was to assist achievement and brotherhood in every field of human endeavors. Its purpose is to shape a group personality unique in the annals of college Greek Letter Organizations around the idea of achievement.

The Diamond Goes On

ZETA PHI BETA, INCORPORATED



PHI BETA SIGMA, INCORPORATED



THE LOVELY LADIES OF

Z
E
T
A
P
H
I
B
E
T
A



THE MEN OF PHI BETA SIGMA

T
H
E
M
E
N
O
F
C
L
A
S
S



T
H
E

L
O
V
E
L
Y

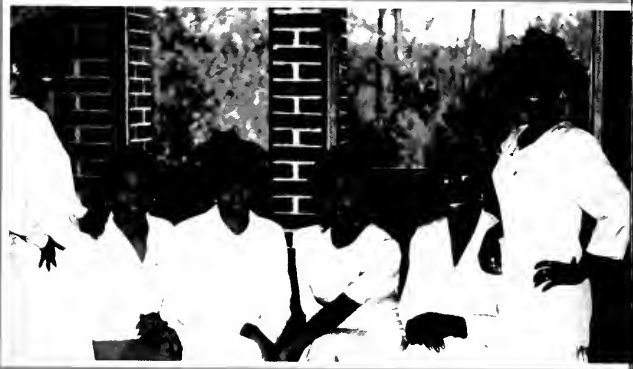
L
A
D
I
E
S

O
F

D
E
L
T
A

S
I
G
M
A

T
H
E
T
A

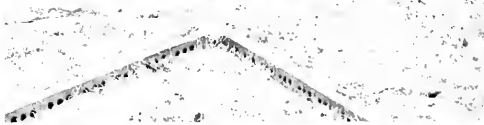


OMEGA PSI PHI, INCORPORATED



CHILLIN' WITH THE LADIES OF

DELTA SIGMA THETA



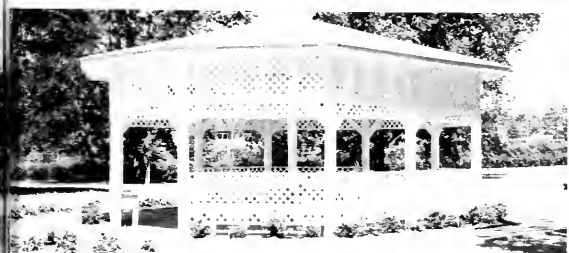
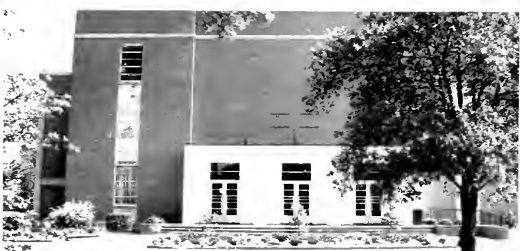
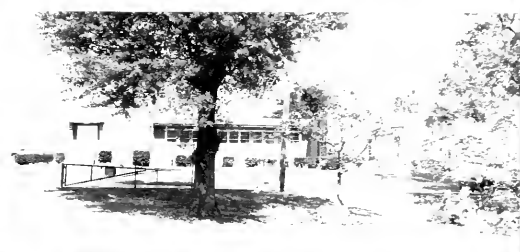
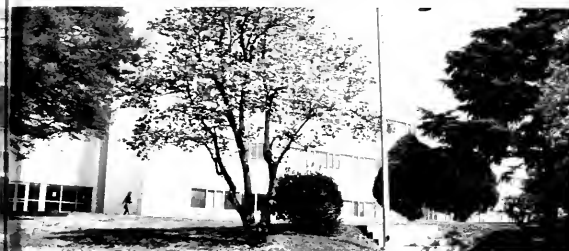
OMEGA PSI PHI



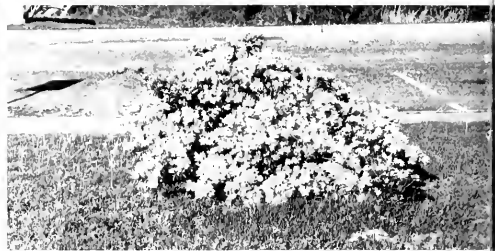
THE MANY DIFFERENT FACES OF THE FSU CAMPUS



THE FACES OF FSU CONTINUE



THE CAMPUS SCENE MOVES ON



THE CAMPUS SCENE CONTINUES



IN LOVING MEMORY OF

This page is dedicated to the memory of Alex Haley, who died February 10, 1992 and also the many members of the Fayetteville State University Family, who have passed. Our loss is great, but we know that the persons that we are remembering are indeed in a much better place.



REFLECTIONS

"To live a life fully,
to live a life in service,
to live a life in love with others,
to live a life in faith,
to live a life in contented acceptance,
gives one the right to extol."
Life owes me naught. I have lived . . .

Ms. Maggie Webb
Chestnut Library
(Pictured at right)

Mr. Melvin Bevins
Bookstore

Ms. Marion Boyton
Dept. of Health and Physical Education



COLOPHON

The thirty-fifth volume of the Fayettevillian was printed by the Delmar Printing Company in Charlotte, North Carolina. Joe Hughes was the personal representative. This book was published by the FSU Yearbook staff, which is composed of undergraduate student members.

Eighteen hundred copies of the book were published for distribution. The book contains 200 pages with printing in 4 color process on both endsheets. The endsheet paper is #120 Glacier White. The trim size is 9 x 12 inches. Paper stock is Westvaco #80 gloss enamel. The book is smyth sewn and rounded and backed.

The cover was designed by Lamar Wiggins with the help of the yearbook staff. Many of the layouts in the publication were done by Tammy Terry, the yearbook editor. The cover design is blind embossed on bright blue lexotone cover material. The theme is "KEEPING OUR EYES ON THE PRIZE" and is foil stamped in silver SA-40. A Spanish Grain (#1820) has also been applied to the cover.

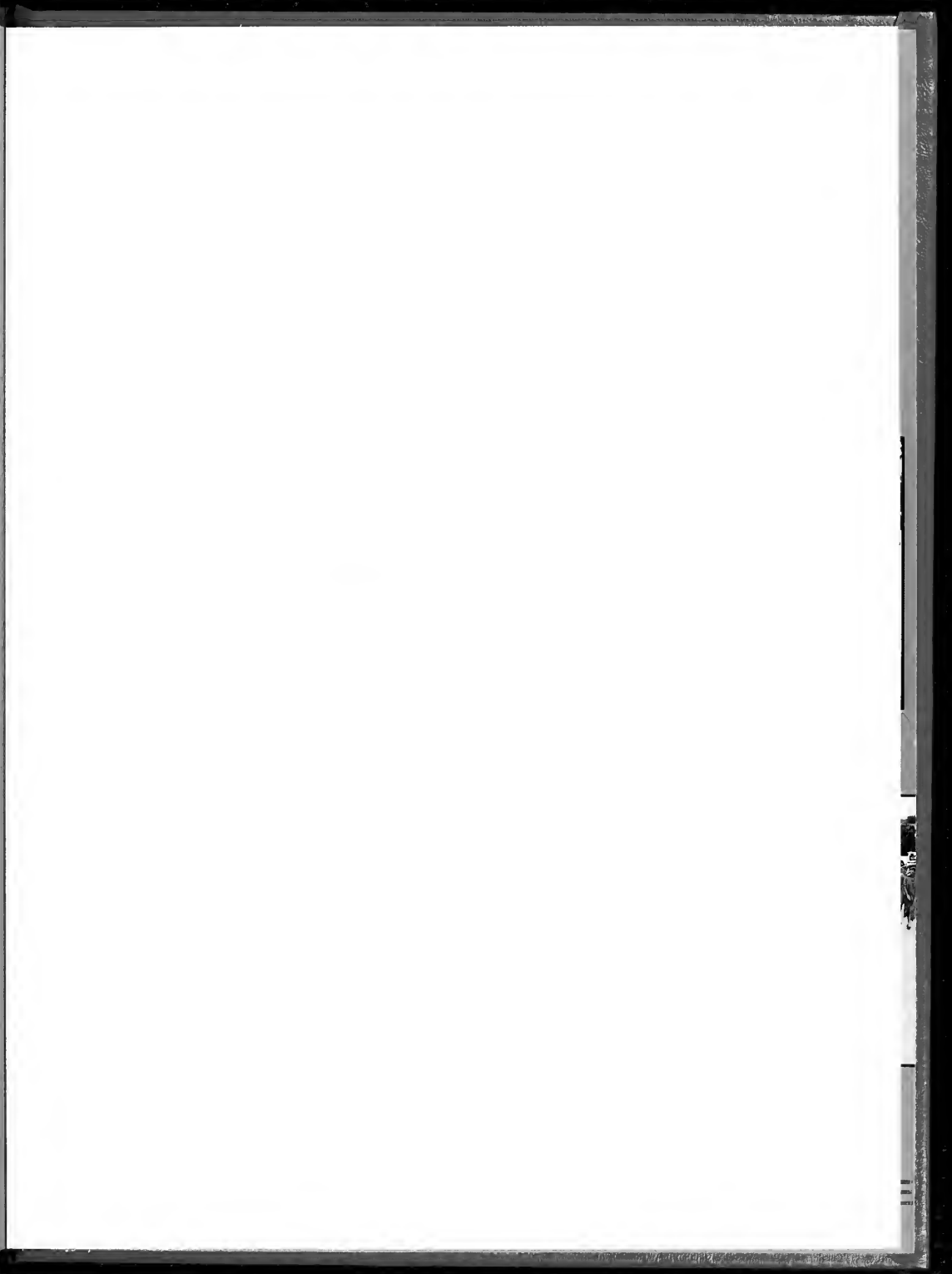
Body copy is set in Benguiat along with the caption copy. Headline typestyle is Benguiat Book.

Reproduction of this publication may be done so only by written permission from the copyright holders.

FAYETTEVILLE STATE UNIVERSITY STUDENTS



RECEIVING THE PRIZE





(A)

(A) Chancellor Hackley and Edward Joseph Perkins, speaker for graduation



(B)

(B) Can we hurry here, my pantyhose seem to be falling.



(G)

(F) My contacts My My Contacts!!!!!!!!!!!!

(G) Look alive people, someone is looking our way!!!!!!!!!!!!

(H) You mean it's mine, now?????? All mine?????



(K)

(K) The faculty and staff at graduation



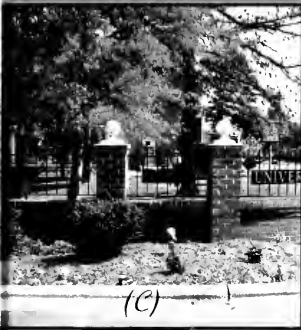
(L)

(L) Thank you, sir, oh thank you, oh thank you!!!!!!



(M)

(M) FSU's Decree of Establishment



(C) Fayetteville State University

(D) Can I stop smiling now???? Oh, not yet, huh!!!!!!

(E) Will all the deans and administrators of Fayetteville State University give us a big smile, please???????????



(J) The FSU Concert Band at the graduation exercises

(I) The day of exuberation!!!! Graduation is here finally!!!!!!!!!!



(M) The Fayetteville State University Choir gives us a little harmony at the commencement exercises.

(O) Soon this will be all over and I'll have my 9 to 5 job.....

(P) Okay everyone this is it!!!!!!!!!!!!!!

