

FIFTY-FIRST
ANNUAL CATALOGUE AND REGISTER
..... OF

HOWARD COLLEGE

EAST LAKE, ALABAMA

FOR THE ACADEMIC YEAR 1892-93

Howard
v. 51
1893

Howard College Library

. . . NOTA BENE . . .

THE Board of Trustees of Howard College announce with great satisfaction that Rev. ARTHUR W. MCGAHA, D. D., has been elected President of the Faculty of Howard College. The earnest hope is indulged that all the friends of education and all Baptists will lend this talented, learned and pious gentleman cordial and effective support. He was selected to succeed Dr. Riley because he was found worthy.

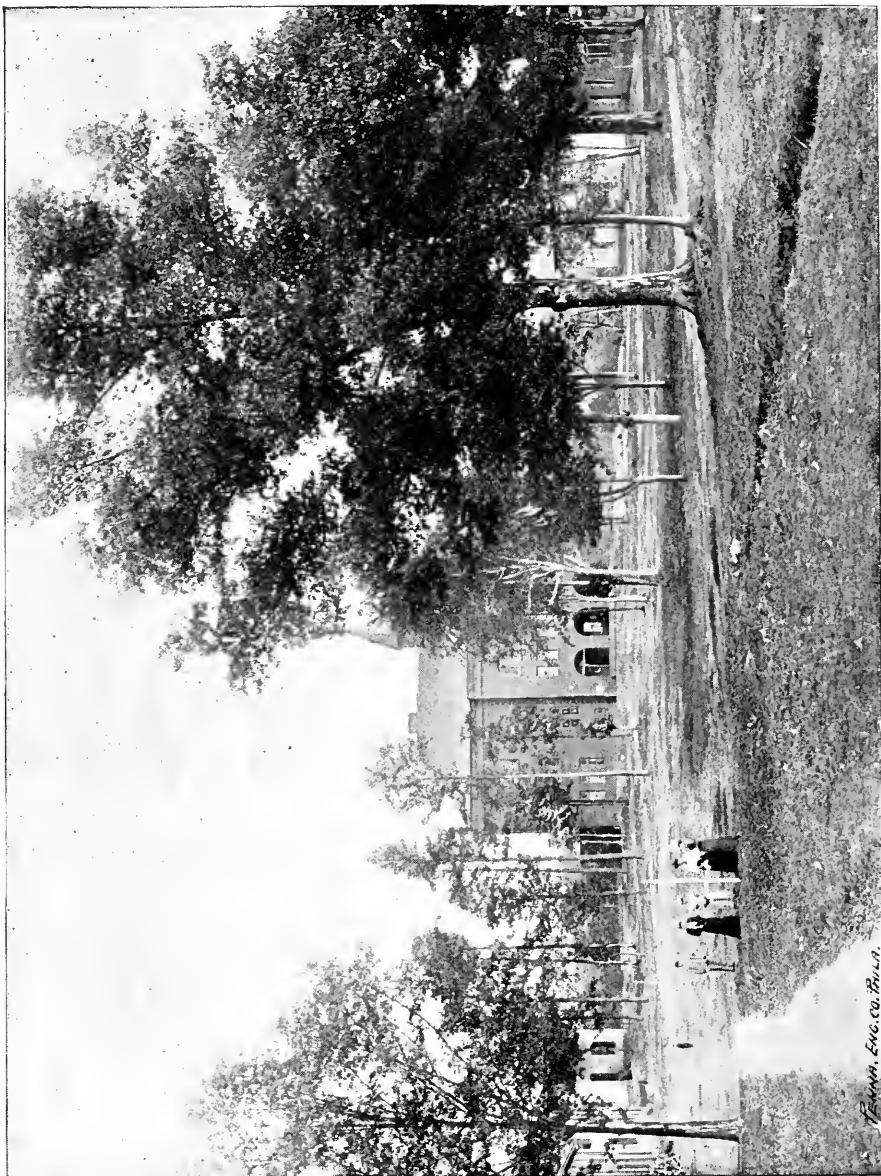
R. W. BECK,
Secretary.
July 3, 1893.

WM. C. WARD,
President Board of Trustees,
Howard College.

Howard College Library

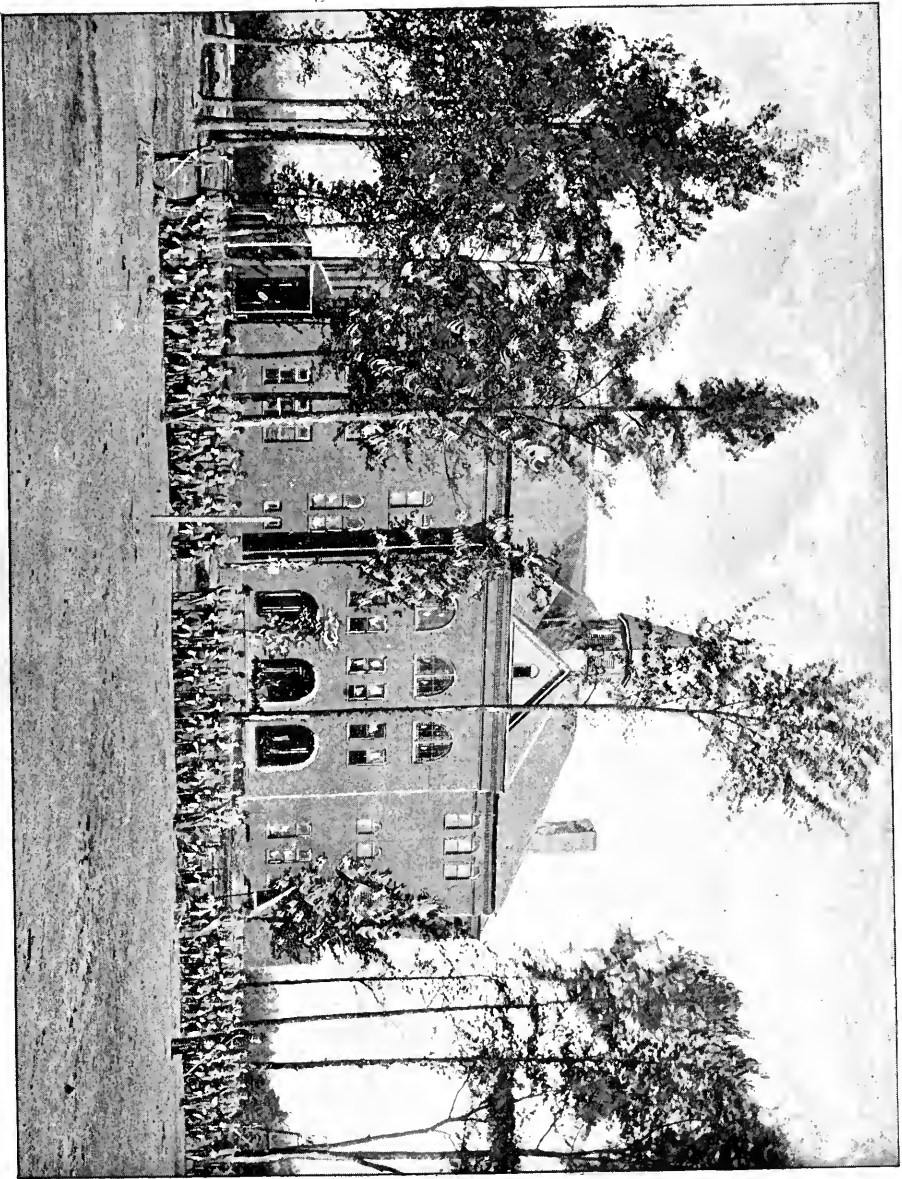






Howard, Enc. Co. W. Va.

HOWARD COLLEGE



CADET CORPS IN FRONT OF MAIN BUILDING

Digitized by the Internet Archive
in 2010 with funding from
Lyrasis Members and Sloan Foundation

FIFTY-FIRST

ANNUAL CATALOGUE

AND REGISTER

... OF ...

HOWARD
COLLEGE

EAST LAKE

... ALABAMA

FOR THE ...

ACADEMIC YEAR

1892-3

ROBERTS & SON
PRINTERS AND LITHOGRAPHERS
BIRMINGHAM, ALA.

Calendar for Session 1893-94.

FIRST TERM BEGINS.....	September 12, 1893
INTERMEDIATE EXAMINATIONS	January 20-30, 1894
FIRST TERM ENDS.....	January 31, 1894
SECOND TERM BEGINS	February 1, 1894
ANNIVERSARY OF PHILOMATHIC SOCIETY	February 22, 1894
ANNIVERSARY OF FRANKLIN SOCIETY.....	April 22, 1894

BOARD OF TRUSTEES.

HON. W. C. WARD, LL. D.,
PRESIDENT,

R. W. BECK, Esq.,
SECRETARY.

FIRST DIVISION—1887-93.

JUDGE J. M. ARNOLD.....Birmingham
GILBERT CARTER.....Birmingham
REV. J. J. TAYLOR, D. D.....Mobile
CAPT. J. T. DAVIS.....Columbia
JUDGE J. R. TYSON.....Montgomery
REV. J. P. SHAFFER, D. D.....Dadeville
REV. E. B. TEAGUE, D. D.....Columbiana, Shelby County
REV. W. C. CLEVELAND, D. D.....Columbia

SECOND DIVISION—1889-95.

REV. J. L. THOMPSON.....Seottsboro
F. M. WOOD.....Woodlawn, Jefferson County
W. T. SMITH.....Chapman, Butler County
REV. W. WILKES, D. D.....Sylacauga, Talladega County
W. H. WOOD.....East Lake, Jefferson County
R. W. BECK, Esq.....East Lake, Jefferson County
J. H. EUBANK.....Pratt City, Jefferson County
COL. T. G. BUSH.....Anniston

THIRD DIVISION—1891-97.

REV. J. A. GLENN.....Ashville
EUGENE F. ENSLEN.....Birmingham
HON. W. C. WARD, LL. D.....Birmingham
HON. G. R. FARNHAM.....Montgomery
HON. E. H. CABANISS.....Birmingham
REV. JOSEPH SHACKELFORD, D. D.....Trinity Station, Morgan County
HON. JOHN M. MCKLERoy.....Anniston
S. P. FOWLKES.....Birmingham

FACULTY AND OFFICERS.

BENJAMIN FRANKLIN RILEY, D. D., *President*,
Professor of Psychology and Moral Philosophy.

THOMAS JOHN DILL, LL. D.,
Professor of Greek and Latin.

ALBERT DURANT SMITH, A. M.,
Professor of Applied Mathematics.

GEORGE WASHINGTON MACON, A. M., Ph. D.,
Professor of Chemistry, Natural History and Modern Languages.

BENJAMIN FRANKLIN GILES, A. M.,
Professor of English.

ROBERT JUDSON WALDROP, A. M.,
Professor of Pure Mathematics.

AMOS BAILEY GOODHUE, A. M.,
Professor of Elocution.

WILLIS HILLIARD PAYNE, A. B.,
Professor of the Sub-Collegiate Department.

D. P. COLEMAN, W. S. EUBANK, F. S. ANDRESS,
Tutors.

R. J. WALDROP, A. M.,
Treasurer of the Faculty.

GEORGE W. MACON, A. M., Ph. D.,
Secretary of the Faculty.

H. L. FINKLEA,
Post Adjutant.

D. J. GANTT,
Commissary.

W. A. BROWN,
Quartermaster.

C. C. JONES, M. D.,
College Physician.

CADET OFFICERS.

I.—STAFF.

CAPTAIN G. A. HOGAN.....Adjutant
LIEUTENANT W. A. BROWN.....Sergeant Major
SERGEANT N. H. CARPENTER.....Color Bearer
SERGEANT M. L. WILLIAMS.....Ordnance Sergeant
CORPORAL W. C. WILLIAMS.....First Color Corporal
CORPORAL H. E. WATLINGTON.....Second Color Corporal
CORPORAL M. STAMPS.....Third Color Corporal

II.—COMPANY OFFICERS.

COMPANY A.

CAPTAIN J. T. BROWN.....Captain
LIEUTENANT D. P. COLEMAN.....First Lieutenant
LIEUTENANT J. J. HAGOOD.....Second Lieutenant
SERGEANT J. F. GABLE.....Orderly Sergeant
SERGEANT A. G. MOSELEY.....Second Sergeant
SERGEANT W. O. LINDSEY.....Third Sergeant
CORPORAL O. C. BRAKE.....First Corporal
CORPORAL J. M. WEATHERLY.....Second Corporal
CORPORAL C. L. SEYMOUR.....Third Corporal

COMPANY B.

CAPTAIN E. P. HOGAN.....Captain
LIEUTENANT C. RILEY.....First Lieutenant
LIEUTENANT W. S. EUBANK.....Second Lieutenant
SERGEANT R. E. LAMB.....Orderly Sergeant
SERGEANT J. F. THOMPSON.....Second Sergeant
SERGEANT W. H. STATON.....Third Sergeant
CORPORAL J. H. BAREFIELD.....First Corporal
CORPORAL G. HERBERT.....Second Corporal
CORPORAL E. HINSON.....Third Corporal

COMPANY C.

CAPTAIN F. S. ADDRESS.....Captain
LIEUTENANT R. B. HOGAN.....First Lieutenant
LIEUTENANT P. CARSON.....Second Lieutenant
SERGEANT T. F. HENDON.....Orderly Sergeant
SERGEANT W. R. MEADOWS.....Second Sergeant
SERGEANT R. G. MOORE.....Third Sergeant
CORPORAL C. S. REEVES.....First Corporal
CORPORAL G. L. GRIFFIN.....Second Corporal
CORPORAL T. Y. PRUDE.....Third Corporal

DRUM CORPS.

Corporals.

I. C. BRINSON, E. M. LYKES, E. V. SMITH, M. L. SCOTT.



Catalogue of Students.

ABBREVIATIONS.

Astr.—Astronomy.	G.—Greek.
B. K.—Bookkeeping.	H.—History.
B.—Botany.	L.—Latin.
Ch.—Chemistry.	Lo.—Logic.
Civ. Gov.—Civil Government.	M.—Mathematics.
D.—Dictation.	M. S.—Moral Science.
El.—Elocution.	N. H.—Natural History.
Engn.—Engineering.	N. P.—Natural Philosophy.
E.—English.	Pen.—Penmanship.
E. Lit.—English Literature.	Phys. and Hy.—Physiology and Hygiene.
E. C.—Evidences of Christianity.	P.—Psychology.
F.—French.	P. E.—Political Economy.
Geo.—Geography.	U. H.—Universal History.
Geol.—Geology.	Zool.—Zoology.
Ger.—German.	

ADDIKSON, R. E. L.	Evergreen, Ala.
M., E., L., G.	
ALTMAN, W. H.	York Station, Ala.
M., Ger., G., L., Lo., P. E.	
ALVERSON, C. B.	Coal City, Ala.
E., El., M., L., G.	
ANDRESS, F. S.	Brundidge, Ala.
E., Lit., M. S., E. C., P., Zool., L., Ch., N. P., Geol., Astr., Phys. and Hy.	
ANSLEY, S. J.	Forest Home, Ala.
M., E. El., L., G.	
ARNOLD, W. A.	Clopton, Ala.
ASHCRAFT, R. W. ✓	East Lake, Ala.
M., L., G., E.	
BAREFIELD, J. H.	Gosport, Ala.
L., M., E., El.	
BATES, R. C.	East Lake, Ala.
M., L., G., El., E.	
BEAN, J. C.	Geneva, Ala.
M., E., G., L., El.	
BEASON, A. L.	East Lake, Ala.
M., L., G., Ger., Ch., Lo., P. E.	
BEDINGFIELD, C. A.	Bellville, Ala.
L., M., E., G.	
BLACK, J. W.	Coaling, Ala.
M., E., G., L.	
BRAKE, H.	Warrior, Ala.
M., Geo., E., H., Civ. Gov.	
BRAKE, O. C.	Warrior, Ala.
L., M., G., Ger.	

BRINSON, I. C.	M., L., E., G.	Albany, Ga.
BROWN, J. C.	M., E., L., G., B. K.	Milo, Ala.
BROWN, J. T.	E. Lit., M. S., N. P., E. C., P., Astr., P. E.	Centreville, Ala.
BROWN, W. A.	M., L., G., Ger., Lo.	East Lake, Ala.
BURTON, R. M.	M., L., G., E., El.	Carlowville, Ala.
BUSH, A. P.		Anniston, Ala.
Phys. and Hy., Zool., Geol., E. Lit., M. S., N. P., E. C., P. E., G., M., Astr., Engn., Ch.		
CAHALL, W. L.	M., L., G., Ger., F., Engn., Lo., P., E.	Mobile, Ala.
CAHOON, W. H.	M., L., E., B. K.	East Lake, Ala.
CALDWELL, B. F.	M., L., G., E., P. E., El.	Birmingham, Ala.
CAMP, S.	M., E., H., Geo.	Woodlawn, Ala.
CARDER, J. J.	M., L. E.	Hawesville, Ky.
CARPENTER, N. H.	F., E., L., M., P. E., Lo., El.	Clinton, Ala.
CARROLL, J. S.	M., Geo., E., H., Civ. Gov.	East Lake, Ala.
CARSON, P.	M., L., G., Ch., E., Phys. and Hy., Zool.	Orrville, Ala.
CHANCEY, A. P.	M., L., E., El., G., B. K.	Milo, Ala.
COLEMAN, D. P.	M., G., M. S., Phys. and Hy., Zool., Geol., E. C., Lo., P., Astr.	Mobile, Ala.
COLLINS, A. B.	M., L., E., G., El.	Kennedy, Ala.
CONNELL, W. H.	M., E., G.	East Lake, Ala.
CUNNINGHAM, C.	M., E., L., B. K.	Evergreen, Ala.
CUNNINGHAM, M. E.	M., E., L.	Birmingham, Ala.
DAVIS, C. H.	Phys. and Hy., Ch., Lo., P. E., E. M.	Columbia, Ala.
DAVIS, T. W.	M., L., E.	Mobile, Ala.
DELONEY, C. E.	M., E., H., Geo.	Woodlawn, Ala.
DOHMEIR, H. P.	L., M., E.	Greenville, Ala.
DOSSETT, J. W.	E., G., L., M., P. E., El.	Mobile, Ala.
DUNLAP, J. B.	B. K., L., M., E.	Birmingham, Ala.
ELLARD, F. M.	Ger., M., E.	East Lake, Ala.
ELLARD, I. J.	M., E., L.	East Lake, Ala.
ESPY, J. B.	P. Ch., N. P., Astr., Phys. and Hy., Zool., Geol.	Dothan, Ala.
EUBANK, J. W.	G., L., E., M.	East Lake, Ala.

EUBANK, W. S.	Pratt Mines, Ala. E. Lit., M. S., E. C., P., N. P., Astr., N. H.
FALKNER, W. W.	East Lake, Ala. E., M., L., G.
FAULK, H. M.	Mt. Pleasant, Ala. E., El., M., L., B. K.
FENN, E. J.	Clayton, Ala. E., M., G., L., B. K.
FENN, H. M.	Clayton, Ala. M., E., L., B. K.
FINCH, E. M.	Evergreen, Ala. M., L., E.
FINKLEA, H. L.	Buena Vista, Ala. E. Lit., P., M. S. E. C., M., Engn., N. P., Astr., Ch., Phys. and Hy., Zool., Geol.
FINKLEA, J. F.	Buena Vista, Ala. M., L., G., E.
FITZGERALD, J.	Woodlawn, Ala. M., G., E., H., Civ. Gov.
FULTON, H. G.	Huffman, Ala. E. Lit., M. S., N. P., E. C., P., Geol., Astr., Phys. and Hy., Zool.
GABLE, J. F.	East Lake, Ala. M., E., G., Ch.
GAMBLE, E. N. B. A.	East Lake, Ala. M., E., G., L.
GANTT, D. J.	Evergreen, Ala. E. Lit., M. S., E. C., M., L., Ch., N. H., N. P., Engn., Astr., P., Phys. & Hy., Zool., Geol.
GILMER, J. C.	East Lake, Ala. M., L., G.
GRIFFIN, G. L.	Trussville, Ala. M., Ger., Ch., G., Lo., P. E., Engn., L.
HAGOOD, J. J.	Braggs, Ala. E. Lit., M. S., N. H., N. P., E. C., Lo., P., P. E., Astr., Zool., Geol., Phys. and Hy.
HASSETT, W. L.	Sedalia, Mo. M., L., E.
HAYS, B. B.	Columbia, Ala. M., E., G.
HENDON, T. F.	Warrior, Ala. L. G., Lo., P. E., Ger., Ch.
HERBERT, G.	Coal City, Ala. L., G., E., M., El.
HEWLETT, T. I.	Montgomery, Ala. G., E., M., L., El.
HICKS, H. L.	Randolph, Ala. M., G., M. S., Ch., N. H., N. P., P., Engn., E. C., Astr., Geol., Zool., Phys. and Hy., E. Lit.
HINSON, E.	Mt. Willing, Ala. M., L., Ger., N. P., Engn., El., Lo., E. Astr.
HOGAN, E. P.	Birmingham, Ala. Zool., Phys. and Hy., E. Lit., G., N. P., M. S. N. H., F., Astr., P., E. C., Geol.
HOGAN, G. A.	Birmingham, Ala. E. C., P., N. P., N. H., E. Lit., M. S., Geol., Phys. and Hy., Zool., Astr.
HOGAN, R. B.	Woodstock, Ala. E. Lit., M. S., E. C., P., G., F., N. P., Astr., N. H.
HOOD, J. W.	Woodlawn, Ala. E., M., L., G., B. K.
HARMAN, J. H.	McCalla, Ala. M., L.
HUNT, R.	Woodlawn, Ala. E., M., L.

HUTTO, A. A.	Lincoln, Ala.
	M., E., L.
IVEY, J. N.	Fork, Ala.
	G., M., E., L., B. K., El.
JOHNSON, J.	Woodlawn, Ala.
	M., E., L., G., El.
JOHNSON, J. W.	Maplesville, Ala.
	M., E., L., G.
JONES, F. B.	Decatur, Ala.
	E., M., L., G.
KALEY, W.	Warrior, Ala.
	E., Geo., M., H., Civ. Gov.
LACY, D.	East Lake, Ala.
	M., E., L., Ger. P. E.
LACY, J. V.	East Lake, Ala.
	M., L., E.
LAMBERT, J. S.	Mt. Pleasant, Ala.
	Phys. & Hy., Ch., G., E., F.
LAMB, R. E.	Union, Ala.
	M., G., L., Ger., Ch.
LEE, W. W.	Lyerly, Ga.
	M., L., G., Ger., F., Lo., P. E., Engn., E.
LINDSEY, W. O.	Trussville, Ala.
	M., M. S., N. H., N. P., E. Lit., Engn., E. C., P., Astr., Phys. & Hy., Zool., Geol.
LINDSEY, S. P.	East Lake, Ala.
	E. Lit., N. P., Geol., G., M., Phys. & Hy., Zool., Ch., Engn. Astr.
*LOCKARD, J. L.	Gaston, Ala.
	M., E., L.
LOWERY, A. G.	Perdue Hill, Ala.
	M., Ch., G., L., Lo., P., M. S., E. C.
LYKES, E. M.	East Lake, Ala.
	M., L., E., B. K.
MALONE, B. L.	New Decatur, Ala.
	M., E., L., F., Ch.
MARTIN, J. W.	Harpersville, Ala.
	M., E., L., Lo., P. E.
MCADORY, T. H.	East Lake, Ala.
	M., L., E.
MCADORY, W. P.	East Lake, Ala.
	M., E., L., G., El.
MCDANIEL, E. M.	East Lake, Ala.
	M., E., L., G.
MCDANIEL, W. B.	East Lake, Ala.
	M., E., L., G.
MCDAVID, L. A.	Chumuckla, Fla.
	M., E., L., B. K.
MCDAVID, W. J.	Chumuckla, Fla.
	M., E., L., B. K.
MCIVER, E. D.	East Lake, Ala.
	E., H., M.
MEADOWS, W. R.	Lowndesboro, Ala.
	G., L., Ger., Lo., P. E., Phys. & Hy., Zool., Geol., N. P., Astr.
MONTGOMERY, J. P.	Woodlawn, Ala.
	M., L., G.
MOOR, H. P.	East Lake, Ala.
	M., L., Ch., N. P. Phys. & Hy., Geol., Zool., Astr.
MOOR, M. L.	East Lake, Ala.
	M., E., L.

*Deceased.

MOORE, R. G.	Franklin, Ky. E. Lit., L., G., M. S., Ch., E. C., Lo., P. E., P. E.
MOSELEY, A. G.	Orrville, Ala. L., G., M., Ger.
MYNATT, F.	Lincoln, Ala. M., L., E.
NASH, W. S.	Burnt Corn, Ala. M., L., E., B. K.
OFFUTT, A. P.	Montgomery, Ala. M., E., B. K.
ORR, J. B.	Danville, Ala. M., E., El.
OWENS, H. G.	Huffman, Ala. M., E., L., El.
OWENS, O. S.	Avondale, Ala. M., Geo., E., H., Civ. Gov.
PRATHER, R. C.	Seale, Ala. M., L., G., E.
PRATOR, B. W.	Woodlawn, Ala. M., L., G., E.
PRATOR, R. W.	Woodlawn, Ala. M., L., G., E.
PROWELL, R. J.	East Lake, Ala. M., L., E.
PROWELL, V. S.	Dayton, Ala. M., L., E.
PRUDE, T. Y.	East Lake, Ala. M., E., B. K., L., G., El.
REEVES, C. S.	Eufaula, Ala. M., L., G., F., P. E., Lo.
REYNOLDS, M. P.	East Lake, Ala. Phys. and Hy., Ch., M., N. H., Geol.
RICE, F.	Northport, Ala. M., U. H., Geo., E., B. K., Civ. Gov.
RIKE, E. G.	Montgomery, Ala. M., L., E., G. El., B. K.
RILEY, B. F. JR.	East Lake, Ala. M., L., E., G.
RILEY, C.	Troy, Ala. M., L., G., Ch., Lo., E., P. E., Phys. and Hy., Geol., Zool.
RILEY, O. E.	East Lake, Ala. M., L., E. G., B. K.
RODEN, J. M.	East Lake, Ala. M., L., E., G., El.
ROSSER, H. N.	Birmingham, Ala. M., L., G., Lo., P. E.
SANDLIN, J. W.	Moulton, Ala. M., E., L., G.
SCOTT, M. L.	Birmingham, Ala. M., L., E., El.
SEALS, H. M.	Decatur, Ga. M., E., Geo., H., Civ. Gov.
SEROYER, J. P. JR.	Camp Hill, Ala. M., L., E., El., P. E., Lo.
SEYMOUR, C. L.	Livingston, Ala. M., L., E., P. E., Lo., Ger.
SHAW, E. A.	Cuba, Ala. M., E., B. K.
SHELL, W. T.	Pigeon Creek, Ala. M., L., E., G.

SHUGART, S. C.	M., E., L.	East Lake, Ala.
SINGLETON, R.	M., E., H., Geo.	Oxford, Ala.
SMITH, E. V.	M., L., G., E., El.	Birmingham, Ala.
STAMPS, C. B.	M., E., L., B., K.	East Lake, Ala.
STAMPS, M.	M., L. G., F., Ger.	East Lake, Ala.
STATON, A. B.	M., L., E.	Athens, Ala.
STATON, W. H.	Phys. and Hy., E. Lit., M., E. P., E. C., M. S., Astr., L., Ch., Zool., N. P.	Woodlawn, Ala.
STEPHENS, H. L.	M., E., Geo., H., Civ. Gov.	East Lake, Ala.
STEVENS, M. S.	M., L., G., Geo., Engn.	Rock Mills, Ala.
SWEET, H. W.	M., E., H., B. K.	Birmingham, Ala.
THOMPSON, J. F.	E. Lit., P., M. S., E. C., M., G., Ger., Ch., Phys. and Hy., Zool., Geol.	Centreville, Ala.
TYSON, C. B.	M., L., E.	Birmingham, Ala.
WADE, J. T. S. JR.	M., E.	East Lake, Ala.
WALDROP, W. J.	M., L., G. El	East Lake, Ala.
WALLACE, J. A.	M., E., L., G.	Cusseta, Ala.
WALTHALL, H. B.	M., E., Geo., H., Civ. Gov.	Irondale, Ala.
WATLINGTON, H. E.	M., L. Lo., P. E., Ger.	East Lake, Ala.
WATSON, J. F.	M., L., E., G.	Dothan, Ala.
WATTS, W. W.	M. E., L.	Evergreen, Ala.
WEATHERLY, J. M.	M., L., E.	Birmingham, Ala.
WEBB, J. F.	M., L., G.	East Lake, Ala.
WEST, O.	Phys. and Hy., E., G., Lo., P. E., M.	Birmingham, Ala.
WILLIAMS, M. L.	M., L., G., E., El.	Decatur, Ala.
WILLIAMS, W. C.	M., L., E., G., B. K.	East Lake, Ala.
WILSON, W. W.	M., L., E., El., B. K.	Bethlehem, S. C.
ZEIGLER, H. L.	M. E. L.	East Lake, Ala.

Total enrollment, 159.

Certificates.

I. CERTIFICATES OF DISTINCTION are given to undergraduates for *distinguished attainments* in any class of any school.

II. A Certificate, with title of DISTINGUISHED UNDERGRADUATE, is conferred upon any student who makes distinguished attainments in any *three schools* within one session.

UNDERGRADUATES ENTITLED TO CERTIFICATES.

SCHOOL OF ENGLISH.

W. W. LEE,	M. L. SCOTT,
W. L. CAHALL,	J. M. RODEN,
R. G. MOORE,	A. B. STATON,
J. N. IVEY,	J. M. WEATHERLY, ✓
W. P. McADORY, ✓	I. C. BRINSON,
W. J. WALDROP, ✓	J. P. SEROYER, JR.,
F. MYNATT,	C. A. BEDINGFIELD,
J. F. GABLE,	W. T. SHELL,
C. B. ALVERSON,	E. V. SMITH,
R. C. PRATHER,	B. B. HAYS,
R. E. L. ADDKISON,	F. B. JONES,
S. J. ANSLEY, ✓	A. A. HUTTO,
J. JOHNSON,	R. M. BURTON,
N. H. CARPENTER,	A. B. COLLINS,
M. L. WILLIAMS,	J. W. DOSSETT,
J. F. WATSON,	W. W. FALKNER,
E. G. RIKE,	H. G. OWEN,
J. F. FINKLEA,	A. G. LOWERY,
H. N. ROSSER, ✓	

SCHOOL OF MATHEMATICS.

W. W. LEE,	R. C. PRATHER,
O. C. BRAKE,	G. HERBERT,
M. S. STEVENS,	W. W. WATTS,
W. P. McADORY,	J. H. HARMAN,
W. J. WALDROP,	J. M. WEATHERLY,
F. MYNATT,	J. F. GABLE,
C. B. ALVERSON.	

SCHOOL OF LATIN.

W. W. LEE,	C. B. ALVERSON,
W. L. CAHALL,	R. E. L. ADDKISON,
O. C. BRAKE,	S. J. ANSLEY,
A. G. MOSELEY,	J. JOHNSON,
M. S. STEVENS,	G. HERBERT,
W. R. MEADOWS,	J. P. MONTGOMERY,
J. N. IVEY,	J. P. SEROYER, JR.,
W. P. McADORY,	W. J. WALDROP,
F. MYNATT,	J. F. GABLE.

SCHOOL OF GREEK.

W. W. LEE,	R. G. MOORE,
W. L. CAHALL,	W. R. MEADOWS,
O. C. BRAKE,	J. N. IVEY,
A. G. MOSELEY,	W. P. McADORY,
M. S. STEVENS,	W. J. WALDROP,
J. F. GABLE,	R. C. PRATHER,
J. JOHNSON,	R. E. L. ADDKISON,
J. F. WATSON,	S. J. ANSLEY,
B. W. PRATOR,	M. L. WILLIAMS,

R. W. PRATOR.

SCHOOL OF ELOCUTION.

J. F. GABLE,	J. F. WATSON,
N. H. CARPENTER,	G. HERBERT,
M. L. WILLIAMS,	M. L. SCOTT,
J. M. RODEN,	J. W. BLACK,
J. H. BAREFIELD,	A. B. STATON,

E. HINSON.

SCHOOL OF GERMAN.

W. W. LEE,	M. S. STEVENS,
W. L. CAHALL,	R. E. LAMB,
O. C. BRAKE,	A. G. MOSELEY.

SCHOOL OF FRENCH.

W. W. LEE,	C. S. REEVES,
W. L. CAHALL,	N. H. CARPENTER.

SCHOOL OF CHEMISTRY.

R. E. LAMB,	R. G. MOORE.
-------------	--------------

SCHOOL OF SCIENCE.

W. R. MEADOWS.

BUSINESS SCHOOL.

J. N. IVEY,	W. H. CAHOON,
E. G. RIKE,	F. RICE,
W. W. WILSON.	

DISTINGUISHED UNDERGRADUATES.

W. W. LEE,.....	Distinguished in 6 Schools.
W. L. CAHALL,.....	“ “ 5 “
O. C. BRAKE,.....	“ “ 4 “
A. G. MOSELEY,.....	“ “ 3 “
M. S. STEVENS,.....	“ “ 4 “
R. G. MOORE,.....	“ “ 3 “
W. R. MEADOWS,.....	“ “ 3 “
J. N. IVEY,.....	“ “ 4 “
W. P. McADORY,.....	“ “ 5 “
W. J. WALDROP,.....	“ “ 3 “
F. MYNATT,.....	“ “ 3 “
J. F. GABLE,.....	“ “ 4 “
C. B. ALBERSON,.....	“ “ 3 “
R. C. PRATHER,.....	“ “ 3 “
R. E. L. ADDKISON,.....	“ “ 3 “
S. J. ANSLEY,.....	“ “ 3 “
J. JOHNSON,.....	“ “ 3 “
N. H. CARPENTER,.....	“ “ 3 “
M. L. WILLIAMS,.....	“ “ 3 “
J. F. WATSON,.....	“ “ 3 “
G. HERBERT,.....	“ “ 3 “

GRADUATES.

MASTER OF ARTS.

JASPER F. THOMPSON, JAMES J. HAGOOD.

BACHELOR OF ARTS.

FRANCIS S. ANDRESS,	ALBERT P. BUSH,
PAUL CARSON,	DANIEL P. COLEMAN,
JAMES B. ESPY,	WILLIAM S. EUBANK,
HENRY L. FINKLEA,	HARVEY G. FULTON,
HARVEY L. HICKS,	EDGAR P. HOGAN,
ROSCOE B. HOGAN,	SAMUEL P. LINDSEY,
CLAUDE RILEY.	

BACHELOR OF SCIENCE.

JACKSON T. BROWN,	DANIEL J. GANTT,
GEORGE A. HOGAN,	WALTER O. LINDSEY,
HENRY P. MOOR,	MAXWELL P. REYNOLDS,
WILLIAM H. STATON.	

COLLEGE HONORS.

THE HONORS ARE A PART OF THE COLLEGE SYSTEM.

COMMENCEMENT ORATIONS.

1. The *Valedictory Oration* is awarded to that graduate, whether a Bachelor or Master of Arts, who shall be judged to have attained the highest degree of general scholarship.

2. The *Salutatory Oration* is awarded to that graduate whose scholarship is second in grade.

PRIZE MEDALS.

The College Faculty have instituted prizes for excellence in Elocution and Composition, consisting of gold medals.

1. A gold medal is awarded the best declaimer in the Sophomore Class.

2. A gold medal is awarded the best Essayist. Into the contest for this prize any student of the College may enter. The competition takes place in the President's office and in his presence, the subject of the Essay being withheld until a given time after all the competitors are assembled. At the expiration of two hours the contest closes. The papers thus prepared are submitted without signature, or anything to indicate the author, to a competent committee for examination. After the decision is reached the successful author is discovered and the medal is awarded.

3. A gold medal is awarded by the Rev. W. A. Whittle and Mrs. Whittle to the graduate delivering the best speech on Commencement Day.

GRADUATES.

In every class and school, and in every list of proficient students or distinctions, the names are announced in the order of relative standing.

VALEDICTORY ORATION.

J. F. THOMPSON,..... Centreville, Ala.

SALUTATORY ORATION.

H. G. FULTON, Huffman, Ala.

SENIOR PRIZE MEDAL FOR ORATION.

A. P. BUSH,..... Anniston, Ala.

SOPHOMORE PRIZE MEDAL FOR DECLAMATION.

E. HINSON,..... Mt. Willing, Ala.

ESSAY PRIZE MEDAL.

CLAUDE RILEY,..... Troy, Ala.

MCGAHA DEPARTMENT MEDAL.

W. T. SHELL,..... Butler County, Ala.

PRIZE MEDAL FOR SOLDIERSHIP.

A. L. BEASON,..... East Lake, Ala.

PRIZE MEDAL FOR MANUAL.

J. F. THOMPSON, Centreville, Ala.

OFFICERS OF CLASSES.

SENIORS.

E. P. HOGAN, *President.*
 J. F. THOMPSON, *Vice-President.*
 F. S. ANDRESS, *Secretary.*
 W. S. EUBANK, *Treasurer.*

JUNIORS.

A. G. MOSELEY, *President.*
 J. F. GABLE, *Secretary.*



Organization.

The Course of Study is divided into the following Schools:

- I. School of Latin.
 - II. School of Greek.
 - III. School of Modern Languages.
 - IV. School of English.
 - V. School of Moral Science.
 - VI. School of Mathematics.
 - VII. School of Chemistry, Geology and Mineralogy.
 - VIII. School of Natural Philosophy and Applied Mathematics.
 - IX. School of Civil Engineering.
 - X. Business School.
 - XI. School of Military Art and Science.
-

Course of Study in Sub-Collegiate Department.

FIRST TERM.

English Grammar (Swinton).
 Arithmetic (Robinson's Practical and Higher Progressive).
 United States History.
 Geography (Maury's Manual).
 Latin (Harper & Tollman's Inductive Method).
 Compositions once a week.

SECOND TERM.

English Grammar and Composition (Swinton).
 Physical Geography.
 Arithmetic, completed.
 Algebra (Sensenig).
 Latin, same as in first term.
 Reading Lessons from best English and American authors.
 General History (Myers).

Courses of Study for Degree of Bachelor of Arts.

FRESHMAN CLASS.

FIRST TERM.

Algebra : Sensenig ; Greek : Boies & Pattengill and Hadley & Allen's Grammar ; Latin : Allen & Greenough's Grammar Compendium and Cæsar ; English Grammar : Swinton.

SECOND TERM.

Algebra, completed ; Greek : Boies & Pattengill and Hadley & Allen's Grammar ; Latin : Allen & Greenough's Grammar, Compendium and Cicero ; English Grammar and Composition : Swinton ; Declamation ; General History : Anderson.

SOPHOMORE CLASS.

FIRST TERM.

Geometry : Chauvenet ; Greek : Hadley & Allen's Grammar and Xenophon's Anabasis ; Latin : Virgil ; Rhetoric : Hill ; Essays and Orations.

SECOND TERM.

Geometry and Plain Trigonometry ; Greek : Homer's Iliad ; Latin : Horace ; Mythology and Antiquities ; Lessons in English : Rhetoric completed ; Logical Analysis ; Orations.

JUNIOR CLASS.

FIRST TERM.

Spherical Trigonometry and Surveying : Wentworth ; Chemistry : Sheperd's Inorganic and Experimentation ; Greek : Demosthenes ; Latin : Crowell's Selection from Latin Poets ; Logic : Jevon ; Physiology : Huxley and Youman's ; French : Fasquelle's Grammar ; German : Joynes—Meissner's Grammar.

SECOND TERM.

Analytical Geometry : Wentworth ; Calculus : Taylor ; Organic Chemistry and Qualitative Analysis ; Greek : New Testament ; German : Grammar, completed, Grimm's Kinder-

und-Hausmarchen, Schiller's Wilhelm Tell; French: Fassel's Grammar completed and Selections from French Authors: Political Economy: Wayland & Chapin; Outlines of History.

SENIOR CLASS.

FIRST TERM.

History of English Literature: Shaw; Physics: Gage; Psychology: Davis; Zoology: Packard.

SECOND TERM.

Astronomy: Young; Moral Science; Evidences of Christianity; Geology: LeConte.

EXAMINATIONS.

Intermediate Examinations are held during the progress of the session; Final Examinations near the close of the session. Students are not allowed to absent themselves from any of their examinations; nor are resignations allowed within six weeks of the Final Examinations.

Lower classes are required to attain sixty per cent.; Junior, sixty-five; and Senior, seventy.

DEGREES.

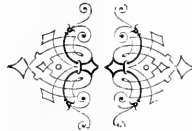
I. BACHELOR OF SCIENCE (B. S.)—*Required*: Certificates of *Proficiency* in Mathematics; Mechanics and Astronomy; Chemistry; Mental Philosophy; Ethics and Evidences of Christianity; English; Natural History and Political Economy; Latin or Greek; French or German.

II. BACHELOR OF ARTS (B. A.)—*Required*: Certificates of *Proficiency* in Latin; Greek; Mathematics; Mental Philosophy; Ethics and Evidences of Christianity; English; History; Literature; one Modern Language; Chemistry; Mechanics; Astronomy; Mineralogy; Geology; Natural History and Political Economy.

III. MASTER OF ARTS (M. A.)—To attain this degree the student must have received Certificates of *Proficiency* in Latin; Greek; English; Mental and Moral Philosophy; History; Mathematics; Chemistry; Mineralogy; Geology; Natural History; Natural Philosophy; two Modern Languages;

English Literature and Applied Mathematics; and Certificates of *Distinguished Proficiency* in at least SEVEN ENTIRE SCHOOLS; and he must have passed a satisfactory Review Examination on all the subjects included. Schools X. and XI. are not included.

IV. CIVIL ENGINEER (C. E.)—The requirements of this Degree are Certificates of *Proficiency* in Mathematics; Applied Mathematics; Civil and Military Engineering; Chemistry; Mineralogy and Geology; Natural Philosophy, including Analytical Mechanics; French or German; English and Plans and Reports upon assigned subjects.



Howard College.

HISTORY.

Howard College, established under a charter granted by the General Assembly of Alabama in 1841, has had an eventful, but honorable, career. It is one of the oldest institutions of learning in the South. Throughout the states of the South, and in many states of the North, its influence has been felt in the usefulness of its graduates.

Thrice, in its history, it has been reduced to ashes, but each time it has come forth stronger than before.

Its course was interrupted by the years of the war; but promptly upon the cessation of hostilities, with the vitality and energy which have attended it from the beginning of its career, it reopened its halls of learning to the youth of the state. It was the first institution of learning of high grade in Alabama to renew its exercises after the close of the war. From its inception in 1841, to 1887, the college was located in Marion. At the session of the Baptist State Convention held in Union Springs in July, 1887, it was resolved to remove the college from Marion to such a point as might be selected by a prudential committee of thirteen. East Lake was selected because of the superior advantages which it afforded, and the success which has attended the College from the opening of its first session in its present location, vindicates the wisdom of those who selected the present site.

LOCATION.

Howard College is located in the beautiful suburban town of East Lake, six miles from the city of Birmingham.

The situation supplies every condition essential to health.

The College is located at the base of the famous Red Mountain, which furnishes a picturesque back ground to the site, while the fertile Ruhama Valley is spread out beneath.

The surface of the region is undulating, thus affording superior natural drainage.

Large springs of pure, cool water abound, and wells are obtained everywhere with little difficulty. The temperature in warm weather is moderated by constant mountain breezes. Because of the cool nights in midsummer, East Lake has become a popular residential resort. Throughout the year the air is free from the taint of local disease.

ACCESSIBILITY.

No point in the South enjoys greater railroad advantages than Birmingham. It is the meeting point of such important lines as the Louisville & Nashville, Alabama Great Southern, Kansas City, Memphis & Birmingham, East Tennessee, Virginia & Georgia, Georgia Pacific, and the Georgia Central.

Ready access from the city to the College is afforded by a dummy line, on which trains arrive and depart from Birmingham at intervals of thirty minutes.

Baggage checked by students to Birmingham is transferred promptly to East Lake upon the presentation of the check to the Quartermaster at the College.

MORAL TRAINING.

The success of the College is, in large measure, due to the marked attention given to the moral and social culture of the students. By such attention the institution seeks to commend itself to the favorable consideration of the public. It has insisted (1) that the student shall show himself to be a gentleman, and (2) that he shall show himself to be a student. He will find the atmosphere of this institution uncongenial without these traits. Special effort is made on the part of every member of the Faculty to inculcate correct views of life and duty. The idea is constantly kept before the student that intellectual power is of small worth if the sentiments and habits be corrupt. Hence more than usual attention is given to the moral development of the students of this institution. As a means of protection against evil influences it is a regulation of the College that, whenever it shall become apparent from any cause, that it is to the interest of any student, or of the College, that he shall withdraw from the institution, his

resignation may be demanded by the President. To retain such a student is an imposition upon himself, for he is induced to believe that he is doing that which he is not; it is an imposition upon the parent or guardian, for by his retention they are being misled as to his conduct, and it is an imposition upon the students of the College, for his influence must be damaging and demoralizing.

The authorities of the College are largely aided in the administration of a moral discipline by the favorable surroundings of the institution.

Religious worship is regularly observed every Sabbath in the Baptist, Presbyterian and Methodist churches, which are located within a few hundred yards of the College buildings. By special statute, the disposition of ardent spirits is prohibited within a radius of three miles.

INCIDENTAL ADVANTAGES.

By reason of the proximity of Howard College to a large city, it enjoys immense advantages without experiencing the slightest disadvantage.

The life and energy characteristic of this region are apt to awaken a corresponding spirit in the young men who attend upon this institution of learning. This, taken in connection with the public lectures and libraries of a large city, is not without vast benefit to the young men seeking development. A firm but kind discipline serves to restrain students from the disadvantages of the city.

PERSONAL ATTENTION OF THE PROFESSORS:

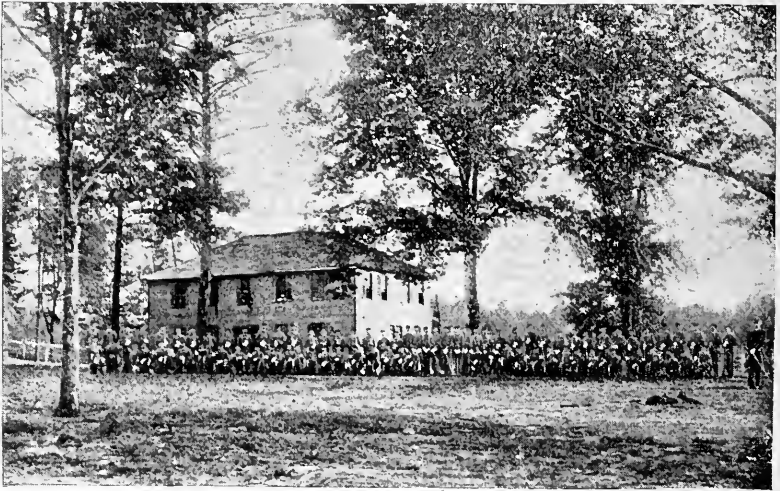
The professors devote all their time to the students, giving instruction in the class-room during the day, and visiting dormitories night and day. Parents, committing their sons fully to the care of the College officers, may be assured that physical comfort, moral influences, and intellectual training will be provided.

To avoid distracting influences, to command full attention, and to facilitate study, young men are required to board and lodge in the College, unless their relatives live in town, or unless the President, for special reasons, allows otherwise.

RELIGIOUS CULTURE

Prayers are held every morning in the Chapel, and the Faculty and students attend.

Students are required to attend the churches of their choice every Sabbath morning; they are also required to attend Sabbath-school, *provided* there is one belonging to the church of their choice accessible. They may be entirely relieved of the duty of attendance upon Sabbath-school by pre-



CADET CORPS, WITH MESS HALL IN REAR

senting to the President a written request to that effect from their parents or guardians. In no instance is a student forced to attend other than a Sabbath-school of his own or his parents selection.

SPECIAL CARE FOR YOUNG BOYS.

By keeping the College buildings and grounds free from moral contaminations, the President has made the institution an inviting place for youths under ordinary college age. During the past session a number of lads were placed under his care, and such was the management of their surroundings socially, and the arrangements for companionship in their rooms, that he was encouraged to make this a special feature of the College. If parental and guardian endorsement can

be had in the management of youths, there will be little difficulty in giving wholesome direction to their minds and characters. There will be no lack of diligence in the case of this class of students.

OCCASIONAL EXCURSIONS.

Partly for recreation, but chiefly because of the advantage derived, the students of the higher classes are now and then taken upon an excursion to attend upon some important occasion or visit some noted point. The railroad facilities of Birmingham afford immense advantage for this purpose. This is done, however, only when greatly reduced rates can be procured, and when the excursion will involve but slight loss of time from College work. This is regarded as one of the most agreeable as well as one of the most profitable means of instruction to the young.

BED ROOMS FOR SUMMER.

Students desiring to take partial courses under any member, or members, of the Faculty of Howard College during the summer vacation with a view of the prosecution of their studies in the institution will be furnished a room free during the period of such special courses.

SICKNESS.

When ill, students have the personal attention of the President. It is an abiding rule in the institution to notify parents and guardians of the sickness of students and to advise them, from time to time, of the tendency of the disease.

MESS HALL ARRANGEMENTS.

Great care is exercised in the selection and preparation of food for the students.

BED ROOMS.

The bed rooms of the students have been furnished throughout with the most improved style of iron bedsteads, such as are usually employed in hospitals and soldiers' homes. On each of these is placed a wire-woven mattress, which greatly enhances the repose of the tired student.

SOCIETIES.

There are in connection with the College, and in successful operation, two literary societies—the Philomathic and the Franklin. These societies, provided with well-selected libraries, are regarded as valuable aids to the student in the formation of a literary taste, and in affording opportunities for exercise in debate, and in obtaining a knowledge of parliamentary rules.

All students in the College classes are required to join and attend one of these societies, or to recite on Saturdays to one of the professors.

Secret societies are not allowed.

At the annual meeting of the Board of Trustees of Howard College of 1881, the following preamble and order were passed :

WHEREAS, The influence of secret college societies has proved, in the general experience of educational institutions, unfavorable to discipline and scholarship, and, therefore, to the welfare of colleges and to the best interests of students; it is hereby

Ordered by the Board of Trustees of Howard College, That no student in this institution, who may, after the first of September, 1881, become a member of such secret society or fraternity, shall be eligible to the offices or honors of Howard College.

This order is rigidly enforced.

ALUMNI SOCIETY.

OFFICERS.

REV. W. A. HOBSON.....	<i>President</i>
L. L. VANN.....	<i>Corresponding Secretary</i>
RAY RUSHTON, ESQ., Montgomery.....	<i>Orator</i>
REV. W. H. SMITH, Jacksonville.....	<i>Alternate</i>
PROF. W. G. BROWN, Harvard University.....	<i>Poet</i>
REV. L. O. DAWSON, Tuskalooza.....	<i>Alternate</i>

General Information Respecting the Course.

ADMISSION.

1. Applicants for admission must furnish evidence of good moral character, and produce certificates of honorable dismissal from the institution of which they were previously members.

2. A student may enter at any time and be assigned to proper classes.

3. All applicants for admission are assigned to such classes as they are prepared to enter in the schools of their choice.

4. Students are required to report to the President and matriculate within twenty-four hours after they reach the city.

TERMS OF ADMISSION TO COLLEGE.

A candidate for admission to any class must undergo such examination as will satisfy the Faculty that his attainments will justify such admission. Under no circumstances will a student be allowed to enter any class in the College course without examination. The first week of the session will be devoted to the examination and classification of students.

SUB-COLLEGIATE DEPARTMENT.

Special attention is given to students who apply for admission into the College, and yet who are not ready to enter the collegiate department.

In order that a proper basis may be laid for the future courses of boys and young men contemplating a collegiate course in this institution, they are assigned a place in the sub-collegiate department.

It is expected that students applying for admission into this department shall be able to read, write and spell correctly.

COURSE OF STUDY.

Particular attention is paid to English Composition and Declamation. Students may select such other studies as their parents or guardians may desire. Every one is required to have at least fifteen recitations a week.

The time required to complete the course of study for any degree will depend upon the previous preparation and future diligence of the student.

PLAN OF INSTRUCTION.

Professors and teachers are occupied as many hours as are necessary to examine thoroughly each day all the members of every class, and thus allow no neglect of any study.

The classes are divided into small sections, so that each student may receive special attention. The members of sections are arranged according to merit in each branch, and the students are kept constantly stimulated to obtain and preserve good positions.

The progress of each class and the relative merit of the members are recorded. At the end of each week the results are reported to the President and afterward posted on the bulletin board for encouragement or warning.

GOVERNMENT.

The government is administered by the President and professors in accordance with the regulations adopted by the Board of Trustees. A copy of the laws is kept in each student's room.

These laws inculcate manly virtue, preserve order, require sobriety and morality, protect and encourage good students, and do not allow the persistently idle and immoral to remain where they can injure others.

The personal influence of the President and Faculty is exercised to encourage the young men in the discharge of their duties, and the co-operation of parents is solicited, as the success of college government depends greatly upon the support which is given from home to the administration of discipline.

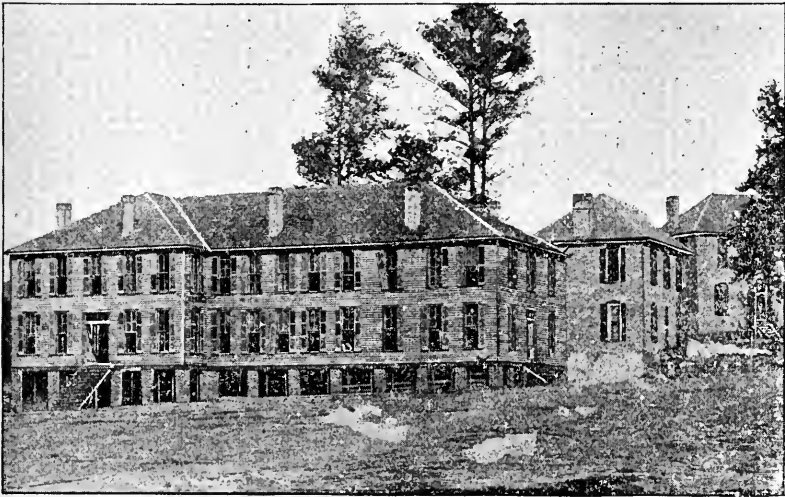
Daily reports of conduct, and weekly reports of studies, are made to the President. From these, semi-quarterly reports

are made to parents and guardians. The reports to parents show the absolute and relative standing in each class and other facts that may be thought of interest.

BUILDINGS.

There is one main college building of brick and stone, and four brick dormitories. A large two-story wooden building with thirty-two rooms has also been built for dormitory purposes.

The main building is three stories high, and embraces



DORMITORY BUILDINGS, LOOKING NORTH.

lecture rooms, offices, laboratory, society halls and chapel. It is heated throughout by the most improved methods.

LIBRARIES.

Each of the two literary societies has a good library, and the College has one.

Additions are constantly being made to all of these libraries. Contributions of books are earnestly solicited from the friends of the College.

CABINETS.

The Geological and Mineralogical Cabinets contain a large variety of specimens. A handsome series of Maps and Charts and Engravings illustrate lectures on Geology, Physiology and Astronomy.

APPARATUS

The Institute is in possession of a good Chemical, Mathematical and Philosophical apparatus.

THE SCHOLASTIC YEAR.

Is divided into two terms. The first begins September 12th and ends January 31st. The second begins February 1st and ends the first Wednesday in June.

EXPENSES, PAYABLE SEPTEMBER 12TH AND FEBRUARY 1ST,
STRICTLY IN ADVANCE.

COLLEGIATE.

Tuition, per term.....	\$30 00
Board.....	66 38

SUB-COLLEGIATE.

Tuition, per term.....	\$24 00
Board.....	66 38

Board includes fuel, furnished room, and the laundry of the sheets and pillow cases.

Every student is required to bring a pair each of blankets or comforts, sheets and pillow cases. They should have his name well sewed into them. When he retires from the College he may remove them as a portion of his baggage.

PAYMENT OF DUES.

Prompt payment must be made by each student at the beginning of each term, or else satisfactory arrangements must be made with the President with a bankable note.

Remittance by registered letter, postoffice order or New York exchange should be made to Prof. R. J. Waldrop, Treasurer, East Lake, Ala.

MEDICAL FEE

Observation has taught us that every student needs some medical attention during the session, while some need a great deal. In order to economize in the matter of medical fees, a College physician has been elected by the Board of Trustees to that position.

His services will be given any student the entire year for the payment to the treasurer of the faculty of \$2.50 at the beginning of each term.

Every student will be required to deposit this amount as

a medical fee with the treasurer. This does not apply to such students as attend from home unless they should desire it.

MONEY REFUNDED.

When a student leaves the College before the close of the term, board, room rent, etc., are refunded; but no tuition or medical fees.

TO PARENTS AND GUARDIANS.

Except for books and lights there is no necessity of the student being furnished more money than is advertised in the catalogue, and parents are advised to limit the amount of pocket change allowed their sons, and not to permit them to make private accounts.

When requested to do so, the President or Treasurer will act as *fiscal* guardian of students, granting only such sums to the student as may, from time to time, be needed. Nothing contributes more to the demoralization of the young man at college than a well-filled purse for private use. *No student will be allowed to keep in his room, during any night, a sum exceeding \$3.00.*

Not infrequently complaint is made because of the extravagance of a student at College, as if the institution were responsible for the amounts sent from time to time by parents or guardians. The actual College expenses are stated in the catalogue, and if parents or guardians are lavish in their gifts of money to their sons or wards, they should not hold the College responsible. By mutual intercourse and co-operation between the home and the College, the student will be saved from the demoralization arising from a useless expenditure of funds. The attention of parents is urgently called to this matter.

SONS OF MINISTERS

The sons of ministers engaged in the active work of the ministry pay one-half the tuition fee.

MINISTERIAL STUDENTS

Students who comply with the regulations of the Ministerial Board, at Montgomery, are furnished \$138 per session

to assist in the defrayment of their expenses for board at Howard College. Such students are given tuition free.

Other ministerial students, who may desire to pay their own board, will be furnished tuition free upon the presentation of licenses from their churches.

Such as may desire to enter the College as ministerial students must correspond with the Secretary of the Board, G. W. Ellis, Montgomery, Ala.

The aid already indicated applies only to ministerial students from Baptist churches in Alabama. They should not go to the College without first making application as already directed.

Ministerial students, however, from without the state are furnished tuition free.

CADET CORPS.

For the purpose of physical education—erect, graceful and manly carriage of the body, a vigorous and healthy constitution ; for cultivating politeness, moral courage, respect for self, deference to others, frankness, perseverance, industry, and self-reliance ; and for giving the mind the power of close and continued attention,—all students over fifteen years of age are required to join the Cadet Corps, which is drilled not more than one hour a day, and at such time as not to interfere with studies.

No student is exempt from this duty, unless it be by the President for special reasons.

UNIFORMS AND OTHER APPAREL.

Students should bring from home a good supply of underwear. They should also bring each a good overcoat, a pair of rubber shoes and an umbrella. No student will be permitted to leave the campus except in full uniform.

Uniforms may be obtained through agencies which will be found existing in the College. The cost of a complete uniform need not exceed \$18.50. The suits are warranted to be of the best cloth manufactured, and are quite durable. It will be found that these goods will not prove more expensive than civilian suits.

HOLIDAYS.

A vacation during Christmas holidays is, in large measure, made dependent upon the conduct of the students. If, by reason of good behavior and diligence in work, they are regarded as deserving a brief respite, it is given.

SCHEDULE OF RECITATIONS.

HOURS	MONDAY	TUESDAY	WEDNESDAY	THURSDAY	FRIDAY
8:30 to 9:30	Jun. Math. Fresh. Gk.	Jun. Math. Fresh. Gk.	Jun. Math. Fresh. Gk.	Jun. Math. Fresh. Gk.	Jun. Math. Fresh. Gk.
9:30 to 10:30	Nat. Sci. Soph. Mat. Fresh. Eng. French.	Nat. Sci. Soph. Mat. Fresh. Eng. French.	Nat. Sci. Soph. Math. Fresh. Eng. French.	Nat. Sci. Soph. Math. Fresh. Eng. French.	Nat. Sci. Soph. Mat. Fresh. Eng. French.
10:30 to 11:30	Soph. Eng. Alg. 2. Jun. Lat.	Soph. Eng. Alg. 2. Jun. Gk.	Soph. Eng. Alg. 2. Jun. Lat.	Soph. Eng. Alg. 2. Jun. Gk.	Soph. Eng. Alg. 2. Jun. Lat.
11:30 to 12:30	German. Alg. 1. Prep. Lat. Sen. Eng.	German. Alg. 1. Prep. Lat. Sen. Eng.	German. Alg. 1. Prep. Lat. Sen. Eng.	German. Alg. 1. Prep. Lat. Sen. Eng.	German. Alg. 1. Prep. Lat. Sen. Eng.
2:00 to 3:00	Soph. Lat. Fresh. Lat. Chemistry.	Soph. Lat. Fresh. Lat. Chemistry.	Soph. Lat. Fresh. Lat. Chemistry.	Soph. Lat. Fresh. Lat. Chemistry.	Soph. Lat. Fresh. Lat. Chemistry.
3:00 to 4:00	Soph. Gk. Sen. Math.	Soph. Gk. Jun. Eng.	Soph. Gk. Sen. Math.	Soph. Gk. Jun. Eng.	Soph. Gk. Sen. Math.



Courses of Study.

I.—School of English.

PROFS. GILES AND RILEY.

Great attention is given to the study of our mother tongue. In the Sub-Collegiate Department the basis is laid in the study of elements of English Grammar. With such a knowledge obtained, the student is next made acquainted with the Science of Grammar.

After a review of the fundamental principles of grammar, he is required to criticize and analyze selections from various authors. In this analysis the principal proposition is stated, and the relation which the subordinate elements bear to it and to each other.

The course in word-building includes a study of primitive words, prefixes, suffixes and the formation of derivative words.

The student is given the root or primitive word, and is required to form as many derivative words as possible by using the prefixes and suffixes:

This prepares him for passage from the Freshman to the Sophomore class, where he enters upon the study of Rhetoric. Special effort is made at this stage to beget in the student an acute discrimination in the study of language. Creation of thought and its expression in pure diction are made objects of special endeavor. Attention is repeatedly called to popular inaccuracies in speech, and the critical taste of each student is sought to be cultivated. Original essays and orations are prepared by the student and subjected to the criticism of the class. Reading exercises from standard authors are also had.

That the student may be able to express himself in the most forcible manner possible, he is trained in both the analytic and synthetic methods of arrangement.

The latter part of the session of the Sophomore course in English is devoted to elocutionary exercises.

The text books used in the course already indicated are: Swinton's English Grammar and Composition, Town's Word Building, Welsh's Essentials of English, and Hill's Rhetoric.

From the study of Rhetoric in the Sophomore class, the student passes to that of Logic in the Junior class. Jevon's Logic is the text book that is used in this course. The course pursued is intended to be practical throughout.

After studying the methods or reasoning, both deductive and inductive, the pupils are given various propositions to put into the different forms of syllogisms. In order to create enthusiasm in the class-room, and to make the study of practical value, numerous correct and incorrect syllogisms are examined.

SECOND TERM.

Text-book—Wayland's Political Economy.

In this course a free discussion of the subject under consideration is encouraged by the professor. When the pupil differs from the text he is allowed to give his reasons for not accepting the author's views.

The first part of the Senior course is devoted to a study of the History of English Literature, in which the development of the language, from the beginning, is carefully noted.

II.—Latin.

PROFS. DILL AND GILES.

The subjects taught are the Latin language and literature. The studies of the department comprehend a course of four years, divided as follows:

PREPARATORY CLASS.

Text-book—Collar and Daniell's Beginner's Latin.

The student is thoroughly drilled in the inflections of the parts of speech.

The translation of Latin into English, and English into Latin, is begun at once.

The first is recited orally, the latter is written.

Special attention is given to syntax and position.

FRESHMAN CLASS.

Text-books—Cæsar's Gallic War and Cicero's Orations against Cataline.

In connection with these, Allen & Greenough's Latin Grammar and Dr. Dill's Compendium are used.

In addition to the translation of latin into English, each word is written on the blackboard, the place where found, the rules of euphony, the rules of syntax, and a thorough analysis of the sentence are given.

A written translation of an English exercise into Latin is required once a week.

SOPHOMORE CLASS.

Text-books—Virgil's Æneid, Horace, Allen & Greenough's Latin Grammar, Dr. Dill's Compendium, and a classical dictionary.

The course of study comprehends the following topics :

First—Throughout the session much attention is paid to the analysis of the inflections of declension and conjugation, the seeming exceptions being explained by the rules of euphony. The simple sentence is also analyzed into its component elements—the connective, subject, verb, object or complement, and adjunct, with their several modifiers. The method of analysis of word and sentence is based upon the Compendium of Analytical Etymology and Syntax prepared by Prof. Dill.

Second—During the first term the class is drilled in the more common and essential rules of concord and government; in the second term the most difficult points of syntax occurring in the text are indicated by the professor, and the student is required to state the facts involved and to give the corresponding rule in the grammar.

Third—Versification and the rules of quantity are studied throughout the session.

Fourth—Mythology, ancient geography and ancient history are required in reference to the names of persons and places appearing in the text read.

JUNIOR CLASS.

Text-books—Crowell's Selections from Latin Poets and the Agricola of Tacitus. Books of reference as in the preceding course.

In addition to the constant review of topics previously taught, the following new subjects are taken up :

First—The rules of word-building are applied to the explanation of derivatives and compounds in the text read. The student is also encouraged by prize marks to apply the principles of Latin word-building to the English language, in the performance of work prescribed by the professor in addition to the daily recitations.

Second—The subject of syntax is also completed by the thorough, exhaustive analysis of compound and complex sentences. The sentence as a whole is defined, and the relation of the several clauses explained; and each clause is analyzed as taught in the previous course.

III.—Greek.

PROFS. DILL AND GILES.

The course of study in this department extends through three years, and is divided into the following classes :

FRESHMAN CLASS.

Text-books—Hadley & Allen's Grammar and White's First Lessons in Greek.

After six weeks' study of the grammar, the reading exercises begin. In this, special attention is given to accent, pronunciation, euphony and syntax.

A written exercise of English into Greek is required each day.

SOPHOMORE CLASS.

Text-books—Xenophon's Anabasis, Homer's Iliad and Hadley's Greek Grammar.

In connection with the text read during the first term, the attention is confined to a thorough review of the preparatory topics, the alphabet and rules of euphony, and the analysis of the inflections of declension and conjugation; also, the rules for accentuation.

In the second term the whole grammar is required, special attention being given to the word-building and the rules of

quantity; also, to dialectic differences in connection with the rules of euphony. The study of comparative philology is also introduced in the tracing out, in Latin and English, the collaterals of the Greek root occurring in the text, as well as the derivation of English words directly from the Greek language.

JUNIOR CLASS.

Text-books—Demosthenes de Corona, the New Testament and Hadley's Greek Grammar.

During the year, the specialty is the accurate translation of Greek into English. This subject is illustrated, especially, in the reasons for the changes made in the Revised Version of the New Testament.

IV.—Modern Languages.

For the present, the duties of this Chair are divided between Profs. Dill and Macon.

FRENCH

This course is limited to one year, and its purpose is to open to the student the literature of the language.

Text-books—Fasquelle's French Course and *Choix de Contes Contemporains*.

Oral translations of French into English, with special reference to the attainment of a correct pronunciation, and written translations of English into French are continued throughout the course. Special attention is given to the study of verbs, regular and irregular.

GERMAN.

This language is studied only in the junior year (five recitations per week). The objects of this brief course are to give the student a fair facility in speaking and reading the language. This is accomplished by daily conversation and reading. Frequent and correct use of words in conversation, and daily readings from texts suited to the progress of the students, secure very satisfactory results, even in a single session.

Joynes-Meissner Grammar is now used.

V.—Mathematics.

PROFS. SMITH, WALDROP AND PAYNE.

The Sub-Freshman Class begins with Sensenig's Algebra and pursues this work through Quadratic Equations. Beginning at this point, the Freshman Class proper prosecutes the study of Sensenig's Algebra to its close and enters upon Plane Geometry.

The Sophomore Class completes Geometry—Plane, Solid and Spherical—and enters fairly upon the study of Trigonometry. At this point the Junior Class begins, completing Plane and Spherical Trigonometry, Surveying and Analytical Geometry. The Senior Class completes Physics and Astronomy.

VI.—Physical Sciences.

PROF. MACON.

CHEMISTRY.—All students must take this school throughout their junior year. It embraces: 1. Phenomenal Chemistry; and, 2. Qualitative Analysis.

1. *Phenomenal Chemistry* (five hours per week during first term) is an introductory course of instruction, consisting in experimental demonstrations of the facts of the science; calculations of quantities by weight and volume; of changes in the volume of gases by changes of temperature and pressure; writing of reactions, and establishing of formulas upon proper physical facts, accompanying the work.

2. *Qualitative Analysis* (five hours per week during second term).—In this course the student, having first observed the characteristic reactions of the most important basic and acid radicals, has practiced in deducing methods of analysis based upon his own observations; after which, simple and mixed salts, minerals, alloys, etc., are analyzed.

It is believed that organic and physiological chemistry and quantitative analysis will, at an early day, be added to this school, and that ample laboratory supplies will be furnished for an adequate course in these departments of the science.

Text—Shepard.

BIOLOGY.

Students of Biology recite five times per week throughout the senior year. In all the departments of this science the texts are supplemented by lectures, objects and charts, which aid much in giving a wide general knowledge of the subjects.

Texts—Zoology, Packard; Physiology, Huxley and Youman.

GEOLOGY.

Text—(LeConte) Lectures and cabinet specimens are used in teaching this science. It is hoped that the friends of this institution will forward specimens of the minerals of their vicinity. By means of a full cabinet of Alabama minerals, the geology of the State can be thoroughly taught.

VII.—Commercial School.

PROF. PAYNE.

The creation of this department is in response to a demonstration on the part of young men to acquire the ability of book-keeping while prosecuting a literary course.

During the first term the student is given, in the outset, the simple processes of single entry, in which the forms and uses of personal accounts are clearly exhibited. The foundation principles of the science are thus illustrated. Care is taken to point out all the characteristics of the ledger and the utility of auxiliary books.

Throughout the first term models are given, which are succeeded by exercises fully elaborated, in which the material only is given, in the shape of memorandum transactions, from which the student is required to write up, circumstantially, all the required books of entry. A similar process is adopted in double entry.

During the second term the commercial course is completed—that is to say, the student is rendered perfectly familiar with all business forms.

The latest works are used, making Bryant & Stratton's Common School and Complete Works the basis.

VIII.—Psychology and Moral Philosophy.

PROF. RILEY.

This course is restricted to the senior year. The latest text-books, coupled with practical lectures, are employed in the aim to develop the nature of the soul and of the intellectual constitution. While ample time is afforded for the study of all subordinate questions, such matters as the Will and the Emotions receive particular attention.

Under the guide of the latest works, the effort is made to show the harmony subsisting between the most recent results of science with the so-called old Psychology. In other words, particular attention is devoted to physiological-psychology.

The fallacies of materialism and cerebralism are indicated throughout the course.

The study of Psychology readily prepares for that of the principles and practices of morality, the whole of which culminates with an investigation of the claims of the evidences of Christianity.

Text-books—Davis' Psychology, Robinson's Principles and Practices of Morality, and Fisher's Manual of Christian Evidences.

Commencement and Degrees.

The annual commencement is held on the first Wednesday in June.

No student is admitted to a degree, or permitted to take any part in the commencement exercises, unless he has creditably sustained all his examinations, performed such other exercises as may have been assigned him, and settled all college dues, including a graduation fee of five dollars.

Commencement Orations.

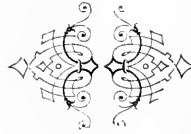
Baccalaureate Sermon—By Rev. R. H. Harris, D. D., Columbus, Ga., June 4, 1893.

Annual Literary Address Before the Societies—By Rev. Z. D. Roby, D. D., Opelika, Ala., June 5, 1893.

Address Before the Alumni of Howard College—By C. W. Wood, Esq., Meridian, Miss., June 6, 1893.

Alumni Poem—By Prof. W. H. Payne, Howard College, June 6, 1893.

Baccalaureate Address—By Gen. Jno. W. A. Sanford, Montgomery, Ala., June 6, 1893.



Register.

Alumni.

1848.

- †J. T. BARRON, A. M., M. D., Practitioner, Surgeon C. S. A. Marion
 †T. BOOTH, Merchant Selma
 †W. S. BLASSENGAME, A. M. Texas
 †W. L. MOSELEY, Professor Orrville Academy Dallas County
 †H. W. NAVE, Attorney Perry County
 †M. M. WEISINGER, A. M., M. D., Practitioner Florida
 †S. A. WILLIAMS, A. M. Montgomery

1849.

- F. ABBOTT, Lawyer Arkansas
 G. D. JOHNSTON, Civil Service Commissioner Washington, D. C.
 †L. A. MOSELEY Dallas County
 R. A. F. PARKER, A. M., M. D., Practitioner Wilcox County
 W. H. SMITH, Professor Tennessee

1850.

- †J. J. FREEMAN Greene County
 †H. C. HOOTEN, A. M. Georgia
 †J. F. HOOTEN Macon, Ga.
 H. C. KING, Lawyer, Colonel C. S. A. Memphis, Tenn.
 †R. J. YARRINGTON, A. M., Editor Montgomery

1851.

GRADUATES IN THEOLOGY.

- J. S. ABBOTT, Minister of the Gospel Wilcox County
 W. WILKES, A. M., D. D., Minister of the Gospel Sylacauga

1852.

- G. W. CHASE, Georgia
 W. D. LEE, A. M., Lawyer, Planter and State Commissioner. Greensboro
 †P. LOCKETT, A. M., Legislator, Judge, Professor Howard College. Marion
 G. W. LOCKHART, A. M., M. D., Practitioner Pontotoc, Miss
 †R. A. MONTAGUE, A. M., Professor Howard College Marion
 J. H. PEEBLES Mississippi

†Deceased.

GRADUATE IN THEOLOGY.

A. J. SEALE, Minister of the Gospel.....Greene County

1853.

T. C. DANIEL, Lawyer.....Mississippi

†T. S. HOWARD, Lawyer.....Macon County

†HUGH S. LIDE, Planter.....Sumter County

1854.

J. E. BELL, Minister of the Gospel.....Butler County

W. E. CHAMBLISS, A. M. Minister of the Gospel.....Mississippi

†L. B. LANE, JR., killed in C. S. Army.....Marengo County

W. A. MAY, Planter.....Sumter County

†W. HOWARD, A. M., D. D., Pastor.....Dallas, Texas

1855.

J. C. FOSTER, Minister of the Gospel.....Mississippi

†S. R. FREEMAN, D. D., Pres. Howard College, Pastor...Jefferson, Tex.

Z. G. HENDERSON, Minister of the Gospel.....Macon County

J. L. HUNTER.....Mississippi

G. C. MATTISON.....Benton

†W. PHELAN, Lawyer, killed in the C. S. Army.....Marion

1856.

†C. C. CLEVELAND, Planter.....Dallas County

A. S. HINTON, Planter.....Perry County

T. M. MARBURY, Planter.....Coosa County

WM. N. REEVES, D. D., Minister of the Gospel.....Eufaula

J. C. WRIGHT, D. D., Minister.....Oxford

1857.

W. L. ARMSTRONG, Lawyer.....Florida

D. M. REEVES, D. D., Minister of the Gospel... ..Johnstown, N. Y.

S. R. SHEPPARD, Lawyer.....Bibb County

1858

B. B. MCKENZIE, A. B., Civil Engineer.....Montgomery

M. D. ROBINSON, A. B., Farmer.....Benton

†J. M. TURNBOW, B. S., killed in C. S. Army.....Hamburg

1859.

J. B. HAWTHORNE, A. M., D. D., Pastor.....Atlanta, Ga

A. W. BRASSFIELD, A. B.....Forkland

S. C. COOK, A. B., Captain C. S. A., Lawyer.....Camden

J. P. HUBBARD, A. B., Lawyer, Speaker H. of Rep., Circuit

Judge.....Troy

R. J. LIDE, A. B., Planter.....Carlowville

†Deceased

J. A. CHAMBLISS, A. M., D. D., Pastor.....Orange, N. J
 J. A. J. HOLLMAN, A. B., Druggist.....Carroll County, Miss
 †W. G. JOHNSON, A. M., Lawyer, Captain C. S. A.....Marion
 J. B. SHIVERS, A. M., Lawyer, Captain C. S. A., Probate Judge..Marion
 WM. L. FAGAN, A. M., Professor, Captain C. S. A.....Marion
 R. S. HARKNESS, B. S., Planter.....Texas
 J. H. GEORGE, B. S., M. D., Captain C. S. A., Practitioner.....Texas
 †N. S. McCRAW, B. S., Major C. S. A., Lawyer.....Selma

1860.

J. F. BURNS, A. M., Captain C. S. A., Planter, Legislator...Burnsville
 J. T. CAINE, A. B., Planter.....Uniontown
 T. B. COX, A. M., Captain C. S. A., Lawyer.....Macon, Ga.
 J. L. DUPREE, A. M., Captain C. S. A., Planter.....Macon, Miss.
 J. W. FRIEND, A. B.....Greene County
 W. T. HENDON, A. M., Lawyer, Colonel C. S. A., Planter,
 Prof.....Evergreen
 †A. P. HINTON, A. B., Captain C. S. A., Planter.....Texas
 †E. P. KIRKLAND, A. B., Minister of the Gospel.....Greene County
 †T. M. LENOIR, Captain C. S. A.....Cahaba
 R. A. MASSEY, A. M., State Evangelist, Professor.....Hale County
 J. M. MCKLEROY, A. M., Lawyer, State Superintendent of Public
 Instruction, Trustee Howard College.....Anniston
 L. B. ROBERTSON, A. B.....Oxford
 †P. A. RUTLEDGE, A. B., Lieutenant, killed C. S. A.....Marion
 H. SNELL, A. B., Teacher.....Houston, Texas
 †J. W. TAYLOR, A. B., Minister of the Gospel.....Pickensville

1861.

J. G. DUPREE, A. B., Planter, Professor.....Jackson, Miss.
 J. M. SHIVERS, A. B., Planter.....Marion
 J. C. WILLIAMS, A. B., Farmer, Merchant.....Mobile
 †J. H. POLLARD, A. B.....Uniontown
 J. A. ROBERTSON, A. B.....Mobile
 O. H. SPENCER, A. B., Aid-de-Camp C. S. A., Planter...Monroe County
 B. M. HENRY, A. B., Lieutenant C. S. A., Legislator.....Glennville
 G. W. THIGPEN, A. M., Professor.....Keachi, La

1862.

W. HESTER, A. B., M. D., Practitioner Medicine.....Tuscaloosa
 H. G. WEISINGER, A. B., Professor.....Marion

1863.

†H. HARRELL, A. B., Druggist.....Texas
 D. P. GOODHUE, A. M., Merchant, Professor.....Gadsden

1866.

C. G. BROWN, A. M., Lawyer.....Birmingham

†Deceased.

1867.

- G. I. HENDON, A. B., Insurance Agent..... Texas
 †T. S. SUMNER, A. M., M. D., Practitioner..... New York City
 O. L. SHIVERS, B. S., M. D., Practitioner..... Marion

1868.

- H. C. COOKE, Professor, Druggist..... Kimball, Texas

1869.

- KNOX LEE, A. B., Lawyer..... Texas
 †P. W. VAIDEN, A. B., M. D..... Marion
 †J. H. HENDON, A. B., Minister of the Gospel..... Texas

1870.

- CHARLES M. FOCHE, A. B., Secretary and General Man-
 ager Knoxville Foundry and Machine Co.... Knoxville, Tenn
 T. D. JONES, A. B..... Texas
 †E. M. VARY, A. B., Lawyer, Judge of Probate..... Florida
 T. J. WHITE, A. B., M. D., Practitioner..... Uniontown

1871.

- Z. T. WEAVER, B. S., Minister of the Gospel..... Barbour County

1872.

- J. M. HARRELL, A. B., Asst. Prof. Howard College, Lawyer.. Linden, Tex
 M. T. SUMNER, A. B., County Surveyor and Engineer..... Birmingham

1873.

- W. D. FONVILLE, A. M., Prof. Math. Howard College, Prof... Tuskegee
 A. P. SMITH, A. B., M. D., Practitioner..... Greene County
 †W. W. SANDERS, B. S., Minister of the Gospel..... Tuscaloosa
 †F. A. BONNER, B. S., Professor..... Choctaw County
 W. W. BUSSEY, B. S., Bank Cashier..... Columbus, Ga.
 A. J. PERRY, B. S., Planter, Merchant..... Birmingham

1874

- J. M. DILL, A. M., Professor Howard College, Teacher..... Greenville

1875.

- D. G. LYON, A. B., Ph. D., Minister of the Gospel, Prof. Har-
 vard University..... Massachusetts
 J. S. DILL, A. B., Minister of the Gospel..... Richmond, Va.
 J. L. BONNER, A. B., Minister of the Gospel..... Choctaw County

1876.

- P. KING, JR., A. B., Lawyer..... Atlanta, Ga.
 S. MABRY, JR., A. B., President Clayton Female College..... Clayton
 J. A. HOWARD, A. B., Minister of the Gospel..... Reidville, N. C.

†Deceased.

W. T. CRENSHAW, B. S., Lawyer Atlanta, Ga.
 W. W. BURNS, B. S., Merchant Selma
 W. E. BROWN, B. S., Lawyer Huntsville

1877.

W. M. WILKERSON, A. B., M. D. Montgomery
 T. H. CLARK, A. B., Professor, Lawyer, Editor Montgomery
 J. R. TYSON, A. B., Lawyer, Legislator, Circuit Judge Montgomery

1878.

†T. W. RAYMOND, A. M., Minister of the Gospel Tennessee
 W. W. WILKERSON, A. M., Judge City Court Birmingham
 L. L. LEE, A. B., (1st honor) Farmer Marion
 C. L. WINKLER, A. B., (2d honor) Lawyer South Carolina
 J. MOORE, JR., A. B., Lawyer Tennessee
 J. W. PONDER, A. B., Merchant Opelika
 J. D. GWALTNEY, A. B., Professor Shorter College Georgia
 †B. F. COLLEY, JR., B. S., Planter, Lawyer Florida
 W. H. COOPER, B. S., Planter Calhoun County
 †J. M. HERRING, B. S., Planter Springville
 H. P. BROWN, L. B., Lawyer Texas
 W. F. HOGUE, L. B., Lawyer Marion
 M. T. SUMNER, JR., L. B., Civil Engineer Birmingham

1879.

W. Y. DILL, A. B., (1st honor) Druggist Birmingham
 P. T. HALE, D. D., (2d honor) Minister of the Gospel Birmingham
 W. S. LOTT, A. B., Merchant Mobile
 P. M. JOHNS, B. S., Merchant, Planter Bullock County
 L. C. ALLEN, B. S., Planter, Engineer Mexico
 J. W. CONNELLA, B. S., Editor Dakota

1880.

J. M. FOSTER, A. B., Professor, Lawyer Tuskaloosa
 B. H. ABRAMS, A. B., Merchant, Insurance Agent Atlanta, Ga.
 C. F. WOODS, A. B., Lawyer Meridian, Miss
 J. T. MONCRIEF, B. S., Merchant Birmingham
 S. W. WELSH, B. S., Planter, Physician Talladega County

1881.

H. F. SMITH, A. B., Merchant Prattville
 S. O. HALL, A. B., Minister of the Gospel Virginia
 H. GRIGGS, A. B., Professor Montevallo
 A. W. MCGAHA, A. B., D. D., Minister of the Gospel East Lake
 N. S. WALKER, A. B., Planter Tallapoosa County
 J. M. MCCORD, B. S., Minister of the Gospel, Professor Verbena
 C. W. KNIGHT, B. S., M. D., Professor Snow Hill
 H. D. LYMAN, B. S., Merchant Birmingham

†Deceased.

1882.

J. R. SAMPEY, A. B., D. D., Minister of the Gospel, Professor Southern Baptist Theological Seminary.....	Louisville, Ky
R. D. PALMER, A. B., M. D., Practitioner.....	Furman
W. H. LOVELLACE, A. B., Merchant.....	Marion
T. C. KING, A. B.....	New York
P. C. DREW, A. M., Minister of the Gospel.....	Florida
W. J. ALSOP, B. S., Merchant.....	Montgomery
B. F. GILES, A. M., Minister of the Gospel, Professor Howard College.....	East Lake

1883.

J. G. SCARBROUGH, A. B., Lawyer.....	California
O. HARALSON, A. B., Manufacturer.....	California
T. E. LOCKHART, A. B., Druggist, Physician.....	Marion
W. M. VAREY, A. B., Professor.....	Marengo County
J. H. FOSTER, A. B., Professor, Lawyer.....	Tuskaloosa

1884.

W. H. SMITH, A. M., Minister of the Gospel.....	Jacksonville
W. B. NEWMAN, A. M., Lawyer.....	Franklin, Texas.
G. W. MACON, A. M., (1st honor) Professor Howard College..	East Lake
J. M. QUARLES, A. B., (2d honor) Professor.....	Star City, Ark.
W. L. SANFORD, A. B., Merchant.....	Sherman, Texas
C. W. GARRETT, A. B., Farmer.....	Lowndes County
J. W. STEWART, B. S., Minister of the Gospel	Evergreen
J. M. HUDSON, B. S., Cashier of Bank.....	Birmingham

1885.

W. L. SAMPEY, A. B., Merchant.....	Clanton
J. M. WEBB, A. B., Professor, Merchant.....	Birmingham
L. E. THOMAS, A. B., Merchant.....	Marion, La.
W. O. JOHNSON, A. B., Professor.....	Beulah
H. R. SCHRAMM, A. B., Minister of the Gospel.....	Phoenix City
J. W. HURT, B. S., Merchant.....	Selma
H. C. SANDERS, B. S., Minister of the Gospel, Teacher	Columbia

1886.

C. A. THIGPEN, A. M., Physician.....	Greenville
W. G. BROWN, A. B., (1st honor) Editor, Professor, Student,	Harvard University
†W. M. WEBB, A. B., (2d honor) Professor.....	Brundidge
L. O. DAWSON, A. B., Minister of the Gospel.....	Tuscaloosa
J. W. MCCOLLUM, A. B., Minister of the Gospel... Missionary to Japan	
D. J. MCWILLIAMS, A. B., Professor.....	Wilcox County
W. W. RANSOM, A. B., M. D.....	Birmingham
W. L. PRUETT, A. B., Professor.....	Bullock County
J. M. MCIVER, A. B., Professor.....	Scottsboro College
J. B. ADAMS, A. B., Banker.....	Montgomery

†Deceased.

J. GAMBLE, JR., A. B., Lawyer..... Troy
 J. C. LOVELACE, A. B., Merchant..... Selma
 J. H. RAINER, JR., B. S., Merchant..... Union Springs
 R. L. GOODWIN, B. S..... Anniston

1887.

F. G. CAFFEY, A. M., Professor, Student Harvard University..... Massachusetts
 E. W. BROCK, A. M., Professor Marion Military Institute,
 Law Student..... Tuskaaloosa
 W. H. MCKLEROY, A. B., (1st honor) Banker..... Anniston
 †V. R. PEEBLES, A. B., (2d honor)..... Vienna
 C. A. FLOREY, A. B., Teacher..... Choctaw County
 W. H. CAFFEY, A. B., Professor..... Marion
 J. M. THOMAS, A. B., Minister of the Gospel..... Bessemer
 F. M. THIGPEN, A. B..... Greenville
 J. M. KAILIN, A. B., Minister of the Gospel..... Mobile
 R. F. SMITH, A. B..... Frankfort, Ky
 H. J. THAGARD, A. B..... Greenville
 E. C. JONES, A. B..... Selma
 L. M. BRADLEY, A. B., Minister of the Gospel..... Brundidge
 J. H. SMART, B. S..... Pine Bluff, Ark
 J. W. HAMNER, B. S., Minister of the Gospel..... Five Points

1888.

E. R. RUSHTON, A. M., Professor, Lawyer..... Montgomery
 W. W. LAVENDER, A. B., (1st honor) Professor, Lawyer,.... Centreville
 T. M. HURT, A. B., (2d honor)..... Marion
 W. J. BELL, A. B., Practitioner of Medicine..... Prattville
 C. HARDY, A. B., Professor..... Furman
 J. H. BLANKS, A. B., Professor, Medical Student..... Nashville, Tenn
 J. M. REEVES, A. B., Merchant..... Eufaula

1889.

C. G. ELLIOTT, A. M., Theological Student at Southern Baptist
 Theological Sem., Pastor..... Meridian, Miss.
 H. R. DILL, A. B., (1st honor) Professor, Lawyer..... Birmingham
 W. L. CHITWOOD, A. B., (2d honor) Professor, Lawyer..... Tusculmbia
 G. J. HUBBARD, Law Student..... Troy
 S. L. TYSON, A. B., Merchant and Planter..... Montgomery
 W. H. OWINGS, A. B., Merchant..... Birmingham
 J. A. MCCREARY, A. B., Lawyer..... Evergreen

1890

L. A. SMITH, A. M., Minister of the Gospel, Principal High
 School..... Thomasville
 W. H. PAYNE, A. B., (1st honor) Professor..... Howard College
 S. J. STROCK, A. B., (2d honor) Professor..... Harpersville
 W. S. HERRIN, A. B., Livery Business..... Dadeville
 T. S. HERRIN, A. B., Merchant..... Dadeville

†Deceased

R. B. CAINE, A. B., Teacher.....	McKinley
M. E. WEAVER, A. B., Theological Student.....	Louisville, Ky.
H. H. SHELL, A. B., Pastor.....	Mobile
J. A. THOMPSON, A. B., Teacher.....	Newton
G. G. SPURLIN, A. B., Physician.....	Camden
J. D. HEACOCK, B. S., Physician.....	Alpine
V. H. CAINE, B. S., Medical Student.....	Mobile

1891.

T. T. HUEY, A. M., Merchant.....	Bessemer
J. D. ABERNETHY, A. B., (1st honor) President College, Law Student.....	Sommerville LaFayette
H. J. WILLINGHAM, A. B., (2d honor) General Agent.....	Memphis, Tenn.
A. G. SPINKS, A. B., Principal High School.....	East Lake
S. H. NEWMAN, A. B., Teacher.....	Beulah
J. R. JARRELL, A. B., Principal Ashland High School.....	Ashland
W. D. HUBBARD, A. B., Theological Student, Pastor.....	Furman
A. S. SMITH, A. B., Theological Student, Pastor.....	Roanoke
R. E. MEADE, B. S., Student Civil Engineer.....	Lehigh Univ
L. L. VANN, B. S., Professor.....	Mississippi
J. E. HARRIS, B. S., Teacher.....	Wilsonville
R. W. HUEY, Vice-Pres. Ala. Guarantee Loan and Trust Co., Lawyer.....	Birmingham
W. B. FULTON, B. S., Teacher.....	Attalla
R. J. JINKS, B. S., Farmer.....	Dadeville

1892.

M. E. COE, A. M., Bookkeeper.....	Birmingham
J. F. SAVELL, A. M., Theological Student.....	Louisville, Ky
J. A. HENDRICKS, A. M., Professor.....	Louisiana
C. B. LLOYD, A. M., Theological Student.....	Louisville, Ky
J. W. WILLIS, (1st honor) Pastor.....	Auburn
MARCELLUS MCCREARY, (2d honor) Teacher.....	Evergreen
THOS. B. WALDROP, Teacher.....	Moulton
J. E. BARNES, Theological Student.....	Louisville, Ky
J. F. BLEDSOE, Student Kendall Green.....	Washington, D. C
H. C. HURLEY, Pastor.....	Abbeville
J. A. SARTAIN, Teacher.....	Jefferson County
J. R. MARTIN, Merchant.....	Harpersville
W. A. HOBSON, Theological Student.....	Louisville, Ky
T. B. NETTLES, Planter.....	Kempville
J. R. MELTON, Merchant.....	Pine Apple
J. T. COLLINS, Law Student.....	Tuskaloosa
E. G. GIVHAN, Medical Student.....	Mobile
W. N. SPINKS, Teacher.....	Tallapoosa County
R. B. DEVINE, Teacher.....	St. Clair County

NOTE.--Graduates and other friends of the College are requested to suggest to the President any corrections needed in the Register, and to furnish any facts that should be put upon permanent record.

Honorary Degrees.

1860.

T. F. BLEDSOE.....M. A.
W. CAREY CRANE.....D. D.

1866.

S. H. LOCKETT.....M. A.
I. B. VAIDEN.....M. A.
J. H. DEVOTIE.....D. D.

1867.

R. C. BURLESON.....D. D.

1868.

R. HOLMAN.....D. D.
CADWALLADER LEWIS.....LL. D.

1869.

P. H. MELL.....LL. D.

1870.

A. J. BATTLE.....D. D.
E. B. TEAGUE.....D. D.

1875.

W. C. CLEVELAND.....D. D.
J. J. D. RENFROE.....D. D.
CRAWFORD H. TOY.....LL. D.

1877.

J. B. HAWTHORNE.....D. D.

1878.

B. PURYEAR.....LL. D.
W. S. WEBB.....D. D.
WM. CARROLL.....Ph. D.

1879.

J. H. FOSTER.....D. D.

1880

A. B. WOODFIN.....D. D.
W. R. BOGGS, JR.....M. A.

1881.

GEORGE B. EAGAR.....D. D.

1883.	
J. E. CHAMBLISS.....	D. D.
T. M. BAILEY.....	D. D.
1884.	
J. M. FROST.....	D. D.
J. M. PHILLIPS.....	D. D.
W. H. WILLIAMS.....	D. D.
J. E. WILLETT.....	LL. D.
1885.	
A. C. DAVIDSON.....	D. D.
W. E. LLOYD.....	D. D.
G. W. THOMAS.....	LL. D.
1886.	
GEO. M. EDGAR.....	LL. D.
O. F. GREGOAY.....	D. D.
1887.	
S. W. AVERETT.....	LL. D.
J. C. WRIGHT.....	D. D.
D. I. PURSER.....	D. D.
R. J. WALDROP.....	M. A.
1888.	
B. H. CRUMPTON.....	D. D.
1889.	
W. WILKES.....	D. D.
J. J. TAYLOR.....	D. D.
W. C. BLEDSOE.....	D. D.
W. G. HIX.....	M. A.
1890.	
H. M. WHARTON.....	D. D.
B. F. GILES.....	M. A.
G. W. MACON.....	M. A.
1891.	
W. H. YOUNG.....	Ph. D.
P. T. HALE.....	D. D.
H. R. POLLARD.....	LL. D.
1892	
J. P. SHAFFER.....	D. D.
1893	
W. C. BITTING.....	D. D.
J. A. FRENCH.....	D. D.
A. W. MCGAHA.....	D. D.





Howard College Library



*Samford
University
Library*

GENERAL

Special Collections

LD 1892/93
4881.2 C.2

Howard College (Birmingham,
Ala.)

Catalogue and register of
Howard College, East Lake,
Ala.

ROOM USE ONLY

