

T

834

F3C3

UC-NRLF



\$B 110 419

YC 101225

GIFT OF



EX LIBRIS

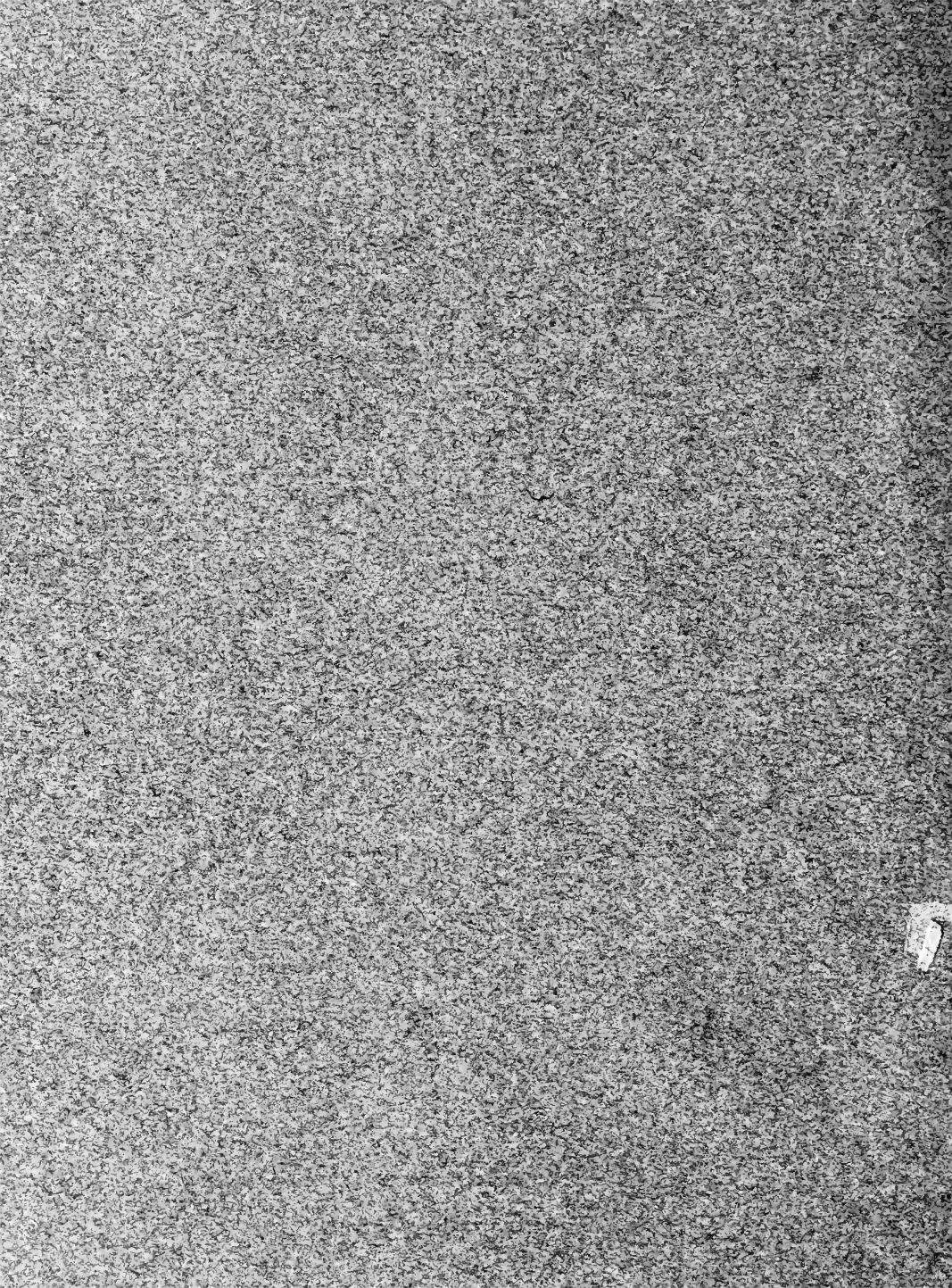


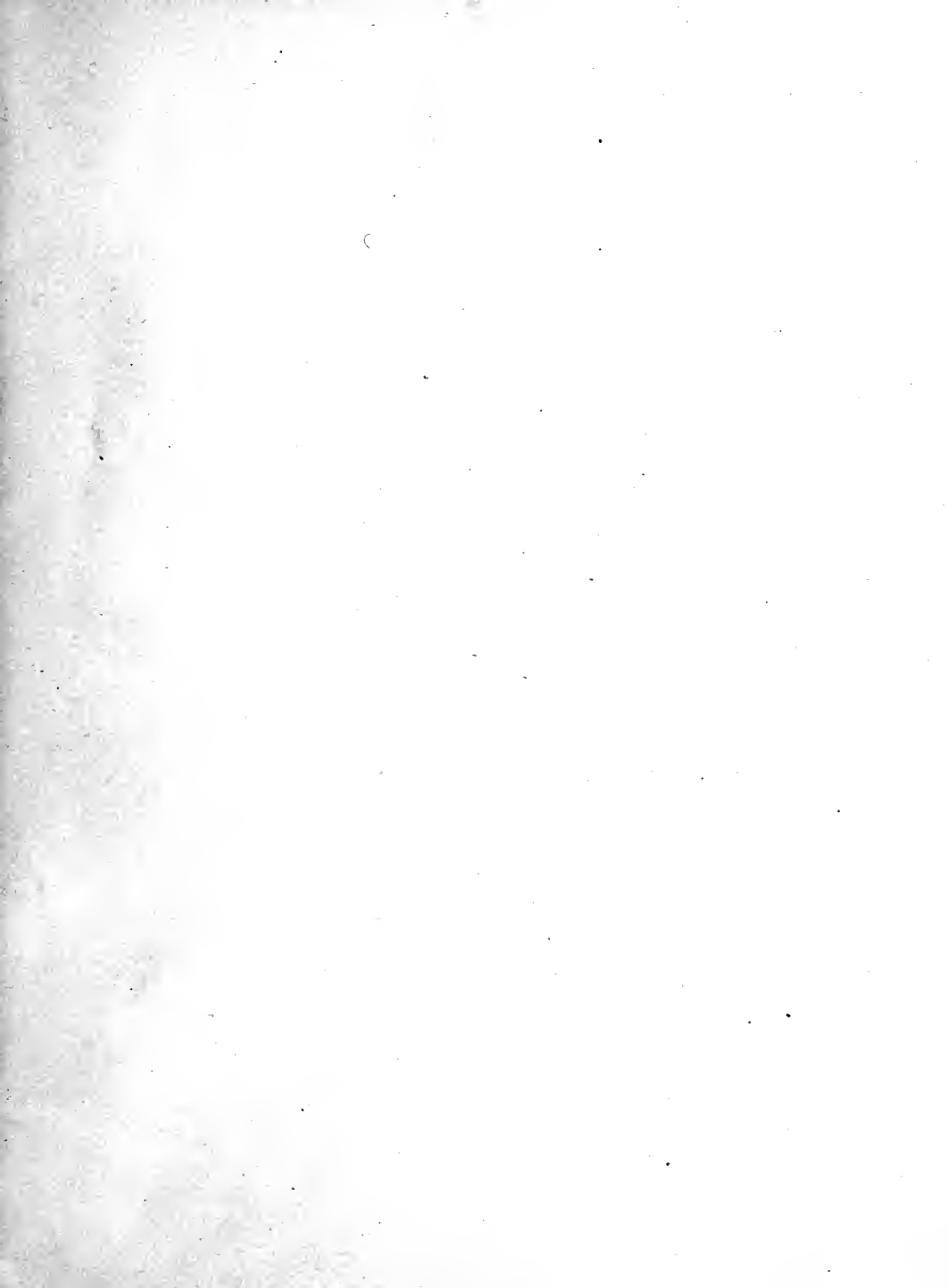
CALIFORNIA

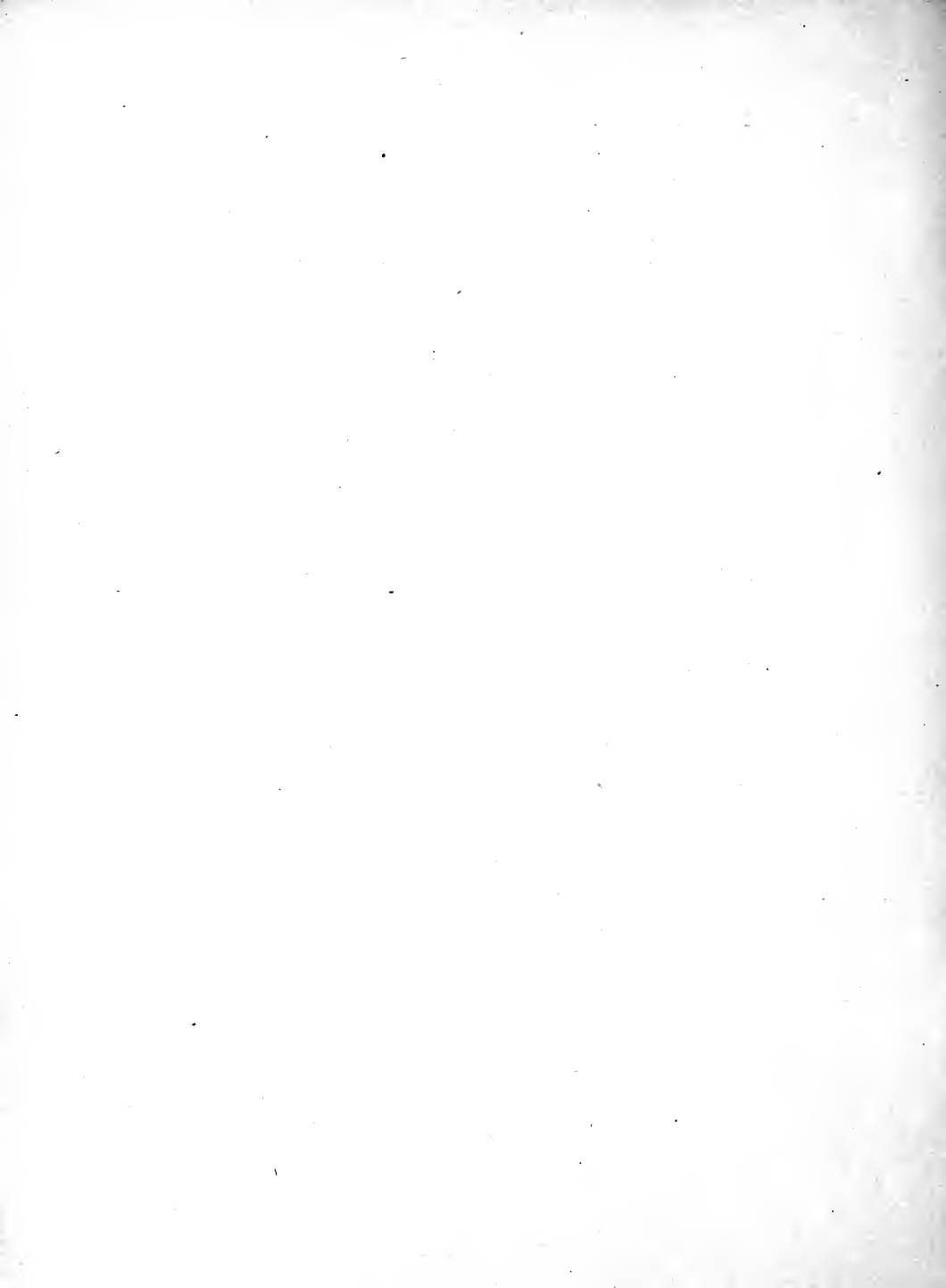
FINAL REPORT
Digitized by the Internet Archive
in 2007 with funding from
Microsoft Corporation

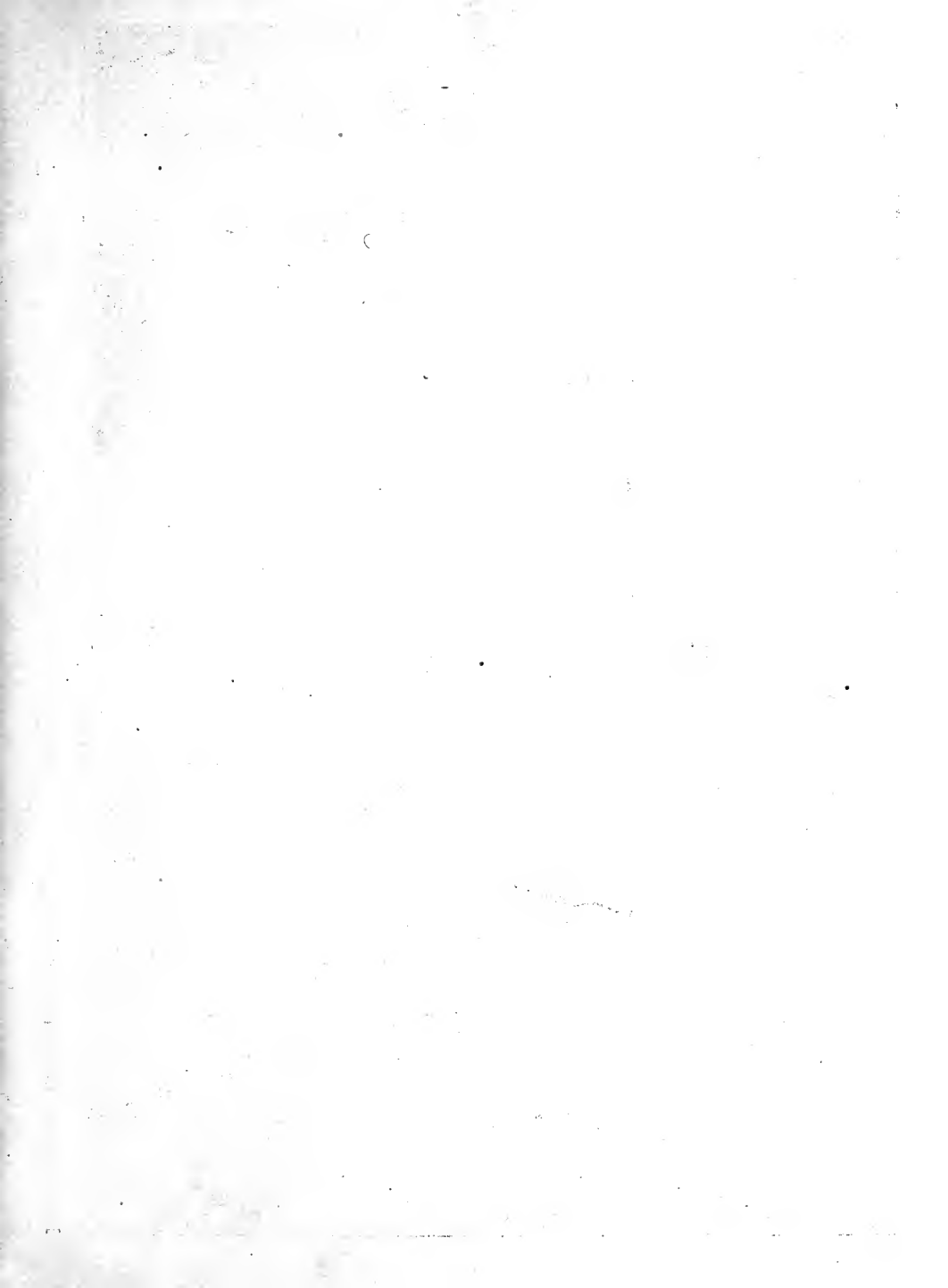
LEWIS & CLARK
EXPOSITION
COMMISSION.

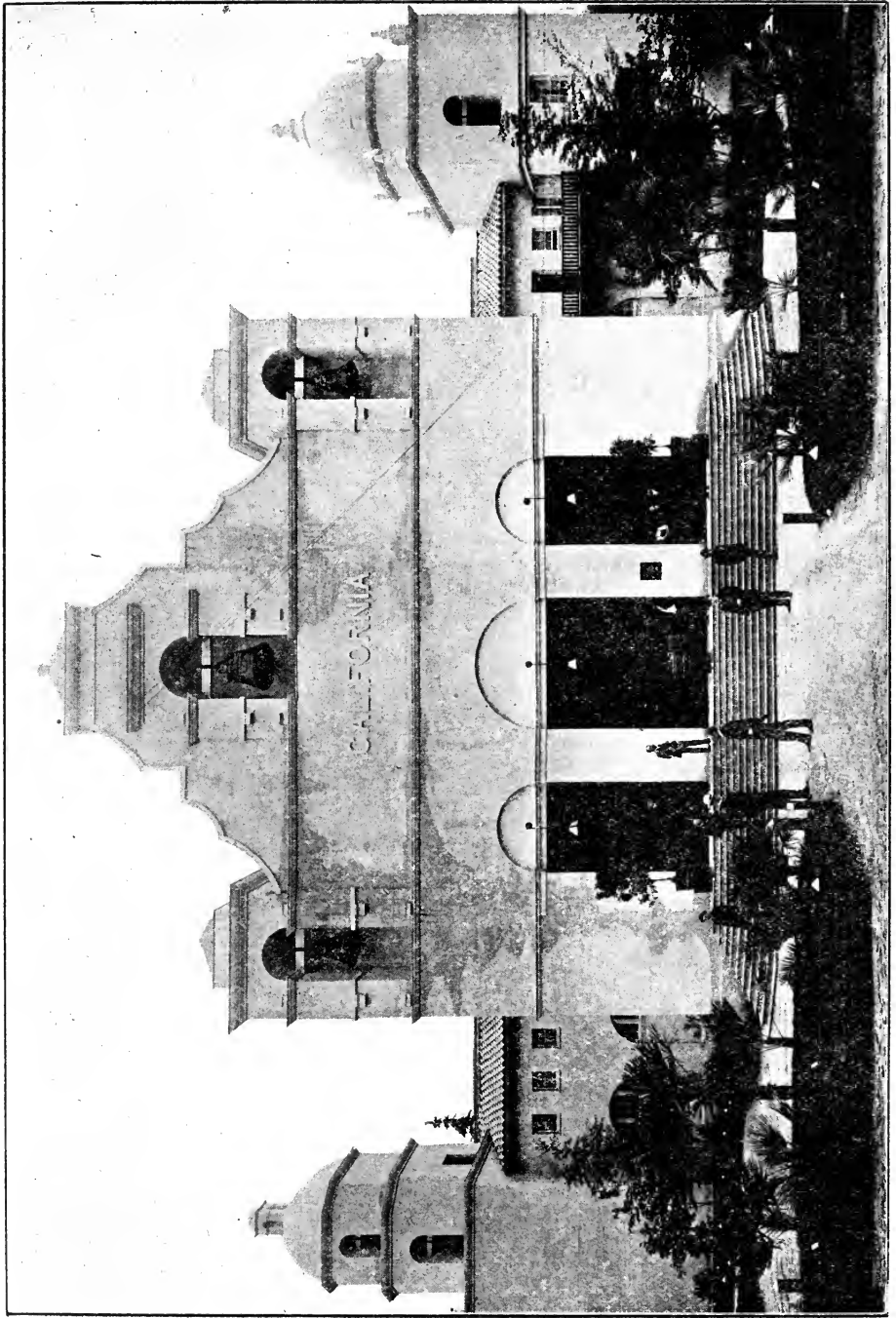
GEO. G. PARDEE - COMMISSIONER
S. H. HUTTON } DEPUTY
FRANK WIGGLES } COMMISSIONERS











Main Entrance, California State Building

FINAL REPORT

OF THE CALIFORNIA LEWIS AND CLARK EXPOSITION COMMISSION

To the Senate and Assembly:

Gentlemen: The Acts of your honorable body appropriating money for the participation of California at the Lewis & Clark Exposition, held at Portland, Oregon, in 1905, imposed on me the duties of Commissioner, with power to appoint such assistants as might be found necessary for the proper carrying out of the purposes of the said Acts. Accordingly I appointed J. A. Filcher of Northern or Central California, and Frank Wiggins of Southern California, to serve as my Deputies, and to these gentlemen I entrusted the details of the work. Their report to me is submitted herewith, and I take pleasure in calling your attention to the same for a full understanding of the character and effort of California's participation at the said Lewis & Clark Exposition, and for a detailed statement of the expenditure of the money appropriated for the purpose.

The credit for the fine exhibit made by this State at Portland is due to Messrs. Filcher and Wiggins, whose vast experience in such matters gave California a prominence that she otherwise could not have attained.

I am of the opinion that the State has been well repaid for the money expended at the Lewis & Clark Exposition.

Very respectfully,

GEORGE C. PARDEE, Governor.

444231

Report of Deputy Commissioners

CALIFORNIA LEWIS AND CLARK EXPOSITION.

San Francisco, Cal., February 1, 1906.

To George C. Pardee, Governor, and Ex Officio Commissioner Lewis & Clark Exposition.
Sacramento, Cal.

Dear Sir:

As your deputies, charged with the details of California's representation at the Lewis and Clark Exposition, held at Portland, Oregon, from June 1st to October 14th inclusive, 1905, we take pleasure in rendering to you the following report of our work.

APPROPRIATION.

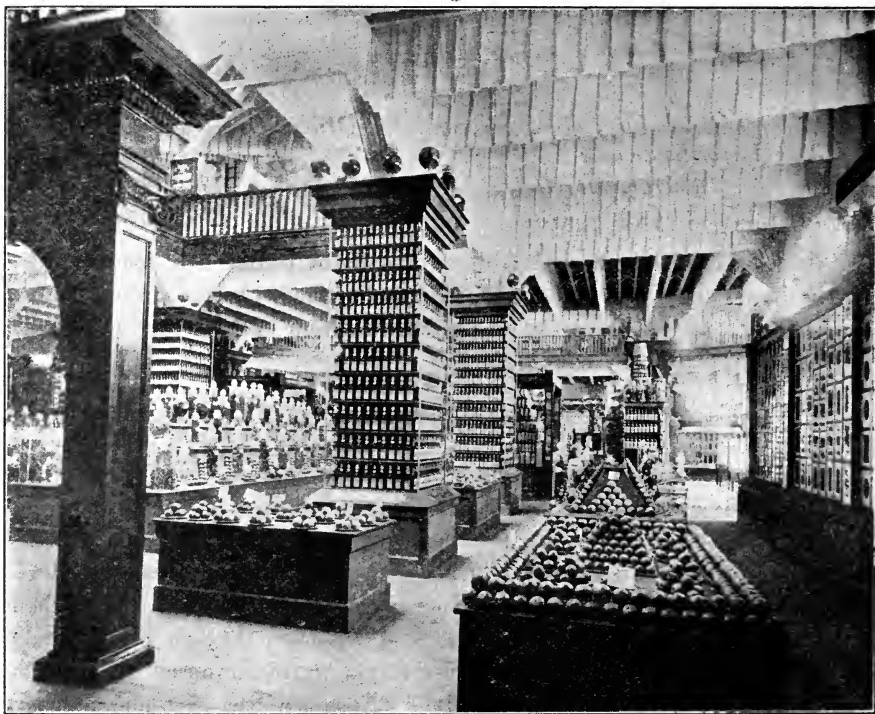
The Legislature of 1903 made a preliminary appropriation for the Portland Exposition of \$20,000. The Legislature of 1905 passed an act supplementary to the act of 1903, appropriating for the representation of California at Portland the further sum of \$70,000, making the total special appropriation for the Fair \$90,000. In addition to this sum of money there was exhibit material on hand from the St. Louis work the year before valued at about \$10,000. Thus, we can say that the aggregate means available by the State of California for the Portland Exposition was in round numbers \$100,000.

THE COMMISSION.

The different acts of the Legislature appropriating money for the Oregon Fair made you the sole Commissioner to supervise its expenditure, erect a building and provide for a suitable display therein of California's resources and industries.

The same acts authorized you to employ such persons as you found to be necessary to assist in carrying out the purposes and provisions of the law. Acting on this authority you verbally requested the undersigned, immediately

on our return from St. Louis, which was the latter part of December, 1904, to enter at once upon the collection of material for a suitable display at Portland in connection with the work of closing up the St. Louis accounts and supervising the distribution of the St. Louis material. On the 14th of February, 1905, we had the pleasure of filing with you our final report as your Commissioners to the St. Louis Exposition, and on the same day you formally appointed us as your Deputy Commissioners to the Portland, or Lewis and Clark Exposition. From that day we have drawn our salary from the Portland fund and devoted ourselves, with your co-operation and advice, to the



General View from South Entrance

work of carrying out the purpose of the Acts providing for California's participation at the Portland Fair. Incidentally, whatever details remained to be attended to relating to the St. Louis work received our attention, and it may be mentioned that even at this writing, more than a year after the close of the St. Louis Exposition, we are receiving correspondence on the subject, particularly relating to the matter of awards and diplomas.

Mr. George A. Dennison, who had rendered very efficient service for the Commission as Secretary at St. Louis, was, with your approval, appointed to

the same position for Portland and remained with the work to the end.

Mrs. Wiggins and Mrs. Filcher, who had served as hostesses at St. Louis, filled the same positions at Portland, so arranging their duties as to assure the presence of at least one of them all the time on the main floor or in the reception room to help welcome our visitors and contribute to their comfort. On the occasion of receptions their services were invaluable. In this connection we want also to acknowledge the very valuable assistance of Mrs. Pardee and her sister, Miss Penniman, during the season of their visit to Portland.

PROMPT WORK NECESSARY.

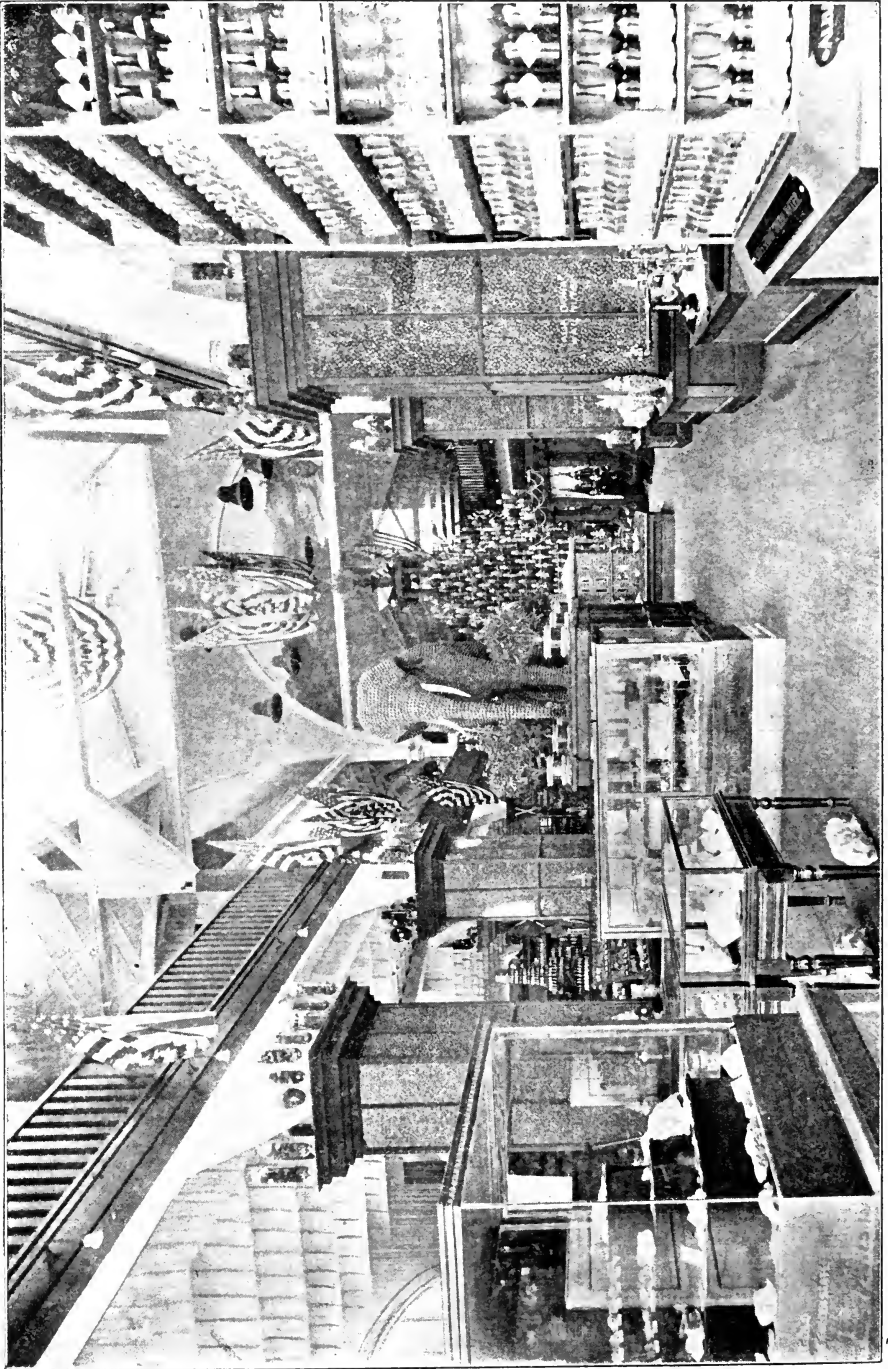
The time for preparation being short required prompt and vigorous action. With efficient assistants the collection of exhibit material was pursued energetically, and anticipating favorable action in the matter of a supplementary appropriation by the Legislature then in session, plans were prepared for a suitable California building and all preparations made for letting a contract for the erection of the same as soon as means should be available. The Supplementary act carrying the second Portland appropriation was passed by the Legislature and approved by you on the 3d of February, 1905, and on the 14th day of February the contract for the California building at the Portland Fair was let to the Burrell Construction Company of Oakland, California, for \$33,970, less additions and reductions, with a stipulation that its construction should be commenced at once and finished by the first day of the following May, with a penalty clause of \$50 a day for every day the contractor should be at work on the building after the time limit. Another clause in the specification provided that the Commission might enter the building before the final completion and begin the erection of exhibit structures.

COMMENCE INSTALLING.

Accordingly on the 18th of April, Deputy Commissioner Filcher proceeded to Portland to commence the work of installation. He was accompanied by the wife of Deputy Commissioner Wiggins, whose purpose in going early was to supervise the purchase of household supplies, in order that the deputies and their secretary, as a matter of economy, might occupy the building at the earliest possible date.

DESIGN OF BUILDING.

The building as designed and erected was in the form of a Greek cross, with four wings, 50 feet in length, and averaging about 70 feet wide,



View from Main or East Entrance

extending from a center square 100 feet in diameter. A wide gallery extended into the wings and all around the building, leaving the center open from the lower floor to the ceiling of the dome, and to the sky lights which extended from the dome over each wing. The lower floor of the north wing was used mainly for officers, reception room and lecture hall. The second floor of the same wing was utilized for living rooms and a public parlor, while a third or mezzanine floor in this wing was partitioned into sleeping rooms for the principal attendants. Exclusive of these features, the building contained on the main floor and in the galleries a little more than 30,000 square feet of exhibit space.

THE BUILDING SITE.

The site for the building, which had been early selected by you personally, was on high ground, commanded a magnificent view, barring an obstruction from one point by another State building, which was located later, and in point of accessibility was the best on the entire Exposition grounds.

MISSIONS COPIED.

Each of the four fronts of the building represented in facsimile one of the historic California Missions, and the idea of reproducing them in an exhibition building outside of California proved a happy thought, as they, with their towers and bells and tiled roofing and quaint architecture generally, gave to the structure a distinction and an interest which did not attach to any other building at the Exposition. It really was an exhibit within itself. We have displayed pictures of the Missions. This time we reproduced in exact proportion and with all the details, the fronts of four of the prominent Mission buildings, to say nothing of the dome which was copied from the dome on the old Mission San Juan Capistrano. The main or east front was a reproduction of the front of the Mission San Antonio de Padua, the north front was a reproduction of the Mission El Carmel, the west front a reproduction of the Mission Dolores, the south front a reproduction of the Mission San Luis Rey.

THE EXHIBIT.

In this building we collected, installed and maintained one of the most attractive and comprehensive exhibits of our products and resources ever put up by California anywhere. It was not so extensive as the exhibit made by this State at St. Louis, but it contained more features than the latter and was infinitely more attractive, because of the better opportunity for artistic



Looking into Forestry Exhibit

installation, and because it showed in due order and in compact form all of California's varied and splendid products under one roof, as one general and splendid whole. It was more effective, too, because even the casual observer could not help but be impressed with the wide range of our products, as well as the excellence of their quality. And though in this one building we had

something of everything that California produces, not one feature was so small as not to be noticeable.

Our display of minerals was quite strong and included all of California's precious and commercial ores, her oils, building stones, cement and clays, her gems and her gold, her iron, copper and quicksilver, and all the other articles taken from mother earth that have a present or prospective value. Then in order came wire and wire rope, and mining appliances. Then came nuts in variety, then seeds and cereals, then sugar, then wine, then olives and olive oil, then canned fish, and sardines, marmalades, jams and jellies, canned milk, canned cream, seeded raisins, dried fruit, canned fruit, fresh fruit, honey, forestry, fish and game, silk, citrus products, soap, citron, ostrich and ostrich feathers, hay, grain, brooms and broom corn, beans and flour—all surrounding a splendid pyramid of processed fruits and vegetables.

In the gallery was an extensive fine art display; the best educational exhibit California ever made; liberal art features, such as ceramic, art glass, burnt wood, inlaid wood, pianos, violins, etc.; an extensive display of raw and manufactured silk, of mohair, of leather, of tobacco, of incubators, etc. There was a model irrigation scene with running water, and an interesting transportation department with shipping statistics and models and pictures of wharfs in San Francisco, and of battleships and ships of commerce made in the same city. The grounds were beautifully laid out under the supervision of the Director of Works, and artistically set with a profusion of semi-tropic palms, trees, shrubs, etc., all shipped from California for the purpose, and contributed largely by the Golden Gate Park, the Stockton State Hospital, Geo. C. Roeding of Fresno, R. M. Teague of San Dimas, and others. In the interior of the building, dispersed among the exhibits and on the buttresses to the stairs, were smaller plants and flowering shrubs in jardinières which tended to brighten the scene and give a fresh and rich appearance to the exhibits.

It may be said, in short, that with its spacious and attractive building, its unequalled exhibits, and a strong corps of veteran exposition people, California was the best equipped of any State represented at the Portland Exposition, and its prestige for leading all States at exposition work was fully maintained.

THE MISSION CHIMES.

In the tower of the San Luis Rey wing a chime of Mission bells was installed, which were kindly loaned for the purpose by Mr. Frank Miller, of the famous Glenwood Hotel at Riverside, and under the deft manipulation of Miss Henrietta Hardenburg, a sister-in-law of Mr. Miller, they rang out sweet melodies every hour from 9 o'clock a. m. until sundown every day dur-

ing the continuance of the Fair. This feature gave an additional interest to the California Building, as music from a chime of bells, and bells in an old tower of an old Mission, had a fascination and an attraction that no other music could equal. These chimes provoked favorable comment from all visitors and were one of the features of the Fair.

LECTURES.

The lecture hall in the California Building had no outside exposures, and though well ventilated was dark enough to give perfect effect to the



California Day, September 9th

stereopticon views without closing the double doors that opened into the main exhibition room. Thus when a lecture was in progress, people passing through the exhibits could see the beautiful colored pictures reflected on the screen and they naturally were attracted to them. By this means it was found easy to fill the hall on short notice. Indeed a lecture would hardly begin before the 150 seats were occupied, and before its conclusion standing room was generally at a premium. Ten lectures of about twenty-five minutes each were delivered daily, and in their scope they covered every attrac-

tion in California. Many slides were provided by different localities, and these were supplemented by loans from the Southern Pacific Company and others, so that the total number available was about eleven hundred, and these eleven hundred covered every phase of California life, industry and scenery from the northern boundary to the Mexican line and from the mountains to the sea. These lectures were a striking and popular feature, and, added to California's other attractions, proved a valuable work.

RECEPTIONS.

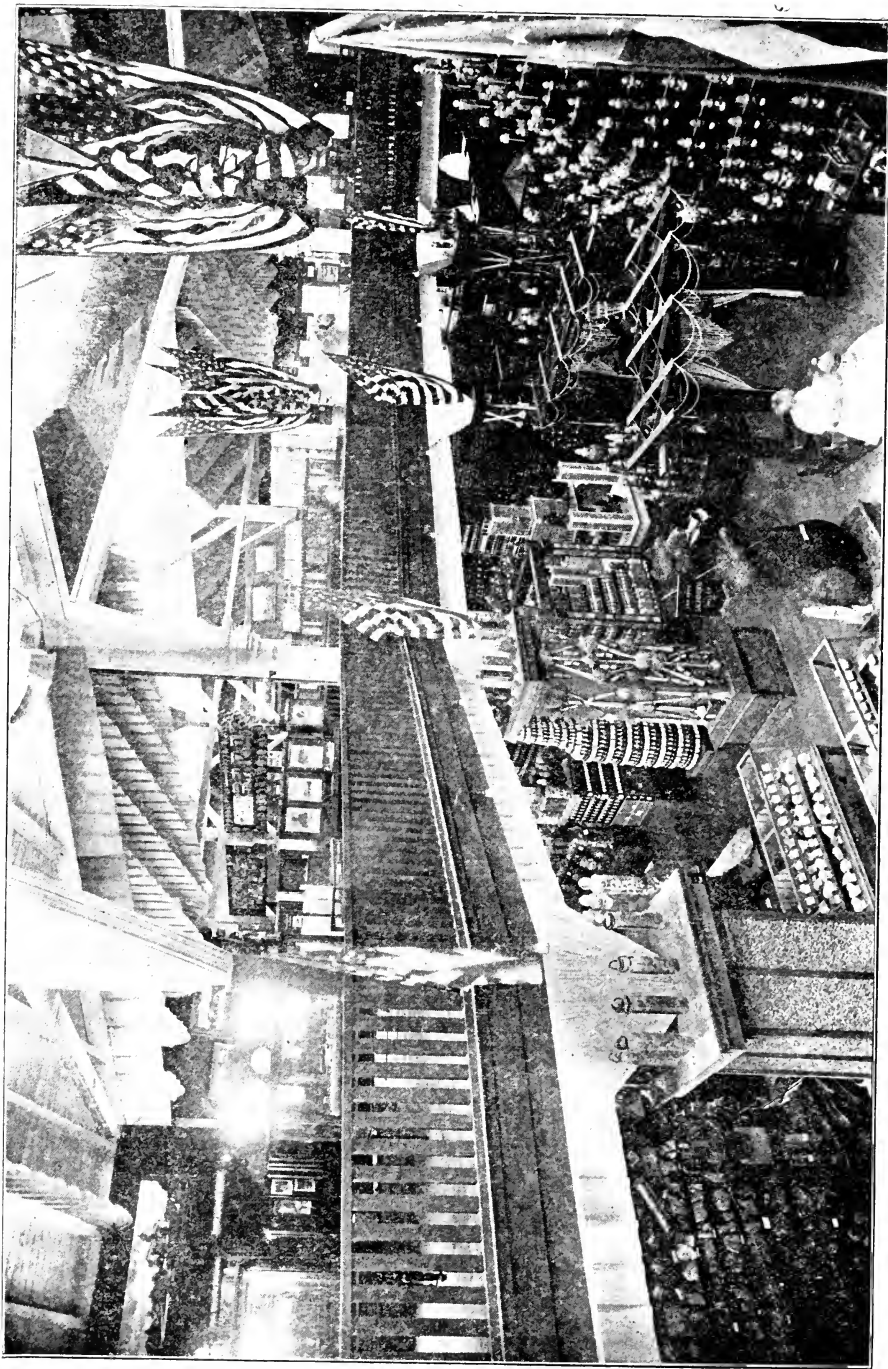
There was nearly always something doing at the California Building out of the ordinary. By special arrangements and courtesy of the officials, the Exposition band played for us more than for other States, and the numerous delegations and special parties arriving from California and their proper entertainment kept up a show of life and activity that characterized the California Building as the most popular and best attended building on the grounds.

There were twenty-two large and popular receptions given by the Californians during the four and a half months of the Exposition, at which the attendance varied from 1000 to 5000 people, excepting California Day, September 9th, when there were entertained at the California Building, as nearly as we can estimate, 30,000 people. Our receptions were conducted on lines peculiarly our own, were stripped of formalities so far as possible consistent with dignity, and as a rule proved to be popular, giving us prestige in this line and adding to our State reputation for generosity and whole-souled hospitality.

Of the lesser and purely informal receptions we kept no record.

COUNTY AND DISTRICT REPRESENTATION—PLANS OF INSTALLATION.

Independent of the material and attendants supplied by the State, certain counties and other geographical divisions of the State sent exhibit material and people specially to explain their interests. This material and these people found a place in the California Building. In the general plan of installation it was arranged that the products from the main geographical subdivisions of the State should be as far as practicable together. To illustrate, the main central pyramid of processed fruits and vegetables was six sided. On one side the material was supplied entirely by the State at large. The other sides contained material respectively from the Sacramento Valley, the



A General View from the Gallery

Bay counties, Southern California, Coast counties and the San Joaquin Valley. At right angle from the side of the pyramid that contained the processed fruit and vegetables of any one subdivision of the State were installed the other main products from that same subdivision. Thus, without marring the harmony of the general installation, each of the main subdivisions of the State had a department, an arrangement which helped the visitor in his inspection and study of the exhibit and greatly facilitated the work of the different county or district representatives. Besides it pleased the California visitor, for as a rule each one wanted to see the things from his or her part of the State, and was glad to be able to do this without traveling all over the building. The local representatives worked naturally in the section that contained the products from their respective localities. Among the subdivisions and counties that sent representatives to Portland specially delegated to exploit the interests of their several localities were the Sacramento Valley, Sacramento County, Alameda County, Contra Costa County, Fresno County, Santa Cruz County, Santa Barbara County, Ventura County, Los Angeles County, San Bernardino County, Riverside County and San Diego County. For a short time Glenn, Yolo and San Joaquin Counties also had representatives.

In addition to these the American Steel and Wire Company, which had a small but very attractive exhibit in the California Building, maintained a man there to look after it, as also did the Pacific Portland Cement Company, which reproduced the Vernal Falls in cement and had water running over them during the hours the building was open. The Petaluma Incubator Company had an attendant with its exhibit most of the time, as did Mills College, and for a short time the Throop Institute and the Wagner Leather Company each maintained a representative at the Fair. These, with the force of State employees, constituted a strong California guard.

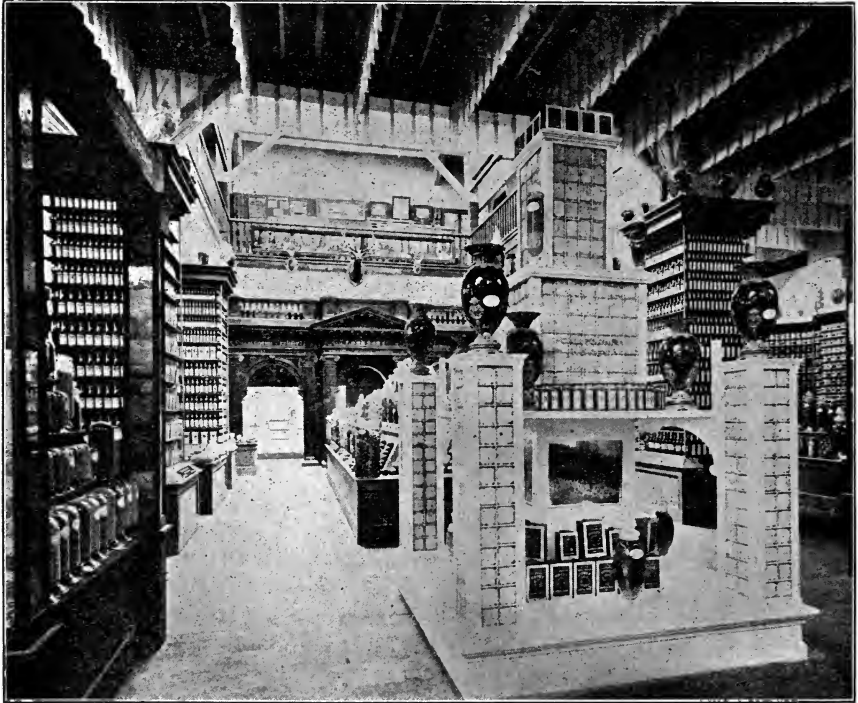
STATE EMPLOYEES.

It may be stated in this connection that the principal employees of the State were selected not only because of their ability or adaptability for the particular work each was expected to perform, but with a view to locality, so that each important section of the State should be represented. This arrangement, besides being fair, tended greatly to increase their efficiency.

OTHER EXHIBITS FROM CALIFORNIA.

The State of California secured a block of space in the north end of the main Agricultural Building, as an overflow for the accommodation of such

enterprising Californians as desired to make separate and distinct exhibits of their own individual products. Those who occupied this space were the California State Board of Trade, the California Fruit Canners' Association, the Ehmann Olive Company, Bishop & Co., the Santa Clara Prune Growers, Elwood Cooper and H. P. D. Kingsbury. These each had separate attendants, and were counted with the force at the California Building as belonging to the Californian Exposition Colony. That this colony was numerous must be apparent, and it is a pleasure for us to testify that it was strong. Your Deputies directed the general plan of action, and it is with more than



Honey, Forestry and Other Features

pleasure we can now say that the best of harmony prevailed throughout the entire season; no knocking of one another, or of localities was indulged in; none stepped to the right or left to do that which might have reflected on the whole; all worked (and they did work) on lines so broad as to command the admiration of all, and the feeling to help California as a whole, or to help one another where opportunity offered, was apparent always, thus insuring the best of feeling one towards the other, and the best possible work for California.

In the matter of literature we were well supplied. Besides revising and publishing a new edition of the State book, which was originally gotten up for St. Louis, we purchased 5000 copies of the splendid annual report of the California State Board of Trade. These comprehensive publications were handed out with discrimination to those who expressed an interest in California generally and desired information on the whole State. In addition to these, the different counties and subdivisions of California sent up liberal quantities of acceptable literature, so that from our literary booth, which was admirably located for the accommodation of visitors, constructed from rare California woods, and arranged with every convenience for the purpose intended, we were able to meet the heavy demand throughout the entire season and supply printed information on all lines of inquiry. Altogether we gave away during the four and a half months of the Fair something over ten tons of printed matter relating to California, or some section or some industry thereof. We found the people of our neighboring States, Oregon, Washington, Nevada, Utah and Idaho, almost as eager to obtain literature on California, as were the people from the Eastern or Middle West States.

THE STOCK DEPARTMENT.

In the stock shows that were held during the term of the Exposition under the direction of the Exposition authorities, California was fairly well represented. Believing in the importance of encouraging this line of industry, as well as others, the Commissioners saw fit to hold out some extra inducements to the California breeders. With this idea in mind we offered a suitably engraved silver cup for the best exhibit of horses by a California breeder, and a similar cup for the best exhibit of poultry by a California breeder. These awards were further stimulated by the donation of a splendid silver cup by Shreve & Co., of San Francisco, to be given to the California breeder making the best show of horses at the Portland Exposition.

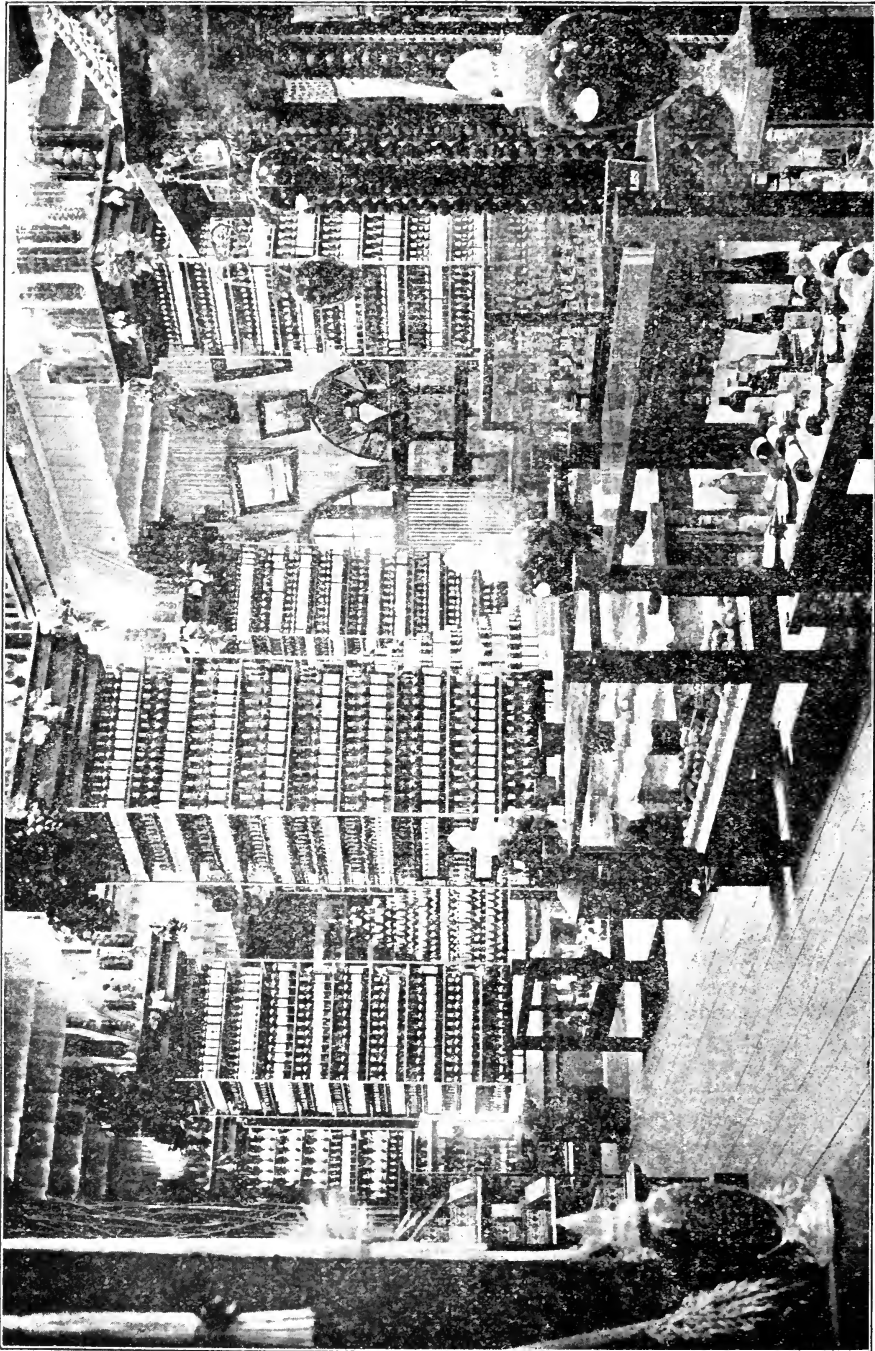
After carefully examining the different displays made by California exhibitors ourselves, and having them passed on by competent men in the respective departments, and taking in consideration the awards won at Portland independent of the cups offered by the Commission and by Shreve & Co., these mementoes or tokens were awarded as follows:

Shreve Cup to Clyde Chipman of Wilmington, for the best general exhibit of horses.

The Commissioners' Cup to George Becker of Los Angeles for his sweep-stake stallion.

The Commissioners' Cup for poultry to Lindgren Bros., Kingsburg, Fresno County, for the best general display of poultry.

These parties have made acknowledgment of the receipt of the respective cups and expressed gratitude for the same and appreciation of the motive that prompted us to offer them.



General View of Wine Exhibit

THE ATTENDANCE.

In point of attendance the Exposition was more of a success than had been anticipated. The St. Louis Exposition had intensified the desire among Eastern people to see the West. The Portland Fair following so soon after was the suggestion, the low rates the opportunity, and the people came in large numbers. Added to these the attendance from neighboring Western States was very liberal, swelling the aggregate to proportions that happily surprised the average exhibitor and made the Exposition a success. California's participation was a success from every standpoint. Her building was the largest of State buildings, her exhibit was the most extensive and attractive of any collective State display, and the attendance from this State was admittedly larger in proportion to distance than from any State in the Union. At the Information Booth, in the California Building, all Californians were requested to register and all who registered were given a California badge. These badges were so much in evidence on the grounds from day to day as to impress the visitors with the liberality of California's attendance and to awaken the enthusiasm of the management and of Oregonians generally for the good will manifested by our people in so generously patronizing their fair. Altogether the attendance from California, as shown by the register, was, in round numbers, about 37,000, or an average of nearly 300 a day for each day the fair was open.

HELP TO CALIFORNIA.

It was noticeable that nearly all the Eastern visitors who had not arrived there by way of California were easily induced to return by way of this State. Hotel managers at all the centers of population in the State, so far as we can learn, agree that the Eastern patronage coming in by way of Portland during the exposition added materially to their business and insured for them a good summer's trade. If we received no other benefits, the extra tourist travel alone and the money necessarily left in its wake would more than compensate for every dollar expended by the State at Portland. But this, we think, is only the beginning of the benefit that California will realize from the Portland Exposition. In its broadest sense, as a Western enterprise, it held the attention of the world for at least the time being and caused people to take up the consideration of this portion of the United States, who otherwise might have lived their allotted time without seriously thinking of us. It brought collectively and therefore forcibly to the attention of home-seekers and investors the great variety of resources and wonderful possibilities of this partially developed region of America. Reasoning, therefore, from

the results of other similar enterprises, it is bound to awaken new interest and arouse new people to the opportunity this region offers, and result in a stimulus of immigration and consequent new enterprises throughout all this Western country. In any such results that may come to the West, California will reap its full share. If we had made a poorer exhibit this might not have been the case. But having made an exhibit that fully maintained our prestige as the State of the greatest variety of the best products, and which showed the superiority of our climatic conditions over all other portions of America, we can rest assured that those who attended the exposition and who



General View from West Entrance

will convey their impressions to thousands of others, will not fail to concede to us, judged from the showing made, the title of "Queen of all the West;" and those visitors, as well as those they talk to, when the time comes for them to cast their lot and fortunes in the West, will not be disposed to settle until they have at least investigated the State that made the first and best and biggest showing at Portland. We repeat, therefore, that in the very nature of events this Western fair must awaken new interest in the West, and assuming confidently that it does, California, by liberal participation, has put herself in a position to reap a large share of the benefits.

But there is another consideration. We impressed Oregon and Wash-

ington and other neighboring States that we were there primarily as a Western State to help a Western enterprise, to contribute our share in showing to the world what the West could do when it tried and what it had to show when its products were collected for inspection; and secondly, we were there for any commercial benefit that might come to us without detracting in any way from what legitimately was theirs. This spirit in time dominated the representatives from other States, it permeated the visitors, and if no other result was apparent the better feeling, the better understanding and the greater unity of purpose among these Western States that has grown out of the Portland Exposition is worth a great deal. Even the Governors of Oregon and Washington, who, in all their early banquet and special day speeches invariably used the term "The Great Northwest," became impressed with the narrowness of this expression before the fair was half over and adopted the broader and more becoming term, "The Wonderful West." Increased trade invariably follows a better understanding and a more friendly feeling, and that the Portland fair was followed at once by an enlargement of the trade between California and our northern neighbors is evidenced from a Tacoma dispatch, which appeared early in December in one of San Francisco's daily papers, from which we quote as follows:

"Tacoma, Dec. 9th.—Business between San Francisco and Tacoma has grown to such proportions that the San Francisco shed on the water-front has become inadequate for the freight, and more space will be added. When the improvements are made the quarters for California freight will practically be doubled. The south end of the ocean warehouse has been used as San Francisco shed space. Milling was stored in the north end, which is known as the bonded warehouse. After the Northern Pacific built the new warehouse at the head of the bay, most all the milling was housed in it. The former bonded warehouse will now be used for housing San Francisco cargo."

Still further we may say under this head that reports to us since the fair closed indicate that travel this way from the North and Northwest continues very large, showing that the interest awakened throughout that region in California by the Portland work is already manifesting itself in the greater number of people from there who are coming this way to investigate the opportunities offered by this State, or to at least spend the winter in our more genial clime. If we did no more than to get our northern neighbors in the habit of coming here to spend their winters, as the people in Northern Europe go to the Mediterranean to spend theirs, this alone would pay California for its outlay. We did not forget your admonition that "California wants results." When our premium list is reviewed and the points considered which are here enumerated, we believe you will admit that results from the Portland work are in evidence, and likely to increase as the years pass.



Main Center Piece Processed Fruits

AWARDS.

We can point to the list of premiums won by this State as conclusive evidence of the excellence of our exhibit and the superior character of our products. In proportion to the number of entries, we not only beat all other States in the number of high awards, but we beat all past records made by

California, and this in face of the fact that the juries, as a rule, set a high standard and were very critical in their examinations. One-third is considered a very high percentage of gold medals, yet at Portland, out of a total of 518 awards made to this State, not counting the premiums of live stock, 267, or more than half, were gold, 140 silver, 87 bronze and only 24 honorable mentions. It will be noticed from the detailed list of the awards, which follows in this report, that they are well distributed throughout the different sections of California and among the different interests—nearly every important locality and every leading industry shares in the honors—which shows how thoroughly the exhibits were representative of all the State and all its interests. There were no grand prizes at Portland, and yet in several instances the jurors found exhibits from California so much better than they had fixed as a standard for a gold medal that they felt it their duty to make some special recommendation in the premises. This was done in the case of California's exhibit as a whole, in the case of our mining exhibit as a whole, in the case of the exhibit made by the California State Board of Trade, in the case of the combined exhibit of the Lick and Wilmerding schools, and in the case of Repsold's Medicinal Tokay wine. In each instance, the recommendation was that the superior jury award to these several exhibits some special diploma of honor.

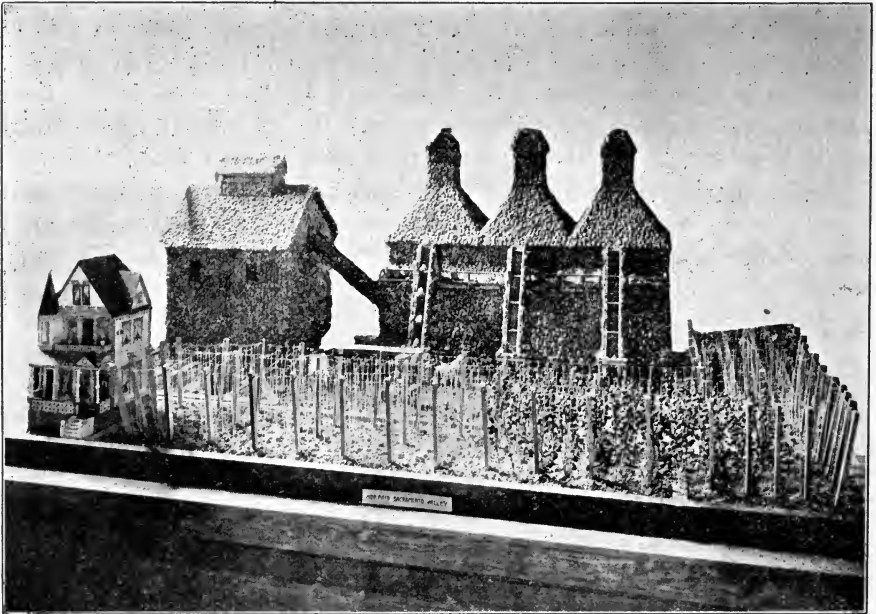
SALVAGE.

At the close of the fair, we took time to pack the goods carefully that were to be returned and to label them properly, in order to facilitate their distribution in California. In the meantime, we sold some of the edible goods and some we turned over to local representatives of the owners. All the money received therefor has been handed to the parties who furnished the articles and receipts received for the same. The furniture, fixtures and other material that belonged to the State, and which it was advisable to sell, was disposed of to the best advantage possible considering the great quantity of this class of goods that was being offered for sale at the same time. From this source we realized the total sum of \$7,178.54. From rent of a soft drink and souvenir stand, \$175.00, interest \$790.93, and from sale of building the net sum of \$450. These make an aggregate of \$8,594.47, which came into our hands over and above the State appropriation. These items appear more in detail in our financial report, which appears hereafter, and which shows the disposition of all the moneys received from all sources.

MATERIAL ON HAND.

It was not deemed advisable to hastily dispose of such permanent exhibit material as came to the State as a heritage from the St. Louis and Portland

fairs. This consists of about 1000 glass jars at present filled with nuts, seeds, cereals, soils and fruits, and other desirable show products; of a fine forestry collection, of a fine collection of California minerals, and a collection of large photographs, framed and unframed, representing different industrial and scenic views of California. A more detailed list of these articles will appear hereafter. This material has been stored in Sutter's Fort, Sacramento City, where it is available by the State for future exposition purposes. In the meantime, we have the promise of the Sutter's Fort trustees that they will put most of it on display for the benefit of visitors to the fort as soon as means are available for the purpose. Intrinsically, this material



Model Hop Farm

may not be worth a great deal of money, but its studied collection from the four quarters of the State, including the price of the glass, picture frames, cabinets, etc., cost about \$10,000, and for exhibition purposes it is worth to the State fully that much. We ask you to note the fact that in turning this material over as an asset we are setting a precedent, since so far as we can learn no exhibit material has heretofore been left to the State as a result of any previous exposition experience.

ACKNOWLEDGEMENTS.

We are under so many obligations that it would be tedious to enumerate

them. The officials of the exposition, from President Goode down to the lowest subordinate, showed us every courtesy and manifested a studied desire to do all they could to facilitate our work. There were cases of difference, as there always are in such relations, but California's requests were always given serious and courteous consideration, and invariably granted where they did not conflict with the rules of the exposition or the rights of others. There were fewer restrictions placed upon us at Portland than at any exposition we have ever attended.

The Southern Pacific Company, which had the only direct railroad line



Massive Ores, Mining Exhibit

to Portland, gave us liberal rates on our freights, carried our people at a reduced fare and co-operated with us otherwise by the loan of slides, pictures and some valuable exhibition material.

To the Golden Gate Park officials, and also to the officials of the Stockton State Hospital, we are under obligations for liberal contributions of ornamental plants and shrubs for the decoration of the California building and grounds. Mr. R. M. Teague of San Dimas and the Fancher Creek Nursery of Fresno, also contributed generously of their choicest stock for the same purpose, for which we owe them a debt of gratitude.

To the counties and other subdivisions of the State that through organized effort and at their own expense collected valuable exhibition material, prepared descriptive literature and sent representatives to Portland, thereby strengthening the exhibit and adding to the force of California workers, we are under great obligations. To their efforts and to the efficiency of the people they sent much of California's success at the Portland Exposition is due, and we want them to feel and know that their efforts and co-operation are fully appreciated.

To producers, manufacturers and packers, and to lumbermen and miners, who generously responded to our call for samples of their wares, we owe a debt which we tried to pay in part by caring for their goods as they would have cared for them, and by studying their interests in the matter of awards as carefully as they could have done had they been there.

In this connection, we desire to express our obligations to the Niles Pease Furniture Company for the generous loan of the finest art mission furniture for our reception room; to Byron Mauzy of San Francisco for the loan of two beautiful California-made pianos for the use of our guests, and to the Eilers Piano Company of Portland for the free use of a pianola for our lecture room and a high-class piano for the use of the ladies attached to the building.

To every person or firm, who, in any way, by word or act, contributed to our efforts for the maintenance of California's prestige at Portland, we improve this opportunity to express our thanks.

CONCLUSION.

In conclusion, it may be confidently stated that California's participation at the Portland exposition was a success from every point of view, and knowing our trust was conscientiously performed and that our best efforts were exerted in the interest of the State we served, we trust the people of California who generously advanced the money for the work will be satisfied with the showing made, and reap lasting benefits as the result of their enterprise and liberality. In this connection, we want to thank you sincerely for the confidence reposed in us, for your kindly co-operation and advice, and particularly for the generous rein given to us in carrying out a work for which you, in the eyes of the law, were primarily responsible. Our studied efforts were continually directed in trying to get the greatest results at the least cost, and while congratulating ourselves on having plenty of money to proudly maintain the prestige of our great State, we never lost sight of the fact that it was the people's money, and consequently we consented to the expenditure of a dollar only where our judgment dictated a dollar's worth or more of benefit would accrue to California; neither did we lose

sight of the high and impartial standard which has been your guide in the handling of public affairs, nor did we forget your desire expressed to us in writing at the inception of our work, "that the State's money shall in this, as in every other case, be expended with even more care than you would exercise in the management of your own affairs." If, therefore, a dollar is left to be returned to the treasury, it is because the expenditure of that dollar was not necessary for the full and creditable completion of the Portland work.

J. A. Filcher,
Frank Wiggins,
Deputy Commissioners.

Financial Report.

Sacramento, Cal., December 5, 1906.

California Lewis & Clark Exposition Commission, Sacramento, Cal.:

Gentlemen: Pursuant to request, I examined the books and accounts of your Commission, showing in detail the disbursement of the \$90,000 appropriation by the State of California for the Portland Exposition. I find same correct, entries properly made, and a voucher on file supporting each payment.

A Trial Balance of your books, hereto annexed, and marked Exhibit "A," shows in general the disbursements, etc.

Respectfully submitted.

S. W. MOLKENBUHR.

EXHIBIT "A."

TRIAL BALANCE, DECEMBER 5, 1906.

Office supplies	\$ 557.55	
Postage	413.86	
Telephone and telegraph	319.56	
Drayage	1,701.40	
Printing	2,459.05	
Express and freight	3,710.70	
Building Maintenance	2,598.07	
Furniture and fixture	2,407.82	
Miscellaneous (includes insurance, advertising, etc.)	2,412.03	
State of California		\$90,000.00
J. A. Filcher, salary	3,375.00	
J. A. Filcher, expense	915.02	
Frank Wiggins, salary	3,000.00	
Frank Wiggins, expense	1,200.67	
G. A. Dennison, salary	2,900.00	
G. A. Dennison, expense	720.56	
Employees' salary	16,383.78	
Employees' expense	1,115.45	
Rent	1,059.00	
Exhibit material	5,155.91	
Installation	4,939.15	
California building	37,404.75	
Salvage		7,803.54
Interest		790.93
International Banking Co., cash on deposit.....	27.71	
Los Angeles Trust Company, cash on deposit.....	3,817.43	
	<u>\$98,594.47</u>	<u>\$98,594.47</u>

NOTE.—The amount of the aforementioned deposits, viz., \$3,845.14, has been returned to the State Treasury, and the Commission have the State Controller's receipt for the same.

CATALOGUE OF EXHIBITS

IN THE CALIFORNIA BUILDING, LEWIS AND CLARK EXPOSITION

State of California—General collection of fish and game; general collection of olive oil; general collection of dried fruit; general collection of canned fruit; general collection of honey; general collection of processed fruit; general collection of processed vegetables; general collection of cereals; general collection of soils; general collection of nuts, showing ninety varieties; general collection of forestry (including samples of commercial woods, cabinet woods, doors, shingles, rustic, mouldings, ornamental burls), incidental features showing durability of redwood and its different commercial uses; general collection of beans, showing varieties; general collection of wines and brandies; general collection of beet sugar products; general collection of minerals and metals; model irrigation scene; general collection of oil paintings illustrating the art life and development of California; general collection of photographs of farm and industrial and scenic views; general collective educational exhibit; general collective fresh fruit maintained throughout the exhibition; general collection of palms, shrubs and semi-tropical plants; general collection of mineral oils; collection of grain in sheaf; general collection of mineral waters.

Alden Anderson, Suisun—Almonds.

Davisville Almond Growers' Association, Davisville—Almonds.

Southern California Walnut Growers' Association, Los Angeles—Decorative display of walnuts; walnut elephant.

Sacramento County—Processed fruits in glass; processed vegetables in glass; almonds; peanuts; grain in seed and in straw; brooms and broom corn; general collection of wild game; great seal of the State of California made of beans in their variety; processed flowers in glass jars; model of grizzly bear made of prunes; model of State Capitol made of nuts; walnuts; photographs of county views; chrome ore; building stones; woods; fresh fruits; bottled beer; dried fruits; raisins; olives, oil, etc.

Contra Costa County—Almonds in variety; walnuts in variety; fruit in pro-

- cess; vegetables in process; dried fruits; olive oil; wines; Alhambra mineral water and ginger ale; obelisk of grain; collection of wild game and fish; fifty-seven photographs of county scenes.
- Santa Cruz County**—Collection of salt water fish; processed fruit in glass; art picture showing entrance to San Francisco harbor, worked in native woods.
- Orange County**—Chestnuts; peanuts; walnuts; fruit in process; vegetables in process.
- Sutter County**—Vegetables in process; peanuts; fruit in process; seedless grapes, etc.
- Yolo County**—Vegetables in process; almonds in variety; fruit in process.
- Placer County**—Fruits in process; vegetables in process; clays, terra cotta; building stone; fresh fruits; olives, oils, etc.
- Glenn County**—Vegetables in process; almonds in variety; fruit in process.
- Butte County**—Vegetables in process; almonds in variety; walnuts in variety; fruit in process; dredging gold and platinum; photographs of dredging near Oroville; oils and olives.
- Santa Barbara County**—Walnuts; collective exhibit of mustard seed; tile from old Santa Barbara Mission; processed fruits; beets and beet sugar; collection of grains.
- Los Angeles County**—Walnuts; almonds (Antelope Valley); grain in sheaf; fruit in process; vegetables in process; extracted honey; game ducks; citrus and deciduous fruits; fresh vegetables; mounted fish; photographs.
- Ventura County**—Walnuts; elk made of beans; processed fruits; beans in variety.
- Riverside County**—Almonds; fruit in process; vegetables in process; citrus fruits.
- Alameda County**—Vegetables in process; fruit in process; hay; cherry tree stump; forty-five photographs of county scenes; fresh fruits; canned goods.
- San Bernardino County**—Fruit in process; vegetables in process; citrus fruits.
- Fresno County**—Collection of cluster raisins; seeded raisins; loose muscatels; seedless sultana and Thompson seedless; dried fruits, etc.
- Tulare County**—Fruits in process; oranges, lemons, etc.
- California Nursery Company, Niles, Alameda County**—Nuts in variety.
- Southern California**—Kiosk of nuts, honey, fruits and oranges.
- E. W. Martin, Little Rock**—Almonds.
- Los Angeles Chamber of Commerce**—Display of nuts.
- Los Nietos & Ranchito Walnut Growers' Association, Rivera**—Soft shell walnuts.
- The J. H. Flickinger Co., San Jose**—Assorted canned fruits; fruits in glass.
- California Fruit Cannery Association, San Francisco**—Canned fruits; canned asparagus, peas and other vegetables; preserved fruits and marmalades; fruit jams and jellies.
- Code-Portwood Canning Co., San Francisco**—Assorted canned fruits; canned tomatoes.
- Hunt Brothers, Haywards**—Canned fruits.
- Oakland Preserving Co., Oakland**—Canned fruits.
- San Leandro Packing Co., San Leandro**—Canned tomatoes.
- D. Van Lennep, Auburn**—Fig preserves and compote.
- P. H. D. Kingsbury, Redlands**—Orange marmalade; lemon juice; fig jam.
- Bishop & Co., Los Angeles**—Preserved fruits; marmalades; canned soup, vegetables, etc.

- Mrs. Stevens and Miss Ogilvy, Santa Barbara—Home-made pomelo marmalade.
- Dr. Alexandrian Co., Riverside—Narshak (young oranges pickled).
- Pacific Coast Syrup Co., San Francisco—Preserved fruits; syrups, jams, honey, etc.
- Griffin & Skelley Co., San Francisco—Canned fruits; seeded raisins; assorted dried fruits.
- Castle Brothers, San Francisco—Assorted dried fruits; raisins.
- Sanitary Dried Fruit Co., Red Bluff—Assorted dried fruits.
- North Ontario Packing Co., North Ontario—Assorted dried fruits.
- Souther & Crosby, San Diego—Cluster raisins.
- Santa Clara County Fruit Exchange, San Jose—Assorted dried fruits.
- Clarchen Packing Company, Los Gatos, Santa Clara County—Special pack of prunes in five-pound cartons.
- Roeding Fig Packing Company, Fresno—Fancy Calimyrna figs in cartons.
- John Haenny, Lincoln, Placer County—Zante currants.
- R. B. Blowers, Woodland—Seedless raisins in fancy frames; dried pears.
- Pacific Creamery Company, Los Angeles—Condensed cream (Lily brand).
- Alpine Evaporated Cream Co., Hollister—Evaporated cream in tins.
- Monterey Packing Company, Monterey (F. E. Booth, Agent, San Francisco)—Canned broiled mackerel (Crescent brand).
- Abalone Packing Company, Cayucos, San Luis Obispo County—Gayetty's abalone food.
- California Fish Company—Sardines; broiled mackerel, etc.
- Union Fish Company, San Francisco—Cured fish; Dr. Fisherman's Carbolized Lotion.
- San Pedro Packing Company, Terminal, Los Angeles County—Concentrated clam juice; abalone in tins.
- The Rosenblatt Company, San Francisco—Wines and brandies; Irving's apricot brandy.
- Edward Germain Wine Co., Los Angeles—Sweet wines, port, sherry, angelica, etc.
- Sierra Madre Vintage Co., Lamanda—Old port, sherry and brandy.
- Napa and Sonoma Wine Co., Sonoma and San Francisco—Table wines.
- Gundlach-Bundschu Wine Co., San Francisco—Table wines, assorted.
- Repsold Select Vintages, San Francisco—Table wines; cognac; medicinal Tokay wine.
- La Questa Wines, San Francisco—Table claret.
- Theodore Gier, Oakland and San Francisco—Table wines; brandy.
- Dresel & Co., Sonoma—Table wines.
- Italian-Swiss Colony, San Francisco—Table wines and brandies; red and white Tipo Chianti.
- Wetmore-Bowen Company, San Francisco and Livermore—Cresta Blanca table wines.
- Vina Vineyard, Vina, Tehama County—Sweet wines, port, sherry, etc.
- J. H. Hayden, Sacramento—Strawberry wine.
- Buffalo Brewing Company, Sacramento—Pyramid of bottled beer.
- H. Jevne, Los Angeles—Sweet wines.
- California Winery, Sacramento—Table wines; sweet wines.
- Southern California Wine Co., Los Angeles—Table wines; sweet wines; Good Samaritan brandy.

- T. Vache & Co., Los Angeles**—Table wines; sweet wines.
- Paul Masson Champagne Co., San Jose**—Champagne; sparkling burgundy.
- A. P. Hotaling & Co., San Francisco**—O. K. Whisky (Old Kirk).
- Leo Metzger & Co., San Francisco**—Table wines.
- Los Angeles Brewing Co., Los Angeles**—Lager beer; Mission Malt Tonic.
- John Swett & Son, Martinez**—Grape juice.
- El Verde Grape Juice, Pomona (Louise Cary Smith)**—Red and white grape juice.
- Rincon Heights Olive Co., Santa Rosa**—Olive oil.
- Ehmann Olive Company, Oroville**—California ripe pickled olives; olive oil
- Ekman-Stow Company, Oroville**—Olive oil.
- F. Birdsall, Auburn**—Olive oil.
- Fair Oaks Fruit Company, Fair Oaks, Sacramento County**—Olive oil.
- Fred H. Busby, Concord, Contra Costa County**—Olive oil.
- Los Angeles Olive Growers' Association, Los Angeles**—Olive oil.
- J. A. Kleiser, Cloverdale, Sonoma County**—Olive oil.
- J. M. Doty, Livermore, Alameda County**—Olive oil.
- F. J. Lea & Company, Oakland**—Olive oil; candy.
- American Olive Company, Los Angeles**—Olive oil; ripe olives in tins.
- Roeding Olive Company, Fresno**—Olive oil.
- C. M. Gifford, San Diego**—California pickled olives; Gifford's best ripe olives, olive oil.
- Dr. A. M. Cooms, Cloverdale, Sonoma County**—California pickled olives; California ripe pickled olives.
- Akerman & Tuffley, North San Diego**—Olive oil; ripe pickled olives (Old Mission brand).
- George C. Roeding, Fresno**—Ripe pickled olives; pickled Calimyrna figs.
- F. W. Braun & Company, Los Angeles**—Olive oil.
- A. M. McNally, La Mirada, Los Angeles County**—Olive oil.
- Spencer Carey, Auburn**—Olive oil.
- California Packing Co., San Francisco**—Olive oil; Home Brand California Relishes.
- Mrs. S. S. Cutler, San Jose**—Olive oil.
- J. C. Kubias, Redlands**—Ripe Ascolano olives.
- J. G. Curtis, Pentz, Butte County**—Olive oil.
- R. B. Blowers, Woodland**—Olive oil.
- James Hill & Sons Company, Los Angeles**—Olive oil.
- H. Jevne, Los Angeles**—Olive oil.
- Ojai Olive Company, Nordhoff**—Pure olive oil.
- A. V. Stuart, San Jose**—Pure olive oil.
- Western Sugar Refining Co., San Francisco**—Exhibit of twelve grades of beet sugar (forty-eight jars).
- Alameda Sugar Company, Alvarado and San Francisco**—Beet sugar; beet sugar alcohol.
- Los Alamitos Sugar Co., Los Alamitos**—Beet sugar.
- American Beet Sugar Company, Oxnard**—Beet sugar.
- Union Sugar Company, Betteravia**—Beet sugar.
- Emerson Brothers, Los Angeles**—Strained honey in jars and bottles.
- Gordon Syrup Company, Oakland**—Syrup.
- C. R. Splivalo & Co., San Francisco**—Paste products; macaroni, vermicelli, etc.

- Capitol Paste Company, Sacramento**—Paste products; macaroni, vermicelli, etc.
- California Packing Company, Haywards**—Pickles and condiments; pure olive oil.
- Pioneer Pickle Works, Sacramento**—Assorted pickles and relishes.
- W. J. McClendon, Healdsburg, Sonoma County**—Cross cotswold and merino wool.
- C. P. Bailey & Sons Co., San Jose**—Angora rugs and Mohair.
- Thomas Denigan Son & Co., San Francisco**—General display of wool, showing fleece samples of different clips and variety, from different parts of the State.
- G. W. Cox, Preston, Sonoma County**—Seventy pounds Merino fleece.
- J. M. Howell, Henleyville, Tehama County**—Two fleeces Merino wool showing one year's growth.
- Conklin Brothers, Orland, Glenn County**—Angora rug and fleece.
- Southern Pacific Company, San Francisco**—Collection of photographs showing views along its railroad lines; facade, showing different expressions of redwood for cabinet purposes.
- Sunset Photo and Engraving Company, San Francisco**—Collection of forest photographs.
- Excelsior Woeden Pipe Company, San Francisco**—Redwood pipe for underground use.
- Sierra Lumber Company, Red Bluff**—Display of building material; sample of doors in miniature.
- Diamond Match Company, Sterling, Butte County**—Display of wood; sugar pine, oak and spruce.
- Redwood Manufacturers' Association, San Francisco**—Redwood planks, doors, mouldings, etc.
- Sugar and White Pine Agency, San Francisco**—Sugar and yellow pine planks; white pine stump, etc.
- Pacific Redwood Shingle Co., Eureka**—Shingles, all patterns.
- Humboldt Milling Company, Fortuna, Humboldt County**—Redwood mouldings; doors, etc.
- Mercer & Hodgson, Eureka**—Redwood mouldings, doors, etc.
- J. A. Cottrell, Eureka**—Redwood mouldings, doors, etc.
- Fresno Flume and Irrigation Co., Clovis, Fresno County**—Sugar pine plank.
- Hammond Lumber Company, Eureka**—Redwood doors.
- Dolge-Posey Company, Los Angeles**—Superior piano sounding boards, manufactured from California wood.
- J. C. Crisler, Palo Alto**—Handsome inlaid table.
- Allen's B. B. B. Flour Company, San Jose**—Boston Brown Bread Flour, in packages and ten-pound sacks.
- Luther Burbank, Santa Rosa**—Collection of photographs, showing new creations in horticulture and floriculture; Santa Rosa Plums.
- California Extract of Fig Company, San Francisco**—California Fig Bitters in bottles.
- California Citrus Products Company, National City, San Diego County**—General assortment of citrus products, including citric acid, oil of lemon and lemon extracts.
- C. C. Morse & Co., Santa Clara**—Collective exhibit of flower and garden seeds, in glass.

- Hanson Poland, Lompoc**—Collective exhibit of mustard seed.
- John Heany, Gridley, Butte County**—Hemp in the stalk.
- W. H. Murray, San Francisco**—Ramie and ramie fiber; rope, cloth, etc., made from ramie.
- Citrus Soap Company, San Diego**—Citrus washing powder, in packages.
- The Banning Company, Avalon, Santa Catalina**—Collection of salt water fish.
- The Cawston Ostrich Farm, South Pasadena**—Ostrich plumes, colored and uncolored; ostrich eggs; young ostrich stuffed; adult ostrich, stuffed.
- F. Lauderbach, Avalon, Santa Catalina**—Collection of marine paintings, fish, etc.
- J. S. Benn, San Francisco**—Collection of fish flies and hooks.
- Lovdal Brothers, Sacramento**—Model of hop farm; exhibit of commercial hops.
- Pleasanton Hop Company, Pleasanton**—Hops.
- C. H. Holzhauser, Etna Mills**—Hops.
- Pioneer Milling Company, Sacramento**—Assorted meals and milling stuff.
- Sacramento Manufacturing Company, Sacramento**—Bale of excelsior.
- Yolo County**—Special exhibit, showing farming scenes.
- August Hageman, Livermore**—Barley, improved variety.
- H. C. Compton, Chico**—Moravian barley.
- Ch. Thornberg, Santa Maria**—Barley.
- Corsica Citron Company, Los Angeles**—Prepared citron.
- Los Angeles Soap Company, Los Angeles**—Fancy toilet soap.
- Mrs. Carrie Williams, San Diego**—Silk cocoons; silk worms; silk.
- Miss Annie McNaughton, Pasadena**—Candied flowers.
- Miss Bessie Marsh, South Pasadena**—Candied flowers.
- Lemola Soap Company, Los Angeles**—Lemola Soap and Cream of lemon.
- Mrs. H. W. R. Strong, Whittier**—Pampas grass.
- Putnam & Valentine, Los Angeles**—Photographs.
- C. C. Pierce & Co., Los Angeles**—Photographs.
- C. J. Crandall, Pasadena**—Photographs.
- Sacramento Valley Development Association, Sacramento**—Display of photographs.
- Andrew P. Hill, San Jose**—Display of bromide enlargement photographs.
- Alfred Dolge Mfg. Co., Dolgeville**—Felt and felt shoes.
- Chamber of Commerce, Los Angeles**—Display of nuts; collection of photographs; palms; topographical relief map.
- Fancher Creek Nurseries, Fresno**—Tropical plants; fruit trees; palms; orange trees; olive trees.
- Stockton State Hospital, Stockton**—Large variety ornamental shrubs and plants.
- R. M. Teague, San Dimas**—Orange trees.
- Golden Gate Park, San Francisco**—Large variety ornamental shrubs and plants.
- Bachman & Brandt, Stockton**—Chicory in different stages of manufacture.
- N. J. Cooley, Bishop, Inyo County**—Mountain honey.
- G. B. Woodberry, West Glendale**—Honey.
- L. E. Mercer, Ventura**—Honey.
- M. H. Mendleson, Ventura**—Honey.
- J. F. McIntyre, Ventura**—Honey.

- Mrs. Mary E. Snyder, San Diego—Mounted sea mosses and marine algae scientifically classified.
- Etta Waring, Fallbrooke—Picture of Mission San Luis Rey artistically worked in moss.
- A. F. Weck, San Francisco—Artistic display of pressed California flowers; noted not only for the perfect manner of preservation and illustration; but particularly because it includes those varieties most noted for their medicinal properties.
- Miss Mary Montague, Colfax, Placer County—Pressed wild flowers.
- W. D. Nichols, Sacramento—Processed flowers.
- Mrs. A. Marshall, San Francisco—Ten paintings of California missions and a mission home.
- Wagner Leather Co., Stockton—General display of leather.
- Petaluma Incubator Co., Petaluma, Sonoma County—Incubators, brooders and photographs illustrating the poultry industry.
- H. Bohls & Co., San Francisco—Variety of manufactured tobacco, from imported and domestic product.
- Stockton Glass Works, Stockton—Samples of glass, the product of the factory.
- Byron Mauzy, San Francisco—Two art pianos.
- California Art Glass Works, San Francisco—Art glass window, representing a dragon.
- California State Horticultural Commission, Sacramento—Bug vs. Bug. A case showing the insects that prey on the fruit in California and their parasites, and a collection of reports from the California State Board of Horticulture, together with the bulletins from the same society.
- Frank De Vorney, San Francisco—Violins made in San Francisco, of California and Oregon woods.
- Los Angeles Art Leather Company, Los Angeles—Stamped and engraved leather work.
- Misses O'Hara & Livermore, San Francisco—Collection of carved leather.
- George C. Jensen, Eureka, Humboldt County—Collection of California Missions in pyrography.
- Carlson-Currier Company, San Francisco—Raw and manufactured silk; embroidered doilies and pictures.
- H. G. Adams, San Francisco—Silk embroidery table cover, from silk manufactured in California.
- David Hetzel, Guerneville, Sonoma County—Leaf and manufactured tobacco.
- G. W. Baltic, San Francisco—Cement art work.
- Mrs. J. H. Burden, Sacramento—Grandma's Spanish Pepper, a new condiment.
- E. A. Wright & Co., Oakland—Home-made preserves, jams and jellies.
- Arthur E. Power, Los Angeles—Furniture, frames and fixtures used in the equipment and furnishings of the California building, manufactured out of domestic woods and finished by a new and original process.

EXHIBITORS IN CALIFORNIA'S EDUCATIONAL DISPLAY.

City of Stockton—Work from elementary and secondary schools; six cabinets, bound work and wall display.

- City of Oakland**—Work from elementary and secondary schools; seven cabinets, bound work and wall display.
- City of Fresno**—Work from elementary and secondary schools; four cabinets, bound material and wall display.
- City of Los Angeles**—Work from elementary and secondary schools; seven cabinets, bound work and wall display.
- City of San Francisco**—Work from elementary and secondary schools; ten cabinets, bound work and wall display.
- City of Sacramento**—Work from elementary and secondary schools; four cabinets and bound work.
- City of Redlands**—(A) Lugonia school—Work from elementary school; three cabinets. (B) Kingsbury school—Work from elementary school; one cabinet, bound work and wall display.
- City of Pasadena**—Work from elementary and secondary schools; three cabinets and bound work.
- City of Berkeley**—Work from elementary and secondary schools; three cabinets and bound work.
- County of Alameda**—Work from elementary and secondary schools; three cabinets and bound work.
- County of Los Angeles**—Work from elementary and secondary schools; seven cabinets.
- County of Sonoma**—Work from elementary schools; three cabinets and bound work.
- County of Fresno**—Work from elementary and secondary schools; two cabinets and bound work.
- County of Kern**—Work from elementary schools; secondary schools; four cabinets and bound work.
- County of Marin**—Work from elementary schools; one cabinet and bound work.
- County of Santa Clara**—Work from elementary schools; two cabinets.
- County of Sacramento**—Work from elementary schools; one cabinet and bound work.
- County of Santa Cruz**—Work from elementary schools; one cabinet and bound work.
- County of San Diego**—Work from elementary schools; one cabinet.
- County of El Dorado**—A few loose folders and sheets of work.
- County of Placer**—Work of elementary schools; one cabinet and bound material.
- County of Monterey**—Work of elementary schools; one cabinet and bound materials.
- County of Ventura**—Three cabinets; elementary education.
- State of California**—Collective. (a) State Normal Schools—San Jose, Chico, Los Angeles and San Diego, one cabinet; three elementary; two secondary. (b) State of California Traveling Libraries; three cases of books. (c) State of California Institution for the Deaf Dumb and Blind—situated at Berkeley—one cabinet. (d) State of California School Administration, State text books. (e) State of California Reform School at Whittier, one cabinet. (f) State of California Polytechnic School at San Luis Obispo, one case and wall exhibit.
- University of California**—Transparencies, case of chemicals from College of Pharmacy and picture of Lick Observatory,

- Stanford University**—One picture.
Heald's Business College, San Francisco—One cabinet and bound material.
Mills College—One cabinet, bound material and wall display.
College of Notre Dame—One picture.
Santa Clara College, Santa Clara—One picture.
Occidental College, Los Angeles—One picture.
Girls' Collegiate School, Los Angeles—Three pictures.
The Harvard School—One picture.
California School of Mechanical Arts and Wilmerding School of Industrial Arts, San Francisco—Wall exhibit, case of domestic science department work, example of work from the forge and wood-working departments and bound material.
Throop Polytechnic Institute, Pasadena—Wall exhibit, case with contents of forging, sewing leather and wood-working; chairs, cabinets and iron gate.
Van der Naillen School—Two pictures of engineering classes.
Hitchcock's Military Academy, San Rafael—Mounted wall exhibit of Sloyd work.
Boys' and Girls' Aid Society of California, San Francisco—Mounted wall exhibit of Sloyd and album illustrating the work of the society.
Institution for Deaf, Dumb and Blind, Berkeley—Exhibit illustrating the methods of instruction and the results accomplished.
Whittier State School, Whittier—Photographs.
T. J. Kirk, Supt. Public Instruction, Sacramento—Exhibit of school Administration.
California Polytechnic School, San Luis Obispo—Exhibit illustrating course of study and work accomplished by first year students.
City of San Francisco—Globe illustrating commercial relation of San Francisco with the world; relief maps showing the bay counties of California.
County of Contra Costa—Relief map of the county.
County of Los Angeles—Relief map of Los Angeles.
The Whitaker & Ray Co.—Four cases of books.
Stone & Smith, School Architects—One model of Mission school building; one cabinet.
The Hicks-Judd Company, San Francisco—Display of printing and binding.

MINING EXHIBIT.

State of California—Large glass case containing gold quartz specimens, gold nuggets, noted for their exceptional richness and rarity. Cabinet containing massive gold ores. These ores, collected from all parts of the State where gold is produced, are characteristic of all the veins of all grades of richness. Gold gravel in jars from various ancient river channels of the State. Native platinum; gold concentrates in jars; gold sand from dredgers; two cases containing specimens of gold ore showing free gold, sulphides, galena and iron pyrites; massive specimens of copper ore, characteristic of the copper veins of California; large specimens of cinnabar ores showing character of cinnabar in different parts of the State; two cases containing rare

- specimens of cinnabar ores and native quicksilver; magnificent specimen of diatomaceous earth; magnificent specimen of orbicular diorite; massive specimens of iron ore; specimens of chrome ore; mineral oils, including crude and refined, from all the oil producing districts in California; liquid asphalt; gypsum; limestone; granite blocks from the different quarries in the State; asbestos; cements; clays in variety; kaolin; mineral paints; sand; limestone; sandstone, etc.; photographs and transparencies illustrating the mining industry of the State; case containing quartz crystals and miscellaneous minerals; carbonate of soda; sulphur; crude and refined iron ores.
- Maryland Mine, Grass Valley**—Large specimen of quartz impregnated with free gold and associate minerals.
- Nevada County**—Case specimen gold ores, showing free gold, gold sulphides, and iron pyrites.
- Empire Mine, Grass Valley**—Massive specimen of gold quartz, showing free gold sulphides, iron pyrites and galena; large bromide of the company's surface works.
- California Liquid Asphalt Co., Summerland**—Asphalt.
- Papoose Mining Co., Randsburg**—Calcium tungstate.
- North Bloomfield Mine, North Bloomfield**—Cemented gold gravel in jars.
- Iron Mountain Mine, Shasta County**—Massive specimens of copper ore.
- Copperopolis, Calaveras County**—Massive specimens of copper ore.
- Virginia Gold Hill Mine, Nevada County**—Massive specimens of copper ore.
- Mountain Copper Co., Shasta County**—Large copper ingot.
- Afterthought Mine, Shasta County**—Two large specimens copper sulphides.
- Mountain Copper Company, Shasta County**—Copper briquettes.
- Iron Mountain Mine, Shasta County**—Stalactite gosson.
- Western Mineral Co., Sunset, Kern County**—Sulphur and sulphur ores.
- Eureka Slate Company, El Dorado County**—Slate for roofing and other purposes.
- Pacific Art Tile Co., Tropico, Los Angeles County**—Display of decorative tiling.
- American Nitre Company, San Bernardino County**—Display of nitre in jars and in case.
- Western Salt Company, San Diego County**—Display of table salt in jars.
- Shasta Springs Company**—Display of mineral waters.
- Witter Springs Company**—Display of mineral waters.
- Bartlett Springs Company**—Display of mineral waters.
- Cooks Springs Company**—Display of mineral waters.
- Napa Soda Springs Company**—Display of mineral soda water.
- Santa Barbara Springs Company**—Display of mineral water.
- Alhambra Mineral Springs Company**—Display of mineral water, ginger ale, etc.
- Castle Rock Spring Co., San Francisco**—Mineral water.
- San Diego County**—One large cabinet of precious stones, noted for their brilliancy and hardness, and include the following varieties: Kunzite, tourmaline, topaz (many varieties), beryls (many varieties), hyacinth, opals, quartz, garnets, rubies, sapphires, moonstone, epidote, aximite, spodumene, pearl, vesuvianite, andalusite and actinolyte. San Diego is the only place in the world where kunzite is mined.

- San Diego County**—One case containing specimens of lepidolite and amblygonite, remarkable for the large percentage of lithium which they contain.
- Pacific Coast Borax Company**—Display of all grades of borax in jars; also model of twenty-mule team in borax.
- Los Angeles Pressed Brick Company**—Elaborate and artistic display of pressed brick.
- Carnegie Brick Company, Contra Costa County**—Display of fire and other brick.
- Gladding, McBean & Company, San Francisco**—Glazed brick and terra cotta.
- Pacific Portland Cement Company, San Francisco**—Artistic display of cement and the products from which it is made; showing photographs of the works and articles of utility made from the products, including a facsimile miniature of Vernal Falls, Yosemite Valley, in action, constructed of the cement of this company.
- California Salt Company, Alvarado**—Salt.
- American Magnesite Company, Alameda County**—Magnesite.
- Realty Syndicate Company, Oakland**—Copper ore.
- Colusa County**—Sandstone; assorted woods; pine, maganta, etc.
- Siskiyou County**—Natural building stone in shape of a cross; gold nuggets; gold ore and quartz.
- Solano County**—Slab of marble.
- Gladding, McBean & Co., Lincoln, Placer County**—Sample building material.
- L. P. Peterson, Sites, Colusa County**—Rock salt.
- P. C. Cohn, Folsom**—Gold quartz ore.
- American Magnesite Company, San Francisco**—Display of magnesite and artistic tiles.
- Western Carbonic Acid Gas Company, San Francisco**—Display of magnesite.
- Holland Sandstone Brick Company, Antioch**—Display of brick.
- California State Mining Bureau**—Large Cabinet containing fifty varieties of minerals all from deposits in California; mining literature.
- Henry Gervais, San Francisco**—Different samples of mosaic marble.
- F. W. Braun, Los Angeles**—Display of muffle furnaces, pulverizers, crushers, cupal machines, etc.
- American Steel and Wire Company, San Francisco**—Artistic display of wire fencing, wire rope, cable, etc.
- A. C. Rush, Los Angeles**—Different models of crude oil burners.
- G. W. Price Company, San Francisco**—Centrifugal pumps.
- Waltz Safe Company, San Francisco**—Large fire and burglar-proof safe.
- R. H. Herron & Co., San Francisco and Los Angeles**—Complete model of oil derrick and engine.
- Union Iron Works, San Francisco**—Model, showing war vessel, ocean liner and drydock constructed by said works; collection of photographs, illustrating their works, vessels and other articles built thereat.
- California Iron Works, Riverside**—Fruit brusher.
- Packing House Equipment Company, Upland**—Orange cleaner and weigher.
- E. P. Boden, Santa Clara**—Model of a tree and vine puller.
- Board of State Harbor Commissioners, San Francisco**—Model of pier built of improved patent piling, also large photograph showing wharf built after plan of model.

EXHIBITORS IN FRESH FRUIT DEPARTMENT.

- Pajaro Valley Board of Trade, Watsonville—Collective exhibit of apples and strawberries.
- Sacramento Valley Development Association, Sacramento—Collective exhibit of fresh fruits and vegetables.
- Los Angeles Chamber of Commerce, Los Angeles—Collective exhibit of fresh fruits and vegetables.
- Sonoma Board of Trade, Sonoma—Valencia late oranges.
- Southern California Fruit Exchange, Los Angeles—Citrus fruits.
- Whittier Fruit Exchange, Whittier—Lemons.
- Azusa Foothill Citrus Association, Azusa—Oranges and lemons.
- Captain Hutchison, Lindsay—Oranges.
- C. W. Leffingwell, Whittier—Lemons.
- Redlands Fruit Association, Redlands—Oranges.
- Santiago Orange Growers' Association, Orange—Oranges.
- Arlington Heights Fruit Co., Riverside—Oranges.
- J. H. F. Jerchow, San Gabriel—Oranges.
- W. S. Andrews, Sierra Madre—Lemons and oranges.
- Whittier Citrus Association, Whittier—Lemons.
- D. Felthensal, Ventura—Eureka lemons.
- Pike & Kendall, Mills—Deciduous fruits.
- Rivers Brothers, Los Angeles—Deciduous fruits.
- J. T. Law, Loomis—Peaches.
- William Baake, Toluca—Peaches.
- Charles Frieberg, Toluca—Peaches and plums.
- H. P. Stabler, Yuba City—Grapes.
- W. S. Wiley, Fresno—Grapes.
- W. H. Samson, Corning—Smyrna figs.
- Earl Fruit Company, Vacaville—Cherries and apricots.
- Mrs. E. Phelan, Watsonville—Bellflower apples.
- Peckham & Peckham, Watsonville—Bellflower apples.
- I. H. Tuttle Co., Watsonville—Bellflower apples.
- McDonald & Son, Aptos—Bellflower apples.
- M. N. Lettunich, Watsonville—Bellflower apples.
- P. W. Morse Co., Watsonville—Apples and strawberries.
- Orrin Eaton, Watsonville—Strawberries.
- Chamber of Commerce, Santa Ana—Sweet potatoes.
- S. Flick & Sons, Huntington Beach—Vegetables.
- Chas. Volkert, Oxnard—Burbank potatoes.
- Parr Brothers, Hollywood—Pine apples.
- Theodosia B. Shepherd, Ventura—Crimson winter rhubarb.
- C. F. Foster, Corning—Fruits and vegetables.
- C. G. Redman, Watsonville—Bellflower apples.
- M. Kukuliya, Watsonville—Bellflower apples.
- Wm. Sandholt, Watsonville—Apples.
- A. F. M. McCollough, Red Bluff—Peaches.

- Louis Amés, Newcastle—Elberta peaches.
 Elmerdale Orchard, Newcastle—Peaches.
 Henry Vaughman, Los Angeles—Peaches.
 Scannel & Son, Marysville—Grapes.
 G. W. Chapman, Winters—Grapes.
 W. O. Davis, Florin—Grapes.
 W. C. Spencer, Colfax—Tokay grapes.
 A. E. Emeral, San Gabriel—Grapes.
 A. Gregory, Sierra Madre—Grapes.
 R. J. Coggeshall, Vorden—Wickson plums.
 F. A. Ahrens, Los Angeles—Plums.
 Paul Steude, Newcastle—Deciduous fruit.
 G. O. Hughes, Elizabeth Lake—Bartlett pears.
 C. B. Douglas, Antioch—Fruit.
 Southern Pacific Co., Indio—Commercial dates.
 A. T. Oglivy, Santa Barbara—Eureka lemons.
 Crocker-Sperry, Montecito—Citrus fruits.
 Thermal Canteloupe Growers' Union, Thermal—Vegetables.
 R. J. Trembath, Antioch—Apricots, peaches.
 C. A. Martin, Verduga—Apricots.
 J. L. Nagle, Newcastle—Peaches.
 Wm. Gribble, Antioch—Peaches.
 E. Dane, Pasadena—Peaches.
 E. Metzler, Los Angeles—Peaches.
 Mrs. E. Noyes, Broderick—Peaches.
 F. K. Barton, Little Rock—Bartlett Pears.
 Stitt & Niemann, Guinda—Bartlett Pears.
 A. P. Hoffman, Toluca—Plums.
 H. R. Foss, Fowler—Grapes.
 Board of Trade, Madera—Grapes.
 Sierra Madre Vintage Co., Sierra Madre—Grapes.
 A. W. Randolph, Burbank—Grapes.
 S. H. Taft, Sawtelle—Grapes.
 A. F. Eppers, Eppersburg—Gooseberries, new variety.
 Wm. Benjamine, Sacramento—Berries.
 J. B. Wagner, Pasadena—Rhubarb.
 Joseph Studarus, Sacramento—Deciduous fruits.
 W. J. Smith, Vorden—Deciduous fruits.
 W. J. Gowns, Los Angeles—Tropical fruits.
 Dr. S. S. Black, North Glendale—Citrus fruits.
 D. McNiven, North Glendale—Pomelos.
 C. M. Gifford, Jamaica—Pomelos.
 Upland Citrus Association, Uplands—Pomelos.
 D. A. Talbot, Glendale—Fruit.
 M. D. Lack, Redding—Apples.
 T. Pavis, Watsonville—Bellflower apples.
 W. A. Sanborn, Watsonville—Bellflower apples.

D. H. Baldwin, Manyana—Apples.
 Park Commission, Los Angeles—Tuna fruit.
 Cutter Brothers, Perkins—Tomatoes.
 George M. Williams, Santa Barbara—Tomatoes.
 Robert Shields, Mills—Plums.
 P. S. Wahraftig, Folsom—Prunes.
 F. H. Cook, Napa—Plums.
 Loma Fruit Co., Watsonville—Apples.
 Hanson Poland, Lompoc—Bellflower apples.
 G. O. Hughes, Elizabeth Lake—Apples.
 A. Martin, Little Rock—Apples and pears.
 D. A. Bakman, Toluca—Prunes.
 D. A. Talbert, Verduga—Apricots.
 Rector Bros., Coachella—Seedling dates.
 F. Fagealde, Burbank—Grapes.

LIST OF EXHIBITORS IN THE ART GALLERY.

Mrs. Alice B. Chittenden, San Francisco.
 E. Almond Withrow, San Francisco.
 C. Chapel Judson, San Francisco.
 Henry Raschen, San Francisco.
 Matteo Sandona, San Francisco.
 Joseph Greenbaum, San Francisco.
 L. P. Latimer, San Francisco.
 Mrs. Sarah Bender De Wolf, San Francisco.
 Gordon Coutts, San Francisco.
 Alice Coutts, San Francisco.
 C. P. Neilson, San Francisco.
 Louise Carpenter, San Francisco.
 F. Edith Whitefield, San Francisco.
 Gertrude Willison, San Francisco.
 George Henry Melcher, Hollywood.
 Benjamin C. Brown, Los Angeles.
 F. E. Duval, Los Angeles.
 J. W. Nichol, Los Angeles.
 N. L. de Nubila, Los Angeles.

EXHIBITORS IN KERAMIC DEPARTMENT.

California Ceramic Club, San Francisco—Extensive and artistic display of hand-decorated china.
 Mrs. Culp, San Francisco.
 Mrs. Perley, San Francisco.

Mrs. Haynes, San Francisco.
 Miss Kleinschmidt, San Francisco.
 Miss Colby, San Francisco.
 Mrs. Griffin, San Francisco.
 Miss Swan, San Francisco.
 Mrs. Ashworth, San Francisco.
 Mrs. Jakobs, San Francisco.
 Miss Lamb, San Francisco.
 Mrs. McCalvy, San Francisco.
 Miss O'Malley, San Francisco.
 Mrs. Bateman, San Francisco.
 Miss Taylor, San Francisco.
 Mrs. Wilson, San Francisco.
 Miss Osterman, San Francisco.
 Miss Thompson, San Francisco.
 Mrs. Clay, San Francisco.
 Mrs. Scudder, San Francisco.
 Miss Hesselmeyer, San Francisco.
 Mrs. Bickley, San Francisco.

EXHIBITS IN THE CALIFORNIA SPACE OF THE AGRICULTURAL BUILDING.

- California State Board of Trade, San Francisco**—Handsone structure containing installation of exhibit representing the principal commercial and industrial features of California, and illustrating the work of the Board as carried on in San Francisco.
- Ehmann Olive Company, Oroville**—Handsone exhibit stand containing display of olive oil, ripe pickled olives, olive press used in the manufacture of oil, and other interesting features connected ith the olive industry, demonstrating the value of the product as a wholesome article of consumption.
- Bishop & Co., Los Angeles**—Booth built on the Mission style, enclosed plate-glass counters, wherein were installed the products of the firm, consisting of crystallized fruits, preserved, canned and potted meats, fruits, etc.
- Elwood Cooper, Santa Barbara**—Tower 100 feet tall of olive oil.
- California Fruit Cannors' Association, San Francisco**—Artistic exhibit of canned fruits, vegetables, meats, soups, jellies, and marmalades.
- Dried Fruit Association of Santa Clara County**—Demonstrating booth of Mission style where prunes, properly cooked, were served in many tempting ways to the passing throng, attendants explaining the way to prepare the fruit, and giving away books containing recipes.
- P. H. D. Kingsbury, Redlands**—Display of orange marmalade, jams, jellies, preserves, etc.

OTHER CALIFORNIA EXHIBITS.

- Fig Prune Cereal Co., San Jose—Cereal coffee.
- D. Moriarity, Elmhurst—Terra Cotta vases.
- J. D. Spreckels, San Francisco—Lignite coal.
- Western Fire Appliance, San Francisco—Fire Extinguisher.
- American Chocolate Co., San Francisco—Malto cocoa.
- T. H. Burden, Sacramento—Grandma's pepper sauce.
- Geo. Mitchel, Los Angeles,—Steam generator from waste heat.
- Baker & Hamilton, San Francisco—Auxiliary wagon spring.
- Paraffine Paint Co., San Francisco—Pabco damp proof paint.
- Hueter Varnish Co., San Francisco—Elastic interior durable varnish.
- M. J. Brandenstein, San Francisco—Package tea, Oolong teas, Congo teas, coffees.
- Joshua Hendy Machine Works, San Francisco—Pinder concentrator.
- George E. Woodbury, San Francisco—Table concentrator.
- David Hewes, Orange—Oregon Pony Locomotive.

LIST OF AWARDS

MADE TO CALIFORNIA EXHIBITORS AT THE LEWIS AND CLARK EXPOSITION

GOLD MEDALS

State of California.....	California State Building.
State of California.....	General Installation.
State of California.....	General Collective Educa- tional Exhibit.
State of California.....	General collection of fresh fruits maintained as a fea- ture of the California Build- ing during the term of the exposition.
State of California.....	Collection of 90 varieties of nuts.
State of California.....	Installation of exhibit of olive oil.
State of California.....	Installation of wine exhibit.
State of California.....	Installation of exhibits in building.
State of California.....	Installation of comb and strained honey.
State of California.....	General collection of soils.
State of California.....	Model irrigation scene.
State of California.....	Collection of processed fruit.
State of California.....	Collection of processed vege- tables.
State of California.....	Collection of the products of the sugar beet.
State of California.....	General collection of cereals.
State of California.....	Collection of grain in sheaf.
State of California.....	General collection of beans.
State of California.....	General collection of honey.
State of California.....	General collection of forestry products.
State of California.....	General collection of mineral productions from base ore to the most precious.
State of California.....	General collection of mineral waters.

State of California.....	Gold ores, showing massive and specimen product of auriferous gold veins.
State of California.....	Gold nuggets, dredger gold, float or surface rock, showing gold, also free gold.
State of California.....	Gold ores.
State of California.....	Cinnabar ore and also refined quicksilver.
State of California.....	General collection of oils.
State of California.....	Diatomaceous earth.
State of California.....	General collection of food and marine game fish, mounted.
State of California.....	General collection of photographs, scenic and industrial.
City of San Francisco.....	Elementary Education.
City of Sacramento.....	Elementary Education.
City of Fresno.....	Elementary Education.
City of Oakland.....	Elementary Education.
City of Oakland.....	Secondary Education.
City of Stockton.....	Elementary Education.
City of Stockton.....	Secondary Education.
City of Los Angeles.....	Elementary Education.
City of Los Angeles.....	Secondary Education.
University of California.....	Perkeley..... Photo-transparencies from Lick Observatory.
Institution for Deaf, Dumb and Blind.....	Perkeley..... Exhibit illustrating the methods of instruction and the results accomplished.
California School of Mechanical Arts and Wilmerding School of Industrial Arts.....	San Francisco .. Collective exhibit of Industrial Arts.
Throop Polytechnic Institute.....	Pasadena..... Collective exhibit.
Whittier State School.....	Whittier..... Photographs.
California State Library.....	Sacramento..... Collective exhibit.
California College of Pharmacy.....	San Francisco .. Cabinet of chemicals.
Mills College.....	Alameda County.. Cabinet and wall display of school work.
T. J. Kirk, Supt. Public Instruction.....	Sacramento..... Exhibit of School Administration.
Heald's Business College.....	San Francisco .. Collective exhibit.
Stone & Smith.....	San Francisco .. Plans and photographs of school architecture; plaster model of school house.
Mrs. Mary E. Snyder.....	San Diego..... Mounted sea mosses and marine algae scientifically classified.
F. A. Weck.....	San Francisco .. Pressed California wild flowers. Installation of wild flowers.
Sonoma Board of Trade.....	Sonoma..... Valencia Late Oranges.
Captain Hutchinson.....	Lindsay..... Citrus Fruits.
California Fruit Exchange.....	Los Angeles..... Citrus Fruits.
Redlands Fruit Association.....	Redlands..... Oranges.
Santiago Orange Growers' Association.....	Orange..... Oranges.
Arlington Heights Fruit Co.....	Riverside..... Oranges.
C. W. Leffingwell, Jr.....	Whittier..... Eureka Lemons.
J. H. F. Jarchow.....	San Gabriel..... Oranges.

W. S. Andrews.....	Sierra Madre ...	Lemons and oranges.
Azusa Foothill Citrus Ass'n...	Azusa	Citrus Fruits.
Whittier Citrus Association...	Whittier	Lemons.
D. Felthensal	Ventura	Eureka lemons.
Pike & Kendall	Mills	Deciduous fruits.
Rivers Brothers	Los Angeles	Deciduous fruits.
J. T. Law	Loomis	Peaches.
William Baake	Toluca	Peaches.
Charles Frieberg	Toluca	Peaches and plums.
Luther Burbank	Santa Rosa	Santa Rosa plums.
Luther Burbank	Santa Rosa	Photographs of creations in (Also special mention.) fruits and flowers.
H. P. Stabler	Yuba City	Grapes.
W. S. Wiley	Fresno	Grapes.
George C. Roeding	Fresno	Calimyrna figs.
W. H. Samson	Corning	Smyrna figs.
Earl Fruit Company	Vacaville	Cherries and Apricots.
Mrs. E. Phelan.....	Watsonville	Bellflower apples.
Peckham & Peckham	Watsonville	Bellflower apples.
I. H. Tuttle Co.....	Watsonville	Bellflower apples.
McDonald & Sons.....	Aptos.....	Bellflower apples.
M. N. Lettunich	Watsonville	Bellflower apples.
P. W. Morse Co.....	Watsonville	Apples and strawberries.
Orrin Eaton	Watsonville	Strawberries.
Pajaro Valley Board of Trade.	Watsonville	Strawberries.
W. N. Woodson	Corning	Fruit and vegetables.
Chamber of Commerce	Santa Ana	Sweet potatoes.
S. Flick & Sons.....	Hunt'gton Beach.	Vegetables.
Chas. Volkert	Oxnard	Burbank potatoes.
Rapp Brothers	Hollywood	Pineapples.
Theodosia B. Shepherd	Ventura	Crimson winter rhubarb.
C. F. Foster (two awards)...	Corning	Fruit and vegetables.
Gundlach-Bundschu Wine Co.	San Francisco ..	Chambertin wine.
Repsold Select Vintages	San Francisco ..	Assorted table wines; Repsold cognac; Medicinal Tokay wine. (Also special mention for the latter.)
The Rosenblatt Company.....	San Francisco ..	Brandies; Irving's apricot brandy.
Vina Vineyard	Vina	Assorted sweet wines; port, sherry, etc.; brandy.
Wetmore-Bowen Company ..	San Francisco ..	Assorted Cresta Blanca table wines.
Napa & Sonoma Wine Co....	San Francisco ..	Brandy.
Italian-Swiss Colony	San Francisco ..	Assorted table wines, red and white Tipo Chianti.
Paul Masson Champagne Co.	San Jose	Champagne.
Dresel & Company	Sonomo	Assorted table wines.
California Winery	Sacramento	Assorted table wines, brandy.
A. P. Hotaling & Company...	San Francisco ..	Old Kirk whisky.
Southern California Wine Co.	Los Angeles	Assorted table wines; sweet wines; Good Samaritan brandy.
T. Vache & Co.....	Los Angeles	Assorted table wines; sweet wines; brandy.
Edward German Wine Co....	Los Angeles	Assorted sweet wines, port, sherry, angelica.
Sierra Madre Vintage Co....	Lamanda	Old port, sherry and brandy; angelica, muscat.
El Verde Grape Juice.....	Pomona.....	Red and white grape juice, un- fermented.
Sacramento County	Facsimile of State Capitol in miniature, made of nuts.

Alden Anderson	Suisun	Almonds.
Davisville Almond Growers' Association	Davisville	Almonds.
Contra Costa County		Almonds and walnuts.
Los Angeles County		Almonds and peanuts.
Chamber of Commerce	Los Angeles	Unique display of nuts.
Los Nietos & Ranchito Walnut Growers' Association	Rivera	Soft shell walnuts.
Southern California Walnut Growers' Association	Rivera	General collection of walnuts.
California Nursery Company	Niles	Collective exhibit of nuts.
Orange County		Peanuts.
Spencer Carey	Auburn	Pure olive oil.
F. Birdsall	Auburn	Pure olive oil.
J. A. Kleiser	Cloverdale	Pure olive oil.
R. B. Blowers	Woodland	Pure olive oil.
Ehmann Olive Company	Oróville	Pure olive oil.
Ehmann Olive Company	Oroville	Pickled ripe olives.
Ehmann Olive Company	Oroville	Installation of exhibit.
Ehmann Olive Company	Oroville	Ripe olives.
Ekman-Stow Company	Oroville	Pure olive oil.
F. J. Lea & Company	Oakland	Pure olive oil.
Roeding Olive Company	Fresno	Pure olive oil.
Elwood Cooper	Elwood	Pure olive oil.
Ojai Olive Company	Nordhoff	Pure olive oil.
Los Angeles Olive Growers' Association	Los Angeles	Pure olive oil.
Los Angeles Olive Growers' Association	Los Angeles	Installation of exhibit.
F. W. Braun & Co.	Los Angeles	Pure olive oil.
H. Jevne	Los Angeles	Pure olive oil.
Akerman & Tuffley	North San Diego.	Pure olive oil, pickled ripe olives.
Akerman & Tuffley	North San Diego.	Installation of exhibit.
Dr. A. N. Cooms	Cloverdale	California pickled olives, pickled ripe olives.
American Olive Co.	Los Angeles	Pickled ripe olives.
Contra Costa County		Assorted dried fruits.
Sacramento County		Grizzly bear made of prunes.
Sanitary Dried Fruit Co.	Red Bluff	Assorted dried fruits.
Castle Brothers	San Francisco ..	Assorted dried fruits; seeded raisins, raisins.
Griffin & Skelley Co.	San Francisco ..	Assorted dried fruits, canned fruits, seeded raisins.
Santa Clara County Fruit Ex.	San Jose	Assorted dried fruits.
North Ontario Packing Co.	North Ontario ..	Assorted dried fruits.
Roeding Fig Packing Co.	Fresno	Fancy Calimyrna figs.
Roeding Fig Packing Co.	Fresno	Installation of exhibit.
Bishop & Company	Los Angeles	Crystallized fruits.
Corsica Citron Company	Los Angeles	Prepared citron.
Souther & Crosby	San Diego	Cluster raisins.
Fresno County		Collection of cluster raisins, loose muscatels, seedless sultana and Thompson seedless, dried fruits, etc.
Fresno County		Effective and comprehensive installation of raisin exhibit.
R. B. Blowers	Woodland	Seedless raisins, dried pears.
Cal. Fruit Cannery Assn.	San Francisco ..	Griffin extra lemon cling peaches.
Cal. Fruit Cannery Assn.	San Francisco ..	All fruits in tin and glass.
Cal. Fruit Cannery Assn.	San Francisco ..	General display.

- Cal. Fruit Cannery Assn....San Francisco ..Canned asparagus, pineapple, tomatoes.
- Hunt BrothersHaywardsAssorted canned fruits.
- Code-Portwood Canning Co..San Francisco... Assorted canned fruits, canned tomatoes.
- The J. H. Flickinger Co.....San JoseAssorted canned fruits, fruits in glass.
- Oakland Preserving Co.....OaklandApricots and plums.
- Pacific Coast Syrup Co.....San Francisco .. Preserved fruits, jams, honey, etc.
- Pacific Coast Syrup Co.....San Francisco .. Installation of exhibit.
- E. A. WrightOaklandJellies and jams.
- Bishop & Company.....Los Angeles.... Preserved fruits, jams, and jellies, tomato catsup.
- Bishop & Company.....Los Angeles ... Original and unique installation of exhibit.
- N. J. Cooley.....Bishop Mountain honey.
- G. B. Woodberry.....West Glendale .. Honey.
- L. E. Mercer.....Ventura Honey.
- M. H. Mendleson.....Ventura Honey.
- J. F. McIntyre.....Ventura Honey.
- Emerson BrothersLos Angeles ... Honey.
- Alameda County Fruit and vegetables in process; perfection of process.
- Southern California Fruits and vegetables in process.
- Contra Costa County Fruits and vegetables in process; perfection of process.
- Monterey Packing Company..San Francisco .. Canned broiled mackerel.
- San Pedro Packing Co.....Terminal Concentrated clam juice, abalone in tins.
- California Fish Company ...Los Angeles ... Sardines, broiled mackerel.
- Mrs. Stevens & Miss Ogilvy..Santa Barbara .. Pomelo marmalade.
- D. Van Lennep.....Auburn Fig preserves and compote.
- Miss Bessie Marsh.....South Pasadena.. Candied flowers.
- Miss Aminta Wilson Mc-NaughtonPasadena Candied flowers.
- Bachman & Brandt.....Stockton Chicory in different stages of manufacture.
- Los Alamitos Sugar Co.....Los Angeles ... Beet sugar; jars showing process of manufacture; beet sugar alcohol.
- Union Sugar Company.....Betteravia Beet sugar.
- American Beet Sugar Co.....Oxnard Beet sugar.
- Western Sugar Refining Co..San Francisco .. Exhibit of twelve grades of beet sugar.
- Alameda Sugar Company.....San Francisco .. Beet sugar, beet sugar alcohol and process showing manufacture of sugar.
- Empire Mining Co.....Grass Valley ... Gold ore.
- Pacific Borax Company.....San Francisco ... Borax.
- Cal. State Mining Bureau....San Francisco ... Collection of mining literature.
- Cal. State Mining Bureau....San Francisco ... Cabinet of minerals.
- Pacific Portland Cement Co..San Francisco .. Cement.
- San Diego County..... Precious stones.
- Shasta Mineral Springs Co..San Francisco ... Shasta Water.
- Bartlett Springs Company....San Francisco... Mineral Water.
- Joshua Hendy Machine Wks.San Francisco ... Pinder concentrator.
- George E. WoodburySan Francisco ... Table concentrator.
- Allan C. Rush.....Los Angeles ... Rush crude oil burner system for steam power purposes.

F. W. Braun & Co.....	Los Angeles	Combination assay furnaces, Cary hydrocarbon burner, Marvel hydrocarbon burner, Braun's disc pulverizer, Chipmonk crusher, Cupel machine.
Mercer & Hodgson.....	Eureka	Redwood mouldings, doors, etc.
Pacific Redwood Shingle Co..	Eureka	Shingles (all patterns).
Excelsior Wooden Pipe Co...	San Francisco ...	Redwood pipe for under- ground use.
Sierra Lumber Co.....	San Francisco ...	Display of building material; sample of doors.
Sugar & White Pine Agency..	San Francisco ...	Sugar and yellow pine; planks; white pine stump.
Fresno Flume & Irrigation Co.	Clovis	Sugar pine plank.
J. C. Crisler	Palo Alto	Inlaid table of native woods.
Byron Mauzy	San Francisco ...	Art pianos.
Dolge-Posey Company	Los Angeles	Superior piano sounding boards.
Thomas Denigan Son & Co...	San Francisco ...	Wool.
C. P. Bailey & Sons Co.....	San Jose	Angora rugs and mohair.
The J. M. Howell Co.....	Henleyville	Merino wool.
John Heany	Gridley	Hemp in stalk.
W. H. Murray	San Francisco ...	Ramie and ramie fiber, rope, cloth, etc., made from ramie.
Southern Pacific Co.....	San Francisco ...	Redwood facade, showing or- namental use of woods.
Sacramento County		General collection of wild game.
Contra Costa County		Collection of native fish and game.
Santa Cruz County		Collection of salt water fish, mounted.
Los Angeles County		Variety of game ducks.
The Banning Company	Santa Catalina...	Collection of salt water fish.
J. S. Benn.....	San Francisco ...	Collection of fish flies and hooks.
M. J. Brandenstein.....	San Francisco ...	Oolong teas.
M. J. Brandenstein.....	San Francisco ...	Congo teas.
Pleasanton Hop Company....	Pleasanton	Hops.
Lovdal Brothers	Sacramento	Model of hop farm; exhibit of commercial hops.
C. H. Holzhauser.....	Etna Mills	Hops.
Golden Gate Park.....	San Francisco ...	Ornamental shrubs and plants.
Stockton State Hospital.....	Stockton	Ornamental shrubs and plants.
Fancher Creek Nurseries	Fresno	Tropical plants; fruit trees; palms; orange and olive trees.
Chamber of Commerce	Los Angeles	Palms.
R. M. Teague	San Dimas	Orange trees.
California State Horticultural Commission	San Francisco ...	"Bug vs. Bug."
California Iron Works	Riverside	Fruit brusher.
Packing House Equipment Co.	Upland	Orange cleaner and weigher.
H. C. Compton	Chico	Moravian barley.
August Hageman	Livermore	Improved variety barley.
Ch. Thornberg	Santa Maria	Barley.
Sacramento County		Beans used in construction of Great Seal.
Ventura County		Display of beans, in variety; bean elk.

C. C. Morse & Co.....	Santa Clara	Collective exhibit of flower and garden seeds.
Hanson Poland	Lompoc	Collective exhibit of mustard seed.
Davis Hewes	Orange	Oregon Pony locomotive.
Paraffine Paint Co.....	San Francisco ..	Pabco damp-proof paint.
Alfred Dolge Manufacturing Co.	Dolgeville	Display showing process of manufacture of felt, with finished and manufactured product.
San Diego County	Raw, spun and ornamental silk; cocoons.
Mrs. Carrie Williams	San Diego	Silk cocoons; silk raw and spun, with manufactured products.
Carlson-Currier Company	San Francisco ..	Raw and manufactured silk; embroidered doilies and pictures.
H. G. Adams.....	San Francisco ..	Hand-embroidered table cover.
American Magnesite Co.....	San Francisco ..	Tiles.
Lemola Soap Company.....	Los Angeles	Lemola soap.
Lemola Soap Company.....	Los Angeles	Cream of lemon in tubes.
California Citrus Products Co.	National City ...	General assortment of citrus products, including citric acid, oil of lemon and lemon extracts.
Stockton Glass Works.....	Stockton	Glass manufactured from native materials.
California Art Glass Works...	San Francisco ..	Art glass window.
Wagner Leather Company....	Stockton	Pacific harness and sole leather.
Los Angeles Art Leather Co..	Los Angeles	Stamped and engraved leather work.
Misses O'Hara & Livermore..	San Francisco ..	Collection of carved leather.
City of San Francisco.....	Topographical relief map.
Cawston's Ostrich Farm	South Pasadena.	Ostrich plumes, colored and uncolored; ostrich eggs, young and matured ostrich stuffed.
Union Iron Works	San Francisco ..	Model of war vessels and dry-dock. Photos.
Hicks-Judd Company	San Francisco ..	Artistic printing and book-binding.
Waltz Safe & Lock Co.....	San Francisco ..	Fire-proof safe.
Petaluma Incubator Co.....	Petaluma	Incubators and brooders.
Southern California	Kiosk of nuts, honey, fruits and oranges.
W. D. Nichols	Sacramento	Processed flowers.
Mrs. H. W. R. Strong.....	Whittier	Pampas grass.
Alpine Evaporated Cream Co.	Hollister	Evaporated cream in tins.
C. J. Cranda!! ..	Los Angeles	Photographs.
Putnam & Valentine.....	Los Angeles	Photographs.
Andrew P. Hill.....	San Jose	Display of bromide enlargement photographs.
Sacramento Valley Development Association	Sacramento	Display of photographs.
Southern Pacific Company....	San Francisco ..	Collection of photographs.
Sunset Photo & Engraving Co.	San Francisco ..	Collection of forest photographs.
Contra Costa County.....	Collection of photographs.

Board of State Harbor Commissioners	San Francisco	..Model of pier built of improved piling, also large photograph.
California State Board of Trade	San Francisco	..On exhibit as a whole. (And especial mention.)
American Steel & Wire Co...	San Francisco	..Wires, wire rope, cables, etc.
Hueter Varnish Co.....	San Francisco	..Elastic interior durable varnish.

SILVER MEDALS

State of California.....		General collection of oil paintings.
State of California.....		Assorted apples.
State of California.....		Structural materials — limestone, gypsum, granites, asbestos, cements, mineral paints, clays, sands, sandstones, kaolin, etc., etc.
State of California.....		Copper ores in massive form and in cases.
State of California.....		Native platinum.
State of California.....		Magnesite.
State of California.....		Comprehensive installation of canned fruit.
State of California.....		Installation of exhibit of preserved fruits, canned milk, etc.
State of California.....		Installation of canned fish, original and unique.
State of California.....		Installation of canned vegetables.
State of California.....		Original installation of paste products.
City of San Francisco.....		Secondary education.
County of Alameda.....		Elementary education.
City of Berkeley.....		Secondary education.
City of Berkeley.....		Elementary education.
County of Sonoma.....		Elementary education.
County of Kern.....		Secondary education.
County of Kern.....		Elementary education.
County of Fresno.....		Elementary education.
County of Los Angeles.....		Elementary education.
City of Pasadena.....		Elementary education.
City of Redlands.....		Elementary education.
Boys' & Girls' Aid Society...	San Francisco	..Exhibit of Sloyd work.
Miss Mary Montague.....	Colfax	..Pressed wild flowers.
Miss Etta Waring.....	Fallbrooke	..Picture of Mission San Luis Rey, worked in moss.
George C. Jensen	Eureka	..Collection of California missions in burnt wood.
Contra Costa County.....		..Topographical relief map.
Chamber of Commerce.....	Los Angeles	..Topographical relief map.
L. P. Latimer.....	San Francisco	..Oil paintings.
C. P. Nielsen.....	San Francisco	..Water colors.
E. Almond Withrow.....	San Francisco	..Oil paintings.
Matteo Sandona	San Francisco	..Oil painting, portrait.

Gordon Coutts	San Francisco ..	Oil paintings and pastel.
Henry Raschen	San Francisco ..	Oil paintings.
California Ceramic Club.....	San Francisco ..	Display of hand-decorated china.
Mrs. Culp	San Francisco ..	Hand-decorated china.
Mrs. Perley	San Francisco ..	Hand-decorated china.
Mrs. Haynes	San Francisco ..	Hand-decorated china.
Miss Kleinschmidt	San Francisco ..	Hand-decorated china.
Miss Colby	San Francisco ..	Hand-decorated china.
C. G. Redman.....	Watsonville	Bellflower apples.
M. Kukuliya	Watsonville	Bellflower apples.
Wm. Sandholt.....	Watsonville	Apples.
A. F. M. McCollough.....	Red Bluff	Peaches.
Louis Ames	Newcastle	Elberta peaches.
Elmerdale Orchard	Newcastle	Peaches.
Henry Vaughan	Los Angeles	Peaches.
Scannell & Son.....	Marysville	Grapes.
G. W. Chapman.....	Winters	Grapes.
W. O. Davis.....	Florin	Grapes.
W. C. Spencer.....	Colfax	Tokay grapes.
A. E. Emerel.....	San Gabriel	Grapes.
A. Gregory	Lamanda	Grapes.
Hastings Rancho	Sierra Madre	Grapes.
R. J. Coggeshall	Vorden	Wickson plums.
F. A. Ahrens.....	Los Angeles	Plums.
Paul Steude	Newcastle	Deciduous fruit.
G. O. Hughes	Elizabeth La'e	Bartlett pears.
C. B. Douglas	Antioch	Fruit.
Southern Pacific Company.....	Indio	Commercial dates.
A. T. Oglivy.....	Santa Barbara	Eureka lemons.
Crocker-Sperry	Montecito	Citrus fruits.
E. W. Martin.....	Little Rock	Almonds.
Thermal Canteloupe Growers' Union	Thermal	Vegetables.
Sacramento Valley Development Association	Sacramento	Vegetables.
The Rosenblatt Company.....	San Francisco ..	Assorted wines.
Italian-Swiss Colony	San Francisco ..	Brandy.
Gundlach-Bundschu Wine Co.....	San Francisco ..	Assorted table wines.
Theodore Gier	Oakland.....	Assorted table wines, brandy.
La Questa Wines.....	San Francisco ..	Table claret.
Leo Metzger & Co.....	San Francisco ..	Assorted table wines.
Paul Masson Champagne Co.....	San Jose	Sparkling burgundy.
H. Jevne	Los Angeles	Assorted sweet wines.
Buffalo Brewing Co.....	Sacramento	Bottled "Bohemian" beer.
Buffalo Brewing Co.....	Sacramento.....	Installation, original and unique, of bottled beer exhibit.
J. H. Hayden.....	Sacramento	Strawberry wine.
John Swett & Son.....	Martinez	Unfermented grape juice.
John Swett & Son.....	Martinez	Installation of exhibit.
J. C. Curtis.....	Pentz.....	Pure olive oil.
Rincon Heights Olive Co.....	Santa Rosa	Pure olive oil.
Fair Oaks Fruit Co.....	Fair Oaks	Pure olive oil.
Fred H. Busby.....	Concord	Pure olive oil.
J. M. Doty.....	Livermore	Pure olive oil.
Mrs. S. S. Cutler.....	San Jose	Pure olive oil.
A. V. Stuart.....	San Jose	Pure olive oil.
Roeding Olive Co.....	Fresno	Pure olive oil.
George C. Roeding	Fresno	Pickled ripe olives, Calimyrna figs.
A. M. McNalley.....	La Mirada	Pure olive oil.
James Hill & Sons.....	Los Angeles	Pure olive oil.
James Hill & Sons.....	Los Angeles	Installation.

American Olive Company....	Los Angeles....	Pure olive oil.
C. M. Gifford.....	San Diego	Pure olive oil.
C. M. Gifford.....	San Diego	Installation of exhibit.
John Haenny	Lincoln	Zante currants.
California Fruit Cannery As- sociation	San Francisco ..	Petit Pois peas, stringless beans, marmalades and pre- serves.
California Fruit Cannery As- sociation	San Francisco ..	Installation of exhibit.
San Leandro Packing Co.....	San Leandro	Tomatoes.
Los Angeles County.....	Extracted honey.
Abalone Packing Company....	Cayucos	Gayetty's Abalone Food.
Union Fish Company	San Francisco ..	Cured fish; Dr. Fisherman's Carbolized Lotion; cod liver oil.
Gordon Syrup Company	Oakland	Assorted syrups.
Roeding Fig Packing Co.....	Fresno	Spiced Calimyrna figs.
Dr. Alexandrian Company....	Riverside	Pickled young oranges.
Pioneer Pickle Works	Sacramento	Assorted pickles and relishes.
J. D. Spreckels.....	San Francisco ..	Lignite coal.
Nevada County	Gold ores.
Eureka Slate Company.....	Placerville	Slate.
Maryland Mining Company....	Grass Valley	Gold ore.
Castle Rock Springs Co.....	Mineral water.
Napa Soda Springs Co.....	Napa	Jackson's Napa soda.
Santa Barbara Mineral Water Co.	Santa Barbara ..	Mineral water.
San Francisco & San Joaquin Coal Co.	Tesla	Coal briquettes.
Los Angeles Pressed Brick Co.	Los Angeles	Pressed and fancy brick.
Allan C. Rush.....	Los Angeles	Angelo oil burner.
J. H. Burden.....	Sacramento	Grandma's Spanish pepper sauce.
Western Fire Appliance.....	San Francisco ..	Fire extinguisher.
American Chocolate Co.....	San Francisco ..	Malto cocoa.
Diamond Match Co.....	Sterling	Display of wood; sugar pine, oak and spruce.
Sacramento Mfg. Co.....	Sacramento	Excelsior.
Redwood Association	San Francisco ..	Redwood planks, doors, mouldings, etc.
Hammond Lumber Co.....	Eureka	Redwood doors.
Humboldt Milling Co.....	Fortuna	Redwood mouldings, doors, etc.
J. A. Cottrell.....	Eureka	Redwood mouldings, doors, etc.
W. J. McClendon.....	Healdsburg	Cross Cotswold and merino wool.
G. W. Cox.....	Preston	70-pound fleece merino wool.
Alameda County	Collection of hay, showing varieties.
Pioneer Milling Company	Sacramento	Assorted meals and milling stuffs.
Capitol Paste Company.....	Sacramento	Paste products, macaroni, ver- micelli, etc.
C. P. Splivalo & Co.....	San Francisco ..	Paste products, macaroni, ver- micelli, etc.
Pacific Creamery Co.....	Los Angeles	Condensed cream.
Los Angeles Soap Company....	Los Angeles	Fancy toilet soap.
Citrus Soap Company.....	San Diego	Citrus washing powder.
Arthur E. Power.....	Los Angeles	Furniture, frames and fixtures, used in the California build- ing.

H. Bohls & Co.....	San Francisco ..	Variety of manufactured tobacco.
David Hetzel	Guerneville	Leaf tobacco and manufactured products.
Yolo County	Special exhibit showing farming scenes.
Alameda County	Collection of photographs.
C. C. Pierce & Co.....	Los Angeles	Photographs.
Frank De Vorney.....	San Francisco ..	Violins.
Allen's B. B. B. Flour.....	San Jose	Installation of exhibit.
Alameda County	Installation of exhibit of jellies, jams, etc.
Alameda County	Artistic, convenient and attractive display of food products.
Contra Costa County	Display in form of pyramid of olive oil, wines, etc.
Los Angeles Brewing Co.....	Los Angeles	Installation of exhibit.
El Verde Grape Juice Co.....	Pomona	Installation.

BRONZE MEDALS

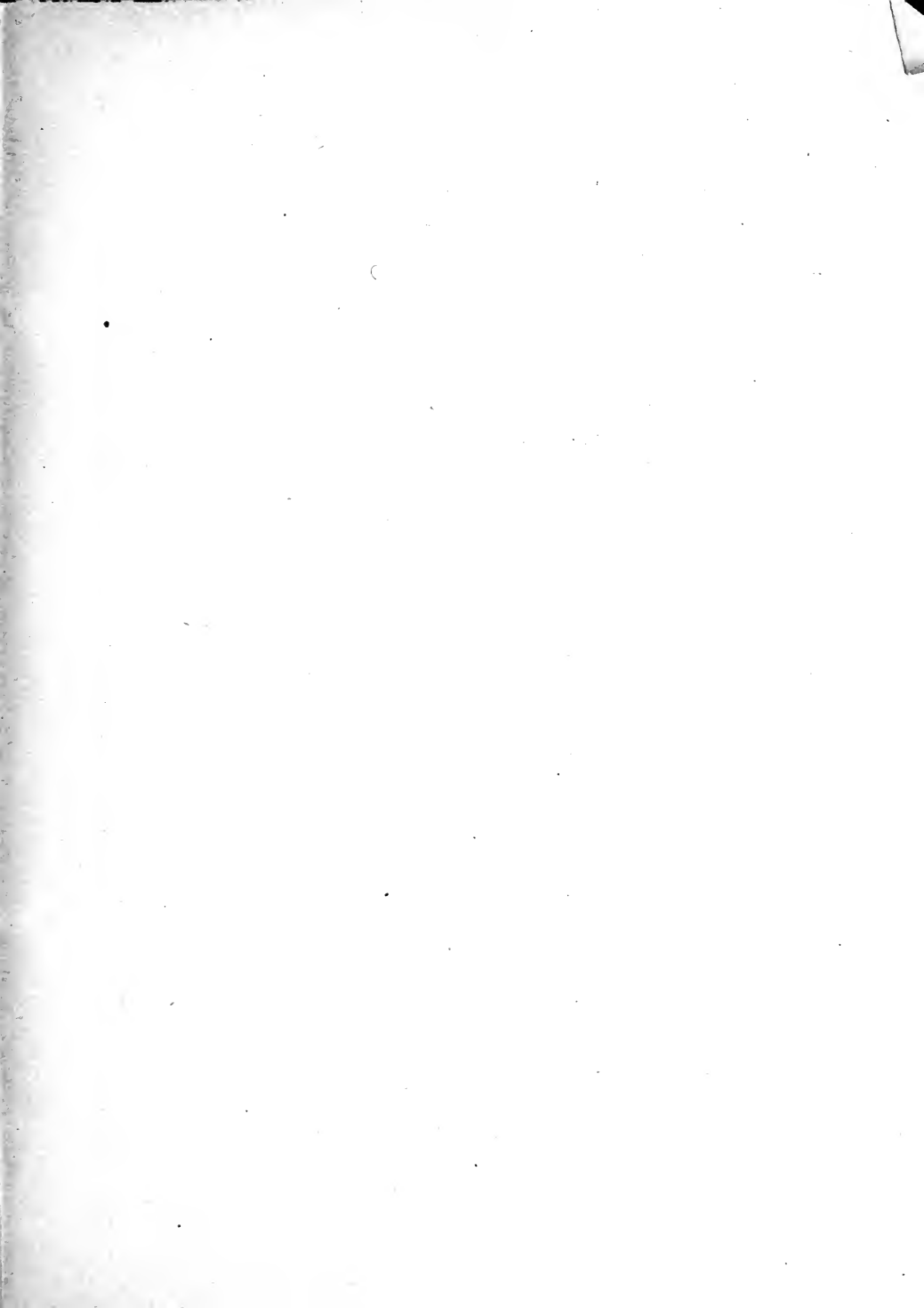
State of California.....	Carbonate of soda.
State of California.....	Sulphur, crude and refined.
State of California.....	Iron ores.
County of Santa Cruz.....	Picture in native wood.
County of Placer.....	Elementary education.
County of Sacramento	Elementary education.
County of Marin	Elementary education.
County of Monterey.....	Elementary education.
County of Santa Cruz.....	Elementary education.
City of San Francisco.....	Globe, made to illustrate the commercial relation of San Francisco with other parts of the world.
Mining School, University of California.....	Berkeley	Transparent photographs.
County of Ventura.....	Elementary education.
Hitchcock's Military Academy.....	San Rafael	Exhibit of Sloyd work.
California Polytechnic School.....	San Luis Obispo.....	Exhibit illustrating course of study and work accomplished by first-year students.
C. Chapel Judson.....	San Francisco ..	Oil paintings.
Mrs. Alice B. Chittenden.....	San Francisco ..	Oil paintings.
Sarah Bender De Wolf.....	San Francisco ..	Oil paintings.
Louise M. Carpenter.....	San Francisco ..	Oil paintings.
Joseph Greenbaum	San Francisco ..	Oil paintings.
Mrs. Alice Coutts	San Francisco ..	Oil paintings.
Benjamin C. Brown.....	San Francisco ..	Oil paintings.
J. W. Nicoll.....	Los Angeles	Oil paintings.
F. E. Duvall.....	Los Angeles	Oil paintings.
N. L. De Nubila.....	Los Angeles	Oil paintings.
F. Edith Whitefield.....	San Francisco ..	Oil paintings.
Mrs. A. Marshall.....	San Francisco ..	Oil paintings.
Gertrude Willison	San Francisco ..	Ivory miniature.
Mrs. Griffin	San Francisco ..	Hand-decorated china.
Miss Swan	San Francisco ..	Hand-decorated china.

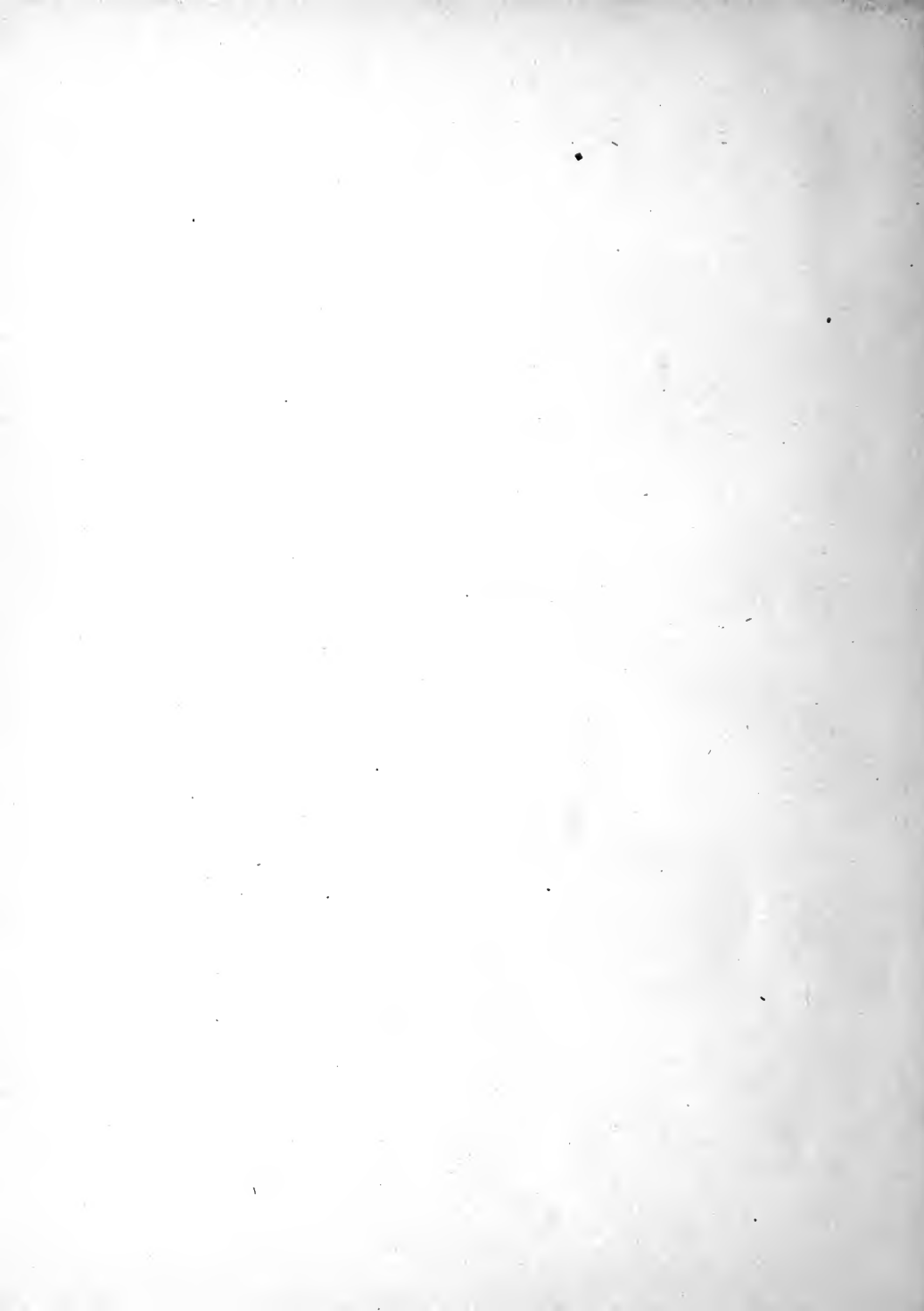
Mrs. Ashworth	San Francisco	Hand-decorated china.
Mrs. Jakobs	San Francisco	Hand-decorated china.
Miss Lamb	San Francisco	Hand-decorated china.
Mrs. McCalvy	San Francisco	Hand-decorated china.
Miss O'Malley	San Francisco	Hand-decorated china.
Mrs. Bateman	San Francisco	Hand-decorated china.
Miss Taylor	San Francisco	Hand-decorated china.
Mrs. Wilson	San Francisco	Hand-decorated china.
Miss Osterman	San Francisco	Hand-decorated china.
Miss Thompson	San Francisco	Hand-decorated china.
Mrs. Clay	San Francisco	Hand-decorated china.
Fig Prune Cereal Co.	San Jose	Cereal coffee.
D. Moriarity	Elmhurst	Terra cotta vases.
R. J. Trembath	Antioch	Apricots.
C. A. Martin	Verduga	Apricots.
J. L. Nagle	Newcastle	Peaches.
R. J. Trembath	Antioch	Peaches.
Wm. Gribble	Antioch	Peaches.
E. Dane	Pasadena	Peaches.
E. Metzler	Los Angeles	Peaches.
Mrs. E. Noyes	Broderick	Peaches.
F. K. Barton	Little Rock	Bartlett pears.
Stitt & Niemann	Guinda	Bartlett pears.
A. P. Hoffman	Toluca	Plums.
H. R. Ross	Fowler	Grapes.
Board of Trade	Madera	Grapes.
Sierra Madre Vintage Co.	Sierra Madre	Grapes.
A. W. Randolph	Burbank	Grapes.
S. H. Taft	Sawtelle	Grapes.
A. F. Etters	Ettersburg	Gooseberries, new variety.
Wm. Benjamine	Sacramento	Berries.
J. B. Wagner	Pasadena	Rhubarb.
Joseph Studarus	Sacramento	Deciduous fruits.
W. J. Smith	Vorden	Deciduous fruits.
W. J. Gowns	Los Angeles	Tropical fruits.
Dr. S. S. Black	North Glendale	Citrus fruits.
D. McNiven	North Glendale	Pomelos.
C. M. Gifford	Jamaica	Pomelos.
Upland Citrus Association	Uplands	Pomelos.
D. A. Talbott	Glendale	Fruit.
M. D. Lack	Redding	Apples.
T. Pavis	Watsonville	Bellflower apples.
W. A. Sanborn	Watsonville	Bellflower apples.
D. H. Baldwin	Manzana	Apples.
Park Commission	Los Angeles	Tuna fruit.
Cutter Brothers	Perkins	Tomatoes.
George M. Williams	Santa Barbara	Tomatoes.
Los Angeles Brewing Co.	Los Angeles	Lager beer, Mission malt tonic.
George Mitchell	Los Angeles	Steam generator from waste heat.
California Packing Co.	San Francisco	Pure olive oil.
Baker & Hamilton	San Francisco	Auxiliary wagon spring.
California Fruit Cannery Association	San Francisco	Griffin extra tomato catsup.
California Fruit Cannery Association	San Francisco	Canned vegetables, soups and relishes. Oyster sauce.
P. H. D. Kingsbury	Redlands	Orange marmalade, lemon juice, fig jam, etc.
Bishop & Company	Los Angeles	Chili sauce, soups.
Allen's B. B. B. Flour	San Jose	Prepared flour.
Western Salt Company	San Diego	Table salt.

California Liquid Asphalt Co.	Summerland	Asphalt.
Papoose Mining Company	Randsburg	Calcium tungstate.
Pacific Art Tile Co.	Tropico	Decorative art tiling.
San Diego County		Lepidolite and amblygonite.
R. H. Herron & Co.	Los Angeles	Model of oil derrick and engine.
Cook's Springs Mineral Water		
ter	Williams	Mineral water.
Witter Medical Springs Co.	San Francisco	Witter Springs water.
Alhambra Mineral Water Co.	Martinez	Mineral water.
Alhambra Mineral Water Co.	Martinez	Ginger ale.
Alameda County		Exhibit of hay.
State of California		Orbicular diorite.
California State Normal		
Schools		Collective exhibit.
F. Lauderbach	Santa Catalina	Marine paintings.
George Henry Melcher	Hollywood	Oil painting.
Mrs. Scudder	San Francisco	Hand-decorated china.
Miss Hesselmeyer	San Francisco	Hand-decorated china.
Mrs. Bickley	San Francisco	Hand-decorated china.
Robert Shields	Mills	Plums.
P. S. Wahraftig	Folsom	Prunes.
F. H. Cook	Napa	Plums.
Loma Fruit Co.	Watsonville	Apples.
Hanson Poland	Lompoc	Bellflower apples.
G. O. Hughes	Elizabeth Lake	Apples.
A. Martin	Little Rock	Apples and pears.
D. A. Bakman	Toluca	Prunes.
D. A. Talbert	Verduga	Apricots.
Rector Brothers	Coachella	Seedling dates.
F. Fagealde	Burbank	Grapes.
J. C. Kubias	Redlands	Pickled olives.
Conklin Brothers	Orland	Angora rug.
American Niter Company	Los Angeles	Niter.
M. J. Brandenstein	San Francisco	Package tea.
St. Mary's College	Oakland	Cuts and drawings.

EXHIBIT "B."

NOTE.—After closing up the St. Louis Report the Commissioners at that Exposition received from a claim that had been in dispute, \$486.00. This not appearing in their Report, it is here accounted for as follows: \$237.05 of the said amount was expended for freight, postage, stationery, labor and material in receiving, handling, plating and distributing the St. Louis medals, and also labor and postage for distributing the St. Louis diplomas. This leaves a balance of \$248.95, which has been returned to the State Treasury, and vouchers for the amount expended filed with the Controller.







14 DAY USE
RETURN TO DESK FROM WHICH BORROWED
LOAN DEPT.

This book is due on the last date stamped below, or
on the date to which renewed.
Renewed books are subject to immediate recall.

REC. ILL JUN 16 1978

LIBRARY USE
APR 30 1957

REC'D LD

APR 30 1957
DEC 2 1977
FEB 2 78

REC. ILL JUN 16 1978

INTERLIBRARY LOAN
MAY 1 1 1978
UNIV. OF CALIF., BERK.

LD 21100m-6,'56
(B9311s10)476

General Library
University of California
Berkeley

Gaylord Bros.
Makers
Syracuse, N. Y.
PAT. JAN. 21, 1908

YC101225

T 834
F3C3 441231

UNIVERSITY OF CALIFORNIA LIBRARY

