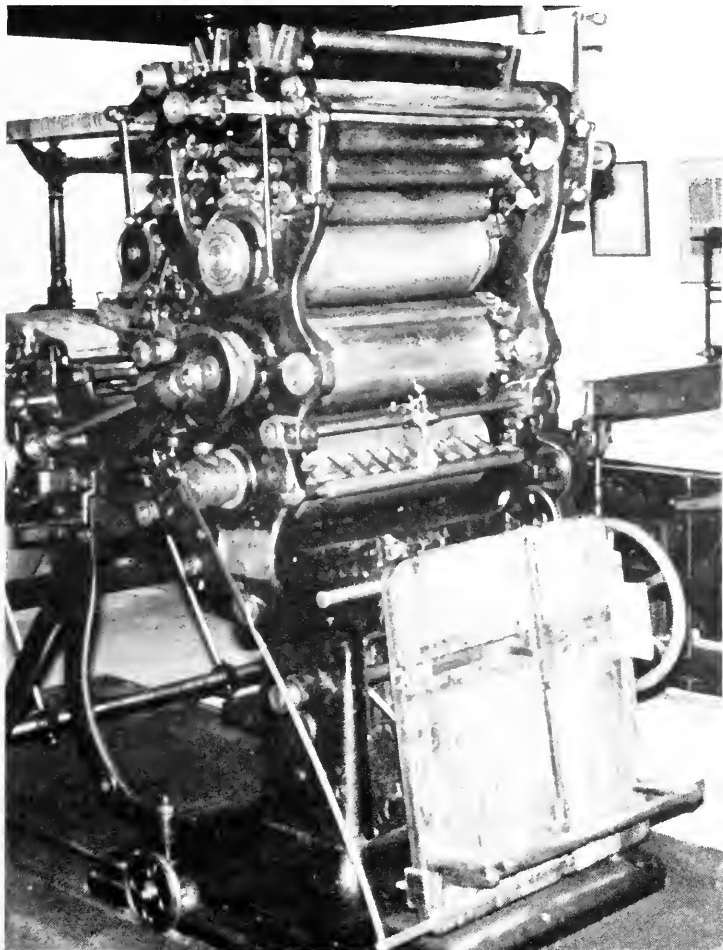


The Flyleaf

Friends of Fondren Library Vol. 37, No. 2

Winter, 1986



RICE UNIVERSITY
FONDREN LIBRARY

Founded under the charter of the university dated May 18, 1891, the library was established in 1913. Its present facility was dedicated November 4, 1949, and rededicated in 1969 after a substantial addition, both made possible by gifts of Ella F. Fondren, her children, and the Fondren Foundation and Trust as a tribute to Walter William Fondren. The library recorded its half-millionth volume in 1965; its one millionth volume was celebrated April 22, 1979.

THE FRIENDS OF
FONDREN LIBRARY

The Friends of Fondren Library was founded in 1950 as an association of library supporters interested in increasing and making better known the resources of the Fondren Library at Rice University. The Friends, through members' dues and sponsorship of a memorial and honor gift program, secure gifts and bequests and provide funds for the purchase of rare books, manuscripts, and other materials which could not otherwise be acquired by the library.

THE FLY LEAF

Founded October 1950 and published quarterly by The Friends of Fondren Library, Rice University, P.O. Box 1892, Houston, Texas 77251, as a record of Fondren Library's and Friends' activities, and of the generosity of the library's supporters.

Editor, Elizabeth Dabney; Editorial Committee, Samuel Carrington, Margaret Clegg, Fern Hyman, Tom Phillips, Nancy Rupp.

FRIENDS OF FONDREN LIBRARY

Board of Directors, 1986-87

Mr. David D. Itz, President
Ms. Mary Lou Rapson, Vice-President, Membership
Mrs. John L. Margrave, Vice-President, Programs
Mr. Edgar O. Lovett, II, Vice-President, Special Event
Mr. Richard. W. Lilliott, III, Treasurer
Mrs. George A. Laigle, Secretary
Mr. John B. Baird, III, Immediate Past President
Dr. Samuel M. Carrington, Jr., University Librarian (ex-officio)
Dr. Neal F. Lane, Provost and Vice President (ex-officio)
Dr. Robert M. Stein, University Committee on the Library (ex-officio)
Mrs. Elizabeth Dabney Charles, Executive Director (ex-officio)

Members at Large

Mr. Walter S. Baker, Jr.	Mrs. Don Mafrige
Dr. John B. Boles	Ms. Tommie Lu Mautsby
Mrs. John T. Cabaniss	Dean O. Jack Mitchell
Mrs. Joe D. Clegg	The Hon. Thomas R. Phillips
Mrs. Katherine B. Dobelman	Mrs. Nancy Rupp
Mr. Robert J. Garlington	Mrs. Gus A. Schill, Jr.
Mr. John F. Heard	Ms. Mary Woodson
Mr. J. Richard Luna	

COVER: *The Museum of Printing History*
Photograph by Elizabeth Dabney

Photographs by Elizabeth Dabney, Dick Luna, Mary Lou Margrave,
and from the Johnson Space Center History Archive

A LETTER TO THE FRIENDS

Dear Friends,

Our organization has reached a milestone: we have passed the 1000 membership mark! This actually means we have over 1500 members. The Friends of Fondren started in 1950 with only 30 members. Look what we have done in 36 years! In this past year alone we have increased from 933 members to 1006 members, a 7.2% increase.

Through our membership budget this year we supported the contemporary literature shelf and have also funded an audio visual grant by special request of the librarian. An additional \$65,000 was donated through the honor gifts and memorials account. The Friends of Fondren Endowment Fund has increased to \$270,000 from \$80,000 in just 5 years.

The most important resource we have is our members. If each current member would bring in just one new member, we could easily reach the 2000 member mark! Think what we could do for our library with that many members!

Sincerely,

Mary Lou Rapson

Vice President, Membership

A Notice to our Friends with Modems

You can now dial into the LIBRARY Information System (LIBRIS). This number is 527-6070. It is a direct line.

CONTENTS

1	A Letter to the Friends <i>Mary Lou Rapson</i>
2	Presentations of Collections
3	Preserving "The Right Stuff" <i>Joey Pellarn</i>
6	An Update - The Friends of Fondren
7	Calendar
7	The Allan H. Stevenson Collection <i>Anthony P. Narkin</i>
8	Friends of Fondren 36th Annual Meeting, May 7, 1986 <i>Elizabeth Laigle</i>
9	Tour of The Fondren Library
10	The Museum of Printing History
11	Homecoming, 1986
12	The Friends of Fondren Library
13	Gifts To The Fondren Library
16	The Fondren Library Building Hours

PRESENTATIONS OF COLLECTIONS

The Fondren Library has received two collections from the members of the Friends.



Mrs. James A. Darby, Jr. has given her father's collection of Sam Houston Papers, The Franklin Weston Williams Memorial Collection, for permanent loan until 1988 when the collection reverts to the Fondren Library and the University. Present at the presentation were members of Mrs. Darby's family.



Front Row: Mrs. Darby, Anne Darby Kennett, Weston Darby, Charlotte Darby Taylor, Holly Darby, Jim Darby. Back Row: Jay Kennett, Stanley Taylor.

The Benjamin Monroe Anderson Collection on the History of Aeronautics was given to the Library by Mr. Ben M. Anderson.



Mr. Anderson and Samuel M. Carrington, University Librarian



Nancy Booth, Mrs. Anderson, Mr. Anderson

PRESERVING "THE RIGHT STUFF"

Joey Pellarin, Archives Assistant
Johnson Space Center History Archive

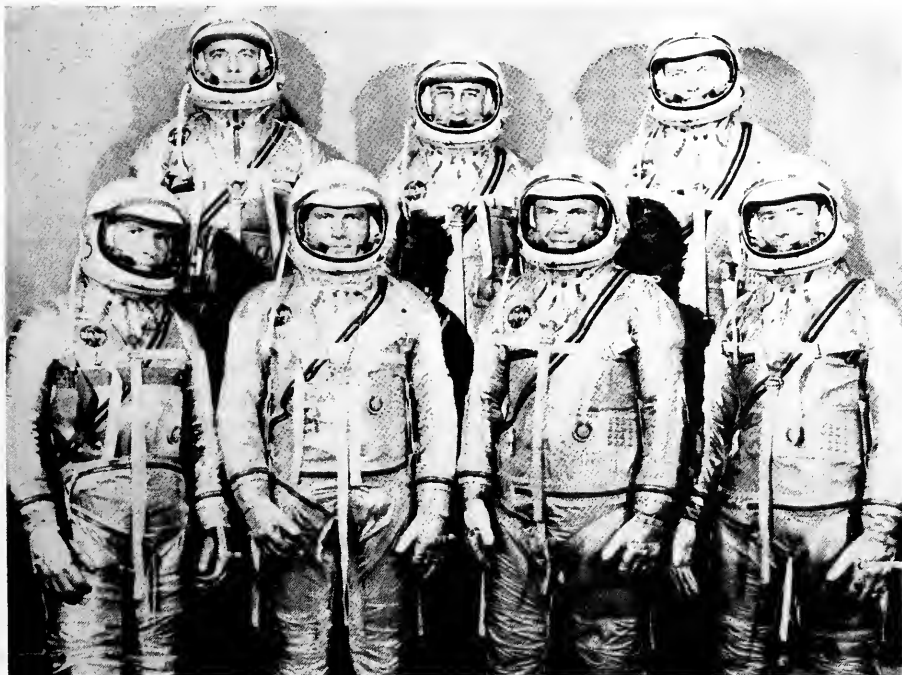
A few years ago, audiences sat before a movie theater screen and relived their memories of America's first adventures in space. Adapted from the popular Tom Wolfe book of the same name, "The Right Stuff" retold on film the story of the original Mercury 7 astronauts — Alan Shepherd, "Gus" Grissom, John Glenn, Scott Carpenter, Gordon Cooper, Walter Schirra and "Deke" Slayton.

The written record of these space achievements — Wolfe's source materials — reside on the fifth floor of the Fondren Library. A unique partnership formed with the Johnson Space Center in 1982 has given Rice University and The Fondren Library boasting rights for a significant collection of documents in the field of American aerospace research.

A Memorandum of Understanding, signed by Center Director Christopher C. Kraft and Dr. Norman Hackerman, transfers materials to Rice from the Mercury, Gemini, Apollo (scheduled for delivery next year), Skylab and Apollo-Soyuz programs. The terms of the agreement stipulate that Rice will "provide improved curatorial facilities for these documents" and arrange for the "public use by individuals and scholars involved in research projects of these files."

With the assistance of a one year Department of Education grant, Woodson Research Center staff arranged and described documents originating from the files of NASA engineers and program managers at the Johnson Space Center. Each project evolves in the letters, memoranda, working papers, engineering notes, and contractor publications that were produced in great quantities during the 1960's and 1970's. After gaining a rough familiarity with these documents, I am tempted to conclude that the success of U.S. manned spaceflight programs depended almost as much upon management's ability to make thousands of critical design decisions as it did upon the skills of NASA and contractor engineers!

It goes without saying that Johnson's particular responsibilities within the space program (as in the area of flight crew development) are heavily documented in the collection. However, since Johnson is a part of a much larger network of NASA field centers, a research interest in the quality of the working relationships between them is understandable. The extensive correspondence files in the collection are particularly useful in this regard. Knowledge of launch operations at Kennedy, global communications and tracking at Goddard, booster development at Marshall and policy considerations at Headquarters were essential to those who managed Johnson's efforts. The record of communications between centers is, therefore, a



valuable tool for understanding inter-center co-operation.

Complimenting the main body of material are some smaller ones, donated separately. In 1982, Bruce Nichols of the Houston Chronicle offered Rice a collection of NASA related papers from the office of the United Press International. The mission commentary, press releases, telexes and photographs that it contains offer interesting insights into media coverage of the U.S. space program.

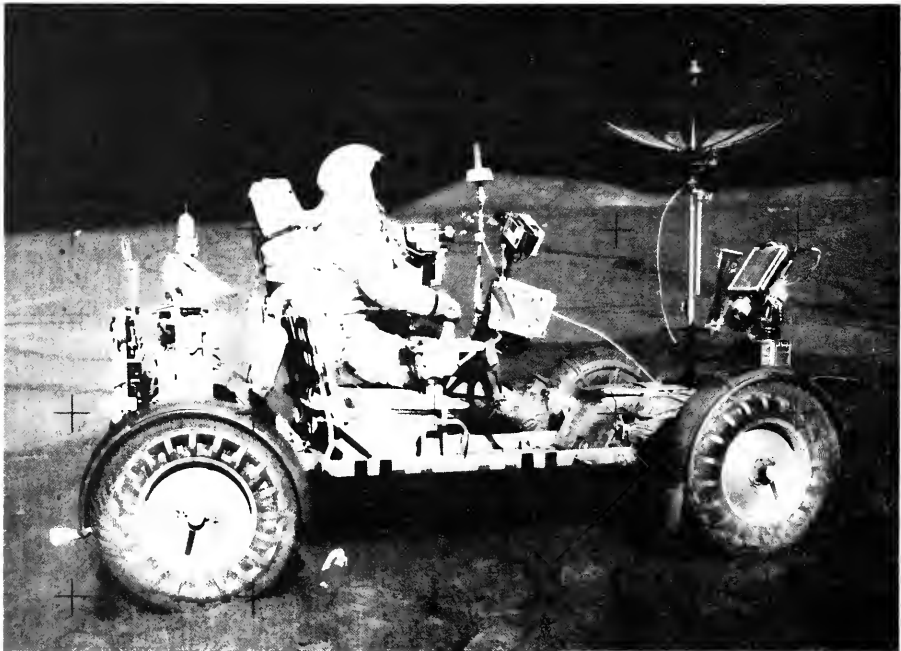
The visual images that television coverage provided the American public are also part of the archive. Shortly after the UPI papers arrived, footage from Gemini, Apollo, Skylab and the Apollo-Soyuz program arrived from the Movie Newsreels Company of Hollywood, California. Everyone's most enduring memories of the space program, of launches, space walks and lunar landings, seem a most fitting way to round out the collection.

Of course, conducting research in a large archive such as this one would be difficult indeed without effective finding aids. Woodson staff have completed a traditional printed guide to the Johnson Space Center History Archive and are working on a computer index to the collection. The index can be searched on a number of fields including date, office of origin, title, key words, signator, NASA number or any combination thereof. This dual finding aid system gives the researcher the luxury of casually browsing the guide for items of interest or using the computer to "zero in" on very specific documents from within a large collection.

Among the most pleased to learn that the files of America's manned space programs are well organized and searchable are the NASA personnel who make frequent use of the material in the archive. The particular difficulty and expense of working in the unique environment of space make the lessons learned over the last three decades of aerospace research invaluable to the present crop of NASA engineers. This is particularly true in light of the loss of Challenger and her crew.

NASA engineering and management personnel are joined by NASA contract historians as major users of the collection. The results of their work have been the agency's admirable series of program histories. Each of them pays justifiable attention to technological developments in aerospace research without neglecting to explore the political considerations that affect any large government research and development project. (Copies of these very readable books are available in the government publications division of the Fondren.)

Not to be forgotten, of course, are the space buffs and free lance writers whose fascination for the space program has not waned. Although it has been said that the glamor days of the space program are over, this solid core of enthusiasts is convinced otherwise and continues to produce magazines and monthly newsletters for the benefit of their membership. Many of them write to us from Europe where news and information about America's space effort is less abundant.



Interest in the Johnson Space Center History Archive is increasing steadily. Perhaps this is partly attributable to public scrutiny of the space program in the wake of the Challenger accident, but there is no doubt that word of this important collection is getting around in scholarly and other circles.

Further exposure is expected for the collection with the opening in 1988 of a space related exhibit at the Fort Worth Museum of Science and History. The exhibit will travel to six other such institutions across the country through December of 1991. "Space Spinoffs" will focus on the engineering concerns that are common to both the U.S. space program and to private industry and will display nearly 120 consumer products with origins at NASA. Interactive computer-video programs will allow visitors to test their problem solving capabilities and to expand their understanding of the challenges of space research. Much of the exhibit is being built around materials borrowed from the Rice collection and from the Johnson Space Center.

Developing and refining the collection for the growing number of users is a primary concern. The former is achieved by virtue of a close working relationship with the History Office at the Johnson Space Center and with the NASA Technical Library on-site. Through them Rice receives new material for integration into the collection and is kept current on activities at the Center. They also provide a liaison between Rice and the NASA Media Service Branch that helps us to maintain (and occasionally duplicate) the audio and visual recordings in the archive.

Refinement of the collection and its finding aids is continuing with the assistance of a new AT&T personal computer and modem that the agency has provided to Rice in recent months. By the end of this year, or early in the next, our existing index will be migrated to a new full-text management system recently purchased by NASA for center-wide use. This program uses an inverted file for searching rather than the sequential system employed by the old (and archaic) system. This simply means that the computer searches a separate alphabetical listing of keywords rather than the complete text of the documents. This represents a faster and more efficient method of searching since the user can modify queries without having to examine the documents themselves.

The system integrates structured and full text documents, updates the inverted file on-line, contains a thesaurus, can link to other databases for searches, and offers on-line menus and help screens for increased user "friendliness". The end result is a vastly improved indexing capability and more efficient research assistance.

The outlook for the JSC Archive is, on the whole, positive and exciting. Renovation of its fifth floor living quarters was completed by the library in June making those who work there very pleased indeed. Certainly the Fondren is fortunate to be the custodian of such an important collection chronicling some of our nation's most spectacular achievements in space.



AN UPDATE — THE FRIENDS OF FONDREN

The Friends of Fondren Library was formed on May 30, 1950, by a small group of Fondren patrons for the purpose of "making better known the resources of the Fondren Library at Rice University". The Friends' main purpose stated in the charter was one of enhancing the collection, of providing the means of acquiring materials which could not be acquired under the auspices of the regular university budget.

Additional goals were established by the Board of Directors in 1975. They were to increase the size of the board, the membership, to present vital and interesting Friends' programs, and to expand and improve *The Flyleaf*, the Friends' quarterly journal. All these goals have been realized. The size of the Board and the membership have increased dramatically to where the Friends' membership is now over one thousand.

The programs that the Friends provide for its members are varied. They range from formal lectures to art shows, plays, concerts by the Shepherd School and the Casino Party. While enjoying themselves, the Casino Party provides the means for the Friends to increase their Endowment Fund.

The format of *The Flyleaf* is now sophisticated containing a variety of articles on library problems, acquisitions, processes as well as activities of the Friends and Rice legends. The journal has won two awards from the Council for the Advancement and Support of Education.

The Friends primary purposes, that of enhancement of the collection and supporting the library itself, have been successful. The Friends have encouraged many donations of collections to the Fondren. Because of their efforts the Fondren contains one of the largest collections on Texana and the Southwest. The library is a storehouse of many family papers — Masterson, Newman, Grace, Sharp, Fondren, Kelley, Huxley.

Through the efforts of the Friends, many rare volumes, or facsimile editions thereof, have been donated to the Fondren. The Friends have also arranged for the purchase of volumes and manuscripts as well. The group has encouraged donations to the library by establishing a challenge grant for the Shepherd School of Music to expand the Music Library and for the Jesse H. Jones School of Business Administration.

The Friends are an active group. The Board looks for every possible way to encourage the community to become interested in the Library by holding book sales, sponsoring benefit performances of the Rice Players, encouraging gift memberships and staging an annual Casino — Auction Party. Student interest is encouraged by a year's complimentary membership in the Friends for all graduating students and by holding a Student Book Collectors' Contest in which monetary prizes are awarded.

In short, it appears that the Friends of Fondren have more than surpassed their original goals. Through the efforts of its expanding membership the organization is achieving the stated goal of enhancing of the Fondren Library.



CALENDAR

1986 — 1987

Tuesday, March 31 HOUSTON'S WATER—QUANTITY, QUALITY, AND QUANDRY, Dr. C. H. Ward, Professor of Biology and Environmental Science. Kyle Morrow Room, Fondren Library, 7:30 p.m.

Tuesday, April 21 PREVIEW OF STUDENT ART EXHIBITION sponsored by the Friends and the Arts Committee of the Association of Alumni. Sewall Gallery, Rice University, 7:00 to 9:00 p.m.

Wednesday, May 6 ANNUAL MEETING. RECEPTION HONORING FOUNDERS: FORTIETH ANNIVERSARY OF GROUNDBREAKING, FONDREN LIBRARY, Kyle Morrow Room, Fondren Library, 7:30 p.m.

An informal reception will follow each program
Mary Lou Margrave, Program Chairman

THE ALLAN H. STEVENSON COLLECTION

Anthony P. Narkin, Processor,
Woodson Research Center

The bibliographic reference collection of the late Dr. Allan Stevenson, Rice graduate (B.A. 1924, M.A. 1926), has been received in the Woodson Research Center, the gift of Dr. Stevenson's widow. At the time of his death in 1970, Allan Stevenson was one of a small number of distinguished American incunabulists, and his research brought him international acclaim among those who study the origins of late medieval printing with moveable types when, in 1967, the Oxford University Press published his *The Problem of the Missale Speciale*. A full account of this study is available in *The Flyleaf* for summer, 1986 (vol. 36, no. 4, p. 9).

Although Dr. Stevenson's interest and greatest contributions to his field concerned the use of watermarks in the paper of undated fifteenth-century imprints, the books and papers in the Stevenson Collection concern all phases of early printing and paper production. The fifty-six volumes, many of them from very limited editions, are to be cataloged for the WRC reference collection, while the remaining papers, including manuscripts, drafts, corrected off-prints of articles, paper samples, and watermark reproductions, are already processed in the usual manner for manuscript and archive collections and are available for use in the Woodson Research Center.

FRIENDS OF FONDREN 36TH ANNUAL MEETING, MAY 7, 1986

John Baird opened the meeting in the Kyle Morrow Room of Fondren Library. He introduced the officers and director of the board.

Mary Lou Margrave, Vice-President of Programs has served in her position for two years and has agreed to remain for another year.

John Baird is the immediate Past President and David Itz is the new President. Joining David on the Executive Committee are three new officers, who like David, served this past year as Directors:

Mary Lou Rapson – VP Membership
Edgar Lovett – VP Special Event
Elisabeth Laigle – Secretary
Rick Lilliott – Treasurer

The following former officers will not be on the Board next year, but were thanked for the enormous contribution they have made during their years on the Board.

Frank Bay – VP Membership
Karl Doerner – VP Special Event
Nancy Eubank – Secretary
Camille Simpson – Asst. Secretary

Also making their exit are three Directors who have served the Friends in many capacities for at least three years each:

Diana Hobby
Bob Moore
Pam Smith

Nine new Directors were elected: John Heard, Kay Dobleman, Walter Baker, Mary Woodson, Betty Cabaniss, Kay Schill, Tommy Lu Maulsby, Nancy Mafrige and Dick Luna.

Four people were appointed to our Board as "Ex Officio" members: Sam Carrington, Neal Lane, Frank Brotzen and Betty Dabney Charles.

The six remaining directors are Judge Tom Phillips, Margaret Clegg, Bob Garlington, Shirley Redwine, Jack Mitchell and Nancy Rupp.

John discussed the fact that the master plan for the library renovation soon will be complete and this present board will have a chance to participate in this major facelift. He asked for the support of all present.

Mary Lou Margrave introduced the program for the evening "Lasers in Our World Today" presented by Dr. John Margrave, Dr. F. Barry Dunning and Dr. Frank K. Tittel.

The meeting was adjourned for a social hour.

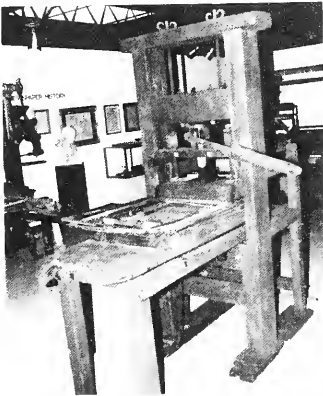
Respectfully submitted,

Elisabeth Laigle,
Secretary

TOUR OF
THE FONDREN LIBRARY



THE MUSEUM OF PRINTING HISTORY



HOMECOMING 1986



THE FRIENDS OF FONDREN LIBRARY

New Members

September 1, 1986 to November 30, 1986

Benefactor

Miss Alma Detering

Sponsors

Mr. and Mrs. Thomas L. Caldwell
Mr. and Mrs. Gordon E. Davenport
Mr. John R. Dreyer, Jr.
Mr. and Mrs. Roy L. Lay
Mr. Jefferson Lewis
Dr. and Mrs. Donald H. Little
Dr. and Mrs. Fred R. Lummis
Mr. and Mrs. Patrick H. Monaghan
Mr. Roy M. Pitner
Mr. Robert M. Secrest

Contributors

Mr. and Mrs. Bruce R. Baker
Ms. Linda Becerra
Dr. Elizabeth S. Boyce
Craig E. Fredrickson
Dr. Louis J. Girard
Mr. and Mrs. Thomas B. Greene III
Mac and Rosine Hall
Ms. Anne Lau
Mr. William F. McIlhenny
Mrs. Nancy Mafrige
Mr. Gary P. Menzel
Mr. and Mrs. Ralph A. Mitkiff
Dr. and Mrs. Ferrin B. Moreland
Mr. William James Murray
Mr. and Mrs. F. Tim Pease
J. Edwin Smith
Mrs. Dorothy C. Sorrells
Mr. and Mrs. Robert Tucker

Donors

Mr. Henry Clay Adams III
Mr. and Mrs. Igor George Alexander
Mrs. Aurelia Askew
Ms. Michelle P. Arthebise
Mr. Murvin R. Auzenne
Ms. Anne Brown Bledsoe
Ms. Kathy M. Cole
Mr. and Mrs. James Colhart
Mr. G. W. Corporon
A. B. Crossman
Mrs. Platt W. Davis, Jr.
Mrs. Roy Die
Mr. and Mrs. R. E. Durden
Mr. Lew Eatherton
Mr. H. Banks Edwards
Mrs. James H. Erwin, Jr.
Mr. Jerry S. Evans
Roserta McGregor Fatheree
Bill Flanagan

Mr. and Mrs. Andy Foley
Mr. and Mrs. A. P. Friedman
Mrs. Martha M. Frye
Mr. Kenneth L. Gau
Mr. and Mrs. Harold L. Green
Mr. and Mrs. James A. Grenadier
Mr. John Griffey
Mr. R. V. M. Groves
Mrs. Mary E. Gullo
Mrs. John P. Hardy
Ms. Renee Harthorn
Ms. Mary Lou Henry
Marian Hillar, MD, PhD
Nancy Grier Hogan
Mr. and Mrs. Ralph Holibaugh
Jacqueline Marcinda Jackson
Robert E. Keegan, II
Mr. David W. Kiel
Mr. Març Kilbride
Ms. Amelia Kornfield
Mr. James G. Laine
Mr. and Mrs. Ted C. Lutton
Mr. and Mrs. E. R. McHaffie
Mr. Robert L. McKee
Mr. Charles D. Maynard, Jr.
Mr. and Mrs. J. D. Mills
Mr. Tim Mock
Charles Moran
Mr. Michael Most
Mr. and Mrs. John M. Nagle, Jr.
Mr. and Mrs. James L. Noel III
Dr. and Mrs. Lysle H. Peterson
Mr. and Mrs. Peter M. Schwab
Mr. Antonio Serrato
Mr. and Mrs. Steve Shaper
Patricia Shelton Simon
Ms. Kathleen Slaydon
Mrs. V. W. Sponseller
Donna Stammer
H. Mark Stanley III
Mr. Sergey Svedlin
Mrs. Mary Rose Veggeberg
Randy Wagner
Bonnie Brookshire and Dan Watson
Mr. Gordon Weisser
Mr. Thomas C. Williams
Mr. Allan J. Winston
Dr. Madeleine E. Wright

Faculty/Staff

Mr. Konstantine Kolenda
Dr. William L. Taylor
Dr. and Mrs. A. Van Helden

Graduating Students

Mr. Scot Brooks
Mr. Alan Juza

Karin Murphy

In addition, the following have upgraded their membership in the Friends.

Dr. and Mrs. John G. Barrett
Elizabeth D. Collins
Mr. and Mrs. T. Benson Ford
Mr. and Mrs. Edgar O. Lovett, II
Ms. Sharon E. Whiting

The Friends of Fondren Library is most grateful to these new Friends for their interest and to the Friends of longer standing for their support and for renewing their commitments.

GIFTS TO THE FONDREN LIBRARY

September 1, 1986 to
November 30, 1986

The Friends sponsor a gifts and memorials program for the Fondren Library which provides their members and the community at large a way to remember or honor friends and relatives. It also provides the Fondren the means to acquire books and collections beyond the reach of its regular budget. All gifts to the Fondren through the Friends' gift program complement the library's university subsidy.

Funds donated through the Friends are acknowledged by the library to the donor and to whomever the donor indicates. Gifts can be designated in honor or memory of someone or on the occasion of some signal event such as birthdays, graduation or promotion. Bookplates are placed in volumes before they become part of the library's permanent collection.

For more information about the Friends' gift program, you may call Gifts and Memorials or the Friends' office (527-4022). Gifts may be sent to Friends of Fondren, Rice University, P.O. Box 1892, Houston, Texas 77251, and qualify as charitable donations.

The Friends and the Fondren Library gratefully acknowledge the following gifts, donations to the Friends' fund and donations of periodicals, and other materials to the Fondren. All gifts enhance the quality of the library's collections and enable the Fondren Library to serve more fully an ever-expanding university and Houston community.

GIFTS IN KIND

Gifts of books, journals and manuscripts were received from:

Natalia Alexandrov
American Stock Exchange
Boston College Libraries
Franz R. Brotzen
The Brown Foundation
Robert Butler
Center for Defense Information
Susan Clark
Claude Cook
William C. Dickerman
Mrs. Elaine Dippel
Elf Aquitaine Petroleum
Farm Credit Banks of Texas

Foundation for Human Understanding
Ray Garfield
Jane D. Hall
Dick Hedges
City of Houston
Dayton G. Justice
Professor Michael J. Katz
Kent State University Libraries
R. LaReau
Ruth W. Lewis
Menil Foundation Inc.
Christakis S. Modinos
Stephen C. Paine
Kenneth C. Pitts
University of Delaware Library
University of Wisconsin
Western Savings Association

Gifts were received in memory of

RAYMOND F. CLARK, by
Robert A. McKee

A gift of a 3M Reader/Printer was received from

Brown & Associates Medical Laboratories

MONEY GIFTS

Unrestricted gifts

Margaret C. Ammons
Jennifer M. Elskes
Jack Pettyjohn

Restricted gifts

Dr. Frederick D. Rossini, to be used for materials in the Chemical Sciences

Gifts in honor of/given by

ALBERT & LOUISE BOWLES, on the
occasion of their fortieth
wedding anniversary, by
Al & Bridget Jensen

SAMUEL M. CARRINGTON, in
appreciation of his help in hosting the
Spain and Texas Sesquicentennial
Architectural Exhibition in Fondren
Library, by
Mr. & Mrs. Frank Zumwalt, Jr.

MR. & MRS. FRANK FEAGIN, on the
occasion of their fiftieth anniversary, by
Sara Leah & Alex Frosch

MRS. GERALDINE FRANKLIN, on
the occasion of her birthday, by
Mildred S. Franklin

MR. & MRS. S. F. GOOD, on the
occasion of the of their fiftieth wedding
anniversary, by
Mildred S. Franklin

JOHN F. HEARD, on the occasion of his
reception of The Friends of Fondren
Library Award - 1986, by the Board of
Directors of The Friends of Fondren
Library

C. M. HUDSPETH, on the occasion of
his reception of The Association of
Rice Alumni Gold Medal for Disting-
uished Service - 1986, by
Maconda Brown O'Connor

RITA MARSALES, in appreciation of
her help in organizing The Spain and
Texas Sesquicentennial Architectural
Exhibition in Fondren Library, by
Mr. & Mrs. Frank Zumwalt Jr.

DR. RANDALL MATTHEWS, by
Mr. & Mrs. Edward Oppenheimer, Jr.
A. J. PHIPPS, on the occasion of his
birthday, by
Mildred S. Franklin

JAMES A. ROBINSON, in apprecia-
tion for a very special flight, by
H. Russell Pitman

MARGARET ANN SCHMITT,
D.D.S. & CHARLES WILLIAM
BRITT, M.D., on the occasion of
their wedding, by
Mr. Fred L. Williams, Jr.

MR. & MRS. M. H. STEWART, by
Mr. & Mrs. Alex Frosch

J. D. THOMAS, by
Walter E. Liljestrand
Gifts in memory of/given by

HUGH G. ALEXANDER JR.
Mr. & Mrs. H. Malcolm Lovett

MRS. ALMA ANDERSON
Mr. & Mrs. Edwin H. Dyer Jr.
Mr. & Mrs. Hugh E. McGee Jr.

WILLIAM V. BALLEW SR.
Mr. & Mrs. Ralph Carrigan
Mr. & Mrs. J. Thomas Eubank
and Family
J. H. Freeman

Mr. & Mrs. Hugh E. Gragg
Mr. & Mrs. C. M. Hudspeth
Mrs. Edward C. Hutcheson
Mr. & Mrs. Carl Illig

Mr. & Mrs. H. Malcolm Lovett
Mr. & Mrs. John S. Sellingsloh
Mr. & Mrs. Charles Szalkowski

H. N. BARKLEY JR.

Jackie Buchanan
S. M. Carrington
Nell Chappell
Jewel Hamilton
John Hunter
Ferne Hyman
Barbara Kile
Rita Marsales
Jean McKinney
Ola Moore
Kann Murphy
Jet Prendeville
Catherine Siever
Emma Smith
Ruth Van Steenberg

JAMES BARRY

Dr. & Mrs. Ed F. Heyne III

MRS. ADDLEAN WHITE BENNETT

Martha and Warren Davis
Owen Wister Literary Society Alumnae

JESSE STONE BINFORD

Mr. & Mrs. Paul R. Waters

MRS. BLAKEMORE

Mrs. Fred L. Williams Jr.

W. A. BLAKEMORE

Mrs. Wilbur F. Nicholson

MIGNON W. BOWEN

W. H. Higginbotham, M.D.

MOSCELYN BRINEGAR

Mr. & Mrs. Claude T. Fuqua Jr.

MRS. ESTHER NORBECK BROWN

Mr. & Mrs. Samuel E. Sims
Mr. & Mrs. Frank E. Zumwalt Jr.

**MRS. CHERRY SCHWARTZ
BRINSON**

Faculty Women's Club of Rice University
Mrs. Marshall F. Robertson

**CORRINE CROTHERS
BUCHANAN**

Mr. & Mrs. Frank M. Fisher
Mr. & Mrs. Gus Schill Jr.

STEVE BURROUGHS

Mr. & Mrs. Russell J. Simon
and Family

DR. ALLEN CHANDLER

Prof. & Mrs. André M. Bourgeois

BEATRICE ROBERT CHRISTINA

Mrs. Edith E. Braznell
Bernice D. Stephenson

EWELL A. CLARKE JR.

Oscar M. Palmer Jr.
Mr. & Mrs. J. C. Wilhoit Jr.

HENRY A. CLORE

Mr. & Mrs. William O. Morgan

JOHN B. COFFEE JR.

Mr. & Mrs. James A. Fite Jr.
Mr. & Mrs. Dan M. Moody

T. P. CREEDON

Robert V. Turner

MRS. PATRICIA J. DAVIS

Dr. & Mrs. Karl C. ten Brink

MRS. FREDRICA GROSS DUDLEY

Mr. & Mrs. Ward N. Adkins
Mrs. Sloan Bainum
Mrs. Ronick Cravens
Mr. & Mrs. Henry W. Hoagland
Mr. & Mrs. H. Malcolm Lovett
Mrs. Eliza Lovett Randall

DR. C. A. "RED" DWYER

Mary and Jack Dwyer

PROF. FRANK N. EDMONDS JR.

Mr. & Mrs. Emmett L. Hudspeth

DR. GEORGE EHNI

Mr. & Mrs. C. M. Hudspeth
Mrs. A. C. Muller
Mrs. Rex Shanks Jr.

KRAFT WARNER EIDMAN

Mr. & Mrs. Victor N. Catter
Mr. & Mrs. James A. Fite Jr.
Mr. & Mrs. William J. Hudspeth
Mr. & Mrs. Carl Illig
Alvin S. Moody

CARD G. ELLIOTT JR.

Mr. & Mrs. James A. Fite Jr.
Kate and Haylett O'Neill
Robert V. Turner

ERNEST BEL FAY

Mrs. Ronick Cravens
Mrs. Edward W. Kelley
James M. Lykes Jr.
Mrs. W. McIver Streetman

WILLIAM BROWNLEE

FERGUSON III
Virginia Kirkland Innis

HAROLD F. FULBRIGHT

H. Russell Pittman

MARY FAUNTLEROY FULLER

Mr. & Mrs. Jay H. Rose

MRS. HAZEL GANNON

Mr. & Mrs. James C. Wilhoit Jr.

STUART GARCIA

Mr. & Mrs. Emmett L. Hudspeth

JOE F. GERLICH

Allene Biehle
Wanda Jackson
Patricia Matrin
Yvonne Sears
Mattha Vest
Lois Waldron

JOSEPH CLARENCE GOLDSTON

Mr. & Mrs. H. Malcolm Lovett

RALPH C. GRAHAM

Mr. & Mrs. H. Malcolm Lovett

HALL W. GRIGGS SR.

Jon and Margot Madsen
Mr. & Mrs. James U. Teague

W. BROOKE HAMILTON

Mrs. Fred L. Williams Jr.

WILLIAM HARTMAN

Waldo F. McNeir

SHIRLEY MAXWELL HELM

Ralph A. Anderson Jr.
Mr. & Mrs. Walter Hebert
Mr. & Mrs. Wendel D. Ley
Mr. & Mrs. H. Malcolm Lovett
Mr. & Mrs. John T. Maginnis

V. K. HRNCIR

Mr. & Mrs. Edward Helmle

FLORENCE HUCK

Linda Burge Bramlett
Catherine Burge
Susan Burge Schotters

THAD T. HUTCHESON

Mrs. Ronick Cravens
James M. Lykes Jr.
Charles Perlitz III

MRS. AURELIA KURTH JAMESON

Ralph A. Anderson Jr.
Mr. & Mrs. Henry W. Hoagland
Rice University Associates
Mildred Malone Ryman

WILLIAM F. JENKINS

Mr. & Mrs. C. M. Hudspeth

WALTER L. JUDD

Dr. & Mrs. Robert K. Blair

LEONARD KAROTKIN JR.

Mr. & Mrs. John E. Joiner

JOHNNIE L. KERRICK

Mr. & Mrs. Ross Perricone

MINA CLAER KEY

Mr. & Mrs. George W. Batten Jr.

HOWARD KINSER

Mrs. Louise Dunnam

ELODIE MARTEL LADEN

Alvin S. Moody

K. O. LADIG

Mr. & Mrs. Phillip B. Costa

MISS SARAH L. LANE

Dr. & Mrs. John Barrett
Mr. & Mrs. George W. Batten Jr.
S. M. Carrington
Mrs. Mildred Malone Ryman
Mrs. Fred L. Williams Jr.

VIOLA LASSITER
 Mr. & Mrs. Hugh E. McGee Jr.
CLIFFORD LEFTON LAWRENCE
 Stan Blount
 Mr. & Mrs. H. A. Burnell
 Royce W. Clark
 William J. Condon
 Mr. & Mrs. James E. Cree
 David Y. Cunningham
 Mrs. W. B. Cunningham
 H. Clayton Edwards
 Mrs. Frank E. Gill
 Douglas Hair
 Robert J. Hayward
 Milus E. Hindman
 John Holsomback
 Mrs. E. M. Hurlbut Jr.
 Elvin M. Hurlbut Jr.
 Mr. & Mrs. Conrad Kroll
 Donald Lehde
 Robert L. Lohse Jr.
 Donald H. Majerus
 Mason Matthews
 Richard H. Perrine
 Antonio Prado
 Charles E. Slade Jr.
 Laura C. Taylor
 Patricia van Bergh
 Gordon D. Watson
 Mr. & Mrs. William F. Wickstrom
 Milton Wilson
CHARLES R. LEDBETTER
 Mary and Jack Dwyer
MRS. MARCELLE P. LE BOURG
 Mrs. Helen Rene Hilleyer
RUTH TURRENTINE LEE
 Mr. & Mrs. Edwin H. Dyer
 Mr. & Mrs. Ed F. Heyne III
DR. THOMAS LELAND
 The Discussion Group
 Dr. & Mrs. William E. Gordon
 Mr. & Mrs. C. M. Hudspeth
 Rice University Faculty Women's Club
CARROLL A. LEWIS SR.
 Mr. & Mrs. Joseph F. Reilly Jr.
MR. RICHARD W. LILLIOTT JR.
 Mr. & Mrs. Ernest M. Charles
 Mr. & Mrs. C. M. Hudspeth
 Dr. & Mrs. John L. Margrave
 Kate and Haylett O'Neill
 Mr. & Mrs. Frank Zumwalt Jr.
PROF. ROBERT N. LITTLE JR.
 Mr. & Mrs. Emmett L. Hudspeth
MRS. REBA RUGELEY LIVESAY
 Judge and Mrs. Reagan Cartwright
WILLIAM EMORY LOOSE
 Mrs. Gene D. Hovey
 Evelyn and Roy Nolen
 Mr. & Mrs. J. C. Wilhoit Jr.

ELIZABETH DUCKETT LYON
 Mary Louise Giraud
ELEANOR McFADDIN
 Mr. & Mrs. John E. Joiner
JOHN MACKENZIE
 Mrs. Wilbur F. Nicholson
JAMES P. MARKHAM JR.
 Mr. & Mrs. H. Malcolm Lovett
CAPTAIN JERZY MIESZKOWSKI
 Rice University Department of Economics
S. ALLIN MITCHELL
 Mrs. A. Lawrence Lennie
MRS. LAURENE TROUTMAN MOORE
 Dr. & Mrs. A. Thomas Adkins
 Mr. & Mrs. Thomas Avilson
 Mr. & Mrs. E. W. Barnett
 Robert Beamon
 Mr. & Mrs. Franz R. Brotzen
 Reagan and Claudia Burch
 Mrs. Ben A. Calhoun
 S. M. Carrington
 Mr. & Mrs. Ernest M. Charles
 John P. Cogan Jr.
 Mr. & Mrs. Richard Davis
 Mr. & Mrs. David Devine
 Mrs. J. T. Eubank
 Mr. & Mrs. W. C. Griffith
 Mr. & Mrs. Stephen M. Hackerman
 Mr. & Mrs. George W. Hansen
 Violet B. Harlan
 Mr. & Mrs. George H. Jewell
 Nelle Kelley
 Mr. & Mrs. M. Arthur Kotch
 Dr. & Mrs. William Rugeley Livesay
 Mr. & Mrs. E. W. Louden
 Annette C. McAdams
 Dr. & Mrs. John L. Margrave
 Mrs. Byron Meredith
 Mr. & Mrs. Harold Metts
 Mr. & Mrs. Jon L. Mosle Jr.
 Mrs. Mildred M. Patterson
 Mr. & Mrs. Edward A. Payne
 Randall's Food Markets Inc.
 Mr. & Mrs. Perry M. Reaves
 Mr. & Mrs. R. D. Richards Jr.
 Mr. & Mrs. Gus Schill Jr.
 L. Chapman Smith
 Mr. & Mrs. T. D. Smith
 Mr. & Mrs. Charles Szalkowski
 Mr. & Mrs. Bruce W. Wallace
 Mr. & Mrs. Paul R. Waters
 Mr. & Mrs. H. T. Watson
 Mr. & Mrs. Sterling B. Womack
MRS. MARTHA SCOTT MOORE
 Tom C. Dunn
 Mr. & Mrs. H. Malcolm Lovett
 S. I. Morris
 Mrs. Eugenia Rayzor
 Mrs. Carl W. Schumacher Sr.

NORVEL Q. MOORE
 Mr. & Mrs. Edwin H. Dyer Jr.
GROVER W. NEEDHAM
 Charles M. Hickey
MRS. ANNETTE LUMMIS NEFF
 Judge & Mrs. Reagan Cartwright
 Tom C. Dunn
 Mr. & Mrs. Hugh E. Gragg
 Mr. & Mrs. H. Malcolm Lovett
 Mrs. Eliza Lovett Randall
SAMUEL NOCK
 Waldo F. McNeir
HAROLD MARCUS NORTH
 Mrs. Frank Allen
 Mrs. Mack C. Adams
 Mrs. M. E. Lemmons Jr.
 Mrs. Fofu Lewis
 Sharlyn Liningier
 Mrs. W. Mathis
 Mrs. Fred Miller Jr.
 Mrs. Glenn C. Wilcox
MRS. MARY MOODY NORTHERN
 Jefferson Davis Association
MRS. ROSELYN PERDUE
 Mr. & Mrs. Frank Zumwalt
EDWARD L. PUTNAM
 Judge & Mrs. W. N. Blanton Jr.
 Judge & Mrs. Reagan Cartwright
CLINTON S. QUIN JR.
 Mr. & Mrs. H. Malcolm Lovett
 Kate and Haylett O'Neill
 Mrs. J. N. Rayzor
 Robert V. Turner
TAYLOR RAY
 Rice University Associates
V. P. RINGER
 Mrs. Virginia Ansel and Family
 Mr. & Mrs. E. W. Barnett
 Dr. & Mrs. Ed F. Heyne III
 Mr. & Mrs. Robert J. Hogan
 Milton B. McGinty
 Mr. & Mrs. Robert G. Smith
THELMA ROGERS
 Mr. & Mrs. Hugh E. McGee Jr.
MRS. ANNE ROQUEMORE
 Mrs. A. Lawrence Lennie
EMIL SABA
 Mr. & Mrs. C. M. Hudspeth
MRS. ANN SCRIVNER SANFORD
 Raymond H. Moers
MRS. CATHERINE SCHROEPFER
 Faculty and Staff of Rice University
LINDA SEARCY
 Jack and Ellen Heemer
JON SHAFFER
 Shanna Herbert
 Lisa Tippette
 Dan and Ann Wise

HELEN SHANER

Mr. & Mrs. C. R. Brunson
 Mr. & Mrs. M. E. Lemmons Jr.
 Mr. & Mrs. T. G. Narum

MRS. ELIZABETH NEATHERY SMITH

Mr. & Mrs. George S. Bruce Jr.
 Mr. & Mrs. Emory T. Carl
 Mr. & Mrs. Ernest M. Charles
 Mrs. Charles W. Dabney Jr.
 Mr. & Mrs. Henry W. Hoagland
 Mr. & Mrs. J. Griffith Lawhon
 Mr. & Mrs. Wendel D. Ley
 Kate and Haylett O'Neill

MRS. GRACE REED STEINMAN

Mr. & Mrs. Harold E. Mortimer

JAMES L. STUNSTON

Mr. & Mrs. H. Malcolm Lovett

MARY NESBIT TAUSEND

Mrs. Victor H. Abadie Jr.
 Mr. & Mrs. Ward Adkins
 & John and Ward Adkins

Mr. and Mrs. Jay H. Rose

RONALD S. TAYLOR

Cleo Barkley
 S. M. Carrington
 Fondren Library Staff Association
 Mrs. Barbara G. Kile

JAMES LEE TOLLY

Fondren Library Staff Association

MRS. MYRTLE LINDLEY TROTTER

Mr. & Mrs. Edwin H. Dyer
 Mrs. James P. Jackson

GORDON TURRENTINE

Mr. & Mrs. Hugh McGee

CHARLES H. UNDERWOOD

Mary and Jack Dwyer

HENRIETTE E. VOLLMER

Bessie Minge Wendt

MISS MARGARET AMY WAPLES

Mr. & Mrs. Linden G. Bowers
 Mrs. Helen C. Earl
 Rotzien H. Eberley

Miss Beatrice Y. Harrison

Frank and Maxine Bowers
 Mildred Howland
 Ms. Thelma L. Jones
 W. A. Kirkland
 Mrs. Elizabeth Lewis
 Mr. & Mrs. Wendel D. Ley
 Dorothea W. Lissim
 Mr. & Mrs. H. Malcolm Lovett
 Mrs. Elizabeth S. Moore
 Ms. Mary Pound
 Miss H. Lel Red
 Mrs. Mary L. Tobin
 Mrs. Paul E. Wise

ROLAND WHIDDON

Mr. & Mrs. J. B. Leftwich

COURTNEY TAYLOR WILLET

Mr. & Mrs. Nelson B. Sears

MRS. JOHN H. WRIGHT

S. M. Carrington
 Rice University Associates

THE FONDREN LIBRARY**Building Hours****REGULAR HOURS**

Monday – Thursday
 Friday
 Saturday
 Sunday

January 8, 1987 — April 23, 1987

7:45 AM – 1:00 AM
 7:45 AM – 8:00 PM
 10:00 AM – 6:00 PM
 1:00 PM – 1:00 AM

MID TERM RECESS

Sunday
 Monday – Friday
 Saturday

March 1
 March 2 – 6
 March 7

1:00 PM – 7:00 PM
 7:45 AM – 8:00 PM
 Regular Hours Resume

SPRING RECESS (EASTER)

Thursday – Friday
 Saturday
 Sunday

April 16 – 17
 April 18
 April 19

7:45 AM – 8:00 PM
 10:00 AM – 6:00 PM
 1:00 PM – 7:00 PM

FINALS, SPRING SEMESTER

Friday
 Saturday
 Sunday
 Monday – Friday
 Saturday
 Sunday
 Monday – Tuesday

April 24
 April 25
 April 26
 April 27 – May 1
 May 2
 May 3
 May 4 – 5

7:45 AM – 1:00 AM
 10:00 AM – 1:00 AM
 1:00 PM – 1:00 AM
 7:45 AM – 1:00 AM
 10:00 AM – 1:00 AM
 1:00 PM – 1:00 AM
 7:45 AM – 1:00 AM

SUMMER HOURS

Monday – Friday
 Saturday
 Sunday

May 6, 1987 –

7:45 AM – 8:00 PM
 10:00 AM – 6:00 PM
 CLOSED

(Closed May 23 – 25, Saturday – Monday, for Memorial Day)



MEMBERSHIP

Membership in the Friends of Fondren Library is open to all segments of the community. It is not an alumni organization. Membership dues are as follows:

Donor	\$25
Contributor	\$50
Sponsor	\$100
Patron	\$250
Benefactor	\$500
Rice University Student	\$10
Rice University Staff/Faculty	\$20

Members of the Friends will receive *The Flyleaf* and invitations to special programs and events sponsored by the Friends. In addition, members who are not already students, faculty, or staff of the university will receive library circulation privileges.

Checks for membership dues should be made out to the Friends of Fondren Library and should be mailed to Friends of Fondren, Rice University, P.O. Box 1892, Houston, Texas 77251, along with your preferred name and address listing and home and business phone numbers. Dues qualify as charitable donations. Dues, like donations to the gift fund, also help meet the Brown Foundation Challenge Grant which last year, in response to gifts to the university for current operating expenses, added nearly \$2.5 million to the university's permanent endowment. The same opportunity exists this year.

FRIENDS OF THE FONDREN LIBRARY
RICE UNIVERSITY P.O. BOX 1892 HOUSTON, TEXAS 77251-1892

In memory of In honor of On occasion of

Name _____

Event or Occasion _____

Please send the information card to:

Name _____

Address _____

City _____ State _____

=====
This space for contributor

Name _____

Address _____

City _____ State _____

Contributions to Friends of The Fondren Library are deductible for income tax purposes.

Friends of Fondren Library
Rice University
P.O. Box 1892
Houston, Texas 77251-1892

Non-Profit
U.S. POSTAGE
PAID
Houston, Texas
Permit No. 7349