

# The Flyleaf

Friends of Fondren Library Vol. 39, No. 4

Summer 1989





## RICE UNIVERSITY FONDREN LIBRARY

Founded under the charter of the university dated May 18, 1891, the library was established in 1913. Its present facility was dedicated November 4, 1949, and rededicated in 1969 after a substantial addition, both made possible by gifts of Ella F. Fondren, her children, and the Fondren Foundation and Trust as a tribute to Walter William Fondren. The library recorded its half-millionth volume in 1965; its one millionth volume was celebrated April 22, 1979.

---

### THE FRIENDS OF FONDREN LIBRARY

The Friends of Fondren Library was founded in 1950 as an association of library supporters interested in increasing and making better known the resources of Fondren Library at Rice University. The Friends, through members' contributions and sponsorship of a memorial and honor gift program, secure gifts and bequests and provide funds for the purchase of rare books, manuscripts, and other materials that could not otherwise be acquired by the library.

---

### THE FLYLEAF

Founded October 1950 and published quarterly by the Friends of Fondren Library, Rice University, P.O. Box 1892, Houston, Texas 77251, as a record of Fondren Library's and Friends' activities, and of the generosity of the library's supporters.

---

### BOARD OF DIRECTORS 1989-90

#### OFFICERS

Mr. Edgar O. Lovett II, *President*  
Mrs. Frank B. Davis, *Vice-President, Membership*  
Mr. David S. Elder, *Vice-President, Programs*  
Mr. J. Richard Luna, *Treasurer*  
Mrs. Gus Schill, Jr., *Secretary*  
Mr. David D. Itz, *Immediate Past President*  
Dr. Samuel M. Carrington, Jr., *University Librarian (ex-officio)*  
Dr. Neal F. Lane, *Provost (ex-officio)*  
*Chairman of the University Committee on the Library (ex-officio)*  
Mrs. Elizabeth D. Charles, *Executive Director (ex-officio)*

#### MEMBERS AT LARGE

Mrs. J.D. Allshouse	Mr. Charles D. Maynard, Jr.
Mr. Ronald W. Blake	Mrs. William H. Merriman III
Mrs. Jack S. Blanton, Jr.	Dr. Harold E. Rorschach, Jr.
Mrs. John R. Hurd	Mrs. George Rupp
Dr. Harold M. Hyman	Mr. Thomas D. Smith
Mr. Richard W. Lilliott III	Mr. Henry L. Walters, Jr.
Mr. John H. Matthews	Dr. John E. Wolf

## A LETTER TO THE FRIENDS

Dear Friends,

The Annual Meeting of the Friends of Fondren Library was held on Wednesday, May 10, 1989, at 7:30 p.m., in the Farnsworth Pavilion of the Ley Student Center.

After calling the meeting to order, President Edgar Lovett reported that the March special event raised approximately \$33,000 for the Endowment Fund, an increase of 33 percent over last year's event. It was emphasized by David Elder that this figure does not include membership contributions, which are 21 percent higher than last year. The Friends has returned 27.55 percent of the membership contributions to the university through its support of the Contemporary Literature Shelf, the Audio Visual Grant, book purchases in honor of guest speakers, and partial funding for the renovation of the library's administrative corridor.

Mr. Lovett announced the 1989-90 board of directors and then thanked the retiring officers, Mary Lou Margrave (Mrs. John L. Margrave) and Tommie Lu Maulsby, and the retiring directors, John B. Baird, Walter S. Baker, Jr., and Elisabeth Laigle (Mrs. George A. Laigle).

David Elder, programs vice-president, noted the donation of four books to the library in honor of Linda Pringle, the evening's guest speaker. He then introduced Mrs. Pringle, librarian at Holy Spirit Episcopal School. In her talk on children's literature, Mrs. Pringle described ways to stimulate children's interest and skills in reading and reviewed a variety of lovely, humorous, and relevant children's books.

The meeting was adjourned and was followed by a reception.

Sincerely yours,  
Tommie Lu Maulsby  
Secretary

## CONTENTS

1	A Letter to the Friends
2	The Sackton Collection <i>Anthony P. Narkin</i>
4	Pressing Ahead <i>Cory Masiak</i>
8	Books and Bytes: Merging Tradition and Technology <i>Martin Halbert</i>
10	Fondren Forty
12	Opening of the Student Art Exhibition
14	Ben Anderson Receives TLA Philanthropic Award
15	The Friends of Fondren Library
16	Gifts to Fondren Library

Managing Editor, Betty Charles; Editor, Cory Masiak; Editorial Committee, Samuel Carrington, Margaret Clegg, Ferne Hyman, Nancy Rupp; Computer Consultant, Tim Freeland

Cover: "The Expulsion from Paradise,"  
*J.B. de Medina's illustration for Book XII  
of Milton's Paradise Lost, 1688.*

Photos by Betty Charles

# The Sackton Collection

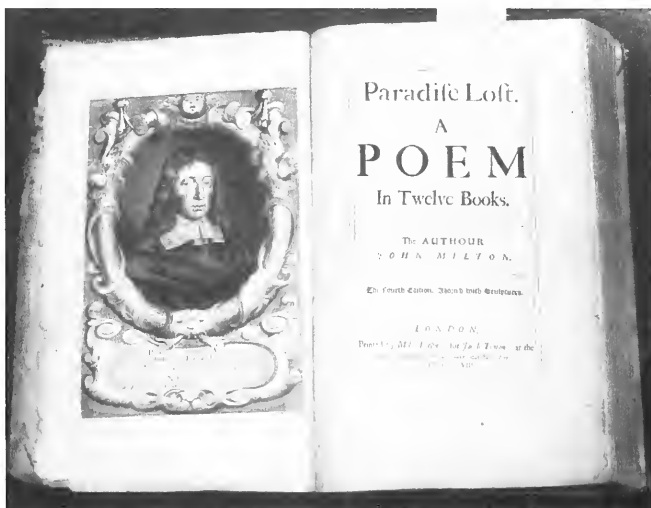
Seventeenth- and eighteenth-century English books  
are donated to the Woodson Research Center.

by Anthony P. Narkin

In the summer of 1988, sixty-one years after his freshman registration in the Rice Institute, Professor Alexander Sackton (class of 1931) contacted University Librarian Samuel Carington to offer a valuable gift in memory of Harry Lee Bowen, instructor in history, 1927–30. The gift was a collection of English books of the *STC* and *Wing* categories, English printing of the periods 1475–1640 and 1641–1700, respectively. Dr. Sackton, now Emeritus Professor of English at the University of Texas at Austin, had collected these choice volumes as a natural extension of his academic specialty. A few nineteenth-century scholarly works in the same field were included, and these have been cataloged for the open stacks. The Woodson Research Center, appropriately, houses the bulk of the collection, including seventeenth-century editions of Milton, Jonson, Camden, Hooker, Herbert, and Rowlands, along with eighteenth-century editions of Pope,

Drummond, Beaumont and Fletcher, and yet more Milton.

Milton, indeed, is the author of the single most impressive item in the bequest—a beautiful copy of the illustrated folio of 1688. It is not surprising that the famous printer–publisher Jacob Tonson, responsible for the production of so many great books of the later seventeenth and early eighteenth centuries, regarded the Milton folio as his claim to the reverence of posterity; he even had his portrait painted holding a copy. This book presents in a single volume for the first time all the major poetry of Milton. The volume is further noteworthy in being the first illustrated edition of Milton. Each of the twelve books of *Paradise Lost* is preceded by a full-page copper-plate engraving designed, and in some instances engraved, by J.B. de Medina. The influence of the illustrations upon subsequent Milton iconography and interpretation proved considerable. Furthermore, this is a spe-



Portrait and title of *Paradise Lost* in the large-paper copy of the 1688 illustrated folio edition of Milton's major poetry.

The rose and violet and the springe  
 The rose the violet and the springe  
 and all to her for sweetenesse runne  
 the diamond is darkened in the ring  
 when she neares the morninge gone  
 doe the glory of the sunne

Wotton

The final stanza of the manuscript variant of Wotton's "To His Mistress, the Queen of Bohemia," copied in the early seventeenth century on a blank page in the 1616 folio of Ben Jonson's Works.

cial copy of a special edition, for it is one of a very small number printed on large paper, with the result that the amplified margins enhance the aesthetic impact of the stately typography and the intriguing engravings. If any printed book can aptly be described as "a monument," this one should be.

Shakespeare's younger and more academic colleague, Ben Jonson, is even more fully represented in folio, for all three editions of the seventeenth century are included — 1616, 1640, and 1692. Prior to this gift, Fondren Library held only some extracts of the 1640 edition and a defective copy of that of 1692. All of the Jonson folios are important, for each is augmented by the addition of previously unpublished material, but the first is naturally the rarest and most sought after. This 1616 volume — a fat folio in the old-fashioned small-forme size — is a pleasure to examine. So different from the spacious and dignified edition of 1692 or the 1688 Milton, this copy of the Jonson first folio is made even more interesting by a unique addition. On the verso of the separate title to *Volpone*, an early seventeenth-century reader transcribed, perhaps from memory, a version of the most famous of the few poems written by that busy Stuart statesman and philosopher, Sir Henry Wotton. "To His Mistress, the Queen of Bohemia" is a lyric compliment to Elizabeth, daughter of King James I. The poem was first published in 1624 set to music, and it occurs in a number of manuscript versions with various alterations, most of which could easily have been errors of recollection. Still, this early copy, in the quaint and cramped "secretary hand" of most Englishmen at the start of that century, is a gratifying relic of that poetic golden age. For illustration, here is a transcription of the first stanza of the manuscript variant followed by the same stanza of the "official" version.

you meaner beauties of the night  
 that onely satesfye mens eyes  
 more by by [sic] your numbers then your light  
 like comon people of the skies  
 what are you when the moone doth rise

\* \* \*

You meaner beauties of the night,  
 That poorly satisfy our eyes  
 More by your number than your light,  
 You common people of the skies —  
 What are you when the sun shall rise?

Aside from unmodernized spelling and a total absence of punctuation, the manuscript version differs only modestly from the printed one. But greater differences follow. Wotton's authorized version consists of four five-line stanzas, whereas the manuscript contains two extra stanzas, making the poem a third again longer. Here is the manuscript's final stanza, one which has no counterpart in the published version.

the rose the violet and the springe  
 and all to her for sweetenesse runne  
 the diamond is darkened in the ring  
 when she neares the morninge gone  
 as doe the glory of the sunne

For many reasons — the early influence of Professors Axson and McKillop, the devotion of students and alumni, and the generosity of patrons and friends — the Woodson Research Center of Fondren Library houses a rich collection of the seventeenth- and eighteenth-century literature of England. Even so, Professor Sackton's gift constitutes an important expansion of this legacy. ≡

Anthony P. Narkin is bibliographer in the Woodson Research Center.

# Pressing Ahead

by Cory Masiak

Being on the "jock end" of campus hasn't necessarily translated into muscle for Rice University Press. However, its location since last year behind campus police headquarters in the administrative annex has given the seven-year-old scholarly/regional book publisher more room and a well-earned ego boost. Rice University Press remains a fledgling among American university presses in quantity of output (three or four books a year), but the quality of those titles has been high and the ambitions of its tiny staff are even higher. Managing editor Susan Fernandez and half-time staff editor Susan Bielstein (the entire staff, with some student help) hope to see the number of books published grow to about twelve annually by 1994. That, at least, is the five-year plan. Its realization depends on several factors, only one of which truly counts: financial support from the university administration.

Rice University Press has had a number of small but bolstering successes in the past couple years. In 1987, the cloth edition of Chaucer's *Legend of Good Women*, translated and with an introduction by Ann McMillan, sold out a 600-copy print run in six months, catching its publisher slightly off guard. "We didn't expect such a demand for the cloth edition," notes Fernandez, a former editor of women's studies books at Indiana University Press. "We had underprinted, so in that sense it came as a surprise." (The typical scholarly book sells from 800 to 1,200 hardcover copies in its lifetime, which is usually five years or longer.) There followed a paperback edition that is now enjoying a respectable measure of course adoption. Cary Wintz's *Black Culture and the Harlem Renaissance* sold out its entire hardcover print run of 1,500 copies within two months of publication in November 1988; a second printing was ordered and a paperback edition is in the works. *Black Culture* also garnered a token of recognition for its publisher: Rice University Press was nominated by

the Cleveland Foundation for the Anisfield-Wolf Award in race relations.

In 1987 Rice University Press was admitted to affiliate membership in the Association of American University Presses (AAUP), an organization whose purpose is to promote scholarly publishing. Because of its size, Rice University Press is not eligible for full membership, but even affiliate status provides the small publisher tangible benefits. In addition to the press being listed in the AAUP catalog, its titles enjoy wider exposure in academic circles. "We couldn't afford to send books to all the major academic meetings," says Fernandez, "but now we get our books to those meetings through an omnibus exhibit that the association sponsors."

After years of publishing a quarterly journal called *Rice University Studies*, the press in 1982 switched to book publishing under the guidance of faculty editor Fred von der Mehden. A professor of political science, von der Mehden views the press's brief history in books with moderate satisfaction: "Given what [Rice University Press] was before, I think we've come a fairly long way." Its first title, *A History of Rice University: The Institute Years, 1907-1963*, by Fredericka Meiners, is still published under the Rice University Studies label. Though hardly a runaway best-seller by commercial-press standards, the book remains a "bread-and-butter" item for Rice University Press, with sales of more than 2,250 copies to date.

As outlined in its five-year plan, Rice University Press intends to develop areas of concentration, a strategy employed by most presses, large and small. The advantages of concentration, or clustering, are manifold: a reputation is more readily established in a given field, resources can be consolidated, and marketing proves more cost-effective. In addition, says Fernandez, "We'll try to draw on the strengths of the university. We'd like to publish in areas where Rice has a national—even international—reputation.

That's how we got into photography—because of the Media Center.” With three books of photography under its tightly cinched belt and another two in progress, this is a logical choice for concentration. But, explains the managing editor, “We’re going to be very, very picky. We want to do books that are on the cutting edge, that are different. We’re not just going to be another publisher of photography books.” Sharing the top of the press’s list of preferred subject areas with photography are literary criticism and theory, Southern history and culture, including



*Fred von der Mehden, Susan Fernandez, and Susan Bielstein*

that of Texas and Houston, and minority studies. Von der Mehden also hopes to develop closer ties to the medical center, which could prove fertile ground for manuscripts in medical ethics and public health, for example.

At present, the Rice University Press list consists of roughly fifty percent scholarly and fifty percent regional books, a ratio likely to be maintained. “There’s a real argument to be made for university presses as regional publishers,” says Fernandez. Regional books tend to have trade potential—in other words, they may make money—and thus help to offset the expected losses of purely academic texts. Von der Mehden explains the balancing act thus: “It is necessary for us to have a combination of books—some which are relatively narrow in their academic audience and which therefore are not going to provide us much in terms of financial recompense, and some which may have a wider range, perhaps regional books, so that we have enough money to support the others.” Yet, as he is quick to point out, it is difficult to achieve this kind

of balance, or for that matter to foster areas of concentration, when one publishes so few books annually. Fernandez echoes that sentiment: “There is a school of thought in publishing, and I agree with it, that a university can’t publish fewer than twelve books a year and be legitimate do a good job for its parent institution and its authors.” She contends that the press’s operating budget, approximately half of which comes from the university and half from sales income, would have to triple in size for Rice University Press to join the ranks of the serious content publishers. Yet even such growth would not make the press self-supporting.

In this respect, Rice University Press is no different from other scholarly publishers. Only rarely are university presses money-making operations; most fail to break even. Asserts von der Mehden, “You have to accept the fact that [publishing] is going to be a long-term drain on [the university’s] resources.” Nonetheless, proponents of the academic press argue that their raison d’être lies in a realm other than that of mere profit and loss. According to them, its chief purpose is to make a serious contribution to scholarship. But in addition, maintains Fernandez, “I think one of the mandates of a university press really is to go where others fear to tread, not to stay with what’s safe and what everybody else is doing. A university press, I think, can take risks that commercial presses either can’t or won’t take.” In return, a reputable scholarly press provides certain unquantifiable benefits to the university of which it is a part. The school’s name is more widely disseminated, and the attendant prestige can help to attract superior faculty and graduate students.

Von der Mehden concurs that an academic press has a special mission, but as the one responsible for the budget, he is careful to qualify his agreement by steering the discussion back to the ledger book. “I think a university press ought to be putting out books of academic importance which are not necessarily going to make a profit and some things which are at the frontier of new fields and which commercial presses might not be interested in. At the same time, a university press is a business, and it has to do some things which are going to provide it the financial wherewithal to go ahead.”

Nagging bottom-line considerations are an ever-present hurdle to the press’s plans for growth and expansion. With its current operating budget, Rice University Press can publish most two relatively inexpensive books” a year

notes von der Mehden. So in order to produce more books, the press is increasingly dependent on both corporate and academic subsidies, even at times for its less expensive titles. One such example is *Immaterialist Aesthetics*, by William Piper, a senior professor of English at Rice. On the low end of the scale in terms of production costs, the recently published text nonetheless required a subsidy for a few color plates essential to the author's argument. Only after a bit of scrounging was the necessary \$2,000 found. On the opposite end of the luxury scale is a book like *Seasons of Light*, a large-format work of color photographs by Peter Brown of the art department, which cost \$25,000 to publish. Brown personally raised most of that money from the Houston arts community.

In the ongoing search for funds, much of the staff's time is spent writing grant proposals and ferreting out new sources of revenue. To date, Rice University Press has received two modest grants from the Cultural Arts Council of Houston (CACH) for specific titles, and it has several more applications pending with that organization. The state of publishing in Houston being what it is, an argument could be made that some monies now channeled into the performing arts ought to be redirected into book publishing. "The literary arts in Houston have been totally neglected," laments Fernandez, "and that has to change. We're in a position to help change it."

Of critical importance to any university press, but particularly a small one, is its backlist. Since publishing is a cash-intensive industry in which all publication costs are paid up front—and in which books earn back their costs only very slowly—a university press relies on the income generated by its backlist to weather immediate financial shortfalls. "A university press lives on its backlist," insists Fernandez. "That's the backbone of the press." With a mere sixteen titles to its name, Rice University Press still lacks a substantial cushion to fall back on in lean times.

A backlist with particular concentrations can also be marketed more economically. "Every time you can promote your backlist, you're saving marketing dollars," argues Fernandez. "It costs us more per book to market than if we had a cluster." Rice University Press depends on direct mail as one of its chief marketing tools, as do most university presses, because scholarly books are often highly specialized and the publishers know by and large who the audience will

be. In its advertising campaign for *The Legend of Good Women*, for instance, the press bought the mailing list of the *Women's Review of Books*. In addition, Rice University Press titles are advertised in the two seasonal catalogs of Texas A&M University Press, with whom it has a special contractual arrangement. Since 1985, A&M handles almost all of the press's order fulfillment and warehousing, plus some promotion, in return for 25 percent of net receipts. Though the fee sounds hefty, Fernandez finds the arrangement more than satisfactory, for it frees the staff to concentrate on its main task—publishing.

---

"We'd like to publish in areas  
where Rice has a national—  
even international—reputation."

---

Of course, a good book review is far and away the most effective and cheapest marketing tool available. While the local media have given Rice University Press books less notice than the publisher would like, the larger picture may be changing. After years of benign neglect, Fernandez believes the scholarly publishing community in general is finally getting the attention of the national media, both because university presses are more willing to take risks and because an increasing number of scholarly books have commercial appeal. Two of the most prestigious organs of review in this country, the *New York Times Book Review* and the *New York Review of Books*, she says, are beginning to devote more space to university press publications. The press's own *Black Culture* received favorable early reviews in *Kirkus Reviews* and *Library Journal*, which accounted in part for the healthy sales of the initial print run. "It brought home to me," says Fernandez, "as nothing had before, how important national reviews are."

In order to broaden its base of local support, next year the press intends to open up membership on the Press Advisory Board, which until now has been made up solely of Rice faculty, to



include people from other Houston universities and from the arts community. The expertise of these individuals should help to reinforce the development of certain subject concentrations. Also intent on drumming up support within the hedges, Rice University Press is actively pursuing manuscripts among Rice faculty and graduate students. Almost every university press labors under what Fernandez calls a "home press disadvantage," and young faculty in particular are encouraged to publish elsewhere. "It's made very clear to them by their departments that they'll have a better chance for tenure if they publish with another press," she explains. What the home press can offer, however, especially one as small as Rice University Press, is a great deal of personal attention, a rare commodity in an era of corporate publishing. "There are people who really want to be nurtured, who want the editor to work with them every stage of the way," maintains Fernandez. "If that's what they want, we can supply it." To senior faculty members, von der Mehden emphasizes the quality and speed of publication at Rice University Press, while reminding them that they, as established scholars, are now in a position to do something for Rice University. "That's the only way we'll be able to build up a reputation, and in

turn impress upon the administration the kind of quality work we do."

Both von der Mehden and Fernandez feel Rice University Press has reached a plateau, which could be easily transcended—say, to six books a year—with only incremental increases in its university subvention. Fernandez, at once animated by her ambitions for the press and frustrated by the lack of progress, makes a final argument for additional support: "I feel we're in a holding pattern. I get frustrated because I would like to get going—we have the talent, we have a skilled staff, we have experience. We've got a good supporting scholarly community here, and we have a crying need in Houston for a university press. We could be serving not just Rice but the other universities here—we've got a lot of people to draw on. There's no reason that the best works of scholarship ought to be leaving the city. We ought to be drawing things in from other cities; we ought to be raiding other universities. To some extent we try to do that, but we can't very effectively if we're not competitive—and we can't be competitive unless we're doing, I think, twelve to fifteen books a year. So we're just sort of holding our place. I don't know when or if the administration is going to decide that it wants a university press." ≡

The following questionnaire is being circulated with membership renewals. If you would like to respond *before* your membership is up for renewal, please fill out this form, detach, and mail to: Friends of Fondren Library, P.O. Box 1892, Houston, TX 77251-1892.

.....  
 Name \_\_\_\_\_

Address \_\_\_\_\_

Daytime Telephone Number \_\_\_\_\_

I am interested in working on one of the following committees:

- \_\_\_ Membership (helping in contacting nonrenewal members)
- \_\_\_ Editorial (researching and/or writing articles for *The Flyleaf*)
- \_\_\_ Reading Club
- Special Event Subcommittees
- \_\_\_ Invitations/Reservations
- \_\_\_ Decorations
- \_\_\_ Auction

I am interested in hearing a lecture on \_\_\_\_\_ .

An interesting speaker from the Rice faculty would be \_\_\_\_\_ .

# Books and Bytes

## Merging Tradition and Technology

by Martin Halbert

The abundance of information available today is phenomenal; yet that information is of value only if we can access and manipulate it. Words, images, sounds, and numbers, like any raw resource, must be processed to be useful. Computers can aid the task of manipulating information: data once found only in printed form, for example, can now be searched better and faster with on-line databases. For many people, however, the primary obstacles to exploiting this network of information technology have been finding the right computer system and knowing how to use it. In order to assist users of the new technology, libraries and computer centers have begun to offer computer-oriented information and multimedia services. In 1988, two facilities were established on the Rice campus for this purpose. Each has a slightly different focus.

The Computing Reference Area (CRA), located in Mudd Lab as part of ICSA's Computing Reference Center and staffed by a full-time librarian, contains a growing collection of current literature on the rapidly changing world of modern computing. The CRA subscribes to some 190 computer-related magazines, and the library also includes a wide assortment of manuals and books. Whether the patron is a student learning how to use a word-processing package for the first time, or an experienced faculty member looking for technical information on a campus mainframe system, the CRA can provide documentation on the subject under investigation. Moreover, most of the material is free to circulate.

Popular recent additions to the CRA are several noncirculating CD ROMs (Compact Disc—

Read-Only Memory). A single CD ROM, measuring a mere five and a quarter inches in diameter, has the capacity of 550 megabytes, or the equivalent of the amount of data in the *Oxford English Dictionary*. Now available to CRA patrons in this format are abstracts of thousands



Martin Halbert (right foreground) and staff in the CRA.

of recent magazine articles on computing, comprehensive databases of software reviews, various reference tools, and a large collection of public-domain (i.e., free or low-cost) software. A beginning student of CD ROMs, for example, can look into the Apple CD ROM Explorer, which includes a graphic introduction to the solar system with animation and pictures from space shots. For the stout of heart there is the *Electric Cadaver*, described as "a dynamic image-oriented textbook for anatomy classes." To date,

---

Martin Halbert is computer resource librarian in the CRA.



David Kilgore displays a videotape from the CSI's extensive collection.

primary patrons of the CRA have been undergraduates in computer science and electrical engineering, but humanities and social science students also use the library.

The Center for Scholarship and Information (CSI), a multimedia facility located in the basement of Fondren Library, provides patrons the use of computer and audiovisual equipment. Staffed by two full-time employees, the center has twelve Apple Macintoshes (all connected to shared printers) and three IBM-compatible machines. (Funding for the latter was generously provided by the Friends of Fondren.) Software includes word processors (Microsoft Word and Macwrite for the Mac; Wordperfect for DOS), spreadsheets (Excel for the Mac; Lotus 1-2-3 for DOS), style checkers, and "courseware"—software written specifically to assist in course instruction.

Besides helping people get started with the basics, the CSI is commonly asked to assist with the removal of viruses from students' discs. Viruses are generally transmitted from program to program, reports CSI manager David Kilgore, whose background is in communications. He therefore encourages patrons to bring in only data discs. Says Kilgore, "If you don't have pro-

grams on your disc, chances are you can't infect us. Conversely, if a virus happened to be on one of our programs, it couldn't infect your disc. In the CSI, we try to practice safe computing." After individual users, the primary patrons of the facility thus far have been English classes for writing instruction; however, plans for the fall semester include use by the statistics department as well.

In addition to the microcomputer labs, the CSI possesses an audiovisual center with four individual viewing carrels, and one of the services it provides is to help departments with complex A/V setups. A videotape collection of more than 400 titles is available to faculty for class use and to students for viewing in the library. With money from the Friends of Fondren, the CSI was able to purchase educational series like *Bill Moyers' Walk Through the 20th Century*, *Bill Moyers' World of Ideas*, and *The Constitution: That Delicate Balance*, as well as how-to items like *The Successful Job Hunter*. Sharing space on the shelf with the instructive is less serious fare, such as the popular favorites *Gone With the Wind* and *To Kill a Mockingbird*.

In the past, libraries and computer centers have often been perceived as aloof and forbidding institutions. Today, as they become linked conceptually and functionally, that attitude is changing. Both kinds of facilities are becoming more service-oriented, and more attention is being paid to their patrons. New centers like the CRA and the CSI will help people learn about and gain access to the new information technologies that have come to be an integral part of intellectual endeavor. ☸



Staff member and patron at Mac terminals in the CSI.

# Fondren Forty

March 18, 1989



Mary Lou Margrave, Fondren Forty chairman.

Where under a single roof can one purchase such exotica as a guided alligator hunt or a Turkish handmade kilim? A performance by the Pipes & Drums of St. Thomas Episcopal School or a Seventy-first Texas Legislature gavel? No, not even at that local shrine to consumerism, the Galleria. These were just a few of the live-auction items available at the ninth annual Fondren Saturday Night, which this year celebrated the fortieth anniversary of Fondren Library. In honor of the occasion, Drs. George Rupp and Samuel Carrington cut two large birthday cakes, and guests were led in English and French renditions of "Happy Birthday."

Besides the live auction, the party once again included a silent auction, a casino, dancing to Bob Kuldell's five-piece combo, and a cocktail buffet. As in the past, proceeds from the event will benefit the Fondren Library Endowment Fund.



Pam Lovett displays sign for an unusual live-auction item.



George Rupp does the honors. Cakes were donated by the French Gourmet Bakery and Allegro.



Clockwise from upper left:

*Fur jackets are modeled for guests.*

*Guests survey silent-auction items.*

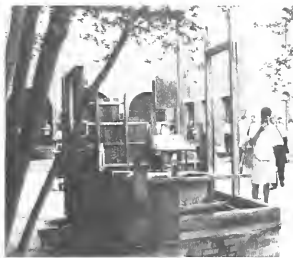
*Auctioneer Bucky Allshouse conducts the lively bidding.*

*Members of the Pipes & Drums of St. Thomas Episcopal School demonstrate their talents.*

*Fondren staff members Rita Marsales and Janet Thompson review silent-auction items.*

*Photos by Gina Walters*





## Opening of the Student Art Exhibition April 25, 1989



Dear Friends of Fondren Library,

You were extremely generous to help fund the Twenty-Sixth Annual Rice Student Exhibition. The response by the community at the progressive opening was overwhelming. I was told that we have never before had such a good turnout at the student show. The art students were so elated and appreciative that people made the effort to see their work and that they responded to it in such a positive way. Your participation in this event fosters and encourages a creative atmosphere for Rice art students. Many thanks!

Sincerely,  
Stella Dobbins, Director  
Sewall Art Gallery





Take 'Em Up to 80, 1989, acrylic on canvas, by Karl B. Jensen, winner of the Mavis C. Pitman Memorial Prize.

## Student Prizewinner

Karl B. Jensen was awarded the 1989 Mavis C. Pitman Memorial Prize for two paintings, *Take 'Em Up to 80* and *Untitled* (both 1989, acrylic on canvas), which appeared in the Twenty-Sixth Annual Rice Student Exhibition. The event is sponsored by the Friends of Fondren Library and the Arts Committee of the Association of Alumni. A native of Lake Forest, Illinois, Jensen graduated this spring with a bachelor's degree in architecture. He plans to spend the summer painting in Greece, after which he hopes to work in Chicago as an architect. He feels strongly about wanting to continue to paint.

Rice art professor Basilios Poulos included the following statement about Jensen: "Every few semesters a student with energy, single-mindedness, and serious intent comes along and produces paintings that go beyond the expectations of student work. Karl Jensen has done so in my advanced painting classes of fall 1988 and spring 1989. He has produced an astonishing body of work, consisting so far of ten paintings ranging in size from four by six feet to eight by twelve feet. The paintings explore a number of issues dealing with the language of the mark (the artist's hand at work) and the space it occupies. The paintings are full of marvelous invention and wonderful color. Karl has created a world of his own with these very sophisticated paintings. There is no question in my mind of his high achievement."

# Ben Anderson Receives TLA Philanthropic Award

April 12, 1989



Mary D. Lankford, chairman of the Awards Committee, presents the TLA Philanthropic Award to Ben Anderson.



Ben Anderson surveys the portion of his collection on exhibit at the TLA convention.

The Texas Library Association at its convention in the George R. Brown Convention Center presented Mr. Ben Anderson with the Philanthropic Award for the donation of his collection, the Benjamin Monroe Anderson Collection on the History of Aeronautics, to Fondren Library. The most prestigious award given by the TLA, the Philanthropic Award is presented to those who through their support of libraries encourage the same action from others.

In his letter of nomination, Dr. Samuel M. Carrington, university librarian at Fondren Library, stated that Mr. Anderson has long been an active and generous supporter of Rice University, its Fondren Library, and the library's Friends of Fondren. He also serves as a member of the advisory council of the Jesse Jones Library of the Houston Academy of Medicine-Texas Medical Center.

An engineer by profession and a cofounder of Anderson, Greenwood & Company, Mr. Anderson began designing and constructing airplanes early in his career. This professional orientation led him to begin assembling what several scholars have described as one of the most comprehensive and erudite collections on the history of aeronautics in the United States. The focus is on the evolution of the science of aeronautics (nonmilitary) before the Space Age.

Mr. Anderson's primary requirements in the disposition of the collection were that it be readily available to the public in support of studies on the history of aeronautics, that it be securely maintained as a separate, distinct collection and not interfiled in the general collection, and that there be an institutional commitment to sustain its subject growth in the general collection. Rice's Fondren Library agreed to these stipulations and the collection was received in 1987.

We congratulate Mr. Anderson and thank him for his continued support of and interest in Fondren Library.



THE FRIENDS OF  
FONDREN LIBRARY



March 1, 1989 - May 31, 1989

Sponsors

Mr. & Mrs. Sam Rice Bethea  
Rosemary King  
Mae Nacol

Contributors

Lee B. Backsen  
Dr. Doug Carlson  
Mrs. Barry Davidson  
Dr. E.B. Davies  
Judge & Mrs. Simon T. Lake III  
Susan B. Levin  
Boyd Lien  
Robert C. Malahy  
Mr. & Mrs. Roger T. Olsen  
Mr. & Mrs. Henk Pretorius  
Robert & Jeanne Rothberg  
Mr. & Mrs. Daniel L. Sanford  
Deborah Seldon  
Dr. Charles Sepos  
Mr. & Mrs. Richard W. Wroten  
T.R. Young

Donors

James Phillip Arnold  
Warren B. & Carolyn Stokes Austin  
Martin Burdeax  
D. Dimitri Carles  
Mr. & Mrs. Vaughan E. Counts  
Lorraine Gibbons  
Marcine A. Gibson  
Dr. Ronald W. Hanks  
Mr. & Mrs. Henry C. Herrington, Jr.  
Richard & Barbara Hibbard  
Marvin Hirsch

Alison Kenamer  
Mr. & Mrs. Rick A. Kneisley  
Mr. & Mrs. William Madigan  
Ernesto Maldonado  
Jane M. McKee  
John & Jo Migliavacca  
John W. Minear  
Mr. & Mrs. M. Bradford Moody  
Jane G. Ohrt  
Robert Pearson  
Loren K. Pieper  
Ralph & Lillian S. Ragsdale  
Pieter van den Sigtenhorst  
Mrs. Charles Sullivan  
Mr. & Mrs. H. Josef Thywissen  
Gene Walker  
Kirt & Mary Lewis Walker  
Andrew Stephen Walmsley  
H.W. & Donna R. Weinberg  
Bessie Minge Wendt  
Mr. & Mrs. Charles H. Wilson  
Mr. & Mrs. James W. Woodruff

Graduating Students

Robert W. Been  
Jerry Boettcher  
Mark Bradshaw  
Kirsten Cerre  
Claire Clossmann  
Timothy A. Deibler  
Anna Franco  
Julie Vaught Fry  
Anthony B. Generette  
Winifred J. Hamilton  
Lisa Carol Hardaway  
Helen Hong  
Robert McCauley  
Patricia R. Orr  
Ngoc Pham  
Dr. Carole Brooks Platt  
Allison Rice  
Romain Valery Roy  
Jeffrey J. Ryan  
Brian Tagtmeier  
Cornelia Williams  
James F. Wilson

*In addition, the following have upgraded  
their membership in the Friends.*

Dr. Stephen D. Brezner  
Mr. & Mrs. Roy E. Campbell  
Milton K. Eckert  
Mr. & Mrs. Ralph V. Ford  
Mr. & Mrs. H. Malcolm Lovett, Jr.  
Dr. & Mrs. John L. Margrave  
Deborah A. McCauley  
Mr. & Mrs. Joseph H. Rosenbaum  
Mrs. George & Barbara Taylor  
Mr. & Mrs. David M. Underwood  
Mr. & Mrs. R.K. Walters  
Mr. & Mrs. Allen G. Weymouth  
Jack C. Williams  
Mr. & Mrs. Jean Worsham

*The Friends of Fondren Library is most  
grateful to these new Friends for their inter-  
est and to the Friends of longer standing  
for their support and for renewing their  
commitments.*

## GIFTS TO FONDREN LIBRARY



March 1, 1989 - May 31, 1989

The Friends sponsors a gifts and memorials program for Fondren Library that provides its members and the community at large with a way to remember or honor friends and relatives. It also provides Fondren the means to acquire books and collections beyond the reach of its regular budget. All gifts to Fondren through the Friends' gift program complement the library's university subsidy.

Funds donated through the Friends are acknowledged by the library to the donor and to whomever the donor indicates. Gifts can be designated in honor or memory of someone or on the occasion of some signal event such as birthdays, graduation, or promotion. Bookplates are placed in volumes before they become part of the library's permanent collection.

For more information about the Friends' gift program, you may call Gifts and Memorials or the Friends' office (285-5157). Gifts may be sent to Friends of Fondren, Rice University, P.O. Box 1892, Houston, Texas 77251; they qualify as charitable donations.

The Friends and Fondren Library gratefully acknowledge the following gifts, donations to the Friends' fund, and donations of periodicals and other materials to Fondren. All gifts enhance the quality of the library's collections and enable Fondren Library to serve more fully an ever-expanding university and Houston community.

### GIFTS IN KIND

*Gifts of books, journals, manuscripts, recordings, and videotapes were received from:*

Council on Library Resources  
Albert E. Flemming  
The Ford Foundation  
Michael Jay Katz  
Kent State University Libraries  
KPRC-TV Houston  
The Menil Foundation, Inc.  
Sammlung Berthold-Sames  
University of Delaware Library  
Vanderbilt University Library  
John Wright

### *Gift in honor of/given by*

**THE FONDREN LIBRARY  
STAFF,**  
by Lynda L. Crist

### MONEY GIFTS

#### *Restricted gifts*

Michael E. Burns

#### *Unrestricted gifts*

Anonymous  
The Butcher Fund  
The Kinkaid School  
The Leader Mortgage Co.

#### *Gifts in honor of/given by*

**JOHN B. BAIRD III,**  
on the occasion of his  
fiftieth birthday, by  
Mr. & Mrs. John E. Joiner

**ALEX FROSCH,**  
on the occasion of his recovery, by  
Mrs. G. Frank Lipper

**THEO F. KELLER,**  
on the occasion of his  
eighty-fifth birthday, by  
Carolyn Litowich

**MRS. T.P. KELLY,**  
on the occasion of her birthday, by  
Mr. & Mrs. J.H. Freeman

**CHRISTINE HALL  
& CHARLES E. LADNER,**  
on the occasion of their  
fiftieth wedding anniversary, by  
Emily M. & Andrew W. Ladner

**MR. & MRS. LOUIS WEINSTEIN,**  
on the occasion of their  
fiftieth wedding anniversary, by  
Mr. & Mrs. Julian L. Shapiro

**MR. & MRS. DAVID  
WINTERMANN,**  
on the occasion of their  
anniversary, by  
Mrs. Joiner Cartwright

### *Gifts in memory of/given by*

**ALLEN ABRAMSON**  
Mr. & Mrs. Julian L. Shapiro

**LOWANA AGEE**  
Jackie Ehlers

**OTIS LEE ALLBRITTON**  
Milton K. Eckert

**MARGARET TEWS ANAWATY**  
Milton K. Eckert  
Ben & Margaret Love

**IDA APPLEBAUM**  
Mr. & Mrs. John E. Joiner  
Mr. & Mrs. Allen G. Weymouth

**DR. TOM BARR**  
Mrs. L.A. Bickel

**ARTHUR E.W. BARRETT, JR.**  
Mr. & Mrs. Edwin H. Dyer, Jr.

**MAXINE C. BARTON**  
Mr. & Mrs. Kingsland Arnold  
Mr. & Mrs. John C. Jackson, Jr.

**STEVEN ERIC BAUER**  
Meredith T. McGregor

**MRS. MARVYN HIRSCH BELL**  
Raymond H. Moers

**BETTY WORKMAN BERLETH**  
Robert V. Turner

**RITCHIE McGLASSON BILLUPS**  
Clint & Betty Gosse  
W.H. Higginbotham, M.D.  
Muriel Ridley  
Dr. & Mrs. Edward T. Smith

**DR. DAN BRANNIN**  
Mr. & Mrs. Claude T. Fuqua, Jr.

**MRS. FOSTER BREWER**  
Dr. & Mrs. Alfred E. Lauden

**HARRIET BUENGER**  
Mrs. Freeman E. Perkins

**MRS. ORVILLE W. BURG**  
Mr. & Mrs. H. Clyde Dill

**JAYNE CAMPBELL**  
Mr. & Mrs. James P. Jackson

**CARRIE T. CARLTON**  
Ed Bryan & H. Russell Pitman

**LORETTA CHANDLER**  
Susan H. Trout

**OPAL CHRISTENSON**  
Elva Kalb Dumas

**THOMAS E. CLARK**  
David Y. Cunningham

**S.J. CROSS**  
Mr. & Mrs. Edwin H. Dyer

**DR. MORTON L. CURTIS**  
Dr. & Mrs. John W. Clark, Jr.  
Mrs. Stephanie Curtis Contreras  
Mr. & Mrs. James F. Erwin  
Mr. & Mrs. Fount E. McKee  
Mr. & Mrs. Samuel G. Moseley  
Mr. & Mrs. Thomas D. Smith  
Mr. & Mrs. Steven W. Thomas  
Mr. & Mrs. John A. Wheeler  
Mr. & Mrs. W.C. Wheeler

**JERRY DANIEL**  
Mr. & Mrs. T.J. Doggett

**WILLIAM EDWARD DANIELS**  
Mr. & Mrs. Sam D. Amspoker  
D.K. Anderson  
Mel Anderson & Stephennie Anderson  
Rick & Marjorie Armstrong  
Mr. & Mrs. Daniel C. Arnold  
Arthur Anderson & Co.  
Kirby Atwell  
Ayrshire Corporation  
Doris & Laskey Baker  
Mr. & Mrs. Walter S. Baker, Jr.  
Gene C. Bankston  
Mr. & Mrs. Robert Beamon  
R. Fred Beeler  
The Berryman Family  
Van & Anita Berson  
Ray F. Biery  
Dr. & Mrs. Robert K. Blair  
Mr. & Mrs. John Boettcher  
Bud & Sandy Bonner  
Lewis E. Brazelton III  
John B. Brent  
Mr. & Mrs. Don Brice  
Rinse & Cecile Brink  
Raymond & Susan Brochstein  
Ruth & Morris Brownlee  
Mr. & Mrs. R.W. Broyles  
The Thomas M. Broyles Family  
Dr. & Mrs. Thomas W. Burke  
Maydelle Burkhalter  
Mrs. John C. Bybee

Dr. & Mrs. Dana Caledonia  
Mr. & Mrs. Don Campbell  
Mr. & Mrs. Ralph S. Carrigan  
Leslie R. Center  
Erminie & Dave Chapman  
Ray & Raymond Chilton  
Mr. & Mrs. Robert L. Clark  
Mr. & Mrs. Arthur Coburn II  
Connie Colley  
Pat & Robert Collins  
Mr. & Mrs. William N. Collins  
Gus Comiskey  
Helen H. Coverr  
Mr. & Mrs. Marshall Crawford  
Jann, Fred, & Lisa Curry  
Mr. & Mrs. David J. Devine  
Mrs. Franklin Devine  
Mr. & Mrs. T.J. Doggett  
Mr. & Mrs. J. Ray Driver, Jr.  
Mr. & Mrs. Robert W. Drye  
Mr. & Mrs. Edwin H. Dyer, Jr.  
Mr. & Mrs. Pat Taylor Dyer  
Mr. & Mrs. Augie Erfurth  
Mr. & Mrs. Joe F. Estes  
Mr. & Mrs. J. Thomas Eubank  
Farm & Home Savings  
Mr. & Mrs. Elliott Flowers  
Mr. & Mrs. Larry Fraser  
Paschal L. Gagliardo  
Mr. & Mrs. Earl W. Gammage  
Mr. & Mrs. Homer B. Gibbs  
Mickey & Noel Graubart & Family  
Mr. & Mrs. Robert P. Gregory, Jr.  
Sharon & Holman Gregory  
Mr. & Mrs. Dickie B. Haddox  
Tom & Bitsey Hail  
Harris County Housing Finance Corp.  
Mrs. E.P. Harvey  
Heidemie S. Hellriegel  
Mr. & Mrs. P.F. Hendricks  
Dr. & Mrs. Edward F. Heyne III  
Paul D. Hinch Family  
Lee W. Hogan  
Gladys & Richard Holland  
Mr. & Mrs. B.B. Hollingsworth, Jr.  
Mr. & Mrs. John N. Iler  
The Jake & Nina Kamlin Foundation  
Mr. & Mrs. John E. Joiner  
Mr. & Mrs. W.F. Joplin  
Mary & Joe Kelly  
Mr. & Mrs. R.B. Kinzbach  
Mr. & Mrs. George B. Kitchel  
Ron & Ella Lee Lassiter  
Mr. & Mrs. La-Mar W. Lee  
Mr. & Mrs. Wendel D. Ley  
Mr. & Mrs. Elbert W. Link  
Mr. & Mrs. Eugene E. Little  
Marie & Charlie Lloyd  
Mr. & Mrs. R. Ray Mahaffey  
Mr. & Mrs. Everitt M. Mahon

Mr. & Mrs. Clark P. Manning  
Mr. & Mrs. Frank Maresh  
Dr. & Mrs. John L. Margrave  
Carolyn & Everett Marley  
Mr. & Mrs. James H. Martin  
Betty Matthews  
Mr. & Mrs. Everett Mattson  
Mr. & Mrs. Phil Mayeux  
Gundi McCandless  
Tom & Dorothy McDade  
Mrs. Aileen P. McElreath  
Mr. & Mrs. Hugh McGee  
Richard K. McGee  
Bryce & Maryann McKee  
Patricia M. Minnis  
George P. Mitchell  
Mr. & Mrs. Thomas J. Mitchell  
Phil & Gayle Mobley  
Mr. & Mrs. C. Dean Moore  
Harvin C. Moore, Jr.  
Mr. & Mrs. Pat H. Moore  
Mortgage Bankers Association  
NBC Bank-Houston  
NCNB Texas National Bank  
Mr. & Mrs. Ralph S. O'Connor  
Tom & Patty Pagel & Family  
Park National Bank-Stafford  
Mr. & Mrs. Kenneth A. Paul  
Winston C. Pickens  
Adele & Ber Pieper  
Muriel E. Pilgrim  
Mr. & Mrs. Denton C. Priest  
Steve & Liz Pringle  
Mrs. Mitchell N. Pryor  
Dean E. Putterman  
Lillian & Bob Putterman  
Rice University Associates  
Mr. & Mrs. Mark J. Riedy  
River Oaks Bank & Trust Co.  
Elizabeth & Tryon Robinson  
Jonathan W. Rogers  
Sally Bell Rutherford  
Sue & Mike Salvato  
Mr. & Mrs. Frank G. Satterfield  
Edward B. Schulz & Co.  
Mr. & Mrs. Peter M. Schwab  
Mr. & Mrs. Joe Shaffer  
Mrs. Jack Shannon  
Myron M. Sheinfeld  
Mr. & Mrs. James C. Shindler  
Mr. & Mrs. Robert Simonds  
Richard H. Skinner  
Gerald & Dorothy Smith  
Mr. & Mrs. Thomas D. Smith  
Joe & Sybil Stephens  
Booth B. Strange  
Mr. & Mrs. Leo R. Strom  
Sundance Construction, Inc.  
Jean C. Syper  
Robert F. Teague, Jr., & Family

Louann & Larry Temple  
Dr. & Mrs. Karl C. ten Brink  
Trammell Crow Co.  
Mr. & Mrs. R.E. Tresch  
Mr. & Mrs. James M. Turley  
Jane A. Vanzant  
Bass & Julia Wallace  
Jeanette & King Walters  
Rolan W. Walton  
Alex & Jerri Wasaff  
Sanford A. Weiner  
Joe C. Wessendorff  
Western National Bank of Tulsa  
Mr. & Mrs. James A. Whitson, Jr.  
Mr. & Mrs. Tom Wilcox  
Mr. & Mrs. Christopher M. Williams  
Mary & Bob Wilson  
Mary Ellen & Dick Wilson  
Mr. & Mrs. George E. Woods, Jr.  
Mr. & Mrs. James M. Wooten  
Peggy M. Zievert  
Mr. & Mrs. Frank Zumwalt

**MRS. JOHN PEYTON DEWEY**

Mr. & Mrs. Claude T. Fuqua, Jr.

**HERBERT CLYDE DILL**

Frances & Franz R. Brotzen  
Mr. & Mrs. Emory T. Carl  
Mr. & Mrs. Eugene Cortner  
Country Club Estates,  
East Civic Association  
James K. Dunaway  
Janie Dunaway  
Mary & Jack Dwyer  
Mr. & Mrs. A. Gordon Jones  
Martha Lilliott  
Mr. & Mrs. D.V. Lyttleton  
Mr. & Mrs. Clinton F. Morse  
Mr. & Mrs. James K. Nance  
Mrs. Katherine Porter Perkins  
Georgia H. Safford  
Louis D. & Wanda Spaw  
Dr. & Mrs. Karl C. ten Brink  
Bessie Minge Wendt  
Mrs. Sam P. Worden  
Mr. & Mrs. Frank Zumwalt

**WILLIAM H. DRUSHEL**

Mrs. Herbert Stevenson

**MRS. KENNETH R. DUFF**

Mr. & Mrs. Carl Illig

**JANE STOCKTON DUNAWAY**

Architecture Class of 1955,  
Rice University  
Mr. & Mrs. Kingsland Arnold  
Raymond & Susan Brochstein

Frances & Franz R. Brotzen  
Leslie R. Center  
Mr. & Mrs. Charles S. Chan  
Mr. & Mrs. F. Gene Crawford  
Louise J. Crawford  
Mr. & Mrs. A.L. Dial, Jr.  
Mr. & Mrs. H. Clyde Dill  
Mr. & Mrs. A.D. Dyess  
Mr. & Mrs. J. Thomas Eubank  
Fairchild & Cantey, Realtors  
Mr. & Mrs. Charles E. Fennell  
John A. Gerlt  
Mr. & Mrs. A.A. Goodson, Jr.  
Mr. & Mrs. Hugh E. Gragg  
Daniel Hirsh  
Mr. & Mrs. Henry W. Hoagland  
Mr. & Mrs. Burke Holman  
Dr. & Mrs. Warren A. Hunt  
Doris B. Japhet  
C.A. Johnson  
Mr. & Mrs. John E. Joiner  
Dr. & Mrs. Riki Kobayashi  
John W. Kozarich  
Emily M. & Andrew W. Ladner  
Mr. & Mrs. Morton Levy  
Mr. & Mrs. Thomas L. Lewis, Jr.  
Eleanore S. MacMahon  
Mr. & Mrs. James K. Nance  
Margaret Field Norbeck  
Mr. & Mrs. Ralph S. O'Connor  
Mr. & Mrs. Harry S. Ransom  
Virginia & Harold Rorschach  
Della Schaffer  
Mr. & Mrs. Ronald P. Schutz  
Spencer Engineers Inc.  
Mr. & Mrs. Charles F. Sullivan  
Dr. & Mrs. Karl C. ten Brink  
Laurie & Mace Tungate, Jr.  
Mr. & Mrs. Allen G. Weymouth  
Dorothy H. Winslett  
Mr. & Mrs. L.B. Wootters  
Mrs. Sam Worden  
Mr. & Mrs. Frank Zumwalt

**MRS. FLOYD W. EASTERWOOD**

Mr. & Mrs. James W. Woodruff

**CECILIA BREMER EDMUNDSON**

Mr. & Mrs. W. Browne Baker, Jr.

**EMILY BERNICE BROWN**

**ELLIOTT**

Mr. & Mrs. David S. Howard, Jr.

**JOHN B. EVANS**

Mr. & Mrs. J. Thomas Eubank

**ISABEL P. FARIS**

Dr. & Mrs. Robert K. Blair

**WINIFRED GAHAGAN**

Mr. & Mrs. P.A. Meyers

**BLAIR WILLSON GOODLOE**

Elizabeth & Tryon Robinson  
Dr. & Mrs. Edward T. Smith

**PAUL GOODRICH**

Louise Dunnam

**DORIS N. GREGORY**

Mr. & Mrs. James W. Woodruff

**MRS. LAWRENCE A. HAMILTON**

Mr. & Mrs. Carl Illig

**VIRGINIA EAGLE BOYD**

**HAWKINS**

Mrs. Freeman E. Perkins

**THE REV. EUGENE A. HEYCK**

Ms. Mary Louise Giraud  
Joe & Mary Williamson

**MONTE CLIFTON HICKAM**

James W. Woodruff

**JEAN HOWARD**

Kathie & Dave McStravick

**HARRY HURT**

Mrs. Eliza Lovett Randall

**DR. KENNETH H. JOHNSON**

Roy & Evelyn Nolen

**MARY ELIZABETH JOHNSTON**

Mr. & Mrs. William W. Akers  
Mr. & Mrs. Herbert Allen  
Richard A. Armstrong  
Mr. & Mrs. Louis L. Banks  
Evelyn Benjamin  
Samuel M. Carrington, Jr.  
Champion Industrial Sales Co.  
Marie Cherichetti  
Hedley Donovan  
Henry F. Dressel  
Mrs. Elizabeth Weil Fisher  
Marilyn L. Frank  
Mr. & Mrs. John F. Heard  
Mr. & Mrs. C.M. Hudspeth  
Patricia A. Langan  
Henry Luce III  
Mr. & Mrs. D.V. Lyttleton  
Robin Bierstedt & Peter Mayer  
Mrs. Merle M. McDaniel  
Mr. & Mrs. Harold B. Meyers  
David E. Park III  
Mr. & Mrs. Gus Schill, Jr.

Eleanor N. Schwartz  
Dr. & Mrs. Karl C. ten Brink  
VISTA Chemical Company  
Mr. & Mrs. Wallace S. Wilson  
Mr. & Mrs. John N. Winton, Jr.

**BETTY JO LACKEY JONES**  
Dr. Thomas E. Sample, Jr.

**FIRAS KABLAWI**  
Mr. & Mrs. Emmett L. Hudspeth

**MARION KASSEBERT**  
Mrs. Katherine Perkins

**RENEE BATTELSTEIN  
KAUFMAN**  
Evelyn Rosenthal

**DOROTHY BURNHAM KECKLEY**  
Mr. & Mrs. W.M. Ferguson  
Mr. & Mrs. A. Gordon Jones  
Mr. & Mrs. Haylett O'Neill, Jr.  
Owen Wister Literary Society  
Alumnae

**TOKUYE KOBAYASHI**  
Prof. & Mrs. Wilfred S. Dowden

**ERNEST LACY**  
Dan M. Moody

**IDA LAIT**  
Mr. & Mrs. William S. Douglas

**LAVOISIER LAMAR**  
Mrs. Eva S. Brandes  
Marie & Philip Scott

**LOUIS LETZERICH**  
Mrs. Eliza Lovett Randall

**MARK JOSEPH LIVERMAN, JR.**  
Mr. & Mrs. Kingsland Arnold  
Raymond H. Moers  
Grace W. Osborne  
Alberta Taylor

**ANN GILES LOCKLAND**  
Miss Nell Willmann

**DUNCAN MacLAREN**  
Augusta Levine

**MARION LUCILLE MADDREY**  
Mr. & Mrs. Allen G. Weymouth

**MAURICE W. MATTHEWS**  
Mr. & Mrs. George Hartung

**MALCOLM McPHAIL**  
Frances & Franz R. Brotzen

**MARGUERITE MEACHUM  
MELLINGER**  
Mrs. George S. Bruce, Jr.  
Mrs. A.C. Muller  
Mrs. Eliza Lovett Randall  
Rice University Associates  
Mrs. Rex Shanks, Jr.  
Miss Nell Willmann

**HOPE SUTTON MEREDITH**  
Julia & Bass Wallace & Family

**LYDIA PONDER MILLER**  
Tom & Clara Niland  
Mr. & Mrs. Haylett O'Neill, Jr.

**FRANCES BLACK MOERS**  
Alberta Taylor

**THOMAS GARLAND MOISE**  
Rita M. Cobler

**JEFF E. MONTGOMERY**  
Mr. & Mrs. Arnold Smith

**ALVIN S. MOODY, JR.**  
Sidney A. Adger  
Mrs. Mary Lake Arnold  
Mr. & Mrs. Victor N. Carter  
W. Winthrop Carter  
The Colonneh Club  
Mr. & Mrs. John H. Crooker, Jr.  
William M. Dickey  
Mrs. Card G. Elliott  
Mr. & Mrs. Claude T. Fuqua, Jr.  
Ms. Mary Louise Giraud  
Mr. & Mrs. Harrison Hale  
Mr. & Mrs. Martin Hall  
Mrs. H. Kirk Harrison  
Mildred M. Holmes  
Mrs. Russel Lee Jacobe  
Elva & Fred Johnston  
Mr. & Mrs. Jack Josey  
Mr. & Mrs. William H. LaRue  
Wendel & Audrey Ley  
Mr. & Mrs. C.M. Malone, Jr.  
Mr. & Mrs. Jack Modesett, Jr.  
Mr. & Mrs. Haylett O'Neill, Jr.  
Mr. & Mrs. Homer Potter, Jr.  
Mr. & Mrs. T.H. Riggs  
R.E. Robertson  
Mary B. Scott  
Mr. & Mrs. Ike Sewell  
Mrs. J.E. Snoddy  
Mrs. Charles Talbot  
Mr. & Mrs. Howard T. Tellepsen

Joe & Mary Williamson  
Michael W. Wood

**BETH MOONEY**  
Dr. & Mrs. Edward T. Smith

**TYE NEILSON**  
Dr. & Mrs. Edward T. Smith

**KENNETH NETTING**  
Prof. & Mrs. Wilfred S. Dowden

**SHUFORD R. NICHOLS**  
Mr. & Mrs. Claude T. Fuqua, Jr.

**VIRGINIA NOEL**  
Bernard & Beverly McMaster

**MR. & MRS. SYDNOR ODEN**  
Mr. & Mrs. Howard I. Mason, Sr.  
Mrs. Eliza Lovett Randall

**ALICE B. PAUL**  
Mr. & Mrs. John E. Joiner  
Mr. & Mrs. T. Philip Scott

**MALCOLM L. PECH**  
Mr. & Mrs. Carl Illig

**JO R. PERSONS**  
Mrs. Willoughby C. Williams

**MRS. LYNNE C. PETLEY**  
Mr. & Mrs. Edwin H. Dyer

**EARL PIERSON**  
Mr. & Mrs. Ralph S. O'Connor

**KATHRYN RISHER RANDALL**  
Mr. & Mrs. W. Browne Baker, Jr.

**FLOYD RANSOM**  
Mr. & Mrs. Hugh E. McGee

**ARNAN A. RASCH**  
Robert V. Turner

**WILLIAM WHITNEY REEDER**  
Shell Oil Co.,  
Processing & Support  
Finance Dept.

**DR. JOHN M. ROBERTS**  
Mr. & Mrs. Ray M. Bowen  
Gwenn Schmidt

**DR. HENRY J. ROSENBLUM**  
Mr. & Mrs. Ervin K. Zingler

MARY G. ROTHERMEL  
Mr. & Mrs. Robert J. Hogan

LILLIAN KIRK SAMS  
Mr. & Mrs. J.R. Hildebrand

INEZ SCAMMAN  
Dr. Thomas E. Sample, Jr.

DR. JAMES C. SCHILLER  
Mildred S. Franklin  
Hill Country Exxon Annuitants Club  
Mr. & Mrs. J.T. Horeczy

CARL A. SCHNEIDER  
Mrs. Ben Blanton  
Mrs. Mildred P. Wells

WILLIAM A. SCHRADER  
Dr. & Mrs. Francis M. Bramlett

JACK P. SHANNON  
Dr. & Mrs. Robert K. Blair  
Charles W. Giraud  
Mr. & Mrs. Carl Illig  
Mr. & Mrs. R.B. Kinzbach  
Mr. & Mrs. Wendel D. Ley  
Mr. & Mrs. W.R. Lloyd, Jr.  
Mrs. John L. Mortimer  
Mr. & Mrs. Haylett O'Neill, Jr.  
Eleanor & Dan C. Smith, Jr.  
Robert V. Turner

MRS. JAMES A. SINCLAIR  
Mr. & Mrs. D.V. Lyttleton

MRS. HARRY K. SMITH  
Rice University Associates

MRS. R.W. "BOB" SMITH  
A. Fred Renaud

THOMAS WILLIAM SMITH  
Mr. & Mrs. Thomas D. Smith

ROBERT SPIERS  
Dr. & Mrs. Harold M. Hyman  
Barbara Kile

EVIE MARGARET MOTT  
SUMMERS  
Mr. & Mrs. Roy D. Demme

J.B. SYLVAN, JR.  
Mr. & Mrs. Claude T. Fuqua, Jr.

HOWARD MARTIN THOMPSON  
Mr. & Mrs. Howard I. Mason, Sr.

TACITUS CLAY THORNHILL, SR.  
Virginia Kirkland Innis  
Mr. & Mrs. William R. Lloyd, Jr.

JANE AMERMAN VANZANT  
Mr. & Mrs. Leslie R. Center

FRANCIS W. VESEY  
Mr. & Mrs. Henry W. Hoagland  
Milton B. McGinty  
Mrs. Mary Marshall F. Robertson

NINA VOSS  
Mr. & Mrs. Claude T. Fuqua, Jr.

JOHN EDWARD WALTON, JR.  
Jeanne Loudon & Robert W. Maurice

DR. TRENTON WANN  
Cynthia Croucher  
M. Field Norbeck

EUGENE WERLIN, SR.  
Leota Meyer Hess  
Mrs. William G. Murray

HELEN WILLIAMS WHEELER  
Mr. & Mrs. Phillip B. Costa  
Mariann & George Kitchel  
Owen Wister Literary Society  
Alumnae  
Mr. & Mrs. Thomas D. Smith

DR. FREDERIC A. WIERUM, JR.  
Yves Angel  
John & Mary Atkinson  
Col. & Mrs. R.C. Bishop  
Mr. & Mrs. Ray M. Bowen  
Camile Ann Stelzer &  
Carl R. Brinkmann  
Philip R. Brooks  
Frances & Franz R. Brotzen  
Mr. & Mrs. Ernest Carlson, Jr.  
Mr. & Mrs. Alan J. Chapman  
Dr. & Mrs. John W. Clark, Jr.  
Ruben D. Cohen  
Mike & Gay Connelly  
Mr. & Mrs. S.W. Higginbotham  
Dr. & Mrs. Neal Lane  
Dr. & Mrs. John L. Margrave  
Dr. & Mrs. Angelo Miele  
H. Russell Pitman  
Jill Roberts  
Karllyn Roberts-Guichon  
Gwenn Schmidt  
Jim & Midge Sims  
Jeanette & King Walters  
Mr. & Mrs. J.C. Wilhoit, Jr.



## MEMBERSHIP

Membership in the Friends of Fondren Library is open to all segments of the community. It is not an alumni organization. Membership contributions are as follows:

Donor .....	\$.25
Contributor.....	\$.50
Sponsor.....	\$.100
Patron.....	\$.250
Benefactor.....	\$.500
Library Fellow .....	\$.1,000
Endowed Membership.....	\$.4,000

Members of the Friends will receive *The Flyleaf* and invitations to special programs and events sponsored by the Friends. In addition, members who are not already faculty or staff of the university will receive library circulation privileges. Borrowing privileges for Rice nonaffiliate members are available starting at the \$50 membership level. A maximum of four books may be checked out for a period of 28 days. Members must be at least 18 years old.

Checks for membership contributions should be made out to the Friends of Fondren Library and should be mailed to Friends of Fondren Library, Rice University, P.O. Box 1892, Houston, Texas 77251-1892, along with your preferred name and address listing and home and business phone numbers. Contributions qualify as charitable donations and also help to meet the Brown Foundation Challenge Grant.

### FRIENDS OF THE FONDREN LIBRARY

RICE UNIVERSITY P.O. BOX 1892 HOUSTON, TEXAS 77251-1892

In memory of                       In honor of                       On occasion of

Name \_\_\_\_\_

Event or Occasion \_\_\_\_\_

Please send the information card to:

Name \_\_\_\_\_

Address \_\_\_\_\_

City \_\_\_\_\_ State \_\_\_\_\_

This space for contributor

Name \_\_\_\_\_

Address \_\_\_\_\_

City \_\_\_\_\_ State \_\_\_\_\_

*Contributions to Friends of The Fondren Library are deductible for income tax purposes.*

Rice University  
P.O. Box 1892  
Houston, Texas 77251-1892

---

Non-Profit  
U.S. POSTAGE  
PAID  
Houston, Texas  
Permit No. 7549

---