

R.E.C. Arts

ST. JOSEPH'S COLLEGE

PROUDLY PRESENTS

FOOTPRINTS '77







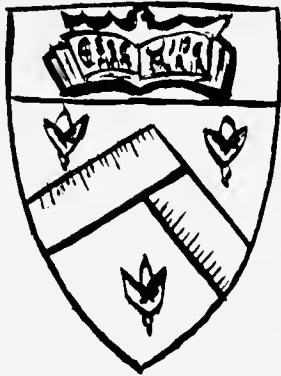
10654
93901



FOOTPRINTS 1977

St. Joseph's College
245 Clinton Avenue
Brooklyn, New York
11205





ST. JOSEPH'S COLLEGE

Alma Mater

*Joys that now surround us
Slip too fast away;
Years will try to dim them
Try to hide each ray;
Something yet will linger,
Something half a dream,
Mem'ry holds us to her,
And repeats this theme:*

Chorus:

*When they sing of Alma Maters,
Famed and ever seen as fair,
Then we will raise our voices proudly
To tell of one beyond compare.
Hers to stand for truth and honor,
Hers the hallowed way we trod,
St. Joseph's cause, ours forever,
Failing her never,
All for her and for God!*

IN MEMORIAM



S. VINCENTTHERESE

*We, the senior class, dedicate Footprints 1977
in remembrance and love to S. Vincent Therese
and S. Saint Brigid Lambe.*

*To leave is to die a little;
To die to what we love.
We leave behind a bit of ourselves
Wherever we have been.*

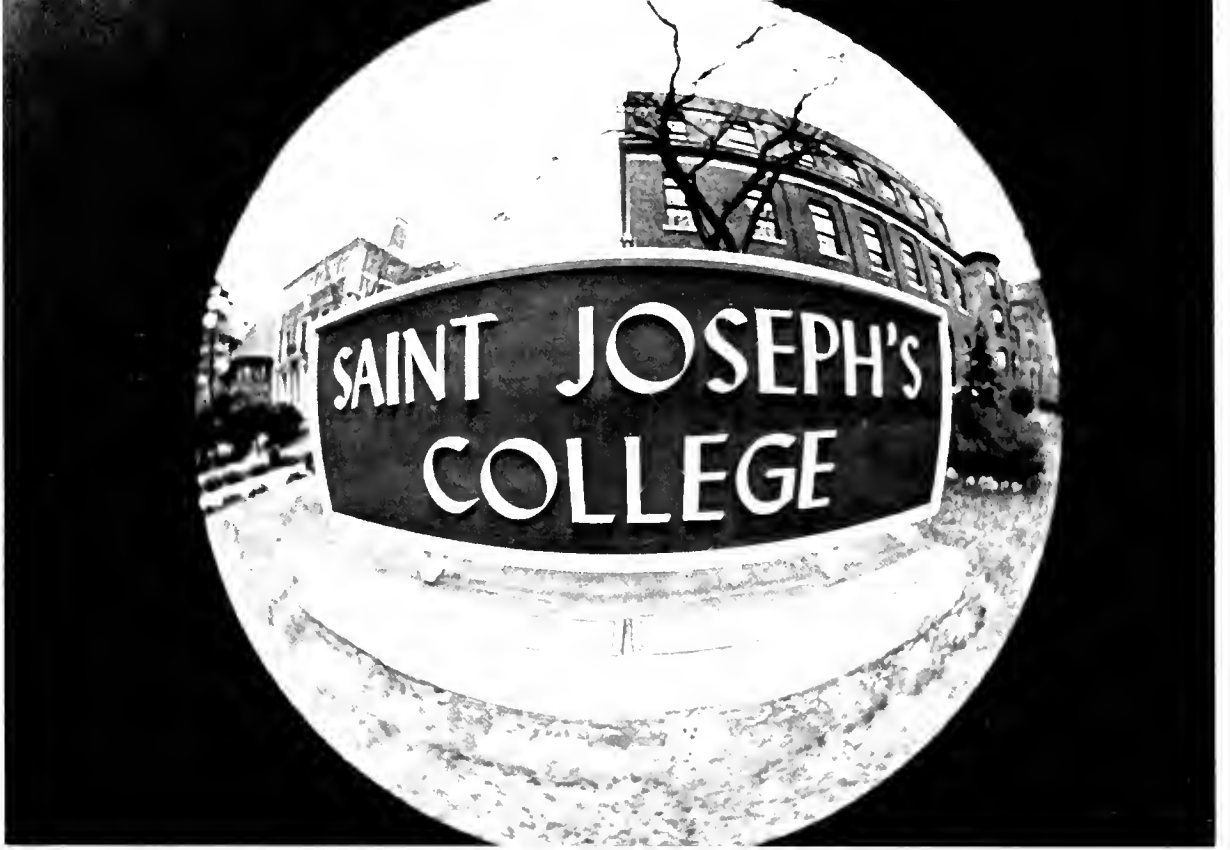
Edmond Haraucourt



S. SAINTBRIGID LAMBE





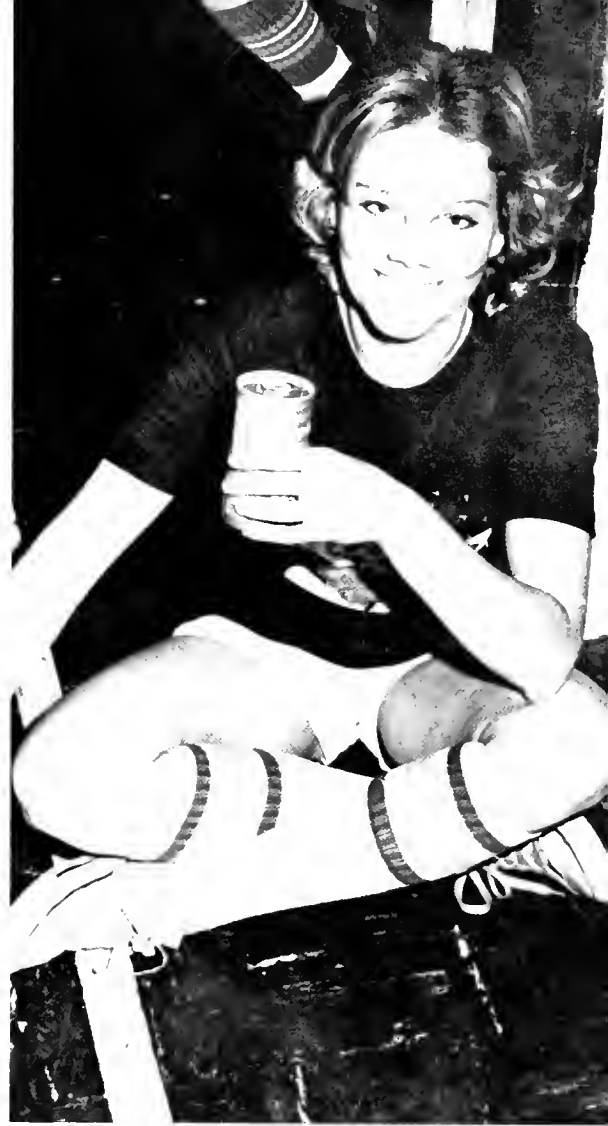






















DIRECTORS



ADMINISTRATION



S. GEORGE AQUIN O'CONNOR
President



S. MARY FLORENCE BURNS
Academic Dean



S. TERESA AVILA BURKE
Dean of Student Affairs



RICHARD F. DOYLE
Dean of General Studies



S. MARY AMATA KADLACK
Registrar



S. MARY ELIZABETH O'CONNOR
Treasurer



S. MARGARET BUCKLEY
Assistant Dean
Director of SAY Program



SHERRIE VAN ARNAM
Director of Admissions



ROSALIE TUTINO
Director of College Relations



S. MARY WINIFRED GRASS
Librarian



S. BERNADINE MARIE HAYES
Financial Aid Officer



S. MARGARET LOUISE SHEA
Director of Dillion Child
Study Center



S. JOHN RAYMOND MCGANN
Director of Counseling and Testing



S. IRENE VERONICA VAN WESTERING
Affirmative Action Officer



CHRISTINE PADLO
Administrative Assistant
Division of General Studies



MARGARET LYNCH
Associate Registrar
Division of General Studies

ADMINISTRATIVE STAFF



MARIE GRACE

Clerical Coordinator, Development Office

HELEN HERLEY

Assistant to the Director of College Relations



CATHERINE McINTYRE

Assistant to the Director of Development



FRANK MARCHIANO

Admissions Counselor



JOSEPHINE CAMPS

Secretary to the
Director of the Dillon Center



CAROL SULLIVAN
Financial Aid Counselor



JUSTINE LASHKOW
Secretarial Assistant



MARIE MARRONE
Secretary to Academic Dean

FACULTY



S. JEAN MARIE AMORE
Child Study



JOHN ARNEZ
Economics



JOAN BACHI
Child Study



ELIZABETH BALFOUR
Child Study



JOSEPHINE BELOSO
Art



WILLIAM BENGSTON
Sociology



S. JOAN ANCILLA BLAKE
Political Science



S. NORA BOTTCHER
Special Education



S. ANN EDMUND CAREY
Classics



S. JOSEPHINE MARIE CAVANAUGH
Religious Studies



S. HELENE CIBORSKI
History



RAYMOND D'ANGELO
Sociology



JOAN DAVIS
Child Study



REV. GENNARDO D'ECCLESIIS
Music



S. ST. FRANCIS DILGEN
Chemistry



MARIANNE DISARNO
Library



S. PATRICIA DITTMER
Preschool Teacher



ANNE EPSTEIN
Graduate Assistant



S. MARIA deSALES ESPOSITO
Spanish



S. MARIE CLOTILDE FALVEY
Chemistry



REV. RICHARD FERRIS
Religious Studies



PATRICIA GABEL
English



ELIZABETH GILBERT
Dance



RICHARD GREENE
Psychology



S. JOSEPH DAMIEN HANLON
History



CAROL HAYES
Biology



REV. JOHN HESSION
Philosophy



MARGARETE HOPKINS
Mathematics



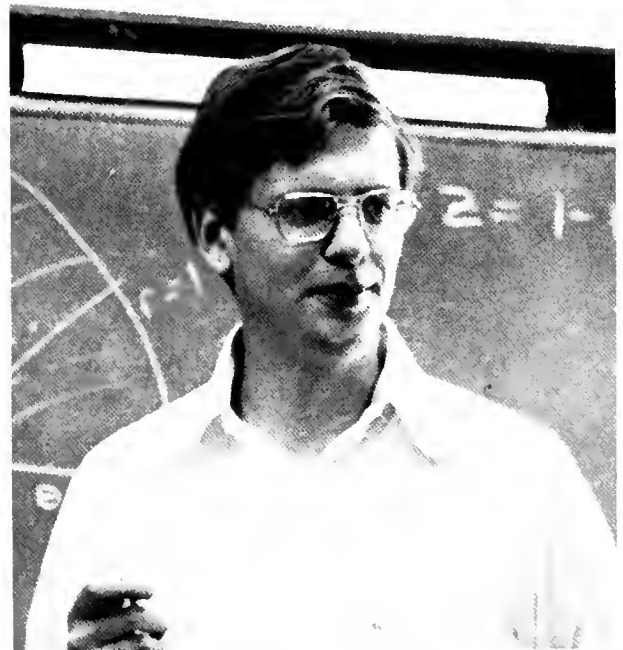
S. JOHN BAPTIST HULL
Speech



JANICE JACKSON
Psychology



S. MARGARET JENNINGS
English



WILLIAM JOSEPHSON
Mathematics



S. HELEN KEARNEY
Child Study



DOROTHY A. KING
English



LENORE M. KELLY
Sociology



ROSEMARY LATHAM
Speech



EILEEN LUONGO
Child Study



NORMA MALLIA
French



S. MYRA PAUL MANSFIELD
History



S. MARIA INES MARTIN
Spanish



ANNE McBREARTY
Child Study



S. AGNES MEAGHER
Library



STANLEY NEVINS
Philosophy



S. ROSAMOND O'KEEFE
Psychology



MARGHERITA PICONE
Graduate Assistant



S. MARIE SECOUR PRIVITERA
Assistant Librarian



DEREK REIST
Business



ROBERT RADUS
French



REV. JOSEPH ROFF
Music



LOUISE ROSE
English



S. JOAN RYAN
History



S. MARY BEATRICE SCHNELLER
Biology



S. JOSEPH IMMACULATE SCHWARTZ
English



S. JOANMARIE SMITH
Philosophy



MICHAEL TSUJI
Mathematics



S. MARY CORDE TYMANN
Physics



MARGARET WARD
Physical Education



S. ALICE FRANCIS YOUNG
Child Study

STAFF



INEZ MORIARTY
Business Office



DOROTHY DORSCH
Library



ROSEMARY CHAPMAN
Receptionist



THANA LOIR
Library



CLARA GRAY
Business Office



ANDREW FLEMING
Maintenance



JOSEPH FARRELL
Maintenance

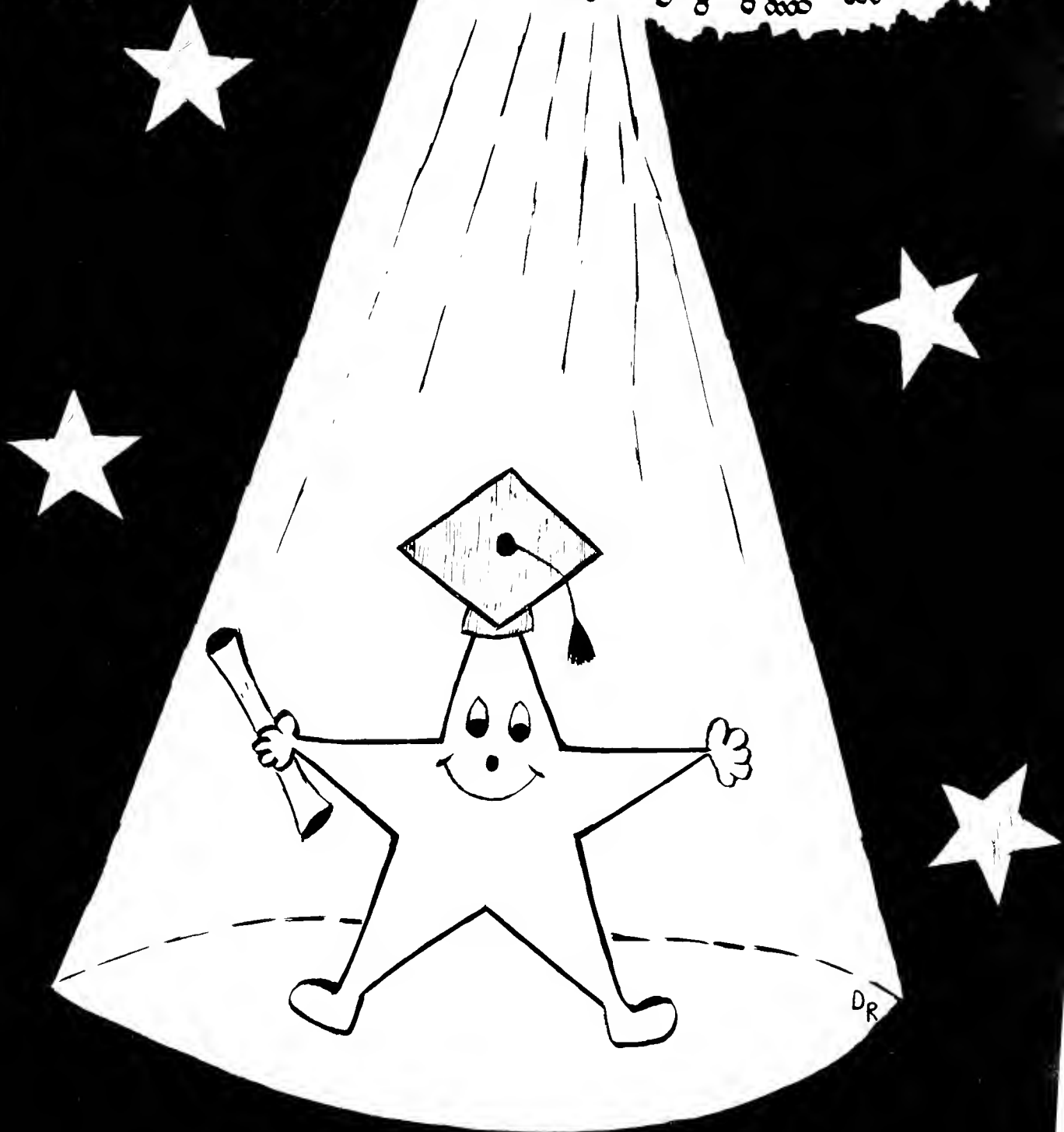


ANNE O'DONNELL
PHYLLIS ANZALONE
ANNA DAYS
Cafeteria



THERESA CLARKE
Cafeteria

SPOTLIGHT ON THE STARS





CATHERINE AKINS, B.A.

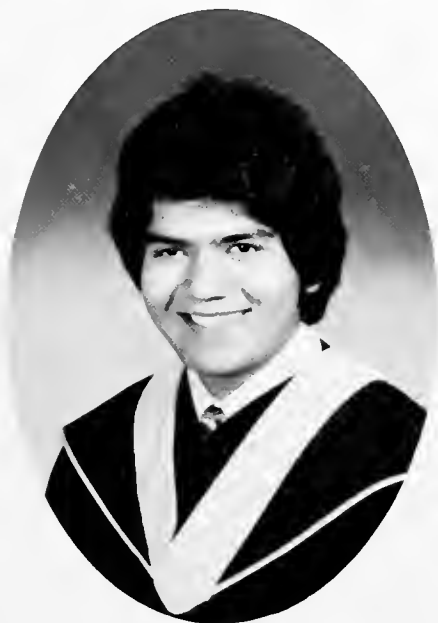
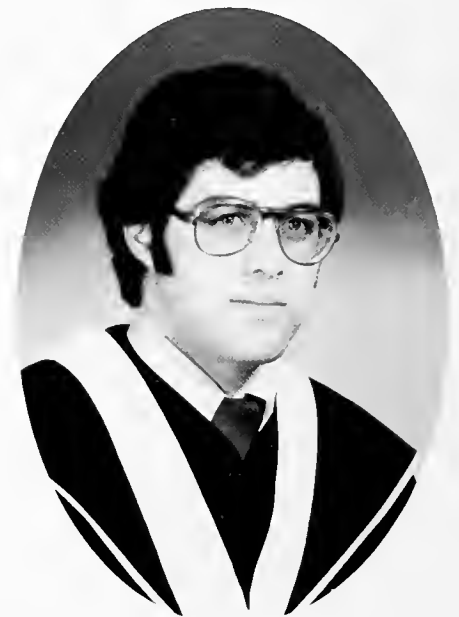
Psychology

Political Science

MICHAEL ARTZ, B.A.

Child Study

Psychology



EDGAR BALLENAS, B.S.

Chemistry

THERESE BENNETT, B.A.

English



LORRAINE BURNS, B.A.

Psychology



S. MAUREEN CAMERON,

B.S.

Mathematics

Education



JOAN CARRIG, B.A.

Psychology



KATHLEEN CASEY, B.A.

Child Study

English



CATHERINE CASTALDO,

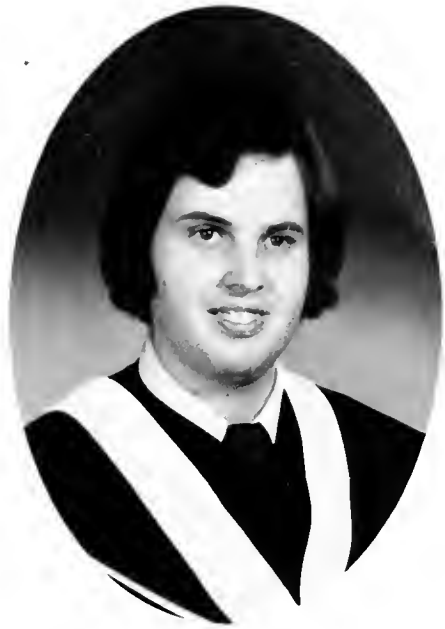
B.A.

Child Study

Psychology

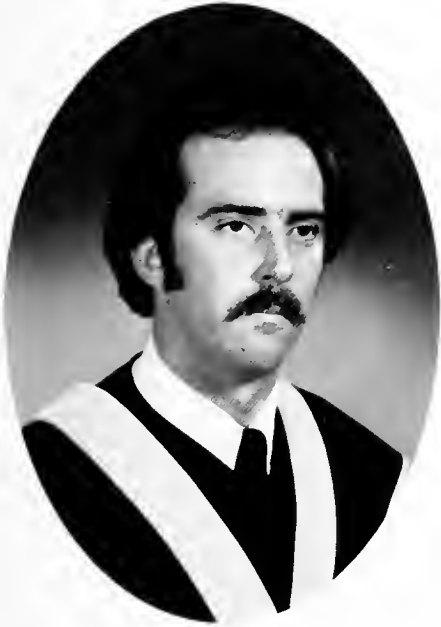
THOMAS CHADZUTKO,
B.A.

English Education



DAVID d'ECCLESIIIS, B.S.

Biology



ANTOINETTE DeFALCO,
B.A.

Child Study Psychology





JOANN DEL GAUDIO, B.A.

Child Study

Psychology

ANNE MARIE DELLA
MONICA, B.A.

Child Study

Speech



DEBORAH DiMAIOLO,
B.A.

Child Study

Psychology



KATHLEEN DOWD, B.A.

Child Study

Speech



MAUREEN DUFFY, B.A.

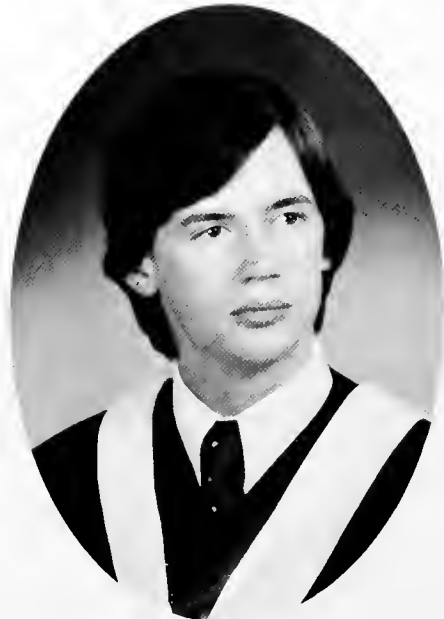
Social Science

Sociology



JOHN FOX, B.A.

English





LAURA GALBO, B.A.

Child Study

Speech

BERNICE GALDORISI,
B.A.

Sociology



CLARE GIANGRECO, B.S.

Mathematics

Education

CATHERINE GILDEA, B.A.

English



CORNELIA GILDEA, B.A.

English



MILDRED GONZALEZ,
B.A.

Child Study

Spanish





CLARE GRIFFIN, B.A.

Child Study

English

TERESA GUIDARELLI, B.A.

Child Study

English



MARY ELLEN HARRIS,
B.A.

Child Study

Speech



JEANNE HAUSSER, B.S.

Biology



KATHLEEN HEFFERNAN,
B.S.

Chemistry

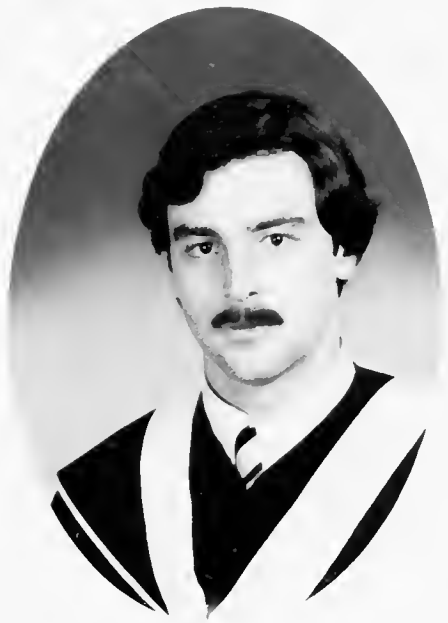


BARBARA HOLTON, B.A.

Child Study

Psychology





RAYMOND INDELICATO,
B.A.
Sociology

LORETTA JOHNSON, B.A.

Child Study

Mathematics



JANE KELLY, B.A.

Child Study

Speech

PATRICIA KELLY, B.A.

English



VERONICA KIEWRA, B.A.

English

Education



VINCENT LEWANDOWSKI,
B.A.

Child Study

Psychology





CATHERINE LEWIS, B.A.

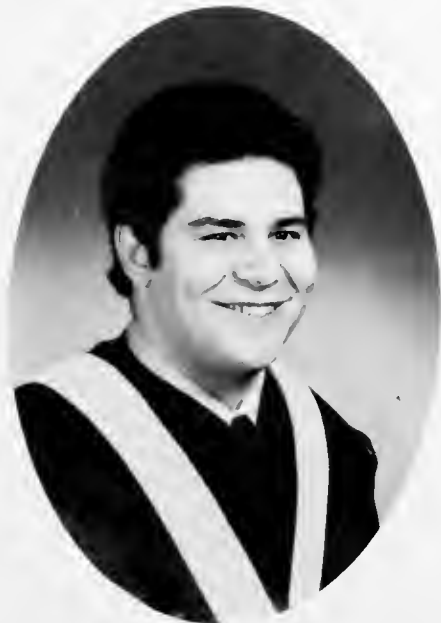
Child Study

Sociology

DEBORA MAIDA, B.A.

Child Study

Speech



ANTHONY MARINELLO,

B.S.

Biology

THERESE MARTIN, B.A.

English



JOANNE MCCOY, B.A.

English

Education

EILEEN McCULLOUGH,
B.A.

Child Study

Psychology





MARY McLAUGHLIN,
B.A.

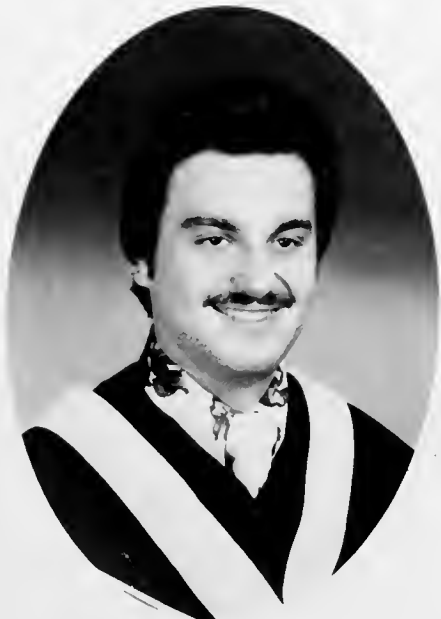
Child Study

History



EDWARD McQUADE, B.A.

Psychology



JOSEPH MELE, B.A.

Psychology

KATHRYN MEYER, B.A.

Child Study

Speech



VITA MONASTERO, B.A.

Child Study

Psychology



JUDY MULVANEY, B.A.

Child Study

English





EDWARD MURPHY, B.A.

History

PATRICIA O'CONNOR,
B.A.

Child Study

Speech



ROSE ANN PAGANO,
B.S.

Mathematics

GENEROSA
PAPPALARDO, B.A.

Child Study

Mathematics



BARBARA PASI, B.A.

Child Study

Psychology



ANTONIA PICCINI, B.S.

Biology



CHRISTOPHER PROCIDA,
B.A.

Psychology

KATHLEEN REGAN, B.A.

Speech



S. THERESE REISER, B.A.

Child Study

Science

CAROL ROBERTI, B.A.

Child Study *Psychology*



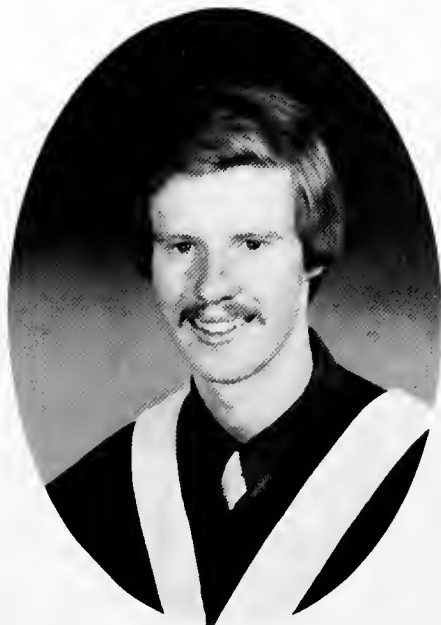
MARGARET ROCHFORD,
B.A.

Child Study *Psychology*



THOMAS ROEDER, B.A.

Child Study *English*





JULIETTE ROMAGNANO,
B.A.

Child Study

Psychology

FRANCES ROSATO, B.A.

Child Study

Spanish



DEBORAH ROTKIEWICZ,
B.A.

Child Study

Mathematics



JAYNE SCANSAROLI, B.A.

Child Study

Fine Arts



JANIS SMYKLA, B.A.

Child Study

Speech



CARMELA SPINELLI, B.A.

History





JO-ANN TUFANO, B.A.

Child Study

Speech

PAUL WEISS, B.A.

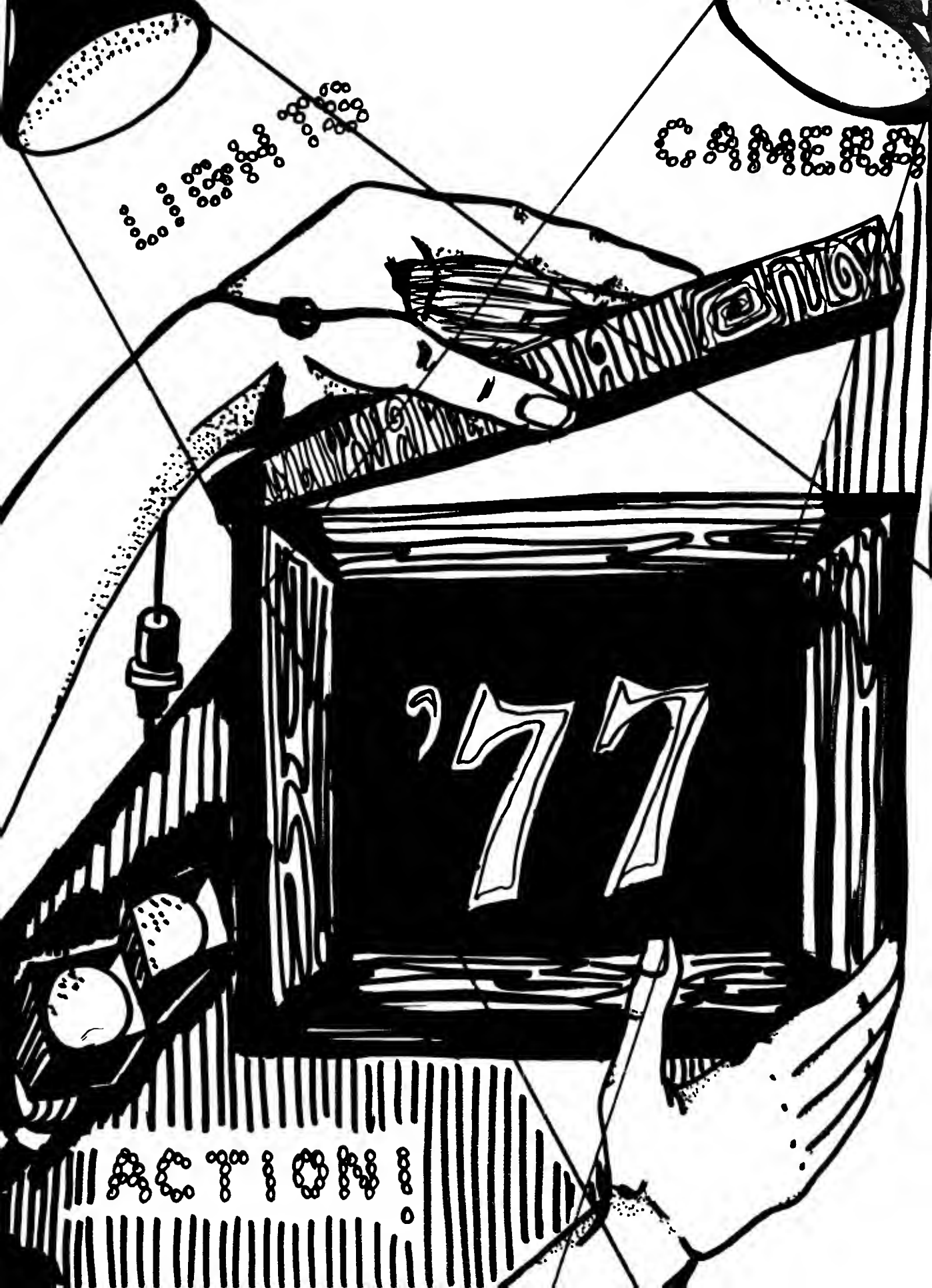
English



CAMERA SHY

JENNIE BRUTUS
LOUIS FAVICCHIO
ARLEEN GLENNON
EDWARD JOESTEN
EMILY KOLODZINSKI

PATRICIA RADIGAN
RACHELE RAIA
MARIA SALDARRIAGA
JO-ANN TREBLE
JOHN WALSH



CARTON

77

ACTION



MEN'S VARSITY



Left to Right, TOP ROW: Kevin Dorney, Thomas Roeder, John Stevenson, Reinaldo Sanchez. BOTTOM ROW: Jim Sullivan (Coach), Mathew Irvine, Robert Troutman, Timmy Sullivan.

WOMEN'S VARSITY



Left to Right, TOP ROW: Clare Griffin (Manager), Clare Giangreco, Terri Stevenson, Denise Delpratt, Susan Oldham, Maureen Cameron, Patricia Brown, Miss Ward (Coach). BOTTOM ROW: Marlene Baisley, Corinne Gamper, Eileen McCullough, Denice Gamper.

ART CLUB



Left to Right, Debby Bocchino, Marilee Cosentino, Rose Ann Pagano, Veronica Kiewra, Nicole Monroe, Pat Ayala, Josephine Belloso, Maureen Duffy, Barbara Connors, Barbara Holton.

CHESS CLUB



Left to Right, Paul Romanello, Thomas Macaluso, Brian Sequeira, Andrew Vaccari, Emily Sabbagh.

POLITICAL AFFAIRS CLUB



Left to Right: Virginia Ayala, Lillian DelSeni, Joseph Gregg, Vincent Daniele, Eileen Loughlin, Anne McConnell, Sharon Balloqui, Irma Torres. SEATED: S. Joan Ancilla Blake.

PSYCHOLOGY CLUB



Left to Right, TOP ROW: Barbara Pasi, Caroline Donovan, Deborah Valderrama. BOT-
TOM ROW: Catherine Castaldo, S. Rosamond O'Keefe, Catherine McKenna.

SCIENCE CLUB



Left to Right, TOP ROW: Paul Kollete, S. St. Francis Dilgen, Paul Romanello. MIDDLE ROW: Theresa Gerolimatos, Bruno Romeo, Andrew Vaccari, Gerry McManus. BOTTOM ROW: Denise Delpratt, Emily Sabbagh, Matthew Goldstein, Lorraine Conlon.

MODERN DANCE CLUB



Left to Right, TOP ROW: Teresa Hunter, Marina Cheung, Kathy Conn, Teresa Mante. MIDDLE ROW: Denise Delpratt, Debby Bocchino, Pat Brown. BOTTOM ROW: Chris Strianese.



Left to Right, Pat Brown, Teresa Hunter, Chris Strianese.

SPECIAL PROGRAMS COMMITTEE



Left to Right, TOP ROW: Sally Murphy, Kevin Dorney, Paul Weiss, Billy Witt, Janis Smykla, Jo-Ann Tufano, Michael Legieza, Vinnie Daniele. BOTTOM ROW: S. Margaret Jennings, S. Teresa Avila Burke, Angela Pocchia, Marisa Maisto.

EXAM COMMITTEE



Left to Right, TOP ROW: Mary Anne O'Callaghan, Barbara O'Leary, Richie Sparaco, Jeanne Hausser, Maureen Keegan. MIDDLE ROW: Angela Pocchia, Eileen McCullough. BOTTOM ROW: Maureen Fleming, Debbie Pafundi, Rolande Paultre, Corinne Gamper.

COUNCIL



Left to Right, TOP ROW: Connie Gildea, Vinnie Daniele, Cathy Gildea, Billy Witt. BOTTOM ROW: Clare Griffin, Barbara O'Leary, Eileen McCullough.

SENATE

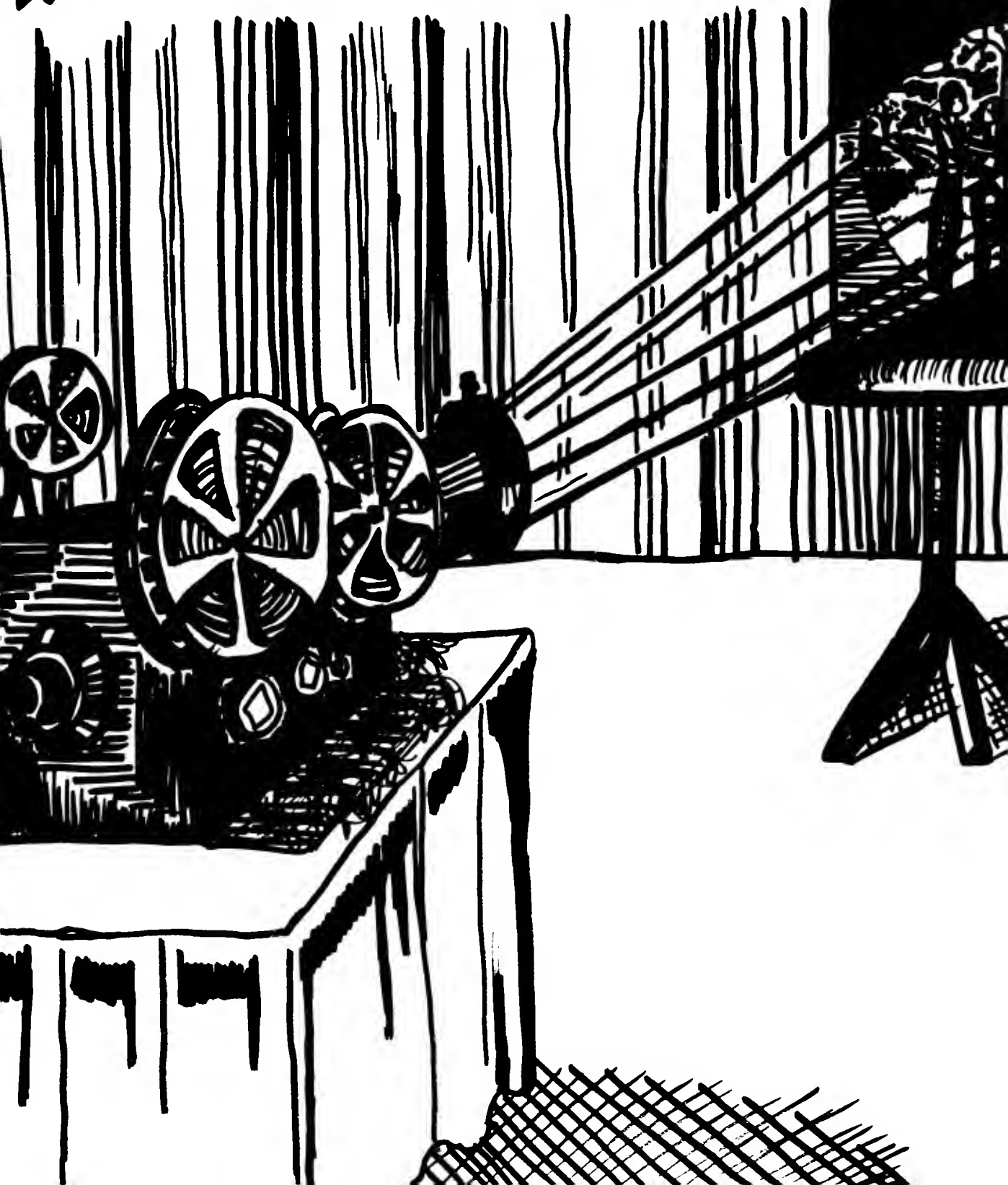


Left to Right, TOP ROW: Debbie Pafundi, Mary Anne O'Callaghan, Bruno Romeo, Rosemarie Porcaro, S. Darlene Sampson, Vinnie Daniele, Connie Gildea, Jeanne Hausser. BOTTOM ROW: Gail Worcelo, Angela Pocchia, Rolande Paultre.



Left to Right, TOP ROW: Michael Legieza, Tom Roeder, Pat Brown, Lucille Pluchino. MIDDLE ROW: Teresa Daniele, Joe Ferguson, Paul Weiss, Corinne Gamper. BOTTOM ROW: Diane Ruf, Cathy McKenna.

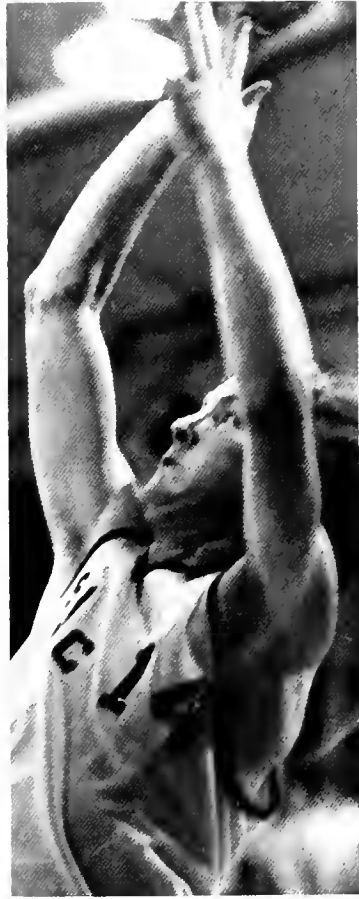
★ THAT'S ENTERTAINMENT



HALLOWEEN PARTY



MEN'S BASKETBALL GAMES



WOMEN'S BASKETBALL GAMES



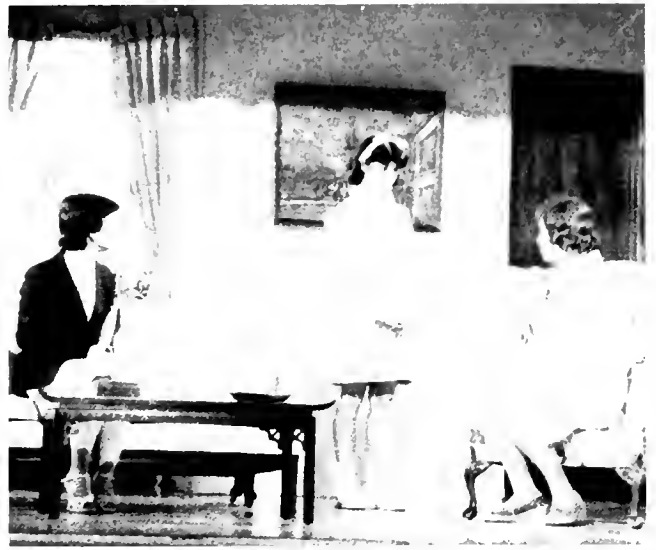




HARVEY



BAD SEED



TALENT SHOW





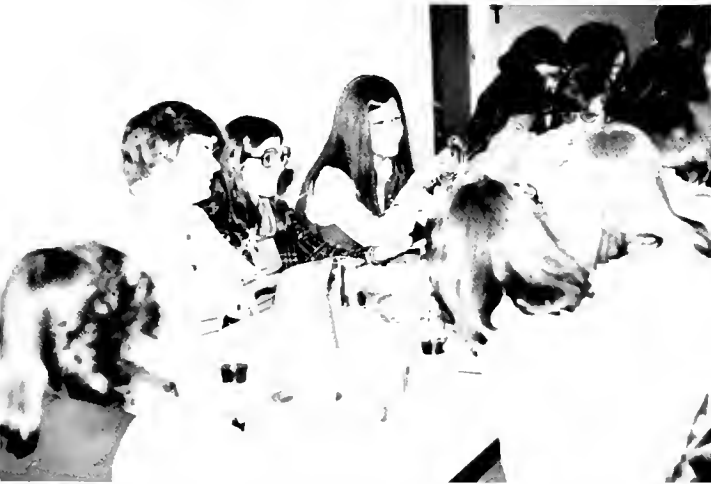
CAKE SALES



60th ANNIVERSARY MASS



101 NIGHTS





ANNUAL DINNER DANCE







HELP!



E
X
A
M



W
E
E
K

ART EXHIBIT



SENIOR MASS

PEACE
I
LEAVE
YOU



PEACE
IS
MY GIFT
TO YOU



SENIOR BARBECUE



COCKTAIL PARTY



GRADUATION



JUNE 1, 1977









CO-STARS

JUNIORS



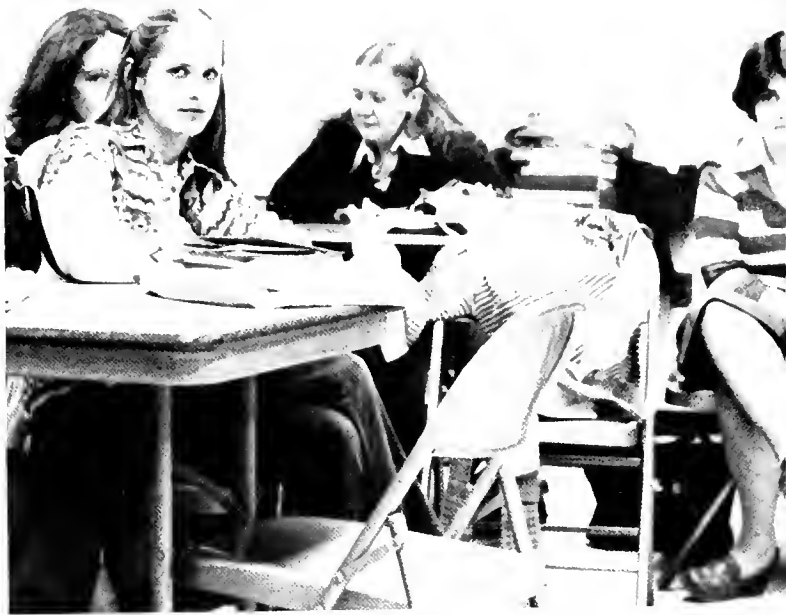
SOPHOMORES



FRESHMEN





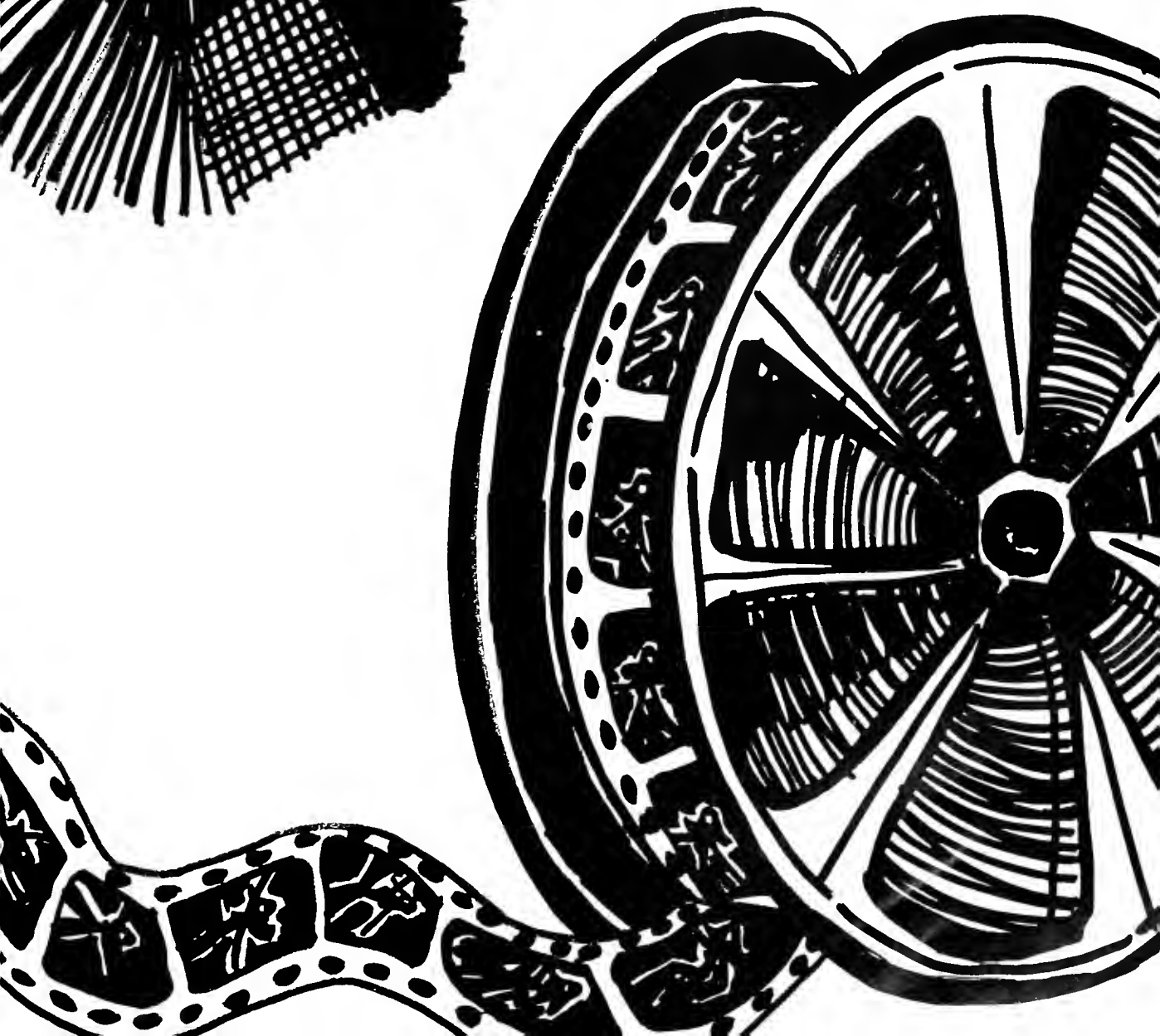
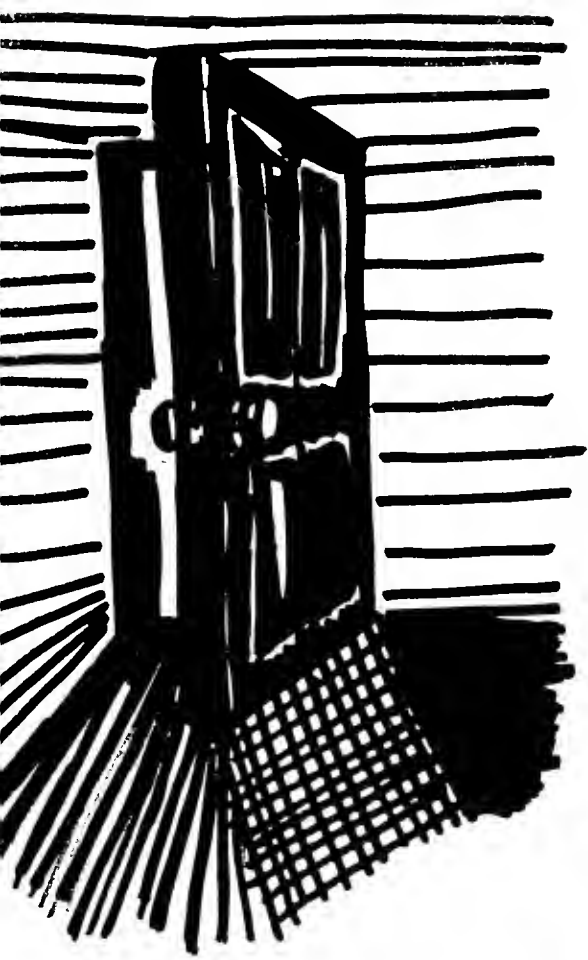








BEHIND
THE
SCENES



SENIORS, REMEMBER WHEN . . .

You graduated High School.

You saw St. Joseph's at Open House.

Merry-go-round was the first course you took.

You didn't know what a ginko tree looked like.

You got capped.

Excitement filled the air as the new courses were posted.

The screams of "nothing fits" replaced the excitement.

You went to the financial aid office and received a loan.

The Rec Room wasn't a wreck.

You wondered why the Red Room was green.

You expected to find mud in the swamp.

You were on the bathroom line in the swamp for the first time.

Erik's was condemned and everyone knew why.

You made annual visits to Pax.

The only way to find the lab was to follow your nose.

You tried to separate male and female fruit flies.

You received your first "Blue Book" and you really were blue.

The "Blue Books" turned pink and yellow.

The longest 15 minutes of your life was hoping the teacher wouldn't come to class.

You were told there were "unlimited cuts" and yet — 3 strikes — and you were out.

You cut class and met your teacher.

You dashed from the locker room to the auditorium in your leotards.
Bowling included setting up your own pins.
You were a toy in the Sophomore Christmas Play.
You thought a ski weekend was to ski.
Tuition went up and up and up.
You needed two hours to finish an HOUR QUIZ.
A calculator was a necessity.
You stayed up all night doing term papers.
Juniors in Child Study dreaded Thursdays as much as exams.
Someone said teaching was going to be easy.
There was a Mr. St. Joseph's College.
Ring Day arrived without the rings.
There wasn't going to be a yearbook.
You needed just one more course to finish your CORE.
There were only 101 Nights left instead of years.
The Footprints staff declined in number.
You danced and drank all night at the Awards Dinner.
Thesis never ended.
Graduation was almost rained out.
You became a member of the Alumni Association on June 1, 1977.
You said your last good-byes.
Remember when? Ah, yes!
JUST KEEP ON REMEMBERING WHEN . . .



WAKE ME WHEN IT'S OVER



MADAME X



THOROUGHLY MODERN MILLIE



THE FARMER'S DAUGHTER



HELLO DOLLY



FOR THOSE WHO THINK YOUNG



GOODBYE MR. CHIPS



THE LAST TANGO IN PARIS



THE SUNSHINE BOYS



GIRL FRIDAY



THE ODD COUPLE



A POCKETFUL OF MIRACLES



THAT'S ENTERTAINMENT?



A STAR IS BORN



PROMISE HER ANYTHING



THE PRIME OF MISS JEAN BRODIE



THE INFORMER



THE THRILL OF IT ALL



BUTTERFLIES ARE FREE



THE PRESIDENT'S ANALYST



MAN'S GREATEST SPORT



GIRL HAPPY



JUNE BRIDE



SUCH
GOOD
FRIENDS





THE IMPOSSIBLE YEARS



HOW TO SUCCEED IN BUSINESS WITHOUT REALLY TRYING



THE SPY THAT CAME IN FROM THE COLD



SORRY, WRONG NUMBER



HIGH SOCIETY



FUNNY FACE



DO NOT DISTURB



THE SEVEN YEAR ITCH



TEACHER'S PET



THE COMPUTER WORE TENNIS SHOES



THE LITTLE PRINCE



HOW SWEET IT IS



THE ROMANTIC ENGLISHWOMAN



SMART WOMAN



THE SECRET LIFE OF AN AMERICAN WIFE



MAN IN THE MIDDLE



THE ACTRESS



THE GRADUATE



YOUNG AT HEART



FUN WITH DICK AND JANE



PLEASE DON'T EAT THE DASIES



BREAKFAST AT TIFFANY'S



DOUBLE
TROUBLE



WHERE ANGELS GO, TROUBLE FOLLOWS



MADE FOR EACH OTHER



CINDERELLA LIBERTY



SUNSHINE



TRUE GRIT



THE NEXT VOICE YOU HEAR



WHATEVER HAPPENED TO BABY JANE?



THE GIRL WHO HAD EVERYTHING



FAR FROM THE MAD-
DING CROWD



SMILIN' THROUGH



THAT FUNNY FEELING



THE INTERN



DREAM GIRL



THE SKY'S THE LIMIT



MY FAIR LADY



HOMBRE



HAPPY GO LUCKY



THANKS FOR THE MEM-
ORY



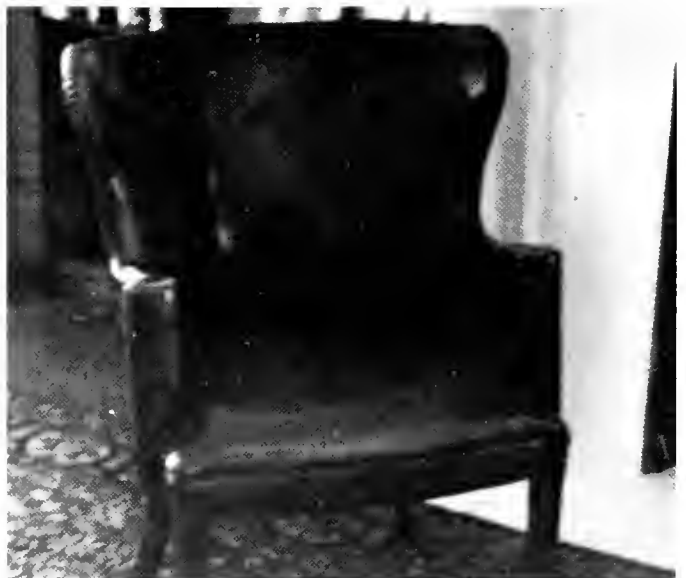
SPRING MADNESS



AFTER THE FOX



LET FREEDOM RING



THE INVISIBLE MAN

SIDE LINES

CATHERINE AKINS

Cooking Club 1, 2; French Club 2; Research Assistant 2.

MICHAEL ARTZ

Chapel Players 2, 3, 4; Photography Club 2, 3.

EDGAR BALLENAS

Photography Club 1; Science Club 3.

THERESE BENNETT

Work-Study Program 3.

LORRAINE BURNS

Psychology Club 1, 2, 3; Work-Study Program 2, 3.

SISTER MAUREEN CAMERON

Women's Basketball 4.

JOAN CARRIG

Religious Affairs Committee 1, 2, 3, 4; Valois Guild 1, 2; Senate 1, 2, 3, 4; Exam Committee 2, 3, 4; Budget Committee 4; Council 2, 3 (Secretary).

CATHERINE CASTALDO

Psychology Club 1, 2, 3, 4; Senate 3, 4; Freshman Orientation 3, 4; Peer Counselor 3, 4.

THOMAS CHADZUTKO

Peer Counselor 4; Senior Barbeque Committee 4 (Chairman); New Faces Committee 4.

DAVID d'ECCLESIIIS

Men's Basketball 2.

JOANN DEL GAUDIO

Work-Study Program 1; Senior Assistant 4.

KATHLEEN DOWD

Senior Assistant 4.

MAUREEN DUFFY

Modern Dance Club 2, 3, 4; Work-Study Program 2, 4; Art Club 3, 4.

JOHN FOX

Men's Basketball 1, 2, 3; Chapel Players 2, 3, 4.

LAURA GALBO

Junior Ring Committee 3; Footprints 4.

CLARE GIANGRECO

Women's Basketball 1, 2, 3 (Captain), 4; Exam Committee 1, 2 (Secretary), 3 (Chairperson), 4; Peer Counselor 2, 3, 4; New Faces Committee 2, 3 (Co-Chairman), 4; Sophomore Christmas Play 2; Senate 3; Council 4.

CATHERINE GILDEA

Senate 2, 3; Sophomore Christmas Play 2; 101 Nights Committee 2; Basketball Club 2, 3; Freshman Orientation 2, 4; Budget Committee 3; Freshman Barbecue Committee 3 (Chairperson); Pro-Temp Exam Committee 3, 4; Council 4; Talent Show 4.

CORNELIA GILDEA

101 Nights Committee 1, 2 (Chairperson); Senate 2, 3; Basketball Club 2; Women's Basketball 3; Freshman Orientation 2, 3, 4; Sophomore Christmas Play 2; Annual Dinner Dance Committee 2; Athletic Association 3 (Secretary); Pro-Temp Exam Committee 3; Budget Committee 3; Freshman Barbecue Committee 3; Senior Cocktail Party Committee 3; Council 4 (Secretary); Mixer Committee 4 (Chairperson); Talent Show 4.

MILDRED GONZALEZ

Footprints 4; Work-Study Program 3.

CLARE GRIFFIN

Valois Guild 1; Religious Affairs Committee 2, 3, 4; Exam Committee 2, 3, 4; Peer Counselor 3, 4; Freshman Orientation 3, 4; Council 4; Women's Basketball 4 (Manager); College Advisory Committee 4; Senior Week Committee 4 (Chairperson); Senior Assistant 4.

TERESA GUIDARELLI

Chapel Players 1, 2, 3 (Vice-President); Peer Counselor 3.

MARY ELLEN HARRIS

Footprints 4.

JEANNE HAUSSER

Science Club 3 (Vice-President), 4; Science Bicentennial Program 3; Honor System Revision Committee 3; Exam Committee 3, 4; Senate 4; College Advisory Committee 4; Biology Lab Assistant 4.

KATHLEEN HEFFERNAN

Chapel Players 1; Work-Study Program 2, 3, 4; Science Club 3 (President); Science Bicentennial Program 3.

BARBARA HOLTON

Psychology Club 3, 4; Footprints 4; Art Club 4; Work-Study Program 4.

LORETTA JOHNSON

Work-Study Program 1, 2, 3, 4; Religious Affairs Committee 2, 3; Footprints 4; Senate 3.

VERONICA KIEWRA

Art Club 1, 2, 3, 4 (President); Religious Affairs Committee 2; Freshman Orientation 3; Special Programs Committee 3; Footprints 4.

CATHERINE LEWIS

Freshman Orientation 3; Peer Counselor 3; Senior Assistant 4.

ANTHONY MARINELLO

Senate 2; Academic Development Committee 2, 3, 4; Freshman Orientation 2, 3, 4; Chapel Players 2, 3, 4 (President); Science Club 3; Talent Show 3; Science Bicentennial Program 3 (Chairman).

THERESE MARTIN

101 Nights Committee 2; Freshman Orientation 2.

JOANNE McCOY

Glee Club 1; Art Club 1.

EILEEN McCULLOUGH

Women's Basketball 1, 2, 3, 4; Senate 1, 2; Exam Committee 1, 2, 3, 4; Sophomore Christmas Play 2; 101 Nights Committee 2; Freshman Orientation 2, 3, 4; Council 3, 4; Freshman Halloween Party Committee 3 (Co-Chairperson); Athletic Association 2 (Secretary), 3 (President); Budget Committee 4.

EDWARD McQUADE

Men's Basketball 1, 2; Senate 1; Talent Show 1, 4; Freshman Barbecue Committee 2; New Faces Committee 3; Peer Counselor 3; Work-Study Program 4; 101 Nights Committee 4.

JOSEPH MELE

Men's Basketball; Psychology Club; Talent Show.

KATHRYN MEYER

Sophomore Christmas Play 2; 101 Nights Committee 2; Freshman Orientation 3; Peer Counselor 3; Footprints 4 (Photographer).

VITA MONASTERO

Work-Study Program 1, 2, 3, 4; Sacristan 4.

JUDY MULVANEY

Religious Affairs Committee 2, 3, 4; Sacristan 2, 3, 4.

EDWARD MURPHY

Political Affairs Club 1, 2, 3; Counterpoint 1; Curriculum Committee 1, 2; Work-Study Program 1; Senate 2.

ROSE ANN PAGANO

Art Club 2, 3 (Treasurer), 4 (Treasurer); Footprints 3, 4; Freshman Orientation 3; Math Career Day 4.

GENEROSA PAPPALARDO

Psychology Club 2, 3, 4.

BARBARA PASI

Psychology Club 2, 3, 4 (President-Spring); Freshman Orientation 3, 4; Senior Assistant 4.

ANTONIA PICCINI

Chapel Players 2, 3, 4; Sophomore Christmas Play 2; Freshman Orientation 3; Science Club 3; Honor System Revision Committee 3; Science Bicentennial Program 3; Talent Show 3; Biology Lab Assistant 4; Senior Class Valedictorian.

CHRISTOPHER PROCIDA

Men's Basketball 1, 2, 3, 4; Psychology Club 3 (President-Fall).

PATRICIA RADIGAN

Chapel Players 2, 3; Freshman Orientation 3; Social Service Club 3; Work-Study Program 3.

KATHLEEN REGAN

Women's Basketball 2.

CAROL ROBERTI

Senate 1, 2; Exam Committee 1, 2; Glee Club 1; Chapel Players 1, 2.

THOMAS ROEDER

Men's Basketball 1, 2, 3, 4; Exam Committee 3, 4; 101 Nights Committee 2; Senate 2, 3; Peer Counselor 2, 3, 4.

FRANCES ROSATO

Chapel Players 1; Musical Workshop 1; Junior Ring Committee 3 (Chairperson); Footprints 4 (Photographer).

DEBORAH ROTKIEWICZ

Work-Study Program 1, 2, 3, 4; Sophomore Christmas Play 2; Footprints 3, 4 (Business Manager); Freshman Orientation 3, 4; Peer Counselor 3, 4.

MARIA SALDARRIAGA

Political Affairs Club 2, 3.

JAYNE SCANSAROLI

Modern Dance Club 2; Sophomore Christmas Play 2; Art Club 3; Senior Assistant 4.

JANIS SMYKLA

Work-Study Program 1, 2, 3, 4; Sophomore Christmas Play 2; Freshman Orientation 3, 4; Peer Counselor 3, 4; Footprints 3, 4 (Assistant to Editor); Senate 3; Special Programs Committee 4.

CARMELA SPINELLI

Chapel Players 2, 3; Freshman Orientation 3.

JOANN TREBLE

Modern Dance Club 2, 3, 4; Chapel Players 2.

JO-ANN TUFANO

Work-Study Program 1, 2, 3, 4; Sophomore Christmas Play 2; Freshman Orientation 3 (Co-Chairperson); Peer Counselor 3; Pro-Temp Exam Committee 3; Special Programs Committee 4; Footprints 2, 3 (Business Manager), 4 (Editor).

PAUL WEISS

Senate 3, 4; New Faces Committee 3, 4 (Chairman); College Directory Publication 3 (Chairman); Admissions Committee 3, 4; Special Programs Committee 3, 4 (Chairman); Pro-Temp Exam Committee 3; College Advisory Council 3, 4; Budget Committee 4.

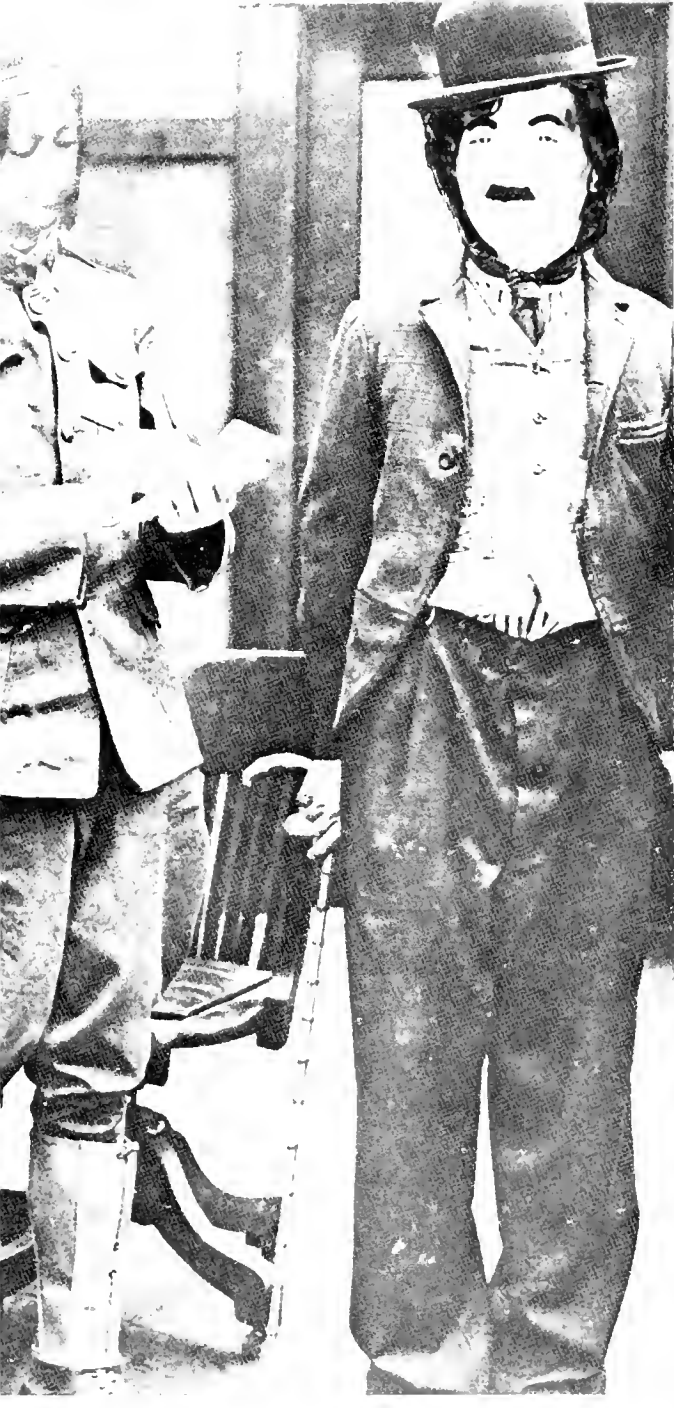


ST. JOSEPH'S GOES



TO HOLLYWOOD













CITIBANK

430 Myrtle Avenue

Brooklyn, New York

LET US HELP



Save Your Money

CONGRATULATIONS
to the
CLASS OF 1977



ST. JOSEPH'S COLLEGE
ALUMNI ASSOCIATION

*Congratulations
from*

S. STEINHAUER & SONS

(JAKE'S ART SUPPLIES)

A Complete Line of
Art Supplies and Stationery

321 DeKalb Avenue
Brooklyn, New York

Tel. - 789-9219





QUEEN OF ALL SAINTS

300 Vanderbilt Avenue

Brooklyn, New York 11205

BETTER GROCERIES



at

STERLING FOOD CO.

Frozen Foods, Vegetables, and Cold Cuts

258 DeKalb Avenue
Brooklyn, New York 11205

Joe and Al

For Delivery
857-8746

*Congratulations
to the
Class of 1977*



MR. AND MRS. EDWARD HOPKINS

*Congratulations
to the
Class of 1977*

CLINTON-HILL DELI

438 Myrtle Avenue
Brooklyn, New York
11205

**CINO'S
ITALIAN RESTAURANT**

243 DeKalb Avenue
Brooklyn, New York
11205

CONGRATULATIONS

To Our

Niece and Cousin

MARY ELLEN HARRIS '77

AND THE CLASS OF '77

from

MR. AND MRS. ANDREW J. CONLON

and

KATHLEEN M. CONLON '66



Congratulations Class of 1977

DAZIES

Italian and American Cuisine

Hostess: Lily Kerim



39-41 Queens Blvd.
Sunnyside, New York
11104

Phone: 786-7013

When You Care Enough
To Send the Very Best

WOODSIDE HOUSE

45-15 Greenpoint Ave.
Sunnyside, New York

Cards - Gifts
And Other Nice Things

I would like to express my special thanks to all those who gave not only their time, but a part of themselves in making FOOTPRINTS 1977 a successful and unique book.

Moderator: Sister Margaret Jennings
Managers: Deborah Rotkiewicz
Janis Smykla

Layout Staff:
Kim Dalmau
Laura Galbo
Millie Gonzalez
Eileen Harris
Mary Ellen Harris

Barbara Holton
Loretta Johnson
Veronica Kiewra
Rose Ann Pagano

Art Staff: Maureen Duffy
Deborah Rotkiewicz
Brian Sequeira (Cover)

Photography Staff: Kathy Meyer
Fran Rosato

Sister Margaret Jennings

Sincerely,
JO-ANN TUFANO
EDITOR

DIRECTORS' WHO'S WHO

- S. Jean Marie Amore . . . Assistant Professor of Child Study; B.S., Brentwood College; M.A., Columbia University; Ed.D., Columbia University.
- Dr. John Arnez . . . Professor of Economics; Licence en Sciences Politiques et sociales et Licence en Sciences Economiques, Catholic University of Louvain; M.A., Yale University; Ph.D. Laval University.
- Joan Bachi . . . Preschool Teacher and Lecturer in Child Study; B.A., Marymount Manhattan College; M.A., Hunter College.
- Elizabeth Balfour . . . Lecturer in Child Study; B.A., University of British Columbia; M.A., Columbia University.
- Josephine Belloso . . . Assistant Professor of Art; B.A., Marymount Manhattan College; M.A., City College of New York.
- William F. Bengston . . . Instructor of Sociology; B.A., Niagra University; M.A., St. John's University.
- S. Joan Ancilla Blake . . . Associate Professor of Political Science; B.A., St. Joseph's College; M.A., Ph.D., St. John's University.
- S. Nora Botcher . . . Instructor of Child Study, Coordinator of Special Education Program; B.A., St. Francis College; M.S., Fordham University.
- S. Margaret Buckley . . . Assistant Professor of Education and Director of SAY Program; B.A., St. Joseph's College; M.A., Ed.D., Columbia University.
- S. Teresa Avila Burke . . . Dean of Student Affairs and Professor of History; B.A., College of New Rochelle; M.A., Ph.D., Columbia University.
- S. Mary Florence Burns . . . Academic Dean and Professor of English; B.A., St. Joseph's College; M.A., St. John's University; Ph.D., Columbia University.
- S. Ann Edmund Carey . . . Associate Professor of Classical Languages; B.A., St. Joseph's College; M.A., Columbia University.
- S. Josephine Marie Cavanaugh . . . Assistant Professor of Religious Studies; B.A., Manhattan College; M.A., Providence College; S.T.L., S.T.D., Hethrop College (England).

- S. Helene Ciborski . . . Instructor of History; B.A., St. Joseph's College; M.A., Indiana University.
- Raymond D'Angelo . . . Instructor of Sociology; B.A., Duquesne University; M.A., New School for Research.
- Joan Davis . . . Lecturer in Child Study; B.A., St. Joseph's College; M.A., Fordham University.
- Rev. Gennaro D'Ecclesiis . . . Professor of Music; B.A., Brooklyn College; M.S., College of the City of New York; M.A., Ph.D., New York University.
- S. Saint Francis Dilgen . . . Professor of Chemistry; B.S., St. John's University; M.S., Ph.D., Fordham University.
- Marianne Di Sarno . . . Librarian; B.A., St. Joseph's College; M.L.S., Pratt Institute.
- S. Patricia Dittmer . . . Preschool Teacher; B.A., St. Joseph's College.
- Richard F. Doyle . . . Director of Continuing Education; B.A., Holy Cross College; M.A., New York University.
- Anne Epstein . . . Graduate Assistant in Dillon Child Study Center; B.S., Fordham University.
- S. Maria deSales Esposito . . . Instructor of Spanish; B.A., Catholic University of Puerto Rico; M.A., University of Puerto Rico; Li Licenciatura in Filologia Romanica, University of Madrid; Ph.D., Universidad Complutense de Madrid Espana.
- S. Marie Clotilde Falvey . . . Professor Emeritus of Chemistry; B.A., St. Joseph's College; M.A., Columbia University.
- Rev. Richard W. Ferris . . . Assistant Professor of Religious Studies; B.A., Cathedral College; S.T.L., Gregorian University.
- Patricia S. Gabel . . . Assistant Professor of English; B.A., Marymount Manhattan College; M.A., Fordham University; Ph.D. Cand., Fordham University.
- Elizabeth Gilbert . . . Associate Professor of Dance; B.A., Barnard College; Bennington School of the Dance.
- S. Mary Winifred Grass . . . Librarian; B.A., St. Joseph's College; B.L.S., M.S., Columbia University.
- Richard Greene . . . Instructor of Psychology; B.A., Brandeis University; M.A., Ph.D., City University of New York.

- S. Joseph Damien Hanlon . . . Professor of History; B.A., St. Joseph's College; M.A., Catholic University of America; Ph.D., Columbia University.
- S. Bernardine Marie Hayes . . . Financial Aid Officer; B.B.A., M.B.A., St. John's University.
- Carol J. Hayes . . . Associate Professor of Biology; B.A., St. Joseph's College; M.S., Adelphi University; Ph.D., New York University.
- Rev. John C. Hession . . . Professor of Philosophy; B.A., Manhattan College; M.A., Columbia University.
- Margarete W. Hopkins . . . Professor of Mathematics; B.S., M.A., Ph.D., University of Wisconsin.
- S. John Baptist Hull . . . Professor Emeritus of Speech; B.A., College of New Rochelle; M.A., Catholic University of America.
- Janice Jackson . . . Assistant Professor of Psychology; B.A., Marymount College, Tarrytown; M.A., Ph.D., Fordham University.
- S. Margaret Jennings . . . Associate Professor of English; B.S., Brentwood College; M.A., University of North Carolina; Ph.D., Bryn Mawr.
- William Josephson . . . Lecturer in Mathematics; B.S., M.S., Ph.D., Polytechnic Institute of New York.
- S. Mary Amata Kadlack . . . Registrar and Assistant Professor of Mathematics; B.A., St. John's University; M.A., Columbia University.
- S. Helen Kearney . . . Preschool Teacher, Lecturer in Child Study; B.A., St. Joseph's College; M.A., New York University.
- Lenore M. Kelly . . . Associate Professor of Sociology; B.S., Brentwood College; M.A., Ph.D., Fordham University.
- Dorothy A. King . . . Associate Professor of English; B.A., College of New Rochelle; M.A., Fordham University; Ph.D., St. John's University.
- Rosemary Latham . . . Lecturer in Speech; B.A., St. Joseph's College; M.A., New York University.
- Eileen Luongo . . . Preschool Teacher, Lecturer in Child Study; B.A., St. Joseph's College; M.S., Fordham University.

- Margaret Lynch . . . Associate Registrar, Division of General Studies; B.A., St. Joseph's College.
- Norma Mallia . . . Professor of French; B.A., Hunter College; M.A., Columbia University; Diplômée, Sorbonne, Paris.
- S. Myra Paul Mansfield . . . Assistant Professor of History; B.A., Manhattan College; M.A., St. John's University.
- S. Maria Inés Martín . . . Associate Professor of Spanish; B.A., Regis College; M.A., St. John's University; Certificado, Universidad de Madrid; Ph.D., Columbia University.
- Anne McBrearty . . . Preschool Teacher, Lecturer in Child Study; B.A., St. Joseph's College; M.A., Fordham University.
- S. John Raymond McGann . . . Director of Counseling and Testing, and Professor of Education; B.A., College of New Rochelle; M.A., Columbia University; Ph.D., St. John's University.
- S. Agnes Meagher . . . Assistant Librarian; B.A., St. Joseph's College; M.A., Hunter College; M.S., Columbia University.
- Stanley A. Nevins . . . Associate Professor of Philosophy; B.A., Manhattan College; M.A., Ph.D., Fordham University.
- S. George Aquin O'Connor . . . President and Professor of Sociology-Anthropology; B.A., Hunter College; M.A., Catholic University of America; Ph.D., New York University.
- S. Mary Elizabeth O'Connor . . . Treasurer; B.B.A., St. John's University; M.A., Columbia University.
- S. Rosamond O'Keefe . . . Assistant Professor of Psychology; B.S., M.S., St. John's University.
- Christine Padlo . . . Administrative Assistant, Division of General Studies; B.A., St. Francis College.
- Margherita Picone . . . Graduate Assistant; B.A., St. Joseph's College.
- S. Marie Secour Privitera . . . Assistant Librarian; B.A., Manhattan College; M.L.S., St. John's University.
- Robert Radus . . . Associate Professor of French; B.A., Brooklyn College; M.A., Columbia University; Diplômé, Sorbonne, Paris; Ph.D., Columbia University.
- Derek Reist . . . Instructor of Business Management; B.A., M.B.A., Harvard University.

- Rev. Joseph Roff . . . Composer in Residence, Lecturer in Music; B.A., M.A., Mus. D., University of Toronto; F.T.C.L., Trinity College, London.
- Louise Rose . . . Assistant Professor of English; B.A., Sarah Lawrence College; M.A., Columbia University.
- S. Joan Ryan . . . Assistant Professor of History; B.A., St. John's University; M.A., Catholic University of America.
- S. Mary Beatrice Schneller . . . Professor of Biology; B.A., St. Joseph's College; M.S., Ph.D., New York University.
- S. Joseph Immaculate Schwartz . . . Professor of English; B.A., St. Joseph's College; M.A., Columbia University; Ph.D., Yale University.
- S. Margaret Louise Shea . . . Director of Dillon Child Study Center; B.A., St. Joseph's College; M.A., Columbia University; Ph.D., Catholic University of America.
- Mary Shea . . . Professor of Speech; B.A., Brooklyn College; M.A., New York University.
- S. Joanmarie Smith . . . Associate Professor of Philosophy; B.S., St. John's University; M.A., Ph.D., Fordham University.
- Michael Tsuji . . . Assistant Professor of Mathematics; B.A., M.S., Fordham University; Ph.D., New York University.
- Rosalie Tutino . . . Director of Development and College Relations; B.A., St. Joseph's College; M.A., New York University.
- S. Mary Corde Tymann . . . Associate Professor of Physics; B.A., St. Joseph's College; M.A., Columbia University; M.S., New York University.
- Sherrie Van Arnam . . . Director of Admissions; B.A., College of Saint Rose.
- S. Irene Veronica Van Westering . . . Affirmative Action Officer; B.B.A., M.S., St. John's University.
- Margaret Ward . . . Professor of Physical Education, Coordinator of Recreation Department; B.S., New York University; M.A., Columbia University.

S. Alice Francis Young . . . Associate Professor of Child Study; B. A. , St. Joseph's College; M. A. , Columbia University.



CALL BOARD

Class of '77

Therese Bennett
2157 East 21 St.
Bklyn., N.Y. 11229
SH3-1411

Lorraine Burns
58-34 Catalpa Ave.
Ridgewood, N.Y. 11227
497-6809

Joan Carrig
518 61 St.
Bklyn., N.Y. 11220
- - -

Kathleen Casey
810 East 35 St.
Bklyn., N.Y. 11210
859-2037

Catherine Castaldo
670 Carroll St.
Bklyn., N.Y.
499-5869

Thomas Chadzutko
66-21 Hull Ave.
Maspeth, N.Y. 11378
457-4930

David d'Ecclesiis
8508 11 Ave.
Bklyn., N.Y. 11228
TE6-3136

Joann Del Gaudio
2968 Avenue T
Bklyn., N.Y.
769-1786

Debbie Di Maiolo
1324 East 15 St.
Bklyn., N.Y. 11230

375-2496

Kathleen Dowd
647 East 14 St.
New York, N.Y. 10009
OR3-5296

Maureen Duffy
7201 4 Ave.
Bklyn., N.Y. 11209
833-1790

John Fox
1725 Coleman St.
Bklyn., N.Y. 11234
376-4704

Laura Galbo
403 Avenue C
Bklyn., N.Y. 11218
854-8889

Bernice Galdorisi
153 Bay 47 St.
Bklyn., N.Y.
449-6076

Clare Giangreco
438 76 St.
Bklyn., N.Y. 11209
- - -

Catherine Gildea
431 East 5 St.
Bklyn., N.Y. 11218
- - -

Connie Gildea
431 East 5 St.
Bklyn., N.Y. 11218
- - -

Arleen Glennon
4521 Foster Ave.
Bklyn., N.Y.
629-2650

Mildred Gonzalez
844 42 St.
Bklyn., N.Y. 11232
854-7764

Clare Griffin
9113 78 St.
Woodhaven, N.Y. 11421
- - -

Mary Ellen Harris
72-07 57 Drive
Maspeth, N.Y. 11378
639-8547

Jeanne Hausser
1962 Ford St.
Bklyn., N.Y.
376-7993

Kathleen Heffernan
196-36 48 Ave.
Flushing, N.Y. 11365
225-9615

Barbara Holton
421 6 St.
Bklyn., N.Y. 11215
499-6393

Edward Joesten
145-35 135 Ave.
Jamaica, N.Y. 11436
659-4795

Loretta Johnson
11109 54 St.
Bklyn., N.Y. 11219
854-2225

Jane Kelly
31-84 51 St.
Woodside, N.Y. 11377
AS4-0658

Patricia Kelly
114 Milton St.

Bklyn., N.Y. 11222
383-5912

Vincent Lewandowski
Box 379
Scottsdale, Pa. 12683
412-887-6593

Catherine Lewis
1756 Bay Ridge Pkway
Bklyn., N.Y. 11204
837-8390

Debora Maida
93 East 2 St.
Bklyn., N.Y. 11218
- - -

Therese Martin
359 Ovington Ave.
Bklyn., N.Y. 11209

Kathy Meyer
15 Turner Place
Bklyn., N.Y. 11218
436-6869

Vita Monastero
94-26 76 St.
Ozone Park, N.Y. 11416
296-0562

Judy Mulvaney
337 12 St.
Bklyn., N.Y.
499-2031

Edward Murphy
147-84A Lake Shore
Lake Ronkonkoma, N.Y.
516-585-2593

Joanne McCoy
544-A 16 St.
Bklyn., N.Y.
- - -

Eileen McCullough
2548 East 22 St.
Bklyn., N.Y. 11235
743-3554

Mary McLaughlin
430 76 St.
Bklyn., N.Y. 11209
748-5974

Edward McQuade
273 84 St.
Bklyn., N.Y. 11209
833-2278

Rose Ann Pagano
39 Powers St.
Bklyn., N.Y. 11211
EV8-6827

Genna Pappalardo
146 Autumn Ave.
Bklyn., N.Y. 11208
277-2018

Barbara Pasi
1742 Dahill Rd.
Bklyn., N.Y. 11223
336-8284

Antonia Piccini
1025 82 St.
Bklyn., N.Y. 11228
836-1292

Christopher Procida
250 Washington Ave.
Bklyn., N.Y. 11205
- - -

Patricia Radigan
1667 72 St.
Bklyn., N.Y. 11204
232-6615

Kathleen Regan
166-54 - 21 Rd.
Whitestone, N.Y. 11357
352-3748

Carol Roberti
53-18 Hollis Court Blvd.
Flushing, N.Y. 11365
225-3309

Margaret Rochford
3612 Flatlands Ave.

Bklyn., N.Y. 11234
258-3327

Tom Roeder
32-25 38 St.
Astoria, N.Y. 11103
932-9319

Juliette Romagnano
2392 Ocean Pkwy.
Bklyn., N.Y. 11223
375-3457

Frances Rosato
114-44 135 Ave.
So. Ozone Park, N.Y. 11420
738-5689

Deborah Rotkiewicz
32-51 38 St.
Astoria, N.Y. 11103
721-2041

Maria Saldarriaga
48-15 59 St.
Woodside, N.Y. 11377
899-6864

Jayne Scansaroli
35-72 164 St.
Flushing, N.Y. 11358
1N1-2017

Janis Smykla
127 East 7 St.
New York, N.Y. 10009
673-9037

Jo-Ann Treble
27-43 170 St.
Flushing, N.Y. 11358
358-6385

Jo-Ann Tufano
15 Powers St.
Bklyn., N.Y. 11211
384-7163

John Walsh
110 Oceanside
Rockaway Pt., N.Y. 11697

634-7211

Paul Weiss
46-01 39 Ave.
L.I.C., N.Y. 11104
937-6843

Class of '78

Patricia Ayala
400 Henry St.
Bklyn., N.Y. 11201
625-7655

Marlene Baisley
215 Grant Ave.
Bklyn., N.Y. 11208
277-4919

Christina Balut
423 60 St.
Bklyn., N.Y.
492-5761

Deborah Bocchino
195 East 3 St.
Bklyn., N.Y. 11218
TR1-0959

Gerald Calabrese
363 Prospect Ave.
Bklyn., N.Y.
788-4322

Maureen Carney
1107 Lorimer St.
Bklyn., N.Y. 11222
383-1144

LuAnne Colucci
1951 W. 10 St.
Bklyn., N.Y. 11223
449-2174

Barbara Connors
252 74 St.
Bklyn., N.Y. 11209
748-9323

Marilee Cosentino
1127 East 14 St.
Bklyn., N.Y. 11230
252-6095

Kim Dalmau
243 88 St.
Bklyn., N.Y. 11209
745-4509

Teresa Daniele
8687 Bay 16 St.
Bklyn., N.Y. 11214
331-5921

Vincent Daniele
8687 Bay 16 St.
Bklyn., N.Y. 11214
331-5921

Denise Delpratt
185 Wortman Ave.
Bklyn., N.Y. 11207
257-8826

Lillian Del Seni
1310 Pennsylvania Ave.
Bklyn., N.Y. 11239
- - -

Spiros Demetis
1113 59 St.
Bklyn., N.Y. 11219
633-8662

Kevin Dorney
1618 Brooklyn Ave.
Bklyn., N.Y. 11210
859-6527

Jeannie Downs
5 Stuyvesant Oval
New York, N.Y.
- - -

Theresa Ferraro
87-17 253 St.
Bellerose, N.Y. 11426
343-8523

Rosa Franco

135-07 107 Ave.
Richmond Hill, N.Y.
529-7834

Mary Anne French
761 East 21 St.
Bklyn., N.Y. 11210
434-1056

Kathie Geehern
525 East 14 St.
New York, N.Y. 10009
677-1320

Jim Gigliello
693 Union St.
Bklyn., N.Y.
789-0191

Matthew Goldstein
2138 East 17 St.
Bklyn., N.Y.
336-0583

Tracy Hojnacki
464 73 St.
Bklyn., N.Y.
748-2658

Eileen Harris
72-07 57 Dr.
Maspeth, N.Y. 11378
639-8547

Susan Howard
1502 East 53 St.
Bklyn., N.Y. 11234
241-4493

George LaFemina
285 Washington Ave.
Bklyn., N.Y. 11205
857-0413

Michael Legieza
156 Monitor St.
Bklyn., N.Y. 11222
389-3676

Peggy Lorenzo
240 Ovington Ave.

Bklyn., N.Y. 11209
TE6-8322

Eileen Loughlin
88-25 89 St.
Woodhaven, N.Y. 11421
849-2879

Marisa Maisto
126 Bay 46 St.
Bklyn., N.Y.
- - -

Gale Mileo
818 5 Ave.
Bklyn., N.Y.
ST8-6522

Nicole Monroe
25 Eastern Pkwy.
Bklyn., N.Y. 11238
622-0442

Frances Murray
2289 Smith Lane
Seaford, N.Y. 11783
516-785-3812

Sally Murphy
7401 Ridge Blvd.
Bklyn., N.Y. 11209
748-6192

Anne McConnell
51-40 30 Ave.
Woodside, N.Y.
AS4-3386

Ann McLoughlin
424 72 St.
Bklyn., N.Y. 11209
SH5-7724

Artie Navan
2433 Barnes Ave.
Bronx, N.Y. 10467
OL4-1013

Diane Nobile
196 Clinton Ave.
Bklyn., N.Y.

625-0579

Barbara O'Leary
515 East 43 St.
Bklyn., N.Y. 11203
629-9272

Irene O'Sullivan
11 Gotham Ave.
Bklyn., N.Y. 11229
769-8225

Wendy Patitucci
120 Kenilworth Place
Bklyn., N.Y. 11210
859-6827

Rosemarie Porcaro
43 2 St.
Bklyn., N.Y. 11231
855-2361

Yvette Ramos
611 Wythe Ave.
Bklyn., N.Y. 11211
387-9519

Rosemary Rao
245 Washington Ave.
Bklyn., N.Y. 11205
789-2209

Kathy Reilly
333 83 St.
Bklyn., N.Y.
BE8-2016

Bruno Romeo
218 22 St.
Bklyn., N.Y. 11232
SO8-2765

Bruno Romeo (Summer)
209 Wood St.
Camp Hill, Penn. 17011
717-737-5167

Diane Ruf
719 Lorimer St.
Bklyn., N.Y. 11211
782-4828

Momodou Sissoho
112 West 72 St.
New York, N.Y.
862-9086

Marilyn Smart
730 Rogers Ave.
Bklyn., N.Y. 11226
462-5976

Richard Sparaco
1152 67 St.
Bklyn., N.Y.
259-2868

John Stevenson
33-25 Bell Blvd.
Bayside, N.Y. 11361
229-6985

Elizabeth Tobin
4707 Avenue K
Bklyn., N.Y. 11234
338-7717

Ivy Turnbull
148 Martenese St.
Bklyn., N.Y. 11226
- - -

Bill Witt
167-16 43 Ave.
Flushing, N.Y. 11358
461-7339

Gail Worcelo
436 Bleecker St.
Bklyn., N.Y.
456-1751

Barbara Yelcich
656 East 2 St.
Bklyn., N.Y.
438-6926

Class of '79

Barbara Ajakie
158 Prospect Park West

Bklyn., N. Y. 11215
788-8132

Patricia Brown
103 East 3 St.
Bklyn., N. Y.
871-3272

Frank Callery
2001 Schenectady Ave.
Bklyn., N. Y. 11234
253-0493

Marina Cheung
1246 Flatbush Ave.
Bklyn., N. Y. 11226
941-2166

Mary Colozzo
2304 Bath Ave.
Bklyn., N. Y.
946-4850

Cathy Corcoran
343 63 St.
Bklyn., N. Y. 11220
- - -

Karen Cullen
506-13 St.
Bklyn., N. Y. 11215
494-3052

Kathy Darr
247-82 St.
Bklyn., N. Y. 11209
748-8990

Rosemary DeLuca
105-11 76 St.
Ozone Park, N. Y. 11417
835-1488

Linda D. Devine
90-19 143 St.
Jamaica, N. Y. 11435
739-0373

Caroline Donovan
218 Prospect Park West
Bklyn., N. Y. 11215

768-3515

Joan Dushock
450 Beach 129 St.
Belle Harbor, N. Y. 11694
634-1910

Debra Ann Ellis
565-72 St.
Bklyn., N. Y. 11209
833-2526

Deborah Fragomeni
176 Bay 44 St.
Bklyn., N. Y.
996-3993

Beatrice Galvin
110 Ebony Court
Bklyn., N. Y. 11229
743-7180

Corinne L. Gamper
3851 Flatlands Ave.
Bklyn., N. Y. 11234
CL3-8565

Denise Gamper
3851 Flatlands Ave.
Bklyn., N. Y. 11234
CL3-8565

Marianne Glanzman
343 Beach 92 St.
Rockaway Beach, N. Y. 11693
- - -

Michael Gross
57-45 255 St.
Little Neck, N. Y. 11362
224-8607

Donna Guzzo
1355-81 St.
Bklyn., N. Y. 11228
331-3767

Catherine Havriliak
60-49 69 Lane
Maspeth, N. Y. 11378
672-6710

Margaret Heck
557 Morgan Ave.
Bklyn., N. Y.
389-7166

Sarah Henriques
441 - Clermont Ave.
Bklyn., N. Y.
- - -

Mary B. Hollwedel
138-40 91 Ave.
Jamaica, N. Y. 11435
523-4788

Regina Hopkins
135 Prospect Park S. W.
Bklyn., N. Y.
499-9153

Susan Intranuuvo
7⁶ Windsor Pl.
Bklyn., N. Y. 11215
499-3922

Patricia Johnson
224 E. 63 St.
New York, N. Y.
832-8736

Maureen Keegan
19 Cypress Court
Bklyn., N. Y. 11208
827-3562

Henry Kiechlin
18 Daniel Dr.
Matawan, N. J. 07747
201-566-6245

Diane C. Laraia
1844 82 St.
Bklyn., N. Y. 11214
BE6-1340

Louis Lopez
26 Madison St.
Bklyn., N. Y.
267-4044

Charlean Lowery

1103 Myrtle Ave.
Bklyn., N.Y. 11206
- - -
Thomas Macaluso
2029 E. 34 St.
Bklyn., N.Y. 11234
998-2887

Adrienne Milea
719 Ave. K
Bklyn., N.Y. 11230
CL3-9277

Jill Miller
716 Greenwood Ave.
Bklyn., N.Y. 11218
871-8639

Mona Moran
165 Bch. 118 St.
Rockaway Park, N.Y. 11694
- - -
Mary Morry
4413-5 Ave.
Bklyn., N.Y. 11220
436-1805

Mary Murphy
425 5 St.
Bklyn., N.Y.
788-0131

Donna McCaddin
34 Plaza St.
Bklyn., N.Y.
783-4772

Maureen McCaffrey
30-07 84 St.
Jackson Heights, N.Y. 11370
672-4876

Betty McCauley
248-78 St.
Bklyn., N.Y. 11209
833-4299

John McManus
1359 E. 28 St.

Bklyn., N.Y.
338-8017

Valerie R. Overton
585 Remson Ave.
Bklyn., N.Y.
385-8276

Rolande Paultre
189-41 118 Ave.
St. Albans, N.Y. 11413
723-5081

Lucille Pluchino
24 Bay 31 St.
Bklyn., N.Y. 11214
373-0972

Frank Proscia
23-13 28 Ave.
Astoria, N.Y. 11102
278-8456

Mary Protheroe
2549 E. 21 St.
Bklyn., N.Y.
743-9610

Joan Radigan
1667-72 St.
Bklyn., N.Y. 11204
BE2-6615

Gail Rendo
2127 E. 73 St.
Bklyn., N.Y. 11234
531-1497

Paul Romanello
40-21 221 St.
Bayside, N.Y. 11361
225-7372

Eileen Rorke
264 E. 37 St.
Bklyn., N.Y. 11203
282-9245

Linda Scudieri
121 Ave. U
Bklyn., N.Y.

996-8724

Darlene Spoldi
2819 Ave. P
Bklyn., N.Y. 11229
CL8-7781

Eara Denese Stennett
30-35 Richman Plaza
Bronx, N.Y. 10453
583-6807

Christine Strianese
1605 Ave. P
Bklyn., N.Y.
645-1539

Maureen Troici
1322 Sage St.
Far Rockaway, N.Y. 11691
327-8625

Lenore Tully
2154 Troy Ave.
Bklyn., N.Y.
252-0210

Songsak Tuntivatingorn
412 W. 115 St. #3W
New York, N.Y. 10025
222-8319

Debbie Valderrama
160 Bay 47 St.
Bklyn., N.Y.
266-4264

Angela J. Watson
220 West 33 St.
New York, N.Y.
731-9059

Barbara Wolski
64-28 60 Ave.
Maspeth, N.Y. 11378
386-0688

Daniela Zajac
152 16 St.
Bklyn., N.Y. 11215
499-6024

Class of '80

Virginia Ayala
154 South 2 St.
Bklyn., N.Y. 11211
384-6958

Paul Bento
72 Baruch Dr.
New York, N.Y. 10002
674-8802

Anna Marie Bifulco
405 Linwood St.
Bklyn., N.Y.
235-1548

Gina Caselli
2026 84 St.
Bklyn., N.Y.
266-2388

Joseph Chillemi
40 Waterside Plaza
New York, N.Y.
686-1187

Kathy Conn
2229 East 21 St.
Bklyn., N.Y.
646-1816

Brenda Donald
472 Prospect Place
Bklyn., N.Y. 11238
789-8020

Brigitte Ann Doyle
160 72 St.
Bklyn., N.Y. 11209
833-8169

Joseph Ferguson
3115 Fort Hamilton Pkwy.
Bklyn., N.Y.
- - -

Maria Fernandez
594 Linwood St.
Bklyn., N.Y.

277-5464

Diane Geyer
434 82 St.
Bklyn., N.Y. 11209
748-0839

John Guerriero
876 40 St.
Bklyn., N.Y. 11232
633-9436

Janet Hernandez
586 10 St.
Bklyn., N.Y. 11215
- - -

Teresa Hunter
415 Lafayette Ave.
Bklyn., N.Y. 11238
857-4806

Jennifer Joseph
194 Weirfield St.
Queens, N.Y.
443-6720

Elizabeth Juliano
77 East 3 St.
Bklyn., N.Y.
853-3805

Cathy Kennion
2966 Ave. R
Bklyn., N.Y.
998-9379

Catherine Kidd
53-94 65 Place
Maspeth, N.Y. 11378
898-8217

Mary Loftus
41-49 45 St.
L.I.C., N.Y. 11104
392-4623

Mary Lynagh
3817 Ave. M
Bklyn., N.Y.
258-0917

Rhonda Meyers
1945 East 18 St.
Bklyn., N.Y. 11229
646-7027

Albina Miller
150-23 117 St.
So. Ozone Pk., N.Y.
835-5585

Susan Morace
680 Vanderbilt St.
Bklyn., N.Y. 11218
633-6629

Mildred Morales
770 Tinton Ave.
Bklyn., N.Y.
842-8240

Mary Murphy
320 Beach 89 St.
Rockaway Beach, N.Y.
945-2057

Patrick McCue
4 Friar Court
Jackson township, N.J.
201-363-8525

Mary Anne O'Callaghan
201 Clinton Ave.
Bklyn., N.Y. 11205
UL2-3911

Susan Oldham
3000 Ocean Pkwy.
Bklyn., N.Y.
372-8356

Debbie Pafundi
88-59 77 St.
Woodhaven, N.Y. 11421
296-0098

Arlene Ricci
41 East 2 St.
Bklyn., N.Y. 11218
438-7237

Maureen Rice
63-59 76 St.
Middle Village, N.Y.
894-1133

Brian Sequeira
121-05 84 Ave.
Kew Gardens, N.Y. 11415
441-8758

Robert Troutman
3039 Ave. U
Bklyn., N.Y.
SH3-4700

Emily Sabbagh
550 9 St.
Bklyn., N.Y. 11215
499-2002

Terri Stevenson
33-25 Bell Blvd.
Bayside, N.Y. 11361
229-6985

Andrew Vaccari
104-70 38 Ave.
Corona, N.Y. 11368
429-3483

Carol Saluga
33-19 31 Ave.
Astoria, N.Y. 11106
AS4-4911

Ivonne Thompson
709 Ashford St.
Bklyn., N.Y. 11207
649-1456

Gregory Washington
440 West 164 St.
New York, N.Y. 10032
927-5886

Sharon Scaturro
75-09 64 St.
Glendale, N.Y. 11227
386-2820

Irma Acacia Torres
248 Palmetto St.
Bklyn., N.Y. 11221
443-0972

Jon Willoughby
20 Vandalia Ave.
Bklyn., N.Y. 11239
642-2292

Charlynn Scott
21 St. James Place
Bklyn., N.Y.
789-1430

Roseann Treacy
904 East 37 St.
Bklyn., N.Y. 11210
859-5063

Francine Zitz
2637 Harway Ave.
Bklyn., N.Y.
266-8761



CHEERS!

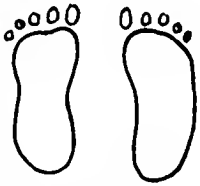
Remember . . .
When Times Are Rough



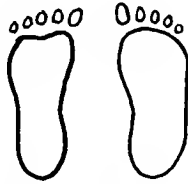
HANG IN THERE



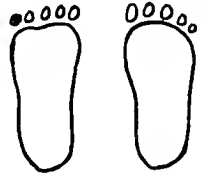
PRODUCERS



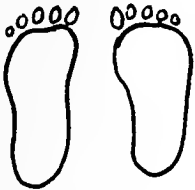
Jo-Ann
Tufano



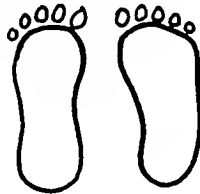
Deborah
Rotkiewicz



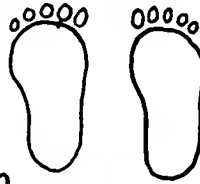
Rose Ann
Pagano



Janis
Smykla



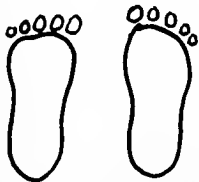
Laura
Galbo



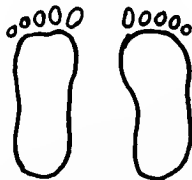
Barbara
Holtan



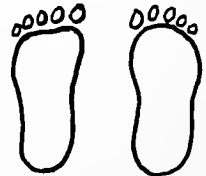
Veronica
Kiewra



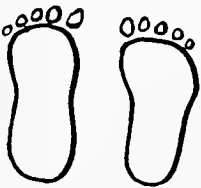
Loretta
Johnson



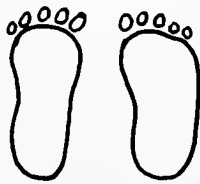
Mildred
Gonzalez



Kim
Dalman



Kathy
Meyer



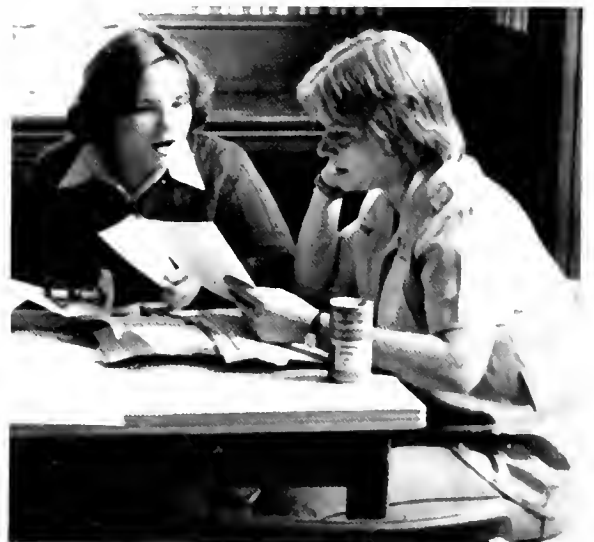
Eileen
Harris



Mary Ellen
Harris



Fran
Rosato





THE CROSSROADS OF LIFE

You will stand many times
At a crossroad in life
Just as you're standing now.
And no one can tell you
Which way to go . . .
Or what you should do . . .
Or how.
Yours is the choice . . .
May you follow your dreams
And believe in yourself
All the way
As you journey along
With your eyes on the stars
And with hope in your heart
Day by day.

Noel
Sidney
Williams



93901

R 93901
378.05
S St. Joseph's College
Footprints 1977

R	93901
378.05	
S	St. Joseph's College
AUTHOR	Footprints 1977
TITLE	
DATE DUE	BORROWER'S NAME





