

FORESTER

1 • 9 • 3 • 4





NOTICE

If you don't like some page in the Annual your own picture for example) DON'T KNOCK - take one of these sheets and paste over that page then there'll be humor in the situation.

" Sez You, Sez Me"
Janet Wyllie—"Oh, I don't know."
Marjorie Stupcy—"Don't be asinine."

Winnie Bragg—"Yeah?"

Margaret Alford.

Lewis Clarke.

Sylvia Jacobs.

Malin Buzzarrd.

Ce.t.ude Fisher.

Sam Bearman.

Betty Barr.

William King.

Louise Ferry.

Richard Willerton.

Marjorie Stupcy.

John Kotteamp.

Ellsworth Dorton—"I haven't the slightest ambition."

Nancy Jane Rudel—"Oh, Boo!"

Miss Warren—"Come to order, please!"

Ellen Walsh—"Ski-ram!"

Pam Emmerson—"Skoopier!"

Bob Brown—"Fish-hooks!"

Eloise Stohm—"Oh, Man!"

Sweetheart's Trail.

Virginia Bairstow.

Arthur Teece.

Winifred Bragg.

Teddy George.

Carmen Hess.

Norman Litz.

Helen Sippola.

William Morrison.

Elinor Simpson.

Ed. Broadbear.

Beeda Littunen.

John Gartley

Marlin Buzzard.

Marion Clarke.

Harvey Metzler.

Sally Carter.

Lloyd Koenig.

Willa Burke.

Herbie Jacobs.

Marjorie Stupcy.

Nancy Simmons.

Teddy Turner.

Betty Ross.

Russell Whyte.

Gunhild Peterson.

George McClure.

Bernice Bauman.

William Ferry.

Marie Levandusky.

William Diver.

Lillian Fosberg.

Howard Gutherie.

B. Morrison: "Anyone could tell by looking at you that your parents come from Ireland."

T. Murphy: "They certainly never, they are in Ireland yet."

Mr. Fields: "Who was the first president of the U. S.?"

Marcella Schumann: "I don't know."

"If someone asked you for a 'Honey-moon Salad' what would you give them?"

Lewis Clarke: "Just lettuce alone."

Charles Crabtree (Being arrested for speeding): "But officer, I'm a student."

Officer: "Ignorance is no excus."

Wm. Harding: "What's Wrigly's most famous slang phrase?"

John S.: "I dunno."

Wm. Harding: "By gum."

Mr. Fields: "Where was the Declaration of Independence signed?"

Margaret Nelson: "Well, it wasn't at the top."

Margaret says, "The only reason some people leave school is because they can't take it with them."

Did you ever know that:

Absence makes the heart grow fonder,

But presents bring quicker results.

Alice Anderfuren: "Where's the side of the street?"

Mary Balen: "This is it. That fellow across just told me so."

Leo Lehto: "What's the difference between an ambitious wife and her lazy husband?"

Dyke Johnson: "She does fancy work and he doesn't fancy work."

Margaret Fitch: "Why do farmers wear red suspenders?"


"Bud" Farmer: "I wonder."

Margaret F.: "Why does anyone wear them?"

Mr. Hurd: "Could you give the number of tons of coal shipped out of the U. S. in one year?"

Carl Stark: "1492; none."





Digitized by the Internet Archive
in 2011 with funding from
CARLI: Consortium of Academic and Research Libraries in Illinois

<http://www.archive.org/details/forester36lake>

This edition of the Forester, in
the Classic Manner, is limited
to 300 numbered copies.

Number 36



FORESTER



THE FORESTER

Lake Forest College Lake Forest, Illinois ●

VOL. XXXVI

1.9.3.4

Editor Raoul Robert Haas, II.

Assistant Editor Elizabeth Jane Henes

Business Manager William Francis Davis

Faculty Committee on Publications

Mr. Keller, Chairman; Mr. Hill, Mr. Perry

● FORESTER STAFF

Faculty and Classes Elizabeth Jane Henes,
Dorothy Regina Maiman

Athletics Evelyn Marjorie Ingram,
Glenn Kenneth Seidenfeld, John Robert Vogt

Activities Helen Kathryn Lithway,
Charles William McKnight, Eleanor Margaret Moore

Fraternities and Sororities James Paul Kearney,
William Howard Malmgren

● DESIGNMENT Dean W. Bacon

P R E F A C E

- Books are not absolutely dead things, but do contain a progeny of life in them, to be as active as that soul whose progeny they are; nay, they do preserve as in a vial the purest efficacy and extraction of that living intellect that bred them.

—MILTON, *Areopagitica*

C O N T E N T S

- I. Faculty and Administration
- II. Classes
- III. Campus
- IV. Activities
- V. Athletics
- VI. Greeks

A book's a book, though
there's nothing in't.

—BYRON

DEDICATION

- We dedicate this, the
1934 Forester

to

Agnes Rose Koupal



A sincere friend to the
college and to its young
men and women



● Agnes Rose Koupal



HERBERT MCCOMB MOORE, D.D.
*President and William Gross Professor of
Biblical Literature.*



WILLIAM E. MCPHEETERS, PH.D.
*Dean of the College and
Professor of English.*



AGNES ROSE KOUPAL, M.A.
*Dean of Women and Assistant
Professor of English.*



FLETCHER BAKER COFFIN, PH.D.
Professor of Chemistry.



ROSCOE EVERETT HARRIS, PH.D.
Professor of Physics.



HAROLD BARTLETT CURTIS, PH.D.
Professor of Mathematics.



BRUCE LINEBURG, PH.D.
Professor of Biology.



F. C. L. VAN STEENDERN, PH.D.
Professor of Modern Languages.



STERLING PRICE WILLIAMS, PH.D.
*Professor of Philosophy
and Psychology.*



GEORGE NEWTON SLEIGHT, PH.D.
Professor of Education.



GEORGE ARTHUR WOOD, PH.D.
Professor of History.



RONALD BOAL WILLIAM, PH.D.
*Professor of Romance
Languages.*



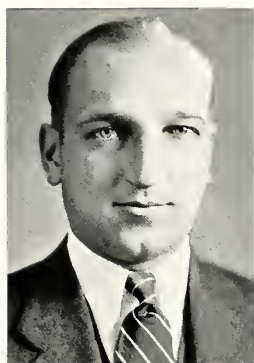
SOLLY A. HARTZO, M.A.
*Associate Professor of
Political Science.*



ERNEST AMOS JOHNSON, PH.D.
*Professor of Economics
and Business Administration.*



VICTOR GRAHAM DAVEY, M.A.
Instructor in Romance Languages.



LOUIS A. KELLER, M.A.
Assistant Professor of Economics.



ELIZABETH TETER SMITH, M.A.
Instructor in Biology.



KARL ADOLF ROTH, M.A.
*Assistant Professor of the
History of Religion and
Biblical Literature.*



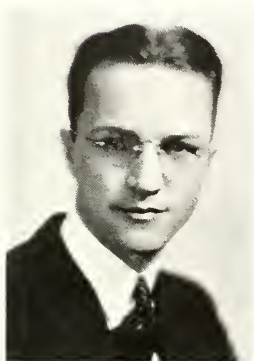
LILLIAN MARIE LENNARDS, M.A.
Instructor in Spanish and Latin.



EDWARD FRANKLIN PERRY, M.A.
Instructor in History.



RUSSELL CARLTON TOMLINSON,
B.A.
*Assistant Professor of
Speech and the Drama.*



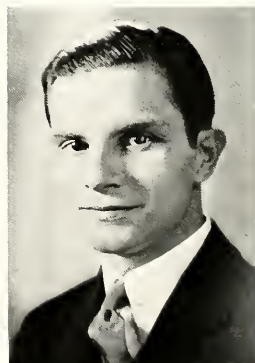
ELDON C. HILL, M.A.
Instructor in English.



ROBERT R. LOGAN, M.B.A.
Instructor in Economics.



MILDRED TRAVIS MURPHY, M.A.
*Director of Physical Education
for Women and Instructor in
English.*



WALTER S. ARMBRUSTER, M.MUS.
Director of Music.



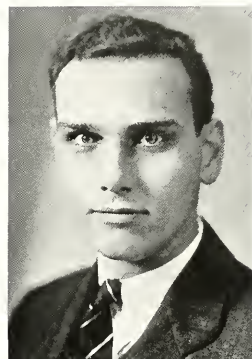
RALPH E. JONES
*Director of Physical
Education for Men.*



ELLIS C. HALVERSON
Auditor.



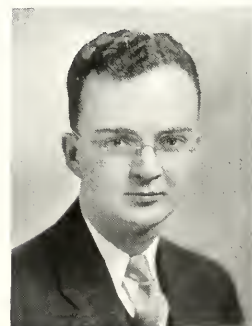
MARIE J. MELOY
Registrar.



FREDERICK H. HAYE[§]
*Assistant to the President
and Alumni Secretary.*



WARREN S. HALL
Business Manager.



PHILLIP C. ALLEN
Graduate Manager.

[§]Resigned February, 1934.



MARY IRENE ROBERTS

Bookkeeper



RUTH E. ZINK

Secretary to the President

MABEL POWELL

Librarian

GILBERT A. JOHNSON

Assistant Director of Athletics



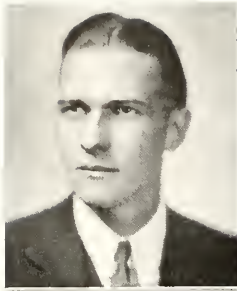
CLASSES



"Citizens, you are brothers, yet God has framed you differently. Some of you have the power of command; and these he has made of gold, wherefore they have the greatest honor; others of silver, to be auxiliaries; others again, who are to be husbandmen and craftsmen, he has made of brass and iron; and the species will generally be preserved in the children. But as you are of the same original family, a golden parent will sometimes have a silver son, or a silver parent a golden son. And God proclaims . . . that if the son of a golden or a silver parent has an admixture of brass or iron, then nature requires a transportation of ranks; and the eye of the ruler must not be pitiful towards his child because he has to descend in the scale to become a husbandman or an artisan, just as there may be others sprung from the artisan class who are raised to honor, and become guardians and auxiliaries. For an oracle says that when a man of brass or iron guards the state, it will be destroyed."

—Plato

SENIORS



WALTER THOMAS AYE, *President* Phi Pi Epsilon

Entered from Lake View High School, Chicago: Phi Eta Sigma, 1, 2, 3, Pres. 4; Chairman Dance Committee, 4; Football, 1; Golf, 3.



DOROTHY REGINA MAIMAN, *Vice-President* Alpha Xi Delta

Entered from Deerfield-Shields High School: Phi Sigma Iota, 3, Pres. 4; Committees: Election, 3, 4; Junior Prom, 3; Homecoming, 4; French Club, 3; Chorus, 2, 3; W. A. A., 1, 2, 3, 4; Y. W. C. A., 1, 2, 3, Board, 4; Pan-Hellenic Council, 4; Interfraternity-Intersorority Council, 4; Forester Staff, 4.



HARRIETTE MIRIAM GOLDEN, *Secretary*

Entered from Deerfeld-Shields High School: Day-Student Girls, Social Chairman, 3, President, 4; Kappa Alpha, 4; Garrick, 4; Committees: Homecoming, 3; Dad's Day, 4; Election, Chairman, 4; Y. W. C. A., Sec'y, 4; McPherson Prize for Declamation, 2.



ELIZABETH ELVIRA BARNEY, *Treasurer* Kappa Kappa Chi

Entered from Nicholas Senn High School, Chicago: Chorus, 2, 3; Choir, 2, 3; Y. W. C. A., Board, 4; Committees: Homecoming, 4; Student Trip, 4; International Relations Club, 4; Interfraternity-Intersorority Council, 3, 4.

SENIORS

CHARLES WILLIAM ADAMS

Phi Pi Epsilon

Entered from Riverside High School, Milwaukee: Football, 1, 2, 3, 4; Basketball, 1; Track, 1, 2; L. F. Club: Athletic Board, 3, Vice-Pres. 4; Interfraternity-Intersorority Council, 4; Intra-Mural Committee, 4.



MARIAN ANDERSON

Sigma Tau

Entered from New Trier Township High School: W. A. A., 1, 2, Board, 3, President, 4; Y. W. C. A., 1, 2, 3, 4; Interfraternity-Intersorority Council, 3, 4; Pan-Hellenic Council, 4; Stentor, 4; Committees: Prom, 3; House, 4; Dance, 4.



MILDRED LUCILLE ATTRIDGE

Entered from Deerfield-Shields High School: W. A. A., 2; 3; Y. W. C. A., 3, 4; Chorus, 2, 3; Phi Sigma Iota, 3, 4.



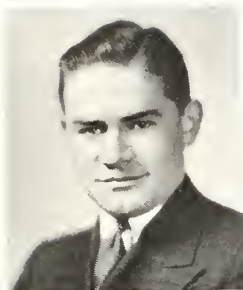
RUTH VENITA BEERLY

Kappa Kappa Chi

Entered from Lakeview High School, Chicago: W. A. A., 1; Y. W. C. A., 2, 3, 4; Chorus, 1, 2; Choir, 1, 2, 3; Women's Self Government, 4.



SENIORS



NATHANIEL BUTLER

Alpha Sigma Kappa

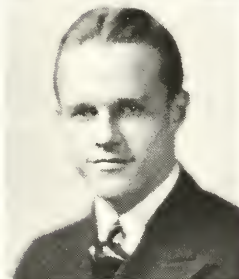
Entered from University High School, Chicago; Chairman Homecoming Committee, 4; Football, 1; Interfraternity-Intersorority Council, 3.



VIRGINIA MAURINE CLICKENER

Alpha Xi Delta

Entered from Waukegan Township High School; W. A. A., 1, 2, 3, 4; Choir, 1, 2, 3, 4; Chorus, 1, 2, 3.



STERLING CRAMER, JR.

Digamma Alpha Upsilon

Entered from New Mexico Military Institute; Chairman Student Trip, 4; International Relations Club, 3, Vice-Pres., 4; Wings, 2, 3, 4.



WILLIAM FRANCIS DAVIS

Kappa Sigma

Entered from Loyola Academy; Stentor, 2; Forester, 2, 3; Business Manager, 4; Committees: Election, 2; Social, 2; Chairman Dads' Day, 4.

SENIORS

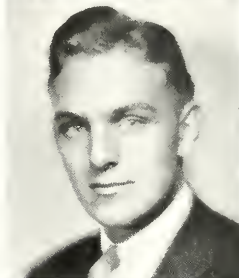
LUCILLE MARGARET DE VRIES Gamma Rho Delta

Entered from Proviso High School, Chicago; Women's Self Government, President, 4; Kappa Alpha, 3, 4; Y. W. C. A., 1, 2, 3, 4; W. A. A., 1, 2, 3, 4; International Relations Club, 2, 3, 4; Wings Club, 3, 4; Lois Hall House Committee, 3; Committees: Student Trip, 2, 4; Homecoming, 3; Election, 2; Varsity Basketball, 2, 3.



FREDERICK JOHN DRAKEMAN Kappa Sigma

Entered from Deerfield-Shields High School; Baseball, 1, 2, 3, 4; Interfraternity-Intersorority Council, 4; Committees: Prom, 3; Dads' Day, 4.



KATHRYN PAULINE FAAS Theta Psi

Entered from Lakeview High School, Chicago; Interfraternity-Intersorority Council, 4; Chorus, 1; Y. W. C. A., 1, Cabinet, 3.



CATHERINE ELIZABETH FORAN Gamma Rho Delta

Entered from St. John's Cathedral; Dramatics, 4.



SENIORS



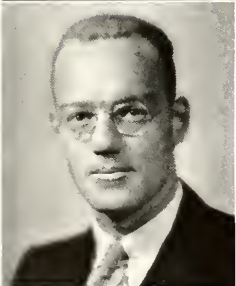
AUGUSTUS JEROME FORREST Alpha Sigma Kappa
Entered from Deerfield-Shields High School; Tennis, 1, 2, 3;
L. F. Club, 3, 4.



DOROTHEA ELIZABETH GOTTLIEB Gamma Rho Delta
Entered from Arsenal Technical High School, Indianapolis;
Kappa Alpha, 2, 3, Pres., 4; Garrick Club, 2, 3, Pres., 4; Sigma
Tau Delta, 2, 3, 4; Committees: Prom, 3; Election, 4; Forester
Staff, 3.



RAOUL ROBERT HAAS, JR. Alpha Sigma Kappa
Entered from Marshall High School, Chicago; Sigma Tau
Delta, 2, 3, Pres., 4; Garrick Club, 2, 3, 4; Stentor, 2, 3, 4;
Forester, 3, Editor, 4; International Relations Club, 3, Sec'y-
Treas., 4; Interfraternity-Intersorority Council, 4; Committees:
Dance, 2, 4; Prom, 3; Dads' Day, 3; New Students' Day, 2,
Chairman, 4; Election, 4.



ROBERT KING HALL Kappa Sigma
Entered from Deerfield-Shields High School; Sigma Pi Sigma,
Pres., 3, 4; Phi Eta Sigma, Sec'y, 1, 3, Treas., 4; Sigma Tau
Delta, Sec., 2, Treas., 3, Pres., 4; Wings Club, 3, 4; Tennis,
2, 3; Stentor, 2, 3, 4; Forester, 3, Editor, 4.

SENIORS

ALICE ELIZABETH HARPER

Kappa Kappa Chi

Entered from Evanston Township High School; W. A. A., 2, 3; Chorus, 1, 2.



ERWIN MATHEW HEIDBRINK Digamma Alpha Upsilon

Entered from Lakeview High School, Chicago; Athletic Board, Sec'y, 3, Pres., 4; Business Manager Garrick Club, 4; International Relations Club, 2, Vice-Pres., 3; Football, 1, 2; L. F. Club, 4; Homecoming Committee, 3.



ELIZABETH JANE HENES

Theta Psi

Entered from Milwaukee University School; Sigma Tau Delta, 2, 3, 4; Kappa Alpha, 2, 3, 4; Class Secretary, 3; Pan-Hellenic Council, Pres., 4; Committees: Prom, 3; Lois Hall House, 4; Y. W. C. A., 1, 2, 3, 4; Interfraternity-Intersorority Council, 4; Stentor, 2, 3, 4; Forester, 3, Assistant Editor, 4.



MARGARET LAURA HOELZL

Entered from Milwaukee-Downer Seminary; Y. W. C. A., 4; Committees: Homecoming, 4; Lois Hall House, 4.



SENIORS



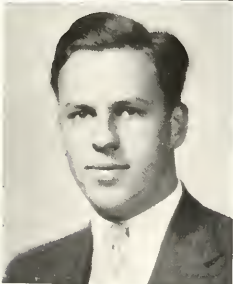
GEORGE EDWARD HOFFMAN, JR. Digamma Alpha Upsilon
Entered from Staunton Military Academy, Virginia.



WILLIAM VINEY HOFFMAN Phi Pi Epsilon
Entered from New Trier High School: Football, 1; Tennis,
1, 2, 3, 4.



HERBERT BENNETT JACOBS
Entered from Waukegan Township High School: Stenior,
2, 3, Editor, 4; Student Council, 3, Vice-Pres., 4; Class Treas-
urer, 2; Debate, 2, 3, 4; MacPherson Prize for Oratory, 2;
International Relations Club, 3; Basketball, 1; Baseball, 1; Com-
mittees: Dads' Day, 3, 4; Pep, 2, 3, Chairman, 4; Student
Trip, 3.



FLOYD VICTOR KISTLER Phi Pi Epsilon
Entered from Waukegan Township High School: Band, 2,
3, 4; Chorus, 1, 2, 3; Football, Ass't Mgr., 2.

SENIORS

JOHN HENRY KLEINE

Digamma Alpha Upsilon

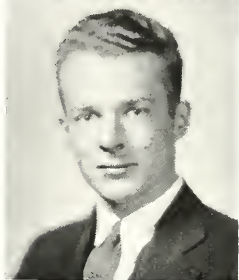
Entered from Nicholas Senn High School, Chicago; Garrick Club, 2, 3, 4; Sigma Tau Delta; Track, 1.



WILLIAM LEE KLEINZ, JR.

Alpha Sigma Kappa

Entered from Morgan Park High School, Chicago; Baseball, 1; Basketball, 1; Tennis, 2, Manager, 3, 4; L. F. Club, 4; International Relations Club, 3, 4; Athletic Board, 4; Interfraternity-Intersorority Council, 4; Election Committee, 3, 4.



DAVID WARREN LAMB

Alpha Sigma Kappa

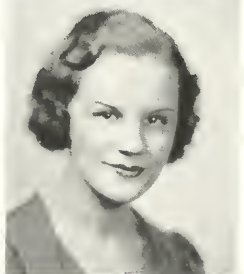
Entered from Hinsdale Township High School; Chorus, 3; French Club, 4.



RUTH ETHEL LAVERY

Theta Psi

Entered from Academy of Our Lady, Chicago; Chorus, 3; Y. W. C. A., 3, 4; French Club, 4.



SENIORS



HELEN KATHRYN LITHWAY

Kappa Kappa Chi

Entered from Bloom Township High School, Chicago Heights; Kappa Alpha, 3, 4; Sigma Tau Delta, 2, 3, 4; International Relations Club, 4; Class Vice-Pres., 2; Student Council Sec'y, 4; Forester Staff, 3, 4; Committees: Prom, 3; Dance, 3, 4; Dads' Day, 4; Election, 4; Chorus, 1, 2, 3; Y. W. C. A., 1, 2, 3, 4; W. A. A., 3, 4; Interfraternity-Intersorority Council, 3, 4.



ELNORA ALICE LOOMIS

Kappa Kappa Chi

Y. W. C. A., 3, 4.



BERNICE VERONICA MALELA

Entered from Waukegan Township High School; Chorus, 1, 2, 3, 4; Y. W. C. A., 1, 2, 3, 4.



MILTON ERWIN MORGAN

Digamma Alpha Upsilon

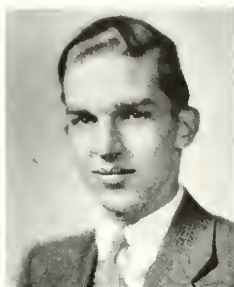
Entered from Iron Mountain High School; Iron Key, 3, Pres., 4; Football, 1, 2, 3, 4; Basketball, 1, 2, 3, 4; Baseball, 1, 2, 3, 4; L. F. Club; Intramural Committee, 3.

SENIORS

CARL MARIUS PETERSON

Alpha Sigma Kappa

Entered from Deerfield-Shields High School; Phi Sigma Iota, 2, 3, 4; French Club, 2; Economics Fraternity, President, 4.



KAARINA RAUTALAHTI

Entered from Waukegan Township High School; Phi Sigma Iota, 3, Sec'y, 4; French Club, 3, 4; Sec'y-Treas., Day Student Girls, 4; Y. W. C. A., 2, 3, Board, 4; Choir, 2, 3; Chorus, 1, 2, 3, Vice-Pres., 4; W. A. A., 2, 3, 4; Baseball, 2, 3; Hockey, 3.



AUDREY MAY RIDGWAY

Gamma Rho Delta

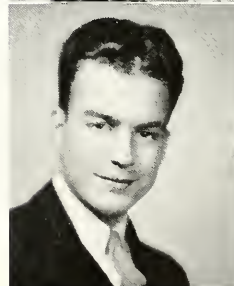
Entered from Freeport High School; W. A. A., 1, 2, 3, 4; Y. W. C. A., 1, 2, 3, 4; Committees: House, 4; Dads' Day, 4.



WILLIAM H. J. SCHULTZ

Alpha Sigma Kappa

Entered from Austin High School, Chicago; Pres., Student Council, 4; Iron Key, 2, 3, 4; Stentor, 2, 3, Bus. Mgr., 4; Garrick, 1, 2, 3, Vice-Pres., 4; Band, 1, 2; Economics Fraternity, 4; Basketball Mgr., 4; Football Mgr., 1, 2; Baseball, 1; Committees: Election, 2; Student Trip, 2; Chairman, Prom, 3.



SENIORS



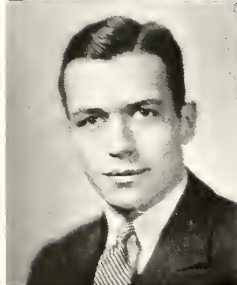
PAUL WILLIAM SPEICHER Digamma Alpha Upsilon
Entered from Berne High School, Indiana; Band, 1, 2; Orchestra, 2; Forester, 3; Economics Fraternity, 4.



EMILY SHIRLEY WALCZAK Alpha Xi Delta
Entered from University of Wisconsin; W. A. A., 2, 3, 4; Y. W. C. A., 1, 2, 3, 4; Pan-Hellenic Council, 4; House Committee, 2.



JANE REYNOLDS WENBAN
Entered from Ferry Hall; French Club; Y. W. C. A., 4; W. A. A., 4.



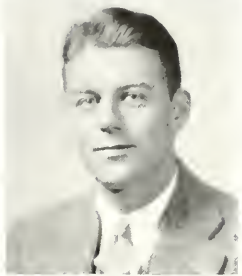
ALFRED JAMES WENNERMARK Digamma Alpha Upsilon
Entered from Fort Wayne High School; Garrick Club, 2, 3, 4; Track, 1, 2, 3; Cross-country, 1; Sigma Tau Delta, 2, 3, 4; Iron Key, 2, 3, 4; International Relations Club, 2, Pres., 3, 4; Class President, 3.

SENIORS

DONALD EVANS LUDER

Entered from Mt. Horeb, Wisconsin.

Kappa Sigma



FATHER ANDREW E. F. ANDERSON

DALTON BERNARD BLECH

Entered from Lake Forest Academy: Band, 2, Business Mgr., 3, Vice-Pres., 4. Student Trip Committee, 4.

ALLYN GEORGE BONNIE

Kappa Sigma

Entered from Rhineland High School: Football, 1, 2, 3, 4, Baseball Mgr., 3; Intramural Committee, 4; Homecoming Committee, 4; Student Trip, 4; Economic Fraternity, 4.

GEORGE EDWARD EATON

Phi Pi Epsilon

Entered from New Trier High School; Sigma Tau Delta, 3, Treas., 4; Phi Sigma Iota, 3, 4; Iron Key, 4; Football, 1, 2, 3, 4; Track, 1, 2; L. F. Club.

JOHN WILLIAM ENOS

Digamma Alpha Upsilon

Entered from Parker High School, Chicago: Football, 2, 3, 4; Track, 3; Stentor, 3.

GUNNAR CARL ERICKSON

Phi Pi Epsilon

Entered from Grosse Point High School, Detroit: Football, 1, 2, 3, Captain, 4; Prom Committee, 3.

CARL PARKER

Digamma Alpha Upsilon



WILLIAM GROUTT DWINNELL, *President* Kappa Sigma
 Entered from Providence Technical High School, R. I.: Football,
 1, 3, 4; Class Treasurer, 1; Baseball Mgr. 4.

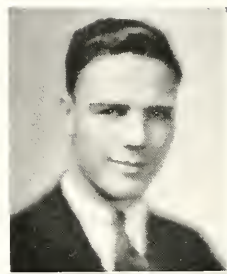


ELEANOR MARGARET MOORE, *Secretary* Sigma Tau
 Entered from Waukegan Township High School: W. A. A.,
 1, 2, 3; Y. W. C. A., 1, Sec'y, 2, Pres., 3; Committees: Prom, 3,
 Dads' Day, 3; Election, 3; Forester, 3; French, 1, 2, 3.

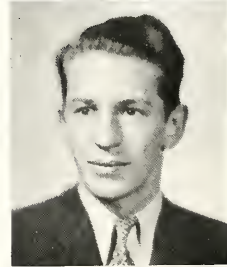


ELIZABETH JANE LEISING, *Treasurer* Theta Psi
 Entered from Bloom Township High School, Chicago Heights:
 Y. W. C. A., 1, 2, 3; Garrick, 2, 3; Vice-President Sophomore Class;
 French Club, 2, 3; Prom Queen, 2; Committees: Homecoming, 3;
 Student Trip, 3; Election, 3; Dance, 3.

JUNIORS



ROBERT CARL BADE Kappa Sigma
 Entered from Lane Technical High School, Chicago: Iron Key,
 2, 3; Track, 1, 2; Football, 3; Orchestra, 1, 2, 3; Stentor, 2, 3; L. F.
 Club.



CHARLES GREGORY BARTON Alpha Sigma Kappa
 Entered from St John's Military Academy; Baseball, 1, 2, 3;
 Homecoming Committee, 3.



MONA VIVIENNE BERNDT Theta Psi
 Entered from Washington High School, Milwaukee: Y. W. C. A.,
 1, 2, 3; Chorus, 2; Dance Committee, 2; W. A. A.

THOMAS MARVIN ELVIN

Alpha Sigma Kappa

Entered from New Trier High School: Band, 1, 2, Pres., 3; Chorus, 1, 2, 3; Choir, 1, 2, 3; Stentor Business staff, 3; Garrick, 2, 3; Committees: Dance, 3; Dads' Day, 3; Homecoming, 2; New Students' Day, 2; Prom, 3.

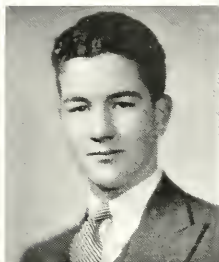
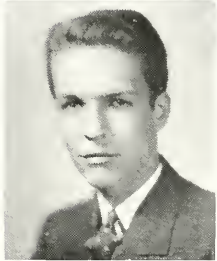
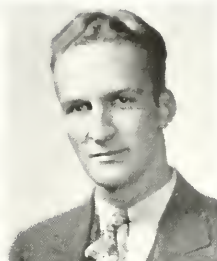
DORIS GANN

Entered from Buena Vista College: French Club, 3; Chorus, 3.

FREDERICK EDWARD GOTTLIEB

Kappa Sigma

Entered from Waukegan Township High School.



JUNIORS

ERNEST THEODORE BROWN

Kappa Sigma

Entered from Southwest High School, Kansas City: Stentor, Business staff, 3; Assistant Track Mgr., 2; Manager, 3; Wings Club, 1, 2, 3.

HELEN FRANCES CAPP

Alpha Xi Delta

Entered from University High School, Chicago: Y. W. C. A., 2, 3; Chorus, 1, 2; Committees: House, 2, 3; Dads' Day, 2, 3; Student Trip, 3.

DOROTHY ECKFELDT

Theta Psi

Entered from Bloom Township High School, Chicago Heights: Sigma Tau Delta, 2, 3; Economics Fraternity, 3; Y. W. C. A., 1, 2, 3; Chorus, 2; Secretary Freshman Class.



JOY LEONE GRUMMITT Alpha Xi Delta
Entered from Libertyville Township High School: W. A. A., 1, 2, 3; Y. W. C. A., 3.

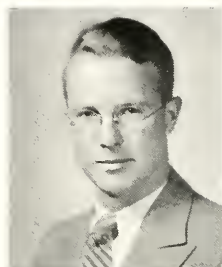


ELEANOR HECKER Theta Psi
Entered from Milwaukee University School; French Club, 1, 2, Pres., 3; Phi Sigma Iota, 2, 3; W. A. A., 1, 2, 3; Y. W. C. A., 1, 2, 3; Chorus, 1, 2; Dads' Day Committee, 3.



GEORGE HAROLD GRUENDEL Digamma Alpha Upsilon
Entered from Lakeview High School, Chicago: Wings Club, 1, 2, 3; Football, 1, 2; Basketball, 1, 2, 3; Baseball, 1, 2; L. F. Club.

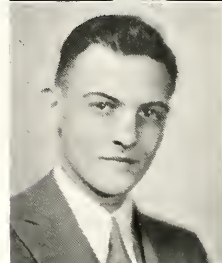
JUNIORS



LOWELL HARTLEY JOHNSON Alpha Sigma Kappa
Entered from New Trier High School; Baseball, 1, 2, 3; Athletic Board, 3; Intramural Board, 3; Economics Fraternity, 3; Pep Committee, 3.



ETHYL GERTRUDE KENNEDY Theta Psi
Entered from Marywood Academy, Evanston; Phi Sigma Iota, 3; French Club, 1, 2, Sec'y-Treas., 3; W. A. A., 1, 2, 3; Y. W. C. A., 1, 2, 3.



RUDOLPH HENRY KROETZ Phi Pi Epsilon
Entered from Milwaukee University School; Student Council, 3; Iron Key, 2, 3; International Relations Club, 2, 3; Football Manager, 1, 2, 3; Stentor, 1, 2, 3; Committees: Homecoming, 2; Prom, 3.

JOHN WOODROW LOVETON

Kappa Sigma

Entered from Rhinelander High School, Wisconsin; Garrick, 2, 3; Debate, 3; Baseball, 1, 2, 3; Committees: Prom, 3; Pep, 1, 3.

MARY ETHLYN MELLOR

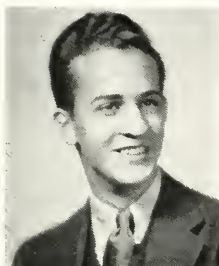
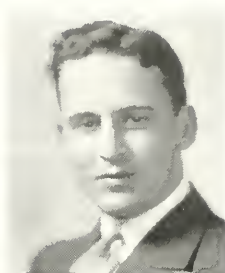
Theta Psi

Entered from St. Mary's School, Knoxville, Illinois; French Club, 3; W. A. A., 1, 2, 3; Y. W. C. A., 1, 2, 3.

MARY ELIZABETH LONGBRAKE

Alpha Xi Delta

Entered from Marysville High School, Ohio; French Club, 2, 3; Chorus, 1, 2; Y. W. C. A., 2, 3; W. A. A., 1, 2, 3; Prom Committee, 3.



JUNIORS

CHARLES WILLIAM McKNIGHT

Alpha Sigma Kappa

Entered from Bloom Township High School; Garrick, 2, 3; Forester staff, 3; Committees: Intramural, 3; Election, 2.

MARY ELEANOR NEWSOM

Entered from Libertyville Township High School; Y. W. C. A., 3; Dramatics, 1.

EDWARD WILLIAM NIEMEYER

Digamma Alpha Upsilon

Entered from Deerfield-Shields High School.



FREDERICK CHARLES PANZER Digamma Alpha Upsilon
 Entered from Carl Schurz High School, Chicago: Dramatics, 2, 3; Debate, 3; Basketball, 3; Committees: Prom, 3; Dads' Day, 3; Homecoming, 3.

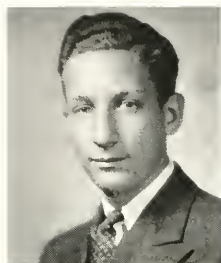


JANET MITCHELL RITCHEY Theta Psi
 Entered from Academy of Our Lady, Chicago: Y. W. C. A., 2, 3; Dramatics, 2, 3; House Committee Secretary, 3.

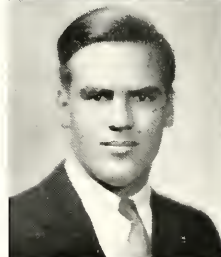


LLOYD GEORGE ROBERTS Digamma Alpha Upsilon
 Entered from Crystal Lake Township High School: Football, 1, 2, 3; Intramural Board, 2, 3; Chairman of the Prom Committee, 3; L. F. Club.

JUNIORS



GLENN KENNETH SEIDENFELD
 Entered from Waukegan Township High School: Debate, 1, 2, 3; Tennis, 2; Athletic Board, 2, 3; Intramural: Dads' Day, Homecoming Committees, 2; Prom: Dance Committees, 3; Student Council, 3; Forster, 3; Stentor, 2, 3.



ROBERT BIGGER SMITH
 Entered from Pyeng Yang Foreign School, Chairyung, Chosen: Phi Eta Sigma, 1, 2, Treas., 3; Sigma Tau Delta, 2, 3; Tennis, 2; Band, 1, 2, 3.



RODGER BROWNING SMITH
 Entered from Pyeng Yang Foreign School, Chairyung, Chosen: Phi Eta Sigma, 1, Treas.; 2, Vice-Pres., 3; Sigma Tau Delta, 2, 3; Tennis, 1, 2.

GIFFORD DEAN WRAY
 Entered from Nicholas Senn High School, Chicago: Band, 1, 2, 3; Chorus, 1, 2.



JUNIORS



RUTH MIRIAM WHITE Theta Psi
 Entered from Rockford High School, Illinois: W. A. A., 2, 3; Y. W. C. A., 1, 2, Treas., 3; Chorus, 1, 2, 3; Hockey, 2.

PAUL ROMNEY BLOOM
 Digamma Alpha Upsilon
 Entered from Lindblom High School, Chicago.

MARLYS LORRAINE GREEN
 Entered from Waukegan Township High School.

ELEANOR MARGARET De YOUNG
 Theta Psi
 Entered from Waukegan Township High School: W. A. A., 1, 2, Sec'y, 3; French Club, 3; Y. W. C. A., 1, 2, 3.

GEORGE ALEXANDER HARDY
 Kappa Sigma
 Entered from Detroit Country Day.

JACOB FELL
 Entered from Deerfield-Shields High School: Baseball, 1; Election Committee, 3.

JOHN HUBLEY Digamma Alpha Upsilon
 Entered from Deerfield-Shields High School.

ANTON JOSEPH FUCHS
 Digamma Alpha Upsilon
 Entered from Antioch High School; Basketball, 2, 3; Baseball, 1, 2, 3.

ROSE ANNA JAECKEL
 Entered from Waukegan Township High School.

ALFREDA ELIZABETH GESSNER Theta Psi
 Entered from Riverside High School, Milwaukee: Y. W. C. A., 2, 3; Chorus, 2.

MARSHALL JOYCE
 Entered from Deerfield-Shields High School.

JAMES PAUL KEARNEY
 Digamma Alpha Upsilon
 Entered from Mankato High School, Minnesota.

JUNIORS

CECEL RAY KRAMER

Entered from Waukegan Township High School; Phi Sigma Iota, 3; French Club, 2, 3; Wings Club, 2; W. A. A., 1, 2, 3.

WILLIAM HOWARD MALMGREN

Kappa Sigma
Entered from Farmington High School, Illinois; Sigma Tau Delta, 3.

AUDREY GWENDOLYN MEYER Theta Psi

Entered from Nicholas Senn High School, Chicago; Phi Sigma Iota, 3; Y. W. C. A., 1, 2, 3; French Club, 2, 3; Chorus, 1, 2.

FRANK WOODS MILHENING

Entered from Evanston High School.

HELEN WILSON McEWEN

Entered from Deerfield-Shields High School; Hockey, 1, Captain, 2; Basketball, 1, 2; Baseball, 1, Captain, 2; W. A. A., 1, 2, Treas. 3; Economics Fraternity, 3.

RAYMOND V. NORTMAN Phi Pi Epsilon

Entered from Milwaukee University School; French Club, 2; Choir, 3; Stentor, 2, 3; Committees: Election, 3; Homecoming, 3; Debate, 3; Dramatics, 2, 3; Interfraternity-Intersorority Council, 3.

SAMPSON LOUIS PARSONS Phi Pi Epsilon

Entered from Milwaukee University School; Football, 1, 2; Baseball, 2, 3; Iron Key, 3, 4; Dads' Day Committee, 3; Stentor, 3, 4; L. F. Club, 4.

SAMUEL ORRICK RICE

Entered from New Trier High School.

DOUGLAS IRVING SCHAUS Phi Pi Epsilon

Entered from Milwaukee University School; Baseball, 1, 2.

JOHN HENRY SCHROEDER Phi Pi Epsilon

Entered from Waukegan Township High School; Baseball, 3; Football, 3.

LILLIAN BROWN SCOTT Theta Psi

Entered from New Trier High School; Y. W. C. A., 2, 3; French Club, 3.

ARTHUR CHURCH SEARING Phi Pi Epsilon

Entered from Mankato High School, Minnesota; Tennis, 1, 2; International Relations Club, 3.

FRANK LENZ SPREYER

Digamma Alpha Upsilon
Entered from Crystal Lake Township High School; Iron Key, 2, 3; Football, 3; Basketball, 3; Economics Fraternity, 3; L. F. Club.

CHESTER HAROLD STRIPE

Entered from Waukegan Township High School; Football, 1; Chorus, 2; International Relations Club, 3; Debate, 3.

MAE ELIZABETH STUDER

Entered from Libertyville Township High School.

JOHN ROBERT VOGT Phi Pi Epsilon

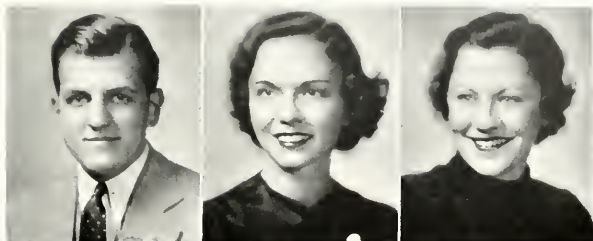
Entered from Milwaukee University School; Football, 1, 2, 3; Debate, 2, 3; Forester, 3; Economics Fraternity, 3; L. F. Club.

WILMA KATHRYN WESTERMAN

Theta Psi
Entered from Milwaukee University School; Kappa Alpha, 2, 3; Phi Sigma Iota, 2, 3; Sigma Tau Delta, 2, 3; W. A. A., 1, 2, Vice-Pres., 3; Y. W. C. A., 1, 2, 3; Chorus, 1, 2; French Club, 1, 2; Stentor, 2, 3; Junior Prom Committee, 3.

JACK HENRY ZENGLER

Digamma Alpha Upsilon
Entered from Deerfield-Shields High School.



WILLARD JEAN DAIKER *President*
 Kappa Sigma
 Entered from Grant Township High School,
 Fox Lake, Illinois.

MARY ELIZABETH SIEMAN *Secretary*
 Sigma Tau
 Entered from Oak Park High School.

ELLEN JULIA ERICKSON *Vice-President*
 Theta Psi
 Entered from Oak Park High School.

WILLIAM HAMMOND *Treasurer*
 Phi Pi Epsilon
 Entered from Deerfield-Shields High School.

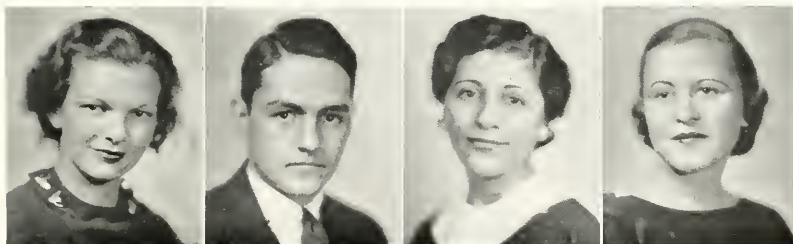
SOPHOMORES

JANICE BARR *Sigma Tau*
 Entered from La Jolla High School, Cali-
 fornia.

JENNIE GEORGE
 Entered from Deerfield-Shields High School.

LOWELL MAURICE COMEE *Alpha Sigma Kappa*
 Entered new New Trier High School.

RUTH ADELINE HACKLEY *Theta Psi*
 Entered from Oak Park High School.





FRANCIS AMES HAYNER Kappa Sigma
Entered from Deerfield-Shields High School.

HELEN WILLETT HEYWORTH
Gamma Rho Delta
Entered from Nicholas Senn High School,
Chicago.

RALPH WALDO HENNINGS
Digamma Alpha Upsilon
Entered from Evanston Township High
School.

GEORGE EDWARD HISCOTT Kappa Sigma
Entered from Evanston Township High
School.

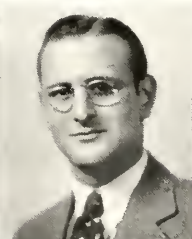
SOPHOMORES

DEFREES HOLMES Kappa Sigma
Entered from New Trier High School.

EVELYN MARJORIE INGRAM
Gamma Rho Delta
Entered from Deerfield-Shields High School.

STEPHEN HOPKINS Kappa Sigma
Entered from Deerfield-Shields High School.

REVA LOIS KAMPER Alpha Xi Delta
Entered from Oak Park High School.





ROY DIEZ KEEHN Kappa Sigma
Entered from Principia, St. Louis, Missouri.

JANICE LLEWELLYN Sigma Tau
Entered from Girl's Latin School, Chicago.

DOROTHEA ETTA LANDRY
Kappa Kappa Chi
Entered from Grant Township High School,
Fox Lake, Illinois.

VIRGINIA LOUISE LOWRY Sigma Tau
Entered from Rock Island High School.

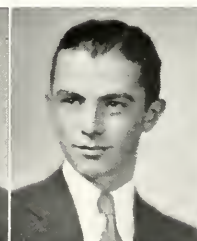
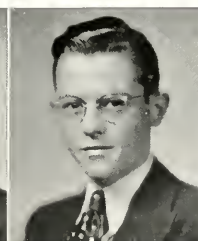
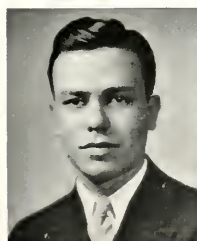
SOPHOMORES

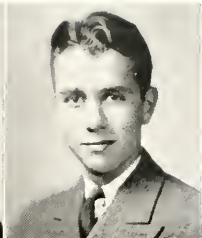
GEORGE MADDEN Kappa Sigma
Entered from Lyons High School, Clinton,
Iowa.

ELBERT HUBBARD MASON
Entered from Waukegan Township High
School.

CHARLES MEYER MASON
Entered from Waukegan Township High
School.

KATHERINE MCKOWN Theta Psi
Entered from Rock Island High School.





LOUIS ORTON PALMER Alpha Sigma Kappa
Entered from Parker High School, Chicago.

OMAR HOLLINGSWORTH QUINN
Digamma Alpha Upsilon
Entered from Hyde Park High School, Chicago.

MARY ELIZABETH POTTER Sigma Tau
Entered from Evanston Township High School.

HERMAN HART RITZWOLLER
Digamma Alpha Upsilon
Entered from University High School, Chicago.

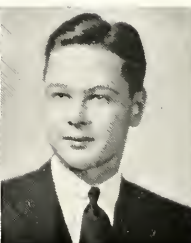
SOPHOMORES

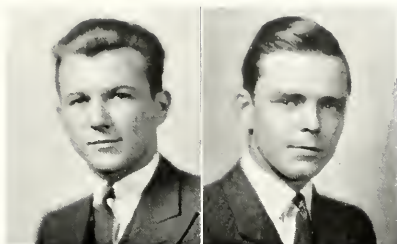
ELEANOR LOUISE THOMPSON Theta Psi
Entered from Evanston Township High School.

BEATRICE WELTON Alpha Xi Delta
Entered from Waukegan Township High School.

JANE TVERDAHL Gamma Rho Delta
Entered from St. Katherine's School, Davenport, Iowa.

GEORGE IRVING WENBAN Kappa Sigma
Entered from Deerfield-Shields High School.





WILLIAM JOHN WOODALL Kappa Sigma
Entered from Royal Oak High School, Michigan.

JOHN BRANDON GUTHRIE
Alpha Sigma Kappa
Entered from Lake Forest Academy.

SOPHOMORES

VERNON RAY ANDREWS Kappa Sigma
Entered from Libertyville Township High School.

GEORGE OLIVER CHURCHILL
Digamma Alpha Upsilon
Entered from Libertyville Township High School.

ELEANOR AUSTIN Gamma Rho Delta
Entered from Deerfield-Shields High School.

HELEN MARY DECKER
Entered from Libertyville Township High School.

JOHN DRAKE AUSTIN Phi Pi Epsilon
Entered from Deerfield-Shields High School.

WILLIAM STOWELL DIVER Kappa Sigma
Entered from Waukegan Township High School.

HAROLD LAVERN BISHOP
Entered from Waukegan Township High School.

ROBERT RAPHAEL DOBBIN
Alpha Sigma Kappa
Entered from Deerfield-Shields High School.

CALVIN EDMUND BLAIR Kappa Sigma
Entered from New Trier High School.

LESLIE MORTON DOHR Phi Pi Epsilon
Entered from Proviso Township High School.

RUTH LOUISE BOLT
Entered from Deerfield-Shields High School.

THOMAS HARTWELL DYER
Digamma Alpha Upsilon
Entered from Iron Mountain High School, Michigan.

HAROLD KEITH CADY Kappa Sigma
Entered from Brimfield Township High School, Illinois.

LESLEY KIRK CHAMPLIN Gamma Rho Delta
Entered from New Trier High School.

ELBERT RANEY EMERY Kappa Sigma
Entered from Deerfield-Shields High School.

SOPHOMORES

FRANK KENDALL GARRETSON
Phi Pi Epsilon
Entered from New Trier High School.

GEORGE GESSNER Digamma Alpha Upsilon
Entered from Northwestern University.

STEPHEN WOOD GRAY
Entered from Evanston Township High School.

ROBERT ANDREW GUILFORD
Digamma Alpha Upsilon
Entered from Lake Forest Academy.

OSCAR LEE GYLLENBERG
Digamma Alpha Upsilon
Entered from Deerfield-Shields High School.

EDWARD HERBERT HOFFMAN
Phi Pi Epsilon
Entered from Deerfield-Shields High School.

ROBERT HAROLD ICKES Phi Pi Epsilon
Entered from Morgan Park Military Academy.

UNO MATTHEW LAKE Kappa Sigma
Entered from Lake Forest Academy.

GEORGE WILLIAM MARTIN
Entered from Waukegan Township High School.

ROBERT L. NORRINGTON
Entered from Indian Hill Academy, Winnetka, Illinois.

WILLIAM WALTER PENROD
Phi Pi Epsilon
Entered from Milwaukee University School.

WINFIELD JAMES REED
Entered from Waukegan Township High School.

WILLIAM HOWARD SPURGEON
Alpha Sigma Kappa
Entered from Webb School, Clairmont, California.

NETTA ELIZABETH STEINHAUS
Entered from Warren Township High School.

JULIAN RUTLAND STRIPE
Entered from Waukegan Township High School.

FRANCES CHARLOTTE WALDO
Entered from Libertyville Township High School.

FRANKLIN DOLAN WANNER
Alpha Sigma Kappa
Entered from New Trier High School.

ERWIN WALTER WENDT Phi Pi Epsilon
Entered from Carl Schurz High School, Chicago.

RICHARD WIDMARK Phi Pi Epsilon
Entered from Princeton Township High School, Illinois.

HUGO G. JOLO WINKLER
Entered from Deerfield-Shields High School.

CURTIS WUHS Digamma Alpha Upsilon
Entered from Lakeview High School, Chicago.



CAMPUS





THE HENRY C. DURAND INSTITUTE

A brown-stone building, the institute was erected by Mr. Durand in 1891. It contains the offices of the President, Registrar, Dean, and Business Manager; the recitation rooms of the departments of Latin, Modern Languages, Economics, Religion, and Speech.

When I heard the learn'd astronomer,
When the proofs, the figures, were ranged
in columns before me,
When I was shown the charts and diagrams,
to add, divide, and measure them,
When I sitting heard the astronomer where
he lectured with much applause in the
lecture-room,
How soon unaccountable I became
tired and sick,
Till rising and gliding out I wander'd off
by myself,
In the mystical moist night-air,
and from time to time,
Look'd up in perfect silence at the stars.

— WHITMAN



THE REID MEMORIAL CHAPEL

Erected in 1899 by Mrs. Simon S. Reid and her family as a memorial to Mrs. Lily Reid Holt, '84, of Lake Forest. It is a Gothic building of Bedford stone, crowned by a graceful tower. In the rear of the choir is a stained glass window by Louis Tiffany.

Here all is beautiful!
The rustling boughs
Have such a strange,
full sound. The
darkling arms
Of the great firs move
so mysteriously.
How solemnly their
heads sway to and
fro!

—HAUPTMAN



THE LOIS DURAND HALL

It was erected in 1898 by the late Henry C. Durand in memory of his mother, in whose honor it is named. The Hall is a red brick building in Elizabethan style.

But oh! that deep romantic
chasm which slanted
Down the green hill
athwart a cedarn cover!
A savage place! as holy
and enchanted
As e'er beneath a waning
moon was haunted
By woman wailing for her
demon lover!

—COLERIDGE



THE BLACKSTONE AND HARLAN HALLS

Built in 1906-7, they are the gift of Mrs. Timothy B. Blackstone, of Chicago, and named in memory of Mr. Blackstone, and in honor of Richard D. Harlan, former President of Lake Forest University.

The towers amid the
moonlight, yet more
sweet

Than any voice but
thine, sweetest of all.

—SHELLEY



THE CALVIN DURAND COMMONS

The gift of the late Calvin Durand, it was erected in 1907-8. The furnishings were the gift of Mr. D. Mark Cummings, of Lake Forest.

PETO. (Reads)

Item, A capon, - - - 2s. 2d.

Item, Sauce, - - - 4d.

Item, Sack, two gallons 5s. 8d.

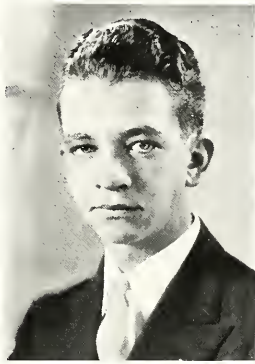
Item, Anchovies and sack
after supper, - - 2s. 6d.

Item, Bread, - - - ob. 8d.

PRINCE. O monstrous! but one half-penny worth of bread to this intolerable deal of sack!

—SHAKESPEARE

I HENRY IV



Jack Bass Hyder
1912 — 1933

. . . that best portion of a good man's life,
This little, nameless unremembered, acts of
kindness and of love.

—Wordsworth



ACTIVITIES



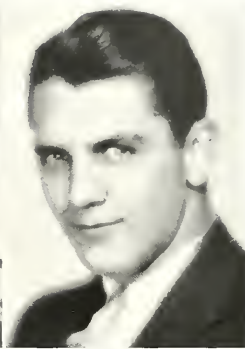
STUDENT POLL



DR. JOHNSON



EILEEN HEYWORTH



WILLIAM DWINELL

THE STENTOR-FORESTER POLL

<i>Most Beautiful Coed</i>	EILEEN HEYWORTH
<i>Most Popular Coed</i>	MARGARET HOLTY
<i>Most Popular Professor</i>	DR. ERNEST A. JOHNSON
<i>Most Popular Man</i>	WILLIAM DWINELL
<i>Best Dressed Woman</i>	CATHERINE FORAN
<i>Best Dressed Man</i>	FREDERICK PANZER
<i>Most Thorough Gentleman</i>	RAOUL R. HAAS
<i>Laziest Individual</i>	CHARLES ADAMS
<i>Biggest Bluffer</i>	SAMUEL RICE
<i>Most Versatile Individual</i>	MARGARET SHOEMAKER
<i>Most Scholarly Individual</i>	THE SMITH BROTHERS
<i>Most Loving Couple</i>	GEORGE EATON-ESTELLA MAE LAWRENCE
<i>Most Bashful Woman</i>	DORIS BUTLER
<i>Most Bashful Man</i>	ROBERT SPRING

FORESTER



1st row: Haas, Henes, Davis, Maiman, Lithway.
 2nd row: McKnight, Moore, Seidenfeld, Ingram, Bacon.
 Not present: Vogt, Kearney, Malmgren.

<i>Editor</i>	RAOUL ROBERT HAAS, JR.
<i>Assistant Editor</i>	ELIZABETH JANE HENES
<i>Business Manager</i>	WILLIAM FRANCIS DAVIS

STAFF

DOROTHY REGINA MAIMAN	HELEN KATHRYN LITHWAY
EVELYN MARJORIE INGRAM	CHARLES WILLIAM MCKNIGHT
GLENN KENNETH SEIDENFELD	ELEANOR MARGARET MOORE
JOHN ROBERT VOGT	JAMES PAUL KEARNEY
WILLIAM HOWARD MALMGREN	

DESIGNMENT

DEAN W. BACON

CANDIDATES

LOUIS ORTON PALMER

ARTHUR CHURCH SEARING

STENTOR



1st row: Jacobs, Seidenfeld, Schultz, H. Heyworth, J. Wenban.
 2nd row: DeVries, M. Anderson, Durkin, Moore, Bade.
 3rd row: Holmes, Haas, Kroetz, Elvin, Brown.
 Not present: Smith, Domville, Kuerst, Lidicker, Steinhaus, Andrews, Westerman, Gray, C. Stripe, Meigs, Penrod, Wright, Parsons, Cady, Dobbin.

EDITORIAL STAFF

Editor-in-chief	HERBERT BENNETT JACOBS
News Editor	GLENN SEIDENFELD
News Staff—DALE SMITH, TOM DOMVILLE, AL KUERST, HELEN HEYWORTH, JANE WENBAN, HUBERT LIDICKER.	
Activities Editor	WILMA WESTERMAN
Activities Staff—NETTA STEINHAUS, VERNON ANDREWS, STEPHEN GRAY, CHESTER STRIPE, HAROLD MEIGS.	
Women's News Editor	LUCILLE DEVRIES
Women's News Staff—MARION ANDERSON, JANE DURKIN, ELEANOR MOORE.	
Sports Editor	ROBERT BADE
Sports Staff—WILLIAM PENROD, ROYCE WRIGHT, DEFREES HOLMES.	
Feature Editors	RAOUL HAAS, SAM PARSONS

BUSINESS STAFF

Business Manager	WILLIAM H. J. SCHULTZ
	RUDI KROETZ, TOM ELVIN, KEITH CADY, ROBERT DOBBIN, TED BROWN

GARRICK CLUB



1st row: Schultz, Haas, D. Gottlieb, President; Leising, Elvin.
 2nd row: Loveton, Golden, Heidbrink, McKnight.

September 22: Garrick Club begins 32nd season under the direction of R. C. Tomlinson.

October 6: Tomlinson announces the cast of "Counsellor-At-Law." Widmark and Gottlieb in title roles.

October 14: Members of Garrick present a one-act play for Dads' Day.

October 25 and 26: "Counsellor-At-Law" a huge success.

November 24: The Freshman play announced. To be "The Third Leg." Hazel Fisher and Jack Stuart in leads.

March 7 and 8: "Smilin' Through" presented with Leslie Champlin and Lawrence Palmer.

March 28 and 29: "Houseparty," with a huge cast of Freshmen, receives much applause. Domville, Sugg, and Lane get big hand.

April 17: "Another Language" to be last play of 32nd season, Director Tomlinson announces.

THE THIRD LEG

Susie	MARGARET STRUVE	Mr. Patterson	AL KUERST
The Nameless One	JOHN WADE	Mrs. Boyd	JUNE WEBSTER
Mrs. Janey	HAZEL FISHER	Mrs. Mallory	MARION LANE
Mr. Jamey	JACK STEWART	Mr. Boyd	HERBERT SCHNETZSKY
Mrs. Driver	SARAH LINEBURG	Mr. Field	ROBERT SPRING
Mr. Thompson	JACK SUGG	Sergeant	JAMES TIBBETTS
Bobby Gordon	TOM DOMVILLE	Police Officers	TOM DIVER, DICK SWEITZER
Mrs. Patterson	LORRAINE CLARK	Salesman	JAMES TIBBETTS
Messenger			LLOYD VAN DUSEN

COUNSELLOR-AT-LAW

THE CAST

Bessie Green	Elizabeth Leising
Henry Suskind	William Schultz
Sarah Becker	Leslie Champlin
A Tall Man	James Kearney
A Stout Man	Jack Stewart
A Postman	William Diver
Zedora Chapman	Virginia Lowry
Charles McFadden	John Loveton
John P. Tedesco	William McKnight
Goldie Rindscof	Ellen Erickson
Regina Gordon	Dorothea Gottheb
Herbert Howard Weinberg	Raoul Haas
Arthur Sandler	Louis Palmer
Lillian LaRue	Kay Foran
An Errand Boy	Defrees Holmes
Roy Darwin	William Spurgeon
George Simon	Richard Widmark
Cora Simon	Harriet Golden
Lena Simon	Hazel Fisher
Peter J. Malone	Ray Nortman
Johann Bretstein	Sterling Cramer
David Simon	Frederick Panzer
Harry Becker	William Malmgren
Richard Dwight, Jr.	William Penrod
Dorothy Dwight	Janet Ritchey



SMILIN' THROUGH



CAST

John Carteret	Lawrence Palmer
Dr. Owen Harding	John Stewart
Ellen	Elizabeth Leising
Moonyeen Clare	Leslie Champlin
Kathleen Dugannon	John Loveton
Willie Ainley	Kenneth Wayne
Kenneth Wayne	Richard Widmark
Jeremiah Wayne	Mary Clare
	Jane Clark
	John Wade
First Woman	Shirley Combs
Second Man	Erwin Heidbrink
Second Woman	Ellen Erickson
Third Man	Herbert Schnetzky
Third Woman	Lois Wilson



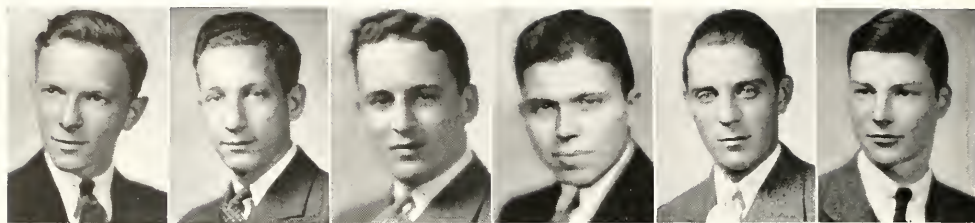
HOUSE PARTY

CAST

Alan Bradford	Thomas Donville
Ronald Evans	Jack Sugg
Sally Andrews	Marion Lane
Florence	Elizabeth Leising
Hortense Pfeiffer	Eleanor Moore
Mrs. Milligan	Nedra Tres
Mrs. White	Virginia Farmer
Mrs. Rutherford	Hazel Fisher
Edward Canby	William Penrod
Darrow Jenckes	John Loveton
Doris Callander	Elizabeth Korhunel
Malcolm F. R. White	Herbert Schmetzky
Bill Warren	William Schultz
Chick Snyth	Erwin Heidbrink
Marianne Guion	Margaret Shoemaker
Bob Davis	James Tibbets
Betty Creeling	Lora-Belle Bundesen
James	Lowell Comee
Jack	Ray Evans
Beatrice	Margaret Struve
Peter	Louis Palmer
Helen	Julie Peterkort



DEBATING



1st row: Jacobs, Seidenfeld, Loveton, Speicher, Panzer, Holmes.

October 6: Professor Tomlinson issues call for men interested in debating.

November 24: With Herbert Jacobs and Glenn Seidenfeld as the only experienced men, the team as announced today will be composed of: Ray Nortman, Kenneth Garretson, John Loveton, James Kearney, Paul Speicher, Frederick Panzer, Richard Widmark, Chester Stripe, William Diver, John Vogt, and Defrees Holmes.

February 12: First debate of season with Beloit. Results: non-decision.

February 15: Lake Forest at Beloit.

February 27: Lake Forest Debate Tournament held at Manchester College, Manchester, Indiana.

INTERFRATERNITY-INTERSORORITY COUNCIL



1st row: Schultz, Chairman; Henes, Faas, Maiman, Waleczak, Ridgeway.

2nd row: DeVries, Lithway, Barney, M. Anderson, Moore, Morgan.

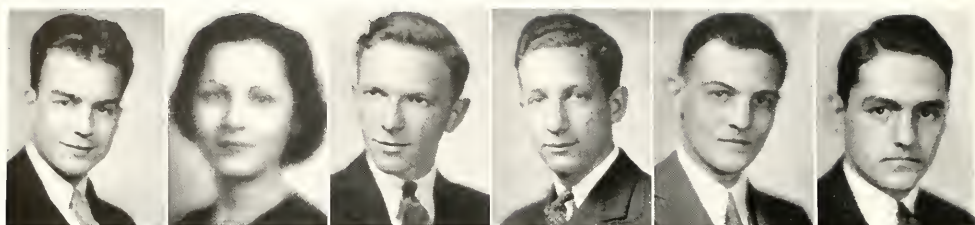
3rd row: Heidbrink, Kleinz, Haas, Drakeman, Davis.

Not present: G. Erickson, Nortman.

January: Members of the Greek organizations of the campus meet to discuss reduction of formal costs. Individual groups are to keep costs down to a minimum.

March: Chairman Schultz submits revised constitution of the Student Council to members for approval. Unanimous favor.

STUDENT COUNCIL



Schultz, President; Lithway, Jacobs, Seidenfeld, Kroetz, Comee.

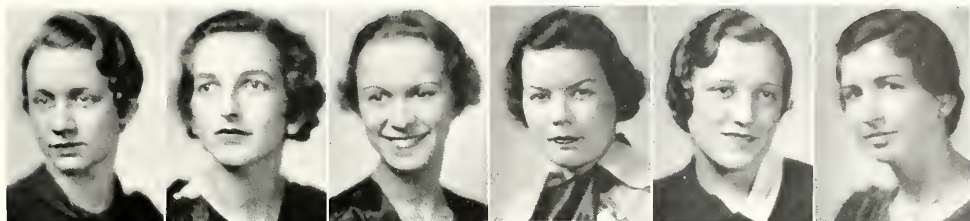
September 18: President Schultz calls first meeting of the Student Council. Chairmen of various student committees appointed.

December 27-31: William Schultz and Herbert Jacobs, Vice-President, sent as delegates to the National Student Federation of America Convention held in Washington, D. C.

January 19: Students of the College are told about the major discussions at the N. S. F. A. Convention; embrace any number of topics concerning student life and student problems.

January-April: Council members spend their time rewriting the present constitution. A plan originated to eliminate factional politics as much as possible—and provisions made to give more power to the Council. Another important feature: the complete revision of the present organization of the Council.

WOMEN'S SELF-GOVERNMENT



1st row: DeVries, President; Henes, M. Anderson, Ridgeway,
Hoelzl, Beerly.

2nd row: Capp, Ritchey.



October 5: Lucille DeVries, President, announces the inauguration of a series of teas to be held for resident students every two weeks during the winter months.

November 25: Lois Hall Formal sponsored by the House Committee of the Women's Self-Government.

March 1: The House Committee present a sterling silver tea service as the annual gift to Lois Durand Hall of the 1933-34 administration.

April 12: Lois Durand Hall Open House.

DANCE COM- MITTEE



1st row: Drakeman, Lithway, Aye, Chairman: Maiman, Elvin.
2nd row: Seidenfeld, M. Anderson, Adams, DeVries, Haas, Leising.

September 23: Annual Freshman-Mixer proved to be the dance of the year! Wally Aye did have a time arranging those lights—but effect—oh, my—it was an effect!

October 14: Homecoming Dance rated the best informal of the year. What a gay lot the "Alums" are!



1st row: Gottlieb, Golden, Chairman; Leising.
2nd row: Kearney, Moore, Lithway, Haas.

ELECTION COM- MITTEE

September 30: Harriet Golden chosen as head of Election Committee. She is the only woman having a major chairmanship.

November 3: Freshmen elections held—Tom Roberts chosen president.

January 19: Dalton Blech appointed to succeed Harriet Golden as Chairman.



DADS' DAY

1st row: Drakeman, Golden, Davis, Chairman: Hecker, Elvin, Lithway.
2nd row: Jacobs, Capp, Parsons, Moore, G. Gessner, Ridgway.

October 6: Bill Davis appointed head of Dads' Day Committee. Committee selected to begin plans for one of the most important days in the school year.

October 14: Beautiful weather—proud mothers and dads—happy sons and daughters—exciting football game—delicious food—faculty reception—Garrick play—and so the day ended. It was nice, mother and dad, wasn't it?

HOME- COMING



1st row: Hoelzl, Barney, Ingram, Leising, Maiman.
2nd row: Martin, Barton, Lutler, Chairman: Bonnie, Panzer.

October 14: Nat Butler announces members of the Homecoming Committee. Date set for October 28th.

October 28: Alumni always turn out in true style—300 of them in all. And were those floats knockouts! Varsity lost to Carroll, 13-6. No mourning when evening came around though! Seeing old faces again is mighty nice.

STUDENT TRIP



1st row: Capp, DeVries, Cramer, Chairman; Barney, Leising.
2nd row: Quinn, Blech, Comce, Bonnie.

October 20: Members of the Student Trip Committee, under the guidance of Sterling Cramer, make attempts at salesmanship. Tickets aren't being sold! Come on, you students!

November 10: With Coach Jones supporting the trip in a big way—the students ought to crawl under their chairs and hide. Big Pep meeting at Institute.

November 11: They did it! The students actually turned out. Were they disappointed? Indeed not! There never was a gayer bunch. Were you at the Spanish Tavern? You might not believe L. F. students had so much pep!



1st row: Ayc, Henes, Haas, Chairman; Kramer, Speicher.
2nd row: Fisher, R. Smith, Capp, Elvin, Moore, Dwinell, H. Heyworth.

January 12: Raoul Haas announces the members of the New Students' Day Committee.

April 18: First meeting of the Committee.

May 26: Greeting of old friends and new—Forester out—Garrick Play—and Commencement looms . . .

NEW STUDENTS' DAY

JUNIOR PROM



1st row: Moore, L. Roberts, Chairman: M. Longbrake.
2nd row: Seidenfeld, Elvin, Kroetz, Bloom.

October 20: Lloyd Roberts departs from tradition—the Prom is scheduled for before Christmas!

October 28: Prom committee appointed to begin arrangements for coming dance. Announce unprecedented price for tickets—admission slashed to \$3.75 per.

December 8: Prom proclaimed a brilliant affair. Ace Brigode and his Virginians make hit with students and friends attending.

INTER- NATIONAL RELATIONS CLUB



1st row: DeVries, Shoemaker, Trefney, Mr. Hartzog, L. Clark, Harper, Barney.
2nd row: L. Johnson, C. Stripe, Guthrie, Wennermark, President: Cramer, Haas.

October 6: Mr. David Maynard, former professor at Lake Forest College addressed the members of the club, telling them of the many interesting experiences he had while in the Orient.

April 15: Lorraine Clark sent as representative to a convention held at Ripon College, Ripon, Wisconsin. Many schools were represented, she reported.

ECO- NOMICS CLUB



1st row: Lithway, Mr. Keller, Peterson, President: Dr. Johnson, McEwen.
2nd row: L. Johnson, Speicher, Drakeman, Vogt, Bonnie, Schultz.

December 7: New Economics Club organized to promote interest in current economic problems. The roster includes fourteen charter members. Dr. Johnson, Mr. Keller, and Mr. Logan are faculty advisors. The organization arousing much interest.

January 16: Economics Club holds its first meeting in Dr. Johnson's apartment. Peterson and Bonnie present papers on "Inflation."



FRENCH CLUB

1st row: Wenban, Moore, Leising, Kennedy, Hecker, President: Drakeman, Kramer.
2nd row: Mellor, Lavery, Hackley, E. Erickson, DeYoung, J. Clark, Hardsocg, Shoemaker, Maiman, Meyer, Palmer.
3rd row: Combs, Thompson, Scott, M. Longbrake, Webster, Trefney.

March: French enthusiasts meet to elect officers and to discuss timely subjects. All students interested in the French and their literature are invited to become members.



WINGS CLUB

1st row: DeVries, Cramer, Gilford, Gray, Hennings, Brown, Schnetzky.
2nd row: Domville, Wendt, Dr. Harris, Randall, Hall.

October 20: First general meeting held. Helen Jackson of Northwestern University is to be the instructor and chairman of the group. All students interested in aviation are privileged to join the group.

Y.W.C.A.



E. Moore, President, White, Ingram.

December 14: Christmas Vespers held in the Big Room of Lois Durand Hall. All women students participated in the service.

December 24: Christmas baskets distributed to the needy of Lake Forest.

COLLEGE CHORUS



1st row: Malela, Rautalahti, White, H. Heyworth, Struve, Stauffer.
 2nd row: Armbruster, Fisher, Guthrie, Wilson, Elvin, Todd, McKown, J. Stripe.
 3rd row: R. Spring, Donville, Winkler.

October 6: Tryouts held in the Chapel. The Freshman class reveals unusual talent.

October 28: A selected group entertains the Lake Forest Women's Club.

January 14: The Chorus sings at the Presbyterian Church.

April 15: College Chorus entertains the Waukegan University Club at the Glen Flora Country Club.



COLLEGE BAND

1st row: Spring, Blech, Elvin, President: Dobbin, Wendt.
 2nd row: Kelley, Kistler, MacMahon, R. Smith, Gilford, Armbruster.
 3rd row: Wray, C. Mason, E. Mason, R. Smith.

October 14: The college sees great improvement in the band. There are 25 new members. Spirited melodies liven the football games.



MEN'S QUARTET

Standing: Winkler, Armbruster, Elvin, J. Stripe.
At piano: Todd.

March: Students receive a pleasant surprise when this recently organized group entertains in Chapel. They have the ability to "put themselves across."

INDE- PENDENT MEN'S CLUB



1st row: Sedenfeld, Martin, J. Stripe, Jacobs, President: Blech, Vane.
2nd row: C. Stripe, Lidicker, Congdon, R. Smith, Wray, Gray.
3rd row: Winkler, MacMahon, Tingwall.

January 10: At last the "Barbs" are organized—and in great style, too! Under the leadership of Herbert Jacobs they are now a unified group—with a club room in the basement of College Hall where Ping-Pong seems to be the main attraction.

PHI
ETA
SIGMA



1st row: Aye, President: Dr. Johnson, Dr. Moore, Dr. Williams,
2nd row: Palmer, Comee, Dobbins, R. Smith, R. Smith, Cady, Gray.

November 10: Honorary Scholastic Fraternity holds smokers for interested Freshman.
April 18: Dale Smith and Tom Roberts initiated.



1st row: Clickener, Maiman, President: Miss Koupal, Studer, Westerman.
2nd row: Lithway, E. Erickson, Bolt, Ingram, Holty.

February 28: National honorary women's society organized. Women having a 2.5 average in their Freshman year were elected to membership. Dr. and Mrs. Moore entertained the group.

ALPHA
LAMBDA
DELTA



SIGMA
TAU
DELTA

1st row: Dr. McPheeters, Henes, Haas, President; Gottlieb, Eaton.
2nd row: R. Smith, Westerman, Davis, Lithway, R. Smith.

January 15: Honorary English Fraternity meets at Dorothea Gottlieb's home in Lake Bluff. Original papers read by Wennermark and Haas.

February 15: Mr. Hill talks to members on "Authors and the New Age" at the home of Dr. McPheeters.

April 17: New members selected on the basis of original compositions.

PHI
SIGMA
IOTA



1st row: Attridge, Maiman, Dr. Van Steendern, Rautalahti, Kramer.
2nd row: Peterson, Eaton, Meyer, Mr. Davey, Kennedy, Dr. Williams, Hecker, Drakeman.

December: National Honorary Romance Language Fraternity initiates new members. Eleven students and four faculty members now comprise the organization.

SIGMA
PI
SIGMA



1st row: Andrews, Morgan, Hennings, Cramer.
2nd row: Hall, Dr. Harris.

January 12: Members of the National Honorary Physics Fraternity met in the Physics Building at which time several papers were read. Dr. Harris is sponsor of the group.



Henes, DeVries, Gottlieb, President; Golden, Lithway, Harper.

KAPPA
ALPHA

May: Women meeting the scholastic requirement of a 1.5 average and having a required number of activities are elected to Kappa Alpha, the goal of every woman on the campus.



IRON KEY

Wennermark, Eaton, Dr. Johnson, Spreyer, Schultz, Morgan, Kroetz, Bade, Parsons.

October 26: Rudi Kroetz, Robert Bade and Frank Spreyer initiated into Iron Key—Honorary Men's Organization which aims to promote leadership, scholarship and participation in activities.

November 17: Special Chapel Service. Iron Key "tapping." George Eaton chosen for membership.

DAY STUDENT GIRLS



Rautalahti, President: Bolt.

January 20: Bridge and shower given for Harriet Golden, the retiring president of the Day Student Girls.

March 16: Bridge-Tea given in the newly decorated rooms at Academia.

MARCH OF EVENTS

- September 18: Freshman orientation day. Frosh rate a movie. Rushing begins.
- September 22: Stentor appears. 48th year!
- September 23: Annual Freshman Mixer. The Frosh seem to be a snappy group—especially the women.
- October 6: Rushing ends. Greeks pledge the much sought after freshmen. Good times for them will now be but pleasant memories.
- October 14: Lake Forest loses to Lawrence with score of 6-0. Mothers and Dads were proud of the boys in spite of the loss. Davis' day a big success.
- October 20: Under the new system, chapel is held once a week on Wednesdays. Today Dean Dennis entertained the students and if he is a sample of what chapel programs will be like—let's have more of them!
- October 28: Homecoming! "Butz" did a splendid job. A day of pleasantries.
- November 3: Jones launches a new athletic program. "A New Deal in Athletics, as it were.
- November 11: Off to Beloit! Sterling Cramer and his committee made this one of the finest Student Trips in the history of the school.
- December 16: Christmas vacation begins.
- December 30: All these sun-tanned persons who can afford to spend Christmas vacations in Florida—what long and lurid tales they tell!
- January 25: Semester examinations begin. Oh, my . . . some of us.
- February 16: And more excitement—robbery in the fraternity houses. Who was guilty? That lie-detecting machine seemed a waste of money . . .
- March 6: The Men's Quartet entertains in Chapel.
- March 31: Spring recess begins.
- April 1: Easter Sunday.
- April 10: Back to L. F. again and the work that seems to have piled up higher and higher while we enjoyed the Florida sunshine, or froze in Illinoisian blizzards . . .
- April 18: Dale Smith and Tom Roberts initiated into Phi Eta Sigma.
- April 19: The editor and staff of the Forester tearing their hair with the thought that date of issuance is hardly a month away.
- April and May, Friday nights: Many, many formals. Nice days . . . work and examinations, but who cares?
- May 26: New Students' Day. The Forester out at last!
- May 29: Semester examinations . . . so soon? Oh, oh!
- June 9: Commencement.
- Good-bye, good-bye. Pleasantest of summers.



ATHLETICS

Coach R. R. Jones, Director of Athletics, came to Lake Forest this year with a background of thirty years of unusually successful coaching, covering the entire field of prep-school, college, and professional work. In this period he has produced winning teams in football, basketball and track; and has gained a national reputation. Included in his record are three Big-Ten basketball titles; a national professional football title, and several record victory strings.

Jones began his career at Wabash College as coach of basketball. When he left, after five years, to accept a position at Purdue University, he was director of all athletics and his basketball teams had run up a record of 49 straight victories—a feat which has seldom been equaled.

At Purdue, Jones won one Big-Ten Championship and tied another during a period of three years. Then for eight years, Illinois claimed him as coach of basketball. Here he won two conference championships and was below third place only once.

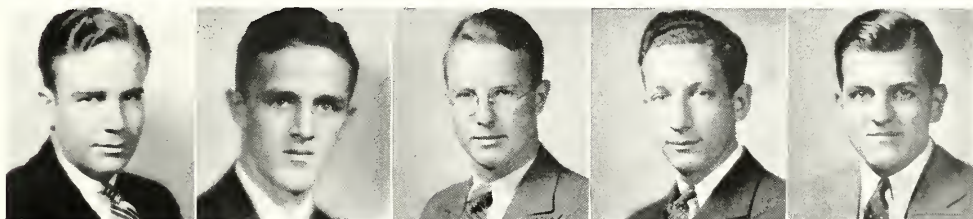
In 1919 he came to Lake Forest Academy as director of athletics. His teams there acquired a national reputation by losing only six games in ten years of competition.

Professional football occupied the mentor's attention in 1929, and he led the Chicago Bear team to a national title. A preference for college work, however, led him to accept an offer to come to Lake Forest as director of all athletics in 1933.



R. R. JONES

ATHLETIC BOARD OF CONTROL



Heidbrink, President: Adams, L. Johnson, Seidenfeld, Daiker.

The Athletic Board of Control, composed of one member from each fraternity on campus, one independent representative, the Director of Athletics, the Graduate Manager of Athletics, and the chairman of the faculty Committee on Athletics, has had an active part in the reorganization of the Lake Forest athletic program this year. In its function as a student-faculty body organized for the purpose of regulating varsity and freshman athletics, it has settled problems arising out of eligibility, schedules, awards, and intramural rules.

The board includes Coach Jones, Phil Allen, and Dr. Lineburg from the faculty, and Erwin Heidbrink, Charles Adams, Lowell Johnson, William Daiker, and Glenn Seidenfeld as student members.

FOOTBALL



1st row: Enos, L. Roberts, Morgan, Dyer, G. Erickson, Captain: Adams
2nd row: Bonnie, Spreyer, Vogt, Eaton, Gyllenberg, Wuhs, Bade, Lake.
3rd row: Kroetz, Widmark, Dwinell, Niemeyer, Dohr, Bloom, Schroeder, Bishop, Coach Jones.

Coach R. R. Jones, in his first year as director of Lake Forest's football destinies, faced, with a small, light and none too speedy squad, one of the hardest schedules in years. But the team, absorbing the Jones' principles of football in rapid style, made up in smartness and fight what it lacked in speed and size, and closed the 1933 season with the credible record of three victories, three losses, and a tie.

Only one of the losses was by more than one touchdown. The victories came at the expense of heavier, and for the most part, more experienced rivals.

In the first game of the season at Farwell Field, the Foresters beat Northwestern College 26-15. While there was a noticeable weakness on defense, the running and passing attack functioned well. Passes: Eaton to Dohr and Roberts to Dohr accounted for two of the touchdowns. Another came on a plunge by Eaton after long runs had brought the ball within scoring distance. A brilliant lateral by Roberts to Adams to Dyer, brought another touchdown.

With a week of hard practice in which to polish up its ragged defense, the team travelled to Wheaton the following Saturday to win its second victory, 7-0. The entire first half was played in Lake Forest territory most of the time, but the improved play in the line blocked any score. The second half saw the situation reversed, with the Foresters more than holding their own on exchanges of punts. A Wheaton kick blocked by Vogt and recovered on the one yard line by Lake Forest resulted 'in the winning goal being pushed over in the final quarter.

With an enthusiastic crowd of students and parents lining the sides of Farwell Field, the team lost a heart-breaker to Lawrence, 6-0, in the annual Dads' Day game. This game was featured by the strong defense of the Red team, and in particular the play of Erickson and Bonnie in the line. Both teams alternated evenly in gaining yardage, but in the last six minutes of play, Walters, the Lawrence half, reeled off several sparkling runs in succession to carry the ball over the chalk markers for the only score of the game.

The team played a fighting North Central team at Naperville the following week-end, and floundered through a downpour to lose, 9-0. A torrent of rain near the second half turned the field into mud and made the ball too

FRESHMAN FOOTBALL



1st row: F. Roberts, Spring, S. Flynn, Bartz, T. Diver, McKay.

2nd row: Tibbets, Doolittle, Kennedy, Grace, Larson, Sweitzer, Rouse, T. Roberts, Eiserman, Coach Johnson.

This year's frosh football team finished the season undefeated — beating the American College of Physical Education 7-0 in its lone start.

Numerals were awarded to the following: Tibbets, Doolittle, Grace, Larson, Sweitzer, Rouse, T. Roberts, Eiserman, F. Roberts, R. Spring, S. Flynn, T. Diver.

slippery to handle effectively. The game was characterized by many fumbles on the part of both teams, and with the exception of Eaton, the Forester attack was squelched before it could get started. Besides Eaton, the punting of Roberts and the line play of Erickson, Bonnie and Dohr stood out.

On the following Saturday, Carroll murdered the chances for a great Homecoming celebration by a score of 13-6. A 40-yard return of the kick-off, a pass to a "sleeper" for 35 yards and a line plunge in the first minute of play provided the margin of victory for the Waukesha school and resulted in Lake Forest's third straight loss. The lone score for the Red and Black came also in the first quarter on a sweeping end run by Dyer. After Carroll had scored its second touchdown in the last quarter on a series of line plunges the team came back with a 30 yard run by Wuhs on an intercepted pass which brought the ball within 10 yards of a goal. Four plays, however, failed to bring the required yardage.

A story-book finish gave Lake Forest its third victory against Augustana, 9-7. With but two minutes to play in the last quarter, and the score 7-6 in favor of the Little 19 leaders, Augustana, Les Dohr stepped back to the 40-yard line and booted a place kick that spelled victory. The entire team played great ball, both on offense and defense, to break the down-state's string of thirteen consecutive victories.

The Foresters closed their season by holding a strong Beloit team, previously victorious over Carroll and Lawrence, both of whom had won from Lake Forest earlier in the season, to an 0-0 tie. The team put up a great defense, but with the exception of once in the second quarter, when it had advanced the ball to Beloit's 10-yard line, there was little chance to score. The punting of Roberts and some exceptional line play by Bonnie stood out.

Following the close of the season, Gunnar Erickson, outstanding lineman, was elected honorary captain for the season.

BASKETBALL



Sitting: Emery, Daiker, Dohr, Dyer, S. Flynn, L. Roberts.

Standing: Coach Jones, Gruendel, Cady, Morgan, Spreyer, Bishop, Fuchs, Manager Schultz.

While the 1933-34 varsity basketball team ended its season with comparatively few victories to its credit, the year was not entirely without its bright spots. Coach Jones again faced a hard schedule with a shortage of material from which to choose and the task of introducing a style of play which was unfamiliar to every member of the squad. In spite of this, there was a steady improvement all during the season with several heart-breaking losses being sustained at the hands of outstanding and more experienced rivals.

Letters were awarded to Dohr, Emery, Dyer, Spreyer, L. Roberts, and Daiker — all of whom will be back next year. Tommy Dyer, fast and experienced guard, was elected honorary captain. William Schultz received a managerial award.

Lake Forest31	Milwaukee Engineering School26
Lake Forest42	Lake Forest Alumni32
Lake Forest45	Milwaukee Engineering School33
Lake Forest25	Ripon41
Lake Forest19	Lawrence42
Lake Forest26	Beloit40
Lake Forest34	Ripon35
Lake Forest35	North Central48
Lake Forest32	Carroll42
Lake Forest27	Carroll39
Lake Forest26	North Central33
Lake Forest31	Beloit34
Lake Forest39	Lawrence40

FRESHMAN BASKETBALL



Sitting: P. Clark, Eiserman, M. Rouse, H. Rouse, Larsen.
 Standing: Coach Johnson, Tibbetts, Hall, MacNamara, Doolittle, Stewart, Griffis, VanDusen.

Gil Johnson, in his first year as coach of Freshman sports at Lake Forest, produced a fast-stepping basketball team which provided the varsity with a lot of competition, and uncovered some promising material for next year's squad.

Lake Forest32	Chicago Phy. Ed. College25
Lake Forest36	Carroll Frosh56
Lake Forest31	Carroll33
Lake Forest26	Chicago Phy. Ed. College47
Lake Forest32	Young Men's Club of L. F.14

L. F. CLUB



1st row: Eaton, Dohr, Morgan, Coach Jones, Drakeman, Adams, G. Erickson.
 2nd row: Forest, Parsons, Niemeyer, Bloom, Kleinz, Spreyer, Dyer, Bade.
 3rd row: Enos, Dwinell, Wuhs, Heidbink, Gyllenberg, Kroetz, L. Roberts.

Organized in 1933 for the purpose of creating a closer bond between participants in the various sports, the administration, and the student body, the Lake Forest Varsity club has merited a ranking position among campus organizations. The club is open to all men students who have won a varsity letter in a sport and who meet certain entrance requirements. This year a room in College Hall, formerly occupied by a fraternity, was turned over to the group.

BASEBALL



Seated: (Those marked with an asterisk are also on the 1934 team) C. Hoffman, Fuchs*, Johnson*, Fitzgerald, Drakeman*, Dohr*, Parsons*, Lutz, Gruendel*, Hynd.
 Standing: Bonnie, Gostisha, Luder, Dyer, Schaus, Morgan, Lavery, Barton*, Loveton*, Katzenmaier, Correll.
 Not present: Emery, Hubley, Bade, Lake, Dobbin, F. Gottlieb, Daiker, Quinn, G. Churchill, Schroeder.

The 1934 season, under the direction of Coach Ralph R. Jones, saw Lake Forest win from Chicago, 6-4, in the opening game. To date, the games played are: Lake Forest-Northwestern, 1-6; Lake Forest-Elmhurst, 3-0.

The scores of the Varsity Baseball team for the 1933 season are:

Lake Forest 5	Chicago 11
Lake Forest 3	Armour Tech. 2
Lake Forest . . . 15	Chicago 21
Lake Forest 6	Elmhurst 4
Lake Forest 5	Armour Tech. 3
Lake Forest 2	Wheaton 1
Lake Forest 3	North Central 0
Lake Forest 0	North Central 6
Lake Forest 7	Wheaton 4
Lake Forest 2	Elmhurst 1

CLAYTON MARK TROPHY

To the player judged most valuable to the Lake Forest College football team, the Clayton Mark Trophy is awarded each year. This trophy, a silver loving cup, is to be kept in rotation for one hundred years, each year being awarded to an outstanding player by Clayton Mark, a member of the Board of Trustees of the College.

This year the award was made to Lloyd Roberts, a junior playing his second year of varsity football. Roberts directed the team from the quarterback position, handled most of the punting, and in general showed a type of consistent leadership which made him of outstanding value to Lake Forest.



INTRAMURAL



BASKET BALL

1st row: Wuhs, F. Roberts, Enos, Bloom, Hubley.
2nd row: Dyer, R. Spring, Zengler, H. Crawford, Gyllenberg.

In the league which was exceptionally well-balanced, the ability of the Digamma Alpha Upsilon team to click in the pinches provided it with the intramural championship. All of the games were close and hard fought and the winners were not able to clinch the title over the strong I. M. C. and Phi Pi teams until the final games.

INTRAMURAL

BASKETBALL

High scoring honors for the year went to G. Erickson of the Phi Pi's with 55 points; Bade of the Kappa Sig's with 53; and Jacobs and Joyce of the I. M. C.'s with 49 and 43 respectively.

Standings:	Won	Lost	Pct.
Digamma	6	1	.750
I. M. C.	5	3	.633
Phi Pi	4	4	.500
Kappa Sigma	3	5	.375
Alpha Sigma	2	6	.250

WRESTLING

Probably the most interesting innovation of the year was the wrestling meet which provided Lake Forest with its first official mat champions.

They are:

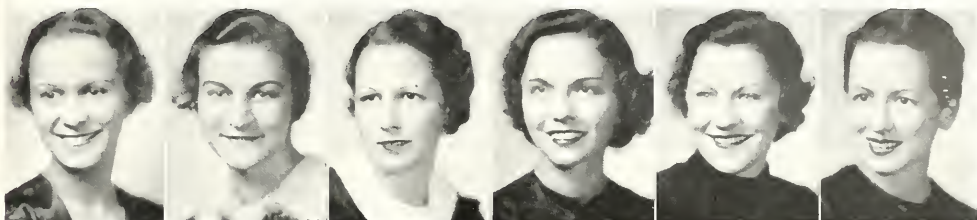
T. Fuchs	125 lbs.
R. Guilford	135 lbs.
R. Ickes	145 lbs.
J. Eiserman	155 lbs.
L. Roberts	165 lbs.
H. Crawford	175 lbs.
E. Niemeyer	Heavyweight

OTHER EVENTS

Under the direction of Gil Johnson, the most extensive program of intramural athletics which the school has seen in many years was undertaken. Competition was provided in, besides basketball and wrestling, baseball, tennis, horseshoe pitching, and golf. A "Turkey Race" and contests in free throwing, drop-kicking, and punting completed the program.

Because of the early publishing date of the Forester, final scores in many of these later events are unobtainable.

WOMEN'S ATHLETIC ASSOCIATION



Marian Anderson, President; Marjorie Ingram, Hockey; Dorothy Maiman, Basketball, Ellen Erickson, Tennis; Elizabeth Sieman, Hiking; Reva Kamper, Baseball.

The Women's Athletic Association, under the capable leadership of Marian Anderson, has had a very successful year. The association, as the most active of women's organizations on campus, has, since its origin in 1920, fulfilled its purpose of giving the girls organized athletic activity to suit each season and training and development in sportsmanship, leadership, and responsibility. Assisting Jerry in governing the association were Wilma Westerman, Vice-president, Eleanor De Young, Secretary, and Ella McEwen, Treasurer. Eager participants in various sports headed the departments and formed the W. A. A. board. Marjorie Ingram managed the hockey tournament, Dorothy Maiman, the intramural basketball tournament, Ellen Erickson, tennis, Betty Sieman, the hikes, and Reva Kamper, baseball.

One main campus activity of the Women's Athletic Association was the annual dance held in the form of a country fair. Instead of the customary barn-like appearance of the W. A. A. Hard Times Dance, the Institute this year really looked the part of a country fair with each sorority and fraternity supporting a booth in the foyer.

Food, balloons, lemonade, "parking space," were among the wares of the "farmer's" booths. Prizes for the best dressed farmers were awarded to Virginia Throgmorton and Thomas Elvin. This dance continued to uphold the tradition that the W. A. A. dance is annually a memorable one among the social activities of the year.

MARGARET HOLTY

HOCKEY



Thompson, Korhumel, Erickson, Ingram, J. Crawford, J. Wenban, Shoemaker, Hackley, J. Longbrake, Kamper.

The hockey tournament between the Reds and the Blacks was won this year by the latter team under the captainship of Marjorie Ingram. The Blacks won in a three game series.

The varsity line-up follows: Marian Anderson, Jane Wenban, Wilma Westerman, Ellen Erickson, Ruth Hackley, Eleanor Thompson, Elizabeth Korhumel, Marjorie Ingram, Helen Decker, Janice Longbrake, Margaret Shoemaker, Jane Crawford.

W. A. A. MEMBERS

Marian Anderson
Mildred Atteridge
Maurine Clickener
Leslie Champlin
Jane Crawford
Helen Decker
Eleanor De Young
Lucille De Vries

Joy Grummitt
Ruth Hackley
Alice Harper
Eleanor Hecker
Marjorie Ingram
Reva Kamper
Cecile Kramer
Ellen Erickson

Ethyl Kennedy
Helen Lithway
Dorothea Landry
Mary Longbrake
Dorothy Maiman
Mary Mellor
Ella McEwen
Kaarina Rautalahti

Audrey Ridgeway
Netta Steinhaus
Alice Slingluff
Betty Sieman
Eleanor Thompson
Ruth White
Emily Walczak
Wilma Westerman

Beatrice Welton

BASKETBALL



1st row: Harsoeg, Westerman, J. Crawford, Ingram, Erickson.
2nd row: Miss Murphy, Holty, Thompson, Shoemaker, Kamper, Throgmorton.

The annual game with Ferry Hall, which has almost become a tradition, did not materialize this year. The "Feries" failed to send the long-awaited challenge to the coeds.

The final standings in the Sorority Basketball Tournaments were as follows:

	Won	Lost
Theta Psi	5	0
Gamma Rho Delta	4	1
Sigma Tau	3	2
Alpha Xi Delta	1	4
Non-sorority	0	5

SWIMMING, TRACK and BASEBALL

Swimming, an elective activity among women's sports, was fairly popular this year. Several classes each week beginning in February were sponsored by Miss Murphy at the Ferry Hall pool. There beginners had a chance to learn how to swim, and old-timers to dive or paddle about as they desired.

At the time this goes to press the annual intersorority track meet had not been held. It is held each year late in the Spring. The cup was won last year by Gamma Rho Delta.

Baseball, under the leadership of Reva Kamper, will be played by the girls this year. As in the case of track, results cannot be given as the tournament is not scheduled until later in the Spring.

VOLLEY BALL



Left to right: Westerman, Haggerty, Hardsocg, Wilson, J. Clark, Hackley, Kamper, Miss Murphy, Webster, Holty, H. Heyworth, Thompson, Shoemaker, Ingram, J. Crawford.
Kneeling: Thrognorton.

Volley ball found many enthusiasts among the girls this year. An interclass tournament between the freshmen and the sophomores found the freshmen, even without a full team, in the lead. However, the sophomores won the second game and calmed, somewhat, their chagrin.



1st row: Erickson, Wilson, Hardsocg.
2nd row: J. Wenban, J. Clark, Haggerty, Miss Murphy.

The Tennis tournament, started last year, was not completed because of the sudden cold and rainy weather which stopped outdoor activity early in the fall. There are plans under way for the continuation of the tourney in the Spring.

TENNIS



G R E E K S



SIGMA TAU



1st row: Anderson, Moore, Lowry,
Sieman, Barr, Llewellyn.

2nd row: Potter, Throgmorton,
Durkin, Walker.



SIGMA TAU WAS FOUNDED AT LAKE FOREST IN 1900.

ACTIVES

Marian Anderson	Janet Anne Llewellyn
Eleanor Margaret Moore	Mary Elizabeth Potter
Virginia Louise Lowry	Virginia W. Throgmorton
Mary Elizabeth Sieman	Jane Durkin
Janice Barr	Helen Lorraine Smith
Willa Ellen Burke	

PLEDGES

Joan Hulburd Walker

THETA PSI



1st row: Henes, Faas, Lavery, Kennedy, Eckfeldt, Mellor.

2nd row: Ritchey, Hecker, White, Berndt, Leising, McKown.

3rd row: Hackley, Erickson, Thompson, Lineburg, Bentley, Clark.

4th row: Stauffer, Struve.

THETA PSI WAS FOUNDED AT LAKE FOREST IN 1905.

ACTIVES

Elizabeth Jane Henes
 Kathryn Pauline Faas
 Ruth Ethel Lavery
 Ethyl Gertrude Kennedy
 Mona Vivienne Berndt
 Dorothy Eckfeldt
 Eleanor Margaret DeYoung
 Alfreda Elizabeth Gessner
 Eleanor Hecker
 Elizabeth Jane Leising

Kathryn Eleanor McKown
 Mary Ethlyn Mellor
 Audrey Gwendolyn Meyer
 Janet Mitchell Ritchey
 Lillian Brown Scott
 Wilma K. Westerman
 Ruth Miriam White
 Ellen Julia Erickson
 Ruth Adeline Hackley

Alice Blacker Slingluff
 Eleanor Louise Thompson
 Jeanne Margaret Bentley
 Margaret Jane Clark
 Shirley Jane Combs
 Janice Hagerty
 Marion Norton Lane
 Sara Rachel Lineburg
 Roberta E. Stauffer
 Margaret Martha Struve

PLEDGES

Laura-Belle Bundeson

Dolores Evelyn Norquist

KAPPA KAPPA CHI



1st row: Lithway, Barney, Harper, Beerly, Loomis, Landry.

2nd row: Trefney.



KAPPA KAPPA CHI WAS FOUNDED AT LAKE FOREST IN 1919.

ACTIVES

Helen Kathryn Lithway
Elizabeth Elvira Barney
Alice Elizabeth Harper
Ruth Venita Beerly
Elnora Alice Loomis
Dorothea Etta Landry

Nita Rose Trefney
Lorraine Edith Clark
Margaret E. McKenzie
Lois June Wilson
Hazel Maxine Fisher
Marian Phipps

Janet Loraine Tousey

PLEDGES

Florence Alice Vaii

GAMMA RHO DELTA



1st row: DeVries, Foran, Gottlieb, Ridgway,
Ingram, H. Heyworth.

2nd row: Tverdahl, E. Heyworth, Farmer.

GAMMA RHO DELTA WAS FOUNDED AT LAKE FOREST IN 1925.

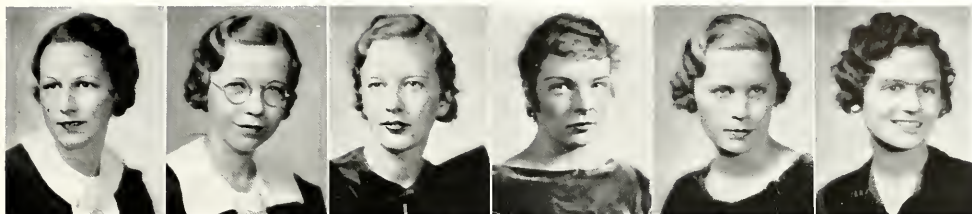
ACTIVES

Lucille Margaret De Vries	Marjorie Evelyn Ingram
Catherine Elizabeth Foran	Helen Willett Heyworth
Dorothea Elizabeth Gottlieb	Jane Noyes Tverdahl
Audrey May Ridgway	Janet Louise Hardsocg
Margaret Agnes Holty	Eileen Rushton Heyworth
Eleanor M. Austin	Cynthia Davis Holmes
Lesley Kirk Champlin	Margaret Clare Shoemaker
June Elizabeth Webster	

PLEDGES

Doris Eloise Butler	Virginia Jeffris Farmer
Jane Whitson Crawford	Charlotte Harnet Meyer
Bernice Patricia Driscoll	Mary Nusbaum

ALPHA XI DELTA



1st row: Maiman, Clickener, Walczak, Capp, Longbrake, Grummitt.

2nd row: Kamper, Welton, Korhumel, Peterkort.



ALPHA XI DELTA, BETA ZETA CHAPTER, CHARTERED AT
LAKE FOREST IN 1932.

ACTIVES

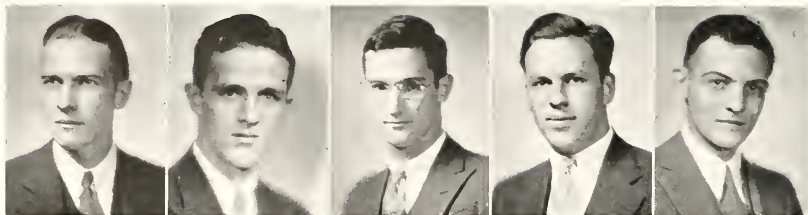
Virginia M. Clickener
Dorothy Regina Maiman
Emily Shirley Walczak
Helen Frances Capp
Joy Leone Grummitt
Mary Elizabeth Longbrake

Reva Lois Kamper
Beatrice Edith Welton
Estella Mae Lawrence
Elizabeth Korhumel
Julie Nan Peterkort
Anita Lorraine Wells

PLEDGES

Janice Longbrake

PHI PI EPSILON



Aye, Adams, W. Hoffman, Kistler, Kroetz.

PHI PI EPSILON WAS FOUNDED AT LAKE FOREST IN 1895.

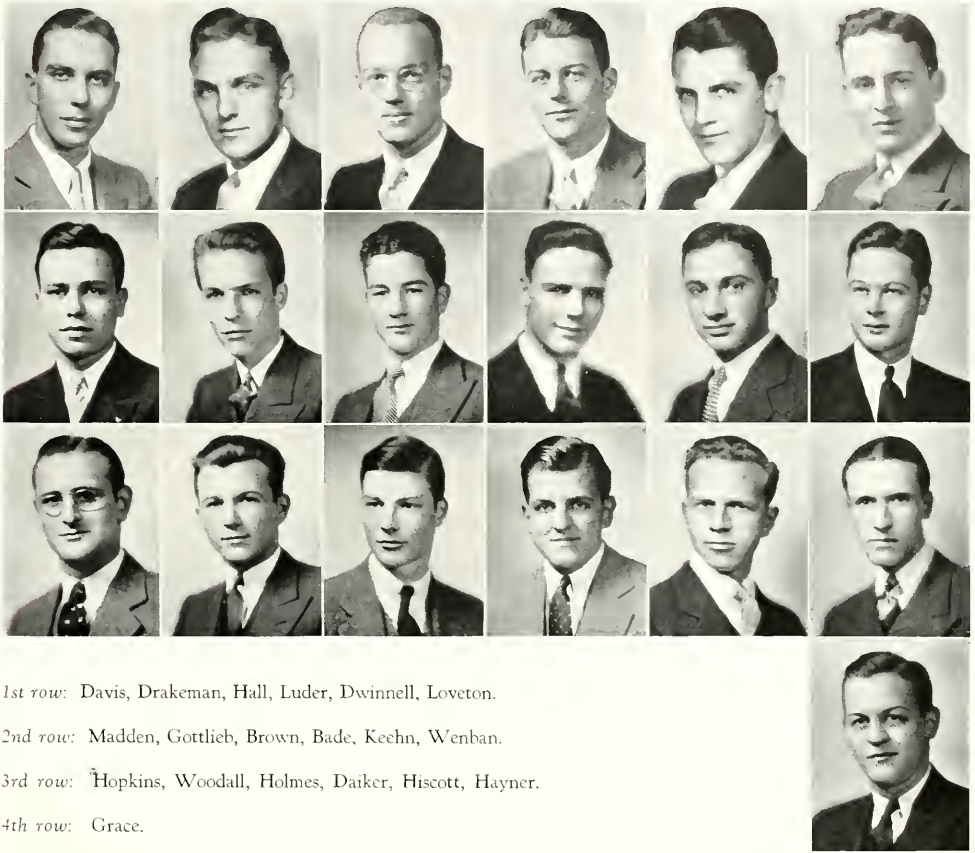
ACTIVES

Charles William Adams	Douglas Irving Schaus
Walter Thomas Aye	John Robert Vogt
William Viney Hoffman	Raymond V. Nortman
Floyd Victor Kistler	Frank Kendall Garretson
Samson Louis Parsons	William Walter Penrod
Leslie Morton Dohr	Richard Widmark
Gunnar Carl Erickson	John Henry Schroeder
George Edward Eaton	Edward Herbert Hoffman
Rudolph Henry Kroetz	Erwin Walter Wendt
Arthur Church Searing	Robert Harold Ickes

PLEDGES

John Joseph Larson	William Nicholas Steffen
Louis Falzer	William Stuart Kennedy
Edward Thomas Steigelman	Edward John Flynn, Jr.
Gordon LeMoyné Kelley	

KAPPA SIGMA



1st row: Davis, Drakeman, Hall, Luder, Dwinnell, Loveton.

2nd row: Madden, Gottlieb, Brown, Bade, Keehn, Wenban.

3rd row: Hopkins, Woodall, Holmes, Daiker, Hiscott, Hayner.

4th row: Grace.

KAPPA SIGMA, ALPHA CHI CHAPTER, CHARTERED AT
LAKE FOREST IN 1896.

ACTIVES

Allyn George Bonnie
William Francis Davis
Frederick John Drakeman
Donald Evans Luder
Robert Carl Bade
Ernst Theodore Brown
William Groutt Dwinnell
Frederick Edward Gottlieb
George Alexander Hardy
Uno Matthew Lake
John Woodrow Loveton
William Howard Malmgren

Vernon Ray Andrews
Calvin Edmund Blair
Harold Keith Cady
Willard Jean Daiker
William Stowell Diver
Elbert Raney Emery
Francis Ames Hayner
Defrees Holmes
Stephen Hopkins
Roy Diez Keehn
George Ehrlich Madden

George Irving Wenban
William John Woodall
Thomas Ward Diver
Emmet Charles Grace
Roland Everett Griffis
Alfred Ertel Kuerst
Curtis Andrew McKay
Thomas Roberts
Herbert W. Schnetzky
John Wilhelm Stewart
Royce Edward Wright, Jr.
Richard Harry Sweitzer

PLEDGES

George Edward Hiscott
Avery Edward Doolittle

Virgil Ray Evans

Joe Wilfred Flynn
Edward John Flannery, Jr.

DIGAMMA ALPHA UPSILON



1st row: Cramer, Morgan, G. Hoffman, Kleine, Speicher, Heidbrink.

2nd row: Wennermark, Roberts, Panzer, Gruendel, Quinn, Hennings.

3rd row: Niemeyer, Ritzwoller.

DIGAMMA ALPHA UPSILON WAS FOUNDED AT LAKE FOREST IN 1906.

ACTIVES

Sterling B. Cramer
 John William Enos
 Erwin Mathew Heidbrink
 George Edward Hoffman, Jr.
 John J. Hubley
 Milton Erwin Morgan
 Frederick Charles Panzer
 Paul William Speicher
 Alfred James Wennermark
 Paul Romney Bloom
 Thomas Hartwell Dyer

George Gessner
 George Harold Gruendel
 James Paul Kearney
 Lloyd George Roberts
 Frank Lenz Spreyer
 Jack Henry Zengler
 George Oliver Churchill
 Oscar Lee Gyllenberg
 Ralph Waldo Hennings
 Omar Hollingsworth Quinn

Curtis Wuhs
 Warren Paul Clark
 Thomas Charles Domville
 Myles Frank Hall
 Evert Axel Larson
 Frank Jones Roberts
 Harry Edgar Rouse
 Melvin Foster Rouse
 Robert Elton Spring
 Jack Logan Sugg
 James Merle Tibbetts

PLEDGES

Henry Barnes Crawford
 Jobbie Harold Eiserman

Spencer Tracy Lange
 Edward William Niemeyer
 Stuart Gray Randall

John Potter Wade
 Herman Hart Ritzwoller

ALPHA SIGMA KAPPA



1st row: Kleinz, Haas, Schultz, Butler, Forrest, Lamb.

2nd row: McKnight, Barton, Elvin, Johnson, Palmer, Comee.

3rd row: Peterson, Guthrie.

ALPHA SIGMA KAPPA WAS FOUNDED AT LAKE FOREST IN 1926.

ACTIVES

William Lee Kleinz, Jr.
Raoul Robert Haas, Jr.
William Henry John Schultz
Nathaniel Butler
Augustus Jerome Forrest
David Warren Lamb

Charles William McKnight
Charles Gregory Barton
Thomas Marvin Elvin
Lowell Hartley Johnson
Louis Orton Palmer, Jr.
Lowell Maurice Comee
John Maynard Barney, Jr.

Harvey Raymond Beatty
Robert Raphael Dobbin
Karl Barent Hansen
Harold Vincent Meigs
Gilbert Dale Smith
Franklin Dolan Wanner

PLEDGES

Carl Marius Peterson

John Brandon Guthrie

Allen H. Long

Lake Forest College

Offers you——

1st.—Full educational value in environment unexcelled for beauty.

2nd.—Proximity to Chicago, so that the sights, recreations, aesthetic advantages and great industrial plants of a large city are near at hand. Transportation facilities provide easy accessibility.

3rd.—A complete home on the campus for all students, in modern dormitories.

4th.—Lake Forest College accepts Student Activities as a part of the training of young people for life and seeks to promote the athletic, dramatic, musical and literary interests of the students.



ADDRESS ALL INQUIRIES CONCERNING THE
COLLEGE TO
THE PRESIDENT
LAKE FOREST COLLEGE
LAKE FOREST, ILLINOIS

SMART . . . EFFICIENT
SERVICE

Vogue Cleaners

COMPLETE
VALET SERVICE

Campus Representatives

ELLEN ERICKSON
BILL DWINELL

NO TOLL CHARGE

Call Translate 775

HIGHLAND PARK

*Compliments
of*

William J. Quigley
Inc.

NATIONAL OFFICE
SUPPLY CO.

*Printers . . . Lithographers
Office Supplies*

WAUKEGAN

ILLINOIS



WISCONSIN
CREAMERIES
INC.

Ice Cream

*Served Exclusively
at*

Lake Forest College

Herman R. Jahnke
Florist

CORSAGES AND SPECIAL
ARRANGEMENTS

Telephone L. F. 1182

179 E. Deerpath Lake Forest, Ill.

Patronize ...

Our
Advertisers

QUALITY



MR · H · A · GOODNOW



PALMER HOUSE STUDIO
PORTRAIT PHOTOGRAPHERS
CHICAGO · · · ·

O'Neill Hardware
Company

•
General Hardware
Sporting Goods
Devoe's Paints
and
Varnishes
•

Telephone
Lake Forest 500-501

LAKE FOREST

ILLINOIS

DEERPATH
INN

100 Rooms

•
Excellent Food
Attractive
Rooms and Suites
Moderate Prices
•

LAKE FOREST

ILLINOIS

M. H. HUSSEY & CO.

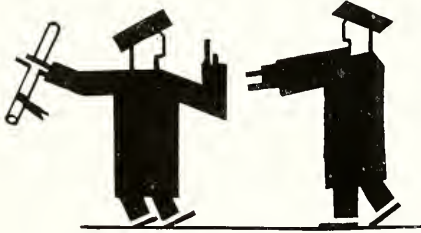
•
Coal . . . Coke . . . Wood
Building Material and Feed
Lumber and Millwork
•

Telephones 888 — 889

LAKE FOREST

ILLINOIS

. . . *first you must*
taste



Swift's
PREMIUM
H A M

it's Ovenized!

Your knowledge of things delicious is incomplete until you've tasted Swift's Premium Ham - - the new *Ovenized* kind.

Ovenized Swift's Premium Ham has a better flavor . . . a more pronounced individuality because of the new way of smoking in ovens . . . where mellowing heat and the tangy smoke of prime hardwood combine to make each bite a treat.



smoked a new way . . . in ovens

Swift & Company

Chicago

College Men May or May Not Agree With

DURKIN & DURKIN

LAKE COUNTY'S LARGEST STORE FOR

LAD AND DAD

We Firmly Believe

Personal Appearance is More Important Than Education

Shop Where Standard Quality is Offered

Stetsons . . . Arrow . . . Society Brand

Bradley . . . Holeproof

Lake Forest Laundry
WASHER DRYER

Phone
175

Established 1895

*Compliments
of*

FRANK BURKE
HARDWARE CO.

WAUKEGAN, ILLINOIS

Campus Representative
"JOHNNY" LOVETON

•
F L O W E R S
WE DELIVER ANYWHERE

•
Kohout Flower Shop

266 E. DEERPATH

TEL. 220

*The only exclusive Dry Goods
Store in Lake Forest*

GARNETT'S
DRY GOODS

Women's and Children's
Furnishings

PHONE 881

FREE DELIVERY



Public Garage
in Connection



All Work Guaranteed
Electrical and Mechanical



DEERPATH AUTO SALES
191 Deer Path Ave., E.
Lake Forest, Ill.
Telephone Lake Forest 80

Quality
Wise



Serve...
EDELWEISS

JOHN SEXTON & CO.
MANUFACTURING WHOLESALE GROCERS
CHICAGO BROOKLYN

The
Oriental Ballroom
The Silver Room
The Towne Club
*provide most attractive
facilities for formal
or informal dinners,
or dinner-dances*

YOUR INQUIRY IS CORDIALLY
INVITED



**HOTEL
KNICKERBOCKER**

Walton Place
East of Michigan Boulevard
PHONE SUPERIOR 4264

LAKE FOREST
AUTO SALES

Authorized Ford Dealers

Telephone Lake Forest 369
602-608 N. Western Ave.
LAKE FOREST, ILL.

SPORTS CLOTHES

*Afternoon and Evening
Gowns of Distinction at
Moderate Prices*



THE SPORTS SHOP
265 Market Square • Lake Forest

“A Bank is as strong as the men
who are behind it”

OUR DIRECTORS

Cyrus H. Adams, Jr.

Philip D. Armour

John A. Chapman

A. B. Dick, Jr.

Thomas E. Donnelley

Charles H. Ewing

John Griffith

Carl L. Krafft

D. R. McLennan

John T. Pirie

Frank W. Read

George T. Rogers

E. A. Russell

R. Douglas Stuart

Robert J. Thorne

Farwell Winston

First National Bank

LAKE FOREST

ILLINOIS

*Compliments
of*

Lake Forest Fuel
Company



Telephone

Lake Forest 1560-561

THE
CAMPUS SHOP

“Our Advertisements Are Not
Written . . . They Are Worn
On The Campus”



Robertson's Mens'
Shop

Wells & Copithorne
Company

•
GENERAL HARDWARE
ELECTRICAL SUPPLIES
•

Market Square
LAKE FOREST, ILLINOIS
Phone L. F. 92

The Calvert
Greenhouses, Inc.

"Quality Always"

Located a short distance from the
College Campus

•
Flowers

for all occasions

Pot Plants, funeral designs, corsages,
decorations of all kinds

•
Delivery on North Shore
•

477 E. Illinois Rd.
Phone: L.F. 17
BONDED F.T.D. MEMBER

Telephones: Lake Forest 407-408

G. L. BLANCHARD CO.

Quality and Service

COAL, WOOD, BUILDING MATERIALS
FEED AND FERTILIZERS

Lake Forest

Illinois

GRIFFIS BROTHERS

General Contractors

Telephone 914

216 E. Wisconsin Ave.

Lake Forest, Ill.

















