





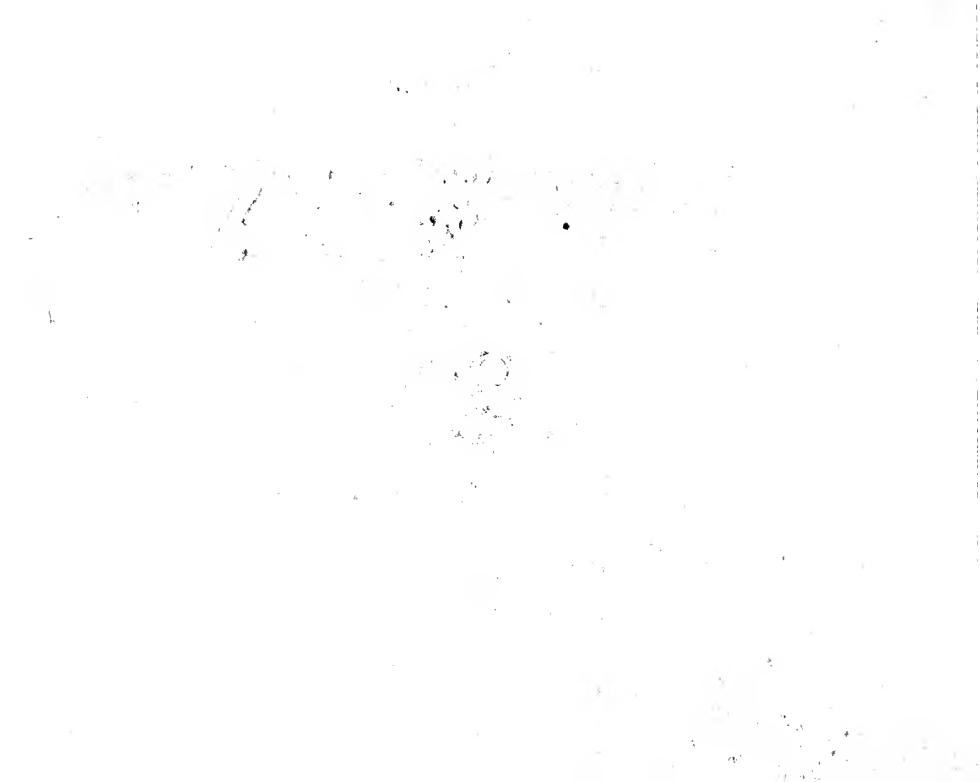
GC 977.202 F77p1
Gardner, H. W.,
Fort Wayne, Indiana



FORT WAYNE

INDIANA

1913





FORT WAYNE

INDIANA

A PRESENTATION OF HER RESOURCES
ACHIEVEMENTS AND POSSIBILITIES



PUBLISHED BY THE FORT WAYNE NEWS

An Authentic Compilation of the City's
Industrial, Financial and Civic Activities

Compiled By H.W.Gardner



WILDWOOD AVENUE

The City of Fort Wayne

IT IS not the intention of the publishers of this work to go into details of the early history making episodes nor to portray in elaborate word painting the remarkable growth and expansion of Fort Wayne, but rather to exemplify the city of today, its resources, possibilities and achievements. To that end no mention is given to the early history makers nor even to those who today are bending their individual energies to build a still greater Fort Wayne. Fort Wayne, termed the Summit city, occupies the highest altitude in Indiana, 775 feet above sea level, is located in the northeastern part of the state at the confluence of the Maumee, St. Mary and St. Joseph rivers and is the third largest city in Indiana in point of population, in manufacturing, industries and commerce, second in point of postal business and bank clearing. It is situated one hundred forty eight miles east from Chicago, one hundred twenty three miles northwest from Indianapolis, and one hundred miles west from Toledo. Seven railroads, the Pennsylvania, Toledo, New York, Chicago & Lake Erie, Grand Rapids & Indiana, Cincinnati, Hamilton & Dayton, Lake Erie & Western, and the Lake Erie & Michigan, southern railroads pass through Fort Wayne. Over sixty passenger trains enter and leave the city daily. These transportation facilities are augmented by four



ROWHILL STREET



MAPLE PLACE

interurban traction companies carrying both freight and passengers: The Fort Wayne & Northern Indiana Traction Co.; Toledo & Chicago; Fort Wayne, Van Wert & Lima and the Fort Wayne & Springfield Traction Co. The city is fortunate as regards freight rates. Fort Wayne enjoys equal rates with Chicago and lower rates than Grand Rapids in transcontinental shipments. Fort Wayne is situated in the center of a vast and rich agricultural region and is the metropolis of Allen County and a wide surrounding territory. The population is estimated for 1913 at 75,000. Fort Wayne has never entertained a boom growth. During its advancement, both in population and industries, the city has always traveled along safe, sane and conservative lines. It is a story of a sound, healthful and natural growth, a city which extends a welcoming hand to the home seeker and of successful business opportunity to the investor. Fort Wayne is important as a manufacturing and distributing center for a vast territory. Chief among the industries are: Railroad shops, electric works, iron, knitting mills, auto accessories, wood-working machinery, chemical products, soap works, steel dredges, foundries, oil tanks, mining concentrators, breweries, lumber mills, cigar manufacturers, pianos, fertilizer plant, meat packing, art glass, paper boxes, brick, cement stone, engravings and electrotypes, rolling mills, special furniture, corrugated paper, washing machines, cooperage, road machinery, flour mills, clothing and underwear, patent medicines, gas plant manufacturers and hundreds of smaller manufacturers. Fort Wayne has enjoyed much prosperity in the past and is planning much for the future. Building operations are expand-



LAKESIDE PARK



FOREST PARK BOULEVARD

ing. More people are builders of homes here. Manufacturing is broadening scope and facilities to make way for a population of 100,000. The assessed valuation of the city for the year 1913 was \$37,077,980.00. The tax rate is \$1.16 per thousand. The city contains well paved streets upon which have been expended in the past five years, including sewers, \$599,728.00. During the past three years \$95,715.00 have been expended for other improvements. The city maintains well equipped fire and police departments with auto equipment of the latest type, it owns and maintains its own water system, with 122 miles of mains, and electric light plant, the former valued at \$1,750,000.00 and the latter at \$150,000.00. Fort Wayne boasts of numerous beautiful city parks of which it is justly proud, occupying 231.65 acres, valued at \$330,000.00. The public schools of Fort Wayne consist of modernly equipped buildings with competent teachers, and curriculum equal to that of the largest cities. The public school property of the city is valued at \$1,330,000.00. Fort Wayne has numerous fine church edifices representing all denominations. Under various captions throughout this publication will be found authentic and interesting information pertaining to the general ensemble of Fort Wayne of today.

Fort Wayne a Beautiful City

Fort Wayne is unequalled among cities of like size in the presentment of all that is



FOSTER PARK



LAWTON PARK

artistic in the general appearance of its streets, parks, public and office buildings, residences, etc. The business section of the city presents clean, wholesome thoroughfares paved with the most approved material and lined with stores and office buildings that display the utmost modern and metropolitan attractiveness. The residential districts are well laid out, the streets are well paved, the homes are attractive with here and there an exceptionally fine bungalow with which the city abounds. Although Fort Wayne is not a show place for palaces, there are numerous magnificent homes that would do credit to the city of millions. It is a trait of Fort Wayne people to own their own homes and it is estimated that nearly ninety per cent. of the householders are freeholders as well. Building operations each year established new records. In the residential section of the city many imposing church edifices abound representing all denominations and in various styles of architecture. There are 548 streets and avenues mostly paved with asphalt and brick containing over 210 miles. The streets of Fort Wayne in the residence district are lined with elms and maples. Beautiful drives reach to every section of the city and touch at all the parks. Nowhere can there be found a city of this size where the streets present more attractions for driving, for automobiling, cycling, or for the ordinary uses of traffic. The streets are well lighted by electricity furnished by the municipal power station with hundreds of ornamental lighting standards which line the principal business thoroughfares.



CLINTON STREET BRIDGE



VIEW IN ROBINSON PARK

The Future of Fort Wayne

THE Fort Wayne of today has an approximate population of 75,000 people. The work in hand and the plans already under way for the future, points the road for further prosperity for Fort Wayne. The citizens of Fort Wayne know that their city possesses advantages that make it the premier in manufacturing facilities and residential environs. The Fort Wayne Commercial Club was organized about fourteen years ago for the purpose of promoting the general welfare of the community and is composed of the leading manufacturers, merchants and professional men of the city. Much good has already been accomplished by this organization, with many plans on foot for future betterment. The Fort Wayne Commercial Club holds itself ready at all times to bestow its aid upon any project that looks to the promotion of the city's welfare in any way. The organization maintains a handsome clubhouse with commodious rooms, including a large hall for banqueting or lecture work.

Health, Water, Sanitation

The general health of a city is always of utmost importance. It may be said that no other place in the country has been more free from contagious and infectious diseases. The excellent system of sewerage and



PUMPING STATION NUMBER ONE



BORDSON PARK PAVILION

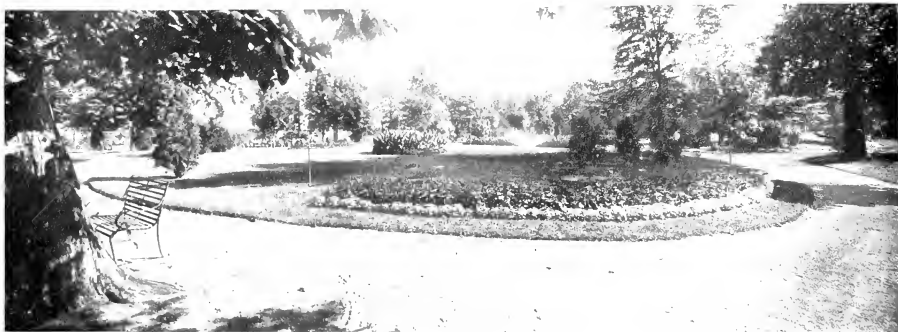
hygienic regulations are prominent factors in maintaining this reputation for this city. The public health is in the hands of a Board of Health appointed by the Mayor, assisted by a corps of consulting physicians and sanitary officers. The Health Commissioner is a skilled chemist and bacteriologist, who conducts an up-to-date, modern laboratory in which examinations of diseased material, of foods, water and milk are made. Sanitary measures, such as disinfection of houses, house to house inspection and the management of contagious diseases are controlled by scientific laboratory methods. For many years Fort Wayne has shown the lowest death rate of any of the cities in Indiana, and is among the cities that stand first in the United States in matter of public health. Fort Wayne has pure water. It owns its water works, the value of which is placed at \$1,750,000.00, the supply coming from rock wells of great depth and pumped to the consumers through 122 miles of water mains distributed throughout the city. There has always been an adequate supply for drinking, manufacturing and city purposes.

Educational Advantages

Fort Wayne is justly proud of its educational institutions which are on a par with those of the largest cities. No municipal asset is more valuable, means as much to the public at large and to the future welfare of the community as a city's educational advantages. For these reasons Fort Wayne has spent its money liberally and wisely in the upbuilding of its public school system. The attendance at these schools is constantly at the max-



RESERVOIR PARK

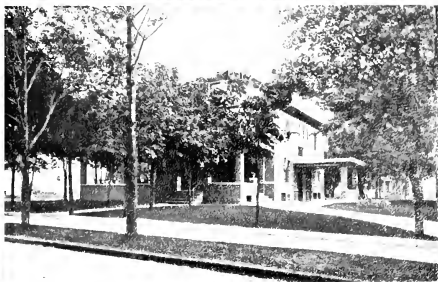


VIEW IN McCLELLAN PARK

imum capacity. This also applies to the parochial schools. The public schools number twenty, including an excellent high and manual training school. There are, also, fifteen parochial schools and eighteen colleges and academies. The Board of Education employs two hundred forty-nine teachers whose combined salaries total yearly \$249,637.79. The value of public school property, including new schools, is placed at \$1,336,000.00. The roster of pupils for the year, term beginning September, 1912, to June, 1913, was 7976, divided as, males 3916, females 4060. The parochial or sectarian schools of Fort Wayne represent almost every denomination which operates separate schools. There are nine catholic and nine lutheran schools and colleges, besides other denominations. The enrollment of these schools almost equals that of the public schools. Fort Wayne is the seat of Concordia College an institution of wide note, maintained by the German Lutheran Church of the Missouri Synod, founded in Fort Wayne in the year 1861. Approximately four thousand young men have been enrolled at one time or the other. The curriculum of this college embraces theological, classical and literary courses. This college is well equipped. It has a campus of twenty-six acres, large and tuckly appointed buildings. Fort Wayne also possesses an excellent commercial school, the International Business College. This institution is one of the largest of its kind in the country. The European School of Music is another institution of Fort Wayne of recognized merit, and which is conducted by an excellent faculty.



CATHOLIC CEMETERY



UPPER—KENFIELD, S. B. BECHTEL
 LOWER—C. A. DUNKELBERG

Prominent Fort Wayne Residences

UPPER—FRY HAVEN, A. Z. BOOTHBY
 LOWER—A. A. BROWSE



VIEW IN SWINNEY PARK

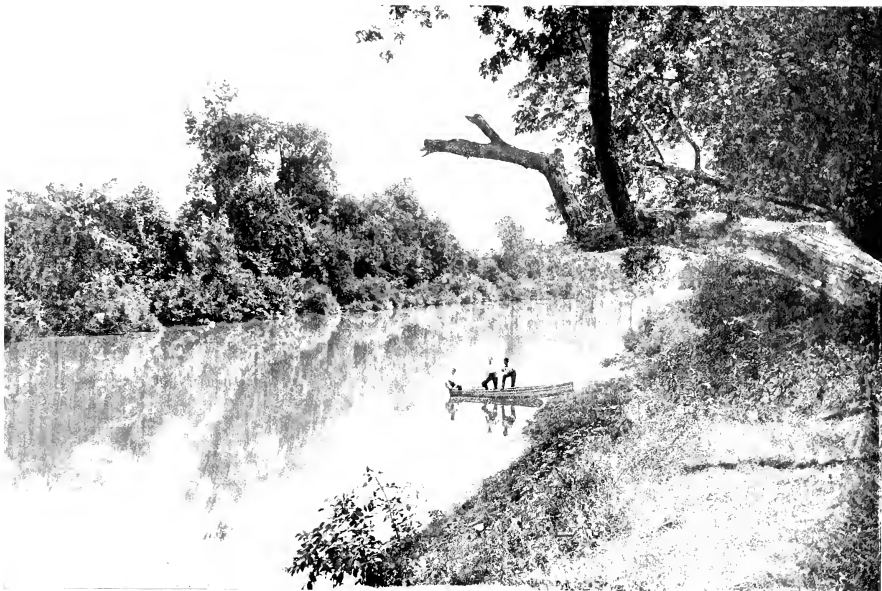
City and County Government



HE government of the city of Fort Wayne is entrusted to a mayor, clerk, city comptroller, deputy city comptroller, city attorney, judge of the city court, three members of common council, five councilmen at large, ten councilmen with fifteen standing committees, a board of park commissioners, department of public safety, board of park commissioners, department of public health and charities. The county executive officials including two judges, one of the circuit and one of the superior court, twenty-four commissioners and trustees and twenty supervisors. Since its incorporation as a city, Fort Wayne has seen many capable administrators hold the reins of its city government. The city is well protected by completely equipped fire and police departments, the former consisting of the latest approved apparatus including auto fire fighting machines, etc. The police department consists of a chief, eleven executive officers and forty-eight patrolmen. That the city fathers have expended wisely is evidenced by the extremely low bonded indebtedness of the city, and its low taxation which is \$1.16. The combined salaries of city officials amount to \$26,350.00 yearly. These city and county officials have had at all times the interest of the city as the paramount factor in their services. The low taxation demonstrates the carefulness with which they have expended the people's money.



PUMPING STATION NO. 2



SHADY NOOK POINT—ON THE MAMMEE



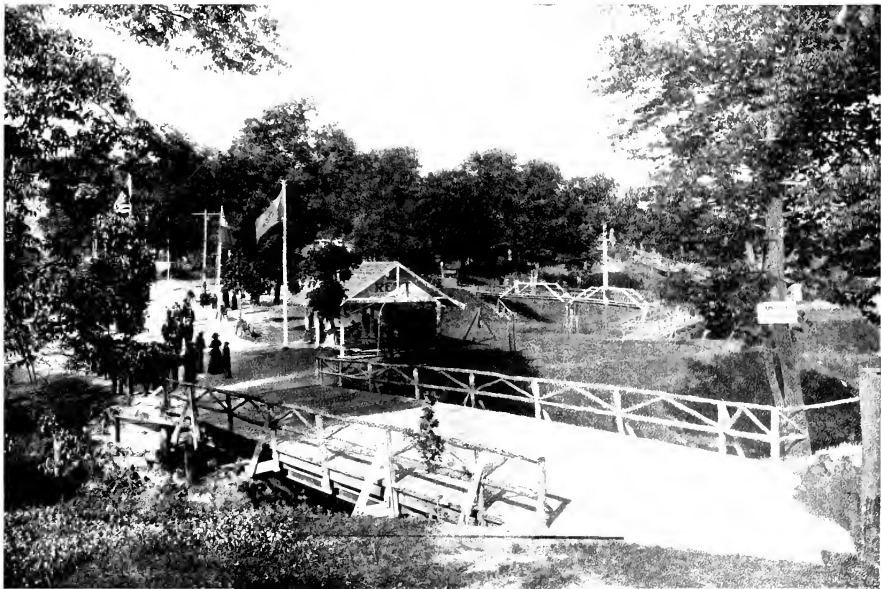
OLD LOG CABIN

Public Service Utilities

PUBLIC service utility concerns: The Fort Wayne and Northern Indiana Traction Co., furnishing electric light and power to consumers; The Indiana Lighting Co., gas for light, heating and fuel; The Home Telephone and Telegraph Co. and the Central Union Telephone Co. Bell System. The total capitalization of the first three amounts to \$13,211,000.00 and they employ 1475 people. The Fort Wayne and Northern Indiana Traction Company was incorporated February 25, 1911, through reorganization with a capital stock of \$8,000,000.00, over 4000 people are employed by this company with a wage roll of \$700,000.00 yearly. As an adjunct this concern operates power and light service. The traction service represents 85.74 miles of city track and 131.71 miles of interurban, 70 city and 14 interurban cars are in operation. Robison Park one of the most unique recreation and amusement parks in the country is owned and operated by this company. It was acquired in the year 1896. It contains 274 acres of beautiful land, fine playgrounds and architecturally fine buildings and is reached by the city car line, six and one-half miles from the city transfer corner. The Indiana Lighting Company was originally established in the year 1854 and incorporated on August 1908 under present title with a capital stock of \$1,500,000.00. It also supplies gas for light, heat and fuel purposes, coke, ammonium



MIZPAH TEMPLE
NOBLES OF THE MYSTIC SHRINE



RUSTIC BRIDGE - ROBESON PARK



BIBLE TRAINING SCHOOL.

and tar are manufactured as by-products. 275 people are employed. This concern consumes yearly 250,000 tons of coal and 100 tanks of oil. It operates 135 miles of gas mains, and two gas containers each with a capacity of 1,000,000 feet of gas. Three hundred fifty millions feet of gas are consumed by Fort Wayne people yearly. The rate is eighty-five cents per thousand. The Home Telephone and Telegraph Company was organized in October, 1896, and incorporated with a capital stock of \$711,600. This concern employs 200 people. Besides serving Fort Wayne, this Company operates branches at Kendallville, Auburn and New Haven, Indiana, and owns 1000 miles of toll lines, serving 11,000 subscribers including Fort Wayne City subscribers who total 9000, with underground cable system in the business section and part of the residence district in Fort Wayne. Two exchanges are operated in this city in buildings owned by the company. The average number of daily local calls is 90,000; long distance 1000. There are over 300,000 pounds of copper wire in service and 350,000 feet of cable for Fort Wayne use. The Central Union Telephone Co. is a branch of the Bell System which furnishes considerable long distance toll service in Fort Wayne and throughout the country. Antagonistic relationship between the public and its public service corporations is practically unknown in Fort Wayne, it being mutually understood that the best interests will be conserved by a successful get-together spirit, a policy that has proven a working success.



FIRST PRESBYTERIAN CHURCH



BROOKSIDE—RESIDENCE OF MR. JOHN H. BASS



LUTHERAN HOSPITAL

Henry W. Meyer, Architect

Postal Business



ALLEN County, in which the city of Fort Wayne is located, has a working day delivery of mail to practically every farmer in the County. There are in all 52 rural free delivery routes, average length 25 miles, so that 1300 miles is covered every working day. Indiana has more miles of good gravel roads, according to Government reports, than any other state in the Union, and Allen County has more miles of good gravel roads than any other county in Indiana. These county roads all lead to Fort Wayne, the county seat, and they come through as rich a farming country as lies out of doors. Allen County has an area of 661 square miles and a population of 93,386 according to the U. S. Census of 1910. The Fort Wayne Postoffice is open to the public, from 7-15 A. M. to 9 P. M.; it serves a city population of 75,000 with two deliveries and two collections in the residence district and four deliveries and two collections in the business district; it has 14 numbered stations at which stamps and money orders are sold, mail registered, parcel post mail insured, and from which night collections are made in addition to the regular day collections. After paying its own employees and 21 railway mail clerks this office remitted to the Government during the fiscal year ending June 30, 1913, the sum of \$254,969.81. A bill calling for an appropriation of \$500,000.00 has been



ST. PAUL'S LUTHERAN CHURCH



BROOKSIDE DAIRY FARM—OWNED BY MR. JOHN P. BASK



SCHOOL FOR FEEBLE MENDED YOUTH

John F. Wynn, Architect

introduced in Congress to provide a new Government building for Fort Wayne. In 1904, this office employed 19 officials and clerks, 26 city carriers and 8 rural route carriers. In 1913 there are employed 38 officials and clerks, 11 city and 15 rural carriers. The increase in receipts, 1913 over 1904, amounts to \$200,532.63. The increase in salaries from 1904, which totaled \$36,361.92, to 1913, which total \$95,612.87, is \$39,247.95. The total, actual weight of mail handled during the months of October and November, 1912, this being before parcel post was inaugurated, was 975,106 pounds. The total, actual weight of mail handled during the months of March and April, 1913, this being after parcel post was inaugurated, was 1,210,992 pounds—Increase 235,886 pounds. By actual count it was found that 33% of this increase was due to the adoption of the parcel post system. The Fort Wayne Postoffice is now handling about 7,000,000 pounds of mail each year. The money order business of this office for the year 1910, issued, amounted to \$353,199.65. For the year 1911, \$358,665.78. For the year 1912, \$412,533.88. The amount paid out for the year 1910 was \$623,502.47. For the year 1911, \$581,365.87. For the year 1912, \$611,703.53. The above figures begin with the fiscal year July 1st to the following year, ending June 30th.

Financial

Fort Wayne is well known for its sound financial operations and banking methods. There are eleven banking institutions here; four national banks, four trust companies and three private banks. Besides these there is a Building and Loan Association. This city has never had a financial panic, neither has it ever had a boom growth during its existence. The mercantile and industrial enterprises of the city



UPPER—THEODORE J. THENE
LOWER—ROBERT MILLARD

Prominent Fort Wayne Residences

UPPER—H. PAUL MOSSMAN
LOWER—DAVID N. TOSTER



REFORMED ORPHANS HOME

have been carefully organized upon a sound, conservative basis. The banking facilities have played a big part in the upgrowth of these institutions by their liberal, yet sane policies. Upon the financial standing of the banks often depends the fortunes or misfortunes of their customers and a feeling of confidence in these institutions gives an assurance to depositors. Bank failures are unknown here, and at no time during the severest panics have the doors of any bank been closed for a moment to a depositor. In other words, no city regardless of size or location offers safer or better banking accommodations. The combined capital of the national banks and trust companies is \$2,220,000.00; surplus and undivided profits \$1,372,100.00; deposits \$22,873,000.00. The private banks have paid up capital and surplus running into several thousands of dollars. The above statements are divided as follows: First National, capital \$500,000.00 surplus and undivided profits \$250,000.00, deposits \$1,500,000.00; Hamilton National, capital \$300,000.00, surplus and undivided profits \$152,100.00, deposits \$3,738,000.00, German American National, capital \$260,000.00, surplus and undivided profits \$125,000.00, deposits \$2,600,000.00, Old National, capital \$350,000.00 surplus and undivided profits \$213,248.66, deposits \$3,359,881.31; Citizens Trust Co., capital \$200,000.00, surplus and undivided profits \$18,000.00, deposits \$1,417,000.00; German American Trust Co., capital \$100,000.00, surplus and undivided profits \$10,000.00, deposits \$577,000.00; Peoples Trust and Savings Co., capital \$200,000, surplus and undivided profits \$63,100.00, deposits \$1,617,000.00; Tri-State Loan and Trust Co., capital \$310,000, surplus and undivided profits \$217,000.00, deposits \$1,989,000.00. The clearings of these banks have jumped by leaps and bounds. In the year 1911 the amount was \$53,921,953.13. In 1912, \$58,930,166.26. In 1913 it is estimated these clearings will exceed \$63,000,000.00.



UPPER—HUGH G. KEEGAN
LOWER—FRED T. THOME

Prominent Fort Wayne Residences

UPPER—DR. EDWARD W. DOBLE
LOWER—WAL. M. GIBLIN

Manufacturing and Jobbing



THE manufacturing industries of Fort Wayne number over three hundred, representing a wide diversity of products, over a thousand separate and distinct articles being made. New factories are constantly being added to the present roster with numerous additions being made to present industries with a total capitalization of over \$27,000,000.00 and a wage roll of over \$10,000,000.00. The approximate number of people employed in Fort Wayne in various industries and places of employment is over 12,000. Fort Wayne's products are sold throughout the world and several thousands of cars are shipped annually into foreign countries. Fort Wayne boasts of great electric works, knitting mills, washing and road building machinery, gas making machinery, oil tanks, rolling mills, foundries, flouring

(Continued on page 117)



THE STATE CAPITOL, FORT WAYNE



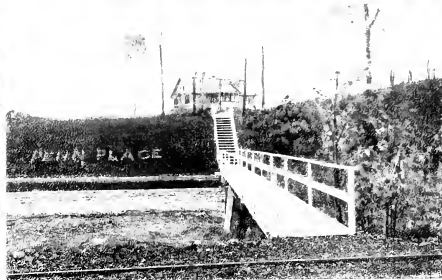
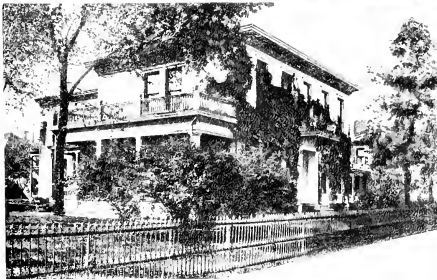
UPPER—CHARLES W. OGR
LOWER—CAROLINE M. OLDS

Prominent Fort Wayne Residences

UPPER—J. M. GARDNER
LOWER—HUNNY PLADDT



THE BISON RANGE



UPPER—S. B. FLEMING
LOWER—MRS. M. C. EWING

Prominent Fort Wayne Residences

UPPER—T. G. GAUNT
LOWER—W. S. BALLOU, PENN PLACE



SCENES IN SWINNEY PARK



SCENES IN ROBESON PARK



1100 - 1101 NORTH FROM SOUTH BEND



CALHOUN STREET—SOUTH FROM COLUMBIA STREET



BERRY STREET - WEST FROM CARROLL STREET



CATHEDRAL SQUARE



PERIOD HOUSE BY



HIGH AND MANUAL TRAINING SCHOOL

Chas. H. Wright, Jr., D. C. Del.



SCOTTISH RITE CATHEDRAL

Makura & Makura, Architects



CITY MARKET

Markings of Malibu, and other



1881-1884



CITY HALL

John F. Wing, Architect



AERIAL VIEW OF CONCORDIA COLLEGE

J. M. C. 1911



1 EPISCOPAL RESIDENCE OF BISHOP ALERDING, AND RECTORY
3 ST. VINCENT'S ORPHAN ASYLUM

2 ST. PATRICK'S LYCEUM AND GYMNASIUM
4 ST. JOSEPH'S HOSPITAL



1



2



3



4



5

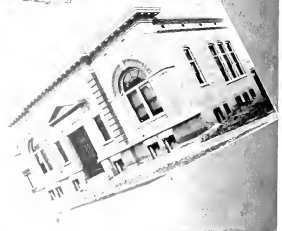


6

1 WAYNE HOTEL
4 ALT HEIDELBERG HOTEL

2 RANDALL HOTEL
5 HOTEL CENTLIVRE

3 BALTHES HOTEL
6 THE HOF DRAU



1. BRIDGEVILLE
S. HIGH SCHOOL

2. COMMERCIAL CITY
S. HIGH SCHOOL

3. F. DECHER, BRIDGEVILLE
S. HIGH SCHOOL

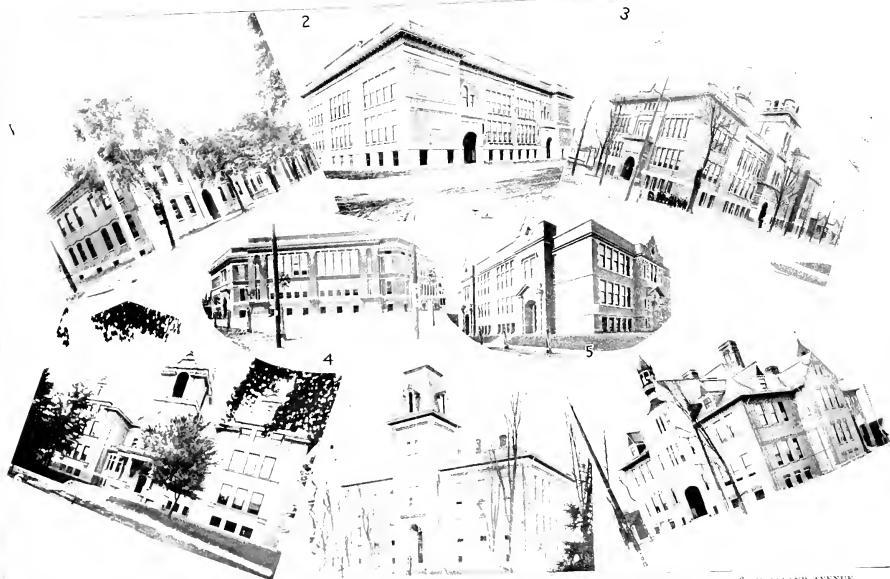
4. STEVENSON COUNTY ORPHANS HOME
OCEOLIDE BRANCH



1 MASONIC TEMPLE AND TEMPLE THEATRE 2 ELKS TEMPLE
6 MAJESTIC THEATRE

3 I. O. O. F. BUILDING
7 EMPRESS THEATRE

4 TURNER VERBIN GOERWARDS 5 LYRIC THEATRE
8 JEFFERSON THEATRE



1 101 E. BIRD - 1890 DISTRICT
2 W. HENNING STREET

3 1100 MAIN BUILDING
4 1000 W. 10TH STREET

Schools

5 1000 BASSA STREET
7 1000 BASSA STREET

6 1000 BRAYLAND AVENUE
S. CLAY STREET



1 NEW ST. PATS. 2 NEW REDBELL 3 MINER
4 ST. MARYS

Public and Parochial Schools

5 ST. MARYS GERMAN R. C. FOR GIRLS 7 ST. ANDREW'S
6 CHURCH OF PRECIOUS BLOOD SCHOOL 8 ST. PELLIC



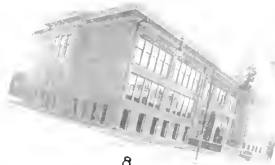
2



6



1



8



4



7



3

1. GLEBE WAY. 2. HAMBURG.
3. JAMES SQUARE. 4. OLD BISHOP.

Public Schools

5. HILLMAN STREET. 6. McCULLOUGH
7. NEBRASKA. 8. JAMES SQUARE



10



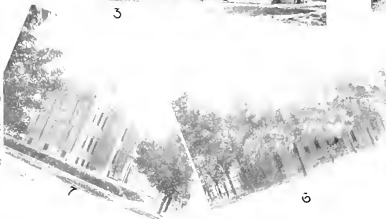
8



9



1



3



7



2



7

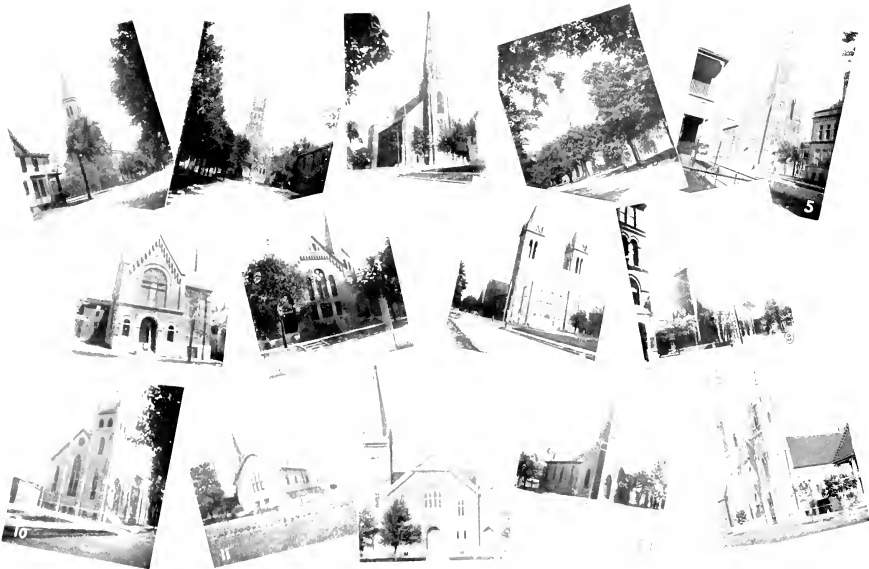


4

1 AND 2 EMMANUEL GERMAN LUTHERAN 3 GRACE GERMAN LUTHERAN
7 CONCORDIA 8 ST. PAULS GERMAN CATHOLIC

Parochial Schools

4 ST. JOHNS LUTHERAN 7 TRINITY GERMAN LUTHERAN 6 ZION
9 ST. PAULS GERMAN LUTHERAN 10 CATHEDRAL SCHOOL



1. ST. JOHN'S REFORMED
2. ZION EVANGELICAL LUTHERAN
3. ST. PETER'S
7. GRACE REFORMED

4. EBENEZER EVANGELICAL LUTHERAN
5. ST. MARY'S R.C.
6. CHRIST'S EVANGELICAL LUTHERAN

Churches

8. CHURCH OF PRECIOUS BLOOD
9. TRINITY ENGLISH LUTHERAN
10. BOWLER
11. ST. PAUL'S

12. CONCORDIA LUTHERAN
13. AFRICAN
14. ST. ANDREW'S



1 TRINITY
2 CRESCENT EVANGELICAL
3 WESTMINSTER

4 BETHANY
5 SALEM
6 UNITED BRETHREN

Churches

7 POLISH
8 FIRST CHURCH OF CHRIST SCIENTIST
9 LUTHERAN CHURCH OF THE REDEEMER

10 FREE METHODIST
11 UNITED FREE METHODIST
12 THIRD CHURCH OF CHRIST



4



3



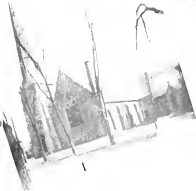
7

1 WEST JEFFERSON STREET CHURCH OF CHRIST

2 WAYNE STREET METHODIST
3 FIRST CONGREGATIONAL

Churches

4 SECOND CONGREGATIONAL 5 BAPTIST 6 THIRD PRESBYTERIAN
7 JEWISH SYNAGOGUE 8 SOUTH SIDE BAPTIST



1 TRINITY EPISCOPAL
2 ST. PATRICK'S

3 CATHEDRAL OF THE IMMACULATE CONCEPTION
4 ST. JOHN'S EVANGELICAL LUTHERAN

Churches

9 FIRST METHODIST CHURCH

5 SIMPSON M. E.
6 ST. PAUL'S

7 LAMMAS LUTHERAN CHURCH AND HALL
8 WEST OREGON AVENUE CHURCH OF CHRIST



THE Lincoln National Life Insurance Company was organized on the strictest standards maintained by the laws of any state in the Union. It must deposit in approved securities with the State of Indiana at least the net cash value of each outstanding policy. Under this law no policyholder in an Indiana company has ever lost a penny, nor can lose. The benefits to be derived from investing in present-day life insurance policies are thoroughly understood by every one. Proof of this is shown by the fact that over a million people of excellent judgment and business sagacity avail themselves of the opportunity every year.

The Lincoln Life has made the greatest success of any company organized in the Central States in the last 10 years. This success is due to the fact that it has at all times adhered to the highest principles of life insurance underwriting. The strength of the organization is shown in the splendid results achieved by the Company. Although only 8 years old, it has approximately eight thousand policyholders carrying insurance for over \$11,000,000. These facts demonstrate that the people of Northern

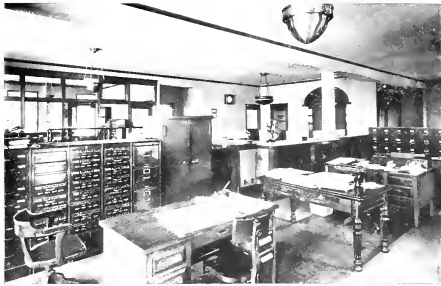


LINCOLN NATIONAL LIFE INSURANCE COMPANY BUILDING

Indiana are thoroughly in sympathy with the establishment of a life insurance company in this particular section. The Company, however, writes insurance not only in Indiana but also in Ohio, Michigan and Pennsylvania. The majority of its business, however, has thus far been secured at home where the excellent business standing and ability of its officers is best known.

The Lincoln Life is regarded as one of the big elements that has brought fame to Fort Wayne financial institutions. Its premium income is over \$1200 a day and growing by leaps and bounds. The Company has a fully paid-up capital stock of \$200,000 and its assets at the close of the year will exceed \$1,000,000.00. That the Company's policyholders are well satisfied with their policies and with the management of the Company is evidenced by the fact that the Company has the smallest lapse rate experienced by any company of similar age, having been less than 9% for the past three years. This is a remarkable showing.

The watchword of the Company is "Advance". Its managers pride themselves on the conservative and substantial advancement in the Company's business which has been shown from year to year.



INTERIOR OF OFFICES OF LINCOLN NATIONAL LIFE INSURANCE COMPANY
 1 POLICY DEPARTMENT 2 CASHIER'S OFFICE 3 VICE PRESIDENT AND GENERAL MANAGER 4 SUPERINTENDENT OF AGENCIES



HE Anthony, built in 1908, is Fort Wayne's leading hotel, and ranks among the best in the country. The plans and designing, both exterior and interior, are the work of Mr. Charles R. Weatherlogg, of this city, whose work is to be found in many of the city's most prominent buildings and fine residences including the Elk's building, High and Manual Training School, Peoples Trust and Savings Co. office building, Wm. M. Griffin's residence, Perfection Biscuit Co., Fort Wayne Box Company, T. E. Thome's country residence, Fort Wayne Country Club, Summit City Soap Works and the County residence of Dr. E. W. Dolez.

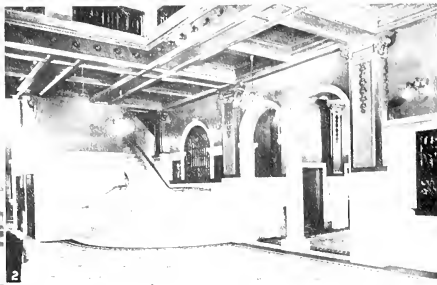
The Anthony is one of the best hotels in the state, and is advantageously located on West Berry Street closely adjacent to the business



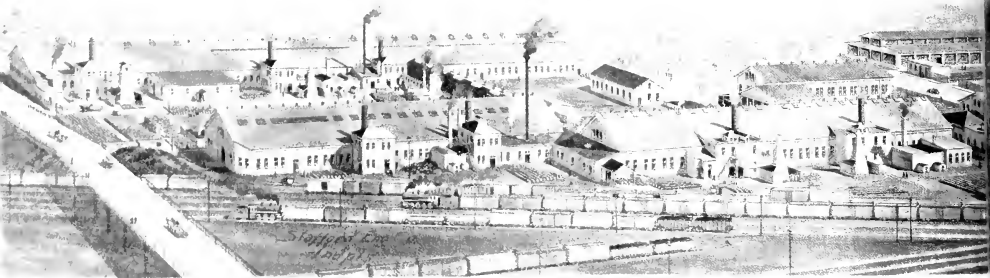
THE ANTHONY

CHAS. R. WEATHERLOGG, ARCHT.

center of the city and is one of its handsomest buildings. The Grand staircase leading from the rotunda is a symphony in marble. The rotunda, beautiful in design and decoration, gives a distinction to the whole interior. The furnishings are elegant and every convenience has been provided. The cafe, grill and public dining room are on the first floor and the design and finish show marked professional ability on the part of the Architect who fashioned them. There are also two private dining rooms and a spacious and handsomely designed banquet hall. The appointments in these dining places are elegant in every detail and the service and cuisine are all that a discriminating public can desire. The mural decorations of the bar are exceptionally beautiful, having been executed by a German artist of rare ability.



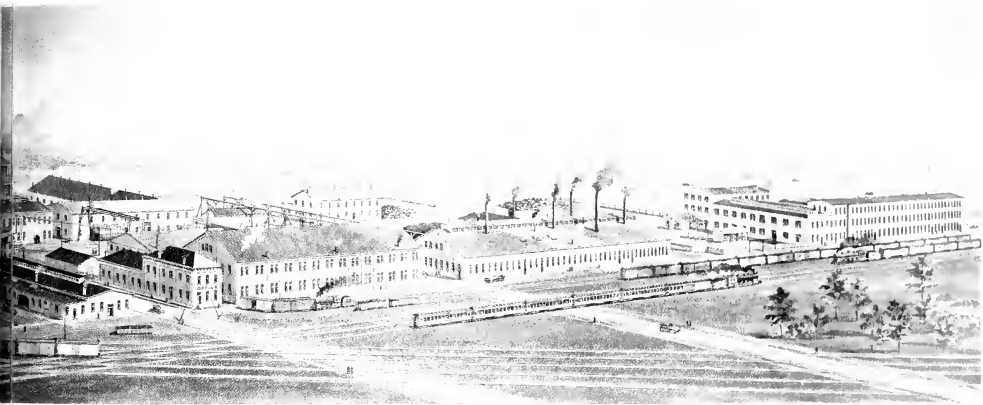
INTERIOR VIEWS OF THE EXHIBITS
1. LOBBY AND OFFICE 2. GRAND STAIRWAY 3. BANQUET HALL 4. DINING ROOM



THE BASS FO



BOVE view of The Bass Foundry and Machine Company gives a comprehensive idea of the enormity of this plant, the leading industry of Fort Wayne. This concern had its conception in the year 1853 when it was organized as Jones, Bass and Company. In 1898 a reorganization took place and incorporated as The Bass Foundry and Machine Company with a capitalization of \$1,500,000, which has since been increased to \$2,200,000. A branch plant is operated and owned by this corporation at Rock Run, Alabama, which mines and smelts part of the ore used in the products of the Fort Wayne plant, being established for the purpose of producing a finer grade of pig iron for use in Bass car wheels. Since this now mammoth business was established in a small way in the early fifties to the present day, the success following has been phenomenal in all its aspects. Buildings have been added to the original group of structures, machinery of the most modern and approved type is constantly being installed and the labor field raked for competent mechanics. The number of men employed in both the Fort Wayne factory and the branch at Rock Run total approximately 2500 men with an annual pay roll of \$1,500,000. The tonnage of manufactured material, and metal shipped from both sources, amounts to 300,000 tons annually. The products of the Fort Wayne factory are car wheels, general gray iron castings, axles, iron and steel tooling, Corliss engines, boilers and complete power plants. The



THE COMPANY

product of the Rock Run branch is furnace high grade pig iron which brings the highest market price. The Fort Wayne plant covers an area of 20 acres, and the branch at Rock Run, Alabama, 25 000 acres of land, upon which is operated the business of ore mining. Mr. John H. Bass, president of the company, has ever since its inception, been the guiding hand in its operations and to him is due the immense success of this concern. Besides his ownership of this plant, Mr. Bass has a wide interest in various other Fort Wayne enterprises including banking, is a large holder of property here and elsewhere and is held in the highest esteem in the business world for sagacity, keen foresight and judgment. The year 1852 saw his advent here, being a product of the blue grass state, Kentucky. His introduction to the iron industry was with the Jones, Bass Company in the year 1853. Raw material, out of which this concern makes its products, comes to the Fort Wayne factory carload after carload. In every department of this immense plant the work is systematized for economy in time and operation, giving smooth and rapid execution in manufacture. A view of the interior of the many departments gives an educational touch to any one interested in mechanical work and to the layman. Intricate machinery operated as a beehive of industry, turning out work absolutely correct and accurate in construction, giving the impression that here is a typically modern producer.

KNOWN in all parts of the world, the products of S. F. Bowser and Company, Incorporated, one of the largest manufacturing concerns in Fort Wayne, carry a guarantee of quality

and excellence attested by the long experience and enviable record of the company. This concern was founded in 1885 with the home plant and general offices in Fort Wayne. Branches are maintained in the United States in New York, San Francisco, St. Louis, Denver, Albany, Dallas, Atlanta and Harrisburg, while foreign offices are located in London, Paris, Johannesburg, Buenos Aires, Porto Rico, Mexico City, Toronto and Havana. The S. F. Bowser & Company, Incorporated, are oil system engineers, patentees and manufacturers of Oil Storage and Distributing Systems, Self Measuring Hand and Power Driven Pumps, Underground Storage and Distributing Systems, Large Tankage, Automobile Filling Station, Oil Cleaning System, Self Regulating Pipe Line Measuring Oil and

Gasoline Storage Outfits for public and private garages and Oil Filtering and Circulating Systems. Many features of the tanks and systems are exclusive and not to be found on other apparatus of this class. These devices

are designed for perfect and accurate work, are built on honor as to materials and workmanship and are tested and adjusted in the factory. Bulletins giving complete detailed description of any line will be furnished upon application and without obligation. If interested persons state what oils they handle, this Company will send literature descriptive of equipment suited to their particular needs. The firm's catalogue illustrates and describes the line, in a limited way, and shows a large number of installations in widely diversified fields. Every year sees additional uses to which oil and gasoline

are put, not in a commercial way, and these perfectly working devices are a boon to manufacturers, transit companies and others. They stand as one of the best equipped and managed in America.

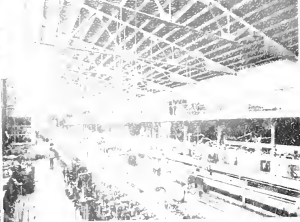
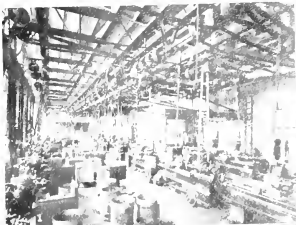
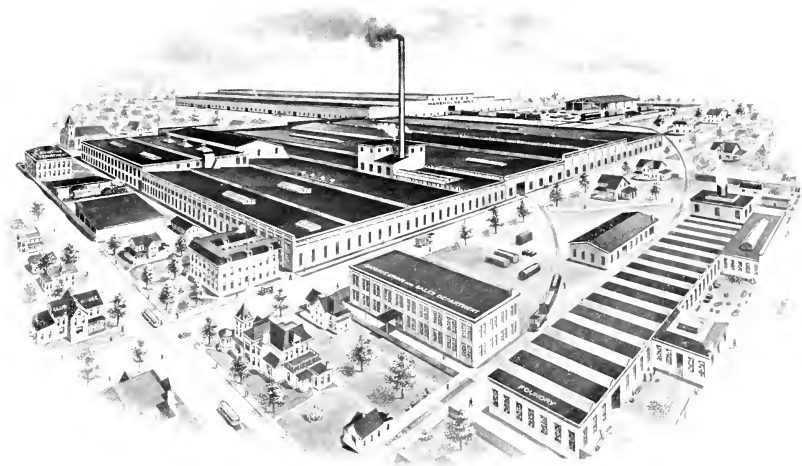
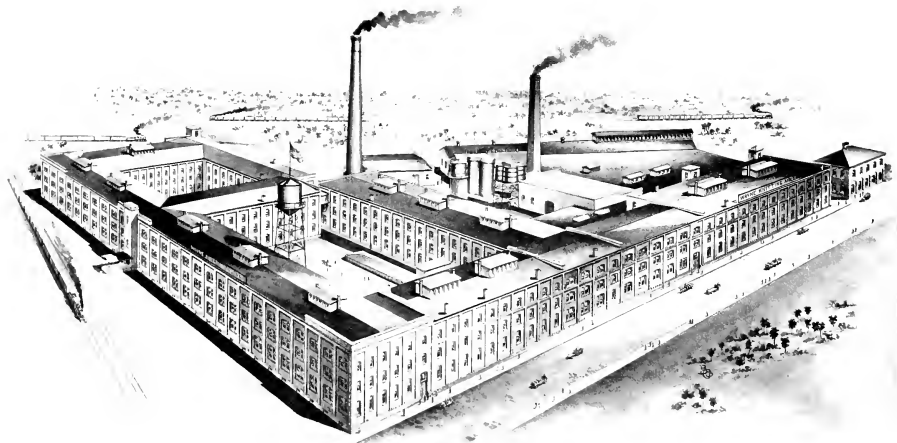


PHOTO COURTESY OF S. F. BOWSER AND COMPANY, INCORPORATED



PLANT OF THE T. S. F. BOWSER & COMPANY, INC.



WAYNE KNITTING MILLS

THE first successful establishment in America for manufacturing full fashioned hosiery, the Wayne Knitting Mills, is perhaps the largest exclusive hosiery factory under one roof in the world. It was founded and incorporated in 1891, with a capital of twenty-five thousand dollars, which has increased to one million two hundred thousand dollars. This immense plant, perfectly equipped in every department, affords a floor space of three hundred twenty-five thousand square feet. The output consists of cotton, lisle and silk hosiery for men, women and children. A speciality is made of medium priced hosiery. The firm also owns and operates an exclusive silk Hosiery factory for the manufacture of high grade silk hosiery. "Wayne Knit" appears on every pair of genuine Wayne Knit hose. This concern was the first manufacturer of hosiery to sell goods with a guarantee. The "Indestructible" hose bears a strong guarantee and represents one of the strong features of the Wayne Knit line. For twenty years "Wayne Knit" goods have been sold by the leading stores in all cities.



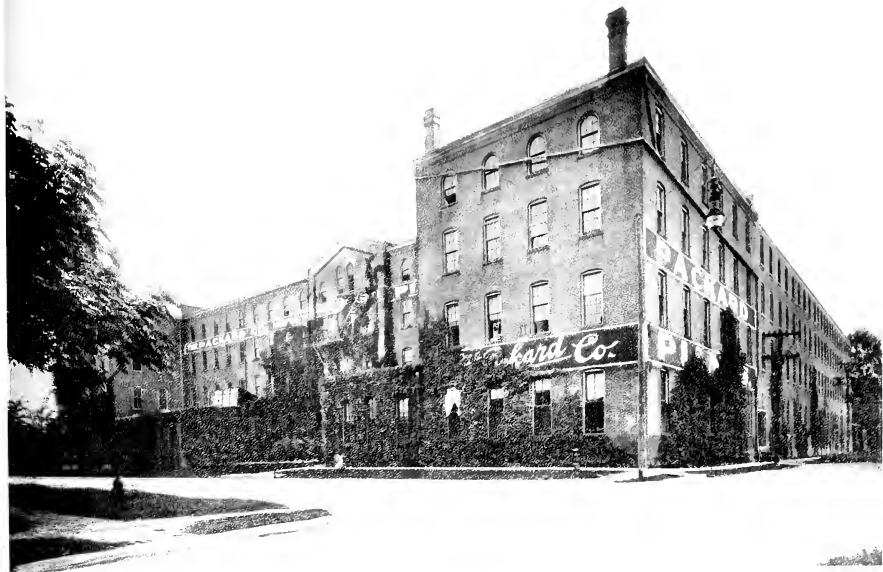
WESTERN GAS CONSTRUCTION CO.



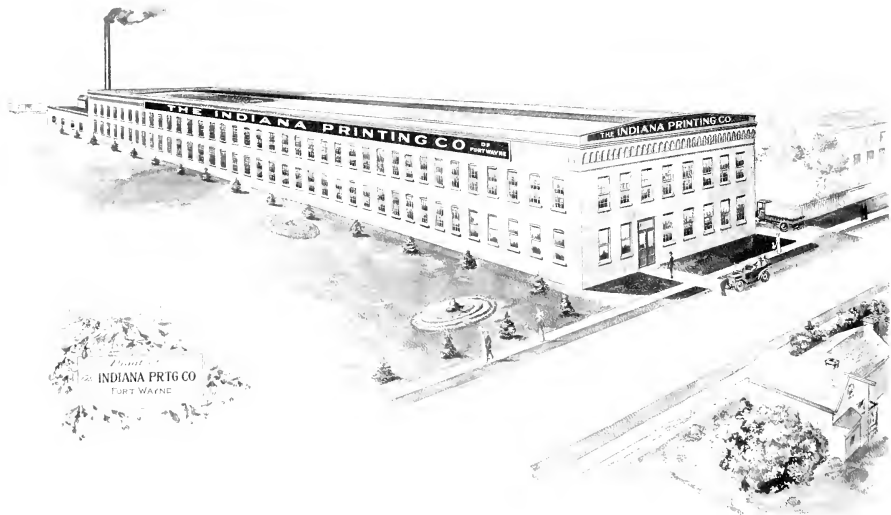
THE Western Gas Construction Company constitutes one of the largest of Fort Wayne's many large manufacturing institutions both in point of area, value of the manufactured products and number of employes. This company was established in 1888 and incorporated in 1890 and is capitalized at one hundred thousand dollars. The plant occupies an area of thirteen and three-tenths acres of ground space. The company gives employment to about six hundred people including a field force of one hundred fifty with wages and salaries amounting to about three hundred thousand dollars annually. The annual output in value amounts to seven hundred fifty thousand dollars, to one million dollars yearly, consuming approximately seven thousand five hundred tons of material and exporting about five thousand five hundred tons of the manufactured product. The specialties are Gas works construction, gas works apparatus and machinery, gas holders, valves and pipe specials of every description.



THE PACKARD COMPANY

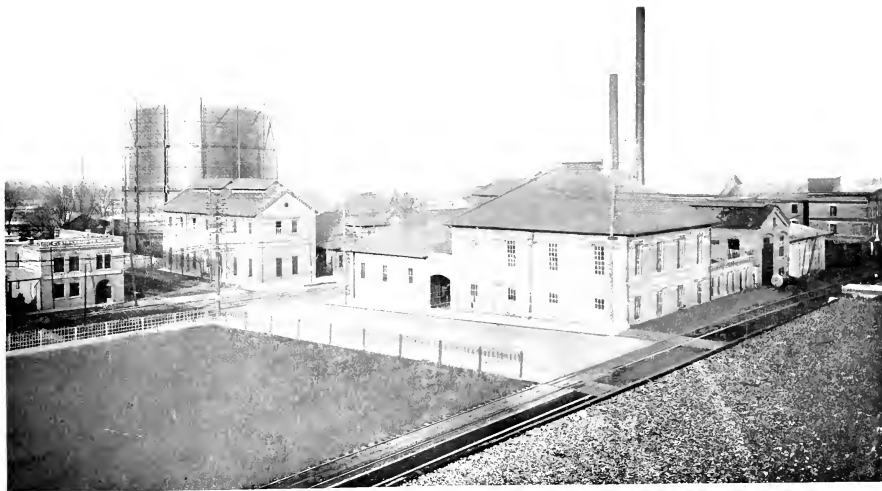


THE PACKARD COMPANY

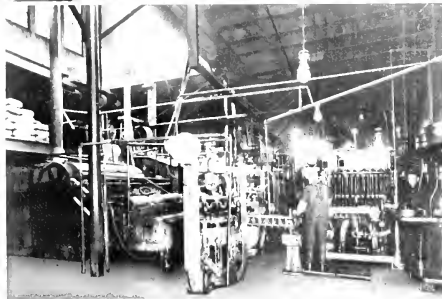
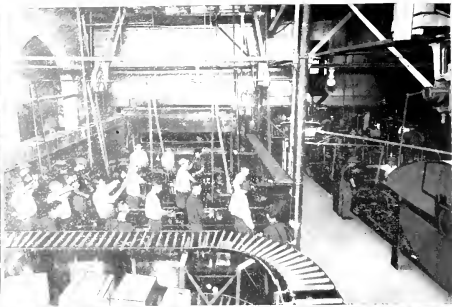
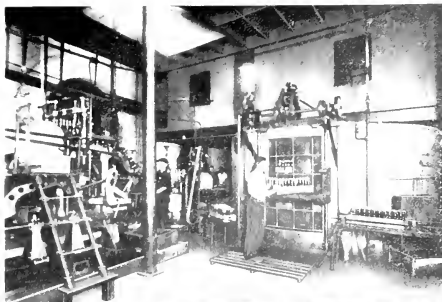


Plant of
INDIANA PRtg CO
FORT WAYNE

THE INDIANA PRINTING COMPANY OF FORT WAYNE. (See Page 116)



INDIANA LIGHTING COMPANY PLANT



SELECTED MILL FEEDING DEPT.



BERGHOFF BREWING ASSOCIATION



OR more than a quarter of a century, the Berghoff Brewing Association has offered to the public a health giving beverage. Berghoff beer has an established reputation throughout the country. It stands on its merits—brewed from absolutely pure materials, by the best scientific methods. Every step in the process of brewing Berghoff beer is rigidly inspected and perfect cleanliness prevails throughout. Only the most carefully selected hops and the best grade of malt are used. The water is thoroughly tested—Berghoff beer has a nation-wide reputation to maintain and no care or expense are spared to uphold this high standard. The Berghoff Brewing Association was formed twenty-six years ago in 1887, and in 1899 was incorporated with a capital stock of one million, five hundred thousand dollars. The plant, strictly modern in every detail, is amply equipped with the most recently approved type of apparatus in every department. The two hundred and twenty-five employees are thoroughly experienced and receive two hundred thousand dollars in yearly wages. Ten thousand four hundred eighteen tons of raw material are consumed each year in producing one hundred sixty thousand barrels of beer which is valued at two and a half million dollars. This up-to-date brewery, which is commodious and unusually well lighted, has two hundred eighty one thousand four hundred sixty-eight square feet of working space. For local delivery purposes, this concern has six auto trucks and twenty teams. The brewery is provided with ample shipping facilities, having railroad switches from both steam and electric lines at the doors of the brewery.



1 OFFICE BUILDING
2 ELECTRIC BUILDING

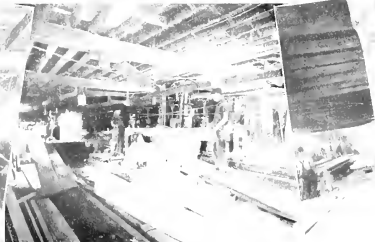


Fort Wayne Electric Works
of General Electric Company

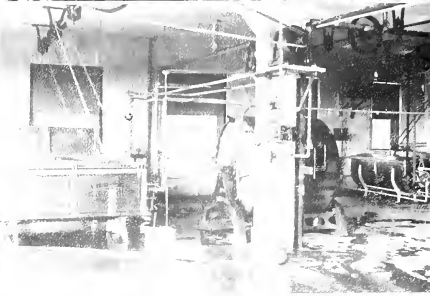
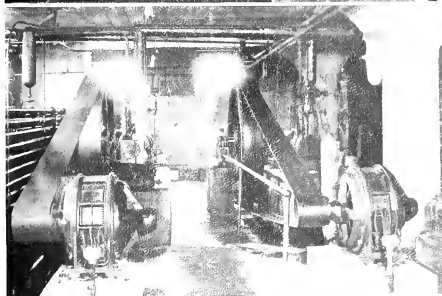
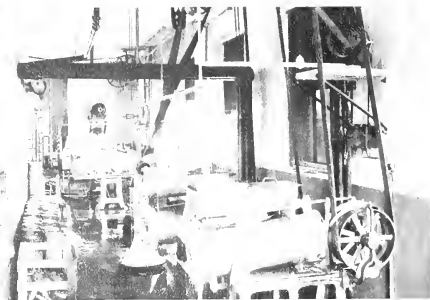
1 OFFICE BUILDING
2 ELECTRIC BUILDING



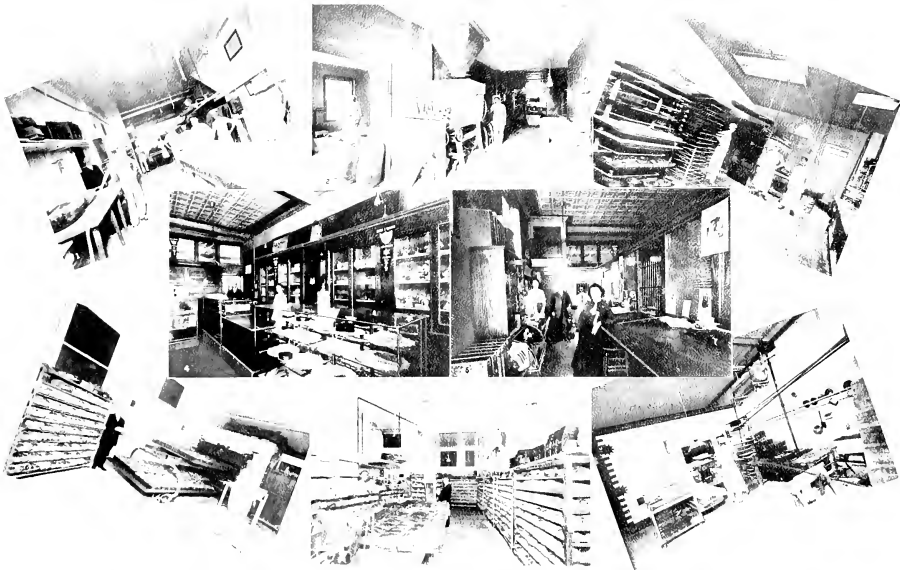
FORT WAYNE CORRUGATED PAPER COMPANY See page 108



HOFFMAN BROTHERS COMPANY (See page 112)



INTERIOR VIEWS OF THE MAUILE DAIRY COMPANY'S PLANT. (See page 98)



1. BREAD MOLDING ROOM

2. DOUGH MIXING ROOM

HEIMERS' STAR BAKERY (See page 112)

3. CAKE BAKING DEPARTMENT

4. SALES ROOM

5. OFFICE

6. DRAW PLATE OVEN ROOM

7. BREAD COOLING ROOM

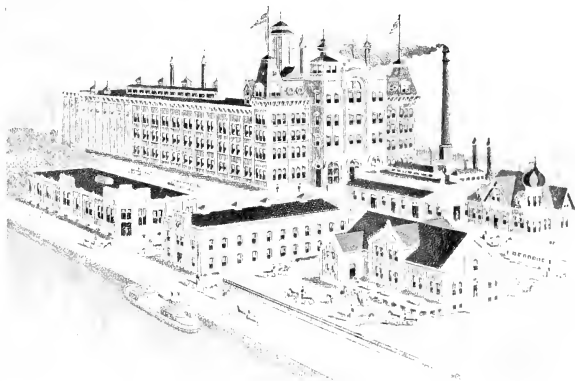
8. BIG CAKE OVENS



ONE of the largest establishments supplying the middle west with a high grade beer, is the C. L. Centivire Brewing Company. This concern was established in 1862. More than a half century of experience has brought the product of this company to a high degree of perfection. The Centivire Brewery is a thoroughly modern plant in every detail. The well equipped buildings have ample space and are admirably arranged. Great care and watchfulness are exercised that only the purest water is used and absolute cleanliness prevails throughout. None but the best grade of hops is used in this company's brew and its product is free from all contamination and adulteration. Centivire Beer is brewed by a German brewmaster who knows what should enter into good beer and what processes are necessary to get the full effects of the materials. Extreme care characterizes every step of the making of Centivire Beer. It means something when a firm starts out with the

ambition to supply an absolutely pure product means much to the firm, much to the commercial world and more still to the consumer. Some time ago, the United States Brewers' Association advocated the

Pure Food and Drink Bill by this resolution "We are anxious to have the sanitary officers do their duty in our case, as this is the shortest, surest way of counteracting the unfounded talk about adulteration. If any law can be passed to make the surveillance over food and drink any more stringent, this association will be found among its supporters." When The Pure Food Bill was before the United States Senate, in 1905 Senator McCumber found the Brewers' Association true to its word. He said, "I believe that we manufacture in this country the purest beers that are made on the face of the earth, and the fact that the Brewers' Association are all in favor of this bill is proof that they are satisfied they make a pure article." The brands are, "Centivire Special" "Centivire Ex. Pale" "Muenchener" "Special Export" "Nickel Plate Special."



C. L. CENTIVIRE BREWING COMPANY

Associations are all in favor of this bill is proof that they are satisfied they make a pure article." The brands are, "Centivire Special" "Centivire Ex. Pale" "Muenchener" "Special Export" "Nickel Plate Special."



FORT WAYNE DRUG COMPANY - C. T. PIDGEON MILLINERY COMPANY



THE Brown Trucking Company has been for the past twenty-eight years, one of Fort Wayne's most substantial and reliable concerns. The Company was established in 1885, since which time it has greatly enlarged its organization and increased its facilities. In 1898 the firm was incorporated with one hundred thousand dollars capital stock. The office is conveniently located at 125 West Columbin Street where there are also storage facilities. The modern equipment in use by the Brown Trucking Company consists, in part, of one motor truck and thirty-five teams. The firm also has the most modern derricks and devices for hoisting safes, pianos and other heavy furniture to upper stories. When pianos of great value are to be moved it is of great importance that the men handling them be not only cautious but competent to operate the devices with which they are moved or hoisted. The men employed by this concern are painstaking and thoroughly competent. Persons having valuable pianos or other heavy pieces of costly furniture to be moved may have every assurance of its safety when entrusted to the care of this firm. Fifty experienced men are employed who thoroughly understand this particular line of work. Large and especially arrang'd vans for moving household goods are also a part of the company's equipment. The large number of factories and jobbing houses, operated in Fort Wayne and the widely diversified lines of commodities made and handled together with the vast amount of raw materials receive-



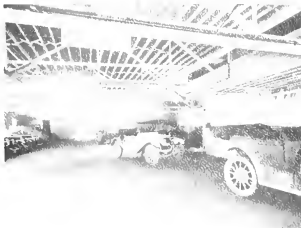
BROWN TRUCKING COMPANY

ed and shipped by the manufacturers, creates an immense bulk of cartage and the greater per cent of this business is handled by the Brown Trucking Company. As the city increased its number of business concerns this firm enlarged its facilities and force of men proportionately. A vast deal of transfer work is done between the various railroads that lead into Fort Wayne, which, in the last five years, has become a shipping point of much importance necessitating rapid movements between points. Starting in a small way, this concern has kept pace year by year with this commercial growth. The men in charge have ever been in close touch with modern conditions, and with the expansion of Fort Wayne's industrial growth have at all times considered expediency and effectiveness. The large army of men and teams employed attest to the fact that much money and facility additions have been expended in order that quick service and reliability should be the prime asset of this business. The large amount of patronage given this company with its corresponding great tonnage handled yearly shows conclusively that close and constant application to the wants of its customers has brought its own reward, year by year, by renewals of contracts from satisfied customers. The men who conduct the operation of this business are well known business men of Fort Wayne. The officers are, Walter A. Borgman, president, Christian F. Borgman, treasurer, August S. Borgman, secretary. These men are in constant touch with local conditions. They have ample storage facilities.

M

R. H. G. Raymond, distributor for high grade motor cars, has sales and display rooms at 718-20 Barr Street. This business had its beginning in a small way in the spring of

1911, in an old cement building on Lafayette Boulevard. Business increased so rapidly that the garage was removed to the commodious and well appointed quarters, in July, 1912. So great has been the demand for the cars handled by Mr. Raymond, that he has oversold his supply capacity by sixty per cent, for 1913. All cars sold by Mr. Raymond are machines of standard makes, the merits of which have been unquestionably proven. He is state representative for the Imperial Automobile and local distributor for the Paige-Detroit Motor Cars, the Waverley, the Kissel Cars and Waverley Commercial Cars. The Imperial Automobile, built in Jackson, Michigan, is constructed under the watchword "An honest car at an honest price." The builders are well satisfied that Imperial Cars



H. G. RAYMOND, CARPET

have been brought to an unchallenged mechanical perfection; that they embody all the essentials to safe, enjoyable motoring. Handsomely illustrated catalogues announce to the



purchase public the merits of the 1914 Imperials. The Paige 1914 model is a mechanical masterpiece in design, construction and equipment in its price field. Paige cars are designed and built by men who know the fundamental principles of mechanical construction, to the last detail. An elaborately beautiful year-book from the Waverley Electric Company of Indianapolis presents clear illustrations, full specifications and prices of eight models of the "Silent Waverley Electric." These cars are the acme of luxury supported by masterly construction. The Waverley Commercial Electrics are the most dependable, economical and efficient of all power wagons. It requires but a slight study of the "Kissel Kar" to prove that it is a worthy exponent of all that is best and most desirable in automobile construction.



AUBURN GARAGE



INTERIOR OF AUBURN GARAGE



THIS company, composed entirely of Fort Wayne business men, was organized and incorporated in 1912, and has a capital stock of fifteen thousand dollars. The firm handles a complete line of the Auburn Automobile Company's machines. This is the Auburn Automobile Company's fourteenth successful year manufacturing automobiles and it has never created an unsuccessful model. The firm's 1914 car is on the market and is a sensation in motor car values. The body design of this car constitutes the blended lines adopted by two famous European cars for 1914. Men were sent to study styles and in this car they offer the latest. Europe has always dictated motor car styles. America, usually two years afterward, has invariably followed. But in the Auburn's new 1914 model, is presented the accepted European vogue of today. This is one reason this car is 1914's startling motor car value. Many other costly features are included, chief of which is dependable and enduring service. At no extra cost, the new Auburn "10" is electrically self-crunked; it is electric lighted; it is also equipped with an electric horn. The Auburn electric self-crunking system spins the motor. That ends a motor car fault, that of revolving the motor too slowly to secure combustion. There have been big value cars that need extras to complete them. With the new Auburn "10" there is nothing one could buy to more completely equip it. The Auburn Auto Company of Fort Wayne is located at 124-128 Washington Boulevard West, where the beautiful new Auburn is on exhibit in its spacious and well appointed garage which is the largest in the city. This garage has a complete repair department for all makes of cars. Twelve experienced mechanics are employed in this department. In connection with the auto sales, this firm is the exclusive distributing agency for Knight tires for Allen County; also for the Brown inner tube which is the only pneumatic proof tube on the market not using any chemicals or artificial substance.



LINDENWOOD CEMETERY



LIN 1859 the association controlling Fort Wayne's most beautiful cemetery was organized. As a place of sepulcher, Lindenwood is most eminently fitting, enhanced as it is by nature's own beauty. The landscape gardening of the cemetery has been carried out



admirably. Most of the natural growth of woods has been undisturbed except for the making of roadways. The entrance to Lindenwood is conceded by many to be the most beautiful of any in this part of the country. Its park-like appearance gives one the feeling of security and peaceful rest. Lindenwood is open to all who wish to make it the burial place of their dead. Lots in this cemetery may be purchased for future use by a small cash payment and the balance in installments. Lots are platted in sizes to meet the demands of any family. In connection with the cemetery, there is a well appointed crematory. There is also a fine receiving vault. The articles of Association state that no profits can ever accrue to any of the corporators. They only ask a concurring in the plan to insure a perpetual improvement of the grounds dedicated to the public till the end of time.





NIEZER AND COMPANY - MAIN OFFICE AND COAL YARDS

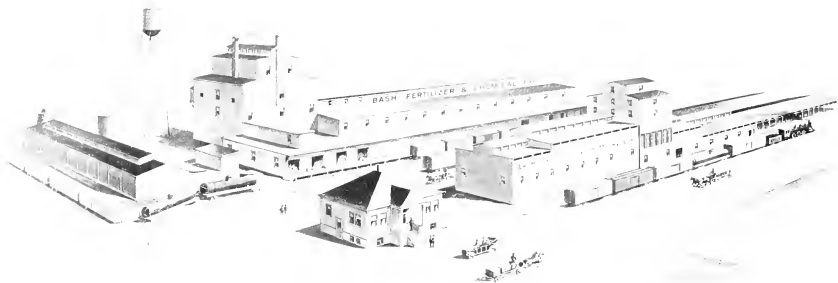
NIEZER and Company deal extensively in grain, hay, straw, seeds, wool, live stock and coal. The main office is at 1320 Hayden Street, with large coal yards adjacent. The firm's grain elevators are located at Convoy, O., and at Monroeville, Indiana, with a capacity of one hundred thousand bushels of grain. Twenty-eight experienced men are employed. All orders carefully executed. The officers of the company are George B. Niezer, president, Frank A. Kneel, vice president and Maurice C. Niezer, secretary and treasurer.



ELEVATOR AT MONROEVILLE, IND.



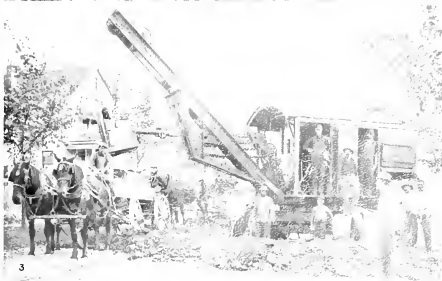
ELEVATOR AT CONVOY, OHIO



BASH FERTILIZER AND CHEMICAL COMPANY (See page 112)



THE Grace Construction Company, organized and incorporated in 1912 with fifty thousand dollars capitalization, is one of Fort Wayne's most important industries. The business consists of all kinds of paving. Since its inception the company has met with sure and well deserved success. The increase in business done for the past two years is shown by the company's books which state that in 1912, two hundred and forty thousand dollars worth of business was done and in the present year the contracts completed amount to about two hundred and seventy-five thousand dollars. The company's plant, which occupies about one and one-half acres of ground space, is adequately equipped with the latest improved models of machinery. Three hundred skilled workmen are employed, who are thoroughly experienced in this line of work. The monthly pay roll averages fifteen thousand dollars. One hundred thousand tons of raw material are used each year for completing the work. These materials are always selected with the utmost care and are given the most severe tests and thorough preparation possible to insure their fitness and stability and thus reduce deterioration to a minimum. The bricks, gravel, cement and other materials are of the best grades obtainable and no pains are spared in their treatment to conserve their durability under the severest use probable. The Board of Public Works of Fort Wayne has kept pace with the rapid growth of the city in the amount of new pavements bid and much of this recent work has been done by the Grace Construction Company. The visitor to the city remarks upon the extent of paved streets and wonders at the public spirit of a community which makes such public improvement possible. When Fort Wayne builds, it builds well, and this statement applies to the character of its permanent road making. The city of Fort Wayne has been fortunate in the choosing of a competent concern to build its pavements. Along this line, hundreds of thousands of dollars have been expended in the last few years and at this time Fort Wayne can take pride in being a well paved city. There is doubtless no other feature of a city that appeals more strongly to the outside observer than the appearance of a city's streets.



GRIST CONSIDERED COMPANY BRANT FORT, ILL.



THE D. M. STARS CO.—FOOD PRODUCTS

FORE WAYNE TESTING LABORATORY

THIS company was established and incorporated in 1908, with a capital stock of ten thousand dollars. The company includes departments of industrial chemistry, technical chemistry, mining and assaying and drug and food analysis. The firm is equipped to make fuel tests, showing the exact heat producing value of the coal, coke or fuel oil. The equipment includes machines for testing cement and asphalt. The company's staff includes a practical mining engineer who is qualified not only to make assays of mineral ore, but to furnish estimates and give advice of practical value to those contemplating the purchase of prospects or paying mines. The company tests water for drinking and for factory purposes, tests wine, beer, sugar, honey, butter, milk, cream, oils, paints, dyes, fats, fertilizers, lubricating oils, drugs, etc. The company is located in the Hofman Building, where prices will be given upon application. The officers are G. Max Hofman, president, Lothar Hofman, vice president, C. J. Schwehn, treasurer, and Eugene Troendle, secretary and manager.

PAUL E. WOLF BEDDING COMPANY

SINCE the year 1873, the Paul E. Wolf Bedding Company has been engaged in the manufacture of mattresses, awnings and tents. In 1910 the firm was incorporated with twenty-five thousand dollars capital stock. In addition to the other lines, the business consists of upholstering, carpet cleaning and feather renovating. The mattresses put out by this firm rank among the best on the market as to wearing qualities, comfort, materials used and workmanship. The awnings are made to measurements accurately taken and are easily adjustable. Upholstering of all kinds is done in a most satisfactory manner and at moderate rates. The workmen in this department are especially skillful and are experienced in this line of work. The firm carries a fine selection of tapestries, reps, velours and other fabrics so that upholstering may be done to harmonize with other furnishings or carry out certain color schemes. Through its forty years' experience, the firm has acquired the best methods for conducting its various departments. Twenty-five workmen of superior skill are employed.



FORT WAYNE FOUNDRY AND MACHINE COMPANY (See Page 1121)

THE GLOBE MILLS

ONE of the long established concerns which has entered substantially into making Fort Wayne an industrial centre, is the Globe Mills, which have been a prominent feature of the business life of the city for thirty-five years. This industry consists of milling, grinding spices, grinding and roasting coffee and grinding mustard. The firm conducts a wholesale and a retail department. The plant is modern in its equipment and is amply supplied with the latest improved machinery and apparatus of the newest type. Each process is carried on with great precaution and careful attention to details. The nine people employed have a thorough understanding of the work. Every connoisseur knows that flavor of coffee depends very largely upon the method employed in roasting it. The Globe Mills have succeeded in evolving a process of roasting that brings out the richest flavor in the coffee. Through long and valuable experience the buyer of this concern has acquainted himself with the most desirable coffee and spice markets and the brands chosen are unequalled.

FORT WAYNE ART GLASS CO.

THE Fort Wayne Art Glass Company occupies a distinctive position in the city's roster of manufacturers. The firm was established sixteen years ago and in 1908 was incorporated for five thousand dollars. The business, which is conveniently located at 317 East Columbia Street, employs ten people who bring training and experience to the work. Two thousand square feet of the plant are devoted to working space. Though not one of the largest industries of Fort Wayne, yet the importance of such a business must be felt in a city of active construction work and it is the only one of its kind located here. The demand for this firm's goods has greatly increased as the possibilities of the use of art glass in modern building have been recognized by the architect, the builder and the decorator. Art glass is widely used in the artistic finishing of the well designed home, church and public building. Many of the homes and buildings of this city contain beautiful examples of this firm's work. The designing of art glass work is the key note of its beauty and worth.



AMERICAN ROAD MACHINERY COMPANY

THIS concern was originally organized in 1892 as the Indiana Road Machine Company. In 1913 it was taken over by the American Road Machinery Company. The concern is incorporated for four million dollars. The Fort Wayne plant employs ninety expert workmen who receive in annual wages sixty thousand dollars. The plant occupies a ground space of two acres and devotes seventy-five thousand square feet to working space. The road building and rock crushing machinery constructed by this company is modern in design and made of the very best materials throughout. The list includes the Fort Wayne Steel Frame Rock Crusher, a portable crusher with elevator, revolving screens, portable stone bins, the National Reversible Road Machine, the Indiana Reversible Road Machine, the "Little Winner" Road Machine, the Indiana Reversible Road Roller, the Keystone Steel Street Sweeper, the Indiana Lever Road Drag, National Dump Wagon and National Elevating Grader,



WAYNE OIL TANK AND PUMP CO.

THE Wayne Oil Tank and Pump Company, among the larger plants of Fort Wayne, was founded twenty-six years ago and nineteen years later, in 1906, was incorporated for three hundred thousand dollars. The output of the concern consists of oil and gasoline storage and distributing systems. These modern devices are widely known and used extensively. The firm's plant is located at the intersection of Canal Street and the Nickel Plate Railroad. This location gives ample railroad facilities to the door of the factory and affords ease in obtaining raw material and in shipping the completed product without unnecessary handling. The plant is fully equipped, has ample space and keeps ahead of the demands of the business that it may at no time be found lacking. The company's officers, all well known men of Fort Wayne, are H. C. Berghoff, president, M. A. Mason, vice president, C. O. Griffin, secretary, R. L. Speer, treasurer and R. F. Diserens, general manager.

FOR nearly thirty-five years, the firm of Mossman, Yarnelle and Company have occupied a leading position among the wholesalers of the country of iron and steel, heavy hardware, and vehicle supplies. Fort Wayne has been put on the map with the wagon, carriage and automobile manufacturers of the country because of the location of this firm. Mossman, Yarnelle and Company has its representatives in every part of the United States. Its trade is with the blacksmith and wagon manufacturer, the foundry and machine shop, the buggy and carriage builder, and, keeping abreast of the times, with the greatest industry of the age, the automobile manufacturer. The firm carries large stocks of iron and steel.

RAPP AND ZOLLINGER ELECTRIC COMPANY

The Rapp and Zollinger Electric Company do all kinds of electrical repair work. A specialty is made of new and second hand motors, wiring, armature rewinding, field coils, installation of motors and machine work of all kinds. The business was established in 1910, since which time it has had a rapid and substantial growth. At present the out of town business extends over a radius of five hundred miles. Four expert mechanics are employed at the shop which is located at 451 East Columbia Street. The members of this firm have a familiar knowledge of all kinds of electrical machinery, and are in a position to fill all orders promptly and with complete satisfaction.

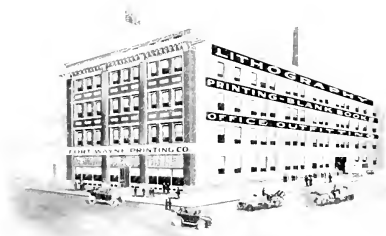
THE Deister Concentrator Company manufactures concentrating tables for every purpose of improved types. The company is located at the foot of Fairmount Place, and employs twenty-five men who are skilled in this particular line of work. The firm was organized and incorporated in May of the year 1906, and is capitalized at two hundred thousand dollars. Since its inception, the firm has met with pronounced success and there is a steadily increasing demand for its output. The officers of the company are: J. R. McCulloch, president; F. G. Coggin, first vice president; E. J. O'Connell, second vice president, and William H. Bensman, secretary, treasurer and manager.

AL HAZZARD CIGAR MANUFACTURER

The Cigar factory owned and operated by Mr. Al. Hazzard, forms one of the substantial and rapidly increasing industries of Fort Wayne. For twenty-one years, this factory has supplied a large trade extending to towns within a radius of sixty miles of Fort Wayne as well as a large city trade with an unending quality of cigars. Thirty-five skilled workers receiving thousands of dollars in yearly wages find employment in this factory. None but the choicest and most carefully selected tobaccos enter into the Hazzard brands of cigars. The "Univocs" a popular ten cent cigar, "Gold Seal" and "Novel," five cent grades are leading brands. Choice smoking tobaccos are also sold.



MOSSMAN, YARNELLE AND COMPANY BUILDING



FORT WAYNE PRINTING COMPANY

THE name of Fort Wayne is being carried afar, even into Africa by products from the Fort Wayne Printing Company. This concern has the best equipped plant in the state of Indiana engaged in general printing, lithographing and furnishing office supplies. The firm was organized and first incorporated in 1902. Nine years later, in 1911, it was reincorporated for one hundred fifty thousand dollars. The business requires one hundred eighty skilled employes to carry forward the work. These receive one hundred thousand dollars in yearly wages. Approximately, twenty-five hundred tons of raw material are annually used in turning out two thousand tons of the finished product, the value of which is three hundred twenty-five thousand dollars. The finely equipped plant affords forty-five thousand square feet of working space and is adequately supplied with the most modern types of machinery. Catalogs, system office forms, bank and county forms and supplies are included in the output.



HOME TELEPHONE & TELEGRAPH CO. MAIN OFFICE

THE Home Telephone and Telegraph Company was established and incorporated in 1896, with an authorized capital and bond issue of two hundred thousand dollars which has since been increased to nine hundred and seventy thousand dollars. Exchanges are maintained at Fort Wayne, Kendallville, Auburn and New Haven the general office being in Fort Wayne, Indiana. The Company owns one thousand miles of toll lines and has eleven thousand subscribers, nine thousand of whom are in Fort Wayne. The underground cable system is used throughout the business section and in part of the residence section in Fort Wayne. The company has over three hundred thousand feet of copper wire in service in the city and three hundred fifty thousand feet of cable. The average daily local calls in Fort Wayne number ninety thousand. The daily long distance messages average one thousand. The two modern buildings occupied by the Fort Wayne exchange are the property of the corporation.



EMRICH BAKING COMPANY

SIX years ago the Emrich Baking Company was established, since which time it has become one of Fort Wayne's largest baking concerns. The plant, which is thoroughly modern in its equipment in every department, is located at 1247 Maumee Avenue. The work rooms are well lighted and sanitary. All work is done under careful supervision and the most rigid inspection. Twenty-five experienced people are employed. All materials used in the baked goods of the Emrich Baking Company are of the purest and best quality. The ovens are of the latest improved designs and the kneaders, mixers and sifters are of recently approved models. "Emrich's New England Bread," and Sanitary Potato Bread," are special brands of bread which are very popular and are sold in enormous quantities daily. Rye bread of exceptional quality, fine cakes and cookies also, form a large part of the output. Seven delivery wagons are needed to take care of the rapidly increasing business of this enterprising concern.

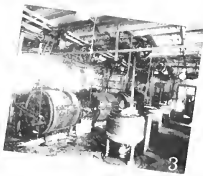
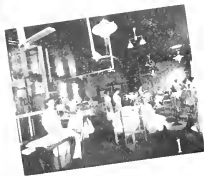


FURNAS ICE CREAM COMPANY

FURNAS Ice Cream has been known to Fort Wayne since 1909, but the rapid growth of the company's business suggests an appreciation and a public demand for not only a palatable, but also a pure and wholesome grade of goods. This fine plant is one of the best and most modernly equipped ice cream plants of the Middle West. The building, designed especially for the particular business, has cement floors, all modern improvement and is sanitary in every respect. All vats, containers and conveyors are thoroughly sterilized with steam twice daily and all cans are carefully treated before using. The leading flavors are prepared in the firm's factory by special formulas. The sweet cream is obtained from carefully inspected dairies of Central and Northern Indiana. Only the best raw materials enter into the company's production. It is made especially in ice cream for lodges, holidays or anniversaries of a community. The firm's office and factory are located at 614-615 E. State at 800-811.



2



3

BANNER LAUNDERING

FOR seventeen years the Banner Laundering Company has operated a first-class laundry in this city. A specialty is made of high grade work in every department. General laundering of personal work, family washings and hotel work comprise the main line. Beside the main office which is located at 425-431 East Columbia Street, one branch office is maintained in the city, at 113 Breckenridge Street, as well as twenty-five agencies. There are six agencies in adjacent towns. The plant which is modern in every particular affords a working space of seven thousand nine hundred sixty square feet. Sixty-five people are employed, each of whom is experienced and particularly skilled in his own line of work. The machinery installed in this firm's plant is of a lately improved type and designed for turning out perfect work. The partners in this business are Oscar C. Leggett, Adelaide V. Leggett and Alfred T. Bailey. The direct management of the concern is in charge of Mr. Bailey.



FORT WAYNE BUILDERS SUPPLY CO.

THE Fort Wayne Builders Supply Company manufactures everything in mill-work and are especially prepared to execute orders for interior trim according to Architect's details. They carry an extensive stock of lumber and building materials of all kinds. The company has grown more rapidly than any similar institution in this city. It was established in 1905, and nearly every year has witnessed an addition to its buildings or needed space. The capital stock has been increased twice within the eight years of its existence. The present year the capital was raised to one hundred and twenty-five thousand dollars, in order to expand still further. This will soon place it in a position to handle the constantly increasing patronage better than ever before. The plant and yards occupy two acres of ground, a sufficient space in which to store a large stock, enabling them at all times to meet demands. From thirty-five to forty people are given regular employment.



EUROPEAN SCHOOL OF MUSIC

THE European School of Music, organized in 1892, has entered upon the twenty-first season of its long and successful existence. Under the direction of George Bailhe, the School in the last two years has assembled without exception the strongest faculty of any institution in the Northern part of the State and one which compares favorably with the best Schools in Chicago and New York. Many of the members are graduates of the most famous European and American Conservatories, are pupils of noted masters and are further well equipped as instructors and virtuosi for the work of their departments. The remarkable growth of the institution is the best evidence that the work is satisfactory. Evidence that the institution is thorough and complete is seen in the fact that the institution now enrolls pupils from all over the State and from cities in surrounding States. All grades are taught in Piano, Violin, Voice, Cello, Theory, Public School Music, Harp, Wind Instruments, and Dunning System for beginners.



INTERIOR THE EMPRESS THEATRE

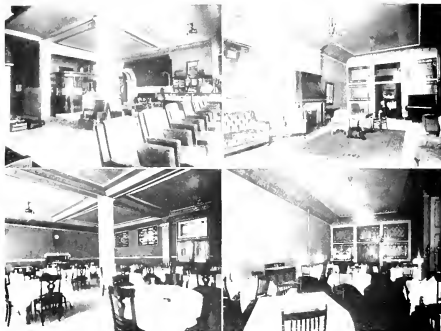
ONE of the leading places of amusement in Fort Wayne is the Empress Theater located at the corner of Wayne and Clinton Streets. This theater was opened about one year ago and is owned and controlled by a stock company and is under the management of Mr. Harry W. Crull. The building, including the furnishings, is valued at about eighty thousand dollars and has a seating capacity of thirteen hundred. This house presents high class vaudeville at an unvarying price of ten, twenty and thirty cents; the vaudeville attractions offered by Sullivan and Considine, part of an organization extending from coast to coast, playing what is termed "Road Shows," are presented at this theater. The policy of the management is to present at all times shows that are clean, wholesome and highly entertaining. An orchestra of carefully selected musicians is connected with the Empress. The ventilation is perfect; the acoustic properties are such that the entertainment may be enjoyed from any seat in the house.



AL HEIDELBERG
HOTEL AND
CAFÉ



A STAG hotel is a success in Fort Wayne. The Al Heidelberg Hotel answers every requirement of a stag hotel and answers it so well that it is one of the best patronized hotels in the city. The Al Heidelberg will accommodate guests in twenty-six rooms. Twenty-seven employees, courteous and experienced, wait on a large and satisfied trade. The hotel was established and incorporated in 1909, with a capital stock of fifty thousand dollars. It is admirably located at 905-911 Calhoun Street. Its location, easily accessible to the interurban and steam roads, has made it popular with the traveling man, as well as with the general public and has been a factor in its development and prosperity. The cafe, arranged in two connecting rooms, one open to both men and women, offers excellent service. An orchestra provides pleasing music each evening. Mr. Daniel Clemens, who has had wide experience in the hotel business, is manager. The plan is European. Fort Wayne is justly proud of the Al Heidelberg.



WAYNE HOTEL

THE Wayne Hotel is closely allied with the early history of Fort Wayne as a city, having been a favorite for twenty-six years. In 1911 it was incorporated as the Peters Hotel Company. The Wayne is located at 117-123 West Columbia Street and is under the management of Mr. J. C. Peters. With four floors containing every feature of the most up-to-date hostelry. The Wayne offers to its patrons every comfort possible to ask. A most comfortable lobby, dignified in simplicity and attractive decoration, ample writing rooms and a large banquet hall, modernly equipped. The tastefully appointed dining and grill room and the unexcelled cuisine have gained wide popularity. There are also a fine buffet and cafe. The admirably arranged banquet hall is in popular demand owing to the rare service given. Music rendered by a well chosen orchestra adds to the pleasure of the diners. One hundred finely furnished rooms, forty of which are provided with private baths, are supplied with every comfort.



IN 1908 the Cracker and Cake Department of the National Biscuit Company of which Mr. Myron Downing was Manager, were transferred to Chicago, and Mr. Downing, with his father-in-law, Wm. B. Donaldson, purchased the Bread Department, calling same "The Myron Downing Bakery."

Mr. Myron Downing died June 7, 1913, after an illness of eighteen months' duration, his half interest in the concern reverting to his



widow, Lewella Downing. The plant is strictly modern in every detail, and is equipped with all the very latest facilities known to the first class bakery. Only the highest grades of flour and other ingredients are used, and absolute cleanness is maintained throughout the light, well ventilated bakery. "The quality of the Bread, Rolls, and Coffee Cake manufactured cannot be surpassed." "Domestic" brand is the leading product.

BALTES HOTEL

The Baltes Hotel is one of Fort Wayne's prominent hostleries and is known to all travelers who make this city a part of their itinerary as being one of the most comfortable and modern hotels in the state of Indiana. The Baltes Hotel is located at the corner of Harrison and

West Berry Streets, near the center of the city, conveniently adjacent to the business district. The building is absolutely fire proof. Fifteen of the rooms have private baths and all of the others have running hot and cold water. There is also telephone service in every room. The house is conducted on the European plan at the rates of seventy-five cents, one dollar and one dollar and a half, a day. The dining room is spacious and attractive and the service excellent. Wm. H. Knapp, proprietor.



OFFICE AND LOBBY



DINING ROOM



FORT WAYNE HORSE AND MULE MARKET (See page 116)

BEERS-OFFUT CONSTRUCTION COMPANY

FORT WAYNE DAIRY COMPANY

ONE of the largest contracting firms operating in the state of Indiana is the Beers-Offut Construction Company. The company was organized in 1908 and in 1910 was incorporated for twenty-five thousand dollars. General contracting, particularly that of heavy construction work, comprises the firm's activities. Building in reinforced concrete, laying pavements, installing filtration plants, reservoirs, etc., form a large part of the work. The company has large resources and is in a position to give the largest orders prompt attention and fill them with the minimum of delay. With a large and thoroughly modern equipment, the company has taken some of the largest orders in the city and has executed them to the fullest satisfaction. The company occupies commodious offices on the second floor of the Hamilton Bank Block. The force of expert workmen engaged varies in number, usually between one hundred and five hundred men. Mr. D. N. Beers is the manager, and with Mr. H. C. Offut, the vice president, possesses a very high order of technical and executive ability.

THIS company does an annual business of \$250,000.00, its territory covering this city and a radius of one hundred miles. It was established in 1908, with Charles McCulloch as its president, and William Klitke, secretary and treasurer. The products consist of milk, butter and ice cream, and employment is given to fifty people. Over 10,000 square feet of floor space is occupied by the Fort Wayne plant, and a branch operated in Hammond, Indiana.

F. G. GAUNT MANUFACTURING COMPANY

For seven years the F. G. Gaunt Manufacturing Company has been engaged in roll corrugating, manufacturing flour and feed mill machinery, all kinds of blending machinery for bakeries, self-rising flour, chemicals, fertilizer plants, poultry, molasses and mixed feed plants. Special attention and study has been concentrated in these lines, resulting in a high degree of perfection. Each year since its beginning the business has shown a rapidly increasing demand.



3

1 C. H. PROJECT COMPANY
3 FRED ROBERT PACKING CO., HOME OF GOVERNMENT C-SPECTED MEATS

2 FORT WAYNE DAIRY COMPANY
1 F. G. GAUNTT MANUFACTURING COMPANY

OUTDOOR publicity in recent years has become a part and parcel of the advertising campaign, of nearly every important manufactured article. The national advertiser has long recognized posters as an essential medium. What originated among national advertisers has gradually found its way to the smallest struggling retailer and today there is not a line of business that has not its own effective posters. The fact that posting has been found to be a strong advertising medium has forced men of means into the business and with their entrance into the game the whole posting situation has been revolutionized and today line steel construction is appearing everywhere, and the service rendered the advertiser has been made doubly effective.

Fort Wayne today, on the authority of national advertisers boasts of the finest bill posting plant in the state of Indiana. Space is sought for by national advertisers six months to one year in advance, largely because of the good service rendered, and also because Fort Wayne for its size is considered the best field in the Middle West.

FORT WAYNE BOX COMPANY

The Fort Wayne Box Company is one of the best known institutions engaged in the manufacture of paper boxes in the middle West. In the "Set Up" boxes they can furnish everything in drug boxes, Candy boxes, shoe boxes, shelf boxes and mailing tubes. They also manufacture folding cartons of every description, from the plain shell to a fancy carton printed up in five colors. Their ability to handle orders requiring original designing has brought them into prominence in this line of work.

FORT WAYNE ENGINEERING & MFG. CO.

Fort Wayne Engineering and Manufacturing Company, Incorporated, Pumping machinery and complete water supply systems comprise the products of this concern. The company was incorporated in 1908 for three hundred thousand dollars. Its plant has a working area of twenty-three thousand square feet and employs seventy five people in the factory and an office force of twelve. The officers are Henry C. Paul, president, John Astron, vice president, and chief engineer and James H. Haberly, secretary and treasurer.

THE process of dry cleaning, a comparatively modern innovation has proven a decided boon to people in every profession and in every business. Many garments, through the dry cleaning process can be made as good as when new, that would otherwise have to be discarded. This is true also of draperies, curtains and many household furnishings. At 229 East Main Street, Mr. Gustave Schubert conducts a first class dyeing and dry cleaning establishment. Dry cleaning of every description as well as fancy dyeing are done successfully. Latest modern equipment has been installed and, with twenty-five skilled and experienced assistants, the work done by this concern cannot be improved upon by the best equipped plants in our largest cities. A specialty is made of ladies' clothing of all kinds. The Schubert dry cleaning process used does not shrink or injure the finest fabrics and it is only way way to successfully clean garments of delicate texture. The reputation built up by this concern in cleaning and pressing of men's and women's garments is envied by its competitors. Prompt delivery service, by motors.

HORTON MANUFACTURING CO.

The Horton Manufacturing Company, which was organized in 1871 and incorporated in 1883 for fifty thousand dollars, manufactures washing machines. Fifty competent men are employed at the plant which occupies a ground space of two and one half acres and turns out two hundred thousand dollars worth of products yearly. The Horton washing machines have been widely used for forty-two years and are considered standard. The line consists of electric machines, water motor machines and various hand driven machines.

METER-WIESE COMPANY

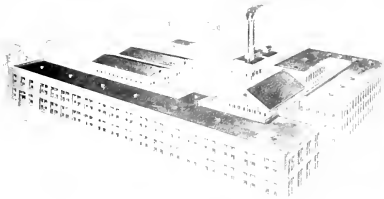
The firm of Meter-Wiese Company has contributed a very large share in its own particulars line in the building activities of Fort Wayne. The Company which was established in 1896, makes a specialty of structural and ornamental iron work. Eight hundred tons of raw material are consumed yearly, while the finished products represent a value of eighty thousand dollars. Twenty-seven skilled mechanics are employed to whom is paid an annual sum of \$20,000.00. The shop is amply supplied with improved machinery.



1



2



3



1. FORT WAYNE BOX COMPANY
 2. FORT WAYNE ENGINEERING AND MFG. COMPANY

2. THE W. W. KEENE COMPANY
 1. THE GEORGE MANN COALING COMPANY

TROY LAUNDRY

THE Troy Laundry is one of the pioneer laundries of Fort Wayne, having been established thirty-seven years ago, in 1876. In 1911 the concern was incorporated. The Troy Laundry is conveniently located at 308-314 Pearl Street where seventy experienced people are employed. Mr. F. L. Jones and sons make up the members of this firm, of which Mr. Jones is manager. This thoroughly modern laundry is supplied throughout with special machinery of the latest improved type. The building of commodious proportions is suitably arranged well lighted throughout and has ample working space. The laundry is also supplied with a superior soft water plant and has the only white sulphur wells in the city. The use of injurious chemicals is not permitted in the cleansing process. The management takes special care that all details of the work are thoroughly inspected, thus assuring satisfactory results. Long and successful experience has proven conclusively that careful attention to the minutest details spells success in a very great degree. Year by year the business done by the Troy Laundry has shown a marked increase.

PERRINE-ARMSTRONG COMPANY

About fifteen years ago, the Perrine-Armstrong Company was organized, and in 1905 it was re-incorporated and its capital stock increased from sixty thousand dollars to one hundred twenty thousand dollars. The firm operates a mill for turning out hard wood lumber. The plant occupies a ground space of nine and one half acres and employs about seventy-five men who are skilled mill workers. The mill which is run by electricity is modernly equipped throughout and adequately supplied with the most recently devised machinery.

THE CONDENSING COMPANY

This company designs and manufactures special milk condensing machinery, sterilizers and shakers. Also, fire escapes, shutters, iron stairs, doors, sidewalk lights and grating. In addition, the firm does all kinds of structural and ornamental iron work. The company was established in 1907 and in 1908 was incorporated for fifteen thousand dollars. The plant, which is modern and fully equipped, is located at the intersection of Winter Street and the Wabash Rail Road. Forty-five expert workmen are employed.

FORT WAYNE COAL COMPANY

THE Fort Wayne Coal Company has its office at 602 Fulton Street and deals in coal at retail. The firm was organized and incorporated in 1903, since which time it has built up a large and growing business. It has a capital of twenty thousand dollars. Twelve men are needed to take care of the increasing number of orders. Prompt delivery service to all parts of the city is assured at all times. Service to the satisfaction of its patrons has been a prime feature in the company's business and satisfied patrons are regular patrons. The yards are conveniently located and through a knowledge of the local demands made upon it, the firm is in a position to fill all orders promptly. The rapid growth of the business proves public appreciation of the firm's knowledge of coal values and the character of the administrative and delivery system. There is a vast difference between the grades of coal in burning and heating power. Every variety of coal handled is the best and its customers will be gratified with the quality and price. The officers are P. F. Dixon, president, H. G. Kegan, vice president, A. S. Coverdale, secretary, and Charles E. Crall, treasurer.

FORT WAYNE BRICK COMPANY

Among the industries which play a vital part in the welfare of the community is the Fort Wayne Brick Company which has been in business ten years. The company is capitalized for one hundred thousand dollars. The yard comprises three acres of land suited to its purpose, where sixty men are employed. Thirty thousand dollars are paid in annual wages. Sixty thousand tons of clay are used yearly in making fifty thousand tons of bricks which represent a value of seventy-five thousand dollars.

THE CONSUMERS ICE COMPANY

The Consumers Ice Company is one of the largest manufacturers of ice in the city. The firm was incorporated in 1901 with a capital stock of twenty-five thousand dollars. One hundred fifty tons daily represent the output. Fifty experienced people are employed, who receive thirty-one thousand dollars in annual wages. The company's plant is modern in every particular. The firm also handles coal. The officers are Charles W. Donson, pres., Fred O. Eward, vice pres. and E. D. Eward, secy., treas. and genl. manager.



1



2



3



4

1 - PERRINE-ARMSTRONG CO
3 - THE ENGINEERING CO

2 - FORT WALKER CO
4 - CONSUMERS CO

THE Ginn Printing Company, whose finely equipped plant is located in the Daily News Building, 709 Clinton Street, is widely known for its unexcelled work. The firm was established here five years ago, during which time it has gained an enviable reputation. Two years ago the business was incorporated. The Ginn Printing Company do high grade color work and job printing. A specialty is made of designing, embossing, multiple color work, etc. Platen presses are used exclusively by this firm and the entire equipment is of the most recent invention. From seven to ten expert workmen are employed, each particularly skillful in his department. Every progressive business man recognizes the fact that classy printing matter, executed with taste and good workmanship, is a potent factor in gaining the recognition he seeks. Advertising literature illy printed carries with it a bad impression and does more harm than good. Many of the most up-to-date business men of Fort Wayne, as well as those of surrounding towns, are putting their publicity printing in the hands of the Ginn Printing Company, the "Snappy Printers."

EMERALD BOX COMPANY

This concern makes cigar boxes and small wooden boxes. Each year three hundred and sixty thousand feet of lumber are used in turning out two hundred fifty thousand boxes, one fourth of which is shipped to outside territory. The factory, is located at 1026-1032 Broadway, employs fourteen trained people and has a working space of five thousand square feet. The business was founded in 1876 but was reorganized and incorporated in 1905. Mr. John P. Rabus is the manager and conducts the business along progressive lines.

H. H. DOSWELL CEMENT BURIAL VAULTS

The automatic sealing, water expelling, reinforced cement burial vault is the only burial vault of its kind ever invented. These vaults are manufactured by Mr. H. H. Doswell at 1821 Howell Street. The concern was established in 1910. The old custom of using the wooden rough box for the interment of the dead, is rapidly giving way to the safe and secure method by use of the cement burial vault, and these special vaults are meeting a long sought for need in providing absolute protection to the casket from any contact with water.

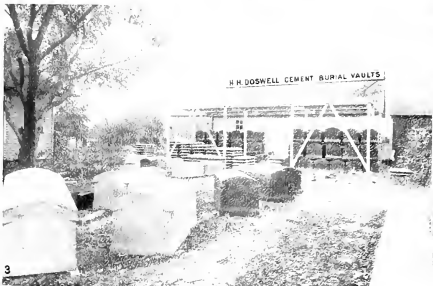
FOR twenty years the Miner Studio, located at 121 West Wayne Street, has been widely known for the excellency of the work done there. A special feature is the fine portrait work, including a large variety of photo work, enlargements and color work. Out door and interior views of a superior grade are furnished as well as every kind of photos for catalogues and other commercial purposes, including photos of machinery, furniture, etc. Copying is also a part of the work. Special cameras and lenses are used for the several kinds of work and every order, whether large or small, receives the most careful attention and skillful execution. The Miner Studio is under the management of Miss Stella Miner whose wide experience and progressive methods have brought continued success to the business. Mr. John D. Albrecht is the efficient operator and is an artist as well as a photographer. Mr. Albrecht makes a continuous study of his work and keeps abreast of the times in all that is new in photography, both in methods and materials. Photographs signed "Miner" compare favorably with those from our larger cities.

E. M. BALTES AND COMPANY

Selling builders' supplies constitutes the business of E. M. Baltes and Company. The firm makes a specialty of face brick, best wall board, plaster board, Whiteacre Hollow Fire Clay Block and Tile. All materials handled by this company are of the best quality the market offers. The firm was established over a half century ago, in 1861 and is located at 312 Harrison Street where fifteen capable men are employed. The company consists of E. M. Baltes, M. Baltes and Theodore C. Schwier the latter of whom is manager.

ADAMS & TAYLOR MACHINE COMPANY

This company conducts a general machine and repair shop at 1113-1115 Clay Street. The company was organized eight years ago and consists of Messrs. Walter W. Adams, Robert L. Taylor and Henry William Meyer. The firm's shop is well lighted and amply supplied with modern equipment for turning out rapid and accurate work. A specialty is made in building machinery for handle factories, bending factories and for brick and tile yards. The company also builds gas engines and does automobile work.



1 EMPIRE BOX CO
3 H. H. DOSWELL

2 F. M. BULLOCK
4 ADAMS AND TAYLOR MACHINE CO.

ARCHITECTURE is one of the principal features to be considered in the construction of any building or residence. Consistent design, attractive appearance and right construction are almost impossible without the advantages of this art. Beautifully designed homes, though modest in cost, go far in making up the attractive features of a city. The same thing is true in regard to business houses, factory and public buildings. Instead of the unsightly factory structures of years ago, the modern business institution is conducted in well planned edifices that, under the supervision of efficient architects, have been made possible. Mr. John M. E. Riedel, since 1889 has planned many of the important buildings in Fort Wayne. Among them are the Empress Theater, Wayne Hotel, Centlivre Hotel, St. Paul's School, Concordia School, Concordia College, Engine Houses Nos. 7 and 8, South Wayne School, Lyric Theatre and Horace Mariotte's Emporium; residence for Dr. H. A. Duenling, Al Riegel, H. Beverforden, P. Nussbaum and many others. Mr. Riedel's office is located in the Schmitz Building.

MAUMEE DAIRY COMPANY

The Maumee Dairy Company maintains the most modern plant of its kind in Indiana. It operates its own ice plant in connection with the complete dairy, creamery, and ice cream plant. The company specializes in all dairy products. The plant consumes two thousand five hundred tons of raw material yearly and its annual output represents two hundred seventy five thousand dollars. In 1898 the company was organized as the Collins Ice Cream Company and was reorganized in 1912 as the Maumee Dairy Company.

WAYNE TOBACCO COMPANY

The Wayne Tobacco Company is the largest wholesale tobacco concern in northern Indiana. In 1908 the firm was established and in 1909, was incorporated. The business is centrally located at 119 East Washington Street. Owing to their modern methods of transacting business the company has made rapid strides during the five years it has been in business. Besides dealing in cigars and tobacco, the company handles a complete assortment of pipes and kindred lines. Mr. Albert H. Bunck, a native of Fort Wayne, is president.

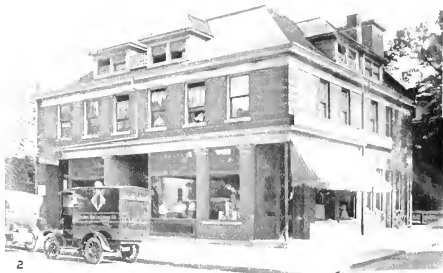
THE Fort Wayne Mercantile Accident Association is a strictly mutual association, not a company for personal profit. For this reason this company can give insurance for which most companies charge twenty-five dollars a year, for only ten dollars a year. Policy holders are assessed only for enough to pay losses and carry on the business. There are no high salaried officers. The stockholders are the policy holders. Only the safest risks are accepted. Commercial travelers, business and professional men and those whose duties are no more hazardous, comprise the policy holders. For total disability, twenty-five dollars a week are paid, not to exceed one year; for partial disability, ten dollars a week, not to exceed five weeks; for death, of a sum equal to the amount collected from an assessment of two dollars upon each member not exceeding \$5,000.00. This is the safest accident insurance for the least money, with the promptest settlement in addition. The company was organized and incorporated in 1892. The principal offices occupy suite 400 of the Peoples Trust and Savings Company's Building.

COONY BAYER CIGAR COMPANY

This concern, of which Mr. Coony Bayer is president, began the manufacture of cigars twenty-two years ago. In 1901 the business was incorporated. So popular have been the brands that almost 5,000,000 cigars are made annually, representing a value of one hundred thirty-five thousand dollars. Among the special brands are "Coony's Little Havana," at five cents; "Lady Wayne," ten cents and "La Rienta," ten cents. Eighty people are employed who receive sixty thousand dollars in yearly wages.

FRANK GIEBER'S BOILER WORKS

Since 1897, this concern has been engaged in manufacturing boilers, feed water heaters, filters and water generators. The output also includes sheet iron work of all descriptions, structural, plain and ornamental iron work, iron doors and shutters, sidewalk lights and gratings. Repairing is done in all these branches. The firm is capitalized for twenty-five thousand dollars and employs thirty skilled mechanics who receive annually fifteen thousand dollars. The well equipped plant occupies one half acre of ground.



1 MAUMEL BROS CO
2 WAYNE BROS CO



3 WANN CARRIAGE & BROS WORKS
4 WANN CARRIAGE & BROS WORKS

THE Jefferson Theatre, located at 116-118 West Jefferson Street, is the largest and safest theatre in the State, devoted to motion pictures. The building, having a capacity of one thousand one hundred twenty-eight, presents a most attractive appearance, has thorough ventilation, mirror screens and is furnished with modern equipment. The pictures displayed in this house are uniformly high class. The management is constantly seeking the best class of films obtainable and secures many reels, the subjects of which are taken from the field of drama of real worth, from standard literature and valuable historical events. The public is growing more and more in favor of the pictures that carry an element of refinement and education as well as entertainment. The increase in the business of the Jefferson since its opening in February of the present year, is most gratifying to its owners and management and is a proof that the higher class of amusement is growing in popularity. Mr. Walter L. Hill is the manager. The officers of the company who own the Jefferson are well known business men. A rest room is being added for ladies.

AUTO SUPPLY COMPANY

The Auto Supply Company, located at 122 West Washington Boulevard, deals at wholesale and retail in automobile supplies. The stock consists of a full and complete line of the latest improved automobile accessories. The display rooms are admirably arranged for showing these goods and have every facility for handling large orders. From the time the firm established its business here in March of the present year, it has enjoyed a rapid growth. The company is capitalized for twenty thousand dollars.

WILLIAM KAMMIGHOFF COMPANY

Selling coal at wholesale and retail is the business of this company which is located advantageously at the intersection of the Lake Shore and Michigan Southern Railroad, and Wells Street. The firm, which was established in 1908 and incorporated in 1910, consists of two partners, August J. Lassus and Henrietta Lassus, the former of whom is manager. Eighteen men are employed. Each year the firm has met with a steady increase in the volume of its business. Deliveries are made to all parts of the city.

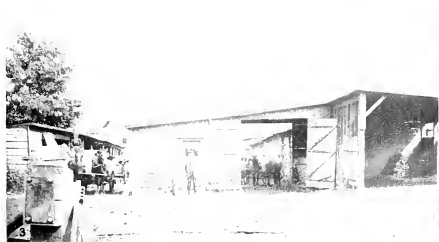
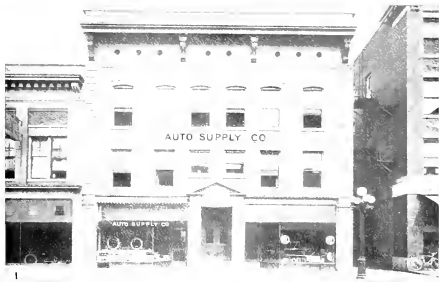
THIS partnership was formed in 1893 and consists of Messrs. William J. Lennart and F. William Ortleb. During twenty years, the business has grown to considerable proportions. The office is at 819 Calhoun Street where an extensive list of different kinds of property is to be seen. Important local real estate deals have been consummated through this firm in business and residence properties, forming an important factor in the growth and development of Fort Wayne. In the real estate business, Fort Wayne owes its activity to a few good firms whose integrity and substantiality, together with the ability to foresee the future possibilities of Fort Wayne, has made the valuable conditions of the city's property today. This firm does not believe in boom methods of any description, the outlook upon valuations being influenced only by what can be seen in actual expansion in growth, that being conservatively, the proper and only basis upon which to place intrinsic worth. In connection with the real estate business, Lennart and Ortleb represent some of the best known insurance companies.

DRAGE-HARRIS COMPANY—722-724 BARR STREET

Five years ago this firm was established by Mr. F. A. Drage who is still manager of the company. In 1912 the company was incorporated for ten thousand dollars. A. H. Kiel and D. H. Harris are the other members of the firm. The concern deals exclusively in motor trucks for which there is an increasing demand. Firms in practically every line of business are adding the motor trucks to their equipment and discarding the horse drawn wagons. This company also does a general trucking business and furnishes busses for parties.

TROY DRY CLEANING COMPANY

The Troy Dry Cleaning Company was established in 1910 and one year later was incorporated. The business is located at 1812 Calhoun Street and is under the supervision of Mr. D. V. Jones. Dry cleaning of every description is satisfactorily done, the French process being used. Repairing and dyeing are also a part of the business. The firm has recently installed all new equipment complete in every detail. The latest improved devices, especially constructed for superior service have been placed in use.



1 AUTO SUPPLY CO
 3 WM. K. SMITH CO. CO.

2 THE DRAGE BARRIS CO.
 4 TROY DRY CLEANING CO.

HOF BRAU CAFE

THE Hof Brau Cafe was opened in 1906, by Mr. H. Wiebke, manager. It is centrally located at the corner of Calhoun and Columbia Streets. This cafe was patterned after the famous Hof Brau of Munich, an ancient eating and drinking house of the Eighteenth Century and of which there are but three other counterparts in this country. The aim of the management is to extend the best service and hospitality at a popular price. A specialty is made of sea foods, game, steaks and special luncheons. The Hof Brau is in touch with the best markets of America, for its supply of meats and delicacies. Its cellars contain at all times the choicest of everything. The cuisine is supplied with the finest equipment obtainable and everything in connection with it is immaculate and sanitary in all details of operation. For the use of the bar and the dining tables, there is a special cellar set aside for the storage of wines of choicest vintages, liquors that are bonded and guaranteed by the United States government, beers and ales, both imported and domestic, draught or bottle. Imported and domestic cigars are sold.

NATIONAL MILL SUPPLY COMPANY

The National Mill Supply Company, owns and operates the largest wholesale factory and plumbing supply house in Indiana. Since its inception in 1905 when it was incorporated for one hundred thousand dollars, it has increased steadily and now occupies entirely its own fine fire proof building at 209-211 East Columbia Street. Twenty-one capable men are employed. The output consists of engines, boilers, belting, hose, oil, contractors', plumbers', mill, mining and factory supplies; shafting and transmission equipment.

HEIT-MILLER-LAN COMPANY

For thirty-seven years, the Heit-Miller-Lan Company has been supplying Fort Wayne and extensive outside territory with fine confections. The company was incorporated for fifty thousand dollars and is located at 113-115-117 East Jefferson Street where about one hundred and fifty people are employed. The factory, which is amply supplied with modern equipment, has forty-eight thousand, two hundred and fifty square feet of working space. The firm's specialty is the famous He-Mi-La' brand of confections.

HOTEL CENTLVRE

HOTEL Centlvre, located at 118-120 Baker Street, is in the immediate vicinity of the main railroad depots of the city. It was incorporated two years ago by E. R. and R. L. Carr, the former of whom is manager. Its seventy-five rooms, twenty-five of which have private baths, are finely furnished, equipped with steam heat, electric lights, telephones and with good ventilation throughout. The building, constructed of reinforced concrete, is fire proof. The Centlvre is conducted on the European plan with rates at one dollar and one dollar and a half per day. The twenty-five employes of this house are competent and uniformly courteous. The convenient location, together with the efficient management, have gained for the Centlvre a large patronage. There is a well appointed cafe which is popular with the guests owing to the excellency of the food, good service and moderate rates. This purveys strongly to the patronage of the traveling salesman and has suitable sample rooms for their use. The environment, convenience and comfort of the Centlvre make it a desirable place to stay while in Fort Wayne.

C. J. UMER UNDERTAKING AND LIVERY

The livery service furnished by Mr. C. J. Umer is in every way all that a high class patronage could desire. The livery business was opened in 1892 and fourteen years later, undertaking was added. The business is located at 316-318 East Main Street where five men are employed, who are uniformly courteous and competent. The barn equipment includes both good horses and stylish carriages, which enables Mr. Umer to provide fine turn-outs for almost any occasion. Prompt service both day and night may be had.

FRED LAMBERT REAL ESTATE

During the four years Mr. Fred Lambert has been engaged in the real estate business, he has built up a large patronage and gained the esteem and confidence of his associates and clients. A large list of desirable property, for sale or trade, can always be found at Mr. Lambert's office and his earnest endeavor is to supply all clients with their desires and institute satisfactory results. The well appointed office occupies rooms 320-321 of the Shoaff Building where all inquiries will receive careful consideration.



1 NATIONAL MILL SUPPLY COMPANY
2 C. J. FEMER, UNDERTAKING AND LIVERY



4



3 BEET-MILLERS COMPANY
4 LAMBERS DRUG

CHARLES W. ORR

GENERAL AGENT AETNA LIFE INSURANCE COMPANY OF HARTFORD, CONN.

THE Aetna Life Insurance Company of Hartford, Conn., is the second oldest life insurance company in the United States, having been chartered in 1820, following the oldest company, The Presbyterian Ministers, founded in 1759. The Aetna has paid policyholders the sum of \$233,131,650. On January 1, 1913, the company's assets amounted to \$110,523,775. This company was a pioneer in the practice of lending money to Indiana farmers, as well as to those of the Middle West, thus helping to develop the country, it now having more than \$8,000,000.00 invested in the State of Indiana, which represents about 8800 of investments to each \$1000 insurance in force in Indiana. The Aetna has always been a pioneer in the Life Insurance business, having years ago voluntarily introduced numerous policy features favorable to policyholders, that competition now demands of all companies. The Aetna's Indiana general agency is located at 132 East Berry Street, with Mr. Charles W. Orr as Manager.

CITY AND SUBURBAN BUILDING COMPANY

The City and Suburban Building Company through its reasonable plans, has made it possible for many people of moderate circumstances to own homes in the most desirable parts of the city. The firm still has many of these beautiful homes for sale. The company was organized in 1905 and has a paid up capital of one hundred sixty thousand dollars. The offices occupy rooms 205-9 Shoaff Building. Mr. W. H. Scheiman is vice president and manager. P. J. Archer president, R. L. Magee secretary, W. E. Doud treasurer.

GEO. F. TRIER'S MINUET DANCING SCHOOL

For twenty years Mr. Geo. F. Trier of Trier's Minuet Dancing School (Mulqueen's) has been teaching the old as well as young people of Fort Wayne correct dancing and deportment. From its inception this institution, by virtue of its high standards and competent instruction, has attracted the best class of pupils and each succeeding year its classes have increased in numbers. The school is now conducted in a fine, new building, with modern appointments, at 421 East Washington Blvd. George F. Trier is manager and conductor.

RANDALL HOTEL

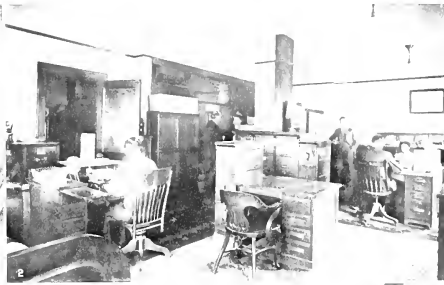
LOCATED at the corner of Harrison and Columbia Streets, adjacent to the business centre of the city, the Randall Hotel is one of Fort Wayne's oldest and best known hosteleries. The house was opened twenty-three years ago and is conducted on the American plan at two dollars a day and up and on the European plan at seventy-five cents, one dollar and one dollar and a half a day. There are one hundred nicely furnished rooms, each equipped with running water, telephone, steam heat and electric lights. The house has won a favorable reputation by reason of its excellent table and dining room service. Perfect cleanliness prevails throughout. Mr. Perry Randall, who is the popular manager of this hotel, has had wide and valuable experience in this line of business, and has a large acquaintance with the traveling public. The thirty-two employes are uniformly courteous and attentive to the comfort of the house guests. It is the desire of Mr. Randall to make the public feel that there is always a hospitable welcome at the Randall and that it is his purpose to offer the best service possible at moderate prices.

C. B. FITCH—INSURANCE

A general line of insurance is the business of Mr. C. B. Fitch, who has his office in room 213 of the Shoaff Building. Life, fire, accident, health, liability, plate glass, steam boiler, burglary, use and occupancy, rent, tornado, credit indemnity, surety bonds, and every form of automobile insurance are among the lines represented by Mr. Fitch. Mr. Fitch has been in the insurance business for the past twenty-two years and is thoroughly qualified to render dependable service. Four able assistants are employed in this office.

FORT WAYNE TRUNK AND LEATHER COMPANY

The Fort Wayne Trunk and Leather Company, located at 924 Calhoun Street, in the Schmitz Block, manufactures and sells high grade trunks, suitcases and traveling bags. A full line of leather goods and related sundries are handled. The sales and display rooms are admirably arranged and fully equipped for handling the complete stock. Goods are sold both at wholesale and retail. The officers are O. J. Keller, president, E. S. Raymond, secretary and treasurer and O. J. Keller, Jr., manager.



1 OFFICE OF CHAS. W. ORR INSURANCE
3 TIER'S MARKET DANCING ACADEMY

2 OFFICE OF C. B. FITCH INSURANCE
4 FORT WAYNE TRUNK AND LEATHER CO.

MARSHALL S. Mahurin and Guy M. Mahurin comprise this firm of architects whose well appointed office occupies rooms 13-16 of the Swinney Block. Since the business was established here six years ago the firm has designed some of the city's most attractive buildings and residences—work that reflects credit upon the designers and that adds materially to the appearance of the city. Both members of the firm have a comprehensive knowledge of every department of architecture and are eminently qualified in this science. Among the buildings in Fort Wayne designed by these architects are the Scottish Rite Cathedral, one of the handsomest buildings in the state, the Fort Wayne Market Way, G. E. Bursley Co.'s wholesale grocery warehouse, St. Patrick's Lyceum, Lincoln Life Building, the Rudisill School on Spy Run Avenue, Sherman White and Company's Cold Storage Warehouse and residences for A. Z. Polhannus, S. B. Bechtel, James Shields, Mrs. Ed. Seidel, C. A. Dunkelberg and many others. All of the work executed by this firm is characterized by its adaptability, consistent outline and proportion and fine construction.

JOHN F. WING—ARCHITECT

Many of the more attractive buildings and residences of Fort Wayne are the designs of Mr. J. F. Wing, an architect who has been in business here for twenty-two years. Among the buildings and homes planned by Mr. Wing are the City Hall, State School for Feeble Minded Youth, St. Pauls Church, the J. H. Bass residence and many other local buildings. The Port Clinton Court House, Knox County Court House, Greenfield County Court House and about one hundred school buildings are all his work.

OLIVER S. JONES—DECORATING, ETC.

At the present time more thought is given to the correct decoration of homes and of public buildings than ever before. For sixteen years, Mr. Oliver S. Jones has been engaged in interior decorating and hard wood finishing. He is located at 120 East Lieth Street and employs forty capable men. Mr. Jones makes a close study of his work. Two of the most notable examples of his work of local interest are the interior wood work of the Scottish Rite Cathedral and the decorating of the Anthony Hotel.

MR. Henry W. Meyer has been closely connected with the development of Fort Wayne, along the line of better buildings. For fifteen years, Mr. Meyer has been engaged in designing and supervising the construction of buildings in this city. His work as an architect and construction engineer is widely known. Many of the buildings in which the city takes great pride are his work. Among the more important buildings designed by Mr. Meyer are the Washington School, Lutheran Hospital, Emanuel Church, Concordia Church, Christian Church, International Harvester's Building, Mossman Yarnelle's building, Gas works, and Hillman's building. These buildings are at once distinctive in appearance, substantial and suitable. Mr. Meyer is a thorough student along all lines pertaining to his work and makes constant research among the highest authorities. It costs no more to erect a building of right proportions and beautiful lines, than to make an unsightly heap. But an architect's service are required to produce the better result. Mr. Meyer's office is suite 3, 4 and 5 of the Old National Bank Building.

J. W. MONNINGER—GENERAL CONTRACTOR

Mr. J. W. Monninger, contractor and builder, whose office is located at 1718 St. Joe Boulevard, has been engaged in business in Fort Wayne for the last seven years. Mr. Monninger employs only competent men and in every part of his constructions uses carefully selected materials. In almost every section of the city may be found examples of his work. Ten homes on Grant Avenue for W. H. Shambaugh, two on Oregon Avenue, two on Force Street and one in Drexel Park are a very few of the houses built by this contractor.

JOHN HAGEMAN—GENERAL CONTRACTOR

Several of Fort Wayne's prominent churches, as well as many other buildings, are the work of Mr. John Hageman. St. Andrews Church, Church of the Precious Blood, St. Joseph Hospital and St. Andrews Academy were built under his supervision. He also built the St. Rose Academy at Monroeville. Mr. Hageman's office is located at 1101 Fletcher Avenue and employs twenty men who are skilled in their work. Great care is given to the selection of all materials and to the inspection of all work.



1 RESIDENCE OF GEO. BIRNEY
3 RESIDENCE OF OLIVER S. JONES, CONTRACTOR

2 RESIDENCE OF JOHN W. MORGENTHAU, CONTRACTOR
4 FREDON'S BLOOD CHURCH, J. B. HAUGMAN, CONTRACTOR

MR. Ingham specializes on three lines of investment: Choice vacant property, close in, in desirable neighborhood, most of which he either owns or controls. Parties looking for high grade vacant lots on which to build will find an excellent selection with him. "Wayne Wood Heights," the beautiful subdivision on the south side, overlooking the entire city, on the highest platted ground in town. This property faces on Hanna street, is in the direct line of the city's natural growth, and will become one of Fort Wayne's choicest additions. Parties seeking home sites or investments will find "Wayne Wood Heights" offers exceptional opportunities. The Home Site Realty Company owns and develops this property, of which Mr. Ingham is president and secretary. Well located acreage for subdivision and platting. Mr. Ingham has several choice pieces of acreage, which are ripe for subdivision and can be handled on favorable terms. The city's steady growth will bring tracts, now a little way out, into the heart of the residence district.

W. E. DOND—REAL ESTATE

For twenty years W. E. Dond, has been a prominent figure in Real Estate circles. With rare foresight he saw great possibilities in developing suburban sections, as a result, such sub-divisions as Pfeiffer Place, Pontiac Place and a score of other modern additions have been developed to the lasting benefit of Fort Wayne. Mr. Dond is Treasurer of the City and Suburban Building Company, which has built hundreds of high class houses during the past few years. He also maintains a retail office in the Shoaff Building.

FORT WAYNE CORRUGATED PAPER COMPANY

This company was originally established and incorporated in 1908. In July 1, 1913, the Fort Wayne Corrugated Paper Company of Fort Wayne, the Blackford Paper Mills of Hartford City, Indiana and the Paragon Paper Mills of Eaton, Indiana, consolidated under the name of Fort Wayne Corrugated Paper Company, with a capital of one million dollars. The output amounts to seven hundred thousand dollars yearly, and the plant, which occupies about six acres of ground, employs two hundred and ten people.

ALTHOUGH established in business in Fort Wayne but eighteen months, Mr. H. E. Dial has built up an enviable clientele in the real estate, loan and insurance business. The office is located in room 18 of the Swimney Block where Mr. Dial has a large list of farms and city property and will give all inquiries careful attention. Mr. Dial deals mostly in farm lands and has at his disposal some choice properties to be sold on easy payments. These farms are located throughout Indiana, Ohio, Michigan and southern states. Thousands of people are today looking for good agricultural land in the United States. There is a general land hunger to an extent never before known in this country. Better prices for farm products and a rapidly increasing population has influenced people to believe that now is the best time to buy land. Farms that are both good and cheap, close to markets and at prices that will never be lower than now, are offered by Mr. Dial. Money is loaned at this office at the rate of five per cent. Mr. Dial, who came from Illinois seven years ago, has had valuable experience in the real estate business and knows land values.

LOUIS F. CURDES—REAL ESTATE

Twenty years ago Mr. Louis F. Curdes established a real estate business in Fort Wayne, during which time he has met with continued success. Mr. Curdes deals largely in residence property and has been especially successful in platting new additions. He has beautified and laid out Forest Park addition, Forest Park Boulevard and Florida Drive and is now platting Driving Park Addition and extending the above streets through it. The office is in rooms 218-219-220 of the Shoaff Building.

JOHN F. KING—ARCHITECT

John F. King, whose office is located in room 308 of the Bank Block, at the corner of Main and Court Street, is an architect whose work may be seen in many parts of the city. He designed the Mulqueen Dancing Academy on East Washington Street, the Kappel Building, the S. F. Bowser factory at Toronto, Canada, and a residence for A. A. Bowser. Buildings designed by Mr. King are attractive in appearance, practical in arrangement and suitable for the purpose for which they are intended.



1 NORTHERN INDIANA TRACTION CO., POWER STATION
 2 HANN & BRACKENRIDGE CO.
 3 L. RASTETTER & SONS

4 WAYNE SPOOL & BENDING CO.
 5 H. WAYNE GORRING SONS
 6 DEISTER CO. (CENTRAL) DR. CO.

7 NATIONAL HANDLE CO.
 8 DE L. ALDO CO.
 9 WAYNE AUTO WARE CO.

10 AMERICAN STEEL DEPOT
 11 AMERICAN STEEL DEPOT
 12 MOTTLEY AUTO DEPOT

THE fundamental values of all properties are based upon the real estate valuations, be it city or farm properties. Thus the prosperity of any locality is represented in the activity of the real estate operators who are the outriders of progress in all communities. Prominent among those whose activities in the real estate field have contributed largely to the development of Fort Wayne's properties is George L. Ashley and Sons, dealers in city and suburban real estate. The firm, whose office occupies rooms 420-421 of the Shoaff Building, consists of George L. Ashley, Charles Ashley and George S. Ashley. This firm was established in its present quarters January 1, 1909, and by honorable and progressive business methods have built up and maintained a patronage that is a credit to the ability and integrity of its members. This enterprise is devoted to the handling of farm and city properties, loan and investments and general insurance including life, accident, health, fire, tornado and automobile insurance. The firm makes a specialty of dealing in farm lands in the corn belt of Indiana and Ohio and is also agent for Michigan, Wisconsin and Minnesota lands. Possessing an intimate and practical acquaintance with present and prospective values in all parts of the city and surrounding counties, the manager of this firm, Mr. George L. Ashley, is always able to furnish just what his clients want and always has a long list of desirable properties on which the values set can be absolutely relied upon.

JOHN O. BROWN—CONTRACTOR

For the past twenty-three years, Mr. J. O. Brown has been engaged in general contracting in Fort Wayne. During the past five years, Fort Wayne has seen unusual activities in building and construction work and Mr. Brown has built many of the new factory additions, residences, etc. His long experience has brought him a wide knowledge of the business and his work is uniformly satisfactory. The twenty men employed are skilled in carpentry, masonry and other lines of building. All work contracted for by Mr. Brown receives rigid inspection at all stages of the work. Great care is exercised in the selection of all materials used. Upon application at 1614 West Main Street, estimates will be given.

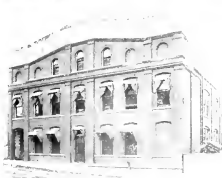
OF the new residence districts and home sites recently opened to the public and worthy of note, Penn Place stands out distinctively on account of its natural beauty. Overlooking the banks of the St. Joe River from across the Robison Park car line, and having an elevation of more than fifty feet above the low water mark, Penn Place is developing into one of the most attractive suburban neighborhoods in the city. On another page of this book we show the approach to Penn Place from the Robison Park car line. The fine pressed brick residence in the color picture is the home of Attorney William Ballou. The modern facilities, such as city water, sidewalks, sewers, macadam streets and city car service are all here.

SINGMASTER PRINTING COMPANY

For more than eighteen years the Singmaster Printing Company has been engaged in high class job printing. The firm also turns out loose leaf devices. The company was organized eighteen years ago, in 1895 and in 1904 was incorporated for five thousand dollars. The plant is located at 207 East Berry Street and is under the direct management of Mr. Eric Peterson, who possesses a thorough and practical knowledge of the printing business. The working force employed by this company are men of experience. The presses installed by this concern are of the latest models and all other equipment is of a most modern type. Estimates on work gladly furnished.

M. J. BLITZ—GENERAL INSURANCE

In 1895 Mr. M. J. Blitz established an agency for a general line of insurance including accident, fire, tornado, life, liability, burglary, surety, boiler, automobile and all other lines of insurance. With the large number of automobiles in use in the city, Mr. Blitz in the last several years has been called upon to write a large amount of insurance of this character. Mr. Blitz is one of the best known in Fort Wayne's insurance field. He has been engaged in this line for the last eighteen years, during which time he has been associated with some of the oldest and best known insurance companies. The offices are located in rooms 514-516 of the Shoaff Building where three people are employed. Mr. Charles W. Carrell is manager.



- 1 G. E. BURSLEY & CO.
- 2 PERFECTION DISC. CO.
- 3 SUMMIT CITY SOAP WORKS.

- 4 WASH. R. SPODS.
- 5 PENNSYLVANIA R. SPODS.
- 6 UNIVERSAL WHEEL CO.

- 7 TOBY-DOWN FLYING CO.
- 8 LONS MFG. CO.
- 9 CRAB DISC. CO.

- 10 S. M. FOSTER CO.
- 11 MARY-OVER MFG. CO.
- 12 NORTH WHEEL CO.

FIRST NATIONAL BANK

This bank, founded and incorporated in 1863, was the first National Bank established in the state of Indiana, and the eleventh in the United States. The capital stock is five hundred thousand dollars and surplus fund, two hundred twenty-five thousand dollars. In addition to commercial banking, the departments of this bank include a savings department, interest being paid on certificates of deposit, collections, bonds and investments, foreign exchange, women's department and safe deposit boxes. Steamship tickets are also sold.

GERMAN AMERICAN NATIONAL BANK

The German American National Bank is one of the strongest institutions in the local financial world. Its growth in volume of business has been rapid and the confidence reposed in its methods and stability are evidenced by the patronage given it. This bank was established in 1905 and has a capital stock of two hundred sixty thousand dollars and a surplus fund of one hundred five thousand dollars. There is a savings department which is largely patronized. A safety deposit department offers security for valuable papers and other valuables.

HAFFNER'S STAR BAKERY

Haffner's Star Bakery, having been established in 1869 is one of the city's oldest concerns. The output consists of bread, rolls, cakes, pies and cookies and is sold at both wholesale and retail. "Haffner's Potato Loaf" and "Tip-top Bread" are the special brands of bread. This bakery, located at 333-335 East Lewis Street, is thoroughly modern, being equipped with electric driven machinery, three modern bake ovens and the latest improved devices in every department. One electric delivery car and six wagons comprise the delivery service.

BASS FERTILIZER AND CHEMICAL COMPANY

This is the only company producing a humus fertilizer. The process is an exclusive one and is patented. The new plant, erected in 1913, has a capacity of forty thousand tons of fertilizer per year and the best equipped and most modern fertilizer plant north of the Ohio river. The company owns one hundred twenty acres of ground and employs seventy-five thoroughly experienced men. The annual output is valued at one million dollars and is distributed thru over four hundred agencies in the Central states.

OLD NATIONAL BANK

This bank was originally established in 1835 and was reorganized in 1884 as the Old National Bank. It was incorporated the same year with a capitalization of three hundred fifty thousand dollars. It has a surplus fund of one hundred sixty thousand dollars and undivided profits, less expenses and taxes paid, amounting to fifty-three thousand, two hundred forty-eight dollars and sixty-six cents. In addition to the commercial banking and savings department there are ample and well equipped safety deposit vaults.

TRI-STATE LOAN AND TRUST COMPANY

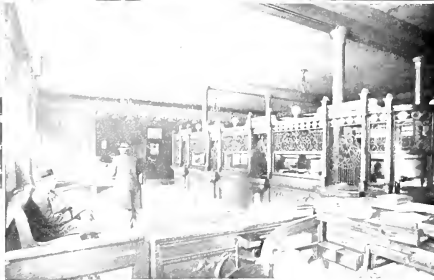
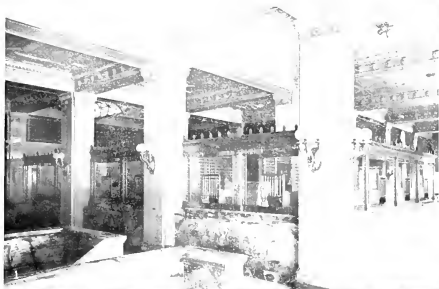
The Tri-State Loan and Trust Company is the largest trust company in the state outside of Indianapolis. It pays four per cent interest on deposits of one dollar and upward and issues certificates which pay four per cent if left four months. This company also furnishes gilt edge investments in bonds and stocks for those who desire to invest. Correspondence is solicited. Safety deposit vaults may be rented at reasonable rates. The paid up capital is three hundred thousand dollars and its additional liability is of equal amount.

HOFFMAN BROS. COMPANY

This company makes a specialty of choice, high grade veneers and lumber for fine interior finish, furniture, musical instruments such as pianos etc. Hoffman Brothers Company, one of the oldest manufacturing concerns in the city, was founded in 1867 and incorporated in 1904. The plant occupies about two acres of ground and has approximately twelve thousand square feet of working space. Fifty to sixty experienced men are employed whose annual salaries amount to about forty thousand dollars.

FORT WAYNE FOUNDRY AND MACHINE COMPANY

The Fort Wayne Foundry and Machine Company is one of the city's oldest established industries, having been founded in 1842. In 1897 the company was incorporated with a capital stock of two hundred and ten thousand dollars. The plant occupies a space of forty-six thousand five hundred square feet and the force of workmen consists of one hundred skilled mechanics. The firm makes a specialty of structural iron and general machine work. J. H. Bass, pres., C. T. Strawbridge, sec'y, G. M. Leslie, treas., A. W. Pickard, man. and asst. treas.



1 FIRST NATIONAL BANK
3 GERMAN-AMERICAN NATIONAL BANK

2 GERMAN-AMERICAN NATIONAL BANK
4 FIRST NATIONAL BANK

HAMILTON NATIONAL BANK

The history of the Hamilton National Bank dates back to 1853, under the firm of Allen Hamilton and Company. Later Charles McCulloch and Stephen B. Bond entered the firm. This firm was succeeded by the Hamilton Bank and in 1879, it became the Hamilton National Bank. The present capital stock is three hundred thousand dollars and surplus, four hundred thousand dollars. This bank does a general banking business, all departments being included. Plans are made for a modern, bank and office building on the present site.

THE PARROT STUDIO AND ART STORE

The Parrot Studio and Art Store is the successor of the longest established studios in Fort Wayne, having bought out the Barrows, studio in 1901, which in turn, had by purchase acquired the negatives and business of the Shoaff studio back in 1892. The business was that of a photograph studio only until 1906 when the Art Store was added. This department fills the demand for a reliable place to secure wares of real artistic merit, pictures of worth and framing of perfect taste.

THE PACKARD COMPANY

An ideal Modern Piano Factory, that will be required to produce over 5000 high grade pianos next year to meet the demand. Packard Instruments are famous throughout the world, and are bought by critical people. 8000 Packard Uprights, Grands, and Interpreters are in use in Fort Wayne and Vicinity, including the most prominent Schools of Music and the best private Teachers and Musicians. Thirty-three Packard Grands and Uprights recently placed in Columbia School of Music of Chicago.

BURROUGHS ADDING MACHINE COMPANY

The Fort Wayne office of the Burroughs Adding Machine Company occupies room 204 of the Peoples Trust Building. Mr. J. Wade Bailey is manager. There are eighty-seven different models. These machines perform more than five hundred different combinations of accounting work. Besides straight adding and listing, the Burroughs multiplies, subtracts, divides, extracts square root, ledger posting, monthly statements. The Burroughs has keys for printing the months in English, French, German, Italian or Spanish.

CITIZENS TRUST COMPANY

The Citizens Trust Company organized and incorporated in 1898, has a capital of two hundred thousand dollars, surplus and undivided profits, nineteen thousand eight hundred three dollars and forty-five cents. In connection with the general banking business, this company receives deposits with interest at four per cent and loans money on real estate mortgages at six per cent. There are also adequate safety deposit vaults. This company acts as executor, administrator, guardian, receiver and trustees.

INTERNATIONAL BUSINESS COLLEGE

This well known college was organized twenty-four years ago by Professor T. L. Staples who is president. Professor H. A. Popp is vice president and secretary. Expert faculty—fifteen thousand square feet of floor space in the fire proof Lincoln Life Building—everything in modern equipment money can buy,—fifteen thousand dollars invested in typewriters alone—ten thousand graduates holding responsible positions—twenty-four years under the present management. Write for free catalogue.

J. R. MITCHELL, DISTRICT AGENT, WASHBURN-CROSBY COMPANY

The Washburn-Crosby Company, manufacturers of the famous Gold Medal Flour and the largest milling concern in the world, chose Fort Wayne as a location for its branch office controlling Northern Indiana. The office is located in the Shoaff Building rooms 520 and 521. There is also a large storage warehouse here. Ten sub stock storage places are variously located throughout northern Indiana, which are all operated from the Fort Wayne, office under the management of Mr. J. R. Mitchell.

CRYSTAL LAUNDRY

One of the essentials in every day life that demands the highest point in workmanship is laundry work. The Crystal Laundry produces work of a high order. In 1910 it was incorporated with a capital stock of twenty-five thousand dollars. During the three years it has built up a huge and well deserved trade. The plant, equipped with modern machinery and appliance, is located at 126 West Superior Street. The management is in the hands of A. E. Sumner who is thoroughly qualified to handle the business.



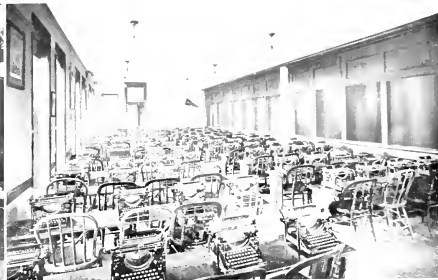
1



2



3 THE PARROT STUDIO AND ART STORE



4 SECTION OF TYPEWRITING DEPT. INTERNATIONAL BUSINESS COLLEGE

THE Fort Wayne Horse and Mule Market began operations in this city in 1908 and is capitalized at one hundred fifty thousand dollars. The market is located at 1001-1007 Wells Street. One hundred four express loads of horses are shipped each year to the main barn at 940-942 14th Ave., Detroit, Mich. A branch is at 2664-70 E. 22nd St., Cleveland, O. An auction is held every Monday at Detroit market, Thursday at Cleveland and Saturday at Fort Wayne. Private sales daily. E. D. Burnett is manager of Ft. Wayne branch.

FISHACK SUPPLY COMPANY

The Fishack Supply Company deals extensively in lath, plaster, hair, lime, cement, mortar cloth, flue lining, sewer pipe, fittings, fine brick, fine clay, pressed brick and builders' supplies in general. Goods are delivered promptly to all parts of the city. The business, which is located at 401-413 North Clinton Street, was incorporated in 1912 for twenty thousand dollars. The officers, well known men in Fort Wayne's business circles, are H. F. Fishack, president and C. E. Ellenwood, secretary and manager.

FORT WAYNE BEEF COMPANY

The Fort Wayne Beef Company makes a specialty of home dressed beef, veal and pork. Great oversight is given to the purchase of stock and the meat is carefully prepared for market. The firm deals also in provisions, butter and eggs. The company was established in June of this year and is meeting with growing success. There is a great demand for meat and provisions that are fresh and carefully chosen, and this concern supplies no small part of that demand. The firm consists of E. M. Mix and H. E. Lowery.

B. M. HUTCHINS—INSURANCE

Mr. B. M. Hutchins conducts an agency for a general line of reliable insurance with offices located in room 513 of the Shedd Building. Among the well and favorably known lines represented by Mr. Hutchins are the Philadelphia Life Insurance Company, The Health and Accident, the National and the Ben Franklin Fire Insurance Company. Since this office was opened there has been a steady increase in the amount of business done. Clients may be assured of receiving every consideration from this reliable agency.

THE Indiana Printing Company of Fort Wayne enjoy a reputation for high class printing equalled by few concerns in the central west and surpassed by none. The plant is situated outside the business district where there is plenty of light, and the entire building is devoted to the printing business alone—Four Monotype machines for making type, seven mammoth Miehle presses and a bottery of smaller ones being kept constantly running on high quality work. There is considerable satisfaction in being constantly engaged in artistic work and this coupled with pleasant working conditions and fair treatment has resulted in building up a corps of skilled employees, that is highly efficient because the men are not constantly changing. With such an organization and equipment it is not strange that Fort Wayne concerns never feel obliged to send their high-grade printing out of the city, or that many fine catalogs are sent here from all over the country to be printed.

GALLAGHER AND RYAN—CONTRACTORS

The members of this firm, E. L. Gallagher and J. B. Ryan, are contractors for all kinds of cement work. Building cellars is a part of the work, while a specialty is made of sidewalks. The firm has just completed sidewalks on Thieme Drive, Washington Boulevard East, between Armour and Glasgow Streets, Layma Street between Fairfield and Broadway, Fairfield between Wayne and Jefferson, including work in front of St. Paul's Church. Also Rumsey Avenue between Rimini and Richardson Streets.

G. HALLER—DECORATOR, ETC.

Interior decorating of homes and buildings, house painting and dealing in wall paper comprise the business of Mr. G. Haller, who is located at 1912 South Calhoun Street. A large share of the business is contract work. Mr. Haller makes a special feature of artistic work, carefully chosen materials and a high grade of workmanship. Excellent examples of work done under the supervision of Mr. Haller are to be seen in many Fort Wayne homes. The business has rapidly increased since its beginning.

The Fort Wayne Commercial Club



INGULARLY situated in the heart of a rich agricultural region, in the very center of America's manufacture, Fort Wayne, a city of 75,000 inhabitants, offers splendid opportunity for the location of money and people. The Fort Wayne of yesterday is today a prosperous city. Seven steam railroads afford the manufacturer a market in all parts of the country; the wheels of industry are continually turning; the wholesale and retail merchants are busy; the banks are thriving, offering the best accommodations to all those entitled to credit, and no other city excels its labor condition. Briefly, Fort Wayne's railroad rates and transportation facilities are among the best in the land. There are few important centers within hundreds of miles that cannot be reached by overnight freight or express, at a rate that compels attention to the city as a manufacturing and distributing center. The fact that the facilities for distribution are unsurpassed make it likewise possible that the home dealer can readily supply himself with the commodities that his business demands. It is such splendid advantages that enable the manufacturer to market his goods not only in all American markets but as well in foreign ports. With 82 miles of interurban and 181 miles of steam trackage in Allen County, of which Fort Wayne is the county seat, and 563 miles of interurban and 1000 miles of steam trackage within a radius of sixty miles affording facilities for reaching Fort Wayne, it is no wonder that the manufacturer wisely located here and prospered from the opportunity. In Fort Wayne there are 1340 business and industrial concerns, of which 280 are manufacturing institutions. The product of these factories values at \$10,000,000 and the wage for the laborer is in excess of \$10,000,000. In Fort Wayne there is work for the workingman. For these factories there is cheap power, a good water supply and splendid car service. And Fort Wayne has fine banks. In them there is on deposit over \$25,000,000, or \$300.00 for every man, woman or child in the community. When money has been tight and when times are hard, the banking institutions of Fort Wayne were never cramped and the man who had his dollar on deposit could always get it. In Indiana there are no better schools than those of Fort Wayne—its religious institutions are of the highest order. Fort Wayne's people have applied scientific principles in developing the natural and artificial resources of the city.

MANUFACTURING AND JOBBING—CONTINUED FROM PAGE 22

interests, wearing apparel factories, soap factories, woodworking enterprises, pianos and piano players, etc. Commercially, Fort Wayne is in the front rank of the growing cities of the Middle West. In all that makes for strenuous and prosperous business conditions, this city is well equipped. The growth of Fort Wayne manufacturing industries is in full swing. The factories are large, roomy and sanitary and cover considerable ground area and floor space. Labor conditions are ideal. There is no place in the country where the standard of employees is higher than in Fort Wayne. From the standpoint of freight rates and shipping advantages, Fort Wayne is favored amongst other cities. These rate advantages extend over a vast territory. The steam and electric roads diverging from Fort Wayne make shipping facilities of inestimable value.

W. F. WOLKE—CONTRACTOR

Since 1896, Mr. William F. Wolke has been engaged in general contracting, building and carpentry. His office is located at 1210 Jones Street, phone number 1392. Mr. Wolke has in his employ fifteen men who are adequately qualified to assist in carrying on the work. During the seven years Mr. Wolke has been in business here, his business has steadily grown and creditable examples of his work are to be seen in many parts of the city. Estimates on work will be gladly given upon application.

CITY LOAN COMPANY

The City Loan Company aims to be of practical service to persons requiring additional sums of money. Many times, opportunity to earn money or make wise and good paying investments presents itself. By taking advantage of the reasonable terms offered by the City Loan Company, such opportunity need not be lost. This company was organized and incorporated in 1907 and is located in rooms 1 and 2 of the Schmitz Block. The firm also handles real estate. Four people are employed. Mr. Jerry F. O'Connor is the manager.

COMPOSITION PRESSWORK AND BINDING
DONE BY
THE INDIANA PRINTING COMPANY OF FORT WAYNE
FORT WAYNE, INDIANA
1913







HECKMAN
BINDERY INC.



SEPT 98

Bound-To-Please® N MANCHESTER,
INDIANA 46962

