

Z
733
013

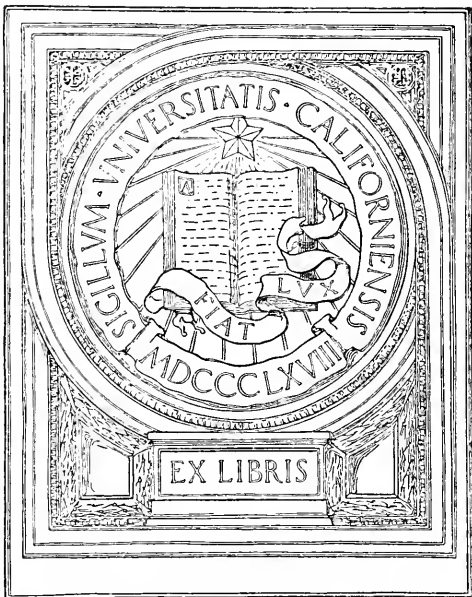
UC-NRLF



B 3 921 873

Oakland, Calif. ...

Z 733 013



EX LIBRIS

LIBRARY
SCHOOL

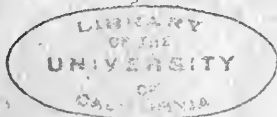
FOURTH ANNUAL REPORT

OF THE

ALAMEDA COUNTY DEPARTMENT

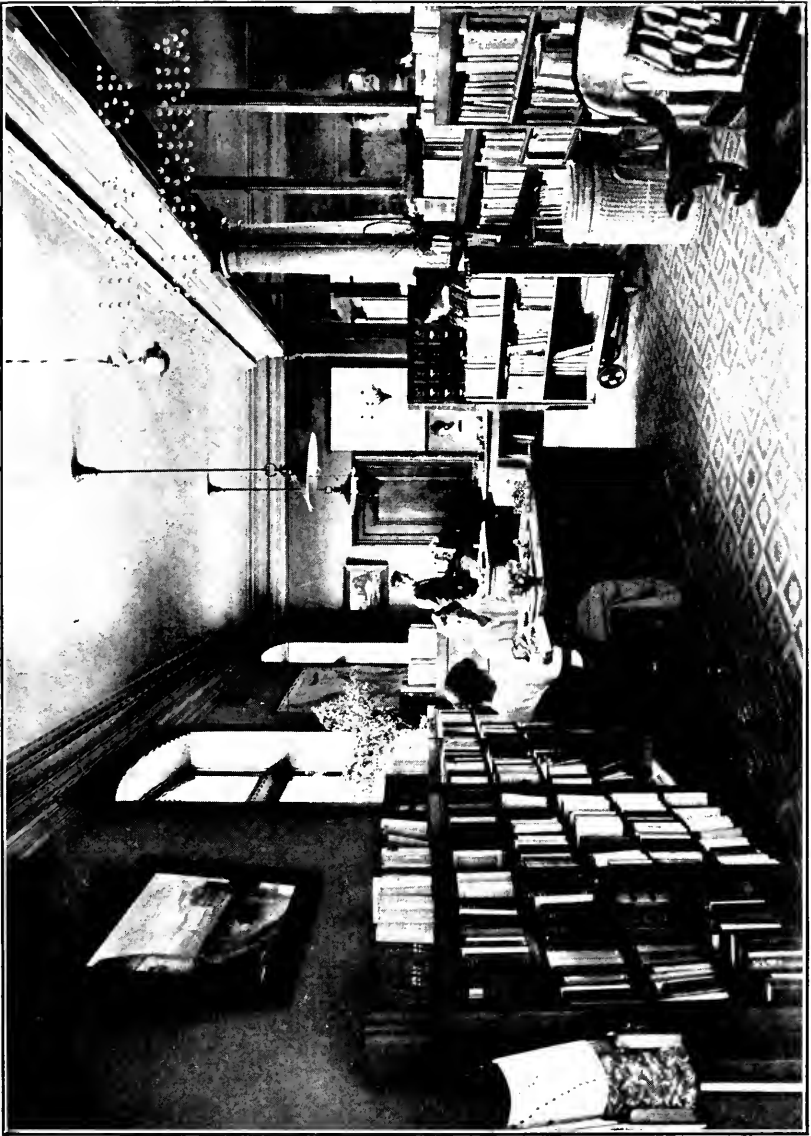
OF THE

OAKLAND FREE LIBRARY



**FOR THE FISCAL YEAR 1913-1914
OAKLAND, CALIFORNIA**

1
2
3
4
5
6
7
8
9
10
11
12
13
14
15
16
17
18
19
20
21
22
23
24
25
26
27
28
29
30
31
32
33
34
35
36
37
38
39
40
41
42
43
44
45
46
47
48
49
50
51
52
53
54
55
56
57
58
59
60
61
62
63
64
65
66
67
68
69
70
71
72
73
74
75
76
77
78
79
80
81
82
83
84
85
86
87
88
89
90
91
92
93
94
95
96
97
98
99
100



CARNEGIE BUILDING—THE COUNTY DEPARTMENT'S OFFICE.

1-31-15 - included
- Report of Oakland
free library

FOURTH ANNUAL REPORT

OF THE

ALAMEDA COUNTY DEPARTMENT

OF THE

OAKLAND FREE LIBRARY

LIBRARY OF
ALAMEDA COUNTY



**FOR THE FISCAL YEAR 1913-1914
OAKLAND, - - CALIFORNIA**

ALAMEDA COUNTY DEPARTMENT OAKLAND FREE LIBRARY

BOARD OF SUPERVISORS OF ALAMEDA COUNTY

JOHN F. MULLINS
W. B. BRIDGE

F. W. FOSS
J. M. KELLEY

DANIEL J. MURPHY

BOARD OF DIRECTORS OF THE OAKLAND FREE LIBRARY

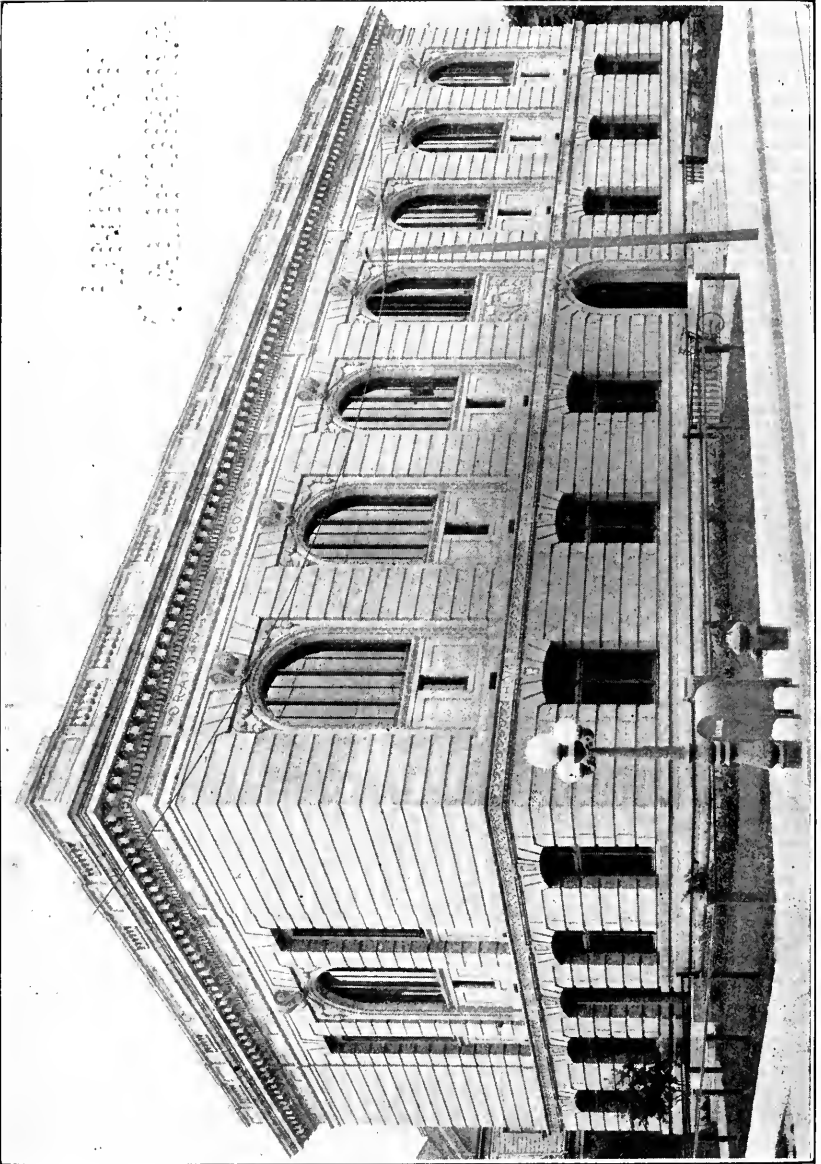
	Term Expires.
FRANK M. PARCELLS.....318 Lee St..... President	1919
SAMUEL HUBBARD.....244 Montecito Ave.....	1920
JOHN W. EVANS.....604 E. 14th St.....	1915
CARY HOWARD.....328 29th St.....	1916
SAM BELL McKEE.....225 Vernon St.....	1917

CHARLES S. GREENE, Librarian and Secretary of the Board.

MARY BARMBY, Chief of Department.

1954
1955
1956
1957
1958
1959
1960
1961
1962
1963
1964
1965
1966
1967
1968
1969
1970
1971
1972
1973
1974
1975
1976
1977
1978
1979
1980
1981
1982
1983
1984
1985
1986
1987
1988
1989
1990
1991
1992
1993
1994
1995
1996
1997
1998
1999
2000
2001
2002
2003
2004
2005
2006
2007
2008
2009
2010
2011
2012
2013
2014
2015
2016
2017
2018
2019
2020
2021
2022
2023
2024
2025

LIBRARY
SCHOOL



OAKLAND FREE LIBRARY—THE CARNEGIE BUILDING, 14TH AND GROVE STREETS

FINANCIAL STATEMENT

Balance, of which \$197.77 was held in trust for schools.....\$ 299.15

RECEIPTS.

Received from County Treasurer, July 1, 1913, to June 30, 1914, at \$1250.00 per month for 5 months and \$1500.00 for 7 months.....	\$16,750.00
Received from Albany.....	30.00
Overdraft due Oakland Free Library.....	4.24
	\$17,083.39

EXPENDITURES.

Salaries	\$ 6,801.31
Books	5,164.56
Binding	236.55
Printing	89.75
Furniture	606.85
Express	121.37
Traveling	198.05
Office Supplies	128.62
Periodicals	692.03
Views and Pictures	374.20
Messenger	32.97
Building and Repair.....	119.62
Light and Heat	102.51
Rent	258.00
Incidentals	110.75
Janitor	46.25
For Use of Oakland Library	2,000.00
	\$17,083.39

REPORT OF THE ALAMEDA COUNTY DEPARTMENT OF THE OAKLAND FREE LIBRARY

To the Honorable Board of Directors of the Oakland Free Library—

Gentlemen: The fourth annual report of the County Library work in Alameda County, is hereby presented.

Library work has been carried on in Alameda County since November, 1910, under a contract entered into between the County of Alameda through its Board of Supervisors, and the Oakland Free Library through its Board of Library Directors, to establish a County Library system and to work under Section 12 of the County Library Law, the Legislature of the State of California having passed a law April, 1909, permitting such co-operation. Twelve thousand dollars was given for the first year's work. In November, 1911, a new contract was agreed upon whereby the work would be enlarged and the added sum of \$250 a month was given, making \$15,000 a year. The same contract was continued in 1912. The work was carried on, but not much new work was started, as it took up all funds to keep up the standard of the year before. Again in November, 1913, a new contract was agreed upon, and \$18,000 was given for the year. New branches were started and the service to the older branches much improved.

In 1911, the County Free Library Law was amended, and we are now working under Section 16 of this law. The only important change was the adding of the phrase "Including incorporated cities and towns therein."

We have now eighteen branches with reading rooms. These include the libraries placed in Livermore, Hayward, and Pleasanton town libraries. The reading rooms are well supplied with the current magazines and daily papers, and are open, in most cases, every afternoon and evening but one. Encyclopedias have been placed in the larger branches, also other reference books. The farmers' bulletins from the Government and important documents from the University of California are received.

There are two or three prints on the walls of even our smallest branches. Labels have been made for the frames of these pictures, to hold a slip, explaining the pictures and giving the artist's name and title of picture. There are between three and four thousand stereographic views in the County system and these are all in each of the branches at some time during the year. Two stereoscopes to be used with these views remain in each branch. The stereographs are an important feature of the library work, the subjects being so varied. All important countries of the world are represented by sets of about one hundred views. Then there are sets on the industries of the countries, sets on natural history, and one on battleships. The people who do not care to read, come to the branch to look at these stereographs. Teachers use them in connection with their geography work in the schools. Panama and Mexico are in the greatest demand at present.

We found the radiopticon purchased the year before had proved so satisfactory that we decided to add to this department. So a balopticon was

purchased. This is much like the radloptican, but we felt possibly a little in advance in results.

These machines with instructions for their use are sent out to the branches to remain for a few weeks. Post cards in sets are sent also, which the machines reflect and enlarge. Someone in the community is always found who is willing to explain the cards and make the evenings enjoyable. These picture-evening entertainments are open to every one, though they are almost too modest to be called entertainments.

Some fourteen colored Berlin prints have been purchased for the County. These will be sent from branch to branch so the entire County may enjoy them.

A branch was established at Albany in December. The people of the community rented the room on Main Street and furnished the tables, chairs and book cases. The room is very attractive, the attendance and circulation satisfactory. Mrs. Elizabeth S. Hamilton is the efficient attendant. Her knowledge of people and books makes her a valuable addition to our County staff. The town trustees pay \$5 a month toward buying books, and show in many ways their interest in their new library.

A branch was opened in Dublin, May 21st. The library occupies a room in the store facing the main road. Mr. Green, the owner of the building, had burlap put on the walls and a window and door put in so that the library is quite an attractive place. Mrs. Lawrence is the attendant. Here, as in every library we have started, we had a public opening. The people came from all about in numbers, until we wondered where they had all come from.

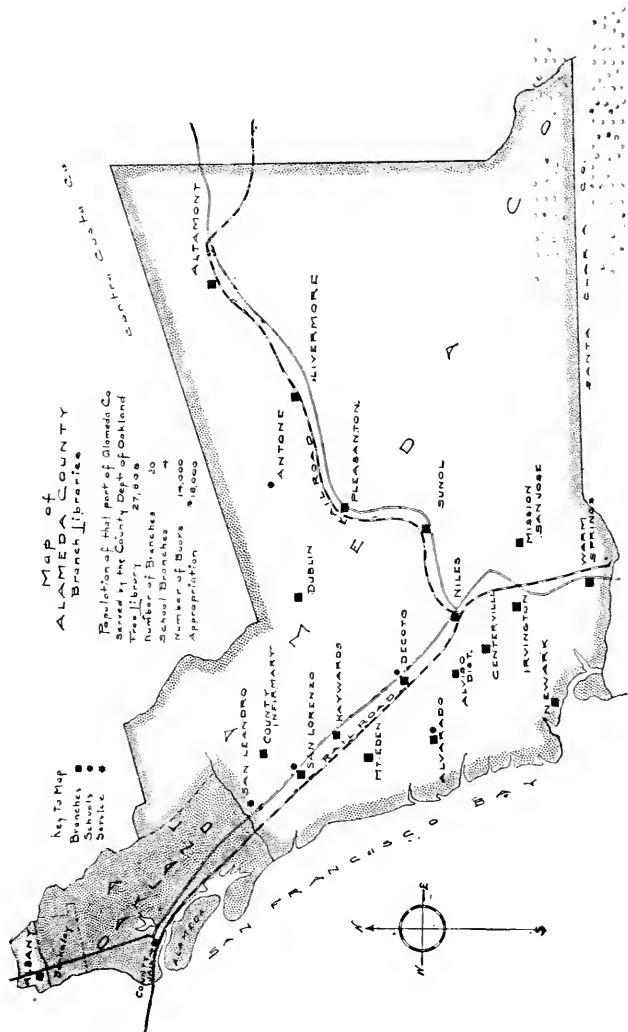
For some time we had a deposit of books at Alviso school attended to by the principal. This did very well, but we decided in June to make it a regular branch library, so we have a room in the home of Mrs. Frank George. This room is open to the street and is used only for the library. Mrs. George is the attendant. The district is quite thickly settled and we expect will make good use of the books and the reading room. Mr. Greene spoke at the opening here, as he did at the opening at Albany.

Mrs. Runckel, the attendant at Niles, resigned in July and Mrs. Nichols was appointed to fill the place. Mrs. Nichols' work has been most satisfactory, as the steady growth of the Niles library shows.

The library at Irvington moved into new rooms in March. Formerly we had one large room, too large to heat or light properly. The present place is next door and is better adapted to the library needs. We have two rooms and better lighting. The quarters at San Lorenzo became so crowded that it was necessary to move to a larger room in the same building, the village hall. The reading room is generally well filled with magazine and newspaper readers both afternoons and evenings. The circulation from here is larger than any other branch of its size in the County.

In Alvarado we were fortunate in having a vacant room next to our library room. The partition was taken down, making it one large room.

Meetings of the attendants have been held in the County Library office in Oakland. At these meetings we talk over and work out the problems that are always present. We plan new work and criticise the work done.

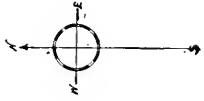


Map of ALAMEDA COUNTY Branch Libraries

Population of that part of Alameda Co. covered by the County Dept. of Oakland Public Library 27,500
Number of Branches 20
Number of Books 14,000
Appropriation \$16,000

Key to Map
Branches (square)
Schools (circle)
District (dotted area)

CITIES AND TOWNS: ALAMEDA, SAN LEANDRO, CONTRARY, SAN LORENZO, KAYWARDS, MIDWAY, ALVARADO, ALBANY, CENTERVILLE, IRVINGTON, NEWARK, SAN JOSE, SAN MATEO, WARM SPRING, MARIPOSA, SAN JOSE, ALTAMONT, LIVERMORE, PLEASANTON, FRESNO, NILES, SUNOL, DUBUN, ANTOINE, WILKESBORO.



Scale: 1 inch = 1 mile

THE UNIVERSITY OF CHICAGO
LIBRARY

The work with the County Jail has grown during the past year. We have a messenger service twice a week. The prisoners make their requests and the boy fills them from the Oakland Library. There is no collection of books in the jail. We continue to borrow books from the State Library for the Law Library, whenever lawyers of Alameda County require material not in the County. Books ready for discard have been sent out every month to the County Infirmary, to be read there and then burned at the discretion of the attending doctor. A few phonograph records have been sent to Altamont on their request, as they had a machine in the community which they could use. Altamont has no electricity, so could not have the benefit of the radioptican and the records were sent to make up for this loss.

Some work has been done with Alameda and Berkeley in the way of supplying special books, and in Alameda in the loaning of pictures.

Post cards with the map of Alameda County on the back have been printed for use in correspondence. The map shows the location of the libraries and gives a few figures.

The County Library had a booth at the Alameda County fair last year and this year plans to be represented.

The circulation of books in the County has been steadily increasing, amounting to about one thousand a month more than last year. The special requests coming from our people and from other libraries in the State, have been very large. We have been able to fill these requests from our library, the Oakland Library, and the State Library.

The problem of properly housing our libraries will need to be considered in the near future. The present rooms in many cases are too small. With larger space better work can be done. We hope to find the people of the towns ready to help when the time comes.

The County Library in California has well passed the experimental stage, and has become a strong factor in the twenty-six counties in which it is working, many of the counties growing in a remarkable way. Los Angeles, for instance, last year received \$40,000 for the county work and this year expects to nearly double that amount.

Respectfully submitted,

MARY BARMBY,
Chief of Department.

STATISTICS

Number of borrowers—established branches	3,689
Number of borrowers—County at large.....	1,159
Total number of books sent to stations.....	12,992
Circulation of stations	66,529
Total number of books sent to schools.....	1,020
Total number of books in office.....	1,354
 Count of bound volumes, July 6, 1913.....	10,444
Accessions—	
By purchase	4,667
By gift	227
	4,894
	15,338
Discarded	35
Lost	36
	71
	15,267
Borrowed from Teachers' Library.....	122
	15,389
 Total bound volumes, July, 1914.....	15,389

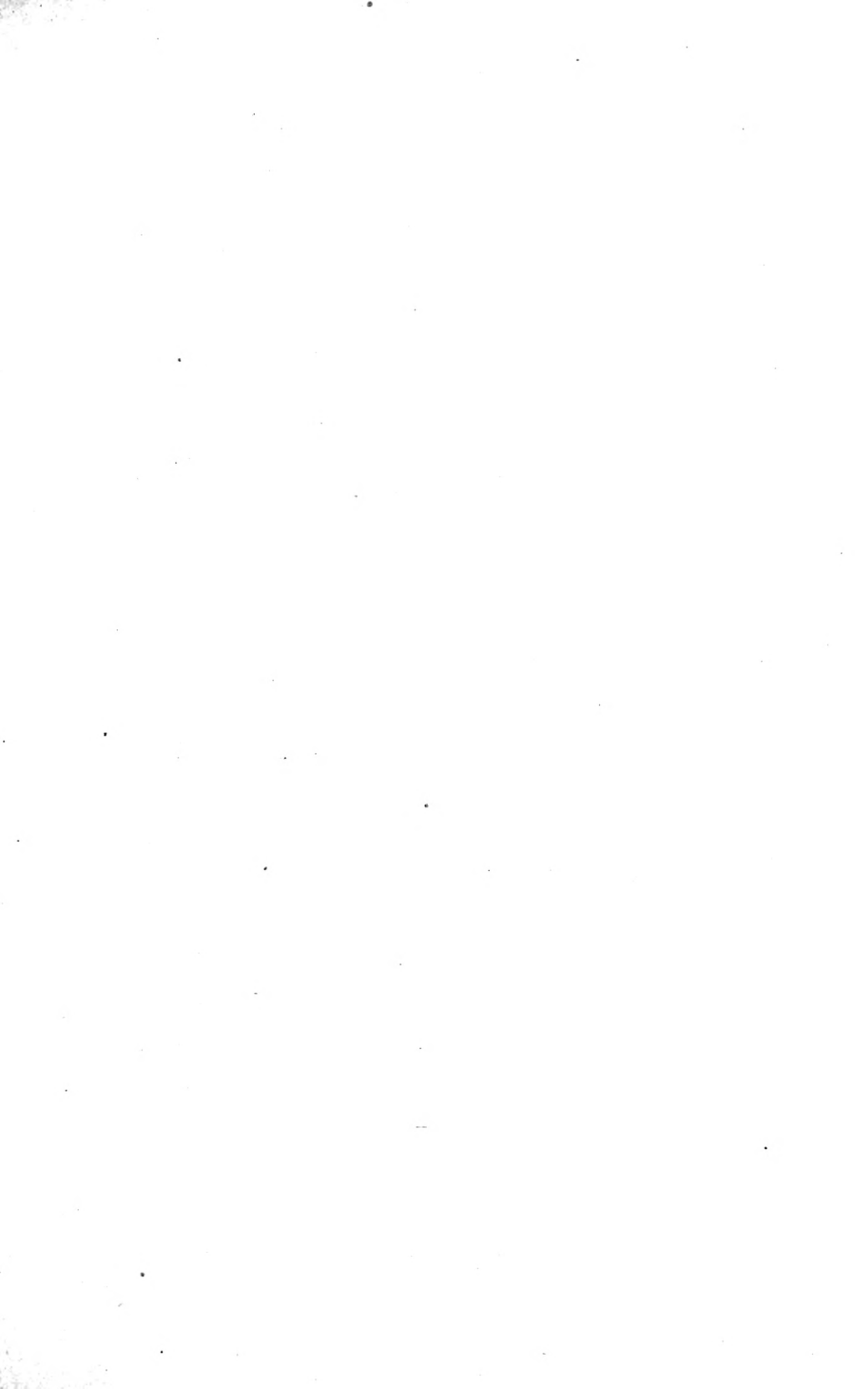
Branches—	Date of Opening.	Borrowers.	Books.	Circulation	
				Books.	Mags.
Albany.....	Dec. 4, 1913	235	761	3,206	305
Altamont	April 2, 1912	102	406	1,513	810
Alvarado	Dec. 7, 1910	193	1,060	2,775	1,606
Centerville	Dec. 2, 1910	291	1,199	4,805	1,936
Decoto	Dec. 11, 1910	246	765	2,508	484
Dublin	May 21, 1914	33	144	(no report)	
Irvington	April 4, 1911	161	765	2,683	139
Mission San Jose.....	Dec. 10, 1910	78	710	2,191	1,132
Mt. Eden.....	Feb. 1, 1911	125	755	1,523	52
Newark	Sept. 4, 1911	164	904	3,253	480
Niles	Feb. 2, 1911	459	1,099	8,256	1,848
San Lorenzo	Dec. 1, 1910	305	1,113	4,852	1,163
Sunol	Dec. 9, 1910	108	674	1,985	1,110
Warm Springs	Feb. 20, 1912	79	400	916	131

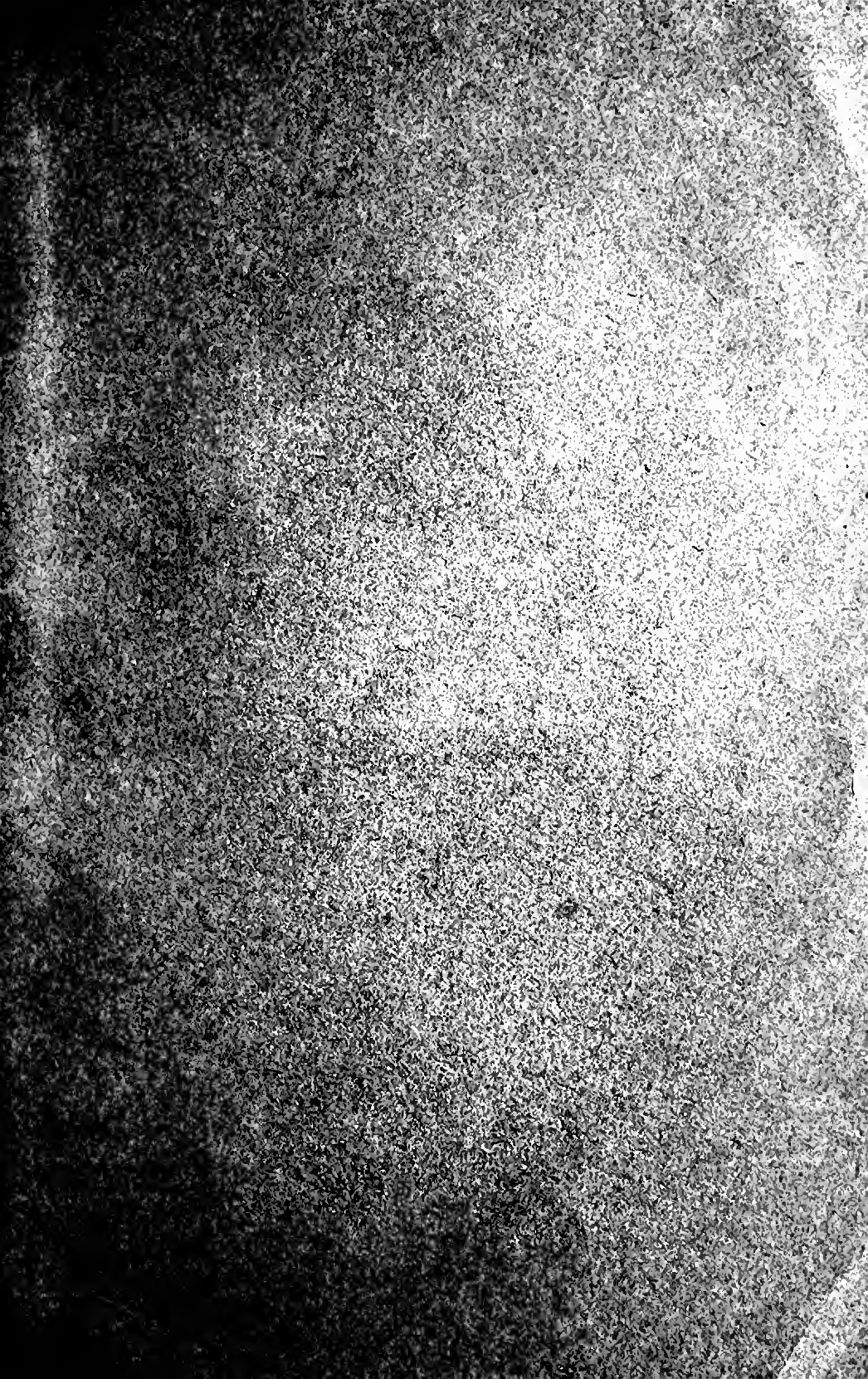
Deposit Stations—

Alviso	Feb. 27, 1911	53	100	343	97
Hayward	April 12, 1911	457	789	6,037
Livermore	Sept., 1911	464	727	5,142
Pleasanton	May 29, 1911	136	644	2,361	120

Request Books—

County Jail	July, 1911			481	2
San Leandro				238	
Inter-Library				41	
		3689	13,015	55,114	11,415
Borrowers—County at large.....		1159			
Books in office and schools.....			2,374		
		4,848	15,389	55,114	11,415





Enquirer  Oakland

Gaylamount
Pamphlet
Binder
Gaylord Bros., Inc.
Stockton, Calif.
T. M. Reg. U. S. Pat. Off.

U.C. BERKELEY LIBRARIES

C027525486

M110723

Z733
013

THE UNIVERSITY OF CALIFORNIA LIBRARY

