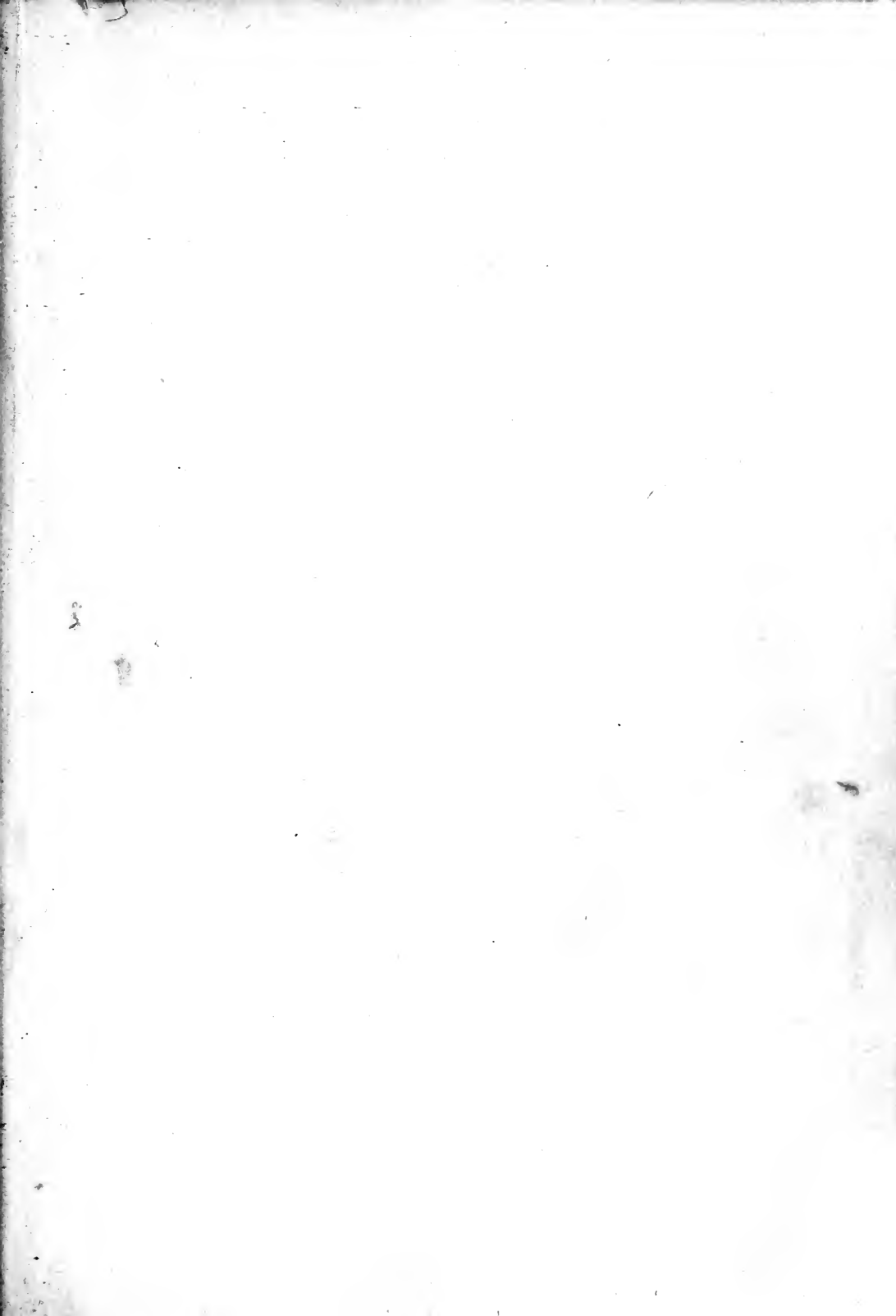
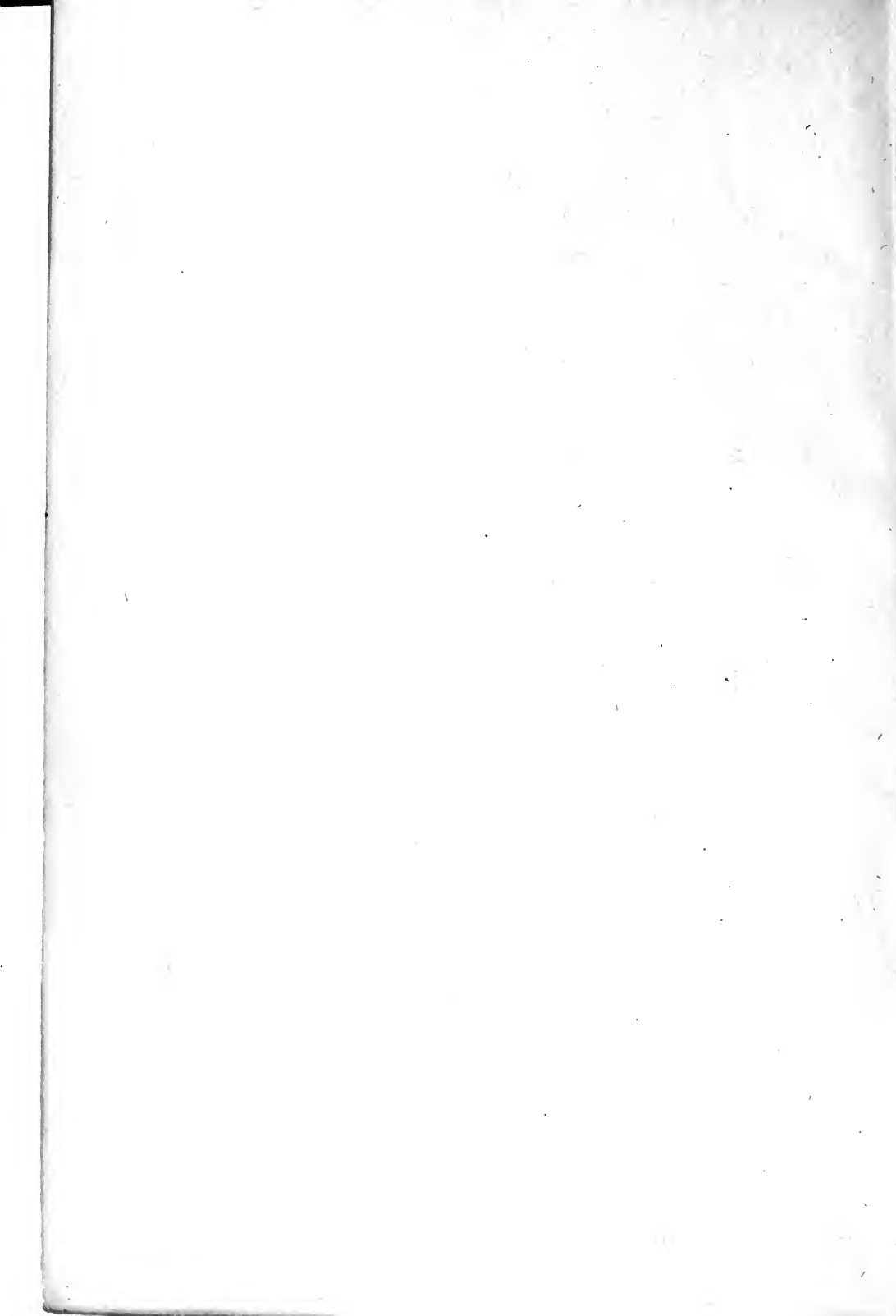




Digitized by the Internet Archive
in 2008 with funding from
Microsoft Corporation





March 19. - 44 192

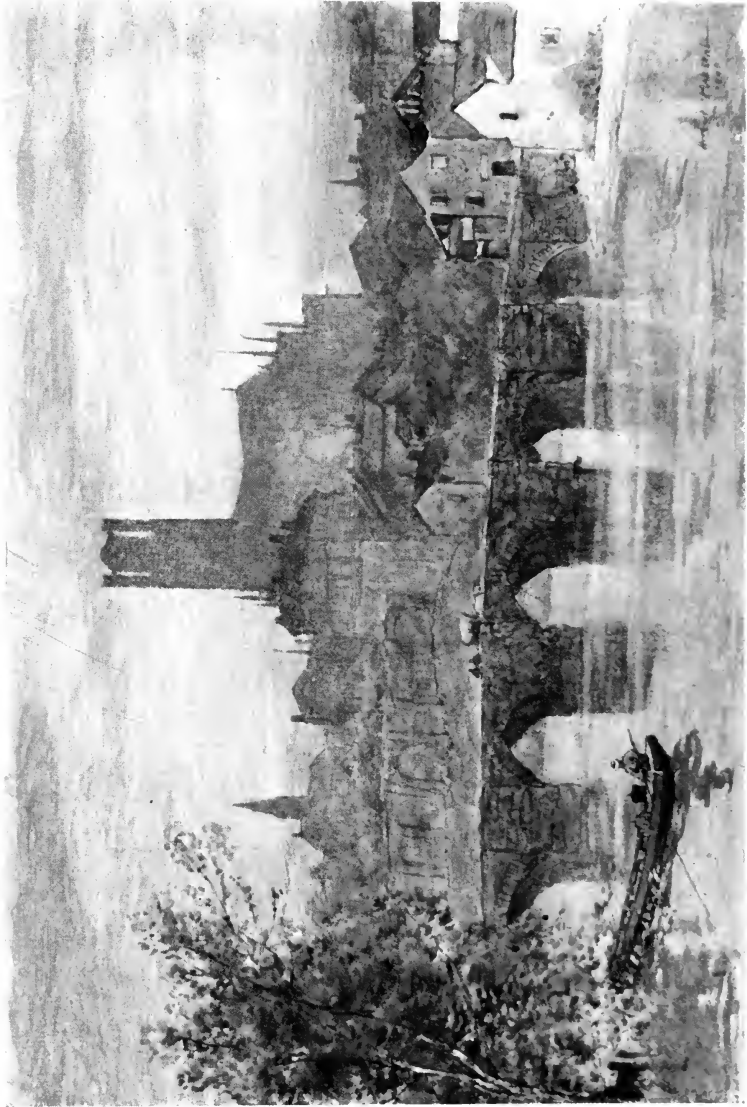
DC 20

M42

Arch.
dept.

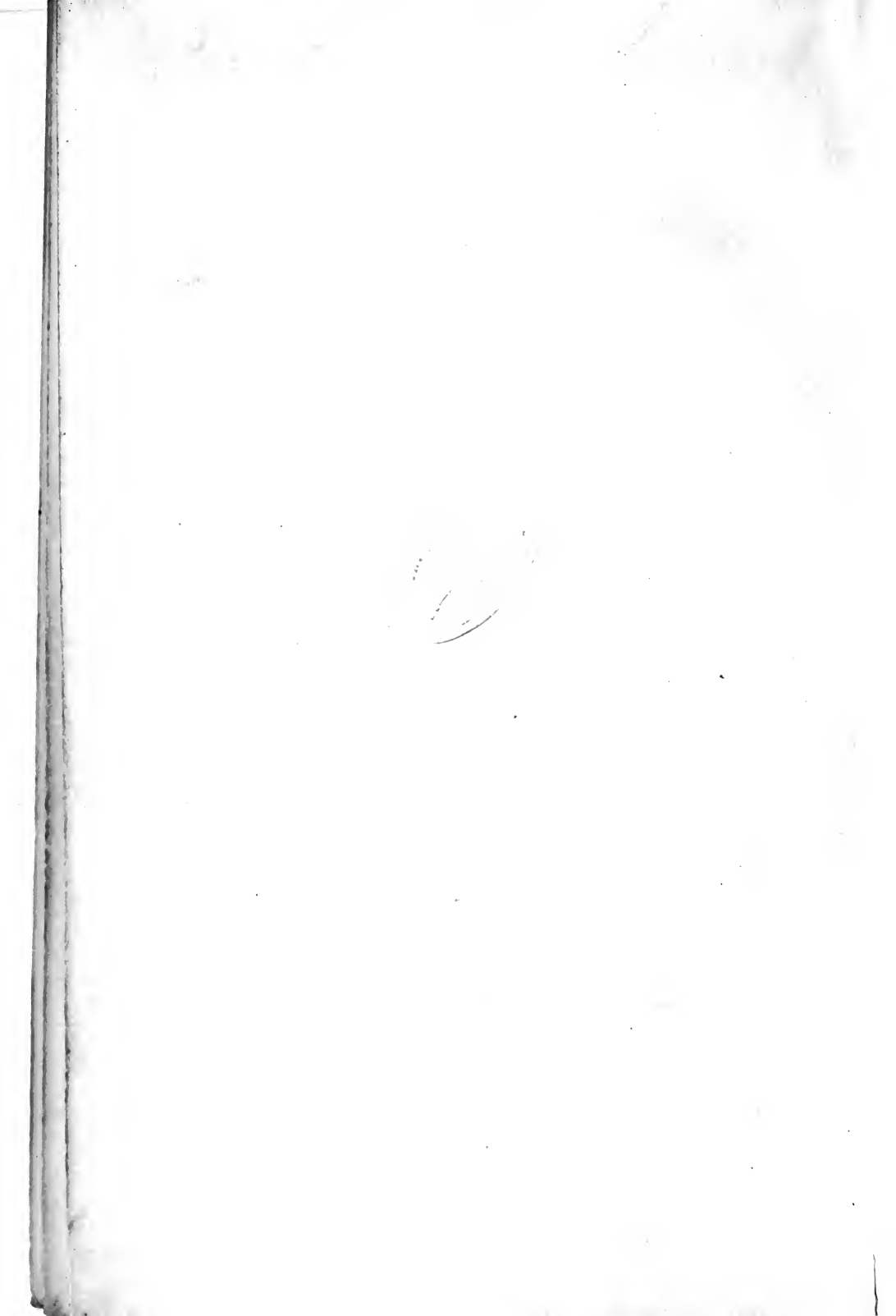
16

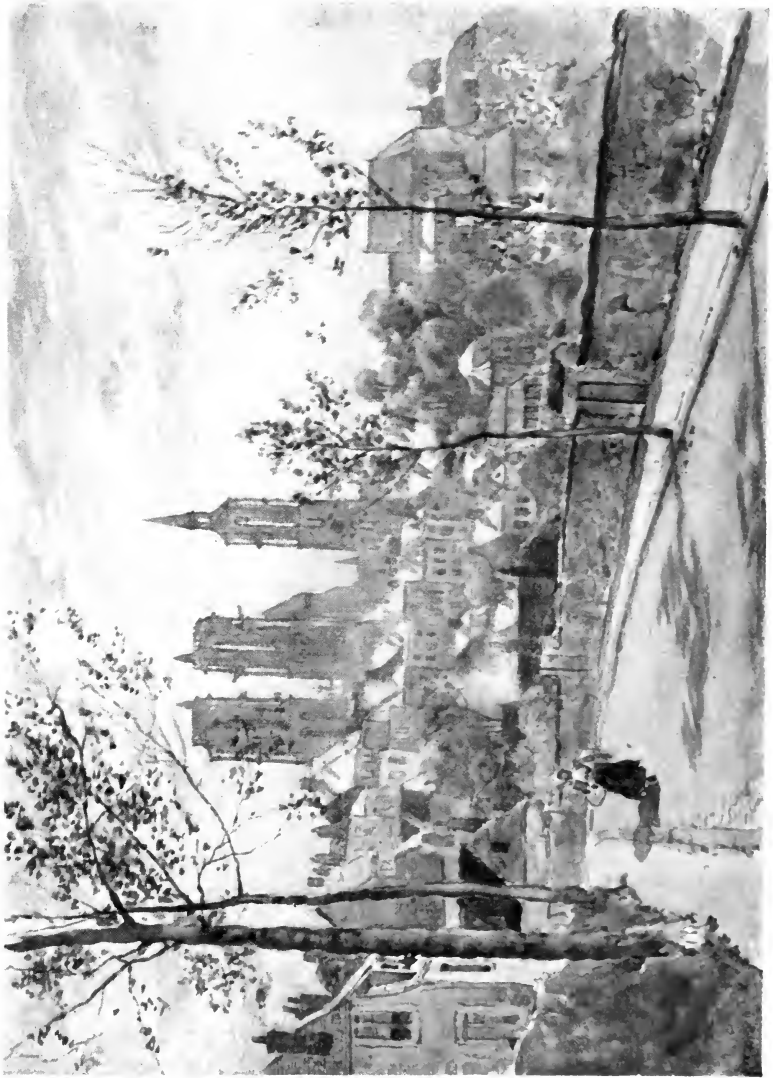
101



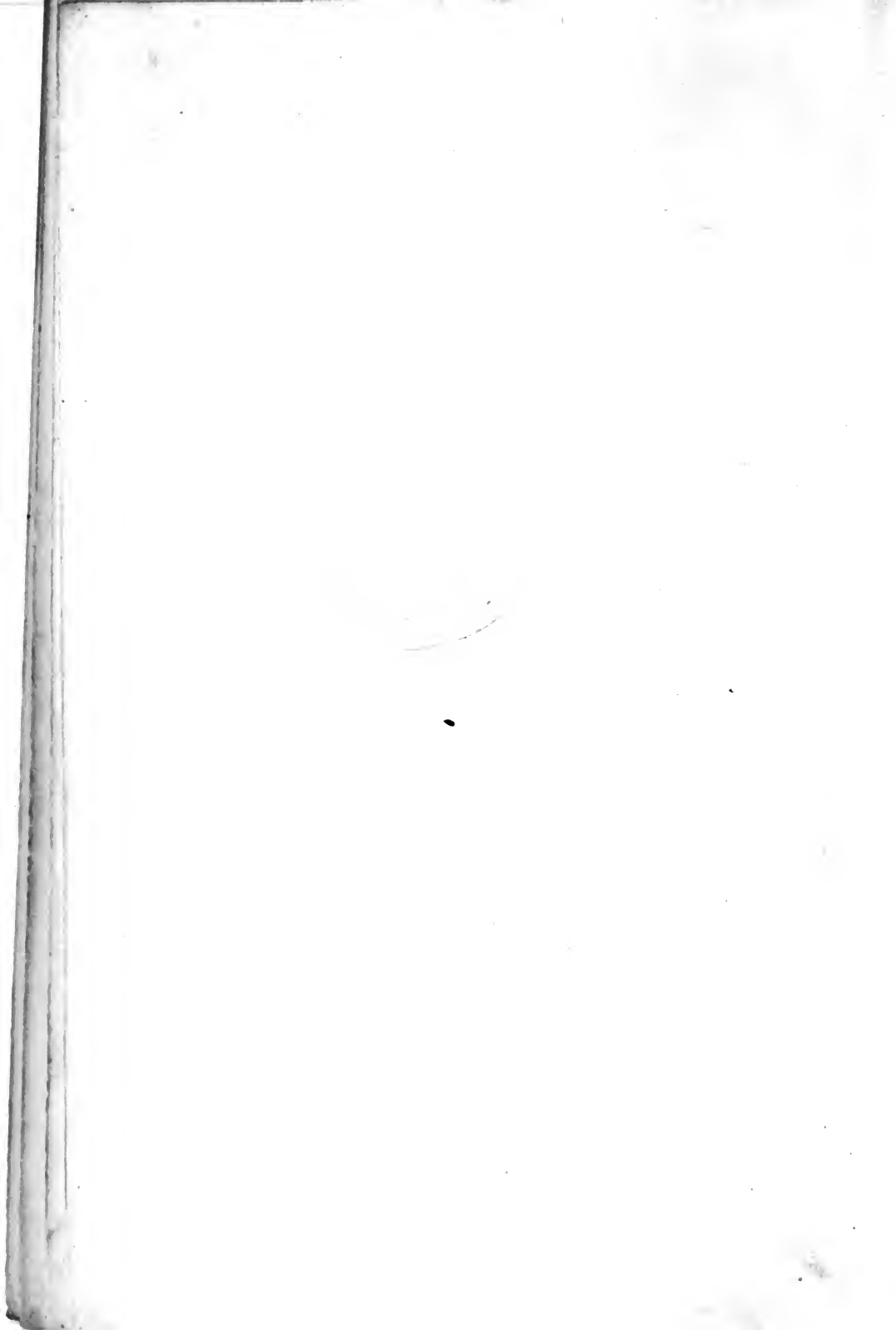
LIMOGES

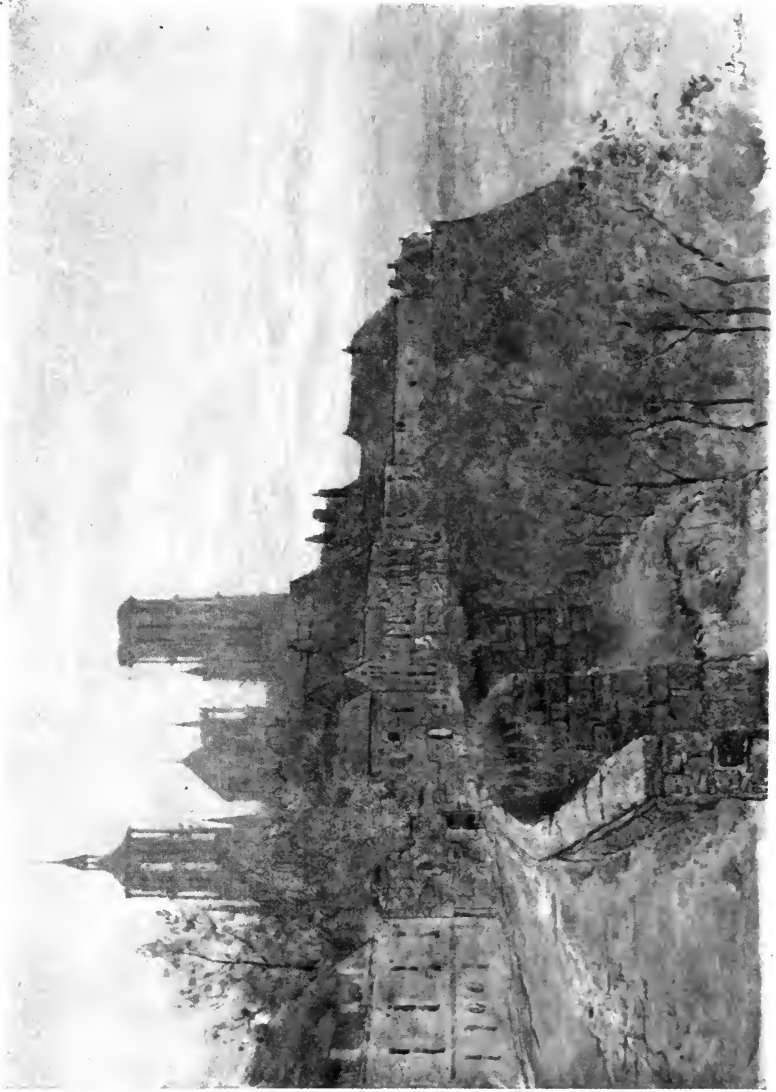
197803



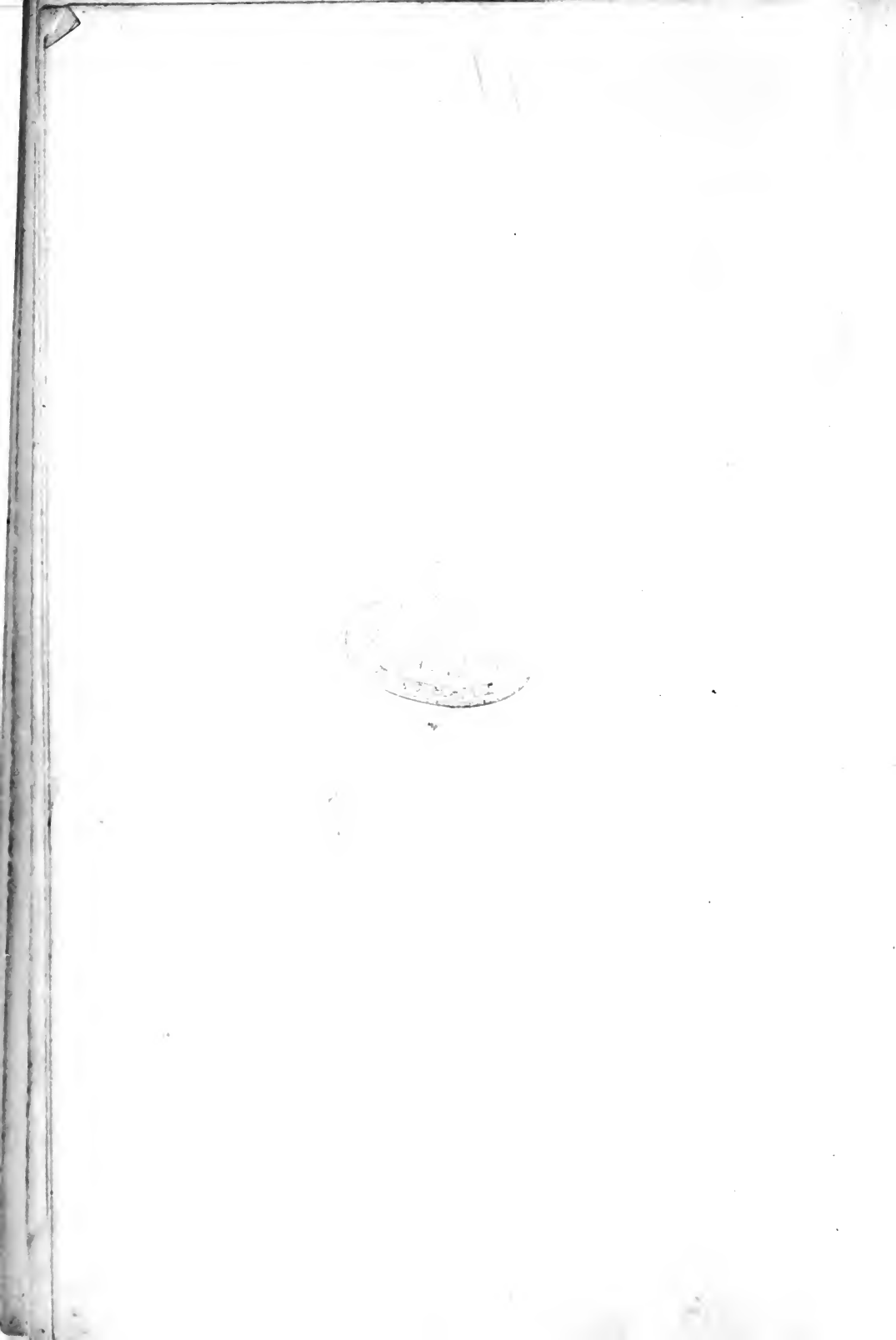


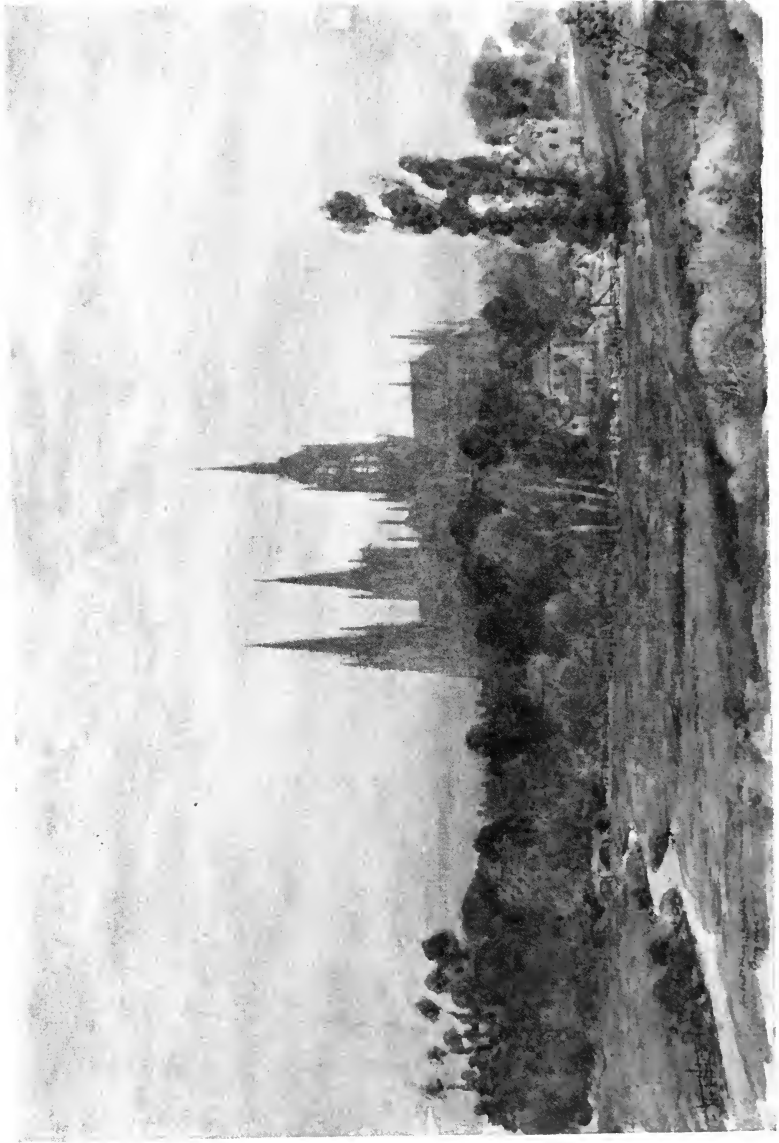
LÀON FROM THE BOULEVARDS





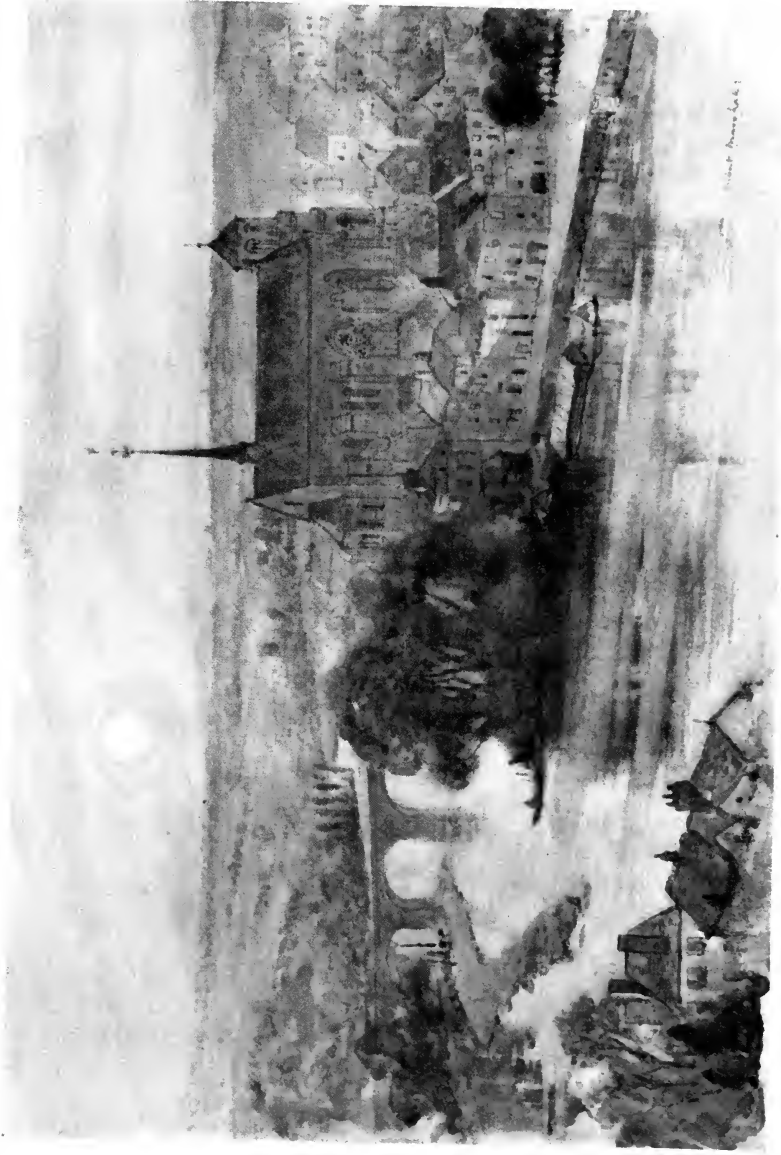
THE RAMPARTS, LAON



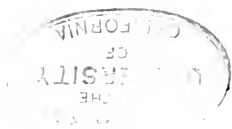


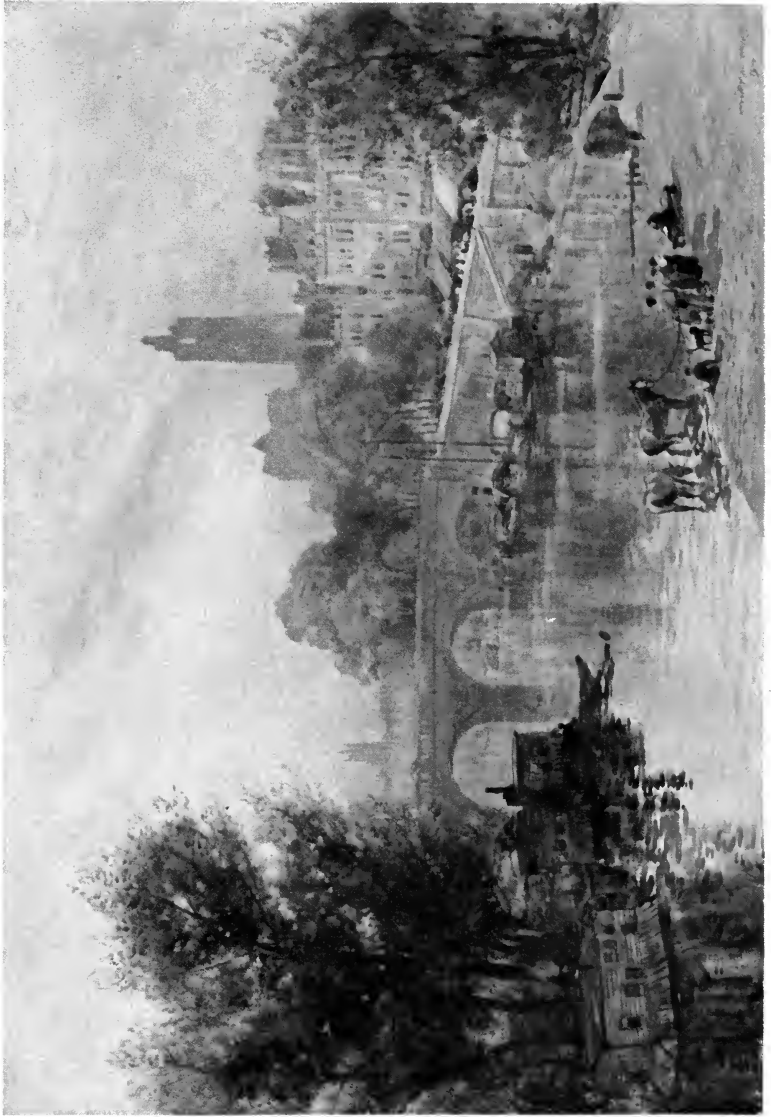
BAYEUX FROM THE MEADOWS

LIBRARY
OF THE
MUSEUM OF
COMPARATIVE ZOOLOGY
AND ANATOMY
HARVARD UNIVERSITY



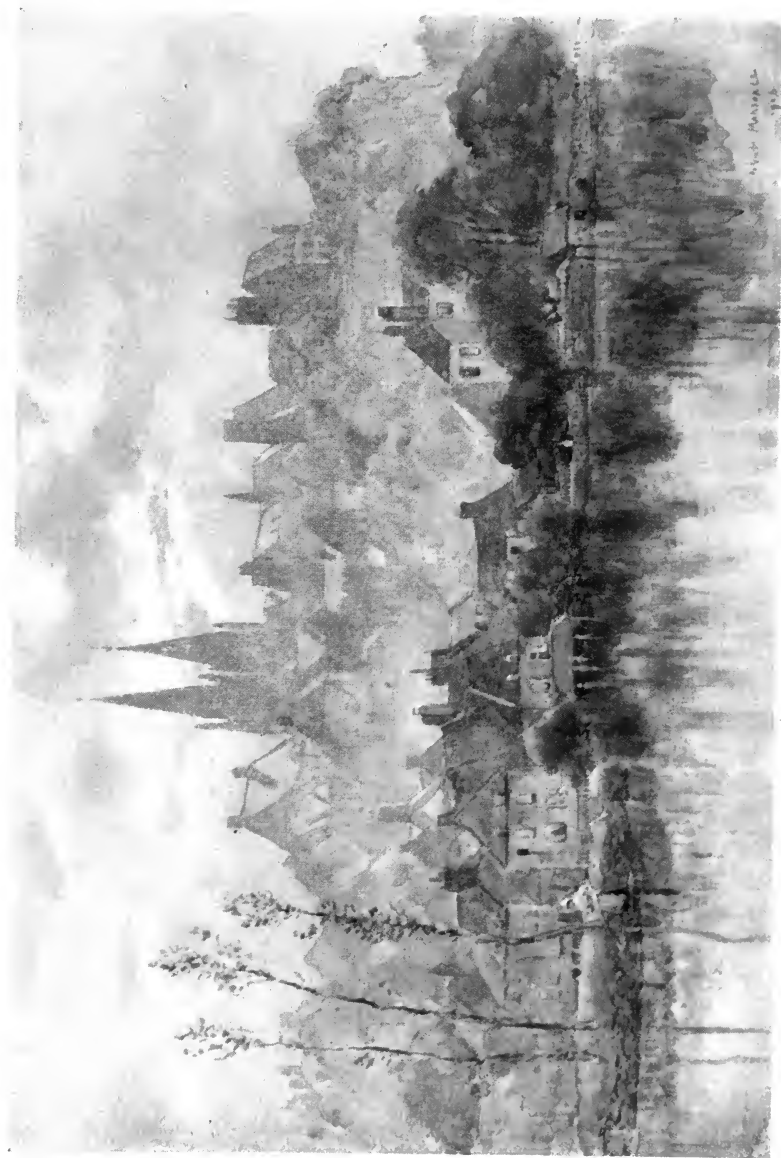
POITIERS



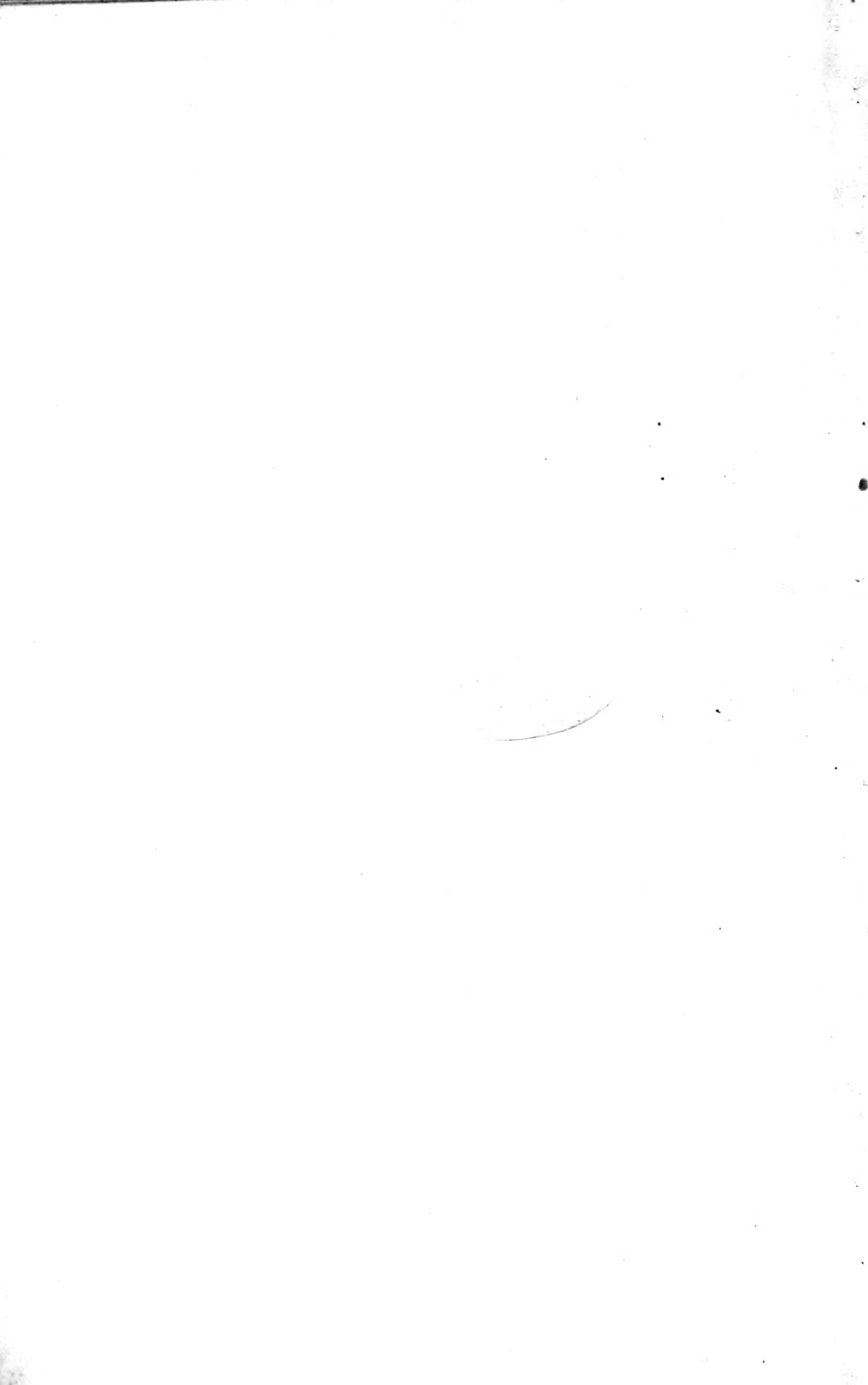


THE PONT MARIE, PARIS



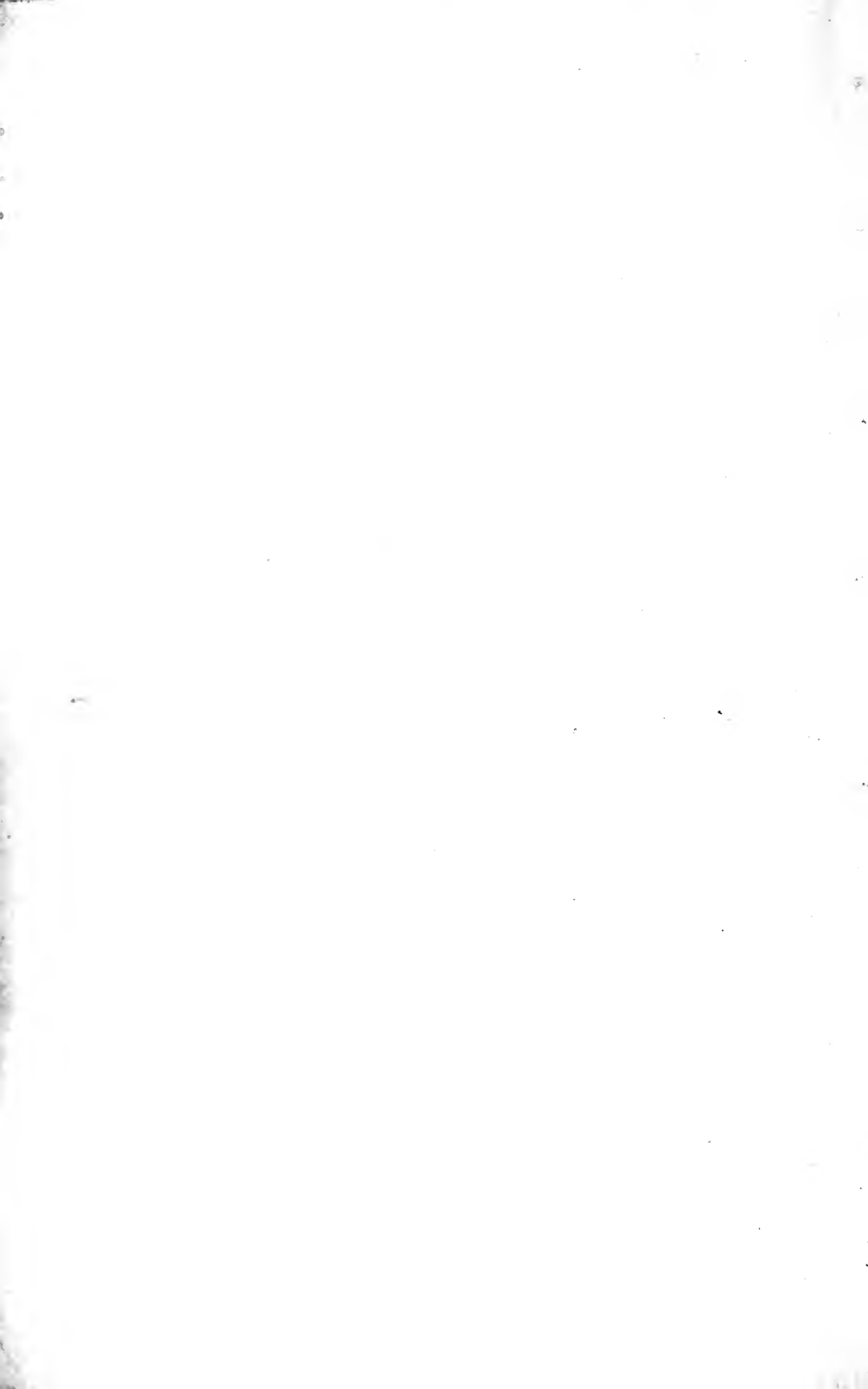


ST. LO





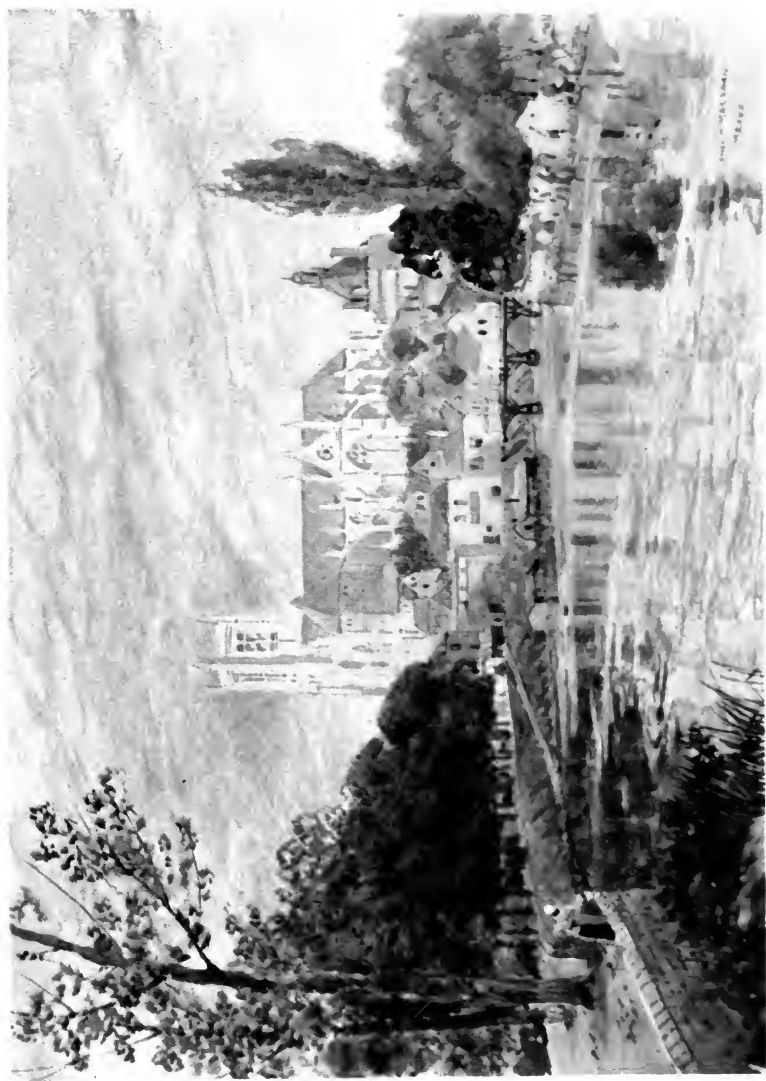
RHEIMS





MOULINS





MEAUX

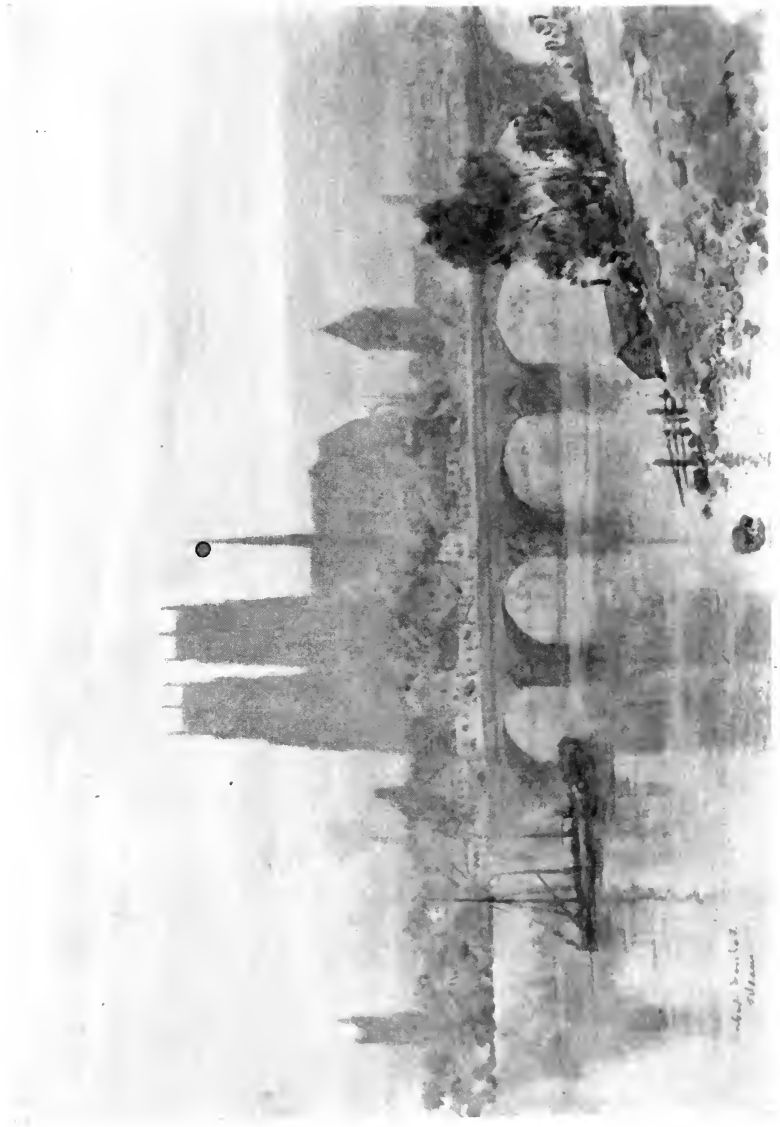


THE PORTE GAYOLE, BOULOGNE



THE QUAYSIDE, AMIENS

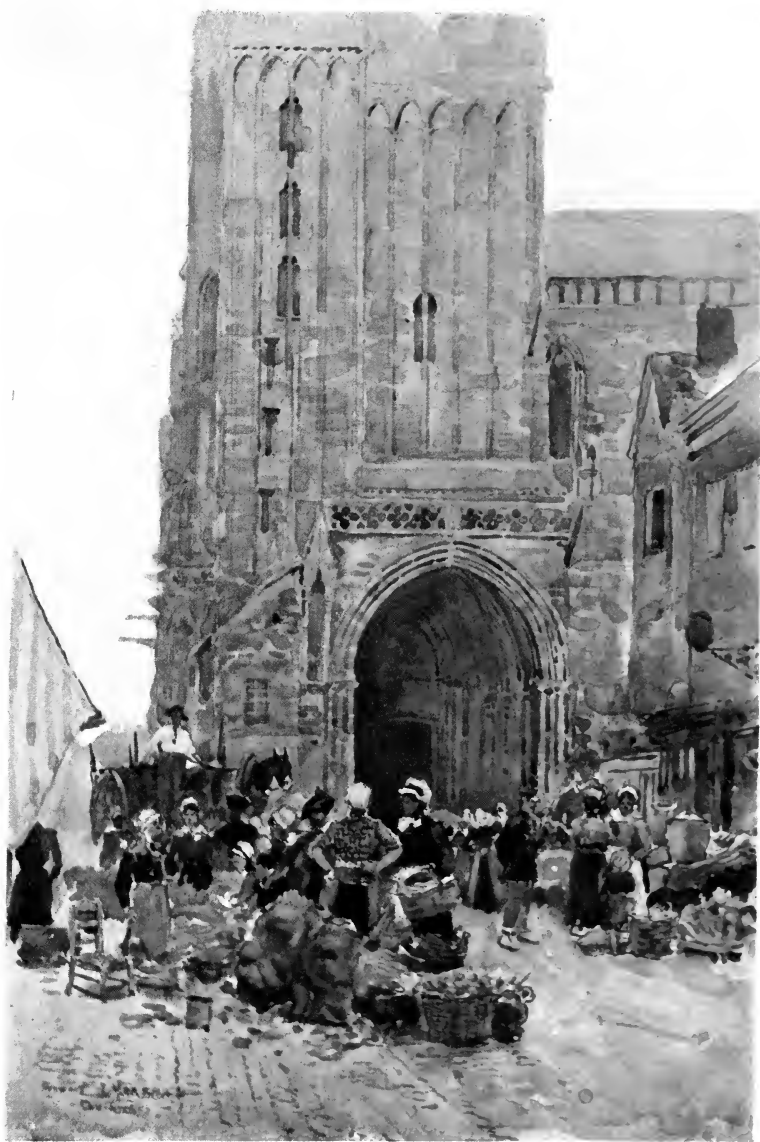




ORLÉANS

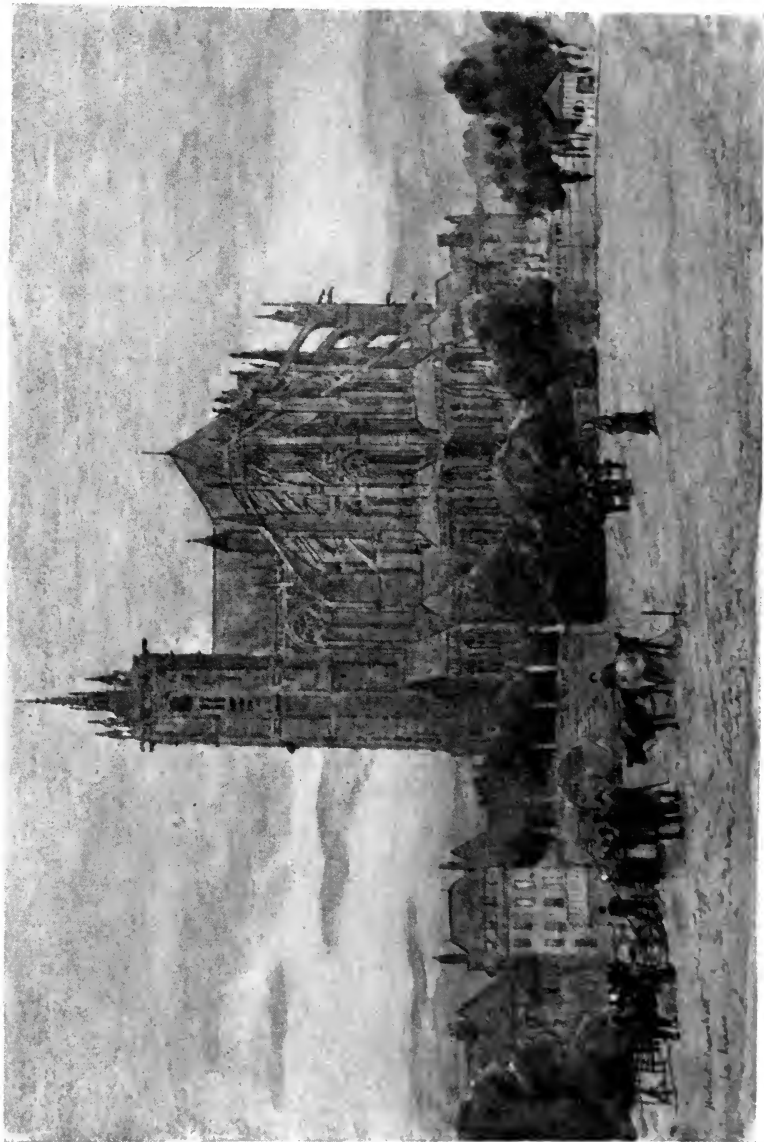
*Wm. D. Smith & Co.
1850*





THE SOUTH PORCH OF THE CATHEDRAL, CONTANCES





LE MANS



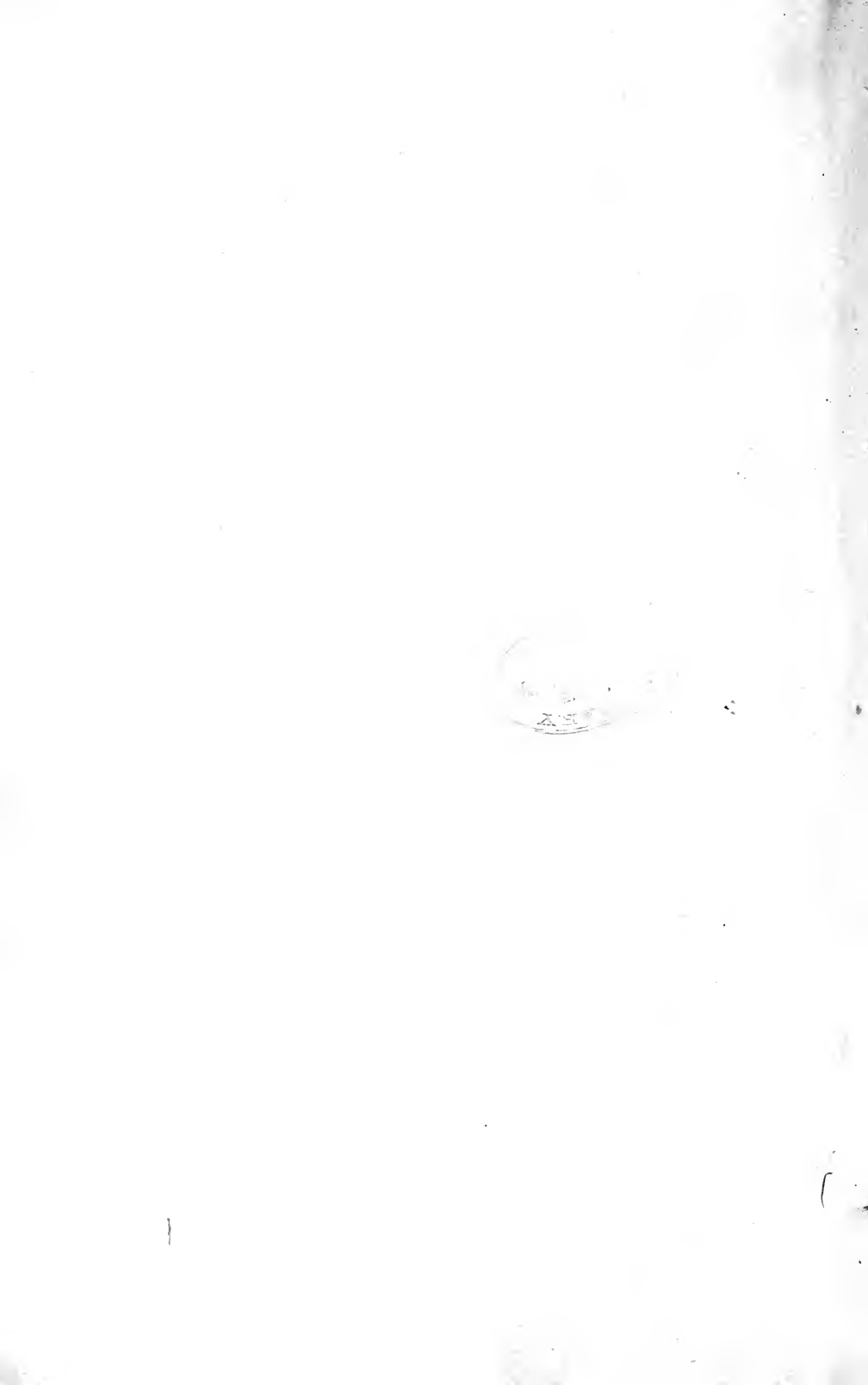


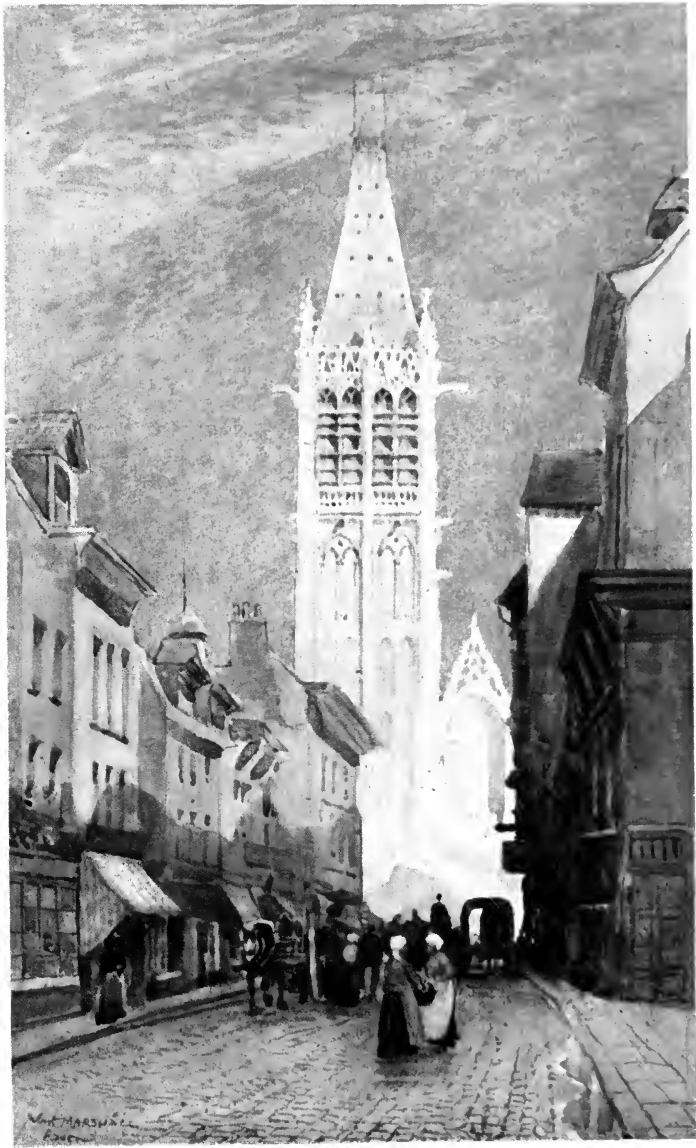
ANGERS





THE PLACE VOGEL, AMIENS





RUE DE L' HORLAGE, ROUEN



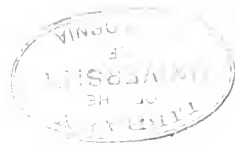


RUE DE LA PORTE GUILLAUME, CHARTRES





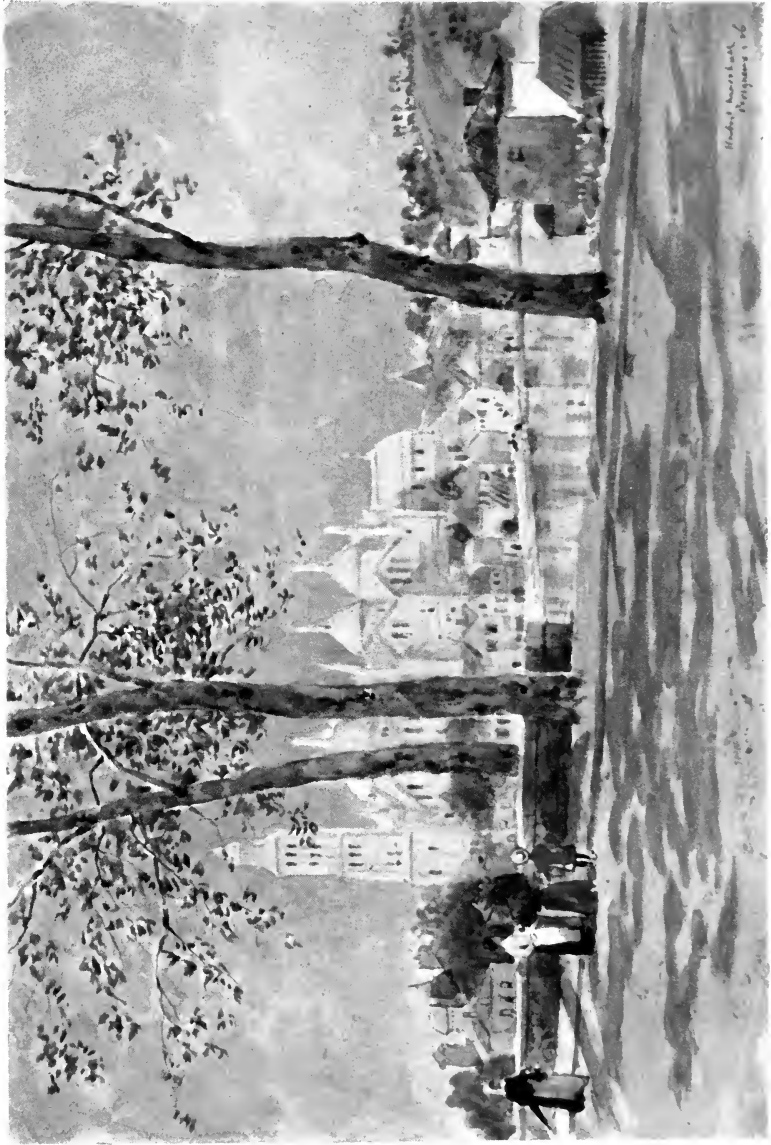
ST. PIERRE, COUTANCES



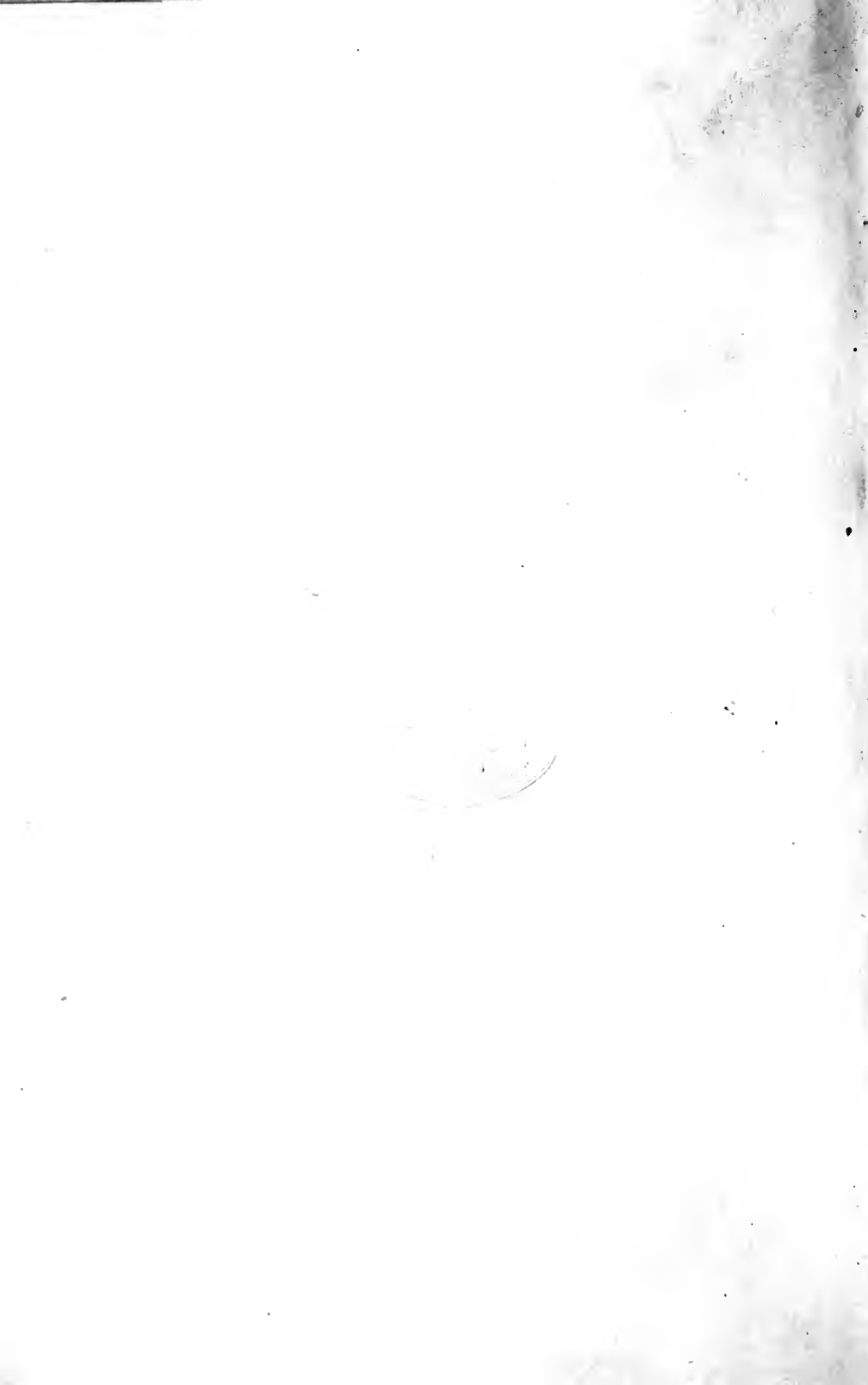


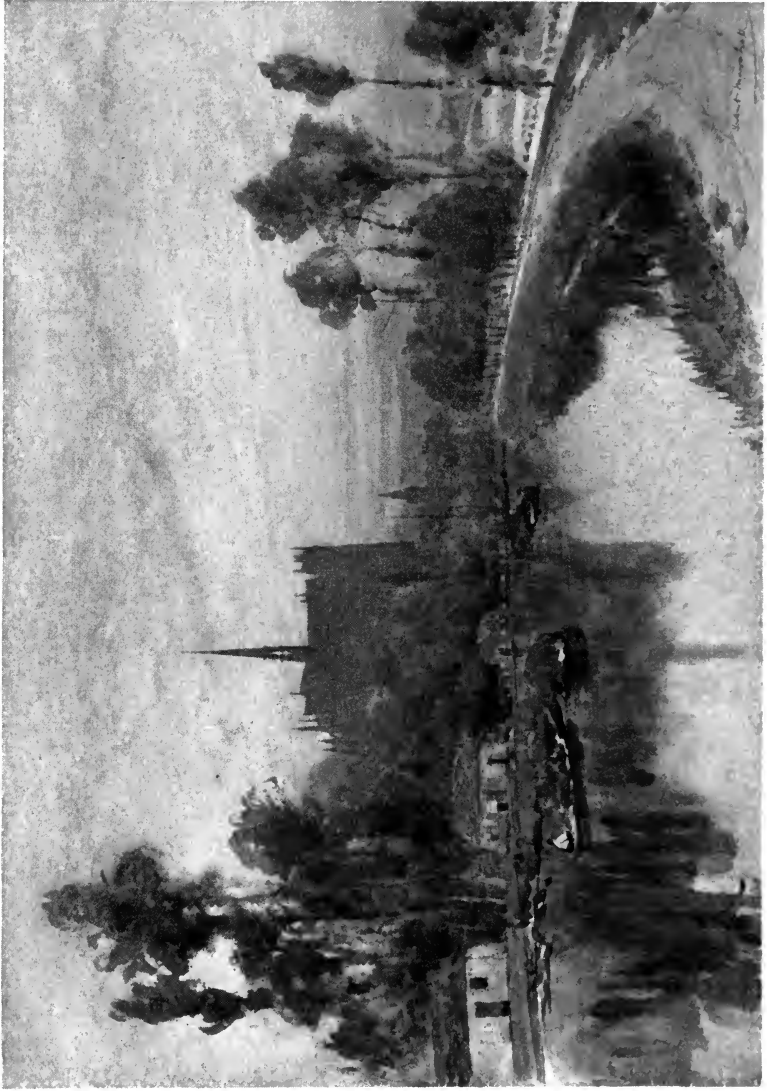
ST. GATIEU, TOURS





ST. FRONT, PERIGUEUX



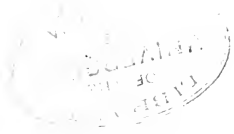


EVENING ON THE SOMME AT AMIENS

1111
1111
1111



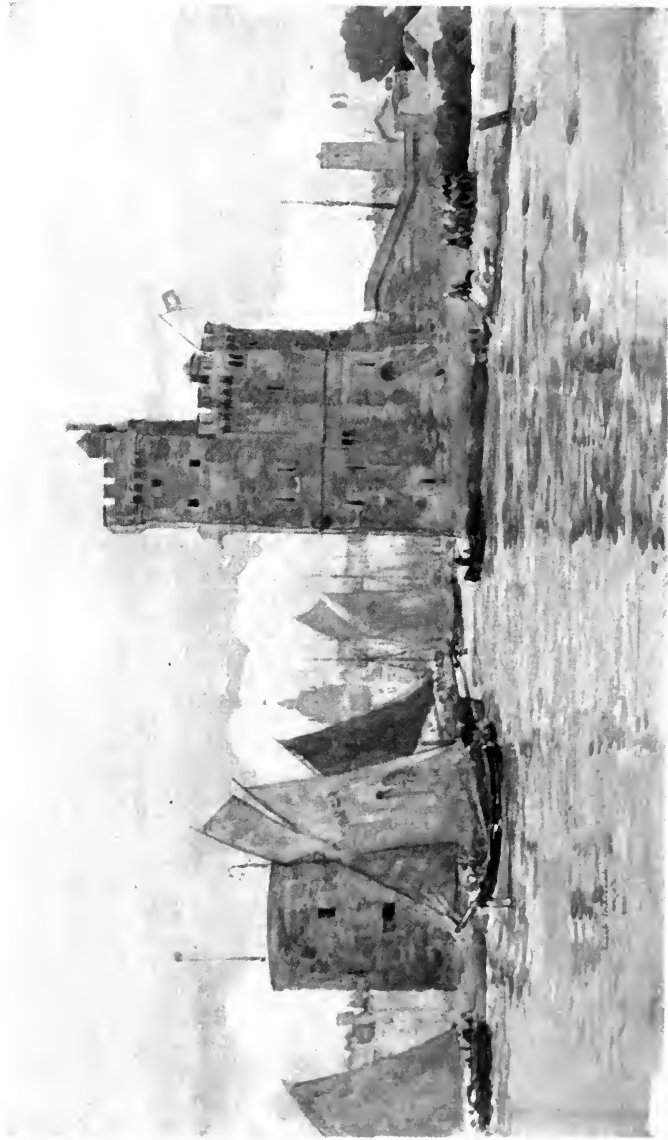
CHARTRES FROM THE NORTH





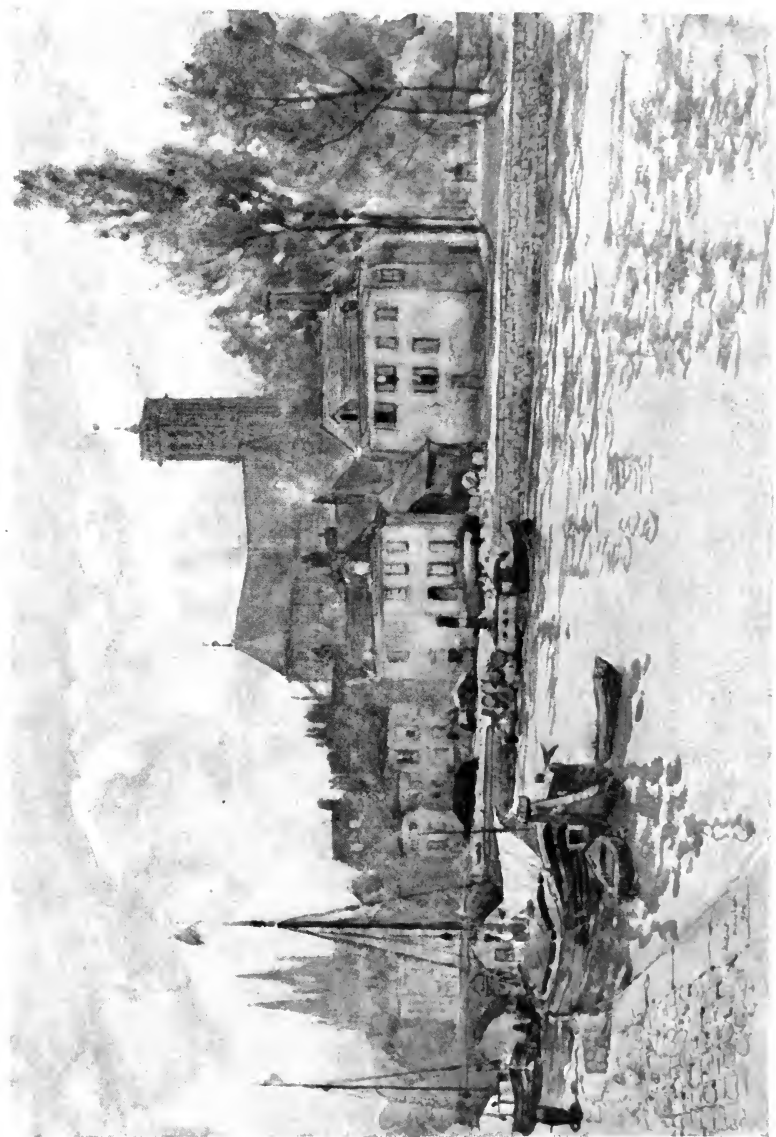
THE TOWER OF EVREUX





ENTRANCE TO THE HARBOR, LA ROCHELLE





SOISSONS





Lausanne
Michele Berninelli 1906

ST. JACQUES LISIEUX





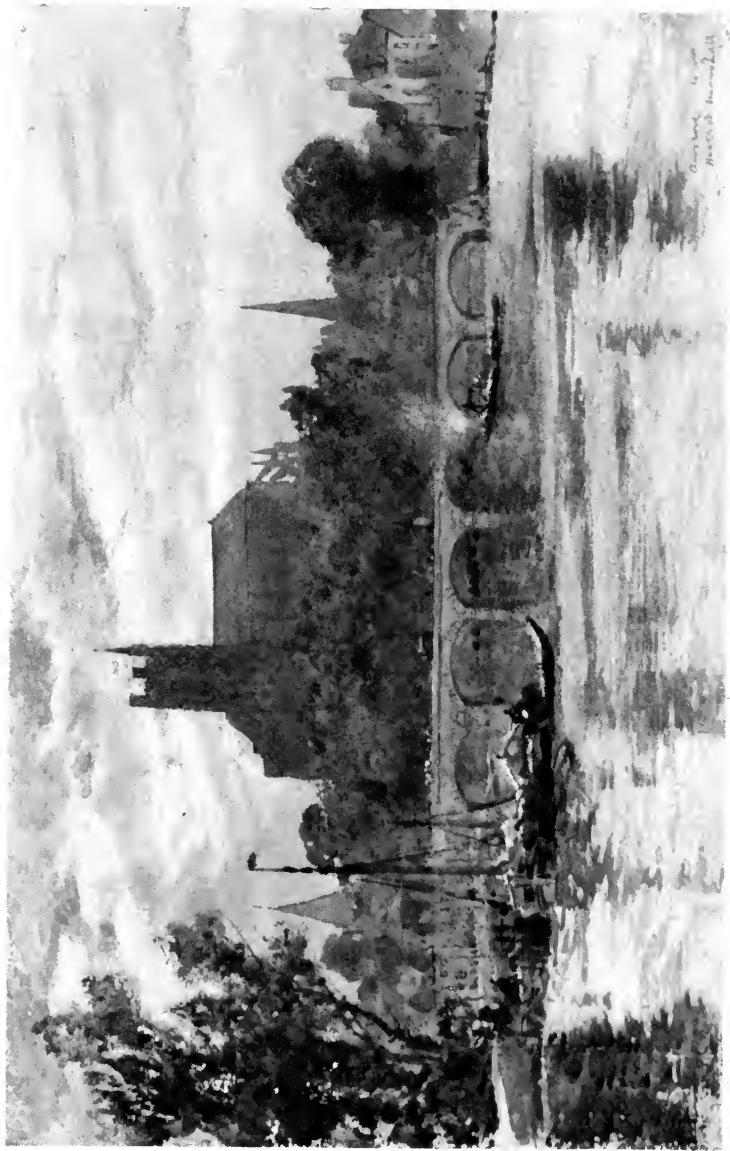
NÔTRE DAME DE LA CÔTURE, LE MANS

LIBRARY
OF THE
UNIVERSITY
OF
CALIFORNIA



PONT ST. MICHEL AND STE. CHAPELLE, PARIS

Handwritten text in a circular stamp, possibly containing a date or reference number.

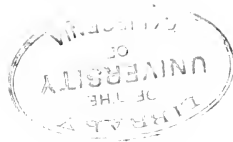


THE BRIDGE AND CATHEDRAL, AUXERRE





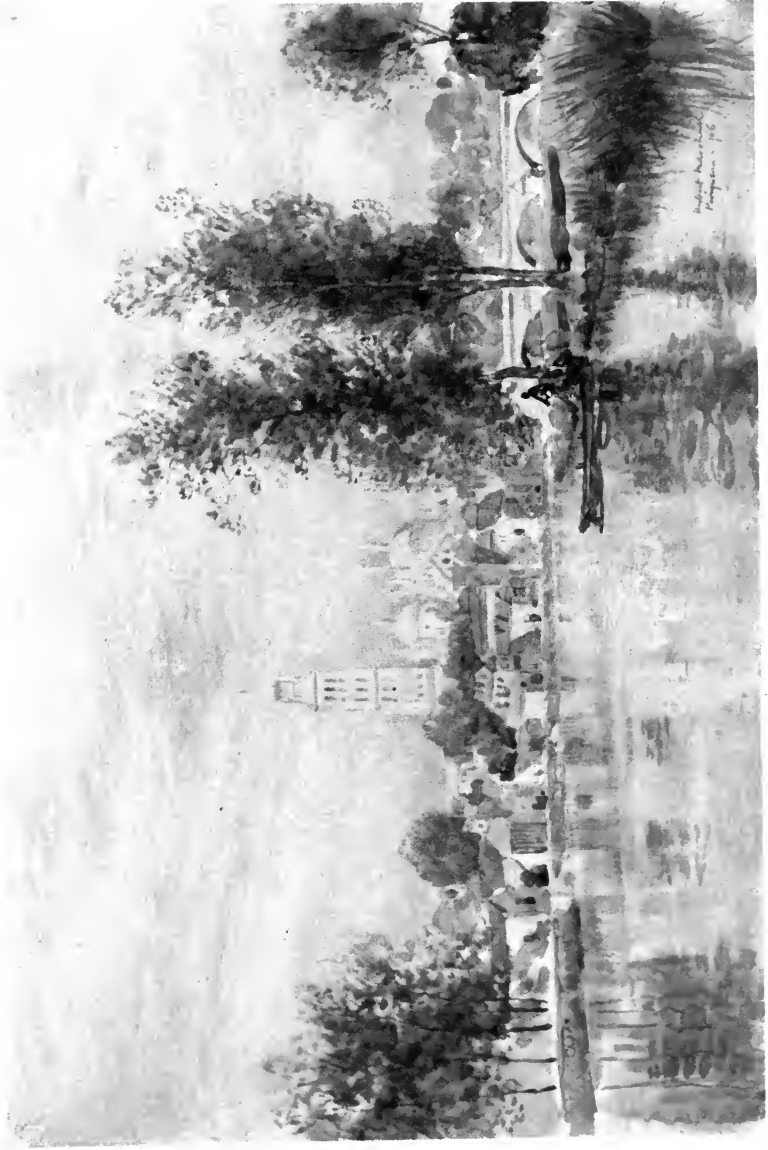
BLOIS





ST. GERMAIN DES PRÉS, PARIS





PERIGUEUX FROM THE RIVER





SENLIS





TOUR DE L'HORLAGE, TOURS





Sens
M. H. B. L. L.
Ch. L. L. L.

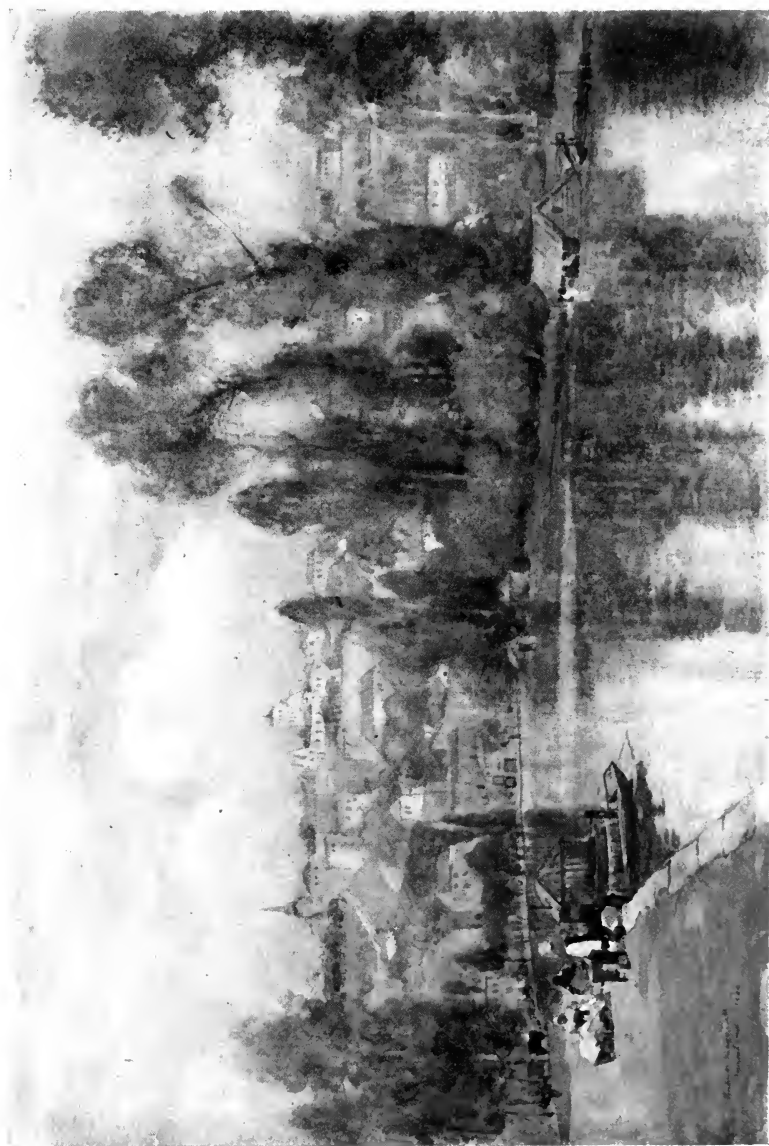
SENS





BORDEAUX



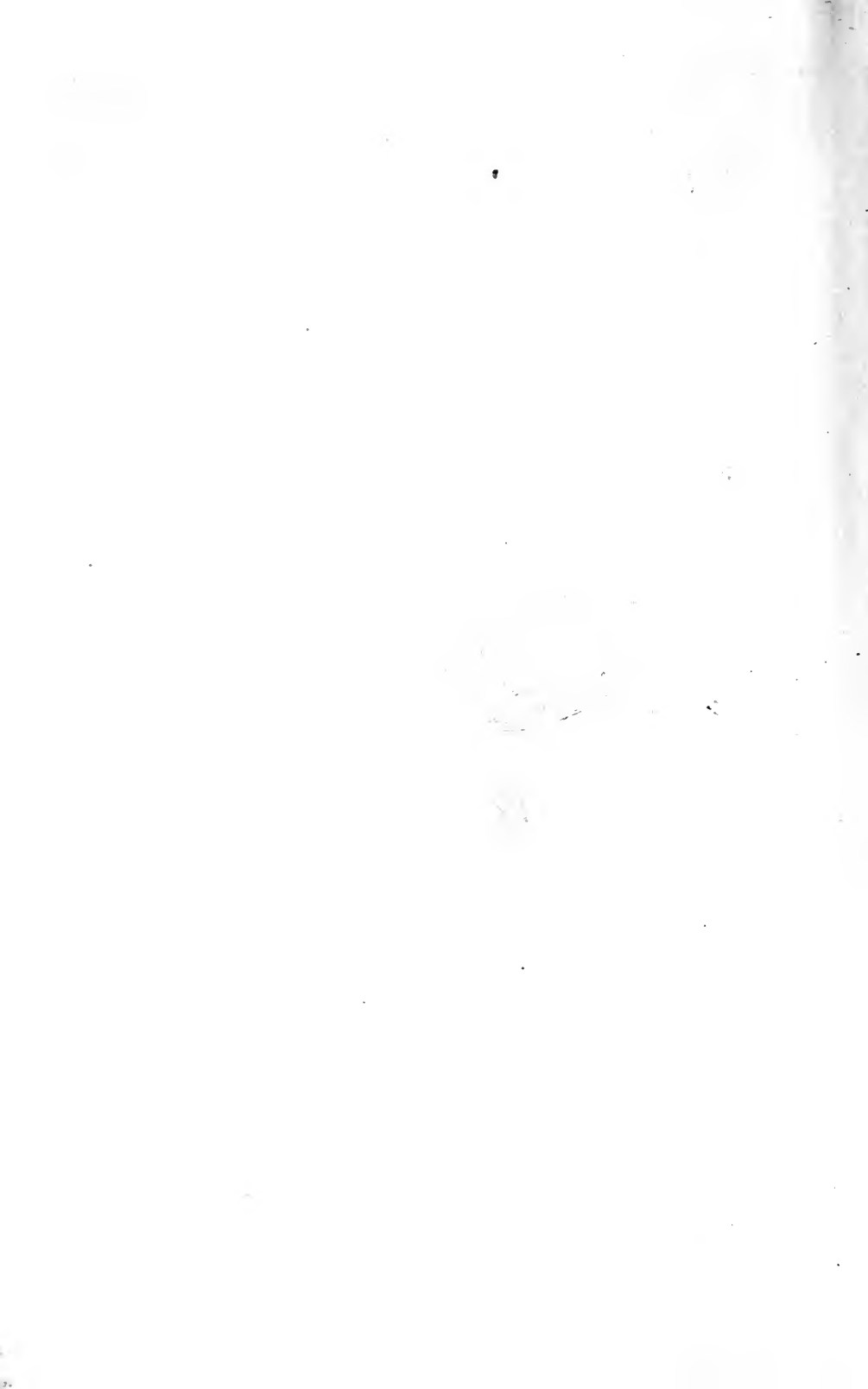


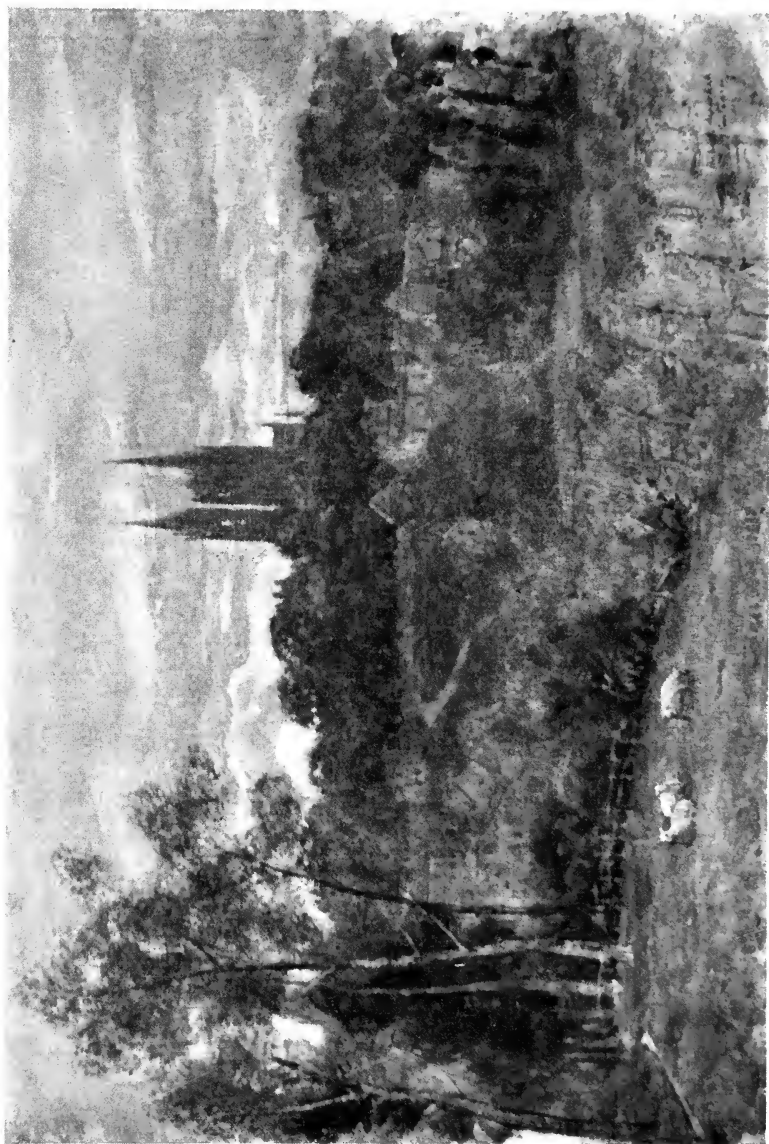
ANGOULÊME





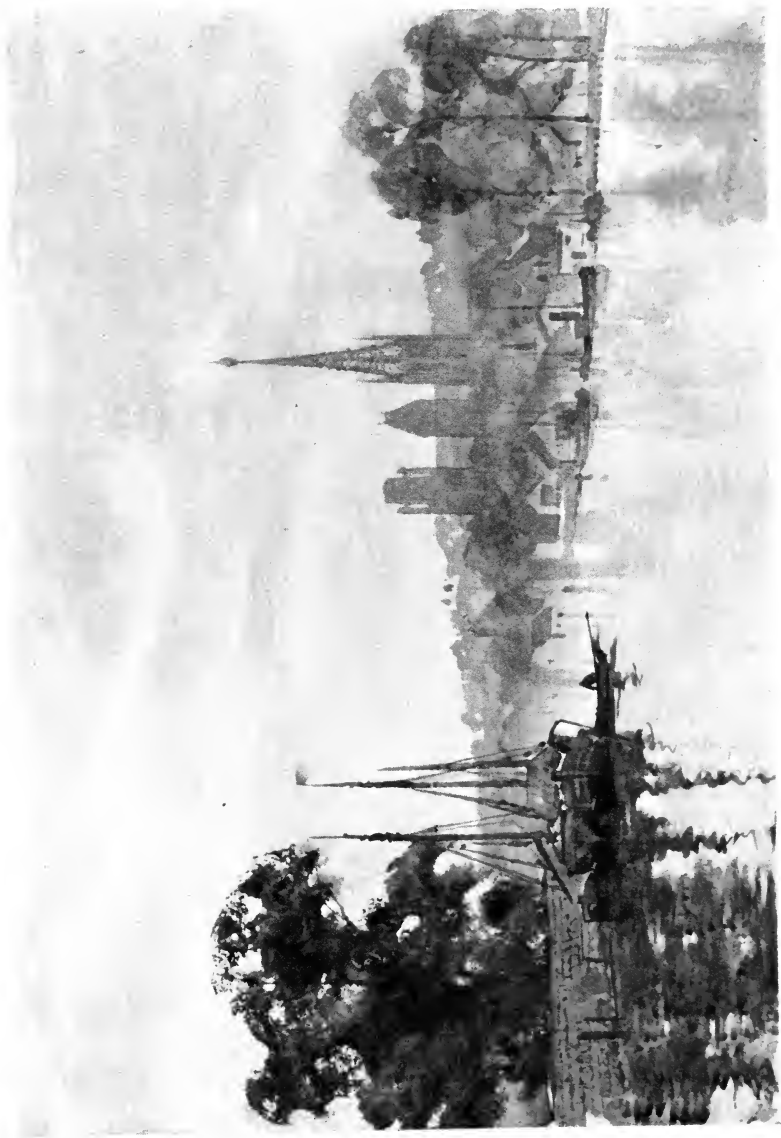
A STREET IN PERIGUEUX





CONTANCES



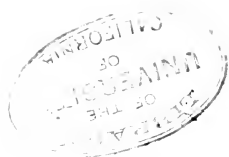


ROUEN FROM THE RIVER

THE
OF THE
50
1900



BOURGES





A STREET CORNER, BAYEUX





EVREUX





THE MUSÉE CUJAS, BOURGES



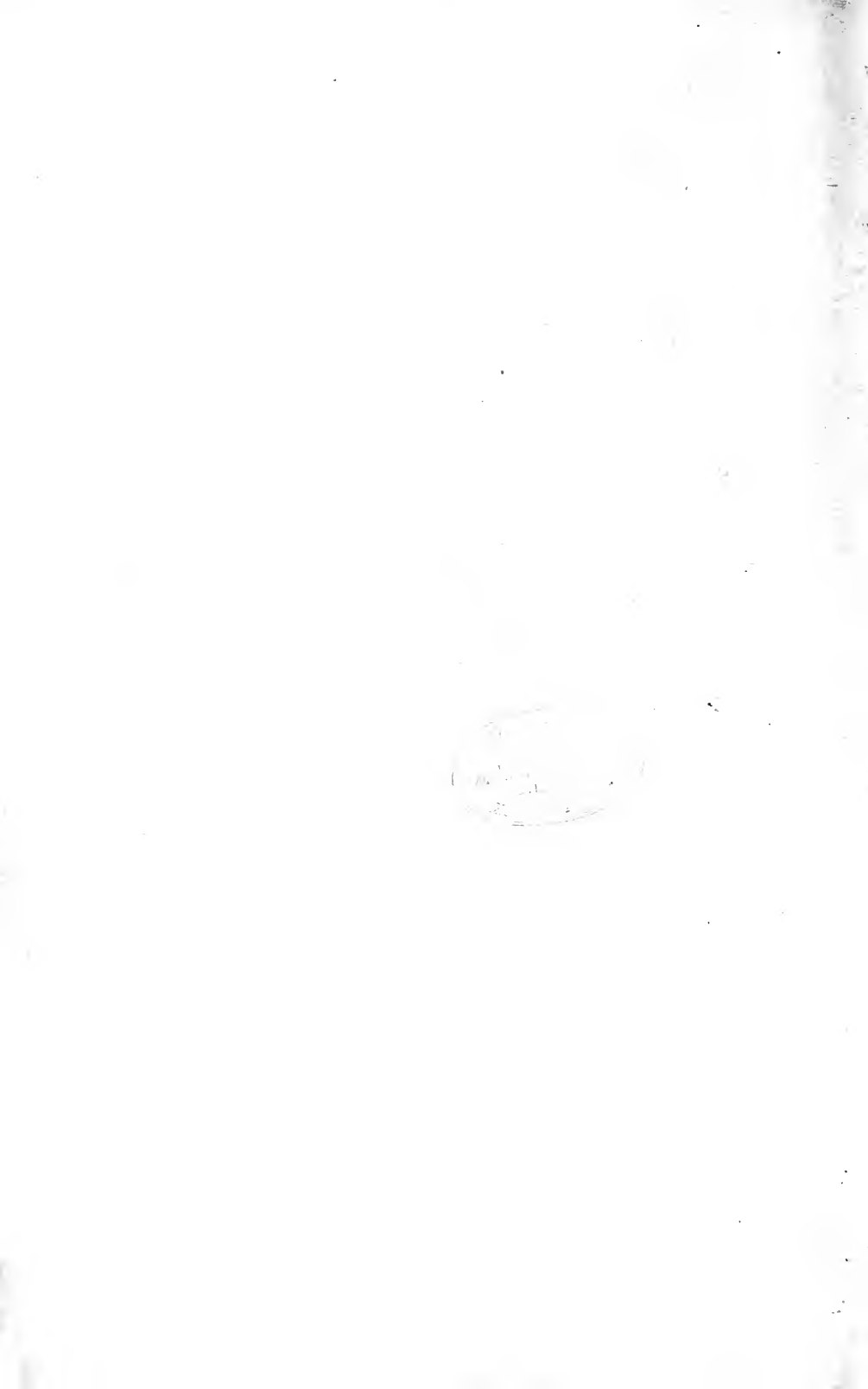


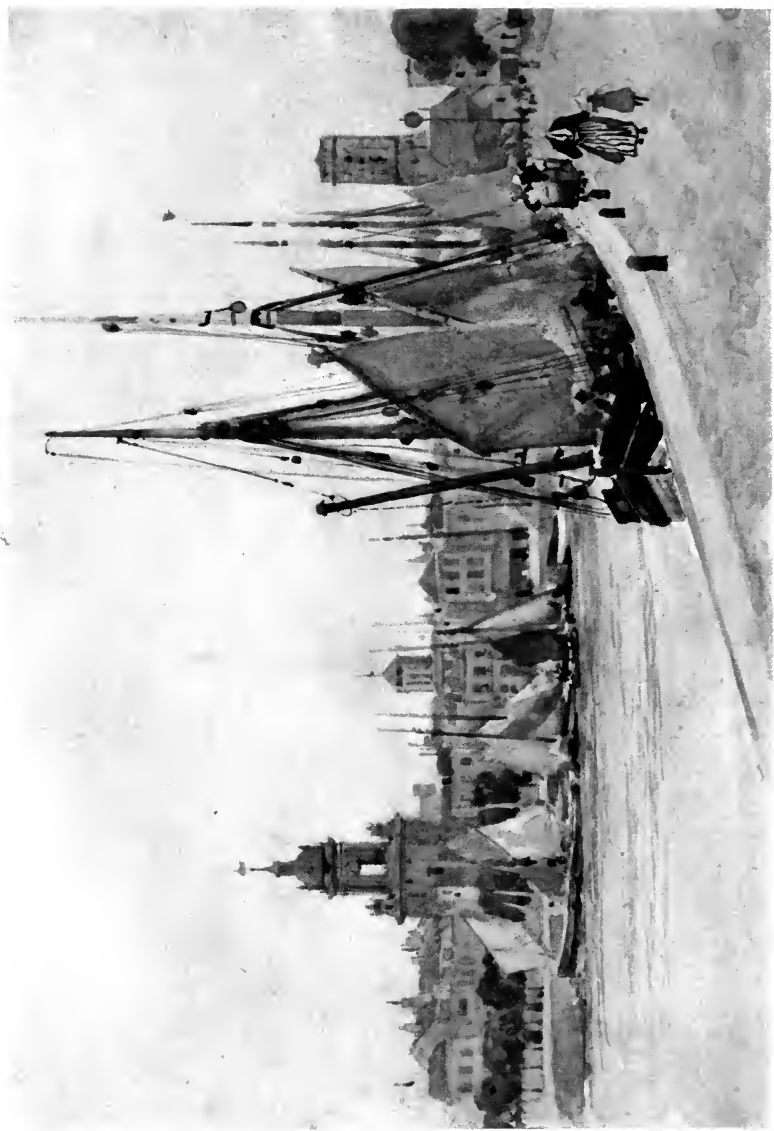
PORTE DU CROUX, NEVERS





THE OLD MILLS AT MEAUX





THE HARBOUR OF LA ROCHELLE





LÂON, VIEW FROM THE PLAIN





THE CATHEDRAL FRONT ST. LÔ





ABBEVILLE



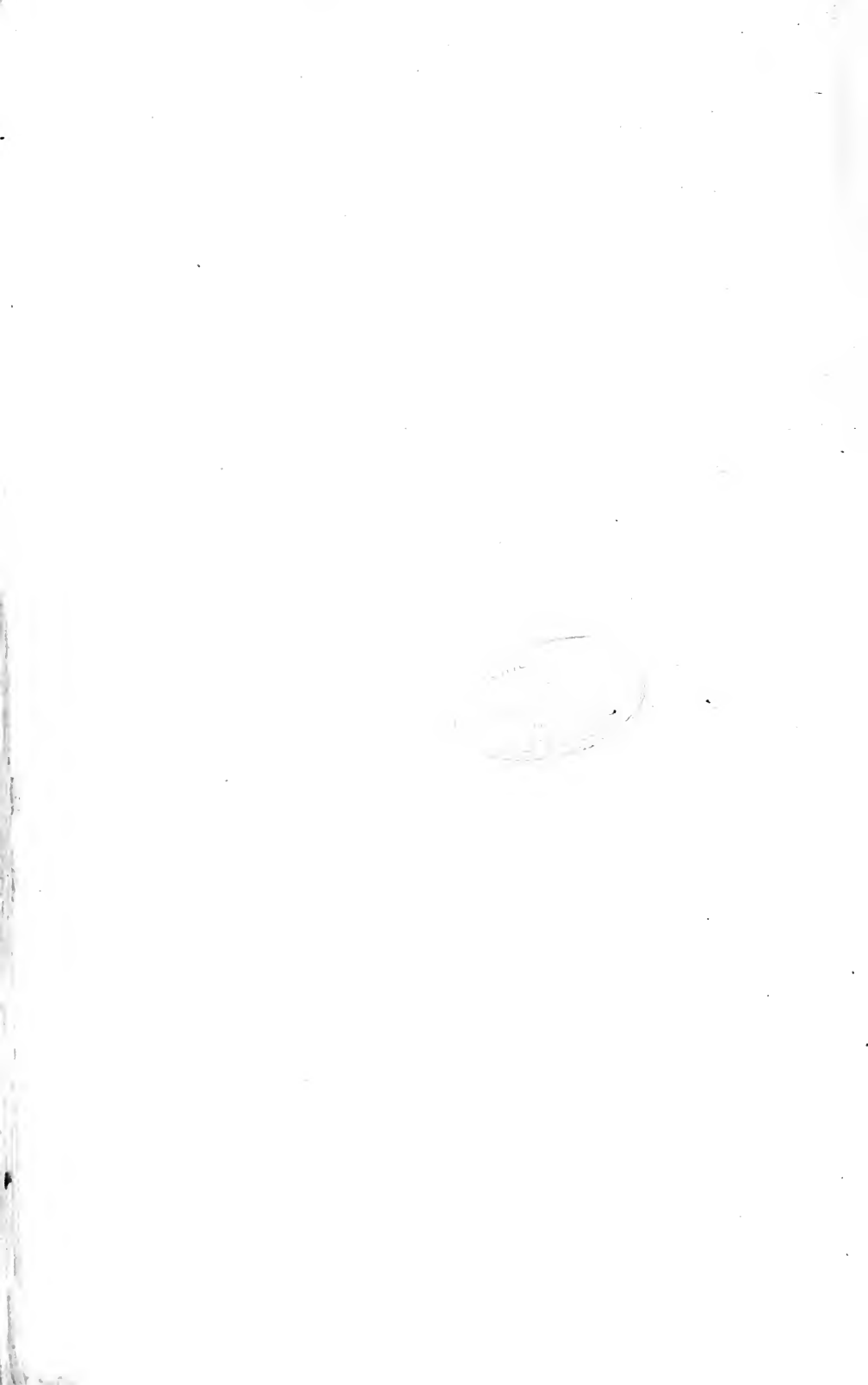


RUE ST. ROMAIN, ROUEN





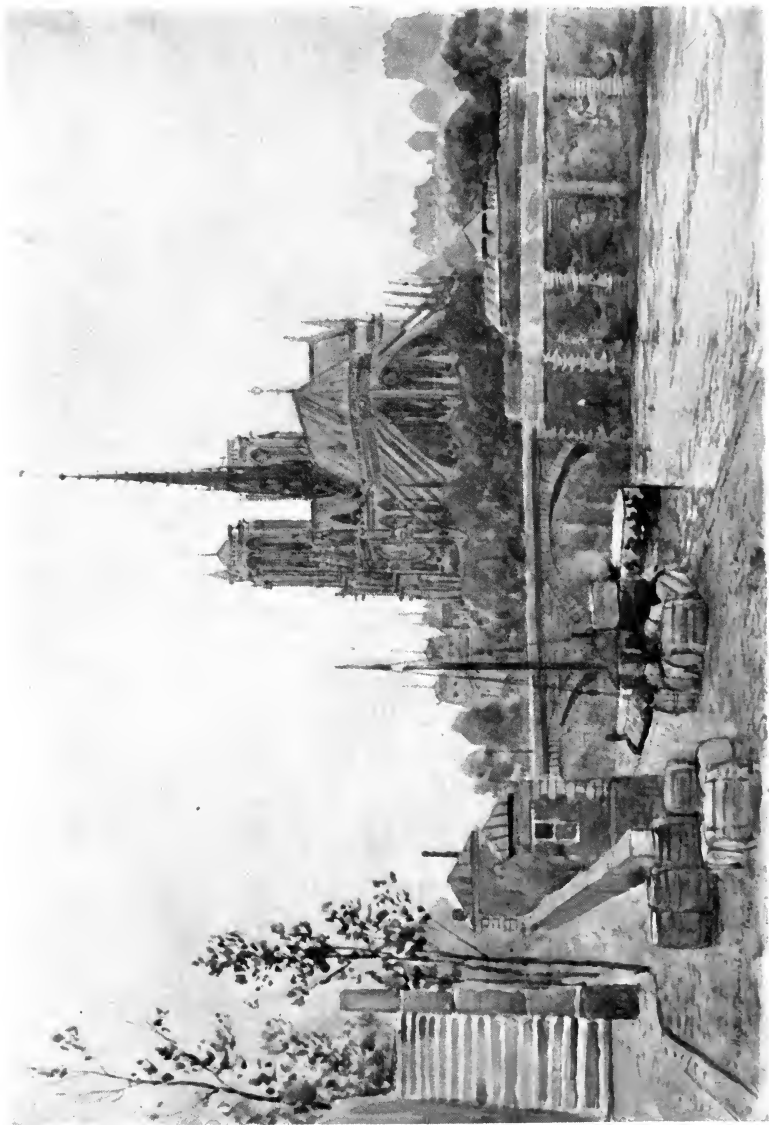
ST. GERMAIN, AUXERRE





THE HÔTEL-DE-VILLE, NEVERS





NÔTRE DAME, PARIS

LIBRARY
OF THE
UNIVERSITY
OF CALIFORNIA



THE HOUSE OF JACQUES CŒUR, BOURGES





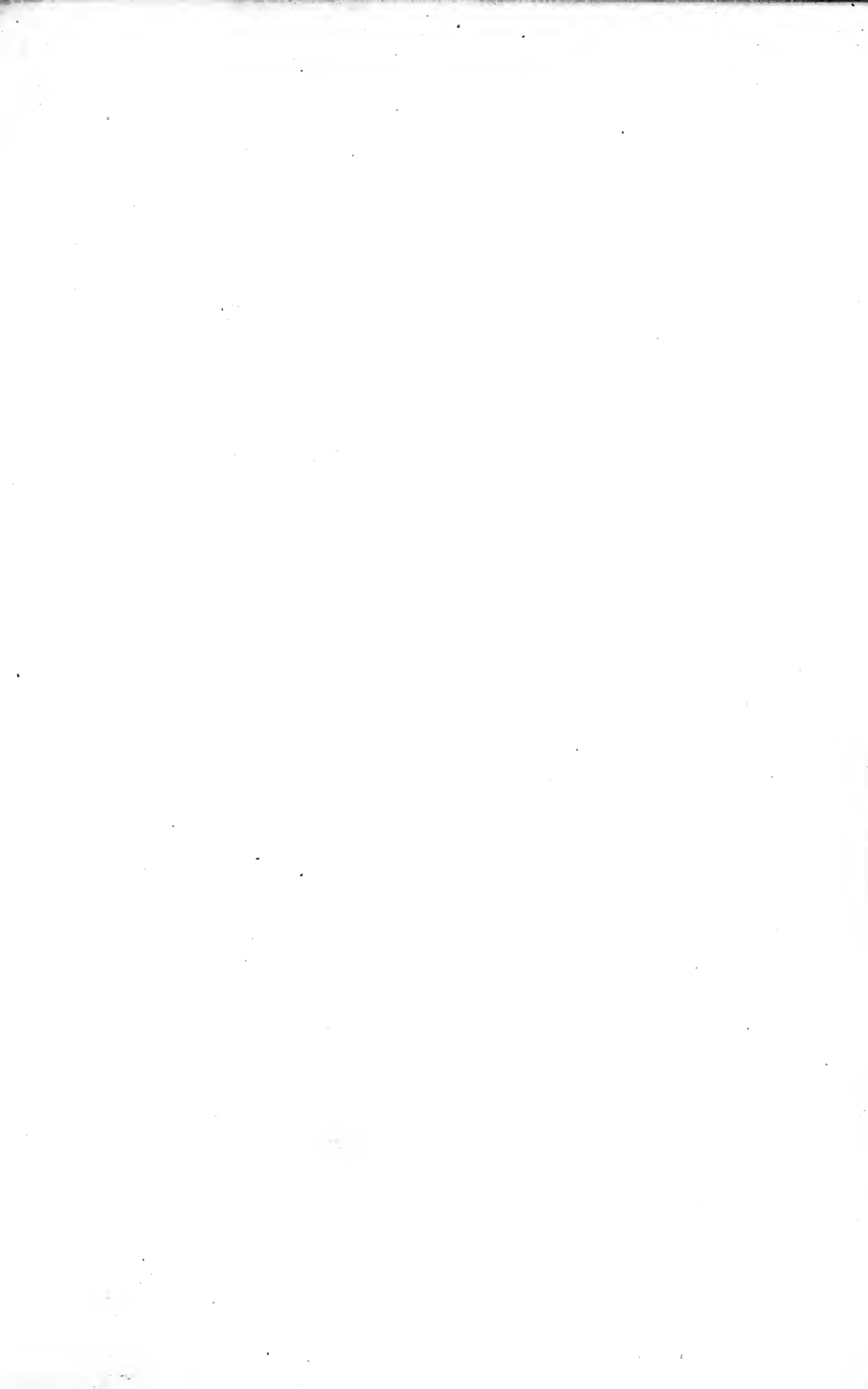
ST. MARTIN, LÂON

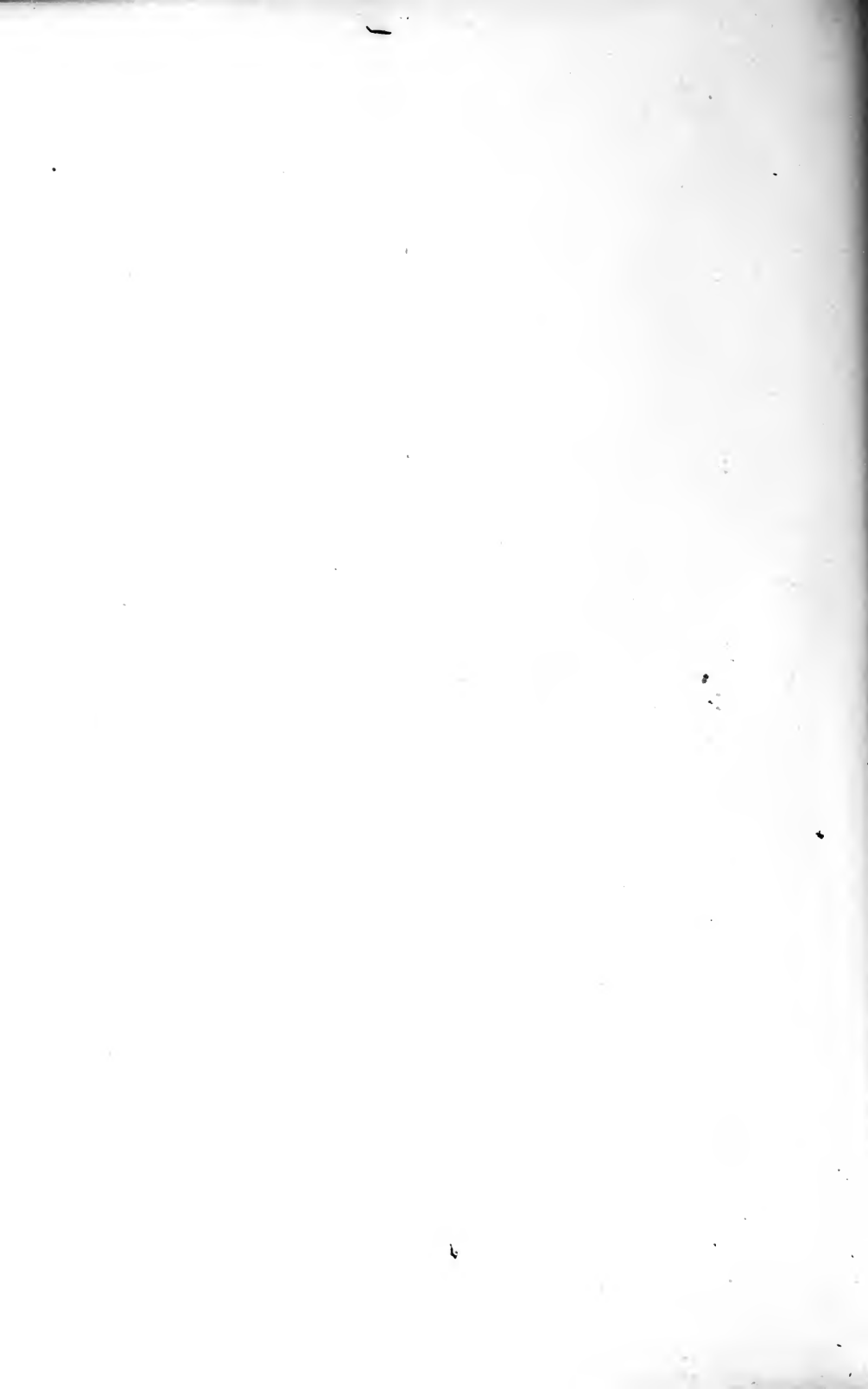


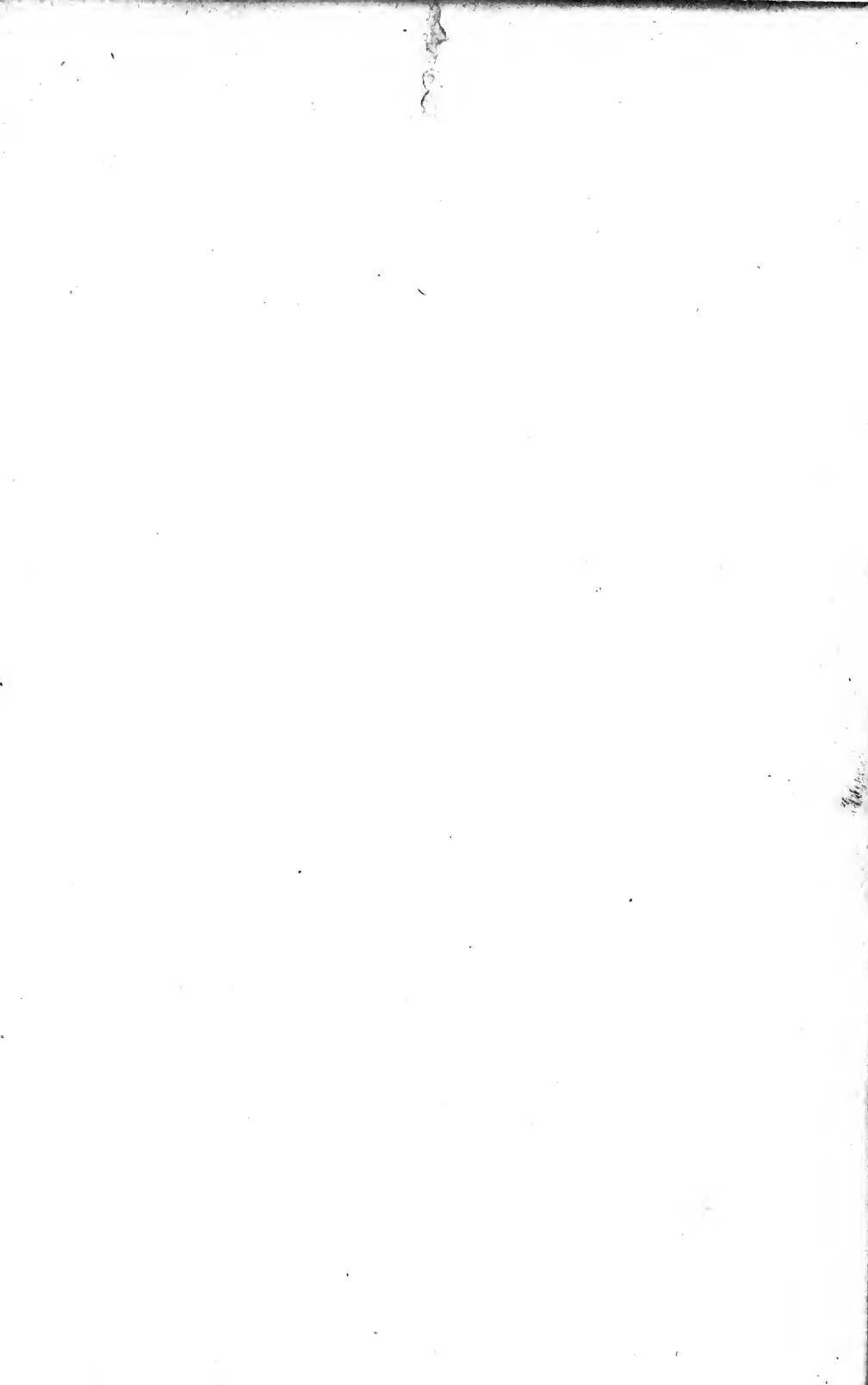


CHARTRES













RETURN ENVIRONMENTAL DESIGN LIBRARY
TO → 210 Wurster Hall 642-4818

| | | |
|----------------------|---|---|
| LOAN PERIOD 1 | 2 | 3 |
| QUARTER | | |
| 4 | 5 | 6 |

ALL BOOKS MAY BE RECALLED AFTER 7 DAYS
Return books early if they are not being used

DUE AS STAMPED BELOW

| | | |
|--|--|--|
| | | |
| | | |
| | | |
| | | |
| | | |
| | | |
| | | |
| | | |
| | | |
| | | |
| | | |
| | | |
| | | |
| | | |
| | | |
| | | |



U.C. BERKELEY LIBRARIES



C006414259

