


1947

CEECHEE

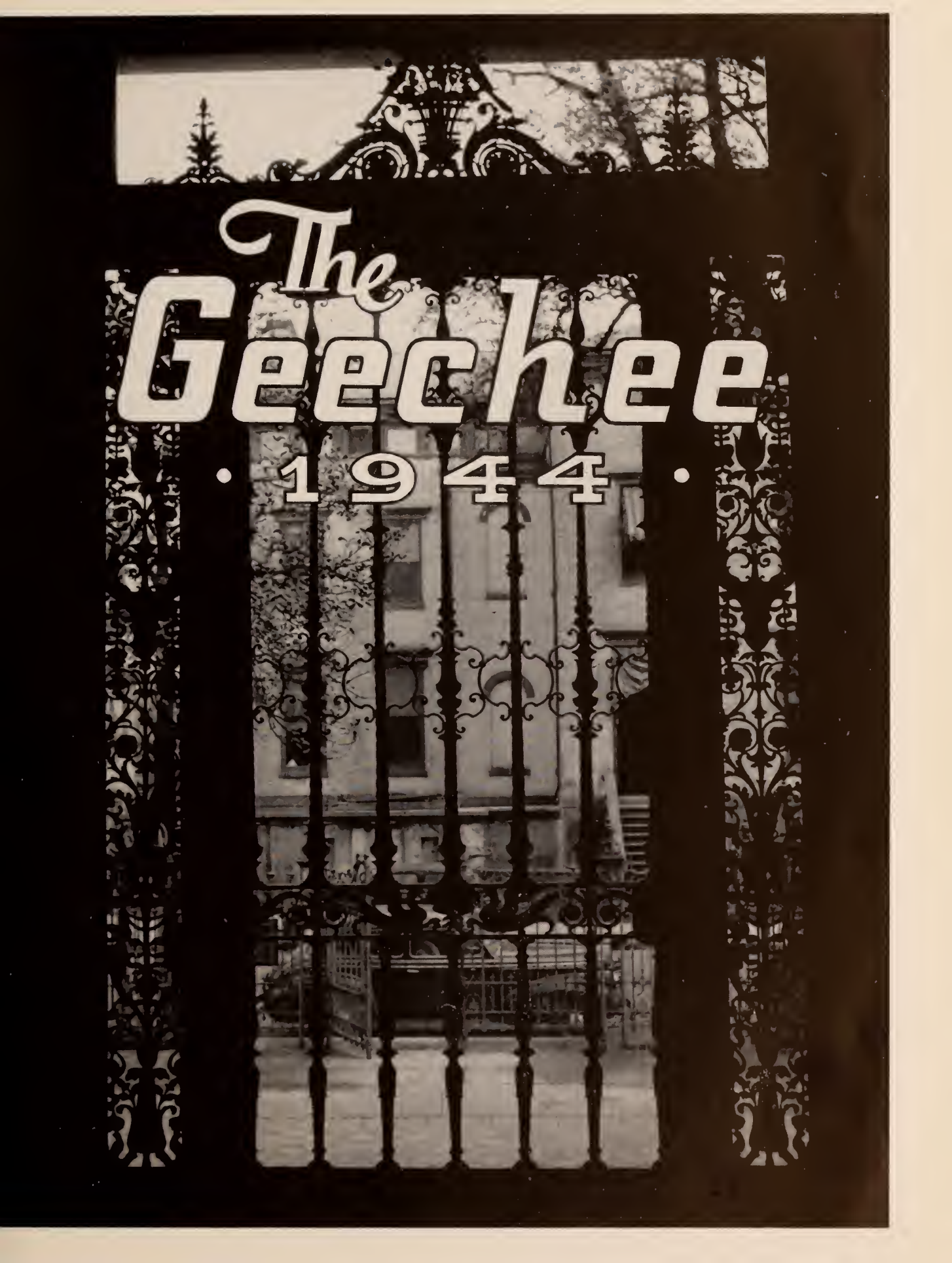






Digitized by the Internet Archive
in 2012 with funding from
LYRASIS Members and Sloan Foundation

<http://archive.org/details/geechee1944arms>



The
Geechee

• 1944 •



Dedication

With proud and grateful hearts, we, the students of Armstrong, dedicate this 1944 'Geehee to our President, FOREMAN McCONNELL HAWES, who, through his interest in each individual, his constant courage, and his strong leadership has been an inspiration to us throughout the year.

FOREWORD

We should like to think that those who browse through this year's annual will absorb some of the atmosphere of our dear Alma Mater—Armstrong Junior College. With this thought in mind we have tried to create an informal pictorial theme to thread its way through these pages. We trust, as one glances from picture to picture, that he will feel the flow of "life" as it actually is among the student body. It is the spirit of youth so full and so free—the spirit we have tried to maintain despite the ravages of war, having received it as an heritage and feeling in our hearts our responsibility to sustain it for posterity.

We want here to express our sincere thanks to Mr. Robert Herriot, who took all student pictures appearing in this annual, and to Mr. Ralph Rhodes, whose pictures of the monuments appear as an historical theme introducing each section. Both of these gentlemen spent much of their time and effort in helping to create through their excellent photography the spirit of the 1944 edition of the '*Geechee*.'

THE STAFF.

CONTENTS

- ★ ADMINISTRATION
- ★ SOPHOMORES
- ★ FRESHMEN
- ★ ACTIVITIES
- ★ FEATURES
- ★ ADVERTISERS

ARMSTRONG JUNIOR COLLEGE
SAVANNAH, GEORGIA
VOLUME VIII

In Memoriam



MARK JOHNSON
Merchant Marine



LT. JOHN SCHLEY
Army Air Corps



MELVIN KILEY
Merchant Marine



Armstrong Building



Gamble Hall



Lane Building



Jenkins Hall

THE COLLEGE COMMISSION



MR. FRED WESSELS



MAYOR THOMAS GAMBLE



MRS. JULIAN
QUATTLEBAUM



MR. JOHN L. SUTLIVE



DR. MICHAEL J. EGAN



MRS. CHARLES D.
RUSSELL



MR. HERBERT L.
KAYTON



MR. WILLIAM MURPHEY



MR. HERSCHEL V.
JENKINS, Chairman

THE FACULTY



Spanish American War Veterans

A D M I N I S T R A T I O N



J. THOMAS ASKEW
Ph.B., M.A.
President on leave of absence in armed
service



FOREMAN M. HAWES
A.B. Mercer University
M.S. Emory University
Professor of Chemistry and Acting
President



REUBEN W. HOLLAND
A.B., M.A., Emory University
Registrar and Treasurer
Professor of French

F A C U L T Y



MARGARET F. STEPHENS
 A.B., LL.B., M.A. University of Georgia
 Certificate, University of Paris
 Professor of English



EVERETT L. BISHOP, JR.
 A.B., M.S. Emory University
 Ph.D. State University of Iowa
 Professor of Biology



GLADYS FEAGIN
 B.S. University of Georgia
 Professor of Mathematics and Physics



F A C U L T Y



HELEN ELIZABETH WOODWARD
 A.B. Maryville College
 B.S. in L.S. Peabody College
 Librarian



W. ORSON BEECHER
 A.B., M.A. Emory University
 M.A. University of Georgia
 Professor of Spanish and History



JEANNE PATTERSON OLSON
 B.S. Home Economics
 M.S. University of Wisconsin



F A C U L T Y



MRS. ELIZABETH LYNES BEECHER
A.B. University of Georgia

MERVIN SHIVERS
B.S.E. Georgia Teachers College
Instructor in Typewriting and
Shorthand

MARJORIE ALLEEN MOSELEY
Associate in Commerce Armstrong
Junior College
Secretary





HOMework



LAST BELL

SOPHOMORES



William Jasper

SOPHOMORE CLASS OFFICERS



FRANK CHEATHAM, JR.
President

MARION NELSON
Vice President

BETTY BUTLER
Treasurer

MEEGAN MONTGOMERY
Secretary

S O P H O M O R E S



CHARLOTTE EUBANKS GUEST

Spontaneous gaiety—refreshing manner—sparkling green eyes.

Geechee staff—Inkwell—Music Club—Foreign Relations Council—Student Senate—Homecoming Committee—Alpha Tau Beta.

CARSWELL HILL COBB

Popular dancing partner—everyone's chum—radiant smile—Dean's List student.

Geechee '43—Music Club—Member of Institute of Citizenship—Inkwell—Foreign Relations Council—Permanent Dean's List.



BETTY BUTLER

Sparkling companionship—animated beauty—vivacious disposition—musical talent—dramatic ability.

Music Club—Member of Homecoming Committee—Home Ec. Club—Sec'y of Sophomore Class—Inkwell—Geechee—Alpha Tau Beta—Permanent Dean's List.



S O P H O M O R E S



BETTY GRINER

Rich coloring—energetic mind—steadfast—cool composure.

Inkwell—Assistant Business Mgr. '43—Home Ec. Club Secretary—Foreign Relations Council—Music Club—Delta Chi Treas.—Student Senate—Bowling Team Capt.

THOMAS HELMLY

Contagious amiability—engaging smile—spirited enthusiasm.



MARY FOY

Twinkling toes—tiny form—dainty mimicry—patriacian features—clear judgment.

Home Ec. Club—Homecoming Committee—Geechee Staff—Sophomore Editor—Riding Club—Alpha Tau Beta.



S O P H O M O R E S



JANIE WAITES

Skillful sketcher—laughing blue eyes—
nice figure—good mixer.

Home Ec. Club '43, '44— Art Editor
Geehee '43, '44— Art Editor Inkwell
'43, '44—Homecoming.

MARGARET WILLIAMS

Lustrous dark hair—friendly eyes—
independent thought—remarkable scho-
lastic ability.

Permanent Dean's List.



JULANIE AMELIA BRUNSON

Serene brown eyes—speculative quiet-
ness—scientific thought—real potential-
ities.

Homecoming Committee.

S O P H O M O R E S



GERALDINE SWINT

Pale gold hair—genial temperament—artist.

Music Club '43, '44—Home Ec. Club '43, '44—Homecoming Committee—Student Senate.

KATHERINE KELLEY

Sparkling good humor—husky voice—striking complexion.



MARGUERITE SMITH

Homecoming Committee — Home Ec. Club—Basketball Team.

Lightning basketball player—good looking clothes—smooth dancer.

S O P H O M O R E S



MARY CATHERINE MURPHY

Golden curls— attractive clothes and grooming— sings beautifully— subtle guiding hand.

Inkwell— Foreign Relations Council— Geechee Staff.

MEEGAN MONTGOMERY

Quiet reserve—petite figure—studious. Geechee '44—Spanish Club '43—Music Club '43, '44—Home Ec. Club '44—Treasurer Sophomore Class '43—Alpha Lambda Sigma—Permanent Dean's List.



MARY LOUISE KEY

Titian beauty—gay personality—quiet friendliness—expert musician.

Geechee—Inkwell—Music Club—Foreign Relations Council—Homecoming Committee—Riding Club—Alpha Tau Beta.



S O P H O M O R E S



BETTY HARDY

Elfin features—dependable efficiency—
ready smile.
Music Club.

ANNA ELIZABETH SULTER

Delicate blond complexion — serene
beauty—chic—loyal friend.
Foreign Relations Council—Inkwell—
Geehee—Music Club—Riding Club—
Homecoming '42—Alpha Tau Beta.



JANE CHEESEBOROUGH MARTIN

Diplomatic—charming manner — scien-
tific excellence — artistic — athletic —
mobile features.

Editor-in-Chief of Geehee '44—Busi-
ness Staff Geehee '43—Vice President
Foreign Relations Council '43, '44—In-
stitute of Citizenship '43—Alpha Tau
Beta Sorority, Treasurer '43, President
'44— Student Senate '42-'3-'4—Perma-
nent Dean's List—Alpha Lambda Sig-
ma '43, '44 (Armstrong Leadership So-
ciety).

S O P H O M O R E S



JUNE ROBERTSON POINDEXTER

Soft brown hair—graceful stature—smooth—fluid self assurance—friendly interest.

Institute of Citizenship '42, '43—Geechee Business Editor '44—Vice President of Freshman Class—Alpha Tau Beta, sec'y '43—Permanent Dean's List—Foreign Relations Council.

NORTON MELNER

Engaging manner—easy going—keen sense of humor—quick mind.

Basketball Team '42, '43—Inkwell '42—Foreign Relations Council '42—Geechee Staff '43, '44.



DORIS PERKINS

Colorful personality—strawberry blonde turned-up nose—efficient Home Economist.

Home Ec. Club '43, '44—Music Club '43, '44—Foreign Relations Council '43, '44—Homecoming Committee '43—Inkwell, Asst. Business Manager—Delta Chi.



S O P H O M O R E S



STELLA MARIE LYONS

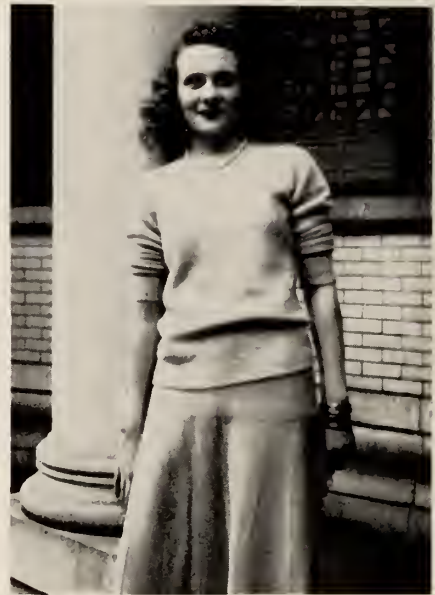
Creative imagination—gay sense of humor—disarming frankness—expressive Irish eyes.

Editor of Inkwell '43, '44—Associate Ed. of Inkwell '43—President of Foreign Relations Council '43, '44—Delta Chi—Alpha Lambda Sigma '43, '44—Permanent Dean's List '42, '43.

SARAH THORPE

Curly brown hair—dreamy eyes—poetic ability—sophisticated—skilled conversationalist.

Foreign Relations Council—Music Club—Geechee—Delta Chi.



LILLIAN BLOWE

Dry wit—reversible dimples—beguiling smile—facile pen.

Managing Editor of Inkwell '43—Foreign Relations Council '43, '44—Delta Chi—Geechee.

S O P H O M O R E S



FRANK CHEATHAM, JR.

Lake blue eyes—vibrant voice—winsome personality—able student—outstanding leader.

President of Freshman Class '43—President of Sophomore Class '44—Chairman of Homecoming Committee '42—Institute Committee—Foreign Relations Council—Assistant Editor of Geechee—Alpha Lambda Sigma.

MARGARET PERSSE

All-round athlete—Irish wit—radiant good looks.

Institute of Citizenship—Home Ec. Club—Basketball Team (Letter) '43, '44—Homecoming—Alpha Lambda Sigma—Delta Chi—Permanent Dean's List.



MARIAN NELSON

Unusually lovely black hair—willing participator—pillar of strength—enduring friendships.

Business Manager of Inkwell '44—Spanish Club '43—Music Club '43, '44—Vice President Sophomore Class '44—Foreign Relations Council '44—Delta Chi, President—Student Senate '43, '44.



S O P H O M O R E S



ROSE VARN

Pleasing appearance—hard worker—reliable—unusual thoughtfulness.
 Music Club '44—Home Ec. Club '43, '44—President Homecoming Committee '43, '44—Chairman Foreign Relations Council '44—Geechee Art Staff '44—Business Staff '44—Basketball '44.



HELEN SALLAS

Grecian beauty—adaptable—music enthusiast.
 Music Club '43, '44—Home Ec. Club '42-'3-'4—Homecoming Committee—Basketball Team (Letter), '43, '44.



GERTRUDE MARCUS

Red curls—friendly comrade—tranquil manner.
 Music Club—Geechee Staff.



BENNY JANE NEWTON

Blue eyes—brown hair—cute freckles—Home Economics specialist—always dependable.
 Home Ec. Club '43, '44—Homecoming Committee '43, '44—Foreign Relations Council—Music Club '44—Geechee '44.

FRESHMEN



James Edward Oglethorpe

FROSH CLASS OFFICERS



FRANCES CLEVERDON
President



LILLIAN NICHOLLES
Secretary



ANNA CONE
Vice President

F R E S H M E N



ANSIL BAILEY



ARABELLE EPPS



BETTYE DURRENCE



MARDETTE NEAL



MARY McMILLAN



NANCY ELLIOT



CATHERINE HEYMAN



ANNE YARBROUGH



GEORGE SULLIVAN

F R E S H M E N



MARTHA ANN COWAN



FRANCES CLEVERDON



FIFI LAMAS



GWENDOLYN GOLD



BENJAMIN GRINER



SUSAN MILLER



MARY LILLA PALIN



LILLIAN NICHOLS



ANNE HOYLE

F R E S H M E N



CAROL FRENCH



ALICE MATTHEWS



TRENT GARIS FAHEY



LOUISE KAUFMANN



WILLIAM DISMER



COMER HYMES



KATE PURVIS



MARINA CAPITAN



MARGUERITE STORER

F R E S H M E N



VIRGINIA DANKLEFS



CORNELIA BREWER



BETTY HUBERT



BERNARD RATNER



LILLA BAKER



PAULINE CARELLAS



ELOISE PENN



MIRIAM WILLS



CHARLOTTE ROSENTHAL

F R E S H M E N



BETTY BLACKWELL



JOANNE NICHOLSON



SHIRLEY JOHNSON



BETTY HITT



THOMAS RICHARDSON



ANNA CONE



RAY BURTON



ROSE SCOVILLE



HOWARD LAMAR

F R E S H M E N



MALCOLM JOHNSON



PAULINE JONES



LAURA BYRD



BEVERLY FAY CULBERTSON



CATHERINE MONSEES



WILLIAM SHAW

ACTIVITIES



Casimir Pulaski

A C T I V I T I E S



EDITORIAL STAFF OF THE 'GEECHEE

Editor-in-Chief	Jane Martin
Associate Editor	Frank Cheatham
Lay-out Editor	Charlotte Guest
Art Editor	Janie Waites
Features Editor	Mary Murphy
Artists	Rose Varn, Meegan Montgomery
Freshman Editor	Catherine Heyman
Sophomore Editor	Mary Foy
Writers	Lillian Blowe, Sarah Thorpe
Typist	Gertrude Marcus
Faculty Adviser	Professor Holland

MARTIN

GUEST

CHEATHAM



THE " 'GEECHEE"

*Editorial
Staff*

A C T I V I T I E S



BUSINESS STAFF OF THE 'GEECHEE'

June Poindexter, Business Manager; Frank Cheatham; Marian Nelson; Catherine Heyman; Rose Varn; Meegan Montgomery; Bettye Durrence; Catherine Monsees; Fifi Lamas; Norton Melaver; Jerry Swint; Nancy Elliott; Doris Perkins; Frances Cleverdon; Howard Lamar.

POINDEXTER

HOLLAND

WAITES



THE "'GEECHEE'

Business Staff

A C T I V I T I E S



Editor-in-Chief	Marie Lyons
Managing Editor	Lillian Blowe
Associate Editor	Martha Cowan
News Editor	Mary Louise Key
Fashion Editor	Betty Butler
Feature Editor	Charlotte Guest
Exchange Editor	Mary Murphy
Art Editor	Janie Waites
Reporters	Mary Louise Key, Jane Martin, Bettye Durrence, Howard Lamar

LYONS Editor-In-Chief



THE "INKWELL"

*Editorial
Staff*

A C T I V I T I E S



Business Manager Marian Nelson
Associate Business Managers
Marguerite Storer, Nancy Elliott, Virginia Danklefs, Doris Perkins

NELSON . . . Business Manager

THE "INKWELL"

**Business
Staff**



A C T I V I T I E S



The aim of the Council on Foreign Relations is to promote further interest in international affairs. The Council meets every other Wednesday at four-fifteen, and topics of current interest are discussed. Some of the most interesting round table discussions were on post-war Germany and post-war planning.

Each year Armstrong Junior College and the Council on Foreign Relations present for the public of Savannah a series of speakers and forums as an Institute of Citizenship.

MEMBERS OF THE COUNCIL ARE: Marie Lyons, president; Marian Nelson, treasurer; Betty Griner, secretary; June Poindexter; Mary Louise Key; Sarah Thorpe; Lillian Blowe; Lisette Black; William Dimer; Frank Cheatham; Marguerite Storer; Catherine Heyman; Mary MacMillan; Laura Byrd; Mary Murphy; Betty Butler; Charlotte Guest, student representative to the Senate. Professor Orson Beecher is Faculty Adviser of the Council.

President . . . MARIE LYONS



**FOREIGN
RELATIONS
CLUB**

A C T I V I T I E S



The Home Economics Club, under the direction of Mrs. L. G. Olson, sponsored numerous activities at Armstrong during the past year. The club gave the Hallowe'en dance last fall and was in charge of the Homecoming and the first annual Open House.

MEMBERS OF THE HOME ECONOMICS CLUB ARE: Rose Varn, president; Gwendolyn Gold, vice-president; Betty Griner, secretary; Marguerite Smith, treasurer; Jerry Swint, representative to the Student Senate; Betty Hitt; Margaret Perse; Doris Perkins; Beverly Fay Culbertson; Janie Waites; Ray Burton; Mary Foy; Betty Butler; Nancy Elliott; Meegan Montgomery; Comer Hymes; Benny Jane Newton; Laura Bird; Helen Salas; Catherine Monsees; Mardette Neil; Pauline Carellas.

President ROSE VARN

HOME ECONOMICS CLUB



A C T I V I T I E S



The Student Senate performs a vital function in the activities of Armstrong by serving as a perfectly representative organization for the entire student body. Its members are selected from all recognized clubs and organizations in the college to discuss proposed student activities and to advise the faculty of student opinion concerning new projects.

This group was greatly instrumental in arranging details for the newly-instituted annual Open House, with the aid and counsel of Dr. Bishop as Faculty Adviser. Capable leadership and active cooperation on the part of its members have made this organization highly successful in its undertakings.

MEMBERS OF THE SENATE ARE: Betty Griner, Music Club; Charlotte Guest, Foreign Relations Council; Jane Martin, Editor of Geehee; Marian Nelson, Vice-President of Sophomore Class; Geraldine Swint, Home Economics Club; Marie Lyons, Editor of Inkwell; Pres. Frank Cheatham, President of Sophomore Class; Foreman Hawes, Faculty Adviser; Frances Cleverdon, President of Freshman Class; Ann Hoyle, Freshman Class; Lisette Black, Riding Club; Betty Foshee, Freshman Class.

Faculty Advisor . FORMAN HAWES



THE STUDENT SENATE

A C T I V I T I E S



Twice a month the Music Club meets in the Home Economics Lab of the Armstrong Building. Special programs are planned for each meeting, emphasizing the works of outstanding composers. Collections of records have been lent by club members, friends and Levy Jewelers.

MEMBERS OF THE MUSIC CLUB ARE: Janie Waites, Bennie Jane Newton, Meegan Montgomery, Marguerite Smith, Frances Cleverdon, Betty Griner, Margaret Perse, Helen Salas, Sarah Thorpe, Rose Varn, Pauline Jones, Betty Blackwell, Louise Kaufmann, Betty Hitt, Betty Butler.

President . . . BETTY BUTLER

THE MUSIC CLUB





BETTY GRINER, Captain



LILLA BAKER

BOWLING TEAM

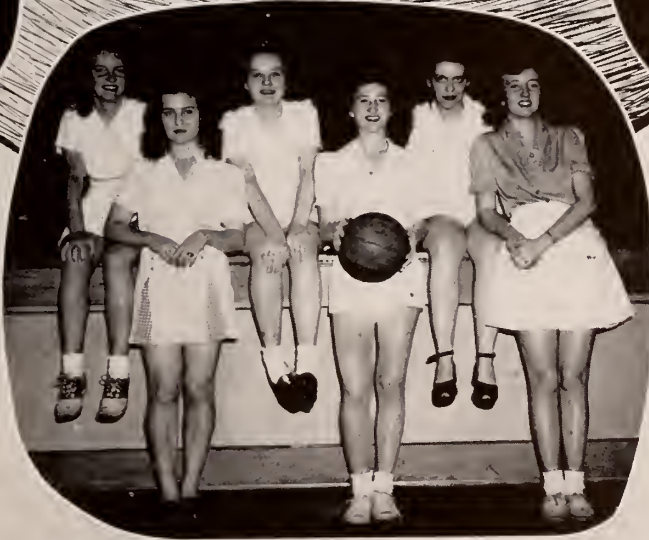
MARGUERITE STORER



MARY LILLA PALIN



Mathews Persse Salas
BASKETBALL TEAM



Fahey

French

Smith

Cleverdon

Purvis

Persse Mathews Purvis Elliott
Smith Fahey



A
J
S

→
←
←



GLADYS FEAGIN

ANN HOYLE

CATHERINE MONSEES

HELEN WOODWARD

R I D I N G C L U B



CO-EDUCATIONAL - ? ? ? ?



DELTA CHI



1—LILLIAN BLOWE
2—SARAH THORPE
3—MARGARET PERSEE
4—SHIRLEY JOHNSON

5—LILLIAN NICHOLS
6—CATHERINE HEYMAN
7—LOUISE KAUFMAN

8—PAULINE JONES
9—BETTY HITT
10—MARTHA COWAN

11—MARIAN NELSON
12—BETTY GRINER
13—MARIE LYONS
14—DORIS PERKINS



1



2



3



4



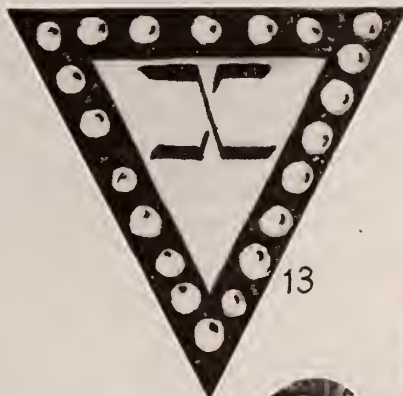
7



5



6



13



11



8



9



10



12

1. Marie and Prexy take Kitty for a ride. 2. Delta Chi's Beach Club. 3. Kitty and Pauline give Alpha Tau the horse laugh. 4. All this and a C card too. Huh, Sarah? 5. Old Acquaintance. 6. Baby-face Nelson. 7. Lilly picks up! 8. Cossiping? No — Posing? No — Studying? NO. 9. Cover Girls. Betty G., Margaret and Shirley. 10. Call 2-1790 and ask for Martha. 11. Double Play—Nicky's leg art, Beauty Queen's smile. 12. Lasses on the Grasses Making Passes at the Masses. Perssey and Betty H.

ALPHA TAU BETA



MARY LOUISE KEY
President . . . Fall 1943



JANE MARTIN
President . . . Spring 1944



Left to right, front row—Mary Foy, Charlotte Guest, Anna Cone, Jane Martin. Second row—Ann Hoyle, Mary McMillan, Betty Butler. Third row—Mary Murphy, June Poindexter, Mary Louise Key. Not in picture—Frances Cleverdon.



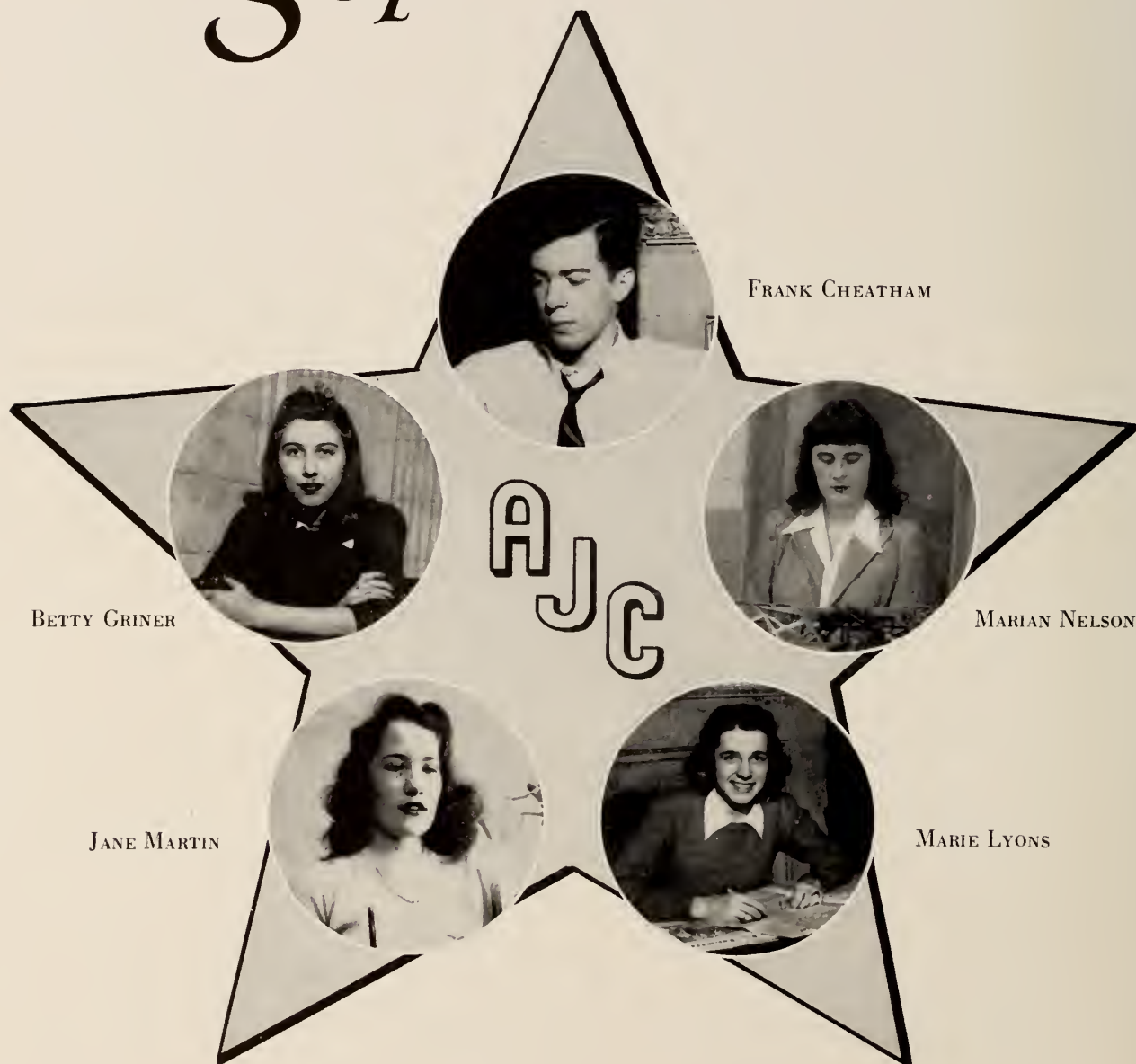


FEATURES



NATHANAEL GREENE

Outstanding Sophomores



FRANK CHEATHAM

BETTY GRINER

MARIAN NELSON

JANE MARTIN

MARIE LYONS

The students on this page were chosen by the Sophomore class for their outstanding leadership during their two years at Armstrong. Frank Cheatham was voted the most outstanding.

**CORONATION OF
FRESHMAN
QUEEN**



Highlight of this year's annual Homecoming was the coronation of the Freshman Queen, lovely Shirley Johnson. Miss Betty Smith, Freshman Queen of '43, presented the crown to the new Queen and the president of the Freshman Class, Mrs. Frances Cleverdon, gave Miss Johnson a gift on behalf of her class mates.



BEAUTY QUEENS

The May meeting of the Savannah Camera Club this year was devoted in part to the selection of a Beauty Queen for Armstrong.

Miss Betty Hitt won on the first ballot. However, there were three who tied for runner-up. From these three Miss Catherine Heyman was selected.

The candidates represented the clubs of the college and they appear on the following pages.



WINNER

BETTY HITT, Home Economics Club



CATHERINE HEYMAN, 'Geechee

RUNNER-UP



LILLIAN BLOWE, Inkwell



BETTY BUTLER, Alpha Tau Beta



MARGARET PERSE. Basket Ball Team



SHIRLEY JOHNSON, Delta Chi

ADVERTISERS



Confederate Dead

Greetings to


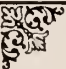
ARMSTRONG JUNIOR COLLEGE

Savannah's Own Institution of Higher Learning

Savannah is proud of your contribution to this community.



The Mayor and Aldermen
of
The City of Savannah



We extend to the members of

The

Graduating Class

our sincere wish for their success

in all of the

Circumstances of Life



A Friend



All Student Pictures In This Book

Taken by

Savannah Camera Shop

Robert Herriot, Prop.

143 BULL STREET

DESIGNED FOR APPEARANCE!



ENGINEERED FOR STRENGTH!



The Big Swing

IS TO

"GREAT DANE" Trailers

THE STEEL PRODUCTS CO., INC.

SAVANNAH, GEORGIA



CONRAD NAGEL—Star of "Radio Readers Digest"
Sundays at 9:00 P. M.



WALTER PIDGEON, Heard in "The Star and the Story"
Sundays at 8:00 P. M.



PHIL BAKER—Quip Master of "Take It or Leave It"
Sundays at 10:00 P. M.



FUNNY FRED ALLEN, Head Man of "Star Theatre"
Sundays at 9:30 P. M.



Master Showman CECIL B. DeMILLE, of "Lux Radio Theatre" fame
Mondays at 9:00 P. M.

HERE ARE SOME OF THE TOP FLIGHT CBS SHOWS



THAT GO TO MAKE UP **WTOC's** ALWAYS ATTRACTIVE SCHEDULE

WTOC's 125 Weekly Hours of Broadcast Are Packed with Hundreds of Top-Flight Features. Among Them: Fred Allen . . . Take It or Leave It . . . Lux Radio Theatre . . . Vox Pop . . . Radio Reader's Digest . . . Blondie . . . Suspense . . . Burns & Allen . . . Big Town . . . Frank Sinatra . . . Superman . . . Breakfast at Sardi's . . . Gay 90's Revue . . . Judy Canova . . . Crime Doctor . . . The Thin Man . . . The Passing Parade . . . Dr. Christian . . . Kate Smith Hour . . . Major Bowes . . . Dinah Shore . . . Moore & Durante . . . Your Hit Parade . . . Inner Sanctum . . . Groucho Marx . . . and Hosts of Others! It's Always a Better Show When It Comes Over . . .

WTOC

5000 WATTS
1290 ON THE DIAL
UNITED PRESS NEWS

CBS

Daniel Hogan, Inc.
DRY GOODS
DRAPERIES AND LINENS

125 Broughton Street, West
SAVANNAH, GA.

"Quality Our Standard Since 1868"

THE ACCESSORY SHOP

127 East Broughton

Short Casuals for the Fashion Wise Miss

Compliments of

Hotel Whitney



MORRIS LEVY'S

*Savannah's Finest Store for Young Men
and Men Who Stay Young*

8-10-12 BROUGHTON ST., E.

Compliments of

PEPSI-COLA BOTTLING COMPANY

of

SAVANNAH

4009 MONTGOMERY

PHONE 6877

FIGHT WASTE!

USE LESS—SO OUR FIGHTING
FORCES WILL HAVE MORE!

Follow these four simple principles:

1. Conserve everything you use.
2. Buy only what is necessary.
3. Salvage what you don't need.
4. Share what you have.

Savannah Electric and Power Co.
Savannah, Ga.

Southern Dairies

Sealtest **ICE CREAM**



KEEP INFORMED!

on events of the world today.
Be a regular subscriber to the

SAVANNAH MORNING NEWS
SAVANNAH EVENING PRESS

SAVE 25% ON YOUR INSURANCE
FIRE — AUTOMOBILE — WINDSTORM — PLATE GLASS

ATLANTIC MUTUAL FIRE INSURANCE CO.
OF SAVANNAH

"A SOUTHERN COMPANY DOING A NATIONAL BUSINESS"
ASSETS OVER \$1,250,000

19 BAY STREET, EAST

DIAL 2-2113

Best Wishes to the Graduates

THE SAVANNAH
A DINKLER HOTEL

R. W. RUSSELL, Manager



BIG STAR
FOOD STORES

116 BARNARD STREET
BULL and HENRY STREETS



YOUR PORTRAITS *by*

TOOLEY-MYRON

*—are as priceless as a
good Education!*

STUDIO - 119 East Broughton

FOREMOST PHOTOGRAPHERS IN THE SOUTH

LINDSAY
&
MORGAN
CO.

Headquarters
for

FINER
QUALITY
HOME
FURNISHINGS

Since
1866

9-21 West York Street
Savannah

FOR A REALLY GOOD USED CAR

See

"PUGGY'S BUGGYS"

PINCKNEY'S

USED CARS

JONES and DRAYTON

Compliments of

PLAZA
RESTAURANT

COMPLIMENTS OF
Snead's Pet Supply and Feed Co.

2413 BULL STREET PHONE 6555

FREE BROTHERS
LAUNDRY AND CLEANERS
Broughton and Habersham
Phone 2-3125

COMPLIMENTS
OF
ALEXANDER GROCERY CO.

GILBERT COMPANY
WILLIAM C. GILBERT
REALTORS
Phone 3-4513

**BETTENCOURT
SIGN COMPANY**
GENERAL SIGN CONTRACTORS

COMPLIMENTS
OF
HOME FURNISHING CO.
10 W. BAY PHONE 2-2139

"We Give Your Keys a Fit"
SEE
**BRADLEY LOCK and
KEY SHOP**

S. H. KRESS CO.
SAVANNAH, GEORGIA

COMPLIMENTS OF
CONEY ISLAND LUNCH

SHOP AND SAVE AT
K A R P F ' S
107 Broughton Street, West

SELECT
Your Wrist Watch from our Superb Collection
and obtain style, beauty and quality.
DESBOUILLONS - JEWELERS

COMPLIMENTS
OF
GREENO REALTY CO.

**BAGGETT'S
PEANUT DUMP**

440 BULL

LA ROCHE PHARMACY

"Prescriptions Our Specialty"

N. W. Corner Broughton
and Habersham

DURRENCE MARKET

"WHERE QUALITY RULES"

PHONE 2-4249 1505 OTT ST.

MARILYN
FEMININE FOOTWEAR

112 West Broughton St.

Compliments of

**QUALITY
MOTORS**

Savannah, Georgia

"It's Smart to be Thrifty"

That's Why Millions of American Students
Look to

PENNEY'S

SAVANNAH'S YOUTH CENTER

OVER 1600 STORES SERVING

NEARLY

30,000,000 CUSTOMERS

The
MORRIS PLAN COMPANY
OF SAVANNAH

At Drayton and Bryan Streets

"The Institution for the Individual"

Compliments of

**OELSCHIG and SONS
FLORISTS**

151 Bull Street

5191

THOMAS WEST & CO.

18 WEST STATE STREET

PHONE 8463

COMPLIMENTS
OF

PURSE PRINTING AND PAPER CO.

COMPLIMENTS
OF

SILVER'S 5c & 10c STORE

Broughton and Barnard Streets

PARKER AND KLUG

FINE FURNITURE, DRAPERIES,
RUGS, ETC.

8 STATE STREET, EAST

ROYAL CROWN
COLA

COMPLIMENTS
OF
THE MEN'S QUALITY SHOP
24 EAST BROUGHTON

COMPLIMENTS OF
MAIER & BERKELE, Inc.
Jewelers and Silversmiths
113 BULL ST.

COLUMBIA DRUG COMPANY
Wholesale Druggists

DEARING CHEVROLET
COMPANY

43 WEST BROAD



RANCH RIDING SCHOOL
BEE ROAD SAVANNAH, GEORGIA

COLUMBIA MERCHANDISING
COMPANY, INC.

Subsidiary of
COLUMBIA NAVAL STORES CO.
135 WHITAKER STREET

Devoe Paints
Painters' Supplies

Wall Paper

COMPLIMENTS
OF
J. C. LEWIS
MOTOR COMPANY, INC.
SAVANNAH, GEORGIA

LAMAS BROS.

Try Our Cash-and-Carry Service
DRY CLEANERS AND HATTERS
ONE-DAY SERVICE

44 BULL STREET

PHONE 8900

Compliments
of

MEDDIN BROTHERS

SELLING LOANS RENTING

SWEAT & BROWN

14 Bryan Street, East

WOLF'S

MUSICAL INSTRUMENTS JEWELRY
SPORTING GOODS LUGGAGE
BROUGHTON at MONTGOMERY 5294

PEEPLES HARDWARE CO.

125-127 CONGRESS STREET, WEST
SAVANNAH, GEORGIA

Four-
Day
Service

**TERRELL'S
Cleaners**

Phone
6868

SAVE 20%

110-112 Bull Street

Cash & Carry

MEET YOUR FRIENDS
AT

MORRISON'S CAFETERIA

CONGRESS and WHITAKER

MAXWELL BROS. & ASBILL

FURNITURE

302-308 Broughton St., W.

Phone 3-5701

ALBERT GOETTE

Funeral Home

RABHAN'S

FOR CORRECT APPAREL and
MILLINERY
107 BROUGHTON STREET, EAST

MANGEL'S

Feminine Apparel
15 BROUGHTON STREET, EAST
SAVANNAH, GEORGIA

Compliments of

LOUIS RAYOLA

SOLOMONS

PRESCRIPTIONS
TOILET ARTICLES, SODA, ETC.
Solomons Pharmacy, Inc.

Compliments
of

RICHARDSON'S FLORIST

STUBBS HARDWARE CO.

SPORTING GOODS
GOLF — TENNIS — BASEBALL
FISHING TACKLE
JOHNSON MOTORS and BOATS
121-123 Congress Street, West

Compliments
of

SHORE'S MARKET

"FUN HEADQUARTERS"
THE TAVERN
HOTEL DE SOTO

Always a Good Band—

Currently playing

Cyril Mansfield and his Orchestra

Ken Wolfe — Tavern Host

ALL AMERICAN FASHIONS
FOR THE
ALL AMERICAN YOUTH

BH Levy Bros. Co.
The Store Dependable™
Savannah Born - Savannah Owned - Savannah Managed



. . . . outfitters to students
of today, yesterday, and to
students in the bygone 65
years



STANLEY JEWELERS

*Compliments
of the*

**Atlantic Creosoting
Company**

PORT WENTWORTH, GEORGIA

Jewelers...
...Silversmiths

21 Broughton Street, East

*Best Wishes
from*

YANK'S LUNCHEONETTE

*Compliments
of*

H. MINKOVITZ AND SON

425 WEST BROUGHTON STREET

Compliments of

**INDUSTRIAL
SAVINGS &
LOAN
CO.**

Savannah, Georgia

FOREMOST DAIRIES

SAVANNAH, GA.

- Delicious Ice Cream
- Pure Dairy Products

SERVING THE SOUTH

Cleanliness and Conformity to Standards are
Paramount With Us

Phone Savannah 3-1107

Steinway Pianos Kimball Pianos

Alnutt Music Company

240 Broughton Street, West
Savannah, Georgia

Victor Records Sheet Music

VARSIITY TOWN CLOTHES

exclusive at

The Jones Co.
Quality Clothing for Men and Boys
Perrell F. Tulen - Carl J. Kraft

18 East Broughton Street, Savannah, Ga.

DRINK ORANGE CRUSH

Bottled Exclusively
at

PETERS BOTTLING CO.

116-118 West Bay 2-4332

WACHTEL'S

PRESCRIPTIONS

and

SICK ROOM SUPPLIES

406-410 Bull Street 8145

Compliments of

C. D. ELLIS & CO.
A Complete Real Estate Service
140 WHITAKER STREET

LANG'S

221 - 23 - 25 W. BROAD ST.
3 BIG STORES IN ONE
WHERE THRIFTY FAMILIES
SHOP AND SAVE!

Best Wishes for a Successful Future

BEN'S MEN & BOYS' SHOP
225 W. BROUGHTON STREET

The Young Men's Store

SAVANNAH TOBACCO CO.

Wholesale Tobacco and Beer

Phones

3-3083 - 3-9235

18 BARNARD

Compliments of

M. B. SHEPHERD

**B. J. SHEPPARD FURNITURE
COMPANY**

220 Broughton Street, West

FURNITURE and MUSIC

The Thinking Fellow

Calls a

Yellow

6161 - PHONE - 6161

THOMAS C. HELMLY

All Classes of Real Estate
Sales - Mortgage Financing
Insurance - Rents
Property Management

7 BULL STREET
SAVANNAH, GA.

Compliments of

Howden Coal and Oil Company

Compliments of

HAVERTY FURNITURE
COMPANY

Compliments of

JOSEPH'S
SAVANNAH, GEORGIA

LEVY'S STUDIO

Photographs For The Family
SAVANNAH'S MOST POPULAR

Compliments of

49TH STREET PHARMACY

CHATHAM PRINTING COMPANY

COMMERCIAL PRINTING — PUBLICATIONS — ENGRAVING

109 STATE STREET, WEST



SAVANNAH, GEORGIA





M.W.



N.M. J.B.



M.L.



B.H.



R.V.



J.W.



F.C.

L.B.



S.T.

B.G.



M.L.K.



G.M.



M.M.



B

