




'GEECHEE  
1947











Digitized by the Internet Archive  
in 2012 with funding from  
LYRASIS Members and Sloan Foundation

<http://archive.org/details/geechee1947arms>



## *Dedication*

Our annual is dedicated to Mr. William Orson Beecher, Dean of Students. Knowing Mr. Beecher has been an experience . . . an experience compounded of many things: his ready friendliness, his ever-present humor, his qualities as a man and as a teacher, both in and out of the classroom. Words, being rude instruments which often damage the thought in the handling, cannot convey the impact of a personality such as that of Orson Beecher's . . . for those who have known him, nothing need be said; for those who have not, nothing can be.



*The 1947 Class of  
Armstrong Junior College*

*presents the*

G E E C



# Contents

	<i>Page</i>
Reminiscence . . . . .	4
College Commission . . . . .	6
Faculty . . . . .	7
Sophomore . . . . .	13
Freshman . . . . .	25
Warren Candler Nurses . . . . .	36
Activities . . . . .	39
Sports . . . . .	67
Advertisements . . . . .	76

H E E

785903



JULES  
BAGOT

# Reminiscence

'46-'47! The year started off with a bang . . . a tremendous enrollment for old A.J.C. . . . the veterans comprising most of it . . . out-of-town students galore . . . then politics reared its ugly head . . . speeches . . . assemblies . . . more speeches . . . old boss Donald Austin and his Progressive Party turning the school inside out, upside down and several other ways . . . the election . . . Progressive Party wins by two votes . . . the old slogan, "Vote early, vote often, vote Progressive" . . . wonder if old A.J.C. has got her cafeteria yet? . . . wonder when the annual is coming out? . . . Homecoming . . . "Big Wheel" Julian Silver and that parade . . . Christmas and the Homecoming Dance . . . the New Year . . . new subjects, new teachers . . . the basketball team that won so many games . . . one of the best in the state they said . . . "Irish" Goldberg and that gossip column . . . the anti-Talmadge rally . . . radio programs . . . Austin and Williamson shouting "Capitalist and Communist" at one another on one of the broadcasts . . . the newspaper and the fine work of Jack Sparkman . . . Mr. Dabney's Political Science . . . Mr. Beecher's Economics and new baby . . . the faculty skit at assembly one day . . . trying to get out a "GLECHEL" . . . the debating team . . . the Student Senate and heavy-handed president Jimmy Wood . . . Mr. Baker's Pop Quizzes . . . Coach Torrie and P. E. . . the outstanding 'Soph' Jane Brown . . . Alan Moore, the "Preacher" and the Minstrel show . . . Mr. Murphy and that hat . . . Goldberg and Williamson letting each other have it in the "Bulletin" . . . sic 'em, "Irish!" . . . graduation plans . . . the Sophomore-Alumni luncheon . . . the house party at Tybee . . . the night of graduation . . . those were the days . . . sure would be nice to be back!

of Politics





... *Administration*

HERSCHEL V. JENKINS  
*Chairman*

WILLIAM MURPHY  
*Vice-Chairman*

GORDON C. CARSON  
*Ex-Officio*



HUGH HILL  
*Ex-Officio*

MAYOR JOHN G. KENNEDY  
*Ex-Officio*

MRS. JULIAN K. QUATTLEBAUM



ORMOND B. STRONG  
*Ex-Officio*

FRED WESSELS, SR.

EDGAR L. WORTSMAN



Members whose pictures are missing  
are:

JUDGE JAMES P. HOULIHAN  
*Ex-Officio*

GUNNAR W. E. NICHOLSON

# THE COLLEGE COMMISSION



*Foreman M. Hawley*

PRESIDENT

... FACULTY



W. ORSON BEECHER



WILLIAM B. BAKER



ARTHUR M. GIGNILLIAT



FRANCIS M. BRANNEN

## FACULTY

Here they are, folks! The faculty of our Alma Mater! Leading the list is an English teacher, old "Bach" Baker, familiar to all World Lit' students . . . Dean Beecher, to whom the '47 GFLCHEE is dedicated . . . the Registrar, Mr. Gignilliat, the man who takes your money and makes your choice . . . Engineering Drawing is Mr. Brannen's field . . . he's the man that meets those 7:40 classes . . . our Librarian, Miss Colson . . . now you know why the Library is crowded all the time. "Fret" Crider, known as "Fearful Fret" to all chemistry students . . . Mr. Dabney, old "Wild Bill", who has charge of the Political

ELIZABETH COLSON



WILLIAM M. DABNEY



FRETWELL G. CRIDER





MRS. WILLIAM DABNEY



ELEANOR J. DOYLE



DR. MARTHA B. FAY

# FACULTY

Science department . . . Mrs. Dabney, who had charge of the home economics department the first of the year, and managed to make her "pretty cooks" candidates for successful wives . . . Miss Eleanor Doyle, our Spanish teacher . . . Dr. Fay, of Biology, the lady who tells you all about the shark's insides . . . Miss Feagin, who makes the going rough for her Math and Physics students . . . Miss Goodwin, that English teacher who makes you work like mad for some reason or other . . . our French instructor, Mrs. Lubs, who likes De Musset and Beaumarchais so much . . . Marie Lyons, the friendly secretary who greets



GLADYS FEAGIN

ELOISE GIBBS



NOMA L. GOODWIN



MRS. MARGARET S. LUBS





MARIE LYONS



DR. HARRY B. MILLER



MRS. CHRISTIN W. MINNIX



MARJORIE A. MOSLEY

## FACULTY

you as you come in the office door . . . "Rabbit" Miller, the factotum of the Chemistry department ("Eh, what's up, Doc?") . . . Mrs. Minnix, Girls' P.E. and folkdancing teacher . . . Miss Mosley, the faithful and patient secretary . . . Hineckley "The Hat" Augustus Murphy, also known as, but then we can't print that, instructor in English . . . Mr. Nichols, instructor of drawing, and let's not forget that he also met those wide-awake 7:40 classes . . . Miss Margaret Persse, "Miss Money Bags" or the college Treasurer . . . Mrs. Russell, who took over Mrs. Dabney's position in the home economics.

WILLIAM H. MURPHY



IRA L. NICHOLS



MARGARIT PERSSE







MRS. LEON RUSSELL



JAMES H. SCARBOROUGH



MRS. W. HUGH STEPHENS

## FACULTY

department . . . "Big Jim" Scarborough, the Math and Physics man, no, that picture does not show him where his students think he should be . . . Mrs. Stephens, our well-loved World Literature teacher, whose grading system we complained so much about . . . Miss Thompson, the psychology instructor and mentor of the Psychological Seminar . . . "Coach" Torrie, the man who coached our fine basketball team this year and planned a splendid intramural program . . . Mrs. Wahlburg, the German teacher who had trouble with all her little "Till Eulenspiegels" . . . Mrs. Zilch and her musical typing class.



DOROTHY THOMPSON

CARMEN TORRIE

MRS. PHILIP WAHLBURG

MRS. GLADYS N. ZILCH



# ARMSTRONG VETERANS GUIDANCE CENTER

In the summer of 1945, it was realized by the faculty of Armstrong that some means would be needed for rehabilitating the anticipated enormous numbers of veterans to civilian and college life. The outgrowth of this realization was the Armstrong Veterans Guidance Center. The Center is at present under the direction of Mr. Ross Cummins, and offers its services to all veterans who wish to know where their interests and abilities lie, so they will not waste time in college trying to do things for which their temperament and abilities do not fit them. Although at first offered only to veterans, the services of the Center are now open to any student at Armstrong who wishes to take advantage of them.



## STAFF

- L. ROSS CUMMINS . . . . . *Director*
- WILLIAM E. HOPKE . . . . . *Counselor*
- MARY GARRARD . . . . . *Counselor*
- HARRIT G. DAVIS . . . . . *Counselor*
- FRANCIS B. SETTLE . . . . . *Counselor*
- JANE M. SCHROEDER . . . *Chief Psychometrist*
- SARAH M. THORPE . . . . . *Psychometrist*
- DIXIE C. MARKS . . . . . *Secretary*
- JULIA L. YARLEY . *Secretarial Assistant and Psychometric Clerk*



*Left to right, First Row: Brodhead, Davis, Garrard. Left to Right, Second Row: Lowe, Thorpe, Schroeder, Cummins, Hopke, Yarley, Settle, Marks.*



JULES  
BACOT

... *Sophomores*



SIMON UPCHURCH WOOD MOORE



JAMES WOOD  
*President*



ALAN MOORE  
*Vice President*



NICK SIMON  
*Treasurer*

# SOPHOMORE CLASS OFFICERS

GEORGE UPCHURCH  
*Secretary*



I  
V  
S  
E  
I  
J  
S  
I  
J



DONALD AUSTIN

JANE BROWN  
*Most Outstanding*

HAROLD GOLDBERG

## OUTSTANDING SOPHOMORES

Jane Brown, voted the most outstanding sophomore this year, will be remembered as an extremely active person around the campus. Jane was president of Delta Chi sorority, and in charge of financial arrangements for the minstrel show in February, and moreover, she was on the rolls of a large number of clubs in school.

"Boss" Donald Austin, one of the outstanding men on the campus this year, was president of the Student Forum, a member of the Student Senate and financial brain of the "GILCHIE". It was also rumored that Donald was partly responsible for the Progressive Party. Who knows?

"Irish" Goldberg, the newspaper man. "Irish" did a magnificent job on publications this year, a job that won't soon be forgotten.

Allan Laird, one of the oldtimers around the halls of Armstrong, never missed one of the dances. Allan did a bang-up job as Intramural Manager this year, too. He was just about the most popular boy around Armstrong . . . with the girls, anyway.



ALLAN LAIRD  
MARY ELLEN MONTGOMERY

Mary Ellen Montgomery, the class "brain". Need any help with your Chemistry? Ask Mary Ellen. This lady should go far. She really knows all the answers in that Chemistry textbook.

The class wit, Alan Moore, was known as "Preacher" to his classmates. You'll never go wrong if you follow the teachings of Alan.

His sister, Lida Moore, was the president of Alpha Tau Beta. Lida really worked this year. Neither the dances, nor other things around the school, would have gone nearly as well without her help.

Leila Ann Nease was just plain popular. You couldn't help falling for that winning smile and personality. Oh yes, let's don't forget that Leila was in the Student Forum and the Music Club.

Poor Editor Charles Williamson tore his hair out trying to get the annual out before September. Charlie wanted to rename the "GEECHEE" the "Century".

James Wood, the genial president of the Sophomore Class and the Student Senate, will probably never want that job again, with all the legislation from his senatorial group.

ALAN MOORE  
LIDA MOORE

LEILA ANN NEASE

CHARLES WILLIAMSON





ANCHORS  
BARKER  
BRANCH

ANTONOPOLO  
BLACHAM  
BRANCH

AUSTIN  
BIRNBAUM  
BREWER

BAILLY  
BLAIR  
BROWN

ANCHORS, JOHN I.—Age 23; Weight 175; Height 6 ft. 4 in.; Activities: Philosophical and Psychological Seminar.

ANTONOPOLO, GEORGIA LOUISE—Age 19; Weight 128; Height 5 ft. 3 in.; Activities: President of Radio Club; Dance Committee; Student Forum; Business Manager of *Inkuell*; Glee Club Business Staff; Philosophical and Psychological Seminar; Bridge Club; Beta Lambda.

AUSTIN, DONALD EVANS—Age 20; Weight 150; Height 5 ft. 9 in.; Activities: President of Student Forum; Radio Club; Student Senate; Philosophical and Psychological Seminar; Debating Team; Assembly Committee; Business Manager of Glee Club; Homecoming; Open House; Minstrel Show; *Inkuell*; Alpha Lambda Sigma; Permanent Dean's List; Film Club; Staff of "A" Book.

BAILLY, MIRIAM—Dean's List.

BARKER, LARIYNN—Age 19; Weight 113; Height 5 ft. 3 in.; Activities: *Inkuell*; Glee Club; Alpha Tau Beta; Freshman Queen Court '45; Beauty Queen Contestant '46-'47; Minstrel Show; Basketball Team; Dance Committee; Homecoming; Open House.

BLACHAM, MARIAN BIVERLY—Age 19; Weight 135; Height 5 ft. 5 in.; Activities: Music Club; Secretary of Dance Committee; Managing Editor of Glee Club; Glee Club; Beta Lambda; Radio Club; Film Club; Dean's List; Homecoming; Open House.

BIRNBAUM, WILLIAM ARTHUR (Picture missing)—Age 19; Weight 165; Height 6 ft. 2 in.; Activities: Basketball Team.

BIRNBAUM, HARRIET—No information available.

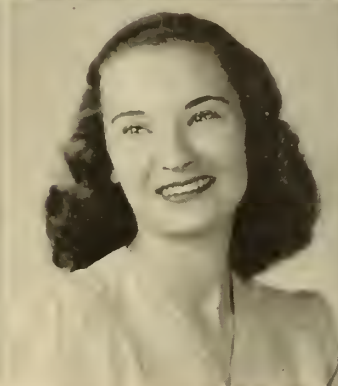
BLAIR, MARION—Exchange Editor, *Inkuell*; Glee Club Staff; Glee Club; Home Economics Club.

BRANCH, IRENE—Alpha Tau Beta; Beauty Queen Candidate.

BRANCH, JOHN IRVIN, JR.—Age 29; Weight 190; Height 5 ft. 9 in.; Activities: Radio Club; Minstrel Show; Intramural Sports; Permanent Dean's List.

BREWER, SARA ELIZABETH—Age 19; Weight 108; Height 5 ft. 11 in.; Activities: Radio Club; Glee Club.

BROWN, HOWARD (BILL)—Age 22; Weight 165; Height 5 ft. 5 in.; Activities: Armstrong Veterans Social Club; Radio Club; Publicity Manager of Minstrel Show; Intramural Team; Debating Team; *Inkuell* Bulletin Staff; *Inkuell* Magazine Staff.



BROWN  
CLARK  
COOK

BRUNNER  
COLLIER  
CORDRAY

BYERS  
COLQUITT  
COX

CLARK  
COLSON  
COX

BROWN, JANE ELIZABETH—Age 19; Weight 110; Height 5 ft. 3 in.; Activities: Vice President of Freshman Class '45; President of Delta Chi Sorority; Secretary of Music Club; Student Forum; Radio Club; Dance Committee; Freshman Queen '45; May Court '46; Beauty Sponsor '46-'47; Open House; Homecoming Committee; GEECHEE; Philosophical and Psychological Seminar; Business Manager of Minstrel Show; Film Club; Constitutional Committee.

BRUNNER, WILLIAM FRANCIS—Age 22; Weight 150; Height 5 ft. 7 in.

BURT, ROBERT E. (Picture missing)—Age 29; Weight 160; Height 5 ft. 11 in.

BYERS, MARGARET MARY—Age 19; Weight 125; Height 5 ft. 4 1/2 in.; Activities: Delta Chi; Student Forum; Beta Lambda; Open House; Music Club; Homecoming; Dance Committee; May Day Festival.

CAPETANAKIS, GRACE (Picture missing)—Age 19; Weight 105; Height 5 ft. 3 1/2 in.; Activities: GEECHEE Staff; Open House; Permanent Dean's List.

CLARK, GRACE ELIZABETH—Age 20; Weight 125; Height 5 ft. 6 in.; Activities: Beta Lambda; Student Senate; Open House; Homecoming.

CLARK, JUANITA MINNETTE—Age 19; Weight 135; Height 5 ft. 1 1/2 in.; Activities: Homecoming; Open House.

COLLIER, MARTHA FRANCES—Age 20; Weight 120; Height 5 ft. 4 in.; Activities: Secretary of Student Forum; Philosophical and

Psychological Seminar; Music Club; Glee Club; GEECHEE Editorial Staff.

COLQUITT, ALFRED HOLT, JR.—Age 23; Weight 145; Height 5 ft. 6 in.; Activities: Armstrong Veterans Social Club; Riding Club; Manager of Basketball Team.

COLSON, MARY ELAINE—Age 19; Weight 103; Height 5 ft. 2 in.; Activities: Radio Club; Music Club; Glee Club; Philosophical and Psychological Seminar; Bridge Club; Student Forum.

COOK, PATTIE ARLENE—Age 19; Weight 100; Height 5 ft. 2 1/2 in.; Activities: Radio Club; Music Club; Glee Club; Philosophical and Psychological Seminar; Minstrel Show; Beta Lambda; Homecoming Committee; Open House.

CORDRAY, BOBBIJANE—Age 18; Weight 118; Height 5 ft. 5 in.; Activities: Business Manager of *Inkuell*; Student Forum; Radio Club; Student Senate; Music Club; Beauty Contest '47; GEECHEE; Glee Club; Homecoming; Dance Committee.

COWAN, BARBARA FRANCES (Picture missing)—Age 19; Weight 110; Height 5 ft. 6 in.; Activities: Music Club; Philosophical and Psychological Seminar; *Inkuell* Business Staff; Student Forum; Open House.

COX, BARBARA JANE—Age 18; Weight 124; Height 5 ft. 7 1/2 in.

COX, CATHA SUE—Age 19; Weight 140; Height 5 ft. 5 1/2 in.; Activities: Treasurer of Beta Lambda; Student Senate; Homecoming; Open House; May Day Festival; Basketball Team; Art Editor of GEECHEE; Co-Art Editor and Girls' Sports Editor of *Inkuell*; Alpha Tau Beta.



CROVATT  
DUBOIS  
FLANDERS

DICKEY  
DUPONT  
FORMAN

DICKEY  
DURRENCI  
FREEMAN

DOERNER  
FITZSIMONS  
GOLDBERG

CROVATT, MARGARET LORRAINE—Age 19; Weight 105; Height 5 ft. 4½ in.; Activities: President of Music Club; Treasurer of Radio Club; Student Forum; Beauty Contestant '46-'47; GLEECEE; *Inkuell*; Philosophical and Psychological Seminar; Homecoming; Permanent Dean's List; Open House; Alpha Lambda Sigma; Cheerleader.

DICKEY, GRADY—French Club.

DICKEY, SARA—Age 18; Weight 124; Height 5 ft. 5½ in.; Activities: Beta Lambda; Basketball Team; *Inkuell* Bulletin; *Inkuell*; Dance Committee; Homecoming.

DUFFRE, HELEN JEANETTE (Picture missing)—Age 18; Weight 112; Height 5 ft. 7 in.; Activities: Manager of Basketball Team; Alpha Tau Beta.

DOERNER, GEORGE G.—Age 22; Weight 160; Height 5 ft. 10 in.; Activities: Associate Editor of GLEECEE; Intramural Teams of Softball, Football, Basketball.

DUBOIS, JOHN H.—Age 23; Weight 150; Height 5 ft. 9 in.; Activities: Minstrel Show.

DUPONT, MARY ANN—Age 19; Weight 115; Height 5 ft. 4½ in.; Activities: Treasurer of Alpha Tau Beta; Homecoming.

DURRENCE, JOANNE—Age 18; Weight 113; Height 5 ft. 4 in.; Activities: Publicity Chairman of Alpha Tau Beta; *Inkuell*;

GLEECHIE; Freshman Queen Court '46; Beauty Queen Contestant '47; Basketball; Student Senate; Homecoming Committee; Open House; Minstrel Show.

FITZSIMONS, THEODORF BARKER, JR.—Age 23; Weight 150; Height 5 ft. 6 in.; Activities: Student Forum; Philosophical and Psychological Seminar; Debating Team; Armstrong Veterans Social Club.

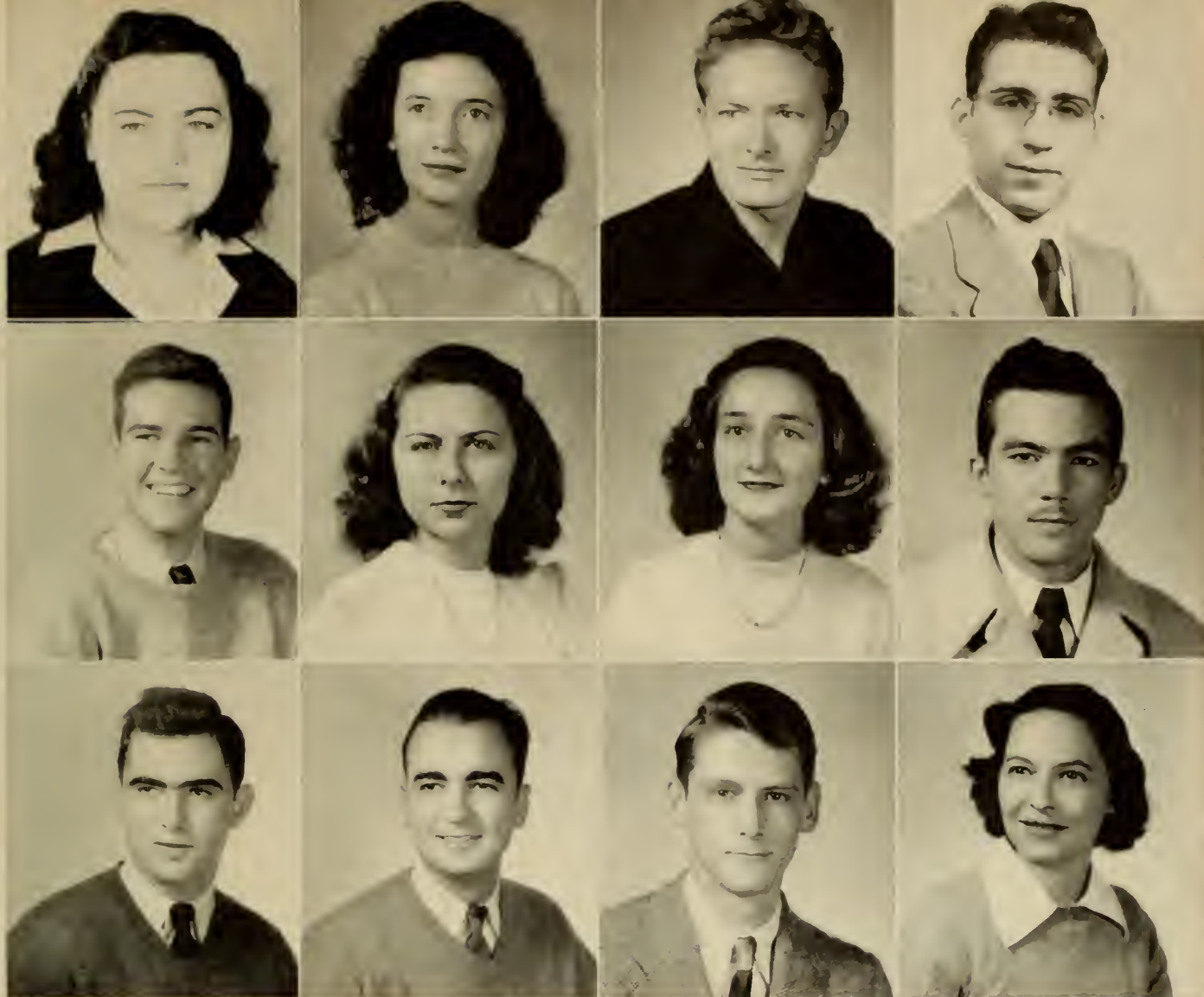
FLANDERS, BEVERLY GIANNI—Age 18; Weight 97; Height 5 ft. 2 in.; Activities: Radio Club; Glee Club.

FORMAN, BETTY LEE—Activities: Secretary, Alpha Tau Beta '46-'47; President of Beta Lambda; '47 GLEECEE; Basketball.

FREEMAN, BETTY ANNE—Age 20; Weight 110; Height 5 ft. 3 in.; Activities: Treasurer of Student Forum; Music Club; GLEECEE Editorial Staff; Philosophical and Psychological Seminar; *Inkuell* Business Staff.

GOLDBERG, HAROLD BRADLEY—Age 22; Weight 192; Height 5 ft. 9 in.; Activities: Editor of *Inkuell*; Associate Editor of GLEECEE; *Inkuell* Reporter '42; GLEECEE Artist '42; Foreign Relations Club '42; Homecoming Committee '42 and '46; Managing Editor of *Inkuell*; Cheerleader; Student Forum; Radio Club; Student Senate; "A" Book Editor; Dean's List; Permanent Dean's List '47; Alpha Lambda Sigma.





GRACEN  
HASLAM  
KEARNEY

HALE  
HUTCHINS  
KESSLER

HAMILTON  
HYMES  
KESSLER

HARMON  
ISLEY  
KILROY

GRACEN, LILLIAN WELLS—Age 19; Weight 180; Height 5 ft. 6 in.; Activities: Open House; Homecoming; Music Club.

HALE, CHARLOTTE—Music Club.

HAMILTON, PHILLIPS D.—Age 22; Weight 175; Height 5 ft. 9 in.; Activities: Vice President of Armstrong Veterans Social Club; Student Senate; Debating Team.

HANCOCK, FAYE (Picture missing)—Age 18; Weight 115; Height 5 ft. 5 in.; Activities: Music Club; *Inkuell*.

HARMON, DOUGLAS E.—Age 22; Weight 150; Height 5 ft. 9 in.; Activities: Treasurer of Armstrong Veterans Social Club; Riding Club; Intramural Sports Team of Terrible Terrapins; Minstrel Show; Music Club.

HASLAM, NELSON—Age 21; Weight 145; Height 5 ft. 8 in.; Activities: Veterans Social Club; Minstrel Show.

HUTCHINS, EDNA ANN—Age 19; Weight 128; Height 5 ft. 6 in.; Activities: GEECHEE; Music Club; Homecoming; Open House; Permanent Dean's List, Alpha Lambda Sigma.

HYMES, NATALIE—Age 19; Weight 125; Height 5 ft. 4 in.; Activities: Beta Lambda; Glee Club; Music Club; Dance Committee; GEECHEE Staff; Homecoming; Open House.

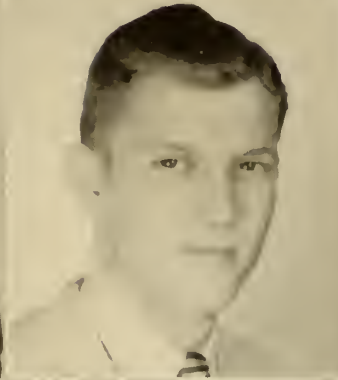
ISLEY, GEORGE HOWARD, JR.—Age 21; Weight 138; Height 5 ft. 9 in.; Activities: President of Riding Club; Head Cheerleader; Radio Club; Armstrong Veterans Social Club; Loafers Intramural Team; *Inkuell* Sports Staff; GEECHEE Business Staff; "A" Club; Assistant Editor, *Bulletin*.

KEARNEY, JAMES ARTHUR, JR.—Age 18; Weight 175; Height 5 ft. 10 in..

KESSLER, FRED OTTO, JR.—Age 21; Weight 155; Height 5 ft. 11 in.; Activities: Armstrong Veterans Social Club.

KESSLER, WILEY B., JR.—Age 19; Weight 148; Height 5 ft. 10 in.; Activities: Vice President of Student Forum; Student Senate; Glee Club; Music Club; Softball Team; Dance Committee.

KILROY, ELIZABETH W.—Age 29; Weight 98; Height 5 ft.; Activities: Armstrong Veterans Social Club.



LAIRD  
LYNN  
MOORE

LINTON  
MALLORY  
MOORE

LITTLE  
MALLORY  
MURPHY

LUCAS  
MONTGOMERY  
NEASE

LAIRD, ALAN STURIDGEN—Age 26; Weight 165; Height 5 ft. 10 1/2 in.; Activities: Intramural Sports Manager; President of Armstrong Veterans Social Club; Student Senate; Football Team '40; Monogram Club; *Inkuell*.

LINTON, DOROTHY VIRGINIA—Age 20; Weight 125; Height 5 ft. 8 in.; Activities: Beta Lambda, Glee Club; Homecoming Committee; *Inkuell* Bulletin Staff; Basketball Team.

LITTLE, WILBERT NATHANIEL—Age 19; Weight 149; Height 6 ft. 2 in.; Activities: Student Forum; Music Club; Vice President of Philosophical and Psychological Seminar.

LUCAS, CLARENCE—Psychology Club.

LYNN, CECIL WILBUR—Age 26; Weight 170; Height 5 ft. 11 in.

MALLORY, JAMES—Armstrong Veterans Social Club; Terrapins Intramural Team.

MALLORY, LOIS ELIZABETH—Age 19; Weight 104; Height 5 ft. 4 in.; Activities: Treasurer of Dance Committee; *GLEE*; Vice President of Delta Chi Sorority, Homecoming; Open House.

MATTHEWS, ASHBY L., JR. (Picture missing)—Age 29; Weight 155; Height 5 ft. 10 in.; Activities: Treasurer of Armstrong Veterans Social Club.

MITCHELL, CAROLYN EUGENIA (Picture missing)—Age 18; Weight 138; Height 5 ft. 7 in.

MONTGOMERY, MARY ELLEN—Age 18; Weight 110; Height 5 ft. 4 in.; Activities: Music Club; *GLEE* Staff; Homecoming; Open House; Secretary of Freshman Class; Permanent Dean's List; "A" Average; Valedictorian '47 Class.

MOORE, ALAN A., JR.—Age 21; Weight 158; Height 5 ft. 11 in.; Activities: Vice President of Sophomore Class; Armstrong Veterans Social Club; Dance Committee; Homecoming Committee; *Inkuell* Staff, Minstrel Show.

MOORE, HILDA HOLLOWAY—Age 19; Weight 125; Height 5 ft. 6 3/4 in.; Activities: *Inkuell* Staff; President of Alpha Tau Beta; Chairman of Homecoming Committee '46; *GLEE* Staff.

MURPHY, CAROLYN DELLA—Age 19; Weight 110; Height 5 ft. 5 in.

NEASE, FELLA ANN—Age 19; Weight 105; Height 5 ft. 2 in.; Activities: Treasurer of Freshman Class '45; Student Forum; Radio Club; Music Club; Glee Club; *Inkuell* Staff; *GLEE* Staff; Open House; Homecoming; Dancing Committee; Beauty Contestant '46-'47; May Court '46; Freshman Queen Court '46.



NODVIN  
PRATT  
SIMON

PARRISH  
REDMOND  
SMITH

PETRIS  
RYAN  
SMITH

PORTERFIELD  
SIGMAN  
SNEAD

NODVIN, MARVIN PHILIP—Age 18; Weight 193; Height 6 ft. 1¼ in.; Activities: Radio Club; Student Forum; Debating Team; Minstrel Show; *Inkuell* Bulletin; Homecoming.

PARRISH, JESSE—No information available.

PETRIS, PAUL DEBELE—Age 22; Weight 165; Height 5 ft. 11 in.; Activities: Manager of Loafers Intarmural Club; Armstrong Veterans Social Club.

PORTERFIELD, CLARA ANNETTE—Age 18; Weight 104; Height 5 ft. 2½ in.

PRATT, JOAN ALICE—Age 20—Weight 115; Height 5 ft. 5 in.; Activities: Treasurer of Student Forum; Vice President of Alpha Tau Beta; Managing Editor of *Inkuell*.

PRENDERGAST, MARY ELLEN (Picture missing)—Age 21; Weight 130; Height 5 ft. 8 in.

RATNER, BERNARD ISRAEL (Picture missing) Age 21; Weight 135; Height 5 ft. 9 in.; Activities; Secretary of Radio Club; Music Club.

REDMOND, ROBERT L.—Age 24; Weight 130; Height 5 ft. 7 in.; Activities: Tennis Club '42; Council of Foreign Relations '42; Spanish Club '46; *Inkuell* '42; Softball '42 and '46.

RYAN, ANGELA—No information available.

SASEEN, BARBARA THERESA (Picture missing)—Age 19; Weight 120; Height 5 ft.; Activities: Music Club; Student Forum; Radio Club; Home Economics Club.

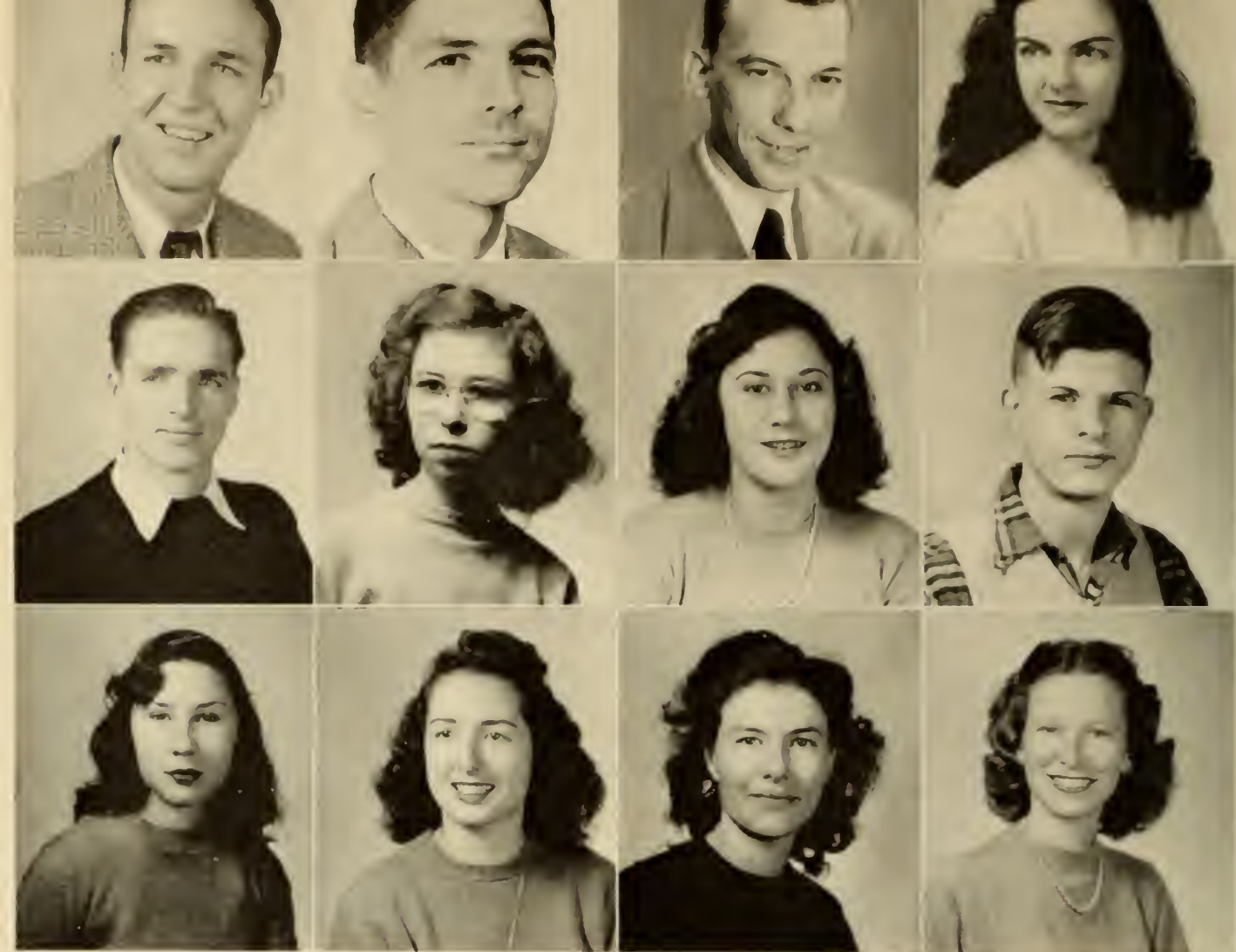
SIGMAN, FRED N., JR.—Age 22; Weight 175; Height 6 ft.; Activities: Manager of Basketball Team; Opinion Please (WTOC); Armstrong Veterans Social Club.

SIMON, NICK P.—Age 24; Weight 170; Height 5 ft. 6½ in.; Activities: Treasurer of Sophomore Class; Radio Club; Dance Committee; Open House; Student Forum; Homecoming.

SMITH, FRED—Permanent Dean's List '47; Armstrong Veterans Social Club; Psychology Club.

SMITH, MAY ANN—Age 19; Weight 145; Height 5 ft. 4 in.; Activities: President of Dance Committee; Historian of Delta Chi; Beta Lambda; GEECHEE.

SNEAD, LESLIE GARFIELD—Age 19; Weight 120; Height 5 ft. 9½ in.; Activities: Homecoming; *Inkuell* Business Staff; Philosophical and Psychological Seminar; GEECHEE Business Staff; Radio Club.



SPARKMAN  
TARVIR  
VAUGHNDORF

STOKES  
TOSHACK  
WALKER

STREET  
UNGAR  
WALKER

SULLIVAN  
UPCHURCH  
WALSH

SPARKMAN, CHARLIE LEE—Age 19; Weight 165; Height 6 ft.; Activities: Armstrong Veterans Social Club; Basketball Team; Loafers Intramural Team; Sports Editor, *Bulletin*; Student Senate; Vice-President, "A" Club.

STOKES, THOMAS—Dean's List.

STREET, WAYNE—Music Club; Dean's List; GEECHEE Photography Editor; *Inkuell* Photography Editor; Armstrong Veterans Social Club; French Club; Alpha Lambda Sigma.

SULLIVAN, RUTH GOLDEN—Age 20; Weight 110; Height 5 ft. 1 in.; Activities: Glee Club; Radio Club; Music Club, GEECHEE; *Inkuell*; Dance Committee.

TARVIR, WILLIAM BYRD—Age 19; Weight 170; Height 6 ft.; Activities: Armstrong Veterans Social Club; Terrible Terrapins of Intramural Sports; *Bulletin*.

TOSHACK, SALLY ANNETTI—Age 18; Weight 105; Height 5 ft. 3 in.

UNGAR, HELENE SELMA—Age 19; Weight 135; Height 5 ft. 5½ in.; Activities: President of Philosophical and Psychological Seminar; Student Forum; *Inkuell* Reporter; Beta Lambda; GEECHEE Staff.

UPCHURCH, GEORGI—Music Club; Radio Club President; Secretary Sophomore Class; Psychology Club; Senate Representative of Psychology Club.

VAUGHNDORF, SUSANNE—Permanent Dean's List '46.

WALKER, BETTY JUANITA—Age 19; Weight 120; Height 5 ft. 4½ in.; Activities: Delta Chi; Music Club; Glee Club; Student Senate; Dance Committee.

WALKER, MARGUERITE GRAHAM—Age 24; Weight 108; Height 5 ft. 6 in.

WALSH, MILDRED ELIZABETH—Age 19; Weight 103; Height 5 ft. 2½ in.; Activities: Basketball Team; Treasurer of Delta Chi Sorority; Open House; Beauty Sponsor '47; Delta Chi Bowling Team.



WHILLER

WILLIAMSON

WILSON



WEATHERS  
YATES

WEATHERS, JEAN—Beta Lambda; GEECHEE Minstrel; Alpha Tau Beta; Glee Club; Basketball.

WHEELER, JANE MARIE—Age 19; Weight 115; Height 5 ft. 6 in.; Activities: Secretary of Delta Chi Sorority.

WILLIAMSON, CHARLES MICHAEL ARTHUR—Age 18; Weight 190; Height 6 ft. 3 in.; Activities: Editor-in-Chief of GEECHEE '46-'47; Vice President and Program Director of Music Club; Vice President and Program Director of Student Forum; *Inkuell* Staff; Alpha Lambda Sigma; Philosophical and Psychological Seminar; Radio Club; Film Club; Debating Team; Permanent Dean's List; "A" Book Staff; Student Senate; "A" average.

WILSON, JAMES EUGENE—Age 23; Weight 170; Height 6 ft. 2 in.; Activities: Armstrong Veterans Social Club.

WOOD, JAMES ARTHUR (Picture missing)—Age 23; Weight 145; Height 6 ft. 1 in.; Activities: President of Sophomore Class; President of Student Senate; GEECHEE Staff; *Inkuell* Staff; Student Forum; Intramural Sports.

YATES, JAMES E.—Age 22; Weight 165; Height 6 ft.; Activities: Riding Club; Armstrong Veterans Social Club.

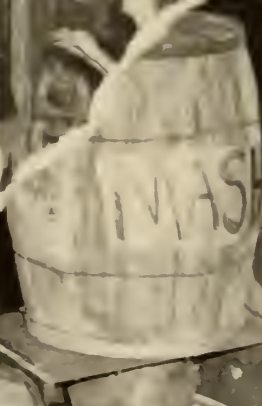




JULES  
BACOT

... *Freshmen*

... of Homecoming



448S4







JEAN DEMARS  
*Secretary*

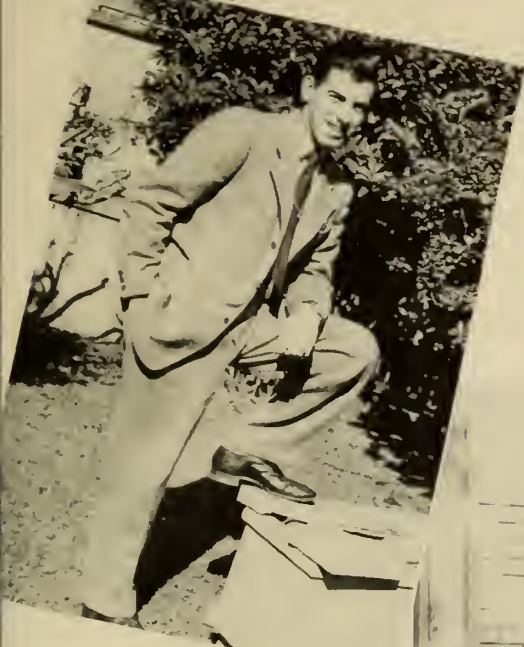
JACK KILLY  
*Vice-President*

THADDEUS LAIRD  
*Treasurer*

PHILLIPA KANDEL  
*President*



KANDEL



KILEY



LAIRD



DEMARS

# FRESHMAN CLASS OFFICERS



JACK KILEY  
MATILDA LAIRD

# Freshman King and Queen

King and Queen and their court, left to right: Carolyn Rovce, Dorothy Johnson, King Kiley, Phillipa Kandel, Queen Laird, Nancy Whitner, and Jane Brown.

Last year's queen, Jane Brown, crowns Matilda.



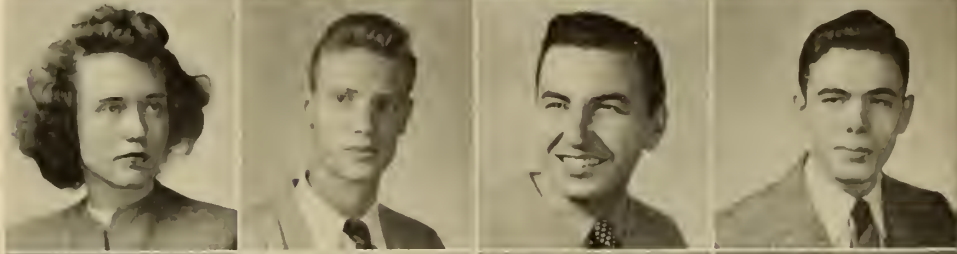
JOHN AKINS  
WALDO ANDERSON  
HELEN ANDREWS  
SAM ASSELANIS



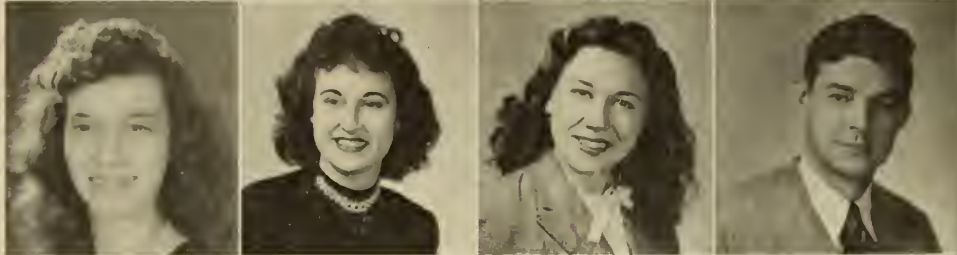
JULIS BACOT  
EUGENE BAGWELL  
ALLIE BAKER  
ALLEN BEALL



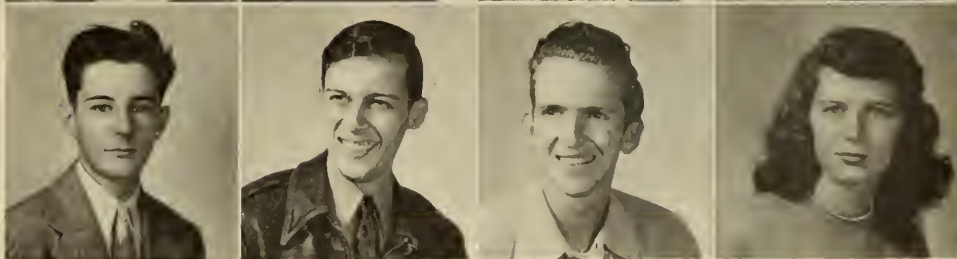
BETTY BECKWITH  
JACK BERGMAN  
THOMAS BERRY  
HENRY BLACK



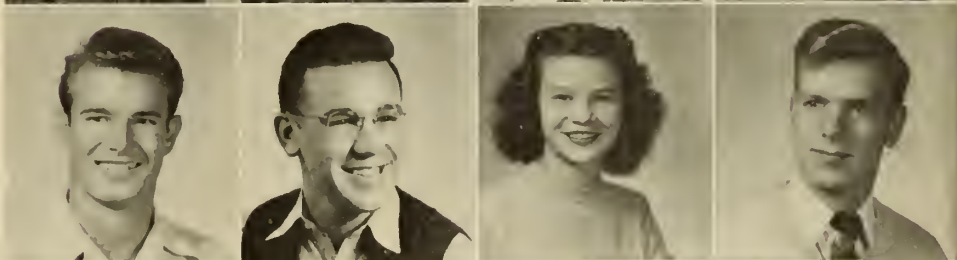
NELLWYNE BLACKBURN  
NORMA BLOCKER  
HELEN BLUMBERG  
MOYE BRABHAM



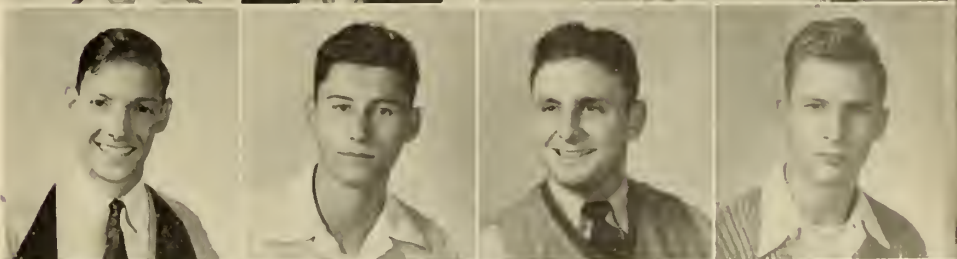
CHARLES BRIGHAM  
HENRY BROWN  
HUGH BROWN  
BARBARA BURCH



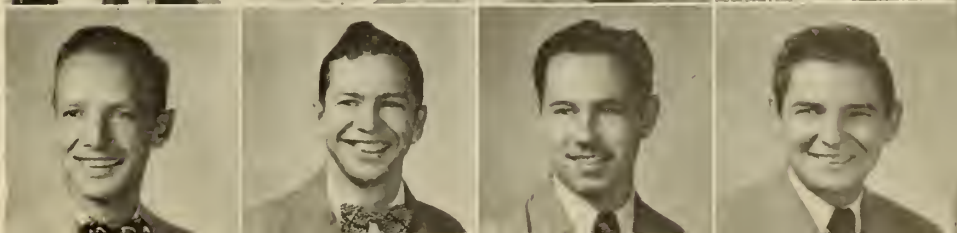
ARNOLD BURGIN  
WILLIAM CARROL  
LOURDINE CARTER  
CHARLES CLANTON



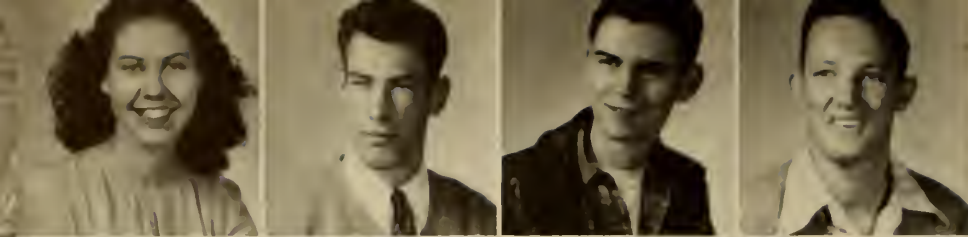
JOE CLEMENTS  
FRANK COLEMAN  
CHARLES COLLINS  
FRED CORCORAN



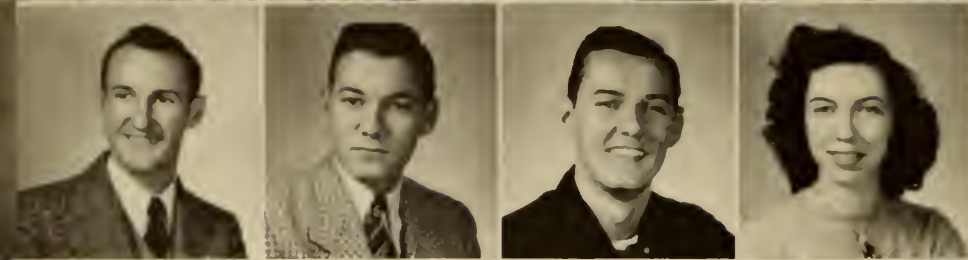
CLEON CREWS  
EMORY DANIEL  
DEWEY DELETTRE  
DANIEL DELOACH



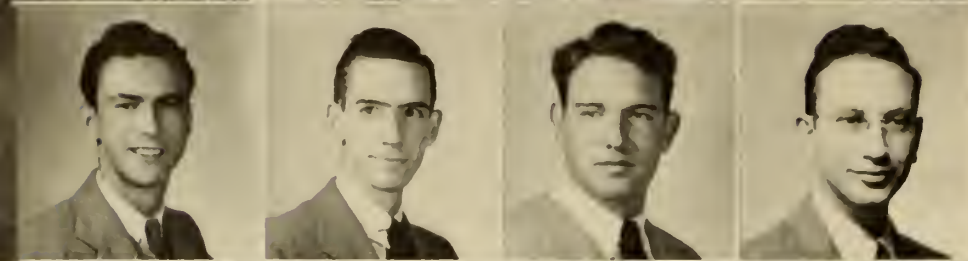
F  
R  
E  
S  
H  
M  
E  
N



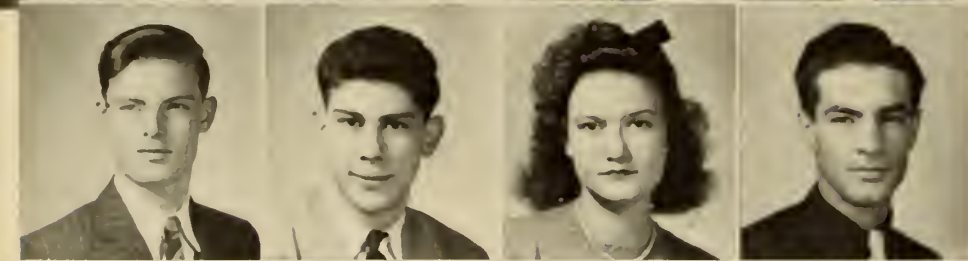
JEAN DEMARS  
JOHN DEMARS  
GEORGE DEVIRI  
ROBERT DINMICK



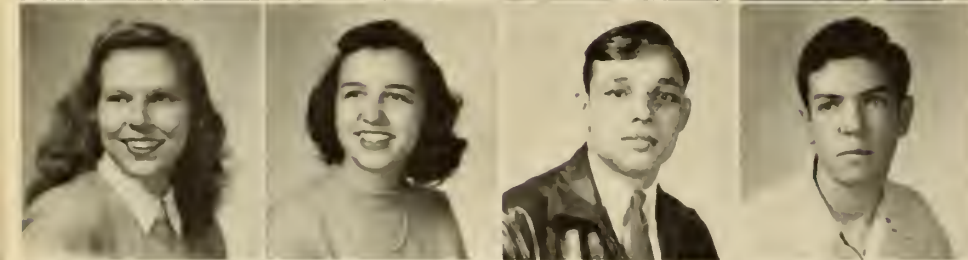
JOHN DOWNS  
GLEATON DUPREE  
JACK DURRINCE  
ADELIA EDWARDS



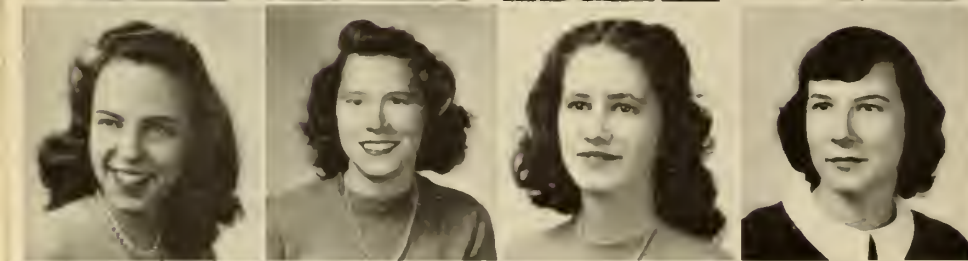
KERTIS ELKINS  
DEXTER EVANS  
WILLIAM EXLEY  
RICHARD FALK



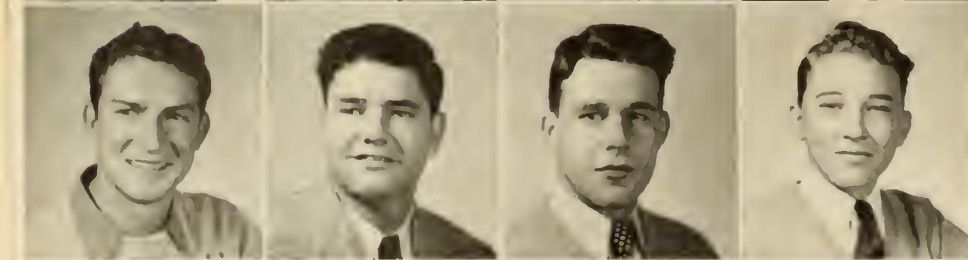
WILLIAM FARRIOR  
FRANK FINOCCHIARO  
HELLEN FOARD  
ANTHONY FONTS



ANNE FRLTWELL  
MARY FULTON  
HUGH FUTRELL  
ALVIN GALIN



KITTY GARIS  
BETTY GILBERT  
PHYLLIS GILES  
BETTY GRAHAM



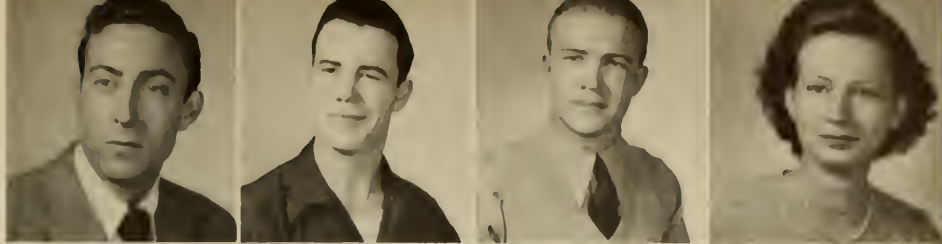
HAROLD GREENE  
ROBERT GROOVER  
BARON HAAG  
JOHN HADDOCK



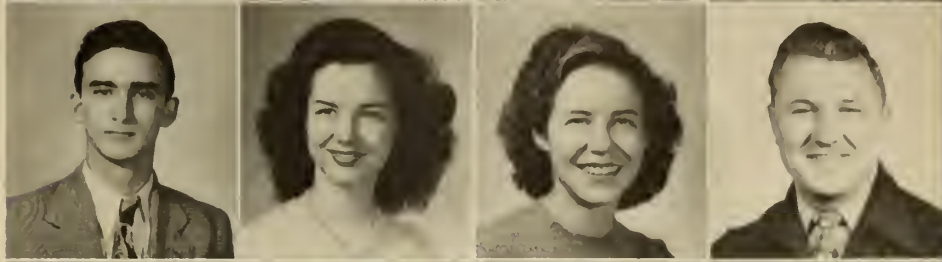
COLLEEN HALL  
ROBERT HANLY  
JAMES HARDIE  
CARL HARMON

F  
R  
E  
S  
H  
M  
E  
N

ROBERT HARMON  
 JACK HARRIS  
 ANTHONY HARTY  
 MARGUERITE HAYMAN



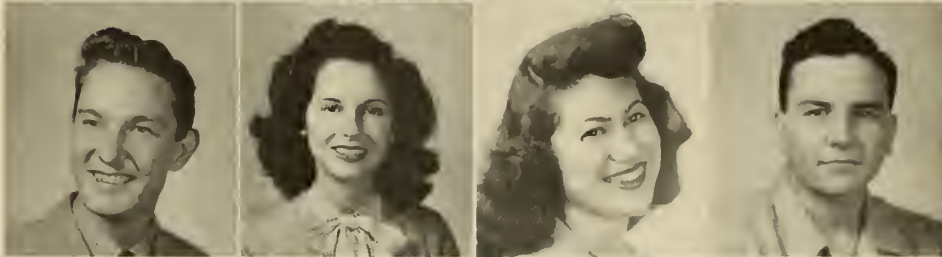
JOHN HENDRICKS  
 PAULINE HENDRIX  
 JUANITA HICKOX  
 CHLATHAM HODGES



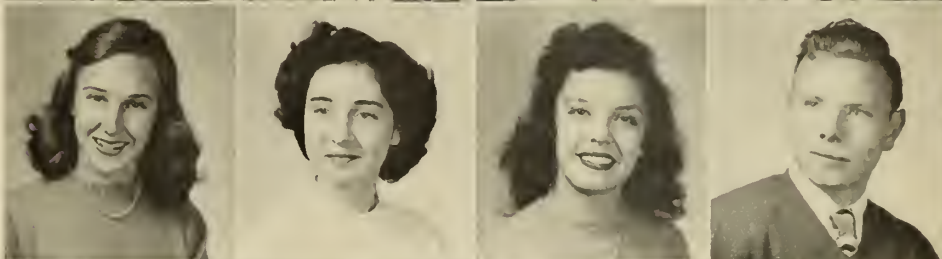
ERNEST HOLLEY  
 EMIL HOPKINS  
 BERNARD INHULSEN  
 DOROTHY JOHNSON



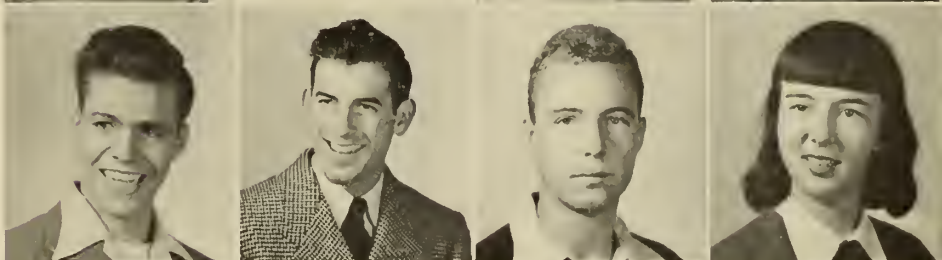
HOWARD JOHNSON  
 GEORGETTE JONES  
 RIETTE JOSELOVE  
 BUDDY KAHN



PHILLIPPA KANDL  
 MARY ANN KAVANAUGH  
 LINNEY KEEVER  
 NELSON KETCHUM



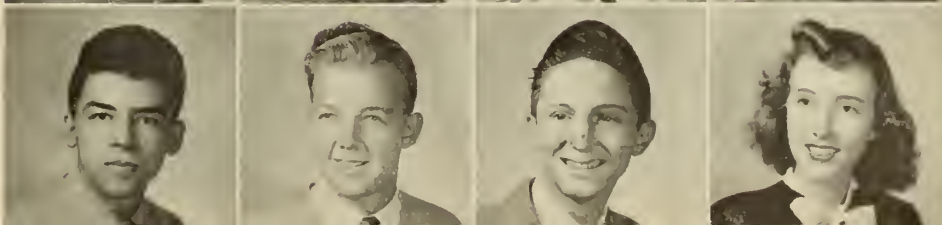
GRADY KICKLIGHTER  
 JACK KILEY  
 MACK KITCHENS  
 ROSEMARIE KRAFT



ANNABELLE LAIN  
 MARGUERITE LAIRD  
 MATILDA LAIRD  
 THADDEUS LAIRD



TED LAMAS  
 HUNTER LEAF  
 EDWARD LEE  
 ELIZABETH LEONARD



F

R

E

S

H

M

E

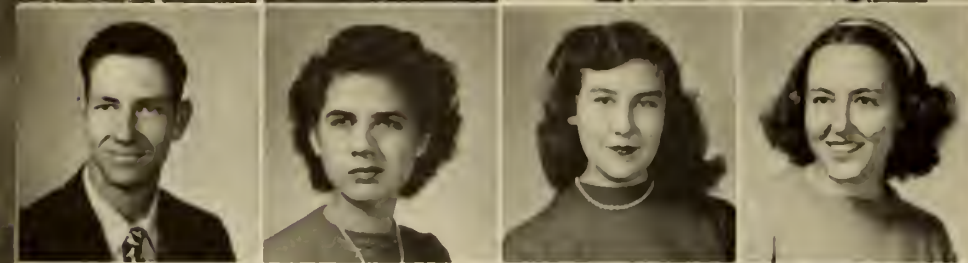
N



ROBERT LISTER  
JOHN LEWIS  
HARRY LIVINGSTON  
CAROLINE LORD



IVYERSON LORD  
VERDIN LOVE  
KENNETH LYNN  
CHARLES LYONS



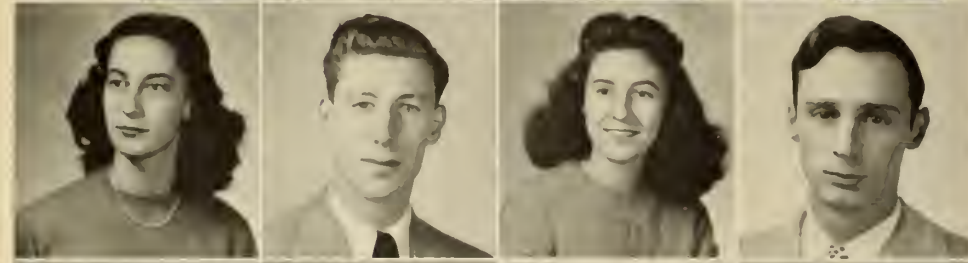
HERBERT MACKY  
FLORRIE LEE MALPHRUS  
JOSEPHINE MAXWELL  
ANN MAYER



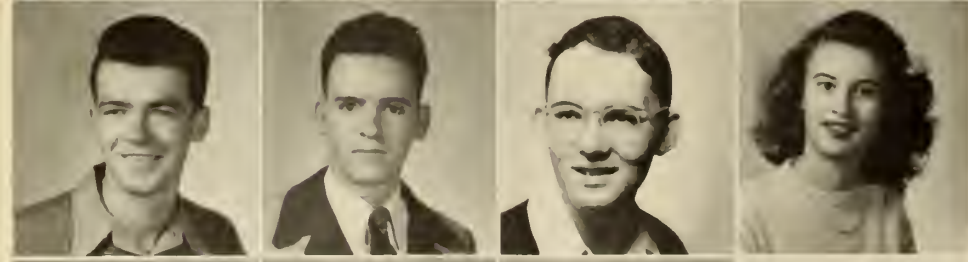
ROY McCULLOUGH  
ROBERT McDUFFEE  
JOHN MCGINTY  
JANE McMILLAN



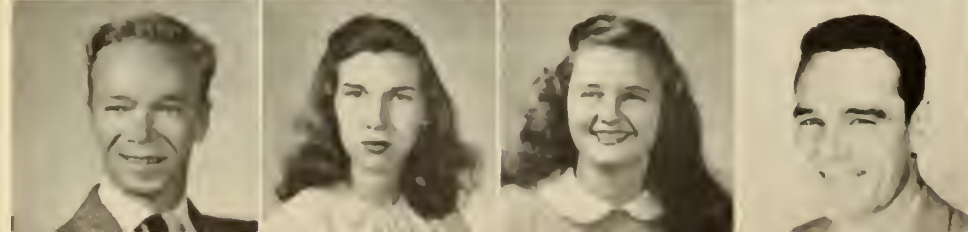
FRANK MILES  
BLTTY ANN MILLER  
SARA MILLER  
ARTHUR MINGLEDORFF



CAROLINE MINIS  
WILLIAM MONAHAN  
MARY MOREL  
MOREL WALDBURG



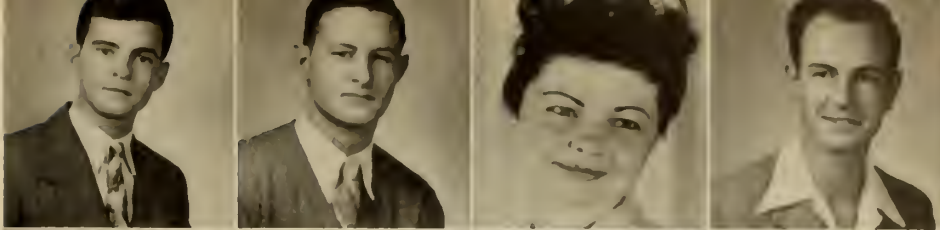
JOHN MURPHY  
VAN NOLAN NICHOLS  
RUFUS NIGHTINGALE  
JIAN OXENFELD



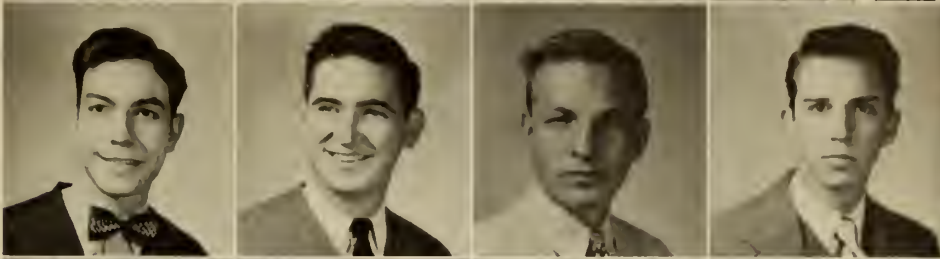
HAMPTON PAINE  
ANN BOOKER  
MARY PATTERSON  
ROBERT PATTERSON

F  
R  
E  
S  
H  
M  
E  
N

DENNIS PERKINS  
 JEFFERSON PIRSSI  
 ELIZABETH PIETS  
 PAUL PIETS



ROBERT PORTER  
 WILLIAM PRICE  
 DEWEY PRINCE  
 RAYMOND REHM



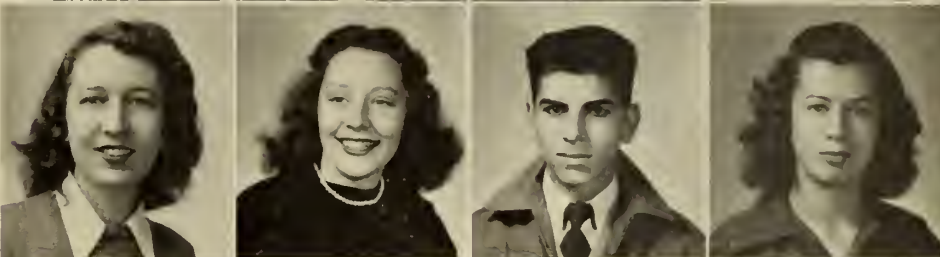
LOUIS REISMAN  
 JANICE RICE  
 ROBERT RICHARD  
 FRANK RIZZA



CURTIS ROANE  
 EMORY ROBERTS  
 MORRIS ROSENTHAL  
 CAROLYN ROYCE



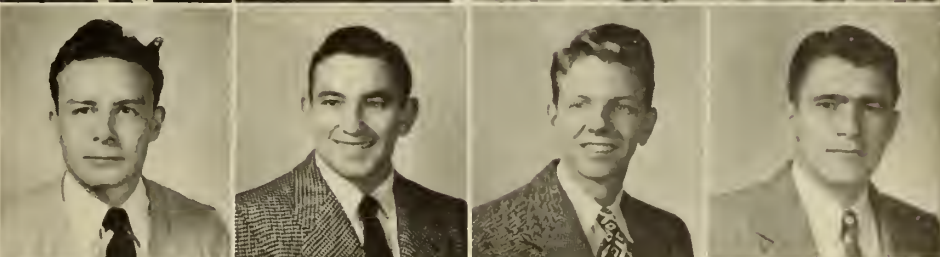
JO RYAN  
 MARY RYAN  
 JOE SASEEN  
 MARTHA SAXON



FRANK SCOTT  
 BARBARA SECKINGER  
 JOYCE SEE  
 JULIAN SILVER



WILLIAM SITLER  
 HARRY SLOTIN  
 KEELMAN SMITH  
 HARRY SNIPES



ROBERT SOWELL  
 JOHN SPARKMAN  
 CHARLES STEWART  
 JAMES TEUTON



F  
 R  
 E  
 S  
 H  
 M  
 E  
 N



REPPARD THOMAS  
 BOB THORPE  
 JAMES TOOTLI  
 THERISA WADE

WILLIAM WALL  
 WILLIAM WALLACE  
 VENNA WALSH  
 NANCY WHITNER

MILLARD WILLIAMS  
 ROBERT WILSON  
 BILLY WINN  
 POLLY WISE

WILLIAM WORRELL  
 LEON ZALKOW

F  
 R  
 E  
 S  
 H  
 M  
 E  
 N



... of Parties





LOUISE LENHARDT  
Director of Nursing

AUBREA BARRETT

Wacona High School, May 22, 1945,  
Waycross, Georgia.

BETTY DAUGHERTY

Waycross Senior High School, 1946,  
Waycross, Georgia.

MELBA FLOOD

Guyton High School, May 21, 1945,  
Guyton, Georgia.

BOBBIE HERRING

Morven High School, 1946, Barney,  
Georgia.

ANNE KICKLIGHTER

Glennville High School, 1945,  
Glennville, Georgia.

LAVEAU JONES

Register High School, 1945; Georgia Teachers College, 1946, Statesboro, Georgia.

VIRGINIA LITTLE

Athens High School, June 2, 1946,  
Athens, Georgia.



BARRETT  
FLOOD  
DAUGHERTY



HERRING  
JONES  
KICKLIGHTER  
LITTLE



MARTHA CHEVES SMITH  
*Assistant Director of  
Nurses in Charge of Education*



VILMA NEAL

Register High School, 1945; Georgia Teachers College, 1946, Register, Georgia.

DENTA FAYE PURCELL

Glennville High School, 1945, Glennville, Georgia.

VERA MARTENE NEWMAN

Stilson High School, June 3, 1946, Stilson, Georgia.

SHIRLEY SCRUGGS

No history available.

GERALDINE SKIPPER

Douglas High School, May 27, 1946, Douglas, Georgia.

DAISY BELLE WILKERSON

Portal High School, 1946, Portal, Georgia.

EUNICE ROBERTA SOLOMONS

Estill High School, May 20, 1946, Estill, South Carolina.

LUCY ANGELA WOODS

Collins High School, May 28, 1946, Collins, Georgia.

NEAL  
NEWMAN  
PURCELL  
SCRUGGS



SKIPPER  
SOLOMONS  
WILKERSON  
WOODS



... of Dances





JULES  
BACOT

... *Activities*



# STUDENT SENATE

The Student Senate is the governing body of the students at Armstrong. Representatives are elected from the student body, the publications, and the clubs of Armstrong. The faculty advisor is Dean Orson Beecher.

*Left to right:* Sue Cox, Charles Williamson, Grady Kicklighter, Phillips Hamilton, Hampton Paine, Phillipa Kandel, Ann Fretwell, Harold Goldberg, Allan Laird, Mr. Beecher, Donald Austin, James Wood, Joanne Durrence, Louis Reisman, Wiley Kessler.





## DANCE COMMITTEE

The Dance Committee is in charge of all dances given by Armstrong. Members are elected from all the clubs at Armstrong. The members take care of all arrangements and do all the decoratorial work connected with a dance.

*Left to right:* Bob Dimmick, Wiley Kessler, Bob Harmon, Dot Johnson, Betty Walker, Ruth Sullivan, Natalie Hymes, Ruth Foster, Leila Nease, Bobbijane Cordray, Mr. Dabney, Beverly Beacham, May Ann Smith, Phillipa Kandel, Barbara Seckinger, Lois Mallory, Jane Brown, Donald Austin.





## “A” CLUB

The “A” Club is composed of those boys at Armstrong who have earned a letter in sports. Formerly known as the Monogram Club, it was reorganized towards the end of the year under its present name.

*First row, left to right: Fred Sigman, Bud Fonts, John Adams, Bobby Blake, Jack Kiley. Second row, left to right: Joe Solana, William Binns, Charles Sparkman, Harry Snipes, James Brewton, G. H. Isley.*







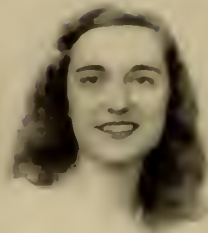
 \$65.00

# ARMSTRONG VETERANS SOCIAL CLUB

The A.V.S.C. is an association of all Armstrong veterans interested in activities of a social nature. The club put on a number of dances and other entertainments this year which were well-received by the student body. Membership is open to all veterans at Armstrong College.

*First row, left to right:* Mrs. Kilroy, Bill Harmon, Dot Devere, "Red" Colquitt, Annabelle Lain, Allan Laird, Jack Durrence, Hampton Paine, Phillips Hamilton, Fred Sigman, Allen Beall. *Second row:* Harold Goldberg, "Red" Fogarty, Mr. Dabney, Julian Silver, Louis Audese, Bill Brown, Gene McKnight, Jack O'Donovan, Harold Greene, George McGraw. *Third row:* Jack Sparkman, Paul Petris, Grady Kicklighter, Howard Johnson, Jack Kiley, Allen Moore, Bob Richard, James Yates, G. H. Isley, James Mallory, Bob Harmon. *Fourth row:* Clinton Robertson, Jerry Cordell, Lawrence Allen, Bob Dimmick, Gordon Cowart, William Exley. *Fifth row:* Troy Knight, Bob Lester, Ben Hindman, Fred Kessler, Billy Winn, Frank Coleman, John Anchors, Jules Bacot, Joe Clements, Dexter Evans, Ronald Varn.





JIAN WEATHERS

KITTY GARRIS

LOUISE TAYLOR

DOROTHY DEVERF

LIDA MOOR  
President '46-'47

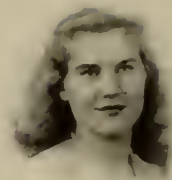
CAROLYN ROYCE

MATILDA LAIRD

BETTY LEE FORMAN  
Secretary '46-'47

LYNN BARKER

# ALPHA TAU BETA



HELEN DeVERE

MARY ANN DUPONT  
Treasurer '46-'47

BETTY ANNE FREIMAN

JOANNE DURRENCE  
Scribe '46-'47

JOAN PRATT  
Secretary '45-'46  
Vice President '46-'47

MARY MONTAGUE

CAROLINE LORD

IRENE BRANCH

SUE COX

# ALPHA TAU BETA

# BETA LAMBDA

Beta Lambda is the Home Economics club of Armstrong. The members learn to do such essential things about running a household as cooking, sewing, and the thousand-and-one other little details that a good housewife must know.

*First row, left to right:* Janice Rice, Patty Cook, Grace Clark, Mrs. Dabney, Margaret Mary Byers, Jean Weathers, Dot Johnson, May Ann Smith, Lida Moore. *Second row:* Sara Dickey, Colleen Hall, Beverly Beacham, Jean DeMars, Betty Leonard, Sue Cox, Betty Forman, Dot Linton, Natalie Hymes.





## FRENCH CLUB

The French Club is composed of those students at Armstrong who are interested not only in improving their command of the French language, but in the study of the great contributions of the French to the civilization of the West.

*First row, left to right:* Wayne Street, Phillipa Kandel, Marguerite Storer, Lida Moore, Mrs. Lubs, Ann Mayer, Charlotte Bailey, Grady Dickey. *Second row:* Mack Kitchens, Eugene Thompson, Larry Dunn, Bob Hanley, Robert Porter, Stelljis Nichols, Bob Lester. *In front:* Freddy Lubs.





		MOIRA FOGARTY		
	THIRESA WADI	PHILLIPA KANDEL	JEAN DEMARS	
BETTY WALKER	MARGARET MARY BYIRS	MARY FULTON	HILIN ANDRIWS	
BETTY WALSH	LOIS MALLORY	JANI BROWN	MAY ANN SMITH	JANE WHILLER

# Delta Chi



Δ

Χ



WE'LL GIVE  
AUGUSTA



## GLEE CLUB

The Glee Club was organized under the direction of Mr. William Baker, for the purpose of giving those students at Armstrong who had an interest in choral work an opportunity to indulge their liking. The Glee Club is to be congratulated on the number of fine assembly programs it has put on this year.



*First row, left to right:* Patty Cook, Bobbijane Cordray, Ruth Sullivan, Adelia Edwards. *Second row:* Martha Collier, Jean Weathers, Phillipa Kandel, Natalie Hymes, Leila Nease, Beverly Beacham, Elizabeth Brewer, Marguerite Laird. *Third row:* Mr. Baker, Bernard Inhulsen, Emil Hopkins, Wiley Kessler, Charlton Cohen.





## MUSIC CLUB

The Music Club is devoted to the popularizing of good music at Armstrong College. Music heard this year includes Beethoven's "Eroica", Mozart's "Jupiter" symphonies, and the "Petrouchka" ballet suite of Stravinsky.

*First row, left to rights* Jane Brown, Lorraine Crovatt, Polly Wise.  
*Second row:* Martha Collier, Janice Rice, Patty Cook, Mr. Baker, Wiley Kessler, Wilbert Little, Donald Austin, Emory Daniel, Natalie Hymes, Nellwyne Blackburn, Phillipa Kandel.



# RADIO CLUB

The Radio Club makes it possible for students at Armstrong to become acquainted with the techniques and practices of modern radio. During the year, the Radio Club produced a series of programs over local radio stations that were notable for the high standards of acting and radio technique that were maintained.

*First row, left to right:* Helene Ungar, Nellwyne Blackburn, Mary Elaine Colson, Betsy Meadows, Georgia Antonopolo, Lenny Keever, Leila Nease, Bobbijane Cordray. *Second row:* George Upchurch, Janice Rice, Lorraine Crovatt, Charles Williamson, Patty Cook, Martha Saxon. *Third row:* Beverly Beacham, Julian Silver, Donald Austin, Marvin Nodvin, Grady Kicklighter, G. H. Isley, Edward Lee, Bill Brown, Barbara Seckinger.





## RIDING CLUB

The Riding Club is the equestrian society of Armstrong. The members meet together and ride every Saturday. The faculty advisor is Mrs. Minnix, girls physical education instructor.

*Left to right:* Allan Laird, Ed Yates, G. H. Isley, Janice Rice, "Red" Colquitt, Mary Ryan, Bob Harmon, Colleen Hall, Caroline Minis, Bill Harmon.



## STUDENT FORUM

The Student Forum is the sounding board of student opinion on the issues of the day, civic, national, and international. This year the forum formed a debating team which bowed to Hunter Field, but was victorious over Emory. The negative team defeated the affirmative team in an intramural debate.

*First row, left to right:* Mr. Beecher, Martha Collier, Betty Ann Freeman, Donald Austin, Jane Brown, Margaret Mary Byers, Betsy Meadows, Lorraine Crovatt. *Second row:* Theodore Fitzsimmons, Harold Goldberg, Dexter Evans, Wilbert Little, Marvin Nodvin, Charles Williamson, Grady Kicklighter, Ronald Varn, Wiley Kessler.



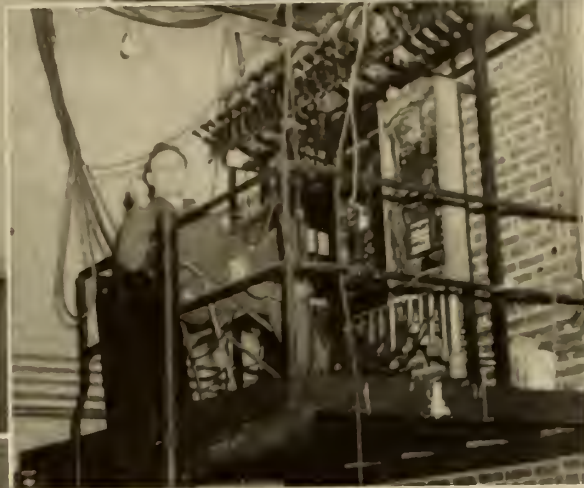


# PHILOSOPHICAL SEMINAR

The Seminar is devoted to the discussion of moral, intellectual and philosophical problems that are of paramount interest to modern man.

*First row, left to right:* Clarence Lucas, Georgia Antonopolo, Betty Ann Freeman, Martha Collier, Helene Ungar, Betsy Meadows, Leslie Snead, Lorraine Crovatt, Patty Cook. *Second row:* Donald Austin, Edward Lee, Wilbert Little, Charles Williamson, Frank Miles, George Upchurch, Ted Fitzsimmons.





# GEECHEE MINSTREL

In February, it was decided to put on a minstrel show in order to raise funds for student activities. The project was taken in hand by the people pictured on the opposite page. They turned in a magnificent performance, which reflects much credit on them for the work that must have gone into the rehearsals. It is hoped that the minstrel will become an annual event at Armstrong.

## ACT I The First Part "HARMONY ISLE"

King of Harmony Isle	James Wood
King's Aide	Dick Daniel
Princess of Harmony Isle	Ruth Sullivan
King's Jesters	Dot Lanton,
<i>Lida Moore, "Red" Fogarty, Allie Baker, Bill Harmon, Grady Kicklighter, "Bobby" Wise.</i>	
Entertainers	Polly Wise,
<i>Pattie Cook, Jean Weathers, Leola Ann Nease, Bobbjane Cordray, Mary Ann DuPont, Betty Gilbert, Nellwyne Blackburn, Dot DeVeve, Bob Lester, Allen Moore, Alvin Galin, John DuBois, Dennis Perkins, Hunter Leaf, Bettsye Meadows, Jane McMillan, Mary Ryan.</i>	
Court Musician	Charlotte Hale

### INTRODUCTION OF THE MINSTREL

End Joke	"Red" Fogarty
"Somebody Done Me Wrong"	Grady Kicklighter
End Joke	Allie Baker
"You've Got to See Mama Every Night"	Lida Moore
"Indian Love Call"	Nellwyne Blackburn
End Joke	Dot Lanton
"Who Threw the Whiskey in the Well?"	Bill Harmon
End Joke	Grady Kicklighter
"Nobody's Business but My Own"	"Red" Fogarty
End Joke	Lida Moore
"It Takes a Long, Tall, Brown-Skinned Gal"	Allie Baker
"My Buddy"	James Wood
End Joke	Bill Harmon
"Mine, All Mine"	"Bobby" Wise
"Pray for the Lights to Go Out"	Jean Weathers
End Joke	"Bobby" Wise
"Dixieland, I Hear You Calling Me"	Ruth Sullivan

## ACT II

### SCENE I

Vocal Solo	Johnnie Branch
------------	----------------

### SCENE II

"A Gal in Calico" (Toe-Tap Dance)	Joanne Durrence
-----------------------------------	-----------------

### SCENE III

A Jive Session	Sara Leon and Clint Robertson
----------------	-------------------------------

### SCENE IV

"Begin the Beguine"	Ruth Sullivan
---------------------	---------------

### SCENE V

"A Little Bit of Hawaii" (Hula Dance)	Paulette Hendricks
---------------------------------------	--------------------

### SCENE VI

"Suwanee" (Al Jolson Impersonation)	Alvin Galin
-------------------------------------	-------------

### SCENE VII

"The Sunday Sermon"	Allen Moore
---------------------	-------------

### SCENE VIII

Two Dark Clouds	Julian Silver and "Bobby" Wise
-----------------	--------------------------------

### SCENE IX

"St. Louis Blues"	James Wood
-------------------	------------

### SCENE X

### WATERFRONT LAMP POST SCENE

Boy	Bob Harmon
-----	------------

Girl	Joanne Durrence
------	-----------------

Drunkard	Bill Harmon
----------	-------------

### SCENE XI

### GAY NINETIES BARROOM SCENE

Lady Frivolity	Sue Cox
----------------	---------

Innocent Daughter	Lynn Barker
-------------------	-------------

Bartenders	Carl Harmon and Baron Haag
------------	----------------------------

The Russian	Bill Harrior
-------------	--------------

Girls (Can-Can Dancers)	Celeste Curlin,
-------------------------	-----------------

*Jane Wheeler, Dot Johnson, Anne Fretwell, Barbara Burch, Jean Weathers.*

Boys	"Red" Fogarty,
------	----------------

*Allan Laird, John DuBois, Allie Baker, John McGinty, Hunter Leaf.*

Musicians	Margaret Byers and Thomas Small
-----------	---------------------------------

### PRODUCTION STAFF

Director	Robert F. Wise	Advertising	Joan Pratt, Jules Bacot, Ruth Foster, Lois Mallory
Produced and staged by	Julian Silver	Publicity	Bill Brown
Dance Director	Joanne Durrence	Ticket Sales	Jane Brown and Donald Austin
Assistant Dance Director	Bob Harmon	Art Work by	David Cooley
Stage Manager	Larry Collins	Written by	Robert F. Wise
Scenery by	Ruth Foster	Faculty Advisor	W. Orson Beecher
Technician	Leon Bourne	House Manager	G. H. Isley

### STAGE CREW

Ruth Foster, Pattie Cook

Charles Stewart, Jr.

### LIGHT CREW

Leon Bourne, Evelyn Simms

Harmon Corley, Ernest Holley



HELEN QUATTLEBAUM  
Armstrong Veterans Social Club Sponsor

---

# BEAUTY SECTION





LYNN BARKER  
Alpha Tau Beta Sponsor



IRENE BRANCH  
"A" Book Sponsor

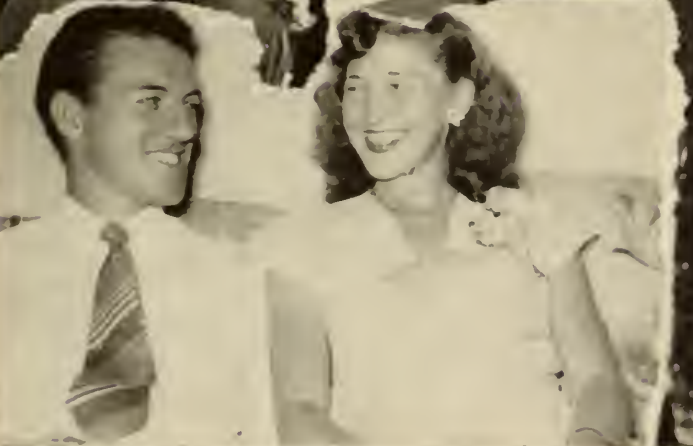
LORRAINE CROVATT  
Music Club Sponsor



PAULETTE HENDRIX  
Riding Club Sponsor



... of Dates





# “A” BOOK

Last year, it was decided that since a large number of freshmen were coming to Armstrong, it would be a good idea to have some means of orienting them to life at Armstrong. The result was the “A” Book, a book containing all the things which new students would wish to know, such as rules on the campus, honors, and location of buildings.

*Editors*

HAROLD GOLDBERG  
CHARLES WILLIAMSON  
DONALD AUSTIN

*Art Editor*

JULES BACOT

Pictures Missing:

MARGARET CLAGHORN  
*Editor*

HARVEY MORGAN  
*Editor*





CHARLES WILLIAMSON  
*Editor-in-Chief*



BEVERLY BLACHAM  
*Managing Editor*



DONALD AUSTIN  
*Business Manager*



WAYNE STREET  
*Photography Editor*

# THE 1947 GEE

## THE GEECHEE STAFF

*Left to right: Ruth Sullivan, Lynn Barker, Bob Hanley, Harold Goldberg, Joanne Durrence, Edna Ann Hutchins, Lorraine Crovatt. Left to right: Sue Cox, Jean DeMars, Betty Forman, Betty Ann Freeman, Edward Lee, Martha Collier.*



JULIUS BACOT  
*Art Editor*

The GEECHE Staff worked hard this year against material shortages and crowded conditions at the printers. Despite all obstacles, the staff managed to produce a fine annual this year, for which they have every reason to be proud.

Much thanks is due to the work of Donald Austin and his Business Staff, without whom this annual could not have been published. The Staff obtained this year more ads than have been gathered ever before in previous years. A feature of the staff's work this year has been the setting up of a file of back ads which will make it much easier for future work of the staff.

CHEE

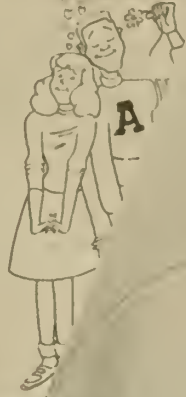


VALENTINE'S DAY

William C. Brown  
 The day of all true loves the  
 when two hearts are joined  
 "That's why love and af-  
 fairs are  
 made in  
 heaven."

The  
**INKWELL**

of  
 ARMSTRONG JUNIOR COLLEGE  
 Savannah, Georgia



Vol. XII, No. 2

*Armstrong Junior College*  
 APRIL, 1947

**THE INKWELL**



THE  
 INKWE

INKWELL STAFF

EDITOR	HAROLD GOLDBERG
MANAGING EDITOR	JOAN PRATT
BUSINESS MANAGER	BOBBIJANE CORDRAY
ASSOCIATE EDITOR	Jack Sparkman
FEATURE EDITORS	Bill Brown, Hal Greene
ARTIST	Jules Bacot
PHOTOGRAPHER	Wayne Street
EXCHANGE EDITOR	Phyllis Ftherton
COLUMN EDITOR	Alvin Galin

FEATURE ASSISTANTS: Jo Ann Durrence, Lynn Barker, Mary Montague, Faye Hancock, Lida Moore, Alan Moore, William Worrell, and Henry Slotin.  
 COLUMNISTS: Charles Williamson, Jack Sparkman, Sue Cox, Alvin Galin, Robert Porter, Ronald Varn, and Louis Reisman.  
 SOLICITORS: Leon Zalkow, Leila Ann Nease, Lorraine Crovatt, Philippa Kandel, Ruth Sullivan, Sam Asselans, Leslie Snead, Bob Richard and Buddy Kahn.

HAROLD GOLDBERG  
*Editor-in-Chief*



MEMBERS OF THE GEECHEE  
 STAFF ARE AS FOLLOWS:

EDITOR-IN-CHIEF	CHARLES WILLIAMSON
MANAGING EDITOR	HAROLD GOLDBERG
ART EDITOR	JULES BACOT
PHOTOGRAPHY EDITOR	WAYNE STREET
BUSINESS MANAGER	DONALD AUSTIN
EDITORIAL STAFF MEMBERS	JANE BROWN, EDWARD LEE, ANNE FRETWELL



*First row, left to right: Bill Brown, Louis Reisman, Lynn Barker, Joanne Durrence, Lorraine Crovatt, Charles Williamson, Ann Fretwell. Second row: Harold Greene, Bob Porter, William Worrell, Marvin Nodvin, Bob Hanley, Lida Moore, Jules Bacot.*

The *Inkwell* Staff has done a fine job this year under the direction of Harold Goldberg. The paper was transformed this year into a magazine, but has continued to come up to the high standards set in previous years by the newspaper.

The *Inkwell* Business Staff is due much credit this year for their untiring efforts to keep the newspaper going in the face of mounting financial difficulties due to greater prices of material and services in newspaper work. Bobbijane Cordray and her staff put in as much work as any group of students in the publications and really did a fine job in keeping the newspaper a going and paying concern.

# LL MAGAZINE

JOAN PRATT  
*Managing Editor*

BOBBIJANE CORDRAY  
*Business Manager*



GET YOUR

# Bulletin

May 16, 1947

THE BULLETIN

SELECTIONS  
PUBLICATION SLATE READY

NOMINEES

OPERATORS TAKE EMORY

The combined staffs of the Bulletin, Inkwell, and Geechee met for Thursday, 15 May for the purpose of nominating members of the slate to receive the honorary publications keys of which there will be eight. The winners will be announced later date upon their selection. Editor and Faculty were following the keys. C. W. Sparkman, Editor-in-Chief, Inkwell.

## INKWELL BULLETIN

When the Inkwell Newspaper was converted to a magazine, it was decided at the same time to publish another newspaper which would be devoted to daily news around the campus. The outcome of this decision was the *Inkwell Bulletin*, a separate newspaper with a separate staff which was to publish the bi-weekly. Under the editorship of Jack Sparkman, the newspaper was set up, and at the end of the year was functioning smoothly under his direction.



First row, left to right: Ruth Foster, Ann Fretwell, John Sparkman, Nancy Whitner, Lorraine Crovatt. Second row: G. H. Isley, Louis Reisman, Grady Kicklighter, Marvin Nodvin.

## BULLETIN STAFF

- CHARLES WILLIAMSON . . . . . *Editor-in-Chief*
- HAROLD GOLDBERG . . . . . *Managing Editor*
- JULIS BACOT . . . . . *Art Editor*
- WAYNE SRIIT . . . . . *Photography Editor*
- DONALD AUSTIN . . . . . *Business Manager*
- JANE BROWN,
- EDWARD LEE,
- ANNI FRETWELL . . . . . *Editorial Staff Members*

JOHN SPARKMAN  
*Editor-in-Chief*







JULES  
BACOT

... *Sports*

... of Sports



# INTRAMURAL BOARD

The Intramural Board, under the direction of Allan Laird, directed the course of all sports at Armstrong which did not involve contestants outside of Armstrong. Competition was held in practically all fields, including basketball, swimming, ping-pong, and tennis.

The Board is composed of the president, the faculty advisor, and the captains of all intramural clubs.



*Left to right:* Coach Torrie, Allan Laird, Charles Clanton, Ronald Varn, Daniel DeLoach, Paul Petris.

## . . . BEHIND THE SPORTS ACTIVITIES

LINNY KEEVER, HEAD CHEERLEADER GEORGE ISLEY,  
AND LORRAINE CROVATT

## CHEERLEADERS

The Cheerleaders were organized to provide bench support for the basketball team and other competitive sports at Armstrong.





*Left to right: Jack Bergman, John Adams, Harry Snipes, Harry Slotin, Joe Solana, Coach Torrie, Bobby Blake, Bud Fonts, William Binns, Chick McGarvey, Jack Kiley. Missing are: James Brewton, "Skinny" Pearson, and Charlie Sparkman.*

With a wealth of human material, the A.J.C. quintet opened the dusty footlockers and donned the moth-eaten uniforms of yesteryear to play varsity basketball for the first time since 1942. Under the energetic and capable leadership of Coach Carmen Torrie, basketball was a huge success in '47. Lacking a gym in which to practice, the team, nevertheless, proved to be one of the best junior college aggregations in Georgia.

The Geecees posted nine consecutive wins before losing a close and hard-fought game to Georgia Teachers College. Then the services of Bobby Blake were lost. It might be said that the 1947 basketball history would not be complete without a word of praise to Bobby, undoubtedly the sparkplug of the team. But neither will we forget one of the most outstanding quintets in the Armstrong "Passing Parade." They ended the season with a record of twelve wins and six losses. Although outplaying Abraham Baldwin Agricultural College for the Georgia Junior College Basketball Tournament Championship . . . a heart-breaker . . . they lost during the last ten seconds of play.

Indeed it is a good record to enter into the books.

## ... ON THE HARDWOOD

JACK KILEY  
*Captain*



BOBBY BLAKE  
*High Scorer in Savannah*





*Team Managers*  
 "RED" COLQUITT  
 JULIE COWART  
 FRED SIGMAN



CARMEN TORRIE  
*Coach*



1946-47 SCHEDULE

	DECEMBER 6	
A.J.C. 39	. . . . .	Augusta Junior College 29
	DECEMBER 9	
A.J.C. 39	. . . . .	Dublin Naval Hospital 37
	DECEMBER 18	
A.J.C. 50	. . . . .	Brewton Parker Institute 17
	DECEMBER 21 (Homecoming)	
A.J.C. 54	. . . . .	Augusta Junior College 17
	JANUARY 4	
A.J.C. 48	. . . . .	Georgia Teachers College 37
	JANUARY 7	
A.J.C. 63	. . . . .	Oliver General Hospital 43
	JANUARY 10	
A.J.C. 45	. . . . .	Georgia Military College 24
	JANUARY 11	
A.J.C. 45	. . . . .	Brewton Parker Institute 21
	JANUARY 17	
A.J.C. 41	. . . . .	Georgia Military College 22
	JANUARY 20	
A.J.C. 25	. . . . .	Georgia Teachers College 29
	JANUARY 31	
A.J.C. 38	. . . . .	Abraham Baldwin Agricultural College 61
	FEBRUARY 7	
A.J.C. 41	. . . . .	Parris Island Marine Base 48
	FEBRUARY 10	
A.J.C. 59	. . . . .	Bluefield (West Virginia) 51
	FEBRUARY 11	
A.J.C. 28	. . . . .	Concord (West Virginia) 62
	FEBRUARY 15	
A.J.C. 44	. . . . .	Abraham Baldwin Agriculture College 47
	FEBRUARY 18	
A.J.C. 43	. . . . .	Parris Island Marine Base 32

GEORGIA JUNIOR COLLEGE BASKETBALL  
 TOURNAMENT

	FEBRUARY 26	
A.J.C. 66	. . . . .	Norman Park Junior College 38
	FEBRUARY 27	
A.J.C. 42	. . . . .	Abraham Baldwin Agricultural College 43



Left to right: Helen DeVere, Jean Weathers, Mary Morel, Mary Patterson, Carolyn Royce, Ruth Foster, Mrs. Minnix, Dot DeVere, Betty Forman, Sara Dickey, Polly Wise, Phillipa Kandel, Tilly Laird, Nancy Whitner.

## GIRLS' BASKETBALL

The girls also began varsity basketball on the campus for the first time since '42. Coach Christine Minnix and her girls, although lacking proper practice facilities, exhibited a fighting spirit which gave them a worthy season record against keen competition.



MRS. CHRISTINE MINNIX  
Coach



### GIRLS' CITY BASKETBALL LEAGUE

A.J.C. 22	DECEMBER 2	Stubbs Hardware Co. 35
A.J.C. 28	DECEMBER 5	Kress 15
A.J.C. 19	DECEMBER 9	Candler Nurses 24
A.J.C. 31	DECEMBER 12	Union Bag 35
A.J.C. 35	JANUARY 2	Stubbs Hardware Co. 43
A.J.C. 33	JANUARY 13	Rebels 27
A.J.C. 22	JANUARY 16	Stubbs Hardware Co. 49
A.J.C. 31	JANUARY 23	Union Bag 36
A.J.C. 25	JANUARY 27	Candler Nurses 37
A.J.C. 47	JANUARY 30	Rebels 29
A.J.C. 25	FEBRUARY 3	Stubbs Hardware Co. 32
A.J.C. 21	FEBRUARY 10	Union Bag 32
A.J.C. 31	FEBRUARY 13	Candler Nurses 53



# INTRAMURAL SPORTS

SUF COX  
*Girls' Intramural Manager*

ALLAN LAIRD  
*Boys' Intramural Manager*

The Intramural Teams provide an organized sports outlet for the students who do not care or are unable to engage in extra-mural activities. Each year, the club with the highest number of points in all fields of sports combined is picked as champion for that year. This year, the "Gators", under the captaincy of Ronald Varn, won the Intramural championship.



... of school days







... and so ends another  
year at Armstrong

# CHATHAM PRINTING COMPANY

*Commercial Printing — Publications — Engraving*

109 STATE STREET, WEST

SAVANNAH, GEORGIA

## MORRIS LEVY'S

SAVANNAH'S FINEST STORE FOR  
MEN AND WOMEN

OUTFITTERS TO YOUNG  
AMERICANS

**Penney's**

Style and Value Center  
of the Coastal Empire

Compliments of

**Harms Dairy**

OAKHURST FARM

KAISER

FRAZER

**McCarroll Motors, Inc.**

Dealer-Distributor

*Kaiser-Frazer Motor Cars*

T. B. McCARROLL

212 Montgomery St.

Savannah, Ga.

PHONE 5015

VARSAITY TOWN CLOTHES

Exclusive At

**The Jones Co.**

Quality Clothing for Men and Boys

*Terrell T. Tuten — Carl J. Kraft*

18 East Broughton Street

Savannah, Ga.

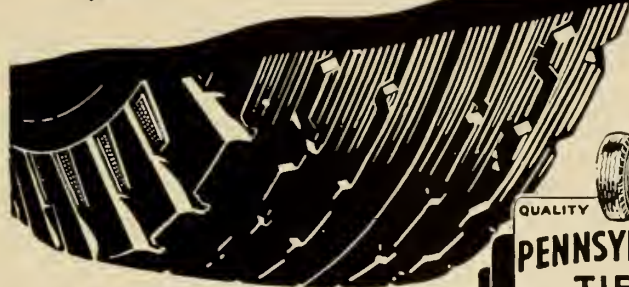


## NEW PENNSYLVANIA TIRES

all have Long-Wearing  
Dual-Purpose Tread!



CAR AND TRUCK OWNERS, we have just received a shipment of sturdy, new Pennsylvania Tires. Before you buy tires, be sure to see our new Pennsylvanias, the extra-mileage tire with the cool-running Dual-Purpose tread patented by Pennsylvania.



EXPERT REPAIRING and RECAPPING



# PENNSYLVANIA TIRE SERVICE

Phone 3-7692

P. O. Box 1844

## LAWING TIRE & RUBBER CO.

AUTOMOTIVE SUPPLIES — ELECTRICAL APPLIANCES  
SAVANNAH'S LARGEST RECAPPING PLANT  
702-708-712 East Liberty Street  
SAVANNAH, GA.

**Lamas Brothers**  
*Dry Cleaners and Hatters*

102 E. Broughton St.  
18 E. State  
8900 — PHONE IF POSSIBLE

We specialize in all Stationary  
Supplies for Schools and Colleges

**S. H. Kress**

**Klug's**

Abercorn at 42nd St.  
*Furniture — Carpets*

Compliments of  
**Karpf's**

—  
107 Broughton, W.

Compliments of  
**Wesson Oil & Snowdrift  
Sales Co.**

Wesson Oil & Snowdrift

*Made in Savannah*

Compliments of  
SAVANNAH POST NO. 135  
**American Legion**

*"Fustest  
with  
the  
Mostest"  
in Savannah!*



**WTOC**

• 1290 on your dial •

Consistently bringing you the very  
finest in radio programs since 1929!

**WTOC-FM**

• 98.5 mc or channel 253 on your FM dial •

Savannah's FIRST frequency modu-  
lation station — offering absolutely  
interference-free broadcasts!

Alnutt Music Co.

240 W. Broughton St.

*Pianos — Music — Records*

Compliments  
of

Joe Gardner's

YARD GOODS

*Pictures, Gifts, Greeting Cards*

*Artist's Materials*

*Fine Picture Framing*

Friedman's Art Store

116 Whitaker St.

Grants

*Known for Value*

*for*

*Over 40 Years*

Compliments of

Superior Laundry



4307 Bull St.

Savannah, Ga.

Phone 2-1010

Compliments of

Shore's Market

Corner

Henry and Montgomery Sts.



GREETINGS TO

**Armstrong Junior College**



Savannah's Own Institution of Higher Learning  
Savannah is proud of your contribution to the community



**The Mayor and Aldermen  
of The City of Savannah**

Compliments of

"GREAT DANE" Trailers

THE STEEL PRODUCTS CO., INC.

Savannah, Georgia

TELEPHONE 6555

2413 BULL STREET

Snead's Pet Supply and Feed Co.

DEALERS IN

*Dairy and Horse Feeds and Remedies*

*Dog, Chicken and Bird Supplies*

Compliments of

PEPSI-COLA

Bottling Company

of

SAVANNAH

4009 MONTGOMERY

PHONE 6877



Mangel's

*Feminine Apparel*



15 Broughton St., East

SAVANNAH, GA.



Featuring  
Typically  
Jane Engel  
Fashions  
Bull and Perry  
Streets  
Telephone  
3-3214  
SAVANNAH,  
GA.

Stephen Rabey's Sons

"Our 71st Year"

*Painting*

*Paints*

*Decorating*

*Wall Hangings*

316 WHITAKER ST.

"IN THE HEART OF THE COASTAL EMPIRE"

W D A R

1400 on your dial

ABC NETWORK

SAVANNAH, GA.

Bill Kehoe Tire Co.

Dreyton and Oglethorpe

SAVANNAH, GA.

BEST WISHES OF  
Chatham Paper Co., Inc



COMPLIMENTS OF

Delux Cafe

301 BULL ST.

*FINE FOODS*

COMPLIMENTS OF  
Dugger's Supper Club

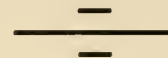


●  
FINES

*Where Fashions*

*Make Their Debut*  
●

COMPLIMENTS OF  
Dixie Portland Flour  
Mills



*Millers of the South's Finest Flour*

PLACE YOUR INSURANCE

with

Atlantic Mutual Fire Insurance Co.

OF SAVANNAH  
The Home Company

The Atlantic Mutual Fire Insurance Company of Savannah  
is a home owned Savannah Company

*"A Southern Company Doing a National Business"*

ASSETS OVER \$1,000,000

FIRE — AUTOMOBILE — WINDSTORM — PLATE GLASS

19 BAY STREET, EAST

DIAL 2-2113

Solomons Pharmacy, Inc.

337 Bull St.

PHONE 8169

*Profession Pharmacists*

Compliments of

The Ridge Shop

*Manufacturers' Outlet*

141 Bull St.

*Ladies Coats and Suits*

Compliments From

The South's Most Modern

PRODUCE HOUSE

Max Movsovitx Co., Inc.

Compliments of

The Play Shop

*Hobbies — Games*

*Sporting Goods — Toys*

*Smokers' Supplies*

Best Wishes from the Seven

*"Allied Flower Shops"*

Richardson

Breckenridge

Paul's Flowers

Oelschigs

Innecktion Florist

Rhines

Wolf

Compliments of

Beacham's Garage

2112 Price

*Automobile Repairs*

*Airplane Repairs*

*Gasoline — Oil*

PHONE 3-2844

*We Extend to the Members of*

**The Graduating Class**

*Our Sincere Wishes for Their Success*



**Savannah Machine and Foundry Company**

**SAVANNAH, GEORGIA**

HARRIS

The Hub

Style Center for Men  
in Savannah  
Since 1896

Compliments  
of

J. C. Lewis  
Motor Company, Inc.  
SAVANNAH, GEORGIA

Compliments  
of

Globe Shoe Co.

The Style Shop

*Distinctive Women's Wear*  
23 E. Broughton Street  
SAVANNAH, GA.

COMPLIMENTS

WFRP

1230 KILOCYCLES

AND THE PERSONALITIES WHO ARE CREATING THE  
PERSONALITY STATION

*Jimmy Barclay*  
*Etha Harold*  
*"Coco" Stator*  
*John Hancock*  
*Emmylou Burns*  
*Wally*  
*Bob*  
*Ernest*  
*El Groucho*

# *The Georgia Pine Tree*

Its giant trunks supply the lumber that goes into homes and the beams that give strength to many ships that sail the seven seas.

Its sap provides the turpentine and resin that are used in the making of a myriad of products, and its cellulose and lignin challenge the imagination and skills of the world's laboratories.

Its strong fibers furnish the raw material for a great and growing pulp and paper industry whose plants, devoted to the manufacture of paper, paper board, bags and boxes, have brought new job opportunities and increased purchasing power to many communities in Georgia and throughout the Southeast.

This tree that does so much for so many needs only protection from "fire—the forests' prime evil"—to assure its continued contribution to the economic welfare of Georgia and her people.



**Union Bag and Paper Corporation**

SAVANNAH

GEORGIA

COMPLIMENTS  
of  
Edgar L. Wortsman



WOMEN PREFER  
RASKIN'S

23½ W. Broughton St.  
SHOES — HANDBAGS — HOSE

"The House of Fashion"  
Morris Levy's  
Store for Men  
Shop for Women

*For Over Thirty Years*  
*Serving the Entire Family*  
Family Shoe Store  
215 W. Broughton St.  
SHOES — HANDBAGS — HOSE

Desbouillons  
*Jewelers*  
Agents for  
Gorham  
Towle  
Lunt  
Aluin  
Stieff  
International  
Sterling Silver

COMPLIMENTS  
OF  
Atlanta Towing Co.







**"THE OLD FORT"**

**Part of Fort Wayne, on East Bay Street, dating from Colonial days  
and standing as defender of Savannah until acquired in 1850  
by one of the oldest gas companies in America**

**(Savannah Gas Company)**

**ROMANTIC AS YESTERDAY  
MODERN AS TOMORROW**

*Finé's*

WHERE FASHIONS  
MAKE THEIR DEBUT

Compliments of  
**Smith Bros.**

2438 BULL STREET  
SAVANNAH, GEORGIA

Your School Needs  
Can Be Found At  
**The Midget Stores**

2430 Bull St. and  
1401 Waters Ave.



**KEEP INFORMED**

on events of the World Today.  
Be a regular subscriber to the

**SAVANNAH MORNING NEWS**  
**SAVANNAH EVENING PRESS**



COMPLIMENTS OF  
J. A. PETERS



SERVING SAVANNAH SINCE 1868

*Hogan's*

BROUGHTON AND BARNARD STS.

Mercer Insurance Agency is proud of Armstrong's contribution to Savannah. Best of luck to its Staff, Students and Grads!

**MERCER INSURANCE AGENCY, INC.**

7 EAST BAY ST. (Our New Location)

Walter Mercer

Nick Mamalakis

William N. (Bill) Jones

**STUBBS HARDWARE COMPANY**

121-123 WEST CONGRESS STREET — SAVANNAH, GA.

Phone 5149

*SPORTING GOODS*

Compliments of  
**LANGS**

Three Big Stores in One  
221, 222, 225 West Broad

SAVANNAH'S ONLY COMPLETE APPLIANCE STORE



RADIO & APPLIANCE Corp.

Radio and Appliance Cord  
BROUGHTON OPP. THE BIJOU

Phone 5556

"Modern Sells Nationally Known Brands"

Compliments of  
**McCallar Bros.**  
*Service Station and Garage*

Standard Oil Products

*Washing — Greasing — Accessories*

406 WHITAKER STREET

Phone 8886 Open 9:00 until 7:30 on Sunday

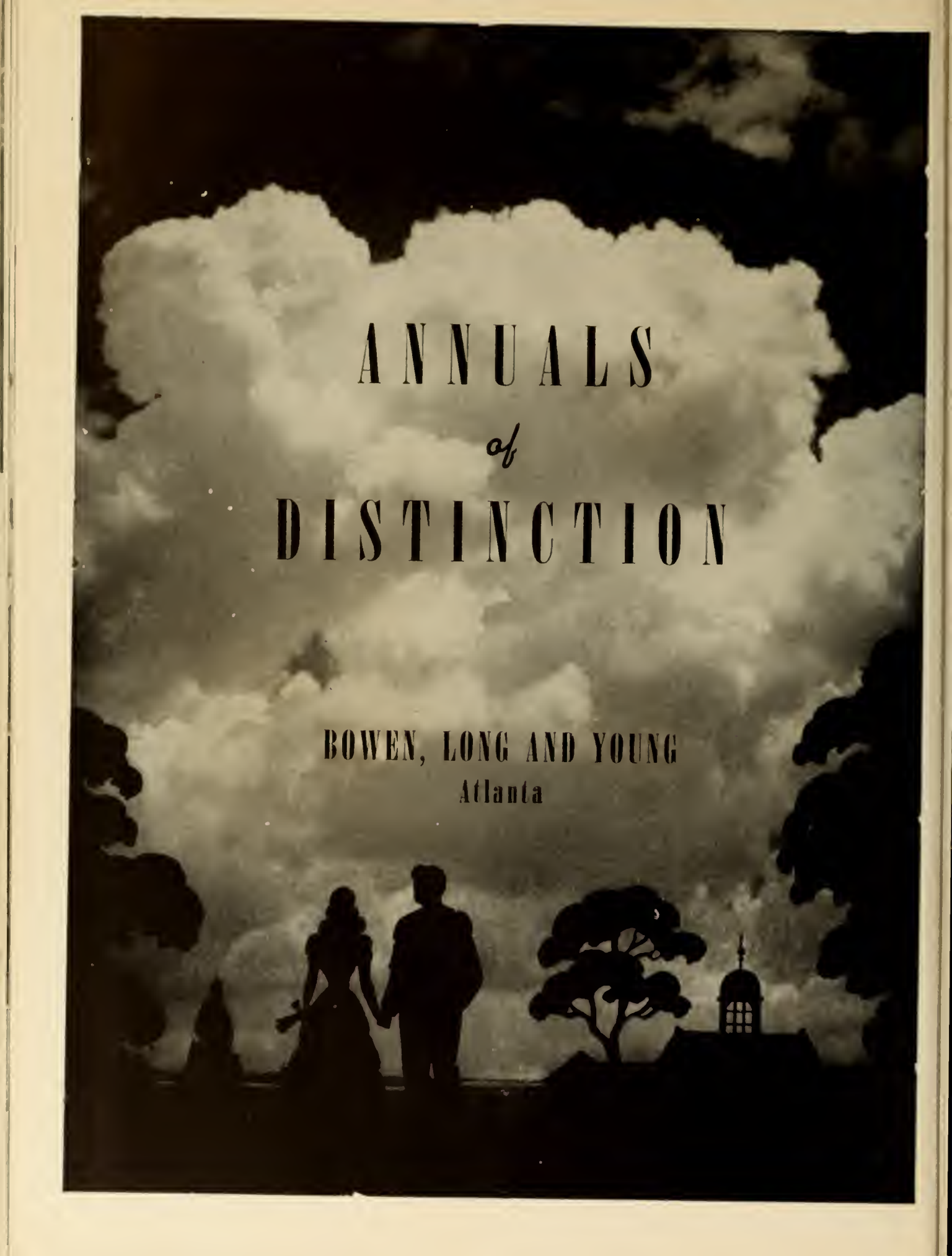
We Wish to Express

Appreciation to the

**Advertisers**

Who Have Helped to  
Make Our Annual

Possible . . .



ANNUALS  
*of*  
DISTINCTION

BOWEN, LONG AND YOUNG  
Atlanta



