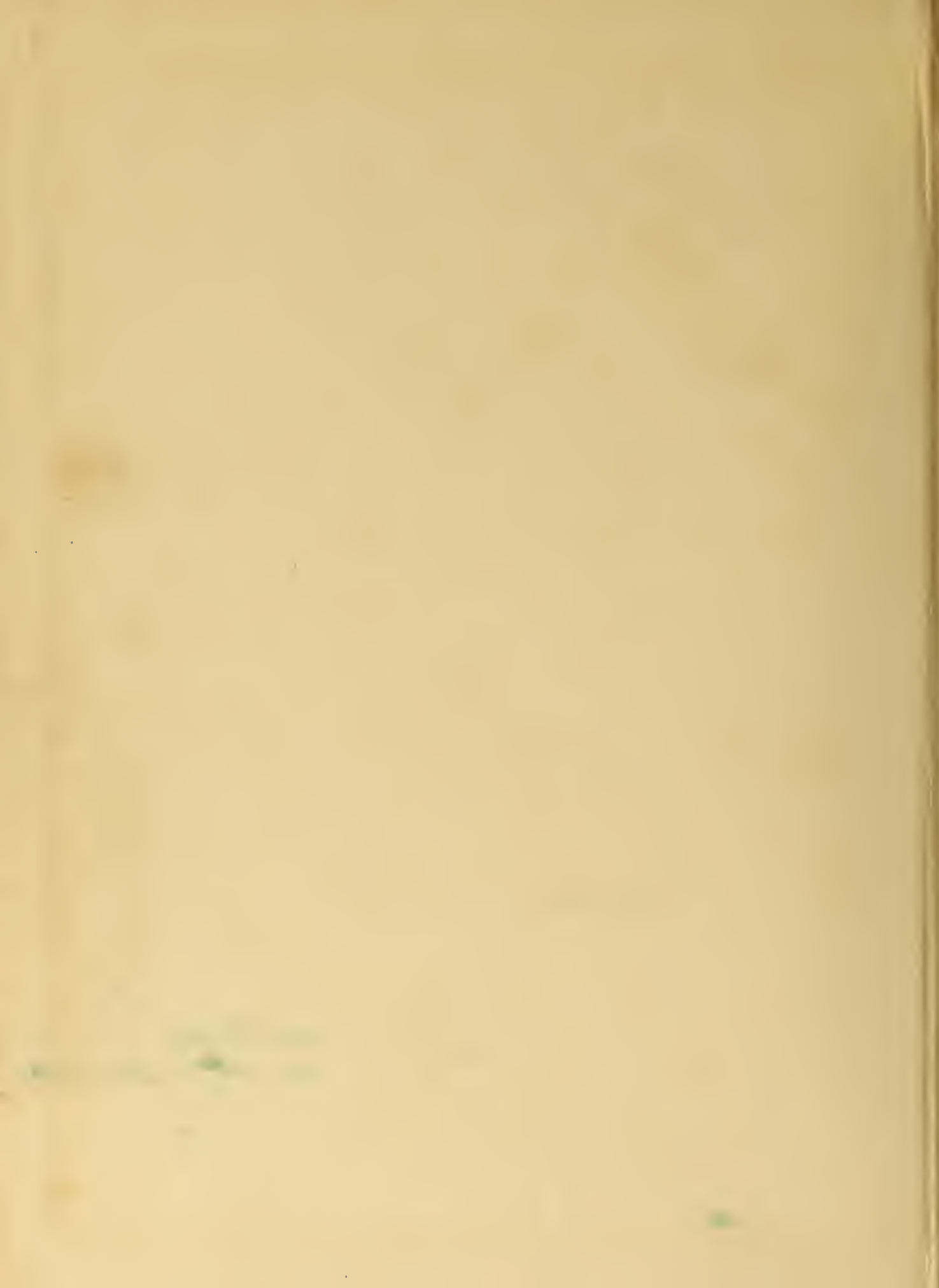
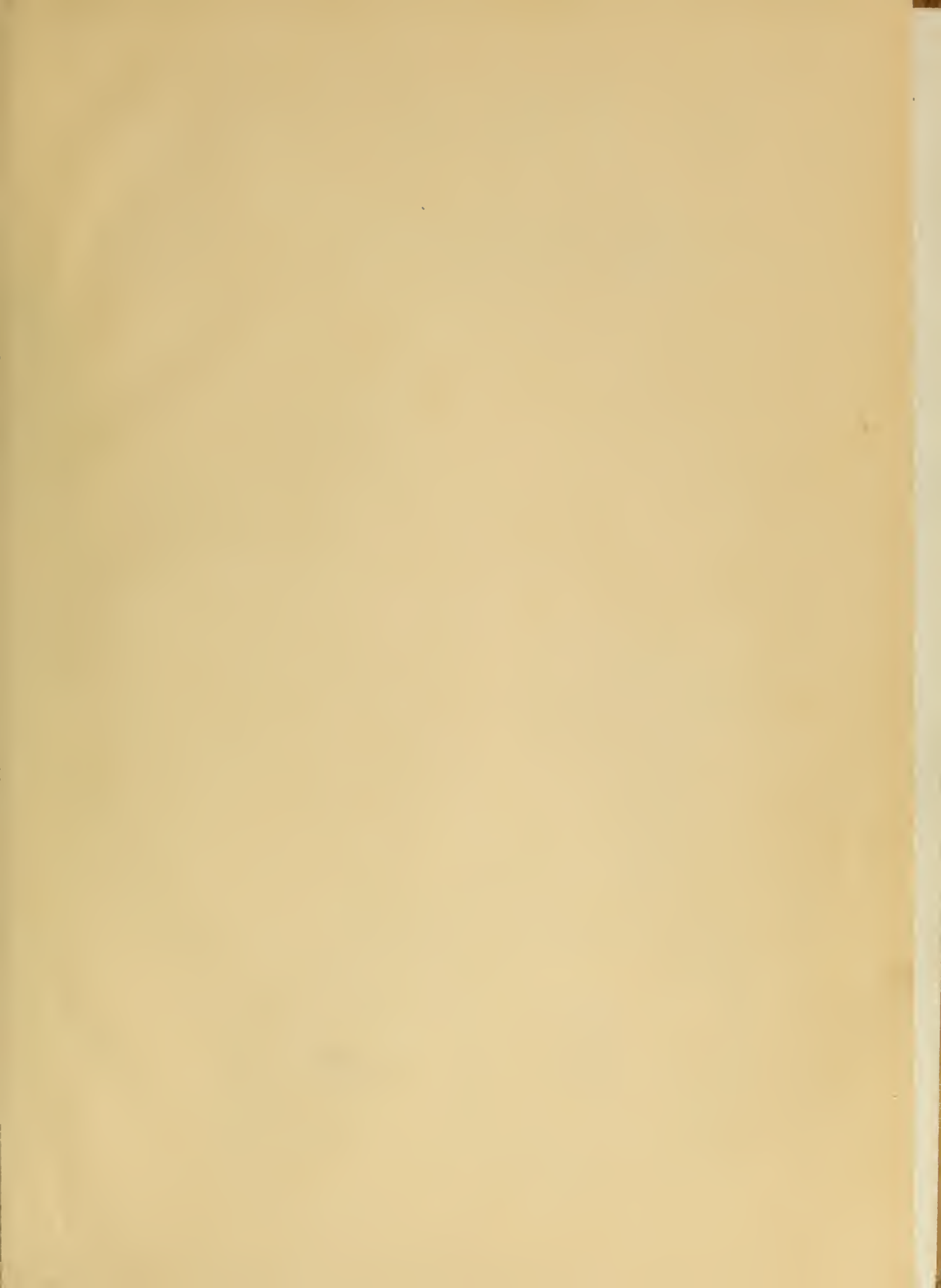


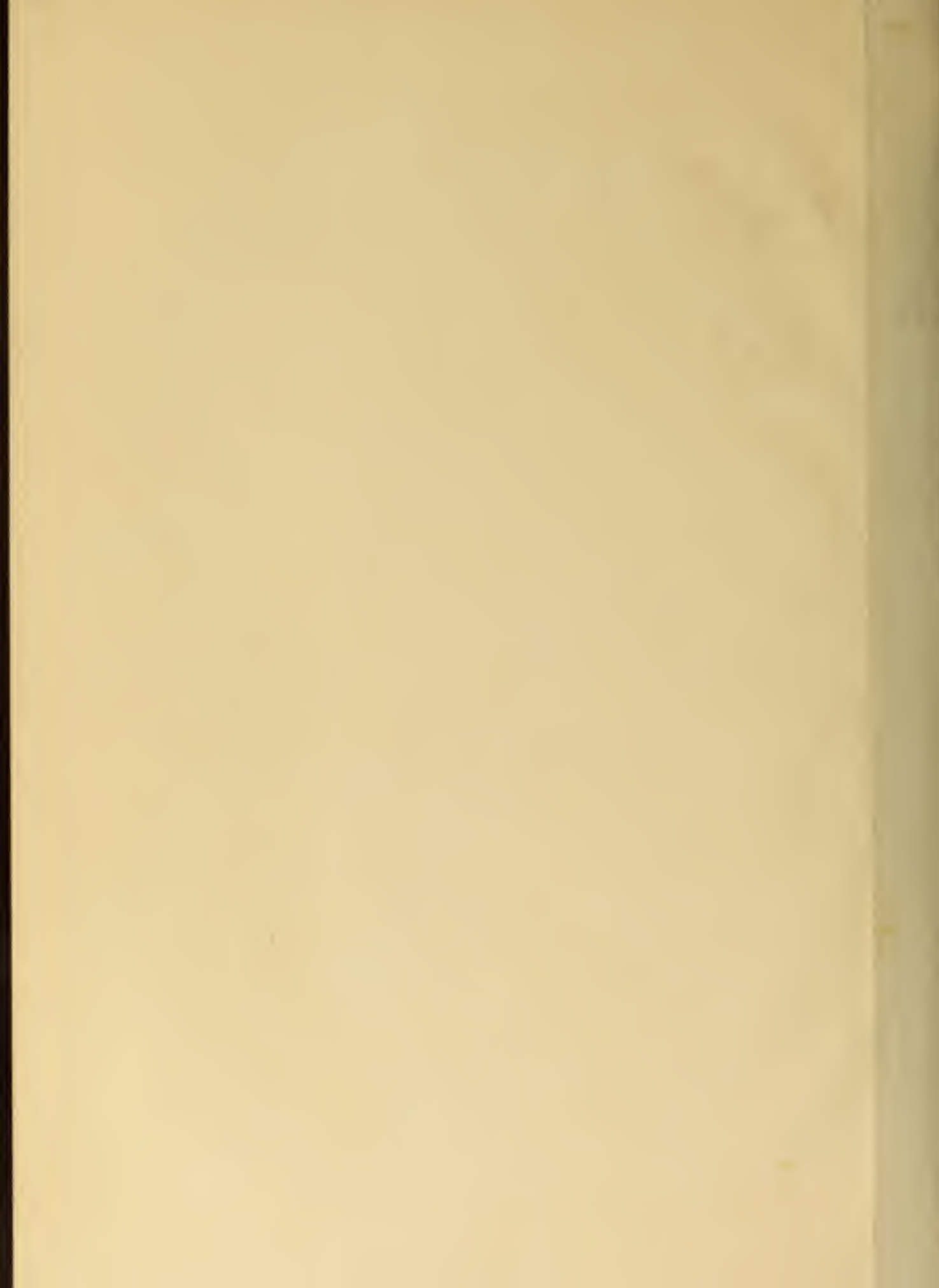
1948

GEECHIEE

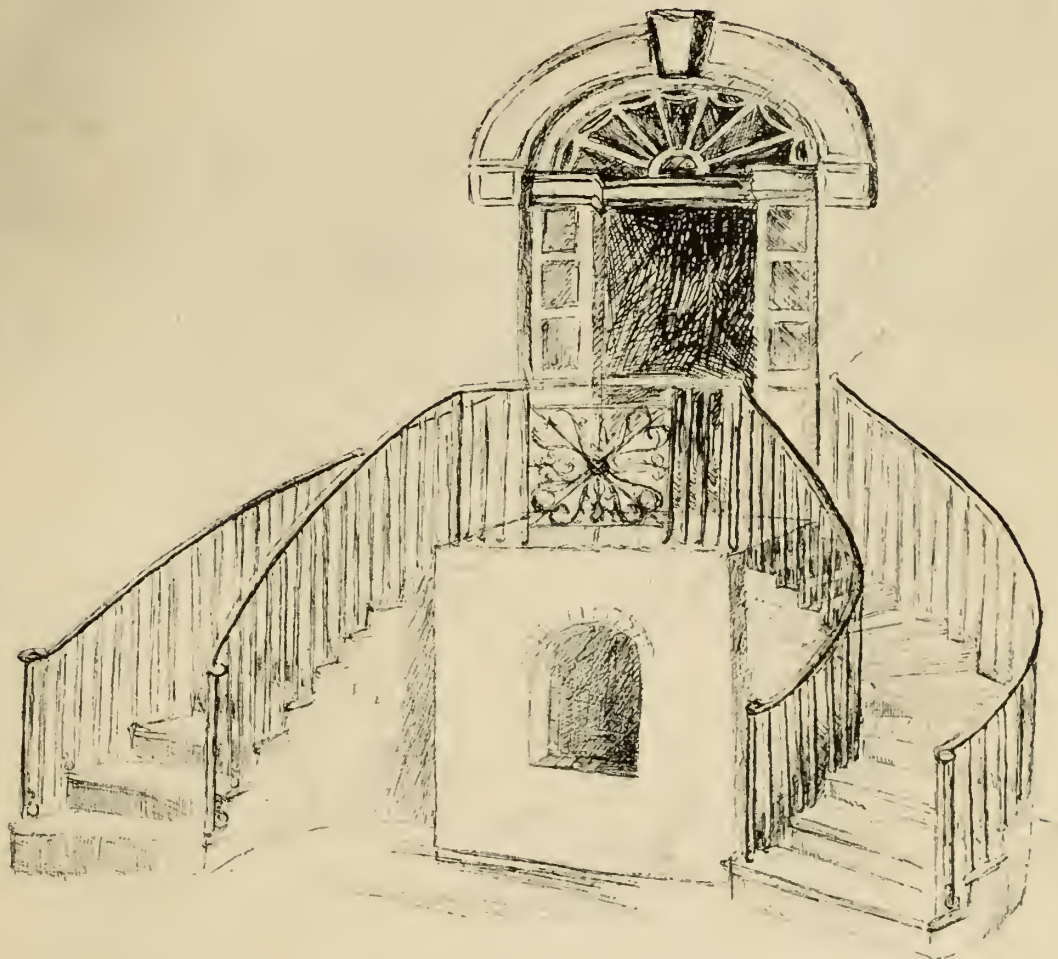








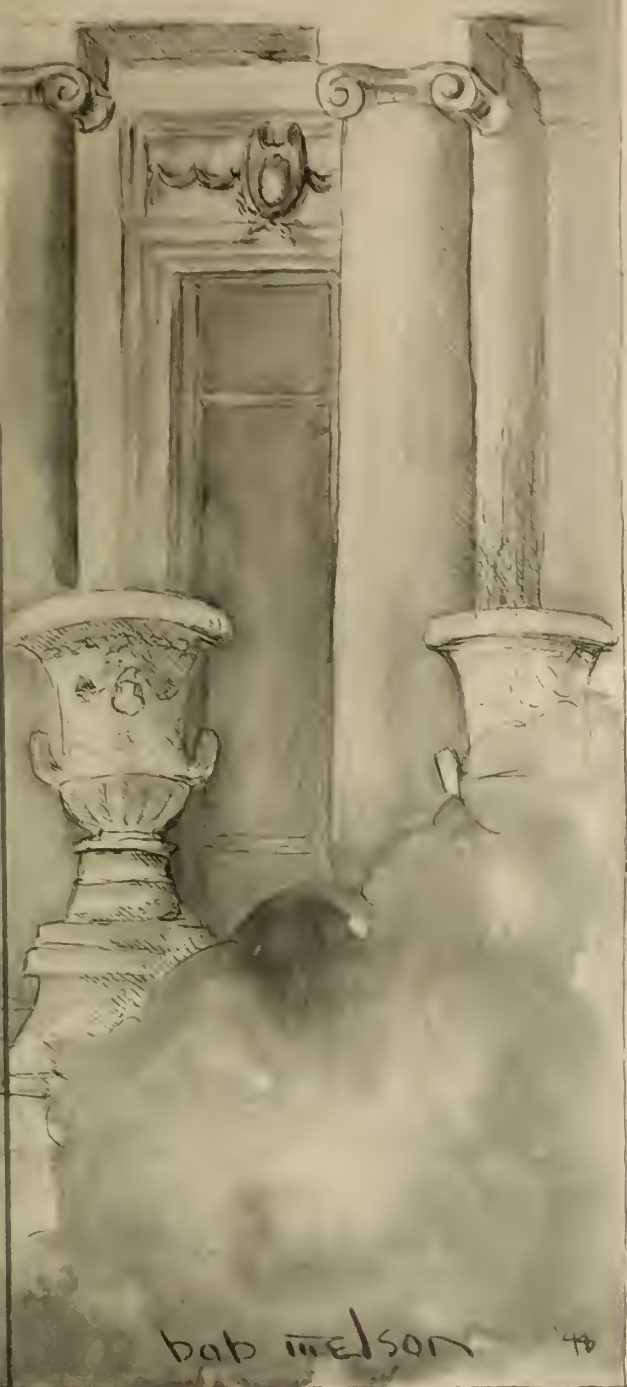
In the heart of old Savannah.....





**ARMSTRONG
JUNIOR COLLEGE**

1948



GEECHEE

DEDICATION

In sincere appreciation
of his outstanding contributions
to the development of
ARMSTRONG JUNIOR COLLEGE
this, the 1948 GEECHEE,
is gratefully dedicated to
WILLIAM MURPHEY,
Vice-Chairman of the
College Commission.





ARMSTRONG BUILDING



JENKINS HALL



HUNT MEMORIAL BUILDING



LANE BUILDING



GAMBLE HALL

IN MEMORIAM



Edgar L. Wortsman

FACULTY AND ADMINISTRATION



BOB MELSON -47



HERSCHEL V. JENKINS
Chairman



WILLIAM MURPHY
Vice-Chairman

COMMISSION



ORMOND B. STRONG
Ex-Officio



HANSELL HILLYER
Ex-Officio



MRS. W. F. ROBERTSON



FRED SHEAROUSE



MORRIS BERNSTEIN



FRED WESSELS



GORDON C. CARSON
Ex-Officio



MAYOR JOHN G.
KENNEDY
Ex-Officio

ADMINISTRATION



FOREMAN M. HAWES
A.B., Mercer University
M.S., Emory University
President



ARTHUR M. GIGNILLIAT
A.B., M.A., University of Georgia
Registrar



W. ORSON BEECHER
A.B., M.A., Emory University
M.A., University of Georgia
Dean of Students
Instructor in Social Sciences

FACULTY



WILLIAM B. BAKER
A.B., Emory University
Member American
Guild of Organists
Instructor in English



FRANCIS M. BRANNEN
B.S. in Chemical
Engineering, Georgia
School of Technology
Graduate Study,
Georgia School of
Technology
*Instructor in
Engineering*



ELIZABETH COLSON
A.B., Georgia State
College for Women
Graduate Study, Emory
University Library
School
Librarian



ARTHUR W. CASPER
A.B., Beloit College
Graduate Study,
University of
Wisconsin
*Instructor in
Engineering*



FRETWELL G. CRIDER
B.S., University of
North Carolina
Instructor in Chemistry

FACULTY



MARIE LYONS CRIDER
A.B., Vanderbilt
University
Assistant Registrar



HARRIET G. DAVIS
A.B., University of
North Carolina
Publicity



WILLIAM M. DABNEY
A.B., M.A., University
of Virginia
Instructor in History



ELEANOR J. DOYLE
B.S., Immaculata
College
M.A., Catholic
University of America
Instructor in Spanish



ANNE ALLEN DAVIS
A.B., Brenau College
Assistant Librarian



MARTHA BOZEMAN FAY
B.S., Rockford College
M.S., Ph.D., University
of Illinois
Instructor in Biology

FACULTY



NOMA LEE GOODWIN
A.B., M.A., Duke
University
Instructor in English



GEORGE B. MILLER, JR.
B.S. in Aeronautical
Engineering,
Georgia School of
Technology
*Instructor in
Mathematics*



JOSEPH KILLORIN
A.B., St. Johns College
Instructor in German



CHRISTINE WILSON
MINNIN
A.B., University of
Chattanooga
Graduate Study
University of Tennessee
*Instructor in Physical
Education*



MARGARET SPENCER
LUBS
B.Mus., Converse
College
A.B., University of
Georgia
M. A., Columbia
University
Instructor in French



MARJORIE MOSLEY
Associate in Finance
and Commerce,
Armstrong Junior
College
Secretary

FACULTY



HINCKLEY A. MURPHY
 A.B., Vanderbilt
 University
 Graduate Study,
 Peabody College and
 University of Georgia
Instructor in English



JAMES H.
 SCARBOROUGH, JR.
 B.S. in Electrical
 Engineering,
 Emory University
 Graduate Study, Emory
 and Harvard
 Universities
*Instructor in
 Mathematics*



MARGARET PERSE
 Associate in Liberal
 Arts, Armstrong Junior
 College
Treasurer



MARGARET FORTSON
 STEPHENS
 A.B., M.A., LL.B.,
 University of Georgia
 Certificate from the
 Sorbonne in Paris
Instructor in English



WILLIAM S. POLLITZER
 A.B., M.A., Emory
 University
Instructor in Biology



CARLSON R. THOMAS
 A.B., University of
 Richmond
 Graduate Study,
 University of Iowa
 M.A., University of
 North Carolina
*Director of the
 Savannah Playhouse*

FACULTY



DOROTHY THOMPSON
A.B. Monmouth College
M.A. Northwestern
University
Social work at
Milwaukee School of
Social Work
Certificate of Psychiatric
Social Work,
Western Reserve
University
Instructor in Psychology



CARMEN TORRIE
B.S. in Physical
Education,
Concord College
M.S., University of
Tennessee
*Instructor in Physical
Education*



HELEN C. WOLFE
B.S., Columbia
University
Graduate Study,
Teachers College,
Columbia University
*Instructor in Home
Economics*



GLADYS NICHOLS ZILCH
Special courses in Type-
writing and Shorthand
at University of
Michigan and
University of Florida
Diploma from the Gregg
College (Normal
School)
Instructor in Commerce

GUIDANCE CENTER STAFF



WILLIAM E. HOPKE
A.B., New York State
Teachers College
M.A., New York State
Teachers College
Vocational Counselor



L. ROSS CUMMINS
B.S., Yale University
Graduate Study,
University of
Connecticut
Director



DIXIE MARKS
Secretary



LOUISE FLEMING
A.B., Ohio State
University
M.A., Ohio State
University
*Psychological Examiner
and Personal Counselor*



FRANCES B. SETTLE
A.B., University of
Georgia
Vocational Counselor



MARTHA D. GREGSON
*Secretary and
Psychometric Clerk*



First Row, Left to Right: Linney Keever, Louis Reisman, Robert Porter, Edward Lee, Ronald Varn, Grady Dickey.

Second Row: Robert Harmon, James Doolan, Clark Blanton, Dean Orson Beecher, Arthur Chandler, John Folger and Charles Stewart.

STUDENT SENATE

The Student Senate is the student governing body of Armstrong Junior College. It is composed of the following representatives:

President of the Sophomore Class (President of the Senate).

President of the Freshman Class (Vice-President of Senate).

The editors of the *Inkwell* and 'GEECHIE'.

Two Freshman representatives.

One representative from each organization recognized by the Senate. If the organization has more than thirty members it is entitled to two representatives.

Meetings of the group are called by the President.

A Student Senate Committee on Activities is composed of members of the Student Senate. Its purpose is to plan and promote the activities of the school year.



SOPHOMORES



bob melson '47



GRADY DICKEY, *President*



HARRY SNIPES, *Vice-President*

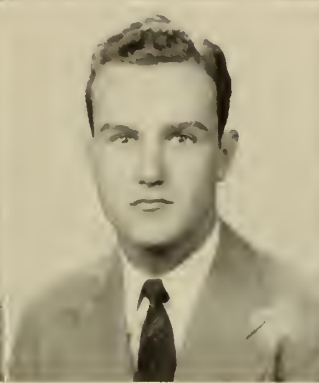
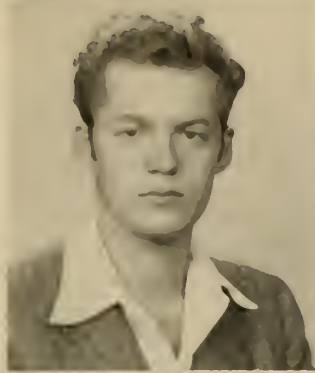
OFFICERS

JEAN DEMARS, *Secretary*



BOB DIMMICK, *Treasurer*





ABBOTT
ANDERSON
BANKS

ADAMS
ANDREWS
BARON

AKINS
BAILEY
BECTON

ALLEN
BAKER
BELL

ABBOTT, LAURIE K.

ADAMS, JOHN L.—"A" Club; Armstrong Veterans Social Club; Basketball Team; Terrapin Intramural Team.

AKINS, JOHN—Armstrong Veterans Social Club; 'GEECHEE Staff.

ALLEN, LAWRENCE—Armstrong Veterans Social Club; 'Gators Intramural Team.

ANDERSON, CHARLES

ANDREWS, HELEN—Delta Chi (Historian); Glamazons Intramural Team; Homecoming ('46); Minstrel.

BAILEY, CHARLOTTE—French Club; *Inkwell* Make-Up Editor.

BAKER, ALLIE—Armstrong Veterans Social Club; Minstrel.

BANKS, LOUIE

BARON, EDWIN

BECTON, CHARLES—Armstrong Veterans Social Club; Permanent Dean's List.

BELL, WILLIAM—Armstrong Veterans Social Club; Basketball Team; 'Gators Intramural Team; Tennis Team.

BERRY, MERCER—Armstrong Veterans Social Club (Treas.); 'Gators Intramural Team (Cheer Leader).

BLOCKER, NORMA FAYE—Beta Lambda; Philosophical and Psychological Seminar; Glamazons Intramural Team.

BOURNE, LEON—'Gators Intramural Team ('47); Loafers Intramural Team ('46); Minstrel.

BRIGHAM, CHARLES

BURGIN, ARNOLD—"A" Club; Armstrong Veterans Social Club, Golf Team; French Club.

BUTLER, WILLIAM

CARROLL, WILLIAM—*Inkwell* Staff; Intramural Football Team (Manager); Terrapin Club.

CARTER, LOURDINE—Beta Lambda; Dance Committee; Homecoming ('46); Radio Club ('46); *Inkwell* Staff.

CARTLIDGE, GEORGE—Eager Beaver Intramural Team.

CHANDLER, ARTHUR J.—Alpha Lambda Sigma; Armstrong Veterans Social Club; French Club; Great Books Seminar; *Inkwell Bulletin* (Editorial Staff '47); *Inkwell* Staff; Music Club; Outstanding Sophomore; Philosophical and Psychological Seminar; Radio Programs; Student Forum (Treas.); Student Senate, Savannah Playhouse ("Winter-set").

CLANTON, CHARLES—Armstrong Veterans Social Club; Intramural Board; Terrapin Club (Vice-President).

CLARK, WILLIAM—Gas Company Scholarship 1947-1948.

BERRY
BURGIN
CARTLIDGE

BLOCKER
BUTLER
CHANDLER

BOURNE
CARROLL
CLANTON

BRIGHAM
CARTER
CLARK





COLLINS
CORLEY
DELETTRE

COLQUITT
CUBBEDGE
DEMARS

COOPER
DAUGHTRY
DEVERE

CORCORAN
DAVIS
DICKEY

COLLINS, LARRY—Armstrong Veterans Social Club; Loafers Intramural Team.

COLQUITT, ALFRED—Armstrong Veterans Social Club; Basketball Team (Manager); Riding Club; Student Forum.

COOPER, BERNICE—'GEECHEE Staff; Co-Eds Intramural Team; Savannah Playhouse (Ticket Sales).

CORCORAN, FRED—*Inkwell* Staff; Loafers Intramural Team ('46); Scholars Intramural Team ('47); Philosophical and Psychological Seminar (President).

CORLEY, HARMON—Basketball Team; Eager Beavers Intramural Team (President); *Inkwell* (Sports Editor); Minstrel (Stage Crew); Tennis Team.

CUBBEDGE, ROBERT

DAUGHERTY, SIDNEY

DAVIS, DONALD—Armstrong Veterans Social Club; Dance Committee; Terrapin Club; *Turtle Times* (Associate Editor).

DELETTRE, DEWEY—Armstrong Veterans Social Club; Eager Beavers Intramural Team.

DEMARS, JEAN—Alpha Lambda Sigma; Beta Lambda (President); Delta Chi; *Inkwell* Staff; 'GEECHEE Staff; Treasurer Freshman Class; Secretary Sophomore Class; Gas Company Scholarship; Intramural Sports; Permanent Dean's List.

DEVERE, DOROTHY—Alpha Tau Beta; Basketball Team; Minstrel; Music Club.

DICKEY, GRADY—Armstrong Veterans Social Club; College Book Store (Manager); Eager Beavers Intramural Team ('46); French Club (President); 'Gators Intramural Team ('47); Permanent Dean's List; President Sophomore Class; Student Senate (President).

DIMMICK, ROBERT—Armstrong Veterans Social Club; Dance Committee; Gators Intramural Team (Manager); Treasurer Sophomore Class.

DUPREE, F. GLEATON

DURRENCE, JACK—Armstrong Veterans Social Club; Dance Committee; Terrapin Club.

EDWARDS, ADELIA—Beta Lambda; Glee Club Staff; Glee Club; Music Club; Rebels Intramural Team; Dean's List.

FALK, RICHARD

FARRIOR, WILLIAM

FOGARTY, MOIRA—Delta Chi (Secretary); Homecoming ('46); Rebels Intramural Team.

FOGARTY, THOMAS—Armstrong Veterans Social Club; Minstrel; Terrapin Club.

FONTS, ANTHONY V.—"A" Club, Alpha Lambda Sigma; Basketball Team; Golf Team; Student Senate; Table Tennis Champion; Terrapin Club.

FRETWELL, ANNE—Glamazon Intramural Team; *Inkwell* Staff; May Day ('47); *Mercury* Staff; Minstrel; Student Senate.

FRITTS, DAVID—Philosophical and Psychological Seminar (Vice-President).

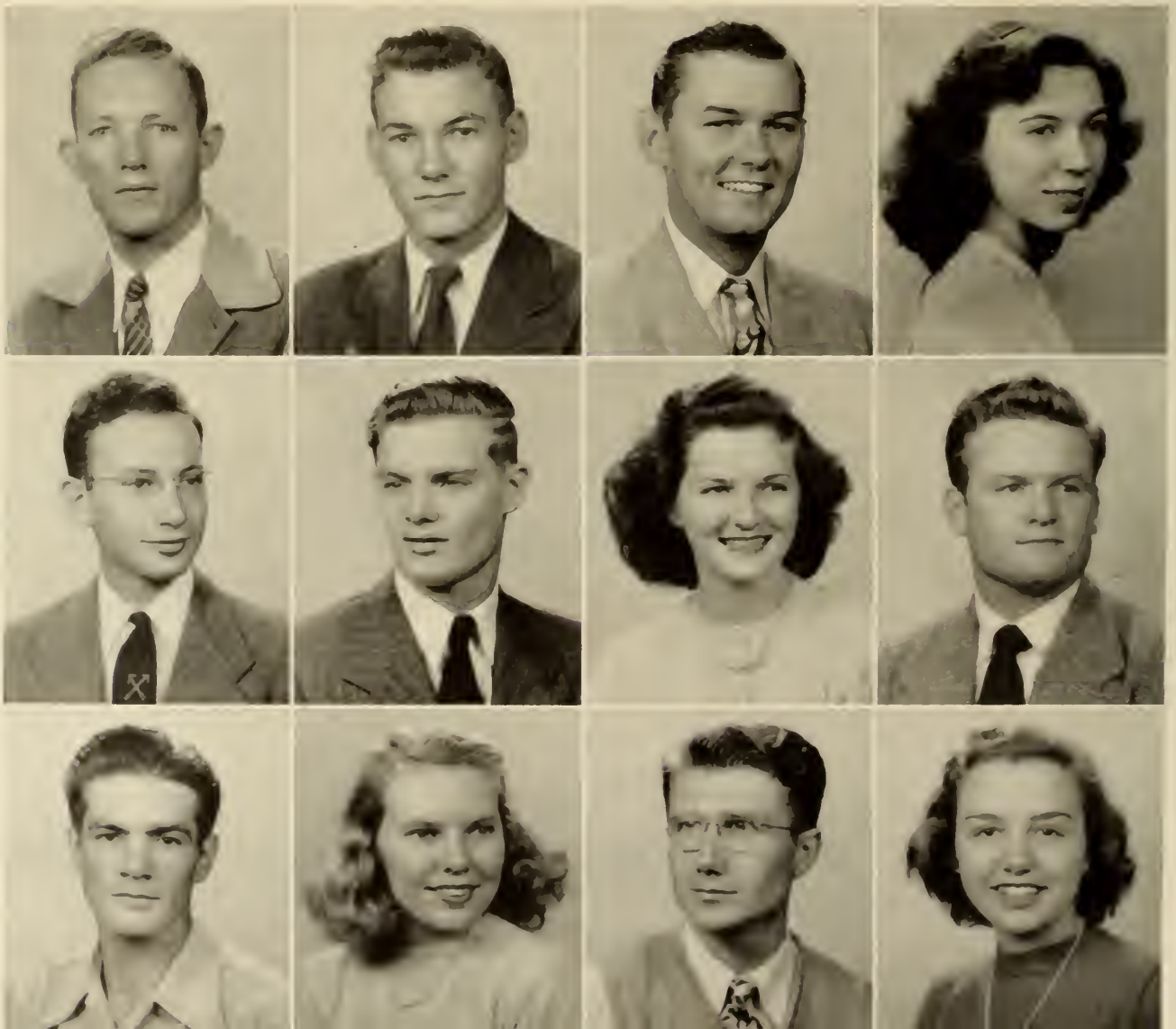
FULTON, MARY—Delta Chi (Treasurer); Glamazon Intramural Team; Homecoming Parade.

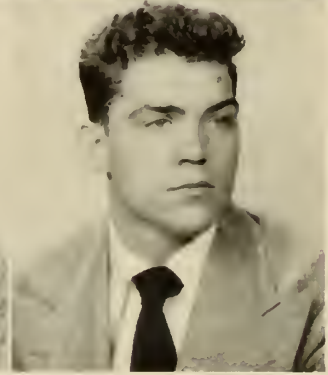
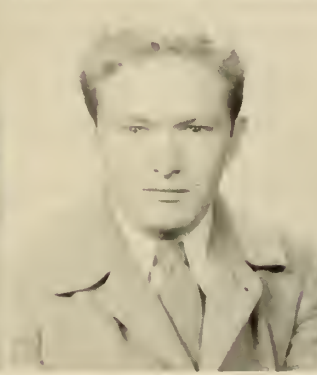
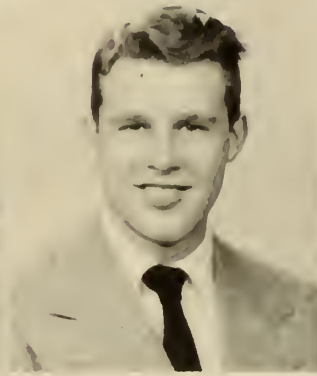
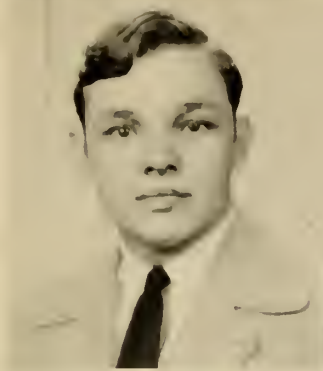
DIMMICK
FALK
FONTS

DUPREE
FARRIOR
FRETWELL

DURRENCE
FOGARTY, M.
FRITTS

EDWARDS
FOGARTY, T.
FULTON





FUTRELL
GORDON
HALE

GALIN
GRAHAM
HALL

GILBERT
HAAG
HAMILTON

GILES
HADDOCK
HARMON

FUTRELL, HUGH—Armstrong Veterans Social Club; Eager Beavers Intramural Team; French Club; Permanent Dean's List.

GALIN, ALVIN—'GEECHEE (Managing Editor); *Inkwell* (Column Editor); Minstrel; Philosophical and Psychological Seminar; Radio Club ('46).

GILBERT, BETTY—Delta Chi; 'GEECHEE Staff; Intramural Sports; Minstrel; Music Club; Riding Club.

GILES, PHYLLIS—Glee Club.

GORDON, RAYMOND

GRAHAM, BETTY—Dance Committee; *Inkwell* Staff; Co-Eds Intramural Team; Music Club; Permanent Dean's List; Student Forum; Student Senate.

HAAG, BARON—Armstrong Veterans Social Club; Intramural Board; Minstrel; Terrapin Club.

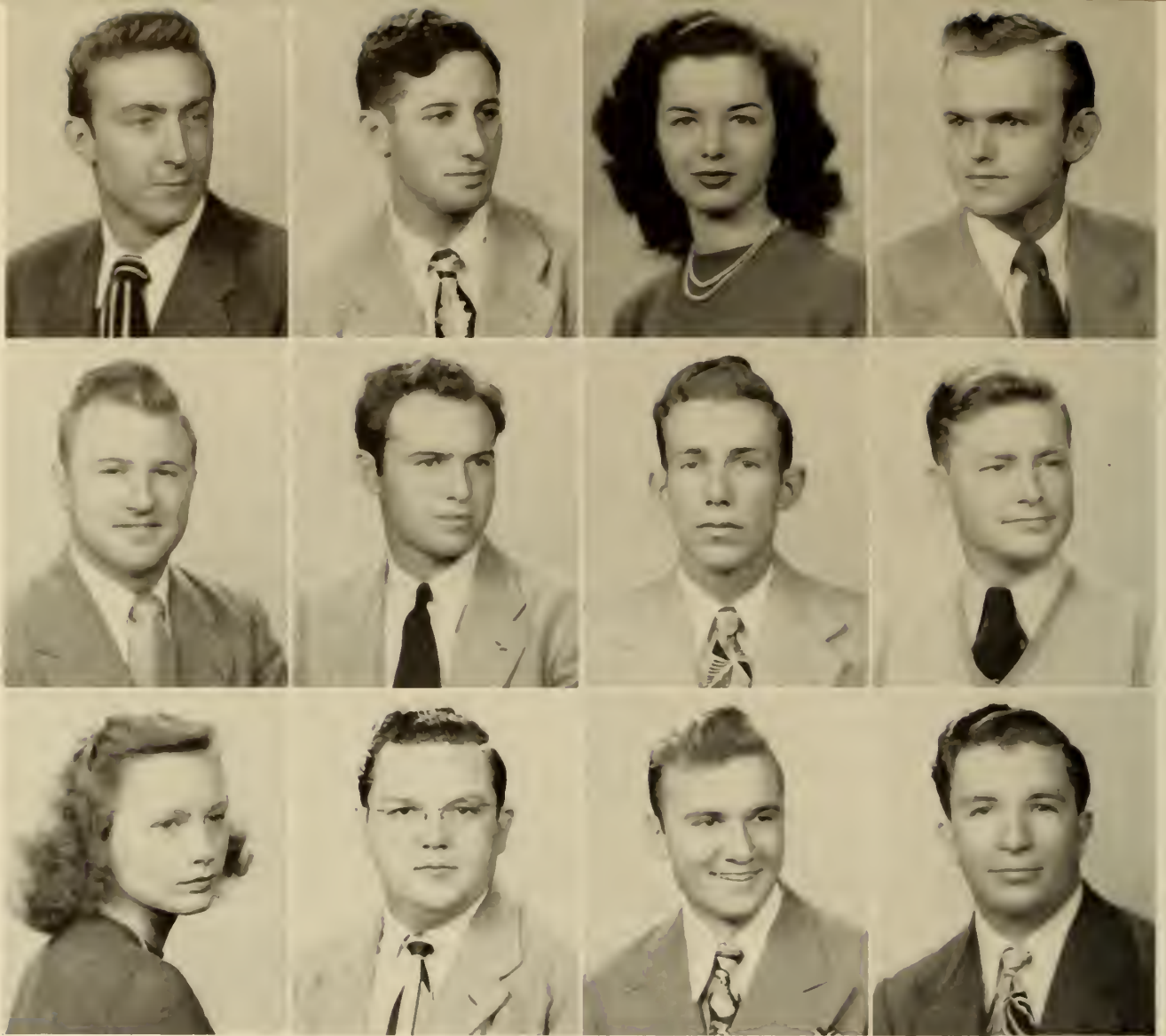
HADDOCK, JOHN

HALE, CHARLOTTE—*Inkwell* Staff; Music Club; Philosophical and Psychological Seminar; Savannah Playhouse; Student Forum.

HALL, COLLEEN—Beta Lambda; Co-Eds Intramural Team; Riding Club.

HAMILTON, PHILLIPS—Armstrong Veterans Social Club (Vice-President); Debating Team; Savannah Playhouse ("My Sister Eileen").

HARMON, CARL—Intramural Board; Minstrel; Terrapin Club (President).



HARMON
HODGES, C.
HOPKINS, M.

HELLER
HODGES, E.
HORTON

HENDRIX
HOLLEY
JARROTT

HINDMAN
HOPKINS, E.
JOHNSON

HARMON, ROBERT—"A" Club, Alpha Lambda Sigma, Armstrong Veterans Social Club, Intramural Board (Manager '46), Minstrel (Assistant Producer), Master of Ceremonies of May Day, Student Senate, Tennis Team, Terrapin Club.

HELLER, HASKELL—French Club, *Mercury* Staff, Permanent Dean's List.

HENDRIX, PAULETTE—Alpha Tau Beta, Dance Committee, Glamazons Intramural Team, Minstrel, Candidate for Beauty Queen '47.

HINDMAN, BEN

HODGES, CHEATHAM—Armstrong Veterans Social club, Eager Beavers Intramural Team, Minstrel.

HODGES, ELDRID

HOLLEY, ERNEST—Dance Committee, Eager Beavers Intramural Team, 'GEECHEE Business Staff, Glee Club, *Inkwell* (Editorial Staff), Minstrel.

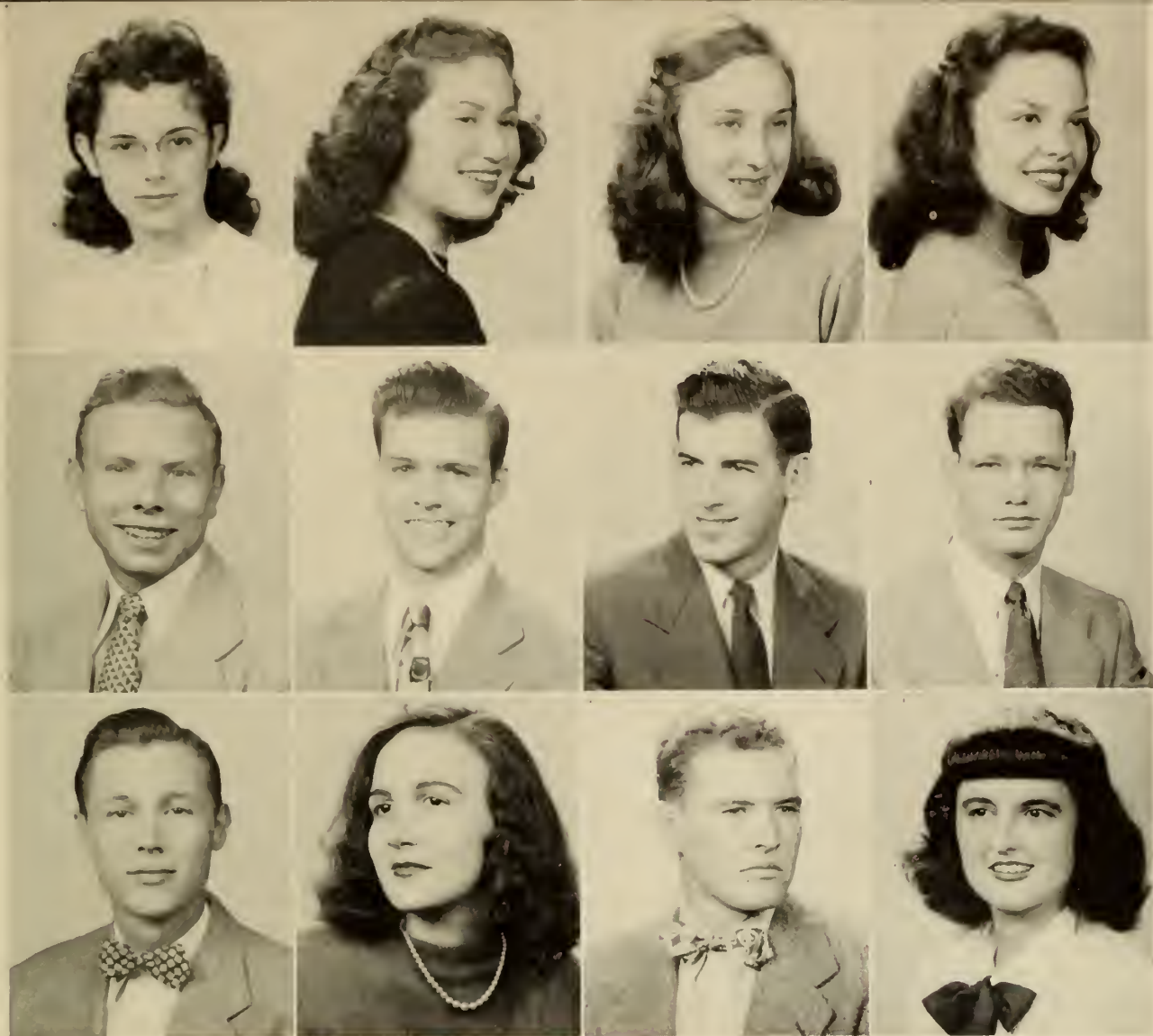
HOPKINS, EMIL—Glee Club, *Inkwell* Staff.

HOPKINS, MARGUERITE—Glee Club, *Inkwell* Staff.

HORTON, WILLIAM

JARROTT, GEORGE

JOHNSON, CHARLES—Armstrong Veterans Social Club, *Mercury* Staff, Music Club, Radio Club '46, Savannah Playhouse ("My Sister Eileen"), Philosophical and Psychological Seminar, Student Forum (Vice-President).



JONES
KETCHUM
KNIGHT

JOSELOVE
KICKLIGHTER
KUHKE

KANDEL
KILEY
LAIRD, R. M.

KEEVER
KIMBERLY
LAIRD, M.

JONES, RHETA GEORGETTE—Beta Lambda; Spinners Intramural Team.

JOSELOVE, RIETTE—Co-Eds Intramural Team; Music Club.

KANDEL, PHILLIPPA—Basketball Team (Varsity); Dance Committee; Delta Chi (President); French Club; Glamazons Intramural Team; Glee Club; Homecoming; *Mercury* (Editor-in-Chief); Music Club; Permanent Dean's List; President Freshman Class; Student Senate; Woman's Athletic Association.

KEEVER, LINNEY—Dance Committee; Cheerleader; 'GEECHEE Staff; Manager Woman's Intramural Board; Student Senate; Woman's Athletic Association.

KETCHUM, NELSON—Armstrong Veterans Social Club.

KICKLIGHTER, GRADY—Alpha Lambda Sigma; Armstrong Veterans Social Club; 'Gators Intramural Team; *Inkwell Bulletin*; Minstrel; Philosophical and Psychological Seminar; Radio Club ('46); Sa-

vannah Playhouse ("My Sister Eileen"); Student Senate.

KILEY, JACK—"A" Club; Armstrong Veterans Social Club; Basketball Team (Captain '46-'47); Freshman King; Terrapin Club; Vice-President Freshman Class.

KIMBERLY, CARLTON—Armstrong Veterans Social Club; Debating Team ('47-'48); *Inkwell* (Managing Editor); Permanent Dean's List; Student Forum (President).

KNIGHT, TROY—Armstrong Veterans Social Club; Loafers Intramural Team; Permanent Dean's List.

KUHKE, BETTY—Glee Club; Intramural Sports.

LAIRD, ROBERT McDONALD

LAIRD, MARGUERITE—Dance Committee; French Club; Glee Club; Music Club; Philosophical and Psychological Seminar; Student Forum.

LEE, EDWARD—Alpha Lambda Sigma; 'GLEECHEE' (Staff '47, Editor-in-Chief '48); *Intell* Staff; Philosophical and Psychological Seminar; Radio Club ('46); Student Forum; Student Senate; Outstanding Sophomore; Permanent Dean's List.

LEONARD, ELIZABETH—Dance Committee; Beta Lambda; Glamazons Intramural Team; Philosophical and Psychological Seminar.

LIVINGSTON, HARRY—Armstrong Veterans Social Club; 'Gators Intramural Team; Permanent Dean's List.

LOGAN, JOSEPH—Scholars Intramural Team; Savannah Playhouse ("Winterset").

LORD, IVERSON—Armstrong Veterans Social Club.

LYNN, JAMES—Armstrong Veterans Social Club.

MCDANIEL, WILLIAM E.—Armstrong Veterans Social Club; Eager Beavers Intramural Team.

MCDUFFIE, ROBERT

MCGARVEY, WARREN—"A" Club; Armstrong Veterans Social Club; Loafers Intramural Team ('46); Terrapin Club ('47); Varsity Basketball Team.

McMILLAN, JANE—*Mercury* Staff; Minstrel.

McTEER, JOSEPH

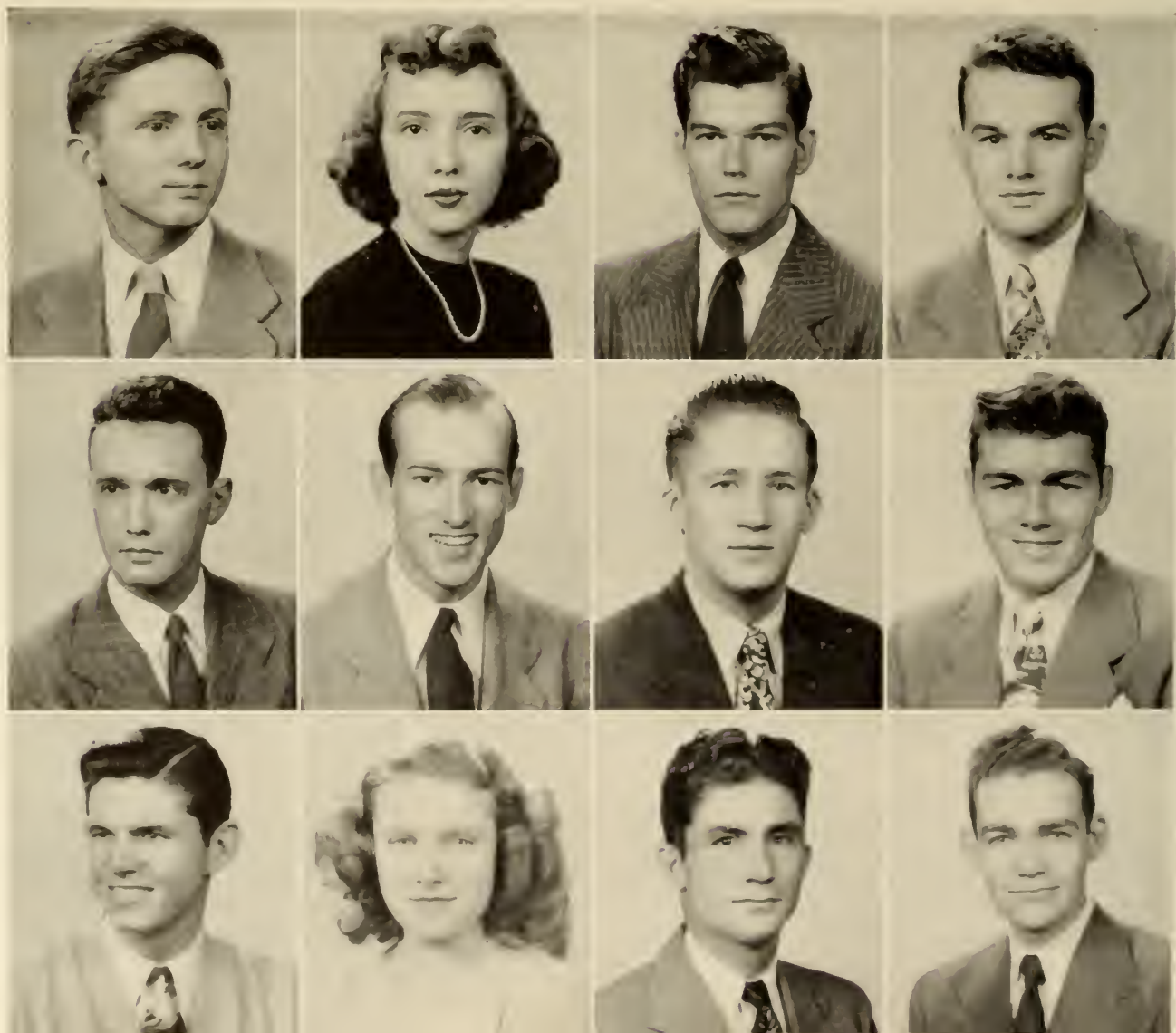
MARKS, LYMAN—Armstrong Veterans Social Club; 'Gators Intramural Team.

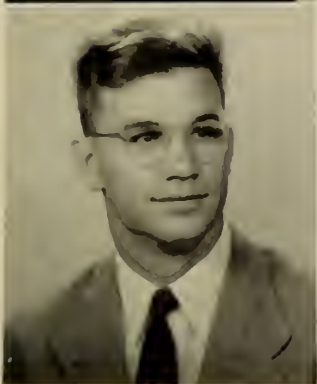
LEE
LORD
MCGARVEY

LEONARD
LYNN
McMILLAN

LIVINGSTON
MCDANIEL
McTEER

LOGAN
MCDUFFIE
MARKS





MAXWELL
MIRSKY
MORRIS

MAYER
MIXON
MURPHY

MIKELL
MOORE
NICHOLS

MILLER
MOREL
NEWMAN

MAXWELL, JOSEPHINE—Radio Club ('46); Student Forum.

MAYER, ANNE—French Club.

MIKELL, JOHN—Armstrong Veterans Social Club.

MILLER, BETTY ANN—Beta Lambda (Historian); Dance Committee; Delta Chi; 'GEECHEE Staff; Glamazons Intramural Team; Permanent Dean's List.

MIRSKY, ZELDA—Savannah Playhouse.

MIXON, CAMERON—"A" Club; Armstrong Veterans Social Club; Loafers Intramural Team (Manager).

MOORE, BETTY A.—*Inkwell* Staff.

MOREL, MARY—Beta Lambda; Varsity Basketball Team; Woman's Athletic Association.

MORRIS, CLINTON

MURPHY, JOHN H.—Scholars Intramural Team; *Inkwell* Staff.

NEWMAN, JOHN

NICHOLS, STELLGIS—Armstrong Veterans Social Club; 'GEECHEE Business Staff; Glee Club; Savannah Playhouse (Ticket Sales).

NICHOLS, VAN N.—French Club, Scholars Intramural Team.

NIGHTINGALE, RUFUS—Glee Club; *Inkwell* Staff; *Mercury* Staff; Permanent Dean's List.

NUTTING, SIDNEY

PAINE, HAMPTON—Armstrong Veterans Social Club (President); Student Senate; Terrapin Club.

PARRISH, JESSE—Armstrong Veterans Social Club; Terrapin Club.

PATTERSON, MARY—Glee Club; Intramural Manager; Varsity Basketball Team; Woman's Athletic Association

PAULSEN, JACOB—Dance Committee (Treasurer); Lager Beavers Intramural Team; *GEECHEE* Staff.

PERKINS, W. E.

PERSSE, JEFF—Scholars Intramural Team.

PETERS, HAZEL—Glee Club, Co-Eds Intramural Team; Music Club.

PIERCE, BETTY

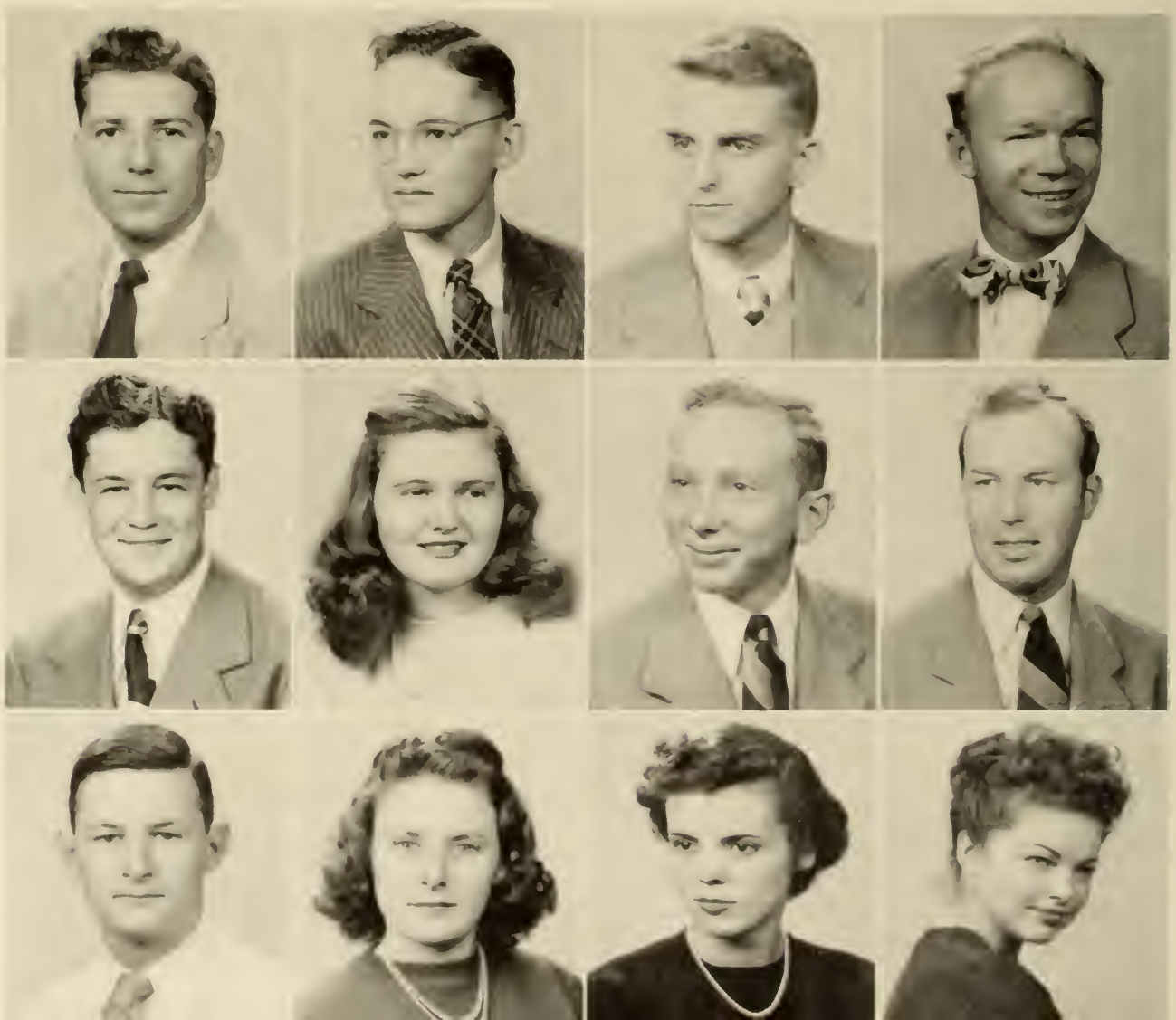
PITTS, BETTY—Beta Lambda; Dance Committee; Glee Club; *Mercury* Staff; Permanent Dean's List; Spinners Intramural Team.

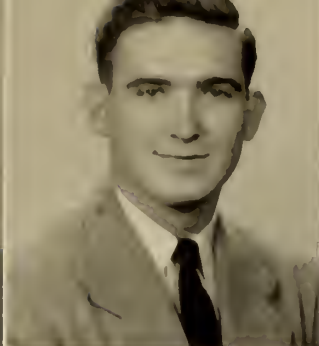
NICHOLS
PARRISH
PERSSE

NIGHTINGALE
PATTERSON
PETERS

NUTTING
PAULSEN
PIERCE

PAINE
PERKINS
PITTS





PORTER
RICHARDS, R.
RYAN, J.

PRICE
RICHARDS, J.
RYAN, M.

REISMAN
RIZZA
RYDER

RICE
ROYCE
SAXON

PORTER, ROBERT—Alpha Lambda Sigma, *Inkwell* (Editor-in-Chief); French Club; Great Books Seminar; Music Club; Student Senate.

PRICE, WILLIAM—Armstrong Veterans Social Club; *Mercury* Staff; Permanent Dean's List; Student Senate; Terrapin Club.

REISMAN, LOUIS—Alpha Lambda Sigma; *Inkwell* sports Editor; *Inkwell Magazine* ('46-'47); 'GEECHEE Business Manager; Music Club; Student Senate; Student Forum; Permanent Dean's List.

RICE, JANICE—Beta Lambda (Publicity Chairman); 'GEECHEE Business Staff; Glee Club; Co-Eds Intramural Team; Music Club; Radio Club ('46) (Vice-President); Riding Club.

RICHARDS, JOHN

RICHARDS, ROBERT—Armstrong Veterans Social Club;

Inkwell Staff; Philosophical and Psychological Seminar.

RIZZA, FRANK—Dance Committee; French Club; Student Forum.

ROYCE, CAROLYN—Alpha Tau Beta; Rebels Intramural Team (Manager); Varsity Basketball Team; Woman's Athletic Association.

RYAN, JO—Glee Club; Intramural Sports.

RYAN, MARY—'GEECHEE Staff; May Day ('47); Minstrel; Music Club; Riding Club; Student Senate.

RYDER, JAMES

SAXON, MARTHA—Dance Committee; Glee Club; *Inkwell* Staff; Music Club; Philosophical and Psychological Seminar; Radio Club ('46); Student Forum.

SCOTT, FRANK—Armstrong Veterans Social Club.

SEAWRIGHT, CAROLYN

SECKINGER, BARBARA—Dance Committee; 'GEECHIE Staff; Intramural Sports; Lucas Scholarship; Music Club; Radio Club ('46); Student Forum.

SILVER, JULIAN—Armstrong Veterans Social Club (Treasurer); Basketball Manager; Debating Team; 'GEECHIE Business Staff; Homecoming Parade Chairman; Loaters Intramural Team; Minstrel (Student Director); Student Forum; Radio Club ('46).

SIMMS, EVELYN—'GEECHIE Staff; Savannah Playhouse ("My Sister Eileen").

SLOTIN, HARRY—Terrapin Club, *Turtle Times* Staff.

SMITH, WILLIAM

SNIPES, HARRY—"A" Club; Armstrong Veterans Social Club; Dance Committee; 'Gators Intramural Team; Vice-President Sophomore Class.

SNIPES, RALPH—"A" Club.

SPEIR, HENRY

STEWART, CHARLES—Dance Committee; Eager Beavers Intramural Team; 'GEECHIE Business Staff; Glee Club; *Inkwell* Staff; Minstrel (Stage Crew); Student Senate.

STEWART, JOHN—Armstrong Veterans Social Club; 'Gators Intramural Team.

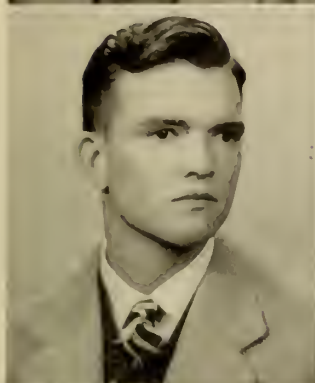
SCOTT
SIMMS
SNIPES, R.

SEAWRIGHT
SLOTIN
SPEIR

SECKINGER
SMITH
STEWART, C.

SILVER
SNIPES, H.
STEWART, J.





STRICKLAND, H.
TURNER
WALSH

STRICKLAND, S.
VARN
WEATHERS

THOMAS
WADE
WEBSTER

TOOTLE
WALLACE
WILLIAMS

STRICKLAND, HARRY

STRICKLAND, SIDNEY—Eager Beavers Intramural Team.

THOMAS, REPPARD—Armstrong Veterans Social Club.

TOOTLE, JAMES—Armstrong Veterans Social Club; Dance Club; Eager Beavers Intramural Team; Permanent Dean's List; *Inkwell* Staff.

TURNER, DELAMAR—Armstrong Veterans Social Club; Eager Beavers Intramural Team; Riding Club.

VARN, RONALD—Armstrong Veterans Social Club; 'Gators Intramural Team; Gymnasium Committee; Intramural Board; Intramural Manager; *Inkwell* Staff; Student Forum; Student Senate.

WADE, THERESA—Beta Lambda (Treasurer); Dance Committee; Delta Chi (Vice-President); 'GEECHIE Staff; Glamazons Intramural Team; Homecoming Parade.

WALLACE, WILLIAM

WALSH, VERNA—Intramural Manager; Varsity Basketball Team.

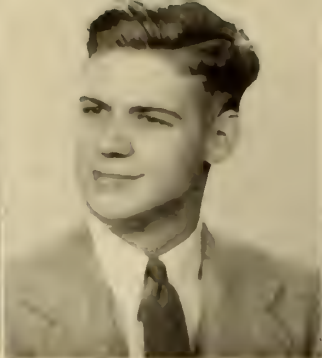
WEATHERS, JEAN—Alpha Tau Beta (President); Beta Lambda (Treasurer '46); Minstrel; Varsity Basketball Team.

WEBSTER, CHARLES—Armstrong Veterans Social Club; 'GEECHIE Staff; Tennis Team.

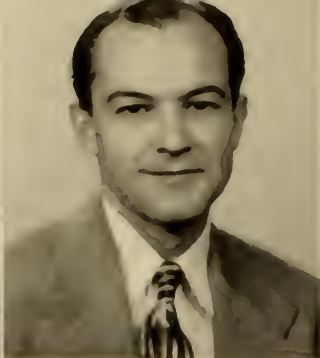
WILLIAMS, ANNE—Beta Lambda; Dance Committee; 'GEECHIE Business Staff; *Inkwell* Staff; Permanent Dean's List.



WILSON



WINN



YARBER



ZALKOW

WILSON, ROBERT—Armstrong Veterans Social Club; *Inkwell Bulletin* Staff; Dance Committee; Eager Beavers Intramural Team; Philosophical and Psychological Seminar; Savannah Playhouse ("My Sister Eileen").

WINN, WILLIAM—Armstrong Veterans Social Club; Dance Committee; Glee Club.

YARBER, WILLIAM

ZALKOW, LEON—*Inkwell* Staff; Lucas Scholarship; Savannah Playhouse (Ticket Sales).

SOPHOMORES WHOSE PICTURES ARE NOT INCLUDED:

BACOT, JULES
BONIFACE, R. E.
BRANNEN, GEORGE
BROWN, HUGH
BURCH, BARBARA
COBB, LUCIUS
COHEN, CHARLTON
COOLEY, IRWIN
CREDLE, KENNETH
DISMUKES, JAMES
DOWNS, JOHN
FINDLEY, EMORY
FINOCCHIARO, FRANK
FOUNTAIN, MARY
GREENE, HAROLD
GRINER, BENJAMIN
HELMY, EDGAR
HODGKINS, WILLIS B.
HOLMAN, GUSTAV
HYRNE, JOHN
JOHNSON, CECIL
JONES, WILLIAM

KITCHENS, MACK
KLUBER, HAROLD
LAMAS, THEODORE
LEONARD, EDDIE
LEWIS, JOHN
McCULLOUGH, ROY
McDONALD, RICHARD
McGHEE, JERRY
MALLORY, PAUL
MOONEY, THOMAS
OLSON, JOHN
PITTS, PAUL
RAHN, HENRY
REED, WILLIAM
RICHARDS, WALLACE
SASEEN, JOE
STEVENS, JAMES
STOKES, ROBERT
STRICKLAND, WILLIAM
TAYLOR, LOUISE
TEUTON, JAMES





ED LEE



JEAN DEMARS



HARRY SNIPES

OUTSTANDING



PHILIPP A KANDEL



ARTHUR CHANDLER



GRADY DICKEY



HARRY SLOTIN



RONALD VARN

SOPHOMORES

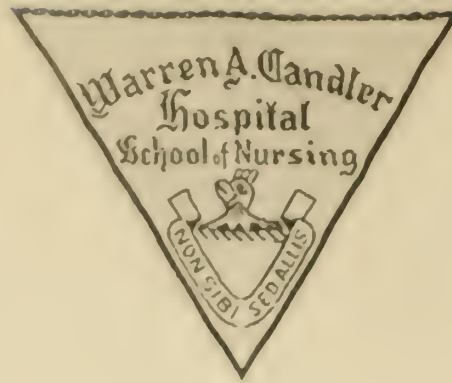
BOB HARMON

JACK KILEY





LOUISE LINNHARDT
Director of Nursing



MARTHA CHEVES SMITH
*Assistant Director of
Nurses in Charge
of Education*

WARREN A. CANDLER SCHOOL OF NURSING

ANN BARFIELD



VIRGINIA BLACKBURN
NELL BUCHANAN
JACKIE CARTER
LAVERNE CARTER



JERRY COOK
LEOLA DELOACH
MELBA HARVEY
JO ANNE JOHNSON



BARBARA JONES
EDITHE KENT
HAZEL LONG
IDA MAE REID



WALLIE SCHON
DOROTHY SHAW
LAVERNE SMITH
NETTIE SPENCE



FRANCIS STEWART
MARLYN WARNELE
RUTH WATERS
GILDA WILSON



FRESHMEN



Bob Melson



CLIFFORD CLARKE, *President*

PEGGY WORRELL, *Vice-President*

OFFICERS

SHIRLEY JONES, *Secretary*

TOMMY RIDGWAY, *Treasurer*





SYLVIA ALDER
GUS ALFIERIS
RUTH ALLEN

JOHN ALLRED
HARTLEY ARNOLD
CAROLYN BACON

WILLIAM BACON
JAMES BAKER
DANIEL BARBOT

ROBERT BARKER
THOMAS BLALL
ROBERT BENIT

DAVID BERGRIN
LOUISE BLACKBURN
NORA BLACKWELDER

CLARK BLANTON
WALTER BLATNER
MARTHA BOONI

FRESHMEN

GEORGE BRIDGER
BETTY BRODRICK
MADISON BROWER

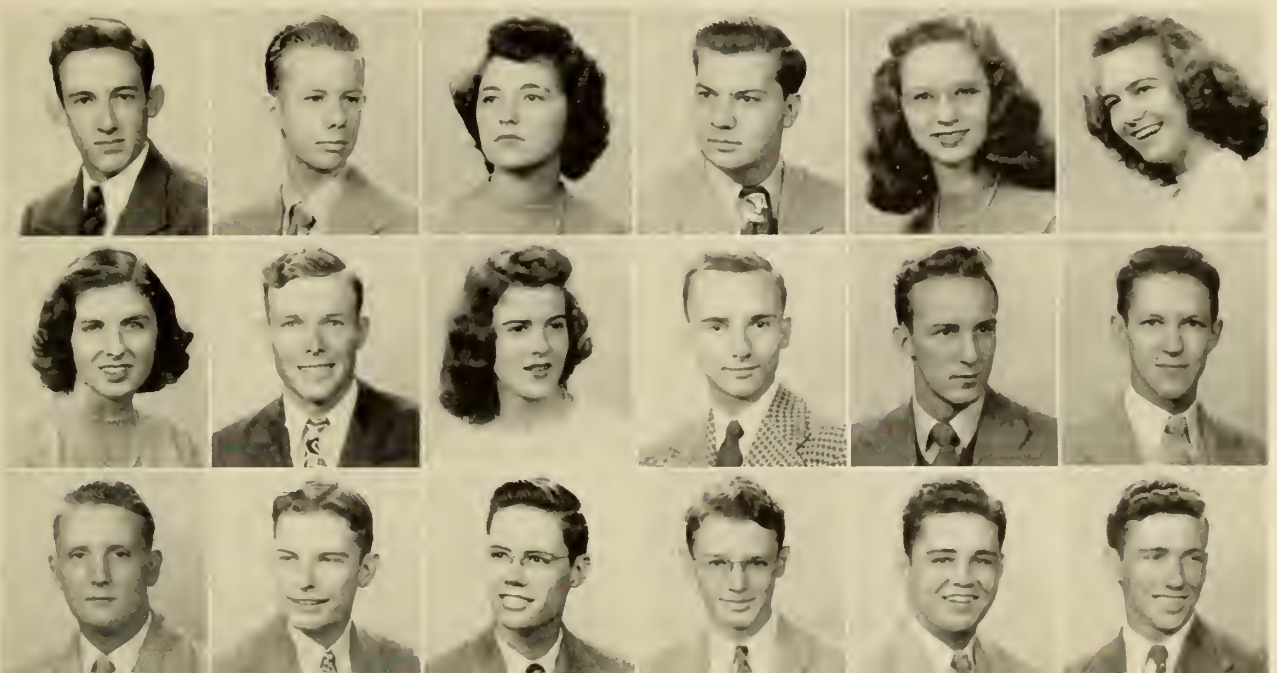
GLENN LESLIE BROWN
EWIN BURCH
OSCAR BURNETT

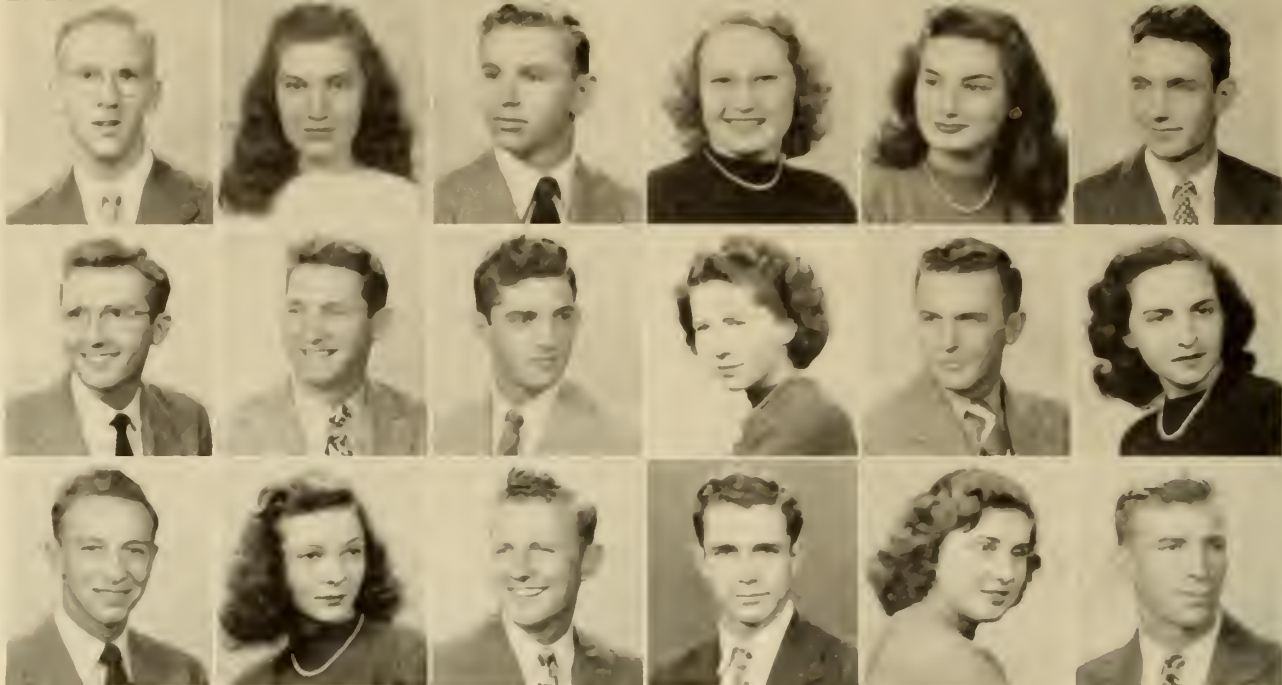
DOROTHY CASON
LUCY CHAMBERS
SAM CHANCE

CLIFFORD CLARKE
HENRY CLEMENS
HENRY J. COFFER

NANCY SUE COFFEY
WILLIAM H. COLCOCK
LAWRENCE CONNEFF

MARY CONWAY
EARNEST L. COOK
PETER COOLEY

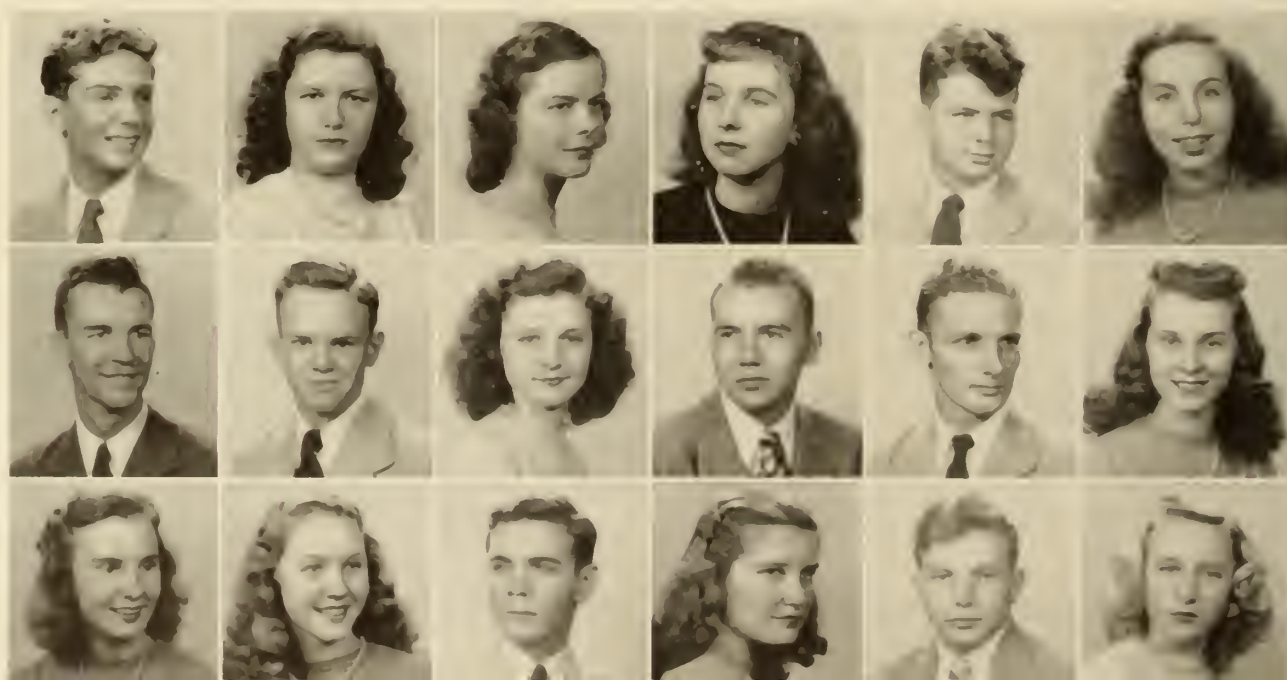


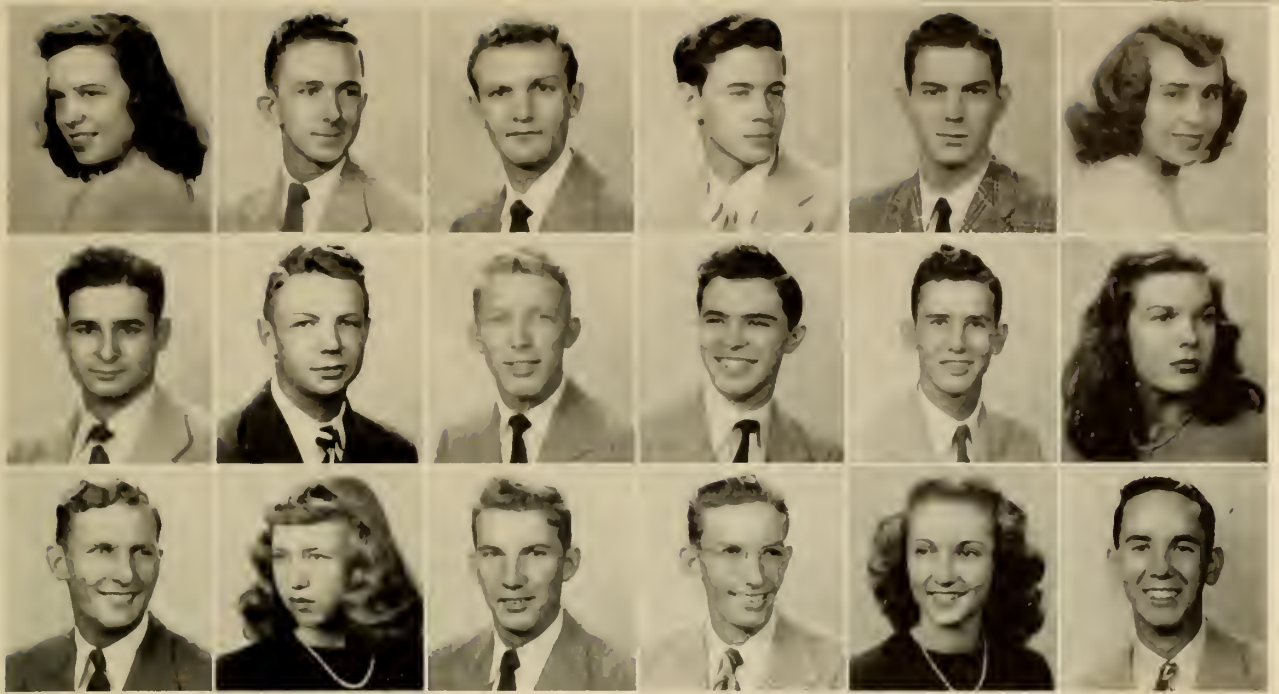


| | | | | | |
|---------------------|---------------------|----------------|------------------|---------------------|---------------|
| WILLIAM C. COMPLAND | LYNDA CREECH | JAMES DOOLAN | MARTIN DUNSMUIR | SARA EISENBERG | WALTER FALLIN |
| HARRY COOPER | RICHARD CROSBY, JR. | ROBERT DRANE | ROSE MARY DURDEN | EUGENE EPTING | REBA FIDMAN |
| WILLIAM CRANE | EILEEN DE BERETTE | WILLIAM DUGGER | CHARLES EAST | ANNIE BILLIAN FAANS | CHARLES FLOYD |

FRESHMEN

| | | | | | |
|-------------|-----------------|---------------|--------------------|-----------------|------------------|
| MEYER FLUKI | CAROLYN FRAZIER | IRIS GIGNELLI | CAROLYN GROSS | ROBERT HANSON | MARY HARTI |
| JOHN FOLGER | DAVID GAY | JO ANN GODDIE | CHESTER HANBERRY | MARVIN HARDIE | SHIRLEY HATTRICH |
| SARA FORD | NORMA GIBBONS | JOHN GRILEIN | DORIS JEAN HANCOCK | WILLIAM HARNLEY | JOAN HEALY |

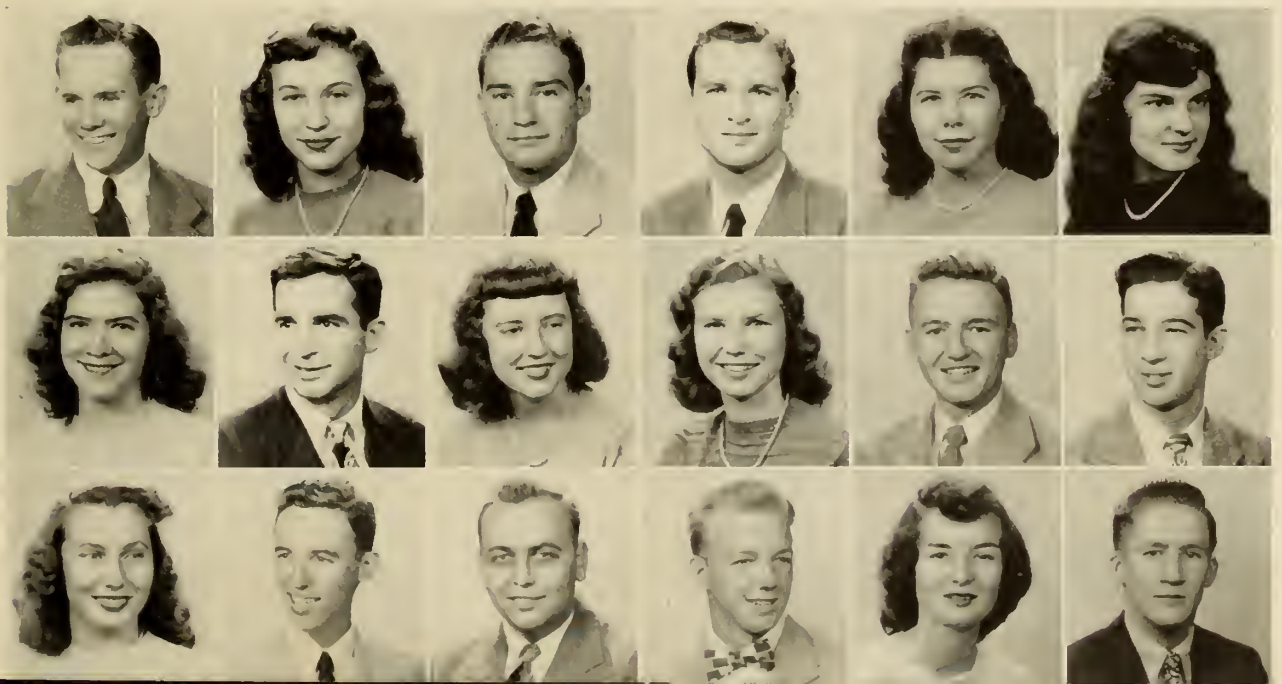


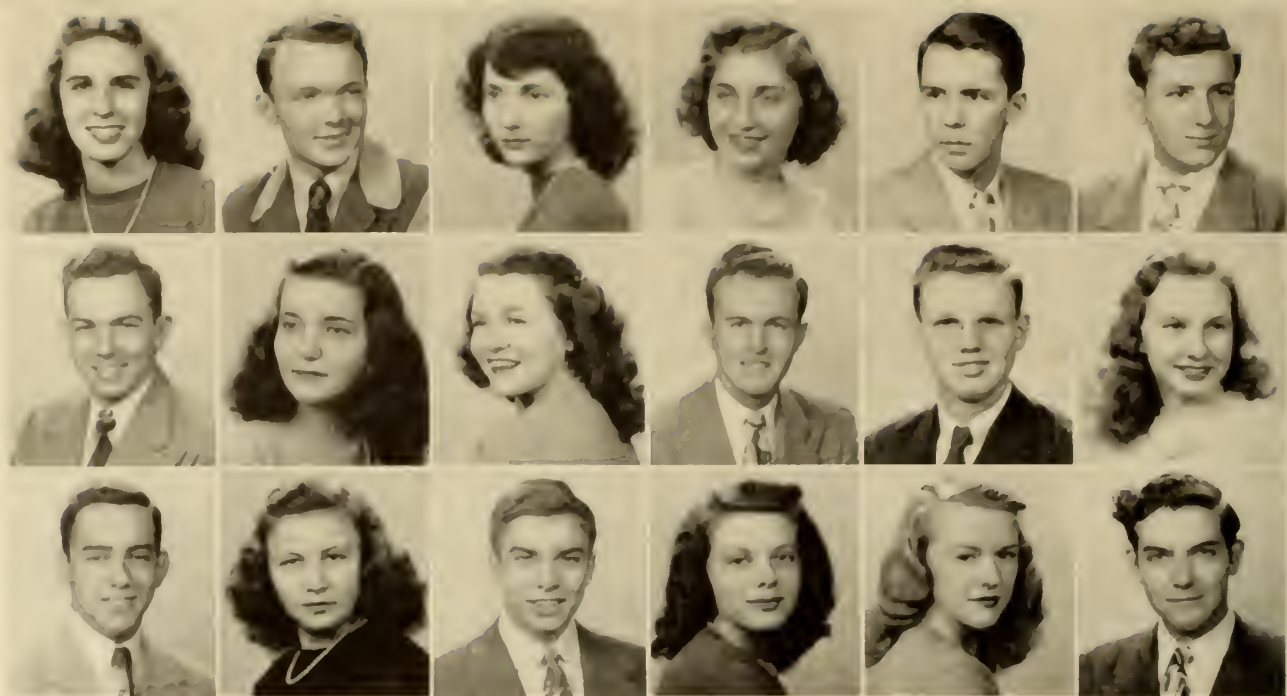


| | | | | | |
|---------------|------------------|---------------------|------------------|----------------|--------------|
| BITTY HICKER | ROBERT HENDERSON | EDWIN HODGKINS | JOHN HUBBARD | MUNDEL JOHNSON | JOANNI KANDL |
| RUPERT HELLER | JOI HILL | PHILIP HOFFMAN | WILLIAM JACKSON | GEORGE JONES | MARY KEATING |
| EDDIE HELMY | HELENE HODGES | GIBBES HOPKINS, JR. | HERBERT L. JINKS | SHIRLEY JONES | DAVID KELLEY |

FRESHMEN

| | | | | | |
|-------------------|------------------------|------------------|--------------------|--------------------|------------------|
| JOHN KELLEY | DORA ANNE KIMBERLY | BERNARD KRAMES | EDWIN LANIER | NANCY LEVINGTON | JO ANN LUMLEY |
| LILLIS KELLY | THOMAS KNOX | DOROTHY M. LAIRD | CATHERINE LANKENAU | ROBERT LEWIS | WILLIAM McCALL |
| FLOSSIE L. KERVES | HENRY F. KOLSHORN, JR. | ROBERT LAMB | HUNTER LEAF | MARTHA LITTLEFIELD | WILLIAM McDANIEL |

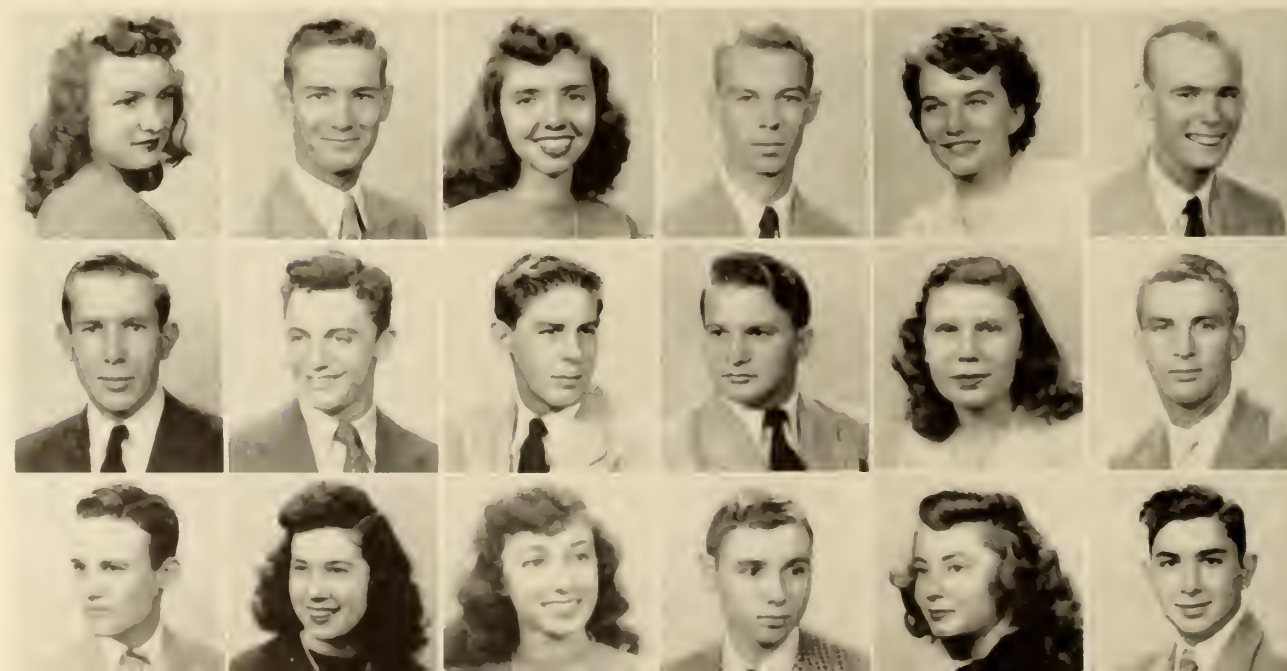


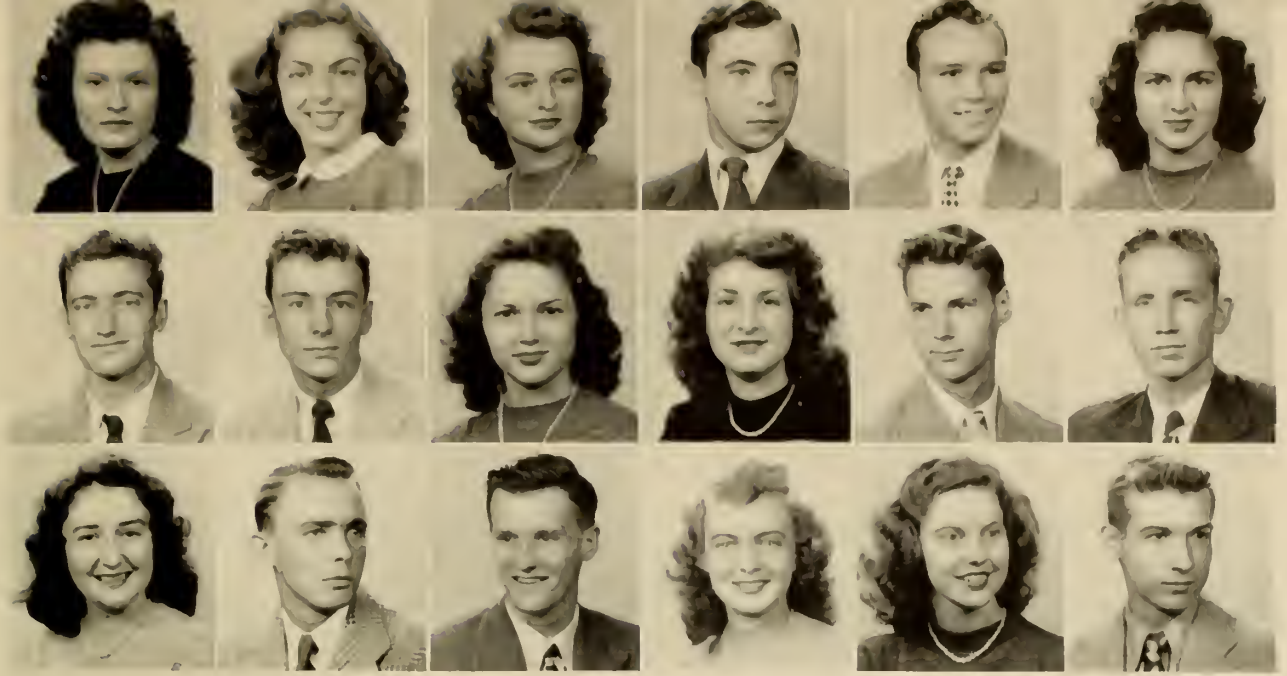


| | | | | | |
|---------------|----------------------|-------------------|----------------------|------------------|----------------------|
| MARY Mc GRATH | NATHANIEL MARTIN | MARTHA MEADOWS | WINIFRED MITCHELL | RICHARD MULLINIX | GEORGE J. NICHOLS |
| JOSEPH MAGLI | MARY FRANCIS MASTERS | MILICENT MILLAVER | JAMES O. MORGAN, JR. | BOBBY J. NEWMAN | SARA NICHOLS |
| MAURICE MAGLI | EMILY MASTOPOULOS | ROBERT MILSON | DOLORIS MURHEAD | NANCY NICHOLS | WILLIAMSON NICHOLSON |

FRESHMEN

| | | | | | |
|-------------------|------------------|---------------------|-------------------|------------------|-------------------|
| MARTHA NORMAN | J. M. OWENS | JEANINE PEARSON | CLEMON PIERCE | ELIZABETH RICH | EDWARD RICKS |
| THOMAS K. O'BRIEN | JOHN R. PADDON | JOHN A. PETERS, JR. | RAYMOND H. POWELL | NORMA RICHARDSON | JOSEPH T. RIDGWAY |
| JACK L. OGLISBY | LAURA LEE PARKER | CAMELLI PHILLIPS | RICHARD M. RAINES | MARILYN RICHMAN | JACK H. ROBBINS |

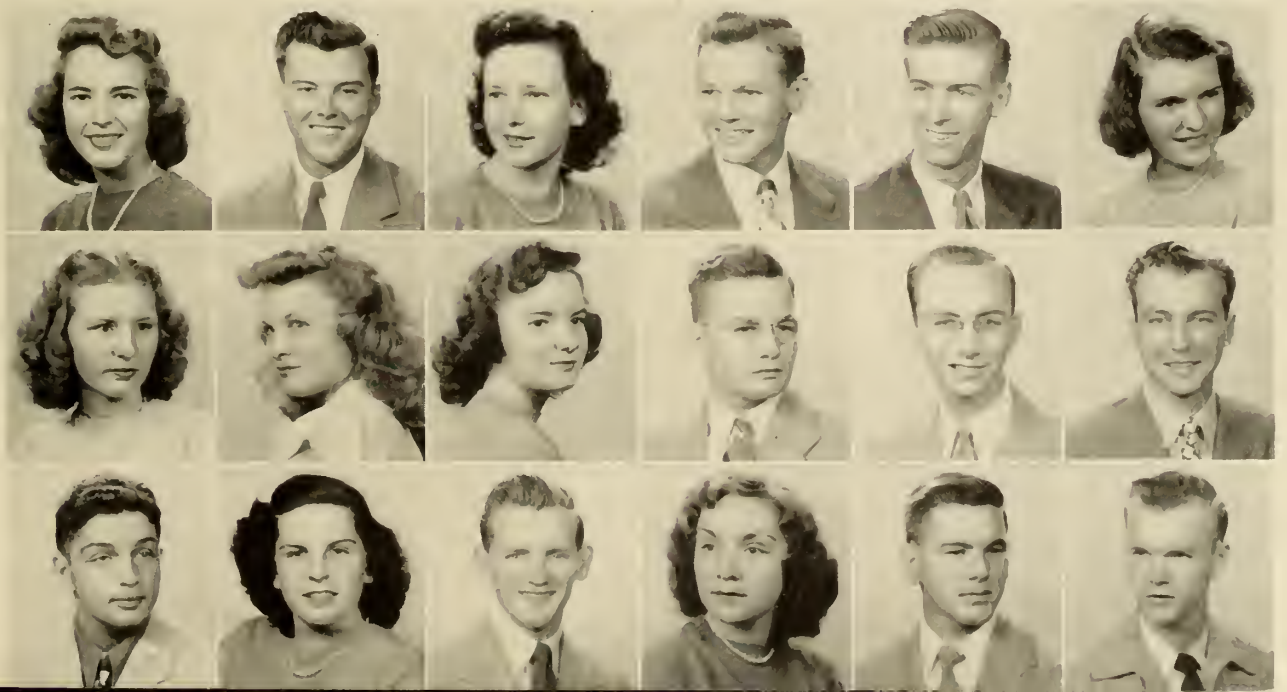




| | | | | | |
|-------------------------|--------------------|----------------|---------------------|------------------|--------------------|
| BARBARA ROBINSON | LOIS ROSENTHAL | JOYCE SCOTT | MURRAY SILVER | E. K. SMITH | LAURA J. SOLANA |
| JOSEPH M. RODRIGUEZ, JR | ANDREW M. ROSSHOLT | GIRALDINE SHIG | CATHERINE SKEADAS | WILLIAM R. SMITH | HAROLD N. STARLING |
| JUNE DOLORES ROPP | JOSEPH L. ROTUREAU | WILLIAM SIMMS | CATHERINE I. SLATER | JULIA SOJOURNER | MARK S. STEADMAN |

FRESHMEN

| | | | | | |
|-----------------------|---------------------|----------------------|---------------------|------------------|---------------------|
| DOROTHY A. STEGIN | GEORGE STEVENSON | IRIS M. TAYLOR | DEAN D. TUNNO | EDWARD A. WILDEN | MARY J. WARREN |
| CATHERINE R. STILLJES | MARGARET A. STEWART | LOUISL C. TERRACE | JAMES EDWARD TURNER | ROBERT A. WARE | HENRY B. WELLS, JR. |
| ROSS H. STEMER | MARY C. SULLIVAN | HARRY H. THOMAS, JR. | JANE E. TURNER | ARNOLD B. WALKER | GEORGE C. WILDER |





BARBARA WILLIAMS

RALPH D. WILSON

BETTY L. WOODS

FRED WOLSON

C. W. WORRILL

JOHN W. WRIGHT

CHARLES W. WILSON

CYRUS S. WOOD

BILLY F. WOODS

PEGGY WORRILL

RAYMOND C. WORRILL

STANLEY G. YARBER

FRESHMEN

ACTIVITIES





ED LEE
Editor-in-Chief

'GEECHEE STAFF

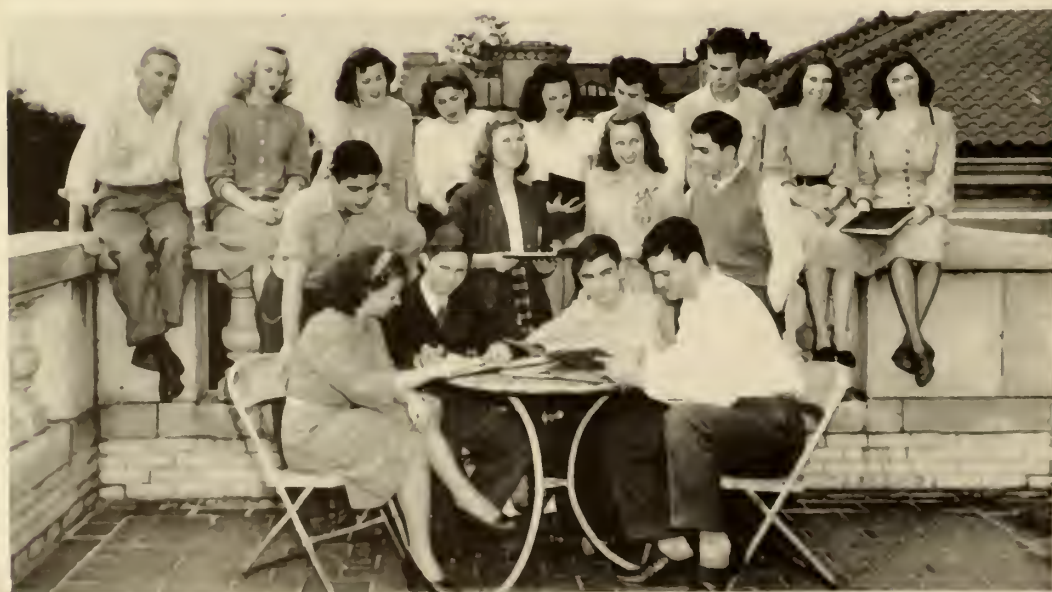


ALVIN GALIN
Managing Editor

The principal objective of the 1948 'GEECHEE Staff has been to complete publication by the end of the school year and yet maintain the high quality of the annual. Toward this end, the editorial, business and art staffs have worked diligently and in close co-operation. The 'GEECHEE depicts pictorially a cross section of campus activities.



BOB MELSON
Art Editor



Seated: Miss Goodwin, Ed Lee, Bob Melson, David Bergin. *Standing, First Row:* Ross Stemer, Catherine Lankenau, Flossie Kerves, Harry Robbins. *Top Row:* Jay Paulsen, Joan Healy, Betty Ann Miller, Bernice Cooper, Linney Keever, Theresa Wade, Charlie Stewart, Jean DeMars, and Adelia Edwards.



Standing: Louis Reisman, Charlie Stewart, Roddy Meddin, and Stellgis Nichols. *Second Row:* Jay Paulsen, Jo Lumley, Ann Kimberly, Ernest Holly, Geraldine Seig, and Bernice Cooper.

The ultimate aim of the staff has been to present a living history of Armstrong students in order that the memories and incidents related herein may be preserved for their posterity.



LOUIS REISMAN, *Business Manager*

DAVID BERGRIN, *Photo Editor*

MISS NOMA LEE GOODWIN, *Faculty Advisor*



THE INKWELL STAFF



ROBERT PORTER, *Editor in Chief*

The *Inkwell*, student newspaper published every two weeks except during holidays and the summer quarter, represents an integral part of collegiate activities. Operated during the 1947-48 term in conjunction with the college journalism classes, the *Inkwell* endeavored to follow professional newspaper standards and to encourage writings of literary merit.

The *Inkwell* adopted a conservative editorial policy. Perhaps the most important aspect of this policy was opposition to the proposed conversion of Armstrong into a four-year senior institution. Instead, the *Inkwell* supported a program favoring the expansion of Armstrong's existing facilities into an even higher quality junior college in order to meet the constantly increasing demands of Savannah and vicinity for higher learning.

The enthusiastic participation in *Inkwell* activities by both students and faculty members alike was indicative of the respect which the *Inkwell* commanded.



CARLTON KIMBERLY, *Managing Editor*



Seated Around Table: Betty Graham, Martha Saxon, Charlotte Baily, Betty Leonard.

Second Row: Charlotte Hale, Mary Keating, Charles Stewart, Harmon Corley, Ernest Holley, Jean DeMars, Ross Stemer, Bob Porter, Carleton Kimberly, Mr. Murphy, David Landy, Grady Kicklighter.

THE MERCURY STAFF

The *Mercury* was added to the publications at Armstrong Junior College in the Fall of 1947 to serve as an outlet for creative literary efforts of some merit. Short stories, poems, essays, and character sketches, with numerous original illustrations, predominated in the first issues. Encouraged by its first year's achievements and looking toward the future, the *Mercury* hopes to establish a tradition of high literary excellence among Armstrong writers.



PHILIPPA KANDEL
Editor-in-Chief

MERCURY STAFF

- PHILIPPA KANDEL *Editor*
- HASKELL HELLER *Managing Editor*
- JULES BACOT *Art Editor*
- JOHN PADDISON *Photographer*
- HENRY COFFER
- ROSS STEMER
- ANNE FRETWELL
- BETTY PITTS
- JANE McMILLAN
- CHARLES JOHNSON
- ELEANOR RICH



HASKELL HELLER,
Managing Editor-in-Chief

. *Staff Members*
ated, Left to Right: Haskell Heller,
Henry Coffe. Philippa Kandel, Anne
retwell, Jane McMillan.
auding: Charles Johnson, Betty Pitts.



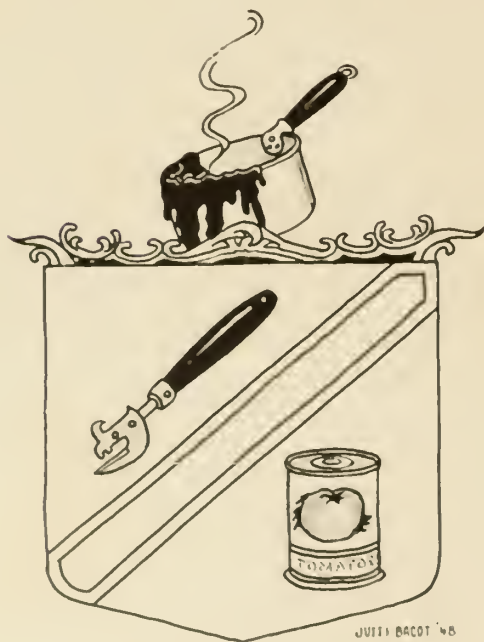


First Row: Julia Sojourner, Theresa Wade, Janice Rice, Betty Ann Miller.
Second Row: Jean DeMars, Miss Wolfe, Catherine Lankenau, Betty Leonard, Lourdine Carter, Norma Faye Blocker.
Third Row: Colleen Hall, Ruth Allen, Carolyn Frazier, Martha Norman, Laura Lee Parker, Martha Meadows, Camille Phillips, Mary Sullivan, Rose Mary Durden.

BETA LAMBDA

OFFICERS

JEAN DEMARS *President*
 CATHERINE LANKENAU *Vice-Pres.*
 JULIA SOJOURNER *Secretary*
 MARY SULLIVAN *Treasurer*
 MISS HELEN WOLFF, *Faculty Advisor*
 JANICE RICE *Publicity*
 BETTY ANN MILLER *Scrap Book*



Beta Lambda, the Home Economics club at Armstrong Junior College, is made up of a very enthusiastic group of girls. This year the club decided to furnish one of the rooms in the Hunt Building as a lounge. The club was responsible for the preparations for Homecoming, Open House, and May Day, and the members were asked to serve at several receptions given by local organizations.

Of course Beta Lambda is famous for its parties, and several delightful entertainments have been given this year.

THE STUDENT FORUM

The Student Forum is the sounding board for student opinion on subjects of international, national, and civic interest. Debates and informal speeches are prepared and delivered by members at the meetings which are held twice a month.

The Armstrong Debating Team, a major project of the Forum, arranges several debates with various colleges and universities throughout the state during the school year.

Dean W. Orson Beecher is faculty advisor to the group, Carleton Kimberly, president.



First Row: Clifford Clarke, Charles Johnson, Carlton Kimberly, Murray Silver, Harry Robbins.
Second Row: Marguerite Laird, Barbara Seckinger, Anne Kimberly, Betty Graham, Louis Reisman, Julian Silver.
Third Row: Dean Beecher, Martha Saxon, Mildred Laird, Flossie Kerves, Arthur Chandler, Mary Keating, Harold Starling, David Landy, Charlotte Hale, Frank Rizza.
Not in Picture: Ed Lee.





First Row: Arthur Chandler, Mary Keating, Martha Saxon. Second Row: Robert Richards, Dean Beecher, Fred Corcoron, Miss Thompson, Charles Johnson.

THE PHILOSOPHICAL AND PSYCHOLOGICAL SEMINAR



This organization aims to provide a medium for the frank and informal discussion, from the psychological viewpoint, of moral, sociological, and philosophical problems.

Topics are suggested and discussions led by the membership under the sympathetic guidance of Miss Dorothy Thompson, instructor in psychology. Fred Corcoron was 1947-48 president.

THE FRENCH CLUB



This club was organized to aid students in mastering the oral phase of the French language. It meets once a week and students are skillfully drilled in conversation under the guidance of Mrs. Margaret S. Lubs, faculty advisor and Grady Dickey, club president.

First Row: Josephine Maxwell, Mrs. Margaret S. Lubs, Rita Fishman, Zelda Mirsky, Marilyn Richman, Millie Melava, Annette Raskin.

Second Row: Marguerite Laird, Bob Porter, Arthur Chandler, Mildred Laird, Sara Ehrenrich.

Third Row: Buddy Bergin, Freddie Wolson, Haskell Heller, Henry Coffier, Van Nichols.





First Row: Marguerite Hopkins, Mary Patterson, Adelia Edwards, Nancy Coffey, Barbara Williams, Phillippa Kandel.
Second Row: Emil Hopkins, Stellgis Nichols, Hazel Peters, Mr. William Baker, Martha Saxon, Norma Richardson, William Winn, Janice Rice.

THE GLEE CLUB



The two-fold purpose of the Glee Club is to bring together students who enjoy singing, and to furnish vocal music of a high quality for Armstrong Junior College.

Besides the opportunity to indulge their bent for singing, members also receive training which may well prove useful to them in later life.

The club holds weekly meetings under the direction of Mr. William Baker, faculty advisor. William Winn was the 1947-48 president.

MUSIC CLUB



The Music Club was organized by students of Armstrong who are interested in enjoying classical music. The club meets twice a month at the home of either Mr. Baker, faculty advisor, or the home of one of the members. Each member has an opportunity to plan the program, thereby offering to the club the individual musical tastes of its members. Membership is open to any student at Armstrong who is interested in serious music.

President of the club for the school year 1947-48 was Betty Graham.

First Row: Bob Porter, Bob Melson, Adelia Edwards, Arthur Chandler, Charles Johnson, Betty Graham, Josephine Maxwell, Janis Rice.

Second Row: Bridger, Blanton, Cobb, Hanson, Hopkins, Taird, Laurie Abbott, Mr. Baker, Charles Cohen, Charlotte Hale.





First Row: Allen, Clanton, Fogarty, McGarvey, Paletsky, Davis, Magee, Dimmick.
Second Row: Bridger, Blanton, Cobb, Hanson, Hopkins, Turner, DeLettre, Collins, Bergin, Ryder, McDonald, Godbold.
Third Row: Walden, Holley, Marks, Parrish, Steward, Lanier, Berry, Worrell, Crane, Richards, Kiley, Fritts, Pitts, Tootle, Williams, Scott, Worrell, Akins, Futrell, Mooney.
Fourth Row: Hecker, Bacon, Ambrose, Dickey, Varn, Snipes, Drane, Martin.
Fifth Row: Lewis, Heller, Fallon, Adams, Leat, Richards, Farrior, Nichols, Wynn.
Sixth Row: Anderson, Haag, Greene, Knight, Robinson, Barbot, Chandler, Paine, Johnson, Kicklighter, Kimberly, Crosby, Reed, Altieris, Clarke, Webster, Harney, Mixon.

ARMSTRONG VETERANS SOCIAL CLUB

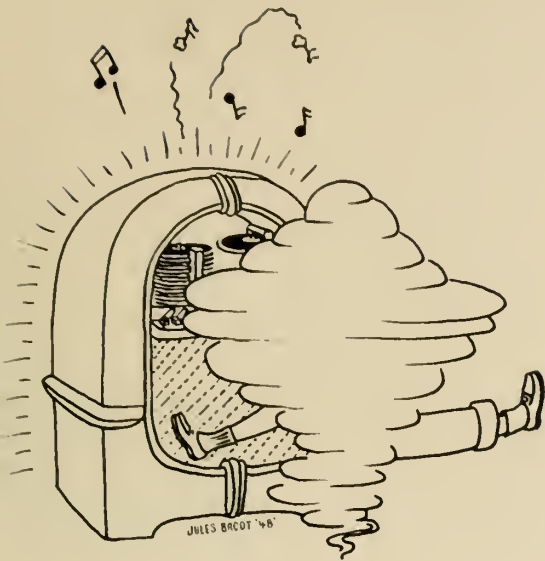


This club is composed of veterans of World War II, and as its name indicates is a purely social organization open to all veterans of Armstrong. It is directed by William M. Dabney, faculty advisor, and Hampton Paine, president.

DANCE COMMITTEE

The Dance Committee is a joint faculty-student group whose function is to formulate and execute plans for the dances sponsored by the college. The faculty members of the Committee, of whom William M. Dabney is chairman, act as liaison between the Committee and the Administration. Each organization in the college is entitled to one representative on the Committee. In addition, any student who is interested in the dance program and is willing to help is welcomed as a member.

The president for the school year 1947-1948 was Harold Greene. Highlights of the season were the Harvest Dance, Homecoming Ball, Valentine Ball, and the May Dance.



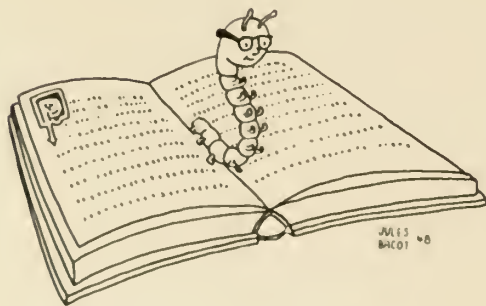
First Row: Jean DeMars, Louise Terrace, Norma Gibbons, Martha Saxon, Flossie Kerves, Theresa Wade.
Second Row: Jay Paulsen, Linney Keever, Betty Leonard, Barbara Seckinger, Lourdine Carter, Betty Graham, Betty Hecker, Betty Anne Miller, Billean Evans.
Third Row: John Lewis, Hal Greene, Shirley Jones, Anne Williams, Marguerite Laird, Paulette Hendricks, Betty Pitts, Ruth Allen, Frank Rizza.
Fourth Row: Charles Stewart, Jimmy Tootle, Mr. Crider, Wally Richards, Bob Dimmick, Bill Wynn, Mr. Dabney, Robert Wilson, Harry Snipes, Ernest Holley, Clifford Clarke.





*First Row, Left to Right: Robert Melson, Nancy Levington, Arthur Chandler,
Second Row: Robert Porter, Dean W. Orson Beecher, Charles Johnson, James Carter and Joseph Killorin.*

THE GREAT BOOKS SEMINAR



Every other Wednesday afternoon at 4:30, the Great Books Seminar meets in the Faculty Room of the Armstrong Building with Dean W. Orson Beecher, moderator, to discuss one of the hundred great books of all times.

The purpose of the Seminar is to stimulate thought through a critical analysis of each book in turn; thus members are afforded an opportunity to familiarize themselves with the great books and at the same time to air personal convictions and do some original thinking.

Rufus Nightingale served as secretary in charge of all arrangements.

D
E
L
T
A

C
H
I



MARTHA BOONE



BETTY GILBERT



CAROLYN GROSS



MARY McGRATH



JOANNE KANDEL



LILLIS KELLY



BETTY ANN MILLER



THERESA WADE



BETTY HECKER



PHILIPPA KANDEL



HELEN ANDREWS



JEAN DEMARS



MARY FULTON



MOIRA FOGARTY

A T B



SARA
NICHOLS

MARTHA
LITTLEFIELD

IRIS
GIGNELLIAT

DOROTHY
DEVERE

BETTY
PIERCE

LOLLY
SOLANA



KITTY
SLATER

CAROLYN
ROYCE

LUCY
CHAMBERS

SHIRLEY
JONES

DOROTHY
CASON

MISSY FRANCES
MASTERS



JEAN
WEATHERS

MARTHA
NORMAN

PEGGY
WORRELL

JOAN
HEALY

DOROTHY
STEGIN

PAULATT
HENDRIX

ALPHA TAU BETA



FRESHMAN KING AND QUEEN

Clark Blanton and Geraldine Sieg were crowned Freshman King and Queen at the annual Homecoming Dance by Jack Kiley, last year's Freshman King.

The court consisted of Joanne Kandel, Shirley Jones, Kitty Slater, Dot Stegin, Bernie Kramer, Tony Fogarty, John Peters, and James Doolan.







HOMECOMING

Homecoming at Armstrong Junior College is the big annual event at which alumni are welcomed back, old friendships renewed, and reminiscences exchanged. This year it was held Monday, December 22.

The first event of a full day was a parade in which all college organizations entered floats. The parade started in front of the Armstrong Building, proceeded down Bull Street to Broughton, and back. An engraved

silver cup was presented to Delta Chi for the winning float. Later in the afternoon a reception was held in the lobby of the Armstrong Building in honor of the alumni. Faculty advisors for Homecoming and alumni officers made up the receiving line. The lobby and adjoining rooms were decorated in the Christmas motif.

At 8:15 the Armstrong Junior College basketball team defeated the Paris Island Marines at the Savannah High School Gymnasium. After the game every one rushed back for the big semi-

formal Christmas Ball which was held in Jenkins Hall from 9:30 to 11:30. Music was furnished by the Merry-makers. Coronation of the Freshman King and Queen took place immediately following intermission.

The 1947 Homecoming at A. J. C. will be long remembered as a delightful and highly successful day.

SAVANNAH PLAYHOUSE

The Savannah Playhouse of Armstrong Junior College was re-opened in September, 1947, after five years of inactivity during the war. The membership of the Playhouse consists of students of Armstrong Junior College and citizens of Savannah.

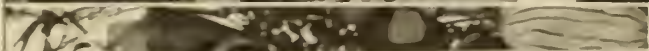
As a first step in getting Playhouse activities under way, the stage in Jenkins Hall was completely reorganized and greatly improved. The acquisition of several essential items of equipment including tools, lights, floor-covering, and backdrops, facilitated the staging of plays, while drapes, carpeting, and a new seating arrangement added to the appearance and comfort of the house.





The Playhouse season was opened with a very successful presentation of *My Sister Eileen*, followed by *Winterset* as the mid-year production, and *The Importance of Being Earnest* in the Spring.





SPORTS



bob melson



Seated, Left to Right: Coach Torrie, Program Director; Jeff Perse, Mgr. Scholars; Robert Wilson, Mgr. Eager Beavers; Baron Haag, Mgr. Terrapins; Ronald Varn, Intramural Mgr. Standing: Bob Dimmick, Mgr. 'Gators; Cameron Mixon, Mgr. Loafers.

INTRAMURAL BOARDS

The intramural program at Armstrong was carried out under the direction of Coach Carmen Torrie and Mrs. Christine Minnix of the Physical Education Department. The two intramural boards directed the course of all sports which did not involve outside competition. At the end of the year the winning teams were rewarded for their outstanding achievements.

The Boy's Intramural Board was composed of the intramural manager, Ronald Varn; Robert Wilson, manager of the Eager Beavers; Baron Haag, manager of the Terrapins, Bob Dimmick, manager of the Gators; Cameron Mixon, manager of the Loafers, and Jeff Perse, manager of the Scholars.

The Girl's Intramural Board was composed of Linney Keever, the intramural manager; Mary Patterson, manager of the Co-Eds; Lillis Kelly, manager of the Glamazons; Carolyn Royce, manager of the Rebels, and Verna Walsh, manager of the Spinners.

During the fall quarter the sports offered were touch football, ping pong, and tennis. In the winter quarter the main sport was basketball. For the spring period swimming, tennis, and paddle tennis were offered.

This program has proved very successful since there were over 200 students participating in the athletic events.



Mary Patterson, Mgr. Co-Eds; Linney Keever, Intramural Mgr.; Verna Walsh, Mgr. Spinners; Mrs. Minnix, Program Director.



EAGER BEAVERS

*Kneeling, Left to Right: Med-
din, Holley, Stemer, Beale,
Tunno.*

*Second Row: Hoffman, Al-
fieris, DeLettre, McDaniels,
Colcock.*

*Third Row: Paulsen, Corley,
McDonald, Tootle, Stewart.*

LOAFERS

*First Row, Left to Right:
Mixon, Cooley, Walden,
Clark, Harney, Collins.*

*Second Row: Silver, Fallin,
Helmy, Simms.*

Third Row: Knight, Thomas.



'GATORS

*First Row, Left to Right:
Dickey, Kelly, Barker, Rich-
ards, Dimmick, McDuffie,
Allen.*

*Second Row: Kitchens, Bell,
Ownes, Berry, Webster, Reed,
Crane, Paddison, Bourne,
Stewart, Snipes.*

Not in Picture: Marks.





SCHOLARS

First Row, Left to Right: Doolan, Peters, Bonitace, Leonard.

Second Row: Madison, Ware, Fogarty, Grittin, McCracken, Logan, Finocchiaro, Murphy.

Not in Picture: Spillane, Saseen, Burnett.

TERRAPINS

First Row, Left to Right: Heller, Slotin, Laird, Godbold, Blanton, Baker, Clanton, Davis.

Second Row: Conneft, Carroll, Leaf, Bridges, Hopkins, Magee, Harmon.

Third Row: Crider (faculty advisor), Fogarty, Stevenson, McGarvey, Williams, Paine, Adams, Fogarty.

Fourth Row: Parrish, Cobb, Kiley, Fonts, Smith, Hecker, Harmon, Haag, Holmen.

Not in Picture: Price, Ferguson, Kramer, Hudson Paletsky.



CO-EDS

First Row, Left to Right: Broderick, Skeadas, Patterson, Carter, Sullivan, Peters, Jose-love.

Second Row: Cooper, Parker, Graham, Gignilliat, Hall, Frazier, Stelljes.

Third Row: Conway, Hat-trick, Pearson, Lankenau, Gibbons, Seckinger, Rice, Graham, Williams.

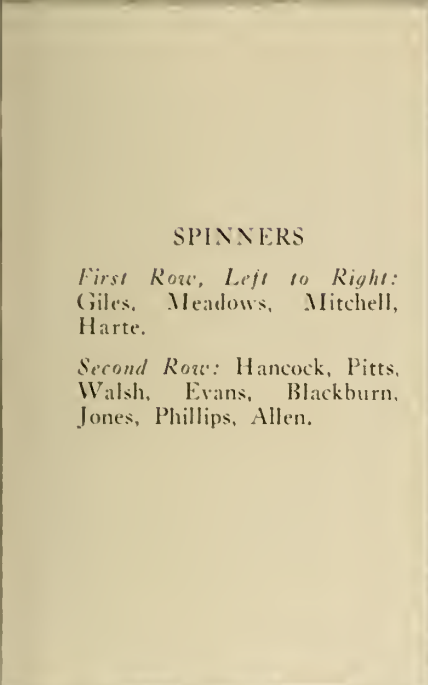


GLAMAZONS

First Row, Left to Right: Kelly, Hecker, Keever, Hendrix, Fretwell, Seig.

Second Row: Miller, Wade, Leonard, McGrath, Gross, DeBeruff, Slater, Stegin.

Third Row: Blocker, Kandel, Fulton, Kerves, Jones, Worrrell, Kimberly, Boone, Kandel.



SPINNERS

First Row, Left to Right: Giles, Meadows, Mitchell, Harte.

Second Row: Hancock, Pitts, Walsh, Evans, Blackburn, Jones, Phillips, Allen.



REBELS

First Row, Left to Right: Edwards, Weathers, Healy, Norman, Lumley, Nichols, Ryan.

Second Row: Scott, Ryan, Fogarty, Williams, Chambers, Littlefield, Royce, Sojourner, Pierce.





First Row: Tommy Ridgway, Aubrey Hayes, Walter Campbell, Earl Sires, "Chick" McGarvey, Johnny Peters, Bobby Gunn, Tony Fogarty.
Second Row: Robert Ware, Bernie Kramer, Jack Kiley, B. L. Tillman, Charlie Eitel, Bill Wilson, "Bud" Fontz, Pete Palefsky, Adolph McCracken.

COACH CARMEN TORRIE

'GEECHEES

"CHICK" MCGARVEY, *Captain*



1947-48 SCHEDULE

| A.J.C. | OPPOSITION | |
|--------|---------------------------------------|----|
| 64 | Georgia Military College | 37 |
| 47 | Brewton Parker Institute | 63 |
| 46 | Parris Island Marines | 36 |
| 62 | Middle Georgia College | 48 |
| 47 | Brewton Parker Institute | 44 |
| 36 | Parris Island Marines | 51 |
| 41 | South Georgia College | 44 |
| 78 | Orlando Junior College | 20 |
| 78 | Georgia Military College | 64 |
| 50 | Jacksonville Junior College | 45 |
| 40 | Spartanburg Junior College | 61 |
| 43 | Gardner Webb Junior College | 41 |
| 53 | Belmont Abbey | 30 |
| 46 | Middle Georgia College | 63 |
| 38 | Orlando Junior College | 31 |
| 43 | South Georgia College | 35 |
| 63 | Jacksonville Junior College | 62 |
| 54 | Georgia Military College | 30 |

TOURNAMENT

| | | |
|----|------------------------------------|----|
| 58 | Brewton Parker Institute | 48 |
| 55 | West Georgia College | 51 |



CHEERLEADERS

Betty Hecker, Lolly Solana,
Dot Stegin, Lenny Keever,
Kitty Slater.





Seated: Cameron Mixon, Jack Kiley, Bud Fonts.

Standing: Buddy Bergin, Chick McGarvey, Harry Snipes, Ralph Snipes, Coach Torrie, Bob Harmon, John Adams.

“A” CLUB

The “A” Club is composed of those boys at Armstrong who have earned a letter in sports. First appearing on the campus as the Monogram Club, it was reorganized towards the end of the year 1946 under its present name.



BEAUTY



melson — 47
Rm 47



GEECHEE BEAUTY QUEEN

KITTY SLATER

Terrapin Club Sponsor



DOROTHY STEGIN
JO ANN LUMLEY

SHIRLEY JONES
MOIRA FOGARTY



BEST HAIR DYE

ADS

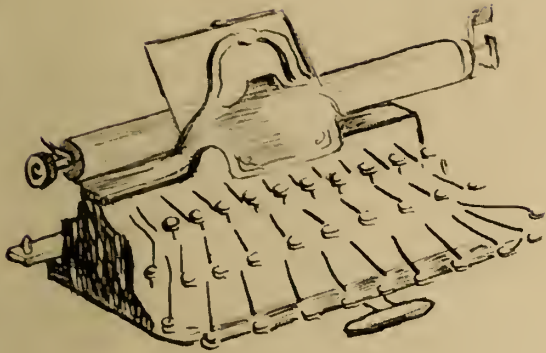


Instantaneous and
HARMLESS

One Preparation
only

Beware of cheap
and
Worthless Imitations

Three Shades: Black, Brown, & Blonde



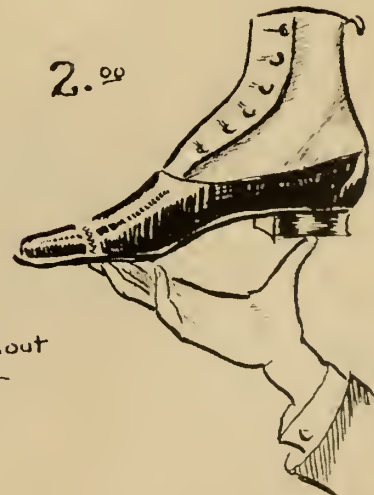
BEST & CHEAPEST FOOD

"FRAME FOOD" DIET

for INFANTS, INVALIDS, & EVERYBODY

POSITIVELY FORCES
LUXURIANT HAIR
WHISKERS
AND
MOUSTACHIOS

to grow heavily in a few weeks, without
injury to the skin, and no matter
what age



bob melson



GREETINGS TO

ARMSTRONG JUNIOR COLLEGE



Savannah's Own Institution of Higher Learning

Savannah is proud of your contribution to the community



**The Mayor and Aldermen
of The City of Savannah**

Compliments

of



Southern States
IRON ROOFING COMPANY



General Offices: Savannah, Ga.

Factory-Branch Warehouses Throughout the South

**JEFFERSON STANDARD'S
PROGRESSIVE SPECIAL**

For Forward Looking Young Men and Women Offers:

1. A systematic plan of savings
2. Financial Security
3. Cash or loan values for emergencies
4. Policy fully paid up in 20 years
5. It is insurance you do not have to die to get
6. Low rates for young men and women

Let us give you full particulars.

J. A. WEBSTER, SR., Manager

906-12 Liberty National Bank Building

Telephone: 2-1183 and 2-1184

Savannah, Georgia

Jefferson Standard Life Insurance Company

Home Office

Greensboro, N. C.

A Daily Newspaper

Is literally "THE VOICE OF AMERICA."

It is a great written history, bringing to you in bright and interesting form all of the happenings of note in the world.

There is no way — except through the daily perusal of local, state, national news, to be thoroughly informed.

Savannah Morning News
SAVANNAH EVENING PRESS

Compliments of

THE SAVANNAH HOTEL



The Savannah

Coca-Cola
TRADE MARK
REG. U.S. PAT. OFF.

Bottling Company

Dine

Dance



Romance

at

THE SAPPHIRE ROOM

Compliments

of

THE HOTEL DESOTO





"THE OLD FORT"

Part of Fort Wayne, on East Bay Street, dating from Colonial days
and standing as defender of Savannah until acquired in 1850
by one of the oldest gas companies in America

(Savannah Gas Company)

*Romantic As Yesterday
Modern As Tomorrow*

A SOUND EDUCATION GUARANTEES YOUR FUTURE
SOUND INSURANCE IS OUR GUARANTEE TO YOU!

MERCER
INSURANCE AGENCY, INC.
"Personal Service"

7 East Bay Street

Savannah, Georgia

(Next to Customs House)

Auto — Fire — Burglary — Bonds — Workman's Compensation

Compliments
of

**Savannah Tobacco
Company**

Distributors of
Hav-A-Tampa Cigars

18 Barnard Street

Phone 3-3083

Savannah's
"All American"
Station



W D A R

1400 on Your Dial

A B C

Best Wishes

Good Luck!



Happy Sailing!

“The House of Fashion”



MORRIS LEVY'S



SHOP FOR WOMEN

HARRIS

The Hub

Style Center for Men



In Savannah

Since 1896

Compliments

of

W F R P



Compliments
of
CONEY ISLAND

Harry Andris

Compliments
of a
FRIEND



Compliments
of
Ben's Men & Boys Shop

"Home of 10 Pay Plan"
225 West Broughton Street
Savannah, Georgia

MANGEL'S

Feminine Apparel



15 Broughton Street, East
Savannah, Georgia

Compliments
of
**THE INCOMPARABLE
BARCLAY'S**

Selling Loans Renting

Sweat & Brown

REALTORS

14 Bryan Street, East
Savannah, Georgia

Hartmann Luggage
Leather Goods . . . Perfumes
Ladies' Handbags . . . Gifts
Costume Jewelry . . . Toys

Joe Price Inc.

2 STORES

5 Congress St., W. 252 Bull St.
Phone 3-9612 Phone 3-8045
Savannah, Georgia

Compliments
of
SILVER'S



Compliments
of

CLARKE & PAPY

22 Drayton Street

Compliments
of the

SPORTS SHOP

2510 Abercorn Street

Compliments
of

S. H. KRESS & CO.

5-10-25c Variety Store

ALNUTT MUSIC CO.

240 Broughton Street, West

Savannah, Georgia

PENNEY'S

STYLE and VALUE
CENTER OF THE
COASTAL EMPIRE

Compliments
of

WILSON MOTOR CO.

(Your Packard Dealer)
Bryan and Abercorn Streets

Security Storage Co.

Bay and Abercorn Streets

Local and Long Listance Moving
Storage — Packing — Shipping

Phone 7161

Compliments
of

BO PEEPS



Compliments of

DERST BAKING COMPANY



Worrill-Dudley School of Speech

808½ Drayton Street

THERAPUS
SPEECH SPECIALISTS AND
PSYCHOTHERAPISTS
NORMAL SPEECH AND VOICE FOR
THE DEAF, LIP READING
CORRECTION OF SPEECH DEFECTS
DICTION
VOICE BUILDING

Savannah, Georgia

●
F I N E S

Where Fashions

Make Their Debut
●

The Georgia Pine Tree

Its giant trunks supply the lumber that goes into homes and the beams that give strength to many ships that sail the seven seas.

Its sap provides the turpentine and resin that are used in the making of a myriad of products, and its cellulose and lignin challenge the imagination and skills of the world's laboratories.

Its strong fibers furnish the raw material for a great and growing pulp and paper industry whose plants, devoted to the manufacture of paper, paper board, bags and boxes, have brought new job opportunities and increased purchasing power to many communities in Georgia and throughout the Southeast.

This tree that does so much for so many needs only protection from "fire—the forests' prime evil"—to assure its continued contribution to the economic welfare of Georgia and her people.



Union Bag and Paper Corporation

Savannah

Georgia

Compliments
of
Schulte United, Inc.

•

SHOP AND SAVE AT
K A R P F ' S

•
Savannah's Most Popular
"Women's Shop"

Compliments
of
Yachum & Yachum

•

Compliments
of
Dearing Chevrolet Co.

•

Compliments
of
Globe Shoe Co.

•

Compliments
of
Mingledorff's, Inc.

•

Compliments
of
**J. C. Lewis
Motor Company, Inc.**
Savannah, Georgia

Compliments
of the
COLLEGE NOOK

•

Compliments
of

A. C. Oelshig & Sons

FLORISTS

Bull Street at Oglethorpe Avenue
Savannah, Georgia

Solomon's Pharmacy

337 Bull Street

Phone 8169

Best Wishes From

L A N G ' S

3 BIG STORES IN ONE

221-223-225 West Broad Street

The Stamp & Stencil Co.

Rubber Stamps, Stencils, Seals

Bay and Montgomery Streets

Dial 2-1006

LIVE ELECTRICALLY

and

ENJOY THE DIFFERENCE



**SAVANNAH
ELECTRIC AND
POWER CO.**

M O R R I S

L E V Y ' S



SAVANNAH'S FINEST

Store for Men

Compliments of

SOUTHERN DAIRIES



Compliments of

COASTAL NEON CO.

CARL E. RAWLS

Outfitters to Students of Today, Yesterday, and to the
Students in the Bygone 68 Years

LEOPOLD ADLER CO.

SAVANNAH'S LEADING AND LARGEST
DEPARTMENT STORE

NEW PENNSYLVANIA TIRES
all have Long-Wearing Dual-Purpose Tread!

CAR AND TRUCK OWNERS, we have just received a shipment of sturdy, new Pennsylvania Tires. Before you buy tires, be sure to see our new Pennsylvanias, the extra-mileage tire with the cool-running Dual-Purpose tread patented by Pennsylvania.

Phone 3-7692

P. O. Box 1844

LAWING TIRE & RUBBER CO.

Automotive Supplies . . . Electrical Appliances
Savannah's Largest Recapping Plant

702-708-712 East Liberty Street

Savannah, Georgia

MARK THE OCCASION

with a

Photo Reflex Portrait

Let our unique Mirror Camera
be your expert recorder
of all memorable occasions!
Photo Reflex Studio . . . Floor

IN SAVANNAH IT'S
Levy's
ABERCORN - BROUGHTON

Serving Savannah

Since 1868

Hogan's

Broughton and Barnard

Streets

HOME FURNISHING COMPANY

SAVANNAH, GEORGIA

Carroll L. Williams, President

10 West Bay Street — Phone 8452

120 West Broad Street — Phone 3-5861

STUBBS HARDWARE COMPANY

121-123 WEST CONGRESS STREET — SAVANNAH, GA.

Phone 5149



SPORTING GOODS

Authorized Distributors
MIMEOGRAPH

THE REVIEW CO.

2-6 West Bay Street
Savannah, Georgia

ANNUALS
of
DISTINCTION

Bowen, Long & Young, Inc.
Decatur, Georgia





