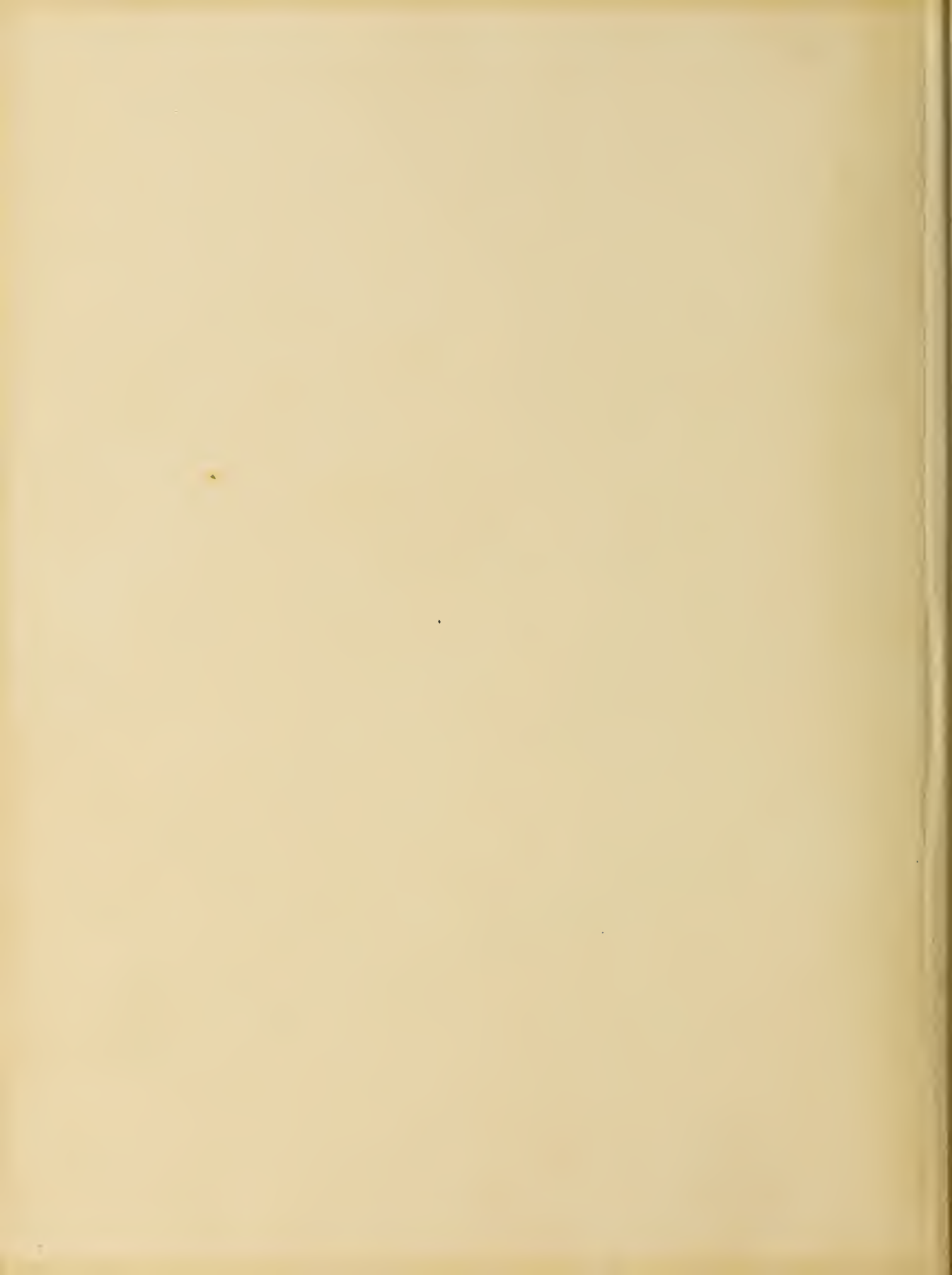



1949

AJG

Geechee





Digitized by the Internet Archive
in 2012 with funding from
LYRASIS Members and Sloan Foundation

<http://archive.org/details/geechee1949arms>



Remember .



Hours of Study





Hours of Pleasure

Hours of Classes





Hours we Treasure

as presented in the

Hunt Building



Gamble Hall



Jenkins Hall



Lane Building



1949 'Geehee



ARMSTRONG BUILDING

of ARMSTRONG JUNIOR COLLEGE

Savannah

Georgia

Alma Mater

Alma Mater, through the ages,
Singing thy undying fame,
Will thy sons and daughters cherish
And defend thy golden name.
To each heart thy noble story
And thy calm and stately grace
Herald thine immortal glory.
Armstrong, hail, all hail to thee!

Alma Mater, those before us
Left thine honor great and strong;
We who follow take their banner,
Raise it with a fighting song.
Consecrated is thy teaching,
Sacred is thy marble height,
Glorious thy spirit reaching
Ever upward to the light!



Arthur
M.
Gignilliat

Dedication

THE 1949 'GEECHEE IS GRATEFULLY DEDICATED IN BEHALF OF THE ARMSTRONG STUDENTS TO ARTHUR M. GIGNILLIAT, REGISTRAR, COUNSELOR, TEACHER AND FRIEND. HIS QUIET HUMOR, HIS UNFAILING PATIENCE, HIS LONG SERVICE TO THE COLLEGE, WHICH HAS BEEN INTERRUPTED SINCE 1935 ONLY BY HIS SERVICE TO HIS COUNTRY—ALL MARK HIM AS A MAN OF WHOM ARMSTRONG IS PROUD.



Mr. Herschel V. Jenkins
Chairman

ARMSTRONG *College* COMMISSION



Mr. William Murphey
Vice-Chairman



Mr. Fred Shearouse



Morris Bernstein



Fred Wessels



Mrs. W. F. Robertson



Mr. G. Philip Morgan



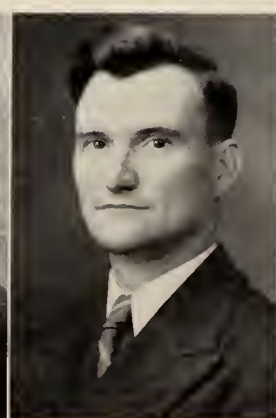
Mayor Olin F. Fulmer
Ex-Officio



Judge J. P. Houlihan
Ex-Officio



Mr. Ormonde B. Strong
Ex-Officio



Mr. Jack J. Cook
Ex-Officio



Mr. W. L. Mingledorff
Ex-Officio



The
FACULTY

FOREMAN M. HAWES

A.B., Mercer University
M.S., Emory University
President

ARTHUR M. GIGNILLIAT

A.B., M.A., University of Georgia
Registrar

W. ORSON BEECHER

A.B., M.A., Emory University
M.A., University of Georgia
Dean of Students



HAWES

A D M I N I S T R A T I O N



GIGNILLIAT



BEECHER



Berg

Blakeley

Brannen

Campbell

Casper

Cone

JOSEPH W. BERG—

*B.S. University of Georgia
Instructor in Mathematics*

CLIFTON CAMPBELL—

*A.B., M.A. Emory University
Instructor in Political Science*

LAURA BLAKELEY—

*B.S. Peabody College, M.A. Peabody College
Instructor in Mathematics*

ARTHUR W. CASPER—

*A.B. Beloit College, Graduate Study, University of Wisconsin
Instructor in Engineering*

FRANCIS BRANNEN—

*B.S. Chemical Engineering, Georgia School of Technology
Business Manager*

ANNA CONE—

*A.B. University of Georgia
Secretary to the Dean*



Crollly

H. Davis

L. Davis

Douglas

Fay

Goodwin

ANNE CROLLY—

*A.B. Ursuline College
Assistant Registrar*

HARRIET DAVIS—

*A.B. University of North Carolina
Publicity—Instructor in Journalism*

LAMAR DAVIS—

*B.S. University of South Carolina
Instructor in Commerce*

LILLIAN DOUGLAS—

*B.S. Birmingham Southern College, M.S. Emory University
Instructor in Chemistry*

DR. MARTHA FAY—

*B.S. Rockford College, M.S., Ph.D., University of Illinois
Instructor in Biology*

NOMA LEE GOODWIN—

*A.B., M.A. Duke University
Instructor in English*

F A C U L T Y

JOSEPH I. KILLORIN—
A.B. St. John's College
Instructor in History

MARJORIE MOSLEY—
*Associate in Finance and Commerce, Armstrong
Junior College*
Secretary

MARGARET S. LUBS—
*B.Mus. Converse College, A.B. University of Georgia,
M.A. Columbia University*
Instructor in French

HINCKLEY A. MURPHY—
*A.B. Vanderbilt University, graduate study Colum-
bia University*
Instructor in English

DOROTHY MORRIS—
B.S. University of Tennessee
Instructor of Physical Education

MRS. JOSIE NELSON—
Banks Secretarial School
Secretary

Killorin

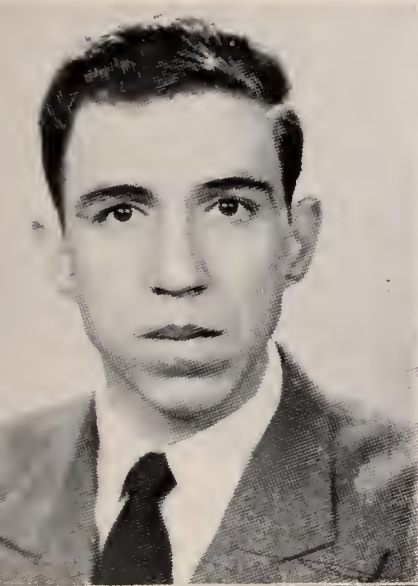
Lubs

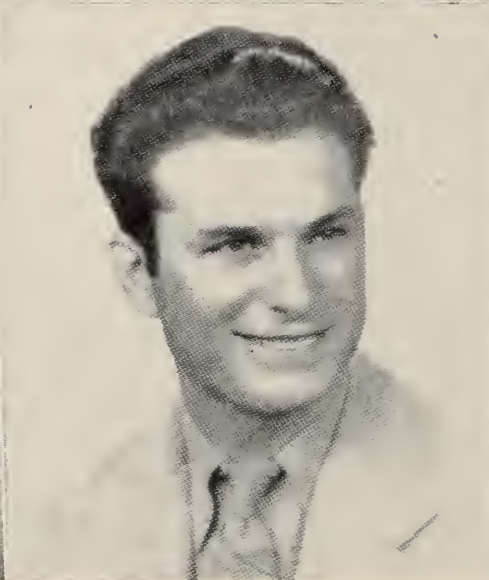
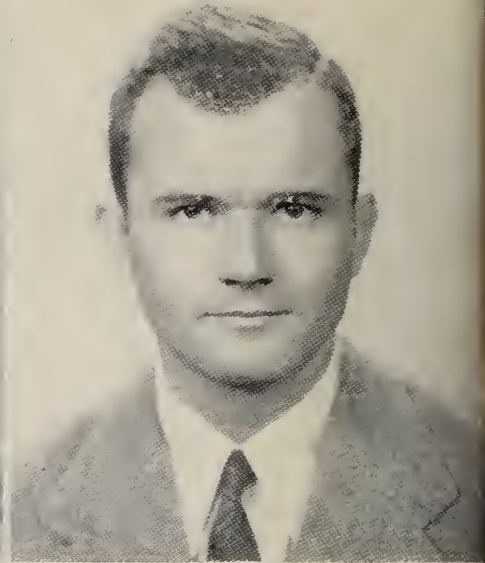
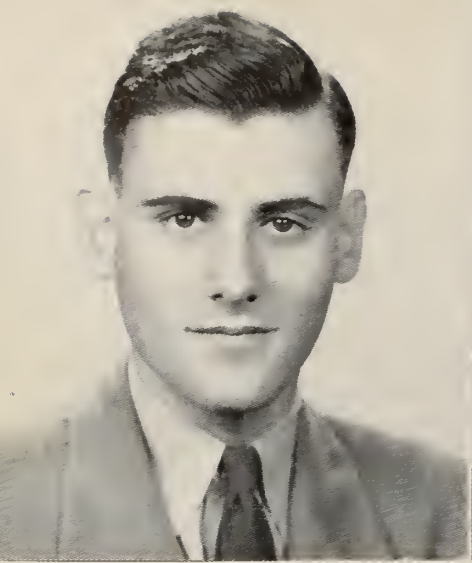
Morris

Mosley

Murphy

Nelson





Pollitzer

Stephens

Thomas

Thompson

Torrie

Wolfe

WILLIAM S. POLLITZER—
A.B., M.A. *Emory University*
Instructor in Biology

DOROTHY THOMPSON—
A.B. *Monmouth College*, M.A. *Northwestern University*,
Social Work at Milwaukee School of Social Work,
Certificate of Psychiatric Social Work, Western Reserve University
Instructor in Psychology

MRS. MARGARET F. STEPHENS—
A.B., M.A., LL.B. *University of Georgia*, *Certificate from the Sorbonne in Paris*
Instructor in English

CARMEN TORRIE—
B.S. in *Physical Education, Concord College*, M.S. *University of Tennessee*
Instructor in Physical Education

CARLSON R. THOMAS—
A.B., *University of Richmond*, M.A. *University of North Carolina*
Director of Savannah Playhouse

HELEN WOLFE—
B.S. *Columbia University*, *Graduate Study, Teachers College, Columbia University*
Instructor in Home Economics



Howard



Zahn



Zilch

F A C U L T Y

CHARLES B. HOWARD—

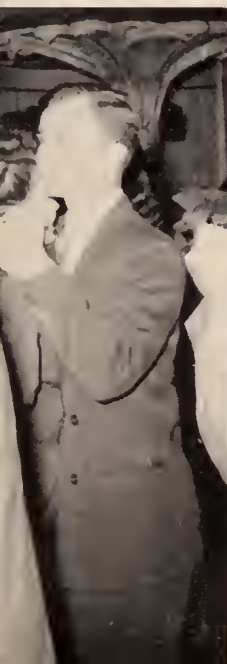
*B.S. Troy State Teachers College, M.A. George Peabody College for Teachers
Instructor in English*

LOUIS J. ZAHN—

*A.B. Emory University, M.A. Emory University, Certificate from the University of Mexico
Instructor in Spanish and German*

MRS. GLADYS ZILCH—

*Special Courses in Typewriting and Shorthand at University of Michigan and University of Florida, Diploma from Gregg College (Normal School)
Instructor in Commerce*





L. ROSS CUMMINS

Director

B.S. Yale University; Graduate Study, University
of Connecticut

Community

GUIDANCE CENTER

MRS. MARTHA D. GREGSON

*Secretary and
Psychometric Clerk*

MRS. DIXIE MARKS DICKEY

Secretary

MRS. FRANCES S. O'TUEL

Vocational Counselor

A.B. University of Georgia

HENRIETTA KICKLIGHTER

Psychological Examiner

B.S. University of Georgia





The

SOPHOMORES



MARK STEADMAN
President



MARY CONWAY
Vice-President

SOPHOMORE OFFICERS

PEGGY WORRELL
Secretary



JOHN ALLRED
Treasurer





BERNIE KRAMER



SHIRLEY JONES



DAVID BERGRIN



MARY CONWAY
*Most Outstanding
Soph*

Outstanding SOPHOMORES



CATHERINE LANKENAU
*Most Outstanding
Soph*



MURRAY
SILVER

ROSS STEMER
JEAN HANCOCK

MARK STEADMAN

PEGGY WORRELL

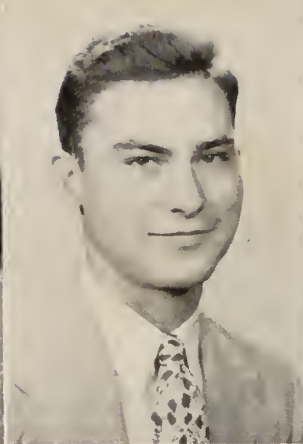




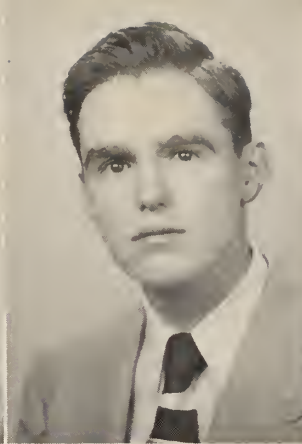
Alberino



Allen



Allred



Aycock



Baker

JOSEPH ALBERINO

RUTH ALLEN

Liberal Arts — Beta
Lambda, Student Senate,
Dance Committee, Interim
Committee '48, Alpha
Lambda Sigma, Co-eds,
Mercury Staff.

JOHN ALLRED

Engineering — Treas-
urer of Sophomore Class,
American Business Club
scholarship, Armstrong
Engineering Society.

JAMES BAKER

Liberal Arts — Terra-
pin Club.

WILLIAM L. AYCOCK

Sophomores of

DAN BARBOT

Engineering — Arm-
strong Engineering Soci-
ety, Loafers.

**GEORGE WESLEY
BARTHELMESS**

Liberal Arts — Eager
Beavers, Fraternity X.

ROBERT BENET
Liberal Arts.

ROBERT BARKER
Liberal Arts.

JOE BADAL

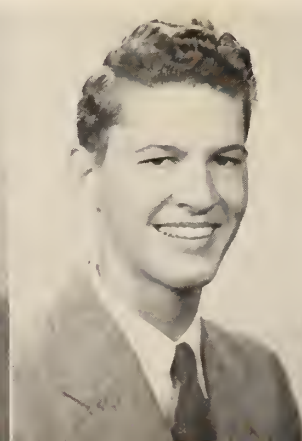
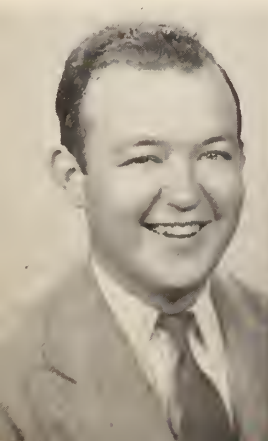
Barbot

Barker

Barthelmess

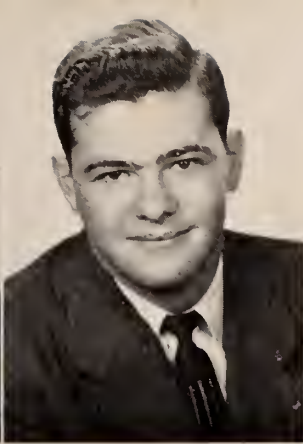
Badal

Benet





Benton



Bergrin



Berry



Bisset



Blanton

DAVID BERGRIN

Liberal Arts — Student Senate, Terrapin Club, 'GEECHEE Photography editor, "Hits and Fits," Dance Committee, Riding Club, Alpha Lambda Sigma, *Inkwell* staff, 'GEECHEE Photography Editor.

CHARLES BISSET

CLARK BLANTON

Liberal Arts—Terrapin Club, "Hits and Fits," Freshman king '48, Student Senate, Interim chairman, *Inkwell* business manager '48, Dance Committee.

JOHN BERRY

DANIEL BENTON

NINETEEN HUNDRED AND '49

WALTER BLATNER

Engineering — President of Armstrong Engineering Society '48-'49, Permanent Dean's List, Loafers.

SIDNEY BOONE

THOMAS BOSWELL
Science.

NICK BREWER
Liberal Arts.

EMMET BRIDGES

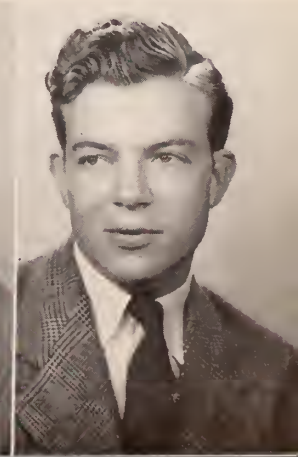
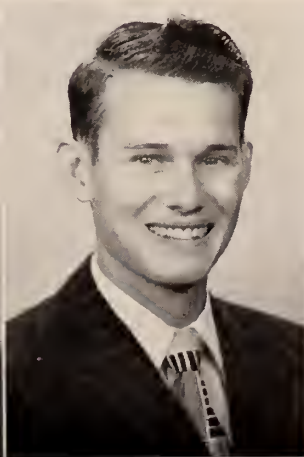
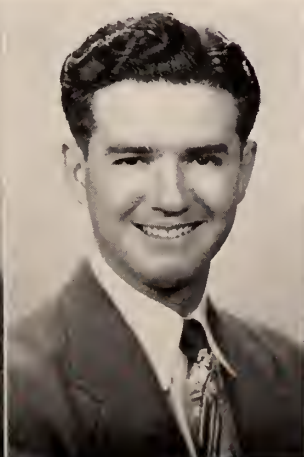
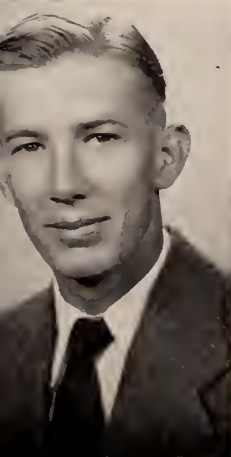
Blatner

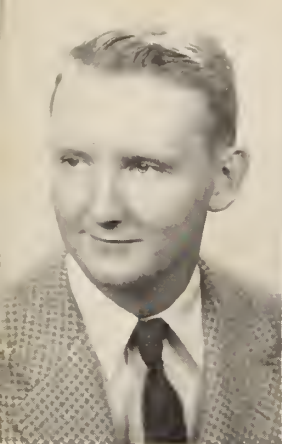
Boone

Boswell

Brewer

Bridges

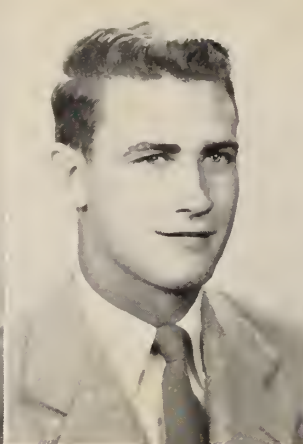




Brower



Browne



Campbell



Caphton



Chambers

MADISON BROWER

Liberal Arts—President of Drama Club, Savannah Playhouse Planning Committee, Music Club.

WALTER CAMPBELL

Commerce — Varsity Basketball Team '48-'49, Terrapin Club.

LUCY CHAMBERS

Liberal Arts — Alpha Tau Beta.

LESLIE BROWNE

Liberal Arts.

DONALD CAPHTON

Sophomores of

SAM CHANCE

Liberal Arts.

RICHARD CLARKE

NICK CLARKE

Engineering.

PAUL CHIVINGTON

Liberal Arts.

CLIFFORD CLARKE

Liberal Arts—President of Freshman Class '48, Student Forum, Debating Team, Homecoming Committee, Vice-President of Student Senate, Secretary of Student Senate, Dance Committee, Dean's List, Music Club, Armstrong Veterans' Social Club '48, Alpha Lambda Sigma.

Chance

Chivington

R. Clarke

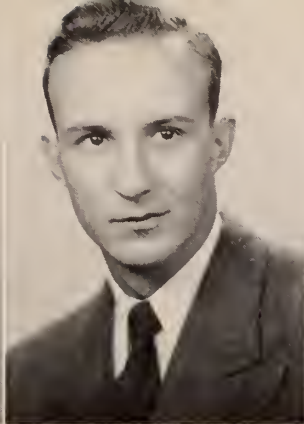
N. Clarke

C. Clarke

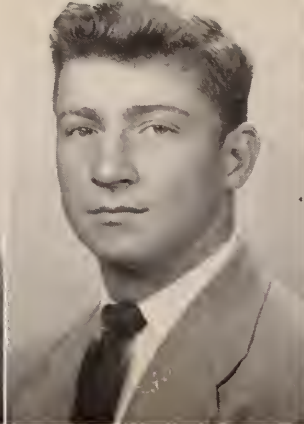




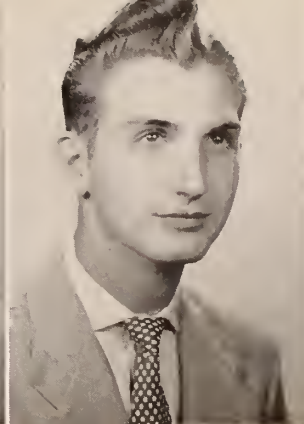
Coffer



Colcock



Colley



Collins



Cone

HENRY COFFER
Liberal Arts.

WILLIAM COLCOCK
Liberal Arts.

CHARLES COLLINS

BILL COLLEY
Liberal Arts—Terrapin
Club, "Hits and Fits."

JAMES CONE

NINETEEN HUNDRED AND '49

MARY CONWAY
Liberal Arts — Vice-
President of Sophomore
Class, Student Senate, Beta
Lambda, Women's Athletic
Association, Manager of
Co-eds, President of Dance
Committee, French Club,
Glee Club, Alpha Lambda
Sigma, Mercury Staff,
'GEECHEE Staff, Perma-
nent Dean's List, Out-
standing Sophomore.

Conway

WILLIAM COPELAND
Liberal Arts.

CHARLES CURRY

JERRY CORDELL
Science.

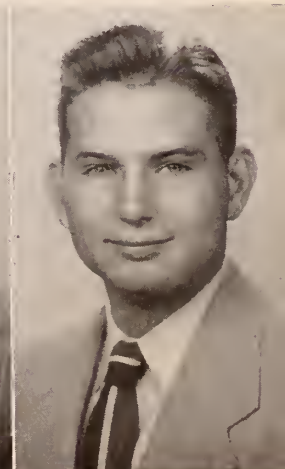
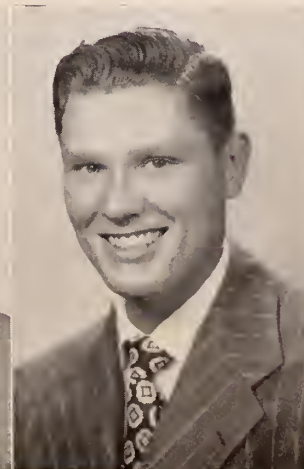
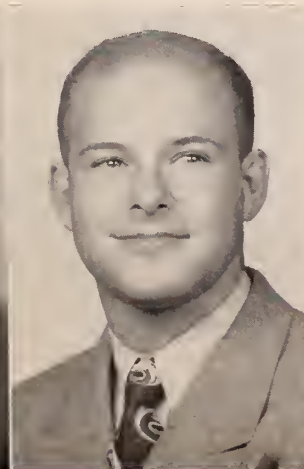
DeVAUGHN DAVIS
Science—Armstrong En-
gineering Society, Scholars.

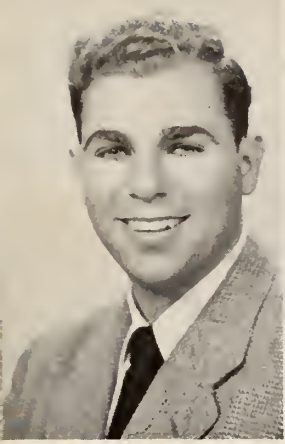
Copeland

Cordell

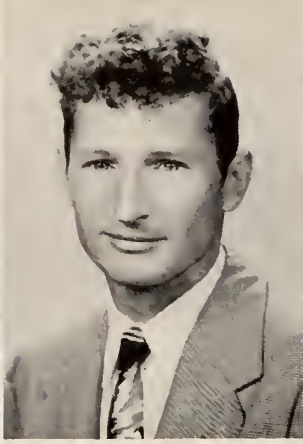
Curry

Davis





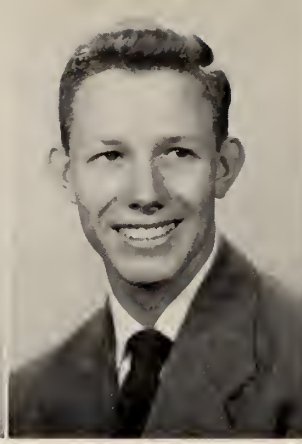
Dinerman



A. Dugger



W. Dugger



Eitel



Epting

JACK DINERMAN
Science.

ARTHUR DUGGER

WILLIAM DUGGER
Engineering.

CHARLES EITEL
Engineering—Treasurer
of Terrapin Club '48,
Dance Committee, Varsity
Basketball Team '48-'49.

EUGENE EPTING
Liberal Arts.

Sophomores of

MARTHA NORMAN
FAWCETT—Home Economics—'GEECHEE Staff,
Rebels '47, Treasurer of
Alpha Tau Beta '47, Beta
Lambda, Dance Committee,
Woman's Athletic Association,
Student Senate, Slick Chicks '48,
Permanent Dean's List, Commission
Scholarship.

Fawcett

JUANITA FORAN

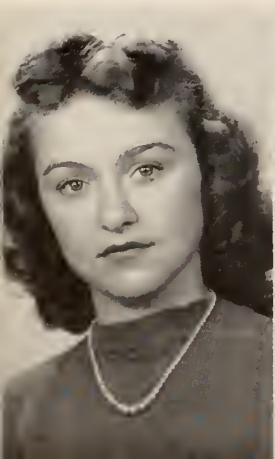
SARAH FORD
Science — Dance Committee,
Co-eds '48.

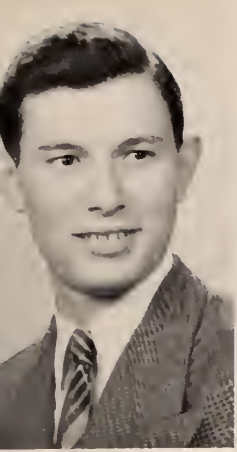
Ford

ALTON FOREHAND
Liberal Arts.

JANE FORTSON

Fortson





Fountain



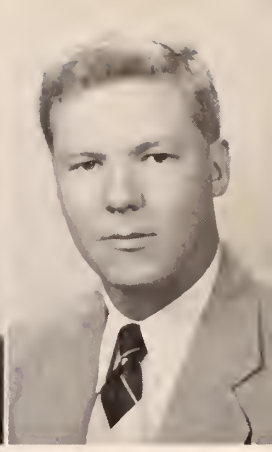
Gay



Gibbons



Glasscock



Green

DAVID GAY

Engineering — Eager Beavers, Dance Committee, Armstrong Engineering Society.

NORMA GIBBONS

Liberal Arts — Dance Committee, Co-eds '47, Slick Chicks '48-'49, 'GEE-CHEE Staff, Alpha Tau Beta, Permanent Dean's List, Woman's Athletic Association, Student Senate.

ROBERT GLASSCOCK

JAMES GREEN

EDWIN FOUNTAIN

Liberal Arts — Drama Club, Savannah Playhouse, Student Senate, Student Forum, French Club.

NINETEEN HUNDRED AND '49

HUNDLEY GRIFFITH

Liberal Arts — Eager Beavers, Fraternity X.

DOUGLAS GUILD

Liberal Arts.

BUDDY GREENWAIDE

CAROLYN GROSS

Liberal Arts — Vice-President of Delta Chi '48, Glamazons '47, Slick Chicks '48-'49, Riding Club, 'GEECHEE Staff.

JEAN HANCOCK

Liberal Arts—Assistant Editor of *Inkwell*, Dance Committee, Riding Club, Delta Chi, Permanent Dean's List, Beta Lambda, Spinners '47, Glamazons '48-'49, Science Club, Outstanding Sophomore.

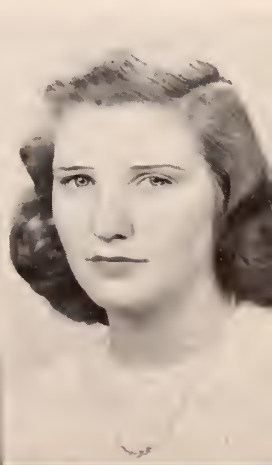
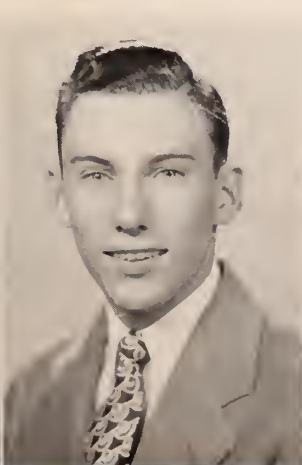
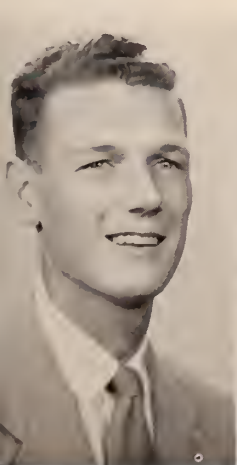
Greenwaide

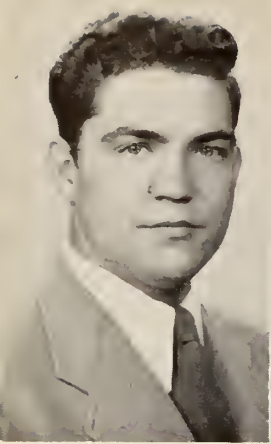
Griffith

Gross

Guild

Hancock





Harman



Harrison



Harte



Healy



H. Hecker

MARY JO HARTE
Liberal Arts — Beta
Lambda.

CARL HARMAN

CARTER HARRISON
Liberal Arts — Eager
Beavers, Permanent Dean's
List.

JOAN HEALY
Liberal Arts — Alpha
Tau Beta (Treasurer '47,
President '48), Art Editor
of 'GEECHEE '48, Rebels
'47, Slick Chicks '48-'49,
Beta Lambda, Dance Com-
mittee, Women's Athletic
Association, Open House
'48, Permanent Dean's List.

HAROLD HECKER
Engineering — Terra-
pin Club.

Sophomores of

BETTY HECKER
Liberal Arts — Dance
Committee, Glamazons '47,
Slick Chicks '48-49, Cheer-
leader, 'GEECHEE Staff,
Varsity Basketball Team,
Secretary of Delta Chi,
Riding Club, Women's
Athletic Association, In-
tramural Board.

WENDELL HESTER

JOHN HOLEC

DONALD HILTZ
Science.

WILLIAM JACKSON

B. Hecker

Hester

Hiltz

Holec

Jackson





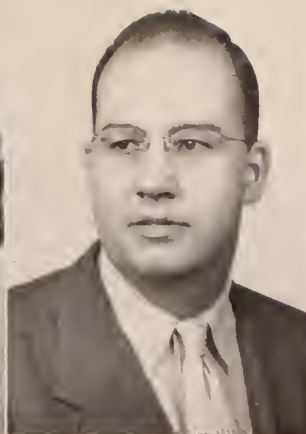
Johnson



B. Jones



S. Jones



W. Jones



Keller

EMMA LOU JOHNSON
Science—Beta Lambda.

BERT JONES
Science — President of Freshman Class '48-49, President of Scholars '48-'49, Vice-President of Student Senate '48-'49, Varsity Basketball Team '49, Freshman King.

SHIRLEY JONES
Liberal Arts—Secretary of Freshman Class, Secretary of Alpha Tau Beta, Dance Committee, Interim Committee, 'GEECHEE Staff, Glamazons '47, Slick Chicks '48-'49, Permanent Dean's List, Alpha Lambda Sigma, Lucas Scholarship, Outstanding Sophomore.

GENE KELLER
Engineering — Terrapin Club, Varsity Basketball Team.

WILLIAM JONES

NINETEEN HUNDRED AND '49

LILLIS KELLY
Commerce — Varsity Basketball Team, Delta Chi, Manager of Glamazons, Intramural Board.

FLOSSIE KERVES
Applied Arts — Alpha Lambda Sigma, 'GEECHEE Staff, Glamazons, Student Forum, Homecoming Committee, Permanent Dean's List.

ANNE KIMBERLY
Applied Arts — Alpha Lambda Sigma, Student Forum (Secretary '47), 'GEECHEE Business Staff, Homecoming Committee, Glamazons, Permanent Dean's List.

EARL KIRKLEY

RITA LANG
Liberal Arts — French Club, Drama Club, Alpha Lambda Sigma.

Kelly

Kerves

Kimberly

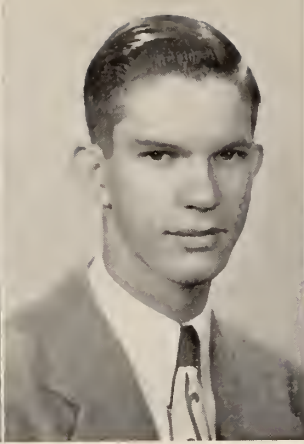
Kirkley

R. Lang

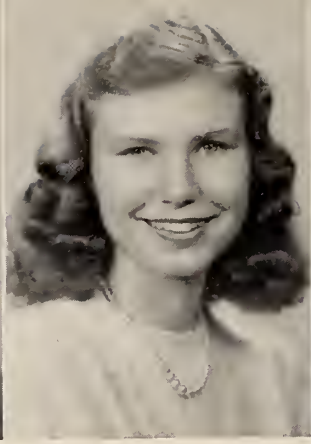




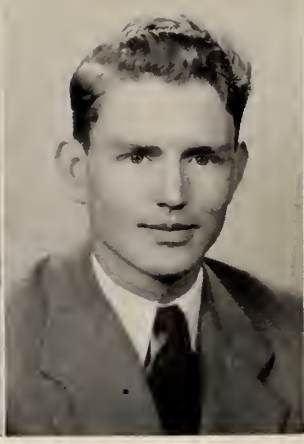
B. Lang



Lanier



Lankenau



Latzak



Logan

BILLY LANG
Science.

ELLISON LANIER
Science.

**CATHERINE LANKE-
NAU** — Liberal Arts —
Editor of 'GEECHEE '49,
Alpha Lambda Sigma, Beta
Lambda (Vice - President
'48, President '49), Co-
eds '48, Slick Chicks '49,
Delta Chi, Women's Ath-
letic Association, Secretary
of Student Senate, Dance
Committee, Riding Club,
Permanent Dean's List,
Outstanding Sophomore.

THOMAS LATZAK
Engineering.

JACK LOGAN

Sophomores of

MAURICE MAGEE
Engineering—Permanent
Dean's List, Alpha Lamb-
da Sigma, Terrapin Club,
Music Club, Dance Com-
mittee, Varsity Basketball
Team, Homecoming Com-
mittee.

ROY MARTIN
Liberal Arts — Perma-
nent Dean's List.

BAXTER McCREERY
Engineering — Arm-
strong Engineering Soci-
ety, *Mercury* Staff, Glee
Club, Debating Team.

RICHARD McDONALD
Liberal Arts—Manager
of Eager Beavers, Arm-
strong Veterans' Social
Club, Intramural Board
'48-'49.

MARY McGRATH
Liberal Arts — Dance
Committee, Glamazons '47,
Slick Chicks '48-'49, Pres-
ident of Delta Chi '48,
Riding Club, *Inkwell*
Staff, Varsity Basketball
Team.

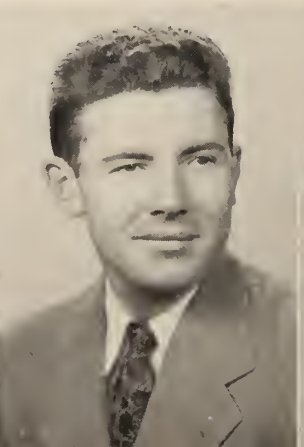
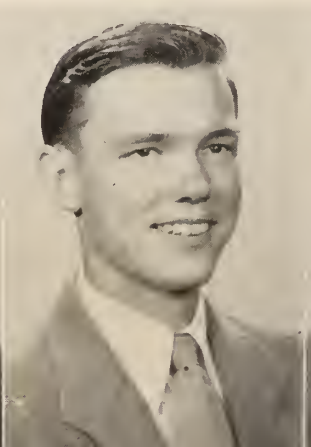
Magee

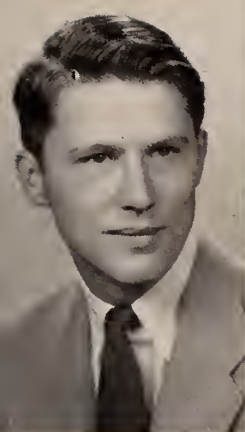
Martin

McCreery

McDonald

McGrath





McGraw



Melaver



Mitchell



Mixon



Morgan

ROBERT McGRAW

MILLICENT MELAVER

Liberal Arts—Editor of *Mercury* '49, *Inkwell* Staff, French Club, Permanent Dean's List, Alpha Lambda Sigma, Student Senate, Co-eds.

WINIFRED MITCHELL

Home Economics—Beta Lambda, Co-eds.

RAY MIXON

Science.

JIMMY MORGAN

Science—Riding Club.

NINETEEN HUNDRED AND '49

LARRY MORRIS

RICHARD MULLINIX

Liberal Arts.

SARAH NICHOLS

Liberal Arts — Treasurer of Alpha Tau Beta '48, Glee Club, Riding Club, Co-eds '47, Glamazon's '48-'49.

NEAL MORRIS

GEORGE NICHOLS

Liberal Arts.

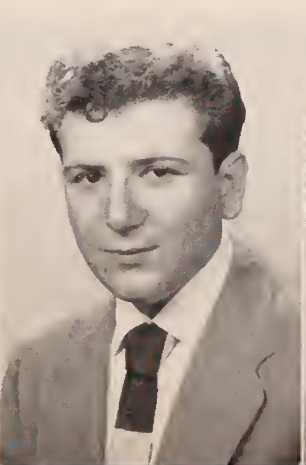
L. Morris

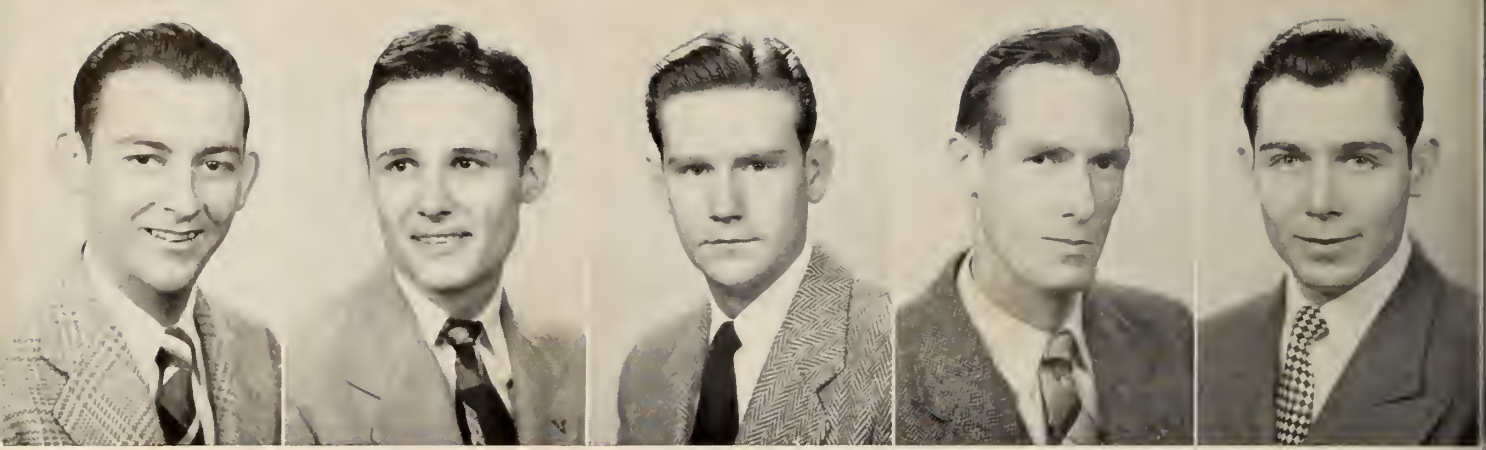
N. Morris

Mullinix

G. Nichols

S. Nichols





Oetgen

Oglesbee

Oglesby

Olson

O'Tuel

JOSEPH OETGEN
Engineering — 'Gators,
Armstrong Engineering
Society.

JOHN OGLESBY
Liberal Arts.

A. L. O'TUEL
Liberal Arts.

JACK OGLESBEE

JOHN OLSON

Sophomores of

GLORIA PERKINS
Home Economics — Al-
pha Tau Beta, Secretary
of Beta Lambda, Dance
Committee, Slick Chicks,
Co-chairman of Homecom-
ing '48.

GEORGE PETOURIS

RAYMOND POWELL
Commerce — Eager
Beavers.

GERALD PITTMAN

HENRY RAHN

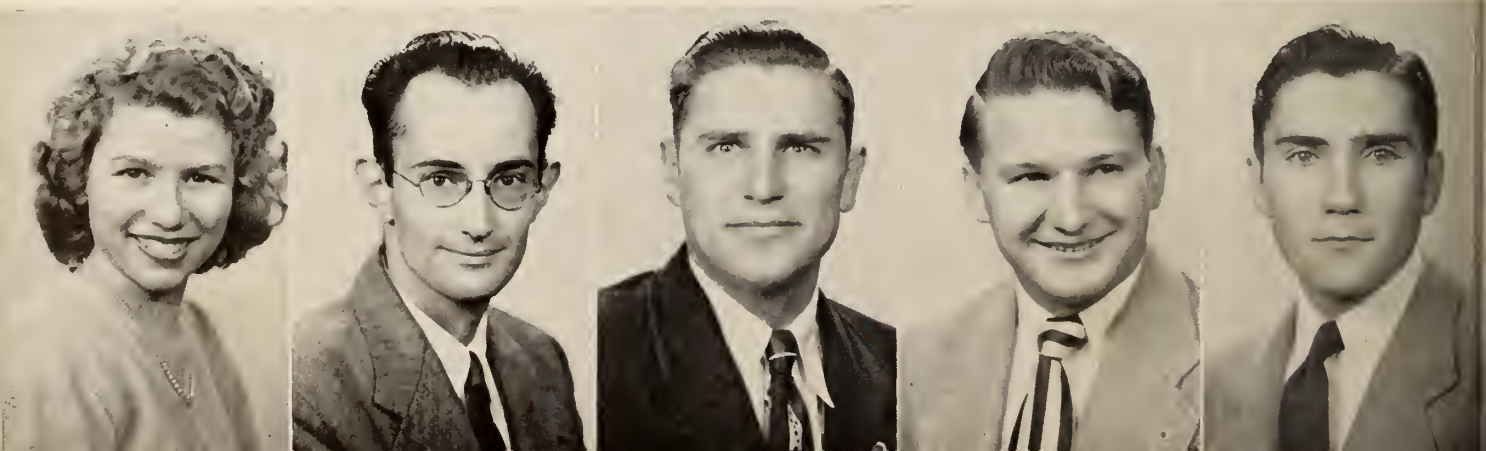
Perkins

Petouris

Pittman

Powell

Rahn





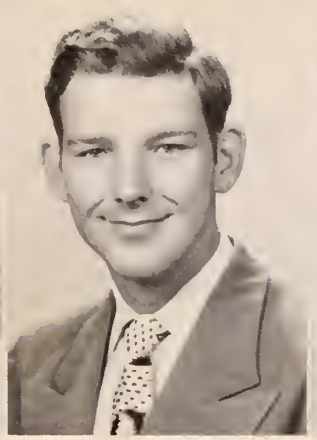
Reid



Register



Rich



Richter



Ridgway

JEANNE REID

ROBERT REGISTER
Science.

ELEANOR RICH
Liberal Arts.

CARL RICHTER

TOMMY RIDGWAY
Liberal Arts — Varsity
Basketball Team.

NINETEEN HUNDRED AND '49

HARRY ROBBINS
Commerce.

BARBARA ROBINSON
Home Economics—Beta
Lambda, Homecoming
Committee.

DAVIS ROGERS
Liberal Arts—News Ed-
itor of *Inkwell*, Terrapin
Club.

LOIS ROSENTHAL
Liberal Arts — Perma-
nent Dean's List, Alpha
Lambda Sigma, *Inkwell*
Staff, Delta Chi, Student
Senate, Glamazons.

LORENZO RUSSELL
Liberal Arts.

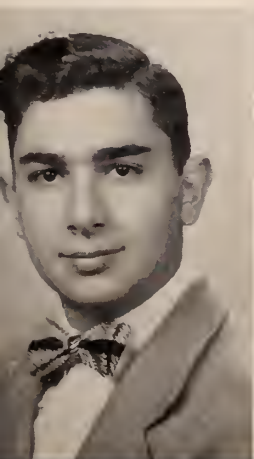
Robbins

Robinson

Rogers

Rosenthal

Russell





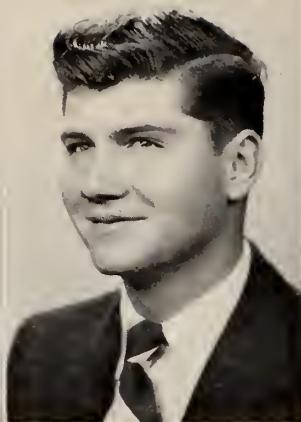
Seigler



T. Shakespeare



K. Shakespeare



Shaw



Sickel

JEANNE SEIGLER
Liberal Arts — Science
Club, Co-eds, Beta Lamb-
da.

KATHRYN SHAKES-
PEARE—Liberal Arts.

MARILYN SICKEL
Science — 'GEECHEE
Staff, Dance Committee,
Science Club, French Club,
Riding Club.

THOMAS SHAKES-
PEARE—Liberal Arts.

RICHARD SHAW

Sophomores of

EDWARD SIEG
Liberal Arts — Savan-
nah Playhouse.

JERRY SIEG
Liberal Arts — 'GEE-
CHEE Staff, Freshman
Queen '47, Glamazons,
Homecoming Committee
'47.

MURRAY SILVER
Liberal Arts — Student
Forum, Debating Team,
Student Senate, Scholars,
Business Manager of 'GEE-
CHEE, Manager of Student
Elections, Outstanding
Sophomore.

CATHERINE SKEADAS
Liberal Arts — Beta
Lambda, Slick Chicks,
Dance Committee, Co-eds
'47.

BILLY SMITH

E. Sieg

J. Sieg

Silver

Skeadas

Smith

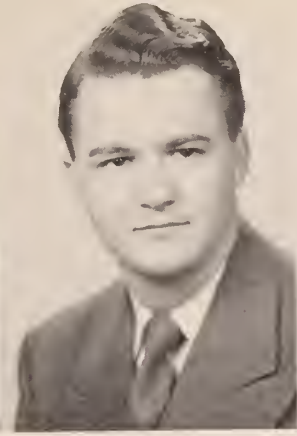




Sojourner



Solana



Sowell



Spillane



Starling

JULIA SOJOURNER
Home Economics—Beta
Lambda, Science Club.

LOLLY SOLANA
Liberal Arts — Cheer-
leader, Alpha Tau Beta
(Vice President '48, Pres-
ident '49), Slick Chicks
'48, Women's Athletic As-
sociation.

TOMMY SPILLANE

HAROLD STARLING

JOHN SOWELL

NINETEEN HUNDRED AND '49

MARK STEADMAN
Liberal Arts — Feature
Editor of *Inkwell* '48, *Mer-
cury* Staff, Science Club,
President of Sophomore
Class '48, President of Stu-
dent Senate, Outstanding
Sophomore.

DOT STEGIN
Commerce—Alpha Tau
Beta, Glamazons, Cheer-
leader, 'GEECHEE Beauty
Queen '49.

GEORGE STEVENSON
Liberal Arts—Terrapin
Club, "Hits and Fits."

ROSS STEMER
Science—Editor of *Ink-
well* '48-'49, 'GEECHEE
Staff, *Mercury* Staff, Eager
Beavers, Alpha Lambda
Sigma, Outstanding Soph-
omore.

BOBBY STROZIER
Liberal Arts—*Mercury*
Staff, Eager Beavers, Sci-
ence Club.

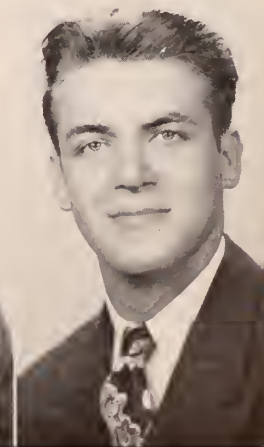
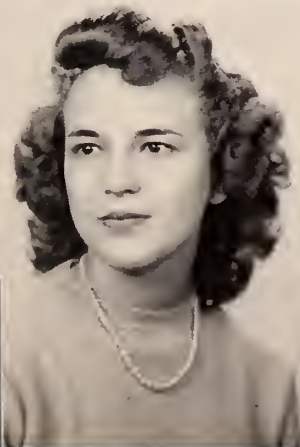
Steadman

Stegin

Stemer

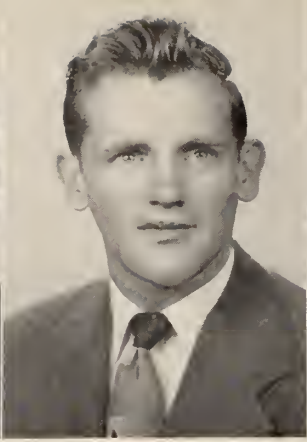
Stevenson

Strozier

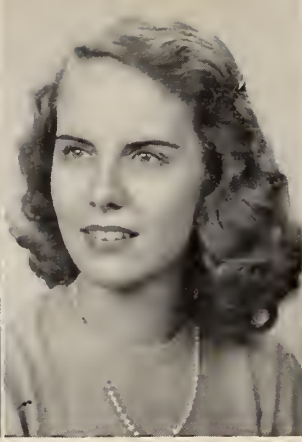




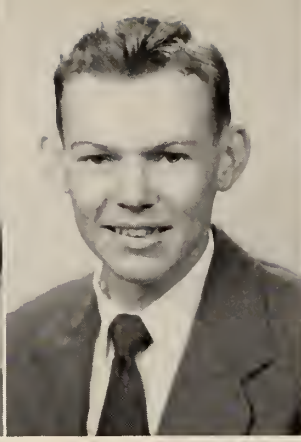
Sullivan



Thomas



Tootle



Tunno



Jane Turner

MARY SULLIVAN

HARRY THOMAS
Liberal Arts—President
of Loafers, Intramural
Board.

CAROLYN TOOTLE
Science — Dance Com-
mittee, Delta Chi, Science
Club, Riding Club, Slick
Chicks '48.

DUNWOODY TUNNO
Liberal Arts.

JANE TURNER
Science—Co-eds.

Sophomores of

JIMMY TURNER

BERNARD WALKER
Liberal Arts.

JOE WARD
Engineering — Terrapin
Club, Treasurer of Dance
Committee, Armstrong
Veterans' Social Club.

MARY JANE WARREN

ARTHUR WHITFIELD
Liberal Arts—President
of Terrapin Club '49,
Sports Editor of *Inkwell*,
Student Senate.

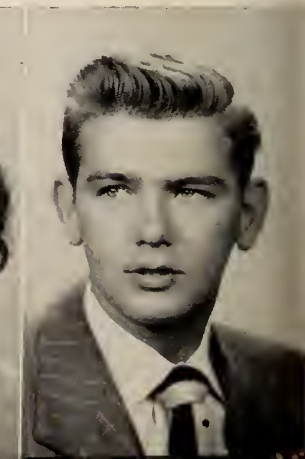
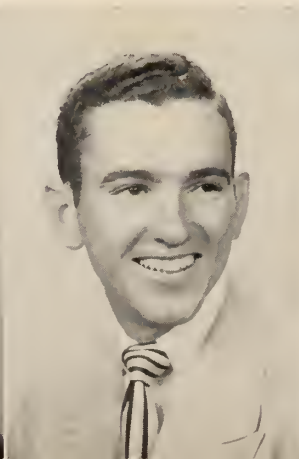
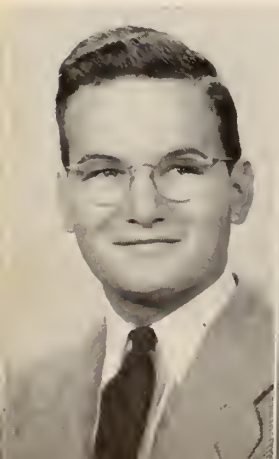
Jimmy Turner

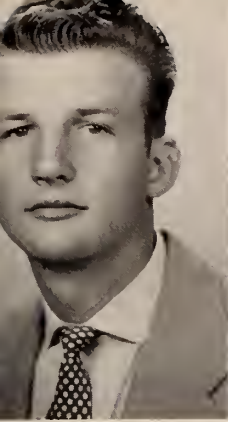
Walker

Ward

Warren

Whitfield

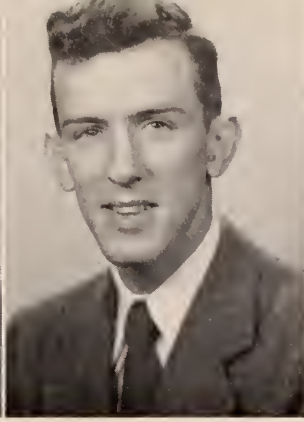




B. Wilson



H. Wilson



Wood



Woods



Worrell

BILLY WILSON

HARRY WILSON

CYRUS WOOD

Liberal Arts — Fraternity X, Savannah Playhouse.

BILLY WOODS

Liberal Arts — Loafers, Fraternity X, Dance Committee, 'GEECHEE Staff.

PEGGY WORRELL

Liberal Arts — Alpha Tau Beta, Vice-President of Freshman Class, Secretary of Sophomore Class, Dance Committee, Glamazon '48, Vice-President of Slick Chicks '49, Riding Club, Interim Committee '48, Outstanding Sophomore.

NINETEEN HUNDRED AND '49

RAYMOND WORRILL

STANLEY YARBER

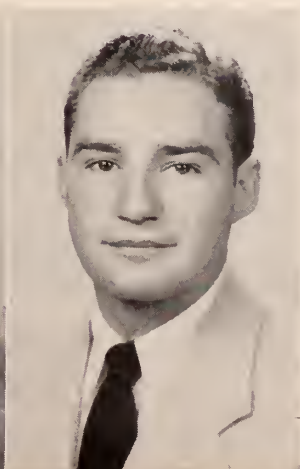
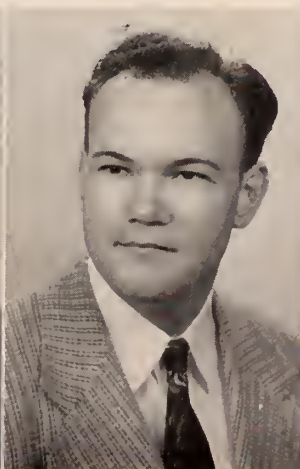
BERNIE KRAMER

Liberal Arts — Basketball Team '48-'49, Captain '49, Terrapin Club, A Club, Armstrong Veterans Social Club '48.

Worrill

Yarber

Kramer







The
FRESHMEN



Freshman KING AND QUEEN

When the smoke from the annual Freshman King and Queen election cleared, there emerged from the student body as handsome a King and Queen as we have ever seen. Bert Jones donned the crown of King and started his reign with Queen Ann Brown.

Royalties in the court were Harriet Parker, Claire Zipplies, Miriam Kessler, Beverly Moore, Tony Heffernan, Tommy Dillon, Jimmy McGrath, Charlie Guyer.





BERT JONES
President

TOMMY DILLON
Vice-President

FRESHMEN OFFICERS

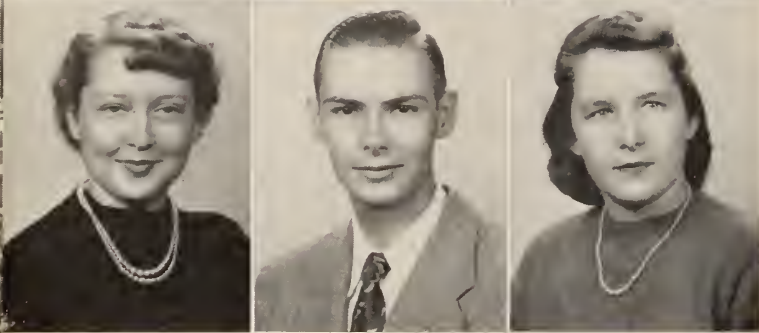
ANN BROWN
Secretary

BOB HORNSTEIN
Treasurer





ADAMS, LUTRECIA
ALEXANDER, BARBARA
ALL, NAN LOU



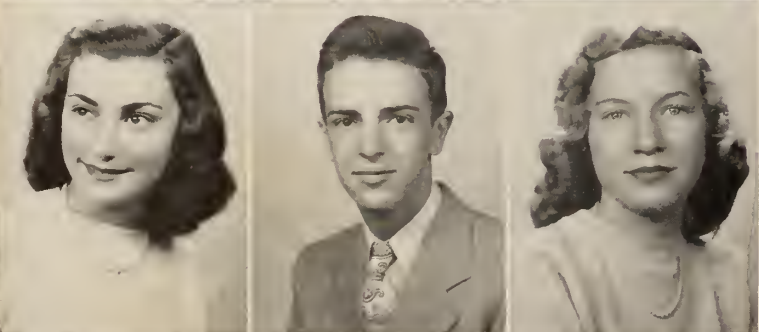
ANDERSON, MARYSE
ARNSDORFF, JACK, JR.
BAILEY, MARY



BARBOT, EMMA JO
BARBOT, LOIS JEAN
BARNHARDT, MARY JANE



BELL, CHARLES
BERRY, CLIFFORD
BLOCKER, MARGARET



BOBLASKY, MARIANNE
BOLIN, EDGAR
BOONE, MARY



BREWTON, GENE
BRIGHT, RUTH
BROWN, ANN

Freshmen

Freshmen

BRUNSKILL, ELIZABETH
BUTLER, ELIZABETH
CHENEY, MIGNONNE



COATSWORTH, MARTHA
COCKE, ANDREW
COLLINS, CECELIA



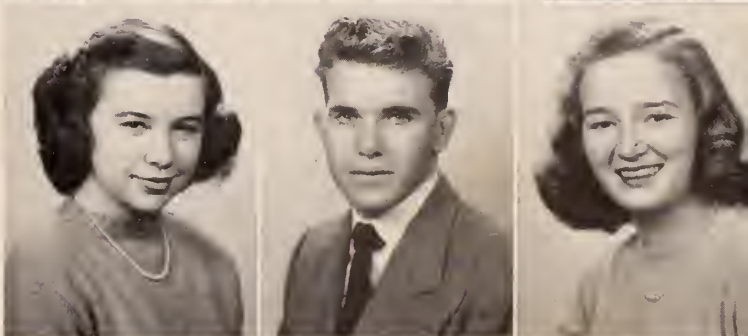
CONE, DORIS
CONNER, JOAN
COOLIDGE, BILL



CORDRAY, MARY
CRONIN, AMELIA
DENNY, LEON



DE WITT, EVELYN
DILLON, THOMAS
DU BOIS, BARBARA

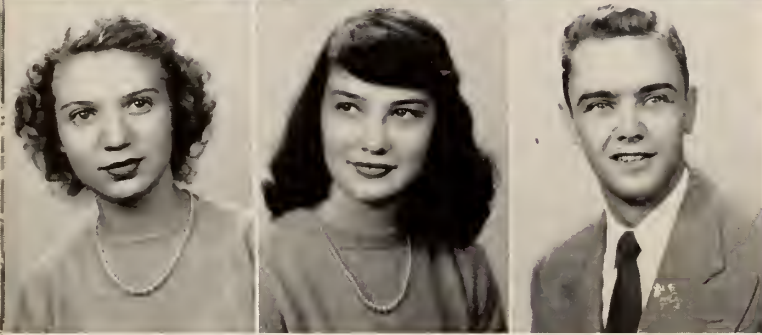


DURRENCE, MERRILL
EITEL, ANN
ELLIOTT, BETTY ANN

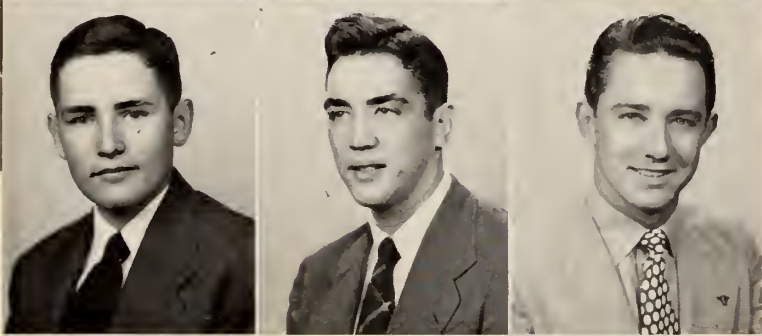




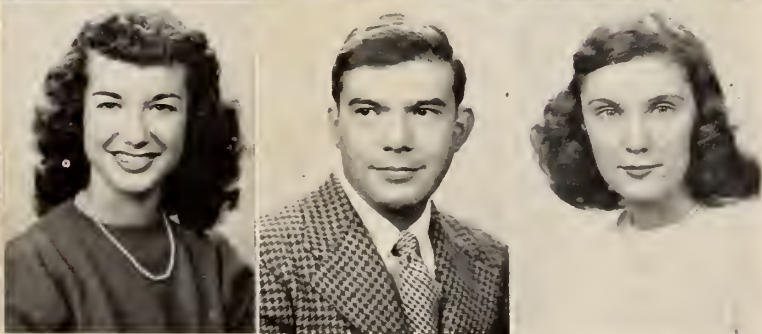
EVANS, ARTHUR
FLOYD, PICOT
FRASER, HUGH



GERKEN, JEANNE
GIVENS, LULA
GUYER, CHARLES



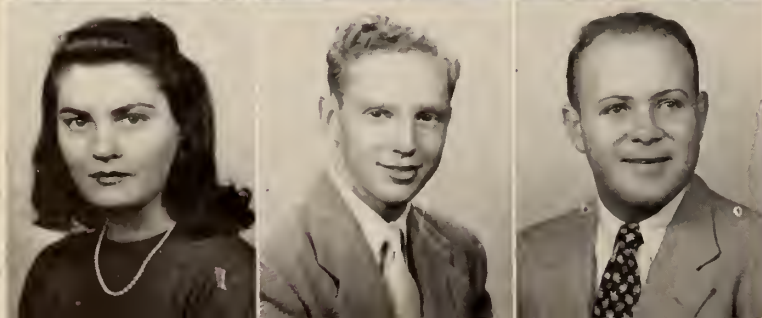
HARVEY, HOWARD
HAYES, AUBREY
HEFFERNAN, TONY



HENDRIX, MILDRED
HENRY, GRADY
HESTER, JEAN



HOBBS, SARAH
HORNING, JAMES
HORNSTEIN, ROBERT



HUNNICUTT, BYLEE
JAMES, DONALD
JOHNSON, BOB

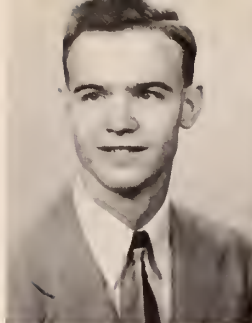
Freshmen

Freshmen

JOHNSON, GENE

JOHNSTON, ED

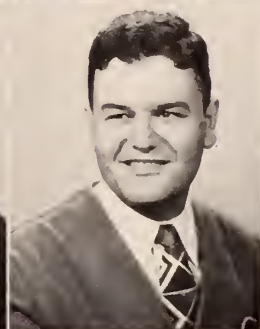
KESSLER, MIRIAM



KNOX, THOMAS

KRAFT, WILLIAM

KROBALASKI, HARRIET



LANG, BILLY

LASKY, WILLIAM

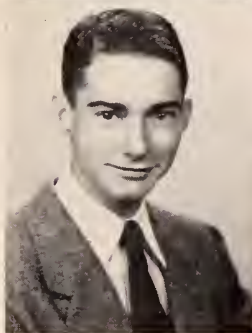
LAWSON, SARA



LIMEHOUSE, EDWARD

LOMEL, MARY ANN

LOUKS, LUCILLE



MARTIN, CLEMENTINE

MASON, BETTY ROSE

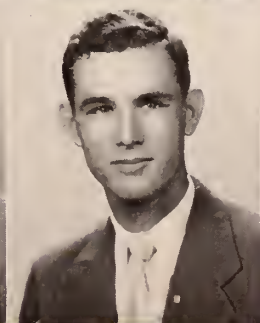
McCALLISTER, HELEN

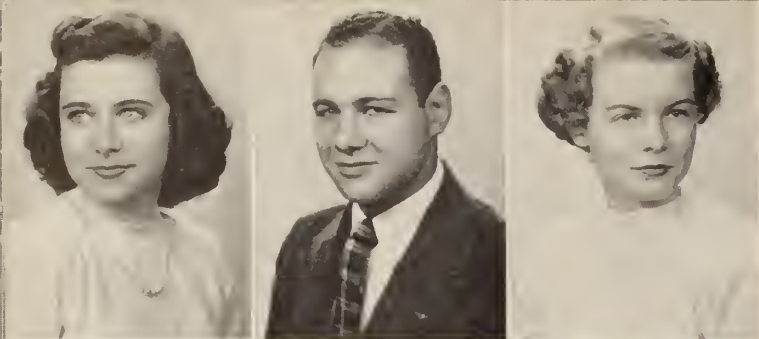


McCREERY, CATHERINE

McGRATH, JAMES

McKENZIE, BILL J.

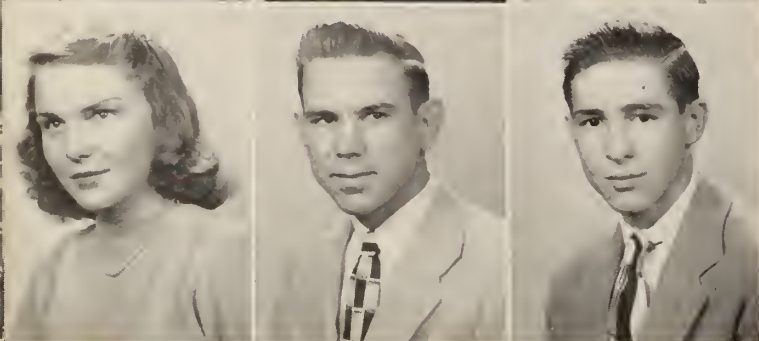




McMILLAN, NANCY

MEYER, BERT

MORGAN, ANN



MOORE, BEVERLY

MORRISON, ARTHUR

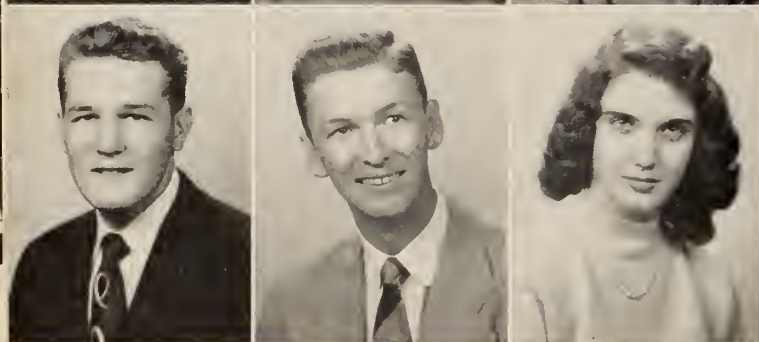
NEASE, EDWARD



NOBLE, NOVELLA

OGLESBEE, MIRIAM

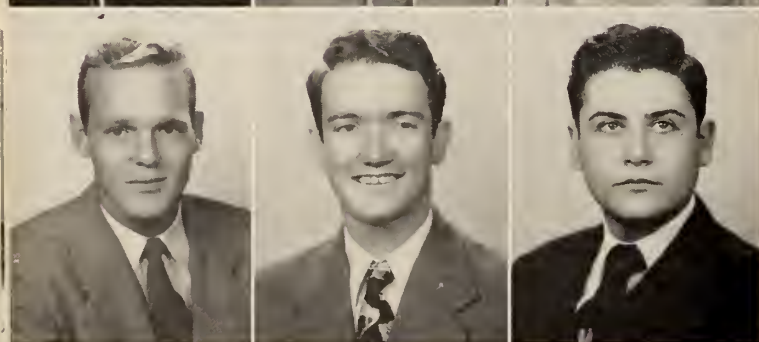
OGLESBY, ROBERT



O'HAYER, WILLIAM

O'NEAL, JAMES

PARKER, HARRIET



PERKINS, ESTON

PIERCE, BERNARD

PIKE, BENJAMIN



PLATOCK, GERALD

PLUMB, ANNE E.

POLLACK, GERALD

Freshmen

Freshmen

POWELL, JULIA

POWELL, OLIVER

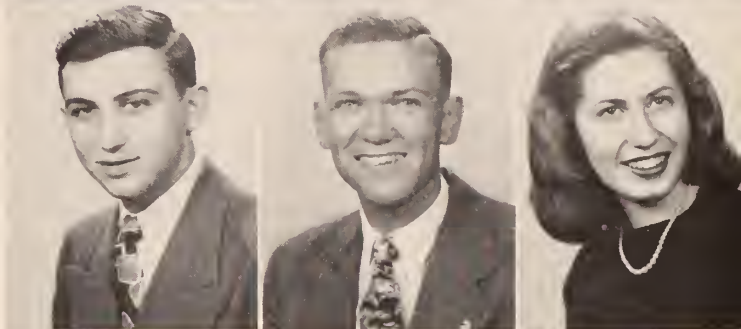
RABHAN, RIETTE



RABINOWITZ, HERMAN

RAY, JAMES, JR.

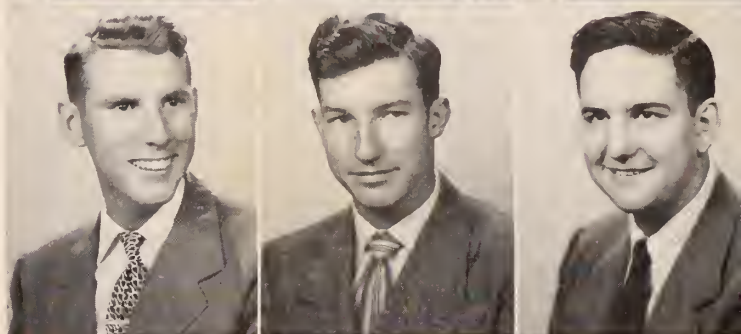
REISMAN, HANNAH



RICHARDSON, WILLIAM

RICKS, EDWARD

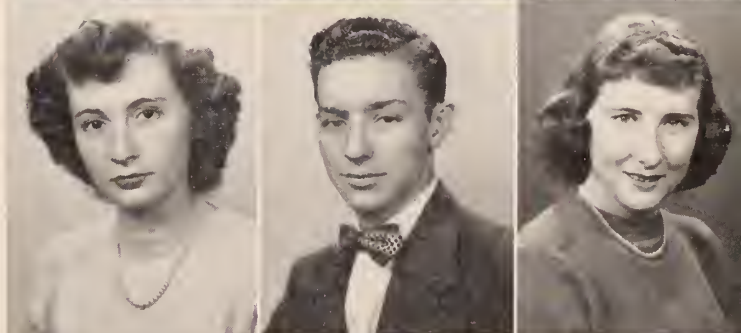
RIZZA, ROBERT



ROBINSON, SARA

ROGERS, LEE ROY, JR.

SCHLEUNING, HARRIET



SCHWARZ, EVA

SHAW, ADA

SINEATH, FRED, JR.



SLUDER, LOUIS

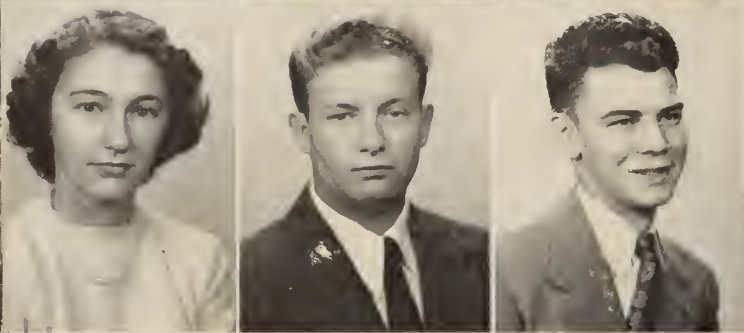
SMITH, SUE ELIZABETH

STAPLETON, FRANK

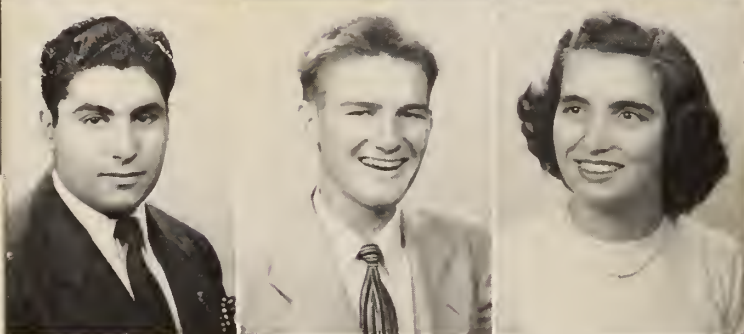




STEARMAN, MARGARET
STRONG, EVE
SULLIVAN, JOSEPH



TAYLOR, GLENDA
THAGGARD, JIMMIE
THIEN, BERNARD



THOMAS, FAYES
THOMPSON, CLYDE
ULIVO, MONICA



VANN, SARA
WALSH, BETTY
WHELAN, GORDON



WOODWARD, PRISCILLA
WOOTTON, JANE
YOUNGBLOOD, RALPH

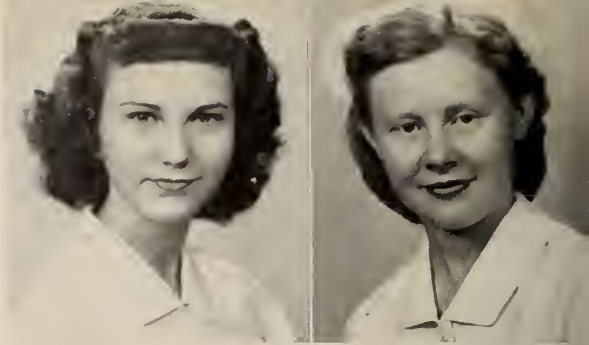


ZERMAN, JOSEPH
ZIPLIES, CLAIRE

Freshmen



Class of '49



Jean Cheek
Myrtle Dickey
Mary Heelnery
Joyce Waters

Faye Collins
Barbara Earley
Shirley Owens
Betty Whitehead

Gracie Counts
Lucille Freeman
Ora Belle Padgett
Ann Wilkenson

Delores Banks
Harriet Cronin
Martha Kennedy
Louise Parker
Ruby Wilson

Nona Chancey
Doris Dickey
Nona Jean King
Lavina Patten
Betty Wolson



MISS LOUISE
LENHARDT

Director



MISS ELIZABETH
JARRETT

Advisor

CANDLER NURSES





Pictured above, left to right: Lillis Kelly, *Girls' Intramural Board*; Tony Heffernan, *Glee Club*; Jack Schaaf, *Armstrong Engineering Society*; Bill O'Hayer, *Freshman Class*; Bert Meyer, *Boys' Intramural Board*; Lois Rosenthal, *Glamazons*; Murray Silver, *Scholars*; Ross Stemer, *Inkwell*; Arthur Whitfield, *Terrapins*; Dean Beecher, *Faculty Advisor*; Mark Steadman, *President Sophomore Class*; Ed Johnston, *Armstrong Engineering Society*; Clark Blanton, *Dance Committee*; Dick McDonald, *Eager Beavers*; Ed Fountain, *Drama Club*; Harriet Schleunig, *Freshman Class*; Norma Gibbons, *Slick Chicks*; Bert Jones, *President Freshman Class*; Catherine Lankenau, *'Geebee*. Not in picture: Nan All, *French Club*; Joan Conner, *Music Club*; Millicent Melaver, *Mercury*.

STUDENT SENATE



The most important and powerful organization in the College is the governing body known as the Student Senate. Its membership consists of representatives from all recognized Clubs in the School, the Presidents of the two Classes, two representatives from each of the Classes, and the Editors of the three college publicaions.

The President of the Sophomore Class holds the important position of President of the Senate, and the President of the Freshman Class serves as Vice-President. All other officers of the Senate are elected from the members of the group.

The powers of this governing body were extended this year to include the establishment of an Honor Court, and control of the new Student Activity Fund.

Present officers of the Senate are:

- President* Mark Steadman
- Vice-President* Bert Jones
- Secretary* Catherine Lankenau
- Treasurer* Tony Heffernan



The
ACTIVITIES



CATHERINE LANKENAU
Editor-in-Chief

MURRAY SILVER
Business Manager



DAVID BERGRIN
Photography Editor

MARY CONWAY
Literary Editor

G E E C H E E S T A F F

It is the task of the 'GEECHEE Staff to publish an annual that will give the student a lasting reminder of the years spent at Armstrong. The Staff sincerely hopes that it has achieved its aim in trying to present this accurate and realistic memory of the never-to-be-forgotten days at A.J.C.

The Editor of THE 'GEECHEE, the Business Manager, and the Managing Editor are elected by popular vote, and all other officers of the Staff are appointed by the Editor.



'GEECHEE Staff—Seated, left to right: Betty Hecker, Catherine Lankenau, David Bergrin. Standing, left to right: Madison Brower, Carolyn Gross, Nick Clark, Murray Silver, Mary Conway, Bill O'Hayer.



MISS HARRIET DAVIS

Faculty Advisor

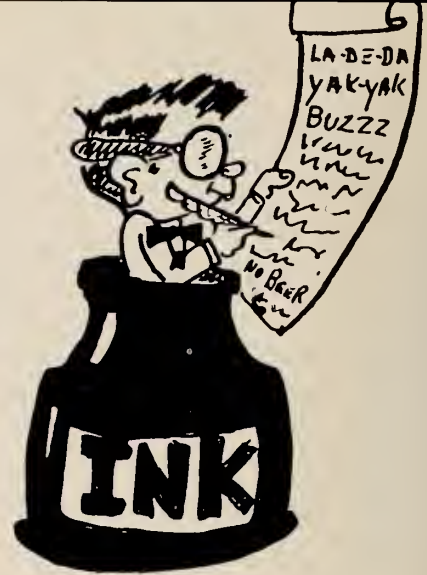




ROSS STEMER
Editor



JEAN HANCOCK
Assistant Editor



INKWELL STAFF

The weekly publication sponsored by the College is called the *Inkwell*. It contains current news around the school, special feature articles, jokes, sports news, and gossip. The *Inkwell* keeps the students informed on events of major importance at Armstrong.

Staff officers are elected by popular vote, and are as follows:

<i>Editor-in-Chief</i>	Ross Stemer
<i>Assistant Editor</i>	Jean Hancock
<i>Business Manager</i>	Clark Blanton
<i>News Editor</i>	Dave Rogers
<i>Feature Editor</i>	Arthur Whitfield

Pictured below, left to right: First row—Ross Stemer, Jean Hancock, Harriet Krobalski. Second row—Clark Blanton, David Bergrin, Eston Perkins, Bill O'Hayer, Miriam Oglesbee, Marianne Boblasky, Betty Ann Elliott, Mary McGrath, Lois Rosenthal, and Millicent Melaver.





MILLICENT MELAVER
Editor



FLOSSIE KERVES
Assistant Editor



TONY HEFFERNAN
Managing Editor

MERCURY STAFF

The newest college publication is *The Mercury*, a quarterly magazine containing short stories, poems, and original articles contributed by students and faculty members. The magazine began the school year under the editorship of Eleanor Rich, who was succeeded by Millicent Melaver.

Pictured below are: Seated, left to right—Tony Heffernan, Millicent Melaver, Flossie Kerves. Standing, left to right—Ruth Allen, Eston Perkins, Bobby Strozier, Miss Harriet Davis, advisor.





Pictured above, left to right: First row—Miss Noma Lee Goodwin, Joe Ward, *Treasurer*; Miss Morris, Mary McGrath, *Secretary*; Mary Conway, *President*; Norma Gibbons, Catherine Skeadas, Jean Hancock, Catherine Lankenau, Glenda Taylor, Peggy Worrell, Jeanne Seigler, Clark Blanton, *Senate Representative*. Second row—Miriam Oglesbee, Sarah Ford, Emma Lou Johnson, Gloria Perkins, Joan Healy, Marilyn Sickel, Lillis Kelly, Ruth Allen, Maurice Magee, David Bergrin, and Billy Woods.

DANCE COMMITTEE



The Dances which are given each year by the College are planned and presented by the Dance Committee of Armstrong. Each Club in the College is represented by one member in the Dance Committee, in addition to any other students interested in planning and decorating for dances.

During the past year, under the direction of faculty advisors Miss Noma Lee Goodwin, Miss Dorothy Morris, and Mr. William Pollitzer, the Dance Committee has met with great success in all its dances. Its well rounded program of social entertainment included the Freshman-Sophomore Dance, the Halloween Dance, the Homecoming Dance, the Valentine Dance, and the May Dance.

The Riding Club is one of the newest organizations at Armstrong. It was organized this year to provide fun and relaxation for students who like to ride. Members meet every Saturday morning for weekly rides at the Sa-Hi Riding Academy, and once every month a Moonlight Ride or a Breakfast Ride is given.



Officers of the Club for this year are:

- President* Sarah Nichols
- Secretary* Marilyn Sickel
- Treasurer* Jean Hancock

R I D I N G C L U B

Pictured, left to right: First row—Barbara DuBois, Carolyn Gross, Betty Hecker. Second row—Sarah Nichols, Jean Hancock, David Bergrin, Mary Ann Lomel, Lucy Chambers, Mary McGrath, Miss Dorothy Morris—advisor, and Catherine Lankenau.





The aim of the Music Club is to develop a greater appreciation of fine music, and to provide the Club members with weekly evenings of pleasant enjoyment. These informal Club meetings are held at the homes of the various members.

Officers of the Club are:

- President* Betty Plumb
- Vice-President* Tony Heffernan
- Secretary* Jeanne Gerken
- Treasurer* Joan Conner

MUSIC CLUB

Pictured, left to right: First row—Jeanne Gerken, Hannah Reisman, Betty Plumb. Second row—Betty Jane Pye, Betty Walsh, Tony Heffernan, Clifford Clarke, and Mr. Campbell, advisor. Not Present—Joan Conner, Claire Zipplies, Ray Mixon, Chuck Curry, and Mr. Pollitzer.





The dual purposes of the Glee Club are the fulfillment of the desires of those students who enjoy singing choral arrangements, and the furnishings of superior vocal music for the College.

Armstrong is proud of these fine voices and is grateful for the wonderful programs produced during this school year under the direction of R. Clifton Campbell.

GLEE CLUB

Pictured below, left to right: First row—Elizabeth Butler, Catherine McCreery, Betty Rose Mason, Jinx McClurkin, Mary Jane Barnhardt, Lois Barbot, Mary Warren, Mary Keating, Teeny Martin, Mildred Hindrix. Second row—Elizabeth Ehlers, Ruth Bright, Joan Conner, Barbara Alexander, Beverly Moore, Jeanne Gerken, Monica Ulivo, Miriam Kessler, Betty Plumb, Glenda Taylor, Margaret Stearman. Third row—Fayes Thomas, Tony Heffernan, Edward Ricks, Edward Sieg, Harty Keating, Fred Sineath, Eston Perkins, R. Clifton Campbell, Charles Guyer, Sam Chance, Baxter McCreery, Bernard Walker.





Pictured above, left to right: First row—Julia Powell, Ed Fountain, Harriet Schleuning, Clifford Clarke, Catherine McCreery, Murray Silver. Second row—Baxter McCreery, Dean Orson Beecher, Tony Heffernan, Harold Starling, Ralph Wilson. Those who were not present when picture was made were: Joan Conner and Claire Zippies.

STUDENT FORUM

The Student Forum is composed of students who are interested in world affairs, and who are gifted with "debating" abilities. At various times, students from the Forum form a team and engage fellow-debators from other Colleges in scheduled contests. This Club provides excellent opportunities for students to improve their oratorical abilities, and to express their opinions openly.

Officers of the Club are:

- | | | |
|-----------------------|-----------|--------------------|
| <i>President</i> | | Clifford Clarke |
| <i>Vice-President</i> | | Murray Silver |
| <i>Secretary</i> | | Harriet Schleuning |
| <i>Treasurer</i> | | Ed Fountain |



Beta Lambda is the Home Economics Club for girls majoring in Home Economics and for those interested in homemaking. This Club maintains several lounges in the Hunt Building, promotes interest through candy sales and parties, and takes charge of the Homecoming Reception by preparing and serving for this annual event.

Officers of the Club are:

<i>President</i>	Catherine Lankenau
<i>Vice-President</i>	Jean Hester
<i>Secretary</i>	Gloria Perkins
<i>Treasurer</i>	Mary Boone
<i>Senate Representative</i>	Martha Fawcett
<i>Faculty Advisor</i>	Miss Helen Wolfe

B E T A L A M B D A

Pictured below, left to right: First row—Miss Helen Wolfe, Mary Boone, Catherine Lankenau, Gloria Perkins, Jean Hester. Second row—Doris Cone, Lula Givens, Ann Morgan, Catherine Skeadas, Ruth Allen, Catherine McCreery. Third row—Julia Sojourner, Jeanne Seigler, Jean Hancock, Lois Barbot, Barbara Robinson, Mary Sullivan, Emma Jo Barbot.





Pictured above, left to right: First row—Billy Woods, Rita Lang, Mrs. Lubs, advisor; Bernard Dismukes, Glenda Taylor, Harriet Krobalski. Second row—Millicent Melaver, Celia Collins, Julia Powell, Ruth Allen, Miriam Oglesbee, Lutrecia Adams, Ruthie Bright, Nan All, Marilyn Sickel, Mary Conway, Marianne Boblasky. Third row—Albert Dismer, Johnny Polychronides, James Ryan, Ed Killorin, Bobby Hornstein, Jimmy Head, Robert Rizza, Clyde Thompson, Ed Fountain.

FRENCH CLUB



The French Club is an organization which is interested in furthering relations with European nations, as well as offering conversational opportunities to the student. Their meetings are called by the President monthly.

This Club attempts to aid the European situation by means of food and clothing drives, along with its other activities.

Officers of the French Club are:

- President* Bernard Dismukes
- Vice-President* Rita Lang
- Secretary* Glenda Taylor
- Treasurer* Harriet Krobalski
- Senate Representative* Nan All

The Armstrong Engineering Society, composed of students interested in engineering, gives the member a closer contact with the practical field of engineering through lectures given by prominent practicing engineers, by field trips to various industries and engineering projects, and through movies on subjects pertaining to engineering.

Meetings are held twice monthly, and officers are elected at the first meeting in September. For the current year, officers are:

<i>President</i>	Walter Blatner
<i>Vice-President</i>	Charles McKenzie
<i>Secretary</i>	Robert Ware
<i>Treasurer</i>	George Donnelly

The two Senate Representatives for the Club of 40 members are Jack Schaaf and Bill Dugger.



ARMSTRONG ENGINEERING SOCIETY

Pictured below, left to right: First row—Ed Parker, Jimmy Owens, Bill Dugger, Dan Barbot, Dalles McClellan, J. C. Thurmond, Charles McKenzie, Nick Clarke. Second row—George Donnelly, Harold Hecker, Sonny East, Duke McGraw, Charlie Bell, Bo Ware. Third row—George Petouris, Jack Schaaf, Ed Johnston, Dale Adams, Don James. Fourth row—Walter Blatner, Maurice Magee, Oliver Powell, Forney Nelson, Gene Johnson, Hartly Keating, John Allred, Frank Stapleton, Bill Smith.





The Science Club is not only a Club for students who are majoring in some field of science, but for all students who are interested in new developments in the various fields. Its activities range from educational talks by prominent teachers and leaders to motion pictures and scientific expeditions. Under the leadership of Dr. Fay and Mr. Pollitzer, the Science Club is endeavoring to better the health conditions of Savannah.

Officers of the Club are:

- | | | |
|-----------------------|-----------|----------------|
| <i>President</i> | | Carolyn Tootle |
| <i>Vice-President</i> | | Marilyn Sickel |
| <i>Secretary</i> | | Jeanne Seigler |
| <i>Treasurer</i> | | Robert Rizza |

SCIENCE CLUB

Pictured below, left to right: First row—Dr. Martha Fay, Ed Johnston, Carolyn Tootle, Marilyn Sickel, Jeanne Seigler, Mr. William Pollitzer. Second row—Donald James, Eddie Limehouse, Emma Lou Johnson, Billean Evans, Jean Hancock. Third row—Hugo Richter, Robert Rizza, Joseph Zerman. Fourth row—Fred Sineath, Joseph Alberino, Berko Edelbaum, Ray Mixson.



The Drama Club is organized for the purpose of promoting interest in the Savannah Playhouse. This Club helps develop theatrical ability through the reading and actual performance of plays. All members of the Drama Club assist in Playhouse productions, and thus add greatly to their experience.

Under the direction of Mr. Carlson Thomas, faculty advisor, the Club has done much to make the Student body feel that it has a very real part in the Savannah Playhouse.

Officers of the Club are:

- President* Madison Brower
- Vice-President* Kathryn Blocker
- Secretary-Treasurer* Harriet Schleuning

These officers are members of the Playhouse Planning Committee which assists the Director in planning for the presentation of the plays.



DRAMA CLUB

Pictured below, left to right: First row—Barbara Alexander, Mildred Hendrix, Hannah Reisman, Rita Lang, Marian Dunsmuir, Elizabeth Butler, Kathryn Blocker. Second row—Bill Richardson, Ed Fountain, Harriet Schleuning, Madison Brower, Mr. Carlson Thomas.





Father and the maids for whom he made life miserable. *Life With Father*.

SAVANNAH

CARLSON THOMAS, *Director*

The Savannah Playhouse of Armstrong Junior College had a successful year, presenting four full-length plays during the season, and inaugurating the post-season Savannah Drama Festival.

First play of the season was *Life With Father*, one of the first non-professional performances in the nation of the popular comedy. *Life With Father* scored a hit and set the season off to a flying start.

Green Grow the Lilacs, the second production, was a western musical, the original version of the recent Broadway hit, *Oklahoma*. It was more of a success than anyone had dared to hope. "Standing room only" signs were posted on the last two nights of its week-run. *Green Grow the Lilacs*, with an all-student cast, had to be reopened for two extra performances by popular demand.

Curly and Laurey reunited in the final scene of *Green Grow the Lilacs*.



PLAYHOUSE

The third play, *Angel Street*, a Victorian thriller about a homicidal maniac, was something new for Playhouse audiences. And they liked its spine-tingling drama.

Adding even more variety to the dramatic menu, *The Taming of the Shrew*, completed the season. The Shakespearean comedy required a cast of twenty-four.

Early in the spring Playhouse director Carlson Thomas conceived the idea of Savannah's first drama festival. Mayor Olin Fulmer approved the idea and appointed a citizens' committee to form plans for it. It was decided to present the last three plays of the season in repertory during the week of the festival, which was scheduled for May 16 through 21.



Young Clarence Day is the victim of a tongue-lashing as members of his family look on. *Life With Father*.

Top—The innocent-looking man is a killer, but his wife doesn't know it—yet. *Angel Street*.
Bottom—Old Man Peck sings a "sad song" at his play-party. *Green Grow the Lilacs*.

SCHEDULE

'Life With Father'	November 1-6
'Green Grow the Lilacs'	January 24-29 and February 15, 16
'Angel Street'	March 21-26
'The Taming of the Shrew'	May 2-7



SAVANNAH DRAMA FESTIVAL SCHEDULE (May 16-21)

May 16	8:40	"Green Grow the Lilacs"
May 17	2:40	"The Taming of the Shrew"
May 17	8:40	"Angel Street"
May 18	8:40	"The Taming of the Shrew"
May 19	2:40	"Green Grow the Lilacs"
May 19	8:40	"Angel Street"
May 20	8:40	"The Taming of the Shrew"
May 21	2:40	"Angel Street"
May 21	8:40	"Green Grow the Lilacs"



Mary Jane Barnhardt

Mary Frances Boone

Cecilia Collins

Barbara DuBois

Anne Eitel

Carolyn Gross

Betty Ruth Hecker

Joanne Kandel

Lillis Kelly

Miriam Kessler

Catherine Lankenau

Margaret Stearman

Glenda Taylor

Carolyn Tootle

Monica Ulivo

Lois Rosenthal

DELTA CHI

Sorority



ONE BLEAK WINTER DAY



FAVORITE GATHERING PLACE

OLD TIMERS



MADE — ONE BASKET

ALPHA TAU BETA

Sorority



Mary E. Bailey

Lucy Chambers

Amelia Cronin

Shirley Jones

Norma Gibbons

Mary Ann Lomel

Sarah Nichols

Harriet Parker

Gloria Perkins

Lolly Solana



BREEZY TYBEE

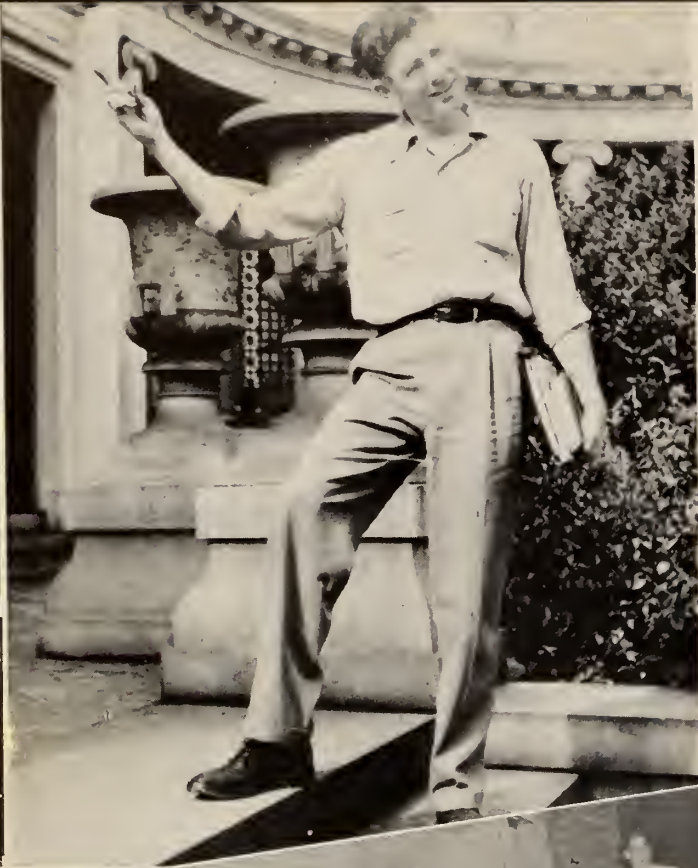
... AND SANTA TOO



CARLOAD OF BEAUTIES

TOTEM POLE







The
S P O R T S



Walter Campbell
 Johnny Peters
 Bert Jones
 Tony Fogarty
 Gene Keller
 Charlie Eitel
 Bernie Kramer
 Pete Palefsky
 Danny Hudson
 C. M. Adams
 Billy Wilson
 Tommy Ridgway

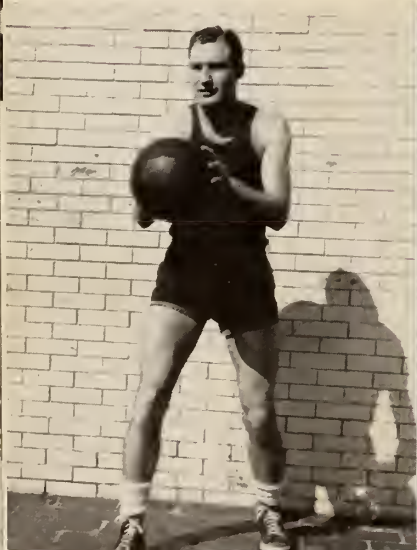
' G E E C H E E S

Bernie Kramer
Captain

Tony Fogarty
Alternate Captain

BASKETBALL SCORES

A.J.C.	Opponent	Score
97	Orlando	28
55	Abraham Baldwin	69
60	Gardner Webb	45
63	Brewton Parker	50
55	Middle Georgia	50
54	G. M. C.	21
51	West Georgia	41
52	Jacksonville	63
49	South Georgia	40
48	Abraham Baldwin	37
36	Brewton Parker	75
50	Middle Georgia	37
48	Jacksonville	57
61	G. M. C.	37
53	Spartanburg	41
64	West Georgia	40
46	Orlando	38
37	South Georgia	40
43	Middle Georgia	42
61	Georgia Southwestern	36
40	Brewton Parker	42
71	West Georgia	57





The Armstrong 'Geechees had a very successful year with 16 wins against only 6 losses. At the state tournament the 'Geechees returned with the third place trophy, and Captain Bernie Kramer won for himself a place on the All State Team. Coach Torrie and the boys have worked hard and played hard and the school is proud of them.





Pictured, left to right—

Bert Meyer
Intramural Manager (seated)

Bobby Hornstein
Manager of Scholars

Jimmy Owens
Manager of Gators

Dick McDonald
Manager of Eager Beavers

Harry Thomas
Manager of Loafers

Bob McDuffie
Manager of Terrapins

INTRAMURAL BOARDS

MEN'S INTRAMURAL BOARD

The Men's Intramural Board, with the aid of Mr. Carmen Torrie, Athletic Director, plans the sports program for the men in the College. This board is composed of one member from each of the five boys' teams which are: the Scholars, the Gators, the Terrapins, the Eager Beavers, and the Loafers. The three most outstanding sports in the athletic program this year were two-handed touch football, basketball, and softball. It is the aim of the Board to encourage greater participation in sports at A.J.C.

WOMEN'S INTRAMURAL BOARD

The Women's Intramural Board seeks to enlist all girls in the athletic program of the College. It is organized similarly to the Men's Board, and is composed of the team captains from each of the four teams: the Co-eds, the Glamazons, the Sassy-Strutters, and the Slick Chicks. These teams compete in ping-pong, basketball, softball, swimming, tennis, and other intramural sports during the year.

Pictured, left to right—

Miss Morris
Advisor

Lillis Kelly
Intramural Manager

Tenny Martin
Manager of Sassy-Strutters

Mary Conway
Manager of Co-eds

Betty Hecker
Manager of Slick Chicks

Not Pictured—

Joanne Kandel
Manager of Glamazons



Eager Beavers

Pictured, left to right:
First row—Costa Alferis, Hoyt Powell, Charlie Guyer, Tommy Ridgway, Dick McDonald, manager.
Second row—Donald James, Eddie Johnston, Forney Nelson, William Coolidge.
Third row—Bobby Strozier, Eston Perkins, Cyrus Wood, Dunwoody Tunno, Billy Colcock.



1949 INTRAMURAL CHAMPS



'Gators

Pictured, left to right:
First row—Ellison Lanier, Eddie Parker, Charles Rockwell, Bill Henry, Howard Harvey, Clyde Thompson, Jimmie Owens.
Standing—Jimmy McGrath, Billy Copeland, Billy Smith, Emmett Bridges, James Dewberry, Fred Sineath, Nick Clarke.

Scholars

Pictured, left to right:

First row—Bert Jones, Johnny McCracken.

Second row—DeVaughn Davis, Donald Hiltz, Jack Schaaf.

Third row—Bert Meyer, Bobby Hornstein, manager; Bo Ware, Eddie Limehouse, Dale Adams.

Fourth row — Douglas Guild, Gordon Whelan, Fayes Thomas, Bernard Dismukes, Gene Brewton.

Fifth row—William Girardeau, Harry Wilson, Herbie Johnson, Jimmy Head, Ed Killorin.

Sixth row—Murray Silver, Bill O'Hayer, Jug Ryan, Tommy Dillon, Bob Henderson.



Loafers

Pictured, left to right:

First row—B. L. Tillman, Harry Thomas, manager; Robert Oglesby, Edward Nease.

Second row, standing—Dan Barbot, Walter Blatner, Wendell Hester, Frank Eitel.

Third row—Billy Woods, Jimmy Horning, Joe Koubleur.

Terrapins



Pictured, left to right:

First row — Frank Willis, Joe Sullivan, Bill Colley, Gus Godbold, Arthur Whitfield, Clark Blanton, Jack Hudson, Walt Campbell, Joe Magee.

Second row—James Baker, Ed Ricks, Hunter Leaf, Harty Keating, Buddy Sluder, David Bergrin, Vincent Billingsley, Bobby Pierce.

Third row—Mr. Hinckley Murphy, advisor; Jimmy Green, Harold Hecker, Bob McDuffie, George Stevenson, Joe Ward, Charles Eitel, Jack Logan, Dick Coffield, Henry Tuten, Gene Keller, Bernie Kramer.

Not Pictured — Cy Adams and Jim Holland.



Colley

"A" Club

Pictured, left to right:

First row — Walt Campbell, Tommy Ridgeway, Danny Hudson, Cy Adams, Gene Keller, Johnny Peters, Bo Ware.

Second row—Tony Fogarty, Bill Wilson, Bernie Kramer, Charlie Eitel, Larry "Chief" Morris, Bobby Hornstein, Bert Jones.



Co-Eds

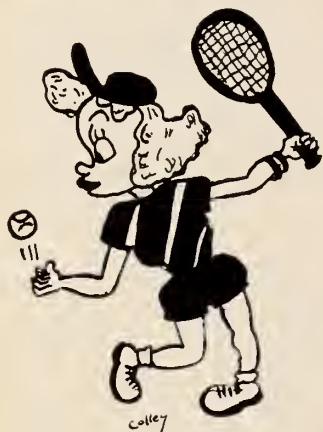


Front row, left to right—

Kathryn Blocker
 Marian Dunsmuir
 Mary Conway
 Sarah Nell Robinson
 Joyce Remion
 Sarah Ford

Second row—

Jane Fortson
 Nan All
 Lutrecia Adams
 Emma Lou Johnson
 Jeanne Seigler
 Jane Turner
 Ruth Allen
 Novella Noble



Slick Chicks

Pictured, left to right:

*First row, seated—*Marilyn Sickel, Gloria Perkins, Betty Hecker, Mary McGrath, Peggy Worrell, Dorothy Stegin, Carolyn Tootle.

Second row — Monica Ulivo, Beverly Moore, Barbara Alexander, Norma Gibbons, Catherine Skeadas.

*Third row—*Carolyn Gross, Martha Fawcett, Joan Healy, Julia Powell, Lolly Solana, Catherine Lankenau, Shirley Jones, Mary Jo Harte.



Glamazons

Pictured, left to right:

First row, seated — Jean Hancock, Barbara DuBois, Harriet Krobalski, Elizabeth Butler, Mildred Hendrix, Marianne Boblasky.

Second row—Sarah Nichols, Lorraine Bonelle, Ellen de Beruff, Lois Rosenthal, Celia Collins, Jane Wooten, Jo Ann Kandel, Harriet Parker, Martha Boone.



Sassy

Strutters

Pictured, left to right:

First row, seated—Miriam Kessler, Lois Barbot, Tenny Martin, Catherine McCreery, Ann Morgan.

Second row — Eve Strong, Jean Hester, Evelyn DeWitt, Miriam Oglesbee, Mary Boone, Emma Jo Barbot, Mary Jane Barnhardt.

Third row—Joan Conner, Amelia Cronin, Mary Ann Lomel, Elizabeth Ehlers, Ruthie Bright, Betty Walsh, Margaret Stearman, Glenda Taylor.





HEAVY HITTER



BATTER UP



SHE'S OUT !



SUSPENSE

SPECTATORS





The
BEAUTIES



D O R O T H Y S T E G I N

Geechee

BEAUTY QUEEN

C O N N I E A R G U S T



B E A U T I E S



A N N B R O W N



S H I R L E Y J O N E S

B E A U T I E S

B Y L E E H U N N I C U T T



M A R Y M c G R A T H



B E A U T I E S



C A T H E R I N E S K E A D A S





OPEN



BASKETBALL EXHIBIT

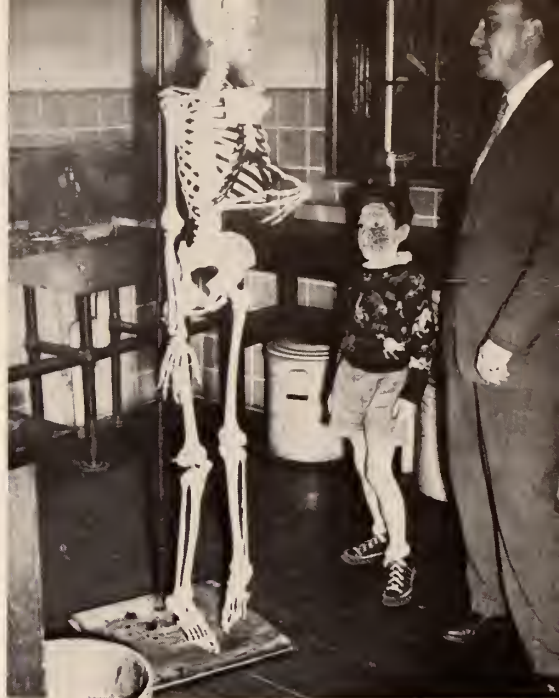


CHEMISTRY EXPERIMENT

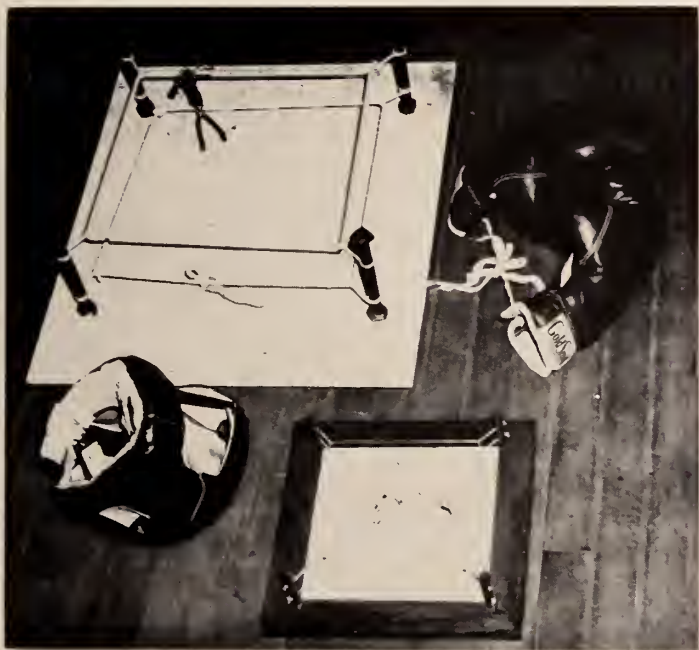
PSYCHOLOGY



HOUSE



BIOLOGY



PHYSICAL EDUCATION

PHYSICS LECTURE







The
A D S

*Greetings
and
Best Wishes
to*

**ARMSTRONG JUNIOR
COLLEGE**

Savannah's Own Institution of Higher Learning
Savannah Is Proud of Your Contribution to
the Community

**The Mayor and Aldermen
of the City of Savannah**

A MESSAGE TO THE STUDENTS OF ARMSTRONG

Life's most effectual partnership is that between educated people and daily newspapers.

By seeking higher education, young men and women arrive at a station called success.

On the way, you have made history which we chronicle, and our pages help you to appraise world happenings and chart your proper course.

As your co-workers in progress, we extend cordial greetings and good wishes.

Savannah Morning News

SAVANNAH EVENING PRESS

Compliments of



*Trademark applied for

GENERAL OFFICES

SAVANNAH, GEORGIA

Dine -- Dance -- Romance

THE SAPPHIRE ROOM

Hotel De Soto

Other J. B. Pound Hotels:

General Oglethorpe, Savannah

Hotel Seminole, Jacksonville

De Soto Beach Hotel, Savannah Beach

Hotel Patten, Chattanooga



Compliments

FINES

Where Fashions

Make Their Debut



Harris--

THE HUB

Style Center for Men In

Savannah

SINCE 1896

The Style Shop

Distinctive Women's Wear

23 E. Broughton Street

SAVANNAH GEORGIA

GOOD LUCK!

HAPPY SAILING!

Our House



EAT — DRINKS — SMOKES

Bo Peeps

"The Finest In the South"

19 East Congress

2-3400

9500

9533

*Hartmann Luggage
Leather Goods — Perfumes
Ladies Handbags — Toys
Costume Jewelry — Gifts*

Joe Price, Inc.

Two Stores

5 Congress St., W.

252 Bull St.

3-9612

3-8045

Frank C. Mathews

116 West Congress Street

Phone 5195

Compliments

The Knitting Nook

BULL STREET

What

PAUL'S

Says, Is So

MEN'S AND BOY'S SHOP

Clothing and Furnishings

246 Broughton Street, West

Phone 8395

Savannah, Georgia

Compliments of

SILVER'S 5 and 10c Store

201 WEST BROUGHTON

Shop and Save at

KARPF'S

Savannah's Most Popular

"Women's Shop"

Compliments

of

Schulte United, Inc.

Compliments

of

Globe Shoe Co.

"Shoes for the Whole Family"

GAY-NELL

SHOP FOR WOMEN

248 Bull Street

SPORTSWEAR — BEACHWEAR

Alnutt Music Co.

FINE PIANOS

240 Broughton Street, W.

SAVANNAH GEORGIA

MANGEL'S

FEMININE APPAREL

15 Broughton Street, E.

SAVANNAH GEORGIA



Typically
Jane Engel

Telephone
3-3214

BULL and PERRY STS.
SAVANNAH GEORGIA

SERVING SAVANNAH

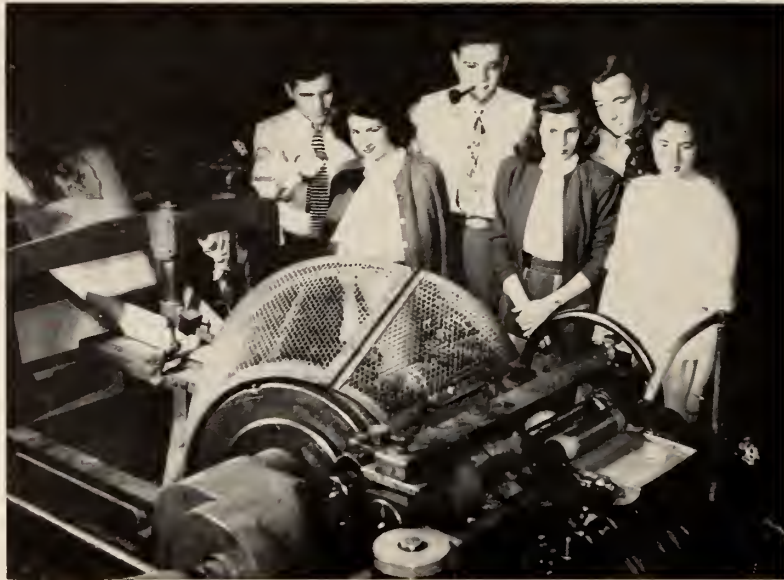
SINCE 1868

Hogan's

PENNEY'S

STYLE and VALUE CENTER
OF THE COASTAL EMPIRE

Broughton and Barnard Streets



Armstrong students, on recent visit to Union Bag & Paper Corporation, pause to watch high-speed bag making machine. From left to right: William Girardeau, Catherine Skeadas, David Bergrin, Claire Zipplies, Murray Silver, Connie Argust.

A Busy Year

Running continuously twenty-four hours a day, the massive, high-speed machines in the "World's Largest Integrated Kraft Container Plant" last year produced 383,000 tons of paper and paperboard, 9 billion paper bags and 37,000 tons of corrugated sheets and boxes. The 4,700 employees responsible for this record breaking production received total annual wages of more than 13 million dollars.

UNION BAG

& PAPER CORPORATION

SAVANNAH GEORGIA

Compliments of

S. H Kress & Co.

5-10-25c VARIETY STORE

SAVANNAH'S FINEST

The Weis Theatre

"Showplace of the South"

Albert Weis, Executive Mgr.

Compliments of

DESBOUILLONS

JEWELERS

126 Broughton St., East
SAVANNAH GEORGIA

Agents for
GORHAM & TOWLE SILVER

Compliments of

*The
College Nook*

Compliments

of

**Savannah
Tobacco
Company**

Distributors of

Hav-A-Tampa Cigars

18 Barnard Street

Phone 3-3083

**Triple XXX
Thirst Station**

EAST VICTORY DRIVE

Delicious Drinks

Curb Service

Wholesome Food

SAVANNAH GEORGIA

Stubbs Hardware Company

121-123 Congress Street

*"Sporting Goods Headquarters
for the Coastal Empire"*

Athletic Equipment for Every Sport

Johnson Motors and Boats

Dick Piazza's SHOE SERVICE STORE

A Sole of Honor

2504 Abercorn St. Telephone 3-2639

SAVANNAH GEORGIA



East Victory Drive Phone 3-1024

Mark the Occasion with a

Photo Reflex Portrait

Let our unique Mirror Camera
be your expert recorder
of all memorable occasions!

IN SAVANNAH IT'S
Levy's
ABERCORN - BROUGHTON

Live Electrically

and

Enjoy the Difference



Savannah Electric and Power Co.

Compliments of

SOUTHERN DAIRIES



"Quality carries on"



BOTTLED UNDER AUTHORITY OF THE COCA-COLA COMPANY BY

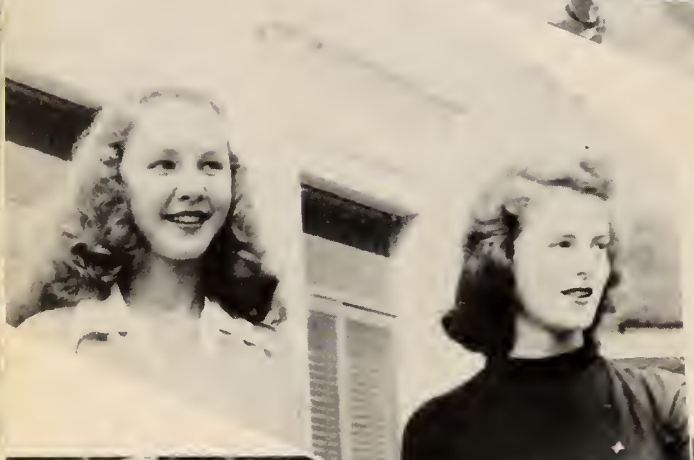
SAVANNAH
COCA-COLA BOTTLING CO.

BEST WISHES

Morris Levy's

SAVANNAH'S FINEST
STORE FOR MEN AND SHOP FOR
WOMEN

The House of Fashion





ANNUALS
of
DISTINCTION

Bowen, Long & Young, Inc.
Decatur, Georgia

