

1953



Geechee





STRONG JUNIOR COLLEGE
OFFICE OF THE REGISTRAR
SARASOTA, FLORIDA



PREFACE

Those who originally planned Armstrong College as well as those who have contributed to its development have provided us with a unique environment where we can take advantage of our heritage—life, liberty, and the pursuit of happiness.

Our system of operation here is one of liberality where the student is given many opportunities to prove himself, develop his character, and establish his standards of life.

We have been fortunate in bringing one phase of this liberality—the modern dance—to our annual. To Miss Morris and her group we express our appreciation for their interest and cooperation in posing for the silhouettes on our title pages.

It is our hope that posterity will benefit from the wonderful happiness and the fruitful experiences that have filled our life at Armstrong as recorded in the 1953 'Geechee.



1953 'Geechee

ARMSTRONG COLLEGE

Savannah,

Georgia

Volume XVII





Setting



Hunt Building

Hodgson Hall



Gamble Hall

Jenkins Hall

Lane Building





At left, Instructor Elmo M. McCray, Jr., lectures to his biology class in Gamble Hall.

Below, several students are seen making use of the attractive and well-equipped reading room on the lower floor of Hodgson Hall.

Setting

Armstrong has much to offer its students. There is a fine physical plant including the five buildings on the opposite page and the Armstrong building seen on the end pages of this annual. Informal discussion classes as well as the traditional lecture classes are conducted at the college. The students have very fine library and recreational facilities as well. Shown here are several typical classroom and study scenes at the college.



At left, Miss Dorothy Thompson and her sociology students study a chart of Savannah in an informal discussion-type class.



To Miss Dorothy Thompson

because of her genuine love, interest, and faith in people—for being a generous and understanding instructor who goes far beyond the line of duty to help those who call on her for counsel—we dedicate the 1953 'Geechee.



HERSCHEL V. JENKINS
Chairman



WILLIAM MURPHY
Vice-chairman

ARMSTRONG COLLEGE COMMISSION



MAYOR OLIN F. FULMER



J. P. HOULIHAN



G. PHILIP MORGAN



MRS. W. F. ROBERTSON

ED WESSELS, JR.

HERBERT L. KAYTON

CHARLES S. SANFORD

W. KIRK SUTLIVE

WILLIAM A. EARLY



ADMINISTRATION

The Armstrong Administration and Faculty have a great influence on student life at the college. Combining youth and versatility, they are our sincere friends as well as inspiring teachers and leaders.



FOREMAN M. HAWES
A.B., Mercer University
M.S., Emory University
President

ARTHUR M. GIGNILLIAT
A.B., M.A., U. of Georgia
Graduate Study, U. of Texas
Director of the Evening College

JULE C. ROSSITER
A.A., Armstrong College
Secretary and Treasurer

ANNA C. SEYLE
A.B., University of Georgia
Registrar



FACULTY

ELEANOR DOYLE ANDREWS
 B.S., Immaculata; M.A., Catholic U.;
 Graduate Study, Tulane University
Publicity—Instructor in Spanish

***W. ORSON BEECHER**
 A.B., M.A., Emory University;
 M.A., University of Georgia
Instructor in History

WILLIAM L. BELL
 B.S., Georgia Teachers College;
 Graduate Study, Peabody College
Instructor in Physical Education

ARTHUR W. CASPER
 B.S., Beloit; M.A., U. of Wisconsin;
 Graduate Study, U. of Georgia
Instructor in Physics and Mathematics

LAMAR W. DAVIS
 B.S., M.S., U. of South Carolina;
 Certified Public Accountant
Instructor in Commerce

JOSEPH W. GREEN
 A.B., Birmingham-Southern College;
 M.A., Vanderbilt University
Instructor in English



HARRIETTE J. HAINES
 Draughton's Business College
Instructor in Commerce

MILDRED L. HAMILTON
 A.A., Armstrong College
Library Assistant

ANDREWS

BELL

DAVIS

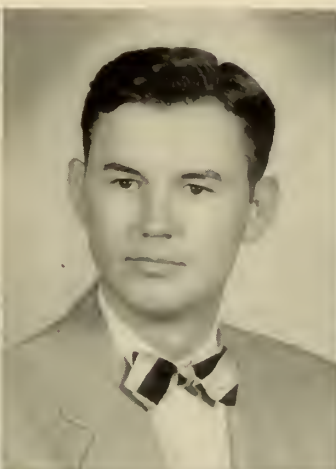
HAINES

BEECHER

CASPER

GREEN

HAMILTON



*On leave



JACKSON



KASK



KILLORIN

CRAWFORD G. JACKSON, JR.
A.B., Emory University
Graduate Study, U. of Miami, Harvard
Instructor in Biology

UNO KASK
B.S., University of Georgia
Graduate Study, U. of Washington,
U. of Missouri, U. of Minnesota
Instructor in Chemistry

JOSEPH I. KILLORIN
A.B., St. John's College
M.A., Columbia University
Instructor in History

MARGARET SPENCER LUBS
B.M., Converse C.; A.B., U. of Georgia
M.A., Columbia University
Instructor in French and English

MURIEL B. McCALL
A.B., Florida State University
M.A., University of Georgia
Librarian

MARJORIE A. MOSLEY
Associate in Finance and Commerce,
Armstrong College
Secretary to the President

*HINCKLEY A. MURPHY
A.B., Vanderbilt; M.A., Columbia U.
Instructor in English

ELMO M. McCRAY, JR.
B.S., M.S., University of Alabama
Instructor in Biology

HELEN H. McINTIRE
B.A., M.A., University of Mississippi
*Instructor in Political Science
and History*

HELEN E. MEIGHEN
Taylor's Business School
Secretary of the Evening College

DOROTHY MORRIS
B.S., University of Tennessee
Instructor in Physical Education

LUBS

MCCRAY

MEIGHEN

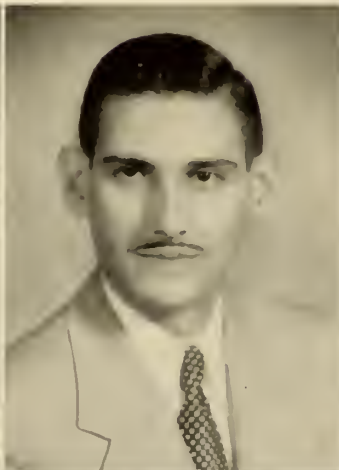
MOSLEY

McCALL

McINTIRE

MORRIS

MURPHY



*On leave

JOSEPHINE S. MUTHER
 B.S., Georgia Teachers College;
 M.S., University of Georgia
Instructor in Home Economics

JACK H. PADGETT
 A.B., Wofford College;
 M.A., University of North Carolina
Instructor in Mathematics

J. HARRY PERSSE
 B.F.A., University of Georgia;
 M.M., Florida State University
Glee Club—Instructor in Music

JACK PORTER
 A.B., George Peabody College;
 M.A., University of North Carolina
Masquers—Instructor in English

ELIZABETH POUND
Manager of the Bookstore

ANNE LORE STELLJES
 A.A., Armstrong College
Business Office Assistant



DOROTHY M. THOMPSON
 A.B., Monmouth; M.A., Northwestern;
 Certificate, Psychiatric Social Work,
 Western Reserve University
Instructor in Psychology and Sociology

GLADYS NICHOLS ZILCH
 Diploma, Gregg C. (Normal School);
 Special Courses, University of Florida,
 University of Michigan
Instructor in Commerce

MUTHER

PERSSE

POUND

THOMPSON

PADGETT

PORTER

STELLJES

ZILCH





Sophomores



Sophomore Officers



Left to right, EARLINE LEWIS, treasurer; RONALD COLEMAN, vice-president; MOLLY BARNHARDT, president; SANDRA HART, secretary.



MAURICE AYER

MOLLY BARNHARDT

JEAN BOLEN

Outstanding Sophomores

ARTHUR M. GIGNELLIAT, JR.
Most Outstanding



JOHN CARTER

ROBERT CARTER

MARY CRAIK



SANDRA HART

BETTY JOHNSON

ETHEL SPONSELLER



ABRAHAM
ALL

AYRER
BANDY

BARNHARDT
BERGMAN

BOLEN
BRIGHAM

BROWNE
BURRISS

ABRAHAM, JULES MURRAY, Scholars, '51-'53, Captain, '52-'53; Sports Editor, Inkwell, '51-'53; Associate Editor, Greechec, '52-'53. Varsity Basketball Team, '52-'53; Intramural Board Member, '52-'53; Publication Key, '53. ALL, MARIAN NELSON, Treasurer, Alpha Tau Beta, '52-'53; Beta Lambda, '52-'53. AYRER, MAURICE AMMONS, JR., Masquers, '51-'53; Glee Club, '51-'52; Stage Crew, '51-'53; Dean's List, Silver 'A'; Outstanding Sophomore. BANDY, MARION ELIZABETH, Slick Chicks, '51-'52; Historian, Delta Chi, '51-'53. BARNHARDT, MOLLY ANN, Secretary, Freshman Class, '51-'52; President, Sophomore Class, '52-'53; President, Student Senate, '52-'53; Treasurer, Dance Committee, '51-'52; Glee Club, '51-'53. Secretary, '51-'52; Business Manager, Mercury, '51-'52; Publication Key, '52; Co-Eds, '51-'53; Cheerleader, '51-'52; Silver 'A'; Outstanding Sophomore. BERGMAN, DONALD, BOLEN, HANNAH JEAN, Inkwell, '51-'53, Editor-in-Chief, '52-'53; Publication Key, '53; President, Baptist Student Union, '52-'53; Secretary, Student Senate, '52-'53; Publicity Chairman, Alpha Tau Beta, '52-'53; Greechec, '51-'53, Beauty Editor, '52-'53; Mercury, '51-'53; Glee Club, '51-'53; Masquers, '51-'53; Slick Chicks, '51-'53; Radio Workshop, '51-'53; Beta Lambda, '52-'53; Permanent Dean's List, Silver 'A'; Outstanding Sophomore. BRIGHAM, MARY, Slick Chicks, '51-'53; Beta Lambda, '52-'53; Greechec, '52-'53; Alpha Tau Beta, '52-'53. BROWNE, MARIE KATHERINE, Newman Club, '51-'53, President, '52-'53; Glee Club, Treasurer, '51-'52, Secretary, '52-'53; Co-Eds, '51-'53; Beta Lambda, '52-'53; Inkwell, '52-'53, Greechec, '52-'53; Delta Chi, '52-'53. BURRISS, BETTY SOPHIA HUNTINGTON, Mercury, '51-'53, Editor, '52-'53; Publication Key, '53; Glee Club, '51-'53; Inkwell, '51-'53; Baptist Student Union, '52-'53; Student Senate, '52-'53; Permanent Dean's List, Silver 'A'.



IT TOOK A GREAT DEAL OF BLOWING BY DANCE COMMITTEE MEMBERS TO GET THEIR HOME-COMING FLOAT READY BY PARADE TIME.

BASKETBALL SQUAD AND COACH BELL WERE INTRODUCED TO THE STUDENT BODY AT THE FIRST PEP RALLY OF THE 1952-53 SEASON.



CANTY, JOHN FRANCIS, JR. CARTER, JEAN, Sassy Strutters, Co-captain, '51-'52, Captain, '52-'53; Delta Chi, '52-'53; Dance Committee, '51-'53; Masquers, '51-'52; 'Geechee, '51-'52; Student Senate, '52-'53; Sassy Strutters, '51-'53; Intramural Board Member, '51-'53. CARTER, JOHN CALHOUN, JR., President, Archery Club, '52-'53; Masquers, '51-'53; Glee Club, '51-'53; Science Club, '51-'53; Tumbling Team, '51-'52; Dance Committee, '52-'53; Dean's List: Outstanding Sophomore. CARTER, ROBERT HAROLD, Student Council, '51-'53; Glee Club, '51-'53; Masquers, '51-'53; Science Club, '51-'53; Tumbling Club, '51-'52; Dance Committee, '52-'53; Dean's List: Silver 'A'; Permanent Dean's List: Outstanding Sophomore. CLARK, DEBORAH ARDELLE, Alpha Tau Beta, '52-'53; Beta Lambda, '51-'53; Inkwell, '52; Slick Chicks, '51-'53; Baptist Student Union, '52-'53; Permanent Dean's List: Silver 'A'. COHEN, SANDRA PHYLLIS, Delta Chi, '52-'53; Inkwell, '52-'53; Beta Lambda, '52-'53; Dean's List. COKER, JAMES ROBERT, Loafers, '50-'51. COLEMAN, RONALD LANE, Vice-president, Sophomore Class, '52-'53; Loafers, '51-'53; Dance Committee, '52-'53; Student Senate, '52-'53; Publicity Chairman, Armstrong 'Geechees, '51-'53. CRAIK, MARY, Beta Lambda, '51-'53, President, '52-'53; Historian, Masquers, '51-'53; Secretary-Treasurer, Dance Committee, '52-'53; Adv'sor, Alpha Tau Beta, '52-'53; Dean's List; Permanent Dean's List: Outstanding Sophomore. DeLORME, HARRY HAYNESWORTH, Glee Club, '51-'53; Masquers, '52-'53; Radio Workshop, '52-'53; Newman Club, '51-'53.

CANTY
CARTER, JEAN

CARTER, JOHN
CARTER, ROBERT

CLARK
COHEN

COKER
COLEMAN

CRAIK
DeLORME





DOUGHERTY
DOWDY

FINCH
FRIEDMAN, C. R.

FRIEDMAN, W. L.
GIGNILLIAT

GOINS
GOLDEN

GRAHAM, C.
GRAHAM, J. L.



DOUGHERTY, LOIS ALICE, Delta Chi, '51-'53, President, '52-'53, Newman Club, '51-'53, Masquers, '51-'52. DOWDY, JOSEPHINE, Beta Lambda, '51-'53, Vice-president, '52-'53, President, Alpha Tau Beta, '52-'53; Sassy Strutters, '51-'53. FINCH, ALBERT, Math Club, '52-'53; Student Senate, '52-'53; Lager Beavers, '51-'52, Gators, '52-'53, Dance Committee, '52-'53; Varsity Basketball Team, '52-'53, Dean's List. FRIEDMAN, CYRIL ROBERT, Glee Club, '51-'52; Masquers, '51-'52; Debating Team, '51; Dance Committee, '52. FRIEDMAN, W. LEON, JR., Science Club, '52-'53; Math Club, '52-'53, German Club, '52; Archery Club, '52-'53; Masquers, '52. GIGNILLIAT, ARTHUR MATHEWSON, JR., President, Freshman Class, '51-'52; Student Senate, Vice-president, '51-'52, Treasurer, '52-'53, Varsity Basketball, '51-'53; A Club, '52, '53; Scholars, '52-'53; Glee Club, '52-'53. Most Outstanding Sophomore; Student Chairman Homecoming, '52; Dean's List; Silver 'A'. GOINS, MARY CATHERINE, Co-Eds, '51-'52; Dance Committee, '52-'53; Newman Club, '51-'52; Delta Chi, '51-'53, Secretary, '52-'53. GOLDEN, JACK, Student Senate, '52-'53; Glee Club, '51-'53; Masquers, '51-'53; Inkwell, '51-'53; Mercury, '51-'53; Radio Club, '52-'53; Dance Committee, '52-'53, Dean's List. GRAHAM, CLEO HUGHES, Masquers, '51-'52; Alpha Tau Beta, '52-'53. GRAHAM, J. L.

MISS MORRIS SEEMS INTRIGUED BY SEVERAL OF THE CLEVER COSTUMES FEATURED AT THE BEAUX ARTS BALL.

BOB THUGPEN, FRESHMAN PRESIDENT, LOOKING ON AS PRESIDENT HAWES PRESENTS TROPHY TO JO DOWDY, PRESIDENT OF ALPHA TAU BETA, FOR BEST FLOAT IN HOMECOMING PARADE.



GROSS, BARBARA ANN, Slick Chicks, '51-'53; Glee Club, '51-'53; Masquers, '52-'53; Beta Lambda, '52-'53; Alpha Tau Beta, '52-'53; 'Geehee, '52-'53; Intramural Award; Dean's List. HART, SANDRA GLENN, Glee Club, '51-'53, President, '52-'53; Business Manager, 'Geehee, '52-'53; Publication Key, '53; Secretary, Sophomore Class, '52-'53; First Vice-president, Baptist Student Union, '52-'53; Student Senate, '51-'53; Outstanding Sophomore; Dean's List; Silver 'A'. HARVEY, WILLIAM HAROLD, Terrapins, '51-'53. HOOKS, BOBEIE JEAN, Student Senate, '52-'53; Glamazons, Co-captain, '52-'53, Captain, '53. HUGHES, JOAN CURTIN, Inkwell, '51-'53; Masquers, '51-'53; Mercury, '51-'52; Slick Chicks, '51-'52; Radio Workshop, '52-'53; Delta Chi, '51-'53; Science Club, Treasurer, '51-'52, President, '52-'53. HUTSON, DUANE GRAY, Tumbling Team, '53; Gators, '52-'53; Dean's List. HYERS, MARJORIE ELOUISE, Co-eds, '51-'53; Beta Lambda, '51-'53. ITZKOVITZ, CHARLES, Glee Club, '51-'53; Masquers, '51-'53; Inkwell, '52-'53; Radio Club, '51-'53; Dance Committee, '52-'53; Dean's List. JOHNSON, BETTY ELEANOR, 'Geehee, '51-'53, Editor-in-Chief, '52-'53; Glee Club, Publicity, '51-'52, Treasurer, '52-'53; Student Senate, '51-'53; Publicity, Baptist Student Union, '52-'53; Masquers, '51-'53; Mercury, '51-'52; Inkwell, '51-'52; Publication Key, '52-'53; Silver 'A'; Outstanding Sophomore. KENSINGER, DOROTHY VIRGINIA, Masquers, '51-'53; Glee Club, '51-'53; 'Geehee Staff, '52-'53.

GROSS
HART

HARVEY
HOOKS

HUGHES
HUTSON

HYERS
ITZKOVITZ

JOHNSON
KENSINGER





KRAFF
LAMBERTSON

LANIER
LAW

LAWING
LEECH

LEWIS, E.
LEWIS, J.

MCKENZIE
MITCHELL

KRAFF, HERBERT RONALD, Loafers, '51-'53; A Club, '52-'53; Manager, Basketball Team, '51-'53. LAMBERTSON, JOAN WILLIAMS, LANIER, ROBERT T. LAW, LOUIS CARSON, Scholars, '51-'53. LAWING, BARBARA ANNE, Science Club, '51-'53; Vice-president, '52-'53; Glee Club, '51-'53; Mercury, '51-'53; Tumbling Team, '51-'52; Masquers, '51-'53; Student Senate, '51-'53; Archery Club, '52-'53; Coeds, Alt. Captain, '51-'52; Captain, '52-'53; Silver 'A'; Permanent Dean's List. LEECH, RICHARD WAYMACK, Fager Beavers, '49-'51; Manager, '51; Loafers, '52-'53. LEWIS, EARLINE WRIGHT, Treasurer, Sophomore Class, '52-'53; Masquers, '51-'53; Glee Club, '52-'53; Delta Chi, '51-'53. LEWIS, JACK CHARLES, Masquers, '51-'52. MCKENZIE, EDWARD MARION, Terrapins, '51-'52; Gators, '52-'53; Varsity Basketball, '51-'53; Dance Committee, '52-'53; Boy's Intramural Board, '52-'53; A Club; Student Senate, '52-'53; Freshman Court, '51. MITCHELL, WILLIAM KENNETH, Loafers, '49-'51.



NEWMANTIES JERRY MOCK,
CHRIS RUSSELL, PRESIDENT
KITTY BROWNE, AND RALPH
SIKES ALL SET TO GO IN THE
HOMECOMING PARADE.

PUBLICATIONS FLOAT COMMITTEE STOPPED HERE FOR A BREATHIER BEFORE COMPLETING THE DECORATIONS FOR THEIR HOMECOMING FLOAT.



MOSHER, GEORGE DEWEY, JR., Student Senate, '52-'53; Dance Committee, '52-'53; Intramural Board, '52-'53; Terrapins, '51-'53, Captain, '52-'53. MURPHY, BETTY, Treasurer, Beta Lambda, '52-'53; Slick Chicks, '51-'53, Captain, '52-'53; Alpha Tau Beta, '52-'53; Student Senate, '52-'53. MURPHY, WILLIAM FLOOD, Scholars, '50-'51; Terrapins, '52-'53; Newman Club, '50-'51. NEASE, EDWARD LABAN, Loafers, '48-'50, '52-'53, Treasurer, '49-'50, Captain, '52-'53; Varsity Basketball Team, '52-'53; Dance Committee, '52-'53. PECK, JOHN FENN, Math Club, '52; Scholars, '52-'53; Geechee, '52-'53; Newman Club, '52-'53; Radio Workshop, '52-'53; Dean's List. PERRY, TOM HAYNES, Gators, '51-'52; Co-captain, Varsity Basketball Team, '52-'53; Dance Committee, '52-'53. POWERS, ISABELLE MARY, Newman Club, '51-'53, Vice-president, '51-'52; Delta Chi, '51-'53, Treasurer, '52-'53; Glamazons, '51-'53; Freshman Queen, '51; Geechee Beauty Court, '53. PURCELL, JOAN, Glamazons, '52-'53. REGISTER, RICHARD P. REMION, GLORIA MARLENE, Co-eds, '51-'53; Beta Lambda, '51-'53.

MOSHER
MURPHY

MURPHY
NEASE

PECK
PERRY

POWERS
PURCELL

REGISTER
REMION





ROARK
SHERIFF

SILVER
SKEADAS

SMITH
SOTIROPOULOS

SPONSELLER
STANLEY

SWEET
WATERS

WILSON
WYATT



YOUNGBLOOD



ROARK, MICHAEL H. SHERIFF, JACQUELINE. SILVER, STANLEY M. SKEADAS, JOHN ANTHONY, Scholars, '50-'51; Loafers, '52-'53. SMITH, LORETTA B. SOTIROPOULOS, NICK, Math Club, '51-'53; Scholars, '51-'53; Music Club, '53; Masquers, '51-'53; Glee Club, '51-'53; Science Club, '52. SPONSELLER, ETHEL ERICHSEN, Vice-president, Glee Club, '52-'53; Inkwell, '51-'53; Make-up Editor, '52-'53; Student Senate, '52-'53; Beta Lambda, '52-'53; Alpha Tau Beta, '52-'53; Slick Chicks, '51-'53; Masquers, '52-'53; Science Club, '51-'52; Outstanding Sophomore; Beauty Editor, 'Geeheet, '52-'53; Publication Key, '53. STANLEY, CAROLYN. SWEET, CAROL JEAN, Delta Chi, '52-'53. WATERS, JOSEPH LARRY, JR., Inkwell, '52-'53; Glee Club, '51-'53; Masquers, '52-'53; Science Club, '52-'53; Dean's List. WILSON, WILLIAM MYERS, Masquers, '51-'53; Radio Club, '51-'53; Mercury, '51-'53; Inkwell, '51-'53; Glee Club, '51-'52; Dance Committee, '51-'53; Dean's List. WYATT, RICHARD WALTER, Scholars, '52-'53. YOUNGBLOOD, HELEN JOAN, Glee Club, '51-'53; Inkwell, '51-'53; Co-eds, '51-'53; Mercury, '52-'53; Radio Workshop, '52-'53; Dean's List; Publication Key, '53.



Beta Lambda members enjoy a tacky party at the home of one of the members. From all reports the evening was a memorable success.



Prizes for the tackiest costumes were awarded to: Kitty Browne, for second place; Debbie Clark, for the best costume; and Sandra Hart, for third best.



Mrs. Muther, faculty advisor, shows Mrs. Carmen Marcado of the Philippine Islands and Mrs. Hazel Franklin of the Savannah Vocational School around the Armstrong cooking lab.



Several original dances performed by members of the tap and modern dance classes at their annual recital are shown here. This program was well received by students, faculty members and parents.

Freshmen



Freshman Officers



Left to right, JOAN LECROY, secretary; BOB THIGPEN, president; BETTYE MOREKIS, treasurer; and JANE EDMFIELD, vice-president.



QUEEN BETTYE MOREKIS AND KING JIM MOODY

Freshman Royalty



JOAN ALBERINO



THEODORE ALLEN



CLAY ANDERSON



JOAN ASENDORF



PATSY BACKUS



NANCY BACON



RILEY BAKER



FREDERICK C. BALDWIN



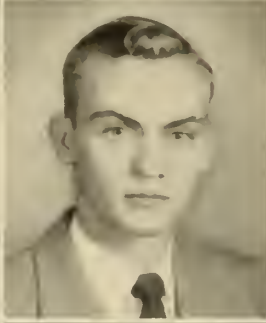
JAMES BARFIELD



GEORGE BATAYIAS



CLARENCE D. BELL



ALICE BENSON



WILLIAM O. BERRY



JOS. T. BLESSINGTON



JOHN BLEVINS, JR.



JOHN BRODMAN



DAVID O. BURGESS

RICHARD R. CANADY



MARJORIE CANTY



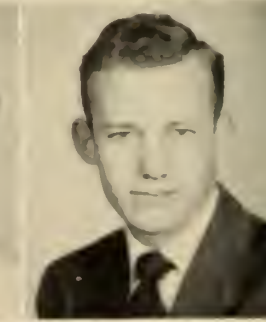
RICHARD CANTY



JOAN CARTWRIGHT



FRANK CIUCEVICH





HOWARD K. COHEN



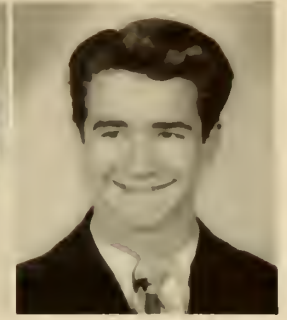
JACQUELINE COOK



JANI CRAWFORD



RUTH DANIELS



GORDON DAURELLE



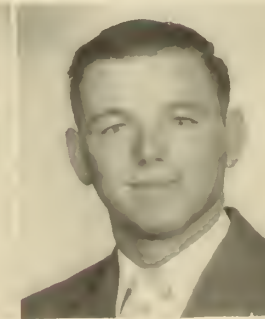
PAUL E. DAVIS

REGINALD M. DAVIS

VADNA DeLOACH

WILLIAM R. DeWITT

JOANNE DEWBERRY





JOSEPH T. DOWD



BILL A. DROSSOPOULOS



JAMES DUMOND



JANI EDENHILD



ALBERT EPSTEIN



WALTER FISCH



JERRY E. FLANDERS



JAMES A. FOGARTY



WILLIAM L. FOGARTY



JULIAN R. FRIEDMAN



WILLIAM A. FUHRMAN



LOLA GERBASI



ELEANOR GLISSON



GRAYSON GOPLEY



IVAN T. GODRICH, JR.



CARL BARRY GODSON



MARGARET HALE

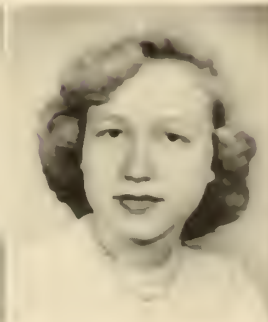
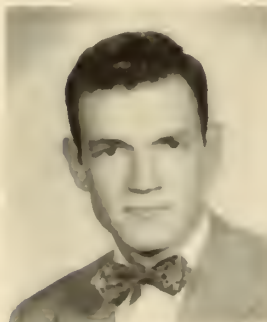
STEPHEN P. HALE

MARGARET HAMM

CHARLES HAYMASS

CAROLE HUFFMAN

CECH D. HENDERSON





DOROTHY HODGES



AILEEN HUFF



JOYCE HUNTER



GENE HUTCHINSON



EDWARD C. JAUDON



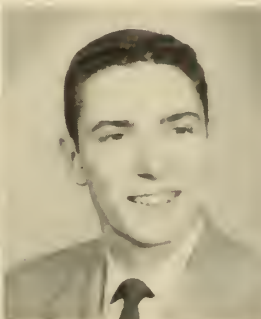
JEANNETTE JONES

JOSEPH F. JOSELOVE

WILLIAM L. KITCHENS

AILEAN KUHLE

HENRY LAROACH





ANTONIO LAMAS



JOHN E. LAMBERTSON



JOAN LeCROY



MARTHA ANNE
LEONARD



FRAN LISSER



CHARLES C. LILLS



JOHN W. LOADMAN



WILLIAM C. LORD



DEONNE LYMON



TEDDY LYMON



DONALD MCKENZIE



JULIE MCPIPKIN



HUBERT R.
MALLORY, JR.



ARTHUR P. MINCHEW



ANITA MITCHELL



JERRY B. MOCK



JAMES D. MOODY

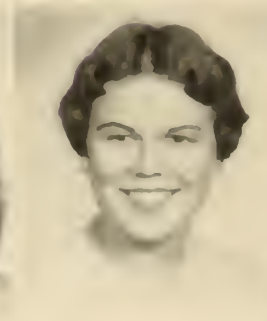
SARA MOORE



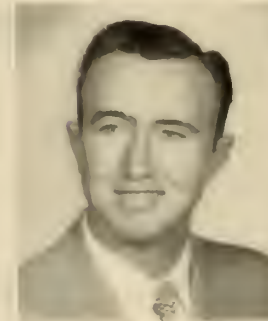
BETTYE MOREKIS



JOAN MOREL

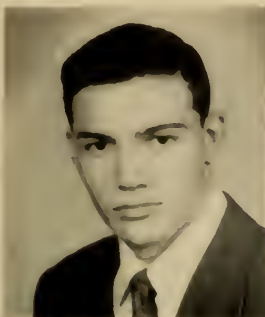


JOSEPH D. MOSLEY



DANIEL A.
MURPHY, JR.





LANDY NEW



MARESE NEWSOME



CARROLL NORMAN



ROBERT O'DONNELL



ROBERT M. OETGEN



JAMES F. OSBOURNE

ANN PERKINS

JEAN PRESCOTT

SALLY PRYOR

CAROLYN READDICK





JOSEPH RICE



THOMAS G. ROBERTS



SUSANNA
ROBERTSON



CHRISTOPHER F.
RUSSELL, III



PHILLIP M. RUSSELL



MARY HERMES RYAN



JOHN D. SANDERS



GRADY SAPP



SIDNEY SHEPERD



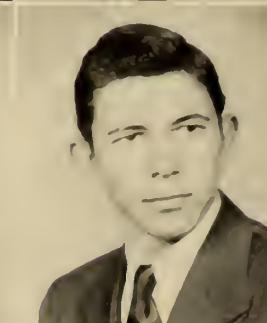
RALPH SIKES



CAROLE SINCLAIR



FRANKLIN P. SMITH



GLENN L. SMITH



HERBERT A. SMITH



ROBERT E. SMITH



VIRGINIA SMITH



BETTE STAFFORD

FRED STEGIN

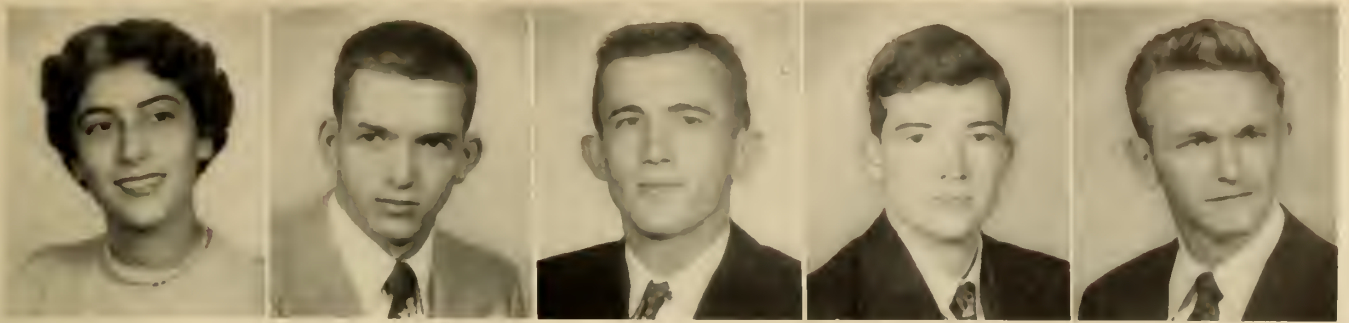
MARILYN STEPHENS

MARY SULLIVAN

BARBARA
SUNDERLAND

ROBERT E.
THIGPEN





MARY ANN THOMAS

CHARLES THOMPSON

VERNON R. TULLIS

NORTON TURNER

HENRY W. TUTEN, JR.



JOHN C. TUTEN

KIRBY TYLER, JR.

MICHAEL TYSON

JACK W. USSURY

LOU VAUGHN





FRANK M.
WALDEN, JR.
KATHERINE WALKER
AL WINTERS
DAVID WOOLSEY



JACK WRIGHT
MARGARET ZEIGLER
SUE ZOUCKS





ALICE G. AKINS

EMMA CANTY



MISS LORA JOHNSON
*Director of Nurses and
Nursing Service*

Student nurses from the Candler Hospital School of Nursing take their freshman year's work at Armstrong. These credits may be used later towards nursing degrees at other colleges and universities. Their busy schedules of class and practical experience leave them little time to join in Armstrong activities. However, this year their own Pat Perkins was elected 'Geechee Beauty Queen by the student body here.

MITTIE ANN
DAVIS

LINDA DOROTHY
DURRENCE

MARGARET CAROLYN
GREGORY

BETTY JEAN
MADDOX

PATRICIA
PERKINS

LEONA AMY
DICKEY

HARIOT FE
FINN

JEANNE CAROLYN
MCCAIN

MARJORIE J.
MARTIN

NORMA JOYCE
ROBEY



Evening College

Director of the Evening College, Arthur M. Gignilliat, Sr., and his secretary, Mrs. Helen Meighen are pictured at the right.



The Armstrong Evening College is an integral part of the educational program here with the same program of study being offered both in the day school and the Evening College. A number of courses of interest to the adult student who does not care to work for a degree are offered also. Another feature of the Evening College is the opportunity it offers students to complete junior and senior requirements through courses offered at Armstrong by the Extension Division of the University of Georgia.

Mr. Chris Murphy and his art class are shown here at work on sketches of a still life.



Mr. J. Harry Perse's music appreciation class was one of the larger classes during the winter quarter.

This year Armstrong had one of the best Homecoming celebrations in its history. A bigger and better parade, a basketball game, a reception for alumni and friends, and a ball were features of the 1953 Homecoming. This page as well as the next three show highlights of the celebration.



Above, Alpha Tau Beta's prize winning entry.

Above, the entry of the Women's Intramural Teams.



At right, the Glee Club entry.



Cheerleaders float which provided music for the parade and which bore placards as reminders of the Homecoming basketball game scheduled for that same evening.

Publications float planned and decorated by a committee representing the 'Geechee, Inkwell and Mercury. The three editors and other staff members rode on the float.



The Men's Intramural Board entry — a small cart drawn by a small Shetland pony — paced the parade.

At right and below, assembled guests and receiving line at the traditional Homecoming reception held in the lobby of the Armstrong building. The receiving line included officers of the college, alumni officers and chairman of the commission.



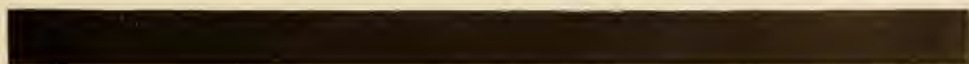
Above and at left, scenes from the Homecoming Ball which followed the reception. The attendants to the Freshman King and Queen are seen above, and at left, the dance in full swing.



Pictured here are several other entries in the Homecoming parade as well as other sidelights of the celebration including: the Dance Committee float, students voting for Freshman King and Queen, and several of the musicians and singers from the Glee Club float.



Activities



'GEECHEE

The 'Geechee Staff is composed of freshman and sophomore students who wish to leave a permanent record of the year's activities. Untold hours are represented by the pages of photographs and copy which they hope will give pleasure and even some chuckles through the years.

At left, Kitty Browne, Barbara Gross, and Sandra Hart, Business Staff

Below, Ethel Sponseller and Jean Bolen, Beauty Editors.

Above, Jim Moody, Marion Bandy, Hubert Mallory, and Teddy Lymon, Make-up Editors.

STAFF

The cooperation of the administrative staff, faculty and students of the college is necessary for successful planning and scheduling of photographs and gathering of copy. Prompt effort on the part of the photographer, engraver and printer make it possible to meet deadlines. All this and much more goes into making the 1953 'Geehee the annual we present to you.



Above, Jules Abraham, associate editor; Betty Johnson, editor-in-chief; Sandra Hart, business manager; Mrs. Eleanor Doyle Andrews, faculty advisor.



At left, Jules Abraham, Barbara Gross, Bill Fuhrman, and Betty Morekis, Sports and Activity Section Editors.



At right, Jeannette Jones, John Peck, Carolyn Readdick, and Deonne Lymon, Freshman and Sophomore Section Editors.



Left to right, seated: Ethel Sponseller, Mary F. Sullivan, Barbara Lawing, Jack Golden, Julian Friedman, Betty Burriss, Joanne Dewberry, Arthur Gignilliat, Jean Bolen, Molly Barnhardt, Bob Thigpen, Ann Perkins, Betty Murphy, Kitty Browne, Sandra Hart, Betty Johnson, Jean Carter, Mary Craik, Bobbie Jean Hooks, Robert Carter. *Standing:* Jane Edenfield, Teddy Lymon, Ronald Coleman, George Batavias, Dewey Mosher, and Ed McKenzie.

Below, Arthur M. Gignilliat, Jr., treasurer; Jean Bolen, secretary; Molly Barnhardt, president; Bob Thigpen, vice-president.



STUDENT SENATE

The Student Senate is composed of representatives from all recognized clubs of the college and of the presidents of the freshman and sophomore classes. The Senate is the governing body of the students of the college and its purpose is to make and enforce the laws and regulations of Armstrong. It also formulates the budget for student activities. President Foreman M. Hawes is the faculty advisor.

MERCURY STAFF

The Mercury is a quarterly magazine containing short stories, poems and original articles contributed by the students and faculty members of the college. Mr. Joseph W. Green is faculty advisor.



Above, Bill Fuhrman, associate editor; Mary Sullivan, business manager; Betty Burriss, editor; and Mr. Joseph W. Green, faculty advisor.



Staff members include: Betty Burriss and Mary Sullivan, in front of stairs, and from top to bottom, Mr. Green, Fred Baldwin, Harry DeLorme, Jim Moody, Bill Fuhrman, Jack Golden, Bill Wilson, Helen Youngblood, Jean Bolen, and Bette Stafford.



Back row: Nick Sotiropoulos, Brett Baxley, Ronald Coleman, Albert Finch, Freddie Stokes. *Third row:* Tom Perry, Henry LaRoche, Ted Lymon, Dewey Mosher, Joby Graham, Bill Wilson, Jack Golden, Charles Itzkovitz, Robert Friedman. *Second row:* Carroll Norman, Anita Mitchell, Joyce Hunter, Alleen Huff, Lou Vaughn, Bettye Morekis, Joan Edenfield, Carole Sinclair, Carolyn Readdick, Earline Lewis. *Front row:* Miss Morris, Alleen Kuhlke, Jean Carter, Mary H. Ryan, Mary Craik, Deonne Lymon, Patsy Backus.

DANCE COMMITTEE

One of the hardest working committees at Armstrong is the Dance Committee. It combines artistic talent with a talent for hard work found in its members who come to it as representatives from the various clubs or are interested in joining in its work. Faculty advisors are Miss Dorothy Morris and Mr. Uno Kask.

Dance Committee officers include, in front: Freddie Stokes, chairman; Miss Morris, faculty advisor; *in back:* Teddy Lymon, decorations chairman; Lou Vaughn, publicity chairman; Al Finch, entertainment; Dewey Mosher, student senate representative; Mary Craik, secretary and treasurer.





Standing: Eleanor Glisson, Betty Murphy, Mrs. Muther, faculty advisor; Barbara Sunderland, Jackie Cook. *Seated:* Barbara Gross, Kitty Browne, Martha Ann Leonard, Jean Bolen, Ethel Sponseller, Debbie Clark, Jeannette Jones, Jo Dowdy, Mary Craik, Cleo Graham, Joan LeCroy, Marian All, Marjorie Hyers, Sara Moore, Gloria Remion, and Sue Zoucks.

BETA LAMBDA

Beta Lambda, one of the largest service clubs on campus, arranges for the Homecoming Reception, refreshments for Open House and other social activities during the year. Its membership includes many women students who intend to major in home economics and many who do not. Mrs. Josephine S. Muther is faculty advisor.



Left to right: Jackie Cook, secretary; Jo Dowdy, vice-president; Mary Craik, president; Mrs. Muther, faculty advisor; Betty Murphy, treasurer; Cleo Graham, historian.

GLEE CLUB

The Glee Club is made up of students who enjoy singing and who are interested in music. This year the Glee Club members sang at assemblies, presented a Christmas concert and another in the spring, and cooperated with the Masquers in presenting a spring musical, "Down in the Valley." The Glee Club director is J. Harry Perse.



Glee Club members pictured below include, front row: Barbara Gross, Barbara Lawing, Jean Bolen, Carole Heffernan, Betty Johnson, treasurer; Ethel Sponseller, vice-president; Sandra Hart, president; Kitty Browne, secretary; Betty Burris, Mary F. Sullivan, Sue Zoucks, Katherine Walker, and Betty Morekis. Second row: Grady Sapp, Jack Golden, Charles Itzkovitz, Robert Carter, John Carter, John Canty, Susannah Robertson, Marjorie Canty, Mary Ann Thomas, Mary H. Ryan, and Helen Youngblood. Back row: Joe Waters, Harry Delorime, Jack Sanders, Harry Perse, director; and Maurice Ayer.



INKWELL STAFF

The Inkwell is published bi-weekly by a capable staff composed of students who are interested in journalism. The publication includes news of college activities, feature stories and editorials. Mrs. Eleanor D. Andrews is faculty advisor.



ANDREWS
Mrs. Andrews, faculty advisor; Ethel Sponseller, make-up editor; Jean Bolen, editor-in-chief; Bill Fuhrman, associate editor.

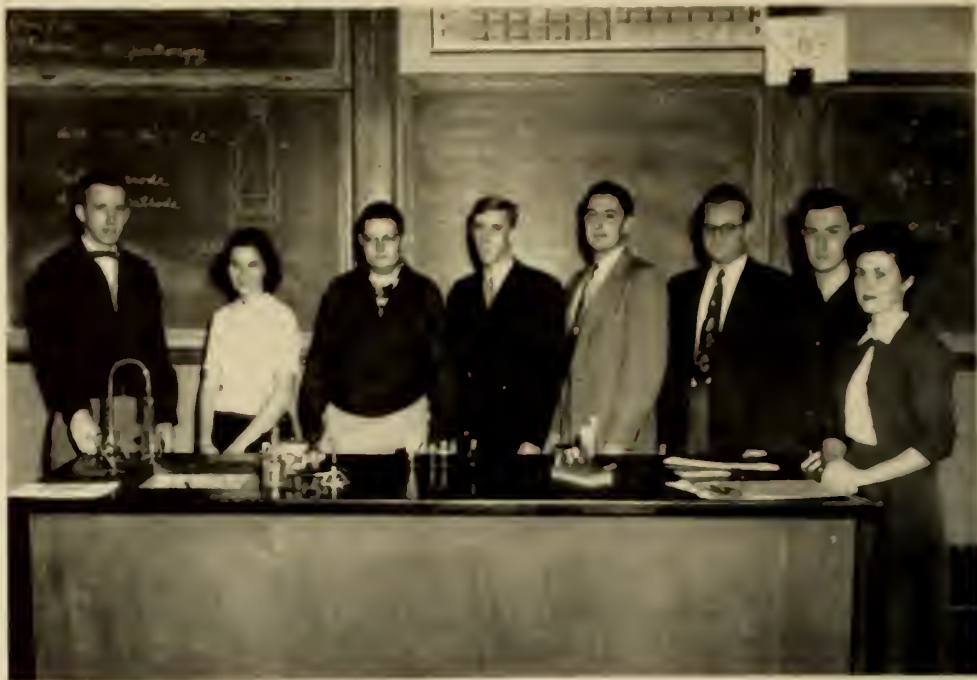
Below, reporters Don McKenzie, Hubert Mallory, Helen Youngblood, Joanne Dewberry, Debbie Clark, Jimmy Abraham, and Betty Burriss.

Below, Joe Waters, Debbie Clark, Sandy Cohen, Bill Wilson, Charles Itzkovitz, Carolyn Readdick, Marian All, Jack Golden, Jim Moody of the reportorial staff. *Below right, Top row*: Ruth Daniels, Barbara Gross, Dot Hodges, Kitty Browne, and Joan Hughes; *Front row*: Mary Sullivan, Joan LeCroy, Joan Edenfield, Patsy Backus, and Ann Perkins, all of the news staff.



SCIENCE CLUB

The Science Club is not only a club for students who are majoring in some scientific field, but for all students who are interested in new developments in the various fields. This year club activities included a field trip to collect biological specimens, a tour of the Union Bag plant, and some interesting lectures and demonstrations. Faculty advisors are: Mr. Uno Kask, Mr. Crawford G. Jackson, Mr. Arthur Casper and Mr. Elmo M. McCray, Jr.



Left to right: Don McKenzie, program co-chairman; Barbara Lawing, vice-president; Hubert Mallory, secretary and treasurer; Mr. Casper, Mr. Jackson and Mr. Kask, faculty advisors; Joe Waters, program co-chairman, and Joan Hughes, president.

Front row: Joe Waters, Robbie Carter, Joan Hughes, George Batavias, Julian Friedman. Second row: Joan Asendorf, Vadna DeLoach, Joan Morel, Thomas Roberts, Joseph E. Dowd. Third row: Leon Friedman, Mr. Casper, Mr. Jackson, and Mr. Kask. Back row: Nancy Bacon, Johnny Carter, Joe Rice, Don McKenzie, Barbara Lawing, and Hubert Mallory.



NEWMAN CLUB



Above, Bill Fuhrman, vice-president; Lou Vaughn, secretary-treasurer; Rev. Thomas A. Payne, moderator; and Kitty Browne, president.

Though the Newman Club has as its objective the promotion of spiritual, intellectual and social interests of the Catholic students of Armstrong, all students are invited to membership. Mrs. Eleanor D. Andrews and Mrs. Mildred L. Hamilton are faculty advisors and the Rev. Thomas A. Payne is moderator. Highlights of the year were an essay contest sponsored by the club and the annual Newman Day Communion Breakfast.

Below, standing: Joan Hughes, Harry DeLorme, Jim Moody, John Peck, Chris Russell, Jerry Mock, Danny Murphy. *Seated*: Jean Prescott, Mary Ann Thomas, Mrs. Mildred Hamilton, Bill Fuhrman, Lou Vaughn, Kitty Browne, Father Payne, Isabelle Powers, Joan Cartwright, Alice Dougherty, Jean Morel, Carole Heffernan, Marjorie Canty, Richard Canty.





The capable cast and the unusually effective set of the morality play "Everyman" as it was presented in the fall quarter is seen above.

Armstrong Masquers

A rollicking comedy—Moliere's "Doctor in Spite of Himself" was also presented during the fall quarter.





Above and at left, two of the most effective scenes from the Masquers' winter production, "Hay Fever."

Jack Porter is director of the Masquers and the officers include: Fred Stokes, president; Lou Vaughn, treasurer; Mary Craik, historian; Jack Golden and Ted Lymon, student senators; Jane Edenfield, party chairman.

Below, members of the Masquers' production crews.





Above, left to right: Fred Baldwin, Hubert Mallory, John Peck, Mr. Casper, Mr. Padgett, Leon Friedman, James Dumond, Albert Finch, program chairman; Julian Friedman, representative to the student senate; George Batayias, Bobby Harrod, Don McKenzie, Maurice Avrer, and Ed Nease.

MATHEMATICS CLUB

The primary aim of the Mathematics Club is to give students who have a special interest in mathematics an opportunity to further their understanding of the subject beyond ordinary college requirements. The club has interesting programs and includes social functions as well. Mr. Arthur Casper and Mr. Jack Padgett are faculty advisors.



Front row: Betty Burriss, Sandra Hart, membership vice-president; Jean Bolen, president; Jeannette Jones, secretary-treasurer; Joanne Dewberry, social vice-president; and Helen Youngblood. *Back row:* Joan LeCroy, Jane Edenfield, Ruth Daniels, Walter Fisch, Joe Waters, Mr. Padgett, faculty advisor; Bill Wilson, Mr. Porter, Jack Lewis, Bob Thigpen, Mrs. Seyle, and Betty Johnson, publicity director.

BAPTIST STUDENT UNION

Organized this year at Armstrong, the Baptist Student Union, with chapters on many college and university campuses, has as its purpose to bring church and campus closer together. Meeting every other week, this organization has grown and looks forward to a very active year beginning next fall. In April several of the students and Mr. Padgett went to the Georgia Spring Retreat at Bessie Tift College to plan for next year and to train the newly elected officers.



*Marian All, Treasurer; Patsy Backus, Jean Bolon, Publicity; Mary Brigham, Deborah Clark, Jackie Cook, Jo Dowdy, President;
 Eleanor Glason, Cleo H. Graham, Secretary; Barbara Gross, Margaret Hale, Alleen Huff, Jeannette Jones, Joan LeCroy, Marla
 - Anne Leonard, - Anita Mitchell, Betty Morekin, Vice-President; Betty Murphy, Ann Perkins, Sally Poyor, Virginia Smith,
 and Ethel Sponseller.*



Joan Alberino, Cloy Anderson, Marion Bandy, Molly Barnhardt, Vice-President; Kitty Browne, Jean Carter, Joan Cartwright, Sandy
 Cohen, Alice Dougherty, President; Kitty Goins, Secretary; Carole Heffernan, Joan Hughes, Allcan Kahlke, Fran Lesse, Earlene
 Lewis, Deonne Lyman, Isabelle Powers, Treasurer; Jean Prescott, Carole Sinclair, Carolyn Stanley, Marilyn Stephens, Carol Jean
 Sweet, Mary Ann Thomas, and Sue Zoucks.

RADIO WORKSHOP

The Armstrong Radio Workshop is an activity which gives interested students experience in radiobroadcasting through the creation and production of radio programs. This year they have entertained the student body on assembly programs with two productions: "Sorry, Wrong Number" and "The Kingdom of Marmalade," an original play by Jim Moody, one of its members. Mr. Jack Porter is director.

At left, Radio Workshop officers: Susannah Robertson, vice-president; Jim Moody, president; Lou Vaughn, secretary, and Ann Perkins, representative to the student senate. Members pictured below include: Helen Youngblood, Bill Fuhrman, Jean Bolen, Ann Perkins, Susannah Robertson, Jim Moody, Bill Wilson, Jack Porter, director; and John Peck.





Pictured above are Home Ec students who made and then modelled their own handwork in Christmas fashion show. *Left to right, top to bottom:* Mary Craik, Eleanor Glisson, Peggy Smith, Jackie Cook, Sandy Cohen, Joan Hughes, narrator: Ethel Sponseller, Joan Lambertson, Allean Kuhlke, Bettyc Morekis, and Jean Bolen.



Sports





Squad members include: *Back row:* Herbert Krapf, Jules Abraham, Robert Helmey, Grayson Godley, Bill Kitchens, Arthur Gignilliat, Larry Bell, Billy Lord, and Coach Bell. *Front row:* Bob Gorman, Riley Baker, Tom Perry, Ed Nease, Ed McKenzie, Herb Smith.



At right, Coach William L. Bell just before a practice session of the Geechees.



At left, Co-captains Tom Perry and Arthur Gignilliat.

Geechees

Armstrong	Opponents	Score
42	Armstrong Alumni	43
64	Glynco Navy Yard	65
49	Georgia Teachers "B"	75
50	College of Charleston	79
57	Jacksonville Junior College	91
70	College of Charleston	80
70	Charleston Navy Yard	75
61	Middle Georgia College	64
61	Southern Tech	54
50	Georgia Teachers "B"	91
70	Georgia Military College	78
53	Southern Tech	67
70	Charleston Navy Yard	75
72	Middle Georgia College	87
56	Glynco Navy Yard	65
57	Jacksonville Junior College	90

JUNIOR COLLEGE TOURNAMENT

56	Southern Tech	52
59	Georgia Military College	54
60	Young Harris	87
69	Brewton Parker	92



The action shots shown on this page were taken at the annual Homecoming game played this year against Jacksonville Junior College on December 20th at the Hellenic Center. Armstrong Geechees captured fourth place in the Georgia Junior College Tournament.



Managers Herbert Krapf and Billy Lord show how they would care for an injury to one of the Geechees during a game. Bill Kitchens is the willing victim in this photo.



Bill Kitchens, Grayson Godley, and Arthur Gignilliat were high scorers for the Geechees this season. Their individual total scores for the regular season were: Kitchens, 232, Godley, with 177 and Gignilliat, 124. In the Georgia Junior College Tournament Kitchens led the Geechees with 99 points, Godley next with 57, and Gignilliat third with 39 points.

WOMEN'S INTRAMURAL STANDINGS

Basketball

	<i>Won</i>	<i>Lost</i>	<i>Tied</i>
Sassy Strutters	5	1	0
Slick Chicks	4	1	1
Co-Eds	3	2	1
Glamazons	0	6	0



The action shots seen here were taken in a preliminary game between the Co-Eds and the Slick Chicks. The result was a tie.



Volleyball

	<i>Won</i>	<i>Lost</i>
Sassy Strutters.....	4	0
Co-Eds	3	1
Slick Chicks.....	1	3
Glamazons	0	4

Ping-Pong

Sandra Hart of the Co-Eds is the 1952-3 Champion

“A” Club

The “A” Club is composed of students who have been outstanding in athletics during the current year. Membership in the club automatically accompanies the award of an athletic letter.

Members of the club pictured at right, Back row: Ed McKenzie, Herbert Krapf, Billy Lord, Grayson Godley, Jules Abraham, Herb Smith. *Front row:* Riley Baker, Tom Perry, Ed Nease, Bill Kitchens, Arthur Gignilliat, and Bob Gorman.



Cheerleaders

This year Mr. Crawford Jackson and his group of cheerleaders faithfully attended all the home games played by the Geechees and also attended many of the games away. They also led a number of successful pep rallies prior to the home games.

Pictured at left: Joan Asendorf, Jane Edenfield, Bettye Morekis, Mary H. Ryan, Patsy Backus, captain. *Not in picture:* Jeanette Jones.



Men's Intramural Board



Left to right, Jimmy Rowe, chairman; Coach Bell, Dewey Mosher, Ed Nease, Herb Smith, and Jules Abraham.

Women's Intramural Board



Left to right, Mary Sullivan, chairman; Barbara Lawing, Miss Morris, Jean Carter, Betty Murphy. Not in picture: Bobbie Jean Hooks.

Scholars



Back row: Arthur Gignilliat, Maurice Ayer, Donald Bergman, Louis Law, Jules Abraham. *Front row:* Nick Sotiropoulos, Richard Wyatt, and John Peck.

Loafers



Left to right: Herb Krapf, Johnny Lambertson, Dick Leech, Larry Bell, Reggie Davis, Ronald Coleman, Bob Thigpen, James Lucas, Johnny Skeadas, Ed Nease, David Woolsey, John Canty, Joe Rice and Jack Ussury.

Gators

Left to right: Ted Allen, David Carter, Riley Baker, Jerry Mock, Al Winters, Jack Sanders, Tom Perry, Paul Davis, Albert Finch, Chris Russell, Herb Smith.



Terrapins

Back row: Freddie Stegin, Bob Gorman, and Bobby Oetgen.
Front row: Sidney Sheperd, Grayson Godley, Bill Pope, Dewey Mosher, John Tuten, Frank Wallden.

Slick Chicks



Standing: Mary Brigham, Patsy Backus, Mary H. Ryan, Joan Asendorf, Carolyn Readdick, Dot Hodges, Barbara Gross, and Debbie Clark. *Kneeling:* Jane Edentfield, Joanne Dewberry, Joan LeCroy, Betty Murphy, Jean Bolen, Ethel Spon-seller, and Alleen Huff.

Sassy Strutters

Standing: Clay Anderson, Carole Sinclair, Jo Dowdy, Mar-jorie Canty, and Carole Heffer-nan. *Kneeling:* Joan Cartwright and Jean Carter.



Glamazons

Left to right: Virginia Smith, Carolyn Stanley, Lola Gerbasi, Joan Purcell, Bobbie Jean Hooks, Margaret Hamm, and Hazel Blackburn.



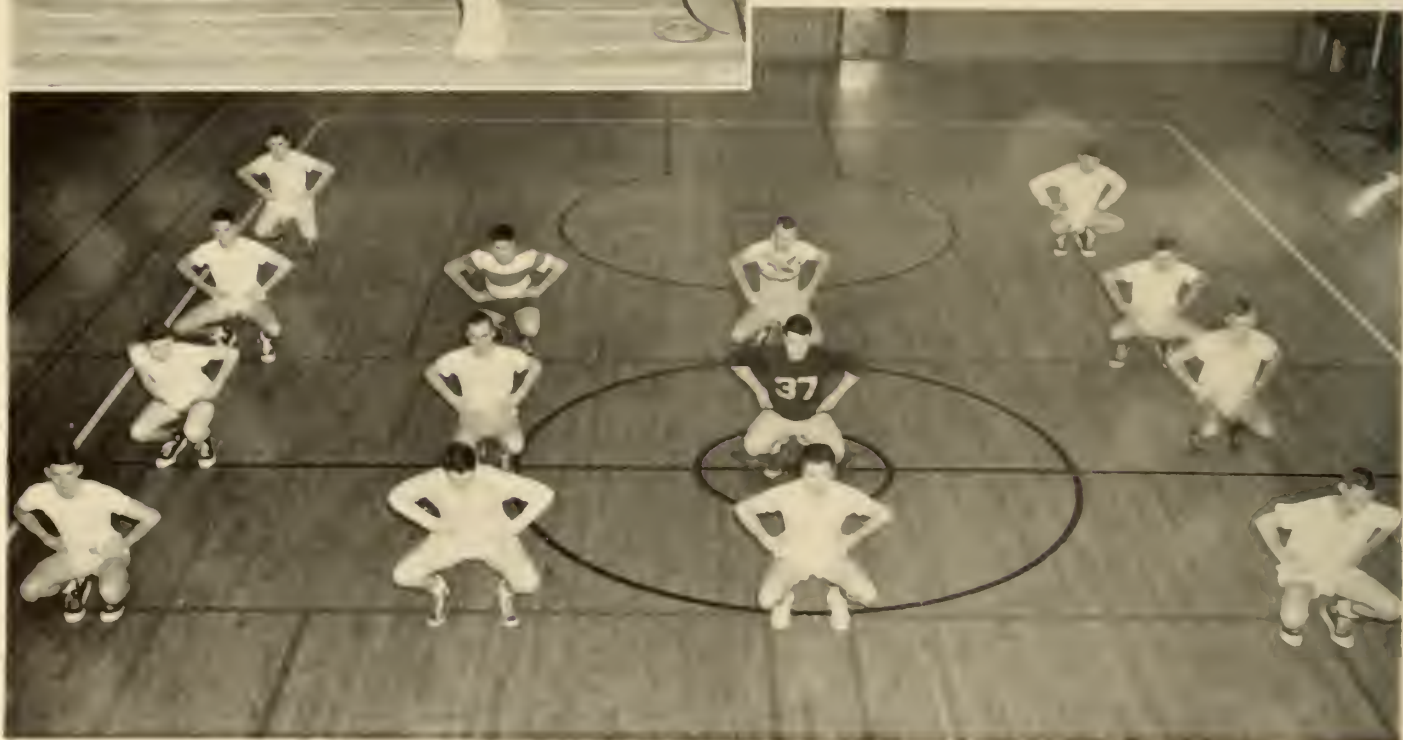
Co-Eds

Left to right: Barbara Sunderland, Joyce Hunter, Ruth Daniels, Sandra Hart, Gloria Remion, Barbara Lawing, Ann Perkins, Jeannette Jones, Helen Youngblood, Bettye Morekis, Mary Sullivan, Marjorie Hyers, and Kitty Browne.

The informals on this page show some of the exercises used by members of the men's physical education classes under the direction of Coach Bell.



At left, Joby Graham lifts weights while in the lower picture one of the physical education classes is shown as it goes through a series of calisthenics at the Y.M.C.A.



Beauty





Queen Patricia Perkins, Candler Nurses

*A pearl . . . captured sunlight . . . love at first sight . . . a lighted window
on a lonely street . . . white violets in an earthen jar*



Kay Helmly, Basketball Team

*An emerald . . . daisies blowing in an open field . . . sunlight on the sea
. . . water skiing by moonlight . . . dewdrops on an early harvest*



Isabelle Powers, Delta Chi

*A sapphire . . . Venus the Goddess of Beauty . . . roses and ivy intertwined in gay
springtime's basket . . . a Botticelli elf . . . blending torrents of a summer shower*



Carole Sinclair, Freshman Class

*A diamond . . . romantic verse carved in clouds . . . a bending poplar on a windy day
. . . a nosegay of violets . . . the moon and stars on a summer night*



Joan Lambertson, Sophomore Class

*A ruby . . . haunting beauty of gypsy music . . . a flame in a fieldstone fireplace
. . . perfection of an orchid . . . a windswept beach . . . lightning in a tropical storm*



Every year the 'Geehee staff sponsors the 'Geehee Beauty Court. Every recognized club and class at Armstrong is privileged to nominate a candidate. The young ladies nominated for the honor this year are shown here as they were presented at a student assembly.

At left, Carole Heffernan, Joan Morel, Marjorie Hyers, Joan Lambertson, and Mary Craik.

At right, Jo Dowdy, Deonne Lymon, Betty Burriss, Patsy Backus, and Pat Perkins.



Below, left: Mary Ann Thomas, Isabelle Powers, Jeannette Jones, Margaret Hamm, Bettye Morekis, and Kay Helmy. Below right, standing: Carole Sinclair, Joanne Dewberry, Anita Mitchell, Joan Asendorf; seated: Joan Hughes, Lou Vaughn, and Nancy Bacon.





Valedictorian of the June 1953 graduating class is Miss Barbara Gross pictured above as she leaves the Armstrong building after being told the outcome of the election.



INDEX OF ADVERTISERS

Mayor and Aldermen of Savannah
Union Bag and Paper Corporation
Savannah Morning News & Press
Schwobilt
Schwanebeck's
Savannah Electric and Power Co.
Savannah Hotel
Penny's
Smith Brothers
Savannah Gas Company
The Morris Plan of Savannah
Raskin's
Stubbs Hardware
Derst Baking Co.
James H. McKenna
Cargill's
Haverty Furniture Co.
John G. Butler Company
Harris the Hub
Bloomingdale Nurseries
Desbouillons
Globe Shoe Co.
Mangel's
Joe Gardner
The Card Mart
The Stamp & Stencil Co.
Frank C. Matthews
Country Store
Stelljes Jewelers
Kroskin's Men's Shop

John G. Kitchell, Inc.
Photocraft
Park's
Bolen's Business College
Teen Shop
Savannah Floor Covering Co.
Leopold Adler Co.
Our House
Alnutt Music Co.
Mercer Insurance Agency
Savannah Transit Co.
The Sports Shop
Triple XXX
Maxwell Bros.
Savannah Ice Delivery Co.
Lindsay and Morgan
Joe Price, Inc.
Fine's
Claussen's
Dream House Furniture
Dairy Queen
Gay Nell
Men's Quality Shop
Gold Star Wagon Wheel
Bargain Corner
Southern Photo Service, Inc.
Morris Levy's
Sapphire Room
Standard Engraving Co.
Foote & Davies, Inc.



THE MAYOR
AND
ALDERMEN
OF THE
CITY OF SAVANNAH

congratulate

Armstrong College for affording the youth of Savannah and other places the opportunity to improve their education along substantial lines. This volume of *The 'Geechee* illustrates life at the college and presents to the public an excellent picture of the many activities of its students.

Fortunate are those who avail themselves of this educational opportunity.



What's a DIBBLE ?



Any one of the thousands of youths who make up the membership of the 4-H Club or the Future Farmers of America in Georgia could tell you without a moment's hesitation that a dibble is a spade-like tool used in setting out pine seedlings.

The dibble, although a simple instrument, is making an outstanding contribution to the progress of Georgia, just as are the boys who use it in starting their crops of trees for tomorrow.

Union Bag & Paper Corporation keeps many dibbles and a large number of boys busy during the winter months by providing 4-H Clubs and Future Farmers of America groups with hundreds of thousands of pine seedlings for planting on old fields or on land that has been rendered unproductive by over-cutting, disease, or fire.

In cooperating with the 4-H and Future Farmers members in their tree planting projects, we feel that we are making a contribution to the future of these youthful "tree farmers," to those who work with us in our own industry, and to the welfare of all other Georgians.



UNION BAG & Paper Corporation

SAVANNAH

GEORGIA

KEEP INFORMED!

on events of the world today.

Be a regular subscriber to the

Savannah Morning News
SAVANNAH EVENING PRESS

A Great Name in Clothing



"SUITS THE SOUTH"

Make life more pleasant by putting
ELECTRICITY
to work for you—for just a few pennies
a day!

**Savannah Electric
and Power Company**

SCHWANEBECK'S

Church and School Supplies

25 Abercorn St.

SAVANNAH, GEORGIA

64455 — Telephones — 64456

SAVANNAH HOTEL

Leading Commercial Hotel of the City

MAURICE PUCKETT

General Manager

VALUES FAR BEYOND THE PRICE
TRADITIONAL AT

PENNEY'S

*Style and Value Center of the
Coastal Empire*

SMITH BROTHERS

VEGETABLES AND GROCERIES

CHOICE MEATS

Habersham and 11st Streets

Phones 4-2204 — 4-2205



If your kitchen is modern...it's got to be GAS!

SAVANNAH GAS COMPANY

**The
Morris Plan Company
of Savannah**



At Drayton and Bryan Streets

Compliments of

RASKIN'S

"WOMEN PREFER RASKIN'S
SHOES, BAGS, AND HOSE"

23 $\frac{1}{2}$ Broughton St., W.



Reach For . . .



Savannah's Favorite Bread!

CARGILL COMPANY

OFFICE SUPPLIES - FURNITURE

GREETING CARDS

8 State St., East

James H. McKenna

SAVANNAH, GEORGIA

Est. 1881

Wholesale Plumbing and Heating Supplies

23-25-27 W. York Street

PHONE 2-7144

*Leading Home Furnishers of the South
for 68 Years*

Haverty's
THERE'S NO PLACE LIKE HOME

301 West Broughton St. Phone 26188

**JOHN G. BUTLER
COMPANY**

PAINTS — GLASS

BUILDING MATERIALS

MILLWORK and HARDWARE

Store 2-1161

Plant 2-1164



Nearly a Century of Service

HARRIS

THE HUB

Fine Men's Clothing Since 1896

28 Broughton St., West

Savannah

**Bloomingdale
Nurseries**

ORNAMENTAL
TREES AND SHRUBS

Bloomingdale, Ga.

"Best Wishes"

**Desbouillons
Jewelers**

Est. 1870

Quality Shoes for the Entire Family

Globe Shoe Company

17 East Broughton St.



PATRONS

MANGEL'S

15 Broughton Street, East

JOE GARDNER

17 West Congress Street

THE CARD MART

11 Abercorn Street

THE STAMP AND STENCIL COMPANY

326 West Bay Street

FRANK C. MATTHEWS

116 West Congress Street

COUNTRY STORE

306 West Congress Street

STELLJES JEWELERS

137 Drayton Street

KROSKIN'S MEN'S SHOP

114 East Broughton Street

JOHN G. KITCHELL INC.

322 East Broughton Street

PHOTOCRAFT

12 West State Street

PARK'S

107 Broughton Street, East

BOLEN'S BUSINESS COLLEGE

409 Liberty Street, East

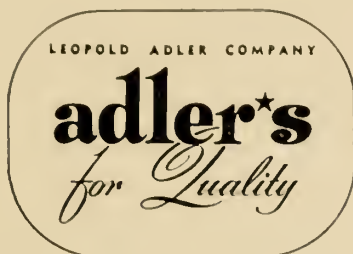
TEEN SHOP

118 East Broughton Street

SAVANNAH FLOOR COVERING COMPANY

409 East Broughton Street

Savannah's
 Leading and Largest
 Department Store



Savannah's Headquarters
 for the Nation's Leading Brands
 in Quality Merchandise



Follow the Crowd
 to "Our House" for

- BARBECUE
- SANDWICHES
- CHICKEN
- SEA FOOD
- HAMBURGERS
- BEER AND
SODA FOUNTAIN
FAVORITES

*Curb Service,
 Table Service,*

THE SOUTH'S FINEST • ONE OF THE NATION'S BEST!

Alnutt Music Co.

STEINWAY PIANOS, KNABE PIANOS.
 WURLITZER PIANOS,
 WURLITZER ELECTRONIC ORGANS

240 Broughton St., West, Savannah, Ga.

Best Wishes From

MERCER
INSURANCE AGENCY, INC.

"Personal Service"

ALL FORMS OF INSURANCE—EXCEPT LIFE

7 E. Bay St.

No matter where you go . . . to work, shopping, a movie, or school . . . it's easier to get there when you ride the Bus. No hunting for a place to park. No fighting heavy traffic. And no worry about a "ticket" for parking too long. It's cheaper, too, when you stop to consider how far you can ride on a Bus token.



Guns - Fishing Tackle - Athletic Equipment

THE SPORTS SHOP

27 West Congress Street
SAVANNAH, GA.

Jimmie Kahrs

Telephone 5816

Compliments of

Maxwell Brothers Furniture

300-308 Broughton St., West

Telephone 3-5701



Compliments of

Savannah Ice Delivery Co.

Telephone 2-0121

For 86 years the Savannah housewife has looked to Lindsay and Morgan for the finest in home furnishings.

Easy Terms



Joe Price Inc.

LUGGAGE - - LEATHER GOODS
HANDBAGS - - GIFTS

5 W. Congress St.

Fine's

*Where
Fashions
Make
Their
Debut
in
Savannah*

Call For

Claussen's



*The South's Finest
Since 1841*



" FURNITURE YOU DREAM ABOUT "



Dream House

FURNITURE CO.

2217 BAY ST. EXTN. DIAL 3-2121

"The Cone With the Curl on Top"

DAIRY QUEEN

2005 Skidaway Road
164 West Broad Street
2215 Bay Street Extension

Mrs. Lottie Hendrix

Gay-Nell
SHOP FOR WOMEN

248 Bull Street Telephone 2-2686

SAVANNAH, GEORGIA



... the Store that
CONFIDENCE
is building ...

where quality
standards are
found in ...
courtesy
service
and merchandise

24 Broughton St., East
Savannah, Georgia

home of the Nation's Leading Brands

**NEW GOLD STAR
WAGON WHEEL**

White Bluff Road



SAVANNAH'S NEWEST SUPPER
CLUB



*We cater to parties in our spacious
private dining room*



Call 9483 for reservations



"The One and Only"

**BARGAIN
CORNER**

THE BIG 4-STORY BUILDING AT BAY & JEFFERSON STS.

**Southern
Photo Service, Inc.**

CAWLEY'S STUDIO

Photo Finishing—Commercial

Portrait—Supplies

1209 BULL STREET PHONE 4-4493

Nights—Holidays . . . 3-2280



Official 'Geechee' Photographer

MORRIS LEVY'S

Savannah's Finest

STORE FOR MEN • SHOP FOR WOMEN

Compliments of the


SAPPHIRE ROOM

HOTEL DESOTO



Standard Engraving Co.

ENGRAVERS OF MERIT
FOR ANNUALS OF DISTINCTION



Since the dawn of the century...

WE HAVE SPECIALIZED
IN THE PRODUCTION OF
OUTSTANDING COLLEGE
AND HIGH SCHOOL
YEARBOOKS



FOOTE & DAVIES, INC.

PHONE WALNUT 4600

POST OFFICE BOX 5109

ATLANTA





