

1959

Ó

E

E

C


H

E

E



GEORGIA HISTORICAL SOCIETY,  
501 Whitaker Street  
SAVANNAH, GEORGIA 31499



Digitized by the Internet Archive  
in 2012 with funding from  
LYRASIS Members and Sloan Foundation

<http://archive.org/details/geechee1959arms>



# THE 1959



# 'GEECHEE

ARMSTRONG COLLEGE OF SAVANNAH

*Editor-in-Chief*

BARBARA MORDECAI

*Associate Editor*

WARD LARISCY

*Business Manager*

ARLENE HOLLAND

*Assistant Business Manager*

DALE SUTTON








## TABLE OF CONTENTS

ADMINISTRATION . . .	10
BEAUTIES . . .	22
FEATURES . . .	34
SPORTS . . .	44
ORGANIZATIONS . . .	62
CLASSES . . .	94
ADVERTISERS . . .	126



THE PERSSE FAMILY: Tim, Mrs. Persse, Cecilia, Jimmy, Mr. Persse, and Pat,  
Tim's twin.

*It seems that most of us judge or evaluate others by either recognizing material accomplishments, or by appreciating efforts, intentions, and sacrifices that are not tangible. The material accomplishment is easily recognized and can be inspirational. The appreciation of the intangible, however, is of a more general nature and therefore more difficult to inspire. It is rare that one among us is capable of activating our minds in both areas by his efforts and deeds. This volume is dedicated to such a person.*

*If we could measure success only in terms of appreciation, no one could be more successful. If there were no way to judge success except by past achievement and service, he would be more than successful, always making others feel his warmth, friendliness, helpfulness, and humanity.*

*Therefore, it is especially fitting that we, the 1959 'Geechee Staff, dedicate this volume to our advisor, J. HARRY PERSSE.*





IN MEMORIAM

DR. JAMES CHARBONNIER

IN MEMORIAM

HARRY STRACHAN



# ADMINISTRATION

Delightful task! to rear the tender Thought,  
To teach the young Idea how to shoot,  
To pour the fresh Instruction o'er the Mind,  
To breathe the enlivening Spirit, and to fix  
The generous Purpose in the glowing breast.

JAMES THOMSON



*Editor*

DONALD DAVIS

*Staff*

ETHEL KELLY  
GLORIA KING





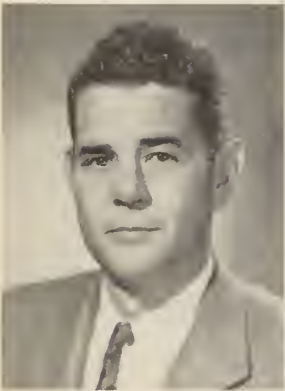
Herschel V. Jenkins  
*Chairman*



Judge H. Lee  
Fulton, Jr.



Joseph H.  
Harrison



Edward J. Bartlett



Jack E. Cay, Jr.



Dr. H. Y. Charbonnier



Herbert L. Kayton

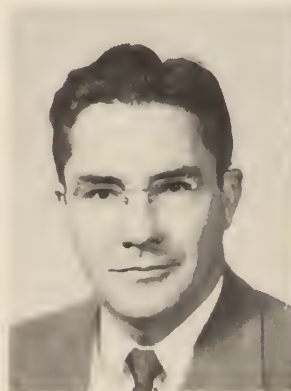


Judge Victor B. Jenkins

## THE ARMSTRONG COLLEGE COMMISSION



D. Leon McCormac



Mayor W. Lee  
Mingledorff, Jr.



Dr. Helen A. Sharpley



Dr. Irving Victor





PRESIDENT FOREMAN M. HAWES



JACK PADGETT  
*Registrar*



MARY STRONG  
*Director of Evening College*



JULE C. ROSSITER  
*Secretary-Treasurer*



**LORRAINE ANCHORS**  
*Instructor in English*  
 Coordinator, Student Personnel  
 Service



**ORSON BEECHER**  
*Instructor in History*  
 Advisor for Debate Forum



**STEPHEN BOND**  
*Instructor in Engineering Drawing*



**WILLIAM COYLE**  
*Instructor in History and  
 Political Science*  
 Advisor for Young Democrats



**LAMAR DAVIS**  
*Instructor in Business Administration*



**JOSEPHINE DENMARK**  
*Instructor in Home Economics*  
 Advisor for Beta Lambda  
 Advisor for Delta Chi



**JOHN DES ISLETS**  
*Instructor in Physics*



**ROSS DURFEE**  
*Instructor in English*  
Director of the Masquers  
Advisor of Radio Workshop



**HARTLEY ECKERSON**  
*Instructor in Mathematics*



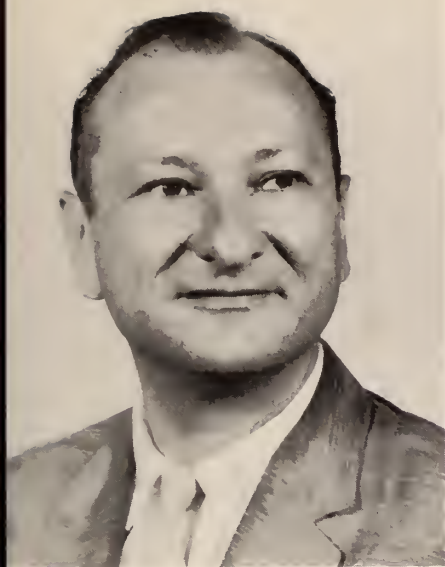
**JACK FOWLER**  
*Instructor in English*



**DANIEL HOOK**  
*Instructor in Mathematics*



**ESSIE JENKINS**  
*Instructor in Typing*  
Advisor for the Secretary-Ettes



**NORMAN KAPLAN**  
*Instructor in Psychology*



**MARGARET LUBS**  
*Instructor in French and English*



**MURIEL McCALL**  
*Librarian*



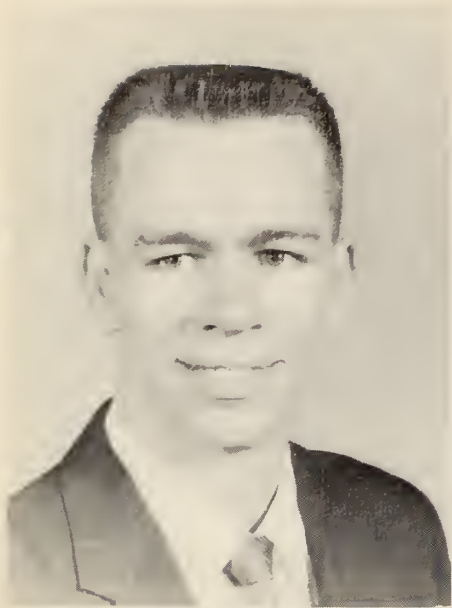
**ELMO McCRAY**  
*Instructor in Biology*  
Advisor for the Aesculapians



**HAGOOD OWEN**  
*Instructor in Chemistry*



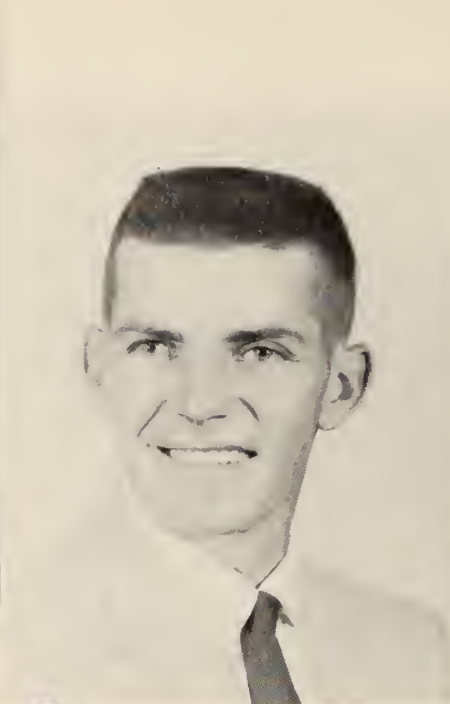
**HARRY PERSSE**  
*Instructor in Music*  
Faculty advisor for Student  
Publications  
Director of Glee Club



**RAY REMLEY**

*Instructor in Psychology  
and Sociology*

Advisor for the Wesley Foundation



**ROY SIMS**

*Instructor in Physical Education*

Basketball Coach



**FRANK SIVIK**

*Instructor in Biology*



**ROBERT STROZIER**

*Instructor in English*



**NANCY SUMMERS**

*Instructor in Shorthand  
and Comptometer*

Advisor for the Secretary-Ettes



**MARY THACKER**

*Instructor in Chemistry*



**DOROTHY THOMPSON**  
*Instructor in Psychology  
and Sociology*



**LOUIS THOMPSON**  
*Instructor in Business  
Administration*



**WILLIAM TRAVIS**  
*Instructor in Mathematics*



**ELIZABETH TUCKER**  
*Instructor in Physical Education*  
Advisor for Alpha Tau Beta



**ANTHONY WARREN**  
*Instructor in English*  
Advisor for the Canterbury Club



**WILLIAM WINN**  
*Instructor in Mathematics*  
Advisor for Math and Science Club



HENRIETTA ALL

*Secretary, Student Personnel Services*



MINNIE CAMPBELL

*Veterans' Office*



ELLA CLANCY

*Assistant to the Librarian*



ELIZABETH HITT

*Assistant to the Registrar*

*Advisor for the B.S.U.*



ELIZABETH HOWARD

*Clerical Assistant to the Registrar*



ANGELA McBRIDE

*Switchboard Operator*





**HELEN MEIGHEN**  
*Secretary of the Evening College*



**MARJORIE MOSLEY**  
*Secretary to the President*



**ELIZABETH POUND**  
*Manager of the Bookstore*



**JULIE REMLEY**  
*Clerical Assistant to the Registrar*  
*Advisor for the Wesley Foundation*



**NELLIE SCHMIDT**  
*Coordinator for English Classes*  
*in Evening College*



**SARA WILLIAMS**  
*Clerical Assistant in the Business*  
*Office*

# BEAUTIES

A thing of beauty is a joy forever;  
Its loveliness increases; it will never  
Pass into nothingness; but still will keep  
A bower quiet for us.

KEATS

*Editor*

ANN SPENCER

*Staff*

WARD LARISCY







## GEECHEE BEAUTY REVIEW

On Wednesday, February 11, the strands of Norrie Paramor filled the air as Tom Edenfield announced the twenty-three lovely contestants. They were escorted across the stage by Walter Carson, Neal Perkins, Ward Lariscy, Donald Davis, Jimmy Collins, Frank Rossiter, and Gary Allen. The judges, Mrs. John Hall, Mr. Curt Elkins, and Mr. Windy Herrin, had a very difficult task choosing the Queen and her court.

Johnny Lassiter's orchestra played for the dance which was held in the Hotel General Oglethorpe's Plantation Room. A Valentine theme was carried out with hearts and cherubs. Miss Ann Burkhalter, last year's Queen, presented the court with flowers and crowned the new Queen, Miss Tish Stevens.





## *The 1959 Geechee Beauty Court*

*Queen—Miss Fisk Stevens*

*Miss Louise Cunningham*

*Miss Maureen Donohue*

*Miss Dotti Porter*

*Miss Joan Coons*

# Geechee Queen

Miss Tish Stevens



Miss Stevens, our 19 year old Queen, is a lovely blue-eyed honey blonde. Her 104 pounds are distributed on a 5'2" frame. Tish's winning smile won the hearts of Fraternity X as well as the choice of the judges.





*Miss Maureen Donohue*  
*Sponsor for the Co-Eds*





*Miss Dotti Porter*

*Sponsor for the Cheerleaders*



*Miss Joan Coons*

*Sponsor for the Sophomore Class*



*Miss Louise Cunningham*

*Sponsor for the Masquers*



*Above:* Miss Pat Crumpler, Sponsor for the Debate Team; Miss Gloria King, Sponsor for the Glee Club; Miss Erma Holland, Sponsor for the 'Geechee; Miss Dana Hurst, Sponsor for the Math and Science Club; Miss Ann Herrin, Sponsor for Beta Lambda; Miss Donna Waters, Sponsor for the Dance Committee; Miss Judy Williams, Sponsor for the Canterbury Club; Miss Gwen Garwes, Sponsor for Alpha Tau Beta. *Right:* Miss Beth Mock, Sponsor for the Newman Club; Miss Margaret Schuman, Sponsor for Delta Chi; Miss Dale Sutton, Sponsor for the Freshman Class; Miss Nonie Ringwald, Sponsor for the Sassy Strutters; Miss Angela McDonough, Sponsor for the Student Senate.



# FEATURES

Let us drink and be merry,  
dance, joke, and rejoice,

With claret and sherry,  
theorbo and voice.

THOMAS JORDAN

*Editor*

DANA HURST

*Staff*

DONNA WATERS  
ERMA HOLLAND  
WARD LARISCY







Dance Committee readies Jenkins Hall for the Masquerade. *Left to right:* Mary Burke, Clelia Weber, Joan Coons, Lane Biggs, Donna Waters, Ward Lariscy.

## HALLOWEEN MASQUERADE

Armstrong's fall dance took the form of a Masquerade in Jenkins Hall on October thirty-first. A king and queen were chosen by an elimination dance to reign over the festivities of the night. Walter Strickland as Adam, and Gloria King as a Geisha girl were chosen from many get-ups ranging from red-bugs to Romans.





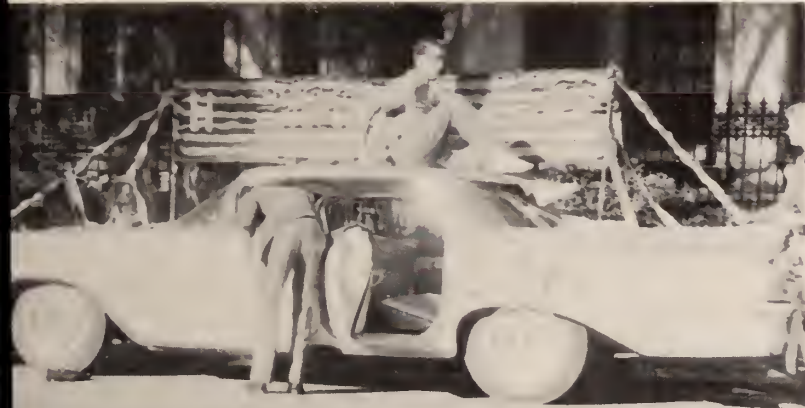
# HOMECOMING PARADE



Mr. Remley offers his advice for the Wesley Foundation car.



Windell Bradford and Bobby Matthews look over their entry for final touches.



Ward Lariscy and Charlie Wilkins complete work on the Dance Committee's car.

On Saturday, December 6, a large crowd of students met at school to decorate their cars for the parade. At 3:00 the judges announced that there was a tie for the best car between the Dance Committee's entry and the Secretary-ettes entry.



Right: Judy Glisson, Charlie Kilpatrick, Pete Anderson, and Barbara Myers wait before their car for the final decision of the judges.

# H O M E C O M I N G D A N C E



FRESHMAN KING AND QUEEN: Jimmy Collins and Nonie Ringwald.



One of the big events on Armstrong's social calendar is the annual Homecoming Dance. This year the dance was held the night after Christmas, bringing to a climax the series of Homecoming events which began with the parade and basketball game on December sixth. Russell Peacock furnished music for dancing at the Hotel Oglethorpe's Crystal Ballroom. At eleven o'clock the room was filled with anticipation during the announcement of the new Freshman King, Queen, and court. Joan Coons and Tom Edenfield, last year's royalty, crowned the new reigning couple.



**HOMECOMING COURT:** George Leon, Margaret Schuman, Sam Inglesby, Dotti Porter, King Jimmy Collins, Queen Nonie Ringwald, Beth Mock, Frank Rossiter, Dale Sutton, Joe Smith.



HERE  
and  
THERE



"It could be Y-O-U!"



Don't say Hi!, "GO APE!"



Famous last words: "I shall return!"



"HEY . . . . Pat's got the Queen of Hearts!"

# GEECHEE VALENTINE DANCE



Miss Tish Stevens, the 1959 Geechee Beauty Queen.



Ann Burkhalter crowns Tish, as Tom Edenfield and the court look on.



Johnny Lassiter's Orchestra plays a fast number, and the crowd kicks up their heels.



"But Calvin, there's no Casbah in Savannah!"



"Mama, that man's here again!"



"Let's have a ball."



Up in the air over History.



A.T.B. party at the Chinese Country Club.



"Have fun, will travel!"



"Sorry wrong number!" Jean Tremonto, telephone operator, was left out of the staff section.



"Don't give me no bull!"



Is this an optical illusion or is Dana really studying?

# SPORTS

There's joy to be found in a surging crowd,  
The colors that flash on the floor,  
The battle-cries that are sharp and loud,  
In the tales of traditional lore.

*Editor*

ROBERT MALLIS

*Staff*

JUDY GLISSON











The tipoff starting the first home game of the season.

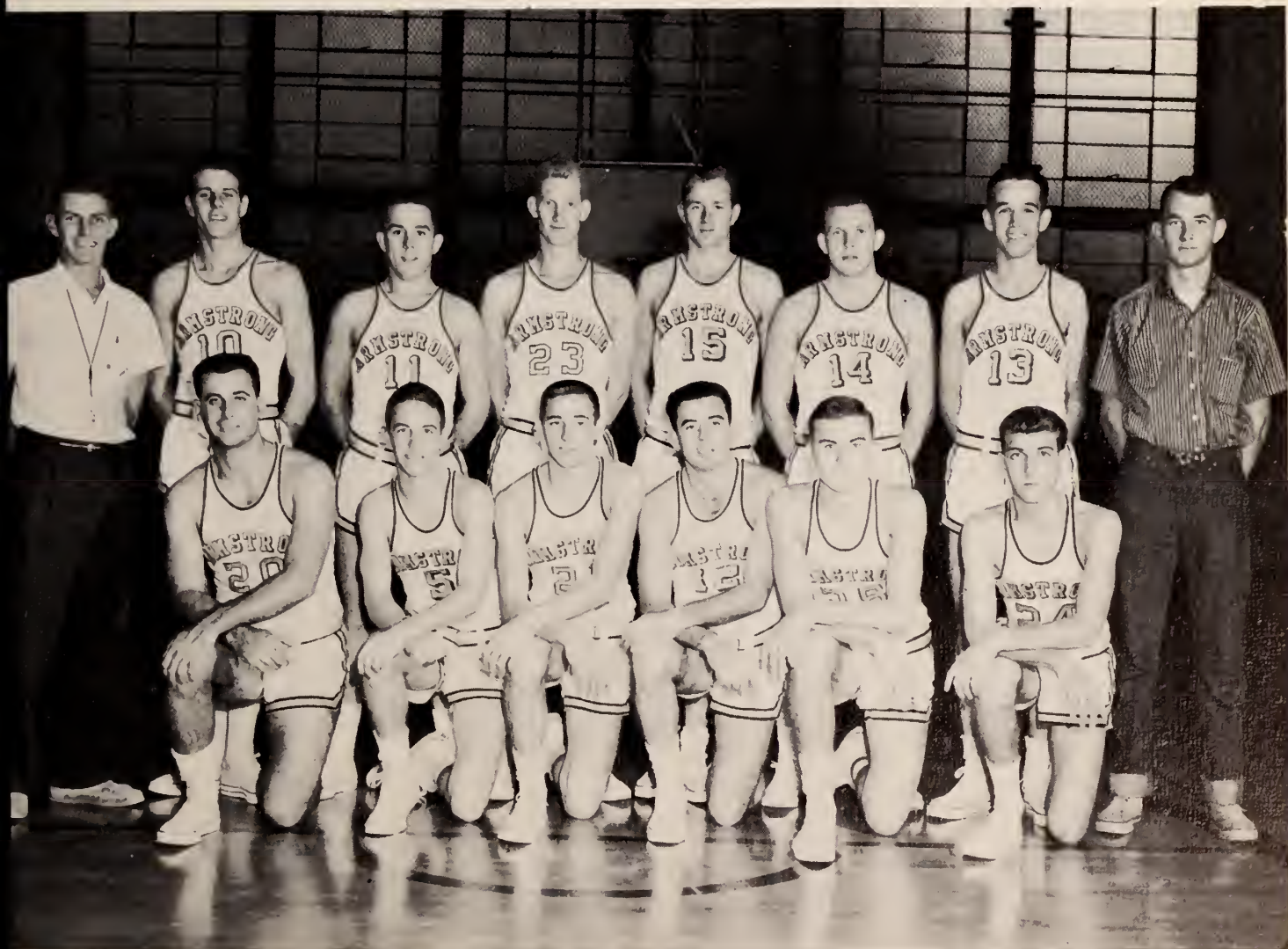
## GEECHEES POST 10-9 SEASON

With a win-loss record for the season standing at 10-9, the Armstrong Geechees closed out one of their most successful seasons in recent years.

Coached for the fourth straight season under the capable leadership of Roy Sims, the Geechees began this year's schedule with four returning lettermen and a group of promising freshmen to replace the graduates.

The Geechees progressed to the State Tournament where they defeated South Georgia in the opening game, but they were eliminated in the second game by losing to Gordon Military College.

During the season, the team tallied up 1361 points while their opponents scored 1264 points.



THE 1958-59 ARMSTRONG GEECHEES: *Kneeling:* Dave Thomas, George Leon, Gene Bazemore, Pete Anderson, Johnny Daltzell, Joe Kaminsky. *Standing:* Coach Roy Sims, Buddy Mallard, Leonard Herb, Neal Perkins, Dan Lanier, Gary Allen, Herb O'Keefe, Manager Calvin Cross.

# SEASON'S RECORD

Armstrong	Opponents
75 . . .	Georgia Southwestern . . . 60
70 . . .	South Georgia Trade . . . 73
65 . . .	Georgia Southwestern . . . 69
68 . . .	Brewton Parker . . . 85
58 . . .	Georgia Teachers (Freshmen) . . . 71
67 . . .	South Georgia College . . . 52
80 . . .	South Georgia Trade . . . 48
68 . . .	College of Charleston . . . 42
54 . . .	South Georgia College . . . 51
66 . . .	Abraham Baldwin . . . 91
99 . . .	College of Charleston . . . 41
60 . . .	Georgia Teachers (Freshmen) . . . 63
81 . . .	Brewton Parker . . . 97
66 . . .	Middle Georgia . . . 51
70 . . .	Georgia Military College . . . 74
56 . . .	Middle Georgia . . . 85
83 . . .	Georgia Military College . . . 61
93 . . .	Abraham Baldwin . . . 72
82 . . .	College of Augusta . . . 78



Coach Roy Sims



Manager Chud Fields and Trainer Calvin Cross.



Co-captains Pete Anderson and Gary Allen.

# HOMECOMING GAME



Buddy Mallard drives through a hole in the South Georgia defense and racks up another 2 points for Armstrong.

Before a capacity Homecoming crowd at the Hellenic Center, the Armstrong Geechees rolled over South Georgia College by a 67-52 victory.

Leading the attack for the Geechees was Buddy Mallard with 20 points followed by Leonard Herb with 12 points.



Neal Perkins loses second quarter tip-off.



Neal Perkins gets set for an important foul shot.



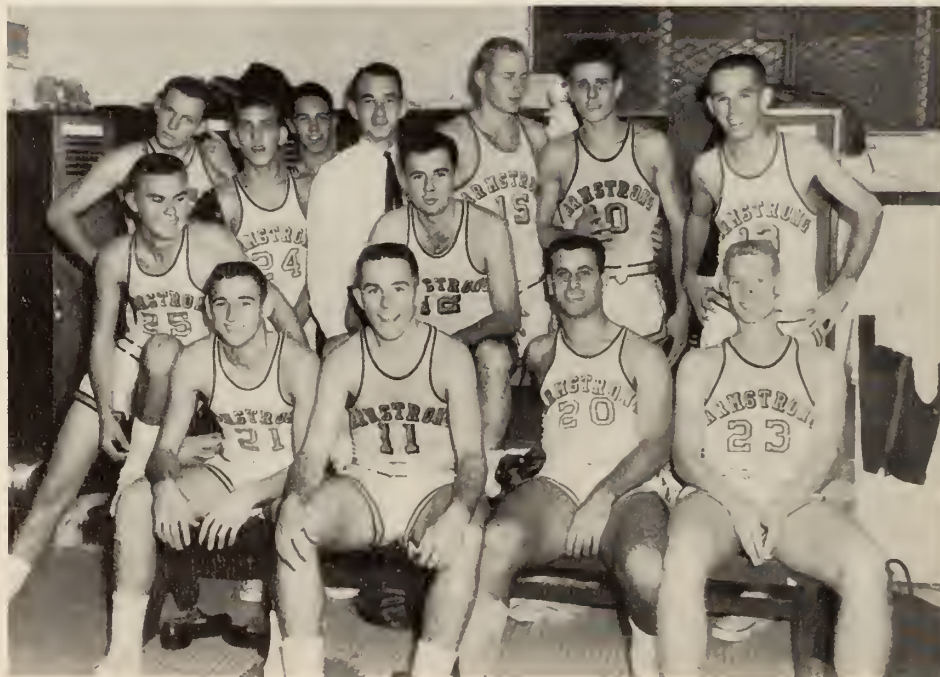
Mallard fights for the ball as Pete Anderson and Neal Perkins look on.



Gary Allen adds 2 more points to Armstrong's score.



Buddy Mallard gets off a jump shot as Johnny Dalzell goes in for the rebound.



They must have won!!!



Buddy Mallard goes up for a jump shot, as Pete Anderson and Dan Lanier look on.



A moment of prayer before the start of an important game.



Coach Sims talks over pre-game strategy with Gary Allen, Pete Anderson, Buddy Mallard, Leonard Herb, and Neal Perkins.



Neal Perkins gets off a jump shot against Brewton Parker.



Pete Anderson shoots under the watchful eyes of the referee.



Perkins and Mallard scramble for a loose ball against Abraham Baldwin.







*Above and below: Gary Allen, Armstrong cager, shows hustle in game action.*





THE 1958-59 CHEERLEADERS: Judy Glisson, Captain; Dotti Porter, Dale Sutton, Barbara Myers, Barbara Preston.

## CHEERLEADERS

The 1959 Armstrong Cheerleaders lived up to their responsibility of drawing from the student body the necessary vocal evidence of school spirit at all the basketball games.

As usual the cheerleaders presided at all home games and managed this year to accompany the team on several road trips.

They also sponsored an assembly to teach the cheers to the student body and to encourage support of the team.





GIRLS' INTRAMURAL BOARD: Erma Holland, Glamazons; Tay Harmon, Co-Eds; Joan Coons, Slick Chicks; Marsha Torrance, Sassy Strutters.



BOYS' INTRAMURAL BOARD: Jimmy Collins, Scholars; Tom Edenfield, Terrapins; Kirby Winters, Loafers; Tommy Curry, Gators.

I  
N  
T  
R  
A  
M  
U  
R  
A  
L  
  
B  
O  
A  
R  
D  
S



Jimmy Collins, Philip Jones, Richard Geriner, David Exley, Bobby Matthews, Buford Price.



Bobby Matthews serves a high-ball to Robert Jue.

# MURALS

T  
E  
R  
R  
A  
P  
I  
N  
S



G  
A  
T  
O  
R  
S

Robert Mallis, Charlie Kilpatrick, Robert Cronian, Balder Elmgren, Pat Barry, Robert Jue.



Courtney and Benton team up with Marvin and Jimmy for a game of doubles at Daffin Park.

## C O - E D S



*First Row:* Barbara Dent; Angela McDonough; Tay Harmon, Captain; Sue Dodge; Hazel Gardner. *Second Row:* Dottie Porter; Beth Mock; Aline Heitman; Dale Sutton; Sybil Ann Viar. *Third Row:* Daphne Lee; Betty Smith; Lynn Hallman; Gail Barton; Elizabeth Brown; Miriam Shearouse.

## G L A M A Z O N S



*First Row:* Linda Wallace, Pat Womble, Erma Holland, Captain; Ginger Lee, Freshman Captain; Sue Leonard. *Second Row:* Carolyn Martin, Donna Waters, Faye Brady, Dorothy Boblasky, Sandra Lasky, Pat Leary. *Third Row:* Glenda Littelfield, Gail Bonnell, Judy Zipperer, Arlene Holland, Kippy Elkins, Rochelle Ginsberg.

# MURALS



*First Row: Sandra Smith, Marsha Torrance, Captain; Nonie Ringwald, Freshman Captain; Margie Lynn. Second Row: Barbara Preston, Ginger Stanley, Dana Hurst, Lane Biggs, Lillian Davis. Third Row: Virginia Nease, Mary Sue Sweeney, Joyce Buffington, Virginia Morgan, Gwen Garwes, Mary Anne Roberts.*



*First Row: Francis Wong, Joyce Lancaster, Joan Coons, Captain; Sandra Hadden, Diane Shelton, Freshman Captain. Second Row: Sue Phelps, Miriam Rushing, Francis Jones, Marjorie Barnes, Janet Stanford. Third Row: Joyce Carlson, Judy Williams, Frances Dean, Helen Garfield, Hazel Key, Linda Sauls, Suzanne Hurst.*

S  
A  
S  
S  
Y  
S  
T  
R  
U  
T  
T  
E  
R  
S

S  
L  
I  
C  
K  
C  
H  
I  
C  
K  
S



Gwen Garwes and Erma Holland fight over the ball in a game between the Sassy-Strutters and the Glamazons.



A tip-off shot in a Slick Chicks-Co-Eds game.

## INTRAMURAL ACTION

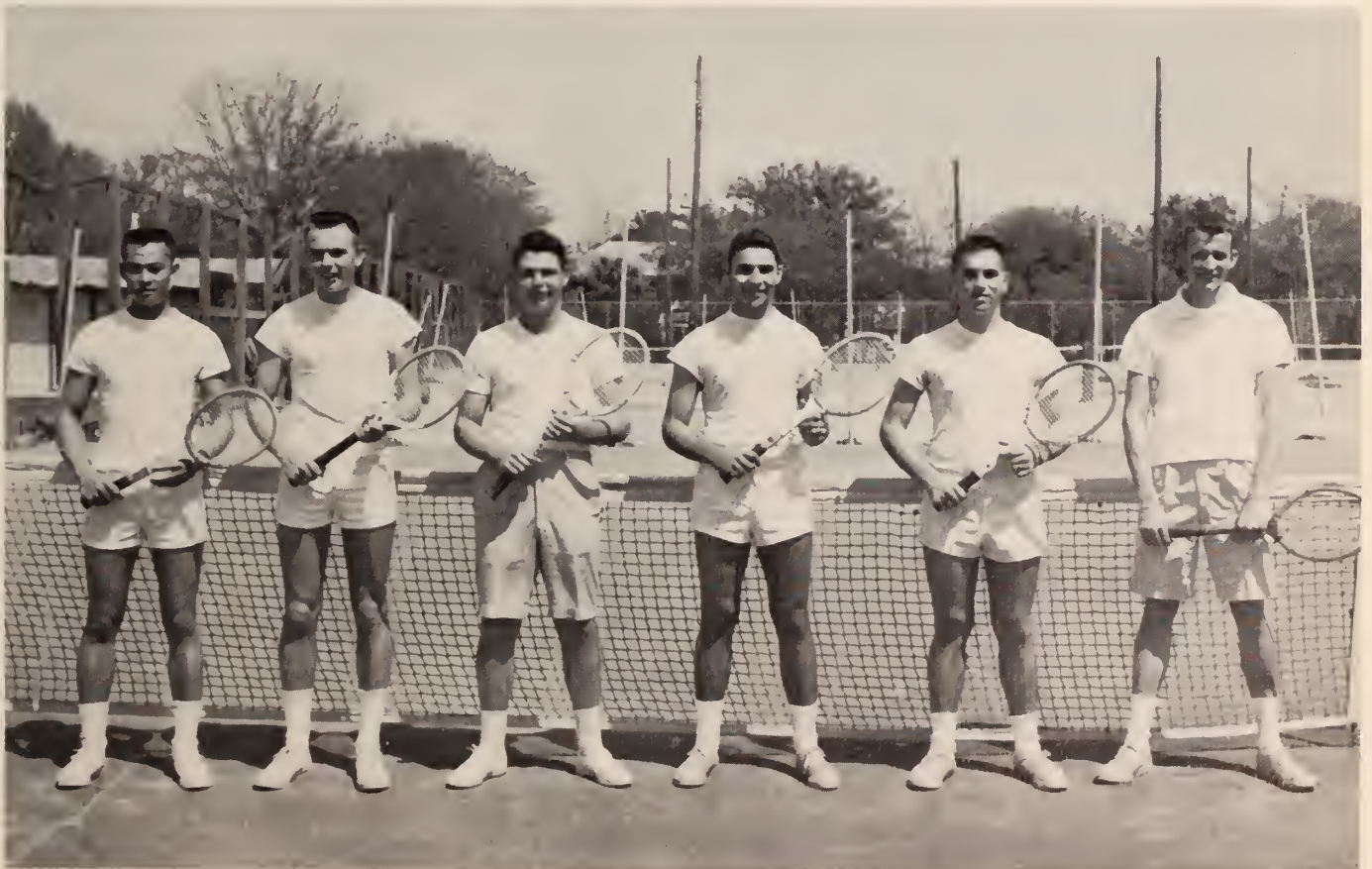
Marsha Torrance of the Sassy-Strutters makes a long shot for the basket during a game with the Glamazons.







GOLF TEAM: Steve Bernstein, Andy Smith, Barry Goodman, Alan Fialkow, Ronald Conner, Sandy Rosenthal.



TENNIS TEAM: Robert Jue, Pat Barry, Benton Freedman, Marvin Cranman, Robert Mallis, Courtney Brooks.

# ORGANIZATIONS

Count that day lost whose low descending sun  
Views from thy hand no worthy action done.

ANONYMOUS

*Editor*

MARY BURKE

*Staff*

ETHEL KELLY







SENATORS: Barbara Mordecai, Tom Edenfield, Jimmy Collins, Joan Coons, Angela McDonough, Robert Cronian, Mary Sue Sweeney, Barbara Myers, Marsha Torrance, Dana Hurst, Mickey Arata, Tay Harmon, Sharon Thigpen, Donna Waters, Mary Ann Roberts, Erma Holland, Sam Magee, Calvin Cross, Barbara Dent, Linda Herrin, Nonie Ringwald, Richard Fields, Sue Dodge, Ward Lariscy, and Ann Spencer.



OFFICERS OF THE STUDENT SENATE: Jay Cook, Treasurer; Barbara Mordecai, Secretary; Jimmy Collins, Vice President; Tom Edenfield, President.

## STUDENT SENATE

The 1959 version of the Student Senate accepted its task of running student affairs seriously and became one of the most active student governing bodies in recent years. It served the college during the change from city to state ownership of Armstrong, fought the resultant battle of a limited student activity budget and approved several constructive suggestions to the faculty on vital issues.



Judge Jenkins and President Hawes congratulating the new officers of the Freshman and Sophomore Class.



Student Senate swearing-in.



*Sports Editor, ROBERT MALLIS*



*Classes Editor, MARSHA TORRANCE*



*First Row: Judy Glisson, Erma Holland, Donna Waters, Anne Spencer, Gloria King. Second Row: Mary Ann Roberts, Mary Burke. Third Row: Arlene Holland, Donald Davis, Ward Larisecy, Susanne Overby, Barbara Mordecai.*



*Editor of the Inkwell, BRICE LANGFORD*



*Business Manager, MARSHA TORRANCE*

## THE INKWELL

The 1959 Inkwell averaged about four issues per quarter, was short on advertising and long on good editorials and reporting. As usual, most of the work was done by a few people but the Inkwell always managed a varied array of material.



*Exchange Editor, NONIE RINGWALD and Assistant Business Manager, DANA HURST*



*Associate Editor, BILLY DEAL*



THE MEMBERS OF THE INKWELL ARE: Donald Davis, Judy Glisson, Brice Langford, Liz Reid, Erma Holland, Mary Ann Roberts, Mary Burke, Louise Cunningham, Barbara Mordecai, and Sam Magee.



Judy Glisson, Co-ed's Columnist.



Sports' Columnist, Calvin Cross.



# DANCE COMMITTEE

Careful planning and much good work proved to be the objective of the '59 Dance Committee. Headed by its chairman, Donna Waters, the committee successfully sponsored the quarterly formal dances, the Fall Halloween Dance, this year a Masquerade, the Winter Quarter Valentine Dance with the presentation of the Geechee Queen, and finally the Spring Dance this year combined with the Graduation Dance.



Donna Waters, Chairman of the Dance Committee.



First Row: Tony Battle, Kirby Winters, Jimmy Collins, Calvin Cross, Tommy Daly. Second Row: Chloe Pugh, Ward Lariscy, Mary Catherine Willis, Agnes Thomas, Barbara Cook, Joan Coons, Charlie Wilkins, Linda Herrin, Mary Ann Roberts, Herbie Davis, Erma Holland, Frances Wong, Donna Waters, Mary Burke, Jay Cook.



MEMBERS OF THE MASQUERS ARE: Audrey Sommers, Ann Spencer, Liz Reid, Patty Williams, Gloria King, Maureen Donohue, Joan Coons, Miriam Shearouse, Louise Cunningham, Penn Myrick, Paul Porzio, Suzanne Overby, Willard Kirkland, and Lynn Hallman.



OFFICERS OF THE MASQUERS: Marsha Torrance, Treasurer, Miriam Shearouse, Historian; Louise Cunningham, President; Sam Magee, Vice President.

## MASQUERS

The 1959 Masquers opened its season with the fall quarter production of the somber tragedy "The House of Bernada Alba" with an all-girl cast headed by Tiena Van Puffelen. The winter quarter production moved to the opposite extreme of light comedy and practically an all-male cast (except for Mary Burke and Maureen Donahue). The play was Krasner's farce "Room Service." Under Ross Durfee's capable direction these plays proved to be fit vehicles for the available talent and with the addition of the essential technical assistance of the stage crews provided the invaluable opportunity for theatrical experience that is the Masquers' aim.



Aline Heitman, Tay Harmon, Barbara Mordecai, Ethel Kelly, Sol Ratner, Marsha Torrance, Dana Hurst, Mary Burke, Ward Lariscy, Dave Kirshner, Leby Colson, Herbie Davis, Brice Langford, and Eddie Foy.



ROSS DURFEE, *Director*



A group of Masquers having a good time at a party in the Green Room.

# Fall Quarter

## "THE HOUSE OF BERNARDA ALBA"

Tiena Van Puffelen . . . BERNARDA ALBA  
 Beth Mock . . . . . MAGDELENA  
 Dotti Porter . . . . . MARTIRIO  
 Louise Cunningham . . . . . ANGUSTIAS  
 Pat Singer . . . . . ADELA  
 Audrey Sommers . . . . . LA PONCIA  
 Mary Jon Slocomb . . . . . AMELIA  
 Molly Williams . . . . . MARIA JOSEFA



Tiena Van Puffelen as the despotic Bernarda and Audrey Sommers as the defiant maid.



Beth Mock, Dottie Porter, Louise Cunningham, and Mary Jon Slocomb as the oppressed Alba sisters.



Maureen Donohue as a servant and Melissa Beecher and Patty Williams as beggars.



Pat Singer portrays the selfish romance-minded daughter, Adela.

## Winter Quarter "ROOM SERVICE"

Sol Ratner . . . . . GORDON MILLER  
 Ed Foy . . . . . JOSEPH GRIBBLE  
 Donald Davis . . . . . HARRY BINION  
 Nathan Coleman . GREGORY WAGNER  
 Ward Lariscy . . . . . LEO DAVIS



Maureen Donahue, as Godspeed's leading lady, shows off her colonial gown before opening night.



The frustrated waiter-actor, played by Paul Porzio, auditions for the coal miner's part: "Dig . . . Dig . . . Dig . . . All my life I dig coal!"



Lance Smith, as the Southern Senator who is "busier than a bird-dog," airs his views on the new play, "Godspeed."



Donald Davis, up to his neck in deer, refuses to part with the rest so Tom Edenfield satisfies himself with bananas.



BEHIND  
THE  
SCENES





## RADIO WORKSHOP

The Armstrong Radio Workshop, a branch of the Masquers, this year inaugurated daily lunch-hour broadcasts from its studios on the third floor of the Armstrong Building to the "Dump." These programs, consisting of news, announcements of interest, and recorded music, proved popular with the student body when they could be heard above the lunch-hour din in the Snack Bar.

Benton Freedman, Charles Deich, Bruce Friddle, and Nathan Coleman broadcasting over MASK.



MEMBERS: Liz Reid, Nathan Coleman, Director-Producer; Nelson Litou, Don Davis, Benton Freedman, and Dick McGune.



Advisor of the Young Democrats, Mr. Coyle.

## YOUNG DEMOCRATS

The Young Democrats of Armstrong College were organized to stimulate interest in politics among students. It is affiliated with the National Young Democrats organization. Membership is open to all students regardless of political affiliation.



THE YOUNG DEMOCRATS ARE: Tommy Daly, Jimmy Collins, Erma Holland, Audrey Sommers, Chud Fields, Bobby Miley, Mary Jane Gallaher, Bubsy Ryan, Jerry Eagle, Walter Strickland, Jay Cook, Gerald Cohen, Nonie Ringwald, George Jenkins, and Dan Lanier.





Beta Lambda Advisor, Mrs. Denmark.



F. H. A. from Jenkins High School visits Beta Lambda.

## BETA LAMBDA

Beta Lambda's purpose is to develop leadership and personality and to create professional attitudes toward an understanding of home economics. It also provides an opportunity to join students of similar interests in various useful and constructive projects.



*First Row:* Jean Grieg, Sec.; Donna Waters, V. Pres.; Erma Holland, Pres.; Joan Coons, Treas. *Second Row:* Ann Herrin, Linda Page, Mrs. Denmark, Advisor; Frances Wong, Lane Biggs. *Third Row:* Sandra Smith, Susanne Overby, Nonie Ringwald, Barbara Preston, Linda Herrin, Mary Burke.

# GLEE CLUB

For those interested in the fine art of singing, Armstrong's Glee Club meets their need. Worked strictly on volunteer basis, the participation in this group is excellent. Under the direction of Harry Persee, the Glee Club serenades the student body with two concerts each year. One of these, at Christmas time, consists of special Christmas music at its best. The other, in the Spring, is made up of various selections of different types.



Mr. Persee, Director, and Mary Anne Roberts, President of the Glee Club.



*First Row:* Mary Anne Roberts, Judy Glisson, Virginia Stanley, Dana Hurst, Linda Herrin, Helen Garfield, Eddie Taylor, and Ethel Kelley. *Second Row:* Julie Remley, Marsha Torrence, Linda Page, Margie Barnes, Claire Williams, Suzanne Overby, Esterene Dawson, Lilian Davis. *Third Row:* Mickey Arata, Billy Fulgum, John Dekle, Calvin Cross, and Joyce Buffington.



MEMBERS OF THE DEBATE FORUM: Ann Spencer, Betty Hurst, Marsha Torrance, Pat Crumpler, Mr. Beecher - Advisor, Nonie Ringwald, Gerald Cohen, Jay Cook, and Al Walls.

## DEBATE FORUM

The Debate Forum provides opportunity for students interested in public speaking and logical thinking to participate in a program of intramural and intercollegiate debating. The college debate team makes several trips a year to neighboring colleges to participate in intercollegiate debating and also enters regional intercollegiate debate tournaments.



Advisor of the Debate Forum, Mr. Beecher.



*First Row: David Nihols, Pres.; Herbie Davis, Sec.; Charlie Wilkins, Kirby Winters, Mary Catherine Willis, Wade Roach, V-Pres. Second Row: Barbara Cook, Agnes Thomas, Chloe Pugh, Hall Willet, Ward Lariscy, Wilbur Dellinger, and Jimmy Strickland.*

## MATH AND SCIENCE CLUB

The Math and Science Club is to further an understanding of Mathematics beyond the ordinary college requirements and the latest developments in the various fields of science. Its activities range from talks by prominent local scientific people, motion pictures, and scientific expeditions, to the working of difficult mathematical problems.



Advisor of the Math and Science Club, Mr. Winn.



Advisor of the National Secretaries' Association, Mrs. Campbel, and Advisor of the Secretary-Ettes, Mrs. Summers.

## SECRETARY-ETTES

The Secretary-Ettes is a club for those students interested in the field of secretarial science. It is affiliated with the local chapter of the National Secretary's Association. Membership is open to students enrolled for a minimum of one year of shorthand.



THE SECRETARY-ETTES ARE: Lynn Hallman, Esterine Dawson, Jo Helen Holman, Carol Hinley, Arlene Holland, Helen Garfield, Judy Williams, Eddie Louise Taylor, Virginia Stanley, Mary Sue Sweeney, Miriam Rushing, Elizabeth Reid, Sue Phelps, Angela McDonough, Joyce Buffington, and Lillian Davis.



*First Row:* Barbara Cook, Treasurer; "Leroy", Sandy Page, President; Sara Kelly, Chloe Pugh, Secretary. *Second Row:* Clelia Weber, Sylvia Arlington, Vice President; Jean Grieg, Mr. McCray, Advisor; Wilbur Dellinger, Agnes Thomas, Stanley Greenfield.



Advisor of the Aesculapians, Mr. McCray.

## AESCULAPIANS

The Aesculapians, named after Aesculapius, the Greek god of healing, was organized to promote interest in the fields of medicine and science. Membership is open to students who have completed two quarters of chemistry or two quarters of zoology. Meeting twice a month, they view medical movies and go on field trips to points of interest, including the laboratories at Oatland Island and the medical labs at the various hospitals. In the Spring they visited the Memorial Hospital.



## NEWMAN CLUB

To foster the spiritual, intellectual and social interests of the Catholic students at Armstrong and to weld them into a common union are the main purposes of the Newman Club.

Father Teoli, advisor; Barbara Cook, President.



MEMBERS: Mary Burke, Frank Rossiter, Vice-President; Barbara Cook, President; Angela McDonough, Secretary; Dick Buttimer, Treasurer; Kirby Winters, Faye Smith, Mary Sue Sweeny, Sally Caire, George Jenkins, Danny Nesmith, Herbie O'Keefe, Beth Mock, David Thomas, Dick Hammerick, Bobby Lingensel, Joe Mahaney, Penn Myrick, Pat Barry, and Tommy Daly.



BAPTIST STUDENT UNION MEMBERS ARE: Barbara Myers, Sec.; Margie Lynn, Barbara Preston, Carolyn Hinley, Judy Glisson, Pres.; Calvin Cross, Dana Hurst, Marsha Torrance, Esterine Dawson, Lillian Davis, Virginia Morgan, Philip Jones, Sharon Thigpen, Linda Page, Joyce Lancaster, Robert Mallis, Franklin Huggins, Daphne Lee, Alex Chew, Sara Kelley, Charles Exley.



## BAPTIST STUDENT UNION

To promote Christian fellowship among college students is the primary aim of the organization. Highlighting the many projects of the year is the giving of a turkey and food to a needy family, and visiting and sending cards to the sick at Thanksgiving.



Mrs. Hitt, Mr. Jack Padgett, and Rev. Frank Morris, Advisors of B.S.U.



# WESLEY FOUNDATION

To promote an on-campus organization dedicated to the religious life, the knowledge, and the recreation of its members, is the purpose of the Wesley Foundation. Activities are centered around the desires and the needs of those who participate. A better understanding of the Methodist's beliefs and those of others is the main objective. This club is sponsored by the Methodist Church, but is open to all denominations.



MEMBERS: Ward Lariscy, treasurer; Hazel Key, secretary; Donna Waters, president; Mary Ann Roberts, Windell Bradford, Robert Horrell, Sandy Page, Sylvia Arlington, Freddie Scholl, Frances Wong, Linda Herrin, Ted Owens, Albert Gnann, Erma Holland, Pat Crumpler, Judy Barnes, Patty Williams, and Suzanne Overby.



Mr. and Mrs. Ray Remley, Advisors of Wesley Foundation.



CANTERBURY CLUB MEMBERS: Father Hatch, Advisor Judy Williams, Ethel Kelly, Mickey Arata, and Barbara Mordecai.



## CANTERBURY CLUB

To encourage a spirit of prayer, study, giving, and unity is the aim of the Canterbury Club. This club is re-organizing this year.



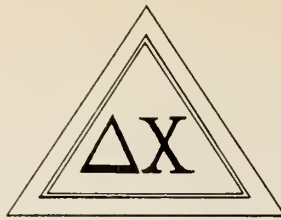
Advisor of the Canterbury Club, Mr. Warren.

## FRATERNITY "X"

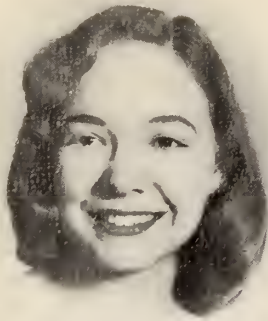
Fun, fellowship and good will among its members are the aims of Fraternity "X." This year Fraternity "X" boasted among its members the student body President, the president of the Freshman Class, and the treasurer of the Sophomore Class. To climax the year the club's sponsor, lovely Miss Tish Stevens, won the coveted crown of the 'Geechee Beauty Queen.



FRATERNITY "X" MEMBERS AND SPONSOR ARE: Robert Mallis, Tish Stevens, sponsor; Gene Bazemore, George Leon, Jimmy Collins, Tom Edenfield, Bobby Miley, Marvin Everett, Herbie O'Keefe, Charles Kilpatrick, President.



Delta Chi

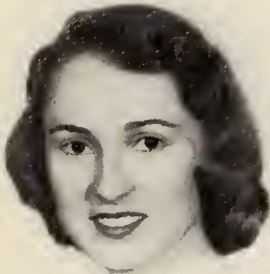


*President*



*Advisor*

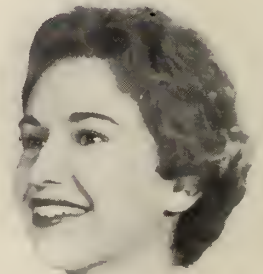
*Secretary*



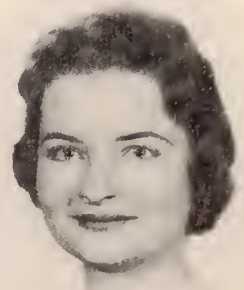
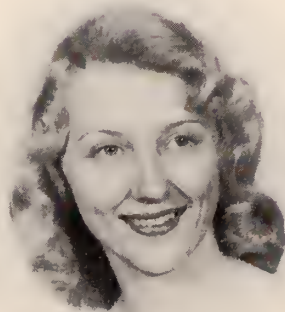
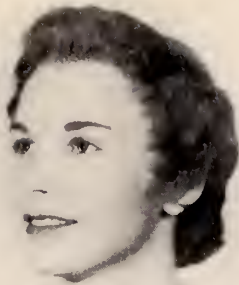
*Vice President*



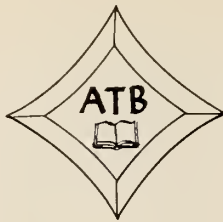
*Treasurer*



Tay Harmon, Mrs. Josephine Denmark, Kay Thompson, Jan Thomas, Aline Heitman, Barbara Dent, Sue Dodge, Maureen Donohue, Kippy Elkins, Hazel Gardner, Angela McDonough.



Beth Mock, Dotti Porter, Sue Rossiter, Nancy Scharff, Miriam Shearouse, Margaret Schuman,  
Dale Sutton, Linda Wallace, Judy Williams, Judy Zipperer.



Alpha Tau Beta

*President*

*Secretary*

*Advisor*



*Vice-President*

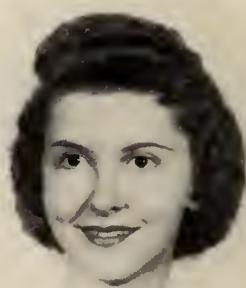
*Treasurer*



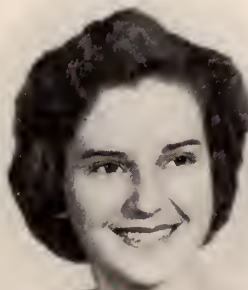
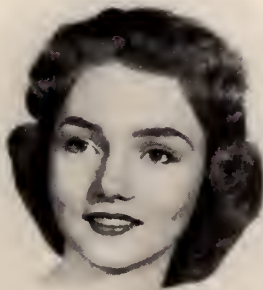
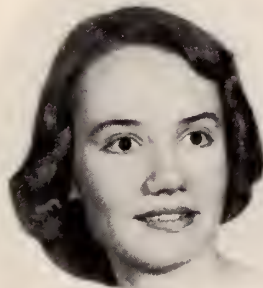
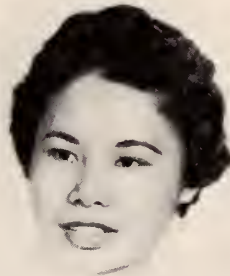
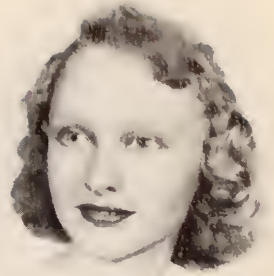
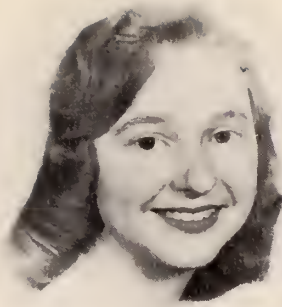
*Chaplin*

*Pledgemaster*

*Social Chairman*



Judy Glisson, Miss Elizabeth Tucker, Barbara Myers, Mickey Arata, Mary Ann Roberts, Sharon Thigpen, Marsha Torrance, Linda Herrin, Lane Biggs, Pat Crumpler, Esterine Dawson.



Frances Dean, Gwen Gawes, Dana Hurst, Sara Kelly, Joyce Lancaster, Daphne Lee, Ginger Lee, Margie Lynn, Barbara Mordecai, Virginia Morgan, Suzanne Overby, Linda Page, Barbara Preston, Margaret Ringwald, Sandra Smith, Bernice Warr.

# CLASSES

Taste the joy  
That springs from labor.  
LONGFELLOW

*Editor*

MARSHA TORRANCE

*Staff*

BARBARA PRESTON

SANDRA SMITH

FAY BRADY

ETHEL KELLY









## SOPHOMORE CLASS OFFICERS

SALLY CAIRE, *Secretary*    JOAN COONS, *Vice President*  
TOM EDENFIELD, *President*    ROBERT MALLIS, *Treasurer*



GARY ALLEN  
Basketball Team 57-59.



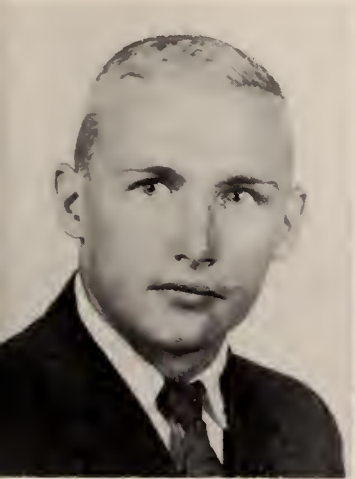
PETE ANDERSON  
Basketball 57-59; Fraternity  
X 57-59.



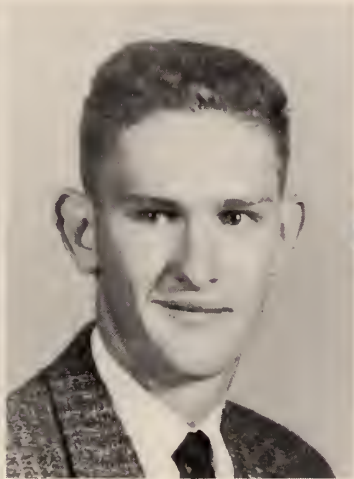
FEROLINE ARATA  
A.T.B. Sorority 58-59, Sec. 58-  
59; Canterbury Club 57-59;  
Inkwell Staff 57-59; Student  
Senator 58-59.



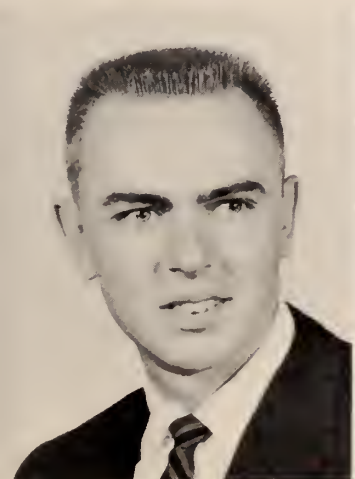
SYLVIA ARLINGTON



JESSE ARMSTRONG



DERRELL BANKS



PATRICK BARRY



WINDELL BRADFORD  
Pres. Wesley Foundation 57-  
58.



*Most Outstanding Sophomore*

JOAN ISABEL COONS

Vice President Freshman Class 57-58; Vice President  
Sophomore Class 58-59; Homecoming Queen 57;  
Capt. Slick Chicks 58-59; Co-Manager Intramural  
Board 58-59; Alpha Lambda Sigma Honor Society 59.



SALLY CAIRE

*Outstanding Sophomore*

Soph. Class Sec. 58-59.



BRUCE BAXLEY



JAMES BECKWORTH



FAYE BRADY



COURTNEY BROOKS



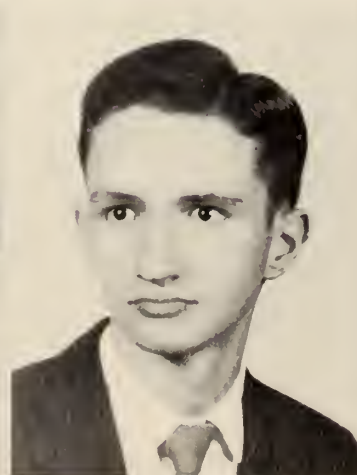
MARY BURKE

Inkwell Staff 58-59; Geechee Staff, organization editor 58-59; Slick Chicks 57-59; Geechee Beauty Review 59; Beta Lambda 57-59; Newman Club 57-59; Radio Workshop 59.



SALLY CAIRE

Newman Club 57-59; Permanent Deans List 58; Slick Chicks 57-59; Sponsor, Geechee Beauty Review 58.



ALEX CHEW



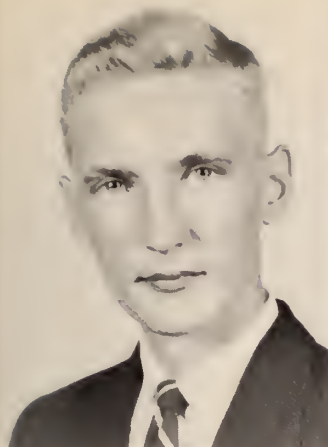
NATHAN COLEMAN

Producer-Director, Radio Workshop 57-59; Masquers 57-59.



LEBBY COLSON

Masquers 57-59.



RONALD CONNER

Inkwell Staff 57-58; Gators 57-58; Science Club 58.



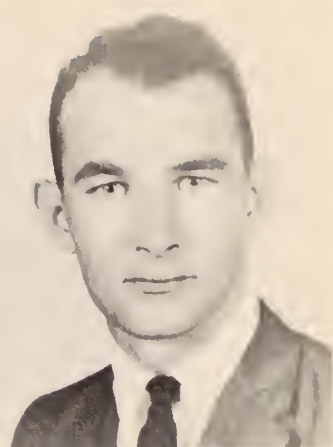
BARBARA COOK

Newman Club 57-59, Pres. 58-59; Dean's List; Student Senate; Aesculapians, Tres. 58-59; Math and Science Club 58-59; Slick Chicks 57-58; Emblem 58.



JOAN COONS

Geechee Beauty Review 58; Treas. Beta Lambda 59; Masquers 57-59; Dance Committee 59; Student Senate 58-59.



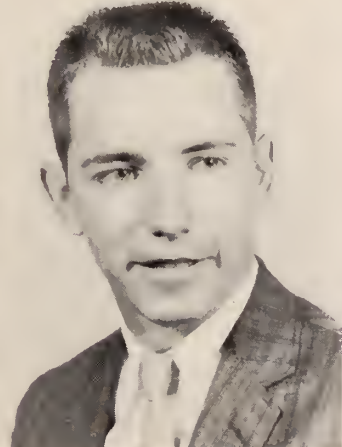
CALVIN CROSS

Fraternity X 57-59; Glee Club 57-59; B.S.U. 57-59; Loafers 57-59; Student Senate 57-59; Basketball 57-59; Inkwell Staff 58-59.



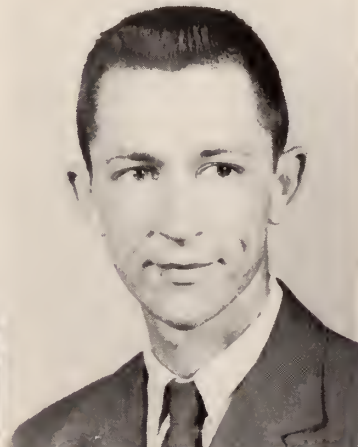
LOUISE CUNNINGHAM

Inkwell Staff 57-59; Glee Club 57-58; Permanent Dean's List 58; Geechee Court 57; Geechee Beauty Review 58-59.



DONALD DAVIS

Masquers 57-59; Geechee 58-59; Admin. Edit; Radio Workshop 58-59; Math and Science Club 57-58.



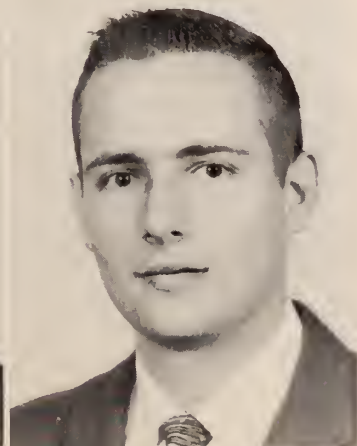
HERBERT DAVIS, JR.

Math and Science Club 57-59; Dance Com. 58-59; Masquers 58-59.



ESTERINE DAWSON

Alpha Tau Beta 58-59; Glamazons 57-59; Baptist Student Union 57-58.



CHARLES DEICH

Radio Workshop 58-59.



LOUISE CUNNINGHAM

*Outstanding Sophomore*

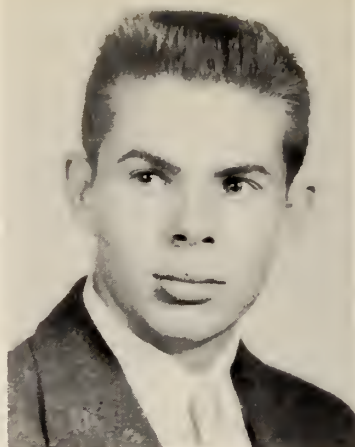
Alpha Lambda Sigma 58; Masquers Pres. 58-59; Honors Seminar 58-59.



TOM EDENFIELD

*Outstanding Sophomore*

President Freshman Class 57-58; Pres. Soph. Class 58-59; President Terrapins 57-59; Alpha Lambda Sigma 59.



JAMES DEKLE, III



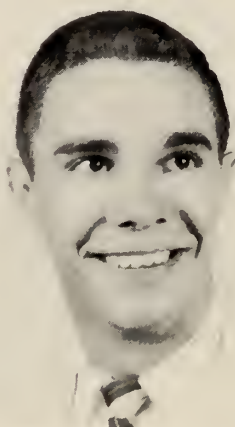
ALICE ANN DUGGER

Geehee 57-58; Slick Chicks 57-58; Inkwell 57-58.



STEVEN EADY

Fraternity X.



TOM EDENFIELD

Homecoming King 57; Chair, Interim Com. 58; Intramural Board 58-59; Vice Pres., Young Democrats.



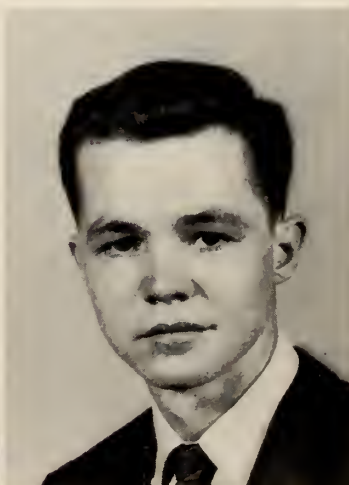
BALDER ELMGREN



DAVID EXLEY



MANNING FAUST



ROBERT FENNEL

Newman Club 57-59; Geehee 57-59; Sports Editor 57-58; Associate Editor 58-59; Scholars 57-58; Pres. 58-59.



CHARLES FISHER

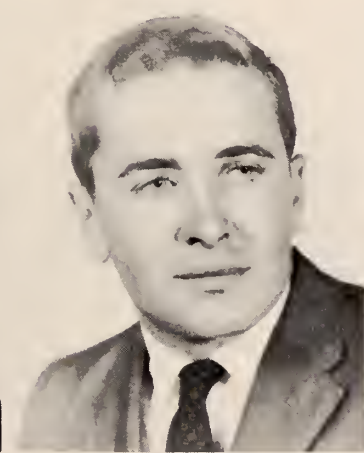


MARY JANE GALLAHER  
Sassy Strutters 57-59.

LYDA GINSBERG

JERRY GLISSON

JUDY GLISSON  
Cheerleader 57-58; Sassy Strutters 57-59; B.S.U. 57-58, Pres. 58-59; Inkwell Staff 57-59; Geechee Staff 57-59; Alpha Tau Beta 57-59.



STANLEY GREENFIELD

ALBERT GNANN, JR.

HUGH GOLDEN



JEAN GREIG

LYNNE HALLMAN

Math and Science Club 58-59; Aesculapians 58-59; Beta Lambda 58-59; Secretary 58-59.

Co-Eds 57-59; Masquers 57-59; Secretaryettes 58-59; Permanent Dean's List.



JUDY A. GLISSON

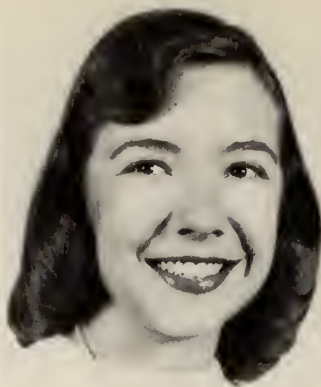
*Outstanding Sophomore*

Captain Cheerleaders 58-59; Pres. Baptist Student Union 58-59; President, Alpha Tau Beta.



BRICE F. LANGFORD

*Outstanding Sophomore*  
Editor, Inkwell 58-59.



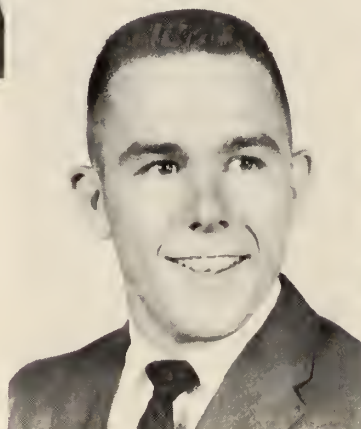
TAY HARMON

Student Senator 57-59; Masquers 57-59; Co-eds Intramural Team 57-58, Captain 58-59; Delta Chi 57-59; President 58-59.



ALINE HEITMANN

Co-eds Intramural Team 57-59; Masquers 57-59; Student Senate 57-58; Delta Chi 58-59; Young Democrats 57-58.



LEONARD HERB

Basketball 57-58; Newman Club 57-59.



ANN HERRIN



LINDA HERRIN

Wesley Foundation 57-59; Alpha Tau Beta 57-59; Dance Committee 58-59; Glee Club 58-59; Student Senate 58-59; Glamazons 57-59; Beta Lambda 57-59.



CAROL HINELY



ARLENE HOLLAND

Glamazons 57-58; Geechee, Asst. Business Manager 57-58, Business Manager 58-59; Wesley Found. 57-59; Geechee Beauty Rev. 59.



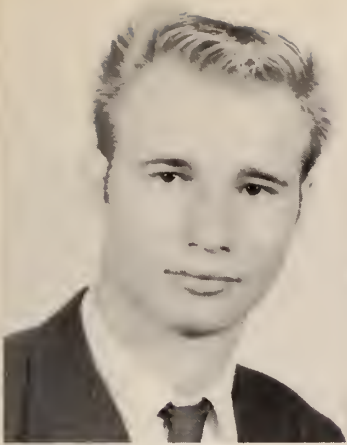
ERMA HOLLAND

Dance Comm. 58-59; Beta Lambda, Sec. 57-58, Pres 58-59; Geechee 57-59; Inkwell 58-59; Senator 58-59; Young Demos. 58-59; Glamazons, Capt. 58-59; Wesley Found. 57-59; Alpha Lambda Sigma 59.



JO-HELEN HOLMAN





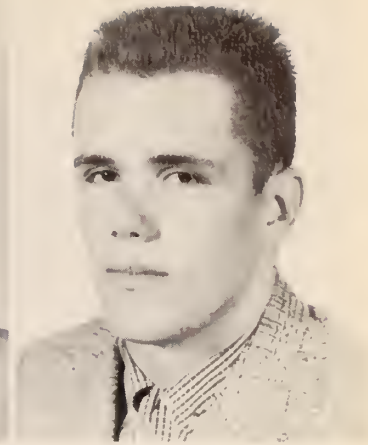
ROBERT HOREL



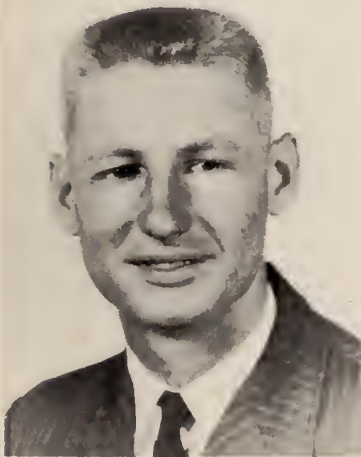
EDWINA HOUGH



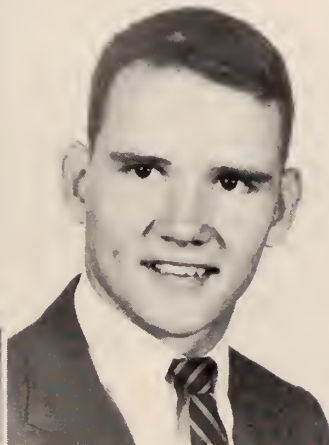
BETTY ANN HURST



SAM JACOBS



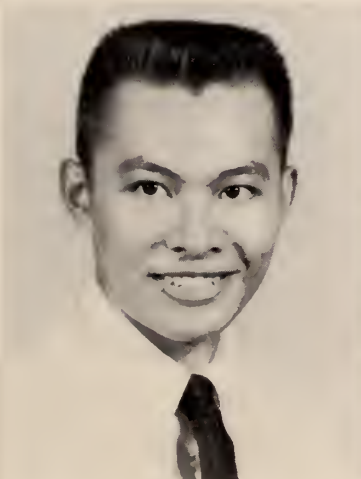
EUGENE JONES



PHILIP JONES



PICKENS JONES



ROBERT JUE



ETHEL KELLY

Masquers 57-59; Glee Club 58-59; Inkwell Staff 58-59; Geehee Staff 58-59; Canterbury Club 58-59.



BARBARA MORDECAI

*Outstanding Sophomore*

Editor, Geehee 58-59; Secretary Student Senate 58-59; Treasurer Math and Science Club 57-59; Alpha Lambda Sigma 59.



ELIZABETH REID

*Outstanding Sophomore*

Radio Workshop 58-59.

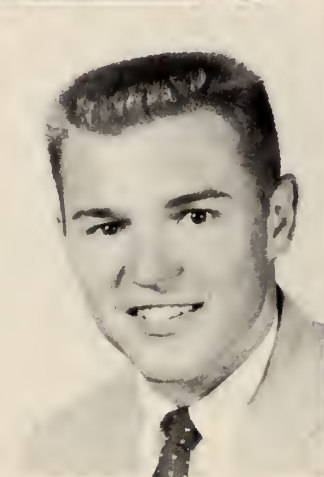


SARA KELLY

Student Senate 58-59; Baptist Student Union 58-59; Slick Chicks 58-59; Math and Science Club 58-59; Alpha Tau Beta 58-59; Aesculapians-Vice Pres. 58-59.



ARLENE KEMPER



CHARLES KILPATRICK

Fraternity X 57-58; President 58-59; Baptist Student Union 57-58.



WILLARD KIRKLAND

Young Democrats Vice Pres. 57-58; Masquers 57-59.

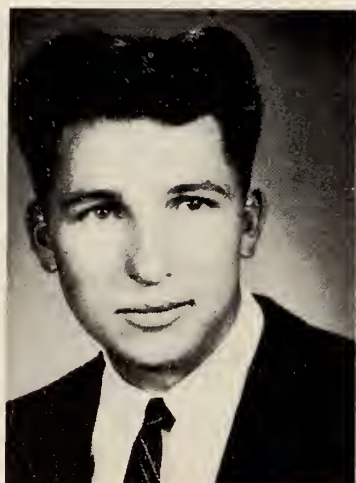


CALLIE LAMB

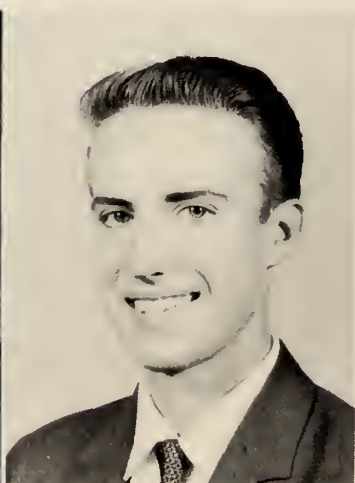


BRICE LANGFORD

Editor, The Inkwell 58-59; Masquers 58-59; Student Senate 58-59; Outstanding Sophomore 58-59.

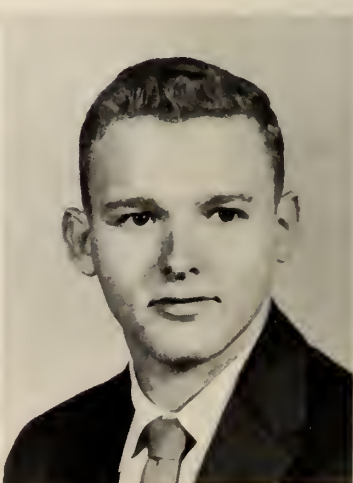


ALLEN LANIER

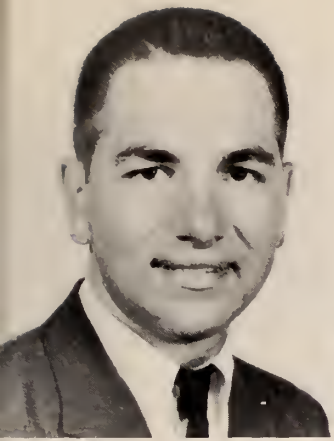


WARD LARISCY

Math and Science Club 57-58; Senator 58-59; Wesley Found. 57-58; Dance Comm. 58-59; Geehee, Assoc. Ed. 58-59; Masquers 58-59.



CHARLES McCALL



ROBERT MALLIS

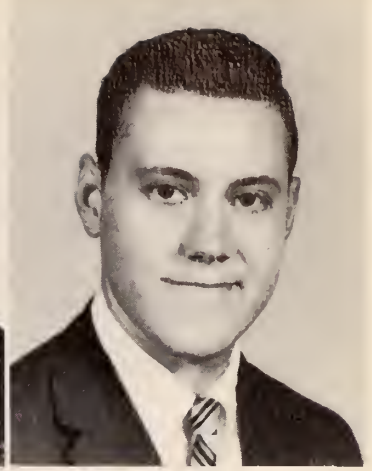
Treasurer Sophomore Class, 58-59; Geechee Sports Editor, 58-59; Terrapins, 57-59; Fraternity X, 57-59; B. S. U. 58-59.



ROBERT MATTHEWS



LEON MEYER



BOBBY MITCHELL

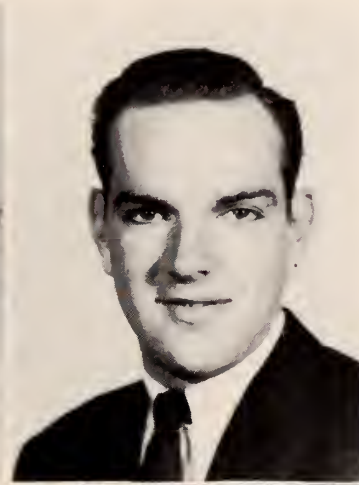


JON MONSON



BARBARA MORDECAI

Alpha Tau Beta 57-59; Masquers 57-59; Inkwell Staff 58-59; Canterbury Club 58-59; Dance Committee 58-59; Geechee Staff 57-59; Math and Science Club 57-59.

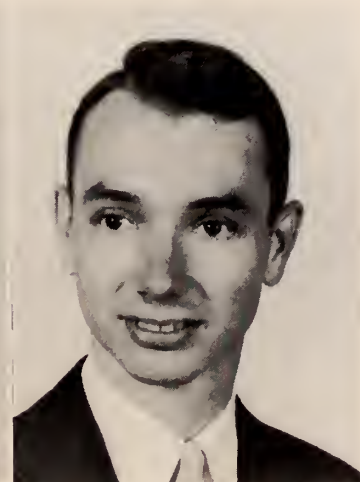


GRADY MURPHY



BARBARA MYERS

B.S.U., Sec. 58-59; Alpha Tau Beta 57-59, V.P. 58-59; Cheerleader 57-59; Sassy Strutters 57-58; Senator 58-59.



DAVID NICOL

Freshman Math Award; President Science Club 57-59.



MARSHA K. TORRANCE

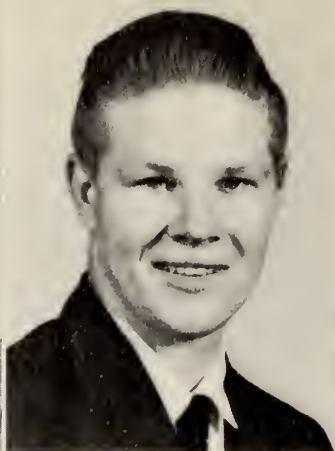
*Outstanding Sophomore*

Alpha Lambda Sigma 58; Captain Sassy Strutters 58-59; Business Manager, Inkwell 58-59; Treas. and Business Manager, Masquers 58-59; Class Editor, Geechee 58-59; Intramural Letter & Emblem Award 58; Alpha Tau Beta 58-59; Captain Debate Team 58-59; Co-Manager Intramural Board 58-59.



SUZANNE OVERBY

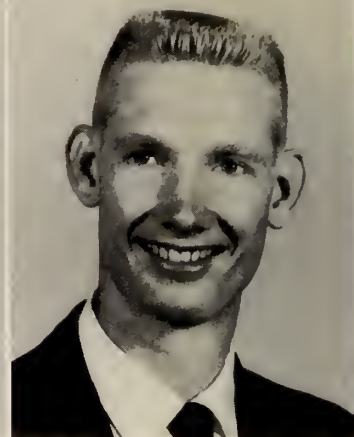
Alpha Tau Beta 57-59; Sassy Strutters 57-59; Glee Club 57-59; Masquers 57-59; Beta Lambda 57-59; Inkwell 58-59.



THEODORE OWENS

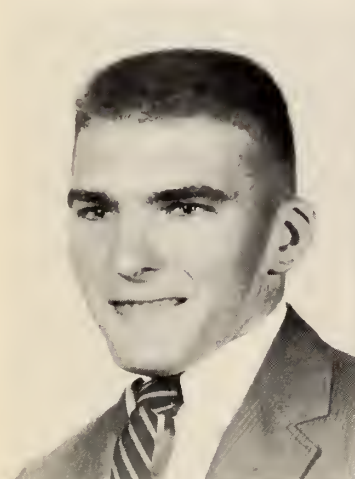


ADA S. PAGE



NEAL PERKINS

Basketball 57-59.



BUFORD PRICE



CHLOE PUGH



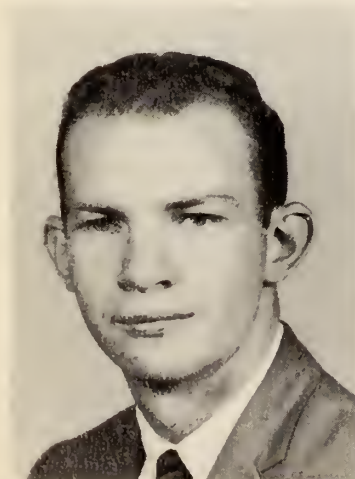
SOL RATNER

Masquers, Radio Workshop 57-59.



ELIZABETH REID

Masquers 57-59; Radio Workshop 58-59.



WADE ROACH



MARY ANN ROBERTS

A.T.B. 58-59; Treas. 58-59; Sassy Strutters 58-59; Glee Club, Pres. 58-59; Inkwell 58-59; Wesley Found. 58-59; Senator 58-59; Beta Lambda 58-59; Alpha Lambda Sigma 59.



ANDREW RYAN



SANDRA SLEVERS



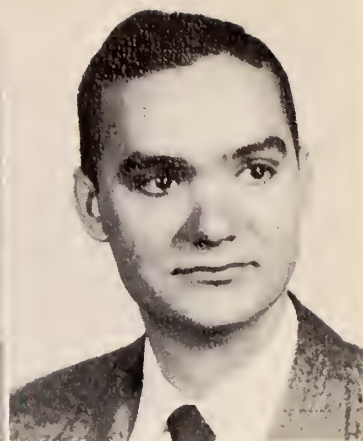
PATRICIA SINGER



PHYLLIS SKINNER



MARY JON SLOCOMB



FRANKLIN SMITH



AUDREY SOMMER

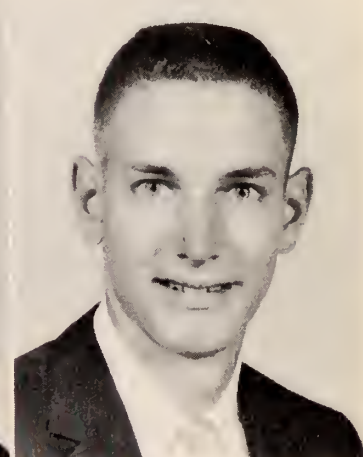


ANN SPENCER

Slick Chicks 57-59; Masquers 57-59; Debate Team 57-59; Beauty Editor, Geechee Student Senator 58-59; Secretary, Young Democrats 58-59.



PATRICIA STEVENS



JAMES STRICKLAND



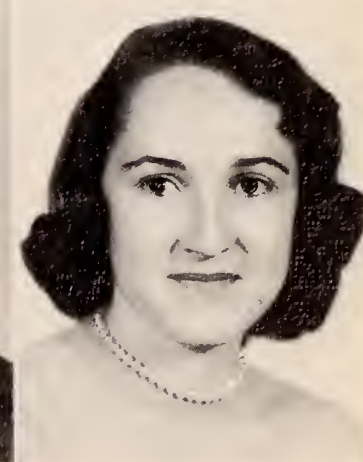
HARIETTE SUTTON



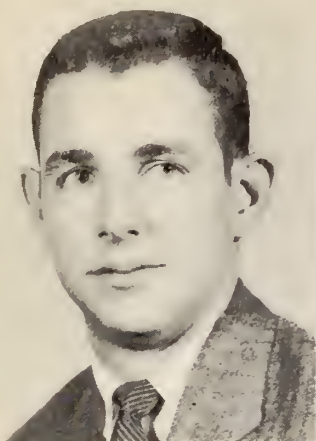
MEREDITH TAYLOR



AGNES THOMAS



KAY THOMPSON

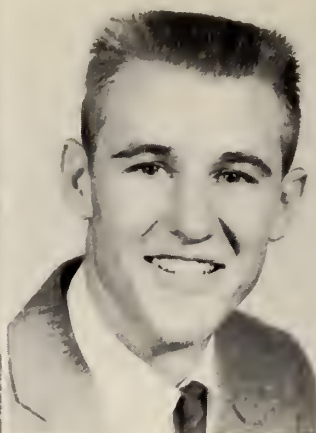


ROBERT THOMPSON



MARSHA TORRANCE

Glee Club 57-59; Sassy Strutters, Capt. 57-58; Masquers 57-59; Inkwell 57-59; Geechee 57-59; Debate Team 57-59; A.T.B. 57-59; Senator 58-59; Dance Comm. 58-59; B.S.U. 58-59.



FRANKLIN TRAVER



SYBIL ANN VIAR

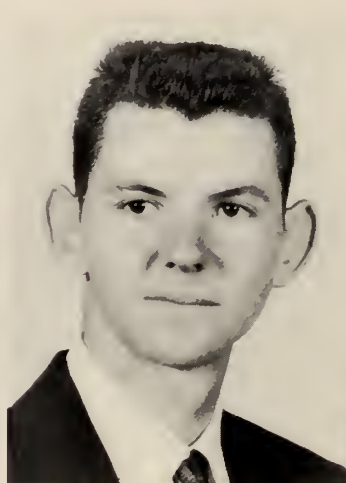


DONNA WATERS

Dance Comm. 57-59, Chair. 58-59; Senator 58-59; Wesley Found. 57-59, Pres. 58-59; Beta Lambda 57-59, V.P. 58-59; Geechee 58-59; Glamazons 57-59; Geechee Beauty Rev. 59; Alpha Lambda Sigma 59.



CLELIA WEBER



HAL WILLETT

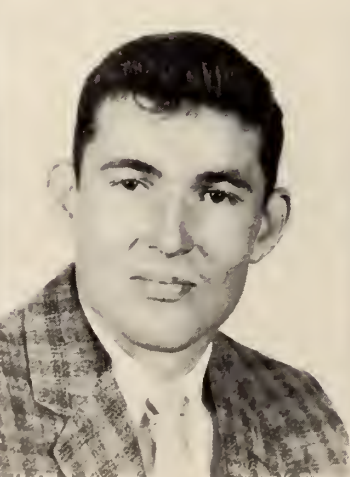


PATTY WILLIAMS

Masquers, Secretary 58-59; Wesley Foundation 57-59; Debate Team 57-58; Slick Chicks 57-58.



MARY CATHERINE WILLIS



KIRBY WINTERS

Math and Science Club 57-59; Newman Club 58-59; Gators 57-58.



FRANCES WONG

Permanent Dean's List; Wesley Foundation, Treas. 57-58; Slick Chicks 57-59; Dance Committee 58-59.



## FRESHMAN CLASS OFFICERS

JIMMY COLLINS, *President*

MARGARET SCHUMAN, *Secretary*

TIM COX, *Treasurer*

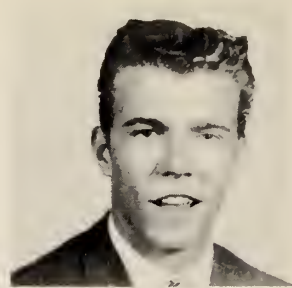
JAY COOK, *Vice President*



ARNO ALNUTT



EMILE ABBOTT



GERALD ALTHEN



MARION ARNSDORFF



JAMES AULD



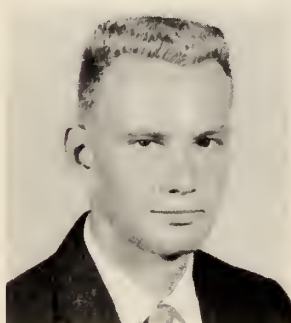
JIM BACHMAN



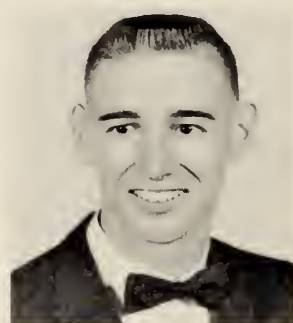
JUDITH BARNES



MARJORIE BARNES



JOSEPH BATTLE



EUGENE BAZEMORE

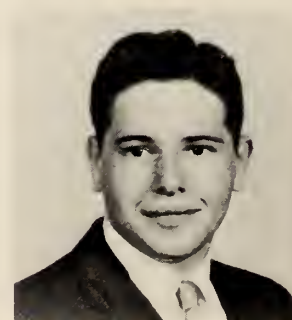
CLASS  
of  
'60



JAMES BELCHER



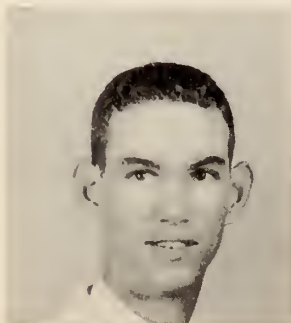
CARL BERGER



SEPHEN BERNSTEIN



LANE BIGGS



LEORY BLACK



STEPHEN BLACKBURN



C. P. BLACKWELDER



DOROTHY BOBLANSKY





GAIL BONNELL



DURWARD BRANTLEY



ELIZABETH BROWN



MARGARET BROWN



CARL BRUNNER



JOYCE BUFFINGTON



WILBER CALHOUN



JAKE CANADY



JOYCE CARLSON



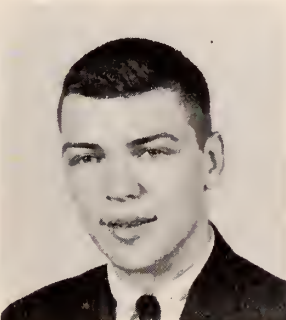
HENRY CAVENDER



NELL CHAMBERS



SYBIL CLARK



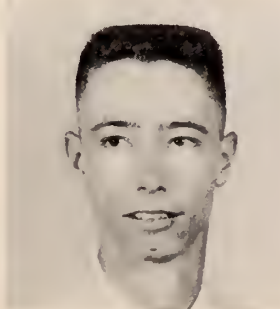
GERALD COHEN



SONNY COLLEYE



JIMMY COLLINS



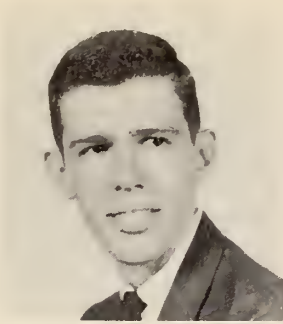
JAY COOK



FRANCES DEAN



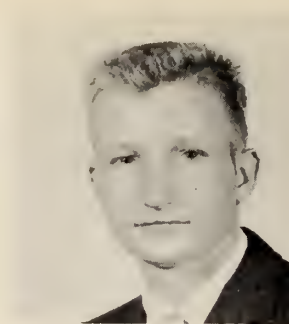
KENNETH COWART



TIM COX



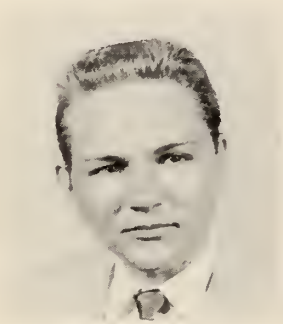
RONALD CRAWFORD



RUSSELL CRIBBS



ROBERT CRONIAN



LAMONT CROSBY



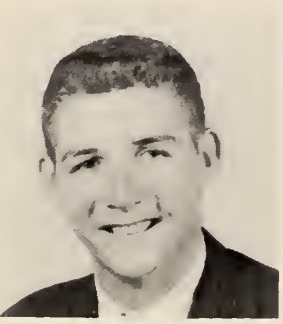
ALVIN CROUCH



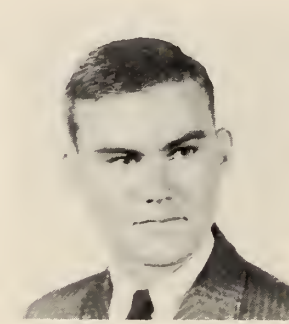
FRANK CROVATT



PAT CRUMPLER



THOMAS DALY

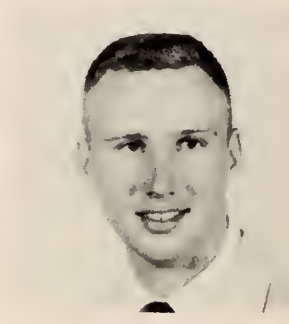


JOHNNY DALZELL

CLASS  
of  
'60



LILLIAN DAVIS



BILLY DEAL



DIANA DEAN



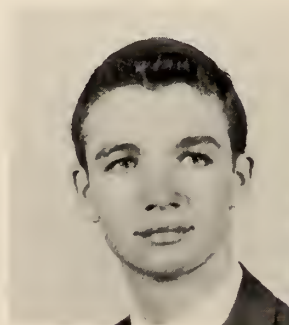
BARBARA DENT



NIKOLA DIMITROV



SUE DODGE



R. B. DONALDSON



MAUREEN DONOHUE



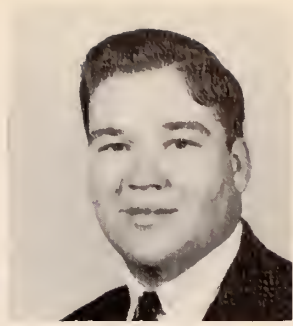
WAYNE DOROUGH



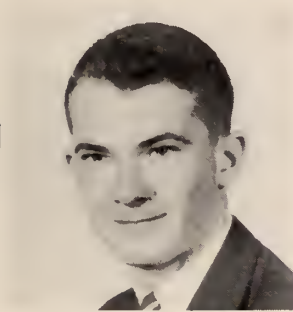
WILLIAM DuBOIS



GENE DUGGER



EDWARD DYCHES



JERRY EAGLE



HENRY EASON



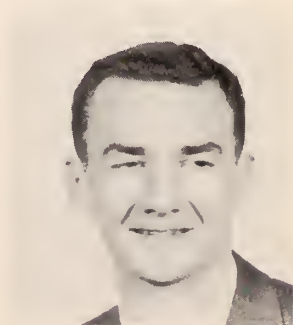
JAMES EDENFIELD



KIPPY ELKINS



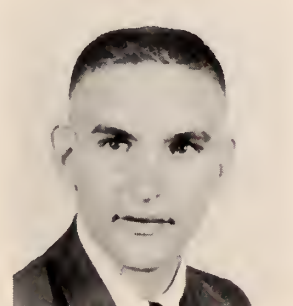
RICHARD EVERETT



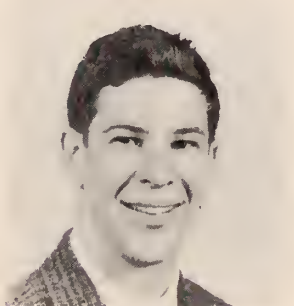
MARVIN EVERETTE



SUE ELTON



CHARLES EXLEY



ALAN FIALKOW



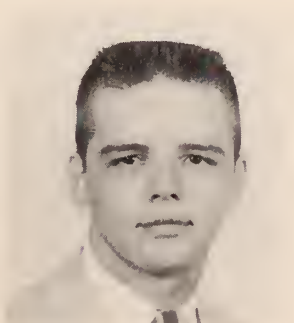
ROBERT FERRARO



J. L. FERRELL



MANFRED FISCHER



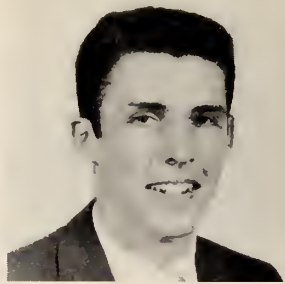
GERALD FLEMING



NANCY M. FOLSOM



RAYMOND FOUNTAIN



BEN FREEMAN



THOMAS FRIES



SHARON FRIZELLE



HAZEL GARDNER



HELEN GARFIELD



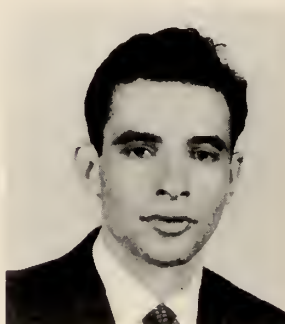
GWEN GARWES



RICHARD GERINER



ROCHELLE GINSBERG



ARTHUR GOLDSTEIN

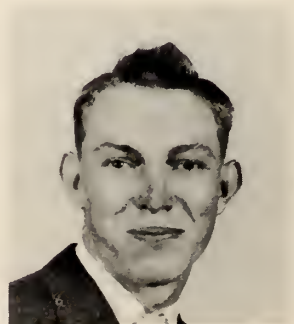
CLASS  
of  
'60



BARRY GOODMAN



NATHANIEL GRAYSON



ELWYN GRIER



SANDRA HADDEN



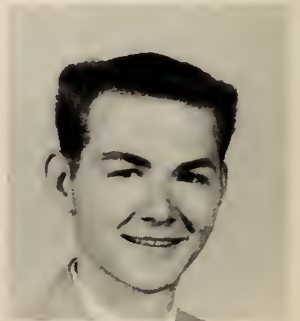
PATRICIA HAGER



CHARLES HALL



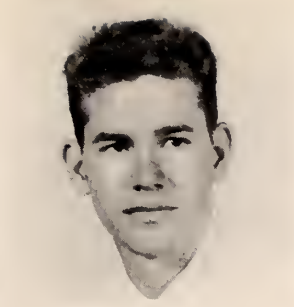
ROBERT HAMILTON



EDWARD HAMRICK



MICKEY HAKAKAL



MICHAEL HARREL



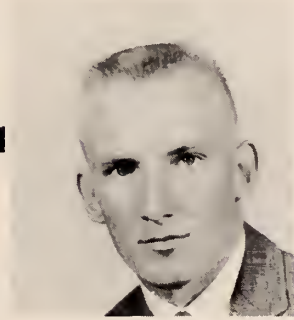
WILLIAM HARRELL



CHARLES HENDRIX



DAVID HILL



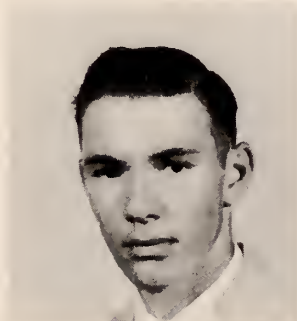
JAMES HILLIARD



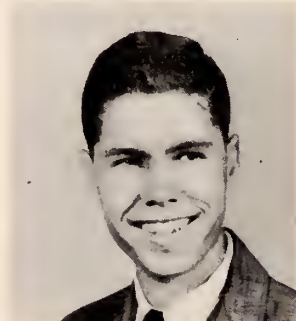
THOMAS HILLIS



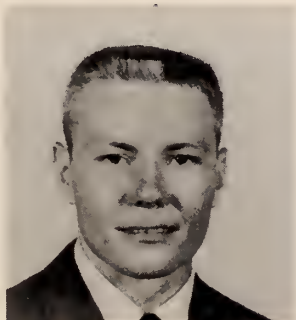
CAROL A. HINCHCLIFFE



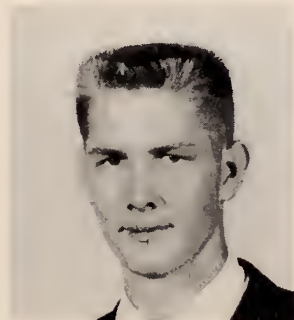
ROYCE HINELY



DAVID HODGES



HERMAN HOHNERLEIN



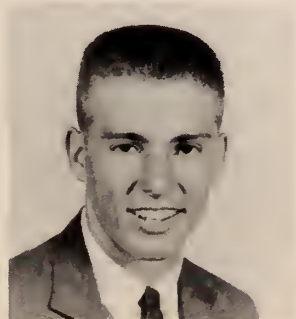
FRANKLIN HUDGINS



DANA HURST



SUZANNA HURST



SAM INGLESBY



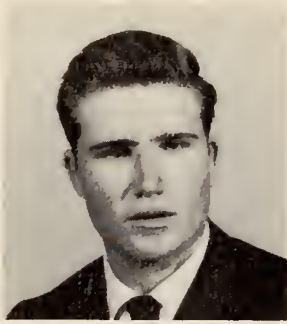
HENRY INGRAM



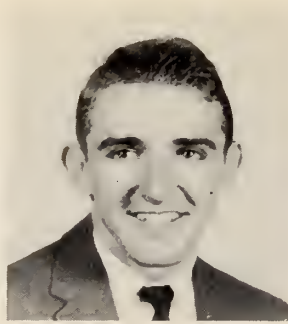
CHARLES JAMES



GEORGE JENKINS



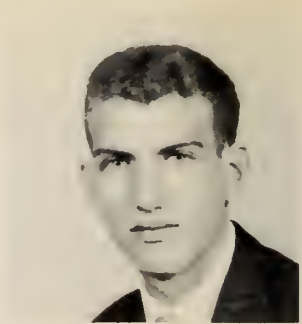
MELVIN JENNINGS



JOE JOHNSON



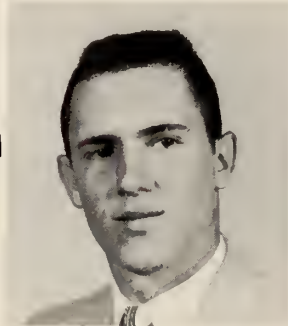
FRANCES JONES



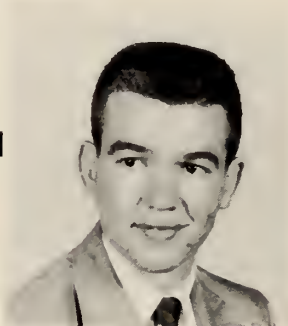
JOE KAMINSKY



LOUIS KARACOSTAS



ELWIN KENNEDY



MARION KENNICKELL



HAZEL KEY



KENNY KIMBALL



GLORIA KING

CLASS  
of  
'60



JOYCE LANCASTER



RANDALL LAND



RICHARD LANDSBERG



DANIEL LANIER



GRACE LANIER



PATRICIA LEARY



DAPHNE LEE



GINGER LEE



CAROLINE LENNARD



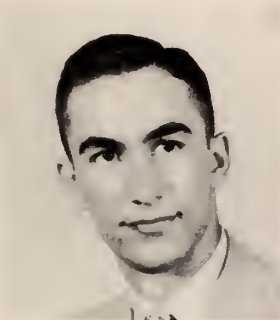
GEORGE LEON



BETTY LEVY



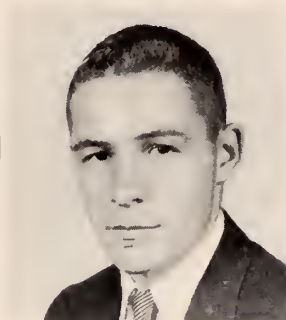
WILLIAM LEWIS



NELSON LITOU



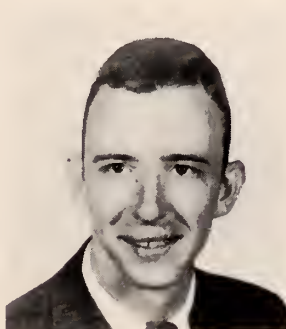
MARGIE SUE LYNN



ROBERT McBRIDE



JAMES McCANE



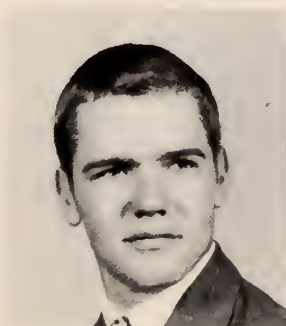
ROBERT McCORD



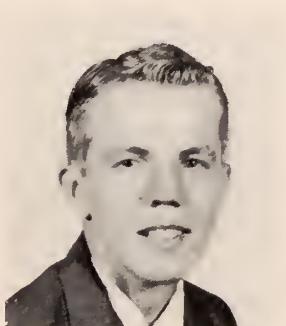
ANGELA McDONOUGH



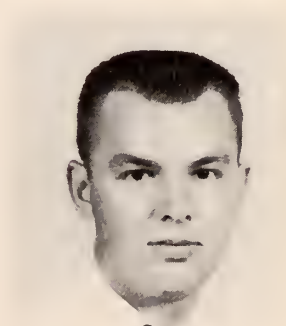
JOHN McLEOD



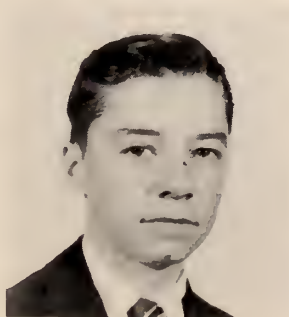
DAVID McPIPKIN



FRED McPIPKIN



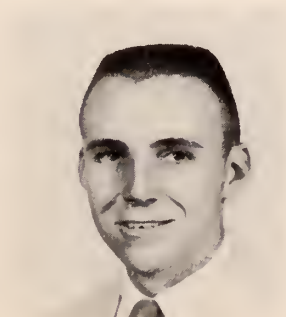
BILL McVEIGH



ROBERT MACKEY



DANIEL MALLARD



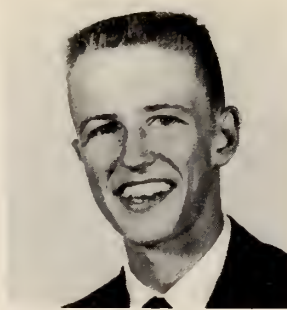
JOHN MARKS



JAMES MARTIN



ANTHONY MASTERS



ROBERT WILLIAM MILEY



CHARLES MILLER



BETH MOCK



CAROL FRANCES MOORE



VIRGINIA MORGAN



DOYLE MULLIS



HERBERT O'KEEFE



RAY ORTON



JOHN OSTEEN

CLASS  
of  
'60



FAYE OVERSTREET



LINDA PAGE



FRANK PAPY



SUE PHELPS



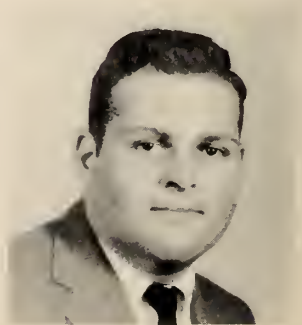
BARBARA PINCKNEY



DOTTI PORTER



ERNEST PORTER



PAUL PORZIO

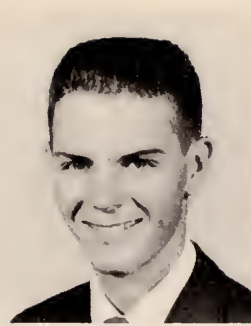




BARBARA PRESTON



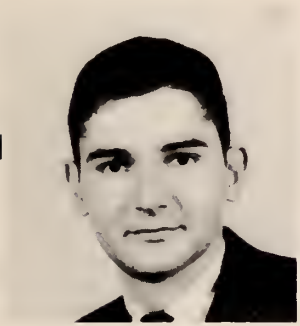
ALBERT RABIN



THOMAS REAGAN



NONIE RINGWALD



SOLOMON ROBBINS



FRANK ROSSITER



WILIAM ROUNTREE



GAIL RUIZ



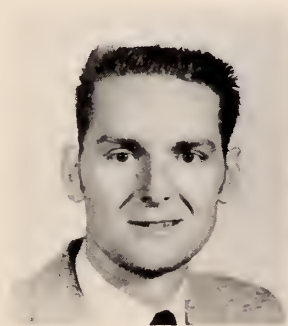
MIRIAM RUSHING



DEWEY SALTER



WILLIAM SANDERS



PRENTICE SAPP



MARIAN SATURDAY



LINDA SAULS



RANDALL SCARBOROUGH



FRED SCHOLL



MARGARET SCHUMAN



WAYNE SEAY



H. R. SHEAROUSE



MIRIAM SHEAROUSE



DIANA SHELTON



JOHN SHEPPARD



MAC SECKENGER



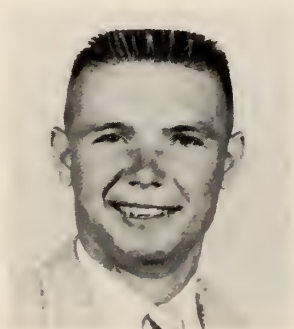
JOHN SEWELL



ARNOLD SEYDEN



HENRY SHACKELFORD



JAMES SIKES



ANDREW SMITH

CLASS  
of  
'60



BETTY JOYCE SMITH



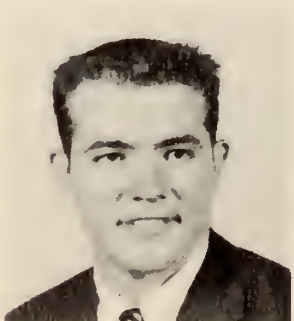
JACK MOORE



JOHN SMITH



SANDRA SMITH



JOE SMITH



FRANK SPENCER



JANET STANFORD



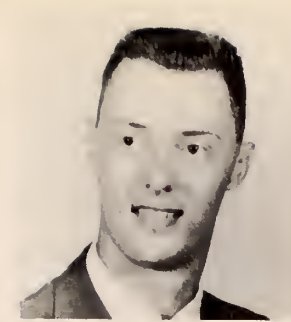
VIRGINIA STANLEY



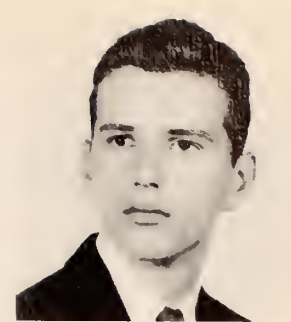
DAVID STEVENSON



MARSHALL STREET



EDDIE STRICKLAND



WALTER STRICKLAND



JOHN SULLIVAN



DALE SUTTON



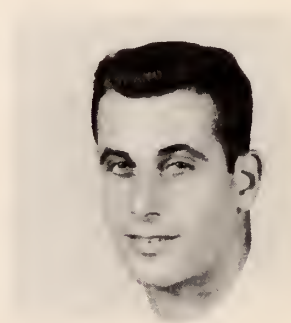
MARY SUE SWEENY



EDDIE LOUISE TAYLOR



SHARON THIGPEN



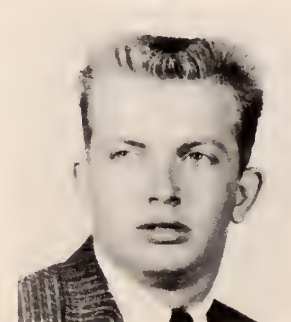
DAVID THOMAS



ROBERT THOMAS



PAM THOMSON



CHRISTOPHER TILLOSTON



JERRY TUTTLE



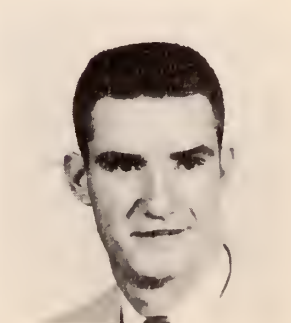
LINDA WALLACE



WADE WALLACE



AL WALLS



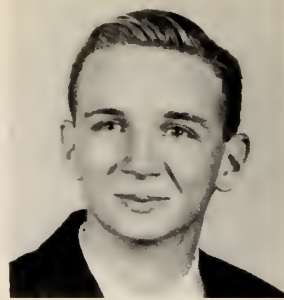
STEPHEN WALSH



WILLIAM WALSH



ERNEST WALSTON



JAMES WARE



BERNICE WARR



BUSTER WHITE



JUDY WILLIAMS



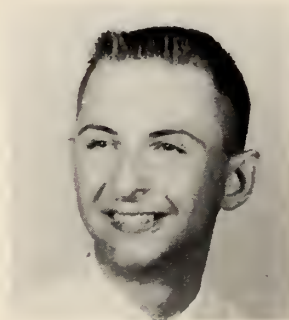
CHARLES WILLYARD



JACK WILSON



HUDSON WISE



JOSEPH WISE



DANIEL WINFIELD



JUDY ZIPPERER



# Candler School of Nursing



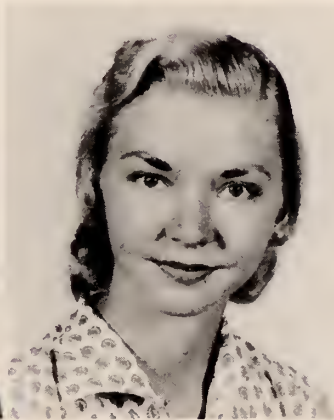
LAVERNE R. JOHNSON  
*Director of Nursing*



EVELYN AMBROSE  
*President*



EDNA GREER  
*Vice President*



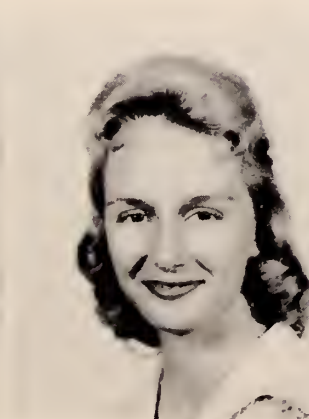
GRACE BRANTLEY  
*Secretary*



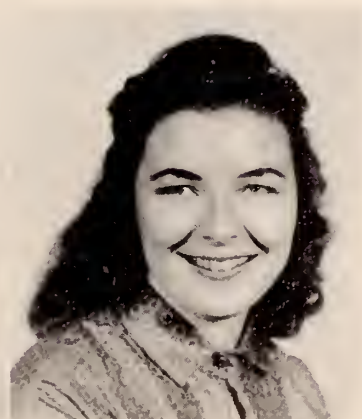
CLARICE TIPPENS  
*Treasurer*



BETTY BLOUNT



ANNETTE BROWN



JUDY BURKE



JAYNE COLLINS



MARY LOU CROCKETT



SUE DAVIS



FREIDA DeLOACH



REBECCA DUGGER



DELAINÉ FLANDERS



KAYE FREEMAN



SUE GRIFFIN



MARTHA HOLLAND



HELEN HICKMAN



GLYNDA HOWARD



DANA HUGHES



CAROL JEWELL



NANCY KING



LINDA LANIER



ZENIE MALPHRUS



JOAN McDANIEL



JEANNE MOONEY



PEGGY PARKER



JUDY POWELL



MARY RINGWALD



SARAH ANNE SOWERS



LaROSE STOKES



MYRA THOMPSON



MARY LOU THRIFT



VERNIA WILDES

# ADVERTISERS

*Editor*

ARLENE HOLLAND

*Staff*

DALE SUTTON

CAROL HINELY

MARY CATHERINE WILLIS

LINE & SPORTS





INC.

542 UNITED 542

Low Jewelry

Step Six

1955

UNITED





A. B. C. Furniture Company  
Buck Furniture Company  
Chatham Furniture Company  
Deese Furniture Company  
Dream House Furniture Company  
Dubose & Davis  
Gilbert Furniture Company  
Green Company  
Haverty Furniture Company  
I. C. Helmly Furniture Company

Home Furnishing Company  
Klug's  
Liberty Furniture Company  
Lindsay & Morgan Company  
Lovett Furniture Company  
Maxwell Brothers  
B. J. Sheppard Furniture Company  
Shoob Furniture Company  
Solomon Furniture Company  
Taylor Furniture Company

*Shop and Save at*

**KARPF'S**

SMART  
FASHIONS  
FOR  
WOMEN

*Compliments*

*of*

**WEIS & SAVANNAH THEATRES**

WHERE  
*movies are always  
at their best*

Day Phones :  
AD 2-6400  
AD 4-3837

Night Phone  
AD 2-0186

**ROY R. SIMS SERVICE GARAGE**

BEAR WHEEL ALIGNING

*Complete Automotive Service*

409-15 West Bay St.

Savannah, Ga.

**GLOBE SHOE CO.**

FINEST FAMILY SHOE STORE  
IN THE SOUTHEAST



17 Broughton Street East

WALTER MERCER NICK MAMALAKIS

WM. N. JONES

**MERCER**

**Insurance Agency, Inc.**

*"PERSONAL SERVICE"*

AUTO - HOME - BUSINESS  
PROTECTION

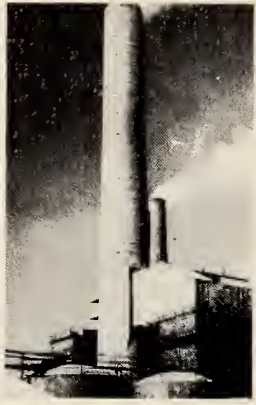


**MORRISON'S CAFETERIA**

15 Bull Street

SAVANNAH, GEORGIA





Where 5,300

employees



earn



\$27,000,000 yearly

converting pulpwood



into paper bags



and

boxes



for the nation.



**UNION BAG - CAMP**

*Paper Corporation*

SAVANNAH, GEORGIA

**WACHTEL'S**

PRESCRIPTIONS & SICK-ROOM SUPPLIES

410 Bull Street  
SAVANNAH, GEORGIA  
PAUL H. EWALDSEN, *Owner*



*Compliments of*

**SOLOMON'S PHARMACY, INC.**

*Professional Pharmacist  
For 100 Years*

Bull and Charlton Streets

*City Wide Delivery*

MORE THAN 2,000,000  
PRESCRIPTIONS FILLED

**SAVANNAH MACHINE AND  
FOUNDRY COMPANY**



*"The One and Only"*  
**BARGAIN  
CORNER**  
THE BIG 4-STORY BUILDING AT BAY & JEFFERSON STS.

# GREAT CARGO FREEZER DANE

*There's a difference in a Great Dane*

The superior quality of a Great Dane is not achieved by chance. It is realized only through infinite care in the selection of materials...strictest attention to every detail of design...assembly with uncompromising devotion to the highest standards of craftsmanship

...every step planned, tested, checked and rechecked by perfectionists. The final results reflect the skills and collective experience of many men dedicated to producing the *best* in the industry. Before you buy another trailer investigate the Great Dane.

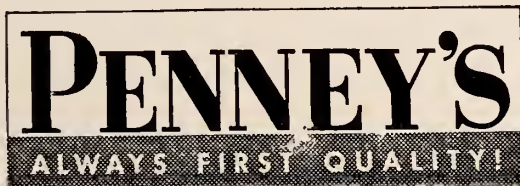


**GREAT DANE Trailers travel the nation's highways ...  
from SAVANNAH, GEORGIA**





To find a solution to a perplexing problem whether it be geometry or English Lit., is sometimes difficult and Reddy agrees. But, when it comes to the convenience of Electricity, Reddy knows all the answers. So, whenever you need Reddy to go to work for you, day or night, he's ready at a flip of a switch.



*Joseph's*

*Exclusive Fashions for Women*

**MASON, INC.**

OFFICE SUPPLIES — PRINTING  
DITTO AGENT

18 Bryan St., West  
AD 2-4192

*Fine's*

*Where Fashions Make Their Debut in  
Savannah*

*Compliments of*

**HOME FEDERAL SAVINGS  
and LOAN ASSOCIATION**

3½% on Insured Savings  
*Current Rate*

37 Bull Street

Your Headquarters for:

**Teens  
and  
Junior**

116 East Broughton Street

*SAVANNAH LARGEST FABRIC CENTER*



dress fabrics—drapery and slip cover materials—  
traverse rods and drapery hardware—  
upholstery fabrics



AD. 2-5149

*1959 Geechee Photographer*

**Al Schunemann's Photography**

*Wedding - Commercial - Aerial*



1 Hibiscus Avenue

AD 6-6049





Since the Dawn of the Century

WE HAVE SPECIALIZED  
IN THE PRODUCTION OF  
OUTSTANDING  
COLLEGE AND HIGH SCHOOL  
YEARBOOKS

---

**FOOTE & DAVIES, INC.**


POST OFFICE BOX 13084 • ATLANTA 24, GEORGIA



*Printers • Lithographers • Book Manufacturers*

764 MIAMI CIRCLE, N. E. • PHONE CEDAR 7-1611

---



**SAVANNAH'S FOUR-MOST RESTAURANTS...**

- **OUR HOUSE**  
VICTORY DR. AT SKIDAWAY RD.
- **Triple XXX**  
VICTORY DR. AT GRAYSON STAD.
- **Harvest House**  
2 MILES SOUTH ON U. S. 17
- **The Pirates' House**  
20 EAST BROAD STREET

# Smith Brothers

*"Savannah's Finest Foods"*



41st and Habersham Sts.  
SAVANNAH, GEORGIA

*Compliments of*

**THE DeSOTO HOTEL**

*"A Savannah Tradition"*

## YOUR FUTURE DEPENDS ON YOU!

Your future depends on you now—and every day of your life. It is a challenge that every man and woman must meet—in some way. But there is no set formula, no certain way to meet that dynamic challenge called life. And that is why the future is always exciting—because it is as different as the events that fill and characterize our each succeeding day. So meet your life's challenge today—by looking forward to tomorrow.

**Newspapering . . . A Dynamic Career In Journalism!**

**Savannah Morning News**  
**SAVANNAH EVENING PRESS**

Light Of The  
Coastal Empire

SAVANNAH'S OLD HARBOR LIGHT - ERECTED 1858

