

1.



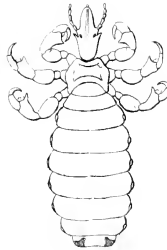
2.
B



3.
c



4.
D

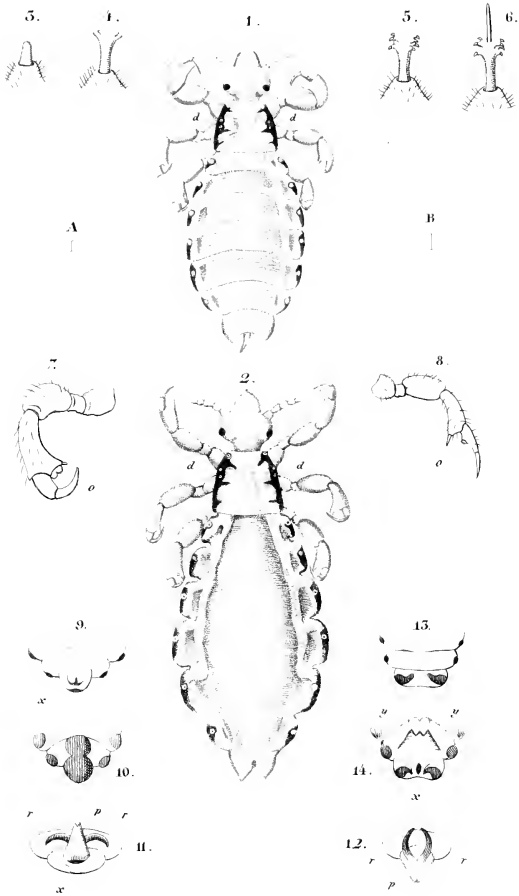


5.
E



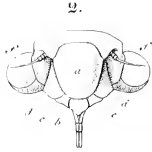
Genus PHTHIRIUS.

Order I, Trib. I, Fam. I



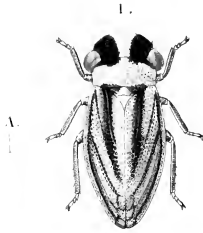
Genus PEDICULUS.

Ordo I. Trib. I. Fam. 5.



5.

4.



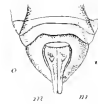
5.



7.

6.

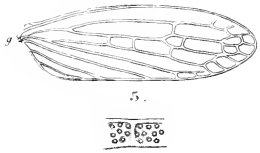
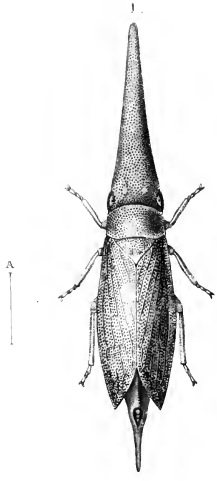
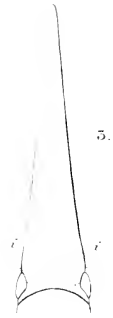
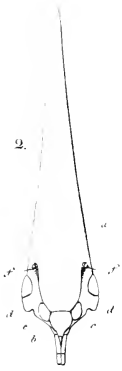
8.



Genus ULOPA.

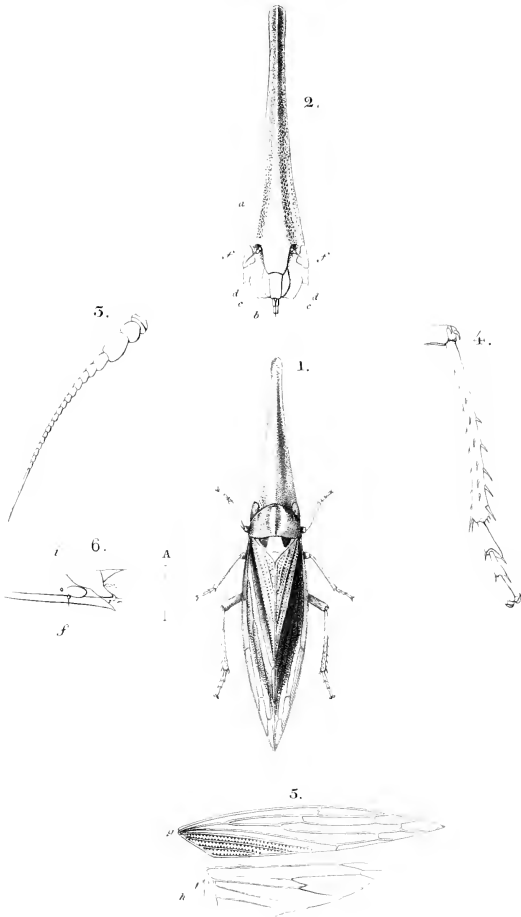
282, 2

Ordo I. Trib. 1. Fam. 5.



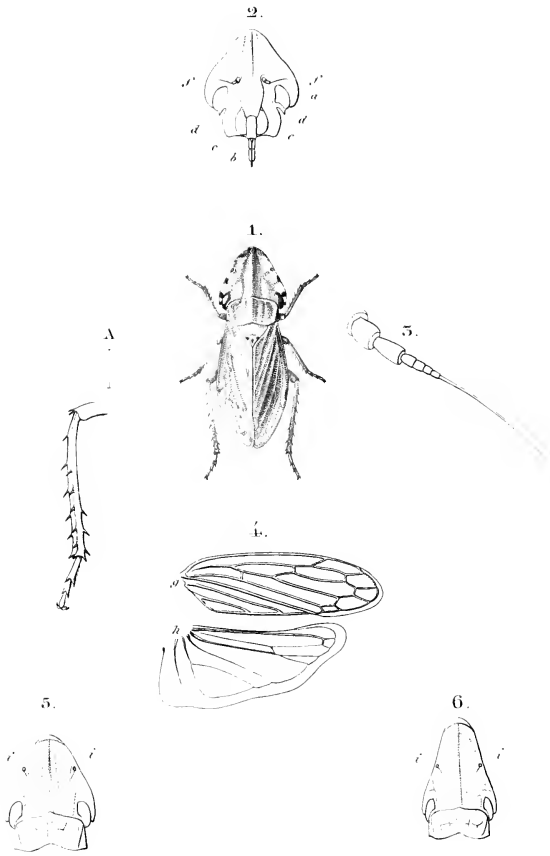
Genus CEPHALEUS

Oxyc. Trib. 4. Fam. 5.



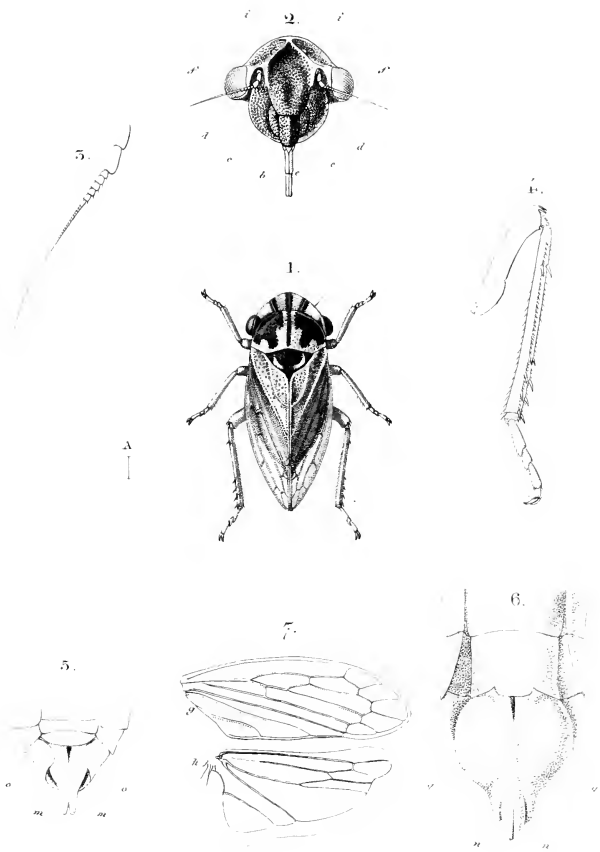
Genus DORYDIUM.

Ordo 1. Trib. 4. Fam. 5.



Genus EUPELIX.

Orolo 2. Trib. 4. Fam. 5

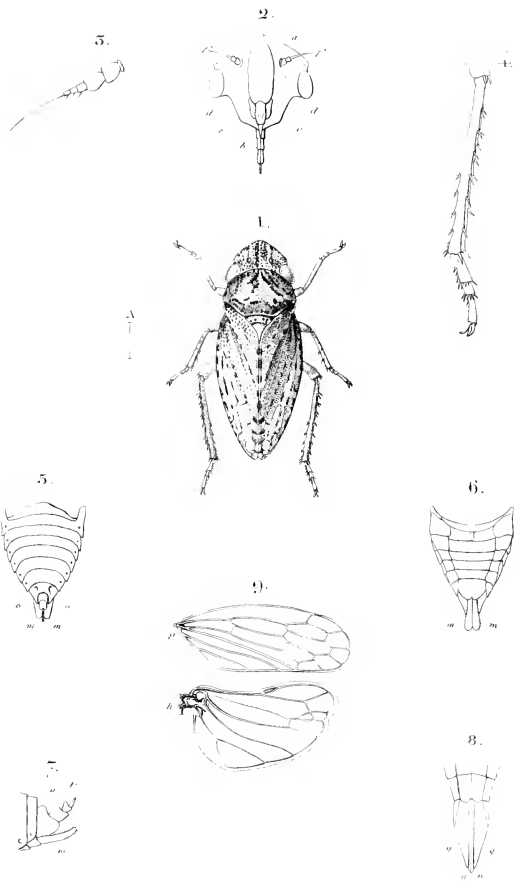


Genus PAROPLA.

B. Minter sc.

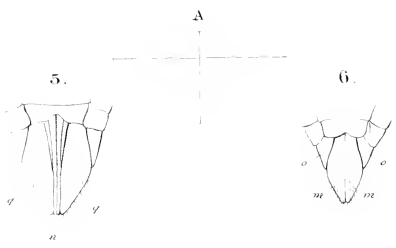
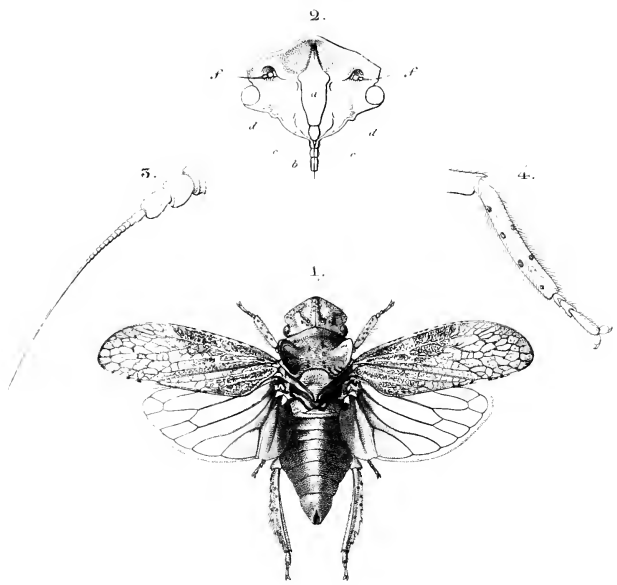
1837.5

Ordo 1. Trib. 4. Fam. 5.

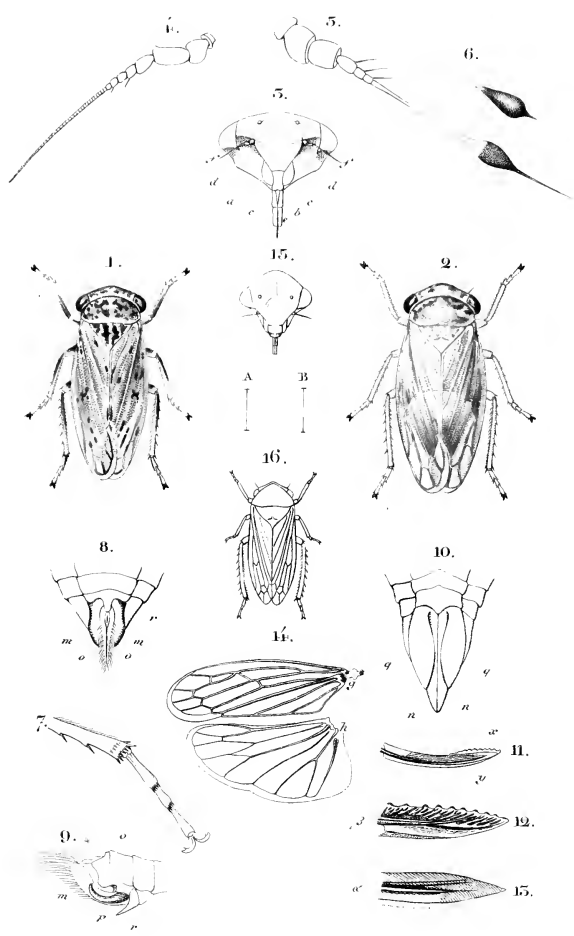


Genus XEROPHLOEA.

Ordo I. Trib. 4. Fam. 5.

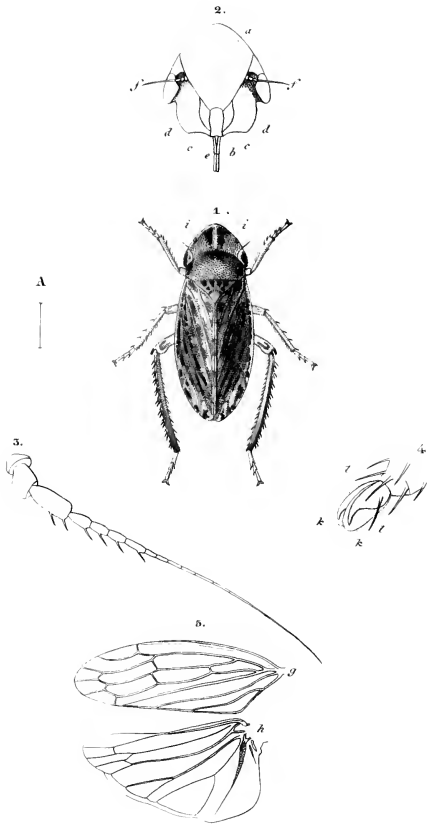


Genus LEDRA.

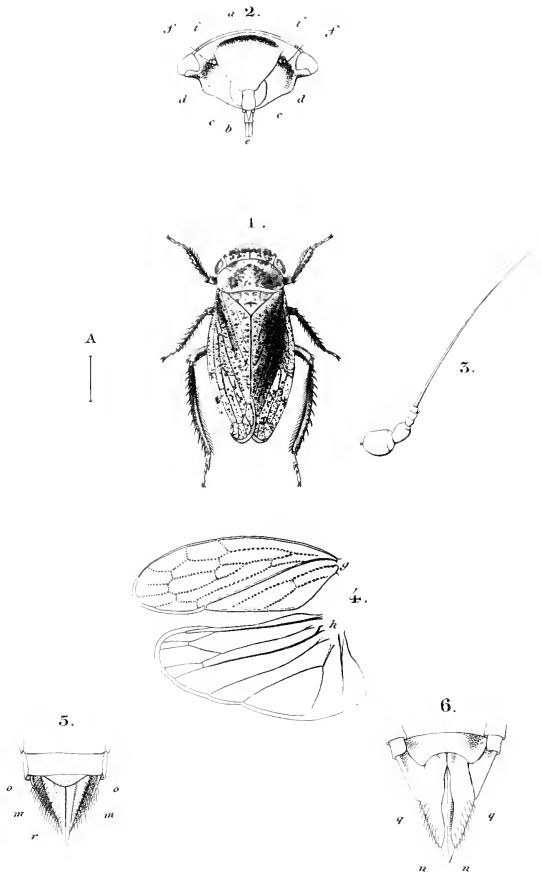


Genus BYTHOSCOPUS.

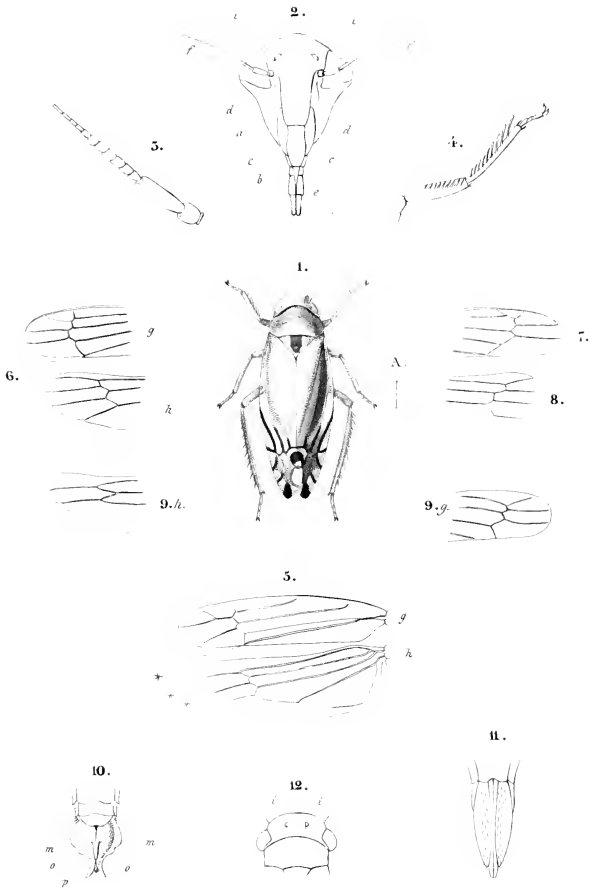
Ordo I. Trib. I. Fam. 5.



Genus ACOCEPHALUS.

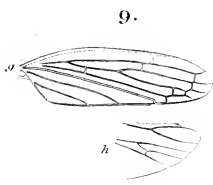
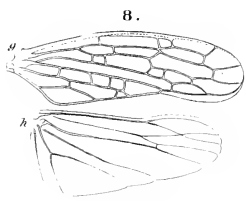
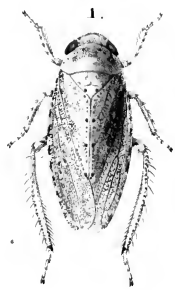
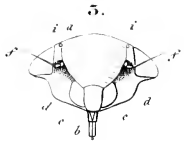


Genus SELENOCEPHALUS.



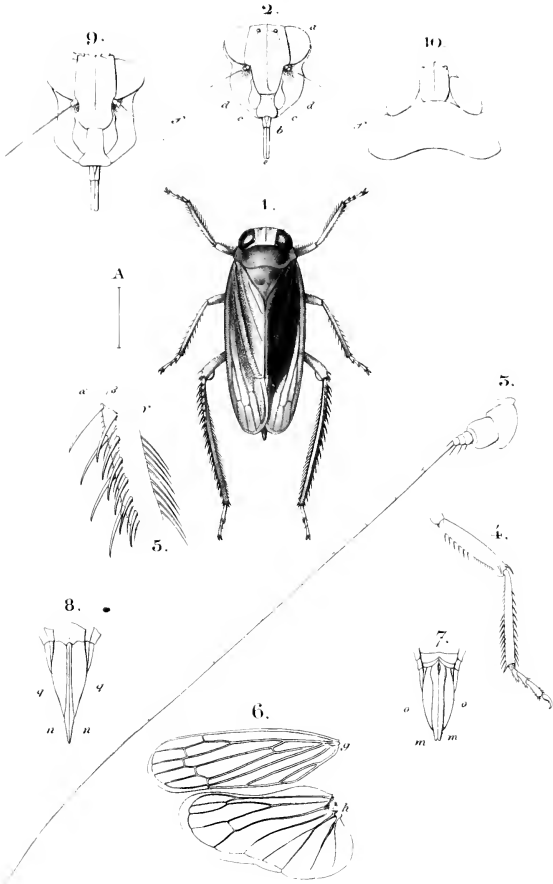
Genus TYPHLOCYBA.

Ordo 1. Trib. 4. Fam. 5.



Genus JASSUS.

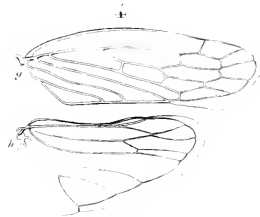
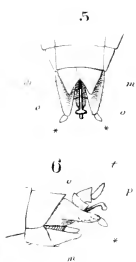
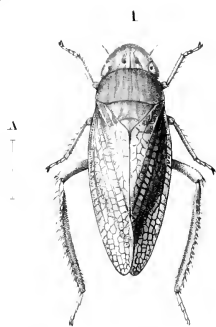
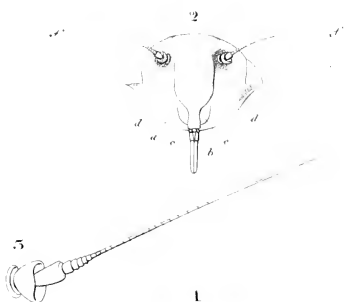
Ordo I. Trib. 4. Fam. 5.



Genus COELIDIA.

18-276

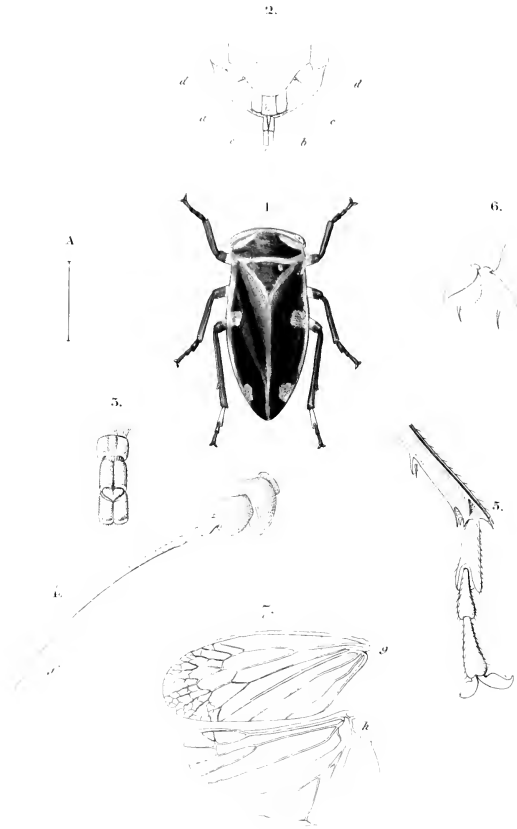
Ordo I. Trib. 4. Fam. 5.



Genus GYPOXA.

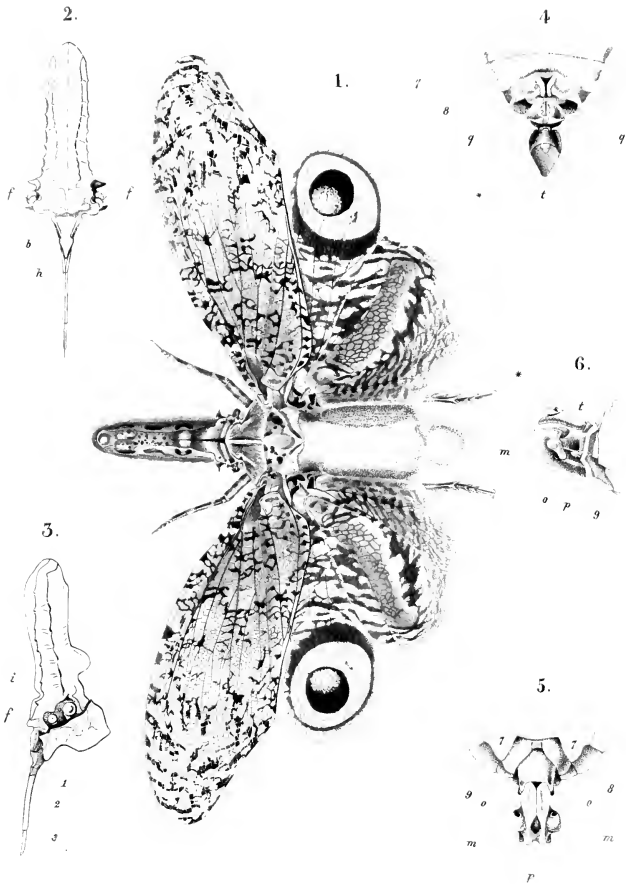
Fig. 1

Oscio 1. Trib. 4. Fam. 5.



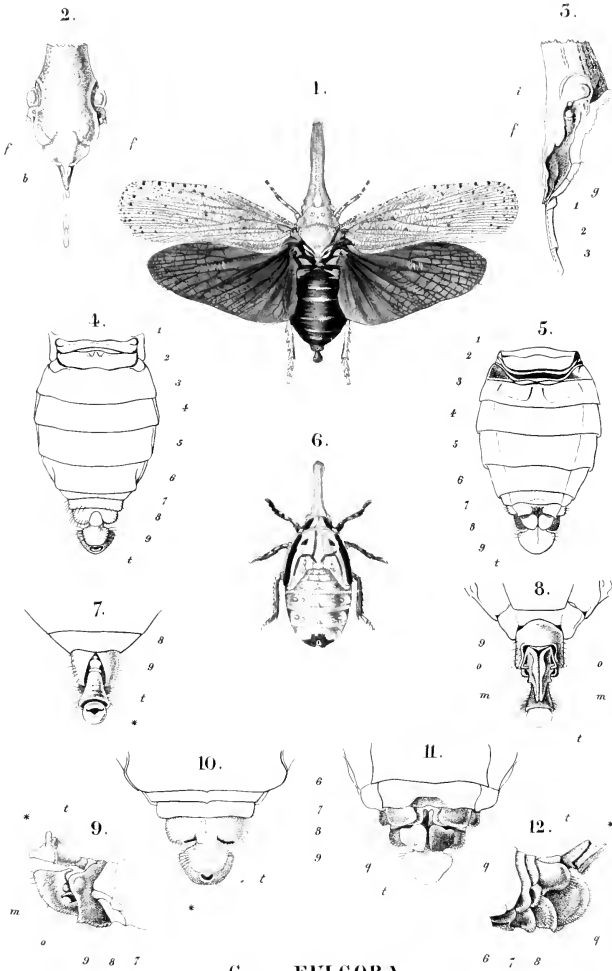
Genus EURYMELA.

Ord 1. Trib. 4. Fam. 7.



Genus **FULGORA.**

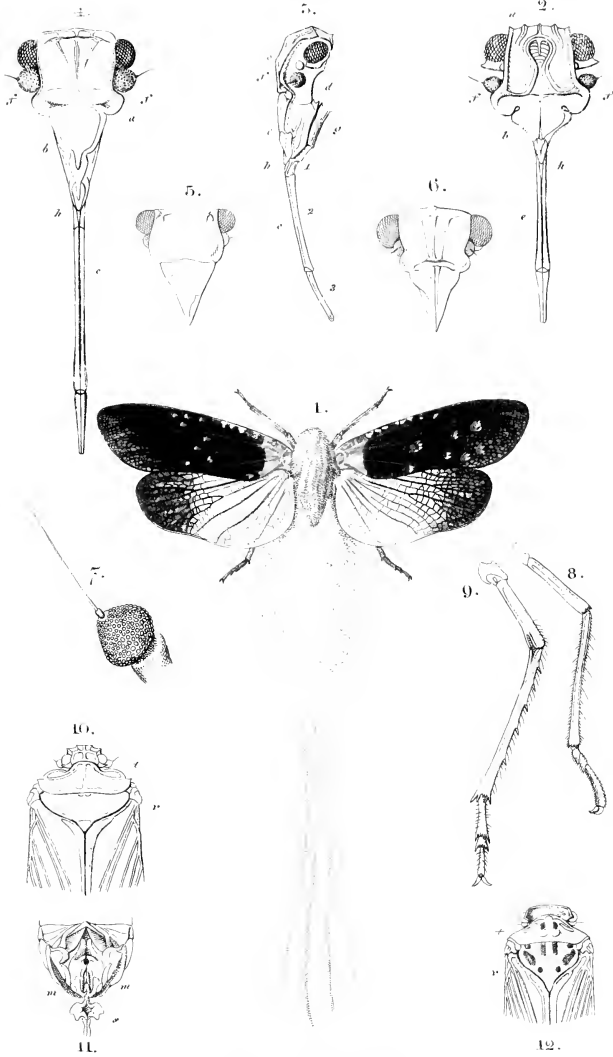
Subgenus Fulgora.



Genus **FULGORA.**

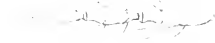
Subgenus Pyrops.

Lyto 1. Trib. 4. Fam. 7.

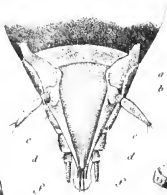


Genus LYSTRA.

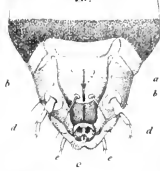
2.



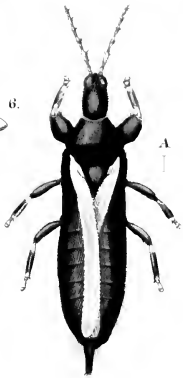
5.



10.



1.



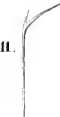
6.



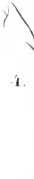
12.



11.



4.



5.



15.



7.

8.



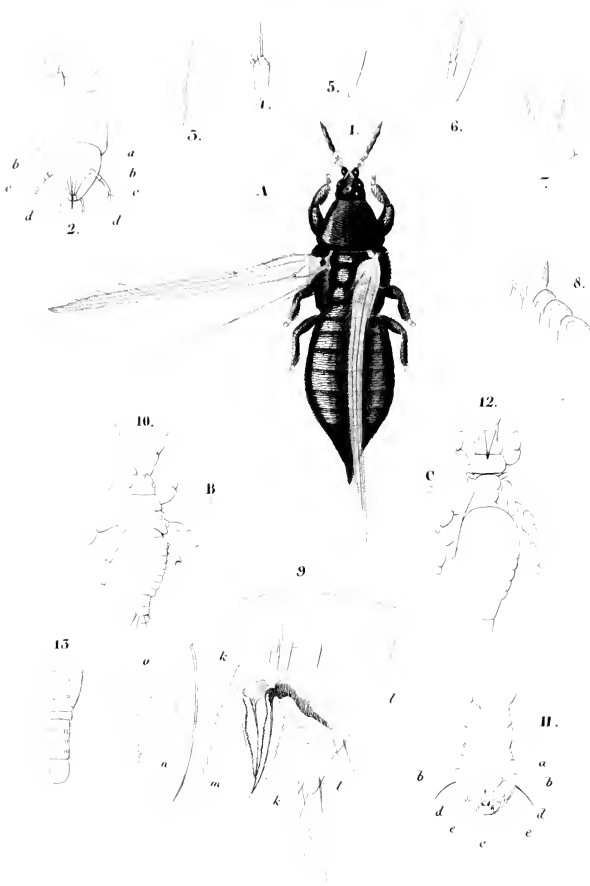
14.



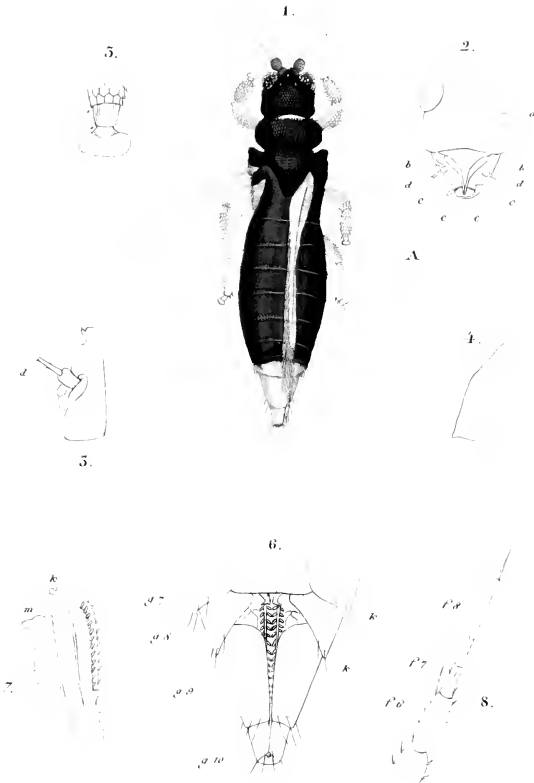
9.



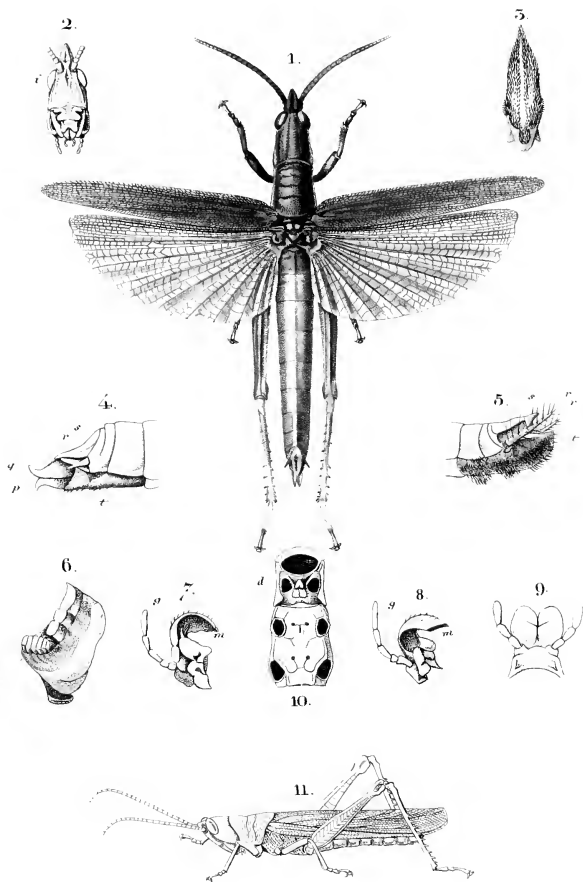
Genus PHLOETHRIPS.



Genus THIRIPS.



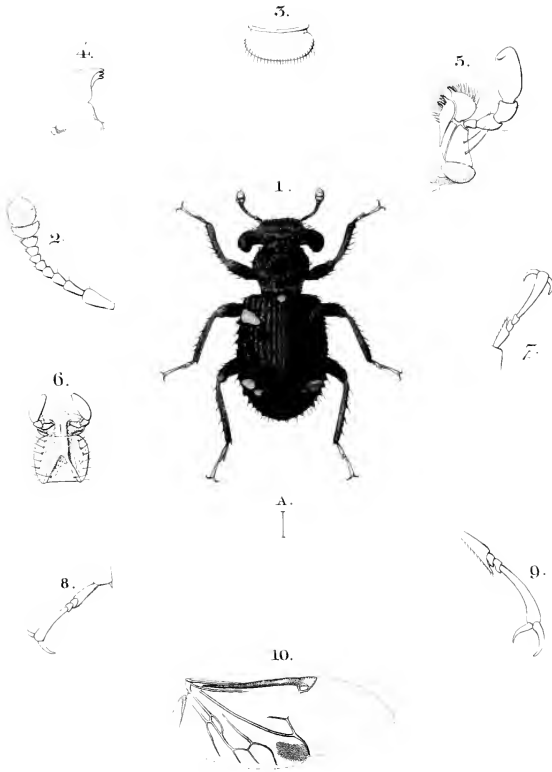
Genus HELIOTHRIPS.



Genus OPSOMALA.

Ordo COLEOPTERA.

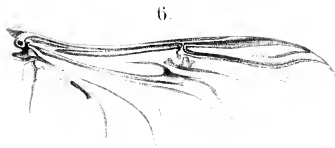
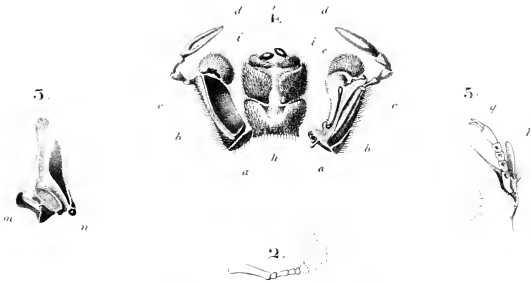
Tribus *Alytrogae*. Fam. *Ilyctidae*.



Genus ACROPIS.

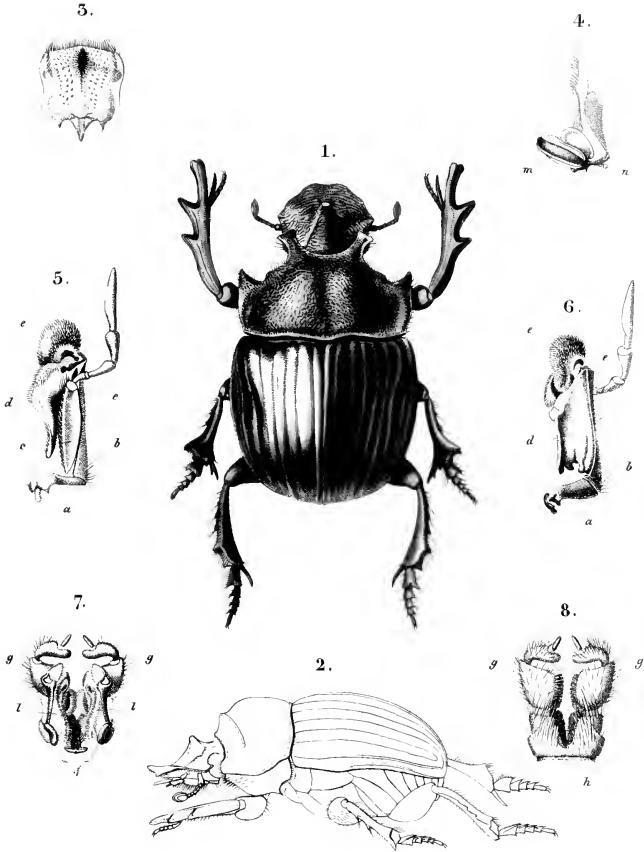
Ordo COLEOPTERA

Trib. Lamellicornia. Fam. Coprophegna.



Genus EUDINOPUS.

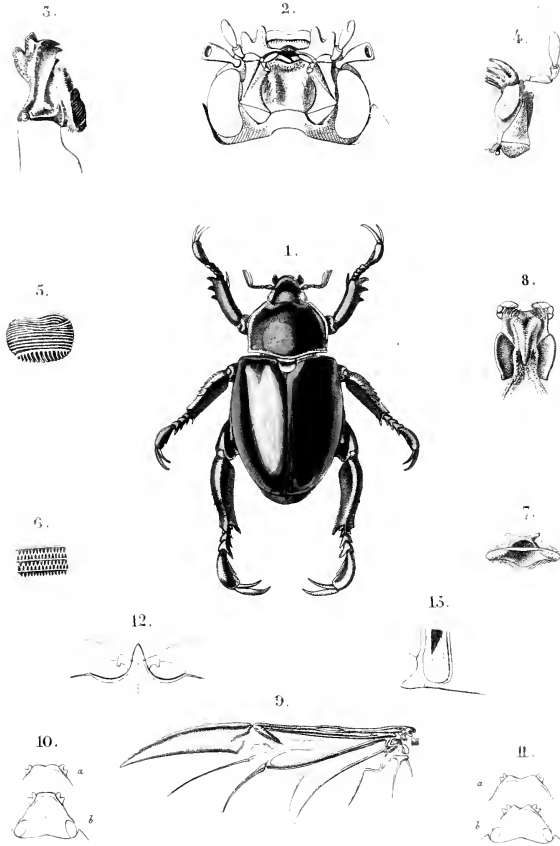
Ordo COLEOPTERA.
 Trib. Lamellicornia. Fam. Coprophaga.



Genus COPRIS.
 Subgen. *Helicopris*.

Ordo COLEOPTERA.

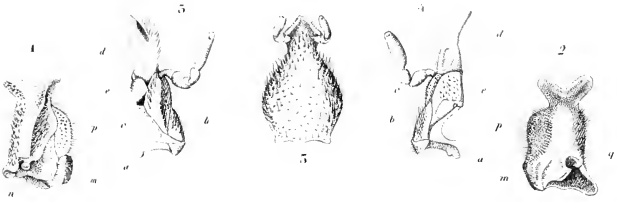
Trib. Lamellicornia. Fam. Phyllophaga.



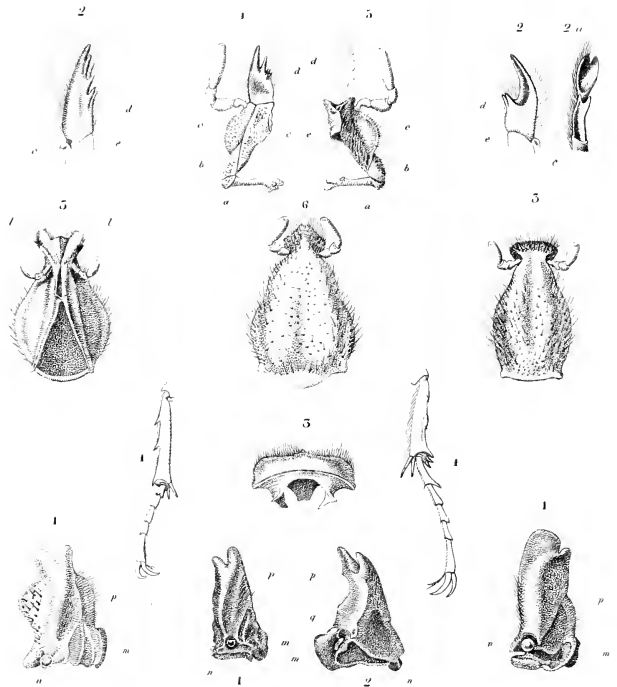
Genus PELIDNOTA

Ordo COLEOPTERA

Tribe Lamellicornia Fam. Xylophil.



Genus MEGALOSOMA



Genus XYLOTRITES

Genus DYNASTES

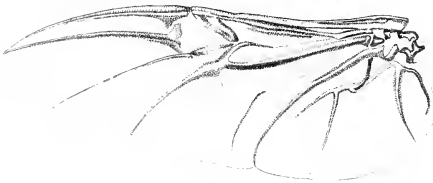
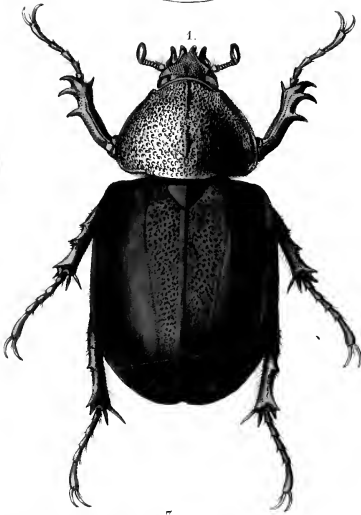
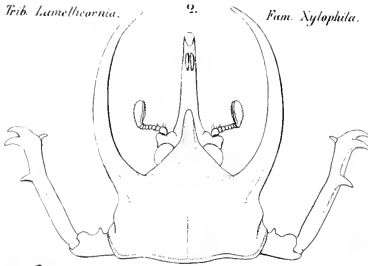
Genus AUGOSOMA

Ordo COLEOPTERA.

Trib. Lamellicornia.

2.

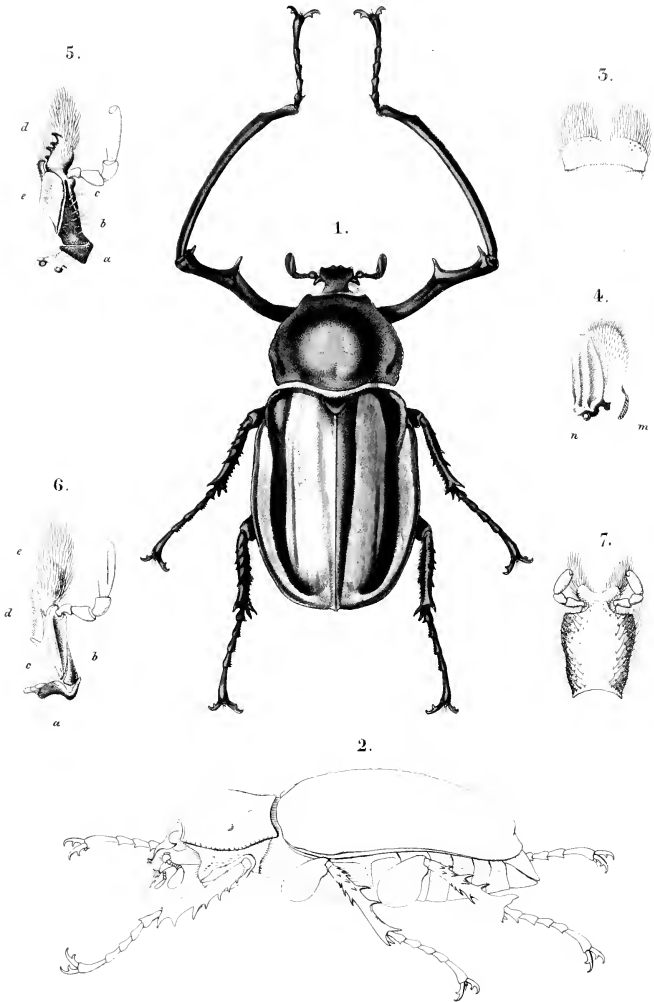
Fam. Xylophila.



Genus. CHALCOSOMA.

B. H. 1861. 1. 10.

Ordo COLEOPTERA.
 Trib. Lamellicornia. Fam. Melitophila.

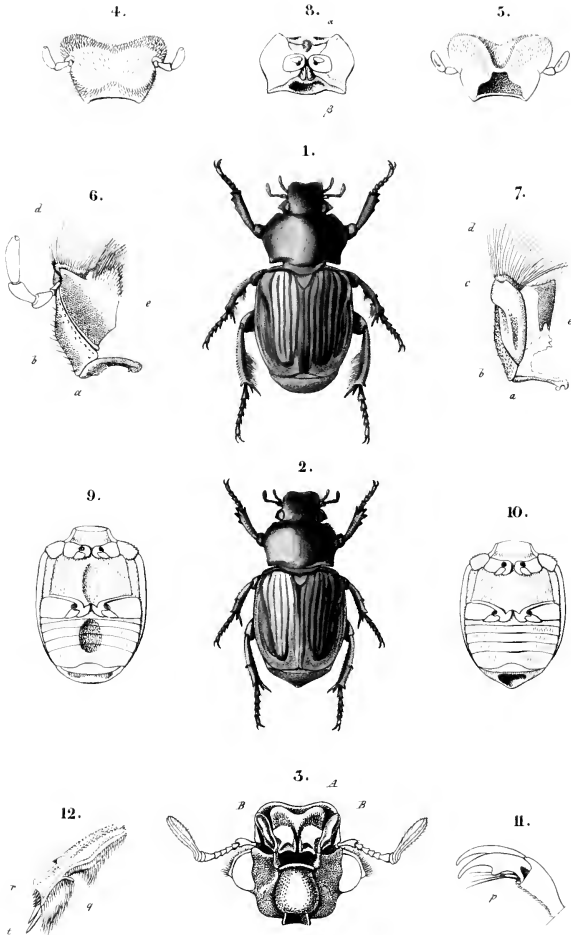


Genus EUCHRUS.

Wenker sc.

Ordo COLEOPTERA.

Trib. Lamellicornia. Fam. Melitophila.



Genus PLATYGENIA.

Ordo COLEOPTERA.

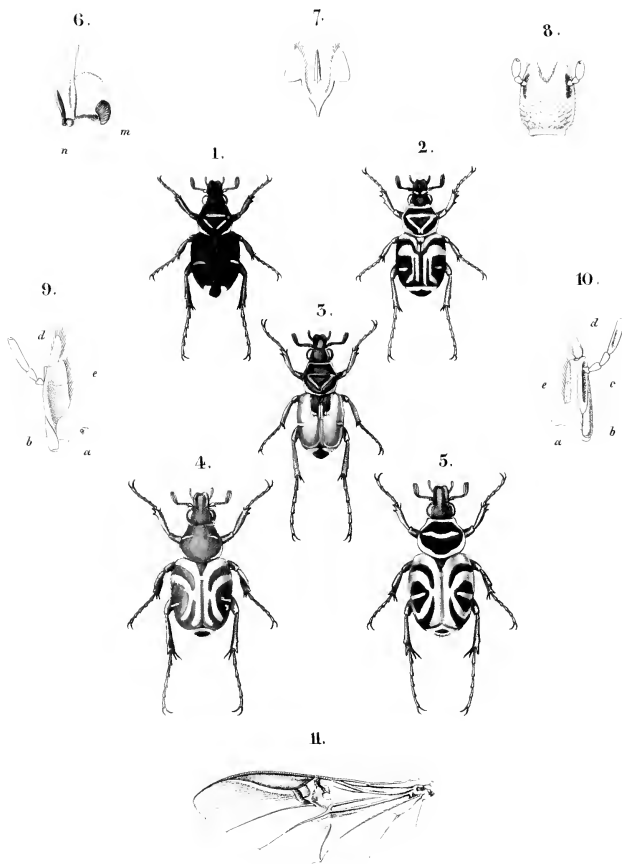
Trib. Lamellicornia. Fam. Mritophila.



Genus TRICHIUS

Subgen. *Clastocnemis*

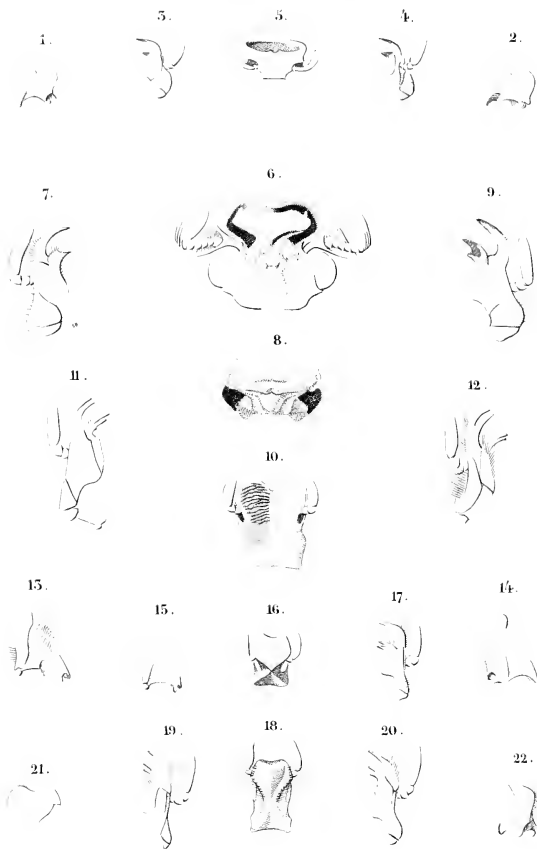
Ordo COLEOPTERA .
 Trib. Lamellicornia. Fam. Melitophila.



Genus TRICHIUS
 Subgen. *Trigonopeltastes*.

Ordo COLEOPTERA.

Trib. Lamellicornia Fam. Melitophila.

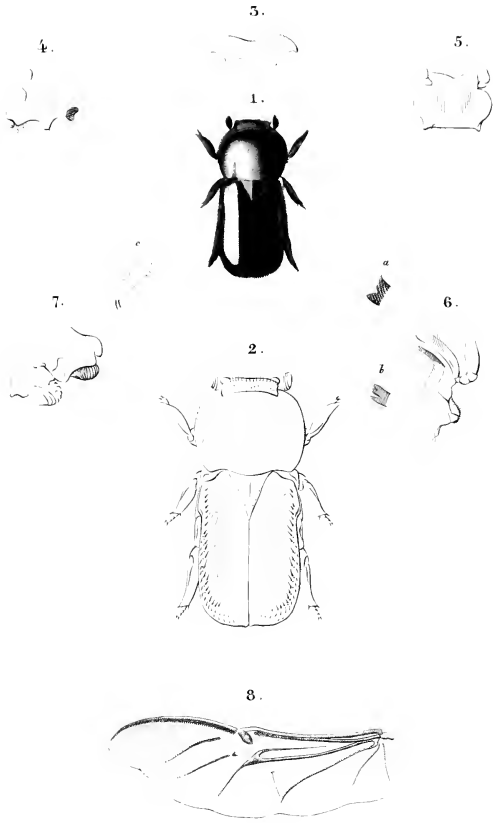


1-5 *Cremastochilus*. 6-7 *Psilocnemis*.

8-9 *Cyclidius*. 10-14 *Coenochilus*.

15-17 *Centrognathus*. 18-22 *Ptychophorus*.

Ordo **COLEOPTERA.**
Sub. Lamellicornia. Fam. Melitophila.



Genus **TRICHOPLUS.**

W. Wagenschieber sc.

Ordo COLEOPTERA.
Trib. Lamellicornia. Fam. Melitophila.

2.



6.



3.



1.



4.



5.



Genus HOPLOSTOMUS.

W. Wagenschieber sc.

Ordo COLEOPTERA.
Trib. Lamellicornia. Fam. Melitophila.

2.



6.



5.



1.



5.



4.



7.



Genus RHAGOPTERYX.

W. Wagenschieber sc.

Ordo **COLEOPTERA.**
Trib. Lamellicornia. Fam. Melitophila.

3.



2.



6.



1.



4.



5.



7.

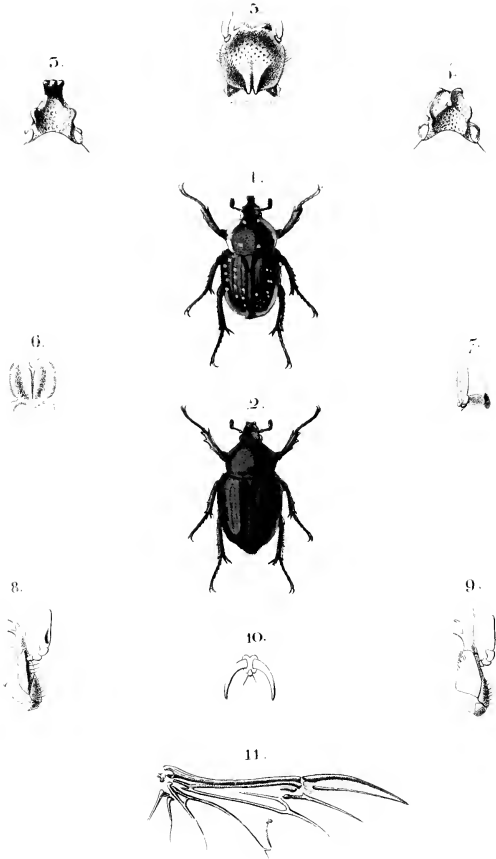


Genus **ULOPTERUS.**

W. Wagenscheber sc.

Ordo COLEOPTERA.

Trib. Lamellicornia, Fam. Melitophala.



Genus HYPSELOGENIA.

Hänken sc.

