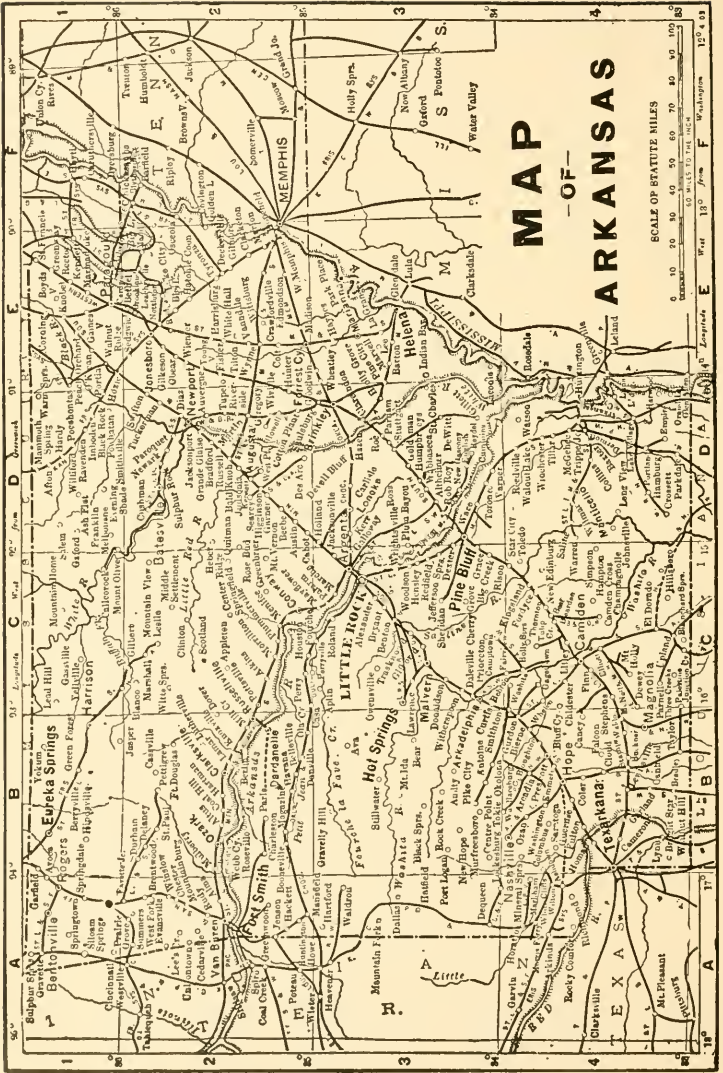


GET A HOME
IN
ARKANSAS

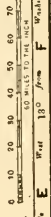


ISSUED BY
LAND DEPARTMENT
OF THE
ST. LOUIS, IRON MOUNTAIN & SOUTHERN AND
LITTLE ROCK & FORT SMITH RAILWAYS
LITTLE ROCK, ARKANSAS



MAP OF ARKANSAS

SCALE OF STATUTE MILES



GET A HOME

— IN —

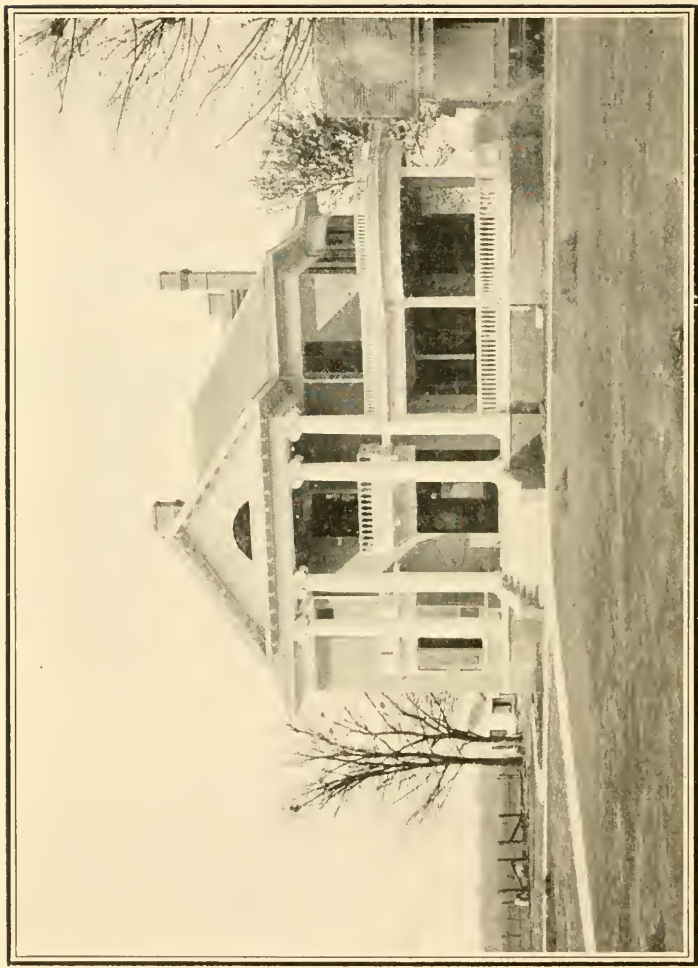
ARKANSAS

WORLDS FAIR
INDUSTRIAL
SERIES No. 12
1ST EDITION

BY S. L. KAY

Issued by LAND DEPARTMENT of the ST. LOUIS,
IRON MOUNTAIN & SOUTHERN and LITTLE ROCK
& FORT SMITH RAILWAYS, Little Rock, Arkansas

F411
5154





Introductory

Was there ever a human heart which did not look fondly back to some hallowed spot which it called home, or looked forward with longing and anticipation to the time when a new and ideal home would be secured and occupied?

In every living creature, from the lowest form of animal life up to the most refined and intelligent classes of the human race, the home instinct is, above all other influences, the primary, controlling force which binds the individual to some certain place—that place called and loved as home.

The love for home is universal, and, next to self-preservation, is the deepest impulse of all nature, and to the building of that home, whether it be the nest of the bird, the lair, burrow, hole or den of the beast, or the tent, hut, cabin, cottage or palace of man, the greatest care, industry and enthusiasm of life is directed, and as soon as the parental roof is forsaken the heart begins to desire and plan for the new home. He who follows this impulse and puts this natural and praiseworthy desire into practical execution is "the salt of the earth," and to him all the nations of the world have, do and will forever look and depend for preservation.

How heartily we all join in the sentiments so beautifully expressed by the poets who sang

"Mid pleasures and palaces though we may roam
Be it ever so humble, there's no place like home."

And,

"How dear to my heart are the scenes of my childhood,
When fond recollection presents them to view."

Can any man or woman who reads, reflects upon and applies these sacred lines to their own lives, close their eyes and hearts

to them and continue to drift passively down life's river without making an effort to build on the strand, a little home, to which his or her children, may, when they have gone out upon the world, in strong maturity or declining age, look back with these endearing memories?

To you, thousands upon thousands, who reside in overcrowded cities and in those parts of the world where lands are scarce and high in price, whose dearest desire is to provide comfortable homes for your families, but to whom the future seems to promise no ray of hope;

To you, who, although you own homes of sufficient capacity to supply present needs, are looking forward with apprehension and anxiety to the time when each of your little ones will have gone from the old "hive," and will require as much room as the little home now provides for all;

To you, who are seeking profitable places for investment of surplus and idle capital; and

To you, whose declining health warns you to seek a change of surroundings, rest, diversion or a mild, salubrious climate;

To you, we respectfully dedicate this little booklet. We urge you to look beyond the narrow limits of your present environments and see the benefits which Arkansas is able to offer you, and we want to invite you to come here, where a hearty welcome and a prosperous and happy future awaits every good, industrious and ambitious citizen who comes to join us in building, developing and enjoying a home in **Arkansas.**



Get a Home In Arkansas

We mean the above as a word of advice to the thousands who are now living in homes which belong to others. It matters not whether you now toil on the barren shores of New England, on the worn hills of the "Old South," the ice-bound but rich soils of the North, the wind-swept plains of the Northwest, the parched flats of the West, the rock-ribbed heights and depths of the Rocky Mountains, or the sun-blasted deserts of the Southwest, there is

Get a Home in Arkansas. some place in the great State of Arkansas which you may make into a congenial, contented, happy and prosperous home; some place, which, no matter how modest may be your store of earthly goods, if you have a vigorous body, a strong will, industry and an ambition to better your condition, you may own without going hopelessly into debt.

We want you to accept this statement as true, and then we want you to stop and think. We want you to look back over your past life, consider how many years you have spent in the severest of toil, and then figure your gain therefrom. Have you received adequate pay for your time and toil? Has your family enjoyed the comforts and advantages which you had planned for them? Have you accumulated a fund from your efforts which will save you and your dear ones from being kicked out upon the world in case accident or ill health should rob you of your power to continue to toil? Have you any assurance that next year, the next decade, or the remainder of your life has anything better in store for you than the past has brought? If "no" be your answer to all these questions we want to remind you that you ought now to be at that point in life where you know the necessity of yourself getting

to them and continue to drift passively down life's river without making an effort to build on the strand, a little home, to which his or her children, may, when they have gone out upon the world, in strong maturity or declining age, look back with these endearing memories?

To you, thousands upon thousands, who reside in overcrowded cities and in those parts of the world where lands are scarce and high in price, whose dearest desire is to provide comfortable homes for your families, but to whom the future seems to promise no ray of hope;

To you, who, although you own homes of sufficient capacity to supply present needs, are looking forward with apprehension and anxiety to the time when each of your little ones will have gone from the old "hive," and will require as much room as the little home now provides for all;

To you, who are seeking profitable places for investment of surplus and idle capital; and

To you, whose declining health warns you to seek a change of surroundings, rest, diversion or a mild, salubrious climate;

To you, we respectfully dedicate this little booklet. We urge you to look beyond the narrow limits of your present environments and see the benefits which Arkansas is able to offer you, and we want to invite you to come here, where a hearty welcome and a prosperous and happy future awaits every good, industrious and ambitious citizen who comes to join us in building, developing and enjoying a **home in Arkansas.**



Get a Home In Arkansas

We mean the above as a word of advice to the thousands who are now living in homes which belong to others. It matters not whether you now toil on the barren shores of New England, on the worn hills of the "Old South," the ice-bound but rich soils of the North, the wind-swept plains of the Northwest, the parched flats of the West, the rock-ribbed heights and depths of the Rocky Mountains, or the sun-blasted deserts of the Southwest, there is

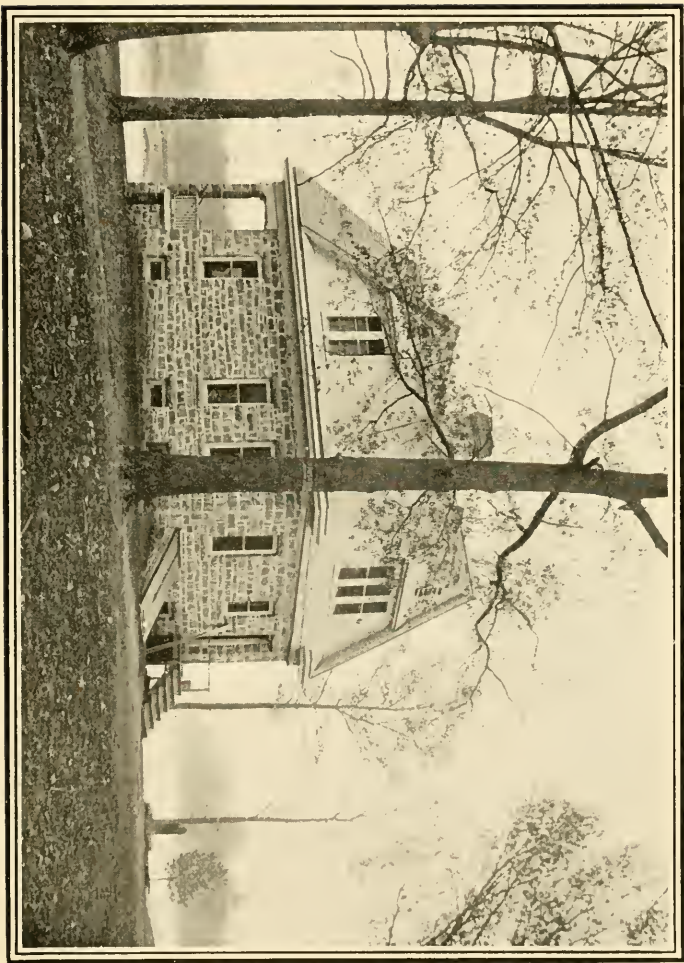
Get a Home in Arkansas. you may make into a congenial, contented, happy and prosperous home; some place, which, no matter how modest may be your store of earthly goods, if you have a vigorous body, a strong will, industry and an ambition to better your condition, you may own without going hopelessly into debt.

We want you to accept this statement as true, and then we want you to stop and think. We want you to look back over your past life, consider how many years you have spent in the severest of toil, and then figure your gain therefrom. Have you received adequate pay for your time and toil? Has your family enjoyed the comforts and advantages which you had planned for them? Have you accumulated a fund from your efforts which will save you and your dear ones from being kicked out upon the world in case accident or ill health should rob you of your power to continue to toil? Have you any assurance that next year, the next decade, or the remainder of your life has anything better in store for you than the past has brought? If "no" be your answer to all these questions we want to remind you that you ought now to be at that point in life where you know the necessity of yourself getting

the first fruits of your own industry. Experience has no doubt taught you that high rents, interest and taxes are together absorbing all the profits of your work and that you must eliminate them from your expenses before you may hope to rise above the dignity of "working for your keep" the same as your dumb animals are doing. If rent is the barrier that obstructs your progress, go to some new country where you can buy land cheap, and purchase and open up a new home which you may occupy without paying rent. If interest and taxes on your own high-priced, but heavily mortgaged farm absorbs your resources, sell the place and get rid of these burdens. Get together your earthly store and seek a new country, where, by hard work, economy and modest living for a year or two, you may become established again without carrying these loads for the benefit of a landlord or for building expensive public improvements from which you receive little or no personal benefit. Do not continue to work blindly against the force of overwhelming odds. Stop and think. Work your mind as well as your body. Lay your plans for the future, and then work, economize, trade and barter until your affairs are in shape to cut loose from the old home, and cast your lot in a newer and better country, where you can get ten acres for the price of one in the country in which you now live. That means forty acres instead of four, a quarter section instead of a fair-sized truck patch. There are several States which offer you this abstract proposition, but there is only one State which offers you the best proposition, and that State is Arkansas.

The producer's margin of profit upon his products are exceedingly narrow. He must reduce the cost of production in every possible way. Low-priced land will reduce his taxes and the interest on his investment. Productive soil and modern machinery will increase the returns from his labor. Improved seed and live stock will raise the market value of his offerings, and close proximity to market will save for him, every day, as long as he remains in active life, a little margin from transportation charges.

Arkansas lands are available at very low prices. Why is this? It is easily explained, and in a way which your own reason will

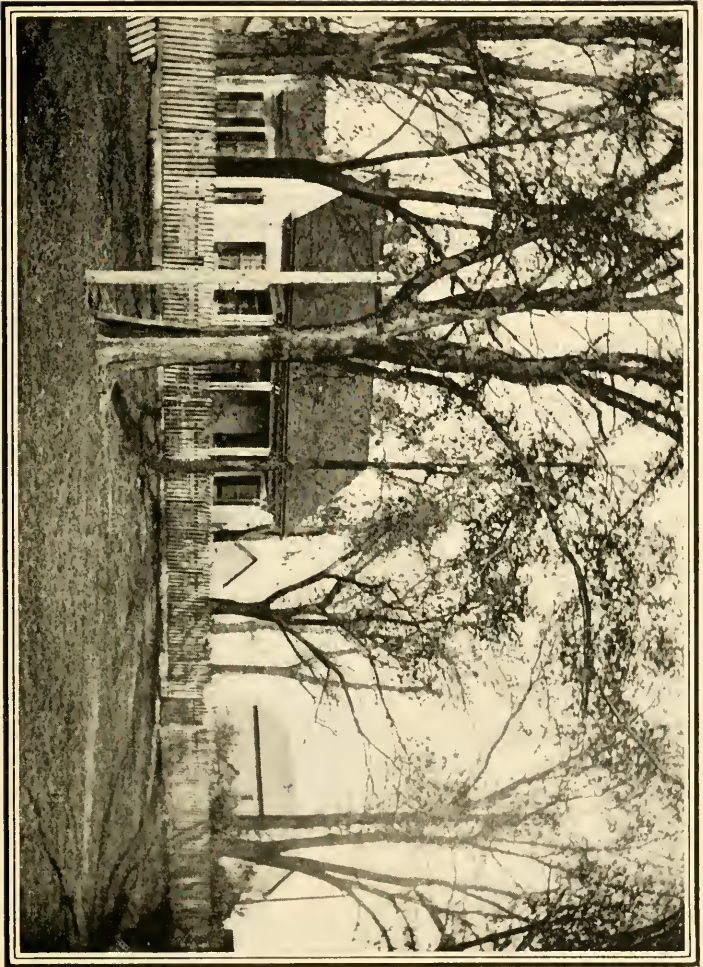


lead you to approve. Arkansas was originally one of the most heavily timbered States in the Union. There is timber everywhere.

Homeseekers have, in past years, sought prairie sections, thoughtlessly passing through timbered localities, without giving them an investigation, and paying double, thrubble or quadruple the prices asked for our soils, for far-away prairie lands, not half so fertile and in climates not half so favorable for profitable farming. This condition has held prices for timbered lands down, below their real values as guaranteed by their earning capacities. But productive prairie lands are now no longer available and the passing emigrant is now looking beneath the banks of verdure which his predecessor blundered blindly by. What does he see? A fertile soil, hidden beneath a valuable and merchantable covering of timber, which, through the exercise of wisdom and diligence may often be made to yield funds enough to repay the price of a warranty deed to the premises. He sees free fuel, and free building materials with which to improve his home. With a giant oak or a magnificent pine always ready to be felled and marketed, he sees an ever-present resource, any day in the year, should he stand in need of a little "ready money." He also sees in the lower price at which he is able to buy these timbered lands, an opportunity to "cash in" his labor, years in advance of having performed it. He sees in the timber, a protection against high winds and an absolute guarantee that his crops will not be blighted by hot winds nor drouths. Even though he has meager means, he will run no risk in bringing his family here for a new home.

Owing to the great variety of soils found in the different sections of Arkansas she has become noted for the wide range of her staple products, and is able today to offer substantial inducements to those who desire to engage in nearly all lines of farming. In some sections her soils are formed from the disintegration of heavy deposits of limestone, intermixed and made lively by the decay of the leaves of the forest for thousands of years. In other sections the lime has by the action of waters been intermixed with sand and formed into deep, alluvial deposits, easy to till and of inexhaustible fertility. Great beds of phosphate rock have in other sections added their richness to the others. Here we find clay

Productive Soils.



loams charged with humus and mixed with marl washed from mountain deposits further up the valleys. Nearly all our soils are colored with iron, which, in the cases of some fruits, adds much to the appearance and market value of the product. Thousands of square miles of the southwest part of the state are underlaid by a deep deposit of chalk or carbonate of lime, the decay of which has formed a soil in which every known product which thrives in this latitude can be profitably raised.

There are comparatively few farmers, even among those who have followed the industry for many years, who have ever given any thought to the importance of being close to market. We want to emphasize this point, for in it Arkansas has an enormous advantage over all her sister States, and a full understanding of what

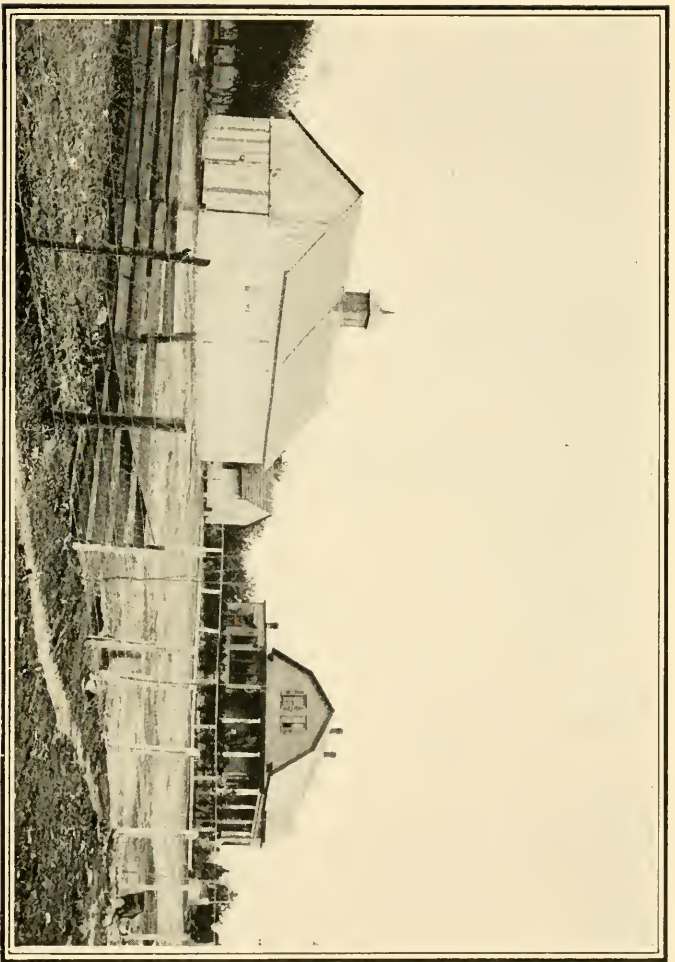
you may save in shipping rates by locating here

Close to Market. instead of in any of the States which lie further south or southwest, will cause every investigator

to pitch his new home in Arkansas. Let us figure on this matter. Your ultimate market for every commodity will always be where the greatest demand arises. Great northern and eastern cities, and mining and manufacturing communities, are the points to which you must look for your markets, and as the price on any product is the same there, no matter whether these products are raised in Arkansas or California, it is evident that the Arkansas producer will save a greater profit than the man who ships further, because his freight and express charges are less, and he saves the entire difference.

Little Rock, Arkansas, is 345 miles from St. Louis, our nearest market. Double that distance and you will increase your transportation charges about 50 per cent. At first thought that don't appear to amount to much, especially as you never have had your attention called to this expense. You have, no doubt, always shipped your produce direct to your commission man, and let him defray the expense and charge the amount up to the consignment and remit to you the overplus.

For example: There is no place on earth where strawberries do better than in Arkansas, and if you come here you will, of course, raise some of them, to fill in your time at slack seasons,

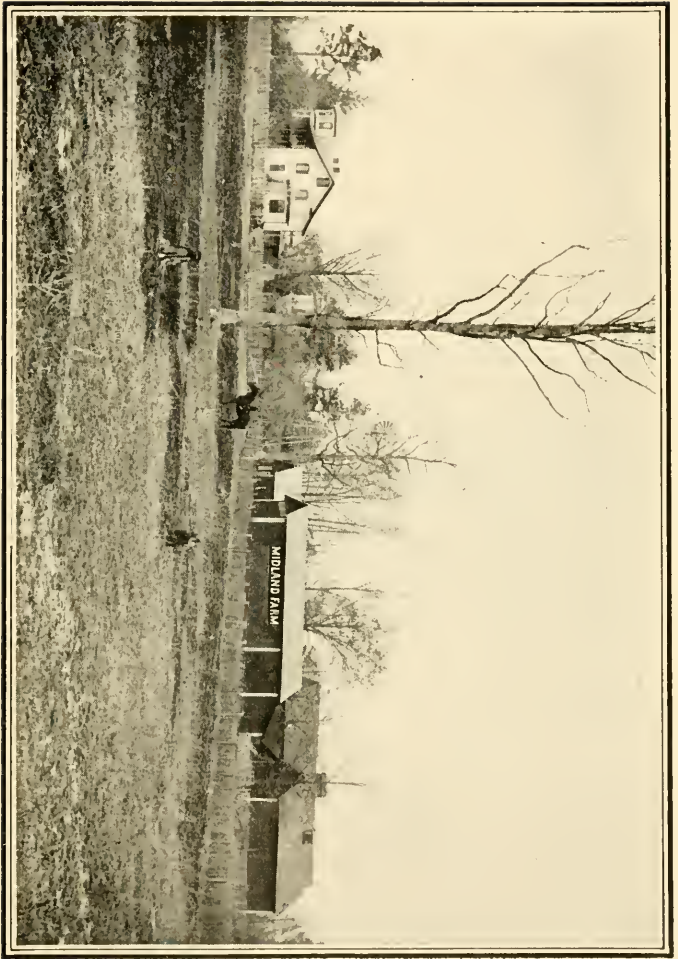


and to bring in a few dollars in cash at a time of the year when your expenses will run heavy and your income

Let Us See. light. One acre of berries would be a great help, as a fair yield would be about 200 crates, worth, if they are of an early variety, from \$1.50 to \$2.00 per crate. The express charges on these will be about 30 cents per crate, that is \$60.00 for delivering the crop from your one acre. If you had located 700 miles distant from your market instead of in Arkansas, this charge would be \$90.00 instead of \$60.00, and you have saved \$30.00. In twenty-five years this saving from one acre of your farm would amount to \$750.00. Should your success and the liberal profits from your Arkansas acre planted to this crop lead you to raise forty acres of berries instead of one, your saving would, in twenty-five years, amount to \$30,000, and you will have saved a fortune from this seemingly unimportant source, all, too, because you had been wise enough to locate your home close to market in Arkansas, instead of going farther away. This saving will come to you from every commodity which your farm, garden, truck-patch, mill or factory produces, no matter whether it be fruit, vegetables, grain, cotton, hay, live stock, lumber or other manufactured article.

There is one more thought which we want to apply here. No farm, no matter how well it is managed, can supply all the owner's needs and there will always be a lot of necessities, which you and your family must have, which you cannot produce, but must buy, and they must be shipped to you from the same market to which you ship your own products. Here again we

A Look at the Other Side. see that the further they are shipped the more transportation charges will have piled up against them, and you, as the consumer, must stand this expense, and if you have wisely located in Arkansas, close to where these necessities are produced or manufactured, you will save a little in the cost of every sack of flour, every pound of coffee, every plug of tobacco, every gallon of oil, and so on, clear down through the almost endless list of your needs. We have emphasized this point entirely in your interest, and if you are not yet convinced we would urge you to search deeper into the subject before you decide to locate elsewhere. If Arkansas and some other



State are inviting you to seek your future home within their borders, write to the general freight agent of each of the railroads near which you expect to locate, and secure freight rates on the particular product which you expect to cultivate. Then estimate the volume of your yearly shipments and multiply the result by the number of years you expect to remain in active business. Now compare the two grand totals, and we doubt not that you will conclude that you can better afford to pay a good price for a good farm, close to market in Arkansas, than to accept a home free in any other competing State.

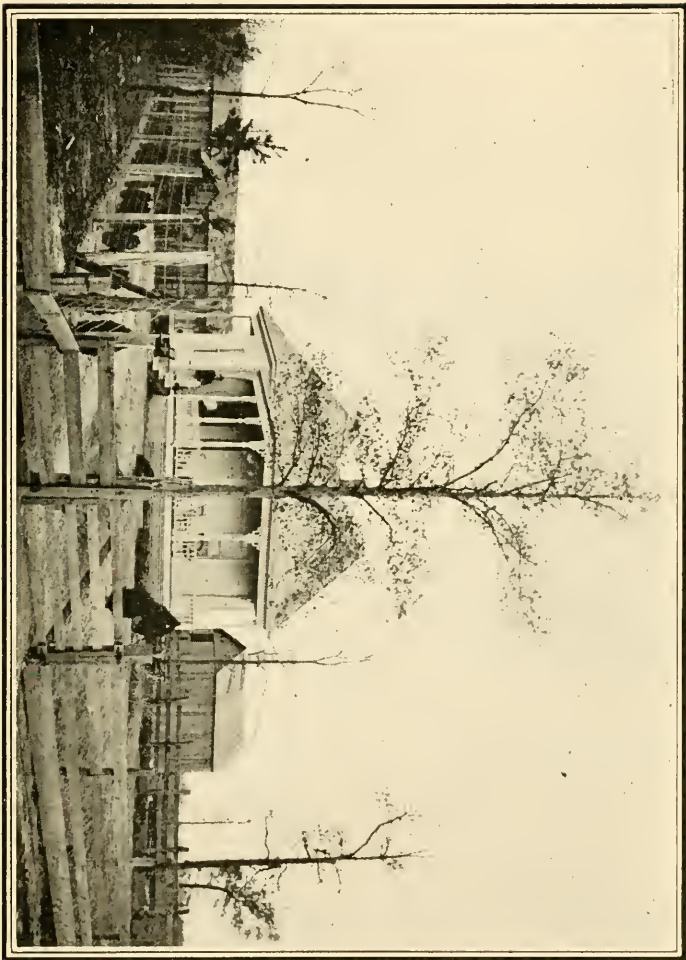
Every practical farmer and every intelligent home-seeker has formed in his own mind an ideal of what the new home should be, a picture in his mind's eye. He wants to engage in some certain

Your Ideal. line of farming, in which he has been in the past the most successful, or from which he has derived the greatest pleasure. He wants to go to a country where all the conditions of soil, climate, elevation, market and surroundings are especially adapted to the success of his plans, and in order to give our reader the best possible knowledge of the adaptabilities of the different sections of Arkansas, we will divide the State into five "industrial sections," specifying the general lines which are best adapted to each.

In the level, alluvial lands of Randolph, Clay, Greene, Craighead, Lawrence, Independence, Jackson, Woodruff, Poinsett, Cross, Lonoke, and White counties grain, grass, live stock, truck and

General Grain and Live Stock Farming. vegetable farming is the most successful combination. In the upland sections of these counties fruits of almost all kinds may be added to this list. Cotton is also a very profitable crop on any land where corn does well, this section

being just within the northern limit of the "cotton belt." Those parts of this region which lie below the stone levels, are underlaid at a depth of from sixteen to sixty feet by a stratum of gravel, filled with sheet water, pure, sparkling and soft, which may be reached, in most cases, by driving a pipe with a sandpoint attached, until the water-bearing gravel bed is tapped, then attach an ordinary suction pump-head, and a reliable and inexhaustible well is secured. In the mountainous and rocky portions of these



counties bold springs are often found. The various clovers, timothy and Kentucky blue grass and other tame grasses are adapted to the soils of this section. The list of native timbers is composed exclusively of hardwoods and wild range is good, especially in the vicinity of the streams where canebrake grows profusely.

Skirting the great Arkansas river from the west line of the State, down to the city of Pine Bluff, is a country which, while it produces good yields of corn and other grains, it is especially adapted to cotton, potatoes, vegetables and small fruits. Above

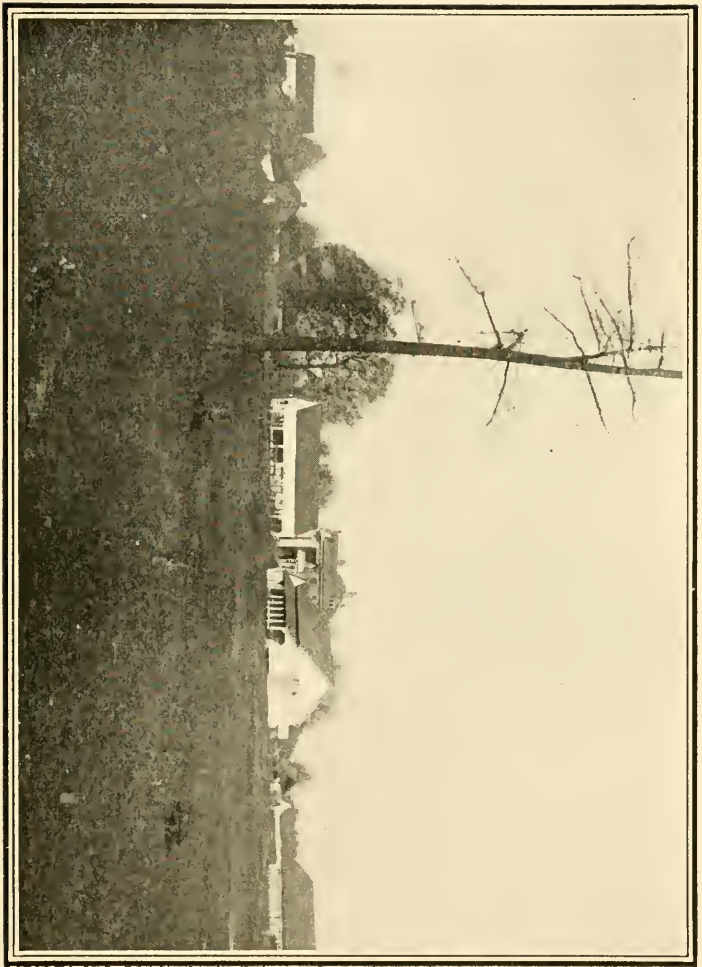
the city of Little Rock, the capital of the State, this stream flows between two ranges of mountains, the Boston range on the north and the Magazines on the south, and as you ascend the slopes on either side our noted apple lands are

entered. These are the lands which have produced the premium-taking "big red apples" which have entered all competitive exhibitions held in this country for years, and carried away the blue ribbons, thus making Arkansas famous everywhere as the "world's orchard." The man who wants to raise apples, peaches, pears, small fruits, potatoes, vegetables, poultry, with cotton and a few head of live stock and enough of grain and forage to finish them for slaughter or market, can not do better than to locate on the sunny slopes of this great and picturesque valley.

In that part of the State covered by the counties of Pulaski, Saline, Garland, Hot Spring, Grant and Western Jefferson is found unusual local markets for all varieties of farm produce. Clustered together, each within fifty miles of the other two, lie three great cities. The enormous demands of the city of

Hot Springs, with its hotel capacity of more than fifty thousand, reinforced by the wants of the cities of Little Rock and Pine Bluff, together with the ample and peculiar transportation facilities furnished by the three great railway systems which

penetrate and are striving for the patronage of the territory, have all conspired to open here the finest of opportunities for those who desire to make their leading work intensive farming, dairying, trucking and gardening to supply the necessities of the locality. The soils of this section are well adapted to the purpose, being of



a warm, sandy nature, easy to cultivate and early to produce. There is a considerable acreage of mountain lands in the western part of this territory, but they furnish good pasturage for cattle, are perfectly adapted to the raising of fruit and will be utilized for dairies and orchards yielding splendid profits. The local markets of this little section are its great attractive feature and may always be relied upon to take, at good prices, all the produce of its truck patches, dairies and gardens.

All that part of the State lying southeast of the city of Pine Bluff, comprising the counties of Jefferson, Lincoln, Drew, Ashley, Desha and Chicot, is a wonderful cotton country. The surface is in most places, low and level, some of it lying so low as to necessitate protection from overflow by levees. There are no richer nor

A Great Cotton Country. more productive soils on earth than those of this section of Arkansas. They are best adapted to the production of cotton and corn, and an improved farm in this region usually rents at from \$5.00 to \$8.00 per acre, money rent, or one hundred pounds of lint cotton, which, of course, depends for value on the market price. In the fall of 1903, farms rented on this plan netted their owners about \$12.00 per acre. While these soils are very rich they are not adapted to a wide range of products. Corn, cotton, Irish potatoes and vegetables yield the most liberal returns. The man who is looking for an investment and desires an acreage sufficient to justify him in hiring an overseer to look after its improvement, or if it is already opened up, to superintend the colored tenants, should carefully investigate this section, for, by judicious management, he can make an investment here to clear him a profit of from 50 to 100 per cent per annum.

These are not the only products of Southwest Arkansas, but they help to make up a long and profitable list. The counties of Clark, Pike, Dallas, Howard, Hempstead, Nevada, Ouachita, Little River, Miller and Lafayette are among the richest in soil fertility of any upland region of the Southwest. All this section is under-

Peaches and Cream. laid by a heavy deposit of chalk or carbonate of lime with light and scattering deposits of iron, these two, in combination with silica, forming the basic ingredients of the soil. From the deterioration and mixture of these deposits with humus from the decay,



through centuries, of heavy annual coats of leaves and other vegetation has come the deep, dark, rich mould which all through these counties covers hill and valley alike. Such a soil will grow and mature with profit almost anything which is planted in it, and Southwest Arkansas only limits its range of products to those varieties which thrive in a temperate climate.

The luxurious growth of clover, alfalfa, oats, corn, sorghum, millet and nearly all other grain, forage and pasture plants, not only fits this fortunate country for the dairy industry but guarantees that all other kinds of live stock will do well.

The soil of these counties is mostly of a warm, quick nature and admirably fitted to produce early fruits and vegetables, and in this class of products will probably be found the great source of the future wealth of the locality. The iron in the soil and subsoil seems to be just the ingredient which is needed to put faultless finishing touches of color upon the luscious berries and peaches produced here, and the early offerings of these fruits from Southwest Arkansas always top the market wherever they appear. The natural advantages and general conditions of this region are favorable to the small, prosperous farmer, who, by intensive cultivation and a large assortment of products, some of which will mature during almost every month of the year, builds up a plethoric bank account and surrounds himself and his happy family with the pleasures and luxuries of life. It will be but a few years until the grandeur of the old-time, southern manor will be eclipsed by many a mansion on the small farms of Southwest Arkansas.

The question of first importance to the man who is considering a change of his home to a distant state is: "What is the climate?" This question is vital to him, because

Climate of Arkansas. he must take and endure the climate just as he at first finds it. He can change or modify the soil, break the prairie, clear the forest, drain the swamp or irrigate the desert, but the climate must remain essentially unchanged.

Arkansas rejoices under a climate so mild and agreeable, so salubrious and healthful, and so favorable to propagation, growth and cultivation of farm crops, that every day seems perfect as it passes.

While our climate is mild as compared with that of the States

further north, yet it presents a greater diversity of temperature at any given time than any other equal area of country on the western continent. This is owing to the diversity of elevation and the many sheltered valleys. The season in the southeast is three weeks in advance of that of the northern part of the State. The rainfall is abundant, but days of sunshine largely outnumber the cloudy ones.

The seasons of seed-time and harvest are long and mild. Outdoor work can go on during the whole year.

Where to go and how to get there, are the first questions for the home-seeker to decide. Arkansas, as well as many other new States, are inviting and urging him to come. They are sending him descriptive circulars, pamphlets and maps, but as these multiply in his home and are read by him and the

How to members of his family they are more liable to
Select a Home. bewilder than to assist him. They usually deal in generalities only, making sweeping statements covering a whole State. A State is a large territory for him to look over, and the minute he starts from home, on his trip of investigation, his expenses begin to pile up at a rate which will soon convince him that, unless he is a large investor he had "better hurry" or he will soon have more money invested in the trip than he will have left to put into the home after he at last succeeds in finding what he wants.

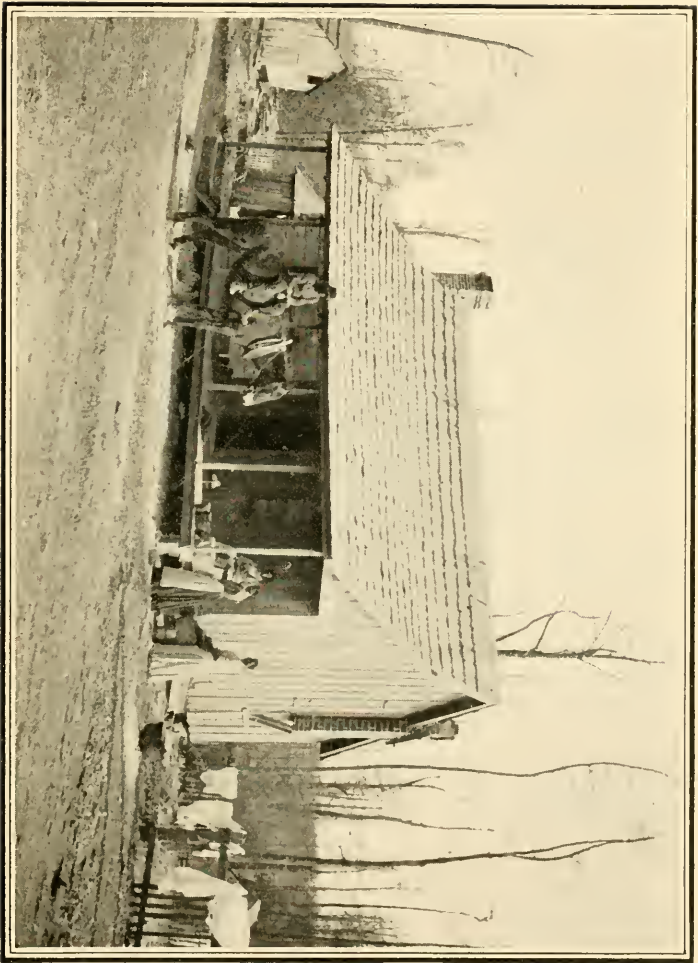
He should, therefore, ascertain by correspondence, before leaving home, what particular section or county is in a general way best adapted to his needs. The preceding pages of this pamphlet are intended to assist him in this way. There are also five other booklets published by the Land Department of the St. Louis, Iron Mountain and Southern and Little Rock and Fort Smith Railways which are full of definite information for him, and which he may secure free by writing to G. A. A. Deane, Land Commissioner, at Little Rock, Ark., and asking for them. They are: "Mineral Wealth of Arkansas," which describes and locates all the most important deposits of ore, coal, clays and other valuable inorganic deposits; "Timber Resources of Arkansas," which describes and points out where all the leading varieties of timber are native; "Northeast Arkansas," takes up that section of the State by coun-

ties, one at a time, and fully describes each, giving area, population, county seat, location, soil, subsoil, water supply and streams, general lay of surface, varieties of timber growth, products to which the soil is best adapted, class of settlement, shipping, school and church facilities, range of land prices and acreage of railroad lands now offered for sale; "Southwest Arkansas" and "The Arkansas Valley" take up and treat of the respective sections as indicated by their names, in the same manner as the preceding pamphlet. All these publications are comprehensive and accurate and will be of great assistance to the seeker for reliable information.

After you have finally decided as to what point is nearest in line with your ideal, then call upon or write to your nearest railroad ticket agent and tell him that you want to go to that place, to look up a home. State, as near as possible, the date on which you would like to start and ask him to procure for you a round-trip, home-seeker's ticket for the excursion date nearest the time when it is convenient for you to go. Tell him that you want to reach the lines of the Missouri Pacific-Iron Mountain System at the nearest convenient point, and to travel over the lines of that system from there to destination and return. If the agent refuses or is unable to secure the ticket for you, write at once to G. A. A. Deane, Land Commissioner, at Little Rock, and explain what you want, where you want to go and when you will be ready to start, and if it is possible to secure the reduced rate ticket for you he will see that you are accommodated.

Provide yourself before leaving home with a good map of Arkansas and a local time-table of the line over which you will travel in the State, showing the stations at which you will stop, which will enable you to know before boarding the next train after a stop off whether this new train stops or not at the next place which you desire to investigate. You can get both the map and the time-table free by application to any representative of the road. Also secure a small blank book to carry in your pocket, in which to jot down objects of interest, addresses, prices and descriptions while en route. You will thus be able to store up a much larger amount of useful information than you will if you rely on your memory.

**Prepare
for the Trip.**



Your home-seekers' ticket will be for the round trip. It will allow you fifteen days in which to reach the point to which you desire to go. After you reach the Arkansas State line on the way down, you are entitled to stop off at any station, which is a regular stop for the train, to look over the country. When you change cars for the last time before entering the State, inform the conductor, when you hand him your ticket, at what station you desire to make the first stop. Be sure to do this. He will then fix your ticket accordingly. Don't remain silent until he cancels the full going portion of your ticket and then kick because he tells you that you will have to go clear through without a stop-off. He takes it for granted that you desire to go clear through, otherwise you would say so. Be careful to observe these instructions with each conductor until you reach your destination.

And be sure to make all the stops you desire to make on the going portion of the trip, because when you once start for home you must go through without stop. This requirement is imperative and can not be changed.

After you have selected the location for your future home, you desire to move your belongings and family. In order to enable you to do this as cheaply as possible the various **Colonist Rates.** railroads which enter the State from the territory in which the home-seeker tickets are on sale have agreed upon a cheap one-way ticket, at half the regular rate, plus \$2.00, and which are on sale on regular home-seeker dates and good for continuous passage.

These are made especially low, and the goods which may be shipped under this class are all the equipment of farm and home, including a limited number of domestic animals. On most roads a free ticket is given **Freight Rates on Emigrant Movables.** for one attendant to ride in the car, when the load consists partly of live stock. This latter concession, however, is not allowed on all roads.

The St. Louis, Iron Mountain & Southern, and the Little Rock & Fort Smith Railways own nearly two million acres of lands in the State of Arkansas, which is offered to actual settlers at low prices and on easy terms. These lands are scattered through the counties of Clay, Randolph, Green, Sharp, Lawrence, Craighead, Jackson, Independence, Woodruff, White, Cleburne, Prairie, Lonoke, Pulaski, Saline, Grant, Garland, Hot Spring, Dallas, Clark, Pike, Howard, Sevier,

**Railroad
Lands.**



Map showing the Iron Mountain and Little Rock and Fort Smith Railroad Land Grants.

Hempstead, Nevada, Ouachita, Little River, Miller, Lafayette, Faulkner, Perry, Conway, Van Buren, Pope, Johnson, Yell, Logan, Franklin, Crawford, Sebastian, Jefferson, Lincoln, Desha, and

Drew, and comprise lands of every description known in our State, and are adapted to the growth of all crops suited to our latitude. They contain mineral, coal, and every valuable natural deposit found in our State, and are covered with valuable forest growth of great variety. They lie close to market and shipping points, and are supplied with good school and social facilities.

These lands came to the railway companies direct from the government and their titles are perfect. Prices range from \$3.50 to \$7.00 per acre, according to actual value of soil and timber growth and desirability of location.

Since its admission into the Union Arkansas has never ceased to advance. She has never had a boom; she has never had a setback. Her natural resources are so great and varied in their character, so strong and far-reaching in their attractiveness, that immigration has, through all the years, come to her in a steady stream, and, like her great rivers, it never flows backward.

There is not an acre of her surface which does not, in its wild state, produce something of value which can be turned into cash on the markets of the world.

Her agricultural lands cover an area of more than twenty-five millions of acres, only about one-third of which are now under cultivation.

Her lands which are especially adapted to fruit growing comprise nearly twenty million acres, and not one-twentieth are now utilized for that purpose.

More than seven million acres contain valuable minerals, almost entirely undeveloped, and much of it never having been prospected.

In a coal field underlying nearly five million acres and yielding a quality of smokeless coal generally considered equal, and by some superior, to Pennsylvania hard coal, hardly a score of mines are operated.

Her timber land originally covered almost the entire thirty-three million acres comprising the State, and there is enough merchantable timber now standing, which, if manufactured into lumber and sold at market price, would produce funds sufficient to buy


and pay for all the farming land in our sister State of Kansas at assessed valuation.

Four million acres contain valuable architectural stone and clays, and it is almost untouched.

A few of our medicinal springs are improved, and nearly an hundred thousand of the world's afflicted make annual pilgrimages to Arkansas to partake of the health and life-giving waters.

More than three thousand miles of majestic, navigable rivers, almost entirely unimproved today, are destined to be converted into ship canals and commerce carriers, their immeasurable power utilized, and their banks lined by thousands of factories ere the passing of the present generation.

With all these unused and undeveloped possessions, Arkansas invites the farmer, the fruit grower, the miner, the manufacturer, the merchant, the capitalist, the professional man, the invalid, the industrious, the enterprising, the deserving of all vocations, to come and build their homes. **Come! She will do you good!**



Standard Publications

of The

LAND DEPARTMENT

of The St. Louis Iron Mountain & Southern,
and Little Rock & Ft. Smith Railways —

SECTIONIZED, topographical roller map of Arkansas, size 40 x 44 inches. This is the most comprehensive and complete map of the State ever compiled. Price, 25c. Special Land Grant map of Arkansas, size 28 x 30 inches. FREE.

THE FOLLOWING PAMPHLETS

When ordered singly, will be sent free to any address. When full set or more than one copy is desired, two cents for each copy should be enclosed to pay cost of transmission.

ARKANSAS AND HER RESOURCES. FREE.
A FRUITFUL HAND. FREE.
ARKANSAS FILLS THE BILL. FREE.
THE WORLD'S ORCHARD. FREE.
ARKANSAS AS AN AGRICULTURAL STATE. FREE.
THE ANGORA GOAT IN ARKANSAS. FREE.
STOCK RAISING IN ARKANSAS. FREE.
MINERAL WEALTH OF ARKANSAS. FREE.
MANUFACTURING OPPORTUNITIES IN ARKANSAS. FREE.
TIMBER RESOURCES OF ARKANSAS. FREE.
SOMETHING DOING IN ARKANSAS. FREE.
NORTHEAST ARKANSAS. FREE.
DOCUMENTS IN THE CASE. FREE.
GET A HOME IN ARKANSAS. FREE.
THE ARKANSAS VALLEY. FREE.
SOUTHWEST ARKANSAS. FREE.

ADDRESS ALL REQUESTS FOR LITERATURE TO



G. A. DEANE LAND CO^Y
LITTLE ROCK, ARK.

NOTE—To those who desire to subscribe for an Agricultural Paper, published in this State, we take pleasure in recommending the ARKANSAS HOMESTEAD, published monthly in Little Rock. Subscription price, 50 cents per year. Sample copy sent free on application to the publisher.

FOR INFORMATION RELATIVE TO

RAILROAD LANDS

WRITE TO ANY OF THE FOLLOWING
AGENTS OF THE

LAND DEPARTMENT

— OF THE —

St. Louis, Iron Mountain & Southern and
Little Rock & Fort Smith Railways

GENERAL AGENT

E. S. GRONK St. Louis, Mo.

DISTRICT AGENTS

RICHARD JACKSON Paragould, Ark. J. W. GHEEK Little Rock
V. M. THRELKELD Conway, Ark.

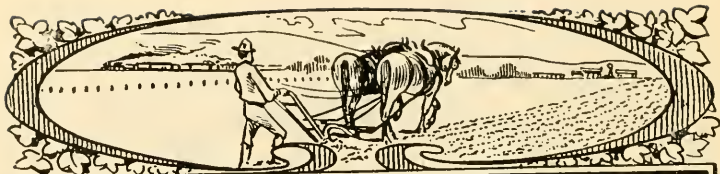
LOCATING AGENTS

E. N. ROYAL Piggott, Ark.	H. B. MCKENZIE Prescott, Ark.
S. G. DOWELL Walnut Ridge, Ark.	JOHN W. YOES Van Buren, Ark.
F. M. HAM Moorefield, Ark.	S. GARRIGAN Hope, Ark.
H. N. BEAM Beebe, Ark.	W. H. DUNCAN Conway, Ark.
W. G. CALDWELL Searcy, Ark.	N. T. HAWKINS Morrilton, Ark.
W. L. COOPER Benton, Ark.	R. B. WILSON Russellville, Ark.
J. P. MELLARD Hot Springs, Ark.	C. ELSKEN Paris, Ark.
A. M. GROW Arkadelphia, Ark.	H. A. ALLISON Clarksville, Ark.
J. P. KING Ozark, Ark.	

G·A·A·DEANE

LAND COM'R

LITTLE ROCK, ARK.



VALUABLE ASSISTANCE

THE
MISSOURI PACIFIC IRON MOUNTAIN
 RAILWAY SYSTEM.

H. C. TOWNSEND, Genl Passenger and Ticket Agt.
 ST. LOUIS

The following Traveling and Passenger Agents of the Missouri Pacific Railway and Iron Mountain Route are constantly looking after the interests of the line, and will call upon parties contemplating taking a trip and cheerfully furnish them lowest rates of fare, maps, guides, time tables, etc., or they may be addressed as follows:

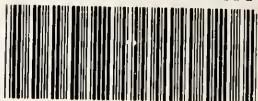
Atchison, Kan.	C. F. Leebler	Louisville, Ky, 202 Equitable Building	R. T. G. Matthews
Boston, Mass., 192 Washington St.	Louis W. Ewald	Memphis, Tenn., 314 Main St. H. D. Wilson	W. E. Hoyt
Chattanooga, Tenn., 16 E. 8th St.	I. E. Rehlander	New York City, 335 Broadway. W. E. Hoyt	Thos. F. Godfrey
Chicago, Ill., 111 Adams St. Bissell Wilson	A. A. Gallagher	Omaha, Neb., corner 13th and Douglas	Sts.
Cincinnati, O., 409 Walnut St.	H. D. Armstrong	Pittsburg, Pa., Room 905 Park Building	John R. James
Detroit, Mich., 32 Campus Martius.	G. A. A. Deane, Jr.	St. Joseph, Mo., 602 Edmond St.	Benton Quick
Indianapolis, Ind., Room 200 Sentinel	J. H. Lyon	Sedalia, Mo.	J. W. McClain
Building.	E. S. Jewett	St. Louis, Mo.	B. H. Payne
Kansas City, Mo., 901 Main St. C. E. Styles	P. C. Lyon	St. Louis, Mo., Sixth and Olive.	H. F. Berkley
Kansas City, Mo., 901 Main St. J. H. Lyon	F. D. Cornell	St. Louis, Mo., Room 402 Union Station	W. H. Morton
Kansas City, Mo., 901 Main St. E. S. Jewett		Wichita, Kan., cor. Douglas and Wichita	I. R. Sherwin
Leavenworth, Kan.		Sts.	
Lincoln, Neb., 1039 O St.			

RUSSELL HARDING,
 Vice Pres't and Genl Mgr.

A. C. BIRD,
 Vice President, CHICAGO.

C. G. WARNER,
 Vice President.

ST. LOUIS, MISSOURI.



0 007 381 654 3

