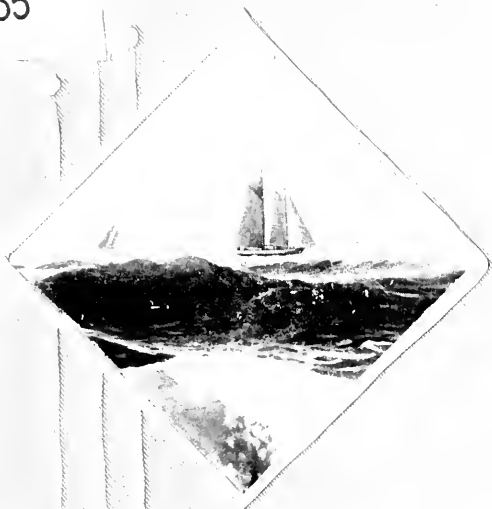


F 139

.655



Clippers of  
New Jersey (1871)  
1871



Class F 139

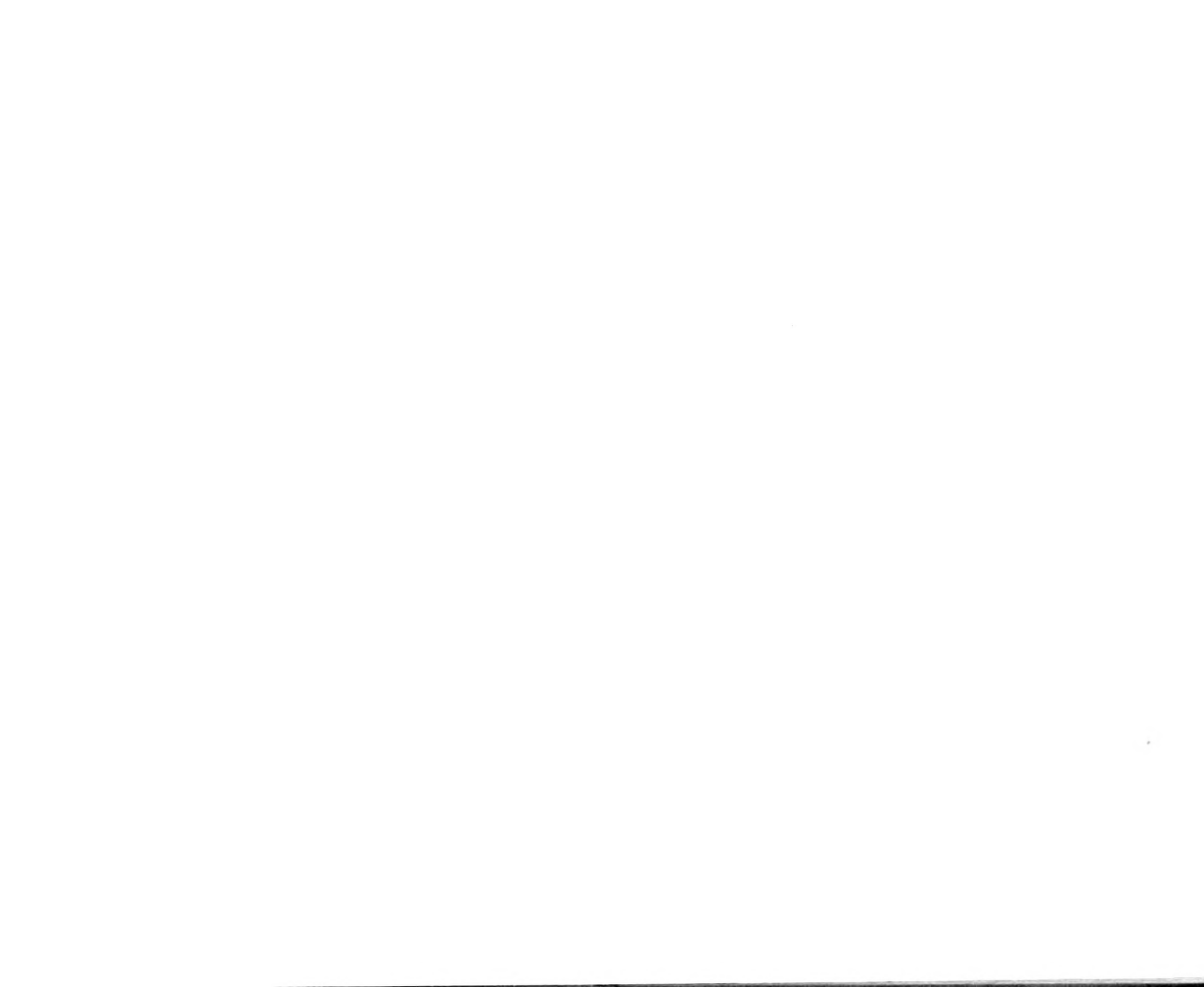
Book .G 55

Copyright N<sup>o</sup> \_\_\_\_\_

COPYRIGHT DEPOSIT.







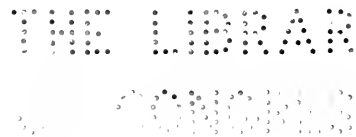


# Glimpses of New Jersey Coast Resorts.

W

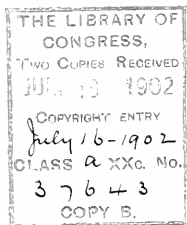
A COLLECTION OF CHOICE PHOTOGRAPHIC VIEWS OF

ASBURY PARK, OCEAN GROVE, AVON, BELMAR, SPRING LAKE,  
SEA GIRT, ALLENHURST, INTERLAKEN, DEAL, ELBERON,  
HOLLYWOOD, MONMOUTH BEACH,  
SANDY HOOK, ETC.



(EDITION DE LUXE.)

ASBURY PARK, N. J.:  
M., W. & C. PENNYPACKER,  
PUBLISHERS.



COPYRIGHTED, 1894,

BY

M., W. & C. PENNYPACKER.

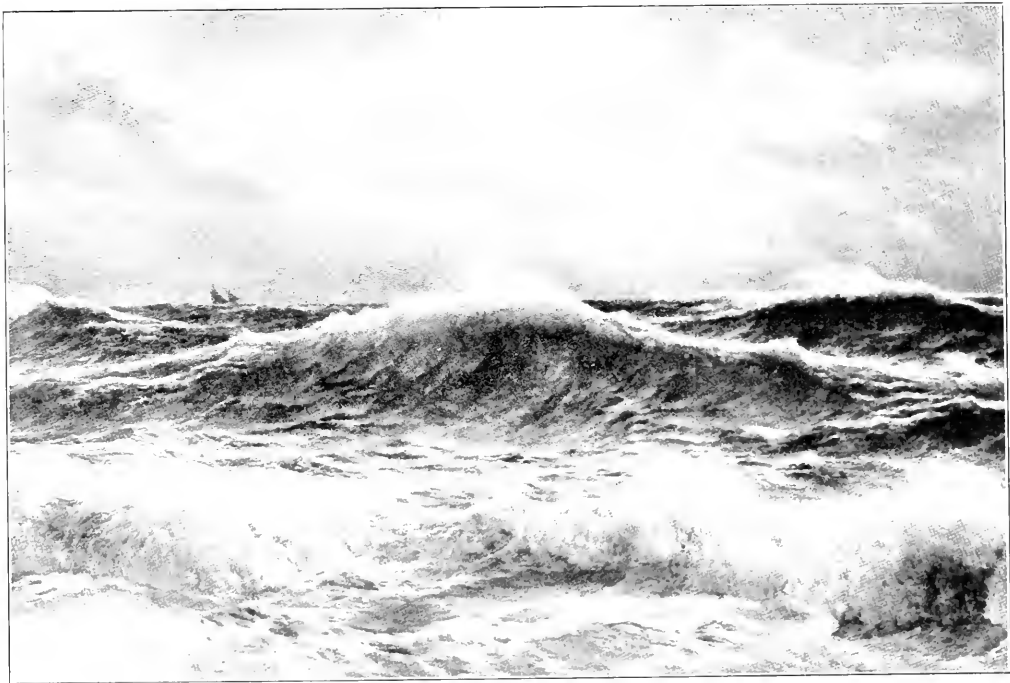
COPYRIGHTED, 1900, 1902,

BY

M., W. & C. PENNYPACKER.

All rights reserved.

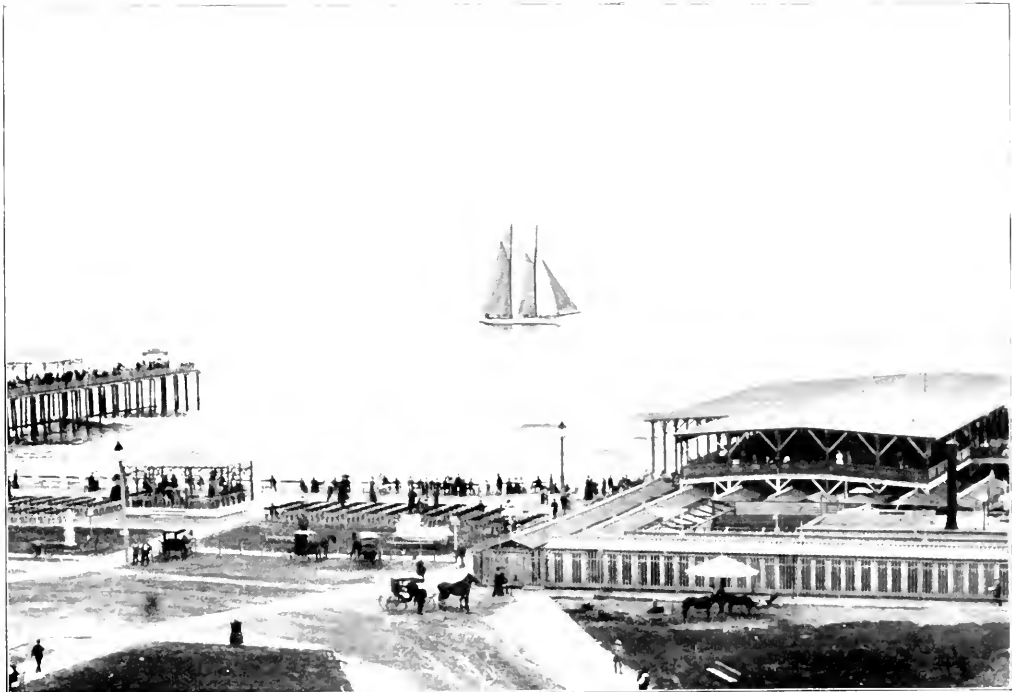




"Unfathomable Sea, Whose Waves are Years!"



Asbury Park's Noted Promenade as it is To-day.



Fishing Pier, the Yacht "Emma B." and Asbury Avenue Pavilion.



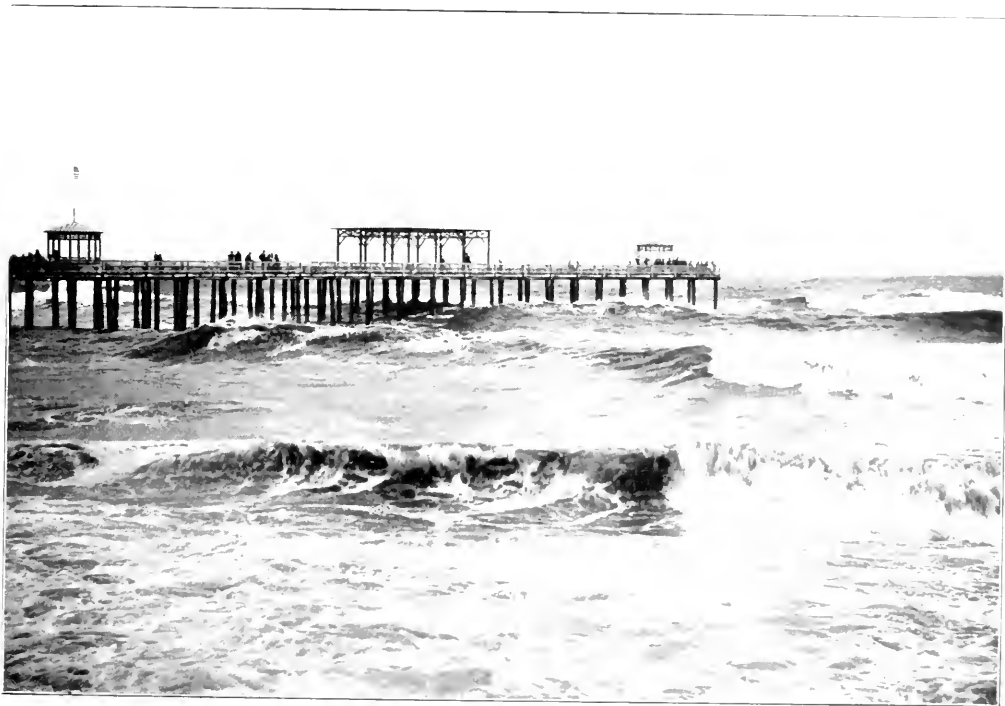
The Beach, Looking North from the Pier.



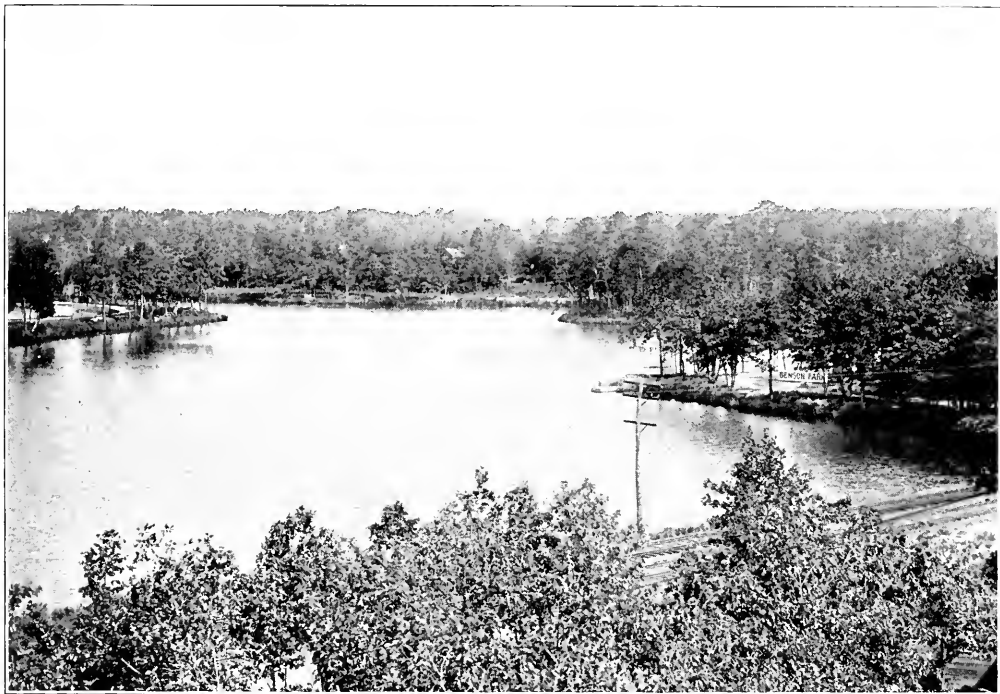
“The Heaving Sea, Whose Great Heart Swells with Eestroy.”



The Bathing Hour.

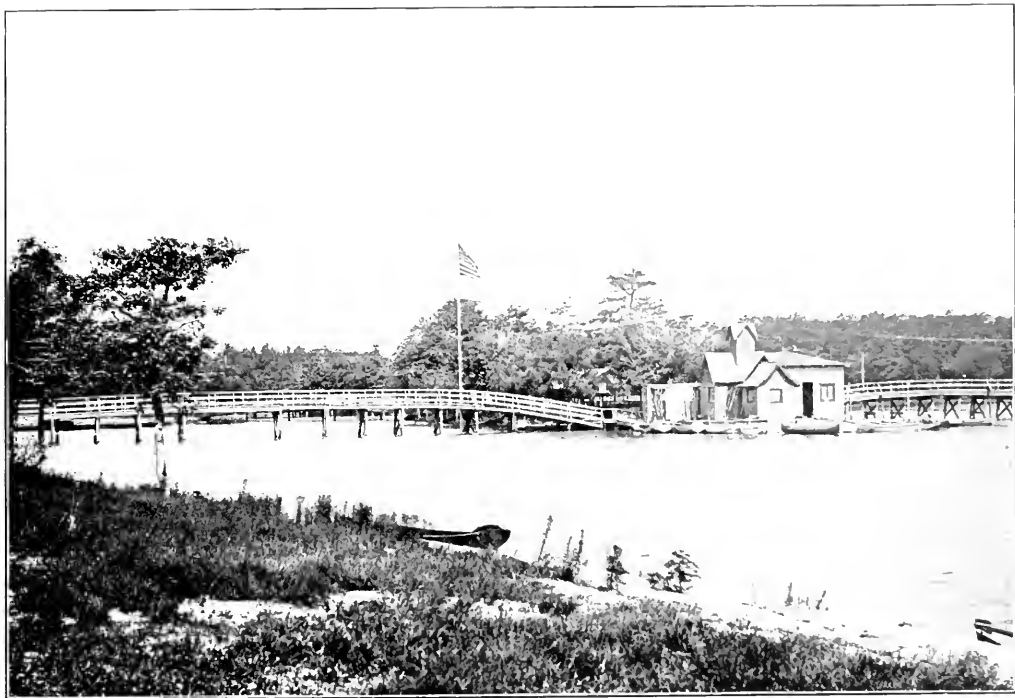


The Fishing Pier from Asbury Avenue.



North Arm of Deal Lake. Separating Interlaken, Edgemere and Allenhurst.





St. John's Island, Sunset Lake.



Kingsley Street, Looking North from Asbury Avenue.



Asbury Avenue Pavilion and Bathing Grounds.



Interior of the Sun Parlor on the Pier.



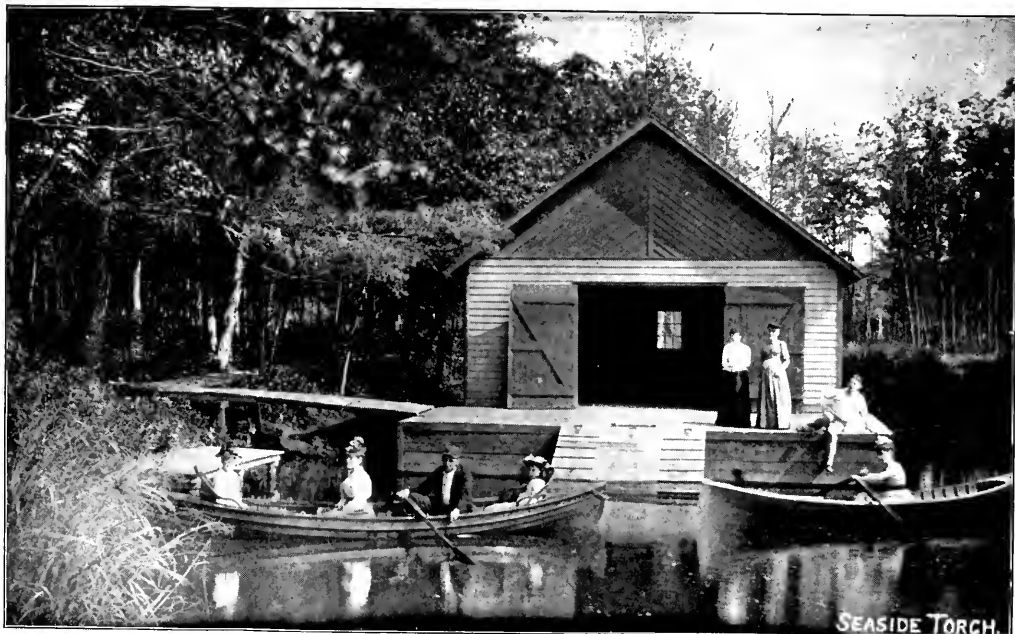
The Beach Promenade in March.



The Athletic Grounds.



Ocean Avenue, Looking North from Second Avenue.



Boat House on Deal Lake.





A Quiet Nook, Deal Lake.



Asbury Park Railroad Station.



In the Business Centre—Main Street Opposite Depot.

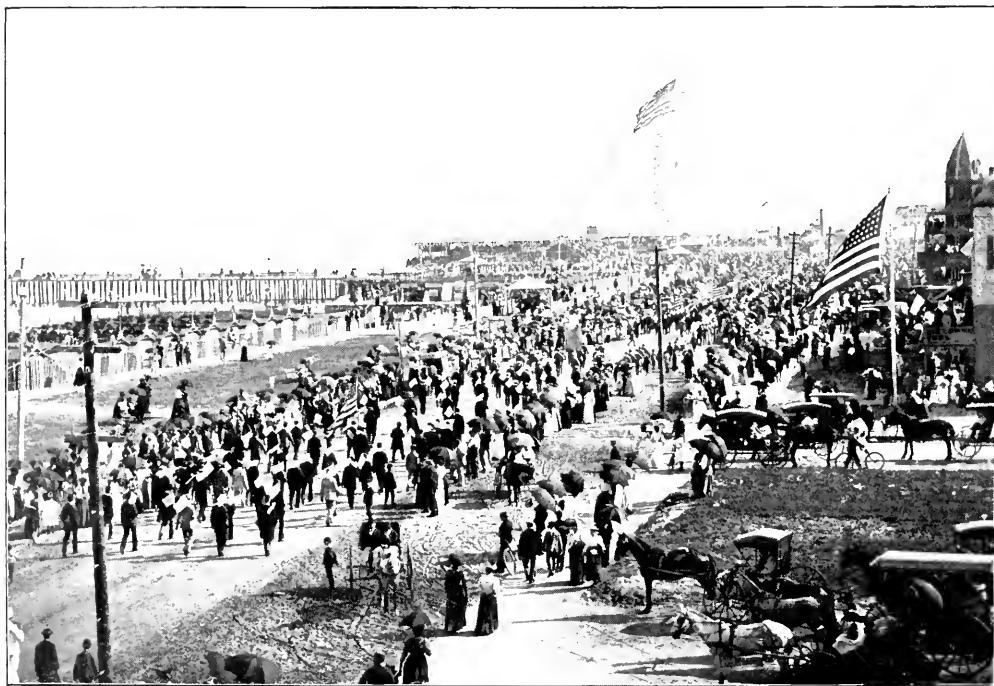


Postoffice and Department Store, Cookman and Mattison Avenues.

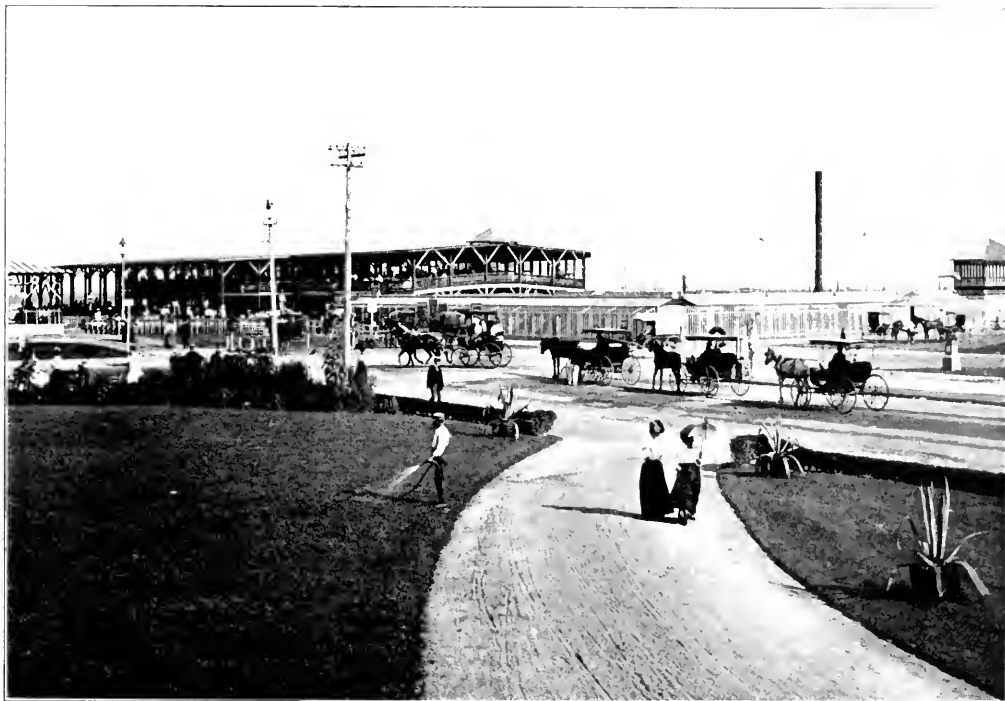


SEASIDE TORCH

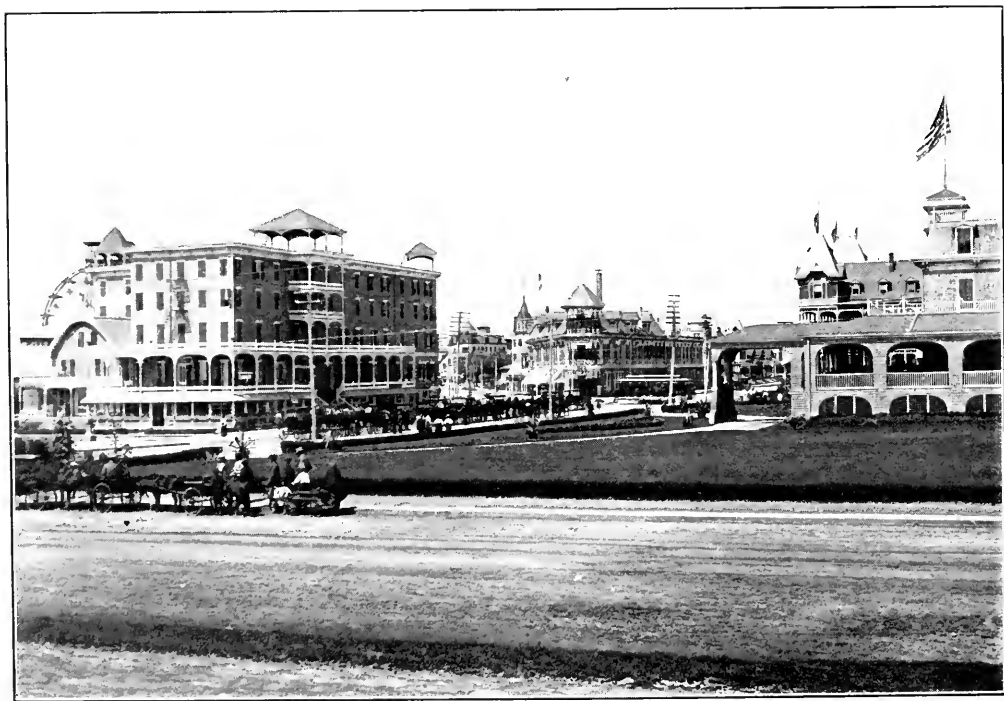
Asbury Avenue from the Beach.



American Mechanics' Parade on Ocean Avenue.



Asbury Avenue Pavilion From the Coleman.

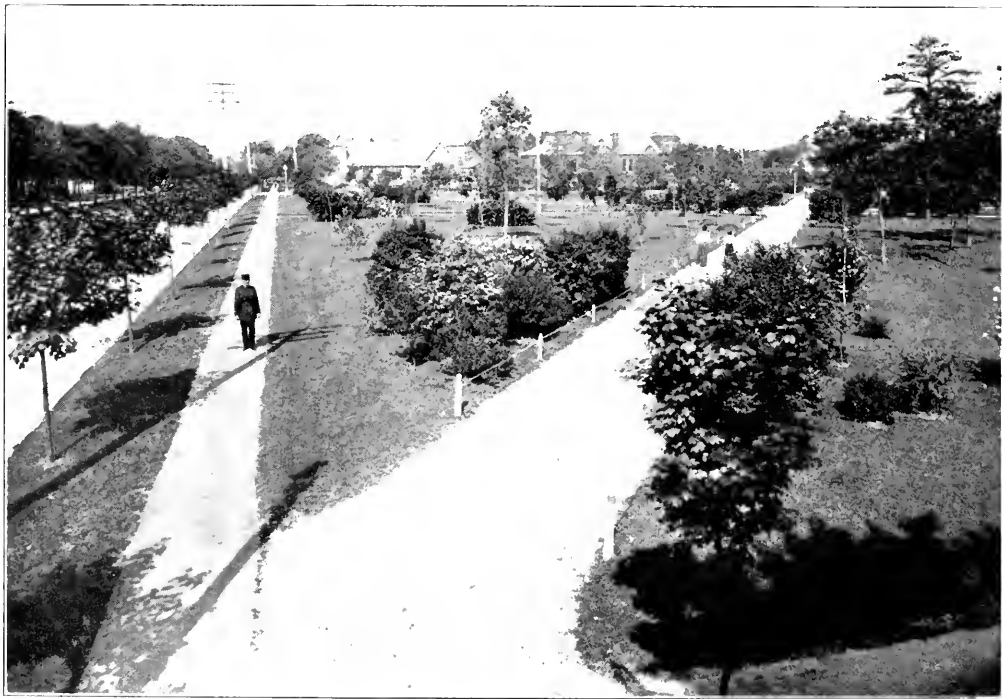


View West From the Pier.





First Avenue, Looking North-West From the Beach.



Library Square. Episcopal Church and Library in the Distance.



Among the Islands, Sunset Lake.



An Ideal Bathing Beach.



Second Avenue, Looking Southwest from Ocean.



Second Avenue from the Beach.



Third Avenue from the Beach.



Third Avenue, Looking West from Heck Street.





Fourth Avenue, West of Kingsley Street.



Fourth Avenue from the Beach.



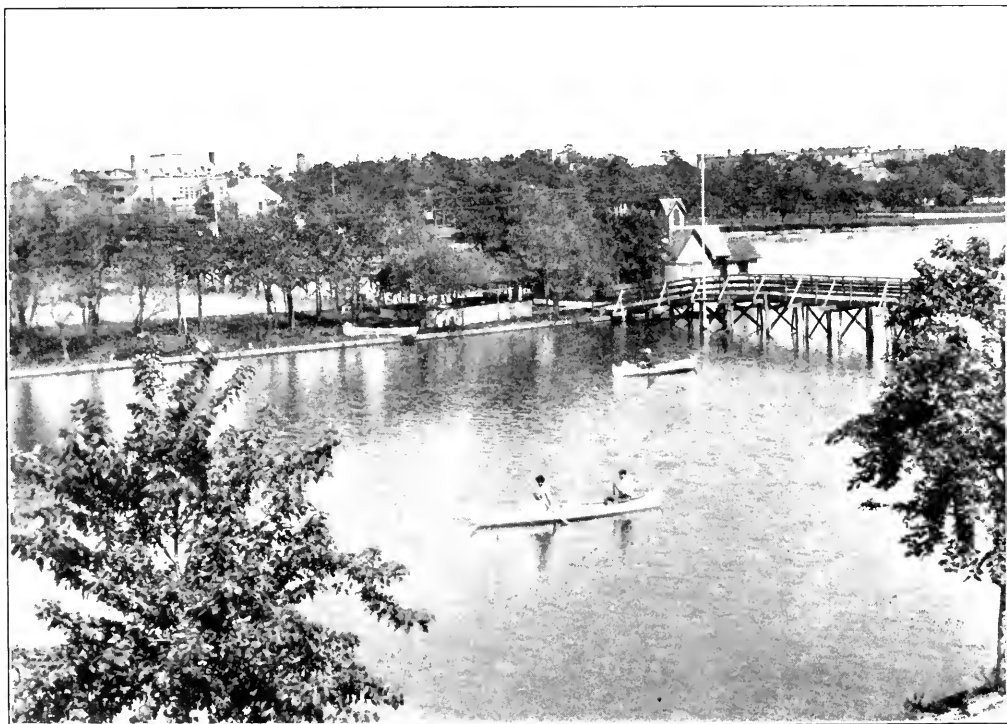
North Asbury Station From Railroad Avenue



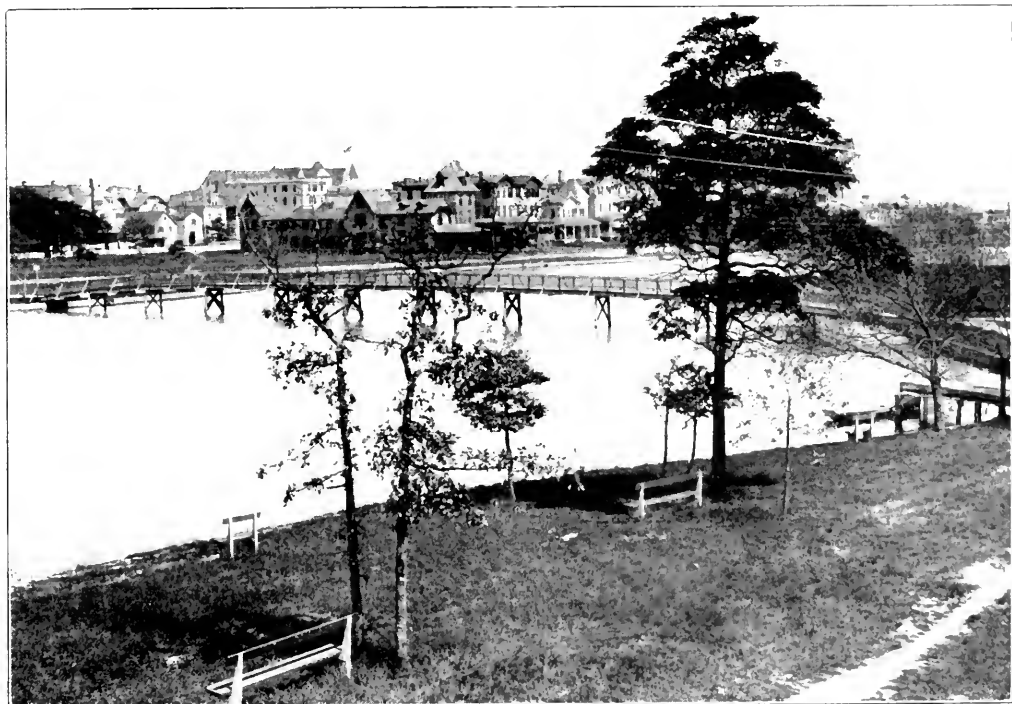
Sunset Lake. A Fascinating Sheet of Water Fed by Crystal Springs.



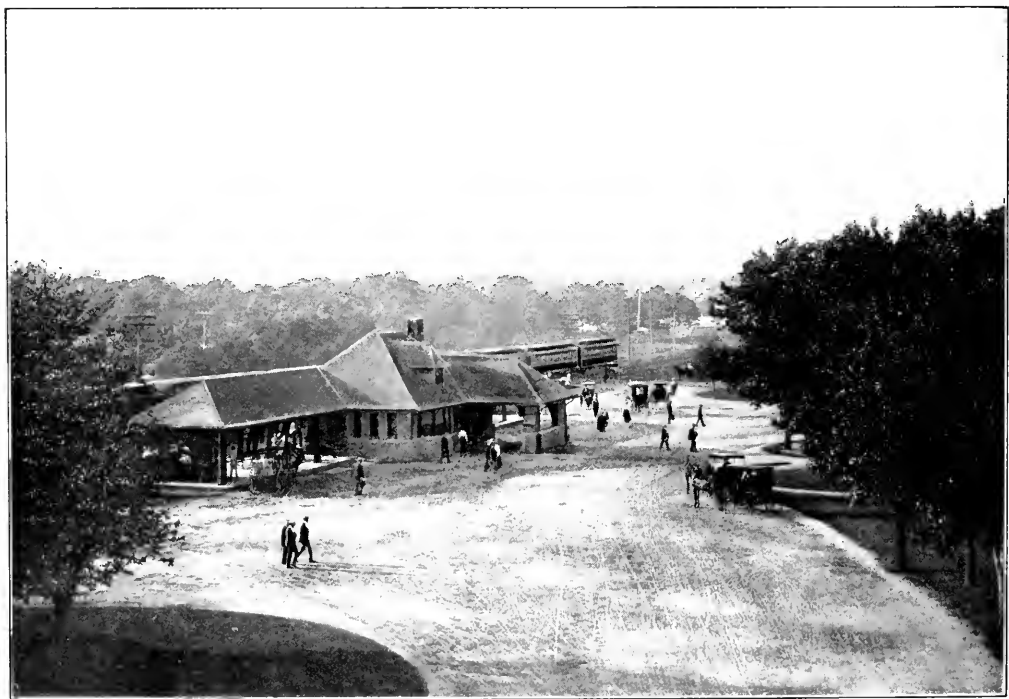
Fifth Avenue. Looking West.



St. John's Island, Sunset Lake, Looking North-East From Fifth Avenue.



Sunset Lake, Looking Toward Sunset Avenue.



North Asbury at Sundown.





Fourth Avenue from the Beach.



Sixth Avenue from the Beach.



Sixth Avenue, East of Grand.



Sunset Avenue, Looking North-East.



The Bathing Grounds at the Season's Height.



Seventh Avenue, Looking Towards the Beach.



Seventh Avenue from the Beach.



North Asbury Park Station, from the Pennypacker Building.





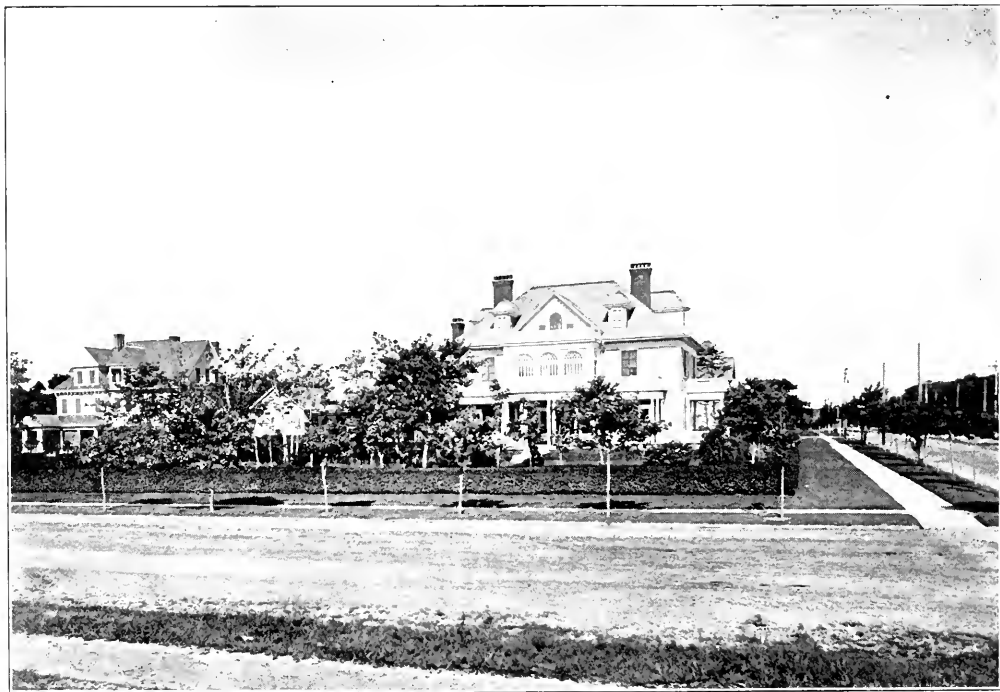
Electric Railroad Bridge across Deal Lake.



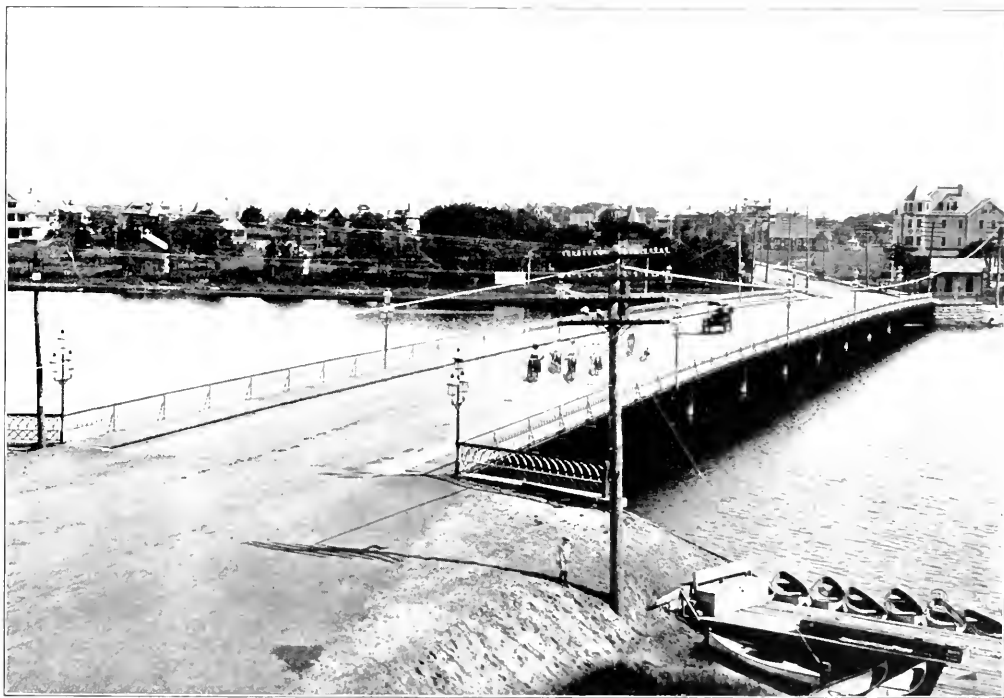
Residences on Seventh Avenue.



Eighth Avenue from the Beach.



In the Residence Section, Eighth and Park Avenues.



Park Avenue Bridge, Deal Lake, Looking Towards Loch Arbour and Allenhurst.



Wheelmen's Parade, Asbury Avenue near Grand.



G. A. R. Parade on Asbury Avenue.



Firemen's Parade on Asbury Avenue.





The Annual Baby Parade.



The Beach During an Unusually High Tide.



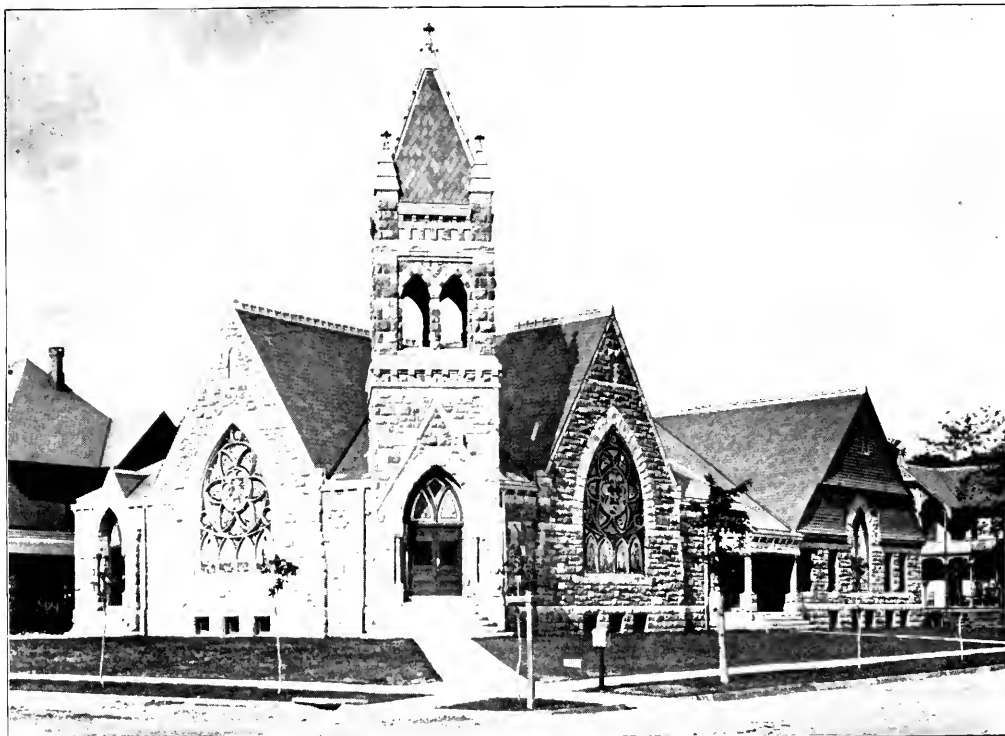
Life Saving Station No. 6, Foot of Deal Lake.



A Wreck on the Beach—The Mary F. Kelly.



Excitement on the Beach During a Week.



First Presbyterian Church.



Lake Avenue Looking East From Grand Avenue.



Emory Street From Lake Avenue. Post-Office in the Distance.





Cookman Avenue, at its Junction with Mattison Avenue and Emory Street.



Afternoon on the Asbury Avenue Pavilion.



Ross' Pavilion and Bathing Grounds.



Ross' Pavilion, Ocean Grove.



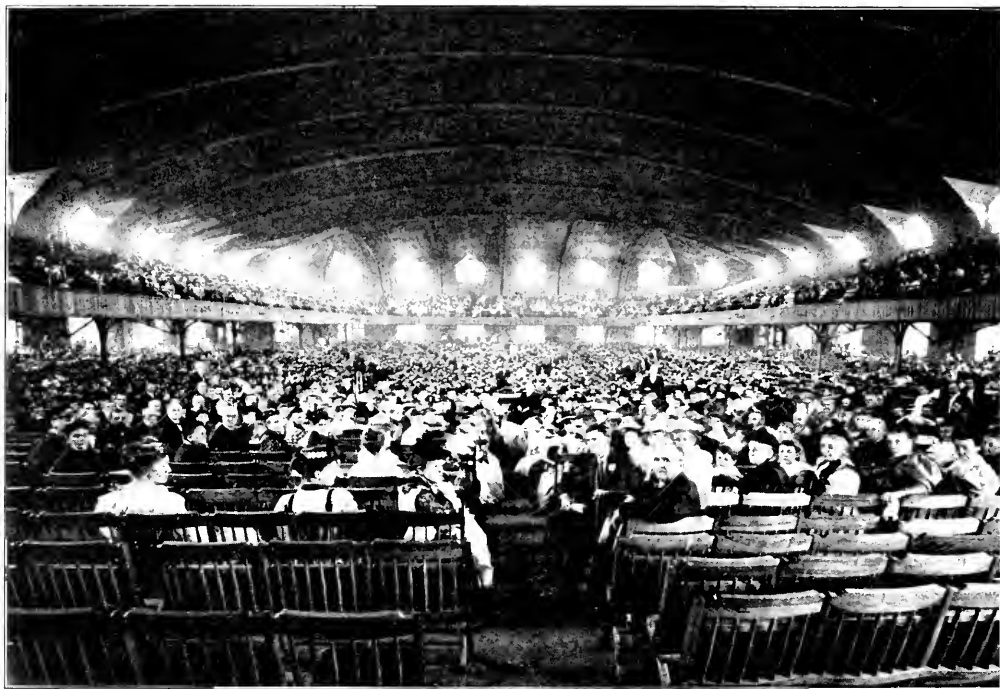
Wesley Lake, separating Asbury Park from Ocean Grove.



Ocean Pathway from the Sea.

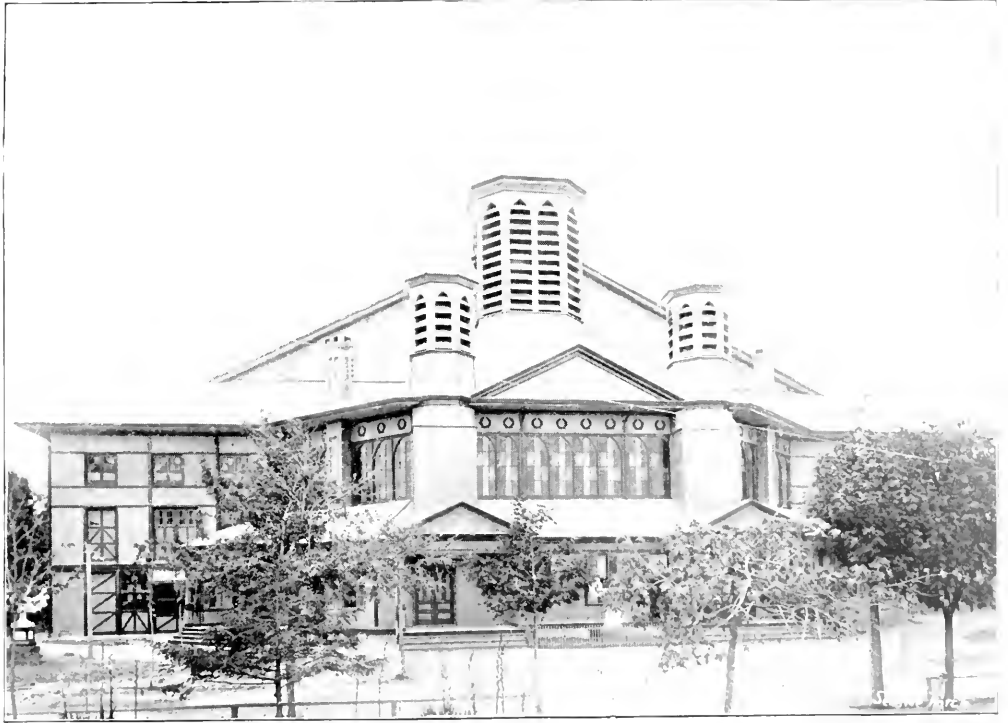


Ocean Grove Beach Front.

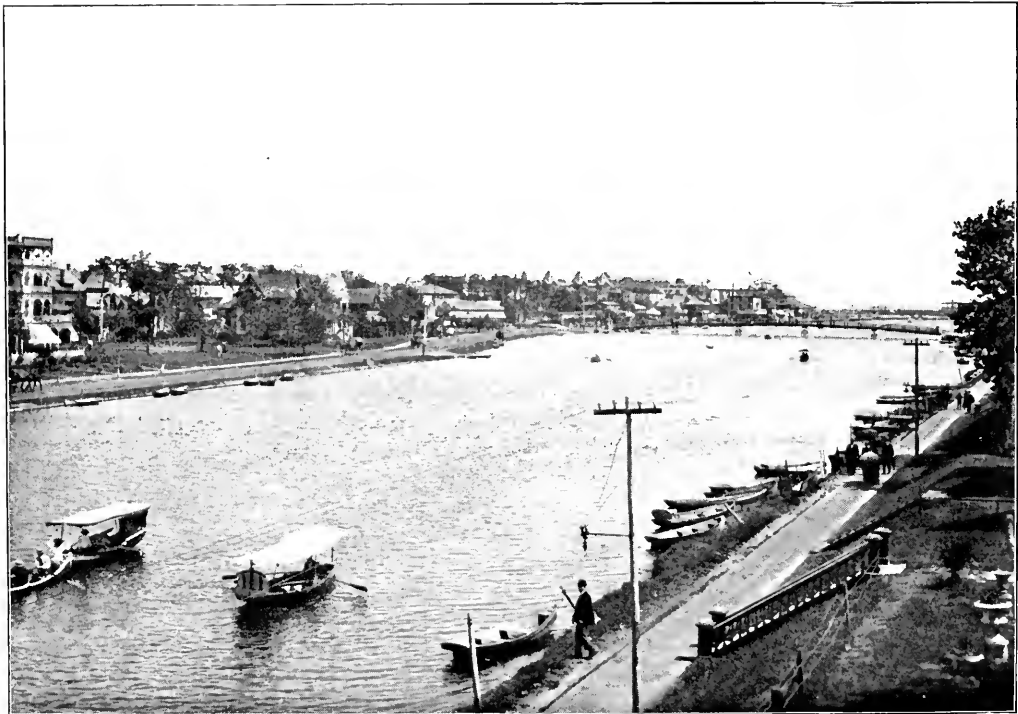


Interior of the Auditorium.





The Great Auditorium, Ocean Grove.



Wesley Lake from Emory Street Bridge.



Main Avenue, Ocean Grove.



A Corner of the Ross Pavilion.



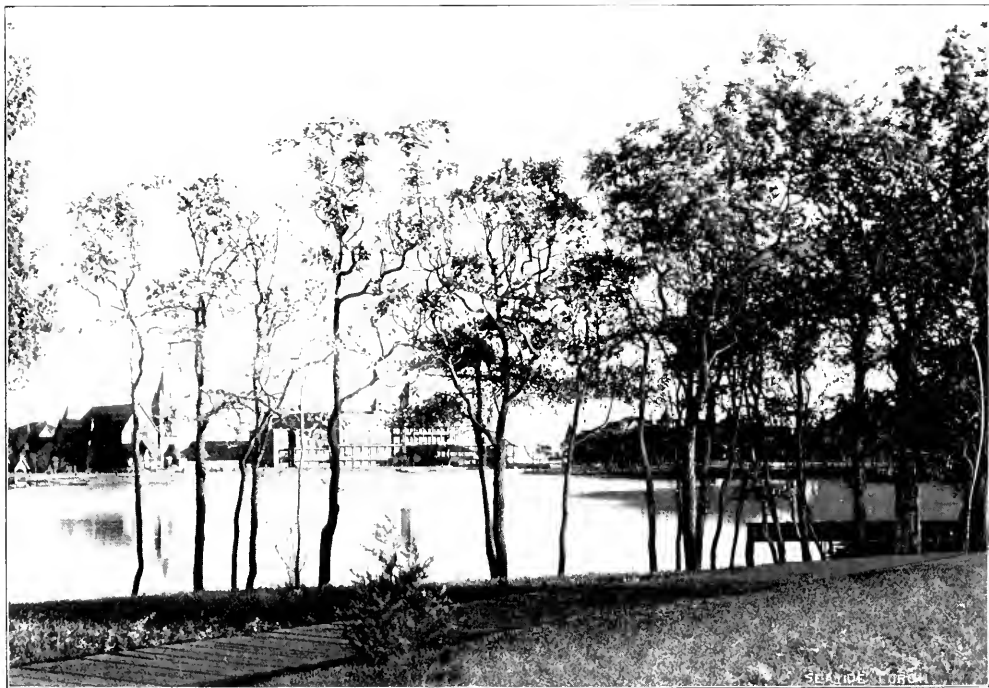
Yachting.



The Ocean Front, Avon-by-the-Sea.



An Avenue in Belmar.



A Glimpse of Spring Lake.





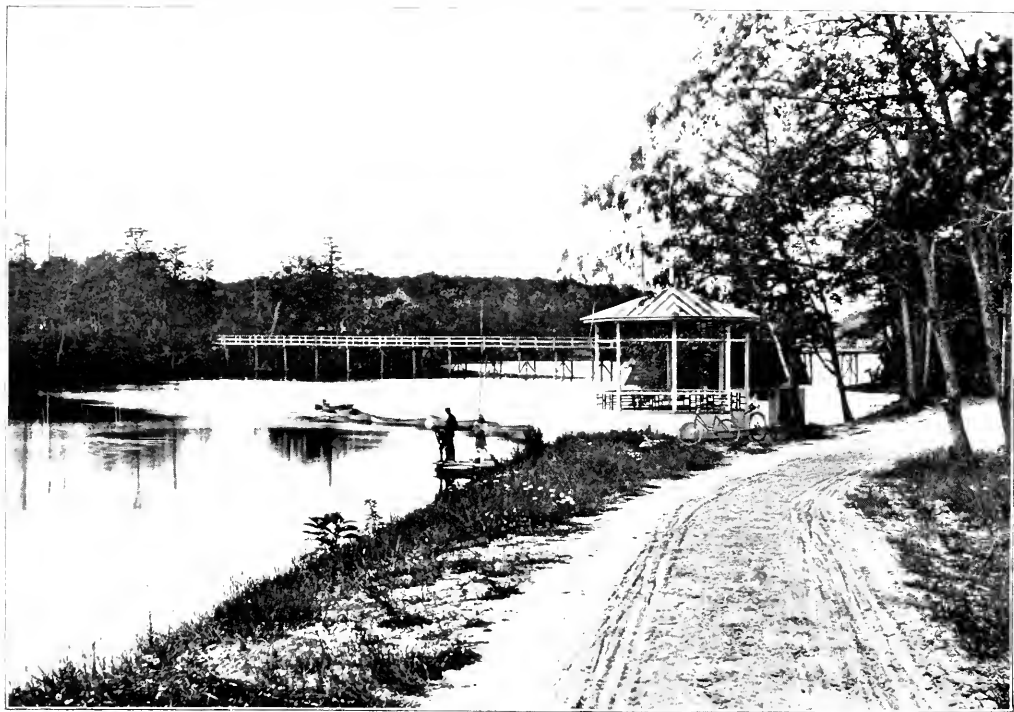
Bird's Eye View of Spring Lake.



The Sea Girt Encampment.



A Picturesque View of Interlaken, and Deal Lake.



Deal Lake and Lake Drive, Allenhurst.



Corlies Avenue Cottages, Allenhurst.



Residences at Allenhurst. Norwood Avenue.

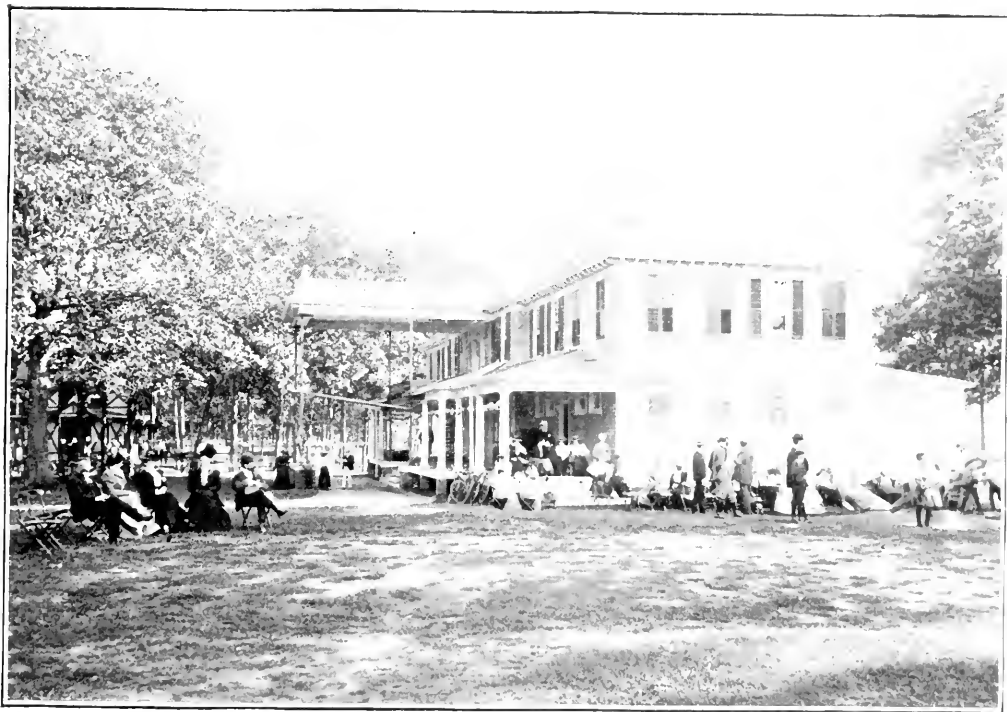


Rustic Bridge in the Park, Allenhurst.

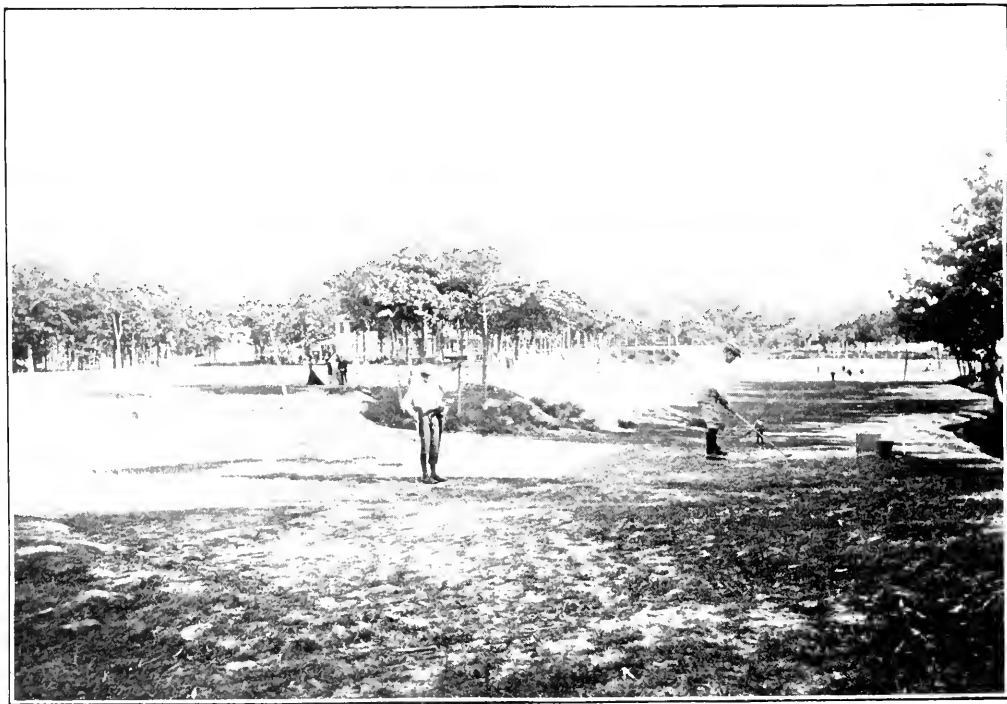


The Drive through Benson Park, Allenhurst.

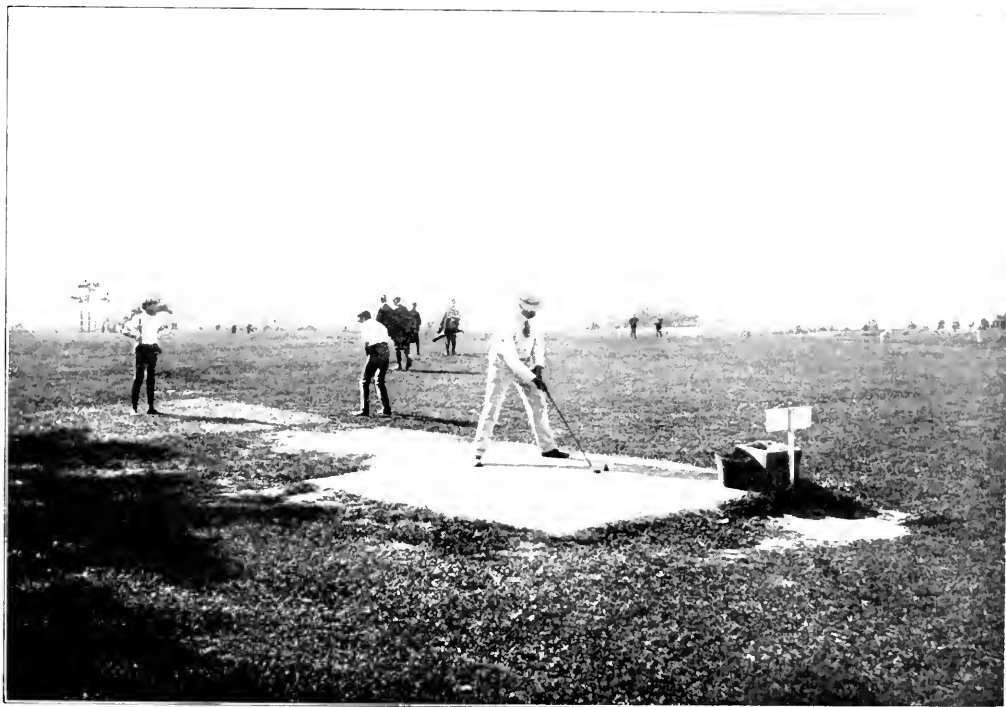




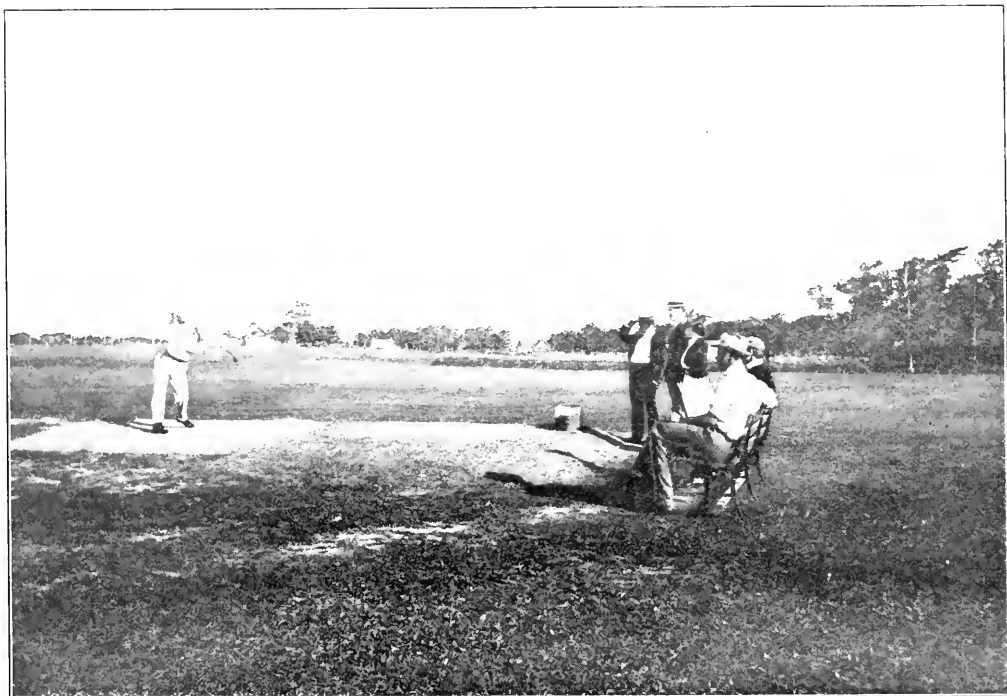
The Deal Golf Club House.



The Deal Golf Links.



The Deal Golf Links, Stretching Westward as Far as the Eye can see.



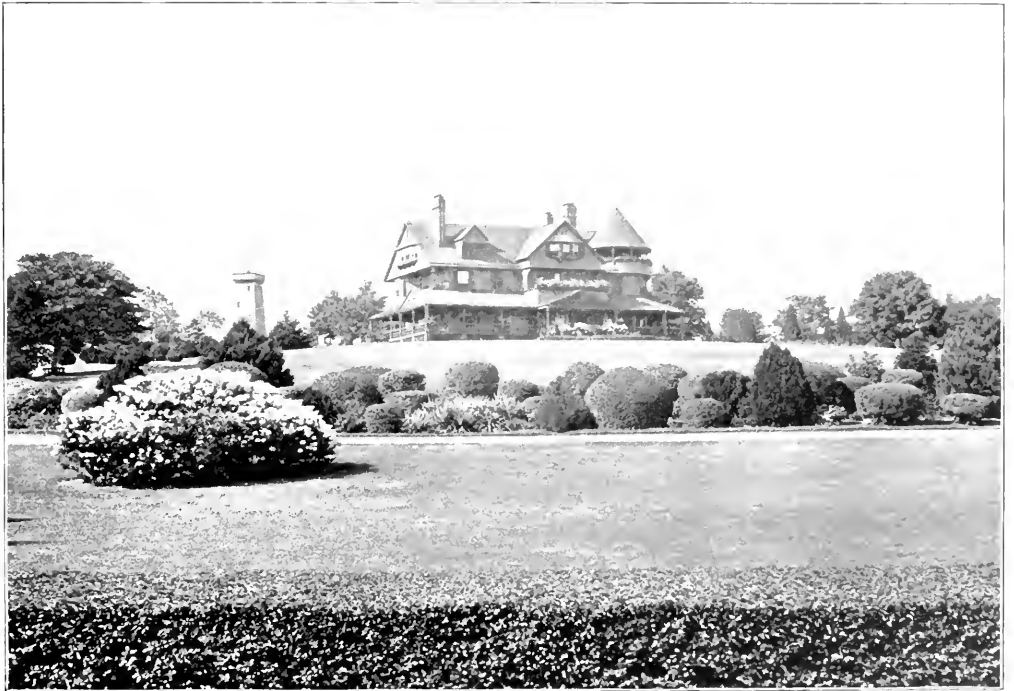
A Long Drive.



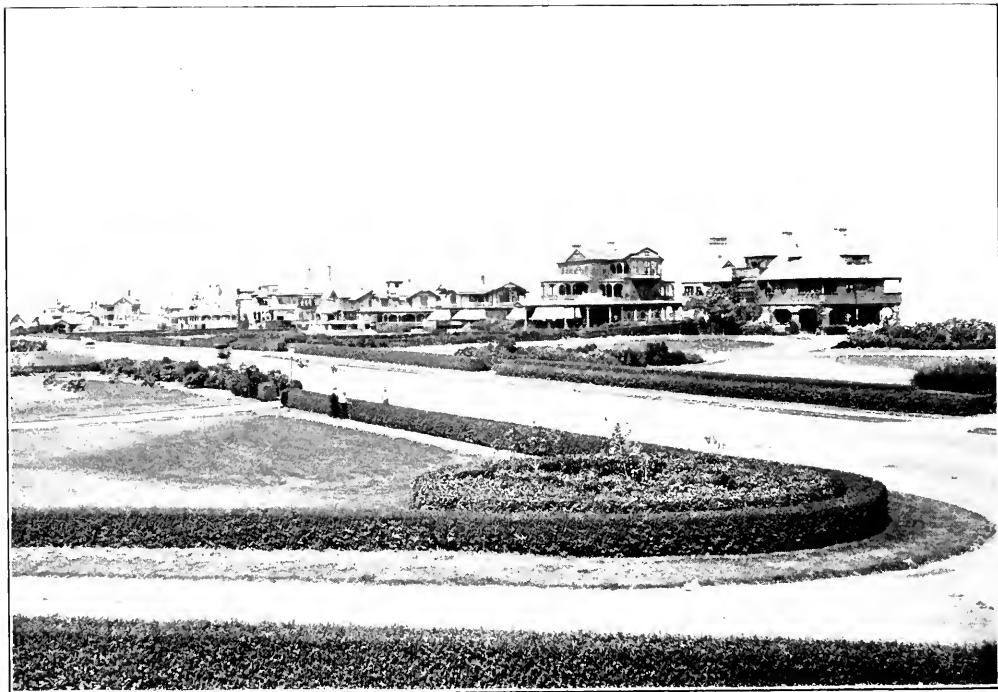
The Ocean Drive through Elberon.



Cedar Avenue, Hollywood.

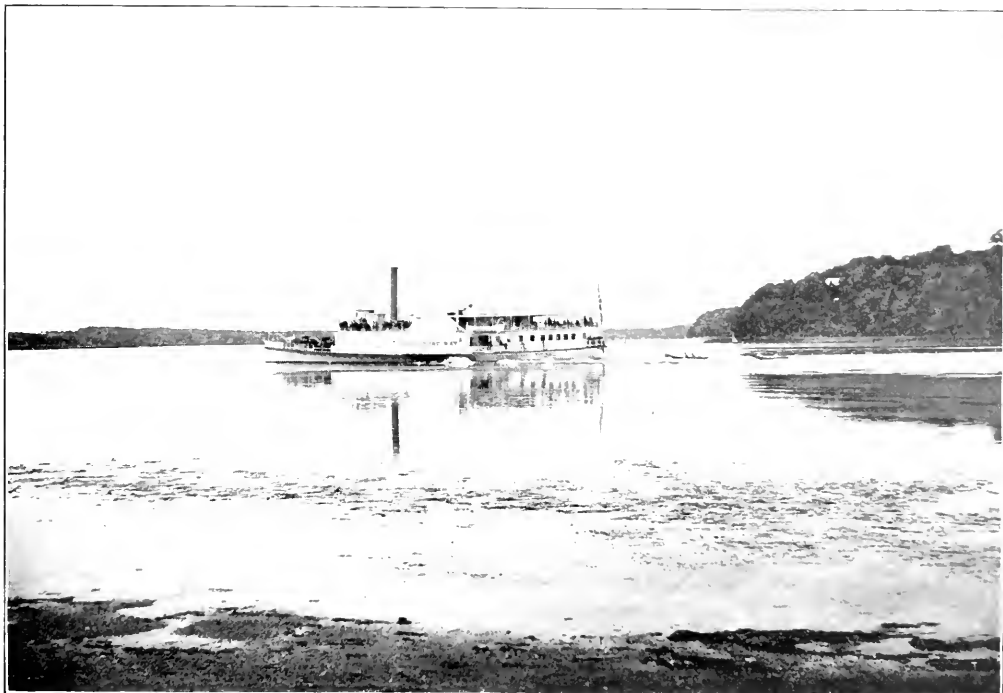


A Residence on the Rumson Road.



Cottages at Monmouth Beach.





The Picturesque Shrewsbury River from the Railroad.



Bird's Eye View of Sandy Hook from Highland Light.







3 1902



LIBRARY OF CONGRESS



0 014 205 821 2