

EXHIBIT
8
(PART 2 OF 2)

Comparison: Prisoner and Probationer Arrests for New Felonies

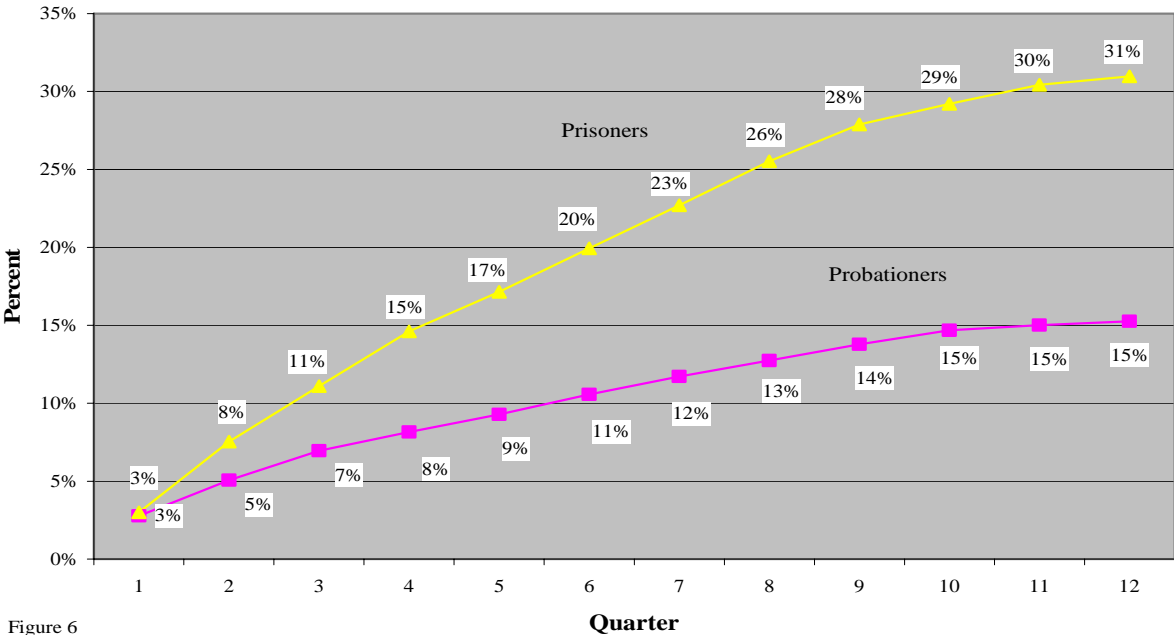


Figure 6

Table 43 examines rates of arrest for new crimes against persons. They are termed “violent” crimes in the table due to their involving threat to a person (although not necessarily a physical attack). The table shows a further reduction in rates from the previous two tables, with overall rates being about 2/3 of those in Table 42. This table shows misdemeanor prison releases and probationers with higher rates after three years than felons. This is particularly the case for the released misdemeanor prisoners, who show a rate about 30 percent higher than released felons.

This table, like table 42, shows less than half the new arrests occurring during the first year, suggesting that arrests for new violent crimes tend to be spread out over time. As in the previous table, it is the Class B felons and aggravated misdemeanants among probationers who show the highest rates of arrest.

Table 43: Rate of New Violent Arrest, Prisoners and Probationers, by Offense Class

Lead Offense Class	Prisoners				Probationers			
	Total N	Cumulative Rate			Total N	Cumulative Rate		
		One Year	Two Years	Three Years		One Year	Two Years	Three Years
B felony	84	13.1%	23.8%	26.2%	20	0.0%	10.0%	15.0%
O felony	73	9.6%	13.7%	17.8%	0	--	--	--
C felony	897	10.3%	18.6%	21.7%	205	4.9%	6.8%	9.8%
D felony	1,822	8.0%	15.9%	19.4%	730	5.1%	9.3%	10.3%
All Felonies	2,876	8.9%	16.9%	20.3%	955	4.9%	8.8%	10.3%
Agg. Misd.	591	12.9%	24.4%	26.7%	917	9.4%	14.1%	17.2%
Serious Misd.	39	20.5%	33.3%	41.0%	1,560	5.0%	8.8%	10.2%
Simple Misd.	0	--	--	--	137	6.6%	10.2%	10.9%
All Misd.	630	13.3%	24.9%	27.6%	2,614	6.6%	10.7%	12.7%
Total	3,510	9.7%	18.3%	21.6%	3,570	6.2%	10.2%	12.0%

Total rates of new violent arrests by quarter are shown in Figure 7. Note that while the prisoner rate after one year is about 50 percent higher than the probationer rate, but that after three years the differential increases to about 80 percent. This suggests that prisoners be arrested for new violent crimes over a longer period than probationers (i.e., that the incidence of new probationer arrests will approach zero faster than will be true for prisoners).

Comparison: Prisoner and Probationer Violent Arrests

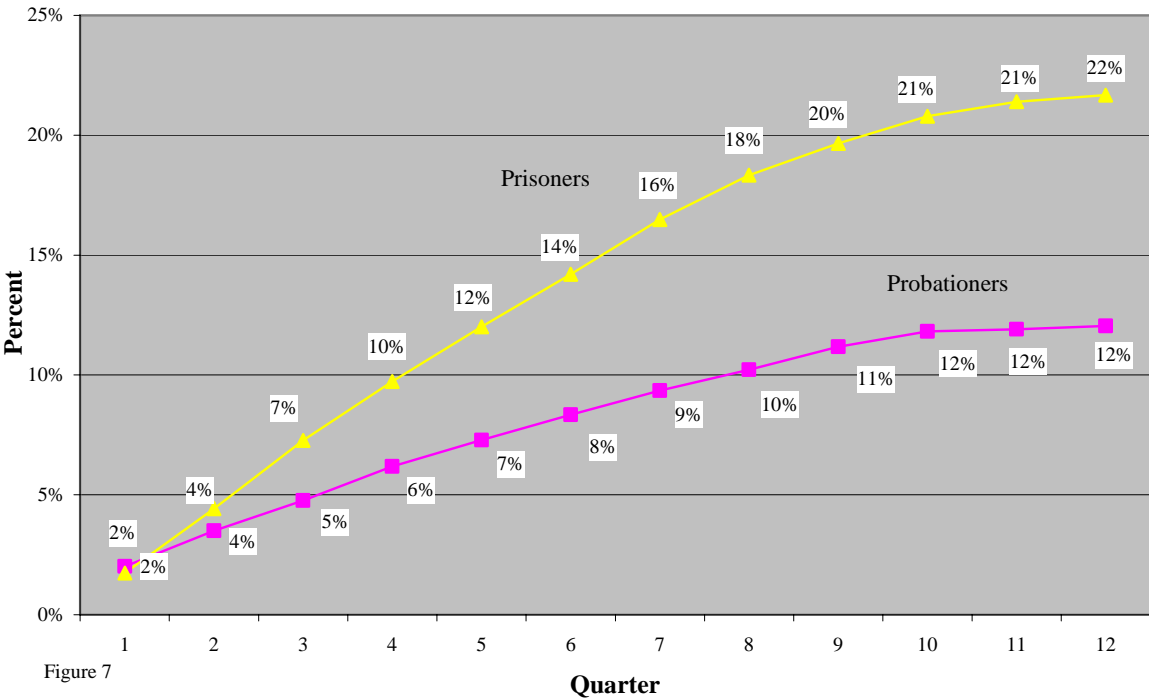


Table 44 examines the rate of new violent felony arrests. The crimes included in this table would include such offenses as robbery and a variety of felonious assaults. It is here that we see the greatest disparity among probationers and former prisoners, as the three-year rate for the former is less than $\frac{1}{4}$ that of the latter. One would have to conclude that the rate of new violent felonies among probationers is very low; in this context **it appears that probationers in Iowa present little threat of new violent felonies during and shortly after their period of probation supervision.**

In a pattern seen previously, misdemeanants in both cohorts showed higher rates than their felon counterparts. As was true in several tables above, it is the aggravated misdemeanants who show the highest rate among probationers. Curiously, while Class B Felony probationers showed comparatively high rates in previous tables, this is not the case here, probably because B Felony probationers tend to be drug offenders. Among the prisoners, the serious misdemeanants and Class B felons showed the highest rates after three years. In another trend seen previously, new violent felony arrests tended to be spread out over time, as less than half the new arrests took place in the first year of tracking.

If one compares this table to the results of Table 43, it can be noted that the felony rates presented here for prisoners are about $\frac{1}{3}$ of those in Table 43, while the probationer rates are less than $\frac{1}{5}$ of the rates above. This suggests again that even when probationers are re-arrested during or shortly after the period of probation, they typically are not arrested for new crimes against persons.

Table 44: Rate of New Violent Felony Arrest, Prisoners and Probationers, by Offense Class

Lead Offense Class	Prisoners				Probationers			
	Total N	Cumulative Rate			Total N	Cumulative Rate		
		One Year	Two Years	Three Years		One Year	Two Years	Three Years
B felony	84	7.1%	16.7%	22.6%	20	0.0%	0.0%	0.0%
O felony	73	5.5%	6.8%	9.6%	0	--	--	--
C felony	895	5.1%	8.6%	11.3%	205	0.5%	0.5%	1.5%
D felony	1,821	3.3%	7.5%	9.5%	730	1.0%	1.9%	1.9%
All Felonies	2,873	4.1%	8.1%	10.4%	955	0.8%	1.6%	1.8%
Agg. Misd.	591	7.1%	14.6%	16.8%	917	2.6%	4.0%	5.2%
Serious Misd.	39	12.8%	23.1%	23.1%	1,560	0.8%	1.3%	1.7%
Simple Misd.	0	--	--	--	137	2.2%	2.2%	2.2%
All Misd.	630	7.5%	15.1%	17.1%	2,614	1.5%	2.3%	2.9%
Total	3,507	4.7%	9.3%	11.6%	3,570	1.3%	2.1%	2.6%

Comparison: Prisoner and Probationer Violent Felony Arrests

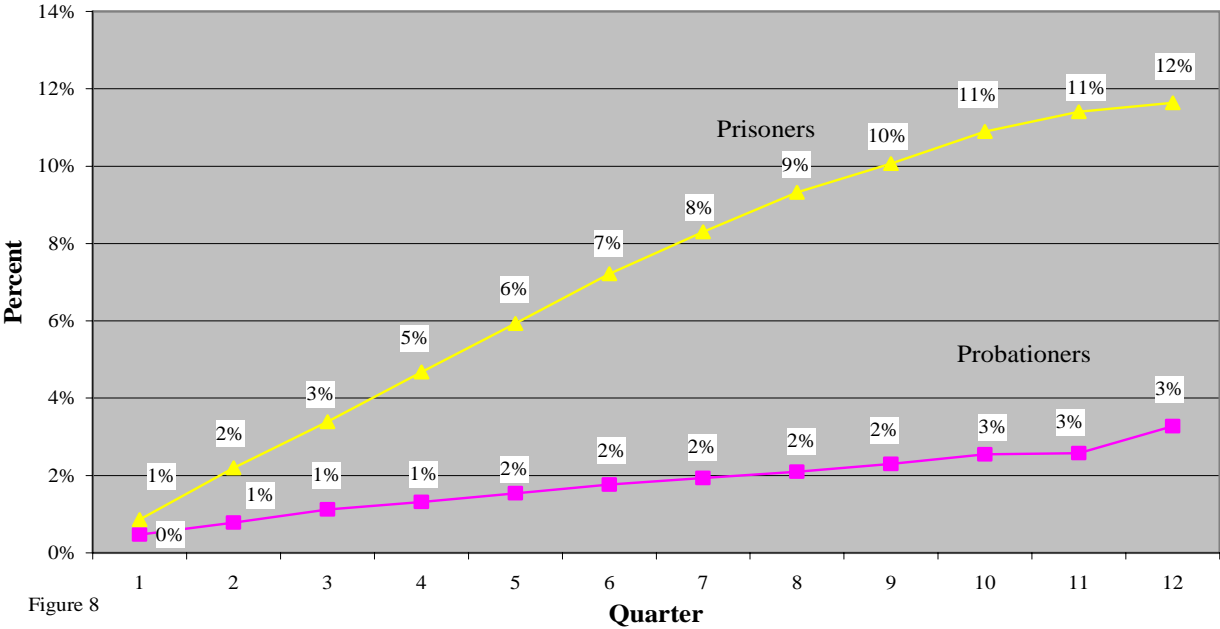


Figure 8

The final table in this series examines imprisonment during the tracking period. This table also shows large differences between the prisoner and probationer cohorts, as the former are imprisoned at nearly three times the rate of the latter after three years. Note, however, that the disparity among felons is not nearly so great as among misdemeanants; the overall difference between probationers and prisoners is due largely to the higher percentage of misdemeanants among probationers combined with their low rate of incarceration.

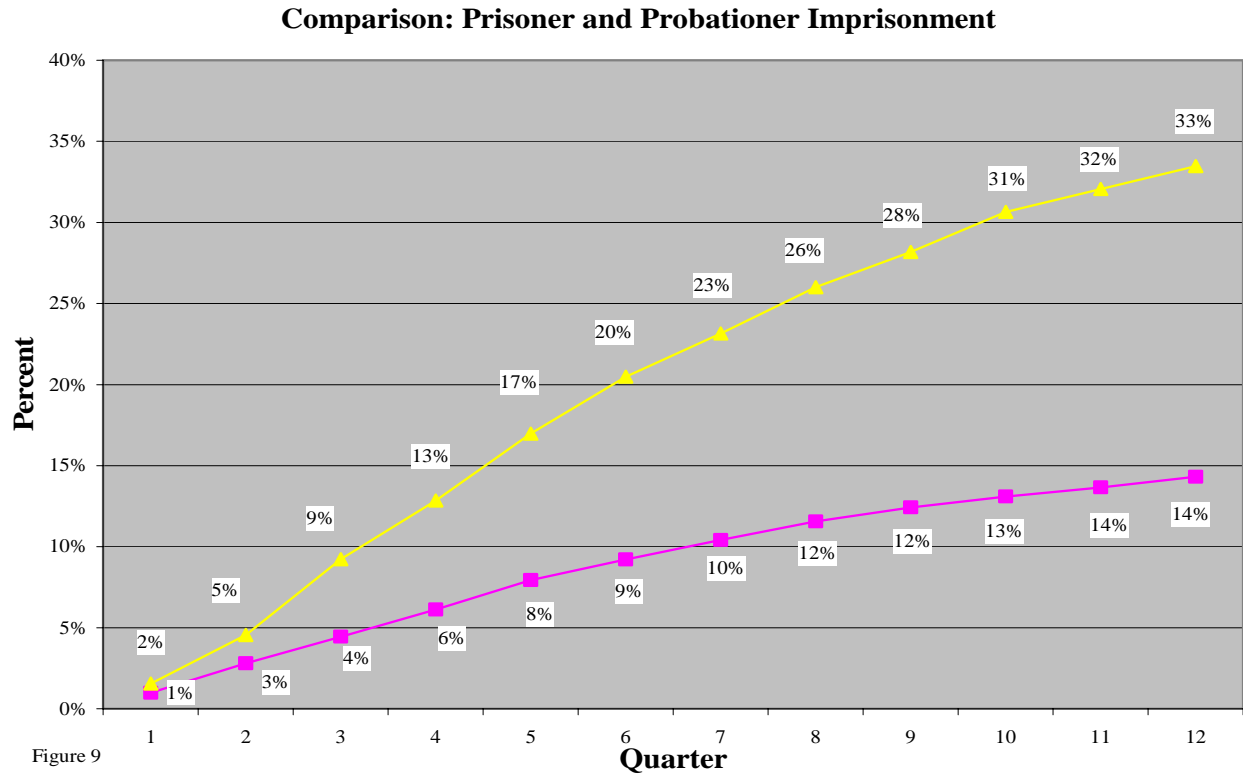
Imprisonment also tended to be spread out during the tracking period, with each group showing 3-year imprisonment rates more than double that of the first year. This was particularly the case for the misdemeanor cohorts, as the prisoner cohort showed a 3-year rate more than triple the first year and the probationer cohort a rate nearly as high.

Among the probationers, while aggravated misdemeanants tended to exhibit high rates of re-arrest in the previous tables, here they show rates of imprisonment slightly below those of their felon counterparts (but much higher than the other misdemeanants). Note, too, that the prisoner misdemeanants who showed higher rates of new violent felonies in Table 44 show lower rates of re-imprisonment than felons.

Table 45: Rate of Any New Imprisonment, Prisoners and Probationers, by Offense Class

Lead Offense Class	Prisoners				Probationers			
	Total N	Cumulative Rate			Total N	Cumulative Rate		
		One Year	Two Years	Three Years		One Year	Two Years	Three Years
B felony	85	9.4%	29.4%	42.4%	20	0.0%	15.0%	20.0%
O felony	76	19.7%	32.9%	46.1%	0	--	--	--
C felony	921	16.4%	32.7%	40.6%	205	15.1%	23.4%	28.3%
D felony	1,840	16.1%	28.5%	34.7%	730	10.7%	19.5%	23.0%
All Felonies	2,922	16.1%	29.9%	37.1%	955	11.4%	20.2%	24.1%
Agg. Misd.	599	9.3%	23.4%	33.9%	917	8.1%	15.4%	18.6%
Serious Misd.	39	15.4%	30.8%	38.5%	1,560	1.3%	3.4%	4.7%
Simple Misd.	0	--	--	--	137	0.0%	0.7%	3.6%
All Misd.	638	9.7%	23.8%	34.2%	2,614	3.6%	7.5%	9.5%
Total	3,564	15.0%	28.8%	36.5%	3,570	5.7%	10.9%	13.4%

State totals are shown in Figure 9.



Prisoner and Probationer Recidivism Rates by Offense Type

The next table begins a series of tables similar to those above comparing prisoner and probationer recidivism. This group, rather than examining offense severity, breaks out recidivism by the type of lead offense resulting in either imprisonment or probation. This sort of comparison may be useful in helping identify the types of offenders most likely to succeed or fail after a period of imprisonment or probation.

In reviewing these tables, it may be helpful at first to return to Table 13, which shows the distribution of offense types for prisoner and probation admissions between July 1 and September 30, 2001. Remember that probationers are more likely to be OWI offenders, while prisoners are more likely to be drug, property, and sex offenders. The tables below compare the probation cohort with the cohort released between July 1, 1999 and June 30, 2000. Both groups were tracked for three years.

The highest rates of new arrest seen in Table 46 are for prison releases committed for property offenses, public order offenses, and crimes against persons, respectively. Each of these groups showed a 3-year re-arrest rate of 60 percent or higher. A different picture is shown for probationers, as the highest rates of re-arrest in that cohort were found for those convicted of traffic and weapons offenses. Neither of these rates, however, was as high as any of the prisoner rates, although traffic and weapons offense probationers showed rates comparable to prisoners in the same categories.

Consistent with previous recidivism findings, the lowest rates of new arrest were found for sex offenders in the two cohorts, with OWI offenders showing the second-lowest rates in each group. The low rates of the OWI probationers, combined with their numbers on probation, are the main source of the low overall probation re-arrest rate.

Table 46: Rate of Any New Arrest, Prisoners and Probationers, by Offense Type

Lead Offense Type	Prisoners				Probationers			
	Total N	Cumulative Rate			Total N	Cumulative Rate		
		One Year	Two Years	Three Years		One Year	Two Years	Three Years
Drug	596	26.7%	44.1%	51.0%	827	24.8%	36.8%	42.0%
Public Order	50	34.0%	56.0%	62.0%	107	23.4%	37.4%	42.1%
OWI	857	21.0%	37.8%	44.3%	1,111	15.1%	24.2%	26.6%
Vs. Person	486	32.3%	54.9%	60.5%	590	24.2%	37.8%	42.9%
Property	1,205	39.7%	61.4%	67.7%	744	30.8%	43.7%	47.7%
Sex	192	20.3%	32.8%	37.5%	56	12.5%	17.9%	19.6%
Traffic	48	29.2%	52.1%	56.3%	103	35.0%	48.5%	55.3%
Weapons	72	33.3%	51.4%	58.3%	32	37.5%	50.0%	53.1%
Total	3,510	30.4%	49.8%	56.0%	3,570	23.1%	34.6%	38.7%

The pattern of rates for new felony arrests is slightly different than that seen above. Among the released prisoners, those serving sentences for public order crimes (escape, prostitution, sex registry violations) showed the highest rates of new felony arrests, followed by property and weapons offenders, respectively. The ranking for probationers, however, was the same as in the previous table, with the highest rates found for traffic offenders and those on probation for weapons and property offenses. In one other change for the probationers, the lowest rates of new felony arrests were found for OWI offenders, with sex offenders showing the next-lowest rates. Unique among the groups, nearly all the new felony arrests for sex offenders occurred in the first year of tracking.

Table 47: Rate of New Felony Arrest, Prisoners and Probationers, by Offense Type

Lead Offense Type	Prisoners				Probationers			
	Total N	Cumulative Rate			Total N	Cumulative Rate		
		One Year	Two Years	Three Years		One Year	Two Years	Three Years
Drug	596	14.3%	22.0%	28.7%	827	8.9%	14.6%	17.4%
Public Order	50	12.0%	32.0%	42.0%	107	7.5%	14.0%	17.8%
OWI	857	8.2%	17.0%	20.4%	1,111	3.3%	6.1%	7.5%
Vs. Person	486	16.0%	29.2%	35.6%	590	9.0%	13.4%	16.8%
Property	1,205	20.0%	33.3%	39.4%	744	13.0%	19.0%	21.8%
Sex	192	7.3%	12.5%	15.6%	56	7.1%	7.1%	8.9%
Traffic	48	8.3%	20.8%	27.1%	103	13.6%	20.4%	25.2%
Weapons	72	19.4%	34.7%	38.9%	32	12.5%	18.8%	21.9%
Total	3,510	14.6%	25.5%	30.9%	3,570	8.2%	12.7%	15.3%

Table 48 shows a pattern different from those seen above but consistent with previous recidivism findings: the highest rates of new arrests for crimes against persons (violent crimes) after three years was found for those either released from prison or placed on probation for crimes against persons. In the prisoner cohort, the lowest rates after three years were found for those released on OWI, traffic offenses, and sex offenses. In the probationer, cohort, however, those placed on probation for traffic offenses had among the highest rates, rates which were actually higher than traffic offenders released from prison. This is the first group of probationers showing a higher rate of recidivism (however defined) than the comparable prison cohort.

Table 48: Rate of New Violent Arrest, Prisoners and Probationers, by Offense Type

Lead Offense Type	Prisoners				Probationers			
	Total N	Cumulative Rate			Total N	Cumulative Rate		
		One Year	Two Years	Three Years		One Year	Two Years	Three Years
Drug	596	7.6%	13.4%	16.3%	827	4.7%	8.9%	10.6%
Public Order	50	14.0%	22.0%	26.0%	107	3.7%	6.5%	9.3%
OWI	857	5.8%	11.2%	13.4%	1,111	4.0%	6.3%	7.2%
Vs. Person	486	15.8%	30.7%	35.0%	590	10.3%	16.6%	19.8%
Property	1,205	11.0%	21.7%	25.4%	744	7.4%	12.8%	14.5%
Sex	192	7.8%	13.5%	15.1%	56	1.8%	1.8%	5.4%
Traffic	48	6.3%	10.4%	14.6%	103	13.6%	16.5%	18.4%
Weapons	72	12.5%	20.8%	29.2%	32	6.3%	6.3%	15.6%
Total	3,510	9.7%	18.3%	21.6%	3,570	6.2%	10.2%	12.0%

Table 49 shows a different pattern, however, among the probationers. While violent offenders released from prison showed the highest rate of new violent felonies in that cohort, among probationers it was weapons offenders (e.g., those convicted of carrying weapons, felon in possession of a firearm) that showed the highest rate after three years.

Some of this high rate may be attributable to small numbers of probationers (32) sentenced for weapons crimes, as even their rate (6.3 percent) was only marginally higher than the lowest rate for former prisoners (OWI offenders, at 5.6 percent). Among the prisoners, the weapons offenders showed a rate (9.7 percent) below the cohort total of 11.6 percent.

Table 49: Rate of New Violent Felony Arrest, Prisoners and Probationers, by Offense Type

Lead Offense Type	Prisoners				Probationers			
	Total N	Cumulative Rate			Total N	Cumulative Rate		
		One Year	Two Years	Three Years		One Year	Two Years	Three Years
Drug	596	3.9%	5.9%	7.9%	827	0.6%	1.3%	1.9%
Public Order	50	10.0%	12.0%	14.0%	107	0.9%	2.8%	3.7%
OWI	857	2.3%	4.7%	5.6%	1,111	0.5%	0.8%	1.1%
Vs. Person	486	9.3%	20.4%	24.5%	590	2.9%	3.9%	4.9%
Property	1,205	5.1%	10.5%	13.5%	744	2.2%	3.4%	3.6%
Sex	192	3.6%	6.3%	6.8%	56	0.0%	0.0%	1.8%
Traffic	48	2.1%	8.3%	8.3%	103	2.9%	2.9%	2.9%
Weapons	72	2.8%	5.6%	9.7%	32	0.0%	3.1%	6.3%
Total	3,510	4.7%	9.3%	11.6%	3,570	1.3%	2.1%	2.6%

Table 50 shows the degree to which members of the cohorts received the maximum sanction in Iowa, (re-)imprisonment. This table is interesting in part because the ratio of the lowest and highest 3-year rates for prisoners (2.1) is considerably smaller than is the case for probationers (4.6), suggesting a wider range of unacceptable behavior among the probationers. While the sex offenders released from prison showed the lowest 3-year return rate for prisoners (21.8 percent), it was those sentenced for OWI who showed the lowest rate among the probationers. Part of this may be explained by the nature of offenses. Given that OWI offenders tend to be re-arrested for that same offense, and given that most of the OWI probationers were sentenced for OWI-1 (a serious misdemeanor), even a new conviction for OWI would not be likely to result in prison. In the case of sex offenders, however, even a low rate of new arrest may result in a proportionately high rate of imprisonment because it's apparent that the courts are not very tolerant of any misbehavior by sex offenders on probation or parole. This idea is also supported in Table 28, which showed that sex offenders tend to be revoked to prison on technical violations of probation without any arrest for a new offense.

A similar rationale might explain why probationers sentenced for public order crimes have a relatively high rate of commitment to prison. Most of those previously convicted of public order crimes had been convicted of aggravated misdemeanors (alcohol offenses, prostitution, and sex offender registry violations) Most of these offenders, as well, went to prison due to violation of the conditions of probation, suggesting that judges felt that community alternatives had been exhausted for this group.

Table 50: Rate of Any New Imprisonment, Prisoners and Probationers, by Offense Type

Lead Offense Type	Prisoners				Probationers			
	Total N	Cumulative Rate			Total N	Cumulative Rate		
		One Year	Two Years	Three Years		One Year	Two Years	Three Years
Drug	608	11.8%	28.8%	38.5%	828	7.0%	11.4%	15.1%
Public Order	51	19.6%	25.5%	33.3%	107	10.3%	16.8%	21.5%
OWI	858	11.5%	21.2%	26.3%	1,111	1.3%	3.6%	4.8%
Vs. Person	495	12.5%	28.3%	36.6%	590	4.9%	11.4%	13.1%
Property	1,228	20.3%	36.5%	45.0%	746	10.2%	18.6%	22.0%
Sex	197	10.2%	17.3%	21.8%	56	14.3%	17.9%	19.6%
Traffic	50	8.0%	22.0%	32.0%	103	4.9%	15.5%	20.4%
Weapons	73	21.9%	32.9%	43.8%	32	9.4%	12.5%	15.6%
Total	3,564	15.0%	28.8%	36.5%	3,573	5.7%	10.9%	13.4%

A comparison of prisoner and probation rates of recidivism by specific offense will be found in the appendix.

Probationer Recidivism Rates by Sentence Type

The next table presents the various recidivism rates based on the type of sentence resulting in probation (a suspended sentence, a deferred judgment, and reconsideration of sentence). Because of small numbers, the table shows only the three most common sentence types, eliminating deferred sentences, extensions of probation, and re-sentences after appeal. The “total” lines, however, include all probationers.

In assessing the table, it should be remembered that the types of offenders receiving each of these types of sentences are not necessarily similar. Those receiving deferred judgments, for example, are theoretically first offenders when it comes to being sentenced for anything but a simple misdemeanor. Many of them are also charged with OWI, which, as has been seen above, is an offense with a relatively low rate of recidivism.

Those entering probation as the result of a reconsideration of sentence (shock probation), on the other hand, are likely to either have been convicted of a more serious offense or have more substantial criminal histories. Shock probation is probably a “last chance” prior to prison commitment. Thus, it should not be surprising if these offenders show higher rates of recidivism than other probationers.

Results in Table 51 for the most part verify this contention. With the exception of two cells in the table, those entering probation as the result of deferred judgments show the table's lowest rates of recidivism at every stage. Generally, the various rates for those receiving deferred judgments are about half those of the shock probationers. The primary exception to this trend is found in admissions to prison, where the shock probationers show a much higher rate than either of the other two groups. Nearly one-quarter of the shock probationers return to prison within the first year, and four of ten return during the first two years. Curiously, however, the shock probationers show rates of violent felonies lower than those who had previously received suspended sentences.

Table 51: Recidivism of Total Cohort, by Sentence Type

Sentence Type	Criterion	Total N	Cumulative Rate		
			One Year	Two Years	Three Years
Deferred Judgment	Any new arrest	1,263	14.2%	23.2%	26.8%
Suspended Sentence		2,251	27.9%	40.7%	45.0%
Shock Probation		47	29.8%	51.1%	51.1%
Total		3,570	23.1%	34.6%	38.7%
Deferred Judgment	New felony arrest	1,263	3.6%	5.9%	7.1%
Suspended Sentence		2,251	10.7%	16.5%	19.7%
Shock Probation		47	6.4%	17.0%	19.1%
Total		3,570	8.2%	12.7%	15.3%
Deferred Judgment	New violent arrest	1,263	3.4%	6.1%	7.0%
Suspended Sentence		2,251	7.6%	12.4%	14.7%
Shock Probation		47	6.4%	10.6%	14.9%
Total		3,570	6.2%	10.2%	12.0%
Deferred Judgment	Violent felony arrest	1,263	0.6%	1.3%	1.4%
Suspended Sentence		2,251	1.7%	2.6%	3.3%
Shock Probation		47	0.0%	0.0%	2.1%
Total		3,570	1.3%	2.1%	2.6%
Deferred Judgment	Imprisonment	1,265	1.4%	3.3%	4.5%
Suspended Sentence		2,252	7.8%	14.5%	17.8%
Shock Probation		47	23.4%	40.4%	42.6%
Total		3,573	5.7%	10.9%	13.4%

Because of the suspicion that many of the disparities evident in Table 51 may have been due to differences in the types of offenders in each category rather than differences in outcome due to sentence type, Table 52 was prepared to permit comparisons among felons only. There is less consistency in this table, in that the repeatedly higher rates of recidivism for those on shock probation are not so much in evidence. This table generally shows little difference between shock probationers and those receiving suspended sentences, with the latter showing higher rates of recidivism on three of the five criteria after three years. The only criterion showing a “spread” between suspended sentences and shock probation is imprisonment, again suggesting that shock probation is regarded by judges and probation officers as a last resort prior to commitment to prison.

Table 52: Recidivism of Felon Cohort, by Sentence Type

Sentence Type	Criterion	Total N	Cumulative Rate		
			One Year	Two Years	Three Years
Deferred Judgment	Any new arrest	257	14.4%	24.9%	30.4%
Suspended Sentence		654	30.4%	40.8%	46.3%
Shock Probation		43	27.9%	48.8%	48.8%
Total		955	26.0%	36.9%	42.1%
Deferred Judgment	New felony arrest	257	4.3%	8.6%	10.5%
Suspended Sentence		654	11.9%	17.0%	20.8%
Shock Probation		43	7.0%	18.6%	18.6%
Total		955	9.6%	14.8%	17.9%
Deferred Judgment	New violent arrest	257	3.5%	7.0%	8.6%
Suspended Sentence		654	5.5%	9.6%	11.0%
Shock Probation		43	4.7%	7.0%	9.3%
Total		955	4.9%	8.8%	10.3%
Deferred Judgment	Violent felony arrest	257	0.4%	1.2%	1.2%
Suspended Sentence		654	1.1%	1.8%	2.1%
Shock Probation		43	0.0%	0.0%	0.0%
Total		955	0.8%	1.6%	1.8%
Deferred Judgment	Imprisonment	259	6.2%	10.4%	13.9%
Suspended Sentence		655	12.7%	22.9%	27.0%
Shock Probation		43	23.3%	37.2%	39.5%
Total		958	11.4%	20.1%	24.0%

Recidivism Rates by Judicial District

The tables below present recidivism rates based upon the judicial district providing supervision. In examining these tables, it should be remembered that this report has previously found substantial differences in offender types among the districts. Given that there are differences in rates of recidivism based on offender types and offense seriousness, we would expect to see some differences among the districts in these tables. To help control for these discrepancies, the tables have been divided into categories for felons and misdemeanants.

Table 53 shows the overall rate of new arrests for probationers in the cohort, with the Sixth District showing the lowest total rates of new arrests and the Fourth and Eighth Districts showing the highest rates, depending on the length of tracking. The total figures may be a bit deceiving, however, as we have previously seen a high percentage of OWI offenders in the Sixth District and high percentages of felons in the Seventh and Eighth Districts. Thus, looking at new arrests among the felons paints a different picture than the totals, as the highest rate of new arrests among felons after three years is found in the Sixth District and the lowest in the First.

Note also that, while the overall re-arrest rate of misdemeanants is lower statewide than is true for felons, five of the districts show higher re-arrest rates for misdemeanants.

Table 53: Rate of Any New Arrest, by Judicial District

Offense Level	Judicial District	Total N	Cumulative Rate		
			One Year	Two Years	Three Years
Felony	First	132	21.2%	32.6%	35.6%
	Second	151	29.8%	39.7%	43.7%
	Third	88	25.0%	35.2%	36.4%
	Fourth	47	27.7%	36.2%	44.7%
	Fifth	252	21.0%	34.9%	41.3%
	Sixth	100	36.0%	44.0%	51.0%
	Seventh	86	27.9%	36.0%	45.3%
	Eighth	99	27.3%	38.4%	42.4%
	Total	955	26.0%	36.9%	42.1%
Misd.	First	362	25.1%	38.7%	43.6%
	Second	306	22.2%	32.7%	35.9%
	Third	326	25.2%	39.6%	42.6%
	Fourth	71	32.4%	45.1%	46.5%
	Fifth	923	22.0%	33.6%	37.2%
	Sixth	503	14.5%	22.5%	25.6%
	Seventh	56	25.0%	41.1%	46.4%
	Eighth	68	33.8%	55.9%	60.3%
	Total	2,615	22.1%	33.8%	37.4%
Total	First	494	24.1%	37.0%	41.5%
	Second	457	24.7%	35.0%	38.5%
	Third	414	25.1%	38.6%	41.3%
	Fourth	118	30.5%	41.5%	45.8%
	Fifth	1,175	21.8%	33.9%	38.0%
	Sixth	603	18.1%	26.0%	29.9%
	Seventh	142	26.8%	38.0%	45.8%
	Eighth	167	29.9%	45.5%	49.7%
	Total	3,570	23.1%	34.6%	38.7%

Table 54, which looks only at new arrests for felonies, shows the same basic pattern among the districts as Table 53, with the Sixth District exhibiting the lowest total rates of recidivism (due to very low rates for misdemeanants) and the Fourth, Seventh, and Eighth Districts showing the highest rates. The table shows that, after three years, about one probationer in six is re-arrested for a new felony arrest, with slightly more than half the arrests occurring during the first year after assignment to probation.

Table 54: Rate of New Felony Arrest, by Judicial District

Level	Judicial District	Total N	Cumulative Rate		
			One Year	Two Years	Three Years
Felony	First	132	8.3%	10.6%	12.9%
	Second	151	10.6%	17.9%	21.2%
	Third	88	8.0%	11.4%	13.6%
	Fourth	47	4.3%	12.8%	17.0%
	Fifth	252	8.7%	15.5%	18.3%
	Sixth	100	15.0%	18.0%	20.0%
	Seventh	86	10.5%	14.0%	18.6%
	Eighth	99	10.1%	15.2%	20.2%
	Total	955	9.6%	14.8%	17.9%
Misd.	First	362	6.1%	13.0%	16.6%
	Second	306	8.2%	11.4%	13.7%
	Third	326	10.4%	14.7%	16.6%
	Fourth	71	16.9%	25.4%	26.8%
	Fifth	923	8.1%	12.5%	14.7%
	Sixth	503	3.0%	5.0%	6.2%
	Seventh	56	12.5%	19.6%	25.0%
	Eighth	68	13.2%	22.1%	26.5%
	Total	2,615	7.6%	12.0%	14.3%
Total	First	494	6.7%	12.3%	15.6%
	Second	457	9.0%	13.6%	16.2%
	Third	414	9.9%	14.0%	15.9%
	Fourth	118	11.9%	20.3%	22.9%
	Fifth	1,175	8.3%	13.1%	15.5%
	Sixth	603	5.0%	7.1%	8.5%
	Seventh	142	11.3%	16.2%	21.1%
	Eighth	167	11.4%	18.0%	22.8%
	Total	3,570	8.2%	12.7%	15.3%

As in the previous table, the felons show a different pattern. Among the felons, the Sixth District again exhibits the highest rates of new felony arrests during the first and second years after entry to probation, while the Second, Eighth, and Sixth Districts show the highest rates after three years. A comparison of rates after one and three years is also instructive, as districts that exhibit low rates after the first year do not necessarily show

similarly low rates after three. While the Fourth and Fifth Districts show below-average felony arrest rates after one year, by the end of the third year their rates are very close to the state average. In the First and Third Districts, on the other hand, low rates in the first year are continued through three years, and the Sixth District, which exhibits a high rate after one year, adds only another five percent to its rate during the two ensuing years.

Table 55 shows the rate of new violent arrest, with about one probationer in eight being arrested for such offenses after three years. This table, like Table 65, shows the Sixth Judicial District with the lowest rate of new arrests after three years. The ranking of the districts in Table 55 is very similar to that in Table 54, as the districts having the highest rates of new felony arrests also show the highest rates of new violent arrests.

Table 55: Rate of New Violent Arrest, by Judicial District

Level	Judicial District	Total N	Cumulative Rate		
			One Year	Two Years	Three Years
Felony	First	132	4.5%	7.6%	8.3%
	Second	151	4.0%	7.3%	7.9%
	Third	88	4.5%	9.1%	11.4%
	Fourth	47	4.3%	4.3%	6.4%
	Fifth	252	4.8%	8.7%	9.9%
	Sixth	100	7.0%	12.0%	14.0%
	Seventh	86	4.7%	10.5%	14.0%
	Eighth	99	6.1%	10.1%	11.1%
	Total	955	4.9%	8.8%	10.3%
Misd.	First	362	8.6%	11.9%	14.9%
	Second	306	6.5%	10.8%	13.4%
	Third	326	6.4%	12.0%	13.5%
	Fourth	71	11.3%	18.3%	19.7%
	Fifth	923	6.9%	11.3%	12.8%
	Sixth	503	3.2%	5.4%	7.0%
	Seventh	56	7.1%	12.5%	14.3%
	Eighth	68	13.2%	20.6%	26.5%
	Total	2,615	6.6%	10.7%	12.7%
Total	First	494	7.5%	10.7%	13.2%
	Second	457	5.7%	9.6%	11.6%
	Third	414	6.0%	11.4%	13.0%
	Fourth	118	8.5%	12.7%	14.4%
	Fifth	1,175	6.5%	10.7%	12.2%
	Sixth	603	3.8%	6.5%	8.1%
	Seventh	142	5.6%	11.3%	14.1%
	Eighth	167	9.0%	14.4%	17.4%
	Total	3,570	6.2%	10.2%	12.0%

Among the felons, there is relative consistency in arrests for violent crimes, particularly during the first year, which shows rates ranging from four percent to seven percent. Most

of the districts exhibit three-year rates about twice what was seen in the first year, although the change in the Seventh District (4.7 percent to 14 percent) is quite large.

Table 56 shows low rates of new violent felony arrests among all the judicial districts, as only about one probationer in 38 was arrested for a new violent felony during the tracking period. Note that the rates in Table 56 are considerably below those in the previous table, and also that misdemeanants show a higher rate of new violent felonies than felons statewide and in five of the districts.

Table 56: Rate of New Violent Felony Arrest, by Judicial District

Level	Judicial District	Total N	Cumulative Rate		
			One Year	Two Years	Three Years
Felony	First	132	1.5%	2.3%	2.3%
	Second	151	0.0%	1.3%	1.3%
	Third	88	1.1%	2.3%	2.3%
	Fourth	47	0.0%	0.0%	0.0%
	Fifth	252	0.4%	1.2%	1.2%
	Sixth	100	1.0%	1.0%	1.0%
	Seventh	86	2.3%	3.5%	4.7%
	Eighth	99	1.0%	1.0%	2.0%
	Total	955	0.8%	1.6%	1.8%
Misd.	First	362	1.1%	2.5%	3.0%
	Second	306	2.9%	3.9%	4.9%
	Third	326	0.6%	1.5%	1.8%
	Fourth	71	2.8%	4.2%	4.2%
	Fifth	923	2.2%	2.9%	3.6%
	Sixth	503	0.2%	0.4%	0.6%
	Seventh	56	1.8%	1.8%	3.6%
	Eighth	68	0.0%	1.5%	5.9%
	Total	2,615	1.5%	2.3%	2.9%
Total	First	494	1.2%	2.4%	2.8%
	Second	457	2.0%	3.1%	3.7%
	Third	414	0.7%	1.7%	1.9%
	Fourth	118	1.7%	2.5%	2.5%
	Fifth	1,175	1.8%	2.6%	3.1%
	Sixth	603	0.3%	0.5%	0.7%
	Seventh	142	2.1%	2.8%	4.2%
	Eighth	167	0.6%	1.2%	3.6%
	Total	3,570	1.3%	2.1%	2.6%

The rate of new imprisonments is found in Table 57, with a pattern similar to those in other tables in this section. The Sixth District shows the lowest total rates of

imprisonment, with the Seventh and Eighth Districts exhibiting the highest. Interestingly, the highest three-year rate in the table is for misdemeanants in the Eighth District

The ranking for felons is somewhat different than the total for all probationers, as the Fourth and Third districts exhibit the lowest rates after three years and the Second, First, and Eighth districts show the highest rates. Note that while the range of incarceration rates for felons is wide after three years (10.6 percent to 29.8 percent) the range for misdemeanants is even wider (2.6 percent to 36.8 percent). This may suggest that a good part of the disparity in incarceration rates among the districts might be due to differential handling of misdemeanants.

Table 57: Rate of Any New Imprisonment, by Judicial District

Level	Judicial District	Total N	Cumulative Rate		
			One Year	Two Years	Three Years
Felony	First	132	10.6%	25.0%	28.8%
	Second	151	14.6%	23.2%	29.8%
	Third	88	7.9%	10.1%	11.2%
	Fourth	47	4.3%	8.5%	10.6%
	Fifth	252	12.7%	22.2%	25.0%
	Sixth	100	8.9%	15.8%	18.8%
	Seventh	86	12.8%	20.9%	25.6%
	Eighth	99	12.0%	22.0%	28.0%
	Total	955	11.4%	20.1%	24.0%
Misd.	First	362	5.2%	11.0%	13.8%
	Second	306	4.2%	6.5%	7.8%
	Third	326	1.5%	5.5%	7.1%
	Fourth	71	4.2%	9.9%	12.7%
	Fifth	923	3.8%	7.6%	10.6%
	Sixth	503	0.6%	1.6%	2.6%
	Seventh	56	7.1%	12.5%	12.5%
	Eighth	68	19.1%	36.8%	36.8%
	Total	2,615	3.6%	7.5%	9.5%
Total	First	494	6.7%	14.8%	17.8%
	Second	457	7.7%	12.0%	15.1%
	Third	414	2.9%	6.5%	8.0%
	Fourth	118	4.2%	9.3%	11.9%
	Fifth	1,175	5.7%	10.7%	13.7%
	Sixth	603	2.0%	4.0%	5.3%
	Seventh	142	10.6%	17.6%	20.4%
	Eighth	167	14.9%	28.0%	31.5%
	Total	3,570	5.7%	10.9%	13.4%

Appendix I: Type of Discharge from Probation**Discharge Type, by Offense Class and Type**

Offense Class and Type	Total N	Not Disch.	Discharge Type				% Positive¹⁷
			Death	Negative	Neutral	Positive	
B felony not vs. person	20	8	0	2	0	10	83.3%
C felony not vs. person	178	44	2	41	0	91	67.9%
C felony vs. person	27	13	0	3	0	11	78.6%
D felony OWI	92	8	0	12	1	71	84.5%
D felony not vs. person	583	129	3	112	0	339	74.7%
D felony vs. person	58	12	0	11	0	35	76.1%
Felony not vs. person	871	189	5	167	1	509	74.6%
Felony vs. person	87	25	0	14	0	48	77.4%
Total felony	958	214	5	181	1	557	74.9%
Other misd. not vs. person	1	0	0	0	1	0	0.0%
Agg. misdemeanor OWI	276	12	2	41	0	221	83.7%
Agg. misdemeanor not vs. person	425	27	0	117	0	281	70.6%
Agg. misdemeanor vs. person	216	9	1	60	0	146	70.5%
Ser. misdemeanor OWI	743	30	3	79	1	630	88.4%
Ser. misdemeanor not vs. person	566	21	2	125	0	418	76.7%
Ser. misdemeanor vs. person	251	8	1	58	0	184	75.7%
Simple misd. not vs. person	49	0	0	3	0	46	93.9%
Simple misdemeanor vs. person	88	1	0	19	0	68	78.2%
Misdemeanor not vs. person	2,059	90	7	365	1	1,596	81.1%
Misdemeanor vs. person	556	18	2	137	1	398	74.0%
Total misdemeanor	2,615	108	9	502	2	1,994	79.5%
Total not vs. person	2,930	279	12	532	2	2,105	79.4%
Total vs. person	643	43	2	151	1	446	74.3%
Total	3,573	322	14	683	3	2,551	78.5%

¹⁷ Percent positive is based upon total number of cases minus current cases.

Discharge Type, by Offense

Offense Description	Total N	Not Disch.	Discharge Type				% Posi- tive
			Death	Nega- tive	Neu- tral	Posi- tive	
Accessory After Fact, Felony	11	1	0	1	0	9	90.0%
Administer Harmful Substance	1	0	0	0	0	1	100.0%
Alcohol Chapter 123 Viol/Habitual	2	0	0	1	0	1	50.0%
Alcohol Chapter 123, 2nd Conviction	2	0	0	2	0	0	0.0%
Alcohol Chapter 123, 3rd and Subsequent	17	1	0	5	0	11	68.8%
Animal Abuse	3	0	0	0	0	3	100.0%
Arson-2nd Degree	1	0	1	0	0	0	0.0%
Arson-3rd Degree	4	0	0	0	0	4	100.0%
Assault - Serious Injury	4	0	0	0	0	4	100.0%
Assault Causing Injury - Peace Officers/Others	5	0	0	2	0	3	60.0%
Assault Hate Crime - Injury - Mental	2	0	0	0	0	2	100.0%
Assault Intent of Injury Peace Officer/Others	1	0	0	1	0	0	0.0%
Assault on Peace Officers and Others	11	1	0	2	0	8	80.0%
Assault to Sex Abuse/No Injury	9	0	0	2	0	7	77.8%
Assault to Sex Abuse/Serious Injury	1	1	0	0	0	0	--
Assault w/o Intent with Injury	2	0	0	0	0	2	100.0%
Assault with a Weapon	25	0	0	7	0	18	72.0%
Assault With a Weapon - Peace Officers/Others	1	0	0	0	0	1	100.0%
Assault with bodily injury or mental illness	96	1	0	20	0	75	78.9%
Assault with Intent	37	1	1	10	0	25	69.4%
Att. Burglary-2nd Degree	3	0	0	2	0	1	33.3%
Att. Burglary-3rd Degree	23	1	0	7	0	15	68.2%
Burglary 3rd Degree-1st Offense	15	1	0	4	0	10	71.4%
Burglary-2nd Degree	10	2	0	7	0	1	12.5%
Burglary-3rd Degree	104	19	0	27	0	58	68.2%
Carrying Weapons	13	1	0	5	0	7	58.3%
Child Endangerment - Serious Injury	1	0	0	0	0	1	100.0%
Child Endangerment/No Injury	43	1	0	6	0	36	85.7%
Compulsory Education Violation	1	0	0	0	0	1	100.0%
Conspiracy to Deliver Meth - 1st Offense	1	1	0	0	0	0	--
Conspiracy to Commit Felony (Property)	1	0	0	0	0	1	100.0%
Conspiracy to Commit Forcible Felony	3	2	0	1	0	0	0.0%
Conspiracy to Commit Non-Forcible Felony	2	0	0	0	0	2	100.0%

Offense Description	Total N	Not Disch.	Discharge Type				% Posi- tive
			Death	Nega- tive	Neu- tral	Posi- tive	
Conspire, Recruit Person Under 18 to Del, Mfg Sched I, II, III, IV	1	0	0	0	0	1	100.0%
Criminal Mischief-2nd Degree	15	2	0	5	0	8	61.5%
Criminal Mischief-3rd Degree	25	1	0	4	0	20	83.3%
Criminal Mischief-4th Degree	18	0	0	3	0	15	83.3%
Criminal Mischief-5th Degree	4	0	0	1	0	3	75.0%
Dependent Adult Abuse - Reckless Serious Injury	1	0	0	0	0	1	100.0%
Disem/Exhibit Obscene Material/Minor	1	0	0	0	0	1	100.0%
Disorderly Conduct	6	0	0	0	0	6	100.0%
Dist/Poss w/Int to Dist Sched I, II to Persons Under 18	1	0	0	0	0	1	100.0%
Domestic Abuse Assault	49	1	0	11	0	37	77.1%
Domestic Abuse Assault - 2nd SI	14	1	0	2	0	11	84.6%
Domestic Abuse Assault - 2nd SI/SE	24	1	0	9	0	14	60.9%
Domestic Abuse Assault - 3rd or Subs. Offense	2	0	0	0	0	2	100.0%
Domestic Abuse Assault - Bodily Inj - Mental	47	3	1	15	0	28	63.6%
Domestic Abuse Assault w/o Intent w/Injury	43	2	0	9	0	32	78.0%
Domestic Abuse Assault With Intent	27	5	0	13	0	9	40.9%
Domestic Abuse, Simple Assault, Prior	1	0	0	0	0	1	100.0%
Domestic Assault Ref. 708.2(1)	3	1	0	0	0	2	100.0%
Domestic Assault Ref. 708.2(2)	8	0	0	3	0	5	62.5%
Domestic Assault Ref. 708.2(3)	1	0	0	0	0	1	100.0%
Driving License Denied or Revoked	1	0	0	0	0	1	100.0%
Driving while Barred	65	5	0	23	0	37	61.7%
Driving While License Denied or Revoked	10	0	0	3	0	7	70.0%
Driving while License Suspended	1	0	0	0	0	1	100.0%
Drug Paraphernalia	1	0	0	0	0	1	100.0%
Eluding-Aggravated Misdemeanor	3	1	0	1	0	1	50.0%
Eluding-Class D Felony	7	2	0	1	0	4	80.0%
Eluding-Serious Misdemeanor	5	0	0	1	0	4	80.0%
Extortion	6	1	0	1	0	4	80.0%
Failure to Affix Tax Stamp	22	5	0	1	0	16	94.1%
Failure to Appear - Felony Charge	3	0	0	1	0	2	66.7%
Failure to Report Contraband in Corr. Facility	1	0	0	0	0	1	100.0%

Offense Description	Total N	Not Disch.	Discharge Type				% Posi- tive
			Death	Nega- tive	Neu- tral	Posi- tive	
False Imprisonment	1	0	0	1	0	0	0.0%
False M.V. Lic., Forms ID Card	4	1	0	1	0	2	66.7%
False Report of Indictable Crime to Law Enf.	3	0	0	0	0	3	100.0%
False Report to Law Enforcement	1	0	0	0	0	1	100.0%
False Reports	1	0	0	0	0	1	100.0%
Forge/Alter Counterfeit Lottery Ticket	1	0	0	0	0	1	100.0%
Forgery	128	32	1	21	0	74	77.1%
Fraudulent Practice-1st Degree	2	1	0	0	0	1	100.0%
Fraudulent Practice-2nd Degree	15	7	0	0	0	8	100.0%
Fraudulent Practice-3rd Degree	9	0	0	1	0	8	88.9%
Fraudulent Practice-4th Degree	1	0	0	0	0	1	100.0%
Furnish Controlled Substance To Inmates	1	0	0	0	0	1	100.0%
Gathering for Use of Drugs - Marijuana	5	0	0	0	0	5	100.0%
Gathering For Use of Drugs - Other than MJ	4	0	0	0	0	4	100.0%
Go Armed w/Knife Blade >8"	1	0	0	0	0	1	100.0%
Go Armed w/Knife Blade 5" to 8"	1	0	0	0	0	1	100.0%
Going Armed with Intent	6	2	0	2	0	2	50.0%
Harassment / 1st Degree	22	0	0	6	0	16	72.7%
Harassment / 2nd Degree	12	0	0	2	0	10	83.3%
Harassment / 3rd Degree	8	0	0	2	0	6	75.0%
Harboring a Runaway	4	0	0	1	0	3	75.0%
Identity Theft	12	3	0	1	0	8	88.9%
Illegal Gaming/Betting 3rd Degree	1	0	0	0	0	1	100.0%
Incest	4	1	0	0	0	3	100.0%
Indecent Contact with a Child	4	0	0	0	0	4	100.0%
Indecent Exposure	7	0	0	1	0	6	85.7%
Inmate Assault on Corrections Officer	1	0	0	0	0	1	100.0%
Insurance Fraud	4	1	0	0	0	3	100.0%
Interference w/Official Acts	9	0	0	4	0	5	55.6%
Interference w/Official Acts - Bodily Injury	2	0	0	0	0	2	100.0%
Interference w/Official Acts - Injury	4	0	0	1	0	3	75.0%
Lascivious Acts with a Child	7	3	0	4	0	0	0.0%
Lascivious Acts with a Child - 2 years PA/WR after TDD.	3	0	0	1	0	2	66.7%
Lascivious Conduct/Minor	2	0	0	1	0	1	50.0%

Offense Description	Total N	Not Disch.	Discharge Type				% Posi- tive
			Death	Nega- tive	Neu- tral	Posi- tive	
Leave Scene of Injury Accident	2	0	0	0	0	2	100.0%
Make Alcohol Available to Minor	1	0	0	0	0	1	100.0%
Manner of Conveyance-Gun	1	0	0	0	0	1	100.0%
Mfg./Deliver Other Controlled Substance	1	0	0	0	0	1	100.0%
NCIC - Assault	1	0	0	0	1	0	0.0%
Neglect – No Injury - Health Care Res.	1	0	0	0	0	1	100.0%
Neglect or Abandonment	3	1	0	0	0	2	100.0%
Obstruction Emergency Communications	1	0	0	0	0	1	100.0%
Obtain Prescription Drug by Fraud	2	0	0	0	0	2	100.0%
Ongoing Criminal Conduct	4	2	0	0	0	2	100.0%
Operate Vehicle w/o Consent	33	2	0	12	0	19	61.3%
OWI-1st Offense	743	30	3	79	1	630	88.4%
OWI-2nd Offense	276	12	2	41	0	221	83.7%
OWI-3rd Offense	92	8	0	12	1	71	84.5%
Perjury	3	1	0	0	0	2	100.0%
Perjury Vehicle Licensing	1	0	0	0	0	1	100.0%
Pistol, Revolver-Acquisition w/o Permit, Transfer to	1	0	0	0	0	1	100.0%
Police Dogs - Interference	1	0	0	0	0	1	100.0%
Possess Burglary Tools	4	0	0	1	0	3	75.0%
Possess Contraband in Correctional Facility	1	0	0	0	0	1	100.0%
Possess Controlled Substance	13	0	0	5	0	8	61.5%
Possession Marijuana	30	2	0	10	0	18	64.3%
Precursor Substance Violation	1	0	0	0	0	1	100.0%
Prescription Drug Cont Sub See 204.401 - 1	1	0	0	0	0	1	100.0%
Prescription Drug Viol (C.S.), 204.401(1B)	1	0	0	0	0	1	100.0%
Prescription Drug Viol. (Not Cont. Subst.) - 2nd Offense	2	1	0	0	0	1	100.0%
Prevent Apprehension, Obstruct Prosecution	2	0	0	1	0	1	50.0%
Prohibited Acts Premises	1	0	0	0	0	1	100.0%
Prohibited Acts/Contr.,CF, Sim. Substance	1	0	0	0	0	1	100.0%
Proh Acts-Distributors, Registrants, Proprietors	3	0	0	0	0	3	100.0%
Prohibited Acts-Mfg, Del, Conspire or Possess Sched IV or V	4	0	0	1	0	3	75.0%
Prohibited Acts-Mfg, Del, Conspire or Possess w/Int-Amphetamine >5gm but < 5kg	1	0	0	0	0	1	100.0%
Prohibited Acts-Mfg, Del, Conspire or Possess w/Int-Cocaine > 5gm but < 50 gm	1	0	0	0	0	1	100.0%

Offense Description	Total N	Not Disch.	Discharge Type				% Posi- tive
			Death	Nega- tive	Neu- tral	Posi- tive	
Prohibited Acts-Mfg, Del, Conspire or Possess w/Int-LSD < 10gm	1	0	0	1	0	0	0.0%
Prohibited Acts-Mfg, Del, Conspire or Possess w/Int-Meth > 5gm but < 5kg	3	3	0	0	0	0	--
Proh Acts-Mfg, Del, Conspire, or Poss. w/Int Prohibited Acts-Mfg, Del, Conspire, or Possess w/Int-Amphetamine < 5 gm	12	4	0	2	0	6	75.0%
Prohibited Acts-Mfg, Del, Conspire, or Possess w/Int-Meth < 5 gm	2	0	0	0	0	2	100.0%
Prohibited Acts-Mfg, Del, Conspire, or Possess w/Int-Other Substance Sched I, II, III	116	28	0	27	0	61	69.3%
Prohibited Acts-Possess Prod Intended for Mfg Cont Substance-Anhydrous Ammonia	11	3	0	0	0	8	100.0%
Prohibited Acts-Possess Prod Intended for Mfg Cont Substance-Ephedrine	4	1	0	2	0	1	33.3%
Prohibited Acts-Possess Prod Intended for Mfg Cont Substance-Ethyl Ether	1	0	0	1	0	0	0.0%
Prohibited Acts-Possess Prod Intended for Mfg Cont Substance-Pseudoephedrine	4	0	0	2	0	2	50.0%
Prohibited Acts-Possess Prod Intended for Mfg Cont Substance-Red Phosphorous	1	0	0	0	0	1	100.0%
Prohibited Acts-Possess Prod Intended for Mfg Cont Substance-Lithium	1	0	0	0	0	1	100.0%
Prohibited Acts-Possess Product Intended For Mfg Any Cont Substance	3	1	0	0	0	2	100.0%
Proh Acts-Poss w/o Prescription - 1st Offense	16	5	0	3	0	8	72.7%
Proh Acts-Poss w/o Prescription - 2nd Offense	280	9	1	52	0	218	80.4%
Prohibited Acts-Possess w/o Prescription - 3rd and subsequent	26	2	0	8	0	16	66.7%
Prohibited Acts-Possess w/o Prescription - Marijuana - 1st offense	25	4	0	13	0	8	38.1%
Prohibited Acts-Possess w/o Prescription - Marijuana - 2nd offense	104	6	0	23	0	75	76.5%
Prohibited Acts-Possess w/o Prescription - Marijuana - 3rd and subsequent	23	0	0	11	0	12	52.2%
Prohibited Acts-Premises violation	10	0	0	3	0	7	70.0%
Prohibited Acts-Sell, Distribute, Possess Precursor Products For Mfg Illegal Substance	1	0	0	1	0	0	0.0%
Prohibited Acts/Marijuana, <50 Kilo	2	0	0	0	0	2	100.0%
Prostitution	79	16	0	10	0	53	84.1%
Provide Alcohol to Minor	11	0	0	7	0	4	36.4%
	2	0	0	0	0	2	100.0%

Offense Description	Total N	Not Disch.	Discharge Type				% Posi- tive
			Death	Nega- tive	Neu- tral	Posi- tive	
Public Intoxication	11	0	0	0	0	11	100.0%
Receive Precursor Substance./Mfg C.S.	1	1	0	0	0	0	--
Receive, Transport, Possess Firearm Felon	12	2	0	1	0	9	90.0%
Reckless Driving	4	0	0	0	0	4	100.0%
Reckless Use Fire/Explosives	4	0	0	1	0	3	75.0%
Riot	1	0	0	1	0	0	0.0%
Serious Injury by Vehicle	1	1	0	0	0	0	--
Sex Offender Registry - 1st Offense	10	2	0	5	0	3	37.5%
Sex Offender Registry - 2nd Offense	1	0	0	1	0	0	0.0%
Sexual Abuse - 3rd - Not Forcible Felony	4	3	0	0	0	1	100.0%
Sexual Abuse - 3rd Degree	14	6	0	2	0	6	75.0%
Sexual Misconduct w/Juvenile Offender	1	0	0	0	0	1	100.0%
Simple Assault	30	0	0	6	0	24	80.0%
Solicitation to Commit Felony	3	1	0	0	0	2	100.0%
Supply Alcohol to Person Under Age-Serious Injury	2	0	0	0	0	2	100.0%
Tampering with Records	6	0	0	1	0	5	83.3%
Terrorism	3	1	0	1	0	1	50.0%
Theft-1st Degree	27	7	1	6	0	13	65.0%
Theft-2nd Degree	103	28	2	18	0	55	73.3%
Theft-3rd Degree	89	6	0	19	0	64	77.1%
Theft-4th Degree	47	1	1	11	0	34	73.9%
Theft-5th Degree	11	0	0	1	0	10	90.9%
Trespass - Injury/Damage >\$100	3	0	0	2	0	1	33.3%
Unauthorized Possession Offensive Weapon	2	0	0	0	0	2	100.0%
Unauthorized Use of Credit Cards	28	2	0	8	0	18	69.2%
Unlawful Possession of RX Drug	4	1	0	0	0	3	100.0%
Unlawful use of Certificate	1	0	0	1	0	0	0.0%
Violate Custodial Order	1	0	0	0	0	1	100.0%
Willful Injury	1	0	0	0	0	1	100.0%
Willful Injury Causing Bodily Injury	16	3	0	1	0	12	92.3%
Total	3,573	322	14	683	3	2,551	78.5%

Appendix II: Comparison of Prisoner and Probationer Rates by Offense**Rate of Any New Arrest, Prisoners and Probationers, by Offense**

Lead Offense	Prisoners				Probationers			
	Total N	First Year	Second Year	Third Year	Total N	First Year	Second Year	Third Year
Alcohol	10	40.0%	60.0%	60.0%	37	27.0%	48.6%	51.4%
Arson	19	31.6%	47.4%	47.4%	9	22.2%	22.2%	22.2%
Assault	262	33.2%	55.7%	60.7%	520	25.2%	38.5%	44.0%
Burglary	455	38.9%	60.7%	68.1%	159	35.2%	52.8%	56.6%
Drug Possession	36	44.4%	61.1%	61.1%	535	27.5%	38.7%	43.6%
Drug Trafficking	540	25.2%	42.2%	49.6%	251	19.5%	33.1%	38.6%
Other Drug	28	32.1%	53.6%	57.1%	41	22.0%	34.1%	41.5%
Flight/Escape	23	39.1%	60.9%	65.2%	5	40.0%	60.0%	60.0%
Forgery/Fraud	240	38.3%	60.8%	66.7%	192	31.8%	40.6%	47.4%
Kidnap	6	16.7%	66.7%	66.7%	6	16.7%	66.7%	66.7%
Murder	22	18.2%	27.3%	31.8%	0	--	--	--
Other vs. person	42	19.0%	33.3%	40.5%	55	16.4%	29.1%	30.9%
OWI	860	21.0%	37.9%	44.4%	1,111	15.1%	24.2%	26.6%
Prostitution	18	38.9%	66.7%	66.7%	11	54.5%	72.7%	81.8%
Public Order	45	37.8%	62.2%	68.9%	52	13.5%	21.2%	26.9%
Robbery	145	37.9%	63.4%	69.7%	6	16.7%	16.7%	16.7%
Sex Offenses	192	20.3%	32.8%	37.5%	56	12.5%	17.9%	19.6%
Theft	416	41.1%	62.7%	68.5%	322	29.2%	38.8%	41.6%
Traffic	48	29.2%	52.1%	56.3%	102	35.3%	49.0%	55.9%
Vandalism	28	39.3%	60.7%	75.0%	65	26.2%	58.5%	61.5%
Weapons	72	33.3%	51.4%	58.3%	32	37.5%	50.0%	53.1%
Total	3,511	30.4%	49.8%	56.0%	3,570	23.1%	34.6%	38.7%

Rate of New Felony Arrest, Prisoners and Probationers, by Offense

Lead Offense	Prisoners				Probationers			
	Total N	First Year	Second Year	Third Year	Total N	First Year	Second Year	Third Year
Alcohol	10	10.0%	30.0%	30.0%	37	5.4%	16.2%	18.9%
Arson	19	5.3%	15.8%	21.1%	9	11.1%	11.1%	11.1%
Assault	262	16.8%	27.1%	33.2%	520	9.4%	13.8%	17.3%
Burglary	455	19.3%	33.6%	40.9%	159	11.9%	19.5%	24.5%
Drug Possession	36	22.2%	33.3%	41.7%	535	9.2%	14.0%	16.6%
Drug Trafficking	540	13.7%	20.6%	27.2%	251	8.4%	15.1%	18.3%
Other Drug	28	14.3%	32.1%	35.7%	41	9.8%	19.5%	22.0%
Flight/Escape	23	17.4%	39.1%	43.5%	5	20.0%	20.0%	20.0%
Forgery/Fraud	240	19.6%	32.9%	38.3%	192	17.7%	24.0%	28.1%
Kidnap	6	16.7%	33.3%	50.0%	6	0.0%	16.7%	16.7%
Murder	22	4.5%	9.1%	9.1%	0	--	--	--
Other vs. person	42	2.4%	11.9%	19.0%	55	5.5%	9.1%	12.7%
OWI	860	8.3%	17.2%	20.6%	1,111	3.3%	6.1%	7.5%
Prostitution	18	16.7%	16.7%	16.7%	11	18.2%	27.3%	27.3%
Public Order	45	17.8%	33.3%	44.4%	54	5.6%	9.3%	14.8%
Robbery	145	21.4%	40.0%	47.6%	6	16.7%	16.7%	16.7%
Sex Offenses	192	7.3%	12.5%	15.6%	56	7.1%	7.1%	8.9%
Theft	416	21.6%	35.3%	40.9%	322	12.4%	16.5%	17.7%
Traffic	48	8.3%	20.8%	27.1%	103	13.6%	20.4%	25.2%
Vandalism	28	10.7%	21.4%	32.1%	65	4.6%	15.4%	16.9%
Weapons	72	19.4%	34.7%	38.9%	32	12.5%	18.8%	21.9%
Total	3,511	14.6%	25.5%	30.9%	3,570	8.2%	12.7%	15.3%

Rate of New Violent Arrest, Prisoners and Probationers, by Offense

Lead Offense	Prisoners				Probationers			
	Total N	First Year	Second Year	Third Year	Total N	First Year	Second Year	Third Year
Alcohol	10	20.0%	30.0%	30.0%	37	5.4%	13.5%	16.2%
Arson	19	15.8%	15.8%	21.1%	9	11.1%	11.1%	11.1%
Assault	262	14.9%	31.7%	37.0%	520	10.6%	17.3%	20.8%
Burglary	455	11.2%	22.9%	26.6%	159	8.8%	15.7%	17.0%
Drug Possession	36	11.1%	19.4%	25.0%	535	5.8%	10.7%	12.1%
Drug Trafficking	540	7.6%	13.5%	16.3%	251	2.4%	4.8%	6.8%
Other Drug	28	7.1%	7.1%	7.1%	41	4.9%	12.2%	14.6%
Flight/Escape	23	13.0%	17.4%	17.4%	5	20.0%	20.0%	20.0%
Forgery/Fraud	239	6.7%	19.2%	23.8%	192	4.2%	9.4%	10.4%
Kidnap	6	0.0%	16.7%	16.7%	6	16.7%	16.7%	16.7%
Murder	22	9.1%	13.6%	13.6%	--	--	--	--
Other vs. person	42	9.5%	19.0%	21.4%	55	5.5%	9.1%	10.9%
OWI	860	5.8%	11.2%	13.4%	1,111	4.0%	6.3%	7.2%
Prostitution	18	22.2%	27.8%	27.8%	11	0.0%	0.0%	9.1%
Public Order	45	8.9%	20.0%	28.9%	52	1.9%	1.9%	3.8%
Robbery	145	22.1%	37.2%	41.4%	6	16.7%	16.7%	16.7%
Sex Offenses	192	7.8%	13.5%	15.1%	56	1.8%	1.8%	5.4%
Theft	416	12.0%	20.9%	23.6%	322	7.8%	11.5%	14.3%
Traffic	48	6.3%	10.4%	14.6%	102	13.7%	16.7%	18.6%
Vandalism	28	17.9%	32.1%	42.9%	65	12.3%	23.1%	23.1%
Weapons	72	12.5%	20.8%	29.2%	32	6.3%	6.3%	15.6%
Total	3,510	9.7%	18.3%	21.6%	3,570	6.2%	10.2%	12.0%

Rate of New Violent Felony Arrest, Prisoners and Probationers, by Offense

Lead Offense	Prisoners				Probationers			
	Total N	First Year	Second Year	Third Year	Total N	First Year	Second Year	Third Year
Alcohol	10	10.0%	20.0%	20.0%	37	2.7%	8.1%	8.1%
Arson	19	10.5%	10.5%	10.5%	9	0.0%	0.0%	0.0%
Assault	262	7.6%	19.8%	23.7%	520	2.7%	3.7%	4.6%
Burglary	455	4.4%	10.3%	14.1%	159	2.5%	3.8%	4.4%
Drug Possession	36	8.3%	13.9%	16.7%	535	0.7%	1.5%	2.2%
Drug Trafficking	538	3.7%	5.6%	7.6%	251	0.0%	0.4%	0.8%
Other Drug	28	3.6%	3.6%	3.6%	41	2.4%	4.9%	4.9%
Flight/Escape	23	8.7%	8.7%	8.7%	5	0.0%	0.0%	0.0%
Forgery/Fraud	239	2.1%	8.4%	10.9%	192	1.6%	2.6%	2.6%
Kidnap	6	0.0%	0.0%	16.7%	6	0.0%	0.0%	0.0%
Murder	22	4.5%	4.5%	4.5%	0	--	--	--
Other vs. person	42	7.1%	14.3%	16.7%	55	3.6%	5.5%	7.3%
OWI	859	2.3%	4.7%	5.6%	1,111	0.5%	0.8%	1.1%
Prostitution	18	16.7%	16.7%	16.7%	11	0.0%	0.0%	9.1%
Public Order	45	8.9%	13.3%	20.0%	54	0.0%	0.0%	0.0%
Robbery	145	14.5%	27.6%	33.1%	6	16.7%	16.7%	16.7%
Sex Offenses	192	3.6%	6.3%	6.8%	56	0.0%	0.0%	1.8%
Theft	416	6.0%	11.1%	13.0%	322	2.5%	3.7%	4.0%
Traffic	48	2.1%	8.3%	8.3%	103	2.9%	2.9%	2.9%
Vandalism	28	10.7%	14.3%	25.0%	65	1.5%	3.1%	3.1%
Weapons	72	2.8%	5.6%	9.7%	32	0.0%	3.1%	6.3%
Total	3,507	4.7%	9.3%	11.6%	3,570	1.3%	2.1%	2.6%

Rate of Any New Imprisonment, Prisoners and Probationers, by Offense

Lead Offense	Prisoners				Probationers			
	Total N	First Year	Second Year	Third Year	Total N	First Year	Second Year	Third Year
Alcohol	10	20.0%	30.0%	30.0%	37	10.8%	10.8%	18.9%
Arson	19	5.3%	15.8%	15.8%	9	0.0%	0.0%	0.0%
Assault	268	7.1%	23.5%	30.2%	520	4.8%	10.8%	12.7%
Burglary	470	17.2%	32.1%	38.9%	159	17.6%	30.2%	32.7%
Drug Possession	37	8.1%	27.0%	40.5%	535	4.3%	7.3%	10.5%
Drug Trafficking	564	9.4%	24.8%	34.2%	251	13.1%	19.9%	25.1%
Other Drug	28	14.3%	25.0%	32.1%	42	4.8%	11.9%	14.3%
Flight/Escape	23	34.8%	43.5%	47.8%	5	0.0%	20.0%	20.0%
Forgery/Fraud	245	18.0%	32.7%	39.2%	194	6.7%	14.9%	20.1%
Kidnapping	8	12.5%	25.0%	50.0%	6	0.0%	16.7%	16.7%
Murder/Mansl.	24	8.3%	20.8%	20.8%	--	--	--	--
Other vs. person	43	7.0%	14.0%	23.3%	55	5.5%	12.7%	12.7%
OWI	868	10.7%	20.2%	25.3%	1,111	1.3%	3.6%	4.8%
Prostitution	18	11.1%	33.3%	44.4%	11	18.2%	45.5%	63.6%
Public Order	47	17.0%	23.4%	42.6%	54	9.3%	14.8%	14.8%
Robbery	149	17.4%	33.6%	43.6%	6	16.7%	50.0%	50.0%
Sex Offenses	207	8.7%	14.5%	18.8%	56	14.3%	17.9%	19.6%
Theft	424	18.4%	34.9%	44.6%	322	9.6%	16.5%	18.3%
Traffic	50	6.0%	20.0%	30.0%	103	4.9%	15.5%	20.4%
Vandalism	28	7.1%	32.1%	39.3%	65	6.2%	13.8%	21.5%
Weapons	73	17.8%	27.4%	38.4%	32	9.4%	12.5%	15.6%
Total	3,607	12.9%	26.1%	33.5%	3,573	5.7%	10.9%	13.4%

Appendix III: Rates of Re-arrest During Probation**Arrests on Probation, by Offense Class and Type**

Offense Class and Type	Total N	Probation Arrests?			% Arrested
		No	Yes	Active	
B Felony non-person	20	13	7	0	35.0%
C felony non-person	178	116	60	2	33.7%
C felony vs. person	27	24	2	1	7.4%
D felony OWI	92	62	29	1	31.5%
D felony non-person	583	342	235	6	40.3%
D felony vs. person	58	40	18	0	31.0%
Total Felonies	958	597	351	10	36.6%
Other misd. vs. person	1	1	0	0	0.0%
Agg. misdemeanor OWI	276	202	69	5	25.0%
Agg. misd non-person	425	221	192	12	45.2%
Agg. misd. vs. person	216	132	81	3	37.5%
Serious misdemeanor OWI	743	619	107	17	14.4%
Serious misd. non-person	566	398	155	13	27.4%
Serious misd vs. person	251	181	66	4	26.3%
Simple misd non-person	49	41	8	0	16.3%
Simple misd vs. person	88	72	15	1	17.0%
Total Misdemeanors	2,615	1,867	693	55	26.5%
Total	3,573	2,464	1,044	65	29.2%

Arrests on Probation, by Offense Type

Lead Offense Type	Total N	Probation Arrests?			% Arrested
		No	Yes	Active	
Weapons	32	18	14	0	43.8%
Traffic	103	55	45	3	43.7%
Property	746	430	304	12	40.8%
Drug	828	550	262	16	31.6%
Violent	590	407	175	8	29.7%
Public Order	107	75	30	2	28.0%
OWI	1,111	883	205	23	18.5%
Sex	56	46	9	1	16.1%
Total	3,573	2,464	1,044	65	29.2%

Arrests on Probation, by Offense

Lead Offense Type	Total N	Probation Arrests?			% Arrested
		No	Yes	Active	
Prostitution/Pimping	11	4	7	0	63.6%
Flight/Escape	5	2	3	0	60.0%
Kidnap	6	3	3	0	50.0%
Burglary	159	78	79	2	49.7%
Weapons	32	18	14	0	43.8%
Traffic	103	55	45	3	43.7%
Vandalism	65	36	28	1	43.1%
Forgery/Fraud	194	113	78	3	40.2%
Theft	322	198	118	6	36.6%
Alcohol	37	24	13	0	35.1%
Other Drug	42	26	14	2	33.3%
Trafficking	251	167	83	1	33.1%
Drug Possession	535	357	165	13	30.8%
Assault	520	354	158	8	30.4%
Arson	9	7	2	0	22.2%
Other Vs. Person	55	43	12	0	21.8%
OWI	1,111	883	205	23	18.5%
Robbery	6	5	1	0	16.7%
Sex	56	46	9	1	16.1%
Public Order	54	45	7	2	13.0%
Total	3,573	2,464	1,044	65	29.2%

Arrests on Probation, by Offense Type

Lead Offense Type	Total N	Probation Arrests?			% Arrested
		No	Yes	Active	
Burglary	159	78	79	2	49.7%
Non-OWI Traffic	103	55	45	3	43.7%
Forgery/Fraud	194	113	78	3	40.2%
Theft	322	198	118	6	36.6%
Domestic Assault	219	137	76	6	34.7%
Other	267	179	85	3	31.8%
All Drug Offenses	828	550	262	16	31.6%
Non-domestic Assault	314	225	87	2	27.7%
OWI	1,111	883	205	23	18.5%
Sex Offenses	56	46	9	1	16.1%
Total	3,573	2,464	1,044	65	29.2%

Arrests on Probation, by District and Offense Level

Lead Offense Level	District	Total N	No	Yes	Active	% Arrested
Felony	First	132	88	43	1	32.6%
	Second	151	84	63	4	41.7%
	Third	89	59	29	1	32.6%
	Fourth	47	30	17	0	36.2%
	Fifth	252	164	85	3	33.7%
	Sixth	101	57	43	1	42.6%
	Seventh	86	56	30	0	34.9%
	Eighth	100	59	41	0	41.0%
	Total	958	597	351	10	36.6%
Misd.	First	362	239	115	8	31.8%
	Second	306	218	82	6	26.8%
	Third	326	216	98	12	30.1%
	Fourth	71	43	25	3	35.2%
	Fifth	923	673	241	9	26.1%
	Sixth	503	407	81	15	16.1%
	Seventh	56	37	18	1	32.1%
	Eighth	68	34	33	1	48.5%
	Total	2,615	1,867	693	55	26.5%
Total	First	494	327	158	9	32.0%
	Second	457	302	145	10	31.7%
	Third	415	275	127	13	30.6%
	Fourth	118	73	42	3	35.6%
	Fifth	1,175	837	326	12	27.7%
	Sixth	604	464	124	16	20.5%
	Seventh	142	93	48	1	33.8%
	Eighth	168	93	74	1	44.0%
	Total	3,573	2,464	1,044	65	29.2%