



THE GRADATIM 1937

File Copy
Do not remove

ARCHIVES
SISTERS OF MERCY
BELMONT, NORTH CAROLINA

GRADATIM



AMY HOLLAND
Editor-in-Chief

MARGARET HOWE
Business Manager

THE GRADATIM, 1937

VOLUME V

Published By

THE SENIOR CLASSES OF
SACRED HEART JUNIOR COLLEGE
AND ACADEMY
BELMONT, N. C.



DEDICATION

IN SINCERE GRATITUDE AND DEEP APPRECIATION FOR OUR TRAINING IN A NOBLE INSTITUTION; FOR THE LOFTY IDEALS, LOYALTY TO PRINCIPLE, AND HIGH SCHOLARSHIP INCULCATED THEREIN, WE DEDICATE THIS VOLUME OF THE GRADATIM TO OUR BELOVED FATHERS AND MOTHERS, WHOSE UNSELFISHNESS, DEVOTION AND LOVE HAVE MADE POSSIBLE THIS CHRISTIAN EDUCATION THAT KEEPS THE MIND AND HEART FIXED ON ITS OWN PERFECTION, GOD.



FOREWORD

*"Oft in the stilly night,
E'er Slumber's chain has bound me,
Fond Memory brings the light
Of other days around me."*

This volume of the GRADATIM, in which are enshrined memories of the years that have flown so swiftly, is designed to be "the light of other days" in our flight through time.

The experiences of our school life have meant much to us. We trust the remembrances of them, in the years to come, will be signal lights that grow ever brighter as they beckon us on to greater endeavor.



T H E M E

*There is a quest that calls me
 In nights when I am alone,
 The need to ride where the ways divide
 The Known from the Unknown.
 I mount what thought is near me
 And soon I reach the place,
 The tenuous rim where the Seen grows dim,
 And the sightless hides its face.
 I have ridden the wind,
 I have ridden the sea,
 I have ridden the moon and stars,
 I have set my feet in the stirrup seat
 Of a comet coursing Mars.
 And everywhere
 Thro' the earth and air
 My thought speeds, lightning-shod,
 It comes to a place where checking pace
 It cries "Beyond lies God."*

—CALE YOUNG RICE



CONTENTS

COLLEGE

HIGH SCHOOL

ACTIVITIES

ADVERTISEMENTS



GRADATIUM



Page Six



GRADUATE



COLLEGE

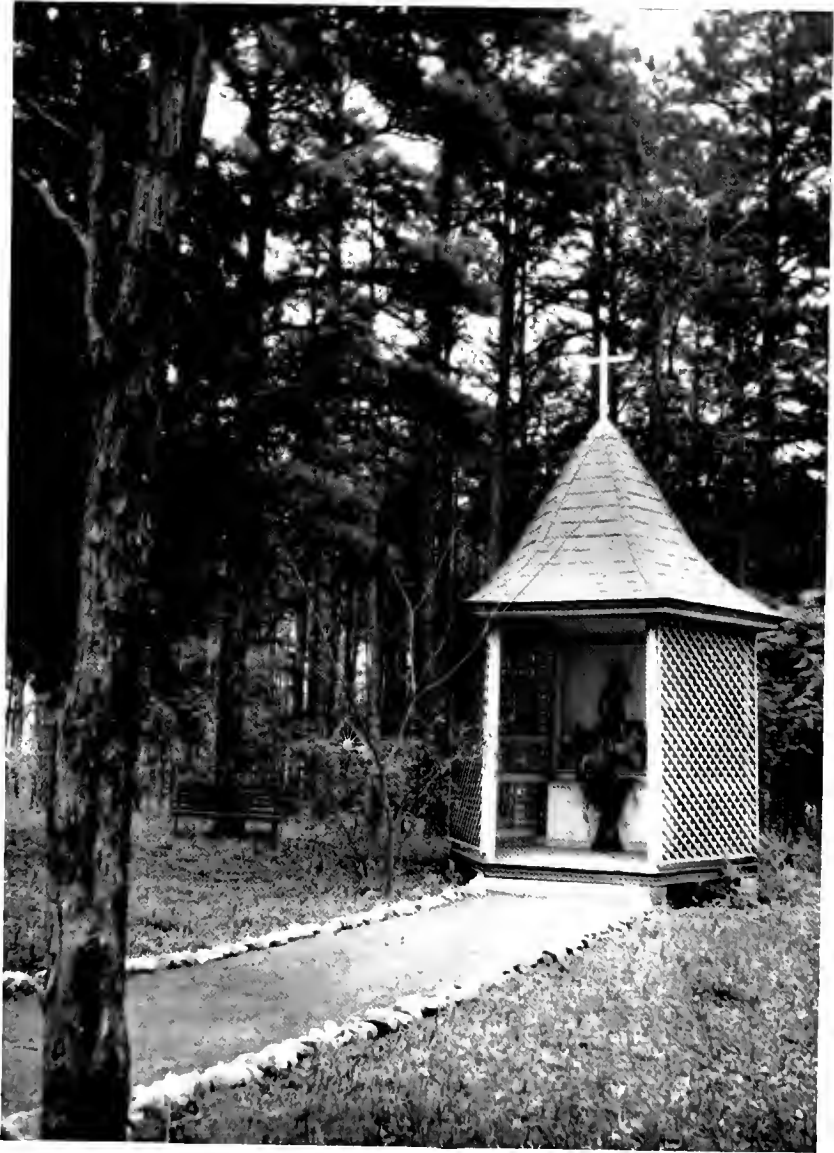




West Campus



South Campus



Shrine of Our Lady of Lourdes



G R A D U A T I M

A HISTORY OF OUR SCHOOL

Sacred Heart Academy was founded in 1892 by that great pioneer, missionary, educator and scholar, the Rt. Rev. Leo Haid, O.S.B.D.D. The beauty of the surrounding country side, the pleasing climate, the quiet charm and the seclusion conducive to study were the factors that led the noble Benedictine to consider this locality as being an ideal situation for a boarding school for young ladies.

The Sisters of Mercy were chosen to carry out the project. Ventures of this nature are extremely difficult, and this foundation proved to be no exception. For years, the enrollment in the new Academy continued to be small, and the meagre accommodations rendered the work difficult and even trying. But the Sisters were exceptional women and they faced the situation with so dauntless a determination that the splendid modernly equipped Sacred Heart Academy and Junior College of today is a monument to the foresight, and zeal, the strength of character and energy of will of those brave pioneers.

The Academy continued with ever varying success through periods of affluence and depression, and as time went on, the people of Belmont and surrounding towns who had once looked askance at the undertaking began to patronize the school. At present, the number of day students bears witness to the fact that the educational advantages offered and the culture and refinement instilled have come to be appreciated at their true worth.

A new wing, Victory Hall, named in honor of our Lady of Victory, was erected in 1920. This building includes the music department and auditorium as well as private rooms. In 1928 the administrative building was replaced by a splendid fire-proof structure, that combines durability with architectural beauty. The comfortable and homelike accommodations, the comprehensive and complete library facilities and the up-to-date furnishings have proven great assets toward scholastic achievement.

When, in 1935, in response to ever-increasing demands for College courses, Sacred Heart Junior College opened its doors to students much joy was manifest and a long-felt need in this section was filled. The Junior College and Academy now offers instruction in the following departments: A two-year College Course, which offers a choice of classical studies or a Cultural-Secretarial preparation for the business world; a fully standardized High School, recognized by the State and holding membership in the Southern Association of Secondary Schools; and an efficient Grammar School in which pupils are grounded in the fundamental branches.

We, the Class of 1937, are the first graduates of the Junior College. We are proud of the distinction which is ours, and we trust that through the years to come we may be living exemplars of those spiritual truths, and those lessons in self-reliance, character building and appreciation of things worth while, all of which have formed the very warp and woof of the pattern into which our lives have been woven during our stay at Sacred Heart.



FLIGHT

AN APPRECIATION

The training days at Sacred Heart flying field have prepared us to meet the hazards of the long flight into the future. Our pilots have warned against the risks of stunt flying and "barn-storming." They have helped us build planes that will withstand the sleet of severe winters and the heat of blazing summers.

As we "take off" into the future, we shall ever be mindful of that bright beacon shining from Sacred Heart. May it be to others as it has been to us — the inspiration for strong flights and "happy landings."



GRADATIM

GRADUATE



AMY HOLLAND
MT. HOLLY, N. C.

Class President (1, 2); Manager Basketball (1, 2); Glee Club (1, 2); Dramatic Club (2); Secretary-Treasurer (2); Day Students' Association (1, 2); Monogram Club (1, 2); Le Cercle Francais (2); Editor-in-Chief GRADATIM (2); Valdictorian (2).



GRADATIM

GRADUATE



MARGARET HOWE
BELMONT, N. C.

Class Vice-President (1); Dramatic Club (2), President
(2); Day Students' Association (1, 2); Bridge Club (2);
Business Manager, GRADATIM (2).



GRADUATE

COLLEGE FRESHMEN

FRANCES ANGELO
Winston-Salem, N. C.



CATHERINE BARNHARDT
Concord, N. C.



MILDRED BRENNAN
Troy, N. C.



BETTY ROSE CRAIG
Mt. Holly, N. C.



LOTTIE HONEYCUTT
Belmont, N. C.



FRANCES KILROY
Savannah, Ga.



MARY SUE LINEBERGER
Belmont, N. C.



MARGARET MAYNARD
Belmont, N. C.



GRADUATION

COLLEGE FRESHMEN

ALICE MCBENNETT
Fayetteville, N. C.



MARGARET MIDDLETON
Savannah, Ga.



ALICE RATCHFORD
Belmont, N. C.



MILDRED REID
Belmont, N. C.



TERESA SAPULOS
Raleigh, N. C.



EVELYN WADE
Belmont, N. C.



MAE WILKINSON
Gastonia, N. C.



WINNIE WILKINSON
Gastonia, N. C.



G R A D U A T I M



H I G H S C H O O L



SENIORS



EDITH ADAMS
HIGH POINT, N. C.

Class President (1); Class Treasurer (3, 4); Basketball (2, 3, 4); Monogram Club (3, 4); Secretary (3); President (4); Sodality (1, 2, 3, 4); Hockey (3); GRADATIM Staff (4); Class Post (4); Le Cercle Français (3, 4); Tennis (4); Music Club (1, 2, 3, 4); Glee Club (1, 2, 3, 4); Honor Society (4).



BETTY CHADWICK
FERNANDINA, FLA.

Class President (3, 4); Class Treasurer (2); Basketball (1, 2, 3, 4), Captain (3, 4); Monogram Club (3, 4); Sodality (1, 2, 3, 4); Hockey (3); GRADATIM Staff (4); Class Historian (4); Le Cercle Français (3), President (3); Tennis (3, 4); Dramatic Club (3, 4); Honor Society (4); Valedictorian (4).



SENIORS

HENRIETT DANNENBERG
GASTONIA, N. C.

Park School, Baltimore (1); Gastonia High (2); Day Students' Association (3, 4); Bridge Club (4); GRADATIM Staff (4); Class Prophet (4); Le Cercle Français (4); Honor Society (4).



OLIVE HENNESSEE
PINEHURST, N. C.

Maplewood School (1); Class President (2); Glee Club (2, 3, 4); Class Secretary (3, 4); Basketball (2); Dramatic Club (3, 4); Sodality (2, 3, 4); Monogram Club (3, 4); Le Cercle Français (3); Class Testatrix (4); GRADATIM Staff (4); Tennis (3, 4).



GRADATIM



SENIOR

MARGARET ANN SEAGREN
LENOIR, N. C.

St. Genevieve's-of-the-Pines (1, 2);
Basketball (3, 4); Glee Club (3, 4);
Dramatic Club (3, 4); Sodality (3, 4);
Monogram Club (3, 4); Tennis (3, 4);
Le Cercle Français (3, 4); GRADATIM
Staff (4); Hockey (3); Honor Society
(4).

TO THE GRADUATES

We wish you TRUTH—
That things for you may not just *seem*,
But *be* their seeming—good or ill
And that each radiant, rose-tipped dream
That beckons you from that high hill
Of Heart's Desire may be in sooth
God's noble truth! . . .

We wish you PEACE—
Such peace as Easter lilies know
Upon His blessed altar fair—
The peace that lives with spotless snow—
The hush and calm of fervent prayer
The peace that comes with glad surcease—
Heaven's sweetest peace! . . .

And BEAUTY, too.
We wish for you—soft twilights dim,
The petals of a full-blown rose,
Sweet organ notes that plead to Him
And every fragrant wind that blows.
May your dear feet forever stray
In beauty's way! . . .

We wish you LOVE
Such love as John of old half-guessed
In that dear hour so long ago,
When Virgin head met Virgin BREAST
Such love not even mothers know
Most dearly prized all things above,
God's perfect LOVE!

THE JUNIORS



C R A F T M

SENIOR CLASS HISTORY

The large blue and white airplane, the S.H.A., was ready to take off, and we, the passengers, hesitatingly and even reluctantly climbed into the clean cool interior. What we were going to do, how long the trip would take, what disappointments or enjoyments were going to be ours, we knew not. But the good blue and white ship seeking higher altitudes proved to be safe and enjoyable, and the trip extremely interesting, cultural, and educational.

From the day when, as Freshmen, we entered into this strange barque, when the rarefied atmosphere boomed loudly in our untrained ears, when the regularity and discipline aroused rebellious thoughts in our liberty loving hearts, until today, when sadly but hopefully we leave our beloved S.H.A., few were the lonely hours and fewer still the hours of inactivity.

During the first lap of our journey, after we had become accustomed to our strange surroundings, we were initiated into athletics and joined in the numerous activities. But early we learned that in social events we were the entertainers. Perhaps these swift descents made us homesick for the attentions that had been ours, but we now realize that spiritually and mentally we were benefited. And, though we are not sure, yet we feel that development of character made us love the daily routine and sigh with regret when we sighted in the distance the hangar in which our ship would be moored.

After the novelty of the larger freedom had died away, we gladly boarded the big ship for our second year of exploration and discovery. This time, we were more at home, and even helped to assuage the fears and make enjoyable the trip for the new passengers who had timorously joined us at the last airport. Surer of ourselves, and more certain of our footing, we now took an active part in all events. When the weather was "ceiling zero," and low flying only was safe, our studious discoveries were numerous and interesting. But when we could sail aloft, debates on our findings often ended with a lunch and dance. Or again we staged a play for St. Patrick's Day, which, like an oasis, brightened and cheered us until Easter ushered in other entertainments. And quickly we flew until all too soon we arrived at our second terminus. Our regret on landing proved that our plane was really becoming a home.

But, being eager travelers, there we were ready again to scramble in when the ship was about to "take-off" in September. Our trip was half over, but the better part lay ahead. For our minds, like soil prepared for seed, were more adaptable to new truths and correspondingly fruitful, while we were more appreciative of the wondrous vistas that opened before us. Proud of our histrionic ability and our knowledge of the language we staged a French play. And to us the "marchons" of the *Marseillaise* was but another note of encouragement to continue. And we did. The numerous card parties, the entertaining plays, the well-planned, picturesque May fete, and above all, the never-to-be forgotten Junior-Senior Banquet, proved our proficiency as entertainers.

Gladly, hopefully, yet with anticipations tinged with sadness, we began our last year. The tables were now turned, and on all occasions we were the entertained, not the entertainers. We enjoyed all our privileges and pleasures to the utmost. But then again we realized the fact that doing for others brings the only real enjoyment in this world. Our athletic prowess grew with our growth, and in this our last year, many victories crowned our efforts.

But now, all these happy days belong to the past. We shall miss the pure, clean wholesome air, the regularity that means comfort to all the passengers, the quick uplift of unexpected pleasures, the stunts and fancy diving of athletic and social events, and above all the calm, peaceful sailing that ever kept before us the thought—"Beyond lies God."

And now that time, the ever changeable, with inexorable decree has written "Finis" to our peaceful days, may we prove ourselves worthy of the expectations of our fellow passengers, our classmates; of our pilot and officers, the chaplain and the Sisters who have guided us, guarded us, and taught us during the past years.

And still your teaching shines with perfect brightness,
To guide our feet along life's road
That winds away o'er the misty mountains,
And will end one day at the Lord's abode.



C O N T A I N I N G

PROPHECY

"Pilot D. calling . . . Pilot D. calling . . . Three-one-four-two calling . . .
Three-one-four-two calling . . ."

"Go ahead . . . Three-one-four-two . . ."

"Go ahead . . . Three-one-four-two . . ."

"Flying over the Blue Ridge Mountains . . . Four thousand, five hundred feet . . . North West blowing . . . ceiling clear and unlimited . . . everything on the up and up . . . will land Sacred Heart Alumnae in one hour for their first reunion banquet."

"Passenger list as follows . . ."

Miss Edith Adams (High Point, N. C.)—secretary to the President of The Continental Furniture Company.

Miss Betty Chadwick (Fernandina, Fla.) the speed-dash young aviatrix of the day.

Mrs. William Lanier (Nee Olive Hennessee) wife of the famous Pinehurst doctor and sole owner of the popular Riding Club and the thorough-bred horses.

Miss Margaret Ann Seagren (Lenoir, N. C.) the famous designer for the Paris Belle-Aire Furniture Company.

Miss Margaret Howe (Belmont, N. C.) dashing Maniquin for Madame Henriette's shops of New York, Baltimore, and Palm Beach.

Miss Amy Holland (Mt. Holly, N. C.) Primary grade teacher of Lakeview Private School.

Madame Henriette (Henriett Dannenberg, Gastonia, N. C.) distinctive importer for stylish wardrobes for young women.

"We are now circling the campus . . . Landing on Sacred Heart Academy and College field . . ."

"Pilot D. signing off . . . Pilot D. signing off . . ."

"That is all . . ."

HENRIETT DANNENBERG, *Prophetess*, '37



C R A T I A T I M

LAST WILL AND TESTAMENT

Flying over State of North Carolina.
Altitude 2000 Ft.
Barometer 22

OLIVE HENNESSEE, *Testatrix*

We, the tailspin tommies of 1937, do hereby solemnly declare in the presence of witnesses this to be our Last Will and Testament, and all previous flight records to be null and void.

ARTICLE I

To our chaplain, the never failing beacon whose strong and steady light ever guided us through the perils of the storm, we leave our sincerest appreciation.

ARTICLE II

To our beloved directress, the voice of our unfaltering wave set, whose helpful direction has consoled many a lost flyer and brought her to a perfect three-point landing, we bequeath our inexpressible love and promise of faith and loyalty.

ARTICLE III

To our faculty, we express our deepest gratitude for their understanding and patient overhauling of our ship in preparing us for a smooth "take-off" into the flight of life.

ARTICLE IV

To the future students of our training school, we leave the profit of our experience. May their plane avoid all air pockets and smash-ups and may their undaunted courage smooth all roughened flight.

ARTICLE V

I, Amy Holland, do will and bequeath my "gift of gab" to Winnie and Mae Wilkinson.

I, Margaret Howe, do will and bequeath my captivating personality to Alice McBennett. May it get you places, Alice.

I, Edith Adams, do will and bequeath my worldly wisdom to Helen Camper.

I, Betty Chadwick, do will and bequeath my unique coiffure to Ruth Buxton.

I, Henriett Dannenberg, do will and bequeath my Herculean strength to Frances Kilroy. May her success in the Golden Gloves be world renowned.

I, Olive Hennessee, do will and bequeath my faithful alarm clock to Emma Bauza. May your day begin with a ring.

I, Margaret Anne Seagren, do will and bequeath my contagious giggle to Miriam Weldon. May it keep you safe from the blues.

As the shadows lengthen upon our field of training we hereby contact one another officially leaving to our chief pilot the power to execute this will. To all we say "gain altitude" and "happy landings!"

Signed and Sealed.

The Individual Members of the Plane
of Nineteen Hundred and Thirty-Seven.

OLIVE HENNESSEE, *Testatrix*

Witnesses:

THERESA KABAS

RUTH BUXTON



GRADUATE



HIGH SCHOOL

Front Row

MARY ELIZABETH PALMER
MARY BALMORI
MARGARET REISER
ANNIE TATUM
BEATRICE SUMNER
BARBARA ALLEN
MARY ALICE COFER
RUTH ARBOR
DOROTHY HOGAN
JEANNE MALENCHECK

Second Row

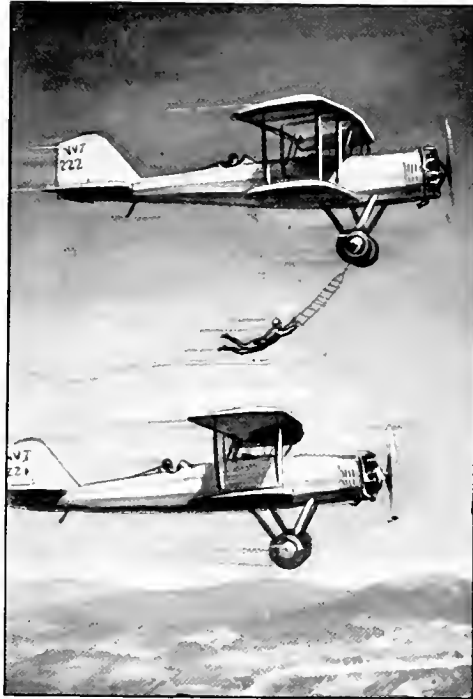
MARY EVELYN HOLTZCLAW
BETTY CHADWICK
EDITH ADAMS
RUTH BUXTON
OLIVE HENNESSEE
VIVIAN HAVERTY
HENRIETT DANNENBERG
VIRGINIA HUGHES
DIXIE CORPENING
JOSEPHINE WATKINS
ALICE CLEMMENTS
MONICA BROWN
DORIS PRUETT
KATHERINE GAMMON

Third Row

CAROLYN HALE
ANN TIPTON
PAULINE BOYTER
EMMA BAUZA
HELEN CAMPER
MIRIAM WELDON
TILLIE SMITH
MARGARET ANN SEAGREN
EMILY O'DONOGHUE
LUCILLE JANNETTA
BRIDIE MADDEN
MARJORIE ROPER
ESTHER STEIN
EVA MOSES
KATHERINE RYAN



C R A F T I M



ACTIVITIES



GRADUATION



HOLLAND
PRUETT

MIDDLETON
STOWE

CHADWICK
HOWE

CAMPER
ADAMS

PRESIDENTS' FORUM

The Presidents' Forum is composed of the Presidents of the High School and Junior College Classes, the Music Club, the Monogram Club, the Dramatic Club and the Day Students' Association.

MEMBERS

AMY HOLLAND

HELEN CAMPER

MARY MARGARET STOWE

MARGARET MIDDLETON

RUTH BUNTON

MARGARET HOWE

BETTY CHADWICK

DORIS PRUETT

EDITH ADAMS



GRADATIM



HOLLAND HOWE ADAMS
CHADWICK DANNENBERG HENNESSEE SEAGREN

GRADATIM STAFF

AMY HOLLAND	<i>Editor-in-Chief</i>
MARGARET HOWE	<i>Business Manager</i>
BETTY CHADWICK	<i>Photographic Editor</i>
MARGARET ANN SEAGREN	<i>Advertising Manager</i>
EDITH ADAMS	<i>Business Assistant</i>
HENRIETT DANNENBERG	<i>Literary Editor</i>
OLIVE HENNESSEE	<i>Literary Editor</i>

Page Twenty-seven



GRADUATION



MCBENNETT
CHADWICK
CAMPER

ANGELO
ADAMS
HOLTZCLAW

PRUETT

REID
SEAGREN
REISER

MIDDLETON
DANNENBERG
RYAN

HONOR SOCIETY

The Honor Society consists of members who have made an average of ninety or over during the scholastic year. Thirteen young ladies have been fortunate enough to reach the goal that we should all be proud to achieve.

MEMBERS

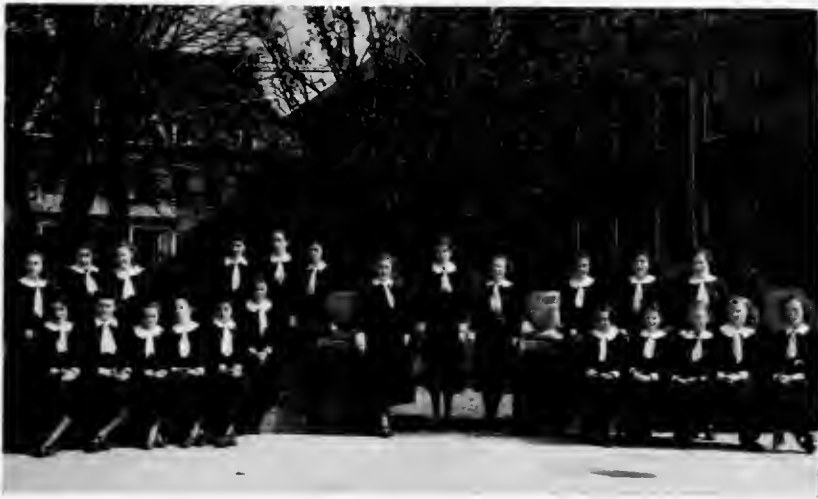
ALICE MCBENNETT
FRANCES ANGELO
MILDRED REID
MARGARET MIDDLETON
BETTY CHADWICK
EDITH ADAMS

MARGARET ANN SEAGREN
HENRIETT DANNENBERG
HELEN CAMPER
MARY EVELYN HOLTZCLAW
DORIS PRUETT
MARGARET REISER

CATHERINE J. RYAN



GRADUATION



SODALITY

The Sodality is the concrete expression of the great love for our Blessed Mother that inflames the hearts of her children. The interest manifested in the Sodality this year shows the active love that permeates each member. Through the Virgin Mother's intercession may we, Children of Mary, ever strive to approximate in our lives the ideal set before us.

CHILDREN OF MARY

Seated

THERESA SAPULOS
CATHERINE BARNHARDT
ALICE MCBENNETT
FRANCES ANGELO
MILDRED BRENNAN
VIVIAN HAVERTY
RUTH ARBOR
MARY KATHERINE KABAS
DOROTHY HINES
BRIDIE MADDEN
MARGARET MIDDLETON

Standing

MARGARET REISER
MONICA BROWN
DOROTHY HOGAN
EDITH ADAMS
RUTH BUNTON
BETTY CHADWICK
MARGARET ANN SEAGREN
VIRGINIA HUGHES
TILLIE SMITH
HELEN CAMPER
EMMA BAUZA
MIRIAM WELDON



GRADUATION



DRAMATIC CLUB

Dramatics ever hold an attraction for all students. But ability, that stumbling block at the entrance, keeps many admirers on the outside. The plays given during the year were indeed most successful, and gave great promise that those who took part would excel in dramatic art.

The students also had the opportunity to see professional players recently when Shakespearian players from New York presented scenes from *As You Like It*, *Julius Caesar*, and *The Taming of the Shrew*.

One who does not appreciate the splendid field of dramatics at Sacred Heart should truly exclaim with Cassius in *Julius Caesar*:

*"The fault, dear Brutus, is not in our stars,
But in ourselves, that we are underlings."*

MEMBERS

AMY HOLLAND
DOROTHY HOGAN
FRANCES ANGELO
ALICE MCBENNETT
JEANNE MALENCHECK
JOSEPHINE WATKINS
EMMA BAUZA
OLIVE HENNESSEE
MONICA BROWN
EDITH ADAMS

BETTY CHADWICK
VIVIAN HAVERTY
DORIS PRUETT
MIRIAM WELDON
TILLIE SMITH
MARGARET MIDDLETON
ALICE CLEMMENTS
MARGARET MAYNARD
MARGARET HOWE
MARGARET ANN SEAGREN



GRADATIUM



GLEE CLUB

Beginning the year with half a dozen of last year's members, prospects seemed very bright for a successful Glee Club. The new material proved to be excellent for the making of a fine musical organization, and through hard work this has been achieved. That the Glee Club has been much in demand is proof sufficient that artistic effect and melodic beauty are genuinely appreciated by the entire student body.

MEMBERS

MARY ALICE COFER
RUTH ARBOR
LILLIE BELLE DICKENSON
MARY KATHERINE KABAS
DORIS PRUETT
MARGARET REISER
JEANNE MALENCHECK
AMY HOLLAND
MONICA BROWN
ALICE MCBENNETT

BETTY JEANNE WALTERS
MILDRED BRENNAN
VIVIAN HAVERTY
OLIVE HENNESSEE
FRANCES ANGELO
BRIDIE MADDEN
MARGARET ANN SEAGREN
DOROTHY HOGAN
EDITH ADAMS



GRADATIUM



MUSIC CLUB

MEMBERS

Left to Right

MARGARET REISER

KATHERINE BARNHARDT

EVELYN WADE

VIRGINIA HUGHES

EDITH ADAMS

MARY SUE LINEBERGER

DOROTHY HOGAN

HELEN CAMPER

ESTHER STEIN

"Music, oh how faint, how weak
Language fades before thy spell.
Why should feeling ever speak
When thou canst breathe her soul so well?"



GRADUATION



DAY STUDENTS' ASSOCIATION

In response to the eager requests of the day students, this association was formed. Its purpose is to attain and maintain closer contact with the activities of the school. The club has been most successful and has shown the marvelous school spirit that exists among its members.

MEMBERS

Front Row

LUCILE JANNETTA
ANNIE TATUM
MARY E. PALMER
EVA MAE MOSES
CAROLYN HALE
BEATRICE SUMNER

Middle Row

ALICE RATCHFORD
LOTTIE HONEYCUTT
EVELYN WADE
MARGARET MARY STOWE

EMILY O'DONOGHUE

HENRIETT DANNENBERG
MARGARET MAYNARD
MARGARET HOWE

Back Row

MILDRED REID
ANNE TIPTON
MAE WILKINSON
WINNIE WILKINSON
BETTY CRAIG
MARY HEDRICK
MARJORIE ROPER
AMY HOLLAND



GRADATIUM



LE CERCLE FRANCAIS

Le Cercle Français, organized in 1935, has a two-fold purpose: to attain a closer acquaintance with the people, customs, and ideals of a land so nobly defended by her great and holy patron, St. Joan of Arc; and to further the interest in and increase our knowledge of the French language. The Club has certainly stimulated the study of French and helped us to appreciate the beauties of the language. It has also enabled us to value more deeply the land of our little patroness St. Germaine of Toulouse.

MEMBERS

FRANCES ANGELO

TILLIE SMITH

MARGARET ANN SEAGREN

EMMA BAUZA

DOROTHY HOGAN

HENRIETT DANNENBERG

KATHERINE GAMMON

ALICE CLEMMENTS

MONICA BROWN

VIVIAN HAVERTY

AMY HOLLAND

MARGARET MIDDLETON

JOSEPHINE WATKINS

EVELYN WADE

EDITH ADAMS



GRADUATION



BRIDGE CLUB

EMMA BAUZA
MARGARET ANN SEAGREN
MARGARET HOWE
HENRIETT DANNENBERG
MARGARET MAYNARD

OLIVE HENNESSEE
MARGARET MIDDLETON
CATHERINE BARNHARDT
EDITH ADAMS
MARY SUE LINEBERGER

BETTY CHADWICK
MILDRED BRENNAN
MIRIAM WELDON
ALICE M'BENNETT
FRANCES ANGELO

MONOGRAM CLUB

RUTH BUNTON
MARGARET MIDDLETON
AMY HOLLAND
OLIVE HENNESSEE

MIRIAM WELDON
FRANCES ANGELO
MARGARET ANN SEAGREN

MILDRED REED
MONICA BROWN
BETTY CHADWICK
EDITH ADAMS



GRADUATION



BETTY CHADWICK
Captain



GEORGE HOWE
Coach



AMY HOLLAND
Manager

BASKETBALL TEAM

Front Row

MIRIAM WELDON
MARGARET ANN SEAGREN
MONICA BROWN
EDITH ADAMS
BETTY CHADWICK, *Captain*
RUTH BUXTON
MILDRED REID
FRANCES ANGELO

Back Row

KATHERINE GAMMON
BRIDIE MADDEN
JOSEPHINE WATKINS
VIVIAN HAVERTY
AMY HOLLAND, *Manager*
ALICE CLEMMENTS
MARGARET MIDDLETON
HELEN CAMPER
MARGARET REISER



GRADUATE



TENNIS

Seated

TILLIE SMITH
MARGARET MIDDLETON
ALICE MCBENNETT
FRANCES ANGELO

Standing

OLIVE HENNESSEE
BETTY CHADWICK
EDITH ADAMS
MARGARET ANN SEAGREN

HOCKEY

MIRIAM WILDON
MARY K. KABAS
MARY ALICE COFER
MARGARET REISER
BRIDIE MADDEN

DOROTHY HINES
DOROTHY HOGAN
JEANNE MALENCHECK
KATHRYN GAMMON
HELEN CAMPER

DORIS PRUETT
JOSEPHINE WATKINS
ALICE CLEMENTS
VIVIAN HAVERTY
MONICA BROWN



GRADUATE



CAMPUS SCENES UNDER FIRST SNOWFALL OF 1937



CENTRAL



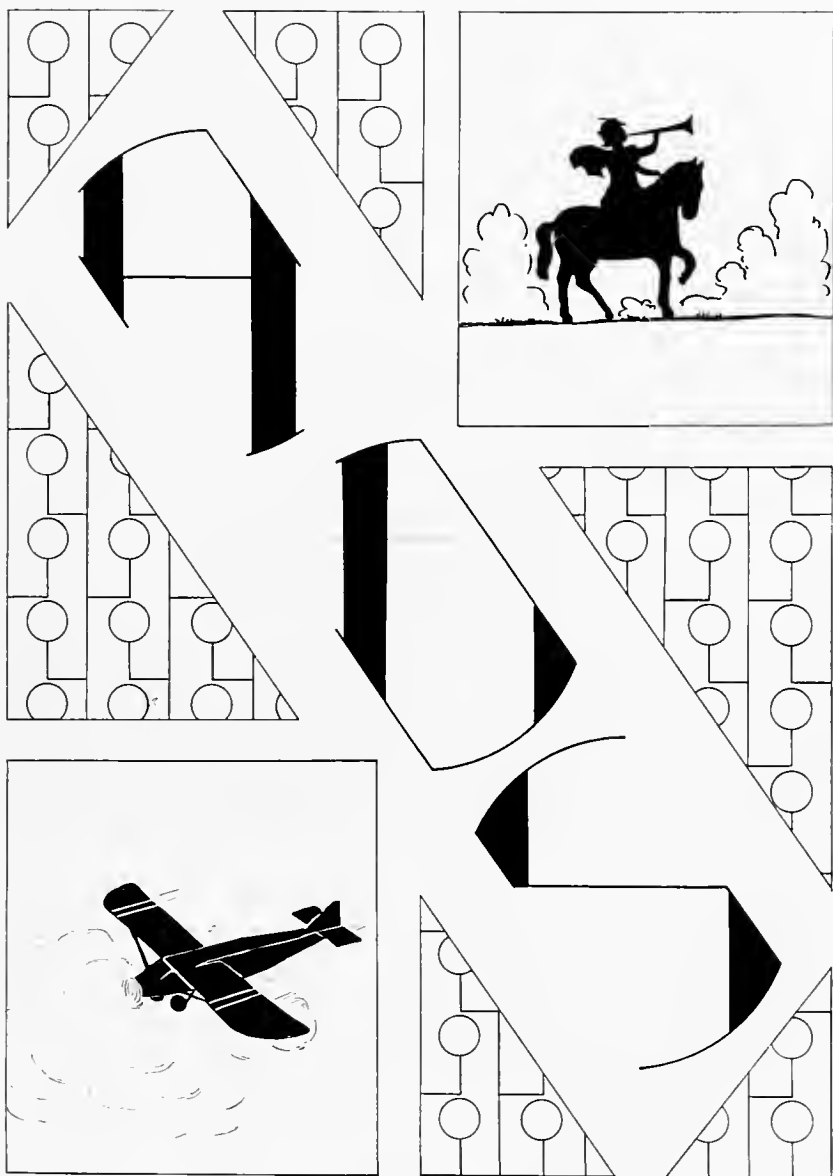
CAMPUS LIFE



GRADATIM



GRADATIM



Remington
Rand, Inc.

CHARLOTTE, N. C.

The Bank of
Belmont

—●—
*Safe — Strong
Conservative*

BELMONT, N. C.

LISK
Cut Rate
Pharmacy

■
Phone 2-2137
826 E. Trade Street
CHARLOTTE, N. C.

Warren Transfer
Company

*Long Distance and Heavy
Hauling*

●
*Moving — Packing
Storing*
Phone 3-7151
CHARLOTTE, N. C.



Thomas-Howard
Company



WHOLESALE GROCERS



CHARLOTTE, N. C.

Compliments of

Salley Tire Co.,
Inc.

Firestone

Complete One-Stop Service

357 Biltmore Avenue
Phones 2604 - 2605

Compliments of

Brownell-Dunn
Funeral Home



ASHEVILLE, N. C.

Southern Fruit
Company

*The Big Fruit House
Where Quality Counts*

CHARLOTTE, N. C.

Headquarters for
BANANAS



GRADUATE

Morris & Barnes

Incorporated



Market of Quality



Dial 3-1116

227 West Trade Street

CHARLOTTE, N. C.

Interstate Milling Company

Manufacturers of

*High Grade Flour, Grits,
Meal, Poultry, Dairy,
Horse and Hog Feeds*



CHARLOTTE, N. C.

Louis G. Ratcliffe Inc.



Flowers



431 South Tryon Street

CHARLOTTE, N. C.

Williams & Shelton Co., Inc.



Importers
Wholesalers
Mill Agents



CHARLOTTE, N. C.



Hospital
Equipment Corp.

*Hospital Supplies of
Distinction*

Hospital Beds and Wheel Chairs
For Sale or Rent

Phone 6694
404 1/2 West Trade Street

David I. Hirsch



*Wholesale Cigars, Drug
Sundries, Stationery,
and Candies*



Phone 5942
312-314 South College St.
CHARLOTTE, N. C.

C. D. Kenny Co.



TEAS, COFFEES AND
SUGARS



Phone Dial 2-1145 and 2-1146
216 E. 7th St.
Norfolk & Southern R. R.
CHARLOTTE, N. C.

Norfleet Motors
Company

Incorporated

Dodge Brothers and
Plymouth Motor
Vehicles

Fifth and Poplar Streets
Dependable Used Cars and Trucks
CHARLOTTE, N. C.



M. B. Smith
Jewelers, Inc.



Quality Jewelry
Fine Gifts



105 E. Trade Street
CHARLOTTE, N. C.

Hinson Coal
Company



Yard: 1800 North Tryon St.
CHARLOTTE, N. C.

Sweetland Restaurant
GASTONIA, N. C.

EXTENDS A HEARTY WELCOME
AND THE BEST OF FOOD AND
REFRESHMENTS TO ITS
PATRONS

Glad to Have You Come
See Us

SWEETLAND RESTAURANT
113 West Main Ave.
GASTONIA, N. C.

Pound and Moore
Company

Manufacturing Stationers
Office Outfitters
Printers

213 South Tryon Street
CHARLOTTE, N. C.



*Lumber and Building
Materials*



**ARCHITECTURAL
MILL WORK**

**The Wearn
Lumber Co.**

Phone 5191

Compliments of

**Horne-Wilson
Inc.**



*Plumbing Fixtures
Heating Equipment*

314 W. First St.

CHARLOTTE, N. C.

**Charlotte
Hardware Co.**



Telephone 3-1137



218 North College Street

CHARLOTTE, N. C.



Compliments of

A FRIEND



The S & H
X-Ray Co.

CHARLOTTE, N. C.



KELEKET X-RAY
APPARATUS

ASHEVILLE, GREENVILLE,
ATLANTA, NASHVILLE

Smith-Wadsworth
Hardware Co.



424-428-430 South Tryon Street

Phone 3-5161

CHARLOTTE, N. C.

Carolina
Absorbent Cotton
Company



Hospital Supplies
Surgical Dressings

CHARLOTTE, N. C.

Unincorporated Division of Barnhardt
Manufacturing Co.

"You Furnish the Bride
We'll Furnish The Home"



Johnston's

425 S. Tryon St.

CHARLOTTE'S

Oldest — Largest — Best

COMPLETE HOME
FURNISHERS



GRADUATION

Hardaway-Hecht
Company



High Class Groceries



CHARLOTTE, N. C.



The Great A & P
Tea Co.

FOOD STORES

F. H. Ross & Co.
Incorporated



224 West Second Street
CHARLOTTE, N. C.



ATLANTA OFFICE
637 Whitehall St., S. W.

With Best Wishes to the
GRADUATING CLASS

from

Citizens Transfer and
Coal Company

ASHEVILLE, N. C.

Serving Asheville since 1904



Larkwood Silk Hosiery Mills
INCORPORATED

Manufacturers of
Ladies' Full Fashioned Silk Hosiery



CHARLOTTE, N. C.



TELEPHONE 3-4141
CHARLOTTE, N. C.



* REMEMBER . . .

You Always Save at

**BELK
BROTHERS
CO.**



"CHARLOTTE'S HOME
OF BETTER VALUES"



SOUTHEASTERN
CONSTRUCTION COMPANY

218 WEST SECOND STREET

CHARLOTTE, N. C.

*STUDY HOURS ARE STRENUOUS
HOURS FOR THE EYES*

School children as well as adults should not attempt to do studying or any other work requiring close visual application in dim or glaring light. Straining the eyes in poor light hour after hour might develop a handicap that can never be overcome.

The eyes are one's most precious possession. We can never buy another pair.

Lighting engineers have recently developed inexpensive lighting equipment for the study table whether it be in the school or home. Adequate in quantity and excellent in quality the illumination provided by the Illuminating Engineering Society Study and Reading lamp is SAFE AND COMFORTABLE for seeing.

Davidson College, Bennett College, and hundreds of homes in North Carolina are equipped with these lamps to conserve eye-sight and raise scholastic standards.

DUKE POWER COMPANY



C E A T A I M

THOMAS GRIFFITH, *President*

THOMAS C. HAYES, *Treasurer*

Thomas Griffith & Company

INSURANCE HEADQUARTERS

ESTABLISHED 1875



Offices 508-515 Commercial Building

CHARLOTTE, N. C.

INSURE WITH
"INSURANCE HEADQUARTERS"



We Insure Anything, Anywhere—Except Your Life



*Every Reader of This Book
Will Surely Know*

HOTEL CHARLOTTE

Let this remind you, please,
that you're always welcome
here, that we're always
anxious to please you . . .

Queen City Mattress Company

Manufacturers

*Cotton and Cotton Felt
Mattresses — Living
Room Furniture*



200 W. Tremont Ave.
Phone 2-1822
CHARLOTTE, N. C.

Southern Dairies

INCORPORATED



ICE CREAM
AND MILK



ASHEVILLE, N. C.

W. H. Arthur Co.

225 Patton Avenue

Telephone 2115, 2116

Contractors — Dealers
Manufacturers

SHEET METAL
ROOFING — HEATING
AIR CONDITIONING

*Barrett and Johns-Manville
Approved Roofers*

ASHEVILLE, N. C.



WILSON'S
Certified

PURE FOODS



The Wilson label protects your table

BELMONT ABBEY COLLEGE

BELMONT, NORTH CAROLINA

AN ACCREDITED

JUNIOR COLLEGE AND PREPARATORY SCHOOL

ACCREDITED BY

The State Board of Education, The Southern Association of Colleges and Secondary Schools, The Catholic University of America.

MEMBERS OF

North Carolina College Conference, American Association of Junior Colleges, The National Catholic Educational Association.

For information, catalogue, and announcements, address

THE OFFICE OF THE REGISTRAR

Belmont Abbey College

BELMONT, NORTH CAROLINA



In Asheville . . . It's the Famed

**GEORGE VANDERBILT
HOTEL**

The cordial hospitality and gay, cheering atmosphere of The George Vanderbilt give it popularity with its home people . . . just as with vacationists, business visitors and all those who travel. Modern, close-in, convenient to everything—and always ready to make your stay a pleasant one!

*For Information or Reservations
Address:*

J. H. ENWRIGHT, *Manager*
ASHEVILLE, N. C.

**PRITCHARD PAINT &
GLASS COMPANY**



CHARLOTTE, N. C.

**CAROLINA ELECTRIC
SUPPLY COMPANY**



Distributors

ELECTRICAL
MERCHANDISE



117 West First Street
CHARLOTTE, N. C.

**HAVERTY
Furniture Co.**

227 N. Tryon St.



COMPLETE HOME
FURNISHERS



Phone 7144



CHARLOTTE FEED AND SEED COMPANY

*Feed, Flour, Fertilizer, Seeds
Farm Implements*

600 South College St.
CHARLOTTE, N. C.

Smith's Book Store

Books - Pictures - Mirrors

402 West Trade Street
CHARLOTTE, N. C.

DAUGHTRY SHEET METAL CO.

Sheet Metal — Roofing — Warm Air
Heating — Combustioneer Stokers
Air Conditioning

CHARLOTTE, N. C.

SCOTT FEED COMPANY

*Rock Ground Meal, Purina Chicken,
Hog and Dairy Feeds, Garden
and Field Seeds*

610 South College Street
CHARLOTTE, N. C.

W. R. FORD

HARDWARE AND PAINTS

Phone 238
BELMONT, N. C.

Compliments of the
CRANE CO.

1307 W Morehead St.
CHARLOTTE, N. C.

H-K CHEVROLET CO., Inc.

Sales — Service
BELMONT, N. C.

General Fire Extinguisher Company

Products Sold Exclusively by
GRINNELL COMPANY

1431 West Morehead Street
CHARLOTTE, N. C.

Robinson's Drug Store

The Store of Personal Service

BELMONT, N. C.

Charlotte Bread Co.

Phone 2-1651 1807 S. Tryon St.

CHARLOTTE, N. C.



DIXON MOTOR CO.

Authorized Ford Sales and Service
ACCESSORIES

We Recommend Genuine Ford Parts
PHONE 59

Charlotte Fish and Oyster Co.

Wholesale and Retail
300 East Trade Street
CHARLOTTE, N. C.



American Trust Company

MEMBER FEDERAL RESERVE SYSTEM
CHARLOTTE, N. C.

DECEMBER 31, 1936

(Condensed from Reports to the North Carolina Commissioner of Banks and to
the Federal Reserve Bank of Richmond, Virginia)

RESOURCES

Cash in vault, on deposit in Federal Reserve Bank and due from banks	\$22,042,054.32	
U. S. Government obligations, direct and/or fully guaranteed	14,752,144.80	
Federal Land Bank, and listed bonds	1,578,941.81	
State of North Carolina and State of South Carolina bonds	4,271,266.57	
Municipal bonds and notes	3,167,033.47	
Loans eligible for rediscount by Federal Reserve Bank	7,477,943.76	
Loans secured by listed stocks and bonds	3,027,935.69	
Accrued Interest on bonds	<u>216,859.81</u>	\$56,534,180.23
Other high grade, well secured loans		6,250,510.69
Cash surrender value life insurance policies carried on the officers of the bank		39,302.50
Stock Federal Reserve Bank, Richmond, Va., and other stocks and bonds		158,691.50
Banking House, Furniture and Fixtures	\$ 331,983.62	
Property adjoining present banking quarters purchased for expansion	<u>143,901.33</u>	
Reserve for Depreciation	\$ 475,884.95	
Other Real Estate (The recent appraised value of which is \$202,691.38 and the assessed value of which is \$183,439.36)	<u>110,299.08</u>	365,585.87
		<u>93.00</u>
		\$63,348,363.79

LIABILITIES

Capital stock		\$ 1,200,000.00
Surplus	\$ 1,000,000.00	
Undivided Profits	<u>703,864.64</u>	1,703,864.64
Reserve for Unearned Interest	\$ 70,626.27	
Reserve for Premium on Bonds	600,000.00	
Reserve for taxes and contingencies	<u>85,000.00</u>	755,626.27
DEPOSITS		<u>59,688,872.88</u>
		\$63,348,363.79

Winchester Surgical Supply Co.

106 East 7th St.
CHARLOTTE, N. C.

Winchester-Ritch Surgical Co.

111 North Greene Street
GREENSBORO, N. C.

CLINCHFIELD

Dependable

Steam COAL Domestic
SERVICE

CLINCHFIELD FUEL CO.

Main Office
SPARTANBURG, S. C.

Western Office
CINCINNATI, OHIO



AUTOGRAPHS



THIS ANNUAL PRINTED BY

**An
Organization**

Prepared to serve the
most exacting annual staff.

An organization with a thorough knowledge of printing and binding achieved through years of experience in the production of college and high school annuals . . .

OBSERVER PRINTING HOUSE

CHARLOTTE N.C.

ESTABLISHED 1893







