

42



1942
Graduation

Betty G. Lagan

ARCHIVES
SISTERS OF MERCY
BELMONT, NORTH CAROLINA

Given to the Archives
Oct 2, 2006
by Betty Cooper
AME

Let your light
shine before men
and love you!
Dexter M. Columbus

To ~~Julia~~,
To Betty, a swell girl with a
friendly smile In Tim

God love you!

F. Charles

THE 1942 GRADATIM



LEONA MOODY
Editor-in-Chief

JULIA DICKSON
Business Manager

VOLUME IX

Published by
THE SENIOR CLASSES OF
SACRED HEART
JUNIOR COLLEGE AND ACADEMY
BELMONT, NORTH CAROLINA



Our Patron

DEDICATION

*With minds filled with
recollections
of
School days spent
at
Sacred Heart
the
Graduates of '42
dedicate
this*

GRADATIM to

SISTER MARY ANGELA

*Love & appreciation
Sister Angela*

CONTENTS

THE contents of the GRADATIM for '42 falls into three main sections. Section one is devoted to the faculty members, the junior college classes, and the high school graduates. In section two are pictures of club members, "shots" of Superlatives and sponsors for the Sophomore Turn-about Dance, and scenes of activities in which graduates played a prominent part. The last section given to Athletics shows "stills" and action shots of the campus sports.



MOST REVEREND ABBOT VINCENT TAYLOR, O.S.B., D.D.

FACULTY



FATHER BENEDICT RETTGER, O.S.B.
Religion



FATHER SEBASTIAN DORIS, O.S.B.
Chaplain



FATHER GREGORY EICHENLAUB, O.S.B.
Religion

FACULTY

MR. J. B. HOUREN
Choral, Glee Club



MISS CATHERINE BOGAN
*Physical Education
Social Science*



FACULTY

REVEREND MOTHER M. RAPHAEL, *President*

SISTER M. COLUMBA, *Dean*

SISTER M. ANGELA, *Dean of Instruction and Registrar*

MOTHER M. GENEVIEVE, *Social Science*

MOTHER M. MAURA, *French, German*

SISTER M. HELFN, *Library Science*

SISTER M. TERESA, *Commercial Science*

SISTER M. KEVIN, *English, French*

SISTER M. IMMACULATA, *Music*

SISTER M. STEPHEN, *Mathematics, Science*

SISTER M. BENIGNUS, *English, History*

SISTER M. RAYMOND, *Home Economics*

The Chapel





Dining Hall

Library





Auditorium

Music Studio





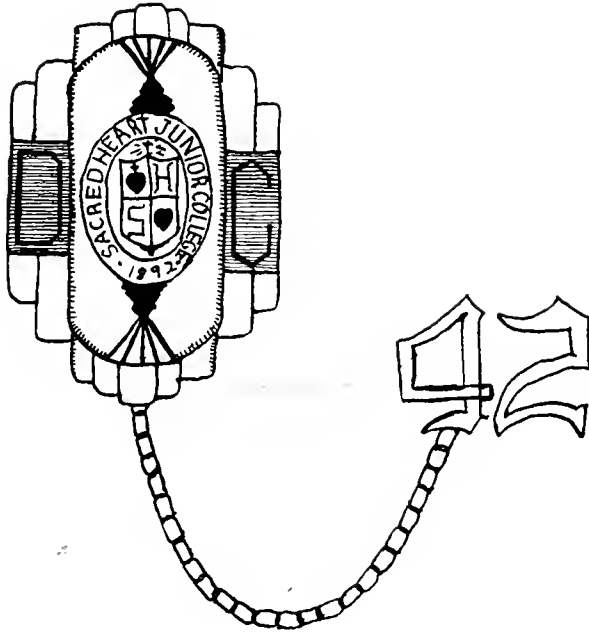
Chemistry Laboratory

Biology Laboratory





Home Economics Laboratory



GRADUATES



Left to right: M. PARTRICK, L. MOODY, B. LOGAN, M. HEDRICK.

GRADUATE CLASS OFFICERS

MARY HEDRICK

President

BETTY LOGAN

Vice-President

LEONA MOODY

Secretary

MAUDE PARTRICK

Treasurer

GRADUATES

Catherine Allison

GASTONIA, NORTH CAROLINA

Although she is usually "cool, calm, and collected," Catherine never lets anything a wee bit humorous pass without her full cooperation. May success be hers in the career she is determined to have.

Commercial Club (1, 2); Teasdale Book Club (1); W. A. A. (1); *Sacred Heart Echoes* Staff (2); GRADATIM Staff (2).

Julia Dickson

BELMONT, NORTH CAROLINA

A Southern charm as refreshing as the rose covered with morning dew, a smile that lights up her face as the sunbeams light up the day, a generous heart and hospitality to all—all these has our Julia.

Commercial Club (1, 2); Glee Club, Accompanist (1, 2); W. A. A. (1); Teasdale Book Club (1); Day Students' Association (1, 2); Business Manager of GRADATIM (2); Organist for Choir (1, 2).





Elizabeth Georgi

BURLINGTON, NORTH CAROLINA

As Editor of *Sacred Heart Echoes*, Betty has performed her task well. With her friendly disposition and her sweet smile we know that she will swiftly reach the top.

W. A. A Treasurer (1); *Sacred Heart Echoes* Staff (1, 2), Editor (2); GRADATIM Staff (2); Writers Club (2); Teasdale Book Club (1); Commercial Club (1, 2); Vice-President of Class (1); Sodality (1, 2).

*Betty, I never
saw you
get to know your better
May your song of life
always be happy and
one of success.
Another Betty*

Harriet Harrison

GASTONIA, NORTH CAROLINA

If one seeks a true friend, a good sport, and a jolly companion, combined in an excellent student, here's the combination—Harriet.

Asheville College (1); Freshman Guild (1); Secretary of Bible Class (1); Day Students' Association (2); Commercial Club (2); Glee Club (2).

G R A D U A T E S

GRADUATES

Mary Hedrick

BELMONT, NORTH CAROLINA

A leader of her class and a friend to her classmates is Mary. A mixture of seriousness and fun, she is always ready to take part in whatever is on hand—work or play.

Teasdale Book Club (1); Commercial Club (1); W. A. A. (1); Writers Club (2); *Sacred Heart Echoes* Staff (1), Associate Editor (2); President of Sophomore Class (2); Day Students' Association (1, 2); GRADATIM Staff (2).

Betty Logan

DALLAS, NORTH CAROLINA

Gay and fun-loving is Betty. Usually carefree and irresponsible, she, nevertheless, does have her serious moments. Her melodious voice which has so endeared her to us will carry her far in her fight to "conquer the world."

Glee Club (1, 2), Soloist (1, 2); Teasdale Book Club (1); W. A. A. (1); Day Students' Association (1, 2); *Sacred Heart Echoes* Staff (1, 2); GRADATIM Staff (2); Vice-President of Class (2); Quartet (1); Glee Club Librarian (2).





Leona Moody

TAYLORSVILLE, NORTH CAROLINA

"It is better to be small and shine than to be big and cast a shadow." Leona is faithful and decisive in all of her executive duties. She is quiet to walk with, but witty to talk with.

Day Students' Association (1, 2); W. A. A. (1); Writers Club (2); Basketball (1); Glee Club (1, 2); String Quartette (1); Honor Society (1, 2); Curie Club (1, 2); Teasdale Book Club President (1); Sacred Heart Echoes Staff (1, 2); Class Secretary (2); Editor-in-Chief of GRADATIM (2).

*Betty, I've liked you a lot these two years we've been together. I'll never forget our "Cultural" English class - Dear Sr. Kevin!!!!?
Bye, bye,
Maude*

Maude Partrick

WILMINGTON, NORTH CAROLINA

A bundle of restless energy, as good a basketball player as was ever produced by Sacred Heart, as graceful a dancer as any you will meet, modest, sincere, with a love for everyone she meets—this is our Maude.

W. A. A. (1, 2), President (1); Basketball (1, 2); Glee Club (1, 2), Secretary (2); Class Treasurer (2); Curie Club (2); Dramatic Club (1); Sacred Heart Echoes Staff (1, 2); Sodality (1, 2).

GRADUATES

GRADUATES

Marjorie Roper

BELMONT, NORTH CAROLINA

"Laugh and be merry: remember, better the world with a song." Marjorie is one of those rare souls who never lets her troubles trouble you. A sympathetic friend, she is always ready for a laugh and a good time.

Commercial Club (1, 2); Writers Club (2); Glee Club (1, 2); Day Students' Association (1, 2); Teasdale Book Club (1); W. A. A. (1); GRADATIM Staff (2).

*Best of every-
thing Betty always
you're a cute girl and
I like you a lot, so
be good.
Marjorie*

Beatrice Sumner

BELMONT, NORTH CAROLINA

An unswerving determination tempered by sweetness, a tolerance strengthened by light, a loyalty to Alma Mater cherished by long association, and a love for everything beautiful, good and true—these qualities make Bea an understanding and desirable young lady.

Day Students' Association (1, 2); Basketball (1), Manager (2); Glee Club (1, 2); Writers Club (2); Teasdale Book Club (1); Sacred Heart Echoes Staff (2); W. A. A. (1); Commercial Club (1, 2).





Doris Spencer

SPENCER, NORTH CAROLINA

Doris is a person easy to know, easy to love. A sweet disposition and dependability are her outstanding characteristics. She never refuses to do anything she can for anyone. To her we always turn in times of need.

Commercial Club (1, 2), Commercial Club President (2); W. A. A. (1); Day Students' Association (1, 2), Treasurer (2); Teasdale Book Club (1); *Sacred Heart Echoes* Staff (1, 2); Honor Society (2).

Mildred Tate

BELMONT, NORTH CAROLINA

Studios and quiet, yet with eyes showing the laughter that is contained within her heart. Mildred never seems lacking for company. Strictly an A-1 student, she is the pride of her teachers and friends.

W. A. A. (1); Associate Editor of *GRADATIM* (2); Glee Club (1, 2); Teasdale Book Club (1); Honor Society (1, 2); Day Students' Association (1, 2).

GRADUATES

GRADUATES

Anna Wilson Teeter

BELMONT, NORTH CAROLINA

"Industry, economy, honesty, and kindness form a quartette of virtues that will never be improved upon." Anna is a student who sees beauty and shares it with others. Quiet, friendly, loyal, she will always have scores of friends.

Commercial Club (1, 2); Day Students' Association (1, 2); Teasdale Book Club (1).





1. MAUDE PATRICK
 2. MARY HEDRICK
 3. BETTY GEORGI
 4. BETTY LOGAN

5. MILDRED TATE
 6. DORIS SPENCER
 7. IONA MOODY
 8. MARJORIE ROPER

9. HARRIET HARRISON
 10. CATHERINE ALLISON
 11. BEA SUMNER
 12. JULIA DICKSON
 13. ANNA WILSON TEETER

CLASS HISTORY

The halls of Sacred Heart, in September 1940, welcomed a new group of wide-eyed Freshmen, girls who were filled with the conflicting emotions of pride at being college girls and timidity at the strangeness of a new school, both tempered by a healthy respect for our recognized superiors—the Sophomores.

To some of us the traditions of Sacred Heart were not new, but college life was—especially the life presented to us by the Sophomore Class. "Rat Week" came all too soon, bringing with it all the misery of punctured pride and deflated ego. But we received no small comfort in the dance held in our honor at the end of the week.

Adjustments finally completed, we settled down to work, finding welcome relief after exams in the advent of Christmas holidays.

Spring was accompanied by the usual symptoms: we drooped wearily into class and cast longing looks out the windows; faces showed the absence of make-up and appetites were on the wane. It took the Sophomores' Turn-about Dance to waken us from the lethargy.

In our generosity of spirit, but mostly to prove that we were pretty good sports after all, we gave the traditional Junior-Senior Banquet.

Class Day Exercises were closely followed by Commencement on June 4, and we were off for a welcome vacation.

September saw us back with a few members absent but quite a few additional girls. There was the usual flurry of getting settled, organizing clubs, and choosing our leaders.

Realizing that we were now the senior class in college and with the memory of our Freshman year still rankling, we set to work to impress our underclassmen. To see the Freshmen ease around the nearest corner at the mere sight of a Sophomore should have been enough, but we found unholy glee in making them suffer all the horrors that our fertile imaginations could devise. The week ended with the dance attended by the soldiers from Morris Field.

On our return from the Christmas holidays, we held the Annual Turn-about Dance.

Spring meant the Junior-Senior Banquet, one of the most pleasant memories we carry away from Sacred Heart.

Commencement came with tears and farewells and promises of undying friendship. So ended our days under the loving guidance of our Alma Mater.

But these words, lightly spoken and hastily perused, can never tell of our real experience at Sacred Heart, the cherished symbols of school life, lasting friendships and beloved teachers. For our days here, happy and troublous, have left us a heritage we can never lose. We have known Sacred Heart and she has become a living part of us. As we go forth from her gates, we know that we will be all the better for having known her.

CALENDAR 1941-1942

SEPTEMBER

- 11—Registration of Freshmen.
- 12—Upperclassmen return.
- 14—Inaugural Mass at Belmont Abbey Cathedral.
- 15—Classes Begin.
- 19—Introductory dance given for students at Belmont Abbey College.
- 23—Sophomores treat the Freshmen to a movie followed by a party.
- 24—Mercy Day—holiday.

OCTOBER

- 6—Rat Week—Sophomores exert their superior authority on Freshmen.
- 10—Rat Court and Rat Dance. Morris Field Aviators guests at the dance.
- 17—Freshmen sponsor stunt night in college auditorium.
- 23—Students enjoy bingo party sponsored by the Catholic Women's Club at the Community House.
- 29—Students hear James Melton—feature of Gastonia Co-operative Concert Association.
- 30—Hallowe'en Dance sponsored by Junior Class—Jack-o'-lanterns, costumes, and fun.

NOVEMBER

- 19-24—Thanksgiving holidays.
- 27—Students enjoy special matinee of *Smilin' Through*.
- 28—Students attend *Ever Since Eve* given by students of Belmont High School.

DECEMBER

- 8—Holiday—Feast of the Immaculate Conception.
- 12—Prom at the Abbey—plenty of music and laughter.
- 18—Christmas Banquet with gaily decorated tree and bright red candles—Movie, *Jane Eyre*.
- 19—At last ! ! ! Christmas Holidays.

JANUARY

- 7—Christmas holidays end.
- 9—Sophomores sponsor Annual Turn-about Dance. The girls show the boys how to be perfect escorts.
- 16—Basketball game with Belmont High School. Sacred Heart victorious.
- 22—Semester examinations begin.
- 23—Students hear Dorothy Crawford—special feature of Gastonia Co-operative Concert Association.
- 29—Special movie, *Kentucky*, in college auditorium.
- 30-31—Annual Retreat conducted by Father Ryan, O. M. I., of Fayetteville, N. C.

CALENDAR 1941-1942

FEBRUARY

- 2—Holiday—Feast of the Purification.
- 5—First Annual Fashion Show sponsored by the Home Economics Department.
- 7—College and High School students special guests at dance given by Bea Sumner at Community House.
- 14—W. A. A. Valentine Dance at Community House.

MARCH

- 6—Basketball game with Mitchell. Sacred Heart victorious.
- 17—St. Patrick's Day—holiday.
- 20—Musical at Abbey. Combined Glee Club sings.
- 21—St. Benedict's Day—Choir sings at Pontifical High Mass in the Abbey Cathedral.
- 26—Freshmen present *Living Madonnas*.

APRIL

- 1—Easter Holidays begin.
- 8—Classes resume.
- 23—College Junior-Senior banquet. at Barringer Hotel. Charlotte. followed by theater party.
- 24—College day students sponsor Square Dance at Community House.
- 28—Academy Junior-Senior banquet.
- 29—Lawn party sponsored by high school seniors.
- 30—Students attend bingo party sponsored by Catholic Woman's Club at Community House.

MAY

- 4—Musical in college auditorium. Julia Dickson. pianist. Betty Logan. vocalist.
- 7—Glee Club sings at concert sponsored by Kiwanis Club at Belmont High School Auditorium.
- 12—Students' annual recital.
- 13—W. A. A. banquet.
- 14—Ascension Day—Holiday.
- 23—College students have Spring Formal.
- 27—Final examinations begin.
- 29—Class Day exercises and May crowning.
- 31—Baccalaureate Mass in Abbey Cathedral.

JUNE

- 2—Annual Faculty Breakfast for the graduates.
- 3—Graduation exercises in college auditorium.

*with your wishes
 David ...
 meeting ...
 ...
 ...
 ...*



Left to right: L. PARKER, D. LEWIS, M. E. COX, J. HORTON.

FRESHMAN CLASS OFFICERS

DIXIE LEWIS	<i>President</i>
MARY ELIZABETH COX	<i>Vice-President</i>
JACQUELINE HORTON	<i>Secretary</i>
LILLIAN PARKER	<i>Treasurer</i>

FRESHMEN

ELIZABETH BARNHARDT
Concord, North Carolina

DOROTHY BARNETTE
Charlotte, North Carolina

MARGARET BADDOUR
Laurinburg, North Carolina

MARY ELIZABETH COX
Gastonia, North Carolina

GERALDINE DONOVAN
Bellmore, New York

ROBERTA FALLS
York, South Carolina

INEZ GREENE
Belmont, North Carolina

WANDA GREENE
Bakersville, North Carolina

RUTH HAMMACK
Stanley, North Carolina

JACQUELINE HORTON
Belmont, North Carolina

MAXINE HUDSON
Wilson, North Carolina

DORIS JENKINS
Lowell, North Carolina

IRIS JONES
Mount Holly, North Carolina



*Betty, it's
been wonderful
knowing & be-
ing with you they
with your
voice. Love
Margaret Baddour*

*Betty, it's
just as you
well. Love
Doris Jenkins*

FRESHMEN



PAULINE KOURY
Burlington, North Carolina

DIXIE LEWIS
Florence, South Carolina

MARTHA MCFADDEN
Cramerton, North Carolina

EVA MOSES
Belmont, North Carolina

ELEANOR PETTY
Gastonia, North Carolina

LILLIAN PARKER
Elizabethtown, North Carolina

DOROTHY RAMSEY
Belmont, North Carolina

BOBBY REESE
Cramerton, North Carolina

FRANCES ROWAN
Paw Creek, North Carolina

MARILYN SETZER
Hickory, North Carolina

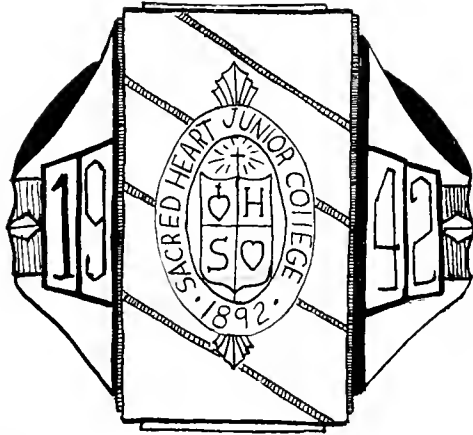
MIRIAM STEWART
Belmont, North Carolina

VIRGINIA VAN PELT
Belmont, North Carolina

FRANCES YARBOROUGH
Hamlet, North Carolina

*Betty, it's needless to wish
a girl of your talent and
ability. But very best of
luck, you will be found
to achieve it. Marylyn*

*Best wishes
to a new
sweet girl
Jenny*



ACADEMY



ACADEMY SENIOR CLASS OFFICERS

JUANITA JONES
President

MARY KATHERINE KABAS
Vice-President

MARTHA JO SEAY
Secretary

DOROTHY HEINZ
Treasurer

Left to right, M. J. SEAY, D. HEINZ, M. K. KABAS. Absent: J. JONES.

ACADEMY SENIORS



MARY ALICE BRYAN

Her laughter rings through the halls of Sacred Heart. Her cheery voice and smiling face lift our spirits and make us happy. With her talent for drawing who can say to what heights she will climb?



ELLEN BRYANT

A carefree manner combined with a quick sense of humor have helped to make "Chubby" popular with her associates. She is outstanding for her ability and sincerity. Here's to Doctor Bryant!

ACADEMY SENIORS

*Betty Luck
I have enjoyed Betty two
years here with you,
Frances*



*... of the ...
... ..
... ..*



*Betty Luck
... ..
... ..*

FRANCES CRESS

Frances invokes our love and admiration. She is always the "life of the party." Her ambition is to be a navy nurse. So "Bon Voyage" and success!

DOLLY DUNN

With a sharp wit and a ready smile, Dolly is as pleasant a girl as you will meet. With a love for pranks and a zest for conversation she never makes for dull company.

DOROTHY HEINZ

Her winning personality makes Dorothy a favorite here at Sacred Heart. Her ability to laugh at all times is her outstanding trait. This has helped her out of many a difficult situation. May it keep her out of many more!

JUANITA JONES

"Jest and youthful jollity"—although Juanita has been with us only one year, her sweet disposition and her participation in school activities have made her a favorite with everyone she has met.

ACADEMY SENIORS



*Betty Hoover
I can never
tell you how
much I'm enjoying
swinging in the
Club with you
By no means
Love
Mary*

*Just old girl
Memories to
see you
Love
Betty Hoover*

MARY KATHERINE KABAS

"She dwells no frown nor anger"—Mary Katherine is one of those lassies who is well-liked by everyone. She is outstanding for her splendid work on the basketball floor and for her general good sportsmanship.

MARGARET MCKNIGHT

"Character is what you are; reputation is what people think you are." In Margaret, studious and sincere, considerate and friendly, reputation and character are one.

ELIZABETH SANFORD

For her sweet understanding, her quiet friendliness and her willingness to help on all occasions we love our "Lib." Her school spirit and cooperation have made her a definite asset to our class.

MARTHA JO SEAY

"Come and trip it as you go, on the light fantastic toe"—Dolly is one our old-timers, loved by all who know her. Her dancing feet and ready smile will carry her far!

SENIOR CLASS HISTORY

In the fall of 1938 five girls—Dolly Dunn, Dolly Seay, Ellen Bryant, Mary Katherine Kabas, and I—rose to the ranks of high school students. We were all familiar with Sacred Heart and we knew only too well what was expected of us.

Thanksgiving passed in the medley of Latin and French phrases; Christmas came and went; Easter passed amid Algebra and the Middle Ages. Just as all these things were beginning to assume shape and reason in our minds, June came and we vacationed in the hope of gaining recognition as Sophomores next year.

In September, the same group returned and was joined by Toney McCaffrey from Asheville. We were pleased to welcome back Dot Heinz who had been with us in the seventh grade. Toney soon came to know our habits and customs and all went well.

The fall of 1940 was indeed happy for us as we had gained the title of Juniors. Mary Jeanne Thibodeau from Atlanta, Georgia, and Mary Edwards from Tryon, North Carolina, took Dorothy's and Toney's places this year. The Junior-Senior Banquet was the main event of the year. The beginning of the year was spent in anticipation of this occasion and the few weeks following were spent in blissful memories.

In September, the faithful five returned and welcomed to our company as seniors Dorothy Heinz, Charlotte; Juanita Jones, Gastonia; Frances Cress, Concord; Elizabeth Sanford, Charlotte; and Mary Alice Bryan, Durham. Juanita Jones was chosen to lead our class in its last round. The biggest thrill of this year was the arrival of the class rings. Commencement Day meant goodbye to friends and teachers and the old carefree days, but we were impatient to meet the mysterious outside world.

Our history has been short but exciting. Chemistry formulas and Latin phrases were hard going at first, but we conquered these as well as many other difficulties. Memories we shall cherish are those of our skating parties, Hallowe'en parties, and dances. We will always remember our Alma Mater and we hope that in the years to come, the class of '42 will be pleasantly remembered by the Faculty of Sacred Heart.

MARGARET MCKNIGHT, *Historian*

BRYAN'S MUSINGS

Scanning the news columns the other evening an item entitled "Keeping Up With The Navy" arrested my attention. Glancing down the page I read through several names. Doctor Ellen Bryant who had graduated from Johns Hopkins and three graduate nurses, Martha Jo Seay, Frances Cress, and Juanita Jones had been assigned to the hospital staff of the Navy department. With a start, I realized that these prominent people had once been classmates of mine at Sacred Heart Academy.

"Chubby," I remembered, had always wanted to be a doctor. I could see her now bending over some medical book or writing a medical story. It was always medicine with her. I had known she would go far and I was highly delighted that she had reached her goal.

"Dolly" Seay was another who had talked of medicine; but only in connection with nursing. We had always known she'd make a good one!

"Juany," too, had been determined to be a nurse, but after she married the great Naval officer, Wilson, we hardly thought she'd go in training. So it was quite a surprise to see her name on the list.

"Fress" had cherished the idea of becoming a Navy nurse after Pete joined up that last year of school. It was a sad day when he went in, but "Fress" made up her mind then and there she'd join too! Now she was in and I knew she must be happy.

Reading further, I saw that a Mrs. Jackson had been assigned as new athletic directress of the Navy. A picture of her was given and looking at it more closely, I saw it was none other than "Scrappy" Kabas. Was I surprised! I had always thought that Mary Katherine would enter the convent.

Next I came to an item of astonishing interest! The department was considering letting the sensational Broadway production "Only Fools Exist" be played in the Navy auditorium. The title was strangely familiar and suddenly I remembered that

Broadway's newest and most sought-after actress was playing the leading role, and she was none other than Margaret McKnight! I had always thought Margaret a trifle shy, but now it seemed that she was the toast not only of Broadway, but of Hollywood as well.

"My old classmates surely have gone up in the world!" I thought.

As I continued reading, I noticed that Miss Dorothy Heinz who had christened the great battleship, Butterfly, had afterwards run off and married. The lucky man was Commodore Throp of the U. S. S. S. S. Disaster. Well imagine that! We all had an idea Dot had married Jake even before school was out! That just goes to prove how brilliant we were.

And speaking of brilliance, I remembered reading just the day before that the world's greatest woman chemist is to address the entire Navy body after her work is completed in Europe. It will be a great event as it is thought that the professor will disclose several of her recent discoveries. Imagine "Dolly" Dunn having made such progress! I should like to hear her. She always had made delightful impromptu speeches and we had taken it for granted that she would go on the stage. But I guess her love for chemistry was just too great.

Last in the list of familiar names was Elizabeth Sanford. "Lib" had been chosen as chief switchboard operator of the Navy department. It was indeed an honor and I knew she wouldn't waste much time making eyes at the good looking seamen. To Lib her work would come first.

Well, that was the end of the article! Laying the paper aside, I thought of how kind life had been to my classmates, and here was I, Mary Alice, who might have been with them, holding down a job on a newspaper and performing all the duties of a housewife at once. But then, I too have found my happiness. And oh, they are so sweet!!!

—MARY ALICE BRYAN. *Prophet.*

LAST WILL AND TESTAMENT

STATE OF NORTH CAROLINA
COUNTY OF GASTON
CITY OF BELMONT

We, the Seniors of '42, now preparing to pass into the future, not wishing to be forgotten, and being in a sound state of mind and body do hereby declare this to be our Last Will and Testament.

ARTICLE I

To our dear Directress, Sister Columba, we will and bequeath our sincere thanks for her kindness, patience, and interest in each of us.

ARTICLE II

To Sister Stephen, the Seniors' best friend, we leave our love and the hope that she will get a more studious crowd next year.

ARTICLE III

To the faculty of Sacred Heart we will and bequeath our appreciation for their untiring effort and skillful guidance through our high school course.

ARTICLE IV

To the future students of Sacred Heart we leave the hope that their years of eventful experience will be as happy as ours have been.

ARTICLE V

I, Mary Alice Bryan, do hereby will and bequeath to Betty Tattersoll, my ability to skip History Class.

I, Ellen Bryant, do will and bequeath to Jane McClancy, my ability to put up an innocent front.

To Carolyn Waldron, I, Frances Cress, do leave my ability to be on time for any and everything.

I, Dolly Dunn, do will and bequeath to Ann King, my ability to cook. May you thus set the world on fire.

I, Dorothy Marie Elizabeth Heinz, alias Dot, do will and bequeath to Shirley Keyser, my neatness and exactness. I'm tired of it.

To Corn—elia Jones, I, Juanita Hewitt Jones, better known as "Juany," do will and bequeath my ability to study and make good. May it take you as far as it took me.

I, Mary Katherine Elizabeth Kabas, known for years as "Scrappy," do will and bequeath my beautiful finger nails to Nell Sudduth. May you keep them as long as mine.

I, Margaret McKnight, do will and bequeath to Madge Mills my ability to play softball. May you always reach first base.

I, Elizabeth Sanford, do will and bequeath to Gloria Gaspard my bed and two lockers. Put them to good use, Gloria.

To Martha Ann, I, Martha Jo Seay, do will and bequeath my gracious manner, particularly with traveling companions.

WITNESSES:

OSCAR—the seal.

JUMBO—the elephant.

DICKIE—the dog.

—ELLEN BRYANT, *Lawyer.*



ACADEMY SENIOR SNAPS

Bulletin Board

S.H. Echoes
staff Meeting
Monday, 12:45
B. Borjic

Don't Forget
W.A.A.
Dance

Whites' Club
meeting Being
your brides
M. Hudson
Pitt

Senior meeting
today at 3:30,
to choose
Superlatives.

The following pictures
for the GRADATIM
will be taken today.

Presidents'
Forum
meeting
today

Honor Society
induction will
take place Monday

All members
of the Chess Club
please meet in
the lab at 3:15
Important

Day Students
Association
members please
meet Tues at
12:45 in the
Auditorium, M.C.

Chess Club
rehearsal at
11:30 Today.
Mr. Wilson

Chess practice
7:15 tonight.
All must
attend. J. M. d.

ACTIVITIES



GRADATIM STAFF

LEONA MOODY
 MILDRED TATE
 JULIA DICKSON
 BETTY LOGAN
 CATHERINE ALLISON
 MARJORIE ROPER
 ELIZABETH GEORGI
 MARY HEDRICK
 MARGARET MCKNIGHT
 MARY ALICE BRYAN
 ELLEN BRYANT

Editor-in-Chief
Associate Editor
Business Manager
Dedication
Calendar
Snapshot Editor
Snapshot Editor
Historian
High School Historian
High School Prophet
High School Testatrix



Betty,
 you know →
 you are welcome
 to the use of
 my articles in
 my hourglass.
 you could do
 much a little
 hair - combing
 (as could I).
 I like your
 voice, & never
 told you did
 I?
 good-bye,
 Lillian

SACRED HEART ECHOES STAFF

- ELIZABETH GEORGI
- MARY HEDRICK
- LEONA MOODY
- CATHERINE ALLISON
- MARY ELIZABETH COX
- DIXIE LEWIS
- MAUDE PARTRICK
- LILLIAN PARKER
- MIRIAM STEWART
- MARILYN SETZER
- GERALDINE DONOVAN

- Editor
- Associate Editor
- Business Manager
- Circulation Manager
- Advertising Manager
- Advertising Manager
- Feature Writer
- Feature Writer
- Feature Writer
- Feature Writer
- News Editor



PRESIDENTS' FORUM

The Presidents' Forum comprises those girls who are the chosen leaders of their classes and organizations.

OFFICERS

MAUDE PARTRICK

MARY K. KABAS

DIXIE LEWIS

MARY HEDRICK

DORIS SPENCER

DOROTHY BARNETTE

MAXINE HUDSON

Curie Club

W. A. A.

College Freshmen

College Sophomore

Commercial Club

Day Students' Association

Writers Club



HONOR SOCIETY

The Honor Society consists of the members of the student body who uphold the high standards of scholarship at Sacred Heart. The members must maintain an average of ninety throughout the year.

MEMBERS

MARGARET MCKNIGHT

MILDRED TATE

LEONA MOODY

DORIS SPENCER

DOROTHY RAMSEY

DIXIE LEWIS

ANNA TEETER

DORIS CURLEE

MARILYN SETZER

MARY BEVERLY WILSON

FRANCES ROWAN



DAY STUDENTS' ASSOCIATION

The day students are banded together in an association which rather than severing the bond between the off-campus and the boarding students serves only to strengthen it.

MEMBERS

IRIS JONES
DOROTHY RAMSEY
ANNA WILSON TEETER
DORIS SPENCER
JACQUELINE HORTON
FRANCES ROWAN
VIRGINIA VAN PELT
MARTHA MCFADDEN
ELEANOR PETTY
DORIS JENKINS
MIRIAM STEWART
MILDRED TATE
MARJORIE ROPER
BEATRICE SUMNER

GLORIA COPPALA
MARY BEVERLY WILSON
JULIA DICKSON
MADGE MILLS
DORIS CURLEE
MARY HEDRICK
LEONA MOODY
WANDA GREENE
BOBBY REESE
MARY ELIZABETH COX
HARRIET HARRISON
INEZ GREENE
DOROTHY GREENE
BILLIE GROVES



COMMERCIAL CLUB

"Career girls"—that is what the Commercial Club is striving to make of its members, "Career girls" who can fill their places in the world of business.

MEMBERS

DIXIE LEWIS

LILLIAN PARKER

MIRIAM STEWART

JULIA DICKSON

DORIS SPENCER

RUTH HAMMACK

BEATRICE SUMNER

PAULINE KOURY

MARGARET BADDOUR

MARILYN SETZER

MARJORIE ROPER

MARTHA MCFADDEN

ELIZABETH GEORGI

GERALDINE DONOVAN

BOBBY REESE

DORIS JENKINS

CATHERINE ALLISON

MAXINE HUDSON

VIRGINIA VAN PELT

ANNA WILSON TEETER

HARRIET HARRISON



WRITERS CLUB

The Writers Club is a small group of girls organized for the further pursuit of literary activities. The aim of the members is to compete in various contests for the purpose of publication.

MEMBERS

FRANCES ROWAN
LILLIAN PARKER
JACQUELINE HORTON
MAXINE HUDSON
ELIZABETH GEORGI
LEONA MOODY
DOROTHY BARNETTE
DOROTHY RAMSEY

MARJORIE ROPER
WANDA GREENE
ELEANOR PETTY
MARILYN SETZER
MIRIAM STEWART
GERALDINE DONOVAN
BEATRICE SUMNER
DIXIE LEWIS

MARY HEDRICK



CURIE CLUB

The Curie Club serves as an outlet for our scientific "brainstorms." Here we make practical application of the formulas and theories which we learn in the classroom.

MEMBERS

JACQUELINE HORTON
MARY ELIZABETH COX
INÉZ GREENE

DOROTHY BARNETTE
LEONA MOODY
MAUDE PARTRICK



GLEE CLUB

To Mr. J. B. Houren, the director, goes a vote of thanks for what he has done for our glee club. With infinite patience and untiring effort he has made it an organization of which we may well be proud. Although he is leaving us, we will never forget our "Mr. Jack!"

First Row

BEATRICE SUMNER
 JULIA DICKSON
Accompanist
 VIRGINIA VAN PELT
 DOLLY SEAY
 DORIS CURLEE
 MARJORIE ROPER
 JANE MCCLANCY
 LEONA MOODY

Second Row

ALVERA MCCLURE
 ELIZABETH SANFORD
 MIRIAM STEWART
 NELL SUDDUTH
 BETTY LOGAN
 MARY E. COX
 HARRIET HARRISON
 ELLEN BRYANT
 MILDRED TATE
 BILLIE GROVES

Third Row

MARY BEVERLY WILSON
 SHIRLIE KEYSER
 TULITA MILLER
 PAULINE KOURY
 JACQUELINE HORTON
 MARY KATHERINE KABAS
 CAROLYN WALDRON
 MAUDE PARTRICK
 MAXINE HUDSON
 MARGARET BADDOUR



CHOIR

"There be none of Beauty's daughters with a magic like thee."
Here the purpose of music is the praise of our Creator.

MEMBERS

TERESA KABAS

FRANCES CRESS

EILEEN KEINAST

GLORIA GASPARD

ALVERA MCCLURE

ELIZABETH SANFORD

SHIRLIE KEYSER

NELL SUDDUTH

JANE MCCLANCY

DOLLY SEAY

JULIA DICKSON

Accompanist



SODALITY

The Sodality is an organization of students under the patronage of Our Blessed Mother. Recognizing Mary as the model of Catholic womanhood these girls take her for their own model and strive to imitate her.

MEMBERS

BETTY GEORGI	GERALDINE DONOVAN
DOLLY SEAY	MARY ANN BLILEY
MARGARET BADDOUR	DIXIE LEWIS
FRANCES CRESS	ALVERA MCCLURE
MARIE RYMER	TERESA KABAS
MARTHA ANN LOWNDES	DOROTHY HEINZ
ELIZABETH SANFORD	MARILYN SETZER
PAULINE KOURY	TERESA WOLHAR
MAUDE PARTRICK	JANE MCCLANCY
MAXINE HUDSON	SALLY BRIGHT
EILEEN KEINAST	MARY KATHERINE KABAS
RUTH HELFER	LILLIAN PARKER

ROBERTA FALLS



HOME ECONOMICS CLUB

In the Home Economics Club the girls are preparing themselves to take their places as the housewives of the future.

MEMBERS

DOLLY DUNN

DOROTHY HEINZ

MARGARET MCKNIGHT

ELLEN BRYANT

DOLLY SEAY



SUPERLATIVES

MAUDE PARTRICK
MARJORIE ROPER
BEATRICE SUMNER

Most Athletic
Best All-Round
Friendliest

JULIA DICKSON
MARY HEDRICK
ELIZABETH GEORGI

Most Attractive
Most Intelligent
Most Likely to Succeed



As some would have you believe



Spring Song



Siesta Time

LOOK! Is that a back up n? Clown Princess



A rolling "Grovestone" gathers----?



"Leisure"Class Meeting



Nine Lives of Master Mickey



Abbey Gossip



Wot'll I tell Miss Bogan today?



SUNNY South



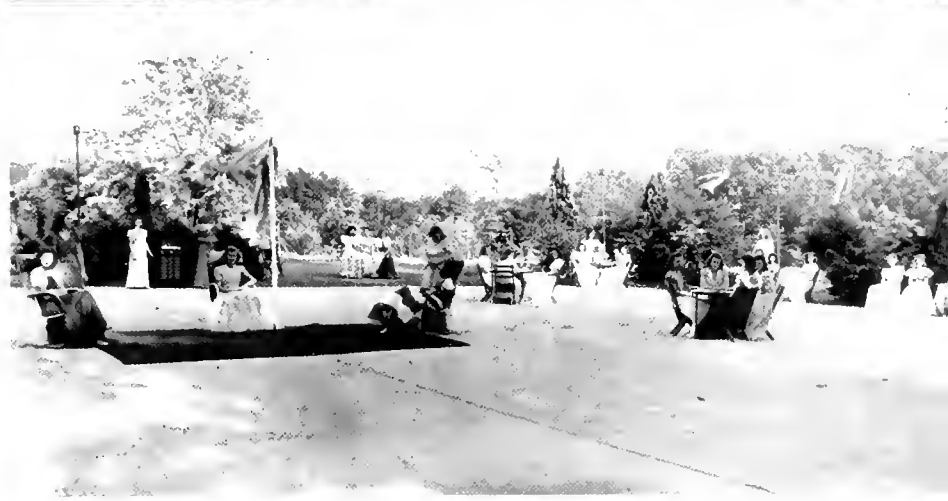
Steady (?) Hour



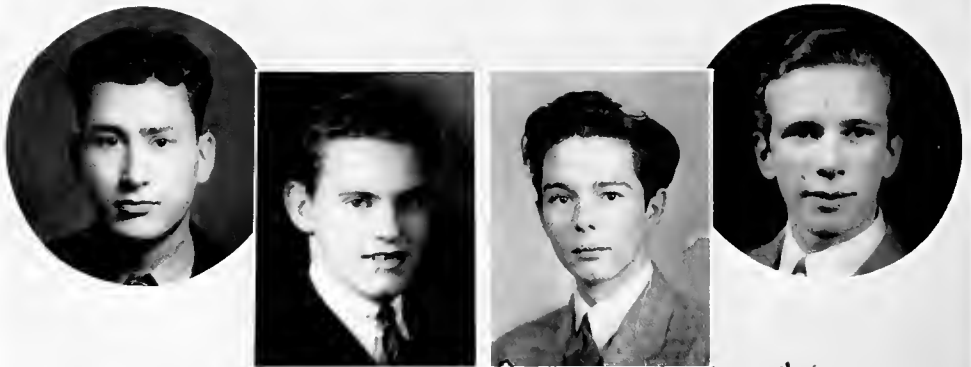
accompanist,
Mrs. J. Hugh Low
Charlotte, N.C.



LAWN PARTY RECITAL MAY PROCESSION.



CLASS DAY CHRISTMAS BANQUET TEA DANCE.



*Seniors heart wishes,
 for Eller,*

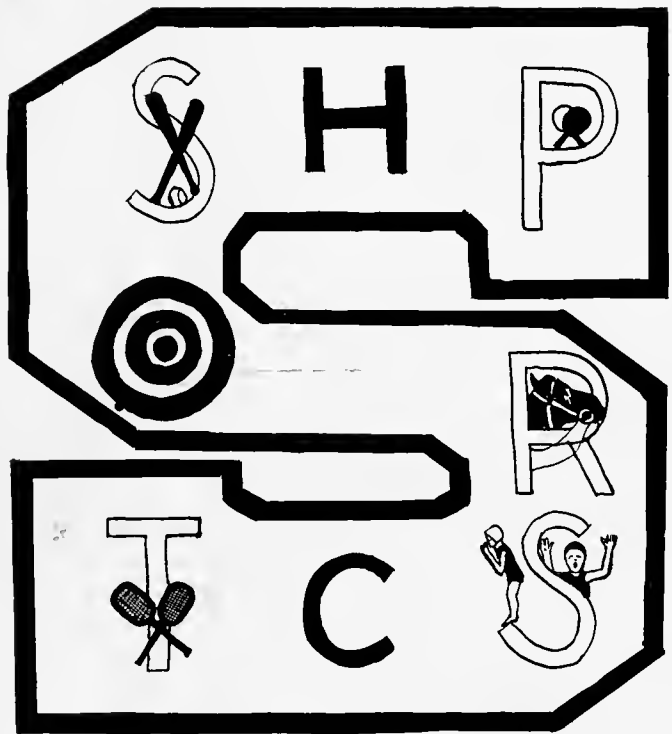
SPONSORS FOR SOPHOMORE DANCE

The Turn-about Dance sponsored by the Sophomore Class has become a tradition at Sacred Heart. On this occasion the girls of the school demonstrate their idea of the perfect escort.

MARY HEDRICK
 BETTY LOGAN
 LEONA MOODY
 MAUDE PARTRICK

DAVID DOUGLAS
 CHARLES CHISHOLM
 DON ELLER
 ASA HOSMER

It is quite
a combination
to find such a
sweet girl with
such a sweet voice.
Luck to you.
Mac. Hudson



ATHLETICS



W. A. A.

During a record year the W. A. A. at Sacred Heart has made rapid and sure strides towards its goal—active participation in a well-rounded athletic program.

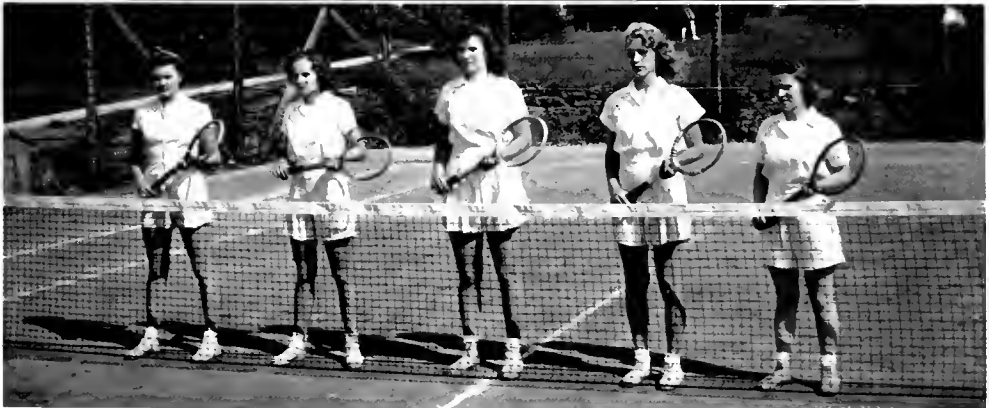
In the course of the school year a competitive program of unusual interest was organized. Students of the College and Academy were presented with a list of individual sports and group activities. From this list each student was privileged to select the individual sports most appealing to her; while all students were required to participate in the group activities.

Individual sports included Archery, Tennis, Badminton, Paddle Tennis, Ping-Pong, Shuffleboard, Darts, and Horseback Riding. Group activities were: Softball, Soccer, Volleyball, Basketball, Track and Field.

Awards distributed at the end of the year were given on the basis of participation, interest, attendance, and costume.

BASKETBALL TEAM

First row: Pauline Koury, Teresa Wolhar, Ruth Hammack, Captain, Maude Partrick, Teresa Kabas. *Second row:* Frances Cress, Eileen Kienast, Mary Alice Bryan, Gloria Gaspard, Martha Ann Lowndes, Dolly Dunn, Mary Anne Bliley, Mary Katherine Kabas



TENNIS TEAM

MARY ALICE BRYAN
MAUDE PARTRICK

FRANCES ROWAN

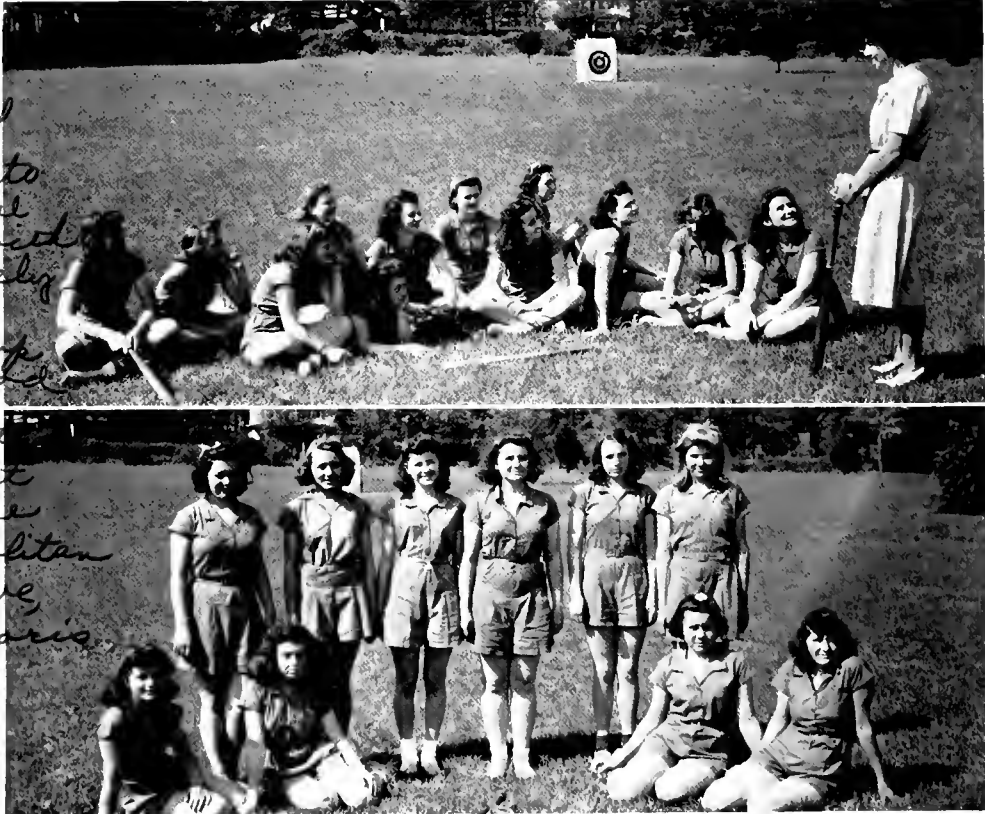
RUTH HAMMACK
DOROTHY HEINZ

SENIOR SOFTBALL TEAM

RUTH HAMMACK
DORIS CURLEE
TERESA KABAS
ELLEN BRYANT

JUNE SMITH
MARY K. KABAS
MARY ALICE BRYAN
FRANCES CRESS
TERESA WOLHAR

MARTHA A. LOWNDES
MAUDE PARTRICK
EILEEN KIENAST
MISS BOGAN, *Coach*



*Loads of
Luck to
a sweet
girl with
a lovely
voice
Keep up
the good
work
with it
&
you get
in the
metropolitan
Love,
Doris.*

JUNIOR SOFTBALL TEAM

TERESA KABAS
JUNE SMITH
MIRIAM THOMAS

MARIE RYMER
TERESA WOLHAR
DORIS CURLEE
MARY ANN BLILEY

EILEEN KIENAST
JACKIE HARPER
RUTH HELFER

Dear Betty, I want to tell you what a fine, sincere girl you are. I'm crazy about you and I certainly have enjoyed being with you this year. I also have enjoyed being in the girls and

RIDING CLUB *glad club with you.*
 PAULINE KOURY *Good-luck to you Betty!*
 CORNELIA JONES
 SALLY BRIGHT
 JUANITA JONES
P.S. I'm going to write to you this summer.

MISS BOGAN
 GLORIA COPPALA
 MAXINE HUDSON
 ALVERA McCLURE



ARCHERY

DIXIE LEWIS
 GERALDINE DONOVAN

MARGARET MCKNIGHT
 JUANITA JONES





Larkwood Silk Hosiery Mills,
Incorporated

Manufacturers of

LADIES FULL FASHIONED
SILK HOSIERY



NEW YORK OFFICE

385 5TH AVE.

CHARLOTTE, N. C.



SO THIS IS
COMMENCEMENT

+

Everything to look forward to and nothing to regret. Mind trained to solve the problems ahead. Character strengthened by splendid associations. Eyesight as good as ever because of Foresight in providing proper lighting through four long years of study in dormitory, class room, and laboratory.

See that the youngsters following you are properly equipped to protect their eyes, do better work, and keep their good dispositions with the aid of scientifically accredited lamps and lights.

+

DUKE POWER CO.

Sally,
New here -
Well girl
Here's to success,
& happiness in
everything you undertake
Jill Barnett
June 1, 1942

Compliments of

A FRIEND

**THE
OYSTER
BAR**

14 No. Pack Square

LOBSTERS, CLAMS,
CRABS, CRABMEAT,
SHRIMP AND OYSTERS
ON HALF SHELL

Operated by

**THE ASHEVILLE
FISH CO., INC.**

**CHARLOTTE
PRODUCE
COMPANY**

305 E. Fifth St.

CHARLOTTE, N. C.

**RELIANCE FRUIT &
PRODUCE CO., Inc.**

Wholesale
FRUITS AND PRODUCE
BUTTER AND EGGS

227-231 South College Street
CHARLOTTE, N. C.
Phone 2-2117

51 YEARS
OF SERVICE

+

**CHARLOTTE
LAUNDRY, Inc.**

CHARLOTTE, N. C.
Established 1890

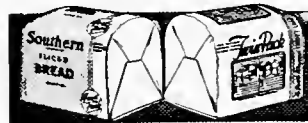
**CAROLINA
ELECTRIC
SUPPLY
COMPANY**

Distributors
ELECTRICAL
MERCHANDISE
117 West First Street
CHARLOTTE, N. C.

COLUMBIA BAKING CO.

Operating as

CAROLINA BAKING CO.



P. O. Box 247
CHARLOTTE, N. C.

**HALF CIRCLE
B RANCH
DAIRIES**



ASHEVILLE, N. C.

**SCHACHNER LEATHER
& BELTING COMPANY**

Telephone 4-1311

CHARLOTTE, N. C.

MANUFACTURERS

REPAIR SERVICE

MRS. J. A. SCHACHNER, SR., *President*
Night Phone 5972

J. A. SCHACHNER, JR., *Vice-President*
Night Phone 2-4777

J. E. TURNER, *Secy. and Treas.*
Night Phone 2-3341

We Invite You to Visit

Biltmore

DAIRY FARMS

ASHEVILLE

CHARLOTTE

*The South's Finest
Dairy*

**WILLIAMS & SHELTON
COMPANY, Inc.**

IMPORTERS - WHOLESALERS
MILL AGENTS

*Dry Goods - Notions
Hosiery - Furnishings*

CHARLOTTE, N. C.

You'll Enjoy Shopping At

BELK'S

★ It's Smart

★ It's Thrifty

★ It's Wise

*The Merchandise You Want
At The Price You Want To Pay*

BELK BROS.

THE CAROLINAS' LEADING STORE

CHARLOTTE. N. C.

Bridges

FURNITURE CO.

Telephone 3-3717

308 S. TRYON ST.

CHARLOTTE, N. C.

HINSON COAL COMPANY

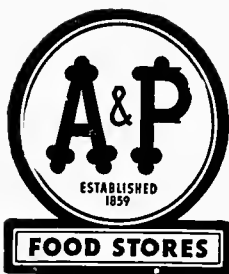
"Berwind's"
Smokeless Coals

P. O. Box 1444

PHONES 8171—8172



CHARLOTTE, N. C.



M. B. SMITH *Jewelers*

INCORPORATED

105 EAST TRADE STREET

CHARLOTTE, N. C.

A GASTON INSTITUTION

Offering Young Men A Thorough Training For Life
Liberal Arts - Business Course - Preparatory School
Supervised Social, Cultural, and Athletic Activities

Member of the Southern Association of Colleges and Secondary Schools,
North Carolina Educational Conference, National Catholic
Educational Association

GASTONIA: *Home of the Crusaders*

For Information, Address

THE REGISTRAR

BELMONT ABBEY COLLEGE

BELMONT, NORTH CAROLINA

ST. LEO'S HALL

*A Preparatory School for Boys Under Thirteen
Years of Age*

+

CONDUCTED BY THE SISTERS OF MERCY

+

For further particulars apply to

THE DIRECTRESS

ST. LEO'S HALL
BELMONT, N. C.

**THOMAS & HOWARD
COMPANY**

*Wholesale
Grocers*



CHARLOTTE, N. C.

DAVID McCOSKER, Inc.



Wholesale



68-70 PARK PLACE

NEW YORK

**HAWTHORNE
PHARMACY**

Prescription Druggists

Elizabeth at Hawthorne

CHARLOTTE, N. C.

DIAL 3-1185
*For Complete Drug
Service*

Free Delivery

WINCHESTER

"Carolina's House of Service"

**Winchester Surgical
Supply Co.**

106 E. SEVENTH ST.
CHARLOTTE, N. C.

**Winchester-Ritch
Surgical Co.**

111 NORTH GREENE ST.
GREENSBORO, N. C.

P. P. LEVENTIS & CO.
Incorporated

ESTABLISHED 1912

*Wholesale Fruits and
Produce*

408 WEST MAIN AVENUE

GASTONIA, N. C.

Horne-Wilson, Inc.

*Plumbing Fixtures
Heating Equipment
Pipe-Valves-Fittings
Sheet Metal - Roofing*



314 W. FIRST ST.

CHARLOTTE, N. C.

**John Sexton
& Company**

ESTABLISHED 1883

Importers - Manufacturers

Wholesale Grocers

MAIL ADDRESS P. O. BOX 466

BROOKLYN

**PRITCHARD PAINT &
GLASS COMPANY**



CHARLOTTE, N. C.

Louis G. Ratcliffe

INCORPORATED



FLOWERS



CHARLOTTE, N. C.

Compliments of

Wachtel's, Inc.

65 HAYWOOD ST.

ASHEVILLE, N. C.



*Hospital, Physician
and
Sick-Room Supplies*

**Pound & Moore
Company**

*Manufacturing
Stationers*

Office Outfitters

Printers



213 S. Tryon St.

CHARLOTTE, N. C.

**CAROLINA ABSORBENT
COTTON CO.**



*Hospital Supplies
Surgical Dressings*



CHARLOTTE, N. C.

**SMITH-WADSWORTH
HARDWARE COMPANY**

●
424-430 S. Tryon St.

PHONE 3-5161

CHARLOTTE, N. C.

**STOWE
Funeral Home**

SERVING THE COMMUNITY SINCE
1892



Ambulance Service



PHONES 330—101—331

BELMONT, N. C.

**CITIZENS TRANSFER
AND COAL CO.**

*Authorized Iron
Fireman Dealer*

18 BATTERY PARK AVE.

TELEPHONE 25



ASHEVILLE, N. C.

**INTERSTATE MILLING
COMPANY**

Manufacturers of

*High Grade Flour,
Grits, Meal, Poultry,
Dairy, Horse and
Hog Feeds*



CHARLOTTE, N. C.

*Betty how;
from knowing
more to your
Glad
been
you
listening
of love & luck,
Glad*

Southeastern Construction Company

218 WEST SECOND STREET



CHARLOTTE, NORTH CAROLINA



CLINCHFIELD FUEL CO.

SPARTANBURG, S. C.



BELMONT LUMBER Co.

"Everything for the Building"

MILLWORK, ROUGH AND
DRESSED LUMBER

BELMONT, N. C.

**BELMONT
SERVICE STATION
AND
CAFE**

STANDARD PRODUCTS

PHONE 9107

BELMONT, N. C.

W. R. FORD

HARDWARE AND
PAINTS

PHONE 248

BELMONT, N. C.

DIXON MOTOR CO.

AUTHORIZED

Sales and Service

FORD — MERCURY

LINCOLN-ZEPHYR

Compliments of

**THE BANK OF
BELMONT**

BELMONT, N. C.

MEMBER F.D.I.C.

J. F. BESS & CO.

*Manufacturers and
Wholesalers*

311-319 EAST MAIN STREET

GASTONIA, N. C.

Robinson's Drug Store

The Store of Personal Service

+

BELMONT, N. C.

Compliments of

DE LAMBERT P. STOWE

BELMONT

USE
SE-FLY-GO

KILLS
Flies
Mosquitoes
and many other
similar household
insects

Ask Your Grocer or Druggist
for
SE-FLY-GO

Made by
THE SELIG CO.
ATLANTA

Compliments of

A FRIEND

W. H. ARTHUR Co.

SHEET METAL - ROOFING
HEATING

P. O. Box 1687
ASHEVILLE, N. C.

Compliments of

IRIS and GEM THEATRES

COMPLIMENTS OF

**THE BELMONT
HIGH SCHOOL**

*The best of the rest!
7 Aug 1915*

THOMAS GRIFFITH, *President*

THOMAS C. HAYES, *Vice-President*

THOMAS GUION GRIFFITH, *Treasurer*

Thomas Griffith & Company

ESTABLISHED 1875

PHONES 2-4195



INSURANCE HEADQUARTERS



200 SOUTH TRYON STREET

FIFTH FLOOR COMMERCIAL BUILDING



CHARLOTTE, N. C.

**LISK CUT-RATE
PHARMACY**

826 E. Trade St.

2204 Avondale Ave.



CHARLOTTE, N. C.

WILSON PRINTING Co.

WEDDING INVITATIONS
WEDDING ANNOUNCEMENTS
AND
SOCIAL STATIONERY

BELMONT, N. C.

From CHICK
To LAYER
Feed

Spartan Quality
Mashes and Pellets

FOR:

Chicks, broilers, pullets, layers,
breeders, turkeys and poults.
See Your Dealer Today

Betty
you will always be as loachy
to me as you are ~~too~~ tonight.

PATRONIZE OUR

Love and Stuff
Germa Padgett
Advertisers

Dear Billy,

It's been a long time since I wrote you

and I'm sorry I haven't done so

more often. I've been so busy

with work and family that I

couldn't find time to do so

but I'm glad to hear from you

and hope you're all well

and happy. I'll write again

soon. Love, Dad

P.S. I hope you like the

card I sent you. It's a

little something from me

and I hope you'll keep it

as a reminder of your

father. Love, Dad



silly.

I have enjoyed so much being with you

and it's a pleasure to hear from you

and I hope you're all well

and happy. I'll write again

soon. Love, Dad

P.S. I hope you like the

card I sent you. It's a

little something from me

and I hope you'll keep it

as a reminder of your

father. Love, Dad

P.S. I hope you like the

card I sent you. It's a

little something from me

and I hope you'll keep it

Here to a very
sweet girl,
Always -
Ernest Johnson

Lots of luck and
success to a sweet
girl.
Love
Mather V -

To a charming girl,
a beautiful voice which
one day will be at the Metropolitan,
Fr. Cuthbert

I've always enjoyed hearing
you sing, Betty. Don't ever
neglect your lovely voice.
Father Anselm.

To the sweetest
girl that ever
lived
Wishing you all the
success that one can
have.
Polly Robinson

Good Luck Always
Dessa W.

Don't forget our little
bit trip to Ford Bldg. It
was lot of fun. I'll see you
next year.

Love
Aca.

Wishes to wish
you true
success
S. M. B.

Dear Betty,

I have really
enjoyed my time
with you & your
family. I have a
few more things
to do but I will
write you again
soon.

Love,
Mary Anne

Here's happy day to a swell girl
Dr Jim.



