

43



THE
GRADUATE
1943

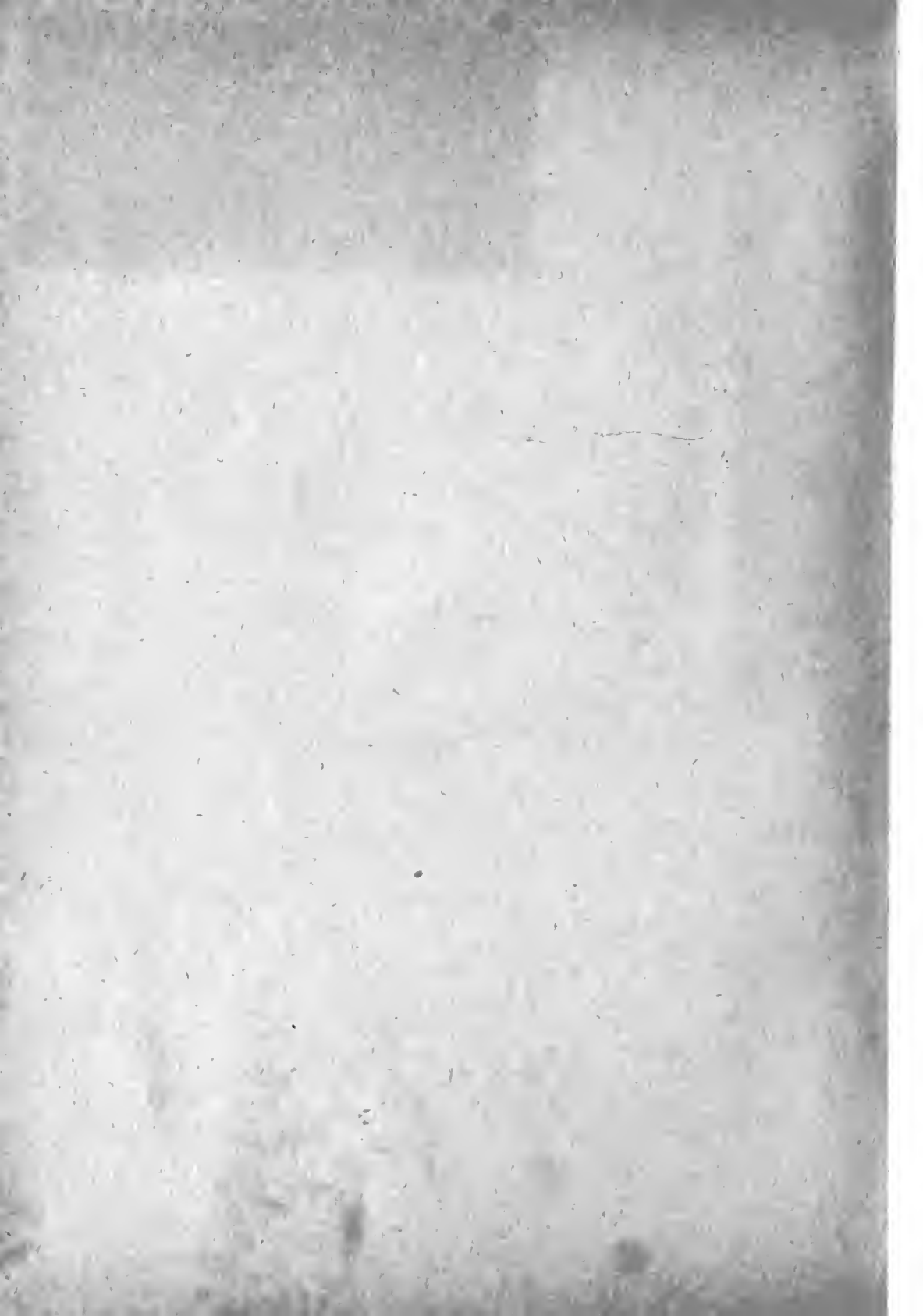
FIFTIETH
ANNIVERSARY
EDITION



File Copy

Do not remove

ARCHIVES
SISTERS OF MERCY
BELMONT, NORTH CAROLINA

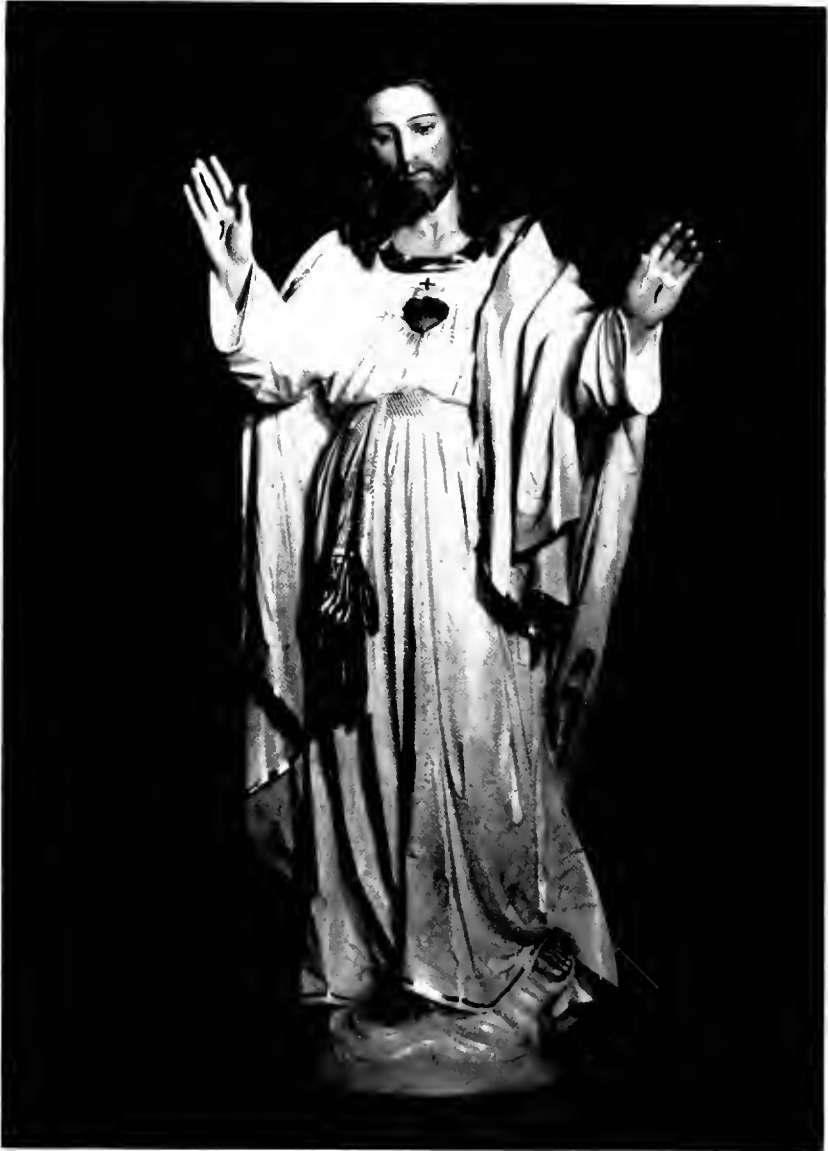


Digitized by the Internet Archive
in 2011 with funding from
University of North Carolina at Chapel Hill

<http://www.archive.org/details/gradatim1943sacr>

1943 GRADATIM
FIFTIETH ANNIVERSARY
EDITION





OUR PATRON

The
G R A D U A T I M



FIRST SACRED HEART ACADEMY. 1892.

Published by
THE SENIOR CLASS OF
SACRED HEART
JUNIOR COLLEGE AND ACADEMY
BELMONT, NORTH CAROLINA



SISTER M. AUGUSTINE KENT
 1869-1882
 1885-1894



SISTER M. TERESA SULLIVAN

1894-1914
July 21, 1893 - July 20, 1914
 ?

S U P E R I O R S

SISTER M. CHARLES CURTIN
 1882-1885

SISTER M. BRIDE McGRATH
 1922-1928—1934-1936

SISTER M. CECILIA COBB
 1914-1919

SISTER M. RAPHAEL DOYLE
 1928-1934—1936-1942

SISTER M. SCHOLASTICA KEENAN
 1919-1922

SISTER M. MAURA BUCHHEIT

Sister Immaculata 1948-51 (51)
Sister M. Maura 1951-57
Sister Benignus 1957 - 1963
Sister Mary James 1963-1966

TO THE BELOVED DIRECTRESSES



Sister M. Agatha

Sister M. Cecelia

Sister M. Genevieve

Sister M. de Sales

Sister M. Angela

Sister M. Helen

Sister M. Stanislaus

Sister M. Columba

Sister M. Hildegarde

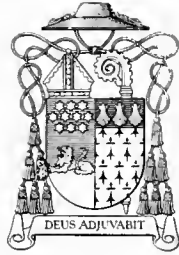
we, the Class of 1943, dedicate this Jubilee Number
of our Gradatim.



MOST REV. LEO HAID, O.S.B., D.D.

First Abbot-Ordinary

1888-1924



RT. REV. VINCENT GEORGE TAYLOR, O.S.B., D.D.

Present Abbot-Ordinary

1925-



VERY REV. FATHER FELIX
HINTEMEYER, O.S.B., V.G.
Ecclesiastical Superior
1892-1924

HISTORY

Jubilee Year of Sacred Heart Convent and Academy, we salute you! Glorious Golden Year that touches with radiant hue the foundation of our beloved Academy, we greet you!

Joyfully, jubilantly, proudly we address our Alma Mater and eagerly request that she tell to us, the graduates of this, her Golden Jubilee Year, something of her glorious past, her joys and sorrows, her strivings and triumphs, through all those happy, fruitful years.

Gathered closely around her, we listen attentively the while she gives us this story that has been fifty years in the making, this story whose principal characters are the revered past and the esteemed present teachers of our beloved Alma Mater. It is a story of self-sacrifice, of constant spending of the energies of life that others might tread the higher paths. It is a story of benevolence, sympathy, and zeal. It is a story punctuated by manifold hardships and even impending threats of failure. It is a story of the boundless charity of the Sisters of Mercy of Belmont, North Carolina. * * * * *

"My dear Graduates of our Golden Jubilee Year, almost every beginning is replete with obstacles and discouragements, doubly so if the instruments are meager and the natural forces, material and personal, inadequate. Such, in truth, was the beginning of the Community of the Sisters of Mercy who

attempted to establish themselves in several different locations in North Carolina before they made their permanent foundation of Motherhouse and Academy in Belmont.

"In 1869, in answer to an appeal from the newly appointed Bishop James Gibbons to the newly created Vicariate of North Carolina, three Sisters of Mercy from the infant foundation in Charleston, South Carolina, came to Wilmington, North Carolina, to undertake the conducting of a Catholic school in that city. The Sisters of Mercy of Charleston were not strangers to the people of Wilmington, for a few years previously they had braved sickness and possible death when they came to Wilmington to nurse the victims of yellow fever which then ravaged that city. Bishop Gibbons' appeal for Sisters for his school was answered in the persons of Sister Mary Augustine Kent, Sister Mary Charles Curtin, and Sister Mary Baptist Sheehan who came to Wilmington on October 11, 1869. These three Sisters were the founders of a new institute destined to take root in this State. They were the pioneers of Catholic learning in North Carolina. They formed the nucleus of the Sisters of Mercy of Belmont.

"Between the arrival of the Sisters in Wilmington and their coming to Belmont, there elapsed several years before the occurrence of that providential event which led to their permanent establishment at Sacred Heart. In 1891, Bishop Haid, first Abbot of Belmont Abbey, wrote to Mother Augustine in Wilmington bringing her the news that he had been informed of the sale of a piece of property between the Monastery and the town of Belmont. The Bishop had desired for some time to have a religious Community of women to conduct a school for girls near the Abbey. The zealous Sisters were eager to work in unison with the Bishop's desire, and though unable then to finance the purchase, they complied with the wishes of Bishop Haid and accepted the offer. Encouraging letters about the proposed purchase were received from the Prior of Belmont Abbey, Father Felix, who then and in the years that followed, showed a kindly, fatherly solicitude for the welfare of the Sisters and in all that concerned them. Negotiations were completed, the property was purchased, and immediately plans for a school building began to materialize. On February 3, 1892, the first peg of the Belmont house was driven into the ground. On September 1, at 4:30 in the afternoon, Sister M. Catherine, as Superior, Sister M. Cecilia, Sister M. Agatha, Sister M. Xavier, and Sister M. Clare arrived in Belmont to begin this new foundation.

"Interesting, amusing, and inspiring are the events chronicled by the Community Annalist of those first days at Sacred Heart. The house was not quite finished when the Sisters arrived. Not at all comforting was the realization that their first night was to be spent in a house without doors, out in the woods, and in utter darkness; Sister Catherine had forgotten her candles and matches. For the dedication on September 8, Sisters and workmen vied with one another in their efforts to be ready for the big day. When at last the day arrived, the whole house was cleared of all evidences of preparations.





all furniture was displayed to best advantage, and a flag of the United States was unfurled from the roof. Ceremonies were delayed till the arrival by train from Charlotte of Sister M. Gertrude, Sister M. Joseph, Sister M. Veronica, and Sister Margaret Mary. At three-thirty in the afternoon the distant thumping of drums heralded the approach of a brass band procession from the Abbey. Students, lay-brothers, and priests were on their way with the Bishop to attend the dedication ceremonies. In suitable order all proceeded through the house accompanied by the nine Sisters bearing lighted candles. When all the rooms of the three-story building were blessed, the procession returned to the Chapel where the Bishop delivered an inspiring address and a fitting welcome to the 'good, holy Sisters.' Later, in the main hall, the band played on and did not take its leave until its members gave three rousing cheers for Sacred Heart Academy.

"Here at Belmont, in September 1892, Sacred Heart Academy opened wide its doors. Here for the years to be she was destined to instill true wisdom, to infuse true knowledge, and to mould truly Christian characters.

"In the school annals are recorded the interesting facts and outstanding events of those first years at Sacred Heart. The first session registration was twenty-one, twelve boarding pupils and nine day students. The first student enrolled was Mary Applewhite of Cronly, North Carolina. At the first distribution of prizes, Mary Goforth of Belmont, N. C., now Sister Mary Ignatius of the Benedictine Sisters of Bristow, Virginia, received the honor of the school as an English graduate. In 1894, Saint Mary's Dramatic Association, with Sister M. Agatha as president, presented entertainments in honor of Father Felix and the Bishop. In 1895, outstanding musicals were given as well as the presentation of Father Felix's play, 'Pontia, the Daughter of Pilate.' Later with Sister Cecilia as president, the students presented a number of plays including 'Witch of Rosenberg,' 'A Dress Rehearsal,' and 'Tyrolean Queen.' In June 1908, the first issue of *The Sacred Heart Echoes* was published. *The Echoes* of that time was a quarterly publication.

"An unforgettable feature of those early and the later years at Sacred Heart was the part Father Felix played in the educational and recreational life of the students. From the time the Academy was established until the time of his death in 1924, Father Felix taught classes at Sacred Heart. But it was not in the class-room alone that the girls learned to know and appreciate Father Felix. In their weekly hikes, their frequent outing excursions, and their seasonal nutting expeditions, he was their friendly guide and most delightful companion. Gentleman, scholar, and priest, he was dearly loved and genuinely revered for his kindly, sympathetic nature, and his whole-hearted interest in all that concerned the students.

"The passing of the years brought many changes to Sacred Heart—changes in the personnel of the teaching staff, changes in the members of the student body, changes in the very face of the school and the campus.

In 1899 Academy space for students became more adequate when a new Convent and Novitiate brick building was erected and Professed Sisters and Novices moved from the frame Convent and Academy building, the first home of the Sisters at Belmont. The frame building was henceforth to be used entirely for the students. The dearest privilege granted them by this change was the converting of the Sisters' Chapel into the school study hall. Still other changes for greater accommodations were made in 1913 when the Academy building was enlarged by the addition of a gymnasium, practice music rooms, and several private bedrooms with open sun porches. Then in 1922 the completion of Victory Hall—named in honor of Our Lady of Victory through whose intercession the building was made possible—was an event of genuine pleasure for students and teaching staff. Here were ample room and scope enough, for the time, for the growing needs of the school. The spacious auditorium, elegant single and double bedrooms, artistic music rooms, attractive art rooms, and interesting museum heightened the students' joy and the teachers' delight in the grand work of education. Again in 1928 the Sisters undertook still other enlargements. At this time the old gave way to the new, when the Academy frame building was torn down and in its stead the more adequate, more accommodating, and more imposing brick Administration Building was erected. In this building the students were given greater facilities in class room space, in science laboratories, in library, periodical room, and reading room, and in recreation halls and dormitories. Unstinted outside recreational facilities, too, were provided in the large pavilion, the rose-covered summer-house, the rolled tennis court, and the concrete court marked for volley ball, badminton, and paddle tennis. These together with the expansive lawn have been the scenes of happy outdoor events, and gay, colorful parties that have become traditional in the life at Sacred Heart.

"Then who would attempt to estimate the influence for good that has been effected within the class rooms and study halls at Sacred Heart during all these years? Since its foundation fifty years ago, Sacred Heart Academy has endeavored to inculcate those principles and attitudes, those fine characteristics that are the essence of cultured womanhood. Using these as their norm, students and teachers have sought to keep pace with educational demands. With ever-increasing joy and enthusiasm they have acquitted themselves nobly of their duty to advance in age and wisdom before God and man.

"In its earlier years the Academy was not a high school in the strict sense of the word as it is today with its affiliations with school associations. It was, rather, a Southern finishing school in which emphasis was placed on



the cultural rather than on the commercial and scientific phases of education. Yet the curriculum as formulated for the Academy in those early days carried the student further than does the four-year high school of today. Besides Music and Art, Literature and Dramatics in which students strove to excel, excellent advanced courses in Latin, Philosophy, and Evidences of Christianity were given. In due time the Academy became fully accredited by the North Carolina State Department of Education. Later it was admitted as a member school of the Southern Association of Secondary Schools and Colleges. Then in August, 1935, came the announcement that the Sisters at Sacred Heart were prepared to extend their field of education. They were ready to supply needed academic, physical, and moral training of young high school graduates in two-year standard college courses. The Sisters proposed to give their students either of two courses: the classical course leading to the bachelor's degree, or a cultural secretarial course in preparation for a business career.

Thus with the passing of the years, Sacred Heart has been richly endowed with temporal blessings that have brought forth in abundance spiritual fruit in the lives of those intrusted to her care. And looking back over a stretch of fifty years, Alma Mater is deeply grateful for the blessings that have been hers. Lovingly she fingers her rosary of golden memories as she muses, and from out the past she recalls cherished names of those who through all the years have given generously of their time and talents that



Sacred Heart might endure. Passing before her today are those revered Religious whose names are most closely associated with the earliest years in Belmont: Bishop Leo Haid, Father Felix, Mother M. Augustine, Mother M. Teresa, Sister M. Catherine, and Sister M. Agatha. Then follow other Community Superiors: Mother M. Cecilia, Mother M. Scholastica, Mother M. Bride, Mother M. Raphael, and the present Mother Superior, Reverend Mother M. Maura. Sacred Heart is mindful too of the self-sacrificing service of her several Directresses: Sister M. Agatha, Sister M. Cecilia, Sister M. Genevieve, Sister M. de Sales, Sister M. Angela, Sister M. Helen, Sister M. Stanislaus, Sister M. Columba, and the present Directress, Sister M. Hildegard. Gratefully she acknowledges her indebtedness for spiritual guidance to the zealous Benedictine Fathers who served as Chaplains: Father Felix, Father Alphonsus, Father Charles, and the present Chaplain, Father Sebastian.

"And today, in this the Golden Jubilee Year of its foundation, from out the peace of her halls, Alma Mater, Sacred Heart, sheds her benedictions on all her cherished ones: on loyal graduates, past and present; on revered Chaplains; on devoted Sisters and Superiors, on all those who have had the privilege of sharing with her at one time or another the joys, the triumphs, the manifold blessings of her fifty years. And humbly mindful of the sources of all these blessings, she turns to the Divine Giver and with deeply grateful heart intones that jubilant hymn of praise—*Te Deum Laudamus*."



A GLANCE



Top Picture FIRST STUDENT AT SACRED HEART

AT THE PAST





COLLEGE AVENUE



ADMINISTRATION BUILDING



WEST CAMPUS



CAMPUS THROUGH THE ARCH



SOUTH CAMPUS



A RUSTIC LANE

FACULTY



FATHER BENEDICT RETTGER, O.S.B.
Religion



FATHER SEBASTIAN DORIS, O.S.B.
Chaplain



FATHER CUTHBERT ALLEN, O.S.B.
Philosophy



MISS LOUISE BUONAGURO
Physical Education
Social Science

FACULTY

REVEREND MOTHER M. MAURA, *President*

SISTER M. HILDEGARDE, *Dean*

SISTER M. ANGELA, *Dean of Instruction and Registrar*

SISTER M. HELEN, *Library Science, History*

SISTER M. TERESA, *Commercial Science*

SISTER M. AQUINAS, *English, History*

SISTER M. IMMACULATA, *Music*

SISTER M. JEAN BAPTISTE, *Science, Mathematics*

SISTER M. INEZ, *Languages*

SISTER M. BENIGNUS, *English*

SISTER M. RAYMOND, *Home Economics, Mathematics*

PROFESSOR GUILLERMO DE RONLO, *Music*



GRADUATE CLASS

OFFICERS

DOROTHY BARNETTE
President

INEZ GREEN
Vice-President

MIRIAM STEWART
Secretary and Treasurer



DOROTHY BARNETTE
CHARLOTTE, N. C.

Day Student Association (1, 2); Curie Club (2); Class President (2); Day Student President (1); W. A. A. (1, 2); Writers Club (1); Business Manager of GRADATIM (2).

With her ready smile and winning personality, Dot has made herself a favorite here at S. H. C. An excellent mixture of seriousness and fun has made her a definite asset to our class.



MARY ELIZABETH COX
GASTONIA, N. C.

Commercial Club (2); W. A. A. (1, 2); Glee Club (1, 2); Curie Club (1); *Sacred Heart Echoes* Staff (1, 2); Class Vice-President (1).

A true spirit of cooperation and a shining personality combine to make Mary Lib a credit to any school. We are all sure her life will never lack a friend.

GRADUATES



MARGARET DAVIS
MOUNT HOLLY, N. C.

Queens College (1); Glee Club (2); W. A. A. (2); Day Student Association (2); Editor-in-Chief of GRADATIM (2).

Leadership, good sportsmanship, eagerness, enthusiasm, and a readiness to serve, are qualities we find gracefully blended in the charming personality of Margaret, who through all her years at Sacred Heart has been sincerely loved and deservedly admired.

MAXINE HUDSON
WILSON, N. C.

Associate Editor of GRADATIM (2); Feature Editor of *Sacred Heart Echoes* (1, 2); Glee Club (1, 2); Sodality (1, 2); W. A. A. (1, 2); May Queen (2); Commercial Club (1, 2); President of Commercial Club (2); Writers Club President (1).

Efficiency, reliability, and determination make leaders. Maxine has shown us these traits in her two years at Sacred Heart. Her staleness well carries the title May Queen. All of these qualities will lead her successfully through the paths of her future life.

INEZ GREEN
BELMONT, N. C.

Class Poet (2); Day Student Association (1, 2); Class Vice-President (2); W. A. A. (1, 2); Curie Club (1, 2); May Court (2).

A sharp wit and ready grin has our Inez. Her troubles must explode in the Chemistry lab, for we never hear of them. She agrees with few, but expresses her own opinion in the most impressive way. After all, "Variety is the spice of life."

IRIS JONES
MOUNT HOLLY, N. C.

Day Student Association (1, 2); W. A. A. (1, 2); Curie Club (2); May Court (2); Commercial Club (2); Day Student Vice-President (2); Snapshot Editor of GRADATIM (2).

Her quiet friendliness, her refreshing attractiveness, and her distinctive charm combine to make Iris a modern edition of the original Southern lady. Her wit and cheerful disposition have endeared her to many.

GRADUATES



ELEANOR PETTY
GASTONIA, N. C.

Day Student Association (1, 2); W. A. A. (1, 2); Day Student President (2); Curie Club (2); May Court Maid of Honor (2); Writers' Club (1); Commercial Club (2); *Sacred Heart Echoes* Staff (2).

Sterling of character, jovial in disposition, loyal to her classmates is Eleanor. Her winning smile and enchanting personality will captivate the hearts of all whom she may meet and carry her far in the pursuit of her career.

FRANCES ROWAN
PAW CREEK, N. C.

Curie Club President (2); W. A. A. (1, 2); Writers' Club (1); Honor Society (1); Day Student Association (1, 2).

Loyal, cooperative, thoughtful, conscientious, and versatile are among the adjectives we might use in describing Frances. One of the most outstanding sophomores, she is well-liked by the faculty and all her classmates. We shall never forget her.

DOROTHY RAMSAY
BELMONT, N. C.

Day Student Association (1, 2); Associate Editor of *GRADUATE* (2); Writers' Club (1); Honor Society (1); W. A. A. (1, 2); Curie Club (2).

She is a girl we are all proud to claim as our own friend. Brilliant, loyal, kind and happy—these are truly Dot's characteristics. She never speaks harshly of anyone, a fact which shows more than any other her strong, lovely character.

MIRIAM STEWART
BELMONT, N. C.

Sacred Heart Echoes Staff (1, 2); W. A. A. (1, 2); Writers' Club Secretary (1); Glee Club (1); Commercial Club (1, 2); Class Secretary and Treasurer (2); Commercial Club Secretary (2); Day Student Association (1, 2).

Always willing to help, no matter the task. Always willing to do, no matter what asked. Always smiling, no matter how dreary the day. Always ready to lead, no matter how dark the way. This and much more makes our Miriam.



Superlatives



DOROTHY RAMSAY
Most likely to succeed

*"To win the wreath of fame and
write on memoru's scroll a deathless
name."*

MARGARET DAVIS
Best all-round

*"Bright as the sun her eyes strike;
And, like the sun, they strike on
all alike."*

IRIS JONES
Wittiest

*"Rare compound of oddity, frolic,
and fun,
Who relish'd a joke and rejoic'd
in a pun"*

ELEANOR PETTY
Most Popular

*"The witty jest, the frequent smile,
Made her friendship well worth-
while."*

MAXINE HUDSON
Most Attractive

*"Plato himself had not surveu'd
Unmoved such charms as she dis-
played"*

FRANCES ROWAN
Most Studious

*"Good actions crown themselves
with lasting bays,
Who well deserves needs not an-
other's praise."*



FRESHMAN CLASS OFFICERS

EILEEN GEORGI

President

MARGARET MCKNIGHT

Vice-President

VIRGINIA MURPHY

Secretary and Treasurer

FRESHMEN

RUBY ANNIS
Belmont, N. C.



BETTY JEAN ARMSTRONG
Belmont, N. C.



VIOLET CADDELL
Belmont, N. C.



SADIE CARSON
Gastonia, N. C.



MARIE DUNCAN
Clover, S. C.



EVA FAUDEL
Shelby, N. C.



BEATRICE FRONEBERGER
Gastonia, N. C.



EILEEN GEORGI
Burlington, N. C.



FRESHMEN

GENEVIEVE GROBUSKY
Walhalla, S. C.



DOROTHY HEINZ
Charlotte, N. C.



BARBARA KIRSTNER
Charlotte, N. C.



MARGARET MCKNIGHT
Belmont, N. C.



VIRGINIA MURPHY
Rocky Mount, N. C.



DOROTHY PAPOULEAS
Tarpon Springs, Fla.



LORENE WARREN
Belmont, N. C.



ANNE WILLIAMS
Gastonia, N. C.





ACADEMY

SENIOR CLASS OFFICERS

MARTHA ANN LOWNDES

President

JEFFIE COCHRANE

Vice-President

RUTH GRIGG

Secretary and Treasurer

ACADEMY SENIORS



JEFFIE COCHRANE
CHARLOTTE, N. C.

Harrisburg, N. C. (1); Huntersville, N. C. (2); Monteverd (3); Sacred Heart (4); Curie Club (4); Dramatic Club (4); Basketball (4); W. A. A. (4); Class Vice-President (4).

RUTH MONTGOMERY GRIGG
BELMONT, N. C.

Gastonia High School (1, 2, 3); Sacred Heart (4); Curie Club (4); Basketball (4); W. A. A. (4); Cheerleader (4); Class Secretary and Treasurer (4); Glee Club (4); *Sacred Heart Echoes* Staff (4).



NORA LEZA ASTORGA
SAGUA LA GRAND, CUBA

Sacred Heart (1, 2, 4); E. Normal de Kindergarten (3); Sodality (1, 2, 4); Basketball (1, 2, 4); Class Treasurer (2); French Club (2, 4); W. A. A. (2, 4); Maynell Literary Society (1, 2); GRADATIM Snapshot Editor (4); Glee Club (4); *Sacred Heart Echoes* Staff (4).

MARTHA ANN LOWNDES
CHARLESTON, S. C.

Walterboro High School (1, 2); Sacred Heart (3, 4); Glee Club (3, 4); Basketball (3, 4); Basketball Captain (4); W. A. A. (3, 4); W. A. A. Vice-President (4); French Club (3, 4); Dramatic Club (3, 4); Curie Club (4); *Sacred Heart Echoes* Staff (4); Class Secretary (3); Class President (4).



VIRGINIA M. VAUGHAN
DECATUR, GA.

Decatur High School (1, 2, 3); Sacred Heart (4); Curie Club (4); GRADATIM Staff (4); W. A. A. (4); *Sacred Heart Echoes* Staff (4); May Court (4).

SENIOR CLASS PROPHECY

As I was passing through Belmont on my way to Raleigh, where a new laboratory had just been completed, the train was forced to stop and I left my dream of a laboratory technician's heaven long enough to get out and see what had happened. There had been a wreck, and among the doctors and nurses I saw a vaguely familiar figure. Suddenly the figure let out a yell and came running toward me.

"Jeffie!" I cried.

It was Jeffie, who had been a class mate of mine at Sacred Heart Academy where we and three others made the most of every day that came. So her dream of being a nurse had become a reality! When she had finished her work, she and I went to Belmont where we sat and chatted until the wreckage could be cleared away enough for my train to leave.

As we sat and talked she explained why she was in Belmont. Mrs. Grigg, better known as Ruth, had a child who was just recovering from measles and Jeffie had been nursing him, as Ruth had her hands full with the other two.

Then after telling me that surprising piece of news, she cross questioned me about Martha Anne and Nora.

"Where is Martha Anne?" she asked very innocently. Little did I know answering that would bring such a deluge of questions.

"The last time I heard from her she was in Washington and—"

"What's she doing there?"

"As I was going to say, she's a physical instructor in one of the big schools and—"

"Well, what about Nora?"

"One question at a time, please! I haven't finished telling you about Martha Anne and you ask about Nora. Well, I'll tell you. She's in the Secret Service acting as an interpreter. She majored in languages, you know. But as I was trying to say about Martha Anne—"

"Virginia, there's the train whistle."

"Oh, now I'll have to run or I'll miss my train but once more. Martha Anne is—"

"Hurry, Virginia!"

"Jeffie, she is engaged! Good-bye!"



CLASS OFFICERS

JUNIOR CLASS

EDITH LUCAS *President*
NELL SUDDUTH *Vice-President*
MARTHA ANN LINEBERGER *Sec'y and Treas.*



SOPHOMORE CLASS

DORIS CURLEE (Absent) *President*
EILEEN KIENAST *Vice-President*
PATRICIA ANDERSON *Sec'y and Treas.*



FRESHMAN CLASS

PEGGY HASTINGS *President*
SARAH WALES *Vice-President*
THERESA HEDRICK *Sec'y and Treas.*



GRADATIM STAFF

MARGARET DAVIS	<i>Editor-in-Chief</i>
DOROTHY RAMSAY	<i>Associate Editor</i>
MAXINE HUDSON	<i>Associate Editor</i>
DOROTHY BARNETTE	<i>Business Manager</i>
VIRGINIA VAUGHAN	<i>Class Prophet</i>
IRIS JONES	<i>Snapshot Editor</i>
NORA LEZA	<i>Snapshot Editor</i>



SACRED HEART ECHOES STAFF

EILEEN GEORGI *Editor*
 MARIE DUNCAN *Associate Editor*
 MAXINE HUDSON *Feature Editor*
 MARTHA ANN LOWNDES *Sports Editor*
 VIRGINIA VAUGHAN *News Editor*
 VIRGINIA MURPHY *Exchange Editor*
 LORENE WARREN *Business Manager*



PRESIDENTS' FORUM

PEGGY HASTINGS	High School Freshman
FRANCES ROWAN	Curie Club
DOROTHY BARNETTE	College Sophomore
MARTHA LOWNDES	High School Senior
DOROTHY HEINZ	W. A. A.
DORIS CURLEE	High School Sophomore
MAXINE HUDSON	Commercial Club
ELEANOR PETTY	Day Students
VIRGINIA MURPHY	Children of Mary
EDITH LUCAS	High School Junior
EILEEN GEORGI	College Freshman

DAY STUDENTS

RUTH GRIGG	MARY JANE VOLK	FRANCES BALTHIS	DOROTHY BARNETTE
MADGE MILLS	BETTY JEAN ARMSTRONG	ANN WILLIAMS	ELEANOR PETTY
BETTY TATTERSALL	JEAN HATCHER	MIRIAM STEWART	RUTH HELFER
SARAH WALES	FRANCES ROWAN	JEANNE SHIRLEY	DOROTHY RAMSAY
JACQUELINE HARPER	SADIE CARSON	DOROTHY RANKIN	THERESA HEDRICK
MIRIAM THOMAS	VIOLET CADDELL	MARGARET DAVIS	MARGARET MCKNIGHT
BEATRICE FRONEBERGER	IRIS JONES	INEZ GREEN	LORENE WARREN

CURIE CLUB

ANN WILLIAMS
SADIE CARSON
DOROTHY HEINZ
IRIS JONES
ELEANOR PETTY

INEZ GREEN
RUTH GRIGG
FRANCES ROWAN
GENEVIEVE GROBUSKY
NELL SUDDUTH
JANE McCLANCY

JEFFIE COCHRANE
DOROTHY RAMSAY
VIRGINIA VAUGHAN
MARTHA ANN LOWNDES
DOROTHY BARNETTE



COMMERCIAL CLUB

EILEEN GEORGI
LORENE WARREN
MARGARET MCKNIGHT
VIOLET CADDELL

EVA FAUDEL
DOROTHY PAPOULEAS
BARBARA KIRSTNER
MAXINE HUDSON
VIRGINIA MURPHY

MIRIAM STEWART
MARIE DUNCAN
BETTY JEAN ARMSTRONG
ELIZABETH COX



CHOIR

THEKESA KABAS
ELLEN KIENAST
GLORIA GASPARD
NELL SUDDUTH

JANE McCLANCY
MARIE RYMER
PATRICIA ANDERSON

MARTHA ANN FOWNDES
PEGGY HASTINGS
NORA LEZA
MARY ANN BILEY



CHILDREN OF MARY

VIRGINIA MURPHY
EILEEN KIENAST
GLORIA GASPARD
PAT ANDERSON
MAXINE HUDSON
RUTH HELFER
BETTY TATTERSALL
MARIE DUNCAN

NORA LEZA
EVA FAUDEL
JEAN SHIRLEY
BARBARA KIRSTNER
EILEEN GEORGI
MARY ANN BLILEY
PATSY BAKER
RAMONA ALMAGUER

MARTHA ANN LOWNDES
GENEVIEVE GROBUSKY
MARGARET MCKNIGHT
MADGE MILLS
PEGGY HASTINGS
MARIE RYMER
MARGARET BROOKS
MARY JANE VOLK

EDITH LUCAS
JANE MCCLANCY
ERNESTINE RUSSELL
TERESA WOLHAR
THERESA KABAS
ANN CLEMENTS
THERESA HEDRICK
MARY ANN RICE



MAY DAY

MAXINE HUDSON
ELEANOR PETTY

..... *May Queen*
..... *Maid of Honor*

QUEEN'S COURT

IRIS JONES
INEZ GREENE

EVA FAUDEL
VIOLET CADDELL

VIRGINIA VAUGHAN
ANNE KING

PATRICIA ANDERSON
RAMONA ALMAGUER



DANCE SPONSORS

MARGARET DAVIS
DOROTHY BARNETTE

INEZ GREEN
MIRIAM STEWART

WOMEN'S ATHLETIC ASSOCIATION



CHEERLEADERS

NELL SUDDUTH

RUTH GRIGG

MARTHA ANN LINEBERGER

BASKETBALL

MEMBERS

THERESA KABAS
NORA LEZA
RUTH GRIGG
VIRGINIA VAUGHAN
PATRICIA ANDERSON

TERESA WOLHAR
MARY ANN BLILEY
EILEEN KIENAST
MARTHA ANN LOWNDES

DOROTHY HEINZ
MIRIAM THOMAS
GLORIA GASPARD
BENDINE EDWARDS
JEFFIE COCHRANE



TENNIS

SOFTBALL

DOROTHY HEINZ
BENDINE EDWARDS
GLORIA GASPARD
MARGARET MCKNIGHT
JEFFIE COCHRANE
MISS LOUISE BUONAGURO
DOROTHY PAPOULEAS
SADIE CARSON
PEGGY HASTINGS
BETSY TITMAN

VIRGINIA VAUGHAN
ANNE KING
TERESA WOLHAR
MARY ANN BLILEY
RUTH HELFER
EILEEN KIENAST
DOROTHY RANKIN
MADGE MILLS
NORA LEZA

PATRICIA ANDERSON
THERESA HEDRICK
ERNESTINE RUSSELL
THERESA KABAS
MARTHA ANN LOWNDES
MIRIAM THOMAS
MARIE RYMER
RUTH GRIGG
BETTY TATTERSALL
GLENN ABBOTT HARDEN



ARCHERY









THE AUDITORIUM

THE LIBRARY





CHEMISTRY LABORATORY

BIOLOGY LABORATORY





HOME ECONOMICS

DINING HALL



Compliments of the

CRAMERTON MILLS, INC.

CRAMERTON, N. C.

Compliments of
H & S LUMBER CO.
CHARLOTTE, N. C.

W. R. FORD



**HARDWARE AND
PAINTS**



PHONE 248
BELMONT, N. C.

J. F. BESS & CO.



*Manufacturers and
Wholesalers*



311-319 EAST MAIN STREET
GASTONIA, N. C.

Compliments of
IRIS and GEM THEATRES

Compliments of

THE BANK OF BELMONT

BELMONT, N. C.



MEMBER F.D.I.C.

Compliments of

WILLIAM L. MAHER

SCHOOL UNIFORMS

CAPS AND GOWNS

GYMNASIUM APPAREL

COLLEGIATE OUTFITTING CO., Inc.

20 WEST 33RD STREET

NEW YORK CITY

PHONE Wisconsin 7-4161

**SOUTHEASTERN
CONSTRUCTION
COMPANY**

218 WEST SECOND STREET

CHARLOTTE, NORTH CAROLINA

**Wilson
Printing Co.**

**WEDDING INVITATIONS
WEDDING
ANNOUNCEMENTS
and
SOCIAL STATIONERY**

BELMONT, N. C.

**RELIANCE FRUIT &
PRODUCE CO., Inc.**

Wholesale
**FRUITS AND PRODUCE
BUTTER AND EGGS**

227-231 South College Street
CHARLOTTE, N. C.
Phone 2-2117

Biltmore

DAIRY FARMS



*The South's Finest
Dairy*

RALPH A. PADGETT

Jeweler



Bank Building
BELMONT, N. C.
PHONE 636

**ASHEVILLE
FISH CO.**

Seafood and Game



MEATS, POULTRY,
BUTTER AND EGGS



14 N. Pack Square
ASHEVILLE, N. C.

**BELMONT SERVICE
STATION
AND CAFE**



STANDARD PRODUCTS



Phone 9107
BELMONT, N. C.

Compliments of

MRS. W. H. BREELAND

Compliments of

**BUILDING AND LOAN
ASSOCIATION**

BELMONT, N. C.

THE BELMONT DRUG COMPANY

The REXALL Store



A LEADER IN THE CIVIC LIFE OF BELMONT
OVER 41 YEARS



We Appreciate Your Patronage

Schachner Leather & Belting Company

TELEPHONE 4-1311

CHARLOTTE, N. C.

MANUFACTURERS AND REPAIR SERVICE

MRS. J. A. SCHACHNER, SR., *President*

J. A. SCHACHNER, JR., *Vice-President*

J. E. TURNER, *Secretary and Treasurer*

Night Phone 5972

Night Phone 2-4777

Night Phone 2-3341

INTERSTATE MILLING COMPANY

Manufacturers of

*High Grade Flour,
Grits, Meal, Poultry,
Dairy, Horse and
Hog Feeds*



CHARLOTTE, N. C.

PRITCHARD PAINT & GLASS COMPANY



CHARLOTTE, N. C.

THE CHRONICLE MILLS
IMPERIAL YARN MILLS, Inc.
NATIONAL YARN MILLS, Inc.
STOWE SPINNING COMPANY



Combed Peeler Yarns
24's to 100's

P. P. LEVENTIS & CO.

Incorporated

ESTABLISHED 1912

**WHOLESALE FRUITS AND
PRODUCE**

408 WEST MAIN AVENUE

GASTONIA, NORTH CAROLINA

51 YEARS OF SERVICE

+

**CHARLOTTE
LAUNDRY, INC.**

CHARLOTTE, N. C.

Established 1890

Compliments of

WACHTEL'S, INC.

65 HAYWOOD STREET

ASHEVILLE, N. C.



*Hospital, Physician and
Sick-Room Supplies*

**THOMAS and HOWARD
COMPANY**

WHOLESALE GROCERS



CHARLOTTE, N. C.

CITIZENS TRANSFER AND COAL CO.

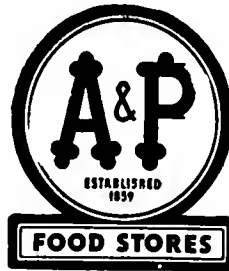
Authorized Iron Fireman Dealer



18 BATTERY PARK AVENUE

TELEPHONE 25

ASHEVILLE, N. C.



Bridges
FURNITURE CO.

Telephone 3-3717

308 S. TRYON ST.

CHARLOTTE, N. C.

Pound & Moore
Company

Manufacturing

Stationers

Office Outfitters

Printers



213 S. Tryon St.

CHARLOTTE, N. C.

Compliments of

SOUTHERN FRUIT CO.

INCORPORATED



Wholesale

FRUITS, VEGETABLES AND

DIXIE OLEOMARGARINE

CLINCHFIELD
 **FUEL CO.**

SPARTANBURG, S. C.

AMERICAN YARN & PROCESSING CO.

MOUNT HOLLY, NORTH CAROLINA

LISK CUT-RATE PHARMACY

826 E. Trade St.

2204 Avondale Ave.



CHARLOTTE, N. C.

ROBINSON'S DRUG STORE

*The Store of
Personal Service*



BELMONT, N. C.

WILLAMETTE HEALTH CENTER

FOR HEALTH'S SAKE . . .

BOWL AND SKATE

SWIM AND DINE

Special Rates For Parties

PHONE 3-6998

Four miles from Belmont, on Wilkinson Boulevard.

**Charlotte Fish &
Oyster Company**



CHARLOTTE, N. C.

**Winchester Surgical
Supply Company**

106 EAST 7TH ST.
CHARLOTTE, N. C.

**Winchester - Ritch
Surgical Company**

111 NORTH GREENE ST.
GREENSBORO, N. C.

Larkwood Silk Hosiery Mills,
Incorporated

Manufacturers of
**LADIES FULL FASHIONED
SILK HOSIERY**



NEW YORK OFFICE
385 5TH AVE.

CHARLOTTE, N. C.

HAGLEY TAILOR SHOP

CLEANING . . . PRESSING

ALTERING

All Clothes Insured Against Fire and Theft

DAY PHONE 525

NIGHT PHONE 550

BELMONT, N. C.

QUERY FEED COMPANY

Phone 3-3282

700 South College St.

CHARLOTTE, N. C.

+

**Purina Chicken,
Hog & Dairy Feeds,
Garden & Field Seeds,
Baby Chicks**

HERFF-JONES COMPANY

Designers and Manufacturers of

SCHOOL and COLLEGE JEWELRY,
GRADUATION ANNOUNCE-
MENTS, MEDALS, CUPS,
and TROPHIES.

INDIANAPOLIS, IND.

Jewelers to

SACRED HEART CONVENT

O. E. BASS. *Representative*

LET'S WIN THE WAR—
and Make it a War Worth Winning!



In the lifetime of the Class of '43 Electric Service in the Piedmont Carolinas has greatly modified Industry, Commerce, Agriculture and the Home. Business initiative and scientific farming give promise of even greater opportunities in the productive years ahead.

May each of you find a worthy place in the enterprising world of tomorrow!



DUKE POWER COMPANY

Knit Products Corporation

Manufacturers of

LADIES FULL FASHIONED HOSIERY

BELMONT, NORTH CAROLINA

H. Susman Company

RICHMOND, VIRGINIA

For the last 40 years we have been supplying Food products to hotels, colleges, hospitals, children's homes, Federal government and public institutions in eight states.

College Maid is our best products

THOMAS GRIFFITH, *President*

THOMAS C. HAYES, *Vice-President*

THOMAS GUION GRIFFITH, *Treasurer*

Thomas Griffith & Company

ESTABLISHED 1875

PHONE 2-4195



INSURANCE HEADQUARTERS



200 SOUTH TRYON STREET

FIFTH FLOOR COMMERCIAL BUILDING



CHARLOTTE, N. C.

A GASTON INSTITUTION

Offering Young Men A Thorough Training For Life
Liberal Arts - Business Course - Preparatory School
Supervised Social, Cultural, and Athletic Activities

Member of the Southern Association of Colleges and Secondary Schools,
North Carolina Educational Conference, National Catholic
Educational Association

GASTONIA: *Home of the Crusaders*

For Information, Address

THE REGISTRAR

BELMONT ABBEY COLLEGE

BELMONT, NORTH CAROLINA

ST. LEO'S HALL

*A Preparatory School for Boys Under Thirteen
Years of Age*

+

CONDUCTED BY THE SISTERS OF MERCY

+

For further particulars apply to

THE DIRECTRESS

ST. LEO'S HALL

BELMONT, N. C.

You'll Enjoy Shopping At

BELK'S

- ★ It's Smart
- ★ It's Thrifty
- ★ It's Wise

*The Merchandise You Want
At The Price You Want To Pay*

BELK BROS.

THE CAROLINAS' LEADING STORE

CHARLOTTE, N. C.

Compliments of

**SOUTHERLAND-HELMS
COMPANY**

CHARLOTTE, N. C.

Compliments of

**BELMONT
HOSIERY
MILLS**



BELMONT, N. C.

Compliments of

**INTERSTATE
ROOFING &
ASPHALT CO.**



CHARLOTTE, N. C.

Compliments of

Hatch Hosiery Mills

BELMONT, NORTH CAROLINA

Compliments of

W. H. & D. P. STOWE
COMPANY

BELMONT, N. C.

●
Compliments of

L. W. DRISCOLL





SEXTON SERVICE

Offers You

- ◆ The only nationally advertised brand of foods prepared exclusively for the institutional market.
- ◆ The security of endorsement by all the leading trade associations in the institutional field in the United States.
- ◆ The facilities of the only wholesale grocery company operating plants in the two principal American markets—Chicago and New York
- ◆ As rendered by America's largest distributors of number ten canned foods, a distinctive service on a complete assortment of quality foods packed in this institutional size container.
- ◆ Home recipe pickles, relishes and conserves from Sexton Sunshine Kitchens—delicious and appetizing.
- ◆ Carefully selected coffees—blends resulting from years of careful study—roasted fresh daily at Chicago and Brooklyn.
- ◆ A selection of your needs from the largest inventory ever assembled for the particular needs of those who feed many people each day.

JOHN SEXTON & CO.

ESTABLISHED 1883

Manufacturing Wholesale Grocers

CHICAGO

BROOKLYN—DALLAS—ATLANTA

Compliments of

**CLIMAX
SPINNING
MILLS**

Compliments of

H. D. PARKER







