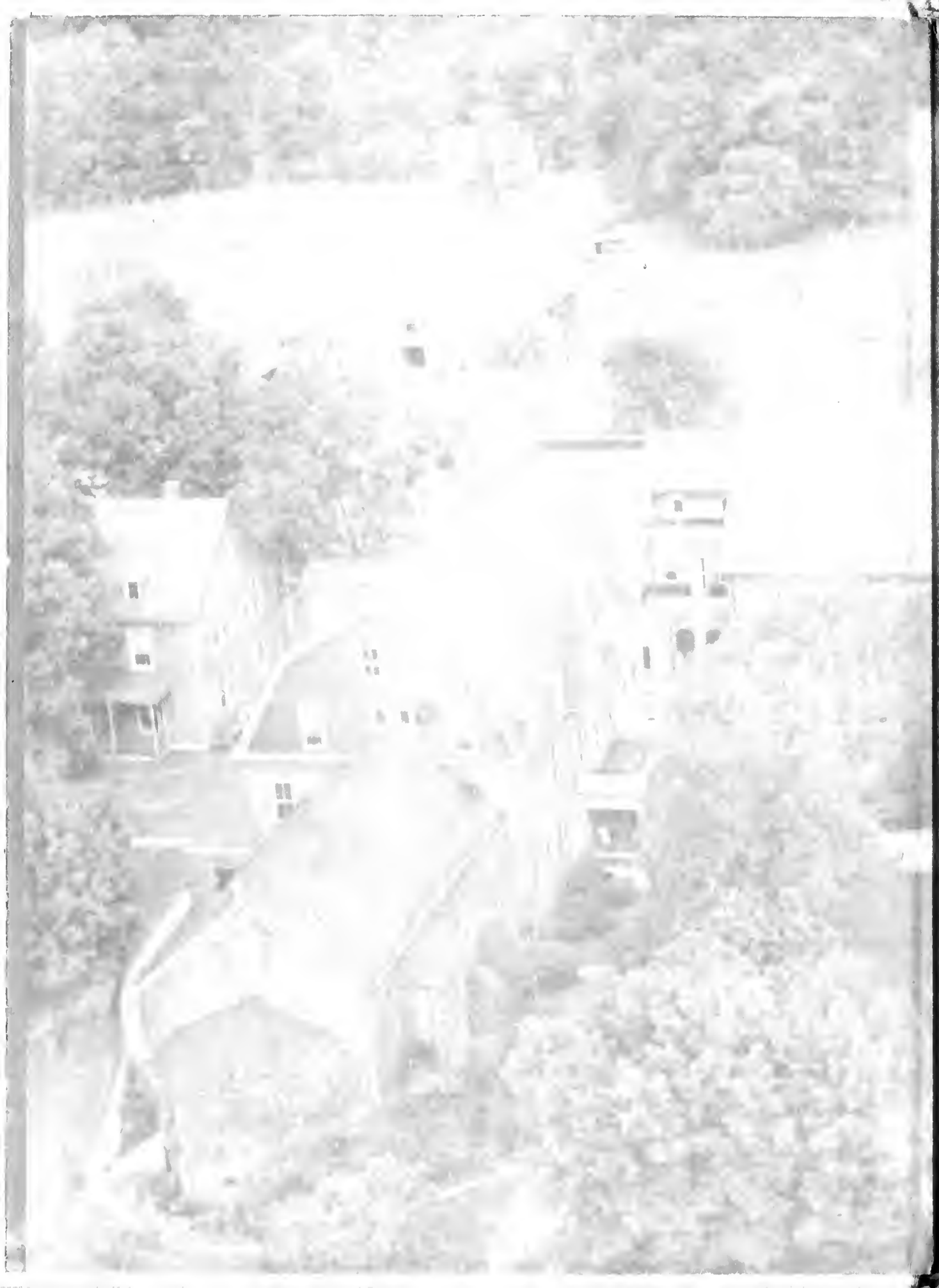
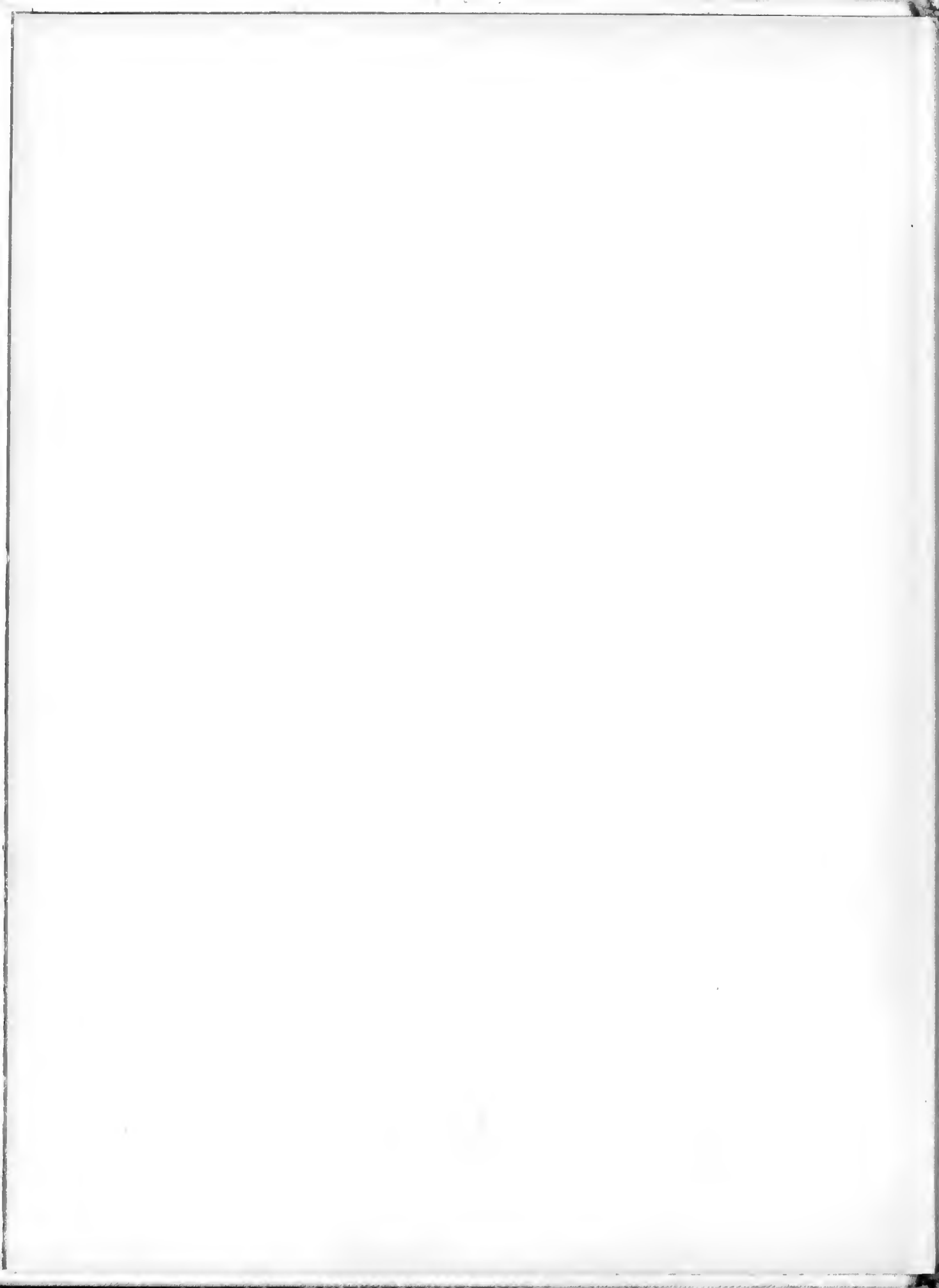


Gradation



ARCHIVES
SACRED HEART CONVENT
BELMONT, NORTH CAROLINA 28012





THE 1950 GRADATIM



VOLUME XVII

Published by

THE GRADUATING CLASSES OF
SACRED HEART
JUNIOR COLLEGE AND ACADEMY
BELMONT, NORTH CAROLINA

*"Heaven is not reached at a single bound,
But we build the ladder by which we rise
From the lowly earth to the vaulted skies,
And we mount to its summit round by round."*

FOREWORD

Graduation is to ascend step by step as man does in his struggle up the ladder of life to his final goal—Heaven.

It is our plan in this GRADATIM to show one phase of this ascent—youth. In doing this we will strive to set forth the aims and ideals of our college and the way in which they permeate every department of our school life.

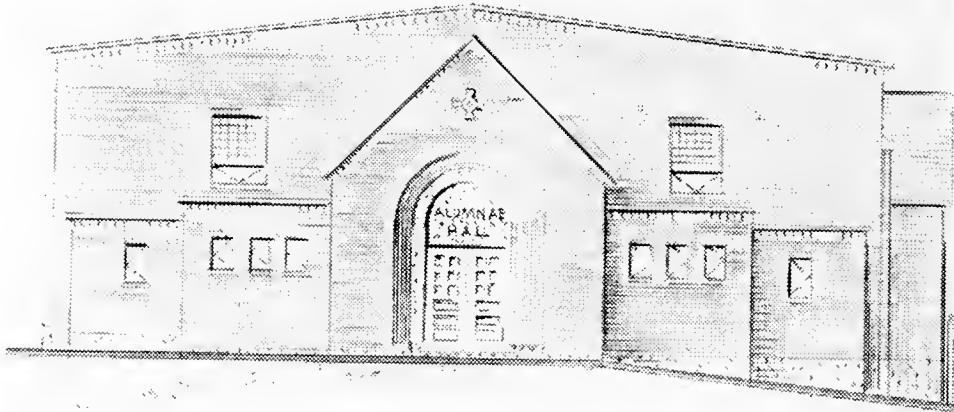


DEDICATION

*It was you—our parents, friends, religious
and lay teachers who have prepared us for
life.*

*It is to you that we dedicate this 1950
GRADATIM.*

ALUMNAE HALL



Pictured above is the architect's drawing of the front entrance of Alumnae Hall, a building made possible by the loyal support of friends and former students.



Naturally a picture of Alumnae Hall under construction had to have a place in the GRADATIM.



VERY REVEREND SEBASTIAN DORIS
O.S.B.

Chaplain, Director of Study Club

"He prayeth best who loveth best all things
both great and small"

REVEREND CUTHBERT ALLEN
O.S.B.

Religion, Sociology

"He only lives with the world's life who hath
renounced his own."



REVEREND WALTER COGGINS
O.S.B.

Philosophy, Psychology

"Father, Teacher and Friend."

MISS GRETCHEN GLONIGER

English, Physical Education

"The heart to conceive, the understanding to direct,
the hand to execute."



MR. DOUGLAS A. SMITH

Music, Glee Club Director

"God sent his Singers upon earth
With songs of sadness and of mirth,
That they might touch the hearts of men
And bring them back to heaven again."

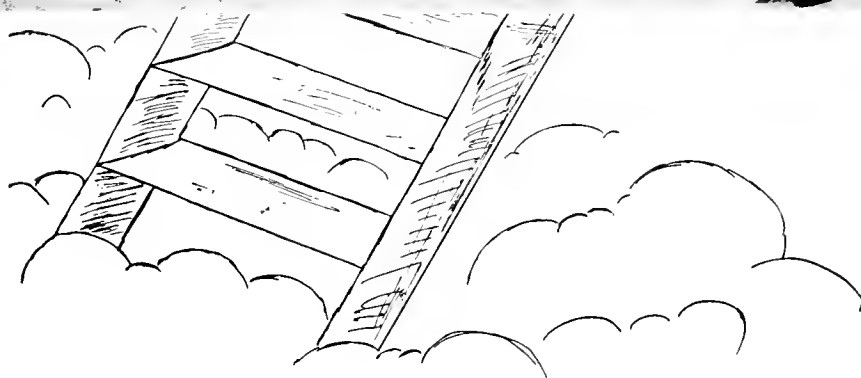
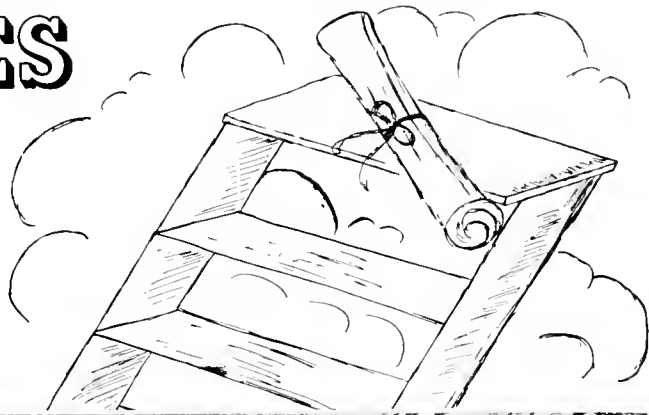
MISS MARGARET DUNN

Secretary

"Earth changes, but thy soul and God
stand sure."



GRADUATES



SOPHOMORE CLASS OFFICERS



Left to Right: FRANCES ENGLAND, Vice President; NANCY JANE CLONGER, Secretary; FRAN HUSS, Treasurer; PEGGY NEIL, President.



MARY EVELYN ALEXANDER
BELMONT, N. C.

*"Her step is music and her voice is
song."*

Day Students' Association (1, 2);
Commercial Class (1, 2);
President of Glee Club (2);
Glee Club (1, 2); Piano (1, 2);
Voice (1, 2); Echoes Staff (1, 2);
N.F.C.C.S. (2); Class Historian (2)



JOAN APPLEWHITE
CAROLINA BEACH, N. C.

"A light heart lives long."

May Court (2); Sodality (1, 2);
Social Committee (1, 2);
Echoes Staff (1); Gradatim Staff (2);
Study Club (1, 2); Glee Club (1)





DOLORES MAE BREAUX
ROCK HILL, S. C.

"She is a winsome wee thing"

Commercial Class (1, 2);
Basketball (1); Study Club (1, 2);
Choir (1); Glee Club (1);
N.F.C.C.S. (1, 2); Sodality (1, 2);
Literary Committee (1);
Social Committee (2);
Echoes Staff (1); Gradatim
(Typist)



GERALDINE ANGELA
CARBONETTI

BLACK MOUNTAIN, N. C.

*"Agreeable; and full of fun, well
liked by everyone."*

Sodality (1, 2); Treasurer of Sodality (1); Social Committee (2); N.F. C.C.S. (1, 2); Treasurer of N.F.C. C.S. (2); Gradatim Staff (2); Superlative (2); Echoes Staff (2)





JUNE FRANCES CAUBLE
STANLEY, N. C.

"She is gentle, she is shy but there is mischief in her eye."

Day Students' Association (1, 2);
Glee Club (1, 2); Commercial Class
(1, 2); N.F.C.C.S. (2)



NANCY JANE CLONINGER
GASTONIA, N. C.

*"Laugh and the world laughs with
you."*

Day Students' Association (1, 2);
Glee Club (1, 2); Commercial Class
(1, 2); Gradatim Staff (2); Class
Officer (2); N.F.C.C.S. (2); Class
Pcet (2)



NELLIE FRANCES CRAIG
GASTONIA, N. C.

*"Whatever is worth doing at all is
worth doing well."*

W.C.U.N.C. (One Semester); Day
Students' Association (1. 2); Glee
Club (1); N.F.C.C.S. (2)



FRANCES ELLEN ENGLAND

GASTONIA, N. C.

*"Ambition rules her brain but love
rules her heart."*

Day Students' Association (1, 2);
Glee Club (1); Secretary of Class
(1); Vice-President of Class (2);
Echoes Staff (1); Editor-in-Chief of
Echoes (2)





FRANCES HUSS
GASTONIA, N. C.

"Good sense which only is the gift of Heaven."

University of Miami (1); Day Students' Association (2); Class Treasurer (2); N.F.C.C.S. (2).



ELIZABETH ANN KELLER
HESTER, LA.

"Good nature is a sign of a large and generous soul."

Commercial Class (1, 2); Sodality (1, 2); Our Lady's Committee (1, 2); N.F.C.C.S. (1, 2); Vice-President (1); Basketball (1); May Court (2); Glee Club (1); Study Club (1, 2)



MARIA ADELAIDA LEON

HAVANA, CUBA

"O spirits gay and kindly heart"

Sodality (1, 2); Study Club (1, 2);
May Court (2); Glee Club (1); So-
dality Social Committee (2)



JANE HOWELL LEWIS
WHITEVILLE, N. C.

*"Then give to the world the best that
you have and the best will come back
to you."*

President of Class (1); Treasurer of
N.F.C.C.S. (1); Sodality (1, 2);
Publicity Committee Chairman (2);
Glee Club (1); Study Club (1, 2);
Echoes Staff (2); Editor-in-Chief of
Gradatim (2); Campus Chairman of
N.F.C.C.S. (2); Superlative (2);
Class Lawyer (2)





LIGIA LOPEZ
HAVANA, CUBA

"I have a heart with room for joy"

Sodality (1, 2); Glee Club (1);
Study Club (1, 2); Sodality Social
Committee (2)



LAVINIA MCKIGHT
BELMONT, N. C.

*"Always laughing, never sad
Some times naughty, never bad."*

Day Students' Association (1, 2);
Sodality (1, 2); Our Ladies' Com-
mittee (1, 2); Commercial Class (1,
2); N.F.C.C.S. (1, 2); Glee Club
(1); Alumnae Daughters (1, 2)



BETTY SUE McLEAN

BELMONT, N. C.

"There is no other like her"

Day Students' Association (1, 2); N.
F.C.C.S. (2); Alumnae Daughters
(1, 2); Commercial Class (1, 2);
Glee Club (1); May Court (1, 2);
Basketball (1); Superlative (2)





PEGGY JEAN NEIL

GASTONIA, N. C.

"To see her is to love her"

Class Vice-President (1); President (i2); May Court (1); May Queen (2); Business Manager Gradatim (2); Superlative (2); Basketball (1); Echoes Staff (2); N.F.C.C.S. (2); Commercial Class (1, 2); Day Students Association (1, 2)





MILDRED LOUISE ROYALS

DUNN, N. C.

*"A friend in work, play, and sorrow;
the same yesterday, today and
tomorrow."*

Commercial Class (1, 2); Treasurer of Class (1); Sodality (1, 2); Chairman of Literary Committee (1); Literary Committee (2); N.F.C.C.S. (1, 2); Secretary of N.F.C.C.S. (2); Study Club (1, 2); Superlative (2); Class Prophet (2); Gradatim (Typist)





FAYE ELIZABETH SETZER
GASTONIA, N. C.

*"A list of charms so complete,
So small, so bright, so sweet."*

Glee Club (1); Echoes Staff (1); Assistant Editor Gradatim (2); Assistant Editor Echoes (2); Day Students' Association (1, 2); N.F.C.C.S. (2)





BETTY THOMAS
CHARLOTTE, N. C.

*"We have but one life to live;
let's live it."*

Sodality (1, 2); Echoes Staff (1, 2);
Study Club (1); Glee Club (1);
Eucharistic Committee (1, 2); Bas-
ketball (1); Day Students' Associa-
tion (2)

SENIOR CLASS OFFICERS



Left to Right: MARY EVELYN THOMAS, Vice President; HELEN ANDERSON, President; DONNA MILLS, Treasurer; CLAIRE MORRISON, Secretary.



HELEN RUTH ANDERSON
MAMARONECK, NEW YORK

... she's tops with all her classmates ... versatile ... personality plus ... in fact, it was a lucky day when this gag-bag hit S.H.A.

Convent of the Sacred Heart, Greenwich, Connecticut (1, 2); Class President (4); Sodality Vice-Prefect (4); Eucharistic Committee (3); Choir (3, 4); Glee Club (3, 4); Art (3); Cheerleader (4); Echoes Staff (4); Dramatics (3, 4); Annual Staff (4); Study Club (3, 4); Class Prophet (4)

JANET THERESA BREAUX
ROCK HILL, SOUTH CAROLINA

... one of a pair ... cute ... clever ... good things come in small packages ... she's proof ...

Beaufort High School, Beaufort, South Carolina (1); Sodality (2, 3, 4); Sodality Secretary (4); Eucharistic Committee Chairman (3); Glee Club (3, 4); Choir (3, 4); Study Club (3, 4); Basketball (3); Queen of May Crowning (3); Class Secretary (3); Cheerleader (4); Superlative (4); Dramatics (4).





JANICE FRANCES BREAU
ROCK HILL, SOUTH CAROLINA

*... the other half ... as gay as her twin
... just as cute ... to know the twins is
to love them ... together they're dynamite ...*

Beaufort High School, Beaufort, South Carolina (1); Sodality (2, 3, 4,); Sodality Treasurer (4); Eucharistic Committee (3); Dramatics (4); Glee Club (3, 4); Choir (3, 4); Basketball (3); Study Club (3, 4); Superlative (4); Cheerleader (4); May Crowning Attendant (3).

MACIE RICHARDSON COLLINS
GASTONIA, NORTH CAROLINA

*... here's the class intellectual ... brains
... beauty ... best-all-around ... Macie's
really going places ...*

Class Secretary (1); Class Treasurer (3); Superlative (4); Echoes Staff (4); First Honors (1, 2, 3); Beta Club (1); Violin (3).





REBECCA MARIE ECKARD
GASTONIA, NORTH CAROLINA

*... so quiet ... so shy looking ... but
such a charming lass, and what grades ...
who ever said brains and beauty don't
mix ...*

Brevard High School, Brevard, North
Carolina (1, 2); Gastonia High School
(3); Echoes Staff (4); Glee Club (4).

VIRGINIA BEVERLY FARIS
SPRINGFIELD, MASSACHUSETTS

*... here's a gal with pep ... Ginny's full
of it ... pretty appearances deceive ...
there's a brain under those bangs ...*

Barker High School, Springfield, Massa-
chusetts (1); Glee Club (3, 4); Echoes
Staff (4); Piano (2, 3); Voice (2, 3, 4);
Annual Staff (4).





JEAN IRIS FRYE

GASTONIA, NORTH CAROLINA

*... plenty of vim, vigor, and vitality ...
utterly carefree ... always has a return
for any wise crack thrown her way ...
beloved by all at S.H.A.*

Choir (1, 2, 3, 4); Cheerleader (4); Glee
Club (3, 4); Glee Club Librarian (3, 4);
Music (3); Dramatics (1, 2, 3, 4); Bas-
ketball (1, 3); May Court (4); Class
Lawyer (4).

EDNA JOAN GOINS

ATLANTA, GEORGIA

*... maybe she's brainy ... but Joan's no
social slouch ... she's on the ball ... an
all-around gal ...*

Immaculate Conception School, Atlanta,
Georgia (1); Class Secretary (2); Glee
Club (2, 3, 4); Secretary of Glee Club
(4).





HILDEGARDE HEDRICK
BELMONT, NORTH CAROLINA

... just about the friendliest girl you ever met ... good natured, with a personality you just can't beat ...

Sodal.ty (1, 2, 3, 4); Publicty Committee (3, 4); Glee Club (3).

CLAIRE ELISSA JONES
HICKORY, NORTH CAROLINA

... this Jones is extra-ordinary ... funny as they come ... and her poetry will send you into peals of laughter ... a wonderful gal ...

Appalachian High School, Boone, North Carolina (1, 2); Hickory High School, Hickory, North Carolina (3); Glee Club (4); Choir (4); Eucharistic Committee (4); Superlative (4); Study Club (4); Dramatics (4); Music (4); Annual Staff (4); Class Poet (4).





AVRA KYRUS
NORFOLK, VIRGINIA

... a striking attraction ... a flash in everything ... her artistic ability is on every poster ... Toni has magic in her fingertips ...

Art (1, 2, 3, 4); Choir (1, 2, 3, 4); Dramatics (1, 2); Glee Club (3, 4); Echoes Staff (3, 4); Study Club (3, 4); Glee Club Vice-President (4); May Court (4); Superlative (4).

MAGDA MARTINEZ
MONTEAGUDO
SANTA CLARA, CUBA

... a Cuban ball of personality ... Magda's personality makes everybody want to go to Cuba ... loads of fun ... unpredictable ...

Sodality (1, 2, 3, 4); Glee Club (3, 4); Study Club (3, 4); Superlative (4); Basketball (3); Sodality Social Committee (3, 4).





DONNA CLARA MILLS
MOUNT HOLLY, NORTH CAROLINA

*... a whiz at Spanish ... sweet ...
friendly ... agreeable as they come ...*

Sodality (1, 2, 3, 4); Literary Committee
(3, 4); Glee Club (3, 4); Class Treasurer
(4).

CLAIRE WYLLA MORRISON
SAVANNAH, GEORGIA

*... tall, dark and terrific ... need we say
more? ...*

Yemassee High School, Yemassee, South
Carolina (1, 2); Class Secretary (4);
Study Club (3, 4); Sodality (3, 4);
Echoes Staff (4); May Court (4); Choir
(3).





ODY RODRIGUEZ

LOWELL, NORTH CAROLINA

*... energetic cheerleader ... witty ...
cute as a bug's ear ... gay as a lark ...*

Lowell High School (1, 2, 3); Cheerleader
(4); Glee Club (4).

MARY EVELYN THOMAS
YORK, ALABAMA

*... a musician in our midst ... Mary
Evelyn's piano is her pet ... she knows
how to wrangle a rhumba out of any old
music box ... but her talents include
much more than tickling the ivories ...
she's swell ...*

Sumter County High School, York, Ala.
bama (1, 2); Glee Club Accompanist (3,
4); Class Vice-President (4); Basketball
(3); Choir (4); Echoes Staff (4).





IRENE SGAMBELLURI WALTERS
BARRIGADA, GUAM

... a knockout from the island ... this gal has grace, poise, and personality ... a treat to meet ...

George Washington High School, Agana, Guam (1, 2, 3); Sodality (4); Glee Club (4); Study Club (4); Music (4).

MARY MOZELLE WILLIAMS
OCALA, FLORIDA

... cute as a button ... Bootsie's no dizzy blonde ... she's got other attributes ... a real leader ... and a grand person to know ...

Sodality (1, 2, 3, 4); Sodality Prefect (4); Eucharistic Committee Chairman (2); Publicity Committee (3); Choir (1, 3, 4); Echoes Staff (4); Study Club (3, 4); Cheerleader (4); May Court (3); May Crowning Attendant (3); Dramatics (1, 2, 3, 4); Glee Club (4); Superlative (4); Music (1); Annual Staff (4); Class Historian (4).





LEFT: ABBEY AVENUE
RIGHT: ABBEY CATHEDRAL

"Abbey," to every Sacred Heart Girl, means Sunday Mass, interesting classes, afternoon dances, basketball games and dates.



Academy girls entering Abbey Cathedral



Students and Parishioners standing for the Asperges, with Father Brenden as Celebrant



Father Walter hitching a ride with College Sophomores, who are headed for sociology at the Abbey.

COLLEGE FRESHMAN OFFICERS



Left to Right: JOAN FEATHERSTONE, Treasurer; SYLVIA LOUIS, President,
LEANOR SOUZA, Secretary.

FRESHMAN CLASS



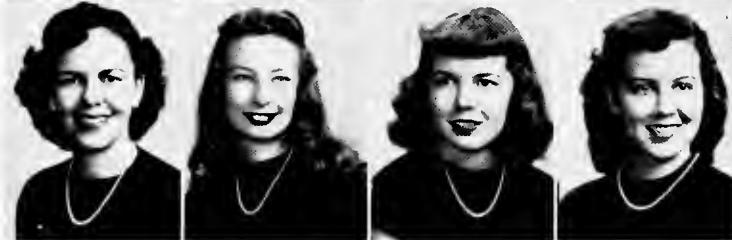
FERMINA BLAS
 CAROLYN BOLES
 MARY LILA BROWN
 RUBY CARROLL



REBECCA DARDEN
 PATRICIA DURBIN
 JOAN FEATHERSTONE
 ELEANOR FROHLICH



MARGARET JONES
 MAXINE HOLMAN
 SYLVIA LOUIS
 HAYDEE MARTINEZ



MARIA LEDON
 CAROLINE MILLER
 FRANCES O'DONOGHUE
 OLGA OTS



ALEIDA RODRIGUEZ
 LEONOR SOUZA
 PATRICIA STEWART
 ANNA CATHRYN TATE



JOAN VAUGHT
 BETTY FAYE RAMSEY
 GWEN RAY
 SUE RUDISILL

ACADEMY JUNIOR CLASS OFFICERS



Left to Right: MARY BRYSON, President; PAT JOHNSTON, Vice-President;
BILLIE SUE LAMBERT, Secretary; HELEN BELL, Treasurer.

JUNIOR CLASS



JANE ABERNATHY
 JANE ALICE BARNES
 HELEN BELL
 MARY BRYSON



DOROTHY BYERS
 BEATRICE CALVO
 JULIA CALVO
 FAITH CHAVIS



HELEN COLBY
 DOROTHY CROWDER
 HELEN ENNIS
 CATHERINE ANN PHARR



PATRICIA FRETZ
 JOANNE GASTON
 ROSE MARIE HAGLEY
 ELIZABETH HEDRICK



NADA RUTH HEDRICK
 MARGARET HELMS
 PATRICIA JOHNSTON
 BILLIE SUE LAMBERT



NAN KANEER
 MARIAN STOWE
 SALLY WHITE

ACADEMY SOPHOMORE CLASS OFFICERS



Left to Right: EVA GIORGIO, President; DENNIS SCHOLL, Vice-President;
MAXINE MILLS, Secretary and Treasurer.

SOPHOMORE CLASS



BETTY JANE McALILEY
ANN EVERS
EVA GIORGIO

MAXINE MILLS
DENNIS SCHOLL
EMILIA TORRE

ACADEMY FRESHMAN CLASS OFFICERS



Left to Right: ELISABETH MURPHY, Vice-President; JUNE ANDREWS, Secretary; JOYCE TAYLOR, President; DOLORES CARBONETTI, Treasurer.

FRESHMAN CLASS

KAY WINTERSON
MARGARET THOMASON
YVONNE TORRES



MARTHA SMOOT
PATRICIA POWELL
ELISABETH MURPHY



ANN McDONNELL
JOYCE TAYLOR
NAN LEARY



MARY JO LAMBERT
CLARA V. KELLEY
MARGARET HOLLAND



DOLORES CARBONETTI
MARGARET BLAND
PATRICIA BARLOWE



JUNE ANDREWS



Beyond the Recall of Sensual Things??????



An afternoon session at Bentley's, the favorite hangout for Sacred Heart and Abbey students.



Sister Raymond's Candy Store



Students Dining Room

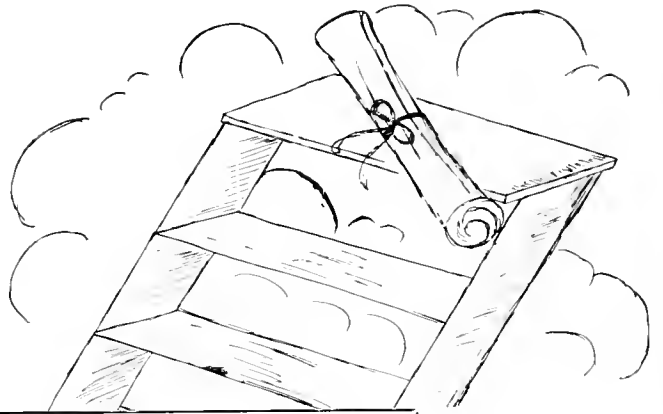


Day Students' Room—High Noon

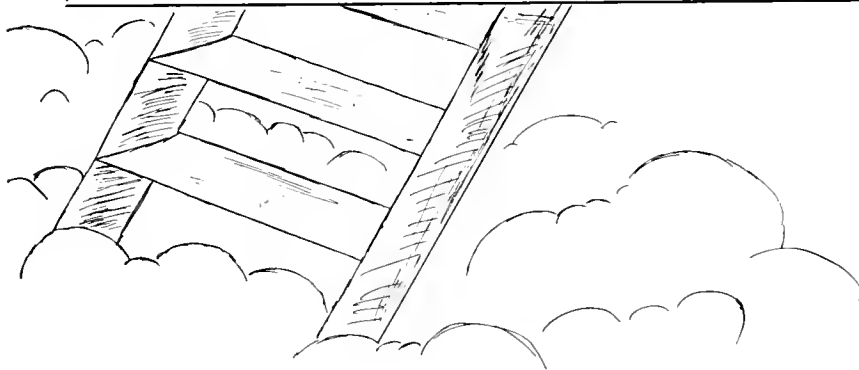


Delicious Detour Between Classes

*"We rise by the things that are under feet;
By what we have mastered of good and gain;
By the pride deposed and the passion slain,
And the vanquished ills that we hourly meet."*



**A
C
T
I
V
I
T
I
E
S**



In the following pages are portrayed
the highlights of
1948-1949

Joan and Johnny at the
Christmas formal



Dancing it out.



Having it out
with Nell as fortune teller



Sitting it out.



Spectators at the
Davidson game



Ligia, Nada, and Rose Marie
enjoying the Snowball
Dance



Sacred Heart versus Pfeiffer



College Christmas Dance



Sodalty May Crowning



Top: Pause on May Pilgrimage
Bottom: Lake Lure loafers



Top: Scenery at Lake Lure
Bottom: College frolic at Lake Crawford

Top: Pilgrims at Abbey
Bottom: Lake Crawford "Piknikers"



THE SPRING COTILLIONS



Middle below shows sponsors
Second from left—Betty Thomas
Second from right—Bootsie Williams



GRADUATION ACTIVITIES

KUESTER'S: Scene of Junior-Senior Banquet



ORIENTAL: Scene of Senior Luncheon



Just after Baccalaureate Mass—Academy Seniors



ROZZELL'S FERRY: Freshman-Sophomore Banquet



Marshall and O'Donoghue: ready to march . . .

College graduates pose on "G" day . . .

Some more Sophomores

1949 - - ACTIV

Left from top to Bottom:

1. Rats parade down Main St.
2. After a game—a dance.
3. The visiting team takes over.
4. J. Borini and I. Frye are caught.



Left: top to bottom:

1. Who won?????
2. Rats pose formally (?)
3. Annual Thanksgiving Banquet.

Below:

1. Half time at a Crusader game.
2. Intermission capers at the Sock Dance.



-- 1950 ITIES

Right from top to bottom:

1. The afternoon crowd at Bentley's
2. All aboard for class after raiding the ice cream truck.
3. The Rag Mop Girls.
4. Fermina crowns her brother, Manuel, as King of the Sweater Swing.



Right top to bottom:

1. Look on Page 90
2. Scene from Sodality play, Our Lady of Fatima.
3. Home Ec's annual Christmas party.

Below:

1. Sacred Heart chorus line
2. Winter Garden Dance.



Helen and Tommy at the Sock Dance



College Christmas Party



Opening the Presents



J. Featherstone and D. Breaux leading the Georgia Military Band

Mary Evelyn and Toni modeling their socks



Profession in Convent chapel

Center: Mildred playing Santa
Bottom: Ann and Eva decorating for square dance.

Christmas banquet



Father Richard conducted this year's Retreat, which was attended by girls from Raleigh and Charlotte.



The "Pause that Refreshes"



Top: Just before Sunday Mass at the Abbey.
Bottom: Bootsie and Frankenstein.



Top: Pajama Party.
Bottom: Witch Emilia and Wizard Tommy.



Top: Good Night, Ladies!
Bottom: Betty and Charlie at Hallowe'en Dance.

GRADATIM STAFF

SISTER M. CHRISTINE, *Adviser*



Senior Committee L. to R.: Virginia Faris, Bootsie Williams, Helen Anderson, Toni Kyrus, who were selected to assist in editing the yearbook. Since its initial appearance in 1933, the Gradatim has considerably increased in size.

Gradatim Staff at Work. L. to R.: Peggy Neil, Jeri Carbonetti, Jane Lewis, Faye Setzer, Joan Applewhite, Nancy Jane Cloniger.



SACRED HEART ECHOES

BELMONT, N. C.

Subscription \$2.00 Per Year

Published October, November, December, February, March, April and May, by the Students of Sacred Heart Junior College and Academy.

Entered as second-class matter November 27, 1943, at the Post Office at Belmont, North Carolina, under the Act of March 3, 1879.

EDITORIAL STAFF

Editor-in-Chief ----- Frances England
Associate ----- Faye Setzer
News Editor ----- Helen Anderson
Feature Editor ----- Betty Thomas
Associates ----- Carolyn Boles, Mary Evelyn Alexander
Columnists ----- Peggy Neil, Jeri Carbonetti, Dot Crowder, Patty Durbin, Mary Bryson, Billie Sue Lambert, Jane Lewis, Macie Collins
Business Manager ----- Bootsie Williams
Assistant ----- Helen Ennis
Circulation Manager ----- Virginia Farris
Reporters ----- Anne McDonnell, Elizabeth Murphy
Typists ----- M. E. Thomas, Toni Kyrus, Becky Eckard



L. to R.: Carolyn Boles; Ann McDonnell; Virginia Faris; Billie Sue Lambert; Bootsie Williams; Frances England; Helen Anderson

The ECHOES was headed by Frances England and included on its staff members of each class who assisted in the news gathering and the various activities connected with its publication. With Sister Christine as moderator, the staff put out an interesting paper every month.

GLEE CLUB

Bottom Row L. to R. Mr. Smith, Director, B. McAliley, E. Torre, J. Calvo, B. Calvo, A. Evers, D. Carbonetti, N. Leary, O. Rodriguez, M. Smoot, Y. Torres.
 Middle Row L. to R. C. Kelly, J. Andrews, J. Taylor, E. Murphy, P. Barlow, H. Thomason, D. Byers, K. Winterson.
 Top Row L. to R. J. F. Breaux, J. T. Breaux, M. Helms, P. Fretz, H. Anderson, M. Bland, V. Faris, B. Williams, A. McDonnell, M. Bryson, H. Ennis.



Bottom Row, L to R.: J Gaston, C. Pharr, D. Crowder, J. Featherstone, S. White, N. Hedrick, R. ley, M. Lambert, C. Boles, P. Powell, Mr. Smith.
 Middle Row, L. to R.: R. Eckard, J. Goins, P. Johnston, T. Kyrus, C. Morrison, M. Holland, D. Scholl, E. Giorgio, F. Chavis.
 Top Row, L. to R.: M. Thomas, E. Hedrick, I. Frye, B. Lambert, M. Alexander, H. Colby, H. Bell, I. Walters, M. Stowe, N. Kaneer, J. Abernathy.

ART, CHOIR, MUSIC

Sister Incarnata, besides directing the choir, teaches piano. Pictured below with Betty Jane McAliley, a pupil.

The Art Studio, under Sister Theophane, makes with the masterpieces. I. to r., F. O'Donoghue, T. Kyrus.



L. to R.: Y. Torres, H. Ennis, H. Anderson, P. Powell, B. Keller, M. Bryson, P. Barlowe, T. Kyrus, M. Thomas, B. Lambert, I. Frye, Sister Incarnata, C. Jones, E. Murphy, M. Thomason, C. Kelly, M. Lambert, M. Smoot, B. Calvo, J. T. Breaux, J. F. Breaux, B. McAliley. Not in picture: B. Williams.

NATIONAL FEDERATION CATHOLIC COLLEGE STUDENTS



Jane Lewis
Campus Chairman



Jeri Carbonetti
Treasurer

Mildred Royals
Secretary



Something new has been added in the N.F.C.C.S.: This year, instead of limiting participation to Catholic students only, all the college girls are members. One of the big things on their calendar is the big convention here in April, jointly sponsored by the Abbey and Sacred Heart.

We hope, we aspire, we resolve, we pray---



Janet Breaux
Secretary



Boots'e Williams
Prefect



Helen Anderson
Vice-Prefect



Janice Breaux
Treasurer



The Sodality Reception, December 12, 1949

*I count this thing to be grandly true;
That a noble deed is a step toward God—
Lifting the soul from the common clod
To a purer air and a broader view.*

THE STUDY CLUB

The study club under the direction of the chaplain, Father Sebastian, meets twice a month.

The purpose of it is to educate the Catholic girl to take her place in society. Some subjects of discussion are marriage, apologetics, aspects of the religious life and church doctrine.



CHEERLEADERS

This year as in years before, Sacred Heart was asked to assist the Abbey in leading the cheers at the CRUSADER and RAMBLER football games.

Pictured at right: the Crusader Squad taken in action: l. to r.: kneeling, J. Featherstone; I. Frye; B. Lambert; O. Rodriguez; standing, F. Driscoll; B. Farley; D. Bacon H. McCarthy.



The RAMBLER SQUAD: out in front: Ed Butler: l. to r.: J. F. Breaux: H. Ennis; R. McDermott: B. Williams: J. Lopez: H. Anderson: J. T. Breaux.

But our feet must rise, or we fall again--

Volley ball, soccer and softball comprise Sacred Heart's sports program.

We borrowed Brendan Hall this year during basketball season but we will be playing in our own ALUMNAE HALL next year.



And we mount to its summit round by round---

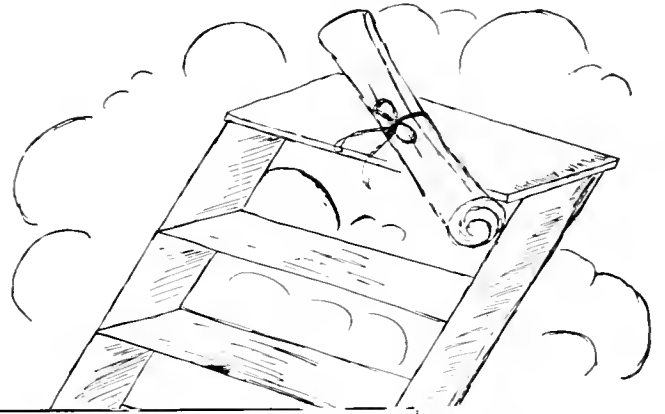
Top: The Sophomore College English Class under Sister Aquinas.
Middle: The Freshman College Philosophy Class under Fr. Walter
Bottom: The College Religion Class under Father Cuthbert.



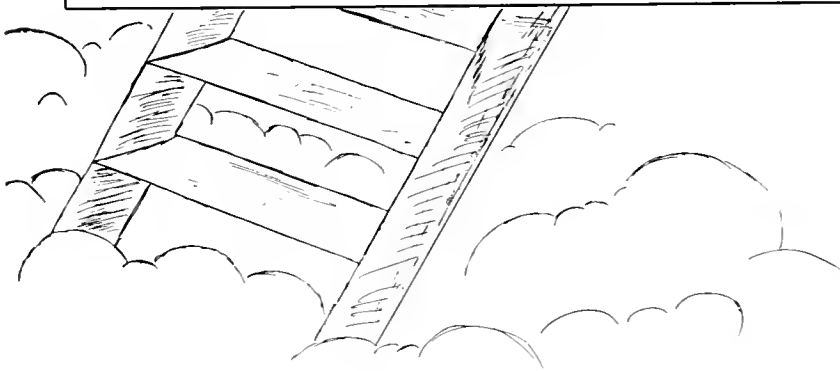
When the morning calls us to life and light--

Top: The Home Economics Lab under Sister Raymond.
Middle: The Chemistry Lab under Sister Jean-Baptiste.
Bottom: Sacred Heart's Excellent Library under Sister Helen.





**F
E
A
T
U
R
E
S**



Wings for the angels, - -

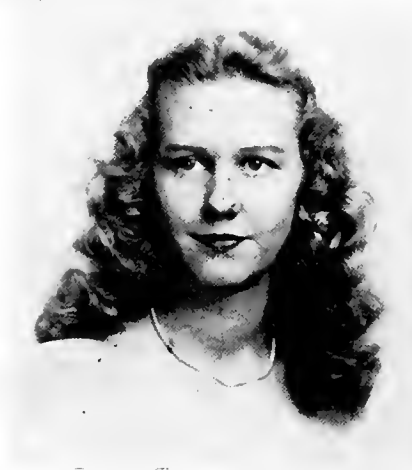
SOPHOMORE SUPERLATIVES



Best All Around
JANE LEWIS



Most Likely To Succeed
MILDRED ROYALS



Most Attractive
PEGGY NEIL



Most Athletic
BETTY SUE MCLEAN



Most Popular
Jeri Carbonetti

-- feet for men --

SENIOR SUPERLATIVES



Most Popular
JANET AND JANICE BREAUX



Best All Around
CLAIRE JONES



Most Attractive
BOOTSIE WILLIAMS



Most Likely To Succeed
MACIE COLLINS



Most Athletic
MAGDA MARTINEZ

ATTENDANTS



Joan
Applewhite
Sophomore



Maid-of-Honor
Iris Frye



Rose Marie
Hagley
Junior

THE 1950 MAY COURT



Margaret Helms
Junior



Elizabeth Keller
Sophomore



Avra Kyrus
Senior

MAY QUEEN, 1950: MISS PEGGY JEAN NEIL →



The May Queen is chosen each year by the votes of the entire college with the approval of the Faculty. The girl selected as queen must have the attributes of beauty, character, personality and school spirit. The Maid-of-Honor is chosen from the Senior Class and is an outstanding member of the Academy.

MARIA LEON
Sophomore



BETTY SUE McLEAN
Sophomore



PATRICIA STUART
Freshman



FRANCES O'DONOGHUE
Freshman



CLAIRE MORRISON
Senior

MAY DAY, MAY 6, 1949

Top: The Queen and her Court watching the Pageant

Middle: The Recessional

Bottom: The May Queen and her Attendants.



L. to R.: Barbara Roebuck, Junior; Elizabeth Rafter, Senior; Peggy Neil, Freshman; Lillian Applewhite, Sophomore; Winnie Rankin, Sophomore; Gloria Gordon, Senior; Margaret McGerrigle, Queen; Joan Murphy, Sophomore; Jean Lewis, Sophomore; Betty Sue McLean, Freshman; Lorinda Willms, Senior; Mary Williams, Junior.

May Day, 1949, continued



Top: Cadets from St. Leo's Military School.

Middle: Queen Margaret.

Bottom: View showing participants in May Day with Belmont Band in foreground.



GRADATIM

Heaven is not reached at a single bound,
But we build the ladder by which we rise
From the lowly earth to the vaulted skies,
And we mount to its summit round by round.

I count this thing to be grandly true:
That a noble deed is a step toward God—
Lifting the soul from the common clod
To a purer air and a broader view.

We rise by the things that are under feet;
By what we have mastered of good and gain;
By the pride deposed and the passion slain,
And the vanquished ills that we hourly meet.

We hope, we aspire, we resolve, we trust,
When the morning calls us to life and light,
But our hearts grow weary, and, ere the night,
Our lives are trailing the sordid dust.

We hope, we resolve, we aspire, we pray,
And we think that we mount the air on wings
Beyond the recall of sensual things,
While our feet still cling to the heavy clay.

Wings for the angels, but feet for men—
We may borrow the wings to find the way—
We may hope, and resolve, and aspire and pray,
But our feet must rise, or we fall again.

Only in dreams is a ladder thrown
From the weary earth to the sapphire walls;
But the dreams depart, and the vision falls,
And the sleeper wakes on his pillow of stone.

Heaven is not reached at a single bound,
But we build the ladder by which we rise
From the lowly earth to the vaulted skies,
And we mount to its summit round by round.

—Dr. J. G. Holland.

BOOSTERS

Mrs. Anthony Kreienbaum

Miss Carol Lewis

Nan And Ann

Pat And Peggy

Jo, Sally, Therese, And Alice

Mr. And Mrs. P. A. McDonnell

June And Jimmy

K. G. Bumgardner

T. Brown

M. J. Mitchell

Red Allen

Miss Margaret Bland

H. L. Robinson, Jr.

The Nu-Mode

E. H. Stewart

Jack Webb

Jack Wood

W. F. Shutton

Bob Sutton

Mrs. W. J. Frances

Robert O. Hicks

Skippy And Frankie

The Yankee And The Rebel

Hotel Charlotte Pharmacy

Ralph's Service Station

Elois' Gift Shop

J. O. Jones, Inc.

PATRONS

S. R. McAliley

Mr. And Mrs. Ivan Anderson

John Eck

Mr. and Mrs. Vincent R. Wood

Mrs. R. M. Lewis

Auto Inn, Inc., Charlotte

Belmont Drug Co., Belmont

Hinson, Inc., Home Furnishings, Belmont

Charlie's Drug Store, Inc., Mt. Holly

Smith Book Co., Charlotte

Kale-Lawing, Charlotte

Smart Shop, Concord, N. C.

Maxwell Bros. And Morris

Wingate's - Jeweler

Oriental Restaurant, Charlotte

L. & L. Service Station, Belmont

Perry Mincey, Charlotte

Kuester's, Inc., Charlotte

Woody's Curb Market And Hardware,
Kannapolis, N. C.

Art Flower Shop, Charlotte

Belmont Bus Station, Belmont

W. M. Hall & Company, Belmont

Southeastern Construction
Company



218 West Second Street

CHARLOTTE, NORTH CAROLINA

Compliments of

**BELMONT BUILDING AND LOAN
ASSOCIATION**

Phone 428

Belmont, North Carolina

THOMAS AND HOWARD COMPANY

Wholesale Grocers

CHARLOTTE, NORTH CAROLINA

Compliments of

WILSON PRINTING COMPANY

"BETTER THAN THE AVERAGE"

BANK BUILDING

BELMONT, NORTH CAROLINA

FAUL AND CRYMES, Inc.

Sporting Goods

415 South Tryon Street

CHARLOTTE, N. C.



Compliments of

Bryant Electric Repair Co., Inc.

TELEPHONE 5-3466

609 EAST FRANKLIN AVENUE

GASTONIA, N. C.



THOMAS C. HAYES

THOMAS G. GRIFFITH

SERVICE BEYOND THE CONTRACT

Thomas Griffith & Company

Insurance Headquarters

SINCE 1875

226 S. Tryon St., Piedmont Bldg. (Street Front)

CHARLOTTE, N. C.

All Lines of Insurance, Except Life Insurance

Representing 15 Highest Grade Stock Insurance Companies

TELEPHONE 2-4195

TELEPHONE 2-4196

INSURE WITH

INSURANCE HEADQUARTERS

MASSEY-CLARK COMPANY

Dealers in

HARDWARE, MILL SUPPLIES AND BUILDING MATERIALS

Phone 168

MOUNT HOLLY, N. C.

CROSSROADS ESSO CENTER

CY AND CHARLIE NIXON

24 HOURS SERVICE

PHONE 503

BELMONT, NORTH CAROLINA

HAGLEY'S TAILOR SHOP

CLEANING—PRESSING—ALTERING

All Clothes Insured Against Fire And Theft

Day Phone 525

Night Phone 550

BELMONT, N. C.

RIVER VALLEY CHEVROLET COMPANY

SALES



SERVICE

MOUNT HOLLY, NORTH CAROLINA

SPENCER-RHYNE COMPANY

STATIONERS—PRINTERS—OFFICE SUPPLIES

Phone 3276

GASTONIA, N. C.

CREASMAN STEEL ROLLER

MACHINE CO., INC.

Wilkinson Boulevard

GASTONIA, N. C.

Telephone 5-3312

Compliments of

HOLLAND'S DRUG COMPANY

MT. HOLLY, N. C.

Compliments of

GARRISON'S

MEN'S AND LADIES' READY-TO-WEAR

Phone 2251

BELMONT, N. C.

Efird's

DEPARTMENT STORE
CHARLOTTE, N. C.

"The Friendly Store In A Friendly City"

Compliments of

GOOD WILL DISTRIBUTORS, Inc.

GASTONIA, NORTH CAROLINA

"Serving Every Home in the Nation"

P. O. Box 269, GASTONIA, N. C.

E. F. GALLAGHER, JR.

My Sacred Heart Girl

She's the Lucky Strike ad in the flesh,
She's the Pause that will always refresh,
She's a Milgram's Creation, a perfect sensation,
My Sacred Heart Girl.

She's the Cover on Harper's Bazaar,
She's the Breath of Giralaine Shaalmar,
She's a Tiffany's necklace, a little bit reckless,
My Sacred Heart Girl.

She's the hit of the show,
And I want you to know,
That I go for her so,
Cause she's mine, yes, she's mine, and I'll never let her go.

She's the reason for Maiden's Debut,
She's the cupid on Park Avenue,
She's a bundle of love from heaven above,
My Sacred Heart Girl.

COHEN'S

JANTZEN
SWEATERS

"JAUNTY JUNIOR"
COATS AND SUITS

Air-Conditioned

BELMONT, N. C.

Compliments of

WILLIAMS AND SHELTON CO.

CHARLOTTE, N. C.

Compliments of

BELMONT LUMBER COMPANY

"Everything for the Building"

MILLWORK, ROUGH AND DRESSED LUMBER

BELMONT, N. C.



Wherever You Go—

Remember this Seal . . .
It's Your Assurance of the Best

PEANUT PRODUCTS

POTATO CHIPS

Candies

Compliments of

ACME SPINNING COMPANY

BELMONT, NORTH CAROLINA

Compliments of

LINFORD MILLS, INC.

BELMONT, NORTH CAROLINA

Compliments of

MATTHEWS-BELK CO.

“Home of Better Values”



GASTONIA, NORTH CAROLINA

Compliments of

BELMONT HOSIERY MILLS, Inc.

BELMONT, N. C.

Compliments of



Printing of the Better Kind

GASTONIA, NORTH CAROLINA

SUNRISE DAIRY

GRADE "A" PASTEURIZED DAIRY PRODUCTS

509 W. Franklin Avenue

GASTONIA, N. C.

Compliments of

J. B. IVEY & COMPANY

CHARLOTTE, N. C.

GASTONIA MILL SUPPLY COMPANY

Dealers in

TEXTILES AND GENERAL MACHINE SUPPLIES

GASTONIA, NORTH CAROLINA

Compliments of

PAYNE'S

Your Jewelry and Gift Headquarters

409 E. Catawba St.

Phone 609

EAST BELMONT

STOWE MERCANTILE COMPANY

GRIFFON CLOTHING

DOBBS HATS

FLORSHEIM AND JARMAN SHOES

PHONE 321

BELMONT, N. C.

Compliments of

THE BANK OF BELMONT

Phone 320

BELMONT, N. C.

RALPH A. PADGETT

Jeweler

Phone 2636

Bank Building

BELMONT, N. C.

EMERSON RADIOS

"PARKER 51" PENS

Compliments of
STEWART MACHINE COMPANY, INC.

P. O. Box 1161
GASTONIA, N. C.

CAROTHER'S FUNERAL HOME

AMBULANCE SERVICE

GASTONIA, N. C.

Mt. Holly 3

Phone 599

Belmont 477

ROBINSON'S DRUG STORE

"THE STORE OF PERSONAL SERVICE"

Phone 351

BELMONT, N. C.

BELK-MATTHEWS COMPANY

DEPARTMENT STORE

"The Home of Better Values"

Phone 534

BELMONT, NORTH CAROLINA

FOREMOST
DAIRY PRODUCTS

ICE CREAM AND MILK



Foremost Dairies, Inc.

Charlotte, N. C.

H-K CHEVROLET COMPANY, INC.

SALES



SERVICE

Frigidaire Service Sales

BELMONT

NORTH CAROLINA

HONIGMAN'S STUDIO

"Creators of Finer Photographs"

Phone Dial 5-4991

144 SOUTH STREET

GASTONIA, N. C.

Compliments of

CITY ICE CREAM COMPANY

404 North Morehead Street

Phone 5-5031

GASTONIA

NORTH CAROLINA

*Best Wishes
to
Sacred Heart*

FIRESTONE TEXTILES, INC.

GASTONIA

NORTH CAROLINA

Compliments

of

BENTLEY'S SODA SHOP

Hot Grilled Sandwiches and Soda Service

ARCADE BUILDING

BELMONT, N. C.

For Economical Transportation

SMITH CHEVROLET CO., INC.

Sales

PHONE 6396



Service

GASTONIA, N. C.

SMITH TEXTILE APRON COMPANY

24 Hour Service

YATES D. SMITH

General Overhauling, Moving, and Erecting Textile Machinery

Day Phone 1723

Night Phones 13383-W, 996W

P. O. Box 664

1055-1059W. Franklin Avenue

Gastonia, N. C.

OLD FORT DIVISION
CLEARWATER FINISHING COMPANY

Dyers and Finishers of Rayon Fabrics

OLD FORT

NORTH CAROLINA

HATCH FULL FASHIONED
HOSIERY COMPANY

Wilkinson Boulevard

BELMONT

NORTH CAROLINA

LENTZ AND CRESS

Plumbing and Heating

Phone 7221

CONCORD

NORTH CAROLINA

Compliments of

HAVERTY FURNITURE COMPANY

227 North Tryon

Phone 7144

CHARLOTTE

NORTH CAROLINA

24 HOUR AMBULANCE SERVICE OF

FITE & BUMGARDNER FUNERAL HOME

Incorporated

515 North Central Avenue

Dial 417

BELMONT, NORTH CAROLINA

Compliments of

RUSTIN FURNITURE COMPANY

GASTONIA

NORTH CAROLINA

Compliments of

J. F. BESS & COMPANY

GASTONIA

NORTH CAROLINA

LEIGH FOOD PRODUCTS, INC.

625 West Airline Avenue

Phone 5-1067

GASTONIA

NORTH CAROLINA

You'll Enjoy Shopping at

BELK BROTHERS

CHARLOTTE

NORTH CAROLINA

The merchandise you want at the price you want to pay.

Air-conditioned

DUTCH'S BODY SHOP

specializing in

BODY AND FENDER WORK—PAINTING

B. "Dutch" Evers, Prop.

Phone 4-2163

CHARLOTTE

NORTH CAROLINA

Every Day Over 80,000 People in Gaston County Read

THE GASTONIA GAZETTE

Gaston County's Great Home Newspaper

Delivered to Your Door
Daily—30c a Week

Compliments of

DO-NUT DINETTE

BELMONT

NORTH CAROLINA

JENKINS CLEANERS

"For Better Dry Cleaning"

1503 West Franklin Avenue
Pick Up Station 709 West Airline Avenue

Phone 7332

GASTONIA

NORTH CAROLINA

WOOD REALTY CO., INC.

SALES—RENTALS—PROPERTY MANAGERMENTS

214 Realty Building

Phone 2387

GASTONIA, N. C.

BEST WISHES

HOLSUM BAKERY

GASTONIA

NORTH CAROLINA

Holsum

Compliments of

GOODNIGHT BROTHERS

Wholesale Fruits and Vegetables

310 EAST MAIN STREET

GASTONIA, N. C.

Compliments

of

POUND & MOORE

CHARLOTTE

NORTH CAROLINA

Compliments of

DON GILLIAM GROCERY

& DRY CLEANERS

LOWELL

NORTH CAROLINA

KRIMMINGER CANDY CO.

Wholesale Cigars and Candies

3200 Central Avenue

Phone 4-3550

ROBINSON ELECTRIC COMPANY

Incorporated

129 West Fourth Street

CHARLOTTE 2, N. C.

RANDY'S

FOR

MEN

Phone 6451

GASTONIA, N. C.

192 W. Main St.

J. V. DWIGGINS—JEWELERS

Best In Watch Repairing

See Us—No Job Too Large Or Too Small

Guaranteed Services—Reasonable Prices

Free Estimates On All Jobs

106 Brantley Road

Kannapolis, N. C.

Compliments of

A. M. Smyre Manufacturing Company



Gastonia, N. C.

PIEDMONT PROCESSING COMPANY

Dyed and Bleached Cotton Yarns

Belmont, N. C.

ABERFOYLE MANUFACTURING COMPANY

BELMONT, NORTH CAROLINA

Fine Cotton Yarns



DYED—BLEACHED—MERCERIZED

Compliments of

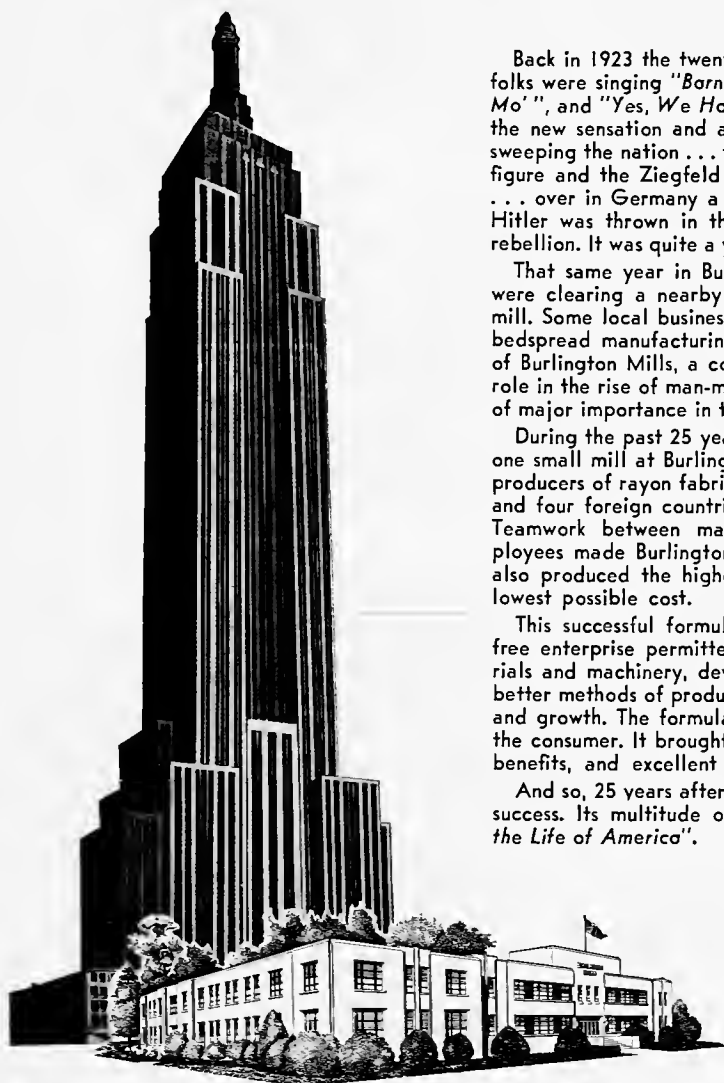
Knit Products Corporation

BELMONT, N. C.



Manufacturers of Vision Hosiery

A Short Course in Success



Back in 1923 the twenties were just beginning to roar . . . folks were singing "Barney Google", "Ain't Goin' Rain No Mo'", and "Yes, We Have No Bananas" . . . jazz music was the new sensation and a dance called the *Charleston* was sweeping the nation . . . the ladies were striving for a boyish figure and the Ziegfeld Girls were the toast of Broadway . . . over in Germany a scrawny little Nazi named Adolph Hitler was thrown in the clink for fomenting a beer-hall rebellion. It was quite a year.

That same year in Burlington, North Carolina, workmen were clearing a nearby cornfield to build a small textile mill. Some local businessmen were risking their money in a bedspread manufacturing venture. That was the beginning of Burlington Mills, a company destined to play a leading role in the rise of man-made yarn from obscurity to a place of major importance in textiles.

During the past 25 years Burlington Mills has grown from one small mill at Burlington into one of the world's largest producers of rayon fabrics. It now has 74 plants in six states and four foreign countries employing over 27,000 people. Teamwork between management and skilled, loyal employees made Burlington Mills a textile leader. Teamwork also produced the highest quality textile products at the lowest possible cost.

This successful formula was possible because American free enterprise permitted constant improvements in materials and machinery, development of our human resources, better methods of production, and an incentive for progress and growth. The formula brought better quality fabrics to the consumer. It brought better jobs, higher pay, increased benefits, and excellent working conditions to employees.

And so, 25 years after, Burlington Mills wears a badge of success. Its multitude of products are truly "*Woven Into the Life of America*".

Sales Offices: New York, N. Y.

Executive Offices:
Greensboro, N. C.

Burlington Mills

"Woven into the Life of America"



MAKER OF WOMEN'S OUTERWEAR AND UNDERWEAR FABRICS • MEN'S WEAR FABRICS • DECORATIVE FABRICS • CAMEO STOCKINGS
COTTON PIECE GOODS AND YARNS • RIBBONS • INDUSTRIAL AND TRANSPORTATION FABRICS

Gaston County Units Are: Cramerton, Flint 1 & 2, Modena, Ranlo, Phenix

TAYLOR'S FOOD STORE

York Road and Brookwood Circle

GASTONIA, N. C.

G. D. TAYLOR, JR. & COMPANY

Cotton

GASTONIA, NORTH CAROLINA

P. O. Box 41

Phone 5-2336

Graduate to Greater Savings
At your friendly

COLONIAL STORE

143 South Marietta St.

GASTONIA, N. C.



Best Wishes

A FRIEND

ST. LEO'S MILITARY SCHOOL

A PREPARATORY SCHOOL FOR BOYS
UNDER THIRTEEN YEARS OF AGE

For Further Particulars Apply to

THE DIRECTRESS

ST. LEO'S SCHOOL

BELMONT, NORTH CARO'INA

MOSKINS CLOTHING STORES

"We cover the South"

A. D. Moore—Manager

Kannapolis, N. C.

THE BAKE SHOP

*Hot Donuts Special Cakes Wedding Cakes Birthday Cakes
Special Orders*

Open Sunday: 8 A.M.-6 P.M. Week Days: 7 A.M.-7 P.M.

Phone 969-w

Kannapolis, N. C.

Established 1922

KIRK COUSART & ASSOCIATES

Manufacturers' Representatives

305 Builders Building

Phone 5-7737

CHARLOTTE 1, N. C.

PETTY MACHINE COMPANY

General Textile Repairs

Phone 5-2161

GASTONIA, N. C.

612 E. Franklin Ave.

NATIONAL WEAVING COMPANY, INC.

LOWELL, NORTH CAROLINA

Subsidiary of Beaunit Mills, Inc.

New York

CARSON'S SPORTING GOODS

GASTONIA

NORTH CAROLINA

BRIDGES FURNITURE COMPANY

CHARLOTTE

NORTH CAROLINA

FRITCHARD PAINT & GLASS COMPANY

112 West Fifth Street

CHARLOTTE

NORTH CAROLINA



Pharr Worsted Mill, Inc.

McAdenville, N. C.



BASKERVILLE-HOWELL COMPANY

Plumbing and Heating Contractors

CHARLOTTE, N. C.

Builders' Building

Phone 2-0215

CHARLES MOODY COMPANY

2101 Thrift Road

Charlotte, N. C.

Love,

The College Sophomores

The Academy Seniors



STUDENTS' DIRECTORY

Abernathy, Jane,
McAdenville, N. C.

Alexander, Mary Evelyn,
45 East Catawba St.
Belmont, N. C.

Anderson, Helen,
343 South Barry Ave.,
Mamaroneck, N. Y.

Andrews, June,
Fairmont Park,
Gastonia, N. C.

Applewhite, Joan,
Carolina Beach, N. C.

Barlowe, Patricia,
1220 Cakwood Ave.
Gastonia, N. C.

Barnes, Jane Alice,
205 N. Pear St.
Gastonia, N. C.

Bell, Helen,
1006 S. Belvedere Ave.,
Gastonia, N. C.

Bland, Margaret,
Box 64,
W. Cramerton, N. C.

Blas, Fermina
Barrigada Village, Guam

Boles, Caroline,
1012 Pryor Street,
Charlotte, N. C.

Breaux, Dolores, Janet and
Janice,
Box 733
Rock Hill, S. C.

Brown, Mary Lilla,
104 W. Second St.,
Gastonia, N. C.

Bryson, Mary,
1617 Riverside Avenue,
Jacksonville, Fla.

Byers, Dorothy,
N. Belmont, N. C.

Calvo, Beatrice,
11-6 Papa St.,
Sinajana Village, Guam.

Calvo, Julia,
Barrigada Village, Guam.

Carbonetti, Jeri and Dolores,
Box 368
Montreat Road,
Black Mountain, N. C.

Carroll, Ruby,
Route 1,
Grover, N. C.

Cauble, June,
Stanley, N. C.

Chavis, Faith,
517 W. Franklin
Gastonia, N. C.

Cloniger, Nancy Jane,
S. Haynes Street,
Gastonia, N. C.

Colby, Helen,
220 Providence Rd.,
Charlotte, N. C.

Collins, Macie,
515 W. 6th Ave.,
Gastonia, N. C.

Craig, Nell
Route 3,
Gastonia, N. C.

Crowder, Dorothy,
514 N. Ransom,
Gastonia, N. C.

Durbin, Patricia Sue,
Rt. 5, Box 815
Charlotte, N. C.

Darden, Rebecca,
Route 5,
Dunn, N. C.

Eckard, Rebecca,
507 S. Chestnut St.,
Gastonia, N. C.

England, Frances,
Smyre Station,
Gastonia, N. C.

Ennis, Helen,
1801 E. Fifth St.,
Charlotte, N. C.

Evers, Ann,
2017 Wilworth Drive,
Charlotte, N. C.

Faris, Virginia,
129 Dunmoreland St.,
Springfield, Mass.

Featherstone, Joan,
405 E. Catawba,
Belmont, N. C.

Fretz, Patricia,
Blue Ridge Ins. Co.,
Shelby, N. C.

Frohlich, Eleanor,
R.F.D. No. 1,
Elizabeth City, N. C.

Frye, Iris,
P. O. Box 284,
Gastonia, N. C.

Gaston, Joanne,
112 S. Central Ave.,
Belmont, N. C.

Giorgio, Eva,
903 Dundalk Ave.,
Baltimore 24, Md.

Goins, Joan,
1781 Venetian Drive,
Atlanta, Ga.

Hagley, Rose Marie,
605 N. Central Ave.,
Belmont, N. C.

Hedrick, Hildegard, Elizabeth
and Nada Ruth,
North Beumont, N. C.

Helms, Margaret,
407 S. Church St.,
Monroe, N. C.

Holland, Margaret,
413 S. Chester St.,
Gastonia, N. C.

Holman, Maxine,
Pinkney Station,
Gastonia, N. C.

Huss, Frances,
1418 McArver St.,
Gastonia, N. C.

Johnston, Patricia,
1409 Biltmore Drive,
Charlotte, N. C.

Claire Elissa Jones,
841 Ninth Ave.,
Hickory, N. C.

Jones, Margaret,
P. O. Box 395,
Mt. Holly, N. C.

Kaneer, Nan,
24 Circle Drive,
Belmont, N. C.

Keller, Elizabeth,
Hester, La.

Kelly, Clara V.,
412 Iredell Ave.,
Spencer, N. C.

Kyrus, Avra,
874 W. 38th St.,
Norfolk, Va.

Lambert, Billie Sue and
Mary Jo,
Rt. 1, Box 299
Charlotte, N. C.

Leary, Nan,
Country Club Road,
Gastonia, N. C.

Ledon, Maria,
Libertabores 19,
Sagua la Grande, Cuba.

Leon, Maria,
Calle 19, No. 1215 e/n 18y20,
Vedado, Havana, Cuba.

STUDENTS' DIRECTORY

CONTINUED

Lewis, Jane,
105 E. Lewis St.,
Whiteville, N. C.

Lopez, Ligra,
Jovellar 133,
Havana, Cuba

Louis, Sylvia,
400 Bay St.,
Nassau, Bahamas.

Martinez, Haydee,
Justicia No. 672
(altos) Luyano,
Havana, Cuba.

Martinez, Magda,
Cuba No. 41,
Santa Clara, L. V., Cuba.

Miller, Carolyn,
1401 Enderly Road,
Charlotte, N. C.

Mills, Donna and Maxine,
Rt. 1,
Mt. Holly, N. C.

Morrison, Claire,
Buckfield Plantation,
Yemassee, S. C.

Murphy, Elisabeth,
Wheeler Hotel,
Dillon, S. C.

McAliley, Betty Jane,
Hotel Charlotte,
Charlotte, N. C.

McDonnell, Ann,
115 Bryan Street,
Belmont, N. C.

McKnight, Lavinia,
Gaston Ave.,
Belmont, N. C.

McLean, Betty Sue,
Route 1, Box 137,
Belmont, N. C.

Neil, Peggy,
306 N. Highland St.,
Gastonia, N. C.

O'Donoghue, Frances,
137 Devoe Ave.,
Yonkers 5, N. Y.

Ots, Olga,
Calle 19, No. 1105—Vedado,
Havana, Cuba.

Pharr, Catherine,
Green Leaves,
McAdenville, N. C.

Powell, Patricia,
604 De Soto Ave.,
Kannapolis, N. C.

Ramsey, Betty Faye,
409 Modena St.,
Gastonia, N. C.

Ray, Gwenleen,
318 S. Vance St.,
Gastonia, N. C.

Rodriguez, Aleida Luisa,
Requena No. 17,
Edificio "Nela",
Havana, Cuba.

Rodriguez, Ody,
11 Stowe St.,
Lowell, N. C.

Royals, Mildred,
Star Route,
Dunn, N. C.

Rudisill, Sue,
Route 1,
Iron Station, N. C.

Scholl, Dennis,
c/o General Delivery,
Belmont, N. C.

Setzer, Faye,
Wilkinson Blvd.,
Gastonia, N. C.

Smoot, Martha,
Rt. 10, Box 572,
Concord Road,
Charlotte, N. C.

Souza, Leonor,
c/o Cia Agricola de Guate-
mala,
Tuquisate, Guatemala.

Stewart, Patsy,
306 N. Highland St.,
Gastonia, N. C.

Stowe, Marian,
304 Central Ave.,
Belmont, N. C.

Tate, Anna,
Tate's Stables,
Pinehurst, N. C.

Taylor, Joyce,
1116 Belvedere Ave.,
Gastonia, N. C.

Thomas, Betty,
900 Pecan Ave.,
Charlotte, N. C.

Thomas, Mary Evelyn,
Townsend Ave.,
Gastonia, N. C.

Thomason, Margaret,
1158 Pendleton St.,
Greenville, S. C.

Torre, Emilia,
Barrigada Village, Guam.

Torres, Yvonne,
Agana, Guam.

Vaught, Joanne,
Wilkesboro, N. C.

Walters, Irene,
Barrigada, Guam.

White, Sally,
707 S. Neil St.,
Gastonia, N. C.

Williams, "Bootsie,"
Ocala, Fla.

Winterson, Katherine,
Jackson Road,
Gastonia, N. C.









