


020.71177366

G75

2005

UNIVERSITY OF  
ILLINOIS LIBRARY  
AT URBANA-CHAMPAIGN  
~~LIB. COL.~~

# GSLiS

 Graduate School of Library and Information Science

2005 Annual Report

University of Illinois at Urbana-Champaign



**DEAN'S REPORT**

- 1** OVERVIEW
- 3** STATUS OF GSLIS IN 2005
  - 4** INCOME & EXPENDITURES
  - 8** AREAS OF STRENGTH
  - 10** AREAS NEEDING IMPROVEMENT
  - 15** EMERGING OPPORTUNITIES
  - 16** IMPEDIMENTS TO SUCCESS
- 17** GOALS & STRATEGIES
  
- 19** AWARDS
  
- 21** GRANTS
  
- 25** HONOR ROLL OF DONORS
  
- 26** CONTINUING PROFESSIONAL DEVELOPMENT
  
- 27** WINDSOR LECTURE
  
- 28** GSLIS EVOLUTION
  
- 29** PhDs AWARDED
  
- 32** NEW: MASTER OF SCIENCE IN BIOINFORMATICS

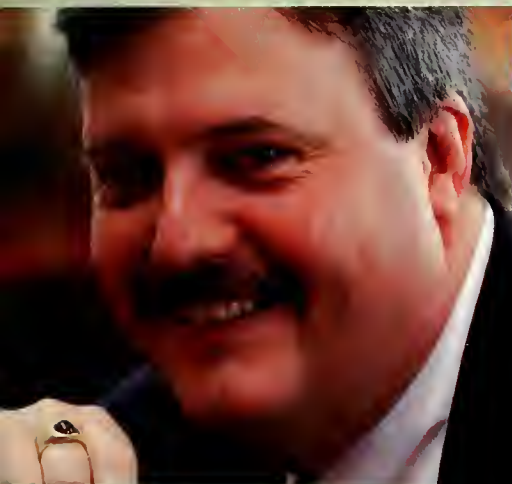
**On the Cover**

clockwise from upper left: master's students Maribel Nash, Kyle Naff, Lisa Schimmer; Ph.D. student Sarah Park; master's student Nalani McClendon; master's student Richard Urban.



675  
2005

## DEAN'S REPORT



John Unsworth  
Dean

### OVERVIEW

2005 has been a year of building for GSLIS: building programs and personnel, building partnerships and a sense of shared purpose with other units on campus. One expression of that shared sense of purpose has been my collaboration with Marc Snir, Head of Computer Science, Paula Kaufman, University Librarian, and Thom Dunning, Director of NCSA, to develop the Illinois Informatics Initiative (I<sup>3</sup>), the goal of which is described as follows in the campus strategic plan:

With the Illinois Informatics Initiative we will lead an integrated approach to information systems, focusing on knowledge creation in the natural sciences, the humanities, the social sciences, and the arts, and on decision support for business and government. The initiative will address both the social and technical aspects of information systems, as well as their reliability. The brief and remarkable history of the World Wide Web demonstrates that university research can have enormous social and technical impact on the rest of the world. The Illinois Informatics Initiative aims to invent the information environments of the future and educate those who will build and use them.

—University of Illinois at Urbana-Champaign Strategic Plan 2006, p. 38  
[http://www.oc.uiuc.edu/announcements/urbana\\_strategic\\_final.pdf](http://www.oc.uiuc.edu/announcements/urbana_strategic_final.pdf)

I<sup>3</sup> is one of four research areas called out in this strategic plan, and it has considerable significance for each of the others—in critical research, integrated sciences for health, and sustainable energy development—as well. The emphasis of I<sup>3</sup> is on social aspects of computing, the effective use of information resources in the practice of science, humanities, or social science research, information organization, and other topics that are at the heart of library and information science.



**What one technology do you wish were available now?**

Associate Professor Ann Bishop answers, "You know that thing that puts extra hours into every day and also keeps you from filling up too many of them with work?"

New or significantly revised programs at GSLIS, many of which have direct bearing on the Illinois Informatics Initiative, include:

- an undergraduate minor in information technology studies, now part of an effort by four colleges (Liberal Arts & Sciences, Engineering, GSLIS, and Communications) to develop a campus-wide informatics minor;
- an option in the campus-wide bioinformatics master's program;
- an option in the campus-wide certificate of advanced study in language and speech processing;
- a new certificate of advanced study in digital libraries (for students who already have a master's degree, offered through our online program as well as on campus);
- early planning and preliminary recruiting for a Chicago-based minority cohort in our online master's program, based in the Paseo Boricua neighborhood, and connected with our community informatics initiative;
- continued planning for a regional Midwest minority recruiting program, working with research libraries and LIS programs at universities in Illinois, Wisconsin, Michigan, Iowa, and Pennsylvania.

## STATUS OF GSLIS IN 2005

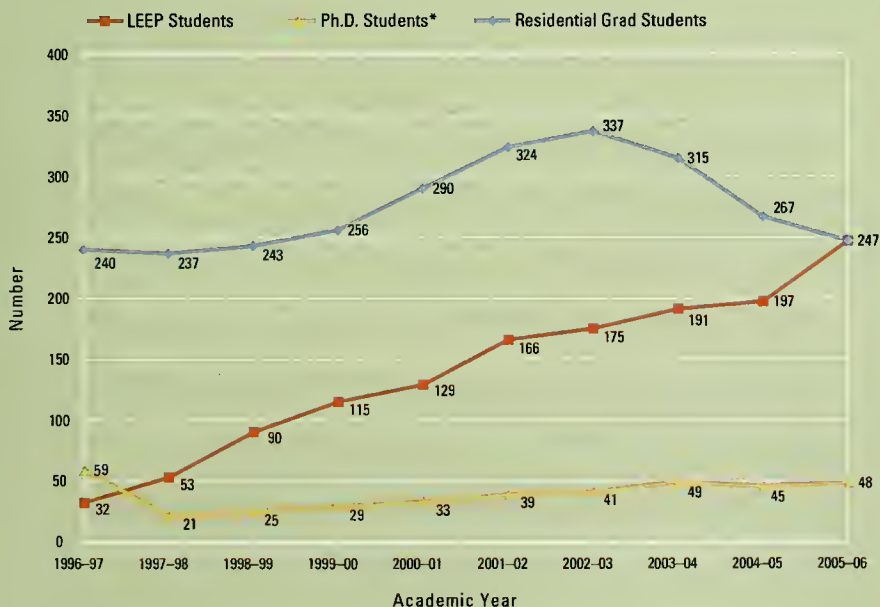
GSLIS, nationally ranked at the top of its field, is an effective and efficient academic unit, by many significant comparative measures. Computer Science, for example, has more than twice the tenure-system faculty that GSLIS has, more than twice the state funding, and seven times the assignable space, but GSLIS has more net graduate tuition, we award more degrees per faculty FTE, and we have nearly the same percentage of faculty acting as principal investigators on grants (88.9% vs. 91.7%; but grant and contract expenditures per faculty FTE are up more than 30% in GSLIS this past year). Unlike Computer Science and most other units on campus,

though, GSLIS does not have undergraduate majors to subsidize its graduate program: it does have some undergraduate minors, but (see below) the way minor tuition is apportioned on this campus makes it very difficult for a program without majors to cover costs on classes for minors, let alone generate tuition income that would offset the cost of graduate education.

If it weren't for LEEP, the online education program that GSLIS has been running since 1996, GSLIS might well be in dire straits financially: LEEP students are gen-

erally part-time students with full-time jobs, and so they don't often need assistantships, which means net tuition income from this part of our master's program is a good deal more than from our on-campus master's students. LEEP students are also more likely to be out-of-state than on-campus students, and minority enrollment in LEEP is twice what it is on campus. Over the last two years, we've been making a deliberate attempt to balance on-campus and LEEP enrollment, and in 2005–2006, for the first time, the numbers are equal: 247 graduate students are enrolled in each delivery option (see **Figure 1**).

**FIG.1 GRADUATE POPULATION**



\* Pre-2004 data includes all post-master's students.



**Do you remember getting your first library card? How old were you?**

Associate Professor Les Gasser answers, "When I was about 7 or 8 I got my first library card from the local bookmobile that used to park in a neighbor's driveway two houses away."



## What one technology could you NOT live without?

Assistant Professor Jerome McDonough answers, "Fermentation."



Even so, this year has been a real challenge for GSLIS, in financial terms. Like the rest of the campus, we've seen flat or declining state dollars for the last several years, and in recent years the campus has been taxing units for "campus unavoidable" and mandating unfunded salary increase programs for faculty and academic professionals. Over the same period, we have tried to cope with this by controlling the number of assistantships we sponsor, by raising in-state tuition above the campus base rate, by addressing efficiency issues having to do with enrollment and curricular management, by discontinuing some administrative positions and some auxiliary units, and by limiting our use of adjunct faculty. Even so, it will be a real accomplishment if the GSLIS budget balances at the end of this fiscal year. Partly, that's because changes to tuition (at least, on-campus tuition) take a full year before they actually affect one's budget, and partly it's because we are still not sufficiently in control of the number of assistantships we fund, but the basic problem is that, as a small unit, we are hit disproportionately by flat-rate "across-the-board" cuts. After several years of such cuts, we are left with no slack and no flexibility in our budget, so even a small confluence of factors—for example, a year without faculty on sabbatical, and some unanticipated tuition waivers—may drive us into the red.

## INCOME & EXPENDITURES

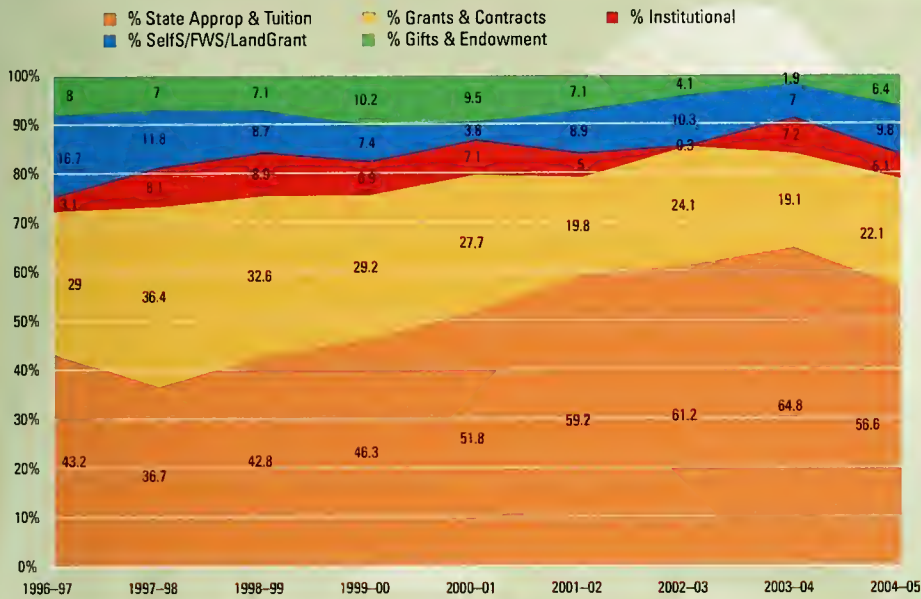
Figures 2 and 3 show the sources of income for GSLIS over the last ten years, and the categories in which state funds are allocated in 2005–2006. What we see from these diagrams is that State appropriations in 2003–2004 accounted for 64.8% of the GSLIS budget, and in 2004–2005 only 56.6%, a decline of more than 8% in one year. The percentage of the GSLIS budget that came from gifts and endowment, from grants and contracts, and from self-supporting activities increased 4.5%, 3%, and 2.8% respectively.

In expenditures, 75% of our state budget was devoted to academic salaries, up a bit from last year; equipment expenditures were down a bit from last year, with the other categories holding roughly steady.

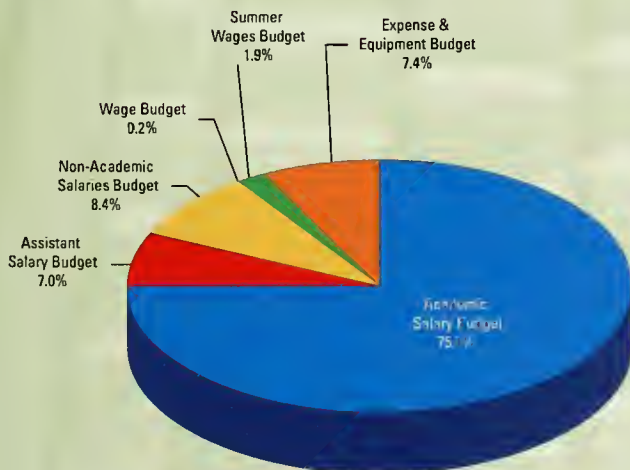
Internal reallocation of funds is one strategy that units can use to achieve their goals, and although we don't have very much room to reallocate within the GSLIS budget, we did move some funds from assistantships to full-time academic professionals in the area of user services (technical support): our estimation was that we could replace several graduate assistants with one academic professional, and we



**FIG.2 SOURCES OF INCOME FOR GSLIS**



**FIG.3 WHERE THE GSLIS 2005-2006 STATE BUDGET IS ALLOCATED**



**What book is on your nightstand right now?**

Professor **Dan Schiller** answers, "A novel, *The Yacoubian Building*; a biography, *American Prometheus*; the latest issue of *The Atlantic*; several prior biblio-strata whose significance will, I fear, turn out to be mostly archaeological."



**What LIS book or article are you recommending to your students right now?**

Associate Professor **Allen Renear** answers, "Gottlob Frege's 'The Thought: A Logical Inquiry' (1918), Jerrold Levinson's 'What a Musical Work Is' (1980); and 'Functional Requirements for Bibliographic Records: Final Report' (1938). These need to be read in quick succession for maximum effect."



would break even financially while lowering our training and supervision costs and providing better service to the faculty and students. Current experience with the new arrangement bears that out.

New, temporary funds from the Provost have allowed us to hire two additional faculty in the past year (McDonough, Kendall) to develop and oversee new or revitalized programs (the advanced graduate degree in digital libraries and the undergraduate minor). By the end of three years, we expect tuition from these programs to replace the Provost's funds, especially if we work out a better arrangement for the distribution of tuition from undergraduate minors.

We are working hard to identify and implement administrative and programmatic mechanisms that will encourage greater efficiency in enrollments, an increase in net tuition revenue, more research funding, and increased private giving. In monthly budget meetings we're also looking very hard at every optional expenditure and every revenue source. However, at the same time we try to shave pennies from

our already modest budget, we are trying to act as a peer and equal partner with units whose budgets are many times the size of ours, in an initiative that is central to our future, and in which the history of our discipline is central to the campus's success.

I have asked campus administration to affirm what GSLIS has accomplished, what it represents in the Informatics Initiative, and what it has to offer in transforming the University of Illinois. Library and information science as an academic discipline has a history of research into "knowledge creation in the natural sciences, the humanities, the social sciences, and the arts, and on decision support for business and government" that goes back to the 19th century; in the 21st century, we are this university's best bet to build the bridges that are required to connect informatics to its application areas.

A one-sided investment in the technical, as against the social, will not get us where we need to go: we need to put some funding into research and teaching about the uses and users of information; about community informatics; about the history, economics, and policy of information; about



the management and evaluation of information systems, resources and services; and about the way that minors and minorities use information to determine their own futures. GSLIS teaches courses and does research in all of these areas, and that cannot be said of another unit on this campus—but it can be said of other schools of our kind, across the country, and they are actively competing for primacy in exactly the area where Illinois wishes to be a leader. See, for example, this excerpt from an October 2005 address by President Emmert of the University of Washington, concerning the I-School (our counterpart) at his university: <http://tinyurl.com/96fy8>. President Emmert specifically cites the UW I-School for “transforming what it means to “...manage information in the

21st century,” by virtue of its interdisciplinarity and its willingness to innovate and take risks. Since 1998, the faculty of the I-School at Washington has grown by more than 700 percent, from 6 to 44. During that same time, the faculty at GSLIS has grown about 33 percent, from 15 to 20.

Taking risks and claiming new territory requires some margin for experimentation, for new ventures and for growth: right now, GSLIS has no such margin. If GSLIS is going to lead in its field, and if Illinois is going to capitalize on its advantages to lead in the broad area of informatics, some venture capital is required, and some of that capital needs to be invested in Illinois’ I-School, the Graduate School of Library and Information Science.



Above: master's student Nalani McClendon; Left: master's students Maribel Nash, Kyle Naff, Lisa Schimmer





## What have your students taught you?

Professor **Linda Smith** answers, "That many different paths lead to study in LIS and that there are many different ways graduates use the knowledge gained from GSLIS degree programs. That's what makes it so fascinating to teach our students and to stay in touch with them once they graduate."

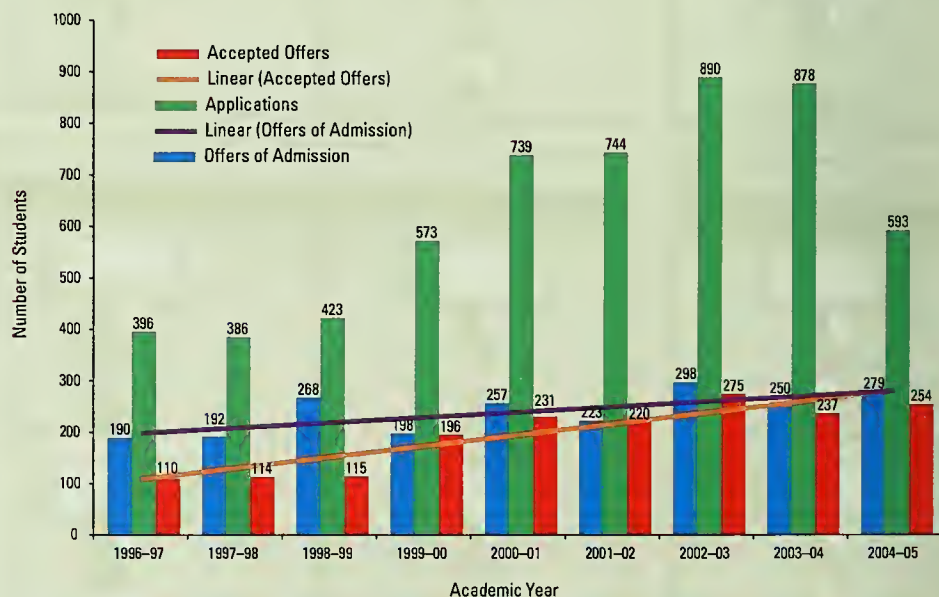


## AREAS OF STRENGTH

GSLIS has a very strong national reputation, as demonstrated by its top position in the 2006 *U.S. News & World Report* rankings of graduate professional schools of library and information science, by its continuing ability to place students from its master's and its doctoral programs in good jobs, and by the continued efforts of other schools of its kind to recruit its associate and full professors, as well as by the American Library Association's re-accreditation of our professional degree. LEEP,

our ten-year-old online education program, is the best program of its kind and a definite area of strength, and it has provided crucial self-determination for GSLIS. Another indicator of strength is yield on admissions (see **Figure 4**). Although our applications are down markedly from last year (and by all accounts, so are those of peer schools across the country, perhaps because of an improving economy), we continue to see nearly 100% yield on admissions, and we continue to receive applications from extremely talented and intelligent prospective students, worldwide.

**FIG.4 YIELD ON ADMISSIONS**



ICES ratings (the student-satisfaction ratings for courses taught on campus), remain strong as well: the average for all courses in this system is higher than it has ever been (see **Figure 5**). It is worth noting that one of the things that seems to be pulling that score up is a significant increase in the ratings for required courses, which have long been a source of dissatisfaction among students, and which faculty have been working hard to improve.

Youth Services remains a strength of GSLIS, and it is currently the area with the best integration between master's and doc-

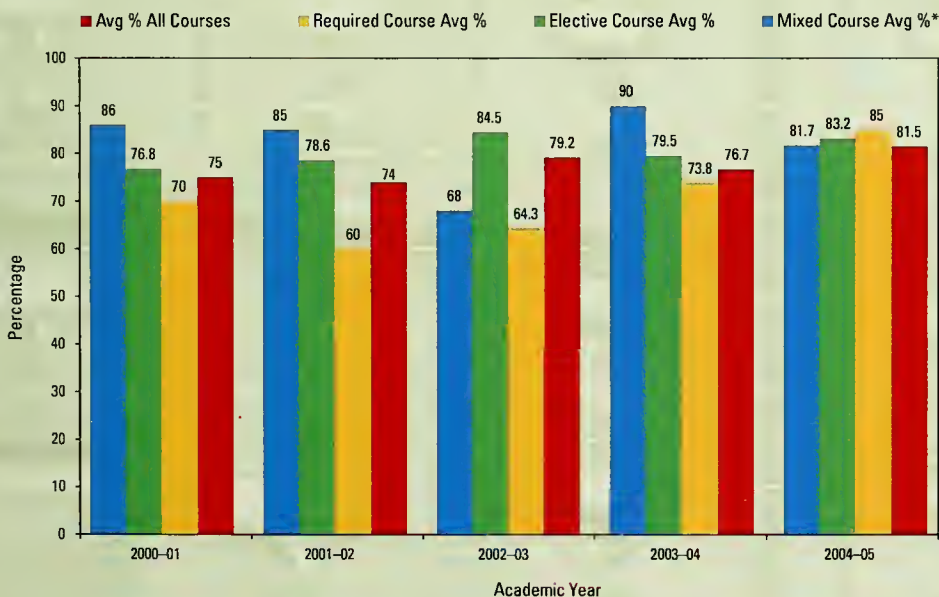
toral students: as such, it serves as an example for other areas. Faculty in the information history, economics, and policy area have been very active this past year in fostering local and international intellectual community, from Dan Schiller's participation in the Age of Networks theme in the Center for Advanced Study, to a very successful conference on libraries in times of war, organized by Boyd Rayward and Christine Jenkins, that drew participants from around the world. Information organization and digital libraries are also areas of strength, and during the past year we



**What is the last CD you bought (or downloaded from iTunes)?**

Assistant Professor Fernando Elichirigoity answers, "David Byrne (Grown Backwards)."

**FIG. 5 ON-CAMPUS FACULTY-TAUGHT COURSES RANKED 4 OR 5 IN ICES**



\*A mixed course has a variety of students taking it for different reasons—some as a required course, some as an elective, others as a choice among several required courses.





### What is your favorite library in the world?

Professor **Boyd Rayward** answers, "As a grown-up, my favorite is the British Library. When I was young, the family took holidays in a small coastal town in New South Wales, Australia, where there was a rental library for use of the holiday makers. It had a special atmosphere drifting into the room from outside, a mixture somehow of the sound and shimmer of the sea, scorching sunlight, and a slightly musty smell arising not so much from the books as from decaying beach vegetation."

have added faculty in both areas—Kathryn La Barre and Jerome McDonough in information organization, and Kate McDowell in youth services. In social informatics, we've added Lori Kendall, who works on online communities, and who is overseeing our planning and participation in the undergraduate minor. We have also seen, with this last round of hiring, an increase in the number of women in tenure-system faculty jobs at GSLIS, up from 7 (where it had been since 1999) to 10.

IT support, systems, and services are also much improved in the School, during the past two years, thanks in part to support from the Office of the Provost (reciprocating grant funding) that helped us to establish a proper server room in GSLIS: with it, we have much less downtime than in previous years, and teaching and research are better served. Credit in this area also goes to Ken Spelke, hired last year as Associate Dean for Information Technology and Research, and to dedicated staff in information technology support and in instructional technology design.

### AREAS NEEDING IMPROVEMENT

Some of the areas in which improvement is most needed have to do with structural disincentives to collaboration, at the campus level. For example, the way that tuition is distributed is a disincentive to interdisciplinary programs, at the graduate or undergraduate level, and even to cross-listing courses: we teach an increasing number of graduate students from other programs in our classes each year. But since graduate tuition follows the student, and not the course, this is all pro bono work: when we balance Instructional Unit (IU) subsidies to GSLIS in 2004–2005 (36) against IU subsidies offered by GSLIS to other units on campus (221), GSLIS is a net provider of free graduate education to other units. In the undergraduate minor, we take in between two and three hundred dollars in tuition per student: if those same students were our majors, we would realize about \$800 per student. The system that governs undergraduate tuition distribution is based on the premise that students who take classes as minors are simply making use of excess capacity in classes already being offered for majors. But for GSLIS, which has no majors, or for Computer Science, who wants to offer classes specifically for non-majors, this system doesn't make





sense. And although we say we follow “modified” responsibility-centered management principles on this campus, in fact it has been several years since there was any relation between unit performance and state funding beyond tuition income, and tuition income is distributed according to an aggregation and averaging formula that makes it essentially impossible to predict the future effect of changes in tuition or enrollment.

The formulas that govern the distribution of indirect cost recovery (ICR) also represent a structural disincentive to collaboration. If GSLIS faculty serve as co-PIs on a grant submitted through another unit, there is no standard operating procedure that ensures any ICR will accrue to GSLIS—and if the grant-funded project is housed in a center or institute (like Beckman or the Institute for Genomic Biology) then

standard operating procedure ensures that no ICR will be returned to any of the units whose faculty members run the project.

The policies that govern tuition, budgeting, and ICR are beyond the control of GSLIS, of course, but it is worth pointing out that they represent real obstacles to some of the core institutional goals of the strategic plan, and they have the effect of penalizing units like GSLIS that already engage in significant interdisciplinary collaboration and that serve populations beyond undergraduate majors.

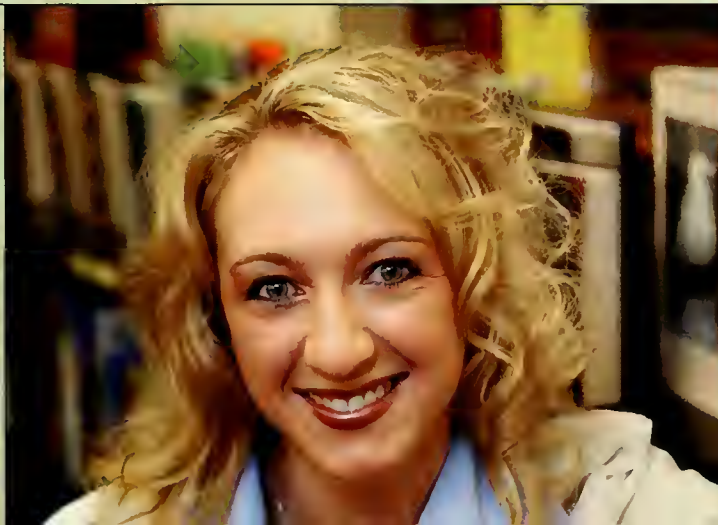
There are areas in need of improvement within GSLIS, too, of course. We continue to struggle to raise minority and out-of-state enrollment in the on-campus program, both important factors in mounting a program with the diversity of perspectives and student experience that one expects in

**What surprises you most about the field of LIS? What have your students taught you?**

Professor Leigh Estabrook answers for both, “How much potential we have to be truly radical.”



Master's student Jen Lara





a top-ranked professional program (see **Figure 6**). In order to reverse a ten-year decline in out-of-state enrollments, we have frozen out-of-state tuition, which was close to the top of the market for programs such as ours, and we are participating in a group effort by I-Schools to increase public awareness of the value of a degree in library and information science (see <http://www.ischools.org>, a domain hosted by GSLIS).

In the area of minority recruiting, enrollment, and retention, Assistant Dean for Student Affairs Rae-Anne Montague led the writing and submission of a grant proposal now pending at the Institute of Museum and Library Services, to provide start-up funding for a regional program in which librarians in academic research libraries at Midwestern universities would identify promising candidates for the professional degree or the Ph.D. in library and information science, place them in summer work experiences, and then send them to a capstone program where they would learn about the many career paths that an LIS degree opens up. LIS programs in the region would provide fellowships and mentoring, and GSLIS would use its experience in fostering online cohorts to provide

a continuing sense of community for these students as they pursue degrees across the Midwest.

Another area in which GSLIS faculty and administration are currently working to improve is to increase enrollment in classes taught by tenure-system faculty and increase the predictability of future course offerings, so that our spending per IU (which was \$362/IU last year—a rather high figure) goes down, and so that students in the program are better able to plan ahead. In the fall of 2005, the GSLIS Faculty Retreat was focused on the master's program, and it launched a series of discussions concerning increased involvement of the faculty in planning and managing the master's curriculum. The results of that discussion, so far, are at <http://www.lis.uiuc.edu/oc/programs/ms/curriculum.html>, and we are currently organizing the faculty—both full-time and supplemental—who are involved in each area, to facilitate planning and management. Linda Smith, Associate Dean for Academic Programs, oversees this effort.

Faculty workload—at least with respect to instructional units per faculty member—has been slightly declining in recent years (see **Figure 7**), at a time when budget exi-

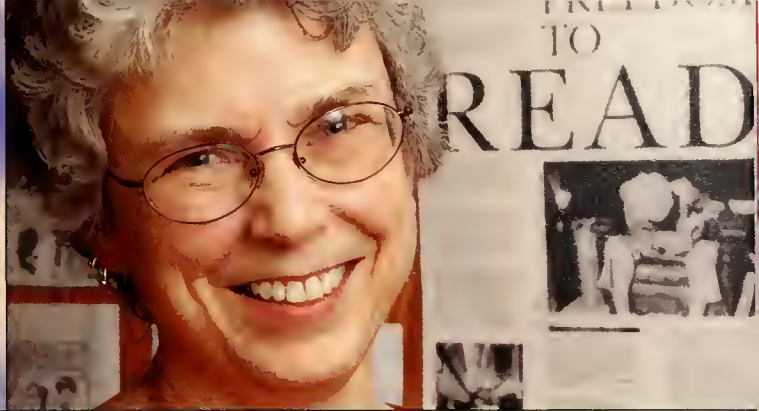
### What surprises you most about the field of LIS?

Associate Professor **Carole Palmer** answers, "That so few people recognize the scope and importance of what we do."



**Do you dog-ear?**

Associate Professor **Christine Jenkins** answers, "Never dog-ear, although sometimes I've used nontraditional bookmarks like socks or silverware or junk mail (depending upon where I'm reading)."

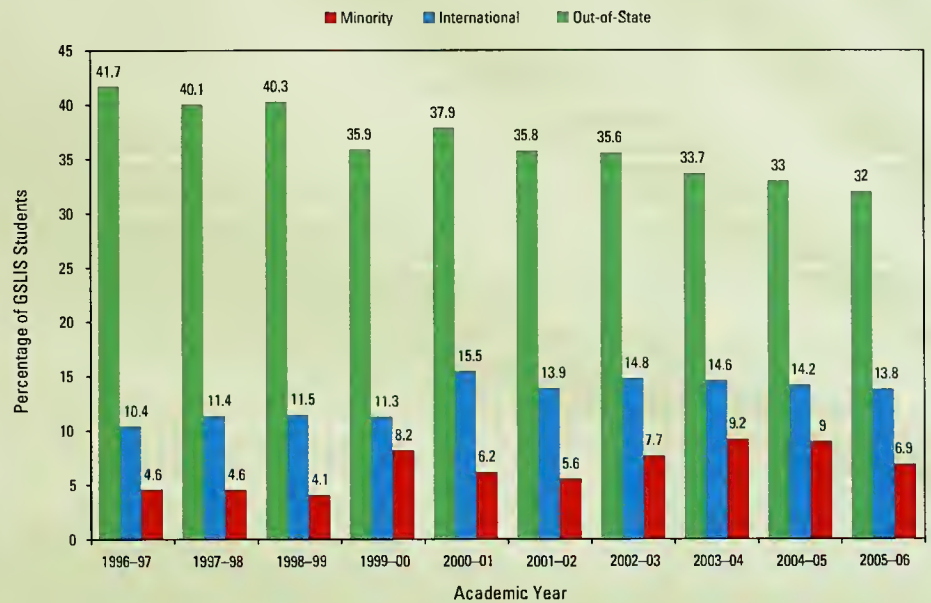


agencies require us to be more, rather than less, productive in the classroom. Therefore, I am working out a system for calculating teaching and advising activities that will reward faculty for teaching fully enrolled classes, recognize the importance of teaching beyond the classroom (in research groups, independent study, and dissertation advising), and offer faculty the opportunity to meet their teaching responsibilities to the School by delivering a certain number of instructional units, rather than by teaching a fixed number of classes. In combination with the course clusters, closer tracking of IUs per faculty member will allow us to predict with some certainty how many classes should be offered in a given area of the curriculum, and that if those courses are allocated to tenure-system faculty first, and then to adjuncts, it should give GSLIS more control over its budgetary fate, faculty more control over their teaching schedules, and students better control over their course selection.

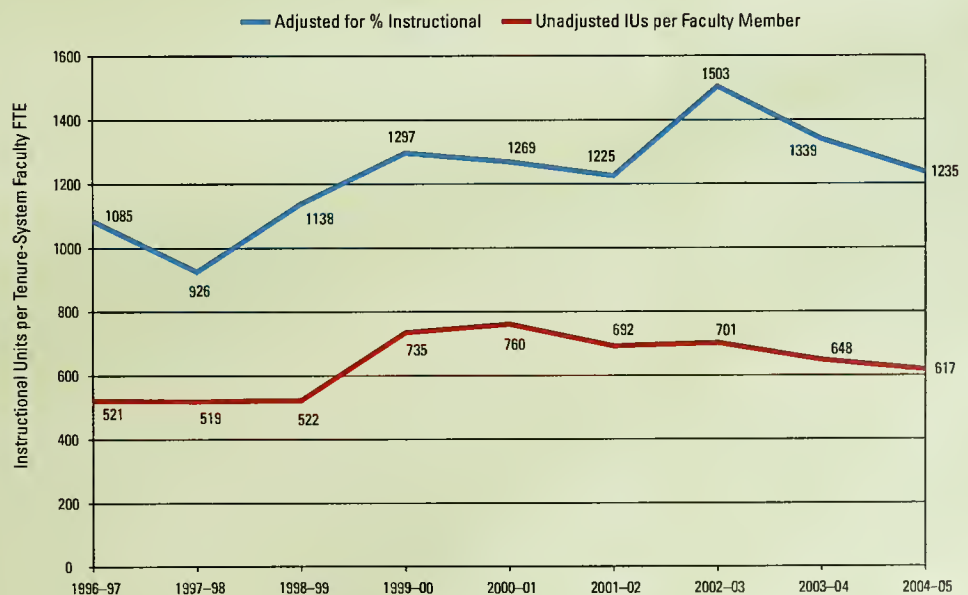
In last year's annual report, I said that

*One of the troubling trends in the ten-year data is the increase (nearly 50%) in terms-to-degree for our Ph.D. students. . . . Partly in response to that, our Doctoral Studies Committee, in consultation with the faculty and current doctoral students, has restructured the Ph.D. program, with*

**FIG.6 ON-CAMPUS INTERNATIONAL, MINORITY, OUT-OF-STATE STUDENTS**



**FIG.7 FACULTY WORKLOAD**







**What one technology could you NOT live without?**

Visiting Lecturer **Kate McDowell**

answers, "Honestly, I could live without all of it. I still write some things on paper, and I enjoy rambling in the woods far away from screens. However, I'd be sunk without email and sad without the online NY Times."

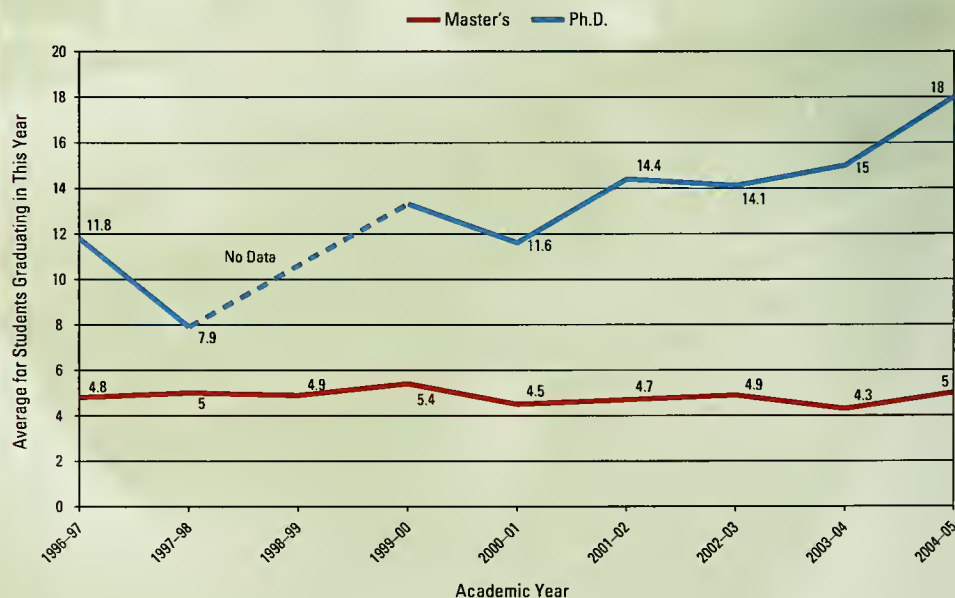
*interim requirements designed to contribute more naturally to the design and completion of the dissertation, and with graduate students' funding contingent on steady progress toward the degree, as measured against a series of milestones.*

At first glance, **Figure 8** would seem to show that—especially in the doctoral program—we seem to be moving in the wrong direction, with terms-to-degree rising sharply in the past year. In fact, though, this rise is probably a good sign, as long as it isn't sustained over coming years: the UIUC Division of Management Information calculates "mean terms to degree" based on the average number of

terms of enrollment for students graduating this year. So, what the increase probably suggests is that the milestones we've put in place are encouraging some of our more senior doctoral students to complete their degrees and graduate.

The increase in terms-to-degree for master's students, shown in the lower portion of Figure 8, reflects the fact that we are enrolling a greater portion of our students online, and almost all of our online students pursue the master's degree part-time. DMI data also shows a significant increase in our capacity to deliver IUs online—from 3544 in 2003–2004 to 4645 in 2004–2005, which is almost double what it was five years ago (2410).

**FIG.8 TERMS TO DEGREE**



Finally, a word about PrairieNet. I am contemplating restructuring PrairieNet (a GSLIS auxiliary unit that does community networking) as a unit that would work with faculty in any unit on campus to support faculty research and the design of service-learning courses in the area of Community Informatics (CI for short). Community Informatics refers to

*"principles and practices concerned with the use of Information and Communications Technologies for personal, social, cultural or economic development within communities"*

[http://en.wikipedia.org/wiki/Community\\_informatics](http://en.wikipedia.org/wiki/Community_informatics)

PrairieNet director Paul Adams and Community Informatics Initiative co-directors Ann Bishop and Chip Bruce are working with me on this, as is Ken Spelke. I will have something more definitive to report on this front later in the spring, after consultation with other deans and with the campus administration: at this point, I will simply say I am hopeful that we can work out a sustainable program that would connect CI teaching and research interests—which I do not believe are limited to GSLIS faculty, by any means—with PrairieNet, as a kind of community lab or liaison.

## EMERGING OPPORTUNITIES

The most important emerging opportunity for GSLIS, at the moment, is the Illinois Informatics Initiative, discussed in the opening pages of this report. The planning group for I<sup>3</sup> is now drafting a proposal for an organizational structure that would permit core units in the Initiative to manage its resources: in designing it, our emphasis is on developing something agile and lightweight that can respond quickly and creatively to new research and teaching opportunities, without having to reshuffle or dissolve existing schools, colleges, or departments. This kind of virtual organization is going to be important for other projects in this university, and for other universities, in the future. With the necessary support provided from campus and the necessary trust and good will established among the principals, it will be a very effective example.



### What electronic gadget have you most recently purchased?

Associate Professor Michael Twidale answers, "A very cheap MP3 player so that I won't get upset when I lose it. It's not white and it's not an iPod. It's an anti-fashion statement."

### What is the most exciting thing you've done for your research?

Associate Professor **Bryan Heidorn** answers, "Prior to a meeting on data standards in Costa Rica, I went running through the jungle and spotted a very surprised margay. Humans do not run through the jungle in the margay's experience because there are too many snakes. Just had ankle surgery for running in too many places where humans should not run."



### IMPEDIMENTS TO SUCCESS

Although we consider it a success to have been one of four partners proposing an initiative (I<sup>3</sup>) that now figures prominently in the campus strategic plan, that very success comes with some impediments. Other partners in this initiative are Computer Science, (with more than twice our state budget), the Library (which has five times as many faculty as we do, and nearly ten times our budget), and NCSA, which has just a few more staff on state funds than GSLIS does (77 vs. 69), but which has twice the amount of state funding that GSLIS receives. Because of the small size of GSLIS and because of an often unconscious prejudice in favor of Engineering on the part of the campus culture, GSLIS is still very much in the position of needing to assert its value to I<sup>3</sup> and needing to argue for a level playing field in the I<sup>3</sup> partnership. For example, among the resources itemized in connection with the informatics initiative in the campus strategic plan, none are allocated to GSLIS by name, but specific and relatively substantial amounts

are designated to other units (CS, NCSA) on the Engineering side of the collaboration. This is not a problem with the partners in I<sup>3</sup>, who work very well together, but it is a problem at other levels, and in the coming months I will be doing my best to make the case that the long-term success of the Illinois Informatics Initiative requires a strong library and information science program.

If campus does capitalize GSLIS as an equal partner in the Informatics Initiative, our next impediment will be lack of space: we need to be able to use the whole of our building, if we are to expand even by one appointment: available office space is now completely occupied. CARLI (<http://office.ilcso.illinois.edu/>), a consortium of academic and research libraries in Illinois, occupies a substantial amount of the second floor in the GSLIS building, and they contributed substantially to the renovation of the building a few years ago. I have asked for help from campus to find a new place for CARLI and to reimburse them for their contribution to renovation.



## GOALS & STRATEGIES

The goals for GSLIS, in the coming year, include:

- Achieving equality as a participant in the I<sup>3</sup> initiative;
- Increasing faculty involvement in curriculum planning, within a framework of expectations that rewards teaching to fully enrolled classes;
- Developing a sustainable program to integrate Prairienet into teaching and research in Community Informatics, campus-wide;
- More effectively managing waivers for on-campus students.

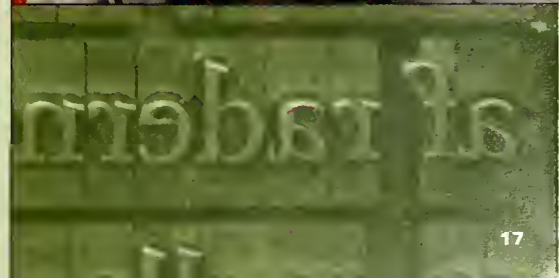
The first three have already been discussed in some detail, but the last of these goals deserves some further explanation.

Assistantships for on-campus students are mostly in the Library, and they have considerable educational value as part of the professional degree program, as well as considerable practical value to the Library. We have agreed with the Library to cap assistantships at 100, and that's been working well. However, our students are free to search out assistantships in other parts of campus, and they do so with considerable success, which speaks well for their abilities, but which also has an impact on our budget (see **Figure 9**).

### What book is on your nightstand right now?

Professor **Betsy Hearne** answers, "Today I counted 28 books on my nightstand. The one currently on top is *Summer Doorways: A Memoir*, by W.S. Merwin."

**FIG.9 ON-CAMPUS TUITION AND WAIVERS**





**What is the last CD you bought (or downloaded from iTunes)?**

Associate Professor **Stephen Downie** answers, "Not sure, I just bought a bulk lot of 400 CDs blind from a wholesaler for the music retrieval project."

Obviously, since the largest number of assistantships is in the Library, managing that pool is important, but as a comparison of 2003–2004 to 2004–2005 numbers in Figure 9 shows, doing so has not solved our problem completely. In the coming year, we need to reassess the policy of unqualified waivers for all assistantships, and we need to arrive at a way of managing the total number of assistantships with waivers, and not just the number that we have with the Library.

In a related matter, we currently provide a complete support package (tuition waiver and a stipend) for all of our 50 doctoral students. We need to assess the policies of other LIS programs with respect to financial support of doctoral students, though, and determine whether this level of support is necessary in all cases, in order to be competitive. If it is, then we will need to find ways to subsidize it, either through

increasing our funded research or through increasing our income in other parts of the program; if it is not, then we will need to establish guidelines for the Doctoral Studies Committee to help them decide when to offer the full measure of support.

Finally, since many of the readers of this report will be GSLIS alumni/ae, let me close by saying that just as I hope GSLIS has been important in your life, you are also important in the life of GSLIS, and to one another: I welcome you to write or to visit me, and if you don't know how to get in touch with your GSLIS classmates, faculty, or mentors, Assistant Dean for Development & Alumni Relations Diana Stroud ([dstroud@uiuc.edu](mailto:dstroud@uiuc.edu)) will try to help you make those connections. Likewise, if you have news that you'd like to share with others in the GSLIS community, Assistant Dean for Publications and Communications Marlo Welshons ([welshons@uiuc.edu](mailto:welshons@uiuc.edu)) will help you get the word out. And even if you can't visit in person, please do visit the redesigned GSLIS web site, at <http://www.lis.uiuc.edu>: I think you'll like what you see there.

John Unsworth, Dean  
Graduate School of Library and  
Information Science  
University of Illinois, Urbana-Champaign

## AWARDS

### CONVOCATION AWARDS

*presented at GSLIS Convocation,  
May 15, 2005*

#### BRYCE ALLEN AWARD FOR REFERENCE SERVICES

Alexander Sonstebly

#### C. BERGER GROUP ENTREPRENEURIAL PROMISE AWARD

Susan Sutherland

#### BERNER-NASH MEMORIAL AWARD

Hong Cui

#### ANNE M. BOYD AWARD

Georgeann Burch

#### JANE B. AND ROBERT B. DOWNS PROFESSIONAL PROMISE AWARD

Janet Pye

#### HERBERT GOLDHOR AWARD FOR PUBLIC LIBRARIANSHIP

Kristin Hungerford

#### HEALTH SCIENCES INFORMATION MANAGEMENT AWARD

Lidia Hutcherson

#### INFORMATION SYSTEMS/TECHNOLOGIES AWARD

Tod Olson

#### FRANCES B. JENKINS AWARD

Jonathan Lorig

#### LIBRARY SCHOOL ALUMNI ASSOCIATION STUDENT AWARD

Jomichele Seidl

#### ALICE LOHRER AWARD FOR LITERATURE AND LIBRARY SERVICES FOR YOUTH

Hope Morrison

#### HAZEL C. REDIGER AWARD

Adam Mathes

#### SOCIAL JUSTICE AWARD

Adam Davis

### FELLOWSHIP AND SCHOLARSHIP AWARDS, ACADEMIC YEAR 2005-2006

#### MARGARET CAFFAL SCHOLARSHIP

Trinie Parker

Emily Goodhue

#### JUDITH DUYI CHIEN FELLOWSHIP

Andrew Gajkowski

Colleen Galvin

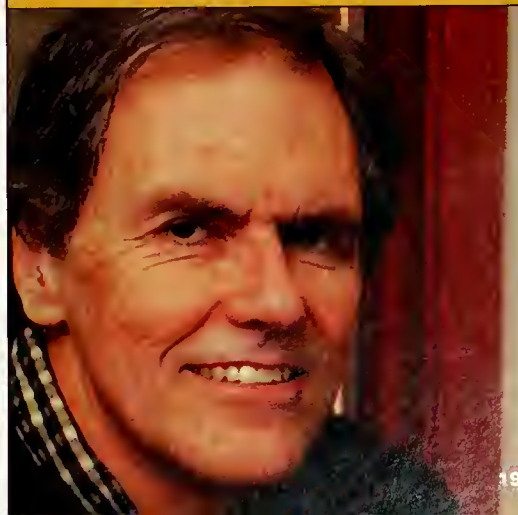
Sean Quimby

April Jackson

Karen Toonen

#### What is your favorite children's book?

Professor Chip Bruce answers, "Sandra Boynton's *Moo, Baa, La La La!* has to rank high on my list for participation, not to mention humor, surprise, art, poetry, and education in about 70 words. It's also chewable."





**What one technology do you wish were available now?**  
Associate Professor **Caroline Haythornthwaite** answers, "Self-organizing files."



**DISTANCE LEARNING SCHOLARSHIP**

Ross Parcels

**DOCTORAL FELLOWSHIPS**

Joan Bessman

Tim Hogan

**DOLORES DLESK SCHOLARSHIP**

Patrice Johnson

Nancy Gistover

**FC GOODWIN SCHOLARSHIP**

Besiki Stvilia

**HAKA SCHOLARSHIP**

Honore Bray

**HERBERT R. AND LAURA BETH HEARSEY SCHOLARSHIP**

Emily Goodhue

**MIRIAM HERRON LIBRARY SCHOLARSHIP**

Nancy Gistover

**ANITA AND MARIE HOSTETTER SCHOLARSHIP**

Joan Bessman

Muzhgan Nazarova

**JOSIE B. HOUCHENS FELLOWSHIP**

Emily Goodhue

Jie Zhang

Paul Park

Seonhee Jeong

**LOIS WELLS IRWIN FELLOWSHIP**

Dinesh Rathi

**ELIZA LUEHM LATZER SCHOLARSHIP**

Corrine Hatcher

Michelle Maloney

**LEEP SCHOLARSHIP**

Honore Bray

**CARL AND KATHERINE PERRIN FELLOWSHIP**

Chulin Meng

**ROSE BERNICE PHELPS FELLOWSHIP**

Jun Wang

**KATHARINE L. SHARP FELLOWSHIP**

Vandana Singh

**SPECTRUM SCHOLAR (ALA  
AWARD SUPPLEMENTED WITH  
GSLIS FUNDS)**

Patrice Johnson

Nancy Gistover

**HELEN T. AND MILDRED  
STEWART FELLOWSHIP**

Kate McDowell

**ALMEDA LEAKE TOOMEY  
SCHOLARSHIP**

Besiki Stvilia

**LUCILE HUNTINGTON WILKINSON  
FELLOWSHIP**

Qin Wei

Jun Wang

Laura Hoksbergen

Amber Prentiss

Melissa Cragin

**OTHER 2005 AWARDS**

**CENTENNIAL SCHOLAR AWARD,  
ACADEMIC YEAR 2004–2005**

Les Gasser

**LIBRARY SCHOOL ALUMNI  
ASSOCIATION DISTINGUISHED  
ALUMNUS AWARD**

Linda Smith

**LIBRARY SCHOOL ALUMNI  
ASSOCIATION DISTINGUISHED  
SERVICE AWARD**

Jean Koch

**LIBRARY SCHOOL ALUMNI  
ASSOCIATION LEADERSHIP  
AWARD**

Rebecca Graham

**ROBERT B. DOWNS  
INTELLECTUAL FREEDOM AWARD**

John Doe (John Doe v. Gonzales)

**CENTER FOR CHILDREN'S BOOKS  
GRYPHON AWARD**

*Little Rat Rides* by Monika Bang-  
Campbell (Harcourt, 2004);

**Gryphon Honor Books:**

*Down Girl and Sit: Smarter Than  
Squirrels* by Lucy Nolan (Cavendish,  
2004);

*You Read to Me, I'll Read to You:  
Very Short Fairy Tales to Read Together*  
by Mary Ann Hoberman (Tingley/Little,  
2004)

**FACULTY AWARDS**

John Unsworth, recipient of 2005  
Richard W. Lyman Award from National  
Humanities Center



Master's student Ingrid Shields.

Where is the most remote place you've gone, most dangerous, or most exciting thing you've done for your research?

Associate Professor Lori Kendall answers, "Into the worldviews of young men."



## GRANTS

### NEW GRANTS FOR FY06

**USER SATISFACTION WITH ACCESS TO GOVERNMENT INFORMATION & SERVICES AT PUBLIC LIBRARIES & PUBLIC ACCESS COMPUTING CENTERS**  
\$495,450 from the Institute of Museum & Library Services

PI: Leigh Estabrook

**VIRTUAL WORLD OF ENTREPRENEURS**  
\$93,000 from the Kauffman Foundation

PI: Leigh Estabrook

**RAPID CONDITIONAL TEXT IDENTIFICATION AND MODELING**  
\$189,871 from Boeing

PI: Les Gasser

**A GRADUATE PROGRAM FOR SCIENTIFIC COMMUNICATION SPECIALISTS: GETTING PAST THE PROTOTYPE IN BIOLOGICAL INFORMATICS**

\$249,189 from the National Science Foundation/Intelligent Information Systems

Co-PIs: Carole Palmer & P. Bryan Heidorn

**ELECTRONIC JOURNALS IN THE HUMANITIES: PATTERNS OF USE AND MEASURES OF IMPACT**

\$17,839 from UIUC Research Board  
PI: Carole Palmer

### CONTINUING GRANTS

**MUSIC INFORMATION RETRIEVAL/MUSIC DIGITAL LIBRARY EVALUATION PROJECT**  
\$390,000 from The Andrew W. Mellon Foundation

PI: Stephen Downie

**TOWARD THE SCIENTIFIC EVALUATION OF MUSIC INFORMATION RETRIEVAL SYSTEMS**  
\$342,110 from the National Science Foundation

PI: Stephen Downie

**STATISTICAL SERVICES FOR THE ILLINOIS STATE LIBRARY**  
\$109,122 from the Illinois State Library

PI: Leigh Estabrook

**PUBLIC LIBRARY DATA SERVICE STATISTICAL REPORT 2006**  
\$50,902 from the Public Library Association

PI: Leigh Estabrook

**2005 ACADEMIC LIBRARY TRENDS AND STATISTICS**  
\$39,858 from the Association of College & Research Libraries

PI: Leigh Estabrook



**DCFS WEB RESOURCE**

\$54,989 from the Illinois Department of Children & Family Services

PI: Karen Fletcher

**INTERNATIONAL WORKSHOP ON RESEARCH DIRECTIONS IN MULTIAGENT SYSTEMS**

\$15,000 from the National Science Foundation

PI: Les Gasser

**ORGANIZATION DYNAMICS OF SOFTWARE PROBLEMS, BUGS, FAILURES AND REPAIRS**

\$545,991 from the National Science Foundation

PI: Les Gasser

**RESEARCH DIRECTIONS FOR CONTINUOUS (RE) DESIGN IN FREE/OPEN SOURCE SOFTWARE SYSTEMS**

\$92,007 from the National Science Foundation

PI: Les Gasser

**HERBIS: HERBIS IS THE ERUDITE RECORDED BOTANICAL INFORMATION SYNTHESIZER IN COLLABORATION WITH YALE UNIVERSITY**

\$174,652 from NSF/Biological Databases and Informatics

PI: P. Bryan Heidorn

**AN INTERNET ENVIRONMENT FOR BIODIVERSITY SURVEY COLLABORATION AND VERIFICATION**

\$500,066 from the National Science Foundation

Co-PIs: P. Bryan Heidorn & Carole Palmer

**BIODIVERSITY TO BIOGEOMANCER**

\$64,563 from the Moore Foundation

PI: P. Bryan Heidorn

**ISL ELECTRONIC DOCUMENTS INITIATIVE**

\$185,380 from the Illinois State Library

PI: Larry Jackson

**INFORMATION WORK AND DISCOVERY POTENTIALS IN NEUROSCIENCE RESEARCH**

\$345,331 from the National Science Foundation

PI: Carole Palmer

**COLLECTION REGISTRY & METADATA REPOSITORY**

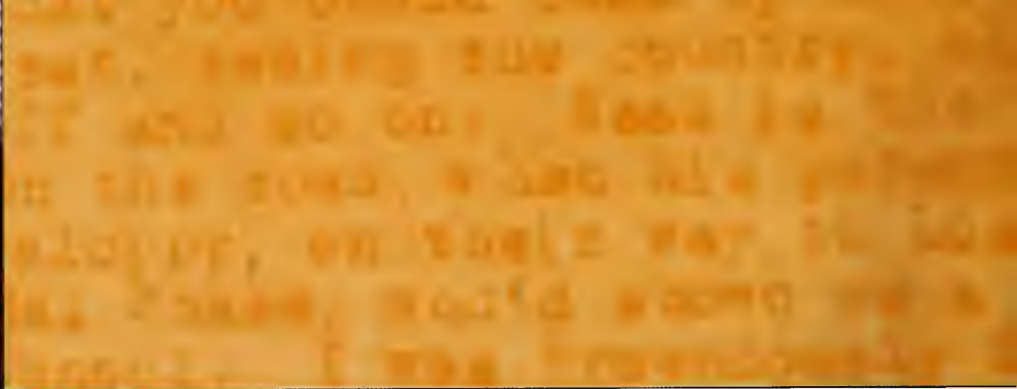
\$308,963 from the Institute of Museum & Library Services

Co-PIs: Carole Palmer & Michael Twidale



Master's student Druet Klugh





**What surprises you the most about the field of LIS?**

Visiting Lecturer **Kathryn La Barre** answers, "How far we reach, how interdisciplinary we have become, and how far we have yet to go."

To read more Faculty Q & As, please go to: [www.lis.uiuc.edu/coplw/faculty/questionnaire.html](http://www.lis.uiuc.edu/coplw/faculty/questionnaire.html)

**WISE: AN ONLINE CONSORTIAL INITIATIVE TO BUILD MULTI-INSTITUTIONAL CAPACITY FOR QUALITY LIBRARY AND INFORMATION SCIENCE EDUCATION**

\$257,171 from the Institute of Museum & Library Services

PI: Linda Smith

**BUILDING AN EFFECTIVE DIGITAL LIBRARY CURRICULUM THROUGH LIBRARY SCHOOL AND ACADEMIC LIBRARY PARTNERSHIPS**

\$394,650 from the Institute of Museum & Library Services

PI: Linda Smith

**EXTENDING THE WEB OF OUR FUTURE: RECRUITING AND EDUCATING THE FACULTY WHO WILL EDUCATE THE NEXT GENERATION OF LIBRARY PROFESSIONALS**

\$62,986 from the Institute of Museum & Library Services

PI: Linda Smith

**WEB-BASED TEXT-MINING AND VISUALIZATION FOR HUMANITIES DIGITAL LIBRARIES**

\$598,674 from The Andrew W. Mellon Foundation

PI: John Unsworth

**EXPLORING COLLABORATIONS TO HARNESS OBJECTS IN A DIGITAL ENVIRONMENT FOR PRESERVATION**

\$2,753,451 from the Library of Congress

Co-PIs: John Unsworth & Beth Sandore

## THE HONOR ROLL OF DONORS

This report recognizes all contributions to GSLIS for the fiscal year ending June 30, 2005. Although every effort has been made to ensure accuracy, errors may occur. If we have omitted your name or listed your name incorrectly, please contact the Office of Development and Alumni Relations, GSLIS, 501 E. Daniel St., Champaign, IL 61820; telephone (217) 333-2973.

The Dean's Council was initiated by Dean John Unsworth to acknowledge and communicate with the top-level donors to the School. Membership includes alumni and friends who support GSLIS annually with total giving of \$1,000 or above, those who have made significant gifts to GSLIS in the past, and those who have made a generous provision to GSLIS in estate plans. For additional information, contact Diana Stroud at [dstroud@uiuc.edu](mailto:dstroud@uiuc.edu) or 217-244-9577.

Members for the 2005 Fiscal Year are noted with an asterisk in the following list of donors.

### R. B. DOWNS CIRCLE

donors who made gifts of \$5,000 or more

1944  
Marjorie R. Schoch

1948  
Kathryn Luther Henderson\*

1967  
James R. Elsesser Jr. and Lionelle H. Elsesser\*

1972  
Linda C. Smith\*

1977  
Clifford H. and Susan F. Haka\*

### FRIENDS OF GSLIS

Mildred Luther\*  
Herbert Goldhor\*  
William T Henderson\*  
Boyd Rayward\*  
Joseph H. Wilkinson Jr.

### P. L. WINDSOR CIRCLE

donors who made gifts of \$1,000 to \$4,999

1938  
Ruth Graham Field  
Ruth C. McMartin\*

1943  
Chester W. and Nadine C. Houston\*

1951  
Richard H. Schimmelpfeng\*

1958  
Laurel A. Grotzinger\*

1959  
Dorothy Joens Glasby\*

1966  
Lucille H. Belcher\*

1970  
Jane R. Terry\*

1971  
Prudence B. Cole\*

1972  
Lynda M. McKibben\*

1973  
Jean E. Koch\*

1974  
Lois Elaine Carroll\*  
Keith J. Stanger\*

1976  
Anne H. Ross\*

1980  
Iris Seeley\*

1986  
Dudee Chiang\*

1988  
Curt B. McKay\*

1992  
Carol A. Erickson\*

2001  
Susan Laura Lugo\*  
Marianne V. Steadley\*

2004  
Dipesh Navsaria\*

### FRIENDS OF GSLIS

R. Kirby Barrick\*  
Susan K. Barrick\*  
Ellen Crosby  
Elizabeth G. Hearne\*  
Claude F. McKibben\*  
Carol Iglauer\*  
Arnold W. Thompson\*  
Marian H. Thompson\*  
John M. Unsworth\*  
Margaret E. Unsworth\*

**K. L. SHARP CIRCLE**  
donors who made gifts of \$500 to \$999

1961  
Robert Wedgeworth

1962  
Mary Sue D. Schusky

1964  
Florence E. Thompson

1965  
Chung-Kyun Wedgeworth

1966  
David L. Johnson

1968  
Marion T. Reid

1970  
Ruth Carol Carter  
Robert A. Daugherty  
Roxanne C. Frey

1972  
Gwendolyn N. Weaver

1973  
Donna O. Dziedzic

1974  
Michael N. Widener

1975  
Lynn S. Cline

1982  
Sylvia H. Justice

1984  
Michèle V. Cloonan

1985  
Marcia S. Trauernicht

1987  
Sidney E. Berger

1989  
Siew-Kie P. Walsh

1996  
Scott A. and Anita S. Coleman  
Danica D. Enlow

1997  
Bridget A. MacMillan

1999  
Wendy Schumacher

2002  
Michael P. Ragen

### FRIENDS OF GSLIS

Eric Enlow  
John D. Frey  
John J. Hilburger  
Faye Louise Lesht

**PROFESSOR'S CIRCLE**  
donors who made gifts of \$1 to \$499

1931  
Doris G. Murdock

1937  
Dorothy B. Gustafson



## GSLIS Conducts Summer School for Chinese Academic Librarians



Eager to enhance their leadership and library management skills, twenty Chinese academic librarians representing universities from several regions in China participated in a three-week intensive summer study program (June 18–July 9, 2005) developed by GSLIS. Lian Ruan (MS '90), Director of the Illinois Fire Service Institute Library, and Marianne Steadley (MS '01), GSLIS Director of Continuing Professional Development Programs, collaborated on creating the summer learning school, recruiting candidates, and guiding participants through the program.

Activities during the three weeks included a series of lectures, field trips, and workshops. Lecture topics ranged from leadership in academic libraries, to information literacy, to digital libraries. GSLIS and Illinois library faculty lectured while GSLIS Chinese doctoral and master's students assisted with paid translation and volunteer work. A special field trip to the ALA conference in Chicago was arranged, enabling the group to attend the presentation "Going Digital: Experiences from East Asia and the Pacific" and to visit the exhibits at McCormick Place.

### OTHER 2005 CPD PROGRAMS

"Digitization Basics," a three-week online course (February 7–25) followed by a two-day hands-on workshop (March 1–2) open to GSLIS alumni and students. Collaboration with Illinois Digitization Institute.

"Soviet Secrets, Russian Revelations: An Inside View of Information and Access in the New Russia," a summer study tour to Russia hosted by Marianna Tax Choldin, July 15–26.

Book Arts Workshops: "The Medieval Book: From Sheep to Shelf," taught May 21 by Sid Berger; "Design in Printing," taught May 22 by Sid Berger; "Bookbinding: East Meets West," taught October 8 and 9 by Bea Nettles; "Hardbound Album with Accordion Spine," taught November 5 by Bea Nettles.

**1938**

Else M. Kelly

**1939**

Joe W. Kraus  
Ralph E. McCoy

**1941**

Doris M. Phillips  
Benjamin F. Smith

**1942**

Mary A. Smith

**1943**

Sarah L. Bush  
Elizabeth A. Dawson  
Myra Secoy

**1944**

Marguerite S. Kaufman  
Elizabeth R. Usher

**1946**

Evelyn S. Clift  
Mildred S. Hedrick  
Mary Radmacher  
Marjorie S. Spence  
Martha M. Tarpley

**1947**

Martha P. Dixon  
Marion J. Wiederecht  
Janice T. Woods

**1949**

Elizabeth A. Germany

**1950**

George N. Hartje  
H. Ellis Mount  
Robert W. Oram  
Dorothy De Braal Urquhart  
James B. Woy

**1951**

Le Mayne W. Anderson  
Dale M. Bentz  
Leonard Coburn  
Betsy M. E. Craft  
Mary P. Hall  
Lois A. Lyons  
Virginia E. Parker  
Rosemary Severance  
Ann L. Slaughter  
Christine Slocum

**1952**

George T. Couston  
William E. Lafranchi  
Rose M. Lomonte  
Thomas E. Parks  
Sonia S. Perry  
Miriam L. Ridinger  
Katherine A. Staack

**1953**

Margaret M. Barks  
Betty J. Buckingham

**1954**

Homer L. Fletcher  
Mary A. Hall  
Virginia V. Kriechel  
Janet P. Shea

**1955**

Theodora U. Andrews  
Pauline A. Cianciolo  
Jeanne K. Fong  
Donell J. Gaertner  
Vivian B. Romans  
Laura Jean Smith

**1956**

Ruth E. Bauner  
Edwin S. Holmgren  
Edward A. Howard  
Margaret L. Knight  
Emily D. Martin  
Virginia L. Owens

**1957**

Judith Hopkins  
Ruth L. Karloski  
Patricia F. Stenstrom  
Kenneth P. Wolford  
Frances L. Woodrum

**1958**

Barbara Ballinger  
Anne B. James  
Helen T. Manning  
Alma G. Peacock

**1959**

Marjorie C. Bengtson  
Leo F. Hamilton  
Martha Landis  
Alice I. Nolte  
Barbara O. Slanker

**1960**

Charles A. Bunge  
Gene L. Dewey  
Lenore M. Glanz  
Patricia A. Heidorn  
Florence H. Maltby  
William L. Mitchell  
Walter D. Morrill

**1961**

Rosemarie Baratta  
Betty C. Black  
Clara E. Castelo  
Evan J. Christensen  
Ruth D. Crockett  
Elberta J. Ewbank  
Robert S. Fuller  
Elizabeth Hofsas  
Frederick James Kent  
Karl D. Kroeger  
Andrew Lasslo  
Barbara S. McCrimmon  
Normalie Strickland  
Janet P. Waitz-Brady

**1962**

Kathleen Breckenridge  
Mata-Marie H. Cooney  
Jean B. Corey  
Marilee Foglesong  
Patricia Gates  
Louise S. Hass  
Alice Norton

**1963**

Margaret A. Bradow  
Carol L. Doty  
Sandra O. Herzinger  
Willis M. Hubbard

Thomas L. Kilpatrick  
Mary Joyce Pickett  
Mary Ellen Soper  
Anna M. Van Kommer  
Marilyn R. Voegelé

#### 1964

Gladys J. Boyer  
Richard R. Brandolino  
Helen J. Ehrensperger  
Almeda G. Maynard  
Lois B. Schultz  
Margaret L. Thrasher

#### 1965

Nancy G. Blase  
Nolan R. Bremer  
Nettie B. Davenport  
Johanne F. Grewell  
Joan L. Hewitt  
Kay E. Hodson  
Mary F. Kralicek  
Barbara J. Lintner  
Julianne Z. Rohmaller  
Mary F. Root  
Beth P. Schober  
Mary J. Stonebraker  
Marianne W. Stowers  
Tamara Strubel  
Joanne G. Wells  
Janet C. Wiehe

#### 1966

John Ed Bell  
Melvin A. Carlson Jr.  
Phyllis W. Cole  
Katherine S. Day  
Georgene E. Fawcett  
Marianne L. Gatewood  
Mary L. Hobbs  
Mary R. Knott  
Thomas J. Michalak  
Jo-Ann Michalak  
Alinda J. Nelson  
Martha J. Sani  
Effie A. Shumaker  
Barbara C. Swain  
Janet K. Uden

#### 1967

Diane L. Bockrath  
Johanna E. Bowen  
Rachel R. Campbell  
James R. Christopher  
William C. Gaines Jr.  
D. Janean Garrett  
Laurel F. Goodgion  
Laura E. Gowdy  
Mary Lou Gregory  
Nancy E. Hardin  
Ann Lynn Kalkhoff  
Damaris A. Koontz  
Elizabeth H. Monette  
John A. Mraz  
Paula L. Neale  
Gordon E. Rasmussen  
Gene K. Rinkel  
Nancy J. Smith  
Virginia R. Weiser

#### 1968

Barbara W. Blinks  
Bonita Dickinson Dillard  
Sandra M. Ellison  
Cecilia K. Gaines  
Julia S. Goldstein

Arlita W. Hallam  
Morelle H. Herzinger  
Jean C. Hughes  
John J. Jax  
Suzanne H. Martensen  
Barbara M. Molitoris  
Marilyn S. Myers  
Manhar P. Thakore  
Wilma F. White

#### 1969

Vondra Shaw Abbott  
John B. Albright  
Sara E. Anderson  
Gail A. Bardhan  
Jary A. Berry  
Philip M. Calcagno  
Nancy K. Coxe  
Adele S. Douglass  
Ruth T. Logan  
Sandra L. Paddock  
Janice K. Shull  
Paul H. Spence  
Robert D. Thomas Sr.  
Carl W. Volkmann

#### 1970

Susan E. Bekiares  
Donna L. Bessant  
Barbara R. Buchman  
Nora J. Cambier  
Charlyn C. Canada  
Barbara Cox  
Wyman P. Deck  
Barbara J. Deffley  
Jean A. Desmond  
Donna J. Gilbert  
Ann C. Heaton  
Linda L. Houle  
Mary J. Huff  
Jane H. Koehler  
Robert A. McCown  
Louis R. Mortimer  
Sally M. Moffitt  
Marilyn L. Nelson  
Rose L. Novil  
Cathleen C. Palmimi  
Kerry M. Pathy  
Roberta E. Peduzzi  
Phyllis C. Rearden  
Linda A. Smith  
Louise A. Taylor  
Cynthia H. Wargo

#### 1971

Ardell M. Bengtson  
Jo Anne Boorkman  
John L. Campbell  
Margaret Field Crane  
Randa J. D'Aoust  
Oleva L. Dick  
Kathryn M. Harris  
Ramona H. Hayes  
Mary P. Krick  
Mary A. Morgan  
Norman V. Plair  
Susan K. Pozdol  
Kathleen L. Shannon  
Julie A. Sigler  
Anne E. Stakelon  
Joyce A. Van Cura  
Robert L. Wagner

#### 1972

Robert L. Archer  
Kathleen Mehaffey Balcom

Nancy J. Balz  
Tekla K. Bekkedal  
Mary E. Bissey  
Ann L. Blair  
James E. Bobick  
Laura E. Bramble  
Carmel C. Bush  
Linda T. Chapman  
Donald G. Davis Jr.  
Kathryn DeGraff  
Ronald K. Fark  
Gail A. Flatness  
Ann E. Fleming  
Maureen E. Gragg  
Janet Hawkins Guydon  
Laurie D. Hartshorn  
Elaine T. Hershberger  
Nancy P. Johnson  
Bridget L. Lamont  
Harold M. Leich  
Nancy A. McDaniels  
Katherine S. McGrath  
Samuel F. Morrison  
Stella F. Mosborg  
Sibyl E. Moses  
Maureen M. Musson  
Sylvia D. O'Brien  
Bobby J. Player Sr.  
Jewel A. Player  
Donna M. Newton  
Sheryl Nichin-Keith  
Diana E. Northup  
Susan Roberts-Forsberg  
Mary H. Salrin  
Joan S. Tansey  
Janet Bradley Woodard  
Christie E. Wrenn  
Gail A. Yokote  
Candace M. Zeman

#### 1973

Laurie W. Bartolini  
Lloyd D. Bockstruck  
James S. Chervinko  
Tschera R. Connell  
Kathryn J. Crouch  
Barbara J. Ford  
Jeanne A. Gittings  
Barbara S. Gontrum  
Danuta Gorecki  
Carol L. Janoff  
Kenneth E. Lavender  
Sandra B. Mohammad  
Nathan Plotkin  
Suzanne S. Reisman  
William C. Robinson  
Suzanne M. Shackleton  
Susan E. Stroyan-Bennett  
M. Kathleen Bartoloni De Tuazon  
Helga B. Visscher

#### 1974

Bruce O. Barkley  
Kathleen R. Bognanni  
Richard E. Bopp  
Jacqueline A. Bourey-Meyer  
Jolien R. Catlin  
Nancy K. Clark  
James A. Flatness  
Tommie A. Gard  
Tad L. Graham  
Judy E. James  
James R. Johnson  
Carolynne Myall  
Nancy L. Lacock  
Mary M. Rooney  
Anne L. Shimojima  
Kathryn M. Weisman

## 2005 Windsor Lectures

The Spring 2005 Phineas L. Windsor lecture, "What Children Can Teach Us: Lessons Learned from the Trenches of Digital Libraries," was delivered on February 25, 2005 by Dr. Allison Druin, University of Maryland College of Information Studies and Institute for Advanced Computer Studies.

The Fall 2005 Phineas L. Windsor lecture, "The Academic Library in a Googlezon World," was delivered on October 21, 2005 by Roy Tennant, User Services Architect, California Digital Library.

Both lectures are available online at:  
<http://puboff.lis.uiuc.edu/catalog/windsor/>

The Windsor Lectures are held thanks to a recent gift to the Windsor Fund by Arnold (BS '50 Architectural Studies) and Marian (BA '50 Science and Letters) Thompson of Tuscon, AZ, in memory of Marian's grandfather, Phineas L. Windsor, librarian and director of the School, 1909–1940.



## GSLIS EVOLUTION

The face of GSLIS is always changing. The following are 2005 new hires, retirements, promotions and tenures, and service awards:

### *New Hires*

**Cindy Hinton**, User Services Specialist

**Lori Kendall**, Associate Professor

**Kathryn La Barre**, Visiting Lecturer (to become Assistant Professor when PhD completed)

**Jerome McDonough**, Assistant Professor

**Rae-Anne Montague**, Assistant Dean for Student Affairs

**Jennifer Morgan**, User Services Specialist

**Megan Mustafoff**, Project Coordinator, Library Research Center

**Kimberly Schmidt**, Publicity & Communications Specialist

**Diana Stroud**, Assistant Dean for Development & Alumni Relations

**Lauren Tefteau**, Visiting Project Coordinator

### *Promotions and Tenures*

**J. Stephen Downie**, Associate Professor, received tenure

### *Retirements*

**Diane LaBarbera**, Research Data Analyst, retired 11/22/05

### *Service Awards*

**Dorlene Clark**, 10 years



**Kathy Painter**, 25 years



### 1975

Edna Beatrice Briggs  
Lawrence A. D'Urso  
Diane D. Dold  
George R. Gaumont  
Margareth S. Gibbs  
Andrea M. Hirtle  
George R. Jaramillo  
Beverly A. Jones  
Linda D. King  
Molly A. Klowden  
Barbara A. Lazewski  
Bernice B. Lieberman  
William C. McCully Jr.  
George F. McGregor  
Susan L. McNeil-Marshall  
Linda K. Miller  
Marcia Thomas  
Barbara R. Tanaglia  
Imogene Zachery

### 1976

L. Kurt Adamson  
Martha C. Adamson  
Mary I. Beveridge  
Marlene C. Book  
Cheryl J. Boyd  
Barbara A. Carroll  
Lynn K. Chmelir  
Judith J. Dudley  
Gordon G. Eriksen  
Michael A. Golrick  
Jill D. Golrick  
Carol Ann Henley  
Terese L. Jennings  
Janis L. Johnston  
Larry A. Kimble  
Pamela W. Kuck  
Jay H. Lambrecht  
Melissa M. Lambrecht  
Charles A. Litchfield III  
Roberta Shallenberger Lynch  
Martha M. Mitchell  
Nancy B. McCully  
Louise A. Pacholik  
Karin A. Reside  
Susan A. Schlein  
Barbara G. West  
John W. Sondheim  
Judith C. Thompson  
Barbara M. Wildemuth  
Lois V. Williams  
Nina M. Wunderlich  
Mary A. Yonan

### 1977

Emily Batista  
Virginia R. Carden  
Mary L. Cartwright  
Nancy J. Choice  
Beth E. Christensen  
Sheila A. Core  
Anders C. Dahlgren  
Larayne J. Dallas  
David J. Gilner  
Ana M. Grandfield  
Doria B. Grimes  
Curley C. Jones  
Christina M. Kampman  
Margaret E. Kier  
Mary A. McDonald  
Nancy P. O'Brien  
Angela G. Plagge  
Susan E. Pope  
E. Ann Puckett

Ann C. Riley  
Ina N. Robertson  
Stephen W. Rogers  
Lois A. Skillrud  
Patricia H. Urbanski  
Debra B. Watson  
Weldon L. Whipple

### 1978

Jackalie L. Blue  
Kenneth E. Bradshaw  
Karen F. Buth  
T. Ashley Edwards  
Cheryl L. Flinn  
Connell B. Gallagher  
Linda S. Greene  
Hector R. Hernandez  
Joanne M. Humphreville  
Christopher R. Jocius  
Carolynne S. Kent  
Mary Anne Knefel  
Lynda G. Leach  
Deborah V. Loeding  
Dianne E. McCutcheon  
Marjorie Kiefer Newman  
Kenneth G. O'Malley  
Lori L. Dsmus  
Brenda McElroy Pacey  
Kathleen K. Piehl  
Linda L. Reichert  
Pamela G. Schaffner  
Steven B. Schoenly  
Kathleen M. Thomson  
Diane Parr Walker  
Sandra J. Walles  
Paula K. Weiss  
Lizabeth A. Wilson

### 1979

James E. Baker  
Pamela R. Broadley  
Susan K. Gvazdauskas  
Eleonore E. Hansen  
Miriam L. Kennard  
Marilyn K. Moody  
Rita M. Moore  
Thomas A. Pearson  
Patricia T. Procter  
Gerald R. Specht  
Wilbur A. Stolt  
Nona K. Watt  
Beth S. Woodard-Wolfe  
David A. Zordan

### 1980

Mary C. Cureton  
Donna J. Dettman  
Sandra L. Edwards  
Mary B. Hester  
Anita D. Johnson  
Carolyn H. McMahan  
Thomas R. Moorman  
Bernadette A. Murphy  
Kathleen J. Norris  
Roxann F. Specht

### 1981

Sharon Lee Blackburn  
Elizabeth S. Brooks  
Mary Ellen K. Davis  
John J. Hasko  
Jean A. Jaderborg  
Terrence D. Nollen  
Vera C. Oyer  
Karen A. Perman

Katharine J. Phenix  
Jean H. Shrier  
Larry L. Weyhrich  
Kim Y. Wittel  
Mary Elaine Woolsey

### 1982

Catherine I. Salika  
Betsy R. Sandford  
George M. Woolsey  
Diane M. Zabel

### 1983

Frances Ott Allen  
Ellen K. Bassett  
David Batista  
Carol M. Gates  
Peter B. Ives  
Nancy E. Noffke  
Phyllis C. Post  
Charles E. Slattery  
J. Mark Tucker

### 1984

Mary Beth Allen  
Lois M. Bellamy  
Angela H. Graham  
Janice L. Kragness  
Scott A. Lemmermann  
Mark C. McKnight  
Laurel P. Preece  
Carol A. Roggenstein  
Stephanie C. Sigala

### 1985

Debra L. Aper  
April A. Bennington  
Kathleen M. Bloch  
Jenny R. Chao  
Peter O. Cookingham  
George E. Ferguson  
Faith D. Fleming  
Paul M. George  
Marihelen Hatcher  
Gary M. Johnson  
Brenda Murphy  
Linda R. Musser  
Mary E. Nourie  
Kathryn B. Scheiner  
Charlene H. Shults  
Elizabeth C. Su  
Carol C. Vaughn

### 1986

Sally M. Duchow  
Allison C. Fisher  
Susan R. Gibberman  
Susan M. Jorgensen  
Barbara E. Klintworth  
Nancy T. Myers  
Cheryl L. Niemeier  
Vincent G. Sovanski  
Jennifer L. Sturgis  
Jean E. Wilkins  
Geoffrey P. Williams

### 1987

Lucy Ann Barron  
Dora R. Bertram  
Gerald M. Carlson  
Kathleen W. Craver  
Melvin G. DeSart  
J. William Draper  
Gordon L. Fellows  
Chengren Hu



Charles F. Huber  
Carol A. Leibiger  
Ann E. Leighton  
H. Vernon Leighton  
Lauren E. Leighton  
Lawrence D. Marcus  
Margaret S. Moga  
Patricia C. Norcott  
Beverly J. Obert  
Karla J. Ritten  
Richard E. Rubin  
Kay M. Sodowsky  
Roger L. Strouse  
Sara R. Tompson  
Carol L. Thornton  
Scott J. Van Jacob  
Sarah A. Wachter

#### 1988

Tracy Bicknell-Holmes  
Jeanne L. Brunkow  
Nena F. Burbank  
Robert H. Burger  
Ann E. Churukian  
Laura A. Frizol  
Lorraine J. Haricombe  
Jan E. Hayes  
Gayle W. Heimer  
Susan K. Herring  
Gail L. Hoef  
Leann S. Johnson  
Lucia M. Khipple  
Bonnie L. Maidak  
James W. Mason  
Susan G. Miller  
Amy F. Robison  
Kwasi Sarkodie-Mensah  
M. Elizabeth Van Jacob  
Mary Wilkes Townner

#### 1989

Patricia K. Barr  
Kathleen M. Bennett  
Timothy W. Cole  
Eugene P. Danilenko  
Diane Kovacs  
Patricia J. Leach  
Sandra L. Levy  
Beth McNeil  
Dennis A. Norlin  
Samuel J. Pathy Jr.  
Louis D. Pettechak  
Mary E. Reiter  
David W. Reser  
Mark V. Scharff  
E. C. Schroeder  
Mary K. Sutherland  
Betty L. Wagoner  
Carolyn C. Wahlmark

#### 1990

Mark E. Andersen  
Nancy D. Bishop  
Robert A. Dunkelberger  
Nura M. Funda  
Elizabeth S. Hippely  
Stacy E. Hortner  
Michael D. Muchow  
Debra Lee Newell  
Denise G. Rabogliatti  
Frances E. Roehm  
Marty Rosen  
Lian J. Ruan  
Kristine G. Schauff  
Susan E. Thrasher  
Bruce A. Weaver

#### 1991

Kimberly Lloyd Armstrong  
Rebecca S. Bare  
Sandra Lee Braber-Grove  
Johanna R. Bradley  
Victoria F. Caplan  
Paul K. Cauthen  
Helen F. Christenberry  
Lisa A. Dick  
Nancy J. Disch  
John H. Forsyth  
Gwendolyn Gray  
Marybeth F. Grimes  
Marianne Hebert  
Allen K. Lanham  
William J. Maher  
Priscilla Matthews  
Sharon K. Naylor  
Laura L. Nekola  
Steven J. Oberg  
Beverly M. Rauchfuss  
Lynne M. Rudasill  
Michael D. Shadix  
Leora O. Siegel  
Bette S. Sydelko  
Lisa M. Williams  
Susan L. Woitte

#### 1992

Sarah W. Aderholdt  
Chris M. Anderson  
Anne K. Barker  
Margaret M. Booker  
Jieru Chen  
Brian P. Dehart  
Gerald T. DeWitt  
Diane M. Duesterhoeft  
Charlotte A. Dugen  
Elizabeth A. Dupuis  
M. Constance Fleischer  
Lisa B. German  
Jan E. Heckman  
Jennifer R. Inglis  
Martin D. Jenkins II  
Nancy Kruse  
Allen D. Merry  
David J. Micko  
Philip E. Orr  
Jeanne Holba Puacz  
Marlys J. Scarbrough  
Susan M. Schnuer  
Donald E. Todaro  
Thomas D. Walker  
Mary M. Wisnewski  
Kristin A. Woizeschke

#### 1993

Laura L. Barnes  
Linda C. Ewbank  
Denise M. Hannibal  
George J. Harmon  
Christine M. Larson  
Janet Lee-Smeltzer  
Kathleen A. Newman  
Eric C. Parker  
Jeannette E. Pierce  
Carol E. Reid  
Haralds K. Robeznieks  
Elizabeth M. Schobernd  
Rebecca E. Sedam  
Rebecca S. Smith  
Katrina Stierholz  
Heidi M. Temple  
Cynthia J. Weber  
Holly A. Whistler  
Roslyn D. Wylie

## PHDs AWARDED IN 2005

**Hong Cui**, "Automating Semantic Markup of Semi-Structured Text Via an Induced Knowledge Base: A Case-Study Using Floras." May 2005. Director of Research: P. Bryan Heidorn

**Robert John Sandusky**, "Information, Activity and Social Order in Distributed Work: The Case of Distributed Software Problem Management." May 2005. Director of Research: Les Gasser

**Alan B. Craig**, "Information Content and Communication in Virtual Reality." December 2005. Director of Research: John Ory

**Christine Hagar**, "The Farming Community in Crisis: The Information Needs of Cumbrian Farmers During the UK 2001 Foot and Mouth Outbreak and the Role of Information and Communication Technologies (ICTS)." December 2005. Director of Research: Caroline Haythornthwaite

#### 1994

Karen A. Anderson  
Ellen R. Butchart  
Louise A. Cayo  
Maria D. Figiel-Krueger  
Jared S. Ingersoll  
Jane L. Loescher  
Mary Ann Monk  
Maureen L. Morrison  
Mary Jane Petrowski  
Brian A. Quinn  
Sara A. Schmidt  
Wei Wu

#### 1995

Connie L. Amon  
Elaine A. Bearden  
Sandra C. Bolek  
Jane E. Chamberlain  
Pamela R. Collebrusco  
Susan K. Douglas  
Bruce D. Fraser  
Eric H. Johnson  
Elizabeth L. Letterly  
Ginger C. Lynn  
Michelle A. Mayes  
Alexander B. McLane  
Jason D. Mitchell  
Janet L. Ditto  
Melissa L. Palmquist  
Lucia R. Webb

#### 1996

Jeffrey S. Brooks  
Stacey L. Cisneros  
Jeanine E. Finn  
Lynn D. Fleming  
Helen A. Flynn  
Brittney L. Goodman  
Heather A. Jagman  
Karen A. MacKenzie  
Patricia M. Mathews  
Margaret C. Mohundro  
Ann Phillips  
Jian Qin  
Andrea L. Schwartz  
Nancy Herron Scott  
Anna Maria S. Watkin

#### 1997

James R. Blank Jr.  
Vivian B. Bliss  
Barbara J. D'Angelo  
Lori A. DuBois  
Manuel G. Erviti  
Kathleen C. Fountain  
Diane J. Fox  
Pasco Gasbarro  
Mirta B. Guglielmoni  
Naomi R. Hochhaus  
Kendi L. Kelley  
Sarah E. Kirsch  
Thomas P. Kmetz  
Christine M. Martin  
William B. McLeod  
William D. Michtom  
Julie M. Miller  
Lynn A. Roe  
Dawn M. Rutherford  
Mary G. Shultz  
Mary M. Strouse  
Sarah G. Wenzel  
Lisa Zhao

#### 1998

Julie M. Chapman  
Stephanie R. Davis-Kahl  
Gabriel R. Gancarz  
Caroline S. Herbert  
Chad M. Kahl  
John D. Laskowski  
Mary K. Laskowski  
Nancy L. Lutgens  
Douglas E. McCullough  
Susan E. Morrisroe  
Lois M. Morse  
Elizabeth Ruhland  
Sandra L. Stauffer  
Karen E. Swanson  
Barbara J. Turner  
William J. Wheeler  
Jennifer B. Young

#### 1999

Jon Mark Bolthouse  
Connie E. Frankenfeld

# GSLIS DEVELOPMENT CAMPAIGN

In 2007 the campus will be announcing a major campaign to raise money for the University of Illinois. At the same time and as part of the larger campaign, GSLIS will launch a development campaign, with a goal of raising \$9 million by 2011. This year we have taken a significant step toward our overall goal, and toward some of the following specific priorities, raising \$1.5 million in new money from individuals, foundations, and corporations. Overall we have raised more than \$3.5 million or about 40% of our campaign goal. To be successful in this campaign we need the help and support of all of our alumni and friends. Every gift, no matter what size, will make a difference to our campaign.

To maintain our position in the library and information science (LIS) profession and to continue to provide the best educational value for our students, GSLIS has identified the following campaign goals as critical to our mission:

1. Additional faculty positions (including endowed chairs and professorships)
2. Fellowships and other forms of student support
3. Upgrading and maintaining information technology
4. Support for GSLIS Research Centers (Center for Children's Books, Library Research Center, Community Informatics Initiative, Information Science Research Lab)
5. Support for space (the building fund, naming building spaces, etc.)
6. Unrestricted funds (that can be used for critical needs as they arise in our building and in support of our faculty and students)

Jill K. Gengler  
 Janna M. Heinen  
 Elizabeth F. Hickey  
 Thomas J. Huber  
 Marc W. Keepper  
 Rachel E. Konkle  
 Rebecca L. Komro  
 Wen-Ying Lu  
 Kara J. Malenfant  
 Brian D. Quigley  
 David C. Tyler  
 Amelia S. Weber  
 Dale M. Wertz  
 Yin Zhang

## 2000

Caitlin B. Augusta  
 Audrey J. Bokuniewicz  
 Ruth S. Connell  
 Tracy A. Gabridge  
 Stacey J. Goldade  
 Cheryl I. Gunselman  
 Jeanne M. Lohfink  
 Lois G. Ridenour Meldrum  
 Rae-Anne L. Montague  
 Patrick M. Reidenbaugh  
 Lawrence J. Ross  
 Courtney Diaz Schraut  
 Patricia A. Scott

## 2001

Malisa J. Anderson  
 Beth E. Ashmore  
 Cynthia C. Colletti  
 Neil E. Das  
 Marilyn Sue Fuller  
 Jessica C. Gibson

Jeannette M. Hulick  
 Melanie J. Huston  
 Joanne C. Kiley  
 Amy Killoran  
 Soobum Kim  
 Monica L. Martens  
 Amy E. Matzke  
 Pamela J. Miller  
 Meg P. Miner  
 Mary A. Pohl  
 Mary Z. Rose  
 Rena D. Rosenthal  
 Donna C. Trendera  
 Marysue J. Schaffer  
 April L. Spisak  
 Bruce R. Stoffel  
 Mark E. Szarko

## 2002

Jean A. Baile  
 Alison K. Barner  
 Paula M. Carns  
 Siobhan M. Champ-Blackwell  
 Cynthia T. Clennon  
 Richard J. Daddieco  
 Sarah M. Feldner  
 Esther R. Gillie  
 Wendy G. Harris  
 Dan L. Jefkin  
 Anita R. Johnson  
 Michelle M. Kazmer  
 Reed Lowrie  
 Cynthia L. Mader  
 David B. Malone  
 Paul F. Marty  
 Kevin S. McClure  
 Doris J. McKay

John A. Moorman  
 Marsha J. Morman  
 Joanne E. Newton  
 Laura G. Olson  
 Susan R. Phillips  
 Jo E. Powers  
 Stacy M. Strauch  
 Jaeyeon S. Sung  
 Louise T. Svehla  
 Elizabeth P. Watkins  
 Jodi Weisz  
 Dana C. Wright

## 2003

Patricia K. Bakunas  
 Andrea L. Dinkelman  
 Nanette Wargo Donohue  
 Alyson Naimoli Dorfman  
 Amy L. Fry  
 M. Brooke Johnson  
 Christine A. Kujawa  
 Marlene K. Landstrom  
 Meghann R. Matwichuk  
 Maureen A. McCarthy  
 Jessica Emily Moyer  
 Janise M. Phillips  
 Catherine T. Pretlow  
 Christine M. Ross  
 Evan J. Rusch  
 Linda Ann Scussel  
 Linda K. Smith  
 Rita Stephens

## 2004

Anna L. Berkes  
 Stephanie D. Crawford  
 Chad M. Fennell

Kendal H. Gladish  
 Christopher P. Hamb  
 Kate Fultz Hollis  
 Elizabeth F. Jones  
 Janet Marry  
 JoAnn M. Passarelli  
 Barry C. Sanders  
 Jordan E. Seymour  
 Francine L. Tanori-Pote

## FRIENDS OF GSLIS

Jeffrey N. Bassett  
 Joel P. Berger  
 Mary Ann Boggs  
 David A. Brunkow  
 Thomas H. Cartwright  
 Fred J. Connell  
 Avis J. Davis  
 Charles E. Davis  
 Gordon W. Day  
 A. Mark Dettman  
 Charlotte A. Dugan  
 Thomas F. Flynn  
 Hangchun Fu  
 Joseph Fulgione Jr.  
 Thomas H. Fuller Jr.  
 Garret W. Gengler  
 Wayne E. Grove  
 Ziwen Guo  
 Stan K. Guydon  
 Adrienne Harmon  
 Christopher S. Harris  
 P. Bryan Heidorn  
 LT Andrew C. Hochhaus  
 Stephen Holmes  
 Robert F. and Gloria K. Harvay  
 Chantelle M. Hougland  
 William H. Huff  
 Norman S. Janoff  
 John J. Jax  
 Ernest W. Jones  
 Curley C. Jones  
 Cynthia A. Kehoe  
 Helen Knights  
 F. Wilfrid Lancaster  
 Priscilla J. Matthews  
 Linda M. McCullough  
 Janet W. McGrath  
 Jeffrey K. Niemeier  
 Michele L. Oberg  
 John C. Peduzzi  
 Leroy K. Pickett  
 Anne Plotkin  
 Dean A. Pollack  
 Scott E. Preece  
 Gordon E. Rasmussen  
 John V. Richardson Jr.  
 Selma K. Richardson  
 Arch D. Robison  
 Thomas R. Salrin  
 Robert L. Sani  
 Susan E. Searing  
 Rosanna E. Shannon  
 Eileen Megan Scully  
 Jean M. Scully  
 Flora Lancaster Smith  
 Thomas S. Stakelon  
 Regis J. Trendera  
 Marjorie J. Schaeve Trust  
 Barbara W. Tucker  
 Peter C. Uden  
 Helga B. Visscher  
 Monica M. Walk  
 Paul M. Walker

William F. Walker  
James E. Watson  
John Webb  
Kathleen Weibel  
Baltasar R. Weiss  
W. Jon Williams  
Lei Xie

## ORGANIZATIONS

support includes direct and matching gift funds and provision of products and services

3M Foundation, Inc.  
Abbott Laboratories Fund  
Accenture Foundation, Inc.  
Alpha Chapter of Beta Phi Mu  
Amgen Foundation  
The Andrew W. Mellon Foundation  
BD  
Bill & Melinda Gates Foundation  
The Boeing Gift Matching Program  
Borg-Warner, Inc.  
BP Foundation  
C. Berger Group, Inc.  
Caterpillar Foundation  
CNA Foundation  
Corning Incorporated Foundation  
The Dialog Corporation  
Eaton Corporation  
Eli Lilly and Company Foundation  
ExxonMobil Foundation  
Fidelity Charitable Gift Fund  
Hewitt Associates LLC  
Houghton Mifflin Company  
Intel Foundation  
LEXIS-NEXIS  
Library Communication Strategies  
Lincoln Trail Libraries System  
The Lubrizol Foundation  
The McGraw-Hill Companies, Inc.  
Monsanto Fund  
Motorola Foundation  
The Schwab Fund for Charitable Giving  
Science Applications International Corp.  
State Farm Companies Foundation  
Tyco International Inc.  
Vanguard Charitable Endowment Program

## THE LEGACY SOCIETY

Last year the Graduate School of Library and Information Science established a Legacy Society to recognize alumni and friends who have included a gift for GSLIS in their estate plans.

These gifts take many forms, including: simple bequests in your will, gift annuities, and charitable trusts.

Many of these plans offer substantial financial and tax savings benefits, often complementing an individual's overall estate plans.

All are greatly appreciated and help to ensure the tradition of excellence at GSLIS for future generations of information professionals.

If you have included GSLIS in your estate plans or would like information on this opportunity, contact Diana Stroud, GSLIS Development Office at 217-244-9577 or [dstroud@uiuc.edu](mailto:dstroud@uiuc.edu)

In our next Annual Report we will recognize our first group of donors to the Legacy Society. GSLIS would be honored to include you as a member of the Legacy Society and celebrate your gift, large or small!

Visit our web site at: <http://www.lis.uiuc.edu/development/> for bequest language and other information.

## ALUMNA'S GIFT FOR STUDENT FELLOWSHIPS IS LOOKING FOR MATCHING FUNDS

Lionelle Elsesser (MS '67) and her husband Jim (BUS '66, '67) made a gift of \$75,000 toward the GSLIS Alumni Challenge Endowed Fellowship Fund last year. Lionelle and Jim then challenged other GSLIS alumni and friends to build this fund to a \$150,000 Fellowship, which will generate a \$7,500 annual student fellowship for a GSLIS student. The Library School Alumni Association Board is assisting in the fundraising. Thanks to your help and support, the GSLIS Alumni Challenge Endowed Fellowship fund has grown to more than \$135,000 during this last year.

Once the fellowship is fully funded to \$150,000, the Provost will match the Alumni Challenge Fellowship with an additional fellowship award to a GSLIS student of \$7,500 every year.

Your gift will build the Elsesser match **and** secure the Provost's fellowship funds. What a great way to increase your dollar power!

To make your gift, go to <http://www.lis.uiuc.edu/development/funds.html> and select GSLIS Alumni Challenge Fellowship Endowment Fund or send a check to GSLIS Development Office, 501 E. Daniel Street, Champaign, IL 61820, made payable to U of I Foundation with GSLIS Alum Fellowship on the memo line.



## GSLIS OFFERS MASTER'S DEGREE IN BIOINFORMATICS

Beginning in Fall 2006, GSLIS will offer a concentration within the campus-wide Master of Science in Bioinformatics (GCB). As a professional school specializing in information management and systems, GSLIS is a natural fit to offer a concentration within the campus-wide degree. GCB students will be taught to develop information management systems in biological applications, with opportunities to consider a broad spectrum of domains including molecular biology, environmental ecology, and biomedicine.

In the GCB program, students may take courses in several departments across the University of Illinois campus. This breadth of training provides students with the multidisciplinary skills that are required for a career developing and managing information systems for the biological community. The program provides training from faculty who are international experts in many areas of information management, including bioinformatics, biology, chemistry, statistics, and computer science.

The GCB is an entirely separate program from the existing GSLIS M.S. degree: students may not be simultaneously admitted to both programs, and the new concentration is not accredited by the American Library Association.

A GSLIS committee for admission to and oversight of the GCB reviews the suitability of each student's program of study, including any necessary remediation in biology or computing. The GCB requires a total of 36 hours of coursework, either with 36 hours of core required and elective courses or with 28 hours of core required and elective courses plus 8 hours of thesis work. At least 12 hours must be at the 500 graduate level.

### Coursework

To satisfy the campus core requirements, one (1) course must be taken from each of the three (3) Core Areas: Biology, Computer Science, and Fundamental Bioinformatics. In addition, GSLIS requires one (1) LIS course in relevant information systems technology to teach text retrieval and the systems perspective. A typical student will thus take four (4) required courses: 1 Biology, 1 Computer Science, 1 Fundamental Bioinformatics, and 1 GSLIS (LIS 456 Information Storage and Retrieval). The approved core courses for the program are listed on the campus-wide M.S. in Bioinformatics site, <http://archimedes.scs.uiuc.edu/mbi/courses.htm>.

## ELECTIVES

### GSLIS

- LIS 503 Use and Users of Information
- LIS 505 Building Digital Libraries
- LIS 522 Information Sources in the Sciences
- LIS 530B Health Sciences Information Services and Resources
- LIS 551 Interfaces to Information Systems
- LIS 556 Implementation of Information Retrieval Systems
- LIS 566 Architecture of Network Information Systems
- LIS 575 Indexing and Abstracting
- LIS 590 Biodiversity Informatics
- LIS 590 Information Transfer and Collaboration Science
- LIS 590EP Electronic Publishing
- LIS 590DM Document Modeling
- LIS 590RO Representing and Organizing Information Resources
- LIS 590HI Healthcare Informatics (Healthcare Infrastructure)
- LIS 590EI Ecological Informatics (Biodiversity Informatics)

### BIOLOGY

- IE 441 Plant Ecology
- IE 452 Ecosystem Ecology
- IE 492 Mammal Classification and Evolution
- IE 498 Insect Classification and Evolution
- CHLH 421 Health Data Analysis
- CHLH 474 Principles of Epidemiology (VP 517)
- CHLH 527 Statistics in Epidemiology
- CHLH 590 Biostatistics

### COMPUTER SCIENCE

- CS 410 Text Processing Algorithms (joint with LIS)
- CS 413 Introductory Combinatorics
- CS 446 Machine Learning
- CS 511 Design of Database Systems
- CS 512 Data Mining

### OTHER DEPARTMENTS


- EPSY/PSYC 594 Multivariate Analysis
- STAT 400 Introductory Statistics
- PSYC 508 Multidimensional Scaling
- UP 519 Spatial Analysis with GIS



The *GSLIS Annual Report* is produced by the University of Illinois Graduate School of Library and Information Science. Editor: Marta Welshans. Assistant Editor: Kim Schmidt. Design: Bonadies Creative Inc. Photography: Lou McClellan of Thompson McClellan for all photos except: photograph of Ann Fishop on page 5 courtesy of University of Illinois at Urbana-Champaign News Bureau; photographs on pages 23 and 24 by Nick Dimmock and Thomas Hawk, respectively, retrieved from flickr.com and used courtesy of a creative commons license.



# GSLiS



**The Graduate School of Library and Information Science**  
University of Illinois at Urbana-Champaign  
501 E. Daniel Street, MC-493, Champaign, IL 61820-6211  
(217) 333-3280 voice, (217) 244-3302 fax





UNIVERSITY OF ILLINOIS-URBANA



3 0112 074060390