

92

THE
HALCYON



Lilian Branson '94

Swarthmore

Pa.

College-

Digitized by the Internet Archive
in 2010 with funding from
Lyrasis Members and Sloan Foundation

<http://www.archive.org/details/halcyon1892unse>

Wanamakers.

THE University Extension Movement is making a stir in progressive circles all over the land. Are you interested in it? If not, you may be some time. It is worth knowing about, it is worth watching, it is worth keeping in touch with. Any man of liberal mind may gain from the University Extension even as a looker on.

May BOOK NEWS tells the story in this great movement as it was never told before—fuller, better. Twenty of the foremost writers on the subject have their say in its columns. The plan, the practice, the *details* are there.

And all the other BOOK NEWS features are as bright and full as ever.

BOOK NEWS is 5c a number, 50c a year.

JOHN WANAMAKER.

DREKA

Fine Stationery and Engraving House,

1121 Chestnut Street, Philadelphia.

College Invitations	Wedding Invitations
Class Stationery	Visiting Cards
Fraternity Stationery	Banquet Menus
Programmes	Diplomas and Medals
Steel Plate Work for Fraternities, Classes and College Annuals.	

All work is executed in the establishment under our personal supervision, and only in the best manner. Unequalled facilities and long practical experience enable us to produce the newest styles and most artistic effects, while our reputation is a guarantee of the quality of the productions of this house.

Designs, Samples and Prices sent on application.

A SPECIALTY MADE OF

COLLEGE AND FRATERNITY ENGRAVING AND PRINTING

FROM STEEL PLATES.



Engraver

Printer

Stationer



The Unique Designs IN COLLEGE WORK
ISSUED BY US IN
THE PAST, AND EXTENSIVELY COPIED, ARE
THE MOST EFFECTIVE RECOGNITION BY THE
TRADE OF THE ORIGINALITY AND EXCELLENCE
OF OUR WORK OVER ALL COMPETITORS.

Wedding Invitations, BALL PROGRAMS,
AND STATIONERY
OF EVERY DESCRIPTION IN FASHIONABLE
STYLES.

YOUR CORRESPONDENCE SOLICITED.

E. A. WRIGHT,

1032 CHESTNUT STREET, PHILADELPHIA, PA.

VISITING CARDS
PLATE ENGRAVED
AND 50 CARDS
FOR \$1.00.

OVER

ART IN STEEL ENGRAVING ❖

The attention of Colleges and Fraternities is especially invited to the Artistic Effect of our Invitations, Class Day, and Ball Programs; also Heraldic Plates and Illustrations for College Annuals and Fraternity uses. We aim at correctness and refinement in all designs.

E. A. WRIGHT,

Engraver, Printer, Stationer,

1032 Chestnut Street,

OVER

PHILADELPHIA, PA.

SWARTHMORE COLLEGE.

FACULTY OF INSTRUCTION FOR 1890-91.

WILLIAM HYDE APPLETON, A. M., LL. B., (Harvard); Ph. D., (Swarthmore), President and Professor of the Greek and English Language and Literature.
ELIZABETH POWELL BOND, Dean.
EDWARD H. MAGILL, A. M., (Brown University); LL. D., (Haverford), Ex-President, and Professor of the French Language and Literature.
ARTHUR BRARDSLEY, C. E., (Rens. Pol. Inst.); Ph. D., (Swarthmore), I. V. Williamson Professor of Civil and Mechanical Engineering and Director of the Workshops.
SUSAN J. CUNNINGHAM, Sc. D., (Swarthmore); Edward H. Magill Professor of Mathematics and Astronomy.
WILLIAM PENN HOLCOMB, B. L., M. L., (Swarthmore); Ph. D. (Johns Hopkins University), Joseph Wharton Professor of History and Political Science, and Lecturer on Pedagogics.
BENJAMIN SMITH, A. M. (Yale), Professor of Rhetoric, Logic and Mental and Moral Philosophy.
WILLIAM CATHCART DAY, Ph. D., (Johns Hopkins University), Professor of Chemistry.
SPENCER TROTTER, M. D., (University of Pennsylvania), Professor of National History, and Lecturer on Physiology and Hygiene.
MILTON H. BANCROFT, (Mass. Art School), Professor of Art and Mechanical Draughting.
GEORGE A. HOADLEY, A. M., C. E. (Union College), Professor of Physics.
GERRIT E. H. WEAVER, A. M. (Swarthmore); A. B. (Harvard), Professor of the German Language and Literature.
FERRIS W. PRICE, A. M. (Swarthmore), Isaac H. Clothier Professor of the Latin Language and Literature.
MYRTLE E. PURMAN, B. O. (National School of Oratory), Assistant Professor in charge of Elocution.
LUCIUS E. WILLIAMS, A. M. (Mercer College), Assistant in Chemistry.
ALICE M. ATKINSON, A. B. (Cornell University), Assistant in Greek.
MARIA DAVIS, (Md. Inst. of Art), Assistant in Art.
MARY D. PRATT, A. B. (Swarthmore), Instructor in Mathematics.
WILLIAM McCLELLAN, (Phila. Man'l Training School), Assistant in Engineering.
JENNIE F. WADDINGTON, B. S. (Swarthmore), Assistant in Biology.
MARY J. MURPHY, Director of Physical Culture for the Young Women.
J. K. SHELL, M. D. (University of Pennsylvania), Director of Physical Culture for the Young Men.
EMILY HUNT, M. D. (Women's Medical Coll., Phila.), Lecturer on Physiology and Hygiene to the Young Women.
ESTHER T. MOORE, Registrar.
SARAH M. NOWELL, Librarian.

FOUR REGULAR COURSES ARE GIVEN:

- I. COURSE IN ARTS, for the Degrees of A. B. and A. M.
- II. COURSE IN SCIENCE, for the Degrees of B. S. and M. S.
- III. COURSE IN LITERATURE, for the Degrees of B. L. and M. L.
- IV. COURSE IN ENGINEERING, for the Degrees of B. S. and C. E.

The second degrees named are given for additional study, on conditions named in the catalogue.

Swarthmore College is situated on the P. W. & B. R. R., 10 miles from Broad Street Station, Philadelphia. It is under the care of Friends and admits students of both sexes, on equal terms. It has good Libraries of about 15,000 volumes, an Observatory, Chemical and Physical Laboratories and Machine Shops. For full particulars, apply for catalogue to

President Swarthmore College, Swarthmore, Pa.

Perfect Fitting
and Fair Prices.

SHEARER & GIBB,

IMPORTERS—TAILORS,

1110 Walnut Street,
PHILADELPHIA.

Prickett College of Commerce,

GIRARD BUILDING,

Broad and Chestnut, Philadelphia,

Urges upon students, as a duty, to devote every moment of time, and the energy of youth to doing first-class work.

The College aims not merely to prepare young men and women for business, but its *chief object* is to make the teaching so superior, the habit of study so pleasant, the endeavor so conscientious, the thinking so accurate, that the result may be *rare excellence and distinguished success*.

Beautiful architecture, superior facilities, refined associations, wholesome, moral influences and faithful teachers contribute to the pleasure of study and the acquisition of knowledge.

DEPARTMENTS OF BUSINESS, SHORTHAND, ENGLISH.

Nineteen Successful Instructors and Lecturers.

STUDENTS MAY ENROLL AT ANY TIME.

SEPARATE LADIES' DEPARTMENT.

The circular of this popular institution will be mailed upon application.

The Commencement Reports contain interesting addresses by Bishop J. H. Vincent, D.D., LL. D., Lyman Abbot, D.D., LL. D., Hon. John Wanamaker, Ex-Gov. Pollock, Geo. K. Morris, D.D., Edward Brooks, Ph. D., Hon. Charles Emory Smith, and others.

THOMAS J. PRICKETT, President.

PORTER & COATES,

900 Chestnut Street, Philadelphia.

Stationery ◦ ◦
◦ ◦ Department



Fine Engraving in the most
Elegant Style of the Art.

WEDDING INVITATIONS,
RECEPTIONS,
AND COMMENCEMENTS.

Note Papers in all the newest forms and styles, for polite correspondence.

MONOGRAMS, CRESTS, AND COATS OF ARMS.

ASK YOUR DEALER FOR

SCARFS AND *S*SUSPENDERS

Bearing Our

Trade



Mark

—≡≡≡▷ THEY ARE THE BEST MADE. ◁≡≡≡—
WELD, COLBURN & WILCKENS,
MANUFACTURERS,

No. 593 Broadway, New York.



GLASS.

PLATE GLASS DEPOT.

LOOKING Glass, French Bevels.

A Full Line of Ornamental Glass.

TINTED Cathedral Glass.

ENAMELED, Embossed and Colored Glass.

GERMAN Looking Glass Plates, for the trade.

LARGE Stock French Glass, single and double thick.

AMERICAN Window Glass, single or double thick.

SKÝLIGHT and Floor Glass, $\frac{1}{8}$, $\frac{1}{4}$, $\frac{3}{8}$, $\frac{1}{2}$ and 1 in. thick.

SUPERIOR Glaziers' Diamonds.

BENJAMIN H. SHOEMAKER,

205, 207, 209 and 211 North Fourth Street,

(Above Race Street.)


PHILADELPHIA.

WINDOW GLASS DEPOT.


Ornamental Glass of every Description.

Estimates given on application.


Fraternity Pins, Etc.




Authorized Jewelers of the
PHI KAPPI PSI Fraternity, and
manufacturers of all articles
incident to athletic sports, cov-
ered by the varied stock of
our departments.



DIAMONDS, CANES,
WATCHES, THIMBLES,
JEWELRY, SILVERWARE.



Graduating Gifts.

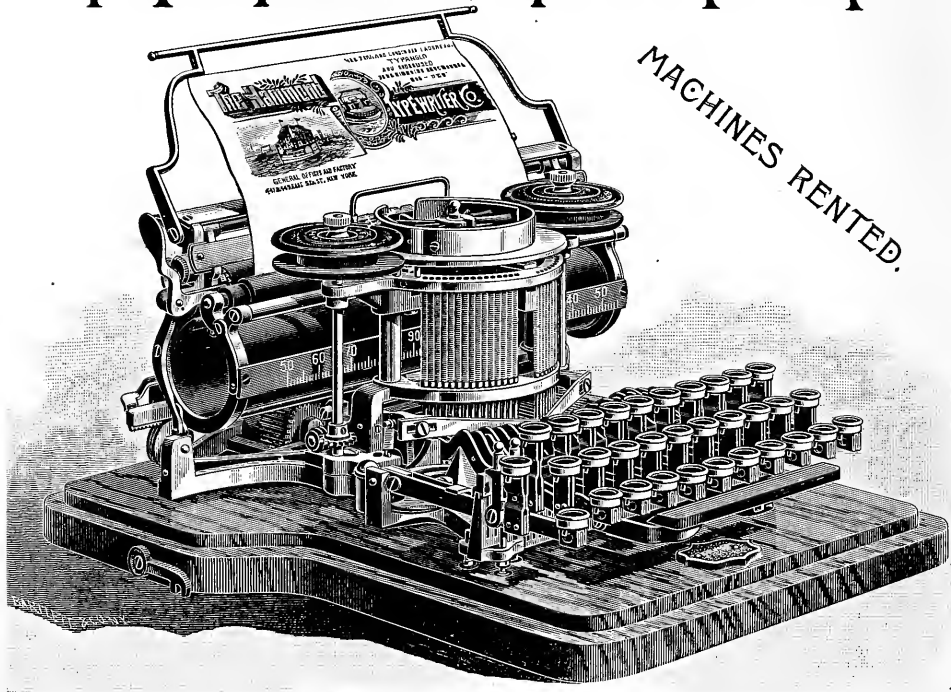


**SIMONS
BRO.
& CO.**



ENTRANCE :
Chestnut Street, 618.
Sansom Street, 613.

HAMMOND TYPEWRITER.



UNIVERSAL KEYBOARD.

Send for copy of the Franklin Institute Report in Full.

Awarded the First Prize GOLD MEDAL, Paris Exposition, 1889.

[EXTRACT FROM LUCY HOOPER'S PARIS LETTER.]

"The Hammond Typewriter has achieved a signal success in the competition before the jury. Under the fingers of a skilled manipulator it carried off the palm for rapidity of production. Its compactness and elegance of shape and the simplicity of its mechanism are also points which are greatly in its favor."

Awarded the Elliott Cresson Gold Medal by the Franklin Institute,

OCTOBER, 1890.

Extract from Report:

"Celerity and certainty of operation, perfection of alignment, and great durability. No limitation upon the speed of the operator. Commended as the best type-writing machine."

Philadelphia Office, 116 S. Sixth St.

VOLUME VII.

The Halcyon

1891.





Halcyon Days

THE
HALCYON.

VOLUME VII.

PUBLISHED BY

THE JUNIOR CLASS.

OF

SWARTHMORE COLLEGE.

1891.

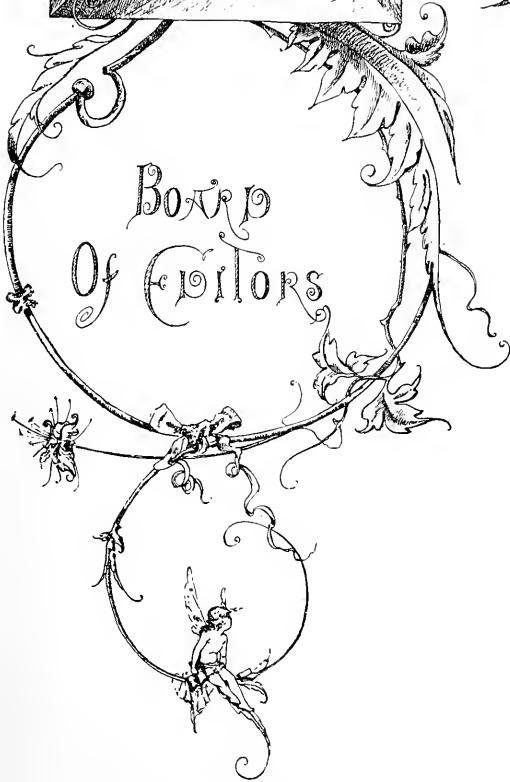
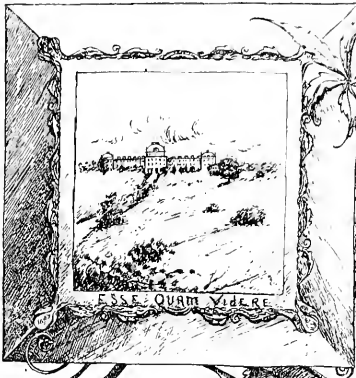
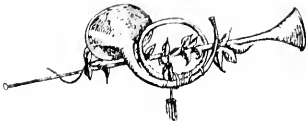
PRESS OF
A. H. SICKLER & CO.
PHILADELPHIA.

To thee, to whom the task is given to rule
This little kingdom of our Quaker school ;
And, with a hand impartial, Wise and kind,
To govern and direct each youthful mind.
To testify that with our modest might
We'll aid to make thy duties here more light,
That, with the best of honor and good-will,
We'll all attempt thy mandates to fulfil ;
To wish thy reign here sweet and full of peace ;
That our dear Swarthmore's welfare may increase,
Until she finds herself, and ruler great—
This book, in all respects, we dedicate
To our dear President.



'92.





EDITOR^{IN} CHIEF
Henry Wallcutter Jr

ASSOCIATE EDITORS
Mary Lang Holvick
Charley East
Mary E. Amwell
Phibe H. Kitcham
Ellen Pyle
W. Elliot Johnson
Howard B. Green
William E. Hatten

BUSINESS MANAGERS
Howard M. Gannett
Edward A. Jenkins

Editorial Preface.

“ Joking decides great things,
Stronglier and better oft, than earnest can.”

Milton Trans. of Horace Satire I.



WE BELIEVE that it was the author of “ The Poet at the Breakfast Table ” who said, that “ The foolishness of a book is a kind of leaky boat on a sea of wisdom ; some of the wisdom will get in anyhow.” We trust that the little boat which the Class of '92 launches to-day will not be pronounced entirely wisdom proof. The members of the editorial staff who have been instrumental in setting it afloat bespeak for it a kindly reception, and trust that the winds of heaven may not visit its course too roughly, but that the gentlest of zephyrs may swell the bosom of its sails.

We have not thought of attempting to emulate the work of the brilliant corps of editors who have immortalized themselves in previous numbers of THE HALCYON. We have aimed only to perform, to the best of our ability, the duty which a generous class devolved upon us. If we have fairly well succeeded, the glory in a great measure attaches to our electors. If we have failed, they, too, must bear a part of the ignominy of failure. How pleasant to have the responsibility so largely diffused ?

A very reasonable excuse for the many imperfections in the little book we are about to cast upon the waters, is that it has been the work of

spare moments hastily snatched from busy college life, and has not had the advantages that arise from continuity of thought and opportunity for uninterrupted effort.

It may be said that one mission of *THE HALCYON* is to jest, but not to jest in a way that leaves a sharp sting behind it. To do so, is both cruel and unmanly.

“ Fate never wounds more deep the generous heart,
Than when a blockhead’s insult points the dart.”

We trust that the victims of our harmless jests may bear in mind one of the wise sayings of old Plautus :

“ Si quid dictum est per jocum
Non æquum est id serio provortier.”

As we place our little work—the result of some spare moments of college life—before our Class and in the archives of our *Alma Mater*, we feel both a sense of pleasure and of pain ; pleasure, that the work devolved upon us is performed ; pain, that we are brought to a severance of our relations with an agreeable companion.



* * *

If this book lacks aught in wit or sense,
Or jokes appear a trifle dense ;
'Twas not for lack of good intents,
Of searching earnestly to find
Somewhat to suit each reader's mind.
We pray you, then, to be most kind,
Whatever does not please your eye
'Turn o'er the leaf and pass it by.
'To each of you we wish it said—
Read as you'd have your Malcyon read.

* * *

Color—GARNET.

Swarthmore College,

INCORPORATED BY MEMBERS OF THE SOCIETY OF FRIENDS, 1864.

CHEER :

“ 'Rah, 'rah, 'rah! 'Rah, 'rah, 'rah! Swarthmore!
Swarthmore! Hoo, 'rah!’ ”

“ 'Rah, 'rah! 'Rah, 'rah, 'rah! 'Rah, 'rah! 'Rah, 'rah, 'rah! Swarthmore!’ ”

The Year.

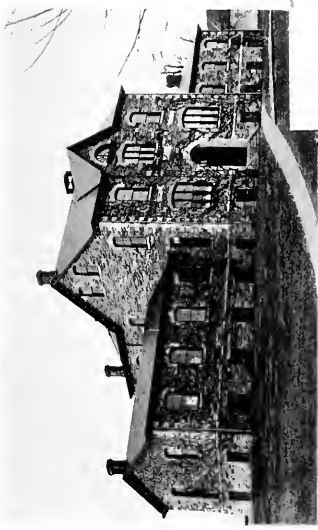
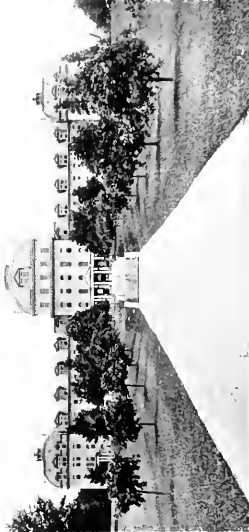


IN their selection to perform the somewhat arduous duties with which the publication of the HALCYON is necessarily attended, your chroniclers feel especially favored in having for their theme, a period of such remarkable brightness and prosperity.

But little more than a year has elapsed since that memorable meeting of our Board of Managers, in which it was decided to relegate the preparatory school to the past, and vouchsafe a new era to our *Alma Mater*. Other concessions consistent with this broad and far-sighted policy accompanied it, and drew from the mouths of Swarthmore's friends, alumni, ex-members and under-graduates, expressions of the most sincere approbation.

The present year has witnessed the happy fulfilment of the highest hopes and beliefs of our sagacious directors. A spirit of renewed interest seems to preside over us, whether in the class-room or on the campus. With all confidence we ascribe this improvement to the increased liberality which has characterized the actions of our managers and faculty. Of the latter body, our thanks are especially due to President William Hyde Appleton, who, at the sacrifice of all personal interests, has governed the college with dignity and firmness and yet with a moderation which has endeared him to the heart of every student.

Of the election of William Dudley Foulke to the presidency, the great affliction which overtook him on the eve of his inauguration, and his subsequent decision to withdraw his acceptance, for a time, at least, our readers are already familiar. We trust and only echo the sentiments of the whole student body that at no very distant date, he will feel justified in assuming the duties of the office which was so unanimously tendered to him.



Board of Managers.

President,

JOSEPH WHARTON.

Term expires, Twelfth month, 1891.

JOSEPH WHARTON, P. O. Box 1332, Philadelphia.	WILSON M. POWELL, 324 W. 58th Street, New York.
M. FISHER LONGSTRETH, Sharon Hill, Delaware Co., Pa.	MARY C. CLOTHIER, Wynnewood, Pa.
MARY WILLETS, 309 Chestnut St., Trenton, N. J.	WILLIAM M. JACKSON, 335 W. 12th Street, New York.
LYDIA H. HALL, Swarthmore, Pa.	RACHEL W. HILLBORN, Swarthmore, Pa.

Term expires, Twelfth month, 1892.

EDWARD H. OGDEN, 314 Vine Street, Philadelphia.	CATHARINE UNDERHILL, Jericho, L. I.
ELI M. LAMB, 1432 McCulloh Street, Baltimore.	CLEMENT M. BIDDLE, 815 Arch Street, Philadelphia.
ANNA M. HUNT, Lansdowne, Pa.	EDWARD STABLER, JR., 3 South Street, Baltimore.
SUSAN W. LIPPINCOTT, Cinnaminson, N. J.	HANNAH H. WOODNUTT, 816 Arch Street, Philadelphia.

Term expires, Twelfth month, 1893.

JOHN T. WILLETS, 303 Pearl Street, New York.	JANE P. DOWNING, 1613 Race Street, Philadelphia.
CHARLES M. BIDDLE, 507 Commerce Street, Philadelphia.	SARAH H. POWELL, 324 West 58th Street, New York.
DANIEL UNDERHILL, Jericho, L. I.	HELEN COMLY WHITE, Lansdowne, Pa.
EMMOR ROBERTS, Moorestown, N. J.	ELIZABETH E. PASSMORE, Oxford, Chester Co., Pa.

Term expires, Twelfth month, 1894.

ISAAC H. CLOTHIER, 8th and Market Streets, Philadelphia.	SOPHIA U. WILLETS, Manhasset, L. I.
JAMES V. WATSON, 718 Franklin Street, Philadelphia.	EDMUND WEBSTER, 1156 S. Broad Street, Philadelphia.
HERMAN HOOPES, 516 Minor Street, Philadelphia.	EMMA McILVAIN, 59th St. and Elmwood Ave., Phila.
*MARTHA G. McILVAIN, 59th St. and Elmwood Ave., Phila.	REBECCA C. LONGSTRETH, Sharon Hill, Del. Co., Pa.

*Deceased.

Faculty of Government.

President.

WILLIAM HYDE APPLETON.

Dean.

ELIZABETH POWELL BOND.

PROF. EDWARD H. MAGILL,
PROF. ARTHUR BEARDSLEY,
PROF. SUSAN J. CUNNINGHAM,
PROF. WILLIAM PENN HOLCOMB.
PROF. BENJAMIN SMITH,
PROF. WILLIAM C. DAY,
PROF. FERRIS W. PRICE,
PROF. GEORGE A. HOADLEY,
PROF. GERRIT E. H. WEAVER,
PROF. SPENCER TROTTER,
PROF. MILTON H. BANCROFT.

Superintendent.

WILLIAM J. HALL,



Faculty of Instruction.

PRESIDENT AND PROFESSOR OF GREEK AND OF ENGLISH LITERATURE.

William Hyde Appleton

A. M. (Harvard University);

Ph. D. (Swarthmore College.)

DEAN.

Elizabeth Powell Bond

PROFESSOR OF THE FRENCH LANGUAGE AND LITERATURE.

Edward H. Magill.

A. M. (Brown University);

L.L. D. (Haverford College.)

I. V. WILLIAMSON PROFESSOR OF ENGINEERING AND DIRECTOR OF THE WORKSHOPS.

Arthur Beardsley.

C. E. (Rensselaer Polytechnic Institute);

Ph. D. (Swarthmore College.)

EDWARD H. MAGILL PROFESSOR OF MATHEMATICS AND ASTRONOMY.

S. J. Cunningham

Sc. D. (Swarthmore.)

JOSEPH WHARTON PROFESSOR OF HISTORY AND POLITICAL SCIENCE AND
LECTURER ON PEDAGOGICS.

Wm. P. Holcomb

M. L. (Swarthmore College);

Ph. D. (Johns Hopkins University.)

PROFESSOR OF RHETORIC, LOGIC, MENTAL AND MORAL PHILOSOPHY.

Benjamin Smith

A. M. (Yale University.)

PROFESSOR OF CHEMISTRY.

Wm. L. Day

Ph. D. (Johns Hopkins University.)

PROFESSOR OF NATURAL HISTORY, AND LECTURER ON PHYSIOLOGY AND HYGIENE
TO THE YOUNG MEN.

Spencer Trotter

M. D. (University of Pennsylvania.)

PROFESSOR OF ART AND OF MECHANICAL DRAUGHTING.

William W. Bancroft.

(Massachusetts Art School.)

PROFESSOR OF PHYSICS.

Geo. D. Hoadley.

A. M. (Union College);

C. E. (Union College.)

PROFESSOR OF THE GERMAN LANGUAGE AND LITERATURE.

Gertrude H. Weaver

A. B. (Harvard University);

A. M. (Swarthmore College.)

ISAAC H. CLOTHIER PROFESSOR OF THE LATIN LANGUAGE AND LITERATURE.

Fernie W. Price.

A. M. (Swarthmore College).

Instructors.

MYRTIE E. FURMAN, B. O.,

Assistant Professor in charge of Elocution.

MARY J. MURPHY,

Director of Physical Culture for the Young Women.

J. K. SHELL, M. D.,

Director of Physical Culture for the Young Men.

EMILY G. HUNT, M. D.,

Lecturer on Physiology and Hygiene to the Young Women.

LUCIUS E. WILLIAMS, A. M.,

Assistant in Chemistry.

ALICE M. ATKINSON, A. B.,

Assistant in Greek.

MARIA DAVIS,

Assistant in Drawing.

MARY D. PRATT, A. B.,

Assistant in Mathematics.

JENNIE F. WADDINGTON, B. S.,

Assistant in Biology.

WILLIAM McCLELLAN,

Assistant in Engineering.

ESTHER T. MOORE, A. B.,

Secretary to the President, and Registrar.

SARAH M. NOWELL,

Librarian.



1791

'91

Officers of the Class.

Presidents :

EDWARD C. WILSON, 1st Term; A. MITCHELL PALMER, 2d Term.

Vice-Presidents :

ISAAC O. HARPER, 1st Term; CHESTER P. MARTINDALE, 2d Term.

Secretaries :

FRANCES M. WHITE, 1st Term; LUCY S. LIPPINCOTT, 2d Term.

Treasurers :

EVA M. DANIELS, 1st Term; HENRY L. McDONALD, 2d Term.

<i>Historian,</i>	EDWARD C. WILSON
<i>Poet,</i>	COSMELIA J. BROWN
<i>Prophet,</i>	HANNAH H. CLOTHIER
<i>Presenter,</i>	WILLIAM C. SPROUL
<i>Ivy Poet,</i>	FRANCES M. WHITE

MOTTO:—*Non dicere, sed facere.*

COLORS:—*Brown and White.*

YELL:—“*M—D—C—C—X—C—I—, S. C.*”



MAGINATION, called upon to personalize our Seniors, retires dismayed at the enormity of the undertaking. To tell what they are, and to express in a few words what they have been and may be, is beyond the power of even that usually most potent resistant of HALCYON chroniclers. They have done everything from giving receptions on short rations to exhibiting to the College an ideal (as far as they were able) of childlike simplicity in behavior and in manner. But we must be charitable toward them as we would to all the old and infirm who live to the period of a second childhood.

Hard and unfeeling, indeed, must be the man who could find it in him to criticize the infirmities of the aged. As their boat is pushed from the light of our shore into "the world of waters dark and deep," the cry of "The King is dead; long live the king," welcomes their successors. And the frequent blunders and sad mistakes with which they have bestrewn their trail shall serve to teach added perfectness to those who wave them from the shore.

'91 can only weakly bewail the impotence of age, as his bleary and hardly open eyes descry his sturdy successor complacently stepping unto the throne, *his* fingers clasping the sceptre caught from the weakening grasp and thrust into hands which were constantly becoming hardened in preparation for wielding the power therein involved.

'91, the horn whose blowing you so derided last year, was but the heraldic announcement that your victor was entering the lists against you. Yet a few days and we step into your place; we, the once despised, shall sit in your seats, sway the rod of empire, and do what you left undone.



Seniors.

EMILY ATKINSON,	<i>Arts,</i>	Moorestown, N. J.
SAMUEL S. BOND,	<i>Engineering,</i>	Sandy Spring, Md.
COSMELIA J. BROWN,	<i>Letters,</i>	Lincoln, Va.
LOUIS P. CLARK, $\Phi. K. \Psi.$,	<i>Engineering,</i>	Haverford College, Pa.
HANNAH H. CLOTHIER,	<i>Letters,</i>	Wynnewood, Pa.
CAROLINE M. CRISFIELD,	<i>Arts,</i>	Princess Anne, Md.
EVA M. DANIELS,	<i>Science,</i>	Charleston, West Va.
ELIZA R. HAMPTON,	<i>Arts,</i>	Spring Brook, N. Y.
ISAAC O. HARPER,	<i>Engineering,</i>	Baltimore, Md.
ESTHER HAVILAND,	<i>Letters,</i>	Brooklyn, N. Y.
ELIZA G. HOLMES,	<i>Arts,</i>	Moorestown, N. J.
JOHN W. HUTCHINSON, JR.,	<i>Engineering,</i>	New York City.
DORA LEWIS,	<i>Letters,</i>	Media, Pa.
LUCY S. LIPPINCOTT,	<i>Arts,</i>	Riverton, N. J.
CHESTER P. MARTINDALE, $\Phi. K. \Psi.$,	<i>Letters,</i>	Oxford, Pa.
HARRY L. McDONALD,	<i>Engineering,</i>	Kansas City, Mo.
SARAH T. MOORE,	<i>Letters,</i>	Sandy Spring, Md.
A. MITCHELL PALMER, $\Phi. K. \Psi.$,	<i>Arts,</i>	Stroudsburg, Pa.
NELLIE PASSMORE,	<i>Letters,</i>	Oxford, Pa.
MARIANNA SMITH,	<i>Letters,</i>	Lincoln, Va.
WILLIAM C. SPROUL, $\Phi. K. \Psi.$,	<i>Science,</i>	Chester, Pa.
EDWARD B. TEMPLE, $\Phi. K. \Psi.$	<i>Engineering,</i>	Ward, Pa.
KATHARINE L. TYLER,	<i>Science,</i>	Philadelphia, Pa.
FRANCES M. WHITE,	<i>Letters,</i>	Lansdowne, Pa.
EDWARD C. WILSON,	<i>Science,</i>	Bloomfield, Ontario, Can.
M. LILIAN YARNALL,	<i>Arts,</i>	Ward, Pa.

Speakers AT THE Nineteenth Commencement

OF

SWARTHMORE COLLEGE

TO BE HELD JUNE 16TH, 1891.

From the Course in Arts.

EMILY ATKINSON,	New Jersey
ELIZA GILLINGHAM HOLMES,	New Jersey
ALEXANDER MITCHELL PALMER,	Pennsylvania

From the Course in Letters.

ESTHER HAVILAND,	New York
SADIE THOMAS MOORE,	Maryland

From the Course in Science.

WILLIAM CAMERON SPROUL,	Pennsylvania
KATHERINE LOWE TYLER,	New Jersey

From the Course in Engineering.

EDWARD BRINTON TEMPLE,	Pennsylvania
----------------------------------	--------------



'92

Officers of the Class.

Presidents :

BENJAMIN F. BATTIN, 1st Term; WILLIAM E. WALTER, 2d Term.

Vice-Presidents :

JOSEPH J. WALKER, 1st Term; BERNARD S. MCILVAIN, 2d Term.

Secretaries :

FLORENCE N. WOLVERTON, 1st Term; JOSEPHINE BEISTLE, 2d Term.

Treasurers :

MARY E. STEBBINS, 1st Term; CARLIE MCCLURE, 2d Term.

Toast-Master :

EDWARD A. JENKINS.

MOTTO:—*Esse quam videri.*

COLORS;—*Garnet and Black.*

YELL:—“*Hist, Boom, Boo, S. C. '92: Tiger!*”

1492—1892. THESE are, doubtless, the two most important dates in the history of America.

In 1492 Christopher Columbus discovered the New World, but little did he dream that this momentous event would be celebrated in so fitting a manner as by the graduation, of our class from Swarthmore after a very eventful and prosperous course.

Yes, '91, we, too, feel that it is not worth while nor exactly proper to be “sounding one’s own trumpet,” without having a reason for so doing; yet from our successes and our qualifications we feel justified in more than a mere mention of our date of graduation.

When, as Freshies, '91 presented us with canes, we were first convinced that they considered us their peers. But was it not because we took from them, at a *hazardous* risk, *their* support?

What we have done in Athletics was simply what we could. We have fulfilled our duty in supplying from our ranks worthy foot-ball and baseball players, who have helped gain many a College victory.

In oratory, elocution, music and art, we have endeavored to hold our place. Of our "Dickens Evening," the winning of the Magill Prizes, and the organization of the first and only class Glee Club, we will say nothing. Our successes will speak for themselves. *These*, and not the athletic track, we have realized, are the fields in which we are destined to labor; and with the dauntless courage of the discoverer, have striven to do our duty, and have met difficulties as numerous and great as ever obstructed the path of Columbus.

Our love of art is shown by the masterly way in which our boys removed that unsightly blot, '93's backstop, from the West Campus.

We pride ourselves on the originality of our girls. If they have been undignified or "irregular," it was in an original way. If they have had undertakings, they were original ones: the entertainments which they gave were the first and only ones given at Swarthmore by the girls of our class.

In all the College there has been no class that has worked in such unison as that of '92. To be sure, the natural independence of our members has caused some disagreement, but we always became reconciled, and work together for our class.

We have been destined for defeats as well as for victories. But with the persistence of Columbus, we have striven to do our best, and have learned to submit to reverses with patience, and, though always elated by our successes, have endeavored to bear them with modesty and discretion.



The Junior Class.

M. ELLEN ATKINSON,	<i>Letters,</i>	Buckingham, Pa.
M. ROSAMOND BAKER,	<i>Arts,</i>	Easton, N. Y.
BENJAMIN F. BATTIN, $\Phi. K. \Psi.$,	<i>Arts,</i>	Omaha, Neb.
JOSEPHINE BEISTLE,	<i>Arts,</i>	Germantown, Pa.
MARY E. BROOMELL,	<i>Letters,</i>	Baltimore, Md.
ROBERTA B. DIXON,	<i>Irregular,</i>	Easton, Md.
HOWARD N. EAVENSON,	<i>Engineering,</i>	Philadelphia, Pa.
HENRY H. GARRETT,	<i>Engineering,</i>	Philadelphia, Pa.
CHARLES HART,	<i>Science,</i>	Doylestown, Pa.
ANNA HILLBORN,	<i>Letters,</i>	Swarthmore, Pa.
EDWARD A. JENKINS,	<i>Engineering,</i>	Gwynedd, Pa.
CHARLES B. KETCHAM, $\Phi. K. \Psi.$,	<i>Arts,</i>	Dover Plains, N. Y.
PHEBE H. KETCHAM,	<i>Science,</i>	Jericho, N. Y.
HENRY McALLISTER, JR.,	<i>Letters,</i>	Colorado Springs, Col.
CARLIE McCLURE,	<i>Arts,</i>	Girard, Pa.
BERNARD S. McILVAIN,	<i>Letters,</i>	Darlington, Md.
JOHN F. MURRAY,	<i>Engineering,</i>	Wallingford, Pa.
GEORGIA PORTER,	<i>Irregular,</i>	Worton, Md.
ELLEN PYLE,	<i>Arts,</i>	London Grove, Pa.
CORNELIA J. SHOEMAKER,	<i>Letters,</i>	Lincoln, Va.
MARY E. STEBBINS,	<i>Letters,</i>	Baltimore, Md.
JOSEPH J. WALKER,	<i>Engineering,</i>	New Centreville, Pa.
WILLIAM E. WALTER, $\Phi. K. \Psi.$,	<i>Engineering,</i>	Philadelphia, Pa.
FLORENCE N. WOLVERTON,	<i>Arts,</i>	Quakertown, N. J.
MARY L. WOLVERTON,	<i>Arts,</i>	Quakertown, N. J.

Third Annual Contest

FOR THE

“PHOENIX” PRIZES IN JUNIOR ORATORY,

HELD FOURTH MONTH, FOURTEENTH, 1891.

“PUBLIC DUTY,”	BENJAMIN F. BATTIN, Nebraska.
“HISTORY AND LITERATURE,”	JOSEPHINE BEISTLE, Pennsylvania.
“THE ENERGY OF POWER,”	HOWARD B. GREEN, New Jersey.
“THE MODERN NEWSPAPER,”	HENRY McALLISTER, JR., Colorado.
“MUSIC,”	WILLIAM E. WALTER, Pennsylvania.



'93

Officers of the Class.

Presidents :

JOHN A. THAYER, 1st Term; E. PUSEY PASSMORE, 2d Term.

Vice-Presidents :

JESSE H. REINHARDT, 1st Term; WILLIAM G. MAROT, 2d Term.

Secretaries :

DORA A. GILBERT, 1st Term; MARGARET C. MOORE, 2d Term.

Treasurers :

CHARLES S. HALLOWELL, 1st Term; CLARENCE W. SMITH, 2d Term.

MOTTO:—*πῶς πάντα.*

COLORS:—*Old Gold and Garnet.*

YELL:—“*Ray! Ray! Ray! Hallabaloo, bala, balle! S. C., '93!*”



OUR dearly beloved '93! How can we sound your praises sufficiently? Though you have been under the nurture and care of your *Alma Mater* for little more than a year, you have diligently put forth your efforts and blossomed into one harmonious whole. Such brilliancy you display in all directions! Who can fail to recall the great mark you made in oratory? How all your members were so eager to write for the Magill Prizes, that the judges were overwhelmed when your six were to be selected. Not only in oratorical ability, but in all lines of study, have you displayed your zeal and genius.

There was a time when we feared lest a certain action of yours would convey to passers-by somewhat the impression that this was a harbor for

car-conductors. Your handsome caps are still occasionally to be seen, but you have now, we are happy to say, become wiser, and have ceased to make them disagreeably conspicuous.

And then in athletics. What wonderful feats you have accomplished! There is yet ringing in the ears of the students the echo of the howls and expressions of self-applause, given vent to by you, after your greatest victory—in the tug-of-war. Where was your giant strength this year? In foot-ball was there ever a class who won so many victories? Had a class of Swarthmore ever before distinguished itself by visiting all the children's schools in the neighborhood, in order to train them in the ins and outs of the foot-ball field?

There is yet one fact which ought not to be overlooked. That is the improvements you have introduced into your constitution, surpassing all known parliamentary laws. By your method, as is well known, if one of your fifty members should receive but five votes, and no other member was more fortunate, you would declare him justly elected to the office, and straightway proceed to have him sworn. Aside from the great amount of time thus saved, you have won a world-wide reputation from this grand innovation. Now we understand how a class of such unwonted wisdom and originality can with difficulty realize its need for any advice, yet we have the greatest fear and anxiety for such precocious infants, and will caution you with this ancient proverb: "Pride goeth before destruction, and a haughty spirit before a fall."



The Sophomore Class.

MARTHA C. ANDREWS,	<i>Letters,</i>	Moorestown, N. J.
ANNA S. ATKINSON,	<i>Arts,</i>	Buckingham, Pa.
JANE ATKINSON,	<i>Arts,</i>	Holicong, Pa.
GEORGE H. BROOKE,	<i>Science,</i>	Sandy Spring, Md.
WALTER H. BROOKE, JR.,	<i>Irregular,</i>	Sandy Spring, Md.
FRANCIS E. BROOMELL,	<i>Engineering,</i>	Chicago, Ill.
ROBERT A. BURBANK, K. Σ.,	<i>Irregular,</i>	Pittsfield, Mass.
FREDERICK N. CARR, K. Σ.	<i>Irregular,</i>	Charleston, West Va.
JOHN L. CARVER,	<i>Letters,</i>	Media, Pa.
FREDERICK H. COCKS, Φ. K. Ψ.,	<i>Letters,</i>	Old Westbury, N. Y.
ROLAND CONROW,	<i>Irregular,</i>	Cinnaminson, N. J.
JOSEPH T. FREEMAN,	<i>Engineering,</i>	Orchard Park, N. Y.
EMILIE C. GARRETT,	<i>Irregular,</i>	Swarthmore, Pa.
DORA A. GILBERT,	<i>Arts,</i>	Chester, Pa.
HANNA W. HAINES,	<i>Letters,</i>	Media, Pa.
CHARLES S. HALLOWELL, Φ. K. Ψ.,	<i>Engineering,</i>	Denver, Col.
EDWARD W. HART, K. Σ.,	<i>Arts,</i>	Garretford, Pa.
WALTER W. HIBBERT, K. Σ.,	<i>Engineering,</i>	Wallingford, Pa.
HELEN S. HUTCHINSON,	<i>Irregular,</i>	Maybeury, West Va.
EDITH H. JANNEY,	<i>Letters,</i>	Occoquan, Va.
S. LUCRETIA KEENAN,	<i>Irregular,</i>	Quaker City, Ohio.
CLEMENT LODGE,	<i>Engineering,</i>	Paulsboro, N. J.
ROBERT C. MANNING, Φ. K. Ψ.,	<i>Letters,</i>	Trenton, N. J.
WILLIAM G. MAROT,	<i>Engineering,</i>	Philadelphia, Pa.
LORENA B. MATLACK,	<i>Arts,</i>	West Chester, Pa.
M. EVELYN MEREDITH,	<i>Irregular,</i>	Felton, Del.
MARGARET C. MOORE,	<i>Arts,</i>	Sandy Spring, Md.
OMAR B. PANCOAST,	<i>Science,</i>	Woodstown, N. J.
E. PUSEY PASSMORE, Φ. K. Ψ.,	<i>Irregular,</i>	Rising Sun, Md.

C. ALICE PAUL,	<i>Letters,</i>	Philadelphia, Pa.
JESSE H. REINHARDT,	<i>Engineering,</i>	Salem, N. J.
GERTRUDE E. ROBERTS,	<i>Arts,</i>	Moorestown, N. J.
CLARENCE W. SMITH,	<i>Irregular,</i>	Swarthmore, Pa.
FREDERICK W. SPEAKMAN, K. Σ.,	<i>Engineering,</i>	Coatesville, Pa.
ARTHUR STAAB,	<i>Irregular,</i>	Santa Fé, New Mex.
JULIUS STAAB,	<i>Letters,</i>	Santa Fé, New Mex.
JOHN B. STETSON,	<i>Engineering,</i>	Lansdale, Pa.
FRANCES B. STEVENSON,	<i>Arts,</i>	Felton, Del.
CLARENCE D. STONER,	<i>Irregular,</i>	Columbia, Pa.
GEORGE H. STROUT,	<i>Arts,</i>	Portland, Me.
ESTHER H. SUTTON,	<i>Letters,</i>	Chappaqua, N. Y.
JOHN A. THAYER, K. Σ.,	<i>Letters,</i>	Charleston, West Va
M. HELEN TRAIN,	<i>Irregular,</i>	Zanesville, Ohio.
HENRY C. TURNER, Φ. K. Ψ.,	<i>Engineering,</i>	Betterton, Md.
CHARLES L. WARNER,	<i>Engineering,</i>	Titusville, Pa.
GEORGE W. WARNER, K. Σ.,	<i>Engineering,</i>	Titusville, Pa.
WALTER L. WATSON,	<i>Irregular,</i>	Scranton, Pa.
LILA K. WILLETS,	<i>Arts,</i>	Roslyn, N. Y.
E. NEWLIN WILLIAMS,	<i>Science,</i>	New Hope, Pa.
S. ELLEN WILLIAMS,	<i>Science,</i>	Holicong, Pa.
GENEVIEVE S. ZANE,	<i>Arts,</i>	West Chester, Pa.





E. A. Waigert, Paris

'94

Officers of the Class.

Presidents :

EDWIN P. BOND, 1st Term; HENRY L. HEULINGS, 2d Term.

Vice-Presidents :

ROBERT W. LIPPINCOTT, 1st Term; HOWARD R. WASHBURN, 2d Term.

Secretaries :

MILLIE M. SHATTUCK, 1st Term; ALTHA T. COONS, 2d Term.

Treasurers :

MARY B. JANVIER, 1st Term; ESTELLE WATERS, 2d Term.

<i>Historian,</i>	RACHEL L. HUTCHINSON.
<i>Poet,</i>	ALBERTA WILSON.
<i>Prophet,</i>	GERTRUDE C. BROSIUS.
<i>Orator,</i>	WARREN G. BOYER.
<i>Toast-Master,</i>	JOSEPH M. PUGH.
<i>Statistican,</i>	CHARLES A. BALLINGER.

MOTTO:—*Vorwärts.*

COLORS:—*Gold and Black.*

YELL:—*Whiff, Whack, Gold and Black,*

Hoo Roar, '94,

Hiss Boom, Ah !"



WE are glad to announce to the public that the Class of '94, after a long and perilous journey, has at last arrived, and has been for the past year a College class.

We saw them as they marched slowly up the asphaltum, on the twelfth of September, and knew they were Freshmen, because all alike were robed in new clothing, which still held the creases of newness. Each, as he gazed about him, wondered if he looked as green as his class-mate.

For a whole month these youths and maidens brushed their hair before every recitation, and appeared as neat as a pin; but these peculiarities soon wore off, and it was but a short time before the Freshies were scarcely distinguishable among the other College classes.

Now we congratulate you, '94, upon having entered the College, where you will undoubtedly be an honorable class, worthy of the position you hold. It remains for you to show your appreciation of this honor.

We have but a few words to say to you, and we would have you weigh them well. They are: Do something. Let people know you *can* do something when the time comes. You made a good beginning last year by winning the base-ball cup; now keep it. Work hard, both boys and girls, to give yourselves as a class a good reputation. You showed us that there *is* a class of '94; now show us what it is made of, by doing something.

We recognize ability in you, and would have it put to some advantage. Your plan for "swearing in" Class Day officers is certainly an excellent one, since it secures conscientious and thorough work on the part of the prophets and historian. Perhaps it may act as a suggestion to the other College classes, and may soon be generally adopted. We have not forgotten, too, that you did try hard to do something on a certain First-day morning, when, with canes in hand, you met the Sophs. down the asphaltum, and we realize that there might have been something done, had you not suddenly changed your minds and marched quietly back to the College.

The next morning, when a small, insignificant black banner waved from the top of our college buildings, we knew '94 was trying bravely to make itself seen. But, my friends, this is the extent of your exertions and your attainments; this is where your work ceased. What a *noble* work to leave the world as your monument!



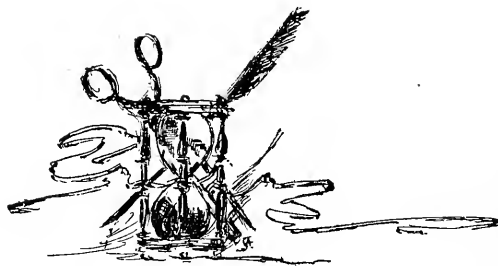
The Freshman Class.

MABEL ALEXANDER,	<i>Irregular,</i>	Philadelphia, Pa.
FRANK C. ANDREWS,	<i>Engineering,</i>	Woodstown, N. J.
EMILY Q. ATKINSON,	<i>Irregular,</i>	Three Tuns, Pa.
CHARLES A. BALLINGER, K. Σ.,	<i>Irregular,</i>	St. Joseph, Mo.
CAROLINE C. BIDDLE,	<i>Irregular,</i>	Lansdowne., Pa.
EDWIN P. BONI, Φ. K. Ψ.,	<i>Arts,</i>	Florence, Mass.
WARREN G. BOYER,	<i>Arts,</i>	Boyertown, Pa.
LILIAN C. BRANSON,	<i>Letters,</i>	Clear Brook, Va.
MARY E. BRANSON,	<i>Letters,</i>	Clear Brook, Va.
SUSIE S. BRIGHTSON,	<i>Irregular,</i>	Brooklyn, N. V.
GERTRUDE C. BROSIUS,	<i>Irregular,</i>	Lancaster, Pa.
WALTER R. BUFFINGTON,	<i>Arts,</i>	Rising Sun, Md.
FRANK D. CLARK,	<i>Engineering,</i>	Hazleton, Pa.
HERMAN CONROW,	<i>Engineering,</i>	Cinnaminson, N. J.
ALTHA T. COONS,	<i>Science,</i>	Deckertown, N. J.
ANNE R. COOPER,	<i>Irregular,</i>	Philadelphia, Pa.
NETTIE CROUNSE,	<i>Letters,</i>	Passaic, N. J.
JEWELL FLOWER,	<i>Arts,</i>	Boston, Mass.
C. EDWARD GILPIN,	<i>Irregular,</i>	Media, Pa.
JESSIE B. GINN,	<i>Irregular,</i>	Winchester, Mass.
MARTHA L. HARMAN,	<i>Irregular,</i>	Oxford, Ind.
HENRY L. HEULINGS,	<i>Science,</i>	Moorestown, N. J.
HELEN R. HILLBORN,	<i>Arts,</i>	Swarthmore, Pa.
HANNAH D. HILTON,	<i>Arts,</i>	Hartford, N. J.
MARY W. HOLME,	<i>Science,</i>	Salem, N. J.
IDA HOPE-DOEG,	<i>Irregular,</i>	Santa Barbara, Cal.
KENT W. HUGHES,	<i>Science,</i>	Lima, Ohio.
RACHEL L. HUTCHINSON,	<i>Irregular,</i>	Maybeury, West Va.,
MARGUERITE INGLIS,	<i>Irregular,</i>	New York City.
MARY B. JANVIER,	<i>Arts,</i>	Wilmington, Del.
HARRIET M. KENT,	<i>Arts,</i>	Swarthmore, Pa.
EDWARD T. LEA, K. Σ.,	<i>Irregular,</i>	Wilmington, Del.
ROBERT W. LIPPINCOTT,	<i>Irregular,</i>	Cinnaminson, N. J.
LILA C. LUNGREN,	<i>Science,</i>	Wilmington, Del.
JOHN MAXEY,	<i>Engineering,</i>	Bozeman, Montana.
WILLIAM C. MEGARGE,	<i>Science,</i>	Moorestown, N. J.
OWEN MOON, JR.,	<i>Science,</i>	Penn Valley, Pa.

CHARLES S. MOORE,
 EDWARD PARRISH,
 MARION D. PERKINS,
 MARGARET D. PFAHLER,
 JOSEPH M. PUGH, K. S.,
 MARY H. PYOTT,
 ROWLAND A. RICHARDS,
 DAVID B. RUSHMORE,
 CHARLES SAXMAN,
 PHILIP SELLERS,
 MILLIE M. SHATTUCK,
 W. WILLIAM SHATTUCK,
 HENRY E. SIMMONS,
 ROSE C. SPENCER,
 ESTHER E. SPICER,
 EDWARD A. STAAB,
 G. EDMUND STRATTAN,
 M. VIRGINIA SUDLER,
 CHARLES S. SWAYNE,
 MARY W. TITUS,
 STEPHEN M. VARGAS,
 HOWARD R. WASHBURN,
 MABEL T. WASHBURN,
 ESTELLE WATERS,
 CARRIE B. WAY,
 STUART WILDER,
 ALBERTA WILSON,

Science,
Science,
Arts,
Science,
Irregular,
Irregular,
Engineering,
Engineering,
Engineering,
Engineering,
Arts,
Engineering,
Engineering,
Arts,
Irregular,
Arts,
Engineering,
Arts,
Irregular,
Letters,
Irregular,
Science,
Irregular,
Science,
Irregular,
Engineering,
Irregular,

May's Landing, N. J.
 Brooklyn, N. Y.
 Moorestown, N. J.
 Swarthmore, Pa.
 Port Deposit, Md.
 Rochester, N. Y.
 Toughkenamon, Pa.
 Old Westbury, N. Y.
 Latrobe, Pa.
 Swarthmore, Pa.
 New York City.
 New York City.
 Moore's, Pa.
 Havre de Grace, Md.
 Fallston, Md.
 Santa Fe, New Mex.
 Altoona, Pa.
 Philadelphia, Pa.
 Kennett Square, Pa.
 Old Westbury, N. Y.
 Nicaragua, Cen. Amer.
 Chappaqua, N. Y.
 Easton, Pa.
 Philadelphia, Pa.
 Kennett Square, Pa.
 Johnson City, Tenn.
 Bloomfield, Ontario, Can.





Hester, Ashwood & Co., Ltd., Printers.

Sub-Collegiate Class.

OFFICERS OF THE CLASS.

Presidents :

PETER A. STEFFIAN, 1st Term; LLOYD R. BLYNN, 2d Term.

Vice-Presidents :

JOHN L. CONARD, 1st Term; ALEXANDER SHREVE, 2d Term.

Secretaries :

MARTHA T. VALENTINE, 1st Term; FRANK G. SHAVER, 2d Term.

Treasurers :

JANE S. SHAW, 1st Term; ELIZABETH M. BAILEY, 2d Term.

MOTTO:—*Consilio et Animo.*

COLORS:—*Silver-gray and Blue.*

YELL:—“*Re! Ra! Ro! Rive! S. C., '95, Tiger!!!*”



DEAR MR. EDITOR:—We felt greatly honored when we received your kind note, saying that we might be represented in your pretty book. And we will now send you a short account of our experiences here.

We had been here but a short time, when we learned that a class could never get along at college without having some particular color to wear, and also a motto, which we might always have to guide our actions. There was at first much quarrelling about these matters, and each one wanted his own way, but as we are all naturally very friendly we presently quieted down. We had the most trouble with our motto, for there were

two given us—one in Greek and one in Latin—from which to select ; but we decided that, since we could not pronounce the Greek, we would take this one: *Consilio et Animo*. A Senior has since translated this for us, and we now feel that we made quite a wise choice.

Early in the year, when we were included on the College Reception Committee, we did feel so proud, but wouldn't you if you had been the first class below the College which had ever been allowed even to attend a reception?

Later on we had great trouble with our elections ; we could not make them go as we wanted at all. But we hope that before we have been here long we may learn how to manage all such things.

This is all we can remember. We have, of course, not yet been able to do very much which deserves notice. But we think that by observing the manners and habits of our elders, and by following the many good examples which are set before us, we may by another year be able to begin college life in earnest.

Good-bye now, and thanking you very much, we remain,

Affectionately your friends,

THE "SUBS."



Sub-Collegiates.

MARY W. BACON,	<i>Arts,</i>	Spring Lake Beach, N.J.
ELIZABETH M. BAILY,	<i>Science,</i>	Norristown, Pa.
CLARA BEARDSLEY,	<i>Arts,</i>	Swarthmore, Pa.
LLOYD R. BLYNN,	<i>Arts,</i>	Philadelphia, Pa.
CORA A. BRIGHTSON,	<i>Arts,</i>	Brooklyn, N. Y.
CLIFFORD R. BUCK,	<i>Science,</i>	Maybeury, West Va.
IRAD C. BURKROUGH,	<i>Science,</i>	Baltimore, Md.
ALFRED C. CASS,	<i>Science,</i>	Swarthmore, Pa.
WALTER CLOTHIER,	<i>Arts,</i>	Wynnewood, Pa.
JOHN L. CONARD,	<i>Arts,</i>	Trenton, N. J.
GEORGE E. COOK,	<i>Science,</i>	Philadelphia, Pa.
ARLETTA CUTLER,	<i>Arts,</i>	Coldstream, Canada.
THOMAS DAVISON,	<i>Science,</i>	Pittsburgh, Pa.
FRANCIS J. DEEMER,	<i>Science,</i>	Chester, Pa.
MARY B. EYRE,	<i>Irregular,</i>	Swarthmore, Pa.
ELMORE C. FAUST,	<i>Irregular,</i>	Middletown, Ohio.
SUSANNA M. GARRETT,	<i>Arts,</i>	Swarthmore, Pa.
LECLERC GAUNTT,	<i>Irregular,</i>	Lumberton, N. J.
MARIA M. FOULKE,	<i>Science,</i>	Stroudsburg, Pa.
MARIANNA HALLOCK,	<i>Arts,</i>	Brooklyn, N. J.
CLARA S. KEELEY,	<i>Arts,</i>	Spring City, Pa.
ADOLF KRAKAUER,	<i>Science,</i>	El Paso, Texas.
ERNESTO LACAYO,	<i>Irregular,</i>	Nicaragua, Cen. Amer.
C. IRVINE LEIPER,	<i>Science,</i>	Chester, Pa.
SAMUEL H. MATTSON,	<i>Arts,</i>	Sharon Hill, Pa.
JOEL N. MORRIS,	<i>Arts,</i>	Washington, D. C.
HENRY C. S. PARRISH,	<i>Science,</i>	Brooklyn, N. Y.
HERMAN S. PETTIBONE,	<i>Arts,</i>	Greenville, Tenn.
ALFRED E. PFAHLER,	<i>Science,</i>	Swarthmore, Pa.

ETHEL V. SHATTUCK,
FRANK G. SHAVER,
JANE S. SHAW,
ALEXANDER SHREVE,
GILBERT T. SMITH, JR.,
HERBERT T. SMITH,
PETER A. STEFFIAN,
MARTHA T. VALENTINE,
ALLEN K. WHITE,
CHARLES D. WHITE,
*AMIE C. WILLETS,

Arts,
Science,
Science,
Science,
Irregular,
Science,
Irregular,
Arts,
Irregular,
Arts,
Arts,

New York, City.
Pittsburgh, Pa.
Williamsport, Pa.
Wrightstown, N. J.
Sandy Spring, Md
Swarthmore, Pa.
San Antonio, Texas.
Glen Head, N. Y.
Lansdowne, Pa.
Lansdowne, Pa.
Roslyn, N. Y.

*Deceased.



In Memoriam

AMIE CHRISTINA WILLETS,

Sub-Collegiate Class.

BORN, FIRST MONTH, 24, 1876.

DIED, FIFTH DAY, FOURTH MONTH, 2, 1891.

WHEREAS, It has pleased our Heavenly Father to remove from our midst our classmate, Amie Christina Willets.

And, Whereas, we the members of the Sub-Collegiate Class sincerely mourn the loss of one who, by her personal attainments, did honor to her class, and by her high moral character endeared herself to us all; therefore be it

Resolved, That our heartfelt sympathy be hereby extended to her bereaved family in this hour of their affliction, and be it further

Resolved, That a copy of these resolutions be sent to the family of our classmate and published in the SWARTHMORE PHOENIX.

COMMITTEE: { JANE C. SHAW,
PETER A. STEFFIAN,
MARTHA T. VALENTINE,
LLOYD R. BLYNN,
CORA A. BRIGHTSON.

'91.

Senior Class, inexpressively queer—
“Self-esteem” is your motto, we hear.
 With your great wealth of knowledge
 You would fain run our College;
Still we're sorry your parting's so near.

'92.

Our Junior Class makes a pretense
To merely good work and good sense.
 But just casually, you know,
 While through College they go,
They have fun in proportions immense.

'93.

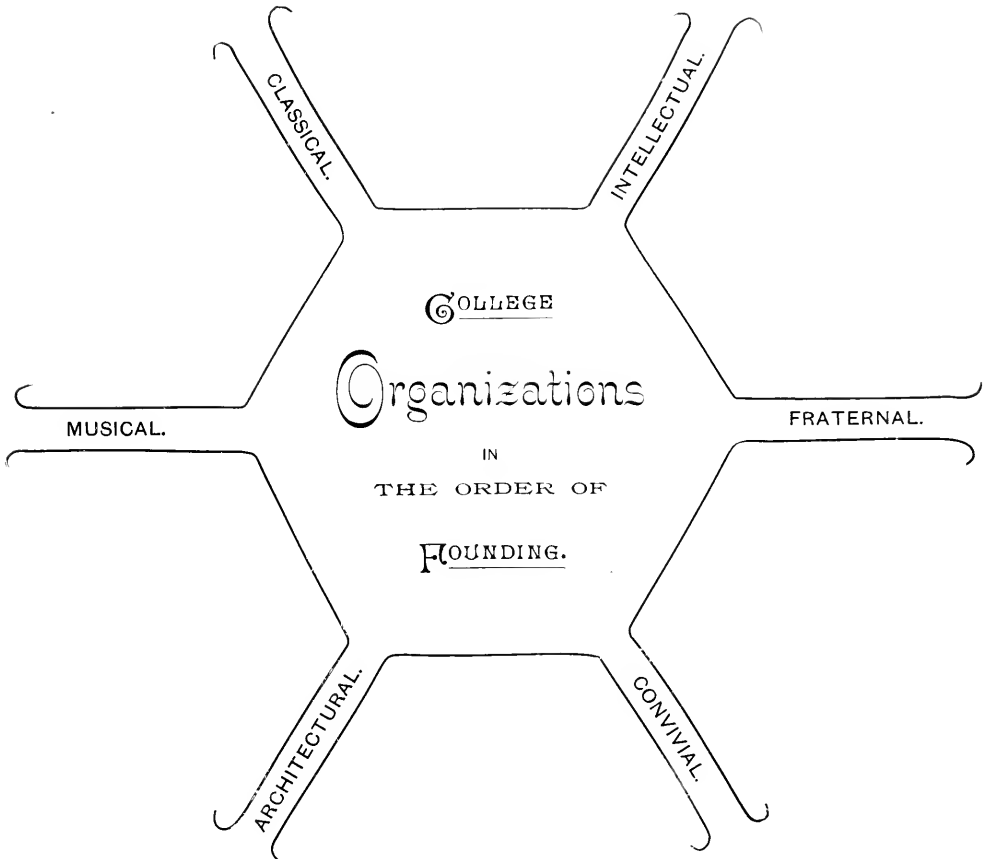
Many-sided, gay, wild Ninety-three,
There's a deal good and ill, both in thee;
 Thee's not quite left thy toys
 And is given to noise
While “thy factions sometimes disagree.”

'94.

There's another young class at Swarthmore
That walks not yet through the front door.
 It has not been here long
 But is noted in song,
And much over books seems to pore.

'95.

In the speech of the world—do not cry—
Ninety-five, you are rather small fry.
 You're Swarthmore's youngest child
 And are still rather wild,
But will grow sedate by-and-by.



Officers of the Alumni Association.

INCORPORATED 1882.

President :

JAMES E. VERREE, '83.

Vice-Presidents :

HOWARD W. LIPPINCOTT, '75.

MARY E. GALE, '82.

S. DUFFIELD MITCHELL, '83.

Secretary :

ELLA MERRICK, '86.

Treasurer :

JOSEPH T. BUNTING, '77.

Recorder :

HERMAN HOOPES, '74.

Board of Directors :

ELIZABETH C. HOLCOMB, '73.

HERMAN HOOPES, '74.

CAROLINE E. HALL, '78.

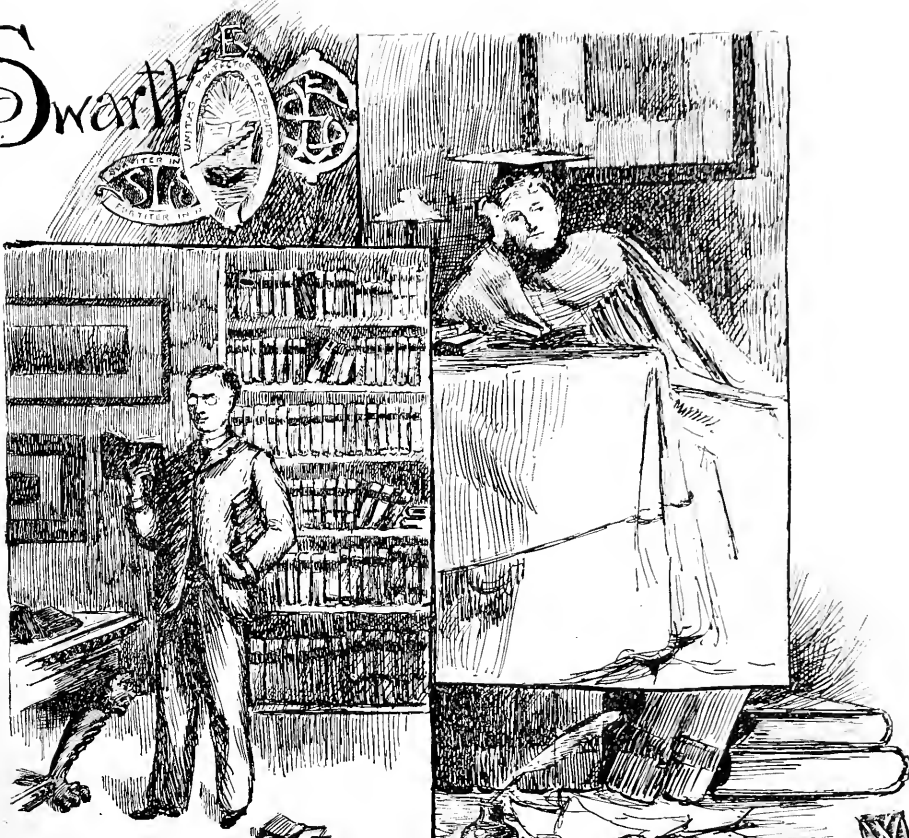
WILLIAM G. UNDERWOOD, '87.

J. RUSSELL HAYES, '88.

LOUELLA PASSMORE, '89.

The President, }
The Secretary, } *Ex-officio.*
The Treasurer, }

Swarth



Literary Societies



IN a work of this kind the maxim “Brevity is the soul of wit” is especially applicable. We cannot enter into a lengthy description of each society. In their proper places we will describe the work of the literary societies, but names of the minor societies are indicative of their work.

The societies of the college present a varied field of operations. Various are their objects and wondrous are their works. They are organized that the individual mind may expand by contact with fellow beings. These are beneficial whether the object be the improvement of the mind, the body, musical talent or gastronomic powers. Each has its prominence and worth, which is left to the discretion of the reader.



Somerville Literary Society.

MOTTO :—*Suaviter in Modo, Fortiter in Re.*

COLOR :—*White.*



THE SOMERVILLE was organized in 1871, the same year with the Eunomian Literary Society; and from its first rather feeble attempts, has grown to be a large and flourishing Society, and one much beloved by its members.

The reunions held once a year, are occasions of great interest and merrymaking, and tend to draw many of the life-members of the Society back to the College. The last gathering was held on April 11th.

The object of the Society, to train our young women in debate, oratory, and the rules and workings of parliamentary bodies, and to give them a general culture and broader knowledge of the questions of the day, is being well fulfilled.

OFFICERS.

Presidents :

ESTHER HAVILAND, '91, 1st Term; LUCY S. LIPPINCOTT, '91, 2d Term

Corresponding Secretaries :

HANNAH H. CLOTHIER, '91, 1st Term; M. ROSAMOND BAKER, '92, 2d Term.

Treasurers :

GENEVIEVE S. ZANE, '91, 1st Term; S. ELLEN WILLIAMS, '93, 2d Term.

Librarians :

HELEN S. HUTCHINSON, '93, 1st Term; MARGARET C. MOORE, '93, 2d Term.

Library Committees :

THE LIBRARIANS.

MARGARET C. MOORE, '93, 1st Term; GERTRUDE E. ROBERTS, '93, 2d Term.
LORENA B. MATLACK, '93, 1st Term; CARRIE B. WAY, '94, 2d Term.

CHAPTER OFFICERS.

SIGMA CHAPTER.

Vice-Presidents :

MARY E. BROOMELL, '92.
M. ELLEN ATKINSON, '92.

Secretaries :

MARTHA C. ANDREWS, '93.
EMILY Q. ATKINSON, '94.

Censors :

ELIZA G. HOLMES, '91.
HELEN S. HUTCHINSON, '93.

OMICRON CHAPTER.

Vice-Presidents :

MARY E. STEBBINS, '92.
ANNIE HILLBORN, '92.

Secretaries :

LILA K. WILLETS, '93.
M. EVELYN MEREDITH, '93.

Censors :

FRANCES M. WHITE, '91.
MARIANNA SMITH, '91.

ACTIVE MEMBERS.

'91.

EMILY ATKINSON.
CORNELIA J. BROWN.
HANNAH H. CLOTHIER.
EVA M. DANIELS.
ELIZA R. HAMPTON.
ESTHER HAVILAND.
ELIZA G. HOLMES.
CAROLINE M. CRISFIELD.

DORA LEWIS.
LUCY S. LIPPINCOTT.
SARAH T. MOORE.
NELLIE PASSMORE.
MARIANNA SMITH.
KATHARINE L. TYLER.
FRANCES M. WHITE.
M. LILIAN YARNALL.

'92.

M. ELLEN ATKINSON.
M. ROSAMOND BAKER.
JOSEPHINE BEISTLE.
MARY E. BROOMELL.
ROBERTA B. DIXON.
ANNIE HILLBORN.
PHEBE H. KETCHAM.

CARLIE McCLURE.
GEORGIA PORTER.
ELLEN PYLE.
CORNELIA J. SHOEMAKER.
MARY E. STEBBINS.
FLORENCE N. WOLVERTON.
MARY L. WOLVERTON.

'93.

MARTHA C. ANDREWS.
ANNA S. ATKINSON.
JANE ATKINSON.
EMILIE C. GARRETT.
DORA A. GILBERT.
HANNA W. HAINES.
HELEN S. HUTCHINSON,
EDITH H. JANNEY.
G. LUCRETIA KEENAN.

LORENA B. MATLACK.
M. EVELYN MEREDITH.
MARGARET C. MOORE.
C. ALICE PAUL.
GERTRUDE E. ROBERTS.
FRANCES B. STEVENSON.
ESTHER H. SUTTON.
LILA K. WILLETS.
S. ELLEN WILLIAMS.

GENEVIEVE S. ZANE.

'94.

EMILY Q. ATKINSON.
LILIAN BRANSON.
MARY E. BRANSON.
CAROLINE C. BIDDLE.
ALTHA T. COONS.
JESSIE B. GINN.
HELEN R. HILLBORN.
HANNAH D. HILTON.
MARY W. HOLME.
IDA HOPE DOEG.

RACHEL L. HUTCHINSON.
MARY B. JANVIER.
HARRIET M. KENT.
MARION D. PERKINS.
MARY H. PYOTT.
MILLIE M. SHATTUCK.
ESTHER E. SPICER.
MARY W. TITUS.
ESTELLE WATERS.
CARRIE B. WAY.

ALBERTA WILSON.

SORORES IN COLLEGIO.

MARY D. PRATT, A. B., '85. JENNIE F. WADDINGTON, B. S., '89.
ALICE M. ATKINSON, A. B., '88.

HONORARY MEMBERS.

HELEN (COMLY) WHITE.
ELLEN H. (EVANS) PRICE.
ESTHER J. (TRIMBLE) LIPPINCOTT.*
LUCRETIA MOTT.*
PHEBE W. FOULKE.
MARIA L. SANFORD.
SUSAN J. CUNNINGHAM, Sc. D.
ANNIE SHOEMAKER.
ELIZABETH POWELL BOND.
MARY A. LIVERMORE.
OLIVIA RODHAM, A. B.
MYRTIE E. FURMAN, B. O.

* Deceased.



The Eunomian Literary Society.



THE Eunomian Literary Society has been particular in its attention to debate, with a flavor of miscellaneous literary exercises.

The Society held its Reunion February 20th. 1891, which many of the Alumni attended.

OFFICERS.

Presidents :

EDWARD C. WILSON, '91, 1st Term; WILLIAM C. SPROUL, '91, 2d Term.

Vice-Presidents :

CHARLES B. KETCHAM, '92, 1st Term; JOHN F. MURRAY, '92, 2d Term.

Corresponding Secretaries :

GEORGE W. WARNER, '93, 1st Term; WILLIAM G. MAROT, '93, 2d Term.

Recording Secretaries :

ROBERT A. BURBANK, '93, 1st Term; GEORGE H. STROUT, '93, 2d Term.

Censors .

GEORGE H. STROUT, '93, 1st Term; FREDERICK H. COCKS, '93, 2d Term.

Librarians :

FREDERICK N. CARR, '92, 1st Term; BENJAMIN F. BATTIN, '92, 2d Term.

Treasurers :

JOSEPH T. FREEMAN, '93, 1st Term; JOHN B. STETSON, '93, 2d Term.

Library Committees :

THE LIBRARIANS.

BENJAMIN F. BATTIN, '92, 1st Term; FREDERICK H. COCKS, '93, 2d Term.

WALTER W. HIBBERT, '93, 1st Term; OWEN MOON, JR., '94, 2d Term.

EDWARD T. LEA, '94, 1st Term; HERMAN PETTIBONE, 2d Term.

W. WILLIAM SHATTUCK, '94, 1st Term; PETER S. STEFFIAN, 2d Term.

ACTIVE MEMBERS.

'91.

LOUIS P. CLARK.
HARRY L. McDONALD.
A. MITCHELL PALMER.

WILLIAM A. SPROUL.
EDWARD B. TEMPLE.
E. CLARKSON WILSON.

'92.

BENJAMIN F. BATTIN.
FRED. N. CARR.

CHARLES B. KETCHAM.
JOHN T. MURRAY.

'93.

ROBT. A. BURBANK.
FRED. H. COCKS.
JOS. T. FREEMAN,
EDWARD W. HART.
WALTER W. HIBBERT.
WILLIAM G. MAROT.

OMAR B. PANCOAST.
FRED. W. SPEAKMAN.
JOHN B. STETSON.
GEO. H. STROUT.
JOHN A. THAYER.
GEO. W. WARNER.

WALTER L. WATSON.

'94.

FRANK D. ANDREWS.
CHAS. A. BALLINGER.
FRANK D. CLARK.
JEWELL FLOWER.
KENT W. HUGHES.
EDWARD T. LEA.

JOHN MAXEY.
OWEN MOON, JR.
EDWARD PARRISH.
CHARLES SAXMAN.
W. WILLIAM SHATTUCK.
HENRY E. SIMMONS.

SUB-COLLEGIATES.

LLOYD R. BLYNN.
THOMAS DAVISON.
LECLERC GAUNT.
HARRY C. S. PARRISH.

ALEXANDER SHREVE.
WALTER CLOTHIER.
ADOLPH KRAKAUER.
HERMAN S. PETTIBONE.

PETER A. STEFFIAN.

FRATRES IN COLLEGIO.

FERRIS W. PRICE, A. M., '74.

WILLIAM J. HALL, B. S., '78,

HONORARY MEMBERS.

SAMUEL B. COOKE.

BENJAMIN SMITH, A. M.

JOSEPH THOMAS, M. D., LL. D.

WILLIAM HYDE APPLETON, A. M., Ph. D.

EDWARD H. MAGILL, A. M., LL. D.

JAMES T. FIELDS.

HUGH FOULKE.

JOHN J. CORNELL.

HENRY W. ROLFE, A. M.

CHARLES CAVENDER.

JOSEPH LEIDY, M. D., LL. D.

CHARLES G. AMES, D. D.

EDWARD HOPPER.

GEORGE L. MARIS, A. M.

THOMAS W. CLEEMAN, A. M., C. E.

CHARLES S. DOLLEY, M. D.

ELI M. LAMB, A. B.

ALBERT G. PALMER, Ph. D.

EUGENE PAULIN, A. M.

WILLIAM C. DAY, Ph. D.

MILTON H. BANCROFT.

SPENCER TROTTER, M. D.

GERRITT E. H. WEAVER, A. M.

WILLIAM DUDLEY FOULKE, A. M.

GEORGE A. HOADLEY, C. E., A. M.

ISAAC H. CLOTHIER.



The Delphic Literary Society.



THE Delphic Literary Society has given particular attention to the development of debaters, in order that the members from the lower classes may be prepared to compete for the Underwood Prize. The establishment of the *Delphic Chronicle*, a monthly journal, is the principal new feature of work. We do not consider a history of great length necessary, preferring to let it rest on its own merits.

OFFICERS.

Presidents :

C. P. MARTINDALE, '91, 1st Term; JOHN W. HUTCHINSON, '91, 2d Term.

Vice-Presidents :

SAMUEL S. BOND, '91, 1st Term; CHARLES HART, '92, 2d Term.

Corresponding Secretaries :

WILLIAM E. WALTER, '92, 1st Term; HENRY McALLISTER, JR., '92, 2d Term.

Recording Secretaries :

JESSE H. REINHARDT, '93, 1st Term; JOHN L. CARVER, '93, 2d Term.
CHARLES S. HALLOWELL, '93, 3d Term.

Censors :

E. PUSEY PASSMORE, '93, 1st Term; EDWARD A. JENKINS, '92, 2d Term.

Treasurers :

BERNARD S. McILVAIN, '92, 1st Term; JOSEPH J. WALKER, '92, 2d Term.

Librarians :

HOWARD N. EAVENSON, '92, 1st Term; CLARENCE W. SMITH, '93, 2d Term.

Library Committees :

THE LIBRARIANS.

R. CALDWELL MANNING, '93, 1st Term; EDWIN P. BOND, '94, 1st Term.
WALTER H. BROOKE, '93, 2d Term; WARREN G. BOYER, '94, 2d Term.

Marshals :

WILLIAM C. MEGARGE, '94, 1st Term; HERMAN CONROW, '94, 2d Term.
IRAD C. BURROUGH, 3d Term.

ACTIVE MEMBERS.

'91.

SAMUEL S. BOND.
ISAAC O. HARPER.

JOHN W. HUTCHINSON,
CHESTER P. MARTINDALE.

'92.

HOWARD N. EAVENSON.
HENRY H. GARRETT.
HOWARD B. GREEN.
CHARLES HART.

EDWARD A. JENKINS.
HENRY McALLISTER, JR.
BERNARD S. McILVAIN.
JOSEPH J. WALKER.

WILLIAM E. WALTER.

'93.

GEORGE H. BROOKE.
WALTER H. BROOKE, JR.
FRANCIS E. BROOMELL.
JOHN L. CARVER.
ROLAND CONROW.
CHARLES S. HALLOWELL.
CLEMENT LODGE.

R. CALDWELL MANNING.
E. PUSEY PASSMORE.
JESSE H. REINHARDT.
CLARENCE W. SMITH.
JULIUS STAAB.
HENRY C. TURNER.
CHARLES L. WARNER.

E. NEWLIN WILLIAMS.

'94.

EDWIN P. BOND.
WARREN G. BOYER.
WALTER R. BUFFINGTON.
HERMAN CONROW.
HENRY L. HEULINGS.
ROBERT W. LIPPINCOTT.
WILLIAM C. MEGARGE.

CHARLES S. MOORE.
ROWLAND A. RICHARDS.
PHILIP SELLERS.
G. EDMUND STRATTAN.
CHARLES F. SWAYNE,
HOWARD R. WASHBURN.
STUART WILDER.

SUB-COLLEGIATES.

IRAD C. BURROUGH.
ALFRED C. CASS.
SAMUEL H. MATTSON.

ALFRED E. PFAHLER.
ALLEN K. WHITE.
CHARLES D. WHITE.

FRATRES IN COLLEGIO.

WILLIAM PENN HOLCOMB, Ph. D., '79.

G. E. H. WEAVER, A. M., '82.

HONORARY MEMBERS.

EDWARD H. MAGILL, A. M., LL. D.

HUGH FOULKE.

ALFRED WILLETS, D. D.

JOSEPH W. TEETS.

ISAAC H. CLOTHIER.

WILLIAM HYDE APPLETON, A. M., Ph. D.

BENJAMIN SMITH, A. M.

EUGENE PAULIN, A. M.

THOMAS S. FOULKE.*

ARTHUR BEARDSLEY, C. E., Ph. D.

JOHN GREENLEAF WHITTIER.

WILLIAM C. DAY, Ph. D.

HENRY W. ROLFE, A. M.

ELI M. LAMB, A. M.

DANIEL UNDERHILL.

CHARLES EMORY SMITH, A. M.

EDWARD LONGSTRETH.

JOSEPH WHARTON.

SPENCER TROTTER, M. D.

GEORGE A. HOADLEY, A. M., C. E.

THOMAS L. DONALDSON.

THOMAS WENTWORTH HIGGINSON.

HORACE HOWARD FURNESS, LL. D.

WILLIAM DUDLEY FOULKE, A. M.

MILTON H. BANCROFT.

*Deceased.



W. H. B. & CO. LONDON

Officers of the Scientific Society.

Presidents :

SAMUEL S. BOND, '91, 1st Term; JOHN W. HUTCHINSON, '91, 2d Term.

Vice-Presidents :

JOHN F. MURRAY, '92, 1st Term; JOSEPH J. WALKER, '92, 2d Term.

Secretaries :

FRED. H. COCKS, '93, 1st Term; HENRY C. TURNER, '93, 2d Term.

Curators :

HOWARD B. GREEN '92, 1st Term; EDWARD A. JENKINS, '92, 2d Term.

Treasurers :

JESSE H. REINHARDT, '93, 1st Term; CHARLES S. HALLOWELL, '93, 2d Term.

Librarians :

JOSEPH J. WALKER, '92, 1st Term; JESSE H. REINHARDT, '93, 2d Term.

ACTIVE MEMBERS.

'91.

SAMUEL S. BOND.
ISAAC O. HARPER.

JOHN W. HUTCHINSON.
EDWARD B. TEMPLE.

EDWARD C. WILSON.

'92.

HOWARD N. EAVENSON.
CHARLES HART.
HOWARD B. GREEN.

EDWARD A. JENKINS.
JOHN F. MURRAY.
JOSEPH J. WALKER.

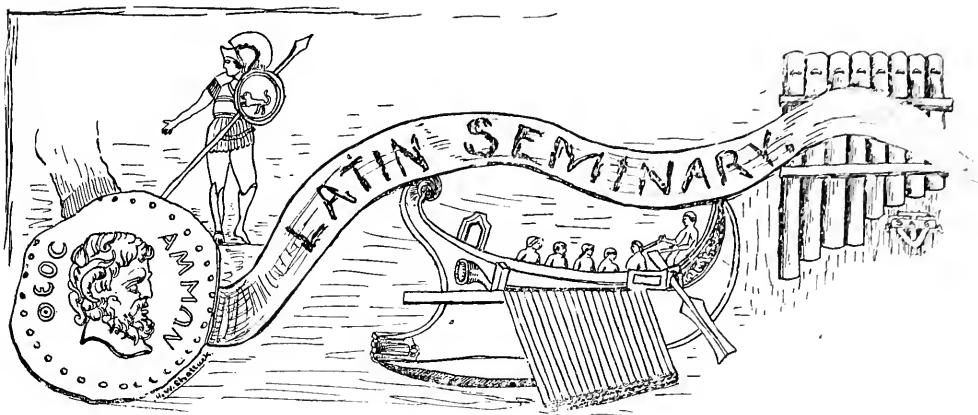
'93.

FRED. H. COCKS.
CHARLES S. HALLOWELL.

JESSE H. REINHARDT.
HENRY C. TURNER.

HONORARY MEMBERS.

JOSEPH LEIDY, M. D., LL. D.
SAMUEL S. GREEN, M. S.
THOMAS M. CLEEMAN, C. E.
JOSEPH WILCOX.
ARTHUR BEARDSLEY, C. E., Ph. D.
SUSAN J. CUNNINGHAM, Sc. D.
EDWARD H. MAGILL, A. M., LL. D.
CHARLES S. DOLLEY, M. D.
MILTON H. BANCROFT.
WILLIAM C. DAY, Ph. D.
C. HERSCHEL KOYL, A. M.
SPENCER TROTTER, M. D.
GEORGE A. HOADLEY, A. M., C. E.



PROFESSOR FERRIS W. PRICE.

ELIZA R. HAMPTON, '91.

ESTHER HAVILAND, '91.

ELIZA G. HOLMES, '91.

SARAH T. MOORE, '91.

A. MITCHELL PALMER, '91.

M. LILIAN YARNALL, '91.

M. ROSAMOND BAKER, '92.

BENJAMIN F. BATTIN, '92.

JOSEPHINE BEISTLE, '92.

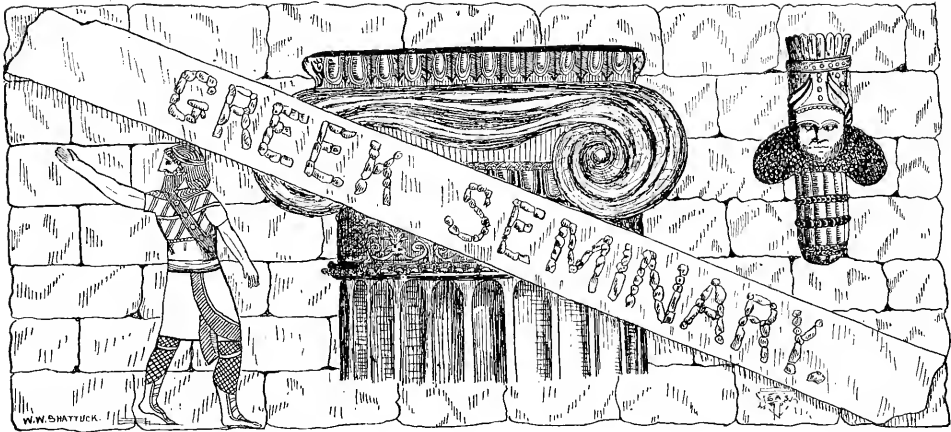
CHARLES B. KETCHAM, '92.

CARLIE McCLURE, '92.

ELLEN PYLE, '92.

FLORENCE N. WOLVERTON, '92.

MARY L. WOLVERTON, '92.



EMILY ATKINSON, '91.

ELIZA R. HAMPTON, '91.

ELIZA G. HOLMES, '91.

LUCY S. LIPPINCOTT, '91.

M. LILIAN YARNALL, '91.

M. ROSAMOND BAKER, '92.

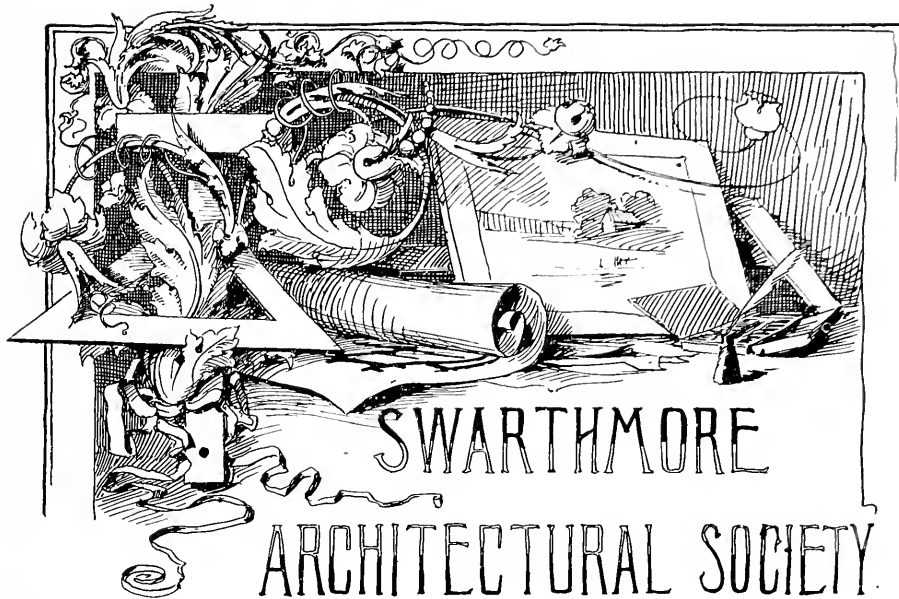
JOSEPHINE BEISTLE, '92.

CARLIE McCLURE, '92.

ELLEN PYLE, '92.

FLORENCE N. WOLVERTON, '92.

MARY L. WOLVERTON, '92.



SWARTHMORE ARCHITECTURAL SOCIETY.

OFFICERS.

Presidents :

WM. E. WALTER, '92, 1st Term; CHARLES S. HALLOWELL, '93, 2d Term.

Vice-Presidents and Censors :

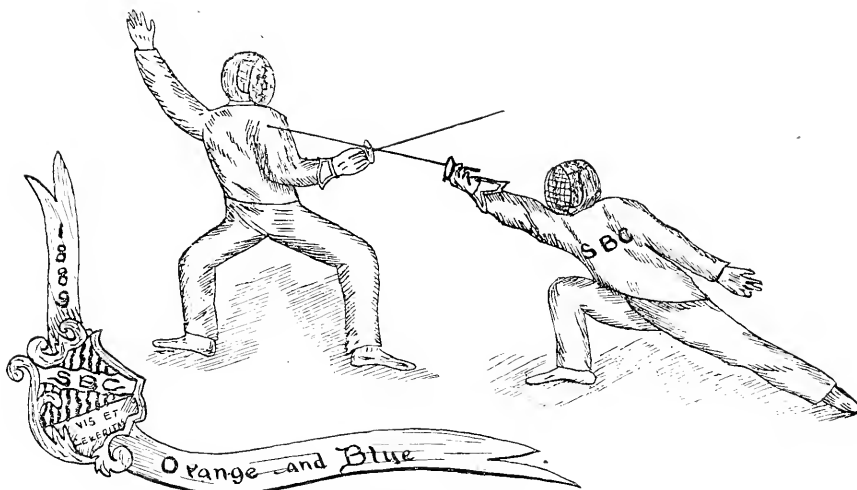
PROF. MILTON H. BANCROFT, 1st Term; WM. E. WALTER, '92, 2d Term.

Secretaries and Treasurers.

CLARENCE W. SMITH, '93, 1st Term; W. WM. SHATTUCK, '94, 2d Term.

MEMBERS.

- | | |
|--|--|
| PROF. MILTON H. BANCROFT. | '92.
WILLIAM E. WALTER. |
| '93.
FREDERICK H. COCKS.
CHARLES S. HALLOWELL.
JESSE H. REINHARDT.
CLARENCE W. SMITH.
GEORGE W. WARNER. | '94.
FRANK D. CLARK.
W. WILLIAM SHATTUCK.
ALLEN K. WHITE. |



FOUNDED DECEMBER 18, 1889

OFFICERS.

President :

CLEMENT LODGE, '93.

Secretary :

WALTER H. BROOKE, '93.

ALPHA CHAPTER.

Vice-President :

OMAR B. PANCOAST, '93.

Secretary :

OWEN MOORE, JR., '94.

Treasurer :

ROBERT W. LIPPINCOTT, '94.

OMEGA CHAPTER.

Vice-President :

HENRY C. TURNER, '93.

Secretary :

ALLEN K. WHITE.

Treasurer :

GEORGE H. BROOKE.

MEMBERS.

'92.

JOHN F. MURRAY.

'93.

WALTER H. BROOKE, JR.

CLEMENT LODGE.

GEORGE H. BROOKE.

OMAR B. PANCOAST.

FREDERICK H. COCKS.

HENRY C. TURNER.

ROLAND CONROW.

CHARLES L. WARNER.

'94.

CHARLES A. BALLINGER.

OWEN MOORE, JR.

KENT W. HUGHES.

ROWLAND RICHARDS.

ROBERT W. LIPPINCOTT.

DAVID B. RUSHMORE.

STUART WILDER.

SUB-COLLEGIATES.

LLOYD R. BLYNN.

PETER A. STEFFIAN.

ALLEN K. WHITE.

The Friends' Central School Club

OF

SWARTHMORE COLLEGE.

President :

HOWARD B. GREEN.

Vice-President :

FRANCES M. WHITE.

Recording Secretary and Treasurer :

HANNAH H. CLOTHIER.

Corresponding Secretary :

WILLIAM E. WALTER.

MEMBERS.

'91.

HANNAH H. CLOTHIER,
FRANCES M. WHITE.

'92.

HOWARD N. EAVENSON.
HENRY H. GARRETT.
HOWARD B. GREEN.
ANNIE HILLBORN.
EDWARD A. JENKINS.
JOSEPH J. WALKER.
WILLIAM E. WALTER.

'93.

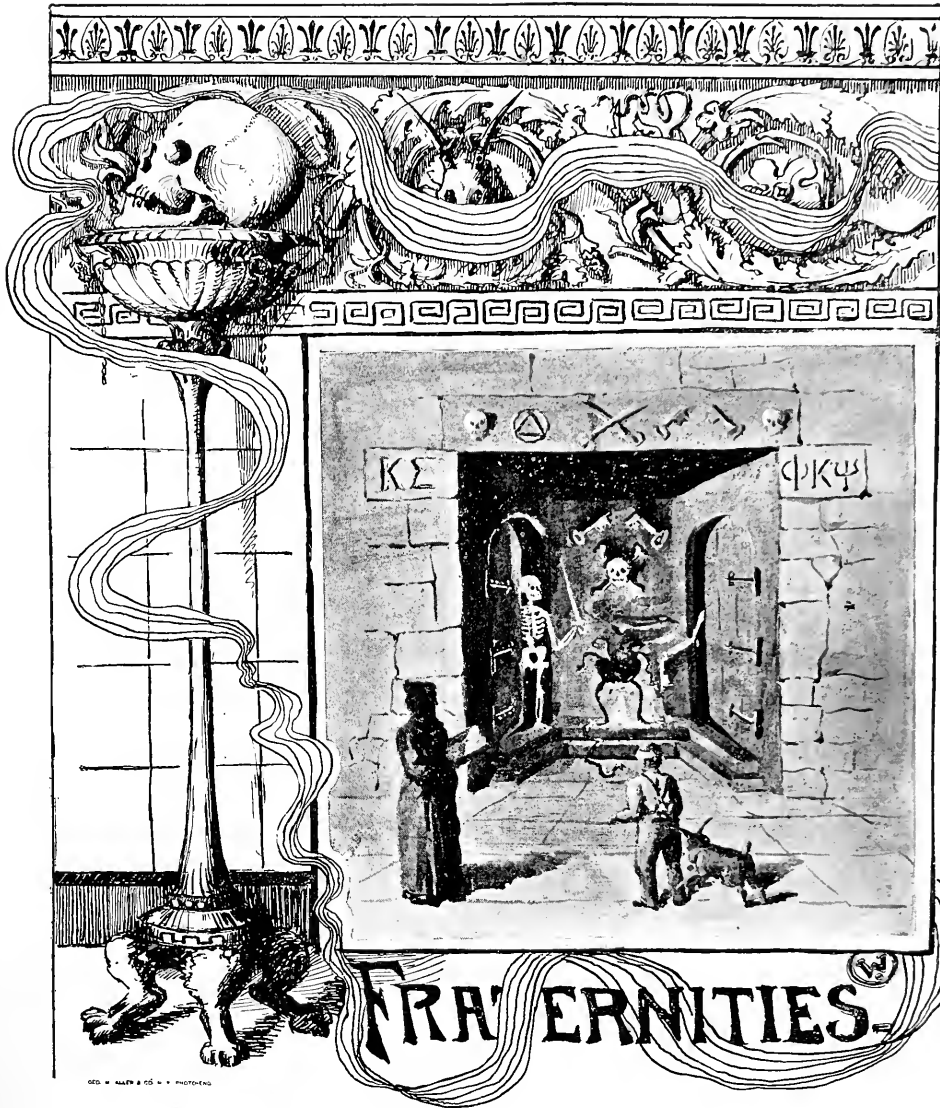
JOHN L. CARVER.
CLEMENT LODGE.
GERTRUDE ROBERTS.

'94.

CAROLINE C. BIDDLE.

SUB-COLLEGIATES :

MARY B. EYRE.
SAMUEL H. MATTSON.
ALLEN K. WHITE.



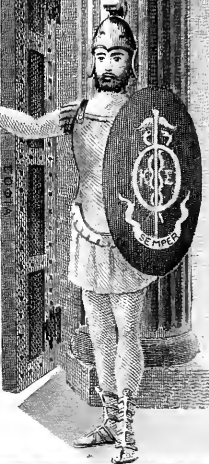
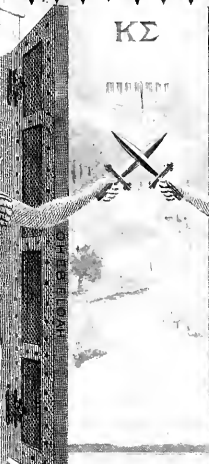
The Fraternities.



HERE are two Fraternities represented at Swarthmore, which we present in the order of their establishment. The Pi Chapter of the Kappa Sigma Fraternity was founded October 19th, 1888, and has eleven members. The Pennsylvania Kappa Chapter of the Phi Kappa Psi Fraternity was founded January 26, 1889, and now has fourteen members. Both Chapters have rooms in Media.



ΚΣ



ΧΡΗΜΑΤΑ *ἢ* ΔΥΝΑΜΙΣ

ΚΑΡΤΕΡΙΑ

ΑΛΗΘΕΙΑ

ΔΙΚΗ

ΠΙΣΤΟΤΗΣ

PI CHAPTER
OF THE
Kappa Sigma Fraternity.

Fraternity Organ :—CADECEUS (bi-monthly).

Fraternity Colors :—MAROON, OLD GOLD AND PEACOCK BLUE.

Fraternity Flower :—LILY OF THE VALLEY.

The Annual Banquet of the Chapter was held at the Bellevue, Philadelphia, on April 11th, 1891.

MDCCCXCH.

FREDERIC NEAL CARR.
JOHN FRANCIS MURRAY.

MDCCCXCIII.

ROBERT ABRAHAM BURBANK.
EDWARD WILLIAM HART.
WALTER WEAVER HIBBERT.
FREDERIC WILLIAM SPEAKMAN.
JOHN ATKINSON THAYER.
GEORGE WILLIAM WARNER.

MDCCCXCIV.

CHARLES ALBERT BALLINGER.
JOSEPH MEREDITH PUGH.
EDWARD TATNALL LEA.

CHAPTERS OF KAPPA SIGMA.

ALPHA,	Emcry College, Ga.
BETA,	Butler University, Ind.
GAMMA,	Louisiana State University.
EPSILON,	Centenary College, La.
ZETA,	University of Virginia.
ETA,	Randolph-Macon College, Va.
THETA,	Cumberland University, Tenn.
IOTA,	Southwestern University, Texas.
KAPPA,	Vanderbilt University, Tenn.
LAMEDA,	University of Tennessee.
MU,	Washington and Lee University, Va.
NU,	William and Mary College, Va.
XI,	Arkansas Industrial University.
CHI-OMEGA,	University of South Carolina.
OMICRON,	Emory and Henry College, Va.
PI,	Swarthmore College, Pa.
RHO,	North Georgia Agricultural College.
SIGMA,	Tulane University, La.
TAU,	University of Texas.
UPSILON,	Hampden-Sydney College, Va.
PHI,	Southwestern Presbyterian University, Tenn.
CHI,	Purdue University, Ind.
PSI,	Maine State College.
OMEGA,	University of the South, Tenn.
ALPHA-ALPHA,	Johns Hopkins University, Md.



Dr. K. Philo.

PENNSYLVANIA CHAPTER
OF THE
Phi Kappa Psi Fraternity.

Fraternity Organ—THE SHIELD (monthly).

Fraternity Colors—LAVENDER AND PINK.

The Annual Banquet of the Chapter was January 10th, 1891, at the Bellevue, Philadelphia.

MDCCCXCI.

LOUIS PELOUZE CLARK.
CHESTER PASSMORE MARTINDALE.
ALEXANDER MITCHELL PALMER.
WILLIAM CAMERON SPROUL.
EDWARD BRINTON TEMPLE.

MDCCCXII.

BENJAMIN FRANKLIN BATTIN.
CHARLES BELDEN KETCHAM.
WILLIAM EMLEY WALTER.

MDCCCXIII.

FREDERICK HICKS COCKS.
CHARLES SHREVE HALLOWELL.
ROBERT CALDWELL MANNING.
ELLIS PUSEY PASSMORE.
HENRY CHANDLEE TURNER.

MDCCCXIV.

EDWIN POWELL BOND.

CHAPTERS OF PHI KAPPA PSI.

PENNSYLVANIA ALPHA,	Washington and Jefferson College.
“ BETA,	Allegheny College.
“ GAMMA,	Bucknell University.
“ EPSILON,	Pennsylvania College.
“ ETA,	Franklin and Marshall College.
“ THETA,	Lafayette College.
“ IOTA,	University of Pennsylvania.
“ KAPPA,	Swarthmore College.
NEW YORK ALPHA.	Cornell University.
“ BETA,	Syracuse University.
“ DELTA,	Hobart College.
“ EPSILON,	Madison University.
VIRGINIA ALPHA,	University of Virginia.
“ BETA,	Washington and Lee University.
“ GAMMA,	Hampden-Sidney College.
MARYLAND ALPHA,	Johns Hopkins University.
DISTRICT OF COLUMBIA ALPHA,	Columbian College.
SOUTH CAROLINA ALPHA.	University of South Carolina.
MISSISSIPPI ALPHA,	University of Mississippi.
OHIO ALPHA,	Ohio Wesleyan University.
“ BETA,	Wellenberg College.
“ GAMMA,	Wooster University.
“ DELTA,	Ohio State University.
INDIANA ALPHA,	De Pauw University.
“ BETA,	Indiana State University.
“ GAMMA,	Wabash College.
ILLINOIS ALPHA,	Northwestern University.
MICHIGAN ALPHA,	Michigan University.
WISCONSIN ALPHA,	University of Wisconsin.
“ GAMMA,	Beloit College.
IOWA ALPHA,	University of Iowa.
MINNESOTA BETA,	State University of Minnesota.
KANSAS ALPHA,	State University of Kansas.
CALIFORNIA ALPHA,	University of the Pacific.
WEST VIRGINIA ALPHA,	University of West Virginia.



WARTHMORE PHOENIX

VOL.
XI.

NO.
1.

Contents.

Verses—The Wanderer's Night Song.....	101
Editorials.....	102-103
Verses—A Simile.....	104
A Snow Day.....	106
Currents, Edits, and Action Ball.....	107
Partings on Badings.....	108
"H. H." and the Indians.....	108
Central Inter-Collegiate Press Association.....	109
"The Quaker Poet".....	110
Athletes.....	111
Obituary.....	111
Local.....	112
Society Reports.....	112
Exchanges.....	114
Inter-Collegiate.....	115
Clippings.....	116

The Swarthmore Phoenix.

BOARD OF EDITORS.

VOLUME X. 1890-91.

Editor:

WILLIAM C. SPOUL, '91.

Associate Editors:

JOHN W. HUTCHINSON, '91. ESTHER HAVILAND, '91.

COSSIE J. BROWN, '91. A. MITCHELL PALMER, '91.

MARY L. WOLVERTON, '92. HENRY McALLISTER, JR., '92.

GEORGE H. STROUT, '93.

Business Managers: { WILLIAM L. DONOHUGH, '92.*
C. P. MARTINDALE, '91

Assistant Business Managers: { CHARLES HART, '92.*
HOWARD N. EAVENSON, '92.

VOLUME XI. 1891-92.

Editor:

HENRY McALLISTER, JR., '92.

Associate Editors:

CHARLES HART, '92. BENJAMIN F. BATTIN, '92.

MARY L. WOLVERTON, '92. JOHN L. CARVER, '93.

HELEN S. HUTCHINSON, '93. GEORGE H. STROUT, '93.

WARREN G. BOYER, '94.

Business Manager:

HOWARD N. EAVENSON, '92.

Assistant Business Manager:

GEORGE W. WARNER, '93.

*Resigned.

Central Inter-Collegiate Press Association.

OFFICERS.

President :

WILLIAM C. SPROUL, *Swarthmore Phoenix.*

Vice-President :

BOUDRE PHINIZY, *Princetonian.*

Secretary-Treasurer :

CHARLES C. GREER, *Dickinsonian.*

Executive Committee :

WALTON FORSTALL, Chairman, *Lehigh Burr.*

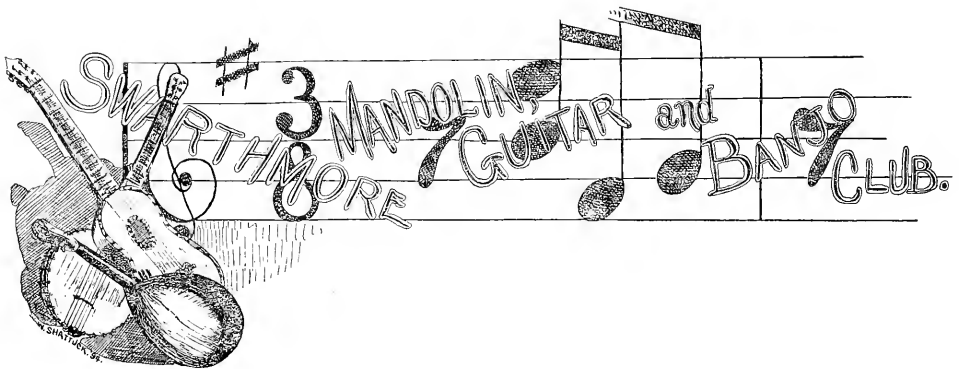
W. M. HART, *Haverfordian.*

A. C. ROTHERMEL, *College Student.*

FRANCIS CHURCHILL WILLIAMS, *Pennsylvanian.*

JOURNALS OF THE ASSOCIATION.

College Journal, Baltimore City College.
College Journal, Georgetown University.
College Student, Franklin and Marshall College.
Columbia Spectator, Columbia College.
Dickinsonian, Dickinson College.
Free Lance, Pennsylvania State College.
Haverfordian, Haverford College.
Lafayette, Lafayette College.
Lehigh Burr, Lehigh University.
Muhlenburg, Muhlenburg College.
Pennsylvanian, University of Pennsylvania.
Princetonian, Princeton College.
Red and Blue, University of Pennsylvania.
Review, Delaware College.
Swarthmore Phoenix, Swarthmore College.
University Mirror, Bucknell University.



SEASON OF 1891.

FREDERICK H. COCKS, '93, *Manager.*

JOSEPH M. PUGH, '94, *Leader.*

Mandolins :

JOSEPH M. PUGH, '94.

ROBERT C. MANNING, '93.

C. EDWARD GILPIN, '94.

BENJAMIN F. BATTIN, '92.

Banjos :

SAMUEL H. MATTSON, JR.

EDWIN P. BOND, '94.

Guitars :

WALTER W. HIBBERT, '93.

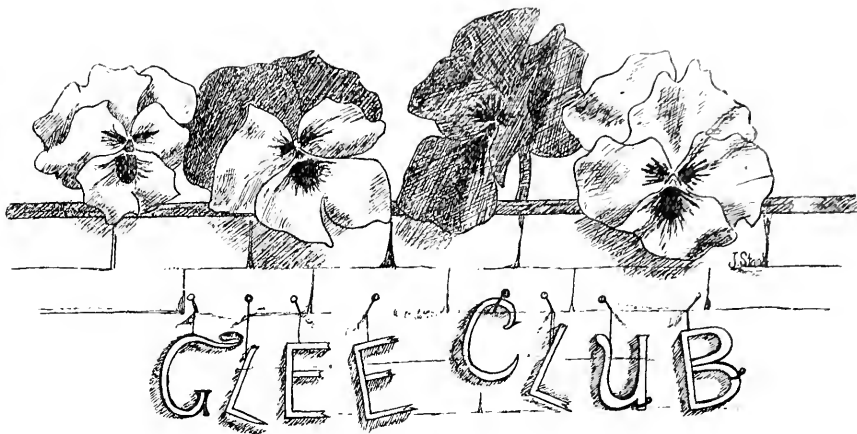
JEWELL FLOWER, '94.

CHARLES F. SWAYNE, '94.



Chamber

S. H. Mattson C. S. Swaine E. F. Bartin F. H. Calks W. W. Hilliard R. C. Mann J. J. J. P.



Absent Director :

PROFESSOR GEORGE A. HOADLEY.

Sopranos :

ANNIE HILLBORN, '92, Chief Manufacturer of Discords.

ELLEN PYLE, '92, No Music when she is Absent,

ANNA S. ATKINSON, '93, Does her Best.

EMILY Q. ATKINSON, '94, Model Expressionist.

Altos :

NELLIE PASSMORE, '91, General Manager.

HANNAH H. CLOTHIER, '91, Listens to Nellie and tries to follow.

HELEN R. HILLBORN, '94, Bashful Member.

Tenors :

PROFESSOR GEORGE A. HOADLEY.

BENJAMIN F. BATTIN, '92, Time-keeper.

FREDERICK N. CARR, '92, Much air—Little Music.

Basses :

EDWARD B. TEMPLE, '91, Strikes an Occasional Low Note.

GEORGE W. WARNER, '93, More Socially Inclined.

CHARLES F. SWAYNE, '94, A most Sonorous Voice.

Double Quartette.

MALE VOICES.

First Basses :

E. B. TEMPLE, '91.

GEO. W. WARNER, '93.

Second Basses :

E. A. JENKINS, '92.

C. F. SWAYNE, '94.

First Tenors :

B. F. BATTIN, '92.

E. P. BOND, '94.

W. W. HIBBERT, '93.

Second Tenors :

F. N. CARR '92.

H. S. PETTIBONE.

C. S. HALLOWELL, '93.



MDCCCXCI.
ESTHER HAVILAND.

MDCCCXCII.
JOSEPHINE BEISTLE.
PHEBE HALLOCK KETCHAM.
FLORENCE NIGHTINGALE WOLVERTON.

MARY ELIZABETH BROOMELL.
ELLEN PYLE.

MARY ELLEN ATKINSON.
ANNIE HILLBORN.
MARY LAING WOLVERTON.

ANNA SMITH ATKINSON.

MDCCCXCIII.
SARAH ELLEN WILLIAMS.

JANE ATKINSON.

HELEN R. HILLBORN.
ESTHER ELIZA SPICER.

MDCCCXCIV.
EMILY QUINBY ATKINSON.
CARRIE BELLE WAY.

MARY WILLETS TITUS.

Wigwam of the Big Ten.



Camp Pitched September 22, 1889.

War-whoop, "B. T. E. C., S. C., '95, Pres."

War-paint, Silver Gray and Navy Blue.

Warriors About the Council Fire:

CHICAGO FRANK, the Cow Boy Scout.

LONG-ISLAND-FRED, the Heap-Big-Tank.

THE-JERSEY-ELECTRICIAN, the Swarthmore Scout.

LOUD-NECK-TIE-UNDER-THE-BIG-CURL.

WHITE-HAIRED-BILL, the Admirer of the Squaws.

HEAP-BIG-MEDICINE-MAN, the Man-of-Many-Wives.

ROARIN-TUG-WATS, the Crum River Path Finder.



1890-91.

ESTABLISHED:—*March, 1890.*

OBJECT:—*To Economize Sugar.*

COLORS:—*Blue and White.*

President :

CLARENCE D. STONER, '93.

Secretary and Treasurer :

CLARENCE W. SMITH, '93.

Members :

CHARLES S. HALLOWELL, '93.

WILLIAM G. MAROT, '93.

JESSE H. REINHARDT, '93.

CLARENCE D. STONER, '93.

E. NEWLIN WILLIAMS, '93.

CLARENCE W. SMITH, '93.

The High Hat.



“LOOK HERE UPON THIS PICTURE AND ON THIS.”

THE MAN :

S. S. B-ND, '91.

“Man delights not me : no
Nor woman either.”—*Shakespeare.*

J. W. H-TCH-NS-N, '91.

“But man, proud man,
Drest in a little brief authority.”
—*Shakespeare.*

C. P. M-RT-ND-L-, '91.

“God made him, therefore let him pass
for a man.”—*Shakespeare.*

F. N. C-RR, '92.

“He was indeed the glass
Wherein the noble youth did dress
themselves.”—*Shakespeare.*

J. A. TH-Y-R, '93.

“Where, perhaps, some beauty lies,
The cynosure of neighboring eyes.”
—*Milton.*

THE MAN AND THE HAT :

“No reckoning made, but
Sent to my account,
With all my imperfections on my head.”
—*Shakespeare.*

“Which of you by taking thought
Can add one cubit to his stature.”
—*The Bible.*

“I know it's a sin
For me to sit and grin at him here ;
But the glossy stove-pipe hat,
And the breeches and all that,
Are so queer.”—*Adapted.*

“A combination and a form indeed,
Where every god did set his seal
To give the world assurance of a man.”
—*Shakespeare.*

“Dressed for service, and that hat upon
his head,
One might call him, a very son of fash-
ion bred.”—*Adapted.*



Inter-Collegiate Athletic Association.

OFFICERS.

President :

VICTOR MAPES, Columbia.

Vice-President :

FRANK R. COATES, Lehigh.

Secretary :

J. J. HACKETT, C. C. N. Y.

Treasurer :

E. A. CAROLAN, Cornell.

Executive Committee :

VICTOR MAPES, Columbia.

J. N. EMLEY, C. C. N. Y.

E. C. MOEN, Harvard.

H. CHEENY, Yale.

E. C. BAILLIE, Cornell.

Inter-Collegiate Athletic Association of Pennsylvania.

OFFICERS.

President :

R. W. ILLINGSWORTH, Dickinson.

Vice-President :

P. B. WINFREE, Lehigh.

Secretary :

CHARLES B. KETCHAM, Swarthmore.

Treasurer :

H. W. CHAMBERLAIN, Lafayette.

Executive Committee .

THE PRESIDENT, *ex-officio*.

F. R. COATES, Lehigh, *Chairman*.

F. H. LEE, University of Penna.

J. W. HUTCHINSON, JR., Swarthmore.

M. P. COLLINS, Haverford.

Colleges of the Association :

DICKINSON.

LEHIGH UNIVERSITY.

HAVERFORD.

SWARTHMORE.

LAFAYETTE.

UNIVERSITY OF PENNA.

FIFTH ANNUAL FIELD MEETING

OF THE

Inter-Collegiate Athletic Association

OF PENNSYLVANIA.

Philadelphia, May 17, 1890.

EVENT.	RECORD.	WON BY.	TIME OR DIST.
100 Yards Dash,	10½ sec.	C. J. TURPIN, (Dickinson),	10½ sec.
120 Yards Hurdle,	†17¼ sec.	W. ROBERTS, (Swarthmore),	*†17 sec.
Two Mile Bicycle,	6 min. 5½ sec.	J. S. REIGEL, (Lehigh),	6 min. 7 sec.
440 Yards Dash,	†53 sec.	W. H. WARRICK, (U. of Pa.),	54½ sec.
One Mile Run,	4 min. 39¾ sec.	E. H. MILLER, (U. of Pa.),	5 min. 2 sec.
One Mile Walk,	7 min. 20 sec.	F. R. COATES, (Lehigh),	7 min. 45½ sec.
220 Yards Hurdle,	†28 sec.	A. W. ATKINSON, (Swarthmore),	30½ sec.
Throwing the Hammer,	†89 ft. 7 in.	C. H. DETWILER, (Lehigh),	87 ft. 9½ in.
Running High Jump,	6 ft. 1¼ in.	W. ROBERTS, (Swarthmore),	5 ft. 7½ in.
Half Mile Run,	2 min. 3⅓ sec.	W. O. GRIFFETH, (U. of Pa.),	2 min. 7⅓ sec.
Running Broad Jump,	20 ft. 2 in.	W. ROBERTS, (Swarthmore),	†*20 ft. 4½ in.
Putting the Shot,	*36 ft. 6 in.	C. H. DETWILER, (Lehigh),	*37 ft. 5 in.
220 Yards Dash,	†23⅔ sec.	C. J. TURPIN, (Dickinson),	24½ sec.
Pole Vault	10 ft. 2 in.	W. ROBERTS, (Swarthmore),	9 ft.
Tug of War,		SWARTHMORE.	

* Penna. I. C. A. A. record broken.

† Records held by Swarthmore.

CUP AWARDED TO SWARTHMORE COLLEGE.



Walter Roberts,

Swarthmore on Track and Field.



EACH succeeding HALCYON chronicles some new departure in athletics at Swarthmore, and records the history of one year's attainments. Thus the facts presented in this volume extend over a space of time in which each branch of athletics has had full sway. The base ball nine and the track athletes and the tennis men all had their season; then came the time for foot ball. Its season ended, so a cycle is completed.

There is no need of lauding our athletes; their work commends itself. Swarthmore enthusiasm, restrained by the careful oversight of a director, gave to us the Pennsylvania I. C. A. A. Cup and the championship of the State. Too much cannot be said in praise of those who won points toward that cup, but especial credit is due to Walter Roberts, '90, whose picture we are pleased to present to our readers. A glance at the page containing the record of the field meeting of the Penna. I. C. A. A., and also the one containing the record of our meeting on Whittierfield, shows that our athletes were in the class of '90. They are gone, but the enthusiasm and the director which won the cup last year, still remain. It lies within the power of our students to say what shall be the disposition of the cup at the next and at each succeeding meeting. Shall it remain at Swarthmore?

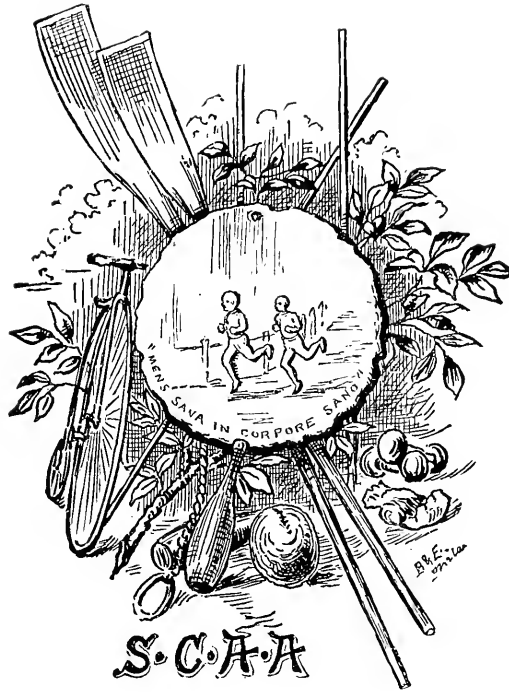
In tug-of-war, Swarthmore's stronghold, she has been particularly efficient during the past year. The College team won the state championship at the annual meeting of the Pennsylvania I. C. A. A., and third place at the Inter-collegiate Athletic Association, at New York, thus engraving Swarthmore's name on the Cup of the Association for the first time. The light-weight team won the championship of Philadelphia, and has the enviable record of never having lost a contest.

The present Halcyon year has seen the development of base ball to such an extent that Swarthmore has been able to put a creditable team in the field. Under the present management we look for still greater success during the coming year. A cup has been presented to the college by Mr. George W. Childs, and is known as the "Childs Cup." This trophy has been valuable as a means of developing new men for the college team, and is to be competed for annually by teams from the various classes. Last year the championship and the cup were won by the Sub-Collegiate Class, '94.

In football the lack of material has been more than counterbalanced by the thorough training and conscientious work of the men. This season has been the most successful in the history of the college. This success is largely due to the work of the college team, but we should also remember that much credit is due to those men who, day after day, without any hope of playing on the college team, came out and played on the "reserves," that the first team might have practice. Without further remark on the teams, we refer the reader to the scores, with the reminder that Swarthmore is not a university and has no aspiration in that line.

Probably the most important change has been in the instituting of an Alumni Advisory Committee. It is needless to say that this is a move in the right direction. Real success can only be reached by the co-operation of the alumni and students. If it be only the approval of the alumni, it has its good effects.

Each year loses to us some who are distinguished for athletic ability. Their loss is always apparent, and this year it is especially noticeable. Each one should do his best, and thus by combined effort strengthen the breach made by those who have gone. The HALCYON has presented things as they are at present ; the future depends on the students.



Swarthmore College Athletic Association.

OFFICERS.

President :

EDWARD B. TEMPLE, '91.

Vice-President :

JOHN F. MURRAY, '92.

Secretary :

FRED. H. COCKS, '93.

Treasurer :

HOWARD B. GREEN, '92.

Athletic Council :

THE PRESIDENT, *Chairman Ex-officio.*

JOHN W. HUTCHINSON, JR., '91, Manager of Track Athletics.

WILLIAM C. SPROUL, '91, Manager of Foot Ball.

SAMUEL S. BOND, '91, Manager of Base Ball.

FRED. NEAL CARR, '92, Manager of Tennis.

Delegate to I. C. A. A. :

JOHN W. HUTCHINSON, JR., '91.

Delegates to Pa. I. C. A. A. :

JOHN W. HUTCHINSON, JR., '91.

WILLIAM C. SPROUL, '91.

CHARLES B. KETCHAM, '92.

Alumni Advisory Committee :

DR. EDWARD MARTIN, '78.

CHARLES R. MILLER, '79.

JAMES E. VERREE, '83.

E. LAWRENCE FELL, '88.

WALTER ROBERTS, '90.

TWENTY-SECOND FIELD MEETING.

Whittierfield, May 10, 1890.

EVENTS :	WON BY :	PERFORMANCE :
100 Yards Dash,	W. E. SWEET, '90,	10 $\frac{2}{3}$ sec.
Two Mile Bicycle Race,	H. L. HEULINGS,	7 min. 30 $\frac{1}{2}$ sec.
Running Broad Jump,	W. ROBERTS, '90.	19 ft. 7 $\frac{3}{4}$ in.
Half Mile Run,	M. L. CLOTHIER, '90,	2 min. 14 $\frac{1}{3}$ sec.
Throwing the Hammer,	B. S. McILVAIN, '92,	85 ft. 6 in.
One Mile Run,	M. L. CLOTHIER, '90,	5 min. 30 $\frac{2}{3}$ sec.
220 Yards Dash,	W. E. SWEET, '90,	25 sec.
Pole Vault,	W. ROBERTS, '90,	9 ft. 5 in.
440 Yards Dash,	M. L. CLOTHIER, '90,	58 $\frac{1}{2}$ sec.
Running High Jump,	W. ROBERTS, '90,	5 ft. 6 in.
Putting the Shot, (16 lbs.),	A. W. ATKINSON, '90,	32 ft. 11 in.
120 Yards Hurdle Race,	W. ROBERTS, '90,	*17 $\frac{2}{3}$ sec.
One Mile Walk,	R. C. MANNING, '93.	8 min. 10 sec.
220 Yards Hurdle Race,	W. ROBERTS, '90,	28 $\frac{2}{3}$ sec.

* College Record Broken.

POINTS FOR PHOENIX CUP.

	'90.	'91.	'92.	'93.
At Fall Meeting,	74.	11.	13.	10.
At Spring Meeting,	62.	3.	14.	21.
TOTAL,	136.	14.	27.	31.

PHOENIX CUP AWARDED CLASS OF '90.

Swarthmore's Records and Record Makers.

One Hundred Yards Dash.

J. FITCH, $12\frac{1}{2}$ sec., 1878. T. L. MOORE, $11\frac{1}{3}$ sec., 1880.
S. PRICE, $12\frac{1}{2}$ sec., 1878. W. F. DOWDALL, $10\frac{2}{3}$ sec., 1880.
I. D. WEBSTER, $10\frac{2}{3}$ sec., 1887.

Two Hundred and Twenty Yards Dash:

— — PALMER, 26 sec., 1877. T. L. MOORE, $23\frac{2}{3}$ sec., 1880.

Four Hundred and Forty Yards Dash :

W. FENDER, 60 sec., 1877. S. KEEMPLÉ, 53 sec., 1879.

One Half Mile Run :

R. W. MORTON, 2 min. $32\frac{1}{2}$ sec., 1878. J. CALEV, 2 min. $11\frac{1}{2}$ sec., 1880.
H. S. WOOD, 2 min. 24 sec., 1879. H. B. FORMAN, JR., 2 min. $8\frac{2}{3}$ sec., 1888.

One Mile Run :

H. C. SHAFER, 5 min. 56 sec., 1882. F. A. BRASTOW, 5 min. 38 sec., 1883.
W. L. ELKINS, JR., 5 min. $53\frac{1}{4}$ sec., 1882. I. D. WEBSTER, 4 min. $58\frac{1}{3}$ sec., 1886.
CHAS. MILLER, 5 min. $41\frac{1}{4}$ sec., 1883. H. B. FORMAN, JR., 4 min. 39 sec., 1886.

One Hundred and Twenty Yards Hurdle Race :

— — PALMER, 21 sec., 1877. I. D. WEBSTER, $17\frac{2}{3}$ sec., 1886.
R. HIGGINS, 19 sec., 1878. W. ROBERTS, 17 sec., 1890.

Two Hundred and Twenty Yards Hurdle Race :

H. G. VERNON, 28 sec., 1889.

Two Mile Bicycle Race :

T. M. LIGHTFOOT, 7 min. 41 $\frac{3}{4}$ sec., 1887. F. W. SPEAKMAN, 7 min. 5 $\frac{1}{2}$ sec., 1888.
H. L. HEULINGS, 6 min. 48 sec., 1889.

One Mile Walk :

W. L. ELKINS, JR., 9 min. 48 $\frac{1}{2}$ sec., 1879. R. HOOPES, 8 min. 45 sec., 1882.
T. T. KIRKLAND, 8 min. 50 $\frac{2}{5}$ sec., 1880. H. SMITH, 8 min. 32 sec., 1886.
D. BAUMM, 8 min. 47 $\frac{2}{5}$ sec., 1881. E. M. HARVEY, 8 min. 9 sec., 1888.

Putting the Shot :

J. FITCH, 29 ft. 10 in., 1878. T. L. MOORE, 31 ft. 7 $\frac{3}{4}$ in., 1879.
W. LUKENS, 36 ft., 1881.

Throwing the Hammer :

A. SHOEMAKER, 55 ft. 10 in., 1878. T. L. MOORE, 82 ft. 2 in., 1880.
W. A. CHRISTY, 89 ft. 5 in., 1888.

Running Broad Jump :

T. MOORE, 16 ft. 6 in., 1877. C. FIELD, 18 ft. 7 in., 1879.
W. BUTLER, 16 ft. 11 $\frac{1}{2}$ in., 1878. T. L. MOORE, 18 ft. 7 $\frac{1}{4}$ in., 1879.
I. D. WEBSTER, 20 ft. 10 $\frac{1}{2}$ in., 1887.

Pole Vault :

S. CLAYTON, 8 ft. 6 in., 1880. E. M. SMEDLEY, 9 ft. 7 $\frac{1}{2}$ in., 1884.
W. H. SEAMAN, 9 ft. 8 $\frac{1}{2}$ in., 1888.

Running High Jump :

L. HOPPER, 4 ft. 7 in., 1877. W. BAUER, } Tie; 5 ft. 2 in., 1880.
J. FITCH, 4 ft. 11 in., 1878. S. CLAYTON, }
L. HOPPER, 5 ft. 1 in., 1879. I. D. WEBSTER, 5 ft. 11 $\frac{1}{4}$ in., 1887.

Swarthmore College Athletic Association.

(INDEPENDENT.)

President :

F. H. COCKS, '93.

Vice-President :

C. A. BALLINGER, '94.

Secretary :

P. A. STEFFIAN.

Treasurer :

H. C. PARRISH.

Field Captain :

A. K. WHITE.

Members :

C. A. BALLINGER.

L. R. BLYNN.

I. C. BURROUGH.

C. R. BUCK.

F. N. CARR.

A. CASS.

W. CLOTHIER.

F. H. COCKS.

G. E. COOK.

W. HIBBERT.

A. KRAKAUER.

I. LEIPER.

C. D. WHITE.

S. MATTSON.

J. N. MORRIS.

J. F. MURRAY.

E. PARRISH.

H. PARRISH.

H. SIMMONS.

A. STAAB.

J. STAAB.

P. A. STEFFIAN.

W. W. SHATTUCK.

J. A. THAYER.

G. W. WARNER.

A. K. WHITE.

Pennsylvania
Inter-Collegiate Foot Ball League.

President :

W. M. IRVINE, Franklin and Marshall.

Vice-President :

WILLIAM C. SPROUL, Swarthmore.

Secretary :

MINTURN P. COLLINS, Haverford.

Treasurer :

C. H. HILE, State College.

Colleges of the League :

BUCKNELL,

DICKINSON,

HAVERFORD,

FRANKLIN AND MARSHALL,

STATE COLLEGE,

SWARTHMORE.

Foot Ball.

1890.

W. C. SPROUL, '91, MANAGER.
 JOHN F. MURRAY, '92, CAPTAIN.

The Team :

B. S. McILVAIN, '92, 5¼.
 E. HART, '93, 4½. C. HART, '92, 6.
 R. W. LIPPINCOTT, '94, 2½. E. B. TEMPLE, '91, 5¾.
 F. N. CARR, '92, 5¾. JOS. M. PUGH, '94, 4¼.
 J. F. MURRAY, '92, 6.
 H. B. GREEN, '92, 2. E. P. BOND, '94, 6.
 S. S. BOND, '91, 2¾.

Substitutes :


F. H. COCKS, '93, 4. J. J. WALKER, '92, 2¼ W. L. WATSON, '93, 2¼.
 C. B. KETCHAM, '92, 4. C. SAXMAN, '94, 0.

Captain for 1891 :

JOHN F. MURRAY, '92.

Games Played :

	SCORE.	
	Opponents.	Swarthmore.
October 1, with University of Penna., at Swarthmore,	10	0
October 4, " Delaware College, at Swarthmore,	0	54
October 9, " Lehigh University, at Bethlehem,	50	0
October 25, " Dickinson, at Carlisle,	8	0
November 15, with Georgetown University, at Washington,	0	20
November 22, " Haverford, at Haverford,	14	30

 Figures after name indicate number of games played.



R. W. Loppinoff, J. J. Walker, H. B. Green, W. C. Sproull, C. E. Ketcher, J. Hart, F. P. Bond
G. Hart, F. B. Temple, S. S. Bond, J. E. Murray, E. S. Mellykain, W. T. Watson, F. N. Carr
F. H. Cooks, I. M. Pugh

Base Ball.



SAMUEL S. BOND, '91, Manager.

JOS. M. PUGH, '94, Captain.

Base Ball, 1890.

W. E. SWEET, '90, *Manager.*

JOHN F. MURRAY, '92, *Captain.*

THE TEAM.

H. B. COLES, '92.
 R. W. LIPPINCOTT, '94. SAMUEL S. BOND, '91.
 H. L. HEULINGS, '94. GEO. H. BROOKE, '93.
 JOSEPH M. PUGH, '94,
 W. H. BROOKE, '93. JOHN F. MURRAY, '92.
 E. P. BOND, '94.

GAMES PLAYED.

	Opponents.	Swarthmore.
April 23, with U. of Pa. Reserves, at Philadelphia,	10	1
May 3, " Haverford, at Swarthmore,	1	16
May 7, " Dickinson, at Carlisle,	9	7
May 12, " U. of Pa. Reserves, at Swarthmore,	10	7
May 21, " Muhlenburg, at Swarthmore,	2	10
June 11, " W. C. S. N. S., at West Chester,	1	4

INDIVIDUAL RECORDS.

BATTING ORDER	GAMES PLAYED	RUNS	TIMES AT BAT	HITS	BATTING AVERAGE	PUT OUTS	ASSISTS	ERRORS	FIELDING AVERAGE
E. BOND, c. f.....	4	4	17	5	.294	1	1	2	.500
G. BROOKE, s. s.....	5	6	20	6	.300	3	15	3	.857
LIPPINCOTT, 1b.....	4	5	16	3	.188	48	1	3	.942
COLES, c.....	5	2	19	8	.421	32	12	6	.880
S. BOND, 3b.....	5	3	19	4	.211	15	6	2	.913
PUGH, 2b.....	3	4	11	1	.091	7	5	3	.800
W. BROOKE, r. f.....	4	4	13	3	.231	1	0	0	1.000
MURRAY, l. f.....	5	4	15	5	.333	5	2	0	1.000
HEULINGS, p.....	4	5	15	2	.133	2	29	3	.912
SUBSTITUTES									
KETCHAM 1b.....	2	2	5	0	.000	12	4	2	.888
CLARK, r. f.....	1	1	4	1	.250	0	0	0	
STONER, c. f.....	1	0	3	0	.000	0	2	1	.666
COCKS, 2b.....	1	0	3	0	.000	2	1	2	.600
MARTINDALE, s. s....	1	0	3	1	.333	1	3	1	.800



R. W. Lippincott,
H. L. Headings,

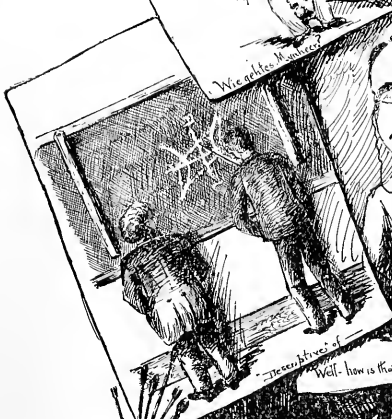
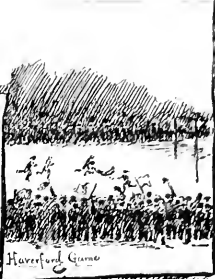
B. P. Bond,
H. B. Cole,

C. E. Ketchum,
S. S. Bond,

J. L. Murray,

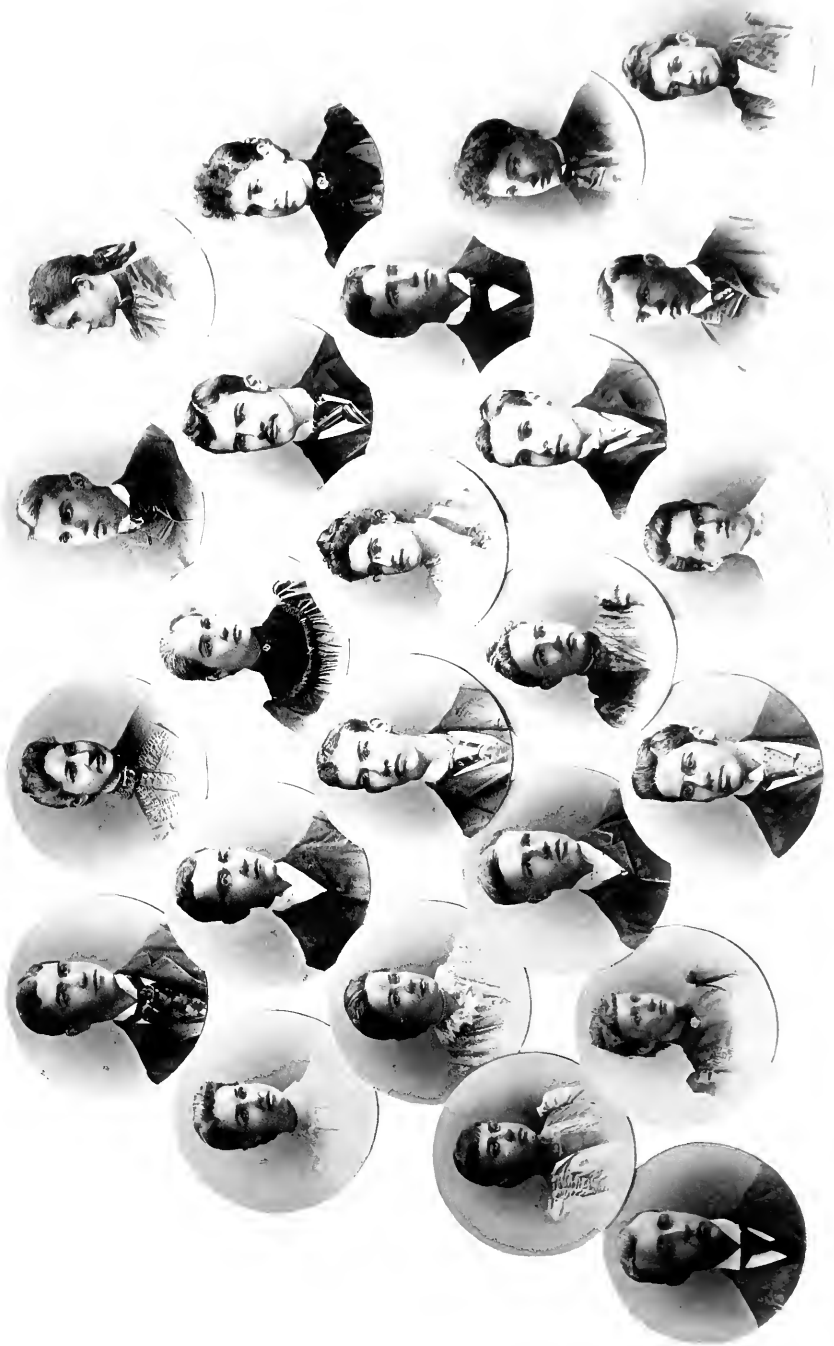
W. H. Brooks,
G. H. Bishop,
A. M. Pugh

Scraps



Prologue.

Ye muses look down from your mountain-top cold
On your far-off Grecian shore,
And, as you did for the poets of old,
Give mortals your aid once more!
Erato, Thalia, Calliope, come!
For yours are the Arts we need,
But to our dull ears your fine voices are dumb,
Our prayers you nevermore heed.
Once again the Halcyon days are here,
And is heard the busy sound
Of Juniors writing far and near,
When they've an idea found.
Some spend the long day writing rhymes
That have no obvious ends;
And others have the gayest times
Finding sentiments for their friends.—
Now, through merry labor our book is done,
And Junior ninety-three,
The next year's Halcyon work and fun
In turn descends to thee.



What They Say of Us.

-LL-N -TK-NS-N :—

“If grief thy steps attend,
If want or sickness be thy lot,
And thou require a soothing friend
‘Forget-me-not—forget-me-not.’—*Mrs. Opie.*

“Love leads to present rapture, then to pain,
But all through love in time is healed again.”—*Leland.*

R-S-M-ND B-A-K-R :—

“I am that Rosamond whom men call fair.”—*Tennyson.*

“If what I was, I be—
A prodigy of learning.”—*Anon.*

B-NJ-M-N B-TT-N :—

“Ful lowd he sang : ‘Come hider, love, to me.’”—*Chaucer.*

J-S-PH-N- B- -STL- :—

“Fair, strong, armed, but to be won by force.”—*Tennyson.*

M-RY BR- -M-LL :—

“With innocence and beauty in her eyes.”—*Gay.*

FR-D C-RR :—

“Oh a most dainty man
To see him walk before a lady and bear her fan.”—*Shakespeare.*

R-O-B-RT- D-X-N :—

“ There is a gift beyond the gift of art, of being eloquently
silent.”—*Bovee*.

H-W-RD --V-NS-N :—

“ A lion among ladies is a most dreadful thing.”—*Shakespeare*.

H-NRY G-RR-TT :—

“ With teachers he will never disagree.
If they'll recite, great goodness! why should he?”

H-W-RD GR -- N :—

“ A *merrier* man I never spent an hour's talk withal.”—*Anon*.

CH-RL-S H-RT :—

“ Upright, hearty and robust.”—*Dickens*.
“ Well, what are you goin' to do about it?”—*C. H.*

-NV -- H-LLB-RN :—

“ Music and poetry are her delight.”—*Marlowe*.

-DW-RD J-NK-NS :

“ Full well they laughed with counterfeited glee
At all his jokes, for many a joke had he.”—*Goldsmith*.

PH-B- K-TCH-M :—

“ Constant at feasts, and each decorum knew.”—*Garth*.

CH-RL-S K-TCH-M :—

“ He looked unutterable things.”—*Thompson*.
“ Her stature tall ; I hate a dumpty woman.”

H-NRY Mc-LL-ST-R:—

“ Him of the western dome, whose weighty sense
Flows in fit words and heavenly eloquence.”—*Dryden*.

C-RL--McCl-R-.—

“ He is a *freeman* whom the truth makes free.”—*Cooper*.

B-RN-RD Mc-LV--N.

“ His limbs were cast in manly mold
For hardy sports or contest bold.”

J-HN M-RR-Y:—

“ Though I cannot talk to a woman
And use my phrases and my learned figures,
Yet I can fight with any man.”—*J. Fletcher*.

G--RG--P-RT-R:—

“ I value science ; none can prize it more.”—*Abraham Coles*.

-LL-N PYL-:—

“ What she undertook to do, she did.”—*Dickens*.

C-RN-L--SH--M-K-R:—

“ She has many nameless virtues.”—*Shakespeare*.

M-RY ST-BB-NS:—

“ I've had my flirtation times.”
“ Her crisped locks, like threads of gold,
Appear to each man's sight.”

J-S-PH W-LK-R:—

“Was there ever such a man with such a flow of eloquence?”
—*Dickens*.

W-LL- -M W-LT-R:—

“Nothing, if not critical.”—*Shakespeare*.
“His discourse is like his behavior, uncommon but not un-
pleasing—he is prodigal of neither.”—*Ben Jonson*.

FL-R-NC- W-LV-RT-N:—

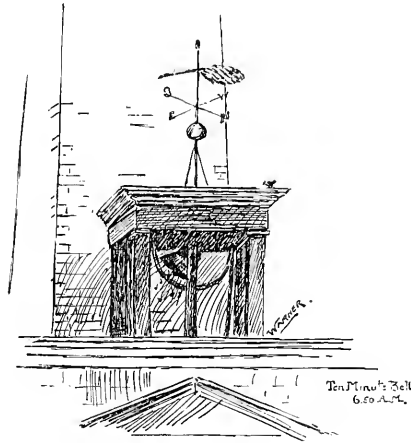
“Always obliging and without offense,
And fancy'd for her gay impertinence.”—*Garth*.

M-RV W-LV-RT-N:—

“She had eyes that could speak, though her tongue were silent.”



The Ten-Minute Bell.



When first the rays of morning light,
Steal in upon my weary sight,
When from their flight I fain would keep
The fast departing hours of sleep.

Then rudely breaks upon my ear
The sound for which in trembling fear
I've waited long—I cry "Do tell!
"That isn't the Ten-minute Bell!"

Ten-minute Bell! thy name brings back
A world of memories on its track,
Of gay glad Spring days, sweet and clear,
Of Winter mornings, cold and drear.

The students give thee morning greeting,
With sentiments not meant for meeting,
When that sad hour, 6.50's rung
Spitefully from thy brazen tongue.

Old bell, each time thy voice is heard
For haste not rest it gives the word,
Thee calls to study and to work,
To tasks we sometimes fain would shirk.

Thee warns us, morning, noon and eve,
When sleep or pleasure we must leave,
When we must turn to duty's way,
And books and pens exchange for play.

BOARD OF EDITORS	ALIAS	FAVORITE HAUNT	FAVORITE OCCUPATION	DESCRIPTION	WHAT THEY DID AT HALCYON MEETINGS
HENRY McALLISTER, JR..... <i>Eddie</i>	"Phoenix" Room	Public Speaking	Must be seen to be appreciated	{ Captured Tick-Tacks made every-one else work
MARY L. WOLVERTON..... <i>Merix</i>	Dentists	Studying Contours	Small, but Oh my!	{ Said she couldn't write poetry, but did
CHARLES HART..... <i>Boettie</i>	Dining Room	Waiting on Table	An excellent, large man	{ Smiled and kicked
M. ELLEN ATKINSON..... <i>Melon</i>	Crum Creek	Skating	Dignity Personified	{ Advised everyone to do something.
HOWARD N. LAVENSON..... <i>Nick or Erny</i>	Unknown	Co-Education	Baffles Description	{ Kept a great sweet silence
ELLEN PYLE..... <i>Pell</i>	Room 20	Making Unea thy Music	Smiled Sweetness long drawn out	{ Raised the Temper-ture of the Room, now and then.
EDWARD A. JENKINS..... <i>Edard</i>	Front Hall, after dinner	Making Puns	Words are Inadequate	{ Retired behind the curtain.
MARY E. BROOMELL..... <i>Mary Lisa</i>	In Front of Room R	Dissecting Felines	Sweet Simplicity	{ Acted as Secretary in an original way
HOWARD B. GREEN..... <i>Buckie</i>	Room H	Day-Dreaming	Nice Little Boy	{ Acted as general dissenter
PERE H. KETCHAM..... <i>Phoebus</i>	Hammock in No. 10	Doing Nothing	?	{ Occasionally made a suggestion
WILLIAM E. WALTER..... <i>Billie</i>	"Home"	Talking	Concentrated Sarcasm	{ Showed his good sense, by keeping out of discussions

Our Waiters.



Now one year has quickly passed
Since was written by the poets,
Of that class, called Ninety-one,
That perhaps things might be altered,
So that in the far-off future,
The poor boys would be excused
From that long and irksome task,
Waiting on the dining table.
We remember them, at dinner,
Running quickly, after bread,
Going to the pump for water.
But this now has all been altered,
And the old familiar scenes
That were then so entertaining,
Have been changed by introducing
In the feasting hall at S'more,
Some new features known as waiters.
When at six we quickly gather,
And the silent grace is ended
Then the door is quickly opened
And from out its open portals
All these useful persons pour.

They are all of different sizes,
Some are short and some are tall,
Some are thin and others stouter.
Some move quickly, others more so,
More resembling in their movement,
That old creature called the snail.
We can find among their numbers
Some such famous ones as these :
Jack and Charley, noted athletes,
Famous on the foot-ball field,
Mary, often called Sylph ;
Old Aunt Rachel but none swifter
And the relic of that hero,
Famed McGinty do we find.
They've the virtue of variety,
Yet in spite of all their faults
We appreciate most fully
Their strong worth and usefulness,
And we thank our college rulers
For the benefit bestowed,
And we say gratefully, truly,
Thanks for these, our useful waiters.

The Feasters.

A FARCE :—FOUNDED ON FACT.

PERSONÆ.—Old Professor, German, or partly so ; Young Professor of M. T. S., Fred and George, room-mates ; Ike, Sam, Ellis, Megarge and a sub, guest of Fred and George.

SCENE.—An American College.

Third Floor, West Wing, 10.30 P. M.

[Room of Fred and George, after a feast of crackers and weak lemonade, through which, evidently, the lemons have passed on stilts. The room-mates discovered with their friends, in negligé costumes and attitudes on the two beds. Lights are out but some light shines in from the hall. Conversation is becoming animated as to some disputed points in a foot ball game.]

YOUNG PROFESSOR (*facetiously, as he comes up the hall.*) “Young men, skedaddle !”

[Ike, Sam and Ellis dive under one bed ; the rest of the guests crawl under the other, which rolls around on its castors ; arms, legs, and coat-tails protruding. Continued scuffling.]

YOUNG PROF. (*entering, still facetious.*) “Say boys, knock off for to-night, will you ?”

[Fred shuts the door behind him, and leaves all in darkness. YOUNG PROF. is afraid of pillows, and quickly retires to get matches.]

GEORGE (*to Ike*) : “Pull in your feet, he can see you.” (*to Sam*) : “Take in your tails, Sam.” (*to Ellis*) : “Look out for that violin-box under there,—if you smash that——”

Re-enter Y. PROF. (*with matches.*)

Y. PROF. “Now then, clear out !”

FRED. “Crackers, Professor? Pass ’em over George.”

Y. PROF. "I don't want you fellows to make so much noise in here."

GEORGE. "I didn't make any noise."

Y. PROF. "Yes you did, I *saw* you."

Enter OLD PROFESSOR (*in dishabille.*)

OLD PROF. (*talking from force of habit.*) "Heigho! Vot is der matter here? If you young shentlemen vishes to make die noise in here, go outside, vill you?"

Y. PROF. "Professor can I trouble you to get that big cane out of my room, to poke these fellows out? They're under the bed."

O. PROF. (*a staunch supporter of order.*) "Yes, I will get him." [Re-enters immediately with cane.]

O. PROF. (*prodding under the nearer bed.*) "Come out, now."

[Muffled sounds of "oh!" "ah!" etc., and some scuffling.]

O. PROF. (*still prodding.*) "Take dot, an' dot. *Accipe hoc*, as der Latins say, an' *hoc*" (prods more vigorously.)

MEGARGE (*angrily, as he is bearing the brunt of the attack, and is thinking of capitulating.*) "Hey, let up on that, a minute, will you?"

[Smothered laughter from the other bed. Some one seizes the cane and releases it suddenly. O. PROF. staggers against Y. PROF. and puts out the match.]

O. PROF. "Donner—r—r! Ve moost haf zome light vich goes not out."

Y. PROF. (*still afraid.*) "Yes of course, lets go and get it."

[Both go out. While they are gone, all but the Sub (who hasn't time to get out) come from under the beds and enter the closet.]

IKE. (*in the closet.*) "Oh, my ribs!"

SAM. (*in the closet.*) "Didn't know the old fellow owned so much muscle."

MEGARGE. (*scared and sober.*) "We're in for it now, fellows."

ELLIS. "Never say die, brother."

FRED. (*outside.*) "Look out there,—here they come."

Re-enter PROFS. (*with stick and candle.*)

O. PROF. (*to Fred and George.*) "Now come oft dese betts, quick!"

(*they come off.*) "Now young shentlemens, I vill state dis makement for your benefit—you must come from under dat bett."

[No answer. O. PROF. explores with the candle.]

O. PROF. (*his face to the floor.*) "Gracious! dey are all gone."

Y. PROF. "No, hold on a minute; let me look."

[Explores one bed carefully and finally discovers the Sub, under the mattress. Pulls him out and holds him by the ear.]

Y. PROF. "It's you, is it?"

SUB. (*after reflection.*) "Yes."

Y. PROF. (*tersely.*) "Git!"

[Exit Sub., holding his ear. Racket is heard down the hall, Y. PROF. is compelled to go out and see to it.]

O. PROF. (*hearing a noise in the closet.*) "Zo! in die closet, hey? Vie moost carry die war into Africa." (*to Fred and George.*) "Die room vill be helt responsible, mein herrn."

[Places the candle on the table, and goes to the closet. Fred manages to over-turn the candle and to abstract the matches. O. PROF. opens the door into the hall, and it now remains open. He tries the door of the closet but the knob is held on the inside.]

O. PROF. "Ha! Zo? Vell, I haf no hurry. Dis is a zoft bett."

[Enters Fred's bed, which is near by, at right angles to the door of the closet.]

O. PROF. (*pleased at the fix the boys are in now.*) "I dere are six in der closet, den ve vill make die seven sleepers, hey?"

[Silence for twenty minutes. The atmosphere in the closet becomes close. O. PROF. drowns a little. Suddenly the door is burst open, a heavy overcoat is thrown over O. PROF.'s head and shoulders and all rush past and escape into the hall. O. PROF. sets up and disentangles himself from the overcoat.]

O. PROF. (*who, after all, admires successful strategy.*) "Ho, ho. Dot vas pretty well done." [Goes out.]

FRED and GEORGE. "Good night, Professor."

CURTAIN.

The Swarthmore Advertiser.

ALL NOTICES IN THESE COLUMNS TEN CENTS PER LINE FOR FIRST INSERTION,
FIVE CENTS FOR EACH SUBSEQUENT ISSUE.

NOTICE!

NOTICE!!

JUST OUT.

HALCYON, '92.

Read What the Critics have said:

"There will not be any HALCYON this year."—*W. C. S., '91.*

"The manager has run the HALCYON into the ground."—*E. C. W., '91.*

On account of the real estate on the cover, due to its being "run into the ground," the Staff has deemed it advisable to raise the price to Seventy-five Cents. Copies may be had on application to *any Member of the Staff.*

Wanted.—A position in a respectable business house where there will be a chance to rise. Can furnish a silk hat, ebony cane and, *possibly*, a B. L. Diploma. *C. Persimmons Nightingale.*

Wanted—IMPORTANT.—A few more students can be accommodated in the Senior German Class. Owing to our motto, "If you want to make a noise in here go outside," unusual quiet prevails and excellent work is the result.

Wanted.—Rest! The rest of anything will answer the purpose—rest of the cake, rest of the pie, crackers, lemonades, etc. Address, *C. H., No. 83 West Wing.*

Wanted.—A room, 8 x 10, with no windows and only one door, perfectly air-tight. The walls should be padded so that the sound cannot penetrate. *S. C. Glee Club.*

Wanted.—An experienced chemist to analyze the Sunday supper cake.

WANTED.

Wanted.—Funds for the Somerville Hall.

Wanted.—A civilized breakfast hour.—A. M. P.

Wanted.—The earth. By the Φ. Κ. Ψ.

Wanted.—By the girls. A new gymnasium.

Wanted.—A new stock of fresh smiles, as my collection is about exhausted.
—C. KETCHAM, '92.

Wanted.—A refined, handsome and well educated butler for three maiden ladies.
Best of references required. Address, Dew Drop In, Pratt Ave.

FOR SALE.

Horse Sale.—Ponies for all uses, English, Greek, Latin, German, Chemistry, etc.
Warranted neither to bite nor kick.—C. B. K., '92.

For Sale.—On the day after commencement, will be sold at a discount:

1 Cap and Gown,

1 High Hat.

1 Cane.—*Senior.*

Public Sale.—Will be sold at auction, June 19, 1891, W. W. Nursery, Children's
Toys, including Rocking Horses, Dolls, Books, etc. As we expect to enter college in the
fall, we will sell everything.—L. R. BLYNN, '95.

For Sale.—Cheap to '93, quantities of good unused advice in regard to the publi-
cation of college annuals. Apply, Ed. '92 HALCYON.

For Sale Cheap.—My mortgage on the West Campus of Swarthmore College.
This step is only taken owing to my removal from college about the middle of June.
—W. C. S., '91.

For Sale.—A good assortment of cushions. Each cushion contains ample stable
room for ponies of all sizes. Class '93.

FOUND.

Found.—An idea, evidently rare and valuable, on Oak Avenue between college
porch and first tier of steps. Owner must be able to identify.

Discovered!—The earthly paradise of the ancients. Address, S'more College
Reading Room.

Found.—That we don't know as much as we thought we did. '93.

SPECIAL NOTICES.

We desire to notify the public that whenever encored, we will repeat the same song, thus enabling anyone who may desire to learn it.—YOUNG MEN'S DOUBLE QUARTETTE.

Notice.—In view of the serious misfortune which has overtaken Swarthmore regarding the presidency, and realizing the great perplexity consequently attendant upon the managers, I do hereby offer myself to fill the vacancy for such time as may be convenient.—J. W. II., JR., '91.

GRAND CONCERT.

TO BE HELD WHENEVER DESIRED.

MANAGER, SWAYNE.

BANJO SOLO,	Charles Swayne
SONG— <i>The Donkey's Lay</i> ,	C. S. Sw-yn-
SONG, WITH GUITAR ACCOMPANIMENT— <i>How I Won the Cup</i> ,	C. Samuel Swayne
WHISTLING FROM BOHEMIAN GIRL,	Charles Samuel S.

“JOHNNY GIT YOUR GUN.”

Guns.—I have constantly on hand guns of every description. Large guns, small guns, revolvers, pistols, pop-guns, etc. Anyone wishing to try their skill can do so by calling at Room 67, 3d floor.

To Students.—Lights furnished from my inexhaustible natural gas well or electric light plant.—MEGARGE-, '94.

BOOK NOTICES.

Just Out.—Several new and valuable works, by noted authors: “Guide to the Translation of the Works of Cicero,” with grammar attached; notes extremely original: shows great erudition.—BICYCLE & BAKER. “Improved Methods of College Management.”—J. HUTCHINSON. “Advantages of Silent Pondering and Meditation.”—MARCUS A. WHITE. “A Glimpse Into New York Society,” a charming and well-known work.—S. BRIGHTSON. “Co-education as I Have Found It,” by J-HN M-RR-Y. This book shows that the author has given the subject careful study.

Our Exports Labelled.

-M-LY-TK-NS-N :—

“Thy pathway lies among the stars.”—*Anon.*

S-M- -L B-ND :—

“Oh Solitude, where are the charms that sages have seen on thy face?”—*Cowper.*

C-SM-L- - BR-WN :—

“So wise, so young they say, do ne'er live long.”—*Shakespeare.*

“Oh coz, coz, coz, my pretty little coz.”—*Shakespeare.*

L- - -S CL-RK :—

“Muttering his wayward fancies he would rove,
Now drooping, woful, wan, as one forlorn,
Or crazed with care or crossed in hopeless love.”—*Gray.*

H-NN-H CL-TH- -R :—

“Impulsive, earnest, prompt to act.
And make her generous thoughts a fact.”—*Whittier.*

-V- D-N- -LS :—

“There was also a nonne, a prioress
That of her smiling was full simple and coy.”—*Chaucer.*

-L-Z- H-MPT-N :—

“She trembled when a man drew near,
Salute her and she turned her ear.”—*Swift.*

-S- -C H-RP-R :—

“Which not even critics criticize.”—*Cowper.*

-STH-R H-V-L-ND :—

“And yet, good faith, I wished myself a man, or that we women
had the privilege of speaking first.”—*Shakespeare.*

-I-Z- H-LM-S :—

“She speaks poignards and every word stabs.”—*Anon.*

“A coquette by nature.”—*Dickens.*

J-HN H-TCH-NS-N :—

“The majority of men are perfect, take me for example.”

—*Dickens.*

D-R- L-W-S :—

“The best of her is, that she’s so weak.”—*Dickens.*

L-CY L-PP-NC-TT :—

“Beautiful as sweet,
As young as beautiful, and soft as young,
And gay as soft, and innocent as gay.”—*Young.*

CH-ST-R M-RT-ND-L- :—

“As short and dark as a midwinter’s day.”—*Anon.*

H-NRY MCD-N-LD :—

“O that those lips had language!”—*Anon.*

S-R-H M- -R- :—

Dost thou love pictures?

M-TCH-LL P-LM-R :—

“Your conversations always equal to print, sir.”—*Dickens.*

“An excellent large statesman.”—*A. M. P.*

N-LL- - P-SSM-R- :—

“My youth is far away from me, in W——n gegone
The days my heart are rolling o’er, ich linger sadly on.”—*Anon.*

M-R- -NN- SM-TH :—

“A husband should be at least ten years older than his wife.”

—*M. S.*

W-LL- -M SPR- -L :—

“I am Sir Oracle, and when I ope my mouth, let no dog bark.”

—*Shakespeare.*

“O that I may obtain a presidency!”—*W. C. S.*

-DW-RD T-MPL-:--

“Nothing but goodness could dwell in such a temple.”—*Dickens*.

K-TH-R-N- TYL-R:—

“All humble worth she strove to raise,
Would not be praised, yet loved to praise.”—*Anon.*

FR-NC-S WH-T-:—

“There is a pleasure in poetic pains,
Which only poets know.”—*Cowper*.

-DW-RD W-LS-N-:—

“I’ll ’stonish the nation and all creation
By rushin’ a thunderin’ big reformation.”

L-L- -N Y-RN-LL:—

“For she will sing the savageness out of a bear.”—*Shakespeare*.

HERE AT MY DESK.

Here at my desk I sit and write—
My desk which (could it speak) might tell
Of mighty bouts that here befell
With Livy and the staganite.
Here, too, I penned those verses light
Which pleased the fancy of *ma belle*;
And here I had a taste of—well,
It struck me that way then, that night
Here at my desk.

She seemed so far above my sight
Despair hung o’er me like a spell;
But round my soul the presence fell,
Of hope who smiled: “All will be right,”
Hope tarries with me since that night,
Here at my desk.

Our "Buttons."



'Twas so new, a grand invention,
Something absolutely stunning,
No one ever thought a moment,
That they were not neat and cunning.
How those maiden hearts did flutter,
On that memorable day,
When across the ground they wore them
When to Physics on the way,
What a smile went round the Class, though,
When Professor just made mention
That he'd have to buy a basket
That would hold the new invention.
And one maiden, loyal creature,
Wished to wear her cap in Class,
But the Prof. for sake of order
Had to disappoint the lass.
Well, Classes have tried hard, no doubt,
To coin a thing more neat,
But with our Classmates, we will say,
None can with ours compete.

Swarthmore Buildings.

This is the College of Swarthmore,
Built in this strange architecture,
Round on the campus at random,
Stand the murmuring maples and scrub-oaks,
Ranged round old Parrish Hall
Are buildings, some ancient and modern.

From the college to the eastward,
And the West House to the northward,
Where many youths went yearning
For the benefits of learning,
Stood a building in the vim of early years,
And the students when returning
From this edifice of learning,
Left their footsteps brimming o'er with tears.

All the geometric angles
Were explained with ease and fangles,
And hyperboloids of revolution,
For instruction without mirth,
And with very little trouble
She could draw ellipses double,
And could strike without a fumble,
Dizzy tangents to the earth.

Within the tower, was a telescope of power
For the purposes of viewing by the heroine of this lay
Sun-spots showy, at the middle of the day.
And at night when ethereal skies are bright,
Searching in the dark recesses
Of the ever watchful moon.

MEETING HOUSE.

As the bell upon the laundry,
Without haste and without heed,
Peals out peal on peal of thunder.
So the student easily started,
Hurries on with winged speed.

Carefully first, his hair he brushes,
Then his coat and hat he dusts.
Then he quickly dons his bonnet,
For to hurry, 'deed he must.

As he dashes out the college,
In falling vapor, he's enveiled,
But 'tis too late to retrace upward,
So the storm he must inhale.

But when settled on the benches,
When the heat pervaded o'er,
All his dampened, withered system,
He will not his thoughts ignore.

He looks at our Prex, so hand-some
See's our Dean's contented look,
Wishes he sat in the gall'ry
With a Bible or some book.

Thinks of home folks as they worship,
In a handsome velvet pew,
Thinks of sister in the choir,
Wishes he were there, don't you?

And if ever he feels homesick,
'Tis when on these benches he sits down,
On these hardened oaken benches,
Then indeed he sleeps so sound.

Soon awakened how he watches,
With what longing eyes he's striven
For that nod unto a senior,
For that favorite signal given.

SCIENCE HALL.

Over the eaves where the sunbeams fall,
Twitters the swallow;
Within the shop, the anvil's call,
Follow! Oh follow!

When I enter the portal
I see a small mortal,
With a large moustache
And glasses to match.
He's dressed quite resplendent,
He looks dire dependent
As he leans on that post.
I inquire his name
And from whence he came.
They reply that it's Guyer,
That he makes the students pay higher

For test-tubes and things that they break
In the lab., than the retail rate.
He fills the bottles,
He dusts the lab.,
He oils the belting
And uses his gab.

I enter further and look to the left,
Through the glass door, at the students bereft.
I notice the Seniors, with their trusses and strains.
I see the Juniors drawing, with pains;
I look on the platform and whom do I see
But a professor, stately and belov'd for his glee.
I hear him speak, the students listen,
Then loud they laugh, with laughter free
"At all his jokes, for many a joke had he."

Here in this building, in the eastern wing,
 Where you hear the beakers and bottles ring,
 And you see the Soph. stretch his long neck
 From the northeast window in search of a speck,
 Which as it draws nearer, seems to be
 None other than our sparse-haired Doctor D——.
 Of the Juniors he asks of di-propargyl,
 Of many things whose odors will kill,
 Of methyl-di-ethyl-methane,
 Of normal butane and iso-hexane
 And on down the list till he comes to Secane,
 Where he stops with a smile.
 To the Sophs he tells of his own baby boy,
 Whose learning he's oft times been forced to declare
 Has exceeded any which he has seen there.

PARRISH HALL.

We have yet to tell the story
 Of our dear old Parrish Hall,
 Of our studies and dormitory
 Of our parlors and et. al.

In the cellar called the basement,
 In the wings both east and west,
 Are the stages where our actors
 Do their acting all in jest.
 On the first floor are the parlors
 And the famous dining hall;
 In the former's done the mating,
 In the latter's done the waiting.
 Here are also many class rooms,
 Where the Professors hold full sway,
 Here we learn of Greek and Latin and of
 mathematics tough,
 Here we struggle up and onward fight-
 ing on from day to day.
 Up the alcove stairs we loiter,
 And the study hall we view;

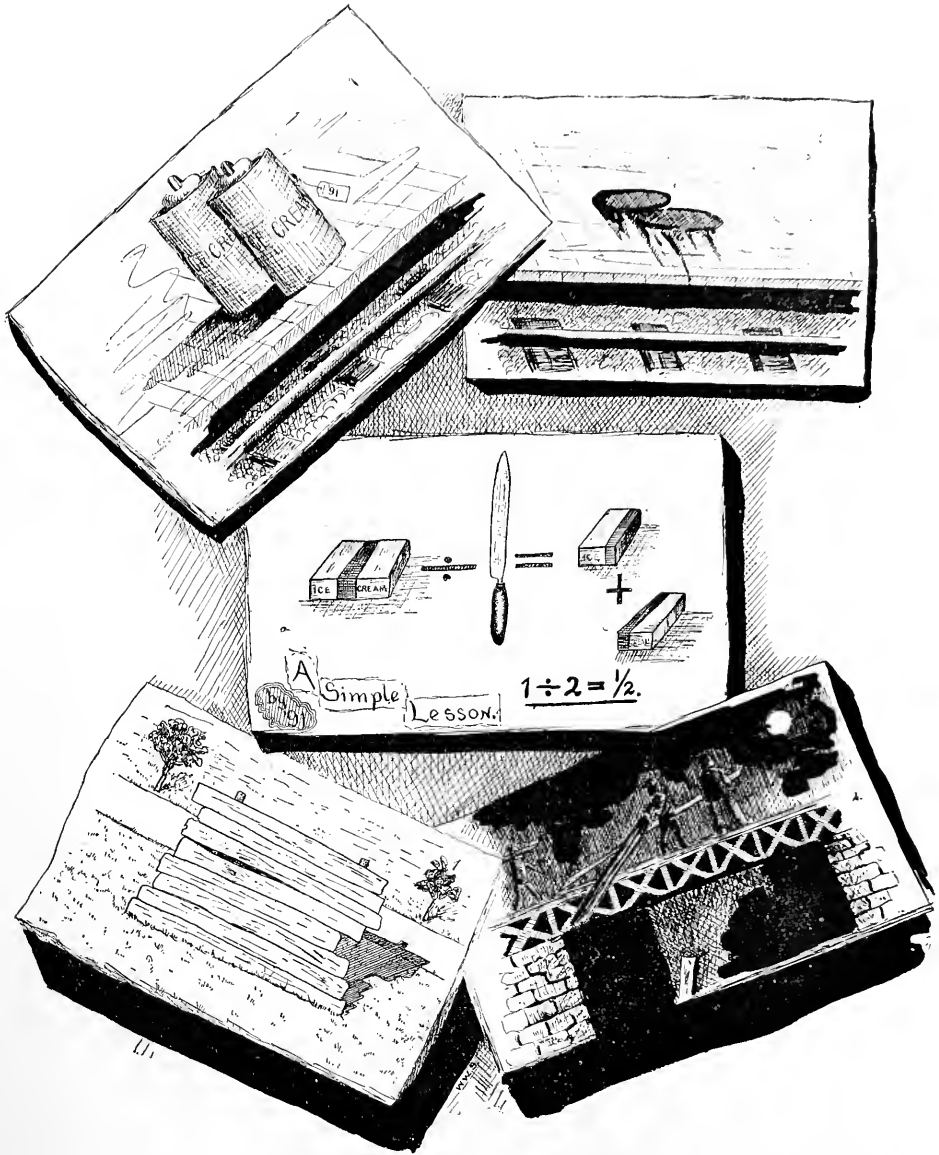
In this room we hear our lectures,
 Hear our Bible read all through,
 And we hear of rows and rackets
 Made in western halls, also.

In our struggle up the stairway,
 We do reach the floor above;
 Here are alcoves, large and roomy
 Where our couples talk of l—e.

“ Higher still and higher ”
 Do our footsteps rise
 Until we reach the museum
 Where the noble feline dies.

From off this seat exalted
 As we gaze around,
 We see the places where we've sported,
 College, campus, and athletic grounds.

And as we see each walk and tree and hill,
 We are with sweet remembrance filled,
 And may we ever look to these
 As the wardens of our destinies.



WHERE WE HAVE BEEN.

Court of Oyer and Terminer and General Jail Delivery

OF THE WEST WING

Convenes at "OLD NICK'S ROOM," Third Floor, on the first First-Day after the second
Second-Day in each month.

Presiding Judge :

HON. EDDIE MACKLEOYSTER, Late Judge of Supreme Court of Colorado.

Associate Judges :

HON. FOURTH PRISMATIC COLOR.

HON. CO-ED JAY, of W—ford.

District Attorney :

HON. CHARLES BUCEPHAS.

<i>Court Crier,</i>	"OLD NICK."
<i>Tipstaff,</i>	KANUCK WILSON.
<i>Sheriff,</i>	B. STUMP HALEY.
<i>County Clerk,</i>	WISE EDDARD.

REPORT OF PROCEEDINGS :

At the last convening of said Court, the following cases were brought up and disposed of :

The case of Jasen, *alias* Fog Horn. The prisoner was found to be in a state of intermittent, almost chronic, lunacy, and the Court found it necessary to issue a permit to admit the prisoner to Norristown.

At times, during the proceedings, the prisoner became rather violent and would have made an assault upon District Attorney Bucephas, for whom he appears to have a special hatred.

Our honored Attorney is an active member of the Farmers' Alliance, which it appears was the prime cause, during the late presidential election, of defeating Mr. Jasen for that office.

Second case; that of John Son, *alias* Hutch. Prisoner was called to answer a charge of undue assumption of power. In the evidence it was brought out that the prisoner had aspired to the Presidency of a certain College. The prisoner was acquitted, but cautioned not to repeat offense.

Third. Case of Walter, *alias* "Lansdowne Bill." Charged with forcible entry into a *Shoemaker's* shop in the village of Lansdowne. Prisoner convicted and sentenced to a life term of service under m—tr—m—n—l bonds.

Case of Henry Huddy. Prisoner thought to be insane. In the evidence it was brought out that the prisoner had lately been seen studying calculus and working at other studies at various times. No absolute evidence of insanity being given, the case was dismissed, but a guardian was appointed.

College Characteristics.

CONIC SECTIONS:—

“ I wish the turf were above thee
Foe of my early years,
None knew thee but to hate thee,
None named thee but with tears.”

J-S-PH-N- B-STL-,	}	“ When Greek joins Greek— Then comes the tug of war.”
M-RV W-LV-R-T-N,		
FL-R-NC- W-LV-RT-N,		
R-S- B-K-R,		

N-WL-N W-LL--MS:—

“ A man who could make so vile a pun, would not scruple to
pick a pocket.”

R. C. M-NN-NG:—

“ O be drest! Stay not for that other pin.”

PR-S. —PPL-T-N:—

“ My library
Was dukedom large enough.”

P-S-Y P-SS-MR:—

“ The sweetest hours that e'er I spent,
Were spent among the lasses.”

MISS F-RM-N:—

“ So wonderful her expedition
When you have not the least suspicion
She's with you like an apparition.”

——— '91:—

“ By sports like these are all their cares beguiled,
The sports of children satisfy the child.”

J. TH-V-R:—

“ Am I nice to look at? Should I be the handsomest creature in
the world if I had but whiskers? Am I quite a lady's
man as it is?”

—D H—P— D—G:—

“What though upon her speech there hung
The accents of the English tongue;
Those silver sounds so soft, so dear,
The listener held his breath to hear.”

H—L—N TR—N:—

“Oh, mim! Oh gracious me, mim, there’s a gentleman!”

M—TCH—LL P—LM—R:

“Is there aught in sleep can charm the wise.”

H—L—N H—TCH—NS—N:—

“Oh, she’s a clever girl, she’s an honor to her sex. Here’s her
health, and wishing they were all like her.”

D—CT—R MCCL—LL—N:—

“Ah, what shall I be at fifty,
Should nature keep me alive,
If I find the world so bitter
When I am but twenty-five.”

DEFEATED CANDIDATE:—

“He is a fool who thinks by force or will
To turn the current of a woman’s will.”

ST—PH—N V—RG—S:—

“’Twas for the good of my country that I should be abroad.”

J. H—TCH—NS—N:—

“One whom the music of his own virgin tongue
Doth ravish like enchanting harmony.”

L. R. BL—NN:—

“Small potatoes and few in a hill.”

C. SW—YN—:—

“The very sparrows in the hedge
Scarce answered to my whistle,
Or, at the most, when three parts sick
With strumming and with scraping
A jackass hee-haws from the rick—
The passive oxen gaping.”

CL-M-NT L-DG:—

“I’ve a beard coming.”

PR-F. SM-TU:—

“I awoke one morning (about 5.30) and found myself famous!”

W-LT-R W-TS-N:—

“Love seldom haunts the breast where learning lies,
And Venus sets ere Mercury can rise.”

S. B-R-G-T-S-N:—

“The fair, the chaste, the unexpressive she.”

F. CL-R-K:—

“Those legs, ah, those legs!”

FR-N-K SH-V-R:—

“My little body is aweary of this great world.”

C-LL-G- GL:—

“Can any mortal mixture of earth’s mould,
Breathe such divine enchanting ravishment?”

D-CT-R TR-TT-R:—

“He undertakes to prove by force
Of argument, a man’s a horse,
He’d prove a buzzard was a fowl
And that a lord may be an owl.”

SW-RTHM-R- WAIT-R:—

“A thing of beauty is a joy forever.”

TH- D-N:—

“Well she knew and quaintly could expound,
What sin it were to waste the smallest crumb.”

J. R-NH-RT:—

“Six hours in sleep, in “conics” study six,
Four spend in prayer, the rest on nature fix.”

—LL-N W-LL-MS:—

“Charmed with the foolish whistling of a man.”

Reasons for Absence from Meetings.

- H-NRY H-DDY G-RR-TT—"Studying conics."
C-LLY M-NN-NG—"Curling my bangs."
SCIENTIFIC SOPHS—"Star-gazing too late."
B-N B-TT-N—"Had another engagement."
S. -LL-N W-LL-MS—"Detained in the Hall."
G-RG- W-RN-R—"Reading St. Paul."
CH-RL-S K-TCH-M—"Force of habit."
CH-RL-S SW-YN-—"Tuning my voice."
N-VL-N W-LL-MS—"Thinking up a new pun."
B-RT- W-LS-N—"Studying German for Herr Weaver."
PH-B- K-TCH-M—"Trying to write something funny for the HALCYON."
FL-R-NC- W-LV-RT-N—"Attack of dizziness."
M. -LL-N -TK-NS-N—"Acquiring dignity."
M-TCH-LL P-LM-R—"Too much study."
J-S-PH-N- B-STL-—"Didn't hear the bell."
MISS -V-S-—"Capturing small Soph who wanted to 'appropriate' the front door."
THE "SUBS."—"Didn't know they had to go."

Among the Collegians.

What is Going on at the Big Institution across the
Camp.

THE CORRESPONDENTS SPEAK FOR THEMSELVES.

The retiring President of the Eunomian Literary Society is Edward C. Wilson, '91. The retiring President of the Class of '91 is Edward C. Wilson.—E. C. W, in *Young Friends' Review*.

In the mid-year elections in the Sub-Collegiate Class, Lloyd Ross Blynn was elected to the presidency. This position is one of great responsibility, and coming as it did, so unlooked for, is a fitting tribute to Mr. Blynn's ability.—L. R. B., in *Baltimore American*.

At the recent meeting of the Inter-Collegiate Athletic Association of America, Mr. John William Hutchinson, delegate from Swarthmore ran a close race for the position of Vice-President, and was only defeated by a few votes. Mr. H. is Track Manager at Swarthmore, and, notwithstanding his numerous duties in this department, is an industrious, hard-working student.—J. W. H., in *New York Tribune*.

William C. Sproul, well known among Pennsylvania collegians, will be one of the honor speakers at the Commencement in June. This speaks very well for the gentleman, since his public duties and private business almost preclude the chance of any attention to the studies of the class-room.—W. C. S., in *Philadelphia Press*.



I.

At old Swarthmore, some years ago,
There was a custom, we all know,
 To go a-skating,
Old Crum would freeze,
By the cold breeze,
 Sent by old Boreas.

II.

But in later years,
The times one hears,
 So often mentioned.
That ice so white,
So smooth and bright,
 Was always lacking.

III.

Until the last,
The one just passed,
 There's been no skating.
But on came the ice
That would suffice
 So much gyrating.

IV.

“The ice is safe,”
'Tis strong and true
 The men report,
Then off they go,
Singly, two by two,
 Down to old Crum.

V.

The skates so neat,
Upon small feet,
 Are quickly placed.
Then off they glide,
Oft side by side,
 To their enjoyment.

VI.

In position sure,
From on the shore,
 We'll see the fun.
And view the scenes,
The ways and means,
 While they are skating.

UMSTEIGEN.

I.

Now all are gliding back and forth,
In groups of three or four ;
Much grace and beauty do we see
Upon the grand ice floor.

II.

Here four are rolling up and down ;
While there a maid is trying
To rise alone and swiftly go,
But only ends in sighing.

III,

Now backwards do the Seniors skate,
And all the Subs are falling ;
The ways those Sophs co-educate
Is truly quite appalling.

IV.

Up hither comes a jolly line,
All seeming mad with laughter,
When suddenly one falls and slides,
Then all come tumbling after.



UMSTEIGEN.

Far beyond the throng of skaters,
'Neath the pines o'er-hanging branches,
Are two figures swift advancing
Now more slowly are they gliding.
And as they are coming near me
I can hear their gentle murmur,
"I've been waiting all the evening,
For a chance when I might see thee,"
Says the youth unto the maiden.
Then her heart begins to flutter

As he says in faltering accents
That she mustn't disappoint him
For he can't live thro' to-morrow
If she doesn't treat him kindly.
Shadows all around are falling,
And the bell doth toll for parting,
Then he summons all his courage
After no slight hesitation,
Comes this great and mighty question :
"Will you — — do my mathematics?"



UMSTEIGEN.

Now we see him, C. Bucephus,
M. LeB. some others call him,
Greatest skater from among them,
Greatest, in the sense of size.
See him coming, on he rushes,
His small feet scarce touch the ice,
Scarce touch the flinty, shining surface,
As he panting, rushing, roaring,
Passes quickly up the stream.

Then a Bertie, one of many,
One from out the happy throng,
One that skated with all grace.
She is smiling, always smiling,
Always laughing, talking, joking,
She is also swiftly skating,
Sliding on the glassy surface,
On comes rushing, whirling, working
Down the stream she quickly comes.

Then they meet and mighty contact
Of such bodies striking there—
Striking there with all their fierceness,
Striking there with all momentum.
It doth seem to shake the nation,
It doth seem to jar the heavens,
So that when the conflict's over,
Stars are seen upon the ice.
Then each strove with all their might,
All the strength at their command,
To retain the old position
That all other skaters have,
That of perpendicularity.

But the shock of that on coming,
But the force with which they met,
Is too much for mortal steadiness
And down they fall upon the ice,
Fall upon its glassy surface—
Fall upon each other's self.
And the battle, mighty battle,
Battle of the *grosser* weights—
Battle that will e'er be remembered—
Now is over and the quiet,
Peace and quiet of old Crum,
Never, will again be broken
By the violence of such scenes.



Song of '92.

TUNE—"SOLOMON LEVI."

I.

O gallant boys of '92,
And maidens brave and bright,
Come gather round our leader,
And we'll sing a song to-night, tra la,
Of the days since first we met here,
Of the struggles we've been through,
And how we've earned a worthy name
For our loved '92.

CHORUS:

Come, fellow class-mates,
Hurrah, hurrah, hurrah!
Swell our joyful chorus,
Hurrah, hurrah, hurrah, hurrah!
A cheer for "Swarthmore College!"
And one for "Hist Boom Boo!"
Another for the "Tiger!"
And the last for "'92!"

II.

Our boys have won athletic fame,
They are a sturdy crew;
They bear a victory or defeat,
As heroes ought to do, tra la.
They dote on mathematics,
Science and letters, too,
O, we have honest working boys
To honor '92.—CHORUS.

III.

The girls tho' brimming o'er with fun,
Keep dignity in view,
And strive to raise the standard
Of Swarthmore's '92, tra la.
And they are so original,
That they can do, 'tis said,
Just anything, in anyway,
To which their thoughts are led.

—CHORUS.

IV.

And now we've worked together
For two whole years, and more;
As Juniors—we rejoice to use
That long-denied front door, tra la,
And soon we'll have our Senior gowns
And caps to bloom anew;
And then we'll graduate and part,
But we'll still be '92.—CHORUS.

V.

O, Swarthmore, fair, we love thee,
And let us bear thee praise
For the lessons we have learned here,
And for these happy days, tra la.
To thee and this Class thou'st sheltered,
We'll evermore be true;
For deep embedded on each heart,
Lies written, "'92"—CHORUS.

Historical Data.



WARTIMORE COLLEGE, Swarthmore, Pennsylvania; opened for students, November 8th, 1869. First Alumni, Class of '73. Total number of students, 206. Swarthmore College Alumni Association, organized 1878; incorporated 1882. The *Phoenix* prizes for oratory, the first being a fifteen dollar medal; second, eight dollars, to be contested for annually for four years by the Junior Class, was offered by the staff of Volume VII of the *Swarthmore Phoenix*. The "Magill" and "President's" prizes for public speaking first offered in 1889. Contest open to members of the Sophomore and Freshman Classes, six being chosen to speak from each class. Prizes of ten dollars' worth of books offered to the five winners.

The *Swarthmore Phoenix*, founded 1882; published monthly by a staff of ten members elected annually by the students.

The HALCYON, published annually by the Junior Class. First volume issued by the class of '84.

Presidents :

EDWARD PARRISH, 1869-'71.

EDWARD HICKS MAGILL, 1871-'90.

WILLIAM HYDE APPLETON, 1890.

Presidents of the Alumni Association :

'78-'79—FRANK L. BASSETT, '76.

'84-'85—JOSEPH T. BUNTING, '77.

'79-'80—MARTHA (McIlvain) EAST-
WICK, '75.

'85-'86—JOSEPH FITCH, '79.

'80-'81—ARTHUR W. BRADLEY, '76.

'86-'87—P. LESLEY HOPPER, '79.

'81-'82—JOHN B. BOOTH, '75.

'87-'88—EDWARD MARTIN, '78.

'82-'83—JOHN B. BOOTH, '75.

'88-'89—WILLIAM P. HOLCOMB, '78.

'83-'84—CHARLES R. MILLER, '79.

'89-'90—GERRITE H. WEAVER, '82.

'90-'91—JAMES E. VERREE, '83.

THE PHOENIX ORATORICAL PRIZES (Junior Class).

FIRST.

1889. ELOISE MAYHAM.
1890. A. MITCHELL PALMER.
1891. BENJAMIN F. BATTIN.

SECOND.

JAMES W. PONDER.
FRANCES M. WHITE.
HENRY McALLISTER, JR.

MAGILL PRIZES FOR ORATORY (Underclasses).

1889.

ESTHER HAVILAND, '91.
JOHN W. HUTCHINSON, '91.
WILLIAM C. SPROUL, '91.
LAURA M. SMITH, '92.
EDWIN M. UNDERWOOD, '92.

1890.

GERTRUDE HUTCHINGS, '92.
LAURA M. SMITH, '92.
HENRY McALLISTER, JR., '92.
E. PUSEY PASSMORE, '93.
GEORGE H. STROUT, '93.

THE SWARTHMORE PHOENIX.

VOL I. '81-'82.

Editor :

JAMES E. VERREE, '83.

Associate Editors :

B. COOPER, '82.

F. A. SEAMAN, JR., '83.

B. MATLACK, '83.

E. M. ZAVITZ, '82.

A. W. JACKSON, '83.

L. C. WOOD, '83.

V. HAWKINS, '83. S. D. MITCHELL, '83. H. J. HANCOCK, '84. M. PRATT, '85.

Business Manager :

E. A. PENNOCK, '83.

VOL. II. '82-'83.

Editor :

JAMES E. VERREE, '83.

Associate Editors :

ALICE W. JACKSON, '83. HENRY J. HANCOCK, '84.

Staff :

BERTHA MATLACK, '83. F. A. SEAMAN, JR., '83.

MARY WILLETS, '84. F. G. CALDWELL, '84. PHILIP Q. CHURCHMAN, '85.

Business Manager :

EDWARD A. PENNOCK, '83.

VOL. III. '83-'84.

Editor :

HENRY J. HANCOCK, '84.

Associate Editors :

MARY WILLETS, '84. ROLAND SPENCER, '85.

FREDERIC J. TAYLOR, '84. MARY E. HUGHES, '84.

FRANK P. CALDWELL, '84. REBEKAH BOYD, '86.

ELIZABETH H. COCKS, '86.

Business Manager :

C. FRED KOHL, '86.

VOL. IV. '84-'85.

Editor :

EDWIN HAVILAND, JR., '85.

Associate Editors :

MINNIE F. BAKER, '85. THOMAS A. JENKINS, '87.

MARY W. WILLETS. MATTIE M. WATSON, '86.

ANNA JENKINS, '87. J. RUSSELL HAYES, '88.

DELEMERE STERRITT.

Business Manager :

FREDERIC P. MOORE, '85.

Asst. Business Manager :

HARRY B. GOODWIN, '87.

VOL. V. '85-'86.

Editor :

THOMAS A. JENKINS, '87.

Associate Editors :

MARTHA M. WATSON, '86. _____ WM. G. UNDERWOOD, '87.

Alice T. Battin, '87. George J. Freedley, '86.

Charlotte L. Stratton, '88. Alice Hall, '88.

Elizabeth B. Smedley, '87.

Business Manager :

Asst. Business Manager.

Harry B. Goodwin, '87. _____ George T. Barnsley, '87.

VOL. VI. '86-'87.

Editor :

WM. G. UNDERWOOD, '87.

Associate Editors :

Elizabeth B. Smedley, '87. Thomas A. Jenkins, '87.

Alice Hall, '88. Carroll H. Sudler, '88. Mame H. Smith, '88.

Emma Gawthrop, '88. A. G. Cummins, Jr., '89.

Business Manager :

Asst. Business Manager :

Frederic B. Dilworth, '87. _____ E. Lawrence Fell, '88.

VOL. VII. '87-'88.

Editor :

CARROLL H. SUDLER, '88.

Associate Editors :

Alice Hall, '88. J. Russell Hayes, '88.

Ralph Stone, '89. Alex. G. Cummins, Jr., '89. Rebe S. Webb, '89.

Abby M. Hall, '90. Mary P. Wilkinson, '90.

Business Manager :

Asst. Business Manager :

E. Lawrence Fell, '88. Howard A. Dill, '89.

VOL. VIII. '88-'89.

Editor :

ALEXANDER G. CUMMINS, JR., '89.

Associate Editors :

LOUELLA PASSMORE, '89. RALPH STONE, '89.

REBE S. WEBB, '90. ABBY M. HALL, '90. EDGAR A. BROWN, '90.
WM. C. SPROUL, '91. ELIZA G. HOLMES, '91.

Business Manager :

GEORGE MASTERS, '89.

Asst. Business Manager.

SAMUEL R. LIPPINCOTT, '90.

VOL. IX. '89-'90.

Editors :

*EDGAR A. BROWN, '90. JAMES W. PONDER, '90.

Associate Editors :

ABBY M. HALL, '90. WM. C. SPROUL, '91.

BEULAH W. DARLINGTON, '90. FRANCES E. OTTLEY, '90.
JOHN W. HUTCHINSON, JR., '91. A. MITCHELL PALMER, '91.
GERTRUDE HUTCHINGS, '92.

Business Manager :

SAMUEL R. LIPPINCOTT, '90.

Asst. Business Manager :

WILLIAM L. DONOHUGH, '92.

VOL. X. '90-'91.

Editor :

WILLIAM C. SPROUL, '91.

Associate Editors :

ESTHER HAVILAND, '91. JOHN W. HUTCHINSON, '91.

COSSIE J. BROWN, '91. A. MITCHELL PALMER, '91.

HENRY McALLISTER, JR., '92.

MARY L. WOLVERTON, '92.

GEORGE H. STROUT, '93.

Business Manager :

CHESTER P. MARTINDALE, '91.

Asst. Business Manager :

HOWARD N. EAVENSON, '92.

*Deceased.

VOL. XI. '91-'92.

Editor :

HENRY McALLISTER, JR., '92.

Associate Editors :

CHARLES HART, '92.

BERNARD F. BATTIN, '92.

MARY L. WOLVERTON, '92.

JOHN L. CARVER, '93.

HELEN S. HUTCHINSON, '93.

GEORGE H. STROUT, '93.

WARREN G. BOYER, '95.

Business Manager :

HOWARD N. EAVENSON, '92.

Assistant Business Manager :

GEORGE W. WARNER, '93.

HALCYON EDITORS.

'84.

President :

EDWIN HAVILAND, JR.

FRANCES G. CALDWELL.

WILLIAM P. HALLOWELL.

REBECCA M. DOWNING. MARY E. HUGHES.

JOHN D. FURNAS.

LAURA H. SATTERTHWAIT.

SARAH L. HALL. FREDERICK J. TAYLOR. MARY WILLITS.

Business Managers :

HENRY J. HANCOCK.

HORACE L. DILWORTH.

'87.

Editor :

WM. G. UNDERWOOD.

Associate Editors :

ELIZABETH B. SMEDLEY. THOMAS A. JENKINS.

Business Manager :

FREDERICK K. LANE.

Asst. Business Manager :

WALTER A. BROWN.

'88.

Editor :

J. RUSSELL HAYES.

Associate Editors :

ALICE HALL.

ANNIE E. WILLETS.

MARTHA P. JONES.

CATHARINE M. RIDER.

MARY H. SMITH.

CARROLL H. SUDLER.

Business Manager :

E. LAWRENCE FELL.

Asst. Business Manager :

WALTER HANCOCK.

'89.

Editor :

RALPH STONE.

Associate Editors :

LOUELLA PASSMORE. ALEXANDER G. CUMMINS, JR.

J. CARROLL HAYES.

CLARA HAYDOCK.

ELSIE D. STONER.

MARY KIRK.

LUCY CHANDLEE.

Business Manager :

HOWARD A. DILL.

Asst. Business Manager :

HORACE B. FORMAN, JR.

'90.

Editor :

EDGAR ALLEN BROWN.

Associate Editors :

ELOISE MAYHAM.

WILLIAM E. SWEET.

ABBY M. HALL.

REBE S. WEBB.

FANNIE B. SMITH.

FRANCES E. OTTLEY.

Business Managers :

SAMUEL R. LIPPINCOTT.

ALVIN W. ATKINSON.

Artist :

GEORGE ELLSLER.

'91.

Editor :

WILLIAM C. SPROUL.

Associate Editors :

ESTHER HAVILAND.

JOHN W. HUTCHINSON, JR.

EMILY ATKINSON.

COSSIE J. BROWN.

ELIZA R. HAMPTON.

EDWARD C. WILSON.

ELIZA G. HOLMES.

J. LAWRENCE DUDLEY.

Business Managers :

CHESTER P. MARTINDALE.

LOUIS P. CLARK.

Epilogue.

At last the time has come when we must part,
Child of our minds, our Halcyon, from thee.
Small book, now dear to every Junior heart,
The world will be more rude than e'er were we—
Thus hopefully to meet its fate we send
Our book, the work of many a happy day,
For all things, good or ill, must have an end—
The fairest are the shortest lived they say—
We hope that to thy faults all will be kind
Out in the stormy, restless sea of books ;
And that thee many a lasting friend may find
For thy good sense, and also for thy looks—
We leave this little wish to help thee on.
What fate awaits thee, only time can tell,
When from our care forever thou hast gone,
So once again, our Halcyon, fare-thee-well.



ACKNOWLEDGMENTS.

In parting, the Editors desire to express their deep thanks for the assistance extended to them in the publication of their little book.

For artistic work, they are indebted to Miss Charlotte Hayland, Professor M. H. Bancroft, George W. Warner, '93, and W. W. Shattuck, '94, who have materially assisted in beautifying the pages of the volume.

The lithotype work was done by the Art Publishing Co., of Gardner, Mass., the photo-engravings by George M. Allen & Co., New York, and the New York Photo-engraving Co., through their Philadelphia agent, Mr. C. H. Brown. The book is from the press of A. H. Siekler & Co., of Philadelphia.

Our dealings with all of the above firms have been of the pleasantest nature, and the excellence of their work is testified to in the foregoing pages. We thank them for the prompt attention with which all of our demands have been met, and recommend them to the kind consideration of future editors.

• ADVERTISEMENTS. •

*We do earnestly advise
All of you to patronize
Those who herein advertise.
In so doing, you'll be wise,
For we know each firm will try
To suit your purse and charm your
eye
If of them your goods you buy.*

INDEX TO ADVERTISERS.

Art Publishing Co.,	159
Bailey, Banks & Biddle,	cover
Bernard, Wm. O.,	166
Caldwell, J. E. & Co.,	back
College of Commerce,	4
Cook, F. W.,	165
Dickeson, W. E.,	163
Dreka, Louis,	2
Earl & Wilson,	6
Eastman Company	166
Elliott, Chas. H. Co.,	162
Ellis, Wardle,	161
Gilbert & Bacon,	156
Hammond Typewriter Co.,	8
Herder Cutlery Co.,	cover
Holl, Emil,	163
Hoyt, F. A. & Co.,	157
Jobson, C. B.,	164
LaRoche & Stahl,	162
Merriam, G. & C. & Co.,	168
Porter & Coates,	5
Pulaski F. & Co.,	163
Rorke, Allen B.,	159
Scott Paper Co.,	156
Shearer & Gibbs,	4
Shoemaker, Benj. H.,	6
Shoemaker, Robt. & Co.,	160
Sickler, A. H. & Co.,	inset
Simons, Bro. & Co.,	7
Smedley, Harry L.,	167
Smith Premier Typewriter Co.,	168
Somerset, Jacob,	167
Strawbridge & Clothier,	155
Stiteler, G. I.,	167
Swarthmore College,	3
Swarthmore Phoenix,	158
Tryon, Edw. K. Jr., & Co.,	inset
Veit, Henry,	161
Wanamaker, John,	1
Webster, Geo. C.,	162
Weld, Colburn & Wilckens,	5
Wright, E. A.,	inset
Zehnder, Chas.,	162

COLLEGE

CAPS AND GOWNS.



WE have unusual facilities for promptly furnishing at moderate prices, College Caps and Gowns, all made to special measure, in the best manner, of excellent quality of material.

ESTIMATES CHEERFULLY FURNISHED.

STRAWBRIDGE & CLOTHIER,

MARKET, * EIGHTH * AND * FILBERT * STREETS,

PHILADELPHIA.

LEADING PHOTOGRAPHERS.

Gilbert & Bacon

CRAYONS, PASTELS, WATER COLORS.

THE LARGEST COLLECTION IN THE COUNTRY.

1030 Chestnut Street, - - - 820 Arch Street,

PHILADELPHIA.

SPECIAL RATES TO STUDENTS.



Toilet Paper.

THE HOYT,

Patent Cabinet and Toilet Paper

Is now admitted by all leading Hotel men to be
THE BEST and most satisfactory. Send
for Samples and Prices.

*Headquarters for all kinds of Flat Papers, Envelopes, Bill
Heads, Letter Heads, Statements and all
kinds of Ruled Goods.*

SCOTT PAPER CO., LIMITED,

25 and 27 North Sixth Street.

Philadelphia, Pa.

F. A. HOYT & CO.,

Ready-Made Clothing

FOR BOYS AND YOUNG MEN.

MERCHANT TAILORS.

LADIES' JACKETS, SACQUES AND RIDING
HABITS MADE TO ORDER.

1026 Chestnut St., Philadelphia.

THE
SWARTHMORE

A MONTHLY JOURNAL

PUBLISHED BY THE STUDENTS OF

Swarthmore College

The support of all Alumni and Ex-members
of the College is desired. Con-
tributions requested.

TERMS:

Per Vol. (9 numbers), in advance, \$1.00
Per Single Copy - - - .15

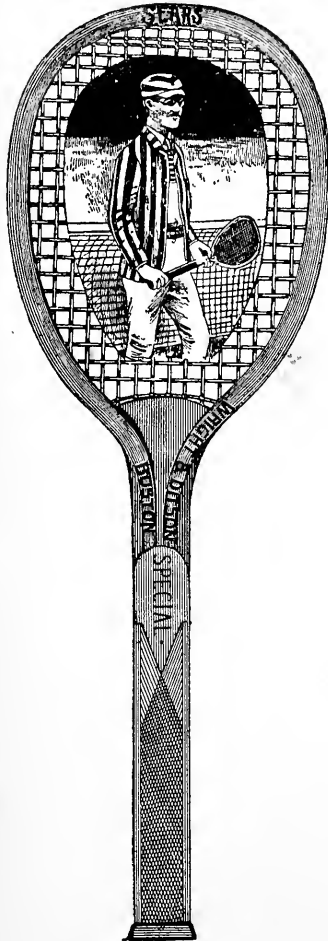
Address contributions of matter to the Editor,
HENRY McALLISTER, JR.

Subscriptions and other communications to the
Business Manager, H. N. EAVENSON, Swarthmore
Delaware Co., Pa.

PHOENIX

EDW. K. TRYON, JR., & CO.,

10 and 12 North Sixth Street.



Philadelphia Depot

A. J. REACH CO.'S

Base Ball Goods.

WRIGHT & DITSON,

Tennis Goods.

New Mail, Diamond,

AND

Eclipse Safeties.

FIRE © ARMS,

Fine Fishing Tackle,

Pocket ❖ Cutlery, ❖ Hammocks, ❖ Etc.

GENERAL

Athletic Outfitters.

SEND FOR CATALOGUE.

ALLEN B. RORKE,

Contractor and Builder

DREXEL BUILDING,

PHILADELPHIA.

The Art Publishing Co.

(CORPORATION)

PRINTERS  PUBLISHERS.



PRODUCERS of fine book illustrations and manufacturers' catalogues; also *fac-simile* reproductions of maps, plans, sketches and engineers' drawings. Illustrations by our processes are all made from photographic negatives, and represent the object equally as well as a photograph at a very much less price. Special attention paid to illustrating college publications. Samples and estimates furnished on application.

THE ART PUBLISHING CO.,
GARDNER, MASS.

ABSOLUTELY
PURE SPICES

—AND—

Flavoring Extracts

FOR FAMILY USE.

THE almost universal adulteration of spices is well known to those who have given the subject any attention. Notwithstanding a package may be nicely put up, and labeled "Pure," or even "Warranted Pure," it is deplorably true, that an examination of the contents, in many cases, has revealed the presence of a cheapening ingredient, or, that the spice has been ground from an inferior crude material.

We give to our

FLAVORING EXTRACTS


the same careful attention. *Vanilla* we prepare from the best quality of Mexican Bean, by a process of our own, which gives us the perfect aroma of the bean in all its delightful freshness, richness and purity. This statement will be verified by all who have used our Extract. We ask those who have not done so, to give our Extracts a trial.

These Extracts are offered in bottles containing two and four ounces, half pints, pints and quarts.

If your Druggist or Grocer cannot supply our Spices or Extracts send your orders direct to us.

Robert Shoemaker & Co.,

N. E. Cor. Fourth and Race Streets, Philadelphia.



* CLASS ANNUALS *
MAGAZINES
— ANNUAL REPORTS —
OUR SPECIALTY

A. H. SICKLER & CO.

STEAM-POWER

Book and Job Printers

514 & 516 Minor Street

CHAS. PAULUS, MANAGER

PHILADELPHIA

ESTIMATES FURNISHED
CORRESPONDENCE SOLICITED
MODERATE PRICES
— FINE WORK —

1871.

1891.

FOR

ACCURACY AND PURITY

—GO TO—

ELLIS' DRUG STORE,

MEDIA, PA.

Where will be found a full line of Drugs, Chemicals, and Fancy
Articles. All warranted to be finest quality.

PRICES REASONABLE.

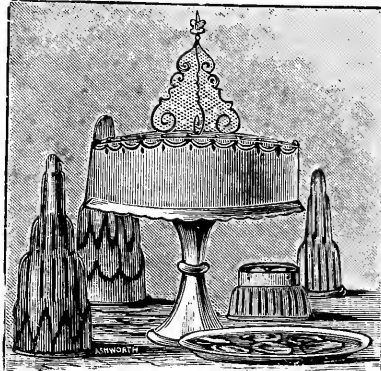
N. B.—GREATEST CARE TAKEN IN COMPOUNDING PRESCRIPTIONS.

HENRY VEIT,

CONFECTIONER AND CATERER.

Special Attention given to
WEDDING,
FAMILY and SOCIAL
PARTIES.

*
ICE CREAM and FRUIT
ICES of all flavors to be
had at any season of the
year, made of fruits put
up by us for that special
purpose.



OYSTERS IN
SEASON.

*
JELLIES, MERINGUES,
CHARLOTTES

And other delicacies con-
stantly on hand.

36 NORTH ELEVENTH STREET, PHILADELPHIA.

College Engraving,

Designing

AND Printing,

~~SEE~~ OUR GREAT SPECIALTIES
Unsurpassed Facilities.

The Charles H. Elliott Co.,

Limited,

834 Chestnut Street

AND

912 Filbert Street,

PHILADELPHIA.

CHARLES ZEHNDER,
MERCHANT * TAILOR,
ORANGE STREET, MEDIA.

(NEXT DOOR TO DICKESON'S DRUG STORE.)
DYEING, SCOURING, CLEANING AND REPAIRING PROMPTLY
ATTENDED TO.

GEO. C. WEBSTER,
Apothecary,
20 EAST STATE STREET,
Media, Pa.

Cut Flowers, Plants and Decorations.

LA ROCHE & STAHL,
North-East Corner Thirteenth and Chestnut Streets.

Designs for All Occasions

TELEPHONE NO. 59.

CITY PRICES.

WM. E. DICKESON P. H. G.,
Drugs, Medicines *and* Toilet Articles,

PRESCRIPTIONS A SPECIALTY,

N. E. COR. ORANGE AND WASHINGTON STS.,
MEDIA, PA.

Soda Water on Draught all the Year.

EMIL HOLL,
Watchmaker, Jeweler and Optician,
ORANGE ST., MEDIA, PA.

REPAIRING IN ALL ITS BRANCHES
SKILFULLY DONE AT MODERATE COST.

F. PULASKI & CO., © ©

724 Chestnut St. Art Publishers, We furnish estimates for
all kinds of Frames

Engravings Photogravures, Water Colors, &c.

CHAS. B. JOBSON,

FIRST QUALITY OF

HOME KILLED BEEF,

MUTTON, VEAL, POULTRY, Etc.

ALL HOME-FED STOCK.

ALL KINDS OF

Vegetables, Fresh Fish,

AND

OYSTERS IN SEASON.

First Market on Orange Street,

Above State Street,

MEDIA, PENNA.



A snap shot with the Kodak from the train window.

Send to The Eastman Company, Rochester, N. Y., for a copy of "Do I want a Camera," (illustrated) free by mail.

Take A Kodak With you.

*"You press the button,
we do the rest."*

Send for Catalogue.

(OR YOU CAN DO IT YOURSELF.)

THE EASTMAN COMPANY, Rochester, N. Y.

F. W. COOK,

Corner State and Olive Streets, Media, Pa.

(OPPOSITE POST OFFICE.)

FANCY CAKE BAKERY,

Confectioner and Caterer

AND

== *ICE · CREAM · PARLOR.* ==



WEDDINGS,

PARTIES,

FESTIVALS, ETC.

Served at Short Notice.

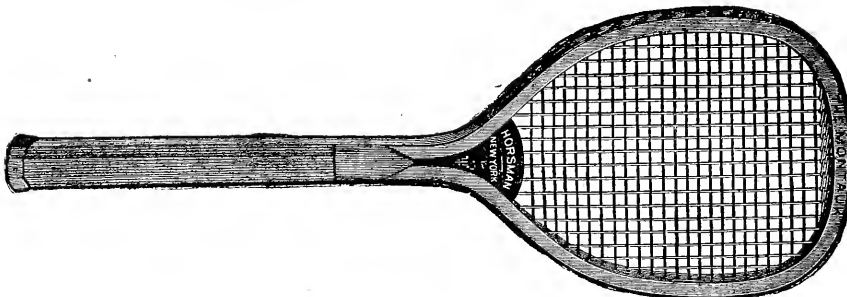
MERINGUES AND CHARLOTTE RUSSE A SPECIALTY.



COLLEGE, CLASS AND SOCIETY RECEPTION COMMITTEES WILL BE FURNISHED WITH ESTIMATES FOR RECEPTIONS AT ANY TIME.

Telephone No. 67.

E. I. HORSMAN, 341 BROADWAY,
NEW YORK.



HAVE YOU SEEN THE

✦ "MONTAUK RACKET," ✦

Used by all good Tennis Players.

SEND FOR CATALOGUE.

SPECIAL RATES TO CLUBS.

W. O. BERNARD & CO.,
Furniture Manufacturers and Upholsterers,
1511 RACE STREET,
PHILADELPHIA.

VICENTE PORTUONDO,
HIGH GRADE ^{CUBAN} HAND-MADE CIGARS

44 North Tenth Street,

PHILADELPHIA.

G. J. STITELER,
Fresh Fish and Oysters

IN SEASON,

Second Market on Orange Street,

ABOVE STATE STREET,

~~~~~ MEDIA, PENNA. ~~~~~

JACOB SOMERSET,

Badge Maker for Swarthmore College

*Eunomian, Delphic, Scientific, Athletic Sports and Record Medals.*

JACOB SOMERSET,

No. 722 Chestnut Street, - - - Philadelphia.

HARRY L. SMEDLEY, M. D., D. D. S., Ph. G.,

DENTIST,

OFFICE HOURS:

9 A. M. to 12 M.

1.30 to 5 P. M.

MEDIA, PA.

Improvement the Order  
of the Age.



# The Smith Premier . . . . . . . Typewriter.

NOW AHEAD OF ALL OTHERS.

ADDRESS,

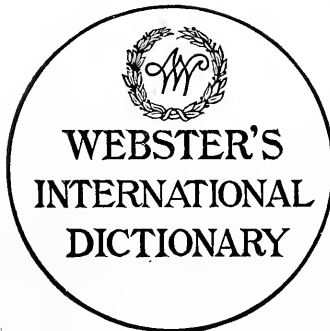
The Smith Premier Typewriter Co.,

JOHN HARRISON, MANAGER.

335 CHESTNUT ST., PHILADELPHIA.

## THE NEW WEBSTER'S DICTIONARY

A GRAND INVESTMENT FOR FAMILY OR SCHOOL.



The Authentic Webster's Unabridged Dictionary, comprising the issues of 1864, '79, and '84, still copyrighted, is now thoroughly Revised and Enlarged, under the supervision of Noah Porter, D. D., LL. D., of Yale University, and as a distinguishing title, bears the name

### WEBSTER'S

International Dictionary.

Editorial work on this revision has been in active progress for over Ten Years, not less than One Hundred paid editorial laborers having been engaged upon it, and not less than \$300,000 having been expended before the first copy was printed.

Critical comparison with any other Dictionary is invited.

Sold by all Booksellers.—Pamphlet free.

GET THE BEST.

**Caution!**—Cheap Books called "Webster's Big Dictionary," "Webster's Encyclopedic Dictionary," etc., are being advertised. The body of these from A to Z, is printed from plates made by photographing the antiquated 1847 edition. The authentic "Unabridged" (still copyrighted) and the new "International" both bear the imprint of

G. & C. MERRIAM & CO., Publishers, Springfield, Mass., U. S. A.







J. E. CALDWELL & Co.

Jewelers  
Silversmiths  
and  
Art Importers

Designers  
and  
Makers  
of  
Medals and Tokens

302  
Chestnut  
Street  
Philadelphia.

