

HALCYON









HALCYON

Published by the Junior Class

SWARTHMORE COLLEGE

1952

Swarthmore, Pennsylvania

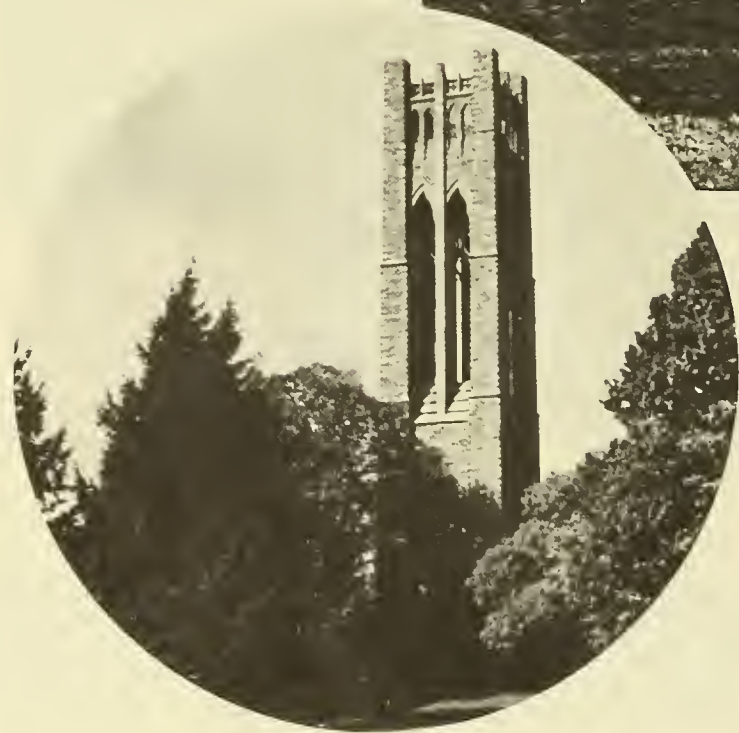


DEDICATION



TO SUSAN P. COBBS . . .

Because of her gracious attention to the problems of every student and because she so conscientiously applies herself to even the most incidental aspects of student life, the Class of 1952 respectfully dedicates this Halcyon to Dean Cobbs. We sincerely appreciate her knowing our names the first day, her smile to us in the halls in the years after, her charming accent that helps to soften the blow. The combination of dignity and informality that is hers is as delightful as it is valuable to the Swarthmore community.





FACULTY AND ADMINISTRATION



PRESIDENT NASON . . .

Said he is glad when spring semester ends, and the campus is calm, but that in three weeks the strangeness wants a change. We know the wearer of a tall black hat at the pre-Haverford game rally as a regular member of the faculty sport teams when occasions arise. First exponent of the theory that college is an individual matter, President Nason continues his tenth year of its effective and gratefully acknowledged practice.



DEAN HUNT . . .

Friendliness and dignity pervade the smile which crosses desk and platform. With one hand in the Board of Managers and the other available for students' shoulders, Dean Hunt consistently preserves the atmosphere of good-will and gentle authority which emanates from the Office of the Deans.



DEAN COBBS . . .

Sometimes wishing for the time to exercise a green thumb, Dean Cobbs finds her element spent instead on the matters which cross her desk. Gracious hostess of after-speaker teas in West house, she handles that other purpose for which deans were created with the same comfortable degree of optimism and competence.





JOSEPH B. SHANE
Vice President



EDWARD K. CRATSLEY
Vice President



JOHN M. MOORE
Registrar



BARBARA COLBRON
Associate Dean



GILMORE STOTT
Assistant Dean



SARA M. LITTLE
KATHRYN A. DAVISSON
House Directors



Campaign Office: H. Gilbert, H. Welsh.



Business Office: G. Gerould, C. Shero.

Registrar's Office: M. Walichuck, D. Allen.



Bookstore: M. Black, J. Sorber.



Secretaries: M. Ricksecker, E. Jacobs, F. Slaugh, M. Knight.



Post Office: J. Kaiser, N. Lewis.



Dining Room: Mrs. Selmes and Teddy.



Switchboard: Ayme Gosman.

Engineering Office: F. Shero.



Secretaries: M. Keeny, J. Bourne.



Dietitian's Office: Mildred and Miss Carr.



Economics Department: Wilcox, Conard, Fraser.



Economics Department: Pierson, Weatherford.

SOCIAL SCIENCES

Political Science Department: Stedman, Sonthoff, Ylvisaker, Michaels.



Political Science Department: Pennock, Jacob.





Philosophy Department: Morgenbesser, Hordern, Firth.



Philosophy Department: Moore, Beardsley, Brandt.



History Department: Weisberger, Larsen, von Laue, Cuttino.



History Department: Lafore, Field, Beik.



Classics Department: Shero, Cobbs, North.

HUMANITIES



Fine Arts Department: Walker, Rhys.



Spanish Department: Asensio, Sorber.



French Department: Philips, Bush, Wencelius, March.



German Department: Reuning, Baer, Cohn.

Music Department: Swan, Dunn.



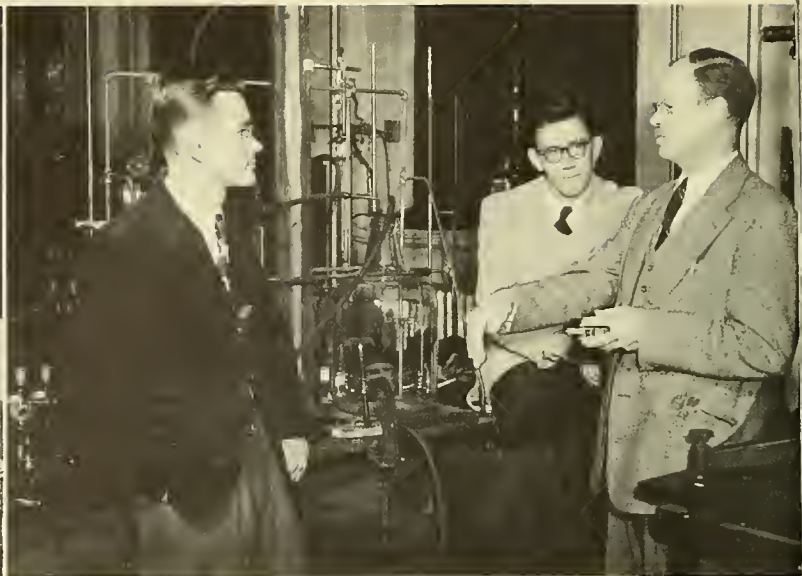
English Department: Whicher, Hunt, Klees.

English Department: Hicks, Hynes, Becker.





Chemistry Department: Keighton, Cox.



Chemistry Department: Fehnel, Slowinski, Foster.

NATURAL SCIENCES



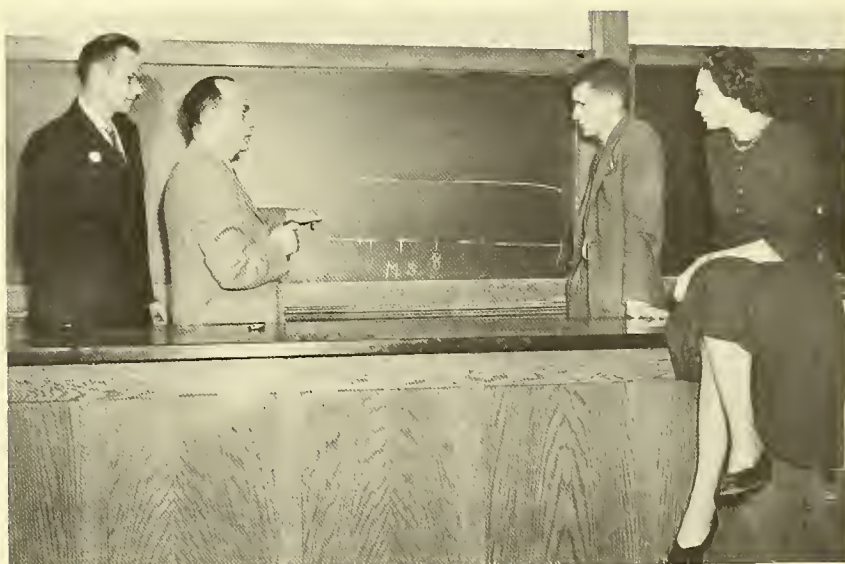
Zoology and Botany Department, Meinkoth, Livingston, Enders.

Zoology Department: Scott, Flemister, Flemister, Littrell.





Physics Department: Wright, Elmore, Bancroft, Garrett.



Psychology Department: Madison, Asch, MacBride, Creedon.



Psychology Department: Wallach, Gleitman, Prentice.



Mathematics Department: Rosenbaum, Brinkmann, Marriot, Dresden, Rosenbaum, Schafer.



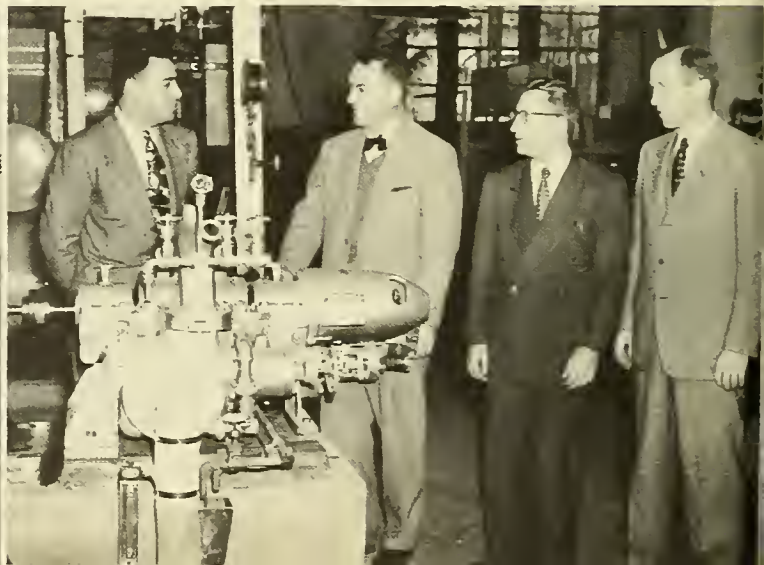
Astronomy Department: van de Kamp, Roth, Pitman.



Civil Engineering: Willis, Newlin, Linsenmeyer, Carpenter.

Mechanical Engineering: Prager, Reaser, Morrill, Wood.

Electrical Engineering: Jenkins, Merriam, Garrahan.





CLASSES





BACK ROW: J. Yntema, A. Snyder, K. Ihrig, S. Hay, W. Francis, R. Raymond. SIXTH ROW: K. Ruhl, J. Romberger, E. Pantke, R. Peters, M. Davis, U. Freund, R. Osborn, A. Al Yasir, J. Tomlinson, G. Pollack, R. Eisinger, E. Arsht, R. Parsons, B. Graves, D. Woodbridge. FIFTH ROW: W. Blass, D. Singer, J. Schwartz, A. Smith, D. Altaffer, J. Lincoln, J. Hoffmeister, A. Wilcox, R. Hall, K. Kurtz. FOURTH ROW: A. Megonigal, W. Armstrong, G. Denton, L. Oblender, W. Miller, A. Thomas, R.

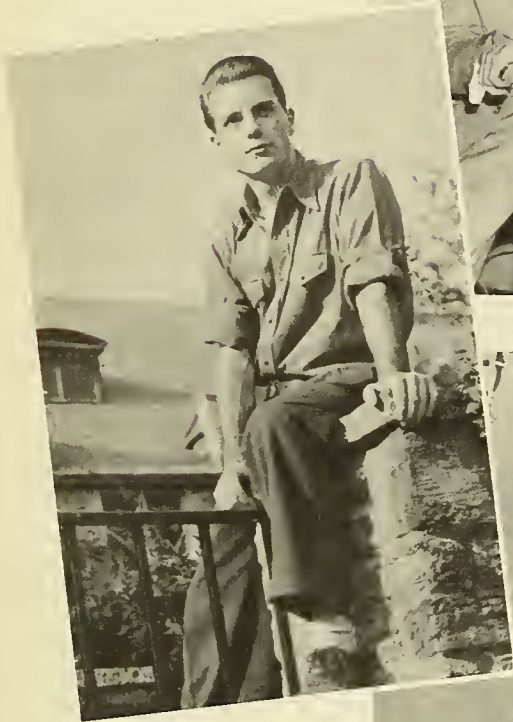
March, B. Seaman, R. Warren. THIRD ROW: S. Spencer, S. Wetherald, H. Botsford, A. Mariani, B. Bruce, M. Strasburger, E. Lovell, J. Kimball, S. Reymond, W. Brown, R. Lobeck, R. Alexander, W. Thomas. SECOND ROW: E. Ashbaugh, J. Merrill, M. Beech, M. Johnson, A. Gambier, J. van den Berg, S. Goodyear, G. Jensen, G. Foster, W. Epstein, E. Robertson. FIRST ROW: H. Machlup, R. Starrels, A. Mount, J. Weston, E. Ash, M. Ash, S. Mitsudo, N. Weber.



CLASS OF 1951

Senior Class Officers: J. Rosenthal, President; D. Singer, Vice President; N. Das, Secretary. Missing: S. Spencer, Treasurer.

What's at the troc?



Pres



What would Mother say?



A-a-a-h!

The word from Worth.





Junior Class Officers: N. Mc Dowell, Treasurer; D. Potter, President; R. Snyder, Vice President; S. Hand, Secretary.

CLASS OF 1952



Let's not worry till next year.



BARBARA JANE ALLEY

Scarsdale, N. Y. English
hobby . . . 58 inches of social, spiritual,
and intellectual energy . . . bubbling . . .
i'm going to diet tomorrow . . . from de-
pression to mania in an afternoon . . . i'd
rather we were just buddies . . . one of
the after-midnight commons crowd . . .
ooort! (with a wrinkly nose) . . . baby
roo



THOMAS M. ALTAFFER

Toledo, O. History Honors
midwestern antecedents and european back-
ground . . . tri-lingual . . . neo-thomist
among positivists . . . empirical, it means
nothing . . . g-2 in e.t.o. . . . beer and
bourbon with george . . . phi delt . . .
monday night concerts and new york
theatre parties . . . you americans . . . tom



DENNIS M. ALWARD

Los Angeles, Calif. History
smiling now—watch those moods . . .
green's club, seven-card stud . . . finx,
dodo, halcyon, hamburg, lic . . . phi delt
and strauss waltzes . . . bouncy when beery
. . . writing the great american novel . . .
trying to understand people, especially
brunettes . . . anonymous cartoons . . .
louis xiv . . . denny



PRISCILLA HUNT AMES

North Plainfield, N. J. English Honors
surprised hangs and curling eye-lashes . . .
commutes from 4e to old nassau . . . miss
bloomingdale's, herself . . . intelligent con-
victions, positively asserted . . . softball,
g & s, halcyon . . . practical idealism . . .
choking laughter and the charleston . . .
puss

ROBERT AMMERMAN

Buffalo, N. Y. Philosophy Honors
questioning. speculative . . . complete
sceptic and pessimist . . . eat, drink, and
be merry . . . cutting-beethoven, bartok,
barber . . . tennis and swimming . . . ex-
cessive appetite . . . always broke . . .
aging gray plymouth . . . transfer . . .
passionate anti-militarist . . . living to
return to venice . . . bob





ROBERT HUGH ASPLUNDH

Bryn Athyn, Penna.

Economics

son of fabulous lester-still trying to kick straight up in the air against haverford . . . phi psi, ifc, varsity football, basketball . . . let's do something about it . . . casual dates . . . ocean city sailor . . . want to buy a chipper? . . . future plans: planting seedlings under electric wires . . . multi



HORACE C. AYRES, JR.

Jersey City, N. J.

Political Science

famed in song and story . . . sleeps by day and walks by night . . . nose for politics . . . sometimes carries his own cigarettes . . . by annapolis out of jersey city . . . reportorial aspirations, phinx, jersey journal . . . leaves commons for meals . . . motto: jamais plus sec derriere les oreilles



ROBERT BAILEY

Swarthmore, Penna.

Economics

that thin, well-groomed look . . . wavy hair, quick tongue, carved pipes . . . engineer once, liberal artist won over . . . upper darby with the boys . . . specializes in slants and shutter speeds . . . finx, halcyon photog . . . get him interested and he's off . . . phi delt, party time . . . still questing . . . bob



MARQUITA BARBOSA

Rio, Brazil

Languages

terrific sense of humor behind solemn brown eyes . . . many phone calls from her brazilian men . . . bridge player par excellence . . . secretary of gwimp . . . dresses beautifully . . . it's been a real pleasure

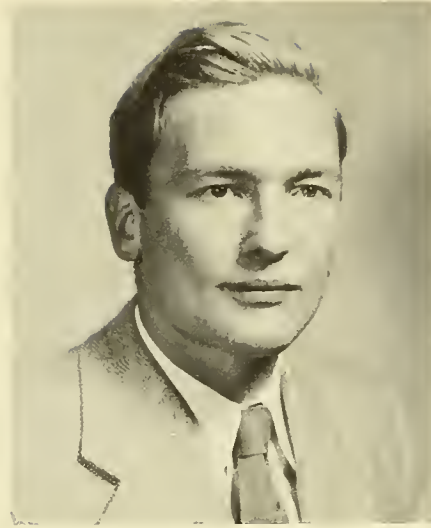


ISAAC L. BATTIN, JR.

Madison, N. J.

Philosophy Honors

armchair philosopher, parlor psychoanalyst . . . crew cut with horn-rims . . . gray flannels—that princeton look . . . solves everything but himself . . . violent ups and downs . . . jv football, kwink, the boys, phi delt . . . women try to mother me . . . dorm suffers with him . . . fate can be fun . . . ike



JOAN BERKOWITZ
Brooklyn, N. Y. Chemistry Honors
 math libe habituee, incorrigible realist . . .
 whom are we getting to speak at the next
 math club meeting? . . . opera lover,
 especially wagner . . . flutist in her spare
 time . . . never forget the six labs in one
 semester . . . discerning individualist able
 to go along with the crowd . . . fire
 corporal caught napping . . . joanie

JAMES M. BESHERS
Washington, D. C. History Honors
 swarthmore's lone arnban . . . hurls math
 books . . . summer in norristown . . .
 builds castles in hair . . . mary lyons pro-
 ctor . . . three piece piano repetoire . . .
 schiz . . . du . . . battered bearcat . . .
 swallows donuts whole . . . scap, student
 council . . . math in sociology? to inte-
 grate human relations . . . jim



AMY BLATCHFORD

Hackettstown, N. J. Political Science
 hackettstown hacker . . . that switchboard
 manner; yes please? . . . amy and her
 magic violin . . . musical talents extended
 to chanteuserie . . . i was in a mental
 hospital last summer, with the afsc, that is
 . . . voluminous correspondence to the dis-
 pair of her boxmates . . . wsga scribe to
 conduct . . . odd nicknames . . . aimless

NANCY JEANNETTE BODEN

Atlanta, Ga. Psychology
 sunny of hair and disposition . . . para-
 doxical practicality . . . lovely to look at,
 delightful to know . . . hilarious individual-
 ist . . . social re-belle . . . core of peace
 and dignity . . . likes things collegiate . . .
 devious means to humanitarian ends

BEVERLY BOND

Bethlehem, Penna. Mathematics
 preps . . . avid sports fan . . . good time
 haverford weekends . . . perpetually
 drunken teetotaler . . . willowy brunnette
 who slings a mean left hook . . . commons
 commando . . . i'm gonna reform . . . never
 outgrew freshman serenades . . . really
 cute on crutches . . . phi psi pin . . . bev



SUZANNE ELIZABETH BRAMAN
Washington, D. C. English Honors
 bright-eyed, bright-hearted, self possessed
 . . . boundless energy and imagination . . .
 ltc, hamburg show, creative writing . . .
 but i like honors . . . kafka and pogo . . .
 mexican songs on guitar . . . phi sig pin
 and flair for domesticity . . . radiates
 vivacity . . . suzi



PHILIP WILLIAMS BRANDT
Braintree, Mass. Biology
 bacteriological interests . . . conscientious
 in a last minute way . . . innocent grin
 . . . from chocolate eclairs to pink
 elephants on social committee . . . walt
 disney, wodehouse . . . ear for music . . .
 flippant manner hides a real understanding
 of people . . . sincere . . . phil



WILLIAM BROSIUS, JR.
Berwyn, Penna. Mechanical Engineering
 quiet and loyal friend . . . conscientious
 student, usually lost in engineering labs
 . . . breaks away to manage swimming
 team and macadoo . . . the ladies on Sat-
 urday night . . . hardworking, reliable du,
 ifc representative . . . summertimes pump-
 ing gas in yellowstone . . . wild bill

DAVID W. BROWN
Newton Highlands, Mass. English
 serious, not-too-conventional thinking . . .
 idealistically inclined . . . insatiable pas-
 sion for bach . . . tom dunn's shadow . . .
 college chorus . . . trackman . . . left wing
 of sca executive committee . . . partial to
 u. of new hampshire . . . that smile behind
 the steam table . . . dave

PRESLEY ROBERT BROWN
Drexel Hill, Penna. Economics
 seen playing a hot tenor sax in commons
 band and with off-campus combos . . .
 pillar of strength in local phi sig chapter
 . . . evenings studying women's phone lists
 . . . was day student, now takes off for wild
 week-ends in nearby metropoli . . . quiet,
 but oh that smile . . . pres





GUY BRUSCA

North Plainfield, N. J. Elect. Engineering
 big smile behind the steam table . . .
 sensitive to feelings and reactions of others
 . . . here via merchant marine and colo.
 school of mines . . . women charmer . . .
 hiya! and a handshake . . . tennis, boxing,
 dancing . . . concern for social problems
 . . . race relations . . . frankie



ANNE CHAPIN BUEL

Morristown, N. J. Mathematics
 come on, let's go! . . . always on the
 move in math, hockey, water ballet, tennis
 . . . walks in crum . . . loves to talk with
 anyone available . . . vital interest in
 music . . . giggler, though at times pensive
 . . . life long interest in cats . . . ambition
 —to sail around the world



HENRY WHITEFIELD BURGESS

Chatham, N. J. History
 will you guys shaddap, i gotta study . . .
 dorm carousing . . . phi delt athletic prexy
 . . . soccer . . . staunch friend and stable
 influence . . . pre-law . . . bogart personal-
 ity . . . a wit . . . wanna buy a psych
 book? . . . still looking for the one and
 only . . . fireworks . . . cape code yankee
 . . . hank

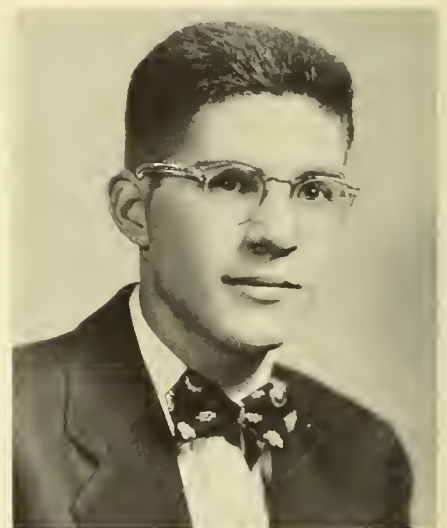


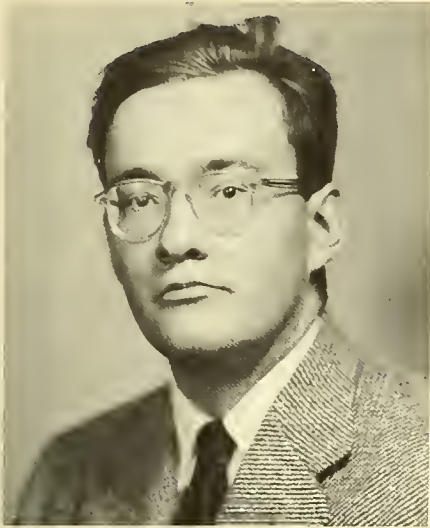
EVANS H. BURN

Chadds Ford, Penna. Economics
 combination of football gentleness and
 lover's brutality . . . ideal friend, always
 dependable . . . can take a good practi-
 cal joke and thinks up better ones . . .
 football and track ace . . . unique sense
 of humor . . . gesticulations . . . poetry
 . . . mec . . . gets more out of college than
 good grades . . . yukon ev

PETER CALINGAERT

Geneva, N. Y. Physics Honors
 scientific mind . . . crew haircut . . .
 mozart with precision, camera portraits
 with feeling, sn without flunking . . . i've
 got you on my little list . . . women should
 be more logical . . . flashy bow ties,
 harmonica . . . dispenses facts with airy
 manner . . . life, liberty, and the pursuit
 of . . . pete





WOODWARD LEE CARTER

Marshall, Mo. History Honors
sly humor under dignified bearing . . .
sloppy hats, ties, and books in a green
laundry bag . . . another merry lioner . . .
famous for his honors papers . . . was in
classics, now in history . . . future will be
a brilliant combination of both . . . dreimal
nein . . . lee



SUSAN CARVER

Rockville Centre, N. Y. Zoology Honors
no chauvinist, but the least you can do is
cheer . . . saddles, swimming, and sails
. . . a philofelist undaunted by the felitomy
of hieronymus . . . high efficiency blended
with femin inconsistency . . . a ladye faire
to see . . . spirited . . . sue



NANCY N. CLIFFE

Pittsburgh, Penna. Psychology
good advice from wide experience . . .
home is a fruit-juice factory . . . spring-
field spaghetti parties . . . decorative abili-
ty . . . humanist . . . scotian at heart but
now sooty city . . . attempt at alto . . .
part of every hamburg show . . . when we
were in mexico last summer with afcs . . .
nan



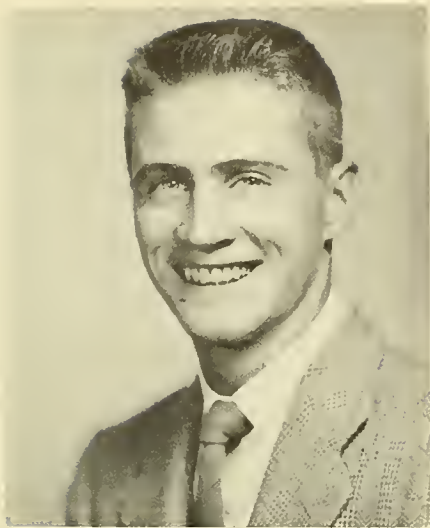
DANILA B. COLE

New Hope, Penna. History Honors
bouncing curls . . . fashion flair . . .
creations for ltc and hamburg show . . .
seamstress extraordinaire, master chef . . .
sings, dances, acts, writes . . . attacks life
exuberantly . . . produces quantities of
knitting and papers simultaneously . . .
avid interest in—you name it . . . dashing
. . . dana



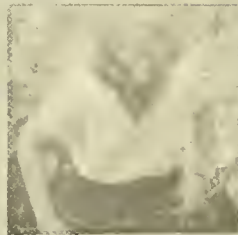
FRANCES ELLEN COMMINS

New York, N. Y. English Honors
grannie frannie, everyone's confidante . . .
sure future in student personnel . . . always
an appropriate story . . . i know a nice
date for you . . . swimming manager,
volleyball defender . . . instigator of frosh
yogi . . . harlan's phi delt pin . . . hey,
kids. i just got food! . . . night owl



JAMES F. COX
Hanover, Penna. Political Science
 ex-middie gone straight . . . danny-kaye-ish, but sometimes studios . . . varsity swimming, roccatorso, hamburg show; when i was in cairo i got myself a sheet . . . but my accent ain't so hot . . . top half of cox and wesson . . . dead pan du pianist . . . jim

MARY McCRACKEN CRAWFORD
Beirut, Lebanon Psychology Honors
 red-headed rosalind . . . pseudo-psychological insight . . . bull-session spark plug . . . the inside track with profs . . . capricious charmer . . . but he's so dumb! . . . stage presence; hamburg to shakespeare . . . ltc secretary . . . chronic procrastinator . . . molly



BEATRICE CROOKSTON
Palmyra, N. Y. English
 deke and dong . . . it's a long way to rochester . . . 'tis that! . . . natural on the swimming team, record smasher . . . slim vogue figure, even in a tank suit . . . home ec future . . . eyes you can't forget; even behind a catcher's mask . . . quiet poise . . . tall, dark, striking . . . be

ELIZABETH G. DAUGHERTY
Elkins Park, Penna. English Honors
 effervescent charm . . . cheerfulness that inspires . . . little girl who does big things . . . popularity, bumble . . . mature philosophy underlies banter . . . enchanting combination of practicality and romanticism . . . twinkling blue eyes and that ready smile . . . little betty

EUGENIA ELIZABETH CUDDY
Sherborn, Mass. History
 recipient and sender of startling postcards . . . nature lover, outdoor girl at heart . . . summers in saddle . . . ski sweater once mistaken for prayer rug . . . penguins . . . and when i woke he was gone . . . water tower and swarthmore police record . . . cuddles



ANNE CARTER DAVIS

Buffalo, N. Y. Psychology
interested in everybody, everything, every-
how . . . wide-eyed and wide-smiling . . .
music and poetry in heaven . . . unpre-
dictable prankster with hysterical laughter
. . . but he's so interesting . . . ever-ready
fund of sympathy . . . explored england by
bike



MARIE JEANNE DE KIEWIET

Rochester, N. Y. History Honors
the goddess . . . impulsive and unpredict-
able . . . one side of a record ad infinitum
. . . invaluable warmth and loyalty . . .
vacant stare . . . enraptured by history
. . . but i can't write it over, it's all typed
. . . mixture of enthusiasm and apathy . . .
wsga, gwimp, churning backstroke . . .
kippie



JUDITH LOUISE DEMOND

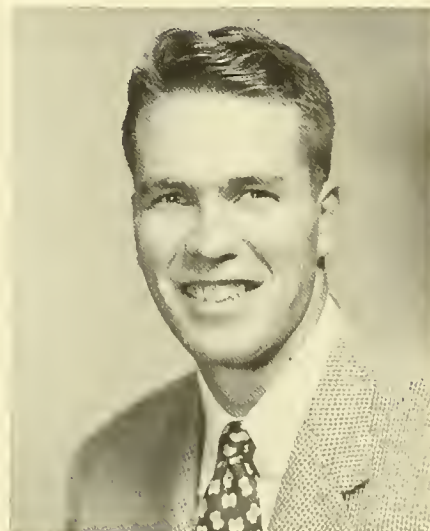
Pittsburgh, Penna. Economics
miss demand, you have a very economic
name . . . self-contained independence . . .
snap, crackle, pop disposition . . . golf
. . . c'mon garnet, cheer darnit! . . .
formation . . . wardrobe of shoes . . . that's
fer sure . . . the worry with the fringe on
top . . . judy

THOMAS FREDERICK DERNBERG

New York City, N. Y. Economics
charter member of the phi sig debauching
society . . . finances dates, other enter-
prises with frat funds . . . undismayed
monday morning quarterback . . . would
rather worry than study . . . i can't stand
this solitude . . . low down jazz in walt's
room . . . recent wsga wizard . . . tom

SANDRA LORD DETWILER

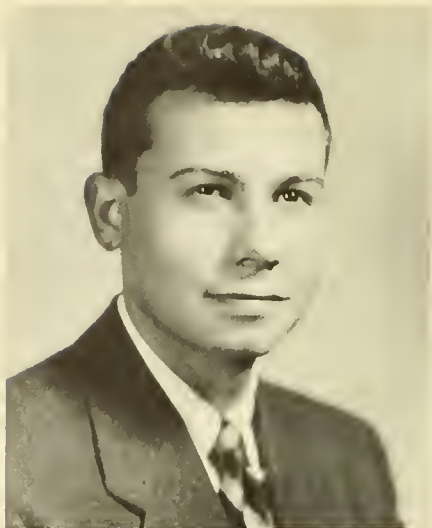
Longmeadow, Mass. Economics Honors
little sandy behind that big bass drum . . .
never studies at night or on weekends . . .
what's playing at the college theatre? . . .
strong philosophy all her own . . . you
may *think* i'm a puritan . . . climbed the
water tower twice in one night . . . cow-
bell, sailor hat, and those checkered shirts
. . . san





ROBERT ALLEN DEXTER

Brooklyn, N. Y. Electrical Engineering
bashful type . . . she's bigger than me . . .
bearcat's big leon, jv lacrosse . . . bow tie,
suspenders . . . everyone's big brother,
nobody's lover . . . thirty-five semester
hours at green's . . . '52 on water tower
best ever . . . pipe and mug . . . youse is a
good girl . . . phi sig . . . dex



ALBERT JAMES DIAZ-GARCIA

Santander, Colombia History
enfant terrible . . . colombian expatriate
. . . egocentric machiavellian . . . ad-
vocates return to feudalism . . . white
bucks and too many martins . . . hypo-
chondriac par excellence . . . makes henry
miller seem puritanical . . . missing the
twenties was the greatest tragedy of his
life . . . phi delt . . . diaz



SHAWN ERIC DISNEY

Bourbonnais, Ill. Zoology
profound interest in literary art . . . writes
westerns . . . lives his art . . . mixes guns
and model t's . . . pre-med . . . friendly
sense of humor . . . frightful blow to world
peace . . . male mona lisa . . . bursts joy's
grape upon his palate fine . . . gad . . .
knapsack for the hiker from ml . . .
shawn



RICHARD DOLE

Lima, Penna. Psychology
transfer from ames, hails from calif . . .
liked suburban philly so much, he married
local girl . . . worked for a change last
summer and turned socialist . . . straight-
est path to an a is a well-polished apple
. . . world federalist president . . . expert
on drinking songs, risque jokes . . . apple-
knocker dole

LEO HART DORFMAN

Scarsdale, N. Y. Electrical Engineering
if you hear a unique note from the brass
section of the hand or hamburg show
orchestra, it was the guy next to me that
did it





JOHN R. DURANT

Wynnewood, Penna. Biology
pre-med with interest in hotel business . . .
now what did i do with that comp anat
book? . . . jv basketball, an original sloth-
trotter . . . phi delt with an air of dignity
. . . introductory courses are the bane of
my existence . . . charter member of
swarthmore ivcf . . .



MARIAN ELLENBOGEN

New York City, N. Y. Fine Arts Honors
most artistic . . . wonderful laugh—half
chuckle . . . turned up nose and freckles
. . . famous two-man seminar at phila.
museum . . . plans for future change
every day . . . many activities and in-
terests . . . strong ideals, always looking
for new ways to help make them come
true . . . ellie



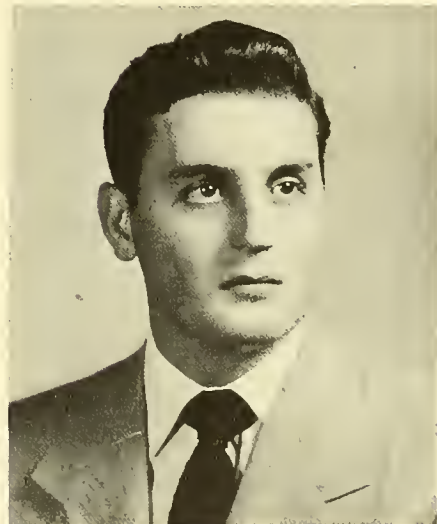
SARAH POTTER EVARTS

Cambridge, Mass. History
best natured soul around . . . steady as
rock and as fullback, too . . . self-effacing
athlete who smokes while chasing flies in
left field . . . off deep end about sailing
. . . unconscious sense of humor . . . my
advisor said hello to me today . . . own
style of whimsy . . . sally



ROGER ALLEN FELDMAN

New York City, N. Y. Zoology Honors
enthusiastically inefficient, but means well
. . . plays bach in cutting, the mandolin in
private . . . master of the unfinished
sentence, but means well . . . zoo major
with a pornographic memory, but means
well . . . capable of confusing anything
by explaining it . . . rog



ALBERT FERNANDEZ

Yonkers, N. Y. Mechanical Engineering
slide rule devotee . . . admires nature
women . . . always the altruist . . . sum-
mers in the catskills . . . likes the quiet
hours peppered with flamenco music . . .
secret passion is bullfighting . . . life gets
complicated . . . hay que tomar la muerte
como si fuera aspirina! . . . al



JAY FINKEL

Philadelphia, Penna. History Honors
casual jay . . . sole remnant of gracious living at mary lyon three . . . time out for greasepaint, microphones, and printer's ink . . . the rolling wheel gathers no moss . . . dapper jay, the man's man . . . wallop of books, master of innuendo . . . hot rod with great expectations . . . e j

ESTHER FISKE

Scarsdale, N. Y. Psychology Honors
six feet of extra curric . . . sense of humor? . . . water pistols, balloons, red jello in bathtub, pins in wax history prof . . . one of those insurance companies hate: one fool accident after another . . . believes in getting full fourteen hours sleep . . . too many worlds, too much to do



JANE SOOP FLETCHER

Selkirk, N. Y. English
majoring in english or is it phil . . . independent but dependable, shy with natural poise . . . home is the country . . . tired of water pistols, allergic to blotters . . . needs music, literature, hamburgers with onions . . . serving at social committee dances . . . bulletin board watcher . . . janie

ROSEMARY FOULGER

Worthing, England English
pre-med with goal in pediatrics . . . un-failing energy, especially at seven am . . . eternal optimist . . . always listening to people's problems, gives a hand . . . gwimp, social committee, wsga committees, lacrosse, freshman counsellor, parrish prexy . . . sadler wells fan, knitter of unusual sweaters . . . romo

MAXINE FRANK

New York, N. Y. Chemistry Honors
little girl with short dark hair, ballet slippers, and slide rule . . . combs hair in centrifuge after beauty parlor wouldn't take her . . . brilliant intellect under warm, effervescent personality . . . two pairs of blue jeans; one pair for dates . . . madam curie on her way . . . mac



LAURENCE WILLIAM FREDERICK

Hershey, Penna. Mathematics
 married navy vet . . . can tell a thousand
 jokes if prodded . . . lives by motto, early
 to bed, early to rise, and van de kamp's
 gradualness and thought . . . interested in
 education but hopes to be a life insurance
 actuary . . . wealth of knowledge at finger
 tips . . . fred



THOMAS FRANCIS GALLAGHER

Flushing, N. Y. Chemistry
 transfer from u. of chicago . . . smiling
 irishman with red hair to prove it . . .
 physically ambitious and inexhaustible
 . . . but it's toodamfar to walk from
 mary lyons . . . philosopher miscast as a
 pre-med . . . can't put down a novel . . .
 ready wit to keep the ball rolling . . .
 athletically reclined



PAUL GASTON

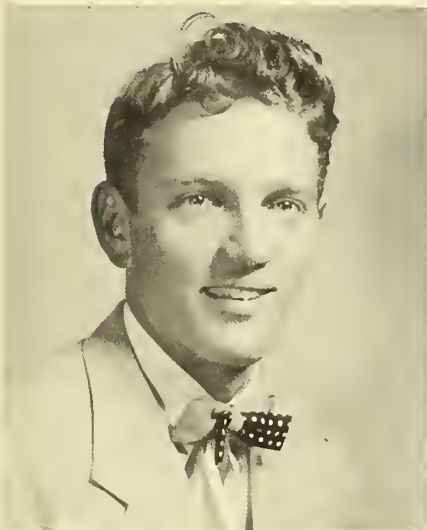
Fairhope, Ala. Economics Honors
 the union next to our liberty most dear
 . . . future governor of alabama . . . by
 george, henry george was right . . . had
 relations with miss america . . . afternoon
 cocktails in ml . . . in the room the wo-
 men come and go . . . fairhope, fairhope
 . . . interfraternity council . . . rebel

ELEANOR GATES

Scarsdale, N. Y. English Honors
 answers to little nell or nell gwynne . . .
 a new twitch for every hour . . . bites off
 more than she can chew (including finger-
 nails) . . . iconoclast . . . send 899 people
 away and i'd be happy at s'more . . .
 pragmatist on paper; idealist in practise
 . . . machiavellian by logic; sentimentalist
 at heart . . . incurably romantic . . .

ROBERT E. GERNERT

Glenside, Penna. Economics
 parties and good times . . . do you know
 how far behind we are . . . chester after
 exams or least provocation . . . above all,
 be practical . . . always kidding someone,
 often himself; alarm on sunday morning
 . . . meticulous, methodical . . . active du
 . . . jv soccer and basketball . . . bob





NATHALIE GOETTER GOLDSTEIN
New Orleans, La. Psychology Honors
 so far south she doesn't even have an accent . . . and yet she seemed busier than she was . . . social conscience the afsc way . . . left her horse in new orleans . . . still waiting for snow . . . corrupts swarthmorons in french quarter . . . a major a month, i don't know . . . nell



NORMAN W. GREEN
Ridgewood, N. J. History
 strong, silent type with sense of duty . . . marines, football, things past . . . teaching, government who knows what in the future . . . mental hospitals and papagos in summers . . . proctor, mec, student council, halcyon editor, phi delt prèxy . . . smile warms the grimmest co-ed . . . norm . . . the rock

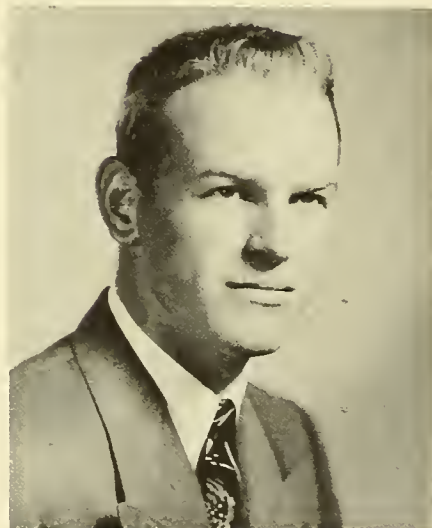


SARAH T. GRINNELL
Ithaca, N. Y. Zoology
 self-contained . . . lots of sparkle hiding behind that smile . . . one of the quietest presidents: outing club, square dance . . . early morning walks looking at birds, philly concerts . . . wants to swim any time . . . knows the country by bike . . . crossword puzzles . . . sally



RICHARD WALLACE HALL
Baltimore, Md. Economics Honors
 bashful blond giant with silly laugh . . . often serious . . . shhh, this is good music . . . student council, mec . . . athlete extraordinary: little all-american end who deserted to soccer, basketball center . . . from pitching for garnet to pitching in majors? . . . du . . . big dick

ROBERT W. HAMILTON
Arlington, Va. Economics-Math Honors
 smiling prey of commons cigarette moochers . . . hey, let's go to vill for some subbies . . . lend me your typewriter, i got a paper due yesterday . . . deep sincerity . . . one-time swimmer, preferring bridge . . . car-hop and life guard by avocation . . . bob





SYLVIA HAND

Geneva, N. Y. Psychology
oh, it was so embarrassing, i nearly died!
. . . room full of music . . . third from
left in 1950 hamburg . . . volleyball is too
a sport! . . . conduct committee . . . who
is sylvia, what is she? . . . gullible; oh,
really? . . . tennis enthusiast . . . efferves-
cent, lots of fun . . . syl



CHARLES GRIFFITH HANKINS, III

Swarthmore, Penna. Economics
cigars, monogrammed shirts . . . peel's
light beer of broadway fame . . . intel-
lectual milkman . . . famous last words:
no woman will catch me! . . . accomplish-
ments for the year: wife and '37 olds-
mobile, both with character . . . english
literature to baseball . . . intelligent, im-
petuous, irresistible . . . chuck



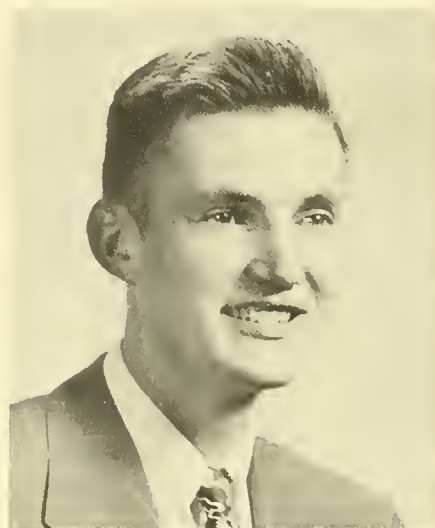
DAVID A. HANSEN

Philadelphia, Penna. History
arrived in swarthmore junior year; in-
augurated hansen sweepstakes . . . former-
ly one of lou little's defensive ends . . .
raconteur of lunky stories . . . profound
thoughts in what am i doing here style
. . . naively suave manner wit' da chippies
. . . penchant for tolstoi, van doren, cum-
mings . . . dave



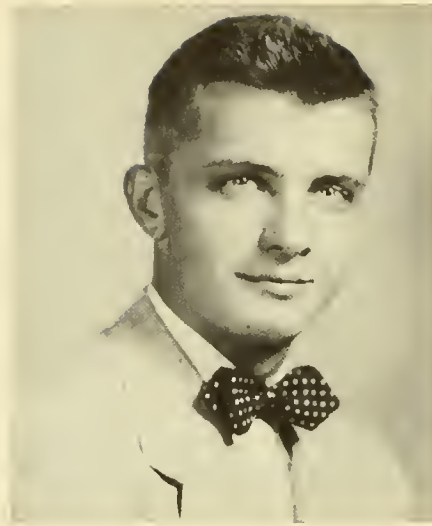
EVERY HARRINGTON

Drexel Hill, Penna. Psychology Honors
friendly greeting, even monday mornings
. . . smooth-running cog in social commit-
tee . . . student council, chorns, sca exec
committee . . . tonight i'm really going to
dig in . . . wrestles . . . runs in the cinder
path, 'cross country, and to appointments
. . . always a minute to chat . . . ave



GEORGE ANDREWS HAY, JR.

Swarthmore, Penna. History Honors
local boy making good . . . used car deals
on the side . . . once in love with amy . . .
never underestimates the power . . . chival-
ry is not dead . . . perceptive, perhaps a
bit philosophical . . . pipe dreams . . . phi
delt chorister, chaplain, reporter . . . let's
get together



STEPHEN HAY

Swarthmore, Penna. Romance Languages
well-traveled: deep springs, haverford, london school of economics, westminster choir college, 18 countries en route . . . hallelujah, i'm a bum, but a sauve one . . . that grin! . . . flair for romance, languages points to international career . . . operator . . . idealist . . . french club, race relations

GEOFFREY C. HAZARD, JR.

Port Washington, N. Y. Poli. Sci. Honors
finances flashy wardrobe by ke funds and phoenix embezzle . . . classroom filibusters confirmed optimist: dreams of a republican administration . . . basketball . . . surprisingly intelligent—the horn-rimmed look . . . under the tattersall weskit beats a heart of gold . . . 'lil geoff



RICHARD EDDY HEATH

Somerville, N. J. Economics Honors
bull major with law partnership on the side . . . never studies til morning before . . . nsa treasurer, quink, debating home-manager, phi deltd, halcyon business wizard . . . dunnie's melon side-kick . . . quad hound . . . tennis fiend . . . poker or hearts . . . smashing good driver . . . dick

JOHN HENEFER

Wayne, Penna. Political Science Honors
unconvinced mainliner . . . transfer from colorado . . . hash house hustler . . . old car and ski boots . . . hates affectation . . . plenty of free will . . . quiet quips . . . collects human interest stories and western songs . . . once seemed actually absorbed in ec theory . . . o. k. chum . . . phi deltd . . . j.c.

JOHN WALTER HIGH

Philadelphia, Penna. History
proud central alum . . . here from three years at drexel . . . conscientious student, but takes time off for fishing . . . former me . . . now bull major . . . independent . . . ask him about his sport . . . he knows all the trout and bass streams for miles . . . john



J. BENNETT HILL

Wynnewood, Penna. Fine Arts
 swarthmore's miniver cheevy, an anachronism . . . pomp, chivalry and ritual . . . and afternoon tea (with milk) . . . gentleman, snob, and anglo-catholic, vents aesthetic creative power in costume design for lit and savoyards . . . admiration for g & s, the phaidon press, mr. rhys and most things british



MALCOLM HILL

Naples, Fla. Psychology
 basically a frustrated humanities man . . . t.s. . . (psycho)analytic penetration . . . deflective thinking . . . de profundis . . . quizzical smile and wary eyes . . . lettered wrestler . . . the mishappy warrior . . . many a muckle makes a mickle . . . meso morpheus . . . good old mickey



EDWIN ANDERSON HOEY, JR.

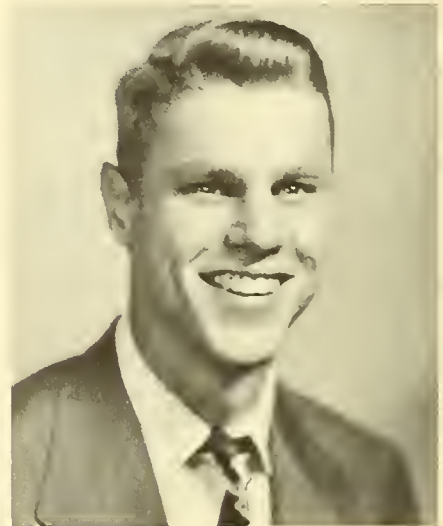
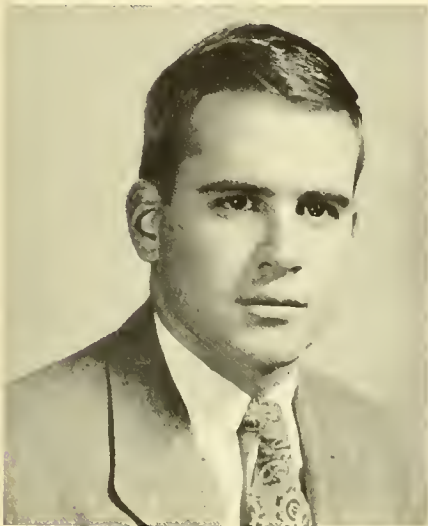
Chillicothe, O. History
 moves in lazy, lesiurely haze . . . monumental, losing struggles getting up . . . bach, buckeyes, beer mugs . . . one of eckerd's dubs with flaying clubs . . . occasional trombone blasts . . . du . . . charter member of e-section heart-sa club . . . has something on his mind; what the hell is it? . . . yah, but fellas . . . ho

GEORGE C. HOFFMAN

Springfield, Ill. Political Science
 now i lay me down to sleep—just a short snooze . . . transferred from illinois college . . . his heart beats for polly cye and e. kahr . . . has the proverbial big friendly smile for every occasion and a good word for everybody . . . a rabbit sports fan

PAUL ARTHUR HUMMER

Swarthmore, Penna. Mech. Engineering
 our first president . . . engineer with deep interest in social science courses . . . lacrosse, nsa, and community chest chairman . . . staunch du . . . always present with a camera at just the right moment . . . member of asme . . . blond beauty that few of the freshman women can resist





CHARLES E. JEANNE

Mount Vernon, N. Y. *Elect. Engineering*
casual engineer . . . one of the three chas's
. . . we'll worry about that later . . . phi
psi prexy and lacrosse hero . . . mec and
asee . . . jolly hello for everyone . . .
10th and arch man . . . never wins dating
bets with roommate . . . "charlie jeanne is
next" . . . misplaced ivy leaguer . . . chas



WHITTLE JOHNSTON

Martinsville, Va. *History Honors*
transfer from u. of chicago . . . two years
beneath radar set in navy . . . guiding
precept: prihee, glancon, sacrifice a little
to the graces . . . man is rational . . .
sings the vast virtues of the south . . .
mozart, tennis, prokofieff, square dancing,
john dewey



RONALD WINTHROP JONES

Summit, N. J. *Mathematics Honors*
cold, cruel, 'n heartless, that's me—don't
believe it . . . phi delt . . . frustrated
drummer . . . equally capable on dance
floor and tennis courts . . . frenzied
charleston . . . struggle between social life
and honors . . . eye for the ladies . . .
that satirical touch . . . gift of gab . . .
ron



ALAN KAMMAN

Philadelphia, Penna. *Civil Engineering*
product of central high . . . big wheel on
sn . . . that big guy with blond hair and
a broad grin . . . contributed to '50, '51,
and '52 halcyons . . . can regularly be
heard extolling the virtues of the druggie
in the vill . . . interested in classical
music . . . big al

MARY ANN KIDDER

Lansdowne, Penna. *English*
full of life; the good life pays off . . .
like soda water she tends to explode with-
out warning . . . organist, pianist, peddles
off surplus energy on a bike . . . pre-med
after impulsive switch from history honors
. . . practical streak for all flights of
fantasy . . . midder





NORMAN KIESS

Washington, D. C. Physics Honors
tennis fiend and on the team . . . orchestra,
ping-ponger . . . jazz and chess . . . look
here, you do it this way . . . i don't see
how the redskins can lose . . . deep subtle
humorist . . . realist . . . a real brain
. . . must be known to be appreciated . . .
norm



LOUIS A. KISLIK

Bronx, N. Y. Mathematics
commons culbertson, writer of hridge
columns . . . varsity, pf, and garnet club
in basketball, football, baseball . . . new
yorker humor . . . always a nasty word
. . . sleeps till noon . . . believes in con-
tamination of library life . . . big telephone
bill to northeast . . . away for weekend
. . . seven club



MARGARET I. KNIPP

Canton, China Zoology
my father is *not* a missionary . . . mam-
moth library, she's read half of them . . .
the triple was too much for her; single
ever since . . . another ex-chem major . . .
jazz addict . . . finally getting to work . . .
individualist . . . i. stands for anything
you want . . . peggy



ROBERT BLODGET KYLE, JR.

Manhasset, N. Y. Economics
from god's country . . . long island rail-
road, fishing in canada . . . newborn mover
. . . jv baseball pitcher (if only the plate
were wider) . . . jv soccer—boomfoot . . .
basketball manager . . . feather-foam lips
. . . here we have the long-sought rational
conservative . . . one of the famous du
theatre players . . . blodge



JAMES AVRA LANDE

Great Neck, N. Y. History
a connoisseur of the good things in life
. . . reflection . . . sleep major with minors
in tennis and soccer . . . graphic and
musical arts . . . i found a new pipe mix-
ture . . . debate . . . the light fantastic
. . . precision in thought . . . care in work
conservatism in action . . . jim



LUCIA LANGTHORN

Chappaqua, N. Y. History in my high school . . . co-captain of water ballet, sink or swim . . . pink angora socks . . . problems . . . but i don't see why . . . personnel committee . . . peppy fourth easter . . . well, i can't figure out what the history department sees in me . . . gwimp . . . legs langthorn . . . brrruhter . . . lusch

JENNIFER LEE

Ridgewood, N. J. History all-round gal with warm smile and big hi . . . mucho savoir faire . . . travels north, especially on weekends . . . chorus and tonettes . . . basketball, volleyball, softball, and at last hockey . . . furious letter writer . . . army brat . . . past includes czjc in panama, and kansan forts . . . jen, jenny, jennifoo



FRANZ LEICHTER

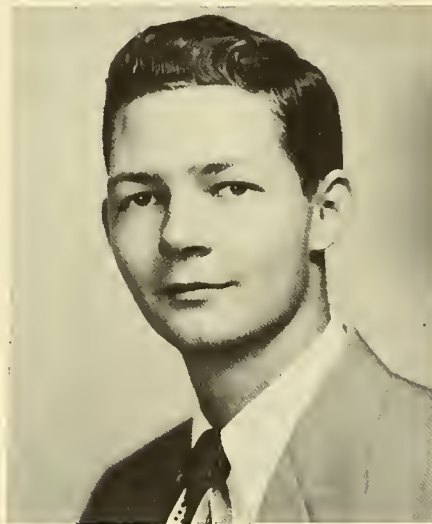
New York City, N. Y. History Honors malaproped english . . . claims descendece from franz-joseph . . . latrine colored sweaters . . . cyrano with heart of gold . . . foghorn voice—great thoughts with viennese accent . . . how the hell did guys like you get into honors? . . . friend of great and near great . . . parties at phi delt . . . hosenose

DAVID HENRY LEMKE

Rutherford, N. J. Civil Engineering timid when frosh, came into his own as soph and going strong ever since . . . boy, what a party, but still gets a's . . . phi delt and the boys—and his sister . . . engineer's club, halcyon . . . confidante of older women . . . summer road gangs . . . deceiving little-boy looks . . . Dave, Smiley, Lippy, but not David Henry

MARIE LENFEST

Stockton, N. J. English quiet voice, but can chatter . . . sly sense of humor sneaks up on you . . . gerry (gorgeous twin brother) . . . survived three years at female boarding school . . . breakfast in bed . . . permanent cocoa cup on bureau . . . make-up, gwimp, chorus . . . i could always knit for a living . . . re



JANET LETTS

Ho-Ho-Kus, N. J. History Honors
 trotter, temperamentally . . . usually half
 seen under stacks of books . . . philo-
 sophically, an optimist with a violent
 hatred of settling questions . . . given to
 speaking more than her mind . . . spec-
 tacles for unearthing mountains of matter
 and a typewriter for jamming it into
 papers . . . janet



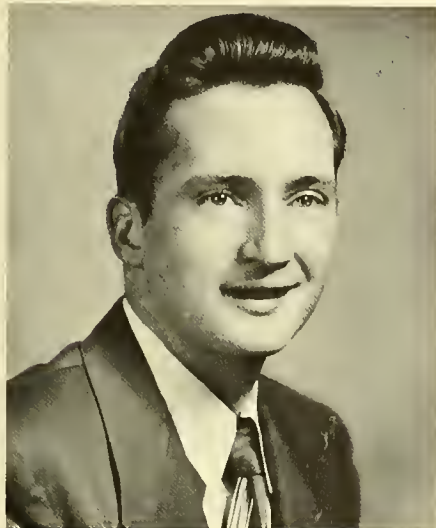
MIRIAM LEWIN

Newton, Mass. Psychology Honors
 not so proper bostonian . . . canoe trips;
 fell in . . . print club apprentice . . .
 gwimp . . . that hat . . . scap . . . at least
 the rats learned to discriminate . . . never
 let your academic studies interfere with
 your education . . . always hungry . . .
 mimi



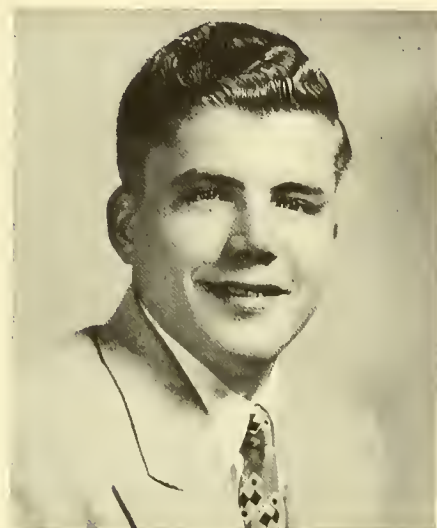
ANDREW JESS LEWIS

Swoyerville, Penna. English
 girard's gift to garnet . . . cigareets,
 whusky, and oh, those women . . . gentle
 six-foot sir galahad . . . anthracite coal
 mines . . . mud, mules and mountains in
 army . . . literary career . . . soccer and
 basketball . . . for god, country and kappa
 sig . . . nancy with the smiling face . . .
 andy



ARTHUR R. LEWIS, JR.

Havertown, Penna. Mech. Engineering
 sunshine . . . burly blond from haverford
 high . . . a man, always on top . . . var-
 sity, soccer and basketball . . . du wheel,
 rushing, ifc, softball . . . unmatched mas-
 ter of quips and humor for engineers . . .
 i'm impressed . . . asme . . . advice:
 never marry a college girl . . . art



DONALD LLOYD-JONES

New York City, N. Y. Economics
 tall, dark and . . . slouching phi psi . . .
 116th st's gift to chester, h section, com-
 mons, and corn-fed women . . . morning
 bridge, afternoon sack, gin rummy, late
 bull sessions . . . look twice, there are
 glimmers . . . hates sophistry and sophis-
 tication . . . don





BARBARA ANNE LOWER

Bethayres, Penna. Mathematics Honors
we hate to admit it, but she's usually quiet and studious—also brilliant . . . keen sense of humor . . . wonderful alto voice . . . beautiful auburn hair . . . music lover and piano-practiser . . . artistic talents on math problems . . . taking radio courses on the side . . . lower as in flower



JULANE LYMAN

Alamosa, Colo. French
transfer from rockford, for girls—need one say more? . . . flutes with band . . . sn . . . mechanical with umbrella . . . square dance, picnics . . . hates alarm clocks, creeping . . . flowing blonde tresses and cute giggle to snare men . . . leave till tomorrow what you hate to do today . . . julie



RONALD PAUL MADDOX

Washington, D. C. History
two years in ethiopia . . . never west of w. va. . . daily nineteen cokes and five hours sleep . . . legal mind under red fez . . . fullback for bearcats . . . ping-pong scholarship not good for four years, so graduates in three . . . science fiction and managing washington senators . . . ron julie

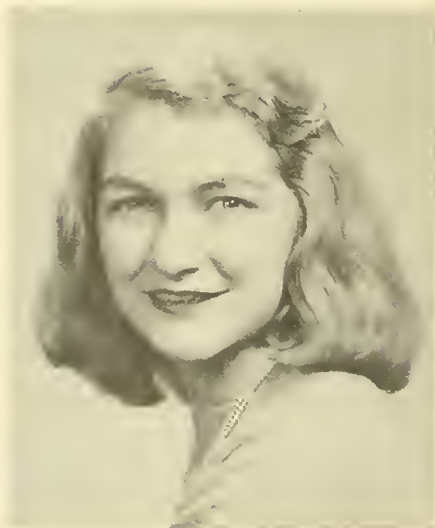


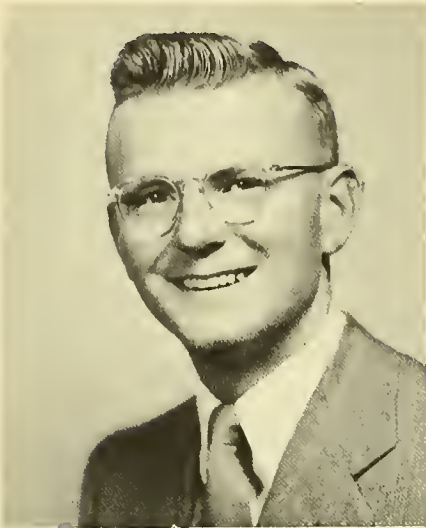
LAURA MAURER

Rockville Center, N. Y. Physics Honors
scientific brain under streaming blonde hair . . . westinghouse scholar . . . first gal pinned . . . phi delt sister . . . fight fiercely harvard . . . wee hours in palmer lounge . . . freshman counselor . . . oh, hey! . . . chain smoker . . . quiet manner hides an irrepressible spirit . . . laurie

ANNE MAURICE

Salem, Mass. Philosophy Honors
life is just a bowl of cherries . . . creep vs goof-off . . . blonde exuberance . . . convinced she's an unstable personality . . . lacrosse failure . . . social . . . work? . . . loves to laugh . . . what if i am a phil major . . . two years before the axe . . . phi sig pin





DONALD H. MAWSON

Wyncote, Penna. Economics Honors
always hurrying, but time for a warm grin . . . how's it going? . . . loves long walks, jitterbugging, all kinds of music, dramatics, food and of course, women . . . frosh class treas sec. treas scf, social committee, ltc, post-office lackey . . . life's no good without god . . . don



NORMAN M. McAVOY

Phoenixville, Penna. History
sportsman . . . mainline and charity balls . . . could anything be west of paoli? . . . arranged famous du ball at the barclay . . . varsity golf, soccer manager . . . known for subtle sharp wit, navajo sport coat . . . philadelphia's most eligible bachelor . . . big grin . . . navcad . . . norm



ROBERT MARSHALL McCARTHY

Brooklyn, N Y. History
softspoken . . . warm and friendly manner that hides a warm and friendly nature . . . pious but no less a man . . . student chorus, soc . . . love that deep springs country . . . sca and sunday school . . . next step ministry?

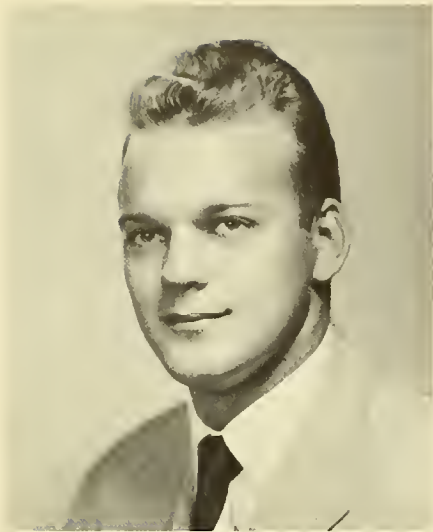


NEVILLE McDOWELL

Fincastle, Va. Fine Arts
virginian; provincial and proud of it . . . to sleep, perchance to dream . . . water tower escapades . . . mac, make me a poster? . . . we do not have a serf! . . . the call of the wild . . . the buds of spring virginia apples are better! . . . dazed silence at the breakfast table . . . neville-devil

SHIRLEY McFARLAND

San Francisco, Calif. Psychology
western ease and hospitality . . . perpetual impromptu melodrama with rusty . . . little things become artistic triumphs . . . twinges of conscience about catching up on psych, but she'd rather study people . . . little girl delight in voluptuous, interpretive dances . . . endless sympathy



ROBERT E. MEYERS

Wilmington, Del. *History*
rocks, euphonious . . . light hair, golden tan: summers at o. c. . . . lew's best defensive halfhack . . . trail of beer cans from swarthmore to wilmington, every weekend . . . clear-headed and logical except in wrestling, where he only takes two seconds to pin . . . greek god . . . bob

BEVERLY MILLER

Minneapolis, Minn. *Psychology*
battlefields of gettysburg . . . minneapolis, soft place in her heart for swedes, phi psi pin . . . water ballet, stroke together! . . . tomorrow i'm getting up for breakfast . . . psych major with no conflicts . . . time to be social committee chairman . . . famous for her groan . . . shut the door! . . . hev



JOHN ANTHONY MILLER, III

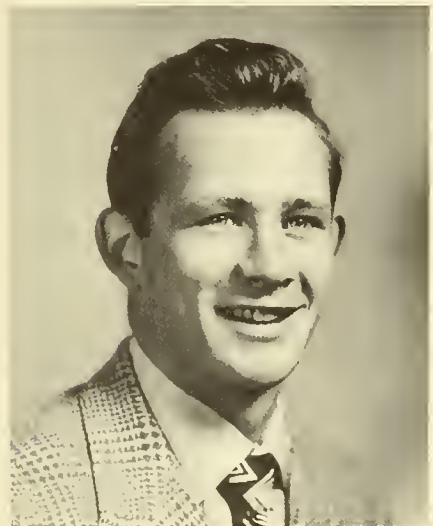
Ridley Park, Penna. *History*
moan, does not imbibe . . . wine, women, and song in reverse order . . . worships at the shrine of bach, ellington, and alec wilder . . . little johnny, flashy half-back . . . i hope lew doesn't walk in now . . . rhythmic snoring of roommate inspires hamburg and roccatorso tunes . . . johnny

ELSPETH MARY MONRO

London, England *Biology*
impish sense of mischief and fun . . . nature lover, grows oak trees in room, must know the name of every obscure plant . . . exploring instinct down back roads, across fields, over fences . . . adopts anything from kittens to kids . . . pre-med . . . spirited left wing in hockey . . . chorus . . . english reserve . . . el

LEONORA WALTON MOOERS

Knoxville, Tenn. *English*
first an open book, then a puzzle; don't let that innocent smile deceive you . . . flair for gentle satire . . . graceful walk, rosy cheeks, modesty, beethoven sonatas, cutting, finx, lacrosse manager . . . slight southern accent . . . i just have to study! . . . oh, drat! . . . breathless . . . lee



CAROLINE MORREL

Ruxton, Md. Philosophy
 ook . . . not afraid of spiders . . . tommy,
 sigma nu . . . loves to be silly . . . 99
 ways to while away the time . . . serious
 tennis, diving star par excellence, no
 splash, what form! . . . nashville accent
 . . . loves a gathering . . . may day is
 honor day . . . badminton . . . ingenious
 and creative . . . jill



ELLIS MOTTUR

Brooklyn, N. Y. History Honors
 brooklyn and mount olympus . . . loves
 leisure . . . dodo editor . . . riding in
 colorado . . . week-ends in long island
 . . . bourbon at brandts . . . india . . .
 kappa . . . aristotle's all wet . . . intel-
 lectual at heart . . . physics through math
 to history . . . nostalgic about parrish dome
 . . . hidden talents . . . just ellis



DOROTHY IRENE NEHRLING

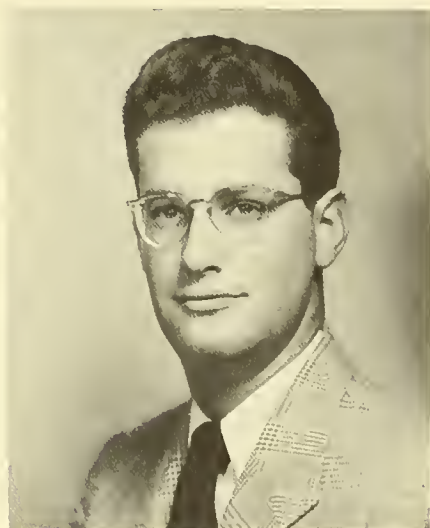
Needham, Mass. Fine Arts
 sophisticate . . . party girl . . . keen
 analysis behind casual quips . . . unex-
 pendable wit . . . idol of male contingent
 . . . never-ending weekends . . . english
 cigarettes and french perfume . . . semi-
 nar's at green's . . . quick trips to libe . . .
 why did i come here?—but loves it . . .
 personality epitomized in duff

ARTHUR OBERMAYER

Philadelphio, Penna. Chemistry Honors
 a rara avis . . . another product of central
 high . . . member of the student curriculum
 committee . . . methodical and unassuming
 . . . practical joker . . . says he spends
 most of his time in labs; actually spends it
 in commons . . . operates a pretzel conces-
 sion in wharton . . . art, alias obe

CHRISTINE PARKER

Forest Hills, N. Y. English Honors
 came to swarthmore via denison . . . future
 desires: paris and writing . . . starvation
 diets, diabolic orgies, rasputin moods, and
 gertrude stein . . . can't i be myself? . . .
 anti-athlete and anti-joiner, but ready for
 bridge or a party . . . a gay blend of the
 ridiculous and intellectual . . . chris





NANCY PARKS

Boston, Mass. Political Science
small spoke in ltc . . . can't see, but seems to operate beautifully on instinct . . . bounce and vivacity . . . i kid you not . . . irresistible wit (just ask her) . . . bostonian with penchant for riding . . . seen hanging from rafters of frat houses screeching, party, party! . . . our gal parks



ANNE PARSONS

Belmont, Mass. Psychology Honors
mulled rum cider for faculty parties . . . pack trips—the pack carried her . . . undifferentiated aesthetic continuum . . . subbies? . . . fastened to fourth east . . . bitte, wo ist der jugend herberge? . . . class of '83 . . . martin mouse . . . my navajos . . . chip



NANCY PAWELL

Summit, N. J. English
alive expression that you can't resist . . . phi psi pin . . . crick in neck from looking up . . . chlorine chorine, budget committee, wsga, to mention a few . . . talks in sleep . . . noted for her infectious smile, friendliness, and personality . . . an english major with a definite goalie in mind . . . that's nance

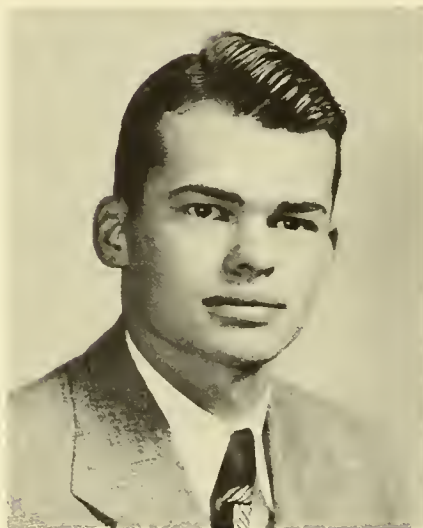


EDWARD PAXSON

Springfield Penna. Civil Engineering
george school . . . disgustingly successful in every project: clothier switchboard, intercom system, ltc productions, hamburg shows . . . voted sigma tau as freshman, hasn't noticeably deteriorated since . . . penetrating laugh threatens associates' equilibria . . . motto: why hut it when you can make it?

DONALD E. PEARSON

San Marino, Calif. Poli. Science Honors
genial philosopher . . . late hours . . . scf president . . . debate manager . . . nsa . . . once a bearcat . . . phi delt with outside interests . . . opinionates prolifically . . . put that waterpistol down,—please? . . . administrative genius . . . sunflower shirts on gray monrings . . . california forever! . . . mrrmphfff!





JOHN RANDOLPH PEET

Montclair, N. J. Civil Engineering
horn with white buck feet . . . fabulous wardrobe and personality . . . versatile sportsman sails and sails, takes pictures of mary . . . tommy's roommate . . . cocktail parties at denworth's . . . hair today, gone tomorrow . . . u. va. boy misplaced . . . tries to camouflage serious mind . . . phi delt . . . sandy



STEVEN J. PHILLIPS

Atlantic City, N. J. Psychology
rapid pace and ready smile . . . one from cross country, the other from a love of humanity . . . psych major—after all, we gotta find out what makes 'em tick . . . aliveness that's contagious . . . rutgers dilettante extraordinaire . . . they're having a lecture every evening this week, isn't that tremendous . . . steve



ANNE EUGENIE PINGON

Franklin, Ky. English
ward-belmont belle . . . breathless southern accent reveals lively animation—imaginative poetic, eager to please . . . still trying to bounce up and down on a diving board without falling in . . . let's not get up for breakfast . . . wants to study archaeology . . . see what she can dig up . . . ping



GEORGE W. PLACE, JR.

Rutherford, N. J. Mech. Engineering
snake; son of the original reptile . . . varsity baseball, basketball, and soccer . . . wants to build things . . . i'll never have another date . . . asme . . . engineer's club . . . old guard phi psi . . . that's a good gag; how d'j'ever think of it? . . . frankie laine, doris day fan . . . dutch



EVELYN BETSY POPKY

Wilkes-Barre, Penna. Math. Honors
claims to love wilkes-barre, mines and all . . . sunset watcher of math dome . . . dresden disciple . . . bartok in bond but debussy suits her better . . . wednesday evenings at madame wolpe's; saturdays in philly . . . phone calls on the floor . . . cooper foundation committee, irc scribe . . . more modern than dance . . . evie



W. JOHN PORTER, JR.
Philadelphia, Penna. Mech. Engineering
 midnight sessions with the boys . . . merits
 of engineers and phi delts . . . news
 bureau sports head, halcyon photo editor,
 asmc . . . good for laughs . . . dorm life,
 impressario and the druggie at ten . . .
 how 'bout dat? . . . who shall i date? . . .
 but never does . . . port

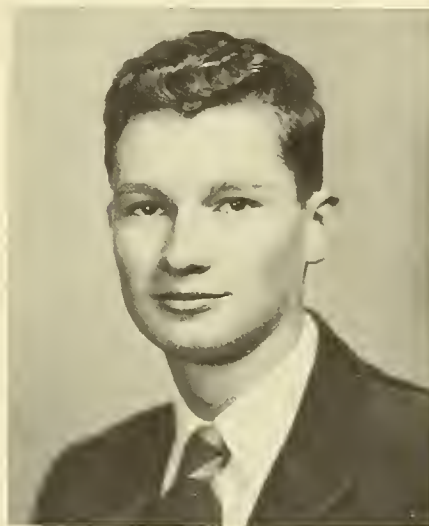
ROGER A. POTT
Summit, N. J. Economics
 mobile, hooker, or just plain rog . . .
 triple threat athlete . . . 6'5" and nose to
 match, huh . . . two year phi psi book
 juggler . . . long-time romance with nance
 . . . three-letter man in soccer, basketball,
 and baseball . . . best goalie in east in
 '48; all-american in '50 . . . heart as big
 as himself . . . hurry up, rog



DAVID DICKINSON POTTER
Amherst, Mass. Zoology Honors
 du amoeba skinner, amused by nuts, mouse,
 his two moldy remarks, and yesterday's
 jokes . . . attracted to sea by earthly
 pleasures . . . man that's simple . . . mca-
 doo's chief goat . . . seen with two fishes
 and a landlubber . . . criminal attendant
 dave podder with keys . . . talents being
 discovered

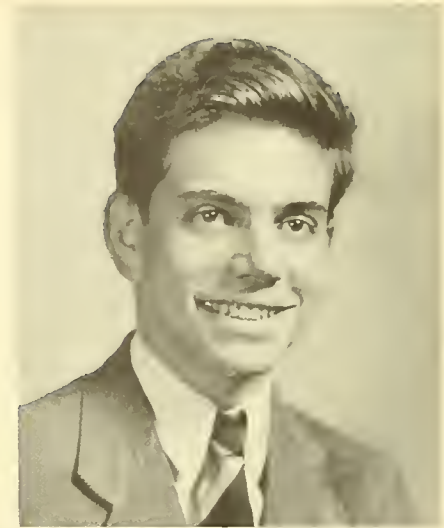
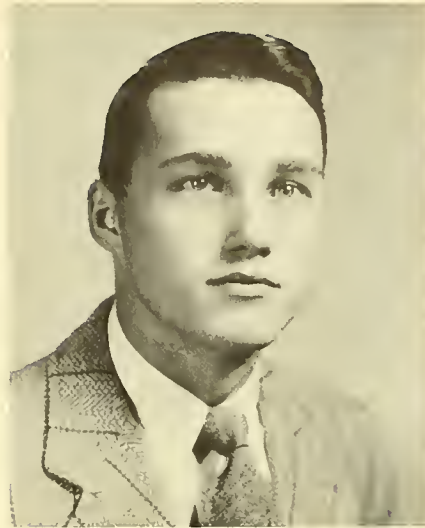
JOYCE POWELL
Westfield, N. J. Fine Arts
 meticulous dresser with trained wig to top
 things off . . . but this takes ages . . .
 gwimp, tennis . . . interior decorator to be
 . . . sincere, cute . . . talented poster-maker
 . . . look quick, can i wear heels with
 him? . . . a cheery hi to everyone . . . in
 middle of social whirl . . . it's been fun
 . . . joyce

PHILIP NEVIN PRICE
Rose Valley, Moylan, Pa. English Honors
 moderately frustrated actor, director, play-
 wright, artist . . . versatile mediocrity . . .
 indiscriminate lover of books, sailing, com-
 fort, the theatre and all things english . . .
 addicted to puns, swords, gilbert & sullivan,
 dressing gowns, pointless arguments . . .
 plan to shoot self in 1968



ROBERT BLAKE REEVES

Whittier, Calif. Zoology Honors
 inscrutable countenance punctuated with warm smile . . . charter member of arm-chair coterie . . . ability and ambition . . . martin libe and enders lab . . . good books, good music, and a pipe . . . subtle satire and forthright opinion . . . genuine basso profundo . . . let's face it . . . blake



THOMAS A REINER

Flushing, N. Y. Poli. Science Honors
 all the world's a stage . . . wheel with large radius . . . the inside dope . . . bohemian by definition . . . mahler at midnight, soup at sunrise . . . slept his way into honors . . . masaryk, gropius, black . . . salami on rye . . . who knows? . . . rising eyebrows . . . thinks he's enigmatic . . . tommy



MARGUERITE CRISPIN RIDGE

Philadelphia, Penna. English
 heading toward publishing . . . finx . . . wavy hair and quiet manner . . . ivy league weekends . . . appreciative sense of humor . . . always falling off horses . . . oh, lee, come look at this pattern! . . . defender of huna and precions . . . perennially penniless . . . margie



ELIZABETH RIKER

Newark, N. J. Psychology Honors
 articulate and well articulated . . . deceptive appearance of monolithic serenity . . . two or three people sit inside her and observe each other . . . constant dilemma . . . would believe in unicorns because no one else does . . . someone ought to paint her picture . . . call it the mona-liz



RICHARD NEWTON ROSECRANCE

Scarsdale, N. Y. Poli. Science Honors
 handshake of the new york times and curly haired smile . . . mighty moral resolutions . . . by great self-discipline i forced myself to remain in bed . . . mother's cookies greatly appreciated . . . innate goodness . . . rare enthusiasm and not one drop of gall . . . glowing with carol . . . dick





CHRISTINE ROSENBLATT

Montclair, N. J. English Honors
majoring in george, minoring in english
. . . commutes from cornell . . . friends
conferences . . . strong feelings about
everything . . . hysterics . . . lacrosse
center, gwimp . . . reads poetry and writes
it too . . . grades show genius . . . but i
do work, you know i do! . . . chris



HENRY RUEGER

Philadelphia, Penna. Mech. Engineering
i have my niche all cut out for me in
steam power . . . father time keeps the
boys in step . . . asme . . . mr. rueger . . .
a sometime casanova . . . there is no school
solution; i did it another way . . . office
hours: 8:00 a.m. to 4:00 p.m.



WALTER DOUGLAS SCHMITZ

St. Louis, Mo. Economics
he's a long way from st. looie . . . dabs in
social committee . . . those damn friday
night dances . . . younger brother at haver-
ford; the kid's misguided . . . sometime
contributor to the new yorker . . . tastes
run to saddle shoes and charcoal gray
flannels . . . prefers martinis and le jazz
hot . . . passion for neatness . . . du . . .
walt

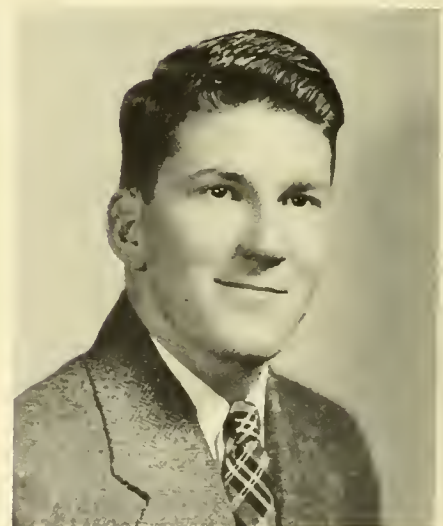
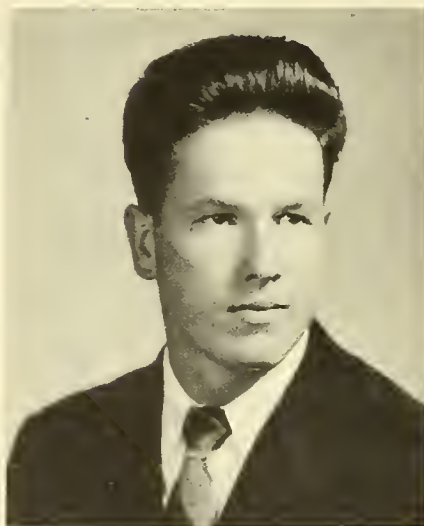


DAVID SCHOENBROD

Moodus, Conn. Mathematics
some are on the path while some still
have to find the way . . . energy that
needs a positive direction . . . a voice that
lies somewhere between clothier and the
wharton showers . . . specializes in com-
pleting unfinished portraits . . . cleaning
up crum . . . what's your major . . . dave

Laurie W. Seaman

Sydney, Australia Civil Engineering
one kangaroo that jumped from down-
under to the top . . . engineer of many
things . . . mec chairman, du, student
council, soccer and broad jump whiz . . .
everybody's friend . . . rowdy when not
asleep or acting naive . . . one moment . . .
those beadsley study sessions . . . loves to
joke . . . waltz with mathilda . . . laurie





EMMA LOUISE SHEPHERD

Elkins, W. Va. English
third east forever . . . always willing to do something devilish . . . ruthie, i need some money . . . frosh year at duke . . . west virginia is *not* in the south . . . commons goof-off . . . psychologist at heart . . . smiling tyrant over freshman counselees . . . clown of clowns . . . emmy



RUTH CARLTON SHEPHERD

Elkins, W. Va. Psychology
that red oilskin and hat at fire drills . . . back to sleep for another hour . . . which half are you? . . . gwimper and practical . . . brown eyes that sparkle . . . let's collect dry-cleaning now, twinner . . . spasms of cleaning up her room . . . mickey was such a nice dog . . . ruthie



NORMAN SHER

Philadelphia, Penna. Zoology Honors
days spent sleeping . . . nights spent questioning and arguing . . . knowledge by osmosis . . . commons committee, sn wheel, small cog on finx . . . central high forever . . . bridge to fill up the gaps . . . philosophy and science room under one celestial hemisphere . . . norm



SUZANNE SLAUGH

Swarthmore, Penna. English
george school's most loyal alum . . . wsga familiar face behind bookstore counter . . . did i ever agonize over that paper! . . . one hand in air, other poking the bridge of her glasses . . . hockey and lacrosse mainstay, formation, riding . . . intellectuals, phooey! . . . sue



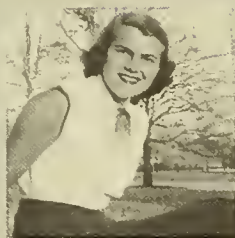
ARDIS LOUISE SMITH

Potsdam, N. Y. Psychology
stacks of letters from back home . . . restrained but explosive laugh . . . quick smile, warm friendliness, and those thoughtful eyes . . . will goof off any time except before a psych test . . . room-mates who transferred . . . music from beethoven to kern . . . oh, those summer beach parties



BARBARA HARRISON SMITH
Westford, Mass. English
 gladly wears her heart on sleeve, where it should be, instead of in the mouth with the rest of us . . . mistress of the intentional pratfall . . . talent without tears, unmarred by mephisto . . . the faith of a wise child, the tender prober, the old gay mare, fused with thoughtfulness . . . rusty

LOIS ANN SMITH
Bound Brook, N. J. Psychology
 unconvinced psych major; tennis minor . . . self-made creep . . . cover girl looks and doesn't know it . . . sense of humor . . . had a beer once . . . nonchalant . . . four years and still with duff . . . halcyon, somerville, gwimp . . . i'm going to the libe, but she can be dissuaded



RAYMOND FULTON SMITH
Palmerton, Penna. Economics
 endless card games, bull sessions, and late study hours . . . nonsense! . . . survives constant turmoil around him with surprising equanimity and sheepish grins . . . quietly opinionated . . . careless but informed piano playing . . . makes the minor vices look like fun . . . smitty

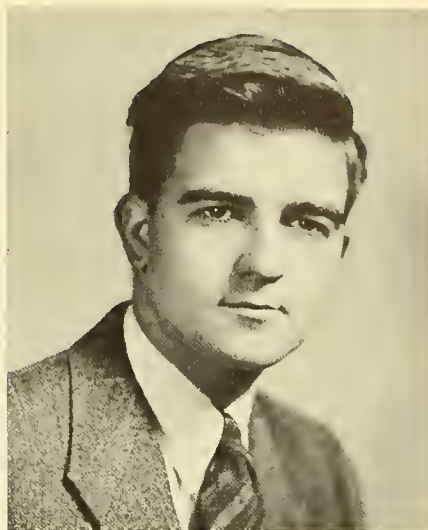
SUSANNE HARDICK SMITH
Easton, Penna. Political Science
 look for her behind neely's saturday evening post . . . easily tempted hut sincerely regretful . . . one of the best loved children on campus . . . artistic leanings . . . inexhaustible at swimming and other sports . . . musclebound . . . swears in yiddish . . . occasionally seen in a skirt . . . sue

JOHN R. SMUCKER, III
Wynnewood, Penna. Civil Engineering
 hmm ponder . . . build the road, to heck with theory . . . sam, mort, roy, and charlie . . . kwink, soccer, asce . . . ambition: tend bar in singapore . . . would like to be conformist but can't make the grade . . . chop-chop . . . why smile when you can frown . . . goin' to buy a paper doll . . . jrs III



ROSS L. SNYDER

Chicago, Ill. Psychology Honors
 acute sense of what is typed, trite, or
 trival . . . best shower technique on swim
 team . . . you gotta be vague . . . who
 me, coach? . . . life an aggregation of
 interactions with room-mates, abstract
 artistic expression, and attempts to under-
 stand the essence of group life . . . goat



FREDERIC NEIL SPOTTS

Harrisburg, Penna. Poli. Science Honors
 great list of definite likes and dislikes . . .
 life's three rewards . . . chamber music
 and autumn . . . garrulous lust . . . won't
 admit it . . . anglophile, bibliophile, and
 gastrophile . . . joie de vivre in childhood
 . . . now only sophisticated exuberance



SARAH RUTH STACY

Western Spring, Ill. English
 sally . . . trouble with those natural bangs
 . . . bookbill got sabotaged in the art de-
 partment . . . takes out frustrations on
 clay . . . avoids athletics, but doesn't
 count the walk from pitt . . . it isn't lost,
 it's misplaced . . . but you'd like the
 middle west!

MARY ALZINA STONE

Chicago, Ill. History Honors
 perpetual activity . . . that stride . . .
 sorties hunting props: where in hell can i
 find that? . . . advocate of learning history
 from historical novels . . . appalling mine
 of info on kings and hapsburg insanity
 . . . zest for fire drills, commons, sports
 . . . rejection slips . . . al

WILLIAM F. STONE

Garden City, N. Y. Economics
 casual refugee from cornell who came here
 to learn ec; now majors in human rela-
 tions . . . jazz fan par excellence . . . if
 an ellington record won't melt her she isn't
 a women . . . can't possibly find time for
 everything including what to do in his
 spare time . . . only best people are pin-
 ned and he's the best . . . staunch kappa
 sig . . . bill





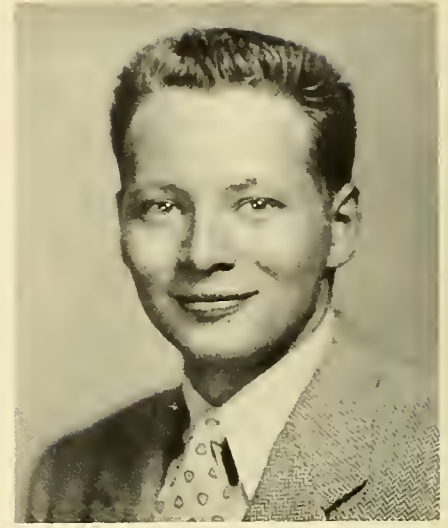
LENORE M. STOUGHTON

New York, N. Y. Latin Honors
new day, new crisis, but she keeps them amusing . . . imagination sometimes getting out of hand . . . friends who keep the same strange hours . . . slightly off-key . . . madrigals in the shower . . . animated discussions of almost anything . . . how absurd . . . the special tree . . . lee



WILLIAM W. STOVER

Claremont, Calif. Economics
active promoter of golden state . . . turkish towel shirt and levis . . . kwink . . . conservative republican yet spontaneous humor . . . du's most social social chairman . . . known for new york weekends and using people . . . slaughters chopin . . . bullock's clothes and green ties . . . what? . . . bill



WILLIAM R. SUTTON

Montgomery County, Md. Poli. Sci. Honors
hesitant liberal, self-made politician . . . old army man . . . phi psi scribe and chairman of igc chapter . . . mows lawns like he plays bearcat football . . . j.v. wrestling and lacrosse . . . crew cut with trace of a part . . . maryland drawl, quiet way, subtle humor . . . slick willie

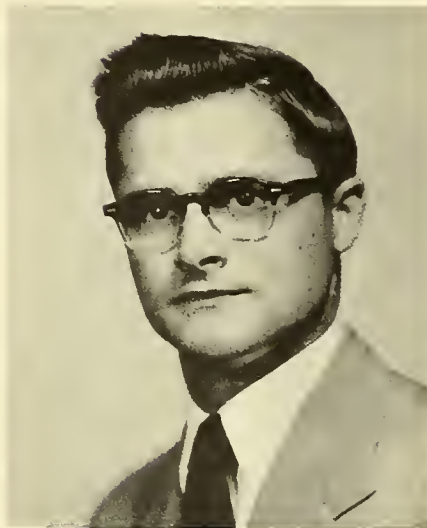


HAROLD J. SWARTOUT

Trumansburg, N. Y. Mech. Engineering
master of slide-rule manipulation . . . likes to whistle to third west better . . . former bearcat and jv grappler . . . asme . . . perennial phi delt warden . . . white shirts and blue jeans . . . one of the mob . . . serious air balanced by grin . . . methodical . . . once there, it sticks . . . hal to some, swart to friends

PHILIP E. SWAYNE

Newtown, Penna. English
well-oiled line when fishing in yellowstone . . . usually seen, always heard at athletic events . . . one of all-time greats on wrestling mat . . . no holds barred in phi psi basement either . . . ex-paratroop sarge, now honorary captain of water tower decorators . . . human dynamo . . . fearless phil





GLORIA ANN SWOPE

Drexel Hill, Penna. Mathematics Honors
emigrant from wellesley . . . terrible taste
in slacks . . . chain smokes . . . honors is
the life . . . sophistication plus but don't
let it fool you . . . studying in the grass
. . . overbids bridge hands consistently
. . . but never gets discouraged . . . the
shoeless wonder . . . gloria



R. ROBB TAYLOR

Towson, Md. English
if only you could harness that energy . . .
phoenix, halcyon, phi sig, hamburg show,
lacrosse, kwink . . . he's in them all . . .
bow ties, saddle shoes . . . all the world's
a laugh . . . serious thinking on the side
. . . emceeing down in crum . . . spur of
the moment ideas . . . snake eyes . . . robb



ROBERT F. TAYLOR

Norristown, Penna. Civil Engineering
animated fireplug . . . built to fit under
phi psi stairs . . . bough and tilden in
pygmy package . . . asce . . . sleeps, but
aroused by sports . . . co-eds are nice, but
it's doris day all the way . . . last period
td passes . . . slow wit to cheer up the
boys . . . captain of racquet squad . . .
studs



ROSLYN THOMAS

Philadelphia, Penna. Psychology
can spot this tall, motivated psych major in
a crowd . . . practices piano incessantly
. . . flair for wearing right clothes the right
way . . . well-known newcomer . . . all
people intrigue her . . . locked door . . .
chaotic, bewildering mixture of warmth,
vagueness . . . those pearl earrings . . .
lynn



J. RICHARD TOMLINSON

Westtown, Penna. History
transfer from hamilton for 395 reasons . . .
now embedded in math and du . . . fall
and winter are spent crawling around tank
with swimming team . . . full of ideas . . .
hard working enough to carry them out
. . . fun and a grin also figure . . . wilt
thee kindly . . . casual course student . . .
leave us creep



WANDA TYLER
Swarthmore, Penna. *History*
 long walks ruin eight-o-clocks . . . woman
 of mystery pose . . . but concerned with
 problems of universe and woes of man-
 kind . . . hot for any involved philosophic
 discussion . . . yet census of humus . . .
 afternoons at the printers . . . unlimited
 capacity for coffee . . . just tyler

CHARLES VALSING
Bradford, Penna. *English*
 respected, energetic . . . news bureau head,
 halcyon . . . aggressive varsity football
 guard who follows all sports from cleve-
 land browns to pingpong . . . successful
 du rusb chairman . . . jovial, relaxed . . .
 it sounds dirty to me . . . inquiring, logical
 . . . chuckles



ROBERT W. WACHA
Reading, Penna. *Economics*
 poker face . . . stands forever on the
 brink of the unknown . . . appealing but
 passive personality . . . fond of euterpe and
 venetian blinds . . . conscientious about
 everything but work . . . model for chas
 addams . . . your doorknob rattles in b
 flat . . . illicit relations with a car . . .
 bob

RICHARD WADDINGTON
Salem, N. J. *Economics Honors*
 impish grin . . . inhabits suites in b section
 when not drinking tall and chillies . . .
 great for bull sessions . . . piano, classical
 music, ltc, ivcf, sca, finx, mec, kwink.
 track manager . . . worries over room-
 mates . . . shy til you know him . . .
 sincere, dependable . . . phi delt . . . dick

PRISCILLA WASHBURN
Watertown, Mass. *Psychology Honors*
 tilly? ah yes, dungarees, sneakers, cigarette
 holder . . . disarming way of asking pene-
 trating questions . . . critical eye for
 people as well as literature . . . gets her-
 self and you excited about a new idea,
 book, painting . . . exuberant within the
 academic . . . self-perpetuating laugh



WILLIAM WATERFIELD, JR.

Ft. Wayne, Indiana *History Honors*
 hearty laugh . . . works at being well-
 rounded . . . going up finx hierarchy . . .
 du . . . fine baritone in frequent use . . .
 there is a right way to do anything, and
 determined to do it that way . . . con-
 vinced that life can be beautiful . . .
 changing views on women . . . humanities
 the best background for medicine



MAUREEN DOLORES WATSON

St. Louis, Mo. *History*
 brown eyes, sunny smile . . . sharpest
 clothes on fourth west . . . great com-
 panion and sympathetic listener . . . quiet
 until you know her . . . grape juice, pea-
 nut butter and crackers . . . modest pianist,
 steady worker on personnel, race relations,
 chorus . . . i really will study tomorrow
 . . . reenie



TOBE WEINSHENKER

Brooklyn, N. Y. *Electrical Engineering*
 feebly she laugheth at the languid moon
 . . . swarthmore's only femme engineer
 . . . parrish front porch . . . interest in
 finer things . . . science and her sister
 poesie shall clothe in light the fields and
 cities of the free . . . penchant for de-
 corating . . . ready smile . . . toebee

CORNELIA ROCKWELL WHEELER

Cambridge, Mass. *French*
 majoring in french but concentrating in
 . . . hockey captain, all around athlete
 . . . skiing by the house that neely built
 . . . she makes it look so easy . . . loves
 greeks and egyptians . . . happy blazer,
 happy girl . . . future plans: settling in
 paris, weekends on the rhine . . . neely

CAROLYN WILCOX

Swarthmore, Penna. *Fine Arts*
 trying to live down family . . . folk festi-
 val, modern dance, chorus, hamburg show,
 et al . . . miss make-up of ltc . . . agile
 eyebrows, artistic, enthusiastic . . . big grin
 . . . but he's very interesting . . . pleine
 d'esprit . . . howls you over . . . i left the
 n off on purpose . . . caroly





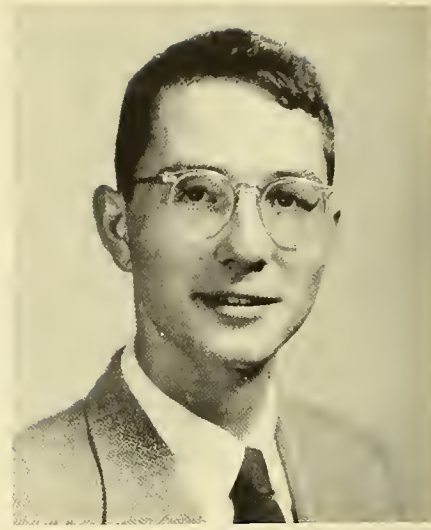
ELIZABETH MARY WILKINSON

Frogmore, S. C. English Honors
alors tu triches, tu ruses . . . english charm
steeped in southern comfort . . . not as
proper as she thinks . . . damnit, where's
my bible? . . . dryadic dignity . . . irene's
waterloo . . . slight sensitivity for gide,
leonardo, greensleeves, and four leaf
clovers . . . bash on regardless . . . mary



SUZANNE WILLIAMS

Philadelphia, Penna. English
why did you transfer from wellesley? . . .
big brown eyes give startled attitude to
life . . . finx drudge . . . innocent at large
in the dining room . . . apprehensive meet-
ings with mildred . . . entanglements with
law; bermuda! . . . only girl to pass
physiology and never send a frog to heaven
. . . sweet sue



MALCOLM WILLISON

Ballston Spa, N. Y. History Honors
intellectic . . . dodo behind the dodo
. . . willison in transition . . . christopher
robin . . . admirable self-control; no self-
discipline . . . bourgeois formalist . . .
highminded; the new england character
. . . i'm disenchantd, too; we're all dis-
enchantd . . . inveterate talker . . . lead-
ing follower

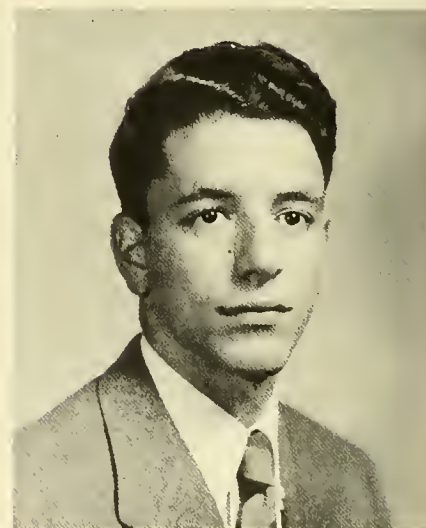


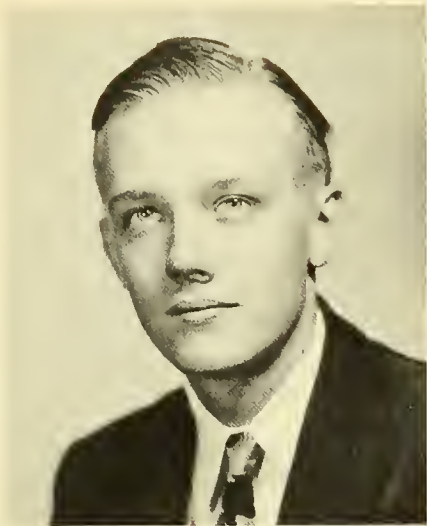
RICHARD CURTIS WILLMOTT

Chengtu, China Mathematics Honors
one fourth of four . . . sublimate with
pooh, pogo, politics, and pounding soccer
ball . . . pleased with exactness and fine
math solutions . . . slain by the simple and
absurd . . . logical procedure for every-
thing but women (uncontrollable vari-
ables) . . . what a nut . . . aims to engi-
neer in new china

LOUIS MARSHALL WINER

Spring Valley, N. Y. Mathematics Honors
spends his time with one of the odd birds
on campus—the phinx that is . . . con-
verses longly about brothers and dogs . . .
dyed-in-the-wool mary lyoner . . . gets his
exercise carrying a brief case to and fro
each day . . . lou





ELMER LOUIS WINKLER
Indianapolis, Ind. Mech. Engineering
 not as dumb as he looks . . . claims to be . . . midwest emigre with frightening sense of humor . . . unpredictable, a man without principles . . . plays soccer for dunnie, in the garnet outfield . . . slothtrotter . . . half of the infamous du refreshment committee . . . hal . . . wink



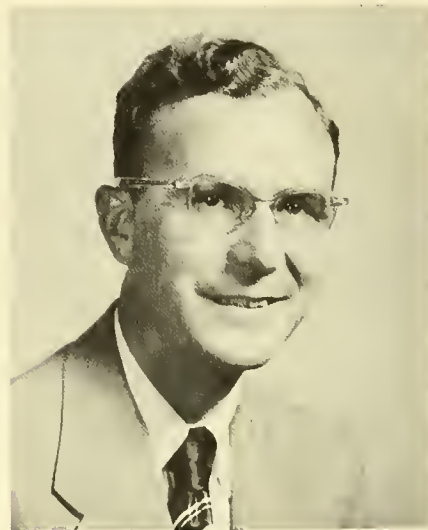
WALTER ALLEN WINTER
New York, N. Y. Psychology
 kid with guitar, six-string alter ego . . . swimming and track . . . writes papers after walks in crum . . . classnotes swarm with stick-figures . . . can't get a thing done, too busy . . . wants to go back to b.w.i. . . levi's, mary lyon's esthete . . . insolvent since "year of our ford" . . . where's jim



BARBARA WOLFF
New York, N. Y. Zoology Honors
 little girl with short dark hair, ballet slippers, and slide rule . . . lively interest in all she does, showing confusion in but a few . . . an enigma to some, an apparently open book to others . . . always busy, but still finds time for puzzling dates . . . bobbie



ELDON WOODCOCK
Rosemont, Penna. Chemistry
 woodie . . . sleeps like a log . . . the paper boy . . . a smile for all . . . sports editor of news bureau, manager of baseball team, phoenix . . . basketball enthusiast and phil-lies fan . . . outing club . . . she just doesn't understand me . . . going to the cracker room . . . raisin bread and apple butter



W. PARK WOODROW
Norwood, Penna. Psychology Honors
 want something done, ask a busy man . . . versatility is his middle name . . . knows where he's going; thought about it longer . . . confidential confidante . . . gallant and debonair . . . i am not a professor . . . phi psi . . . culbertson's disciple . . . you fool, you'll kill us all! . . . park



BARBARA WOODSON
Caracas, Venezuela *English*
 sophisticate . . . once propositioned with a
 cadillac, but likes lincolns . . . new york
 is for real . . . realistic in everything . . .
 suitable with one beer . . . likes men muy
 mucho . . . insists she was once intelligent
 . . . i got in on geographical distribution
 . . . b. j.

KATHERINE JANE WORTH
Greenville, Del. *English*
 sunshiny smiles, backed by the warmth of
 a listening heart . . . that deep down sort
 of sparkle from brown eyes . . . the solemn
 soul soaring in fanciful flight . . . remark-
 able aptitude for bringing out the best in
 you . . . ceiling contemplation . . . pack
 rat . . . ka-it-y



ALFRED J. WROBEL
Philadelphia, Penna. *History*
 dissatisfied with the quintessence of life
 . . . penchant for oddities . . . marsupial
 centaurs . . . eclectic interests . . . dabbles
 in painting, sculpture . . . intellectualized
 emotions . . . citronella circuit . . . yen
 for travelling; kamakura, daibutsu . . .
 sense of detachment . . . high ideals

MARCIA YNTEMA
Swarthmore, Penna. *Psychology*
 oscillatory career . . . horror of calculators
 . . . incipient artist, accomplished wor-
 rier . . . on the one hand, spontaneity and
 the unusual; on the other bathtub full of
 dishes, cats, fish and a normal m.e. spouse
 . . . a few familiar faces . . . moosh

ANNE CARTER YOUMANS
Denver Colo. *English*
 petite sophisticate . . . ingenuous master
 of the raised eyebrow . . . discreetly-ex-
 pressed, intensely-felt love of the aesthetic
 . . . 24-hour commons habituee . . . set-
 designer . . . skiing enthusiast . . . blase
 on motor-scooters . . . gal with eastern
 manner . . . annie





LINDA GUMP

junior year in geneva . . . we miss: that disgusted "oh gump!" echoing through the halls; her lithesome beauty and pert remarks; her fascinating moods

SYBIL HILLMAN

junior year in geneva . . . we miss: the parisien flavor she added to swarthmore life; her deep laugh and gnostic humor; her cynicism and intellectualism

CHICK WARDEN

junior year in paris . . . we miss: his lackadaisical druggie study habits; his true tales of the fortunes in tree surging . . . his slam grin in commons



We Miss . . .

CAROL THOMPSON

junior year at geneva . . . we miss: her histrionic ability; her winsome charm and sophisticated manners; her chic-ness and her smile



VIVI THIMANN

junior year at cambridge . . . we miss: her liberal views; her individuality and serious intent; her solemn exterior and elfin wit



JUDY HARVEY

junior year at geneva . . . we miss: her constant clowning; her sometimes curly, sometimes not hair; her enthusiasm and try-anything-once-ish-ness



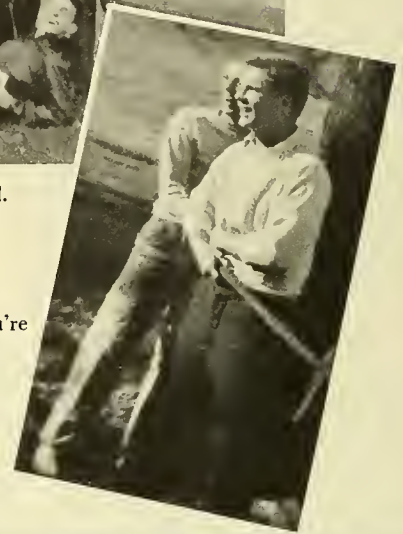


Let's keep it clean, Men. Give us something to build.

It won't be so funny when you're in the water.

Ever been *inside*, Amos?

The '52 Male



Josie Lemon and his Fruit Drops.



I'm impressed!



Leo



Gwimpsters



Prepsteppers



"... but one of the roving kind."



R-o-o-o-m-ie!

The '52 Female



Through these portals pass . . .



Yes, my darling daughters.



Every night . . . the same old thing: grind, grind!



Honors students?

Oompaah!



It all comes out in the wash.

Sophomore Class Officers: J. Paterson, Treasurer; S. Harvey, Secretary; E. Myers, Vice President; P. Landeck, President.

How 'bout that?





BACK ROW: J. Ridland, T. Jones, P. Macy, M. Forbes, D. Morgan. EIGHTH ROW: E. Commins, J. Svenningsen, W. Wood, D. Tayer, A. Meyers, R. Youman, S. Thompson, SEVENTH ROW: B. Harris, P. Landeck, E. Prenowitz, R. Tauber, R. Wentworth, A. Newell. SIXTH ROW: J. Worlock, L. Faulkner, C. Martin, R. Walkling, A. Fujima, M. Merson, R. Altman. FIFTH ROW: R. Stuart, J. Peterken, G. MacMahon, C. Johnson, S. Cohn, L. Stoltze, J. Bell. FOURTH ROW: J. Levine, J. Calvin, P. Hay-

ward, J. Davis, M. Murray, J. Graham, J. Price. THIRD ROW: D. Weidemann, A. North, B. Calkins, J. Hand, E. Ratcliffe, M. Laws, M. Law, M. Bartlett, W. Buckley. SECOND ROW: P. Pao, S. Mills, B. Jackson, J. Stover, J. Schneirla, M. Morey, H. Schmid, J. Litt, J. Kudo. FIRST ROW: R. Rajagopal, P. Woford, D. Cooperson, M. McCloskey, R. McCoy, P. Burnett, J. McKee, D. Bellow.

CLASS OF 1953

BACK ROW: J. Van der Veen, A. Levy, W. Fitts, W. Livant, F. Mangelsdorf, R. Davidson, M. Miller, G. Papanek, W. Honig. FIFTH ROW: L. Owen, R. Fetter, W. Bullock, D. Richardson, N. Erb, B. Turlington, K. Gulick. FOURTH ROW: W. MacNabb, E. Johnson, R. Howell, C. Jones, R. Reydel, E. Wilkins, E. Suckow, F. Benson, N. Gibbons, H. Lawler. THIRD ROW: U.

Victor, B. Keay, L. Hall, D. Strandberg, S. Harvey, E. Hutcheson, H. Fey, J. Gallagher, G. Lankenau. SECOND ROW: C. Kellers, N. Newbegin, A. Mott, A. MacMillan, M. J. Winde, A. Owen, E. Cohn, H. Hurst, C. Brunner, C. Holbrook. FIRST ROW: N. Felber, N. Williams, E. Winkelstein, C. Quigg, B. Palanky, E. Likert, M. Bull, M. Emrich, J. Piper.





BACK ROW: K. Roberts, J. Hopfield, D. Dennison, W. Fanning. THIRD ROW: P. Bart, H. Bruch, G. Bunker, Hawkins, O. Wright, P. Gray, B. Gould. FIFTH ROW: C. Rau, S. Richards, P. Kantrowitz, P. Voysey, P. Forrest, C. Tissot, V. Slinghoff, R. Erenini. SECOND ROW: L. Franck, J. Darlington, F. Irish, F. Allina, E. Brauch, A. Stetkewycz, B. Holloway, B. Spragg, B. Lane, J. Loomis, J. Nugen, B. Bopp, M. Freilich. FIRST ROW: Shapiro. FOURTH ROW: S. Sternberg, M. Lenrow, M. P. Welch, F. Lemke, B. Yost, M. Arizpe, S. Weil, L. Montesinos, W. Jones, R. Howerton, V. Navasky, M. Gatchell, M. Wren, A. Harris, A. Buenger, B. Bauer, H. Bunzl, N. Brigham, S. Marx.

FRESHMEN

BACK ROW: J. Strauss, L. Whitaker, L. Wislocki, G. bridge, M. Kolb, M. Allen, N. Kinyon, S. Bevier, E. Lowen, E. Loppacker. FIFTH ROW: R. Walton, B. Soyars, J. Head. SECOND ROW: E. Sogan, V. Tractenberg, M. Bodansky, S. Mills, C. Lyman, N. Lichtman. Scott, M. Richter, J. Mears, D. Lang, A. Bodin. FIRST ROW: R. Maurer, F. Leland, B. Starfield, D. FOURTH ROW: M. Cummings, B. Coleman, F. Breckenridge, H. Frost, F. Kyle. THIRD ROW: J. Wood Kissling, D. Jacobson, L. Ore.





BACK ROW: E. Wallach, N. Abba, C. Heisterkamp, D. Schneier, D. Rubenstein, U. Atmánya, J. Purnell, H. Scurlock. SIXTH ROW: T. Beatson, J. Bennett, E. Gillett, B. Jones, R. Carle, L. Rorer. FIFTH ROW: B. Keating, J. Cornelius, W. Fisher, P. Bryson, J. Kahlenberg, W. Clark, A. Bradley, P. Van Pelt, W. Jones. FOURTH ROW: S. Lohr, H. Cowell, W. Christ-

mas, C. Loucks, A. Reeves, P. Hall, J. DeWitt, A. Mangels. THIRD ROW: C. Kennedy, A. Metcalfe, R. Laux, A. Smith, R. Wolfe, T. Craig. SECOND ROW: J. Fine, M. Van Tassel, S. McGonagle, E. Ruehl, E. Hay, S. Andrews, S. Bliss, A. Chandler. FIRST ROW: E. Rash, B. Brown, G. Chomiak, H. Donow, M. J. D'Emilio, F. Oski.

CLASS OF 1954

BACK ROW: P. Carter, J. Jacobson, E. Esmerian, C. Baker, W. Gilleland, R. Merin, G. Lowen. FOURTH ROW: R. Houghton, R. Snyder, C. Silver, W. Armstrong, J. Forsythe, R. Morrow, K. Conrow. THIRD ROW: A. Griffith, P. Rhodes, J. White, H. Smith, J.

Auch, C. Barrera, M. Turner. SECOND ROW: M. Sturgeon, H. Thomas, D. Young, B. Hill, D. Brock, A. Fines. FIRST ROW: S. Hill, L. Wilson, L. Steiner, D. Jacobs, B. Manson, R. Shimony.





Voulez vous . . . It's only an hour exam.



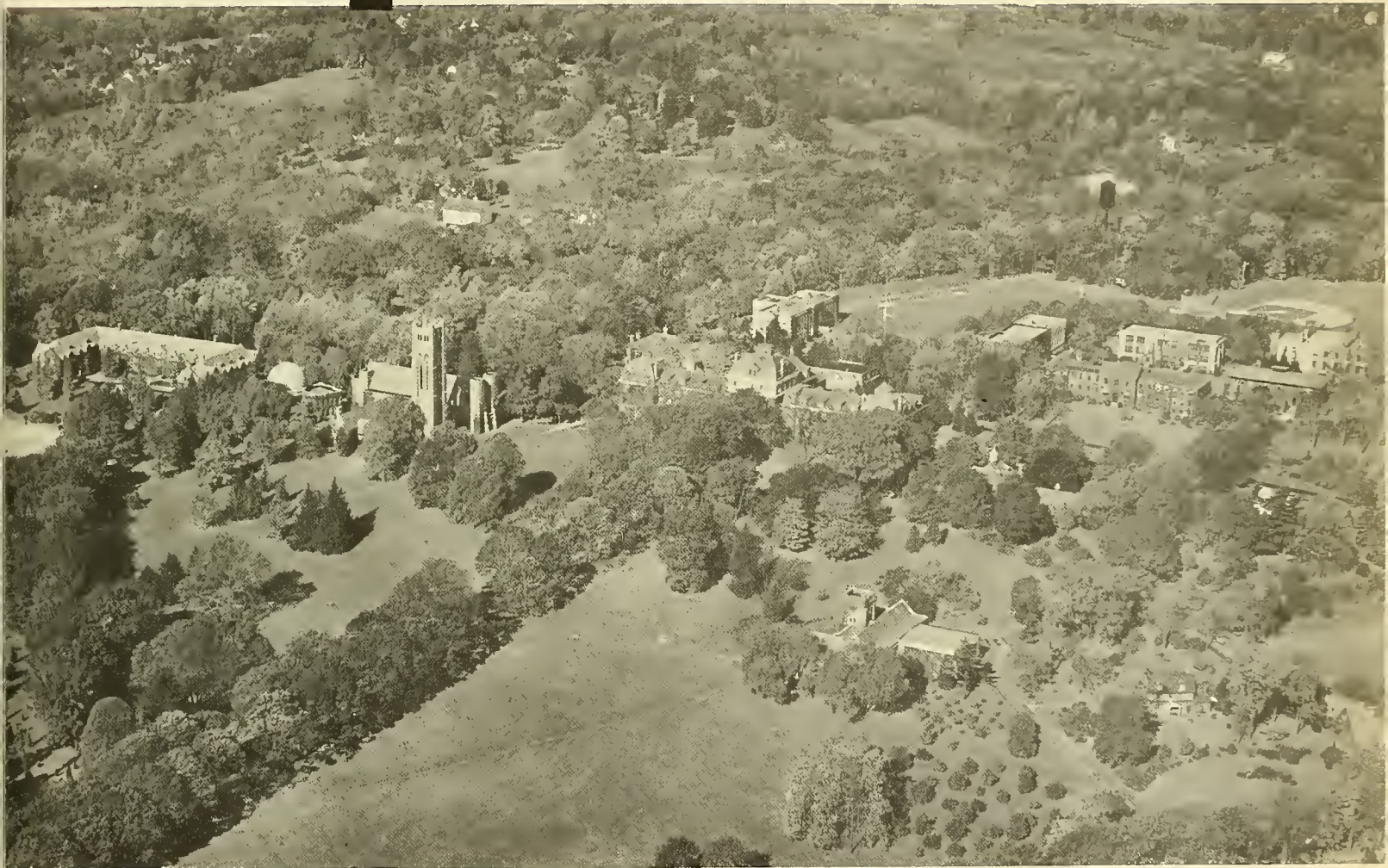
Meche



Freshman Class Officers: B. Keating, President; H. Scurlock, Treasurer; S. Lohr, Vice President; P. Hall, Secretary.



Do you know . . . ?



ACTIVITIES



First Semester Council. BACK ROW: W. Francis, J. Beshers, S. Gentry, N. Green. FRONT ROW: A. Smith, E. Ash, D. Keller, J. McIntyre.

STUDENT COUNCIL

Continuing its progressive emergence from the oblivion of previous years, the Student Council, under the presidencies of Frank Elliott and Wally Francis, initiated numerous projects for student welfare. Capital improvements, a truck and a television set, were made, while other projects, such as open dorms on Saturday afternoons and student councillors for freshmen, were discussed with approval. A doctrine of passive resistance was offered to Haverford.

Advancement, with caution, was made into the field of national and even international student affairs. A new committee dealing with such matters was formed. Greatest achievement in this field was the council's resolution, approved by the student body, opposing the California Regent's loyalty oath. The council also sponsored the fund drive for a DP student, contacts with the Free University of Berlin, and an evaluation of the National Student Association on campus.



Second Semester Council. BACK ROW: R. Willmott, J. Beshers, P. Hummer, A. Harrington. FRONT ROW: R. Asplundh, T. Reiner, F. Commins, C. Valsing.

STUDENT COUNCIL OFFICERS

Kurtz
 Green
 Harrington
 Elliott
 Francis
 Winde





BACK ROW: M. J. Winde, S. McFarland, E. Fiske, A. Stehle, R. Hall. SECOND ROW: R. Foulger, J. Gallagher (secretary), A. Smith (president), S. Slaugh, J. van den Berg. FIRST ROW: G. Denton (vice-president), A. Mott, H. Machlup, J. Morrel.

WSGA

CONDUCT COMMITTEE

Carver
Hand
Nolde
Denton
Kahlenburg
Bartlett
Demond



SOMERVILLE COMMITTEE

Turner
Lickert
Hand
Donow
Smith
Daugherty
Miller



PERSONNEL COMMITTEE

Mangels
Cohn
Shepherd
Gayl
van den Berg
Bellow
Bevier
Bartlett
Martin





MEN'S EXECUTIVE COMMITTEE

Deinard Jeanne Landeck Worlock
 Spock Seaman Levering

PROCTORS

Myers	Peters
Green	Elliott
Hummer	Al Yasir
Finkel	Brown
Reilly	Singer





BOOK AND KEY

Rosenthal	Gentry	Singer
Trescott	Spock	Rivlin
Francis	Elliott	Kurtz
McIntyre	Ruhl	Snyder

MORTAR BOARD

Penfield	Kimball	Lazarsfeld
Freund	Mitsudo	Posel
Oblender	Machlup	E. Smith
Denton	Dayton	A. Smith
Demerec	Ash	





Benson Cohn Wolff Waterfield Frank

Buried under old shovels, painted slogans, stale printer's ink, and last year's editions, one might, with luck, discover the PHOENIX breathing serenely in his Parrish basement. Headed this year by Lou Winer and Jay Stover, first and second semester editors respectively, the PHOENIX has undergone many a change, especially in the direction of good reporting in a more-or-less unbiased style.

Geoff Hazard, with Jo Piper and Fran Benson assisting, has handled the financial portion of the bird. Denny Alward, Bill Waterfield, Bobbie Wolff, and Mac Frank, makeup and assistant editors; Pete Irvine and Vic Navasky, sports editors; and Shelly Cohn and Robb Taylor, have all aided in getting the bird weekly to its feet. Sunday night sessions have also witnessed Wanda Tyler, Margie Ridge, and Nancy McGrayne working hard to prove that the "Finx is not a rag after all."



Taylor
Irvine



Alward
Wolff
Frank



Chomiak Levin Bart Purnell Voysey Rorer

PHOENIX

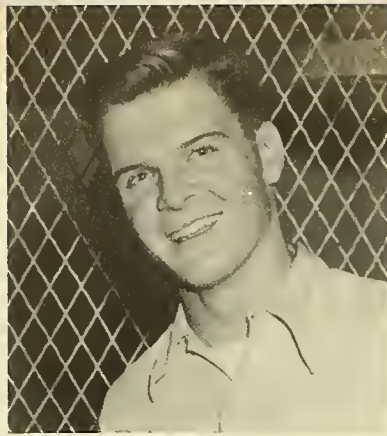
Hawkins
 Benson
 Slinghoff
 Van Tassel
 Jackson
 Schmid
 Piper
 Dodson



Hazard Stover Winer



Green



HALCYON

Born of tradition nurtured by the budget committee, and preened by the junior class, the HALCYON has once again sprouted wings. Reiterating the traditional cries of "HALCYON UBER ALLES" and "the HALCYON will be out on time," Norm Green has served as the chief egg-hatcher. The editorial board of Porter, Taylor, Alward, and Heath have been around at various times to yell encouragement.

Porter



Dividing up the nest, one could also find Puss Ames in charge of the faculty section of the book; Betty Daugherty handling the classes; Bob Davidson, activities; Lois Smith noting social life; Neely Wheeler and Chuck Valsing concentrating on sports; Bob Morin working the spring supplement feature; Dave Potter and Nancy Boden on circulation; and Bob Bailey and Sandy Peet doing the photographic work with Karl Ihrig assisting.

Alward



Smith Valsing Daugherty Davidson Wheeler Ames





Heath

Taylor
Jackson

Potter
Boden



Place, Lemke, Smucker, Lewis,
Richardson, Radcliffe, Hutcheson,
Schmid, Detwiler, Lee.



Evarts, Fetter, Commins, Mc-
Dowell, Ridge, Langthorn.

DODO

Mottur
Editor 1950

Willison
Editor 1951

Rosecrance
Business Manager



General Staff. STANDING: Thompson Brown, Miller, Willison, Albrecht, Lippit, Holbrook, Suckow. SEATED: Popky, Bunzl, Moltz.



CLASSICS CLUB

BACK ROW: H. Prusa, D. Sutherland, C. Baker, J. Ambruster. SECOND ROW: L. Stoughton, B. Bruce, J. Sartorius, L. Ore. FIRST ROW: P. Bryson, S. McGonagle.



FRENCH CLUB

BACK ROW: R. Davidson, T. Greene, M. Willison. SECOND ROW: M. Murray, R. Cheyney, S. Hay, W. Honig, D. Dunstan. FIRST ROW: P. Hayward, A. North, N. Felber, B. Peterken, D. Bellow, C. Gayl, A. Reeves.



GERMAN CLUB

BACK ROW: L. Hartmann, G. Reif, A. Mangels, S. Grinnell, M. Davis, W. Honig. SECOND ROW: U. Freund, J. Kudo, J. Romberger, H. Linder. FRONT: M. Lewin.



SPANISH CLUB

BACK ROW: S. Hay, Mrs. Ascensio, A. Myers, C. Gayl. THIRD ROW: M. White, A. Mangels, J. Schneirla. SECOND ROW: B. Hill, A. Gambier. FRONT: A. Mariani.



Trotter
Chorus
Session



CHORUS

ORCHESTRA

Chorus rehearsal



Dunn



Orchestra rehearsal

Van de Kamp

LITTLE THEATRE CLUB



Lange
Director



General Membership. BACK ROW: R. Davidson, J. Finkel, G. Foster, P. Gislak, L. Rorer, K. Kurtz, J. Tomlinson, R. Warren. SECOND ROW: S. MacFarland, A. Owen, T. Paxson, K. Worth, R. Hall, A. Buenger, P. Bryson, B. Hill. FRONT ROW: M. Stone, J. Matter, D. Cole, S. Braman, S. Weil, S. Andrews.

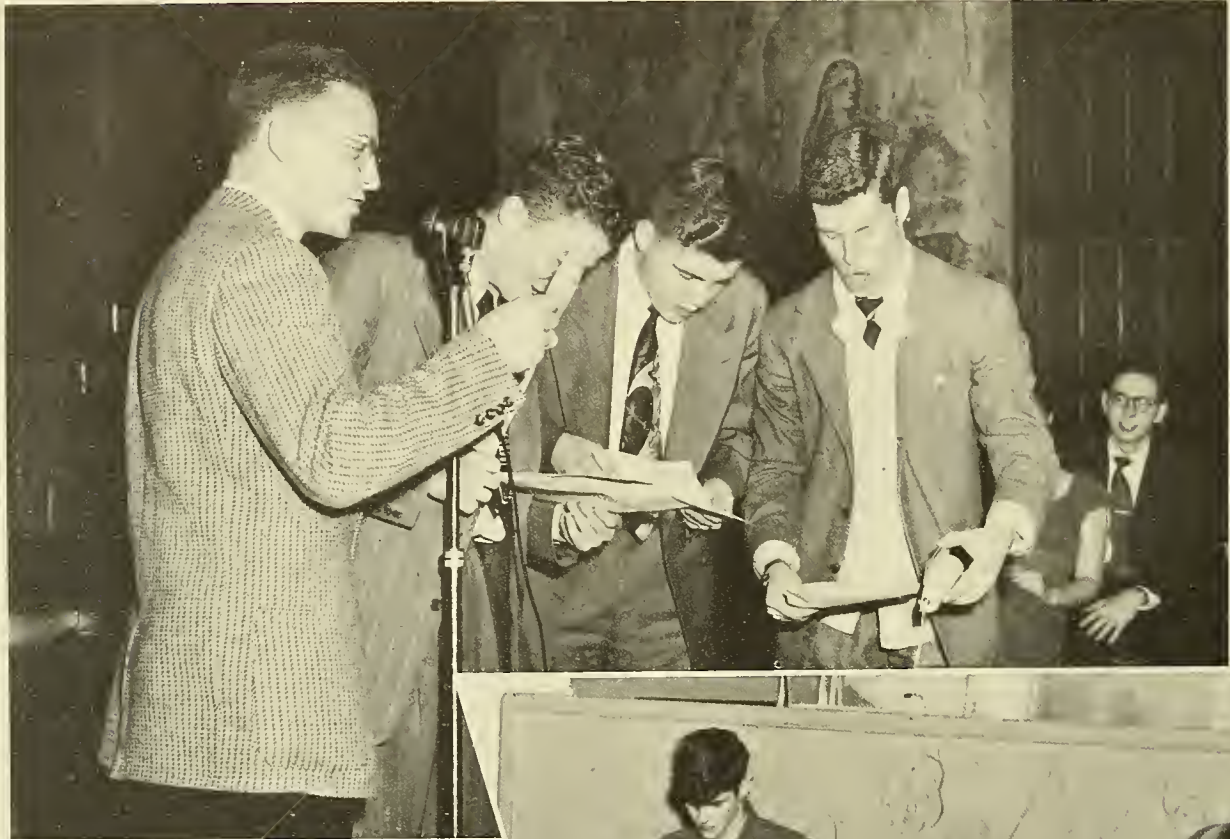
Smith
President
Crawford
Secretary
Tayer
Treasurer



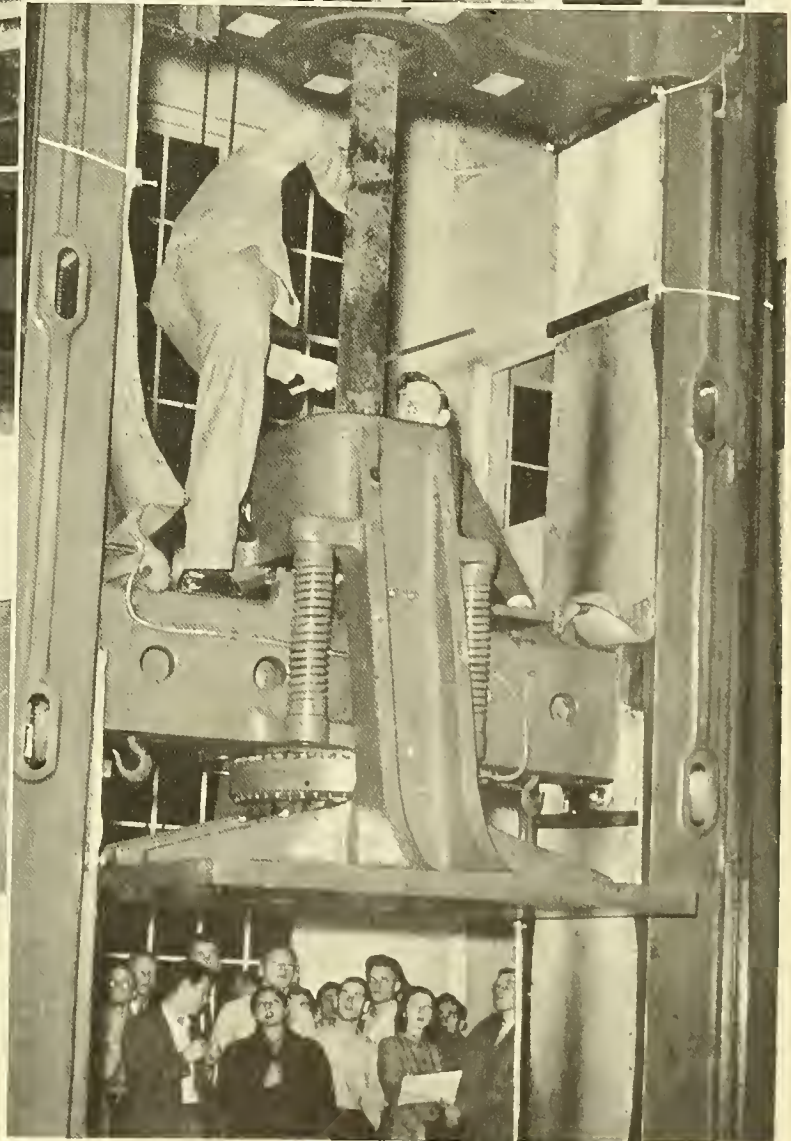
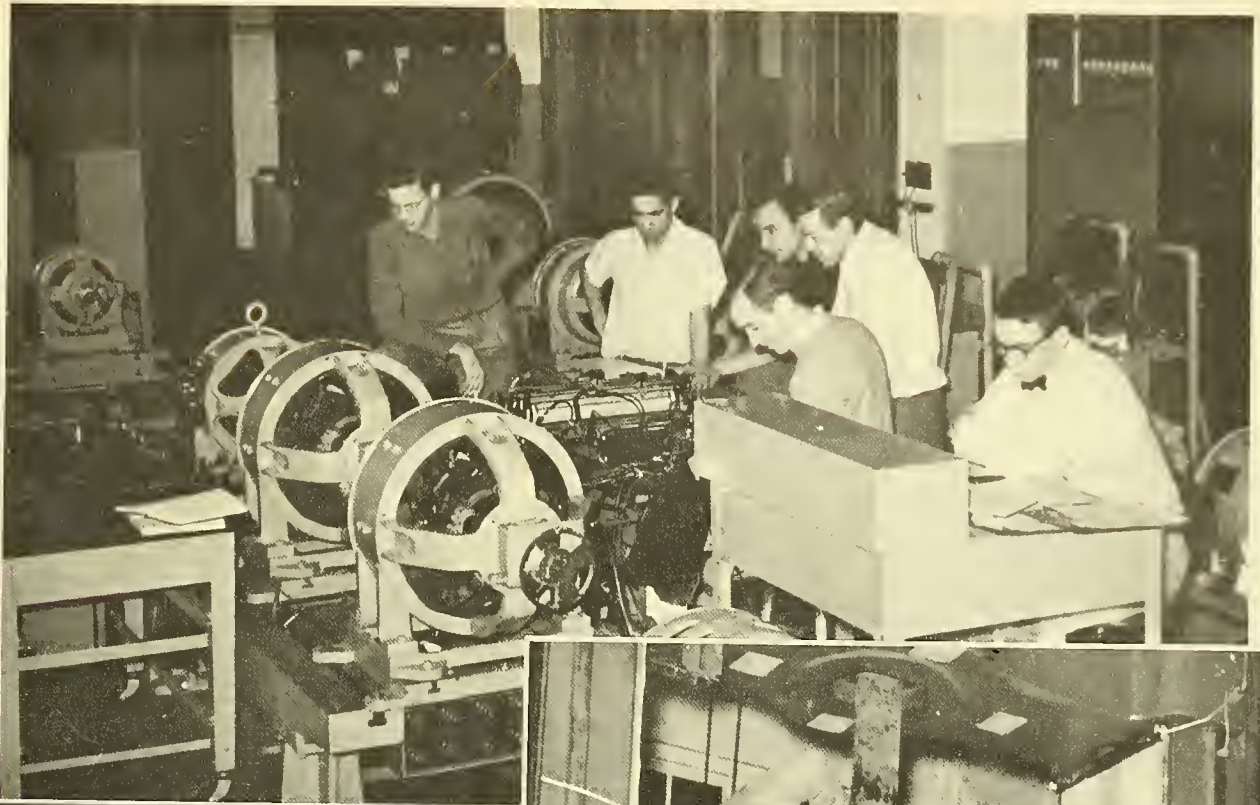
Scenes from L T C's fall production *The Tender Branch*



ENGINEERS CLUB: Intermission at the Mary Lyons' Dance.



SCULPTURE GROUP: Wednesday night meeting in Trotter basement.



ENGINEERS CLUB

WSRN

The most ambitious and most taken-for-granted organization on campus . . . has maintained its high standard of listenability . . . through the untiring effort of Kurtz and Miller, station managers, the wheels pictured below, and the many, many others who have spent too much time in Trotter west.



Miller
Mills
Cowell



THE TIRELESS TWELVE: Standing: Kurtz (station manager 1950). Back row: Kamman, Hastings, Lloyd, Brebner, Carter, Tayer, Robertson. Front row: Kellers, Foster, Miller (station manager 1951), Young.

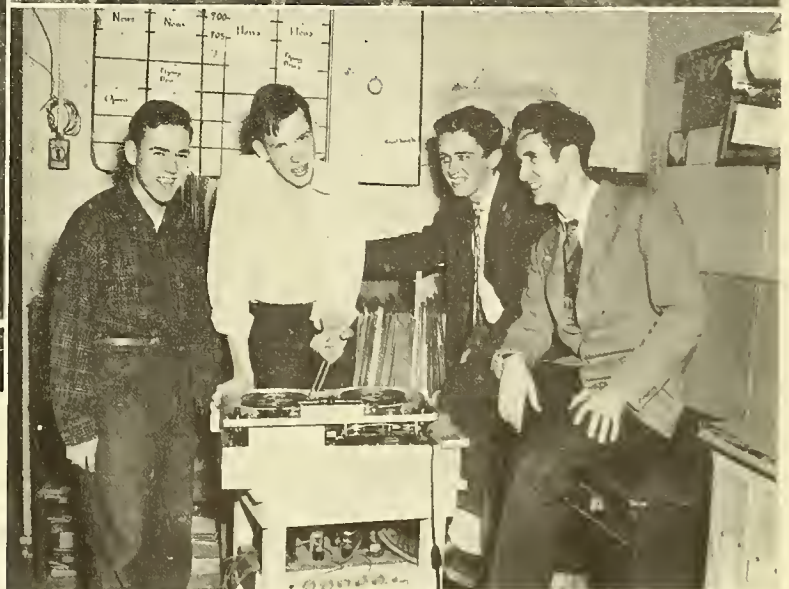
Nobel Foster Bennett DeWitt
Bellow Cornelius Lyman



Kurtz Kamman Lloyd Finkel
Foster Mills Botsford



Bennett Calingaert



Altman Hastings Carter Payne

SCIENCE INTEGRATION



Grossman
Steinbach
Reeves
Victor
Sher

MATH CLUB



BACK ROW: K. Richter, R. Potthoff, G. Foster, K. Conrow, D. Blough, L. Winer, A. Mattuck.
THIRD ROW: R. Eisenger, T. Osgood, F. Breckenridge, C. von Frankenberg. SECOND ROW:
J. Van der Veen, D. Brock, B. Wolf, L. Lazarsfeld, A. Buel. FRONT ROW: C. Fuller, E. Popky,
J. Berkowitz (president), J. Popper, E. Bennett.



**SQUARE
DANCE
GROUP**



STUDENT CHRISTIAN ASSOCIATION



Waterfield
Graves
Snyder
Crawford
Myers
Winde
Potter
MacMillan
Johnson
Boden

STUDENT CHRISTIAN FELLOWSHIP



BACK ROW: D. Sutherland, W. Miller, H. Cowell, A. Myers. THIRD ROW:
H. Hearst, R. Wolfe, S. Bliss, S. Detwiler, M. Bull. SECOND ROW: R. Wad-
dington, D. Mawson, B. Suckow, J. Durant, G. Togasaki, R. Walking. FRONT
ROW: N. Gibbons, C. Brunner, L. McClellan, E. Manson.

RACE RELATIONS

Strasburger
Scurlock
Hay
Tractenberg
Brusca
Johnson



BACK ROW: J. Rounds, K. Kurtz, A. Myers, G. Reif. SECOND ROW: R. Smith, B. Turlington, R. Dole, H. Linder. FRONT ROW: S. Moltz, L. Bunzl, G. MacMahon.

UNITED WORLD FEDERALISTS

INTERCOLLEGIATE CONFERENCE ON GOVERNMENT

Sutton
Pearson
Kurtz
Valsing
Strasburger
Hay
Rivlin
Williams
Hay



INTERNATIONAL RELATIONS CLUB

BACK ROW: W. Johnston, T. Osgood, L. Faulkner, U. Atuanya, H. Linder, R. Smith, B. Turlington, G. Reif. THIRD ROW: P. Bryson, E. Popky. SECOND ROW: C. Gayl, W. Bullock, N. Williams, W. Blass. FRONT ROW: G. MacMahon, L. Bunzl, J. Stover.



STUDENTS FOR DEMOCRATIC ACTION

Woodbridge
Rubinstein
Fine
Rivlin
Prenowitz
Keating
Altman
Strasburger
Kuznets



DEBATE CLUB

BACK ROW: D. Rubin, E. Gillett, D. Sutherland, E. Brebner, L. Rorer.
SECOND ROW: J. Head, E. Brauch, B. Suckow, R. Potthoff, J. Fine. FRONT
ROW: C. Holbrook, L. Wilson.



OUTING CLUB





SPORTS



CHEERLEADERS

BACK ROW: J. Smythe, J. Demond, R. Reydel, N. Erb, B. Daugherty, J. Thompson.
FRONT: R. Handy; J. Merrill, Captain; J. Cromwell.



BAND

S. Andrews
 W. Armstrong
 C. Barrera
 T. Beatson
 E. Bennett
 S. Bliss
 H. Botsford
 W. Brosius
 R. Brown
 J. Cox
 J. Darlington
 J. Davis
 E. Dayton
 S. Detwiler
 J. Dinwoodey
 L. Dorfman
 G. Foster
 L. Franck
 T. Goodfriend
 B. Hershberger
 B. Hill

T. Hoey
 R. Houston
 F. Irish
 L. Izumi
 W. Jones
 F. Kellers
 A. Levy
 J. Lyman
 K. Nicolai
 L. Owen
 B. Robertson
 L. Sasse
 J. Simon
 R. Smith
 D. Spencer
 G. Struble
 M. Sturgeon
 R. Walkling
 W. Williams
 W. Wood
 M. Wren



Dee Webster



BACK ROW: J. Van der Veen, W. Saul, R. Wacha, R. Parsons. FRONT ROW: R. Taylor, W. Brosius, D. Wesson.



BACK ROW: J. Smucker, R. Heath, W. Pratt. FRONT ROW: C. Dean, R. Kyle.

KWINK





BACK ROW: M. Lenfest, M. deKiewiet, L. Moors. SECOND ROW: M. Lewin, L. Smith, J. Powell, R. Shepherd. FIRST ROW: J. Fletcher, N. Boden, M. Barbosa, B. Daugherty.

GWIMP





BACK ROW: P. Stofko (line coach), L. Dettmers, W. Riley, W. Stone, J. Ochroch, J. Frantz, R. Merin, R. DeCharms, A. Blake, P. Macy, L. Whitaker, D. Harvey, A. Metcalfe, T. Soyars, W. Saul (manager), L. Elverson (coach). SECOND ROW: R. Asplundh, S. Griscom, R. Warren, C. Randall, W. Francis, R.

Raymond, R. Forrey, H. Botsford, E. Burn, C. Valsing, M. Hill, R. Howell. FIRST ROW: R. Rodgers, W. Walls, C. Jones, N. Cusano, F. Oski, J. Miller, R. Meyers, W. Jones, R. Laux, M. Freilich, D. Swan, J. Jacobson, W. Fitts.

FOOTBALL

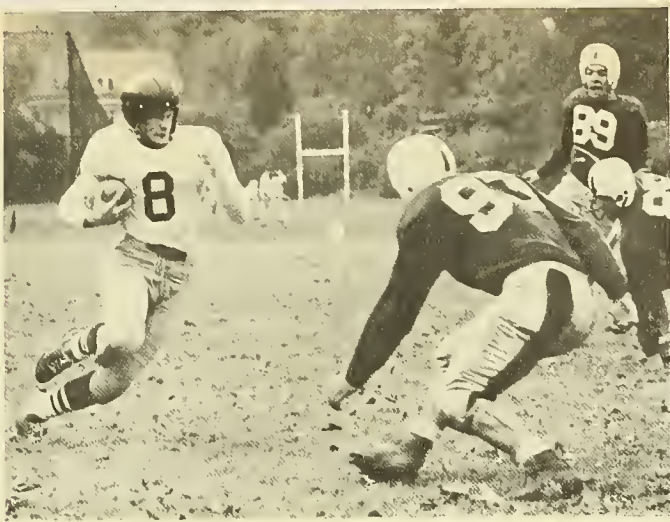


Captain Bob Forrey

Displaying his customary air of determined optimism, Lew Elverson once again gathered the Garnet squad to put it through its early fall training. Captain Bob Forrey led the small but aggressive group of returning lettermen which included Wally Francis, Nick Cusano, Evans Burn, Bob Asplundh, Chuck Valsing, and Sam Griscom. Promising freshmen and transfers were Johnny Miller, Dana Swan, John Frantz, Rich Laux, and Frank Oski.

Having dropped both PMC and Wesleyan from its schedule and having expanded the previous year's T formation to include a single-wing offense, Swarthmore travelled to Washington College for its first game with expectations for a good season. The Shoremen doused hopes for an initial victory however, the Garnet eleven being trounced 32-0 and suffering many injuries as well.

Returning to Alumni Field for the first home game, Swarthmore met and defeated Wagner College 9-6. The Staten Island team got off to an early six-point lead but the conversion was blocked by Bob Meyers. Another near score was stopped by Frank Oski who brought down the Wagner halfback on the two yard line, inspiring Swarthmore to make its most beautiful goal line stand of the year. Then with six minutes left to play,



the Garnet team opened a passing attack with Nick Cusano and freshman Bill Jones clicking on either end of the combination, Jones finally making a spectacular diving catch of Cusano's pass in the end zone. Hal Botsford converted and the Garnet led 7-6. Wagner could not gain after the kickoff and after the ball had changed hands twice sophomore end Dave Harvey made a behind-the-goal tackle for a safety, the final score standing 9-6.

Next game, Swarthmore received a shock from Ursinus where the traditional underdogs, inspired before their home-coming crowd, upset the Garnet 35-14. The situation was even gloomier the next week when Franklin and Marshall handed down a 41-0 score to the injury-ridden eleven.

Recovering a fumble of Bob Asplundh's kick off set Swarthmore in scoring position in the Johns Hopkins' game. After a series of line plunges by Jones, Cusano, and Bob Rodgers, the latter finally took the pigskin over from the two, Botsford following up with the conversion. This early lead did not last, however, and Swarthmore once more went down, 21-7.

Johnny Miller was the big gun for Elverson's men

in the Drexel home-coming game. His kicking and defensive work were outstanding. The home team stood another defeat, however, the lone score coming when quarterback Dana Swan combined with the officials to move the ball to the one yard line where Cusano plunged over.

Captain Forrey took his team to Haverford for the final game of the season. Ev Burn, Chuck Randall, Ave Blake, and Wally Francis were all back in uniform after being injured, and Tom Jones was playing for the team also. Swarthmore played an excellent game but Haverford came out ahead, 13-6. Wally Francis was responsible for the Garnet score. Ev Burn, giant junior tackle, did some outstanding kicking in this game, booting three kick-offs 55, 60, and 70 yards respectively—the last bouncing for the first time on the far side of the end zone.

Rich Raymond, Bob Howell, Bill Fitts, Mike Freilich, Dick DeCharms, Chuck Valsing, and particularly Johnny Frantz deserve much praise for their line play under coach Paul Stofko throughout the season.







BACK ROW: J. Miller (coach), W. Pratt (manager), C. Rettenmeyer, W. MacNabb, W. Bullock, N. K. Abba, C. Palmer, G. Papanek, J. Vander Veen (manager). FRONT ROW: F. Irish, C. Loucks, A. Harrington, R. Cheyney, J. Spaulding, G. Hastings, J. Head.



Captain Ralph Cheyney

CROSS COUNTRY

With the loss through graduation of last year's one, two punch of Alden Stevenson and Bill Battin posing a serious problem, coach Jim Miller none-the-less brought the 1950 cross country team through a successful four win, two loss season. The brilliance of Avery Harrington went a long way toward filling the gap. Avery won 5 out of 6 dual meets, set two records, and, at Johns Hopkins, scored a victory over the Middle Atlantic 880 champion. With Captain Ralph Cheyney returning to form after being hampered by an injury last season, and John Spaulding and Ed Stabler always up near the top, Swarthmore had four first class runners.

The season marked the third consecutive year that the team had been undefeated on its home course. The feature of the season was the Haverford meet where Swarthmore gained a point on the Hood Trophy by triumphing with a walloping 19-39 score.



SOCCER

Led by the fifteen goals of Captain Ali Al Yasir, the 1950 soccer season featured not only victories over Navy, Princeton, and Muhlenberg, but also the elevation of Roger Pott to All-American standings. Indeed, the only black spots came in the opener, in the loss to the University of Pennsylvania, and the last-game fall to Haverford, which destroyed chances of gaining the conference championship.

Smarting under a 3-2 defeat at the hands of a star-filled Alumni team, the Dunnmen began finding themselves with a 3-1 victory over Princeton, and a 2-1 decision over Lafayette. Halfbacks Joe Carroll and Steve Clark played exceptionally well in this rough game which unfortunately saw Stew Lohr, a promising freshman, sidelined for the rest of the season with a broken collarbone.

Turning to the road, Dunny's squad lost to Pennsylvania, 2-1, but redeemed itself by overpowering Muhlenberg 7-2 and by returning to Palmer Field to swamp Ursinus 10-0. George Place, Al Yasir, and Bill Spock led



Captain Ali Al Yasir



BACK ROW: (Junior Varsity) A. Bodin, D. Lang, B. Jones, O. Wright, A. Stetkewycz, M. Laws, H. Burgess, K. Conrow, P. Van Pelt, L. Rorer, J. Bennett, R. Carle, H. Cowell, R. Snyder, P. Sielman. SECOND ROW: T. Craig, R. Weiss, J. Carroll, A. Lewis, R. Hall, S. Clark, R. Pott,

A. Lewis, E. Brebner, F. Kyle. FIRST ROW: Dr. Flemister (faculty adviser), R. Dunn (coach), J. Smucker, K. Ruhl, S. Surjo, G. Place, A. Al Yasir, W. Spock, R. Willmott, F. Elliott, W. Bahr (assistant coach).



the scoring parade in this game with four, three, and two goals respectively, while Dick Hall, a newcomer to the sports, added the final point.

Traveling the next week to Lehigh, the Garnet played the best game of this campaign. In a hard-fought contest, the forwards clicked for five points, while fullbacks Art and Andy Lewis and goalie Roger Pott stopped every Lehigh drive. It was the first defeat for the Engineers on their home field since 1948 when another Swarthmore team had turned the trick.

Once more the Dunnmen established themselves, this time traveling to Annapolis to sink the Midshipmen, 2-1. Sediono Surjo and Captain Ali combined to break the tie in the last two minutes of play, thus removing a two-year strangle-hold on the series by Navy. The next Friday, however, brought retribution in the form of Haverford. The visitors were up for this traditional game all the way and, despite a last minute rally by Swarthmore, won 3-2.

Even though graduation or enlistment will remove Frank Elliott, Ken Ruhl, Spock, Ali, and Pott from the scene, Coach Robert Dunn has yet a strong foundation for next year's team. George Place, a nine-goal man, Steve Clark, Joe Carroll, Dick Hall, John Smucker, Stew Lohr, Dick Willmott and the two Lewises barring unforeseen accidents should be gathering to form the nucleus of another great team.





BACK ROW: D. Strandberg, A. Mott, E. Dunn, G. Jensen, M. J. Winde, M. Law, J. Thompson, A. Buel, B. Jackson, J. Price, E. Monro, N. Lichtman, M. Morey.
 FRONT ROW: N. Ritschard, D. Brock, A. MacMillan, D. Webster, S. Slaugh, C. Wheeler, N. Bixler, S. Evarts, S. Richards, F. Leland, M. J. D'Emilio.



Captain Neely Wheeler
 and Maggie

HOCKEY

The Garnette team, captained by Neely Wheeler and coached by May Parry, had high expectations for a good season after a hilarious—and instructive—week at hockey camp in Maine. Taking a little time to over-come the loss of five valuable players and losing to Beaver (3-2) and Temple (3-0) in the meantime, the team came back to hold Rosemont and Drexel scoreless, (3-0). The season's highlight was the victory (3-2) over Penn, a triumph in that they were undefeated rivals for six years. After the rather non-aggressive game at Chestnut Hill (0-0) the team scored moral victory when it tied Bryn Mawr (1-1) after losing to them eight years in a row.

Four players, including two freshmen, Mary Jane D'Emilio and Sally Richards, placed on All-College teams, with Sue Slaugh and Neely Wheeler going on to the National Tournament in Rochester. The team is faced with an empty goal and right wing position with the graduation of Nancy Bixler and Nancy Ritschard.





MAC Southern Division Champions. BACK ROW: H. Sipler (coach), A. Lewis, R. Millman, R. Hall, W. Pratt, T. Jones, W. Saul (manager). FRONT ROW: M. Merson, J. Carroll, G. Place, P. Landeck, W. Spock.

BASKETBALL



Captain George Place

Howard Sipler's first season as coach of the Garnet turned out to be a successful one as the cagers rallied from a slow start to take their last seven games and make off with another MAC Southern Division Championship. Sipler's main problem was finding a scoring combination to take the place of the phenomenal Jim Reilly. On hand were Joe Carroll, who had shown considerable sharpshooting promise during his freshman year; Dick Hall and Roger Pott, the two big men; Captain George Place and Bill Spock, destined to become a fine pair of play making guards; and Marc Merson, a hustling ballhawk who improved steadily as the season progressed. These six men were the nucleus of the 1950 squad, with Phil Landeck, Tom Jones, and Art Lewis chipping in with timely spot performances.

Carroll and Hall stood out as the big guns of the Garnet offensive. Carroll, the finest outside shot to play for Swarthmore in some years, and a clever dribbler and driver, averaged 17.5 points a game to take scoring honors. Close behind him with a 15 point average was Hall, who bore the brunt of the rebound work and proved quite deadly from short range. Place and Spock hit double figures several times, as did aggressive Marc Merson. Pott, after a fine performance in the opening game, was lost in midseason to the Air Force.

The winter's activities began on an auspicious note when Dickinson was handed a thorough drubbing. After that however, a four game drought set in. Lehigh gave out an unexpected twenty-point shellacking on their floor. In the home opener the Garnet lost a thriller to Penn followed by a respectable loss to a Lafayette five and a disappointing defeat by F. and M. It was in this game that the Garnet unveiled a new fast-breaking style of play that worked well for a time, but boomeranged due to sloppy passing and a deluge of wild shots.

A long-awaited victory was achieved over Hopkins, followed by what was probably the Garnet's worst performance of the season, the first Delaware game, which was lost by a point after the cagers had twice blown substantial leads. The team settled down to leave Drexel by the wayside but then a red-hot PMC outfit, aided immeasurably by the surroundings of their volley ball court, coasted to an easy win. Swarthmore lost the first game after vacation to a bigger and rougher Army quintet but was by no means disgraced in that tussle.



SIPLER, CARROLL



LANDECK



MERSON



ROGER POTT

It was at this point that the tide turned and the remainder of the season was a pleasure to behold as the Garnet settled down and consistently played fine ball. A revitalized quintet took PMC handily, with Carroll hitting for twenty and Hall playing his best game. After overcoming Ursinus, the Garnet turned to Haverford, a game which was a real thriller all the way. Swarthmore came from behind to tie an inspired 'Ford crew and then put them away in overtime, winning by three points. Carroll had his hottest night of the season, accounting for 33 points.

By now the Garnet was in high gear, and literally ran away with the next three games against Drexel, Ursinus and Haverford. The work of Place and Spock in defense, ball stealing, and playmaking deserves high praise. The six-game spurt created a tie for the league lead with Delaware, making the last game with the Blue Hens effectively a play off for the championship. After a ragged start, which left the cagers six points down at halftime, the Garnet came with a tremendous rush in the second half to win the game and, with it, the Southern Division Championship.



SPOCK



PLACE



HALL





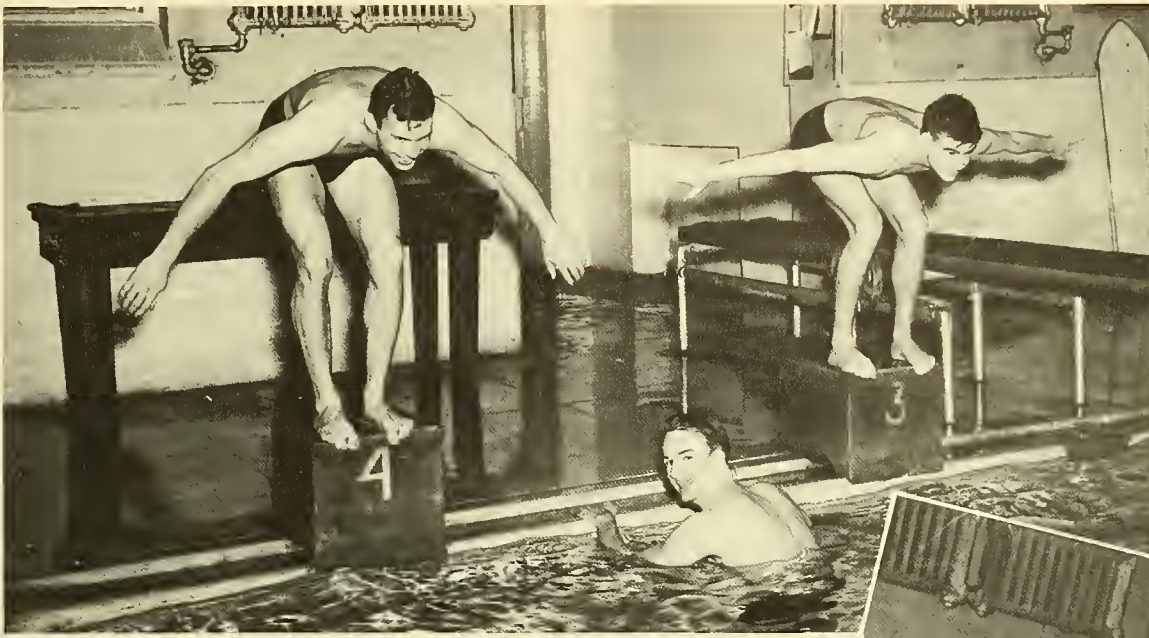
BACK ROW: J. McAdoo (coach), R. Tomlinson, R. Feldman, D. Potter, J. Ridland, W. Reid, A. Metcalfe, R. Snyder. FRONT ROW: R. Laux, B. Coleman, W. Holloway, J. Strauss, G. Chang, A. Levy, H. Frost, W. Brosius (manager).

SWIMMING

The Garnet swimming team, led by Captain Dave Potter and coached by Jimmie McAdoo, won six of its nine meets and placed fourth in the Middle Atlantic Championships to complete a successful season. Several new men joined the squad this year to give the team depth. Halsey Frost, Larry Franck, Rich Laux, and Dick Tomlinson combined with Potter and Ross Snyder in the sprints. John Strauss, Art Levy, and Roger Feldman handled the distance races and Bill Holloway joined John Ridland in the backstroke. Bill Reid and George Chang provided thrilling breaststroke races, usually finishing within a second of one another. Two freshmen, Bruce Coleman and Al Metcalfe, took over the diving positions and developed into two skilled performers.

After outclassing Temple in the first regular meet, the Garnet traveled to Lehigh only to suffer defeat. Dave Potter, however, salvaged two first places as he won the 50 and the 100, setting a college record of 55.7 in the latter. In the next two contests, powerful F. and M. and Delaware teams swamped the McAdoo-men, each team setting new pool records. Chang, Potter, and Tomlinson provided the only firsts for Swarthmore in the individual events in either meet.



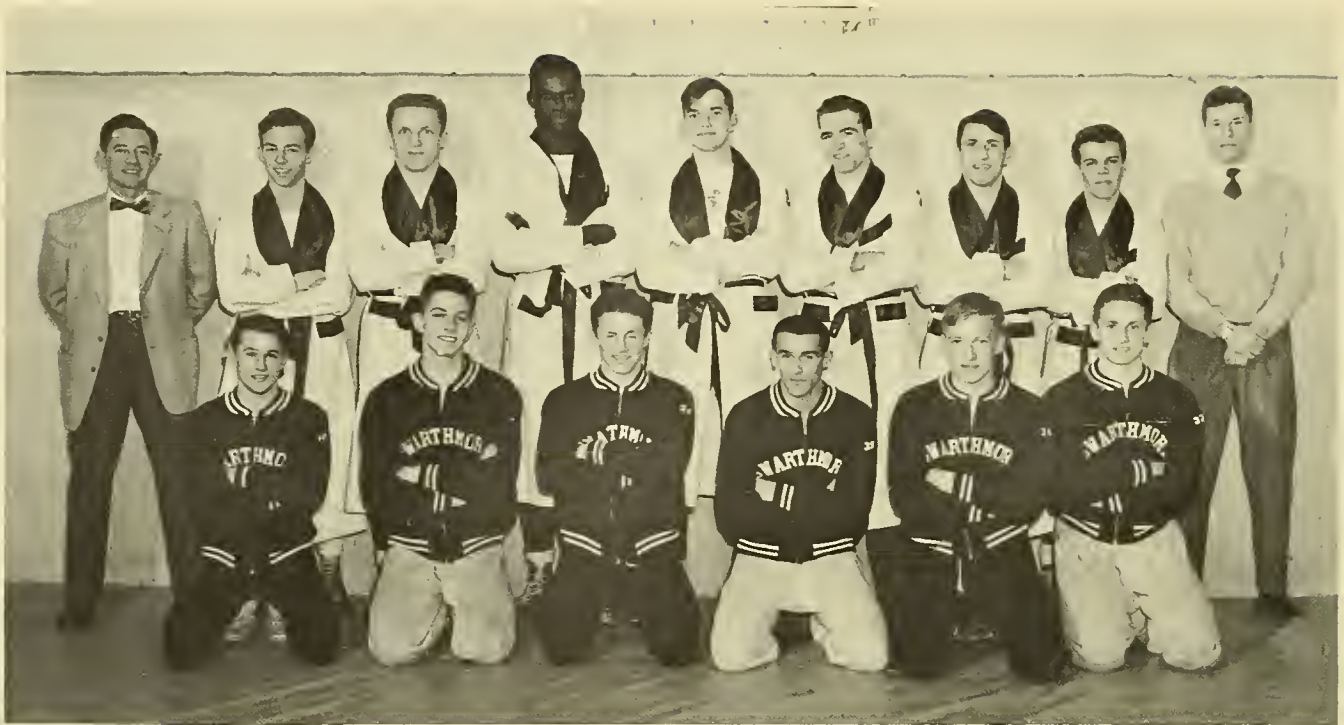


The remainder of the season was victorious as Gettysburg, Dickinson, Lafayette, P.M.C., and West Chester were sunk by Swarthmore's speed. The strong Lafayette swimmers stimulated the Garnet to set two new records, Ridland lowering the 200 yard back-stroke to 2:38.5 and the combination of Lanx, Snyder, Tomlinson, and Potter establishing the final relay mark of 3:51.7.

In the Middle Atlantics, held at Lehigh, the Garnet bowed again to the three teams to whom they had already lost during the season and took for themselves the number four position. Reasonably satisfied with this year's results, the swimmers, with no one graduating, have high expectations for the coming year under captains-elect, Snyder and Tomlinson.

Captain Dave Potter





BACK ROW: R. Bach (coach), A. Harrington, K. Ruhl, U. O. Atuanya, C. Hastie, R. Cheyney, C. Jones, M. Laws, J. Smucker (manager). FRONT ROW: (junior varsity) W. Ferrell, R. Weiss, R. Fetter, R. Howell, K. Conrow, J. Ochroch.

WRESTLING

To compensate for a slow year, Bob Bach's wrestling huskies thrilled a large field house crowd in the season's finale with Haverford by pulling themselves up from a 5-16 count to tie the score in the last three matches, 16-16. Captain Ken Ruhl and freshman Clem Hastie came through with a decision and pin respectively to highlight good season's records for both men. In spite of a heavily taped back injury, senior Ralph Cheyney flashed the best form of his collegiate career by pinning his opponent early in the first period. Heavyweight Atuanya, dangling his opponent in mid-air several times, provided the climax and clinched the tie by taking the final decision.



Captain Ken Ruhl





BACK ROW: I. Moll (coach), M. Winde, A. Griffith, H. Copeland, J. Dinwoodey, B. Brown, C. Barrera. MIDDLE ROW: A. MacMillan, D. Webster, C. Wheeler, P. Woford, P. Meyer, J. Sartorius, S. Evarts, D. Brock. FRONT ROW: E. Dun, M. D'Emilio, E. Daugherty, C. Brunner, J. Piper, J. Lee. ABSENT: R. Handy, N. Heffernan, A. Smith, M. Law, B. Turlington, R. Shepherd (manager).

BASKETBALL

With a varsity guard and two varsity forwards graduated, the team pulled itself together most creditably—in fact most beautifully. Coupled with high-scorer captain Pat, Rita and Peg showed some of the loveliest teamwork and amazing, even fantastic, accuracy in their shooting. The guards, Neely, Jean, and Sally suddenly found their system really working under stress, with Dee and Dolo falling right into “line” when necessary. After beating Rosemont (20-19) thanks to Mac’s free shot, and Chestnut Hill (42-31), and stung into action by losing to Penn (55-45), the team climaxed the season by winning over the all-powerful, awe-inspiring Temple for the first time in twelve (12) years, (34-31)! Hardly recovered from the bumps and burises of West Chester (44-23), there followed an overwhelming victory over Drexel (60-14). The JV’s showed a greater firing power and cohesiveness and, as a result, a greater number of victories.



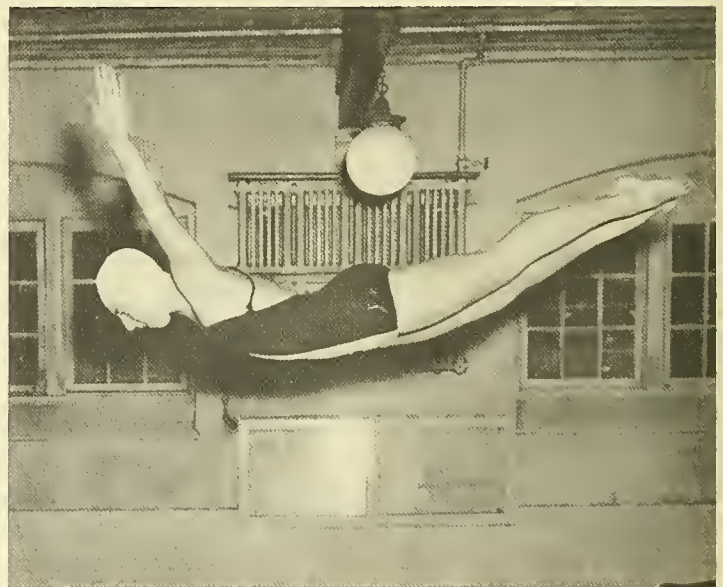
Captain Pat Meyer



BACK ROW: J. Woodbridge, K. Gulick, M. DeKiewiet, S. Carver, B. Crookston, J. Merrill.
 SECOND ROW: E. Dodge, J. Stover, N. Erb, A. Dabrohua, L. McClellan, M. Penfield, J. Thompson, K. Adams, FIRST ROW: L. Ore, B. Keay, S. Bevier, S. Richards, Morrel, S. Smith. ABSENT: L. Faulkner, F. Commins (manager).

Started season by enjoying coed meet . . . Ursinus got the regular season rolling well . . . pulverized Penn . . . glub . . . blub . . . new record, as usual, by Captain Penny—50 yard backstroke down to 33.9 . . . where are you, Laura? . . . finally got a breaststroker, now everyone's doing it . . . *Sally*, Bea, Jill, Maisie, Jean, Penny, Sue S. (?) . . . Dinny's Diving Belles raised the roof at Bryn Mawr . . . latecomers Sue Carver and Kathy Adams bolstered garnette strength . . . where are you, Bea? . . . "In the relay" . . . scrambled team at Drexel but landed sunny side up. Temple was tough. Jill, Laura, Penny, Sally, and two relays . . . third time in a row intercollegiate champions, six out of seven wins at Hutcheson Pool . . . finished the season with a gay trip to New York to swim Hunter. Anita, Kippie, and Ellie with freshmen Janie Woodbridge and Lise Ore shone for the JV which was uniformly successful . . . good time for all, thanks to coach Dinny.

SWIMMING





Statistics: Ectomorphs—Penny, Bea, Jill, Sue C. Mesomorphs—Jean, Sally, Sue S., Kathy, Laura, Dinny. Endomorphs—Terry. Disqualified—Anita, Laura, Sue S. Those who got away with it—everybody else. Blind—Jean, Laura, Sue. Pinned—Laura, Penny, Sally, Jill, Bea. Graduates—Laura, Penny, Maisie, Kathy, Anita. Deserters—Bea.



Captain Penny Penfield





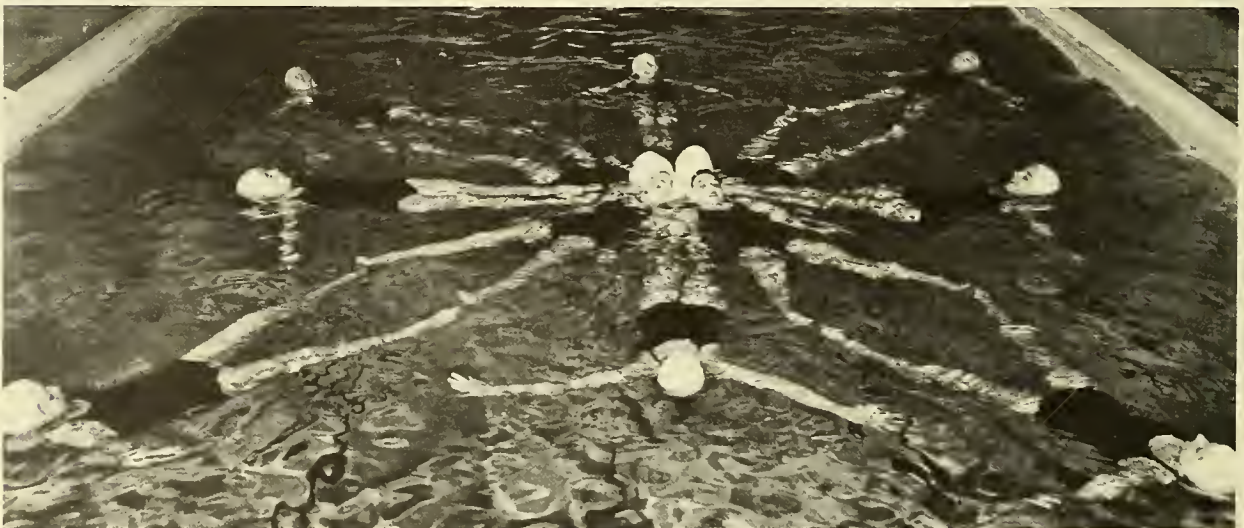
BACK ROW: S. Slauch, N. Pawell, P. Hall, M. Turner, M. Morey, S. Marx, I. Alfke, N. Kinyon, M. Davis, R. Hall, J. Powell (manager). FRONT ROW: E. Likert, N. Gibbons, H. Hearst, S. Bliss, L. Oblender, B. Palanky, J. Demond, H. Smith, L. Langthorn, B. Miller.



Co-captains Bev Miller and Lucia Langthorn

FORMATION SWIMMING

. . . twenty-five girls with limp hair and chlorine eyes, but having a lot of fun . . . showed the men a splash or two at their swimming meets . . . Extravaganza, Graduation Ball . . . glitter and glamor . . . cadets and girls, french maids and drummers . . . even jazz . . . birth of the blues . . . many invitations . . . penn . . . germantown . . . intercollegiate . . . somerville day.





BACK ROW: C. Lippit, N. Felber, C. Wilcox, J. Gallagher, J. Scantlebury (instructor). FRONT ROW: A. Benson, D. Jacobson, M. Frank.

. . . opportunity for creative work and development of dance technique . . . a successful open house workshop . . . improvisation . . . experiments in spontaneous group movement . . . interpretation of unfamiliar music . . . increased participation in dramatic productions—choreography for Hamburg show, group dance by Mac Frank . . . bossed by Carolyn Wilcox . . . activities to introduce dance to Swarthmore audience.

MODERN DANCE





BACK ROW: I. Moll (coach), K. Adams, S. Cohn, J. Bell, D. Ginzburg, A. Oliver, M. Lenfest (manager). FRONT ROW: M. Stone, J. Auch, L. Stoltze, S. Hand, M. Beech, S. Harvey, U. Hahn. ABSENT: W. Armstrong, N. Boden, B. Bond, F. Commins, A. Megonigal, L. Pantke.

VOLLEY BALL

BADMINTON

BACK ROW: S. Grinnell, J. Sartorius, R. Rajagopal, F. Benson, L. Mooers, M. Kidder, H. Machlup, J. Kudo. FRONT ROW: M. Parry (coach), F. Leland, J. Powell, N. Posel, M. Davis, K. Stainton, J. Morrel, L. Fullagar, R. Foulger (manager). ABSENT: A. Buel, P. Das.





Les Stoltze, Jane Auch,
and Al Stone.

Kay Stainton and Jill Morrel



Sylvia Hand



Joyce Powell



BACK: N. Ritschard, A. Mott. MIDDLE: E. Fiske, S. Mitsudo, E. Daugherty.
FRONT: M. J. Winde, M. DeKiewiet.

WOMEN'S ATHLETIC ASSOCIATION

Under the guiding hand of Sumi Mitsudo, this year's WAA Council approached the task of promoting women's sports from several angles. At the traditional AA spring picnic, varsity awards and Junior blazers were given out as the softball team trounced the faculty. For the fall banquet, Miss Betty Shellenburger spoke of her experiences as a member of the American hockey team in South Africa. Dinny Rath in tights and Irene Moll in peasant dress caused hysterics with a pseudo-ballet skit.

In cooperation with the Cooper foundation, the AA sponsored a modern dance recital featuring Jose Limon. Feeling that publicity is extremely important in the promotion of women's sports, the council also persuaded Mr. Catherman to print a schedule of women's athletic events for distribution to the student body. Upon retirement, the Council bequeathed to the college a brand new station wagon, to be used only in connection with women's sports events.





SOCIAL LIFE



Swarthmore Formal





Swarthmore Informal





BACK ROW: P. Brandt, P. Bryson, K. Adams, L. Stoltz, S. Hand, J. Powell, J. Paterson. FIRST ROW: R. Foulger, J. Gallagher, A. Harrington, B. Miller, A. Smith.



BACK ROW: B. Likert, S. McGonagle, L. Dorfman, J. Tomlinson, W. Schmitz, M. Morey, P. Forrest, A. MacMillan, SECOND ROW: A. Pingon, M. Wren, R. Cheyney, V. Slinghoff, J. Lee, A. Maurice.

SOCIAL COMMITTEE

The Social Committee plans a variety of activities to keep week-ends on campus interesting and busy. Informal dancing is provided in Bond every Friday night from eight to eleven. The traditional W.S.G.A. week-ends are held twice a year, and formals are given at Christmas and in the spring.

This year, much effort went into plans for Haverford Week-End, the aim being the closest possible approximation to a "Big College Week-End" at Swarthmore. The I.F.C. sponsored a decorating contest which dressed up the campus for the occasion, and the Social Committee planned a full outline of events, starting off on Friday with a tea dance in Commons

after the home soccer game with Haverford invited. Friday night a rousing pep rally around a bonfire near the baseball field set the fighting mood. Commons was decorated for dancing afterwards and for an Open House Saturday after the away football game. Saturday night Buddy William's Rhythmaires provided the music for a dance in the Swarthmore High School gym.

Other events on this year's social agenda were the Sock hop, Hallowe'en Party in the Hall Gym, Flunker's Frolic, the presentation of *An Imaginary Invalid* in Clothier by the Hedgerow players, and another outdoor dance in the spring.



From Left to Right: Fall Co-chairmen, Ralph Cheyney, Bev Miller. Spring Co-chairmen, Avery Harrington, Jane Gallagher.



BACK ROW: T. Brown, E. Deinard, R. Asplundh, D. Keller, B. Levering, A. Lewis, T. Altaffer, C. Jeanne. FRONT: M. Wetherald, P. Gaston.

INTER-FRATERNITY COUNCIL

The Inter-fraternity Council functions to promote cooperation and good relations between fraternities. It supervises and regulates rushing and other fraternity matters.

Working together with the Social Committee, the I.F. Council sponsored the decorating contest over Haverford Weekend, awarding prizes to Phi Kappa Psi and Worth for the originality shown in their decorations (Flatten the Fords!).

The I.F. Formal last year, first dance of its kind at Swarthmore, was greeted enthusiastically and proved such a success that Paul Gaston was put in charge of planning another for this spring. Inter-

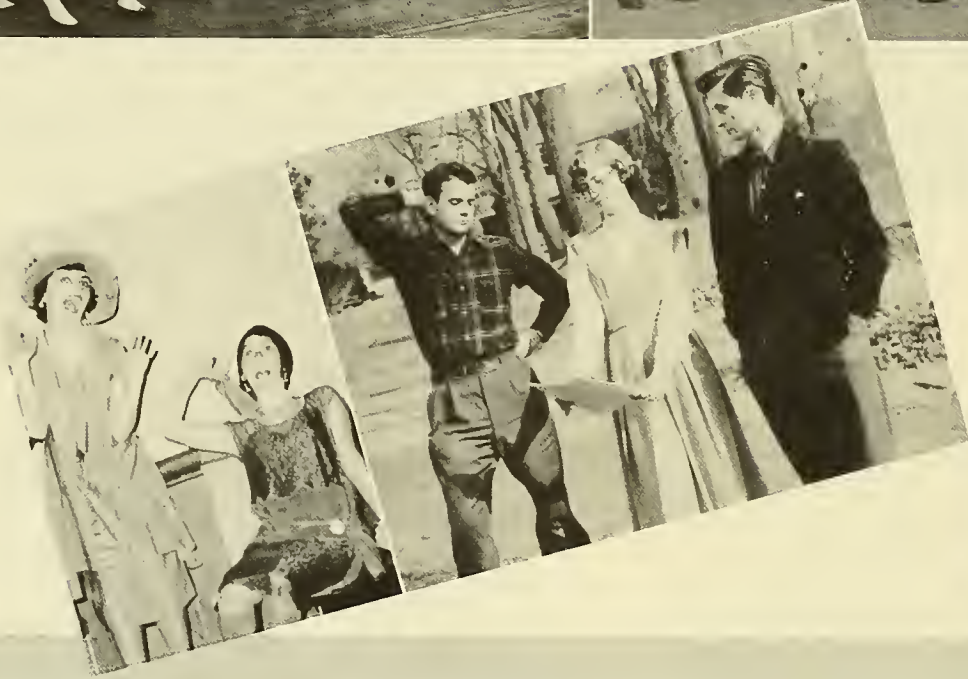
fraternity basketball and softball is another project of the Council, with a faculty team competing with the fraternities. The Athletic cup went to Phi Kappa Psi again last year for the highest total number of points in all inter-fraternity competition.

Busy planning a formal and supervising inter-fraternity athletic events, the Council has also found time to revise and modernize its Constitution, making more up-to-date provisions for rushing and other needed changes.

Another worthy cause undertaken by the Council is the support of a French war orphan, a policy begun during the war and continued through this year.



OFFICERS: R. Asplundh, Spring Semester President; D. Keller, Fall Semester President.



Hi Spirits!





Haverford!





BACK ROW: W. Van Stone, T. Dernberg, C. Hankins, D. Harvey, D. Hunt, A. Montagnolo, R. Brown, J. Rounds, E. Deinard. SECOND ROW: R. Hamilton, R. Rodgers, D. Holcroft, A. Price, R. Dexter. FIRST ROW: D. Ashworth, G. Moeller, I. Ephram, R. Myers.

PHI SIGMA KAPPA

OFFICERS

Fall Semester

President.....Ethan Deinard
 Vice President...Walter Lorch
 Secretary.....Bob Hamilton
 Treasurer.....Tom Dernberg

Spring Semester

President..... Charles Hankins
 Vice Pres.....Gerald Schulsinger
 Secretary.....Ethan Deinard
 Treasurer.....Robb Taylor

MEMBERS

D. Ashworth
 P. Brown
 G. Brusca
 E. Deinard
 T. Dernberg
 R. Dexter
 I. Ephram
 M. Freilich
 R. Hamilton
 C. Hankins
 D. Harvey
 D. Holcroft

D. Hunt
 W. Lorch
 G. Moeller
 A. Montagnolo
 R. Myers
 W. Perrin
 A. Price
 R. Rodgers
 J. Rounds
 G. Schulsinger
 A. Trescott
 W. Van Stone





BACK ROW: T. Jones, D. Gamage, M. Forbes, W. Miller, K. Nicolai, A. Lewis, R. Thomas, T. Brown, C. Baker, G. Hazard, R. Weiss, A. Garab, W. Wilson, O. Wright, W. Jones. SECOND ROW: R. Gray, S. Clark, D. Eisenberg, J. Rogeri, P. Irvine, S. Griscom, E. Dilchus, R. De Charms. FIRST ROW: G. Lowen, K. Broderick, F. Oski, E. Mottur, S. Philips, A. Fernandez.

KAPPA SIGMA

OFFICERS

Fall Semester

President.....Tyner Brown
 Vice President.....John Rogeri
 Secretary.....Steve Clark
 Treasurer.....Geoff Hazard

Spring Semester

President.....Sam Griscom
 Vice President.....Warren Jones
 Secretary.....Steve Clark
 Treasurer.....Geoff Hazard



MEMBERS

C. Baker
 T. Brown
 K. Broderick
 S. Clark
 N. Cusano
 D. Deacon
 R. De Charms
 E. Dilchus
 R. Dippy
 D. Eisenberg
 A. Fernandez
 M. Forbes

W. Gale
 R. Gamage
 A. Garab
 R. Gray
 S. Griscom
 G. Hazard
 W. Hirst
 P. Irvine
 T. Jones
 W. Jones
 A. Lewis
 G. Lowen

E. Mottur
 K. Nicolai
 F. Oski
 S. Philips
 J. Rogeri
 W. Stone
 R. Thomas
 R. Weiss
 W. Weston
 W. Wilson
 O. Wright





PHI DELTA THETA

OFFICERS

Fall Semester

President.....Norman Green
 Reporter.....George Hay
 Secretary.....John Worlock
 Treasurer.....John Porter

Spring Semester

President.....Ronald Jones
 Reporter.....John Worlock
 Secretary.....John Ambruster
 Treasurer.....John Porter

BACK ROW: P. Gaston, J. Henefer, A. Smith, R. Fetter, W. Gilleland, T. Altaffer, D. Altaffer, A. Wrobel, J. Bennett. THIRD ROW: N. Green, D. Alward, J. Mears, T. Soyars, A. Stull, J. Ambruster, W. Buckley, R. Jones, R. Laux, J. Porter, I. Battin, C. Kennedy. SECOND ROW: J. Worlock, R. Stewart, J. Simon, D. Lemke, J. Calvin, H. Swartout, D. Morgan, H. Burgess, G. Hay, P. Soherr, R. Heath. FIRST ROW: G. Lewis, B. Spragg, B. Jones, I. Kennedy, D. Sutherland, R. Waddington, B. Harris, W. Hawkins.

MEMBERS

- | | |
|---------------|---------------|
| D. Altaffer | C. Kennedy |
| T. Altaffer | I. Kennedy |
| D. Alward | R. Laux |
| J. Ambruster | M. Laws |
| R. Bailey | D. Lemke |
| I. Battin | G. Lewis |
| J. Bennett | J. Mears |
| E. Brebner | D. Morgan |
| W. Buckley | W. Newitt |
| H. Burgess | J. Peet |
| J. Calvin | D. Pearson |
| J. Darlington | J. Porter |
| A. Diaz | J. Simon |
| J. Durant | A. Smith |
| R. Fetter | P. Soherr |
| P. Gaston | T. Soyars |
| W. Gilleland | B. Spragg |
| N. Green | R. Stewart |
| B. Harris | A. Stull |
| W. Hawkins | D. Sutherland |
| G. Hay | H. Swartout |
| R. Heath | R. Waddington |
| J. Henefer | R. Walkling |
| B. Jones | J. Worlock |
| R. Jones | A. Wrobel |



MEMBERS

- | | |
|----------------|-----------------|
| P. Allen | N. Meyer |
| R. Asplundh | R. Meyers |
| A. Blake | R. Millman |
| H. Botsford | J. Ochrock |
| J. Carroll | G. Place |
| B. Coleman | R. Pott |
| C. Dean | C. Randall |
| L. Dettmers | C. Reilly |
| R. Forrey | W. Riley |
| J. Frantz | B. Scott |
| H. Friedericy | W. Sutton |
| I. Gable | D. Swan |
| C. Jeanne | P. Swayne |
| C. Jones | R. Taylor |
| W. Jones | W. Walls |
| J. Levine | M. Wetherald |
| D. Lloyd-Jones | W. Winterbottom |
| P. Macy | W. Wood |
| J. Martindale | P. Woodrow |
| A. Metcalfe | |



OFFICERS

<i>Fall Semester</i>		<i>Spring Semester</i>	
President.....	Charles Jeanne	President.....	Park Woodrow
Vice Pres.....	Harold Botsford	Vice Pres.....	Charles Reilly
Secretary.....	Bill Sutton	Secretary.....	Avery Blake
Treasurer.....	Roger Pott	Treasurer.....	Phil Swayne

PHI KAPPA PSI

BACK ROW: I. Gable, P. Allen, B. Scott, J. Levine, W. Wood, P. Macy, C. Reilly, R. Asplundh, D. Lloyd-Jones, C. Jeanne, W. Sutton, J. Martindale, J. Frantz. SECOND ROW: M. Wetherald, H. Friedericy, N. Meyer, C. Dean, H. Botsford, J. Carroll, G. Place, R. Taylor. FIRST ROW: W. Riley, A. Metcalfe, W. Winterbottom, B. Coleman, W. Walls, D. Swan, W. Jones, R. Millman, J. Ochrock.



MEMBERS

- W. Lucht
- N. McAvoy
- J. McIntyre
- M. Merson
- L. Owen
- R. Parsons
- D. Potter
- W. Pratt
- D. Ramsey
- J. Rosenthal
- L. Sasse
- W. Saul
- W. Schmitz
- L. Seaman
- C. Shafer
- P. Sielman
- J. Spaulding
- D. Spencer
- S. Spencer
- W. Stover
- J. Strauss
- J. Svenningsen
- C. Thom
- R. Tomlinson
- C. Valsing
- P. Van Pelt
- C. von Frankenberg
- E. Wallach
- W. Waterfield
- D. Wesson
- H. Winkler



BACK ROW: A. Hunt, D. Ramsey, C. Valsing, E. Burn, R. Hall, W. Schmitz, R. Gernert, J. Spaulding, S. Gentry, R. Parsons, J. Cromwell, J. Rosenthal, J. McIntyre. SECOND ROW: E. Arsht, A. Lewis, R. Kyle, N. McAvoy, W. Stover, L. Seaman, R. Tomlinson, W. Waterfield, C. Shafer. FIRST ROW: S. Spencer, J. Cox, D. Wesson, R. Frost, P. Hummer, D. Keller, W. Brosius.

- E. Arsht
- J. Beshers
- W. Brosius
- W. Brown
- E. Burn
- R. Carle
- R. Cheyney
- J. Cox
- T. Craig
- J. Cromwell
- P. Forrest
- L. Franck
- H. Frost
- R. Frost
- S. Gentry
- R. Gernert
- R. Griest
- R. Hall
- T. Hoey
- R. Howell
- P. Hummer
- A. Hunt
- D. Keller
- F. Kyle
- R. Kyle
- P. Landeck
- D. Lang
- B. Levering
- A. Lewis
- S. Lohr
- C. Loppacker
- C. Loucks

DELTA UPSILON

OFFICERS

Fall Semester

- President Al Hunt
- Vice President Ed Arsht
- Secretary Dave Wesson
- Treasurer Evans Burn

Spring Semester

- President Charles Valsing
- Vice President Bob Gernert
- Secretary Bill Stover
- Treasurer Bill Brosius

BACK ROW: R. Griest, R. Howell, W. Pratt, L. Owen, H. Frost, C. von Frankenberg, J. Strauss, T. Craig, P. Van Pelt, C. Loucks. SECOND ROW: J. Svenningsen, F. Kyle, S. Lohr, D. Lang, P. Sielman, L. Sasse, R. Carle, P. Heagle. FIRST ROW: C. Thom, E. Wallach, W. Lucht, C. Loppacker, D. Spencer, L. Franck, P. Forrest.



Halcyon 1952
17/1/52



SPRING



Scenes from LTC's spring production *Getting Married*.



Swarthmore Savoyard's production of *Ruddigore* and *Trial by Jury*.





ROCCATORSO





**MAY
DAY**



President Nason and Trygve Lie wait to lead the procession.





THE YEAR IN REVIEW . . .

The 1952 Halcyon has tried faithfully to record another year at Swarthmore—its Hamburg Show, its Spring Formal, its LTC productions, its Haverford weekend. This year's editors, presidents, captains, and just plain members are herein preserved for that part of posterity which will be interested. To complete the record, we note the bouquets which were given out Commencement Day: Billy Spock added the Ivy Medal to the Kwink Trophy, Lotte Lazarsfeld and Ellen Ash shared the Oak Leaf Medal. Bill Brown received the McCabe Engineering Award. June 11, 1951, another class moved on, its place soon to be filled by the individuals whose faces dominate this book.

A few changes have stirred the campus this past school year. The football field moved across the tracks, television came to the Cracker Room, Mary Lyons appeared to be closing, though none too gracefully. Teddy was welcomed back at the end of the year after a serious illness. Future applicants to Swarthmore were no longer to be asked a question pertaining to their religious affiliation. Finances, draft laws, and Korea worried the administration. To the faculty came two very fine additions: Joe Conard and Gilmore Stott. Because of their interest in student affairs and because of their quiet combination of sincerity and intelligence, each found a place near the heart of all that Swarthmore stands for.

The activities in which Swarthmore students participated were as varied and as energetic as the students themselves. The college could be proud to be represented through ICG, the Finx, SN, the Community Service Committee, and many other groups. In Student Government, too, the Swarthmore undergraduate proved himself to be aware of his responsibilities and to be mature in his ideas for improving the college community. Few colleges can say as Swarthmore that their students not only administer, but budget their own activities free from faculty supervision and direct their own employment service, or that their student government plays as important a role in college affairs.

The swarm of activities has spun dizzily around the hard core of study which is the center of campus life. No matter how great the pressure from the extra-curricular, the social, or the athletic activity, the Swarthmore undergraduate has been continually conscious that his *raison d'être* is intensive study to form the basis for academic competence and personal convictions. Highest honors went this year to Jean Matter, Arthur Mattuck, and Elise Smith but more important than all academic awards are the expanded interests and wider outlooks that each graduate took with him after his four year stay at Swarthmore.





BACK ROW: A. Blake (coach), K. Nicolai, S. Griscorn, E. Wallach, O. Wright, D. Harvey, R. Dexter, W. Jones, R. Fetter, C. Dean. MIDDLE ROW: J. Ochroch, F. Oski, S. Lohr, S. Wetherald, T. Brown, H. Botsford, C. Franck, F. Kyle. FRONT ROW: C. Jeanne, R. Craig, H. Frost, E. Stabler (captain), B. Levering, W. Fitts, R. Griest.

LACROSSE

With a record of seven wins and three losses for the season, the Garnet lacrosse team was named with Penn State as 1951 co-champion of Pennsylvania. The squad, captained by Ed Stabler and coached by Ave Blake, was outstanding on team play and spirit throughout the year. A large share of the credit for Swarthmore's strong attack goes to Bunky Blake, who set a new record for the most goals scored in one season, chalking up 33 to his credit.

4	Navy	14
15	Lafayette	10
4	Washington	15
14	Pennsylvania	1
9	Delaware	4
14	Stevens	5
10	Loyola	13
5	Lehigh	4
19	West Chester	1
12	Drexel	7



Behind the pitching of Dick Hall and Tommy Jones, Coach Robert Dunn fielded a smooth working, hard hitting nine this season, which came up with a record of eight wins and five losses as well as an eight to one victory over Lakehurst in an exhibition before the alumni. Captain Billy Spock, George Place, Dick Roeder, and Nick Cusano were key men in bringing the team out of tight situations. Dick Hall's hitting, together with his pitching and fielding, attracted a flock of major league scouts who were perhaps remembering a past Swarthmore great, George Earnshaw.

11	Susquehanna	0
1	F and M	2
11	Dickinson	3
11	La Salle	6
5	Drexel	1
3	Delaware	7
5	Temple	3
2	Ursinus	3
6	Moravian	5
13	John Hopkins	5
5	Haverford	10
11	Pennsylvania	1
2	Lehigh	8



BASEBALL

BACK ROW: H. Sipler (coach), R. Taeuber (manager), A. Ludwig, C. Thompson, T. Soyars, H. Burgess, R. Snyder, R. Dunn (coach), R. Wacha, (manager). FRONT ROW: L. Whitaker, J. Bennett, W. Spock (captain), E. Winkler, R. Hall, J. Frantz, K. Broderick, G. Place, D. Swan.





BACK ROW: H. Drumm (coach), L. Elverson (coach), D. Morgan (manager), E. Burn, U. O. Atuanya, W. Bullock, K. Roberts, R. Laux, J. Cromwell, J. Hopfield, W. MacNabb, L. Seaman, R. Waddington (manager), W. Brown (manager). FRONT

ROW: M. Laws (manager), L. Dettmers, W. Jones, R. Cheyney, R. Howell, J. Spaulding (captain), A. Harrington, P. Soherr, R. Stewart, K. Ruhl, B. Seaman, F. Irish, R. Willmott, R. Friedrich.

TRACK

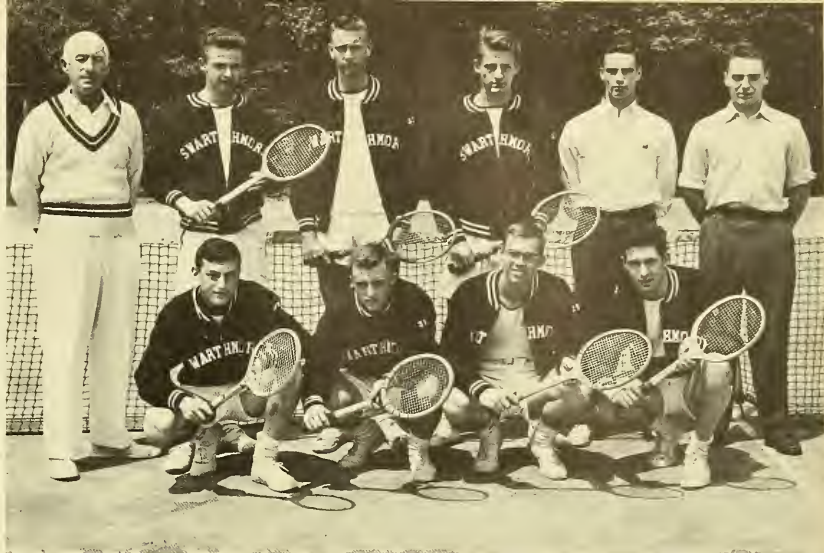


Bob Howell sets new record in Delaware Meet.

Swarthmore's track squad completed its 1951 season with two wins and three losses in dual meets and one win and one loss in the triangulars. In the two-way contests the victories were over Delaware and Hopkins and losses were to La Salle, Lafayette and Haverford. In the first triangular meet Swarthmore lost to Lehigh and Temple but overcame Drexel and Ursinus in the second.

Three new records were set, all in field events. Bill Jones added over three inches in the javelin throw to set the mark 179 feet, one inch; Dick Hall, casually taking time off from baseball, established a broad jumping record of 23 feet, one-quarter inch; and Bob Howell broke Heinz Valtin's pole vaulting record by reaching the height of twelve feet, two and one-half inches. Ev Burn, as another example of Swarthmore's strength in the field events, came within two inches of the college shot put record.

In the running events, too, Swarthmore had some exceptional men. Ave Harrington and Ralph Cheyney commanded the mile and two mile distances, freshman Ken Roberts showed amazing stamina in the 880, captain Johnny Spaulding domineered the 440 and John Cromwell smoothly handled the hurdles. With many men returning, next year's team, under co-captains elect Ev Burn and Laurie Seaman, has potentialities for a great season.



TENNIS

Credit for the tennis team's record of nine wins and four losses goes to Coach Ed Faulkner, Captain Bobby Taylor, Jim Lande, Marc Merson, Bob Wentworth, and the rest of the squad who formed themselves into a well-rounded, high-spirited aggregation which went on winning in spite of the supposed odds against them.

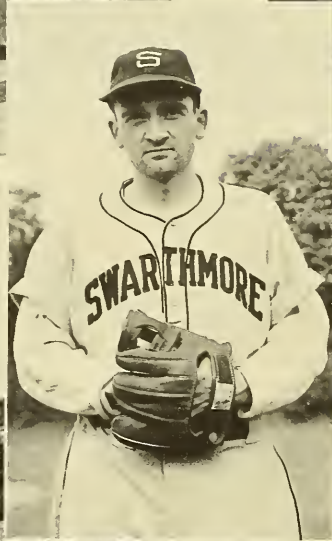
BACK ROW: E. Faulkner (coach), R. Jones, C. von Frankenberg, P. Landeck, J. Paterson (manager), W. Van Stone. FRONT ROW: J. Lande, R. Taylor, R. Wentworth, M. Merson.

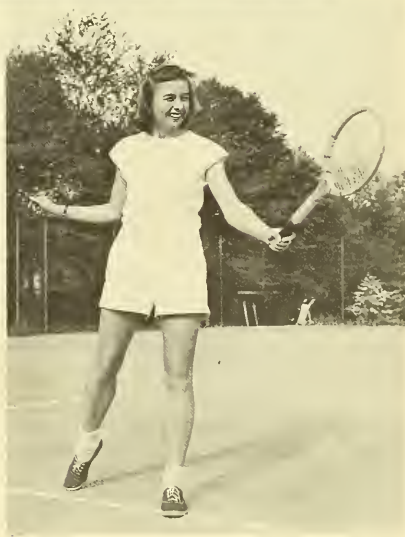
Next year's golf squad, though suffering from the loss of Captain Chuck Reilly, will retain the rest of the crew which has been blasting its way across Magill and chipping into the Chinese Fountain. With more of this practice it will hope to better the 1951 record which featured a win over Delaware, 5-4.

BACK ROW: S. Eckerd (coach), C. Reilly (captain), L. Rorer, R. Asplundh, N. McAvoy, E. Cratsley (faculty adviser). FRONT ROW: R. Morrow, E. Hoey, C. Randall (manager). ABSENT: N. Meyer, J. Carroll, M. Remorenko.

GOLF









BACK ROW: P. Voysey, D. Webster, R. Foulger, F. Benson, A. Smith, E. Hay, L. MacDonald, M. Morey, A. MacMillan, N. Heffernan. FRONT ROW: K. Adams, E. Monro, S. Smith, S. Slaugh, C. Wheeler, F. Leland, L. Mooers (manager).

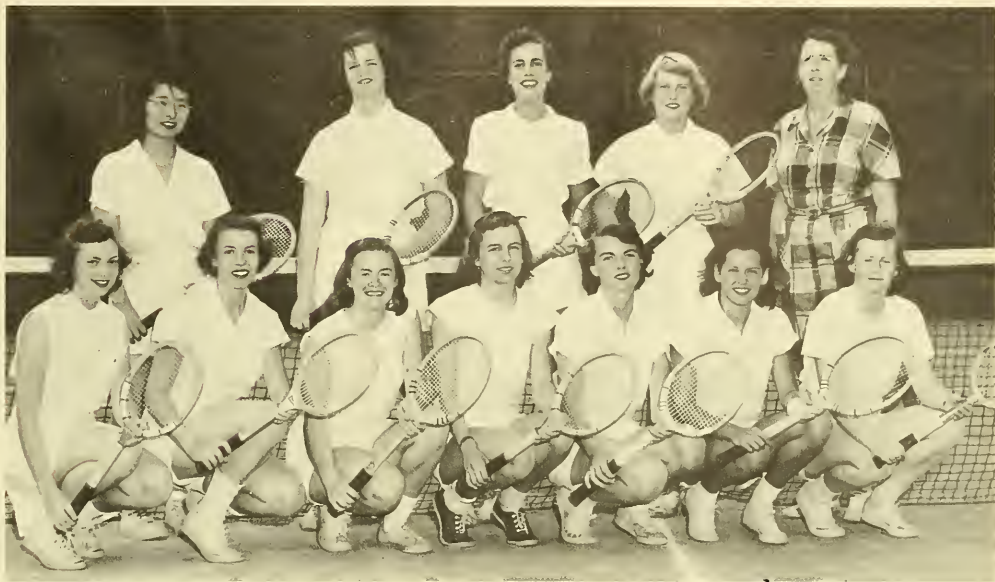
LACROSSE

Swarthmore's female stickwielders started off the season with six veterans from last year's team, and no coach. By the end of the season they had twelve veterans, three wins, three losses, and no coach. In the middle, however, they were lucky enough to have two marvelous English instructors, Mrs. Tucker and Miss Gascoigne.

Sue Slough, doubling as captain and coach, and Neely Wheeler and Anne Smith, provided the experience for the attack. Freshmen Edith Hay, Lois MacDonald, and Elspeth Monro, taking her first stab at lacrosse, combined with effervescent Neely to supply enthusiasm. Kathy Adams, at point, along with Fran Benson and Phyllis Voysey, accounted for many interceptions. At the wing defenses Sue Smith and Ann MacMillan supplied scrappiness. Dee Webster was an indefatigable center whose "tricks" almost fooled her opponents, while Frankie Leland, in the goal, came up with some wonderful saves. Ubiquitous Nancy Heffernan played so many positions that one can't record them. She ended up in the last game playing attack for the first time to score three out of five goals.



Captain Sue Slough



BACK ROW: S. Mitsudo, M. Gatchell, B. Brown, E. Nichol, M. Parry (coach). FRONT ROW: J. Powell, M. Evans, P. Woford, R. Handy (captain), S. Hand, J. Morrel, A. Buel. ABSENT: K. Stainton, C. Holbrook, M. Law, N. Williams, A. Griffith, B. Hill.

TENNIS AND GOLF

The tennis team finished a hectic season of seven matches in four weeks with a record of four and three. The initial defeat at Ursinus was followed by a 4-1 loss to Penn. Joyce Powell was the only winner. Next was a wonderful weekend trip to May Perry's camp in the Poconos, the occasion being a match with East Stroudsburg, which the team won 5-0. Bolstered by the weekend away, the team proceeded to win over Drexel and Rosemont, 5-0, followed by a heartbreaking loss to Bryn Mawr, 2-3. A 4-1 win from Temple finished the season.

Irene's other spring varsity also enjoyed the sun . . . and the rain . . . and the exercise . . . even if all their matches were lost. Their only home game, played with Beaver, was lost 3-2. They also played against Penn, Bryn Mawr, and, in a Round Robin Tournament, with Beaver, Bryn Mawr, and Penn. The two Jo's, Piper and Carroll, scotched the rest in a match with the men's team.



BACK ROW: I. Moll (coach), A. Waterson, J. Demond, S. Cohn. FRONT ROW: E. Winkelstein, J. Piper, E. Fulagar. ABSENT: S. Harvey.



BACK ROW: L. Stoltze, J. Bell, B. Crookston, J. Auch, E. Shepherd, E. Soyars, M. White, I. Moll (coach). MIDDLE ROW: J. Price, M. Stone, P. Burnett, E. Dun, J. Litt, N. Erb, D. Brock. FRONT ROW: J. Hand, B. Yost, S. Everts (captain), M. J. D'Emilio, B. Manson. ABSENT: P. Ames, N. Boden (manager).

SOFTBALL

Victorious season? . . . no . . . home runs and double plays? . . . no . . . but still smiling after *long* innings in the field . . . *could* have beaten Drexel if it hadn't rained . . . captain Sally, good for a hit and a laugh when things were low . . . Bea who taught Ursinus how to steal bases . . . and Phoebe who *caught* the ball.

Another successful season for a proud record of only two dual meets lost since 1934 . . . beat Rosemont, Drexel, Penn, Temple, Brooklyn . . . mixed team led to victory by Al Lloyd and Bill Miller in Inter-Collegiate at West Chester . . . Mary Johnson A, captain Robin Cooley, Marian Ellenbogen, and Marjorie Kolb B in National Telegraphic ratings.



ARCHERY

J. Fletcher (manager), M. Ellenbogen, H. Copeland, M. Kolb, V. Slingshoff, J. Wolfram, L. Hall, R. Cooley, M. Johnson, V. Rath (coach). ABSENT: C. Brunner, G. Bunker, L. Barrera.



ADVERTISERS



Remember!



the
BEST
ICE CREAM
SODA
in
town

A. G. CATHERMAN
Pharmacist
17 SOUTH CHESTER ROAD

Better
Eats and
Every Kind of
Refreshment

Always
Lots of
Entertainment

FRANK'S PLACE

(THE PLUSH MILL)



"America's Finest"

EDWARD L. NOYES & CO.

Swarthmore, Pa.

Real Estate • Insurance

23 S. CHESTER ROAD
SWARTHMORE 6-0114



TROY
Dry Cleaning and Laundry
5th and Yarnall Streets
Chester, Pa.

The College Laundry



SWARTHMORE NATIONAL BANK AND TRUST COMPANY

Offers A Complete Banking Service



Students Accounts Invited

MEMBER, FEDERAL DEPOSIT INSURANCE CORPORATION

Secretarial Training

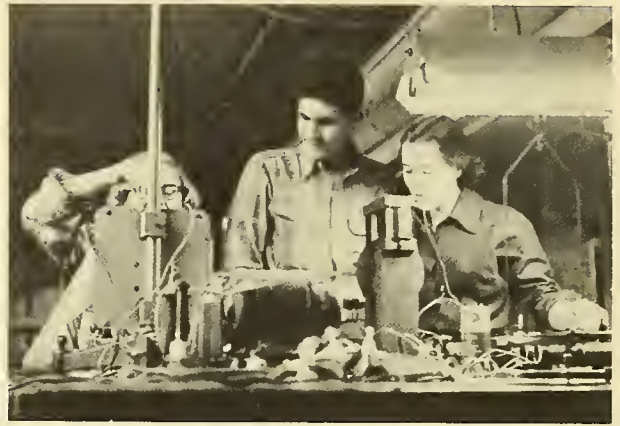
Typing, shorthand and office procedures are your entry permits into the business world. Know them *thoroughly* and you're employable *anywhere*, with a wide choice of interesting jobs open to you.

Peirce School is a tradition with college women preparing for a business career. Call, write, or telephone PENNYPACKER 5-2100 for information on Peirce Secretarial Courses.

PEIRCE

SCHOOL OF
BUSINESS ADMINISTRATION

1420 Pine Street
Philadelphia 2, Pa.



CAMPUS CUT RATE

Cosmetics

Sundries

Luncheonette

Magazines

Candy

MICHAEL'S COLLEGE PHARMACY

**Everything
in Drugs**

**Deluxe
Fountain Service**

Open 'til 11 P. M.

"The Druggie in the Vill"

MARSHALL P. SULLIVAN
Chairman of the Board
RUSSELL BLEAKLEY
President

NATHANIEL T. OFFICER, Vice-President
FRANCIS W. D'OLIER, Treasurer
RUSSELL BLEAKLEY, JR., Ass't. Sec'y.

LEO C. HAVEY, Secretary
ROBERT A. FRANK, Ass't. Sec'y.
JAMES CHALMERS, Ass't. Sec'y.

CRETH & SULLIVAN, INC.

Established 1881

General Insurance

Representing:

- **Aetna Insurance Company**
- **Boston Insurance Company**
- **Commercial Union Assurance Company**
- **Fire Association of Philadelphia**
- **Great American Insurance Company**
- **Hanover Fire Insurance Company**
- **Insurance Company of North America**
- **National Union Fire Insurance Company**
- **Pennsylvania Fire Insurance Company**
- **Providence Washington Insurance Company**
- **Queen Insurance Company of America**
- **Springfield F. & M. Insurance Company**

106-08 S. Fourth Street

Philadelphia, Pa.



MILDEN & WHITE

Incorporated

77 Years in Business

60 People At Your Service

Poultry, Game, Butter, Eggs

and All Sea Foods

Mayfair Frosted Foods

1212 Filbert Street

Phila. 7, Pa.

LOmbard 3-9390

McARDLE & COONEY, INC.

519 Arch Street

Philadelphia

Pipe, Valves and Fittings

FABRICATION

PLUMBING and HEATING SUPPLIES

COTTAGE CHEESE

FRESH EGGS

MILLER FLOUNDERS
SAFE MILK

Distributors of Golden Guernsey—America's Table Milk

HOMOGENIZED MILK

CHester 3-6129

BUTTERMILK

EXPERIENCE HAS NO SUBSTITUTE . . .

**20 YEARS OF YEARBOOK "KNOWHOW"
IS YOURS WHEN YOU SIGN WITH**

MERIN STUDIOS OF PHOTOGRAPHY

Official Photographers to

The Halcyon

All Portraits Appearing in this Publication Have
Been Placed on File in our Studio, and can be
duplicated at Any Time.

Write or Phone us for Information

Pennypacker 5-5777

1010 CHESTNUT STREET

Philadelphia 7, Pa.

CLASS OF '51



LOOKS AHEAD

OF THE MANY HANDS that cooperate in the publishing of your yearbook, none is more important than the one that plans its pages and supervises its production.

. . . You are invited to place your yearbook problems in the hands of the Livingston Publishing Company . . . the same hands which today are producing the finest in school and college annuals.



LIVINGSTON PUBLISHING COMPANY

NARBERTH, PENNSYLVANIA

**SCOTT QUALITY
MEANS PROGRESS . . .**



**FOR OUR WORKERS
FOR OUR COMMUNITY**

**SCOTT PAPER COMPANY
Chester, Pa.**



FELIX SPATOLA & SONS

Established 1880

*Fresh and Frosted
FRUITS and VEGETABLES
Best Quality and Service*

READING TERMINAL MARKET

**Reading Terminal
Philadelphia**

WAlnut 2-5600

Venturi

Inc.

V

*Fresh and Frozen
FRUIT and PRODUCE
Philadelphia*

WILCOX APPLIANCE CO.

Lansdowne and Baltimore Avenues
Lansdowne, Pa.

Radios and Electrical Appliances

MAdison 3-0767

LINES

MOTOR CO., INC.

216 E. STATE STREET
Media, Pa.

GOOD USED CARS

Phone: Media 6-0242



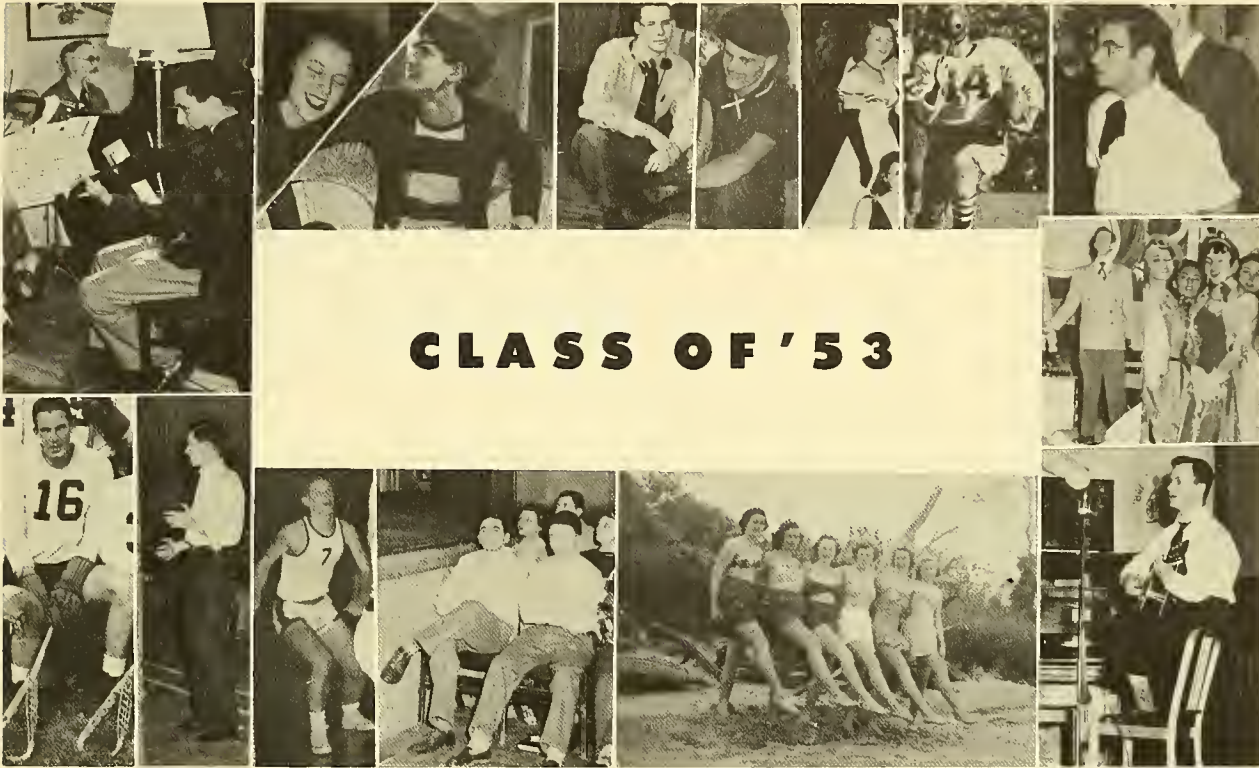
CLASS

OF

'52

"Child of a noble race . . ."





CLASS OF '53

H. D. REESE CO.

MEATS

*Poultry — Butter
Frosted—BIRDSEYE—Foods*

**1208 Arch Street
Philadelphia, Pa.**

SP 4-5811

HUMMER and GREEN

FIFTH and FULTON STREETS

Chester, Pa.

**"EVERYTHING FOR BUILDING
ANYTHING"**

OUR "HOME BUILDERS SERVICE" will help you
Modernize or Build a new home.

OUR "HOME INSULATION DIVISION" will save
you money while making your home more
comfortable.

OUR "KITCHEN SERVICE" offers metal or wood
cabinets for complete kitchens and laundry
rooms. Westinghouse and other nationally
known appliances.

Phone, Chester 3-9171

CELIA SHOE SHOP

102 Park Avenue

Finest in Shoe Repair

Serving Students Since 1904

Phone, SWarthmore 6-2350

MEDFORD'S
PORK PRODUCTS
for
Quality and Flavor

Home Dressed
Beef—Veal—Lamb

Chester, Pa.

MURTA, APPLETON COMPANY

12th and Sansom Streets
Philadelphia 7, Pa.

HARDWARE
LIGHTING FIXTURES
GUNS and FISHING TACKLE

CLUBHOUSE HOTEL

Banquet Service

511 Welsh Street

Chester

Pennsylvania

CYRUS WM. RICE & CO., INC.

Consulting

Chemical Engineers

Industrial Water Conditioning
Waste Disposal

15 Noble Avenue

Pittsburgh 5, Pa.





For...

RECORDS
PHONOS
RADIOS
SERVICE

it's

THE MUSIC BOX

Swarthmore

GITHENS, REXSAMER & CO.

Philadelphia 6, Pa.

*"Institutional Suppliers of
QUALITY FOODS Since 1861"*

THE COLLEGE BOOKSTORE . . .

invites you to examine its
collection of

• BOOKS

• PRINTS

• FRAMING

EQUIPMENT

ART





COLLEGE HABERDASHERS
BETTER CLOTHES
FOR EDS AND CO-EDS
AT REASONABLE PRICES

BUCHNER'S
SWARTHMORE

BAILEY and PEET

Official Campus Photographers
for
THE HALCYON 1952
"BOB and SANDY"



Established 1881

Incorporated 1925

CRETH & SULLIVAN, INC.

•
General Insurance
•

Associated

Marshall P. Sullivan, '97

Francis W. D'Olier, '07

106-08 S. Fourth Street

Philadelphia, Pa.



