

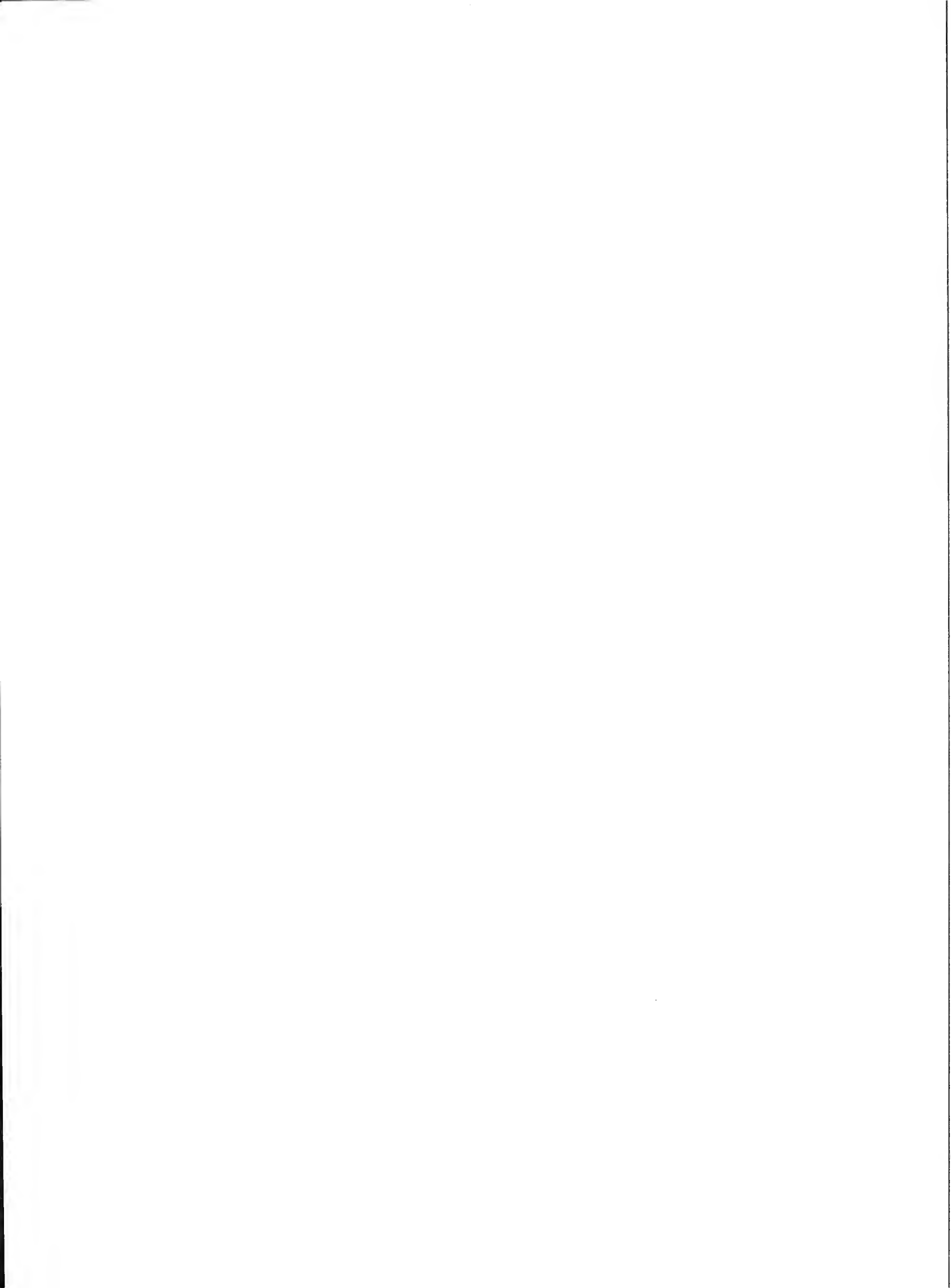
STACHNOE

HALCONB

Digitized by the Internet Archive
in 2011 with funding from
Lyrasis Members and Sloan Foundation

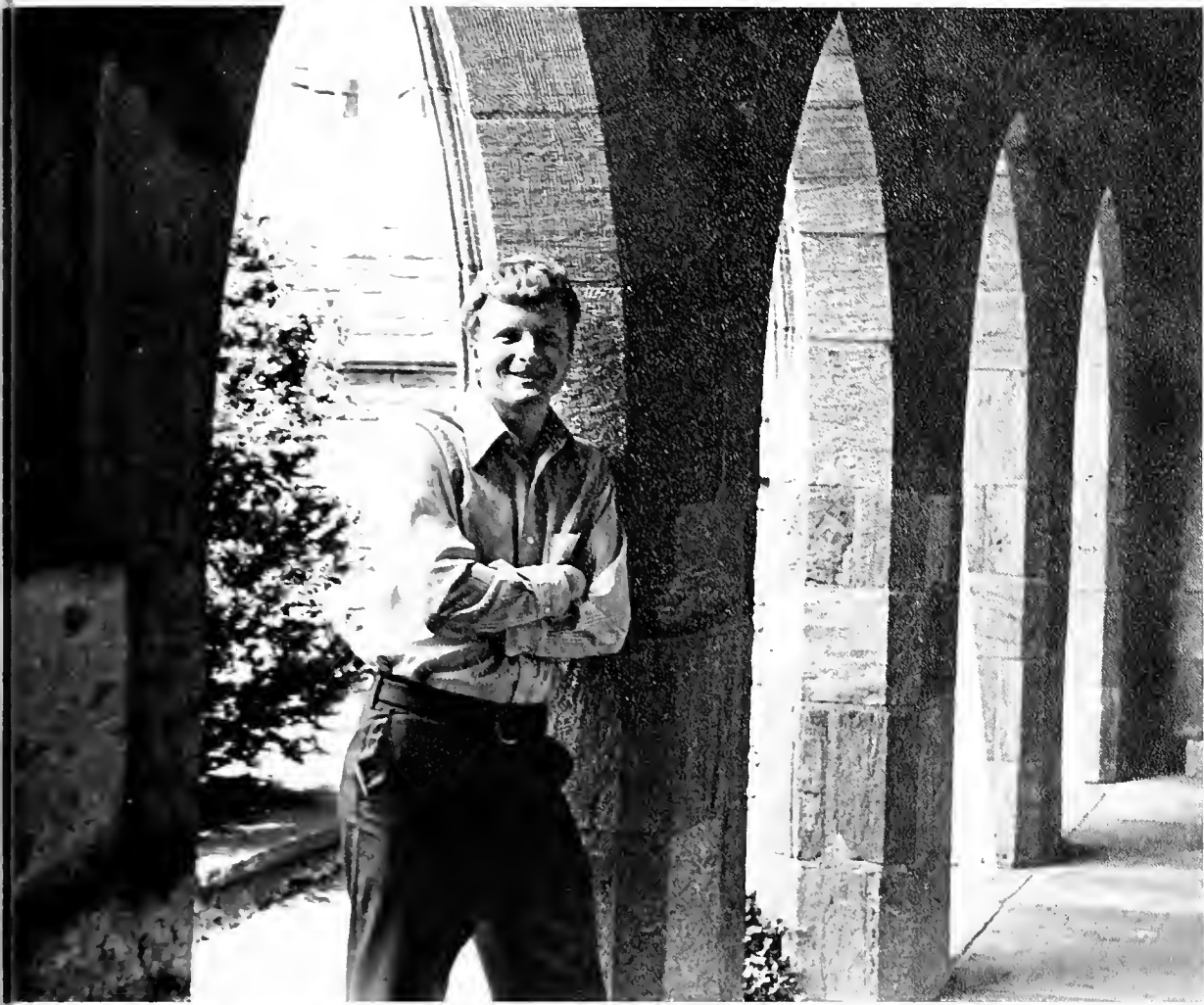
<http://www.archive.org/details/halcyon1973unse>

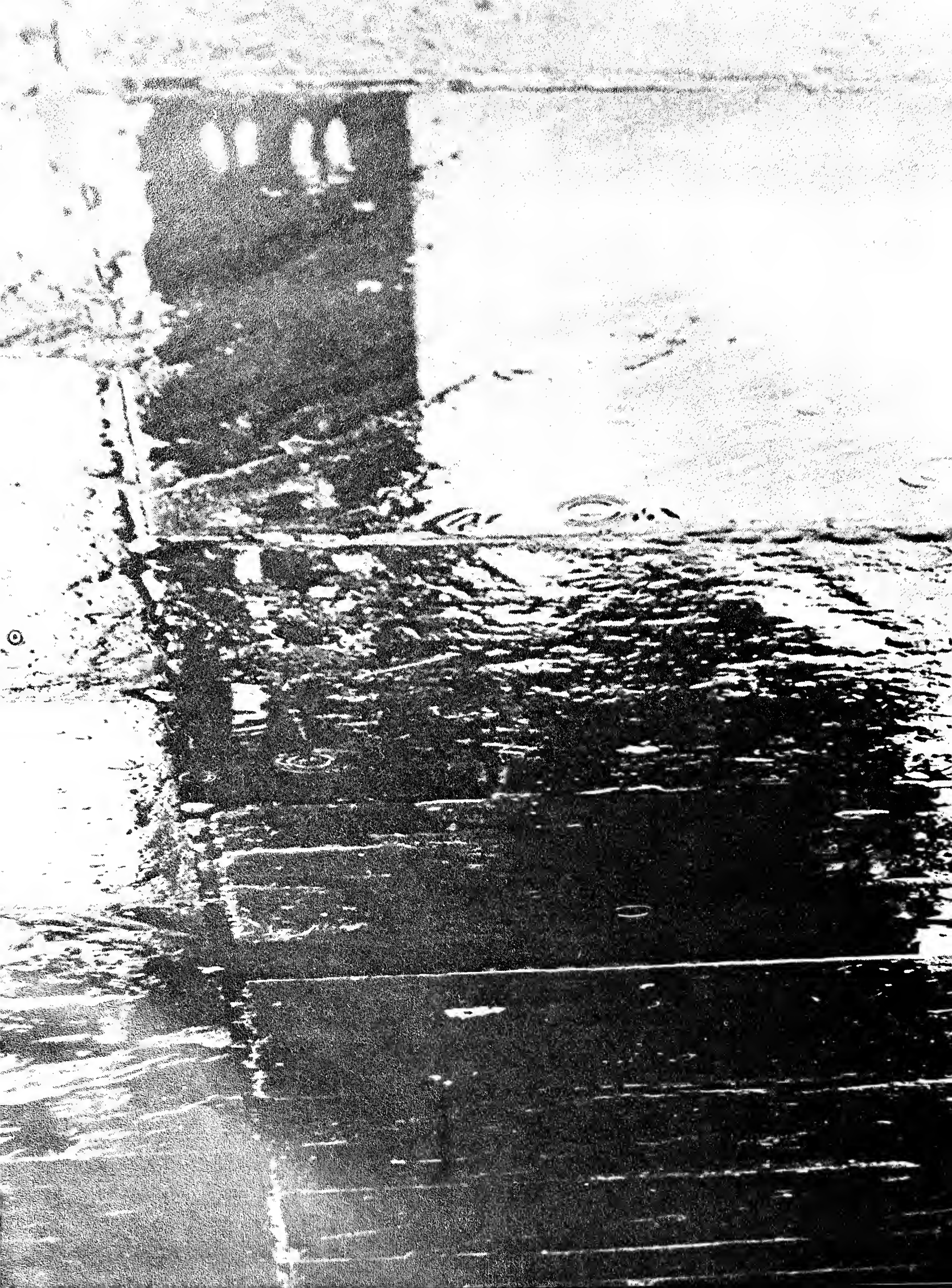








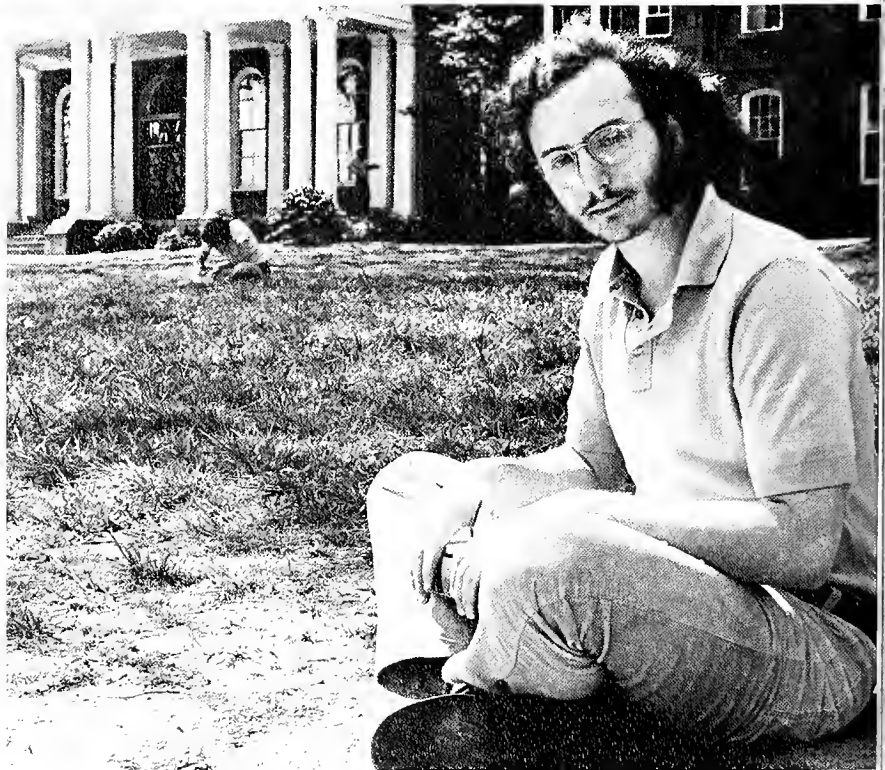
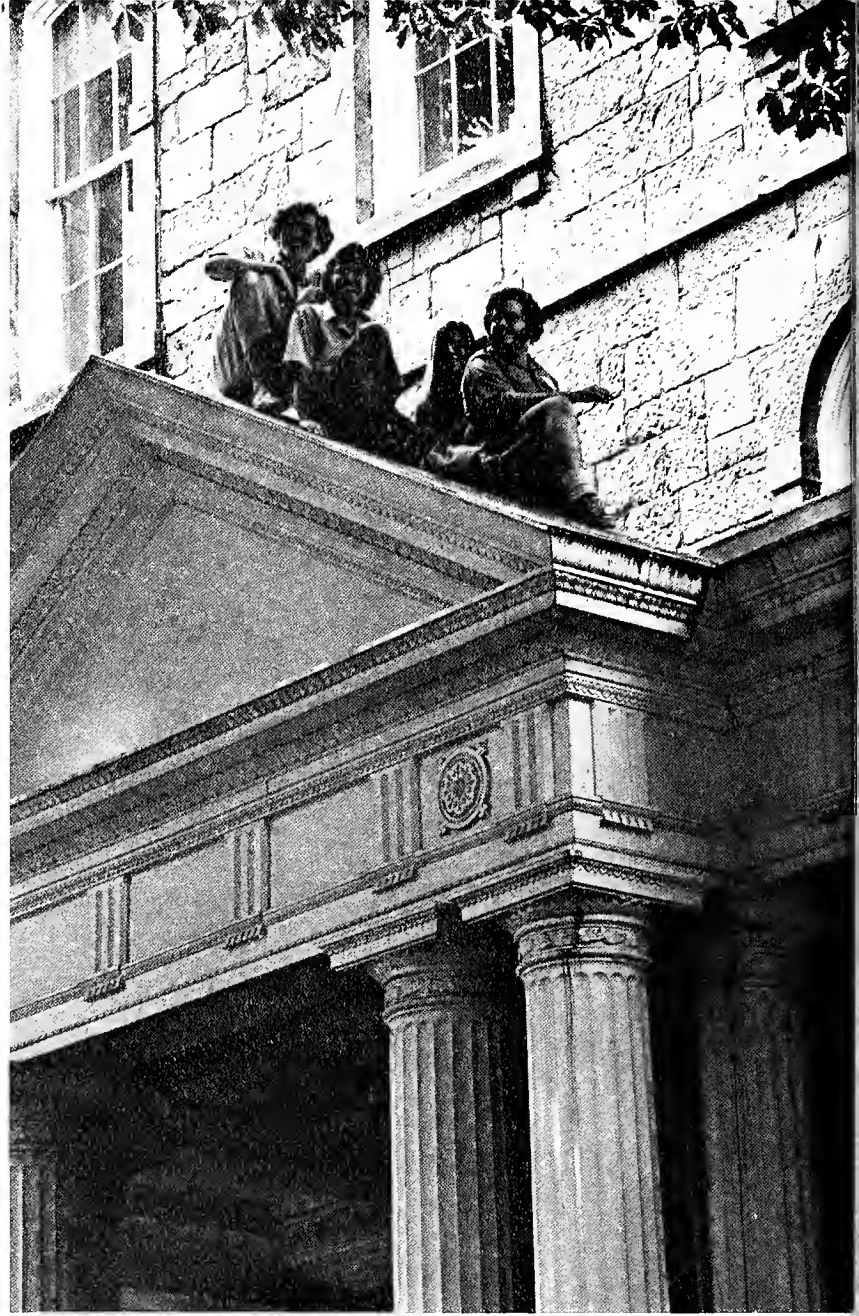




RAIN
Refreshing the old
Bringing life to the new
the womb of the earth
the hope for a tomorrow
the downbeat of time

Gino Bottino '73





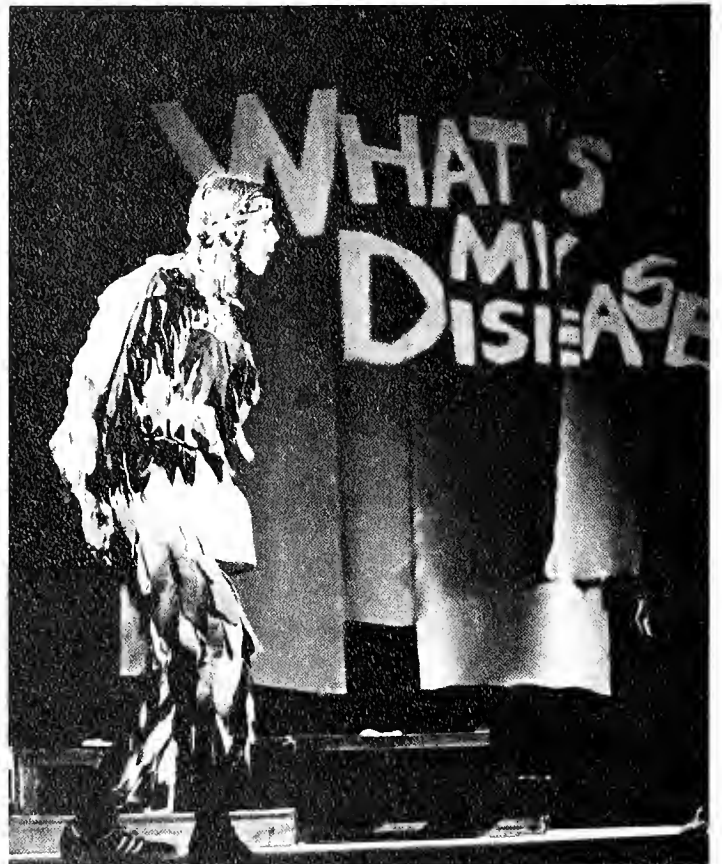






“These pictures—there were hundreds of them, with names and without—all came back. They rose fresh and new out of this night, and I knew again what I had forgotten. They were my life’s possession and all its worth. Indestructible and abiding as the stars, these experiences, though forgotten, could never be erased.”

The Little Prince









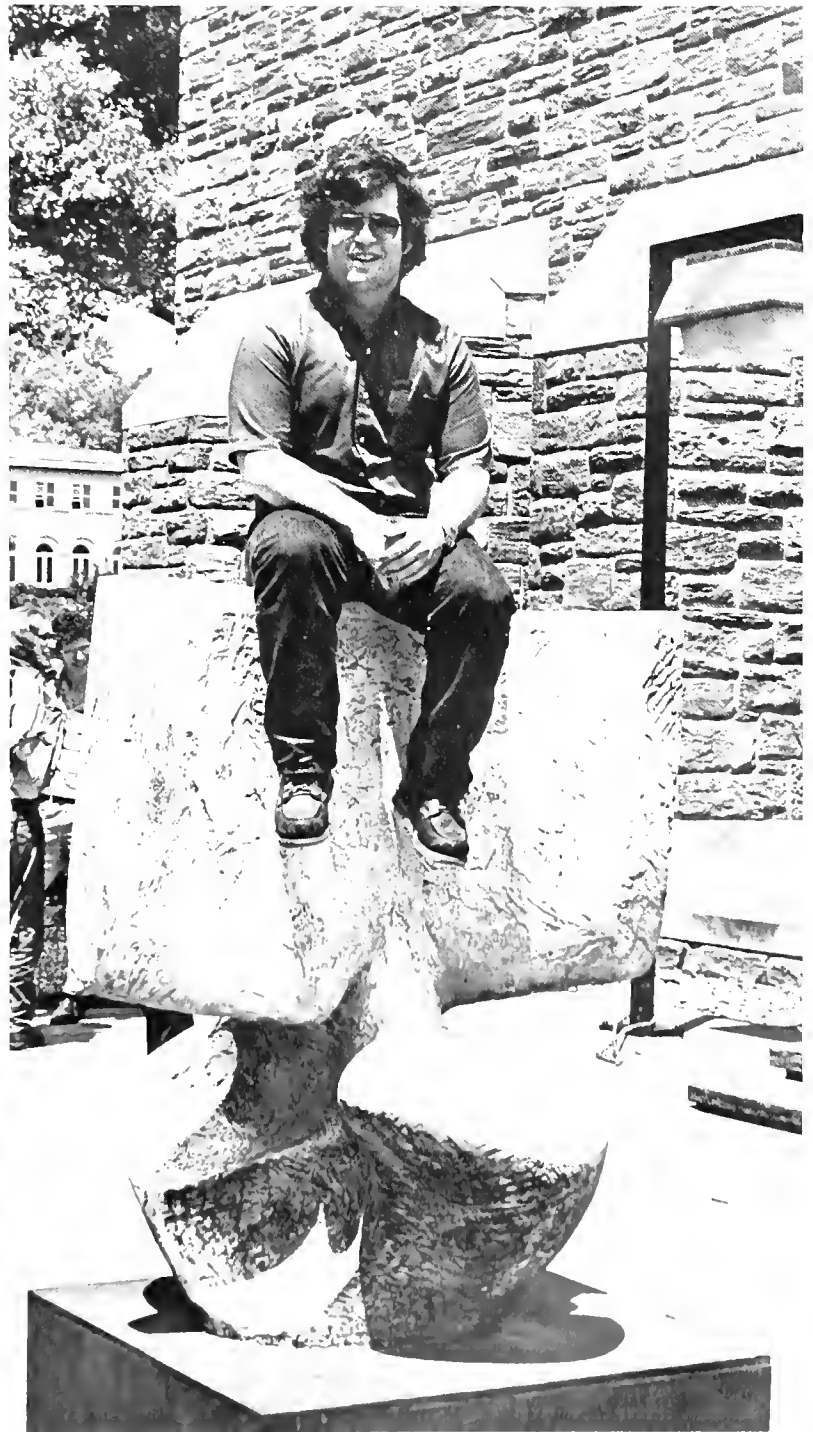


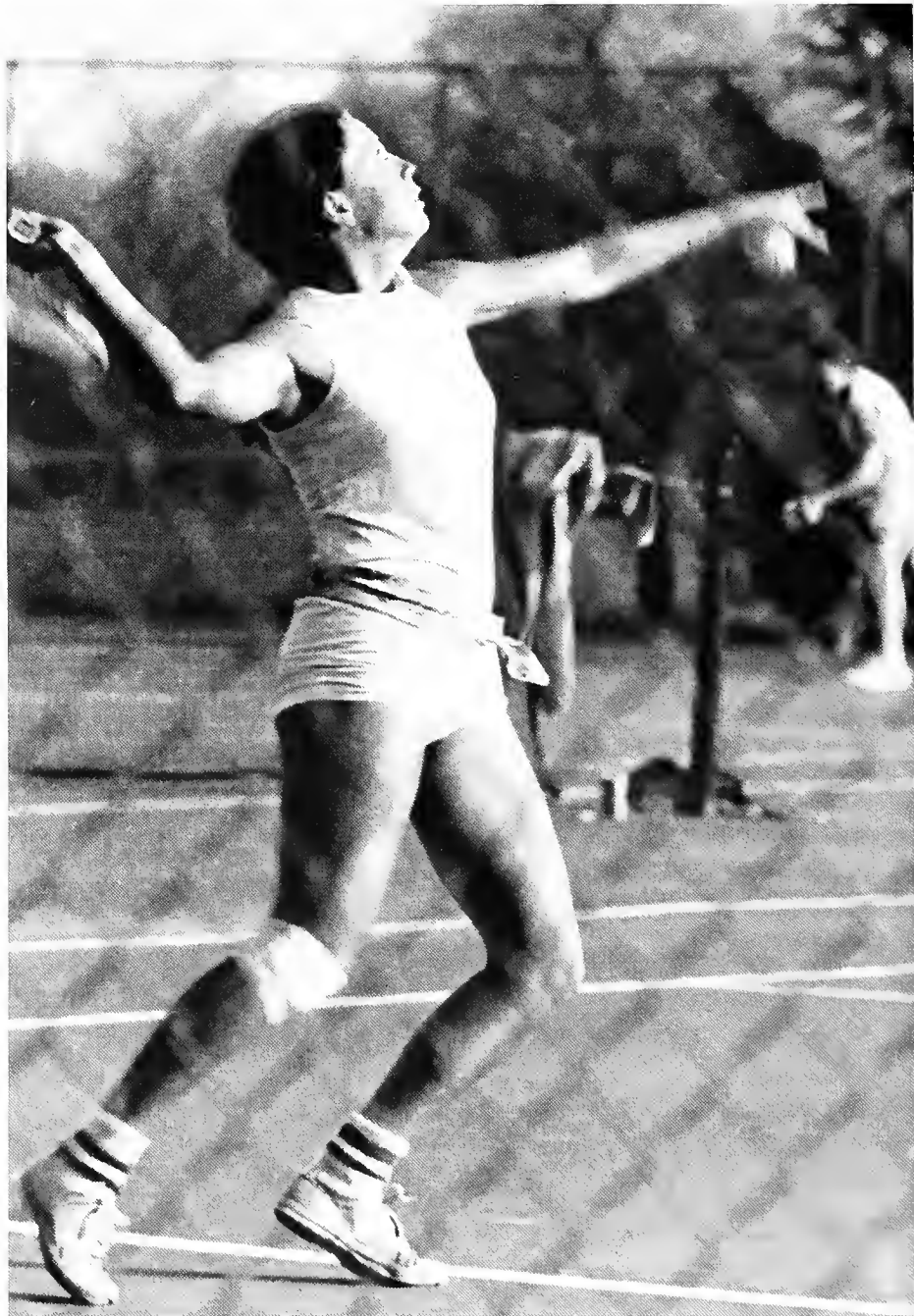


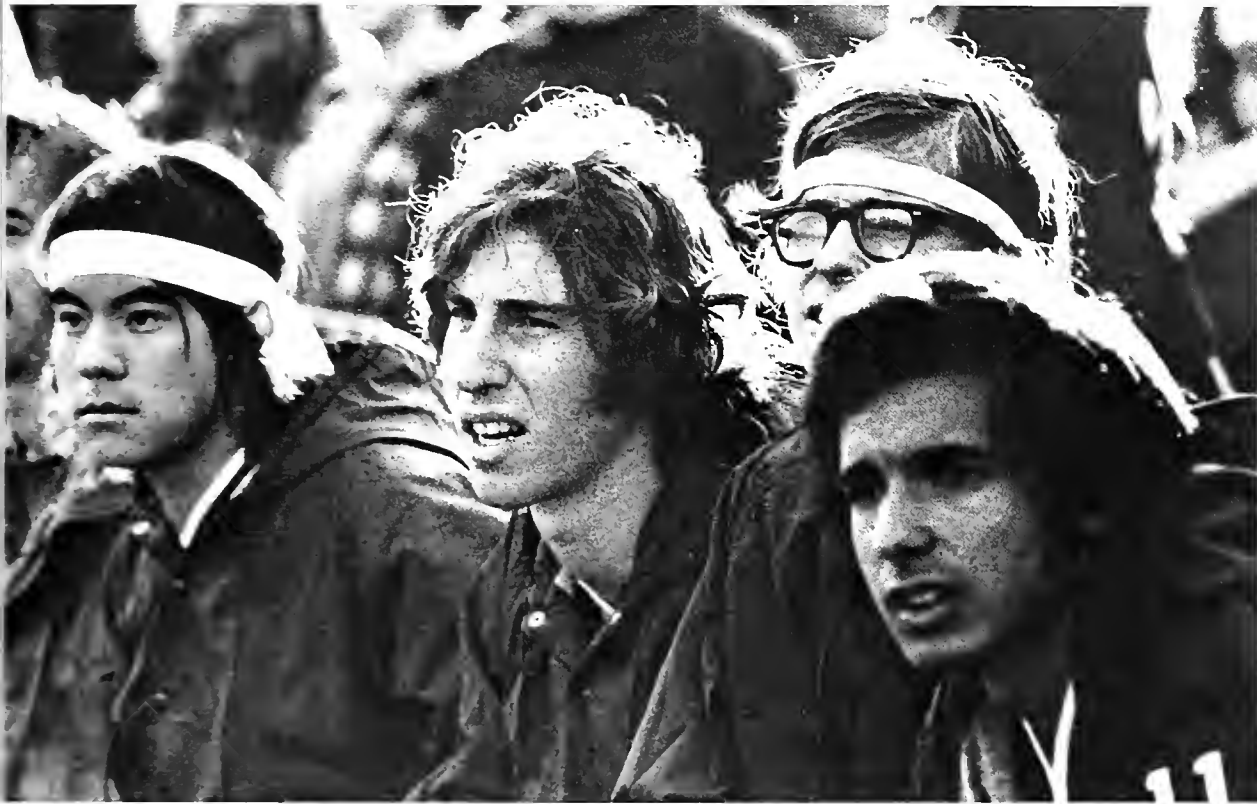






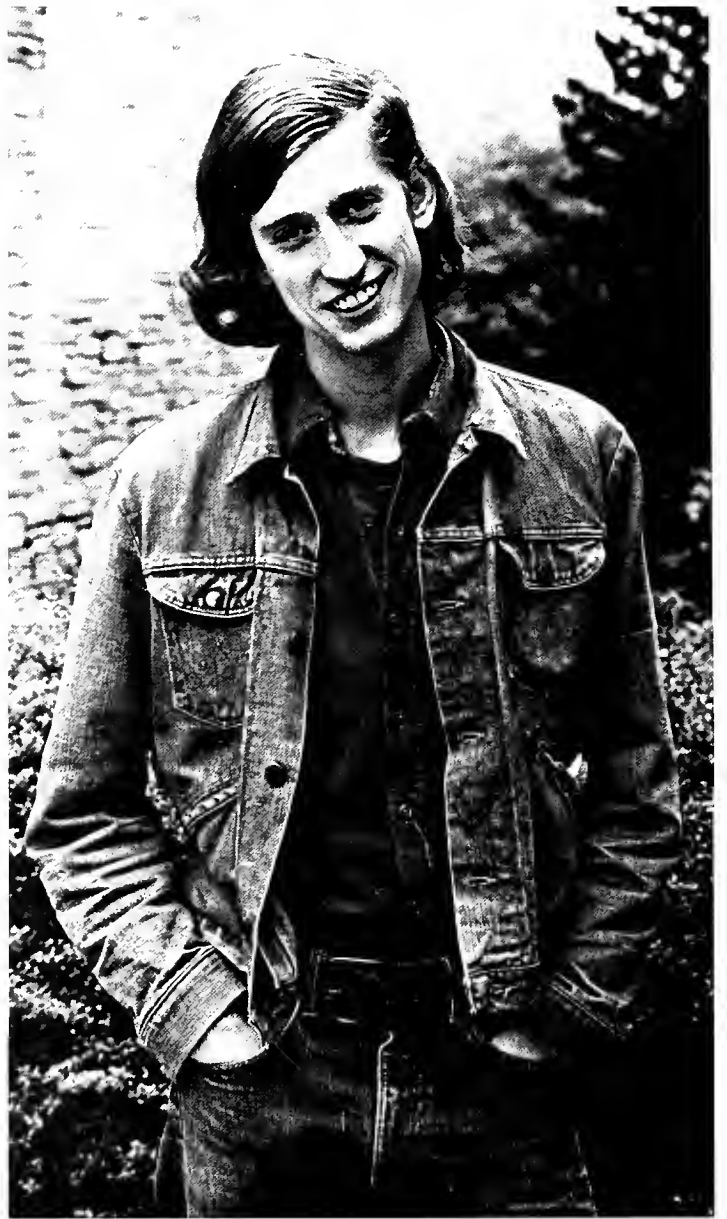


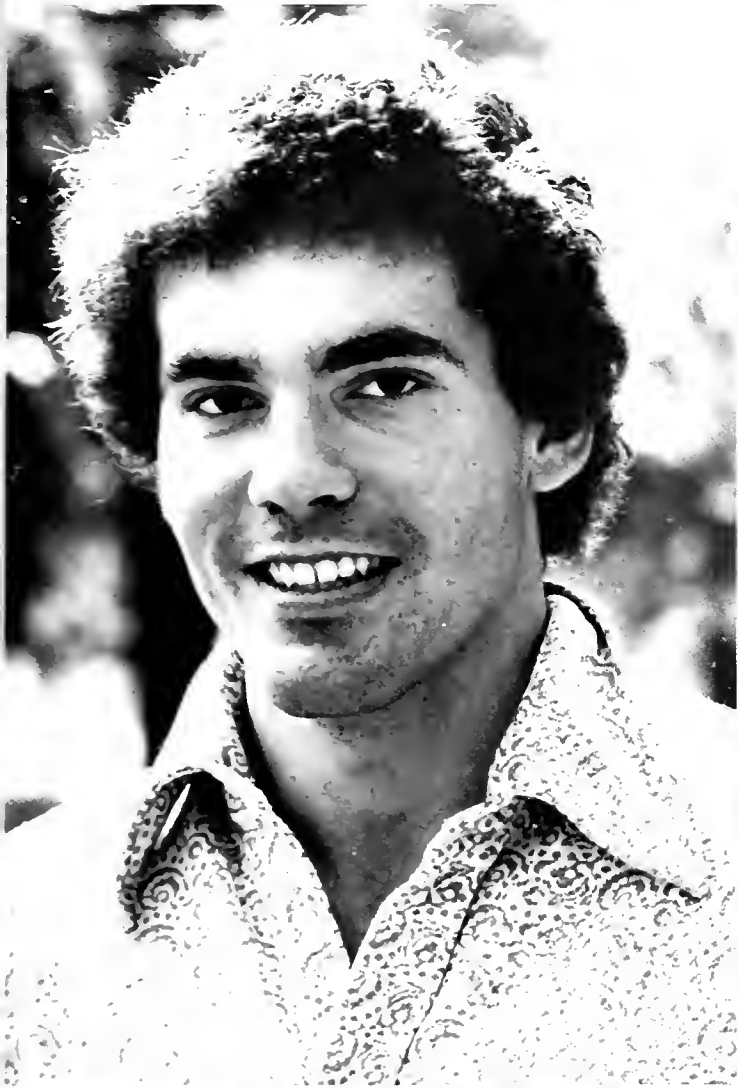










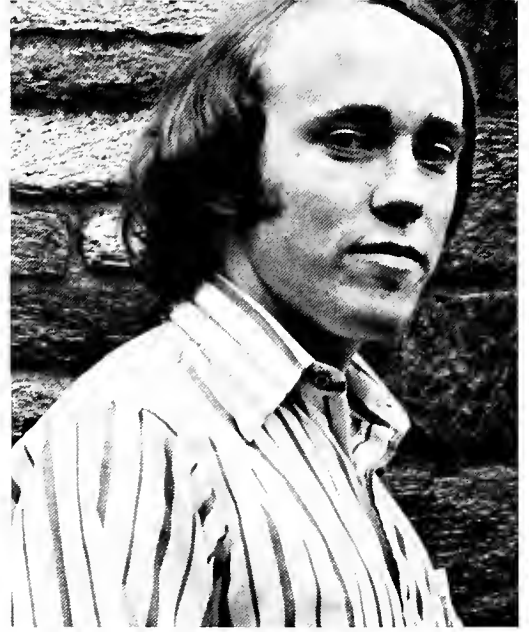














Rehobeth

The bay is calm tonight.
Three miles south, the Bethany lights
Float midway to the sky.
Green and white, shimmering and shy,
They dance their silent dance.
The dark bay sparkles with a crystal chance
To sail a highway moon; and only
Where that broad path ends, we know
The sky begins. Farther east,
The wide Atlantic moans beneath
The stars. Two concrete towers stand
Abandoned on the salt-swept beach:
Their sightless eyes still strain to reach
Beyond the breakers. The sand
Outside the window is a luminescent band
Behind the seawall.

My friends and I
Sit inside the house, silent
As those towers, silent as those colored lights,
Absorbed in the passage of the night.
All day our laughter has been shadowed
By tomorrow and today and the gulf between;
And now the rising sadness can be seen
On dim-lit faces. We have not even
Laughter for a shield tonight; for the boundless
Beauty that encloses us and holds us
Gently in her arms is but a stark reminder
That our years together
Will be over all too soon,

That with the coming of the morning sun
Each of us must go our separate way.
We know we cannot stay
Here any longer, for the shifting world
That long since passed those towers by
Is more than frail desires can deny.
We cannot change what has come.

So we sit amid a speechless gale
And search our minds for some
Bond to take away with us, labor to inhale
Each other's presence, that we may not forget.

Yet we are more than quiet nights;
More even than moving water and the fairy lights.
That we can be together now and share
This moment without words is care
And bond enough. We have each other's love.
Friendship, though apart, shall still be common
To us all. We have, because we live,
The irrepressible will to go on.
And while we may not be this way again,
Still, we have the undiminishable
Gift of our interwoven lives to help us fill
Those nights and days we are alone.

Tonight is not an end:
Though we depart, we begin again.

W. D. Ehrhart '73





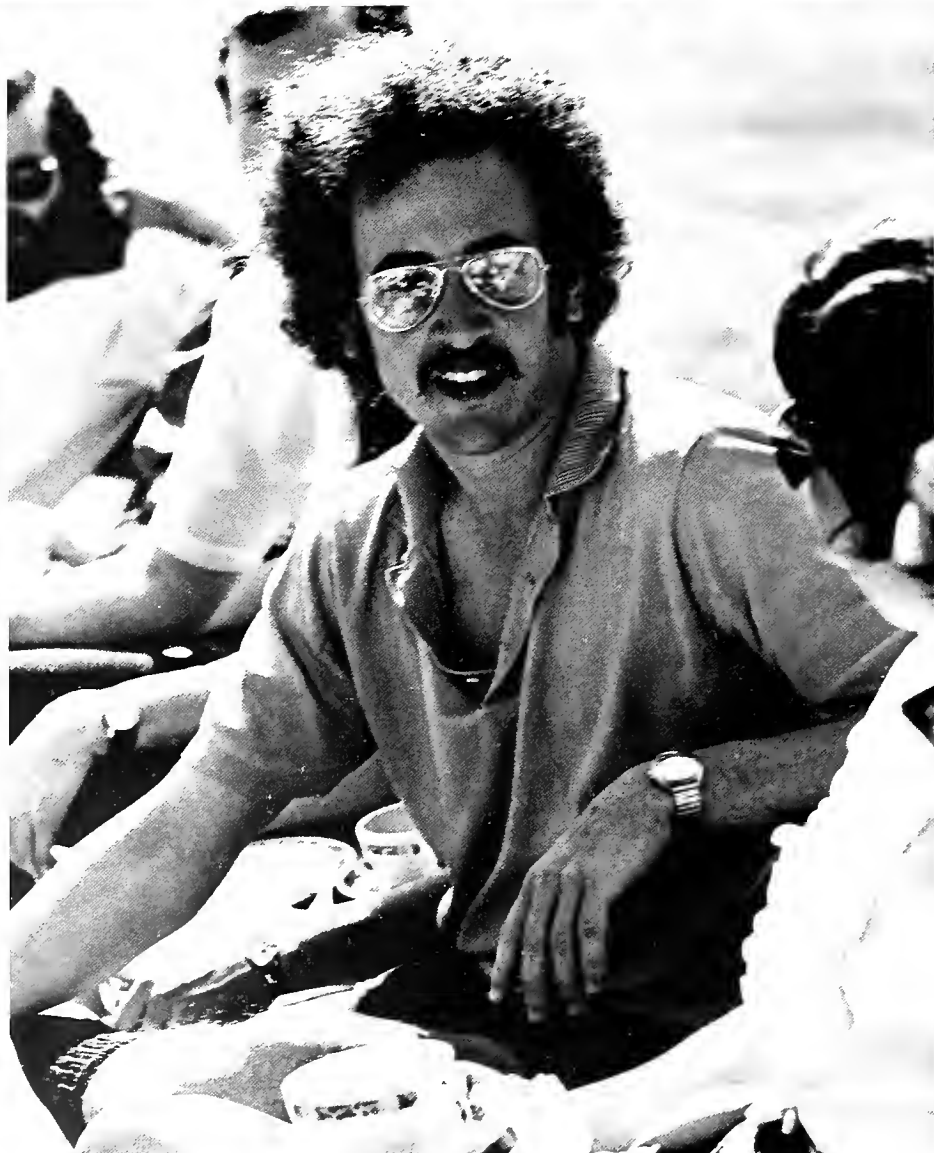
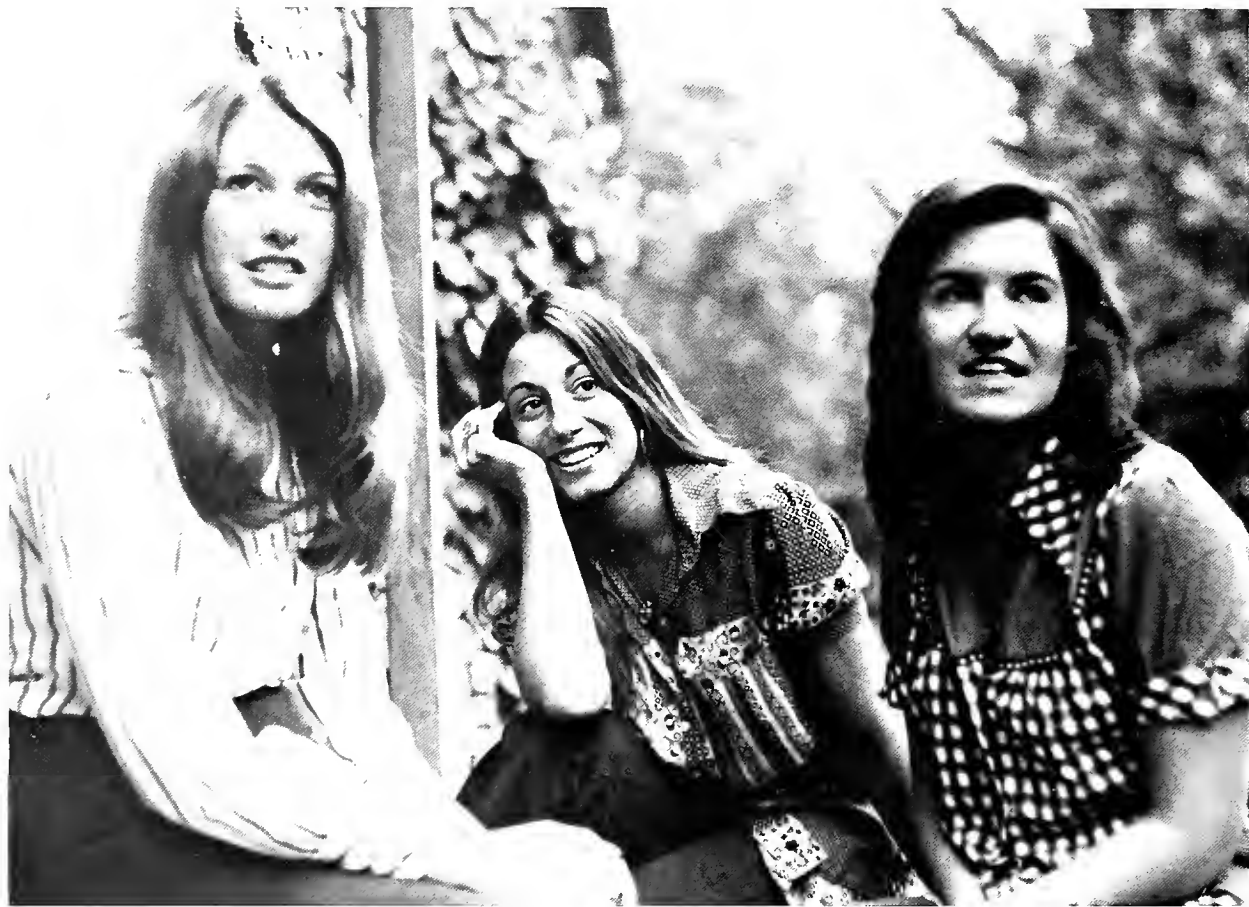


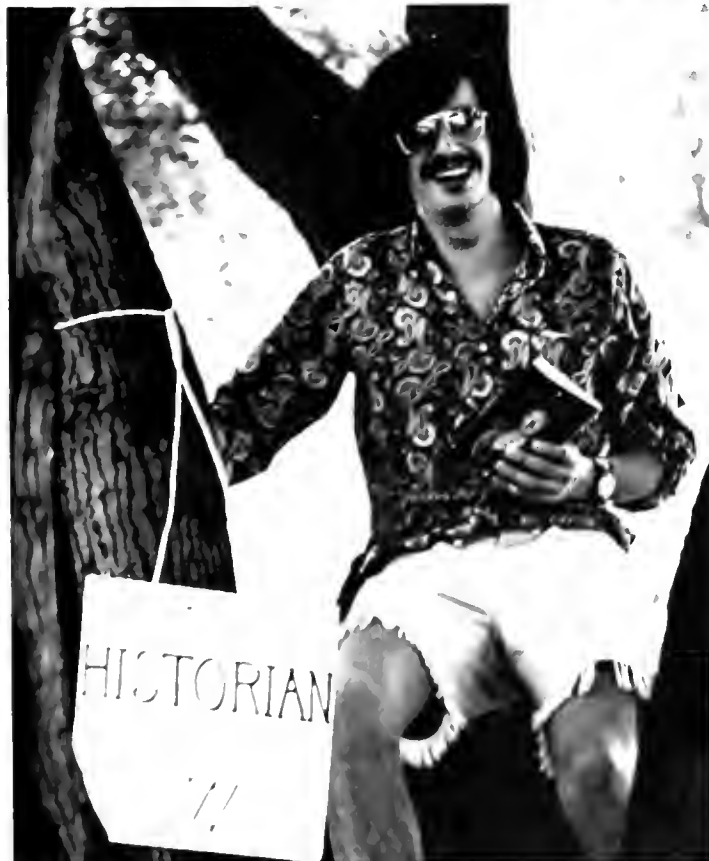






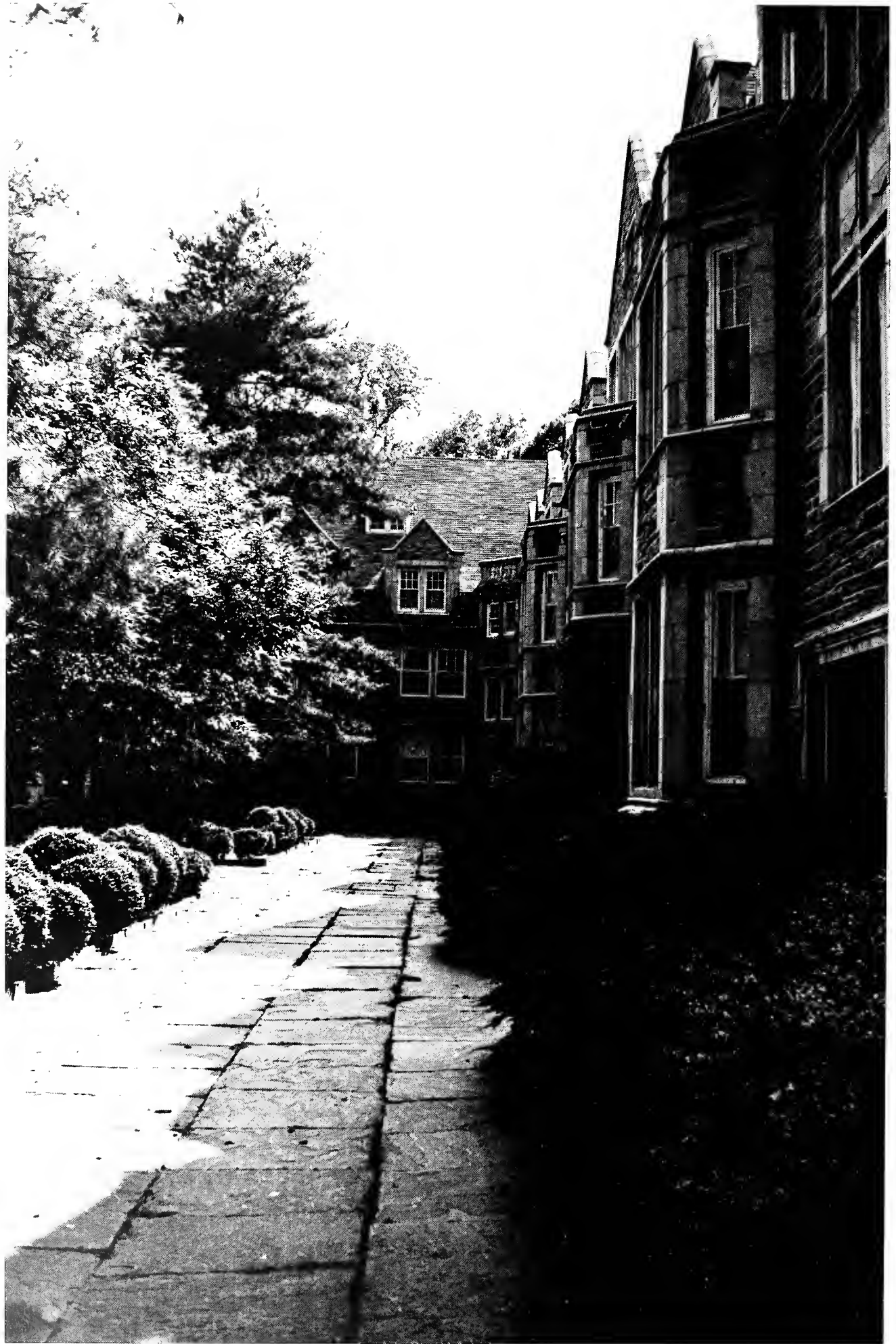










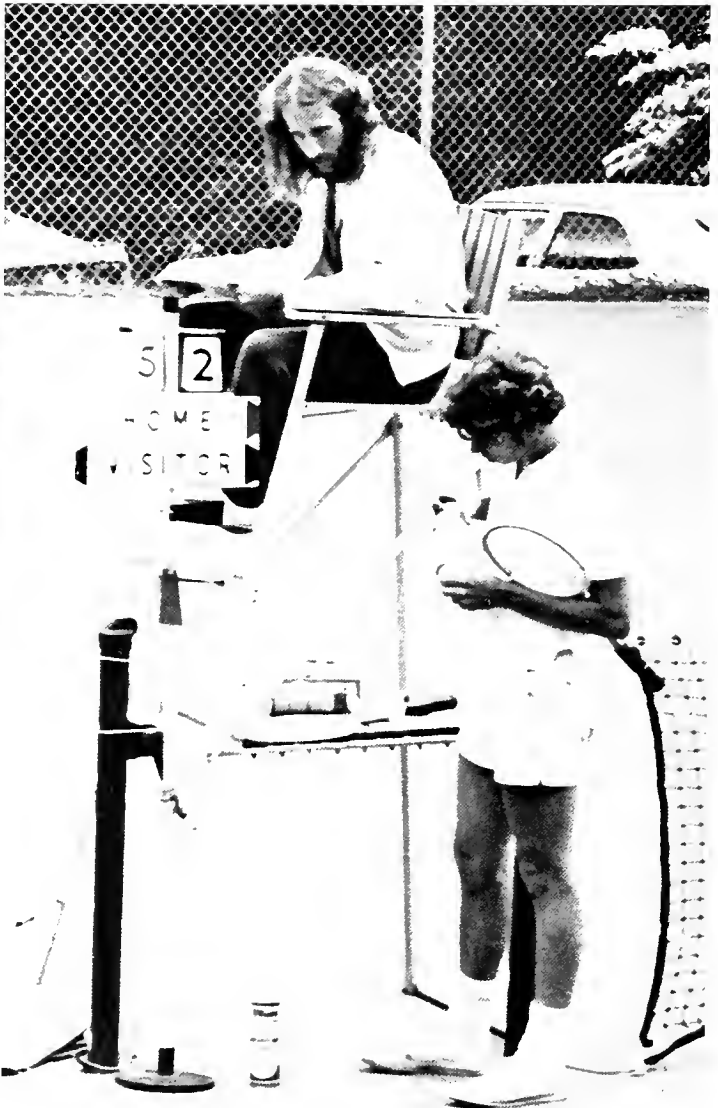
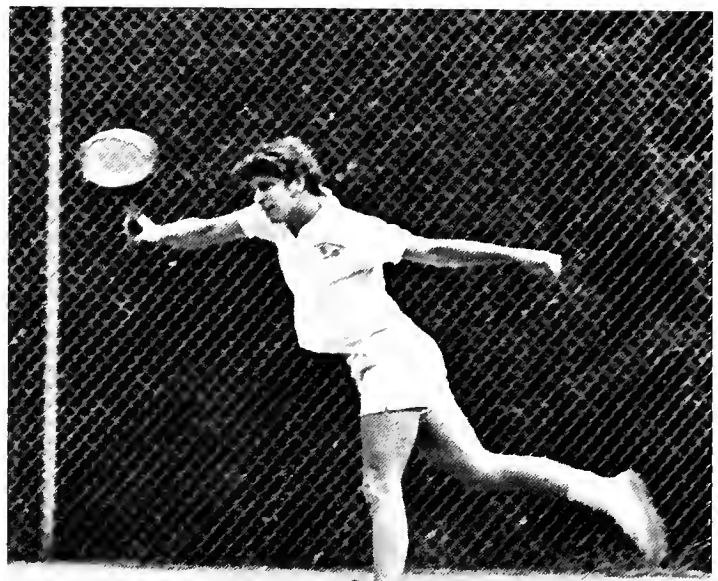
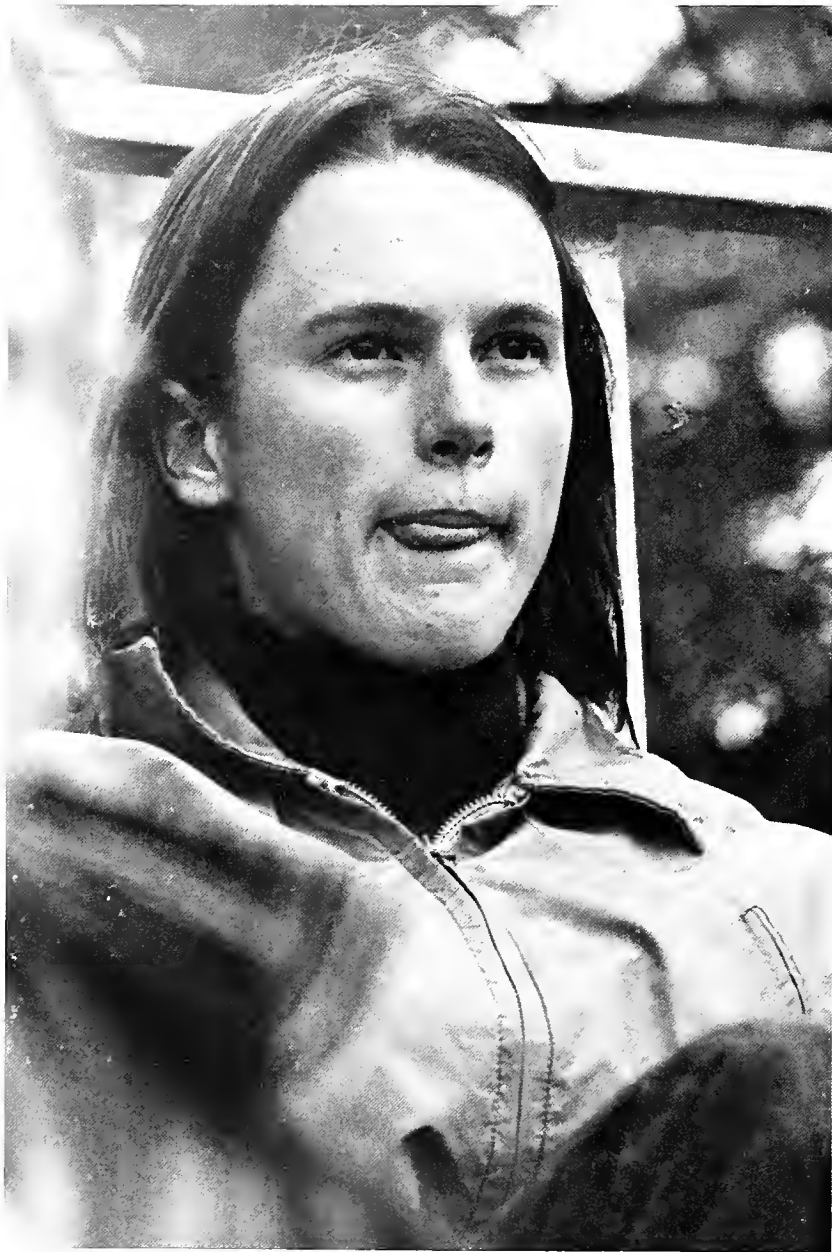


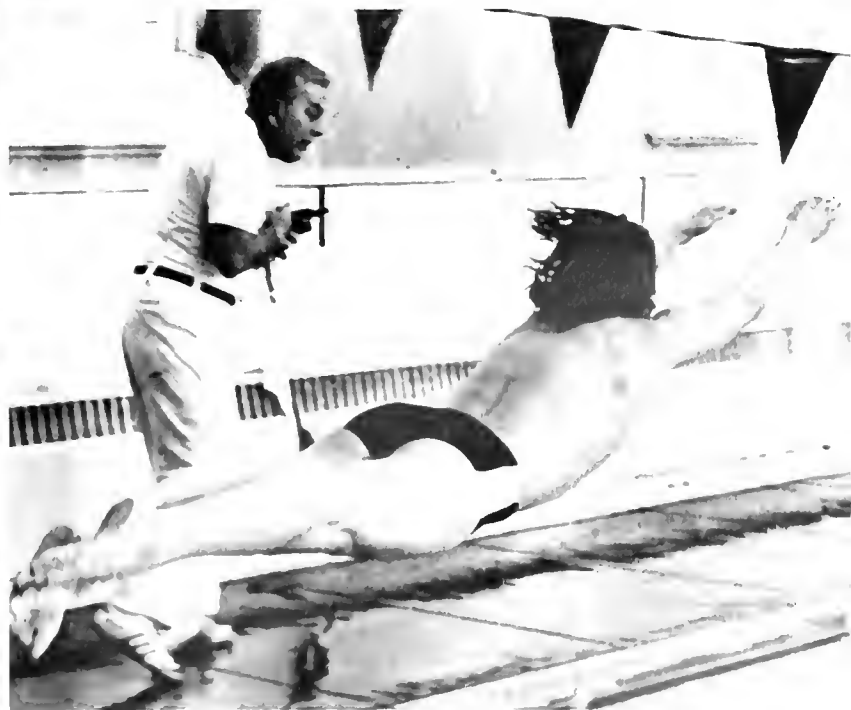


Yours

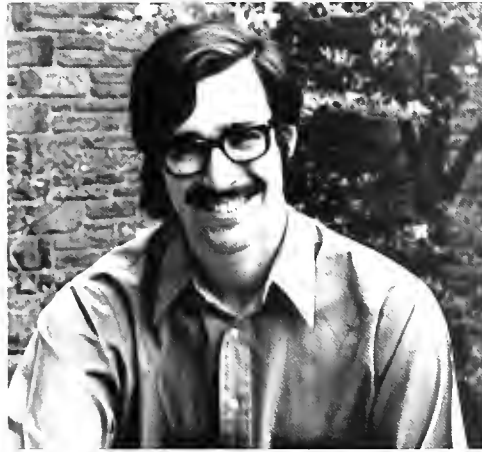
Now it has come to this:
Through dark tunnels, arm-in-arm,
The damp walls cracked
And echoing our footsteps;
On past roads paved
With the harbor of night,
So that the sound of tires,
Though close, is now intangible,
Like unseen ships along the Delaware
Whose foghorns conjure up
Adventurous worlds of Ice
And majesty, exotic markets,
Lions on a beach;
Or rails that hum
With melancholy travellers
Miles to the east;
Through the shadows of trees,
And branches startling in the dark,
And cold wet grass;
Past buildings swallowed by the hour,
No longer real, empty
Of all but dreams;
On, and still on
To an old stone bench
Carved into the edges of a wood
Where we sit and shiver together,
Loving our solitude,
Touching silence and each other;
Reluctant, but unable to return.

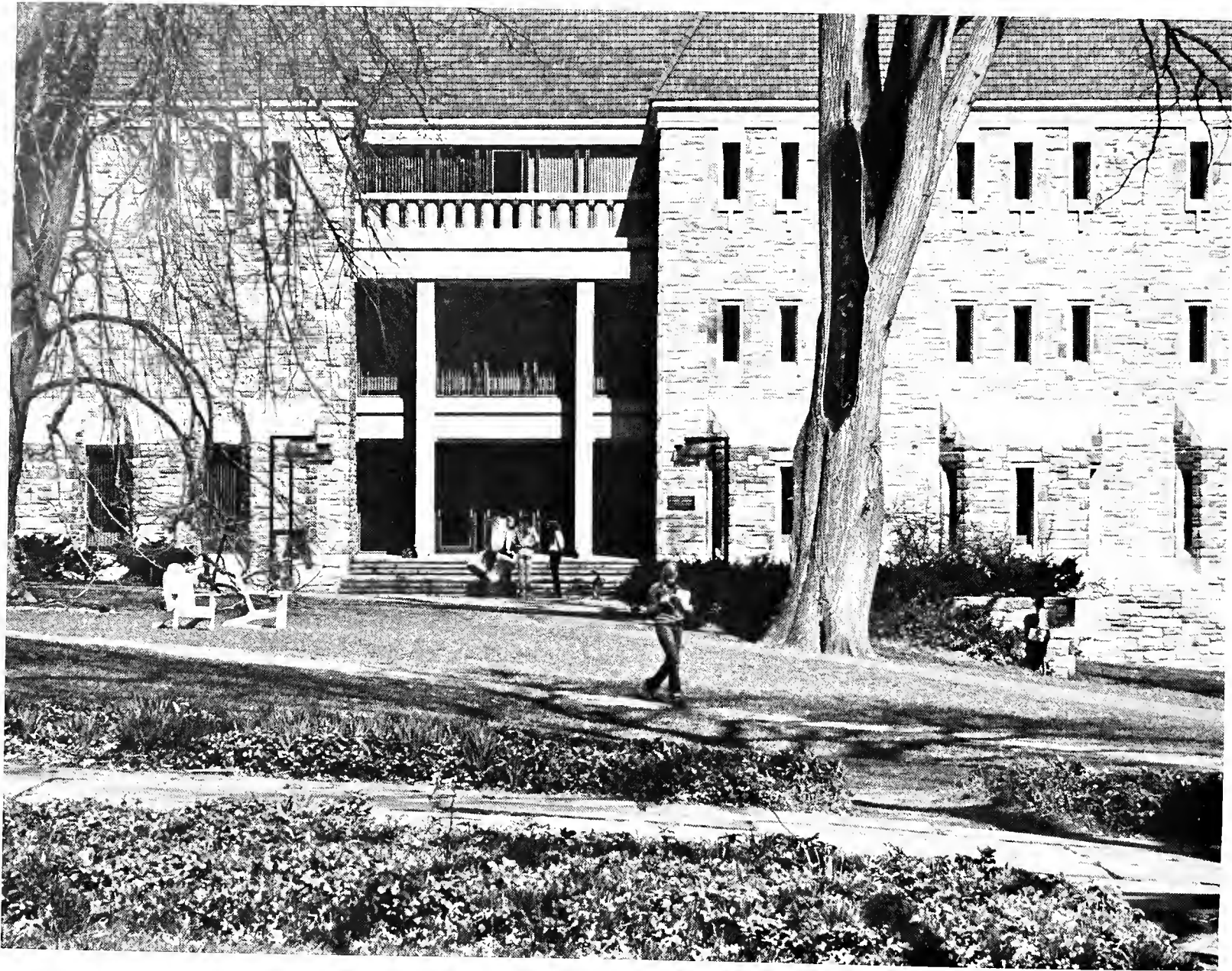
Yes, it has come to an old stone bench;
And to an end of an old life
In an older, simpler world;
And to a raw
Yet undeniably desired
Awakening.

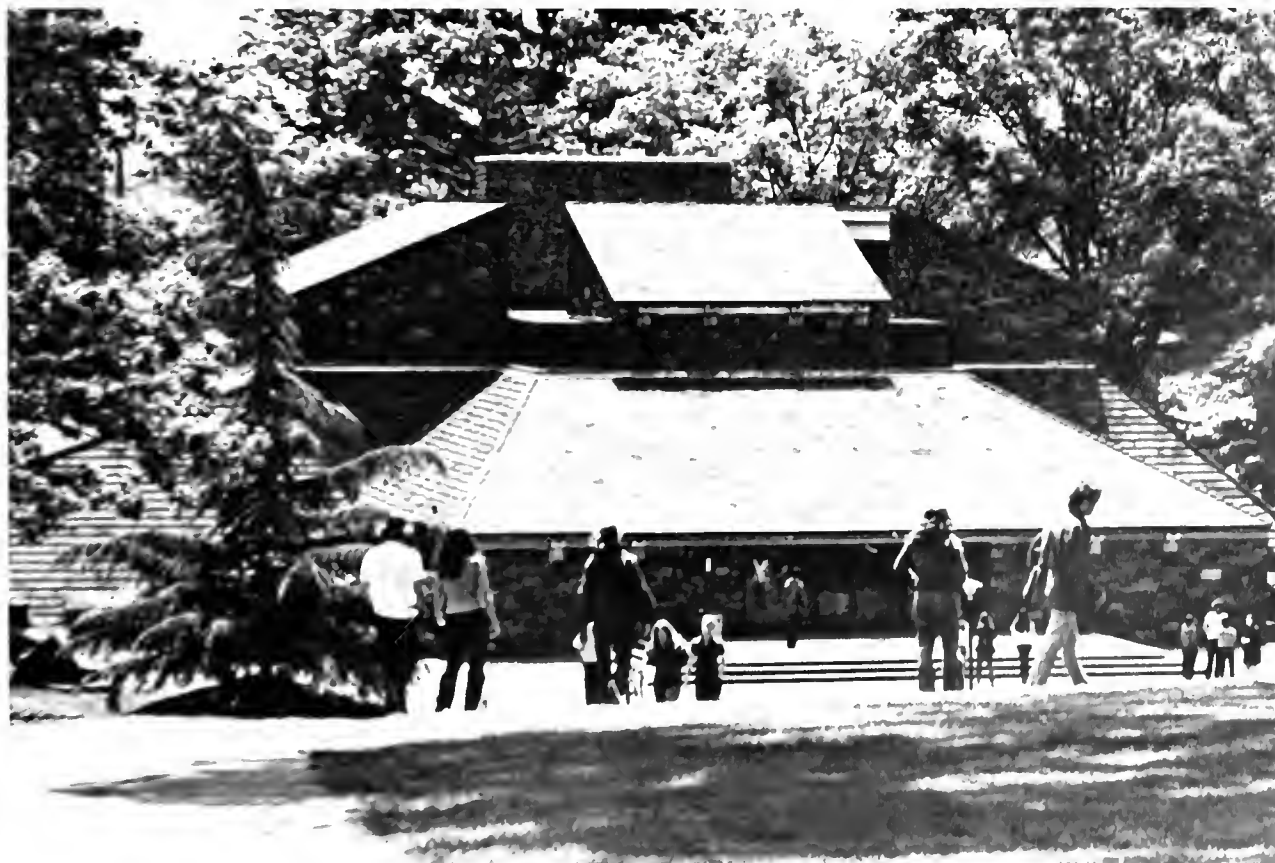
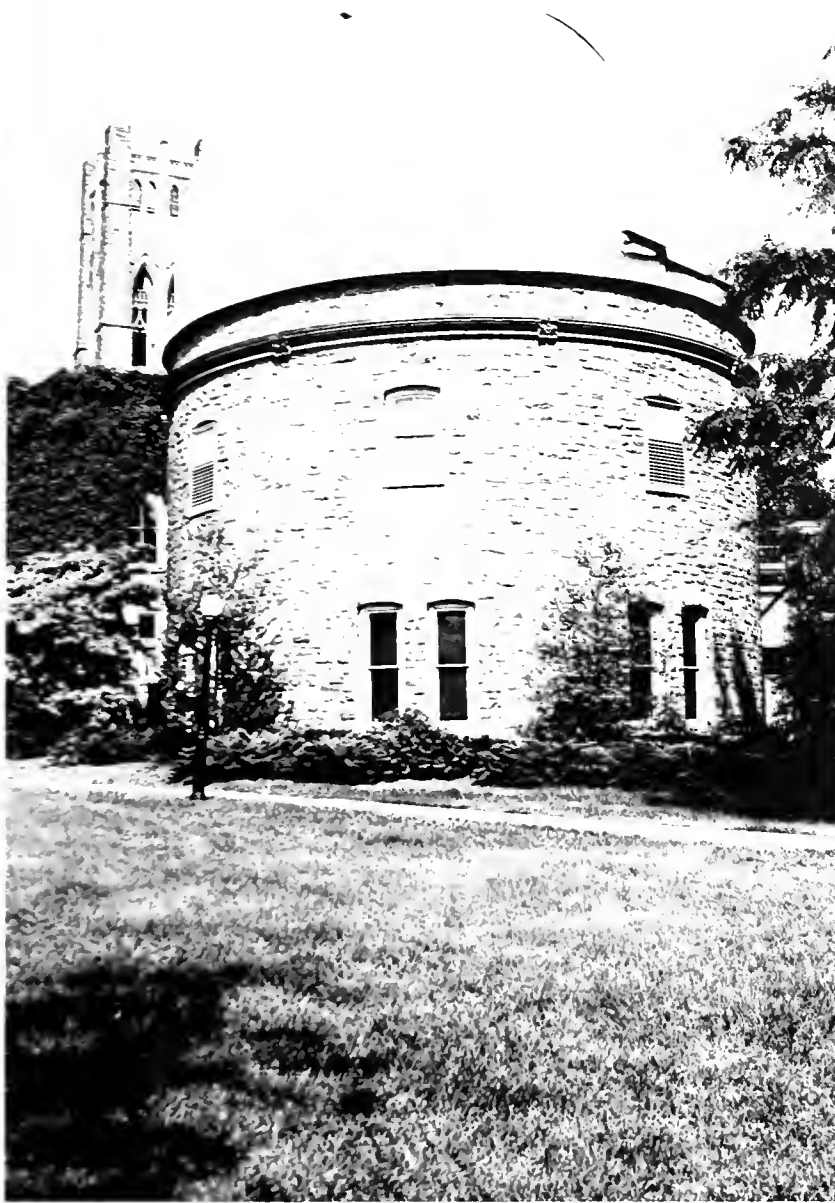


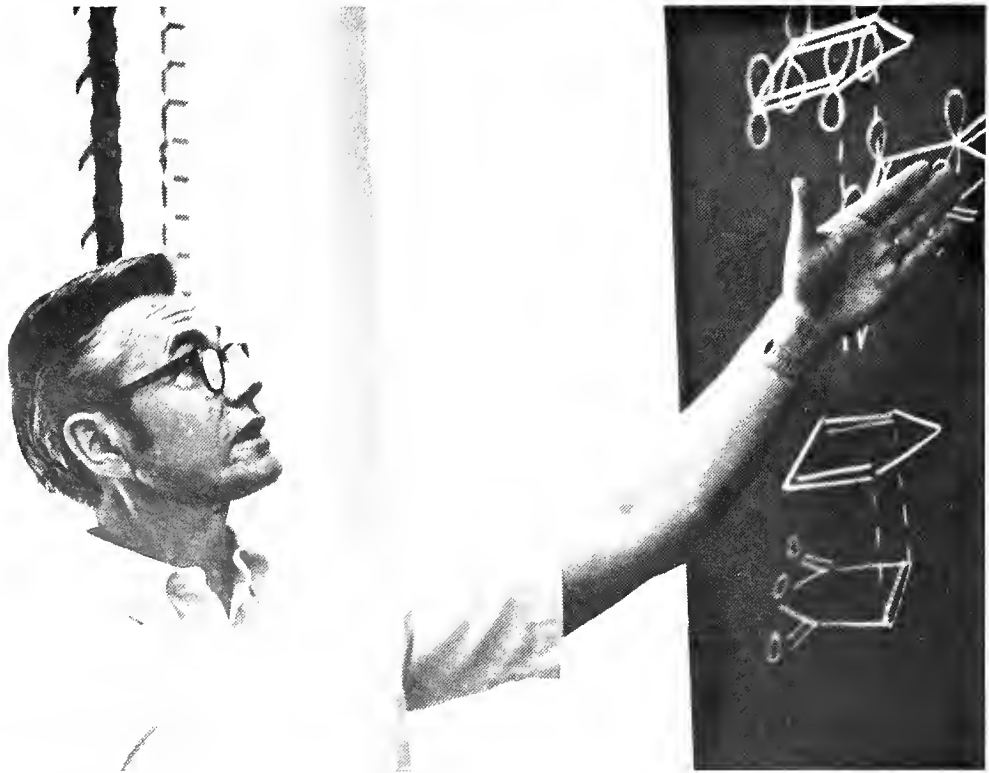
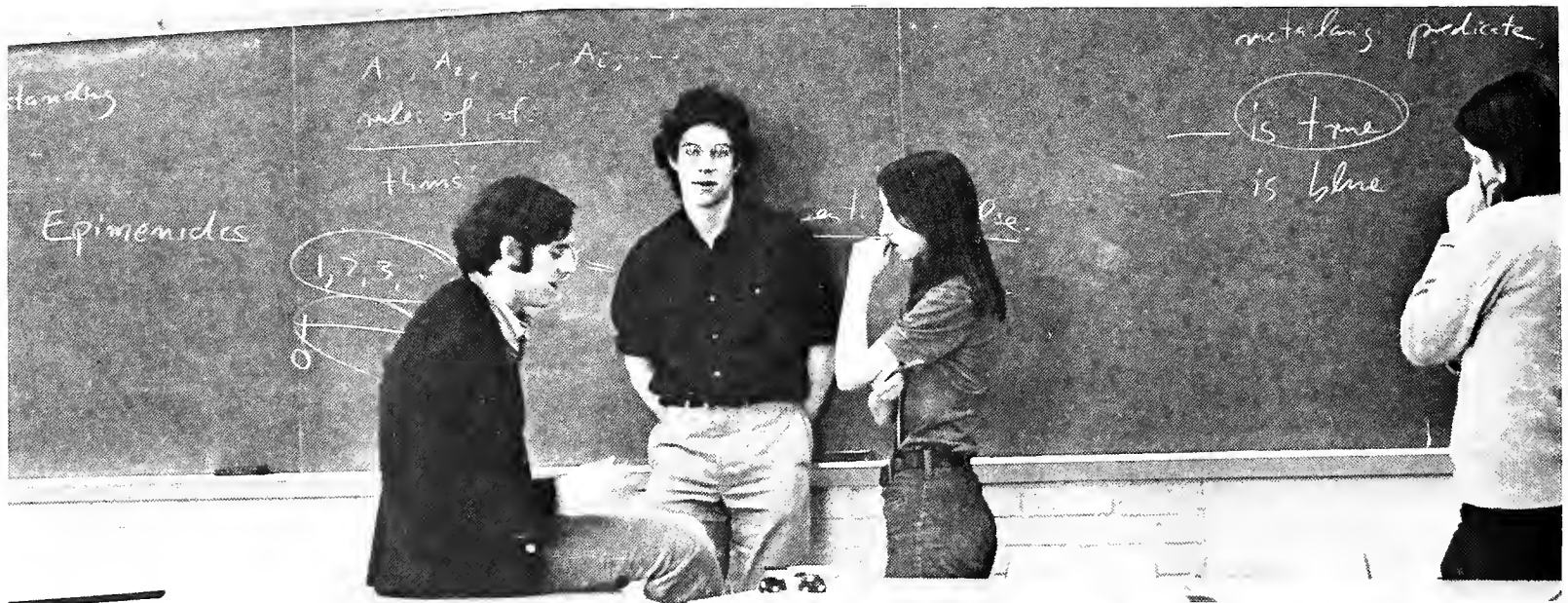
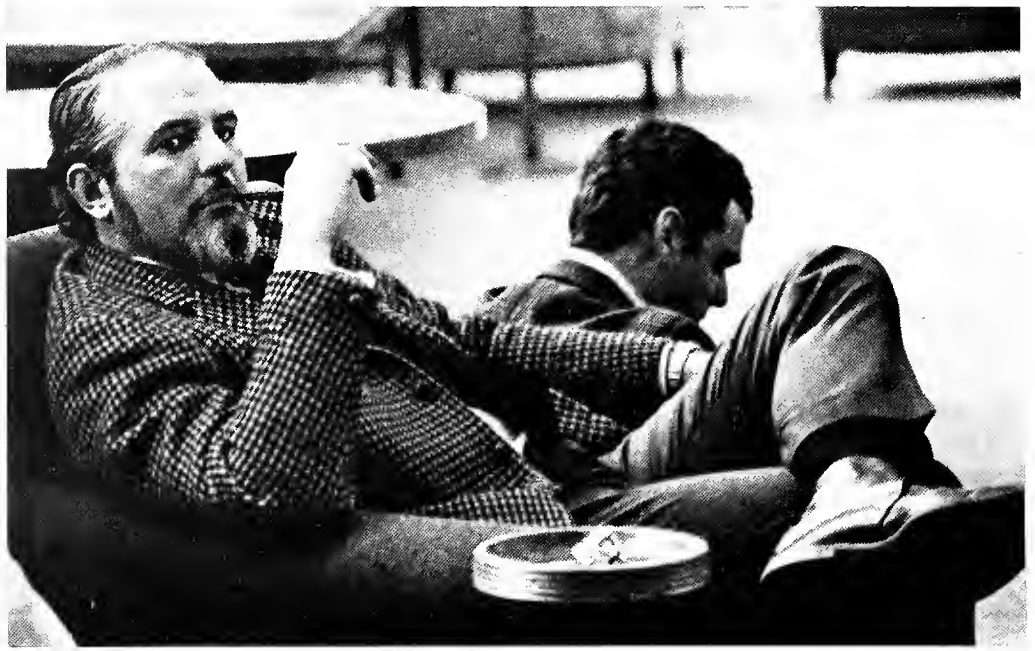




















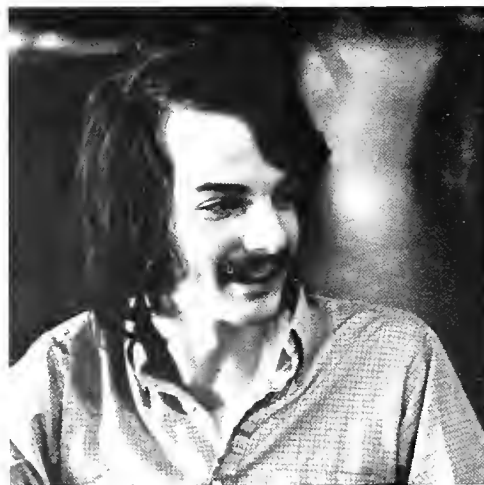
The dawn tapped with scorpion hands upon the windowpane
And scratched my forehead as I slept.
The wrinkles there are from this sun.
It dragged its tail across my skin again.

I am touched in sleep, the time is boldest then;
Its tramples through my dreams.
It is the ivy encroaching on my stone walls,
The jarred notes of night-birds preyed upon,
And the naked wash of the one-ringed moon
As it weaves me into ancient spells.

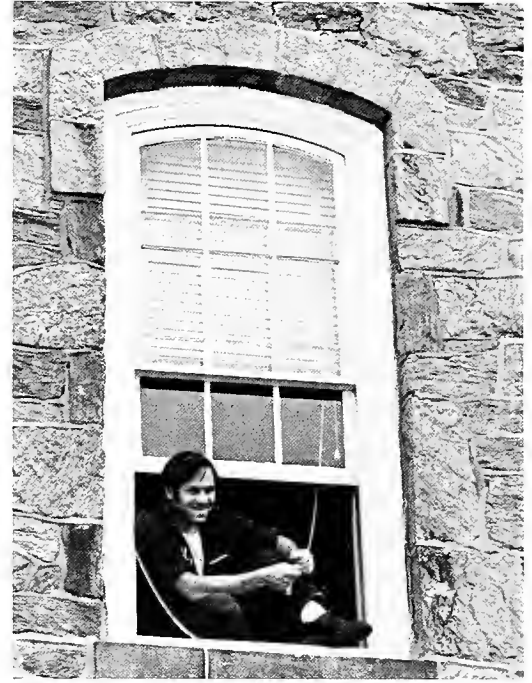
A strangled note of warning dies, lost bird, lost—
The silence of the night returns.
Its creatures lay me out
As at a wake; embalm me with the lunar tides.
The high moon chants a dirge.

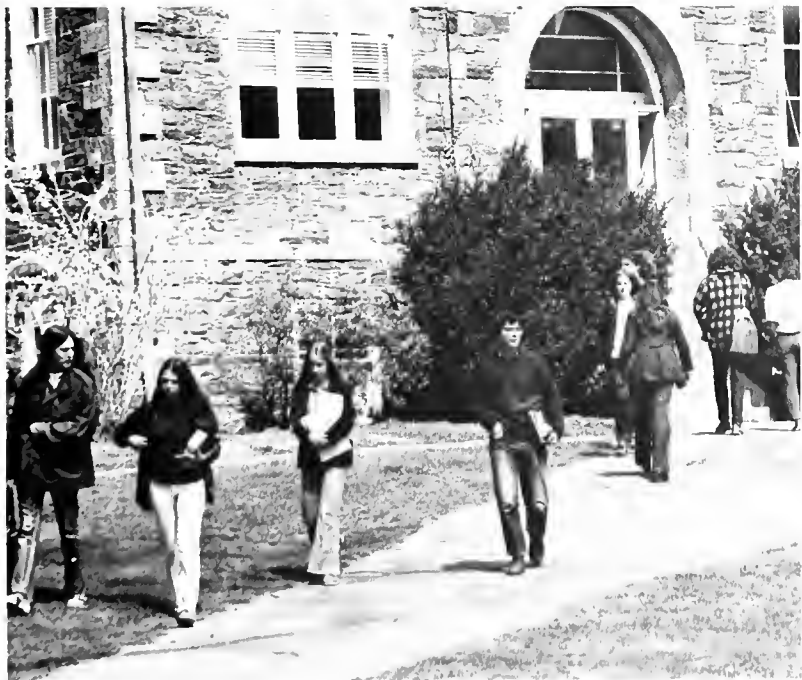
My remains unconscious on the bed
Are nibbled on; the scavenger dawn
Can mark triumphantly upon my skin.
I, moon witch now, watch with laughter.

Lynn Graves '75

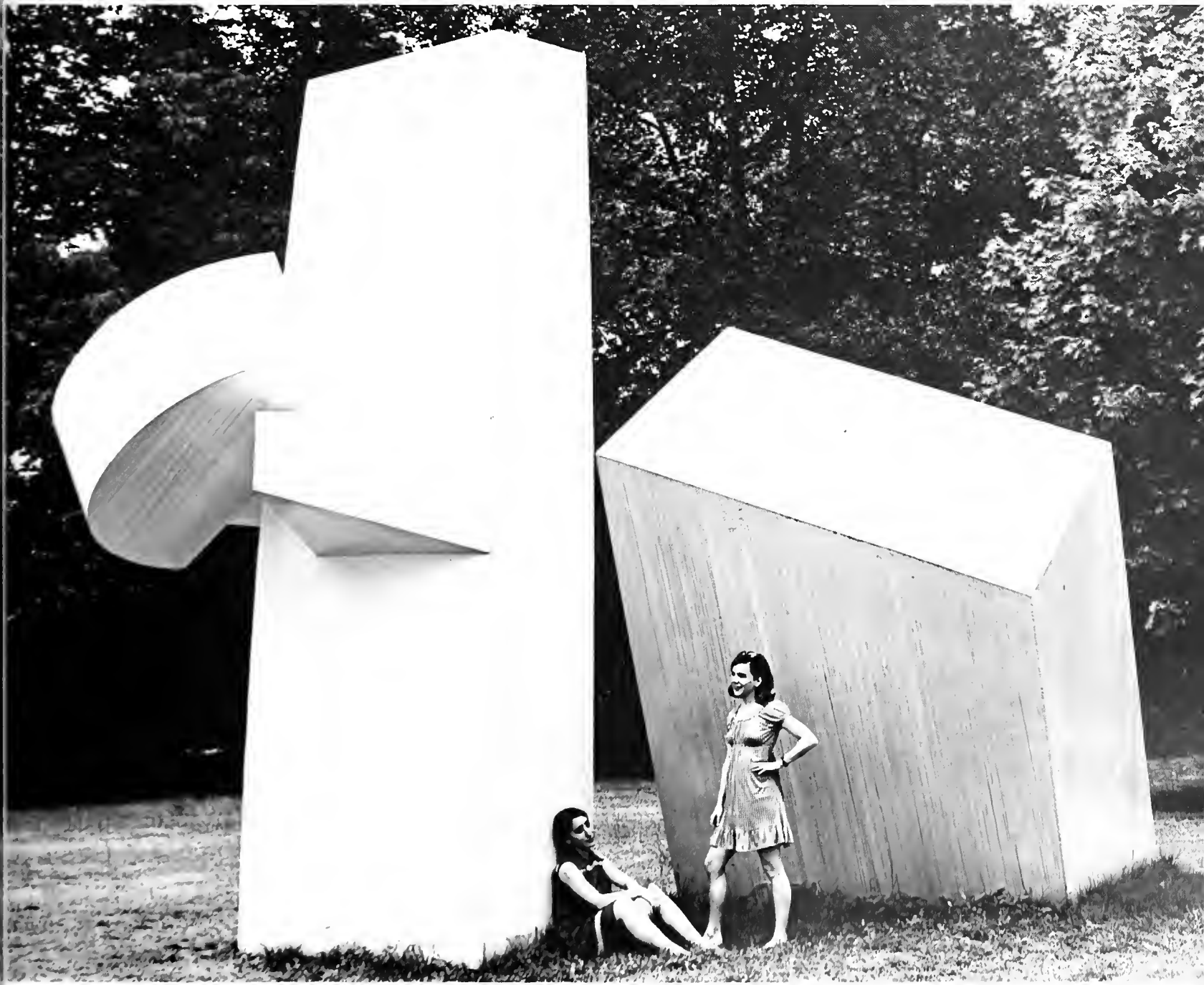


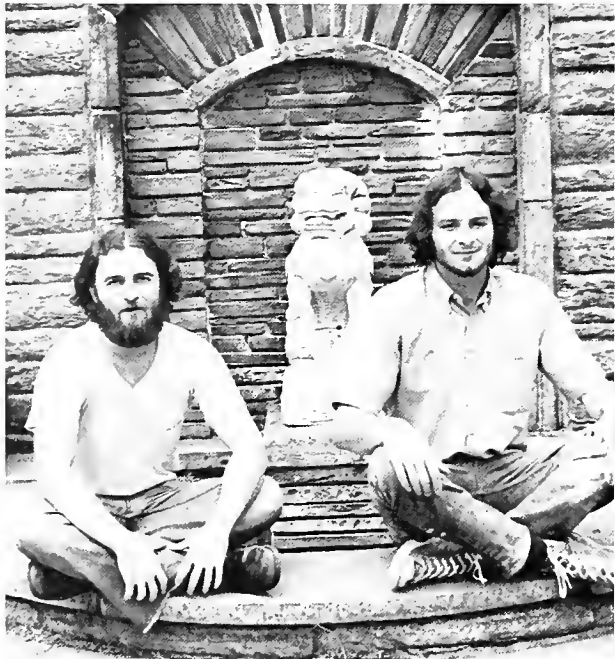


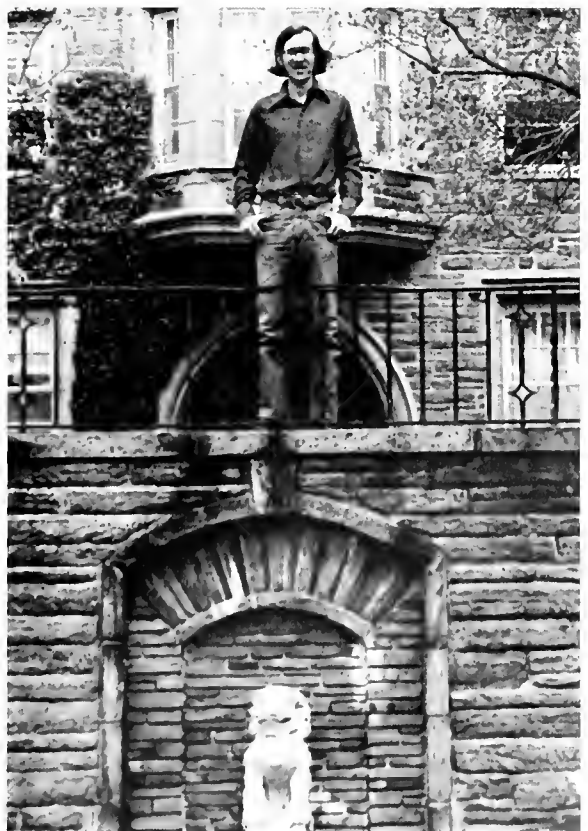




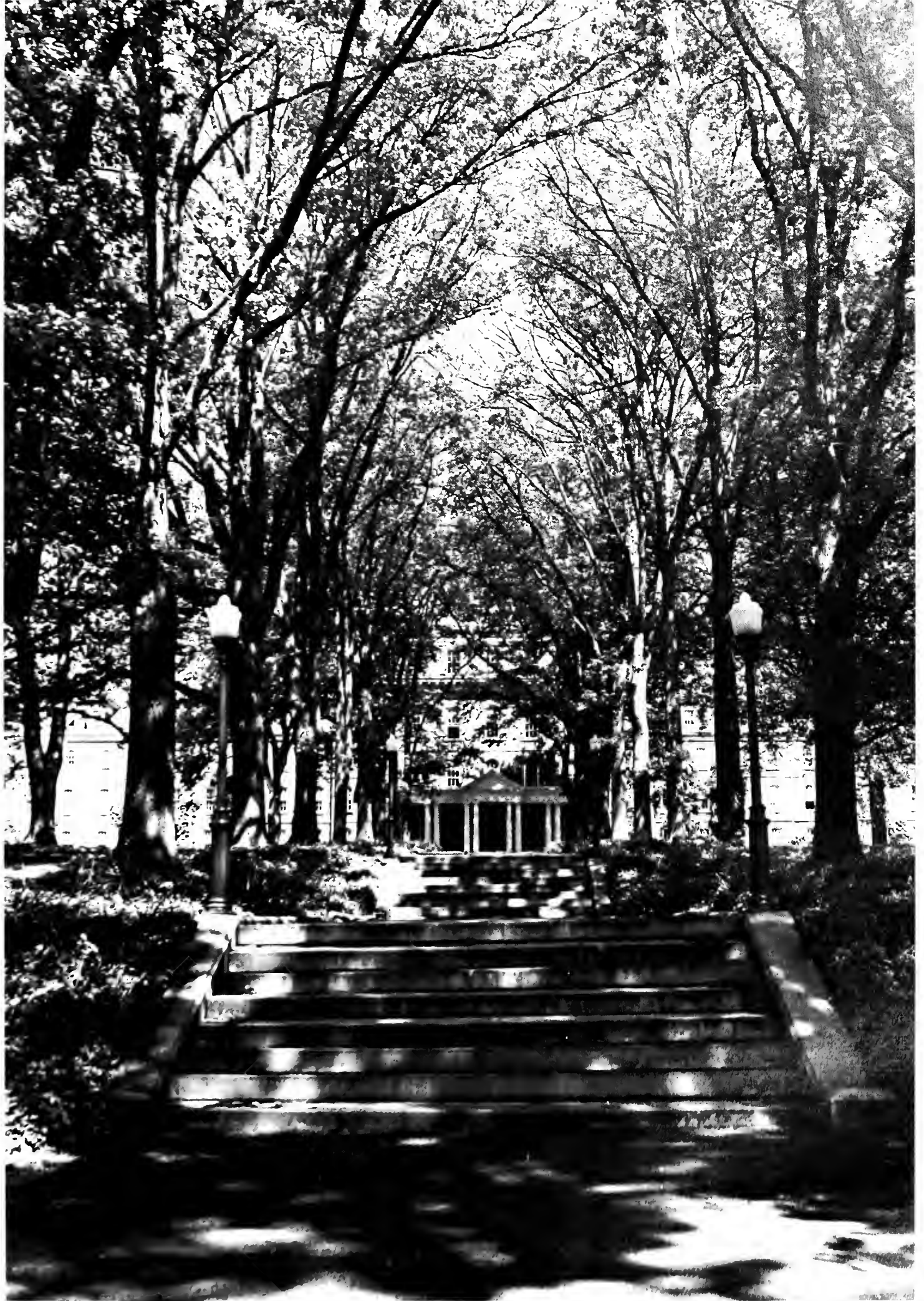






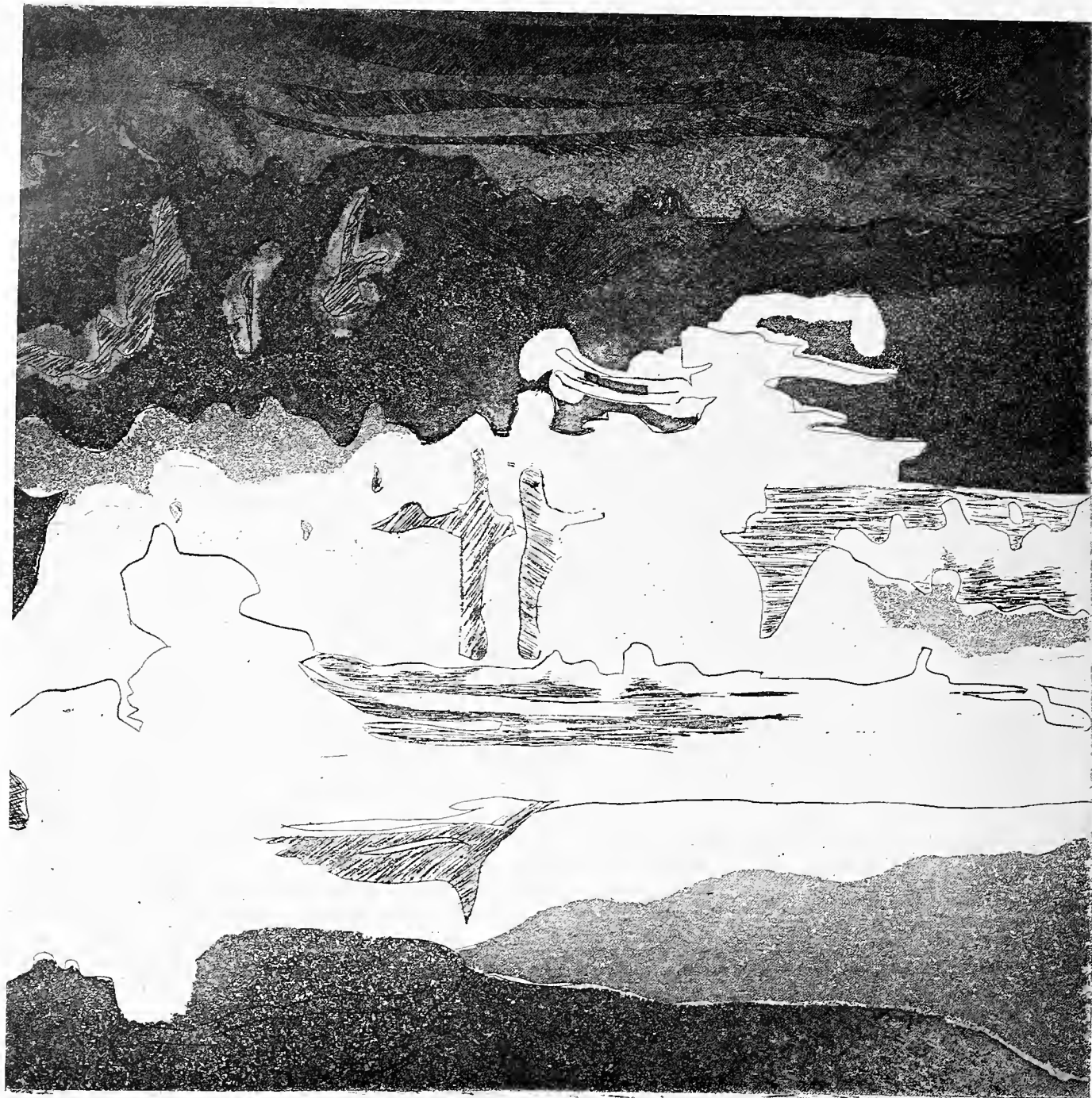








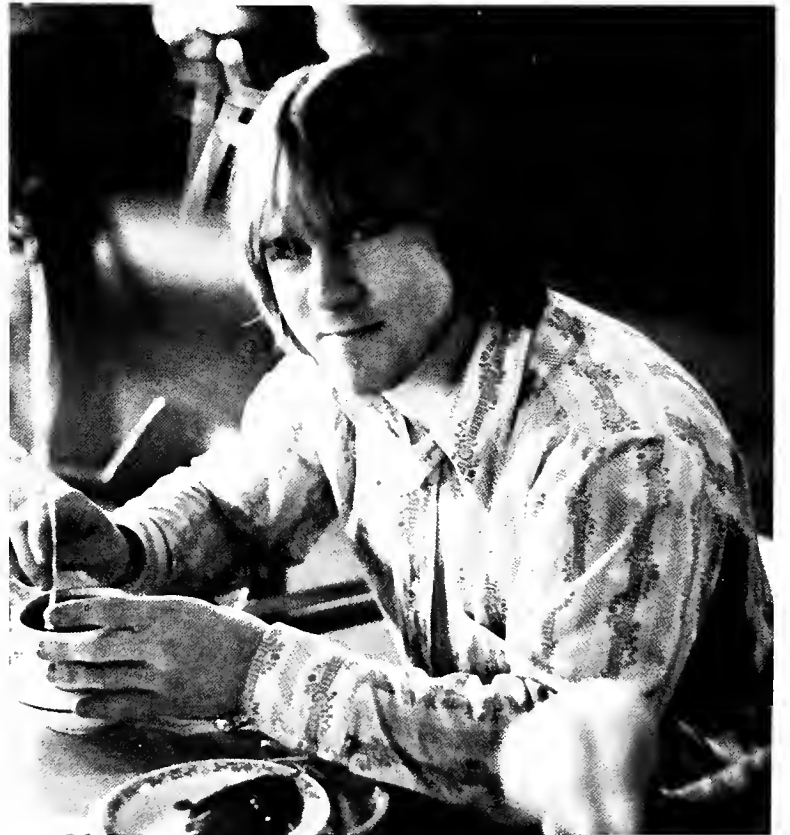




Shadow

Jenny Cook
1972

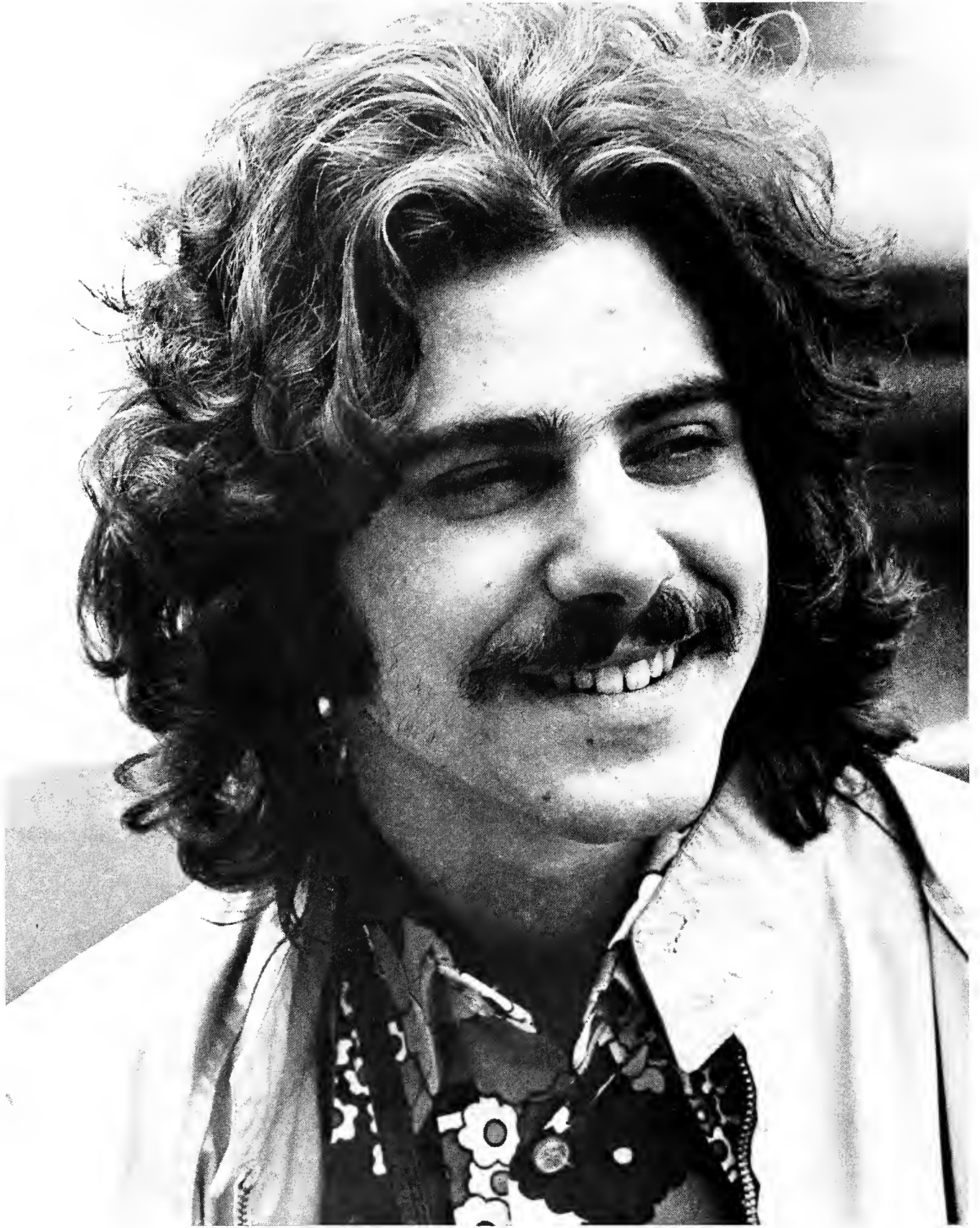














Centering Clay

Upon your mouth, my smile
as we part according to rhythm
in troublesome glances,
through twilight landscapes.
The wheel sings as it spins:
Every lover to their tone
Every lover to their dreams.

Center the clay,
the poem, the meditation.
Your image has molded me
breathing life, holding firm
in your hands
that shape with skill
the waters that make clay.

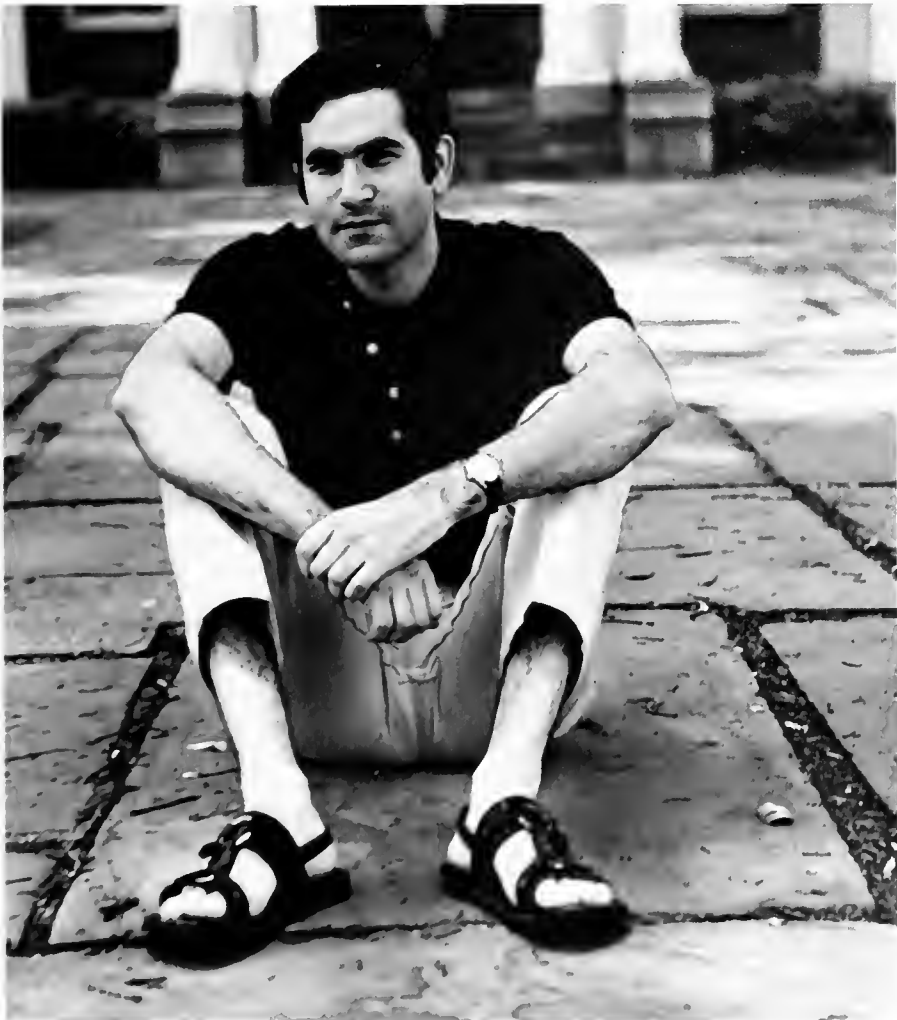
We have inherited meadows
and brooding waters.
I drink the water
wondering how the
Graecian Urn was made
and how i molded you.

Kevin Quigley '74



























A grey-squirrel scampers up,
chattering fearfully wide-eyed,
scolds as I pass by.

The dried remains of a squirrel
lie further on untouched,
unburied, unincinerated.

Killed by a passing car,
the carcass is passed by for weeks
with only an occasional shudder.

Both squirrels serve,
in their own way,
as a warning.

Don Cassidy '75



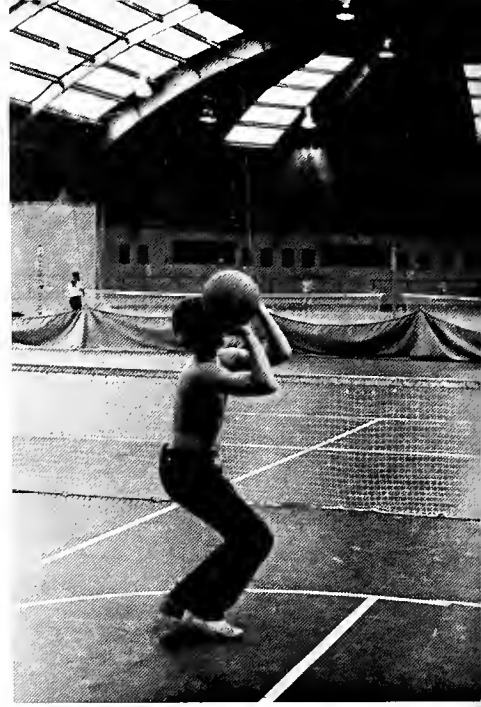
















Justifying Myself (Daily)

TWO FEET WALKING TO LIBRARY, wind in ears,
2 eyes, nose, mouth open,
hands pocketed, knees slightly bent,
nostrils to the sky, back straightly bent,
down-glance at the crunch of leaves
AND moving here through night
into day after
 day after
 lunch I smile
& wipe my sleeve—check the mail
(curiously curling toes and flex
of forearms)
 so VIGOROUSLY!

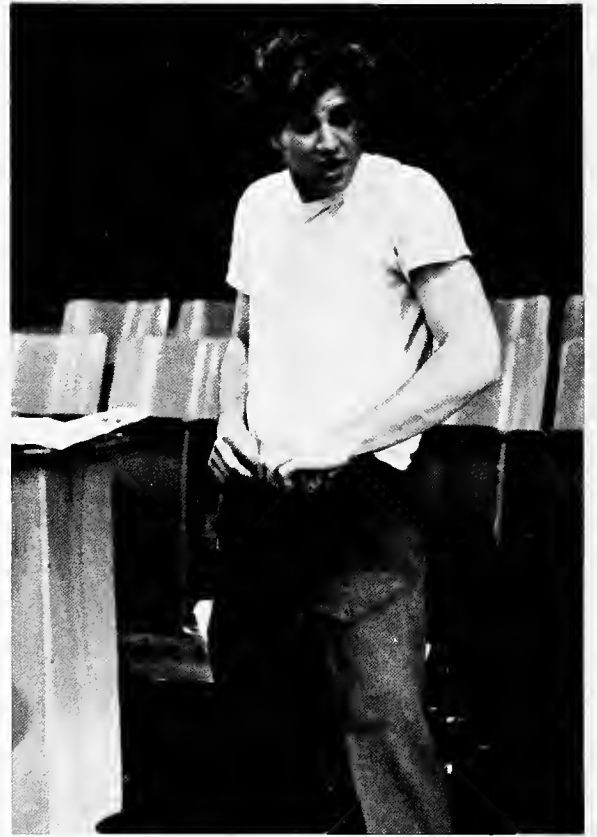
Brian Connery '73







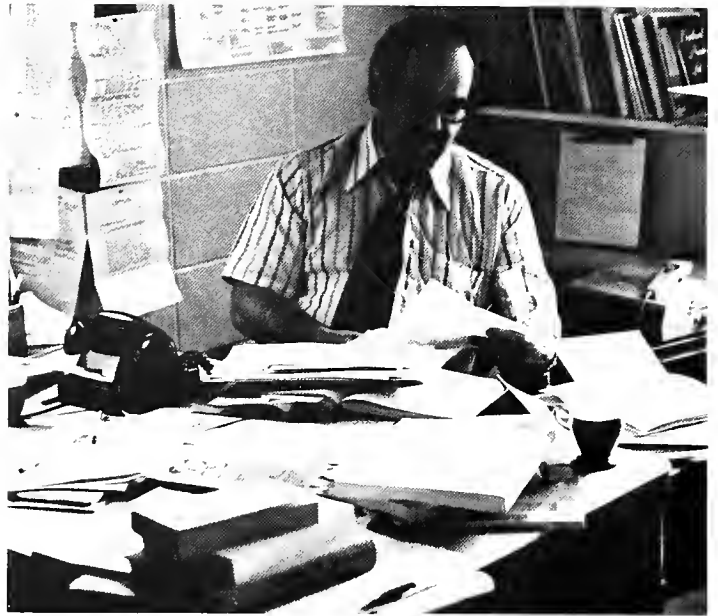




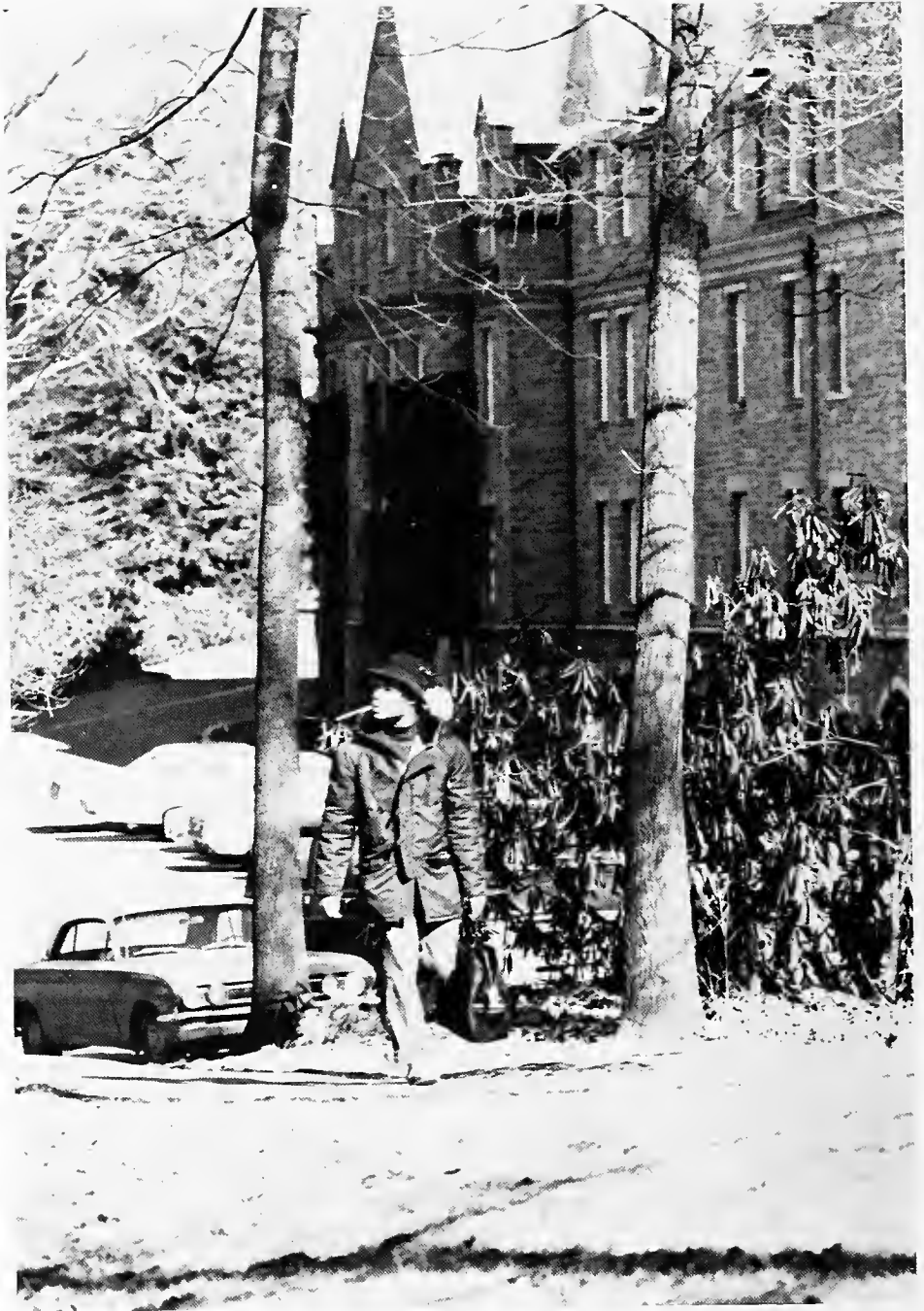




















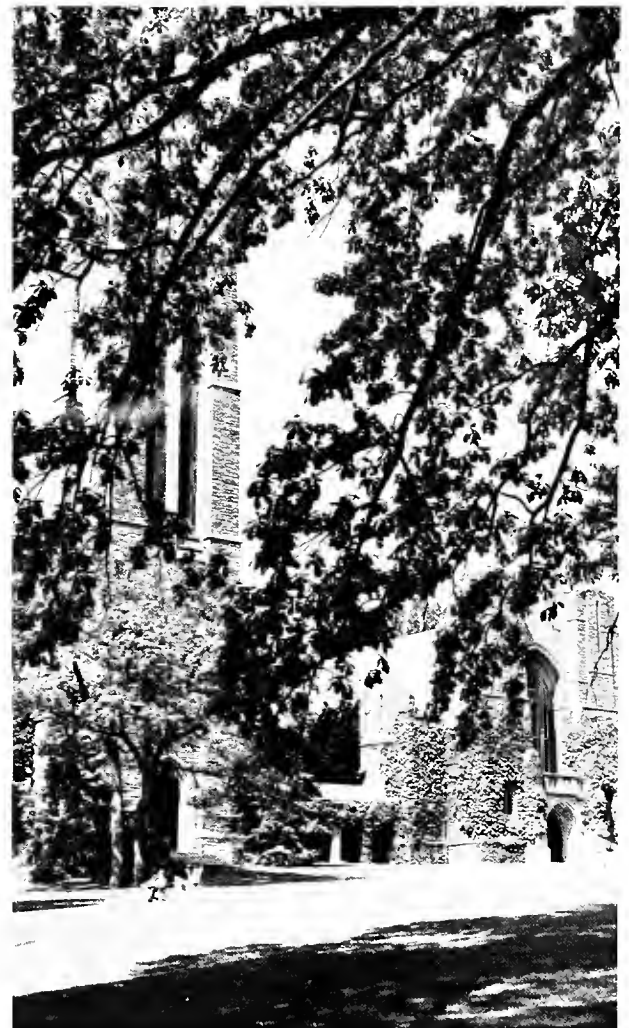
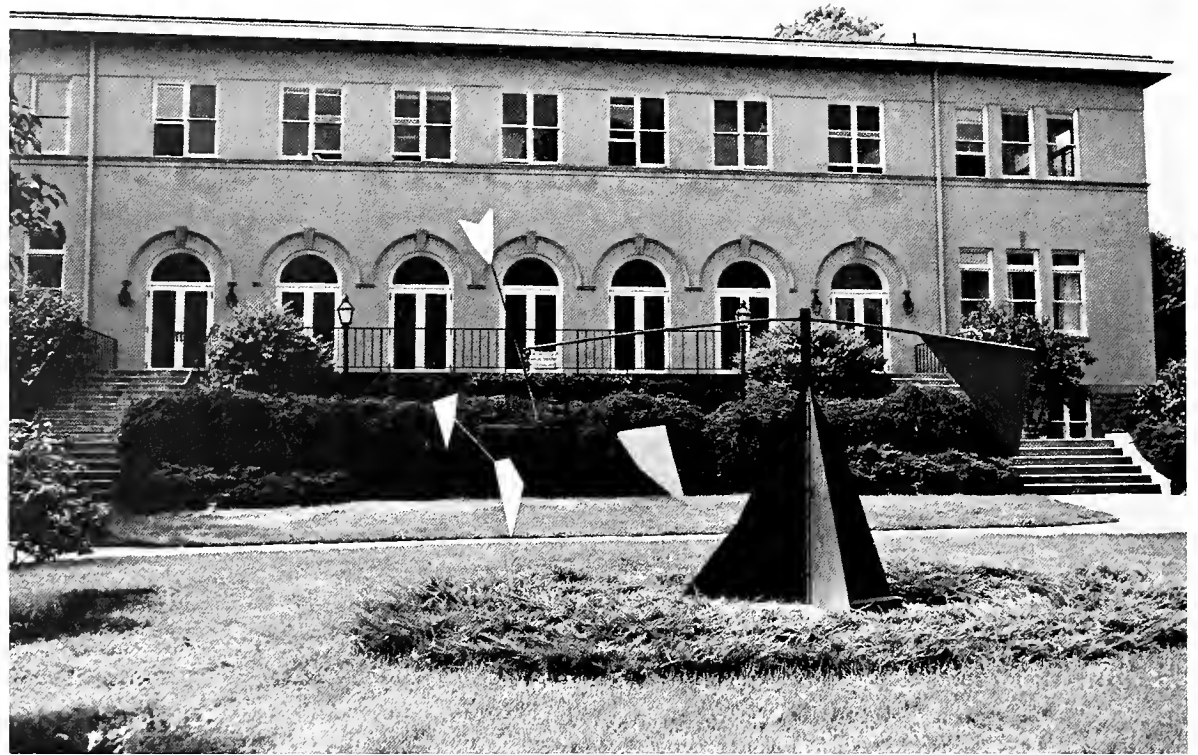
















A POEM OF THE NEW YEAR: 1973

And of how in this universe where,
ultimately, nothing happens,
our situation changes.

How the tides run,
how the Moon orbits the Earth's orbiting.
How the owls are silent this late at night,
and how these fields have rhythms like the seas.

How it was a long time
before I would admit this change
as being more than the second by
second, minute by minute,
hour to hour, day to
day, week to week,
season to season,
that goes by all the time.

How it has come about
that now I believe this change to be more
than the daily changes we encounter.

How we have come full circle
as the Earth swings around once more.
How this changing was in the blood before Stonehenge,
and how, when the blood is gone, it will pulse the rocks.

How things have come around
to begin where they began before.
How the new are at the old
(how the very new are at the very old).

How it is the year that is old,
and how it is we who are new at this old thing.

How this situation,
the new again at the old,
keeps me from despair.

How the Moon shines,
and how this change which is no change
slips by.

Chris Stinson '73



















Seated 1/30

Jenny Cook 73

DREAMS

In a Dream

She sprang
forth to die.

A spark
that once flew

Gone now
with the light

Soon my mind

Gives way to sleep
dreaming of what could be

Bringing to me, again,
that which hides

That which can never be.
Dead through reality?

In this Dream

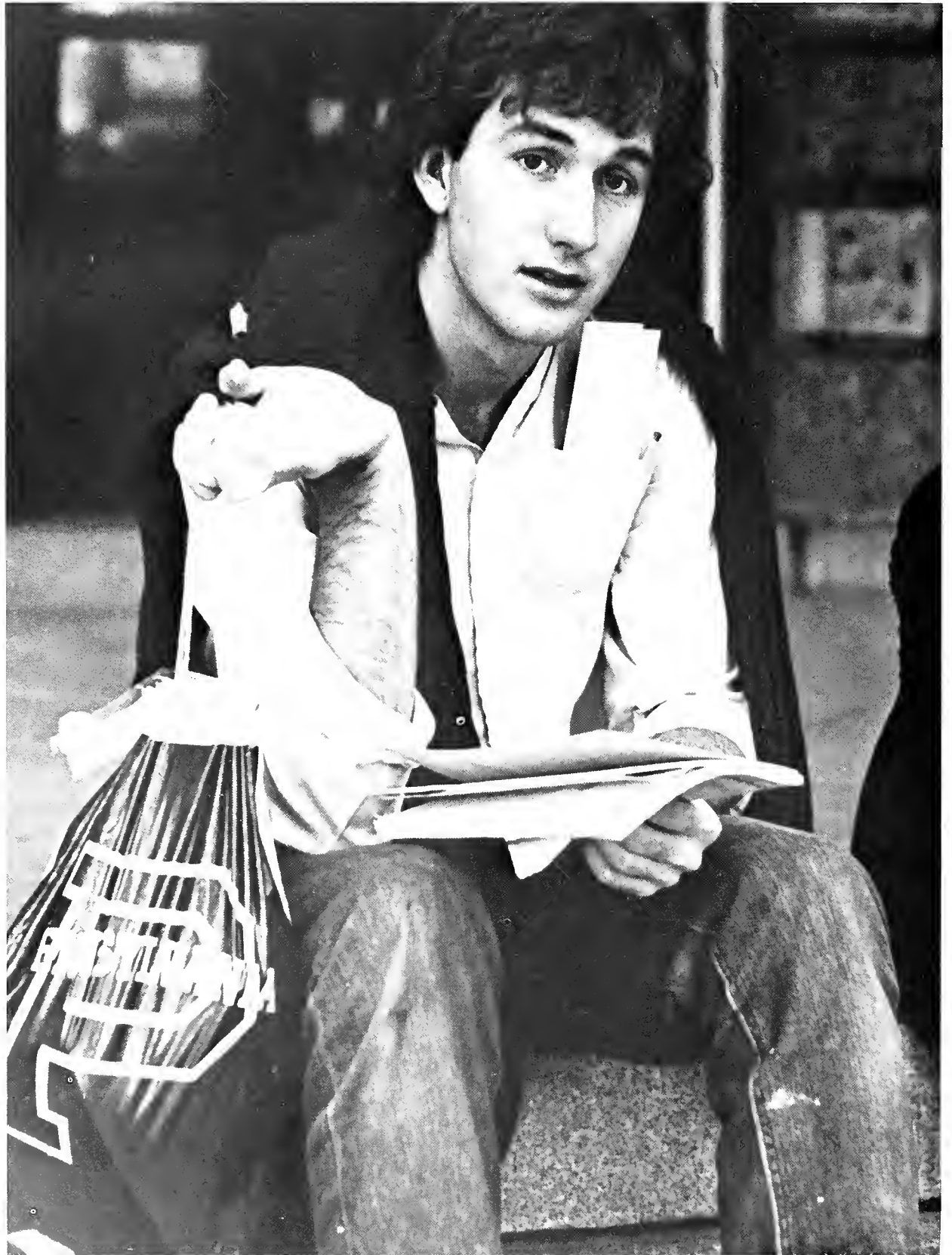
Draped in shadows
does she appear

That which was
never known—seen before.

In morning's light she lies
naked, before me—alive!

Gino Bottino '73









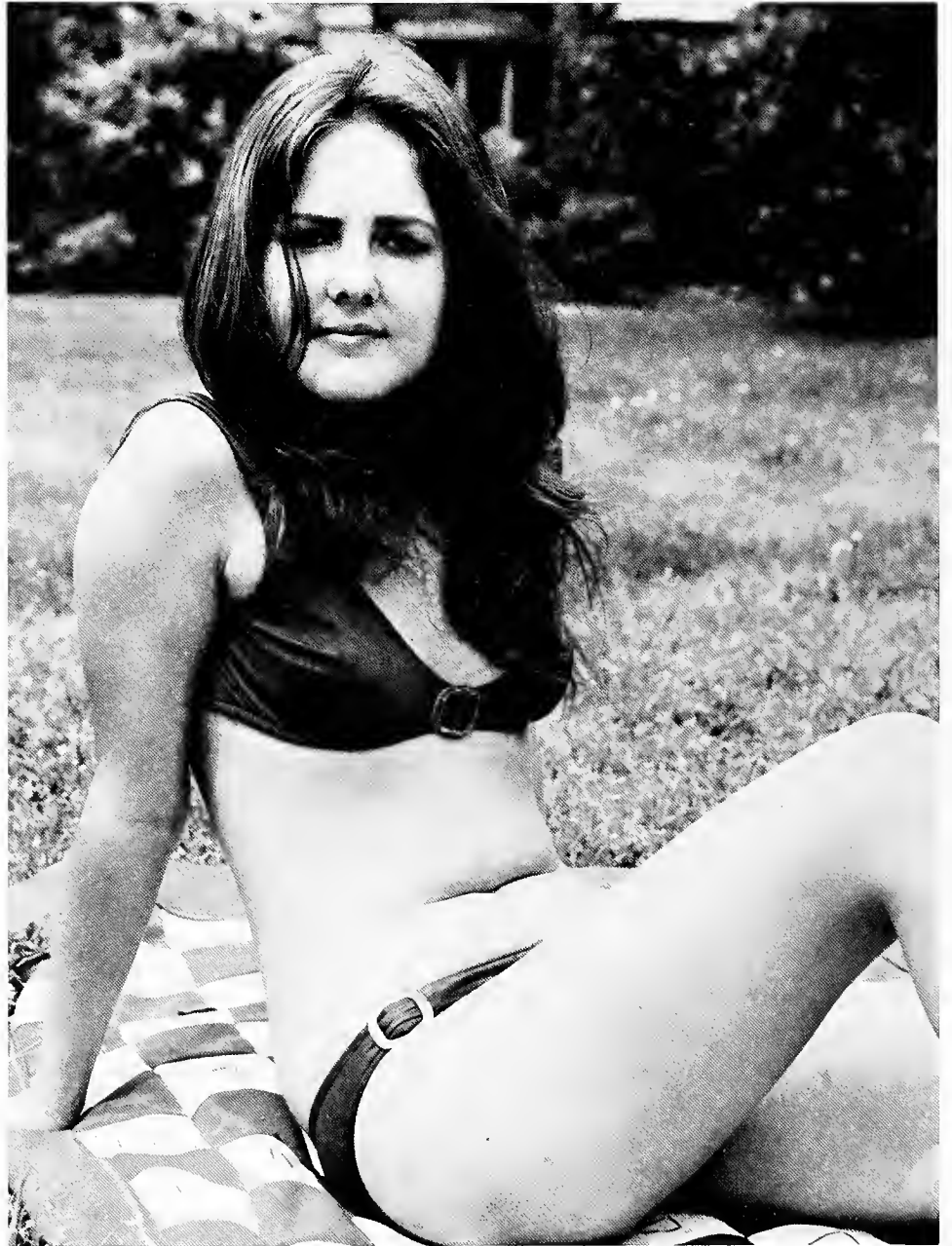
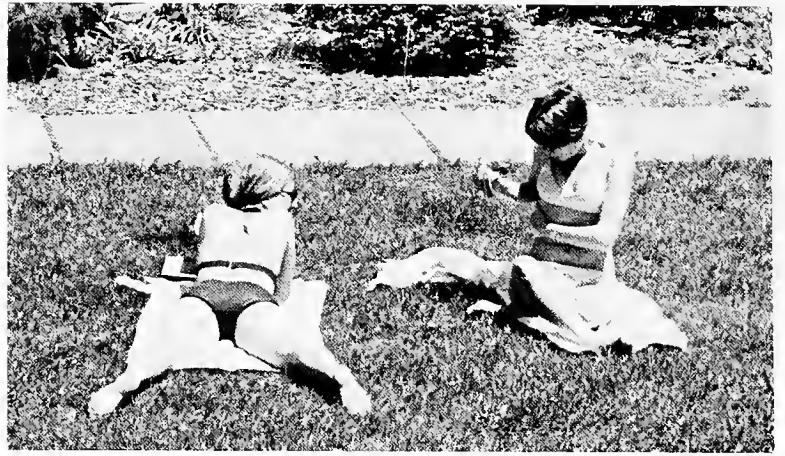




















Standard Time

I gained an hour today
which was nice
as whole yellow oak leaves
stuck to the dark wet street
corn flakes soaking in a black bowl

leaning hotly against a solid mannish table
I stake a ruminating claim
then take my tray
 my leave
swinging from a subtly steaming tree
that only I can see unshadowed
by blue illumination sliding
down a steep stone wall

passing perceiving weaving
spider webs which link the pines
into the fabric of some more substantial
fantasy I glow
momentarily a telephone rings
is held and sleeps
satisfied with words

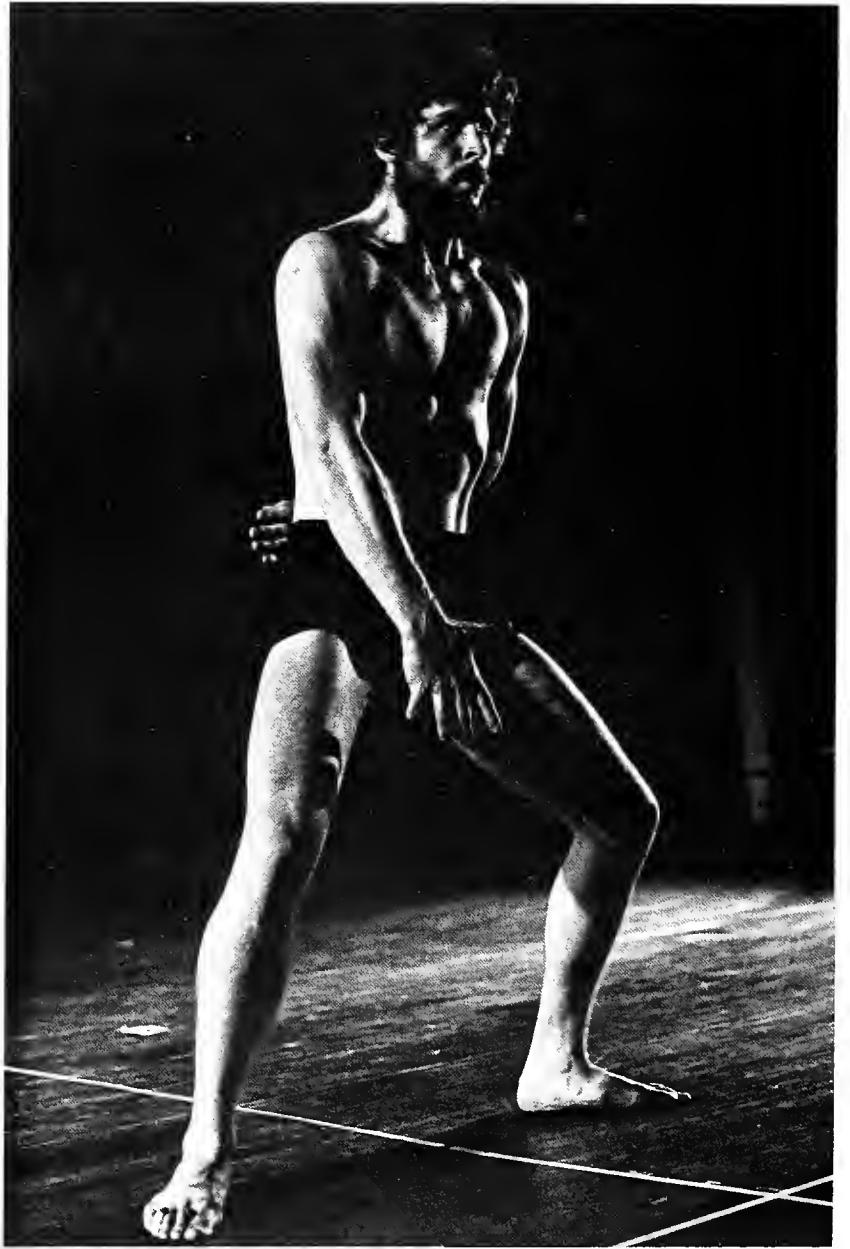
but I jumping from coffee
am not so appeased
nor pleased by puzzles and a laugh
cackling in time with rice krispie ticks
and sabbath chimes
The New York Times
has arrived and smells and sits unread
by me, who thinks
God if I were an olive-skinned painter
what textures—
colors of crimson fire timid blue tongues and ginger wafers
little milk-soaked leaves
beaten gold by gat raindrops
torn and clumped and laquered to the tainted earth
tinted brown

as it is I bear false witness
to the fall, thou shalt not
I know and yet
I sting from silence
sing in vacuums
cry when the sun comes out
and run away when I least want to be alone

but if you would give me
a finger brush
a neater pen
a warmer breakfast

and a nicer smile

who knows what I could do?











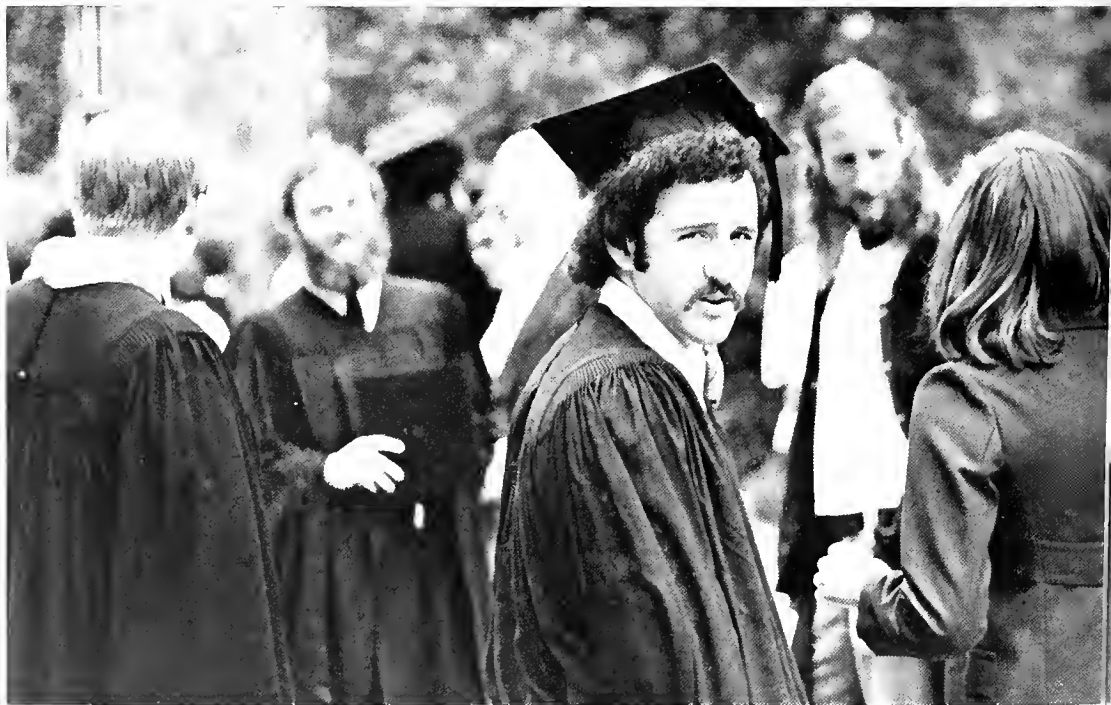


BE DILIGENT...WORK HARD
BE DEDICATED...AND GET...





Jenny Cook
18/10/72





halycon 1973
dedicated
to men who
dream . . .



Samuel Carpenter



Timothy Kitao



Peter van de Kamp



Bernard Morrill



The End

INDEX

NAME, MAJOR, PAGE
1-69-70 2-'70-71
3-'71-72 4-'72-73

ABRAM, DARIO NEVIO—Art History	
ALDRICH, THOMAS KNIGHT—Biology	
ARIEF, JULIUS ROESLI—Engineering, History	82
International Club 2; Basketball 1	
ARMSTRONG, MARY WOODS—Latin	23
BARCKLEY, JEFFREY OWEN—Engineering & Economics	107
Phi Omicron Psi Social Chm. 1, Pres. 3, Treas. 4; Outing Club 1; I.F.C. Pres. 2, Pres. 3; Engr. Student Council 4; Halcyon 4; Crosscountry 1; Track 3,4	
BARNES, ALLISON MARIE—Political Science	42
Political Science Club, Co-pres. 4, Badminton 4	
BATES, DAVID JAMES—Mathematics, W.A.R.R.	3
BATTON, JAMES HENRY—Biology	
Upward Bound Counselor 2,3	
BENJAMIN, ANN NORMA—French	31
BENNETT, FREDERICK CAHILL—Political Science	
Tarble Social Center Comm. 1; Chorus 2,4; College Singer 2; Sailing Club 2,4; Upward Bound tutor 4; Political Science Club 4; Soccer 2.	
BERDE, CHARLES BENJAMIN—Chemistry	28
BERTRAND, CYNTHIA LUDENE—Philosophy	
BLACKBURN, MARK HENRY—English Literature	18
BLAHA, RONALD—Engineering	18
Truck Comm. 2,3,4; Soccer 1,2,3,4; Halcyon 2; Folk Dance Club 2,3,4; Delta Upsilon 2,3,4	
BLAIR, PETER DOUGLAS—Engineering	84
Tau Alpha Omicron 1,2,3, Treas. 4; Wrestling 2,3,4; Tennis 1,2,3,4	
BLOCK, BARRY STEVEN—Political Science	29
Elections Comm. 1; Chess Club, Secty. 2,3; Budget Comm. 3; Faculty Tenure & Course Education 3,4; Pet Policy Comm. 3; Chorus 1; Phi Sigma Kappa 1, sec. 2,3,4; Ice Hockey Club 1,2,3,4; WSRN 1,2; Soccer 1; Lacrosse 1; Exchange Comm. 1; College Singers 2	
BODONSKY, EVA—Philosophy	64
C.I.C. 3, Tennis 1	
BOGYO, LOLA CHARLOTTE—Psychology	6
BOTTINO, GINO CLEMENT JOSEPH—Engineer	
Phi Omicron Psi Treas 2, V-Pres. 3, pres. 4; Halcyon editor 4; Football 1,3; Engineering Student Council 3	
BOUCHER, VIRGINIA LEE—Biology	
Swimming 1; Lacrosse 2,4	
BOY, DONALD	37
Soccer 1,2	
BROMBERG, SUSAN IRENE—Biology	106
Rapport & Support Comm. 1,2,4; C.I.C. 2; Library Comm. 4; Shalom 4; Bios Club 4	
BROWN, BERNARD LEWIS—Sociology & Anthropology	
Rock Festival Comm. 1; S.C. 3,4; Phoenix 3; W.S.R.N. 4	
BROWN, STEPHEN MICHAEL—Psychology	
Car Comm. 1; Track 1	
BULKLEY, DAVID ROBERT—Political Science	64
Ceramics Sculpture 4; Wrestling 1,2,4	
BULLEN, SCOTT HAMILTON—Economics	
Phi Sigma Kappa 1,2; Christian Assoc. 1; Engineering Club 1; Campus Conservative Club 1, Eco-Action secty. 2; Tennis 1	
BUNNAG, SIREL—Sociology-Anthropology	41
Hall President 35 1; International Club 4; Badminton 2,3,4	
BURDMAN, RENEE FRANCES—Sociology & Anthropology	
BURRELL, LIZABETH LORIE—English Literature	38
Literary Magazine 2; Hamburg Show 3; Archery 1	
CAPLIN, MICHAEL ANDREW—English Literature	
Student-Faculty Relations-Comm. 3; Proctor 3,4; Youth Coalition for Muskie 3; Hamburg Show 3; Ice Hockey Club 3; Wrestling 1; Tennis 1,2; Track 1,2,3,4	
CARR, WILLIAM B., JR.—Philosophy	39
Rock Festival Comm. 1, Student Council 1,2,3, Proctor 3,4; Sex Education Comm. 4	
CASSELL, EDWARD J.—Economics	105
CASTER, ARTHUR BRUCE—Psychology	
Folk Dance Club 1, Co-Chm. 3; Methodist Youth Group 1	
CHAPMAN, MICHAEL CHARLES—Political Science	31
Secretary of Senior Class 4; Football 1,2, Wrestling 1,2,3,4	
CHAR, BRUCE WAITER—Mathematics	37
Supervisor, Computer Center Programmer	
CHETHAM, DONALD BUTTERWORTH—Political Science	49
CHEW, EDWARD MARTIN—Biology	19
Delta Upsilon 1,2, Pres. 3,4; Sailing Club 2, Halcyon 2; Football 1; Lacrosse 1,2,3,4	
CHOLST, INA NAOMI—English Literature	65
Little Theatre Club 1	
CHU, KEVIN CHARLES—Music & Biology	
In College Bus. Comm. 3; Chorus 1,3; Folk Dance Club 1, Hamburg Show 3; "Zysisstrata" 3	
CHUN, CORNELL SEU LUN—Physics	108
Physics Club 2; Orchestra 4	
COHEN, HARVEY JR.—Political Science	
Social Comm. Treas. & Chm. 3; Proctor 4; Campus Safety & Security Comm. 4; Co-ordinator Intermural sports league; Football 3; Lacrosse 4	
COMBS, ADRIANNE LYNNETTE—Music	49
CONNERY, BRIAN ARTHUR—English Literature	
Folk Festival Comm. 1; Jazz Festival Comm. 1; Literary Magazine Ed.-in-Chief 2,3; Hamburg Show 2; W.S.R.N. 2	
COOKE, CHRISTINE ADAMS—Medieval Studies	63
Folk Dance Club 2, Treas. 3, Chm. 4; Eco-Action, Sec.-Treas. 4; W.S.R.N. 2; Orientation Comm. 3	
COURANT, CARL RICHARD—Economics	
Manager of Chorus 1,2; Orchestra Mgr. 2,3; Sailing Club 2,3,4; Halcyon 2,3; Phoenix 2,3; Student Chamber Music 3; Literary Magazine 4	
CRAIN, CHRISTOPHER GRIEG—Economics	25
Social Comm. 2; Proctor 3; Phoenix 3; Phi Sigma Kappa 1,2; I.F.C. 2; Social Comm. Co-Chm. 2; Chester Tutorial 2; Ice Hockey Club 3	
CROCKFORD, SUSAN ETHEL—History	126
Library Comm. 3; Concessions Comm. 2,4; Chorus 2,3,4; Hamburg Show 3; Newman Club 4; Archery 1,2	
CSORDAS, JOHN WILLIAM—Economics	
Baseball 1,2,3,4	
CURTIS, CAROLINE BANCROFT—Psychology	30
Hamburg Show 3; Hockey 2,3,4; Basketball 1,2,3,4; Lacrosse 1,2,3,4	
DANIELS, MICHAEL EDWARD—Economics	
DATCHEP, LINDA PATRICIA—Economics	
Budget Overview Comm. 1,2; Ad Hoc Black Admissions Committee 2; Bookstore Overview Comm. 3,4; Upward Bound Counselor 3,4; Student-Faculty Black Studies Comm. 4; Black-Studies Comm. 4; Lacrosse 1,2,3,4	
DAVIES, CATHERINE ST. JOHN—History	30
Senior Resident 3,4; Deans Advisory Comm. 4	
DAVIS, CLAUDE GEOFFREY—Biology	18
DAVIS, GLENN STUART—History	41
Admissions & Scholarship Comm. 3,4; WSRN 2,3,4	
DAVIS, RENDELL A., JR.—Economics;	
Budget Overview Comm. Chm. 1, Chm. 2; D.R.A.C. 1; Debate 1,3; Phoenix 3; New Democratic Coalition 3; Economics Club 3	
DeGRAFFENREIDT, ANDREW III—Political Science	
Ad Hoc Black Admissions Comm. 1,2	
DELMAN, JOHY ANDREW—English Literature	
DEMBSKI, SANDRA A.—Political Science—I.R.	
Basketball 3	
DE SHA, PAULA CALIMAFDE—Political Science	
Social Committee 1; Modern Dance Club	
DILLEY, PATRICIA ELIZABETH—History	49
Student Council 1,3; Phoenix Ed. 3,4; Movie Comm. 4; Senior Resident 4; Little Theater 1; Upward Bound Tutor 1; Chorus 1,3	
DION, JENNIFER ANN—Art History	
DOANE, MARY HELENE—English Literature	73
Newman Club 3,4	
DONAHUE, MICHAEL THOMAS—History	47
Elections Comm 1, Co-Chm. 2; Cross Country 1,2,3,4; Tennis 1,2; Track 4	
DONOVAN, CAREY W.—History	38
Chester Tutorial Secty. 2, Chm. 3; Admissions & Scholarship Comm. 3,4; Faculty Tenure & Course Education 3,4; Rapport & Support 3; Community Services, Co-Chm. 4; Tri-College Bus. 4; Hockey 2	
DOUGALL, JONATHON—Political Science—I.R.	18
Track 1; Football 3	
DRAINE, KATHLEEN A.—Political Science—I.R.	115
S.C. 2,3,4; Women's Athletic Assoc. 2; Pres. Nom. Comm. 4; Senior Resident Selection Comm. 1; Chm. 3; Volleyball 2,3,4; Basketball 1,2; Tennis 1	
EDLEY, CHRISTOPHER FAIRFIELD, JR.—Mathematics	185
C.E.P. 3; Pres. Nom. Comm. 4; Proctor 4	
EFFRON, CAROL ARTIS—History	
EHRHART, WILLIAM DANIEL—English Literature	11
Proctor 2; Phoenix 3,4; Water Ballet 2,3; Delta Upsilon Secty. 3; Swimming 1,3,4	
EH, MITCHELL EVAN—English Literature	106
Dramatics 3; Baseball 1,2,3,4	
HIBBERG, WILLIAM H.—Physics	
Orchestra 2,3; Shalom 2,3; Phoenix 2,3	
EMERSON, PATRICIA—Religion	
Swimming 1,3,4; Softball 1,2,3	
ENLOI, ELIZABETH JANE—English Literature	114
Swimming 1,3	
EPSTEIN, GERAID ALFRED—Political Science	19
Budget Comm. 3; Forum for Free Speech 4; Proctor 4; I.A.O. 1, A.P.A. 1,3; Tenure Comm. 3	

EPSTEIN, WILLIAM HENRY—Economics		Community Service Comm. 1; Phi Sigma Kappa 1, Secty 2; W.S.R.N. 1; I.F.C. 2; Lacrosse 3; Basketball 4	
FAIRBANKS, JONATHON ALBERT—Biology	30	HUTCHESON, RICHARD G. III—Political Science	147
College Exchange Comm. 1; Proctor 3,4		Election Comm. 1, Co-Chm. 2; S.C. 2, Pres. 3,4; C.J.C. 4, Chester Tutorial 2; Students for McGovern 3	
FLANNIGAN, ARTHUR WILLIS—French		HUTTNER, HILARY—Psychology	176
College Exchange Comm. 1, Election Comm. 1; Social Comm. 1; Movie Comm. 1; Camera Club 1; Campus Conservative Club 1; Chester Tutorial 1, Upward Bound 1; Halcyon 1		JONES, DOUGLAS THOMAS—Psychology	25
FLATAU, JANE ALEXANDER—History		Phoenix 3; Orchestra 1,2; Delta Upsilon 1,2; Social Comm. 2; Football 1,2,3; Baseball 1,2,3,4	
Water Ballet 1; Little Theatre Club 1		JOHNSON, ARTHUR PAYNE—English Literature	
FORD, MARY SPENCER—Biology		Literary Magazine 3; Student Advisory Comm. to English Dept. 3	
Eco-Action 2; Dining Hall Comm. 3; Women's Lib 4; Gay Lib 4; W.S.R.N. 4; Badminton 2,3,4		JOHNSON, DAVID S.—Religion	147
FOSTER, JOHN ANGUS—Music;		Rock Festival 1; Christian Assoc. 1,2; Cross Country 1,3,4; Tennis 1,2; Track 4	
(Orchestra 2,4; W.S.R.N. 2		JOHNSON, JOANNE LAFAYE—Sociology & Anthropology	
FOSTER, WAYNE FRANKLIN—Sociology & Anthropology		C.E.P. 1,2	
Chester Tutorial 1,2; Friends Home 1,2,3; Community Service Comm. 2,3; Cross Country 1		JONES, JO ANN BRADLEY—Political Science	
FREEMAN, STEPHANIE VAUGHN—Sociology & Anthropology		Rock Festival Comm. 1; Budget Overview 4; S.A.S.S. 1; Upward Bound 1; Hockey 2,3,4; Badminton 2,4	
FRIEDBERG, BETTYE BEE—Religion	30	JOSEPH, ANTOINE—Economics	105
Hall President 1		Tri College Summer Support comm. 1,2; Curriculum Comm. 1,2; Basketball 1	
FROST, EDWARD LAWRENCE, JR.—English Literature		JURAM, SUSANNA—Psychology	126
Track 3		Music Building Sub-Comm. 1,2; Chorus Mgr. 2,3; Women's Athletic Assoc. 2,3, Pres. 4; Music Building Comm. 3,4; Teacher Education Comm. 4; College Singers Mgr. 2,3; Hall President 3; Hockey 2,3,4; Basketball 1,2; Lacrosse 1,2,3,4	
GATENS, WILLIAM JOHN—Music		KELLY, KAREN GRACE—Biology	37
Campus Conservative Club 2; Secty. 3; Chorus 1,2,3; College Singers 2; Folk Dance Club 1,2,3,4; Chamber Music 1,2; Y.A.F. 2		Phoenix 1; Water Ballet 1,2,3,4; Badminton 2,4; Tennis 1,2	
GAULT, AMY JUSTICE—History	69	KEMPE, EDWIN REID—English Literature	48
Senior Resident 3,4; Draft Counselor 3,4		Rock Festival Comm. 1; Sailing Team 1,2; Soccer 1,2; Track 1,2	
GAYLIN, JOAN—Art History	30	KEMPTHORN, VALDA JILL—Biology	
Phoenix 1; Halcyon 2; Talent Show 2; Chester Tutorial 1; Hamburg Show 1,4		Community Services Comm. 3; Dining Hall Comm. 3; Badminton 3; Swimming 1,2; Tennis 1	
GIBSON, LINDA M.—Philosophy	132	KENNEDY, DIANE ELIZABETH—History	114
Volleyball 2,3		KIANIAN, SHNAHNAZ—Political Science—I.R.	
GIBSON, PETER MCKENNEY—Psychology	147	International Club 4	
Tennis		KING, MARTHA PATTERSON—Biology & Psychology	
GILLIAM, VALERIE JEAN—Biology		Christian Assoc. Publicity Chm. 2,3; Blood Drive 3; Facilities Comm. 3; Phoenix 4; Hall President 2,3; Ice Hockey Club 2; Bios Club 2; Chester Tutorial 2,3,4; Badminton 2,3,4; Softball 1	
Upward Bound Counselor 3,4		KLOTHEN, KENNETH LEONARD—Psychology	36
GOERNER, GAIL—French		Camera Club 2; Dramatics 2; S.C. 3; Tarble Comm. 3; Festival Comm. 3	
Rock Festival 1		KRAUS, ERIC MARSHALL—Biology	58
GOLD, KENNETH JAY—Psychology		Community Services Comm. 1; Blood Drive 1, Co-Chm. 2,3,4; Admission & Scholarship Comm. 2,3; Phoenix 1,2; Faculty Tenure & Course Evaluation 3; Ice Hockey Team 1, Chester Tutorial 1,2,3; Debate Club 2; Biology Club 2; Shalom 2; Flying Club 2,3,4; Baseball 1	
Lacrosse 1,2,3		KROGH, ELIZABETH CUSHING—Religion	4
GOLDMAN, BRUCE IRA—Engineering		Women's Lib	
Car Authorization Comm. 1,2; Basketball 1; Baseball 1,2,3,4		KUHTA, RICHARD JONES—English Literature	24
GOLDNER, STEVE—Philosophy		LaMORTO, ANGELICA MARIE—Psychology	40
GOLDWATER, CATHERINE—Sociology-Anthropology		Chester Tutorial 1; Sailing Club 4; Water Ballet 2	
Basketball 1		LAMSA, LORRAINE ANLIKKI—English Literature	31
GOULD, PETER GRAHAM—Economics	18	LANCINA, VIRGINIA A.—Spanish	
Proctor 3,4; Phoenix 1,2, Ed. 3,4; Draft Counselor 1,2, Co-Dir. 3, Dir. 4; Economics Club 3; Football Manager 1		Chorus 1, Librarian 2; Hockey 2,4; Swimming 1; Lacrosse 2,4; Tennis 1	
GRAHAM, LINDA LEE S.—Engineering, Mathematics	140	LANDAU, DAVID WILLIAM—Biology	40
Senior Resident 4		Biology Club 2; Camera Club 2,3; Upward Bound 2; Halcyon 3	
GRANEY, JOHN FRANCIS—History	136	LARSEN, WILLIAM LUDWIG—English Literature	127
GRANT, SHELLIE EVELYN—Biology	83	Car Comm. 1; C.J.C. 3,4; Budget Comm. 3; J.A.D. 1; Phoenix 1; Ice Hockey Club 2,3; Soccer 1,2,3,4; Lacrosse 1,2,3,4	
Upward Bound Tutor 1		LAVIN, GORDON KYLE—German	
GREEN, FRANK JR.—History	30	Draft Counselor 1; German Club 1	
Proctor 4; Chorus 1,2,3; WSRN 1; Christian Assoc. 1,2; Phoenix 2,3; Chester Tutorial 2; College Singers 3; Wrestling 1		LAWLACE, J. RANDOLPH—English Literature	65
GREEN, ROSCOE JR.—Political Science	39	C.J.C. 2; Curriculum Comm. 3; Christian Assoc. 1; Concerned Democrats 1; Chester Tutorial 1; Literary Magazine 4	
Upward Bound Counselor 2; Basketball 1		LAZZERI, JAMES JAY—Political Science	84
HACKEL, ANDREA JOYCE—Psychology		Proctors 4; Wrestling 1,3	
Softball 1		LEADER, ELIZABETH ANNE—Sociology & Anthropology	26
HAHN, CHRISTOPHER PAUL—History		Student Housing Policy Comm. 2; Women's Lib 4	
Campus Conservative Club; Pres. 2; V.Pres. 3; Tennis Mgr. 1; Mgr. 2		LEE, THOMAS HUN-JAH—English Literature	
HAHN, ELLEN—Economics	58	International Club Treas. 3; Chester Tutorial 1	
HAHN, JAN THEODORE—Sociology & Anthropology	37	LEMBO, ROBERT MICHAEL—Biology	64
Phi Omicron Psi 1; Chester Tutorial 1; C.G.C. 3; Shalom 3; Upward Bound tutor 3; Tennis 1		Phoenix 1,2,3; Cotillion Club 1; Newman Club 2,3; Basketball Mgr. Ass't. 2; Baseball 2,3,4	
HANSEN, STEVEN WAYNE—Political Science	58	LEMOINE, CHANTAL MARIE-DANIELE—Biology	
Student Housing Policy Comm. 1,2; Debate Society 1,2, Co-Chm. 3,4; C.E.P. 4; Chester Tutorial 1,2,3; Chess Club 2; Phoenix 2,3; C.J.C. 3		Swimming 3	
HASLAM, D. ELIZABETH—Sociology & Anthropology	81	LEVINE, ALICE LOUISE—Greek;	115
HENGEN, NANCY LOUISE—History		Orchestra 1	
Badminton 3,4		LEVY, STEPHANIE J.—Psychology	36
HENSEL, JAMES IRVING—Engineering	85	Jazz Festival Comm. 1; Student Housing 4; Phoenix 1; Softball 2,3,4	
Football 1; Wrestling 1,2,3; Tennis 1; Engineering Club Treas. 1; Sailing Club 1,2; Bridge Club 1,2; Physics Club 2; Phi Omicron Psi 3,4; Ice Hockey Club 3; Phoenix 3; Halcyon 3		LICHTENBERG, RICHARD GAY—Engineering & Political Science	08
HEUBERT, GARY PHILIP—Psychology	147	Social Committee 2; Football 1,2; Lacrosse 1	
HICKS, TERRENCE H.—Economics	27	LIEBERMAN, DEBRA ANN—Psychology	31
HILKE, JOHN CORYELL—Economics	104	Am. Field Science Service Club 1,2; Orchestra 2; Orientation Comm. 2; Chester Tutorial 2; Spanish Table 4; Dramatics 4	
(SJC 2; C.E.P. 3; Truck Comm. 3; Chester Tutorial 3; Presidential Nominating Comm. 4; Election Comm. 1; Engineering Club, Secty 2			
HILTZ, SHARON LYNNE—English Literature			
Chamber Music group 1; Orchestra 2,3; Volleyball 2			
HOUGH, JULIA SHOYSE—English Literature	83		
Tennis Manager 1			
HUANG, THOMAS FIN FAH JR.—Biology	61		
Baseball 1; Tennis 1,2,3			
HUGHES, DALE DEE JR.—Economics	22		

LINDSAY, ANN DAVENPORT—Philosophy S.P.A.C. 1; Badminton 1; Tennis 1	24	Ice Hockey 2; Hall President 2; Ecology Action 2; Phoenix 2; Basketball 2; Lacrosse 1,2
LOHR, VIRGINIA L.—Psychology Ice Hockey Club Treas. 4; Volleyball 2,3,4	48	ORR, RICHARD MORGAN—Psychology S.J.C. 3,4; Phoenix 4
LOMELL, RENEE—English Literature Christian Assoc. 1,2,3; Chorus 1	115	ORTEGA, RICHARD IGNATIUS PEREZ—Engineering & Art History 76 Movie Comm. 4; Rapport & Support Comm. 4; Delta Upsilon 1; Election Comm. 2, co-Chairm. 3; Engineers Club 3; Bridge Club 3; Phoenix Club 3; Halcyon 3; Soccer 2; Golf 1,2,3
LOW, ANDREW MARTIN—Political Science Ski Club, V.Pres. & Treas. 3; Curriculum Committee 4; Phoenix 1,2, Ed. 3; Sailing Club 2	127	OYE, ROBERT K.—Economics 47 Proctor 3,4; Soccer 1,2,3,4
LUXENBERG, STANLEY—Political Science Phoenix 1; Chester Tutorial Treas. 1		PACKER, SUSAN BETH—Psychology Cutting Collect; Comm. 4; Cycling Club 1; S.P.A.C. 1; Tennis 2,3; Softball 2,3
LYON, DAVID LAWRENCE—History (Soccer 1,2,4); Swimming 1; Lacrosse 1,2,3		PANETTA, FF. DANE—Biology
MACE, MARGARET ANN—History S.P.A.C. 1; Upward Bound Tutor 1	36	PEPPER, JEFFREY WALTER—Economics S.J.C. 3; Budget Overview Comm. 3
MAGGIORE, MARY ANN—History Faculty Tenure Course Evaluation 3,4; Chester Tutorial 1	80	PEREIRA, MARY BETH—Biology & Psychology 22 Hockey 2,3,4; Basketball 1
MALONEY, ELEANOR ELIZABETH—Biology C.I.C. 2; Bios Club 3,4; Outing Club 4; Hockey 2; Badminton 2,3,4		PERRY, CLAYTON RICHARD—Biology Tarble Social Center Comm. 1,2; Proctor 3; Football 1,2,3,4; Wrestling 1,2,3; Lacrosse 2,3,4
MARPLE, MARY LYNN—Mathematics Teacher Technology Comm. 3; Cooper Foundation Comm. 4; Phoenix 3; Hockey 4; Tennis 3,4		PETERSON, JOHN WENDELL—Psychology Chester Tutorial 1; Soccer 1; Basketball 2,3,4; Trach Mgr. 1, Mgr. 2
MASON, FRANCENE SHELIA—Biology Senior Resident 3,4; Pet Policy Comm. 3; Hall President 2; Ice Hockey Club 2; Shalom 2	139	PETRILLA, MICHAEL C.—History
MASON, LOUISE C.—Religion		PLUMMER, ROSALIND MARIE—English Literature 39 Hall President Willets 3N 1; Teacher Education Comm. 1,2; Upward Bound Counselor 1,2; Hall President 1; S.A.S.S. 1,2,3
MAY, ROBERT CORLEN—Sociology & Anthropology Admission Comm. 1; Tarble Comm. 1; Faculty Tenure & Course Evaluation 3,4; Movie Comm. 1,4; W.S.R.N. 1; Sociology Club 1; Tennis 1		POMERANTZ, TRUDY LESTER—Philosophy
McDONALD, PATRICIA ANNE—Psychology Chorus 1; Newman Club 3	147	POTTER, JACK HOWARD—Biology 148 V. Pres of Senior Class 4
McELREA, BETTY MARIE—English Literature Archery 1,2		POWER, JOHN GILBERT—History 1 Admissions Comm.
McLANE, KRISTIN EVERTS—Psychology		PRINDLE, WILLIAM RODMAN—Psychology 105 Faculty Tenure Comm. 1,2
McLEAVY, CHARLES GUSTOV—English Literature Teacher Education Comm. 3; Hamburg Show Co-producer 4; W.S.R.N. 1,2; Outing Club 3; Literary Magazine 4; Track 1,2,3,4		PUGH, JAMES RICHARD—History 103 Ice Hockey Club V-Pres. 3, Pes. 4; Phoenix 3; Outing Club 4; Soccer 1,2,4; Lacrosse 1,2,3,4
McNAGNY, JOYCE ANN—Psychology Student-Faculty Comm. 1; Social Comm. 1; Volleyball 2		RAMSEY, WALLIS B.—Biology 29 Admissions & Scholarship Comm. 1,2; Soccer 1,2,3,4; Swimming 2; Lacrosse 1; Tennis 2,3
MEIGHAN, JUDITH ELLEN—Art History & Psychology		RANDOLPH, FRANCES LEWIS—Art History
MERCER, ANGELA MYRA—Biology 65 Badminton 2,4		RAPHEL, NEIL ROBERT—Philosophy Budget Overview Comm. 1,2; Chess Club Pres. 1,2; Phoenix 1; Tennis 1
MESSICK, JOHN H.—Economics 33 Delta Upsilon 1,2,3, V. Pres. 4; Tennis 1,2		RENSCH, JEFFREY—English Literature 127 Chester Tutorial 1,2,3; Phoenix 1,2,3, Ed-in-Chief 4; Orchestra 1,2
METLAY, LEON ANDREW—Chemistry		ROBERG, MARILEE—English Literature 37 Movie Comm. 2, Chm. 3, Chm. 4; Budget Comm. 3,4; Phoenix 2,3,4; W.S.R.N. 2,3; Chester Tutorial 2; Water Ballet 3
MICHENER, WILLA KAY—Economics 41 Admissions Scholarship Comm. 2; Debate Club 2; Folk Dance Club 2; Con- cerned Democrats & Independents of Delaware Co. 2		ROLLE, ALEXANDER FREDERICK—Religion
MILLER, MARK WILLIAM—Engineering & Economics 25 Proctor 3,4; Phoenix 2,3; Engineer's Student Council Pres. 4; Engineering Club 1,2, Secty. 3; Delta Upsilon 1,2,3,4; Social Comm. Treas. 2,3; Econom- ics Club 3; Football 1,2,3,4; Lacrosse 1		ROOD, JAN ELLEN—Philosophy 130 Senior Resident 4; Swimming 1
MILLER, RONALD RUSH—History 55 Social Comm. 1		ROSEN, MATTHEW ARMAND—Political Science 36
MORGAN, CAROLINE GAIL—Physics 64 Chorus 1,2,3,4, Society of Physics Students Chm. 4; College Singers 4		ROSENBAUM, DAVID ALBERT—Psychology 6 Men's Athletic Comm. 1; Orchestra Managemt. Comm. 3; Student Bond Concert Comm. 4
MUELLER, ROBERT WALTER—Biology		ROSENBLATT, STUART D.—History 108 Collection Comm. 1,2; S.P.A.C. Chm. 3, Chm. 4
MURRAY GEORGE MALCOLM—Psychology 26 S.J.C. 3,4; Car Authorization Comm. 4; Ice Hockey Club 3		RUBINSTEIN, JOAN ELIZABETH—French 63 Chester Tutorial 3; "Lysistrata" 3
MUSSARI, VIRGINIA MARIE—Political Science S.C. 2,3; S.J.C. 2; Chester Tutorial 1, Chm. 2; Orientation Comm. 3; Campus Conservative Club 1; W.S.R.N. 1,2; Hall President 2; Political Science Club 3		RUDD, JON DEMAREST—English Literature 39 Community Services Comm. 1; Student Corner in the Bookstore 4
MYERS, DONALD R.—Biology 38		SAGER, RICHARD NORMAN—Economics 2 Schedule of Classes Comm. 3,4; Shalom Co-Chm. 3, Co-Chm. 4; Orchestra 4; Tennis 2,3,4
MYERS, MARK SIMPSON—Biology 33 Football 1,3; Lacrosse 2,3; Delta Upsilon 1,2,3,4		ST. CLAIR, MUNSELL WINIFIELD—Economics 28
NADAS, JOHN ALEXANDER—History 24		SANCHEZ, JANIS VALENTINA—Psychology Senior Resident 3,4; S.A.S.S. Secty. 1,2,3,4; Upward Bound Tutor 2,3,4; Ad- mission and Orientation Comm. 3; Basketball 1
NEWMAN, ARNOID LEWIS—Biology 81 Swimming 1,2, Track Manager 1		SASDI, ANDREA EVA—History 137
NICOLAS, MICHELE—Psychology		SCHLIBER, MIRIAM ALICE—Psychology 64 Orchestra 1
O'BRIEN, SANDRA MARIE—Psychology		SCHEUER, LAURA LEE—Philosophy 115 Phoenix 1; Strike Comm. 1; Concerned Democrats 1; Chorus 1
OFFER, VIVIAN SANDRA—Psychology 38 Chorus 1, Badminton 3, Tennis 1,2		SCHNIEDER, JEAN TAYLOR—History 147 Sailing Club 4; Proctor Selection Comm. 1,2; Faculty Tenure Comm. 2,3; Chess Club 2; Proctor 3; Facilities Comm. 3; Swimming 2
OGLETFREE, MARTIN LAWRENCE—Biology		SCHON, JEFFREY V.—Economics 104 Honor Comm. 1; Faculty Tenure Comm. 1,2; Student Exchanges Comm. 1,2, Proctor 3; Wrestling 1,2,3
O'HARA, CHRISTIANE CLASDFE—Psychology 25 College Exchange Comm. 1; Social Comm. 1,2, Admissions & Scholarship Comm. 1,2; Newman Club Chm. 1,2,4, C.I.C. 4, Student Faculty Relations Comm. 4; Christian Assoc. 1,2, Campus Conservative Club 1; Orientation Comm. 2, Political Science Club 2, Chorus 4		SCHULTZ, RICHARD ALAN—Political Science 114 Outing Club 1, Treas. 2, Tri Chm. 3, Co-Chm. 4, Budget Comm. 3,4, Phi Sigma Kappa 1, Treas. 3,4; Christian Assoc. 1, Phoenix 1; Political Sci. Club 4, Cross Country 1,2,3,4; Track 1,2,3,4
OJALVO, STEVEN I.—Engineering 130 Inspiring Student Council 4		SCOTT, DAVID GREGORY—Biology 64 Draft Counseling 3, Lacrosse 1
OPPI, ARTHUR—History 146		SIAGRAVI, ANNI WOOD—Sociology & Anthropology Dining Hall Comm. 1,2; Student Council 1; Senior Resident 2; Badminton 1,2; Tennis 3
ORR, AMANDA—French Collection Comm. 1,2; Student-Faculty Comm. 1, Treas. 2, Teaching Tech- nology Comm. 1,2; Christian Assoc. Treas. 2, College Exchange Comm. 1, Halcyon 1,2; Outing Club 1, Folk Dance Club 1,2, Modern Dance Club 1,2,		

SHEPARD, ALICE BLYTHE—Philosophy Phoenix 1; S.P.A.C. 1,2; Chester Tutorial 1; Women's Lib 2		
SHERIDAN, RICHARD BRINSLEY III—Biology T.A.O. 1; Track 1		
SHIRK, MARTHA RICHARDS—Psychology Phoenix 1,2, Ed. 3	133	
SIMLER, CATHERINE—French		
SIMSON, PAMELA DEE—English Literature		
SMITH, DEBORAH DURKEE—Psychology Volleyball 2,3,4; Basketball 1; Tennis 1	104	
SMITH, M. LAVERNE—Economics		
SPEWOCK, SANDRA—Chemistry Forum for Free Speech 4	19	
SPIEGEL, PAULINE—Psychology	12	
SPROGELL, ROBERT MAURICE—Psychology	39	
STEGENGA, DOROTHY—Biology Senior Resident 3,4; Badminton 1,2,3		
STINSON, CHRISTOPHER HALL—English Literature & Biology Christian Assoc. 1,2; Chess Club 1; Eco-Action 1,2; Chester Tutorial 2; W.S.R.N. 2,3; Literary Magazine 3; Bios Club 3		
STOUT, GARY E.—Political Science; Track 1		
SUSKO, PAUL JOHN—Political Science	65	
Phoenix 3; Pres. of Senior Class 4; Proctor 4; Delta Upsilon 2, V. Pres 3,4; Newman Club 3; I.F.C. Pres. 4; Chess Club 4; Political Science Club 4; Foot- ball 1,2,3		
THOMAS, RUTH HARRISON—History	9	
THOMAS, STEPHEN RANDALL—Biology Chester Tutorial 1; Christian Assoc. 1; Sailing Club 4; Outing Club 4; Bios Club 4; Track 1,2,3	63	
THOMPSON, JAMES RICHARD—History Community Services Comm. Treas. 2,4; Football 1; Track 1,2,4	126	
TOBIN, ELIZABETH HOWARD—History Water Ballet 2; Swimming 1,2,4	77	
TOBIN, L. MICHAEL—French Soccer 1; Cross-Country 2		
TONER, JOHN DAVID—Psychology Tennis 1,2,3; Wrestling 4		28
TRIPPEL, GRANT MERRIL—Economics C.J.C. 3,4; Election Comm. 3; Phoenix 1,2; Ice Hockey Club 2,3,4; Econom- ics Club Pres. 4; Soccer 1		82
ULSOY, ALI GALIP—Engineering Soccer 1,2; Engineering Club 2,3,4; International Club 3,4		10
USHIBA, REIKO—Art History Volleyball 3; Tennis 3,4		
VOGEL, SALLY ANN—Biology Health Center Comm. 3,4; Orientation Comm. 2,3; Chorus 1; Water Ballet 4; Proctor Evaluation Comm. 3; Hockey 2; Swimming 1,2,3,4		127
WAGACHA, BERNARD M.—Economics International Club Pres. 4		
WALBORN, CAROLYN LOUISE—Spanish Chester Tutorial 2		65
WALSH, SCOTT JAMES—Philosophy S.J.C. 3,4; Movie Committee 3,4		147
WANG, MING YEE—Physics		26
WANKLYN, SUSAN HARRIET—Art History		38
WARREN, ANNE ELIZABETH—Greek		
WEBB, NOREEN MARIE—Mathematics Water Ballet 2, Tri-Capt. 3,4; Sailing Club 4; Modern Dance Group 3,4		114
WEBER, AMY VEDDER—Biology Tarble Social Center Comm. 1,2; Student-Faculty Relations Comm. 3; Swimming 1,3; Softball 1		
WEIDMAN, RICHARD C.—Physics		65
WEINTRAUB, ARTHUR NEIL—Philosophy Hamburg Show Co-Producer 4; Soccer 1,2,3; Tennis 1		37
WEISSMAN, ROBERT ANTHONY—Engineering Rock Festival Chm. 3		26
WENNER, JULIA L.—Sociology & Anthropology C.J.C. 1; Senior Resident 1		
WHITE, JAMES M. JR.—Economics Curriculum Comm. 1		

WICKHAM, ABIGAIL ANN —Psychology Car Authorization Comm. 3; Water Ballet 4; Hockey 3; Water Ballet 2,3,4; Swimming 4	
WILSON, JUDITH HELEN —Biology Orchestra Management Comm. 3; Student Band Concert Comm. 4; Chamber Music Group 3; Tenure Comm. 3; Volleyball 2	58
WILSON, RICHARD STUART —Music Health Center Comm. 3,4; Facilities Comm. 4; W.S.R.N. 1,4; Folk Dance Club 3,4; Swarthm. Students to Re-Elect the President; 4; Food Serv. Comm. 4	
WILSON, RICHARD WINSTEL —Biology Bios Club 3; Chm. 4; Outing Club 3; Co-Chm. 4; Tenure Comm. 2; Chester Tutorial 2; Kwink 3; Cross Country Mgr. 2; Mgr. 3	64
WOLF, BARBARA MATTHEWS —History	23
WOOD, ELIZABETH ROBERTSON —History Student Housing Policies Comm. 1, 2; S.C. Secty. 2; Faculty Tenure & Course Evaluation 3; Chorus 2; Librarian 3; Librarian 4; Folk Dance Club 2	29
WUEST, ANDREA —Psychology & Religion Research Ethics Comm. 3; Christian Assoc. 1; Outing Club 1,4; Social Comm. 1; Chester Tutorial 3; Badminton 3,4	
WULFHORST, CHRISTINE ANNE —Psychology Senior Resident 4	48

WYNN, KENNETH RICHARD —French Swimming 2,3; Golf 4	
YARBROUGH, JOHN D. JR. —Sociology & Anthropology S.C. 3; Curriculum Comm. 3; Faculty Tenure & Course Evaluation 3,4; Health Center Comm. 3,4; Pet Policy Comm. 3; Movie Comm. 4; Phoenix 3; Literary Magazine 3; Cooper Foundation Comm. 3	
YARBROUGH, KENNETH CLAUDE —Sociology & Anthropology Track 1	40
YARROW, WILLIAM PAUL —English Literature Hamburg Show Co-producer 4; Movie Comm. 4; Literary Magazine Ed. 4; Dramatics 4	36
YELSEY, ARTHUR RUSSELL —Physics Shalom 2; Physics Club 2; Ice Hockey 3; Tennis 1,2,3,4	141
ZAUERHA, SUSAN CLAIRE —Art History Phoenix 1,2,3,4; Halcyon 1; Folk Dance Club 3; Badminton 2	131
ZUBOW, DEBORAH LOUISE —Sociology & Anthropology	105
ZWIG, ANTHONY JOSEPH —History Rock Festival Co-Chm. 1, Co-Chm. 2; Ice Hockey Club 2,4; Sailing 2,4; Skiing Club 2; Phoenix 2	27

Patrons

Mr. and Mrs. A. W. Beenev
Dr. and Mrs. Clement G. Bottino
Mr. and Mrs. Raymond E. Boucher
Mr. and Mrs. Fred Brown
"Compliments of Two Good Friends"
Mr. and Mrs. John Davis
Dr. and Mrs. Jack Grundfest
Mrs. and Mrs. Frank Hoenemeyer
Mr. Victor U. K. Hui

Mr. and Mrs. Stephen Girard Lax
Dr. and Mrs. O. Theodore Roberg Jr.
Mr. and Mrs. William E. Swigart Jr.
Mr. and Mrs. Thomas O. Taylor
Mr. Melvin B. Troy
Mr. and Mrs. E. W. Weaver Jr.
Mrs. John J. Wilson
Mr. R. D. Wolfe
Mr. Walter Zwig

Boosters

Mr. and Mrs. Franklin S. Atwater
Mr. Norman Barasch
Mr. and Mrs. Charles F. Barber
Mr. and Mrs. B. R. Benjamin
Mr. and Mrs. Sidney Bernstein
Mr. and Mrs. Carl Burkow
Mr. and Mrs. David Chandler
Mr. Sidney L. Cohen
Mr. and Mrs. Dennis Dacey
Mr. Edward J. Dembski
Mr. and Mrs. Anthony DiMedio
Mr. and Mrs. John D. Dixon
Mr. and Mrs. George F. Donahue
Mr. and Mrs. James Draper
Mr. and Mrs. C. P. Englund
Mrs. Marjorie Reid Foley
Mr. and Mrs. James H. Gatens
Dr. and Mrs. Willard Gaylin
Bishop and Mrs. Robert F. Gibson
Dr. and Mrs. J. I. Goldner
Dr. and Mrs. Richard Goldsmith
Mr. and Mrs. Bayard A. Gregg
Mr. and Mrs. Liren L. Hechtner
Mr. and Mrs. Samuel I. Kalkstein
Mr. and Mrs. Alfons Karney
Mr. and Mrs. Henry B. Leader
Mr. Joseph Lembo
Mr. Morris Levine
Mr. and Mrs. J. Magda

Mr. and Mrs. F. J. Maggiore
Mr. and Mrs. Robert D. Maurer
Mr. and Mrs. William H. McNeill
Mr. Seymour I. Moskowitz
Janice S. Orr
Mrs. Enid Krouse Parker
Mr. S. William Pattis
Mr. and Mrs. Thomas F. A. Plaut
Mildred L. Porter
Dr. Fred L. Ribe
Mr. and Mrs. George Roache
Mr. and Mrs. Irving Rosenblatt
Mr. and Mrs. Marshall Schmidt
Mr. and Mrs. Feryl L. Spanniger
Mr. and Mrs. George L. Steinmetz
Dr. and Mrs. H. W. Stinson
Mr. Authur G. Sweeten
Mr. and Mrs. Rufus Thomas
Mr. and Mrs. Donald G. Thoroman
Mr. and Mrs. Robert von Roderer
Dr. and Mrs. William F. Warren
Mr. and Mrs. Ernest W. Williams Sr.
Mr. and Mrs. S. Wolfson
Mr. and Mrs. William C. Yarbrough
Yuen
Mr. and Mrs. James Yuko
Mr. and Mrs. Victor A. Zaveruha
Mrs. Belle Zykofofsky

The yearbook staff also wishes to express its thanks to those patrons and boosters who chose to remain anonymous.



halcyon 1973

Gino C. Bottino
Jeff Barckley

Editor-in-Chief
Business Manager

Emory Gross

Staff Editor

Our special thanks to Louis Heavenrich, Deb Levin, Peg Stone, Rick Ortega, Susan Weaver, Sandi McIntyre, William Ehrhart, Jenny Cook, John Schubert and Mike Gilroy.

Contributors:

Manley Huang
Cynthia Campbell
Leandre Jackson
Susan Zaveruha
George Brdlik
Pekka Mooar
Poem People
and other friends.

Here's to all the friendly Tarble roaches that kept us company.



