

N
850
A57
1920

UC-NRLF

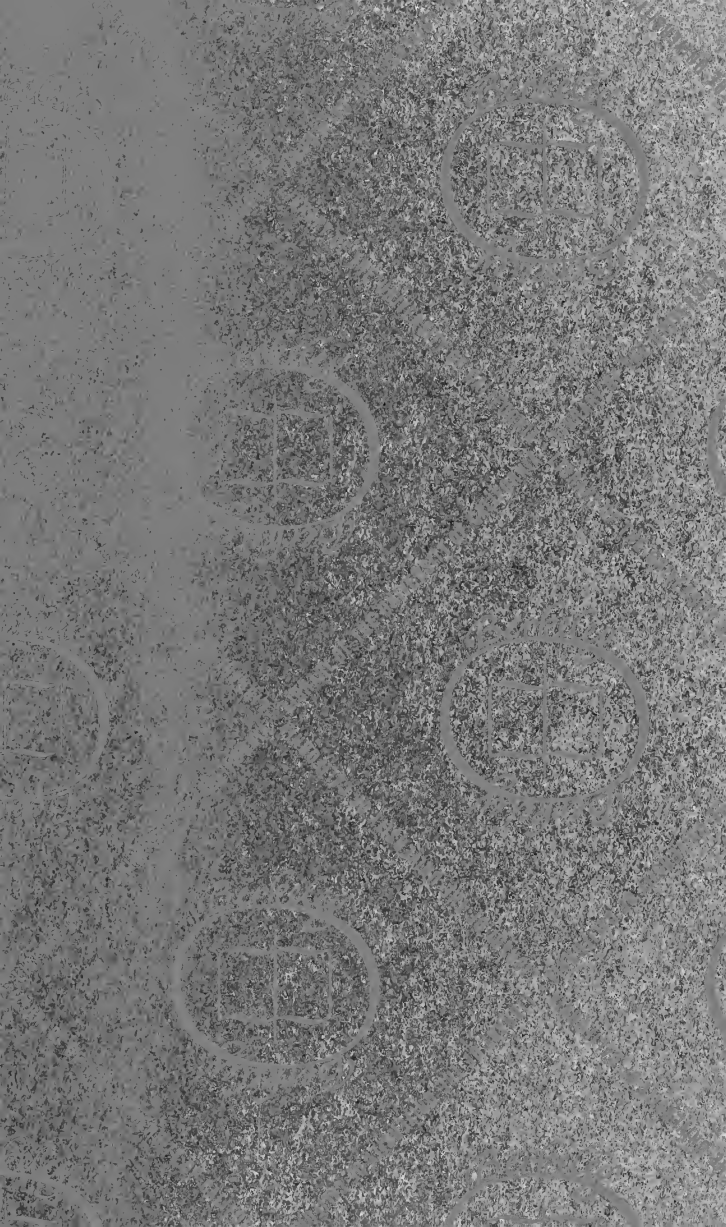


⌘B 270 672



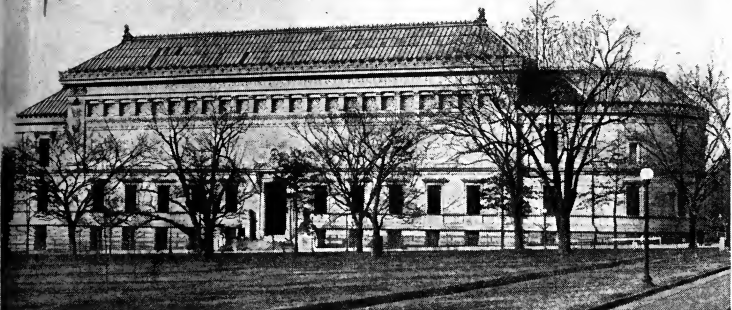
THE LIBRARY
OF
THE UNIVERSITY
OF CALIFORNIA

BEQUEST
OF
ANITA D. S. BLAKE





1/4 vol.



HANDBOOK

OF THE

PAINTINGS AND SCULPTURES
IN THE PERMANENT COLLECTIONS

OF

THE CORCORAN GALLERY OF ART

WASHINGTON, D. C.

1920



HANDBOOK

OF THE

PAINTINGS AND SCULPTURES
IN THE PERMANENT COLLECTIONS

OF

THE CORCORAN GALLERY OF ART

WASHINGTON, D. C.

1920



GIFT

N850
A57
1920

BOARD OF TRUSTEES

CHARLES C. GLOVER	C. POWELL MINNIGERODE
WILLIAM CORCORAN EUSTIS	GEORGE E. HAMILTON
WILLIAM A. CLARK	JAMES PARMELEE
HENRY WHITE	RUDOLH KAUFFMANN
THOMAS NELSON PAGE	

OFFICERS

President and Treasurer:

CHARLES C. GLOVER

Vice-President:

WILLIAM CORCORAN EUSTIS

Secretary and Director:

C. POWELL MINNIGERODE

Secretary to the Director:

EMILY P. MILLARD

Janitor:

BENJAMIN V. DARRELL

Digitized by the Internet Archive
in 2007 with funding from
Microsoft Corporation

COMMITTEES

On Finance

GEORGE E. HAMILTON JAMES PARMELEE
RUDOLPH KAUFFMANN

On the Building

HENRY WHITE WILLIAM CORCORAN EUSTIS
THOMAS NELSON PAGE

On Works of Art

HENRY WHITE WILLIAM CORCORAN EUSTIS
CHARLES C. GLOVER C. POWELL MINNIGERODE
JAMES PARMELEE

On Legislation

GEORGE E. HAMILTON WILLIAM CORCORAN EUSTIS
WILLIAM A. CLARK

On Accounts

JAMES PARMELEE RUDOLPH KAUFFMANN

P R E F A C E

THE CORCORAN GALLERY OF ART, originally located at the corner of Seventeenth Street and Pennsylvania Avenue, including ground, building, its contents, and endowment fund, was the gift of the late William Wilson Corcoran to the public by deed, dated May 10, 1869, "to be used solely for the purposes of encouraging American genius in the production and preservation of works pertaining to the Fine Arts, and kindred objects," with the condition that it should be open to visitors without any pecuniary charge whatever at least two days in each week, with authority to charge for admission at other times such moderate and reasonable fee as might be prescribed, the proceeds arising therefrom to be applied to the current expenses of the Institution.

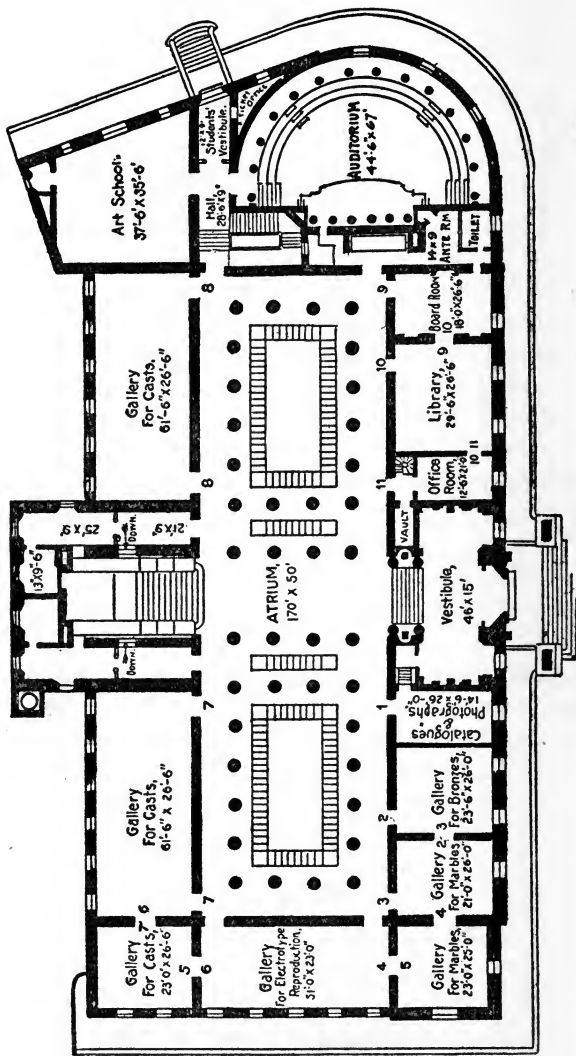
The Institution was chartered by Act of Congress, May 24, 1870. By that Act the building and its contents were declared exempt from all taxation. The organization of the Gallery was completed by the Board of Trustees on November 6, 1873, and on April 29, 1874, all of the rooms of the Institution for exhibition purposes were opened to the public.

The building was used for the purposes for which it was intended until it became apparent that, as planned, it would, in a comparatively short time, be wholly inadequate for the proper display of the works of art belonging to the Gallery, while larger and better facilities were already required for the rapidly growing Free Art School, for

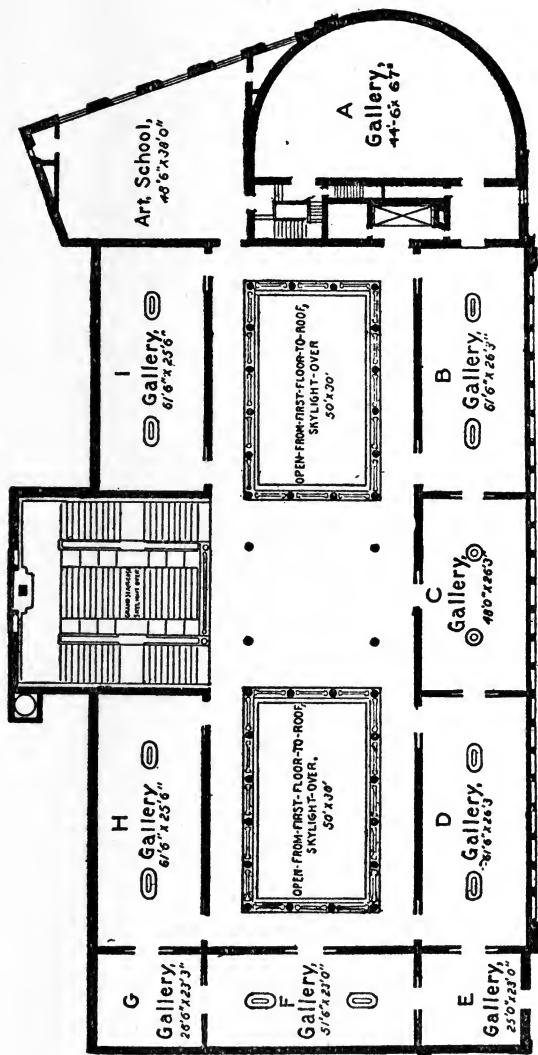
which thoughtful provision had been previously made by Mr. Corcoran. At the same time, it was found that it would not be possible to enlarge the then existing building so as to meet the future wants of the two establishments.

These conditions impressed upon the minds of the Trustees the necessity of providing, without delay, for the erection of a larger, more conveniently arranged, and better lighted building, upon a plot of ground large enough to not only furnish space for the projected building, but also to provide for such enlargements of the Gallery as might be required from time to time to suitably house future acquisitions of paintings, sculptures, etc. With these ends in view, steps were taken to find and secure a proper location, and on the 3d of April, 1891, the purchase of a portion of Square 171, fronting on Seventeenth and E Streets, respectively, on the east and south, and on New York Avenue on the north, was ordered, and subsequently effected.

On the 9th of January, 1892, it was determined to erect a new Gallery building on the eastern portion of the ground thus secured. The new structure was designed by Mr. Ernest Flagg, of New York, and ground for the foundation was broken on June 26, 1893. The cornerstone was laid, with appropriate ceremonies, on May 10, 1894, and the building was completed on January 8, 1897. It was formally opened, with a brilliant reception, on the evening of February 22nd, of that year.



PLAN OF FIRST STORY



PLAN OF SECOND STORY

DESCRIPTION OF THE BUILDING

THE building stands with its main front on Seventeenth Street, extending from New York Avenue on the north to E Street on the south, a distance of 259 feet, extending back 133 feet, and occupies about half of the lot.

The style of architecture is Neo-Grecian, the material being white Georgia marble, on a basement of Milford pink granite. The first story is pierced by windows; the second story rises in a solid white wall broken only by a row of open-work marble panels along the upper edge, which serve as ventilators to the Galleries.

Between these panels and the cornice, which is rich in ornamental carving, extends a narrow frieze bearing in Roman letters the names of some of the most famous painters and sculptors of ancient and modern times. The roof of glass slants sharply upward to the ridge, which is finished by a cresting of bronze, terminating at each end of the building in a winged griffin.

The severity of the elevation is broken by the curve at the north end, in which is located the Art School. It also contains a semi-circular auditorium on the first or main floor, used for lectures, etc., and on the floor above a gallery for various special or temporary exhibitions, which connects with the main picture galleries on the second floor.

The main entrance to the building is on Seventeenth Street. On either side of the steps, upon white marble

pedestals, rests a colossal bronze lion, cast from moulds made over the famous lions by Canova, which guard the tomb of Clement XIII, in St. Peter's, Rome.

Passing through this entrance, a broad and easy flight of stairs leads directly to the main corridor or atrium. This is the largest hall in the building, being 170 feet long and 50 feet wide, running north and south of the main entrance on the first floor. Its light comes through openings or light-wells in the ceiling above, which is supported by forty fluted monolith columns of Indiana limestone. This spacious hall is devoted to the exhibition of casts from sculptures of the antique and Renaissance periods. The rooms surrounding it—except those required for the library, administration purposes, etc.—are also given up to original marbles, casts, bronzes, etc., including the large and valuable collection of the works of the late Antoine Louis Barye, the eminent French sculptor of animals.

Directly in front, upon entering, and upon the further or western side of the hall or atrium, rises the grand white marble staircase, fifteen feet in width, and of easy tread, which leads to the second-story atrium, of the same dimensions as the one below. This has an immense skylight supported by thirty-eight fluted monolith columns, also of Indiana limestone.

Ten large doorways, with sliding doors, lead from the atrium to the galleries for paintings—four fine large rooms on Seventeenth Street, two small and one large one on E Street, and two still larger on the west, on either side of the main staircase, all admirably adapted for their purpose and perfectly lighted, whether for day or night exhibitions.

The entrance on the north, or New York Avenue, side of the building leads to the auditorium, a spacious room, of beautiful proportions, and also to the several rooms set apart for the School of Art.

The dimensions of all the rooms and galleries are given on the accompanying floor plans.

For information concerning the Art School connected with the Gallery see Prospectus, separately printed, to be had by application to the Secretary of the Art School.

Photographs of many of the paintings and other works of art in the Gallery are for sale at the door.

In accordance with the previous policy of the Gallery it is expected that a succession of various special exhibitions of unusual interest and educational value will be held. These exhibitions include works in the different fields of artistic endeavor—paintings, sculptures, etchings, etc.—and the planning of such special displays, for the education and benefit of our public, has become an important and vital part of the Institution's work.

HOURS OF OPENING

The Gallery is open to the public as follows:

On Sundays, from 1.30 to 4.30 P. M.

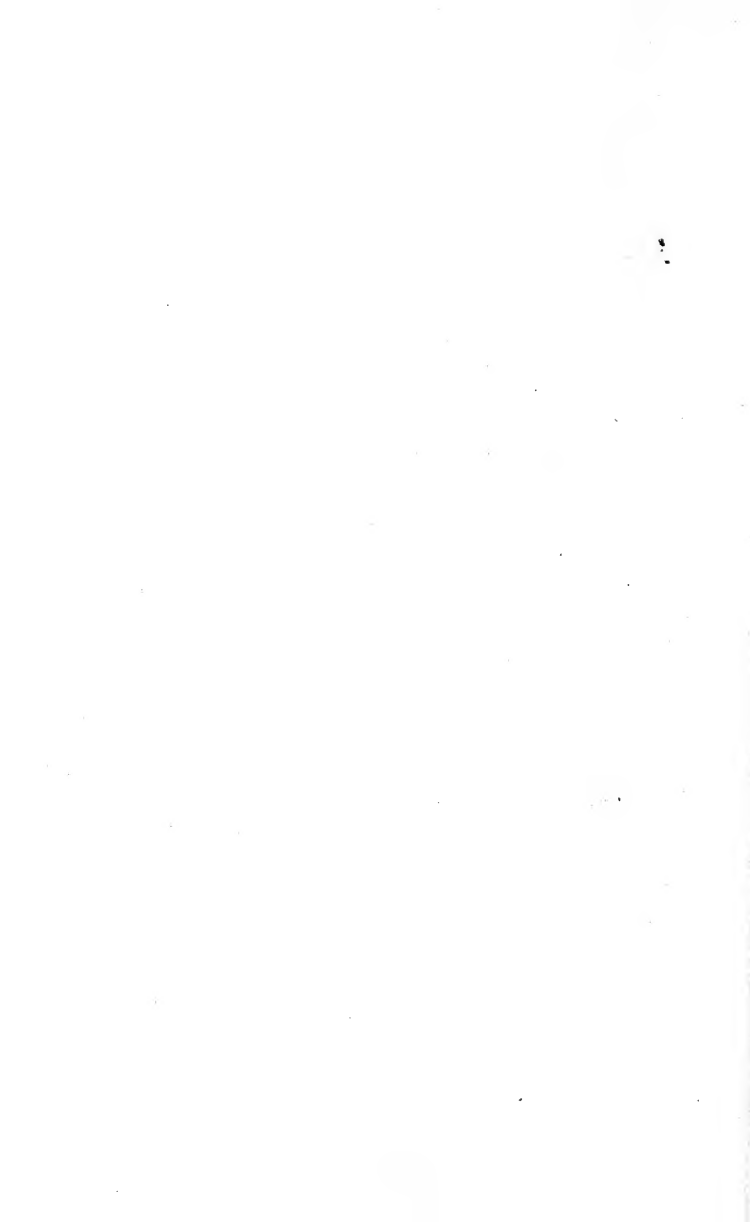
On Mondays, from 12 M. to 4.30 P. M.

On Tuesdays, Wednesdays, Thursdays, Fridays and Saturdays, from 9.00 A. M. to 4.30 P. M.

On Christmas Day and July 4th, it is closed to the public, but on other public holidays it is open from 10.00 A. M. to 2.00 P. M.

On public holidays and Tuesdays, Thursdays, Saturdays and Sundays, the admission is free.

On Mondays, Wednesdays and Fridays, an admittance fee of 25 cents is charged.



PAINTINGS

NOTE: The dimensions of paintings in this catalogue are given in inches, the figures named first indicating the height, the others the width of the canvas.

Achenbach, Oswald (1827-1905) *Düsseldorf School*

1 Festival of Santa Lucia, Naples.

55 x 77

Alexander, John W. (1856-1915) *American School*

2 A Meadow Flower.

50 x 40

Andrews, Eliphalet F. (1835-1915) *American School*

3 James M. Carlisle (First President of Board of Trustees of The Corcoran Gallery of Art.)

30 x 25

Anshutz, Thomas Pollock (1851-1912) *American School*

4 A Dutchman.

80 x 40

Gift of Mrs. Louis Bennett.

Bacon, Henry (1839-1912) *American School*

5 The Nile—Evening (Water Color.)

19 x 36½

Bail, J. A. *French School*

6 Sunday Morning in Auvergne.

35 x 46

Barclay, J. Edward *American School*

- 7 Samuel Hay Kauffmann (Elected Trustee of The Corcoran Gallery of Art, Feb. 26, 1881; President Board of Trustees, from Oct. 15, 1894, until his death on Mar. 15, 1906.)

30 x 25

Gift of Mr. Kauffmann's Heirs.

Bartlett, Frederic Clay (1873- —) *American School*

- 8 Canton Street.

36 x 40

Becker, Carl Ludwig Frederick (1820-1900)

German School

- 9 Pope Julius II, with Raphael, Michael Angelo, Vittoria Colonna, and Bramante, Viewing the Newly Exhumed Statue of the Apolló Belvedere.

60 x 81

Benson, Frank W. (1862- —) *American School*

- 10 My Daughter (Awarded the Potter Palmer Gold Medal, 1912. The Art Institute of Chicago).

30 x 26

- 11 The Open Window (Awarded the First William A. Clark Prize, of \$2,000, accompanied by the Corcoran Gold Medal. The Corcoran Gallery of Art, 1919.)

52 x 42

Bierstadt, Albert (1830-1902) *American School*

- 12 Mount Corcoran.

60 x 96

- 13 The Last of the Buffalo.

69 x 117

Gift of Mrs. Albert Bierstadt.

Bjorck, Oscar (1860- —) *Swedish School*

14 The Nail Makers.

53 x 59

Gift to the Gallery by a number of its friends, May 1, 1896.

Blakelock, Ralph Albert (1847-1919) *American School*

15 Colorado Plains.

16 x 24

Bogert, George H. (1864- —) *American School*

16 Sunset.

28 x 36

Gift of the late George A. Hearn, of New York.

Bonham, Horace (1835-1892) *American School*

17 Nearing the Issue at the Cockpit.

20 x 27

Bonheur, Marie Rosa (1822-1899) *French School*

18 Bull.

15 x 18½

Gift of the Heirs of the Estate of the late George E. Lemon.

Bonington, Richard Parkes (1801-1828) *English School*

19 On the Sea Coast.

10¾ x 14

*Bequeathed to the Gallery by the late Mr. and Mrs.
George Lothrop Bradley.*

- Boughton, George Henry (1834-1905) *English School*
 20 The Heir Presumptive.
 42 x 73
- 21 Edict of William the Testy (Illustrates a passage
 from Irving's "Knickerbocker's History of New
 York," Chapter 8).
 42 x 66
- Bouquet, Michel (1807-18—) *French School*
 22 Halt of Hunters at Fontainebleau.
 17 x 23
- Bréton, Émile Adelpard (1831-1902) *French School*
 23 Sunset.
 43 x 66
- 24 Snow Scene—Moonrise.
 22 x 34
- Bréton, Jules Adolphe (1827-1906) *French School*
 25 Brittany Widow.
 37 x 31
- Bridgman, Frederick Arthur (1847- —) *American School*
 26 Procession of the Sacred Bull, Apis-Osiris.
 39 x 69
- Brooke, Richard Norris (1847-1920) *American School*
 27 A Pastoral Visit.
 46 x 65
- 28 Incoming Tide.
 24 x 37½

-
-
- Brown, John G. (1831-1913) *American School*
29 Allegro and Pensive.
8 x 14
30 The Longshoreman's Noon.
33 x 50
- Browne, W. *English School*
31 Return From Market.
25 x 32
- Brush, George de Forest (1855- —) *American School*
32 Mother and Child.
38 x 28
- Bunce, William Gedney (1840-1916) *American School*
33 Venice—Sunrise.
25½ x 36½
- Burnier, Richard (1826-1884) *Dutch School*
34 Cattle on Seashore near Scheveningen. (Awarded
a Gold Medal at the Brussels Exposition of 1881).
41 x 63
- Carlsen, Dines (1901- —) *American School*
35 The Brass Kettle.
20 x 24
- Carlsen, Emil (1853- —) *American School*
36 Moonlight on a Calm Sea.
58 x 47
-

- Carlson, John F. (1875- —) *American School*
 37 Woods in Winter.
 46 x 56
- Casilear, John W. (1811-1893) *American School*
 38 Lake George.
 25 x 45
Gift of Miss Josephine E. Harrison.
- Cassatt, Mary *American School*
 39 La Femme Au Chien.
 39 x 26
- Cazin, Jean Charles (1840-1901) *French School*
 40 Moonlight in Holland.
 25 x 32
 41 Landscape.
 18 x 22
Gift of the heirs of the estate of the late George E. Lemon.
- Chase, Harry (1853-1889) *American School*
 42 The Harbor of New York.
 40 x 72
- Chase, William M. (1849-1916) *American School*
 43 Portrait of Hon. William A. Clark.
 50 x 40
Gift of Senator Clark.
 44 An English Cod.
 36 x 40
 45 The Model (Pastel.)
 19 x 16
Gift of Ralph Cross Johnson, Esquire.

-
-
- Chialiva, Luigi (1842-1914) *French School*
- 46 A Shower.
22 x 31
- 47 Fine Weather.
22 x 31
- 48 The Old Shepherd.
26 x 41
Gift of the heirs of the estate of the late George E. Lemon.
- Chierici, Gaetano (1838- —) *Italian School*
- 49 The Mask (or Fun and Fright.)
29 x 41
- Church, Frederick Edwin (1826-1900) *American School*
- 50 Niagara Falls.
42 x 90
- 51 Scenery on the Magdalena River, Granada, South
America.
27 x 36
- Cole, Thomas (1801-1848) *American School*
- 52 The Departure
39 x 63
- 53 The Return.
39 x 63
- Comte, Pierre Charles (1823-1895) *French School*
- 54 Scene at Fontainebleau—Costume of Louis XI.
31 x 21
-

Corot, Jean Baptiste Camille (1796-1875) *French School*

55 The Wood-Gatherers.

45 x 65

56 Mountain Stream.

$9\frac{1}{2}$ x $14\frac{3}{4}$

*Bequeathed to the Gallery by the late Mr. and Mrs.
George Lothrop Bradley.*

57 Outskirts of the Village.

$16\frac{1}{2}$ x $22\frac{1}{2}$

*Bequeathed to the Gallery by the late Mr. and Mrs.
George Lothrop Bradley.*

Couder, Émile Gustave

French School

58 Flower Piece (With Cat.)

45 x 58

59 Flower Piece.

14 x 16

Courbet, Gustave (1819-1878)

French School

60 Landscape.

$19\frac{1}{2}$ x $23\frac{1}{2}$

61 Ornans; Birthplace of the Artist.

$14\frac{3}{4}$ x 18

*Bequeathed to the Gallery by the late Mr. and Mrs.
George Lothrop Bradley.*

Couture, Thomas (1815-1879)

French School

62 Female Head.

21 x 19

-
-
- Crane, Bruce (1857- —) *American School*
63 November Hill-sides.
32 x 40
- Daubigny, Charles François (1817-1878) *French School*
64 A Hamlet on the Seine, near Vernon.
34 x 58
65 Rocky Precipice and Mountains.
23 x 29
*Bequeathed to the Gallery by the late Mr. and Mrs.
George Lothrop Bradley.*
66 Landscape.
10¼ x 16
*Bequeathed to the Gallery by the late Mr. and Mrs.
George Lothrop Bradley.*
- Davey, Randall (1887- —) *American School*
67 Old Sea Captain.
40 x 32
Gift of Mrs. Robert E. Westcott.
- Davis, Charles H. (1856- —) *American School*
68 The Deepening Shadows.
28 x 45
- De Bock, Théophile (1851-1904) *Dutch School*
69 The Poudon Commons.
32 x 56
- De Braekeleer, Ferdinandus (1792-1883) *Dutch School*
70 The Unhappy Family.
28 x 23
71 The Happy Family.
28 x 23
-

De Camp, Joseph (1858- —) *American School*

72 The Seamstress.

36 x 28

De Haas, Johannes Hubertus Leonardus (1832-1880)

Dutch School

73 Holland Cattle.

14¾ x 22½

*Bequeathed to the Gallery by the late Mr. and Mrs.
George Lothrop Bradley.*

Delacroix, Ferdinand Victor Eugene (1799-1863)

French School

74 An Arab Spy.

29 x 24

*Bequeathed to the Gallery by the late Mr. and Mrs.
George Lothrop Bradley.*

75 Landscape with Figures.

9 x 13

*Bequeathed to the Gallery by the late Mr. and Mrs.
George Lothrop Bradley.*

De Marne, Jean Louis (1754-1829)

French School

76 Interior.

8½ x 10½

77 Interior.

8½ x 10½

De Neuville, Alphonse Marie (1836-1885) *French School*

78 Champigny (Water Color.)

55 x 79

Desgoffe, Blaise Alexandre

- 79 Souvenirs of the Sixteenth and Seventeenth Centuries.

40 x 36

Detaille, Jean Baptiste Édouard (1848-1912)

French School

- 80 The Passing Regiment.

50 x 50

- 81 General of the First Empire.

32 x 26

Gift of the heirs of the late George E. Lemon.

- 82 French Cuirassiers Bringing in Bavarian Prisoners (Water Color).

17 x 22

Dewey, Charles Melville (1849- —) *American School*

- 83 Edge of the Forest.

36 x 50

Dewing, Thomas Wilmer (1851- —) *American School*

- 84 Lady with a Mask.

22 x 24

Diaz De La Peña, Narcisse Virgilio (1808-1876)

French School

- 85 The Approaching Storm.

33 x 42

- 86 Broken Ground Near the Village.

23 x 28½

*Bequeathed to the Gallery by the late Mr. and Mrs.
George Lothrop Bradley.*

Dickinson, Sidney Edward (1890- —) *American School*

- 87 Portrait of the Artist.

33 x 24

Dodson, Sarah Paxton Ball (1847-1906) *American School*

88 Deborah.

59 x 48

Dougherty, Paul (1877- —) *American School*

89 The Land and the Sea.

36 x 48

Doughty, Thomas (1793-1856) *American School*

90 Landscape.

7 x 15

91 Tintern Abbey.

29 x 36

Gift of William Church Osborn, Esquire.

92 Welsh Scenery.

29 x 36

Gift of William Church Osborn, Esquire.

93 Autumn Scene on the Hudson.

34 x 48

Dupré, Jules (1811-1889) *French School*

94 The Pond of the Great Oak.

37 x 30

95 Old Cottages Reflected in Water.

13 x 18

*Bequeathed to the Gallery by the late Mr. and Mrs.
George Lothrop Bradley.*

96 Moonlight by the Sea.

32 x 39½

*Bequeathed to the Gallery by the late Mr. and Mrs.
George Lothrop Bradley.*

-
-
- Durand, Asher Brown (1796-1886) *American School*
97 Edge of the Forest.
78 x 63
- Dyer, H. Anthony (1872- —) *American School*
98 The Road that Leads Them Home (Water Color.)
30 x 22
- Eakins, Thomas (1844-1916) *American School*
99 The Pathetic Song.
45 x 32½
- Eastman, Seth (1808-1875) *American School*
100 Lacrosse Playing Among Sioux Indians.
28 x 40½
- Elder, John A. (1833-1895) *American School*
101 General Robert Edward Lee.
54 x 40
102 General T. J. Jackson.
55 x 40
- Elliott, Charles Loring (1812-1868) *American School*
103 Portrait of Mr. Corcoran (The Founder of The
Corcoran Gallery of Art. Born Dec. 27, 1798;
Died, Feb. 24, 1888.)
98 x 68
104 Colonel Thomas L. McKenney.
30 x 25
Bequeathed to the Gallery by the late James C. McGuire.
105 James C. McGuire.
30 x 25
Bequeathed to the Gallery by the late James C. McGuire.
-

106 William Cullen Bryant.

24 x 20

Bequeathed to the Gallery by the late James C. McGuire.

107 Horatio Stone.

24 x 20

Gift of Samuel P. Avery, Esquire.

108 Asher Brown Durand.

22 x 27

Faed, John (1820-1902)

English School

109 Shakespeare and His Contemporaries.

53 x 67

Farley, Richard Blossom (1875—)

American School

110 Fog (Awarded the Fourth William A. Clark Prize, of \$500, accompanied by the Corcoran Honorable Mention Certificate, The Corcoran Gallery of Art, 1914).

40 x 58

Foster, Ben (1852- —)

American School

111 Sunset in the Litchfield Hills.

30 x 36

112 Late Autumn Moonrise.

42 x 48

Frère, Pierre Édouard (1819-1886)

French School

113 Preparing for Church.

22 x 19

Frieseke, Frederick Carl (1874- —)

American School

114 Lady in Pink.

32 x 32

-
-
- Fuller, George (1822-1884) *American School*
115 Lorette.
50 x 30
- Garber, Daniel (1880- —) *American School*
116 April Landscape (Awarded the Fourth William A. Clark Prize, of \$500, accompanied by the Corcoran Honorable Mention Certificate, The Corcoran Gallery of Art, 1911.)
42 x 46
- Géricault, Jean Louis André Théodore (1791-1824) *French School*
117 Study of a Torso.
20 x 15
Gift of Julius Oehme, Esquire.
- Gérômé, Jean Léon (1824-1904) *French School*
118 Cæsar Dead.
86 x 124
- Gifford, Robert Swain (1840-1905) *American School*
119 October on Massachusetts Coast.
11 x 21
Gift of A. J. Parsons, Esquire.
- Gifford, Sanford R. (1823-1880) *American School*
120 Ruins of the Parthenon.
27 x 53
- Gray, Henry Peters (1819-1877) *American School*
121 The Judgment of Paris.
50 x 40
-

Grayson, Clifford Prevost (1859- —) *American School*

122 Mid-Day Dreams.

49 x 35

Awarded to The Corcoran Gallery of Art in the
Competitive Exhibition by the American Art
Association, New York, 1886.

Groll, Albert L. (1868- —) *American School*

123 No Man's Land, Arizona.

40 x 51

Gutherz, Carl (1844-1907) *American School*

124 Susan B. Anthony.

24 x 20

Gift of Mrs. John B. Henderson.

Hale, Philip L. (1865- —) *American School*

125 Portrait (Girl with Muff).

30 x 25

Harding, Chester (1792-1866) *American School*

126 John Randolph, of Roanoke.

30 x 25

Harrison, Lovell Birge (1854- —) *American School*

127 Rose and Silver Moonrise.

30 x 40

Harrison, Thomas Alexander (1853- —) *American School*

128 Twilight.

34 x 71

-
- Hart, James McDougal (1828-1901) *American School*
129 The Drove at the Ford.
54 x 38
- Hassam, Childe (1859- —) *American School*
130 Northeast Headlands—New England Coast.
25 x 30
131 The New York Window (Awarded the First William A. Clark Prize, of \$2,000, accompanied by the Corcoran Gold Medal, The Corcoran Gallery of Art, 1912.)
45½ x 35
- Hawthorne, Charles W. (1872- —) *American School*
132 A Fisherman's Wife.
50 x 40
- Hayden, Charles H. (1856-1901) *American School*
133 The Poplars, Chatham, Massachusetts.
36 x 46
Gift of the heirs of the artist.
- Hays, William Jacob (1830-1875) *American School*
134 Head of Bull-Dog.
13 x 15
- Healy, G. P. A. (1813-1894) *American School*
135 Justin S. Morrill, of Vermont.
30 x 25
136 George Peabody.
30 x 25
-

- Heilbuth, Ferdinand (1826-1889) *French School*
 137 On the Pincian Hill, Rome.
 (Cardinal Questioning Acolytes.)
 34 x 55
- Helmick, Howard (1845-1907) *American School*
 138 The Emigrant's Letter.
 20 x 16
- Hemmick, Alice *American School*
 139 Bertha (Pastel).
 24 x 20
Gift of the artist.
- Henner, Jean Jacques (1829-1905) *French School*
 140 Joan of Arc, in Infancy.
 21 x 17½
- Henri, Robert (1865- —) *American School*
 141 Willie Gee.
 32 x 26
- Henry, Edward Lamson (1841-1919) *American School*
 142 The Old Westover Mansion.
 11 x 14
Gift of a friend.
- Hildebrandt, Eduard (1817-1868) *German School*
 143 Moonrise in Madeira.
 36 x 48
- Holmes, William H. (1846- —) *American School*
 144 Midsummer (Water Color).
 18½ x 25

-
-
- Homer, Winslow (1836-1910) *American School*
145 A Light on the Sea.
28 x 48
146 The Hudson River—Logging. (Water Color).
14 x 21
- Howell, Felicie Waldo (1897- —) *American School*
147 A New England Street.
30 x 40
- Hubard, William J. (1807-1862) *American School*
148 John C. Calhoun.
19 x 14½
- Huntingdon, Daniel (1816-1906) *American School*
149 Mercy's Dream.
89 x 69
150 Joseph Henry.
30 x 25
Bequeathed to the Gallery by the late James C. McGuire.
- Inman, Henry (1801-1846) *American School*
151 Henry Clay.
27 x 22
- Inness, George (1825-1894) *American School*
152 Sunset in the Woods.
48 x 72
153 Landscape.
18 x 26
-

Irwin, Benoni (1840-1896) *American School*

154 Portrait of Edmund C. Messer (Principal The
Corcoran School of Art, 1902-1918).

30 x 25

Gift of Mrs. Messer.

Isabey, Eugène Louis Gabriel (1804-1886)

French School

155 The Wedding Festival.

25 x 21

Isham, Samuel (1855-1914)

American School

156 Butterflies.

23 x 29

Presented by the estate of the artist in accordance with his wish.

Israels, Jozef (1824-1911)

Dutch School

157 Interior of a cottage.

44 x 66

Jackson, John (1778-1831)

English School

158 Portrait.

30 x 25

Gift of the late Samuel H. Kauffmann.

Japy, Louis Aimé (1830-1916)

French School

159 Spring Landscape.

40 x 63

160 Twilight.

40 x 63

-
- Jeannin, Georges *French School*
 161 Vase of Flowers.
 33 x 25
- Johnson, Eastman (1824-1906) *American School*
 162 Girl and Pets.
 24 x 28
- Jones, Hugh Bolton (1848- —) *American School*
 163 Springtime.
 36 x 64
- Jongkind, Johan Barthold (1822) *Belgian School*
 164 Moonlight—Coast Scene.
 13 x 16
*Bequeathed to the Gallery by the late Mr. and Mrs.
 George Lothrop Bradley.*
- Kaemmerer, Frederick Hendrik (1839-1892) *French School*
 165 Beach at Scheveningen, Holland.
 28 x 55
- Keith, William (1839-1911) *American School*
 166 By the Creek, Sonoma.
 40 x 50
 167 Irving M. Scott.
 30 x 25
Gift of the family of Irving M. Scott.
- Kendall, William Sergeant (1869- —) *American School*
 168 Narcissa.
 51 x 31
-

Kensett, John Frederick (1818-1872) *American School*

169 Sketch of Mount Washington.

11½ x 20

170 Autumn Afternoon on Lake George.

48 x 72

171 High Bank, Genesee River.

31 x 48

King, Charles B. (1785-1862) *American School*

172 John C. Calhoun (When Secretary of War).

30 x 24

Knaus, Ludwig (1829-1910) *German School*

173 The Forester at Home.

40 x 56

Lawson, Ernest (1873- —) *American School*

174 Boat-House, Winter, Harlem River (Awarded the Second William A. Clark Prize, of \$1,500, accompanied by the Corcoran Silver Medal, The Corcoran Gallery of Art, 1916).

40 x 50

Le Clear, Thomas (1818-1882) *American School*

175 William Page.

24 x 20

Lenbach, Franz (1836-1904) *German School*

176 Otto Fuerst Von Bismarck.

48 x 40

-
- Leroux, Hector (1829-1900) *French School*
177 The Vestal Tuccia. (Awarded a Second-Class Gold Medal at the Paris Exposition of 1874).
53 x 99
- Leutze, Emanuel (1816-1868) *American School*
178 The Amazon and Her Children.
41 x 62
179 Cromwell and Milton.
60 x 84
- Lever, Hayley (1876- —) *American School*
180 Dawn.
50 x 60
- L'hermitte, Léon Augustin (1844- —) *French School*
181 La Famille.
101 x 137
- Linder (or Linderen) Franz (1738-1809) *German School*
182 Woman in Black.
8½ x 6
Bequeathed by the late Mrs. Amelia B. Lazarus.
183 The Butterfly.
20 x 13½
Gift of Ralph Cross Johnson, Esquire.
- Lockwood, Wilton (1862-1914) *American School*
184 Peonies.
30 x 29
-

- Loir, Luigi (Contemporary) *French School*
 185 Effect of Snow.
 22 x 30
- Loiseau, Gustave (1865- —) *French School*
 186 The Inundation.
 20 x 24
Gift of Messrs. Durand-Ruel and Sons.
- Loustaunau, Louis Auguste Georges (1846-1898) *French School*
 187 Monk Fishing.
 36 x 29
- McEntee, Jervis (1828-1890) *American School*
 188 Eastern Sky at Sunset.
 24 x 20½
- MacCameron, Robert Lee (1866-1912) *American School*
 189 Groupe D'Amis.
 51 x 65
- Maccari, Cesare (1840- —) *Italian School*
 190 The Fortune-Teller.
 12 x 16
- MacEwen, Walter (1860- —) *American School*
 191 An Ancestor.
 75 x 33
- Malbone, Edward G. (1777-1807) *American School*
 192 Portrait of the Artist.
 27 x 22

Mayer, Frank Blackwell (1827-1899) *American School*

193 Leisure and Labor.

15½ x 23½

Melchers, Gari (1860- —) *American School*

194 Penelope (Awarded Second William A. Clark Prize, of \$1,500, accompanied by the Corcoran Silver Medal, The Corcoran Gallery of Art, 1910).

53 x 50

195 Maternity.

63 x 43

Mengs, Anton Raphael (1728-1779) *German School*

196 Adoration of the Shepherds.

104 x 60

Menpes, Mortimer *English School*

197 A Venetian Balcony.

9 x 11

Gift of the heirs of the estate of the late George E. Lemon.

198 The Vista.

4½ x 3½

Gift of the heirs of the estate of the late George E. Lemon.

Messer, Edmund Clarence (1842-1919) *American School*

199 January.

30 x 38

Metcalf, Willard L. (1858- —) *American School*

200 May Night (Awarded the First William A. Clark Prize, of \$1,000, accompanied by the Corcoran Gold Medal, The Corcoran Gallery of Art, 1907).

39 x 36

- Mettling, Louis (1847-1894) *French School*
 201 Study Head of a Young Man.
 30 x 21
Gift of Ralph Cross Johnson, Esquire.
- Michel, Georges (1763-1843) *French School*
 202 Landscape—Twilight.
 16¼ x 21
*Bequeathed to the Gallery by the late Mr. and Mrs.
 George Lothrop Bradley.*
- Miller, Eleazer Hutchinson (1831- —) *American School*
 203 Moonrise and Twilight.
 16 x 20 (Water Color).
- Miller, Richard E. (1875- —) *American School*
 204 The Boudoir.
 36 x 29
- Minor, Robert C. (1840-1904) *American School*
 205 Eventide.
 22 x 30
- Moeller, Louis Charles (1855- —) *American School*
 206 Disagreement.
 24 x 34
- Monticelli, Adolphe (1824-1886) *French School*
 207 Landscape.
 18 x 25

-
-
- Moretti, Antonio *Italian School*
208 Piazza of St. Peter's, Rome.
22 x 64
209 Rome From the Forum.
22 x 64
- Morland, George (1763-1804) *English School*
210 The Warrener (Formerly entitled "The Farm
House").
35 x 44
- Morot, Aimé Nicholas (1850- —) *French School*
211 El Bravo Toro.
58 x 32
- Morse, Samuel Finley Breese (1791-1872) *American School*
212 The Old House of Representatives.
85 x 130
- Moser, James Henry (1854-1913) *American School*
213 Winter Sunshine. (Water Color).
12 x 20
214 The Mountain Road. (Water Color).
15 x 21
215 In the Cornwall Hills. (Water Color).
30 x 40
- Mosler, Henry (1841-1920) *American School*
216 Saying Grace.
39 x 51
Gift of Victor G. Fischer, Esquire.
-

-
- Motte, Henri Paul (Contemporary) *French School*
 217 The Trojan Horse.
 38 x 58
- Mount, William Sidney (1807-1868) *American School*
 218 The Long Story.
 17 x 22
- Müller, Charles Louis (1815-1892) *French School*
 219 Charlotte Corday in Prison.
 41 x 33
- Murphy, J. Francis (1853- —) *American School*
 220 October.
 32 x 50
- Neagle, John (1799-1865) *American School*
 221 Col. Richard M. Johnson.
 30 x 25
Gift of Mrs. Benjamin Ogle Tayloe.
- Neubert, Louis (1846-1892) *German School*
 222 An Old Castle in Bavaria.
 30 x 54
Gift of Ralph Cross Johnson, Esquire.
- Nicol, Erskine (1825-1904) *Scotch School*
 223 Paddy's Mark.
 24 x 33
- Ochtman, Leonard (1854- —) *American School*
 224 November Morning.
 30 x 40
-

-
- Paris, Walter (1842-1906) *American School*
 225 The Great Blizzard of 1899.
 18 x 29
Bequeathed by the artist.
- Pauwels, Ferdinand (1830-1898) *Dutch School*
 226 Justice to Levin Pyn.
 45 x 72
- Paxton, William McGregor (1869- —) *American School*
 227 The House Maid.
 30 x 25
- Peale, James (1749-1831) *American School*
 228 Miniature of Mrs. General John P. Van Ness (née Marcia Burns).
Gift of Mrs. Philip Hinckle, of Cincinnati.
 The water-color painting of the Burns Cottage, framed with this miniature, was painted by Walter Paris, in 1892.
- Peale, Rembrandt (1778-1860) *American School*
 229 Washington Before Yorktown.
 139 x 121
Lent by the Mount Vernon Ladies' Association.
- 230 Jacques Henri Barnardin de Saint Pierre.
 28 x 23
Gift of George W. Riggs, Esquire.
- 231 M. Lasteyrie.
 29 x 24
-

- Peretti, B. *Italian School*
 232 Autumnal Corn and Grapes.
 21 x 17
- Perrie, Bertha E. *American School*
 233 In Gloucester Harbor.
 20 x 24
- Phillips, J. Campbell (1873- —) *American School*
 234 The First Born.
 35 x 29
- Piazzetta, Giovanni Battista (1682-1754) *Venetian School*
 235 Two Heads.
 23 x 18
Bequeathed by the late Mrs. Amelia B. Lazarus.
- Picknell, William Lamb (1853-1897) *American School*
 236 The Road to Concarneau.
 40 x 80
 237 En Provence.
 56 x 79
Bequeathed by the late Mrs. Gertrude Picknell Flagg.
- Platt, Charles Adams (1861- —) *American School*
 238 Cornish Landscape.
 26 x 33
- Portaels, Jean François (1818-1895) *Belgian School*
 239 The Drought in Egypt.
 88 x 110

-
-
- Porter, Benjamin Curtis (1845-1908) *American School*
240 Lady and Dog.
50 x 30
- Powell, Lucien Whiting (1846- —) *American School*
241 The Afterglow, Grand Canyon, Arizona. (Water
Color).
20 x 30
- Preyer, Johann Wilhelm (1803-1889) *Düsseldorf School*
242 Fruit.
22 x 20
- Priou, Louis (1845- —) *French School*
243 A Family of Satyrs.
78 x 86
- Ranger, Henry Ward (1858-1916) *American School*
244 The Top of the Hill.
28 x 37
- Ranney, William (1813-1857) *American School*
245 Duck-Shooting.
30 x 40
- Ravier, François Auguste (1814-1895) *French School*
246 Environs de Morestel. (Water Color).
10 x 13
Gift of Frank S. Lahm, Esquire.
247 Environs de Cremieu. (Water Color).
10 x 13
Gift of Frank S. Lahm, Esquire.
-

- Rebouet, Alboj (1841-1875) *French School*
 248 Night.
 82 x 52
- Redfield, Edward W. (1868- —) *American School*
 249 The Delaware River. (Awarded the Webb Prize,
 Society of American Artists, 1906).
 36 x 50
 250 Sleighing.
 31 x 40
- Rehn, Frank K. M. (1848-1914) *American School*
 251 In the Glittering Moonlight.
 30 x 50
Gift of Charles E. Foster, Esquire.
- Reid, Robert (1862- —) *American School*
 252 The Open Fire. (Awarded the Third William A.
 Clark Prize, accompanied by the Corcoran Bronze
 Medal, The Corcoran Gallery of Art, 1908).
 44 x 43
 253 The Japanese Screen.
 37 x 30
- Reiffel, Charles (1862- —) *American School*
 254 Railway Yards—Winter Evening.
 19 x 24

-
- Reinhart, Charles Stanley (1844-1896) *American School*
255 Washed Ashore.
77 x 117
Gift of the heirs of the artist.
- Renouf, Émile (1845-1894) *French School*
256 The Helping Hand.
60 x 86
- Richards, William Trost (1833-1905) *American School*
257 On the Coast of New Jersey.
39 x 72
258 On the Coast of New England.
27 x 47
Gift of the heirs of the estate of the late George E. Lemon.
259 Baldart Castle, Kilkee, County Clare, Ireland.
15 x 24 (Water Color).
Gift of the heirs of the estate of the late George E. Lemon.
- Rico, Martin (1850-1908) *Spanish School*
260 The Banks of the Adige.
18 x 31
- Rix, Julian (1850-1903) *American School*
261 Pompton Plains, New Jersey.
30 x 50
- Robbe, Louis (1806-1887) *Belgian School*
262 Landscape and Cattle.
34½ x 49
-

Robinson, Theodore (1852-1896) *American School*

263 Valley of the Seine From Giverny Heights.

26 x 32

264 Girl Sewing.

58 x 36

Rolfe, Henry Leonidas

English School

265 Fish.

27 x 43

Gift of George P. Rowell, Esquire.

Rook, Edward Francis (1870- —)

American School

266 Peonies. (Awarded the Third William A. Clark Prize, of \$1,000, accompanied by the Corcoran Bronze Medal, The Corcoran Gallery of Art, 1919).

30 x 36

Rossiter, Thomas P. (1818-1871)

American School

267 Rebecca at the Well.

39 x 32

Rousseau, Pierre Étienne Théodore (1812-1867)

French School (Barbizon)

268 Landscape.

13 x 20

Bequeathed by the late Mrs. Amelia B. Lazarus.

Ryder, Chauncey Foster (1868- —)

American School

269 Cape Porpoise.

32 x 40

-
- Saint-Jean, Simon (1808-1860) *French School*
 270 Fruit.
 20 x 26
- Saint-Pierre, Gaston Casimir (1833- —) *French School*
 271 Nedjma-Odalisque.
 43 x 61
- Salmsom, Hugh Frederick (1843-1894) *Swedish School*
 272 The Fête of St. John in Dalecarlia, Sweden.
 52 x 79
- Sargent, John Singer (1856- —) *American School*
 273 The Oyster Gatherers of Cancale.
 31 x 48
- Sartain, William (1843- —) *American School*
 274 Street in Dinan, Brittany.
 18 x 13½
Gift of John Elderkin, Esquire.
- Schaeffer, August (1833- —) *Austrian School*
 275 Sunset in Hungarian Forest.
 42 x 61
Gift of Edward Lind Morse, Esquire.
- Scheffer, Ary (1797-1858) *French School*
 276 Count Eberhard of Wurtemberg (The Weeper).
 65 x 88
 277 Portrait of Commodore Charles Morris.
 26 x 22
Gift of the heirs of Mrs. Morris.
 (This donation also includes the autograph letter
 addressed by General Lafayette to Mrs. Morris,
 under date of Paris, January 26, 1826).
-

- Schofield, Walter Elmer (1867- —) *American School*
 278 Morning After Snow.
 38 x 48
- Schreyer, Adolphe (1828-1899) *German School*
 279 The Watering-Place.
 41 x 68
- Shannon, James Jebusa (1862- —) *American School*
 280 Girl in Brown.
 42 x 33
- Shurtleff, Roswell Morse (1838-1915) *American School*
 281 The First Snow.
 30 x 40
- Smillie, George Henry (1840- —) *American School*
 282 A Long Island Farm.
 19 x 33
 283 Autumn on Massachusetts Coast.
 25 x 50
Gift of Ralph Cross Johnson, Esquire.
- Smillie, James David (1833-1909) *American School*
 284 The Cliffs of Normandy.
 40 x 66
- Smith, Francis Hopkinson (1838-1915) *American School*
 285 Surenes on the Seine.
 13½ x 23
 286 Fading Day. (Water Color).
 28 x 19
Gift of the artist.

-
- Smith, Joseph Lindon (1863- —) *American School*
287 An Antique Statue. (Water Color).
33 x 13
Gift of A. J. Parsons, Esquire.
- Sonntag, William Louis (1822-1900) *American School*
288 Classic Italian Landscape, with Temple of Venus.
36 x 60
*Presented in memory of Orson D. Munn, by Messrs.
Charles A. Munn and Victor G. Fischer.*
- Spencer, Robert (1879- —) *American School*
289 The Red Boat.
30 x 36
- Steelink, Willem (1856- —) *Dutch School*
290 Sheep Coming from Forest. (Water Color).
15 x 25
- Stetson, Charles Walter (1858-1911) *American School*
291 A Galley Is Leaving.
20 x 24
292 Library Frieze, XIV Century, Chaucer and Dante.
12 x 48½
Gift of the widow and daughter of the artist.
- Stuart, Gilbert (1755-1828) *American School*
293 George Washington.
29 x 24
Gift of Mrs. Benjamin Ogle Tayloe.
-

- 294 Chief Justice Edward Shippen, of Pennsylvania.
29 x 24
- 295 Colonel Samuel Miles.
29 x 24
Gift of Miss Elizabeth F. McKean.
- Sully, Robert M. (1803-1855) *American School*
- 296 Chief Justice John Marshall.
36 x 28
- Sully, Thomas (1783-1872) *American School*
- 297 Andrew Jackson.
97 x 60
- 298 Portrait of the Artist.
30 x 25
- 299 James Madison.
27 x 20
Gift of Frederick E. Church, Esquire.
- 300 Ideal Female Head.
30 x 25
- Symons, George Gardiner (1863- —) *American School*
- 301 Where Long Shadows Lie.
50 x 60
- Tarbell, Edmund Charles (1862- —) *American School*
- 302 Josephine and Mercie.
28 x 32
- 303 Portrait of Charles C. Glover, Esquire (President
of The Corcoran Gallery of Art, 1906- —).
33 x 38
-

-
- Thayer, Abbott Handerson (1849- —) *American School*
304 Study Head of a Young Girl.
16 x 13
Gift of Victor G. Fischer, Esquire.
- Thorne, William (1864- —) *American School*
305 The Terrace.
41 x 27
- Tilton, John Rollin (1828-1888) *American School*
306 Venetian Fishing Boats.
30 x 49
- Tom, Jan Bédys (1813- —) *Dutch School*
307 Cattle.
10 x 14½
Bequeathed by the late Mrs. Amelia B. Lazarus.
- Troyon, Constant (1810-1865) *French School*
308 The Drinking Place.
27 x 35
- Truesdell, Gaylord Sangston (1850-1899) *American School*
309 Going to Pasture.
77 x 102
- Tryon, Dwight William (1849- —) *American School*
310 The End of Day.
31 x 46
-

- Turner, Helen M. (Contemporary) *American School*
 311 Girl with a Lantern.
 44 x 34
- Twachtman, John H. (1853-1902) *American School*
 312 The Waterfall.
 30 x 22
- Ulrich, Charles Frederic (1858-1908) *American School*
 313 In the Land of Promise (Castle Garden).
 29 x 36
- Vail, Eugene (1857- —) *American School*
 314 Ready About.
 94 x 125
- Vanderlyn, John (1776-1852) *American School*
 315 President Zachary Taylor.
 29 x 24
- Van Marcke, Émile (1827-1890) *French School*
 316 Landscape With Cattle.
 24 x 30
- 317 Cows in Meadow.
 23 x 33
Gift of the heirs of the late George E. Lemon.
- 318 The Pasture.
 29 x 26
Bequeathed by the late Mrs. Amelia B. Lazarus.

-
- Vely, Anatole (1838-1882) *French School*
 319 The Talking Well.
 72 x 39
- Venneman, Charles Ferdinand (1803-1875) *Flemish School*
 320 The Village Doctor.
 19 x 23
- Vibert, Jean Georges (1840-1902) *French School*
 321 The Schism.
 15 x 21
- Volk, Douglas (1856- —) *American School*
 322 Accused of Witchcraft.
 40 x 50
- Von Thoren, Otto (1828-1889) *German School*
 323 Lost Dogs.
 58 x 48
- Waldo, Samuel (1783-1861) *American School*
 324 George Washington Parke Curtis, of Arlington,
 Virginia.
 36 x 29
- Walker, Horatio (1858- —) *American School*
 325 Ave Maria.
 46 x 34
- Warner, Everett Longley (1877- —) *American School*
 326 Broadway on a Rainy Evening.
 18 x 24 (Water Color).
-

- Weber, Paul (1823- —) *German School*
 327 Scene in the Catskills.
 21 x 17
- Weeks, Edwin Lord (1849-1903) *American School*
 328 Departure for the Hunt, India.
 36 x 50
- Weir, Julian Alden (1852-1919) *American School*
 329 Autumn.
 36 x 29
 330 Portrait of Miss de L. (Awarded the First William
 A. Clark Prize, of \$2,000, accompanied by the
 Corcoran Gold Medal, The Corcoran Gallery of
 Art, 1916).
 30 x 25
- West, Benjamin (1738-1820) *American School*
 331 Cupid and Psyche.
 53 x 56
- Weyl, Max (1837-1914) *American School*
 332 Lover's Lane.
 25 x 32
 333 Approaching Night.
 18 x 24
 334 Forest in the Sapphire Country, North Carolina.
 42 x 52
Gift of Emil Berliner, Esquire.
- Whittredge, Worthington (1820-1910) *American School*
 335 Trout Brook in the Catskills.
 35 x 48

-
-
- Wiles, Irving Ramsey (1861- —) *American School*
336 The Student.
30 x 25
- Woodbury, Charles H. (1864- —) *American School*
337 Monadnock.
36 x 48
- Wright, Joseph (1756-1793) *American School*
338 Benjamin Franklin.
30 x 25
- Wyant, Alexander H. (1836-1892) *American School*
339 Landscape.
36 x 59
- Wylie, Robert (1839-1877) *American School*
340 A Fortune Teller of Brittany.
32 x 48
- Young, Charles Morris (1869- —) *American School*
341 The North Wind.
30 x 40
- Ziem, Felix (1821-1911) *French School*
342 Constantinople, From the Golden Horn.
32 x 50
343 Street in Cairo.
26 x 14

Gift of the heirs of the estate of the late George E. Lemon.

SCULPTURES

CASTS FROM THE ANTIQUE SCULPTURE

The Parthenon

Frieze

- 1001 Zeus.
- 1002 Hera.
- 1003 Iris.
- 1004 Ares.
- 1005 Artemis.
- 1006 Apollo.
- 1007 Hermes.
- 1008 Athene.
- 1009 Hephaistos.

Western Pediment

- 1010 River God, Kephissos.

Original Elgin Marble (440 B. C.), British Museum.

H. 2 ft. 8 in.

Eastern Pediment

The original Elgin Marbles of the following ten casts are in the British Museum.

- 1011 Helios with His Horses.

- 1012 Olympus, commonly called Theseus.

H. 4 ft. 2¾ in.

-
-
- 1013 Two Horæ, commonly called Ceres (or Demeter) and Proserpina (or Persephone).
H. 4 ft. 9 in.
- 1014 Iris.
H. 5 ft. 3 in.
- 1015 Hestia.
H. 4 ft. 7 in.
- 1016 Thalassa and Gaia, commonly called Two of the Three Fates.
H. 4 ft. 11 in.
- 1017 Head of One of the Horses of Selene.
H. 2 ft. 6 in.
- 1017A Eight Slabs of the Metopes of the Parthenon.
From the Original Marbles in the British Museum.
- 1018 The Discobolos (Quoit-thrower).
Original Bronze, in the British Museum.
H. 5 ft. 5½ in.
- 1019 Discobolos.
Original Marble, in the Vatican.
H. 5 ft. 5¾ in.
- 1020 Venus of Melos.
Original Marble, in the Louvre.
H. 6 ft. 8 in.
- 1021 Venus de Medici.
Original Marble, in Florence.
H. 5 ft.

Gift of the late James C. McGuire.

- 1022 Venus of the Capitol.
Original Marble, in the Capitoline Museum, Rome.
H. 5 ft. 11 in.
- 1023 Sleeping Ariadne.
Original Marble, in the Vatican.
H. 5 ft. 3½ in.
- 1024 Euterpe.
Original Marble, in the Louvre.
H. 4 ft. 6 in.
- 1025 Diana di Gabii.
Original Marble, in the Louvre.
H. 6 ft. 5 in.
- 1027 Abundance, or Plenty.
Original Marble, in the Vatican.
H. 6 ft. 11 in.
- 1028 Minerva.
Original Marble, in the Vatican.
H. 7 ft. 3 in.
- 1029 Genius of Eternal Repose.
Original Marble, in the Louvre.
H. 5 ft. 11 in.
- 1030 Germanicus (so-called).
Original Marble, in the Louvre.
H. 5 ft 11 in.
- 1031 Antinous of the Capitol.
Original Marble, in the Capitoline Museum.
H. 5 ft. 10½ in.
-

-
- 1032 The Borghese Warrior.
Original Marble, in the Louvre.
H. 5 ft.
- 1033 Group of Laocoön and His Sons.
Original Marble, in the Vatican.
H. 6 ft.
Date probably B. C. 100.
- 1034 Apoxyomenos.
Marble, in the Vatican.
H. 6 ft. 5½ in.
- 1035 Bust of Nero.
Original Marble, in the Louvre.
H. 1 ft. 11 in.
- 1037 Silenus Holding the Infant Bacchus.
Original Marble, in the Louvre.
H. 6 ft. 4 in.
- 1038 Venus Kallipyge.
Original Marble, in the Naples Museum.
H. 5 ft. 1 in.
- 1039 Boy and Goose.
Original Marble, in the Vatican.
H. 2 ft. 9½ in.
- 1040 Youth Supplicating.
Original Bronze, at Berlin.
H. 4 ft. 2½ in.
- 1041 The Borghese Mars.
Original Marble, in the Louvre.
H. 6 ft. 9 in.
-

- 1042 Hermes of the Belvedere.
Original Marble, in the Vatican.
H. 6 ft. 6 in.
- 1043 Crouching Venus.
Original Marble, in the Vatican.
H. 2 ft. 8¼ in.
- 1044 Venus at the Bath.
Original Marble, in the Louvre.
H. 2 ft. 3 in.
- 1045 Bone-Player.
Original Marble, in the Louvre.
H. 2 ft. ½ in.
- 1046 The Virgin and Child.
Original in the Cathedral, of Paris.
H. 8 ft. 9 in.
- 1047 Julia.
Original Marble, in the Vatican.
H. 4 ft. 5½ in.
- 1048 Demosthenes.
Original Marble, in the Vatican.
H. 6 ft. 5 in.
- 1049 Sophocles.
Original Marble, in the Lateran, Rome.
H. 6 ft. 8½ in.
- 1050 Aristides, or Æschines.
Original Marble, in the Naples Museum.
H. 6 ft. 6 in.
-

-
- 1051 Bust of Socrates.
Original Marble, in the Louvre.
H. 1 ft. 8 in.
- 1053 Bust of Homer.
Original Marble, in the British Museum.
H. 1 ft. 9½ in.
- 1054 Colossal Bust of Jupiter.
Original Marble, in the Vatican.
H. 2 ft. 8½ in.
- 1055 Caryatid.
Original Marble, in the Vatican.
H. 7 ft. 5 in.
- 1056 Polyhymnia.
Original Marble, in the Louvre.
H. 5 ft. 11 in.
- 1057 Apollo Sauroktonos (Lizard-Killer).
Original Marble, in the Louvre.
H. 4 ft. 10½ in.
- 1058 Flora.
Original Marble, in the Capitoline Museum, Rome.
H. 5 ft. 5½ in.
- 1059 Pudicitia.
Original Marble, in the Vatican.
H. 4 ft. 6½ in.
- 1060 Centaur and Cupid.
Original Marble, in the Louvre.
H. 4 ft. 6½ in.
-

- 1061 Daughter of Niobe.
Original Marble, in the Vatican.
H. 5 ft. 6 in.
- 1062 Faun of the Capitol.
Original Marble, in the Capitoline Museum, Rome.
H. 5 ft. 7 in.
- 1063 Faun, with Kid.
Original Marble, at Madrid.
H. 4 ft. 5 in.
- 1064 Faun (à la Tache).
Original Marble, in the Louvre.
H. 1 ft. 10 in.
- 1065 Athlete.
Original Marble, in the Glyptothek, Munich.
H. 4 ft. 9½ in.
- 1066 Dying Galatian.
Original Marble, in the Capitoline Museum, Rome.
H. 1 ft. 11 in.
- 1067 Aphrodite Arranging Her Hair.
Original in the Vatican.
H. 4 ft. 10 in.
- 1068 Mercury in Repose.
Original in the Musuem, Naples.
H. 3 ft. 6 in.
- 1069 Apollo Belvedere.
Original Marble, in the Vatican.
H 7 ft. 1 in.
-

-
- 1070 Colossal Mask of Juno.
From a copy, in marble, in the Villa Ludovisi,
Rome, probably after Alcamenes.
H. 3 ft. 3 in.
- 1071 Meleager.
Original Marble, in the Vatican.
H. 6 ft. 6½ in.
- 1072 Bust of Menelaus, or Ajax.
Original Marble, in the Vatican.
H. 3 ft.
- 1073 Torso or Hercules (the Belvedere Torso).
Original Marble, in the Vatican.
H. 4 ft. 1½ in.
- 1074 Jason.
Original Marble, in the Louvre.
H. 5 ft. 2 in.
- 1075 Bust of Pericles.
Original Marble, in the British Museum.
H. 1 ft. 10½ in.
- 1076 Bust of Periander.
Original Marble, in the British Museum.
H. 1 ft. 7 in.
- 1077 Bust of Julius Cæsar.
Original Marble, in the British Museum.
H. 1 ft. 2 in.
- 1078 The Spinario—Boy Extracting Thorn.
Original Bronze, in the Palazzo dei Conservatori,
Rome.
H. 2 ft. 4½ in.
-

- 1079 Head of Alexander the Great.
Original Marble, in the British Museum,
H. 1 ft. 2½ in.
- 1080 Head of Diogenes.
Original Marble, in the British Museum.
H. 1 ft. 2 in.
- 1081 Bust of Dione.
Original Marble, in the British Museum.
H. 1 ft. 11½ in.
- 1082 Bust of Clytie.
Original Marble, in the British Museum.
H. 2 ft. 2 in.
- 1084 Bust of Trajan.
Original Marble, in the British Museum.
H. 1 ft. 11 in.
- 1085 Bust of Isis.
Original Marble, in the British Museum.
H. 1 ft. 11½ in.
- 1086 The Wrestlers.
Original Marble, in the Uffizi Gallery, Florence.
H. 3 ft.
- 1087 Diana Huntress.
Original Marble, in the Louvre.
H. 6 ft. 6 in.
- 1088 Augustus Cæsar.
Original Marble, in the Louvre.
H. 6 ft. 10 in.
-

-
-
- 1089 Hermes With the Infant Dionysos.
Original Marble, in the Museum at Olympia.
H. 7 ft. 2 in.
- 1090 Bust of Lucius Verus.
Original Marble, in the Louvre.
H. 2 ft. 10 in.
- 1091 Bust of Marcus Aurelius.
Original Marble, in the Villa Borghese.
H. 2 ft. 11½ in.
- 1092 Galatian and His Wife.
Original Marble, in the Villa Ludovisi, Rome.
H. 6 ft. 10 in.
- 1093 Bas-Relief.
From the Original Marble, in the Museo Bourbonico, Naples.
- 1094 Fragment of a Winged Figure.
From the Original Marble, in the Vatican.
- 1095 Etruscan Arm.
Original Bronze, in the Vatican.
L. 4 ft.
- 1097 Bust of Antinous.
Original Marble, in the Louvre.
H. 1 ft. 6 in.
- 1098 Bust of Antonius Pius.
Original Marble, in the Vatican.
H. 1 ft. 4 in.
-

- 1099 Bust of Commodus.
Original Marble, in the British Museum.
H. 1 ft. 4 in.
- 1100 Bust of Caracalla.
Original Marble, in the Louvre.
H. 1 ft. 8 in.
- 1101 Bust of Vitellius.
Original Marble, in the Louvre.
- 1102 Head of Apollo.
Original Marble, in the British Museum.
H. 1 ft. 6½ in.
- 1104 Slab from the Frieze of the Parthenon.
From the Original (Elgin) Marble, British
Museum.
- 1105 Fragment—A Mask.
Original Marble, in the Vatican.
- 1106 Fragment—A Hunter.
Original Marble, in the Vatican.
- 1107 Fragment—A Walking Figure.
Original Marble, in the Vatican.
- 1108 Fragment—Frieze of Trajan's Forum, Rome.
Original Marble, in the Vatican.
- 1109 Bust of the Crowned Augustus (Cæsar).
Original Marble, in the Louvre.
H. 2 ft.
-

-
-
- 1110 Bust of the Young Augustus (Cæsar).
Original Marble, in the Vatican.
H. 1 ft. 5½ in.
- 1111 Bust of Scipio Africanus.
Original Marble, in the Vatican.
H. 2 ft. 1 in.
- 1114 Head of Seneca.
Original Marble, in the Louvre.
H. 1 ft. 1 in.
- 1115 Bust of Euripides.
Original Marble, in the Vatican.
H. 1 ft. 9½ in.
- 1116 Bust of Ariadne (Often called The Young Bacchus).
Original Marble, Capitoline Museum, Rome.
H. 2 ft. 10 in.
- 1117 Bust of Antinous as Bacchus.
Original Marble, in the British Museum.
H. 2 ft.
- 1118 Cast of a Small Model of the Ruins of the Acropolis
at Athens.
- 1119 Niké from Samothrake.
Original Parian Marble, in the Louvre.
H. 8 ft. 8 in.
- 1120 Poseidippos.
Pentelic Marble (Seated Statue, in the Vatican).
H. 4 ft. 5½ in.
-

- 1121 Menander.
Pentelic Marble (Seated Statue, in the Vatican).
H. 5 ft.
- 1122 Boxer Resting.
Original Bronze, in the collection of the National
Government in the Baths of Diocletian, Rome.
H. 4 ft. 3 in.
- 1123 Three Slabs in Relief.
From the Original in Marble, in the National
Museum, Athens.
- 1124 Photograph of the Ruins of the Parthenon at
Athens, giving a view of the East Pediment,
from which was taken the statues represented
by the casts on the two large pedestals.
- 1125 Photograph of the Acropolis, from the Stadium
Hill.
- 1126 Photograph of the Acropolis, from the Hill of the
Nymphs.
- 1127 Reduced copy of Niké from Samothrake, including
original pedestal (See No. 1119).
- 1128 Satyr Playing the Scabellum (Dancing Faun).
Original Marble, in the Gallery of the Uffizi,
Florence.
H. 4 ft. 10¼ in.
- 1129 Anakreon, the Lyric Poet of Teos.
Original Marble, in the Villa Borghese, Rome.
H. 5 ft. 7 in.
-

-
- 1130 Mars and Cupid.
Original Marble, in the Villa Ludovisi, Rome.
H. 5 ft. 4 in.
- 1131 Triton (Mezza).
Original in the Vatican.
H. 3 ft. 6 in.
- 1132 Merope and Aepytus (Orestes and Electra).
Original Marble, in the Villa Ludovisi, Rome.
H. 6 ft. 9 in.
- 1133 L'Arrotino, Barbarian Executioner Whetting His
Knife for the Flaying of Marsyas.
Original Marble in the Gallery of the Uffizi,
Florence.
H. 3 ft. 7 in.
- 1134 Throne of the Temple of Venus, Representing The
Birth of Venus.
Original Marble, in the National Museum,
Rome.
H. 2 ft. 11 in.
- 1135 Alexander Sarcophagus (so-called).
Original Pentelic Marble, in the Imperial
Museum, Constantinople.
H. 3 ft. 4 in.
Copied from the original by Joseph Linden
Smith.
-

SCULPTURES

CASTS FROM THE RENAISSANCE

(Date: Commencement of the 15th Century)

Lorenzo di Cione Ghiberti (1378-1455)

1300 Cast from the East Bronze Gate of the Baptistry
at Florence.

H. 18 ft. 2 in.

1300A Sacrifice of Isaac.

H. 17 in.

Jean Goujon (1530-1572)

1301, 1302, 1303, 1304, 1305, 1306, 1307, 1308, 1309.

Group of Nine Bas-Reliefs of Nymphs of the
Fountain of Innocents.

From the Original Marbles, in the Louvre.

(Two of these bas-reliefs inserted in the
wall at head of main stairway).

1310 Bas-Reliefs of the Four Evangelists.

Original Marble, in the Louvre, from the
Roodloft of St. Germain l'Auxerrois.

1311, 1312, 1313, 1314.

Bas-Reliefs of Sea-Nymphs.

Original Marbles, in the Louvre, formerly in
the Port St. Antoine.

1315 Bas-Relief From the Tomb of Cardinal and Chan-
cellor Duprat.

Original Marble, in the Louvre.

Francois Anguier (1604-1669)

- 1316 Bas-Relief of History Recording the Works of
President J. A. DuThou, Counsellor and His-
torian.

Original Bronze, in the Louvre.

Jacquet

- 1317 Bas-Relief of Victory.

Original in the Louvre.

Gio, or Gian, Bologna (John of Bologna) (1524-1608)

- 1318 Flying Mercury.

Original Bronze, in the National Gallery,
Florence. Executed about 1560.

H. 5 ft. 1 in.

Donato di Betto Bardi (Donatello)

(*Contemporary with Ghiberti; died 1468*)

- 1319 David with Head of Goliath.

Original Bronze, in the National Gallery,
Florence.

H. 5 ft. 1 in.

Germain Pilon (1520-1590, both dates approximate)

- 1320 The Three Graces, or Charities.

Original Marble, in the Louvre. 1560.

H. 6 ft. 6 in.

Michael Angelo Buonarroti (1475-1564)

- 1321 Colossal Bust of David.

From Original Marble Statue, in Florence.

H. 2 ft. 10 in.

- 1322, 1323 The Prisoners, or Slaves.

Original Marbles, in the Louvre.

H. 7 ft. 3 in.

- 1324 Cupid.
Original Marble, in the Kensington Museum.
H. 4 ft. 6 in.
- 1325 Sitting Statue of Lorenzo de Medici.
Original Marble, in Church of St. Lorenzo,
Florence.
H. 5 ft. 8 in.
- 1326 Head of the Statue of Giuliano de Medici.
Original Marble, in Church of St. Lorenzo,
Florence.
H. 1 ft. 6 in.
- 1327 Mask of Moses.
Original Colossal Statue, in Marble, Monu-
ment of Pope Julius II.
H. 2 ft. 7 in.

Mino da Fiesole (1400-1486)

- 1328 Bas-Relief of an Altar-Piece.
Original Marble, in the Cathedral of Fiesole,
Florence.
H. 4 ft. 3 in.
- 1329 Bust of Bishop Lionardi Salutati.
Original Marble, in the Cathedral of Fiesole,
Florence.
H. 1 ft. 10 in.

Benedetto da Majano (1442-1498)

- 1330 Five Bas-Reliefs.
Original Marbles, in the Church of Santa
Croce, Florence.
Each: H. 2 ft. 7½ in.
-

A—Martyrdom of Five Brethren of the Order in Mauritania.

B—Death of St. Francis.

C—St. Francis Receiving the Stigmata, or Impress, of the Five Wounds of Christ.

D—St. Francis Walking, Uninjured, Through Fire Before the Sultan.

E—Pope Honorius Confirming the Rules of the Order of St. Francis.

Donato di Betto Bardi (Donatello)

(*Contemporary with Ghiberti: died 1408*)

1331 Head of St. George.

Original Marble Statue, in Or San Michele, Florence.

Benedetto da Majano (1442-1497)

1332 Bust of Matteo Palmieri.

Original Marble, in Florence.

1333 Bust of Filippo Strozzi.

Original Marble, in Florence.

1334 Bust of Pietro Mellini.

Original Marble, in Florence.

Michael Angelo Buonarroti (1475-1564)

1335 Day.

1336 Night.

1337 Dawn.

1338 Twilight.

Reduced copies from Marble originals, Tomb of Lorenzo and Giuliano de Medici, at Florence.

Luca (Della Robbia) (1400-1481)

1339 Singing Boys (Alto-Relief).

Original Marble, in the National Museum,
Florence.

H. 3 ft. 5 in.

Peter Vischer (Attributed to)

1340 Arthur, King of England.

Original Bronze, dated 1513, in Franciscan
Church, or Hofkirk, Innsbruck.

H. 6 ft. 11 in.

Luca Della Robbia (Attributed to)

1341 The Visitation of the Virgin Mary to St. Elizabeth.

Original in Church of San Giovanni fuor
Civitas-Pistoja.

H. 4 ft. 9 in.

Andrea di Cione Orcagna (Born near beginning of 14th
Century)

1342 Death and Transition of the Virgin.

Original Marble in Chapel of Or San Michele,
Florence.

H. 11 ft. 2 in.

(Wall panel inserted at head of main stairway).

Michael Angelo Buonarroti (1475-1564)

1343 Pièta Group.

Original Marble, in Chapel in St. Peter's Rome.

H. 5 ft. 10 in.

Benedetto da Majano (1442-1497)

1344 Saint John Baptist.

Original Marble, in National Museum, Florence.

H. 4 ft. 5 in.

Donato di Betto Bardi (Donatello)*(Contemporary with Ghiberti; died 1468)*

1345 Judith and Holofernes.

Original Bronze, in the Loggia de'Lanzi, Florence, since 1504.

H. 17 ft. 6 in.

Jacopo della Quercia (1374-1438)

1346 Sepulchral Monument—Portrait Effigy of Ilaria del Carretto.

Original in the Cathedral of St. Martino at Lucca.

H. 3 ft. 10 in.

Jacopo Sansovino (1477-1570)

1347 Bacchus.

Original Marble, in the National Museum, Florence.

H. 4 ft. 8 in.

Benvenuto Cellini (1500-1571)

1348 Andromeda Delivered from the Sea-Monster by Perseus.

From the Bronze Model in the National Museum, Florence.

H. 2 ft. 10 in.

Peter Vischer (Attributed to) (Died 1529)

1349 Archer (Bogenschützen Group).

Original Bronze, in the Germanic Museum,
Nuremberg.

H. 3 ft. 10 in.

SCULPTURES

MODERN BRONZES, MARBLES AND CASTS

Antrakosky

Russian School

2001 Head of St. John the Baptist.

Cast. H. 1 ft. 11 in.

Gift of Professor Louis Amateis.

Bartlett, Paul Wayland (1865- —)

American School

2002 Michael Angelo.

Cast. Original Bronze, Reading Room,
Library of Congress.

H. 7 ft. 9 in.

Gift of the Sculptor.

Boschetti, B.

Italian School

2003 Statuette of Augustus Cæsar.

Bronze. Original Marble, in Vatican, discovered in 1863.

H. 3 ft.

Brooks, Richard Edwin (1865-1919)

American School

2004 Memorial to Eliphalet Fraser Andrews (Principal
of the Corcoran School of Art, 1887-1902).

Bronze. 1917.

H. 2 ft. 7 in.

Gift of former pupils of Mr. Andrews.

Brown, Henry Kirke (1814-1886) *American School*

2005 Bust of Vice-President John C. Breckenridge.

Marble. H. 1 ft. 9 in.

Gift of George Taylor, Esquire.

Bush-Brown, Henry Kirke (1857- —) *American School*

2006 Bust of Dr. James C. Hall.

Bronze. 1880. H. 1 ft. 10 in.

2007 Statuette of a Cow.

Bronze. 1883. H. 9 in.

Canova, Antonio (1757-1822) *Italian School*

2008 Venus From the Bath.

Cast. Original Marble, in Florence.

H. 5 ft. 6¾ in.

2009 Colossal Head of Napoleon I.

Marble replica, by Canova, of his head of the colossal statue of Napoleon I, modelled from the Emperor, at Paris, in 1805.

H. 2 ft. 4 in.

2010 and 2011 The Two Bronze Lions,

in front of the main entrance to the Gallery are copies from the originals in marble by Antonio Canova, at the monument of Pope Clement XIII, St. Peter's, Rome.

Caroni, Emmanuele *Milanese School*

2012 Youth as a Butterfly.

Marble. H. 5 ft. 4 in.

Clodion, Claude Michel (1738-1814) *French School*

2013 Bas-Relief.

Cast. H. 2 ft. 5 in.

2014 Fauns.

Cast. H. 1 ft. 9 in.

Conner, Jerome (1875- —) *American School*

2015 Thomas Moore.

Bronze. H. 2 ft. 9 in.

Gift of Admirers of the Poet in the District of Columbia.

Crawford, Thomas (1813-1857) *American School*

2016 The Peri at the Gates of Paradise.

Marble. H. 5 ft. 5 in.

Dunbar, U. S. J. (1862- —) *American School*

2017 Bust of William Wilson Corcoran. (The Founder of The Corcoran Gallery of Art. Born Dec. 27, 1798. Died Feb. 24, 1888).

Marble. H. 1 ft. 11 in.

2018 Bust of Vice-President Thomas A. Hendricks.

Cast. H. 2 ft. 4 in.

Ellicott, Henry Jackson (1847-1901) *American School*

2019 Bust of Samuel H. Kauffman (President, The Corcoran Gallery of Art, 1894-1906).

Bronze. H. 2 ft.

Gift of Mr. Kauffman.

2020 Bust of George Yost Coffin.

Bronze. H. 2 ft. 4 in.

Gift of Mrs. Mary A. Yost.

-
- Galt, Alexander (1827-1863) *American School*
2021 Bacchante.
Marble. H. 2 ft. 1 in.
- Gibson, John (1791-1866) *English School*
2022 Venus.
Cast after the original marble, in London.
H. 6 ft.
- Gregoire, L.
2023 Alsace (Bust).
Cast. H. 1 ft. 9 in.
Gift of W. G. Metzertott, Esquire.
- Guarnerio, Pietro *Italian School*
2024 Forced Prayer.
Marble. 1875. H. 2 ft. 10 in.
- Hart, Joel T. (1810-1877) *American School*
2025 Bust of Henry Clay.
Marble. H. 2 ft. 3 in.
- Houdon, Jean Antoine (1741-1828) *French School*
2026 Head of George Washington.
Cast from a mould made by Clark Mills after
the original cast, in plaster, by Houdon.
H. 10 in.
Gift of James D. Smith, Esquire.
- 2027 Mask of George Washington.
Cast. H. 1 ft. 1 in.
Gift of Edward J. Stelligagen, Esquire.
-

2028 Bust of John Paul Jones.

Cast. H. 2 ft. 4 in.

Gift of Francis D. Millet, Esquire.

2029 Voltaire (Sitting Figure).

Cast. Original marble in the Vestibule of
Theatre Français, Paris.

H. 4 ft. 5 in.

2030 Bust of Joel Barlow.

Cast. H. 18 in.

Gift of Peter Barlow, Esquire.

Ives, Chauncey B. (Born 1812) *American School*

2031 Statue of a Child.

Marble. H. 3 ft. 1 in.

Gift of Senator John B. Henderson.

Kemeys, Edward (1843-1907) *American School*

2032 Jaguar Lovers.

Bronze. H. 1 ft. 2 in.

2033 Howling Coyote.

Bronze. H. 2 ft. 1 in.

King, John C. *Scotch School*

2034 Bust of Commodore Charles Morris, U. S. N.

Marble. 1850. H. 2 ft. 5 in.

La Farge, John (1835-1910) *American School*

2035 Hollyhocks.

Guilded Cast. H. 5 ft. 4 in.

- Le Lorrain, Robert (1666-1743) *French School*
 2036 Horses of the Sun.
 Cast. From the original at Hôtel de Rohan,
 Paris.
 H. 17 ft. 7 in.
- MacNeil, Herman Atkins (1866- —) *American School*
 2037 The Sun Vow.
 Bronze. H. 4 ft. 9 in.
- Meade, Larkin G. (1835- —) *American School*
 2038 Echo.
 Marble. 1863. H. 2 ft. 10 in.
- Mills, Clark (1815-1883) *American School*
 2039 Bust of George Washington.
 Bronze, 1849. From Houdon's original plaster
 Bust, 1785.
 H. 1 ft. 6 in.
- 2040 Bust of John C. Calhoun.
 Bronze. 1850. The original, in plaster, was
 taken from life by Mr. Mills, in 1845.
 H. 2 ft. 1 in.
Gift of the Sculptor.
- 2041 Statuette of the Sculptor's Mother.
 Bronze. H. 1 ft. 2 in.
Gift of the Sculptor.

O'Connor, Jr., Andrew (1874- —) *American School*

2042 Adam and Eve.

Marble; Indiana Limestone pedestal.

H. 4 ft. 3 in.

Gift of Edward Tuck, Esquire.

2043 Bust of Edward Tuck, Esquire.

Bronze. H. 2 ft. 1 in.

Gift of the Sculptor.

Peyre, Charles Raphael (1872—) *French School*

2043A Crusading for Right.

Bronze figure on stone plinth.

H. 33 in.

Powers, Hiram (1805-1873) *American School*

2044 The Greek Slave.

Marble. 1846. H. 5 ft. 2 in.

2045 Bust of the late William J. Stone (Engraver).

Marble. H. 2 ft. 1 in.

Gift of Mrs. W. J. Stone.

2046 Proserpine.

Marble bust. 1857. H. 2 ft. 1 in.

2047 Geneva.

Marble bust. 1837. H. 2 ft.

Proctor, Alexander Phimister (1862- —)

American School

2048 Indian Warrior.

Bronze. Awarded gold medal, Paris Exposition, 1900.

H. 3 ft. 4 in.

2049 Indian and Buffalo Group.

Bronze. H. 1 ft. 6 in.

Rauch, Christian (1777-1857) *German School*

2050 Bust of Alexander Von Humboldt.

Marble. Executed for Mr. Corcoran at the particular request of Humboldt.

H. 2 ft.

Remington, Frederic (1861-1909) *American School*

2051 The Mountain Man.

Bronze. H. 2 ft. 4 in.

2052 Off the Range.

Bronze. H. 2 ft. 7 in.

Rinehart, William H. (1825-1874) *American School*

2053 Bust of Pensive.

Marble. 1863. H. 2 ft. 4 in.

2054 Endymion.

Marble. 1874. H. 2 ft. 2 in.

2055 Sleeping Children.

Marble. 1874. H. 1 ft. 4 in.

2056 Clytie.

Cast. Original Marble, in Peabody Institute, Baltimore, Md.

H. 5 ft.

Rosa, Ercole *Italian School*

2057 A Study from Nature.

Cast. H. 2 ft.

Gift of Professor Louis Amateis.

Saint-Gaudens, Augustus (1848-1907) *American School*

2058 The Puritan (Deacon Samuel Chapin).

Cast. From the original bronze at Springfield,
Massachusetts. Signed and dated 1887.

H. 8 ft. 8 in.

Saint-Gaudens, Louis (1854-1913) *American School*

2059 Mural Tablet to Professor Joseph Henry.

Cast. Original Marble in Marquand Chapel,
Princeton University.

H. 7 ft. 4 in.

Gift of Miss Henry.

Simmons, Franklin (1839-1913) *American School*

Portrait of Miss Nettie Louvisa White.

Marble bas-relief. H. 1 ft. 6 in.

Gift of Miss White.

Sleeth, Mrs. L. MacDonald *American School*

2061 Bust of General John M. Wilson.

Marble. 1911. H. 2 ft. 8 in.

Thorwaldsen, Bertel (1770-1844) *Danish School*

2062 Venus.

Cast. Original marble, in the Thorwaldsen
Museum, Copenhagen.

H. 5 ft.

Trombetta, E. *Milanese School*

2063 The First Step.

Marble. 1876. H. 2 ft. 6 in.

-
-
- Vela, Vincenzo *Swiss by birth*
2064 Last Days of Napoleon I.
Marble replica of original, at Versailles, 1871.
H. 7 ft. 3 in.
From the John Taylor Johnston Collection.
- Vonnoh, Bessie Potter (1872- —) *American School*
2065 Enthroned.
Bronze. H. 1 ft.
Gift of the Sculptor.
- 2066 Day Dreams.
Bronze. H. 10 in.
- Ward, John Quincy Adams (1830-1910) *American School*
2067 Indian Hunter.
Cast. Original bronze in Central Park, New York. A bronze replica, cast from this exhibit, marks the Sculptor's grave at Urbana, Ohio.
H. 5 ft. 6 in.
Gift of the Sculptor.
- Whiting, Onslow *English School*
2068 Taking the Guns Into Action at Colenso.
Bronze plaque from the original.
H. 1 ft. 6 in.
Gift of Alfred Mosely, C. M. G., of Hadley Wood, England.
-

Sculptor unknown.

2069 The Veiled Nun.

Marble bust. H. 1 ft. 8 in.

Sculptor unknown.

2070 Shakespeare.

Marble bust. H. 2 ft. 6 in.

Sculptor unknown.

2071 Isis.

Marble bust. H. 1 ft. 6 in.

SCULPTURES

ORIGINAL BRONZES

By ANTOINE LOUIS BARYE

Antoine-Louis Barye

Born, Paris, France, September 15, 1796; died there, June 25, 1875.

Barye was the only sculptor who belonged to that famous group of artists known as the "Barbizon School" or the "Men of 1830." The other members of this noted coterie—Corot, Rousseau, Millet, etc.—were all painters. He was the son of a silversmith who came to Paris from Lyons.

From his earliest childhood, Barye showed a pronounced inclination for the fine arts. As a youth he entered the shop of an engraver by the name of Fourier. In 1812, at the age of 16, he was conscripted into the army, and was assigned to the topographical engineers, which gave him a limited opportunity for continuing his studies. In 1814, with the fall of Napoleon, he resumed his work as an engraver, but abandoned it very shortly thereafter in order to follow the profession of a sculptor, entering the studios of the sculptor, Bosio, and of the painter, Gros.

Like many great artists, Barye suffered reverses and disappointments. He entered, unsuccessfully, various competitions for medals and honors, and his work was frequently refused by the Salon. Barye, however, was not discouraged, and he lived to see the recognition of his work. It is recorded that his wife once said to him,

"You must be more careful to see that the signature upon your works is more readable," to which Barye replied, "Fear not, in twenty years it will be looked for with a magnifying glass."

In the production of small sculptures of animals, in bronze, Barye's work stands today second to that of no one. His knowledge of the anatomy of animals and of their natural traits was so profound, and his genius as a sculptor was so extraordinary, that his sculptures are recognized today throughout the world as the product of a great master in his chosen field of endeavor.

The 107 examples of his work listed below (which, with one or two exceptions, is the most complete collection of Barye's work extant) were all secured for this Gallery directly from the great artist himself, in 1873, by one of the trustees of this institution:

3001 DUKE OF ORLEANS (1840)	14 x 13
3002 AMAZON, COSTUME OF 1830	14½ x 14
3003 GASTON DE FOIX (1833)	14½ x 11½
3004 CHARLES VII, THE VICTORIOUS (1839)	11½ x 10
3005 TARTAR WARRIOR CHECKING HIS HORSE With bronze stand, Arabesque	13½ x 13½
3006 TWO ARAB HORSEMEN KILLING LION	14½ x 15
3007 AFRICAN HORSEMEN SURPRISED BY SERPENT	8½ x 10
3008 ELEPHANT, WITH INDIAN MOUNTED, CRUSHING TIGER	10½ x 12
3009 ROGER AND ANGELICA, MOUNTED ON HIPPOGRIF (1846)	20 x 27
3010 CANDELABRAS (pair), with nine lights, decorated with six figures, mascarons, and chimeras (1846) Originals made for Duc de Montpensier	37
3011 MINERVA	12
3012 JUNO	12
3013 THESEUS AND MINOTAUR (1848)	18½ x 10

3014 THESEUS AND CENTAUR (1850)	13½ x 14½
3015 APE RIDING A GNU	9 x 10
3016 TWO YOUNG BEARS FIGHTING (1833)	8½ x 6
3017 BEAR SITTING	5¼ x 6½
3018 EAGLE STANDING	6 x 8½
3019 WOLF HOLDING A STAG BY THE THROAT	8 x 17
3020 TWO YOUNG LIONS WRESTLING	8 x 6
3021 LION DEVOURING A DOE (1837)	5 x 1
3022 LION AND SERPENT (1832)	10 x 12
3023 LION SITTING (1836)	14 x 12
3024 LIONESS OF SENEGAL	8 x 11½
3025 LIONESS OF ALGIERS	8 x 11½
3026 LION WALKING (1836)	9 x 16
3027 TIGER WALKING (1836)	8¼ x 16½
3028 TIGER SURPRISING AN ANTELOPE	13½ x 24
3029 TIGER SURPRISING A DEER	6½ x 10
3030 TIGER DEVOURING A GAVIAL (Crocodile) (1831)	7½ x 19½
3031 TIGER DEVOURING A GAZELLE	5¼ x 12
3032 PANTHER SEIZING A STAG	15 x 22
3033 PANTHER OF INDIA	5 x 10½
3034 PANTHER OF TUNIS (1840)	5¼ x 10½
3035 PANTHER SURPRISING A CIVET-CAT	4 x 9
3036 JAGUAR WALKING	4¾ x 9
3037 JAGUAR STANDING (1840)	5 x 9
3038 JAGUAR SLEEPING	3½ x 9
3039 JAGUAR DEVOURING A CROCODILE	3 x 9½
3040 OCELOT CARRYING A HERON	6½ x 11½
3041 ELEPHANT OF ASIA (1833)	5 x 8
3042 ELEPHANT OF AFRICA	5 x 7¼
3043 HORSE SURPRISED BY A LION (1834)	15½ x 15
3044 HORSE, HALF-BLOOD. Head lowered	7½ x 11½
3045 HORSE, TURKISH. Right foot raised	11½ x 12½
3046 HORSE, TURKISH. Left foot raised	11½ x 12
3047 DROMEDARY, EGYPTIAN. Reduction	5¾ x 6¾
3048 ELK SURPRISED BY A LYNX (1834)	8½ x 11½
3049 DEER ATTACKED BY TWO SCOTCH HOUNDS (1833)	17 x 21
3050 STAG, DOE, AND FAWN	9 x 8½

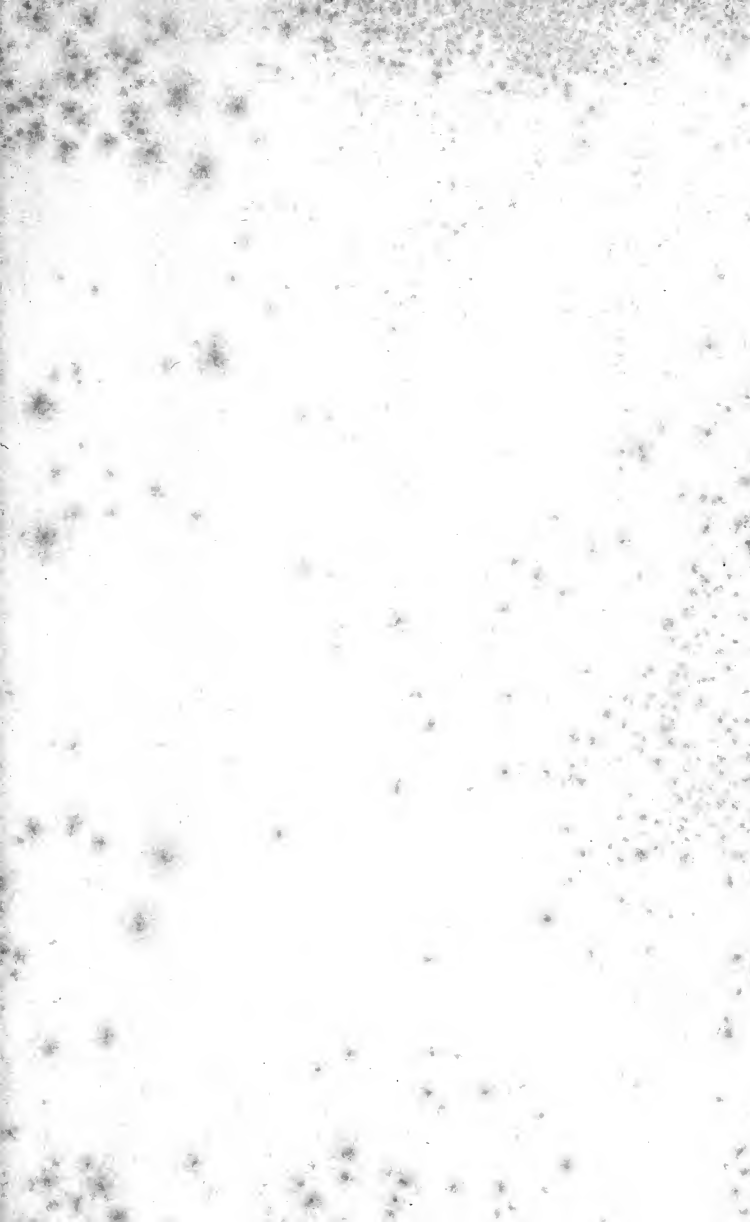
3051 VIRGINIA DEER BITING ITS SIDE (1837)	10 x 14
3052 BULL ON THE DEFENSIVE (1841)	7 x 11½
3053 BULL REARING, ATTACKED BY A TIGER (1837)	9 x 11
3054 BULL DRAGGED TO EARTH BY A BEAR (1839)	5½ x 11
3055 EAGLE HOLDING A HERON	12 x 12½
3056 CROCODILE DEVOURING AN ANTELOPE	6½ x 14
3057 PYTHON SWALLOWING A DOE (1840)	3¼ x 10½
3058 PYTHON STRANGLING A GAZELLE	6 x 13
3059 PYTHON CRUSHING A CROCODILE (1840)	6½ x 10½
3060 HUNTSMAN, COSTUME LOUIS XV	7½ x 7
3061 BEAR OVERTHROWN BY THREE MASTIFFS (1833)	10 x 13½
3062 BEAR FLYING FROM THREE DOGS	12 x 18
3063 GREYHOUND AND HARE	8 x 13
3064 WOLF WALKING	9 x 14
3065 GREYHOUND RECLINING	2½ x 10
3066 BUFFALO OF EGYPT	6 x 8
3067 CAMEL. Head turned to right	4½ x 4½
3068 GREYHOUND SLEEPING	7½ x 13¼
3069 AFRICAN BADGER ROBBING NEST	4 x 6
3070 LION OF THE COLUMN OF JULY (1838). Bas-relief	8½ x 16¼
3071 WARRIOR OF THE CAUCASUS	7½ x 6¾
3072 PEASANT. Mediæval	12 x 10
3073 LEOPARD CROUCHING	3 x 7
3074 DEER (Axis)	5 x 5½
3075 DEER OF THE GANGES	6½ x 6¼
3076 BULL STANDING. Small	3½ x 5½
3077 CARD RECEIVER, with Fawn's Feet	3¾ x 7½
Ornamented with grapes	
3078 CARD RECEIVER	5½ x 7
Ornamented with owls and panthers' heads	
3079 CANDLESTICK (two lights)	10 x 10
Ornamented with owls and panthers' heads	
3080 CANDLESTICK	7 x 3¼
Ornamented with owls and panthers' heads	
3081 CANDLESTICK	10 x 4½
Greek designs, with Syracuse medallions	
3082 CANDLESTICK, with Fawn's Feet	9½ x 3½

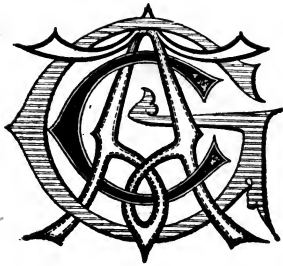
	Ornamented with bell-flowers and serpents	
3083	CANDLESTICK	12½ x 5¼
	Ornamented with bell-flowers, leaves and scarabee	
3084	CANDLESTICK. Small, with handle	3¾ x 4½
	Ornamented with ivy leaves	
3085	PERFUME-BURNER	4 x 2½
	Ornamented with chimeras	
3086	PAROQUET SEATED ON A TREE	7¾ x 5
3087	PHEASANT WALKING. Head turned to left	4¾ x 8¼
3088	PHEASANT WALKING. Head turned to right	4¾ x 8¼
3089	WOLF CAUGHT IN A TRAP	4½ x 5
3090	VIRGINIA DEER. Left foot raised	6½ x 6
3091	DOE RECLINING (Dated 1840)	3½ x 5½
3092	FAWN RECLINING (Dated 1840)	1¾ x 4¾
3093	RABBITS (Group, two)	2 x 3½
3094	TURTLE	1¼ x 4
3095	CROCODILE	1½ x 7¾
3096	CANDELABRAS (pair), with three lights, Antique design, ornamented with serpent, leaves, chimeras, claw feet, and surmounted with storks	31½
3097	THESEUS SLAYING THE CENTAUR (1850)	50 x 41
3098	JAGUAR DEVOURING A HARE (1850)	15½ x 38
3099	LEOPARD. Bas-relief (1831). Bronze frame	3 x 5½
3100	PANTHER. Bas-relief (1831). Bronze frame	3½ x 6½
3101	VIRGINIA DEER, WITH ANTLERS. Bas-relief (1831)	4 x 5½
3102	GENET CARRYING A BIRD, Bas-relief (1831)	3 x 5
	Bronze frame	
3103	AXIS	4½ x 6¼
3104	TIGER HUNT. Water-color sketch	
3105	SLEEPING LIONS. Water-color sketch	
3106	BEAR ERECT	9¾
3107	GENERAL BONAPARTE (1838)	14 x 13

GENERAL INDEX.

	PAGE
BOARD OF TRUSTEES AND OFFICERS.....	3
STANDING COMMITTEES.....	5
PREFACE.....	6
PLANS OF THE BUILDING.....	8 and 9
DESCRIPTION OF THE BUILDING.....	10
HOURS OF OPENING.....	13
CATALOGUE OF THE PAINTINGS.....	15
CATALOGUE OF THE SCULPTURES.....	58
CASTS FROM THE ANTIQUE.....	58
CASTS FROM THE RENAISSANCE.....	72
MODERN BRONZES, MARBLES AND CASTS.....	79
BRONZES BY ANTOINE-LOUIS BARYE.....	90







14 DAY USE
RETURN TO DESK FROM WHICH BORROWED
LOAN DEPT.

This book is due on the last date stamped below, or
on the date to which renewed.
Renewed books are subject to immediate recall.

ICLF (N)

FEB 14 1968 36

REC'D LD FEB 5 '68 3PM

JUL 16 1976 X

REG. CIR. JUL 15 '76

LD 21A-60m-2,'67
(H241s10)476B

General Library
University of California
Berkeley

YB 09366

Burke

LIBRARY OF THE UNIVERSITY OF TORONTO
UNIVERSITY OF TORONTO LIBRARY



