

U-PAY
2-25 ✓

*One of the
Handy Dog Booklet Series*

HANDLING THE MATING

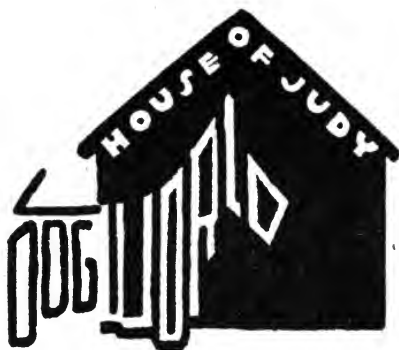
By **CAPT. WILL JUDY**

*Editor of Dog World Magazine, Author of The Dog Encyclo-
pædia, Training the Dog, Care of the Dog, Kennel Building
and Plans, Principles of Dog Breeding, and Sirius Series*



P & M ANGUS
GEORGE E. & HARRIETTA DWYER
ROUTE 1, BOX 261K
ALBANY, OREGON 97321

JUDY PUBLISHING COMPANY
CHICAGO
1945 ✓



COPYRIGHT, 1945, WILL JUDY

Purchasable at any bookstore or from the publisher

Excerpts to a reasonable extent can be made
but with specific credit to author and publisher

Printed in U.S.A.

First edition, 1932—2,000. Second edition, 1935—2,000. Third edition, 1937—4,000
Fourth edition, 1942—4,000. This fifth edition, 1945—6,000.

PUBLISHER'S NOTE

This is one of a series of TWELVE booklets by Capt. Will Judy on specific dog subjects of practical interest and published under the name HANDY DOG BOOKLETS. Figure denotes current edition.

- | | |
|----------------------------|------------------------------------------|
| 1. FEEDING THE DOG (5) | 7. HOUSEBREAKING DOG (5) |
| 2. HOW TO SHIP DOGS (3) | 8. HANDLING THE MATING (5) |
| 3. DOG IN SHOW RING (5) | 9. STUD DOG'S CARE AND
MANAGEMENT (4) |
| 4. DOG SHOWS AND RULES (3) | 10. ANATOMY OF THE DOG (3) |
| 5. LAWS ABOUT DOGS (4) | 11. PUPPIES AND THEIR CARE (4) |
| 6. WHELPING OF PUPPIES (5) | 12. HOW TO SELL DOGS (3) |

It is a pleasure to invite attention to the scientific, authoritative, vigorous manner of presentation characteristic of his writings, not only on dogs but also on general subjects.

The price of these booklets is 25c each, 3 for 50c, 7 for \$1, 8 or more, 13c each; or a special price of \$1.50 for all twelve. Or all twelve nicely bound in book form, \$2.50. Cash or COD. Any assortment of titles. Order either by number or title.

As the subjects covered by the Handy Dog Booklet Series are those which interest every dog owner, breeder and lover in a practical, important way, the publishers take pleasure in offering them in this convenient, low-priced booklet form. More copies have been sold (141,000 total thus far) than of any other printed matter in the dog field.



THE HOUSE OF JUDY
BUILT BY SERVICE

JUDY PUBLISHING COMPANY
JUDY BUILDING, 3323 MICHIGAN BOULEVARD, CHICAGO 16

April, 1945



HANDLING THE MATING OF DOGS

It is strangely true that in almost all of the much writing on dog breeding, little is said about the actual mating and the care and handling of the stud and the matron immediately before, during, and immediately after the mating.

Young and inexperienced studs have been spoiled and serious damage done to matrons by reason of improper care and handling. Both the mind and the body, the physiological and psychological factors, are to be considered. The larger the breed, the greater is the need for care.

A sensitive male unduly or excessively punished, may prove an unwilling stud on this account forever afterward. Also one particular person may succeed in inducing the male to perform the stud duty whereas other persons fail.

Present-day Living Conditions Considered

In the natural life of the woods, the dogs met and mated without interference from human beings. But it is not to be concluded that some of these natural matings did not work physical harm. Further, the stud and the matron, kept today in somewhat artificial conditions, conditions different from and far less rigorous than those of the fields and outdoors, can not be expected to perform sexual intercourse with the same ease and daring as under the conditions of nature and its free life.

Make Arrangements in Advance

Last-minute plans may be illadvised. The time to arrange for a mating for your bitch (matron, dam) is several months (not several days) before she is due in heat. To select a proper stud requires the

study of pedigrees and of the prepotent ancestors in the pedigrees, of both stud and dam. This study properly requires time and effort, comparison and research. This is the most important task—it is the secret—of the successful breeder. It is to be done long before the bitch comes into heat.

How then can the owner of the bitch mate her scientifically (by selective breeding), if he does not choose the stud until the bitch is already in heat? As long as this condition of last-minute attention exists, the majority of matings will be hit-and-miss from the breeding standpoint, with good type offspring a matter of accident rather than planned schedule.

Choose the stud and make all arrangements with his owner at least thirty days before the bitch is due in season or heat. Remind the owner of the stud about ten days in advance of the expected heat so that he can plan accordingly. At least two days before the bitch is shipped to him, write or wire the scheduled hour of arrival at his kennels.

What Day of Heat is Best for Mating?

The present discussion does not concern itself with days of heat to be taken advantage of to secure certain alleged results such as determination of sex, sure pregnancy, size of litter and so forth.

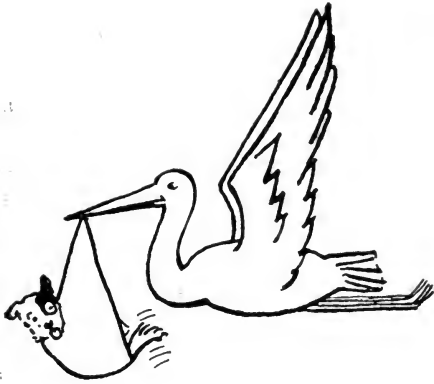
We are now concerned only with the particular day or days of heat when the bitch accepts intercourse with the stud most readily.

We may set the total period of heat (season, oestrus) at nineteen to twenty-one days with twenty days as a set figure. The length of the period varies with breeds and with individuals of a breed. Larger breeds tend toward a longer period of heat than do the smaller breeds. The first heat (which may occur anywhere from 8 to 9½ months of age, usually 8½ months) may be of shorter duration and not strongly noticeable.

A few bitches will receive the stud on the twentieth day. Some bitches, being shy breeders, will receive or admit the stud only during a few hours. Some will admit the stud over a period of two weeks.

No general rule is to be set forth but in most cases, the tenth to the fifteenth day of season, is advisable for the mating. And there are so many exceptions that the rule is well proved.

A bitch will continue to accept a male after a mating and until she goes out of heat, altho after being mated, she is not as receptive during the remaining portion of the heat period. Consequently care must be had lest she mate to another male. It is possible to carry



Breeder's Code

1. I will study the bitch as well as the sire.
 2. I will study grandparents rather than parents.
 3. I will not pay any attention to breeding superstitions.
 4. I will interpret a pedigree by breeding facts rather than names and titles.
 5. I will keep full breeding records and draw conclusions accordingly.
 6. I will put away culls and weaklings shortly after birth.
 7. I will not breed, sell or give away a shy or excessively nervous dog.
 8. I will judge a stud by his offspring even to the third generation.
 9. I will honor most the bred-by-exhibitor dog.
 10. I will give preference to breeding specimens of good disposition and temperament.
- Will Judy.

two litters, even by the same stud, or separate studs, altho one does not develop.

During the second week of heat, the vulva loses some of its hardness and size; the quantity of discharge however may increase until the fifteenth day; and the color pales from a deep red after the ninth day.

Then is an advisable time for actual mating. The conduct of the bitch also tells the condition. She shows signs of excitement, carries her tail to the side, and invites attention. If it is attempted to breed her too early in the season, she may fight the male—but the best day on which to breed the bitch is any day when she accepts the male.

Do Not Breed and Ship on Same Day

A bitch when received for mating, is best kept in the crate until she arrives in the kennels. She is away from home; is uneasy on account of her heat; she is among strangers; she may be inclined to snap or to try to run away. After the stud owner accepts her at the station, the liability for her keeping is upon him.

A bitch should not be brought to the kennel, mated and shipped away the same day. It is true that a howling bitch is a terror to all and an exceeding great nuisance. Yet she should be kept over night; it may be necessary to bring her into the house or bedroom for the night. A bit of human understanding of animal nature is well in place in these instances.

Immediate Preparations to be Made

The stud should not be fed at least two hours before mating. Both he and bitch should have opportunity to relieve bladder and bowels before the mating.

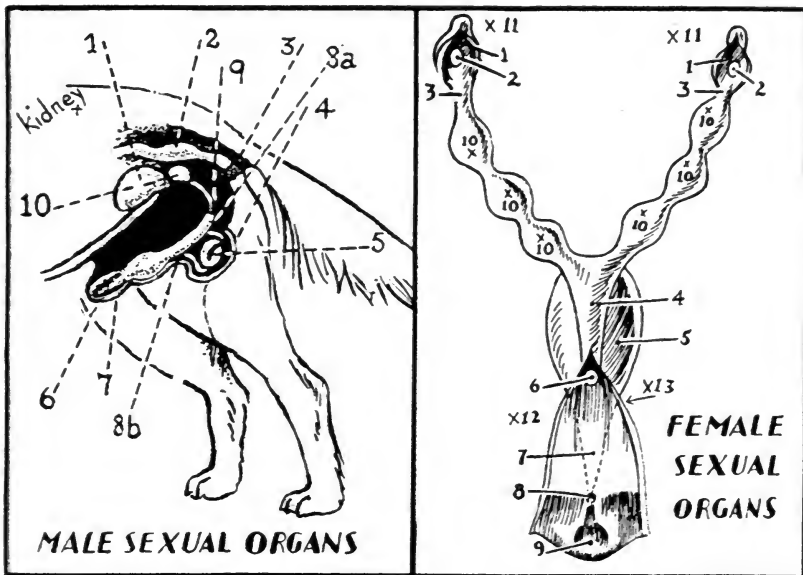
It is well that the sexual organs of both stud and bitch be sponged before mating to remove dirt and possibility of infection.

Examination should be made (of both dogs) for possible infectious skin or other conditions.

Douche the bitch's vagina before service with carbonate of soda in lukewarm water to eliminate any acid conditions, a tablespoonful per pint. Older bitches usually are more likely to have an acid condition of the vagina. Douching should be done about thirty minutes before mating. However, douching is not essential.

Precautions to be Taken at the Mating

A bitch usually does not eat for several hours after mating. Morning matings are preferred for this reason. She then has time to settle down, rest herself, and regain a hearty appetite by eventide.



LEFT, Male Sexual Organs: 1. Bladder. 2. The rectum portion of the colon or large intestine leading on to the external opening or anus at 3. 4. Scrotum or bag containing the testicles (5).

6. Penis. 7. Sheath or covering of penis. 8a and 8b. Vas deferens—tubes from the prostate gland to each testicle (and carrying semen into the urethra).

9. Urethra duct, carrying urine from bladder to external exit (penis, male; vagina, female). In male, urethra is also a genital duct for semen. Do not confuse urethra with ureters, of which there are two, one leading from each kidney to the bladder. 10. Prostate gland.

RIGHT: 1. and 1. Ovarian bursa or sacs. 2. Ovaries (one on each side). 3. Fallopian tubes (one on each of the two horns), 4. Main body of uterus or womb. 5. Bladder (to rear).

6. Os uteri (mouth of womb), from which puppies emerge. 7. Vagina (external opening). 8. External urethral orifice (where urine emerges). 9. Fossa clitoridis. 10. Fetuses (puppies) in the womb. 11. Region of kidneys. 12. Rectal opening (above vaginal opening).

13. Vulva attached to pelvic bone for support.

Do not mate in hot sun; use a quiet inclosure; choose morning or evening to avoid heat of the day; avoid noise and distractions.

If the hair about the sexual parts of the female are long and plentiful, they should be cut to about a half-inch length.

The bitch, even when ready for service, may cause trouble by snapping not only the male but the handler or kennelman. Usually a bitch snaps at the dog two or three times and then accepts him.

It is well that some bitches inclined to be snapping, be muzzled with a strap drawn just taut enough to prevent biting. This precaution may avoid injury either to the stud or to the handler.

Unless the stud is especially savage in disposition, he should not be muzzled altho after repeated unsuccessful attempts, he may be more inclined to bite.

The author's booklet *The Stud Dog's Care and Management*, also one of the twelve in this series, presents full information on its subject.

Breed Forcibly after a Time

If the bitch tries to avoid the stud and moves away from him, if she continues to snap at him, if she keeps her tail pressed closely between her legs, if she sits down, she should be removed as she is likely not ready. She should be brought again the next day to the stud and the meetings repeated until she accepts service.

If she persists in refusing service after three days, whatever force is necessary should be employed.

Suggestions to Facilitate Mating

If other conditions are equal, it is well to mate a maiden or virgin bitch with an experienced stud and an inexperienced stud with an adult bitch that has whelped a litter. A maiden bitch and an inexperienced stud form a difficult combination. The bitch insists on playing by the hour and the male can not manage to mount.

The hymen or membranous covering needs to be broken in a virgin bitch. This is done by the entrance of the stud's penis. In artificial insemination, it must be broken by inserting the finger.

If the bitch is too tight, the vagina should be well lubricated with mineral oil, vaseline or other parafin preparation. This should be done preferably with a clean rubber finger rather than the bare finger.

It is well that the first studding of a male be done in the open and by day. This should be done with a timid male.

Sometimes a young dog is spoiled for all time if an attempt is made to help him. Always each individual dog must be studied for his peculiarities in the matter of sexual romances.

Some romance should be permitted. The bitch and the stud should become acquainted for a few minutes, thru a wire netting. Trouble and hesitation will be avoided by this advance courtship. Also, it tends to urge on a sluggish stud.

The stud shows himself ready by the dribble from his mouth and by his licking of the bitch's vulva.

Manual Handling of the Pair

Two persons should be present at a mating—one to handle the stud, the other to handle the bitch; and one of these, preferably not connected with the kennels, can sign the breeding or stud certificate as a witness, tho this is not required.

TABLE SHOWING WHEN A BITCH IS DUE TO WHELP

Served January	Due to Whelp March	Served February	Due to Whelp April	Served March	Due to Whelp May	Served April	Due to Whelp June	Served May	Due to Whelp July	Served June	Due to Whelp August	Served July	Due to Whelp September	Served August	Due to Whelp October	Served September	Due to Whelp November	Served October	Due to Whelp December	Served November	Due to Whelp January	Served December	Due to Whelp February
1	5	1	5	1	3	1	3	1	3	1	3	1	2	1	3	1	3	1	3	1	3	1	2
2	6	2	6	2	4	2	4	2	4	2	4	2	3	2	4	2	4	2	4	2	4	2	3
3	7	3	7	3	5	3	5	3	5	3	5	3	4	3	5	3	5	3	5	3	5	3	4
4	8	4	8	4	6	4	6	4	6	4	6	4	5	4	6	4	6	4	6	4	6	4	5
5	9	5	9	5	7	5	7	5	7	5	7	5	6	5	7	5	7	5	7	5	7	5	6
6	10	6	10	6	8	6	8	6	8	6	8	6	7	6	8	6	8	6	8	6	8	6	7
7	11	7	11	7	9	7	9	7	9	7	9	7	8	7	9	7	9	7	9	7	9	7	8
8	12	8	12	8	10	8	10	8	10	8	10	8	9	8	10	8	10	8	10	8	10	8	9
9	13	9	13	9	11	9	11	9	11	9	11	9	10	9	11	9	11	9	11	9	11	9	10
10	14	10	14	10	12	10	12	10	12	10	12	10	11	10	12	10	12	10	12	10	12	10	11
11	15	11	15	11	13	11	13	11	13	11	13	11	12	11	13	11	13	11	13	11	13	11	12
12	16	12	16	12	14	12	14	12	14	12	14	12	13	12	14	12	14	12	14	12	14	12	13
13	17	13	17	13	15	13	15	13	15	13	15	13	14	13	15	13	15	13	15	13	15	13	14
14	18	14	18	14	16	14	16	14	16	14	16	14	15	14	16	14	16	14	16	14	16	14	15
15	19	15	19	15	17	15	17	15	17	15	17	15	16	15	17	15	17	15	17	15	17	15	16
16	20	16	20	16	18	16	18	16	18	16	18	16	17	16	18	16	18	16	18	16	18	16	17
17	21	17	21	17	19	17	19	17	19	17	19	17	18	17	19	17	19	17	19	17	19	17	18
18	22	18	22	18	20	18	20	18	20	18	20	18	19	18	20	18	20	18	20	18	20	18	19
19	23	19	23	19	21	19	21	19	21	19	21	19	20	19	21	19	21	19	21	19	21	19	20
20	24	20	24	20	22	20	22	20	22	20	22	20	21	20	22	20	22	20	22	20	22	20	21
21	25	21	25	21	23	21	23	21	23	21	23	21	22	21	23	21	23	21	23	21	23	21	22
22	26	22	26	22	24	22	24	22	24	22	24	22	23	22	24	22	24	22	24	22	24	22	23
23	27	23	27	23	25	23	25	23	25	23	25	23	24	23	25	23	25	23	25	23	25	23	24
24	28	24	28	24	26	24	26	24	26	24	26	24	25	24	26	24	26	24	26	24	26	24	25
25	29	25	29	25	27	25	27	25	27	25	27	25	26	25	27	25	27	25	27	25	27	25	26
26	30	26	30	26	28	26	28	26	28	26	28	26	27	26	28	26	28	26	28	26	28	26	27
27	31	27	May 1	27	29	27	29	27	29	27	29	27	28	27	29	27	29	27	29	27	29	27	28
28	Apr 1	28	2	28	30	28	30	28	30	28	30	28	29	28	30	28	30	28	30	28	30	28	29
29	2	29	3	29	31	29	31	29	31	29	31	29	30	29	31	29	31	29	31	29	31	29	30
30	3			30	Jun 1	30	2	30	Aug 1	30	Sept 1	30	Oct 1	30	Nov 1	30	2	30	Jan 1	30	Feb 1	30	3
31	4			31	2	31	2	31	2	31	2	31	2	31	2	31	2	31	2	31	2	31	4

63 days is the usual calculation for the period of gestation, not including the day of mating. But nature does not run uniform in this regard for the whelping date may fall as early as the 58th or as late as the 68th day.

The bitch should be held still by the handler or other attendant when she shows that she is ready. A nervous bitch may leap forward and twist herself away from the stud with injury to the stud's sexual organs.

The bitch's tail should be pulled from between her legs and the stud permitted to mount. Some help may be necessary with the large breeds in guiding the penis into the vagina.

A small bitch can be held with the hands. A medium-sized bitch can be held by standing astride of her neck, holding her shoulders between the knees; the hands are free to support or steady her.

Two attendants should hold a large bitch, lest she move away or sit down after sexual contact is established. One attendant can grip her collar in the right hand, kneel by her side on his right knee and

Stud service certificate, to be used to verify a mating, set forth the terms of payment, and also the conditions in case the bitch does not show in whelp. Owner of stud should furnish this to owner of bitch.

press his left knee under her abdomen and gently against her near hind leg.

The other attendant holds her by the collar on the other side, holds her tail in his right hand, kneels on his left knee and braces his right knee against the bitch's side.

A bitch that persists in sitting down may enrage the stud so that he bites not only her but anyone within reach. The stud should be muzzled in these cases.

Where the two dogs are of greatly different size, that is, the male considerably smaller, a breeding platform can be erected so that the male receives added height.

A stud's sexual activity and power may be lessened quickly in unsuccessful attempts. Assistance may be given by placing the hand partly closed, palm upward, under the bitch's vulva, which thus is raised slightly with the one finger.

Tieing is Sure Sign of Emission

When the stud treads rather than pushes into the vagina, the act of copulation is accomplished.

Tieing or co-ition is a term applied to the mating of dogs for dogs are attached physically to each other after the mating. The dog does not have seminal vesicles. The penis swells to large size, especially at the rear, and blood fills the spongy tissue. It is an involuntary act, with which the bitch has nothing to do.

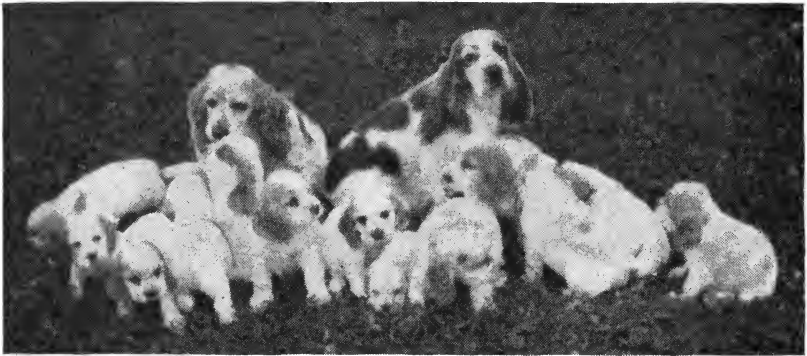
The tie may last for a few minutes to forty minutes. Ten minutes is an average period. The time is immaterial; it has no effect upon the size or quality of the litter.

A tie is undisputed evidence that the seminal fluid of the male has been emitted into the vagina of the bitch. In very rare cases,

DOGGIST'S CODE

- I. Color all your work with a deep love for all dogs.
- II. Welcome the novice for you yourself once knew as little as he.
- III. Win with a smile of course, but to lose with a smile lessens the defeat.
- IV. Beware of him who is quick to find fault for likely you will be his next target.
- V. Seek business but not merely by taking it away from a competitor.
- VI. Mind your own business rather than somebody else's.
- VII. When you lose, breed better dogs and come back with them to win.
- VIII. Say nothing rather than speak ill of another kennel or breed.
- IX. Show in yourself the same sportsmanship you demand of others.
- X. Be the god-on-earth your dogs think you are.

Written by Mill Judy



Two cocker mothers and their families. Some of the puppies are uncles and aunts of the others as one mother is the mother of the other cocker. Cocker puppies are warm, cuddly, appealing salesmen for themselves.

there can be pregnancy without a tie; these cases are in the nature of accident. Only an actual resulting pregnancy can prove this.

Aid Male in Getting Release

As soon as the bitch and stud are tied, one of the stud's forelegs should be unclasped, the forepart of his body lifted sideways off the bitch, and both forefeet placed on the ground to one side of the bitch. This is to be done especially where the stud is inexperienced and both dogs are about of the same height.

After a few minutes, lift his hindlegs slowly over the bitch's back so that he can stand comfortably on his feet, his rear against the bitch's rear. Thus the animals do not hurt each other by undue strain before contact is broken naturally.

Just as soon as the tie is broken naturally, lead the bitch off at once. She should be fed a few hours later and sent to her owner on the following day. The bitch should be led away first.

The stud, after being undisturbed in the mating pen for about ten minutes, should be placed in a dark kennel for an hour or so of resting.

Variance in Sizes

If either dog is much taller than the other, a platform can be made for the shorter dog. Sacking should cover the platform to allow a firm foothold. However, dogs manage these matters very well tho of vastly different sizes. We know of an instance where an English setter mated a pekingese.

The Dog's Bill of Rights

- I. I want one large fresh bone each week for my dessert; I promise not to bury it in the flower pot.
- II. I want clean water in a clean dish twice daily.
- III. I want a dry, draftless place for sleeping.
- IV. I want a collar that doesn't choke me and isn't so loose it catches on my ears.
- V. I want a quiet place in the basement on the Fourth of July.
- VI. I want every boy softly reprimanded who throws stones at me or twists my ears.
- VII. I want folks to believe in my wagging tail and pleading eyes.
- VIII. I want all persons to keep in mind that I do with my mouth, most things they do with their hands; so, they needn't be afraid of a dog's teeth.
- IX. I want to be treated kindly, just as I treat children and all those in distress.
- X. I want my mind to be trained so that I can be of the fullest service.
- XI. I want to be considered one of the family, for I will give my life to protect it.
- XII. I want my master to be my god and to act the part.

SIGNED: FOR ALL DOGS

FIDO



And in general we say that this booklet oftentimes is made little necessary for the two dogs decide most of these matters and it is often just as well.

A large stud may be mated to a small bitch usually with little or no harm.

Sometimes, for large breeds, a "gripping" band of gunnysack or other material can be tied around the loins of a small bitch in order to give the stud a hold with his front legs.

Second Service Not Necessary

One service is sufficient. A second service is not advisable and is an unnecessary drain on the stud. A mating the second time after two or three days is not in any way advisable; it may even cause a second litter to be conceived.

If a second mating is given, it should not be given until the next day, and preferably on the second day following. If the first mating causes the bitch to flow again, she should not be bred until after the flow has ceased. But the flow does not indicate that the first mating has not been effective.

A bitch and stud not fat but in hard lean condition are to be desired. Too much fat on the part of the bitch makes mating mechanically difficult and this fatness may prevent the male fluid (semen) from properly entering far enough; thus barrenness results and the stud dog is blamed.

Extent of Stud Contract

Bear in mind that the owner of the stud sells only a stud service or co-ition, which is proved fully by the tying. He does not guarantee pregnancy or whelping of puppies dead or alive. He is not obligated, unless he specifically agrees in advance to give a free service at next heat if the bitch fails to become pregnant or to whelp puppies. He need not return a fee.

And a second or return service offered is to the same stud if still owned, and to the same bitch at her next heat, upon prompt notice that the first mating did not bring on pregnancy.

It is highly desirable that a breeding certificate be given, setting forth all these conditions (see illustration, page 10).



THE END



Dog Owner's Pledge

- ◆◆ I (name) as a lover of dogs and all other animals, pledge myself:
- ◆◆ To keep my dog under control at all times and to train him to full obedience:
- ◆◆ To respect the rights and feeling of others by keeping my dog from giving needless offense.
- ◆◆ And as the dog is man's best friend, even so I shall be my dog's best friend.

🐾 DOG BOOKS & SPECIALTIES 🐾

●...Order from your local bookseller or from us. ● All prices include delivery anywhere. ● Sent C. O. D. if desired

BREED BOOKS

Each profusely illustrated. Each covers history, standard, breeding, care and showing. Each by an authority. Well bound.

THE BOSTON TERRIER—Perry, 2nd ed....	\$2.00
THE BOXER—Gordon	3.00
THE CHOW CHOW—Will Judy, 2nd ed.	3.00
THE DACHSHUND—Greenburg, 3rd ed.	2.50
THE GREAT DANE—Keckler.....	3.00
THE PEKINGESE—Nicholas	3.00
THE RUSSIAN WOLFHOUND—Martin....	2.50
THE SAINT BERNARD—Fleischli.....	2.50
THE SPRINGER SPANIEL—Riddle, 3rd	3.00

DOG WORLD MAGAZINE

A monthly all-breeds magazine, covering ALL sections of America, ALL breeds, ALL dog subjects. Many pictures, features, news and hints on training, feeding, showing, and breeding.

\$2.00 for 1 year, \$3 for 2 years, or a special offer of 5 years for \$5.00. Sample copy 25 cents, or at your newsdealer.

The best \$2 per year investment you can make whether you have one or a hundred dogs, whether you are beginner or old-timer.

ONE SUGGESTION ALONE may save the lives of your dogs, reduce expenses, correct, improper diet, improve type and bloodlines, and increase your sales.

TERRIER TRIMMING CHART

3rd ed. Complete instruction in grooming, plucking, conditioning and preparation of ALL terriers for the show. By Will Judy. Two colors. \$1.00 each, 3 for \$2.00.

PICTURE CHART ALL DOGS

ALL AKC recognized breeds correctly drawn according to official standards. Size 19x24 in., suitable for framing. Arranged by show groups. 5th ed. \$1 each, 3 for \$2.

WORLD MAP OF DOGS

New 2nd ed., two colors. All the breeds of the world with country of origin. Attractive, educational, informative, \$1 each, 3 for \$2 (can be assorted with Picture Chart and Terrier Trimming Chart).

PEDIGREE SERVICE

Certified pedigrees furnished, based upon AKC, CKC and Field Dog Stud Books. 3 gen. \$1.50 (if reg. Number of dog is not furnished, \$2); 4 gen. \$2.50, 5 gen. \$4.50; 6 gen. \$7. Cash must accompany order.

CONTRACT BLANKS

(We can not furnish samples)
LEASING CONTRACTS for use in leasing or farming out bitches on share or other basis. Set of 2, 40c; 5 sets, \$1.00.

TIME PAYMENT CONTRACTS for use in selling dogs on time payment basis. Set of 2, 40c; 5 sets, \$1.00 (can be assorted with Leasing Contracts).

BOARDING CONTRACTS for use when boarding dogs; prevent serious loss or law suits and protect both sides. 5c each.

KENNEL RECORD BOOK

A complete book, looseleaf, with binder and all necessary forms, for keeping exact, easy records of everything about the kennel. 8 different forms for all purposes.

Use it for income tax records. \$5.00.

PEDIGREE CERTIFICATES

BLUE RIBBON—beautiful 4-generation (62 dogs) well printed in two colors, on heavy ledger paper. 10 for 50 cents, 25 for \$1.00.

DELUXE—4-generation, in three colors, with beautiful border, on stock certificate paper, the most distinctive certificate available at 10 for \$1.00, 25 for \$2.00.

The B. R. and DeLuxe contain also a Bill of Sale, Transfer of Legal Title, and Receipt for Money Paid.

SIX GENERATION—two colors, 126 dogs, white, very desirable for study of bloodlines, 10 for \$1.00 or 25 for \$2.00.

All these blanks can be filled in on the typewriter. Fold nicely into a large (No. 10) mailing envelope. Free registration blanks with pedigree order.

PUPPY COST LEAFLET

Sets forth all the many costs in conducting a kennel, breeding dogs, and caring for a litter. Explains reasonableness of sales prices. 50 for \$1.00. Ideal inclosure with sales letter.

STUD SERVICE RECORD

For complete, exact records of all stud services, with fee and registration data. \$3.00 SINGLE BLANKS, 4 for 50c min. order; 10 for \$1.

SIRIUS SENTIMENT SERIES

Every dog lover should have these. The price is \$1 for entire lot of 14 (each 4x9), or 5 sets for \$3.

- 1.—Senator Vest's Tribute to a Dog. . .
- 2.—The Old Dog. . .
- 3.—How The Dog Was Named. . .
- 4.—A Dog's Prayer. . .
- 5.—My Dog is Dead. . .
- 6.—Purgatory of Dogs. . .
- 7.—Then Be Not so Cruel. . .
- 8.—The Dog's Bill of Rights. . .
- 9.—Why Get a Dog. . .
- 10.—Why the World Likes Dogs. . .
- 11.—Don't Call a Man a Dog. . .
- 12.—Dog the Only True Love that Money Can Buy. . .
- 13.—No Room in Heaven for Dogs. . .
- 14.—Have a Heart.

THE FEMALE

A tribute in praise of the female dog. By Will Judy. Rev. 2nd ed. Give a copy to the prospect who demands a male. 50 for \$1.00; 100 for \$1.75.

JUDY PUBLISHING COMPANY

WORLD'S LARGEST PUBLISHERS OF DOG BOOKS
JUDY BUILDING — 3323 MICHIGAN BOULEVARD

CHICAGO 16

