





GEN

ALLEN COUNTY PUBLIC LIBRARY

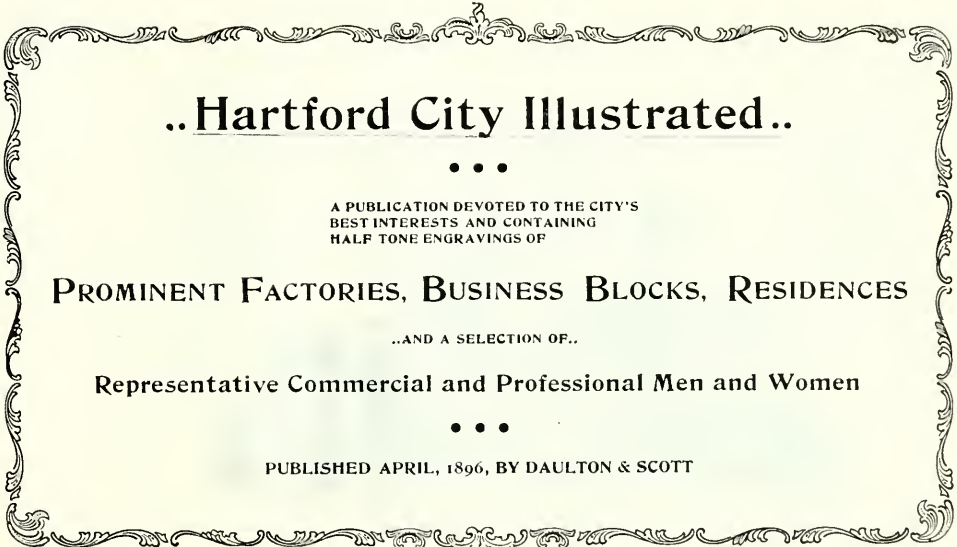


3 1833 01707 8681

Gc 977.202 H25h

Hartford City illustrated





..Hartford City Illustrated..

• • •

A PUBLICATION DEVOTED TO THE CITY'S
BEST INTERESTS AND CONTAINING
HALF TONE ENGRAVINGS OF

PROMINENT FACTORIES, BUSINESS BLOCKS, RESIDENCES

..AND A SELECTION OF..

Representative Commercial and Professional Men and Women

• • •

PUBLISHED APRIL, 1896, BY DAULTON & SCOTT

*Cecil Beeson Jr.
PO Box 1
Hartford City, Indiana*



LILLIAN MILLIKAN
DAISY GARTIN.

JESSIE ARNOLD.
MABEL CLIFTON

BESSIE ABBOTT.
DONA SCHREEL.

... HARTFORD CITY...



In one of the greatest states in the Union, and in the most fertile and productive county of that state, is located beautiful and progressive Hartford City, the future metropolis of Eastern Indiana. Time was when this bustling, thriving manufacturing city's chief claim for distinction arose from the fact that it was the judicial head of a county that contained a rich agricultural territory, with fine black loam soil that needed only to be cultivated by man's hand to induce it to give forth its most bounteous blessings. This was prior to the discovery of natural gas in the immediate neighborhood in the spring of 1887, at which time Hartford City had a total population of not to exceed 2,000 people, none of whom dreamed of the coming importance of their humble village in the manufacturing and commercial world. With that discovery of nature's fuel a great change came over the community, and an awakening to a new and better life was experienced; the rumblings of a metropolitan future were heard in the distance and honors unexpected and unsought were showered upon Hartford City. New and wide-awake people began to locate here and they, working hand in hand with the older residents who were alive to the possibilities of the day, soon had the city fairly started on the road to wealth and fame. They did this in a thorough, systematic and direct manner, offering and giving free factory sites and free fuel and before long had a number of important manufacturing industries located, which naturally gave a great impetus to the growth of the city.

The increase in population from that time to the present has been slow but sure and today a conservative estimate of the residents within the city limits places the number at 6,000. Probably one-half of these are employes, or wives and children of employes, of the various manufacturing industries located in the city, so these plants are great contributors to the wealth and prosperity of local commercial institutions.

But those men who were working so hard to make Hartford City an ideal manufacturing center did not confine their efforts in that direction alone. They lived in this city, called it home, and were justly proud of the place; but at the same time they were painfully aware that it was deficient in many of the advantages usually found in a modern residence city. They began work on another line—this time to remedy existing defects—and many public improvements were soon projected and carried to successful issue. This work has been unceasingly continued from that time until the present, and today strangers admit that Hartford City is one of the most beautiful places in the country. We now have everything in the way of modern conveniences and improvements ordinary to metropolitan cities, and these are fine business blocks, modern hotels, palatial residences, beautiful churches, and convenient school buildings; we also have local and long distance telephones, electric light and power, as well as down town telegraph and express offices. But this is not all, for we supplement these many advantages with fine block paved streets, stone, brick and cement pavements, an excellent sewerage system, and ef-

ficient fire and police departments. Then again we have a free library and reading room, secret and benevolent orders of all kinds literary, musical and social organizations too numerous to mention. All these things add to the attractiveness of the city as a place of residence. In addition to the many advantages just mentioned Hartford City has a practically unlimited supply of natural gas, excellent shipping and transportation facilities, as well as live and progressive commercial and professional men who have the interests of the city at heart.

One other point that should not be overlooked in making claims for the future greatness of Hartford City is its proximity to the great Indiana oil field. At the present time the lower edge of that field is but a few short miles north of the city limits and the close of every day brings additional testimony to the fact that before long Hartford City will be in its geographical center. Already many of the local capitalists have invested large sums of money in companies organized for the purpose of prospecting for oil and considerable work is being done in that line.

And now, having in a general way explained the many advantages attached to Hartford City as a place for the location of manufacturing and commercial institutions, as well as residences, it is well to, in a brief manner, explain some of the interesting points of the city, and therefore some of the following pages are devoted to that purpose.

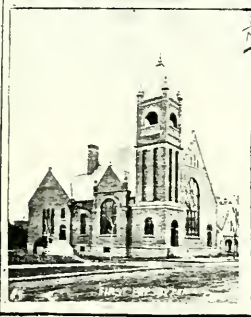
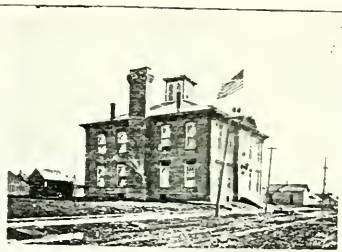
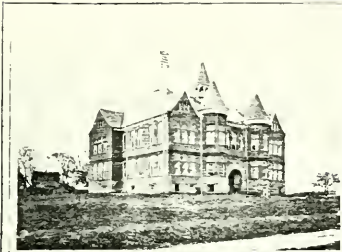
HARTFORD CITY LAND CO.

One of the many agencies that has contributed effectively to the up-building of the community is the Hartford City Land Co., which was incorporated under the state laws in January, 1891, with a capital stock of \$150,000, all of which is paid in. The object of its organization, briefly stated, was to secure the location of additional manufacturing industries in the city,

thereby assuring an expansion of local mercantile trade. With this end in view the company makes the generous offer of free sites, free gas, excellent switching facilities, and reasonable cash subsidies to responsible parties who desire to establish industries that will give employment to a large number of workmen. Soon after its organization the company secured large tracts of land located on both the north and south sides of the city. That on the latter was laid off and platted into 592 lots and is now known as the South Side and the Cantwell & Patterson additions; over one hundred dwellings were erected by the company and these houses and the ground they occupied were soon sold, as well as great numbers of single lots. A few of the latter are still on the market and are 50x120 feet in size while their value ranges from \$50 to \$250 each. Most of the streets in these two additions are nicely graded and many of them are paved; the land is well situated and possesses excellent natural drainage. Taken altogether this part of the city has a bustling thriving appearance, and is an ideal working-man's district.

The company's property on the north side of the city is designated as the 1st, 2d, and 3d additions and originally contained 1,000 lots. It is situated between the business district and the Sneath Glass Works and is all inside the city limits. The size and value of these lots is practically the same as those on the south side, and there are still some remaining unsold. This is a most desirable section for residence purposes and now contains some of the handsomest dwellings in the city. The large and elegant new North School building is also situated on this property.

The company also owns some eighty additional acres just north of this property, which has been reserved for the use of factories. A railway switch, constructed and owned by the land company, runs from the L. E. & W. railway to this property and preparations are being made to extend it to the Pan Handle railway, thus supplying a "belt" line for the convenience of manufacturers. At present two indus-



NEW BUILDING

St. Stephen County Court House

CHRISTIAN CHURCH

SANDERS CO. STORES

tries of considerable importance are on this ground—the Sneath Glass Works and the Semi-Steel Castings plant. The officers of the land company are now in communication with several other concerns that are seeking locations and it is more than probable that some of them will be secured soon.

The officers and directors of the Hartford City Land Co. are men well known in the business world and their connection with the company is an evidence of its reliability. Col. A. L. Conger, of Akron, Ohio, is president; W. B. Cooley, vice president; S. W. Cantwell, secretary and treasurer. The directors are: Col. A. L. Conger, president of the Whitman-Barnes M'fg. Co.; Geo. T. Perkins, president of the First National Bank of Akron, Ohio; F. M. Atterholt, attorney; W. B. Cooley, president of the Blackford County Bank; Chas. W. Cole, vice president of the Blackford County Bank; S. W. Cantwell, attorney; K. B. Conger, treasurer of the Muncie Land Co. All inquiries in reference to the advantages of Hartford City as a place for the location of factories, business institutions, residences, etc., etc., addressed to S. W. Cantwell, secretary of the company, will receive prompt attention.

EDUCATIONAL ADVANTAGES.

The opportunities afforded for the acquisition of an education in Hartford City are not surpassed anywhere in the state. The system which now exists has been in progress of development since the town was originally settled and is as complete as years of experience can make it. The course of study embraces twelve years' work—four years each in the primary, intermediate, and the high school departments. In the latter the course is arranged with a view to the wants of students who complete their education there, with additional studies calculated to qualify them to enter any of the state universities.

The course in the intermediate department includes arithmetic, geography, and grammar, etc., etc., while the primary studies are, of course, of a preparatory character.

The city has two fine public school buildings, known respectively as the North and South Schools; they are both substantially built of brick, commodious and well equipped, thoroughly lighted and ventilated, and provided with every auxiliary and facility to add to the comfort and convenience of both teachers and pupils. The South building contains eight rooms and is under the charge of Wm. Reed, assisted by seven lady teachers. The North building has eleven rooms and Walter E. Ervin is the principal. Owing to the city's rapid increase in population these accommodations are not sufficient and the high school department and two primary grades occupy rooms away from the main buildings. The high school is located in the Evening News building and is in charge of Miss Jennie E. Hoover, assisted by Finley Geiger. The two primary grades are located on the West and South sides and are taught by Miss Nettie Tyner and Edwin C. Ford, respectively. It is believed that another large building will be erected within the near future, thus providing additional accommodations.

Nearly fourteen hundred pupils now have their names enrolled upon the record, seventy-five of which are credited to the high school. Frank M. Beard is the city school superintendent and under his efficient management the standard of education is being rapidly elevated.

CHURCHES AND SOCIETIES.

The cause of religion found expression in the very early days of the city's development and the religious character of the people, as also their liberality, has kept pace with municipal growth. This fact is evidenced by the large number of



JOHN U. DICK'S BLOCK



TELEGRAM NEWS BLOCK



BRISCOE BLOCK



CITY WATER WORKS



NEW WEILER BLOCK



BLANCHFORD COUNTY JAIL

church organizations now in flourishing condition in Hartford City. These embrace the denominations of the following title: Methodist Episcopal, Presbyterian, Christian (the Church of Christ), Seventh Day Adventists, United Brethern, Evangelical Lutheran, Wesleyan Methodist, Catholic, and Baptist (German). All of these societies have church edifices of their own, some of them being very handsome and of striking architectural beauty. Besides the church organizations proper there are a number of societies more or less allied with the churches and working with them in connection with the promotion of christianity, benevolence and charity.

The social and fraternal spirit of the residents of Hartford City is evidenced by the many secret and benevolent organizations that are in flourishing condition. Among the most important of these should be mentioned the Free & Accepted Masons, including a Subordinate Lodge, Chapter of the Royal Arch Masons, and the Order of Eastern Star; Independent Order of Odd Fellows, including the Subordinate Lodge, Uniformed Rank, Encampment, and Daughters of Rebekah; the Knights of Pythias, Independent Order of Red Men, Ancient Order of United Workmen, Junior Order of United American Mechanics, Knighted Order of the Tented Maccabees, and the Grand Army of the Republic. In addition to these there are a number of clubs organized solely for social enjoyment whose members are from among the city's best people.

SUPPLY OF NATURAL GAS.

As stated elsewhere the local supply of natural gas is practically unlimited, there being plenty for home consumption and enough to spare to pipe it to other cities without diminishing the pressure in the least. In fact, instead of its force decreasing it can be truthfully asserted that the pressure is even

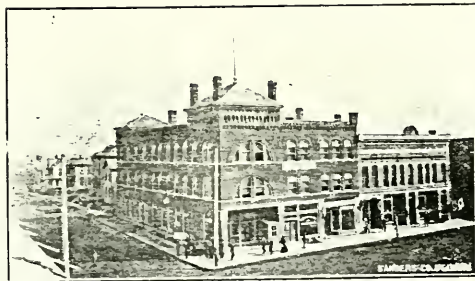
greater than when gas was first discovered in the neighborhood. The supply used within the city for illuminating and heating purposes is controlled by two companies, the Hartford City Natural Gas & Oil Co. and the Peoples Gas Co. The first-named concern owns four wells and the other has five wells, all of which have a pressure of 275 to 300 pounds and a flow of of from 2,500,000 to 6,000,000 feet of gas each per day.

The rates charged for residence heaters and cook stoves range from fifty to seventy-five cents per month while ten illuminating tips cost \$3.96 per year. These companies also supply some of the factories with gas for fuel although many of the manufacturing industries control their own supply.

When it is known that the Indiana gas belt, the largest in the world, has an area of nearly three thousand square miles, and that Hartford City is situated near its highest point, it requires no great amount of figuring to reach the conclusion that the local supply is almost inexhaustible. That this is a fact is conceded by authorities on the subject and no city in the state has better prospects for continued prosperity.

THE HARTFORD CITY PRESS.

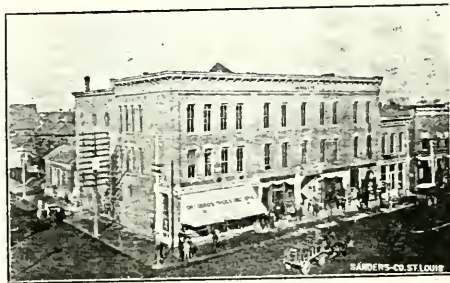
It has been said—and truly said—that the thrift, enterprise, and intelligence of any community can be fairly estimated by the number and character of its newspapers. Judged by this standard Hartford City is a leader among municipalities of equal size in this state, for it has four good ones—two daily and two weekly. All of these are ably edited and occupy a distinctive place in the front rank among their contemporaries in the Gas Belt of Indiana. They furnish their readers with a complete transcript of the local news, as well as brief epitomes of interesting happenings at a distance; taken as a whole they



HOTEL INGRAM.



CAMPBELL BLOCK.



VAN CLEVE BLOCK

are good papers and a credit to the city. The oldest is the

HARTFORD CITY TELEGRAM

which was established in 1875 and purchased by the present editor and publisher, E. E. Cox, in 1891. It is a weekly paper, issued every Wednesday, a six-column quarto, and has a large city and county circulation, being recognized as the mouth-piece of the local democratic party. Its policy is to give the general news of county, state and national importance in an impartial manner. The initial number of the

HARTFORD CITY EVENING NEWS

made its appearance in February, 1893, being under the same management as the Telegram, E. E. Cox, publisher and editor, and C. H. Hoover, city editor. It is a seven-column folio daily, with eight pages on Saturday, and is delivered by carriers for ten cents a week. The News is a non political paper and devotes its space principally to disseminating local news.

THE HARTFORD CITY TIMES

another weekly paper, was established in 1884, but was purchased by A. W. Tracy, the present owner and editor, Dec. 1, 1895. It is a six-column quarto, of republican faith and is the official paper of the county. The subscription price is \$1.00 per year and since coming under Mr. Tracy's management has increased its circulation greatly.

THE DAILY TIMES,

an evening paper, is the offspring of the weekly, and is also edited by Mr. Tracy, assisted by H. Mercer, who holds the position of city editor. It is a six-column quarto and is delivered to any part of the city for ten cents a week. It is also of republican faith and is the official city paper. Although the

youngest daily in the city, Jan. 1, 1896, being the date of its birth, like the Times it has a strong hold on public patronage.

BANKING INSTITUTIONS.

There is, perhaps, no feature that more fully indicates the business and commercial interests of a city than its financial institutions. The bank, to a great extent, is an immense artery channel that supplies the life currents to all business enterprises, and is as indispensable to business life and activity as the great blood channels are to animal vitality and existence. Hartford City, estimated by this standard, makes an unusually solid and substantial showing, for there are few cities of its size possessed of better or even as good banking facilities. Two banks, both state institutions, furnish our manufacturers, merchants, and professional men, with excellent opportunities for exchange of money and paper. Of these two

THE CITIZENS' BANK

is the oldest, as it opened its doors for business in 1872. For some years it was conducted as a private concern under the firm name of Sweetser & Matter but in 1879 the present management secured control, merged it into a State bank and adopted the name now in use. From that time to the present business matters entrusted to its officers have been successfully handled. A general banking business is transacted and the accounts of individuals, firms, and corporations, are solicited. The capital stock is \$60,000 and the surplus and undivided profits amount to \$30,000. The officers are as follows: H. B. Smith, president; C. Q. Shull, vice president; E. M. Stahl, cashier; J. B. Stahl, bookkeeper; S. J. Farrell, clerk.

THE BLACKFORD COUNTY BANK

has a capital stock of \$75,000 and is officered as follows: W. B.

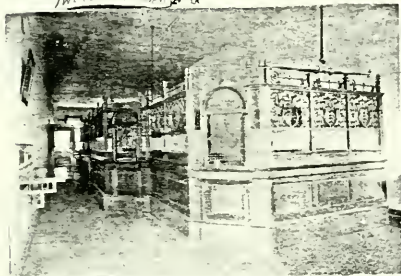


J. W. L. VOSS, JR.

BLACKFORD COUNTY BANK



CHAS. W. L. L.



A. G. LUPTON, CASHIER



MISS ANNA VOSS, BOOKKEEPER



J. A. NEWBAUER, ASST. CASHIER

CAPITAL STOCK \$75,000.



MICHAEL SCHMIDT, BANKER

Cooley, president; C. W. Cole, vice president, A. G. Lupton, cashier; J. A. Newbauer, assistant cashier; M. Schmidt and Anna Voss, book-keepers. The management is a liberal and progressive one, a promoter of legitimate enterprises, and stands ever ready to do all in its power to advance the interests of Hartford City. However, combined with the qualities enumerated, it blends a conservatism that is a guarantee of the safety of any enterprise it may be identified with. This bank was incorporated under the laws of the state in Dec. 1892, with a capital stock of \$50,000; this amount was increased in January of the present year to the figure first mentioned which gives it the largest banking capital in the county. In addition to this the stock-holders, including such men as A. Lupton, president of the Pennville (Ind.) Bank, and Wm. H. Reed, president of the Citizens' Bank of Portland, Ind., represent over \$1,000,000 of capital. The bank has a large real estate backing, and is recognized as a substantial concern.

HARTFORD CITY'S POST OFFICE.

Nothing is more indicative of the growth and expansion of Hartford City's commercial and manufacturing interests than a glance at the amount of business transacted by the local postoffice during 1895. When this is compared with the figures of 1894 and the years preceding it the most skeptical will be compelled to admit that the city had a healthy and surprising growth. During the year ending Dec. 31, 1895, the total number of pieces of mail handled "in" and "out," was 1,103,030, an average of 3,527 daily, not including Sunday. The total weight of this matter amounted to thirty-one tons, and was more than double the business done in 1891 or any year preceding that one. It should here be mentioned that local mail, that is pieces addressed from resident to resident, is not included in either weight or number of pieces handled. The number of money orders issued during 1894 was 3,445, a

monthly average of 287; during 1895 the record shows that 4,869 were issued, or an average of 495 each month. This shows an increase in the latter year of a total of 1,415 or 118 each month. These figures do not include the International Money order business which, was considerable.

In 1891 the rating of this office was changed from the fourth to the third class, and from the fact that so far this year's business has been much greater than the corresponding period of last year, it is believed that within two years at the longest Hartford City will be placed in the second class with the attendant free delivery accommodations. Not including two "star" routes there are nine mails received daily and an equal number dispatched, excepting on Sunday when two mails arrive and two leave. This Sunday feature is an addition made within the last year on account of increased business. For the convenience of patrons there are 857 private boxes, 400 of which are "call" boxes and the remainder "lock" boxes. Of these 157 have been added within the last eighteen months and more will have to be placed in soon. The patrons of the postoffice include a population of 11,000 people which is nearly double the number that used it in 1891.

J. B. Chapman is the present postmaster and has held the office since Jan. 1, 1894. His administration of its affairs have been extremely satisfactory to the public and he is recognized as a careful and painstaking official. His daughters, Misses Maud A. and Grace G., act as first and second assistant, respectively.

SOME GENERAL MENTION.

That Hartford City has a brilliant future no one will attempt to deny. The boom which it has and has had is not an artificial one by any means, but is solid and substantial and founded on purely business conditions. That this is so is proven by the confidence its own citizens have exhibited by erecting many

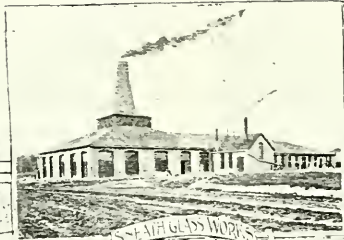
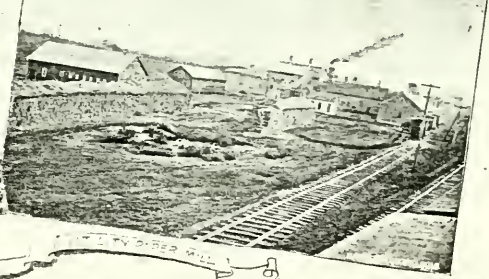


PLATE GLASS WORKS



WATER POWER MILL

handsome and substantial business blocks, residences and public buildings. Of the latter class the pride of the city is the new county court house which is a structure of striking architectural beauty. It was commenced in 1893 and was ready for occupancy in December, 1894, costing complete \$120,000. It is a two-story building, with a half basement and tower, and stands in the center of the public square. The interior is handsomely frescoed throughout and finished in the highest style of art from top to bottom.

Prominent among the business blocks should be mentioned the Cooley block, Campbell block, Briscoe block, Weiler block and the Hotel Ingram. The Weiler block, now being erected by W. B. Cooley, will soon be occupied by A. Weiler & Bros., the general merchants, who will then conduct one of the largest department stores in the state of Indiana. The building is three stories high, is composed of brick and iron and is absolutely fire proof. Each floor is 100x112 feet in size and the entire building will be modern in all particulars, as it is to be fitted with elevators, electric lights, and every convenience.

The Hotel Ingram, which was erected in 1893 and opened to the traveling public Jan. 9, 1894, is also a credit to the city. It is under the management of W. F. Crist, a hotel man of twelve years' experience. It has forty-five handsomely furnished guest rooms and a number of large sample rooms, and taken altogether make a welcome refuge for the weary "Knight of the Grip." The dining room, one of the chief features of this house, is a large, well ventilated room, resplendent with silverware, clean linen and is a model of neatness. The food placed on the table is the best the market affords and is gotten up in a style to suit the taste of the most critical.

CITY WATER WORKS.

Hartford City is blessed with an abundant supply of pure and wholesome water that is obtained from four 8-inch artesian wells, each 250 feet deep. Over ten miles of mains are in use through which the water is forced by two Gordon Compound

Duplex pumps, each with a nominal capacity of 1,000,000 gallons per day. The entire water works system is owned by the city and cost about \$43,500, bonds to that amount having been issued to provide for the payment. Work was commenced on the plant during August, 1894, and completed in January, 1895, the mains also being laid within that time. During 1895 more than three hundred services were put in making fully 1,000 consumers at the present time. From the very beginning the system has been self sustaining and the city will be able to redeem the bonds before maturity, even after making contemplated extensions. For use in case of fire a supply of water is kept in a reservoir with a 300,000 gallon capacity and eighty-five hydrants or fire plugs are scattered throughout the city. Edwin H. Ford is superintendent of the system.

LOCAL FIRE PROTECTION.

The city is protected against fire in the business and main residence districts by paid and volunteer fire departments. The former consists of the men who have charge of the headquarters and the latter is composed of twenty citizens who work under the direction of C. S. Leonard, chief, and Geo. C. Laine, assistant chief. They have at their command a fine, all-steel hose wagon that is drawn by two horses, and have proven themselves successful fire fighters. The department is well-equipped and responds to all calls promptly. An engine is not used as the water works system supplies all needed pressure, 120 pounds, which is a force capable of throwing from four to six streams of water a distance of 130 feet.

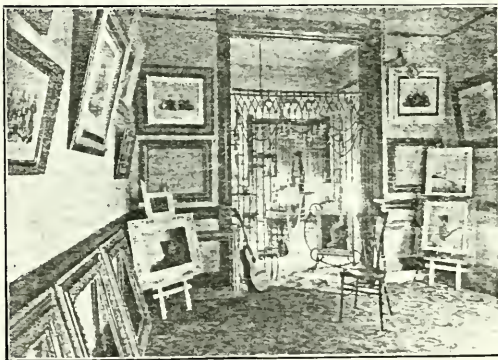
The south side also has a volunteer department which is known as the Diamond Specials; it is equipped with a hand reel hose cart and occupies a special building erected by the individual members. John McIntee acts as chief.

TRANSPORTATION FACILITIES.

As one of many inducements for the location of manufacturing industries Hartford City can offer shipping and trans-



DOWELL BLOCK



SWINGLEY'S STUDIO

portation facilities that are exceptionally good for a place of its size. Two railroads enter and leave the city, one east and west line and the other north and south. The first is the "Pan-Handle" route, a portion of the Pennsylvania system, one of the greatest trunk lines in the country, while the other is the Fort Wayne division of the Lake Erie & Western railway. These two roads either directly reach or make connections with all the principal trunk line roads in the country, and have guaranteed switching charges to all transfer points.

MANUFACTURING INDUSTRIES.

Hartford City is particularly fortunate in its possession of many manufacturing industries that are not only permanent in location and reliable in character, but are of the kind that give employment to great numbers of people, many of them skilled mechanics who receive remunerative wages; hence, they are today all successes and great contributors to the city's wealth and general prosperity. Among the chief and most important of these industries—considered from the standpoint of people employed and value of annual product—is the

HARTFORD CITY GLASS CO.,

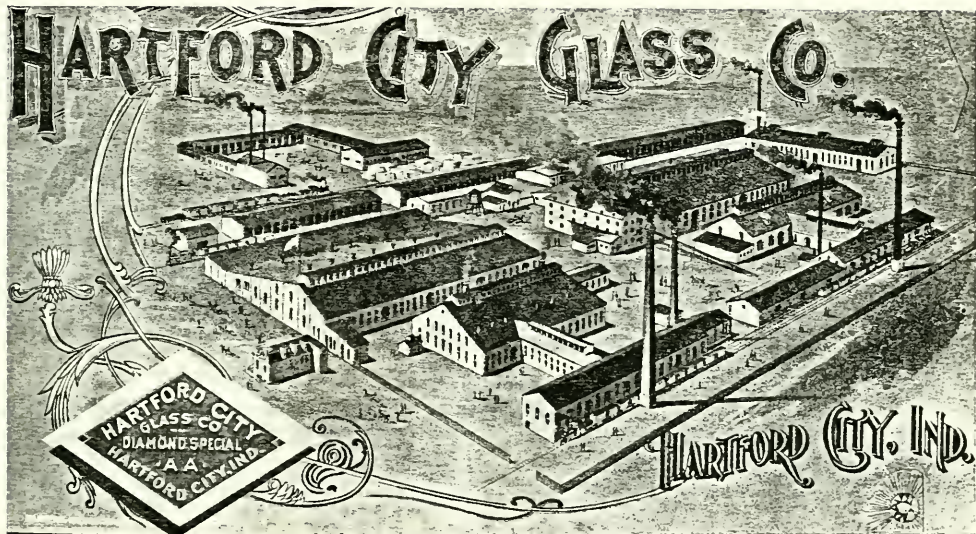
which has been in successful operation since 1891. Its plant is located on the south side of the city and the factory proper, with auxiliary buildings, covers twelve acres of ground. The business carried on is the manufacture of window glass and the product is conceded by authorities to be the best in the market, as it is of a clearness which is very striking and is entirely free from seeds and blemishes. This is accounted for by the fact that all the raw material that goes to make up the finished goods is of the best quality, care being taken in its selection as the management desire to build up and maintain a reputation

for the integrity of the company's product. Although even at the beginning its operations were by no means on a small scale the capacity of the plant has been gradually increased as the quality of the goods became known, until at the present time an average of 40,000 boxes of window glass (approximately 2,000,000 square feet) are placed on the market each month.

To do this requires the employment of 550 people—many of them skilled workmen—whose monthly pay-roll averages \$42,000. The earnings of a blower runs from \$150 to \$200 per month, that of a gatherer about \$90, a flattener's wages is \$120 a month, and a cutter gets \$140. It is easily seen that the distribution of such a volume of money every thirty days is a good thing both for Hartford City and the employes.

As this factory is one of the largest of the kind in the country a little information about its details will prove interesting. There are two melting and blowing rooms, known as No. 1 and No. 2; the dimensions of the first-named are 136x185 feet and it contains a tank eighty-five feet long, eighteen feet wide, and six feet deep. The set of four flattening ovens belong to this tank and occupy a space of 150x365 feet, while the cutting room is 50x365 feet in size. The corrugated galvanized iron roofs that cover the buildings are supported by immense steel trusses that extend from wall to wall in single pieces, thus doing away with the necessity of obstructing pillars. In addition to these buildings there are two large warehouses, each 50 x680 feet in size, that are located on either side of the railway switch that traverses the company's property; then again there is a large blacksmith and machine shop, where skilled mechanics are employed in turning out all the blow pipes, tools and iron work used in the factory.

This is a great source of economy to the company and in addition it manufactures all other articles necessary for its own use, such as clay tank blocks, floating dams and bridges, flattening stones, as well all packing boxes or cases, using for the latter purpose 3,000,000 feet of lumber annually. Natural gas, is, of course, used exclusively as a fuel, thereby effecting



Glass was first made here, Tuesday, Jan 13, 1891.
The first in Blackford County.

a saving of thousands of dollars yearly in the expense account.

One hundred and eighty-four dwellings have been built by the company in the vicinity of the factories for the use of their workmen and families; 443 of their hands live here, all of whom are married. They average five to a family, and this makes 2,215 in the south side towards the total population of Hartford City, which is now estimated to be 8,000, or nearly one-third of the whole. It is evident, therefore, that the prosperity of the window glass manufacturers means the prosperity of the city in a large measure, and that this prosperity is likely to continue is evidenced by the fact that the pressure of natural gas here is not excelled anywhere.

The officers of the Hartford City Glass Co. are: Geo. T. Perkins, president; John A. Jay, vice president; H. B. Smith, treasurer; J. R. Johnston, secretary; Richard Heagany, general manager. The first three named are engaged in the banking business in Akron, Ohio, Kokomo and Hartford City, Ind., respectively, where they are well known and highly esteemed for their business ability, integrity and general worth. J. R. Johnston, the secretary, and Richard Heagany, the general manager, devote their entire personal attention to the affairs of the company, and no higher compliment could be paid these gentlemen than to say that they have the confidence of their superiors, the respect of their employes, and that their conduct of the affairs of the company has been marked by intelligent enterprise.

THE SNEATH GLASS CO.

is another local manufacturing concern of considerable magnitude and second only in importance to the one just described, although the business carried on is entirely different. The Sneath Glass Co. is engaged in the manufacture of all kinds of lantern globes, giving especial attention to railway and ship lantern globes and semaphore glass; it also has the distinction of being one of three factories in the United States that make

what are known as copper ruby globes. The annual value of this company's product exceeds \$100,000 and there is a daily average output of 1,200 dozen lantern globes, fifty dozen semaphores, and from fifty to seventy-five dozen copper ruby globes. To do this necessitates the steady employment of about ninety hands who annually receive over \$40,000 in wages.

This industry was originally established in 1889 at Tiffin, Ohio, and was known as the Tiffin Glass Co., two years later the name was changed to the one now in use, and in May, 1894, the plant was located in this city. It covers three acres of ground and the main building, three warehouses and cooper shop, are all substantially built and lend a prosperous and busy appearance to the section of the city in which they are situated.

To fit these buildings with machinery necessary for the successful manufacture of this company's goods cost over \$12,000, and it is needless to add that everything in use is of the latest improved pattern.

The Sneath Glass Co.'s factory is the only one in the United States devoting its entire attention to this one line of goods, and it makes more globes than any two concerns in existence: that the quality of its product is evidenced by the fact that a market is found for the goods over the entire United States, while considerable exporting is done. Manufacturers of lantern frames are extensive patrons of the company and many of the leading railroads are numbered among its permanent customers. Agencies have been established in New York, Chicago, Philadelphia, Pittsburg, New Orleans, and many other large cities.

Natural gas is the only fuel in use and is secured from a well owned by the company, which has a capacity of 6,000,000 cubic feet per day and is one of the best wells in the county. All barrels used for shipment of globes and semaphores are manufactured by the company, as are the glass moulds, which are made from cast iron.

The officers of the Sneath Glass Co. are as follows: R. D.

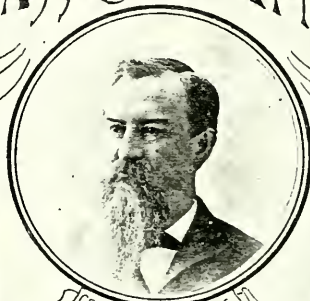
OFFICERS OF THE
HARTFORD CITY
GLASS COMPANY,



JOHN A. JAY, V. PRES.



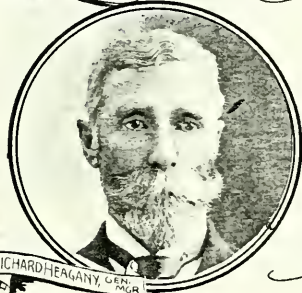
H. B. SMITH, TREAS.



GEO. T. PERKINS, PRES.



J. R. JOHNSTON, SECY.



RICHARD HEAGANY, GEN. MGR.

HARTFORD CITY,
IND.

Sneath, president; J. W. Geiger, treasurer; A. C. Crimmel, secretary; Harry Crimmel, manager. They are all men of experience and ability and have worked hard to bring their company's product up to the proud standard of perfection it has reached. Under their judicious management the future success of the concern they represent is assured and the quality of their goods will never grow less.

THE HARTFORD CITY PAPER CO. •

is the largest institution of the kind in the state and was located in Hartford City during the year 1892. Both news and manilla paper are manufactured and a ready sale of the company's product is found among the jobbers of the central and southern states. The mill is equipped with machinery of the most approved pattern and a process of manufacture originated by the company enables the production of paper stock at a less cost than that of competitors. One brand of manilla paper known as "Texas," manufactured at this mill, is in especial favor with the trade; it is a butcher's wrapping paper and has practically superceded the use of common straw paper as it is much cleaner and has a more inviting appearance.

The water used in the manufacture of this company's paper is secured from a large artificial lake near the mill, which is teeming with trout, an evidence of its purity. The natural gas which is used for fuel comes from the company's own wells and the supply is ample for all needs.

About one hundred employes are given steady work and the company's annual pay roll is over \$30,000, while the value of the year's product is fully \$150,000. A. D. Schaeffer is the local manager.

THE UTILITY PAPER CO.

was organized during the fall of 1890 and the following January began active operations; the company is incorporated under the laws of the State of Indiana and has a capital stock of \$120,000. The business carried on is the manufacture of straw

wrapping paper, nearly six thousand tons of which are made and sold each year. The works cover an area of six acres, has solid stone and brick buildings with slate roofs, and is located on Lick Creek just south of the L. E. & W. depot.

From seventy-five to eighty hands are given steady employment in the company's mill at Hartford City, while forty-five others act as straw buyers and shippers in the territory from which the raw material is secured. To pay this large force for services performed not less than \$45,000 is required each year, and this sum distributed in the regular channels of commerce is a great benefit to the community.

The officers of the Utility Paper Co. are the following: A. B. Trentman, president; W. S. Bash, vice president; John Mohr, Jr., secretary and treasurer; S. B. Fleming, local secretary and cashier. Messrs. Trentman and Fleming are both residents of Hartford City and give the business their personal supervision; under their judicious management of affairs the success of the company has been phenomenal and the product of the mill is now shipped over almost the entire country and gives the greatest satisfaction to consumers.

THE CONGRESS CYCLE CO.

is one of the latest additions to Hartford City's manufacturing circle, although it is by no means the least important as it gives employment to seventy-five workmen, many of whom are practical and experienced mechanics who command good wages. This concern began the manufacture of high grade bicycles during October, 1895, and the popularity of its product is evidenced by the fact that nearly all of this season's output is already contracted for; in round figures this amounts to 10,000 wheels, truly a wonderful showing for a new company.

The "Senator," for gentlemen, and the "Gipsy Queen," for ladies, are the names of the two machines made by the Congress Cycle Co.; they are strictly high grade wheels, and are doing much to advertise Hartford City abroad.

The officers of the company are M. Frash, president; John

THE WILLMAN LUMBER COMPANY.



J.P. WILLMAN, V. PRES.



R.K. WILLMAN, SECY.



THE WILLMAN LUMBER CO.

Frash, treasurer; I. T. Beard, secretary; C. A. Frash, manager. Under their direction the factory has been fitted with the latest improved machinery, all of which was built expressly for the company.

CHAS. H. HUBBARD

is a manufacturer of wagon spokes and carriage turned work and has been engaged in that business in Hartford City since 1869. The product of his establishment is sold over the entire United States, Mr. Hubbard, however, dealing only with the jobbing trade. About fifty men are engaged in this industry, finding comparatively steady employment.

MEREDITH, DAMON & Co.

is the name of a firm that is engaged in the manufacture of barrel staves and headings, also making a specialty of butter tub stock. From forty to forty five men are given steady employment during the twelve months of the year and the annual pay roll of the company is \$12,000.

The output of the concern last year was sold in seventeen different states and its value was in excess of \$30,000; during the present year it is confidently expected that the business transacted will not be less than \$50,000, as each year of the company's existence has seen an expansion of trade.

C. H. Croninger, the resident manager, has been with the company ever since the Hartford City factory was established six years ago. He is a man of wide experience in this line and under his able direction the business has prospered.

THE WILLMAN LUMBER Co.

located on East Washington street, was organized and incorporated in March, 1893, and is engaged in the manufacture of sash, doors, blinds, stair work and all kinds of interior and exterior decorations for houses. The plant is well equipped with modern improved machinery and the facilities for turning out first-class work are unexcelled in this part of the state. This firm also does a retail business in hard and soft lumber and all kinds of builders' materials, the trade in both particulars being

principally local—that is confined to Hartford City, the adjacent country and neighboring towns. Employment is given to about twenty-five men, all of whom receive good wages and comparatively steady work.

The Willman Lumber Co. is officered as follows: John Montano, president; J. P. Willman, vice president; A. G. Lupton, treasurer; R. K. Willman, secretary and manager. The first named, Mr. Montano, is a resident of Union City, Ind., while all of the others live in Hartford City and enjoy the confidence and esteem of the community. J. P. and R. K. Willman devote their entire attention to the company's affairs, and the volume of the trade enjoyed by it evidences their efficiency in that direction. A. G. Lupton, the treasurer, is cashier of the Blackford County Bank and possesses a large acquaintance throughout the county.

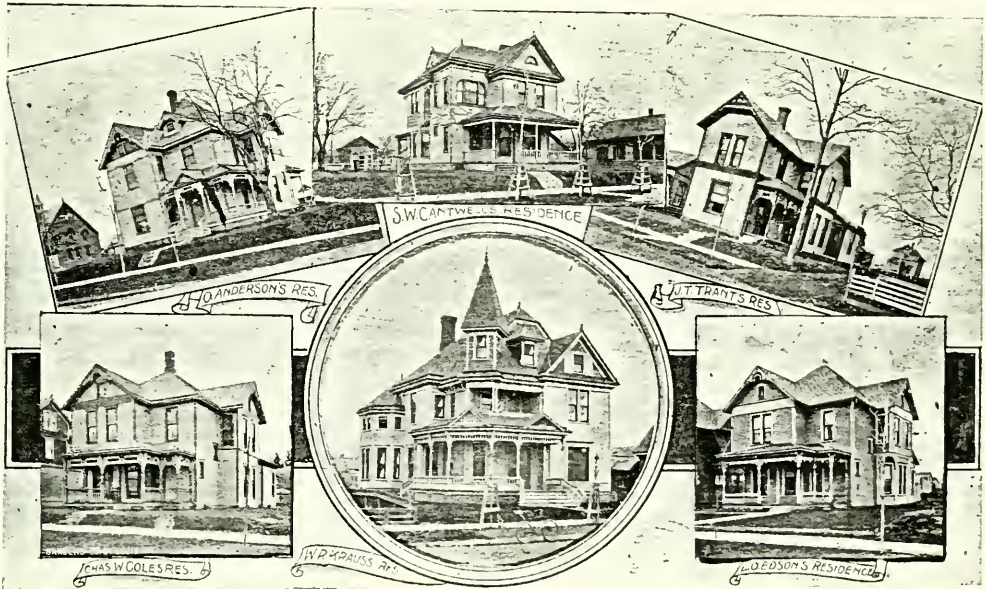
A. A. BOWMAN & Co.

are manufacturers of surreys, buggies; and light vehicles of all descriptions, and have been in business in Hartford City for the past eight years; the local patronage bestowed upon the firm has increased each year as the public apparently appreciates the value of first-class work. The shop is located at the corner of Main and Monroe streets and especial attention is given to fine repair work.

WINKLEBLECK & WINNING

is the firm name of a concern that manufacturers patent elm hoops and has been doing a large business ever since it was established, four years ago. The goods of this company's manufacture possess an enviable reputation and are sold over the entire United States.

Messrs. Winklebleck & Winning are also retail dealers in hardwood lumber and transact a large business in that line. In the various departments of the company's plant twenty-five hands are given steady employment throughout the entire year. J. E. Winning, the junior member of the firm, is the general business manager.



S.W. CANTWELL'S RESIDENCE

H.O. ANDERSON'S RES.

J.T. TRANT'S RES.

CHAS. W. COLES RES.

W.P. KRAUSS RES.

L.O. EDSON'S RESIDENCE

--- WHO THEY ARE ---

And Something About the Positions Occupied by the Ladies and Gentlemen Whose Features are Reproduced in This Publication.



Adams, H. B., of the firm known as Crist-Adams Co., dealers in harness and all articles of horsewear, as well as light vehicles of all descriptions. Mr. Adams is well known throughout the city and county and is recognized as a reliable business man. The firm of which he is a member also does considerable business in the real estate line.

Adams, J. C., photographer, located his business in Hartford City three years ago. He is an adept at all kinds of photographic work and makes a specialty of free hand crayon portraits.

Alexander, J. F., is a physician of the regular school and has been practicing his profession in Hartford City for the past twelve years. Dr. Alexander is a graduate of the University of Pennsylvania

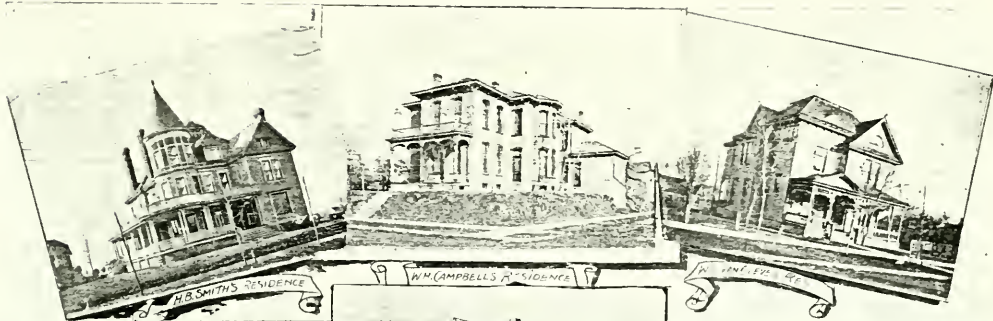
and came to this city from Philadelphia. He is connected with the G. A. R., being entitled to membership in that organization from the fact that he served over four years as a soldier in the war of the rebellion.

Anderson, O., is a member of the firm of Cronin & Anderson, druggists, and was born in Warren, Ind., in 1851. For thirteen years he was identified with the drug business in that city and has been located here for nearly three years. Mr. Anderson is a member of the F. & A. M. and has made many warm friends during his residence in Hartford City.

Anderman, Miss Rae, is a bookkeeper and stenographer in the office of S. J. Emshwiller, real estate dealer, loan and insurance agent.

Arrick, C. C., is manager of the local office of the Western Union Telegraph company and has held that position for the last two years. He is well and favorably known in the city and has resided here for five years. Mr. Arrick is a member of the local lodge of the K. of P.

Ayres, G. P., conducts a first-class grocery and meat market which is located on the northwest corner of the public square. He was born and raised in Hartford City and has been established in his present business for thirteen years. Mr. Ayres is also a member of the city council as in the spring of 1894 he was elected to that body by the Republican party to represent the third ward. Socially he is a member of the K. of P. order.



H.B. SMITH'S RESIDENCE

W.M. CAMPBELL'S RESIDENCE

W. VENTLEVILLE



J.H. ADAM'S RESIDENCE



J.W. MORSE'S RES.



E. WIGGINS'S RESIDENCE

Beard, Frank M., superintendent of the Hartford City public schools is conceded by authorities to be an educator with advanced ideas and one who is doing much to advance the efficiency of the teachers who work under his directions. Prof. Beard has engaged in educational work since the fall of 1894, and wherever employed has given the best of satisfaction. He graduated from Del'auw University with great honors in the Class of '92. In the summer of 1894 he was selected to discharge the duties of the office he now holds and it is safe to add that the wisdom of that selection has never been questioned.

Bedwell, J. A., has been a resident of Hartford City for the past sixteen years and for ten years of that time was connected with the Geo. Gable Dry Goods Co. Mr. Bedwell is well known in the county and numbers his friends by the hundreds. Socially he is affiliated with the local lodge of the K. of P.

Bell, C. L., is one of Hartford City's leading physicians of the younger generation and has been practicing medicine in this locality for over two years. He occupies a suite of pleasantly furnished office rooms in the Briscoe block and is rapidly acquiring a large and desirable practice. Dr. Bell is a graduate of the Starling Medical College, of Columbus, Ohio. At the present time he holds the position of county health officer and is a member in good standing of the local K. of P. lodge.

Bell, J. E., is a member of the firm of Bell & Harris, dealers in boots and shoes, and located on the south side of the public square in the Briscoe block. Mr. Bell has been a resident of the city for the past twelve years, and has a large number of acquaintances and friends. His firm is a prosperous one and does a business that is second to none other in the same line in the city.

Bell, T. B., is a jeweler and optician whose place of business is on the west side of the public square. Mr. Bell has been a resident of Hartford City for twelve years and established himself in his present business something less than two years ago. Socially he is a K. of P.

Bell, W. H., is junior member of the firm of Cox & Bell, furniture dealers, undertakers and embalmers, and gives all of his time to the management of a branch store at the thriving little oil town known as Van Buren. Fraternaly Mr. Bell is an F. & A. M.

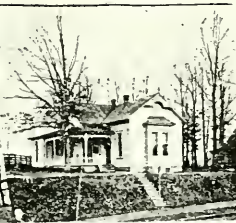
Bonham, John A., is Hartford City's chief executive being elected to the office of mayor in the spring of 1894; since that time he has performed the public duties of the position in such a manner as to reflect credit both upon himself and his party. Mayor Bonham was born in Blackford county and has a large personal acquaintance among its residents; being an ardent Republican and a tireless worker in

that party's behalf he has been honored with public office many times. In 1884 he was elected to the position of town clerk, re-elected in 1885, and again in 1886; he subsequently served a two-year term as town trustee; from 1884 to 1888, inclusive, was town attorney, and in 1889 and in 1890 was county prosecutor. In the latter year he left Hartford City and located in Washington Co., Colo., where he remained for three years, one year of that time holding the positions of county attorney and a member of the Republican County Central Committee. In the spring of 1893 he returned to his old home and again identified himself with public affairs, the following spring being elected to the office he now holds and later the same year was chairman of the Republican County Central Committee. Mayor Bonham takes a great interest in municipal affairs and is a willing worker for any enterprise that has for its end local advancement. Socially he is a member of the I. O. O. F., the K. of P., and the Jr. O. U. A. M.

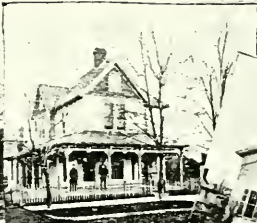
Bonham, J. M., of the firm of McGeath, Bonham & Trant, was born on a farm in Blackford county and devoted the earlier years of his life to agricultural pursuits. From 1879 to 1888 he taught in the public schools of the district, and in the latter year was nominated by the Democratic party for the office of recorder of the county. His election followed and he gave a more than satisfactory administra-



J. R. McGEATH'S RES.



JOHN A. BONHAM'S RES.



ELISHA PIERCE'S RES.



JOHN U. DICK'S RES.



W. B. COOLEY'S RESIDENCE



J. A. BEDWELL'S RESIDENCE



LEWIS MCCREADY'S RES.

tion of the affairs of the office. At the expiration of his term Mr. Bonham became associated with J. P. McGeath in the abstract, real estate, loan and insurance business and the firm was known as McGeath & Bonham until the admission of Mr. Trant some time later. Mr. Bonham is a member in good standing of both the I. O. O. F. and the K. of P. lodges and is extremely popular with all classes, irrespective of political opinion.

Bowman, A. A., is a member of the firm of A. A. Bowman & Co., manufacturers of surries, buggies and light vehicles.

Bowman, J. B., is also a member of the firm mentioned above.

Bowman, J. T., is another member of the same firm.

Briscoe, Miss Francis M., is a teacher in the South school building.

Bugh, Jesse, the present sheriff of Blackford county, was born in Perry Co., Ohio, in 1847; one year later his parents moved to this county and he has resided here ever since. When sixteen years old Mr. Bugh became a soldier in defense of his country serving five months in Co. I, 138th Indiana Volunteers. Politically he is a Republican and was elected to his position on that party's ticket in Nov. 1894, taking the office Aug. 24, 1895. So far he has proven himself a capable officer and justified the expectations of his friends.

Bugh, Leverett, is a deputy in the office of his father, Jesse Bugh, the sheriff of Blackford county. Mr. Bugh, the younger, is twenty-six years of age, was born in this county and prior to appointment to the office he now holds resided in Washington township where he engaged in farming.

Caldwell, A. M., member of the firm of Krauss & Caldwell, dealers in drugs and druggists' sundries, has been a resident of Hartford City since the year 1887. He is a druggist of over twelve years' experience and has been a member of the present firm since 1891. Mr. Caldwell is affiliated with the local K. of P. lodge and personally is a very pleasant gentleman.

Caldwell, D. C., is now serving his second term as clerk of Blackford county which fact is a sufficient guarantee of his fitness for the position. He was first elected in 1888 and re-elected to succeed himself four years later. Mr. Caldwell is a true and tried democrat and has been one of the wheel horses for that party since he located in Blackford county during the year 1874.

Campbell, W. H., is senior member of the firm of Campbell & Ervin, dealers in dry goods, carpets, clothing, boots and shoes. Mr. Campbell gives his personal attention to the business and what is generally and properly termed a successful business man. His store has been in suc-

cessful operation for fourteen years and employment is given to six clerks.

Cantwell, John, is senior member of the firm of Cantwell, Cantwell & Simmons, the well-known attorneys at law. He was born June 29, 1822, in Canton, Stark Co., Ohio, and located in Indiana when twenty years of age. Soon afterwards he began to study law during spare moments and in 1852 was admitted to the bar and commenced the practice of law in Scott county. Mr. Cantwell removed to this county in 1857 and has lived here continuously since; with the exception of a period of six years when he engaged in farming he has been practicing his chosen profession. Politically Mr. Cantwell is an uncompromising opponent of democracy, believing that its principles are detrimental to the country's best interests; prior to the birth of the Republican party in 1856 he was a Whig but since that time he has always voted the Republican ticket.

Cantwell, S. W., attorney at law, and member of the firm of Cantwell, Cantwell & Simmons, was born in this county in 1859 and has always made it his home. He began the study of law prior to reaching his majority and in 1880 graduated from the Central Law School of Indianapolis; one year later he had taken a literary course in DePauw University and graduated from that institution with high honors. Mr. Cantwell then returned to Hart-



P.M. COVAULT.



L. B. SIMMONS



COL. A. L. CONGER.



S. W. CANTWELL.



S. J. EMSHWILER.



ABE WEILER.



FRANK GEISLER



JOHN A. REMY.



O. ANDERSON.



CHAS. W. PIERCE.



JOHN CANTWELL.



S. L. GADBURY.



J. ERVIN LYON.



H. C. DAVISSON, M.D.



J. W. GEIGER



J. J. MADDOX.



Mrs. J. J. MADDOX.



J. B. BOWMAN.



W. R. KRAUSS

ford City and began to practice law, becoming a partner of his father. The firm name was Cantwell & Cantwell until Nov. 1894, when L. B. Simmons' name was added. Mr. Cantwell is a Republican and has always been prominently identified with that party's affairs. In 1888 he was a member of the Republican State Central Committee and has twice been prosecuting attorney for this district. In addition to his law business Mr. Cantwell has many other interests; he is a director of the Blackford Co. bank and Akron Oil Co., and is also secretary and treasurer of the Hartford City Land Co. and as such has been instrumental in accomplishing much good for the city. Socially he is connected with the K. of P. order.

Cantwell, Miss Elvora, is a teacher in the North school building.

Casterline, C. L., is senior member of the firm of Casterline & Co., jewelers and opticians, and has been in business in Hartford City for the last nine years. His place of business is on the south side of the public square. Mr. Casterline is also local manager of the Central Union Telephone company's affairs and is well known in the community.

Casterline, Mrs. C. L., wife of C. L. Casterline the jeweler, is directly interested in the management of her husband's business affairs, as she is herself an expert jeweler.

Cawley, J. W., has been Hartford City's leading merchant tailor for the past eight years. His business room is located in the Cooley block and contains an ample stock of foreign and domestic suitings, and as Mr. Cawley himself is a practical cutter and fitter, the work turned out from his establishment is always satisfactory. Politically speaking Mr. Cawley is a republican and represents the Fourth Ward in the City Council, and is the president of that body. He is also a member of the I. O. O. F. and the F. & A. M.

Chapman, J. B., is Hartford City's postmaster and since taking possession of his office, Jan. 1, 1894, has performed his duties in a more than creditable manner. He was born in Allen Co., Ind., in 1854, and has always resided in this state. He located in Blackford county a little over ten years ago, and until the time of his appointment to office lived on a farm in Licking township and worked at the carpenter trade. He had always been a fighter for the cause of democracy but never sought public office until he made the race for the postmastership. Mr. Chapman has given an administration of the duties of his position in a way that has made a favorable impression with the local business men and the general public. He is a pleasant and obliging gentleman whose great desire is to render every service to those who patronize his office.

Chapman, Miss Mand A., daughter of J. B. Chapman, is first assistant in the Hartford City postoffice and performs her official duties in a satisfactory manner.

Chapman, Miss Grace G., also a daughter of J. B. Chapman, is second assistant in the postoffice. Like her sister she is prompt and reliable in transacting official business.

Clapper, M. M., is a physician with a recognized standing in the city and occupies a pleasant suite of office rooms in the Dowell block. He is a graduate of the Northwestern University Medical College of Chicago and since his location in Hartford City has acquired a host of friends. Socially Dr. Clapper is a member of the I. O. O. F.

Clonser, N. D., is the oldest practicing resident physician in Hartford City, and is highly esteemed by all acquaintances on account of his many sterling qualities.

Cole, Chas. W., is vice-president of the Blackford County Bank and one of Hartford City's representative men of the younger generation. He is also one of the directors of the Hartford City Land Co. and has numerous other local interests.

Cole, Enos, is an attorney at law and has been actively engaged at his chosen profession in Hartford City for the last five years. His office is in the Kir-lbaum block, where he gives attention to legal matters of all kinds and is prepared to

Norman W

Jay A. Hindman



JAY A. HINDMAN.



E.C. VAUGHN.



G.T. FULTON.



JESSE BUGH.



J.G. WOOD.



LEOTA MCGEATH.



D.J. HUMMER.



D.C. CALDWELL.



NORMAN WOOD



FLOYD WILLMAN



LEVERETT BUGH.



J.A. PAINTER.



THOS. M. PIERCE.



S.W. SAGE, M.D.



ZADOK WILLIAMS



C.L. BELL, M.D.



M.H. MCGEATH.

© 1902-13

NOTE:—Through an unfortunate mistake, not discovered until too late to be rectified, the name of Jay A. Hindman appears under the picture of Norman Wood, and Mr. Wood's name under Mr. Hind-

practice in the state and county courts. Mr. Cole is an ex-town clerk and a member of the K. of P. order.

Conger, Col. A. L., president of the Hartford City Land Co., was born in Boston, Summit Co., Ohio, Feb. 19, 1838. He was a farmer's son and began his business career at the age of ten in a foundry, working for ten cents a day; soon afterwards, however, securing a position in a flouring mill at the increased wages of twenty-five cents per day. Later he embarked upon the Ohio canal where he remained for two years, or until he began teaching school, which occupation he followed until war was declared with the South. At that time he enlisted in the army as a private; was soon made Second Lieutenant, then First Lieutenant, and after the final surrender at Appomatox, returned home in command of his company. He has always taken a prominent part in politics, and while never a candidate for office he has served an entire apprenticeship upon republican committees, having been a member of the National Republican Executive committee for eight years; he has also been twice elected treasurer of Summit county. Col. Conger is also prominent in Grand Army circles and was Commander of the Department of Ohio in 1886. He is identified in a prominent way with many important manufacturing industries; he is president of the Whitman & Barnes M'fg. Co., operating several large

factories throughout this country and Canada; is vice-president of the Pittsburg Glass Company, operating nine different plants in the United States, established the American Tin Plate Co., at Elwood, Ind., which has grown to be the largest tin plate factory in the world; was president of the Hartford City Glass Co. until recently; is president of the Akron Steam Forge Co., located at Elwood, Ind; and a director in numerous other manufacturing concerns at Akron, Ohio., of which city Col. Conger is a resident.

Cooley, W. B., is president of the Blackford County Bank, president of the Electric Light Co., vice president of the Hartford City Land Co. and treasurer of the Board of Education, besides being prominently identified with many local business enterprises of various character. He was born and has always lived in Hartford City and is one of the best known men in Blackford county.

Covault, J. F., has been a practicing dentist in Hartford City for the past ten years and in the county for over twenty years. He has an enviable standing in the community and this fact is due to his strict attention to business and his ever courteous manner. Dr. Covault is a member of the local lodge of the K. of P.

Covault, P. M., senior member of the firm of Covault & Thomas, jewelers, was born in Pennsylvania sixty-seven years ago

and located in Blackford county in 1843. For some time he engaged in farming but for the last forty years he has been in the jewelry business. Nov. 1, 1888, Mr. Thomas was taken in as a partner.

Cox, E. E., editor and publisher of the Hartford City Telegram and the Evening News, is a newspaper man of extensive experience a fact that is aptly demonstrated by the capable manner in which he conducts his two publications. He was born in Tipton, Ind., in 1868, but came to Hartford City in 1891 from Peru, Ind., where he had been identified with newspapers for several years. Shortly after his arrival here Mr. Cox purchased the Hartford City Telegram, a weekly paper, and in February, 1893, began the publication of the Evening News, and from that time to the present has been very successful with both publications. Socially he is affiliated with the F. & A. M., and the K. of P. societies.

Cox, W. H., is senior member of the firm of Cox & Bell, furniture dealers, undertakers and embalmers; he gives the business his personal supervision and by his affable manner has made many friends for himself and steady patrons for the store. Mr. Cox is a member of both the K. of P. and the F. & A. M. societies.

Cronin, J. P., the senior member of the firm of Cronin & Winters, dealers in general merchandise, is one of Hartford



NELSON A. WORLEY



E. I. WINTERS



R. L. MANOR



JOHN A. BONHAM



B. G. SHINN



EDWIN H. FORD



J. W. SHAMBARGER



J. W. CAWLEY



W. H. MORSE



G. C. LAINE



CLARKE STEWART



C. S. LEONHARD



F. LECHIN



GEO. P. AYERS



ELISHA PIERCE



E. D. MOFFETT



J. M. BOYHAM



J. R. SEATH



J. T. TRANT



J. E. WINNING



J. P. CRONIN

City's best known business men. His firm has been in existence two years and for eleven years prior to its birth he was connected with A. Weiler & Bros. three years in Farmland as a partner and eight years in this city as a clerk. Mr. Cronin has always been prominent in local politics, is a staunch democrat, and is ex-recorder of Blackford county.

Cronin, T. J., is a member of the firm of Cronin & Anderson, druggists, has been a resident of Blackford county for thirty-one years, although he was born in Delaware county this state, seven years prior to locating here. He has been connected with the drug business in Hartford City for fifteen years and has an established reputation as a successful merchant in that line. His store is located in the Van Cleve block.

Cronin, W. N., is a physician of the regular school and a graduate of the Detroit College of Medicine, receiving the diploma of M. D. in 1885. Dr. Cronin has been practicing in Hartford City for the last ten years and is very popular both with his professional brethren and the public generally. His office is in the Citizens' Bank block on the east side of the public square.

Davisson, H. C., has been a practicing physician in Hartford City for over eighteen years and in Blackford county for thirty-three years. Dr. Davisson's office

is in the Cooley block and he resides on Southwest Walnut street. He is of the regular school and is recognized as one of the leading professional men of the day, which is evidenced by the fact that he is ex-president of the Delaware Medical Society and is a member in good standing of the County, District, State, and American Medical Societies. He is also an F. & A. M.

Denany, L. M., is senior member of the firm of Denany & Hendry, real estate, loan and insurance agents, with offices on the southeast corner of the court house square. They have a large amount of city and farm property listed on their books for sale and exchange; represent a number of the best-known fire and insurance companies, and make a specialty of building and loan business. The present firm has been in existence for two years although the business was established over five years ago.

Dick, John U., is the oldest harness dealer in Blackford county having established his business in this city thirty-one years ago. His store is located on the east side of the public square and he keeps in stock a full line of horsewear, all of which he manufactures himself. Mr. Dick was born in York Co., Pa., in 1833 and by his many years' residence in this city has earned the respect and esteem of his fellow townsmen.

Dick, Miss Irene R., is a bookkeeper in the employ of her father, John U. Dick, the well-known harness dealer. She lives with her parents on West Main street.

Dowell, Frank P., is a real estate broker, abstractor of titles, and fire insurance agent, with an office in the Dowell block on the south side of the public square. He was born in this city in 1853 and has engaged in the above lines of business since 1870. Mr. Dowell possesses large tracts of land and has subdivided three additions just north of town. He makes mortgage loans and investments, loans private money at low rates, buys, sells and rents property and is also a notary public. He is thoroughly identified with the business interests of Blackford county, and has a high rating in the community.

Dowell, J. H., president of the Hartford City Natural Gas and Oil Co., has been a resident of Hartford City since the year 1850 although he was born in the state of Virginia in 1833. Since he has lived in this city Mr. Dowell has always been looked upon as a prominent and influential citizen; for many years he was a leading merchant and grain dealer, was also in the banking business, afterwards engaging in horse buying, selling and trading. He has now practically retired from active life. Since 1881 until the present time Mr. Dowell has continuously been a Drainage Commissioner of Blackford county. Fraternally he is a member of F. & A. M. and



has held all official positions in both the Lodge and Chapter of that organization.

Draper, Miss Anna B., is a teacher in the South school building.

Draper, Miss Winifred J., is a teacher in the South school building.

Edson, L. O., member of the firm of Blake & Edson, dealers in boots and shoes, has been a resident of Hartford City for over a quarter of a century and is favorably known in the community. He served as a justice of the peace for fifteen years; for five years held the position of secretary of the Hartford Natural Gas and Oil Co. and also engaged in the hotel business for a number of years. Something over a year ago he formed a partnership with Mr. Blake and now devotes his entire time to the shoe trade. Mr. Edson is a member of both the F. & A. M. and the G. A. R.

Emshwiller, Dell, represents some of the best-known and oldest established fire, life and accident insurance companies in existence; he will be found in his office in the Opera House block during business hours ready to give information to those desiring policies of any kind. Mr. Emshwiller was born and raised in Blackford county and has a wide acquaintance with the people of the vicinity. He is a member of the Masonic lodge and the Order of Ben Hur.

Emshwiller, S. J., is a real estate dealer, loan and insurance agent, with an

office in the Opera House block. He was born in this county in 1842 and devoted his entire time to agricultural pursuits until 1881 when he moved to Hartford City and became a merchant; six years ago he took up the real estate, loan and insurance business and has met with more than ordinary success since that time. Mr. Emshwiller handles both farm and city property, represents some first class fire, life and accident insurance companies and makes loans on realty holdings.

Emshwiller, Miss Mary, is a teacher in the North school building.

Ervin, Walter E., principal of the North school, graduated from DePauw University in the Class of '95, but prior to that time had two years' experience as a teacher in the public schools of Portland, Ind. In the fall of 1895 Mr. Ervin was selected for the position he now holds, and is performing his duties in more than a satisfactory manner. While in college he made an especial study of history and expects to make the educational line his life's work.

Ervin, W. H., is a doctor of dental surgery, with offices in the Briscoe block. He graduated from the Ohio College of Dental Surgery at Cincinnati in the class of '91, and practiced three years before locating in Hartford City two years ago. He has a high standing among the local professional brethren and has a large circle of acquaintances and friends.

Farrell, S. J., is a clerk in the Citizens' Bank, and by strict attention to business is making his services of great value to that institution.

Ford, Edwin C., is a school teacher and has charge of the South side primary building. Although still young in the service he is already giving evidence of his ability in educational work.

Ford, Edwin H., superintendent of the city water works system, has held that position ever since the plant has been in operation. He is a native of this state and has resided in Hartford City since 1882, with the exception of two years spent in Gas City, Ind., as secretary of the Almerian Glass Co. He resigned that position to return to this city and oversee the erection of the water works plant, after which he was appointed to his present office.

Fouts, Chas. M., attorney at law, is a member of the firm of Geiger & Fouts, and occupies offices in the Opera House block. This firm practices in both county and state courts and transacts all kinds of legal business.

Fulton, G. T., the present incumbent in the office of County Surveyor, has proven himself in every way competent to successfully attend to the many duties devolving upon him. He was born in Ontario, Canada, in 1872, but accompanied his parents to this country when very young. He was elected to his present position by



EDNA HUTCHINSON.



ANNA B. DRAPER.



ELLA TROUTE.



ANNA E. FULTON



ROSE LAITEM.



WINIFRED J. DRAPER.



EMMA SUDWARTH



IDA B. MAINES.



FRANCIS M. BRISCOE.



EDWIN C. FORD.



WM. REED.



FRANK M. BEARD.



WALTER E. ERVIN.



FINLEY GEIGER.



DEA MCCREADY.



IDA E. JONES.



CLARA HEMINGER.



JENNIE E. HOOVER.



MARY EMSHVILLER.



MRS. J. T. TRANT.



FANCHON MOFFETT.



ELVORA CANTWELL.



LULU HADDON.

the votes of the Republican party in November, 1894, and has discharged his duties in a creditable manner. Mr. Fulton is also a member of the firm of Harley & Fulton, and does all kinds of general engineering work.

Fulton, Miss Anna E., is a teacher in the North school building.

Gadbury, S. L., is one of the directors of the Willman Lumber Co. He was born in Ross Co., Ohio, in 1832, but has been a resident of Blackford county and Hartford City for fifty-eight years. Mr. Gadbury has served two terms as sheriff of Blackford county, being elected on the Democratic ticket in 1872 and again in 1880. He is a veteran of the late war and a member of the G. A. R.

Geiger, Finley, is a well-known attorney at law and a member of the firm of Geiger & Fouts, with an office in the Opera House block. He has a large circle of acquaintances, all of whom can be claimed as personal friends, made so by Mr. Geiger's affable manner and evident willingness to render any favor within his power. He also has charge of a department in the local High School.

Geiger, J. W., is treasurer of the Sneath Glass Co. and one of Hartford City's representative men. His conservative but forceful business methods in transacting the affairs of the company which he rep-

resents has won for Mr. Geiger an enviable standing in the community.

Geisler, Frank, formerly senior editor and publisher of the Hartford City Republican, daily and weekly, was born in Wayne Co., Ind., in 1864, and removed to this city six years later. In 1879 he became identified with the newspaper business and has made it his life's work since. In 1884 he, in connection with E. S. Huffman, established the Hartford City Times and successfully conducted it until four years later, when the plant was disposed of. Mr. Geisler then removed to Wisconsin and for the next three years published the Clintonville Times and the Merrill Advocate. He then returned to Indiana and established the Stark County Republican, but after a time disposed of that paper and in March, 1894, again located in Hartford City and, with his brother Henry, purchased a local paper called the Arena and rechristened it the Republican. Last March that paper was consolidated with the Hartford City Times and Mr. Geisler will soon seek another location.

Geisler, Henry, was one of the editors and publishers of the Hartford City Republican until its consolidation with the Times. He was born in this city twenty-three years ago, and although still a young man is a good all-around news and job printer and a first-class newspaper man, having had a practical experience in the business seldom secured by one of his

years. This experience was by no means confined to Hartford City, as he has worked in some of the best offices in the central states.

Haddon, Miss Lulu, is a teacher in the North school building.

Heagarry, Richard, is general manager of the Hartford City Glass Company's local business, and to him much of that concern's success is justly attributable, for he is a conservative but energetic business man and one who is thoroughly conversant with the technical points in the manufacture of glass.

Heminger, Miss Clara, is a teacher in the South school building.

Hendry, H. G., junior member of the firm of Denany & Hendry, real estate, loan and insurance agents. (See Denany, L. M.)

Hindman, Jay A., prosecuting attorney for the Twenty-eighth Judicial Circuit, which is composed of Blackford and Wells counties, was first appointed to that office in March, 1893, to fill a vacancy caused by a special legislative enactment. He proved himself to be such a competent and painstaking official that at the expiration of his term Mr. Hindman was nominated by the Democratic party to succeed himself, and the people of the two counties named recognized his special fitness for the place by returning



him to office by a large majority over his Republican opponent. Mr. Hindman was born in Wells county, Ind., in 1865. He was educated in the Fort Wayne M. E. College and the Valparaiso University, graduating from both institutions and obtaining the degree B. S. from the latter. In 1890 he was elected to the office of County Superintendent of Schools and re-elected in 1892, resigning that position one year later to accept the appointment before mentioned. Mr. Hindman is an I. O. O. F. and an F. and A. M. Politically he is recognized as one of the local leaders in the Democratic party and is an aggressive but fair fighter for its principles.

Hoover, C. H., city editor of the Evening News, has held that position since the birth of the paper. He is a thorough and practical newspaper man of twenty years' experience and a ready and pleasing writer on the current topics of the day.

Hoover, Miss Jennie E., is principal of the High School, and for a number of years has been connected with local educational work, acting as a grade teacher for a considerable length of time. Her general work was of so satisfactory a character as to merit promotion to a more advanced position. It is only fair to add that Miss Hoover just as successfully transacts the duties attendant upon the principal of a high school.

Hughes, Eli, is proprietor of the "Excelsior" grocery and has been engaged in his

present business for the last thirteen years. His establishment is located on the east side of the public square, the first door north of the Citizens' bank. Mr. Hughes is ex-treasurer of Blackford county and is recognized by all as one of Hartford City's representative commercial men.

Hummer, D. J., Recorder of Blackford county, was elected to his present position in 1892. He was born in Delaware county, Ind., but has resided in Blackford county since 1884. He has always been a worker in the ranks of the Democratic party, and was rewarded for his many years of faithful service by political preferment in the year above mentioned, and has satisfactorily administered the responsible duties of his office ever since. Socially Mr. Hummer is a Royal Arch Mason and stands high in fraternal affairs.

Hutchinson, Geo. W., dealer in hardware, tinware and stoves, has been one of Hartford City's leading business men for nearly a quarter of a century. His store is located on the west side of the public square, and in addition to the above mentioned lines he handles high-grade bicycles and probably has the largest trade of that kind in the city. Mr. Hutchinson is a member in good standing of the local lodge of the I. O. O. F.

Hutchinson, Miss Edna, is a teacher in the North school building.

Jay, John A., is vice-president of the

Hartford City Glass Co., and is also engaged in the banking business at Kokomo, Ind., of which city he is a resident.

Johnston, J. R., is secretary of the Hartford City Glass Co. and is a thorough-going and practical business man. He is possessed of an affable and accommodating disposition that has been the means of providing him with friends innumerable.

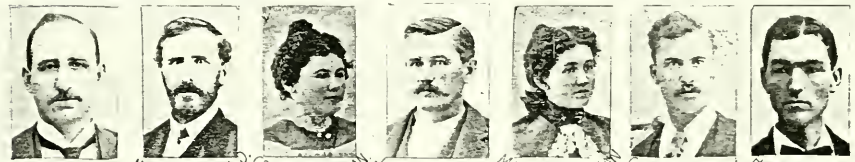
Jones, Miss Ida E., is a teacher in the North school building.

Krauss, W. R., senior member of the firm of Krauss & Caldwell, dealers in drugs and druggists' sundries, has been a resident of Hartford City for the past fifteen years and has engaged in the drug business during all that time. His long experience has taught him just how to conduct a first-class pharmacy, and he is looked upon as one of the city's representative business men. Socially Mr. Krauss is a member of the K. of P. order.

Laine, Geo. C., represents the First Ward in the City Council and does it in a thorough and satisfactory manner. He was elected in the spring of 1894 on the Republican ticket and is an enthusiastic worker in that party's behalf. Mr. Laine is also a member of the I. O. O. F. and the J. O. U. A. M., being State Vice-Counselor of the latter society. He is a clerk in the employ of G. P. Ayres, the grocery man.



DELL EMSHWILER RAE ANDERMAN MEYER M. WEILER ADOLPH R. WEILER GEORGIA E. SCHULTZ J.T. SCHULTZ.



ENOS COLE N.D. CLOUSER, M.J. GRACE G. CHAPMAN J.B. CHAPMAN MAUD A. CHAPMAN C.C. ARRICK H. MERCER.



J.C. ADAMS JOHN U. DICK IRENE R. DICK MRS. C. GASTERLINE C. GASTERLINE H.G. OWENS.

Laitem, Miss Rose, is a teacher in the South school building.

Leehein, F., represents the Third ward in the city council, being elected in the spring of 1894 by the Republican party. He was born in France and is a blower in the Hartford City Glass Company's factory.

Lenox, John, is secretary of the Hartford City Natural Gas and Oil Co. Mr. Lenox was born in Delaware Co., Ind., in 1862. He has been with the company since its organization in 1887, holding the position of secretary for over two years, and prior to that was manager for about one year.

Leonard, Chas. S., is Democratic councilman from the Second ward, to which position he was elected in the spring of 1894. He is also chief of the fire department and chairman of the water works committee. Mr. Leonard was born in France sixty years ago but accompanied his parents to this country when two years of age and has lived in Hartford City for nearly thirty years. Socially he is associated with the G. A. R. and the I. O. O. F., and in business life is a lumber dealer and salesman, his headquarters being with the Mercer Lumber Co.

Lupton, A. G., is cashier of the Blackford county bank, treasurer of the Willman Lumber Co. and a gentleman who takes an active interest in all enterprises

that have a tendency to develop the city's advantages.

Lyon, J. Ervin, is a photographic printer and has been an assistant in C. L. Swingley's studio for two years.

McGeath, M. H., County Superintendent of public schools, was born at Montpelier, Ind., during the year 1857, and his entire life has been devoted to educational pursuits in the immediate neighborhood. From 1876 to 1893 he performed the duties of a school teacher in Wells and Blackford counties, and during the latter year was elected to his present office and re-elected in 1895. Although a Democrat of pronounced views, Mr. McGeath administers the affairs of his office in a fair and impartial manner regardless of political preferences, having an eye only for the good of the public. He now is, and has been for twelve years, a member of the I. O. R. M.

McGeath, J. P., the senior member of the firm of McGeath, Bonham & Trant, is one of the best known, and it would be no exaggeration to add one of the most popular, residents of Blackford county. He was born at New Castle, Ind., but removed to Montpelier when quite young and has been a resident of this county for thirty-nine years. From the age of fifteen until 1880 he acted as school teacher, but from the latter year until 1888 he engaged in the general mercantile business in Montpelier. Mr. McGeath, or "J. P." as he is

generally called, has always valiantly championed the cause of Democracy and that party nominated him for and elected him to the office of County Treasurer in 1888, and re-elected him to the same office two years later, which is an evidence of the faithful performance of his duties. At the expiration of his last term of office Mr. McGeath established himself as an abstractor, real estate dealer, loan and insurance agent, which business he is still engaged in, having Messrs. J. M. Bonham and J. T. Trant as partners. In 1894 he was elected to the state legislature, representing Blackford, Jay and Adams counties in that body. In addition to his local business Mr. McGeath has many interests in Montpelier, being president of the Farmers' Deposit Bank, and is also identified with the Montpelier Land and Oil Co., the Montpelier Sheet and Tin Plate factory and the Montpelier Electric Light Company.

McGeath, Miss Leota, is a deputy in the office of the county recorder, receiving the appointment in 1894. She is a daughter of J. P. McGeath and resides with him on east Washington street. Miss McGeath is well known in local social affairs and has a large acquaintance throughout the county, her charming personality and graciousness of manner making all of these her steadfast friends.

McCready, Miss Dea, is a teacher in the South school building.

Maddox, J. J., is now serving his third term as justice of the peace and is well and favorably known over the entire county. He was born in Highland county, Ohio, during the year 1825, but has been a resident of Blackford county for fifty-six years and now enjoys the distinction of being the oldest attorney practicing at the bar in this city. During his residence in the community Mr. Maddox has engaged in nearly all kinds of business, but has now practically retired from active life. He is an extensive holder of city and farm property and is looked upon as one of the city's solid men. He served his country in the late civil war and was a second lieutenant in the Thirty-fourth Indiana Volunteers.

Maddox, Mrs. J. J., deceased wife of J. J. Maddox.

Maines, Miss Ida B., is a teacher in the North School building.

Manor, R. L., holds the position of City Clerk, being elected to that office by the Republican party in the spring of 1894. He was born in Xenia, Ohio, during the year 1852, and since 1877 has been a resident of Hartford, working at his trade, that of stone cutting, until the time of his election to the office he now holds. Mr. Manor is recognized by all as a courteous gentlemen and an efficient public servant.

Mercer, H., a practical and all-around newspaper man, has been city editor of

the Daily Times since the first issue of that paper. He is a native of this state and learned the printing trade in the office of the Anderson Bulletin and has held several important editorial positions on prominent papers, chief among which should be mentioned the Times-Recorder, of Zanesville, Ohio, where he acted as city editor for some time. He located in this city about one year ago and for a time was connected with the Republican, but as before mentioned assumed his present responsibilities with the birth of the paper. Mr. Mercer is well known among the newspaper fraternity throughout this state as well as Ohio.

Moffet, E. D., is president of the board of education as well as an attorney at law. He is well and favorably known in both city and county, as for a number of years he was editor and publisher of the Hartford City Times.

Moffett, Miss Fanchon, is a teacher in the North school building.

Morse, W. H., is the representative of the second ward in the deliberations of the city council. He was nominated and elected by the Republican party in the spring of 1894 and performs well the duties of the office, giving universal satisfaction to his constituents. Mr. Morse is also proprietor of the Hartford City dairy.

Newbauer, J. A., is assistant cashier of the Blackford county bank and a well

known and influential citizen. He is also senior member of the firm of J. A. Newbauer & Co., dealers in agricultural implements of all kinds, as well as lime, cement and tile. This establishment is located on Walnut street, just south of Washington street.

Owens, H. G., member of the firm of C. L. Casterline & Co., dealers in jewelry, watches, clocks, etc. This firm's place of business is located on the south side of the public square and is recognized as headquarters for goods in the lines above mentioned.

Painter, J. A., is the auditor of Blackford county and since his election, Nov. 1894, has administered the affairs of his office in a systematic manner. Mr. Painter is a dyed-in-the-wool Republican and has always been an active party worker. He is recognized as a practical business man as well as a courteous public servant, and as a result has won the friendship of all whom his official duties have brought him in contact with.

Perkins, Geo. T., is president of the Hartford City Glass Co. He is a resident of Akron, Ohio, where he is engaged in the banking business.

Pierce, Chas. W., is an attorney at law and junior member of the firm of Pierce, Bonham & Pierce. Is well known in the city and county, having lived here practically all his life.

Pierce, Elisha, an attorney at law, is senior member of the well-known firm of Pierce, Bonham & Pierce, that transacts legal business in all the courts of the state. Mr. Pierce has been practicing law in this city since 1872 and has taken an active part in all movements that have had for their object the advancement of his chosen home. Politically he is a Democrat and has always been a leader in that party's affairs. From 1873 to 1877 he was prosecutor for Blackford county. He was also a member of the state legislature in the session of 1887 and was again elected to the session of 1889, serving his constituents in a faithful manner during both terms of office. Socially Mr. Pierce is a member of the F. & A. M., the K. of P. and the G. A. R., being entitled to membership in the last organization from the fact that he served in the late war in Co. C, 26th Indiana Volunteers, and in Co. I, 54th Indiana Volunteers, acquitting himself in a manner creditable alike to both himself and his country.

Pierce, Thos. M., an attorney at law, has an office in the Briscoe block and has been practicing his profession in this city for the last four years. He was born in Newton, Iowa, in 1865, and when twenty-one years of age began the study of law at Winchester, Ind. Three years later he was admitted to the bar and has been practicing since that time. Mr. Pierce transacts all kinds of legal business in the

county, state and U. S. courts and is looked upon as a successful lawyer. In December, 1895, he was appointed to and now holds the position of County Attorney. He is also chairman of the Republican county central committee.

Powell, M. D., is proprietor of the Ingram grocery, which is located in the Ingram hotel block on the east side of the public square. Mr. Powell is a thorough and practical merchant who understands just how to conduct his establishment so as to give his patrons full value for their money.

Reed, Wm., principal of the South school, has had a quarter of a century's experience in educational work, and for seventeen years of that time has been identified with the public schools of this city. He is well known in the city and county, and by his ever urbane and courteous manner has won the respect of the community at large and the esteem of those with whom duty has brought him in contact.

Remy, John A., attorney at law, was born in Bartholomew county, Ind., in 1867. His education was secured in the common and graded schools of his neighborhood, supplemented by a thorough course in the Hartsville University. He began the study of law in 1887, practiced for a short time in Kokomo, Ind., and then located in this city. He is well

known in the city and county and has deservedly attained the reputation of being a painstaking and conscientious lawyer.

Rhoades, J. H., is senior member of the firm of Rhoades, Kenney & Spence, real estate, loan and insurance agents, with offices in the Cooley block. Mr. Rhoades is one of those safe, conservative business men whose counsel is eagerly looked for by younger men in the business and he is recognized by all as a representative citizen.

Sage, J. W., has been a practicing physician in this city since 1868 and is of the eclectic school, graduating from the Scudder Medical College, of Cincinnati. He now holds the positions of coroner and city health officer, and was several times elected as president of the town board. Dr. Sage served three years in the war of the rebellion and was wounded at the battle of Chickamauga. He is a member of the F. & A. M.

Schmidt, M., is a bookkeeper in the Blackford county bank.

Schultz, J. T., is local freight and passenger agent for the Lake Erie & Western Railway. He has been located in this city for about eight months and during that short time has made many friends by his strict attention to business and ever willingness to accommodate the patrons of his road.

Schultz, Miss Georgia E., is the daughter of J. T. Schultz and lives with her parents on East Washington street.

Shambarger, John W., is the marshal of Hartford City and is accredited with being a capable and efficient officer.

Sharpe, T. W., is one of this city's leading dentists and has been located here for the last four years. He is a graduate from the Baltimore College of Dental Surgery, securing the title of D. D. S. in 1891. He practiced in Pennsylvania one year before coming here. Dr. Sharpe is a courteous and affable gentleman whose friends are limited only to the number of his acquaintances. He is a member of the local K. of P. lodge.

Shinn, B. G., attorney at law, was born in Dublin, Ind., fifty-seven years ago, but has practiced law in this city for a quarter of a century. His office is on the east side of the public square over the Citizens' bank, where he transacts legal business of all kinds. Mr. Shinn is a member of the I. O. O. F. and the G. A. R., and at the present time holds the position of City Attorney.

Shull, Dr. C. I., is vice-president of the Citizens' bank. Was the second physician to locate in Blackford county and has now practically retired from active business and professional life. Dr. Shull is a resident of Montpelier.

Simmons, L. B., attorney at law, has only been located in this city for about eighteen months, although he is by no means a stranger in the neighborhood, having lived and practiced his profession for many years in Bluffton, Ind., where he held the office of deputy prosecuting attorney. He is now a member of the law firm known as Cantwell, Cantwell & Simmons, and is recognized as a valuable addition to the local professional circle.

Smith, H. B., is president of the Citizens' bank, treasurer of the Hartford City Glass Co., and is prominently identified with other local enterprises. He is recognized by all as one of the county's representative citizens.

Stahl, E. M., is cashier of the Citizens' bank and an old and prominent resident of Hartford City.

Stahl, J. B., is bookkeeper in the Citizens' bank and a son of E. M. Stahl.

Stewart, Clark, represents the Fourth ward in the city council, being elected to that position by the Republican party in the spring of 1894. In business life Mr. Stewart is a buyer and shipper of live stock. Socially he is affiliated with the F. & A. M.

Sudwarth, Miss Emma, is a teacher in the North school building.

Swingley, Chas. L., proprietor of Swingley's photo parlors, located in this city

about two years ago and since that time has secured a large and permanent patronage, for the general public is quick to recognize and appreciate the worth of true merit. Mr. Swingley's studio is located on the southeast corner of the public square where he exhibits fine samples of his work in both gloss and platino finish, as well as interior and exterior views. He also makes a specialty of group and life-size portraits.

The Group of young ladies shown on another page are the Misses Bessie Abbott, Daisy Gartin, Dona Schreel, Lillian Millikan, Mabel Clifton and Jessie Arnold. The first two named are typewriters in the offices of John A. Remy and J. A. Hindman, respectively; the second two reside at home with their parents, while the last two are stenographers. Miss Clifton at the Utility Paper Co.'s office, and Miss Arnold in Frank P. Dowell's abstract office.

Thomas, D. S., is junior member of the firm of Covault & Thomas, jewelers. He was born in Wells county, Ind., in 1863, and resided there until 1888 when he removed to this city and engaged in the jewelry business.

Townsend, I. L., building contractor, has resided in this city for the last thirty-five years, and for more than twenty years has engaged in the business that now occupies his attention. During that time he has erected many large buildings.

prominent among which should be mentioned the paper mills located at Albany and Eaton, Ind., as well as the two in this city. He also makes a specialty of contracting for business blocks and fine residences.

Tracy, A. W., editor and publisher of the Hartford City Times, daily and weekly, was born in Butler county, Ohio, twenty-five years ago but located in New Castle, Ind., when quite young. It was there that he acquired his early newspaper experience by acting as city editor of the Courier. Prior to that time, while going to high school, he became interested in the business to the extent of establishing a school paper. Later, while attending the DePauw University, he was editor-in-chief of the college paper. After leaving that institution he became assistant city editor of the Richmond, Ind., Item, resigning that position to return to his home and become part owner of the New Castle Press, then a weekly paper, and to which he afterwards added a daily edition. Dec. 1, 1895, Mr. Tracy purchased the Hartford City Times and Jan. 1, 1896, established the Daily Times. Since that date he has successfully conducted both papers. Not long ago he purchased the plant and good will of the Hartford City Republican and consolidated it with the Times.

Trant, J. T., the junior member of the firm of McGeath, Bonham & Trant, is one of this city's best-known residents, as he

has lived here since 1866. He has always been more or less prominently identified with local and county politics, taking his stand with the Democratic party in all its issues. In 1890 he was nominated for and elected to the office of County Auditor. He served the public in a conscientious manner and in 1894 was again nominated to succeed himself. That, however, was the year of the great Democratic landslide and he met defeat with his party, although the majority against him was but fifty-nine votes. When his successor took the office Mr. Trant identified himself with McGeath & Bonham, abstracters, real estate dealers, loan and insurance agents, and the firm has since been known as McGeath, Bonham & Trant.

Trant, Mrs. J. T., is a teacher in the South school building.

Tronte, Miss Ella, is a teacher in the North school building.

Vaughn, E. C., is judge of the Twenty-eighth Judicial Circuit of Indiana, which is composed of Blackford and Wells counties. He was first appointed to that position by Governor Matthews, in 1893, to fill the unexpired term of Judge Dailey, who went upon the Supreme Bench. In 1894 Judge Vaughn was nominated by the Democratic party to succeed himself and his election, as a matter of course, followed. He is a resident of Bluffton, the capitol of Wells county, where his

popularity is attested by the fact that he was once chosen as mayor of that city. He was also prosecuting attorney for two terms when the judicial circuit was composed of Huntington, Wells, Adams and Jay counties. Judge Vaughn, for a number of years, was chairman of the Well-County Democratic Central Committee, and while holding that position did effective work for his party. He has always been an earnest and conscientious believer in the efficacy of Democratic doctrine.

Voss, Miss Anna, is a bookkeeper in the Blackford county bank.

Weiler, Abe, senior member of the firm of A. Weiler & Bros., at the present time is living in Indianapolis, although for twelve years he was a resident of Hartford City. He is well and favorably known here and has many staunch friends who claim that his efforts have done much to advance the commercial interests of the county. Certain it is that he is at the head of one of the largest and most substantial mercantile institutions in Indiana, and that its presence in this city adds much to the general importance of Hartford City as a trading place.

Weiler, Adolph R., also a member of the firm of A. Weiler & Bros., may be said to have practically grown up with the business as he has engaged in it nearly all his life. He has lived in this city for sixteen years and is known to most of the residents of the county, as his position as

manager of the firm's business has been the means of introducing him, year after year, to hundreds of people all of whom he can claim as personal friends. Much of A. Weiler & Bros.'s business success can justly be attributed to Adolph's hard work.

Weiler, Meyer M., another member of the firm of A. Weiler & Bros., is commonly called "Meyer" and can count as many friends as any man in this city. This fact is due to his ever-courteous and affable manner, for to know him is to like him. Mr. Weiler also devotes his entire time to the firm's business and is a valuable man in his position.

Williams, Zadok, is one of the three commissioners of Blackford county and was elected to that position in the fall of 1894 by the votes of the Republican party. Mr. Williams has lived in the county for forty years and been engaged in farming until seven years ago, when he retired and moved into this city.

Willman, Floyd, deputy clerk of Blackford county, is well known to most of the residents of this city. His attention to the details of the work connected with the

county clerk's office shows him to be a valuable assistant to Mr. Caldwell.

Willman, J. P., vice-president of the Willman Lumber Co., has engaged in the saw mill and lumber business in this city for the last thirty years. He was born in Germany in 1830 and came to this country with his parents when less than two years old. He is a member of the F. & A. M.

Willman, R. K., the secretary of the Willman Lumber Co., was born and raised in this city. Although still young in years he is rapidly developing a business instinct that makes his services of much value to the company with which he is connected.

Winning, J. E., is secretary of the Board of Education and a well known citizen. He is also a member of the firm of Winklebleck & Winning, manufacturers of patent elm hoops and dealers in hardwood lumber.

Winters, E. L., the junior member of the firm of Cronin & Winters, dealers in general merchandise, is a progressive and a successful business man, as is evidenced by the rapid strides his firm has made into

popular favor within the last two years. That he stands well in the estimation of his fellow citizens is shown by the fact that Mr. Winters is now serving his fourth term as treasurer of this city. Politically he is a Republican.

Wood, John G., treasurer of Blackford county, was elected in November, 1894, by the votes of the Republican party and is a conscientious and faithful public officer. He is a native of Ohio and was born in the year 1842, but has lived in this county nearly all his life. Mr. Wood, when elected to his present office, was a resident of Harrison township where he engaged in farming and stock raising. Socially he is a member of the G. A. R., the I. O. O. F. and the K. of P.

Wood, Norman, is a deputy in the office of the treasurer of Blackford county and a son of John G. Wood. He was born in Harrison township, this county, in the year 1872, and, like his father, is a staunch and uncompromising Republican.

Worley, Nelson, is deputy marshal of Hartford City as well as street commissioner.

Mr. Cecil Beeson
P. O. Box 1
Hartford City, Indiana 47348



S. FT 75



N. MANCHESTER,
INDIANA

