



THE HATTER

1881









E X L I B R I S



COPYRIGHT, 1932

WINIFRED TUMBLIN  
*Editor-in-Chief*

JOSEPH E. HENDRICKS  
*Acting Business Manager*

RAYMOND WARE  
*Business Manager*



*The*  
H A T T E R

*Published by the*  
*Annual Staff*

*of*

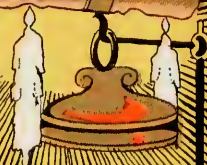
STETSON UNIVERSITY  
DeLand, Florida

1 9 3 2

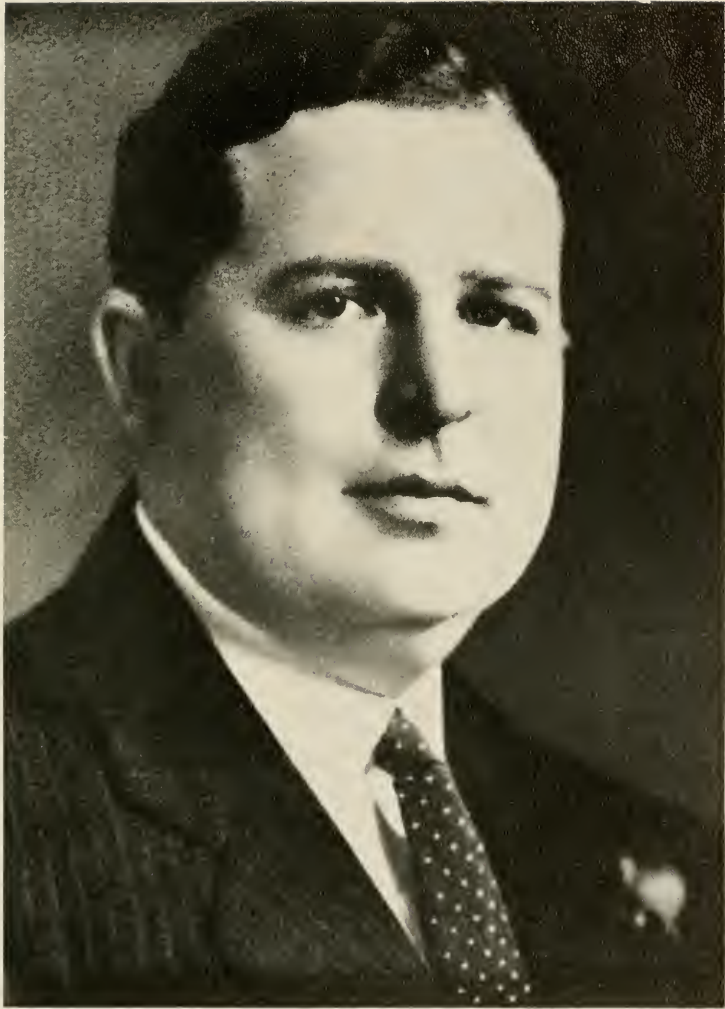


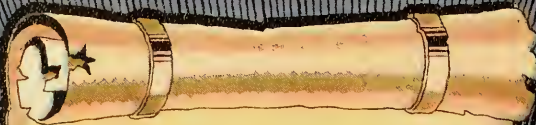
# Medication

*We dedicate this book to*  
**DAVID SHOLTZ**  
*as an expression of our love  
and gratitude to one who is  
an inspiring example of in-  
tegrity and knowledge, who  
shows an active interest in  
every phase of our college  
life, and who stimulates our  
desire to reach the higher goal  
of achievement which he has  
set for us.*



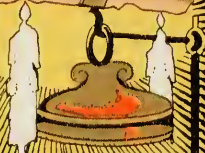
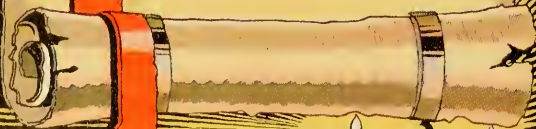


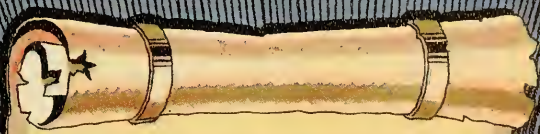




# **F**oreword

*If by furnishing you with these few sights from our college home and insights into the life of our Alma Mater, we inspire you with loyal friendship for Stetson and awaken in your hearts cherished memories, the goal for which we have striven will have been attained.*





# **C**ontents

CLASSES



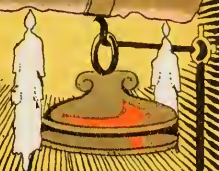
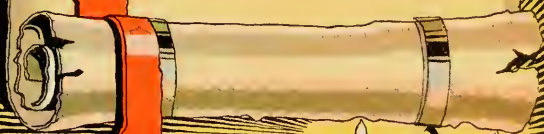
ORGANIZATIONS



ACTIVITIES



FEATURES













PRESIDENT LINCOLN HULLEY'S GREETING

To My Students:

It is a pleasure to me to send you this greeting. Your cooperation in the work of the University has made possible the high standard of efficiency attained in scholarship, conduct, and character, and has put Stetson on the map.

It makes me grateful to think of your devotion to excellence in all things. However short any of us may fall of the goal set, the striving is always there. And one's moral worth is measured by effort.

On the basis of your good use of your opportunities I have always predicted that larger fields and bigger chances will come to you. As to gifts, use or lose is a certain rule. No one can escape the working of that law. You are using, not losing.

Because you are using life right, its gains will increase, your strength will also increase, your shoulders will grow broader and stronger for other responsibilities, and your success will be more sure. This is the source of my great confidence in you.

None of us have any claim on success or happiness, on health or achievement, unless we pay the price and meet the conditions on which they rest. Once more I clasp your hands wishing for you that life may yield its choicest blessings to you. You are my life, my joy, my crown!

Your friend and President,

*Lincoln Hulley*  
Lincoln Hulley



# The Walter



## The Faculty

### ADMINISTRATIVE OFFICERS

- LINCOLN HULLEY, PH.D.  
*President*
- CARL S. FARRISS, D.D.  
*Vice-President and Professor of Ancient Languages*
- G. PRENTICE CARSON, LL.D.  
*Dean and Professor of History and Political Science*
- LEWIS H. TRIBBLE, LL.M.  
*Dean of College of Law and Professor of Law*
- MARY TRIBBLE LOWRY, A.M.  
*Dean of Women and Instructor in English*
- C. B. ROSA  
*Registrar*
- OLGA BOWEN, A.M.  
*Assistant to the Dean*

### PROFESSORS, ASSOCIATE PROFESSORS, and ASSISTANT PROFESSORS

- ROBERT I. ALLEN, M.S.  
*Associate Professor of Engineering and Physics*
- JACOB A. CARPENTER, B.S.  
*Associate Professor of Law*
- RICHARD E. CLARK, PH.D.  
*Professor of Sociology and Librarian*
- JOHN F. CONN, PH.D.  
*Professor of Chemistry*
- WILLIAM E. DUCKWITZ, MUS.D.  
*Professor of Music*
- BOYCE F. EZELL, PH.D.  
*Professor of Psychology and Education*
- DONALD FAULKNER, A.B.  
*Associate Professor of Mathematics*
- CHARLES A. FISHER, PH.D.  
*Professor of Business Administration and Economics*
- HARRY DAVIS FLUHART  
*Professor of Fine Arts*
- JENNIS W. FUTCH, LL.B.  
*Associate Professor of Law*
- HARRY C. GARWOOD, TH.M.  
*Professor of Philosophy and Bible*
- WARREN S. GORDIS, PH.D.  
*Professor of English*
- LUTHER B. GRICE  
*Associate Professor of Bible*
- JOHN JOSEPH KINDRED, M.D.  
*Professor of Law*
- CURTIS M. LOWRY, M.E.  
*Professor of Engineering*
- HERBERT R. MCQUILLAN, B.S.  
*Professor of Physical Education*
- RAYMOND J. MILLER, PH.D.  
*Professor of Biology*
- ORA PHILANDER SEWARD, PH.D.  
*Professor of Modern Languages*
- IRVING C. STOVER, M.O., LITT.D.  
*Professor of Public Speaking*
- HARRY L. TAYLOR, PH.D.  
*Associate Professor of Philosophy*
- CHARLES B. VANCE, M.S.  
*Professor of Mathematics*
- GEORGE E. GANIERE  
*Assistant Professor in Plastic Arts*
- PAUL R. GIDDIS  
*Assistant Professor in Vocal Music*

### LECTURERS AND INSTRUCTORS

- VERONICA DAVIS, MUS.B.  
*Instructor in Public School Music*
- MARY STEWART HOWARTH, LL.B.  
*Lecturer on Domestic Relations*
- ELLA CRAMER KINDRED, A.B.  
*Lecturer in Fine Arts*
- MARION POWELL CARSON  
*Instructor in Domestic Science*
- MARION LOUISE COUTTS, A.B.  
*Instructor in Secretarial Work*
- ALMA RICHARDSON FARRISS  
*Instructor in Domestic Art*
- ETHEL M. FISHER  
*Instructor in Piano*
- BERTHA WEEKS FLUHART  
*Instructor in Art*
- ROSA LEE GAUT, MUS.B.  
*Instructor in Music*
- JULIA GAMEWELL HALE  
*Assistant in Physical Education*
- FRANCIS ALTON HAMMOND  
*Law Librarian*
- ANNIE NADINE HOLDEN, PH.B.  
*Instructor in Languages*
- LOUIS H. MARVIN  
*Instructor in Violin*
- MAHLON S. MCGREGOR, A.B.  
*Instructor in Law*
- MIRIAM WAYT, B.S.  
*Assistant in Physical Education*
- EVA B. WELCH, MUS.B.  
*Instructor in Pipe Organ*
- WILLIE DEE WILLIAN, A.B.  
*Instructor in Expression*
- HARRY S. WINTERS, A.B.  
*Instructor in English*

## Alumni Association, 1932



OLGA BOWEN



CHAN JOHNSON

### OFFICERS

JOHN DUSS, JR., '10 . . . . .	<i>President</i>
JUDGE P. C. ALBRITTON, '22 . . . . .	<i>Vice-President</i>
OLGA BOWEN, '18 . . . . .	<i>Secretary</i>
WM. S. FIELDING, '24 . . . . .	<i>Treasurer</i>
CHAN JOHNSON, '28 . . . . .	<i>Executive Secretary</i>
IRMA CHAPPELL . . . . .	<i>Assistant Secretary</i>

### BOARD OF GOVERNORS

JUDGE EDITH ATKINSON, '22	W. J. SKINNER, '16
JEROME E. WIDEMAN, '14	ROBERT P. STOUT, '12
S. BRYAN JENNINGS, '16	JUDGE IRA HUTCHISON, '05
MRS. JOHN G. LEONARDY, '16	ROBERT C. DAVIS, '22
A. Y. MILAM, '12	LOUIS SNEDIGAR, '14
JOHN D. HARRIS, '19	

The Alumni Association of John B. Stetson University was incorporated under the laws of the State of Florida in November, 1930. Judge Ollie Edmunds served as first President until the first election, when Governor Doyle Carlton was elected to serve as first President.

At the annual meeting in the fall of 1931, John Duss, Jr., was elected President and immediately began to perfect the organization by appointing a committee to select an Executive Secretary who would work full time for the betterment of the Association.

Chan Johnson was chosen to act as Executive Secretary, and he began work on December 15. With the splendid co-operation of the officers, Board of Governors, and many loyal alumni, he is busily engaged in setting up the Alumni Office, forming local units, and publishing the Stetson Alumnus.

The Classes of '87, '92, '97, '02, '07, and so on every five years will have their Class Reunion this year at Homecoming time. All classes meet for reunions every five years from the date of their graduation.

A permanent endowment fund will be built up through class subscriptions and legacies, the proceeds of which will be used for the betterment of our Alma Mater.



**Student Body Officers**

OSBORNE STACEY . . . . . *President*

MARGARET GIBBS . . . . . *Vice-President*

CAROLYN MARTIN . . . . . *Secretary*

GLADYS POWELL . . . . . *Treasurer*



Robin hath a narrow escape

Classes

### Senior Class Officers



GERALD BARKER

*President*

Π Κ Φ

Whitehall, New York

CANDIDATE FOR A.B. DEGREE

*"How myghty and how greet a lord is he."*  
Allegheny University, '28; Thiel University, '29; President of Class, '31, '32; Student Manager Football, '31; Archon Pi Kappa Phi, '32; Green and White Key.



DONNA VAN DYNE

*Vice-President*

Π Β Φ

Troy, Pennsylvania

CANDIDATE FOR A.B. DEGREE

*"And riche she was in plesant thought and werk."*

National Park Seminary, '29, '30; Vice-President Pi Beta Phi, '32; Pan-Hellenic, '32; Vice-President Class, '32.



ELEANOR SPOFFORD

*Secretary*

Σ Α Φ

Miami, Florida

CANDIDATE FOR B.S. DEGREE

*"In felawship wel koude she laugh and chatter."*

Most Collegiate, '30; Basket-ball, '30; Vice-President Sigma Alpha Phi, '31; Tennis, '31; Y. W. A., '30, '31; Football Sponsor, '31; Tennis Instructor, '32; Senior Class Manager W. A. A., '32.

MARIE DIAZ

*Treasurer*

Σ Α Φ

Tampa, Florida

CANDIDATE FOR B.S. DEGREE

## Senior Class

CLARIBEE BRANDON

Seville, Florida

CANDIDATE FOR B.S. DEGREE

*"With lokkes curled, as they were layd in  
presse."*

Basket-ball, '28, '29; Tennis, '28, '29; Or-  
chestra, '30, '32.

ELISABETH BRANNON

Π Β Φ

Hialeah, Florida

CANDIDATE FOR A.B. DEGREE

*"A fair persone and strong, and yong of age,  
And ful of honour and of curteisye."*

University of Georgia, '29, '30; Pi Kappa  
Sigma; Pi Gamma Mu; Treasurer Junior  
Class, '31; Treasurer Pi Beta Phi, '32; Vice-  
President Pi Kappa Sigma, '32; Vice-Presi-  
dent Pan-Hellenic, '32; Vice-President Pi  
Gamma Mu, '32; Student Assistant in Phys-  
ical Education Department, '32; Recorder  
of Points in W. A. A., '32.

MARGAREE BRANTLY

Σ Σ Σ

Clermont, Florida

CANDIDATE FOR A.B. DEGREE

*"Blythe was hir spirit and smyling hir eyen."*

MILNER BRITTAIN

Δ Σ Φ

Jacksonville, Florida

CANDIDATE FOR A.B. DEGREE

*"Synngyng he was or flutyng at the day."*

Oxford Fellowship; Band, '29, '30, '31, '32;  
Orchestra, '29, '30, '31, '32; Director of  
Orchestra, '31; Vice-President Junior Class,  
'31; B. S. U. Council, '31, '32; Tennis, '31,  
'32; Glee Club, '30, '32; President of Glee  
Club, '32.



Senior Class



WILLIAM LYMAN BROWN

Σ N

DeLand, Florida

CANDIDATE FOR A. B. DEGREE

*"He was of persone and of gentillesse,  
And of discrecioun and of hardynesse."*

Torch and Scroll; Band, '29, '30, '31, '32;  
Orchestra, '29, '30, '31, '32; Manager Or-  
chestra, '32; Theta Alpha Phi; Treasurer  
Theta Alpha Phi, '32; Vice-President Chem-  
ical Club, '32.



MADALINI CHILDERS

Pikeville, Kentucky

CANDIDATE FOR A. B. DEGREE

*"She lyved in joy and in felicitiee."*

University of Indiana; Pi Kappa Sigma  
Pledge; Glee Club, '32.



MARGARET COEHLLO

Σ A Φ

Highland, New York

CANDIDATE FOR A. B. DEGREE

*"For she was as fayr as is the rose in May."*  
Connecticut College for Women, '29, '30;  
Pi Kappa Sigma; Secretary Pi Kappa Sigma,  
'32.



BYRON CULL

Π K Φ

Owenton, Kentucky

CANDIDATE FOR A. B. DEGREE

*"Nouber so bisy a man as be there nas,  
And yet he semed bisier than he was."*

University of Kentucky, '29; Basket-ball,  
'31; Glee Club, '30, '32.



Senior Class

DOROTHY DYER

Φ M

Muskogee, Oklahoma

CANDIDATE FOR A.B. DEGREE

*"That of bir smyling was ful symple and  
coy*

*Hir grettest ooth was but by Seinte Loy."*

University of Tennessee, '29, '30, '31; Pi  
Kappa Sigma, '32.

PAULINE ELLIS

Δ Δ Δ

DeLand, Florida

CANDIDATE FOR M.A. DEGREE

*"Sweete was bir voys and sweete her  
manner."*

A.B., Wesleyan College.

CLYDE FLOWERS

DeLand, Florida

CANDIDATE FOR B.S. DEGREE

*"And gladly wolde he learne, and gladly  
teche."*

Stetson Chemical Society.

MADA FRASER

Σ A Φ

Lake Wales, Florida

CANDIDATE FOR LL.B. DEGREE

*"Wcl tanght was she in bookes of lawe."*

Basket-ball, '28; Y. W. C. A., '28; Play-  
crafters' Club, '28; Associate Editor of  
*Campus Chat*, '29; Y. W. A., '28, '29;  
Cabinet of Symphony Orchestra, '29, '30;  
Pi Kappa Sigma; Phi Delta Delta; Secretary  
of Sigma Alpha Phi, '30; Secretary of Pi  
Kappa Sigma, '30; Student Council, '30;  
HATTER Staff, '30, '31; President Pi Kappa  
Sigma, '31, '32; Treasurer Pan-Hellenic, '31;  
Secretary Pan-Hellenic, '32; Treasurer Sigma  
Alpha Phi, '32; Priestess, Phi Delta Delta,  
'32.



Senior Class



MARY GIBBS

Σ A Φ

DeLand, Florida

CANDIDATE FOR A.B. DEGREE

*"This lady bath much of discrecioun."*

Glee Club, '28, '29, '30, '32; Vice-President Sigma Alpha Phi, '29; Secretary Sigma Alpha Phi, '32; W. A. A.



MARGARET GIBES

Σ A Φ

DeLand, Florida

CANDIDATE FOR A.B. DEGREE

*"And sikerly she was of grete disport  
And ful plesant and amyable of port."*

Y. W. A., '28, '29; Playcrafters' Club, '28; Secretary Sigma Alpha Phi, '30; Theta Alpha Phi; Torch and Scroll; President W. A. A., '32; Secretary Theta Alpha Phi, '32; Vice-President Torch and Scroll, '32; Play Production, '29, '30; President Sigma Alpha Phi, '31; Vice-President Student Body, '32.



VINCENT GOULD

Σ N

DeLand, Florida

CANDIDATE FOR B.S. DEGREE

*"A semely man our Vincent was withalle."*

Torch and Scroll; Theta Alpha Phi; Pi Gamma Mu; Tennis, '29.



NINA BELL GREEN

H B Φ

St. Petersburg, Florida

CANDIDATE FOR A.B. DEGREE

*"A better behaved womman was nowhere known."*

Theta Alpha Phi; Torch and Scroll; Pi Kappa Sigma; Class Secretary, '30, '31; Student Council, '29; Treasurer Student Council, '30; Vice-President Student Council, '31; President Student Council, '32; President Pan-Hellenic, '30; Best All-Round Girl, '30; President Pi Beta Phi, '31, '32; Historian Theta Alpha Phi, '32; Editor HATTER, '31.

## Senior Class

JULIA HALE

Spartanburg, South Carolina

CANDIDATE FOR A.B. DEGREE

*"Ful wel koude she write from hir corage,  
To make hir gon forth on pilgrimage."*

Russell Sage School of Physical Education;  
University of Colorado; George Peabody  
College; Instructor in Physical Education,  
'31, '32.

G. CLARK HEFERIN

Φ K Ψ

Conneautville, Pennsylvania

CANDIDATE FOR B.S. DEGREE

*"A better felawe should man nought find."*  
Allegheny University, '29; Ohio Wesleyan  
University, '30; Basket-ball, '31; Green and  
White Key.

ALFREDA HEISETH

Z X E

Vero Beach, Florida

CANDIDATE FOR B.S. DEGREE

*"Fayre was hir mien and stately hir port."*  
Y. W. C. A., '28, '29; Pi Gamma Mu; Y.  
W. A., '31.

AUBREY MARTIN

Coleman, Florida

CANDIDATE FOR A.B. DEGREE

*"All that he scyd was in forme and rever-  
ence,  
And short and quyk, and ful of by sen-  
tence."*

Oxford Fellowship Treasurer, '32; Torch  
and Scroll.



Senior Class



CAROLYN MARTIN

Δ Δ Δ

Bartow, Florida

CANDIDATE FOR A.B. DEGREE

*"Ful wcl she soong the service dyvnye  
Entuned in bir nose ful semely."*

Phi Beta; Secretary Delta Delta Delta, '30;  
Vice-President Delta Delta Delta, '31; Presi-  
dent Phi Beta, '31, '32; Secretary Student  
Body, '32; Chaplain Delta Delta Delta, '32.



CORINA MARTIN

Δ Δ Δ

Amityville, Long Island

CANDIDATE FOR A.B. DEGREE

*"She was so charitable and so pitous  
She wolde weepe if that she saugh a mous  
Kaught in a trappe, if it were deed or  
bledde."*

Cedar Crest College, '29, '30; Phi Beta;  
Vice-President Phi Beta, '31.



FRED MILLS

DeLeon Springs, Florida

CANDIDATE FOR B.S. DEGREE

*"Ful was bis corage of beigh emprise."*



ROBERT MORRIS

Σ N

DeLand, Florida

CANDIDATE FOR B.S. DEGREE

*"Of bis stature he was of evene lengthe  
And wonderly active, and of greet  
strengthbe."*

Sigma Nu Marshal, '32; Basket-ball, '30, '31,  
'32; Krucible Klub, '29; Stetson Chemical  
Society; Glee Club.

Senior Class

JOHN J. MIREs  
DeLand, Florida

CANDIDATE FOR A.B. DEGREE

*"That first he wroghte and afterwards he taughte."*

Pleasant Hill Academy; University of Florida.



JOHN NELSON  
B K

Ryegate, Vermont

CANDIDATE FOR B.S. DEGREE

*"Forget not John, the gentil man."*

Middleburg, '28, '29; President Chemical Society, '32; Glee Club.



MARGARET OGDEN  
Δ Δ Δ

Madisonville, Kentucky

CANDIDATE FOR A.B. DEGREE

*"Curteys she was, discreet, and debonaire."*  
University of Indiana, '29; Historian Delta Delta Delta, '32.



LEO C. ORENDAIN  
Iloilo, Philippines

CANDIDATE FOR A.B. DEGREE

*"A goode man there was of religioun."*

Oxford Fellowship; President Tennis Club, '31, '32; Student Volunteer Band; B. S. U. Council; Football, '30; Art Editor HATTER, '32; President Oxford Fellowship, '32.





## Senior Class

RUTH OSGOOD

ΑΞΔ

Duxbury, Massachusetts

CANDIDATE FOR A.B. DEGREE

*"Of studie took she mooste beede."*

Torch and Scroll; Vice-President Orchestra, '29; President Orchestra, '30, '31, '32; Secretary Alpha Xi Delta, '30, '32; Secretary Student Council, '32; Treasurer Y. W. A., '30; Annual Staff, '30.

GLADYS POWELL

ZX E

Orlando, Florida

CANDIDATE FOR A.B. DEGREE

*"So wise and rype wordes hadde she  
And juggementz of so grete equitee."*

Phi Delta Delta; Y. W. C. A., '29; Y. W. A., '29, '30, '31; President Non-Fraternity Organization, '30; Secretary to Dr. Hulley, '30, '31, '32; Torch and Scroll, '31, '32; President Zeta Chi Epsilon, '31, '32; President Junior Class, '31; City Clerk at Home-Coming, '31; HATTER Staff, '32; Treasurer Student Body, '32.

JAMES PURCELL

ΠΚΦ

Tampa, Florida

CANDIDATE FOR A.B. DEGREE

*"He was a verray parfit gentil knyght."*

Torch and Scroll; Pi Gamma Mu; Krucible Klub; Annual Staff, '32.

JAY SHULER

BK

Hosford, Florida

CANDIDATE FOR A.B. DEGREE

*"Discreet he was, and of greet reverence,*

*He semed swich, bise wordes were so wise."*

University of Florida, '28, '29, '30; Phi Alpha Delta; Alpha Kappa Psi.

## Senior Class

PAULINE SOWERS

ΑΞΔ

Miami, Florida

CANDIDATE FOR A.B. DEGREE

*"Of remedies of love she knew per-chance  
For she coude of that art the olde daunce."*

Florida State College for Women, '29, '30;  
Theta Alpha Phi; Secretary Alpha Xi Delta,  
'32; Play Production, '31, '32; Student  
Council, '32.

DANIEL SPOTTORD

ΦΠΦ

Miami, Florida

CANDIDATE FOR B.S. DEGREE

*"Use reasons he spake ful solemnly."*

University of Miami, '27, '28; Case School,  
'31; Orchestra, '32; Band, '32.

FAUSTINE TOWN

ΔΔΔ

DeLand, Florida

CANDIDATE FOR A.B. DEGREE

*"In hir is high beautee withouten pride  
Youthe withouten green-head or folly."*

Torch and Scroll; Phi Beta; Pi Gamma Mu;  
Glee Club, '28; Secretary Delta Delta Delta,  
'29; Historian Phi Beta, '30; Chaplain Phi  
Beta, '30; Clerk of Torch and Scroll, '31;  
Vice-President Pi Gamma Mu, '31; HATTER  
Staff, '31, '32; City Hostess at Homecom-  
ing, '31; Pan-Hellenic Council, '30, '31;  
Vice-President Phi Beta, '32; President Delta  
Delta Delta, '31, '32; President Pi Gamma  
Mu, '32.

RAY ULMER

ΠΚΦ

Palm Harbor, Florida

CANDIDATE FOR LL.B. DEGREE

*"He was of lawe expert and curious."*

Phi Alpha Delta; Secretary Pi Kappa Phi,  
'31; Historian Pi Kappa Phi, '32; Clerk Phi  
Alpha Delta, '32.



Senior Class



ESTHER WELLMAN

Z X E

Oneida, New York

CANDIDATE FOR A.B. DEGREE

*"Hir wordes ful of plesance and hublesse."*  
Basket-ball, '30, '31; Vice-President Zeta Chi Epsilon, '31; Y. W. A., '31, '32; Diamond Ball, '31; Treasurer Zeta Chi Epsilon, '32.



VIOLA WELLMAN

Z X E

Oneida, New York

CANDIDATE FOR A.B. DEGREE

*"A quiet mayden and ful of wisdomc."*  
Basket-ball, '29, '30, '31; Diamond Ball, '31; Secretary Zeta Chi Epsilon, '31, '32; Y. W. A., '31, '32; Pi Gamma Mu, '32.



VIRGINIA WILLIS

H B Φ

Williston, Florida

CANDIDATE FOR A.B. DEGREE

*"So wommanly, so benigne, and so meeke."*  
Brenau College, '29, '30; Student Council, '32.



MAXINE YOUNG

H B Φ

Sanford, Florida

CANDIDATE FOR A.B. DEGREE

*"And she was a joly goode felawe."*  
Rollins College, '28; Student Council, '30.



### Senior Class

OSCAR ZACHARY

Σ N

Jacksonville, Illinois

CANDIDATE FOR LL.B. DEGREE

*"His joys was deepe, bis thoughts were myghty."*

Torch and Scroll; Recorder Sigma Nu, '32; Phi Alpha Delta; Band, '29; Basket-ball, '29.



FRANCES HUNTER

ΑΞΔ

Jasper, Florida

CANDIDATE FOR A.B. DEGREE

*"Hir eyen twynkled in bir beal aryght  
As doon the starres in the frosty nyght."*

Florida State College for Women, '29; Theta Alpha Phi; Secretary Alpha Xi Delta, '31; Play Production, '30, '31, '32; Most Dramatic Girl, '31; Treasurer Theta Alpha Phi, '31; Chaplain Alpha Xi Delta, '32; Student Council, '31.



JOHN URICH

ΠΚΦ

Biwabik, Minnesota

CANDIDATE FOR B.S. DEGREE

*"He won by strenghte and for bise bye renouit."*

Virginia Junior College, '29, '30; Football, '31, '32; Basket-ball, '31, '32; Captain Basket-ball Team, '32.



EUGENE T. VINING

Tampa, Florida

CANDIDATE FOR A.B. DEGREE

*"Benygne he was and wonder diligent."*

University of Florida, '29, '30, '31; Oxford Fellowship, '32.



### Junior Class



HAROLD S. MARTIN  
*President*  
 Π Κ Φ  
 Swampscott, Mass.

ROBERT SANDLES  
*Vice-President*  
 Σ Ν  
 Gary, Ind.

ELIZABETH ALVERSON  
 Δ Δ Δ  
 Sarasota, Fla.

JOSEPHINE AYRES  
 Brooksville, Fla.

MARY BATTLE  
 Α Ξ Δ  
 Sorrento, Fla.

BETTY BROOKS  
 Σ Α Φ  
 Clermont, Fla.

RUSSELL BROWN  
 Σ Ν  
 DeLand, Fla.

MILDRED CARL  
 Σ Α Φ  
 DeLand, Fla.

JAMES CLARK  
 Winter Garden, Fla.

JOHN COLVARD  
 Σ Ν  
 Greenwood, Miss.

VERONA CRICKMORE  
 Δ Δ Δ  
 Brooksville, Fla.

MARY HARRIS EZELL  
 Π Β Φ  
 DeLand, Fla.

RUTH HALF  
 Α Ξ Δ  
 New Smyrna, Fla.

Junior Class

CATHERINE HOWARTH  
DeLand, Fla.

ENA HURLEY  
Winter Garden, Fla.

ALTHEA JACOBSEN  
Δ Δ Δ  
Fort Pierce, Fla.

LOIS KRAMER  
Δ Δ Δ  
Lake Wales, Fla.

VIRGINIA MACKENZIE  
Λ Ξ Δ  
Tampa, Fla.

BEATRICE MERKHOFFER  
St. Petersburg, Fla.

CHARLES OSBORNE  
Π Κ Φ  
Umatilla, Fla.

ROBERT RENWICK  
Σ Φ  
Cuba, New York

FRED SMITH  
Σ Ν  
Winter Garden, Fla.

MARIE SMITH  
Π Β Φ  
Miami, Fla.

BETTY SPELL  
Ζ Χ Ε  
Titusville, Fla.

WINIFRED TUMBLIN  
Σ Α Φ  
Tampa, Fla.

RAYMOND WARE  
Π Κ Φ  
Mayo, Fla.



**Sophomore Class**



JACK TOWNSEND  
*President*

Σ N  
Lake Wales, Fla.

SALLIE MAE EDWARDS  
*Vice-President*  
Σ A Φ

Vero Beach, Fla.

EDWARD BERGER  
*Treasurer*

Δ Σ Φ  
Hawthorne, N. Y.

LOVETT FIELDS  
*Secretary*

Δ Δ Δ  
Lexington, Ky.

E. M. ALRICH  
Σ N

Glenwood, Fla.

CLAYTON C. BARRETT  
Σ N

Waterbury, Conn.

FRANCIS ALEXANDER  
A Ξ Δ

DeLand, Fla.

MRS. G. W. BRANDON  
DeLand, Fla.

ELIZABETH BROWN  
Δ Δ Δ

DeLand, Fla.

C. CLYATT BROWARD  
Σ N

Jacksonville, Fla.

JOE BURCKHALTER  
Π K Φ  
Eustis, Fla.

ABIGAIL CHAPMAN  
Δ Δ Δ  
New York, N. Y.

MARY ALICE CAHOON  
Jacksonville, Fla.

GERTRUDE COOK  
Σ A Φ  
DeLand, Fla.

DAVIS GODARD  
Π K Φ  
Quincy, Fla.

GERALDINE FARRAR  
Σ A Φ  
Miami, Fla.

ELLEN GUSTAFSON  
Π B Φ  
Green Cove Springs, Fla.

JANE HERSHLY  
Δ Δ Δ  
Canton, Ohio

JOSEPH E. HENDRICKS  
Π K Φ  
DeLand, Fla.

Sophomore Class

WILLIAM JENNINGS  
 Π K Φ  
 Barre, Vt.

HELEN JEWETT                      ELIZABETH KRAMER  
 Δ Δ Δ                                      Δ Δ Δ  
 DeLand, Fla.                      Lake Wales, Fla.

ABERDEEN JOHNSON  
 Α Ξ Δ  
 St. Petersburg, Fla.

ELIZABETH MARTIN              VONCILLE MERCER  
 DeLand, Fla.                              Δ Δ Δ  
     DeLand, Fla.

EVELYN MAY  
 Δ Δ Δ  
 West Palm Beach, Fla.

POLLY NASON                      STEPHEN C. PARDEE  
 Δ Δ Δ                                      Avon Park, Fla.  
 Eric, Penn.

VIRGINIA NOGGLE  
 Α Ξ Δ  
 Edwardsville, Ill.

JACK PHILLIPS                      CHAS. S. ROHDE  
 Σ N    Σ N  
 Jacksonville, Fla.                      DeLand, Fla.

EMMA LOUISE RIEDINGER  
 Α Ξ Δ  
 Sebring, Fla.

ELIZABETH SCARLETT              HELEN SELD  
 Π B Φ    Ζ X E  
 DeLand, Fla.                              Daytona Beach, Fla.

CHARLENE SCOTT  
 Σ Α Φ  
 Vero Beach, Fla.

SIDNEY SINGLETON                  LUCILLE YOUNG  
 Σ N    Σ X E  
 DesPlaines, Ill.                              Lake City, Fla.

MARY STEWART  
 DeLand, Fla.





### Freshman Class

BOYCE EZELL  
*President*  
 Η Κ Φ  
 DeLand, Fla.

HAZEL WALKER  
*Secretary*  
 Α Ξ Δ  
 Sarasota, Fla.

GEORGIA KIRBY  
*Treasurer*  
 Η Β Φ  
 Mt. Dora, Fla.

ELIZABETH ADAMS  
 Η Β Φ  
 Mayo, Fla.

MARIE BAKER  
 Clearwater, Fla.

ELIZABETH ALEXANDER  
 Α Ξ Δ  
 DeLand, Fla.

RUTH BAKER  
 Ζ Χ Ε  
 Seville, Fla.

RUTH BOISCH  
 Η Β Φ  
 Daytona Beach, Fla.

ERCELL BISHOP  
 Zion, Ill.

MARY CARSWILL  
 Δ Δ Δ  
 Tampa, Fla.

VIRGINIA COLBERT  
 Α Ξ Δ  
 DeLand, Fla.

MARY CATON  
 Η Β Φ  
 Bucyrus, Ohio

MARIHA CLAYTON  
 Η Β Φ  
 Lakeland, Fla.

CHERIE COLY  
 Η Β Φ  
 Lake Worth, Fla.

VIRGINIA EINSLEI  
 Η Β Φ  
 DeLand, Fla.

## Freshman Class

MARTHA EWART  
 Π Β Φ  
 Miami, Fla.

MARJORIE HAMMER  
 Π Β Φ  
 DeLand, Fla.

VIRGINIA HAMILTON  
 Leesburg, Fla.

JULIET HOPE  
 Σ Λ Φ  
 Hicoria, Fla.

AUDREY JOHNSON  
 Λ Ξ Δ  
 Grand Marais, Minn.

MARY HOWARTH  
 DeLand, Fla.

LESLIE JOHNSON  
 Σ Ν  
 Grand Marais, Minn.

ALICE LEE  
 Orlando, Fla.

ALBERT KELLY  
 Δ Σ Φ  
 Avon Park, Fla.

LILLIAN LITWIN  
 Σ Λ Φ  
 Umatilla, Fla.

MARGARET CAMPBELL  
 Δ Δ Δ  
 Orlando, Fla.

NANCY MITCHELL  
 Δ Δ Δ  
 DeLand, Fla.

FRANCIS PHILLIPS  
 Δ Δ Δ  
 Jacksonville, Fla.

DONALD PHILLIPS  
 Σ Ν  
 Daytona Beach, Fla.

WINIFRED PYLL  
 Ζ Χ Ε  
 DeLand, Fla.



## Freshman Class



BETTY ROBINSON  
 Δ Δ Δ  
 DeLand, Fla.

LOUISE ROYALL  
 Α Ξ Δ  
 DeLand, Fla.



ETHEL ROGERS  
 Lynne, Florida



A. SANZO  
 Madrid, Spain

CHARLES H. SHOEMAKER  
 Π Κ Φ  
 Daytona Beach, Fla.



VERNELLE SHACKELFORD  
 Σ Α Φ  
 Hicoria, Fla.



HELEN TUCKER  
 Ζ Ξ Ε  
 Darien, Fla.

EDITH VAN  
 Δ Δ Δ  
 DeLand, Fla.



ETTER TURNER  
 Σ Α Φ  
 Williston, Fla.



WINIFRED VAN BUSKIRK  
 Α Ξ Δ  
 Syracuse, N. Y.

LOUISE WEBSTER  
 Leesburg, Fla.



JAMES TESTERMAN  
 Π Κ Φ  
 Umatilla, Fla.



LOIS WHIDDEN  
 Δ Δ Δ  
 Kissimmee, Fla.

ETHEL WHITTEMORE  
 Miami, Fla.



AILEEN WORTH  
 Α Ξ Δ  
 Pontiac, Ill.





Robin makes merry at ye Blue Boar Inn

## Organizations

## Pi Beta Phi

*Founded at Monmouth College, 1867*

*Florida Chapter Established January 30, 1913*

COLORS: *Wine and Silver Blue*

FLOWER: *Wine Carnation*



### CHAPTER MEMBERS

#### IN FACULTATE

ANNIE NADINI HOLDEN

#### IN UNIVERSITATE

NENA BELLE GREEN  
BETTY BRANNON  
MARIE SMITH

BETTY FOARD  
MARY HARRIS EZELL  
DONNA VAN DYNE

BETTY SCARLETT  
ELLEN GUSTAFSON  
MAXINE YOUNG

#### PLEDGES

ELINOR WHIPPLE  
ILLEN HOOVER  
GEORGIA KIRBY  
MARY LOUISE FOARD

VIRGINIA EINSEL  
MARY CATON  
ELIZABETH ADAMS  
MARTHA CLAYTON  
CHERIE COLLY

MARTHA EWART  
MARJORIE HAMMER  
VIRGINIA WILLIS  
BETTY THOMAS

# The Quire



*First Row*

Nena Belle Green, Betty Brannon, Donna Van Dyne, Maxine Young, Marie Smith

*Second Row*

Mary Harris Ezell, Betty Scarlett, Ellen Gustafson, Marjorie Hammer

*Third Row*

Virginia Einsel, Virginia Willis, Georgia Kirby, Ruth Boisch

*Fourth Row*

Elizabeth Adams, Martha Ewart, Mary Caton, Martha Clayton, Cherie Coley

**Sigma Nu**

*Founded at Virginia Military Institute, January 1, 1869*

*Delta Mu Chapter Established 1913*

COLORS: *Black, White and Gold*

FLOWER: *White Rose*



**CHAPTER MEMBERS**

**IN UNIVERSITATE**

JACK PHILLIPS  
OSBORNE STACY  
OSCAR ZACHARY  
VINCENT GOULD  
JACK TOWNSEND  
JOHN SOCASH

ROBERT SANDLES  
CLYATT BROWARD  
ROBERT MORRIS  
WALLACE FIELDS  
LISEH JOHNSON  
DONALD PHILLIPS

CLAYTON BARRETT  
SIDNEY SINGLTON  
WILLIAM BROWN  
JOSEPH CHECK  
LESTER SHIBBL  
DOW WOODWARD

**PLEDGES**

DONALD STARKWEATHER  
RUSSELL BROWN  
FRID SMITH  
HORACE JONAH

HARRY GAYLORD  
CHARLES RHODE  
JOHN COLVARD  
JULIUS WUDZKI

JACK GREEN  
HOLLIC PLOTTS  
E. M. ALRICH  
WILLARD HALDEMAN



*First Row*

Clyatt Broward, William Brown, Vincent Gould, Oscar Zachary, Clayton Barrett, Donald Phillips

*Second Row*

Leslie Johnson, Osborne Stacy, Jack Phillips, Robert Sandles, Fred Smith

*Third Row*

Charles Rhode, Russell Brown, John Colvard, E. M. Alrich, Robert Morris, Sidney Singleton

**Delta Delta Delta**

*Founded at Boston University, Thanksgiving Eve, 1888*

*Alpha Delta Founded May 17, 1913*

COLORS: *Silver, Gold and Blue*

FLOWER: *Pansy*



**CHAPTER MEMBERS**

**IN UNIVERSITATE**

FAUSTINE TOWN  
CORINA MARTIN  
CAROLYN MARTIN  
POLLY NASON

HELEN JEWETT  
LOIS KRAMER  
ELIZABETH KRAMER  
EVELYN MAY  
JANI HERSHEY

LOVETTE FILDS  
MARGARET OGDEN  
VONCILLE MERCLER  
ELIZABETH BROWN

**PLEDGES**

VERONA CREEKMORE  
ELIZABETH ALVERSON  
ADLAIDE MCINTIRE  
MARGARET CAMPBELL

BETTY ROBINSON  
EDITH VAN  
PAULINE ELLIS  
ALFHILD JACOBSEN  
FRANCIS PHILLIPS

GAIL CHAPMAN  
LOIS WHIDDEN  
MARY CARSWELL  
NANCY MITCHELL



*First Row*

Gail Chapman, Betty Alverson, Edith Van, Frances Phillips, Lois Whidden, Verona Creekmore, Lois Kramer

*Second Row*

Jane Hershey, Lovette Fields, Margaret Ogden, Helen Jewett, Corina Martin, Faustene Town

*Third Row*

Carolyn Martin, Pauline Ellis, Polly Nason, Evelyn May, Elizabeth Kramer, Betty Brown

*Fourth Row*

Vonille Mercer, Nancy Mitchell, Mary Carswell, Betty Robinson, Alfhild Jacobsen, Adelaide McIntire, Peggy Campbell

## Pi Kappa Phi

Founded at the College of Charleston, 1904

Chi Chapter Established 1921

COLORS: *Gold and White*

FLOWER: *Red Rose*



### CHAPTER MEMBERS

#### IN FACULTATE

WILLIAM E. DUCKWITZ

#### IN UNIVERSITATE

GERALD BARKER  
RAYMOND WARE  
WILLIAM JENNINGS  
RAY ULMER  
JAMES MCKINNEY  
WILLIAM GAUTIER  
BYRON CULL  
LOUIS GRAVES

MARVIN GARRISON  
CHARLES OSBORNE  
ALBERT WOODLE  
WILLIAM DAVIS  
JOSEPH HENDRICKS  
HAROLD MARTIN  
WILLIAM ELTON  
TRAVIS PETREY

DONALD HORTON  
DAVIS GODARD  
STANLEY BUMBY  
BOYCE EZELL  
GEORGE FARMER  
CHANDLER SHARON  
JOSEPH BURCKHALTER  
JAMES PURCELL

#### PLEDGES

KEMPIS CARPENTER  
RICHARD ELTON  
WATTS BRADY  
CHARLES SHOLMAKER  
JAMES TESTERMAN  
DENNIS CARROLL

AUSTIN HIERS  
BOWMAN PACE  
RANSFORD SHAW  
JOHN URICH  
RUDOLPH NELSON

ROBERT DELL  
JOSEPH PECCALUNAS  
ALEXANDER DOMPI  
LAVERN WILDESON  
CURRY JONES  
SHILDON LINDSEY



# The Walter



*First Row*

Harold Martin, Bill Jennings, Ray Ulmer, Joe Burckhalter

*Second Row*

Charles Osborne, James Purcell

*Third Row*

Byron Cull, Gerald Barker, Joseph Hendricks, Curry Jones, Raymond Ware

*Fourth Row*

Davis Godard, Hilton Shoemaker, John Ulrich, James Testerman, Boyce Fzell

## Alpha Xi Delta

*Founded at Lombard College, 1893*

*Omega Chapter Established May 31, 1917*

*COLORS: Light and Dark Blue and Gold*

*FLOWER: Pink Rose*



### CHAPTER MEMBERS

#### IN FACULTATE

OLGA BOWEN

MARY TRIBBLE LOWRY

ISABEL REMSEN

#### IN UNIVERSITATE

WILLIE DEE WILLIAM

FRANCIS HUNTER

PAULINE SOWERS

VIRGINIA MACKENZIE

ABERDEEN JOHNSON

EMMA LOUISE RIEDINGER

VIRGINIA NOGGLE

RUTH OSGOOD

RUTH HALF

MARY BATTLE

DOROTHY TREADWELL

#### PLEDGES

HAZEL WALKER

WINIFRED VAN BUSKIRK

AILEEN WORTH

LOUISE ROYALL

AUDREY JOHNSON

FRANCIS ALEXANDER

ELIZABETH ALEXANDER



*First Row*

Emma Lou Riedinger, Virginia Noggle, Ruth Osgood, Virginia MacKenzie, Ruth Hale

*Second Row*

Pauline Sowers, Aberdeen Johnson, Willie Dee Willian, Frances Hunter

*Third Row*

Elizabeth Alexander, Hazel Walker

*Fourth Row*

Aileen Worth, Audrey Johnson, Winifred Van Buskirk, Louise Royall, Frances Alexander

## Sigma Alpha Phi

*Founded at John B. Stetson University, January 11, 1926*

COLORS: *Mulberry Green and Wine*

FLOWER: *Violet and Ophelia Rose*



### CHAPTER MEMBERS

#### IN UNIVERSITATE

WINIFRED TUMBLIN  
ELEANOR SPOILFORD  
MARIE DIAZ

ELVA DIAZ  
MARGARET GIBBS  
MARY GIBBS  
MADA FRASER

CHARLENE SCOTT  
SALLIE MAE EDWARDS  
MILDRED CARL

#### PLIDGES

VERNELLI SHACKELFORD  
JUDITH HOPE  
SAIDE DOWLING

GERTRUDI COOK  
BETTY BROOKS  
LILLIAN LIUWIN

GERALDINE FARRAR  
MARGARET COFFHO  
ETTER TURNER

# The Waiter



*First Row*

Charlene Scott, Geraldine Farrar, Sallie Mae Edwards, Mildred Carl, Betty Brooks

*Second Row*

Margaret Gibbs, Winifred Tumblin, Eleanor Spofford, Margaret Coehlo, Mada Fraser, Mary Gibbs

*Third Row*

Gertrude Cook, Juliet Hope, Lillian Litwin, Vernelle Shackelford, Etter Turner

**Delta Sigma Phi**

*Founded at College City of New York, December 10, 1899*

*Alpha Chi Chapter Established 1898; Founded 1925*

COLORS: *Nile Green and White*

FLOWER: *White Carnation*



**CHAPTER MEMBERS**

**IN FACULTATE**

LEWIS TRIBBLE

ROBERT ALLEN

DONALD FAULKNER

**IN UNIVERSITATE**

FRANK ADAMS  
EDWARD BERGER  
MILNER BRITTAIN  
ROBERT BURNS  
WALLACE FOARD  
WILLIAM HERSHLY

JAMES HODGES  
ALBERT KELLY  
GEORGE LINDNER  
HORACE CULBERTSON  
LEWIS PURVIS  
WINFIELD MOSLEY

JAMES NEMEC  
FRANK ORTMAN  
FRANK POWELL  
WILLIAM SHOUP  
SIDNEY TAYLOR  
RICHARD WILDFSON

**PLEDGES**

THOMAS BLAOCK  
WALTER MEYER  
FRANCIS REEVES

RODNEY THURSBY  
WILLIAM TONYN  
FRANK SMITH

**Zeta Chi Epsilon**

AN OPEN FRATERNITY

*Founded at John B. Stetson University, January 12, 1931*

COLORS: *Orchid, Green and Silver*

FLOWER: *Orchid Sweet Pea*



*First Row*

Viola Wellman, Esther Wellman, Alfreda Helseth, Betty Spell, Gladys Powell

*Second Row*

Helen Tucker, Helen Seed, Lucille Young, Winifred Pyle, Ruth Baker, Beth Wilkerson

Theta Alpha Phi

Honorary Dramatic Fraternity

Florida Alpha Chapter Established December, 1919

CHAPTER MEMBERS

IN FACULTATI

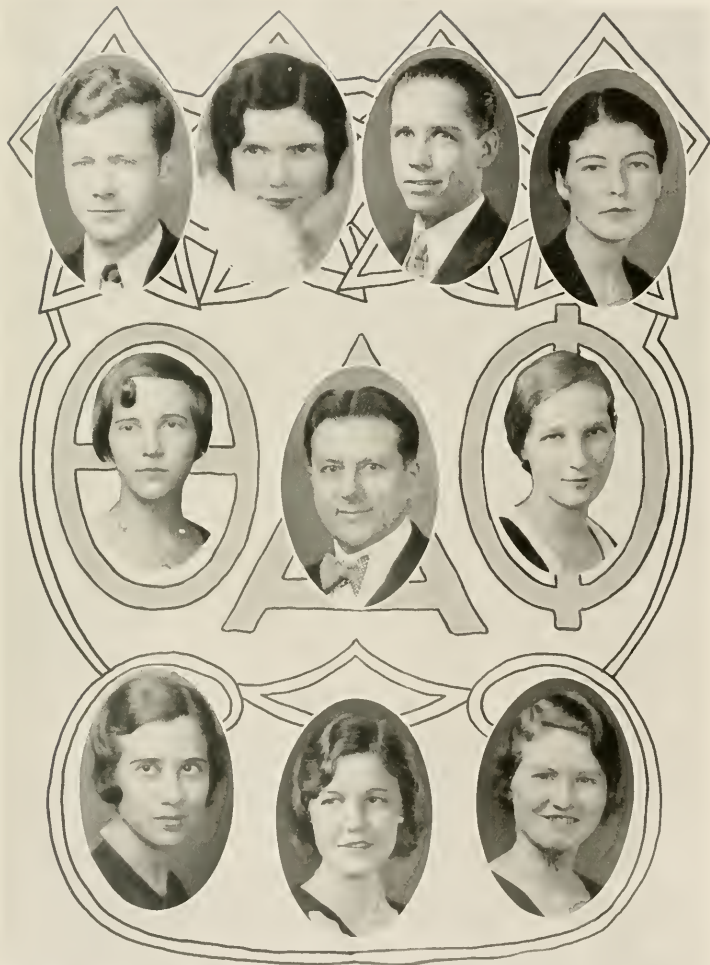
DR. LINCOLN HULLEY	MR. LEWIS TRIBBLE
DR. CHARLES S. FARRISS	MR. ISAAC BRUCE
MISS WILLIE DEE WILLIAN	DR. IRVING STOVER

IN UNIVERSITATE

WILLIAM BROWN	FRANCIS HUNTER
MARY HARRIS EZELL	N. B. O'KILLEY
MARGARET GIBBS	MARIE SMITH
VINCENT GOULD	PAULINE SOWERS
NINA BELLE GREEN	DOROTHY TREADWELL

Thespians of Stetson are much pleased with the results obtained this year in their dramatic presentations. The play "Lilies of the Field" opened the season on October 9, 1931, in a manner which promised great things for 1931-32. This was followed by "The Drum Major," a play written by Dr. Lincoln Hulley, and presented as a feature of the Homecoming Program, November 6, 1931. "Daddy Long Legs" was presented December 11, 1931, in a most pleasing manner. The following production, "The Rear Car," given January 29, was a mystery play, and was accorded the honor of being our "road show" of the year. We were indeed proud of the realistic set prepared for it, and of the effects, weird and otherwise, achieved through the conveniences our new Assembly Hall affords. The next production was another play of Dr. Hulley's, a tragedy developing the doctrine of predestination, entitled "The Potter's Wheel." On the 17th of March James Barrie's delightfully quaint drama, "Quality Street," was presented. The April play, "The Passing of the Third Floor Back," was given successfully. The annual commencement play produced this year was "The Rivals," the afternoon and evening performances of which brought the activities of Thespians for the year 1931-32 to a close with the satisfied feeling that their endeavors had not been without reward.







### The Order of Torch and Scroll

*Honorary Scholarship and Leadership*

*Founded January 14, 1926*

*COLORS: Crimson and Old Gold*

#### CHAPTER MEMBERS

##### IN FACULTATE

DR. CHAS. S. FARRISS  
OLGA BOWEN

DONALD FAULKNER  
WILLIE DEE WILLIAN

##### IN UNIVERSITATE

ISAAC BRUCI  
WILLIAM BROWN  
VINCENT GOULD  
JAMES PURCILL  
AUBREY MARTIN

OSCAR ZACHARY  
ROBERT BURNS  
RUTH OSGOOD  
GLADYS POWELL

FAUSTENE TOWN  
NENA BELLE GREEN  
MARGARET GIBBS  
MARIE SMITH  
MILDRED CARL



**Phi Beta**

NATIONAL PROFESSIONAL FRATERNITY OF MUSIC AND  
DRAMATIC ART

*Founded at Northwestern University, 1912*

*Eta Chapter Established December 20, 1912*

COLORS: *Violet and Gold*

FLOWER: *Ward Rose and Violet*

CHAPTER MEMBERS

IN FACULTATE

EVA BAKER WILSH  
MARY TRIBBLE LOWRY

VERONICA DAVIS  
WILLIE DEE WILLIAN

ISABEL RIMSEN

IN UNIVERSITATE

CAROLYN MARTIN  
FAUSTINE TOWN  
MARGARET BRANTLEY

ELIZABETH KRAMER  
ALFHILD JACOBSEN  
MARIE HERSHEY

PLEDGES

NORMA YATES  
ALICE CURRY

CORINA MARTIN  
VERONA CREEKMORE

LOIS WHIDDEN

VICE-PRESIDENT



WILLIAM BROWN

PRESIDENT



JOHN NELSON

SECT. & TREAS.



CLYDE FLOWERS

# CHEMICAL STETSON SOCIETY



J. COLVARD



DR. JOHN CONN  
ADVISOR



F. SPENCER



J. URICK

FOUNDED 1931  
TO PROMOTE INTEREST  
IN CHEMISTRY AND TO  
SPREAD GOODFELLOWSHIP  
AMONG CHEMISTS.



R. MORRIS



G. C. HEFFRIN



### Pi Kappa Sigma

NATIONAL PEDAGOGICAL SORORITY

*Founded at Michigan State Teachers' College, 1894*

*Alpha Tbeta Chapter Established May, 1929*

COLORS: *Turquoise and Gold*

FLOWER: *Forget-Me-Not and Jonquil*

#### CHAPTER MEMBERS

##### IN UNIVERSITATE

BETTY BRANNON

MARGARET COEHLI

MADA FRASER

NENA BELL GREEN

ALFHID JACOBSEN

MILDRED CARL

##### PLEDGES

MARY ALICE CAHOON

BLATRICE MARKHOTER

MADALINE CHIDDERS

ABERDEEN JOHNSON

HELENA LITTLEFIELD

ELIZABETH BROWN

DOROTHY DYER

BERNICE FISHE



**Pi Gamma Mu**

NATIONAL SOCIAL SCIENCE FRATERNITY

CHAPTER MEMBERS

IN FACULTATE

DR. LINCOLN HULLEY

JENNIS W. FUTCH

DEAN G. PRENTICE CARSON

HARRY C. GARWOOD

DR. RICHARD E. CLARK

HARRIET KENNEDY

DR. CHAS. A. FISHER

IN UNIVERSITATE

FAUSTINE TOWN

VINCENT GOULD

ELISABETH BRANNON

ROBERT BURNS

ALFREDA HILSETH

JAMES PURCILL

VIOLA WELLMAN



Pan-Hellenic Council

OFFICERS

RUTH HALE . . . . . *President*

ELISABETH BRANNON . . . . . *Vice-President*

MADA FRASER . . . . . *Secretary*

ELIZABETH KRAMER . . . . . *Treasurer*

*First Row*

Mada Fraser, Faustene Town, Donna Van Dyne, Ruth Hale

*Second Row*

Elisabeth Brannon, Virginia Noggle, Elizabeth Kramer, Sallie Mae Edwards



**Oxford Fellowship**

A FRATERNITY FOR MINISTERIAL STUDENTS

CHAPTER MEMBERS

IN FACULTATE

LINCOLN HULLEY

HARRY C. GARWOOD

CHARLES S. FARRIS

G. PRENTICE CARSON

IN UNIVERSITATE

LIO C. ORENDAIN

ELBERT TYNER

ALBERT CARNETT

MARSHALL MINES

BRUTON REYNOLDS

HUBEL LEMLEY

MINNER BRITTAIN

WEBB BROOKS

AUBREY MARTIN

FRID SMITH

JAMES MCKINNEY

PRESTON SELLERS

JAMES CLARK

THEODORE JONES

LESLIE SHEPHERD

ALBERT KILLEY

EUGENE VING





**Baptist Student Union Council**

OFFICERS

- PRESTON SELLERS . . . . . *President*  
WINIFRED TUMBLIN . . . . . *First Vice-President*  
GEORGE LINNEY . . . . . *Second Vice-President*  
BRUTON REYNOLDS . . . . . *Third Vice-President*  
KHADRA CULPEPPER . . . . . *Third Vice-President*  
SALLIE MAE EDWARDS . . . . . *Secretary*  
AILEEN ARTHUR . . . . . *Treasurer*

MEMBERS

- ENA HURLEY . . . . . *Y. W. A. Representative*  
JOSEPHINE AYRS . . . . . *B. Y. P. U. Representative*  
WEBB BROOKS . . . . . *S. S. Representative*  
LEO ORENDAIN . . . . . *Oxford Fellowship Representative*  
MILNER BRITAIN . . . . . *Chorister*  
HUBEL LEMLEY . . . . . *Organist*  
MARIE BAKER . . . . . *Reporter*



**Student Government Council**

OFFICERS

- NENA BELLE GREEN . . . . . *President*
- WINIFRED TUMBLIN . . . . . *Vice-President*
- RUTH OSGOOD . . . . . *Secretary*
- ELIZABETH KRAMER . . . . . *Treasurer*

*First Row*

Marie Smith, Pauline Sowers, Virginia Willis, Lois Kramer, Nena Belle Green, Winifred Tumblin

*Second Row*

Ruth Osgood, Elizabeth Kramer, Elisabeth Brannon, Geraldine Farrar, Charlene Scott, Winifred Van Buskirk, Virginia Colbert



**The Hatter Staff**

WINIFRED TUMBLIN . . . . .	<i>Editor-in-Chief</i>
JOSEPH E. HENDRICKS . . . . .	<i>Acting Business Manager</i>
RAYMOND WARE . . . . .	<i>Business Manager</i>
ALBERT KELLEY . . . . .	<i>Associate Editor</i>
WILLIAM JENNINGS . . . . .	<i>Advertising Editor</i>
RUTH HALE . . . . .	<i>Circulation Manager</i>
FAUSTENE TOWN . . . . .	<i>Class Editor</i>
LEO ORENDAIN . . . . .	<i>Art Editor</i>
VIRGINIA MACKENZIE . . . . .	<i>Fraternity Editor</i>
MARY ALICE CAHOON . . . . .	<i>Girls' Athletic Editor</i>
ROBERT SANDLES . . . . .	<i>Boys' Athletic Editor</i>
GLADYS POWELL . . . . .	<i>Organization Editor</i>
BETTY BROOKS . . . . .	<i>Feature Editor</i>
BETTY FOARD . . . . .	<i>Snapshot Editor</i>





Little John defeats Eric o' Lincoln

## Activities



HERBERT R. McQUILLAN  
*Coach*



BILL GAUTIER  
*Freshman Coach*



MARTY MARTIN  
*Assistant Coach*

JAMIS CLARK  
*Trainer*



**Varsity Football Team**

*Standing:* Assistant Coach H. Schmit, H. Plotts, S. Salvage, Assistant Coach H. Martin, J. Socash, J. Check, J. Harriman, Coach H. R. McQuillan, D. Horton, E. Holder, K. Carpenter, W. Haldeman, Assistant Coach Gautier.

*Seated:* J. Pecalunas, R. Thursby, H. Blastie, R. Wildeson, R. McKinney, J. Colvard, S. Lindsey, Captain W. Mosely, L. Shebel, T. Petrey, L. Graves, W. Elton, J. Urich, G. Pay, J. Nemeec.

**FOOTBALL SCHEDULE, 1931**

October 3 . . . . .	Mercer . . . . .	28—Stetson . . . . .	7
October 11 . . . . .	Birmingham Southern . . . . .	19—Stetson . . . . .	0
October 17 . . . . .	Centenary . . . . .	27—Stetson . . . . .	0
October 24 . . . . .	Citadel . . . . .	6—Stetson . . . . .	0
November 7 . . . . .	Erskine . . . . .	7—Stetson . . . . .	19
November 11 . . . . .	Millsaps . . . . .	19—Stetson . . . . .	7
November 20 . . . . .	Southern . . . . .	0—Stetson . . . . .	20
November 27 . . . . .	South Georgia College . . . . .	0—Stetson . . . . .	27
Total . . . . .		<u>106</u>	<u>80</u>



## Varsity Football Team

Working under the double handicap of numerous injuries and a formidable schedule, the football team did not show up so well on the scoreboard. However, it was a different story when it came to winning moral victories and the respect of opponents. In every game of the season Stetson outplayed her foes until the lack of reserve strength began to tell. It was very obvious that Stetson was much superior to teams in like circumstances, as was proven in her easy victories over Erskine, Southern and South Georgia College.

As a whole the team must be given much credit for the invincible spirit which enabled them to hold such teams as Centenary and Mercer to low scores. The team functioned around such pivots as Socash, Captain Mosely and Ulrich, all three of them seniors who earned honorable mention on the All-S. I. A. A.

Each individual showed the spirit of fight which goes to make up a great team and all exhibited excellent teamwork in defeat as well as victory.

Coach McQuillan and his assistants deserve much credit for the way they moulded from comparatively green material a team for which Stetson should be justly proud. We feel that with the return of seasoned players for next fall McQuillan will have no trouble in picking a team which will lead the conference.







## Varsity Basket-ball Team

*Standing:* Buddy Haldeman, Horace Jonah, Bob Sandles, Joe Check, George Straus  
*Scated:* Winfield Mosely, John Gorzeman, Capt. John Urich, Bob Morris, Bus Shebel

### BASKET-BALL SCHEDULE, 1931-32

December 4 . . . . .	Orlando . . . . .	15—Stetson . . . . .	35
December 6 . . . . .	Orlando . . . . .	6—Stetson . . . . .	26
January 2 . . . . .	University of Florida . . . . .	25—Stetson . . . . .	30
January 7 . . . . .	Citadel . . . . .	29—Stetson . . . . .	39
January 8 . . . . .	Citadel . . . . .	24—Stetson . . . . .	29
January 14 . . . . .	Southern . . . . .	25—Stetson . . . . .	52
January 16 . . . . .	Sears-Roebuck . . . . .	24—Stetson . . . . .	31
January 22 . . . . .	Paris Island Marines . . . . .	15—Stetson . . . . .	44
January 27 . . . . .	J. E. Alliance . . . . .	24—Stetson . . . . .	28
January 28 . . . . .	C. Y. M. A. . . . .	31—Stetson . . . . .	34
January 29 . . . . .	Citadel . . . . .	22—Stetson . . . . .	27
January 30 . . . . .	Paris Island Marines . . . . .	20—Stetson . . . . .	33
February 3 . . . . .	Howard . . . . .	15—Stetson . . . . .	39
February 4 . . . . .	Howard . . . . .	16—Stetson . . . . .	42
February 11 . . . . .	University of Georgia . . . . .	27—Stetson . . . . .	30
February 13 . . . . .	Rollins . . . . .	15—Stetson . . . . .	28
February 13 . . . . .	Rollins . . . . .	6—Stetson . . . . .	18
February 13 . . . . .	Rollins . . . . .	16—Stetson . . . . .	32
February 17 . . . . .	Southern . . . . .	20—Stetson . . . . .	36
Total . . . . .		375	631



## Basket-ball

**JOHN URICH**

*Captain and Forward*

Johnny has played his last game for Stetson and in the last two seasons has made a name for himself that will not only be remembered by his team-mates but also by the opponents against whom he played. His accuracy in making field goals has brought him the title of a "sharp shootin' forward" and we know that the McQuillan-coached aggregation will miss him.

**GEORGE STRAUSS**

*Guard*

Straussy, playing his first year on the team, held down a regular guard position. His accurate passing and basket shooting made him a threat to the best of his opponents. Much credit must be given him for the success of the team as he was always giving his utmost.

**JOSEPH CHECK**

*Forward*

Joe looked like a veteran this year and next year will be able to fill any position because of his versatility. Joe was a good floor man and his deception was very baffling to his opponents and with his return next year he should be one of the most valuable on the squad.

\***WINFIELD MOSELY**

*Guard*

Mose could always be depended on when the going was the hardest to make a few baskets that would pull the game out of the fire. He is a Stetson product of whom we can feel proud. We will miss him next year and know that a man to fill his shoes will be hard to find.

**ROBERT MORRIS**

*Forward*

Bob is one of the best forwards that ever donned a Stetson uniform and is noted for the spirit of fight that it takes to make a team successful. We will miss him next year and only hope that Coach will find someone to fill his place.

\***LESTER SHIBEL**

*Forward*

Bus did not play long on the team this year, because of an injury he received during the football season. He will be back with us next year and we wish him better luck.

\*Not in picture.

## Basket-ball

JOHN GORZEMAN

*Center*

John has one more year to wear the green and white and with his ability should be one of the best centers that Stetson has ever turned out as well as one of the best in the South. John's knack of tapping them in under the basket will make him valuable to any man's team.

ROBERT SANDLES

*Center*

Bob has one more year on the varsity and if he shows the spirit that he has shown this year will be an asset to the team as well as a threat to the opponents.

WILLARD HALDEMAN

*Guard*

You've heard of those dark horses—well, Buddy was the man who was dark horse in the Georgia game—and what a man! He is one important reason why Stetson should have another championship team next year.

\*WILLIAM TOMYN

*Forward*

Bill was playing his first year on the team and Coach McQuillan is expecting big things from him next season. Bill was lacking in experience, but with what he gained this year will be a main cog in the works next season.

JOHN SOCASH

*Guard*

Soakie, a veteran guard, has all the qualities it takes to make a real basket-ball player. His earnestness to play the game has given him a trait that will make him a success in life. We regret that he will not be with us next year.

\*HORACE JONAH

*Guard*

Jonah had a spirit that must be respected by the opponents and his own team-mates. He lacked the experience it takes to make a veteran ball player, but his never-say-die spirit soon helped him overcome his faults and we will be glad to see him in a uniform next year.

\* Not in picture.





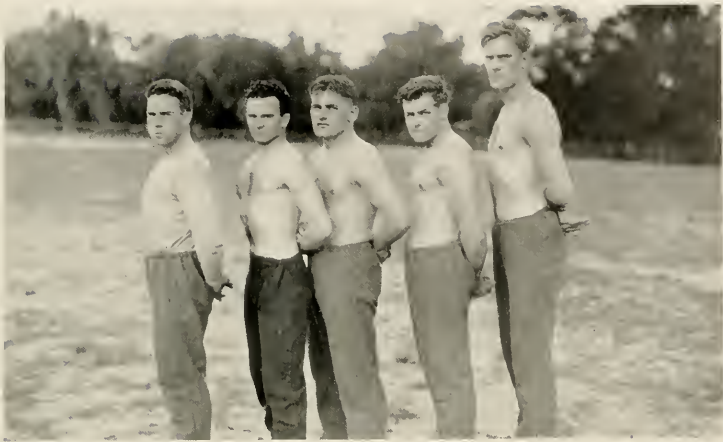
**Freshman Basket-ball Team**

*Standing:* Coach "Doc" Johnson, Harry Gaylord, Leon Rosengren, Al Dompe.  
*Seated:* Boyce Ezell, Jack Green, Rudy Nelson, Dick Elton, Don Phillips.



**Boys' Tennis Team**

*Left to Right:* Kenneth Freeman, Edward Berger, Dick Elton, Milner Brittain, Captain Lewis Maxwell, Leo Orendain, Walter Meyer.



### Wrestling Team

Bill Gautier, Sheldon Lindsay, J. Pecalunas, H. Plotts, Leon Rosengren.



### Boxing Team

*Standing:* Dick Elton, "Red" Reeves, Donald Horton, Kempis Carpenter, Laverne Wildeson, Coach Bill Gautier.

*Seated:* Jack Green, Bill Elton, Travis Petrey, John Colvard, Dick Wildeson.



**Tumbling Team**

*Left to Right:* Helen Jewett, Mary Caton, Geraldine Farrar, Cherie Coley, Virginia Einsel; Virginia Colbert, Frances Alexander, Martha Clayton, Elizabeth Martin and Louise Webster.



**Archery**

*Left to Right:* Virginia Einsel, Mary Louise Foard, Elizabeth Alexander and Frances Phillips.



### Women's Athletic Association

*Standing:* Elizabeth Martin, Sophomore Class Manager; Mary Louise Foard, Freshman Class Manager; Margaret Gibbs, President; Eleanor Spofford, Senior Class Manager; Bernice Fisher, Publication Manager Sophomore Class and Sophomore Cheer Leader.

*Seated:* Mary Caton, Freshman Cheer Leader; Geraldine Farrar, Vice-President; Betty Brannon, Secretary and Recorder of Points; Martha Ewart, Treasurer. Not in picture, Mary Harris Ezell, Junior Class Manager, and Nena Belle Green, Senior Cheer Leader.



### Girls' Tennis Team

*Standing:* Winifred Pyle, Ruth Osgood, Mary Alice Cahoon, Gertrude Cook and Esther Lahmer.

*Seated:* Bernice Fisher, Eileen Arthur and Judith Ordonez.



JOE



BOB



CHAMPS



SOAKIE



JES' US



GYM





Robin Hood goes to the Shooting Match

## Features



WALLACE FOARD *Most Attractive* CORINA MARTIN



ROBERT SANDLES      *Most Popular*      ELIZABETH KRAMER



*Most Pleasing Personality*

WINIFRED TUMBLIN

JACK PHILLIPS



OSBORNE STACY

*Most Intellectual*

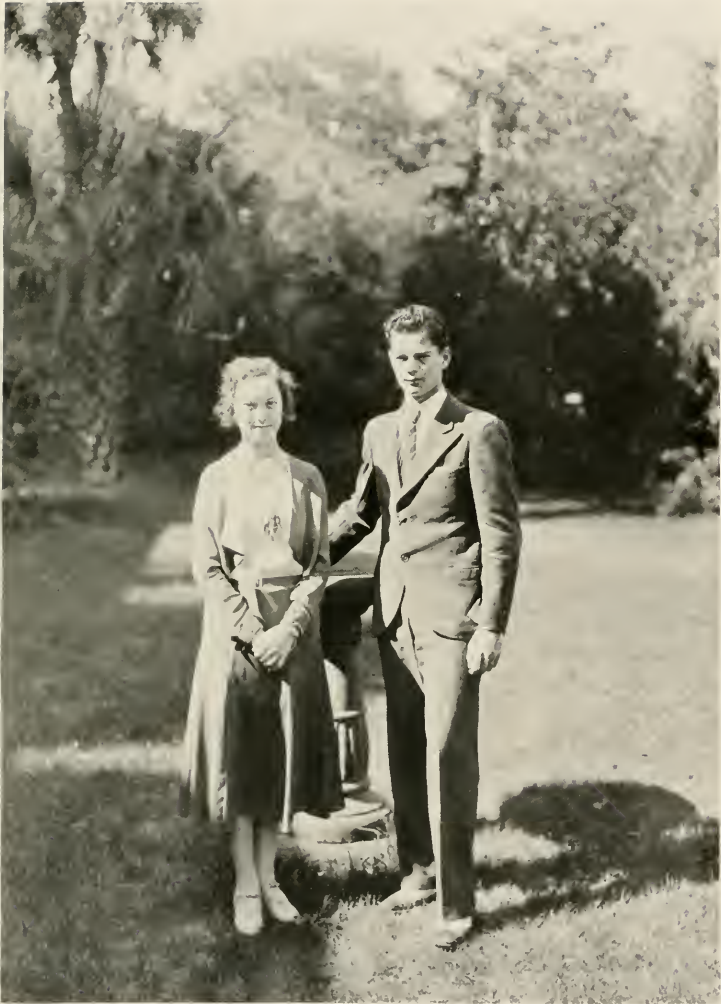
GLADYS POWELL



*Most Versatile*

WINFILD MOSELY

MARGARET GIBBS



*Most Representative Freshmen*

MAKIE BAKER

SIDNEY TAYLOR



"THERE'S ROMANCE



AW NERTZ !!

IN



AIR"



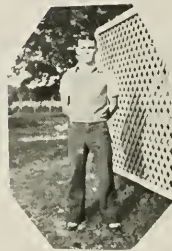
THE







# ΣΝ





ATHLETICS



FULL DRESS



WHERE'S LIB



PI- PHI



BOY SCOUT



HERE

KAPPA



MEDITATING

AND



THERE

# The Haller





# STETSON HATS

*pay big dividends*

INVEST in a Stetson and you will receive rich dividends in style, satisfaction and enhanced appearance.

STETSON HATS are smart hats for smart people who know how important it is for them to look their best. They know that the hat proclaims the man—that a Stetson is worth what they pay for it, and more. There's nothing to compare with a Stetson—no matter how you look at it.



JOHN B. STETSON COMPANY  
PHILADELPHIA

# HOTEL COLLEGE ARMS

D E L A N D , F L O R I D A



*A Winter Home for Discriminating People*

✓ ✓ ✓ ✓

BEAUTIFUL LOCATION  
ELEVATOR, STEAM HEAT  
UNEXCELLED GOLF COURSE

✓ ✓ ✓ ✓

WHITE SERVICE THROUGHOUT



*The*  
CITY *of* De LAND

"THE ATHENS OF FLORIDA"

*Congratulates the*

Graduating Class of 1932

*of*

Stetson University



DeLuxe Laundry and  
Dry Cleaners

*DEPENDABLE  
SERVICE*

\*\*\*

DRY CLEANING OUR  
SPECIALTY

\*\*\*

NORTH DELAWARE AVENUE

\*\*\*

P H O N E    3 4 7

Hon Agency, Inc.

*I N S U R A N C E*

\*\*\*

LICENSED REAL ESTATE  
BROKER

\*\*\*

220 NORTH BOULEVARD

DE LAND    ::    FLORIDA

S T U D E N T S

\*\*\*

TWO GOOD PLACES

*—to go—*

STETSON AND McCRORY'S

\*\*\*

McCrory's 5 & 10  
Cent Store

J. F. ALLEN FURNITURE  
COMPANY

*Home of Dependable Goods*

50 years in business and still going  
strong.

GOHN & DYKES, INC.

*Men's Wear*

\*\*\*

Famous for their made-to-  
measure suits



COMPLIMENTS

—OF—

Harper's Cafeteria

\*\*\*

THE PLACE WHERE OLD  
MAN HARPER  
HAS PLENTY OF GOOD  
THINGS TO EAT.

COMPLIMENTS

—OF—

SPARKS DE LAND THEATRES

\*\*\*

The Dreka  
The Athens

\*\*\*

*Devoted to presenting the best  
entertainment for your  
pleasure.*

F. N. DEHUY & SON

\*\*\*

*Jewelers and Silversmiths*

SINCE 1873

ATHENS BARBER SHOP

Modern and Sanitary

*Skilled Barbers*

A. E. "JACK" COMBS, *Proprietor*

134 NORTH BOULEVARD

CONDON'S CAFE

*Juicy Steaks*

Nice place. We are ready to  
serve.

THE ALLEN-WHITE CO.,  
INC.

*Students' Supplies*

Stationery : Typewriters  
Note Books

A PLEASURE TO SERVE YOU.

DE LAND HOTEL

SOUTH BOULEVARD DE LAND, FLA.

*Restaurant*

EUROPEAN OR AMERICAN PLAN

Brick ; Steam Heated. European Rates :  
\$1.50 and up. Always Open. Phone 660.

ACREE'S, INC.

DE LAND, FLA. PHONE 468

Goodyear Tires and Tubes  
Exide Battery Service

Road Service Opposite Post Office

C. O. LYNCH

144 East Indiana Avenue

PHONE 419-J

Satisfaction Guaranteed

USED FURNITURE FOR SALE

**Daytona Beach News Journal**

✓ ✓ ✓

An independent, home owned, complete  
daily that fills every requirement of read-  
ers and advertisers in Volusia County.

**De Land Bureau**

W. Indiana Avenue

*It Pleases Us to Serve You.*

TOUGHTON DRUG CO.

*The Recall Store*

S. Blvd. and W. New York Avenue

PHONE 71 DE LAND, FLA.

C. M. Geiger J. L. Dalton

THE COURT HOUSE  
PHARMACY

W. Indiana Avenue near the Court House

THE PLACE WHERE STUDENTS  
GATHER FOR

DRINKS, LUNCH AND FUN

Ray Johnson Sid. Singleton

REEVE & HOWARD

*STATIONERY, GIFTS AND BOOKS*

New Location: 105 W. Indiana Avenue

WRIGHT ELECTRIC CO.

*GENERAL ELECTRIC*

NORTH BOULEVARD

BARR'S

*DRY GOODS, NOTIONS AND HOSIERY*

118 N. BOULEVARD

VOLUSIA PHARMACY

*SERVICE WITH A SMILE*

Phone 108

DE LAND : FLORIDA

A D E Q U A C Y



*Offices and Store*

In the production of fine books, or for that matter, fine printing of any sort there must be an adequacy of

Understanding and experience to plan and interpret « Of workers who have mastered their crafts « Of materials of the best quality « And of modern equipment and exact skill in its direction. « « «

These sales and service offices and this manufacturing plant are evidences of an inflexible rule that adequacy must be maintained at « « «

FOOTE & DAVIES COMPANY  
A T L A N T A , G E O R G I A

PRODUCERS  
OF FINE  
ANNUALS  
BOOKLETS  
CATALOGS



*Manufacturing Plant*



*The*  
Barnett National Bank

*"A Florida Landmark"*

Hull, Landis and  
Whitehair

ATTORNEYS

—AND—

COUNSELLORS AT LAW

DE LAND, FLORIDA

\*\*\*

*Practicing in All State and  
Federal Courts*

ARTHUR LANE AGENCY,  
INC.

Insurance : Real Estate  
Surety Bonds

N. Woodland Boulevard : Phone 515

Oldest Insurance Agency in Volusia  
County. Established 1882.

♦ ♦ THE ♦ ♦

STAFF OF THE HATTER

hopes that you are pleased with the results of efforts to overcome many obstacles and produce this book. Come to John B. Stetson University next year and bring your friends.















