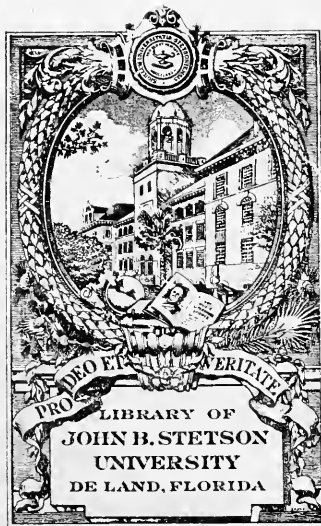


S  
378.73  
P  
1933  
Cop. 2





Florida State Historical  
Society Archives

Stetson University



3 4369 00479771 X

5171  
5177  
43  
1933  
cop. 2

*Presented to*


*The Board of Trustees*

*of Stetson University*  
1933

This book must not be taken from  
the Library building.

NOV 4 1953

DO NOT REMOVE  
FROM LIBRARY



Digitized by the Internet Archive  
in 2010 with funding from  
Lyrasis Members and Sloan Foundation

<http://www.archive.org/details/hatter1933stetson>

**THE  
HATTER**

published by

**THE**

**ANNUAL STAFF**

of

**STETSON UNIVERSITY**

**1933**

---

---

**copyright**  
**IRMA CHAPPELL**  
**EDITOR**  
**E.M. ALRICH**  
**BUSINESS MANAGER**

---





**ex libris**

## FOREWORD

If in the years which are to come, this book brings you a mental panorama of the happy days and pleasant associations of your Alma Mater, our efforts will not have been in vain...





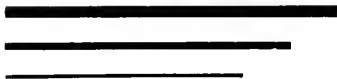
# Dedication

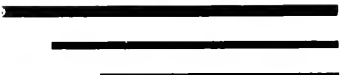
To

**John Joseph Kindred**  
as a token of our  
sincere appreciation  
for his unusual ability  
and versatility, and  
for his unselfish life  
of service to mankind,  
we affectionately dedicate  
this volume of  
**The Hatter**













*To My Students*

*During your college course you have heard stressed the importance of building up a healthy body and keeping it in health; the importance of developing the mind till it works smoothly, untrammelled by prejudice and superstition; and the importance of controlling your emotions so that they may function normally.*

*These things are basic in seeking an education for character and service. They continue to be so after graduation. It will take you years to fill your minds with useful knowledge, to cultivate your wills till they bring your wayward impulses under control, but such should be your aim.*

*In the pursuit of truth keep an open mind; in the strife for moral character, keep the conscience clear; in the effort to purchase the costly glories of the higher life make yourselves serve ideals daily.*

*Growth and enrichment depend on practice, on aiming at proper goals and on constant strenuous effort. The students of Stetson are inducted into the company of scholars who value worth-while things, who do not hide behind masks or serve idols, so I shall be watching you to see that you succeed.*

*Affectionately,*

LINCOLN HULLEY.



## *Administrative Officers*



CHARLES S. FARRISS, D.D.  
*Vice President*

G. PRENTICE CARSON, A.M., LL.D.  
*Dean of College of Liberal Arts*

MARY TRIBBLE LOWRY, A.M.  
*Dean of Women*

LEWIS H. TRIBBLE, LL.M.  
*Dean of College of Law*

OLGA BOWEN, A.M.  
*Assistant to the Dean*

C. B. ROSA  
*Registrar*

# The Faculty

## PROFESSORS, ASSOCIATE PROFESSORS, AND ASSISTANT PROFESSORS

- ROBERT I. ALLEN, M.S.  
*Associate Professor of Engineering  
and Physics*
- JACOB A. CARPENTIER, LL.B.  
*Professor of Law*
- G. PRENTICE CARSON, A.M., LL.D.  
*Dean and Professor of History  
and Political Science*
- RICHARD E. CLARK, PH.D.  
*Librarian and Professor  
of Sociology*
- JOHN F. COXN, PH.D.  
*Professor of Chemistry*
- WILLIAM E. DUCKWITZ, MUS.D.  
*Professor of Music*
- BOYCE F. EZELL, PH.D.  
*Professor of Psychology  
and Education*
- CHARLES S. FARRISS, D.D.  
*Vice-President and Professor  
of Ancient Languages*
- DONALD FAULKNER, A.B.  
*Associate Professor of Mathematics*
- CHARLES A. FISHER, PH.D.  
*Professor of Business Administration  
and Economics*
- HARRY D. FLUHART  
*Professor of Fine Arts*
- JENNIS W. FUTCH, J.D.  
*Professor of Law*
- HARRY C. GARWOOD, TH.M.  
*Professor of Philosophy and Bible*
- WARREN S. GORDIS, PH.D.  
*Professor of English*
- LUTHER B. GRICE, D.D.  
*Associate Professor of Bible*
- JOHN J. KINDRED, LL.B., M.D.  
*Professor of Law*
- CURTIS M. LOWRY, M.E.  
*Professor of Engineering*
- HERBERT R. MCQUILLAN, B.S.  
*Professor of Physical Education*
- ORA P. SEWARD, PH.D.  
*Emeritus Professor of Modern  
Languages*
- IRVING C. STOVER, M.O.  
*Professor of Public Speaking*
- HARRY L. TAYLOR, PH.D.  
*Associate Professor of Philosophy*
- LEWIS H. TRIBBLE, LL.M.  
*Dean of College of Law and  
Professor of Law*
- CHARLES B. VANCE, PH.D.  
*Professor of Biology*
- GEORGE E. GASTNER  
*Assistant Professor in the  
Plastic Arts*
- PAUL R. GEDDES  
*Assistant Professor in Vocal Music*
- ANNIE NADINE HOLDEN, PH.B.  
*Assistant Professor in German  
and English*
- HARRY S. WINTERS, A.M.  
*Assistant Professor of English*

## LECTURERS AND INSTRUCTORS

- EVELYN F. BEACH  
*Instructor in Secretarial Work*
- DAVID BEACHSHEAR, LL.B.  
*Lecturer, Appellate Procedure*
- VERONICA DAVIS  
*Instructor in Public School Music*
- ROSA LEE GAUT, MUS.B.  
*Instructor in Music*
- JULIA G. HALE, A.B.  
*Instructor in Physical Education  
and Health*
- FRANCIS A. HAMMOND  
*Law Librarian and Instructor  
in Legal Bibliography*
- MARY M. HENDRICKS, A.B.  
*Instructor in French*
- MAHLON S. MCGREGOR, LL.B.  
*Instructor in Law*
- ELLA C. KINDRED, A.B.  
*Lecturer in Fine Arts*
- MARY E. LOWRY, A.M.  
*Instructor in English*
- LUCY ANN NEBLETT, A.B.  
*Instructor in Spanish and French*
- PAUL E. RAYMOND, J.D., S.J.D.  
*Instructor in Law*
- MIRIAM WAYT, M.S.  
*Instructor in Physical Education  
and Health*

## ASSISTANTS TO THE FACULTY

- ROSWELL S. BUSHNELL      EMMET C. FEASEL      LOUIS H. MARVIN  
MARION P. CARSON      BERTHA M. FISHER      FAUSTENE B. TOWN, A.B.  
MARY C. CONRATH, A.B.      BERTHA W. FLUHART      EVA BAKER WELCH, MUS.B.  
ALMA R. FARRISS      S. HARRIET KENNEDY, A.M.      WILLIE DEE WILLIAM, A.B.









# *Student Body Officers*



ROBERT BURNS . . . . . *President*  
SEWARD SALVAGE . . . . . *Vice-President*  
ABERDEEN JOHNSON . . . . . *Secretary*  
MILDRED CARL . . . . . *Treasurer*



## Postgraduates



JEAN E. LITTLE  
*Picture Rocks, Pa.*  
A.B., Bucknell University

MARY C. CONRATH  
*DeLand, Fla.*  
A.B., Marietta College

MARY HENDRICKS  
*Edon, Ohio*  
A.B., Denison University

FRANCIS H. THOMAS  
*Hollister, Fla.*  
A.B., Stetson University

GUS ADAMS  
*South Boston, Va.*  
A.B., Presbyterian College

FAUSTENE TOWN  
*Charlotte, Mich.*  
A.B., Stetson University

WILLIE D. WILLIAM  
*Jacksonville, Fla.*  
A.B., Stetson University





# Seniors

## *Senior Class Officers*



RUSSELL BROWN, *President*



BETTY FOARD, *Vice-President*



RUTH HALE, *Secretary*



HENRY T. BASS, *Treasurer*

HENRY F. BASS

$\Delta \Sigma \Phi$

Okeechobee

*Candidate for B.S. Degree*

Treas. Class, 3; Treas. Class, 4; Pres. Stetson  
Engineering Society, 4.

Never let it be said that women bother  
"Chobee," for he's a man among men.



MARY BATTLE

$\Lambda \Xi \Delta$

Sorrento

*Candidate for A.B. Degree*

Vice-Pres. Class, 2; Student Council, 1; Most  
Popular Girl, 2; Homecoming Sponsor, 2; Y. W.  
A., 1, 2.

She's really "a most unconventional lass," but we  
like her to be, because you see, it's Mary.



ELIZABETH BROOKS

$\Sigma \Lambda \Phi$

Clermont

*Candidate for A.B. Degree*

Brenau College, 1, 2; Pi Kappa Sigma; Cor. Secy.  
Sigma Alpha Phi, 4; Hatter Staff, 3.

Betty is a friendly little girl with a great big heart  
and a car that's ready to take you anywhere.





RUSSELL BROWN

Σ X

DeLand

*Candidate for A.B. Degree*

Pres. Class, 4; Chaplain Sigma Nu, 4; Glee Club, 4; Orchestra, 1, 3, 4; Mgr. Orchestra, 4; Band, 1, 4; Mgr. Band, 4; Stetson Players, 4.

Russ is the fellow generally known as "the life of the party," and rightly, for oh, what a way with the women!



JULIA MAE BURTON

Δ Δ Δ

DeLand

*Candidate for A.B. Degree*

Lipscomb College, 1; Glee Club, 1, 4; Treas. Glee Club, 1.

Judy is a composite bundle of energy, good nature and wit wrapped up in a very attractive package.



MILDRED CARL

Σ Λ Φ

DeLand

*Candidate for A.B. Degree*

Flint Junior College, 1; Pi Kappa Sigma; Torch and Scroll; Treas. Student Body, 4; Vice-Pres. Sigma Alpha Phi, 3, 4; Vice-Pres. Pi Kappa Sigma, 2; Treas. Pi Kappa Sigma, 3; Pres. Pi Kappa Sigma, 4; Secy. Torch and Scroll, 4; Pres. Torch and Scroll, 4.

She's one of those likeable little girls that do great big things in a big way, this Midge. We're backing her full force, sure that she'll reach the top.

IDA MAE COCOWITCH

Σ A Φ

Dunnellon

*Candidate for A.B. Degree*

Florida State College for Women, 1, 2, 3; Phi Beta, 4; Glee Club, 4.

Ida Mae has been with us only a short while, but already that "come-hither-look" and its matchless smile have won for her an indispensable place among us.



JOHN COLVARD

Σ X

DeLand

*Candidate for B.S. Degree*

Gamma Sigma Epsilon; Marion Institute, 1, 2; Hatter Staff, 4; Recorder Gamma Sigma Epsilon, 4; Football, 3; Boxing, 3.

John has a host of assets, among them a remarkable power of selection—perhaps 'tis because of his "fair choice," but more than likely his "choice of the fair."



VERONA CREEKMORE

Δ Δ Δ

Brooksville

*Candidate for A.B. Degree*

Florida State College for Women, 1, 2; Vice-Pres. Student Council, 4; Glee Club, 4; Marshal, Delta Delta Delta, 4; Homecoming Sponsor, 3.

We've found when "Red" could spare her for a moment that Verona is really a jolly good sport and nice to have around.





MAE DANIEL

Moore Haven

*Candidate for B.S. Degree*

Torch and Scroll; Gamma Sigma Epsilon; Student Council, 2, 3, 4; Orchestra, 2, 3; Librarian of Orchestra, 3; Secy. Torch and Scroll, 4; Vice-Pres. Y. W. A., 2, 3, 4; Secy. B. S. U., 3, 4.

Sweet, sincere, courteous, with a quiet reserve we all admire—that's Mae.



DAVID DYER

Σ X

Miami Beach

*Candidate for LL.B. Degree*

Ohio State University, 1, 2, 3, 4; Phi Delta Phi.

David came among us a gentleman of courtesy and friendliness that stamped him at once as a likeable fellow.



MARY HARRIS EZELL

Π Β Φ

DeLand

*Candidate for A.B. Degree*

Theta Alpha Phi; Censor Pi Beta Phi, 2; Secy. Pi Beta Phi, 3; Vice-Pres. Pi Beta Phi, 4; Hatter Staff, 4; Homecoming Com., 4; Tennis, 2, 3, 4; Archery, 3; "S" Club, 3, 4; Class Mgr. W. A. A., 3, 4; Glee Club, 1; Choral Group, 2; Stetson Players, 1, 2, 3, 4; Vice-Pres. Theta Alpha Phi, 4; May Queen, 4.

Charm, poise, stateliness—all we could ask for in a queen.

BETTY FOARD

Π Β Φ

Deland

*Candidate for A.B. Degree*

Secy. Class, 2; Treas. Class, 3; Vice-Pres. Class, 4; Hatter Staff, 3; Censor Pi Beta Phi, 2; Secy. Pi Beta Phi, 3; Pres. Pi Beta Phi, 4; Tennis, 3, 4; Archery, 3, 4; Glee Club, 1; Y. W. A., 1, 2, 3, 4.

Everybody knows Betty; everybody loves Betty—  
what more can be said?

D. WALLACE FIELDS

Σ Ν

Lexington, Ky.

*Candidate for LL.B. Degree*

Sigma Nu Phi; Univ. of Ky., 1; Transylvania College, 2; Pres. Class, 3; Editor-in-Chief Hatter, 3; Band, 3, 4; Pres. Band, 3; Orchestra, 3, 4.

A warm, friendly greeting with a cheerful word  
and a winning smile—who else but Wally?

JOHN S. GILL

Δ Σ Φ

Deland

*Candidate for B.S. Degree*

Knox College, 1; Vice-Pres. Delta Sigma Phi, 4; Stetson Engineering Society, 3, 4;

Stacy goes about his way with an air of preoccupation, but it's just a bluff—he's not that way at all.





JOHN GORZEMAN

Hull, Iowa

*Candidate for A.B. Degree*

University of Iowa, 1, 2; Basketball, 3, 4.

Johnnie is truly our ladies' man, with the build of a god and a personality that attracts everyone.



WILLARD HALDEEMAN

Σ X

Youngstown, Ohio

*Candidate for A.B. Degree*

Shepherd Junior College, 1, 2; Basketball, 3, 4; Football, 3; Tennis, 4.

Buddy is our all-round boy—a jolly good sport with both man and maid.



RUTH HALE

A ≡ Δ

New Smyrna

*Candidate for A.B. Degree*

Phi Beta; Pi Kappa Sigma; Secy. Class, 4; Correspondent Alpha Xi Delta, 3; Vice-Pres. Alpha Xi Delta, 3; Delegate to Alpha Xi Delta National Convention, 3; Stetson Players, 1, 2, 3; Homecoming Com., 3, 4; Glee Club, 4; Choral Group 2; Y. W. C. A., 1; Y. W. A., 4; Pres. Pan-Hellenic, 3; Hatter Staff, 3, 4.

Ruth is one of those remarkable people who can do a dozen things at once and pull through with a smiling face and a couple of A's.



ALFRED JACOBSEN

Δ Δ Δ

Et. Pierce

*Candidate for A.B. Degree*

Phi Beta; Pi Kappa Sigma; Rec. Secy. Delta Delta Delta; 4; Rec. Secy. Phi Beta, 2; Cor. Secy. Phi Beta, 3; Vice-Pres. Phi Beta, 4; Rec. Secy. Pi Kappa Sigma, 2; Cor. Secy. Pi Kappa Sigma, 3; Keeper of Archives Pi Kappa Sigma, 4; Glee Club, 1, 3; Y. W. A., 4.

With a sweet charm and pleasing reserve, Jakey goes about her own little way—but not alone!



MYRTLE McCLELLAND

Lakeland

*Candidate for A.B. Degree*

Florida State College for Women, 1, 2, 3; Pi Kappa Sigma; Glee Club, 4; Vice-Pres. B. S. U., 4; Homecoming Com., 4.

"When a feller needs a friend" to share his troubles or to share his fun, Myrtle is always right there.



JAMES MCKENNEY

Π Κ Φ

Lake Monroe

*Candidate for A.B. Degree*

Oxford Fellowship; Chaplain Pi Kappa Phi, 2, 3, 4; Secy. Oxford Fellowship, 3; Vice-Pres. Oxford Fellowship, 4; Hatter Staff, 4.

If there's something to be done, count on Jimmie to be ready to help—especially if there's a woman concerned.





VIRGINIA MacKENZIE

Α Ξ Δ

Tampa

*Candidate for A.B. Degree*

Pres. Alpha Xi Delta, 4; Vice-Pres. Alpha Xi Delta, 3; Soc. Chairman Alpha Xi Delta, 2; Play Production Class, 1; Treas. Pan-Hellenic, 4; Homecoming Sponsor, 3.

One can't help liking a girl like Virginia (especially one "Bus"), for she has the attributes of an attractive personality.



JEAN MOORE

Lake Helen

*Candidate for A.B. Degree*

Jean, when she lets you know her, has that clever Irish wit that is irresistible.



J. WINFIELD MOSLEY, JR.

Δ Σ Φ

Tavares

*Candidate for A.B. Degree*

Football, 1, 2, 3, 4; Basketball, 1, 2, 3, 4; Captain Football Team, 4; Vice-Pres. Delta Sigma Phi, 4; Secy. Delta Sigma Phi, 2; Most Versatile Man, 4.

Mose spent four years on our campus with athletics for his goal, then he switched to scholarship and has proved a winner in both.

CHARLES Z. OSBORNE

Π Κ Φ

Umatilla

*Candidate for I.J.B. Degree*

Phi Alpha Delta; Treas. Pi Kappa Phi, 3; Archon Pi Kappa Phi, 4; Treas. Phi Alpha Delta, 3; Justice Phi Alpha Delta, 4; Football, 1; Glee Club, 1; Band, 1; Stetson Players, 1; Sheriff of Moot Court, 4.

Charlie is one of our promising lawyers. He began his career by convicting Governor Sholtz and here's wishing him as much success with future trials.



HOLLICE H. PLOTS

Σ Ν

Findlay, Ohio

*Candidate for A.B. Degree*

Ohio State University, 1, 2; Football, 3, 4; Wrestling, 3.

If Bud tackles all his troubles the way he tackles men on the grid, he'll win our cheers right on.



SEWARD T. SALVAGE

Α Τ Ω

Coshocton, Ohio

*Candidate for B.S. Degree*

Washington and Jefferson College, 1; Vice-Pres. Student Body, 4; Mgr. Basketball, 4; Football, 2, 3, 4; Boxing, 3; Vice-Pres. Engineering Society, 4; Most Representative Man, 4.

A scholar, an athlete, a man of many friends. Sead is rightly called "most representative."





BETTY SPELL

Z X E

Titusville

*Candidate for A.B. Degree*

Pres. Zeta Chi Epsilon, 4; Treas. Zeta Chi Epsilon, 2; Vice-Pres. Pi Gamma Mu, 4; Y. W. A., 2.

If you're looking for someone with plenty of efficiency and ability, Betty will fill the bill.



FRANK R. SPENCER

Hannacroix, N. Y.

*Candidate for B.S. Degree*

Torch and Scroll; Pi Gamma Mu; Gamma Sigma Epsilon; Grand Alchemist Gamma Sigma Epsilon, 4.

Frank keeps his dry wit tucked away in reserve, but it's all the more pungent when he lets it escape. He's headed for success, we're sure.



DOROTHY TREADWELL

A E Δ

Lake Helen

*Candidate for A.B. Degree*

Florida State College for Women, 1; Theta Alpha Phi; Secy. Theta Alpha Phi, 4; Stetson Players, 2, 3, 4.

Dot, a great little actress, has a certain sparkle and vivacity that one can't forget.

WINIFRED TUMBLIN

Σ A Φ

Tampa

*Candidate for A.B. Degree*

Pres. Student Council, 4; Vice-Pres. Student Council, 3; Editor-in-Chief Hatter, 3; Pres. Sigma Alpha Phi, 3; Chaplain Sigma Alpha Phi, 2; Orchestra, 1, 2, 3, 4; Vice-Pres. Orchestra, 3; Pres. Y. W. A., 3; Vice-Pres. B. S. U., 1, 2, 3; Most Pleasing Personality, 3.

When you find a jolly smile and contagious good humor coupled with an amazing amount of efficiency, you know you've found Winnie.

THOMAS P. WARLOW, JR.

Α T Ω

Orlando

*Candidate for LL.B. Degree*

Sigma Nu Phi; Golf, 4.

Tim's nonchalant demeanor hides the active, diagnosing brain which brings logic in coherence with law.

HOWARD S. WARNER

Orange City

*Candidate for LL.B. Degree*

When aggressiveness is added to personality and a cheerful outlook it's bound to equal success.





ALBERT D. WOODLE

Π Κ Φ

Jacksonville

*Candidate for LL.B. Degree*

Here is an analytical man who speaks few words, but writes many when the occasions arise.

ROBERT KENWICK

Σ Φ

Cuba, N. Y.

*Candidate for A.B. Degree*

Union College, 1, 2; Theta Alpha Phi; Stetson Players, 3, 4; Intercollegiate Debating, 4; Pres. Theta Alpha Phi, 4.

A master of moods is our actor Bob—we laugh, love and cry with him as a hundred different people, but like him best as his own individual self.

GEORGE LINDER

Δ Σ Φ

Ocala

*Candidate for B.S. Degree*

Treas. Delta Sigma Phi, 1, 2, 3; Hatter Staff, 2. Generous, good natured, and likeable—perhaps it's the home influence.



# Juniors

*Junior Class Officers*



JACK TOWNSEND  
*President*



BET KRAMER  
*Vice-President*



GERALDINE FARRAR  
*Secretary*

ROBERT SANDLES  
*Treasurer*



---

---

---

In Memory

of

Richard H. Davis

whom we held in high esteem  
and for whom we felt a deep  
affection . . .

December 21, 1932

---

---

---



MEREDITH ALRICH  
Σ N  
Glenwood

ELIZABETH BROWN  
Δ Δ Δ  
DeLand

ABIGAIL CHAPMAN  
Δ Δ Δ  
Staten Island, N. Y.

IRMA CHAPPELL  
Miami

SALLIE MAE EDWARDS  
Σ A Φ  
Vero Beach

GERALDINE FARRAR  
Σ A Φ  
Miami

LOVETTE FIELDS  
Δ Δ Δ  
DeLand

BIRNICE FISHER  
DeLand



KENNETH FREEMAN  
Σ N  
DeLand



J. DAVIS GODDARD  
H K Φ  
Quincy



ELLEN GUSTAFSON  
H B Φ  
Green Cove Springs



JOSEPH HENDRICKS  
H K Φ  
Montverde



DOROTHY HODIL  
Δ Δ Δ  
Sebring



ABERDEEN JOHNSON  
Λ Ξ Δ  
St. Petersburg





BET KRAMER

Δ Δ Δ

Lake Wales

MARGARET MAXFIELD  
Potsdam, N. Y.

S. COLQUITT PARDEE  
Avon Park

ANDREW PRESTON  
Lincoln, Ill.

GRACE SAFRIET

Δ Δ Δ

Gatliff, Ky.

JACK TOWNSEND

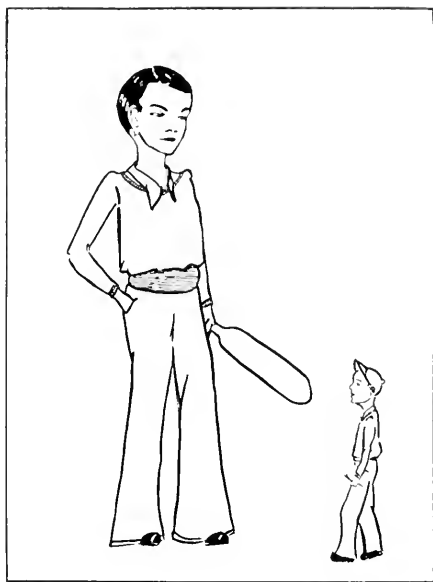
Σ X

Lake Wales

PAULINE WILSON

A Ξ Δ

Red Line, Pa.



# Sophomores

---

## *Sophomore Class Officers*

FRANK ORTMAN  
*President*



MARJORIE HAMMER  
*Vice President*



AUDREY JOHNSON  
*Secretary*



GEORGE FARMER  
*Treasurer*

ELIZABETH ADAMS  
H B Φ  
Mayo

ROUTH BOISCH  
H B Φ  
Daytona Beach

WATTS BRACEY  
H K Φ  
Asheville, N. C.

CORNELIUS CHRISTIANCY  
Daytona Beach

MARTHA CLAYTON  
H B Φ  
Lakeland

GEORGE A. DECOTTES  
H K Φ  
Jacksonville

BETTY DREKA  
DeLand

VIRGINIA EINSEL  
H B Φ  
DeLand

BOYCE F. EZELL  
H K Φ  
DeLand





GEORGE C. FARMER  
 Η Κ Φ  
 Clearwater

MARY LOUISE FOARD  
 Η Β Φ  
 DeLand

HARRY E. GAYLORD  
 Σ Χ  
 Eustis

JACK D. GREENE  
 Chicago, Ill.

IRENE M. HAAS  
 Η Β Φ  
 Tampa

MARJORIE HAMMER  
 Η Β Φ  
 DeLand

ETHEL HIRT  
 Osteen

JULIET HOPE  
 Σ Α Φ  
 Hocoria

AUDREY JOHNSON  
 Α Ξ Δ  
 Grand Marais, Minn.



LESLIE JOHNSON  
Σ X  
Grand Marais, Minn.

GEORGIA KIRBY  
H B Φ  
Mount Dora

ALICE LEE  
Σ A Φ  
DeLand

JOHN D. MARSH  
Σ X  
Detroit, Mich.

ANNE-EMILINE OVERSTREET  
Jacksonville

DONALD PHILLIPS  
Σ X  
Daytona Beach

JACK O. PHILLIPS  
Σ X  
Jacksonville

CHARLES K. REAVES  
B K  
Tampa

ANITA ROBINSON  
New York, N. Y.





VERNELLE SHACKELFORD  
Σ Α Φ  
Hicoria

GEORGE K. STRAUS  
Δ Τ Δ  
Youngstown, Ohio

SIDNEY H. TAYLOR  
Δ Σ Φ  
DeLand

ETTER TURNER  
Σ Α Φ  
Williston

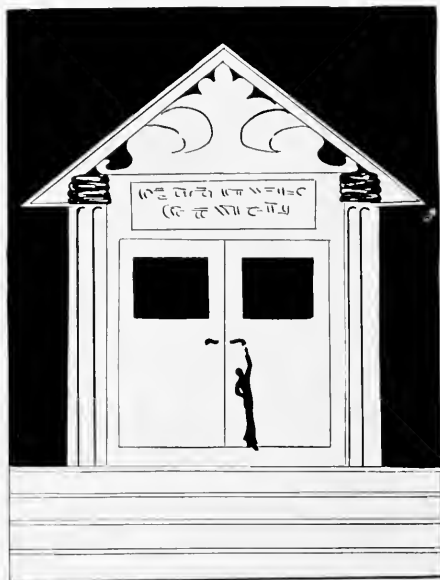
EDITH VAN  
Δ Δ Δ  
DeLand

LOIS WHIDDEN  
Δ Δ Δ  
Kissimmee

LOUISE D. WILSON  
Π Β Φ  
Crescent City

AILEEN WORTH  
Α Ξ Δ  
Pontiac, Ill.

NORMA YATES  
Key West



# Freshmen

*Freshmen Officers*



SARA WILSON  
*President*



RICHARD SIMPSON  
*Vice President*



FLORENCE FINDLAYSON  
*Secretary*



ROY TEW  
*Treasurer*

CHARLES F. ALLEN  
Σ N  
Tampa

ALBERTA M. AXTEL  
Π Β Φ  
Jacksonville

THOMAS E. BALDWIN  
Π Κ Φ  
Vero Beach

T. A. BASS, JR.  
Δ Σ Φ  
Pahokee

MAURICE BRANTLEY  
Altoona, Pa.

DOROTHY BROADBENT  
Ocala

LILLIAN BROWN  
Δ Δ Δ  
Lake City

MARY ANN BROWN  
Α Ξ Δ  
Ft. Lauderdale

FLORENCE BROWNLEE  
Δ Δ Δ  
Chattanooga, Tenn.

ELLEN BURKLEY  
Π Β Φ  
Daytona Beach





MARJORIE CARPENTER  
Α Ξ Δ  
Miami Beach

ELIZABETH CHURCH  
Σ Α Φ  
Orlando

HELEN MAY CHRISTIAN  
Π Β Φ  
Jacksonville

HAROLD DASSLER  
Δ Σ Φ  
Hawthorne, N. Y.

HOWARD M. DAY  
Π Κ Φ  
Punta Gorda

FRANCES DORSEY  
Δ Δ Δ  
Homestead

TERESA EDWARDS  
Ζ Α Φ  
Vero Beach

FLORENCE FINDLAYSON  
Π Β Φ  
Greenville

NANCY FELT  
Δ Δ Δ  
DeLand

MARGARET HOOKER  
Π Β Φ  
Chosen

DOROTHY KEENE  
Δ Δ Δ  
Miami

BEE W. KIRK  
Σ N  
Leesburg

SARAH KLEFFER  
Δ Δ Δ  
Miami

DORIS KNAAK  
Δ Δ Δ  
Detroit, Mich.

PAULINE McFARLAND  
Σ A Φ  
Vero Beach

RHODA NEAL  
St. Augustine

L. P. NICHOLS  
Σ N  
Daytona Beach

THOMAS B. OWENS  
Π K Φ  
Okeechobee

POLLY ROBBINS  
Π B Φ  
Panama City

EVELYN SHULER  
Π B Φ  
Jacksonville





RICHARD SIMPSON  
Δ Σ Φ  
Ft. Lauderdale

IRENE SMILEY  
Δ Δ Δ  
Pierson

ELIZABETH STOVER  
Π Β Φ  
DeLand

ROY E. TEW  
Π Κ Φ  
Ft. Myers

DOUGLAS A. TOWER  
Δ Σ Φ  
Homestead

GEORGE A. WEST  
Δ Σ Φ  
Homestead

SARA WILSON  
Π Β Φ  
Miami

JULIUS A. WUDZKE  
Σ Ν  
DesPlaines, Ill.



**ORGANIZATIONS**





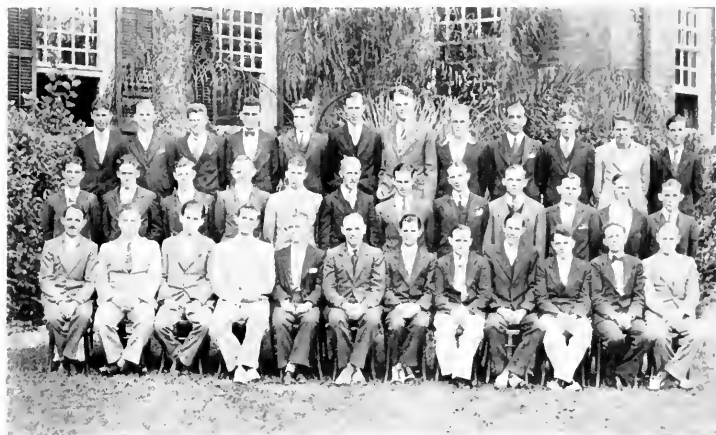
# *Delta Sigma Phi*

Founded at College City of New York, December 10, 1899

Alpha Chi Chapter Established 1898; Founded 1925

COLORS: *Nile Green and White*

FLOWER: *White Carnation*



## CHAPTER MEMBERS

### IN FACULTATE

Lewis H. Tribble

Robert L. Allen

Donald Faulkner

### IN UNIVERSITATE

#### ACTIVES

Frank Adams  
H. T. Bass  
Tom C. Blalock  
Robert Burns  
Jack Duren  
Frank Ortman

Horace Culbertson  
Wallace Foard  
Stacey Gill  
George Lindner  
Winfield Mosley

Sidney Taylor  
Donald Fallbott  
Rodney Thursby  
Francis Reaves  
Edward Berger  
Richard Wildeson

#### PLEDGES

Richard Simpson  
Douglass Tower  
Reginald Farr  
Phillip Wright

Bonar Law  
Frank Smith  
George Diamond  
Wilson Mobley  
Len G. Owens

Allen West  
Ottis Vinson  
James Matlier  
Harold A. Dassler

# *Pi Beta Phi*

Founded at Monmouth College, 1867  
Florida Chapter Established January 30, 1913

COLORS: *Wine and Silver Blue*

FLOWER: *Wine Carnation*



## CHAPTER MEMBERS

### IN FACULTATE

Amie Nadine Holden

### IN UNIVERSITATE

#### ACTIVES

Betty Foard  
Mary Harris Ezell  
Ellen Gustafson

Ruth Boisch  
Martha Clayton  
Elizabeth Adams  
Virginia Emsel

Marjorie Hammer  
Georgia Kirby  
Mary Louise Foard

#### PLEDGES

Alberta Axtell  
Ellen Burkley  
Helen May Christian  
Florence Findlayson

Margaret Hooker  
Irene Haas  
Polly Robbius

Evelyn Shuler  
Betty Stover  
Louise Wilson  
Sara Wilson



FIRST ROW

Georgia Kirby, Mary H. Ezell, Betty Foard, Ellen Gustafson, Virginia Einsel.

SECOND ROW

Ruth Boisch, Mary Louise Foard, Elizabeth Adams, Martha Clayton-Marjorie Hammer.

THIRD ROW

Margaret Hooker, Ellen Burkley, Louise Wilson, Alberta Astell, Evelyn Shuler, Sara Wilson.

FOURTH ROW

Irene Haas, Helen May Christian, Polly Robbins, Florence Findlayson, Betty Stover.

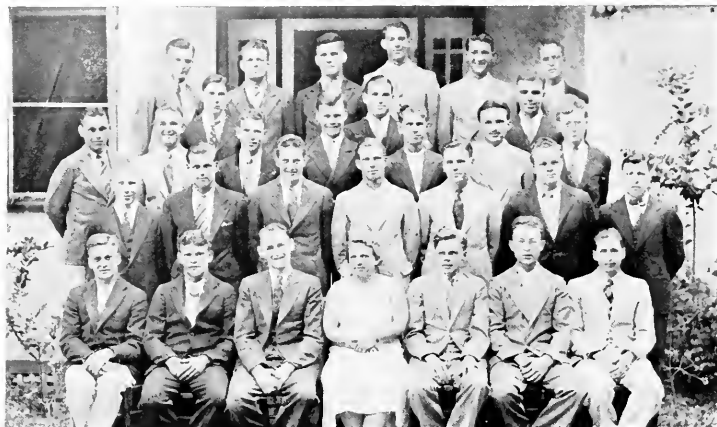
# *Sigma Nu*

Founded at Virginia Military Institute, January 1, 1869

Delta Mu Chapter Established 1913

COLORS: *Black, White and Gold*

FLOWER: *White Rose*



## CHAPTER MEMBERS

### IN FACULTATE

Louis Marvin

### IN UNIVERSITATE

#### ACTIVES

Jack Phillips  
Meredith Alrich  
Lester Shabel  
Joe Check  
Bob Sandles  
Sid Singleton

Fred Brassard  
Clyatt Broward  
John Colvard  
Wallace Fields  
Leslie Johnson

Don Phillips  
John Ruzzo  
Jack Townsend  
John Soeash  
Russell Brown  
Hollice H. Plotts

#### PLEDGES

Charles Allen  
Richard Inghram  
Bee Kirk  
Kenneth Freeman

Jack Marsh  
Harry Gaylord  
Edward Knittle

Sheldon Yates  
L. P. Nichols  
Gordon McCalla  
Ed Dowell



FIRST ROW

Jack Phillips, Leslie Johnson, Russell Brown, John Marsh.

SECOND ROW

Meredith Alrich, John Colvard, Mother Brown, Donald Phillips, Wallace Fields.

THIRD ROW

Beg Kirk, H. H. Platts, Charles Allen, Jack Townsend.

FOURTH ROW

Willard Haldeman, L. P. Nichols, Julius Wudzke, Kenneth Freeman.

# Delta Delta Delta

Founded at Boston University, Thanksgiving Eve, 1888

Alpha Delta Founded May 17, 1913

COLORS: *Silver, Gold and Blue*

FLOWER: *Pansy*



## CHAPTER MEMBERS

### IN UNIVERSITATE

#### ACTIVES

Lovette Fields  
Faustene Town  
Bet Kramer

Gail Chapman  
Verona Creekmore  
Julia Burton

Betty Brown  
Alfhild Jacobsen  
Lois Whidden

#### PLEDGES

Dorothy Keene  
Frances Dorsey  
Florence Brownlee  
Nancy Felt

Edith Van  
Doris Knaak  
Grace Saffriet  
Mary Conrath  
Lillian Brown

Louise Hickson  
Dorothy Hodil  
Narcille Logan  
Betty Zane Wilson





FIRST ROW

Faustene Town, Betty Brown, Lovette Fields, Gail Chapman, Verona Creekmore.

SECOND ROW

Bet Kramer, Alfhild Jacobsen, Julia Burton, Lois Whidden, Jean Little.

THIRD ROW

Sarah Klefeker, Mary Conrath, Florence Brownlee, Dorothy Keene, Nancy Felt, Lillian Brown.

FOURTH ROW

Grace Safriet, Edith Van, Frances Dorsey, Irene Smiley, Dorothy Hodil, Doris Knak.

# Alpha Xi Delta

Founded at Lombard College, 1893

Omega Chapter Established May 31, 1917

COLORS: *Light and Dark Blue and Gold*

FLOWER: *Pink Rose*



## CHAPTER MEMBERS

### IX FACULTATE

Mary Tribble Lowry  
Olga Bowen

### IX UNIVERSITATE

#### ACTIVES

Virginia MacKenzie  
Ruth Hale  
Aberdeen Johnson

Mary Battle  
Willie Dee Willian  
Frances Alexander  
Elizabeth Alexander

Aileen Worth  
Audrey Johnson  
Dorothy Treadwell

#### PLEDGES

Louise Royall

Marjorie Carpenter

Mary Ann Brown

Pauline Wilson



FIRST ROW

Ruth Hale, Virginia MacKenzie, Aberdeen Johnson, Willie Dee William

SECOND ROW

Dorothy Treadwell, Mary Battle, Audrey Johnson,

THIRD ROW

Aileen Worth, Marjorie Carpenter, Mary Ann Brown, Pauline Wilson.

# *Sigma Alpha Phi*

Founded at John B. Stetson University, January 11, 1926

COLORS: *Mulberry Green and Wine*

FLOWER: *Violet and Ophelia Rose*



## CHAPTER MEMBERS

### IN UNIVERSITATE

#### ACTIVES

Winifred Tumblin  
Geraldine Farrar  
Mildred Carl

Sallie Mae Edwards  
Betty Brooks  
Vernelle Shackelford

Etter Turner  
Margaret Gibbs  
Alice Lee

#### PLEDGES

Ida Mae Cocowitch  
Pauline McFarland  
Juliette Hope

Teresa Edwards  
Myrtle McClelland  
Moise Williams

Avaryee Collier  
Annabel Ford  
Elizabeth Church



FIRST ROW

Geraldine Farrar, Winifred Tumblin, Mildred Carl, Vernelle Shackelford.

SECOND ROW

Sallie Mae Edwards, Betty Brooks, Alice Lee, Ida Mae Cocowitch.

THIRD ROW

Juliette Hope, Pauline McFarland, Teresa Edwards, Elizabeth Church, Etter Turner.

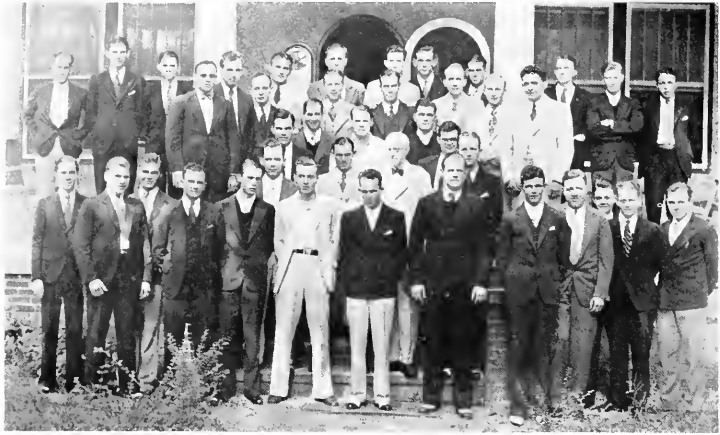
# Pi Kappa Phi

Founded at the College of Charleston, 1904

Chi Chapter Established 1921

COLORS: *Gold and White*

FLOWER: *Red Rose*



## CHAPTER MEMBERS

### IN FACULTATE

William E. Duckwitz  
Chan Johnson

### IN UNIVERSITATE

#### ACTIVES

Gus Adams  
Joe Burkhalter  
William Davis  
George DeCottes  
Boyce Ezell

Gus Garrison  
Davis Goddard  
Joe Hendricks  
Bill Jennings  
Charles Martin  
James McKenney

Charles Osborne  
Raymond Ware  
Albert Woodie  
Amory Underhill  
William Elton  
James McKenney

Donald Horton  
Travis Petrey  
Reginald Hammond  
Robert McKibben  
George Farmer

#### PLEDGES

Harry Cole  
Howard Bateson  
R. B. Hall  
Thomas Baldwin

Watts Bracey  
Kempis Carpenter  
Dennis Carroll  
Richard Elton  
John Haynesworth

Sheldon Lindsey  
Bill Lovett  
Eldon McCloud  
Rudolph Nelson  
Thomas Owens

Joe Peclunas  
Leslie Shepherd  
Hilton Shoemaker  
Roy Tew

## *Stray Greeks*

ELLEN AINSWORTH  
Α Χ Ω

*Northwestern University*

ROBERT RENWICK  
Σ Φ

*Union College*

THOMAS BARTON  
Π Κ Α

*University of Florida*

CHARLES K. REAVIS  
Β Κ

*University of Florida*

DAVID DYER  
Σ Χ

*Ohio State University*

SEWARD SALVAGE  
Α Τ Ω

*Washington and Jefferson University*

JUSTICE HANNA  
Π Κ Τ

*Lafayette College*

GEORGE STRAUS  
Δ Τ Δ

*Ohio State University*

ROBERT LOCKET  
Α Τ Ω

*University of Florida*

THOMAS WARLOW  
Α Τ Ω

*University of Florida*



**THETA ALPHA PHI  
IN FACULTATE**

Dr. Irving C. Stover  
Miss Willie Dee William  
Prof. Donald Faulkner  
Dr. C. S. Fairiss  
Dr. Lincoln Halley  
Dean Lewis Tribble

**ACTIVE CHAPTER**

Frances Alexander  
Fred Brassard  
Cyrus Cressy  
Mary Harris Ezell  
Lovette Fields  
Bernice Fisher  
Aberdeen Johnson  
S. Colquitt Pardee Jr.  
Robert Renwick  
Walter Smith  
Dorothy Treadwell  
Amory Underhill

Dr. Irving C. Stover, Director  
1. William, Assistant Director  
2. Alexander, "Saint Claude"  
3. Cressy, "Merchant Gentleman"  
4. Treadwell, "Beyond the Horizon"  
5. Pardee Stage Mechanic  
6. Renwick, "Hamlet"

7. Fisher, Scene Painter  
8. Fields, "Outward Bound"  
9. Johnson, "Eloise Chimes"  
10. Smith, "Lady of the Tiger"  
11. Ezell, "Dover Road"  
12. Brassard, Business Manager



# The Order of Torch and Scroll

Honorary Scholarship and Leadership Fraternity

Founded January 14, 1926

Colors: *Crimson and Old Gold*



## CHAPTER MEMBERS

### IN FACULTATE

Dr. Charles S. Farriss      Donald Faulkner  
Olga Bowen                  Willie Dee William  
Faustene Town

### IN UNIVERSITATE

Robert Burns  
Mildred Carl  
Mac Daniel

Cyrus Cressey  
Dorothy Hodil  
Bet Kramer  
Lovette Fields

Robert Dell  
Bernice Fisher  
Bruce Webster

# Pi Kappa Sigma

National Pedagogical Sorority

Founded at Michigan State Teachers' College, 1894

Alpha Theta Chapter Established May, 1929

COLORS: *Turquoise and Gold*

FLOWER: *Forget-me-not*



## CHAPTER MEMBERS

### ACTIVES

Mildred Carl  
Betty Brooks

Dorothy Hodil  
Betty Brown  
Bernice Fisher

Ahild Jacobsen  
Aberdeen Johnson

### PLEDGES

Gail Chapman  
Edith Van  
Sara Wilson  
Myrtle McClelland

Alice Lee  
Mary Hendricks  
Florence Brownlee  
Margaret Maxfield  
Pauline Wilson

Eloise Hill  
Lucy Dent Smith  
Ruth Hale  
Violet Felker

# Phi Beta

Professional Fraternity of Music and Dramatic Art

Founded at Northwestern University, 1912

Eta Chapter Established December 20, 1912

COLORS: *Violet and Gold*

FLOWER: *Ward Rose*



## CHAPTER MEMBERS

### IN FACULTY

Eva Baker Welsh  
Mary Tribble Lowry

Veronica Davis  
Willie Dee William

### IN UNIVERSITY

Bet Kramer  
Faustene Town  
Alfild Jacobsen  
Marie Hershey  
Ruth Hale  
Elizabeth Alexander

Ida Mae Coowitch  
Dorothy Keene  
Marjorie Carpenter  
Anne-Emilie Overstreet  
Grace Safriet

Mary Courath  
Feresa Edwards  
Eleanor Wilkinson  
Annabel Ford  
Irene Smiley  
Norma Yates

# Glee Club



FIRST ROW : E. Burkley, M. Brown, E. Adams, L. Whidden, A. Ford, L. Shepherd, M. Conrath, W. Foard, M. Hammer, C. Johnson, P. Prevatt, D. Keene, M. Foard, I. Hass, P. Robbins.

SECOND ROW : M. Hendricks, F. Brownlee, V. Creekmore, D. Broadbent, N. Yates, J. Townsend, B. Ezell, A. Preston, J. McKenney, C. Reaves, H. Wellman, A. Overstreet, S. Klefeker, G. Safriet, D. Knaak, A. Axtell.

THIRD ROW : E. Church, I. Smiley, R. Boisch, R. Hale, M. Clayton, R. Tew, T. Bass, T. Argo, R. Hubbard, H. Bateson, K. Freeman, G. Kirby, E. Shuler, M. McClelland, L. Wilson.

FOURTH ROW : L. Brown, F. Dorsey, I. Cocowitch, P. McFarland, A. West, C. Cressy, J. Goddard, R. Baum, R. Hall, H. Shoemaker, E. Martin, J. Little, M. Carpenter, N. Felt, C. Anders.

## OFFICERS

WALLACE FOARD . . . . .	<i>President</i>
MARY CONRATH . . . . .	<i>Vice-President</i>
MARJORIE HAMMER . . . . .	<i>Secretary</i>
LESLIE SHEPHERD . . . . .	<i>Business Manager</i>
CHAN JOHNSON . . . . .	<i>Director</i>

# *Gamma Sigma Epsilon*

Honorary Chemical Fraternity

Founded at Davidson College, 1919

Beta Beta Chapter Established May 14, 1932

Colors: *Blue and White*



FROM LEFT TO RIGHT: Kenneth Freeman, Kempis Carpenter, Gerald Pay, Joseph Pecelunas, Dr. J. F. Conn, John Colvard, Frank Spencer, Meredith Alrich, Mae Daniel. Not in picture, Frances Alexander.

## OFFICERS

FRANK SPENCER . . . . .	<i>Grand Alchemist</i>
JOHN COLVARD . . . . .	<i>Recorder</i>
GERALD PAY . . . . .	<i>Visor</i>
DR. J. F. CONN . . . . .	<i>Faculty Adviser</i>
MEREDITH ALRICH . . . . .	<i>Sargeant at Arms</i>
JOSEPH PECELUNAS . . . . .	<i>Electron of the Black Guard</i>

# Pan-Hellenic Council



FIRST ROW

Georgia Kirby, Bet Kramer, Virginia MacKenzie

SECOND ROW

Geraldine Farrar, Ellen Gustafson, Lovette Fields.

THIRD ROW

Andrey Johnson, Sallie Mae Edwards.

OFFICERS

GEORGIA KIRBY . . . . .	President
SALLIE MAE EDWARDS . . . . .	Vice-President
LOVETTE FIELDS . . . . .	Secretary
VIRGINIA MACKENZIE . . . . .	Treasurer

# Student Government Council



FIRST ROW

Winifred Tumblin, Verona Creekmore, Aberdeen Johnson

SECOND ROW

Ellen Gustafson, Mae Daniel, Vernelle Shackelford.

THIRD ROW

Ruth Boisch, Ellen Burkley.

## OFFICERS

WINIFRED TUMBLIN . . . . .	President
VERONA CREEKMORE . . . . .	Vice-President
ELLEN GUSTAFSON . . . . .	Secretary
ABERDEEN JOHNSON . . . . .	Treasurer



IRMA CHAPPELL  
*Editor in Chief*



MEREDITH ALRICH  
*Business Manager*





## *The Hatter Staff*

JOHN COLVARD . . . . .	<i>Assistant Business Manager</i>
JAMES MCKENNEY . . . . .	<i>Advertising Manager</i>
GAIL CHAPMAN . . . . .	<i>Art Editor</i>
RUTH HALE . . . . .	<i>Circulation Manager</i>
MARY HARRIS EZELL . . . . .	<i>Class Editor</i>
GEORGE STRAUS . . . . .	<i>Men's Athletic Editor</i>
ELIZABETH MARTIN . . . . .	<i>Women's Athletic Editor</i>
DAVIS GODDARD . . . . .	<i>Fraternity Editor</i>
SIDNEY TAYLOR . . . . .	<i>Editor, Comic Section</i>
GEORGIA KIRBY . . . . .	<i>Feature Editor</i>
VERNELLE SHACKELFORD . . . . .	<i>Snapshot Editor</i>

# Baptist Student Union Council



PRESTON SELLERS  
*Pres. B. S. U.*

ETTER TURNER  
*Pres. Y. W. A.*

ALLEN WEST  
*Pres. B. Y. P. U.*



## OFFICERS

SALLIE MAE EDWARDS . . . . .	<i>First Vice President</i>
MARGARET HARPER . . . . .	<i>Second Vice President</i>
WINIFRED TUMBLIN . . . . .	<i>Third Vice President</i>
BRUCE WEBSTER . . . . .	<i>Third Vice President</i>
MAE DANIEL . . . . .	<i>Secretary</i>
VERNELLE SHACKELFORD . . . . .	<i>Corresponding Secretary</i>
GRACE SAPIRIET . . . . .	<i>Treasurer</i>
JAMES PARRISH . . . . .	<i>Reporter</i>
EVELYN SHULER . . . . .	<i>Pianist</i>
LESLIE SHEPHERD . . . . .	<i>Chorister</i>

# ATHLETICS

A stylized graphic on the left side of the page. It features a thick vertical black bar representing a flagpole. At the top of this bar, the word "ATHLETICS" is written in a bold, black, serif font, curving upwards. At the bottom of the bar is a solid black circle representing a ball. To the right of the bar, three wavy horizontal lines represent the stripes of a flag, each ending in a small black hook.

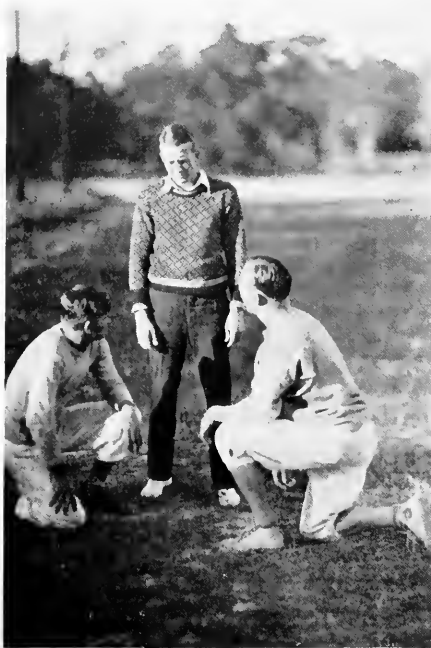




HERBERT R. McCULLIAN

Stetson is indeed fortunate in having such a man as "Coach Mac" (as he is affectionately called by his many followers). The numerous football and basketball teams he has coached while at Stetson have gained him South-wide recognition. His ten-year record at the latter institute is envied by many coaches at larger universities whose teams have met defeat at the hands of his machine-like aggregations.

"Coach" would be worth two or three times his salary even if he just stayed on the campus and did nothing, due to his great influence with the boys; he is truly a moulder of men.



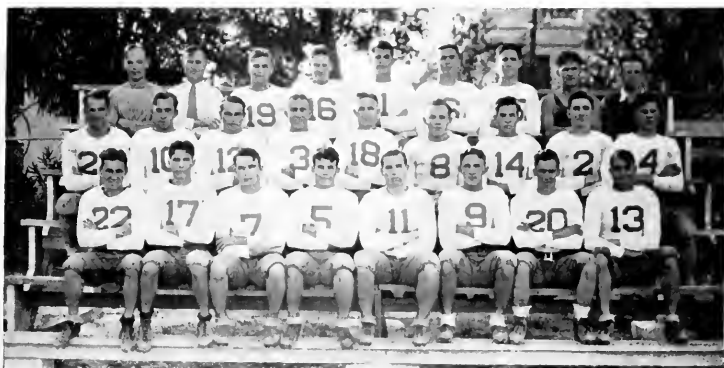
## *Assistant Coaches*

JOHN "ROMANCE" SOCASH, after displaying his prowess as an athlete for three years at Stetson, returned this year to his Alma Mater to continue his service for her. The linesmen developed by Socash this year are an excellent example of his ability as a coach.

HAROLD "MARTY" MARTIN is rendering valuable services as end coach. "Marty" instills in his flankmen the never-say-die spirit that always wins.

WINFIELD "MOSE" MOSLEY, being fully familiar with the McQuillan system, was called upon to instruct the ball-carrying candidates. This he did in fine style, and coupled with a few original ideas, Mosley passes on to the varsity many fine transporters of the pigskin.

Mosley and Socash combined their instructive talents to turn out also a brilliant Baby Hatter basketball team.



## *Future Hatters*

Due to a change in the system of directing athletics at Stetson, there was no varsity football team this year. All efforts were concentrated on the thirty-odd candidates for freshman football. These candidates were rounded into excellent form by Coach McQuillan and his assistants, meeting a part of the tentative varsity schedule. The record of the Baby Hatters against much heavier and more experienced teams was really one to write home about. These same opponents know they have much to look forward to next year with these boys competing on the varsity.

Every team the Frosh encountered outweighed them by fifteen or twenty pounds to the man, and the manner in which they coped with the situation you may see below:

Stetson . . . . .	0	Middle Georgia . . . . .	0	
Stetson . . . . .	34	6	Georgia State . . . . .	34
Stetson . . . . .	0	13	Oglethorpe (Frosh) . . . . .	0
Stetson . . . . .	7	13	Parris Island . . . . .	7
Stetson . . . . .	0	7	Lakeland . . . . .	0
Stetson . . . . .	11	20	Opponents . . . . .	11

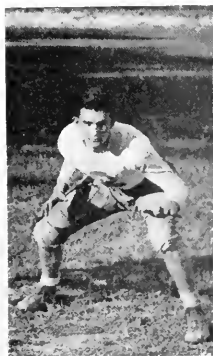




L. H. CRUCE, *End*  
"Hoot" is a valuable asset to any team, possessing excellent blocking ability and a wonderful football head.



CART. "SPOT" WEAVER, *Center*  
Possessed with the heart of a Trojan coupled with a world of football sense, Spot proved an invaluable man at center. We will have to go a long way to find a leader like Spot.



TOMMY LAWRENCE, *Tackle*  
This rangy lad from Chapel Hill upheld his side of the line well, displaying unparalleled defensive ability.



CARLTON PAUL, *End*  
"Preacher" played a bang-up game at end and showed wonderful improvement at the end of the season. He will bear watching next year.



DICK INGRAM, *Tackle*  
Who can forget that sixty-yard run of Dick's in the Oglethorpe game? Keep playing that head-s-up football, Dick.





BOB LOCKETT, *Halfback*

"Pop," one of the most vicious tacklers seen on Hulley field, was a constant thorn in the enemy's flesh. He is an answer to any coach's prayer for a real backfield man.



"BOGUS" OWENS, *Fullback*

A look at "Bogus" and you can tell that he gave tooth and nail for the cause. A punt to suicide corner was his specialty. "Bogus" always comes through.



KNITTLE, SCHEMER, *Quarterbacks*

Eddie Knittle (holding the ball) and Mitch Schemer (kicking) divided the field general's duties. Eddie matched his 140 pounds with unanny football judgment to outwit all defenses. Mitch was of the triple-threat variety and his deception worried the opponents considerably.



JACK HAYNESWORTH, *Guard*

Jack can dish it as well as take it. He played a superior brand of ball all season and really showed how the guard position should be played.



JACK DIAMOND, *Guard*

Jack was a demon on defense, and played heads-up ball all year. You will hear more from this Palatka Panther.



JIM HANSFORD, *Halfback*

"Grits" could really take it and like it when it came to football contact. He delights in throwing that Georgia hip into the opponents.



WILBUR JONES

The "Mulberry Flash" hit his stride in the Parris Island game when he conducted a march of his own that terminated in a touchdown. With this season's experience, Jones should really go places next fall.



HARRY WANSKER, *Halfback*

Injuries kept this lad from displaying his best abilities. Better luck next year, Harry.



CHARLIE ALLEN, *Tackle*

"Beef" is unusually fast for a man of his size. This coupled with his other assets will make him a valuable man for the varsity.



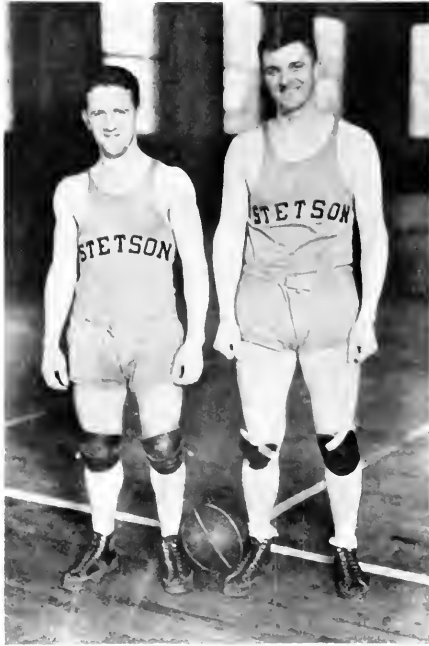
PAGE HADDOCK, *End*

We thank Jacksonville for "Harpo." He possesses all the qualities that a flankman should have.



JOHN MARTIN, *Tackle*

Marty became known as the "ploughboy tackle" and was one of the mainstays of that Hatter line.



GEORGE STRAUS AND JOSEPH CHECK  
*Co-Captains*

# BASKETBALL

# Varsity Basketball

The Hatters closed a very successful season, winning thirteen and losing six games. Inexperience played havoc in a majority of the games, but toward the end of the season, the boys were beginning to find themselves. Florida, with one of the greatest teams in years, damaged the Hatters' aspirations to a Florida championship. The majority of the games were played on foreign courts, only one game was lost at home.

Stetson was given credit at the S. I. A. A. tourney for being the best drilled and coached team seen at that annual affair, but inexperience proved their undoing.



Stetson . . . . .	61—Orlando Collegians . . . . .	28
Stetson . . . . .	32—Orlando Collegians . . . . .	30
Stetson . . . . .	27—Atwater Kent . . . . .	38
Stetson . . . . .	42—Atwater Kent . . . . .	25
Stetson . . . . .	38—Florida . . . . .	46
Stetson . . . . .	48—Florida . . . . .	32
Stetson . . . . .	56—Daytona Beach . . . . .	22
Stetson . . . . .	22—Southwestern . . . . .	30
Stetson . . . . .	28—Centenary . . . . .	35
Stetson . . . . .	40—Louisville Poly . . . . .	38
Stetson . . . . .	38—Mississippi Teachers . . . . .	33
Stetson . . . . .	38—Mercer . . . . .	26
Stetson . . . . .	23—Albany Y . . . . .	24
Stetson . . . . .	23—Mercer . . . . .	39
Stetson . . . . .	50—South Georgia Teachers . . . . .	16
Stetson . . . . .	17—C'babel . . . . .	11
Stetson . . . . .	38—Parris Island . . . . .	26
Stetson . . . . .	34—Charleston . . . . .	25
Stetson . . . . .	26—Tennessee Poly . . . . .	38



*GORZEMAN, Center*

Injuries marred John's senior year, but he was the same dependable player when he was able. The Hatters will certainly miss him next year.



*NELSON, Forward*

Rudy gave a remarkable account of himself, this, his first year on the varsity. Watch this boy step again next year.



*HALDEMAN, Forward*

We hope that somebody on next year's varsity can develop a pair of lungs like Buddy's, for we will miss his whoops and yells on the court. Buddy played a bang-up game at forward all year, being "defense man extraordinary." The Hatters bid farewell this year to this valuable man.



*GAYLORD, Center*

Harry, a sophomore this year, started the season with a willingness to learn and gradually acquired the necessary self-confidence to put him across. He has developed into a real varsity man and should go great next year.



*ELTON, Guard*

Dick showed promise this year, and with more experience should prove to be an excellent man.



*STRAUSS, Guard*

"Bubbles" played the same consistent brand of ball which characterized his play last year. As a ball-handler and dribbler his class hasn't been equalled in the South, and his basketball sense equals that of a coach.



*CLINEK, Forward*

Joe was high-point man for the season. He can really handle himself as few his size can. He has a style all his own and knows basketball backwards, and is remarkable at keeping up a team's spirit.



*RIZZO, Forward*

Steadiness marked Joe's appearance when he was called on this year. We want to hear more from you, next season, Joe.



*SANDLES, Guard*

When the curtain was rung down on the Hatter's season this year, they lost a valuable cog in their machine. The "Gary Flash" really went to town this year.



## WOMEN'S ATHLETICS



### “S” Club

The “S” Club is an organization for the members of W. A. A. who have earned their varsity letters. From left to right they are Gerahdine Farrar, Miss Wyatt, the sponsor, Bernice Fisher, and Mary Harris Ezell. Aberdeen Johnson is not in the picture.



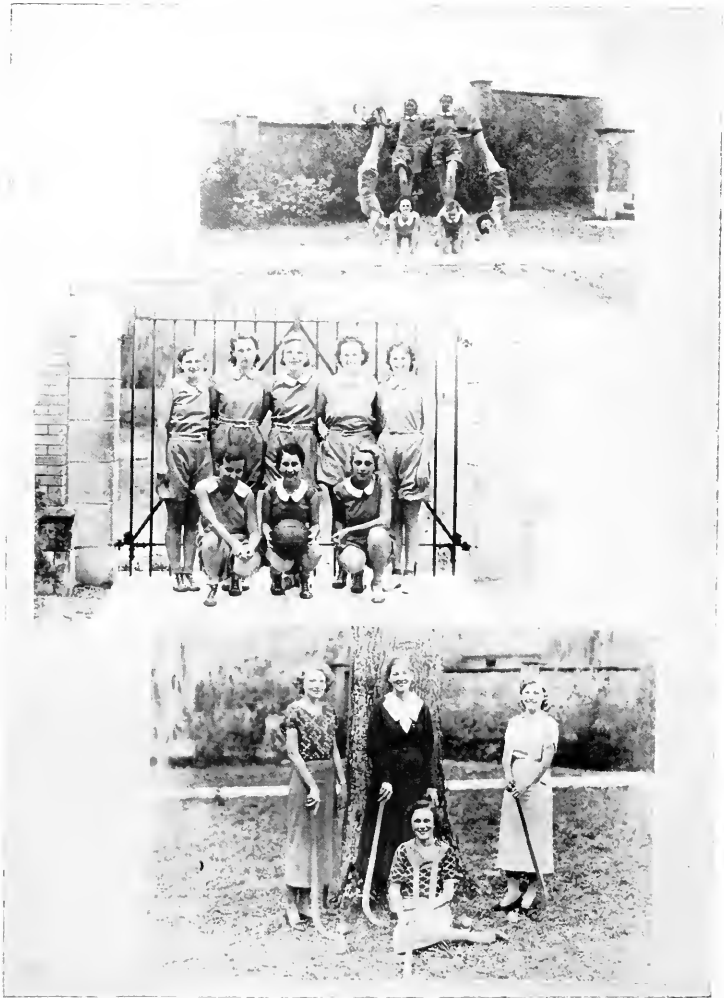
### W. A. A. Officers

The Women’s Athletic Association is open to all co-eds. It sponsors inter-class sports. The officers are:

Bernice Fisher . . . . .	President	Catherine Howarth . . . . .	Senior Class Cheer Leader
Aberdeon Johnson . . . . .	Vice-President	Gerahdine Farrar . . . . .	Junior Class Cheer Leader
Martha Clayton . . . . .	Secretary and Treasurer	V. Shackelford, Sophomore Class Cheer Leader	
Virginia Emsel . . . . .	Publicity Manager	Doris Knaak . . . . .	Freshman Class Cheer Leader
Mary Harris Ezell . . . . .	Senior Class Manager		
Elizabeth Martin . . . . .	Junior Class Manager		
Mary Louise Foard . . . . .	Sophomore Class Mgr.		
Betty Stover . . . . .	Freshman Class Manager		



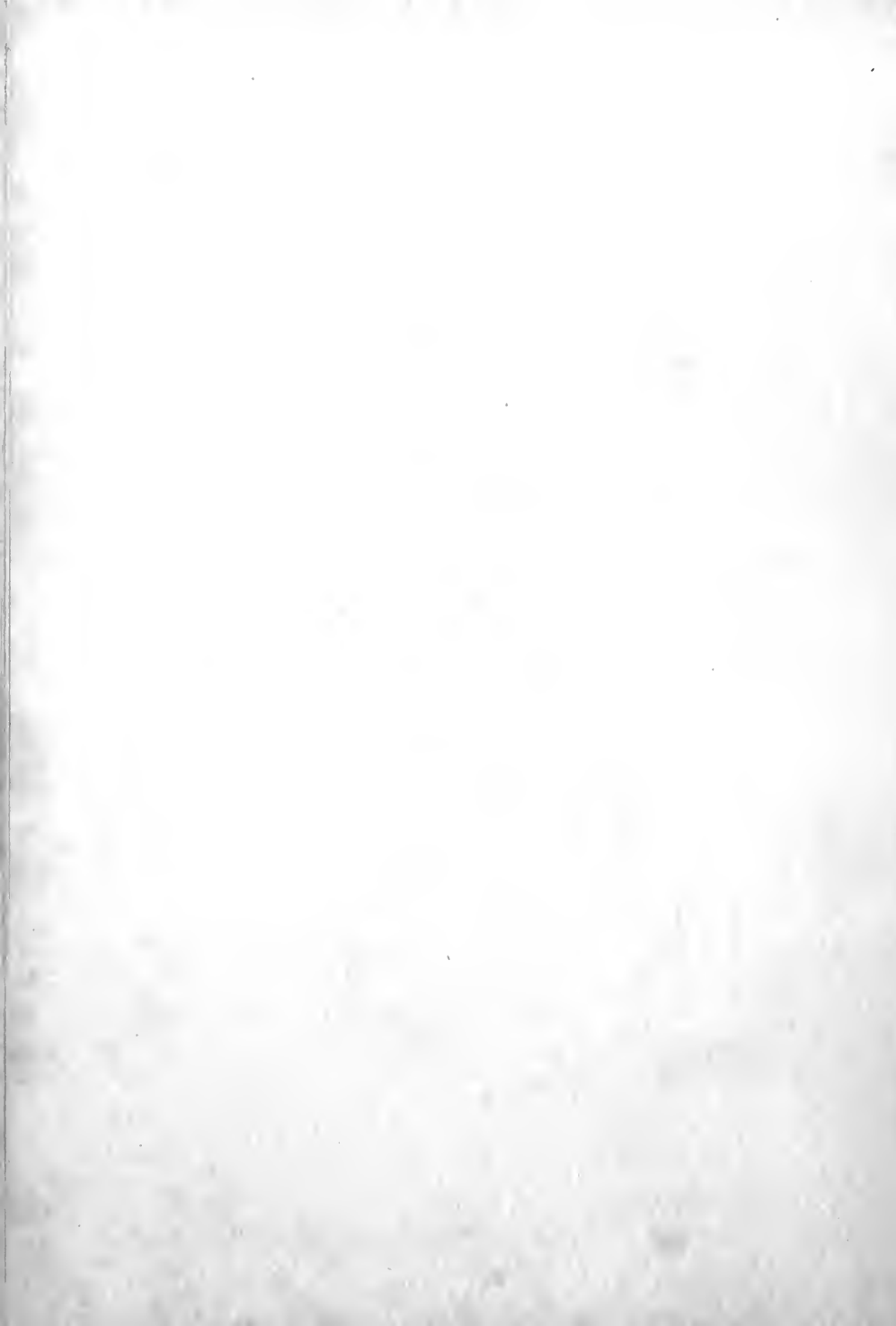






**FEATURES**







# POPULARITY





MARY HARRIS EZELL  
*May Queen*





IDA MAE COCOWITCH  
*Maid of Honor*



GEORGE STRAUS  
*Most Popular Man*







BETTY FORD  
*Most Popular Girl*



BOYCE EZELL  
*Most Attractive Man*



ELLEN GUSTAFSON  
*Most Attractive Girl*



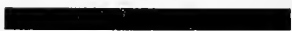
SEWARD SALVAGE  
*Most Representative Man*



ABERDEEN JOHNSON  
*Most Representative Girl*



SIDNEY TAYLOR  
*Most Intellectual Man*





LOUISE ROYAL  
*Most Intellectual Girl*





# *Pi Beta Phi*







SAND PILE CLUB —



AGAIN



WOODMAN  
SPARE THAT TREE



HOMECOMING



OUR PRESIDENT



DIGNITY PERSONIFIED



AH!



READY TO TAKE OFF



WHAT IS IT?

# *Delta Delta Delta*



# THE BATTER

It is not the purpose of this little volume to picture the glamorous and beautiful events of your college career, but it is our desire to have your friends remember you as you really are, therefore, we have presented all the dirt we could find.

Vol. 1, No. 1

FIRST, LAST, AND ONLY ISSUE

Copyrighted (?)

(There are those who may wish to  
right the copy)

*We fondly dedicate this  
the first issue of The Batter  
to  
the untiring efforts of  
our beloved advisor and comforter  
Shorty  
Professor of Furnace-tending and Plumbing*



## *Campus Views*

We hope that our presentation of these favorite old campus scenes will recall to your mind the happiest moments of your college life.



Spacious entrance to Stetson Hall  
(after 10 o'clock)

The up-bringing and the down-fall of  
many a co-ed.



The grounds at the rear of Chaudoin—especially familiar to freshmen girls.



One of our luxurious dating parlors which is very popular.

# Classes

We can present only a limited portion of the classes, but these people are in a class by themselves and are worthy of considerable notoriety.



A Member of Dr. Stover's Public Speaking Class.

Case study used in Dr. Clark's course in criminology. Two cents reward if returned to any girls' dormitory.



A rare specimen of genus homo found in the Engineering School.



A Class in Mob Psychology



Preparatory Class



Firemen's Class. "'Ray, fellers, the girls' dorm is on fire."



A cow session is held every Sunday afternoon.



# Athletics



They made the varsity.



Perfect Form in Drop-Kicking.



Coach has started a new class in loafing these were the first two to enroll.



The Mighty DeCottes  
Arma Virumque

## Fraternities

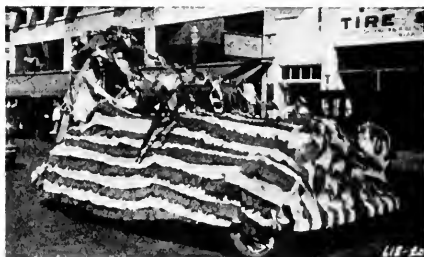


The local chapter of Sigma Nu is the oldest national on the campus. They claim over half of the judges in the State, so they don't worry about obeying the laws. Illinois is their favorite pledge hunting-ground. The football team is lousy with Sigma Nus, but they will probably quit playing football when they reach the mental age of eleven. Yes, we know that the Sigma Nu house is called "Monte Carlo." Bob Sandles is the Sigma Nu with the sleepy look—his only excuse is that he was born late one night and has never had a chance to catch up on his sleep. Jack Phillips is the power in the Sigma Nu chapter and he has power. Also a car. Charlie Allen is always manhandling women in Elizabeth Hall, so he is a liability. The Sigma Nus have the best house on the campus. They also know it.

---



"Is there a lady present?" "Say, what's wrong with you, we are the Tri-Delts." The Tri-Delts have lots of sex appeal—say the Tri-Delts. The Tri-Delts are very sophisticated—they say that there has never been a cup of tea spilled in the chapter. The pledges ride through town in a yellow car and make eyes at all the football players. The actives are either married or engaged or deeply in love. Their chapter is the proud possessor of the most musical laugh on the campus. Lovie Fields is president of the chapter and she is all that her name implies. In 1930 she made a sarcastic remark about the underclassmen which they will never forget. Unfortunately there is nothing about Lovie to criticize at present.



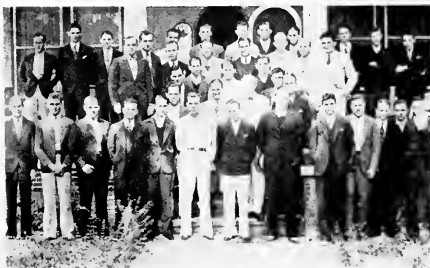
The Pi Phis remind one of Noah's Ark (there is at least one of everything (except a man) in the chapter). Martha Clayton furnishes the pep, Virginia Kinsel looks after the true love interest and Polly Robbins the multiple love interest. Marjorie (Kattisha) Hammer is the scholarship and the opera prima donna and Georgia Kirby furnishes the executive ability. Mite Foard keeps the athletics up to standard and Sara Wilson furnishes the demureness, while Alberta Axtell furnishes the wit. The Pi Phis think they are especially brilliant when it comes to writing papers before pledging. They think that they are brilliant anyway (the technical name for this is delusion). The Pi Phis think they have a good chapter, but they think it is better than it really is. When the Pi Phis were being incubated in Chaudoin, they thought that the Tri Deltas were very naughty girls; then they grew up and became worse.



The local chapter of Delta Sigma Phi began as a local in 1898, and after being nearly wiped out by Bright's disease, dementia praecox, Pi Beta Phi and the boom, continues to flourish and replenish the earth. They are "exclusive" for they never pledge anyone that won't take a pun. Their house looked nice in 1908 and they had a good chapter in 1920. The present chapter is either unconscious or woman-conscious and, well, they don't keep three sofas to put victrola records on. Their president is a blond, blue-eyed little boy who is awfully shy. He is crazy about a brunette Pi Phi. Aside from the president and one pledge, the rest of the chapter, after going strong for many years, have become hardened to such things as moons and Tri-Deltas. The house is kept in an uproar by an Alpha Tau Omega and a Phi Kappa Tau. The campus is kept in an uproar by the Delta Sigs. The question is, who is keeping the Delta Sigs?



For a local, the Sigma Alpha Phis are a darn good bunch; in fact, they give the nationals quite a bit of worry when it comes to pledging. The classiest dresser on the campus is a member, as well as the "Hionde Venus." What we want to know is who rides in the beautiful Connecticut Cadillac? We hope it isn't a ramShack-ford. All in all, this chapter is not the bunch of S. A. P.'s that some people think they are.



The Pi Kaps also have what they call a fraternity. Joe "Politics" Hendricks is 99 per cent of it and young Psychology Ezell, Jr., is most of the rest. They live between the M. & M. house and Conrad, so they are not responsible for their conduct. A chapter ruling prohibits intoxicants in the house—One of the brothers tells us that they are planning to build a \$10,000 garage next summer. They kept a phone in the house all through the depression in hopes that they would get a call. Once a Tri-Delt did call, but she just wanted them to take a message over to the Sigma Nu house. The Pi Kaps go in for rushing and politics in a big way and once in a while they get a good office or a good pledge. In November the Pi Kap house looks like a marine recruiting station. The Pi Kaps get basketball practice dodging their creditors. Their house is decorated in rare style (by rare we mean not well done). They also go in for co-eds in a big way, but it takes two of their best men to keep time with a certain freshman pledge of another fraternity.

Most of the teachers started in life as Alpha Xis and most of the present Alpha Xis started in life as Alpha Xis before they were old enough to protect themselves. They would have a good chapter if they could get about thirty good girls and persuade some of the present members not to return next year. In spite of this, some of the sisters act as if they had a real sorority. They are pretty good sports—sometimes. They receive more than their share of political offices by being called a sorority. The Alpha Xis are too intellectual and sophisticated for us poor mortals—and as for light humor (?) in a college annual, why, they wouldn't even have their picture on this page, which is the reason there is nothing to laugh at.

The Pi chapter of I Totta Tray holds three meetings daily. Colors—white. They keep the biggest graft on the campus, but they are too dumb to know it. They also get the best cracks of any male in Chauloin. George Linney is the high and mighty Keeper of the Door, and with that Simon-Legree countenance, he watches to see that you don't walk out with a bowl of sugar or a pitcher of milk. Jimmie Parish is the Exhausted Toter, but then who wouldn't be exhausted after pouring six glasses of water every meal for Sallie Mae Edwards and Irma Chappell. Jimmie is particularly efficient at toting special orders.



The Muckelutz chapter of the royal Order of the Putz was instigated at Stetson in the spring of 1932. This order, which is internationally infamous, is twelve years old. The members are bound together by an inviolable oath never to schmoeckle or kivitiz. There are no dues to pay, no rules to keep, and no meetings to attend (Everything is irregular.) It is, in fact, a perfect organization where no brother or sister is worse than another. Chan Johnson holds the exhaustive office of Royal Fungputzer, Virginia Einsel is Royal Schmoer, Bill Jennings, Royal Schlutz, and Georgia Kirby, Royal Schwack. Other offices are those of Long Schinore (R. B. Hall), Grand Schmeer (Andrew Preston), High Schmooh (Ish Adams), High Schmeazel (Cyrus Cressy), Grand Schwack (Lois Whidden), and others of equal importance.

# Features

Most of these features are bad, but the poor boy can't help it.



ALGERNON P. SIMMONS  
*Most Sainly*

Self-appointed missionary from Georgia to Stetson. For his untiring efforts to suppress the vice of not wearing socks, we nominate him for the Hall of Fame.



OSCAR J. ZILCH  
*Biggest Bolshevik*

For his untiring efforts in behalf of the World Revolution at Stetson and his devotion to the Third International and Irene Haas's red head, we nominate him to the Hall of Fame.



SAMUEL BUTZ, JR.  
*Most Nertz*

With due apologies to our herd of absent-minded profs we nominate Sam Butz as the nertiest guy at Stetson. He thinks that Martha Clayton is a proof of Mendal's law rather than H.O.



SANDY MACTELL  
*Biggest Gambler*

Member of the Eta Alpha Poker Club, the Darktown Crapshooters Society, and manager of the lottery that bets whether Dr. Farris or Georgia Kirby will stand up first in chapel.

# Popularity

The results of our recent popularity contest. This is an accurate vote, because no one was allowed to politic for himself (he wouldn't want to).



Best Dressed  
also  
Biggest Heart-breaker



Crowned Queen of the  
May  
(What? No Life  
Booy?)



Most All round



Most Poetic



Most Lonesome

# The Calendar



Sept. 1. Mysterious packages arrive from Balfour's.

Sept. 13. Frat men arrive.

Sept. 14. Stetson opens its portals to a gaping crowd of freshmen from—the Dean only knows where.

Sept. 15. Most of the money in town is taken in by Mr. Rosa. The rest is rapidly changing hands at a poker classic at a frat house.

Sept. 16. Ten innocent, unsuspecting rats find Pi Kap pins on their coats.

Sept. 17. The Sigma Nus and Delta Sigs finally get rid of some pledge pins.

Sept. 18. A rat is caught on the main drag wearing a Sigma Nu, Delta Sig and Pi Kap pledge pin.

Sept. 21. A football player is called on in class. The prof apologizes.

Sept. 23. Sorority rushing starts.

Sept. 23-Oct. 3. All Pan-Hellenic rules are broken.

Oct. 3. Pledge Day. Some sororities are disappointed. Pledges will be disappointed later.

Oct. 14. Dr. Gordis caught a student putting a "C" in Spenser.

Oct. 29. Homecoming. Gov. Sholtz guest of honor. Joe Hendricks student mayor. Stetson beats Oglethorpe 13-0.

Nov. 11. Armistice Day. Stetson beats Parris Island Marines 13-7.

Nov. 14. Everybody sober again.

Dec. 1. Engineers organize. Choo-choo.

Dec. 21. School closed because of scarlet rashes. House parties in sway in all frat houses until wee sma' hours.

Jan. 4. School re-opens.

Jan. 13. The Stetson Players present "The Would-Be Gentleman."





# The Calendar

Jan. 17. Peals of laughter emanated from Stetson Hall. Cause unknown but guessed at.

Jan. 17-19. Cramming daze.

Jan. 19-24. Days of agony.

Jan. 24. Exams over.

Jan. 26. Phi Beta presents pledges in a recital.

Feb. 3. The racket in public speaking class was an organ recital—Martha Clayton telling about her appendicitis operation.

Feb. 6. Many prominent figures are seen at Forum lectures and at the beach.

Feb. 7. Phi Beta presents William Harnes in a piano recital.

Feb. 8. M. & M. house changed its name. Since Straus, Haldeman and Check moved in they had to call it Ministers and Morons.

Feb. 9. Dr. Hulley recites a hymn in chapel. Reason—no hymn books.

Feb. 13. Annual battle between the orchestra and the Stetson Players because of the fact that a combination curtain puller and piccolo player was unable to be at two places at once.

Feb. 14. Stetson Players present "Beyond the Horizon."

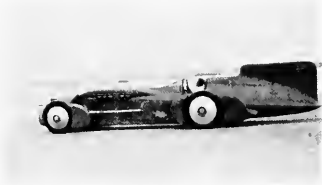
Feb. 16. Straus and Buddy start aesthetic dancing class for men.

Feb. 17. Ministerial student had an idea. It died of solitary confinement.

Feb. 20. Seventeen students fail to wake up at end of Forum.

Feb. 24. The Music Department presents "The Mikado."





## The Calendar

Feb. 25. Most of Stetson students cut classes to journey to Daytona to see Sir Malcolm Campbell break the speed records at 272 miles per hour. Student Body President, Bobby Burns, tries to thumb ride with Sir Malcolm at end of third mile.

Mar. 1. Spring is unofficially here. Poetry appears on the campus.

Mar. 3. Delta Sig cabaret supper.

Mar. 4. The Blue Lake Regatta and the Cassadaga Pilgrimage divide the students' attention.

Mar. 7. An antique exhibit in the show cases of Sampson Library. A football player passes an exam.

Mar. 8. Football player flunks for cheating. Chanodin serenaded. No casualties.

Mar. 9-10. Stetson Players present "The Floise Chimes."

Mar. 12. Spring is still here. Cupid's business is picking up. Note picture.

Mar. 13. Very far-away looks in a certain couple's eyes as a result of vows (at church) last night.

People that jump out of boats at Blue Lake have to send their trousers to the cleaner's.

Mar. 15. A certain smiling Pi Kap caught in the shrubbery at Chandoin.

Mar. 16. Phi Beta presents Alix Young Maroche in a recital.

Mar. 17. The chemistry class's home brew is ready for consumption. Kempis and Meredith appointed official testers.

Mar. 18. A certain blond prof. gets sunburned.

Mar. 19. Stetson debates Rollins at Daytona.

Mar. 20. Third floor of Stetson Hall goes red-headed.



# The Calendar

Mar. 21. The engineers finally win from the "Shyster" lawyers. Somebody stole the Pi Kap ice cream.

Mar. 22. Student Council approves transportation by air—"Air you gain' my way?"

Mar. 23. "A man gave us these bags of oranges, we didn't know where they came from."

Mar. 24. Unknown pugilistic talent revealed as Varsity ties the Frosh 0-0.

Mar. 25. Stetson loses to U. of Fla. in tennis.

Stetson is host to the high school academic contest. Upperclassmen decide that there are dumber things than freshmen.

A very musical and congenial initiation held at the Delta Sig house.

Mar. 26. Fraternity Sunday.

Mar. 27. Seed Salvage has a week-end visitor for another week. Another triangle.

Mar. 28. New Student Council installed.

Mar. 30. Annual goes to press—It's time.

*We look forward to:*

April 1. ? ? ? ?

April 7. Stetson Players present "Outward Bound."

Apr. 14. No Easter vacation.

May 5. Delta Sigma Phi Sailor's Brawl. Wonder if it will be the traditional affair?

May 25-29. Exams.

May 30. Many seniors pace the floor and sweat blood while Miss Bowen prepares the grades to see if they graduate.

May 28. Baccalaureate Sunday.

May 30. "Mose" finally graduates and the rest of the Class of '33 becomes a memory.





THE END

# THE BARNETT NATIONAL BANK

*“A Florida Landmark”*

## Tampa Drug Company

WHOLESALE

Manufacturers and distributors of Allen's Poinsettia Drug Products. Quality, highest grade. For Sale at your Drug Store.

## Louis M. Folsom

### Sales **RADIO** Service

*Radio Is My Business*

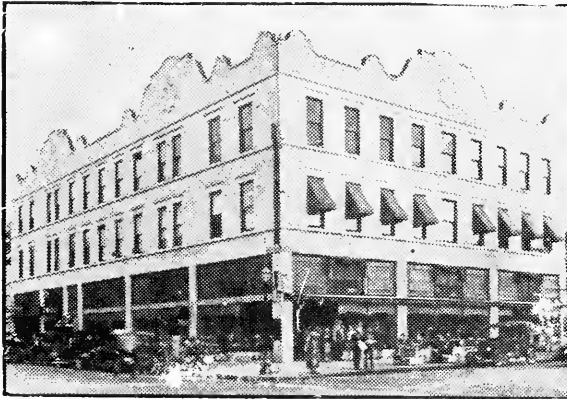
127 So. Blvd. Phone 127-J

DeLand

**DREKA'S**

Since 1878

Florida



**G. A. DREKA & CO.**

THE  
"HOME"  
STORE  
Where  
Stetsonites  
will find  
everything—  
"To wear  
to eat  
to use"

**Student's Supplies**

TYPEWRITERS  
NOTE-BOOKS  
STATIONERY

The **ALLEN-WHITE CO.**  
DeLAND

MAKE

Your Room  
Komfy

RADIO---

the  
Modern Necessity

**BRANDON ELECTRIC  
COMPANY**

North Boulevard

**CAPS, GOWNS and HOODS**  
For All Degrees

The country's largest maker of  
Academic Costumes. Write for  
samples of materials and for  
prices.

*Sole Depository of the Intercollegiate  
Bureau of Academic Costume*

**COTRELL AND LEONARD**  
Estab. 1832 Albany, N. Y.

**ANNOUNCING**

**NEW  
ENCYCLOPEDIA DIGEST  
OF  
FLORIDA REPORTS**

To be complete in 15 Handy Volumes  
(Vols. 1 and 2 now ready)

Kept constantly to date by Cumulative Pocket Parts,  
making it a lifetime Digest.

Prepublication price  
\$125.00, delivered.

Descriptive circular, showing specimen  
pages, mailed on request.

**JOHN M. ELLIOTT**  
Florida Representative

**THE HARRISON COMPANY**  
**LAW BOOK PUBLISHERS**  
Atlanta, Georgia

Compliments of  
  
the  
  
Sparks  
DeLand Theatres

*The Athens*  
and  
*Dreka*

**Court House  
Pharmacy, Inc.**

*THE STORE OF PERSONAL  
SERVICE*

118 W. Indiana Avenue  
DeLAND, FLORIDA  
PHONE 5

**FOARD'S**

LADIES'  
AND CHILDREN'S  
READY - TO - WEAR

Millinery, Hosiery, Corsets,  
Brassieres, Lingerie

The Home of Stetson University

# DE LAND

*"The Athens of Florida"*

---

---

A City of Homes.

In the heart of the citrus belt.

Hunting in the wooded uplands.

Golf on DeLand's sporty courses.

Fishing in the famous St. Johns River.

Civic and Business Center of a fertile farm country.

---

---



The Homes of DeLand nestle in the shade of great oaks that fairly pierce the sky.

For Further Information Write

**THE DE LAND CHAMBER OF COMMERCE**

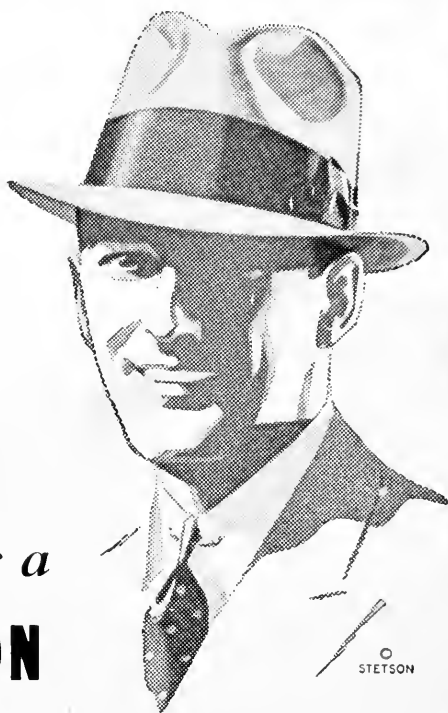
---



**\$5**

*now buys a*

**STETSON**



Price alone means nothing in buying a hat. Price and quality must be considered together. And Stetson Hats, although much lower in price, are just as fine, just as sturdy, just as distinguished as ever in their history.

Stetson Hats are beautifully crafted of fine fur felt. They will hold their shape through long wear—in all sorts of weather.

OTHER STETSONS \$7, \$10 AND UP

**JOHN B. STETSON COMPANY**  
Philadelphia

**Compliments**

**PARAMOUNT  
STUDIOS**

**WINTER PARK, FLA.**

**Compliments**

**WHITE STUDIOS**

**NEW YORK**

**ENGRAVINGS**

**BY**

**Wrigley Engraving Company**

**ORLANDO, FLORIDA**



# HOTEL COLLEGE ARMS

DeLand, Florida



*A Winter Home for Discriminating  
People*

Beautiful Location  
Elevator, Steam Heat  
Unexcelled Golf Course  
White Service Throughout



