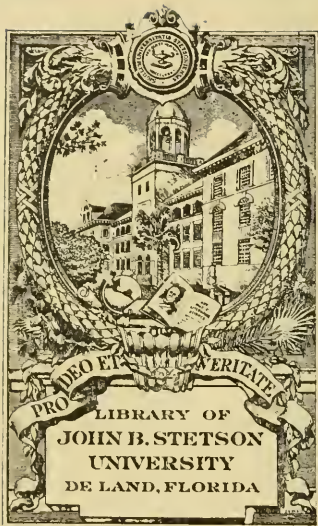


THE
HATTER



1935



Gift of
Editorial Staff

tetson
D
447
3
1935
C.1

The Hatter


DATE	ISSUED TO
11/26/65	T. G. Hayes
11/26/65	G. Hayes
2-8-69	W. M. J. J. J. J.
	C. M. Carson
4-18-76	B. Chaplin
10-30-78	Shelby F. Schatz
7-28	
PI 05 2	EDWARD CAMERON
	23651323
	<i>[Signature]</i>

This book must not be taken from the Library building.

NOV 4 1953

20
24-17
113
1935
21



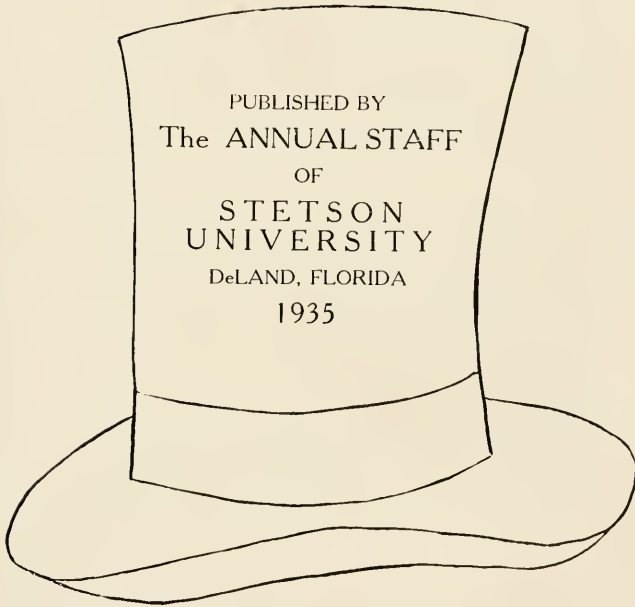


Digitized by the Internet Archive
in 2010 with funding from
Lyrasis Members and Sloan Foundation

<http://www.archive.org/details/hatter1935stetson>

THE HATTER

PUBLISHED BY
The ANNUAL STAFF
OF
STETSON
UNIVERSITY
DeLAND, FLORIDA
1935



DEDICATION

Because he has given us a brighter outlook on life, because he has bestowed upon us the advice and love that has served to make our days in this institution better and wiser, and because he has endeared himself to all the students of Stetson University, we, the annual staff of 1935, wish to dedicate this volume of the Hatter to

DR. WILLIAM SIMMS ALLEN

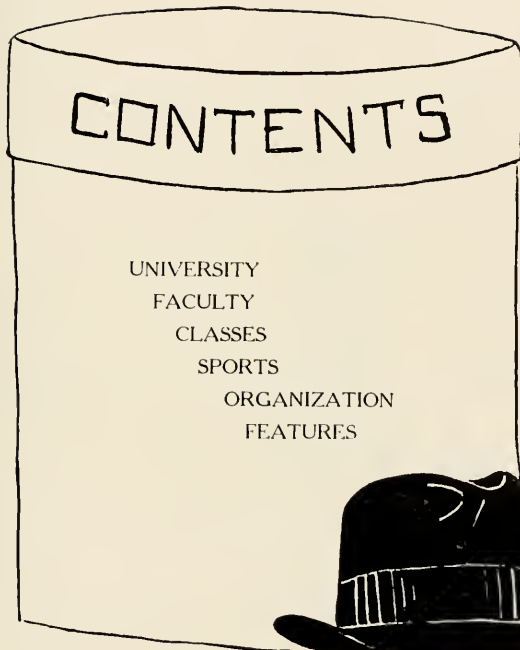


FORWARD

"O memories,
O past that is"
(Eliot)

May this volume serve to
bring back in the years to
come the wonderful thoughts
of yesterday.





CONTENTS

UNIVERSITY
FACULTY
CLASSES
SPORTS
ORGANIZATION
FEATURES







*"Still sits the schoolhouse
by the road"*



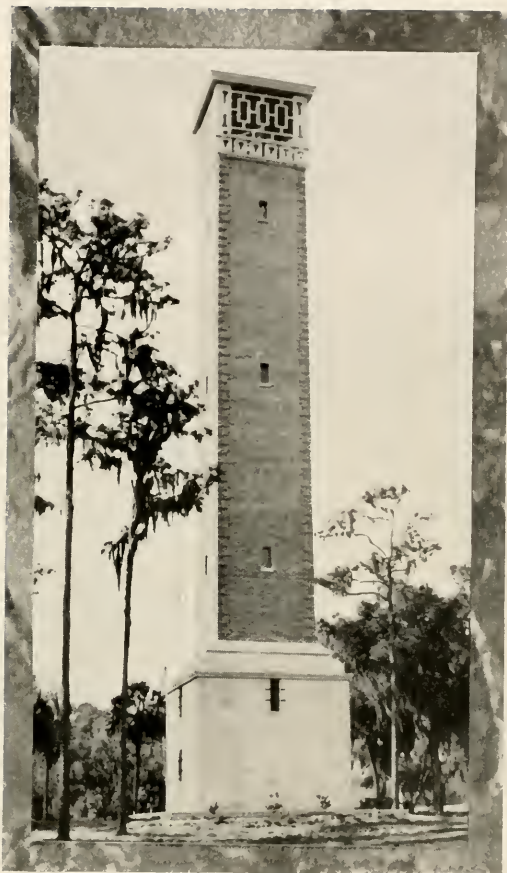
*“Where the spreading oaks are hoary
Lived the birds in all their glory”*



*"And out of old bookes, in good faith,
Cometh all this new science that men live"*



"The great theater for virtue is conscience"



*"The tower reared its stately head aloft,
And viewed the city with disdain"*





The ideal of John B. Stetson University through the years has been to develop scholarship, culture, and dynamic Christian character. The success of the institution in attaining the ideal is shown by the hundreds of Stetson men and women who are leaders in every walk of life—leaders who are striving to make the world better. The ideal of Stetson has not changed. The motto is still "Pro Deo et Veritate"—For God and Truth. With this ideal and this motto the students today are giving their best to the University. Let us look forward and go forward to build a greater Stetson—a Stetson more excellent in equipment and finer in quality.

W. S. Allen

W. S. ALLEN, President.



CHARLES SHERWOOD FARRISS, D.D., LL.D.
Vice-President of the University

G. PRENTIS CARSON, LL.D.
Dean of the University

OLGA RUTH BOWEN, A.M.
Assistant to the Dean of the University

MARY ESTELLE LOWRY, A.M.
Dean of Women

ROBERT IVEY ALLEN, Ph.D.
Professor of Physics and Electrical Engineering

EVELYN FLEETWOOD BEACH
Instructor in Secretarial Work

JEANETTE M. BROOME, M.S.
Assistant in Principles of Cooking and Nutrition

RICHARD ELIJAH CLARK, Ph.D.
Librarian and Professor of Sociology

BOYCE FOWLER EZELL, Ph.D.
Professor of Psychology and Education

CHARLES ADAM FISHER, Ph.D.
Professor of Business Administration

BERTHA WEEKS FLUHART
Fine Arts, Public School Art

HARRY DAVIS FLUHART
Professor of Fine Arts

HARRY CRAWFORD GARWOOD, Ph.D.
Professor of Philosophy and Bible

WARREN STONE GORDIS, Ph.D.
Professor in English

MARIE NAOMI HERSHEY, A.B.
Spanish Assistant

ANNIE NADINE HOLDEN, Ph.D., A.M.
Assistant Professor of German and English

CURTIS MILTON LOWRY, M.E.
Professor of Engineering

CURTIS HORN, A.B.
Secretary to President Allen

HENRY S. JACOBS, A.B., LL.B.
Professor of Laws

LUCY ANN NEBLITT, A.B.
Instructor in Spanish and French





RUTH OSGOOD, A.B.
Assistant in Mathematics

BEATRICE PRIESTER
Baptist Student Secretary

ERNEST RANO
Assistant in Business Administration

IRVING C. STOVER, M.O., Litt.D.
Professor of Speech

FRANCES C. THORNTON
French Assistant

CHARLES BLOUNT VANCE, Ph.D.
Professor of Biology

MIRIAM WAYT, M.S.
Instructor in Physical Education and Health

WILLIE DEE WILLIAN
Assistant in Expression and English

HARRY SUNDERLAND WINTERS, A.M.
Assistant Professor of History and Political Science



MUSIC DEPARTMENT

VERONICA DAVIS, Mus. B.
Instructor in Public School Music

WILLIAM EDWARD DUCKWITZ, Mus.D.
Professor of Music

DONALD FAULKNER, A.B.
Director of Symphony Orchestra
Professor in Mathematics

EMMETT FEASEL
Instructor of Clarinet

ETHEL M. FISHER
Piano, Normal Course in Class Piano Instruction

ROSA LEE GAUT, Mus.B.
Instructor in Music

LOUIS HAROLD MARVIN
Instructor in Violin

THOMAS REMMINGTON
Assistant Professor of Vocal Music

MATTHEW SLATER
Instructor in Organ





STUDENT BODY



SENIOR OFFICERS



JUNIOR OFFICERS



SOPHOMORE OFFICERS



FRESHMEN OFFICERS



Boyce Ezell, President; Virginia Einsel, Vice-President; Pauline McFarland, Secretary;
 Joe Folds, Treasurer.
 Sidney Taylor, President; Josephine Price, Vice-President; Virginia Einsel, Secretary.
 Howard Bateson, President; Maxine McCharly, Vice-President; Moise Williams, Secretary;
 Allan West, Treasurer.
 William Solomon, President; Virginia Skaggs, Vice-President; Geraldine Simmons, Secretary.
 Grover Kirby, President; Helen Brin, Vice-President; Josephine Hamlin, Secretary;
 Hall Godbold, Treasurer.

GRADUATED STUDENTS



ELIZABETH BROOKS
ZTA
Clermont
A.B. Stetson University

KEMPIS CARPENTER
Albany, Ga.
B.S. Stetson University

VIOLET FELKER
DeLand
AB. Stetson University

KENNETH FREEMAN
 ΣN
DeLand
B.S. Stetson University

MARIE NAOMI HERSHEY
Orlando
A.B. Stetson University

RUTH OSGOOD
AEA
Deerbury, Mass.
A.B. Stetson University

VENOLA WOODWARD
ZTA
DeLand
A.B. Stetson University



S
E
N
I
O
R
S





ELIZABETH ALEXANDER

ΛΕΛ

DeLand

Torch and Scroll; Pan-Hellenic Council 4; Symphony Orchestra 1, 2, 3; Vice-President of Student Body 3; Hatter Staff 3; Vice-President of Alpha Xi Delta 3; President of Alpha Xi Delta 4; President of Phi Beta 4; W.A.A. 1, 2, 3; Secretary of W.A.A. 2.

RUTH BOISCH

ΠΒΦ

Daytona Beach

Orchestra Librarian 1, 2; Glee Club 1, 2; W.A.A. 1, Secretary of Pi Beta Phi 2; Treasurer of Mu Omega Xi 4; Student Council 2; House President 2; Most Representative 3; Sponsor Homecoming 4; Student Body Secretary 3; Reporter of Pi Beta Phi 4; Dramatics; Basketball 1, 2.

DENNIS CARROLL

ΠΚΦ

Lake Butler

President of Mu Omega Xi 4; Business Manager of The Hatter 3.

EDNA CORBETT

ΠΒΦ

Jasper

Transfer from Tallahassee; Student Council 4.

VIRGINIA EINSEL

ΠΒΦ

Tampa

Cheer leader 3; Secretary of Senior class; Assistant Gym Instructor 2, 3; Vice-President of Student Body 4; Censor of Pi Beta Phi 2; Treasurer of Pi Beta Phi 3; W.A.A. Publicity Manager 1; Junior Class Manager of W.A.A.; Theta Alpha Phi.

MARY LOUISE FOARD

Π Β Φ

DeLand

Tennis Team, singles and doubles 1, 2, 3; Basketball 1, 2, W.A.A. Class Manager 1, 2; Glee Club Librarian 1, 2; Treasurer of Glee Club 2; Glee Club trio 2, 3, 4; Class Secretary; Most Popular Girl 3.

MARVIN GARRISON

Π Κ Φ

Lakeland

Transfer from Tennessee Military Institute, Georgia Tech, University of Florida; Glee Club J. Warden Π Kappa Phi 2; Mystic Crew 4; Hatter Staff 2; Phi Alpha Delta.

ENA HURLEY

Winter Garden

W.A.A. 2, 3; Y.W.A. 1, 2, 3.

WILLIAM JENNINGS

Π Κ Φ

Barre, Vermont

Archon of Π Kappa Phi 4; Secretary of Π Kappa Phi 3, Master of Rolls Sigma Nu Phi 4; Sheriff of Moot Court; President of City Commission 4; Welcome Committee Homecoming 3; Chancellor of Sigma Nu Phi.

THEODORE JONES

Lakeland





GEORGIA KIRBY

Π Β Φ

Mount Dora

Sponsor 3; Glee Club 1, 2; The Honor 4; Editor of The Hatter 3; Treasurer of Freshman Class; Pan-Hellenic Council 1; Treasurer 3; Representative on Pan-Hellenic Council 4; W.A.A. 1, 2; Tennis doubles 2; Basketball 1, 2; Stetson Opera Company 3; Treasurer of Pi Beta Phi.

WILDA LARSON

Λ Λ Λ

Brookston, Pennsylvania

Transfer from Allegheny college; The Honor 4; Vice-President of Pi Kappa Sigma 4; Vice-President of Pi Gamma Mu 4; Class Manager of W.A.A. 4; Y.W.A. 4; Glee Club 4; Publicity Manager Delta Delta Delta.

ALICE LEE

Z T A

DeLand

Y.W.A. Treasurer 1; Junior Class Vice-President 4; Sigma Alpha Phi Treasurer 4.

ANTHONY J. LICOTA

Tampa

ROBERT LOCKETT

Υ Τ Ω

Jacksonville

Transfer from Vanderbilt; Director of Intramurals 1; Football 2; Basketball 2; Assistant Football Coach 4.

JAMES MATHER
 Δ Σ Φ

Ann Arbor, Michigan

Mystic Crew 4; Stetson Engineer Society; President of Engineer Society 4.

MARGARET MAXFIELD
 Ζ Χ Ε

Potsdam, New York

Secretary of B.S.U. 3; President of Zeta Chi Epsilon; Corresponding Secretary of Pi Kappa Sigma.

RUDOLPH NELSON
Chicago, Illinois

Freshman Football 1; Freshman Basketball 1; Varsity Football 2, 3, 4, Varsity 2, 3, 4.

JOE PECK
 Π Κ Φ

Chicago, Illinois

Football 1, 2, 3, 4; Wrestling 1; American Chemical Society.

VIRGINIA PEEK
 Δ Δ Δ
Ocala

Transfer from Converse and Goucher; President of Delta Delta Delta 4; President of Ipsi-Hellenic 4; Vice-President of Glee Club 4; Chairman of Mission School 3; Vice-President of Student Council 4; Secretary of Student Mayor 3, 4; The Honor, Pi Kappa Sigma.





JACK PHILLIPS

ΣN

Jacksonville

Commander of Sigma Nu 1, 2, 3, 4; Founder of Mystic Crew, President of Young Democratic Club; National Student Committeeman for Young Democratic Club, State of Florida; Most Representative 2; Elk.

JOSEPHINE PRICE

$\Delta \Delta \Delta$

Lake Wales

Student Council 4; Theta Alpha Phi; Pan-Hellenic Council 4, Mu Omega Xi; W.A.A. 3, 4; Glee Club 3; B.S.U. Council; Green Hatters; The Honor Pi Kappa Sigma.

ERNEST RANO

$\Phi M \Lambda$

Binghamton, New York

Mystic Crew, Founder and Treasurer; President of Pi Gamma Mu 4; Assistant to Dr. Fisher 2, 3, 4; Clerk of Stetson Moot Court 4; Homecoming City Clerk 3; City Commissioner 4; Secretary of Sigma Mu Phi 3.

JOSEPH ROUSSEAU

Struthers, Ohio

Varsity Basketball 3, 4; Varsity Football 3, 4; Varsity Tennis 3, 4; Intramurals.

LOUISE ROYALL

$\Delta \Xi \Delta$

DeLand

Torch and Scroll 3, 4; Glee Club 1, 2; Most Intellectual 2, 4, Secretary of Alpha Xi Delta; Stetson Opera Company 2; Debate Team 2, 3, 4; Forum debator 2, 3; Torch and Scroll Scholarship Award 3; French Club 3.

HILTON SHOEMAKER

II K Φ

Daytona Beach

Orchestra 2; Band 1, 2, 3, 4; Charter member of Stetson Engineering Society; President of Stetson Engineering Society 4.



BERT SLADE

Virginia, Minnesota

Football 3, 4; Captain of Basketball Team 4; Basketball 3, 4.

SARA STAFF

St. Petersburg

Transfer from Tampa University; Band 4; Little Theatre Orchestra 4; Stetson Symphony Orchestra 4; Tennis Team.

GEORGE STRAUS

ΑΤΑ

Youngstown, Ohio

Transfer from Ohio University; Mystic Crew; Varsity "S" Club; Football 1; Basketball 1, 2, 3, 4; Captain of All State Basketball Team 4; Secretary of Sophomore Class; Varsity Tennis 3; Coach of Freshman Basketball; Most popular boy 3.

ALICE LEE SWAIN

Z T A

Shreveport, Louisiana

Transfer from University of Arkansas; Annual Staff 4; President of Green Hatters 4; Reporter for Zeta Tau Alpha.

SIDNEY TAYLOR

ΑΣΦ

DeLand

President of Delta Sigma Phi 4; Most Intellectual 2; Torch and Scroll; Debate Team; Theta Alpha Phi; Chancellor of Torch and Scroll 3, 4; President of Senior Class; Head Cheerleader 1, 2; Most Representative 1.



WILLIAM TOMYN

Α Σ Φ

Winter Garden

Most popular boy 3; Varsity Basketball 2; Varsity Tennis 2, 3, Vice-President of B.S.U.; President of Delta Sigma Phi 3; Vice-President of Delta Sigma Phi 4; President of B.Y.P.U.

ETTER TURNER

Z T A

Williston

President of Y.W.A. 3; Vice-President of B.Y.P.U. 1; Secretary of Sigma Alpha Phi 2; Pan-Hellenic Council 2, 3, 4; Hatter Staff 4; Secretary of Student Council 3; President of Student Council 4; Vice-President of Sigma Alpha Phi 3; President of Zeta Tau Alpha 4; State B.S.U. Council 1, 2, 3; Third Vice-President of B.S.U. Council 4; Treasurer of State Student Government 4; President of The Honor.

WALTER WEAVER

Jacksonville

Mystic Crew; Alternate Captain of Football Team 4; All State Team in football; All S.I.A.A. Team 4; Intramurals; Basketball 2; Football 2, 3, 4; Captain of Football Team 2; "Little All American"; "S" Club.

PAULINE WILSON

Α Ξ Λ

Red Lion, Pennsylvania

Transfer from West Chester State Teacher's College; W.A.A. 3, 4; Vice-President of Pan-Hellenic Council 4; The Honor 4; Hatter Staff 4.

AILEEN WORTH

Α Ξ Λ

Pontiac, Illinois

President of Stetson Orchestra 2; Chaplain of 2, 4; Vice President of 4; Band 2, 3, 4; Stetson Symphony Orchestra 1, 2, 3, 4; Stetson Little Theater Players 1, 2, 3, 4; Stetson Federal Music Club.

LOIS WRIGHT

De Land

Theta Alpha Phi.



Seniors Without Pictures

GEORGE KAREL

Orlando

JOHN MOORE

Lake Helen

Ministerial Association 2, 3, 4.

WILSON MOBLEY

Goulds

Football 1; Swimming Team 1, 2; Director of the Hatter Dance Band 3.

SIDNEY SINGLETON

Des Plaines, Illinois

Transfer from Alabama; Football 2, 3, 4; Dramatics 2, 3, 4.

RODNEY THURSBY

Orange City

Football.

RALPH W. WOODRUFF

Sebring, Pennsylvania

Suqquehanna University A.B.; A.M.; George Washington University L.L.B.

MARY JANE LEUTON

DeLand

ANNA MERRYMAN

DeLand

HELEN WILDER

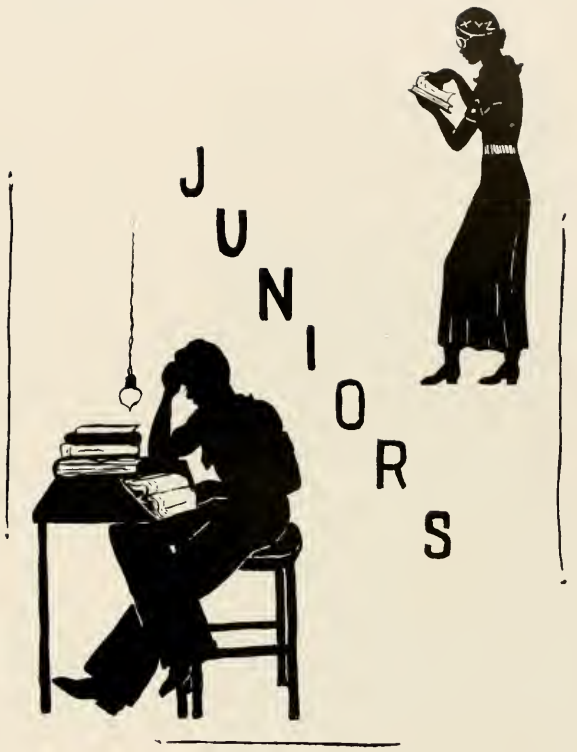
DeLand

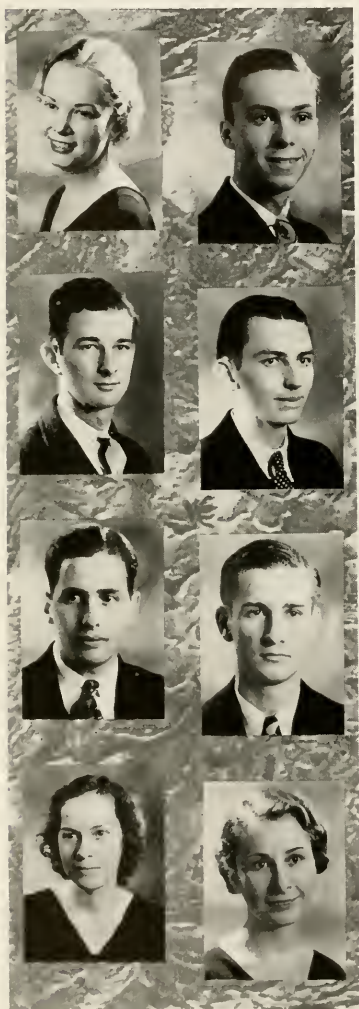
Transfer from Wellesley Tennis Tenn 4

WINEFRED PYLE

DeLand

President of Zeta Chi Epsilon
Mu Omega Xi





EDNA ALDERMAN
Z T A
Lakeland

HOWARD L. BATESON
H K Φ
DeLand

WATTS BRACEY
H K Φ
Ashville, N. C.

WEBB BROOKS
DeFuniak Springs

CLYATT C. BROWARD
Σ N
Jacksonville

LU L. BROWN
Σ N
DeLand

HELEN MAE CHRISTIAN
H B Φ
Jacksonville

AVARYEE COLLIER
Z T A
Crescent City

IRIS DANIEL
 Z T A
Orlando

MALCOLM DAY
 Π K Φ
Key West

HAROLD DASSLER
 Λ Σ Φ
Hawthorne, N. Y.

BETTY DREKA
 Π Β Φ
DeLand

JOHN S. DUSS
New Smyrna

BOYCE F. EZELL, Jr.
 Π K Φ
DeLand

MARJORIE HAMMER
 Π Β Φ
DeLand

MARGARET HARPER
Lakeland





LOUISE HICKSON
 Λ Λ Λ
Sanford

HELEN HORN
 Π Β Φ
Daytona Beach

CARL HOWELL, Jr.
 Σ Ν
Hodgenville, Ky.

CFCIL RICHARD INGRAM, Jr.
 Σ Ν
Jacksonville

LESLIE N. JOHNSON
 Σ Ν
Grand Marais, Minn.

RUTH JONES
Lakeland

DORIS KNACK
 Λ Λ Λ
Detroit, Mich.

SUE LATIMER
 Λ Ε Λ
DeLand

DOROTHY MAYER
Lakeland

PAULINE McFARLAND
 Ζ Τ Λ
Daytona

FRANK M. LIPSCOMB
 Δ Σ Φ
Perry

MAXINE McLARTY
 Π Β Φ
Daytona

RHODA NEEL
St. Augustine

JAMES NEMEC, Jr.
 Δ Σ Φ
Chicago, Ill.

FRANK H. ORTMAN, Jr.
 Δ Σ Φ
DeLand

BURNIS PARKERSON
 Δ Σ Φ
Eastman, Georgia

JAMES PARRISH
 Σ Ν
Albany, Georgia

PAULINE PREVATT
Palatka

JOHN B. ROGERS, Jr.
 Δ Σ Φ
Alachua

MATTIE ANN ROSS
 Ζ Τ Α
Williston





CHARLES R. M. SHEPPARD, Jr.

$\Lambda \Sigma \Phi$
DeLand

RICHARD SIMPSON

$\Lambda \Sigma \Phi$
Fl. Lauderdale

DOROTHY SKILLMAN

$\Pi \beta \Phi$
Skillman, N. J.

WALTER SMITH

$\Lambda \Sigma \Phi$
Kissimmee

BETTE STOVER

$\Pi \beta \Phi$
DeLand

LILLIAN TURNQUIST

$Z \tau \Lambda$
DeLand

AMORY W. UNDERHILL

$\Pi \kappa \Phi$
DeLand

ALLEN WEST, Jr.

$\Lambda \Sigma \Phi$
Homesland

SARA E. WILSON

$\Pi \beta \Phi$
Miami

MOISE WILLIAMS

$Z \tau \Lambda$
DeLand

ALMA MATER

*Dear Alma Mater, smile upon thy children!
Gladly we greet thee, altogether lovely;
Peace be within thy classic halls and temples,
Hail, Alma Mater, dear.*

*Hail to the heroes who have gone before us!
Young men and maidens, filled with true devotion!
Bright is their glory, fadeless and undying,
Hail to our heroes gone.*

*Hail to our classmates, bound by ties ne'er broken;
Here once again we pledge our vows of friendship;
Brave hearts and true hearts sound alike the chorus:
Long live our comrades dear!*

*Dear Alma Mater, tenderly thy children
Gather, and bring to thee gracious salutations;
Comrades, your voices lift once again in chorus,
Hail, Alma Mater dear.*

DR. LINCOLN HULLEY.

S
O
P
H
O
M
O
R
E
S





GEORGE BROWN
DeLand

FLORENCE BROWNLEE
AAA
Cedar town, Georgia

EVELLYN BURHANS
ZTA
Umatilla

JOHN G. BURKHALTER
Miami

FLOANNA BURROWS
ZTA
New Smyrna

MARY DOWNEY CHATHAM
AEA
DeLand

HELEN COLLINS
AEN
Lakeland

CECIL W. COWART
ΣN
Seville

RUTH CROOKS
Z T A
Enslis

HELEN DOSS
A A A
Ty Ty, Georgia

ESTELLE DUKE
A E A
Tampa

NEAL FAIRCLOTH
Π K Φ
Quincy

RICHARD FAULKNER
Σ N
DeLand

JOSEPH FOLDS
Leesburg

DOROTHY FULLER
A E A
DeLand

DOROTHY HAINES
Π B Φ
DeLand





MADELINE HALE

Δ Δ Δ
DeLand

RICHARD B. HALL

Π Κ Φ
DeLand

MARJORIE HARRELL

Λ Ξ Λ
Miami

NED W. HOLLAND

Π Κ Φ
Blakely, Georgia

MARGARET JOHNSON

Z T Λ
Umatilla

THURMOND KNIGHT

Σ Ν
Pahokee

GEORGE W. LEONARD

Δ Σ Φ
Hastings

FRANCES LEE

Δ Δ Δ
Lakeland

MARY LOU LOGAN
 A A A
Lakeland

ELTON MARTIN
DeLand

QUINCY H. MASTERS
 H K Φ
Lecsbury

MARTHA McCONNELL
 A E A
Jacksonville

CORNELIA McRAE
 A E A
Sanford

JENNINGS MINTON
 H K Φ
Hastings

BESSIE FAYE MIRES
 A E A
DeLand

MAUREEN MOSELEY
 Z T A
DeLand





RUTH MURPHY
ΑΞΑ
Daytona

GALE NAYLOR
ΑΑΑ
Camp Hill, Pa.

MILDRED NICKELL
ΑΞΑ
DeLand

LUCY O'DELL
ΑΑΑ
Oxford

CLAUDIA OSBORNE
ΖΤΑ
Umatilla

SUSANNE PENNY
ΑΑΑ
DeLand

PIERRE POOLE
ΠΚΦ
Cross Anchor, S. C.

KATHLEEN SAMPLE
DeLand

GERALDINE SIMMONS
Π Β Φ
Titusville

WILLIAM SOLOMON
Σ Ν
Jacksonville

HELEN SPAULDING
Π Β Φ
DeLand

ELLEN STEPHENS
Ζ Τ Α
Lakeland

EDWARD WARREN
South Hill, Va.

CARL WEEKS
Δ Σ Φ
Chelsea, Mich.

EMILY WHEELER
Dunedin

PAUL WONGREY
Δ Σ Φ
Okechobee



THE HATTER

OLD STETSON

*We love Old Stetson on the height,
We love her chimés and bells,
We love her colors, green and white,
We love her knolls and dells.*

*We love the oaks, we love the pines,
We love the palms and flowers,
We love each creeping, climbing vine,
The sunshine and the showers.*

*We love the buildings, old and new,
And the friendships in them made;
The Love Talks that were softly told,
With little Cupid's aid.*

*We love the "chapel exercise",
We love the hearty song,
We love the Holy Words and wise,
They cheer us all day long.*

*We like each friendly, kindly "Prof",
They always smile and nod,
And sometimes they will really laugh
When feeling "extra good".*

*We like each sturdy, manly lad,
Who o'er the campus strolls;
He has a purpose strong in life,
Which day by day unfolds.*

*To "find his place in God's wise plan",
To "find his place and fill it",
He'll learn that work well done each day,
Will bring him nearer to it.*

*We don't forget the "fair ones" here,
Who lend such charm and grace;
They help us all throughout the year
To fill a higher place.*

*They're always bright, and "hold their own",
So nothing else much matters;
The boys are glad to "see them home",
These clever "Stetson Hatters".*

THE HATTER



*Lest it be of the writer said,
That some one he forgets,
We wave a friendly greeting
To the "blonds" and the "brunettes"*

*May the old grads from Stetson,
Find friends both kind and true;
May each man find a loving wife—
Each girl a husband, too.*

*We're glad to have the old grads back
On Founder's Day each year,
To greet the friends of other days,
And form new friendships here.*

*We miss the dear ones now passed on,
We miss their words of cheer,
We know that God keeps every one
And wipes away each tear.*

*And may we ever keep in mind
Our cherished Founder, who,
Had the steady faith, we find,
To make his dreams come true;*

*And those who've had a guiding hand,
In all the years now past,
Who laid a broad foundation plan
To make Old Stetson last.*

*We're glad to hear the chimes again,
We're glad to hear each bell,
They bring back thoughts of many a friend,
And seem to say "All's well".*

*And as the years roll slowly on,
Old Stetson, brave and true,
Your children come back, one by one,
To prove their love for you.*

W. G. S. LOWE
DELAND, FLORIDA





ELIZABETH BABCOCK
Π Β Φ
Orlando

ELIZABETH PEARL BARBER
Palmetto

MARGARET BARBER
Bithlo

DORIS BARTLETT
Α Ξ Α
Franklin, Pa.

RUTH BARTLETT
West Palm Beach

MARY LOUISE BASS
Π Β Φ
Pahokee

KATHERINE BATMAN
Δ Δ Δ
Miami

THELMA BENSON
Sanford

HELEN BRIN
 Π Β Φ
Stewartville, Minn.

JUDY BROWN
 Π Β Φ
De Land

JUNE BROWN
Brunnell

MARY BROWN
 Π Β Φ
De Land

OLLIE MAE BROWN
 Α Α Α
De Land

VICTORIA BURT
 Α Ξ Α
Boston, Mass.

MARGARET CHAMP
 Α Ξ Α
Mt. Dora

DEWITT DAVIS, Jr.
 Σ Ν
Atlanta, Ga.





DOROTHY DAVIS
 Z T A
Pinchurst, N. C.

FLORENCE DUREN
 Z T A
Archer

FINDLEY EDGE
Albany, Ga

FRANCES FAULKNER
 A E A
DeLand

DOROTHY FIELD
 H B Φ
Fl. Lauderdale

DAVID HALL GODBOLD, Jr.
 A Σ Φ
Gifford

ANNE GOLLNICK
 Z T A
Vero Beach

RUTH GOSS
 A A A
Cleveland, Ohio

RACHEL GRIFFIN
 ΑΞΑ
New Smyrna

MAY GRISWOLD
W. Hartford, Conn.

FAYETTE L. HALL
Eustis

JOSEPHINE HAMLIN
 ΖΤΑ
Tavares

LOLA HAMMER
 ΗΒΦ
DeLand

GEORGINA HART
Sanford

LAWRENCE S. HARTSFIELD
 ΗΚΦ
Eastman, Ga.

MARGARET HAWES
 ΖΤΑ
Daytona Beach

MARGUERITE HAYES
 ΑΑΑ
DeLand

INEZ HILL
 ΗΒΦ
Cocoa





DOROTHY HOOKER
Π Β Φ
Chosen

MARY HUDSON
Ζ Τ Α
Titusville

RUTH HUDSON
Α Δ Α
Crystal River

GROVER C. KIRBY, Jr.
Π Κ Φ
West Palm Beach

LANDIS F. KNIGHT
Α Σ Φ
Vero Beach

CHRISTINE KUMMER
Winter Park

VERONICA LESKO
DeLand

AUDREY LOCKETT
Ζ Τ Α
Cocoa

MARY ELLEN LORD
Π Β Φ
Orlando

WILBUR LUTTRELL
Α Σ Φ
Brooksville

MARGARET MacDONOUGH
Jacksonville

LOUISE MAURHOFF
 Λ Λ Λ
Fareham, Pa.

MARY JANE MAYER
 Π Β Φ
Orlando

MARY MAXWELL
 Π Β Φ
Sanford

ALICE McLAUGHLIN
 Λ Λ Λ
Daytona

ARVEL MILLER
Lakeland

MARTHA MYERS
 Λ Ξ Λ
Boynton

ROBERTA NIGELS
 Λ Ξ Λ
Palm Harbor

FRANCES OGLIVIE
 Π Β Φ
DeLand

MADEINE OSBOURNE
New Smyrna





ORLINE PARRISH
 Δ Δ Δ
DeLand

RAYMOND PARRISH
 Σ N
Lake Lindley

DALLAS PARTIN
 Z T A
DeLand

BARBARA PETRY
 Δ Δ Δ
Lake Wales

STELLA POPE
 Z T A
Lacoochee

DONALD E. POUNDS
 Σ N
Winter Haven

BETTY RIDER
 Π Β Φ
Orlando

CHESTER L. SAUNDERS
 Π Κ Φ
Eastman, Ga.

HELEN STEPHENS
Palatka

JANETTE STEPHENS
Orlando

EVA SULLIVAN
Homestead

JULIA SULLIVAN
Homestead

WUANITA TALBOT
H B Φ
Miami

DOROTHY LEE TYER
Λ Λ Λ
Miami

ALENE VERCOE
Λ Ξ Λ
Florida City

ALFRED R. WARD
Johnson, Kansas

HELEN WEBB
Λ Ξ Λ
DeLand

J. ALLEN WEBSTER
St. Cloud

MADGE WILLIAMS
Jacksonville

MARIE WINSOR
Pompano





THE HATTER



Asst. Coach
ROBERT LOCKETT



COACH H. R. McQUILLAN



Asst. Coach
JAMES NEMEO

Stetson bids farewell to one of its most valued men at the climax of this school year. At the climax of this school year, Stetson bids farewell to one of its most valued men. Coach "Mac" will long be remembered by all students as being outstanding in the field of athletics and also outstanding as a builder of men. It is one of Stetson's greatest losses and Texas A. and M.'s greatest gain. We all wish you success, coach, and great football and basketball teams.



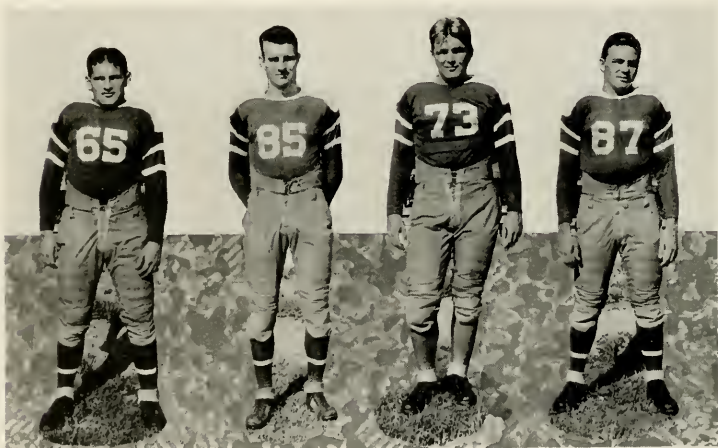
First row: Barber, Jackson, Columbo, Offut, MacQuillan, Lockett, Slade, Schemer, Knittle, Smith, Wotring, Gordon, Turner
 Second row: Hardy, Weaver, Thursby, Kukar, Hughes, Singleton, Nichols, Boyd, Ingram, Hyman
 Third row: Cudmore, Garnerelli, Peck, Caudil, Bridges, Leuton, Parkinson, Phillips, Martin, Haynesworth.

Review of the 1934 Football Season

Greater Stetson teams will come along but never a more courageous one than our 1934 Edition

In the opening game with the University of Georgia at Athens, an aggressive, alert and experienced, Bulldog eleven took advantage of a green, though scrapping, bunch of Hatters; took advantage of their nervousness, and capitalizing on every break, ran up a margin of 48 points to the Hatter's none. This defeat showed a potential strength in the Hatter linemen as the last quarter left a scoreless deadlock. Captain Peck was outstanding.

The next Saturday showed a relentless, smashing, Murray State attack hold sway for the first half, the Teachers scoring 19 points. The last half showed the potential strength, exhibited in the Georgia game assert itself and take shape in the form of a powerful and deceptive offense which time after time was halted in the shadow of the Teacher's goal by over zealous officials who penalized hopes of three touchdowns. Enough said about this game—the writer saw it and the score would have been reversed—if—.



PECK

SINGLETON

LOUTON

HAYNESWORTH

THE HATTER

The following Saturday, Mercer was played at Jacksonville. It was no lack of courage, no want of a fighting heart that caused the Hatter downfall, but merely a day when everything went wrong at the same time. Statistics of the game show Stetson as the outstanding ground gainer and best in all other departments—but the short end of a 6-0 count still spells "lose" to the Florida men. A tough one to lose!

Friday, November 3, found the boys at Miami battling to a 6-6 deadlock with the Hurricans who were just a mere breeze when the final gun sounded the end. The gang showed the same fine work, but was devoid of any scoring punch. Led by the diminutive spark plug, Knittle, and the slashing Slade, the McQuillan offense worked beautifully up and down the field—but bogged down in the shadow of the checked lines. A beautiful game in which we out-classed the enemy by far! The favorites were surprised.

Back home again the next week end, a vastly improved, desperate, Hatter eleven put on one of the finest exhibitions ever witnessed in DeLand in the way of team play—blocking, ferocious tackling and hard running. Bert Slade, the fast running, hard driving, half back of the Hatters scored all points. His form was beautiful to witness while the blocking of Captain Peek, Wotring, Gannerilli, Haynesworth, Gordon, and Singleton was beautiful to see. The whole team coordinated perfectly and the deceptive McQuillan system brought gasps of astonishment from the spectators.

The Armistice day game with Southern was just a warm up game for the Tampa battle. McQuillan only used one formation this game, and the boys scored at will. Phillip, Gordon, Wotring and Shemer showed great form and drive.



KNITTLE

HARDY

INGRAM

MARTIN

The Tampa game on Homecoming was a thrilling epic—a homecoming throng of 5000—mostly old grads—saw the most brilliant game of the season. Every member of the team was outstanding with Ingram, Slade and Captain Peek showing the way. A sustained 60 yard Tampa drive brought the first touchdown for the Spartans, but the Hatters were not to be denied as they worked with machine-like precision yard after yard up the field for their first two touchdowns. Ingram, giant tackle proved a continual thorn in the Higgins coached team on the defense and to climax a brilliant day, Dick intercepted a lateral pass and galloped 6 yards for a score. It was a great day for the old grads, the team, and coach McQuillan.

And so the final game of the season rolled around, the swan song of coach McQuillan as Stetson's football mentor. Florida won 14-0, but only after a terrific battle. Florida did not earn a touchdown through straight football. An intercepted Stetson pass plus a forward pass by Chase to Brown were the only scores made. The boys are going to get them there gators next year, though!

FAREWELL Good-bye Seniors

Whom shall we have back to replace Captain Joe Peek, the All State Tackle Bert Slade, All State Halfback—good old Sid Singleton, one of Stetson's greatest wing men—"Spot" Weaver, the "Iron Man" Center—Thursby, one of the best guards since Bill Gartier—and last but not least, "Man Mountain" Caudil, that tower of strength a tackle. Good-bye, boys, and good luck!



WEAVER

THURSBY

GORDON

SLADE

SCHEMER

BASKET BALL TEAM



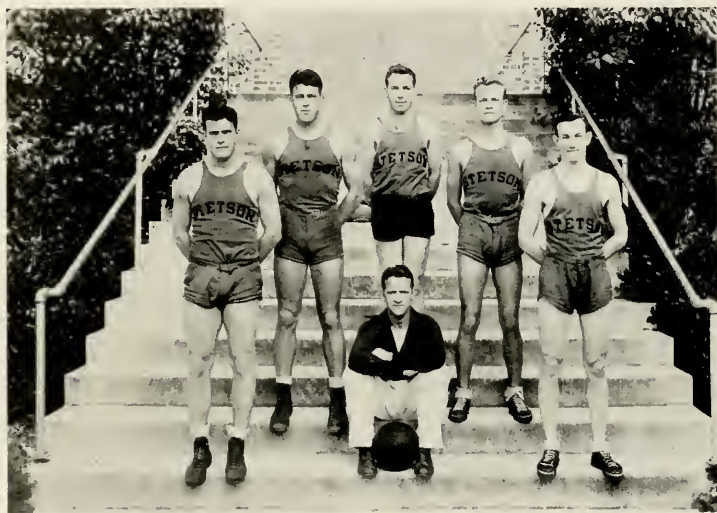
Slade, Wotring, Ofutt, Gough, Columbo, Prakken, Bindford, Fröhmart, Phillips, Robinson, and Lawrence.

The McQuillan system again reigned supreme in Southern Conference circles as the Hatters, in their major games of the year triumphed over Georgia and Florida. The 1934-1935 team compared favorably with those of the past and the potential strength of the team will be realized to its fullest extent next year. Captain Slade is the only senior to graduate, but his loss will be keenly felt. The season ended with thirteen games won and four lost.

The schedule and results follow:

Daytona	26	Stetson	67
Daytona	12	Stetson	54
Cohen Bros.	15	Stetson	40
Southwestern U.	34	Stetson	21
Louisiana College	29	Stetson	26
Louisiana Tech.	37	Stetson	25
Mississippi College	40	Stetson	44
Mississippi Teachers	41	Stetson	43
Florida	40	Stetson	32
Tampa	35	Stetson	46
Tampa	35	Stetson	48
Florida	25	Stetson	40
Georgia	27	Stetson	31
Rollins	15	Stetson	32
Rollins	34	Stetson	44
Rollins	21	Stetson	44
Millsaps	48	Stetson	32

Freshman Basket Ball Team



The 1934-1935 "Baby Hatter" team enjoyed its most successful season in the history of the school. Thirteen games were played without a defeat—a perfect season. Outstanding victories were registered over the Baby Gators and Orlando, finalists in the Florida Gold Medal tournament.

Ryan and Branham were positively outstanding for the season, while Doolen, Sims, Minchart, Edge, and Carpenter played excellent ball. Team play and cooperation spelled success to the greatest Freshman team ever to represent the school. George Strans, former basketball luminary, coached this superb ball club. We need you next year, Frosh!

Freshman Football Team



Back row: Coach Rousseau, Suits, Glidewell, Green, Sims, Hackworth, Clontz, Ryan, James, Dickson.

Front row: Branham, Strickland, Doolen, Norwood, Stevenson, Frison.

The 1934 edition of future greats on future Hatter teams showed great promises.

Much of the success of the varsity team may be attributed to the opposition furnished by the "Baby Hatters".

As usual, quality was present as to numbers of players, and not quantity. Rousseau, freshman coach, is to be commended for the fine spirit and team play exhibited by the first year boys.

Nothing less than broken bones or the bugaloo of scholastic requirements shall keep Minchart, Ryan, Lobinger, Branham, James, Glidewell, Frison, Dickson, Doolen, Stevenson, or Clontz from shouldering a few of the now varsity team out of their positions.

Congratulations, Frosh!



WOMEN'S ATHLETIC ASSOCIATION

W. A. A. OFFICERS

<i>President</i>	- - - - -	PAULINE WILSON
<i>Vice-President</i>	- - - - -	DORIS KNAAK
<i>Secretary</i>	- - - - -	MATILDA OSTDAM
<i>Treasurer</i>	- - - - -	KATHLEEN SAMPLE
<i>Publicity Manager</i>	- - - - -	MARY DOWNEY CHATDAM

Freshmen Managers

Katherine Batman Ruth Goss

Sophomore Managers

Gale Naylor Barbara Davis

Recorder of Points

Elizabeth Martin



ARCHERY



BASKETBALL

Although still young, the Women's Athletic Association is progressing rapidly in fostering the ideals of good sportsmanship and in increasing participation in all sports. The program of sports includes tennis, archery, swimming, basketball, ping-pong, and hand ball.

This year the organization took a further step toward success by joining the Athletic Federation of College Women.

Every woman of the University is eligible for membership in the W. A. A. which has as its slogan, "A Sport for Every Girl and Every Girl A True Sports-woman".

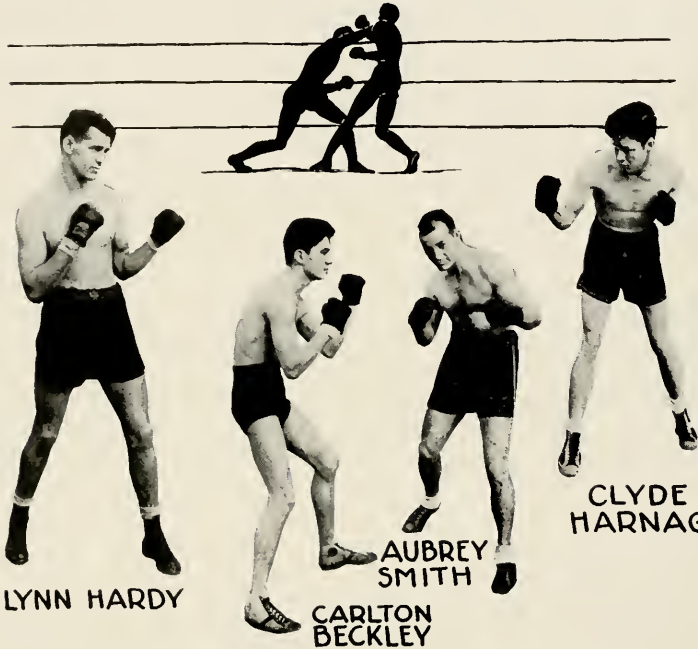


TENNIS



NEW TENNIS COURTS

BOXING



LYNN HARDY

AUBREY SMITH

CARLTON BECKLEY

CLYDE HARNAGE

Several of the boys whose pictures are not above are John Salvage, Robert Young, and Joe Fernley, intramural fighters.

The Stetson team fought well throughout the whole season in their first meet of the year, they met and defeated the tough Daytona Beach Y.M.C.A. team in great style.

Three of the boys went through the central Florida A. A. U. tournament and won three central Florida championships. Fighting in the State A. A. U. meet in St. Augustine, Lynn Hardy won the State



Championship, but only after a terrific fight in the finals.

The boxing team, inaugurated this year, has brilliant outlooks for the future as all the present team will be back next year. Bouts with Tampa, Florida, Miami, and Southern are scheduled.

Lynn Hardy Heavyweight champion of the state.

Aubrey Smith, Welterweight. Clyde Harnage, Lightweight. Carlton Beckley, Featherweight.

Jack Burkhalter, coach.





Pan-Hellenic Council



President - - - - VIRGINIA PEEK
Vice President - - - PAULINE WILSON
Secretary - - - DOROTHY SKILLMAN
Treasurer - - - EDNA ALDERMAN

Representatives: Moise Williams, Elizabeth Alexander, Georgia Kirby,
Josephine Price.



Alpha Xi Delta

Founded at Lombard College 1893
 Omega Chapter Established May 31, 1917
 Colors: Light and Dark Blue and Gold
 Flower: Pink Rose



PAULINE WILSON
 ELIZABETH ALEXANDER
 DOROTHY FULLER
 LOUISE ROYAL
 ESTELL DUKE
 MARY DOWNEY CHATHAM

AILEEN WORTH
 MARGORIE HARRELL
 WILLIE DEE WILLIAM
 BESSIE FAYE MILES
 MARTHA McCONNELL
 RUTH OSGOOD

THE HATTER



DORIS BARTLETT
 VICTORIA BURT
 MARGARET CHAMP
 CORNELIA McRAE
 MARTHA MILES
 RACHEL GRIPPIN

AILEEN VERCOE
 SUE LATIMER
 HELEN WEBB
 HELEN COLLINS
 FRANCES FAULKNER
 MILDRED NICKEL



Delta Sigma Phi



Founded at College of New York, December 10, 1899
Alpha Chi Chapter Established 1898; Founded 1925

Colors: Nile Green and White

Flower: White Carnation

CHAPTER MEMBERS

In Facultate

Prof. Robert Allen

L. H. Tribble

Donald Faulkner

In Universitate

Actives

Sidney Taylor
Frank Ortman
Walter Smith
George Leonard
Wilber Luttrell
Allen West

James Mather
James Nemeč
J. B. Rodgers
Rodney Thursby
Richard Simpson
William Tomin

Carl Weeks
Paul Wongrey
Thomas Teasley
Walter Taylor
Reed Knox
Harold Dassler

Pledges

Clement Combs
William Glidewell
William Kaehler
David Lang
Raymond Millwee
Rayburn Millwee

Carl Norwood
F. W. Strickland
C. R. M. Sheppard, Jr.
Landis Knight
G. S. Murphey
Earl Knabb

Eugene Hackworth
Hershel House
Burnis Parkerson
Richard Fromhart
Donald Roberson
Hall Godbold

THE HATTER



Sidney Taylor
 Frank Ortman
 Walter Smith
 George Leonard
 Allen West
 J. B. Rodgers

Richard Simpson
 Paul Wongrey
 Robert Allen
 James Mather
 James Nence
 Carl Weeks

Wilber Luttrell
 William Tomyn
 Landis Knight
 Burbis Parkerson
 Hall Godbold
 Harold Dasser
 C. R. M. Sheppard, Jr.



Pi Beta Phi

Founded at Monmouth College 1867

Florida Chapter Established Jan. 30, 1913

Colors: Wine and Silver Blue

Flower: Wine Carnation



Helen Horn
 Elizabeth Dreka
 Helen Spaulding
 Maxine McClarty
 Helen Mae Christian

Geraldine Simmons
 Virginia Binsel
 Marjorie Hammer
 Betty Stover
 Georgia Kirby

Ruth Boisch
 Dorothy Skillman
 Mary Louise Foard
 Dorothy Haines
 Sara Wilson

THE HATTER



Elizabeth Babcock
 Dorothy Hooker
 Elizabeth Dryka
 Elizabeth Rider
 Frances Oglivie
 Mary Brown

Mary Maxwell
 Helen Brin
 Edna Corbett
 Mary Ellen Lord
 Inez Hill
 Judy Brown

Dorothy Fields
 Mary Louise Bass
 Wnanita Talbot
 Mary Jane Mayer
 Miss Anne Holden



SIGMA NU



Founded at Virginia Military Institute, January 1, 1869
Delta Mu Chapter Established 1913

Colors: Black, White and Gold

Flower: White Rose

CHAPTER MEMBERS

In Facultate

Louis Marvin

In Universitate

Harry Gaylord
William Solomon
Crell Cowart
John Atwater
Carl Howard
Clyatt Broward
Kenneth Freeman
Richard Ingram
Leslie Johnson
George Limney
Lauris Nichols
Jack Phillips

Philip Dold
Roy Hamlin
Roy Randle
Richard Sims
Raymond Parrish
Lu L. Brown
Carlton Beckley
Wilbur Mead
Robert Thomas
Thurmond Knight
Joe Pernley
Harold Dona

James Parrish
Paul McKinney
Richard Faulkner
William Green
William Kramer
Donald Pounds
Donald Phillips
Hughes Wilson
Sidney Singleton
Jack Marsch
Vassal Carlton
Joe Rousseau

1935

THE HATTER



Jack Phillips
 Wyatt Broward
 Therman Knight
 Cecil Cowart
 Lu Brown

Leslie Johnson
 Richard Ingram
 Joe Rousseau
 Kenneth Freeman
 William Solomon
 Donald Pounds

Dewitt Davis
 James Parrish
 Richard Faulkner
 Carl Howell
 H. R. Bishop



Delta Delta Delta

Founded at Boston University 1888

Alpha Delta Founded May 17, 1913

Colors: Silver, Gold, and Blue

Flower: Pansy



Florence Brownlee
 Virginia Cook
 Doris Knapp
 Susanne Penny

Josephine Price
 Madeline Hale
 Louise Hickson
 Evelyn Beach
 Virginia Skaggs

Wilda Larson
 Alice McLaughlin
 Mary Lou Logan
 Ruth Hudson

THE HATTER



Frances Lee
Dorothy Lee Tyre
Ollie Mae Brown
Helen Doss

Orline Parrish
Gale Naylor
Katherine Batman
Ruth Goss
Louise Maurhoff

Marguerite Hays
Lucy O'bell
Curtis Horn
Barbara Petrey



PI KAPPA PHI



FOUNDED AT THE COLLEGE OF CHARLESTON, 1909
CHI CHAPTER ESTABLISHED 1921

Colors: Gold and White

Flower: Red Rose

CHAPTER MEMBERS

In Facultate

William E. Duckwitz

In Universitate

Actives

William Jennings
E. E. Hall
Howard Bateson
Neal Faircloth
Ned Holland
Dennis Carroll
Malcolm Day

Boyce Ezell, Jr.
Leon Sandlin
Chester Saunders
Hilton Shoemaker
Frank Stoudenmire
Amory Underhill
William Wilson
Robert Young

Mack Ezell
Burton Lancy
Quincy Masters
Perry Nichols
Joe Peck
Pierre Poole
R. G. Roberts

Pledges

Sam Barber
David Bracey
Winston Bridges
Tom Cobb
Gandy Crawford

Fred Fitzgerald
Jack Haynesworth
Lawrence Hartsfield
Grover Kirby
Rene Ledbetter
Paul MacEntine

Jennings Minton
Lloyd Pawley
Ora Sage
Floyd Mahan
Guy Merry

1935

THE HATTER



William Jennings
 R. B. Hall
 Howard Bateson
 Neal Faircloth
 Pierre Poole
 Jennings Minton

Malcolm Day
 Grover Kirby
 Lawrence Barfield
 Dennis Carroll
 Joe Peck
 Hilton Shoemaker
 Ned Holland

Quincy Masters
 Chester Saunders
 Amory Underhill
 Marvin Garrison
 Boyce Ezell, Jr.
 Dr. W. W. Duckwitz



Zeta Tau Alpha

Founded at Virginia State Normal
 October 15, 1898
 Beta Psi Chapter Established
 October 12, 1934
 Colors: Torquoise Blue and Steel Gray
 Flower: White Violet



Moise Williams
 Elton Turner
 Pauline McPurland
 Edna Alderman

Claudia Osbourne
 Margaret Oglvie
 Alice Leo
 Margaret Johnson
 Evelyn Burhans

Elizabeth Brooks
 Vinola Woodward
 Alice Lee Swain
 Iris Daniel

THE HATTER



Ellen Stephens
Josephine Hamlin
Ruth Crooks
Anne Gollnick
Mary Hudson

Stella Pope
Floanna Burroughs
Maurine Moseley
Avaryce Collier
Dorothy Davis
Dallas Partin

Florence Duren
Lillian Turnquest
Anne Ross
Margaret Hawes
Audrey Lockett

THETA ALPHA PHI



CHAPTER MEMBERS

In Facultate

Dr. I. C. Stover
 Dean Lewis Tribble

Dr. Charles Farris
 Miss Willie Dee William

Prof. D. Faulkner
 Prof. Louis Marvin

In Universitate

Amory Underhill
 Colquitt Pardee
 Lois Wright
 Howard Bateson
 Virginia Elnet

Boyce Ezell
 Josephine Price
 Louise Royall
 Bette Stover
 Watts Bracey

Frank Ortman
 Tom Barton
 Sidney Taylor
 Malcolm Day
 Walter Smith

PLAYS PRESENTED

Lady Windermere's Fan
The Jade God
Smilin' Through
Holiday

The Wild Duck
So This Is London
The Return of Peter Grimm
Love's Labor Lost

PI KAPPA SIGMA

FOUNDED AT MICHIGAN TEACHERS COLLEGE 1894

THETA CHAPTER ESTABLISHED 1929

COLORS: TURQUOISE AND GOLD

FLOWER: FORGET-ME-NOT



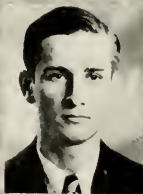
Doris Knaak
 Claudia Osborne
 Wilda Larson
 Violet Pelker
 Margaret Maxfield

Josephine Price
 Virginia Peck
 Jeanette Stevens
 Evelyn Burhans
 Frances Oglvie
 Ruth Goss

Biter Turner
 Ruth Crooks
 Floanna Burroughs
 Dorothy Fuller
 Susanne Penny



The Order
of
Torch and Scroll



Louise Royall
Olga Bowen
Willie Dee William

Marjorie Hammer
John Duss
Elizabeth Alexander
Sidney Taylor

Ruth Osgood
Lu Brown
Howard Bateson

PI GAMMA MU



HONORARY SOCIAL SCIENCE FRATERNITY

FOUNDED AT SOUTH EASTERN COLLEGE 1924
FLORIDA GAMMA CHAPTER ESTABLISHED 1919

Colors: Blue and White

CHAPTER MEMBERS

Dr. Eola K. Eastburn
Evelyn F. Beach
Wilda Larson
Lucy Ann Neblett
Etter Turner
Harriet Kennedy
Beatrice Priester
Howard Bateson

Ernest Rano
Dr. C. A. Fisher
Mr. Woodruff
Dr. J. W. Futch
Dr. W. N. Baer
Robert Kenneth Dulling
Frances C. Thornton
Dean C. P. Carson

Dr. Gatwood



Mu Omega Xi
 Founded at University of Fla. 1933
 Beta Chapter Established 1933



Dennis Carroll
 Aileen Worth
 Wilda Larson
 Pauline McFarland

Pauline Wilson
 Walter Weaver, Jr.
 Ruth Boisch
 Veronica Davis

Miriam Wayt
 Dr. H. C. Garwood
 Prof. H. S. Winters
 Josephine Price



Baptist Student Union Council



James Parrish
 Beatrice Priestler
 Dr. H. C. Garwood
 Allen West
 Etter Turner

Webb Brooks
 Iris Daniel
 Margaret Harper
 Joe Folds
 Edna Alderman

J. B. Rodgers
 Malcolm Day
 Sara Wilson
 Jack Burkhalter
 Pauline Prevatt

The Mystic Crew



MEMBERS

Ernest Rano
Jack Phillips
William Jennings
Marvin Garrison
George Straus
Amory Underhill
James Mather

William Tomy
Tom Barton
Carl Howell
Joe Burkhalter
James Parrish
Charles Reaves
John Duss

Harry Gaylord
John Hyman
Colquitt Pardee
Joe Lea
Boyce Ezell, Jr.
R. B. Hall
Walter Weaver



Student Government Council



Eller Turner
Virginia Peck
Martha McConnell

Josephine Price
Marjorie Harrell
Helen Horn

Edna Corbett
Josephine Hamlin



Editor
Activity Editor
Faculty Advisor
Art Editor
Class Editor
Picture Editor

EDNA ALDERMAN
MARGARET JOHNSON
PROF. H. C. WINTERS
ESTELLE DUKE
SARA WILSON
HOWARD BATESON



Business Manager -	C. R. M. SHEPPARD, Jr.
Advertising Manager -	SUSANNE PENNY
Snap Shot Editor -	CECIL COWART
Advertising Manager -	ALICE LEE SWAIN
Boys' Athletic Editor -	GEORGE STRAUS
Girls' Athletic Editor -	PAULINE WILSON



The
 Honor

Etter Turner
 Helen Mae Christian
 Pauline McFarland
 Doris Kinnik
 Margaret Maxfield
 Virginia Einsel

Sara Wilson
 Georgia Kirby
 Pauline Wilson
 Ruth Boisch
 Wilda Larson
 Edna Corbett

Josephine Price
 Marjorie Harrell
 Virginia Peck
 Martha McConnell
 Helen Horn



James Parrish
Dr. H. C. Garwood
Joe Folds
Fayette Hall
Webb Brooks

Jennings Minton
Findley Edge
Dewitt Davis
J. Allen Webster
Arvell Miller

Theodore Jones
Jack Burkhalter
Allen West
Malcolm Day



Phi Beta
National Honorary
Musical Fraternity



Elizabeth Alexander
Lucy Ann Neblett
Veronica Davis
Iris Daniel

Dorothy Mayer
Marie Hershey
Pauline Prevatt
Mae Marvin
Virginia Skaggs

Ruth Murphy
Sara Staff
Roberta Nigels
Margaret MacDonough

Engineering Society



CHAPTER MEMBERS

In Facultate

Prof. C. M. Lowry
Dr. R. L. Allen
Dr. C. B. Vance

Dr. J. F. Conn
Prof. Donald Faulkner

In Universitate

Hilton Shoemaker
C. M. Ryerson
H. J. Fisher
J. L. Carpenter
Reed Knox

James Mather
Rene Ledbetter
Harrison Oaks
H. B. Stallings
Walter Taylor

Nick J. Marsch
Jack Hughes
John Turner
George Linney
Tom Lawrence

THE HATTER

 GLEE CLUB



DIRECTOR

Prof. Thomas Remington

PRESIDENT

Margaret Johnson
FIRST SOPRANOS

Eleanor Davis
 Margaret Johnson
 Ohse Erikson
 Marion Wood
 Suzanne Sawyer

Cynthia Waterman
 Ruth Crooks
 Eva Sullivan
 Dorothy Mayer
 Alice DeCoursey

Mrs. R. L. Allen
 Dorothy Halme
 Rhoda Neel
 Helene Golding

Tom Teasley
 Allen West

BARITONES
 Wilbur Lattrell
 William Sample

John Dighton
 M. J. Bouterse

Grover Kirby
 Norman Bennett

BASSOS
 Jennings Minton
 Hubert C. Smith

George Brown
 John Duss

Estelle Duke
 Alma Carlton
 Margaret Champ

SECOND SOPRANOS

Wannita Talbot
 Alice McLaughlin
 Ruth Murphy

Bernice Fleming
 Emily Wheeler

Virginia Skaggs
 Josephine Hein
 Madge Williams

ALTOS
 Louise Maurhoff
 Ruth Bartlett
 Marvadene Boyte

Martha McConnell
 Veronica Lesko

J. B. Rogers
 Fayette Hall

TENORS
 Dewitt Davls
 Leroy Waterman

Pinkston Waterman
 Cardon Reeves

Emily Wheeler

ACCOMPANISTS

John Duss
 Miss Rosa Lee Gaut

Ruth Murphy

MAD HATTERS



FLOYD MAHAN	- - - - -	Pianist
A. B. ROBERTSON, Jr.	- - - - -	Drummer
RICHARD FAULKNER	- - - - -	Cornet and bass fiddle
DONALD POUNDS	- - - - -	Cornet
RICHARD SIMS	- - - - -	Saxophone
LAWRENCE HARTSFIELD	- - - - -	Saxophone
GUY MERRY	- - - - -	Saxophone

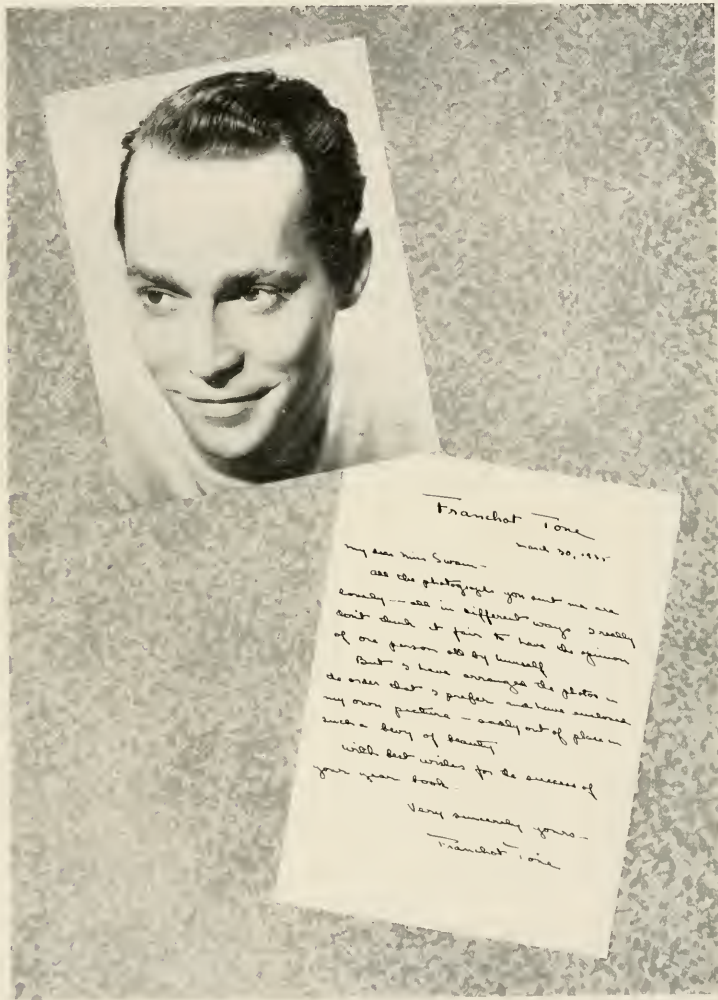


FROM THE EDITOR



In taking the responsibility to select the "WHO'S WHO of STETSON" this year, the annual staff sponsored a new way in which the students were to be chosen for campus honors. Names of candidates were submitted by each social fraternity and non fraternity group, and were left with a faculty committee for final decision and approval by the staff. Stetson's three most beautiful girls were selected from pictures sent to Franchot Tone, and were judged by Mr. Tone himself. So it is with the appearance of this, the 1935 HATTER, that the staff is pleased to share with you the announcement of the following outstanding students. May they maintain leadership throughout life. . .

THE HATTER



Franchot Tone

March 30, 1937

My dear Mrs. Swan -
see the photographs you sent me are
lovely - all in different ways I really
don't think it fair to have the opinion
of one person all by himself
But I have arranged the photos -
do order that I prefer and have ordered
my own pictures - really out of place in
such a bag of beauty
With best wishes for the success of
your year book.

Very sincerely yours -

Franchot Tone



LOUISE HICKSON

IRIS DANIEL

VICTORIA BURT



Most Popular Girl
VIRGINIA PEEK

Most Popular Boy
HARRY GAYLORD



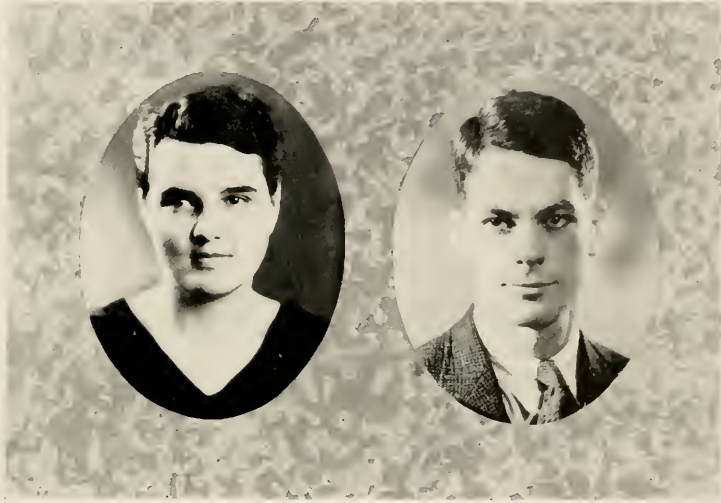
Most Intellectual Girl
LOUISE ROYALL

Most Intellectual Boy
HOWARD BATESON



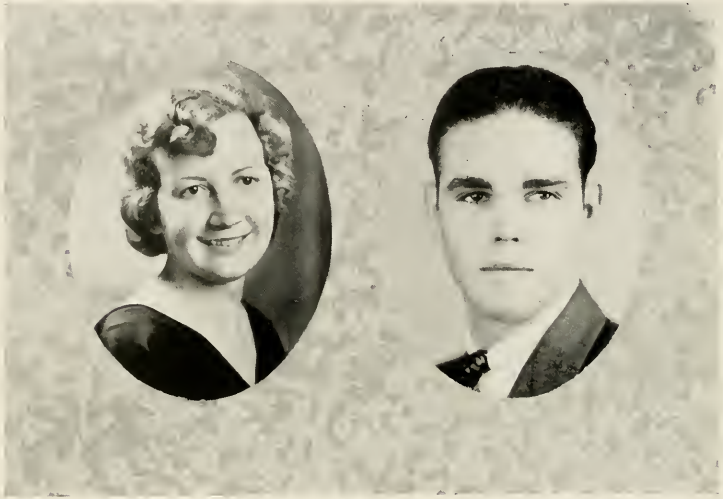
Most Athletic Girl
MARY LOUISE FOARD

Most Athletic Boy
BERT SLADE



Best All-Round Girl
ETTER TURNER

Best All Round Boy
WALTER WEAVER



May Queen
PAULINE WILSON

Best Looking Boy
ROBERT SUITS



*City Hostess
Homecoming*

SARA WILSON

*City Mayor
Homecoming*

AMORY UNDERHILL

THE HATTER



THE HATTER



THE HATTER



THE HATTER



(935)

THE HATTER



THE HATTER



1935

THE HATTER

JOKES



(Hum softly to tune of "Tramp, Tramp, Tramp")

Tramp, Tramp, Tramp, the girls are marching,
Into chapel, one by one—
They're so slow they block the door,
As they stop to talk galore;
Says Miss Bowen, "Don't be like that anymore."

Carl Weeks: "What have you been doing all summer?"
Richard Simpson: "I had a position in my father's office.
And you?"
Carl: "I wasn't working either."

Dr. Gordis rapping on desk for order.
Joe Folds: "Come in!"

Dennis Carrol: "I sleep with my dog every night."
Jo: "But that's unhealthy."
Dennis: "I know, but he is used to it."

Katherine Batman: "Late hours are not good for one".
Joe Folds: "No, but they're fine for two".

Prof. Winters (to American history class): "Now, class, I think we have time for one more battle before the bell rings."

Did you hear about the Scotchman who wore his old clothes because he was going on a blind date?

The students who are continually late for 8:00 classes should eat yeast cakes and rise sooner.

Prof. Conn (making an assignment to chemistry class): "On Wednesday we will take sulphur."

Orator: "Take away women and what follows?"
R. B. Hall: "Me!"

Ralph Odum: "My Scotch uncle sent me a picture this morning."
Paul James: "What does it look like?"
Ralph: "I don't know yet; I haven't had it developed."

THE CITY OF DELAND



The Hatter Staff and the Students of Stetson University Appreciate the
Cooperation of the City of DeLand through the following:

ARTHUR C. HATCH

Mayor

F. N. DeHuy

Carl N. Miller

S. B. Wilson

W. O. Lahrman

Commissioners

GRANT BLY

City Manager



OUR MERCHANTS

have contributed most generously this and in past years and make possible
many student activities. They have the good will and support of every
Stetson student.



The Hatter Staff will always remember the assistance given by these bodies in
making this publication a success.

C. R. M. SHEPPARD, Jr.
Hatter Business Manager.

FRIERSON'S

No. 220
North Blvd.

Firestone

Phone 23
That's Me

ONE-STOP SERVICE

Compliments of

Coca-Cola
Bottling Company

OF
DeLAND

Eddie Nelson: "I've been stung by a wasp."

Louise: "Quick! Put some ammonia on it."

Eddie: "I can't! It's gone."

Dr. Farris: "Mr. Laney, that's the third time I've seen you look at Mildred's paper."

Burton: "Yes, sir, she doesn't write very plain."

Jimmie Mather: "It's preposterous, old man. I'm an expert driver. What I know about driving would fill a book."

Constable: "And what you don't know would fill a hospital."

Give us your name and address now."

Mother: "What's the matter, dear?"

Dallas Partin: "The boy friend and I have parted forever."

Mother: "Well, in that case I don't suppose he'll be around for a few days."

STETSON



Bright, brisk hats to crown keen, young faces . . . styled to give you an air of casual confidence . . . designed with custom care and craftsmanship . . . in attractive colors and contours . . . new styles by Stetson. Available at the better stores, in more than seven thousand towns throughout the world.



JOHN B. STETSON COMPANY

Philadelphia

The Mark of the World's Most Famous Hat

The
BARNETT NATIONAL
BANK

“A Florida Landmark”

Best Wishes
and
Lots of Success

to
CLASS OF 1935




The DeLAND SUN NEWS

INSURANCE

HON-AGENCY, Inc.

220 N. Boulevard
Phone 455



33 Years The Headquarters of

Quality Printing and Engraving

Your Printing

is your representative. It reflects your personality, character and judgment. — Therefore, you should select your printer as carefully as you would your physician or your lawyer

Our Plant

appreciates the confidence our clients impose in us. Each and every job—from a calling card to an annual—is given the same careful attention. It will be to your advantage to consult us regarding your next order for printing or engraving—Engraved June Weddings our specialty.

Carl W. Hill

1101 Ashley Street

Tampa, Florida

DeLand

Florida

DREKA'S

Volusia County's Oldest and Largest Store

Stetson - Students - Faculty - Alumni



We
Welcome
You

A Complete Stock of Dependable Merchandise
at Popular Prices

G. A. DREKA and CO.

DeLand, Florida

Watts Hardware &
Furniture Company

43 YEARS IN DE LAND

"Where Your Dollar Goes Further"

STUDENTS
SUPPLIES

Note Books
Stationery
Fountain Pens

PORTABLE TYPEWRITERS
REPAIRS - RENTALS

Your Are Always Welcome

At

ALLEN-WHITE CO.
DE LAND, FLA.

The CITY OF DE LAND

Offers Congratulations

TO THE

Graduating Class of Stetson University

1935



De Land Chamber of Commerce

Compliments of

The SPARKS THEATERS
IN DE LAND

V. M. Fountain Co.

MENS WEAR - SHOES

32 Years of Service in DeLand



V. M. Fountain

J. C. Hurt

Olin Martin

J. F. Tatum

V. M. Fountain, Jr.

Compliments of

McCrorry's 5 & 10
Cent Store

Headquarters for
Daily Necessities

The
Tampa Daily Times



Tampa's Only
Afternoon
Newspaper

and

MOST EFFECTIVE
ADVERTISING
MEDIUM



Owner and Operator of WDAE
Tampa's Only Radio Station

F. N. DeHuy & Son

Jewelers and Silversmiths
Since 1873

HUNGRY ?

LET "POP" PRESCRIBE
LOG CABIN—
BARBECUE

We Compliment

The Hatter Staff and
The Graduating Class
of 1935

F. H. HAMMER, Agt.
Standard Oil Co.

For Good Home Cooked Meals

Mrs. Nick's is the Place

Cozy Dining Room

Mrs. Geo. Nicholson, Hostess

GREETINGS

From

Your Official Photographer

L. B. TRUESDELL

J. F. ALLEN FURNITURE COMPANY

HOME OF DEPENDABLE GOODS SINCE 1882

53 YEARS IN BUSINESS AND STILL GOING STRONG

FUNERAL DIRECTORS

REAL AMBULANCE SERVICE

The FRANCES SHOP

Dresses - Coats

Hats - Hose

Lingerie

Style Center

of

DeLand, Florida

The Courthouse Pharmacy INC.

"The Store of Personal Service"

Near the Court House

Headquarters for STETSON Students

We deliver from 8 a.m. to 10 p.m.

Phone 5 C. M. GEIGER, Prop.

BRANDON ELECTRIC CO.

"Everything Electrical"

Our Service and Sales Departments are
at Your Service

Norge Refrigerators—Electric Washers—R.C.A. Radios
202 N. Boulevard

Phone 536

HOTEL COLLEGE ARMS

DE LAND, FLORIDA



A Winter Home for Discriminating People

Beautiful Location

Elevator, Steam Heat

Unexcelled Golf Course

White Service Throughout



THE END!

