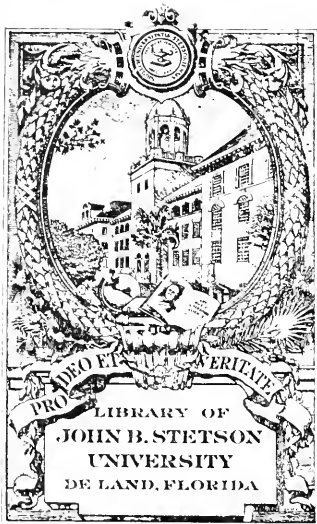


THE  
HATTER



1935



Gift of  
John B. Stetson

tetson  
D  
447  
3  
1935  
C.1

The Hatter

ISSUED TO

DATE

*W. B. C. Hayes*  
*11-11-35*

*4-18-76 B. Chaplin*  
*11-30-35 Howard H. ...*

11 05 2

COPIES ON

*W. B. C. Hayes*

This book must not be taken from  
the Library building.

11 05 2 1953

20  
6447  
113  
1935  
9.1





Digitized by the Internet Archive  
in 2010 with funding from  
Lyrasis Members and Sloan Foundation

<http://www.archive.org/details/hatter1935stetson>

# THE HATTER

PUBLISHED BY  
The ANNUAL STAFF  
OF  
STETSON  
UNIVERSITY  
DeLAND, FLORIDA  
1935



## DEDICATION

Because he has given us a brighter outlook on life, because he has bestowed upon us the advice and love that has served to make our days in this institution better and wiser, and because he has endeared himself to all the students of Stetson University, we, the annual staff of 1935, wish to dedicate this volume of the Hatter to

DR. WILLIAM SIMMS ALLEN





FORWARD

"O memories,  
O past that is"  
(Eliot)

May this volume serve to  
bring back in the years to  
come the wonderful thoughts  
of yesterday. . . . .



# CONTENTS

UNIVERSITY  
FACULTY  
CLASSES  
SPORTS  
ORGANIZATION  
FEATURES



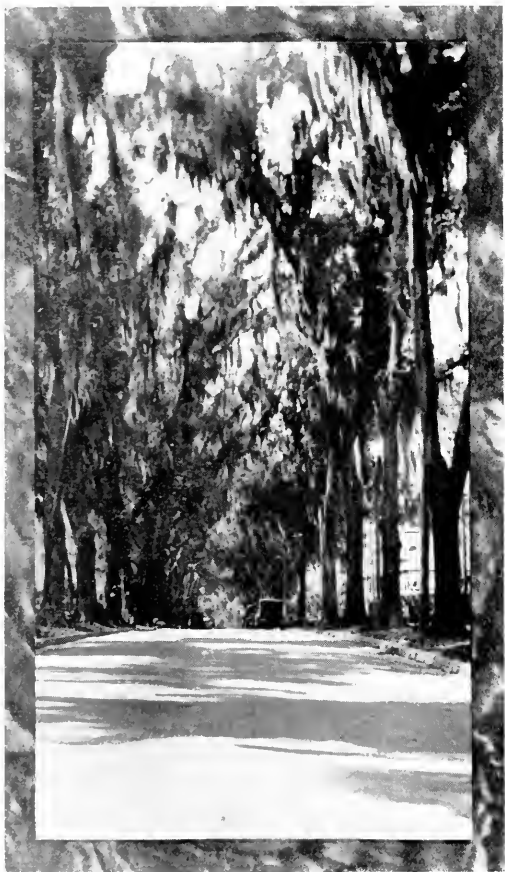








*"Still sits the schoolhouse  
by the road"*



*"Where the spreading oaks are hoary  
Lived the birds in all their glory"*

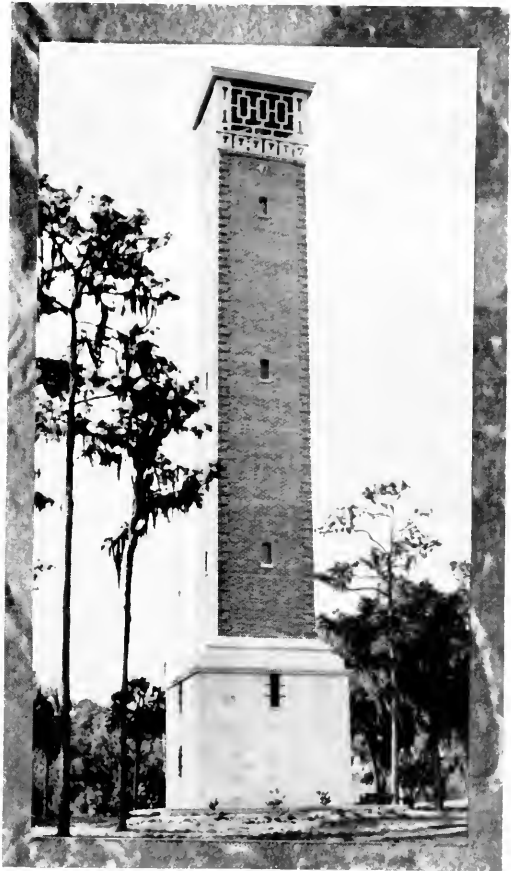




*“And out of old bookes, in good faith,  
Cometh all this new science that men live”*



*"The great theater for virtue is conscience"*



*"The tower reared its stately head aloft,  
And viewed the city with disdain"*









The ideal of John B. Stetson University through the years has been to develop scholarship, culture, and dynamic Christian character. The success of the institution in attaining the ideal is shown by the hundreds of Stetson men and women who are leaders in every walk of life—leaders who are striving to make the world better. The ideal of Stetson has not changed. The motto is still "Pro Deo et Veritate"—For God and Truth. With this ideal and this motto the students today are giving their best to the University. Let us look forward and go forward to build a greater Stetson—a Stetson more excellent in equipment and finer in quality.

*W. S. Allen*

W. S. ALLEN, President.



CHARLES SHERWOOD FARRISS, D.D., LL.D.  
*Vice-President of the University*

G. PRENTIS CARSON, LL.D.  
*Dean of the University*

OLGA RUTH BOWEN, A.M.  
*Assistant to the Dean of the University*

MARY ESTELLE LOWRY, A.M.  
*Dean of Women*

ROBERT IVEY ALLEN, Ph.D.  
*Professor of Physics and Electrical Engineering*

EVELYN FLEETWOOD BEACH  
*Instructor in Secretarial Work*

JEANETTE M. BROOME, M.S.  
*Assistant in Principles of Cooking and Nutrition*

RICHARD ELIJAH CLARK, Ph.D.  
*Librarian and Professor of Sociology*

BOYCE FOWLER EZELL, Ph.D.  
*Professor of Psychology and Education*

CHARLES ADAM FISHER, Ph.D.  
*Professor of Business Administration*



BERTHA WEEKS FLUHART  
*Fine Arts, Public School Art*

HARRY DAVIS FLUHART  
*Professor of Fine Arts*

HARRY CRAWFORD GARWOOD, Ph.D.  
*Professor of Philosophy and Bible*

WARREN STONE GORDIS, Ph.D.  
*Professor in English*

MARIE NAOMI HERSHEY, A.B.  
*Spanish Assistant*

ANNIE NADINE HOLDEN, Ph.D., A.M.  
*Assistant Professor of German and English*

CURTIS MILTON LOWRY, M.E.  
*Professor of Engineering*

CURTIS HORN, A.B.  
*Secretary to President Allen*

HENRY S. JACOBS, A.B., LL.B.  
*Professor of Laws*

LUCY ANN NEBLITT, A.B.  
*Instructor in Spanish and French*





RUTH OSGOOD, A.B.  
*Assistant in Mathematics*

BEATRICE PRIESTER  
*Baptist Student Secretary*

ERNEST RANO  
*Assistant in Business Administration*

IRVING C. STOVER, M.O., Litt.D.  
*Professor of Speech*

FRANCES C. THORNTON  
*French Assistant*

CHARLES BLOUNT VANCE, Ph.D.  
*Professor of Biology*

MIRIAM WAYT, M.S.  
*Instructor in Physical Education and Health*

WILLIE DEE WILLIAN  
*Assistant in Expression and English*

HARRY SUNDERLAND WINTERS, A.M.  
*Assistant Professor of History and Political Science*



---

MUSIC DEPARTMENT

VERONICA DAVIS, Mus. B.  
*Instructor in Public School Music*

WILLIAM EDWARD DUCKWITZ, Mus.D.  
*Professor of Music*

DONALD FAULKNER, A.B.  
*Director of Symphony Orchestra*  
*Professor in Mathematics*

EMMETT FEASEL  
*Instructor of Clarinet*

ETHEL M. FISHER  
*Piano, Normal Course in Class Piano Instruction*

ROSA LEE GAUT, Mus.B.  
*Instructor in Music*

LOUIS HAROLD MARVIN  
*Instructor in Violin*

THOMAS REMMINGTON  
*Assistant Professor of Vocal Music*

MATTHEW SLATER  
*Instructor in Organ*









STUDENT BODY



SENIOR OFFICERS



JUNIOR OFFICERS



SOPHOMORE OFFICERS



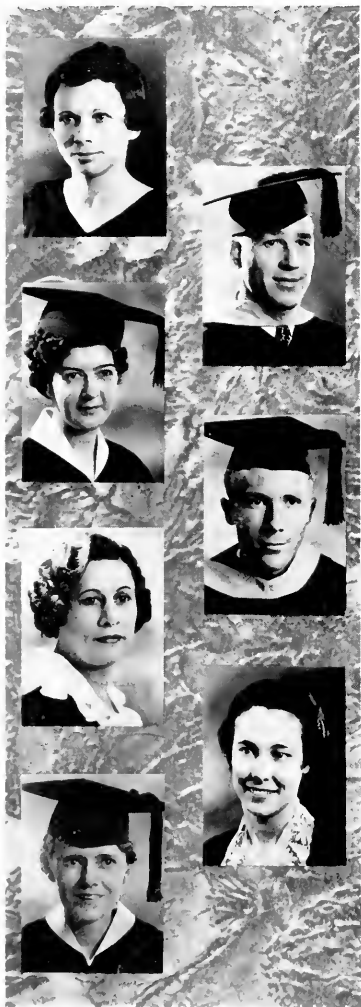
FRESHMEN OFFICERS



Boyce Ezell, President; Virginia Einsel, Vice-President; Pauline McFarland, Secretary;  
 Joe Folds, Treasurer.  
 Sidney Taylor, President; Josephine Price, Vice-President; Virginia Einsel, Secretary;  
 Howard Gateson, President; Maxine McFarly, Vice-President; Moise Williams, Secretary;  
 Alton West, Treasurer.  
 William Solomon, President; Virginia Skaggs, Vice-President; Geraldine Simmons, Secretary;  
 Grover Kirby, President; Helen Brin, Vice-President; Josephine Hamlin, Secretary;  
 Hall Godbold, Treasurer.

---

GRADUATED STUDENTS



ELIZABETH BROOKS  
ZTA  
*Clermont*  
A.B. Stetson University

KEMPIS CARPENTER  
*Albany, Ga.*  
B.S. Stetson University

VIOLET FELKER  
DeLand  
AB. Stetson University

KENNETH FREEMAN  
 $\Sigma N$   
DeLand  
B.S. Stetson University

MARIE NAOMI HERSHEY  
*Orlando*  
A.B. Stetson University

RUTH OSGOOD  
AEA  
*Deerbury, Mass.*  
A.B. Stetson University

VENOLA WOODWARD  
ZTA  
DeLand  
A.B. Stetson University





S  
E  
N  
I  
O  
R  
S





ELIZABETH ALEXANDER

ΔΕΛ

*De Land*

Torch and Scroll; Pan-Hellenic Council 4; Symphony Orchestra 1, 2, 3; Vice-President of Student Body 3; Hatter Staff 3; Vice-President of Alpha Xi Delta 3; President of Alpha Xi Delta 4; President of Phi Beta 4; W.A.A. 1, 2, 3; Secretary of W.A.A. 2.

RUTH BOISCH

ΠΒΦ

*Daytona Beach*

Orchestra Librarian 1, 2; Glee Club 1, 2; W.A.A. 1, Secretary of Pi Beta Phi 2; Treasurer of Mu Omega Xi 4; Student Council 2; House President 2; Most Representative 3; Sponsor Homecoming 4; Student Body Secretary 3; Reporter of Pi Beta Phi 4; Dramatics; Basketball 1, 2.

DENNIS CARROLL

ΠΚΦ

*Lake Butler*

President of Mu Omega Xi 4; Business Manager of The Hatter 3.

EDNA CORBETT

ΠΒΦ

*Jasper*

Transfer from Tallahassee; Student Council 1.

VIRGINIA EINSEL

ΠΒΦ

*Tampa*

Cheer leader 3; Secretary of Senior class; Assistant Gym Instructor 2, 3; Vice-President of Student Body 4; Censor of Pi Beta Phi 2; Treasurer of Pi Beta Phi 3; W.A.A. Publicity Manager 1; Junior Class Manager of W.A.A.; Theta Alpha Phi.

MARY LOUISE FOARD

Π Β Φ

*DeLand*

Tennis Team, singles and doubles 1, 2, 3; Basketball 1, 2, W.A.A. Class Manager 1, 2; Glee Club Librarian 1, 2; Treasurer of Glee Club 2; Glee Club trio 2, 3, 4; Class Secretary; Most Popular Girl 3.

MARVIN GARRISON

Π Κ Φ

*Lakeland*

Transfer from Tennessee Military Institute, Georgia Tech, University of Florida; Glee Club 1, Warden Π Kappa Phi 2; Mystic Crew 4; Hatter Staff 2; Phi Alpha Delta.

ENA HURLEY

*Winter Garden*

W.A.A. 2, 3; Y.W.A. 1, 2, 3.

WILLIAM JENNINGS

Π Κ Φ

*Barre, Vermont*

Archon of Π Kappa Phi 4; Secretary of Π Kappa Phi 3, Master of Rolls Sigma Nu Phi 4; Sheriff of Moot Court; President of City Commission 4; Welcome Committee Homecoming 3; Chancellor of Sigma Nu Phi.

THEODORE JONES

*Lakeland*





GEORGIA KIRBY

Π Β Φ

*Mound Dora*

Sponsor 3; Glee Club 1, 2; The Honor 4; Editor of The Hatter 3; Treasurer of Freshman Class; Pan-Hellenic Council 1; Treasurer 3; Representative on Pan-Hellenic Council 4; W.A.A. 1, 2; Tennis doubles 2; Basketball 1, 2; Stetson Opera Company 3; Treasurer of Pi Beta Phi.

WILDA LARSON

Λ Λ Λ

*Brookston, Pennsylvania*

Transfer from Albion college; The Honor 4; Vice-President of Pi Kappa Sigma 4; Vice-President of Pi Gamma Mu 4; Class Manager of W.A.A. 4; Y.W.A. 4; Glee Club 4; Publicity Manager Delta Delta Delta.

ALICE LEE

Ζ Τ Λ

*Deland*

Y.W.A. Treasurer 1; Junior Class Vice-President 4; Sigma Alpha Phi Treasurer 4.

ANTHONY J. LICOTA

*Tampa*

ROBERT LOCKETT

Υ Τ Ω

*Jacksonville*

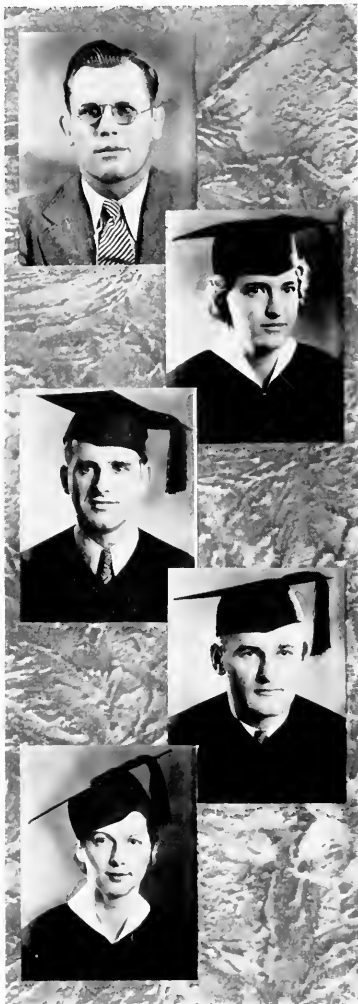
Transfer from Vanderbilt; Director of Intramurals 1; Football 2; Basketball 2; Assistant Football Coach 4.

**JAMES MATHER**

Λ Σ Φ

*Ann Arbor, Michigan*

Mystic Crew 4; Stetson Engineer Society; President of Engineer Society 4.



**MARGARET MAXFIELD**

Z X E

*Potsdam, New York*

Secretary of E.S.U. 3; President of Zeta Chi Epsilon; Corresponding Secretary of Pi Kappa Sigma.

**RUDOLPH NELSON**

*Chicago, Illinois*

Freshman Football 1; Freshman Basketball 1; Varsity Football 2, 3, 4; Varsity 2, 3, 4.

**JOE PECK**

Π Κ Φ

*Chicago, Illinois*

Football 1, 2, 3, 4; Wrestling 1; American Chemical Society.

**VIRGINIA PEEK**

Δ Δ Δ

*Ocala*

Transfer from Converse and Goucher; President of Delta Delta Delta 4; President of Phi-Beta-Kappa 4; Vice-President of Glee Club 4; Chairman of Mission School 3; Vice-President of Student Council 4; Secretary of Student Mayor 3, 1; The Honor, Pi Kappa Sigma.



**JACK PHILLIPS**

**Σ N**

*Jac! souville*

Commander of Sigma Nu 1, 2, 3, 4; Founder of Mystic Crew, President of Young Democratic Club; National Student Committeeman for Young Democratic Club, State of Florida; Most Representative 2; Elk.

**JOSEPHINE PRICE**

**Δ Δ Δ**

*Lake Wales*

Student Council 4; Theta Alpha Phi; Pan-Hellenic Council 4, Mu Omega Xi; W.A.A. 3, 4; Glee Club 3; B.S.U. Council; Green Hatters; The Honor Pi Kappa Sigma.

**ERNEST RANO**

**Φ M Α**

*Binghamton, New York*

Mystic Crew, Founder and Treasurer; President of Pi Gamma Mu 4; Assistant to Dr. Fisher 2, 3, 4; Clerk of Stetson Meot Court 4; Homecoming City Clerk 3; City Commissioner 4; Secretary of Sigma Mu Phi 3.

**JOSEPH ROUSSEAU**

*Struthers, Ohio*

Varsity Basketball 3, 4; Varsity Football 3, 4; Varsity Tennis 3, 4; Intramurals.

**LOUISE ROYALL**

**Δ Δ Δ**

*DeLand*

Torch and Scroll 3, 4; Glee Club 1, 2; Most Intellectual 2, 4, Secretary of Alpha Xi Delta; Stetson Opera Company 2; Debate Team 2, 3, 4; Forum debator 2, 3; Torch and Scroll Scholarship Award 3; French Club 3.

HILTON SHOEMAKER  
 Π K Φ

*Daytona Beach*

Orchestra 2; Band 1, 2, 3, 4; Charter member of Stetson Engineering Society; President of Stetson Engineering Society 4.

BERT SLADE

*Virginia, Minnesota*

Football 3, 4; Captain of Basketball Team 1; Basketball 3, 4.

SARA STAFF

*St. Petersburg*

Transfer from Tampa University; Band 4; Little Theatre Orchestra 4; Stetson Symphony Orchestra 4; Tennis Team.

GEORGE STRAUS

Α T Α

*Youngstown, Ohio*

Transfer from Ohio University; Mystic Crew; Varsity "S" Club; Football 1; Basketball 1, 2, 3, 4; Captain of All State Basketball Team 4; Secretary of Sophomore Class; Varsity Tennis 3; Coach of Freshman Basketball; Most popular boy 3.

ALICE LEE SWAIN

Z T Α

*Shreveport, Louisiana*

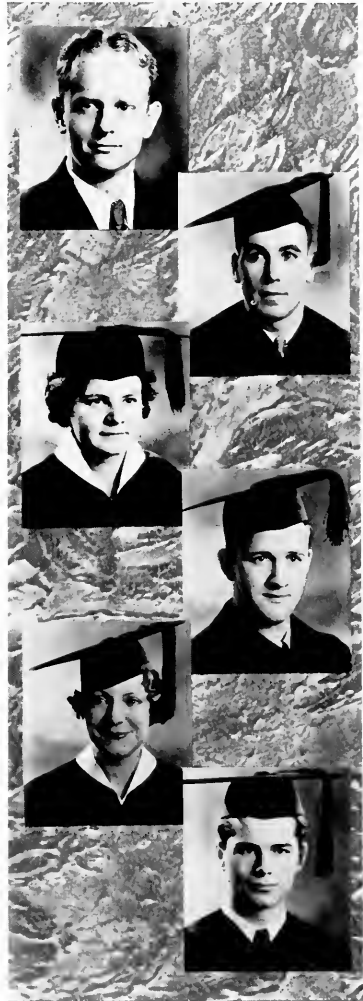
Transfer from University of Arkansas; Annual Staff 4; President of Green Hatters 4; Reporter for Zeta Tau Alpha.

SIDNEY TAYLOR

Α Σ Φ

*DeLand*

President of Delta Sigma Phi 4; Most Intellectual 2; Torch and Scroll; Debate Team; Theta Alpha Phi; Chancellor of Torch and Scroll 3, 4; President of Senior Class; Head Cheerleader 1, 2; Most Representative 1.





WILLIAM TOMYN  
 Λ Σ Φ

*Winter Garden*

Most popular boy 3; Varsity Basketball 2; Varsity Tennis 2, 3, Vice-President of B.S.U.; President of Delta Sigma Phi 3; Vice-President of Delta Sigma Phi 4; President of B.Y.P.U.

ETTER TURNER  
 Z T A

*Williston*

President of Y.W.A. 3; Vice-President of B.Y.P.U. 1; Secretary of Sigma Alpha Phi 2; Pan-Hellenic Council 2, 3, 4; Hatter Staff 4; Secretary of Student Council 3; President of Student Council 4; Vice-President of Sigma Alpha Phi 3; President of Zeta Tau Alpha 4; State B.S.U. Council 1, 2, 3; Third Vice-President of B.S.U. Council 4; Treasurer of State Student Government 4; President of The Honor.

WALTER WEAVER

*Jacksonville*

Mystic Crew; Alternate Captain of Football Team 4; All State Team in football; All S.I.A.A. Team 4; Intramurals; Basketball 2; Football 2, 3, 4; Captain of Football Team 2; "Little All American"; "S" Club.

PAULINE WILSON  
 Λ Ξ Λ

*Red Lion, Pennsylvania*

Transfer from West Chester State Teacher's College; W.A.A. 3, 4; Vice-President of Pan-Hellenic Council 4; The Honor 4; Hatter Staff 4.

AILEEN WORTH  
 Λ Ξ Λ

*Pontiac, Illinois*

President of Stetson Orchestra 2; Chaplain of 2, 4; Vice President of 4; Band 2, 3, 4; Stetson Symphony Orchestra 1, 2, 3, 4; Stetson Little Theater Players 1, 2, 3, 4; Stetson Federal Music Club.

LOIS WRIGHT  
 Δ Λ Δ

*De Land*

Theta Alpha Phi.





## Seniors Without Pictures

GEORGE KAREL  
*Orlando*

JOHN MOORE  
*Lake Helen*  
Ministerial Association 2, 3, 4

WILSON MOBLEY  
*Goulds*  
Football 1; Swimming Team 1, 2; Director of the Hatter Dance Band 3.

SIDNEY SINGLETON  
*Des Plaines, Illinois*  
Transfer from Alabama; Football 2, 3, 4; Dramatics 2, 3, 4

RODNEY THURSBY  
*Orange City*  
Football.

RALPH W. WOODRUFF  
*Schuborg, Pennsylvania*  
Susquehanna University A.B.; A.M.; George Washington University L.L.B.

MARY JANE LEUTON  
*De Land*

ANNA MERRYMAN  
*De Land*

HELEN WILDER  
*De Land*  
Transfer from Wellesley Tennis Team 4

WINEFRED PYLE  
*De Land*  
President of Zeta Chi Epsilon  
Mu Omega Xi







EDNA ALDERMAN  
 Z T A  
*Lakeland*

HOWARD L. BATESON  
 H K Φ  
*DeLand*

WATTS BRACEY  
 H K Φ  
*Ashville, N. C.*

WEBB BROOKS  
*DeFuniak Springs*

CLYATT C. BROWARD  
 Σ N  
*Jacksonville*

LU L. BROWN  
 Σ N  
*DeLand*

HELEN MAE CHRISTIAN  
 H B Φ  
*Jacksonville*

AVARYEE COLLIER  
 Z T A  
*Crescent City*

IRIS DANIEL  
 Z T A  
*Orlando*

MALCOLM DAY  
 H K Φ  
*Key West*

HAROLD DASSLER  
 Λ Σ Φ  
*Hawthorne, N. Y.*

BETTY DREKA  
 H B Φ  
*De Land*

JOHN S. DUSS  
*New Smyrna*

BOYCE F. EZELL, Jr.  
 H K Φ  
*De Land*

MARJORIE HAMMER  
 H B Φ  
*De Land*

MARGARET HARPER  
*Lakeland*





LOUISE HICKSON  
 A A A  
*Sanford*

HELEN HORN  
 H B Φ  
*Daytona Beach*

CARL HOWELL, Jr.  
 Σ N  
*Hodgenville, Ky.*

CECIL RICHARD INGRAM, Jr.  
 Σ N  
*Jacksonville*

LESLIE N. JOHNSON  
 Σ N  
*Grand Marais, Minn.*

RUTH JONES  
*Lakeland*

DORIS KNACK  
 A A A  
*Detroit, Mich.*

SUE LATIMER  
 A E A  
*DeLand*

DOROTHY MAYER  
*Lakeland*

PAULINE McFARLAND  
 Z T A  
*Daytona*

FRANK M. LIPSCOMB  
 Δ Σ Φ  
*Perry*

MAXINE McLARTY  
 Π Β Φ  
*Daytona*

RHODA NEEL  
*St. Augustine*

JAMES NEMEC, Jr.  
 Δ Σ Φ  
*Chicago, Ill.*

FRANK H. ORTMAN, Jr.  
 Δ Σ Φ  
*DeLand*

BURNIS PARKERSON  
 Δ Σ Φ  
*Eastman, Georgia*

JAMES PARRISH  
 Σ Ν  
*Albany, Georgia*

PAULINE PREVATT  
*Palatka*

JOHN B. ROGERS, Jr.  
 Δ Σ Φ  
*Alachua*

MATTIE ANN ROSS  
 Ζ Τ Α  
*Williston*





CHARLES R. M. SHEPPARD, Jr.

$\Lambda \Sigma \Phi$   
*DeLand*

RICHARD SIMPSON

$\Lambda \Sigma \Phi$   
*Fl. Lauderdale*

DOROTHY SKILLMAN

$\Pi \beta \Phi$   
*Skillman, N. J.*

WALTER SMITH

$\Lambda \Sigma \Phi$   
*Kissimmee*

BETTE STOVER

$\Pi \beta \Phi$   
*DeLand*

LILLIAN TURNQUIST

$Z \tau \Lambda$   
*DeLand*

AMORY W. UNDERHILL

$\Pi \kappa \Phi$   
*DeLand*

ALLEN WEST, Jr.

$\Lambda \Sigma \Phi$   
*Homestead*

SARA E. WILSON

$\Pi \beta \Phi$   
*Miami*

MOISE WILLIAMS

$Z \tau \Lambda$   
*DeLand*



## ALMA MATER

*Dear Alma Mater, smile upon thy children!  
Gladly we greet thee, altogether lovely;  
Peace be within thy classic halls and temples,  
Hail, Alma Mater, dear.*

*Hail to the heroes who have gone before us!  
Young men and maidens, filled with true devotion!  
Bright is their glory, fadeless and undying,  
Hail to our heroes gone.*

*Hail to our classmates, bound by ties never broken;  
Here once again we pledge our vows of friendship;  
Brave hearts and true hearts sound all in the chorus;  
Long live our comrades dear!*

*Dear Alma Mater, tenderly thy children  
Gather, and bring to thee gracious salutations;  
Comrades, your voices lift once again in chorus,  
Hail, Alma Mater dear.*

DR. LINCOLN HULLY.



S  
O  
P  
H  
O  
M  
O  
R  
E  
S





GEORGE BROWN  
*DeLand*

FLORENCE BROWNLEE  
AAA  
*Cedartown, Georgia*

EVELLYN BURHANS  
ZTA  
*Ematilla*

JOHN G. BURKHALTER  
*Miami*

FLOANNA BURROWS  
ZTA  
*New Smyrna*

MARY DOWNEY CHATHAM  
AEA  
*DeLand*

HELEN COLLINS  
AEN  
*Lakeland*

CECIL W. COWART  
ΣN  
*Serville*

RUTH CROOKS  
Z T A  
*Enslis*

HELEN DOSS  
A A A  
*Ty Ty, Georgia*

ESTELLE DUKE  
A E A  
*Tampa*

NEAL FAIRCLOTH  
H K Φ  
*Quincy*

RICHARD FAULKNER  
Σ N  
*DeLand*

JOSEPH FOLDS  
*Leesburg*

DOROTHY FULLER  
A E A  
*DeLand*

DOROTHY HAINES  
H B Φ  
*DeLand*





MADELINE HALE

Δ Δ Δ  
*DeLand*

RICHARD B. HALL

Π Κ Φ  
*DeLand*

MARJORIE HARRELL

Λ Ξ Λ  
*Miami*

NED W. HOLLAND

Π Κ Φ  
*Blakely, Georgia*

MARGARET JOHNSON

Z T Λ  
*Umatilla*

THURMOND KNIGHT

Σ Ν  
*Pahokee*

GEORGE W. LEONARD

Δ Σ Φ  
*Hastings*

FRANCES LEE

Δ Δ Δ  
*Lakeland*

MARY LOU LOGAN  
Α Α Α  
*Lakeland*

ELTON MARTIN  
*DeLand*

QUINCY H. MASTERS  
Π Κ Φ  
*Lecsbury*

MARTHA McCONNELL  
Α Ε Α  
*Jacksonville*

CORNELIA McRAE  
Α Ε Α  
*Sanford*

JENNINGS MINTON  
Π Κ Φ  
*Hastings*

BESSIE FAYE MIRES  
Α Ε Α  
*DeLand*

MAUREEN MOSELEY  
Ζ Τ Α  
*DeLand*





RUTH MURPHY  
ΑΞΑ  
*Daylona*

GALE NAYLOR  
ΑΑΑ  
*Camp Hill, Pa.*

MILDRED NICKELL  
ΑΞΑ  
*DeLand*

LUCY O'DELL  
ΑΑΑ  
*Oxford*

CLAUDIA OSBORNE  
ΖΤΑ  
*Umatilla*

SUSANNE PENNY  
ΑΑΑ  
*DeLand*

PIERRE POOLE  
ΠΚΦ  
*Cross Anchor, S. C.*

KATHLEEN SAMPLE  
*DeLand*



GERALDINE SIMMONS  
Π Β Φ  
*Titusville*

WILLIAM SOLOMON  
Σ Ν  
*Jacksonville*

HELEN SPAULDING  
Π Β Φ  
*DeLand*

ELLEN STEPHENS  
Ζ Τ Λ  
*Lakeland*

EDWARD WARREN  
*South Hill, Va.*

CARL WEEKS  
Λ Σ Φ  
*Chelsea, Mich.*

EMILY WHEELER  
*Dundin*

PAUL WONGREY  
Λ Σ Φ  
*Okechobee*



## OLD STETSON

*We love Old Stetson on the height,  
We love her chinns and bells,  
We love her colors, green and white,  
We love her knolls and dills.*

*We love the oaks, we love the pines,  
We love the palms and flowers,  
We love each creeping, climbing vine,  
The sunshine and the showers.*

*We love the buildings, old and new,  
And the friendships in them made;  
The Love Tales that were softly told,  
With little Cupid's aid.*

*We love the "chapel exercises",  
We love the hearty song,  
We love the Holy Words and wise,  
They cheer us all day long.*

*We like each friendly, kindly "Prof",  
They always smile and nod,  
And sometimes they will really laugh  
When feeling "extra good".*

*We like each sturdy, manly lad,  
Who o'er the campus strolls;  
He has a purpose strong in life,  
Which day by day unfolds.*

*To "find his place in God's wise plan",  
To "find his place and fill it",  
He'll learn that work well done each day,  
Will bring him nearer to it.*

*We don't forget the "fair ones" here,  
Who lend such charm and grace;  
They help us all throughout the year  
To fill a higher place.*

*They're always bright, and "hold their own",  
So nothing else much matters;  
The boys are glad to "see them home",  
These clever "Stetson Hatters".*

# THE HATTER

---



*Last it be of the writer said,  
That some one he forgets,  
We wave a friendly greeting  
To the "blonds" and the "brunettes"*

*May the old grads from Stetson,  
Find friends both kind and true;  
May each man find a loving wife—  
Each girl a husband, too.*

*We're glad to have the old grads back  
On Founder's Day each year,  
To greet the friends of other days,  
And form new friendships here.*

*We miss the dear ones now passed on,  
We miss their words of cheer,  
We know that God keeps every one  
And wipes away each tear.*

*And may we ever keep in mind  
Our cherished Founder, who,  
Had the steady faith, we find,  
To make his dreams come true;*

*And those who've had a guiding hand,  
In all the years now past,  
Who laid a broad foundation plan  
To make Old Stetson last.*

*We're glad to hear the chimes again,  
We're glad to hear each bell,  
They bring back thoughts of many a friend,  
And seem to say "All's well",*

*And as the years roll slowly on,  
Old Stetson, brave and true,  
Your children come back, one by one,  
To prove their love for you.*

W. G. S. LOWE  
DELAND, FLORIDA





\_\_\_\_\_



ELIZABETH BABCOCK  
Π Β Φ  
*Orlando*

ELIZABETH PEARL BARBER  
*Palmello*

MARGARET BARBER  
*Bithlo*

DORIS BARTLETT  
Α Ε Α  
*Franklin, Pa.*

RUTH BARTLETT  
*West Palm Beach*

MARY LOUISE BASS  
Π Β Φ  
*Pahokee*

KATHERINE BATMAN  
Δ Δ Δ  
*Miami*

THELMA BENSON  
*Sanford*

HELEN BRIN  
 Π Β Φ  
*Stewartville, Minn.*

JUDY BROWN  
 Π Β Φ  
*De Land*

JUNE BROWN  
*Brunell*

MARY BROWN  
 Π Β Φ  
*De Land*

OLLIE MAE BROWN  
 Α Α Α  
*De Land*

VICTORIA BURT  
 Α Ε Α  
*Boston, Mass.*

MARGARET CHAMP  
 Α Ε Α  
*Mt. Dora*

DEWITT DAVIS, Jr.  
 Σ Ν  
*Atlanta, Ga.*





DOROTHY DAVIS  
Z T A  
*Pinchurst, N. C.*

FLORENCE DUREN  
Z T A  
*Archer*

FINDLEY EDGE  
*Albany, Ga*

FRANCES FAULKNER  
A E A  
*DeLand*

DOROTHY FIELD  
H B Φ  
*Pl. Lauderdale*

DAVID HALL GODBOLD, Jr.  
A Σ Φ  
*Gifford*

ANNE GOLLNICK  
Z T A  
*Vero Beach*

RUTH GOSS  
A A A  
*Cleveland, Ohio*



RACHEL GRIFFIN  
 ΑΞΑ  
*New Smyrna*

MAY GRISWOLD  
*W. Hartford, Conn.*

FAYETTE L. HALL  
*Eustis*

JOSEPHINE HAMLIN  
 ΖΤΑ  
*Taravies*

LOLA HAMMER  
 ΠΒΦ  
*DeLand*

GEORGINA HART  
*Sanford*

LAWRENCE S. HARTSFIELD  
 ΠΚΦ  
*Eastman, Ga.*

MARGARET HAWES  
 ΖΤΑ  
*Daytona Beach*

MARGUERITE HAYES  
 ΑΑΑ  
*DeLand*

INFZ HILL  
 ΠΒΦ  
*Cocoa*





DOROTHY HOOKER  
 Η Β Φ  
*Chocoma*

MARY HUDSON  
 Ζ Τ Α  
*Titusville*

RUTH HUDSON  
 Α Α Α  
*Crystal River*

GROVER C. KIRBY, Jr.  
 Η Κ Φ  
*West Palm Beach*

LANDIS F. KNIGHT  
 Α Σ Φ  
*Vero Beach*

CHRISTINE KUMMER  
*Winter Park*

VERONICA LESKO  
*DeLand*

AUDREY LOCKETT  
 Ζ Τ Α  
*Cocoa*

MARY ELLEN LORD  
 Η Β Φ  
*Orlando*

WILBUR LUTTRELL  
 Α Σ Φ  
*Brooksville*

MARGARET MacDONOUGH  
*Jacksonville*

LOUISE MAURHOFF  
 A A A  
*Fareham, Pa.*

MARY JANE MAYER  
 H B Φ  
*Orlando*

MARY MAXWELL  
 H B Φ  
*Sanford*

ALICE McLAUGHLIN  
 A A A  
*Daytona*

ARVEL MILLER  
*Lakeland*

MARTHA MYERS  
 A E A  
*Boniton*

ROBERTA NIGELS  
 A E A  
*Palm Harbor*

FRANCES OGLIVIE  
 H B Φ  
*DeLand*

MADELINE OSBOURNE  
*New Smyrna*





ORLINE PARRISH  
 ΔΔΔ  
*DeLand*

RAYMOND PARRISH  
 ΣΝ  
*Lake Lindley*

DALLAS PARTIN  
 ΖΤΑ  
*DeLand*

BARBARA PETRY  
 ΔΔΔ  
*Lake Wales*

STELLA POPE  
 ΖΤΑ  
*Lacoochee*

DONALD E. POUNDS  
 ΣΝ  
*Winter Haven*

BETTY RIDER  
 ΠΒΦ  
*Orlando*

CHESTER L. SAUNDERS  
 ΠΚΦ  
*Eastman, Ga.*

HELEN STEPHENS  
*Palatka*

JANETTE STEPHENS  
*Orlando*

EVA SULLIVAN  
*Homestead*

JULIA SULLIVAN  
*Homestead*

WUANITA TALBOT  
 Η Β Φ  
*Miami*

DOROTHY LEE TYER  
 Ψ Ψ Ψ  
*Miami*

ALENE VERCOE  
 Α Ξ Α  
*Florida City*

ALFRED R. WARD  
*Johnson, Kansas*

HELEN WEBB  
 Α Ξ Α  
*DeLand*

J. ALLEN WEBSTER  
*St. Cloud*

MADGE WILLIAMS  
*Jacksonville*

MARIE WINSOR  
*Pompano*











# THE HATTER



Asst. Coach  
ROBERT LOCKETT



COACH H. R. McQUILLAN



Asst. Coach  
JAMES NEMEČ

Stetson bids farewell to one of its most valued men at the climax of this school year. At the climax of this school year, Stetson bids farewell to one of its most valued men. Coach "Mac" will long be remembered by all students as being outstanding in the field of athletics and also outstanding as a builder of men. It is one of Stetson's greatest losses and Texas A. and M.'s greatest gain. We all wish you success, coach, and great football and basketball teams.



First row: Barber, Jackson, Columbo, Offut, MacQuillan, Lockett, Slade, Scherer, Knittle, Smith, Wotting, Gordon, Turner.  
 Second row: Hardy, Wenyer, Thursby, Kukar, Hughes, Singleton, Nichols, Boyd, Ingram, Hyman.  
 Third row: Cudmore, Gannerelli, Peck, Caudil, Bridges, Leuton, Parkinson, Phillips, Martin, Haynesworth.

## Review of the 1934 Football Season

Greater Stetson teams will come along but never a more courageous one than our 1934 Edition

In the opening game with the University of Georgia at Athens, an aggressive, alert and experienced, Bulldog eleven took advantage of a green, though scrapping, bunch of Hatters; took advantage of their nervousness, and capitalizing on every break, ran up a margin of 48 points to the Hatter's none. This defeat showed a potential strength in the Hatter linemen as the last quarter left a scoreless deadlock. Captain Peck was outstanding.

The next Saturday showed a relentless, smashing, Murray State attack hold sway for the first half, the Teachers scoring 19 points. The last half showed the potential strength, exhibited in the Georgia game assert itself and take shape in the form of a powerful and deceptive offense which time after time was halted in the shadow of the Teacher's goal by over zealous officials who penalized hopes of three touchdowns. Enough said about this game—the writer saw it and the score would have been reversed—if—.



PECK

SINGLETON

LOUTON

HAYNESWORTH

# THE HATTER

---

The following Saturday, Mercer was played at Jacksonville. It was no lack of courage, no want of a fighting heart that caused the Hatter downfall, but merely a day when everything went wrong at the same time. Statistics of the game show Stetson as the outstanding ground gainer and best in all other departments—but the short end of a 6-0 count still spells "lose" to the Florida men. A tough one to lose!

Friday, November 3, found the boys at Miami battling to a 6-6 deadlock with the Hurricans who were just a mere breeze when the final gun sounded the end. The gang showed the same fine work, but was devoid of any scoring punch. Led by the diminutive spark plug, Knittle, and the slashing Slade, the McQuillan offense worked beautifully up and down the field—but bogged down in the shadow of the checked lines. A beautiful game in which we out-classed the enemy by far! The favorites were surprised.

Back home again the next week end, a vastly improved, desperate, Hatter eleven put on one of the finest exhibitions ever witnessed in DeLand in the way of team play—blocking, ferocious tackling and hard running. Bert Slade, the fast running, hard driving, half back of the Hatters scored all points. His form was beautiful to witness while the blocking of Captain Peek, Wotring, Gannerilli, Haynesworth, Gordon, and Singleton was beautiful to see. The whole team coordinated perfectly and the deceptive McQuillan system brought gasps of astonishment from the spectators.

The Armistice day game with Southern was just a warm up game for the Tampa battle. McQuillan only used one formation this game, and the boys scored at will. Phillip, Gordon, Wotring and Shemer showed great form and drive.



KNITTLE

HARDY

INGRAM

MARTIN

The Tampa game on Homecoming was a thrilling epic—a homecoming throng of 5000—mostly old grads—saw the most brilliant game of the season. Every member of the team was outstanding with Ingram, Slade and Captain Peck showing the way. A sustained 60 yard Tampa drive brought the first touchdown for the Spartans, but the Hatters were not to be denied as they worked with machine-like precision yard after yard up the field for their first two touchdowns. Ingram, giant tackle proved a continual thorn in the Higgins coached team on the defense and to climax a brilliant day, Dick intercepted a lateral pass and galloped 6 yards for a score. It was a great day for the old grads, the team, and coach McQuillan.

And so the final game of the season rolled around, the swan song of coach McQuillan as Stetson's football mentor. Florida won 14-0, but only after a terrific battle. Florida did not earn a touchdown through straight football. An intercepted Stetson pass plus a forward pass by Chase to Brown were the only score made. The boys are going to get them there gators next year, though!

## FAREWELL Good-bye Seniors

Whom shall we have back to replace Captain Joe Peck, the All State Tackle Bert Slade, All State Halfback—goal old Sid Singleton, one of Stetson's greatest wing men—"Spot" Weaver, the "Iron Man" Center—Thursby, one of the best guards since Bill Gartier—and last but not least, "Man Mountain" Caudil, that tower of strength a tackle. Good-bye, boys, and good luck!



WEAVER

THURSBY

GORDON

SLADE

SCHEMER

BASKET BALL TEAM



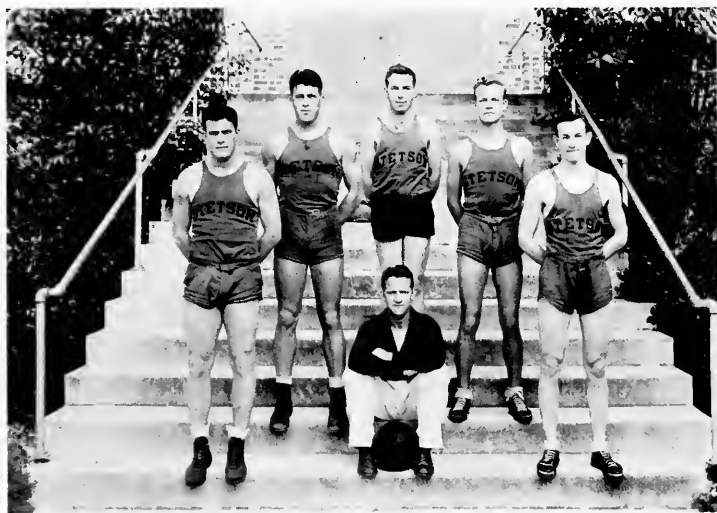
Slade, Wotring, Ofutt, Gough, Columbo, Prakken, Bindford, Fromhart, Phillips, Robinson, and Lawrence.

The McQuillan system again reigned supreme in Southern Conference circles as the Hatters, in their major games of the year triumphed over Georgia and Florida. The 1934-1935 team compared favorably with those of the past and the potential strength of the team will be realized to its fullest extent next year. Captain Slade is the only senior to graduate, but his loss will be keenly felt. The season ended with thirteen games won and four lost.

The schedule and results follow:

Daytona .....	26	Stetson .....	67
Daytona .....	12	Stetson .....	54
Cohen Bros. ....	15	Stetson .....	40
Southwestern U. ....	34	Stetson .....	21
Louisiana College .....	29	Stetson .....	26
Louisiana Tech. ....	37	Stetson .....	25
Mississippi College .....	40	Stetson .....	44
Mississippi Teachers .....	41	Stetson .....	43
Florida .....	40	Stetson .....	32
Tampa .....	35	Stetson .....	46
Tampa .....	35	Stetson .....	48
Florida .....	25	Stetson .....	40
Georgia .....	27	Stetson .....	31
Rollins .....	15	Stetson .....	32
Rollins .....	34	Stetson .....	44
Rollins .....	21	Stetson .....	44
Millsaps .....	48	Stetson .....	32

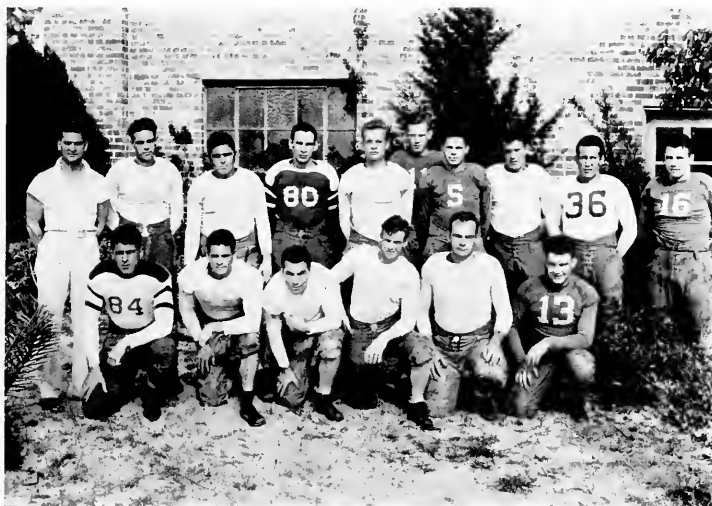
## Freshman Basket Ball Team



The 1934-1935 "Baby Hatter" team enjoyed its most successful season in the history of the school. Thirteen games were played without a defeat—a perfect season. Outstanding victories were registered over the Baby Gators and Orlando, finalists in the Florida Gold Medal tournament.

Ryan and Branham were positively outstanding for the season, while Doolen, Sims, Minchart, Edge, and Carpenter played excellent ball. Team play and cooperation spelled success to the greatest Freshman team ever to represent the school. George Straus, former basketball luminary, coached this superb ball club. We need you next year, Frosh!

## Freshman Football Team



Back row: Coach Rousseau, Suits, Glidewell, Green, Sims, Hackworth, Clontz, Ryan, James, Dickson.  
Front row: Branham, Strickland, Doolen, Norwood, Stevenson, Frison.

The 1934 edition of future greats on future Hatter teams showed great promises.

Much of the success of the varsity team may be attributed to the opposition furnished by the "Baby Hatters".

As usual, quality was present as to numbers of players, and not quantity. Rousseau, freshman coach, is to be commended for the fine spirit and team play exhibited by the first year boys.

Nothing less than broken bones or the bugaboo of scholastic requirements shall keep Minchart, Ryan, Lobinger, Branham, James, Glidewell, Frison, Dickson, Doolen, Stevenson, or Clontz from shouldering a few of the now varsity team out of their positions.

Congratulations, Frosh!



WOMEN'S ATHLETIC ASSOCIATION

W. A. A. OFFICERS

<i>President</i>	- - - - -	PAULINE WILSON
<i>Vice-President</i>	- - - - -	DORIS KNAAK
<i>Secretary</i>	- - - - -	MATILDA OSTDAM
<i>Treasurer</i>	- - - - -	KATHLEEN SAMPLE
<i>Publicity Manager</i>	- - - - -	MARY DOWNEY CHATHAM

Freshmen Managers

Katherine Batman      Ruth Goss

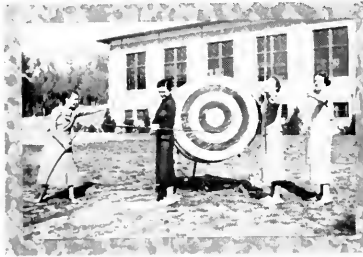
Sophomore Managers

Gale Naylor      Barbara Davis

Recorder of Points

Elizabeth Martin





ARCHERY

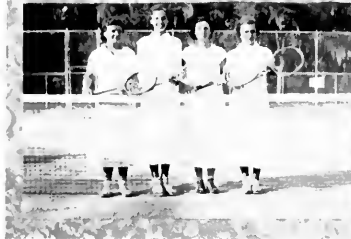


BASKETBALL

Although still young, the Women's Athletic Association is progressing rapidly in fostering the ideals of good sportsmanship and in increasing participation in all sports. The program of sports includes tennis, archery, swimming, basketball, ping-pong, and hand ball.

This year the organization took a further step toward success by joining the Athletic Federation of College Women.

Every woman of the University is eligible for membership in the W. A. A. which has as its slogan, "A Sport for Every Girl and Every Girl A True Sports-woman".

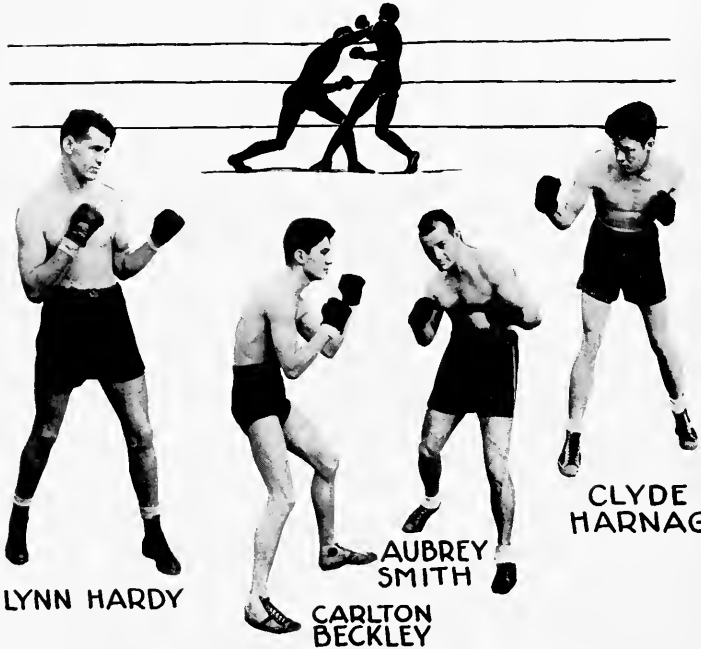


TENNIS



NEW TENNIS COURTS

# BOXING



**LYNN HARDY**

**AUBREY SMITH**

**CARLTON BECKLEY**

**CLYDE HARNAGE**

Several of the boys whose pictures are not above are John Salvage, Robert Young, and Joe Pernley, intramural fighters.

The Stetson team fought well throughout the whole season in their first meet of the year, they met and defeated the tough Daytona Beach Y.M.C.A. team in great style.

Three of the boys went through the central Florida A. A. U. tournament and won three central Florida championships. Fighting in the State A. A. U. meet in St. Augustine, Lynn Hardy won the State



Championship, but only after a terrific fight in the finals.

The boxing team, inaugurated this year, has brilliant outlooks for the future as all the present team will be back next year. Bouts with Tampa, Florida, Miami, and Southern are scheduled.

Lynn Hardy Heavyweight champion of the state.

Aubrey Smith, Welterweight. Clyde Harnage, Lightweight. Carlton Beckley, Featherweight.

Jack Burkhalter, coach.







## Dan-Hellenic Council



President - - - - VIRGINIA PEEK  
Vice President - - - PAULINE WILSON  
Secretary - - - DOROTHY SKILLMAN  
Treasurer - - - EDNA ALDERMAN

Representatives: Moise Williams, Elizabeth Alexander, Georgia Kirby,  
Josephine Price.



## Alpha Xi Delta

Founded at Lombard College 1893

Omega Chapter Established May 31, 1917

Colors: Light and Dark Blue and Gold

Flower: Pink Rose



PAULINE WILSON  
ELIZABETH ALEXANDER  
DOROTHY FULLER  
LOUISE ROYAL  
ESTELL DUKE  
MARY DOWNEY CHATHAM

AILEEN WORTH  
MARGORIE HARBELL  
WILLIE DEE WILLIAM  
BESSIE FAYE MILES  
MARTHA McCONNELL  
RUTH OSGOOD

THE HATTER



DORIS BARTLETT  
 VICTORIA BURT  
 MARGARET CHAMP  
 CORNELIA McRAE  
 MARTHA MITES  
 RACHEL GRIPPIN

AILEEN VERCOE  
 SUE LATIMER  
 HELEN WEIR  
 HELEN COLLINS  
 FRANCES PAULKNER  
 MILDRED NICKEL



## Delta Sigma Phi



Founded at College of New York, December 10, 1899  
Alpha Chi Chapter Established 1898; Founded 1925

Colors: Nile Green and White

Flower: White Carnation

### CHAPTER MEMBERS

#### In Facultate

Prof. Robert Allen

L. H. Tribble

Donald Faulkner

#### In Universitate

##### Actives

Sidney Taylor  
Frank Ortman  
Walter Smith  
George Leonard  
Wilber Luttrell  
Allen West

James Mather  
James Nemeč  
J. B. Rodgers  
Rodney Thursby  
Richard Simpson  
William Tomyň

Carl Weeks  
Paul Wongrey  
Thomas Teasley  
Walter Taylor  
Reed Knox  
Harold Dassler

##### Pledges

Clement Combs  
William Glidewell  
William Kaehler  
David Lang  
Raymond Millwee  
Raybun Millwee

Carl Norwood  
F. W. Strickland  
C. R. M. Sheppard, Jr.  
Landis Knight  
G. S. Murphey  
Earl Knabb

Eugene Hackworth  
Hershel House  
Burnis Parkerson  
Richard Fromhart  
Donald Roberson  
Hall Godbold



# THE HATTER



Sidney Taylor  
 Frank Ortman  
 Walter Smith  
 George Leonard  
 Allen West  
 J. B. Rodgers

Richard Simpson  
 Paul Wongrey  
 Robert Allen  
 James Amler  
 James Nence  
 Carl Weeks

Wilber Luttrell  
 William Tomwu  
 Landis Knight  
 Barhis Parkerson  
 Hall Godbold  
 Harold Dassel  
 C. R. M. Sheppard, Jr.



## Pi Beta Phi

Founded at Monmouth College 1867

Florida Chapter Established Jan. 30, 1913

Colors: Wine and Silver Blue

Flower: Wine Carnation



Helen Horn  
Elizabeth Dreka  
Helen Spurling  
Maxine McClarty  
Helen Mae Christian

Geraldine Simmons  
Virginia Binsel  
Marjorie Hammer  
Ettie Stover  
Georgia Kirby

Ruth Boisch  
Dorothy Skillman  
Mary Louise Board  
Dorothy Haines  
Sara Wilson

# THE HATTER



Elizabeth Babcock  
Dorothy Hooker  
Elizabeth Dreyka  
Elizabeth Rider  
Frances Oglvie  
Mary Brown

Mary Maxwell  
Helen Binn  
Edna Corbett  
Mary Ellen Lord  
Inez Hill  
Judy Brown

Dorothy Fields  
Mary Louise Bass  
Wuanita Talbot  
Mary Jane Mayer  
Miss Anne Holden

SIGMA NU



Founded at Virginia Military Institute, January 1, 1869  
 Delta Mu Chapter Established 1913

Colors: Black, White and Gold

Flower: White Rose

CHAPTER MEMBERS

In Facultate

Louis Marvin

In Universitate

Harry Gaylord  
 William Solomon  
 Cecil Cowart  
 John Atwater  
 Carl Howard  
 Clyatt Broward  
 Kenneth Freeman  
 Richard Ingram  
 Leslie Johnson  
 George Linney  
 Lauris Nichols  
 Jack Phillips

Philip Dold  
 Roy Hamlin  
 Roy Zaidie  
 Richard Sims  
 Raymond Parrish  
 Lu L. Brown  
 Carlton Beckley  
 Wilbur Mead  
 Robert Thomas  
 Thurmond Knight  
 Joe Pernley  
 Harold Dona

James Parrish  
 Paul McKinney  
 Richard Faulkner  
 William Green  
 William Kramer  
 Donald Pounds  
 Donald Phillips  
 Hughes Wilson  
 Sidney Singleton  
 Jack Marsch  
 Vassel Carlton  
 Joe Rousseau

# THE HATTER



Jack Phillips  
 Wyatt Broward  
 Therman Knight  
 Cecil Cowart  
 Lu Brown

Leslie Johnson  
 Richard Ingram  
 Joe Rousseau  
 Kenneth Freeman  
 William Solomon  
 Donald Pounds

Dewitt Davis  
 James Parrish  
 Richard Faulkner  
 Carl Howell  
 H. R. Bishop



## Delta Delta Delta

Founded at Boston University 1888

Alpha Delta Founded May 17, 1913

Colors: Silver, Gold, and Blue

Flower: Pansy



Florence Brownee  
 Virginia Cook  
 Doris Knank  
 Susanna Penny

Josephine Price  
 Madeline Hale  
 Louise Hickson  
 Evelyn Beach  
 Virginia Skaggs

Wilda Larson  
 Alice McLaughlin  
 Mary Lou Logan  
 Ruth Hudson

# THE HATTER



Frances Lee  
Dorothy Lee-Tyre  
Ollie Mae Brown  
Helen Doss

Ollie Parrish  
Gale Naylor  
Katherine Batman  
Ruth Goss  
Louise Maurhoff

Marguerite Hays  
Lacey O'bell  
Curtis Horn  
Barbara Petrey



## PI KAPPA PHI



FOUNDED AT THE COLLEGE OF CHARLESTON, 1909  
CHI CHAPTER ESTABLISHED 1921

Colors: Gold and White

Flower: Red Rose

### CHAPTER MEMBERS

#### In Facultate

William E. Duckwitz

#### In Universitate

##### Actives

William Jennings  
E. E. Hull  
Howard Bateson  
Neal Faircloth  
Ned Holland  
Dennis Carroll  
Malcolm Day

Boyce Ezell, Jr.  
Leon Sandlin  
Chester Saunders  
Hilton Shoemaker  
Frank Stoudenmire  
Amory Underhill  
William Wilson  
Robert Young

Mack Ezell  
Burton Laney  
Quincy Masters  
Perry Nichols  
Joe Peck  
Pierre Poole  
R. G. Roberts

##### Pledges

Sam Barber  
David Bracey  
Winston Bridges  
Tom Cobb  
Grady Crawford

Fred Fitzgerald  
Jack Haynesworth  
Lawrence Hartsfield  
Grover Kirby  
Bene Ledbetter  
Paul MacEathie

Jennings Minton  
Lloyd Pawley  
Ora Sage  
Floyd Mahan  
Guy Merry

1935



# THE HATTER



William Jennings  
 R. B. Hall  
 Howard Bateson  
 Neal Faircloth  
 Pierre Poole  
 Jennings Minton

Malcolm Day  
 Grover Kirby  
 Lawrence Barfield  
 Dennis Carroll  
 Joe Peck  
 Hilton Shoemaker  
 Ned Holland

Quincy Masters  
 Chester Saunders  
 Amos Underhill  
 Marvin Garrison  
 Boyce Ezell, Jr.  
 Dr. W. W. Duckwitz



## Zeta Tau Alpha

Founded at Virginia State Normal  
 October 15, 1898  
 Beta Psi Chapter Established  
 October 12, 1934  
 Colors: Turquoise Blue and Steel Gray  
 Flower: White Violet



Moise Williams  
 Elter Turner  
 Pauline McFarland  
 Edna Alderman

Cleudia Osbourne  
 Margaret Ogilvie  
 Alice Lee  
 Margaret Johnson  
 Evelyn Barhaus

Elizabeth Brooks  
 Vinoly Woodward  
 Alice Lee Swain  
 Iris Daniel

# THE HATTER



Ellen Stephens  
Josephine Hamlin  
Ruth Crooks  
Anne Gollnick  
Mary Hudson

Stella Pope  
Eleanora Burroughs  
Maurine Moseley  
Avaryce Collier  
Dorothy Davis  
Dallas Partin

Florence Duren  
Lillian Turnquist  
Anne Ross  
Margaret Hawes  
Audrey Lockett

## THETA ALPHA PHI



### CHAPTER MEMBERS

#### In Facultate

Dr. I. C. Stover  
Dean Lewis Tribble

Dr. Charles Farris  
Miss Willie Dee William

Prof. D. Faulkner  
Prof. Louis Marvin

#### In Universitate

Amory Underhill  
Colquitt Pardee  
Lois Wright  
Howard Bateson  
Virginia Elnest

Boyce Ezell  
Josephine Price  
Louise Royall  
Bette Stover  
Watts Bracey

Frank Ortmann  
Tom Barton  
Sidney Taylor  
Malcolm Day  
Walter Smith

### PLAYS PRESENTED

*Lady Windermere's Fan*  
*The Jade God*  
*Smilin' Through*  
*Holiday*

*The Wild Duck*  
*So This Is London*  
*The Return of Peter Grimm*  
*Love's Labor Lost*

# PI KAPPA SIGMA

FOUNDED AT MICHIGAN TEACHERS COLLEGE 1894

THETA CHAPTER ESTABLISHED 1929

COLORS: TURQUOISE AND GOLD

FLOWER: FORGET-ME-NOT



Doris Knaak  
 Claude Osborne  
 Wilda Larson  
 Violet Pelker  
 Margaret Maxfield

Josephine Price  
 Virginia Peck  
 Jeanette Stevens  
 Evelyn Burhans  
 Frances Oglivie  
 Ruth Goss

Ruth Turner  
 Ruth Crooks  
 Floanna Burroughs  
 Dorothy Fuller  
 Susanne Penny



The Order  
of  
Torch and Scroll

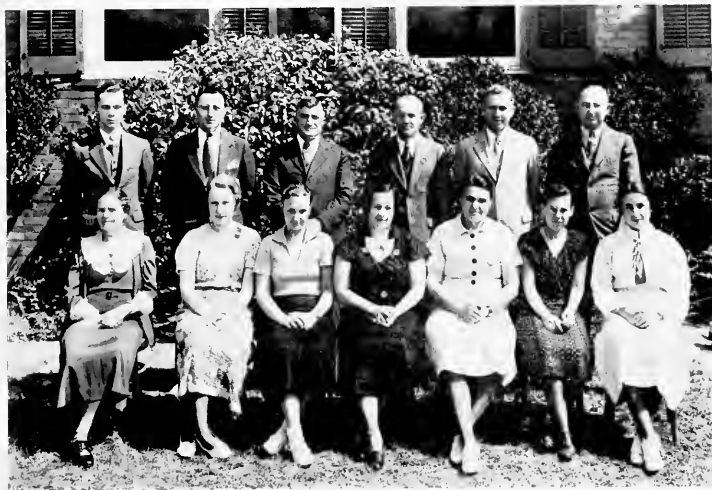


Louise Royall  
Olga Bowen  
Willie Lee William

Marjorie Hammer  
John Duss  
Elizabeth Alexander  
Sidney Taylor

Ruth Osgood  
Ed Brown  
Howard Bateson

## PI GAMMA MU



### HONORARY SOCIAL SCIENCE FRATERNITY

FOUNDED AT SOUTH EASTERN COLLEGE 1924  
FLORIDA GAMMA CHAPTER ESTABLISHED 1919

Colors: Blue and White

### CHAPTER MEMBERS

Dr. Eola K. Eastburn  
Evelyn F. Beach  
Wilda Larson  
Lucy Ann Neblett  
Etter Turner  
Harriet Kennedy  
Beatrice Priester  
Howard Bateson

Ernest Rano  
Dr. C. A. Fisher  
Mr. Woodruff  
Dr. J. W. Futch  
Dr. W. N. Baer  
Robert Kenneth Dulling  
Frances C. Thornton  
Dean C. P. Carson

Dr. Garwood



**Mu Omega Xi**  
 Founded at University of Fla. 1933  
 Beta Chapter Established 1933



Dennis Carroll  
 Aileen Worth  
 Wilda Larson  
 Pauline McFarland

Pauline Wilson  
 Walter Weaver, Jr.  
 Ruth Boisch  
 Veronika Davis

Miriam Wayt  
 Dr. H. C. Garywood  
 Prof. H. S. Winters  
 Josephine Price





## Baptist Student Union Council



James Parrish  
Beatrice Priestler  
Dr. H. C. Garwood  
Allen West  
Etter Turner

Webb Brooks  
Iris Daniel  
Margaret Harper  
Joe Folds  
Edna Alderman

J. B. Rodgers  
Malcolm Day  
Sara Wilson  
Jack Burkhalter  
Pauline Prevatt

## The Mystic Crew



### MEMBERS

Ernest Rano  
Jack Phillips  
William Jennings  
Marvin Garrison  
George Straus  
Amory Underhill  
James Mather

William Tomy  
Tom Barton  
Carl Howell  
Joe Burkhalter  
James Parrish  
Charles Reaves  
John Duss

Harry Gaylord  
John Hyman  
Colquitt Pardee  
Joe Lea  
Boyce Ezell, Jr.  
R. B. Hall  
Walter Weaver



**Student  
Government  
Council**



Edley Turner  
Virginia Peck  
Martha McConnell

Josephine Price  
Marjorie Durrell  
Helen Horn

Edna Corbett  
Josephine Hamlin



Editor  
Activity Editor  
Faculty Advisor  
Art Editor  
Class Editor  
Picture Editor

EDNA ALDERMAN  
MARGARET JOHNSON  
PROF. H. C. WINTERS  
ESTELLE DUKE  
SARA WILSON  
HOWARD BATESON



Business Manager	C. R. M. SHEPPARD, J.
Advertising Manager	SUSANNE PENNY
Snap Shot Editor	CECH, COWART
Advertising Manager	ALICE LEE SWAIN
Boys' Athletic Editor	GEORGE STRAU'S
Girls' Athletic Editor	PAULINE WILSON



The  
Honor

Ester Turner  
 Helen Mae Christian  
 Pauline McFarland  
 Doris Krausk  
 Margaret Moxfield  
 Virginia Emsel

Sara Wilson  
 Georgia Kirby  
 Pauline Wilson  
 Ruth Busch  
 Wilda Larson  
 Edna Corbett

Josephine Price  
 Marjorie Harrell  
 Virginia Peck  
 Martha McConnell  
 Helen Horn



James Parrish  
Dr. H. C. Garwood  
Joe Folds  
Fayette Hall  
Webb Brooks

Jennings Minton  
Findley Edge  
Dewitt Davis  
J. Allen Webster  
Arvell Miller

Theodore Jones  
Jack Burkhalter  
Allen West  
Malcolm Day



**Phi Beta**  
National Honorary  
Musical Fraternity



Elizabeth Alexander  
Lucy Ann Nehlett  
Veronica Davis  
Iris Daniel

Dorothy Mayer  
Marie Hershey  
Pauline Prevatt  
Mae Marvin  
Virginia Skaggs

Ruth Murphy  
Sara Staff  
Roberta Nigels  
Margaret MacDonough



## Engineering Society



### CHAPTER MEMBERS

#### In Facultate

Prof. C. M. Lowry  
Dr. R. L. Allen  
Dr. C. B. Vance

Dr. J. F. Conn  
Prof. Donald Faulkner

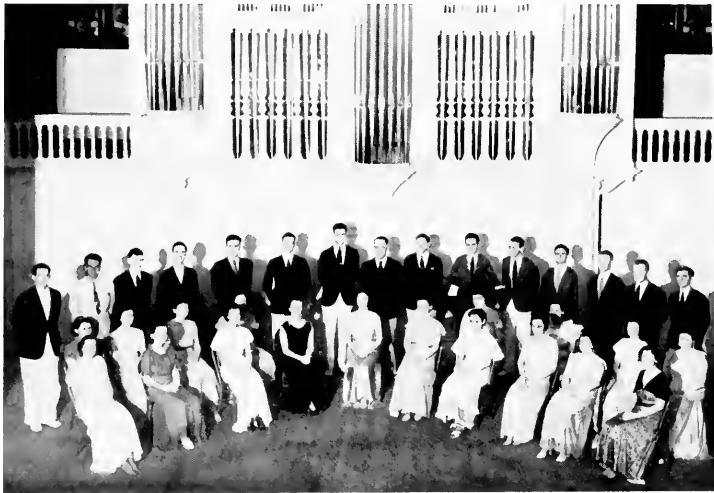
#### In Universitate

Hilton Shoemaker  
C. M. Ryerson  
H. J. Fisher  
J. L. Carpenter  
Reed Knox

James Mather  
Rene Ledbetter  
Harrison Oaks  
H. B. Stallings  
Walter Taylor

Nick J. Marsch  
Jack Hughes  
John Turner  
George Linney  
Tom Lawrence

THE HATTER  
  
 GLEE CLUB



**DIRECTOR**

Prof. Thomas Remington

**PRESIDENT**

Margaret Johnson  
**FIRST SOPRANOS**

Eleanor Davis  
 Margaret Johnson  
 Chas. Erickson  
 Marion Wood  
 Suzanne Sawyer

Cynthia Waterman  
 Ruth Crooks  
 Eva Sullivan  
 Dorothy Mayer  
 Alice DeCoursey

Mrs. R. L. Allen  
 Dorothy Halme  
 Rhoda Neel  
 Helene Golding

Tom Tenstey  
 Allen West

**BARITONES**

Wilbur Lattrell  
 William Sample

John Dighton  
 M. J. Routsse

Grover Kirby  
 Norman Bennett

**BASSOS**

Jennings Minton  
 Hubert C. Smith

George Brown  
 John Duss

Estelle Duke  
 Ann Carlton  
 Margaret Champ

**SECOND SOPRANOS**

Wannita Talbot  
 Alice McLaughlin  
 Ruth Murphy

Bernice Fleming  
 Emily Wheeler

Virginia Skaggs  
 Josephine Hein  
 Madge Williams

**ALTOS**

Louise Maurhoff  
 Ruth Bartlett  
 Marvadene Boyte

Martha McConnell  
 Veronica Lesko

J. B. Rogers  
 Fayette Hall

**TENORS**

Dewitt Davis  
 Leroy Waterman

Pinkston Waterman  
 Cardon Reeves

Emily Wheeler

**ACCOMPANISTS**

John Duss  
 Miss Rosa Lee Gaut

Ruth Murphy







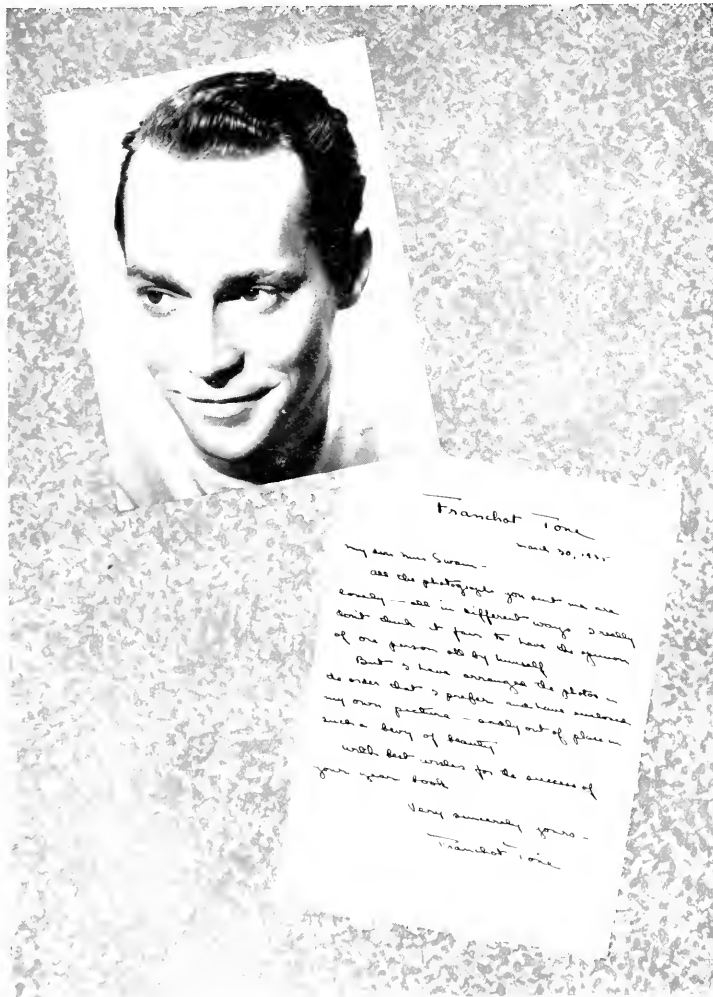


FROM THE EDITOR



In taking the responsibility to select the "WHO'S WHO of STETSON" this year, the annual staff sponsored a new way in which the students were to be chosen for campus honors. Names of candidates were submitted by each social fraternity and non fraternity group, and were left with a faculty committee for final decision and approval by the staff. Stetson's three most beautiful girls were selected from pictures sent to Franchot Tone, and were judged by Mr. Tone himself. So it is with the appearance of this, the 1935 HATTER, that the staff is pleased to share with you the announcement of the following outstanding students. May they maintain leadership throughout life. . .

# THE HATTER



Franchot Tone

March 30, 1937

My dear Mrs. Swan -  
see the photographs you sent me are  
lovely - all in different ways I really  
don't think it fair to have the opinion  
of one person all by himself  
But I have arranged the photos -  
in order that I prefer and have ordered  
my own pictures - and out of place in  
such a bag of beauty  
With best wishes for the success of  
your year book

Very sincerely yours -

Franchot Tone





LOUISE HICKSON

IRIS DANIEL

VICTORIA BURT



*Most Popular Girl*  
VIRGINIA PEEK

*Most Popular Boy*  
HARRY GAYLORD



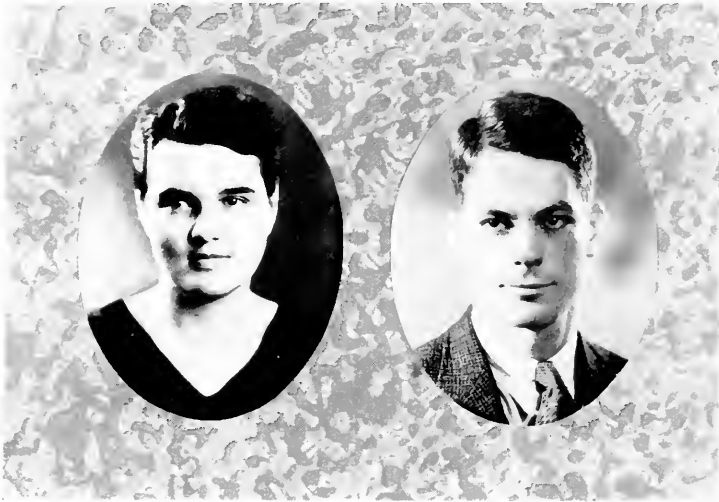
*Most Intellectual Girl*  
LOUISE ROYALL

*Most Intellectual Boy*  
HOWARD BATESON



*Most Athletic Girl*  
MARY LOUISE FOARD

*Most Athletic Boy*  
BERT SLADE



*Best All-Round Girl*

ETTER TURNER

*Best All-Round Boy*

WALTER WEAVER



*May Queen*  
PAULINE WILSON

*Best Looking Boy*  
ROBERT SUITS



*City Hostess  
Homecoming*  
SARA WILSON



*City Mayor  
Homecoming*  
AMORY UNDERHILL

# THE HATTER

---





# THE HATTER



THE HATTER



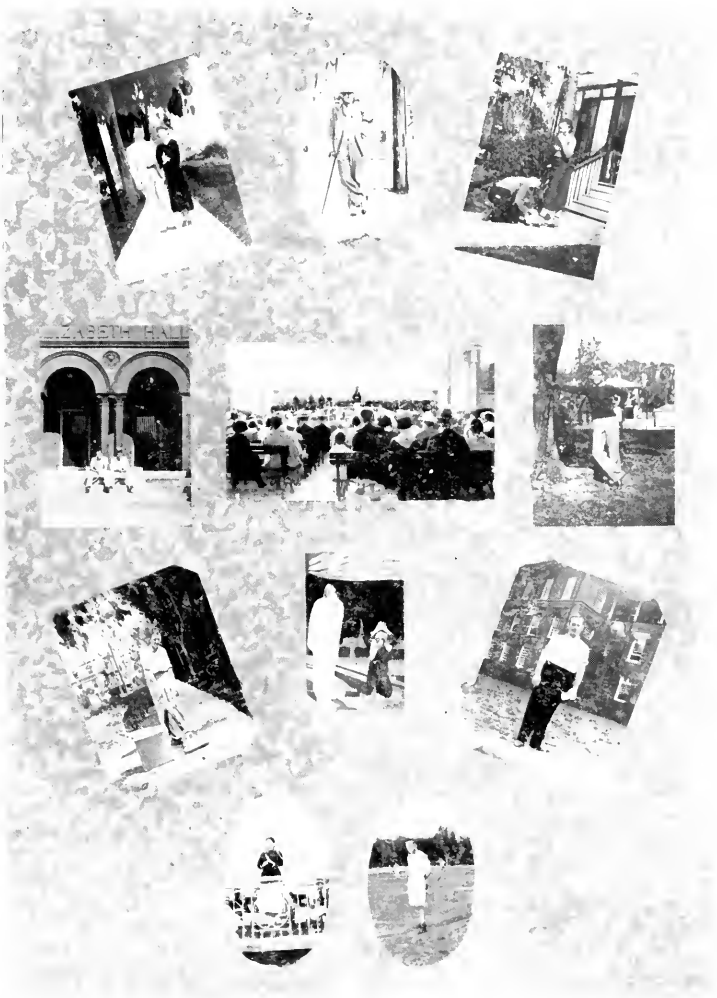
1935



# THE HATTER



# THE HATTER



1935

## JOKES



(Hum softly to tune of "Tramp, Tramp, Tramp")

Tramp, Tramp, Tramp, the girls are marching,  
Into chapel, one by one—  
They're so slow they block the door,  
As they stop to talk galore;  
Says Miss Bowen, "Don't be like that anymore."

-----  
Carl Weeks: "What have you been doing all summer?"  
Richard Simpson: "I had a position in my father's office,  
And you?"  
Carl: "I wasn't working either."

-----  
Dr. Gordis rapping on desk for order.  
Joe Folds: "Come in!"

-----  
Dennis Carrol: "I sleep with my dog every night."  
Jo: "But that's unhealthy."  
Dennis: "I know, but he is used to it."

-----  
Katherine Batman: "Late hours are not good for one".  
Joe Folds: "No, but they're fine for two".

-----  
Prof. Winters (to American history class): "Now, class, I think we have time for  
one more battle before the bell rings."

-----  
Did you hear about the Scotchman who wore his old clothes because he was going  
on a blind date?

-----  
The students who are continually late for 8:00 classes should eat yeast cakes and  
rise sooner.

-----  
Prof. Conn (making an assignment to chemistry class): "On Wednesday we will  
take sulphur."

-----  
Orator: "Take away women and what follows?"  
R. B. Hall: "Me!"

-----  
Ralph Odum: "My Scotch uncle sent me a picture this morning."  
Paul James: "What does it look like?"  
Ralph: "I don't know yet; I haven't had it developed."

## THE CITY OF DELAND



The Hatter Staff and the Students of Stetson University Appreciate the Cooperation of the City of DeLand through the following:

ARTHUR C. HATCH

Mayor

F. N. DeHuy

Carl N. Miller

S. B. Wilson

W. O. Lahrman

Commissioners

GRANT BLY

City Manager



### OUR MERCHANTS

have contributed most generously this and in past years and make possible many student activities. They have the good will and support of every Stetson student.



The Hatter Staff will always remember the assistance given by these bodies in making this publication a success.

C. R. M. SHEPPARD, Jr.  
Hatter Business Manager.

FRIERSON'S

No. 220  
North Blvd.

# Firestone

Phone 23  
That's Me

ONE-STOP SERVICE

Compliments of

*Coca-Cola*  
*Bottling Company*

OF  
DeLAND

Eddie Nelson: "I've been stung by a wasp."

Louise: "Quick! Put some ammonia on it."

Eddie: "I can't! It's gone."

Dr. Farris: "Mr. Lancy, that's the third time I've seen you look at Mildred's paper."

Burton: "Yes, sir, she doesn't write very plain."

Jimmie Mather: "It's preposterous, old man. I'm an expert driver. What I know about driving would fill a book."

Constable: "And what you don't know would fill a hospital. Give us your name and address now."

Mother: "What's the matter, dear?"

Dallas Partin: "The boy friend and I have parted forever."

Mother: "Well, in that case I don't suppose he'll be around for a few days."



# STETSON



Bright, brisk hats to crown keen, young faces . . . styled to give you an air of casual confidence . . . designed with custom care and craftsmanship . . . in attractive colors and contours . . . new styles by Stetson. Available at the better stores, in more than seven thousand towns throughout the world.



JOHN B. STETSON COMPANY

Philadelphia

*The Mark of the World's Most Famous Hat*

The  
BARNETT NATIONAL  
BANK

*"A Florida Landmark"*

Best Wishes  
and  
Lots of Success

to  
CLASS OF 1935



The DeLAND SUN NEWS

INSURANCE

HON-AGENCY, Inc.

220 N. Boulevard  
Phone 455



---

*33 Years The Headquarters of*

---

## Quality Printing and Engraving

### Your Printing

is your representative. It reflects your personality, character and judgment. — Therefore, you should select your printer as carefully as you would your physician or your lawyer

### Our Plant

appreciates the confidence our clients impose in us. Each and every job—from a calling card to an annual—is given the same careful attention. It will be to your advantage to consult us regarding your next order for printing or engraving—Engraved June Weddings our specialty.

Carl W. Hill

1101 Ashley Street

Tampa, Florida

DeLand

Florida

# DREKA'S

Volusia County's Oldest and Largest Store

Stetson - Students - Faculty - Alumni



We  
Welcome  
You

A Complete Stock of Dependable Merchandise  
at Popular Prices

G. A. DREKA and CO.

DeLand, Florida

Watts Hardware &  
Furniture Company

43 YEARS IN DE LAND

*"Where Your Dollar Goes Further"*

STUDENTS  
SUPPLIES

Note Books  
Stationery  
Fountain Pens

PORTABLE TYPEWRITERS  
REPAIRS - RENTALS

*Your Are Always Welcome*

At

ALLEN-WHITE CO.  
DE LAND, FLA.

The CITY OF DE LAND

Offers Congratulations

TO THE

Graduating Class of Stetson University

1935



De Land Chamber of Commerce

*Compliments of*

The SPARKS THEATERS  
IN DE LAND

V. M. Fountain Co.

MENS WEAR - SHOES

32 Years of Service in DeLand



V. M. Fountain

J. C. Hurt

Olin Martin

J. F. Tatum

V. M. Fountain, Jr.

*Compliments of*

McCrorry's 5 & 10  
Cent Store

Headquarters for  
Daily Necessities

*The*  
**Tampa Daily Times**



**Tampa's Only  
Afternoon  
Newspaper**

*and*

**MOST EFFECTIVE  
ADVERTISING  
MEDIUM**



**Owner and Operator of WDAE**  
*Tampa's Only Radio Station*

F. N. DeHuy & Son

Jewelers and Silversmiths  
Since 1873

HUNGRY ?

LET "POP" PRESCRIBE  
LOG CABIN—  
BARBECUE

We Compliment

The Hatter Staff and  
The Graduating Class  
of 1935

F. H. HAMMER, Agt.  
Standard Oil Co.

*For Good Home Cooked Meals*

Mrs. Nick's is the Place

Cozy Dining Room

Mrs. Geo. Nicholson, Hostess

GREETINGS

From

Your Official Photographer

L. B. TRUESDELL



# J. F. ALLEN FURNITURE COMPANY

HOME OF DEPENDABLE GOODS SINCE 1882

53 YEARS IN BUSINESS AND STILL GOING STRONG

FUNERAL DIRECTORS

REAL AMBULANCE SERVICE

## The FRANCES SHOP

Dresses - Coats

Hats - Hose

Lingerie

Style Center

of

DeLand, Florida

## The Courthouse Pharmacy INC.

"The Store of Personal Service"

Near the Court House

Headquarters for STETSON Students

We deliver from 8 a.m. to 10 p.m.

Phone 5      C. M. GEIGER, Prop.

## BRANDON ELECTRIC CO.

*"Everything Electrical"*

Our Service and Sales Departments are  
at Your Service

Norge Refrigerators—Electric Washers—R.C.A. Radios  
202 N. Boulevard

Phone 536

# HOTEL COLLEGE ARMS

DE LAND, FLORIDA



*A Winter Home for Discriminating People*

Beautiful Location

Elevator, Steam Heat

Unexcelled Golf Course

White Service Throughout



THE END!









