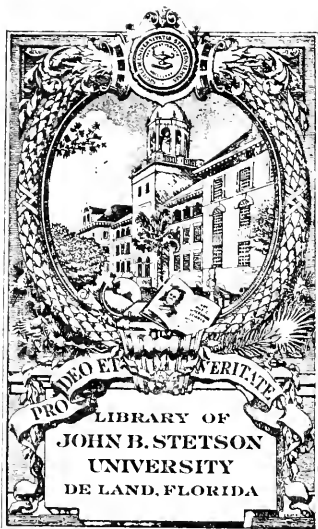




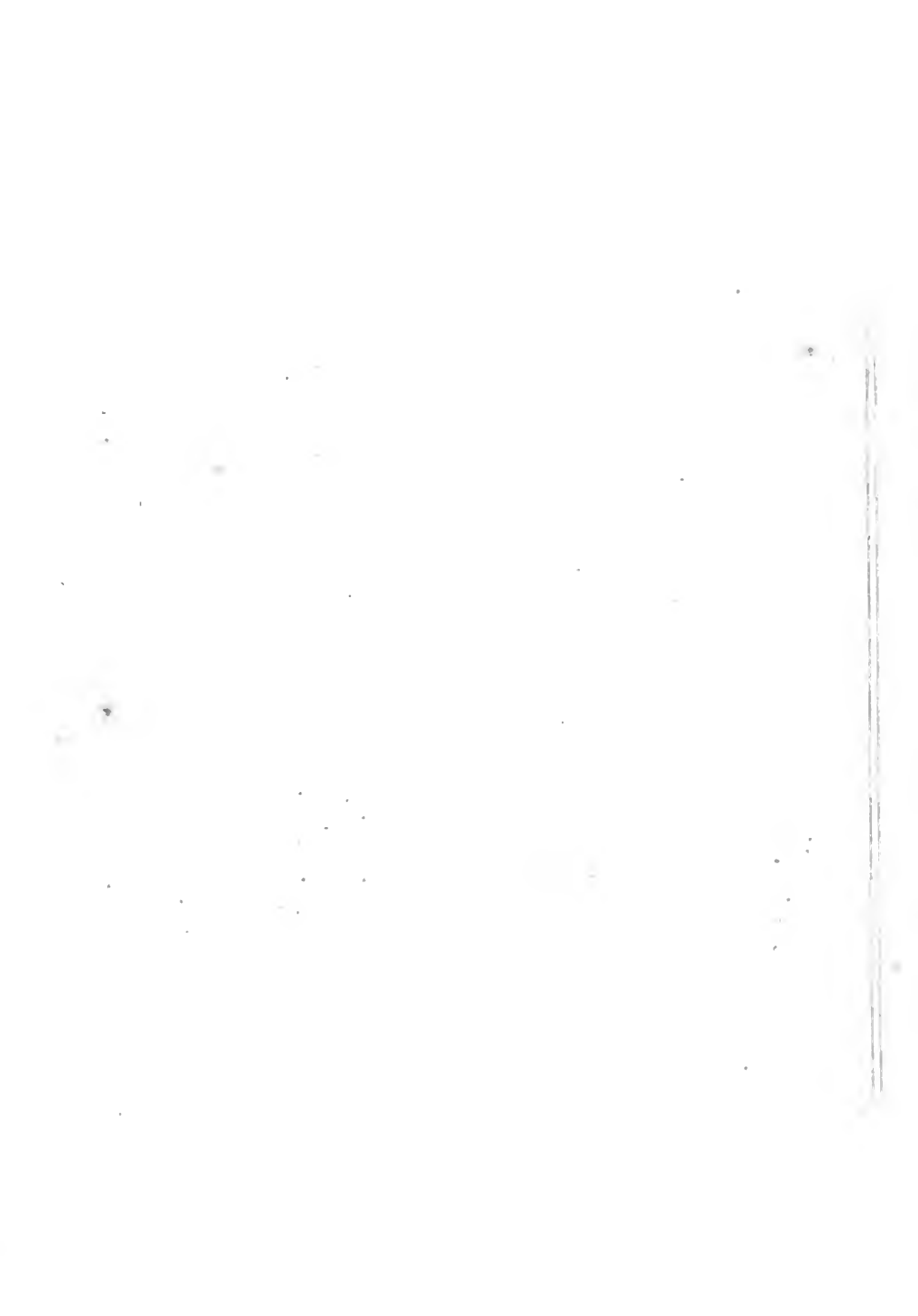
THE HATTER 1936



Gift of  
Editorial Staff







Digitized by the Internet Archive  
in 2010 with funding from  
Lyrasis Members and Sloan Foundation

<http://www.archive.org/details/hatter1936stetson>



THE HATTER

*Published by*

THE ANNUAL STAFF

*of*

STETSON UNIVERSITY

DELAND, FLORIDA

1936

*Edited by*  
DOROTHY HAINES

*Managed by*  
J. NEAL FAIRCLOTH

# Dedication

We, the staff of the 1936 Hatter, dedicate this volume to our true friend, Dr. Charles S. Farriss, a teacher of distinction, a scholar of high rank, who has contributed greatly to the growth of the school, and who has endeared himself to his students forever.





DR. CHARLES A. FARRISS

# Foreword

To each student may the pages of this book be as a mirror, reflecting the sweetest hours, happiest days, and dearest memories of the years spent at Stetson.

# Contents

Faculty  
Classes  
Athletics  
Organizations  
Features  
Snapshots



# History

It was Henry DeLand, of Fairport, New York, who in 1876, after laying out the town now known as DeLand, felt that education and religion should be the very foundation of this enterprise. Thus, in 1883, he established the DeLand High School. In 1884, he erected, at his own expense, DeLand Hall, the first building of DeLand Academy, later to be known as DeLand University. In 1887 a charter was obtained.

When Mr. DeLand met with reverses, and could do no more for his beloved school, he interested John B. Stetson, of Philadelphia, in the project. In 1889, in honor of the great work done by Mr. Stetson, DeLand insisted that the name of the institution be changed to John B. Stetson University.

Under Dr. John F. Forbes' administration the college grew and prospered. In 1897, Stetson University became affiliated with the University of Chicago, and kept this relation until 1910.

In 1900 the College of Law was organized. After President Forbes' resignation in 1903, Dr. Lincoln Hulley became president.

In January, 1934, after thirty years of service, Dr. Hulley passed away, and Dr. William Simms Allen, of Baylor University, became president.

The same principles that guided the founders of the University have prevailed throughout the years of its existence. Stetson University, conceived as an institution where education could be obtained under Christian influence, is today still molding the lives of young citizens.





SAMPSON LIBRARY

*Faculty*





# Greetings from the President



The session of 1935-36 has been most successful. Scholarship has been high. Students have shown a glorious spirit of cooperation and helpfulness toward building a greater Stetson. Student activities, including music, Little Theater, debate, scholarship societies, the paper, athletics, social functions, have been in keeping with the great purposes of the Institution. The ideal of John B. Stetson University through the years has been to develop scholarship, culture, and dynamic Christian character. The ideal is the same today. The year has proved that students and teachers are striving daily to attain the ideal. Let us continue to give our best in thought and in work as we look forward and go forward to build the Stetson of which we dream—a Stetson more adequately endowed, more excellent in equipment, and finer in quality to the end that Stetson students may continue to take places of leadership in the homes, in the professions, in the business and industrial world.

W. S. ALLEN, *President.*

## Faculty of Law



JACOB AMOS CARPENTER, LL.B.  
*Professor of Law*



JENNIS W. FUTCH, J.D.  
*Professor of Law and Law Librarian*



HENRY STROBEL JACOBS, LL.B.  
*Associate Professor of Law*



PAUL EVERETT RAYMOND, S.J.D.  
*Professor of Law*

## Faculty of Arts and Sciences

ROBERT IVEY ALLEN, Ph.D.  
*Professor of Physics*

WILLIS NISSLEY BAER, Ph.D.  
*Assistant Professor of Business  
Administration and Economics*

SUE McEACHREN BEAN, B.S.  
*Instructor in Education and Psychology*

OLGA BOWEN, A.M.  
*Registrar*

NELLE BURCH CAMPBELL, A.M.  
*Assistant Professor of Health and  
Physical Education. Director of  
Physical Education for Women*

G. PRENTICE CARSON, A.M., LL.D.  
*Dean Emeritus and Professor  
of History*

RICHARD ELLIOTT CLARK, Ph.D.  
*Professor of Sociology*

JOHN FERGUSON CONN, Ph.D.  
*Professor of Chemistry*





ROBERT CRAWFORD COTNER  
*Dean of Men, Professor of History and  
Political Science, and Director of Debate*

WARREN CASSIUS COWELL, B.S.  
*Professor of Health and Physical  
Education*



IOLA KAY EASTBURN, Ph.D.  
*Professor of Modern Foreign Languages*

BOYCE FOWLER EZELL, Ph.D.  
*Professor of Education and Psychology*



CHARLES SHERWOOD FARRISS, D.D., LL.D.  
*Vice President and Professor of  
Classical Languages*

CHARLES ADAM FISHER, Ph.D.  
*Professor of Business Administration  
and Economics*



GEORGE CHESTER FREEMAN, B.S.  
*Assistant Professor of Health and  
Physical Education, Assistant Director  
of Athletics and Head Coach of Basketball*

HARRY CRAWFORD GARWOOD, Ph.D.  
*Professor of Bible and Philosophy*

WARREN STONE GORDIS, Ph.D.  
*Professor of English*

SARA EDITH HARVEY, A.M.  
*Assistant Professor of Fine Arts*



MAUDE EMMA KING, A.M.  
*Dean of Women*

CURTIS MILTON LOWRY, M.E.  
*Professor of Engineering*



MARY TRIBBLE LOWRY, A.M.  
*Instructor in English*

MARY STEWART McCURDIE, B.S.  
*Instructor in Secretariat Science*



JOHN STERLING NEBLETT, A.B.  
*Assistant Instructor in  
Business Administration*





LUCY ANN NEBLETT, A.B.  
*Instructor in Spanish*

CORNELIA MARSHALL SMITH, Ph.D.  
*Professor of Biology*



CHARLES G. SMITH, Ph.D.  
*Dean of the University and  
Professor of English*

HARRY LEROY TAYLOR, Ph.D.  
*Associate Professor of Philosophy*



CHARLES BLOUNT VANCE, Ph.D.  
*Professor of Geology and Geography*

WILLIE DEE WILLIAN, A.M.  
*Instructor in English and Speech*



HARRY SUNDERLAND WINTERS, A.M.  
*Assistant Professor of History and  
Political Science*

VERONICA DAVIS, Mus.B.  
*Instructor in Public School Music*



WILLIAM EDWARD DUCKWITZ, Mus.D.  
*Professor of Music*

ETHEL M. FISHER  
*Instructor in Piano*



HAROLD MILNE GIFFIN, A.B.  
Mus.B., M.A.  
*Professor of Voice*

LOUIS HAROLD MARVIN  
*Instructor in Violin*



MATTHEW SLATER  
*Professor of Organ and Piano*





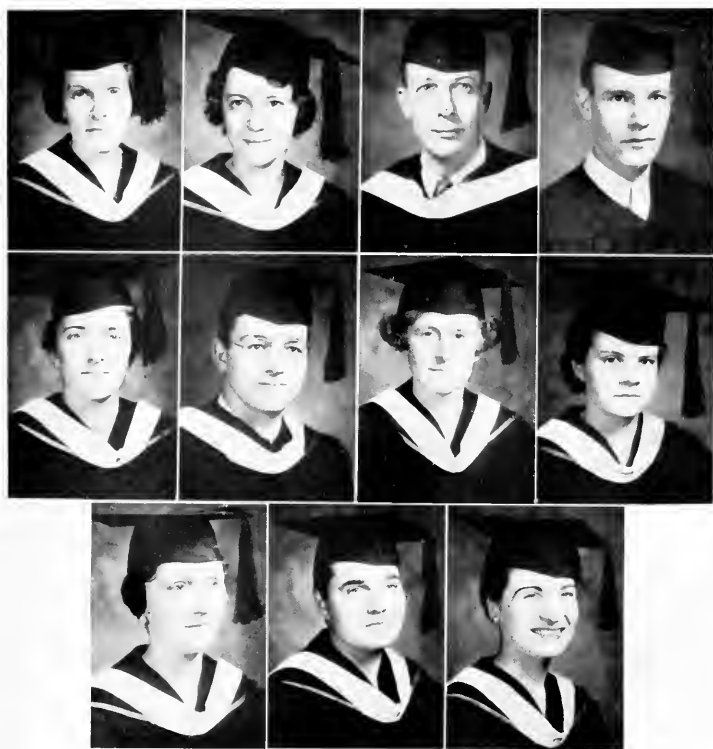


FLAGLER SCIENCE HALL

*Classes*



## Master



Sue M. Bean, B.S.  
Brundidge, Ala.

Virginia E. Giffin, A.B.  
DeLand, Fla.

Margaret C. Maxfield, A.B.  
Potsdam, N. Y.

John A. Moore, A.B.  
Lake Helen, Fla.

Frances C. Thornton, A.B.  
DeLand, Fla.

Etter M. Turner, A.B.  
Williston, Fla.

Carl H. Johnson, B.S.  
Gary, Ind.

Robert Matthews, A.B.  
Jacksonville, Fla.

Winifred F. Pyle, A.B.  
DeLand, Fla.

Sara E. Staff, A.B.  
St. Petersburg, Fla.

Laura S. Watson, A.B.  
DeLand, Fla.



DEAN LEWIS HERNDON TRIBBLE

It is fitting at this time to pay tribute to the Dean of Stetson's law school, and to its other competent and efficient teachers. A law school is as good as its teachers, and judging from the past records, Stetson can proudly hold its record of achievements of its graduate lawyers to the world, showing that the training they received has been most proper. Stetson has the honor of having had more Florida Governors, Judges, State's Attorneys, and lawyers trained in its halls than any other law school in the State. Under the present and able guidance of Dean Tribble, assisted by the other efficient teachers in the law school, Stetson can continue to hold itself out to all of Florida, as well as to the other States, as an ideal place to prepare for an honorable profession. It is earnestly hoped that in the near future a new law building will be completed, which new building will be in keeping with the progressive ideas and ideals of the present Stetson Administration.

Degree—LL.M.

*Seniors*



BARTON, THOMAS BRYAN  
Jacksonville, Florida  
LL.B.

*Pi Kappa Alpha*

Barton is another one of those boys who "Prepped" at Florida before beginning the serious work of studying law at Stetson, and scholastically speaking he has had no trouble with his work. Since his high school days, Tom has had a deep interest in play work, and has done excellent parts in many plays given on the campus. At the present time, due to the pressing need of time on all law students, has had time only to act as business manager for the theater. Having taken an active part also in the social and other activities on the campus, it will be regretted that he has gone.

Theta Alpha Phi; Sigma Nu Phi; Mystic Krewe.

*"I come from a long line of . . . Anything that fits the occasion."*

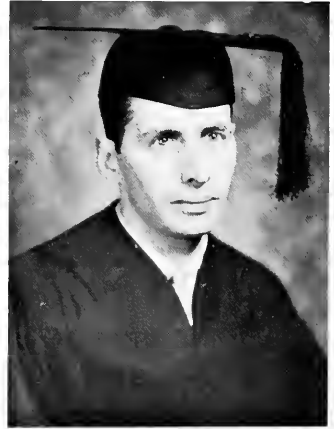
BROWARD, CLYATT CHARLES  
Jacksonville, Florida  
LL.B.

*Sigma Nu*

Of a studious type, Clyatt was slow in gaining campus prominence following his enrollment six years ago. His character and perseverance soon won him the admiration and respect of the campus. Though having many honors, not until this year did he really come into his own. He was Student Mayor of Homecoming—the highest and most sought-after honor of the year—and he did honor to the honor. We are sure that Clyatt will become a successful attorney. Salute!

Commander of Sigma Nu Fraternity; Student Mayor of Homecoming.

*"Well, that"*



BROWN, LU VAN LEER  
DeLand, Florida  
LL.B.

*Sigma Nu*

Outstanding in social, religious, and athletic activities throughout his college career, Lu has endeared himself to all who have known him. Always sincere, of a keen intellect and more than ordinarily ambitious, Lu will probably go far in his chosen profession. (We are wondering how long it will take for him to make that first five thousand!) Chaudoin Hall will surely have the blues without the trim and prim "Muscle" and his persevering . . . we don't know just how successful . . . courtships.

The Order of the Torch and Scroll; Dean's List; Honor Roll; Sheriff of Moot Court.

*He doesn't . . . just blushes around the neck and ears!*





DUSS, III, JOHN  
New Smyrna, Florida  
Law

*Phi Alpha Delta*

John Duss, III, started immediately into the Law College after attending the University of Paris, Paris, France. His first year he attained the highest grades in his class and for such excellent work he was appointed Clerk of Moot Court, an honor position in the Law College; also he was initiated into Phi Alpha Delta, honorary Legal Fraternity of which he is now Justice. This last year he has been accompanist for the popular Stetson Quartette.

Luck to you, John.

Member of Phi Alpha Delta; Torch and Scroll; Clerk of Moot Court.

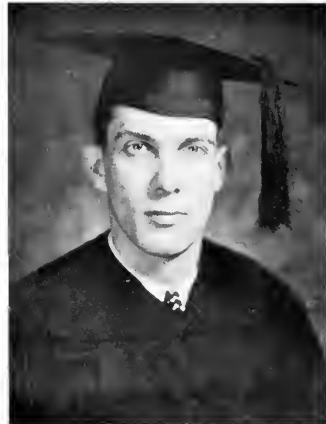
*"Let's go down and get a cup of coffee."*

GAYLORD, HARRY E.  
Eustis, Florida  
LL.B.  
*Sigma Nu*

Harry Gaylord has had a very successful career at Stetson, and it is believed that he will be equally as successful in life. Not only does he keep up his law work, but he finds time to edit the Stetson Paper, which is published at intervals. Harry has always been very popular with the authorities, as well as with the student body. In spite of his many activities, he has devoted enough of his time to his work to warrant creditable grades. He leaves behind him, when he graduates this June, a host of friends who join in wishing him all the luck in the world.

Sigma Nu Phi; Editor of Stetson Reporter; Basketball, 1, 2, 3; Mystic Crew; Who's Who In American Colleges and Universities.

*"How about that, Huh?"*



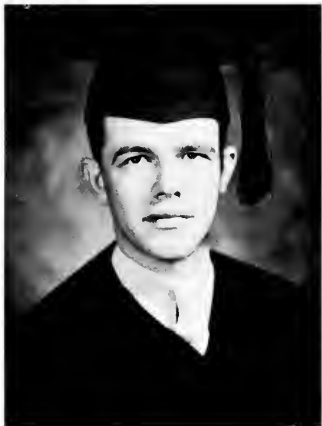
BOYCE, EZELL, JR.  
DeLand, Florida  
LL.B.

*Pi Kappa Phi*

It is with a great deal of regret that the graduating class of 1936 should have to see "Boyce" leave Stetson. For the past five years he has figured prominently in all of the activities on the Campus and his absence from his favorite hunting grounds will be felt by all. Although he did not push his political career at Stetson too hard, it is felt that he could have gone a long way in that field of student activity. Studies never worried him too much during his whole stay at College, but he has compensated for himself in other phases of student activity; and perhaps some day we may stroll in Chapel and find "Boyce" back at his Alma Mater, extolling its virtues to the student body.

Phi Alpha Delta; Pres. Student Body, 4; Pi Kappa Phi; Theta Alpha Phi; Interfraternity Council; Mystic Crew; Glee Club, 1, 2; Opera Co., 2; Delegate to Rho Kappa Phi National Convention, 3.

*"Gosh, that darned course is taking me for a ride."*





HAMMER, MARJORIE MARIE

DeLand, Florida  
I.L.B.

*Pi Beta Phi*

"Marjorie" not only has the distinction of being the only girl in the graduating law class, but also of having one of the highest scholastic records in the law school. She has always been conscientious in her work, and no doubt she will be duly rewarded in the future for this splendid work. In school activities, she has always played a prominent part, not only in the social but in the extra curricula also. The graduating law class of 1936 wishes its only feminine member all of the best wishes for a long and successful career.

Past Pres, Phi Beta Phi, 3, 4; Chapter Delegate to convention, Phi Beta Phi, 3; Torch and Scroll; Glee Club; Stetson Opera Co.; Interfraternity Council.

*"Now when I tried my case . . ."*

JOHNSON, LESLIE HARLAND

Grand Marais, Minnesota  
I.L.B.

*Sigma Nu*

"Bud" came to Stetson from his home state in Minnesota to start his college career, and completed his two years of pre-legal work in the Liberal Arts College before starting on his law course in the Stetson Law School. While in the law school, Bud was initiated into Sigma Nu Phi fraternity, and was an active member in that legal order; was initiated into Sigma Nu fraternity during his first year on the Stetson campus, and during the entire five years at Stetson, he was an active member in this social lodge, and is now one of the few five-year Sigma Nu men on the campus. His frank and sincere attitude has won him a host of friends on the campus.

Sigma Nu Phi Legal Fraternity; Sentinel of Sigma Nu, 2, 3, 4.

*"Have you heard the one about the grass?"*



LEA, JOSEPH PEYTON, JR.

Massies Mill, Virginia  
B.S., I.L.B.

*Kappa Alpha*

Meet the gentleman from Virginia, sub! Like all good Virginians, Joe went to the Virginia Military Institute, Virginia's crack military and engineering school, rich in the traditions of that illustrious State, then to the University of Virginia for his law. However, sickness forced him to come South, so he says that in order to get the best, he came to Stetson. While at Stetson, Joe went back to Virginia and successfully passed the Virginia bar and is now admitted to practice there. His life at Stetson has been uneventful, due to the fact that he has been over most of the activities offered here in other places. Good luck and best wishes. Perhaps, he will some day figure in Virginia politics—who knows?

Chairman Stray Greeks; Vice Justice Phi Alpha Delta; Mystic Krew; Associate Editor of "Hatter."

*"But, Dr. Fitch, I just signed the book out of your library last night."*







MACMILLAN, HUGH  
Orange City, Florida  
A.B., LL.B.

Hugh came to Stetson after having completed his first year of law at the University of Florida, at which school he was prominent in social and educational organizations. He returned there during the summer of his sojourn in DeLand to receive his A.B. degree. He has always stood high in his academic work, and, no doubt, will graduate from Stetson with high honors. He has been an ardent follower of tennis and was on the Stetson team during 1935. Best o' luck to you, Hugh. May success follow in your footsteps!

1934-35-36 Phi Alpha Delta (Legal).

"Mi Gosh."

NEMEC, JAMES  
Chicago, Illinois  
B.S., LL.B.

*Delta Sigma Phi*

"Jimmie" attended Crane University in Chicago before coming to Stetson. He made a name for himself playing guard on McQuillan's famous team of 1931. Following his graduation from academic school, Nemece entered on a short and successful career as tire salesman. However, the call for legal knowledge caused him to drop his business career and resume his studies in law at Stetson, and he will receive his bachelor of laws degree this June. Best o' luck to you, Jimmy; we believe that success is yours!

Varsity Football; Line Coach; Head Freshman Football.

"Well, suppose you had this situation . . . . ?"



PARDEE, COLQUETT S., JR.  
Avon Park, Florida  
LL.B.

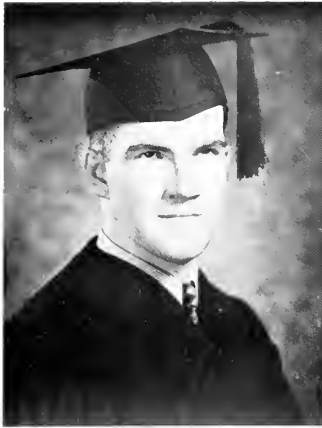
*Lambda Chi Alpha*

Colquett will probably, in the next few years, figure prominently in the political set-up of his county. After leaving the University of Florida, where he "prepped" for Stetson, he immediately threw himself in to work at the law school, and will receive his degree this June. He has made many friends while at Stetson and, no doubt, this asset will help him in his law career. The law class wishes to express to Colquett all of the best wishes for a real success. Who will ever forget Colquett and Rusty sitting together in classroom?

Phi Alpha Delta; Stray Greeks; Mystic Crew.

"Rusty, have you got that case?"





SMITH, WALTER E.  
Kissimmee, Florida  
LL.B.

*Delta Sigma Phi*

Kissimmee's pride and joy came to Stetson some years ago in search of knowledge. Perhaps he has found it. "Smitty's" educational career has been somewhat uneventful, but he has been the type to get the greatest benefit out of his education with the least display of emotion. No doubt, in a few years Stetson will be reading about "State's Attorney Smith, from Kissimmee, was the prosecutor . . . ." He has been active in legal extra curricula work and in the Theta Alpha Phi, having held responsible positions in fraternities representing both fields. We feel sure that in the years to come he will do equally as well in whatever line he may follow.

Phi Alpha Delta; Theta Alpha Phi.

*"Have you men paid your dues?"*



REEVES, CHARLES KAY  
Tampa, Florida  
LL.B.

*Beta Kappa*

"Rusty" studied at the University of Florida before he finally decided to honor Stetson with his presence, and in 1933 he inaugurated his career in law school, which career will be ended at Stetson this June. "Rusty" has always taken an active part in the activities and social life of the Campus, being a member of most of the organizations, social and legal. To him we predict a very successful career, local and otherwise.

Phi Alpha Delta; Dramatics; Stetson Opera Company—Pres. 1933-34; Glee Club, Business Manager, 1935-36; Mystic Crew, 1935-1936; Interfraternity Council.

*"Quote . . . . . Unquote."*



TEASLEY, THOMAS H.  
Miami, Florida  
LL.B.

*Delta Sigma Phi*

From the Magic City of Miami came Tom some few years ago looking for a place to begin his career. Naturally, wishing to receive the best legal education in the State, he directed his steps toward Stetson, where he has been rounding out his education. No doubt, in a few years, he will look back on his academic career at Stetson and say that he was glad that he had been there. Tom has taken a prominent part in the Glee Club and in several of the other activities on the Campus; also he has found time to make good grades in his studies. Soon he will be looking back on a successful academic career at his Alma Mater. Au revoir!

Glee Club, 3, 4, 5; Tennis, 3; Interfraternity Council; Phi Alpha Delta.

*"I'd like to ask a question about that."*

*Juniors*



EDWARD ALLEN  
West Palm Beach

HARRY BLACK  
St. Petersburg



ALMA CARLTON  
Cocoa

DOYLE CARLTON  
Cocoa



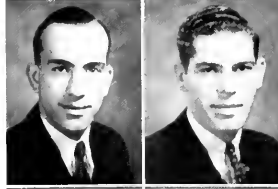
VASSAR CARLTON  
Cocoa

HELEN MAE CHRISTIAN  
Jacksonville



LAWRENCE HADDOCK  
Jacksonville

ALBERT JOHNSON  
Smethport, Pa.



GORDON MACCALLA  
Winter Haven

PERRY NICHOLS  
Timpson, Texas



ANDERSON WOOD  
Middleboro, Kentucky

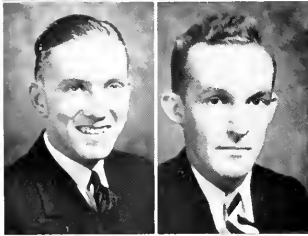
PHILLIP WRIGHT  
Titusville

*Sophomores*



NORMAN C. ABBOTT  
*Sigma Nu*  
Lakeland

MARY LOU BAKER  
Clearwater



ROBERT W. BUSHNELL  
*Sigma Nu*  
Virginia, Minn.

JOHN W. DAWSON  
Brooksville



JAMES NEIL FAIRCLOTH  
*Pi Kappa Phi*  
Quincy

WILLIAM A. HARRIS  
*Sigma Nu*  
St. Petersburg



CURRAN PAUL KELLEY  
*Sigma Nu*  
New York, N. Y.

THURMOND W. KNIGHT  
*Sigma Nu*  
Pahokee



ROBERT C. LINSON  
*Sigma Nu*  
Charles Town, W. Va.

EDWARD J. NELSON, JR.  
Des Plaines, Ill.



RUSSELL J. PHENICIE  
DeLand

ANTHONY P. PIZZO  
Tampa



ROBERT L. POWE  
*Pi Kappa Phi*  
DeLand

CHARLES R. M. SHEPPARD  
*Delta Sigma Phi*  
DeLand



MARION UNDERHILL  
DeLand

PAUL WONGREY  
*Delta Sigma Phi*  
Okeechobee



HUGHES WILSON  
*Sigma Nu*  
New Rochelle, N. Y.

ROBERT G. YOUNG  
*Pi Kappa Phi*  
Lake Monroe





DEAN CHARLES G. SMITH

In this, Dean Smith's first year at Stetson, he has shown himself to be a true educator, a real friend of the student body, and a hearty participant in all school events.

Enthusiastic in the classroom as well as in extra curricular activities, Dean Smith inspires others to accomplishment, and in his personal contacts with the university students, he has won the respect and admiration of everyone.

Degree Ph.D.



*Seniors*



AINESWORTH, MARGARET ELLEN  
Mason City, Illinois  
A.B.

*Alpha Chi Omega*

Since coming to Stetson in 1934, Ellen has made innumerable friends by her humorous outlook upon life, and her dry wit. Popularly known as a "good mixer," Ellen has been everywhere and done everything during her years on the local campus.

To Ellen—a grand person!

Northwestern University, 1, 2; Interfraternity Council, Stray Greeks.

*"I'm not lazy, I'm just deliberate."*

BINFORD, EDWIN KESSLER  
Springfield, Kentucky  
A.B.

"Smiling Ed" Binford, the Kentucky wonder, has been a decided asset to our campus, his two years of basketball being outstanding performances. He has won recognition not only in athletics, however, for he is one of the most popular boys of the dormitories. He showed great versatility in the Intramurals, winning the championships in both horseshoes and volley ball.

Cumberland College, Williamsburg, Ky., Basketball, 3, 4; Intramural Horseshoe Champion, 4.

*"No! Is that right?"*



BATESON, HOWARD L.  
DeLand, Florida  
B.A.

*Pi Kappa Phi*

By his outstanding scholarship, superb acting, pleasing personality and dry wit, Howard has easily won the esteem and admiration of his fellows. He was elected as one of the National Pi Kappa Phi scholars, due to his exceptionally high scholastic standing. To the Stetson student body the intervals between acts at the Little Theatre productions have been made interesting, due to Howard's "Astaire-like" dancing. He is the essence of versatility.

Torch and Scroll; Theta Alpha Phi; Pi Gamma Mu; "Most Intellectual Boy," 2; "Who's Who Among Students in American Universities and Colleges," 3; National Pi Kappa Phi Scholar, 4; Pres. of Junior Class; Treas. Student Body, 4; Band; Hatter Staff, 4; Business Manager of Student Handbook, 4; K. K., 4.

*"Hi, Toots!"*





**BRACEY, WATTS HUGH**  
Asheville, N. C.  
B.S. in Bus. Ad.

Since coming to Stetson from North Carolina, Watts has made himself known for his genial personality and cooperative spirit. During his senior year he was assistant to the Dean of Men, and in this capacity made numerous friends.

Theta Alpha Phi; Mystic Crew; Pres. Junior Class;  
Stetson Players.

*"Wait a minute, Critty."*

**BROOKS, GEORGE WEBB**  
DeFuniak Springs, Florida  
A.B.

Although quiet and retiring, Webb is outstanding for his sincerity and loyalty. He has distinguished himself in the ministerial department of Stetson, becoming well-liked by both students and faculty. We will greatly miss this modest, unassuming fellow-student.

Ministerial Association.

*"Well, . . . ."*



**COLOMBO, JOHN**  
Marble, Minnesota  
B.S.

"Johnny," an outstanding student and athlete, transferred from Itasca Junior College, in Caleraine, Minnesota. He graduates with the respect and admiration of every teacher and student, being co-captain of the basketball team in 1936. His performance in this sport has been seldom equaled at Stetson, and he has attained great heights in athletics. John Colombo, modest and unassuming, is a friend to many.

Varsity basketball, 3, 4; Varsity football, 3, 4; "S"  
Club.

*"It's Cracker."*





DANIEL, IRIS McAFEE  
Orlando, Florida  
A.B.

*Zeta Tau Alpha*

Iris is well known for her attractive appearance, her ability as a pianist, and her sweet personality. Attending Southern College in Lakeland during her freshman year, she entered Stetson in 1934 and immediately became distinguished in all musical activities of the University.

Southern College, 1; Phi Beta; B. S. U. Council, 3, 4; Glee Club, 2, 3, 4; Orchestra, 2, 3, 4; Opera Company, 2; Y. W. A., 2.

*"Heg. Hon."*

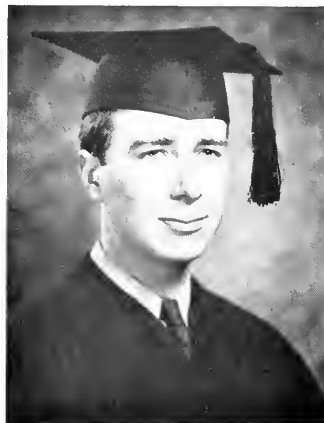
DAY, HOWARD MALCOLM  
Key West, Florida  
B.A.

*Pi Kappa Phi*

"Mac" plans to enter the Navy as a Chaplain, and so, to him, college is just an interlude in his life — just a fine way to pass away the time. He has achieved prominence in several organizations, but is best known for his dramatic work. His claim to be the most dignified headwaiter Stetson has had is uncontested, although he does break down now and then to prove that he is human. Most generally found at Roy's or on his way to some meeting.

Theta Alpha Phi, 3, 4; Ministerial Association; Stetson Opera Company, 1; Pi Kappa Phi; B. S. U. Council, 2, 3, 4; State B. S. U. Council, 3; Debate Team, 3; Sunday School Superintendent, 2, 3.

*"Now, when I was in"*



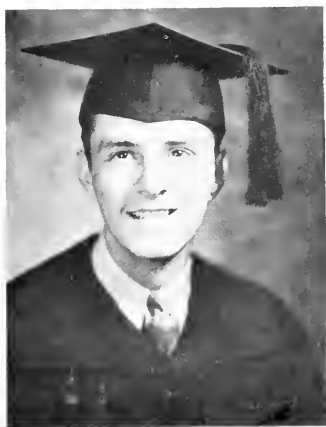
DULING, ROBERT KENNETH  
Gormania, West Virginia  
B.S.

Robert came to us from Potomac State Junior College. Although he is rather quiet and reserved, he is quite well known on the campus. His pleasant manner is always sure to make him many true friends. It is with regret that we say "good-bye" to Robert.

*Pi Gamma Mu*

*"Come on, boys."*





FROMHART, RICHARD FREDERICK  
Keyser, West Virginia  
B.S.

*Delta Sigma Phi*

Richard Fromhart, better known as Dick, came to Stetson from Potomac State Junior College in Keyser, West Virginia. Dick was an outstanding student in Junior College, playing center on the basketball team and taking part in many other extra curricular activities. He has continued his fine record while attending Stetson, being outstanding scholastically, athletically, and socially.

Potomac State Jr. College; Basketball, 3, 4; Pi Gamma Mu, 4.

*"Do you think she will give me a date?"*

GANNARELLI, THOMAS JOSEPH  
Keewatin, Minnesota  
B.S.

Tom "Hollywood" Gannarelli hails from Keewatin, Minn. There he attended Hibbing Junior College, where he starred in football and basketball for two years. After enrolling at Stetson he continued his fine play in both sports. Aside from being a great athlete, Tom has gained the respect of both students and faculty for his fine character and pleasing personality. He is very popular with the students, many of whom are sorry to see Tom graduate this year. Good luck, Tom.

Football, 3, 4; Basketball, 3, 4; Intra-murals, 3, 4; "S" Club.

*"We're really go' in to town, Eh?"*



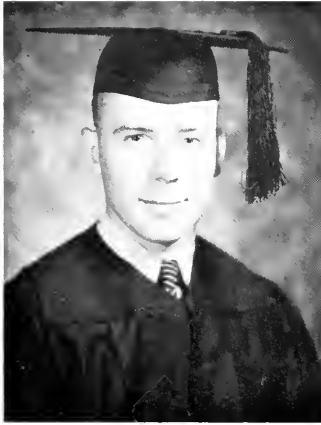
GOLDING, HELENE ROSE  
DeLand, Florida  
A.B.

Helene, elected the Most Intellectual Girl for 1936, is known to be modest, unassuming, and very pleasant of disposition. Because of her ability as a student she is a member of honorary education and teacher's sororities. Attending the University of Grenoble in France during her freshman year, Helene returned to tell many interesting tales of the system of education in foreign countries.

University of Grenoble, France, 1; Pi Gamma Mu; Mu Omega Xi; Pi Kappa Sigma; Most Intellectual, 1; Glee Club, 2, 3, 4.

*"Oh, dear."*





GORDON, HARRY STEWART  
North Braddock, Pennsylvania  
B.A.

*Pi Kappa Phi*

"Whitey," as he is popularly known, came to Stetson from Shenandoah Junior College, where he was an outstanding football and basketball star, at the same time maintaining a high scholastic record. He has a wonderful personality, and has shown leadership and sportsmanship in Stetson. Last year he was selected on several "Little Four" All-Star football teams. He is a fellow among fellows and carries the respect, admiration and friendship of all.

Varsity Football, 3, 4.

"Yes, Rathie."



GOUGH, HENRY DEAN  
Detroit, Michigan  
B.A.

*Sigma Nu*

Dean came to Stetson from Highland Park Junior College, where for the first two years of his college career he was outstanding in scholastics, athletics and social activities. During his last year at Highland Park he was captain both of the basketball team and the "Y" team. At Stetson Dean has continued to carry on his scholastic and basketball record. He has a pleasing personality which has won lasting friendships.

"S" Club; Basketball, 3, 4; Cheer Leader, 4.

"Don't tell me your troubles."



HAYNESWORTH, ROBERT JACKSON  
Mulberry, Florida  
B.S.

*Pi Kappa Phi*

"Wimpy," a handsome lad from Mulberry, entered Stetson in 1932. He starred on the Hatter yearlings, the strongest team in Stetson's history. Showing great fortitude, "Wimpy" played regularly from the start and was elected All-State guard his junior and senior years. "Wimpy" is a fine sport, a good student, and is popular with the faculty and students. The best of success to "Wimpy."

Football, 1, 2, 3, 4; All-State Guard, 3, 4; Intramurals, 1, 2, 3, 4.

"Ah! Come on."



HORN, HELEN ESTHER  
Daytona Beach, Florida  
A.B.

*Pi Beta Phi*

Helen came to us from Tallahassee. Since then she has been quite prominent on the campus. She is well liked by all those who come in contact with her. "Hornie" has made quite a record for herself scholastically as well as socially. Her vivid personality will be missed very much next year.

F. S. C. W. Transfer; Pres. Student Gov., 4.

*"That's just wonderful."*



HUGHES, JOHN LIOTARD  
Bridgeport, Connecticut  
Associate of Arts  
B.S. in E.E.

*Pi Kappa Phi*

"Skippy" Hughes came to Stetson from the Junior College of Connecticut, where he had graduated with an Associate of Arts degree. During his two years at our school he has made many true friends, and has also proved himself, in football circles, to be a vicious tiger at right tackle. He was elected president of the Engineering Society for the second semester of this year—one of Stetson's "diamonds in the rough."

Varsity Football, '34-'35; Engineering Society.

*"Aw, don't you love me any more?"*



INGRAM, RICHARD CECIL, JR.  
Jacksonville, Florida  
B.S.

*Sigma Xi*

At any moment Dick may be seen coming around the corner in his tan roadster which has been quite an asset to Stetson's line of cars every day. He is one of our most popular seniors. Because he was disabled in his early university career, he has been unable to play football, but he was always to be found on the bench cheering the boys along. We shall certainly miss him next year, and never forget his smiling face around the campus.

Football, 1, 2, 3; Mystic Crew.

*"Where is my car?"*



JACKSON, OTIS L.  
Pampa, Texas  
B.S.

*Pi Kappa Phi*

"Stony" is popular with everyone, and Stetson will miss this young man on the campus, in the classroom, and on the football field, for it is in athletics that he has been especially well-known. Stetson cannot easily replace this Original Blonde, and with regret we say "Good-bye and good luck, Stony!"

Football, 3, 4; Amatillo College Transfer.

*"Soo-ly."*

KAELLER, WILLIAM  
St. Petersburg, Florida  
A.B.

*Delta Sigma Phi*

Here's to Stetson's own "Clarke Gable." Bill is one person who has a grand sense of humor. He is well liked, and always has some good word to say to every one he meets. It will seem rather odd not to see Bill running around the campus next year.

Band, 3; Mu Omega Xi; Little Theatre Orchestra,  
3; Intramural Basketball, 3, 4; Diamond Ball, 3, 4.

*"Off to Tallahassee."*



KLEFEKER, SARA FELTON  
Miami, Florida  
A.B.

*Pi Beta Phi*

"Sally," a friend to everybody, has made many friends because she's sweet, modest, friendly, and helpful. She has been quite active in dramatics this year and we are all proud of her. She will be missed very much next year. In character acting "Sally" has reached the top on the Stetson campus, due to her understanding of human nature and sympathy with her fellowman. It is this same understanding that has won "Sally" the hearts and esteem of her classmates. Not only in her stage acting but in all of her work she has entered whole-heartedly and we are all wishing her much success in life, and her absence from Stetson's campus will be a great loss.

DePauw University, 2; Miami University, 2; Theta Alpha Phi, 1; Glee Club; Secretary of Freshman Class; Y. W. A., 1; W. A. A., 1.

*"You don't mean it."*







KNAPP, DORIS VIRGINIA  
 Detroit, Michigan  
 A. B.

*Delta Delta Delta*

Doris is a student of the highest ability. Coming to Stetson her Freshman year, she has proved to be a credit to the university. Of a friendly, dignified bearing, her personality is such that makes many friends.

W. A. A., 1, 2, 3; Glee Club, 1; Pi Kappa Sigma; Stetson Opera Company, 2.

"Oh, Ed!"

KNITTLE, EDWARD JOHN  
 Des Plaines, Illinois  
 B. S.

*Sigma Nu*

During the four years of his college career, "Tripod's" popularity has largely been due to his keen humor and brilliant wit. A conscientious scholar, as well as an outstanding athlete, "Little Napoleon" has many friends among both the faculty and the students.

Football, 1, 2, 3, 4; Basketball, 1, 2; Hatter Staff, 2, 4; Intramural Boxing, 1, 2; "S" Club.

"Don't give me none of that stuff!"



KRANEMAN, HERBERT HERMAN  
 Des Plaines, Illinois  
 B. A.

*Sigma Nu*

"Curley" spent his first year at the Y. M. C. A. College in Chicago before entering Stetson. While there he made an enviable scholastic record which he has surpassed at Stetson. He is known as a true friend—reliable, trustworthy, and honest. Although "Curley" is not athletically inclined he is a lover of sports and follows them closely. He is a little shy and is often kidded about this weakness. But he can take it.

Stetson Reporter; Mu Omega Xi.

"I'm not a twerp."





KUKAR, RUDOLPH JOSEPH  
Gilbert, Minnesota  
Junior College Associated Arts  
B.S.

Rudy Kukar, young giant from Gilbert, Minnesota, entered Stetson from Virginia Junior College, where he was an outstanding figure in track, basketball, and football, being a captain of the last. The "iron man" has established a high social, scholastic, and athletic standing at Stetson. His fine work as star gridiron-guard gained for him the title, "The Cannon of the Fighting Hatters." He is respected and admired by all; Stetson will sadly miss her "Philbert from Gilbert."

Football, 3, 4; Basketball, 3; Intra-murals, 3, 4;  
"S" Club.

"That's true enough."

LANEY, ABNER BURTON  
Greenville, Florida  
B.A.

*Pi Kappa Phi*

Laney comes to us from Junior College at Prineipia. He has made a good record here and is well liked by everyone. Ordinarily rather quiet, he breaks forth every now and then and can be heard from here to there. Perhaps the best thing that we like about Laney is his unflinching optimism, which carries him through in fine style. All in all, we think that "Ab" is a pretty fine fellow and should make his mark in the world.

Pi Kappa Phi, Historian, 3; Class President, 4; Mystic Crew, 4.

"Have you heard this one?"



LATIMER, SUE E.  
Asheville, North Carolina  
B.S.

Sue would most often be found in the Chemistry Laboratory, or either at band practice. Her cheerful, friendly attitude won many friends.

Transfer from Southern Seminary, Buena Vista, Va.;  
Band; Gamma Sigma Epsilon.

"You lazy person!"





McLARTY, SARA MAXINE  
Daytona Beach, Florida  
A.B.

*Pi Beta Phi*

"Maxie"—friendly, cheerful and happy always—she never let's her studies greatly bother her but whenever we needed a sympathetic and understanding listener and advisor it was always to "Maxie" that we turned. It was never that she sought recognition among her classmates but rather that we choose to repay our confidence and belief in her that she attained honors and positions of trust on campus. It is with a feeling of losing one of our best friends that we say good-bye to "Maxie."

Florida State College for Women, 1; Vice-President Junior Class; Secretary Student Body, 1; Pan Hellenic Council, 1; Hatter Staff, 1; Y. W. A., 23; Interfraternity Council, 4.

*"Wait a minute."*

McFARLAND, PAULINE DOLORES  
Daytona Beach, Florida  
A.B.

*Zeta Tau Alpha*

"Polly" is one of the grandest girls on the campus, and it is with a great deal of sadness and regret that we see her graduate. Because of her lovely appearance, her gay, friendly disposition, and her capability, she has held many important student offices, and was May Queen in 1936.

Glee Club, 1, 2; Pan Hellenic, 2, 4; Hatter Staff, 3, 4; Secretary Student Body, 3; Treasurer Senior Class; Interfraternity Council, 4; Mu Omega Xi; The Honor; Delegate to National ZTA Convention, 3.

*"Oh, Gee!"*



MAYER, DOROTHY  
Lakeland, Florida  
B.A.

"Dot" attended Southern College in Lakeland during 1932 and '33. Coming here as a sophomore, she joined the Glee Club as an outstanding soprano. During her years at Stetson "Dot" has sung at many of the churches in DeLand, and is well known for her cheerful, pleasing good nature.

Glee Club, 2, 3, 4; Y. W. A., 3, 4; Opera, 2; Phi Beta.

*"That's what you think!"*





MERCER, LILLIAN CHRYSTELLE  
DeLand, Florida  
A.B.

*Delta Delta Delta*

"Crittzy," the sixth Mercer girl to attend Stetson, was elected "Campus Queen" for 1936. Because of her gay, friendly disposition and her distinctive personality, she has endeared herself to everyone. Attending Florida State College for Women the first two years of her college career, she entered Stetson as a junior, and since then has become one of the most popular girls on the campus. With regret we say "good-bye, Crittzy."

Florida State College for Women, 1, 2, 3; Campus Queen, 1; Delta Delta Delta, 1.

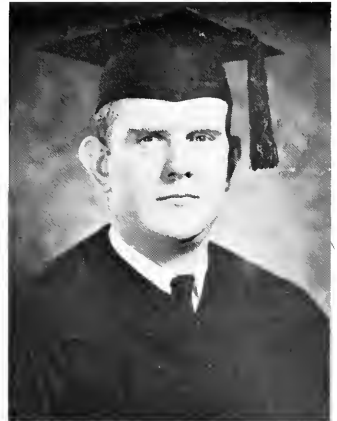
*"Oh, my gosh!"*

MILLER, CLAUDE WILLIAM  
Martinsburg, West Virginia  
B.S.

Claude Miller, husky blond mountaineer from West Virginia, came to Stetson after making history at Shenandoah College, Dayton, Virginia. During his two years at Stetson he added to his laurels both athletically and scholastically. The blond giant was a star tackle, and proved the hubbark of the mighty "Hatter" line. He excelled not only as an athlete, but ranked high as a scholar. His pleasing personality won for him the admiration of the student body.

Football, 3, 1; Intra-murals, 3, 1.

*"Let me tell ya', fellahs."*



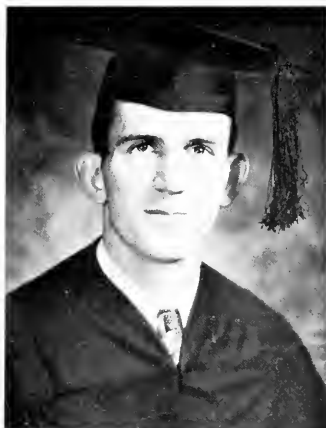
SEEL, RHODA EMMA  
St. Augustine, Florida  
A.B.

Rhoda is one of Stetson's most outstanding conversationalists. She is always prompt with everything she does, including bell ringing in DeLand Hall. Her record in scholastic achievement during her four years in Stetson is one to be proud of. We will say "good-bye" to another of Stetson's seniors.

Pi Gamma Mu; Y. W. A., 1, 2, 3, 1; Glee Club, 2, 3, 1; Opera Company, 2; Basketball, 1, 2.

*"And I said . . . . ."*





**OFFUTT, JOHN REGINALD**

Chicago, Illinois  
B. A.

*Sigma Nu*

"Johnny" has engaged in all major sports at both Potomac State College and at Stetson. At the former he was President of Beta Chapter of Phi Sigma Nu, National Junior College Fraternity, and was selected as forward on the West Virginia Conference All-Star Basketball team in 1933-34. His friendly, reliable personality, his ability as a scholar and a true sportsman, have brought him recognition as a leader and a true friend.

Varsity Football, 3, 4; Varsity Basketball, 3, 4;

"S" Club,

"Hi, friendly!"



**PHILLIPS, HERBERT**

New Smyrna, Florida  
A. B.

"Swede" has had quite a career while here at Stetson, starring in athletics and excelling in the classroom. For three years he has been playing excellent football and basketball for our varsity teams. In addition to his scholarly efforts and athletic endeavors, he was elected as our Student Body Vice-President and to several other important administrative offices. All those who know him, know him as a great entertainer with a great sense of humor. "Swede's" absence will be keenly felt by many, and all wish him the greatest of success.

Mu Omega Xi; Football, 3, 4; Basketball, 3, 4; Vice-President of Student Body; Dramatics; Stetson Reporter; Tennis, 2; 1935-36 Who's Who in American Colleges and Universities.

"Hello, there!"



**POOLE, S. PIERRE**

Cross Anchor, South Carolina  
B. S.

*Pi Kappa Phi*

Smiles, ambition, and industry are what we think of when we think of Pierre. In the three years that it has taken him to get his B.S. he has reached the top in scholarship and friendship. On to medical school and success and may the gods continue their blessings.

Torch and Scroll; Gamma Sigma Epsilon.

"Well, I'll try."



PRIEST, EMILY  
Sanford, Florida  
A.B.

Emily has attended Stetson for three years and has made many warm friends. She is rather reserved in her manner but is liked by everyone who comes in contact with her. Her scholastic record is one to be quite proud of. We shall say "good-bye" to Emily with regrets.  
"Hello,"

BREVATT, PAULINE GLADYS  
Palatka, Florida  
A.B., Music Education  
*Zeta Tau Alpha*

"Polly" has attended Stetson all four years of her college career. During her Freshman year she was accompanist for the Glee Club and piano soloist, as well as accompanist for the Stetson Opera Company, which was formed that year. During the succeeding years, Pauline has continued her work as accompanist, and she has had a major part in all band and orchestra activities. Her graduation recital in piano proved to be one of the most entertaining ever given in Stetson.

Glee Club, 1; B. S. U. Council; Stetson Band, 3, 4;  
Pianist Glee Club, 1, 2; Stetson Opera Company, 1, 2;  
Band, 3, 1; Y. W. A., 1, 2; Symphony Orchestra, 2,  
3, 1; Phi Beta.

"O-k-i-do."



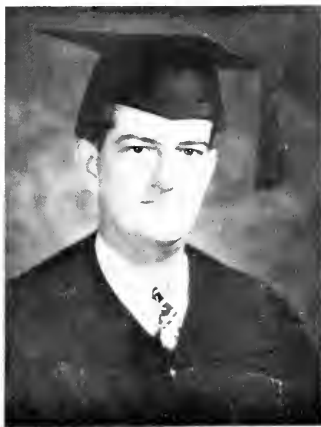
RANSOM, ELIZABETH MARIE  
Portsmouth, Rhode Island  
R.N., B.S.

*Alpha Xi Delta*

Betty is an F. S. C. W. girl who decided to go forward at Stetson. She has the honor of receiving the first degree in nursing given at Stetson. "Nursie," as she is generally known, can generally be found going or coming between the Boy's and Girl's Infirmarys. After knowing Betty we don't wonder that more boys have been sick this year than ever before.

"I will not give you an excuse for over-sleeping."





REEVES, GORDON C.  
St. Petersburg, Florida  
A.B.

Gordon is a very quiet sort of a fellow, but he knows when and how to talk. He is one of our numerous married men on the campus. Maybe, that accounts for his solitude. Gordon is very popular with the faculty and his fellow students.

Ministerial Association, 3, 4; Glee Club, 3, 4; Dramatics.  
"Well, I think it's like this "

ROBERSON, DONALD NICHOLS  
Screven, Georgia  
B.S.

*Delta Sigma Phi*

"Robbie" entered Stetson from Middle Georgia College in the fall of 1934, and became one of the most popular boys on the campus. In his quiet, unassuming and courteous manner and a most generous smile he emanates "personality." An "All Southern" center in Junior College, he has held the torch high among the great players of the S. I. A. A. for the Green and White. The Georgia "Flash" will be missed on the court, on the campus, and in the classroom.

Varsity Basketball, 3, 4; Baseball.

"These Georgia Crackers will go."

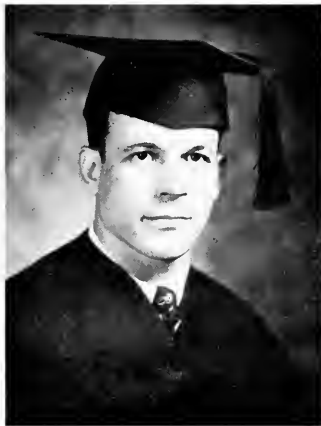


SCHEMER, MITCHELL  
Jacksonville, Florida  
A.B.

"Meec" entered Stetson from Jackson High in Jacksonville, where he was a star in football and basketball. Continuing his fine play at Stetson, "Meec" has become very popular with the student body. His pleasing personality makes him an all-round friend, while his humor and wit make him a welcome member to any "bull-session." Good luck and success, "Meec!"

Football, 1, 2, 3, 4; Basketball, 1, 2.

"Well, fo' goodness sake."





SKILLMAN, DOROTHY ELIZABETH  
Skillman, New Jersey  
A.B.

*Pi Beta Phi*

"Dotty," although the very essence of dignity, ability and determination, is nevertheless underneath it all one of the friendliest, wittiest and most pleasing personalities among the graduating seniors. During her three years at Stetson she has made for herself a name in scholarship, society and above all friendship.

Glee Club, 2, 3; Y. W. A., 2, 3; Pan Hellenic, 3, 4; City Hostess, 1; Interfraternity Council, 1; New Jersey State College Transfer.

*"Yeah . . . . .!"*

SMITH, C. AUBREY  
Electra, Texas  
B.A.

Aubrey entered college in the fall of 1931. While in junior college he played three years of football, track and boxing. His last year in junior college found him co-captain of the Texas Junior College championship football team. In '33-'34 he won the Southwestern Interscholastic Lightweight Boxing Championship. In spring of '33 he tied the state junior college low hurdle record of 24.5 seconds, and was a member of the record holding mile relay team.

Football, '31-'35; Boxing, '31; Transfer from Amarillo (Texas) Junior College.

*"Who threw that last tomato?"*



SMITH, LUCY DENT  
Miami, Florida  
A.B.

Lucy, a senior we can point to with the feeling that some credit is due the class for such a member. Her scholarship hasn't slipped from the high marks she established while a freshman. The number of friends Lucy has made on Stetson campus can't be estimated; she'll never be forgotten.

Mu Omega Xi; Y. W. A., 1, 2, 3, 4; W. A. A., 3; Glee Club, 2.

*"Let's go to town."*







STOVER, ELIZABETH GWENDOLYN  
DeLand, Florida  
B.A.

*Pi Beta Phi*

"Bette" was voted the most popular girl on the campus — need we say more? During her four years here she has been active in dramatics and other social activities. Her pleasing personality has won her a host of friends. A good sport, a good dancer, an attractive girl — put them all together and you have "Bette."

Mu Omega Zeta; Theta Alpha Phi; W. A. A., 1, 2; May Day, 1, 2, 3, 4; Vice-President Senior Class; Most Popular, 4.

*"Yes, indeedie."*

TURNER, JOHN RICHARD  
Stratford, Connecticut  
Associate of Arts  
B.S. in M.E.

John "Stooge" Turner graduated from the Junior College of Connecticut in 1931 with an Associate of Arts Degree. Entering Stetson as a junior the succeeding fall, he immediately became very popular with all who came in contact with him. His versatility was evident by his excellent showing at fullback, end and guard posts on the varsity; he was also an honor student, and president of the Stetson Engineering Society; in addition, he rated the ace barber of Central Hall, where he conducted the "Yankee Clipper Tonsorial Parlors."

Varsity Football, '34 and '35; Stetson Engineering Society.

*"Call me John."*



TURNQUIST, LILLIAN  
DeLand, Florida  
A.B.

*Zeta Tau Alpha*

Lillian, although rather reserved in disposition, has made many friends during her college life. Possessing a pleasing personality she is respected and well liked by the faculty and students. Good luck always, Lillian.

Pi Sigma Phi; Y. W. A., 1, 2, 3, 4.

*"O, Job's tooth . . . ."*





WAGER, DOROTHY JANE  
 Detroit, Michigan  
 B.S.

*Alpha Xi Delta*

As "Dot" came to Stetson only during her senior year she has not had time to win many honors, but during her stay she has won many friends by her spirit of friendliness and cheerful personality. A splendid athlete. "Dot" has a B.S. in Physical Education, and will probably go far in this field.

Wayne University Transfer; Pi Kappa Sigma;  
 W. A. A., 4.

*"Haay, there."*



WEST, JR., GEORGE ALLEN  
 Homestead, Florida  
 A.B.

*Delta Sigma Phi*

Allen entered Stetson in 1932 in the engineering department. During his freshman year he pledged Delta Sig. Frat., joined the Symphony Orchestra, Band and Glee Club. In his sophomore year he became a ministerial student, and was soon known as "Preacher Boy."

Baptist Student Union Council, 1, 2, 3, 4; Stetson Opera Company; Band, 1, 2, 3, 4; Symphony, 1; Ministerial Association, 2, 3, 4; Kappa Kappa Psi.

*"Howdy, Pal."*



WEST, MARIE ELIZABETH  
 Deland, Florida  
 B.S.

During her four years at Stetson "Lib" has made a scholastic record that may well be envied. In spite of her apparent studying, "Lib" has taken enough time off in which to make many friends. Good luck!

Torch and Scroll; Gamma Sigma Epsilon; Pi Delta Sigma.

*"Hay, hon!"*



WILSON, SARA ELIZABETH  
Miami, Florida  
L.L., A.B.  
*Pi Beta Phi*

During the four years on campus Sara has done outstanding work. She has won honorary and social distinction. She was awarded the Amy B. Onken award, Pi Beta Phi recognition, by possessing the highest qualifications in scholarship, personality, fraternity service and student activities. Sara is admired and respected by all of her classmates, and will be greatly missed as we bid her a "fond adieu."

Mu Omega Xi; Student Council, 1; Homecoming Hostess, 3; Vice-President Freshman Class; President Y. W. A., 3; B. S. U. Council, 2, 3; Hatter Staff, 3; Editor of Student Handbook, 1.

*"Hey! Hey!"*

WHITMARSH, RAYMOND  
DeLand, Florida  
B.S.

Raymond is a transfer from North Carolina State, where he won laurels as a swimmer. While here these few months he has gained a host of friends, and all that know him well cherish his friendship. He is quite a golf player and has won several matches for our team. Everyone knows Ray as a fine fellow, and wish him good luck upon his graduation.

Golf, 1.

*"You don't say so!"*



WOOD, MARION  
DeLand, Florida  
A.B.

Marion has spent four years on Stetson campus, during this time she has sung in the Glee Club and Opera Company. A quiet and unassuming person, Marion has won the admiration of her professors by her scholastic standing. Her dependable characteristics make her a friend worth having. She'll be missed at Stetson next year.

Glee Club, 2, 3, 1.

*"Is that so?"*

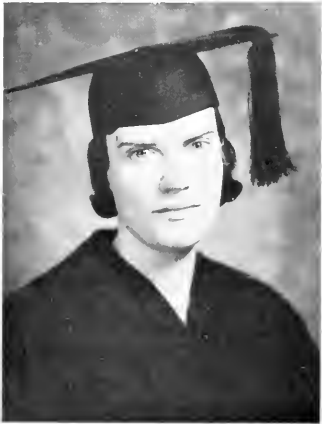




WUDZKE, JULIUS ARTHUR  
Des Plaines, Illinois  
B.S.

"Duke" came to Stetson from a junior college, and although starting on a football career, he was soon forced to give it up because of an injury. A faithful worker and loyal friend, "Duke" has won the admiration and respect of the whole campus.

Freshman Football; Varsity Football, 2.  
*"Hey! You kids!"*



WOTRING, HERBERT ERWIN  
Terra Alta, West Virginia  
B.S.

"Herb," a scholar and athlete, is one of the most popular boys on the campus, both with fellow students and faculty. He transferred from Shenandoah College, Dayton, Virginia, where he starred in athletics; at Stetson he has continued this enviable record and won the title of Best All-round Athlete and was captain of the championship Hatter football team. Being an all-state halfback, he will be remembered for his hard, clean football. Stetson will miss this "chubby" West Virginia Mountaineer.

Elected Best All-Around Athlete, 4; Varsity Football, 3, 4; Varsity Basketball, 3, 4.

*"Now, my hospitable friend—"*



YOUNG, EVA LUCILLE  
Lake City, Florida  
A.B.

Her senior year was the first that Lucille attended Stetson, and for this reason she has not had time to become well known or to gain honors. To the students who have come in contact with her, however, she is known as a good student and a congenial friend.

Bessie Titl Transfer; Sigma Chi Epsilon; W. A. A., 2.  
*"Is that right?"*

## MID-SEMESTER GRADUATES



HARDY, LYNN HENRY  
Beaumont, Texas  
B.A.

*Pi Kappa Phi*

After leaving high school in 1930, he attended Texas A. & M. for a year. He next went to College of Marshall (junior college), graduating two years later. Lynn worked a year and then entered Stetson, from which school he hopes to take his B.A. degree in the spring. In '34 he won the Southwestern Intercollegiate Heavyweight Boxing Championship.

Football, 3, 4; Boxing, '34; Transfer from Marshall Junior College, Marshall, Texas; "S" Club; S. E. Heavyweight Champion of A. A. U.

"Hi, kid."



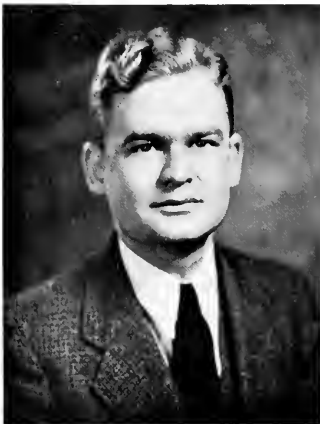
MILWEE, RAYBURN THOMAS  
Holopaw, Florida  
A.B.

*Delta Sigma Phi*

Rayburn, one of the Milwee twins, is well-liked in spite of his rather retiring disposition. Scholastically speaking, he has succeeded in college, for his grades are among the higher ones. A splendid basketball player and boxer, Rayburn took a prominent part in intramural sports.

Louisiana College Transfer; Mu Omega Xi; Boxing, 3, 4; Intramural Basketball, 3, 4.

"This is Rayburn, not Raymond."



PARRISH, JAMES  
Albany, Georgia  
A.B.

"Jimmie" was President of the Student Body before he left at the end of the first semester. He was very popular with the student body and faculty. "Jimmie" was a great leader and the rest of the campus looked to him to do things. His absence from the campus will be keenly felt by those who were close to him. All who know him well are sure that he will bring glory to his Alma Mater in the years to come, and all wish him luck.

President of Student Body, 4; Ministerial Association.

"H'll, we'll see."



ROGERS, CLARA BELLE  
Marblehead, Massachusetts  
A.B.

*Phi Mu*

Clara Belle—Lee to you—a typical northern girl, in her brogue, arrived at Stetson when a senior, and completed her A.B. in February. Although Lee didn't get to be in a regular graduation program, getting to Washington compensated for that, we suspect.

Transfer from George Washington University.

*"What did you say!"*

SANDERSON, MARY GEORGIANA  
DeLand, Florida  
A.B.

*Pi Beta Phi*

While attending Stetson, Mary devoted her whole time to studying, and because of her ability she made an enviable scholastic record, as well as many friends.

Duke University Transfer.

*"Let's go."*



TOMYN, WILLIAM  
Winter Garden, Florida  
A.B.

*Delta Sigma Phi*

Everyone knows Bill. His four years here have won him a host of friends. He was very active in school affairs. He was voted the most popular boy on the campus as a Sophomore and ever since has lived up to that distinction. Many admirers regret his graduation, and all wish him the best of luck.

*"He will go."*



*Juniors*



EDNA ALDERMAN  
*Zeta Tau Alpha*  
Lakeland

WALLACE J. AREY  
Montverde



THOMAS ARGO  
Bradenton

SAMUEL BARBER  
St. Cloud



WILLIAM R. BAUMAN  
DeLand

DORIS BLANKENBAKER  
Center Hill



MATTHEW J. BOUTERSE, III  
Plymouth

MARVEDENE BOYTE  
Leesburg



MAURICE BRANTLEY  
Altoona



GEORGE BROWN  
*Sigma Nu*  
DeLand

MARGARET BRYAN  
Gainesville



FLOANNA BURROWS  
*Zeta Tau Alpha*  
New Smyrna

MARY DOWNEY CHATHAM  
*Alpha Xi Delta*  
DeLand



MARY S. CLARK  
Daytona Beach

CLEMENT COMBS  
Wildwood



HAROLD DASSLER  
*Delta Sigma Phi*  
Hawthorne, N. Y.



BARBARA J. DAVIS  
DeLand

HELEN BOSS  
Ty Ty, Georgia



RICHARD FAULKNER  
DeLand

GRACE FEARING  
Ithaca, N. Y.



JOSEPH B. FOLDS  
Leesburg

DOROTHY L. FULLER  
*Alpha Xi Delta*  
DeLand



DOROTHY HAINES  
*Pi Beta Phi*  
DeLand

RICHARD B. HALL  
*Pi Kappa Phi*  
DeLand



MARGARET E. HARPER  
*Zeta Tau Alpha*  
Lakeland

MARJORIE HARRELL  
*Alpha Xi Delta*  
Miami



MARIAN F. HOOLEHAN  
Sanford

WINSTON JONES  
*Delta Sigma Phi*  
Cumberland, Md.



EUGENE I. KITCHING  
Leesburg

GEORGE W. LEONARD  
*Delta Sigma Phi*  
Hastings



DURWOOD B. LOCKE  
Ponce De Leon



MARY E. LOOMIS  
Jersey City, N. J.



MARTHA McCONNELL  
*Alpha Xi Delta*  
Jacksonville

CORNELIA C. McRAE  
*Alpha Xi Delta*  
Sanford



JAMES B. MARTIN, JR.  
DeLand

BESSIE FAYE MIRES  
*Alpha Xi Delta*  
DeLand



MAUREEN MOSELEY  
DeLand

RUTH MURPHY  
*Alpha Xi Delta*  
Daytona Beach

FRANK H. ORTMAN, JR.  
*Delta Sigma Phi*  
DeLand

CLAUDIA OSBORNE  
*Zeta Tau Alpha*  
Umatilla



EVELYN PATTERSON  
Daytona Beach

SUSANNE E. PENNEY  
*Delta Delta Delta*  
DeLand



DONALD W. PHILLIPS  
*Sigma Nu*  
Daytona Beach

KATHLEEN SAMPLE  
DeLand



SUZANNE SAWYER  
DeLand

GERALDINE SIMMONS  
*Pi Beta Phi*  
DeLand



RICHARD P. SIMPSON  
*Delta Sigma Phi*  
Ft. Lauderdale



HELAN F. SPAULDING  
*Pi Beta Phi*  
DeLand

WILLIAM STEMPER  
Sanford



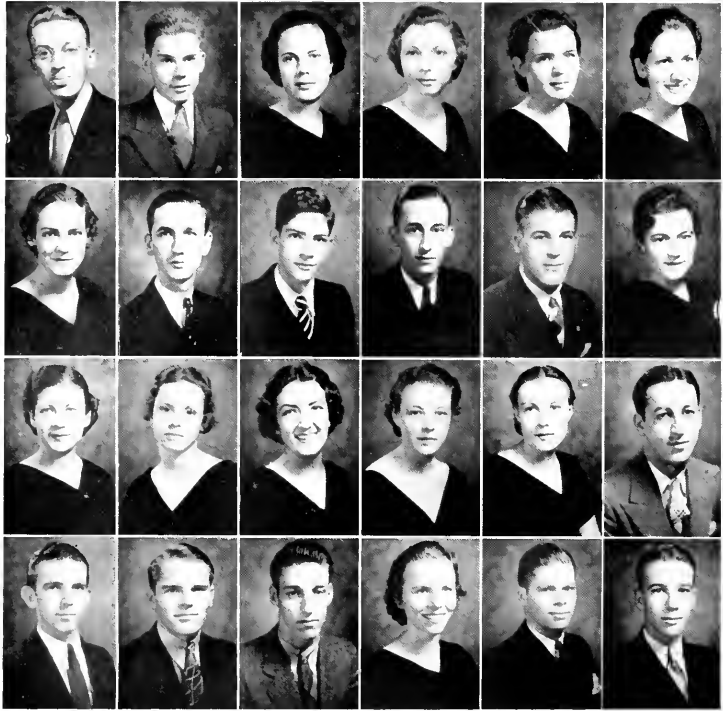
JULIA SULLIVAN  
Homestead

CHARLOTTE VEITH  
Jacksonville



BARRY R. WALKER  
*Delta Tau Delta*  
Park Ridge, Ill.

Sophomores



Robert M. Adams  
DeLand

John M. Amison  
DeLand

Betty Babcock  
*Pi Beta Phi*  
Orlando

Elizabeth P. Barber  
Pahuetto

Margaret Barber  
Bithlo

Doris Bartlett  
*Alpha Xi Delta*  
Franklin, Pa.

Ruth E. Barlett  
*Alpha Xi Delta*  
West Palm Beach

Norman Bennett  
Daytona Beach

Truman Botts  
DeLand

David Bracey  
Asheville, N. C.

Richard R. Branham  
*Pi Kappa Phi*  
Indianapolis, Ind.

Lauretta Bridges  
Cocoa

Helen M. Brin  
*Pi Beta Phi*  
Stewartville, Minn.

Wilma E. Broward  
*Pi Beta Phi*  
Jacksonville

Judy Brown  
*Pi Beta Phi*  
DeLand

Mary Brown  
*Pi Beta Phi*  
DeLand

Victoria Burt  
Boston, Mass.

Raymond Cagni  
*Pi Kappa Phi*  
Pittsburgh, Pa.

Philip Caldwell  
DeLand

Royce Carpenter  
DeLand

William D. Ceely  
DeLand

Margaret L. Champ  
*Alpha Xi Delta*  
Mt. Dora

J. Emmett Clonts  
Winter Garden

Thomas T. Cobb  
*Delta Sigma Phi*  
Daytona Beach





Helen Colbert  
*Alpha Xi Delta*  
Sanford

Helen Collins  
*Alpha Xi Delta*  
Lakeland

Alyce E. DeCoursey  
Sanford

Doris M. Dede  
Apopka

James R. Dickson  
Youngstown, Ohio

Findley Edge  
Albany, Ga.

Olse M. Eriksen  
Orange City

Ruth Faulkingham  
DeLand

Frances Faulkner  
*Alpha Xi Delta*  
DeLand

Dorothy M. Fay  
Panama City

Joseph Fearnley  
Lake Worth

Harold J. Fisher  
DeLand

Anne R. Gollnick  
*Zeta Tau Alpha*  
Vero Beach

William H. Green  
*Sigma Xi*  
DeLand

May Griswold  
West Hartford, Conn.

Fayette L. Hall  
Eastis

Lola Hammer  
*Pi, Beta Phi*  
DeLand

Clyde Harnage  
Lake Monroe

Georgina Hart  
Sanford

Lawrence S. Hartsfield  
Eastman, Ga.

Anne M. Hawkins  
*Delta Delta Delta*  
Gainesville

Marguerite W. Hays  
*Delta Delta Delta*  
DeLand

Curry Hazlett  
Springfield, Ill.

Vernon Hill  
New Smyrna



Inez E. Hill  
*Pi Beta Phi*  
Cocoa

Robert V. Holland  
*Delta Sigma Phi*  
Miami

Dorothy M. Hooker  
*Pi Beta Phi*  
Chosen

William Houghton  
Mulberry

Mary E. Hudson  
*Zeta Tau Alpha*  
Titusville

Landis F. Knight  
*Delta Sigma Phi*  
Vero Beach

Reed Knox  
*Delta Sigma Phi*  
DeLand

Madison Koontz  
Titusville

Christine T. Kummer  
Winter Park

David Lang  
*Delta Sigma Phi*  
St. Cloud

Paul Laufer  
Miami

Veronica Lesko  
Lakeside, Ohio

Mary Ellen Lord  
*Pi Beta Phi*  
Orlando

Marjorie McCary  
DeLand

Paul McEntire  
Dade City

Alice B. McLaughlin  
*Delta Delta Delta*  
Dayton, Ohio

Alton Martin  
DeLand

Elton Martin  
DeLand

Katherine B. Martin  
*Delta Delta Delta*  
Apopka

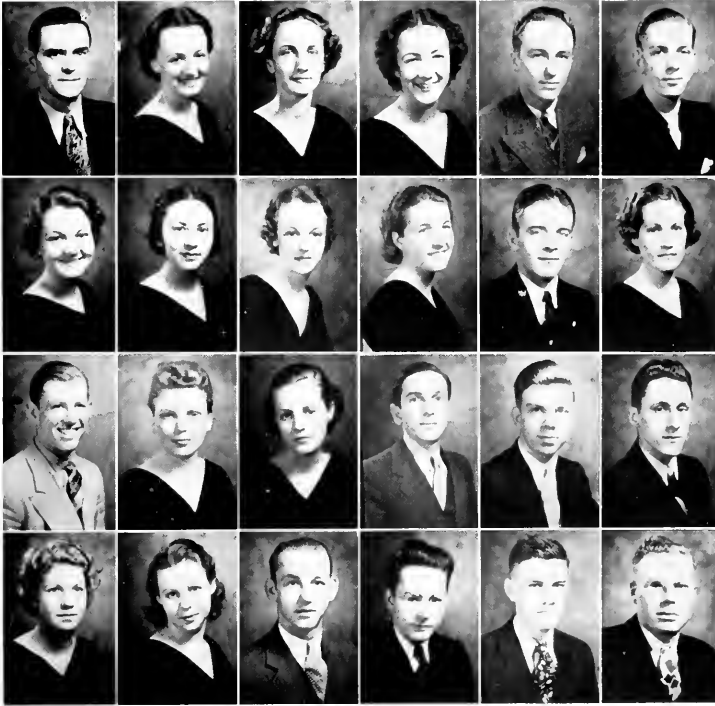
Mary I. Maxwell  
*Pi Beta Phi*  
Sanford

Elwyn L. Middleton  
*Pi Kappa Phi*  
Pomona

Raymond Milwee  
*Delta Delta Phi*  
Holopaw

Frank Minchart  
Youngstown, Ohio

Jennings Minton  
*Pi Kappa Phi*  
Hastings



William Mitchell  
Daytona Beach

Martha Myers  
*Alpha Xi Delta*  
Boynton

Roberta Nigels  
*Alpha Xi Delta*  
Palm Harbor

Evelyn Northern  
*Pi Beta Phi*  
Daytona Beach

William Harrison Oaks  
Greenville

Richard L. Offutt  
*Sigma Nu*  
Chicago, Ill.

Francis M. Ogilvie  
*Pi Beta Phi*  
DeLand

Roberta Orentl  
*Alpha Xi Delta*  
Orlando

Jane Pace  
*Delta Delta Delta*  
Tavares

Orline Parrish  
*Delta Delta Delta*  
DeLand

Lloyd C. Pawley  
*Pi Kappa Phi*  
DeLand

Stella V. Pope  
*Zeta Tau Alpha*  
Lacoochee

Royal F. Raidle  
*Sigma Nu*  
Lake Worth

Evelyn D. Rees  
*Alpha Xi Delta*  
Lake City

Betty J. Rider  
*Pi Beta Phi*  
Orlando

Bennie G. Riggio  
Tampa

Henry T. Riley  
Wheatley, Ky.

Arthur B. Robertson, Jr.  
Jacksonville

Janet Robinson  
Seville

Grace C. Rummell  
Cocoa

Woodrow Russell  
DeLand

Clifford Ryerson  
DeLand

William Sample  
*Delta Sigma Phi*  
DeLand

George Schurr  
*Delta Sigma Phi*  
DeLand



Richard Simms  
Columbus, Ohio

Virginia Skaggs  
*Delta Delta Delta*  
Miami

Henrietta J. Smith  
DeLand

James Snellings  
*Pi Kappa Phi*  
Leesburg

William H. Solomon  
*Sigma Nu*  
Jacksonville

Jeanette Stevens  
Orlando

Frow W. Strickland  
Starke

Vivian M. Swindell  
Boynton Beach

Walter F. Taylor  
*Delta Sigma Phi*  
DeLand

Frank Underhill  
Barberville

Frank Valentine  
DeLand

Alene Vereue  
*Alpha Xi Delta*  
Florida City

Elizabeth Ann Wartmann  
*Delta Delta Delta*  
Ocala

William F. Warnock, Jr.  
*Sigma Nu*  
Daytona Beach

Annie M. Waterhouse  
*Zeta Tau Alpha*  
Daytona Beach

Frances Waterhouse  
*Zeta Tau Alpha*  
Daytona Beach

Cynthia Waterman  
DeLand

Roger Weaver  
Crystal River

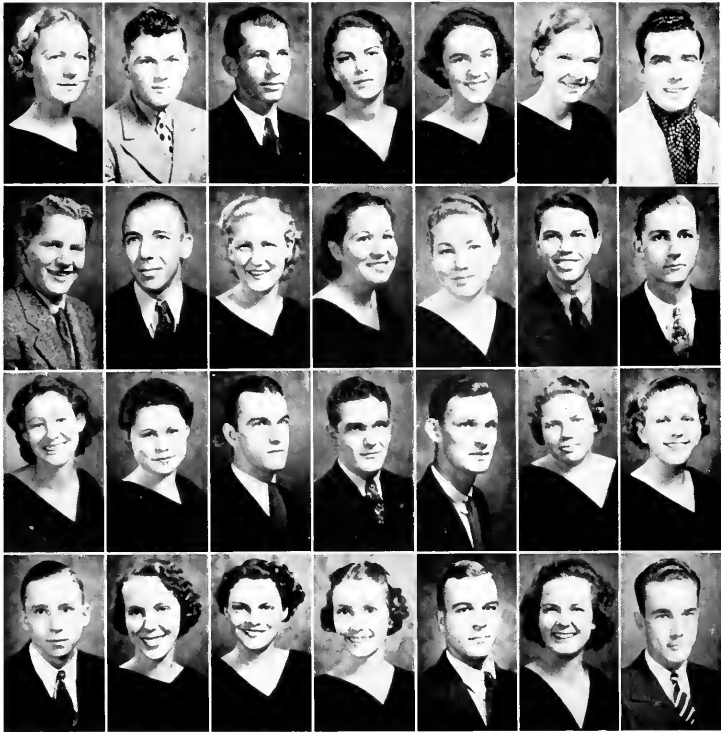
Helene Webb  
*Alpha Xi Delta*  
DeLand

Elizabeth West  
Otter Creek

Katherine Wilhelm  
*Kappa Delta*  
West Palm Beach

Madge Williams  
Jacksonville

*Freshmen*



Mary Aikens  
Daytona Beach

Robert L. Anderson  
Cambridge, Wis.

Raleigh Anderson  
Titusville

Ruth Archer  
Okeechobee

Edith Arrington  
Favares

Mary Ashmore  
Eustis

John J. Atwater  
*Sigma Xi*  
Kensington, Md.

Ward Baggott  
Okeechobee

Victor Barber  
St. Cloud

Katherine Batman  
Augusta, Ga.

Mary Baxter  
Arcadia

Azada Bennett  
*Delta Delta Delta*  
St. Petersburg

Erie L. Biggs, Jr.  
Starke

Horace R. Bills  
Sarasota

Thelma L. Bolin  
Barberville

Carmen Booth  
*Delta Delta Delta*  
Avon Park

Gordon Booth  
St. Petersburg

James W. Booth, Jr.  
*Pi Kappa Phi*  
St. Petersburg

Clifford R. Boyles  
Callahan

Mary Louise Brandon  
Lake Helen

Mary Emma Brooking  
*Pi Beta Phi*  
Gainesville

Sidney Broward, Jr.  
*Sigma Xi*  
Jacksonville

Daphne Brownell  
*Zeta Tau Alpha*  
DeLand

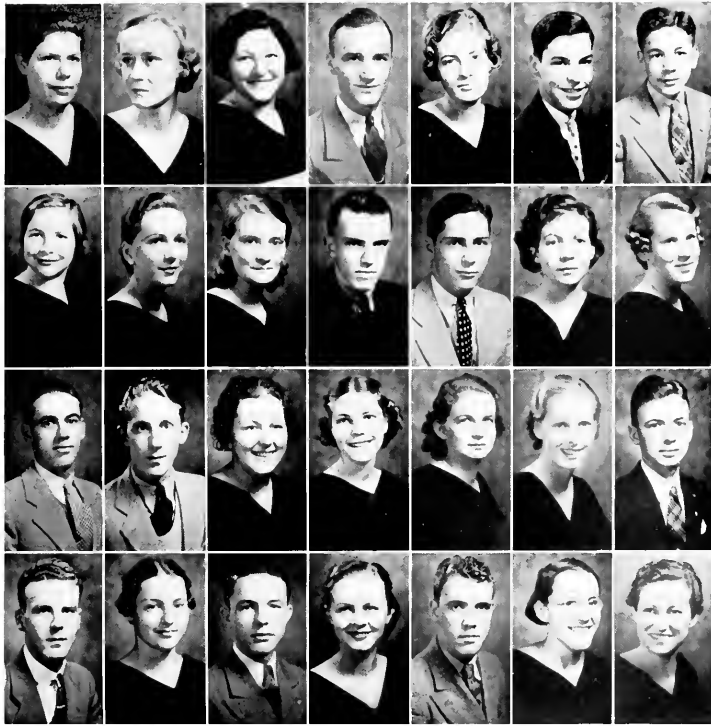
Martha Bumbly  
Orlando

Mavis Burton  
*Delta Delta Delta*  
Columbus, Ga.

Charles Butler  
Montverde

LaVerne Byrd  
*Pi Beta Phi*  
Jacksonville

Charles D. Campbell  
DeLand



Dorothy Chalker  
Ocala

Betty Chapman  
Smithfield, Va.

Thelma Chestman  
New York, N. Y.

Charles Cobb  
Miami

Mary Elizabeth Coen  
Avon Park

Henry Colee  
DeLand

Jack Compton  
*Delta Sigma Phi*  
Orlando

Emily Cone  
Macclenny

Gertrude Conley  
DeLand

Catherine Conn  
Jacksonville

James Cooper  
Titusville

Cecil W. Cowart  
*Sigma Nu*  
DeLand

Dorothy G. Cox  
*Zeta Tau Alpha*  
Homestead

Willa Mae Crosby  
*Pi Beta Phi*  
Citra

Broward Daniel  
*Delta Sigma Phi*  
Moore Haven

Woodrow Darden  
Titusville

Antoinette Davis  
Greene, N. Y.

Marjorie Davis  
*Pi Beta Phi*  
Miami

Priscilla Davis  
Miami

Ruth DeBlois  
Pt. Lauderdale

Hal P. Dekle  
*Pi Kappa Phi*  
Marianna

Joseph B. deLorenzi  
*Sigma Nu*  
South Bend, Ind.

Ruth Dentler  
DeLand

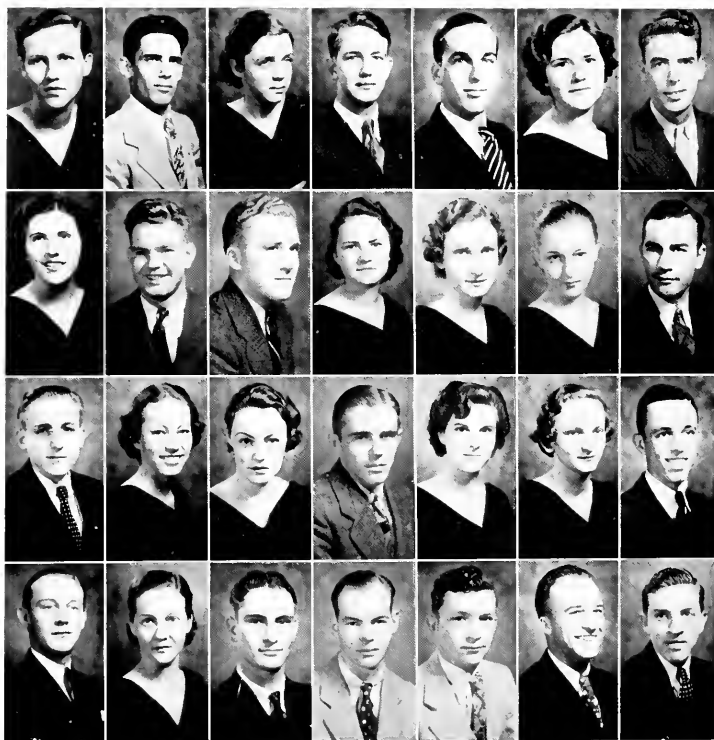
Samuel Dighton, Jr.  
Sanford

Dorothy Dingee  
DeLand

Harold Dona  
*Sigma Nu*  
Potsdam, N. Y.

Hazel Dunn  
Floral City

Florence Duren  
Archer



Virginia Edwards  
Melbourne

LeRoy Elledge  
*Delta Sigma Phi*  
Okeechobee

Eveleen Emerson  
Brooksville

Carroll R. Ezell  
*Pi Kappa Phi*  
DeLand

J. Wendell Finkell, Jr.  
Daytona Beach

Jean Fletcher  
Shrewsbury, Mass

Joseph M. Foy  
*Sigma Nu*  
Greensboro, N. C.

Ruth Freeman  
DeLand

Donald W. Frison  
*Pi Kappa Phi*  
Titusville

William A. Fry  
Van Horn, Iowa

Mary Louise Gaddis  
*Delta Delta Delta*  
Miami

Amelie Getzen  
*Alpha Xi Delta*  
Newberry

LaVerne Gifford  
DeLand

Wendell Gilbert  
Dade City

Graham Gillespie  
Tavares

Sarafrance Gilmore  
Orlando

Miriam Glover  
*Alpha Xi Delta*  
Valle Crucis, N. C.

Jack Gore  
*Sigma Nu*  
Oak Park, Ill.

Ruth Goss  
Cleveland, Ohio

Jean Gower  
*Alpha Xi Delta*  
Mt. Vernon, Ohio

Rodney Gunther  
*Pi Kappa Phi*  
Tampa

Edwin Gustafson  
*Sigma Nu*  
Green Cove Springs

Julia Gustafson  
*Pi Beta Phi*  
Green Cove Springs

Wesley R. Hall  
*Pi Kappa Phi*  
Leesburg

Royal P. Hamlin, Jr.  
*Sigma Nu*  
Tavares

Jarmon Harper  
Pierson

Robert L. Hefner  
Bradenton

Lowell Henderson  
Bedford, Ind.





Mary Viola Hicks  
Melbourne

Frances Holder  
Arcadia

Ruth Hooker  
*Pi Beta Phi*  
Chosen

Herschell House  
Sarasota

Helen Hudgens  
DeLand

Ruth Hammeil  
*Zeta Tau Alpha*  
Philadelphia, Pa.

Carl Hulbert  
*Pi Kappa Phi*  
New Smyrna

Thomas Humphreys  
Youngstown, Pa.

Leslie Jacobsen  
Ann Arbor, Mich.

Kathryn Jelks  
*Alpha Xi Delta*  
Haines City

Jennette Jennings  
*Pi Beta Phi*  
Middleburg

Joseph Jones  
Cottondale

Anna Mae Kean  
Barberville

William Kepler  
DeLand

Marion Kesler  
Umatilla

Grover Kirby  
*Pi Kappa Phi*  
West Palm Beach

Thomas Kirkland  
*Pi Kappa Phi*  
Tulsa, Oklahoma

Mary Ellen Knight  
*Alpha Xi Delta*  
Vero Beach

Mary Julia Knight  
Gainesville

June Krause  
*Alpha Xi Delta*  
FL Landerdale

Inez Lanier  
Cocoa

James LaRoe  
*Delta Sigma Phi*  
Eustis

Norman Lawrence  
Boca Raton

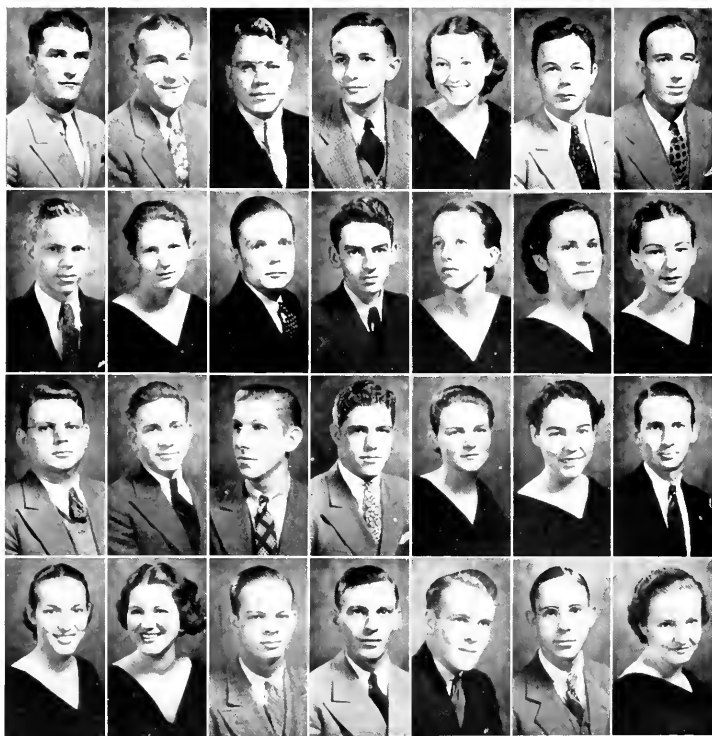
Jennette Lawry  
*Pi Beta Phi*  
Valdosta, Ga.

Elizabeth Lewis  
Lake Helen

Elizabeth Linson  
Charles Town, W. Va.

Andry Lockett  
Cocoa

Patsy Loomis  
*Pi Beta Phi*  
Avon Park



Harris Lowery  
*Sigma Xi*  
Stuart

James Lumpkin  
*Sigma Xi*  
Jacksonville

Jiles Lunsford  
Vero Beach

John McCall  
Madison

Jane McCarty  
*Pi Beta Phi*  
Collinsville, Okla.

Murray McCarty  
Reynolds, Ga.

George McClelland  
*Pi Kappa Phi*  
Sanford

William McDonald  
Pelham, Ga.

Margaret McGarrath  
*Zeta Tau Alpha*  
DeLand

George MacMillan  
Lakewood, N.J.

Neil MacMillan  
Orange City

Myra Machen  
*Delta Delta Delta*  
DeLand

Doris Madden  
*Zeta Tau Alpha*  
Eagle Lake

Virginia Maeger  
Jacksonville

George Malmborg  
DeLand

Hamilton Martin  
DeLand

William Mashburn  
*Delta Sigma Phi*  
Orlando

Edward Mason  
*Delta Sigma Phi*  
Miami

Lucille Matheson  
*Alpha Xi Delta*  
West Palm Beach

Dorothy Mathis  
*Zeta Tau Alpha*  
Panama City

James Meadows  
*Delta Sigma Phi*  
Ocala

Kathleen Mercer  
*Delta Delta Delta*  
DeLand

Ruth Merritt  
*Zeta Tau Alpha*  
Panama City

Joseph Mikler  
DeLand

Arvel Miller  
LakeLand

Oliver Miller  
*Pi Kappa Phi*  
Sanford

Ralph Miller  
DeLand

Jane Mitchell  
*Delta Delta Delta*  
DeLand



Sidney Mories  
*Pi Kappa Phi*  
Jacksonville

William Moores  
*Delta Sigma Phi*  
Holopaw

McLeod Morgan  
Eustis

Roberta Morris  
*Delta Delta Delta*  
DeLand

Monteen Moles  
Palatka

James Neville  
*Delta Sigma Phi*  
Keyser, W. Va.

Harry Newett  
*Pi Kappa Phi*  
Leesburg

George Nichols  
Jacksonville

Lauris Nichols  
*Sigma Xi*  
Daytona Beach

Evelyn Olliff  
Waukeela

Harry Olliphant  
Jacksonville

Ruth Orum  
Pittsburgh, Pa.

Josephine Osborne  
*Zeta Tau Alpha*  
Umatilla

Robert O'Toole  
DeLand

Mildred Owens  
Umatilla

Oscar Parker  
New Smyrna

Jane Parsons  
*Zeta Tau Alpha*  
DeLand

Lillian Pelot  
Manatee

Ella May Perkins  
Williston

Rachel Perry  
Lake Wales

Robert Phillips  
*Delta Sigma Phi*  
Jacksonville

Evelyn Plano  
Kissimmee

Lois Pollock  
*Alpha Xi Delta*  
Daytona Beach

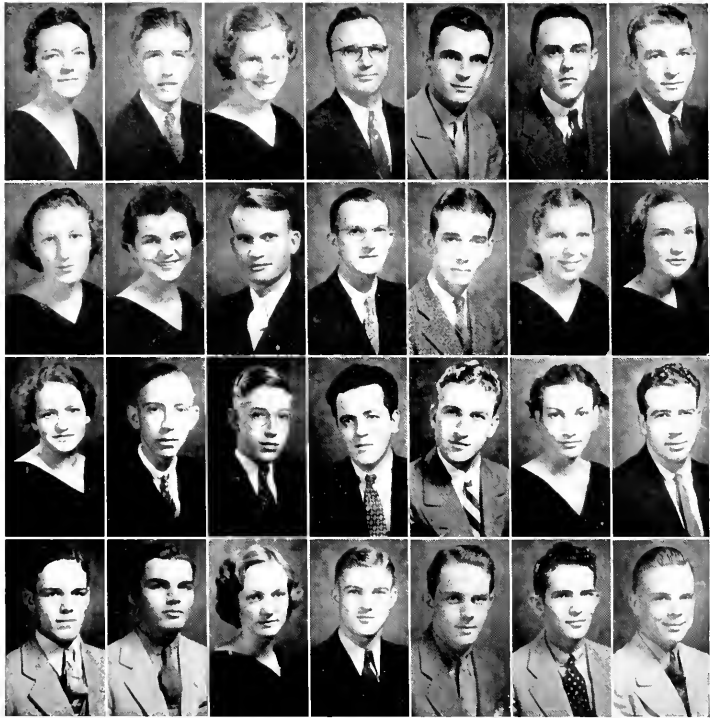
Ava Lou Poppell  
Hastings

Verdie Pridgeon  
Vreardia

Louise Randall  
Daytona

Mary Alice Rausch  
Orlando

Alfred Rehbaum, Jr.  
Mt. Dora



Sara Reid  
*Alpha Xi Delta*  
Hastings

William Rickards  
Tallahassee

Ruth Robbins  
*Alpha Xi Delta*  
Miami

Leo Roberts  
Pensacola

R. G. Roberts  
*Pi Kappa Phi*  
Bradenton

Lloyd Robinson, Jr.  
Daytona Beach

Stanley Roper  
Winter Garden

Constance Rosecrans  
*Delta Delta Delta*  
Blarstown, N. J.

Prudence Ross  
Williston

Wilton Rowe  
*Delta Sigma Phi*  
Orlando

Ora Sage  
DeLand

Curtis Sample  
Connersville, Ind.

Elizabeth Sandusky  
Arcadia

Effie Lee Sapp  
Arcadia

Betty Jayne Sawyer  
*Zeta Tau Alpha*  
DeLand

August Schiek  
*Sigma Nu*  
DeLand

George Schiek  
*Sigma Nu*  
DeLand

Herman Shie  
DeLand

Burt Shotton  
Winter Haven

Marion Simmons  
*Pi Beta Phi*  
DeLand

Randall Slaughter  
Sanford

Francis Smith  
DeLand

Millard Smith  
Pensacola

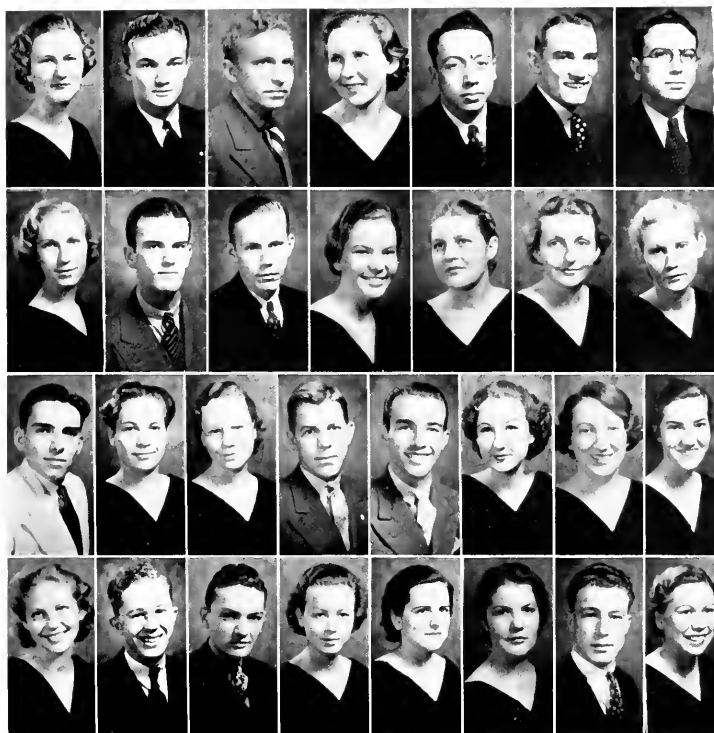
Reba Smith  
*Zeta Tau Alpha*  
Narcossee

Richard Smith  
*Delta Sigma Phi*  
Asheville, N. C.

Harry Somerville  
*Delta Sigma Phi*  
Rye, N. Y.

James Southerland  
Wauchula

Lester Spear  
Coshocton, Ohio



Joy Sterzenbuck  
*Pi Beta Phi*  
Dayton, Ohio

Harry Stewart  
*Sigma Xi*  
Jacksonville

James Stewart  
Panama City

Helen Stollenberg  
*Pi Beta Phi*  
Belle Glade

James Stone  
*Sigma Xi*  
Bristol, Va.

Edwin Strickland  
*Pi Kappa Phi*  
Hastings

James Strickland  
Crystal River

Mary Ella Strickland  
Lake Butler

Donald Strong  
*Sigma Xi*  
Jacksonville

Gustav Swanson  
Jacksonville

Catherine Talton  
Apopka

Luella Tatum  
DeLand

Lois Thacker  
*Pi Beta Phi*  
Kissimmee

Nellie Thigpin  
Pierson

Henry Tudaro  
Newark, N. J.

Janet Trenis  
*Pi Beta Phi*  
Nokesville, Va.

Gertrude Triste  
New Haven, Conn.

Harold Vann  
*Pi Kappa Phi*  
Miami

Earl Verigan  
Lake Jesu

Christine Walker  
*Pi Beta Phi*  
Sarasota

Margaret Walker  
*Delta Delta Delta*  
Keamsburg, N. J.

Eunice Webber  
Eustis

Daisy Welch  
Sarasota

William G. Wilson  
Jacksonville

William M. Wilson  
*Pi Kappa Phi*  
Miami

Josephine Winn  
*Pi Beta Phi*  
Miami

Alice Wolf  
*Alpha Xi Delta*  
Ft. Lauderdale

Dorothy June York  
Pahokee

Lynn Warren  
*Delta Sigma Phi*  
Miami

Vida Ziegler  
DeLand

## Special Students



Rossie C. Allen, Mus. B.  
DeLand, Fla.

Ollie Mae Brown  
DeLand, Fla.

Elizabeth Dreka  
DeLand, Fla.

Florence B. Gooch, A.B.  
Hackensack, N. J.

Frank M. Lipscomb  
Perry, Fla.

Elan V. Martin, A.B.  
DeLand, Fla.

Maria A. Nunez  
Havana, Cuba

Grafton H. Pyne, Jr.  
Bernardsville, N. J.

Lucille B. Parrish  
Dade City, Fla.

Hazel Taylor  
Chicago, Ill.



HULLEY GYMNASIUM

*Sports*







**COACH BRADY COWELL.**— Coach Cowell in his first year as Director of Athletics and Head Football Coach proved from the start to be a coach popular with the boys. His great success during his initial year can be directly due to his great popularity on and off the field. A victim of circumstances at the start, Coach gained the respect of the boys, and before the season was far under way had accomplished as fine a backing spirit as any coach in the history of the school. Coach's ability to understand boys and their ability, and then to adopt a system to fit his material proved to many alumni and friends of the school that Stetson has a fine character at the head of its athletics, and no finer choice could have been made.

**COACH CHET FREEMAN.**— Coach Freeman, after fine success in Florida high schools, has been chosen as Assistant Athletic Director at his Alma Mater, where he gained wide-spread recognition as a great halfback during the years '26 and '27. "Chet" acted as line coach and did a wonderful job in rounding out such a formidable line as Stetson possessed during this last season. "Chet" is our head basketball coach. It should be remembered that several years back as coach at Fort Lauderdale High School he won the State Championship. Coach Freeman's biggest asset is in getting along with the boys. That and his ability and knowledge of sports makes him a popular choice with the alumni and friends of the school.





**CAPTAIN HERB WOTRING**, Captain, Howard Game—The boy with the “educated toe.” Herb won two games by kicking that “precious” point after, and was instrumental in the winning of five more by his fine all-around playing. The squad showed their appreciation by electing him Captain—an honor he justly deserved. His hard blocking and vicious tackling stood out in every game this year. He hails from Terra Alta, West Virginia.



**THOMAS GANNARELLI**, Captain, Erskine Game—Tom’s shoes will be hard to fill next year. It’s been a long time since Stetson has had such a hard-hitting back as “Tommy.” In addition to his “pile-driving Nagurski” type of ball-carrying, he was a demon on backing up the line. “Tommy” was the hardest worker on the squad—the first on the field, and the last off. “Tom” comes from Keewatin, Minn.



**KENNETH LOULTON**, Captain, Oglethorpe Game—“Kenny” finished his third year on the varsity with the fine play he has shown in the two previous years. Game after game his splendid kicking and blocking was lauded by sport-writers, and he truly deserved it, since no end of praise could be showered on him for his three years of faithful service. “Kenny” hails from Des Plaines, Illinois.



**AUBREY SMITH**, Captain, Murray Game—The “Spark Plug” of our team’s attack. With the cooperation of the team and free from injuries this year, “Smitty” lived up to expectations, and then some. His fine runs, his good passing, and dependable kicking stamps him as one of Stetson’s immortals. Players of “Smitty” caliber are few and far between. “Smitty” comes from Electra, Texas.

**MITCHELL SCHEMER**—The finest blocker in the state. A victim of circumstances, “Meec,” after serving as a regular for two years saw comparatively little action. Generally conceded, by the squad, as being the best blocker on the team “Meec” finished up his career with superb performances in the Tampa, Murray, and the Rollins games. A native Floridian “Meec” prepped at Jackson High in Jacksonville, where he was a star in both football and basketball.





**CLAUDE MILLER**, Captain, Tampa Game—In Claude, Stetson possessed one of the best tackles in the south. His viciousness on the defense and fine blocking on the offense always was a determining factor in the outcome of many games. The boys who played next to him can vouch what a tower of strength he was, and what a thorn to the opponents. Coaches dream of tackles like Miller. Claude dropped in from Martinsburg, West Virginia.

**LYNN HARDY**—Lynn, when in the mood to play, was as fine an end as could be found in the state. He was a power on the defense, and was especially adept to pass receiving. Passes to Lynn were always a threat to any team. Injuries hampered Lynn's play part of the season, but he finished in great style against Murray and Rollins. Lynn came to us from Beaumont, Texas.



**JOHN TURNER**, Captain, Georgia State Game—Turner was one of four great guards on the squad this year. Never before has Stetson possessed such an array of fine guards. After being shifted from the backfield to the line Turner developed into being one of the best guards to ever wear the green and white. A great blocker and hard tackler, Turner will be hard to replace when next season rolls around. Turner hails from New Haven, Connecticut.

**RUDOLPH KUKAR**—"Rudy" is the second of our great guards. Teaming with Turner, "Rudy" turned in one brilliant performance after another. Using his weight to the best advantage, he consistently turned back scoring threats single-handed. "Rudy" hails from Gilbert, Minn., where they make 'em big and tough.

**HARRY GORDON**, Captain, Miami Game—"Whitey" also belongs to the list of our four great guards. Being the lightest of the four, he was handicapped. "Whitey" didn't let this bother him. What he lacked in brawn he made up with what we generally term "brains." He was probably the smartest guard to ever don the green and white. "Whitey's" great blocking often enabled our backs to break away on long gains. "Whitey" came to us from North Braddock, Penn., but now seems destined to make his home in Florida.





**JACK HAYNESWORTH**, Captain, Florida Game—Jack completes our quartet of great guards. Of the four, Jack was the only one to serve his school for four years. Jack was probably the steadiest player of the four. Few guards can take it and dish it out like Jack did during his three years on the varsity. Credit is due him for the showing of the line on many of those goal-line stands. He was especially strong on the defense. Jack is another one of the native Floridians on the squad and hails from Mulberry.

**EDWARD KNITTLE**—Eddie was proclaimed to be the smartest Stetson signal caller to represent the green and white in many years. Being able to direct his team was not his only asset; he was also a fine runner and passer. The pass from Eddie to Haddock won the game from Rollins. Eddie seemed to be dogged by hard luck which cut down his effectiveness. His confidence and team spirit seemed catching, making for more effective team play. His teammates attribute the winning of the Oglethorpe game to his strategy. His absence will be keenly felt next year. Eddie came to us from Des Plaines, Illinois.

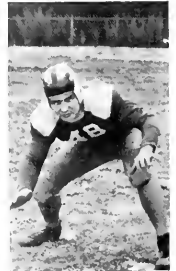


**HERBERT PHILLIPS**—“Swede” was another one of our fine ends, and you could always count on him to turn in a fine performance. “Swede’s” big asset was his fine blocking and pass catching. You could always count on him getting down under punts and get his man. His size and ability always made it hard for the opposition to take him out of the play. Many a ball-carrier did he spill for sizeable losses. “Swede” came to us from New Smyrna.



**JOHN OFFUTT**—Although Johnnie saw little action this year, he was a hard worker and as fine a punter as was on the squad. His fine spirit made him popular with the boys, and with that kind of spirit will make everyone forget football when basketball season opens, since his play on the court will win many games for us. Johnnie comes to us from Chicago, but prepped in West Virginia.

**JACK HUGHES**—Big and rugged, Jack was all that one could ask of a first class tackle. A victim of poor judgment last year, Jack really came thru this year in great style. He loved the game, for anyone who tosses opponents around like Jack does would enjoy it. We only regret that Jack won't be back next year to continue his fine play. Jack came down with Turner from Connecticut.





**JOHN CUDMORE**—Johnny was one of our best ends and being fast was hard to get off his feet and was usually the first man down under punts. Johnnie did most of our kick-offs. His fine kicking always put the opposition back on their heels. In addition to other fine qualities he was a great blocker and tackler. The best part about Johnnie is that he will be back with the squad next year to finish up his already fine career. Johnnie also comes to us from Minnesota.



**WINSTON BRIDGES**—Another one of our good tackles, Winston was somewhat of a surprise this year. No one expected much of him this year since he lacked experience, but with grim determination he set out to land a regular starting berth, and this he did. He was steady and a hard charger which spelled disaster to the opposition time after time. Winston will also be back with the squad next year. He hails from Jacksonville, where he played at Jackson High School.



**SAM BARBER**—Sam was the hardest charging end we had, and as a result very few yards were made around his end. His pet trick was to spill the interference and let the secondary nail the ball carrier. Much of his success was due to the cooperation that existed between him and the rest of the players on his side of the line. Great things can be expected of Sam next year, and those who know say he'll be one of the best in the school's history. Sam lives in St. Cloud, and has one more year of competition.



**OTIS JACKSON**—“Stonewall” played line ball at both center and guard, shifting from one position to the other he was handicapped but played bang-up ball whenever given the chance. With the team well fortified with four crack guards and two excellent centers “Stony” spent considerable time on the bench, but many coaches would be glad to have him on the squad. “Stony” comes to us from Pampa, Texas, where he attended Junior College.



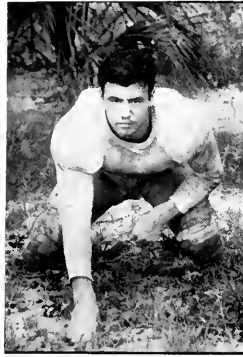
**FRANK MINEHART**—“Tiny” came up from the crack freshman team of '34 and after being hampered by injuries for the first half of the season finished up in great style. “Tiny” was a marked man in every game by the opposition with two, and sometimes three, men designated to take him out. However, he was well able to take care of himself and finished the year with a great performance against Rollins. “Tiny” lives in Youngstown, Ohio, where many of our past stars came from.



**GORDAN MACMILLA**—Mac, when given the chance, turned out to be one of our best linemen. He proved his match in several games before he broke his hand in the Murray game. Mac was a fine center and never made a bad pass. His great defensive play against passes discouraged the opposition's aerial game time after time. With Mac back for the team next year, Minchart will probably be shifted to a tackle position in order to take advantage of both players' great ability. Mac is another native Floridian, hailing from Winter Haven.



**PERRY NICHOLS**—Perry was shifted to tackle this year, where he gave a good account of himself. He was a demon on defense and his blocking gained him respect from both the squad and coaches. Time and again Perry would halt the opponents goal line march, and several times he blocked punts that materialized into scores for Stetson. Perry is big and rugged and hails from way out in Texas.



**JAMES DICKSON**—Jimmy is one of our best end prospects in years. He came up to the varsity with little experience, but showed so much improvement during the current season that we think he'll be a regular next year even tho' several veterans are returning. Jimmy was one of those smashing, busting type of ends who are continually jamming up the opponents running attack. Jimmy comes from Youngstown, Ohio.



**JAMES MARTIN**—"Spec" is a local boy, and were it not for a trick knee would have given the home folks something to rave about. He was as fine a ball carrier as we've seen this year. "Spec" was also a sure tackler and a fine passer. He still has one more year of competition and we're confident that you'll hear much of him next year.

**EMMET CLONTS**—Emmet was the finest passer on the squad, and also a good punter. Only a sophomore this year, great things are expected of him before he grabs the sheepskin. His passes were a continual threat to the opposition. With a little more experience Clonts should develop into a nice blocking back. Another Floridian, coming from Winter Garden.





**LAWRENCE HADDOCK** After warming the bench for most of the season "Harpo" came through the Rollins game to snag a scoring pass that turned out to be the winning marker. He was probably the best receiver on the squad, but lacked weight and experience. "Harpo" will be back next year to thrill the crowds with his spectacular catches. He came to us from Jacksonville, where he prepped at Jackson High.



**WILLIAM GREEN** Bill has the making of a great tackle but lacks only experience. With two more years to go Bill ought to compare with such line tackles as Miller, Bridges, etc. His big asset was his defensive tactics that continually upset the offensive play of the opponents. Bill is another one of the local boys on the squad.



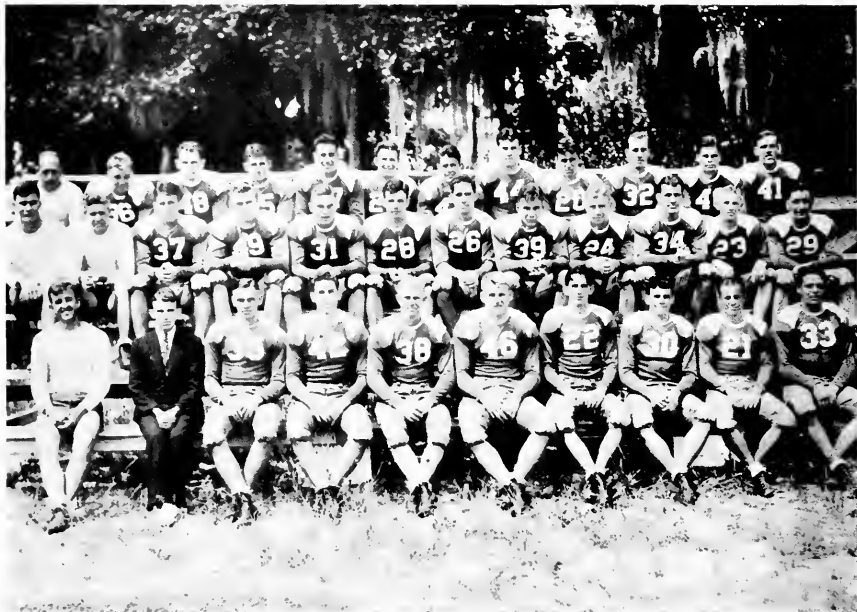
**RICHARD BRANHAM** Dick was our sophomore fullback and for the first year on the varsity gave a very good account of himself whenever given the chance. An injured shoulder kept him from finishing out the season. Dick was especially good at picking holes and getting to them before the opposition could get through. Dick was particularly fast for a fullback, which enabled him to get away on several lengthy gains. He could back up the line with the best of them. Dick comes from the Hoosier State - Indianapolis.



**DONALD FRISON** Don was unfortunate in not being able to participate this year, due to a pre-season ankle injury. The coaches were fortunate in having several good guards so that his absence was not felt as bad as might have been. We'll hear plenty about Don during the next three years. Don is fast and aggressive and will be sure to fill one of the vacancies at guard next year.



**CLEMENT COOMBS** "Pee Wee" lacks experience but should develop into a nice tackle. He is a hard worker and has abilities. With more confidence in himself and more experience "Pee Wee" will be a big help to the squad through their hard schedule next year. "Pee Wee" is a native Floridian, hailing from Wildwood.



VARSITY FOOTBALL SQUAD

## Varsity Squad

Stetson's Varsity squad enjoyed their most successful season in years. Under our new coaches, Cowell and Freeman, they annexed the State Championship and finished up the season with seven wins and two setbacks.

After a rather slow start with defeats by Florida and the strong Howard College elevens, they went on to dispose of Miami, Erskine, Tampa, Murray, Georgia State, and Rollins in order. Oglethorpe also fell victim to our line of victories.

With as fine a spirit as prevailed among the players and coaches, the team was hard to beat. This was demonstrated on several occasions when Stetson turned presumably hopeless losses into victories with their great last minute comebacks.

Half of this year's fine team will be lost by graduation but with good material coming up from the freshman squad we can expect another great team next year.

### SEASON'S RECORD

Stetson	0	.....	Florida	31
Stetson	7	.....	Oglethorpe	6
Stetson	0	.....	Howard	32
Stetson	13	.....	Miami	12
Stetson	19	.....	Erskine	13
Stetson	9	.....	Tampa	7
Stetson	6	.....	Murray	0
Stetson	9	.....	Ga. State	6
Stetson	21	.....	Rollins	14

81

7 wins - 2 losses,

124





FRESHMAN FOOTBALL SQUAD

## Freshman Football

This year's freshman team although beaten in four starts played great football, considering the limited number of boys Coach Nencee had to work with. The freshmen featured a passing game which was second to none among freshmen teams in the south. In Warren, they probably possessed one of the finest passers in the south and without doubt the best that has ever played here. With Vann, McClellan, and Anderson on the receiving end, their passing game often clicked, and to score in every game.

In the line, Mason, Kirkland, Butler, Vann, Kelly, Barber, and Swanson, played great ball, and without doubt, will supply fine material for the varsity next year.

In the backfield, Anderson, Hall, McClellan, Warren, Manies, Cobb, Smith, and Stewart, performed in great style, with Warren, Anderson, and McClellan expected to do great things for the varsity next year.

A lot of credit is due Coach Nencee for the fine way he handled the small squad during the season, and the fact that they scored in every game. The Baby Hatters were the first team in three years to score against the Florida yearlings. With more replacements our Baby Hatters would have won most of their games.



FRESHMAN BASKETBALL SQUAD



**CAPTAIN JOHN OFFUT** Offut was a fast charging, hard driving forward, who excelled at placing the ball through the nets from all angles of the floor. It was through his never-say-die spirit that he led his mates on to victories over such opponents as the University of Florida, the University of Georgia, and the University of Tampa. His speed and quick thinking makes him one of Stetson's great Basketballers.



**JOHN COLOMBO, Alt. Captain** Johnnie finished his basketball career with a wonderful display of basketball skill and teamwork. He was probably the finest defensive man on the squad. Not always the most outstanding man on the floor, but Johnnie could always be counted on to turn in a steady game. The loss of Johnnie to the squad next year will be keenly felt by all our enthusiastic fans.



**ED BINFORD** His "pan-handle" shot has made him high scorer for two straight years. Although guarded closely no one has yet been able to stop his famous shot which he perfected by years of practice. He appears to take things easy on the court but his teammates realize that his every move is premeditated.



**HERBERT WOTRING** Herb's clever passing and great defensive work will be remembered at Stetson for a long time to come. He makes up for his lack in height by being a regular ball-hawk and being able to diagnose and intercept opponents' passes. His clever ball handling earned for him the key position in Coach Freeman's offense.

**DON ROBINSON** For two years "Robby" has done an excellent job in holding down the center position for the strong Stetson machine. He was a hard worker on both offense and defense. His tip-ins and pivot shots were forever giving the opponents a headache.





FRANK MINEHART

"Tiny" displayed a brilliant brand of basketball at times, and with another year of experience should develop a style of play characteristic of our fine teams of the past. His great size and aggressiveness were his chief assets. "Tiny" is expected to do great things on the court next year.



RICHARD BRANSHAM

Dick, like "Tiny," came up to the varsity from the crack Freshman team of last year. Dick comes from Indiana, where they teach 'em young, and his work on the varsity has lived up to the tradition of that State. Dick's fine shooting and floor work gained for him the confidence of the coach, and much depends on his play next year.



HERBERT PHILLIPS

"Swede" could always be depended upon to bring the crowd to its feet. His size helped him in being forever a threat under the basket, where his tip-in shots won several games for his team. "Swede" will leave us this year, and his position at center will be hard to fill.



FINLEY EDGE

Close followers of the team think Finley will become one of Stetson's great stars before he leaves. Coming up to the varsity from the crack Freshman team of last year he began working hard and before the season ended had shown great things. Big things are expected of him next year.



RICHARD FROMHART

Dick was the finest one-hand shooter on the squad, and in addition to this displayed a fine floor game. Dick could always be depended upon to turn in a steady game and be fighting to the end. Fans regret his loss to the squad next year.



DEAN GOUGH

Dean's fighting spirit carried the team to victory after victory. His defensive play was fine to behold and time after time he rallied his teammates to stop opponents' rallies. Dean's loss will also be felt by those who know his abilities.



## Varsity Basketball

Our team this year stacks up well with the teams of the past. Coach Freeman has molded together an aggregation that compares with the best in the South. The team conquered such strong opposition as Georgia, Florida, Erskine, and Macon.

Much credit is due Coach Freeman for the fine and successful season. Coach came here from a Miami High School with an enviable reputation and tackled the job with the utmost confidence, and came out with a winner his first year as a college coach. He presented the fans with a brand of basketball not only interesting, but thrilling to watch.

Many of the boys will graduate this year, but with such Sophomores as Branham, Minchart, and Edge to step right into regular positions next year, we can expect another great team, and another great year.



DIRECTOR CARL "DOC" JOHNSON

# Intramurals

To begin a program is one thing, and to make it end is another. If a good beginning is a criterion for a future success, then the Intra-mural program gives some indications that it will be an established program here at Stetson. From the very beginning of the new athletic endeavor, the young men of the different organizations have been enthusiastic to have such a competitive Intra-school organization be a regular event in their school life; for they realize the value of athletic combats as a field on which brawn, brain, and spirit mix to decide who is the better man or team.

The program for this year included the following major and minor sports:

Basketball	Volley ball	Ping Pong	Handball	Golf
Touch football	Diamond ball	Horseshoes	Shuffleboard	Tennis

The winners of the different events as played up until the time of this writing are:

Basketball . . . . .	Delta Sigs
Horseshoes . . . . .	Conrad Hall
Volley ball . . . . .	Conrad Hall
Ping pong . . . . .	Sigma Nu

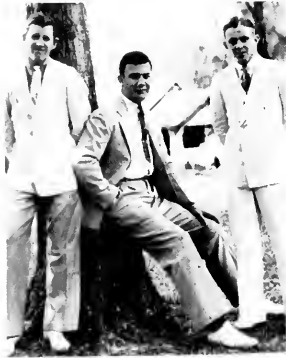
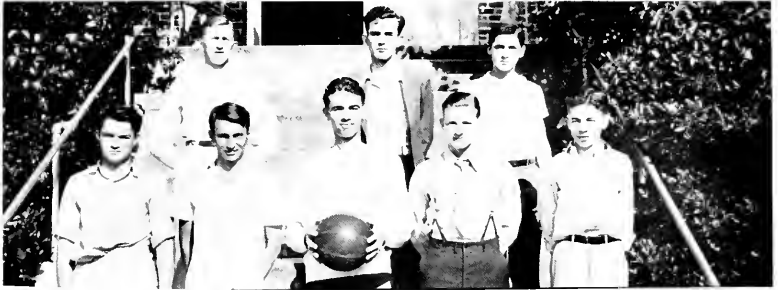
The all-star basketball team chosen by the Intra-mural director and his staff of officials was as follows:

Neville	Edge	Jones
Lang	Milwee	

An award will be given at the end of the season for the outstanding Intra-mural athlete. The award shall be based upon scholarship, reliability, sportsmanship, and athletic powers.

In working out a program of this type, that includes the majority of the student body, it is a pleasure to note the sportsmanship and the good-will of those who compete in the different events. To the winner will go a cup. That cup will signify an effort made and a triumph rewarded.

With the sense of victory that accompanies every award, the director of Intra-mural activities hopes that such minor rewards will serve as reminders that the game of life is a much harder game and it takes strong men to carry forward the great ideals that underlie all human tasks and deeds. Whenever athletics fail to fill the role of a hardener of the coming realities of life, its place becomes an empty occupation of passing away time for no future good. Athletics that do not make for men who can lose, lose, lose, and then come back for more are detrimental to the individual; for life is a pleasant conflict that brings some victories and many defeats. How a man surmounts his every set-back marks the man!



*Top* Touch Football, Delta Sigs.  
*Second Row* Basketball, Delta Sigs.  
*Third Row* Ping Pong, Sigma Nu;  
 Hand Ball, Conrad Hall.  
*Bottom* Volley Ball, Conrad Hall.





## Physical Education Department

Embodying the spirit of health, clean sportsmanship, and fellowship, the Women's Physical Education Department provides for the physical and social development of young women. Its purpose is to develop that one thing upon which nearly all other aspects of life are dependent—a strong and efficient body. This aim is carried out by a system of activities including tennis, ping-pong, basketball, swimming, hiking, archery and tap dancing.

Miss Nelle Campbell is director of the Women's Physical Education Departments. Assistants in the department are: Sara Staff, Victoria Burt, Mary S. Clark, Mary Downy Chattham and Pauline McFarland.



## Women's Athletic Association

### OFFICERS

SARA STAFF . . . . .	<i>President</i>
ROBERTA MORRIS . . . . .	<i>Vice-President</i>
MARY DOWNY CHATHAM . . . . .	<i>Secretary</i>
DOT WAGER . . . . .	<i>Treasurer</i>

The W. A. A. was organized to promote athletics among the women students of the Stetson University and to provide means of contact among those interested in sports. Not only is the organization prominent in athletic events but it offers social activities as well. At the close of the second semester awards are made, on the basis of points earned, during the year in intra-mural activities.

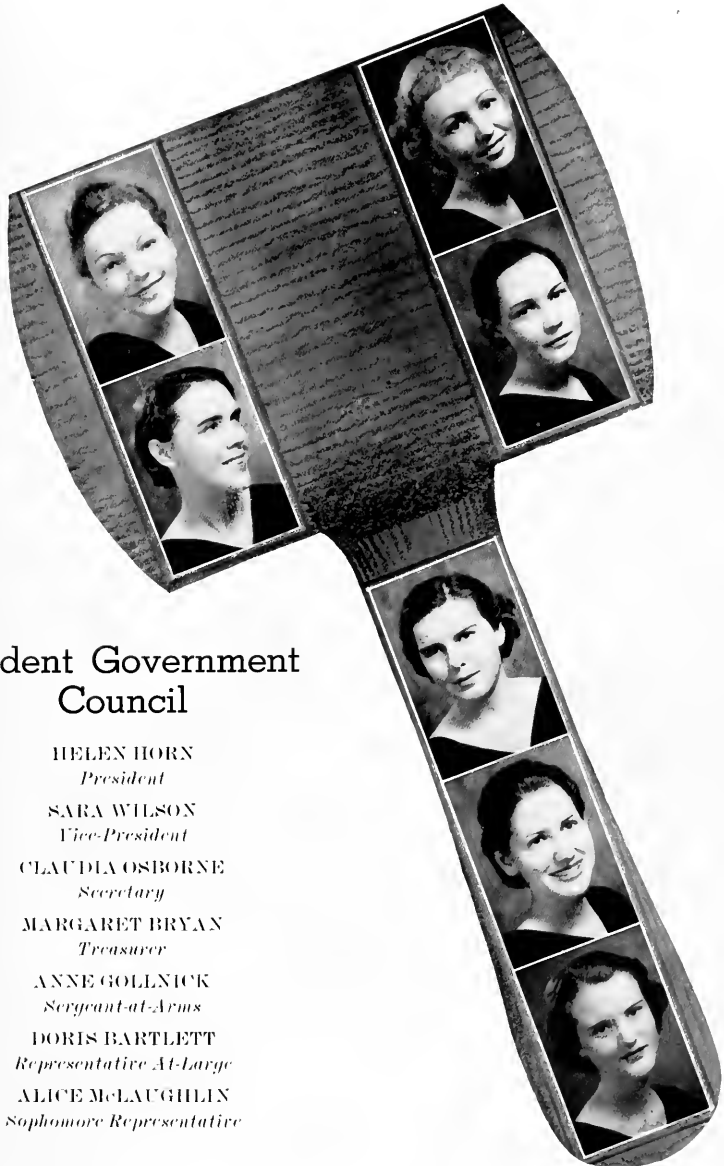




LITTLE THEATRE

*Organizations*





## Student Government Council

HELEN HORN  
*President*

SARA WILSON  
*Vice-President*

CLAUDIA OSBORNE  
*Secretary*

MARGARET BRYAN  
*Treasurer*

ANNE GOLLNICK  
*Sergrant-at-Arms*

DORIS BARTLETT  
*Representative At-Large*

ALICE McLAUGHLIN  
*Sophomore Representative*

## Inter-Fraternity Council



*President* ..... NEAL FAIRCLOTH  
*Vice-President* ..... JANE PACE  
*Secretary* ..... PAULINE McFARLAND  
*Treasurer* ..... MARTHA McCONNELL



*Representatives:* Bessie Faye Mires, Majorie Harrell, George Lennard, Sidney Taylor, Tom Teasley, Dorothy Skillman, Marjorie Hammer, Maxine McLarty, R. B. Hall, Edna Alderman, Carl Hulbert, Roy Randle, Bill Solomon, Hughes Wilson, Susanne Penny, Marguerite Hays.

## Pan-Hellenic Council



*President* ..... MARJORIE HARRELL  
*Vice-President* ..... PAULINE McFARLAND  
*Secretary* ..... DOROTHY SKILLMAN  
*Treasurer* ..... JANE PACE  
*Representatives:* Maxine McLarty, Bessie Faye Mires, Claudia  
Osborne, Susanne Penney.

# Alpha Xi Delta



Founded at Lombard College, April 17, 1888

Omega Chapter established May 31, 1917

Flower— Killarney rose

Colors—Double blue and gold

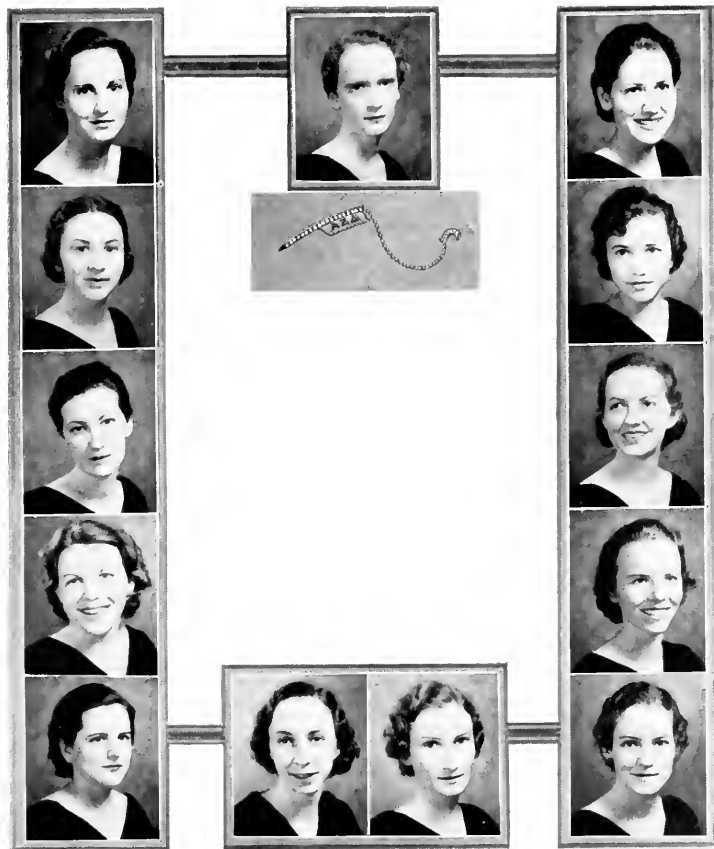
*President* ..... BESSIE FAYE MIRES  
*Vice-President* ..... MARTHA McCONNELL  
*Secretary* ..... DOROTHY FULLER  
*Treasurer* ..... MARJORIE HARRELL



Martha Myers  
 Frances Faulkner  
 Cornelia McCrae  
 Roberta Nigels  
 Sue Latimer

Kathryn Jelks  
 Jean Gower  
 Miriam Glover  
 Sara Reid  
 Ruth Robbins

Evelyn Rees  
 Dorothy Wager  
 Mary Ella Knight  
 Lucille Matheson  
 Betty Ransom



Alene Vercoe  
 Mary Downey Chatham  
 Doris Bartlett  
 Roberta Orcutt

Helene Webb  
 Helen Collins  
 Ruth Murphy  
 June Krause  
 Peggy Champ

Alice Wolfe  
 Lois Pollock  
 Annette Getzen  
 Ruth Bartlett

# Pi Kappa Phi



Founded at the College of Charleston, 1909

Chi Chapter established 1921

Colors— Gold and white

Flower—Red rose

*Archon* ..... JI. MALCOLM DAY  
*Secretary* ..... HOWARD BATESON  
*Treasurer* ..... LEON SANDLIN  
*Chaplin* ..... NEAL FAIRCLOTH  
*Warden* ..... HARRY GORDON

## CHAPTER MEMBERS

### *In Facultate*

WILLIAM E. DUCKWITZ

### *In Universitate*

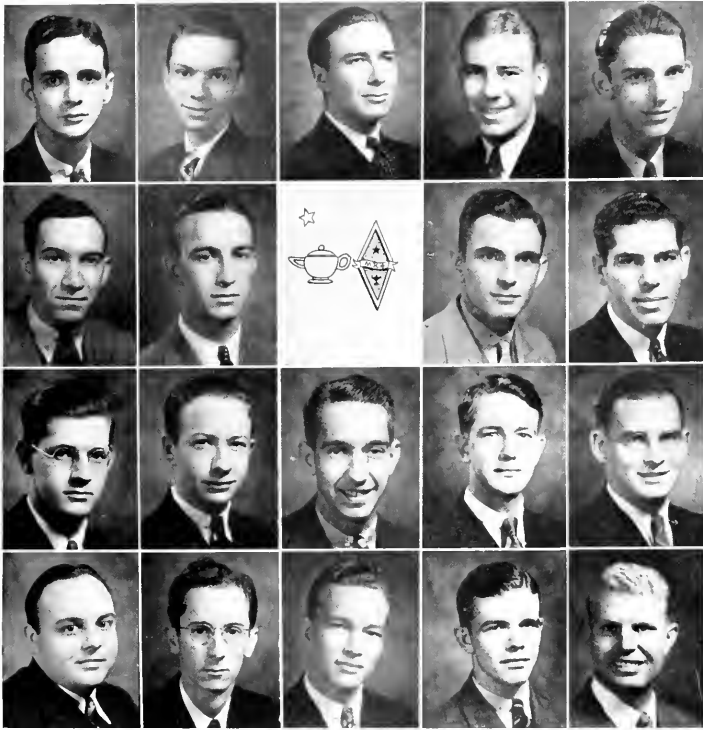
#### PLEDGES

Rodney Gunther  
 Hal Dekle  
 Troy Hall  
 Harold Vann  
 George McClelland  
 Lloyd Pawley

Elwyn Middleton  
 Don Frison  
 James Snelling  
 Tom Kirkland  
 Ed Strickland  
 Dick Branham

Ray Cagni  
 Oliver Miller  
 Fred Hull  
 Harry Newitt  
 Sidney Monies  
 Stubby Booth





Neal Faireloth  
 Howard Bateson  
 Malcolm Day  
 Harry Gordon  
 R. B. Hall  
 Burton Laney

Jennings Minton  
 R. G. Roberts  
 Perry Nichols  
 Robert Young  
 Pierre Poole  
 Bonn Gilbert  
 Carroll Ezell

John Hughes  
 Amory Underhill  
 Carl Hullbert  
 Grover Kirby  
 Boyce Ezell  
 Otis Jackson

# Delta Delta Delta

Founded at Boston University 1888

Alpha Delta established May 17, 1913

Colors—Silver, gold, and blue

Flower—Pansy

*President* .....SUSANNE PENNEY  
*Vice-President* ..... VIRGINIA SKAGGS  
*Secretary*.....CHRYSTELLE MERCER  
*Treasurer* .....MARGUERITE HAYS  
*Marshall* .....JANE PACE



Chrystelle Mercer  
Doris Knaak  
Alice McLaughlin  
Susanne Penney  
Jane Pace  
Marguerite Hays  
Virginia Skaggs

Roberta Morris  
Alzada Bennett  
Kathleen Mercer  
Myra Machen  
Mary Lou Gaddis  
Ann Hawkins  
Constance Rosecrans  
Carmen Booth

Sara Staff  
Margaret Walker  
Mavis Burton  
Jane Mitchell  
Elizabeth Ann Whartmann  
Lanora Ingram  
June Elizabeth Simmons

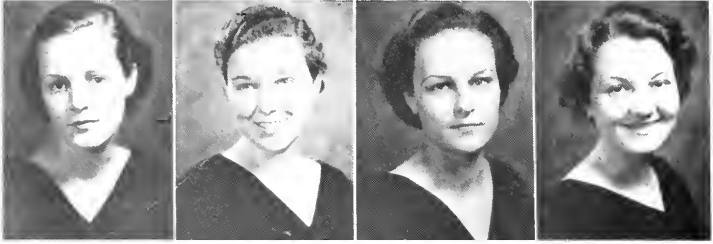


Chrystelle Mercer  
 Virginia Skaggs  
 Susanne Penney  
 Marguerite Hays  
 Alice McLaughlin  
 Jane Pace

Azada Bennett  
 Ann Hawkins  
 Jane Mitchell  
 Sara Staff  
 Katherine Martin  
 Margaret Walker  
 Elizabeth Ann Whartmann

Myra Machen  
 Roberta Morris  
 Doris Knank  
 Mavis Burton  
 Carmen Booth  
 Kathleen Mercer

# Pi Beta Phi



Founded at Monmouth College 1867  
 Florida Chapter established January 30, 1913  
 Colors—Wine and silver blue      Flower—Wine Carnation

*President* ..... HELEN SPAULDING  
*Vice-President* ..... INEZ HILL  
*Secretary* ..... BETTY RIDER  
*Treasurer* ..... FRANCES OGHILVIE



Janel Trenis  
 Laverne Byrd  
 Willa Mae Crosby  
 Joy Sterzenbach  
 Patsy Loomis

Jackie Jennings  
 Marian Simmons  
 Jo Winn  
 Christine Walker  
 Marjorie Davis

Ruth Hooker  
 Helen Stoltenberg  
 Jane McCarty  
 Jeanette Lawry  
 Lois Thacker

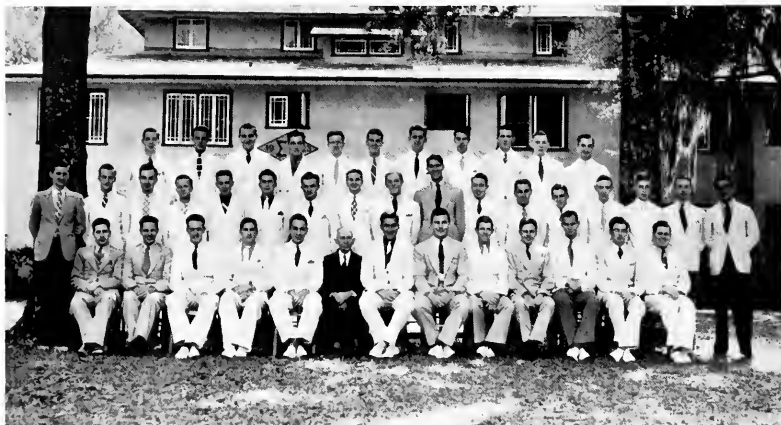


Betty Dreka  
 Dorothy Skillman  
 Mary Maxwell  
 Maxine McLarty  
 Nelle Campbell  
 Helen Brin  
 Wilma Broward

Mary Ellen Lord  
 Marjorie Hammer  
 Helen Horn  
 Evelyn Northen  
 Dorothy Hooker  
 Sara Wilson  
 Lola Hammer  
 Betty Babcock

Judy Brown  
 Bette Stover  
 Mary Brown  
 Sarah Klefeker  
 Helen May Christian  
 Dorothy Haines  
 Gerry Simmons

# Sigma Nu



Founded at Virginia Military Institute January 1, 1869

Delta Mu Chapter established 1913

Colors—Black, white and gold                      Flower—White rose

*Commander* ..... WILLIAM SOLOMAN  
*Lt. Commander* ..... ROY RADDLE  
*Treasurer* ..... CECIL COWART  
*Sentinel* ..... ROY HAMLIN  
*Marshall* ..... JACK GORE

## CHAPTER MEMBERS

### *In Facultate*

LOUIS MARVIN

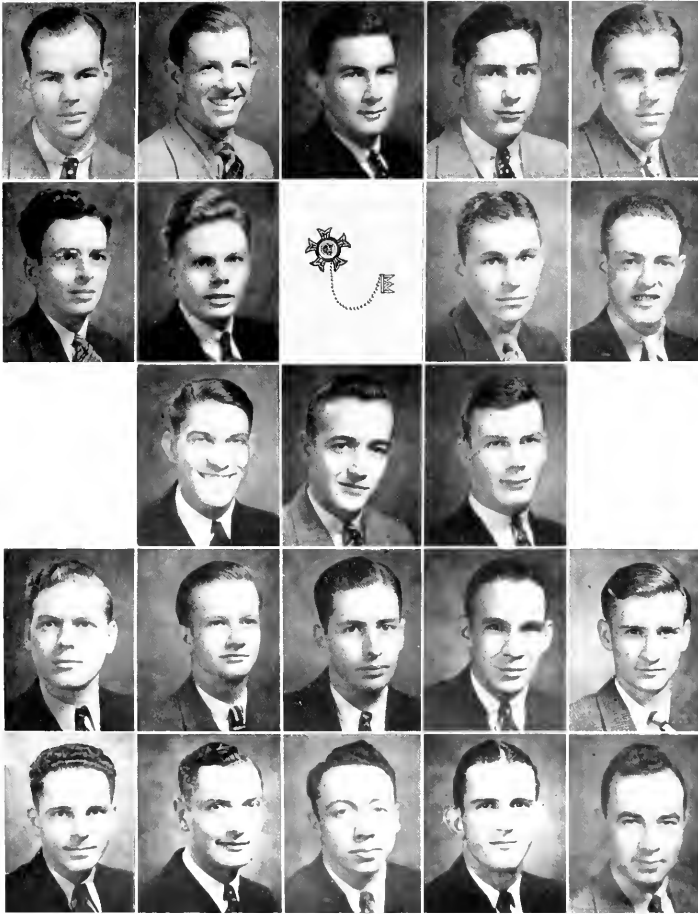
### *In Universitate*

#### PLEDGES

Donald Stroug  
 Harry Stewart  
 Jimmie Lumpkin  
 Edwin Gustafson  
 Bill Harris

Sidney Broward  
 Arnold Michael  
 George Schick  
 August Schick  
 Roger Fry  
 Wade Oliphant

Richard Offutt  
 Robert Bushnell  
 Joseph Foy  
 Harris Lowry  
 Norman Abbott



Roy Hamlin  
 Roy Raidle  
 William Solomon  
 Cecil Cowart  
 Jack Gore  
 Hughes Wilson  
 Leslie Johnson

Edward Knittle  
 Dean Gough  
 Harry Gaylord  
 William Warnock  
 Richard Ingram  
 Robert Powe  
 George Brown  
 Clyatt Broward

William Green  
 Lu Brown  
 Thurmond Knight  
 Herbert Kramenian  
 James Stone  
 John Offatt  
 Robert Linson

# Zeta Tau Alpha



Founded at Virginia State Normal 1898

Beta Psi Chapter established October 12, 1934

Colors—Turquoise blue and steel grey    Flower—White violet

*President* ..... PAULINE McFARLAND

*Vice-President* ..... ANNE GOLLNICK

*Secretary* ..... STELLA POPE

*Treasurer* ..... CLAUDIA OSBORNE

Claudia Osborne

Aune Gollnick

Pauline McFarland

Stella Pope

Edna Alderman

Iris Daniel

Margaret Harper

Floanna Burrows

Etter Turner





Daphne Brownell  
 Dorothy Cox  
 Doris Madden  
 Ruth Hummel  
 Josephine Osborne

Reba Smith  
 Jane Parsons  
 Margaret McGarrath  
 Bettye Jayne Sawyer

Pauline Prevatt  
 Dorothy Malhis  
 Ruth Merritt  
 Mary Hudson  
 Lillian Turnquist

# The HATTERS ART CLUB

EDITH HARVEY



— OFFICERS —

PRESIDENT — "BOB" PHILLIPS  
SEC. — TREAS. — JEAN FLETCHER  
SPONSOR — EDITH HARVEY

"BOB" PHILLIPS



JEAN FLETCHER



"TOOTS" BROWN



EMILY CONE



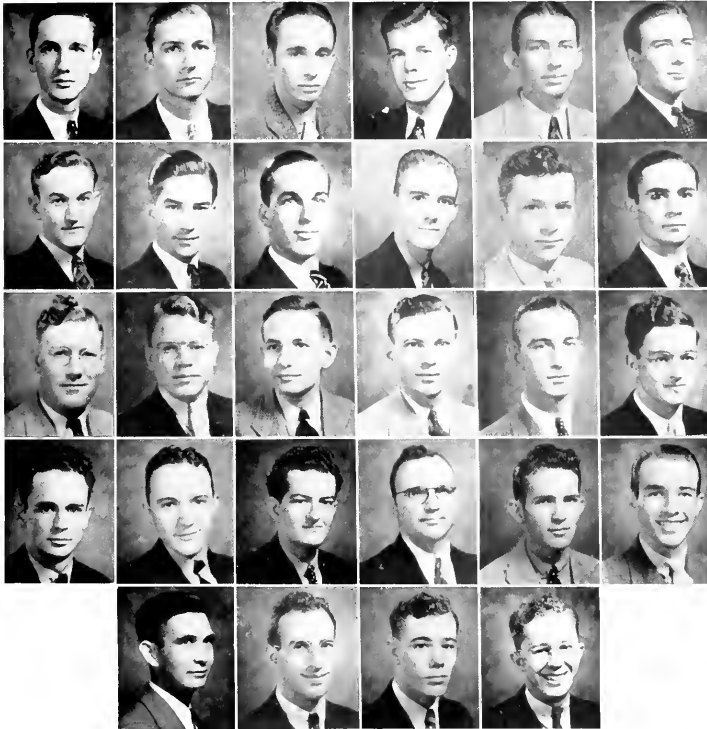
JOY STERZENBACH



JUNE SIMMONS



# Stetson Ministerial Students Association

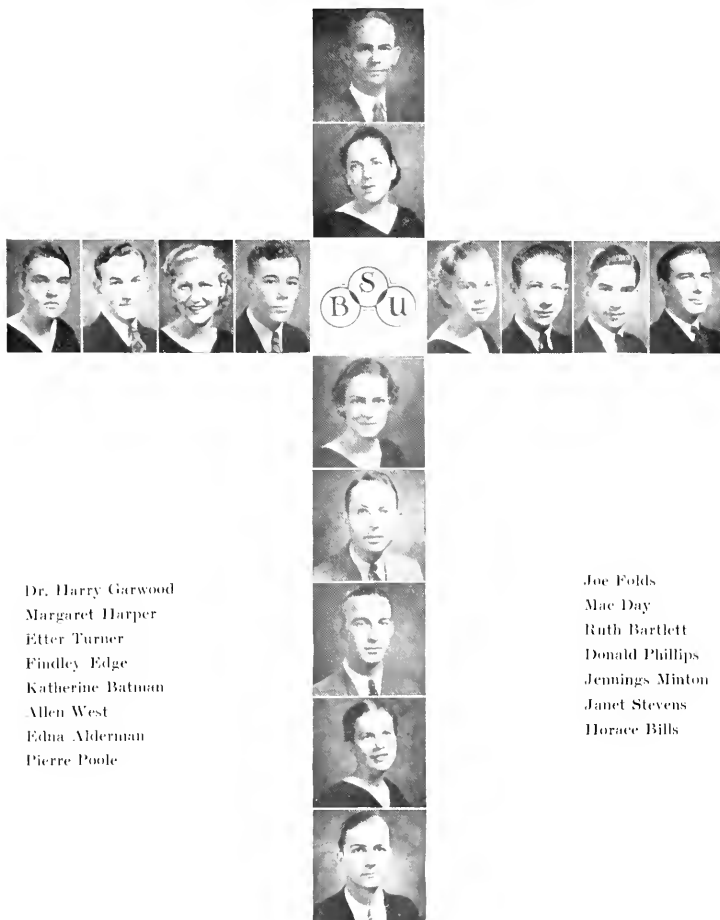


Norman Bennett  
 Horace Bills  
 John Bouterse  
 Maurice Brantley  
 Webb Brooks  
 Malcolm Day  
 Findley Edge  
 Joe Folds  
 Wendell Finkley

Fayette Hall  
 Harmon Harper  
 Joseph Jones  
 Durwood Locke  
 Jiles Lunsford  
 John McCall  
 Arvin Miller  
 Jennings Minton  
 John Moore  
 Melcod Morgan

George Nichols  
 Gordon Reeves  
 Leo Roberts  
 James Southerland  
 Earl Verrigan  
 Roger Weaver  
 Allen Webster  
 Allen West  
 William Wilson

# Baptist Student Union Council



Dr. Harry Garwood  
Margaret Harper  
Etter Turner  
Findley Edge  
Katherine Bateman  
Allen West  
Edna Alderman  
Pierre Poole

Joe Folds  
Mac Day  
Ruth Bartlett  
Donald Phillips  
Jennings Minton  
Janet Stevens  
Horace Bills

# The Order of Torch and Scroll

*Chancellor* ..... LOUISE ROYALL  
*Vice-Chancellor* ..... LA' BROWN  
*Clerk* ..... MARJORIE HAMMER  
*Master of Eschequer* ..... HOWARD BATESON



Marjorie Hammer  
 Louise Royall  
 La' Brown  
 Howard Bateson  
 Sidney Taylor

Olga Bowen  
 Willie Dee Willian  
 Fred Dass  
 Elizabeth West  
 Martha McConnell  
 Albert Johnson

Marvadene Boyte  
 Helen Spaulding  
 Pierre Poole  
 Dorothy Fuller  
 Barbara Davis

# Pi Kappa Sigma

Founded at Michigan Teachers College 1891

Theta Chapter established 1929

Colors—Turquoise and gold

Flower—Forget-me-not



Margaret Bryan  
Helene Golding  
Doris Knaak  
Frances May Ogilvie  
Claudia Osborne

Jane Pace  
Margaret Masfield  
Doris Dede  
Evelyn Olliff  
Marvadene Boyle

Sue Bean  
Susanne Penney  
Suzanne Sawyer  
Dorothy Wager

# Mu Omega Xi

National Scholarship Fraternity

Founded at Stetson 1933

Colors—Black and red



Rayburn Milwee  
Pauline McFarland  
Sara Wilson  
Herbert Phillips  
William Kachler  
Helene Golding

Prof. Harry Winters  
Herbert Kraeman  
Lucy Dent Smith  
Veronica Davis  
Winifred Pyle  
Bette Stover  
Dr. Charles Vance

Margaret Bryan  
Mrs. Sue Benn  
Dr. Harry Garwood  
Dorothy Wager  
Sara Staff  
Nelle Campbell

# Theta Alpha Phi

## HONORARY DRAMATIC FRATERNITY

*Florida Alpha Chapter Installed December, 1919*

*Publication: "THE CUE"*

*Colors: PURPLE AND WHITE*

### MEMBERS

<i>President</i> .....	WALTER SMITH
<i>Vice-President</i> .....	BETTE STOVER
<i>Secretary</i> .....	MALCOLM DAY
<i>Treasurer</i> .....	TOM BARTON
<i>Faculty Adviser</i> .....	PROF. HENRY JACOBS
<i>Director</i> .....	DR. IRVING C. STOVER

WATTS BRACEY

HOWARD BATESON

LAWRENCE HADDOCK

S. C. PARDEE, JR.

MAJORIE HARRELL

LOUISE ROYALL

BOYCE EZELL, JR.

SIDNEY TAYLOR

GAYLORD KENYON

AMORY UNDERHILL

CARL H. WEEKS, JR.

### FACULTY

DR. CHARLES S. FARRISS

PROF. LEWYIS TRIBBLE

PROF. DONALD FAULKNER

MISS WILHE DEE WILLIAMS

### PLAY SCHEDULE

1935 - 1936

The Late Christopher Bean.....	October 21, 25
By Sidney Howard	
Your Uncle Dudley (Home Coming Play).....	November 21, 22
By Lindsey & Robinson	
Little Women.....	January 16, 17
By John D. Ravold	
The Piper.....	March 6, 7
By Josephine Peabody	
The Romantic Age.....	March 27, 28
By A. A. Milne	
Macbeth.....	June 5, 6
By William Shakespeare	





# John B. Stetson University Glee Club



*Director*..... HAROLD MILNE GIFFIN



*Quartette*—Harold Giffin, Harry Black, Charles Reaves, Grover Kirby; John Duss III, Accompanist.



*Trio*—Katherine Martin, Roberta Orcutt, Ruth Bartlett; Jane McCarty, Accompanist.



*Student Leader*.....ROBERTA ORCUTT, GROVER KIRBY  
*Business Manager*.....PAULINE PREVATT, CHARLES REAVES  
*Assistant Business Manager*.....DOROTHY MATHIS, FINDLEY EDGE

PERSONNEL

*Sopranos*

Rossie Allen  
 Ruth Archer  
 Laurretta Bridges  
 Willa Mae Crosby  
 Olise Eriksen  
 Ruth Freeman  
 Annette Getzen  
 Helen Golding  
 Jean Gower  
 Dorothy Haines  
 Ruth Hummel  
 Katherine Marfin  
 Lucille Matheson  
 Margaret Maxfield  
 Dorothy Mayer  
 Jane McCarty  
 Ruth Merritt  
 Ruth Murphy  
 Rhoda Neel  
 Lillian Pelot  
 Pauline Prevatt  
 Suzanne Sawyer  
 Marian Wood  
 Dorothy York

*Altos*

Mary Baker  
 Ruth Bartlett  
 Alna Carlton  
 Antionette Davis  
 Alyce DeCoursey  
 Ruth Deutler  
 Grace Fearing  
 Kathryn Jelks  
 Marion Kesler  
 Dorothy Mathis  
 Martha McConnell  
 Jessis Moody  
 Monteen Motes  
 Evelyn Olliff  
 Roberta Orcutt  
 Josephine Oshorne  
 Elizabeth Sandusky  
 Virginia Skaggs

*Accompanists*

Iris Daniels  
 Jane McCarty  
 John Duss, III

*Tenors*

Robert Adams  
 Thomas Argo  
 Harry Black  
 Carroll Ezell  
 Fayette Hall  
 Jiles Lunsford  
 John McCall  
 Gordon Reeves  
 James Woodfill

*Basses*

Raleigh Anderson  
 Norman Bennett  
 Findley Edge  
 Tom Kirkland  
 Grover Kirby  
 George MacMillan  
 Jennings Minton  
 Robert Phillips  
 Gratton Pyne  
 Charles Reaves  
 William Sample  
 Thomas Teasley  
 Allen West

# Phi Beta

Founded at Northwestern University May 5, 1912

Stetson Chapter established Dec. 20, 1921



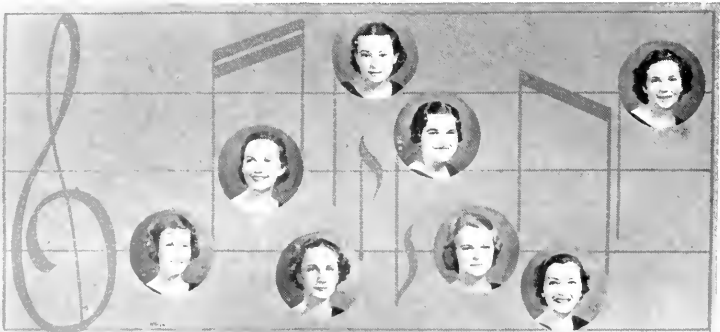
Veronica Davis



Iris Daniel



Lucy Ann Neblett



Pauline Prevatt  
Ruth Murphy  
Roberta Nigels

Jane McCarty  
Dorothy Mayer

Charlotte Veith  
Evelyn Patterson  
Dorothy Haines

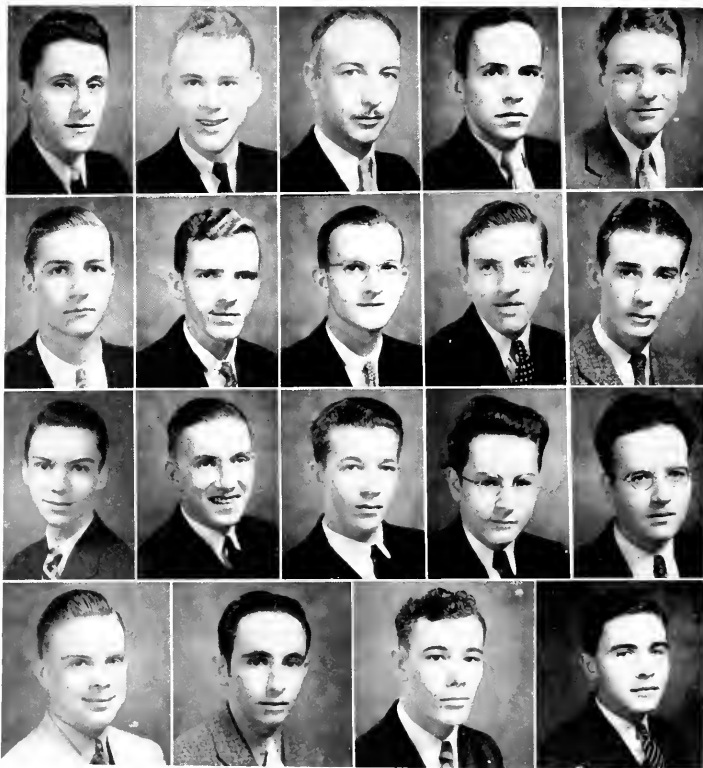
# Kappa Kappa Psi

Founded at Oklahoma State College 1919

Alpha Xi Chapter established May 10, 1935

Colors Blue and white Flower Red Carnation

*President*.....LOUIS H. MARVIN  
*Vice-President*.....LAWRENCE HARTSFIELD  
*Secretary*.....ARTHUR B. ROBERTSON  
*Treasurer*.....RICHARD SIMMS  
*Editor*.....RICHARD FAULKNER

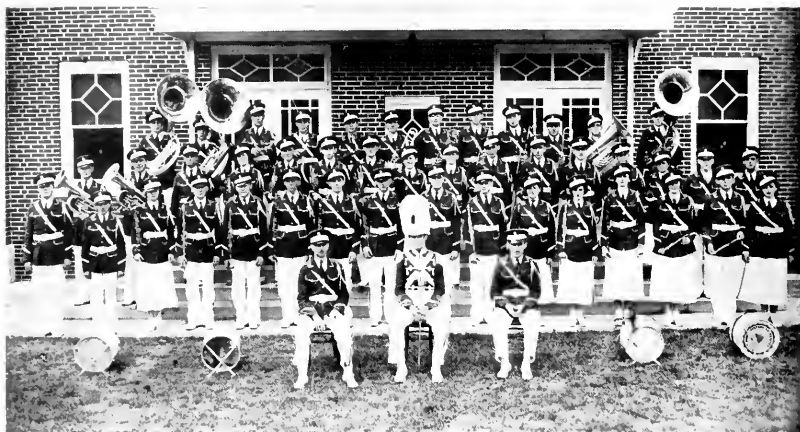


Arthur Robertson  
 Lawrence Hartsfield  
 Louis Marvin  
 Richard Faulkner  
 Richard Simms  
 Horace Bills

Wallace Arey  
 Ora Sage  
 Lowell Henderson  
 Curtiss Sample  
 Howard Bateson  
 Robert Bushnell  
 Oscar Parker

Clifford Ryerson  
 Thomas Humphries  
 Lester Spear  
 Matthews J. Bouterse  
 Allen West  
 James H. Snelling

# Stetson University Band



PROF. LOUIS MARVIN ..... *Band Master*  
 JOHN HENEY ..... *Assistant Band Master*  
 HORACE BILLS ..... *Drum Major*  
 GAYLORD KENYON ..... *Manager*

## *Piccolos*

Phillip Caldwell  
 Floanna Burrows  
 Pansy Caldwell

## *Clarinets*

Richard Simms  
 Clifford Ryerson  
 Allen West  
 Lawrence Hartsfield  
 James Snellings  
 Guy Merry  
 Landis Knight  
 Stella Pope  
 Aline Worth  
 Charlotte Veith  
 Evelyn Patterson  
 Roberta Nigels  
 Olse Eriksen

## *Saxophone*

Howard Baleson  
 Jack Sample  
 James Booth  
 John Reynolds

## *Bassoon*

Armond Pappone

## *Cornets*

Sara Staff  
 Richard Faulkner  
 Curtis Sample  
 Carl Hulbert  
 Gordon Booth  
 Donald Pounds  
 Sue Latimer  
 Jack Knowles

## *Horns*

Robert Bushnell  
 Pauline Prevatt  
 Mathew Bouterse  
 Ora Sage

## *Trombones*

Barry Walker  
 Wallace Arey  
 Samuel Dighton  
 Raleigh Anderson  
 Victor Baer  
 Leslie Shepherd

## *Baritones*

James Mulholland  
 Margueret Edwards

## *Basses*

Lester Spear  
 Thomas Humphreys  
 Oscar Parker  
 Raymond Craig  
 Robert Adeock

## *Bell Lyres*

John Heney  
 George McMillian

## *Snare Drums*

Arthur Robertson  
 Lowell Henderson  
 Curry Hazlett

## *Cymbals*

George Schick

## *Bass Drum*

Robert Powe

# THE STETSON REPORTER

FIRST YEAR NO. 22

DELAND, FLORIDA, WEDNESDAY, APRIL 25, 1936

5¢ PER COPY, \$1.50 PER SCHOOL YEAR

## \$40,000 SHALL FOR SCHOOL GRID TILT TOMORROW NIGHT

### BATTLE CLIMAXES SIX WEEK TRAINING PERIOD FOR TEAM

Tickets on Sale by Members of Mystic Krewe

Touchdown! Fumbles! Passes! Spinners! Off tackles! Center smashes! Thrills galore are anticipated by the huge throng of football loving fans who will be on hand to witness the gridiron battle between two picked teams of the 1936 Stetson varsity football team.



**HARRY GAYLOR**  
Editor Stetson Reporter

### Miss Neblett Is On Board of Directors For Spanish Group

Teacher Also Chosen as Secretary of Rollins Convention

Lucy Ann Neblett, Spanish teacher of the university, had 11 of the 13 Spanish students represented in the Spanish section from the Gonzales Brothers, El Genoa Alegre and General Mexican and Cuban songs and dances at the meeting of the Spanish Institute in America at Rollins College last Sunday afternoon. The program was given in the Annie Russell Theatre on the campus.

Miss Neblett and Mildred Henderson of Orlando, presented the national dance of Mexico, Jarabe Tapatio. The same dance was staged at a similar performance before the fifth grade children of Orlando public schools last Friday afternoon.

The Stetson students, who participated in the celebration which commemorated the 200th anniversary of the death of Christopher Columbus, were: Beane Faye Mirco, Dorothy Fuller, Suzanne Sawyer, Ruth Bartlett, Doris Blankenbaker, Frances Ogilvie, Madge Williams, Maria Nayer, Marie McCreary, David Dracry, William Sample, Jack Robert, and Gladys Gray.

Stetson's Spanish teacher was elected to a position on the board of directors of the American Spa in Florida.

### Students To Elect Next Year Officers Tomorrow Morning

Sidney Taylor, Della Sig, Slated for Major Position

The student body will elect their next year's officers, after the chapter service tomorrow morning, according to the constitution of that organization.

Very little interest has been displayed by the students in connection with this election which should be the most important one of the year. So little has been the enthusiasm, that predictions are very difficult at the present time.

The Fraternity group has had everything its way this year, due to their cooperation and the lack of leadership among the Non-Fraternity group.

It will be remembered that last year the picnic, held at the two major offices in the student body election, and the returns gave James Farish a huge majority for the office of president, and Herbert Phillips was elected vice-president.

However, this year they have had no leaders and the Greeks have run away with every election, by unanimous votes in many instances. There is very little time left before the election and it would seem impossible for the Greeks to get organized now and elect their candidates.

The Fraternities have not selected their man, as yet, but the rumor is that Sidney Taylor of the Delta Sigma Phi fraternity will be their choice. If this be true, there is little question about his election, it will probably be a unanimous vote because the Non-Frats have



**P. I. LIPSEY**  
Publicity Director

### MAY DAY FETE IS SCHEDULED FRIDAY

May Queen Will Have Eight Attendants For Pageant

The annual May Day celebration, which has become one of Stetson's most colorful traditions, will be held in the Forest of Arden on Friday afternoon at five o'clock.

The pageant is based on Greek mythology and depicts the story of the seasons. A large number of girls of the university will participate in the presentation.

The program which is being directed by Miss Nell Campbell, instructor in physical education for women will be elaborate and entertaining.

Miss Pauline M. Farland, senior

### Dighton Stars In Last of One Act Plays Thru Saturday

Other Players Praised for Work in Other Operuses

The four one-act plays staged at the Little Theatre Thursday night and directed by members on Dr. Slover's play-production class, were enthusiastically acclaimed among other triumph for the amateur directors and actors by a large audience. These plays mark the closing of the series of work-shop productions for the season.

Boss Dighton, freshman from Sanford, displayed talent cast as the adolescent hero of "Not Quite Such a Gooder", which was directed by Margorie Harrell. He was applauded again and again for his interpretation of lines and clever punning. Sara Reid, Marjorie Gaudin, Paul Lanier, and Elroy Elton Reid also were praised for capability.

The second play brought to the Stetson stage, Johnny Duffett, a star of the basketball court, who proved that his talent is not limited to athletics. Portraying the sentimental movie star with many love affairs, in "Loves of Lancelot", he received much praise. The ladies who played his wives and sweethearts were Peggy Champ, Marjorie Gaudin, Ruth Bartlett, and Finae afternoon at five o'clock.

"The Imperial Theatre", directed by Paul McIntyre, offered a more serious type of drama in contrast to the three comedies. Players were James Woodill, Bob Adeock, Dorothy Madala, Robert Young, all of whom gave competent performances.

An unusual ending which revealed that the play was a "play

### NEEDED BUILDING WILL BE STARTED SOON AS POSSIBLE

Dining Room Will Be Remodeled to House More Students

Stetson university trustees at a special board meeting Friday afternoon approved plans for the erection in the campus of a \$194,000 common room to house a kitchen, cafeteria, dining hall and at least two assembly rooms.

Construction will begin as soon as all details have been worked out. President W. S. Allen stated after the board meeting that the building, which will occupy the large space back of Chaudron and Stetson Hall, will be ready for use



**MARVIN SHEPHERD**  
Business Manager

### Stetson Members Install Dramatic Chapter in Miami

East Coast Club Is Beta Chapter of Theta Alpha Phi

Florida Beta chapter of Theta Alpha Phi national honorary dramatic fraternity, was installed at the University of Miami last Saturday evening by 12 members of the Alpha Chapter (Stetson).

The group of delegates from Stetson were entertained by the University of Miami at formal luncheon on Saturday evening, preceding the initiation and formal installation of the new members. Following this, the dramatic fraternity from Stetson was guest of the university at the Miami Biltmore Hotel where the representatives of the Press and Student Government convention are being entertained.

Sunday morning the members of both chapters enjoyed a breakfast and beach party at Palm Beach.

The Stetson representatives, who installed the new chapter were: Dr. Irving C. Shover, former national president of the organization, Willie Dee Wilkins, Dean and Mrs. Lewis Trumble, Professor Henry Jacobs, Louise Royal, Howard Hutcheson, Madison Day, Walter Smith, Gaylord Gray and Walter S. Heston.

The three representatives of the Florida Beta chapter were: ...



STAFF STETSON REPORTER

available to them at all times and Holly Field has also been the scene of many Budgie contests during the past year.

Not only has it cooperated with the school, generally, but has aided many of the student graduates in securing scholarships at Stetson.

Edna Alderman of Lakeland student representative, and Edith Arrington of Tavares, Y. W. A. president.

Last week-end a group of students, including several of the new officers, attended the B. C. Spring Retreat in the Oak Springs where they reviewed their work in the past year.

# Pi Gamma Mu

Founded at South Eastern College, 1924  
 Florida Gamma Chapter, Established 1919  
 Colors: Blue and White

*President*.....ALBERT JOHNSON  
*Vice-President*.....HOWARD BATESON  
*Secretary and Treasurer*.....DR. CHARLES FISHER

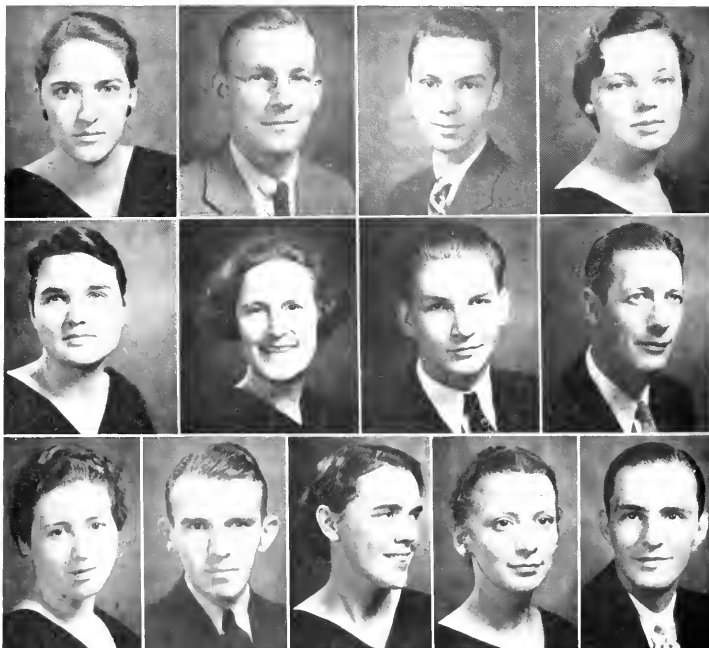
## CHAPTER MEMBERS

### *In Facultate*

Dean C. P. Carson  
 Dean Robert Cotner  
 Dr. C. A. Fisher  
 Mrs. Sue Bean  
 Mr. Jack Neblett

Dr. Iola K. Eastburn  
 Dr. W. N. Baer  
 Dr. Garwood  
 Miss Curtis Horn  
 Mrs. Thornton

Dr. J. W. Futch  
 Prof. Harry Winters  
 Dr. Clark  
 Miss Lucy Ann Neblett  
 Miss Willie Dee William



### *In Universitate*

Margaret Maxfield  
 Albert Johnson  
 Howard Bateson  
 Louise Royall

Eller Turner  
 Winifred Pyle  
 Robert Duling  
 Carl Johnson  
 Helene Golding

Paul Wongrey  
 Margaret Bryan  
 Rhoda Neel  
 Dick Frouhart



# Gamma Sigma Epsilon

Founded at Davidson College, 1919  
Beta Beta Chapter, Established, 1932



Elizabeth West  
Gerry Simmons

Pierre Poole  
Martha McConnell

William Stemper  
Sue Latimer

# Stetson Engineering Society

Organized October, 1932  
Faculty Advisors: Dr. R. E. Allen, Prof. C. M. Lowry



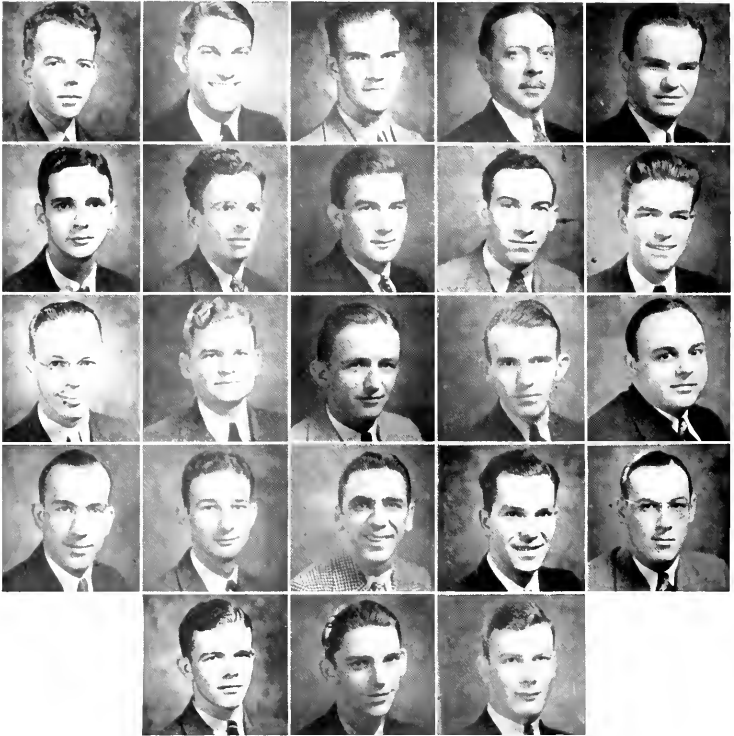
John Turner  
Richard Simpson  
Jack Hughes  
Clifford Ryerson

Harold Fisher  
Harry Gressang  
Quentin Hodges  
Robert O'Toole

Willard Smith  
Gustav Swanson  
Ward Baggott  
Wesley Neville  
Walter Taylor

Bill Oakes  
August Shick  
James LaRoe  
William McDonald

# The Mystic Krewe

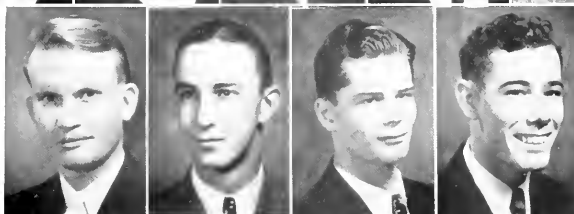


John Duss  
 Harry Gaylord  
 Charles Reaves  
 Prof. Henry Jacobs  
 Tom Barton  
 Neal Faircloth  
 Hughes Wilson  
 William Solomon

Burton Lancy  
 Richard Simpson  
 Marvin Sheppard  
 James Parrish  
 Bill Touyn  
 Paul Wongrey  
 Amory Underhill  
 Gordon McCalla  
 Watts Braey

Anthony Pizzo  
 Joe Lea  
 S. C. Pardee  
 Boyce Ezell  
 R. B. Hall  
 Richard Ingram  
 Carl Weeks  
 Gaylord Kenyon

## Stetson Debaters



Mary Louise Baker  
Margaret McGarrah  
Robert C. Cotner

Madison Koontz  
William Warnock  
Willon Rowe

Jennings Minton  
Sidney Taylor  
Allen West

The Athenian Club, of DeLand, awards at Commencement a cash prize of \$25.00 to the best debator. Mr. Sidney Taylor was winner in this year's contest. Miss Margaret McGarrah and William Warnock represented Stetson in the annual debate, fostered by Dr. Robert S. Holmes, with Rollins College, before the Daytona Beach Forum. Mr. Jennings Minton deserves honorable mention for his work through the season.

Freshmen teams made trips to Winter Park, Gainesville and Lakeland, while the Varsity teams entered the South Atlantic Southern Teachers of Speech tournaments.



Harmon Harper  
George Mahnborg

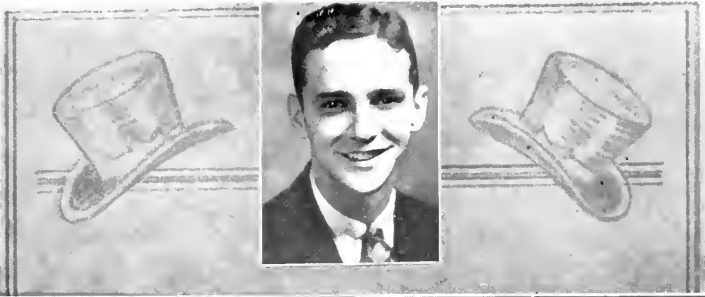
Henry Todaro  
Clifford Boyles

Richard Smith  
Wade Olliphant

# The Hatter Staff



*Editor*..... DOROTHY HAINES  
*Assistant Editor*..... JOE LEA  
*Faculty Advisor*..... PROF. HENRY JACOBS  
*Activities*..... MAXINE MCARTY  
*Women's Sports*..... PAULINE MCFARLAND  
*Men's Sports*..... EDDIE KNITTLE  
*Organizations*..... HELEN SPAULDING  
*Features*..... BESSIE FAYE MIRES



*Business Manager*.....SEAL FAIRCLOTH  
*Assistant Business Manager*.....MARTIN SHEPPARD  
*Advertising Manager*.....R. B. HALL  
*Assistant Advertising Manager*.....RUTH ROBBINS  
*Snaphots*.....MALCOLM DAY  
*Literary*.....SUSANNE PENNEY  
*Art*.....BOB PHILLIPS  
*Classes*.....EDNA ALDERMAN



# *A Toast*

TO THE BEAUTIFUL, A TRIBUTE  
TO THE INTELLECTS, AND A  
CHEER FOR THE ATHLETES--  
IN THE FOLLOWING SECTION  
WE SALUTE OUR

*Top Hatters!*



*Most Attractive*

MARY MAXWELL      JOE LORENZI





*May Queen*  
PAULINE McFARLAND



*Most Popular*

BETTE STOVER      HARRY GAYLORD



*Campus Queen*  
CRYSTELLE MERCER



*Homecoming Hostess and Major*

DOROTHY SKILLMAN

CLYATT BROWARD



*Most Athletic*

HERBERT WOTRING      KATHLEEN SAMPLER



*Most Intellectual*

HOWARD BATESON      HELENE GOLDING



*Most Versatile*

PAULINE McFARLAND

HERBERT PHILLIPS



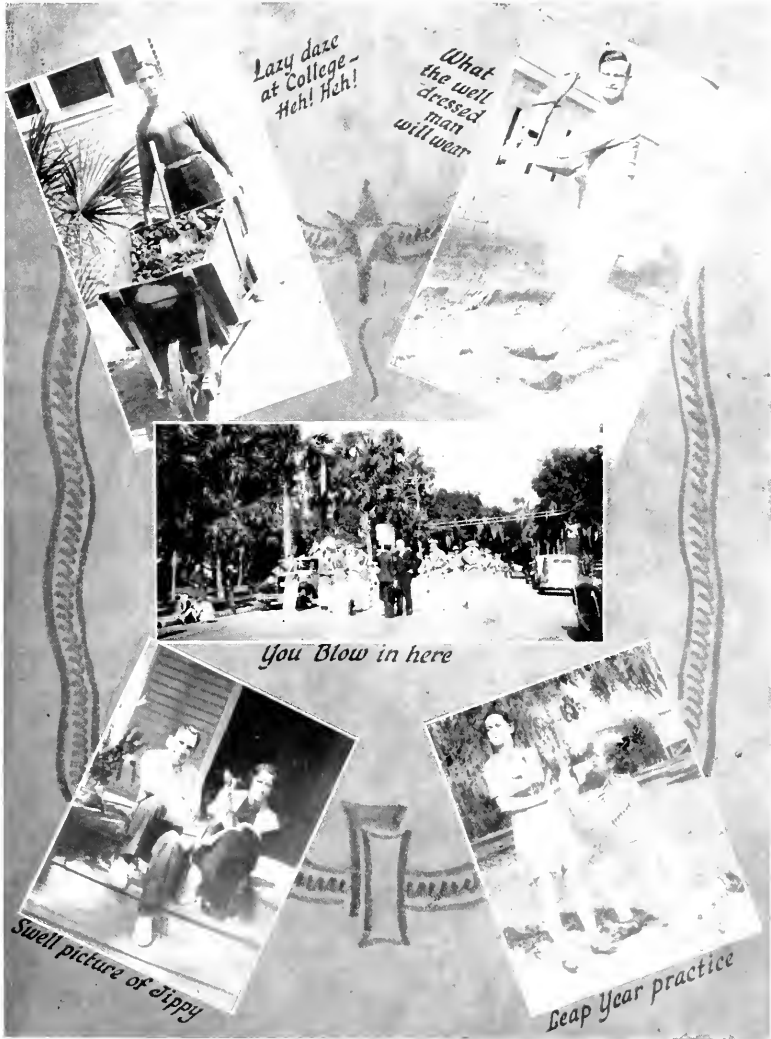




HULLEY TOWER

*Snapshots*





*Lazy daze  
at College -  
Heh! Heh!*

*What  
the well  
dressed  
man  
will wear*

*You Blow in here*

*Swell picture of Jippy*

*Leap Year practice*



*The late Christopher Bean*



*Just a couple of gals*



*Homecoming Sponsons*



*Delta Sigs having fun*



*Your Uncle Dudley*



*Even Lawyers study sometimes*

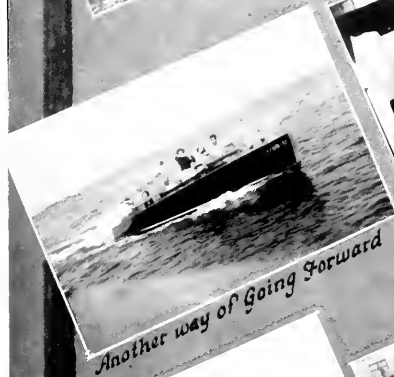


*When do we eat?*

*LP*



*The late Chris Bean - Again*



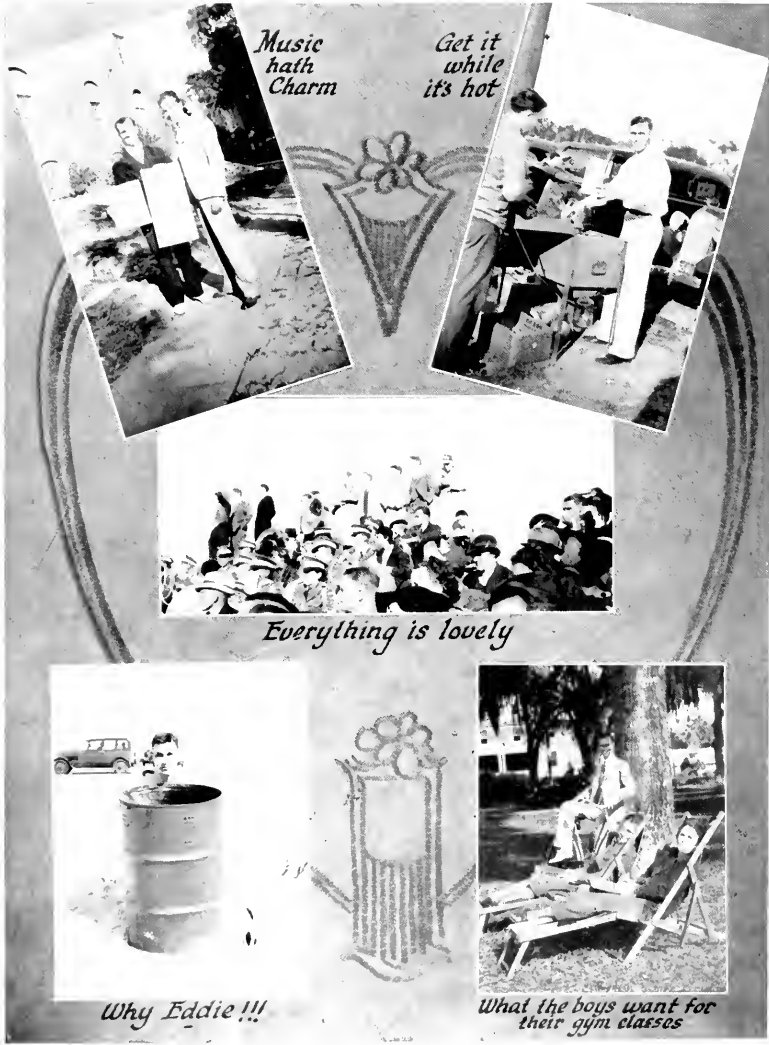
*Another way of Going Forward*



*What is this - You tell me?*



*Stetson is cold - and how*



*Music hath Charm*

*Get it while it's hot*

*Everything is lovely*

*Why Eddie!!!*

*What the boys want for their gym classes*



*Know them ?*



*Good old De Leon*



*Those Alpha Xis*



*Are they Hot ???*



*One way of studying*



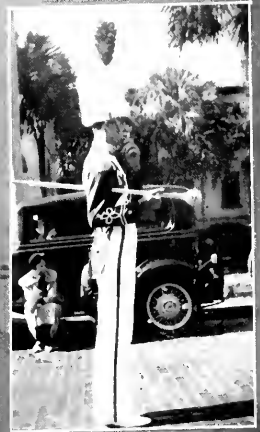
*In case of sickness  
just call*



*Just Whistle*



*Alpha Xis go native  
or something*



*Our Boy Horse*





*Before*

*and*

*After Exams*



*Is Carl humpbacked or are we wrong ?*



*Those Delta Sig Playboys*



*Fire in Chaudoin ?*



## Editors' and Managers' Page

To the administration, townspeople and students we express our thanks and appreciation for your unfailing help and encouragement in the editing of this book, the 1936 "Hatter."

DOROTHY HAINES,  
Editor

J. NEIL FAIRCLOTH,  
Business Manager



# The City of De Land

Offers Congratulations  
to the

Graduating Class  
of Stetson University

1936



ARTHUR C. HATCHER, MAYOR

GRANT BLY, CITY MANAGER

F. N. DeHUY

CARL N. MILLER

S. B. WILSON

W. O. LAHRMAN

COMMISSIONERS

*"The Athens of Florida"*

# DREKA'S DEPARTMENT STORE

ESTABLISHED 1878

Since the founding of Stetson this store has been the favorite shopping place for both students and faculty.

We feel that much of our success in business is due to the friendly relations that have always existed between Stetson and "Dreka's" and we wish to take this opportunity to thank all those in any way connected with the university for their liberal patronage.

*May we continue to serve you?*

G. A. DREKA AND CO., DELAND, FLORIDA

---

## Calendar

- September 20—Freshman reception in Claudoin Hall. It's all been done before.
- September 22—Dean King "at home" to new students.
- September 24—Pan-Hellenic party . . . . just one big party after another—that's what the freshmen thought.
- September 25—Classes begin . . . . So do headaches, excuses, tardies and what not, especially what not.
- September 26—President's reception.
- 

## INSURANCE HON AGENCY, Inc.

220 N. BOULEVARD

PHONE 455

# STETSON HATS



## LOYALTY

PERHAPS the surest proof of the enduring style and quality of Stetson hats is the loyalty of their wearers. The first Stetson hat is certain to be the forerunner of another — and on through the years.

© J. B. S. CO.

JOHN B. STETSON COMPANY  
PHILADELPHIA



*Compliments of*

# The Sparks Theatres in De Land



---

*CALENDAR—Continued*

- September 27—The only thing we can say for rushing is that they never know what they miss.
- October 25—The “Reporter” begins reporting.
- October 26—Classes organize—or is it the frats?
- October 24-25—“Chrisopher Bean” isn’t too late to be enjoyed.
- October 31—Halloween . . . Biggest excitement is a party at Chandoin.
- October 31—Band goes to Miami. They’re going forward in more ways than one.
- November 8—Hatters defeat Erskine 19-13 . . . Proving that a good beginning doesn’t make a bad ending.

---

*Compliments of*

## Thompson’s

Grocery and Meat Market  
*“The Store With the Friendly Service”*

Call Us -527 -We Deliver

## The Cafeteria

W. BROWN JEACIE  
DeLAND, FLA.



# Orange Belt Pharmacy

COMPLETE DRUG AND FOUNTAIN  
SERVICE

220 NORTH BOULEVARD

PHONE 555

*WE DELIVER*

---

*CALENDAR—Continued*

November 15—Hatters beat Tampa. It's getting to be a habit.

November 22—Homecoming. Everything WAS lovely.

December 3—Yearbook staff chosen . . . It's convenient if you want a year-book.

December 8—Dean and Mrs. Smith entertain campus presidents . . . A good idea—why hasn't it been done before?

December 15—115 singers present the "Messiah."

December 15—"Mom" Leary gives football boys a banquet. A few more banquets like this for the "Hatters" and Notre Dame wouldn't have a chance.

---

*Compliments of*

YOUR OFFICIAL PHOTOGRAPHERS

Paramount Studios

J. EDWARD STEVENSON  
REPRESENTATIVE

## STUDENT SUPPLIES

NOTE BOOKS

STATIONERY

FOUNTAIN PENS

PORTABLE TYPEWRITERS

REPAIRS—RENTALS

*You Are Always Welcome at*

**ALLEN-WHITE CO.**

## HAGSTROM'S FLOWER SHOP

TELEPHONE 92

212 NORTH BOULEVARD

DELAND, FLORIDA

BOUQUETS, CORSAGES,

FLORAL DECORATIONS

*We Telegraph Flowers*

### CALENDAR—Continued

December 20—Christmas vacation. Why can't this go on forever?

January 13—Forum opens—and so do our mouths—to cheer because it isn't compulsory.

January 15—Registration for second semester.

January 17—"Little Women" make their debut and a hit on Little Theatre stage.

January 28—Exams begin . . . . Remarks censored.

February 3—Band wins Tampa parade . . . . Hooray for the band!

February 4—Incidentally—this is Leap Year.

February 14—Girls become boys and boys become girls at the Leap Year Valentine party in Chaudoir. 'Tsk, tsk! Such goin's on!

March 11—Dean Cotner and debaters return. Can't debate over their success.

March 21—Stetson Golf Team defeats Florida U. Team. This was no tee-party.

March 25—Sore muscles, strained backs, and sleepy eyes spell "Spring Training."

March 26—Glee Club tours southern part of State. To see the world join the Glee Club—or band.

April 1—Hatters receive felt toppers for their good work. No foolin'.

April 3—Dancing season begins . . . . It speaks for its self.

April 8-13—Spring vacation—a sample of the coming summer—and do we like it?

## THE FRANCES SHOP

DRESSES—COATS

HATS—HOSE

LINGERIE

STYLE CENTER OF DELAND, FLORIDA

FRIERSON'S

**Firestone**

*One-stop Service*

NORTH BOULEVARD

Phone 23

THAT'S ME



EVERYTHING  
FOR THE HOME  
AND  
EACH MEMBER  
OF THE FAMILY

**Cohen Brothers**  
*The Big Store*

JACKSONVILLE, FLORIDA

The Courthouse Pharmacy  
Inc.

*"The Store of Personal Service"*

Near the Courthouse

HEADQUARTERS FOR  
STETSON STUDENTS

We Deliver From 8 A. M. to 10 P. M.

C. M. GEIGER

Phone 5

Proprietor

---

THE  
BARNETT NATIONAL  
BANK

*"A FLORIDA LANDMARK"*

MEMBER FEDERAL RESERVE SYSTEM AND F.D.I.C.

# J. F. Allen Furniture Company, Inc.

*"Home of Dependable Goods Since 1882"*

54 YEARS IN BUSINESS AND STILL GOING STRONG

FUNERAL DIRECTORS

REAL AMBULANCE SERVICE

Phones 62

228—490—604J

---

*CALENDAR—Continued*

April 15—Nothing happened.

May 2—May Day Fete—and May Day Feet from standing so long.

May 8—Freshman-Sophomore Day. Oh, well, we went through that stage, too.

June 2-5—Exams again. No matter how many times they come around they never get any easier.

June 6—"Macbeth" comes to town, the black-hearted villain.

June 7—Baccalaureate . . . . As long as the word.

June 8—Commencement . . . . Graduates commence to miss school.

---



TRIBUNE  
PRESS  
T A M P A  
F L O R I D A

**Gohn & Dykes, Inc.**

MEN'S WEAR

*New Styles First*

**Athens Sweet Shop**

Soda, Lunch, Candy

*"Ask Roy"*

Our Congratulations and Best Wishes  
to the Graduating Class of  
1936

**F. H. Hammer, Agt.**

STANDARD OIL CO.

**F. N. DeHuy & Son**

✦

Jewelers and Silversmiths

Since 1873

*Additional Photography by*

**DeLand Photo Shop**

✦

CONGRATULATIONS TO THE  
CLASS OF 1936

**STETSON FLOWER SHOP**

T. WEST, Proprietor

329 E. New York Ave.

Phone 317-W

**Sinclair Refining Co.**

B. M. JOHNSON

Agent

**FOUNTAIN'S**

*"The Store of Quality"*

CLOTHING  
FURNISHINGS

SHOES

for  
everyone

The Home  
of the  
STETSON STUDENT

**V. M. FOUNTAIN CO.**

DELAND

*Compliments of*

**Coca-Cola**

BOTTLING COMPANW

of

DELAND

# Autographs

---

# Autographs

---

J











