



THE PLAYERS

1938



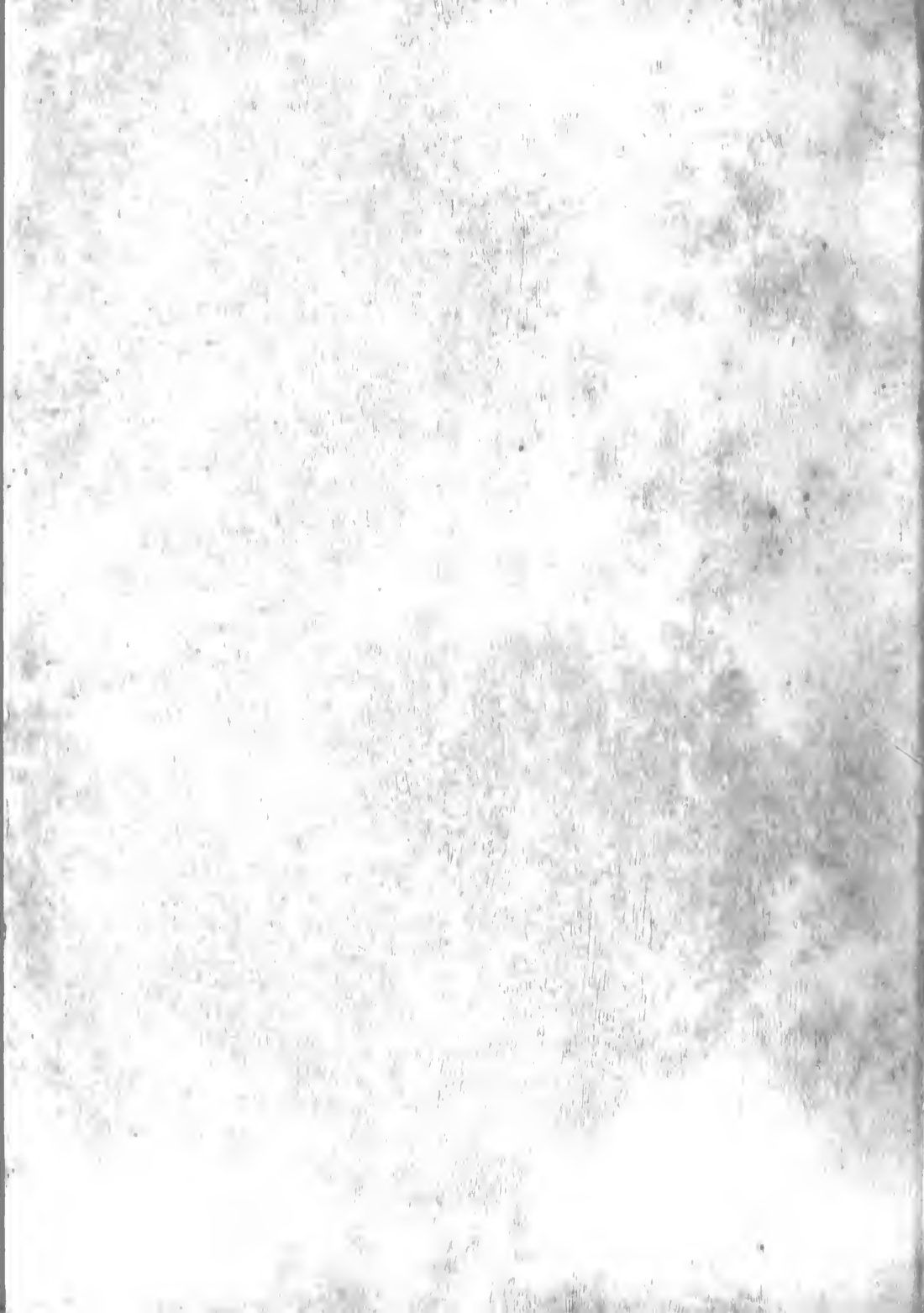




1938 « THE HATTER » 1938



JOHN B. STETSON UNIVERSITY  
DE LAND, FLORIDA



.....

Copyright  
1 9 3 8

MYRA WILSON MACHEN  
*Editor-in-Chief*

JACK W. GORE  
*Business Manager*

.....

# DEDICATION

SCENE:

*Time* — 1938.

*Place* — John B. Stetson University.

CHARACTERS:

IRVING C. STOVER — A man unique. He may laughingly call himself "The Old Man," because a spirit such as his is perennial, ever intensifying.

He is an artist — a director in the fullest sense of that word. For thirty years he has built character, prompting youth and teaching it proper cues, shaping, and pointing up lives. But the climax lies within himself, in his powerful personality.

In such a life there can be no denouement.

CLASS OF 1939 — A group grateful for the privilege of dedicating their book to so noble a man.





DR. STOVER

# F O R E W O R D

*I*N PRESENTING THIS, *the HATTER of 1938*, we have sought to depict, in terms of modernistic art and photography, the old and established charm that is Stetson's, and to catch a fleeting glimpse of the modern American life in which Stetson men and women are prepared to take an active part.

# TABLE OF CONTENTS



## **University**

*Administration*

## **College of Law**

*Seniors*

*Juniors*

*Freshmen*

## **College of Liberal Arts**

*Seniors*

*Juniors*

*Sophomores*

*Freshmen*

## **School of Music**

## **Features**

*Snapshots*

## **Athletics**

## **Fraternities**

*Organizations*

*Advertising*



This volume of the HATER would never have been possible without the willing cooperation of students, faculty, and organizations alike. We, the staff, express our appreciation to the many persons whose loyal support has enabled us to create this monument to the Class of Nineteen Thirty-eight.



U N I V E R S I T Y











---

A D M I N I S T R A T I O N

---



## **THE PRESIDENT'S MESSAGE**

THE SESSION 1937-38 has been the most successful in the history of the University. The enrollment reached the high mark of 832. The scholarship record has continued to improve. Students are giving their best for high achievement. The cultural ideals of the Institution are being stressed in every department and activity of the University. Christian character has ever been the ultimate goal of Stetson University. Students never lose sight of this goal and are striving daily to obtain it. On these foundations Stetson was built. On these foundations Stetson will always grow. I take this opportunity to extend greetings and good wishes to the Stetson Family everywhere.

Sincerely,

W. S. ALLEN,

*President.*

## OFFICERS OF THE ADMINISTRATION



*Dean Emeritus*  
J. PRENTICE CARSON  
A.M., LL.D.



*Vice President*  
CHARLES SHERWOOD FARRIS  
D.D., LL.D.



*Dean of the University*  
CHARLES G. SMITH  
A.M., PH.D.

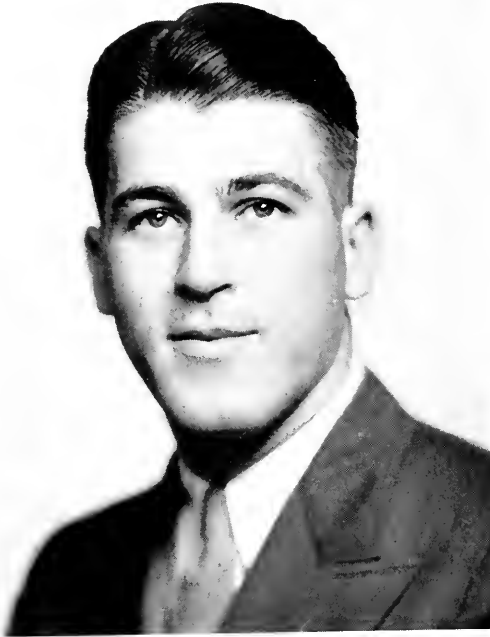
LOLA B. MCCOLLOUGH  
A.M.  
*Dean of Women*

ROBERT C. COTNER  
A.M.  
*Dean of Men*

OLGA BOWEN  
A.M.  
*Registrar*



## OFFICERS OF THE STUDENT BODY



RICHARD B. BRANHAM  
*President*



RUTH BARLETT  
*Vice President*

MARY ELLEN LORD  
*Secretary*

STELLA POPE  
*Treasurer*



COLLEGE OF LAW



## LAW FACULTY



LEWIS H. TRIBBLE  
LL.M.

*Dean of the College of Law  
and Professor of Law*



JENNIS W. FUTCH  
J.D.

*Professor of Law and Law Librarian*



HENRY S. JACOBS  
LL.B.

*Associate Professor of Law*



PAUL E. RAYMOND  
S.J.D.

*Professor of Law*

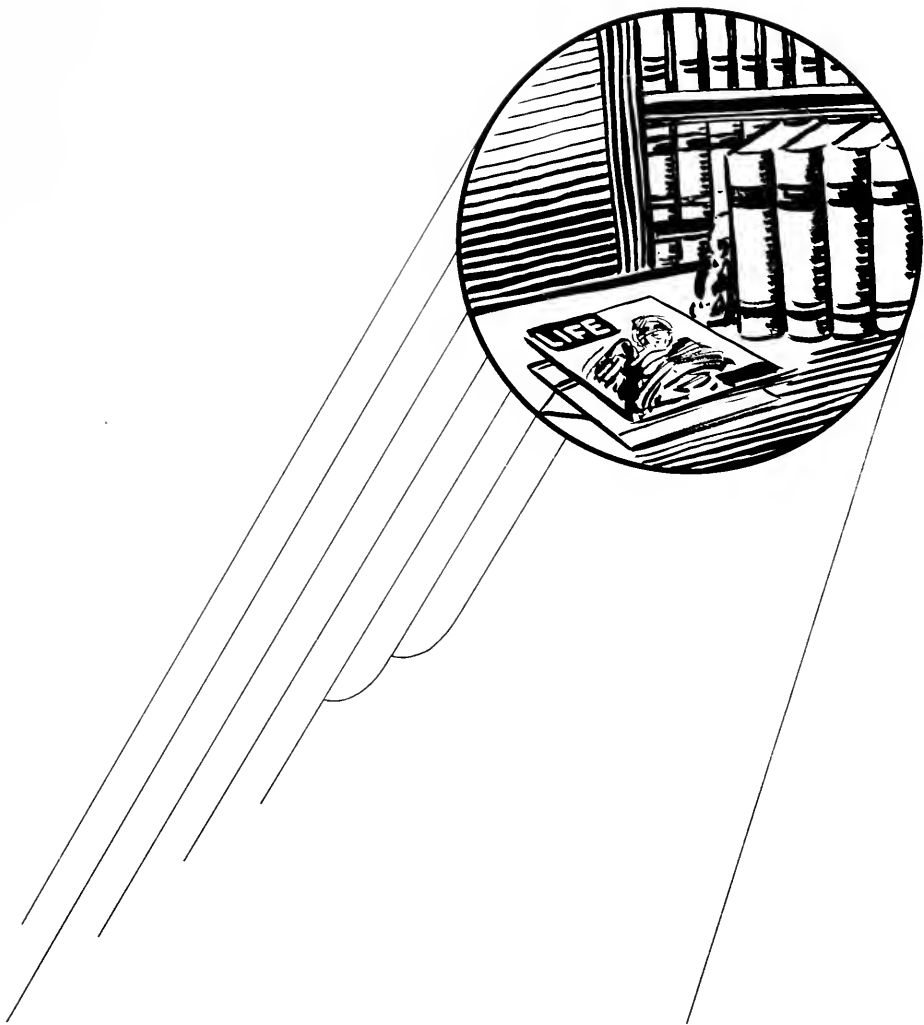


Attorney Hughes Wilson looks on skeptically as his opponent, Bob Young, with a gloating smirk on his face, attempts to probe the truth from witness Mary Lou Baker. Judge Dean Tribble, with gavel in hand, is prepared to halt any digressions from ethical court procedure.

These pseudo-attorneys base their cases upon statutes and precedents set by actual cases. They spend many hours in the Law Library, pictured above, applying the law to their case before presenting it in the moot court.







---

S E N I O R   L A W

---



**SENIOR LAW—Class Officers**



ELDON F. McLEOD, *President*  
Apalachicola, Florida  
*Pi Kappa Phi*



ROBERT YOUNG, *Vice President*  
Lake Monroe, Florida  
*Pi Kappa Phi*



CURRAN KELLY, *Treasurer*  
Madison, Wisconsin



MARY LOU BAKER, *Secretary*  
Clearwater, Florida

ABBOTT, NORMAN CHARLES  
Lakeland, Fla.

LL.B.

Sigma Nu

Transfer Florida Southern College, '34; Business Manager "Southern", '33; Vagabond Club, '33; Sigma Nu Phi, '35-'36, Vice-Chancellor, '36-'37, Chancellor, '37-'38; Mystic Krewe, '36-'37, Treasurer, '37-'38; Theta Alpha Phi, '37-'38; Pi Gamma Mu, '37-'38; Agony Quartette, '37-'38; Editorial Board of Stetsonian, '36-'37.



BAKER, MARY LOU  
Clearwater, Fla.

LL.B.

Secretary Law Classes, '35-'36, '36-'37, '37-'38.



CARSWELL, ROBERT McCLEAN  
DeLand, Fla.

LL.B.

Sigma Phi Epsilon

Transfer University of Richmond, '34, '35, '36, '37; Freshman Track, '33-'34; Varsity Track, '34-'35; Football, '35-'36, '36-'37; Intramural Sports, '33-'34, '34-'35; Delta Theta Phi Legal Fraternity, MacNiel Honorary Law Society; Secretary-Treasurer Intermediate Law Class; Senator, Student Government Association, '36-'37; Justice, Honor Court, '37; S. C. Mitchell Literary Society, '34-'35, '35-'36; Debate Club, '37-'38; Peace Club, '37-'38.



FAIRCLOTH, J. NEAL  
Quincy, Fla.

LL.B.

Pi Kappa Phi

Transfer The Citadel, '31 and '32; Chaplin Pi Kappa Phi, '33-'34 and '37-'38; Business Manager, '35-'36, Delegate National Convention, '36; Charter President Interfraternity Council, '35-'36, member '36-'37; Men's Council, '36-'37; Phi Alpha Delta Legal Fraternity, '35-'36, '36-'37, Marshal, '37-'38; Mystic Krewe, '35-'36, '36-'37, '37-'38, Captain, '35-'36; Business Manager "Hatter," '35-'36, Assistant Business Manager, '36-'37; Agony Quartette, '37-'38.





JOHNSON, ALBERT WALTER  
Smethport, Pa.

LL.B.

Alpha Tau Omega

Transfer University of Pennsylvania in '34; President Pi Gamma Mu, '35; President Torch and Scroll, '38; Vice-Chancellor Sigma Nu Phi, '37; 1st Mate Mystic Krewe, '38; City Clerk Homecoming, '37; Assistant Instructor in Accounting, '35, '36, '37; Chief Justice Law Class, '36; Secretary Law Class, '37; Honor Roll and Dean's List, '35, '36, '37 and '38.



KELLEY, CURRAN PATRICK  
Madison, Wis.

LL.B.

Treasurer Senior Law Class, '38; Freshman Football, '35, '36, '37; Freshman Football Coach, '37; Phi Alpha Delta Legal Fraternity.



KENYON, GAYLORD CARTER  
Lake Worth, Fla.

LL.B.

Pi Kappa Phi

Treasurer Theta Alpha Phi, '28, President, '29, Treasurer '37; Sergeant at Arms Sigma Nu Phi Legal Fraternity, '36, 2nd Vice-Chancellor, '37; 1st Mate Mystic Krewe, '36, Captain, '37; Kappa Kappa Psi; Manager University Band, '29, '35, '36, '37; Manager University Symphony Orchestra, '29; President Student Body, '29; Homecoming Mayor, '37.



LINSON, ROBERT CORWIN  
Charlestown, W. Va.

LL.B.

Sigma Nu

A. B. degree at Dartmouth; Treasurer Sigma Nu Phi Legal Fraternity, Marshal, '38; President Law Class, '37; Varsity Tennis, '36.

MCLEOD, ELDON FARRIS  
Apalachicola, Fla.

LL.B.

*Pi Kappa Phi*

President Senior Law Class, '38; Warden Pi Kappa Phi, '33; Phi Alpha Delta Legal Fraternity.



NELSON, EDWARD J.  
Des Plaines, Ill.

LL.B.

*Sigma Nu*

Treasurer Freshman Law Class, '36; Vice President Junior Law Class, '37; Treasurer Phi Alpha Delta Legal Fraternity, '37; Winner of Congressman Joe Hendricks Law Prize '37; Dean's List, '38; Freshman Basket Ball, '33; Boxing '33; Intramural Lightweight Champion, '32.



PHENICIE, RUSSELL J.  
Montgomery, Mich.

LL.B.



POWE, ROBERT LEE  
DeLand, Fla.

LL.B.

*Sigma Nu*

Sentinel of Sigma Nu, '38; Clerk Phi Alpha Delta Legal Fraternity, '37, '38; Historian Kappa Mu, '38; Stetson Band, '34, '35, '36, '37, Officer, '38; Glee Club, '37; Sheriff Moot Court, '37; Little Theater, '34, '35, '36, '37, '38.





SMITH, HUBERT C.  
Tampa, Fla.

LL.B.

Vice-Justice Phi Alpha Delta Legal Fraternity; Agony Quartette.



WARREN, WILLIAM EDWARD  
South Hill, Va.

LL.B.

Phi Alpha Delta Legal Fraternity, '38; President of Bible Class, '35, '36, '37; Music Director B. Y. P. U., '33; Young Democratic Club, '37; Stetson Band, '32; Boxing Squad, '35; Instructor of Swimming Team, '35.



WONGREY, PAUL  
Okeechobee, Fla.

LL.B.

*Delta Sigma Phi*

Vice President Delta Sigma Phi, '36; Chief Justice Phi Alpha Delta Legal Fraternity, '37; Treasurer Mystic Krewe, '36, Secretary, '37, Captain '38; Vice President Pi Gamma Mu, '37; Clerk of Moot Court, '37; President Freshman Law Class, '36; Hatter Staff, '36; Agony Quartette; Sports Editor Stetson Reporter, '35, '36; Student Manager of Football Team, '35, '36; S Club, '37.



YOUNG, ROBERT GARDNER  
Lake Monroe, Fla.

LL.B.

*Pi Kappa Phi*

Treasurer of Pi Kappa Phi, '37, Archon, '38; Intramural Manager, '37; Phi Alpha Delta Legal Fraternity; Vice President Senior Law Class, '38; Interfraternity Council, '38; Men's Council, '38; Freshman Football, '33.



---

J U N I O R   L A W

---

**JUNIOR LAW—Class Officers**



ELWYN L. MIDDLETON, *President*  
Pomona, Florida  
*Pi Kappa Phi*

•



ROBERT L. ANDERSON, *Vice President*  
Park Ridge, Illinois  
*Sigma Nu*

•



FRED FITZGERALD, *Treasurer*  
Daytona Beach, Florida  
*Pi Kappa Phi*

•



GRADY L. CRAWFORD, *Secretary*  
DeLand, Florida



CLONTS, J. EMMETT  
Oakland, Fla.

---



COBB, THOMAS T.  
Daytona Beach, Fla.

---



DURRANCE, RODNEY L.  
Avon Park, Fla.

---



MCENTIRE, PAUL W.  
Dade City, Fla.  
*Delta Sigma Phi*





RAIDLE, ROYAL F.  
Lake Worth, Fla.  
*Sigma Nu*

---

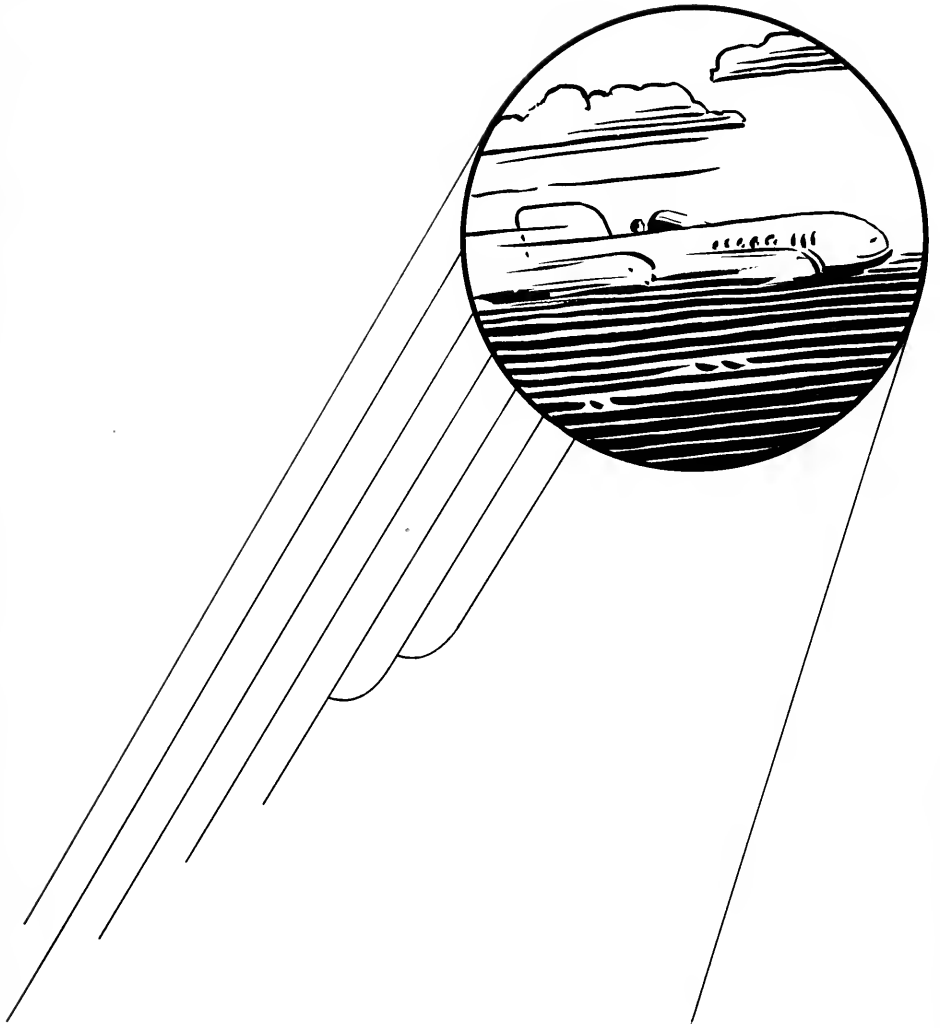


RODGERS, JOHN B.  
Miami, Fla.  
*Delta Sigma Phi*

---



WILSON, A. HUGHES  
New Rochelle, N. Y.  
*Sigma Nu*



---

F R E S H M A N L A W

---

**FRESHMAN LAW—Class Officers**



TOM KIRKLAND, *President*  
Tulsa, Oklahoma  
*Pi Kappa Phi*



EDWIN E. STRICKLAND, *Vice President*  
Tampa, Florida  
*Pi Kappa Phi*



HAL DEKLE, *Treasurer*  
Marianna, Florida



NEIL MACMILLAN, *Secretary*  
DeLand, Florida

BEATTIE, GLADSTONE R.  
St. Petersburg, Fla.  
*Sigma Nu*

---



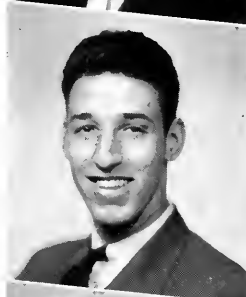
BOIRE, HAROLD A.  
Mooers, New York

---



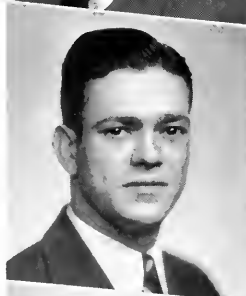
CEELY, WILLIAM D.  
DeLand, Fla.  
*Pi Kappa Phi*

---

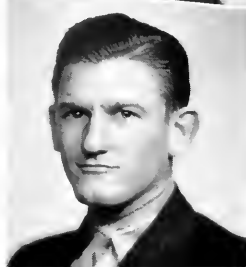


CHERRY, JOHN F.  
Center Hill, Fla.  
*Pi Kappa Phi*

---



FEARNLEY, JOSEPH  
Lake Worth, Fla.





HARNAGE, CLYDE E.  
Lake Monroe, Fla.

---



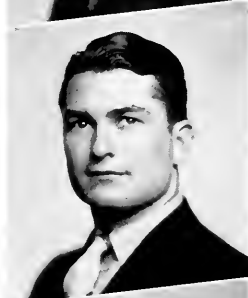
HARRIS, WILLIAM A.  
St. Petersburg, Fla.  
*Sigma Nu*

---



HUNTER, WARD  
Jasper, Fla.  
*Pi Kappa Phi*

---



LOWERY, HARRIS R.  
Stuart, Fla.  
*Sigma Nu*

---



MASON, EDWARD L.  
Miami, Fla.  
*Delta Sigma Phi*

NEWETT, HARRY T.  
Leesburg, Fla.

---



ODUM, RALPH E.  
Lakeland, Fla.

---



ROWE, J. WILTON  
Orlando, Fla.  
*Sigma Nu*

---



SHULER, ARTHUR  
Tallahassee, Fla.  
*Delta Sigma Phi*

---



SLAUGHTER, WM. RANDALL  
Paola, Fla.





SOLOMON, WILLIAM H.  
Jacksonville, Fla.  
*Sigma Nu*



---

STRONG, DONALD M.  
Jacksonville, Fla.  
*Sigma Nu*





**COLLEGE OF LIBERAL ARTS**



## LIBERAL ARTS FACULTY

ROBERT IVEY ALLEN, PH.D.  
*Professor of Physics*

WILLIS NISSLEY BAER, PH.D.  
*Associate Professor of  
Business Administration and Economics*

HOWARD LAMOUREUX BATESON, A.B.  
*Instructor in French*

HELEN LOUISE BATSON, B.S.  
*Dietitian*

SUE BURNS, B.S.  
*Assistant Professor of  
Education and Psychology*

NELLE BURCH CAMPBELL, A.M.  
*Assistant Professor of Health and  
Education, and Director of Physical  
Education for Women*

RICHARD ELIJAH CLARK, PH.D.  
*Professor of Sociology*

JOHN FERGUSON CONN, PH.D.  
*Professor of Chemistry*

WARREN CASSIUS COWELL, B.S.  
*Professor of Health and Physical  
Education, Head Coach, Director  
of Athletics*

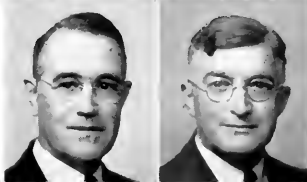
LORENA EADDY DINNING, MUS.B.  
*Instructor in Journalism*

JAMES H. DRAKE  
*Library Assistant*

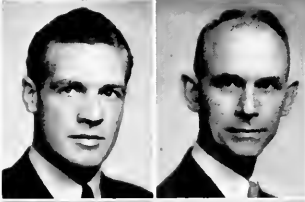
IOLA KAY EASTBURN, PH.D.  
*Professor of Modern Foreign Languages*

BOYCE FOWLER EZELL, PH.D.  
*Professor of Education and Psychology*

CHARLES ADAM FISHER, PH.D.  
*Professor of Business Administration  
and Economics*



## LIBERAL ARTS FACULTY



GEORGE CHESTER FREEMAN, B.S.  
*Assistant Director of Athletics and  
Head Coach of Basketball*

HARRY CRAWFORD GARWOOD, PH.D.  
*Professor of Bible and Philosophy*



WARREN STONE GORDIS, PH.D.  
*Professor of English*

SARA EDITH HARVEY, A.M.  
*Associate Professor of Fine Arts*



EDGELE HENRY, A.B., R.N.  
*Nurse*

ANNIE NADINE HOLDEN, A.M.  
*Assistant Professor of English*



CARL HERBERT JOHNSON, A.M.  
*Instructor in Health and Physical  
Education, Director of Intramural  
Athletics*

LUDIE HARVEY JOHNSON  
*Assistant Dean of Women and  
Housekeeper*



MAUDE ENMA KING, A.M.  
*Assistant Professor of English*

PLAUTUS IBERUS LIPSEY, JR., A.B.  
*Professor of Journalism and  
Director of Publicity*



CURTIS MILTON LOWRY, M.E.  
*Professor of Engineering*

MARY TRIBBLE LOWRY, A.M.  
*Instructor in English*



MARY STEWART MCCURDIE, B.S.  
*Assistant Professor of Secretarial Science*

JOHN STERLING NEBLETT, A.B.  
*Instructor in Business Administration*

## LIBERAL ARTS FACULTY

LUCY ANN NEBLETT, A.B.

*Instructor in Spanish*

CHARLES SHEPPARD

*Manager of the University Press*

CORNELIA MARSCHALL SMITH, Ph.D.

*Professor of Biology*

SARA ELSIE STAFF, A.B.

*Instructor in Health and  
Physical Education*

IRVING C. STOVER, M.O., Litt.D.

*Professor of Public Speaking*

ETTER McTEER TURNER, A.M.

*Assistant Dean of Women*

CHARLES BLOUNT VANCE, Ph.D.

*Professor of Geology and Geography*

ELLA MAE WALKER, A.B.

*Instructor in Secretarial Science*

WILLIE DEE WILLIAN, A.M.

*Instructor in English and Speech*

HARRY SUNDERLAND WINTERS, A.M.

*Associate Professor of History  
and Political Science*



## MASTER STUDENTS



DOROTHY FULLER  
DeLand, Fla.  
A.M.

VIRGINIA GIFFIN  
DeLand, Fla.  
A.M.

GORDON REEVES  
St. Petersburg, Fla.  
A.M.

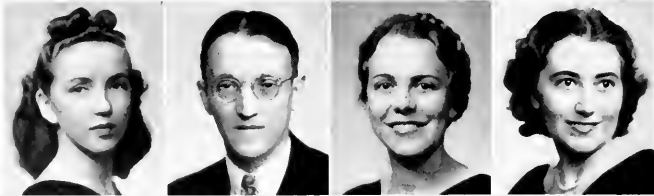
## SPECIAL STUDENTS

BARBARA BLOUNT  
DeLand, Fla.

SAMUEL GAYLORD  
Lake Helen, Fla.

DOROTHY GRAHAM  
Avon, South Dakota

AURELIA JORDAN  
Trinidad, Br. W. Ind.



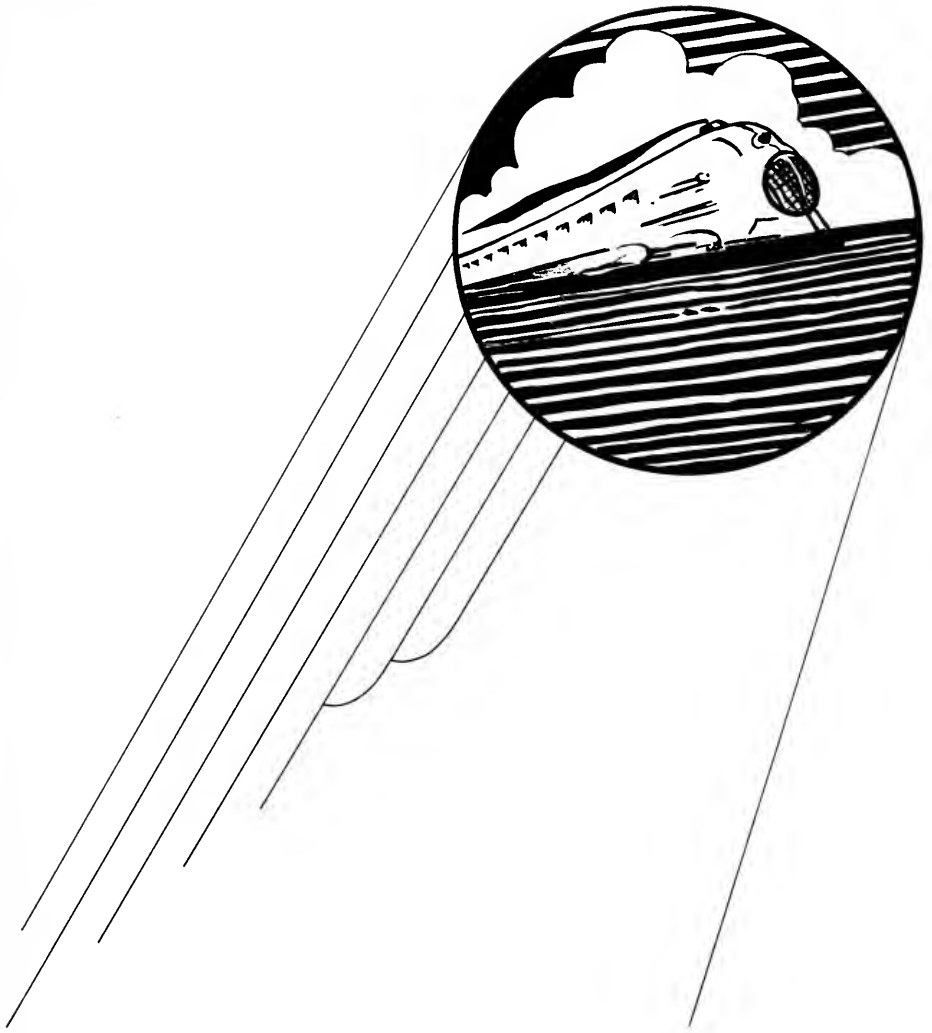
PEARL MUNDALL  
Laurel, Miss.  
*Delta Delta Delta*

GRAFTON PYNE  
Bernardville, N. J.

LETITIA REYNOLDS  
DeLand, Fla.

AUGUST SCHICK  
DeLand, Fla.  
*Sigma Nu*

HENRY SLAUGHTER  
Paola, Fla.



---

S E N I O R S

---



## SENIOR CLASS OFFICERS



GEORGE G. SCHURR, *President*  
DeLand, Florida  
*Delta Sigma Phi*



ANNE M. HAWKINS, *Vice President*  
Gainesville, Florida  
*Delta Delta Delta*



ESTELLE R. DUKE, *Secretary*  
Tampa, Florida  
*Alpha Xi Delta*



SADIE RAE GARDNER, *Treasurer*  
St. Petersburg, Florida  
*Pi Beta Phi*



S E N I O R   C L A S S

ADAMS, ROBERT MACCOLL  
Miami, Florida

B.S.

Transfer U. of Fla., '35; Glee Club '36, '37, '38; Editor of Reporter '38; Stetsonian Board '37, '38; President of Mu Phi '38.



AMISON, JOHN MATHEIS  
DeLand, Florida

B.S.

Gamma Sigma Epsilon '36, '37, Grand Alchemist '37, '38; President of Dec Deutsche Verein '37, '38.



BADGER, ELIZABETH ANNE  
Parkersburg, West Virginia

B.S.

*Beta Theta*

Transfer Marietta College, Ohio '36; Mu Phi '38; Beta Key '38; Deutsche Verein '38; Gamma Sigma Epsilon '37, '38; Mu Omega '37, '38.



BALL, DOROTHY REBECCA  
St. Petersburg, Florida

A.B.

*Zeta Tau Alpha*

Pi Kappa Sigma '37, '38; Publicity Director of Zeta Tau Alpha '38; Y. W. A. '37, '38; W. A. A. '38; Art Club '37.





BARNHART, DAVID HAMILTON  
DeLand, Florida

A.B.

Sigma Delta Pi



BARTLETT, RUTH ELOISE  
West Palm Beach, Florida

A.B.

*Alpha Xi Delta*

President of Alpha Xi Delta '38; Vice President of Student Body '38; Vice President of Junior Class '37; Theta Alpha Phi '35, '36, '37, '38; Inerfraternity Council '38; Pan Hellenic Council '38; B. S. U. Council '36; Glee Club '35, '36, '37, '38; Girl's Trio '35, '36, '37; Homecoming Sponsor '37; Most Popular Girl '37; Who's Who in American Colleges and Universities '38; The Honor '35, '36, '37, '38.



BENNET, NORMAN  
Daytona Beach, Florida

A.B.

Kappa Mu; Stetson Ministerial Student Assn.; Glee Club; Stetson Quartet '37.



BOTTS, TRUMAN ARTHUR  
DeLand, Florida

B.S.

Mu Phi; Peace Club; Stetsonian; The Phi Society; The Mu Society; Chess Club; Sigma Pi Sigma.

SENIOR CLASS

BRANHAM, RICHARD B.  
Indianapolis, Indiana

B.S.

*Pi Kappa Phi*

Football Letterman '36, '37, '38; Basket Ball Letterman '36, '37, '38; Captain Varsity Basket Ball '37; Beta Key; Captain of Mystic Krewe; President of Junior Class '37; Member of "S" Club; President of Student Body '38; Who's Who in American Colleges and Universities.

BROWN, MARY WALTON  
DeLand, Florida

A.B.

*Pi Beta Phi*

W. A. A.; French Club

BRYANT, HENRIETTA R.  
Miami, Florida

A.B.

*Alpha Xi Delta*

Stetson Glee Club

BURDICK, MARGARET K.  
St. Petersburg, Florida

A.B.

*Alpha Xi Delta*

Reporter Staff; Sigma Delta Pi; Der Deutsche Verein.





CHAMP, MARGARET LOIS  
Mount Dora, Florida

A.B.

*Alpha Xi Delta*

President Phi Society '37, '38; Mu Society; Sergeant-at-Arms '36, '37, '38; Vice President Theta Alpha Phi '38; Clerk Torch and Scroll '38; President the Honor '38; Pi Gamma Mu; Editor-in-Chief of Hatter '37; Editor Alumni Association '38; Honor Roll '35, '36, '37, '38; Dean's List '37, '38; Glee Club '35; May Day '36, '37; Homecoming Committees '37, '38.



COLLETTE, RUTH  
Crescent City, Florida

A.B.

Transfer Montreat College '36; Maryville College '37; Student Council '36; Editor of Annual '36; Treasurer Sophomore Class.



CROSBY, ESTHER  
Citra, Florida

A.B.

*Chi Omega*

Transfer Duke and Oglethorpe; Vice President Chi Omega; Sigma Delta Pi '38; Art Club '38.



DEBE, DORIS M.  
Apopka, Florida

A.B.

Transfer Duke University '35; Duke Players '35; Y. W. C. A. '35; W. A. A. '35; Pi Kappa Sigma, Treasurer, Vice President; Mu Omega Xi, Treasurer; Art Club, Vice President; Pi Gamma Mu; W. A. A. '36, '37; Deutsche Verein; Summer School at University of Heidelberg, Germany.

SENIOR CLASS

DICKSON, JAMES R.  
Youngstown, Ohio

B.S.

The Hatters Art Club '38; The "S" Club, Secretary, '38.



DOWLING, MIRIAM VERNA  
St. Petersburg, Florida

A.B.

*Zeta Tau Alpha*

Transfer St. Petersburg Junior College '36; Mu Phi '38; Y. W. A. '38;  
Greater B. S. U. Council '38.



DUKE, ESTELLE BRUCE  
Tampa, Florida

A.B.

*Alpha Xi Delta*

Y. W. A. '34; Glee Club '34, '35, '37, '38; Art Editor of Hatter '35;  
B. S. U. Council '35; Art Club '37, '38; Social Chairman Alpha Xi  
Delta '37; Interfraternity Council '38; Secretary Senior Class '38.



EDGE, FINDLEY B.  
Albany, Georgia

A.B.

Basket Ball '35, '36, '37; Glee Club, Assistant Business Manager '36,  
Publicity Manager '37; Treasurer Kappa Mu '38; B. S. U. Council  
'36, '37, President '38; State B. S. U. Social Chairman '36; Honor  
Roll '35, '37; Dean's List '36; President Mu Omega Xi '38; Mystic  
Krewe '38; Who's Who Among Students in American Colleges and  
Universities '38.





EZELL CARROLL PAUL  
DeLand, Florida

A.B.

*Pi Kappa Phi*

Chaplain Pi Kappa Phi '38; Historian Pi Kappa Phi '37; Sigma Pi  
Sigma, Secretary '38; Peace Club '38; Biology Society '38.



FURLONG, EDWARD C.  
Morgantown, West Virginia

B.S.

Football '37, '38; Kappa Mu '38; Pi Gamma Mu '38; The Mystic  
Krewe '38; Glee Club '38; Stetson "S" Club '38.



GARDNER, SADIE RAE  
St. Petersburg, Florida

A.B.

*Pi Beta Phi*

Transfer St. Petersburg Junior College '37; The Honor '38; Glee  
Club '37, '38; Theta Alpha Phi '38; Women's Student Government  
'38; Treasurer Senior Class '38.



GOLLNICK, ANNE ROBERTSON  
Vero Beach, Florida

B.S.

*Zeta Tau Alpha*

Treasurer Y. W. A. '35; Vice-President Zeta Tau Alpha '36, '37;  
President Zeta Tau Alpha '38; Women's Student Government Council  
Sergeant-at-Arms '36, Secretary '37, Vice President '38; The  
Honor '37, '38; Pi Gamma Mu '37, '38; Secretary Commerce Club  
'38; Secretary Junior Class '37; Pi Kappa Sigma; Interfraternity  
Council '38.

SENIOR CLASS

GREGORY, LILLIAN  
St. Petersburg, Florida

A.B.

Pi Kappa Sigma '38; Y. W. A. '38.



HALL, BENNETT FREEMAN  
Mt. Dora, Florida

A.B.

Transfer William Jennings Bryan University, Dayton, Tennessee;  
Stetson Ministerial Student Association '38; Volunteer Missionary  
Board '38.



HALL, FAYETTE LYON  
Mt. Dora, Florida

A.B.

Stetson Ministerial Student Association Secretary '35; Chorister '36,  
Devotional Chairman '37, '38; Glee Club '35, '36.



HAMMER, LOLA IRENE  
DeLand, Florida

A.B.

*Pi Beta Phi*

Phi Society; Pledge Supervisor Pi Beta Phi '37, Rush Captain '36,  
Recording Secretary '38; Theta Alpha Phi '37, Secretary '38; The  
Honor '38; Torch and Scroll, Keeper of the Seal '38; Pan Hellenic  
'38.





HART, GEORGENA MAY  
Sanford, Florida

B.S.

Mu Society '35; Gamma Sigma Epsilon '37, '38; Deutsche Verein '37, '38.



HAWKINS, ANNE MEREDITH  
Gainesville, Florida

A.B.

*Delta Delta Delta*

Interfraternity Council '36; The Hatters Art Club '38.



HOOKER, DOROTHY MAY  
Chosen, Florida

A.B.

*Pi Beta Phi*

Executive Council Pi Beta Phi '35, Historian '36, President '37; Women's Student Government, Treasurer '36, President '38; The Honor '38.



HOUGHTON, WILLIAM HOWARD  
Mulberry, Florida

B.S.

Sigma Nu Phi '38.



S E N I O R   C L A S S

HUTCHISON, MARGARET LOUISA  
Bonifay, Florida

A.B.

Transfer Florida State College for Women, '36.



INGRAM, LANORA  
Jasper, Florida

A.B.

*Delta Delta Delta*

Secretary Junior Class '37; Pi Kappa Sigma; The Hatters Art Club;  
Women's Athletic Association; French Club.



JOHNSON, MARGARET LOUISE  
Umatilla, Florida

A.B.

*Zeta Tau Alpha*

B. S. U. '34, '35; Assistant Editor of Hatter '35; Manager Stetson  
Glee Club '35, member '34, '35, '38; Women's Athletic Association  
'35; President Y. W. A. '35; Sigma Alpha Phi '34; Honor Roll '38.



JONES, JOSEPH EUGENE  
Cottondale, Florida

A.B.

Stetson Ministerial Student Association.





KNOX, REED  
DeLand, Florida

B.S.

*Delta Sigma Phi*  
Mu Phi; Sigma Pi Sigma.



KUMMER, THERESA CHRISTINE  
Winter Park, Florida

B.S.

Mu Society '36; Pi Gamma Mu '37, '38, Vice President '38; Stetson  
Commerce Club '37, '38.



LANG, DAVID FREDERICK  
St. Cloud, Florida

B.S.

*Delta Sigma Phi*  
Freshman Football '34; Freshman Basket Ball '34; Intramurals '34,  
'35, '36, '37; Outstanding Intramural Athlete '36; Minor Intramural  
Games Director '38; "S" Club.



LAUFER, PAUL H.  
Miami, Florida

A.B. and LL.B.

Peace Club; Stetson Reporter; Stetsonian.

LORD, MARY ELLEN  
Orlando, Florida

A.B.

*Pi Beta Phi*

W. A. A. '35, '36, '37, '38, Vice President '38; Woman's Sports Editor, Hatter '37; Theta Alpha Phi '37, '38; Dean's List '37; Honor Roll '38; The Honor '38; Interfraternity Council '37; Executive Council, Pi Beta Phi '37, Rush Captain '38, Pledge Captain '38, Censor '36; Secretary of Student Body '38; May Day '37; Mu Omega Xi, Secretary '38.



MCCARY, MARJORIE WILSON  
DeLand, Florida

A.B.

Pi Kappa Sigma; The Hatters Art Club; W. A. A.; Fencing Club; Beta Key.



MACDONOUGH, MARGARET EILEEN  
Jacksonville, Florida

B. MUS.

Phi Beta; Glee Club; Phi Society '34; Orchestra '34.



MCLAUGHLIN, ALICE BRUCE  
Dayton, Ohio

A.B.

*Delta Delta Delta*

Glee Club '35; Secretary Delta Delta Delta '36, President '37; Vice President Sophomore Class; Woman's Student Council '36; Interfraternity Council '36, '38, Secretary '37; Theta Alpha Phi '36, '37, Vice President '38; Pan Hellenic '37, '38; The Honor '37, '38; Fraternity Editor of Hatter '37; Editorial Board of Stetsonian '37; "Most Versatile," '37; Der Deutsche Verein '38; Homecoming Hostess '38.





MARTIN, KATHERINE BARSTOW  
Apopka, Florida

B. MUS.

*Delta Delta Delta*

Wesleyan Conservatory of Music, Macon, Georgia, '35; May Queen's Court '35; Treasurer, Freshman Class '35; Interfraternity Council; Glee Club '35, '36, '37, '38; Radio Chorus; W. A. A. '36; May Festival '37.



MEARS, REBA  
DeLand, Florida

A.B.

Summer School at Wayne University, Detroit; University of Pennsylvania, Philadelphia; University of Delaware, Deutshe Verein '38.



MERRITT, RUTH ANNETTE  
Panama City, Florida

B.S.

*Zeta Tau Alpha*

Judson College, Marion, Alabama, '35, '36; Treasurer Zeta Tau Alpha '38; The Honor '37, '38; Stetson Commerce Club '38; State B. S. U. Social Chairman '37; B. S. U. Social Chairman '36; B. S. U. Secretary '36; Y. W. A. Program Chairman '36; Associate Sunday School Superintendent '36; Glee Club '36, '37, '38; Vice President Baptist Training Union '38.



NIGELS, ROBERTA TORREY  
Dunedin, Florida

A.B.

Phi Beta '35, '36, '37, '38. Historian '36, '37. Secretary-Treasurer '38; Band '36, '37; Little Theater Orchestra '35, '36, '37, '38; Symphony Orchestra '35, '36, '37, '38; Assistant Concert Master, Symphony Orchestra '36, '37; Concert Master '38; May Day '35; German Club '38.

SENIOR CLASS

OGILVIE, FRANCES MAY  
DeLand, Florida

A.B.

*Pi Beta Phi*

Pi Beta Phi Treasurer '36, Vice President '37; Pi Kappa Sigma Treasurer '35, President '36, '37, '38; W. A. A. '34; Phi Society Vice President '36; Mu Society '35; Art Club '37; The Honor '37, '38, Vice President '38; Torch and Scroll Vice President '38; Sigma Delta Pi Corresponding Secretary '38; Beta Key '38; Stetsonian Staff '37.



PAWLEY, LLOYD C.  
DeLand, Florida

B.S.

*Pi Kappa Phi*

President of Sophomore Class '36; Hatter Business Manager '37; Mu Society '35; Torch and Scroll Treasurer '38; Pi Gamma Mu; Stetson Commerce Club President '38; Pi Kappa Phi Chaplain '36; Pi Kappa Phi Treasurer '37; Pi Kappa Phi Archon '38; Intramural Major Sport-Manager '36, '37, '38; Mystic Krewe '38.



PIZZO, ANTHONY P.  
Tampa, Florida

A.B.

*Sigma Iota*

University of Florida Transfer; Phi Alpha Delta; Mystic Krewe; Stetson Young Democrats of Florida; Head Cheerleader '35, '36; Coach of Cheerleading squad '37.



POPE, STELLA VIRGINIA  
Lacoochee, Florida

B.S.

*Zeta Tau Alpha*

W. A. A. '35; Y. W. A. '35; Band '36, '37; Secretary Zeta Tau Alpha '36; Treasurer Student Body '38.





RUSSELL, WOODROW WINFERD

DeLand, Florida

B.S.

Pi Gamma Mu '37, '38; Stetson Commerce Club '38.



SAMPLE, WILLIAM RAYMOND

Daytona Beach, Florida

A.B.

*Delta Sigma Phi*

Glee Club 35', '36; Delta Sigma Phi, Editor and Historian '37.



SCHURR, GEORGE G.

DeLand, Florida

A.B.

*Delta Sigma Phi*

Intramural Sports '36, '37, '38; Varsity Tennis Team '35, '36, '37, '38;  
Pi Gamma Mu; Stetson Commerce Club; President Senior Class '38;  
Captain Tennis Team '36; Delta Sigma Phi Treasurer '38.



SNELLINGS, JAMES H.

Leesburg, Florida

B.S.

Symphony Orchestra '35, '36; Stetson Band '35, '36, '37; Kappa Kappa  
Psi '36, '37, '38, Secretary '38; Intramural Manager of Stetson Hall '37;  
Glee Club 37, 38.

S E N I O R   C L A S S

STEVENS, CLARA JEANETTE  
Orlando, Florida

A.B.

Y. W. A. '35, '36, '37, '38; President '35; B. S. U. Council '36, '37, '38;  
Vesper Chairman '36, '37, '38; Peace Club '37, '38; Mu Omega Xi  
'38; Beta Key '38; Pi Kappa Sigma '38.

STRICKLAND, FROW WOODROW  
Starke, Florida

B.S.

*Delta Sigma Phi*

Freshman Football '35; Stetson Commerce Club '38; Intramurals  
'36, '37, '38.

TAYLOR, LOUISE EMBREE  
Vero Beach, Florida

A.B.

*Pi Beta Phi*

Boston University, '35, '36.

TAYLOR, WALTER FRANK  
DeLand, Florida

B.S.

*Delta Sigma Phi*

Mu Phi; Fencing Team '35, '36, '37, '38; Stetson Engineering Society  
'35, '36; Pall Bearer to Stetson Engineering Society '36.





TOLBERT, FRANK M.  
DeLand, Florida

A.B.

---



WEBB, HELENE  
Brockport, New York

A.B.

*Alpha Xi Delta*

Pi Kappa Sigma; W. A. A. '36, '37, '38; French Club '38.

---



WEBSTER, JOHN ALLEN  
St. Cloud, Florida

B.S.

Sigma Pi Sigma.

---



WEST, MARY ELIZABETH  
Otter Creek, Florida

B.S.

Florida State College for Women '35; Hatter Art Club; W. A. A.;  
Stetson Commerce Club; French Club.



S E N I O R   C L A S S

WOODFILL, JAMES O.  
Greensburg, Indiana

A.B.

*Sigma Nu*

Miami University '35; Kappa Mu; Theta Alpha Phi, Treasurer '38;  
Glee Club '36, '37, '38; Varsity Quartette, '37, '38.

WOOTEN, FRANCES ALLIENE  
Daytona Beach, Florida

A.B.

*Zeta Tau Alpha*

Glee Club, '37, '38; Zeta Tau Alpha, Social Chairman, '37, '38, Rush  
Captain, '38; Y. W. A., Secretary, '37, Treasurer, '38; Pi Kappa Sigma;  
Pi Gamma Mu.

YOUNG, BERNICE  
Lake City, Florida

A.B.

Baptist Student Union Council



## SENIORS NOT PHOTOGRAPHED

BUSHNELL, PEARL C.  
DeLand, Florida

A.B.

---

CUDMORE, DOUGLAS L.  
Virginia, Minnesota

B.S.

---

HALDEMAN, VIRGINIA  
DeLand, Florida

A.B.

---

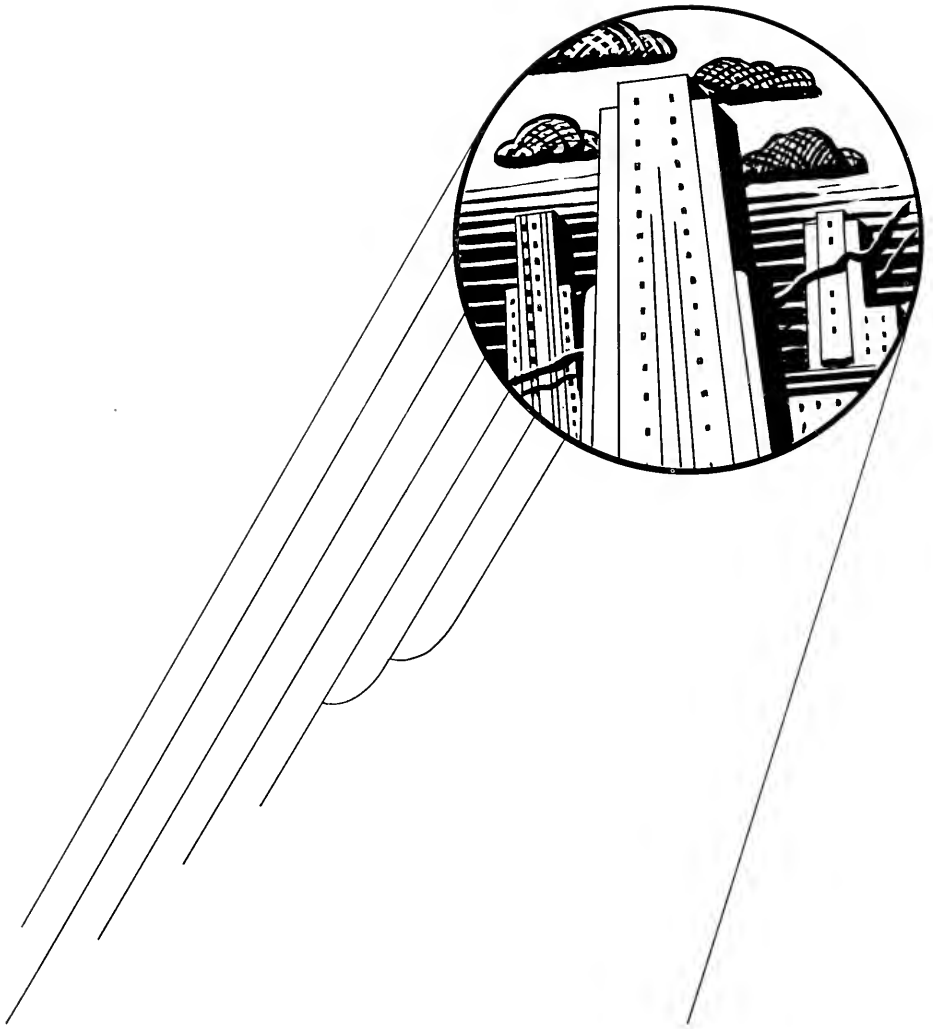
MATHIS, ANNETTE  
Hastings, Florida

A.B.

---

ROSEBERRY, ELIZABETH  
DeLand, Florida

A.B.



---

J U N I O R S

---

**JUNIOR CLASS OFFICERS**



JACK W. GORE, *President*  
Ft. Lauderdale, Fla.  
*Sigma Nu*



HELEN J. STOLTZENBERG, *Vice President*  
Belle Glade, Fla.  
*Pi Beta Phi*



KATHRYN JELKS, *Secretary*  
Lakeland, Fla.  
*Alpha Xi Delta*



JOSEPHINE OSBORNE, *Treasurer*  
Umatilla, Fla.  
*Zeta Tau Alpha*

# JUNIOR CLASS

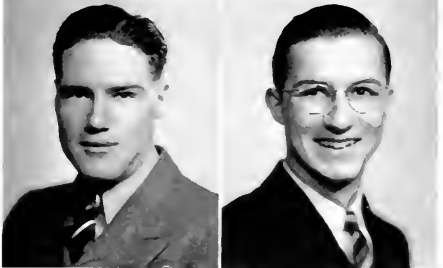
ANDERSON, WILLARD                  Park Ridge, Ill.  
 ARCHER, RUTH                          Malone, Fla.



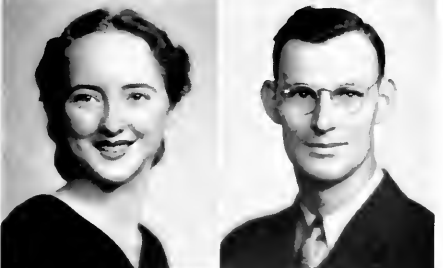
ARRINGTON, EDITH                  Tavares, Fla.  
 BENNETT, ALZADA                  Center Harbor, N. H.  
                                                  *Delta Delta Delta*



BERRY, LINDEN                        Mt. Olivet, Ky.  
 BILLS, HORACE                         Sarasota, Fla.



BISSET, KATHERINE                  Harrodsburg, Ky.  
                                                  *Delta Delta Delta*  
 BOYLES, CLIFFORD                  Callahan, Fla.



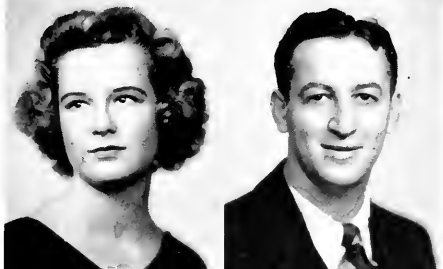
BRACEY, DAVID                        Asheville, N. C.  
 BROWNELL, DAPHNE                  DeLand, Fla.





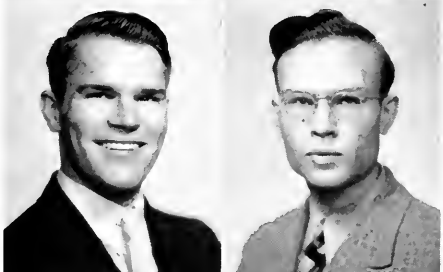
BUTLER, CHARLES Montverde, Fla.

BUTLER, DORIS Live Oak, Fla.  
*Delta Delta Delta*



BYRD, LAVERNE Jacksonville, Fla.  
*Pi Beta Phi*

CAGNI, RAYMOND Pittsburgh, Penn.  
*Pi Kappa Phi*



CARPENTER, ROYCE DeLand, Fla.

CAZER, MARVAL DeLand, Fla.



COBB, CHARLES Miami, Fla.  
*Sigma Nu*

COEN, MARY ELIZABETH Avon Park, Fla.



CRAIG, RAYMOND DeLand, Fla.

CROSBY, WILLA MAE Citra, Fla.  
*Pi Beta Phi*

# JUNIOR CLASS

CULP, MARGARET                      DeLand, Fla.  
 DARDEN, WOODROW                      Titusville, Fla.



DENTLER, RUTH                      DeLand, Fla.  
 DRAKE, FRANCIS                      Iola, Kan.  
                                                  *Pi Kappa Phi*



EHLHARDT, GEORGE                      St. Louis, Mo.  
 FLETCHER, JEAN                      Shrewsbury, Mass.



FREEMAN, RUTH                      Gainesville, Fla.  
 GENEAU, MARIE                      Chicago, Ill.  
                                                  *Zeta Tau Alpha*



GILLESPIE, GRAHAM                      Tavares, Fla.  
 GOBOLD, HALL                      Vero Beach, Fla.  
                                                  *Delta Sigma Phi*



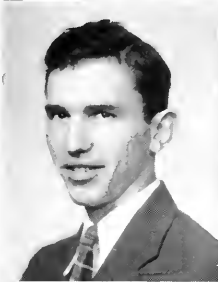


GORE, JACK Ft. Lauderdale, Fla.

*Sigma Nu*

GOWER, JEAN Mt. Vernon, Ohio

*Alpha Xi Delta*

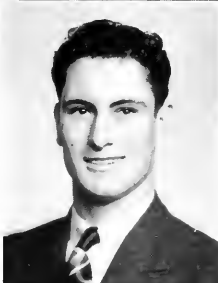


GRESSANG, HARRY Pottsville, Penn.

*Delta Sigma Phi*

GRIFFITH, JOHN Iola, Kansas

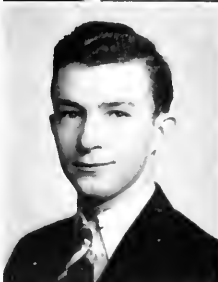
*Pi Kappa Phi*



HALL, TROY Leesburg, Fla.

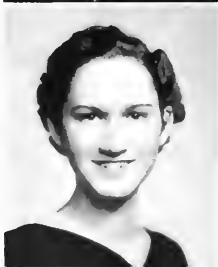
*Pi Kappa Phi*

HARDY, LAWRENCE LaHarpe, Kan.



HARPER, HARMON Pierson, Fla.

HARTSFIELD, LAWRENCE Eastman, Ga.



HOBBS, FRANCES New Smyrna, Fla.

*Alpha Omega Pi*

HOLBROOK, MARGARET Orlando, Fla.

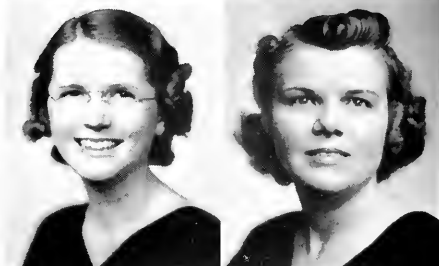


# JUNIOR CLASS

HUDSON, MARY                      Titusville, Fla.  
*Zeta Tau Alpha*  
 HULBERT, CARL                      New Smyrna, Fla.  
*Pi Kappa Phi*



HUMMEL, RUTH                      Philadelphia, Penn.  
*Zeta Tau Alpha*  
 JELKS, KATHRYN                      Lakeland, Fla.  
*Alpha Xi Delta*



JERGER, HARRY                      St. Petersburg, Fla.  
 JOHNSON, HELEN                      Rome, Ga.  
*Delta Delta Delta*



KINSEY, ROY                      St. Petersburg, Fla.  
*Sigma Nu*  
 KINZY, JOSEPHINE                      Memphis, Tenn.  
*Delta Delta Delta*



KRAUSE, JUNE                      Ft. Landerdale, Fla.  
*Alpha Xi Delta*  
 LATHAM, ELSIE                      Shadyside, Ohio





LOWRY, JEANNETTE

Valdosta, Ga.



LINSON, ELIZABETH

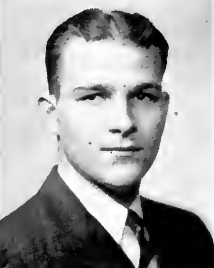
Clarkstown, W. Va.



LOOMIS, PATRICIA

Avon Park, Fla.

*Pi Beta Phi*



LUMPKIN, JAMES

Jacksonville, Fla.

*Pi Kappa Phi*



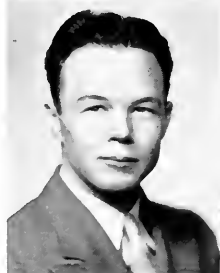
LUNSFORD, JULES

Jacksonville, Fla.



MCCALL, JOHN

Madison, Fla.



MCCARTY, MURRAY

Auburndale, Fla.



MCCARTY, JANE

Boise, Idaho

*Pi Beta Phi*



MCCLELLAND, GEORGE

Sanford, Fla.



MACHEN, MYRA

DeLand, Fla.

*Delta Delta Delta*

# JUNIOR CLASS

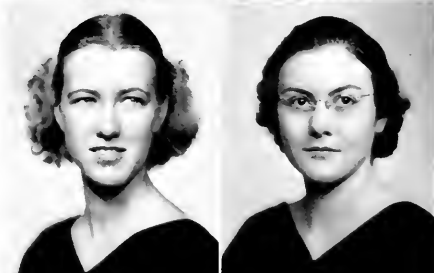
MAIER, PAUL                      Griffin, Indiana  
*Pi Kappa Phi*  
 MEEKS, VALJEAN              Ocilla, Ga.



MESERVE, EVA                      St. Augustine, Fla.  
 MILLER, ARVEL                      Lakeland, Fla.



MORRIS, ROBERTA                      DeLand, Fla.  
*Delta Delta Delta*  
 NEWLIN, RUTH                      Winona Lake, Indiana



OAKS, WILLIAM                      Jacksonville, Fla.  
 OFFUTT, RICHARD                      Chicago, Ill.  
*Sigma Nu*



OLLIFF, EVELYN                      Wauchula, Fla.  
*Zeta Tau Alpha*  
 OLLIPHANT, HARVEY                      Jacksonville, Fla.  
*Sigma Nu*





CRUM, RUTH Pittsburgh, Pa.  
*Pi Beta Phi*  
 OSBORNE, JOSEPHINE Umatilla, Fla.  
*Zeta Tau Alpha*

---



PARSONS, JANE DeLand, Fla.  
 PERKINS, ELLA MAY Williston, Fla.

---



RANDALL, LOUISE Daytona Beach, Fla.  
 REIBAUM, ALERED Mount Dora, Fla.  
*Sigma Nu*

---



ROBERTS, LEO Pensacola, Fla.  
 ROSS, PRUDENCE Williston, Fla.

---



RUBIN, SYDNEY Williamson, N. Y.  
 SANDUSKY, ELIZABETH Arcadia, Fla.  
*Zeta Tau Alpha*

# JUNIOR CLASS

SAWYER, BETTY JAYNE                      DeLand, Fla.  
*Zeta Tau Alpha*  
 SCHICK, GEORGE EDWARD                DeLand, Fla.  
*Sigma Nu*

---



SCHNEIDER, DOROTHY                    DeLand, Fla.  
 SKAGGS, VIRGINIA                        Miami, Fla.  
*Delta Delta Delta*

---



SKEEN, ELEANOR                         Leesburg, Fla.  
*Zeta Tau Alpha*  
 SMITH, ALICE                                DeLand, Fla.  
*Pi Beta Phi*

---

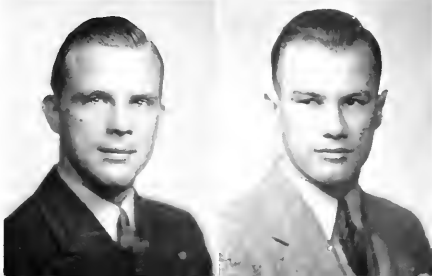


SMITH, MILLARD                            Pensacola, Fla.  
 SOUTHERLAND, JAMES                    Wauchula, Fla.

---



SPEAR, LESTER                             Coshocton, Ohio  
 STAFF, RUSSERT                         St. Petersburg, Fla.  
*Pi Kappa Phi*





STOLTENBERG, HELEN Belle Glade, Fla.  
*Pi Beta Phi*  
 STONE, JAMES Bristol, Va.  
*Sigma Nu*



STOUDENMIRE, TRUETT Deland, Fla.  
*Pi Kappa Phi*  
 SWANSON, GUSTAV Jacksonville, Fla.



TAFT, JANE Cornwall-on-Hudson, N. Y.  
 TALTON, CATHARINE Apopka, Fla.  
*Delta Delta Delta*



THACKER, LOIS Kissimmee, Fla.  
*Pi Beta Phi*  
 TODARO, HENRY Newark, N. J.

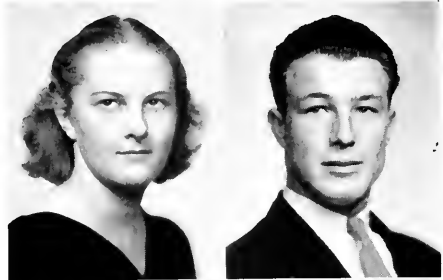


TURNER, VERNON Homestead, Fla.  
 VANN, HAROLD Miami Beach, Fla.

# JUNIOR CLASS

WARNER, ELEANOR                      Coleraine, Minn.

WARREN, LYNDOL                      Miami, Fla.  
*Delta Sigma Phi*



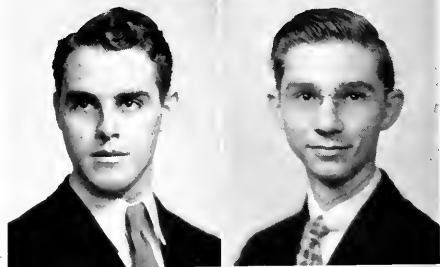
WASHBURNE, CARLOTTA              Ormond, Fla.  
*Alpha Xi Delta*

WEBBER, EUNICE                      Eustis, Fla.



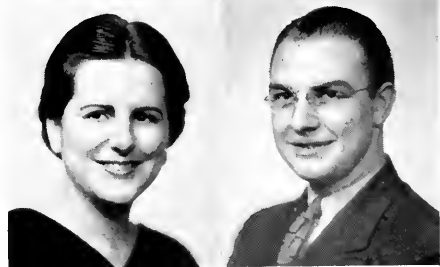
WILLIAMS, ROGER                      Miami, Fla.

WILSON, FRED                          Miami, Fla.  
*Delta Sigma Phi*



WOLFE, ALICE                          Ft. Lauderdale, Fla.  
*Alpha Xi Delta*

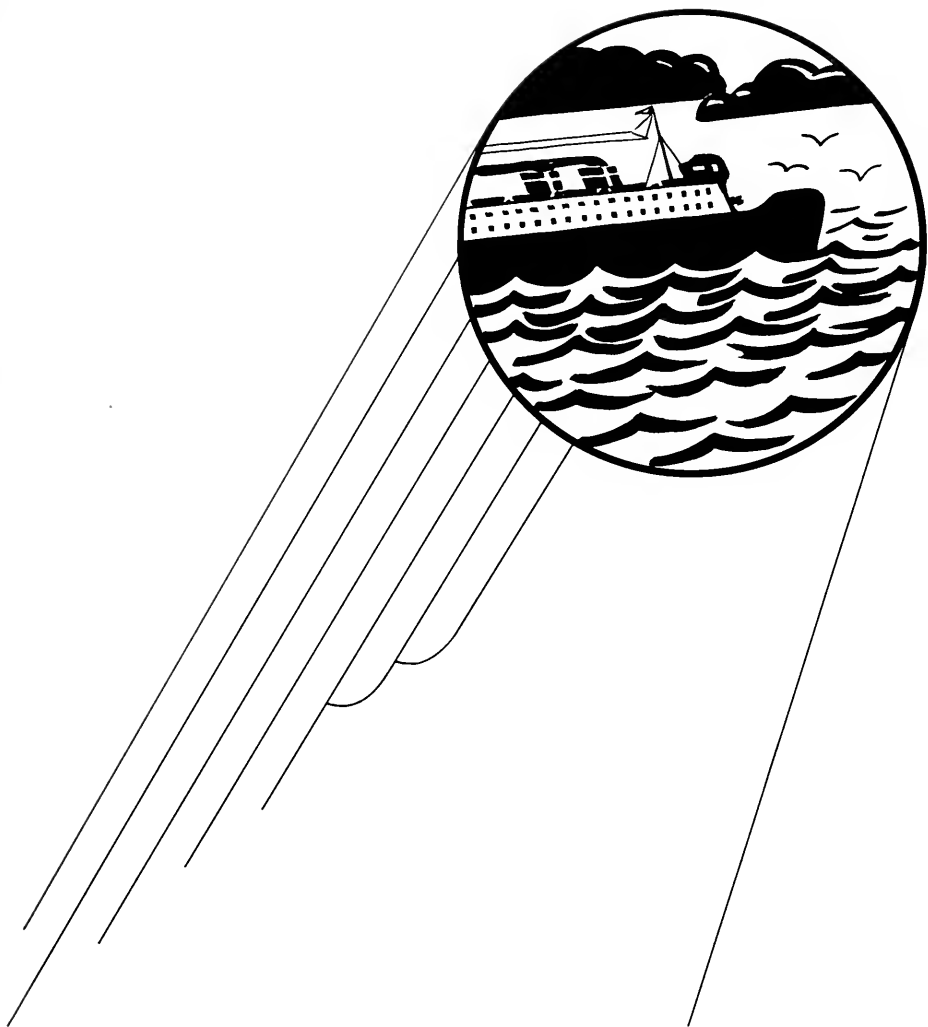
WOOD, ROBERT                          Greensburg, Ind.  
*Sigma Nu*



**A U T O G R A P H S**

---





---

S O P H O M O R E S

---

**SOPHOMORE CLASS OFFICERS**



LEFFIE M. CARLTON, JR., *President*  
Wauchula, Fla.  
*Delta Sigma Phi*

•



HELEN E. BASS, *Vice President*  
Daytona Beach, Fla.  
*Pi Beta Phi*

•



BETTY LOU ALEXANDER, *Secretary*  
Ft. Lauderdale, Fla.  
*Delta Delta Delta*

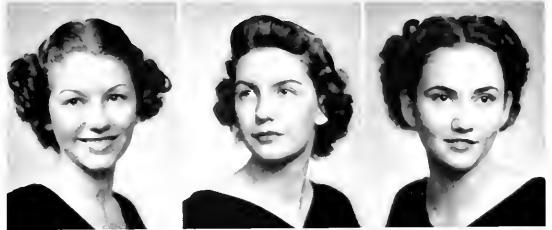
•



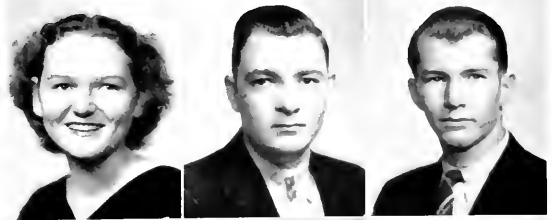
ELOISE R. KENNEDY, *Treasurer*  
High Springs, Fla.  
*Zeta Tau Alpha*

S O P H O M O R E      C L A S S

ADAIR, EMILY                      Jacksonville, Fla.  
*Zeta Tau Alpha*  
 AHLERS, GRACE                  Dayton, Ohio  
*Pi Beta Phi*  
 ALEXANDER, BETTY LOU      Ft. Lauderdale, Fla.  
*Delta Delta Delta*



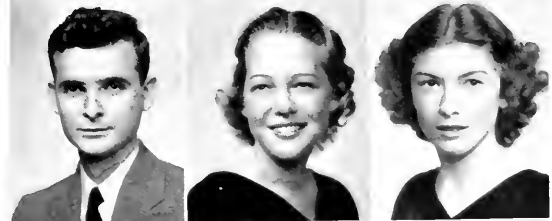
ALEXANDER, HARRIET              DeLand, Fla.  
 ALLEN, WILTON                  Greenville, S. C.  
*Delta Sigma Phi*  
 ANDERSON, RALEIGH          Vero Beach, Fla.



ARNOLD, LYNWOOD              Jacksonville, Fla.  
 ANZ, LEE                          Endicott, N. Y.  
*Delta Delta Delta*  
 BALDWIN, RICHARD          Palmyra, Mich.  
*Delta Sigma Phi*



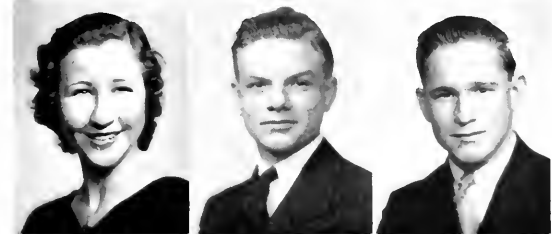
BARNETT, ROBERT              Jacksonville, Fla.  
*Delta Sigma Phi*  
 BASS, HELEN                      Daytona Beach, Fla.  
*Pi Beta Phi*  
 BIRD, BETTE                      Port Washington, N. Y.

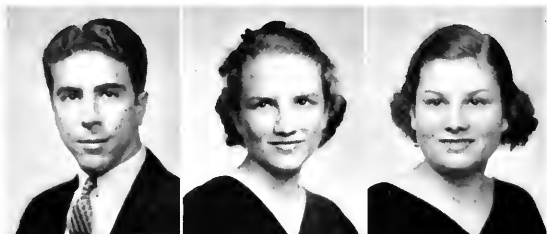


BOOTH, GORDON                  St. Petersburg, Fla.  
 BROCKETT, ANN                  Titusville, Fla.  
*Zeta Tau Alpha*  
 BROWN, MILDRED          Asheville, N. C.  
*Alpha Xi Delta*



BRYCE, RUTH                      Bryceville, Fla.  
*Delta Delta Delta*  
 CARLTON, LEFFIE                  Wauchula, Fla.  
*Delta Sigma Phi*  
 CHEATHAM, LYNWOOD      Jacksonville, Fla.  
*Pi Kappa Phi*





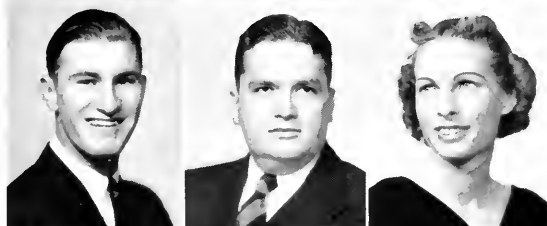
CICERO, JOHN Tampa, Fla.  
 CLARK, SARAH ELIZABETH, St. Petersburg, Fla.  
*Delta Delta Delta*  
 CLOW, JEANETTE Coshocton, Ohio  
*Delta Delta Delta*



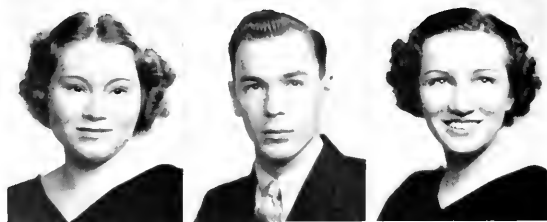
COE, FRANCES Lakeland, Fla.  
 COOK, GEORGE Jacksonville, Fla.  
*Delta Sigma Phi*  
 CRAWFORD, JEAN Woodhaven, L. I., N. Y.



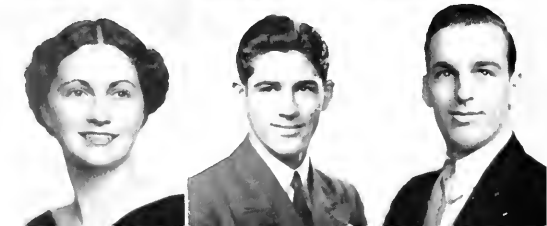
CREVASSE, MARY Jacksonville, Fla.  
 CROW, SYBL Macon, Ga.  
 CUNNINGHAM, BEARDEN Raleigh, N. C.



DARST, RUSSELL Dayton, Ohio  
*Delta Sigma Phi*  
 DAVIS, FRANK Oakfield, Ga.  
 DEBLOIS, RUTH Ft. Lauderdale, Fla.



DEMPSEY, INEZ Waldo, Fla.  
 DENHAM, WILLIAM Bartow, Fla.  
 DICKSON, ANN Orlando, Fla.  
*Delta Delta Delta*

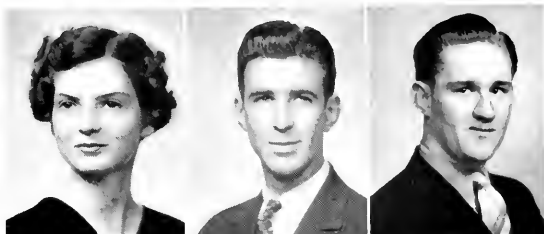


EDWARDS, CHARLOTTE Orlando, Fla.  
 FERGUSON, MAC DeLand, Fla.  
 FINKELL, WENDELL Daytona Beach, Fla.

# S O P H O M O R E   C L A S S

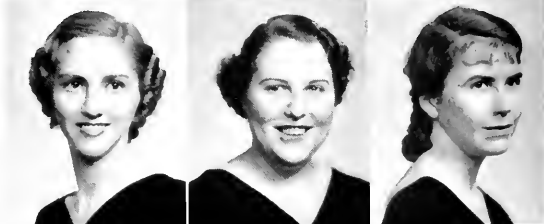
FINNEY, HELEN                      DeLand, Fla.  
 FORD, NELSON                      Orange City, Fla.  
                                                  *Delta Sigma Phi*  
 FULFORD, JESSE                      Orlando, Fla.  
                                                  *Delta Sigma Phi*

---



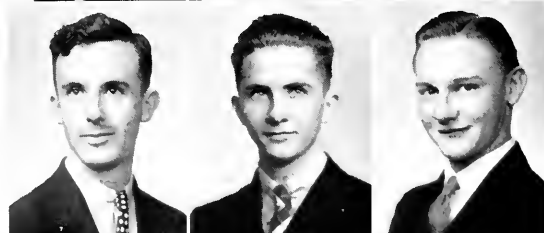
GADDIS, JONELLEN                      Miami, Fla.  
                                                  *Delta Delta Delta*  
 GLOVER, MARJORIE                      Vero Beach, Fla.  
                                                  *Zeta Tau Alpha*  
 GOLDING, HELENE                      Lakeland, Fla.

---



GRIFFIN, CHARLES                      Falmouth, Fla.  
 GRIFFITH, WILLIAM                      DeLand, Fla.  
                                                  *Delta Sigma Phi*  
 GUSTAFSON, EDWIN                      Green Cove Springs, Fla.  
                                                  *Sigma Nu*

---



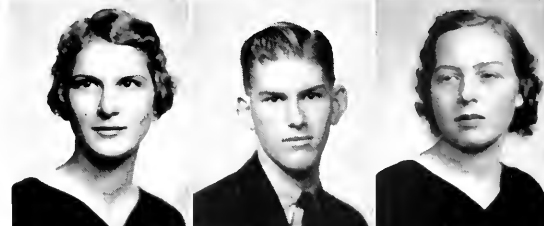
HALL, HAL                                  DeLand, Fla.  
 HAMMOND, FRANCES                      St. Petersburg, Fla.  
 HANDLEY, EMMALINE                      Holopaw, Fla.  
                                                  *Alpha Xi Delta*

---



HICK, ESTHER                                  Eustis, Fla.  
                                                  *Delta Delta Delta*  
 HILL, JOSEPH                                  Vero Beach, Fla.  
 HODGES, DORIS                                  Jacksonville, Fla.

---



HOLDER, BRUNELLE                      DeLand, Fla.  
 HOOKS, HELEN                                  Lakeland, Fla.  
 HUIE, EDWARD                                  Babson Park, Fla.

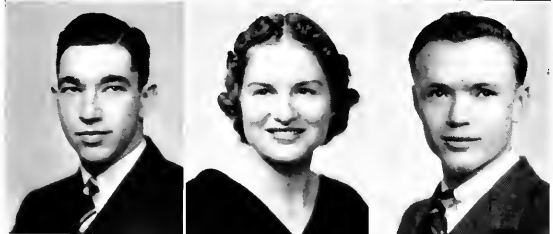




JAMESON, SARAH ELIZABETH, Belle Glade, Fla.  
*Zeta Tau Alpha*  
 JENNINGS, JACKIE Middleburg, Fla.  
*Pi Beta Phi*  
 JENSON, MARJORIE Miami, Fla.  
*Alpha Xi Delta*



JOHNS, FLOY Ft. Lauderdale, Fla.  
 JOHNSON, DORIS Umatilla, Fla.  
*Zeta Tau Alpha*  
 JOHNSON, THEDA Jacksonville, Fla.



KARNS, ROBERT DeLand, Fla.  
*Pi Kappa Phi*  
 KENNEDY, ELOISE High Springs, Fla.  
*Zeta Tau Alpha*  
 KICKLIGHTER, ROBERT Port Orange, Fla.



KIPP, GORDON DeLand, Fla.  
 KNIGHT, DAPHNE Vero Beach, Fla.  
*Alpha Xi Delta*  
 KNIGHT, MARY ELLA Vero Beach, Fla.  
*Alpha Xi Delta*



KNORR, FRANCIS Miami, Fla.  
*Pi Kappa Phi*  
 LAND, LYDIA Apopka, Fla.  
*Delta Delta Delta*  
 LANFORD, KATHRYNE Greenville, S. C.



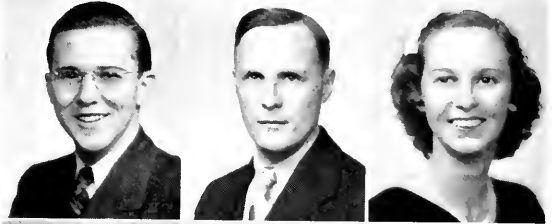
LANG, ANDREW St. Cloud, Fla.  
 LATIMER, HUGH Asheville, N. C.  
 LAVENDER, WILLIAM Altoona, Fla.

S O P H O M O R E C L A S S

LINCOLN, PEARLE Kingwood, W. Va.  
 LOCKE, HOPE Sarasota, Fla.  
*Delta Delta Delta*  
 LOCKWOOD, FRANKLIN DeLand, Fla.



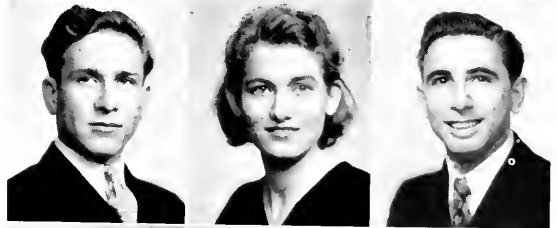
LOVELACE, WILLIAM DeLand, Fla.  
 LYTLE, HOWARD DeLand, Fla.  
 McCLURE, MARJORIE Vero Beach, Fla.  
*Delta Delta Delta*



McCONNELL, DOROTHY Chattanooga, Tenn.  
*Delta Delta Delta*  
 McDONALD, WILLIAM Pelham, Ga.  
 MAGENHEIM, MILTON New York, N. Y.



MARTIN, HAMILTON DeLand, Fla.  
 MARTIN, INEZ DeLand, Fla.  
 MARTINO, ANGELO Tampa, Fla.



MASSEY, AMY Orlando, Fla.  
*Delta Delta Delta*  
 MASSEY, JEAN Orlando, Fla.  
*Delta Delta Delta*  
 MATHIS, ALEX Dothan, Ala.  
*Delta Sigma Phi*



MORRIS, WARREN Winter Haven, Fla.  
 MOSCRIP, GEORGE Chicago, Ill.  
*Sigma Nu*  
 NEELANDS, EARL St. Petersburg, Fla.  
*Pi Kappa Phi*





NICHOLSON, ELIZABETH Chicago, Ill.  
 OSBURN, RUTH Dade City, Fla.  
 OSGOOD, MARTHA Montverde, Fla.



PARKER, HARRY Montgomery, Ala.  
 PARKER, OSCAR New Smyrna, Fla.  
 PEBRET, MILDRED DeLand, Fla.  
*Delta Delta Delta*



PLANO, EVELYN Kissimmee, Fla.  
 PLESS, DOROTHY Lyerly, Ga.  
 POLLOCK, LOIS Daytona Beach, Fla.  
*Alpha Xi Delta*



POLSKI, JOSEPH Eveleth, Minn.  
*Sigma Nu*  
 POPE, DOROTHY Sanford, Fla.  
*Pi Beta Phi*  
 POURTLESS, MARJA St. Petersburg, Fla.



PRESTON, LILLIAN Orlando, Fla.  
 PRESTON, THELMA Orlando, Fla.  
 PRICE, PEGGIE Miami, Fla.  
*Delta Delta Delta*

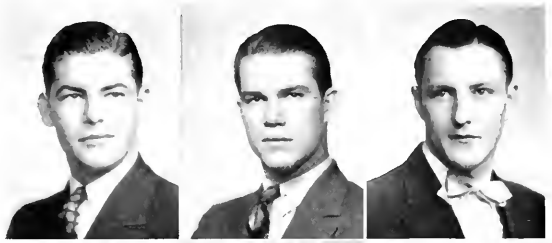


PROLEAU, CHESLEY Eustis, Fla.  
 ROBINSON, ELIZABETH Sarasota, Fla.  
*Zeta Tau Alpha*  
 ROWE, KATHLEEN St. Petersburg, Fla.

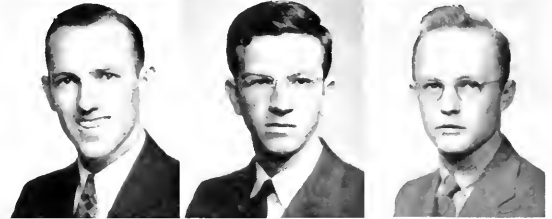


S O P H O M O R E C L A S S

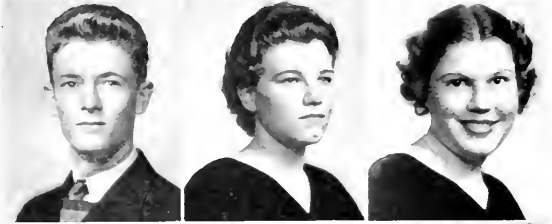
ROWELL, FRANCIS Trenton, Fla.  
*Pi Kappa Phi*  
 SAULS, RICHARD West Palm Beach, Fla.  
*Delta Sigma Phi*  
 SCHAEFER, VINCENT Indianapolis, Ind.  
*Pi Kappa Phi*



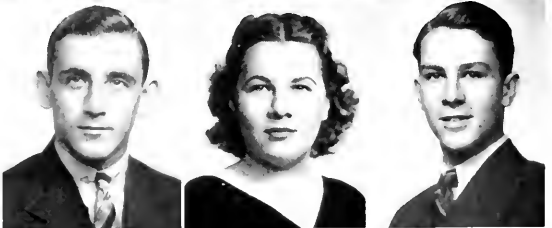
SCOTT, DAN Fort Pierce, Fla.  
*Delta Sigma Phi*  
 SEASHOLE, JOHNNY Jacksonville, Fla.  
*Pi Kappa Phi*  
 SELICK, H. GRAHAM Follansbee, W. Va.



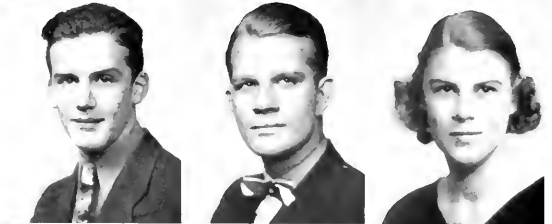
SHERIDAN, THOMAS Augusta, Ga.  
 SIMPSON, MARY ELIZABETH Mt. Dora, Fla.  
 SLOAN, MARTHA DEE McLeansboro, Ill.



SMITH, E. LANIER Daytona Beach, Fla.  
*Pi Kappa Phi*  
 SMITH, JEAN Mt. Dora, Fla.  
*Delta Delta Delta*  
 SMITH, WALLACE DeLand, Fla.



STAFFORD, RALPH Orange City, Fla.  
 STONECIPHER, MELTON Miami, Fla.  
*Delta Sigma Phi*  
 STRICKLAND, DOROTHY Eustis, Fla.



TAYLOR, CLINTON DeLand, Fla.  
 TAYLOR, LOIS DeLand, Fla.  
 TAYLOR, OLIVER Bristol, Va.  
*Sigma Nu*

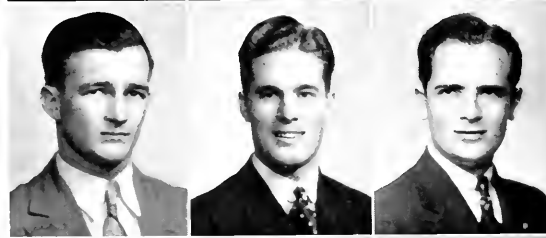




THEURER, LYDIA Grantwood, N. J.  
*Alpha Xi Delta*  
 TOMPKINS, MILBRY Wildwood, Fla.  
 VANCE, JAMES DeLand, Fla.  
*Delta Sigma Phi*



VISEL, GEORGIA Jamaica, L. I., N. Y.  
 WALKER, HELEN South Charleston, Ohio  
*Alpha Xi Delta*  
 WALKER, LOIS Homestead, Fla.



WALKUP, EDWIN McIntosh, Fla.  
 WALL, WOODROW Shelby, N. C.  
*Pi Kappa Phi*  
 WATSON, H. TOM Waycross, Ga.  
*Sigma Nu*



WEAVER, ROBERTS Jacksonville, Fla.  
*Sigma Nu*  
 WEBB, Relda Auburndale, Fla.  
 WEIMERT, RHODA Buffalo, N. Y.  
*Alpha Xi Delta*



WENGATE, PAULINE Rome, N. Y.  
 WENTE, JANE Cincinnati, Ohio  
*Delta Delta Delta*  
 WHITE, CATHERINE Sanford, Fla.  
*Delta Delta Delta*



WINTERS, FRANCES Denver, Colorado  
*Delta Delta Delta*  
 WOLFE, BILLY St. Petersburg, Fla.



---

F R E S H M E N

---

**FRESHMAN CLASS OFFICERS**



GADI LAWTON, *President*  
Orlando, Fla.

•



MABEL ARTHUR, *Vice President*  
Orlando, Fla.

•



HAROLD CLARK, *Secretary*  
Jacksonville, Fla.

•



HAL HUNTER, *Treasurer*  
Live Oak, Fla.

# FRESHMAN CLASS

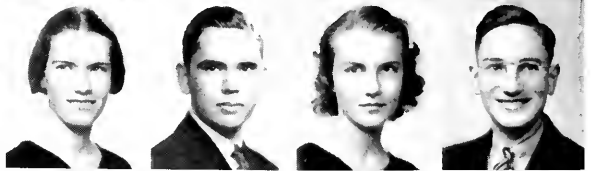
ALBRITTON, J. M. Plant City, Fla.  
 ALLEN, GEROE DeLand, Fla.  
 ALLEN, GWENDOLYN *Sigma Nu* Greenville, S. C.  
 AMISON, ROSEMARY Dayton, Ohio  
*Delta Delta Delta*



ANDERSON, ROBERT Fairport, N. Y.  
*Sigma Nu*  
 ANSLEY, ANN Decatur, Ga.  
*Delta Delta Delta*  
 ARANGO, GLORIA St. Augustine, Fla.  
 ARMSTRONG, BETTY DeLand, Fla.



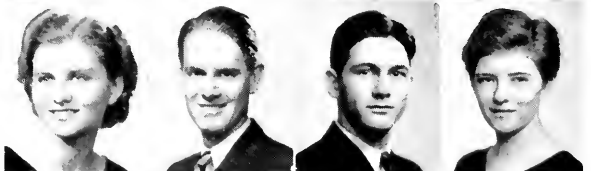
ARNOLD, FRANCES Dayton, Tenn.  
 ARRINGTON, THOMAS Eustis, Fla.  
 ARTHUR, MABEL Orlando, Fla.  
 BAER, VICTOR DeLand, Fla.



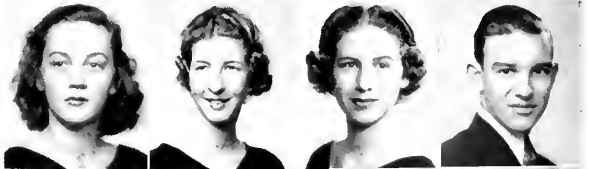
BAKER, ESTER Pierson, Fla.  
 BALDWIN, JEANNE Oak Hill, Fla.  
 BANKS, MILDRED Sanford, Fla.  
 BARTLETT, HAROLD West Palm Beach, Fla.



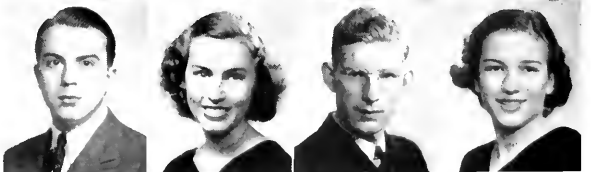
BATTLE, HELEN DeLand, Fla.  
*Delta Delta Delta*  
 BEAN, WHITNEY Homestead, Fla.  
 BEASLEY, JOSEPH Oviedo, Fla.  
 BEASLEY, MARY Fort Lauderdale, Fla.



BETTS, EDNA DeLand, Fla.  
 BEVILLE, MARGARET Fort Lauderdale, Fla.  
*Alpha Xi Delta*  
 RICE, ELIZA Pomona, Fla.  
*Zeta Tau Alpha*  
 BLACKBAY, CHARLES Umatilla, Fla.



BOYD, HAROLD Dayton, Ohio  
*Sigma Nu*  
 BOYLES, MURIEL Callahan, Fla.  
 BRADSHAW, DONALD DeLand, Fla.  
 BRADY, MARY Umatilla, Fla.



BROWN, JOHN, McKinley, Isle of Pines, Cuba  
*Delta Sigma Phi*  
 BROWN, RICHARD Cocoa, Fla.  
*Kappa Sigma*  
 BROWNING, ELIZABETH Orlando, Fla.  
*Pi Beta Phi*  
 BRYANT, LILLAN Miami, Fla.  
*Alpha Xi Delta*





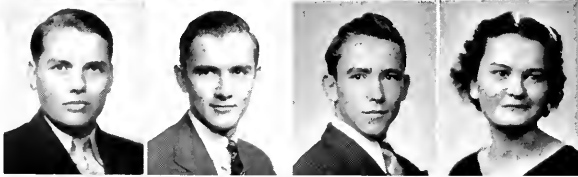
BUNGER, MARY Lake Helen, Fla.  
 BUNKER, BETTY LOU Jacksonville, Fla.  
*Delta Delta Delta*  
 BURNS, MARY KAY Dayton, Ohio  
*Delta Delta Delta*  
 CALDWELL, PANSEY DeLand, Fla.



CAMP, OSCAR DeLand, Fla.  
 CAREY, BETTY Miami Springs, Fla.  
*Delta Delta Delta*  
 CARLTON, CORALIE Cocoa, Fla.  
*Alpha Xi Delta*  
 CARLTON, DORIS DeLand, Fla.



CARLTON, WILLIAM Trenton, Fla.  
 CASSELS, LOIS Arcadia, Fla.  
*Delta Delta Delta*  
 CATE, MARGARET DeLand, Fla.  
*Alpha Xi Delta*  
 CATES, EVELYN Sanford, Fla.  
*Pi Beta Phi*



CATO, TOM Alachua, Fla.  
*Sigma Nu*  
 CHESSER, ROBERT St. Petersburg, Fla.  
 CLARK, HAROLD Jacksonville, Fla.  
 CLARK, LOUISE Bartow, Fla.



CLARK, PATRICIA Stuart, Fla.  
*Pi Beta Phi*  
 CLARKSON, DOROTHEA Jacksonville, Fla.  
*Pi Beta Phi*  
 CLONTS, CHARLES Oviedo, Fla.  
 CLOSE, EVERETT Carmel, N. Y.



COON, ZELMA Charleston, W. Va.  
 COOPER, JANE Orlando, Fla.  
 CORNFIL, ANNA Sanford, Fla.  
*Pi Beta Phi*  
 CULPEPPER, JAMES Jacksonville, Fla.  
*Sigma Nu*



CUSHING, WILLIAM Ormond, Fla.  
 DAVIS, WILLIAM Leesburg, Fla.  
 DAVIS, DOROTHY Miami, Fla.  
*Alpha Xi Delta*  
 DELORENZI, JOE South Bend, Ind.  
*Sigma Nu*



DENHAM, ROBERT Bartow, Fla.  
 DEWITT, ROBERT Cocoa, Fla.  
*Pi Kappa Phi*  
 DONALDSON, BARDWELL Daytona Beach, Fla.  
 DUREY, JACK Canada Lake, Fla.

# FRESHMAN CLASS

EDWARDS, GILBERT DeLand, Fla.  
 ESTRIDGE, MARIAN Sanford, Fla.  
 EULER, DORA *Pi Beta Phi* Abington, Pa.  
 FARMER, HERBERT *Zeta Tau Alpha* Goulds, Fla.



FAY, RICHARD Smethport, Pa.  
 FIDLER, RUTH Ft. Lauderdale, Fla.  
 FORD, LOIS *Alpha Xi Delta* Lakeland, Fla.  
 FORD, WILLIAM Orange City, Fla.



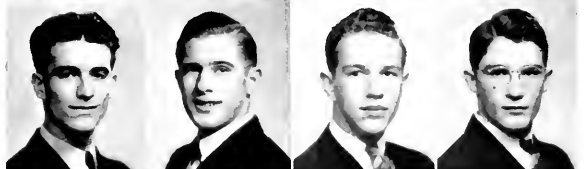
FORMBY, TIDIE Eustis, Fla.  
 FRICK, VIRGINIA Homestead, Fla.  
 FRY, EUGENE Rydal, Pa.  
 GALLIE, MARGARET *Sigma Nu* Latrobe, Pa.



GAYLORD, WINNIFRED Eustis, Fla.  
 GIBBS, MARGARET Wabasso, Fla.  
 GIBEAULT, JOE Orlando, Fla.  
 GODFREY, HELEN Bronson, Fla.



GONZALEZ, CESAR Tampa, Fla.  
 GRAHAM, VANCE *Sigma Nu* Bristol, Tenn.  
 GRAY, ROBERT *Delta Sigma Phi* Burt, Iowa  
 GREENE, JESSE Avon Park, Fla.



GRESHAM, MARVIN Ashland, Miss.  
 GRIFFIN, HUBER Winter Haven, Fla.  
 GRIFFIN, LAWRENCE Tampa, Fla.  
 GRUBBS, LILLIAN St. Augustine, Fla.



GUNBY, ROBERT DeLand, Fla.  
 HALBERT, GORDON Lithia, Fla.  
 HALL, WILLIE RAY St. Petersburg, Fla.  
 HALSTEAD, WILLIAM *Delta Sigma Phi* Lake City, Fla.



HAMBICK, DAVID Monticello, Fla.  
 HANCOCK, EMILY Auburndale, Fla.  
 HANCOCK, MARIE Eustis, Fla.  
 HARGIS, WILLIAM DeLand, Fla.





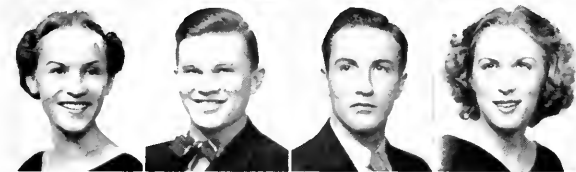
HARMAN, BETTY JANE State College, Pa.  
 HARRIS, ALLIE Dothan, Ala.  
 HASKINS, GEORGE *Zeta Tau Alpha* Oak Park, Ill.  
 HEEBNER, ROBERT S., JR. *Pi Kappa Phi* Lansdale, Pa.



HEINTZELMAN, HELEN Orlando, Fla.  
 HILL, DORIS Cocoa, Fla.  
 HOBBS, KATHERINE *Pi Beta Phi* Panama City, Fla.  
 HOENSHEL, AMY *Alpha Xi Delta* Port Mayaca, Fla.



HOUGH, JOE Goshen, Ala.  
 HOYLE, WILLIAM Fort Pierce, Fla.  
 HOYT, DONNA DeLand, Fla.  
 HUNT, JOHN Lakeland, Fla.



HUNTER, PHYLLIS Jasper, Fla.  
 HUNTER, HAL Live Oak, Fla.  
 HUSSEY, RAYMOND Lake Villa, Ill.  
 HUTTON, PHYLLIS *Sigma Nu* Winter Haven, Fla.  
*Zeta Tau Alpha*



JAHN, HELEN Winter Haven, Fla.  
 JENNINGS, LELA MAY Jacksonville, Fla.  
 JOHNSON, MAYNARD *Alpha Xi Delta* Smethport, Pa.  
 JOHNSON, WILLARD Smethport, Pa.



JONES, JOHN Jacksonville, Fla.  
 JORDAN, RAY *Pi Kappa Phi* DeLand, Fla.  
 KEATHLEY, DAISY *Pi Beta Phi* Brooksville, Fla.  
 KILGORE, MILDRED Orlando, Fla.



KNIGHT, JOAN Detroit, Mich.  
 KNOX, PENELOPE *Alpha Xi Delta* DeLand, Fla.  
 KRUEGER, WALTER *Pi Beta Phi* Toledo, Ohio  
 KUMMER, CHARLES Winter Park, Fla.



LASSETER, CLARISSA Miami, Fla.  
 LATHAM, NELL *Alpha Xi Delta* Miami, Fla.  
 LAWTON, L. GADI *Pi Beta Phi* Orlando, Fla.  
 LEONARD, PHYLLIS Hastings, Fla.

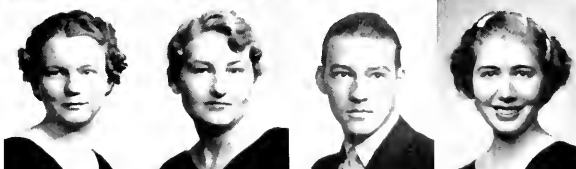


# FRESHMAN CLASS

LEWIS, E. HOPE Mt. Pocono, Pa.  
*Delta Delta Delta*  
 LIEBMAN, JACK Tampa, Fla.  
*Delta Sigma Phi*  
 LITTLE, WINIFRED New London, N. H.  
*Zeta Tau Alpha*  
 LOOMIS, JOSEPHINE Jersey City, N. J.



LUCAS, ANNIE LOU Baldwin, Fla.  
 LUNDELIUS, EMMY Miami, Fla.  
 LYNN, EUGENE DeLand, Fla.  
*Sigma Nu*  
 LYNN, NELL Orlando, Fla.



LYTLE, ANN Weirsdale, Fla.  
*Delta Delta Delta*  
 MCCALL, GROVER High Springs, Fla.  
*Sigma Nu*  
 MCCRAY, MARTHA College Corner, Ohio  
*Alpha Xi Delta*  
 McDONELL, WALTER Duluth, Minn.  
*Pi Kappa Phi*



McEMMER, ROBERT Ludington, Mich.  
 MCGINNES, MARTHA ELIZABETH, Lakeland, Fla.  
*Zeta Tau Alpha*  
 MACLEOD, JEAN West Hartford, Conn.  
*Zeta Tau Alpha*  
 McMURRY, JEAN Jacksonville, Fla.  
*Pi Beta Phi*



MANN, LESTER Kissimmee, Fla.  
*Sigma Nu*  
 MARTIN, HARRY Lenoir, N. C.  
 MASSEY, CAROLYN Marianna, Fla.  
 MATHIS, JEANNETTE Dothan, Ala.



MEADOWS, J. GERALD Umatilla, Fla.  
*Delta Sigma Phi*  
 MEISCH, CONSTANCE Sanford, Fla.  
*Pi Beta Phi*  
 MENERAY, MARY ELVA Lakeland, Fla.  
 MERCER, ERIN DeLand, Fla.  
*Delta Delta Delta*



MERRITT, IRVING Panama City, Fla.  
 MICKLE, LAUREN DeLand, Fla.  
*Delta Sigma Phi*  
 MILLER, JANE Orlando, Fla.  
 MIRES, CORRIE LOU DeLand, Fla.  
*Alpha Xi Delta*



MOORE, BARBARA DeLand, Fla.  
*Pi Beta Phi*  
 MOORE, FONTELLE Jacksonville, Fla.  
 MOORE, LOUISE Miami, Fla.  
 MOORE, ROBERT Temuco, Chile, S. A.





MOORES, WILLIAM Holopaw, Fla.  
*Delta Sigma Phi*  
 MOSLER, MAX Palm Beach, Fla.  
 MUNDY, RAYMOND Smethport, Pa.  
 NORDMANN, RUTH DeLand, Fla.



O'DELL, JAMES Jacksonville, Fla.  
 OOTHOUT, HELEN New York, N. Y.  
 ORDOÑEZ, BETTY Honduras, C. A.  
 PACE, MARJORIE Tavares, Fla.  
*Delta Delta Delta*



PARKER, BONNIE Bradenton, Fla.  
 PARKER, THOMAS Eustis, Fla.  
 PATTERSON, MARIAN West Palm Beach, Fla.  
 PENNINGTON, JULIA ANN Indianapolis, Ind.  
*Delta Delta Delta*



PHILLIPS, MARGARET Cleveland, Tenn.  
*Alpha Xi Delta*  
 PICKETT, SHIRLEY Callahan, Fla.  
 PLANO, EARLE Kissimmee, Fla.  
*Sigma Nu*  
 POPE, MIRIAM Lacochee, Fla.



POWELL, GWENDOLYN DeLand, Florida  
*Pi Beta Phi*  
 POWELL, JANE Orlando, Fla.  
*Pi Beta Phi*  
 PRINCE, ORRIN Jacksonville, Fla.  
*Sigma Nu*  
 PROCTOR, FLORENCE Orlando, Fla.



RAPP, BETTY MARIE Darien, N. Y.  
 RAPP, NETTIE ANN Darien, N. Y.  
 REESE, JOY DeLand, Fla.  
 RICHARDSON, GEORGE Pasadena, Calif.



RICHART, HARRY Lexington, Ky.  
*Sigma Nu*  
 RITCH, BETTY DeLeon Springs, Fla.  
 ROIIDE, DOLORES DeLand, Fla.  
 ROSEBERRY, HENRY Grand Rapids, Mich.  
*Sigma Nu*



ROTUNDO, JOHN Sanford, Fla.  
 ROWLAND, GENE Daytona Beach, Fla.  
*Delta Delta Delta*  
 RUIZ, MARIA HORTENSIA Santa Clara, Cuba  
*Delta Delta Delta*  
 RUMMELL, RICHARD Cocoa, Fla.

# FRESHMAN CLASS

RUSSELL, RALPH                      Binghamton, N. Y.  
 SAPP, ALMA                              Ft. Myers, Fla.  
 SAWYER, CLIFFORD                  DeLand, Fla.  
 SEGARD, CHRISTIAN P.                Leonia, N. J.  
                                                   *Kappa Sigma*



SIMMONS, ALVIN                        Oak Hill, Fla.  
 SLAUSON, LORRAINE                  Orlando, Fla.  
 SLOAN, GEORGE                        Ft. Pierce, Fla.  
 SMITH, HAROLD                         Pensacola, Fla.  
                                                   *Sigma Nu*



SMITH, HELEN                            Bradenton, Fla.  
                                                   *Delta Delta Delta*  
 SMITH, JANE                              Orlando, Fla.  
                                                   *Delta Delta Delta*  
 SMITH, FARRIS MERRILL              Daytona Beach, Fla.  
                                                   *Pi Kappa Phi*  
 SMITH, SIDNEY                         Overton, Texas  
                                                   *Pi Kappa Phi*



SMITH, WESLEY                         Sayville, N. Y.  
                                                   *Delta Sigma Phi*  
 SMITH, WILL RAY                        Lakeland, Fla.  
 SMITH, WILSON                         Sanford, Fla.  
 SOUTHERLAND, FREDERICK              Wauchula, Fla.



SPAIN, WILSON                          Hamilton, Ohio  
 SPERRING, DAVID                        Live Oak, Fla.  
 STALLINGS, PATRICIA                  DeLand, Fla.  
 STANSFIELD, DELLA                      Hartford, Conn.  
                                                   *Alpha Xi Delta*



STICH, FREDERICK                        Sanford, Fla.  
 STOLL, CHARMION                        Woodmere, L. L. N. Y.  
 STROWGER, BONNIE                      Arcadia, Fla.  
 SULLIVAN, RONDO C.                      Frostproof, Fla.  
                                                   *Sigma Nu*



SWANK, HOWARD                         Daytona Beach, Fla.  
 SWITZER, MARY                          Orlando, Fla.  
 TALLEY, LESLEY                         Tallahassee, Fla.  
 TESTERMAN, ALMA                        Umatilla, Fla.  
                                                   *Zeta Tau Alpha*



THEDE, GUILDA                          Lawtey, Fla.  
 THOMAS, MARGARET                      Cambridge, Ohio  
                                                   *Alpha Xi Delta*  
 TIBBALS, HOWARD MUNSON              Umatilla, Fla.  
                                                   *Delta Sigma Phi*  
 TOMLINSON, HARRY                        Madison, Fla.





TURNER, A. J. Gainesville, Fla.  
 VAN LANDINGHAM, MAVIS DeLand, Fla.  
 WADE, MILDRED Leesburg, Fla.  
 WALTERS, HUGH Gainesville, Fla.



WARENSFORD, NORA Orange City, Fla.  
 WELSH, BETTY Orlando, Fla.  
 WERWAGE, CHARLOTTE Eustis, Fla.  
*Delta Delta Delta*  
 WESSMAN, VIRGINIA Pierson, Fla.



WEST, ALFRED DeLand, Fla.  
 WHEELER, GWENDOLYN Fredericksburg, Va.  
*Delta Delta Delta*  
 WHIDDEN, GWENDOLYN Kissimmee, Fla.  
*Delta Delta Delta*  
 WHITMORE, DAVID Lake Placid, Fla.



WHITMORE, PATRICIA Lake Placid, Fla.  
 WHITNEY, JOHN Altoona, Fla.  
 WICKERSHAM, CAROLYN Daytona Beach, Fla.  
*Pi Beta Phi*  
 WILLIAMSON, LILLIAN Lake City, Fla.



WIMBERLY, WILLIAM Orange Springs, Fla.  
 WINGATE, MADGE Orlando, Fla.  
 WOOD, MARGARET Greensburg, Ind.  
*Zeta Tau Alpha*  
 WOODWARD, OZELLO Goldsboro, N. C.



WRIGHT, BETTYE DeLand, Fla.  
 WRIGHT, MAHLON Sanford, Fla.  
 WYNN, EARNEST Lakeland, Fla.  
*Delta Sigma Phi*  
 YENGLING, MARY Miami, Fla.



ZUBER, WESLEY Miami, Fla.

---

IN MEMORIAM—ALTHEA HALL

---



SCHOOL OF MUSIC





**MUSIC FACULTY**

WILLIAM EDWARD DUCKWITZ, *Mus. D.*  
*Director of School of Music and*  
*Professor of Music*



AILEEN WORTH  
 A.B.  
*Assistant Instructor*  
*of Violin*

ROBERTA ORCUTT  
 MUS.B.  
*Assistant Instructor*  
*of Voice*

HAROLD MILNE GIFFIN  
 A.B., M.U.S.B., M.A.  
*Professor of Voice*

VERONICA DAVIS  
 MUS. B.  
*Instructor in*  
*Public School Music*

WILLIAM HORACE BAILEY  
 A.B., M.M.  
*Professor of Violin*  
*and Theory*



THE STUDENTS and faculty of the School of Music are active in presenting the University to the people of Florida. Members of the faculty have given recitals at home and have appeared as soloists in many cities of the state, have officiated as judges in the more important musical contests, and hold high offices in State, District and National Music organizations.

Chamber music, which has contributed to the development of the students and added interest in recitals, is in popular demand for club programs, at home and in other cities. The Stetson Glee Clubs, Orchestra, and Band all have had a most successful year. Each gave a home recital and cooperated in the presentation of radio broadcasts, the "Messiah", and the opera "The Gondoliers". The Glee Clubs and Band have given creditable performances in many of the larger cities of Florida.

The new home for the School of Music, with its enlarged equipment and its increased faculty and student enrollment, gives evidence of continued development.







## STETSON UNIVERSITY BAND

JOHN J. HENY  
 HARRY PARKER  
 HORACE BILLS  
 LESTER SPEAR  
 CARL HULBERT  
 OSCAR PARKER, TOM PARKER, TOM MORRIS  
 HARRY L. PARKER, H. GRAHAM SELICK

*Director*  
*Student Assistant*  
*Drum Major*  
*Captain*  
*Lieutenant*  
*Sergeants*  
*Corporals*

### PERSONNEL

#### *Flutes*

H. GRAHAM SELICK  
 PANSY CALDWELL

#### *Oboe*

ROBERT McEMBER

#### *Bassoon*

BARDWELL DONALDSON

#### *Clarinets*

LAWRENCE HARTSFIELD  
 PATRICIA WHITMORE  
 SIDNEY RUBIN  
 MARSHALL ARRINGTON  
 JACK LIEBMAN  
 MILDRED WADE

#### *Cornets*

CARL HULBERT  
 GORDON BOOTH  
 TOM PARKER  
 ERNEST WYNN  
 ELIZABETH NICHOLSON

#### *French Horns*

WILLIAM CUSHING  
 TOM MORRIS

#### *Trombone*

HARRY PARKER  
 VICTOR BAER  
 PAUL DECKER  
 JOE GIBEAULT  
 LEWIS WRIGHT  
 RALEIGH ANDERSON

#### *Baritone*

HARRY MARTIN

#### *Bass*

LESTER K. SPEAR  
 OSCAR PARKER  
 ROBERT CHEESER

#### *Percussion*

DOLORES ROHDE  
 DAVID WHITMORE

#### *Bell Lyre*

GRAHAM GILLESPIE

#### *Saxophone*

CESAR GONZALEZ



## DOUBLE TRIO

HENRIETTA BRYANT  
HELEN WALKER  
KATHERINE MARTIN

JANE McCARTY  
*Accompanist*

RUTH BARTLETT  
RHODA WEIMERT  
SADIE RAE GARDNER

## QUARTET



HAROLD GIFFIN

JAMES WOODFILL

EDWARD FURLONG

NORMAN BENNETT



## JOHN B. STETSON UNIVERSITY GLEE CLUB

JANE McCARTY, CARL HULBERT  
 JOSEPHINE OSBORNE, EDWARD FURLONG  
 JEAN GOWER, HUGHES WILSON  
 JANE CLAIRE McCARTY, RUTH NEWLIN

*Student Leaders*  
*Managers*  
*Publicity Managers*  
*Accompanists*

### Women's Glee Club

#### *First Sopranos*

GWENDOLYN ALLEN  
 RUTH ARCHER  
 HENRIETTA BRYANT  
 ELISABETH FORD  
 RUTH FREEMAN  
 HELENE GOLDING  
 JEAN GOWER  
 ELIZABETH JAMESON  
 LELA MAE JENNINGS  
 KATHERINE MARTIN  
 MARY NEWMAN  
 MARJA POURTLESS  
 DEE SLOAN  
 HELEN WALKER  
 BETTY WELSH  
 VIRGINIA WESSMAN

#### *Second Sopranos*

MURIAL BOYLES  
 CORALIE CARLTON  
 FRANCES COE  
 WILLA MAE CROSBY  
 KATHERINE HOBBS  
 MARGARET HOLBROOK  
 RUTH HUMMEL  
 DORIS JOHNSON  
 MARGARET JOHNSON  
 ELOISE KENNEDY  
 JOSEPHINE KINZY  
 MARGARET McDONOUGH  
 RUTH MERRITT  
 HELEN OOTHOUT  
 LOIS POLLOCK  
 MARGARET THOMAS

#### *First Altos*

FRANCES ARNOLD  
 BETTE BIRD  
 RUTH DENTLER  
 ESTELLE DUKE  
 VIRGINIA FRICK  
 ELOISE KNABB  
 CLARISSA LANSITER  
 PEARL LINCOLN  
 JEAN McMURRAY  
 ELIZABETH NICHOLSON  
 JOSEPHINE OSBORNE  
 MARTHA OSGOOD  
 MIRIAM POPE  
 JANE SMITH  
 RHODA WEIMERT

GWENDOLYN WHIDDEN  
 MARGARET WOOD  
 FRANCES WOOTEN

#### *Second Altos*

RUTH BARTLETT  
 ANTOINETTE DAVIS  
 SAIDIE RAE GARDNER  
 ELIZABETH MCGINNES  
 SHELLA MCNEESE  
 RUTH NEWLIN  
 ROBERTA ORCLT  
 THELMA PRESTON  
 ELIZABETH SANDUSKY  
 VIRGINIA SKAGGS  
 DOROTHY STRICKLAND

### Men's Glee Club

#### *First Tenors*

ROBERT ADAMS  
 HAROLD CLARK  
 HUBER GRIFFIN  
 EDWIN LIBBY  
 GERALD MEADOWS  
 J. B. RODGERS  
 HENRY ROSEBERRY  
 LYLE SHERMAN

#### *Second Tenors*

JOHN CICERO  
 EDWARD FURLONG  
 CARL HULBERT  
 JOHN JONES  
 JAMES LUMPKIN  
 RAYMOND MUNDY  
 FRED WILSON  
 JAMES WOODFILL

#### *Baritones*

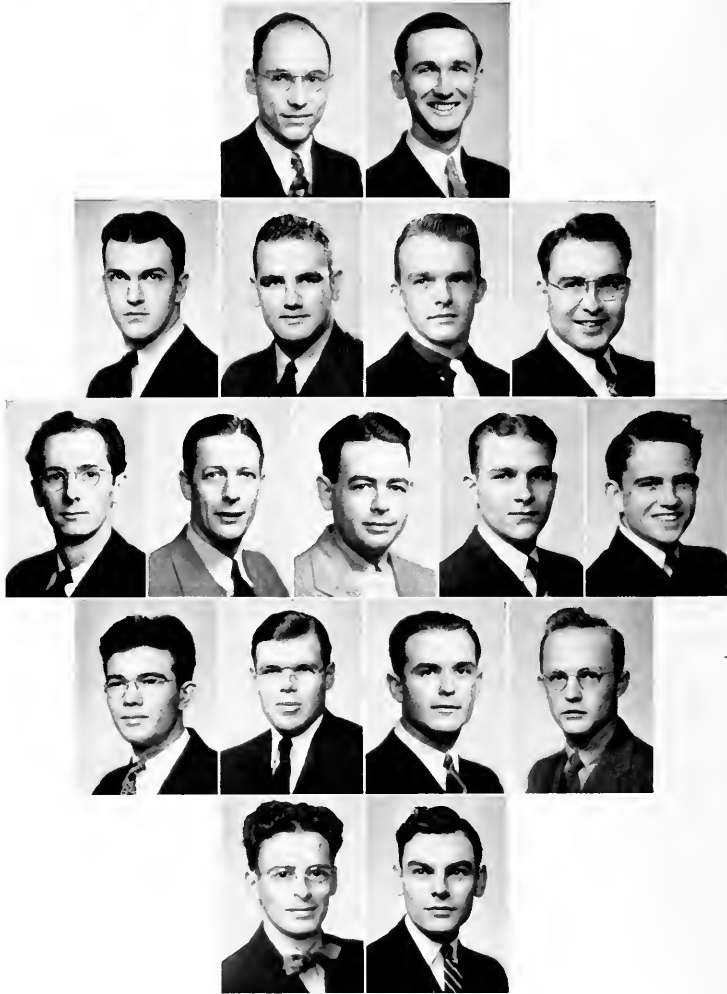
HAROLD BOYD  
 ROBERT DEWITT  
 T. H. FARR  
 STANLEY FRANCK  
 HAL HUNTER  
 ROY KINSEY  
 EDWARD MASON  
 ROBERT POWE  
 GRAFTON PYNE

JAMES SNELLINGS  
 WOODROW WALL

#### *Basses*

NORMAN BENNETT  
 FINDLEY EDGE  
 TOM PARKER  
 EARLE PLANO  
 DONALD STRONG  
 HUGHES WILSON  
 ROBERT WOOD

# K A P P A M U



	PROFESSOR BAILEY	NORMAN BENNETT	
GORDON BOOTH	EDWARD FURLONG	JOE GIBEAULT	PROFESSOR GIFFIN
CARL HULBERT	CARL JOHNSON	ROY KINSEY	JAMES LUMPKIN
HARRY PARKER	GRAFTON PYNE	GEORGE RICHARDSON	GERALD MEADOWS
	HUGHES WILSON	JAMES WOODFILL	GRAHAM SELICK

## Officers

CARL HULBERT  
EDWARD FURLONG

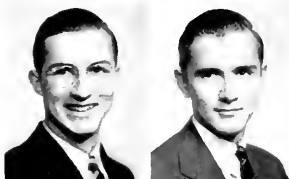
*President* ROBERT POWE  
*Vice President* GRAHAM SELICK  
NORMAN BENNETT *Secretary and Treasurer*

*Historian*  
*Program Chairman*

## NOT PHOTOGRAPHED

DR. DUCKWITZ      STANLEY FRANCK      PROFESSOR GRAHAM      ROBERT POWE      LYLE SHERMAN

# KAPPA KAPPA PSI



HOWARD BATESON  
 HORACE BILLS      ROBERT CHESNER  
 LAWRENCE HARTSFIELD    GAYLORD KENYON    ROBERT McEMBER    THOMAS MORRIS    THOMAS PARKER  
 LESTER SPEAR      JAMES SNELLINGS  
 LEWIS WRIGHT

National Honorary Band Fraternity  
 Founded at Oklahoma State College 1919  
 Alpha Xi Chapter Established May 10, 1935

COLORS—*Blue and White*

FLOWER—*Red Carnation*

## Officers

HORACE BILLS

*President*

JAMES SNELLINGS

*Secretary*

LAWRENCE HARTSFIELD

*Vice President*

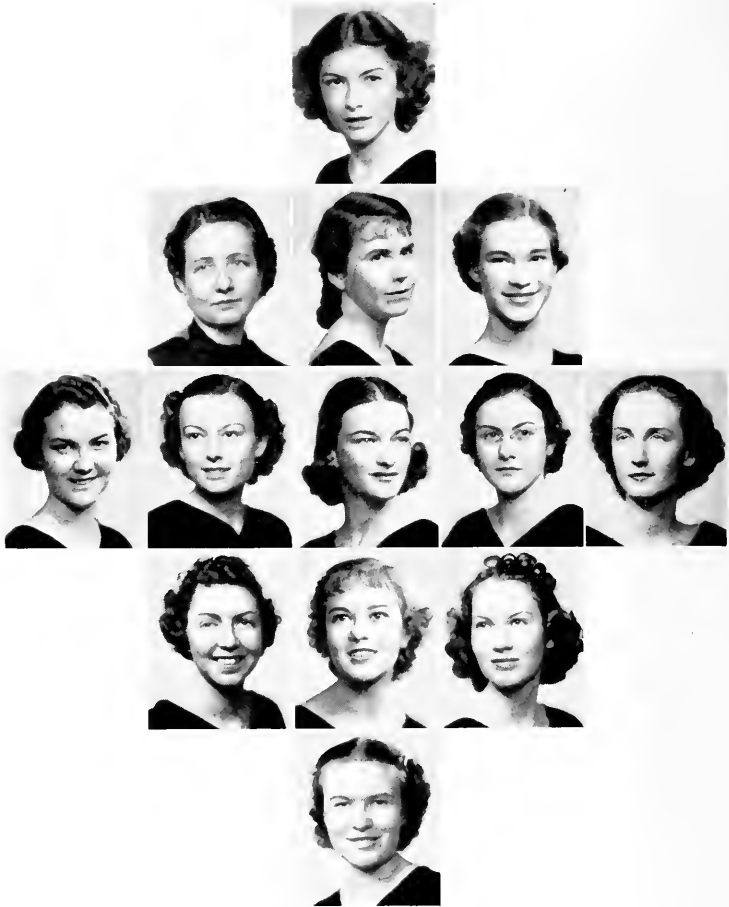
LESTER SPEAR

*Treasurer*

NOT PHOTOGRAPHED

JOHN J. HENY

# P H I B E T A



BETTE BIRD  
 HELENE GOLDING  
 WILLIE RAY HALL  
 ELIZABETH JAMESON    JANE McCARTY    MARGARET McDONOUGH    RUTH NEWLIN    ROBERTA NIGELS  
 JOSEPHINE OSBORNE    BONNIE PARKER    DOLORES ROHDE  
 MILDRED WADE

National Professional Fraternity of Music and Dramatic Art  
 Founded at Northwestern University 1912  
 Eta Chapter Established December 20, 1912

COLORS—*Violet and Gold*

FLOWERS—*Rose and Violet*

## Officers

JANE McCARTY	<i>President</i>	ROBERTA NIGELS	<i>Secretary and Treasurer</i>
JOSEPHINE OSBORNE	<i>Vice President</i>	VERONICA DAVIS	<i>Historian</i>



## Stetson Symphony Orchestra

WILLIAM H. BAILEY  
 WILLIE RAY HALL  
 MILDRED WADE  
 GEORGE RICHARDSON  
 CESAR GONZALEZ, LESTER SPEAR

*Conductor*  
*Secretary and Treasurer*  
*Librarian*  
*Manager*  
*Special Committee Members*

### *First Violins*

WILLIE RAY HALL  
 MILDRED WADE  
 CESAR GONZALEZ  
 ROBERT NIELS  
 DANIEL GAININ

### *Second Violins*

VERNA BAER  
 MARY BRODY  
 PHYLLIS HUTTON  
 WILBER KAYE

### *First Violas*

AILEEN WORTH  
 BONNIE PARKER  
 LEWIS WRIGHT  
 MRS. LENNON

### *First Cellos*

GEORGE RICHARDSON  
 VERONICA DAVIS  
 JEAN BOTTS  
 ROSEMARY CLARK

### *Bass Viols*

LESTER SPEAR  
 OSCAR PARKER  
 ROBERT CHESNER

### *Clarinets*

LAWRENCE HARTSFIELD  
 SIDNEY RUBIN

### *Oboe*

ROBERT McEMBER

### *French Horns*

WILLIAM CUSHING  
 THOMAS MORRIS

### *Flutes*

GRAHAM SELICK  
 PANSY CALDWELL

### *Bassoons*

BARDWELL DONALDSON  
 DOLORES ROHDE

### *Trumpets*

CARL HULBERT  
 GORDON BOOTH

### *Percussion*

DOLORES ROHDE  
 MARGARET McDONOUGH

### *Trombones*

HARRY PARKER  
 VICTOR BAER  
 PAUL DECKER

**A U T O G R A P H S**

---





F E A T U R E S



MAY QUEEN  
*Sadie Rae Gardner*





MOST POPULAR BOY

*Edward Fuclong*



MOST POPULAR GIRL

*Jane McCarty*





MOST ATTRACTIVE BOY

*Richard Branham*



MOST ATTRACTIVE GIRL

*Mary Kay Burns*





MOST VERSATILE BOY

*Findley Edge*





MOST VERSATILE GIRL

*Lydia Theurer*





BEST DRESSED BOY

*Hughes Wilson*



BEST DRESSED GIRL

*Grace Ahlers*





MOST ATHLETIC BOY

*Vincent Schaefer*



MOST ATHLETIC GIRL

*Robetta Moccis*





HOMECOMING MAYOR

*Gaylord Kenyon*



HOMECOMING HOSTESS

*Alice McLaughlin*





MOST INTELLECTUAL BOY

*Truman Botts*



MOST INTELLECTUAL GIRL

*Frances Ogilvie*





CAMPUS QUEEN  
*Mary Hudson*





---

S N A P S H O T S

---



Hoops, my dear!  
 Truth is stranger than fiction  
 Pride of their heart  
 First door to your right  
 A Star Is Born  
 Law School Mufti  
 Fifty! Do I hear fifty-one?  
 The Man on the Street  
 Room Service—  
 Their character is of the highest tripe



Escaped Convict  
 Noon hour rush  
 Soixante-neuf-see  
 Maternal Instinct  
 It's done with mirrors  
 On Coca-Cola?  
 Lettuce alone  
 Who's the favorite  
 I got a million of 'em



No stoop, no squat, no squint  
It's Colossal!  
Does Mary Kay love her dolly?  
To have and to hold—  
Quit Braggin'!!  
Skeets from Vahsahr  
How many suckers, Doc?  
Spring training for Central America  
Everything is lovely  
Jam Session



Sing something simple  
The Ritz Brothers  
Love, Honor and stand straight  
And if I'm elected—  
And that's how I added to my vocab-  
ulary  
He's off again  
Trial by Fury  
Intimate Glimpses of Famous People  
Ho, Hum—Spring is here  
Have a happy thought, Dallas



Whistle while you work  
 We're showing a lovely little model  
 I want my Mama  
 Frame-up  
 Sissy  
 Mrs. Powe sues for divorce  
 After Hours—Lytle, Jocko, and Fanny  
 Truck on down  
 I'd like to do some make-up work  
 A strapping invalid  
 Delta Sig Humor  
 What! No golf clubs  
 Stand still while I hit you  
 Frank Lenz and Co.





AMBITION

Swing out  
 Grand Salon  
 Say it isn't so—  
 The easiest way to baer it  
 That's catalogic stuff  
 Kiddies' Korner  
 That's carrying a good thing too far  
 Hypocrite  
 Stop! You're slaughtering me



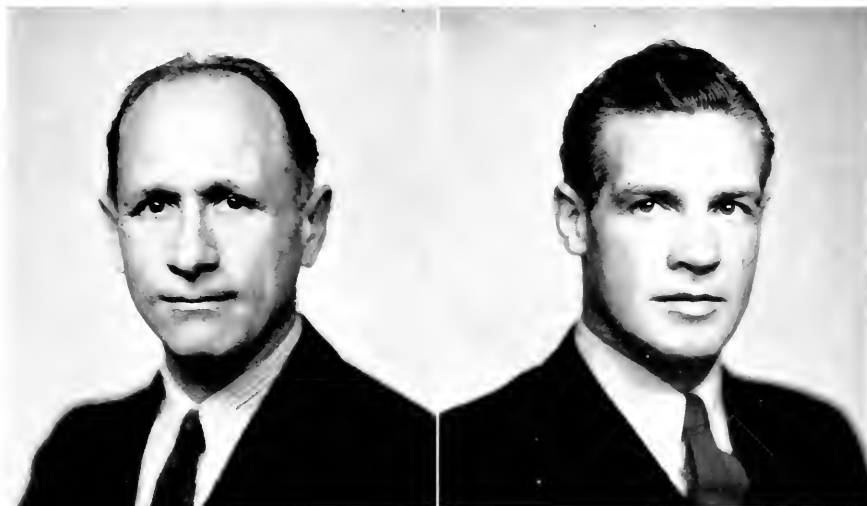
Sweet and High  
This is only the beginning  
That's Stet-on Yumph  
In Memoriam  
Behind the eight ball—again—  
Call for Philip Morris—  
Just friends  
More Stet-on Yumph  
Where'd you borrow the books, Ed?



A T H L E T I C S



# MEN'S ATHLETIC COACHES



COACH BRADY COWELL  
*Director of Athletics  
Head Football Coach*

COACH "CHET" FREEMAN  
*Assistant Director of Athletics  
Head Basket Ball Coach*



RAY CAGNI  
*Director of Physical Education*

CARL "DOC" JOHNSON  
*Director of Intramurals*

RODNEY DURRANCE  
*Freshman Football Coach*



## VARSITY FOOTBALL

Champs of "Little Four."

That is the title our football team of the 1937 season achieved. They earned the title by having the best percentage in a league composed of Stetson, Rollins, Tampa, and Miami. The Hatters, led by Captain Clonts, were successful in five of their nine contests, for Florida, Miami, Oglethorpe, and Erskine were the only teams that turned back our "gridiron heroes."

Some fine material, of which even greater things may be expected next year, was uncovered by Coaches "Brady" Cowell and "Chet" Freeman. Only five members of this year's team will be lost through graduation, and with several prospects from the freshmen, plus several Junior College men, a bright season is in the making.

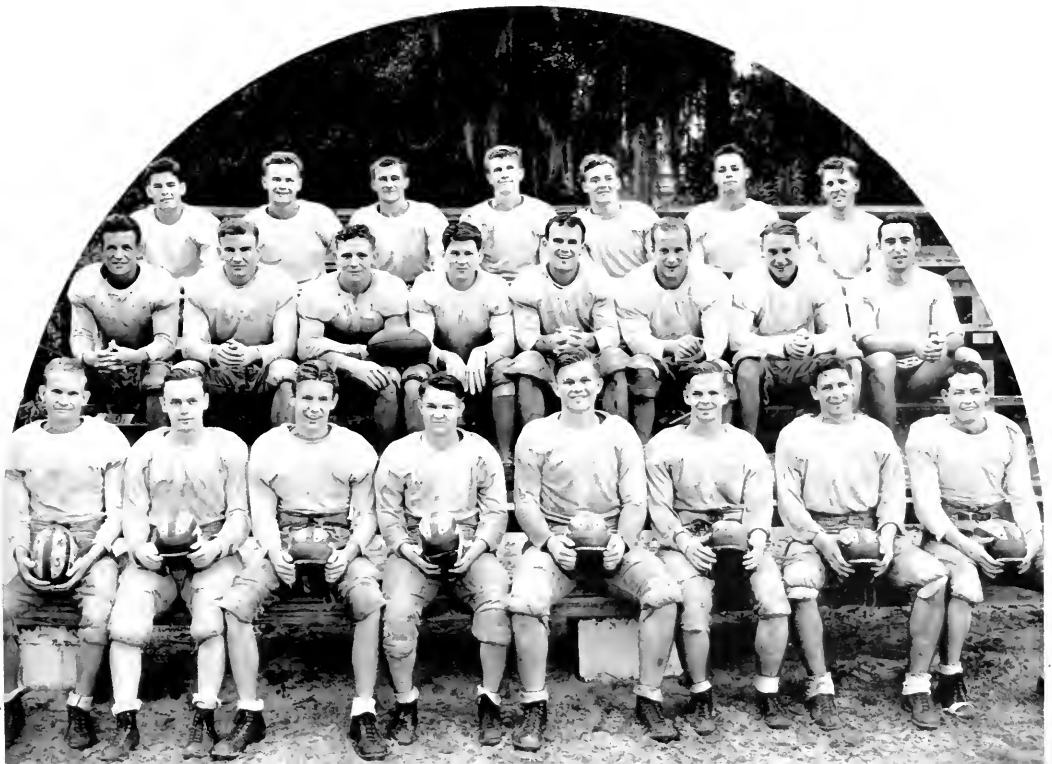
### SEASON'S RECORD

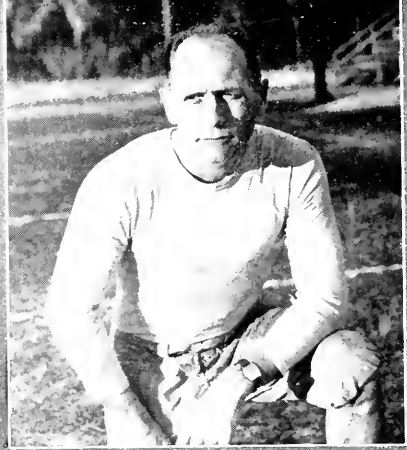
Florida 13	Stetson 0
South Georgia Teachers 0	Stetson 24
Tampa 12	Stetson 18
Erskine 14	Stetson 13
Miami 25	Stetson 13
Lenoir Rhyne 6	Stetson 20
Oglethorpe 10	Stetson 0
Mississippi College 6	Stetson 14
Rollins 12	Stetson 15

# FRESHMAN FOOTBALL

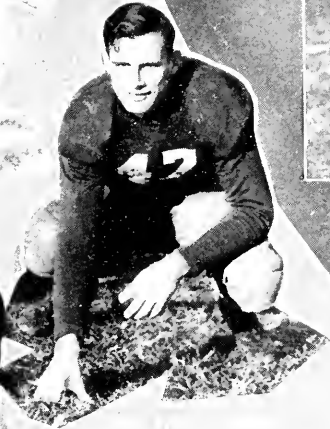
The "Baby Hatters," coached by Rodney Durrance, spent most of the season furnishing opposition for the varsity. Only two games were played, one with Miami, the other with Tampa. Both games ended in defeat for our boys, the former by a score of 44-13, the latter, 12-0.

Even though they had not the success of the freshman team of last year, they did develop some brilliant material. Gaughan, Lawton, Hunter, Smith, Rowell, and McDonnell are a few names that we may expect to see on the varsity roster. Rowell and McDonnell are perhaps the brightest hopes.





BRADY COWELL



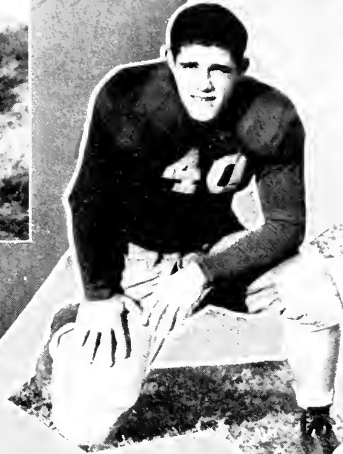
BUCK FRISON  
GUARD

W. C. Cowell, director of athletics and head football coach, is better known as "Brady", but is more often referred to as "Little Napoleon" by the team. Brady took over the great responsibility of coaching at Stetson during the school year of 1936. For the past three years his personality and capacity as head mentor have been responsible for the success he has made here. The prevailing aim and ambition of "Little Nappy" has been to point the arrow upward. The success of his teams has been increasingly improved. He is held in the highest esteem and respect of every football boy and enthusiast, he is the friend of everyone.





CHET FREEMAN



JOHN BICKER  
END



CHUCK ANDERSON  
LINEBACKER



WALDO ELLIOTT  
HAIR BACK



CHIEF HARDY  
FULL BACK

Chester Freeman, who is the assistant football coach and head basket ball coach is considered the best and probably the greatest athlete in the

history of Stetson. Chet took over his job here in 1936. He is an alumni of the class of '29 and is greatly respected by his classmates, as well as the entire student body of the University today. He has shown his ability as

basket ball coach by turning out winning teams for the past three years. Brady and Chet have worked side by side in overcoming the many handicaps which have confronted them. Chet is a keen student and an able teacher of line play, and has a personality which is attractive to the players as well as to older persons.



*EMMETT CLONTS  
QUARTERBACK & CAPTAIN*



*BOB ANDERSON  
QUARTERBACK*

Emmett Clonts, captain and quarterback, showed great ability as a field general and commander of the squad. Emmett finished a brilliant career this season but his name will go down as one of the greatest quarterbacks and captains known to Stetson. He was consistently one of the Hatters' greatest assets, and his spirit of sportsmanship and fair play will live on our gridiron for years to come. Emmett is a junior in law school this year and plans to receive his LL.B. in mid-semester of next year. Good luck, and lots of success to you, Emmett.



VING SCHAEFER  
END & MOST VALUABLE



JOHN GRIFFITH  
HALF BACK



RUSSEL DART  
FULLBACK



Vincent Schaefer, who is a sophomore this year, has displayed unusual ability in the field of athletics. If he continues, at the pace he has set for the past two years, and there is no reason why he should not, he will go down in the history of Stetson as one of its most outstanding and all-round athletes. Schaefer's end play on the gridiron was that of a star, as also was his play from the forward position on the basket ball court. He was voted most valuable athlete for the past year and promises to retain the honor next year.



## VARSIITY BASKET BALL

Another good year for "Chel" Freeman!

For the third season in a row Stetson has achieved an enviable record. Out of seventeen starts the green and white eaglers were successful in thirteen. Revenge for three losses was gained when Florida, Tampa, and Wofford were beaten by large margins in return engagements.

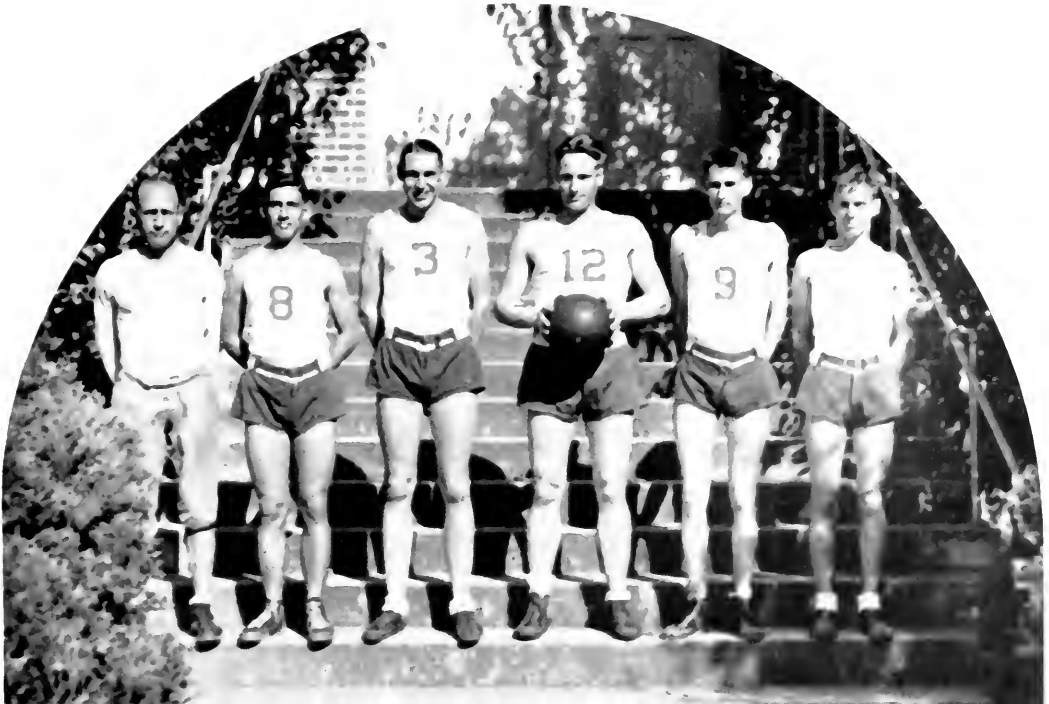
Next year should be one of our greatest, as only two members, Branham, a past Captain, and Cagni, both letter men, were lost through graduation. Several promising freshmen will step in, and of them we are expecting some fine basket ball.

### THE RECORD

Wofford 24	Stetson 42	Wofford 28	Stetson 42
Wofford 26	Stetson 43	Wofford 33	Stetson 31
Florida 39	Stetson 27	Presbyterian College 34	Stetson 33
Sparks 33	Stetson 57	Tampa 20	Stetson 37
Havana 35	Stetson 50	Florida 25	Stetson 42
Havana 32	Stetson 62	College of Charleston 25	Stetson 34
Tampa 33	Stetson 29	College of Charleston 18	Stetson 32
Tampa 23	Stetson 26	Union 33	Stetson 32
College of Charleston 20	Stetson 34		

## FRESHMAN BASKET BALL

The Freshman team, under the tutorage of Coach "Brady" Cowell, turned in a rather fine record. Only two out of ten games were lost, those being to the strong "Sparks Theatre" club of Daytona Beach. The uncovering of three prospective varsity men in Bailes, Close, and Johnson was the high-light of the season. Much can be expected of them in the future varsity games.





VINC SCHAEFER  
GUARD

SKEET COBB  
GUARD

ALVIN CRONY  
FORWARD



ALVIN CRONY  
GUARD

DICK BRANNAN  
CENTER



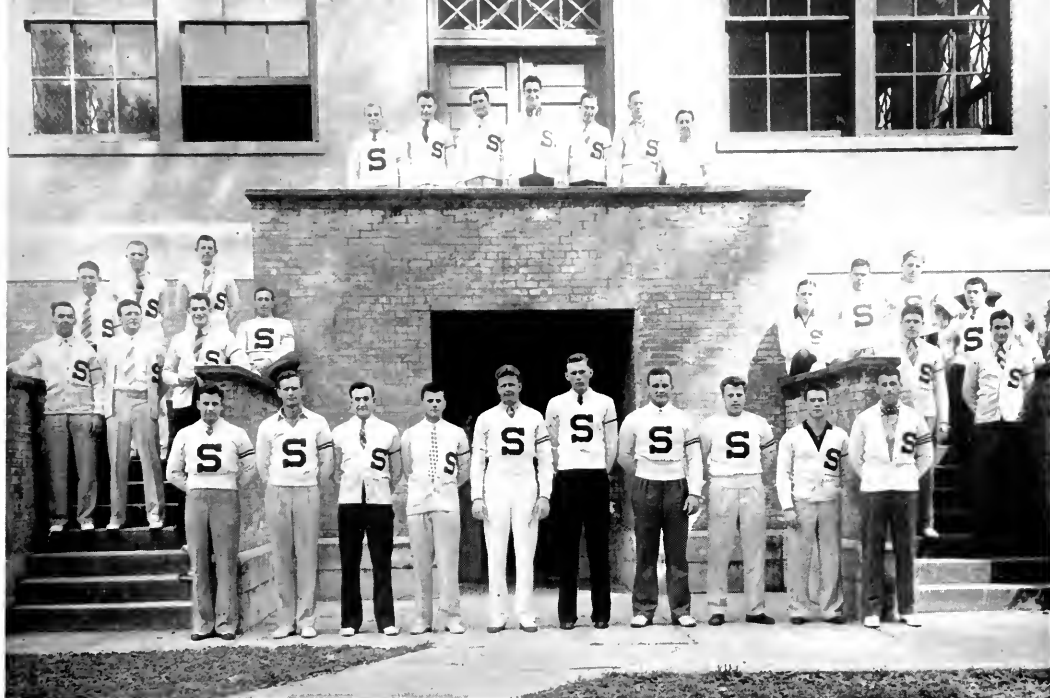
LANTIER SMITH  
FORWARD

ALVA WARE  
GUARD



STEEVE AYMAN  
GUARD

JOHN CARL HUNT  
FORWARD



## “S” CLUB

The men winning varsity letters are eligible for membership in this organization. It was founded in 1936 for the purpose of developing fair play and sportsmanlike conduct, and of creating a more friendly spirit and understanding between the athletes and other students of the University.

To achieve honors both athletically and scholastically and to promote the welfare of Stetson in every possible way is the ambition of every member.

### *Officers*

WILLARD ANDERSON  
CHARLES BUTLER

*President*  
*Vice-President*  
CHARLES COBB

JAMES DICKSON  
EMMETT CLONTS  
*Sergeant-at-Arms*

*Secretary*  
*Treasurer*

### *Members*

ROBERT ANDERSON  
WILLARD ANDERSON  
LYNWOOD ARNOLD  
RICHARD BRANHAM  
CHARLES BUTLER  
RAYMOND CAGNI  
LYNWOOD CHEATHAM  
EMMETT CLONTS  
CHARLES COBB  
DOUGLAS CUDMORE

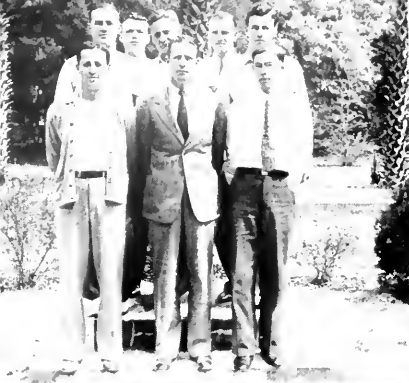
FRITZ DRAKE  
JAMES DICKSON  
RODNEY DUBRANCE  
DONALD FRISON  
EDWARD FURLONG  
JOHN GRIFFITH  
HALL GOBOLD  
TROY HALL  
LAWRENCE HARDY  
THOMAS KIRKLAND  
DAVID LANG

EDWARD MASON  
GEORGE McCLELLAND  
EARL NEELANDS  
ROYAL RAIBLE  
STUART RYAN  
GUS SWANSON  
VINCENT SCHALLER  
RICHARD SALLS  
LYNDOL WARREN  
PAUL WONGREY

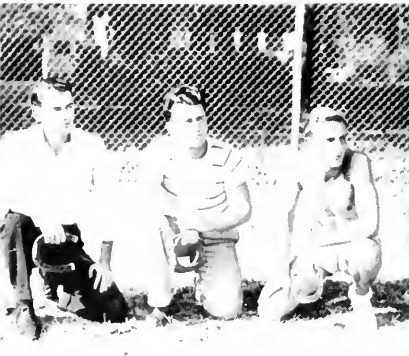
# Intramurals:

## MANAGERS:

<i>Director</i>	JOHNSON
<i>Minor Sports</i>	BALDWIN
<i>Pi Kappa Phi</i>	CAGNI
<i>Sigma Nu</i>	GUSTAFSON
<i>Stetson Hall</i>	A. LANG
<i>Conrad Hall</i>	DICKSON
<i>Delta Sigma Phi</i>	D. LANG
<i>Ministers</i>	KICKLIGHTER



*Stetson Hall*  
*Touch Football*  
 SULLIVAN, A. LANG,  
 BAILES, CLOSE, HAYWARD,  
 LAWTON, WALKUP



*Sigma Nu*  
*Horseshoes*  
 McMILLAN, LOWRY  
 HUSSEY

*Pi Kappa Phi*  
*Ping Pong*  
 STAFF, KIRKLAND



*Delta Sigma Phi*  
*Tennis*  
 WILSON, KNOX, GODBOLD

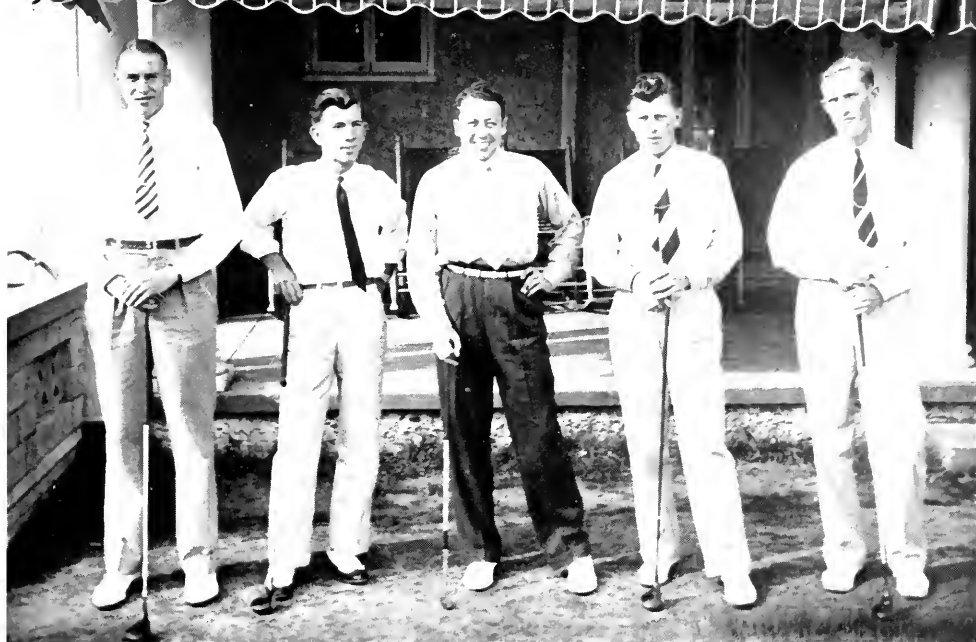
*Delta Sigma Phi*  
*Volley Ball*  
 FULFORD, STONECIPHER,  
 MATHIS, SCURLOCK,  
 D. LANG, DABIN



*Delta Sigma Phi*  
*Handball*  
 DABIN, D. LANG, MATHIS

*Delta Sigma Phi*  
*Basket Ball*  
 SHULER, MATHIS, DABIN  
 D. LANG, STONECIPHER



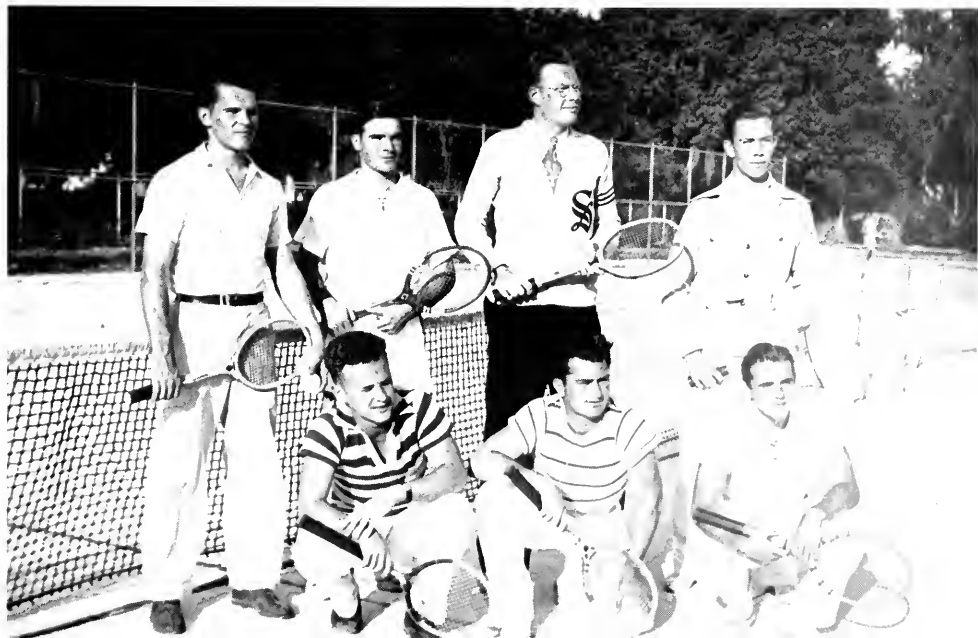


### **Golf Team**

HARRY CLOSE; JAMES NELSON; JAMES STONE, *Captain*; ROBERT ANDERSON  
WALTER KRUEGER

### **Tennis Team**

ROYCE CARPENTER, HAROLD SMITH, GEORGE SCHURR, ERNEST WYNN  
BILLY DAVIS, HARRIS LOWRY, *Captain* JACK GORE



# WOMEN'S ATHLETIC COACHES



NELLE BURCH CAMPBELL  
*Director of Physical Education for Women*

SARA STAFF  
*Instructor of Physical Education*

## *Officers of Women's Athletic Association*



MILBRY TOMPKINS  
*Secretary*

MARY ELLEN LORD  
*President*

LOIS THACKER  
*Vice President*

FRANCES HAMMOND  
*Treasurer*



## **WOMEN'S ATHLETIC ASSOCIATION**

The Women's Athletic Association is an organization open to all girls of the University, regardless of actual athletic ability. Its purpose is to further social attitudes among the girls of Stetson University by developing good sportsmanship and physical skills, by encouraging scholarship, and by giving opportunity for leadership.

The W. A. A. sponsors an extensive intramural program between sorority, dormitory, and independent teams. Competition is in soccer, hockey, tennis, basket ball, diamond ball, archery, ping pong, and badminton. At the end of the year the name of the group, or individual, winning in each of these sports is engraved on plaques which are the permanent possession of the athletic department. A gold loving cup is awarded to the girl who has been adjudged the best all-around athlete.

Girls of the W. A. A. may receive a letter "S" by earning a certain number of points which are awarded on the basis of athletic participation, general activities, and scholarship. Because of the difficulty in fulfilling all the requirements, this coveted letter is each year awarded to only a few girls.

The W. A. A. annually sponsors a play day for the high schools of central Florida. The plan is to avoid any inter-school competition. This year the association successfully carried out a nautical play day with two teams of competition, the Navy and the Marines. They were also hostesses to Rollins in the second year of a reciprocal play day arrangement with that college.

Probably the most noteworthy achievement of the W. A. A. this year has been the initiation of a fund for a swimming pool for Stetson. The fund received an early boost by the generous contribution of Mrs. Letitia Reynolds, Stetson's oldest student, and has grown through special projects sponsored by the association. The W. A. A. feels that with the aid of the student body they may reach their goal before the too-far distant future.





FRATERNITIES





*Secretary*  
KATHRYN JELKS



*President*  
PAUL McENTIRE



*Vice President*  
BETTY JAYNE SAWYER



*Treasurer*  
ANNE HAWKINS

## INTER-FRATERNITY COUNCIL

### REPRESENTATIVES

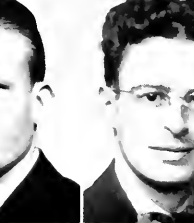
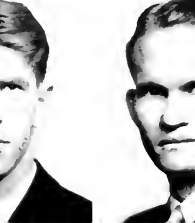
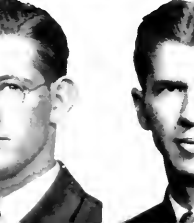
RUTH BARTLETT  
HELEN STOLTENBERG  
WARD HUNTER

MARY ELLA KNIGHT  
ANNE GOLLNICK  
PAUL MAIER

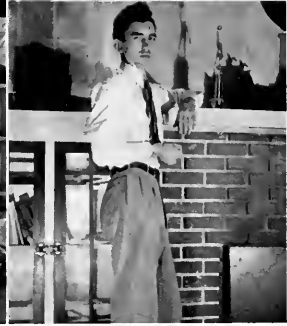
ALICE McLAUGHLIN  
STELLA POPE  
ROBERT YOUNG  
EDWARD NELSON

JEAN MASSEY  
RICHARD BALDWIN  
WILTON ROWE

JANE McCARTY  
ARTHUR SHULER  
HUGHES WILSON



# DELTA SIGMA PHI



REED KNOX  
*Vice President*

ARTHUR SHULER  
*President*

GEORGE SCHURR  
*Treasurer*

RICHARD BALDWIN  
*Secretary*

HARRY GRESSANG  
*Sgt.-at-Arms*

Founded at College City of New York 1899

Alpha Chi Chapter Established 1925

COLORS—*Nile Green and White*

FLOWER—*White Carnation*

## Chapter Members

### *In Facultate*

DR. ROBERT ALLEN   DONALD FAULKNER   DR. HARRY GARWOOD   JOHN NEBLETT   LEWIS TRIBBLE

### *In Universitate*

WILTON ALLEN  
ROY ANGEL  
RICHARD BALDWIN  
ROBERT BARNETT  
JOHN BROWN  
LEFFIE CARLTON  
GEORGE COOK  
RUSSEL DABST  
JAMES DRAKE  
NELSON FORD  
JESSIE FULFORD

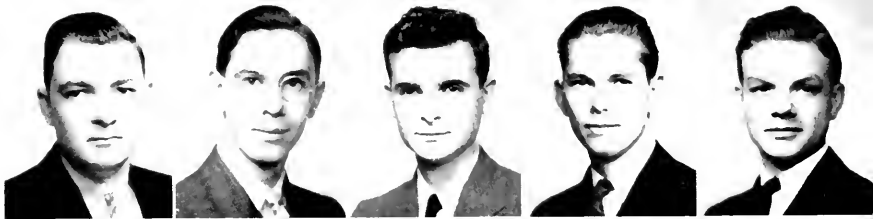
ROBERT GRAY  
WILLIAM GRIFFITH  
HALL GOBOLD  
HARRY GRESSANG  
WILLIAM HALSTEAD  
GERALD JEFFERS  
LUKE KALEEL  
REED KNOX  
DAVID LANG  
JACK LIERMAN  
ALEX MATHIS  
PAUL McENTIRE

JOHN MEADOWS  
LAUREN MICKLE  
WILLIAM MOORES  
CALL NORWOOD  
OSCAR PARKER  
J. B. RODGERS  
WILLIAM SAMPLE  
RICHARD SAULS  
DAN SCOTT  
ARTHUR SHULER  
GEORGE SCHURR  
ROBERT SCURLOCK

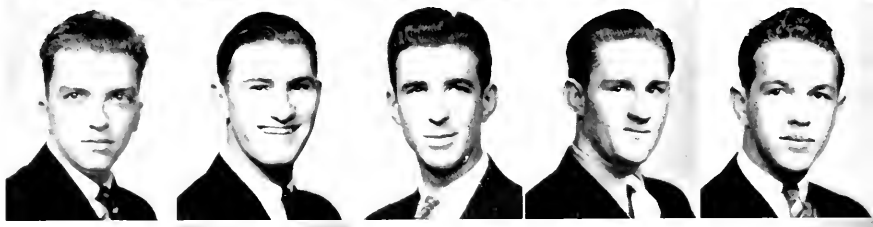
WESLEY SMITH  
MELTON STONECIPHER  
FROW STRICKLAND  
WALTER TAYLOR  
MONSON TIRBALS  
JAMES VANCE  
LYNDOL WARREN  
WILLIAM WEHLEY  
FRED WILSON  
EARNEST WYNN  
PAUL WONGREY



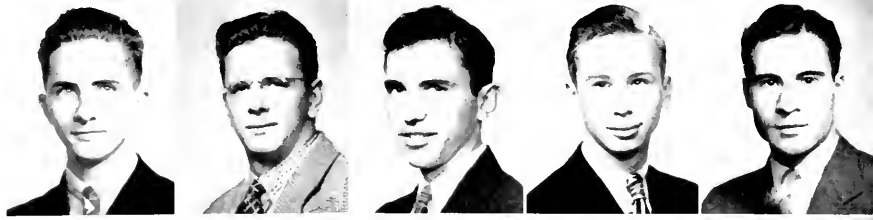
ALLEN  
BALDWIN  
BARNETT  
BROWN  
CARLTON



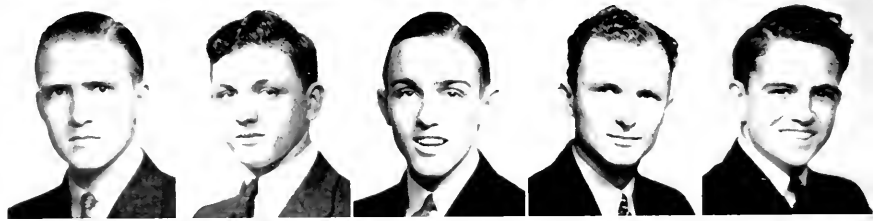
COOK  
DARST  
FORD  
FULFORD  
GRAY



GRIFFITH  
GODBOLD  
GRESSANG  
HALSTEAD  
KNOX



LANG  
LIEBMANN  
MATHIS  
McENTIRE  
MEADOWS



MOORES  
RODGERS  
SAMPLE  
SAULS  
SCOTT



SHULER  
SCHURR  
SMITH  
STONECIPHER  
STRICKLAND



TAYLOR  
VANCE  
WARREN  
WILSON  
WYNN  
WONGREY



# P I K A P P A P H I



LLOYD PAWLEY, *Archon*  
PAUL MAIER, *Secretary*

NEAL FAIRCLOTH  
*Chaplain*

EDWIN STRICKLAND  
*Warden*

WARD HUNTER, *Treasurer*  
EARL NEELANDS, *Historian*

Founded at the College of Charleston, 1904  
Chi Chapter Established 1921

COLORS—*Gold and White*

FLOWER—*Red Rose*

## Chapter Members

### *In Facultate*

HOWARD BATESON    W. E. DUCKWITZ    CHESTER FREEMAN    HAROLD M. GIFFIN    CARL JOHNSON

### *In Universitate*

RICHARD BRANHAM  
RAYMOND CAGNI  
ROBERT CARNS  
LYNWOOD CHEATHAM  
WILLIAM GEELEY  
JOHN CHEERY  
TOM COBB  
FRITZ DRACK  
ROBERT DEWITT  
CARROLL EZELL

NEAL FAIRCLOTH  
FRED FITZGERALD  
ROBERT GAUGHN  
JOHN GRIFFITH  
TROY HULL  
BUD HASKINS  
JOE HILL  
CARL HILBERT  
WARD HUNTER  
JOHN JONES

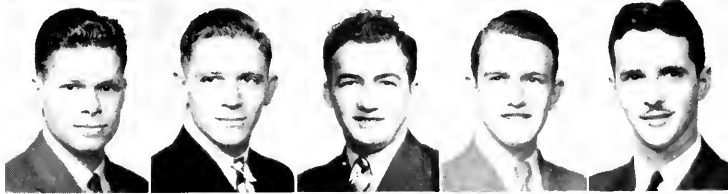
THOMAS KIRKLAND  
FRANK KNORR  
W. KRUGER  
JIMMY LUMPKIN  
PAUL MAIER  
WALTER McDONELL  
JIMMY NELSON  
EARL NEELANDS  
LLOYD PAWLEY  
FRANCIS ROWELL

RUSSETT STAFF  
GUS SWANSON  
JOHN SEASHOLE  
LANIER SMITH  
EDWIN STRICKLAND  
ROBERT SMITH  
AUBREY STOUBENMIRE  
TRULETT STOUBENMIRE  
WOODY WALL  
ROBERT YOUNG

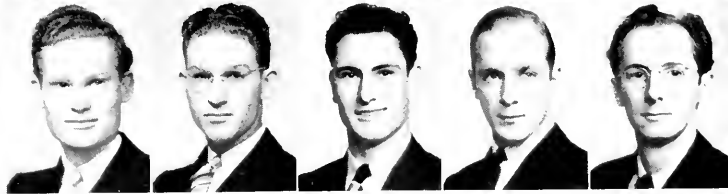
BRANHAM  
CAGNI  
CEELY  
CHEATHAM  
CHERRY



CLONTS  
DEWITT  
DRAKE  
EZELL  
FAIRCLOTH



FITZGERALD  
GRIFFITH  
HALL  
HASKINS  
HULBERT



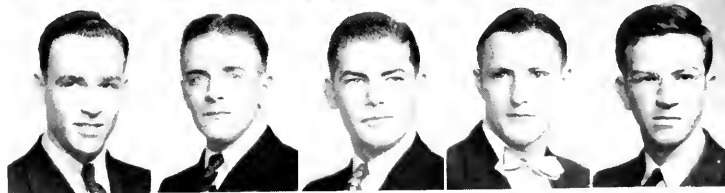
HUNTER  
JONES  
KARNS  
KENYON  
KIRKLAND



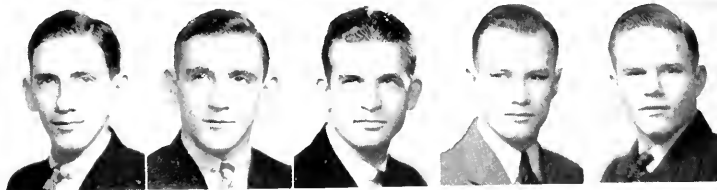
KNORR  
MAIER  
MCLEOD  
MCDONELL  
MIDDLETON



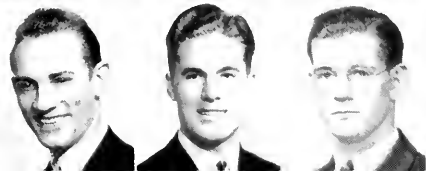
NEELANDS  
PAWLEY  
ROWELL  
SCHAEFER  
SEASHOLE



SMITH  
SMITH  
SMITH  
STAFF  
STOUDENMIRE



STRICKLAND  
WALL  
YOUNG



# S I G M A N U



JACK GORE  
*Lt. Commander*  
ALFRED REHBAUM  
*Treasurer*

EDWIN GUSTAFSON  
*Marshal*

HUGHES WILSON  
*Commander*

GEORGE SCHICK  
*Recorder*

WILTON ROWE  
*Chaplain*  
ROBERT POWE  
*Sentinel*

Founded at Virginia Military Institute, 1869  
Delta Mu Chapter Established 1913

COLORS—*Black, White and Gold*

FLOWER—*White Rose*

## Chapter Members

### In Facultate

CHARLES SHERWOOD FARRIS

### In Universitate

NORMAN ABBOTT  
GEROE ALLEN  
ROBERT ANDERSON  
ROBERT ANDERSON  
LYNWOOD ARNOLD  
GLADSTONE BEATTIE  
HAROLD BOYD  
SIDNEY BROWARD  
TAM CATO  
CHARLES CORR  
S. T. COPENHAVER  
JAMES CULPEPPER  
JOE DE LORENZI

EUGENE FRY  
JACK GORE  
YANCE GRAHAM  
EDWIN GUSTAFSON  
WILLIAM HARRIS  
RAY HESSEY  
ROY KINSEY  
ROBERT LINNEN  
HARRIS LOWERY  
EUGENE LYNN  
LESTER MANN  
GROVER McCALL  
GEORGE MOSCRIP

EDWARD NELSON  
RICHARD OFFUTT  
HARVEY OLLIPHANT  
EARL PLANO  
JOE POLSKI  
ROBERT POWE  
ORRIN PRINCE  
ROYAL RIDGLE  
ALFRED REHBAUM  
HENRY RICHART  
HENRY ROSEBERRY  
WILTON ROWE  
AGUST SCHICK

GEORGE SCHICK  
GEORGE SLOAN  
WILLIAM SOLOMON  
JAMES STONE  
DONALD STRONG  
RONDO SULLIVAN  
OLIVER TAYLOR  
TOM WATSON  
ROBERT WEAVER  
HUGHES WILSON  
JAMES WOODFILL  
ROBERT WOODS

ABBOTT  
ALLEN  
ANDERSON  
ANDERSON  
BEATTIE  
BOYD



CATO  
COBB  
CULPEPPER  
DE LORENZI  
FRY  
GORE



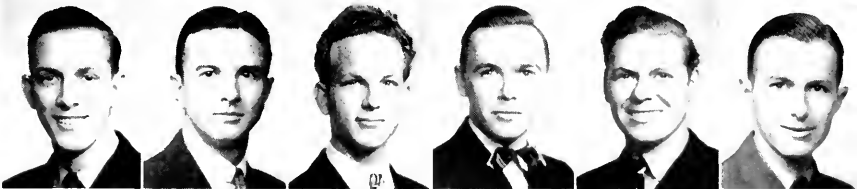
GRAHAM  
GUSTAFSON  
HARRIS  
HUSKEY  
KINSEY  
LINSON



LOWERY  
LYNN  
MANN  
MCCALL  
MOSCRIP  
NELSON



OFFUTT  
OLLIPHANT  
PLANO  
POLSKI  
POWE  
PRINCE



RAIDLE  
REIBBAUM  
RICHART  
ROSEBERRY  
ROWE  
SCHICK



SCHICK  
SLOAN  
SOLOMON  
STONE  
STRONG  
SULLIVAN



TAYLOR  
WATSON  
WEAVER  
WILSON  
WOODFILL  
WOODS





KATHRYN JELKS  
*Secretary*



RUTH BARTLETT  
*President*



JEAN GOWER  
*Vice President*



LOIS POLLOCK  
*Treasurer*



# ALPHA XI DELTA

Founded at Lombard College, 1893  
Omega Chapter Established May 31, 1917

COLORS—*Double Blue and Gold*

FLOWER—*Killarney Rose*

## Chapter Members

### In Facultate

OLGA BOWEN

MARY TRIBBLE LOWRY

ROBERTA ORCUTT

WILLIE DEE WILLIAN

### In Universitate

RUTH BARTLETT  
PEGGY BEVILLE  
BETTE BIRD  
ELINOR BOLTON  
MILDRED BROWN  
HENRIETTA BRYANT  
LILLIAN BRYANT  
MARGARET BRIDCK  
CORALIE CARLTON  
MARGARET CATE  
MARGARET CHAMP

DOROTHY DAVIS  
ESTELLE DUKE  
RUTH FIDLER  
DOROTHY FULLER  
VIRGINIA GIFFIN  
JEAN GOWER  
EMMALINE HUNDLEY  
KATHERINE HOBBS  
KATHRYN JELKS  
LELA MAY JENNINGS  
MARJORIE JENSEN

DAPHNE KNIGHT  
JOAN KNIGHT  
MARY ELA KNIGHT  
JENE KRAUSE  
GLARISSA LANSITER  
MARTHA McCRAY  
CORRIE LOC MIREN  
RUTH NORDMAN  
PAT PATTERSON  
MARGARET PHILLIPS

LOIS POLLOCK  
DELLA STANSFIELD  
LYDIA THEURER  
MARGARET THOMAS  
HELEN WALKER  
ELEANOR WARNER  
CARLOTTA WASHBURN  
HELENE WEBB  
RHODA WEINERT  
ALICE WOLFF  
MARY YENGLING

BEVILLE  
BROWN  
BRYANT  
BRYANT  
BURDICK



CARLTON  
CATE  
CHAMP  
DAVIS  
DUKE



FIDLER  
FULLER  
GIFFIN  
HANDLEY  
HOBBS



JENNINGS  
JENSEN  
KNIGHT  
KNIGHT  
KNIGHT



KRAUSE  
LASSITER  
MCCRAY  
MIREs  
PHILLIPS



STANSFIELD  
THEURER  
THOMAS  
WALKER  
WASHBURN



WEBB  
WEIMERT  
WOLFE  
YENGLING





ROBERTA MORRIS  
*Secretary*



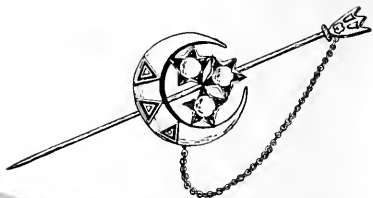
MYRA MACHEN  
*President*



ALZADA BENNETT  
*Vice President*



JONELLEN GADDIS  
*Treasurer*



# DELTA DELTA DELTA

Founded at Boston University, 1888  
Alpha Delta Chapter Established May 17, 1913

COLORS—*Silver, Gold and Blue*

FLOWER—*Pansy*

## *Chapter Members*

### *In Facultate*

CURTIS HORN

SARA STAFF

### *In Universitate*

BETTY LOU ALEXANDER  
ROSEMARY AMISON  
ANN ANSLEY  
LEE ANZ  
HELEN BATTLE  
ALZADA BENNETT  
KATHERINE BISSETT  
RUTH BRYCE  
BETTY LOU BENKER  
MARY KAY BURNS  
DORIS BUTLER  
BETTY CAREY  
LOIS CASSELLS

SARA E. CLARK  
JEANNETTE CLOW  
ANN DICKSON  
ANN HAWKINS  
ESTHER HICK  
PHYLLIS HOPPER  
LANORA INGRAM  
HELEN JOHNSON  
AURELIA JORDAN  
JOSEPHINE KINZY  
LYDIA LAND  
HOPE LEWIS  
HOPE LOCKE  
MARY LYONS

ANN LYLE  
MYRA MACHEN  
KATHERINE MARGIN  
AMY MASSEY  
JEAN MASSEY  
MARJORIE MCCLURE  
DOROTHY MCCONNELL  
ALICE MCLAUGHLIN  
ERIN MERCER  
ROBERTA MORRIS  
PEARL MUNDRELL  
MARJORIE PAGE  
JULIA ANN PENNINGTON  
MILDRED PERRET

PEGGIE PRICE  
GENE ROWLAND  
PAT RUIZ  
VIRGINIA SKAGGS  
HELEN SMITH  
JANE SMITH  
JANE SMITH  
KATHERINE TALTON  
JANE WENTE  
CHARLOTTE WERWAGE  
GWENDOLYN WHIDDEN  
KATHERINE WHITE  
FRANCES WINTERS



ALEXANDER  
AMISON  
ANSLEY  
ANZ  
BATTLE  
BISSET



BRYCE  
BUNKER  
BURNS  
CAREY  
CASSELS  
CLARK



CLOW  
DICKSON  
HAWKINS  
HICK  
INGRAM  
JOHNSON



KINZY  
LAND  
LOCKE  
LYTLE  
MCCLURE  
MCCONNELL



MCLAUGHLIN  
MARTIN  
MASSEY  
MASSEY  
MERCER  
MUNDELL



PAGE  
PENNINGTON  
PERRET  
PRICE  
ROWLAND  
RUIZ



SKAGGS  
SMITH  
SMITH  
SMITH  
TALTON  
WENTE



WERWAGE  
WHEELER  
WHIDDEN  
WHITE  
WINTERS





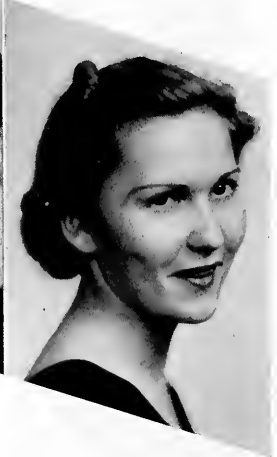
ALICE SMITH  
*Secretary*



LOIS THACKER  
*President*



MARY BROWN  
*Vice President*



HELEN STOLTENBERG  
*Treasurer*



# P I B E T A P H I

Founded at Monmouth College, 1867  
Florida Alpha Chapter Established January 30, 1913

COLORS—*Wine and Silver Blue*

FLOWER—*Wine Carnation*

## Chapter Members

### In Facultate

NELLE CAMPBELL

ANNIE NADINE HOLDEN

### In Universitate

GRACE AHLERS  
HELEN BASS  
MARY BROWN  
BETTY BROWNING  
LAVERNE BYRD  
EVELYN CATES  
PEGGY CLARK  
DOROTHEA CLARSON  
ANNA CORNELL

WILLA MAE CROSBY  
MARIAN ESTRIDGE  
SADIE RAE GARDNER  
LOLA HAMMER  
DORIS HILL  
DOROTHY HOOKER  
JACKIE JENNINGS  
RAY JORDAN  
PENELOPE KNOX

NELL LATHAM  
PATSY LOOMIS  
MARY ELLEN LORD  
FLORENCE LYTLE  
JANE MCCARTY  
JEAN McMURRAY  
CONSTANCE MEISCH  
BARBARA MOORE  
FRANCES OGILVIE  
RUTH ORUM

DOROTHY POPE  
GWENDOLYN POWELL  
JANE POWELL  
ALICE SMITH  
SARA SMITH  
HELEN STOLTENBERG  
LOUISE TAYLOR  
LOIS THACKER  
CAROLYN WICKERSHAM

AILERS  
 BASS  
 BROWNING  
 BYRD  
 CATES



CLARK  
 CLARSON  
 CORNELL  
 CROSBY  
 ESTRIDGE



GARDNER  
 HAMMER  
 HILL  
 HOOKER  
 JENNINGS



JORDAN  
 KNOX  
 LATHAM  
 LOOMIS  
 LORD



McCARTY  
 McMURRAY  
 MEISCH  
 MOORE  
 OGILVIE



ORUM  
 POPE  
 POWELL  
 POWELL  
 TAYLOR  
 WICKERSHAM





BETTY JAYNE SAWYER  
*Secretary*



ANNE GOLLNICK  
*President*



MARY HUDSON  
*Vice President*



RUTH MERRITT  
*Treasurer*

# Z E T A T A U A L P H A

Founded at Virginia State Normal, 1898  
Beta Psi Chapter Established October 12, 1934

COLORS—*Turquoise Blue and Steel Grey*

FLOWER—*White Violet*

## *Chapter Members*

### *In Facultate*

ETER TURNER

MRS. SUE BEAN

### *In Universitate*

EMILY ADAIR  
DOROTHY BALL  
ELIZA BICE  
ANN BROCKETT  
DAPHNE BROWNELL  
SYBIL CROW  
ANTOINETTE DAVIS  
MIRIAM DOWLING

DORA EULER  
ANNE GOLLNICK  
MARIE GENEAU  
MARJORIE GLOVER  
ALLIE F. HARRIS  
MARY HUDSON  
RUTH HUMMELL  
PHYLLIS HUTTON  
ELIZARETH JAMESON

DORIS JOHNSON  
MARGARET JOHNSON  
ELOISE KENNEDY  
WINNIFRED LITTLE  
RUTH MERRITT  
MARTHA MCGINNIS  
JANE McLEOD  
EVELYN OLLIFF  
JOSEPHINE OSBORNE

STELLA POPE  
BETTY ROBINSON  
PRUDENCE ROSS  
ELIZABETH SANDUSKY  
BETTY JAYNE SAWYER  
ALMA TESTERMAN  
MARGARET WOOD  
FRANCES WOOTEN

ADAIR  
BALL  
BICE  
BROCKETT



BROWNELL  
DOWLING  
EULER  
GENEAU



GLOVER  
HARRIS  
HUMMELL  
HUTTON



JAMESON  
JOHNSON  
JOHNSON  
KENNEDY



LITTLE  
MCGINNIS  
MCLEOD  
OLLIFF



OSBORNE  
POPE  
ROBINSON  
ROSS



SANDUSKY  
SKEEN  
TESTERMAN  
WOOD  
WOOTEN





*Secretary*  
ALICE WOLFE



*President*  
JOSEPHINE OSBORNE



*Vice President*  
ALICE McLAUGHLIN



*Treasurer*  
LOLA HAMMER

## PAN-HELLENIC COUNCIL

### REPRESENTATIVES

RUTH BARTLETT  
EVELYN OLLIFF

ROBERTA MORRIS  
LOIS THACKER





---

O R G A N I Z A T I O N S

---

# WOMEN'S STUDENT GOVERNMENT

*President*  
DOROTHY HOOKER



*Vice President*  
ANNE GOLLNICK



*Secretary*  
SADIE RAE GARDNER



*Treasurer*  
ALICE WOLFE



*Sophomore Representative*  
DOROTHY POPE



*Representative at Large*  
KATHRYN JELKS



*Sergeant-at-Arms*  
JOSEPHINE KINZY





# THE ORDER OF TORCH AND SCROLL

DOROTHY FULLER

ALBERT JOHNSON

ELIZABETH LINSON

JANE McCARTY

MYRA MACHEN



ROBERTA ORCUTT  
LLOYD PAWLEY

RUTH OREM  
FRANCES OGILVIE

GEORGE SCHICK  
LOLA HAMMER

WILLIE DEE WILLIAN  
MARGARET CHAMP

Honorary Society of Scholarship and Leadership  
Founded January 14, 1926

COLORS—Crimson and Old Gold

## Officers

LLOYD PAWLEY  
FRANCES OGILVIE  
LOLA HAMMER  
MARGARET CHAMP  
HOWARD BATESON

President  
Vice President  
Keeper of the Seal  
Clerk  
Treasurer

NOT PHOTOGRAPHED  
HOWARD BATESON

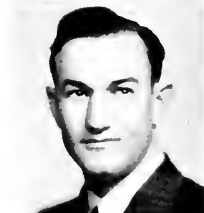
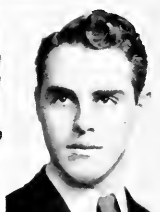
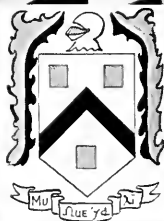
# M U O M E G A X I

WILLARD ANDERSON

MARGARET CULP

DOROTHY GRAHAM

BETTY JAYNE SAWYER



JEANETTE STEVENS  
FINDLEY EDGE

LOIS THACKER  
ELIZABETH BADGER

ROGER WILLIAMS  
MARY ELLEN LORD

ALICE WOLFE  
DORIS DEDE

National Scholarship Fraternity  
Beta Chapter Established in 1933

COLORS—Black and Red

## Officers

FINDLEY EDGE  
ELIZABETH BADGER  
MARY ELLEN LORD  
DORIS DEDE  
DR. ALLEN  
DR. VANCE

President  
Vice President  
Secretary  
Treasurer  
National Officer  
National Advisor

## Faculty Members

MRS. SLE BURNS  
NELLE CAMPBELL

VERONICA DAVIS  
DR. HARRY GARWOOD

JOHN HENRY  
SARA STAFF

MR. WINTERS  
ALEEN WORTH

NOT PHOTOGRAPHED  
GUSTAV SWANSON

# T H E H O N O R

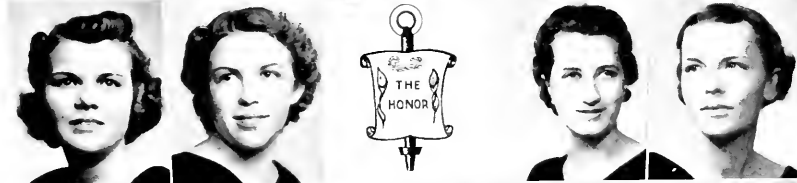
MARGARET CHAMP  
SADIE RAE GARDNER

FRANCES OGILVIE  
ANNE GOLLNICK

ALZADA BENNETT  
JEAN GOWER

ELIZABETH BADGER  
LOLA HAMMER

RUTH BARTLETT  
DOROTHY HOOKER



KATHRYN JELKS  
MYRA MACHEN  
JOSEPHINE OSBORNE

JUNE KRAUSE  
JANE McCARTY  
RUTH OREM

ELIZABETH LINSON  
ALICE McLAUGHLIN  
LOIS THACKER

MARY ELLEN LORD  
RUTH MERRITT  
ALICE WOLFE

Founded at Stetson University in 1934

## Officers

MARGARET CHAMP  
FRANCES OGILVIE  
ALZADA BENNETT

President  
Vice President  
Secretary-Treasurer



*Bullwomsey*  
CAPTAIN



*Edward Furlong*  
1ST. MATE



*Willard Anderson*  
2ND. MATE



*Jack Gore*  
3RD. MATE



*Hughes Wilson*  
4TH MATE

# Mystic Krew



*Norman Abbott*



*Richard Branham*



*Tom Cobb*



*James Dickson*



*Finley Edge*



*Neal Faircloth*



*John Griffith*



*Carl Hullbert*



*Albert Johnson*



*Gaylord Kempton*



*Paul McEntire*



*Edward Nelson*



*Lloyd Pauling*



*Anthony Pizzo*



*Robert Bouse*



*William Solomon*



*Robert Young*



## HATTER STAFF

MYRA MACHEN *Editor-in-Chief* PLAUTIUS LIPSEY *Faculty Advisor* JACK GORE *Business Manager*

*Assistant Editor* EMMETT CLONTS

*Assistant Business Mgr.* WILLARD ANDERSON

*Class Editors* { NEIL MACMILLAN

MARJORIE McCLURE

JEANETTE CLOW

*Feature Editor* RUTH ORUM

*Student Photographer and Snapshot Editor* HUGH LATIMER

*Assistant Advertising Mgr.* JAMES DICKSON

*Men's Sports Editor* RAYMOND CAGNI

*Women's Sports Editor* LOIS THACKER

*Fraternity Editors* { MARY KAY BURNS

{ DONALD STRONG

*Organizations Editor* CARLOTTA WASHBURNE

*Art Editor* OZELLA WOODWARD

NOT PHOTOGRAPHED ~

*Advertising Manager*

GORDON VANN

# The Stetson Reporter

A WEEKLY NEWSPAPER published by the students of John B. Stetson University, DeLand, Florida, under the auspices of the Department of Journalism. Printed by the Stetson University Press.

*"The Truth Shall Make You Free"*

Subscriptions for one school year (34 issues) \$1.50. Price each copy 5c.



LYDIA A. THEURER  
*Editor-in-Chief*

GORDON KIPP  
*Managing Editor*

Professor LIPSEY  
*Faculty Advisor*

HENRY SLAUGHTER  
*Managing Editor*

ROBERT ADAMS  
*News Editor*

GRADY CRAWFORD  
*Advertising Manager*

JANE TAFT  
*Feature Editor*

JAMES VANCE  
*Sports Editor*

MARGARET CHAMP  
*Alumni Editor*

## *Columnists*

ROBERT BARNETT  
HUGH LATIMER  
SAMUEL GAYLORD

HARRY C. HALL  
WILLIAM STONEGIPHER

HARMON HARPER  
BETTY LOU ALEXANDER  
JANE MILLER

## *Reporters*

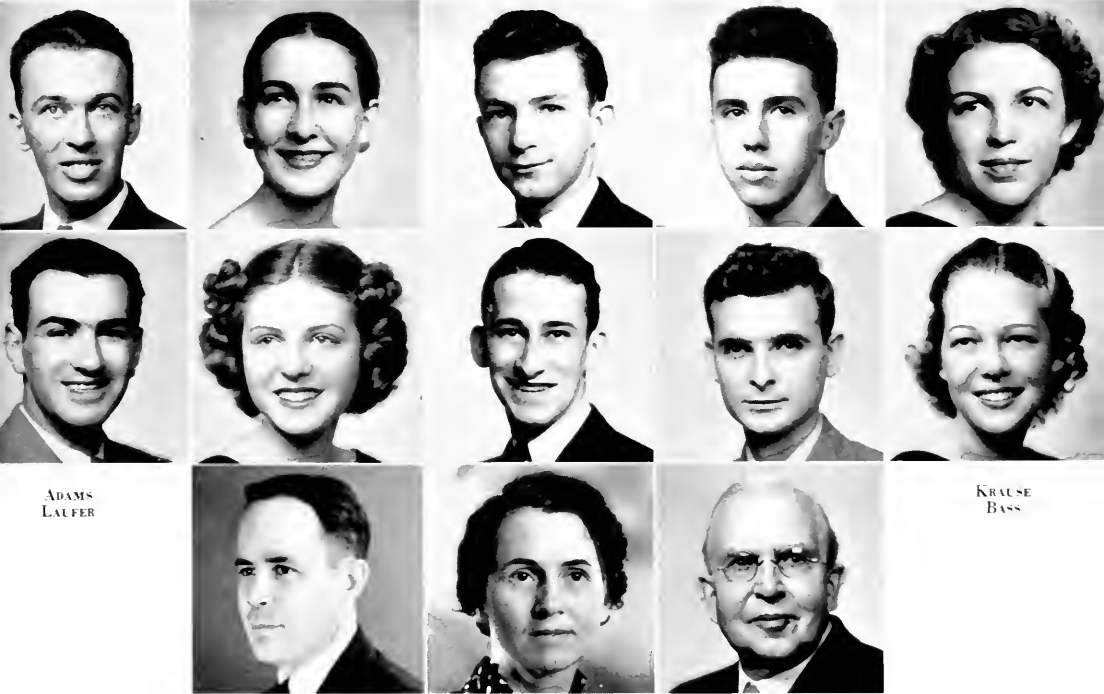
THEDA JOHNSON  
RICHARD OFFUTT

ELINOR BOLTON  
STEWART RYAN

MARGARET BURDICK  
FRANCES WINTERS

1937      Member      1938  
Associated Collegiate Press

# Stetsonian



ADAMS  
LAUFER

KRAUSE  
BASS

COE  
THEURER  
FAULKNER

HARPER  
BRACEY  
KING

KIPP  
BARNETT  
GORDIS

*Editorial Board:* ROBERT M. ADAMS, FRANCES COE, HARMON HARPER, GORDON KIPP, JUNE KRAUSE, PAUL LAUFER, LYDIA THEURER.

*Business Manager:* DAVID BRACEY.

*Receiving Secretaries:* ROBERT BARNETT, HELEN BASS.

*Faculty Advisors:* PROFESSOR DONALD FAULKNER, MISS MAUDE EMMA KING, DR. WARREN GORDIS.

THE STETSONIAN is a literary magazine, published by the students of John B. Stetson University, containing the writings of students, faculty and alumni of Stetson.

**DAVID J. BREWER CHAPTER**  
*of*  
**PHI ALPHA DELTA LEGAL FRATERNITY**



*Justice*  
**PAUL WONGREY**  
*Vice-Justice*  
**HUBERT SMITH**

*Faculty Members*  
**Dean L. H. TRIBBLE**  
**CHESTER FREEMAN**

*Clerk*  
**ROBERT POWE**  
*Marshal*  
**NEAL FAIRCLOTH**

Founded in 1899

**Active Members**

**JOHN CHERRY**  
**EMMETT CLONTS**  
**GRADY CRAWFORD**  
**NEAL FAIRCLOTH**  
**WARD HUNTER**  
**HARRIS LOWERY**

**JAMES McELROY**  
**ELBON McLEOD**  
**NEAL MacMILLAN**  
**ELWYN MIDDLETON**  
**EDWARD NELSON**  
**ROBERT POWE**

**ROYAL RAIBLE**  
**WILTON ROWE**  
**JOHN SHERMAN**  
**RANDALL SLAUGHTER**  
**WILLIAM SOLOMON**  
**HUBERT SMITH**

**RUSSELL PHENEGIE**

**AUBREY STOLDENMIRE**  
**ANTHONY PIZZO**  
**EDWARD WARREN**  
**PAUL WONGREY**  
**ROBERT YOUNG**  
**WILLIAM ZACHARY**

**Pledges**

**ROBERT ANDERSON**  
**HAL DEKLE**  
**RODNEY DURANCE**

**FRED FITZGERALD**  
**LUKE KALLEL**  
**PAT KELLY**

**THOMAS KIRKLAND**  
**EDWARD MASON**  
**HARRY NEWETT**  
**ARTHUR SHULER**

**J. B. RODGERS**  
**EDWARD STRICKLAND**  
**DONALD STRONG**

**Faculty Members**

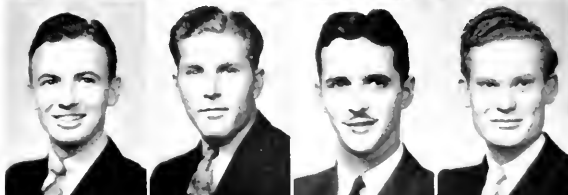
**Dean L. H. TRIBBLE**      **CHESTER FREEMAN**



ROBERT ANDERSON  
JOHN CHERRY  
EMMETT CLONTS  
GRADY CRAWFORD



HAL DEKLE  
RODNEY DURRANCE  
NEAL FAIRCLOTH  
FRED FITZGERALD



WARD HUNTER  
PAT KELLY  
THOMAS KIRKLAND  
HARRIS LOWERY



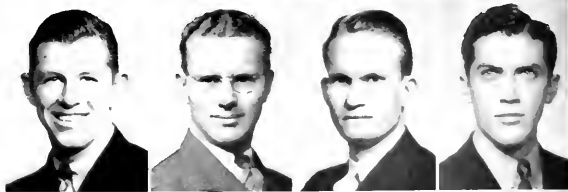
EDWARD MASON  
ELDON MCLEOD  
NEIL MACMILLAN  
ELWYN MIDDLETON



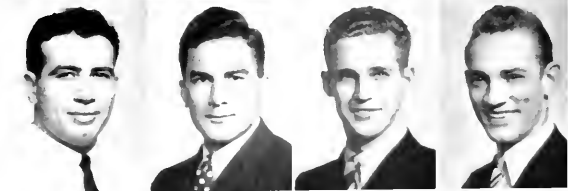
EDWARD NELSON  
HARRY NEWETT  
ANTHONY PIZZO  
ROBERT POWE



ROYAL RAIBLE  
J. B. ROGERS  
WILTON ROWE  
ARTHUR SHULER



RANDALL SLAUGHTER  
WILLIAM SOLOMON  
HUBERT SMITH  
EDWARD STRICKLAND

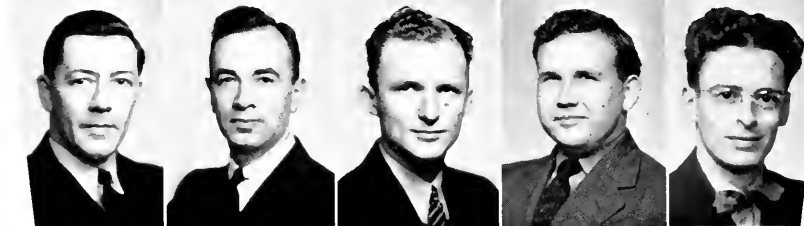
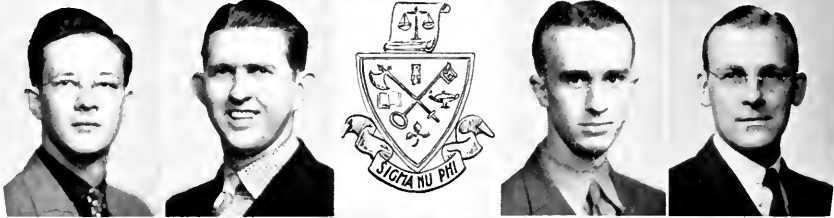
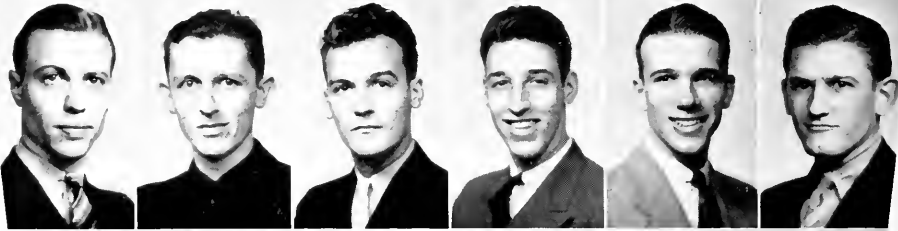


DONALD STRONG  
EDWARD WARREN  
PAUL WONGREY  
ROBERT YOUNG



# S I G M A N U P H I

NORMAN ABBOTT   GLADSTONE BEATTIE, JR.   HAROLD BOIRE   WILLIAM CEELY   THOMAS COBB   JOSEPH FEARNLEY



CLYDE HARNAGE   WILLIAM HARRIS   PAUL McENTIRE   WILLIAM HOUGHTON   ALBERT JOHNSON  
 GAYLORD KENYON   ROBERT LINSON   RALPH ODUM   HUGHES WILSON

Men's Legal Fraternity  
 Founded at National University School of Law in 1902  
 John Marshall Chapter Established April 23, 1915

COLORS—*Purple and Gold*

FLOWER—*White Carnation*

## Officers

THOMAS COBB  
 CLYDE A. HARNAGE  
 RALPH E. ODUM  
 WILLIAM H. HOUGHTON  
 ROBERT W. FRAZIER  
 ARTHUR B. ROBERTSON, JR.  
 ROBERT SCURLOCK

Chancellor  
 Vice Chancellor  
 Second Vice Chancellor  
 Master of Rolls  
 Treasurer  
 Correspondent  
 Marshal

## Faculty Member

DR. JENNIS W. FUTCH

NOT PHOTOGRAPHED

ROBERT L. CALLISON   ROBERT W. FRAZIER   ARTHUR B. ROBERTSON  
 ROBERT SCURLOCK   C. R. M. SHEPPARD, JR.

# B E T A K E Y



DR. SMITH  
CARPENTER  
KIRKLAND  
RANDALL

FULLER  
ARRINGTON  
CLOW  
LINSON  
REEVES

GODBOLD  
BADGER  
EDWARDS  
McCARY  
SCHICK

HAMMOND  
BRANHAM  
GADDIS  
MORRIS  
STEVENS

WOLFE  
BROWN  
GOWER  
OGILVIE  
WASHBURNE

TURNER  
CAGNI  
HARPER  
ORUM  
WEBBER

CARLTON  
HICK  
PERKINS  
WILLIAMS

## Honorary Biology Fraternity

Established November, 1937 at John B. Stetson University

### *Officers*

DOROTHY FULLER  
HALL GODBOLD  
FRANCES HAMMOND  
ALICE WOLFE  
VERNON TURNER  
DR. CORNELIA M. SMITH

*President*  
*Vice President*  
*Secretary-Treasurer*  
*Program Chairman*  
*Publicity Chairman*  
*Faculty Advisor*

### NOT PHOTOGRAPHED

DONALD FRISON    SYLVAN McELROY

# STETSON COMMERCE CLUB



JAMES DICKSON	NELSON FORD	ED GUSTAFSON	EDWARD HUE	
ROY KINSEY	MARY ELLA KNIGHT	CHRISTINE KUMMER	PAISY LOOMIS	WILLIAM LOVELACE
RUTH MERRITT	GEORGE MOSCRIP	HARVEY OLLIPHANT	SIDNEY RUBIN	WOODROW RUSSELL
GEORGE SCHLERR	MARY ELIZABETH SIMPSON	MILLARD SMITH	LESTER SPEAR	FRED WILSON
LOYD PAWLEY	WILLARD ANDERSON	ANNE GOLLNICK	LYDIA THEURER	

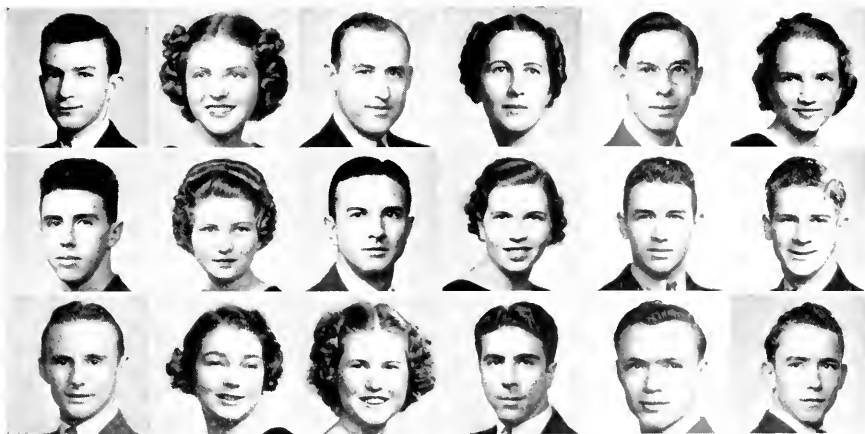
## Officers

LOYD PAWLEY  
WILLARD ANDERSON  
ANNE GOLLNICK  
LYDIA THEURER

*President*  
*Vice President*  
*Secretary*  
*Treasurer*

NOT PHOTOGRAPHED - THELMA CHESMAN

# STETSON DEBATERS



HARMON HARPER  
GORDON KIPP  
OLIVER TAYLOR

LYDIA THEURER  
DOROTHEA CLARSON  
GEORGIA VISEL

DEAN COTNER  
HARVEY OLLIPHANT  
DONNA HOYT

JANE TAFT  
DOROTHY SCHNEIDER  
JOHN CICERO

RICHARD BALDWIN  
ROBERT CARSWELL  
LOBERT KICKLIGHTER

SARAH CLARK  
GADI LAWTON  
HAROLD CLARK

## Officers

HARMON H. HARPER  
LYDIA A. THEURER  
RICHARD BALDWIN

*President*  
*Secretary Treasurer*  
*Vice President*

## The Season

- November 19 First Annual Florida Practice Tournament Initiated by Stetson.
- December 4 Dartmouth College, Baldwin—Harper.
- December 3-6 Strawberry Leaf Tournament at Winthrop College, S. C., Sarah Clark, Taft—Theurer, Kipp—Lawton.
- December 10 DeLand Rotary Club, Harper—Theurer.
- December 15 Rollins College, before Winter Park Chamber of Commerce, Baldwin—Taft.
- January 14 Eustis Rotary Club and High School Demonstration Debate, Baldwin—Harper, Taft—Theurer.
- January 15 Practice Tournament at Rollins College.
- January 17 Bard College, Columbia University, Baldwin—Harper—Lawton.
- February 5 Practice Tournament, General College of University of Florida.
- February 24 University of Pennsylvania, Harper—Taft.
- March 3 University of Dayton at Pierson, Harper—Theurer.
- March 11 University of Florida, dual debate, S. Clark—Clarson, Lawton—Visel.
- March 29
- April 2 Southern Association of Teachers of Speech Tournament at Atlanta, S. Clark—Clarson, Taft—Theurer.
- April 7-9 Grand Eastern Tournament at Winthrop College, S. C., Baldwin—Harper, H. Clark—Olliphant.

The highlights of the year include the petition for admission to Pi Kappa Delta, national forensic organization. Miss Lydia Theurer was declared Dixie Champion Extemporizer and Impromptu Speaker because of five consecutive wins in these contests at Winthrop College.

While the following have not been active this year, we wish to recognize their previous services in debate: Huber Griffin, Clyde Harnage, June Krause, Louise Moore, Ralph Odum, Wilton Rowe, Mary Elizabeth Simpson, Henry Todaro and Martin Hiden.

The Debate Club has grown in size and prestige, and welcomes to membership all those students who are interested in improving themselves and increasing this reputation.

# DER STUDENTEN VEREIN



SCHICK  
HART

DEDE  
McLAUGHLIN

AMISON  
BADGER  
KNOX  
MEARS

EDWARDS  
BURDICK  
LINSON  
WARNER

Founded at Stetson University December, 1937

## Officers

JOHN AMISON  
CHARLOTTE EDWARDS  
GEORGE SCHICK  
DR. IOLA K. EASTBURN

*President*  
*Vice President and Treasurer*  
*Secretary*  
*Faculty Advisor*

## Members

ELIZABETH BADGER  
MARGARET BURDICK  
DORIS DEDE

GLORGENA HART  
REED KNOX  
ELIZABETH LINSON

ALICE McLAUGHLIN  
REBA MEARS  
ELEANOR WARNER

## Pledges

ROY ANGELL  
MARSHALL ABBINGTON  
LEFFIE CARLTON  
ROBERTA NIGELS

RALPH RUSSELL  
STEWART RYAN  
VIRGINIA SKAGGS

MARTHA SLOAN  
LI STAY SWANSON  
LYDIA THEURER  
LILLIAN WILLIAMSON

NOT PHOTOGRAPHED

DR. EASTBURN

# P I G A M M A M U



PAUL McENTIRE   CHRISTINE KUMMER   DR. FISHER   NORMAN ABBOTT   HOWARD BATESON   MARGARET CHAMP   WOOD DARDEN  
 DORIS DEBE   JAMES DICKSON   ANNE GOLLNICK   ALBERT JOHNSON   JAMES LUMPKIN   RUTH ORUM  
 LLOYD PAWLEY   GORDON REEVES   WOODROW RUSSELL   GEORGE SCHURR   LESTER SPEAR   PAUL WONGREY   FRANCES WOOTEN

National Honorary Social Science Society  
 Founded at Southwestern College in 1924  
 Florida Gamma Chapter Established in 1929

## Officers

PAUL McENTIRE  
 CHRISTINE KUMMER  
 DR. CHARLES FISHER

*President*  
*Vice President*  
*Secretary-Treasurer*

## Faculty Members

DR. BAER  
 PROFESSOR BATESON  
 MRS. BURNS  
 DEAN CARSON  
 DR. CLARK

DEAN COTNER  
 DR. EASTRURN  
 DR. FISHER  
 PROFESSOR FUTCH  
 DR. GARWOOD  
 PROFESSOR JOHNSON

PROFESSOR NEBLETT  
 MISS NEBLETT  
 MISS TURNER  
 MISS WILLIAM  
 PROFESSOR WINTERS

NOT PHOTOGRAPHED  
 MARGARET REEVES   CURTIS HORN



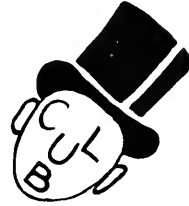
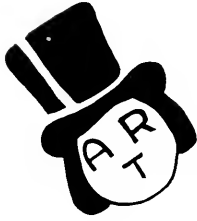
# THE HATTERS ART CLUB

## OFFICERS

PRESIDENT - THELMA PRESTON  
 V. PRESIDENT - LOIS POLLOCK  
 SEC'Y & TREASURER - JEANETTE LOWRY  
 REPORTER - ESTELLE DUKE  
 SPONSOR - EDITH HARVEY



# hatters




---



---

## members

---



---



EMILY ADAIR  
ESTHER CROSBY  
CHARLIE GRIFFIN  
JANE PARSONS

ANN ANSLEY  
WILLA MAE CROSBY  
LANDRA INGRAM  
MARJA POURTLESS

LEE ANZ  
DORIS DEDE  
JACKIE JENNINGS  
GENE ROWLAND

EDNA BETTS  
ESTELLE DUKE  
DORIS JOHNSON  
DOROTHY SCHNEIDER

ANN BROCKETT  
JEAN FLETCHER  
HELEN JOHNSON  
ALICE SMITH

PEGGY CLARK  
MARIE GENEAU  
ELSIE LATHAM  
NILBRY TOMPKINS

MARY GREVASSE  
MARJORIE GLOVER  
PEARL MUNDELL  
KITTY WHITE

### NOT PHOTOGRAPHED

RUTH DeBOIS  
RITA FELD

MARTHA PIPKIN  
ELIZABETH ROSEBERRY



ROBERT ADAMS  
*Newton Club*



JOHN AMISON  
ΨΣΕ



ELIZABETH BADGER  
ΨΣΕ  
*Newton Club*



RICHARD BALDWIN  
ΨΣΕ



TRUMAN BOTTS  
ΣΠΣ  
*Newton Club*



## **Gamma Sigma Epsilon**

Honorary Chemical Fraternity  
Founded, 1926—Beta Beta Chapter, 1934

## **Newton Club**

Local Mathematics Club  
Founded, 1923

## **Sigma Pi Sigma**

Physics Honor Society  
Founded, 1921—Alpha Iota Chapter, 1937

JUNE KRAUSE  
ΨΣΕ  
*Newton Club*

ELIZABETH LINSON  
ΨΣΕ  
*Newton Club*

MILLARD SMITH  
ΣΠΣ

GUSTAV SWANSON  
ΣΠΣ  
*Newton Club*





RAYMOND CRAIG  
ΓΣΕ  
*Newton Club*



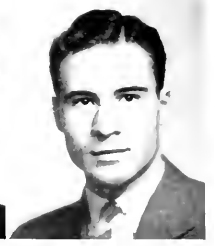
MIRIAM DOWLING  
*Newton Club*



CARROLL EZELL  
ΣΠΣ



GEORGENA HART  
ΓΣΕ



REED KNOX  
ΣΠΣ  
*Newton Club*

PROFESSOR ALLEN  
ΣΠΣ  
*Newton Club*



PROFESSOR CONN  
ΓΣΕ



PROFESSOR FAULKNER  
ΣΠΣ  
*Newton Club*



PROFESSOR VANCE  
ΣΠΣ  
*Newton Club*



WALTER TAYLOR  
*Newton Club*



ELEANOR WARNER  
ΓΣΕ



J. ALLAN WEBSTER  
ΣΠΣ



ROBERT WOOD  
ΣΠΣ  
*Newton Club*



# PI KAPPA SIGMA



LANORA INGRAM  
*Recording Secretary*  
FRANCES OGLAIE, *President*

ELIZABETH LINSON  
*Treasurer*  
DORIS DEDE, *Vice President*

National Educational Sorority

Founded in Ypsilante, Michigan, in 1894

Alpha Theta Chapter Established in 1929

COLORS—*Turquoise and Gold*

FLOWER—*Forget-Me-Not and Jonquil*

## *Active Members*

DOROTHY BALL  
DAPHNE BROWNELL  
DORIS DEDE  
ANNE GOELNICK

LANORA INGRAM  
ELIZABETH LINSON  
MARGORIE MCGARY  
FRANCES OGLAIE  
MARTHA OSGOOD

ELIZABETH SANBUSKY  
ALICE SMITH  
CARLOTTA WASHBURN  
FRANCES WOOTEN

## *Pledges*

HARRIET ALEXANDER  
FRANCIS COE  
JEAN GOWER

LILLIAN GREGORY  
FRANCES HAMMOND  
HELEN HOOKS  
JEANETTE STEVENS

DORIS JOHNSON  
ELSE LATHAM  
ANNETTE MATHIS

HARRIET ALEXANDER

DOROTHY BALL

DAPHNE BROWNELL



FRANCES COE

ANNE GOLLNICK

JEAN GOWER



LILLIAN GREGORY

FRANCES HAMMOND

HELEN HOOKS



DORIS JOHNSON

ELSIE LATHAM

MARJORIE McCARY



MARTHA OSGOOD

ELIZABETH SANDUSKY

ALICE SMITH



JEANETTE STEVENS

CARLOTTA WASHBURN

FRANCES WOOLEN



# THETA ALPHA PHI



CHAMP  
WOODFILL

McENTIRE

HAMMER  
BARTLETT

## Honorary Dramatic Fraternity

Florida Alpha Chapter Installed December, 1919

PUBLICATION—"The Cue"

COLORS—Purple and White

### Chapter Roll

PAUL McENTIRE  
MARGARET CHAMP  
LOLA HAMMER  
JAMES WOODFILL  
RUTH BARTLETT

*President*  
*Vice President*  
*Secretary*  
*Treasurer*  
*Historian*

NORMAN ABBOTT  
VIRGINIA GIFFIN  
JAMES LUMPKIN

DAVID BRACY  
GAYLORD KENYON  
ALICE McLAUGHLIN

SADIE RAE GARDNER  
MARY ELLEN LORD  
MYRA MACIEN

### Faculty

DR. CHARLES FARRISS  
PROFESSOR HENRY JACOBS

PROFESSOR DONALD FAULKNER  
DR. IRVING STOVER  
DEAN LEWIS TRIBBLE

MISS WILLIE DEE WILLIAN  
PROFESSOR HAROLD GIFFIN

### Play Schedule for the Season

Oct. 23 Work Shop Plays.  
Nov. 11-12 "The Bishop Mishelves" by Frederick Jackson (Homecoming Play).  
Dec. 10-11 "The Yellow Jacket," Chinese Fantasy by Hazelton and Benrimo.  
Dec. 16 "The Birds' Christmas Carol" by Kate Douglas Wiggin.  
Jan. 11-15 "Pride and Prejudice," founded on Jane Austen's novel, by Helen Jerome.  
Feb. 18-19 "Mr. Pim Passes By," comedy by A. A. Milne.  
Mar. 11-12 "The Gondoliers," comic opera by Gilbert and Sullivan.  
(Presented by the School of Music and The Players)  
April 8-9 "Dear Brutus," fantasy by Sir James M. Barrie.  
April 22 "The Terrible Meek," drama by Charles Mann Kennedy.  
May 7 Work Shop Plays.  
June 1 "The Merry Wives of Windsor," comedy by William Shakespeare (Commencement Play).



# THETA ALPHA PHI



*presents*

AN ALL-STAR CAST

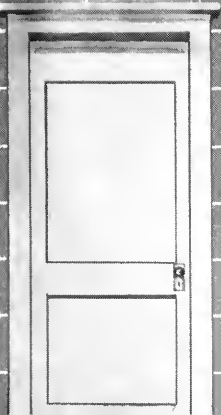
IN



"FLORIDA ALPHA CHAPTER"



STAGE



# S I G M A      D E L T A      P I

DAVID BARNHART

ALICE WOLFE

LOIS THACKER

LUCY ANN NEBLETT

FRANCES OGILVIE



ALZADA BENNETT  
RUTH ORUM

MARGARET BURDICK  
THELMA PRESTON

ESTHER CROSBY  
CARLOTTA WASHBURNE

DOROTHY FULLER  
RELD A ANN WEBB

La Sociedad Nacional Hispanica  
Alpha Kappa Chapter Established May 30, 1937

## Officers

DAVID BARNHART  
ALICE WOLFE  
LOIS THACKER  
LUCY ANN NEBLETT  
FRANCES OGILVIE

*President*  
*Vice President*  
*Recording Secretary*  
*Treasurer and Sponsor*  
*Corresponding Secretary*

## Honorary Members

HOWARD BATESON  
ALBERTA BUSH

ROBERT COTNER  
IOLA KAY EASTBURN

JOHN NEBLETT  
HARRY WINTERS



# BAPTIST STUDENT UNION COUNCIL

*President*  
FINDLEY EDGE



*Second Vice President*  
MARJORIE MCCLURE

*First Vice President*  
MILLARD B. SMITH

*Third Vice President*  
A. J. TURNER



*Secretary*  
LOIS WALKER

*Sunday School Superintendent*  
MURRAY McCARTY

*Treasurer*  
HARVEY OLLIPHANT

*B. T. U. Director*  
HORACE BILLS

*Publicity Director*  
KATHLEEN ROWE

*Y. W. A. President*  
SARAH E. CLARK

*Baptist Student Magazine*  
EUNICE WEBBER

*Ministerial President*  
GORDON REEVES

*Music Chairman*  
JOSEPHINE OSBORNE

*Life Service Band Representative*  
DAPHNE KNIGHT

*Vesper Chairman*  
JEANETTE STEVENS

*Volunteer Band Representative*  
BERNICE YOUNG

*Town Representative*  
BETTY JAYNE SAWYER

*Faculty Advisor*  
DR. H. C. GARWOOD

# LIFE SERVICE BAND

SARAH ELIZABETH CLARK

MARTHA OSGOOD

DORIS JOHNSON

WESLEY ZUBER

DAPHNE KNIGHT



KATHLEEN ROWE  
CHARLES GRIFFIN

HARVEY OLLIPHANT  
CAROLYN MASSEY

MABEL ARTHUR  
EVA MESERVE

MARY CREVASSE  
FLORENCE PROCTOR

## Officers

SARAH ELIZABETH CLARK  
MARTHA OSGOOD  
DORIS JOHNSON  
WESLEY ZUBER  
DAPHNE KNIGHT  
KATHLEEN ROWE  
HARVEY OLLIPHANT

President  
Vice President  
Secretary-Treasurer  
Program Chairman  
B. S. U. Representative  
Tract Chairman  
Associate Member

# STETSON MINISTERIAL STUDENTS ASSOCIATION

HORACE BILLS      FINDLEY EDGE      GEORGE EHLHARDT      WENDELL FINKEL      CHARLES GRIFFIN      SAMUEL GAYLORD      GORDON HALBERT  
 BENNETT HALL      FAYETTE HALL      JOHN HUNT      HAL HUNTER      JOE HOUGH      JOE JONES      ROBERT KICKLIGHTER  
 WHITNEY LAVENDER      JILES LUNSFORD      HOWARD LYTLE      JOHN McCALL      LEO ROBERTS      LIDDON SHERIDAN      WILL RAY SMITH



JAMES SOUTHERLAND      WILSON SPAHN      DAVID SPEARING      ROGER WILLIAMS      BILLY WOLFE      JACK WHITNEY  
 GORDON REEVES      NORMAN BENNETT      HUGH WALTERS      A. J. TURNER      WILLIAM OAKES      ARVEL MILLER

## Officers

GORDON REEVES  
 NORMAN BENNETT  
 HUGH WALTERS  
 A. J. TURNER  
 WILLIAM OAKES  
 ARVEL MILLER

*President*  
*Vice President*  
*Treasurer and Secretary*  
*Devotional Chairman*  
*Reporter*  
*Secretary of Activities*

NOT PHOTOGRAPHED

THOMAS O'MARA      HARRY WILSON



HALL  
TURNER

GREENE  
YOUNG

HENRY  
JONES

RUSSELL  
PERKINS

ALEXANDER  
McCULLOUGH

*Purpose:* To create a real missionary spirit on the campus and to bring together each life which has been called and surrendered to do any foreign missionary work, as the Lord leads.

*Aim:* To know Him and to make Him known.

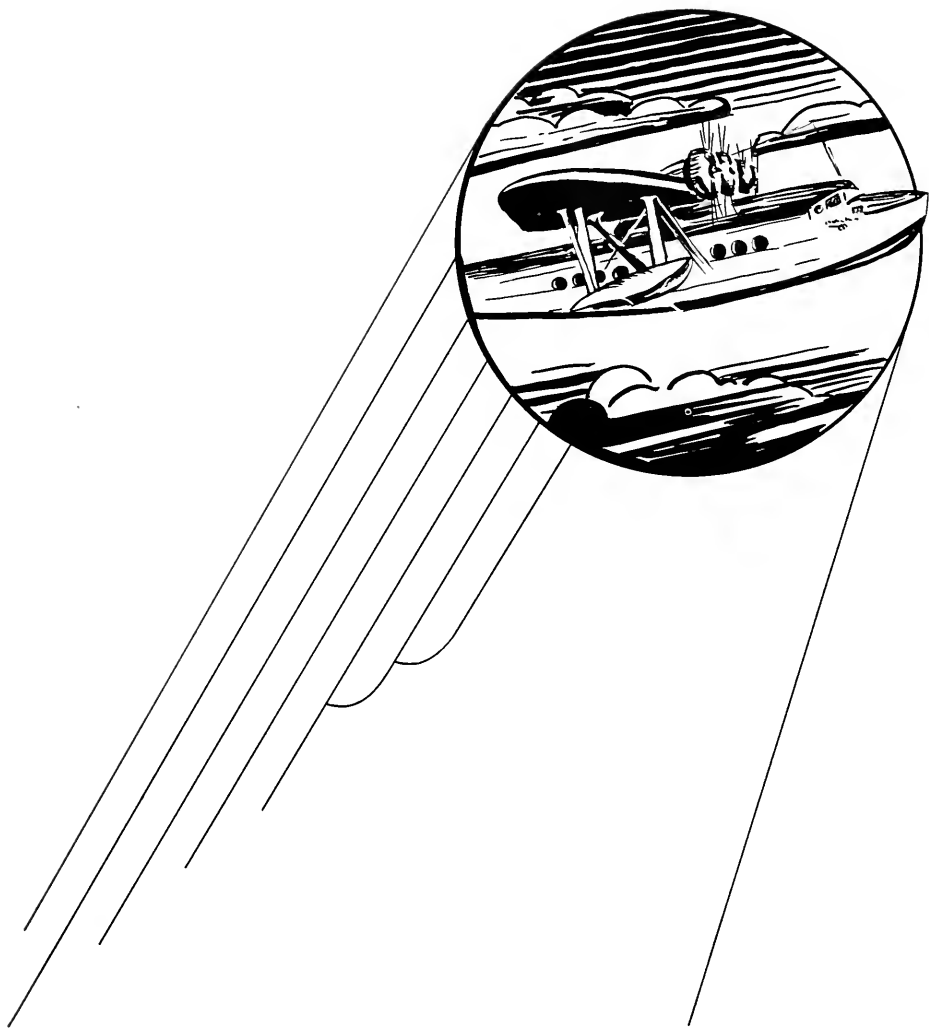
*Motto:* Practice His presence.

*Scriptures:* Isaiah 6:1-3, Acts 1:3; Matthew 23: 13-20, Romans 12: 1-6.

*Song:* Ready.

*Officers:* Sponsor—EDGELLE HENRY.  
 President—BEN HALL.  
 Vice President—J. L. GREENE.  
 Secretary-Treasurer—RALPH RUSSELL.  
 Music Chairman—HARRIETT ALEXANDER.  
 B. S. U. Representative—BERNICE YOUNG.

*Members:* BEN HALL, J. L. GREENE, RALPH RUSSELL, HARRIETT ALEXANDER, A. J. TURNER, BERNICE YOUNG, JOE JONES, ELLA MAY PERKINS, RALPH McCULLOUGH.



---

A D V E R T I S I N G

---

**For HEALTH'S Sake**  
**USE**  
**B O O K E R ' S**  
**Milk and Ice Cream**

*IT'S PASTEURIZED*



COURTEOUS SERVICE  
PROMPT DELIVERY



**309 South Florida Avenue**

**HUBERT H. JACOBS**

PROPRIETOR

**THE  
BARNETT NATIONAL  
BANK**

*"A Florida Landmark"*

JACKSONVILLE

DeLAND

AVON PARK

COCOA

ST. AUGUSTINE

FT. LAUDERDALE

*Member Federal Reserve System and F. D. I. C.*

**The City of DeLand**

OFFERS

CONGRATULATIONS

TO THE

GRADUATING CLASS

OF

STETSON

UNIVERSITY

1937

COMPLIMENTS OF  
**HULL, LANDIS & WHITEHAIR**

*Attorneys at Law*

DeLAND

FLORIDA

**THANK YOU!**

**MERCHANTS *and* BUSINESSMEN**

*for your* **SUPPORT *and* COOPERATION**

**The Advertising Staff**

JACK GORE

JAMES DICKSON

GORDON VANN

**E. K. JONES**

CONTRACTOR *and* BUILDER

TELEPHONE 513

DeLAND



# The Memory of Happy Days-



As you turn the pages of this book we hope that it may be the means of bringing forth memories of friendships made . . . of many happy hours spent. With the passing of each year we feel that these memories will become more and more cherished.

---

It is a great pleasure to know that by furnishing the engravings for this book we have been given the privilege of helping in the preservation of these memories.

---

**TAMPA PHOTO-ENGRAVING CO., Inc.**  
**ENGRAVERS**

ARTISTS



DESIGNERS

*"The South's Color Plate Headquarters"*

# W. M. H. MORGAN COMPANY

## *Cafeteria Equipment*

610 W. BAY STREET, JACKSONVILLE, FLA.

## **FEASEL**

PAINT AND GLASS SHOP

### **Paints & Glass**

DEALERS FOR  
PITTSBURGH PLATE GLASS CO.

**111 W. RICH AVE.  
DeLand, Florida**

## **DeLand Hotel**

M. S. HOWARTH, *Owner*

*Open All Year*

STEAM HEAT

MODERN BRICK

*Meals 50c Up - Rooms \$1.50 Up*

THE PLACE FOR PARENTS

AND STUDENTS TO MEET

*South Boulevard - Phone 660*

*Get Your*

## **TAPS**

- **Pineapple**
- **Grapefruit**
- **Orange**

DRINKS IN THE BOOK STORE

***Taps Bottling Co.***  
*Daytona Beach, Fla.*

## **GOHN and DYKES**

### **MEN'S SHOP**

---

FAMOUS FOR  
MADE-TO-MEASURE SUITS

*Our Congratulations and  
Best Wishes to the*

## **Graduating Class of 1938**

**F. H. HAMMER, Agent**  
**STANDARD OIL CO.**

*Step Out in Style...*



*in a* STETSON

There's plenty of style in the new Stetsons—whether you prefer the casual smartness of the snap brim type, the freedom of the pork-pie tyrolean or the formality of the Homburg.

“Thoroughbred Colors” the latest style news in men's hats, is another smart Stetson origination.

JOHN B. STETSON COMPANY  
Philadelphia

*“the”*  
**CAFETERIA**

**210 North Boulevard**



W. BROWN JEACLE

**DeLand, Florida**

**The Court House  
Pharmacy, Inc.**

*The Store of Personal Service  
Near the Court House*

*Headquarters  
for Stetson Students*

C. M. GEIGER, Proprietor ● PHONE 5

*Congratulations  
to*

**STETSON  
UNIVERSITY**

- **ELECTRIC**
- **GAS**
- **ICE**

**FLORIDA PUBLIC SERVICE COMPANY**

BEST WISHES FROM

## **V. T. BARR**

*Dry Goods      Notions*  
*Hosiery*

118 NORTH BOULEVARD - DELAND, FLA.

## **DELUXE LAUNDRY** AND **DRY CLEANERS**

*Student Work a Specialty*

N. DELAWARE AVE. • PHONE 347

---

## **..FOUNTAIN'S..**

---

We are grateful for and proud of the privilege of having served the faculty and student body of **STETSON UNIVERSITY** for more than thirty-five years, with the finest that the best markets of the world offer in

QUALITY  
MEN'S WEAR, CLOTHING  
AND MEN'S AND WOMEN'S  
FINE FOOTWEAR

---

## **..FOUNTAIN'S..**

---

*"Quality Has No Substitute"*

## **INSURANCE**

## **HON AGENCY INC.**

**220 N. BOULEVARD**

**Phone 455**

*Compliments of*

## **DREKA'S DEPARTMENT STORE**

**Since 1878**

**STETSON'S FAVORITE SHOPPING PLACE**

*Phone 400*

**DeLand, Florida**

# ORANGE BELT PHARMACY

200 NORTH BOULEVARD

**COMPLETE DRUG AND FOUNTAIN SERVICE**

*We Deliver*

*Phone 555*

*Compliments of*

## THE SPARKS THEATRES

IN DELAND

**ATHENS THEATRE**

**DREKA THEATRE**

*Compliments of*



*Bottling Company  
of  
DeLand*

COMPLIMENTS OF

*Best Wishes to*

**Stetson University**

*on its*

**McCrorry's 5 & 10c Store**

*Growth and Achievements*

*Headquarters*

*for Student Supplies*



**The DeLand Sun News**

VISIT OUR STORE DAILY

*A Gore Newspaper*

**THE VOGUE**

*Smart Ready-to-Wear  
for Distinctive Taste*

WE ARE AGENTS FOR  
**"Gage" Hats**

Mrs. Sarah Ceely - 102 N. Boulevard

*Stetsonites:*

*We offer our Best Wishes as you  
are leaving Stetson this year.*

*When visiting your Alma Mater in  
future years, drop in again to say*

*Hello.*

**Frank Patillo**  
**Chrysler**

**Plymouth**

**Packard**

**CARS**

**W. A. Allen & Company**

*"the busy druggists"*

# **J. F. ALLEN FURNITURE CO., INC.**

Home of Dependable Goods Since 1882

***56 Years in Business and Still Going Strong***

FUNERAL DIRECTORS

REAL AMBULANCE SERVICE

***Phones: 62 - 228 - 409 - 604***

*Compliments of*

# **CONRAD LUMBER CO.**

**DeLand, Florida**

STUDENT SUPPLIES

NOTE BOOKS

STATIONERY

FOUNTAIN PENS

*Portable Typewriters*

RENTALS

REPAIRS

**Allen-White Company**

*"You are always welcome"*

**LOGUE BROTHERS**

209 NORTH BLVD. DELAND, FLORIDA

*Growers and Shippers*

*of*

*Fancy Fruits*

GIFT BOXES

EXPRESSED ANYWHERE



# **BRANDON ELECTRIC CO.**

**108 EAST NEW YORK AVENUE**

**Phone 536**

---

**Heating**

**Air Conditioning**

**Norge Appliances**

**R. C. A. Radios**

**Desk Lamps**

---

**DeLand's Modern Electric Store**

**C. J. BRANDON, Proprietor**

# **THE FRANCES SHOP**

**Dresses • Coats • Hats • Hose • Lingerie**

*Fashion Center of DeLand*

*Compliments of*

# **Riley's Store**

**DeLand, Florida**

*"Remember Riley's When You are Home"*

*Westinghouse*  
**Refrigerators • Radios • Ranges**  
**FRIERSON'S**

321 NORTH BOULEVARD

**Firestone**

DELAND, FLORIDA

*Represented by*  
GERALD E. FRIERSON

**A N D E R S O N**  
AND  
**A N D E R S O N**

*Photographers*



STUDIO AND HOME PORTRAITURE  
COMMERCIAL PHOTOGRAPHY



GAINESVILLE, FLORIDA  
1868 W. University Avenue

---

ORLANDO, FLORIDA  
388 N. Orange Avenue

**A U T O G R A P H S**

# A U T O G R A P H S

**A U T O G R A P H S**

---



