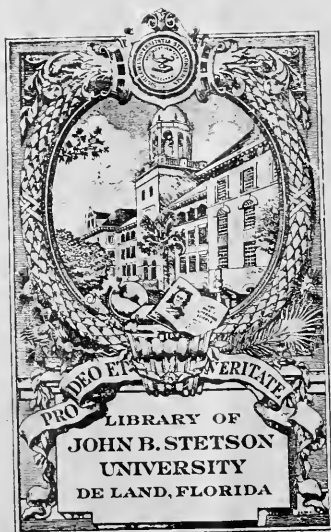


Hutter

1942





Stetson University




3 4369 00479789 2

This book must not be taken from
the Library building.

20 20 '78

DO NOT REMOVE
FROM LIBRARY



Digitized by the Internet Archive
in 2010 with funding from
Lyrasis Members and Sloan Foundation

<http://www.archive.org/details/hatter1942stetson>

Hatter



Copyright 1942

Marion Merrill, Editor-in-chief

Vernon Turner, Business Manager

Published by
the students of
John B. Stetson University
DeLand, Florida



H A T T E R



Foreword



Cummings Gymnasium



Conrad Hall
Chaudin Hall

At a time in which the pattern of our lives is being subjected to constant change we seek signs of basic stability. With this in mind the staff presents the 1942 Hatter as evidence that the deep convictions of American life remain constant. We have chosen as our theme the tower of Elizabeth Hall which, being a reproduction of Independence Hall, is an appropriate symbol of the liberty and freedom which continue to be Stetson's ideals.



TO DR. G. LEIGHTON LAFUZE

In appreciation of his penetrating insight and profound understanding of the present-day affairs which enable all those who come in contact with him to develop a sane interpretation of the world in which we live, we, the staff, dedicate the Hatter of 1942.

Dedication



John B. Stetson University includes four colleges. There is an excellent reason for the fact that the College of Liberal Arts is the largest in Stetson's quartet, because it offers the student the ultimate goal of every well educated individual, a thinking knowledge in countless fields. Although not aiming to teach all about a subject it opens up the door of our curiosity, and widens our interests so that we will always be eager to find out a little more. It is said that we are as young as our minds, and by training the mind to keep alert the Liberal Arts education becomes a "fountain of youth."

Stetson, however, encourages specialization. In fact this spirit is evidenced in a new program which even permits a student to study courses in only one particular field. Basically, however, the three other colleges of the University plan to unite specialized with liberal education. The Music School is so excellent that it has attained an enviable reputation throughout the southeast, and the School of Business Administration, though young is filled to capacity. Our graduate Law School is one of the best in the South.

The School



Elizabeth Hall



Hon, Edwards, Bolton, Brittain, West, Allen, Bailey, Hobson, Edmunds, Baggett, Jennings, Carlon, Stetson.

TRUSTEES

In these critical months, the fate of colleges and universities throughout America depends on the good judgment and wisdom of those who regulate the schools' activities. Trustees can formulate policies which will let a school die, or help it rebuild itself to fill the common needs. We, the students of Stetson, have been watching our trustees with fearful eyes—and are proud to see that they have remodeled Stetson's regulations so that we will continue not only to function but to progress during these war years.

OFFICERS

- | | |
|--|---|
| F. N. K. BAILEY, Sebring, Fla. | President |
| E. L. HON, DeLand, Fla. | Vice-President |
| L. A. PERKINS, Jr., DeLand, Fla. | Secretary |
| WILLIAM SIMS ALLEN, Ph.D., LL.D., DeLand, Fla. | Treasurer |
| C. ROY ANGELL, D.D.
Miami, Fla. | O. F. REAVES
Tampa, Fla. |
| B. B. BAGGETT
Daytona Beach, Fla. | G. HENRY STETSON
San Fernando, Calif. |
| C. H. BOLTON, D.D.
Jacksonville, Fla. | MRS. ALFRED I. DUPONT
Jacksonville, Fla. |
| C. M. BRITAIN, D.D.
DeLand, Fla. | J. OLLIE EDMUNDS
Jacksonville, Fla. |
| THEODORE C. BROOKS
DeLand, Fla. | JOHN L. EDWARDS
Ocala, Fla. |
| DOYLE C. CARLTON, LL.D.
Tampa, Fla. | W. A. HOBSON, D.D.
St. Petersburg, Fla. |
| S. V. HOUGH
Tallahassee, Fla. | JOHN B. STETSON, JR., D.C.L.
Philadelphia, Pa. |
| ELKANAH B. HULLEY, D.Eng.
Pittsburgh, Pa. | JOHN B. STETSON, III
St. Davids, Pa. |
| S. BRYAN JENNINGS
Jacksonville, Fla. | HUGH WEST, M.D.
DeLand, Fla. |
| EDWARD L. MICKLE
Orlando, Fla. | J. L. WHITE, D.D.
Miami, Fla. |



PRESIDENT



Dear Students:

The session 1941-1942 has been another banner year for Stetson. The enrollment has been smaller but the spirit and morale have been the finest in the University's history. Students are taking a genuine interest in the ideals of the Institution. The student government idea is growing. Enthusiasm for scholarship is increasing steadily. More and more Stetson is being recognized as one of the leading universities of the South. She continues to represent scholarship, culture, Christian character.

I take this opportunity to extend greetings and best wishes to the students and to the Stetson family everywhere.

Sincerely,
PRESIDENT WILLIAM SIMS ALLEN



ADMINISTRATION

HARRY C. GARWOOD
Dean of the University and Professor of Religion

CURTIS C. HORN
Assistant to the President of the University

ROY FRANCIS HOWES
Dean of the College of Law; Professor of Law

WILLIAM E. DUCKWITZ
Director of the School of Music; Professor of Piano

THOMAS F. LAMBERT
Acting Dean of the College of Law First Semester; Assistant Professor of Law
(Not pictured.)

OLGA BOWEN
Registrar

G. PRENTICE CARSON
Dean Emeritus and Professor of History

CECIL L. CRISSEY
Manager of University Press





RUSSELL C. LARCOM
Director of the School of Business Administration and Professor of Business Administration and Economics

ETTER M. TURNER
Dean of Women and Instructor in Religion

CARL H. JOHNSON
Director of Men's Activities and Instructor in Education and Intramural.

CHARLOTTE A. SMITH
Librarian

CLIFFORD B. ROSA
Bursar



COLLEGE OF LIBERAL ARTS

EZRA ALLEN
Visiting Professor of Biology

RICHARD E. CLARY
Professor of Sociology

ROBERT I. ALLEN
Professor of Physics

JOHN F. CONN
Professor of Chemistry

DOPIS F. ARJONA
Professor of Spanish

W. C. COWELL
Professor of Health and Physical Education and
Director of Physical Education for Men

MARY AXTELL BAILEY
Instructor in Journalism

IOLA KAY EASTBURN
Professor of German

SUE McE. BURNS
Assistant Professor of Education and Psychology

GEORGE B. EHLHARDT
Assistant Instructor in History

G. PRENTICE CARSON
Professor of History; Dean Emeritus

BOYCE F. EZELL
Professor of Education and Psychology

F
A
C
U
L
T
Y



NA...
 ...
 ...



...
 ...
 ...

...
 ...
 ...

...
 ...
 ...

...
 ...
 ...

...
 ...
 ...

...
 ...
 ...

...
 ...
 ...

...
 ...
 ...

...
 ...
 ...

...
 ...
 ...

...
 ...
 ...

...
 ...
 ...

...
 ...
 ...

...
 ...
 ...

...
 ...
 ...

...
 ...
 ...

...
 ...
 ...

...
 ...
 ...

...
 ...
 ...

...
 ...
 ...

...
 ...
 ...

...
 ...
 ...

...
 ...
 ...

...
 ...
 ...

...
 ...
 ...

...
 ...
 ...

...
 ...
 ...

...
 ...
 ...

...
 ...
 ...

...
 ...
 ...

...
 ...
 ...





OTHER OFFICERS

HARRY L. TAYLOR
Associate Professor of Philosophy

ETTER M. TURNER
Instructor in Religion; Dean of Women

HARRY S. WINTERS
Associate Professor of History and Political Science

CHARLES B. VANCE
Professor of Geology and Geography

EUNICE L. WEBBER
Instructor in English; Secretary to Dean of University

BERNICE YOUNG
Assistant Instructor in English and Assistant to Dean of Women

LYDIA A. THEURER
Instructor in Speech

FRANCES C. THORNTON
Professor of French



M. ROBERT BARNETT
Director of Publicity

LOUISE B. GRIFFITH
Secretary to the Registrar

OVEDA CHEATHAM TAYLOR
Law Librarian

IDA R. CUNNINGHAM
Secretary to Bursar

EDGELLE HENRY
Nurse

GRAFTON PYNE
Director of Civilian Defense

THELMA PRESTON FISKE
Assistant to Director of Publicity

FOY LINEBERRY
Assistant Librarian



RUSSELL C. LARCOM
Professor of Business Administration and
Economic Director of the School of
Business

MARY M. LITTLE
Assistant Professor of Secretarial Sciences

CHARLES A. FISHER
Professor of Business Administration

WILLIS N. BAEF
Professor of Economics



SCHOOL OF BUSINESS ADMINISTRATION



MARION B. LEONARD
Instructor in Secretarial Sciences
(Not pictured)

EDWARD C. FURLONG
Instructor in Business Administration





COLLEGE OF LAW

LEONARD J. CURTIS
Visiting Professor of Law

COL. FRANK W. HALLIDAY
Visiting Professor of Law

NEILL S. JACKSON
Lecturer in Law
(Not pictured)

WILLIAM GRAY LOEHR
Instructor of Law

VERNON W. TURNER
Instructor in Law



ROY FRANCIS HOWES
Professor of Law; Dean of College of Law

THOMAS F. LAMBERT
Assistant Professor of Law; Acting Dean of College of Law First S





HELEN ALLINGER
Instructor in Voice

WILLIAM H. BAILEY
Professor of Violin and Theory

VERONICA DAVIS
Instructor in Public School Music

KATHLEEN A. DUBOSE
Instructor in Piano
(Not pictured)

ETHEL M. FISHER
Instructor in Piano

ARTHUR J. GRAHAM
Professor of Piano and Organ

HAROLD M. GIFFIN
Professor of Voice

JOHN J. HENEY
Director of the Band; Instructor of Wind and Percussion
Instruments

AILEEN WORTH
Assistant Instructor in Violin and Piano

WILLIAM E. DUCKWITZ
Professor of Piano and Director of School of Music

SCHOOL OF MUSIC

GRADUATE STUDENTS



JOSEPHINE VAN DORSTEN HOLCH DeLand, Fla.
 RALPH S. STAFFORD Orange City, Fla.
 J. BERNICE YOUNG Lake City, Fla.



JEANNE BATEMAN DeLand, Fla.
 J. CLEAVER BRADLEY DeLand, Fla.
 ANDREW KNOX Bryn Mawr, Pa.
 DOROTHY JANE McWHORTER Decatur, Ga.
 MARTHA MEDLIN DeLand, Fla.
 LETITIA REYNOLDS DeLand, Fla.
 MARY LOU ROWE Hillsdale, Mich.
 BETTY STAFFORD DeLand, Fla.
 RAY O. VOSS LeSueur, Minn.
 ROBERT H. WILLIAMSON Lakewood, Ohio

SPECIAL STUDENTS





Carnegie Library

Classes

Since it is not the school, but the class that distinguishes between one student and another here at Stetson, the 1942 Hatter staff have treated the whole University as a unit divided only by classes.

STUDENT BODY

OFFICERS

- JAMES GOLDEN President
- WILLIAM STRICKLAND Vice-President
- MARGARET FOY Secretary
- NANCY ROSSETTER Treasurer



STRICKLAND, FOY, ROSSETTER, GOLDEN

Each spring after listening to shady political propoganda and emphatic election addresses the student body picks the best of its seniors to be its leaders for the coming year. Not only do these officers help to form policy and opinion, but they also direct some of the most enjoyable of our school traditions, such as Sadie Hawkin's Day and Founders' Day. To them we owe a vote of thanks for the fine job they have done in seeing us through the past year.

OFFICERS

- HAROLD CLARK President
- A. C. MARTINO Vice-President
- FRED KIEHLE Secretary
- DEKLE DeLOACH Treasurer



CLARK



MARTINO



KIEHLE



DeLOACH

STETSON STUDENT BAR ASSOCIATION



Seniors



THOMAS ANDERSON, Bachelor of Science Port Huron, Mich.
Sigma Nu, Lieutenant Commander, 4; Sentinel, 2; Stetson Reporter, 3.

T. PATRICK ARNOLD, Bachelor of Arts Winter Garden Fla.
Ministerial Association, 1, 2, 3, 4; President, 4; Theta Gamma Epsilon, 3, 4; President, 4; Freshman Advisor, 4; International Relations Club, 2, 3, 4; Honor Roll, 2, 3; Volunteer Band, 3, 4; B. S. U. Council, 3, 4; Radio Guild, 4; Vice-President, 4; Mystic Krowe, 4.

MARJORIE AULT, Bachelor of Science Hialeah, Fla.
Pi Beta Phi, Vice-President, 3; W. A. A., 1, 2, 3, 4; Hatters Art Club, 2, 4; Honor Roll, 3, 4; Freshman Advisor, 4.

LOIS H. BACON, Bachelor of Arts Clearwater, Fla.
Pi Beta Phi, Officer, 1, 2; Historian, 3, 4; W. A. A., 1, 2; Little Theater, 3, 4; Sigma Delta Pi, 4; La Franciade, 1, 2, 3, 4; Secretary, 3; Treasurer, 4; Honor Roll, 3, 4.

IDA FEE BAILEY, Bachelor of Arts Jacksonville, Fla.
La Franciade, 3, 4; Hatters Art Club, 1, 2, 3, 4; Sadie Hawkins Day Committee, 3, 4.

DONALD E. BARGER, Bachelor of Music Edgewood, Iowa
Transfer St. Petersburg Junior College, 2; Stetson Symphony Orchestra, 2, 3, 4; Stetson Symphonic Band, 2, 4; Little Theater Orchestra, 3, 4; Kappa Kappa Psi, 4.





MARY ELIZABETH BOSTICK, Bachelor of Music Tampa, Fla.
Zeta Tau Alpha; Glee Club, 1, 2, 3, 4; Radio Chorus, 4; Traveling Glee Club, 3; Musician Staff, 4; Press Club, 3, 4; Radio Guild, 4; Y. W. A.; Little Theater Work, 2, 3; Freshman Advisor, 4.

JEAN BOTTS, Bachelor of Science DeLand, Fla.
Newton Club, 3, 4; Treasurer, 4; Sigma Pi Sigma Secretary, 4; Phi Beta, 3, 4; Der Deutsche Verein, 1, 2; The Honor, 4; Symphony Orchestra, 1, 2, 3, 4; Vice-President, 4; Little Symphony, 2, 3; Town Women's Council, 1, 2; Methodist Youth Fellowship State and Local Vice-President, 2; Freshman Advisor, 2, 3; Jackpot, TKT, 4.

MARY LOUISE BRANDON, Bachelor of Arts Orange City, Fla.
Hatters Art Club, 2; W. A. A., 1, 2; S. C. Club, 2.

PHYLLIS BROWN, Bachelor of Science DeLand, Fla.
Alpha Xi Delta, Secretary, 4; Y. W. A., 1; Hatters Art Club, 3, 4; W. A. A., 1, 4; International Relations Club, 4; Glee Club, 2.

MARIAN BURGER, Bachelor of Arts Dayton, Ohio
Pi Beta Phi, President, 4; Interfraternity Council, 2, 3, 4; Treasure, 2, 3; Secretary, 4; Newman Club, Treasurer, 2, 3; Panhellenic Council, Treasurer, 4; Freshman Advisor, 4; International Relations Club, 3, 4.

DOROTHY LOU BURGMAN, Bachelor of Science Daytona Beach, Fla.
Delta Delta Delta, Officer, 2, 3; Treasurer, 4; Who's Who in American Colleges and Universities, 4; The Honor, 3, 4; Outstanding Freshman; Outstanding Sophomore; Stetson Blazer Club, 3, 4; W. A. A., 1, 2, 3; Treasurer, 2; Stetson Reporter Staff, 1, 3, 4; Associate Editor, 3; Editor, 4; Phi Society, 1; International Relations Club, 3; Press Club, 3, 4; Vice-President, 4; Gamma Sigma Epsilon, 3, 4; Recorder, 4; Freshman Advisor, 4; Beta Key, 2, 3; Vice-President, 3; Der Deutsche Verein, 2, 3; Vice President, 3; HATTER Staff, 2; STETSONIAN Staff, 3; Associate Member Newton Club, 3; Honor Roll, 1, 2; Glee Club, 1.





ANN BURRELL, Bachelor of Arts Jacksonville, Fla.
Delta Delta Delta Officer, 3, 4; Interfraternity Council, 3, 4; W. A. A., 1, 2, 3;
Y. W. A., 1; Freshman Advisor, 2, 3, 4; Hatters Art Club, 1, 2, 3; International
Relations Club, 3; Sigma Delta Phi, 4; La Francaide, 2, 3; Blazer Club Service
Award, 2; The Honor, 3, 4; Treasurer, 4; Glee Club, 2, 3, 4; Traveling Squad, 3, 4;
HATTER Staff, 3; Reporter Staff, 4.

FRANCIS CARMODY, JR., Bachelor of Laws DeLand, Fla.

HAROLD R. CLARK, Bachelor of Laws Jacksonville, Fla.
Secretary Freshman Class, 1; Debate Squad, Grand Eastern Debate Tournament, 1;
Pi Kappa Delta, Vice-President, L-3; Glee Club, 1, 2, 3, L-2, L-3; Traveling Squad;
Peace Club, Vice-President, 2; International Relations Club, 2, 3; Treasurer, 3; Swim-
ming Team, 2, 3, L-2, Captain, 3; Permanent Swimming Pool Committee, 3, L-2,
L-3; Extra-Curricula Committee, L-2; Instructor, Physical Education Department, 3,
L-2, L-3; President, Freshman Law Class; Secretary, Stetson Bar Association, L-2,
President, L-3; Phi Alpha Delta Legal Fraternity; Delta Sigma Phi; Mystic Krewes,
L-3; Who's Who in American Colleges and Universities, L-3.

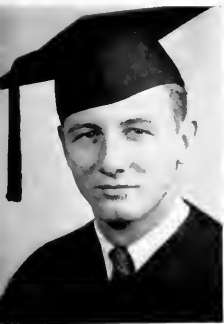


E. DOROTHEA CLARSON, Bachelor of Laws Jacksonville, Fla.
Pi Beta Phi Officer, Treasurer, A-2, L-1, L-2; Phi Delta Delta, Woman's Legal Frater-
nity; Pi Kappa Delta, Secretary-Treasurer, A-2, L-2; Varsity Debate Team, A-1,
A-2; La Francaide, A-2, L-1, L-2; Phi Society A-1, President, A-2; Workshop Plays,
A-1; Sophomore HATTER Editor, A-1, Editor, L-1; Interfraternity Council, A-2,
L-1, L-2, Women's Student Government Association Treasurer, L-1, Vice-President,
L-2; Scroll and Key, L-1, L-2, L-3, Treasurer, L-2; The Honor, L-1, L-2, L-3, Presi-
dent, L-2; Freshman Advisor, A-2, L-1, L-2, L-3; Vice-President, Freshman Law
Class; Vice-President, Junior Law Class; Vice-President, Senior Law Class; Honor
Roll, A-1, A-2, L-1, L-2, L-3; Dean's List, L-1, L-2, L-3; Who's Who in American
Colleges and Universities.

ROSA MAUDE COLE, Bachelor of Arts Philadelphia, Miss.
W. A. A., 1; Hatters Art Club, 2, 3, 4; Women's Council; President, Stevens Hall.

RENA CRAWFORD, Bachelor of Science DeLand, Fla.
May Day, 1; Beta Key, President, 4; Newton Club, 4; STEYSON Reporter, 4.





EDWARD DAIL, Bachelor of Science Philadelphia, Pa.
Sigma Nu Officer, 4; Vice President, Senior Class, 4; White Whiskers American Colleges and Universities, 4; Theta Alpha Phi, 3, 4; Secretary, 4; Pi Gamma Mu, 3, 4; Commerce Club, 3, 4; President, 4; REPOTEP Staff, 2, 3, 4; Sports Editor, 3, 4; Associate Editor, 4; Little Theater, 2, 3, 4; Press Club, 3, 4; Honor Roll, 2, 4; Freshman Adviser, 4; Sadie Hawkins Day Committee, 3, 4; Intrarural Debate, 3, 4

ELIZABETH N. DAVIS, Bachelor of Arts Packledge, Fla.
Zeta Tau Alpha Officer, 3; W. A. A., 1, 2, 3, 4; Hatters Art Club, 1; Freshman Adviser, 3, 4; Episcopal Fellowship, 1, 2, 3, 4

MARY LOU DAVIS, Bachelor of Arts Chicago, Ill.
Transfer, Stephens College; Alpha Xi Delta; The Honor, President, 4; Pan Hellenic Council, 3, 4; Secretary, 4; Der Deutsche Verein, 2, 3, 4; President, 3; President Stevens Hall, 2; Glee Club, 2, 3, 4; Traveling Squad, 3, 4; Radio Chorus, 4; International Relations Club, 2, 3, 4; Freshman Adviser, 3, 4; Honor Roll, 2, 3

C. DEKLE DeLOACH, Bachelor of Arts Claxton, Ga.
Pi Kappa Phi; International Relations Club, President, 4; Varsity Football, 3; Pi Kappa Delta, 4; Phi Alpha Delta, Legal Fraternity, 4; Varsity Debate Team, 3, 4; Treasurer, Law School, 4; Vice President, Freshman Law Class; Chairman, Sadie Hawkins Day Committee, 4; Chairman, Extra-Curricula Activities Committee.

KATHERINE DeMOTSIS, Bachelor of Arts Osteen, Fla.

MILDRED ETHEL DICKERT, Bachelor of Music Holly Hill, Fla.
Glee Club, 1, 2, 3, 4; Traveling Squad, 2, 3, 4; Radio Chorus, 2, 3, 4; Treasurer, Music School, 4; Phi Beta, 2, 3, 4; Y. W. A., 1, 2, 3, 4; B. S. U. Council, 3, 4; Der Deutsche Verein, 4





HELEN G. DRIGGERS, Bachelor of Science DeLand, Fla.
Hatters Art Club, 1, 2, Vice-President, 2; W. A. A.

DOROTHY E. DUNN, Bachelor of Arts Daytona Beach, Fla.
HATTER Staff, 4.

IVA B. DYAL, Bachelor of Arts Homestead, Fla.
Delta Delta Delta; International Relations Club, 2, 3, 4, Secretary, 4; Freshman Ad-
visor, 4; W. A. A., 1; Hatters Art Club, 1.

S. OLEDA DYSON, Bachelor of Arts Sanford, Fla.
Transfer Furman University; Reporter Staff, 4; Piess Club, 4; Delta Delta Delta, Offi-
cer, 4; Little Theater, 3, 4; Debate Team, 4; Sadie Hawkins Day Committee, 3; Red
Cross War Relief Committee.

VIRGINIA M. EVANS, Bachelor of Science Beckley, W. Va.
Delta Delta Delta; International Relations Club, 4; W. A. A., 1.

RICHARD M. FEASEL, I, Bachelor of Music . . . Lake Winnemissett, Fla.
Mystic Krewé Award; Outstanding Freshman; Phi Society, 2; Scroll and Key, 3, 4;
Mystic Krewé, 2; Master at Arms, 3; Boatswain, 3; First Mate, 4; Most Creative
Boy, 3; Honor Roll, 1, 2, 3, 4; Dean's List, 3, 4; Freshman Advisor, 2, 3; Social
Committee, 2; Extra Curricula Activities Committee, 3; Student Library Committee,
2; Stetson Radio Guild, 4; President, 4; Kappa Kappa Psi, 1, 2, 3, 4, Treasurer, 2, 3,
President, 4; Freshman Representative School of Music, Vice-President, 2, President,
3; Student Government, 2, 3; Band, 1, 2, 3, 4; Orchestra, 1, 2, 3, 4; Leader College
Clubmen, 1, 2, 3, 4; Who's Who in American Colleges and Universities, 4.





M. JEAN FINNEY, Bachelor of Science DeLand, Fla.
Commerce Club, 2, 3, 4, Treasurer, 4; Sigma Delta Pi, 3, 4; Pi Gamma Mu, 4;
Honor Roll, 3, 4; Dean's List, 4.

M. ELIZABETH FISHER, Bachelor of Arts DeLand, Fla.
Editor of STETSONIAN, 4, Illustrator, 3, Staff Member, 2; STETSON Reporter, 1, 2,
3, 4; Cartoonist, 3, 4; Art Editor for HATTER, 4, Assistant Art Editor, 3, Associate
Editor, 2; The Honor, 3, 4; Most Creative Girl, 3; International Relations Club, 2, 3,
Press Club, 2, 3, 4; Varsity Debate Team, 2; Freshman Team; Stetson Representative
of Varsity Magazine, 2; Little Theater, 2; Honor Roll, 3, 4.

MARGARET FOY, Bachelor of Science Tampa, Fla.
Delta Delta Delta, Treasurer, 3, Vice-President, 4, President, 4; W. A. A., I-Y, W.
A., I; Pi Gamma Mu; Commerce Club, 3, 4; Sadie Hawkins Day Committee, 4; Fresh-
man Advisor, 2, 3, 4; Business School Treasurer, 3, Secretary, 4; Interfraternity Coun-
cil, 4; Pan-Hellenic Council, 4; Honor Roll, 3, 4; Dean's List, 4; Secretary Student
Body, 4; Honor Roll, 4; Glee Club, 4; Traveling Squad, 4.

JAMES GOLDEN, Bachelor of Science Leesburg, Fla.
Pi Kappa Phi; Glee Club, 1, 2, 4, Radio Chorus, 1; Football, 1, 2, 3; Basketball,
1, 2, 3, 4; Most Athletic Boy, 3; President, Student Body, 4; President, Junior Class;
Freshman Advisor, 2, 3, 4; Mystic Krewe, 3, 4, Captain, 4; Beta Key, 4; "S" Club,
2, 3, 4; Little Theater, 1, 2, 3, 4; Who's Who in American Colleges and
Universities, 4.

CAROLYN E. GOLSNER, Bachelor of Arts Crestwood, N. Y.
Zeta Tau Alpha, Vice President, 3, Secretary, 4; Episcopal Fellowship, 1, 2, 3, 4,
President, 3, 4; Stetson Religious Council, 3, 4; Interfraternity Council, 3, 4; W. A. A.,
3, 4; Y. W. A., 2, 3, 4; Freshman Advisor, 3, 4; International Relations Club, 4;
Hatter Art Club, 3; Hatter Staff, 4.

MARY GORDON, Bachelor of Arts Orlando, Fla.





JESSE L. GREENE, Bachelor of Arts Avon Park, Fla.
 Ministerial Association, 1, 2, 3, 4; President of B. S. U. Council; International
 Relations Club; Volunteer Band; Life Service Band.

HORACE C. HAWN, Bachelor of Music New Smyrna Beach, Fla.
 President, Music School, 4; Stetson Symphony Orchestra, 1, 2, 3, 4, Librarian, 3, 4,
 Stetson Symphonic Band, 1, 2, 3, 4, Librarian, 3, 4; Kappa Kappa Psi, 2, 3, 4, Vice-
 President, 4; Radio Guild, 4; String Quartet, 2, 3, 4; Central Florida Symphony, 4;
 Saxophone Sextet, 4.

MAPY HELEN HILL, Bachelor of Science Miami Beach, Fla.
 Pi Beta Phi; President, W. A. A., 3; President, Freshman Women, 1; Blazer Club;
 Recording Secretary, W. A. A., 2; Secretary, Sophomore Class; Treasurer, Junior
 Class; Treasurer, Senior Class; Freshman Advisor, 2, 3, 4; Woman's Council, 4;
 Beta Key, 4.

ELEANOR A. HILLMAN, Bachelor of Science Orlando, Fla.
 Alpha Xi Delta; President, 4; Treasurer, 3; Corresponding Secretary, 2; The Honor,
 3, 4; Pi Gamma Mu, 3, 4; Honor Roll, 1, 2, 3; Commerce Club, 2, 3, 4; Secretary, 3,
 Vice-President, 4; Woman's Council, 3, 4; Treasurer, 3; Pan-Hellenic Council, 2, 3,
 Treasurer, 3; Interfraternity Treasurer, 4; Pi Kappa Sigma, 1; Freshman Advisor,
 3, 4; HATTER Staff, 3; Newman Club, 2, 3; Who's Who in American Colleges
 and Universities.

LESTER D. HITTINGER, Bachelor of Arts Cincinnati, Ohio
 Transfer, Miami University; Intramural Manager, Conrad Hall, 1, 2; Minor Sports
 Manager, 2; Major Sports Manager, 3; Commerce Club.

SARAH L. HJORT, Bachelor of Music Thomasville, Ga.





EDNA M. HOUGHTON, Bachelor of Science Mulberry, Fla.
W. A. A., 1, 4; Commerce Club, 3, 4; Alpha Delta Phi, 2, 3, 4; Publishing Secretary,
3; Honor Roll, 1.

BARBARA HUNTER, Bachelor of Music Lvs. Oak, Fla.
Delta Delta Delta; Glee Club, 1, 2, 3, 4; Radio Chorus, 3, 4; Traveling Squad, 2,
3, 4; Y. W. A., 1; W. A. A., 1; Phi Beta, 2, 3, 4; Vice-President, 2; President, 3, 4;
Reporter Staff, 4; Radio Guild, 4; Wesley Fellowship, 1, 2, 3, 4.

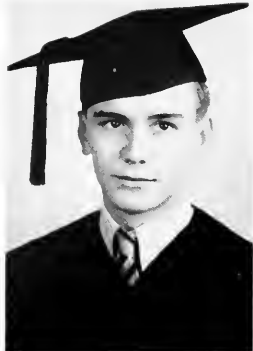
FRANCES INMAN, Bachelor of Science DeLand, Fla.
Pi Beta Phi; Band, 1, 2, 3, 4; Corporal, 3; Second Lieutenant, 4; Delta Gamma Phi,
3, 4; Vice-President, 3; President, 4; Freshman Advisor, 4; Work Shop Plays, 4.

LOIS JOHNSON, Bachelor of Science Jacksonville, Fla.
Alpha Xi Delta; W. A. A., 1; REPORTER Staff, 1, 2, 3; HATTER Staff, 2; La Far-
ciade, 1, 2, 3, 4; Secretary, 4; Hatter Art Club, 4; Honor Roll, 3, 4; Dean's List, 4;
Standards Committee, 3.

CECIL P. JONES, Bachelor of Science Lakeland, Fla.
History Club, 3; Pi Gamma Mu, 2, 3; Commerce Club, 2, 3; STETSON REPORTER,
1, 2, 3, 4; Honor Roll, 1, 2, 3, 4; Dean's List, 3, 4.

WILBUR IRVING KAYE, Bachelor of Science DeLand, Fla.
Stetson Symphony Orchestra, 1, 2; Little Symphony Orchestra, 2; Phi Society, 3;
Scroll and Key, 4; Honor Roll, 2, 3, 4; Dean's List, 4; Presbyterian Student Council,
3, 4; German Club, 3, 4; Treasurer, 3; Newton Club, 3, 4; Associate, 4; Fellow, 4;
Rho Delta Rho, 3, 4; Treasurer, 3; Gamma Sigma Epsilon, 4; Sergeant at Arms, 4;
Sigma Pi Sigma, 4.





JOHN H. KURTZ, Bachelor of Science Ft. Myers, Fla.
 Pi Kappa Phi President, 4; Interfraternity Council, 3, 4; Chairman Rules and Procedure Committee, 4; Theta Alpha Phi, 3, 4; President, 4; Mystic Krowe, 3, 4; Second Mate, 4; Commerce Club, 3, 4; Treasurer Freshman Law Class, 4; International Relations Club, 3, 4; Phi Alpha Delta, 4.

WILLIAM LAKE, Bachelor of Science Loughman, Fla.
 Delta Sigma Phi; Gamma Sigma Epsilon, 3, 4; Newton Club, 4; La Franciade, 2; Der Deutsche Verein, 4; Intramurals, 1, 2, 4.

MARY LEE, Bachelor of Arts Miami, Fla.
 Y. W. A., 1, 2, 3, 4; Secretary, 3; Life Service Band, 1, 2, 3, 4; Treasurer, 2; Vice-President, 4; DeSisma, 2, 3, 4; Corresponding Secretary, 4; Hatters Art Club, 3, 4; Secretary, 4; B. S. U. Council; Honor Roll, 2, 3, 4; Sigma Delta Pi, 4.

MARGARET LINZEL, Bachelor of Arts Washington, D. C.
 Transfer Dickinson College; Pi Beta Phi, Officer, 2, 3, 4; International Relations Club, 2, 3, 4; Corresponding Secretary, 4; Freshman Advisor, 3, 4; President Stevens Hall, 3; HATTER Staff, 3; W. A. A., 2, 3; President Stetson Religious Council, 3, 4; Y. W. A., 2, 3, 4; Secretary, 4; Woman's Council, 3; Wesley Fellowship, 3, 4; President, 4; Hatters Art Club, 4; Florida Conference of Inter-national Relations Clubs; Recording Secretary, 3, 4; Who's Who in American Colleges and Universities.

DOROTHY LOVELESS, Bachelor of Science Mt. Dora, Fla.
 Phi Society, 2; Commerce Club, 2, 3; Treasurer, 3; Sigma Delta Pi, 3; Scroll and Key, 3, 4; Secretary, 4; Freshman Advisor, 4.

E. JANE McCLENAGAN, Bachelor of Arts Lenor City, Tenn.
 Delta Delta Delta, Corresponding Secretary, 4; Freshman Advisor, 4.





M. FRANCES MCGARRAH, Bachelor of Science DeLand, Fla.
Delta Delta Delta; Band, 1, 2, 3, Drum Major, 1, 2, 3; Phi Society, 1; Commerce
Club, 3, 4; Secretary, 4; The Honor, 3, 4; Secretary, 4; Panhellenic Council, 3, 4;
Vice-President, 4; Pi Gamma Mu, 3, 4; Outstanding Sophomore Girl; Honor Roll,
1, 2, 3, 4; Intramural Sports and Debates, 3, 4; Who's Who in American Colleges
and Universities.

ANGELO C. MARTINO, Bachelor of Laws Tampa, Fla.
A. B. Degree, '40; Sigma Delta Phi, A, 1, Vice-President, A, 3, A, 4; Pi Gamma Mu;
Phi Alpha Delta, Clerk, L, 2; Justice, L, 3; Stetson Bar Association, Vice-President;
Treasurer, Law Class, L, 1, Secretary, L, 2, Secretary L, 3; HATTER StaH, L, 3; Supreme
Exalted Ruler of Legal Eagle, L, 3; Exalted Ruler and Last of Tootie Frites, L, 3

DANIEL MEYHOEFER, Bachelor of Arts DeLand, Fla.
Transfer, Miami University; Ministerial Association, 3, 4; International Relations
Club, 3, 4; Der Deutsche Verein, 3, 4.

MAURICE MILLER, Bachelor of Arts DeLand, Fla.
Little Theatre, 1, 3, 4; Glee Club, 1; Band, 1, 2, 3; Orchestra, 1, 2, 3; Stetson
Religious Council, 3; Wesley Fellowship, 3, 4; Phi Alpha Delta, Legal Fraternity,
L, 1; International Relations Club, 4; Secretary, Freshman Law Class.

NELL MIRES, Bachelor of Science DeLand, Fla.
Delta Delta Delta; Freshman Advisor, 2, 3, 4; Commerce Club, 3, 4; Pi Gamma Mu,
3, 4; Secretary, 4; Glee Club, 1, 2, 3, 4; Traveling Squad, 4; Town Council, Presi-
dent, 3; Radio Guild, 4; Honor Roll, 1, 2, 3, 4; Dean's List, 3; Best-Looking, 4.

CECELIA MRUZ, Bachelor of Science DeLand, Fla.
W. A. A., 1; Newman Club, 2, 3; Secretary, 2.





HUGH R. MURPHY, Bachelor of Science St. Petersburg, Fla.
Transfer, St. Petersburg Junior College; Sigma Nu, House Manager, 4; Newman Club.

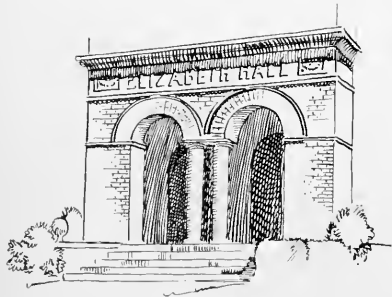
EDWARD NEW, Bachelor of Arts Indianapolis, Ind.
Transfer, Butler University; Sigma Nu; Phi Alpha Delta, Legal Fraternity; Band;
Student Bar Association.

LEROY NEW, Bachelor of Arts Indianapolis, Ind.
Transfer, Butler University; Debate Squad, A-1; Pi Kappa Delta; Tournament; Sigma
Nu; Phi Alpha Delta, Legal Fraternity; Vice-President, Junior Class; President,
Freshman Law Class.

LUELLA NICHOLS, Bachelor of Science Ft. Lauderdale, Fla.
Pi Beta Phi; Cheerleader, 1, 2, 3, 4; Freshman Advisor, 4; Sadie Hawkins Day
Committee, 4; Badminton Club, Secretary, 3; W. A. A., 1, 2, 3, 4; Hetter Art Club,
2, 4; Little Theatre, 1, 2, 3, 4; Honor Roll, 4.

MARY ELLEN NICHOLSON, Bachelor of Science DeLand, Fla.
Commerce Club, 3, 4; La Franciade, 2; Band, 1, 2, 3, 4; Stetson Symphony Or-
chestra, 2; Delta Gamma Phi, 3, 4, President, 3, Corresponding Secretary, 4;
Honor Roll.

SYDNEY NIX, Bachelor of Science Sanford, Fla.
Delta Sigma Phi; Intramurals, 1, 2, 3, 4; Gamma Sigma Epsilon, 2, 3, 4, Visitor, 3,
President, 4; Outstanding Sophomore Chemist; Assistant Business Manager, HATIEP,
4; Sadie Hawkins Day Committee, 4; Mistle Krew, 4; President, Senior Class;
Who's Who in American Colleges and Universities.





JOSEPH PADULA, Bachelor of Science New York, N. Y.
Newman Club, 2, 3; Intramurals, 1, 2, 3, 4; Beta Key, 4; Delta Sigma Phi, 4.

POLLY PASTEUR, Bachelor of Science Ocala, Fla.
Pi Beta Phi, President, 2, Treasurer, 3, 4; W. A. A., 1, 2, 3, 4; Treasurer, 3; President, 4; Little Theatre, 3; HATTER Staff, 2; Interfraternity Council, 2; Blazer Club, 3, 4; Commerce Club, 3, 4; Freshman Advisor, 3, 4; The Honor, 3, 4; Vice-President, 4; Secretary School Business, 3; Treasurer, 4; Student Social Committee, 4; Dean's List, 3; Honor Roll, 3; Beauty Section of Hatter, 2; Who's Who in American Colleges and Universities.

GLENN PAYNE, Bachelor of Science Longwood, Fla.
Football, 1; Baseball, 1, 2, 3, 4; Intramurals, 1, 2, 3, 4.

MARGARET PAYNE, Bachelor of Science Darlington Hts., Va.
Alpha Xi Delta, Corresponding Secretary, 3, 4; Scroll and Key, 3, 4; Vice-President, 4; Commerce Club, 2, 3, 4; Phi Society, 1, 2, 3, 4; W. A. A., 2, 3, 4; Honor Roll, 1, 2, 3; Dean's List, 3; Freshman Advisor, 4; The Honor, 4; Pi Gamma Mu, 3, 4; President, 4.

VAONA PETERSON, Bachelor of Arts Morrison, Fla.
Y. W. A., 1, 2, 3, 4; Program Chairman, 2, 3, 4; W. A. A., 3; Phi Society, 2, 3, 4; Hatter Art Club, 2, 3, 4; Alpha Deltions, 1, 2, 3, 4; Program Chairman, 2, 3; President, 4; Theta Gamma Epsilon, 3, 4; Secretary and Treasurer, 4; Sigma Delta Pi, 3, 4; Vice-President, 4; Hatter Staff, 4; History Club, 4; Pi Gamma Mu, 4; International Relations Club, 4; Scroll and Key, 3, 4; Treasurer, 4; Honor Roll, 1, 2, 3, 4; Dean's List, 3, 4.

ELAINE PHILLIPS, Bachelor of Arts Long Island, N. Y.
Zeta Tau Alpha; W. A. A., 1, 2; Hatter Art Club, 1, 2, 3, 4; President, 3; 4; La Franciade, 1, 2, 3, 4; Vice-President, 4; Assistant HATTER Art Editor, 2; Art Editor, 3, 4; Beta Key, 2; Pi Gamma Mu, 4; Presbyterian Young Peoples Group, 1, 2, 3, 4; Little Theatre Work, 1, 2, 3, 4; The Honor, 4.





VONCILE POWELL, Bachelor of Arts DeLand, Fla.
Pi Beta Phi Receiving Secretary, 3, Vice-President, 4; La Franciade, 2, 3, 4; Theta
Alpha Phi, 4.

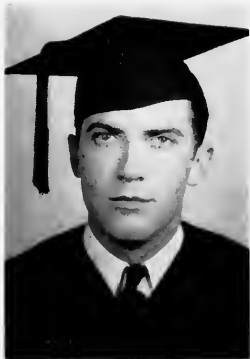
D. KATHRYN REARDON, Bachelor of Arts Ocala, Fla.
Y. W. A., 4; Delsioma, 4; Honor Roll, 4; Dean's List, 4; P. Gamma Mu, 4.

MARY LOUISE REHBAUM, Bachelor of Arts Mt. Dora, Fla.
Zeta Tau Alpha, President, 4; Transfer Junson College; W. A. A., 3, 4; Blazer Club,
4, Treasurer, 4; Hatters Art Club, 2, 3, 4; Interfraternity Council, 4; Panhellenic
Council, 4; Most Valuable Intramural Player, 3.

ROBBINS RICE, Bachelor of Science Hollywood, Fla.
Sigma Pi Sigma, Vice-President, 3, President, 4; Newton Club, 2, 3, 4; Der
Deutsche Verein, 4; Glee Club, 1, 2, 3, 4; Little Theater.

NANCY ROSSETTER, Bachelor of Arts Sanford, Fla.
Vice-President Freshman Girls; Outstanding Sophomore Girl; Symphony Orchestra, 2;
La Franciade, 2; International Relations Club, 3; The Honor, 3, 4; Woman's Council,
Sergeant-at-Arms, 3; President, 4; B. S. U. Council, 3, 4; Vice-President, 4; Sletson
Religious Council, 3; Treasurer of Student Body, 4; Theta Alpha Phi, 3, 4; Vice-
President, 4; Honorary Educator Fraternity, 4; Honor Roll, 1, 2, 3, 4; Dean's List,
1, 2, 3, 4; Delsioma, 3, 4; Secretary, 3; W. A. A., 1, 2.

ARTHUR SCHULER, Bachelor of Laws Tallahassee, Fla.





WALLACE SMILEY, JR., Bachelor of Science Crescent City, Fla.
Delta Sigma Phi

WILSON SPAHN, Bachelor of Arts Hamilton, Ohio
Theta Gamma Epsilon, 3, 4; History Club, 3, 4; Volunteer Band, 3, 4; Minister's
Association, 1, 2, 3, 4; Honor Roll, 2, 3, 4.

PAUL STEWART, Bachelor of Music Owasso, Mich.
Glee Club, 1, 2, 3, 4; Radio Chorus, 4; La Franciade, 4.

RONALD STILLMAN, Bachelor of Laws Ormond, Fla.

WILLIAM STRICKLAND, Bachelor of Arts Bowling Green, Fla.
Ministerial Association, 1, 2, 3, 4; President, 4; Phi Society, 1, 2, 3, 4; Intramurals
1, 2, 3, 4; Honor Roll, 1, 2, 3, 4; Dean's List, 3; Freshman Advisor, 2, 3, 4; Little
Theater Works, 2, 3, 4; Scroll and Key, 3, 4; President, 4; History Club, 3, 4; De
Deutsche Verein, 3, 4; International Relations Club, 3, 4; Vice President, 4; Socia
Committee, 3; Student Discipline Committee, 3; Mystic Kappa, 4; Vice President
Student Body, 4; Beta Key, 4; Sadie Hawkins Day Committee, 4; Most Intellectual
Boy, 4; Stetson Speakers Bureau, 4; Assistant in Biology Department, 1, 2, 3, 4;
Who's Who in American Colleges and Universities.



FRANK THOMPSON JR., Bachelor of Laws Sullivan, Ill.
A. B. James Millikin University; Sigma Nu; Phi Alpha Delta Legal Fraternity





VERNON TURNER, Bachelor of Laws Homestead, Fla.
 Delta Sigma Phi President, L, 3; Vice-President, L, 2; Phi Alpha Delta, Vice-President,
 L, 2; Clerk, L, 1; Beta Key, 1, 2, 3; L, 1, L, 2, L, 3; President, A, 4, L, 1; "S" Club,
 L, 2, L, 3; Business Manager HATTER, L, 3; Intramurals, 1, 2, 3, L, 1, L, 2, L, 3;
 Winner, First and Second Years Law Club Competition; Stetson Student Bar As-
 sociation, L, 1, L, 2, L, 3; Freshman Advisor, L, 1, L, 2, L, 3; Law Honor Roll; Who's
 Who in American Colleges and Universities; President Junior Law Class; Freshman
 Rules Committee, L, 1; Student Body Social Committee; A. B. Degree Stetson Uni-
 versity; Appointed Instructor at Law; Chairman, Legal Argumentation Commit-
 tee, L, 1; Mystic Krowc, L, 2, L, 3; Boatswain, L, 3; Royal Order of Legal Eagles, Grand
 Exalted Ruler, L, 3; Varsity Tennis, L, 1, L, 2; Interfraternity Council, L, 2, L, 3,
 Vice-President, L, 2, L, 3.

NORMA TYSON, Bachelor of Science Hawthorne, Fla.

MIRIAM K. WALDEN, Bachelor of Science Plant City, Fla.
 Delta Delta Delta Officer, 2, 3; HATTER Staff, 3; Secretary Senior Class in
 Business School.

KATHRYN WARD, Bachelor of Science West Palm Beach, Fla.
 Transfer F. S. C. W., 2; Delta Delta Delta, Vice-President, 4; Glee Club, 3, 4;
 Traveling Squad, 3, 4; Y. W. A., 3, 4; Treasurer, 4; Freshman Advisor, 4; Inter-
 national Relations Club, 4.

FRANCES E. WETHERBY, Bachelor of Arts Daytona Beach, Fla.
 Transfer De Pauw University; Honor Roll, 3; Stray Greeks, 3; Interfraternity Council,
 3.

FRANK WHEELER, JR., Bachelor of Arts Oviedo, Fla.
 Pi Gamma Mu, 4; International Relations Club; Honor Roll, 1, 3; Intramurals, 3, 4;
 Transfer Bob Jones College, 2.





DORIS E. WILLIAMS, Bachelor of Arts Ft. Pierce, Fla.
Alpha Xi Delta, Phi Beta, 2, 3, 4; Glee Club, 1, 2, 3, 4; Traveling Squad, 1, 2, 3, 4;
Pyra Club, 3, 4; W. A. A., 3, 4; Y. W. A.; Gamma Psi, 4; Mixed Quartet, 4;
Society, 4.

Senior portrait:

BRENDS DURRANCE

PAULINE GAUDET Daytona Beach, Fla.

WILLIAM McCLENNEN Springfield, Ohio

AUTOGRAPHS



Already Yesterday

. . . Our first three years a tangled mass of delightful memories, the fourth is bidding briefly to become the same. . . . September, torrid and tawny, stepping out of the ACL club car into the waiting arms of gracious oak trees. . . . Unrecognizable humanity, the freshmen, lurking in every familiar nook. . . . The first get-together at Chaudoin, with Jimmy Nelson singing, "Jim" and the Sigma Nus handing out corn with "There's Goin' to be a Weddin.'" . . . Stars uncovered in Freshmen Talent Night, always fun for the old-timers. . . . Slight pangs of regret that football is no more. . . . Pangs also that the ratio of women to men has exceeded the bounds of reason. . . . The mad rush of fraternities to snare the youngsters ending suddenly as the bewildered neophytes gaze fondly at their pledge pins. . . . Playgoers crowding the Stover Theatre for the first one-acts of the season. . . . The much publicized Sadie Hawkins Day proving a great success under the directoral wand of DeLoach. . . . the final split of fraternities in elections. . . . The non-frats becoming almost political nonentities. . . . Gray-and-blue suits of RAF trainees appearing on the scene, allowing the beauteous co-eds brief respite from the local lads. . . . Dean Lambert keeping all the lads and lassies busy and happy. . . . Chaudoin echoing "There'll Always Be An England," and eagerness to find out all about our British cousins overcoming the awkwardness of first meeting. . . . Hub Griffin taking top honors as the perfect "Man Who Came to Dinner"—with the cast adding a few of the cut speeches for the benefit of the men from the little island. . . . Benny Smith, Vinc Stacey, Ed Hughes, Bob Heebner, and Sputter Smith returning periodically with sharp navy blues. . . . Girls reveling in new dormitory rules. . . . Chaudoin quadrangle after the curfew looking like Times Square at 6 o'clock. . . . Tom Anderson, Sam Holch and Harvey Gardner forming the Protective Association to hamper Slaton's Dormitory Sandwich Service. . . . Golden and Pasteur as parties of the first and second part to the romance of the year. . . . Interfraternity dance opening the social season with a banner attendance. . . . Ominous clouds of war falling suddenly on fateful December 7th. . . . Seriousness of purpose marking the faces of previously carefree college youth. . . . Voices humming "Remember Pearl Harbor" . . . "Bundles for America" added to "Bundles for Britain". . . . A quiet sort of patriotic fervor sweeping the school as well as the nation. . . . A note of gayness creeping in with the Pi Phi formal at the Elks Club. . . . Dancers adjourning to the Palm Inn for extended intermissions. . . . Dail portraying Scrooge in "The Christmas Carol," particularly suited for the Nativity celebration of '41. . . . Vacation at last, with hasty departures to foreign fields to spend the Yuletide. . . . Soon the eager return to DeLand after the holidays to tackle with renewed vigor those items that

(Continued on Page 48)



Juniors



ANDERSON
BARNETT

ARKLEY
BENNETT

AVENT
BOND

BARKSTROM
BRANON

BARNES
BROWN, MARY ANN

- ANDERSON S. HELEN Sanford, Fla. ... Liberal Arts
 ARKLEY, FRANCES A., Miami, Fla. ... Music
 AVENT, GEORGE J., Jacksonville, Fla. ... Liberal Arts
 BARKSTROM, F. A. LeROY, Jamestown, N. Y. ... Law
 BARNES, ROBERT, Jacksonville, Fla. ... Business
 BARNETT, SARA ELLEN DeLand, Fla. ... Liberal Arts
 BENNETT, PAULINE Daytona Beach, Fla. ... Liberal Arts
 BOND, BYRON, Locust Grove, Ga. ... Liberal Arts
 BRANON, ELIZABETH ANNE DeLand, Fla. ... Liberal Arts
 BROWN, MARY ANN, Neranja, Fla. ... Liberal Arts
 BROWN, SALLY LOGAN, Fort Myers, Fla. ... Liberal Arts
 BRYAN, HELEN RAY, Bowling Green, Fla. ... Liberal Arts
 BURDINE, J. T., St. Petersburg, Fla. ... Liberal Arts
 CARLTON, MARY K., Sparr, Fla. ... Liberal Arts



BROWN, SALLY
BURDINE

BRYAN
CARLTON

JUNIOR CLASS

CHAMBERLIN, VIRGINIA, Crescent City, Fla.	Liberal Arts
CLARKE, RACHEL, Milton, N. Y.	Liberal Arts
COEN, SHIRLEY, Mt. Dora, Fla.	Business
CROSS, JOHN D., DeLand, Fla.	Liberal Arts
ESTES, ARTHUR, Jacksonville, Fla.	Liberal Arts
FISHER, PAUL H., DeLand, Fla.	Liberal Arts
FRENCH, IRMA J., Jacksonville, Fla.	Liberal Arts
FUTCH, ELIZABETH A., Leesburg, Fla.	Music



CHAMBERLIN
ESTES

CLARKE
FISHER

COEN
FRENCH

CROSS
FUTCH



GARDNER
HERNDON

GIBBONS
HISEY

GILLESPIE
HOLMAN

GOULD
HOOKER

GOWER
HUNTER

GARDNER, NORMA P., Tavares, Fla. Liberal Arts
 GIBBONS, DOROTHY H., Montclair, N. J. Liberal Arts
 GILLESPIE, J. LYLE, South Charleston, W. Va. Business
 GOULD, JOHN R., Stuart, Fla. Business
 GOWER, HUGH T., Mt. Vernon, Ohio Business
 HERNDON, ROBERT S., Sanford, Fla. Liberal Arts
 HISEY, GRACE MARIE, Miami, Fla. Liberal Arts
 HOLMAN, DORIS H., St. Augustine, Fla. Liberal Arts
 HOOKER, ELSIE A., Flushing, N. Y. Liberal Arts
 HUNTER, WILLIAM HAL, Live Oak, Fla. Liberal Arts
 JENNINGS, DOROTHY B., Doctor's Inlet, Fla. Liberal Arts
 KAGEY, SHIRLEY E., Miami, Fla. Liberal Arts
 KIEHLE, FRED E., JR., West Palm Beach, Fla. Law
 KELLEY, ALMA LEE, St. Petersburg, Fla. Music



JENNINGS
KIEHLE

KAGEY
KELLEY

JUNIOR CLASS

KNOX, EDITH S., DeLand, Fla.

Liberal Arts

LEHMAN, DAVID M., Palm Beach, Fla.

Liberal Arts

LEWIS, JOHN M., Miami, Fla.

Liberal Arts

LEWIS, RALPH H., Mt. Pocono, Pa.

Liberal Arts

LIPSCOMB, PAMELA J., DeLand, Fla.

Business

LONGINO, JESSIE BETH, Bradenton, Fla.

Liberal Arts

LORD, OLIVE, Sarasota, Fla.

Music

MACHEN, ERNEST W., JR., DeLand, Fla.

Liberal Arts



KNOX
LIPSCOMB

LEHMAN
LONGINO

LEWIS, JOHN
LORD

LEWIS, RALPH
MACHEN



MATHIS
MERRITT

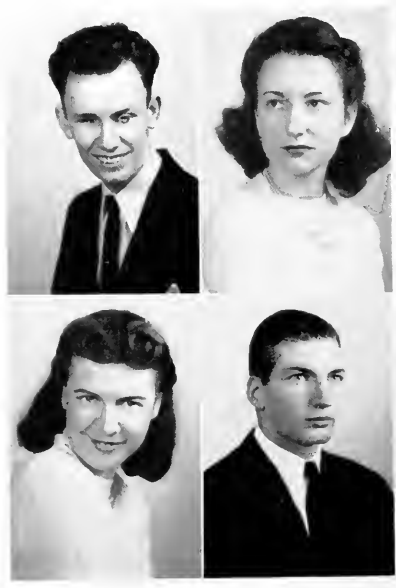
McCLURE
MILLIGAN

McCORMICK
MOBLEY

McMILLAN
MOCK

MERRILL
MOSLER

MATHIS, WILLIAM S., Tampa, Fla. Music
 McCLURE, LOUISE A., Vero Beach, Fla. Liberal Arts
 McCORMICK, HELEN DOPIS, DeLand, Fla. Liberal Arts
 McMILLAN, ARCHIE Y., Madison, Fla. Music
 MERRILL, MARION D., DeLand, Fla. Liberal Arts
 MERRITT, ELSIE, Fort Pierce, Fla. Liberal Arts
 MILLIGAN, DORIS JO., Ormond, Fla. Music
 MOBLEY, MARY, Jacksonville, Fla. Liberal Arts
 MOCK, MARY R., Phillipsburg, N. J. Liberal Arts
 MOSLER, MAX, Palm Beach, Fla. Business
 OSBURN, ORIAN W., Dade City, Fla. Liberal Arts
 OYER, EDNA W., Miami Beach, Fla. Liberal Arts
 PEDEN BARBARA A., Weatherford, Texas Music
 PURTZ CARL F., JR., Sarasota, Fla. Liberal Arts



OSBURN
PEDEN

OYER
PURTZ

JUNIOR CLASS

RATLIFF, MILDRED G., Sanford, Fla.	Liberal Arts
REAVES, MARGARET P., Miami, Fla.	Music
ROGY, JEAN L., West Palm Beach, Fla.	Music
SAXL, ERICH, DeLand, Fla.	Law
SMITH, BETTY LOUISE, Stuart, Fla.	Liberal Arts
SMITH, KATHERINE L., DeLand, Fla.	Music
SMITH, MARY FRANCES, Daytona Beach, Fla.	Music
SPANIER, ALLEN B., Miami, Fla.	Liberal Arts

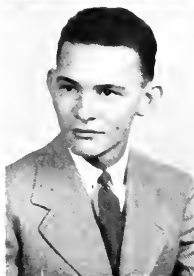
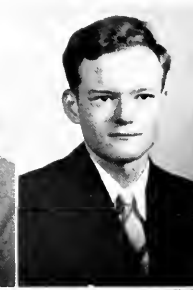
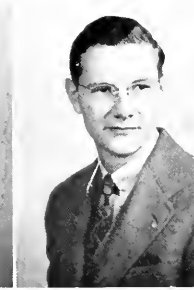


RATLIFF
SMITH, B. L.

REAVES
SMITH, K. L.

ROGY
SMITH, M. F.

SAXL
ZORNES



SPERRING
TURRENTINE

SPINKS
VINCENT

STEFFENS
WALLACE

STILWELL
WARE

TURNER
WARREN

SPERRING, DAVID H., Live Oak, Fla. Liberal Arts
 SPINKS, ANNE M., Leesburg, Fla. Liberal Arts
 STEFFENS, HARRIET M., DeLand, Fla. Liberal Arts
 STILWELL, RUSSELL D., King Ferry, N. Y. Business
 TURNER, WILLIAM R., DeLand, Fla. Liberal Arts
 TURRENTINE, WILLIAM M., Mt. Dora, Fla. Business
 VINCENT, C. AUBREY, Lynchburg, S. C. Law
 WALLACE, GERALDINE D., Coronado Beach, Fla. Liberal Arts
 WARE, ELMER W., St. Andrews, Fla. Liberal Arts
 WARREN, DORIS, Olney, Ill. Liberal Arts
 WATSON, DONALD J., St. Petersburg, Fla. Liberal Arts
 WATSON, FRANK B., JR., Miami, Fla. Liberal Arts
 WEBBER, JOYCE M., DeLand, Fla. Liberal Arts
 WELDEN, ELIZABETH ANNE, Jacksonville, Fla. Music



WATSON, DONALD
WEBBER

WATSON, FRANK
WELDEN

JUNIOR CLASS

WHITEHURST, GEORGE W., Jr., First Myers, Fla. Law

WYNNS, WILLIAM CLIFFORD, Bushnell, Fla. Music

YENETCHI, IVAN H., Daytona Beach, Fla. Law

ZORNES, BETTY LEE, DeLand, Fla. Music



WHITEHURST

WYNNS

YENETCHI

ZORNES

JUNIORS NOT PICTURED

BERGER, MELVIN W., Tampa, Fla.

SMITH, WALLACE R., DeLand, Fla.

ROSSITER, ANNIE F., DeLand, Fla.

SULLIVAN, PAULINE, Orlando, Fla.

Already Yesterday

(Continued from Page 38)

college would be better off without—studies. . . . The nightmare of first-semester exams complete with No-Doze pills, midnight oil, recopied tempapers, sessions at the Library fondly referred to as the Phi Beta House finally consummated with sighs of relief heard 'round the world. . . . Second semester opening with loss of familiar faces to the armed forces and elsewhere. . . . The ordeal of registration for the final time. . . . Founder's Day replacing the traditional Homecoming. . . . Returning alumni less than in former years. . . . Two Barrie plays at the theatre, and the usual Theta Alpha Phi banquets, chapels, speeches, and parties. . . . Effects of war becoming more obvious. . . . Party-mongers being cut to the nub by more stringent enforcement of the Council rules. . . . Coca-Cola becoming the Stetson favorite drink just when sugar shortage forces it to be rationed. . . . Boys getting campused as well as girls. . . . Tri-Deltas starting off new festivities with a grand dinner-dance at the College Arms. . . . The theatre again, this time with Russ Stilwell, uproarious as the alluring "Charley's Aunt". . . . Alpha Xi's hitting the spot with their dance at the Putnam announcing the engagement of Welden to Stacey, Lois Johnson to Merchant, El Hillman to Voss, and B. A. Branon to ex-Dean Lambert. . . . Drama scoring a triumph after a round of comedies, with the Stetson players outdoing themselves in "The Little Foxes". . . . Voncile Powell upholding the honor of the seniors against Anders and Freedlund. . . . The Sigma Nu's carrying out the war theme with their Dance for Victory, sporting a huge "V" in red, white and blue. . . . The Delta Sig's winning the Intramural Sing. . . . The untimely loss of Ed Furlong, professor extraordinary, to the Army. . . . The announcement of a full twelve-month college year, plus streamlined courses—to do in two years what took us four. . . . Parties at the beaches and the 'Nique wonderful but infrequent with tire rationing and all that. . . . Recalling of the "Pirates of Penzance" for a major achievement by the Music School. . . . Pi Kap's rounding out the dance season by covering their dates with orchids, followed by the Delta Sigs, affording a delightfully informal Sailors' Ball. . . . days flying swiftly by as Spring Vacation is left behind. . . . Suddenly, the renewed threat from the East—Exams—with us again. . . . The Big House, alias Chaudoin, agleam with night lights—blackouts called off for the duration of the study emergency. . . . The strains of Alma Mater growing stronger as The Day approaches.—Proud parents and relatives gathering—Commencement line forming (under the palms) from the Library to the Chapel—finally, the climax of undergraduate desire, with Dr. Allen passing the sheepskin and extending his hand to each of the black robes passing by—everyone wishing Godspeed to us, the students, as we enter into the dark world. . . . Can it be that this is already yesterday?



Sophomores



RAYMOND W. ALDEN, JR. Daytona Beach, Fla.
LIBERAL ARTS

BETTY JANE AMIDON Lakeland, Fla.
BUSINESS

FLONNIE M. ANDERS Jacksonville, Fla.
LIBERAL ARTS

RUSSELL E. ANDERSON Franklin, Ind.
BUSINESS

MARTHA ARNOLD Winter Garden, Fla.
LIBERAL ARTS

VERNA L. BEAR DeLand, Fla.
MUSIC

BETTY JOE BARNES Jacksonville, Fla.
LIBERAL ARTS

ELEANOR BASS Bradenton, Fla.
LIBERAL ARTS

ANN S. BAUER Oak Park, Ill.
LIBERAL ARTS

CONSTANCE BENNETT Babson Park, Fla.
LIBERAL ARTS

HELEN BENNETT Miami, Fla.
MUSIC

BARBARA BLACK Jacksonville, Fla.
LIBERAL ARTS

DON H. BLACK Knoxville, Tenn.
LIBERAL ARTS

THEODORE BOUTWELL Jacksonville, Fla.
LIBERAL ARTS

ANN BOYD Lake Worth, Fla.
LIBERAL ARTS

GARLAND BRANCH Plant City, Fla.
LIBERAL ARTS

CLAIRE BRANDIES Callahan, Fla.
LIBERAL ARTS

FRANCES E. BROWN Jacksonville, Fla.
BUSINESS

ROBERT H. BROWN DeLand, Fla.
BUSINESS

HARRY BROWNLEE Sanford, Fla.
LIBERAL ARTS

CLAIRE BUMGARNER DeLand, Fla.
LIBERAL ARTS

BARBARA JEAN BURGMAN Daytona Beach, Fla.
 BUSINESS

GEORGINE CASTAGNET Havana, Cuba
 LIBERAL ARTS

JOHN F. CAUSIER West Palm Beach, Fla.
 LIBERAL ARTS

LEWIS CLADIN Sarasota, Fla.
 LIBERAL ARTS

WILBER T. CLONTS Oakland, Fla.
 LIBERAL ARTS

EDGAR R. COOPER Fort Pierce, Fla.
 LIBERAL ARTS

DELPHENE COVERSTON Bushnell, Fla.
 LIBERAL ARTS

C. DEKLE DeLOACH Clayton, Ga.
 LAW

MARLIN DON Chicago, Ill.
 MUSIC

JEAN DOUGLAS D. Land, Fla.
 LIBERAL ARTS

ROBERT MOORE VALENTI Land, Fla.
 LIBERAL ARTS

MARTHA EUPPRANCE Florida, Fla.
 MUSIC

NINA DYAL Hollywood, Fla.
 LIBERAL ARTS

RUTH EATON Jacksonville, Fla.
 LIBERAL ARTS

LORI TH. V. ESTABROOK Chicago, Ill.
 LIBERAL ARTS

WILBUR H. EICHHOLZ Jacksonville, Fla.
 BUSINESS

JEAN L. ELLIOTT St. Petersburg, Fla.
 BUSINESS

FLORENCE A. EUGA Jacksonville, Fla.
 MUSIC

FRANK FOLTZ Jacksonville, Fla.
 LIBERAL ARTS

ERNA FREEBERG North Haven, Conn.
 BUSINESS

PHYLLIS FREEBERG Memphis, Tenn.
 BUSINESS





ELAINE FREEDLUND Belle Glade, Fla.
LIBERAL ARTS
RUTH E. FRENCH Jacksonville, Fla.
LIBERAL ARTS
HELENE E. FULLER DeLand, Fla.
BUSINESS
DAVID M. GARDNER, JR. St. Petersburg, Fla.
LIBERAL ARTS
HARVEY A. GARDNER, JR. Miami, Fla.
BUSINESS
JEANNE S. GARRARD Miami Beach, Fla.
LIBERAL ARTS
HARRIS P. GRAVELY Millbrook, Ala.
BUSINESS
WALKER S. GREEN DeFuniak Springs, Fla.
LIBERAL ARTS
V. ELOIS HOGAN Sanford, Fla.
LIBERAL ARTS
DORIS M. HARTMAN Daytona Beach, Fla.
LIBERAL ARTS

GARLAND HAYES, JR. Fort Pierce, Fla.
LIBERAL ARTS
EUGENE C. HEAD Ft. Meade, Fla.
BUSINESS
ROBERT D. HENRY DeLand, Fla.
LIBERAL ARTS
LOIS E. HENSLEY Tampa, Fla.
LIBERAL ARTS
WILLIAM F. HERPEL West Palm Beach, Fla.
BUSINESS
PATRICK HILL Dade City, Fla.
LIBERAL ARTS
RUTH A. HILLMAN Orlando, Fla.
BUSINESS
ELIZABETH HOWELL DeFuniak Springs, Fla.
MUSIC
CAROLYN V. HOWES DeLand, Fla.
LIBERAL ARTS
N. LeJEUNE HUGHES Orange Heights, Fla.

JOHNNY J. JONES, JR. DeLand, Fla.
BUSINESS

MARION KELLEY New York, N. Y.
LIBERAL ARTS

CHARLES A. KEOSHIE Miami Beach, Fla.
BUSINESS

KARL F. KESMODEL, JR. Birmingham, Ala.
LIBERAL ARTS

ESTHER J. KIPP DeLand, Fla.
LIBERAL ARTS

BETTY JANE KIRKPATRICK Jacksonville, Fla.
LIBERAL ARTS

MARY ANN KIRKPATRICK Jacksonville, Fla.
LIBERAL ARTS

JAMES E. KNIGHT, JR. Jacksonville, Fla.
LIBERAL ARTS

JANE L. KNIGHT Miami, Fla.
LIBERAL ARTS

CHARLOTTE KNOX DeLand, Fla.
LIBERAL ARTS

ROBERT E. LEE, JR. DeLand, Fla.
LIBERAL ARTS

SYBIL LYTTLE Winter, Fla.
BUSINESS

VIRGINIA McCLANAHAN Winter, Fla.
BUSINESS

FRANK M. DONALD Miami, Fla.
BUSINESS

MARION M. EACHERN St. Petersburg, Fla.
LIBERAL ARTS

MARY CREE M. LAUGHLIN DeLand, Fla.
LIBERAL ARTS

DOROTHY M. LEAN DeLand, Fla.
LIBERAL ARTS

WINSTON C. McQUIDDY Jacksonville, Fla.
LIBERAL ARTS

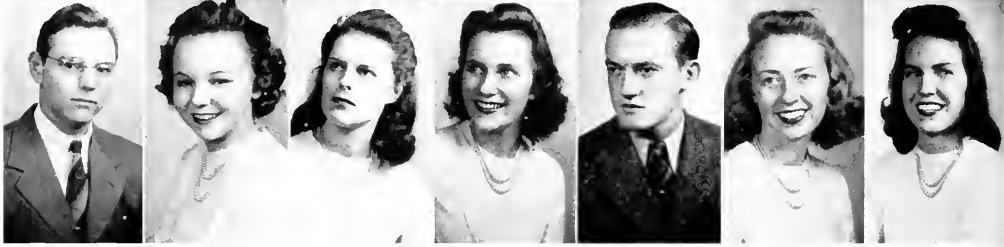
DOROTHY M. MARTIN Huntington, W. Va.
LIBERAL ARTS

HELEN J. MATHIS Tampa, Fla.
LIBERAL ARTS

RUTH LOIS MAXWELL DeLand, Fla.
LIBERAL ARTS

EDWARD FOPREST MAY Sanford, Fla.
LIBERAL ARTS





JOHN KURTZ Ft. Myers, Fla.
LAW

R. DALE MELCHING Miami, Fla.
BUSINESS

COUNCIL J. MILLER, JR. Daytona Beach, Fla.
LIBERAL ARTS

MAURICE MILLER DeLand, Fla.
LAW

THEODORE R. MIMS Tampa, Fla.
LIBERAL ARTS

LULA MAE MORRISON Miami, Fla.
LIBERAL ARTS

BRUCE MUIRHEAD Sanford, Fla.
LIBERAL ARTS

CHRIS NAPOLI Tampa, Fla.
LIBERAL ARTS

JAMES NELSON LaFayette, Ind.
BUSINESS

EDWARD F. NEW Indianapolis, Ind.
LAW

LEROY NEW Indianapolis, Ind.
LAW

RUTH M. ODUM Lakeland, Fla.
LIBERAL ARTS

NANCY C. OSBORN Lake Worth, Fla.
BUSINESS

THERON J. OWEN Tallahassee, Fla.
LIBERAL ARTS

JAMES B. OWENS Tarpon Springs, Fla.
LIBERAL ARTS

MARY PARDEE Avon Park, Fla.
LIBERAL ARTS

BETTY JANE PARKINS Sarasota, Fla.
BUSINESS

BETTY JEAN PARFITT South Jacksonville, Fla.
BUSINESS

CARL S. PARSONS Zephyrhills, Fla.
BUSINESS

PATRICIA PEIFER DeLand, Fla.
LIBERAL ARTS

ROSAMUND POPE Lacoochee, Fla.
LIBERAL ARTS

BETTY W. POWERS LIBERAL ARTS Tallahassee, Fla.
 WALTER L. PURTZ LIBERAL ARTS Sarasota, Fla.
 JANE P. RIESL LIBERAL ARTS Tallahassee, Fla.
 BRUCE REID BUSINESS Panama, Fla.
 MARION U. REID LIBERAL ARTS Lake Worth, Fla.
 BESSIE A. RHODES LIBERAL ARTS Jacksonville, Fla.
 HELEN ROGERS BUSINESS St. Petersburg, Fla.
 MARGARET P. ROSEBOROUGH LIBERAL ARTS D. Land, Fla.
 SARAH E. ROWLETT LIBERAL ARTS D. Land, Fla.
 AARON RUTLEDGE LIBERAL ARTS D. Land, Fla.

VERNE N. SANDERS LIBERAL ARTS Tallahassee, Fla.
 EMMA L. SEDWICK LIBERAL ARTS Tallahassee, Fla.
 HARRIET E. SIMPSON LIBERAL ARTS Tallahassee, Fla.
 BETTY P. SMILEY LIBERAL ARTS Daytona Beach, Fla.
 FARRIS McPERRILL SMITH, JR. LIBERAL ARTS Daytona Beach, Fla.
 DONNA L. SMITH MUSIC Tallahassee, Fla.
 J. RICHARD SMITH LIBERAL ARTS Tallahassee, Fla.
 PAYMOND C. SPAULDING LIBERAL ARTS D. Land, Fla.
 MAX H. STAMPER, JR. LIBERAL ARTS Madison, Fla.
 ANITA E. SCHROEDER MUSIC Daytona Beach, Fla.

PAULA L. SPECHT MUSIC Miami, Fla.





HARRY E. SNYDER Cottickill, N. Y.
 BUSINESS

JAMES BENNETT STONE Blountstown, Fla.
 LIBERAL ARTS

EVELYN A. STOWE Sanford, Fla.
 LIBERAL ARTS

ESTHER L. STRANGE Sanford, Fla.
 LIBERAL ARTS

ROY C. SUMMERLIN Winter Haven, Fla.
 LIBERAL ARTS

PATRICIA J. SWEET Ft. Wayne, Ind.
 BUSINESS

A. LORRAINE TAYLOR LaBelle, Fla.
 BUSINESS

HELEN J. TENNILLE Tampa, Fla.
 MUSIC

S. DOROTHY TRAWICK Cedar Key, Fla.
 LIBERAL ARTS

FRANCES M. TWITTY West Palm Beach, Fla.
 LIBERAL ARTS

LOUBELLE TYRE Putnam Hall, Fla.
 BUSINESS

DORA R. VALDES Tampa, Fla.
 MUSIC

RUBY WAGNER North Bergen, N. J.
 MUSIC

ROBERT WHEATLY Jacksonville, Fla.
 LIBERAL ARTS

BARBARA WHITE Mt. Vernon, Ohio
 LIBERAL ARTS

RUTH F. WHITE Dade City, Fla.
 LIBERAL ARTS

EVERETT WHITMAN Sarasota, Fla.
 LIBERAL ARTS

DOROTHY WIDDERSHEIM Miami, Fla.
 LIBERAL ARTS

O. GORDON WILLIAMSON Baltimore, Md.
 LIBERAL ARTS

ALICE WINBURN Enterprise, Fla.
 LIBERAL ARTS

ANNETTE WOLCOTT Daytona Beach, Fla.
 LIBERAL ARTS

SOPHOMORES WITHOUT PICTURES

MARY LOUISE CHALKER Dunnellon, Fla.
 LIBERAL ARTS

ANDREW JACKSON HAYWARD, JR. Dade City, Fla.
 LIBERAL ARTS

TROY H. JONES, JR. Lacomchee, Fla.
 MUSIC

WILLIAM E. KENT Lake Wales, Fla.
 LIBERAL ARTS

MINERVA LONG Lake Helen, Fla.
 LIBERAL ARTS

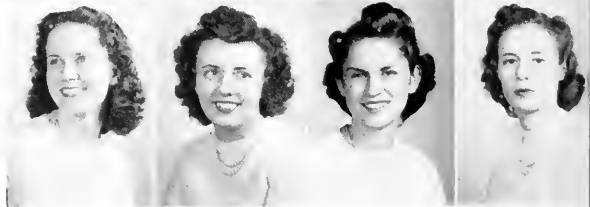
FRANCES B. MADDEN Eagle Lake, Fla.
 LIBERAL ARTS



Freshmen

BETTE ADPINS

Heley, Mont. Liberal Arts
 GAIL AGARD
 Jacksonville, Fla. Business
 VIRGINIA AGETT
 Ringport, Tenn. Liberal Arts
 FREDERIC C. ALLAND
 Jacksonville, Fla. Liberal Arts
 GEORGE J. ARFRARAS
 Fernandina, Fla. Liberal Arts
 BERNICE BAER
 Williston, Fla. Business
 ROBERT J. BAKER
 West Palm Beach, Fla. Liberal Arts
 ELAINE P. BARPON
 North Miami, Fla. Liberal Arts
 EDITH R. BENNETT
 Tranuck, N. J. Liberal Arts
 ROBERTA B. BENNETT
 Babson Park, Fla. Liberal Arts
 GEORGIA O. BENTON
 St. Marks, Fla. Liberal Arts
 DELORIS L. BETHEA
 Lakeland, Fla. Business
 E. ANNETTE BOLTON
 Jacksonville, Fla. Liberal Arts
 HEYLEN J. BOLTON
 Carbondale, Pa. Business
 D. JEAN BRANDON
 DeLand, Fla. Business
 JEAN A. BRONSON
 Endicott, N. Y. Liberal Arts
 JANET E. BROWN
 Miami, Fla. Liberal Arts
 LOUISE H. BROWN
 DeLand, Fla. Liberal Arts
 JUNE E. BRYAN
 Jacksonville, Fla. Liberal Arts
 CAROLYN V. BUCY
 DeLand, Fla. Liberal Arts
 IRENE CAMPBELL
 Miami, Fla. Liberal Arts
 BETTY ANN CANNON
 Frostproof, Fla. Liberal Arts
 GORDON E. CARLSON
 St. Petersburg, Fla. Business
 SARA M. CHENEY
 Sarasota, Fla. Business



FRESHMAN

GLORIA M. FREEMAN
Jacksonville, Fla. Business

F. ELAINE FRETWELL
Jacksonville, Fla. Business

ALVIN E. FULLER, JR.
Miami, Fla. Liberal Arts

MARILYN GARDNER
St. Petersburg, Fla. Liberal Arts

E. ROSEMARY GARRISON
Jacksonville, Fla. Business

MARY W. GEISSINGER
D. Land, Fla. Business

DANIEL C. GILLESPIE
Daytona Beach, Fla. Liberal Arts

SARAH JO GOODIN
Tampa, Fla. Liberal Arts

GEORGE W. GOODMAN
Raspille, N. J. Liberal Arts

CLIFFORD W. GOTAAS
Ch. Lago, Ill. Liberal Arts

LEONARD A. GURRY
D. Land, Fla. Business

BENJAMIN E. HADDOX
Orlando, Fla. Liberal Arts

MARILEE HARPER
Laf. Land, Fla. Business

ANDRE F. HAUERBACH
Maplewood, N. J. Liberal Arts

MARY LOUISE HAVENS
Charlotte, N. C. Business

W. WILSON HAYNES
Winter Haven, Fla. Business

ROSEMARY HEFTY
Miami, Fla. Liberal Arts

JANE C. HILEMAN
Daytona Beach, Fla. Liberal Arts

ELEANOR J. HOLDEMAN
DeLand, Fla. Liberal Arts

ROBERT A. HOLLENBECK
Eustis, Fla. Liberal Arts

VIRGINIA HUGHES
Orange Heights, Fla. Music

O. BROOKS HUDGINS
Bradenton, Fla. Music

WILLIAM T. HUNTER
Enterprise, Fla. Liberal Arts

MARY K. JAMESON
Bell. Glade, Fla. Liberal Arts

S. BRYAN JENNINGS, JR.
Doctor's Inlet, Fla. Liberal Arts

EDITH J. JOHNSEN
Oakland Park, Fla. Liberal Arts



FRESHMAN



AL E. HINCH
 F. E. HINCH
 FRANK F. HINCH
 MARY F. HINCH
 DAVY A. HINES
 ALICE KAZMER ZAK
 HEUTER L. KAZMER ZAK
 MELBA M. KEN
 MARGORIE HARSEY
 A. FLAMING KEY
 GLAUS F. KEYS
 JAMES W. KIEFER
 VIOLETTE T. KOLEFF
 EITTE LYNN
 ELIZABETH B. KRAMER
 NANCY ANNE LAKE
 MARIPEE LA
 LUNNIE H. LITSE
 DOROTHY E. LIDFETT
 DAVIS L. LONG
 CLIFTON W. LOVELAND
 JEANETTE E. M. ARTHUR
 LILLIAN F. McCLEMENT
 HARRY C. M. COLLUM, JR.
 BETTE M. IRVIN
 GEORGE B. McLEAN, JR.
 DENNIS C. M. NAMAPA



CLASS

ELLEN LEE MARCUM
Fla. Business

HELEN C. MARTIN
Birmingham, Ala. Liberal Arts

MAE E. MARTIN
Jacksonville, Fla. Business

SAM C. MARTINO
Tampa, Fla. Liberal Arts

ADELBERT MATCHETT
North Miami, Fla. Business

O. PALPH MATOUSEK
Fort Pierce Beach, Fla. Liberal Arts

JEANNE MAXWELL
DeLand, Fla. Business

LESLIE H. MAXWELL
Fort Lauderdale, Fla. Business

RICHARD D. MERPITT
Oklahoma, Fla. Business

LETA M. MITCHELL
Fort Meade, Fla. Liberal Arts

PHYLLIS A. MITCHELL
Daytona Beach, Fla. Liberal Arts

WILLIAM F. MITCHELL
Miami Beach, Fla. Liberal Arts

E. LAVERGNE MIXON
L. Oat, Fla. Liberal Arts

MAVEPA E. MOCK
New Orleans, La. Liberal Arts

ANITA E. MOIDPE
Temuco, Chile, S. A. Liberal Arts

DOROTHY JANE MORRIS
Indianapolis, Ind. Liberal Arts

RUSSELL H. NAHM
DeLand, Fla. Business

JEANNE NEELY
Sarasota, Fla. Business

EUGENE R. NICKLAS
St. Petersburg, Fla. Liberal Arts

BETTIE J. NIEMANN
Quincy, Ill. Liberal Arts

HELEN E. OLIVER
Baldwin, Fla. Business

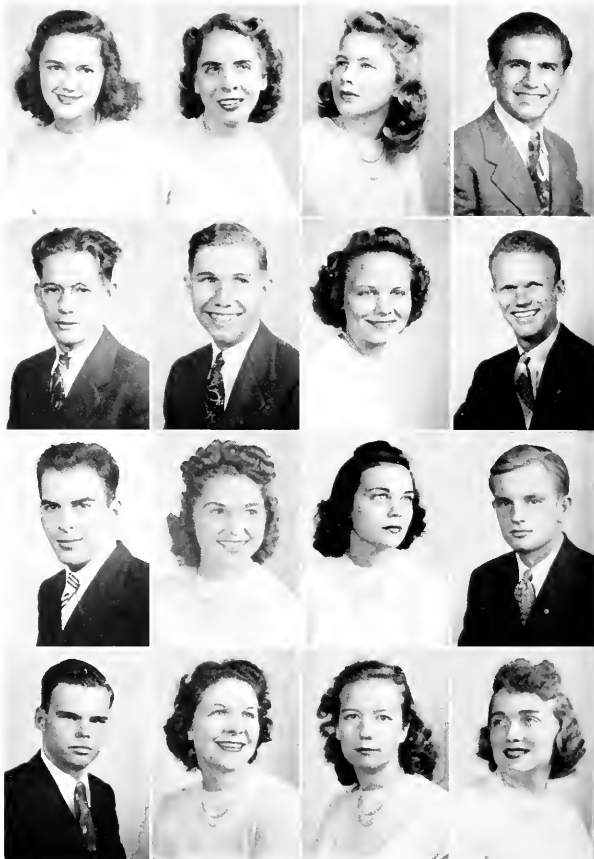
DORIS O. O'NEAL
Tampa, Fla. Liberal Arts

DOPOTHEA E. OSTERMAN
DeLand, Fla. Liberal Arts

PALFH W. PALMER
Lake Como, Fla. Liberal Arts

DOROTHY ANN PARKINS
Sarasota, Fla. Business

ROBERT PARKS
Daytona Beach, Fla. Music



FRESHMAN

RYAN M. STOERK
 Jacksonville, Fla. Business
 JEAN C. STUMPP
 Daytona Beach, Fla. Business
 ERSE V. STONE
 Fort St. John, Fla. Music
 CHARLES A. SUTTON JR.
 Lakeland, Fla. Liberal Arts
 FLORENCE B. SUTTON
 Fernandina, Fla. Business
 HARLAN S. SUTTON
 Auburndale, Fla. Business
 CAROLINE M. TALLANT
 Bradenton, Fla. Business
 FENNETH C. THOMAS
 Honaker, Va. Business
 JAMES L. TOMBERLIN
 Miami, Fla. Liberal Arts
 MARGARET TREADWAY
 Tavares, Fla. Liberal Arts
 EDITH TRESHER
 Jacksonville, Fla. Business
 WILLIAM H. TRIBBLE
 DeLand, Fla. Business
 JEAN L. TRIGG
 Tampa, Fla. Liberal Arts
 NATALIE TRUE
 Lak. Mary, Fla. Liberal Arts
 HERMAN L. TURNAGE
 Jaxonville, N. C. Liberal Arts
 MARYSE J. TYRE
 Eustis, Fla. Business
 M. ALLENE TWINING
 Lakewood, Ohio Liberal Arts
 LURA M. TYNER
 Lakeland, Fla. Liberal Arts
 DIXIE LEE VANCE
 DeLand, Fla. Music
 EMILY F. VAN HEUSEN
 St. Petersburg, Fla. Liberal Arts
 E. JANICE VICKERY
 Griffin, Ga. Liberal Arts
 J. BROOKS WALKER
 Eustis, Fla. Business
 ELIZABETH LEE WALTERS
 DeLand, Fla. Business
 MARTHA W. WHITE
 Perry, Fla. Music
 BARBARA WHITEHURST
 Fort Myers, Fla. Liberal Arts
 MARY A. WINFENWEDER
 Waycross, Ga. Liberal Arts



FRESHMAN



RICHARD WINKENWERFER
Waynesville, Ga. Liberal Arts

JAMES W. WITHERS
Miami, Fla. Business

ALAN F. ZEGLER
Lakeland, Fla. Liberal Arts

FRESHMEN NOT PICTURED

LILYAN ACOSTA
Jacksonville, Fla. Business

MARGARET M. MADDEN
Eagle Lake, Fla. Liberal Arts

JOSEPH E. ADNEY, JR.
DeLand, Fla. Liberal Arts

EDWARD H. MAYWELL
DeLand, Fla. Liberal Arts

JO EVELYN ANDERSON
Auburndale, Fla. Liberal Arts

ROBERT G. MAY
Sanford, Fla. Liberal Arts

WARREN ANDERSON
Enterprise, Fla. Liberal Arts

ELIZABETH M. MESSNER
St. Petersburg, Fla. Music

HARRY D. ATKINSON
Hollywood, Fla. Liberal Arts

MAMIE ANN MOORE
DeLand, Fla. Business

ROBERT BEZANT
Silver Springs, Fla. Liberal Arts

ALTON R. MYERS
Eustis, Fla. Business

AGNES G. COLEE
New Smyrna Beach, Fla. Liberal Arts

ALLAN W. ROBINSON
Key West, Fla. Liberal Arts

CONSTANCE COLEMAN
Chipley, Fla. Business

JOE D. SMITH, JR.
Daytona Beach, Fla. Liberal Arts

JEAN CONE
St. Augustine, Fla. Liberal Arts

KATIE LEE TALLEY
Douglas, Ga. Liberal Arts

JACK D. EMERSON
Eustis, Fla. Liberal Arts

M. JEAN TRESHER
Daytona Beach, Fla. Business

HELEN C. HARPER
DeLand, Fla. Liberal Arts

MAX A. WEISSENBURGER
DeLand, Fla. Liberal Arts

CALVIN O. WILLIAMS
Bayard, Fla. Business

CLASS



SATURDAY CLASSES

FACULTY

DR. R. E. CLARK
 MISS GERTRUDE FOSTER
 MRS. JOSEPHINE HOLCH
 CARL JOHNSON
 R. J. LONGSTREET

MRS. EDITH MERRILL
 M. J. PERRET
 MISS WINIFRED PYLE
 MISS SARA STAFF
 DR. HARRY L. TAYLOR

STUDENT BODY

Agnew, Myra
 Orlando, Fla.
 Baker, Mrs. Ola B.
 Buncell, Fla.
 Benson, Louise M.
 Daytona Beach, Fla.
 Booth, Ruby
 Lake Monroe, Fla.
 Bowles, Mrs. O. Flonda
 DeLand, Fla.
 Bozemen, Mrs. Ella E.
 Leesburg, Fla.
 Bradley, E. Charlotte
 DeLand, Fla.
 Brandon, Mary Louise
 Orange City, Fla.
 Brooks, Mrs. Eva S.
 Oak Hill, Fla.
 Cade, Mrs. Elizabeth J.
 Princeton, Fla.
 Cargile, Mrs. Loyce F.
 Clermont, Fla.
 Cartier, Mrs. Alma C.
 Oak Hill, Fla.
 DeMottis, Mrs. Esther M.
 Osteen, Fla.
 Foster, Gertrude H.
 DeLand, Fla.

Gaudet, Mrs. Pauline M.
 Daytona Beach, Fla.
 Glossar, Mrs. Esther L.
 Daytona Beach, Fla.
 Hanna, Helen C.
 New Smyrna Beach, Fla.
 Harper, Elizabeth J.
 DeLand, Fla.
 Henderson, Mrs. Ruth W.
 Barberville, Fla.
 Higgins, Mrs. Elizabeth L.
 Orlando, Fla.
 Holley, Mrs. C. C.
 Leesburg, Fla.
 Hoskins, Mrs. Erna
 Orlando, Fla.
 Hutson, Willie M.
 Daytona Beach, Fla.
 Humphrey, Mrs. Mary S.
 Daytona Beach, Fla.
 Kilgore, Mildred L.
 Orlando, Fla.
 Ligie, Plena B.
 Daytona Beach, Fla.
 Livcrett, Mrs. Edlette S.
 Daytona Beach, Fla.
 Lowe, Amy D.
 Orange City, Fla.

McColem, Mattie B.
 Daytona Beach, Fla.
 McCullough, Mrs. Essie M.
 Oak Hill, Fla.
 Mircs, Mrs. Frankie M.
 DeLand, Fla.
 Morrey, Pattie M.
 Orlando, Fla.
 Mountain, Lois M.
 Princeton, Fla.
 Peterson, Mrs. Clara U.
 Daytona Beach, Fla.
 Proctor, Florence S.
 Orlando, Fla.
 Richens, Mrs. Winifred K.
 Daytona Beach, Fla.
 Rowell, Ruth F.
 DeLand, Fla.
 Settle, Florence W.
 New Smyrna, Fla.
 Seymour, Olive H.
 DeLand, Fla.
 Scig, Mrs. Mayme F.
 Geneva, Fla.
 Scig, William L.
 Geneva, Fla.
 Stigler, Ferecl C.
 Holly Hill, Fla.

Stoops, Leora
 Umitilla, Fla.
 Stormant, Mrs. Verbia B.
 Umitilla, Fla.
 Swaverly, Mrs. Cordia A.
 Leesburg, Fla.
 Tanner, Annie L.
 Edgewater, Fla.
 Tedder, Ada C.
 Lakeland, Fla.
 Tucker, Hazel C.
 Daytona Beach, Fla.
 Vanlandingham, Mavis A.
 DeLand, Fla.
 Warren, Leana
 Daytona Beach, Fla.
 Waters, Mrs. Janet H.
 Seville, Fla.
 Wheelless, Mrs. Mildred D.
 Orlando, Fla.
 Williams, Mrs. Elsie B.
 Orlando, Fla.
 Woodward, Jean L.
 DeLand, Fla.
 Yelvington, Mrs. Alberta B.
 DeLeon Springs, Fla.



STETSON UNIVERSITY GLEE CLUB

HAROLD M. GIFFIN

Director

SOPRANOS

Gail Agard
 Frances Arkley
 Annette Bolton
 Elizabeth Branon
 Ann Burrell
 Georgine Castagnet
 Marjorie Coker
 Mary Lou Davis
 Florence Euga
 Grace Fearing

Elaine Fritwell
 Elizabeth Futch
 Rosemary Garrison
 Sarah Jo Goodin
 Andre Hauerbach
 Rosemary Hefty
 Ruth Hillman
 Elizabeth Howell
 Brooks Hudgins

Alma Kelley
 Nancy Ann Lane
 Eunice Lipsey
 Helen Mathis
 Elizabeth Messner
 Leta Mitchell
 Helen Oliver
 Agnes Paulk
 Barbara Podon

Elizabeth Pippin
 Mary Ramsey
 Bruce Reid
 Mary Frances Smith
 Anne Spinks
 Margaret Treadway
 Frances Twitty
 Kathryn Ward
 Barbara White

ALTOS

Betty Jane Amidon
 Bernice Baker
 Elaine Barron
 Helen Bennett
 Mary Bostick
 Frances Brown
 Mildred Dickert

Martha Durrance
 Margaret Foy
 Marilee Harper
 Barbara Hunter
 Berta Mae King
 Jane Knight

Olive Lord
 Lillian McClement
 Nell Mires
 Mary Mock
 Anita Moore
 Margaret Reaves

Joyce Roland
 Helen Tennille
 Elizabeth Weldon
 Martha White
 Dons Williams
 Betty Lee Zornes

TENORS

Theodore Boutwell
 Harold Clark
 James Golden

T. R. Mims
 Archie McMillan

Chris Napoli
 James Nelson

Herman Turnage
 Robert Wheatly

BASSES

Maurice Fain
 Hal Hunter
 Davis Long
 Adelbert Matchett

William Mathis
 Ralph Matousck
 William McClennen
 Onan Osburn

Harold Parsons
 Robbins Rice
 Paul Stewart

Allen Spanier
 Gordon Williamson
 Clifford Wynns



STETSON SYMPHONY ORCHESTRA

Season 1941-1942

WILLIAM H. BAILEY Conductor

Verna Baer, principal
Walter Behnke
Robert Parks

Bessie Rhodes
Sarah Hjert
Garland Branch

Leland Earnest
Mary Lou Turner
Ellen Marcum

LeJeune Hughes
Tippin Davidson

VIOLINS

Paula Lee Specht

VIOLAS

Donald Barger

Jean Botts
Ruby Wagner

William Mathis
Veronica Davis

'CELLOS

Virginia Hughes

Dora Valdez

BASS VIOLS

Horace Hawn

Horace Sutcliffe

FLUTES

Patrick Hill

Annette Wolcott

CLARINETS

Dick Feasel

Katherine Smith

Dixie Vance

OBOE

Dorris Holman

BASSOON

Cortez Tedder

TRUMPETS

Ruth Durrance

Jean Shaw

Everett Dix

TROMBONES

Anita Schroeder

Sarah Ann Forehand

Lee Crowell

FRENCH HORNS

Marlin Don

Katherine Allen

PERCUSSION

Donna Smith



PERSONNEL

FLUTES

Olive Lord
Jean Maxwell

OBOES

Doris Holman
Ruth Lois Maxwell

BASSOONS

Cortez Tedder
Edwards Clarke

CLARINETS

Dick Feasel
Katherine Smith
Frances Inman
Martha Durrance
Dixie Vance
Donald Barger
Ettie Koon
Clifton Loveland
Genevieve Kepler
Janet White
Pauline Jensen
Clifford McInnis

ALTO CLARINET

Horace Hawn

BASS CLARINET

Mary Ellen Nicholson

ALTO SAXOPHONE

J. C. Bradley

TENOR SAXOPHONE

Julian McInnis

BARITONE SAXOPHONE

Hubert Talton

BASS SAXOPHONE

Horace Hawn

CORNETS

Ruth Durrance
John Cross
Jean Shaw
J. T. Burdine
Betty Cannon
Robert Herndon

FRENCH HORNS

Robert Hollenbeck
Marlin Don
Katherine Allen
Lois Adams

TROMBONES

Sara Anne Forchard
Harriet Simpson
Connie Bradley

BARITONES

Lee Crowell
Betty Jane Amidon
Jesse Stone

BASSES

Jack Inman
Dick Coan
Hubert Norman

DRUMS

Charlotte Knox
Ruth Hunter
Jack Smith

TYMPANI

Donna Smith



The dust of memory falls upon the cheering crowds of other years. The parade of gridiron heroes fades into the past. Sandspurs and weeds choke the empty gridiron and yet, odd at it may seem, instead of decreasing athletic interest the intramural program has developed activity in a number of previously disinterested groups.

Stetson believes everyone has a place in athletics and is trying to fit each student into her new program which develops the health of the entire student body instead of that of a few. It develops the inner courage, determination, and sportsmanship as well as perfect teamwork.

Here are Stetson's athletics, a symbol of the spirit of freedom which led her to ignore public criticism and shape her athletic program to suit her needs.

Athletics



Hulley Gymnasium

BASKETBALL



Coach Cowell

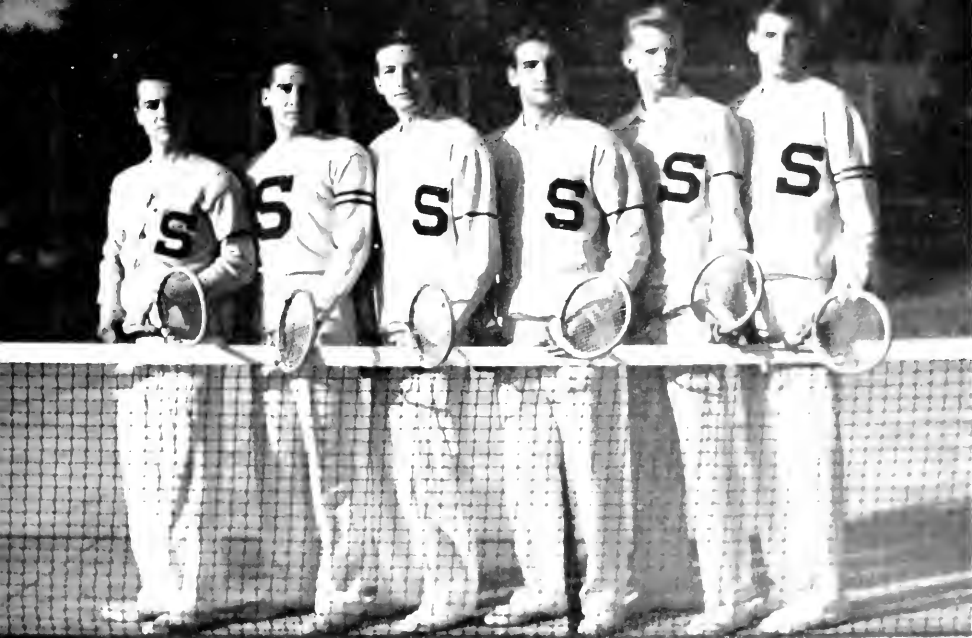
The "INDEPENDENTS"

1. Carl Purtz
2. Russell Anderson
3. Dale Melching
4. Frank Foltz
5. James Golden
6. Robert Barnes
7. Walter Purtz
8. Bryan Jennings
9. Kenneth Purtz



SCHEDULE

Stetson 38	Jax. Nav. Air Base	32
Stetson 85	Southern College	23
Stetson 50	Orlando Air Base	42
Stetson 38	Florida Pipe Line	49
Stetson 47	Miami University	42
Stetson 42	Miami University	34
Stetson 63	Orlando Air Base	49
Stetson 27	Jax. Nav. Air Base	31
Stetson 62	Southern College	32
Stetson 77	Tampa University	35
Stetson 85	Tampa University	17
Stetson 44	Miami University	37
Stetson 36	Miami University	40



TENNIS

1. Fred Head
2. Jack Gardner
3. Kenneth Furtz
4. "Wal," Furtz
5. Bib Brown
6. Carl Furtz



INTRAMURAL

INTRAMURAL MANAGERS

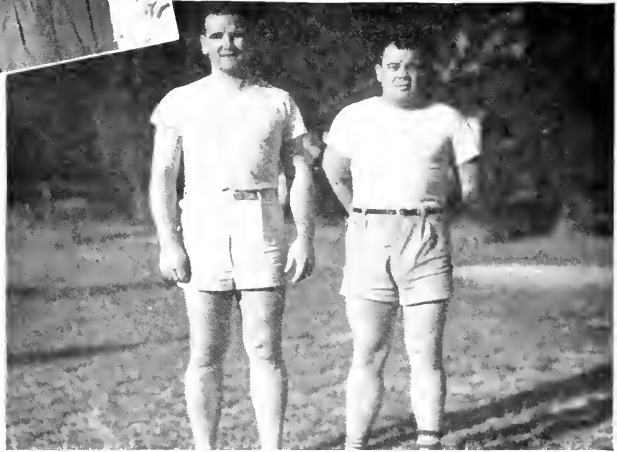
1. FRANK WHEELER . . . Conrad Hall
2. HERMAN TURNAGE . . . Stetson Hall
3. DONALD WATSON . . . Delta Sigma Phi
4. MAX STAMPER . . . General Manager
5. MARION REED . . . Ministers
6. TED BOUTWELL . . . Pi Kappa Phi



BADMINTON

STETSON HALL

1. "Cuddles" Furlong
2. Herman Turnage



FOOTBALL

PI KAPPA PHI

Front row, left to right:

1. WALTER PURTZ
2. KENNETH PURTZ
3. WILBUR CLONTS
4. CALVIN WILLIAMS
5. BOB COSIER
6. DICK STANIER
7. CARL PURTZ

Back row, left to right:

1. DEKLE DeLOACH
2. JAMES GOLDEN
3. TED BOUTWELL
4. "BO" WINKENWERDER





VOLLEYBALL

PREACHERS

Second row - left to right

GLENN PAYNE

T. R. MIMS

MAURICE FAIN

J. L. GREENE

LAYERGNE MIXON

DAVID SPERRING

Front row

ELMER WARE

JOHN LEWIS

BILLY STRICKLAND

CHRIS NAPOLI



BASKETBALL

PI KAPPA PHI

Front row, left to right

BOB COSIER

"BO" WINKENWERDER

DICK STANIER

TED BOUTWELL

Second row

WILBUR CLONIS

"WALLY" PURTZ

KENNETH PURTZ

CALVIN WILLIAMS

PING PONG

SIGMA NU

BOB BROWN

JIMMY KICKER



ATHLETIC DIRECTORS

To Stetson's athletic directors goes the credit for the greatly increased interest and activity in intramurals. Under their expert guidance the program has developed from a mere incidental into a dominant feature of our activity. Each individual is more aware of the benefit of athletic fitness than ever before.

The program includes not only individual sports, such as golf and tennis, but also team sports like volleyball, football and basketball, which develop team spirit and self-control.

So to you—our leaders and advisers—we express our appreciation.



COACH COWELL



"DOC" JOHNSON
Men's Intramurals



SARA STAFF
Women's
Intramurals



Front row, left to right: E. BENNETT, WHITE, WARREN, PASTEUR, C. BENNETT, ESTABROOK, P. BENNETT. Second row: GARDNER, KRAMER, R. BENNETT, OLIVER, SHONE, COVERSTON. Third row: CASTAGNET, STOWE, FREDLAND, HILL, EDWARDS, HISEY. Fourth row: SEDWICK, POPE, VICKERY, M. PAYNE, DAVIS, BETHEA, MITCHELL. BACK ROW: CANNON, CARLTON, TALLANT, HUDGINS, M. SMITH, KERSEY.

WOMEN'S ATHLETIC ASSOCIATION

The Women's Athletic Association is an organization for all college women; it not only fosters participation in sports, but also offers opportunity for fellowship in social activities. It is not necessary for a girl to be athletic to join W. A. A., for any girl who wants to have a good time and get the most out of her college course will find a welcome place in W. A. A.

OFFICERS

POLLY PASTEUR	President
DORIS WARREN	Vice-President
CONSTANCE BENNETT	Recording Secretary
DOT McWHORTER	Corresponding Secretary
DOT ESTABROOK	Treasurer
PAULINE BENNETT	Recorder of Points
RUTH WHITE	Publicity Manager
ESTHER HICK	Faculty Advisor

MEMBERS

Marjorie Ault	Annette Edwards	Mac Martin	Juni Shone
Betty Jo Barnes	Dorothy Estabrook	Dorothy McWhorter	Betty Smiley
Constance Bennett	Grace Fearing	Leta Mitchell	Gerry Smith
Edith Bennett	Elaine Fredland	Mary Mock	Mary Frances Smith
Pauline Bennett	Norma Gardner	Luella Nichols	Joyce Stoerk
Roberta Bennett	Bookie Geissinger	Helen Oliver	Carolyn Tallant
Deloris Bethea	Jeanne Garrard	Betty Jane Parkins	Marjorie Tyne
Ann Boyd	Carolyn Golsner	Dorothy Parkins	Janice Vickery
Louise Brown	Rosemary Hefty	Polly Pasteur	Doris Warren
Jane Bryan	Marie Hisey	Margaret Payne	Barbara White
Carolyn Buck	Edna Houghton	Terry Payne	Ruth White
Betty Ann Cannon	Brooks Hudgins	Pat Peifer	Doris Williams
Georgine Castagnet	Alice Johnson	Janice Phillips	Mary Winkenwerder
Marietta Chilli	Marion Kelley	Dot Pope	Annette Walcott
Delphine Coverston	Margaret Kersey	Betty Powers	Phyllis Freeburg
Bette Davis	Adelaide Key	Mary Louise Rehbaum	Mary Helen Hill
Jean Douglas	Betsy Kramer	Helen Rogers	Phyllis Brown
Mary Carlton	Eunice Lipsey	Emma Sedwick	Dorothy Jennings

W O M E N ' S

BOWLING

Deksioma

DORIS WARREN
DOROTHY ESTABROOK



ACTIVITY COACHES

DOROTHY ESTABROOK Basketball
CONSTANCE BENNETT Golf
DOROTHY McWHORTER Archery
PAULINE BENNETT Softball
ELAINE FREEDLAND Rifle
JEAN DOUGLAS Tennis
DORIS WARREN Chairman
(Not in picture)
RUTH WHITE Hockey
DOROTHY JENNINGS Bowling



CHEER LEADING SQUAD

LOU NICHOLS
MARY ANN KIRPATRICK
BETTY JEAN KIRPATRICK
RUTH WHITE



INTRAMURALS



ARCHERY

Zeta Tau Alpha

ARLENE TAYLOR
ANNETTE WILSON



INTRAMURAL MANAGERS

MARIE HISEY	ZETA
CONSTANCE BENNETT	HEPH
FAULINE BENNETT	ΣΣΣ
DOROTHY ESTABROOK	ΣΣΣ
JEAN TRIGG	ΣΣΣ



SIX-MEMBER HOCKEY TEAM

Dicksons	
MARIE WARREN	Half Back
CLAIRE BRANDIES	Half Back
DOROTHY ESTABROOK	R. Forward
RUTH WHITE	L. Forward
DELPHENE COVERSTON	Guard
MARY JAMESON	Center
(Not in picture)	
JEAN SHAW	R. Forward



Every year at Stetson there are some students who are regularly outstanding and it is a custom of the Hatter to honor them in the Feature Section. This year, as usual, the majority of our features are seniors, but a few well-known juniors are included in the section.

Ten of these students have been elected by the votes of the entire Student Body, and therefore they are the popular choice for their roles. The two most intellectual seniors were picked from their records in the registrar's office and so there can be no doubt as to their validity.

In addition to the regular features we have included some group pictures of the students who are listed in "Who's Who in American Colleges and Universities." Students prominent enough to be entered in that national publication should also be recognized on their home campus.

We conclude the feature section with a few pages of snapshots which, since they are voluntary contributions of the students themselves, give a composite picture of the informal life taking place on the campus.

Features



Science Hall

MOST VERSATILE

Jimmy

Polly



JAMES RAMSEY GOLDEN



POLLY PASTEUR

WILLIAM CLAUDIUS STRICKLAND



NANCY JANETTE ROSSETTER



Strick

Nancy

MOST INTELLECTUAL

BEST LOOKING

Nell



NELLIE FRANCES MIRES

VERNON WILLARD TURNER



Vernon

Nancy



NANCY JANETTE ROSSETER

SYDNEY JOHNSTON NIX



Sid

MOST LIKELY TO SUCCEED

MOST ATHLETIC

Purtz

Connie



CARL F. PURTZ, JR.



CONSTANCE H. BENNETT

JAMES R. GOLDEN



MARY R. MOCK



Jimmy

Mary

MOST POPULAR

SYDNEY NIX—Most Outstanding Chemist in Sophomore Class of 1940; President of Gamma Sigma Epsilon; President of Newton Club; Member of Der Deutsche Verein; President of Senior Class and Delta Sigma Phi.

VERNON TURNER—Law School; Charter Member and Past President of Beta Key; President of Delta Sigma Phi; Vice-President of Phi Alpha Delta; HATTER Staff; Mystic Krewe, "S" Club.

EDWARD DAIL—School of Business; Pi Gamma Mu; Commerce Club; Press Club; Secretary of Theta Alpha Phi; Stetson's Student Government; REPORTER Staff; Recorder of Sigma Nu; Vice-President of Senior Class.

JOHN LEWIS—Ministerial Student; Varsity Debate Team; Phi Society; President of International Relations Club; Mystic Krewe; Vice-President of State Baptist Student Union and President of the Campus Organization; President of Pi Kappa Delta.

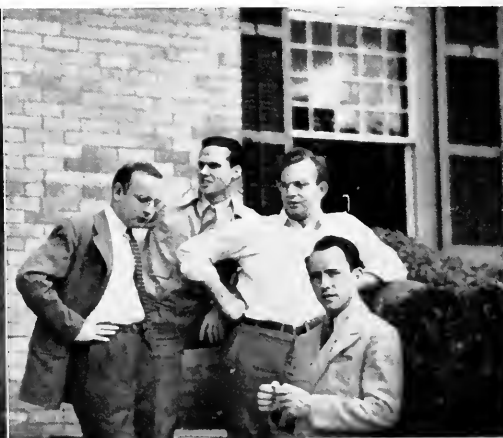
WILLIAM STRICKLAND—Ministerial Student; President of Ministerial Association; Vice-President of the Student Body; Member of Scroll and Key; International Relations Club; Phi Society; Der Deutsche Verein; History Club; Past Captain of Ministerial Intramurals.

HAROLD CLARK—Law School; President of Student Bar Association; Vice-President of Peace Club; Vice-President of Pi Kappa Delta; Member of Phi Alpha Delta; Key Member of Glee Club; Instructor in Swimming; Life-Saving and First Aid.

JAMES GOLDEN—President of the Student Body; Captain of Mystic Krewe; Manager of Men's Glee Club; Varsity Football Team; "S" Club; Pi Kappa Phi; Freshman Adviser; President of Junior Class Last Year.



WHO'S IN AMERICAN AND CO





WHO UNIVERSITIES LEGES

MARY LOU DAVIS—Past President of Der Deutsche Verein, Stetson's Radio Chorus, Women's Council, International R-Relations Club, Pan-Hellenic Council, Alpha Xi Delta, President of The Honor.

DOROTHY LOU BURGMAN—Member of The Honor, Gamma Sigma Epsilon, Blazer Club, Phi Society, Editor of Stetson REPORTER, Vice-President of Press Club, STETSONIAN and HATTER Staffs, Vice-President of Der Deutsche Verein, Delta Delta Delta.

ELEANOR HILLMAN—President of Alpha Xi Delta, Vice-President of Commerce Club and Newman Club, Member of The Honor, Pi Gamma Mu, Pi Kappa Sigma, Women's Council, Inter-Fraternity Council, Pan-Hellenic Council.

NANCY POSSETTER—Member of The Honor, President of Women's Council, Phi Society, La Franciade, Vice-President of Baptist Student Union Council, Scroll and Key, Treasurer of Student Body, Vice-President of Theta Alpha Phi, Stetson Religious Council, Pi Kappa Sigma, Dean's List.

MARGARET LINZEL—HATTER Staff, Women's Council, Stetson Religious Council, International Relations Club, Pi Beta Phi, Wesley Fellowship, Art Club, Young Women's Association, President of Stevens Hall, Women's Athletic Association.

POLLY PASTEUR—School of Business, HATTER Staff, President of Women's Athletic Association, Former President of Pi Beta Phi, Inter-Fraternity Council, Blazer Club, Commerce Club, Pi Gamma Mu, Vice-President of The Honor, Stetson REPORTER, Staff, Secretary of School of Business.

FRANCES McGARRAH—Former Stetson Drum Major, Phi Society, The Honor, Commerce Club, Vice-President of Pan-Hellenic Council and Pi Gamma Mu, Delta Delta Delta.





Quiz Time

1. Son-stroke.
2. Man of my dreams.
3. Sweet, ain't he?
4. Fajama party.
5. Lonesome?
6. Oh, Johnny!
7. Pocahontas?
8. Holey, Holey, Holey.
9. Backstage?
10. Po' relations
11. Military tactics.
12. June first.
13. Efficiency experts.
14. Before rationing?
15. Time was.
16. Pre-Stoerk days.



Lab Techniq...



From the Psychological
Point of View



Snaps



Snaps



Snaps



After the Grind

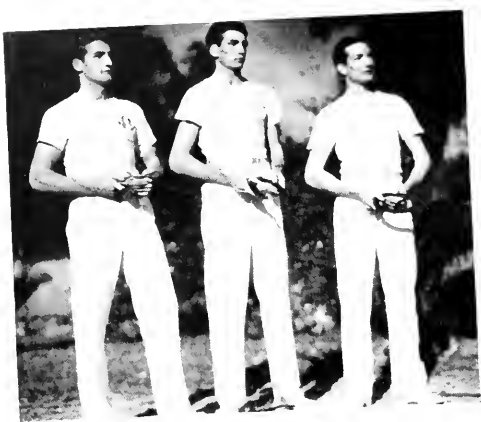


Send the Light



Getting An Insight

1. Li'l Abner—Yoo-hoo!
2. Thus Stetson goes forward
3. Man - hunt.
4. Wrong-way Corrigan.
5. Glory Halleluiah.
6. Who would have thought it of Parsons?
7. Steer clear.
8. "If I had the wings of an angel"
9. Beast o' Burden.
10. Be right there darling!
11. Dean's list.
12. It's Monday night, Rats!
13. Smoothie.
14. Dangerous curves.
15. What's that you're studying, boys?



Three of a Kind

1. "Ladies Night"
2. Fast talkin'
3. Woodman spare that block!
4. Sign here please
5. Oh yes, he has!
6. Sing for your salary!
7. Five till eight.
8. Go the line!
9. Glamor pants.
10. Dixie Dix.
11. Forlorn freshmen.
12. The man who came to dinner.
13. Oh promise me.
14. Love is blind!
15. A blushing Baptist Bride.



Youth Has It's Fling



Family Carriage

Suaps





The extra-curricular activities of a student are often as necessary as the classroom work because they train the individual in social adjustments. For all the information in the world will not make one a good citizen if he does not know how to apply it.

Stetson has combined adaptation with the formal side of education in the effort to make useful citizens of its students. Therefore, it has sponsored approximately fifty organizations on the campus. Although a number of these are local most of them are chapters of national honorary fraternities which keep up the high standard of scholarship and leadership. Each organization stresses one particular field and honors those students who excel in it.

However, two organizations on the campus encourage the development of the all-round individual. The Honor and The Mystic Krewe include in their numbers the outstanding leaders of every field of campus activity. These groups instigate much of the extra curricular activity at Stetson. In recognition of their achievement we place them first in this section.

Organizations



Stetson Commons



MYSTIC KREWE

Founded in 1934
Colors: Red and Black

OFFICERS

First Semester	Second Semester
GOLDEN Captain	FEASEL Captain
FEASEL First Mate	KURTZ First Mate
KURTZ Second Mate	BRANCH Second Mate
TURNER Boatswain	LEWIS Boatswain
LEWIS Cabin Boy	WYNNIS Cabin Boy

MEMBERS

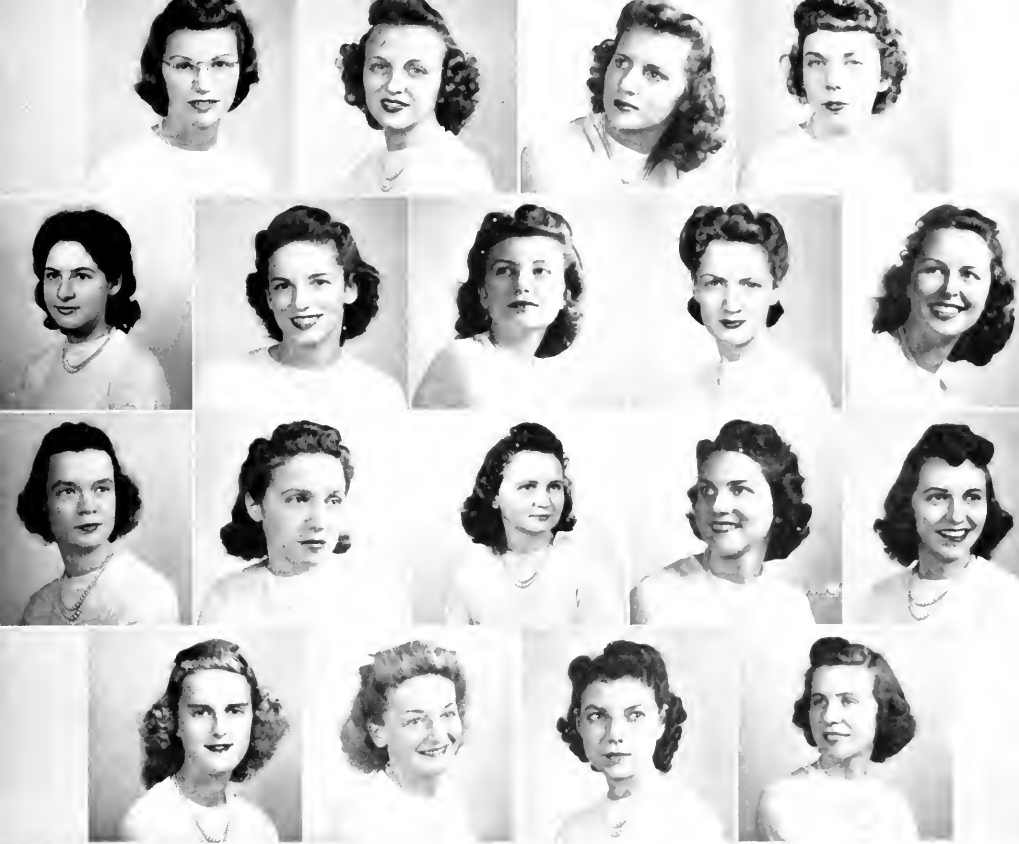
- | | | |
|------------------------|--------------------|------------------------|
| T. Patrick Arnold | James R. Golden | Carl F. Purtz, Jr. |
| Garland M. Branch, Jr. | John H. Kurtz | William C. Strickland |
| Harold R. Clark | John L. Lewis | Vernon W. Turner |
| Richard M. Feasel | Sydney J. Nix, Jr. | William Clifford Wynns |

The Mystic Krewe, honorary and leadership fraternity for men, successfully planned, fostered, and co-ordinated the Red Cross war fund drive on the campus in co-operation with the local Red Cross chapter and special committees. Because of the war situation, the Krewe, which directs Stetson's annual Home-coming program,

altered the old Home-coming plans and instead fostered the first observance of Founder's Day. The Mystic Krewe recognizes and encourages scholarship and leadership by inviting each year into its membership such men as it deems worthy of the honor, and also by presenting annually a plaque to the most outstanding freshman boy.

PLEDGES

- | | | |
|-----------------|----------------|-------------------|
| Arthur J. Estes | Fred E. Kiehle | William S. Mathis |
| Horace C. Hawn | Angelo Martino | Frank B. Watson |



BOTTS
FUTCH

DAVIS
PAYNE

BURGMAN
HILLMAN

PASTEUR
PHILLIPS

CLARSON
MCCLURE

MCGARRAH
REAVES

FISHER
MIRES

BURRELL
ROSSETTER

FOY
MOCK

THE HONOR

HONORARY LEADERSHIP ORGANIZATION FOR WOMEN

Established in 1935

Colors: Green, White, and Yellow

Flower: White Lily

OFFICERS

MARY LOU DAVIS President
 POLLY PASTEUR Vice President
 FRANCES M-GARRAH Secretary
 ANN BURRELL Treasurer

ACTIVE MEMBERS

Jean Bolts
 Dori Lou Burgman
 Ann Burrell
 Dorothea Clarson
 Mary Lou Davis
 Elizabeth Fisher
 Thelma Fiske

Margaret Fry
 Elizabeth Futch
 Eleanor Hillman
 Louise McClure
 Frances McGarrah
 Mary Mock

Polly Pasteur
 Nell Mires
 Margaret Payne
 Elaine Phillips
 Margaret Reaves
 Nancy Rossetter

FACULTY MEMBERS

Lydia Thurmer

Etter Turner

Eunice Webber

Each year The Honor presents an award to the outstanding freshman girl. This year The Honor is beginning the custom of presenting an award at commencement to the outstanding senior woman—the one who has done the most for her school. Other activities this year have been the selling of tickets for the Red Cross Capers and the sponsoring of Sunday afternoon coffees for Stetson students.



STRICKLAND
BRANCH
KAYE

CLARSON
LEWIS

PAYNE
FEASEL
ROSSETTER

LOVELESS
FISHER
SMITH

PETERSON
JONES
WATSON

THE ORDER OF THE SCROLL AND KEY

HONORARY SCHOLARSHIP AND LEADERSHIP SOCIETY

Founded in March, 1940

Colors: Purple and Gold

Flower: Purple Iris

The purpose of the Order of the Scroll and Key is to recognize and further scholarship and leadership on the campus of J. B. Stetson University. Its members are chosen from the upper tenth division of the junior and senior classes. This year the minimum scholastic average for any member in the organization is 2.5 (B).

OFFICERS

WILLIAM STRICKLAND	President
MARGARET PAYNE	Vice-President
DOROTHY LOVELESS	Secretary
VAONA PETERSON	Treasurer

ACTIVE MEMBERS

Garland Branch
Dorothea Clarson
Richard Feasel
Paul Fisher
Cecil Jones

Wilbur Kaye
John Lewis
Dorothy Loveless
Margaret Payne
Vaona Peterson

Nancy Rossetter
Betsy Smith
William Strickland
Frank Watson

FACULTY MEMBERS

Mrs. Sue Burns
Miss Veronica Davis

Dr. Warren Gordis
Dr. G. L. LaFuze

Dr. C. B. Vance
Eunice Webber



BROWN
HILL

BUMGARNER
HILLMAN

COLE
MERRILL

DOUGLAS
MOCK

FUTCH
ROSSETTER

WOMEN'S STUDENT GOVERNMENT ASSOCIATION

OFFICERS

NANCY ROSSETTER President
 CLAIRE BRANDIES Vice-President
 ELIZABETH FUTCH Secretary
 MARY MOCK Treasurer
 ELEANOR HILLMAN Sergeant-at-Arms
 MARY HELEN HILL Representative-at-Large
 JANE REESE Sophomore Representative
 ROSA MAUD COLE Stevens Hall Representative

TOWN COUNCIL

OFFICERS

MARION MERRILL President
 CLAIRE BUMGARNER Secretary
 JEAN DOUGLAS Vice-President
 LOUISE BROWN Treasurer



Left to right: LEHMAN, BURDINE, TURNER, NIX, DAIL, DICKINSON, AVENT, LEWIS, GOLDEN, GARDNER, DeLOACH, ROSSETTER, DYAL, REESE, GOLSNER, PASTEUR, MOCK, MERRILL, STRANGE, DAVIS, PAYNE, AMIDON, HILLMAN.

FRESHMAN ADVISORS

Betty Jane Amidon	Dorothy Dunn	John H. Kurtz	Voncile Powell
Marjorie Ault	Ira Dyal	David M. Lehman	Margaret Reeves
George J. Avent	Richard Feasel	John M. Lewis	Jane Reese
Mary Elizabeth Bostick	Margaret Foy	Margaret Lenzel	Mary Louise Rehbaum
Garland M. Branch	Elizabeth Futch	Dorothy Loveless	Nancy Rossetter
Claire Brandies	Harvey A. Gardner	Jane McClenagan	Anita Schroeder
J. T. Burdine	James P. Golden	Marion McEachern	George C. Slaton
Marian Burger	Carolyn Golsner	Marion Merrill	Betty Smith
Dorothy Lou Burgman	Mary Gordon	Maurice Miller	Ann Spinks
Ann Burrell	Robert D. Henry	Doris Milligan	Esther Strange
G. Edward Dail	Mary Helen Hill	Mary Mock	William C. Strickland
Betty Davis	Eleanor Hillman	Luella Nichols	Vernon Turner
Mary Lou Davis	Frances Inman	Sydney J. Nix	Katherine Ward
G. Dekle DeLoach	Dorothy Jennings	Polly Pasteur	Frank B. Watson
Fred O. Dickinson	Berta Mae King	Margaret Payne	Elizabeth Welden



PI GAMMA MU

NATIONAL SOCIAL SCIENCE HONOR SOCIETY

Colors: Blue and White

Flower: Blue and White Cineraria

Florida Gamma Chapter Established in February, 1929

The purpose of Pi Gamma Mu is the inculcation of ideals of scholarship, and social service in the study of all social problems. It attempts to send out from this university young men and women imbued with social idealism, trained in scientific thought, and encouraged to help others to be scientific in their thinking on all social questions. To this end, various men and women have been asked to speak at our meetings on subjects related to the field of social science. Social hours after meetings are enjoyed together. Candidates for membership are carefully selected from the students of social science.

OFFICERS

MARGARET PAYNE President
 NELL MIPES Vice President
 MRS. JOSEPHINE HOLCH Secretary-Treasurer

ACTIVE MEMBERS

George Avent Edward Dail Jean Finny Margaret Foy	Eleanor Hillman Josephine Holch Cecil Jones John Kurtz	Ernest Machen Angelo Martin Francis McGarrath Nell Mires	Polly Pasteur Margaret Payne Vaona Peterson	Elaine Phillips Kathryn Reardon Frank Wheeler
---	---	---	---	---

FACULTY MEMBERS

Robert Barnett Mrs. Sue Burns Dean Prentice Carson Dr. R. E. Clark	Dr. Iola Eastburn George Ehlhardt Dr. C. A. Fisher Edward Furlong	Dr. H. C. Garwood Miss Curtis Horn Carl Johnson	Dr. G. L. LaFuze Dr. R. C. Larcom Mrs. Dee McEntire	Dr. Frances Thornton Miss Etter Turner Prof. H. S. Winters
---	--	---	---	--



**The Man Who Came To Dinner
Is Next Theatre Production**

Cast at Work on Hilarious Comedy:
Huber Griffin Will Play Title Role

**Campus Stars Expected To Shine
In Hellman's Absorbing Drama**

Stover Theatre Will Present "The Little Foxes"
Thursday and Friday Evenings at Eight O'clock



**Little Theatre
Presents Plays**
Three One-Act Plays
Provide Varied
Entertainment

**Christmas Spirit In Evidence
Play Rehearsals Proceed**
John's "Christmas Carol"
Now Completed
By Gordon Williamson

**TWO BARRIE PLAYS SLATED
FOR ALUMNI ENTERTAINMENT**
Theta Alpha Phi Sponsors One-Act
Plays Friday and Saturday
By Eltonne

**"Charley's Aunt" Is
High Riot In
Three Performances**
Stetsonians Are So
As Oxonian
Slapstick
By
**FOUNDER'S DAY TO
FEATURE PROMINENT
PLAY BY BARRIE**
Student Cast Will Pre-
sented For Alumni
"Twelve Pound Lo

THE STOVER THEATER

Present in 1941-1942 Season

- October 11 Workshop Play
- October 30, 31 The Man Who Came to Dinner
by George Kaufman and Moss Hart
- November 20, 21 The Importance of Being Earnest
by Oscar Wilde
- December 18 The Christmas Carol
by Charles Dickens
- February 6, 7 Two Plays by Barrie,
Frondin's Day
- February 19, 20 Charley's Aunt
by Brandon Thomas
- March 12, 13 The Little Foxes
by Lillian Hellman
- April 18, 25 Intramural Plays
- May 8 Experimental Theatre
- May 30 The Taming of the Shrew
by William Shakespeare



**ENTS PLAY
ORROW NIGHT**
ell Stilwell
es Leading Part
**'S AUNT"
EN**
19-20



EVER DRAWING ROOM COMEDY

Stillwell Performs Capably
Howes and Rossetter Shine

*Anders Cast
As Regina In
The Little Foxes*

Hellman Play To Be
At 7, 8, 12 and 13



AND THETA ALPHA PHI
FLORIDA ALPHA CHAPTER



JOHN KURTZ As President
NANCY ROSSETTER As Vice-President
EDWARD DAIL As Secretary
FRED KIEHLE As Treasurer



STILWELL **ESTES WATSON** **KNOX GIFFIN** **LEHMAN McENTIRE** **LEWIS STOVER** **MCCORMICK THEURER**

**Wilde's IMPORT
OF BEING EARN
is Nov. 20-21 P**

Golden, Alland, and
McCormick Head Ca

**CHRISTMAS CAROL
TO BE PRESENTED
TWICE TOMORROW**

Dukens' Play To Be
Given at 4 and 8 p. m.



**FRESHMAN TALENT
DISPLAYED FOR
UPPERCLASSMEN**

Frosh Perform at
Little Theatre
Monday Night

**'CHARLEY'S AUNT' WOWS TOURISTS
IN MONDAY NIGHT PREVIEW**
Comedy Treated To Be Presented
To Starvation Audience Thursday
And Friday, Stillwell Has Lead
By Bob Le

**rie Plays Presented For
nder's Day Audience**

"The Twelve Pound Look" and
"An Old Lady Shows Her Medals"
Provide Good Entertainment
By Elizabeth Fisher

**OVER LITTLE THEATRE PLAYS
ROVIDES TOP ENTERTAINMENT**

of One Act Imp
**Man Who Came
inner" To Be
This Week**
Schedule on "Next"
**ONE ACT PLAYS
BEGIN DRAMATIC
SCHEDULE SAT.**



FORENSIC SEASON



The season began with work on the N. A. T. S. question of federal labor regulation, which the entire squad debated. At the State Practice Meet, held here for the fifth time, Dickinson and Turnage represented Stetson in extemp; Lewis in after-dinner speaking; and Lewis, Clark, French, Hartman, Reid, Castagnet, Dyson and Lay in debate.

The next project of the squad was the study of the Pi Kappa Delta question of world federation. Debating this topic, John Lewis, Irma French, Bruce Reid and Harold Clark journeyed to Vero Beach on January 16 to debate before the Rotary Club and its guests.

Augmented by Summerlin, Moore, and Matousek, a group of the squad set to work on the question of Pan-Americanism and the Good Neighbor Policy, and participated in Gainesville on March 21 in the district meet of the National Extempore-Discussion Contest.

On March 23, we refurbished our labor question for a meeting with the gentlemen from the University of Florida, on the campus.

Final reward for the year's work was attendance at the Congress of Human Relations, sponsored March 25-27 in Atlanta by the Southern Association of Teachers of Speech.

A departure this year in forensic work was the establishment of the Stetson University Speakers' Bureau, which sent out speakers, debaters, plays, and readers all over the state. Approximately thirty engagements were filled this first year.





STOVER
CLARSON

LEWIS
CLARK

FRENCH
DeLOACH

THEURER
HARTMAN

PI KAPPA DELTA

NATIONAL HONORARY FORENSIC FRATERNITY

Florida Beta Chapter Established 1938

OFFICERS

JOHN LEWIS	President
HAROLD CLARSON	Vice-President
IRMA FRENCH	Secretary-Treasurer

MEMBERS

Harold Clark	Irving C. Stover
Dorothea Clarson	Lydia A. Theurer
John Lewis	

PLEDGES

Dwile DeLoach	Doris Hartman	Bruce Reid
---------------	---------------	------------

ACTIVITIES

On December 6, Pi Kappa Delta sponsored the Fifth Annual State Practice Forensic Tournament, at which the University of Florida, Florida Southern, St. Petersburg Junior College, and Rollins were present.

The season was closed with an intramural debate tournament, a tradition inaugurated last year.



BARNETT
ESTES

BOSTICK
FISHER

BURGMAN
GOULD

DAIL
HILLMAN

DYSON
VINCENT

STETSON PRESS CLUB

OFFICERS

SARA ELLEN BARNETT President
 DOROTHY LOU BURGMAN Vice-President
 THELMA FISKE Secretary
 MARY A. BAILEY Advisor

HONORARY MEMBERS

Hugh McEniry Lydia Theurer

MEMBERS

Robert Barnett	Edward Dail	Thelma Fiske
Sara Ellen Barnett	Olela Dyson	John Gould
Mary Elizabeth Bostick	Arthur Estes	Ruth Hillman
Dorothy Lou Burgman	Elizabeth Fisher	Aubrey Vincent

Purpose: For the betterment of journalism both on and off the campus, in the betterment and improvement of members in the profession and in the perpetuation of journalistic activity at Stetson. The club is semi-professional in nature.

Projects: Journalism Institute.

Founded: March 11, 1940.

THE STETSON REPORTER

The Truth Shall Make You Free

The STETSON REPORTER was founded in 1936. It is published weekly by the students of John B. Stetson University during the school year

under the direction of the Department of Journalism. The newspaper is printed at the University Press on the campus.

STAFF

DOROTHY LOU BURGMAN . . . Editor-in-Chief
G. EDWARD DAIL . . . Associate Editor
HARRIS GRAVELY . . . News Editor
BETTY POWERS . . . Feature Editor
ROBERT H. BROWN . . . Sports Editor

BUSINESS STAFF

CECIL CRISSEY . . . General Manager
ARTHUR ESTES . . . Advertising Manager
BYRON BOND . . . Circulation Manager
CECIL JONES . . . Bookkeeper

NEWS WRITERS

FLONNIE ANDERS
SARA CARVER
BOOTS GUPPY
MARIE HISEY
BARBARA HUNTER
BOB LEE
PAMELA LIPSCOMB
BILLY MITCHELL
JEAN TRIGG
JAMES SMITH
EMMY VAN HEUSEN
NATALIE TRUE
GORDON WILLIAMSON
AUBREY VINCENT

FEATURE WRITERS

ANN BURRELL
ELIZABETH FISHER
JOHN GOULD
MARION McEACHERN
CREE McLAUGHLIN
BOB LEEK

PROOFREADER

HELEN ANDERSON



Left to right: GOULD, BROWN, JONES, BOND, HILLMAN, HISEY, CARVER, VAN HEUSEN, TRIGG, BURRELL, McLAUGHLIN, ANDERSON, FISHER, BURGMAN, KEY, DAIL, POWERS.



Left to right: HUNTER NELSON, HILLMAN, ESTES, KNOX, ANDERSON, WILLIAMSON.



FISHER
DYSON

VINCENT
GORDON

AGETT
HOOKER

AVENT
MATOUSEK

BENNETT
MITCHELL

THE STETSONIAN

Founded in 1936

The purpose of the STETSONIAN is to further creative expression on the campus as well as to entertain the students with the literary talent that has been assembled from the work of students in the University.

STAFF

ELIZABETH FISHER Editor
AUBREY VINCENT Business Manager
DR. HUGH McENIRY Faculty Advisor

ASSOCIATES

Virginia Agett
George Avent
Pauline Bennett
Oleda Dyson

Mary Gordon
Marie Hisey
Elsie Hooker

Billy Mitchell
Letitia Reynolds
Ralph Matousek

MARION MERRILL
Editor-in-Chief

VERNON TURNER
Business Manager



HILLMAN, STAMPER, HAYNES, PHILLIPS, FISHER, FUTCH, HISEY, KIPP, PETERSON, HAYES, JENNINGS, BAUER, BUMGARNER, MOCK



BOND, MERRILL, STILWELL, TURNER, KNOX, ANDERSON.

The 1942 Stetson HATTER has two main reasons for existing. The first is to give both the students and the University a permanent record of this year's personnel, student body, and activities.

The second aim is to develop in each member of the staff qualities of self-reliance, original-

ity, thoroughness and competence, which are necessary not only in producing a good yearbook, but also, in living a useful life.

The staff offers this HATTER to the students in the hope that it will prove a pleasant reminder of their Alma Mater, and of the college year of 1941-42.

The 1942 HATTER

EDITORIAL STAFF

MARION MERRILL Editor-in-Chief
ANN BAUER Associate Editor
ESTHER KIPP Associate Editor
GARLAND HAYES Assistant Editor
ANGELO MARTINO Law Department
ELIZABETH FUTCH Music Department
CAROLYN GOLSNER Senior Class
HELEN ANDERSON Junior Class
BETTY POWERS Sophomore Class
DELPHENE COVERSTON Freshman Class
BYRON BOND Faculty Editor
ELIZABETH FISHER Art Editor
ELANE PHILLIPS Art Editor

VAONA PETERSON Organizations
MARIE HISEY Organizations
CHARLOTTE KNOX Organizations
RUSSELL STILWELL Fraternities
MAX STAMPER Athletics
DOT ESTABROOK Women's Intramurals
RUTH HILLMAN Snapshots
CLAIRE BUMGARNER Snapshots
DOT JENNINGS Features

BUSINESS STAFF

VERNON TURNER Business Manager
SYDNEY NIX Associate Business Manager
DONALD WATSON Advertising Manager



First row, left to right: DAIL, HILLMAN, McGARRAH, FINNEY. . . . Second row: ANDERSON, BROWN, FOY, FREEDLAND, HOUGHTON. . . . Third row: JONES, KEOSKIE, LOVELESS, McCLENAN, MIRES. . . . Fourth row: NICHOLSON, PASTEUR, PAYNE, STILWELL, STRANGE.

THE COMMERCE CLUB

Founded in May, 1937

The Purpose of the Commerce Club is to promote scholarship, to facilitate contact with the commercial world, and to stimulate discussion and constructive thinking in the field of commerce and business. Entrance to the club is

limited to those students in the School of Business who have a high scholastic standing and whose ability in their chosen field meets a rigid standard.

OFFICERS

EDWARD DAIL	President
ELEANOR HILLMAN	Vice-President
FRANCES McGARRAH	Secretary
JEAN FINNEY	Treasurer

ACTIVE MEMBERS

Russell Anderson
Frances Brown
Edward Dail
Jean Finney
Margaret Foy

Elaine Freedland
Eleanor Hillman
Edna Houghton
Cecil Jones
Charlie Keoskie

Dorothy Loveless
William McClenan
Frances McGarrah
Nell Mires
Mary Ellen Nicholson

Polly Pasteur
Margaret Payne
Russell Stilwell
Esther Strange

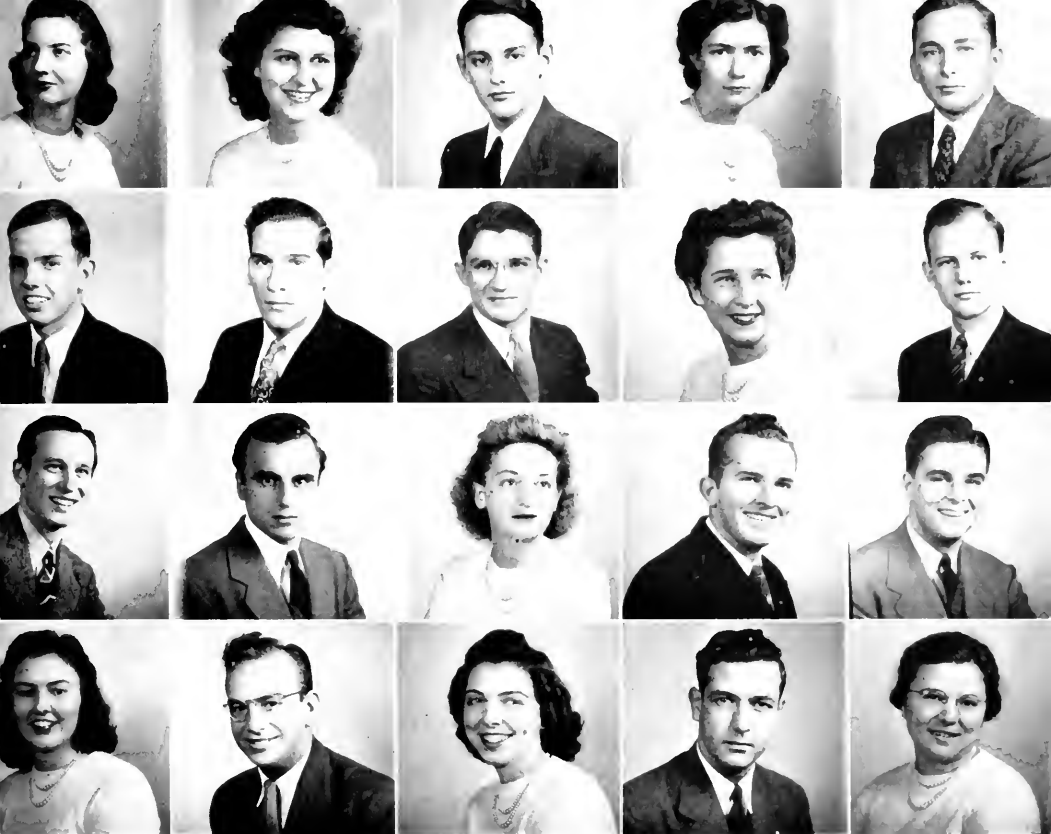
FACULTY MEMBERS

Dr. W. N. Baer

Dr. C. A. Fisher

E. C. Furlong

Dr. R. C. Larcom



First row, left to right: CRAWFORD, HOOKER, CROSS, STEFFENS, ALDEN. Second row: DOUGLAS, GOLDEN, GREENE, HILL, KESMODEL. Third row: LEWIS, PADULA, PHILLIPS, SPANIER, SPAULDINGS. Fourth row: SPINKS, STRICKLAND, TRAWICK, TURNER, WEBBER.

BETA KEY

HONORARY BIOLOGY ORGANIZATION

Founded September, 1937

Colors: Hemoglobin Red and Chlorophyll Green

Flower: Rose

The purpose of this organization is to create and stimulate an interest in the several fields of biological research.

OFFICERS

RENA CRAWFORD	President
ELSIE HOOKER	Vice-President
JOHN CROSS	Secretary
HARRIET STEFFENS	Treasurer
DOROTHY FULLER	Faculty Advisor

MEMBERS

Bill Alden
Rena Crawford
John Cross
Bob Douglas
Jimmie Golden

J. L. Greene
Mary Helen Hill
Elsie Hooker
Karl Kesmodel
Ralph Lewis

Elaine Padula
Allan Spanier
Ray Spauldings
Ann Spinks

Harriet Steffens
William Strickland
Dorothy Trawick
Vernon Turner
Joyce Webber

THE NEWTON CLUB

HONORARY MATHEMATICS SOCIETY

MEMBERS

Wilbur I. Kaye
Paul Fisher

Garland M. Branch, Jr.
Carl Purtz

Dorothy Jean Botts
Betty Smith

Sydney J. Nix, Jr.

ASSOCIATES

William R. Lake
Lula Mae Morrison

Robert S. Herndon
Mary Carlton

Raymond Spaulding
Rena Crawford

Robbins Rice

FACULTY

Dr. Donald Faulkner

Mr. Curtis Lowry

Dr. Vance

OFFICERS

SYDNEY J. NIX, JR.	President
PAUL FISHER	Vice-President
BETTY SMITH	Secretary
DOROTHY JEAN BOTTS	Treasurer
CARL PURTZ	Marshall

COLORS—Infra Red and Ultra Violet
Date Established on this Campus—1932

The purpose of the Newton Club is to promote the interest of mathematics among students. This is done by the giving of reports of work in mathematics at monthly meetings to which the public is invited.

SIGMA PI SIGMA

PHYSICS HONOR SOCIETY

Alpha Iota Chapter

OFFICERS

ROBBINS RICE	President
JEAN BOTTS	Secretary
DR. R. I. ALLEN	Treasurer and Chapter Adviser

MEMBERS

Garland Branch

Paul Fisher

Dr. Donald Faulkner
Wilbur Kaye

Dr. C. B. Vance

Local Chapter Established May 10, 1939.

Sigma Pi Sigma is the National honor society in the field of physics. It is one of the associated societies of the American Association for the advancement of science.

The objects of the society are: (1) To serve as a means of awarding distinction to students having high scholarship and promise of achievement in physics; (2) To promote student interest in research and the advanced study of the subject; (3) To encourage a professional spirit and friendship among

those who have displayed marked ability in physics; (4) To popularize interest in physics in the general collegiate public.

Candidates for membership are selected from advanced-course, graduate and upper-class students, faculty members and qualified alumni. Primary qualifications include high scholarship, manifest interest in physics and promise of achievement in extending the boundaries of human knowledge.

GAMMA SIGMA EPSILON

Beta Beta Chapter

NATIONAL HONORARY CHEMICAL FRATERNITY

MEMBERS

Wilbur I. Kaye
Garland M. Branch, Jr.

William R. Lake
Dorothy Lou Burgman

Harriet Steffens
John D. Cross
Dr. John F. Conn, Faculty Adviser

Ray O. Voss
Sydney J. Nix, Jr.

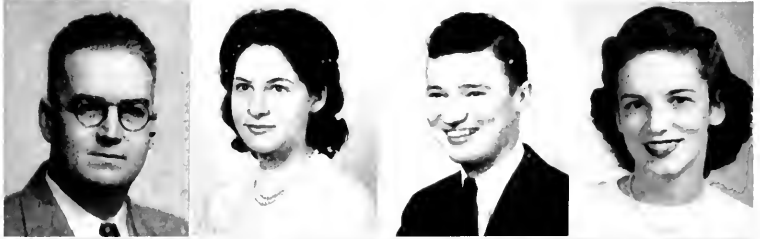
OFFICERS

SYDNEY J. NIX, JR.	Grand Alchemist
WILLIAM R. LAKE	Visor
DOROTHY LOU BURGMAN	Recorder
WILBUR I. KAYE	Electron of The Black Arts

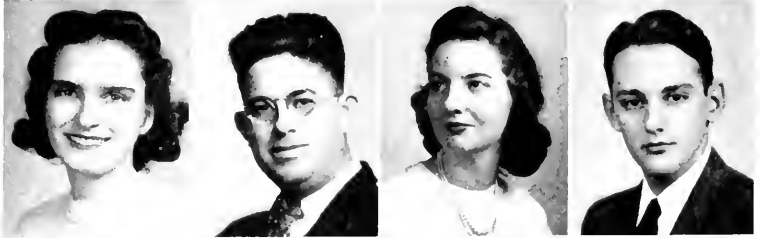
COLORS—Black and White
Date Established on this Campus—1932

Beta Beta Chapter of Gamma Sigma Epsilon attended its biennial convention this year at Brenau College, Gainesville, Ga. This organization was founded in order to advance the importance of chemistry.

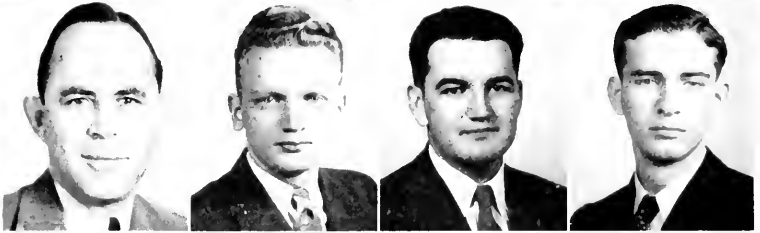
ALLEN
BOTTS
BRANCH
BURGMAN



CARLTON
CONN
CRAWFORD
CROSS



FAULKNER
FISHER
HERNDON
KAYE



LAKE
LOWRY
MORRISON
NIX



PURTZ
RICE
SMITH
SPAULDING



VANCE
STEFFENS
VOSS



KAPPA KAPPA PSI

NATIONAL HONORARY BAND FRATERNITY

Founded in 1919—Alpha Xi Chapter Established in December, 1935

Colors: Blue and White

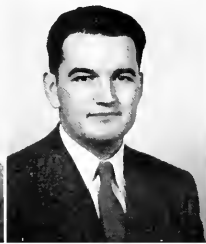
Flower: Red Carnation



FEASEL



HAWN



HERNDON



BURDINE



BARGER

OFFICERS

DICK FEASEL President ROBERT HERNDON Secretary
 HORACE HAWN Vice-President J. T. BURDINE Treasurer
 JOHN J. HENEY Adviser

HONORARY MEMBER

CAPTAIN WILLIAM F. SANTLEMAN, Director of U. S. Marine Band

MEMBERS

Donald Barger Dick Feasel
 J. T. Burdine Horace Hawn
 Robert Herndon

INMAN
 SMITH
 AMIDON

HOLMAN
 NICHOLSON
 SMITH

This organization is dedicated to the cause of better music on Stetson's campus, and to promote the best interests of the University band. Its membership is composed of bandsmen who have proven their worthiness over a period of time. Alpha X chapter has planned and sponsored band trips throughout the state for Stetson's band.

DELTA GAMMA PHI

Colors: Maroon and Silver Flower: Wine Rose
 Honorary Member in Faculty—JOHN J. HENEY

OFFICERS

FRANCES INMAN President
 KATHERINE SMITH Vice-President
 DORIS HOLMAN Recording Secretary
 MARY ELLEN NICHOLSON Corresponding Secretary
 OLIVE LORD Treasurer
 ELIZABETH HOWELL Editor
 DONNA SMITH Historian

ACTIVES

Betty Jane Amidon Frances Inman Mary Ellen Nicholson
 Doris Holman Olive Lord Harriet Simpson
 Elizabeth Howell Ruth Lois Maxwell Katherine Smith
 Donna Smith

PLEDGES

Martha Durrance Ruth Durrance Anita Schroeder Dixie Vance

Delta Gamma Phi works in conjunction with Kappa Kappa Psi in upholding the high standards of the Stetson Band.

This year the organization was granted a charter, making it the first National women's band fraternity in existence.

LORD

MAXWELL

SIMPSON





First row, left to right: KELLEY, HILLMAN, WAGNER, BENNETT, PEDEN, WILLIAMS, BOTTS, RHODES, ARKLEY, ROGY, HUNTER, DICKERT, TENNILLE, BAER. Second row.

PHI BETA FRATERNITY

Colors: Violet and Gold

Motto: Einai mallon e Finesthi.
"To be rather than to seem to be."

Flower: The Rose

Phi Beta is a national professional fraternity of music, drama, and the dance. Eta Chapter was established in 1921 and has progressed to the point of national recognition in receiving the gavel as the most outstanding chapter in the organization in the year 1940.

OFFICERS

VERONICA DAVIS	Advisor
BARBARA HUNTER	President
MARGARET REAVES	Vice-President
MILDRED DICKERT	Recording Secretary
JEAN ROGY	Treasurer
FRANCES ARKLEY	Corresponding Secretary
BARBARA PEDEN	Historian
DORIS MILLIGAN	Doorkeeper

ACTIVE MEMBERS

Frances Arkley	Olive Lord	Jean Rogy
Jean Botts	Doris Milligan	Donna Smith
Mildred Dickert	Barbara Peden	Katherine Smith
Elizabeth Futch	Margaret Reaves	Helen Tennille
Ruth Hillman	Bessie Rhodes	Doris Williams
Barbara Hunter		

PLEDGES

Verna Baer	Martha Durrance
Anita Schroeder	Ellen Marcum
Helen Bennett	Doris Vance
Terry Wagner	



First row, left to right: DURRANCE, FUTCH, LORD. Second row: MARCUM, MILLIGAN, SCHROEDER. Third row: D. SMITH, K. SMITH, WELDEN.



First row, left to right: WATSON, PETERSON, VALDES, LEHMAN, ARJONA. . . . Second row: BACON, BURRELL, CASTAGNET, FINNEY, FRENCH. . . . Third row: GARRISON, GIBBONS, HERPEL, LEE, LOVELESS. . . . Fourth row: MOORE, NAPOLI, STAMPER, TURNER, WHITE.

Alpha Kappa Chapter of SIGMA DELTA PI

NATIONAL SPANISH FRATERNITY

Founded in 1937

Colors: Red and Gold

Flower: Red Carnation

Motto: "Let us go forward under the influence of Spain."

The purpose of Sigma Delta Pi is to stimulate interest in the language and countries of Spanish-speaking peoples, and to foster friendly relations and a co-operative spirit between the nations of Hispanic speech and those of the English lan-

guage. Alpha Kappa chapter has had for its major activities this year: characteristic entertainments of important Hispanic celebrations, visits to historical Spanish sites, and the entertaining of the Florida Spanish Teachers' Convention.

OFFICERS

FRANK WATSON	President
VAONA PETERSON	Vice-President
DORA VALDES	Secretary
DAVID LEHMAN	Treasurer
DORIS K. ARJONA	Faculty Advisor

ACTIVE MEMBERS

Lois Bacon
Ann Burrell
Georgina Castagnet
Jean Finney
Irna French

Rosemary Garrison
Dorothy Gibbons
William Herpel
Mary Lee
David Lehman

Dorothy Loveless
Ann Moore
Angelo Martino
Chris Napoli
Vaona Peterson

Max Stamper
William Turner
Dora Valdes
Frank Watson
Ruth White

FACULTY MEMBERS

George Ehlhardt

Thelma Fiske

Eunice Webber

Harry Winters



First row, left to right: NAPOLI, POWELL, CASTEGNET, THORNTON, REAVES, KING, STEWART. . . . Second row: KIPP, BACON, McWHORTER, POWERS, JENNINGS, BUMGARNER, MOORE. . . . Third row: THORNTON, JOHNSON, PHILLIPS, HOOKER, BAUER, MOCK, TURNER.

LA FRANCIADE

OFFICERS

ELSIE HOOKER
 ELAINE PHILLIPS
 LOIS JOHNSON
 LOIS BACON

President
 Vice President
 Secretary
 Treasurer

MEMBERS

Lois Bacon
 Ida Fee Bailey
 Tod Brown
 Claire Bumgarner
 Georgina Castagnet
 Rachel Clarke
 Virginia Chamberlin
 Elsie Hooker

Dorothy Jennings
 Lois Johnson
 Marion Kelley
 Berta Mae King
 Esther Kipp
 Dorothy McWhorter
 Mary Mock
 Anne Mock

Chris Napoli
 Elaine Phillips
 Betty Powers
 Voncile Powell
 Margaret Reaves
 Paul Stewart
 William Turner

HONORARY MEMBERS

George Ehlhardt

Major Thornton

Dr. Frances C. Thornton

La Franciade is composed of advanced students in French. Our formal purpose is "to encourage an interest in the language, the customs, and the literature of France outside of the classroom." We try to provide an informal atmosphere in which the student may join in the conversation and improve his spoken French. The first semester we did this with a series of supper meetings climaxed by the Christmas party, with menu and program in French.



First row, left to right: BURGMAN, HILL, HICKS. . . . Second row: BENNETT, REHBAUM, BRANDIES. . . .
Third row WARREN, ESTABROOK, STAFF, PASTEUR.

THE STETSON BLAZER CLUB

OFFICERS

DOROTHY ESTABROOK President
 CONNIE BENNETT Vice-President
 DORIS WARREN Secretary
 MARY LOUISE REHBAUM Treasurer

MEMBERS

Connie Bennett	Dorothy Estabrook	Mary Louise Rehbaum
Pauline Bennett	Esther Hicks	Sara Staff
Claire Brandies	Mary Helen Hill	Doris Warren
Dot Lou Burgman	Polly Pasteur	

The Stetson Blazer Club was founded on May 24, 1939, in the Cummings Gymnasium by seven girls who had won their letter "S" for leadership in the athletic field. Membership to the Stetson Blazer Club is based on leadership, scholarship and athletic ability. Students may earn their blazer only after they have completed at least two years of college work.



"PILOTS OF STETSON"

- CARL PARSONS
- JOE FELTER
- BOB LEWIS, Instructor
- TED BOUTWELL
- "SKIPPER" EICHHOLZ
- MARION REED
- WALLACE SMILEY
- GENE HEAD
- "SLUGGER" BLACK
- MERRILL SMITH



"Skyward"

THE HATTER'S ART CLUB

OFFICERS

ELAINE PHILLIPS
President

BETTY SMILEY
Vice-President

MARY LEE
Secretary-Treasurer

MISS EDITH HARVEY
Faculty Advisor



First row, left to right: REHBAUM, LEE, HARVEY, PHILLIPS, SMILEY, WIDDERSHEIM . . . Second row: DAVID WOLCOTT, HISEY, McLAUGHLIN, BAILEY, NICHOLS, STOWE . . . Third row: LINZELL, AULT, BROWN, TRUE, EDWARDS, MOBLEY. . . . Fourth row: McWHORTER, BAUER, PETERSON, SCHELLIG.

The purpose of the Hatter's Art Club is to promote the interest of art on the campus of John B. Stetson University and to create a sincere love of beauty, an appreciation of art, and a spirit of friendship and co-operation among its members.

MEMBERS

Marjorie Ault
Ida Foe Bailey
Ann Bauer
Janet Brown
Phyllis Brown
Carolyn Buck

Rose Cole
Martha Davis
Annette Edwards
Dorothy Gibbons
Edith Harvey
Marie Hisey

Mary Lee
Margaret Linzell
Mary Mobley
Mary Mook
Marion McEachern
Cec McLaughlin

Dorothy McWhorter
Louella Nichols
Vaona Peterson
Elaine Phillips
Mary Louise Rehbaum
Betty Schellig

Betty Smiley
Evelyn Stowe
Natalie True
Dorothy Widdersheim
Annette Wolcott

THE HISTORY CLUB

Colors: Madonna Red and Blue

Founded in April, 1941

Flower: Red Rose

The purpose of the organization is to stimulate interest in the field of history. The major activities have been the reviewing of books and current literature by its members; the sponsoring of a lecture by Dr. L. A. Warren, distinguished author and recognized authority on the life of Abraham Lincoln; and the petitioning to become a chapter of Phi Alpha Theta, the national honorary history fraternity. This chapter at Stetson will be installed in the spring of 1942.



OFFICERS

ERNEST MACHEN
President

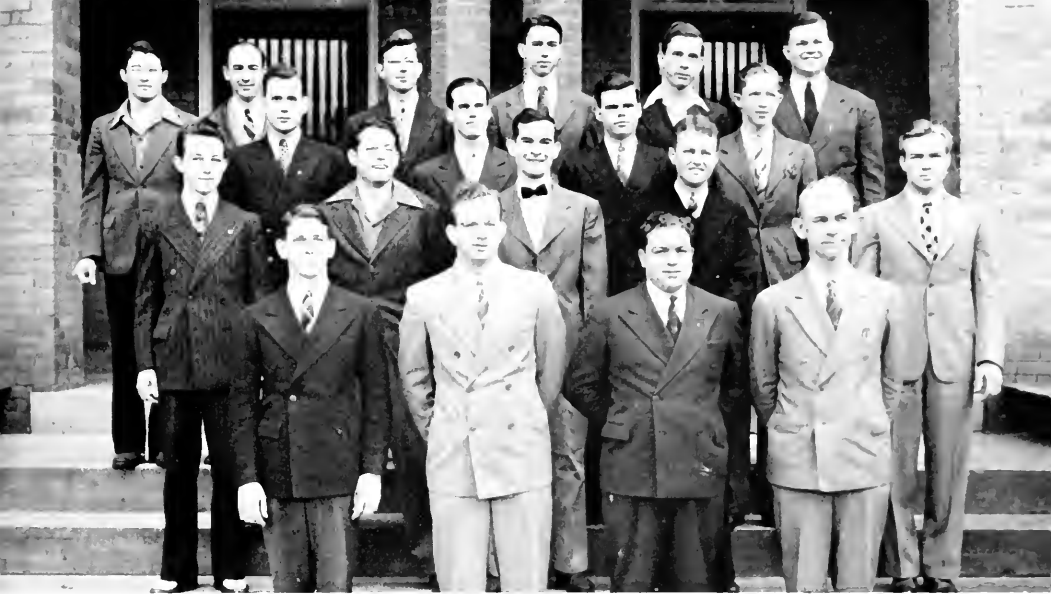
MARY GORDON
Vice-President

DAVID LEHMAN
Secretary-Treasurer

GEORGE EHLHARDT
Faculty Advisor

MEMBERS

George Avent
George Ehlhardt
Mary Gordon
Cecil Jones
Dr. G. L. LaFuze
David Lehman
Ernest Machen
Vaona Peterson
Barbara Rowe
Wilson Spahn
Russell Stilwell
William Strickland
Frank Watson
Prof. H. S. Winters



Front row, left to right: COOPER, STRICKLAND, NAPOLI, GARWOOD. . . . Second row HADDOX, SPEARING, ESTES, AVENT, WARE. . . . Third row: ARNOLD, LEWIS, MIXON, TOMBERLIN. . . . Fourth row GREENE, HILL, SPAHN, FAIN, MIMS, HUNTER.

MINISTERIAL ASSOCIATION

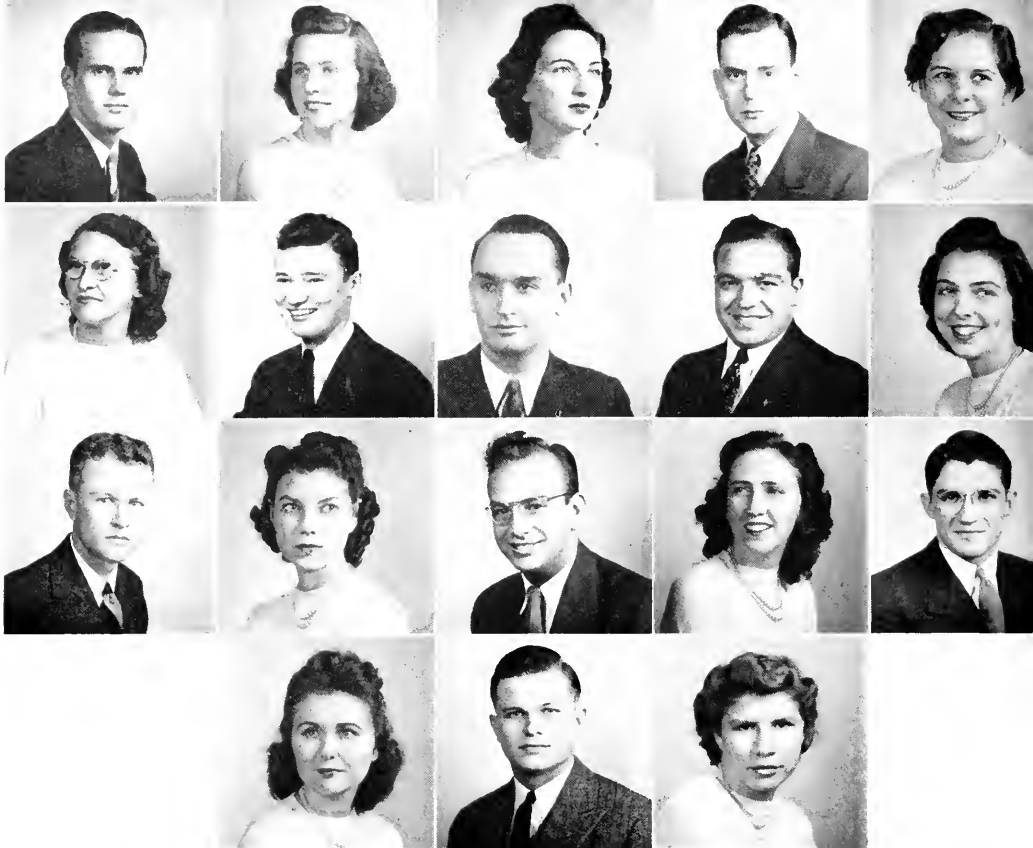
The Ministerial Association was organized into its present form in 1939. Its activities are many and varied. The major ones during this year have been: The holding of services in the DeLand Band Shell every Saturday night that weather conditions would permit, visiting and working in the city jail, and fostering Stetson Day programs in various churches throughout the state. The fundamental work of the association is to help churches. Several members are regular pastors of churches; others supply in churches when the pastors are absent. Members also assist churches in Sunday School and choir work.

OFFICERS

- | | |
|------------------------------|----------------------|
| WILLIAM STRICKLAND | President |
| AARON RUTLEDGE | Vice President |
| J. T. BURDINE | Secretary |
| EDWARD COOPER | Treasurer |
| PATRICK ARNOLD | Statistician |
| JOHN LEWIS | Parliamentarian |
| ARTHUR ESTES | Directional Chairman |
| GEORGE AVENT | Activities Chairman |
| MARION REED | Intramural Chairman |
| ELMER WARE | Intramural Chairman |
| DEAN H. C. GARWOOD | Faculty Advisor |

MEMBERS

- | | | | |
|----------------|--------------|--------------------|--------------------|
| Patrick Arnold | J. L. Greene | Daniel Meyerhoefer | David Spearing |
| Harry Atkinson | Ben Haddox | T. R. Mims | Wilson Spahn |
| George Avent | Pat Hill | Lovergne Mixon | William Strickland |
| J. T. Burdine | Jac Hough | Chris Napoli | Jimmy Tomberlin |
| Edward Cooper | Hal Hunter | Marion Reed | Elmer Ware |
| Arthur Estes | John Lewis | Alvin Robinson | Robert Wheatly |
| Maurice Fain | Forrest May | Aaron Rutledge | |



LEWIS
LEE
AVENT

ROSSETER
BRANCH
REAVES
DICKERT

KING
BURDINE
STRICKLAND
HUNTER

ARNOLD
NAPOLI
MATHIS
ZORNES

BRANDIES
TRAWICK
GREENE

BAPTIST STUDENT UNION COUNCIL

The Baptist Student Union is the organization which co-ordinates the religious activities of the Baptist students of a school and a community, serving as the connecting link between the student and his church. A student becomes a member of the B. S. U. when he joins a Baptist church in the college center, a Baptist Sunday School, Training Union, Y. W. A., or any other recognized unit organization. The B. S. U. Council is a group of students elected from the B. S. U. at large to serve as the executive board in charge of the

various activities. This year the B. S. U. has sponsored all campus Baptist organizations, vespers, student programs in churches at Christmas, the State B. S. U. convention at Tampa, the State B. S. U. Council Retreat, and south-wide Baptist student summer conference at Ridgecrest, N. C. Two of the outstanding activities this year have been the Baptist Student House and the collection of old clothes from students for needy children in the community.

OFFICERS

- JOHN LEWIS President
- NANCY ROSSETER Vice-President
- BERTA MAE KING Second Vice-President
- PATRICK ARNOLD Third Vice-President
- CLAIRE BRANDIES Secretary
- EDWARD COOPER Treasurer
- MARY LEE, GARLAND BRANCH Publicity Chairmen
- J. T. BURDINE Baptist Student Representative
- CHRIS NAPOLI Music Chairman
- DOROTHY TRAWICK Training Union Director

- GEORGE AVENT Sunday School Superintendent
- MARGARET REAVES Y. W. A. President
- WILLIAM STRICKLAND Ministerial President
- HELEN MATHIS Life Service Band President
- J. L. GREENE Volunteer Band President
- MILDRED DICKERT, HAL HUNTER Vesper Chairmen
- DEAN H. C. GARWOOD Faculty Advisor
- REV. R. GRADY SNOWDEN Pastor
- BETTY LEE ZORNES Town Representative



First row, left to right: STAMPER, BARNES, WHEELER, MILLER, MACHEN, BRANON, DICKINSON, CASTAGNET.
 . . . Second row: KURTZ, ANDERSON, DYAL, BURGER, PETERSON, MERRITT, . . . Third row: LEHMAN,
 WATSON, FOY, MERRILL, FRENCH, BROWN. . . . Fourth row: LEWIS, STRICKLAND, DYAL, DeLOACH.

INTERNATIONAL RELATIONS CLUB

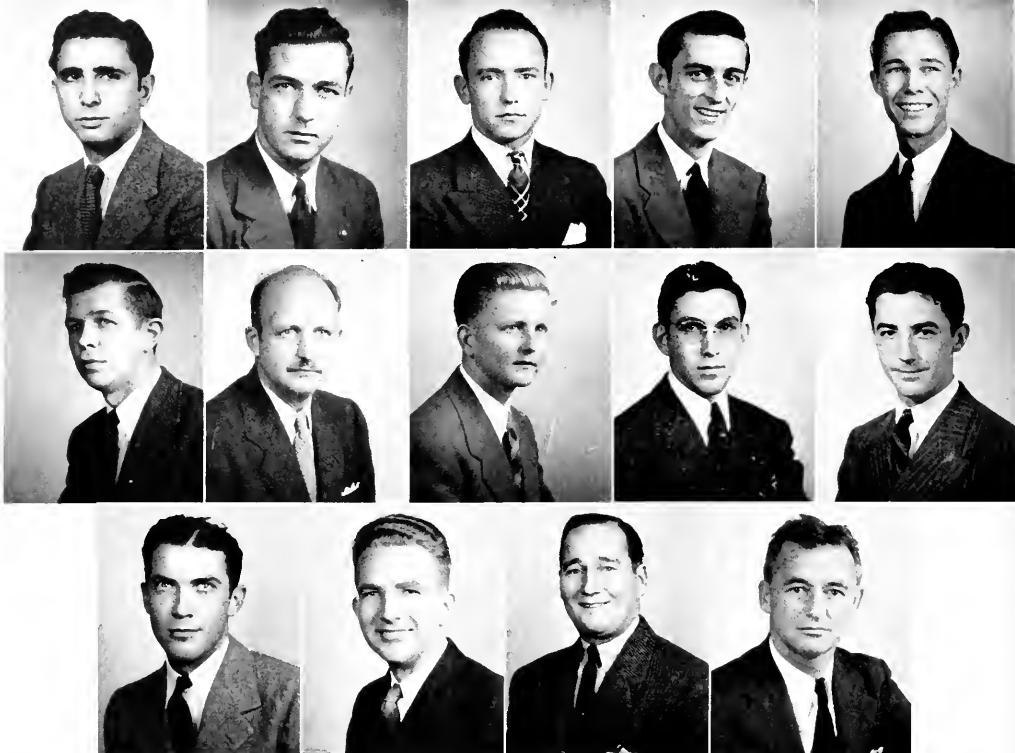
OFFICERS

DEKLE DeLOACH	President
WILLIAM STRICKLAND	Vice President
IVA DYAL	Secretary
PEGGY LINZEL	Corresponding Secretary
JOHN LEWIS	Program Chairman
WILLIAM STRICKLAND	Membership Committee
BETTY ANNE BRANON	Publicity
DR. LA FUZE, PROF. EHLHARDT	Faculty Advisers

Purpose: To acquaint the students of Stetson University with conditions of the world, and to promote interests in these conditions.

MEMBERS

Russ Anderson	Georgina Castagnet	John Kurtz	Maurice Miller
Bob Barnes	Mary Lou Davis	David Lehman	Doris Milligan
Betty Anne Branon	Dekle DeLoach	John Lewis	Vaona Peterson
Mary Ann Brown	Bud Dickinson	Peggy Linzel	Betty Powers
Phyllis Brown	Iva Dyal	Bill McClenen	Max Stamper
J. T. Burdine	Virginia Evans	Ernest Machen	Bill Strickland
Marian Burger	Margaret Foy	Marion Merrill	Frank Watson
Ann Burrell	Irma French	Elsie Merritt	Frank Wheeler
	Edith Knox	Daniel Meyhofer	



PHI ALPHA DELTA

Founded in 1888

David J. Brewer Chapter Founded in 1915

Colors: Purple and White

OFFICERS

ANGELO MARTINO	Justice	Vernon Turner	Vice-Justice
VERNON TURNER	Clark	Harold Clark	Clerk
HAROLD CLARK	Treasurer	Aubrey Vincent	Treasurer
AUBREY VINCENT	Marshal	Fred Kiehle, Jr.	Marshal
FRED KIEHLE, JR.			

The purpose of this Fraternity shall be to form a strong bond among the members of the different classes at the various law schools; to form a strong link between the schools and their students; to establish a widespread exchange for the interchange of business, information, and matters of common interest to the members of this Fraternity; to promote social and intellectual intercourse among its members; to aid the development of fraternal and brotherly sentiments; to cultivate a closer bond of friendship and the attainment of a higher and broader culture than that afforded by the regular college course; and to foster, under the influence of intimate friendship, those principles that tend to form a higher type of manhood.

ACTIVE MEMBERS

Francis X. Carmody	Ronald Y. Stillman	Aubrey Vincent	Harold Clark
A. C. Martino	Vernon Turner	Frank J. Thompson, Jr.	Thomas F. Lambert
Arthur Shuler	Fred Kiehle	F. A. LeRoy Barkstrom	

PLEDGES

Leroy New	Maurice Miller	Dekle DeLoach	Ivan Yenetschi
Edward New			John Kurtz

ACTIVITIES

Reception at the beginning of the school year for the purpose of introducing the freshman law students to the faculty and other law students.

A party honoring the initiation of Dean Thomas F. Lambert.

A farewell boat ride party to our distinguished Justice, Ronald Y. Stillman, and our beloved brother, Dean Thomas F. Lambert.

THE STETSON UNIVERSITY DEFENSE COUNCIL

Established May 8, 1941

OFFICERS

PRESIDENT W. S. ALLEN
General Chairman

CARL H. JOHNSON
Deputy Chairman



GRAFTON H. PYNE
Co-ordinator-Secretary

EXECUTIVE COMMITTEE

DR. HARRY GARWOOD	Curricula and Assembly
MR. HAROLD M. GIFFIN	Extra-Curricula Activities
MR. EDWARD FURLONG	Emergency Safety Precaution
MR. WARREN COWELL	Physical Education

ADMINISTRATION AND FACULTY

Dr. Robert Allen
Mr. William Bailey
Mr. Elmer Barnett
Mr. Robert Barnett
Dr. John F. Conn
Mr. Warren Cowell
Dr. William Duckwitz
Dr. Boyce Ezell
Dr. Charles Fisher
Mr. Edward Furlong
Mr. Harold Giffin
Mr. Arthur Graham
Mr. John Heney

Miss Edgella Henry
Miss Curtis Horn
Dr. Roy Howes
Dr. Russell Larcom
Mr. Curtis Lowery
Dr. Leighton LaFuze
Mr. Hugh McEniry
Miss Barbara Rowe
Miss Sara Staff
Dr. Irving Stover
Miss Etter Turner
Mr. Vernon Turner
Dr. Charles Vance

Mr. Harry Winters

STUDENT COMMITTEE

Robert Barges
Annette Bolton
Claire Brandies
Edward Dail
Grace Fearing
Dick Feasel
Elizabeth Futch
James Golden
Marilee Harper
William Herpel
Mary Helen Hill
Eleanor Hillman
Marie Hiscy

Lois Johnson
Fred Kiehle
John Kurtz
John Lewis
Mary Meck
Lula Mae Morrison
Jane Reese
Nancy Rossetter
Max Stamper
William Strickland
Herman Turnage
Brooks Walker
Don Watson





DeLOACH
GARDNER
NIX

BURGER
GOLSNER
REHBAUM

BURGMAN
HILLMAN
SMITH

BURRELL
JENNINGS
SHULER

DAVIS
KIEHLE
STAFFORD

DOUGLAS
KURTZ
TURNER

FUTCH
MOCK
VINCENT

INTER-FRATERNITY COUNCIL

OFFICERS

FRED KIEHLE President
 VERNON TURNER Vice-President
 MARIAN BURGER Secretary
 ELEANOR HILLMAN Treasurer

MEMBERS

Alpha Xi Delta

Mary Lou Davis
 Eleanor Hillman
 Dot Jennings

Delta Delta Delta

Barbara Burgman
 Ann Burrell
 Elizabeth Futch

Delta Sigma Phi

Sydney Nix
 Arthur Shuler
 Vernon Turner

Pi Beta Phi

Marian Burger
 Jean Douglas
 Betty Smith

Pi Kappa Phi

Bob Barnes
 John Kurtz
 Ralph Stafford

Sigma Nu

Harvey Gardner
 Fred Kiehle
 Aubrey Vincent

Zeta Tau Alpha

Carolyn Golsner
 Mary Mock
 Mary Louise Rehbaum



MOCK
MC CORMICK

FOY
MILLIGAN

DAVIS
REHBAUM

BURGER
SMITH

PAN-HELLENIC COUNCIL

OFFICERS

- | | |
|----------------|----------------|
| MARY MOCK | President |
| MARGARET FOY | Vice President |
| MARY LOU DAVIS | Secretary |
| MARIAN BURGER | Treasurer |
| BARBARA ROWE | Advisor |

MEMBERS

- | | |
|--------------------------|-----------------------|
| Alpha Xi Delta | Pi Beta Phi |
| Mary Lou Davis | Marian Burger |
| Doris Milligan | Betty Smith |
| Delta Delta Delta | Zeta Tau Alpha |
| Margaret Foy | Mary Mock |
| Helen Doris McCormick | Mary Louise Rehbaum |

ALPHA DEKSIOMA

Founded at John B. Stetson University
May, 1940



Colors: Hunter Green and Gold
Flower: Talisman Rose

Motto: "For Friendship
and Understanding"



MERRILL

COVERSTON

OFFICERS

- VAONA PETERSON President
MARION MERRILL Vice-President
DELPHINE COVERSTON Recording Secretary
MARY LEE Corresponding Secretary
SHIRLEY KAGEY Treasurer
ESTHER KIPP Historian
LOUBELLE TYRE Chaplain
HELEN CLEMONS Sergeant-at-Arms



PETERSON
KAGEY
TYRE

LEE
KIPP
CLEMONS

The purpose of Alpha Deksioma is to promote democratic friendship and understanding among its members; to broaden the social, cultural, political, athletic, and religious life of the members and to assist them in every way possible. All women in Stetson University who are not affiliated with a national social organization may become members.

MEMBERS

- Betty Adkins
Claire Brandies
Dorothy Jean Brandon
Frances Brown
Claire Bumgarner
Mary Carlton
Sara Martha Cheney
Helen Clemons
Delphine Coverston
Dorothy Estabrook
Margie Esthus
Sara Forehand
Jo Goodin
Mary Louise Havens
Edna Houghton

- Mary Jameson
Edith Johnson
Shirley Kagey
Alma Kelley
Cordelia Kenarick
Gladys Key
Berta Mae King
Esther Kipp
Ettie Koon
Mary Lee
Dorothy Lockett
Dorothy Martin
Helen Martin
Mac Martin
Helen Mathis

- Lillian McClemont
Marion Merrill
Mavera Mock
Lula Mae Morrison
Vaona Peterson
Janice Phillipis
Mary Pittman
Mildred Rattiff
Kathryn Reardon
Joyce Roland
Nancy Rossetter
Sara Rowlet
Jeanne Shaw
Margaret Treadway
Loubelle Tyre
Ruth White

Adkins
Brandies
Brown
Bumgarner
Carlton



Cheney
Estabrook
Esthus
Forchard
Goodin



Havens
Houghton
Jameson
Johnson
Kelley



Kendrick
Keys
King
Lockett
Martin, D.



Martin, H.
Martin, M.
Mathis
McClement
Mock



Morrison
Phillips
Ratliff
Reardon
Roland



Rossetter
Rowlet
Shaw
Treadway
White





Among the well-known features of college life are the social sororities and fraternities. To them belong much of the glamor and excitement that makes campus life attractive, and their extra-curricula activities greatly supplement the social program of the college.

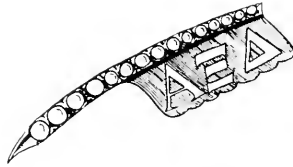
Stetson boasts as many as four national sororities and three national fraternities, and, therefore, it is easy to see why they often list among their members a large number of the leading men and women on the campus. It is conversely easy to see why so many of their members become outstanding figures, especially since these groups foster friendly competition and rivalry, not only in the social and scholastic fields, but also in all college intramurals.

These Greek letter organizations offer no greater benefits to their members than the assurance of comradeship within the group and the training provided by their social functions. The subsequent ability to be socially at ease not only makes the student respected and admired on the campus, but also gives him a confidence that will not fail him when he is faced with more important and exacting situations in the world outside.

Fraternities



Hulley Tower



ALPHA XI DELTA

Founded at Lombard College in 1894
Omega Chapter Established in May, 1917

Colors: Double Blue and Gold

Flower: Killarney Rose

OFFICERS

ELEANOR HILLMAN President
DOROTHY JENNINGS Vice-President
ELIZABETH WELDEN Treasurer
PHYLLIS BROWN Recording Secretary
MARGARET PAYNE Corresponding Secretary

CHAPTER MEMBERS

IN FACULTATE

Olga Bowen Mary Tribble Lowry Des. William McEntire Lydia Theurer

IN UNIVERSITATE

Flonnie Anders	Eleanor Hillman	Denise Milligan	Mary Frances Smith
Pauline Bennett	Ruth Hillman	Betty Jane Parkins	Patricia Sweet
Annette Bolton	Carolyn Howes	Betty Powers	Frances Twitty
Elizabeth Anne Branon	Dorothy Jennings	Margaret Reaves	Elizabeth Welden
Phyllis Brown	Lois Johnson	Jean Rogy	Doris Williams
Mary Lou Davis	Cree McLaughlin	Anita Schroeder	Dorothy Gibbons
	Margaret Payne		

PLEDGES

Edith Bennett	Phyllis Mitchell	Agnes Paulk	Ruby Wagner
Ellen Marcum	Jeanne Neely	Joyce Stoerk	Mary Winkenwerder

E. HILLMAN
JENNINGS
WELDEN
BROWN
ANDERS



E BENNETT
P BENNETT
BOLTON
BRANON
DAVIS



GIBBONS
R. HILLMAN
HOWES
JOHNSON
Mc LAUGHLIN



MARCUM
MILLIGAN
NEELY
FARKINS
PAULK



PAYNE
POWERS
REAVES
ROGY
SCHROEDER

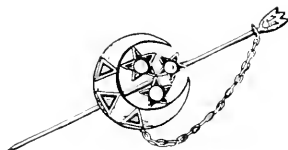


SMITH
STOERK
SWEET
TWTITY
WAGNER



WILLIAMS
WINKENWERDER





DELTA DELTA DELTA

Founded in 1888, at Boston University, Boston, Mass.

Alpha Delta Chapter Established in May, 1913

Colors: Gold and Blue

Flower: Pansy

OFFICERS

MARGARET FOY	President
KATHRYN WARD	Vice-President
ELIZABETH FUTCH	Secretary
DOROTHY LOU BURGMAN	Treasurer

CHAPTER MEMBERS

IN FACULTATE

Sara Staff

Curt's Horn

IN UNIVERSITATE

Eleanor Bass	Virginia Evans	Jan McClunagan	Helen Rogers
Barbara Burgman	Margaret Foy	Louise McClure	Ann Spinks
Dorothy Lou Burgman	Elizabeth Futch	Helen Doris McCormick	Jean Trigg
Ann Burrell	Helen Harper	Frances McGarrah	Natalie True
Iva Dyal	Barbara Hunter	Britie McIvlin	Allene Twining
Nina Dyal	Jessie Beth Longino	Nell Mires	Miriam Walden
Oleada Dyson	Sibyl Lytle	Elizabeth Pippin	Kathryn Ward

Barbara Whitehurst

PLEDGES

Barbar Black	Jeannette McArthur	Edith Tresher	Jane Stone
Sara Carver	Marion McEachern	Emily Van Heusen	

FOY
WARD
FUTCH
D. BURGMAN
BASS



BLACK
B. BURGMAN
EUPRELL
CARVER
I. DYAL



N. DYAL
DYSON
EVANS
HARPER
HUNTER



LONGINO
LYTLE
McARTHUR
McCLENAGAN
McCLURE



McCORMICK
McEACHERN
McGARRAH
McIRVIN
MIKES

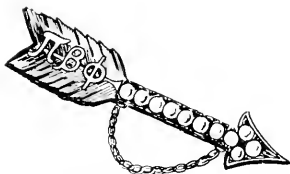


PIPPIN
ROGERS
SHONE
SPINKS
TRESHER



TRIGG
TRUE
TWINING
VAN HEUSEN
WALDEN
WHITEHURST





PI BETA PHI

Founded April 28, 1867, at Monmouth College, Monmouth, Illinois

Florida Alpha Chapter Established January 30, 1913

Colors: Wine and Silver Blue

Flower: Wine Carnation

OFFICERS

First Semester

MARIAN BURGER President
 VONCILE POWELL Vice-President
 POLLY FASTEUR Treasurer
 BETTY SMITH Recording Secretary
 PHYLLIS FREEBURG Corresponding Secretary

Second Semester

BETTY SMITH President
 BARBARA WHITE Vice-President
 NORMA GARDNER Treasurer
 MARY MOBLEY Recording Secretary
 DONNA SMITH Corresponding Secretary

CHAPTER MEMBERS

IN FACULTATE

Annie Nadine Holden

IN UNIVERSITATE

ACTIVE

Betty Jane Amidon
 Marjone Ault
 Lois Bacon
 Verna Baer
 Constance Bennett
 Louise Brown
 Sally Brown
 Carolyn Buck

Marion Burger
 Jean Douglas
 Annette Edwards
 Phyllis Freeburg
 Elaine Freedland
 Norma Gardner
 Mary Helen Hill
 Frances Inman

Marian Kelley
 Adelaide Key
 Edith Knox
 Betsy Kramer
 Margaret Linzel
 Mary Mobley
 Louella Nichols
 Helen Oliver

Polly Pastour
 Voncile Powell
 Pat Perfer
 Betty Smiley
 Betty Smith
 Donna Smith
 Evelyn Stowe
 Barbara White

PLEDGES

Roberta Bennett
 Grace Fearing

Jean Garrard
 Mary Geissinger

Terrella Paync

Maryse Tyre

BURGER
POWELL
PASTEUR
B. SMITH
AMIDON



AULT
BACON
BAER
C. BENNETT
R. BENNETT



L. BROWN
S. BROWN
BUCK
DOUGLAS
EDWARDS



FEARING
FREEBURG
FREEDLUND
GARDNER
GARRARD



GEISSINGER
HILL
INMAN
KELLEY
KEY
KNOX



KRAMER
LINZEL
MOBLEY
NICHOLS
OLIVER
PAYNE



PEIFER
SMILEY
D. SMITH
STOWE
TYRE
WHITE





ZETA TAU ALPHA

Founded October 15, 1898, at Virginia State Normal School, Farmville, Virginia

Beta Psi Chapter Established in October, 1934

Colors: Turquoise Blue and Gray

Flower: White Violet

OFFICERS

MARY LOUISE REHBAUM	President
MARY MOCK	Vice-President
CAROLYN GOLSNER	Secretary
RACHEL CLARKE	Treasurer

CHAPTER MEMBERS

IN FACULTATE

Etta Turner	Sue Burns	Francis Thornton
-------------	-----------	------------------

IN UNIVERSITATE

Ann Bauer	Elizabeth Davis	Mary Mock	Mary Louise Rehbaum
Mary Elizabeth Bostick	Martha Davis	Betty Jean Parfitt	Dorothy Widdersheim
Ann Boyd	Marie Hisey	Elaine Phillips	Carolyn Golsner
Rachel Clarke	Sylvia Jones	Rosamond Pope	

PLEDGES

Virginia Agett	Ruth Durrance	Brooks Hudgins	Leta Mitchell
Betty Ann Cannon	Andie Hauerbach	Elsie Hooker	Carolyn Tallant
Shirley Coen	Rosemary Hefly	Marjorie Kersey	Annette Wolcott
Martha Durrance			

REHBAUM
MOCK
GOLSNER
CLARKE



AGETT
BAUER
BOSTICK
BOYD



CANNON
COEN
DAVIS, E.
DAVIS, M.



DURRANCE, M.
DURRANCE, R.
HAUERBACH
HEFTY



HISEY
HUGGINS
HOOKER
JONES

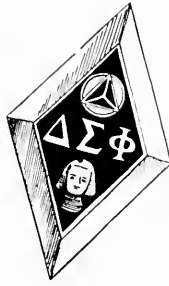


KERSEY
MITCHELL
PARFITT
PHILLIPS



POPE
TALLANT
WIDDERSHEIM
WOLCOTT





DELTA SIGMA PHI

The Fraternity Was Founded at the City College of New York, December 10, 1899
 Alpha Chi Chapter Was Established in 1925
 Colors: Nile Green and White Flower: White Carnation

The primary duty of our Fraternity is the support of the University in its effort to give the members the education and training they desire; and to instill a love of country and of our country's flag, reverence for the Deity and for religion, and regard for the truth.

OFFICERS

VERNON TURNER	President
KARL KESMODEL	Vice-President
HARRY SNYDER	Secretary
RUSSELL STILWELL	Treasurer

MEMBERS

IN FACULTATE

Dr. R. I. Allen	Dean Harry C. Garwood	Dr. Donald Faulkner
Dr. Willis N. Baer		Mr. Vernon Turner

IN UNIVERSITATE

J. C. Bradley	Andrew Knox	Fred Roethke
John Cross	William Lake	Arthur Shuler
Wilson Haynes	Clifton Loveland	Wallace Smiley
Robert Henry	Sydney Nix	Richard Smith
Karl Kesmodel	James Owens	Harry Snyder
		Russell Stilwell
		Vernon Turner
		William Turrentine
		Donald Watson

PLEDGES

Garland Branch
 Harry Brownlee
 Harold Clark
 Harold Ficquette
 Joseph Padula



Chester Kazmierczak
 George Kelley
 Edward Maxwell
 Sam Martino
 Jesse Stone

Our Mascot Alpha Chi (AX)

TURNER
KESMODEL
STILWELL
SNYDER



BRANCH
BROWNLEE
BRADLEY
CLARK



CROSS
FICQUETTE
HAYNES
HENRY



KAZMIERCZAK
KNOX
LAKE
LOVELAND



MARTINO
NIX
OWENS
PADULA



ROETHKE
SHULER
SMILEY
SMITH



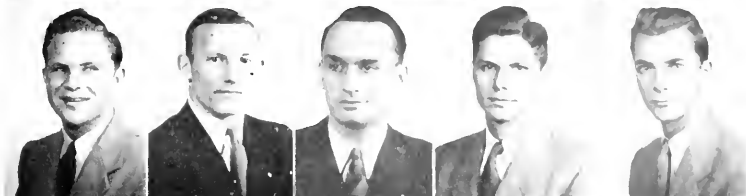
STONE
TURRENTINE
WATSON



KURTZ
GOWER
BARNES
MACHEN



BAKER
BOUTWELL
BURDINE
CLONTS
COSIER



DeFOOR
DeLOACH
DIX
EICHHOLZ
GARDNER



GILLESPIE
GOLDEN
GRAVELY
HERPEL
JENNINGS



JONES
McNAMARA
McQUIDDY
MATHIS
NELSON



C. PURTZ
W. PURTZ
RAY
REID
J. SMITH



M. SMITH
STAFFORD
STANIER
WYNN





EDWARD DAIL, JR.
Recorder



FRED KIEHLE
Commander



THOMAS ANDERSON
Lieutenant Commander



JOHN GOULD
Treasurer

SIGMA NU

The Legion of Honor

FOUNDED AT VIRGINIA MILITARY INSTITUTE, 1869

Delta Mu Chapter Established 1913

Colors: Black, White and Gold

Flower: White Rose

"To believe in a life of love,
To walk in the way of honor,
and to serve in the light of truth."
This is the life, the way, and the light,
this is the creed of our fraternity.

OFFICERS

- FRED KIEHLE Commander
- THOMAS ANDERSON Lieutenant Commander
- EDWARD DAIL, JR. Recorder
- JOHN GOULD Treasurer

ACTIVE MEMBERS

- Thomas Anderson
- Russell Anderson
- Robert Brown, Jr.
- Gordon Carlson
- John Causier
- G. Edward Dail, Jr.
- Alvin Fuller
- Harvey Gardner, Jr.
- John Gould
- Charles Keoskie
- Fred Kiehle, Jr.
- James Knight, Jr.
- William McClencn
- Harry McCollum
- Frank McDonald
- R. Dale Melching
- Council Miller, Jr.

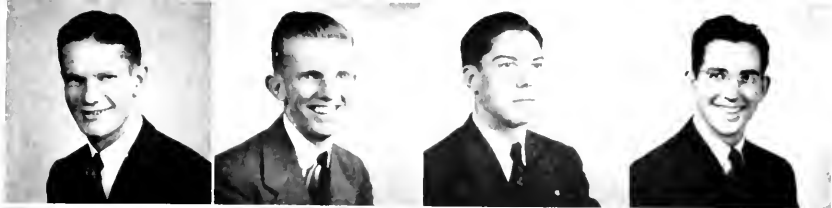


- William Mitchell
- Hugh Murphy, Jr.
- Edward New, Jr.
- Leroy New
- George Slaton
- Ralph Matousck
- Leslie Maxwell, Jr.
- Richard Saurbrun
- Henry Sorenson
- William Tribble
- Frank Thompson
- C. Aubrey Vincent, Jr.
- George Whitehurst, Jr.
- O. Gordon Williamson
- James Withers
- Jack Ziegler

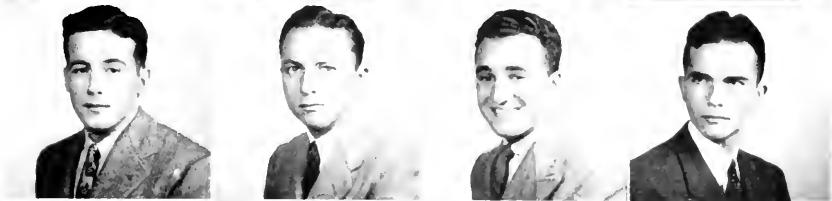
PLEDGE

James Kicker

R ANDERSON
BROWN
CARLSON
CAUSIER



FULLER
GARDNER
KEOSKIE
KICKER



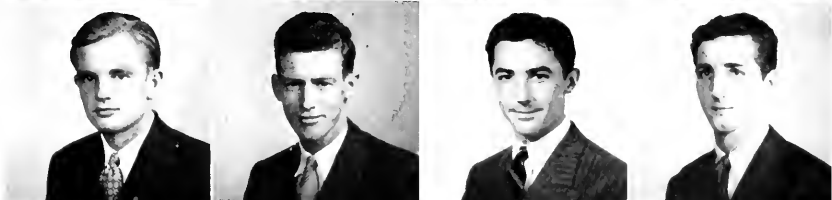
KNIGHT
McCLENNEN
McCOLLUM
McDONALD



MATOUSEK
MAXWELL
MELCHING
MILLER



MITCHELL
MURPHY
E. NEW
L. NEW



SAURBRUN
SORENSEN
TRIBBLE
THOMPSON



VINCENT
WHITEHURST
WILLIAMSON
WITHERS
ZIEGLER





The dictionary defines advertising as "calling public attention to a thing, especially by emphasizing its good points in order to arouse a desire to purchase or invest". But not so with the advertising in The Hatter. Instead, it is the means by which our merchant friends say thank-you, and goodbye for the Summer to the undergraduates, and wish every senior Godspeed as he goes into the future.

We don't need to be reminded that what they have to sell is good; we all know that. We don't have to be told that they are our friends; but it is nice to know that they are willing to co-operate in creating this permanent record of the year.

It is also nice to know the source of some of the basic supplies that the University uses. But, more than anything else, these pages are here to keep us aware of the many merchant-friends that we have made while we have been in Stetson.

Ads



Elizabeth Hall

The City of DeLand
and
DeLand Chamber of Commerce
offer
Congratulations To The Graduating Class
of
JOHN B. STETSON UNIVERSITY

DELAND is situated in the rolling hills of central Florida, 110 miles south of Jacksonville, with the picturesque St. Johns River on the west and the Atlantic Ocean 22 miles to the east. Being centrally located, practically every point of interest in the state may be visited within one day's drive.

During the winter months, there is scarcely a day that the sun does not shine, sending forth its ultra-violet rays to bring new life to growing things. Children grow strong and sun-tanned, and older people add years to their span of life. Gentle trade winds blowing across the peninsula make an ideal year-'round climate—cool in summer and warm in winter. DeLand is a beautiful city, appealing to those of educational and cultural background. It is a friendly city—a city you will like.

For further information about DeLand, please write the

CHAMBER OF COMMERCE
DeLAND FLORIDA

FIRST STATE BANK OF DeLAND

An Account With This Friendly Bank Entitles You to the
Best in Service, Security and Personal Attention

•

Member of the Federal Deposit Insurance Corporation

Congratulations and Best Wishes

To the Class of 1942

DUVAL JEWELRY COMPANY

ALL OVER FLORIDA

BRANDON ELECTRIC CO.

108 E. NEW YORK AVE.

Phone 536

NORGE APPLIANCES

AIR CONDITIONING

HEATING

ZENITH RADIOS

DESK LAMPS

C. J. BRANDON, *Prop.*

DeLand's Modern Electric Store



STETSON HATS

Have Character

Take any STETSON—there's something about it besides its quality and meticulous workmanship. A STETSON has character . . . you respect it, others respect it.

When you wear a STETSON, you know it's authentic in style and that it will give you the service you have a right to expect.

JOHN B. STETSON COMPANY

Philadelphia

Compliments of

"The Students' Shopping Center"

J. C. PENNEY CO.

V. M. FOUNTAIN CO.

Central Florida's Oldest
and Finest Store

DELAND

FLORIDA

ORANGE BELT PHARMACY

200 NORTH BOULEVARD

COMPLETE DRUG AND FOUNTAIN SERVICE

We Deliver Phone 555

Compliments of

FLORIDA STATE THEATRES

IN DELAND

Athens Theatre — Dreka Theatre

WE OFFER OUR CONGRATULATIONS
TO THE GRADUATING CLASS AND
OUR SINCERE APPRECIATION AS
OFFICIAL PHOTOGRAPHERS FOR
THIS ANNUAL.



TOOLEY-MYRON
STUDIOS

"Foremost Photographers in the South"

STITH - GRIFFITH

Funeral Home

DELAND

FLORIDA

Our Best Wishes to the Graduates of
STETSON UNIVERSITY
for 1942

W. A. ALLEN & COMPANY

"The Busy Druggists"

JAS. A. ALLEN
Phone 228

DAY PHONE
62

J. E. SUMMERHILL
Phone 490

ALLEN-SUMMERHILL FUNERAL HOME

Established 1877

FUNERAL DIRECTORS

REAL AMBULANCE SERVICE

109 E. New York Avenue

DELAND

McCRORY'S 5 & 10c STORE

Headquarters
for Student Supplies

VISIT OUR STORE DAILY

The Court House Pharmacy

The Store of Personal Service

Headquarters
for Stetson Students

C. M. Geiger, Proprietor Phone 5

STUDENT SUPPLIES

Note Books Stationery
FOUNTAIN PENS
Portable Typewriters
Rentals Repairs

ALLEN-WHITE COMPANY

"You Are Always Welcome"

BOOSTING FOR STETSON UNIVERSITY

HOTEL PUTNAM

DeLand's Fireproof Hotel

West New York Ave.

F. N. DeHUY & SON

Jewelers and Silversmiths

Since 1873

DELAND

FLORIDA

You Can Always

Shop at SEARS and Save

SEARS, ROEBUCK AND CO.

South Boulevard

DELAND



"They Say

You're Never Too Old To Learn"

Every year when a new class enters Stetson, I'm right with them and stick around until they graduate and then begin the cycle again. But mind you, I like being a college boy, and I hope to keep right on attending dear old Stetson until I'm too old to learn, which I know will be never. Good luck, graduates, and best wishes for every happiness in the coming years. And, by the way, please don't forget your old school mate and PUBLIC SERVICE Servant

Reddy Kilowatt

Florida PUBLIC SERVICE Company

F R I E R S O N ' S

FIRESTONE

WESTINGHOUSE

Phone 23

that's me

230 North Boulevard

Refrigerators—Radios—Ranges

Owner

GERALD E. FRIERSON

Phone 23

that's me

DeLand, Florida

Trade with ORLANDO LINEN & TOWEL SUPPLY CO.

Why?

Because it was the first to service Linens to Central Florida

Because it is a Florida Corporation

Because it is the only Linen Supply servicing Central Florida that is owned and operated by Floridians

Because with its affiliates it maintains one of the largest payrolls in the State

Every dollar received is spent in Florida

Anyway it is the neighborly thing to do and we guarantee to please you

ORLANDO LINEN & TOWEL SUPPLY CO.

Phone 5861

THE BLOSSOM SHOP

Corsages Bouquets

206 N. BOULEVARD

Phone 424

Bushnell & Bushnell Music Shop

Home of the

Marhushek & Wurlitzer Pianos

**THE
BARNETT NATIONAL
BANK**

"A Florida Landmark"

Jacksonville

DeLand

Avon Park

Cocoa

St. Augustine

Ft. Lauderdale

Member Federal Reserve System and F. D. I. C.

CONDON'S
RESTAURANT

Established August 9, 1924

"WE SERVE THE BEST ONLY"

*Our Steaks are as Tender as a
Mother's Love*

DELAND, FLORIDA

DELUXE LAUNDRY
AND
DRY CLEANERS

We Appreciate the Patronage of the
Students During the Year

PHONE 347

NORTH DELAWARE AVENUE

ATHENS LAUNDRY
AND
DRY CLEANERS

You Tried the Rest

Now Try the Best

PHONE 443-J

Compliments

of

DOMINICK'S
RESTAURANT

DELAND, FLORIDA

THIRST ASKS
NOTHING
MORE

DRINK

Coca-Cola

IN BOTTLES

DeLAND
COCA-COLA
BOTTLING
CO.

●
COMPLIMENTS

OF

FUGLE'S DAIRY

DELAND, FLORIDA

PHONE 32
●



THE MARK THAT
IDENTIFIES THE SOUTH'S
BEST YEARBOOKS

HOTO-PROCESS ENGRAVING CO.

115 - 119 LUCKIE STREET ★ ATLANTA GEORGIA



SUCCESSFUL ANNUALS

Require the services of experienced and expert craftsmen, trained in every detail of the processes of creating·planning layout and design·typesetting·printing lithographing and binding... Throughout half a century this company has pioneered in the production of the highest type of printing... Our services include a special college annual sales and service organization... Abundant equipment·modern and complete... Prices representing maximum in value



FOOTE & DAVIES

PRINTING • LITHOGRAPHING • ENGRAVING

ATLANTA







