

STETSON



HATTER

1 9 4 3

du Pont-Ball Library
of
Stetson University




Stetson University



3 4369 00479773 6

DO NOT REMOVE
FROM LIBRARY



Digitized by the Internet Archive
in 2010 with funding from
Lyrasis Members and Sloan Foundation

<http://www.archive.org/details/hatter1943stetson>

THE HATTER





The Hatter

1943

ANNUAL PUBLICATION OF STETSON
UNIVERSITY . . . DeLAND, FLORIDA

DEIPHENE COVERSTON *Editor-in-Chief*
F. A. LeROY BARKSTROM *Business Manager*

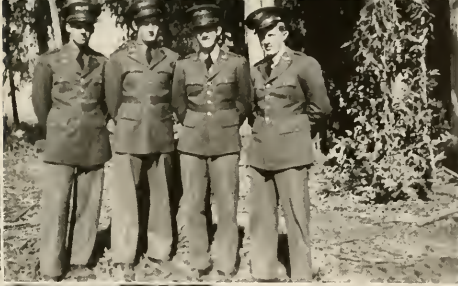




DEDICATION

With a feeling of pride and humility this year's HATTER is dedicated to you men of Stetson who have answered our country's call to arms. We are proud of your deeds wherever you may be, whatever you may be doing, and humble because we cannot show our appreciation in a greater sense. It is our fervent hope that the powers above will see fit to return you to us, safe and victorious, to live in the land you are now defending.







FOREWORD

To students of all ages college has meant a prolongation of youth, a period in which ideals are stabilized, and a time to be remembered as the best in life. Despite the world at war Stetson students have gone forward much as before—the atrocities of an outside uncertain reality tending only to bring us closer together. In the HATTER of 1943 you see reflected the lightheartedness of youth that can never be suppressed in a free country. We hope you like it.





Faculty



THE PRESIDENT'S MESSAGE

Despite war conditions, the session 1942-'43 has been one of the best in Stetson's history. Morale has been high. The scholarship record has been upheld. Students and faculty members have given their utmost to assist the Government in its war effort. At the same time, they have maintained the highest educational standards. Stetson thus continues to go forward.

I take this opportunity to extend greetings and good wishes to the students and to the Stetson Family everywhere.

Sincerely,

WILLIAM SIMS ALLEN, *President.*



HARRY C. GARWOOD
Dean of the University



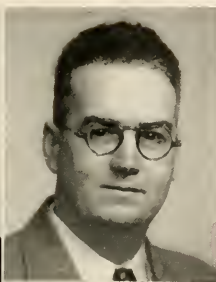
ROY FRANCIS HOWES
Dean of College of Law



WILLIAM E. DUCKWITZ
Director of School of Music



JAMES RUFUS McVICKER
Director of the School of Business



EZRA ALLEN
FRANCES BUXTON
W. C. COWELL

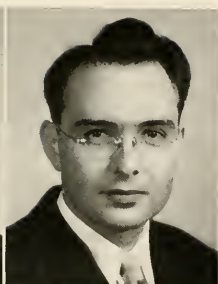
ROBERT I. ALLEN
G. PRENTICE CARSON
CECIL L. CRISSEY
(Manager of Univ. Press)

DORIS K. ARJONA
RICHARD E. CLARK
LEONARD J. CURTIS

SUSIE P. BROWN
ROSEMARY CLARK
IOLA KAY EASTBURN

SUE MCE. BURNS
JOHN F. CONN
BOYCE F. EZELL

**STETSON
FACULTY**



CHARLES A. FISHER
WARREN S. GORDIS
ANNIE N. HOLDEN

ETHEL M. FISHER
VERONICA DAVIS GOVE
CURTIS C. HORN

DOROTHY L. FULLER
COL. FRANK W. HALLIDAY
NEIL S. JACKSON

HAROLD M. GIFFIN
EDITH HARVEY
SARA STAFF JERNIGAN

VIRGINIA GIFFIN
ESTHER M. HICK
CARL H. JOHNSON



ETTER M. TURNER
EDGELLE HENRY
CHARLOTTE A. SMITH



G. LEIGHTON LAFUZE
 WILLIAM H. McENIRY, JR.
 IRVING C. STOVER

MARION B. LEONARD
 MRS. J. M. McLAUGHLIN
 (Dietitian)
 FRANCES C. THORNTON

CURTIS M. LOWRY
 BARBARA ROWE
 HARRY S. WINTERS

MARY T. LOWRY
 ERICH SAXL
 AILEEN WORTH

MARY S. McCURDIE
 R. GRADY SNOWDEN
 M. JEAN FINNEY

IDA R. CUNNINGHAM
 CLIFFORD B. ROSA



**STUDENT
BODY
OFFICERS**



JOHN LEWIS
President
BUD WARE
Vice-President
ELIZABETH STACEY
Secretary
CLAIRE BRANDIES
Treasurer



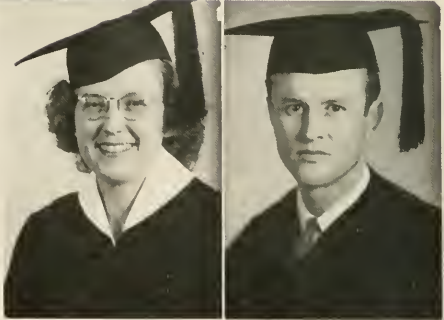
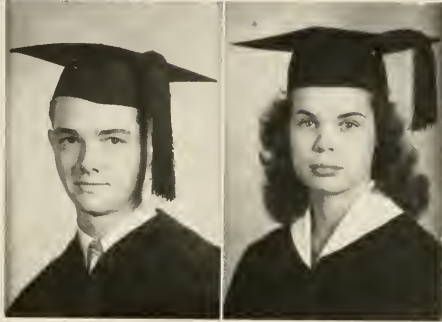
Barnes, F. Smith, Farrell, Rogy, Hillman, Snellings, Coversto, Stacey, Reaves, B. Smith, Jennings, Jones, Elliott, Powers, Purtz.

CLASS OFFICERS



Seniors

STETSON



BARBARA PEDEN ALBRITTON, B.M.

Lakeland, Florida

Phi Beta, 1, 2, 3, 4, 5; Historian, 4; B. S. U. Council, Music Chairman, 1; Secretary of Music School, 3; Radio Guild, 3; Delta Sigma Phi Sweetheart, 4; Y. W. A., 1, 2; Glee Club, 1, 2, 3, 4, 5; Student Leader, 3; Key Club, 1, 2, 3, 4, 5; Radio Chorus, 1, 2, 3, 4, 5; Sadie Hawkins Committee, 3; Opera, 1, 2, 4, 5.

RAYMOND WILLIAM AIDEN, JR., B.A.

Daytona Beach, Florida

Pi Kappa Phi; Beta Key.

ROBERT C. ALLEN, B.A.

DeLand, Florida

Glee Club, 1, 2, 4; Sigma Pi Sigma, 3, 4; Treasurer, 3; Secretary, 4; B. S. U. Council, 2; C. P. T. P., 2; Assistant Recording Room Technician, 1, 2, 4.

SIGNA HELEN ANDERSON, B.A.

Sanford, Florida

Reporter, 2, 3, 4; Proofreader, 2, 3; Bookkeeper, 4; HATPER, 3, 4; Junior Class Editor 3; Associate Editor, 4.

FRANCES ARKITY, B.M.

Miami, Florida

B. S. U. Council, Music Chairman, 2, 3; Freshman Adviser, 4; Glee Club, 1, 2, 3, 4, 5; Business Manager of Girls' Glee Club, 3, 4; Radio Chorus, 1, 2, 3, 4, 5; Traveling Squad, 1, 2, 3, 4, 5; Phi Beta, 1, 2, 3, 4, 5; Corresponding Secretary, 4; Rules and Procedure Committee, 4; Y. W. A., 1, 2, 3, 4, 5; Music Chairman, 2, 3.

GEORGE J. AVANT, B.A.

Jacksonville, Florida

Ministerial Association, 2, 3, 4; Pi Gamma Mu, 3, 4; History Club, 3; Pi Delta Psi, 4; B. S. U. Council, 2, 3; *Stetsonian*, 3; Honor Roll, 2, 3, 4.

J. A. LEROY BARKSTROM, I.I.B.

Jamestown, N. Y.-DeLand, Florida

Pi Kappa Delta, 1, 2, 3; Varsity Debate Squad, 1, 3; Phi Alpha Delta, 1, 2, 3; Justice, 3; Delta Sigma Phi, 2, 3; Student Bar Association, 1, 2, 3; Vice-President, 3; President of Senior Law Class, 3; Student Disciplinary Committee, 1, 2; Winner of Freshman Law Club Competition, 1; Redfern Prize, 2; American Jurisprudence Prize, 2; Business Manager of *HATPER*, 3; Chairman of Rules and Procedure Committee, 3; Mystic Krewes, 3; Interfraternity Council, 3; Honor Roll, 2, 3; Dean's List, 2, 3.

SENIORS



BYRON F. BOND, B.A.

Lucas Grove, Georgia

Pineland Junior College, 1, 2; Scholarship Award, 2; Honor Roll, 1, 2, 4; Dean's List, 4; *Reporter* Staff, 3; HATTER Staff, 3.

GARLAND M. BRANCH, JR., B.A.

Plant City, Florida

Delta Sigma Phi; Mystic Krewe, Second Mate, 3; Captain, 4; Scroll and Key, 3; President, 4; Who's Who in American Universities and Colleges, 4; Sigma Pi Sigma, 3, 4; President, 4; Gamma Sigma Epsilon, 2, 3, 4; Vvor, 4; Newton Club, 3, 4; Associate, 2; Fellow, 3, 4; President, 4; Der Deutsche Verein, 2, 3, 4; President, 4; Stetson Astronomical Society, 2; B. S. U. Executive Council, Publicity Manager, 3; Sunday School Superintendent, 4; Phi Society, President, 2; Symphony Orchestra, 1, 2, 3, 4; Gamma Sigma Epsilon Award as Outstanding Freshman Chemist, and Sophomore Chemist.

ROBERT W. BARNES, B.S.

Jacksonville, Florida

Pi Kappa Phi, Archon, 4; Past Treasurer, Secretary, Pledge Captain; President of Senior Class, 4; Interfraternity Council, 3, 4; President, 4; Business School President, 3; Sophomore Class President, 2; I. R. C., 3, 4; S Club; Social Committee, 4; Sadie Hawkins Committee, 4; Mystic Krewe, 4; Men's Discipline Committee, 4; Varsity Basketball, 2, 3, 4; Freshman Basketball, State Championship, 1.

CONSTANCE H. BENNETT, B.A.

Bahama Park, Florida

W. A. A., 1, 2, 3, 4; Secretary, 3; Vice-President, 4; Pi Beta Phi; Beta Key; Blazer Club, Vice-President, 3; Motor Corps; F. T. A., 4.

FAULINE BENNETT, B.A.

Daytona Beach, Florida

Blazer Club, 2, 3, 4; Treasurer, 4; W. A. A., 1, 2, 3, 4; Secretary, 2, 4; Recorder of Points, 3; Table Tennis Club, President, 2; Little Theatre, 2, 3; Major Club, Vice-President, 3; HATTER, Freshman Editor, 2; *Rebortier*, Associate Editor, 4; *Stetsonian*, Associate Editor, 3; Radio Guild, 4; Student Government, Freshman Orientation Committee; Honor Roll, 3; The Honor, 4; Alpha Xi Delta, 1, 2, 3, 4; Journal Correspondent, 1, 2, 3; Corresponding Secretary, 3, 4.

MILVIN W. BERGER, B.S.

Tampa, Florida

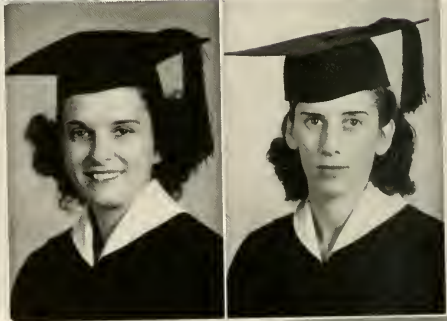
Sadie Hawkins Committee, 1; Intramurals, 1, 2; Freshman Football Manager, 2; Freshman Rules Committee, 2; Constitution Committee, Business School, 3; Freshman Adviser, 3, 4; *Reporter*, Associate Sports Editor, 4; President of Men's Council, 4; Radio Guild, 4; I. R. C., 4.

DON H. BLACK, B.A.

Knoxville, Tennessee

Pi Kappa Phi; Tennis Team Manager, 2, 3; Intramurals, 1, 2, 3, 4; Baseball Team Manager, 1; Independent Basketball Team, 4.

STETSON



CLAIRE BRANDIES, B.A.
Callahan, Florida

W. A. A., 1, 2, 3, 4, Corresponding Secretary, 2, Vice-President, 3; Y. W. A., 1, 2, 3, 4, 5, President, 2, 3; B. S. U. Council, 2, 3, 4, Secretary, 4; Blazer Club, 2, 3, 4, 5, Vice-President, 3, President, 4; Freshman Adviser, 2, 3, 4; Women's Student Government, 3, 4, 5, Secretary, 5, Vice-President, 4, President, 1; Treasurer of Student Body, 5; Who's Who in American Universities and Colleges, 5; Zeta Tau Alpha.

MARY ANN BROWN, B.A.
Naranja, Florida

Art Club, 1; I. R. C., 2, 3, 4; F. T. A., 4; Pi Delta Phi, 1, 4, Treasurer, 4; Hatter Staff, 4; Reporter Staff, 3, 4; Honor Roll, 3; Y. W. A., 1.

HELEN RAY BRYAN, B.A.
Bowling Green, Florida

Pineland Junior College, 1, 2; Scholarship Award, 2; Honor Roll, 1, 2, 3, 4; Dean's List, 3; F. T. A., 4, Treasurer, 4; Hatter Art Club, 4; Alpha Deksoma, 4.

J. T. BURDINE, JR., B.A.
St. Petersburg, Florida

Kappa Kappa Psi, 1, 2, 3, 4, Treasurer, 3, Vice-President, 4; Band, 1, 2, 3, 4, First Lieutenant, 4; Brass Trio, 2, 3, Treasurer, 3; Ministerial Association, 1, 2, 3, 4, Secretary, 3, 4; B. S. U. Council, 3, 4, Magazine Representative, Stetson and State, 3, Secretary, 4; I. R. C., 1, 2, 3, 4, Treasurer, 3, Vice-President, 4, State First Vice-President, 3; Pi Kappa Phi, 1, 2, 3, 4, Chaplain, 3, Warden, 4; Pi Gamma Mu, 4; Theta Alpha Phi, 4; Radio Guild, 3; Symphony Orchestra, 1; Little Theatre Orchestra, 2; Sadie Hawkins Committee, 4.

MARY KATHERINE CARLTON, B.A.
Sparr, Florida

Charles S. Iarriss Memorial Award in Classical Language, 2; Y. W. A., 3; W. A. A., 3; Newton Club, 3, 4; Alpha Deksoma, 3, 4, Vice-President, 4; F. T. A., 4, Custodian, 4.

VIRGINIA CHAMBERLIN, B.A.
Crescent City, Florida

Alpha Xi Delta, 4; La Franciscade, 3, 4; Honor Roll, 2; F. T. A., 4.

LEWIS GLADIN, B.A.
Sarasota, Florida

Pi Kappa Phi Pledge, 3; Intramurals, 1, 2, 3, 4.

SENIORS



RACHEL M. CLARKE, B.A.

Milton, New York
Zeta Tau Alpha, 2, 3, 4; Treasurer, 3, 4; Y. W. A., 1, 2; La Franciade, 1, 2, 3, 4; Phi Delta Psi, 4; Hatter Art Club, 3, 4.

SHIRLEY COEN, B.S.

Mt. Dora, Florida
Transfer Florida State College for Women; Zeta Tau Alpha, Guard; Treasurer of Business School, 4.

DOROTHY GIBBONS COOKE, B.A.

Montclair, New Jersey
Alpha Xi Delta, 3, 2, 3, 4; Hatter Art Club, 1, 2, 3, 4; Sigma Delta Phi, 3, 4; Honor Roll, 3, 4.

EDGAR R. COOPER, B.A.

Fort Pierce, Florida
B. S. U. Council, Treasurer, 3; Ministerial Association, 1, 4; Treasurer, 3; President, 4; Ministerial Representative to B. S. U. Council, 4.

DOROTHY V. ESTABROOK, B.A.

Chicago, Illinois
Transfer MacMurray College; Blazer Club, 3, 4; President, 3; Vice-President, 4; W. A. A., 2, 3, 4; Treasurer, 2; Corresponding Secretary, 4; Green Derby Carnival Chairman, 3; Honor Roll, 4; Major Club, 2, 3; Killely Club, 2; President, 2; Alpha Delta Sigma, Intramural Manager, 3; Hatter Staff, 3.

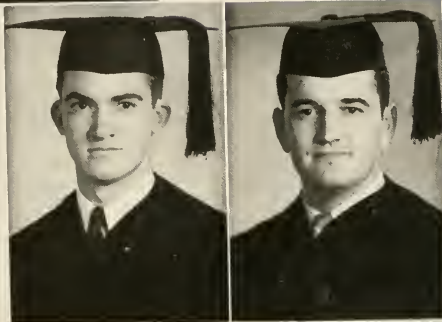
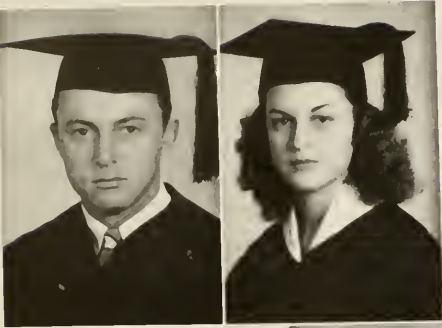
IRMA J. FRENCH, B.A.

Jacksonville, Florida
Honor Roll, 1, 2, 3, 4; The Honor; Pi Kappa Delta, 2, 3, 4; Secretary-Treasurer, 3, 4; Theta Alpha Phi, 4; Pi Gamma Mu, 4; Y. W. A., 1, 2, 3, 4; Vice-President, 4; Sigma Delta Psi, 2, 3, 4; Hatter Staff, 4; Debate Squad, 1, 2, 3; Pi Delta Psi, 4; Theta Gamma Epsilon, 3, 4; I. R. C., 2, 3, 4; Little Theatre, 2, 3, 4; Radio Guild, 3, 4; Secretary, 4; F. T. A., 4; Dean's List, 4.

RUTH E. FRENCH, B.A.

Miami, Florida
Transfer University of New Hampshire; Theta Upsilon, Dean's List, 1, 2; Honor Roll, 2; Der Deutsche Verein, 3, 4; Treasurer, 4; Pi Gamma Mu, 3, 4; Secretary-Treasurer, 4; Phi Alpha Theta, 4; Pi Delta Psi, 4; I. R. C., 4; W. A. A., Archery Manager, 4.

STETSON



HARVEY A. GARDNER, JR., B.S.

Miami, Florida

Transfer Duke University; Sigma Nu, Commander, 4; Vice-President, 3; President of Business School, 4; Interfraternity Council, 1, 4; Freshman Adviser, 3, 4; Radio Guild.

NORMA P. GARDNER, B.A.

Tallahassee, Florida

Y. W. A., 1, 2, 3, 4; W. A. A., 1, 2, 3, 4; Pi Delta Psi, 1, 4; Pi Beta Phi, 1, 2, 3, 4; Recording Secretary, 2, 3; Treasurer 4.

WALKER S. GREEN, B.A.

DeLunak Springs, Florida

Transfer Davidson College; Phi Delta Theta; Intramurals; Scripps and Franks; Quips and Cranks; Davidsonian; Radio Guild Beta Key; Stetson Defense Council; Reporter Staff.

ROBERT S. HERNDON, B.A.

Sanford, Florida

Band, 1, 2, 3, 4; Captain, 4; Kappa Kappa Psi, 3, 4; President, 4; Secretary, 3; Orchestra, 1; Newton Club, 3, 4; Secretary 4; Sigma Pi; Sigma 3, 4; Vice-President, 4; Glee Club, 1, 4; Opera, 3; Men's Chorus, 3.

PATRICK H. HILL, B.A.

Dade City, Florida

Transfer Alabama Polytechnic Institute, Tampa University, Lambda Chi Alpha; Ministerial Association, 3, 4; Devotional Chairman, 4; B. S. U. Council, 4; Vesper Chairman, 4; Glee Club, 3; Orchestra, 3, 4; Reporter; Advertising Manager, 3; Vice-President of Senior Class; HATTEL, Photographer, 4; Little Symphony Orchestra, 3.

MARIE HISLY, B.A.

Miami, Florida

Zeta Tau Alpha, President, Vice-President, Rush Chairman, Social Chairman; Pan-Hellenic Council, 4; The Honor, 4; Freshman Adviser, 4; Stetsonian, 2, 3; Hatter Staff, 3; Reporter Staff, 3, 4; Pi Delta Psi, 3, 4; I. R. C., 4; W. A. A., 1, 2, 3, 4; Y. W. A., 1, 2, 3, 4; Hatter Art Club, 1, 2, 3, 4; F. T. A., 4; Defense Council, 3; Interfraternity Council, 4.

ELSH A. HOOKER, B.A.

Flushing, New York

Honor Roll, 1, 2, 3, 4; Dean's List, 3, 4; Beta Key, 2, 3, 4; Secretary, 3; Vice-President, 4; Phi Society; Der Deutsche Verein, 4; Stetsonian Staff, 2, 3; The Honor, 4; La Franciscade, 2, 3, 4; Treasurer, 3; President, 4.

SENIORS



DOROTHY TRAWICK HOWARD B.S.

Cedar Key, Florida

Y. W. A., 1, 2, 3, 4; Beta Key, 3, 4; Band, 2; Der Deutsche Verein, 3, 4; Newton Club, 1, 4; B. S. U. Council, 2, 3, 4; Treasurer, 2; Training Union Representative, 3; Vesper Chairman, 4; Life Service Band, 3.

CAROLYN V. HOWES, B.A.

DeLand, Florida

Transfer Alfred University Extension; Alpha Xi Delta, 3, 4; Historian, 4; Phi Alpha Theta, 3, 4; Vice-President, 4; Pi Delta Psi, 4; F. T. A., 4; Little Theatre, 3; Honor Roll, 3, 4; Dean's List, 4.

DOROTHY JENNINGS, B.A.

Doctor's Inlet, Florida

Alpha Xi Delta, Vice-President, 3; Rush Chairman, 3; Social Chairman, 4; W. A. A., 1, 2, 3, 4; Little Theatre, 1, 2, 1, 4; HATTR Staff, 1; Interfraternity Council, 3, 4; Blazer Club, 3, 4; Freshman Adviser, 3, 4; The Honor, 3, 4; Beauty Section of HATTR, 1; L'Esplanade, 3, 4; Hatter Art Club, 3, 4; Glee Club, 1, 2; Secretary of Freshman Class; Secretary of Senior Class; Sidie Hawkins Committee, 2.

SHIRLEY KAGEY, B.A.

Miami, Florida

Y. W. A., 1, 2, 3, 4; Personal Service Chairman, 4; Alpha Delta, 1, 3, Treasurer, 3; HATTR Staff, 4; E. T. A., 4.

JANE KNIGHT, B.A.

Miami, Florida

Glee Club, 2; Life Service Band, 2; Volunteer Band, 4; B. S. U. Council, Publicity Chairman, 4; Radio Guild, 2; Little Theatre, 2, 4; Y. W. A., 2, 4.

FDITH S. KNOX, B.A.

DeLand, Florida

Pi Beta Phi, Scholarship Chairman; Theta Alpha Phi, 3, 4; Vice-President, 4; Treasurer of Senior Class; The Honor; Pi Delta Psi, Secretary, 4; I. R. C., 2, 3, 4; Dean's List, 3, 4; Honor Roll, 2, 3, 4; Episcopal Fellowship.

DAVID MARTIN LEHMAN, B.A.

Palm Beach, Florida

Delta Sigma Phi, 3, 4; Secretary, 4; Who's Who in American Universities and Colleges, 4; Freshman Football, 1; Little Theatre, 1, 2, 3, 4; History Club, 2, 3; Secretary - Treasurer, 3; Freshman Adviser, 3, 4; Chairman of Freshman Orientation Committee, 3; Chairman of Freshman Rules Committee, 1; Intramurals, 1, 2, 3, 4; Stetson Representative on DeLand Safety Committee, 3; Sidie Hawkins Committee, 3; Sigma Delta Pi, 2, 3, 4; Treasurer, 3, 4; I. R. C., 3, 4; Delegate to Southeastern Convention, 3; Judge in Freshman Court, 3; Pi Gamma Mu, 3, 4; HATTR, Sports Editor, 4; Intramural Manager of Delta Sigma Phi, 4; Business Manager of Little Theatre, 4; Theta Alpha Phi, 3, 4; Treasurer, 4; Honor Roll, 2, 3; Dean's List, 3; Alpha Theta, President, 4.



JOHN M. LEWIS, B.A.
Miami, Florida

Outstanding Freshman Plaque; I. R. C., 1, 2; Ministerial Association, 1, 2, 3, 4; Parliamentarian, 3, 4; Theta Alpha Phi, 2, 3, 4; Pi Gamma Mu, 3, 4; Phi Alpha Theta, 4; Phi Society; Mystic Krewe, 2, 3, 4; Vice-President, 3; B. S. U. Council, 2, 3, 4; President, 3, 4; State B. S. U. President, 3, 4; Scroll and Key, 2, 3, 4; Treasurer, 4; Varsity Debate, 1, 2, 3, 4; Pi Kappa Delta, 1, 2, 3, 4; President, 3, 4; Provincial Tournament, First Place in Extemporaneous Speech, Second Place in Oratory, 1; A National Winner in Government Extemporaneous Speech Contest, 3; President of Student Body, 4; Chairman of Extracurricula Committee, 2; Honor Roll, Chairman of Red Cross Committee, 4; Who's Who in American Universities and Colleges, 3, 4.

PAMELA J. LIPSCOMB, B.S.
Deland, Florida

Commerce Club, 3, 4; Secretary, 4; Pi Gamma Mu, 3, 4; Vice-President, 4; Press Club, 3, 4; Reporter, 3, 4; Society Editor, 4; Associate Editor, 4; Honor Roll, 2, 3, 4; Dean's List, 4

JESSE BETH LONGINO, B.A.
Bredenton, Florida

Y. W. A., 1, 3, 4; W. A. A., 1, 2, 4; Stetsonian Staff, 2; Hatter Art Club, 2, 3, 4; Delta Delta Delta, 1, 2, 3, 4; Social Chairman, 4; Chaplain, 4; Tabernacle, 1; T. A., 4; Little Theatre, 1, 2.

OLIVE LORDE, B.M.
Sarasota, Florida

Band, 2, 3, 4; Orchestra, 1, 2, 4; Little Theatre Orchestra, 3, 4; Glee Club, 3, 4; Phi Beta, 2, 3, 4; Treasurer, 4; Delta Gamma Phi, 2, 3, 4; Treasurer, 3; Secretary, 4; Sigma Delta Pi, 4.

LOUISE McCLURE, B.A.
Vero Beach, Florida

Transfer Vanderbilt University; Y. W. A., 1; W. A. A., 1, 2; Freshman Adviser, 3, 4; Interfraternity Council, 3; Hatter Staff, 2, 3; Stetsonian Staff, 2; I. R. C., 2, 3; Franciscan, 2; Secretary of Junior Class; Honor Roll, 1; The Honor, 3, 4; President, 4; I. T. A., 4; Little Theatre, 1, 2, 3, 4; Women's Student Council, 4; Secretary, 4; Delta Delta Delta, 1, 2, 3, 4; Corresponding Secretary, 2; Chaplain, 3; Marshal, 4.



HELEN DORIS McCORMICK, B.A.
Deland, Florida

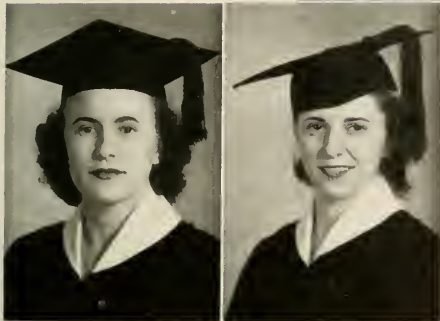
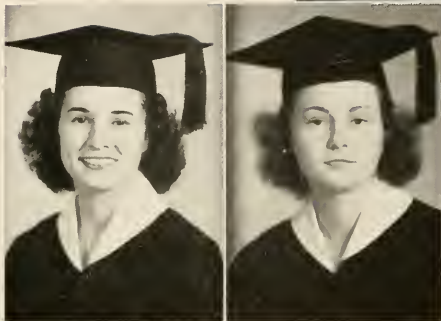
Delta Delta Delta, 1, 2, 3, 4; Recording Secretary, 4; Theta Alpha Phi, 3, 4; President, 4; Historian, 3; Pan-Hellenic Council, 3, 4; President, 4; The Honor, 4; Treasurer of A. B. School, 4; Little Theatre, 1, 2, 3, 4; Who's Who in American Universities and Colleges, 4; Honor Roll, 3; W. A. A., 1; Radio Guild, 3.

WINSTON C. McQUIDDY, B.A.
Jacksonville, Florida

Pi Kappa Phi, Historian, 4; Secretary, 4; Radio Guild, 3, 4; Glee Club, 1, 2, 3, 4; Radio Chorus, 1, 2, 3, 4; Traveling Squad, 1, 2, 3, 4; Glee Club Accompanist, 3; Key Club, 4; Sidie Hawkins Committee, 2, 3, 4; Radio Chorus Accompanist, 3; Symphony Orchestra Soloist, 2; Work Shop Plays, 3; Accompanist for Professor Giffin, 3, 4.



SENIORS



MARY R. MOCK, B.A.
Phillipburg, New Jersey

Zeta Tau Alpha, President, Vice-President, Rush Chairman; Freshman Adviser, 2, 3, 4; Pan-Hellenic Council, 3, 4, President, Treasurer; La Francade, 2, 3, 4; Hatter Art Club, 3; Sigma Delta Pi, 4; Secretary of A. B. School, 3; Treasurer of Junior Class; Interfraternity Council, 3, 4; The Honor, 3, 4, Treasurer; W. A. A., 3, 4; Women's Council, Treasurer, 3; Glee Club, 1, 2, 4; Little Theatre; Pi Delta Psi, 3, 4; Stetson Memorial Committee; Defense Council, 3; Who's Who in American Universities and Colleges.

LULA MAE MORRISON, B.A.
Miami, Florida

Newton Club, 3, 4; F. T. A., President, 4; Y. W. A., 1, 2, 3, 4; W. A. A., 1, 4; B. S. U. Council, 4.

MAX MOSLER, B.S.
Palm Beach, Florida
Stetson Defense Council.

WILLIAM S. MATHIS, B.M.
Tampa, Florida

Pi Kappa Phi, 2, 3, 4, Historian, 4; Interfraternity Council, 4; Glee Club, 3, 4; Key Club, 3, 4; Radio Chorus, 3, 4; Traveling Squad, 3, 4; Orchestra, 1, 2, 3, 4, President, 3; Radio Guild, 3, 4; Pi Delta Psi, 4; I. R. C., 4; Chapel Organist, 3, 4; Who's Who in American Universities and Colleges, 4; Symphony Soloist, 1, 2; Student Accompanist, 3, 4; Sadie Hawkins Committee, 4; Little Theatre, 4; One of Six Most Outstanding Senior Men; Mystic Krewes, 3, 4.

MARION D. MERRILL, B.A.

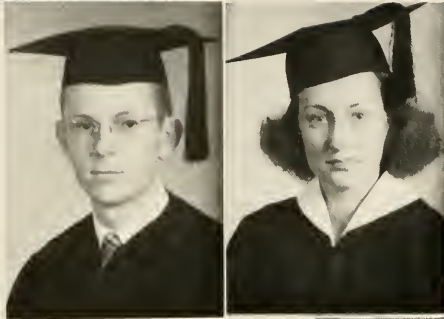
D'Land, Florida
Reporter Staff, 1; Editor, '42 HATTER, 3, Associate Editor, 2, Law Editor, 4; Alpha Delsioma, 1, 2, 3, 4, Vice-President, 3, President, 4; Women's Town Council, President, 3, 4; Social Chairman 2; Freshman Adviser, 2, 3; I. R. C., 2, 3, 4; Radio Guild, 3, 4; Who's Who in American Universities and Colleges, 4; State Secretary of Wesleyan Fellowship, 4; The Honor, 4; Stetson Student Bar Association, 4; Der Deutsche Verein, 4.

ELSIE MERRITT, B.A.

Fort Pierce, Florida
HATTER Staff, 4; F. T. A., 4; I. R. C., 2, 3, 4, Recording Secretary, 4; Pi Delta Psi, 3, 4.

DORIS J. MILLIGAN, B.M.
Ormond, Florida

Alpha Xi Delta, 1, 2, 3, 4, Officer, 2, 3, 4; Honor Roll, 1, 2, 3; Dean's List, 3; Phi Beta, 1, 2, 3, 4, Officer, 2, 3, 4; The Honor, 3, 4; Glee Club, 3, 4; Traveling Squad, 3, 4; Accompanist for Girls' Glee Club, 3, 4; Radio Chorus, 3, 4; Accompanist, 3, 4; Little Symphony, 1, 2; Symphony Orchestra, 1, 2, Secretary, 2; Symphonic Band, 1; Pan-Hellenic Council, 3, 4, Vice-President, 4; I. R. C., 3, 4; Hatter Art Club, 1; Hatter Staff, 2; Freshman Adviser, 3, 4; Radio Guild, 3, 4; Sigma Delta Pi, 4.



RUTH M. ODUM, B.A.
Jacksonville, Florida

Transfer Florida State College for Women; Little Theatre, 1, 2, 3; Vice-President of Freshman Women's Organization; B. S. U., 1; Treasurer of Junior Class; J. T. A., 4.

ORIAN W. OSBURN, B.A.
Dade City, Florida

Glee Club, 1, 2, 3, 4; Traveling Squad, 3; Radio Chorus, 4

JAMES F. OVERTON, B.S.
St. Petersburg, Florida

Transfer St. Petersburg Junior College, Evansville College, Volunteer Band; Pi Gamma Mu.

EDNA W. OYER, B.A.
Miami Beach, Florida

F. T. A., 4; Honor Staff, 4

M. PATRICIA PEIER, B.A.
DeLand, Florida

Transfer William Woods College, Lincoln Junior College; Pi Beta Phi, 1, 4; W. A. A., 3; Little Theatre, 3, 4; F. T. A., Parliamentarian, 4; Honor Roll, 4

MARTHA PRICE, B.A.
Altamaha, Florida

Transfer Brewton-Parker Junior College; Y. W. A., President, 2; B. T. U., Director, 1; F. M. J., 4.

CARL J. PURTZ, JR., B.A.
Sarasota, Florida

Pi Kappa Phi, Intramural Manager, 4; Mystic Krewe, 3, 4, Captain, 4; Newton Club, 2, 3, 4, Marshal, 3; Vice-President, 4; Der Deutsche Verein, 3, 4; Vice-President, 4; I. R. C., 4; Basketball, 1, 2, 3, 4; All State in Amateur Basketball, 1, 2; All American in Amateur Basketball, 2; Who's Who in American Universities and Colleges, 4; Most Athletic, 3; Tennis, 1, 2, 3, 4; Intramurals, Stetson Hall Manager, 1; Major Sports Manager, 3.

SENIORS



GRAFTON H. PYNE, B.M.
New York, New York
Co-Ordinator of Stetson Defense Council.

MILDRED RATLIFF, B.A.
Sanford, Florida
W. A. A., 1; Y. W. A., 1, 3, 4; Alpha
Deltoma, 3; Pi Delta Psi, 4; F. T. A.
Secretary, 4.

JEAN L. ROGY, B.M.
West Palm Beach, Florida
Glee Club, 1, 2, 3, 4; Little Theatre Orches-
tra, 3; Phi Beta, 2, 3, 4; Treasurer, 3; Vice-
President 4; President of Music School, 4; Radio
Guild, 3; Alpha Xi Delta, 1, 2, 3, 4; Secre-
tary, 4; Hattax Staff, 4; Air Raid Warden, 4.

ANNIE FRANCES ROSSITER, B.M.
DeLand, Florida
Music School Librarian, 1, 2, 3, 4; Symphony
Orchestra, 1, 2, 3, 4; Little Symphony Orches-
tra, 1, 2, 3.

BESSIE LOU IVEY RUMBLE, B.A.
Forsyth, Georgia
Transfer Bessie Tift College; I. R. C., 1, 2, 3;
B. S. U., 1, 2, 3; Math-Science Club, 3; *Campus*
Outfit Staff, 2, 3; Sigma Omega, 3, 2, 3; Delta
Sigma Alpha, 1, 2, 3; Hattax Art Club, 4;
Glee Club, 1, 2, 3, 4; French Club, 1, 2, 3;
Studio Players, 3.

AARON L. RUTLEDGE, B.A.
DeLand, Florida
Ministerial Association, 1, 2, 3, 4; Vice-Presi-
dent, 3; Assistant, State Baptist Brotherhood,
3, 4.

P. VERNON S. ANDERSON, B.A.
DeLand, Florida
Ministerial Association, 3, 4; Radio Guild, 3, 4;
Reporter Staff, 2, 3, 4



ERICH SAXL, LL.B.
DeLand, Florida
Stetson Student Bar Association.

BETTY SMILEY, B.A.
St. Petersburg, Florida
Pi Beta Phi, Vice-President, 3; W. A. A., 3;
President of Stevens Hall; Women's Council, 3;
Hatter Art Club, 2, 3; Vice-President, 2; Presi-
dent, 3; HATTER, Art Editor, 3.

BETTY SMITH, B.A.
Stuart, Florida
Pi Beta Phi, 1, 2, 3, 4, President, 4; New-
ton Club, 2, 3, 4, Secretary, 2; The Honor,
Secretary, 4; Scroll and Key, 3, 4, Secretary, 4;
Phi Society; Secretary of Freshman Law Club,
4; Pan-Hellenic Council, 3, 4, Secretary, 4; In-
terfraternity Council, 3, 4; Pi Delta Psi, 4; Who's
Who in American Universities and Colleges, 4;
Freshman Adviser, 3, 4; Honor Roll, 1, 2, 3,
4; Beta Key, 4, Little Theatre, 3.

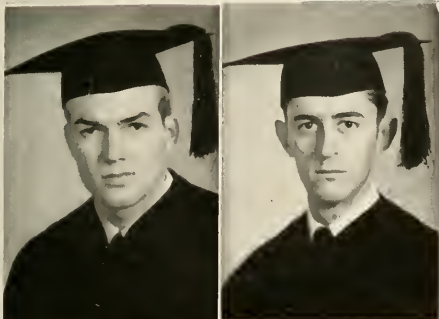
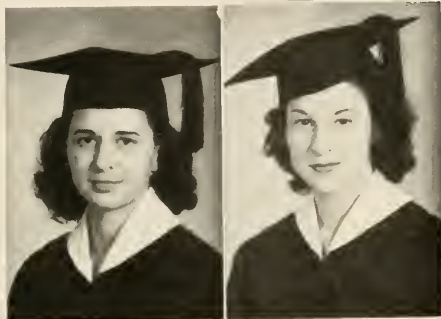
MARY FRANCES SMITH, B.M.
Daytona Beach, Florida
Alpha Xi Delta; W. A. A., 1, 2, 4; Y. W. A.,
1; Radio Guild, 3, 4; Glee Club, 1, 2, 3, 4;
Traveling Squad, 2, 3, 4; Radio Chorus, 4; I
R. C., 4; Intramurals, 2; Defense Council, As-
sistant to Co-Ordinator, Chief of Messenger
Squad; Secretary of School of Music.

RAYMOND C. SPAULDING, JR., B.A.
DeLand, Florida
Sigma Nu, 4; Newton Club, 4; Beta Key, 2, 3,
4; Gamma Sigma Epsilon, President, 4.

PAULA LEE SPECHT, B.M.
Miami, Florida
Orchestra, 3, 4; Phi Beta, 4.

ANN SPINKS, B.A.
Leesburg, Florida
Glee Club, 1, 2, 3, 4; Freshman Adviser, 2, 3, 4;
Y. W. A., 2, 3, 4; Little Theatre, 1; W. A. A.,
2, 3, 4; Beta Key, 3, 4, Secretary, 4; Delta
Delta Delta, 1, 2, 3, 4, Treasurer, 4; Pi Delta
Psi, 4.

SENIORS



ELIZABETH WELDEN STACEY, B.M.

Jacksonville, Florida
Alpha Xi Delta, President, 3, 4; Treasurer, 2, 3; Music Chairman, 2, 3, 4; Glee Club, 1, 2, 3, 4; Phi Beta, 3, 4; Radio Guild, 3, 4; Freshman Adviser, 3, 4; Interfraternity Council, 3, 4; W. A. A., 1, 2; Secretary of Student Body, 4; The Honor, 3, 4; Honor Roll, 3; Dean's List, 3; Treasurer of Music School, 4; Radio Chorus, 4.

HARRIET MARLETTE STEPHENS, B.A.

DeLand, Florida
Gamma Sigma Epsilon, 3, 4; Secretary, 4; Beta Key, 3, 4; Treasurer, 3; President, 4; Phi Alpha Theta, 3, 4; Secretary, 4; W. A. A., 4; Reporter Staff, 4; HATTA Staff, 4; Honor Roll, 1, 2.

KATHERINE SMITH TURNER, B.M.

DeLand, Florida
Phi Beta, 2, 3, 4; Secretary, 4; Delta Gamma Phi, 2, 3, 4; President, 4; Vice-President, 3; Radio Guild, 3; Assistant Band Director, 3; Der Deutsche Verein, 3; Symphony Orchestra, 1, 2; Secretary, 2; Little Symphony Orchestra, Secretary, 2; Band, 1, 2, 3; Corporal, 2; Sergeant, 3; Little Theatre Orchestra, 1, 2, 3, 4.

DORA R. VAIDEZ, B.M.

Tampa, Florida
Transfer University of Tampa; Quill Club; Alpha Gamma, 1, 2, 3, 4; Sigma Delta Pi, 2, 3, 4; Secretary, 3; President, 4; Glee Club, 2; Orchestra, 3, 4; Band, 4.

C. AUBREY VINCENT, JR., LL.B.

Lynchburg, South Carolina
Sigma Nu, Commander; Press Club, President; Phi Alpha Delta; Interfraternity Council, President; Radio Guild; *Sitstonian* Business Manager; Freshman Adviser; Student Bar Association.

ELMER W. WARR, B.A.

St. Andrews, Florida
Ministerial Association, 1, 2, 3, 4; Intramural Manager, 3, 4; Vice-President of Student Body, 4; Honor Roll, 3, 4.

DORIS WARRIN, B.A.

Olney, Illinois
Transfer MacMurray Women's College; W. A. A., 2, 3, 4; Vice-President, 3; President, 4; Blazer Club, 3, 4; Secretary, 3; President, 4; Phi Beta Phi Pledge, President, 3; Executive Council, 4; Honor Roll, 4; Major Club, 2, 3; Ribbery Club, Secretary, 2; F. T. A., 4; Alpha Deksioma, 2; President, 2.



STETSON SENIORS



FRANK B. WATSON, JR., B.A.

Miami, Florida

Sigma Nu, 4; Mystic Krewe, 3, 4, Treasurer, 4; Scroll and Key, 3, 4, Vice-President, 4; Phi Society; Sigma Delta Pi, 3, 4, President, 3; Theta Alpha Phi, 3, 4, Secretary, 4; Phi Alpha Theta, 3, 4; Pi Gamma Mu, 3, 4, President, 4; I. R. C., 3, 4; Phi Alpha Delta Pledge, 3, 4; Student Bar Association, Treasurer, 4; Extra-Curricular Committee, 3; Social Committee, Chairman, 4; Sadie Hawkins Committee, Chairman, 4; Library Assistant, 1, 2, 3; Intramurals, 3, 4; Interfraternity Council, 4.

JOYCE M. WEBBER, B.A.

DeLand, Florida

Beta Key, 3, 4.

EVERETT PARKER WHITMAN, B.S.

Sarasota, Florida

Pi Kappa Phi Pledge, 4; Sigma Pi Sigma; C. P. T. P.; Intramurals, 1, 2, 3, 4; Basketball, 1, 2, 3, 4; State Championship Team, 1; Air Raid Warden 4.

BETTY LEE ZORNES, B.M.

DeLand, Florida

Glee Club, 1, 2, 3, 4; B. S. U. Council, 3; Phi Beta, 4; Secretary of School of Music, 1, 2, 3, 4.

Seniors not pictured

ELIZABETH HOWELL B.M.
DeFuniak Springs, Florida

ERNEST W. MACHEN, JR., B.A.
DeLand, Florida

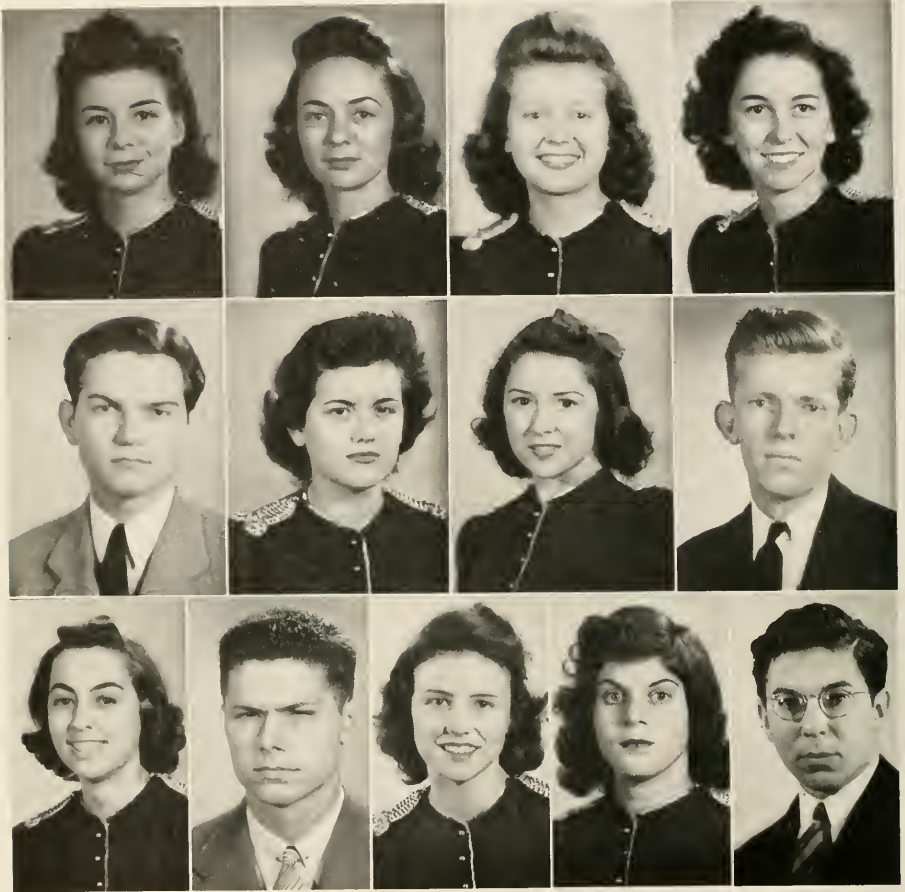
DANIEL MEYHOFFER, B.A.
DeLand, Florida

C. R. M. SHEPPARD, LL.B.
DeLand, Florida

REGINALD P. WISENFELD, B.A.
Jacksonville, Florida

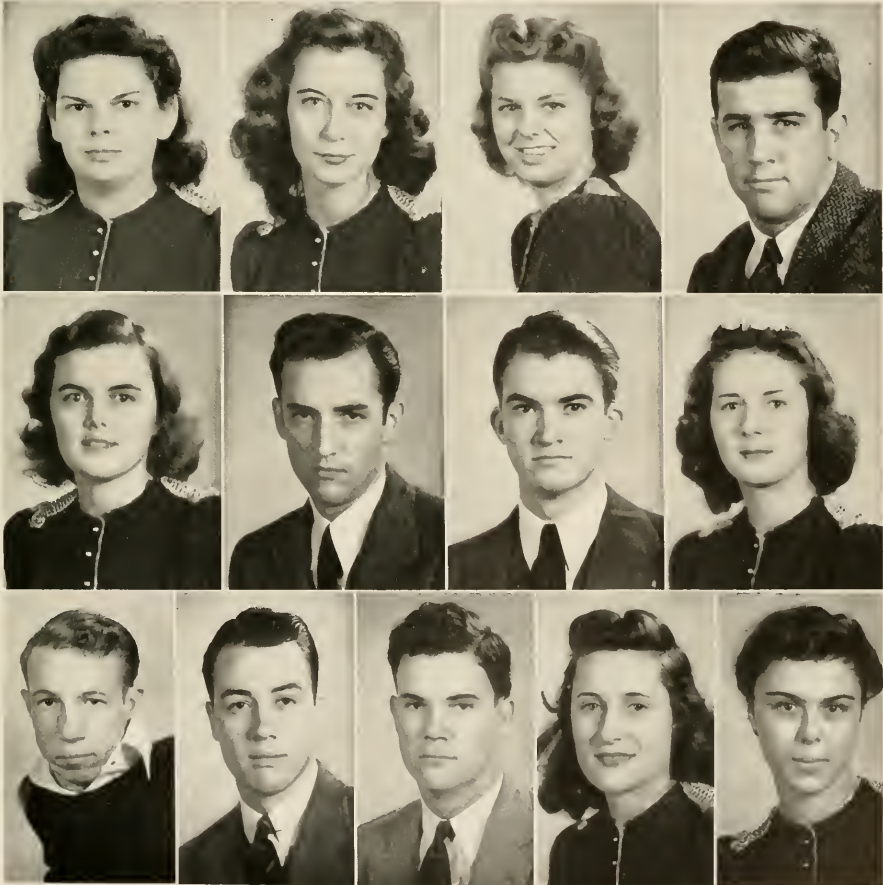


Juniors



BETTY JANI AMIDON, Lakeland, Florida	<i>Business</i>
FLONNIE M. ANDERS, Jacksonville, Florida	<i>Liberal Arts</i>
MARTHA ARNOLD, Winter Garden, Florida	<i>Liberal Arts</i>
HELLN M. BINNETT, Miami, Florida	<i>Music</i>
GILBERT G. BENTLEY, Winter Haven, Florida	<i>Law</i>
BARBARA A. BLACK, Jacksonville, Florida	<i>Liberal Arts</i>
FRANCIS E. BROWN, Jacksonville, Florida	<i>Business</i>
ROBERT H. BROWN, JR., DeLand, Florida	<i>Business</i>
CLAIRE BUMGARDNER, DeLand, Florida	<i>Liberal Arts</i>
WILBER T. CLONTS, Oakland, Florida	<i>Liberal Arts</i>
DELPHINE E. COVERSTON, Bushnell, Florida	<i>Law</i>
ANN DAVIS, Daytona Beach, Florida	<i>Liberal Arts</i>
MARLIN DON, Chicago, Illinois	<i>Music</i>

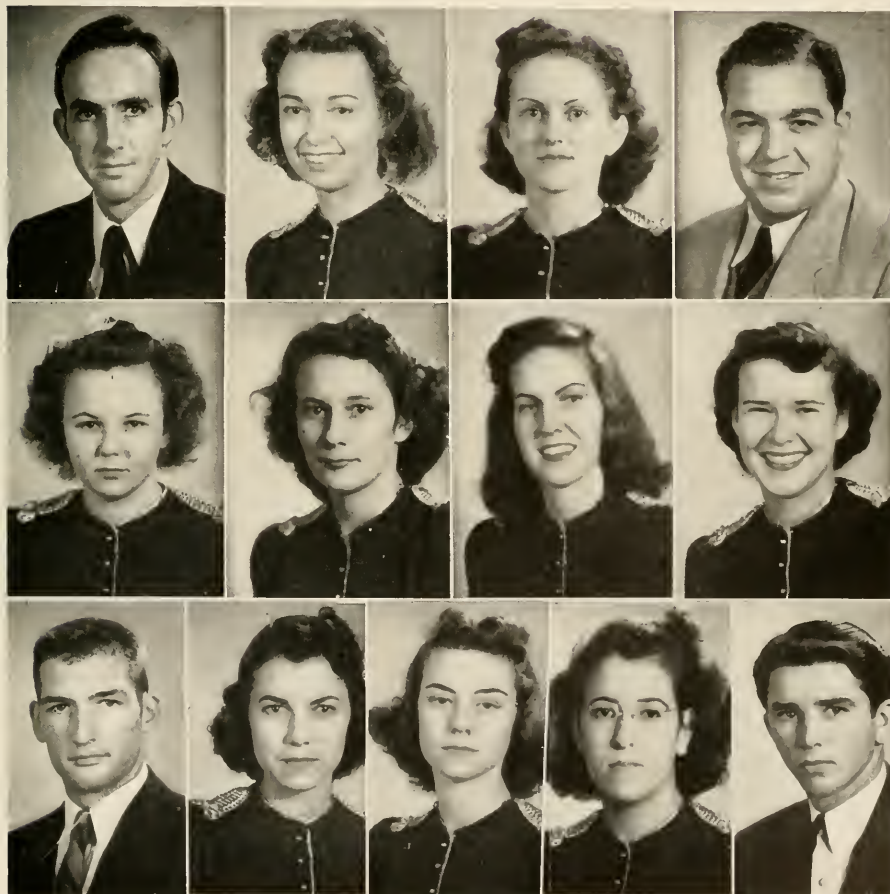
JEAN DOUGLAS, DeLand, Florida	<i>Liberal Arts</i>
MARTHA DURRANCE, Sebring, Florida	<i>Music</i>
NINA M. DYAL, Homestead, Florida	<i>Liberal Arts</i>
WILBUR H. EICHHOLZ, Daytona Beach, Florida	<i>Business</i>
JEAN L. ELLIOTT, St. Petersburg, Florida	<i>Business</i>
DAVID M. GARDNER, St. Petersburg, Florida	<i>Liberal Arts</i>
WALKER S. GREEN, DeFuniak Springs, Florida	<i>Liberal Arts</i>
DORIS M. HARTMAN, Daytona Beach, Florida	<i>Law</i>
A. JACKSON HAYWARD, Dade City, Florida	<i>Law</i>
EUGENE C. HEAD, Ft. Meade, Florida	<i>Business</i>
ROBERT HENRY, DeLand, Florida	<i>Liberal Arts</i>
RUTH HILLMAN, Orlando, Florida	<i>Business</i>
ELFANOR HOLDERMAN, DeLand, Florida	<i>Liberal Arts</i>

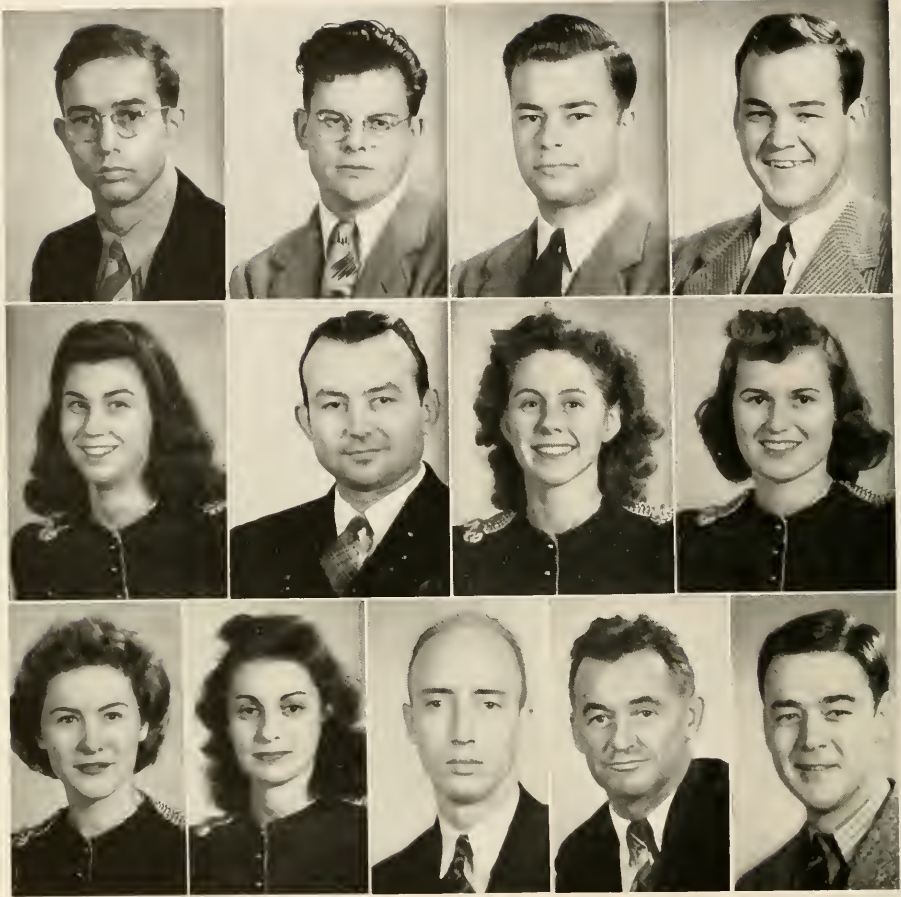




N. LEJUNE HUGHES, Orange Heights, Florida	<i>Music</i>
SARA LOU JOHNSON, Maryville, Tennessee	<i>Liberal Arts</i>
DALL W. JONES, DeLand, Florida	<i>Liberal Arts</i>
KARL F. KFSMODEL, JR., Birmingham, Alabama	<i>Liberal Arts</i>
KATHLEEN MCGHEE, Jacksonville, Florida	<i>Liberal Arts</i>
MARY CREE McLAUGHLIN, DeLand, Florida	<i>Liberal Arts</i>
DOROTHY McLEAN, Dowling Park, Florida	<i>Liberal Arts</i>
RALPH MATOUSEK, Chicago, Illinois	<i>Liberal Arts</i>
RUTH LOIS MAXWELL, DeLand, Florida	<i>Liberal Arts</i>
DALL MELCHING, Miami, Florida	<i>Business</i>
IRVEN MAURICE MILLER, DeLand, Florida	<i>Law</i>
T. R. MIMS, Tampa, Florida	<i>Liberal Arts</i>
ANITA MOORE, Temuco, Chile	<i>Liberal Arts</i>

ROBERT BRUCE MUIRHEAD, Sanford, Florida	<i>Liberal Arts</i>
ANNETTE WOLCOTT MURPHY, Daytona Beach, Florida	<i>Liberal Arts</i>
REBECCA MURPHY, Buchanan, Georgia	<i>Liberal Arts</i>
CHRIS NAPOLI, Tampa, Florida	<i>Liberal Arts</i>
MARY PARDEE, Avon Park, Florida	<i>Liberal Arts</i>
BETTY PARFITT, Jacksonville, Florida	<i>Business</i>
ROSAMOND POPE, Lacochee, Florida	<i>Liberal Arts</i>
BETTY POWERS, Tawson, Maryland	<i>Liberal Arts</i>
WALTER PURTZ, Sarasota, Florida	<i>Liberal Arts</i>
MARGARET P. REAVES, Miami, Florida	<i>Music</i>
JANE P. REESE, Jacksonville, Florida	<i>Liberal Arts</i>
BETTIE SUE REID, Atlantic Beach, Florida	<i>Liberal Arts</i>
ARTHUR ROY ROEBUCK, West Palm Beach, Florida	<i>Liberal Arts</i>





VERNON SANDERSON, DeLand, Florida	<i>Liberal Arts</i>
JOHN RICHARD SMITH, DeLand, Florida	<i>Liberal Arts</i>
HARRY SNYDER, Cottekill, New York	<i>Business</i>
MAXWELL STAMPER, Middletown, Ohio	<i>Liberal Arts</i>
EVELYN STOWI, Tampa, Florida	<i>Liberal Arts</i>
JAMES BENNETT STONI, Blountstown, Florida	<i>Law</i>
HILLEN TENNILLE, Tampa, Florida	<i>Music</i>
RUBY WAGNER, North Bergen, N. J.	<i>Music</i>
RUTH WHITE, Dade City, Florida	<i>Liberal Arts</i>
DOROTHY WIDDERSHEIM, Miami, Florida	<i>Liberal Arts</i>
MILVIN WILKINS, Waterbury, Conn.	<i>Liberal Arts</i>
IVAN YENETZHI, Daytona Beach, Florida	<i>Law</i>
O. GORDON WILLIAMSON, Baltimore, Maryland	<i>Liberal Arts</i>

CAMERA SHY

SOPHIE HERR COFFEY
ERNA V. FREEBERG

JAMES BYRD OWENS
HELEN ROGERS

BETTY JANE SCHELLIG



FALK
DAVIS

Sophomores

STETSON

BETTE ADKINS, *Liberal Arts* Pony, Montana

VIRGINIA AGETT, *Liberal Arts* Kingsport, Tenn.

CLIVE FREDERICK ALLAND, *Liberal Arts* . . Jacksonville, Fla.

MARY ELLEN ANDERSON, *Liberal Arts* . . . Plant City, Fla.

HARRY DOUTHIT ATKINSON, *Liberal Arts* . Hollywood, Fla.

FLORAMAYE BASS, *Business* Kissimmee, Fla.

WALTER ERIC BEHNKE, *Music* Tampa, Fla.

EDITH ANNETTE BOLTON, *Liberal Arts* . . Jacksonville, Fla.

CARLYN VIRGINIA BUCK, *Liberal Arts* DeLand, Fla.

BARBARA BURGMAN, *Business* Daytona Beach, Fla.

BETTY CANNON, *Liberal Arts* Frostproof, Fla.

SARA CARVER, *Liberal Arts* Gainesville, Fla.

MARIETTA LOUISE CHILLI, *Liberal Arts* . . Jacksonville, Fla.

HELEN FLIZBETH CLEMONS, *Liberal Arts* . . Tampa, Fla.

EDWARD C. DANIELS, JR., *Liberal Arts* . . . Sanford, Fla.

EVERETT STEWART DIX, *Liberal Arts* . . . Alexandria, Va.

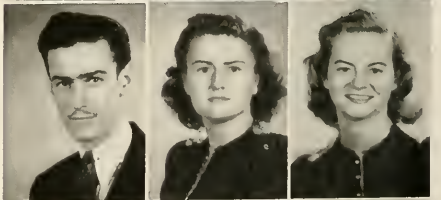
JUDITH ELEANOR DOBBINS, *Liberal Arts* . . Jacksonville, Fla.

RUTH DURRANCE, *Music* Sebring, Fla.

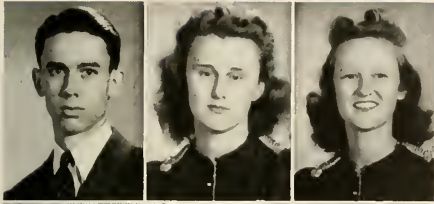
LILAND REDFORD EARNEST, JR., *Liberal Arts* . Tampa, Fla.

ISABELLE EDDINS, *Music* Bushnell, Fla.

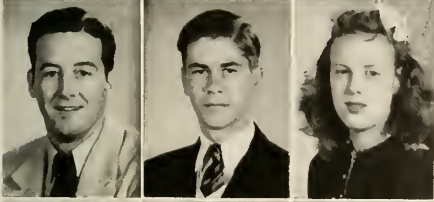
MARGIE LENORE ESTHUS, *Business* Sarasota, Fla.



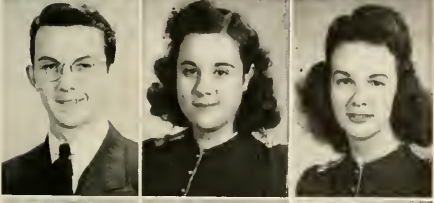
SOPHOMORES



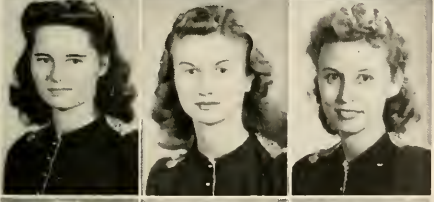
W. MAURICE FAIN, *Liberal Arts* Thomasville, Ga.
 SARA ANNE FORHAND, *Liberal Arts* Florala, Ala.
 FRANCIS ELAINE FRETWELL, *Business* Jacksonville, Fla.



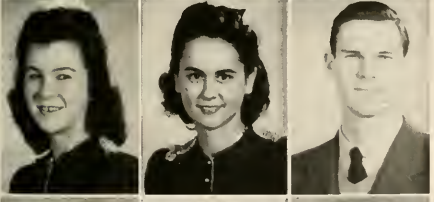
ALVIN ELMO FULLER, JR., *Liberal Arts* Miami, Fla.
 GEORGE WALTER GOODMAN, *Liberal Arts* . . . Roselle, N. J.
 FLORENCE MABEL GROSS, *Liberal Arts* DeLand, Fla.



BENJAMIN EDWARD HADDOX, *Liberal Arts* . . . Orlando, Fla.
 HILEN CYNTHIA HARPER, *Liberal Arts* DeLand, Fla.
 OLIVIA BROOKS HUDGINS, *Business* Bradenton, Fla.



EDITH JEANETTE JOHNSON, *Liberal Arts* . Oakland Park, Fla.
 CAROLYN C. JONES, *Business* Palatka, Fla.
 SYLVIA ELIZABETH JONES, *Liberal Arts* . . . Belle Glade, Fla.



ADELA KAZMIERCZAK, *Liberal Arts* DeLand, Fla.
 MARJORIE KERSEY, *Business* Largo, Fla.
 ANDREW SMITH KNOX, *Liberal Arts* Bryn Mawr, Penn.



NANCY ANN LANT, *Liberal Arts* DeLand, Fla.
 BERNICE MARTHA PITT, *Liberal Arts* Live Oak, Fla.
 TIRRELLA PAYNE LENEHAN, *Liberal Arts* . . . Washington, D. C.



HARRIET E. LINDNER, *Liberal Arts* Washington, D. C.
 JEANETTE EUNICE McARTHUR, *Liberal Arts* . . . Tampa, Fla.
 LILLIAN FRANCES McCLEMENT, *Liberal Arts* . DeLand, Fla.

STETSON

RICHARD W. MANSUR, *Liberal Arts* . . . St. Petersburg, Fla.

ELLEN LEE MARCUM, *Business* DeLand, Fla.

HELLEN DAVIS MARTIN, *Liberal Arts* . . . Birmingham, Ala.

MARTHA NIMMONS MILLER, *Business* . . . Jacksonville, Fla.

LETA MERIAM MITCHELL, *Liberal Arts* . . . Fort Meade, Fla.

PHYLLIS ANNE MITCHELL, *Liberal Arts* . Daytona Beach, Fla.

EDWARD LAVERNE MIXON, *Liberal Arts* . . . Live Oak, Fla.

SHIRLEY ANNA MOORE, *Liberal Arts* . . . Bedminster, N. J.

ALTON RAY MYERS, *Business* Eustis, Fla.

JAMES NELSON, *Liberal Arts* Miami, Fla.

RUSSELL HOLMES NAHM, *Liberal Arts* DeLand, Fla.

ELIZABETH JEANNE NEELY, *Business* Sarasota, Fla.

HELEN ELAINE OLIVER, *Business* Baldwin, Fla.

DORIS O'NEAL, *Liberal Arts* Tampa, Fla.

JEANNE L. OSTRANDER, *Liberal Arts* . . . Winter Haven, Fla.

HAROLD KENNETH PARSON, *Liberal Arts* . . . Miami, Fla.

ELIZABETH VIRGINIA PIPPIN, *Music* Sanford, Fla.

MARY PITTMAN, *Business* Madison, Fla.

BARBARA LLY PRICE, *Business* Miami, Fla.

KENNETH LOUIS PURTZ, *Liberal Arts* Sarasota, Fla.

MARY CATHERINE RAMSEY, *Business* . . . Carol Gables, Fla.



SOPHOMORES



JAMIE LOUISE RICHARDS, *Liberal Arts* DeLand, Fla.

BARBARA LEE ROTURIAU, *Liberal Arts* Tampa, Fla.

ORVA JEANNE SHAW, *Music* Sebastian, Fla.

JUNE DOLORES SHONE, *Liberal Arts* - Green Cove Springs, Fla.

JAMES THOMAS SMITH, JR., *Liberal Arts* - St. Petersburg, Fla.

JOHN KING SNELLINGS, *Business* Orlando, Fla.

CHARLES A. SUTTON, JR., *Liberal Arts* Knights, Fla.

JEAN LOUISE TRIGG, *Liberal Arts* Tampa, Fla.

NATALIE LUCILLE TRUE, *Liberal Arts* Lake Mary, Fla.

LURA MILDRED TYNER, *Liberal Arts* Lakeland, Fla.

EMMY KENT VAN HEUSEN, *Liberal Arts* - St. Petersburg, Fla.

EVELYN LOUISE VAN SCOY, *Liberal Arts* Tulsa, Okla.

MARTHA W. WHITE, *Music* Perry, Fla.

CLEMENT PAUL WILCOX, *Liberal Arts* - Atlantic Beach, Fla.

CHARLES AQUILLA WILLIAMS, *Liberal Arts* . . Alachua, Fla.

COMFR W. WOODALL, *Liberal Arts* Newton, Ala.

Camera Shy

JOSEPH ELLIOTT ADNY, JR.
ELDA APII
GORDON EARL CARLSON
SHIRLEY CLARK
EVELYN DALE
GLORIA FREEMAN
DANIEL GILLESPIE

WILLIAM CATHELL KENNEDY
LETTIE KOON
DAVIS LONG
AVICE MARTIN
ROBERT PARKS
AGNES PAULK

JOYCE ROLAND
MILTON HENRY SMITH
RUTH CHEWING SMITH
JAMES RHODE'S SPELL
HERMAN L. TURNAGE
JAMES BROOKS WALKER
MARY HOWARD WARNER

GRADUATE STUDENTS



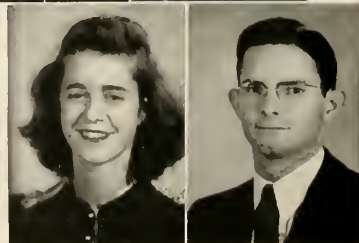
ELSIE A. HOOKER Flushing, N. Y.
 JOSEPH PADULA New York, N. Y.

ELAINE PHILLIPS Richmond Hill, N. Y.
 WILLIAM STRICKLAND Bowling Green, Fla.

SPECIAL STUDENTS

GEORGE L. BROWN DeLeon Springs, Fla.
 EVELYN R. DODD Lake Wales, Fla.
 NINA DOGGART Lake Helen, Fla.
 CLEO JOHNSON Brunswick, Ga.

NANCY NASH Ft. Myers, Fla.
 STELLA RUTLEDGE DeLand, Fla.
 LUTITIA REYNOLDS DeLand, Fla.
 YOLANDE HARGREAVES DeLand, Fla.
 HOWARD THOMPSON Palmetto, Fla.

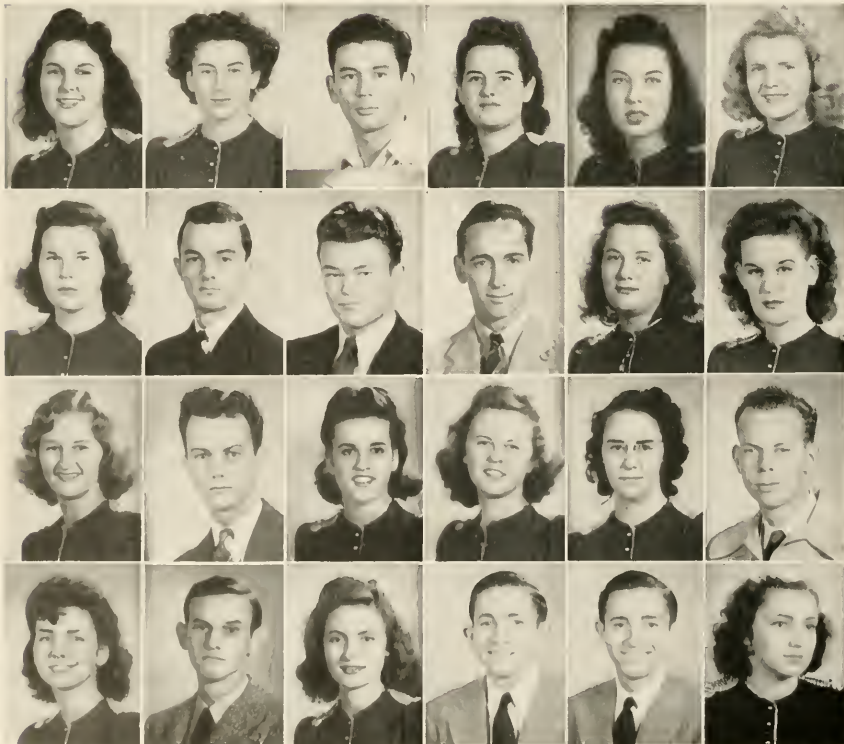


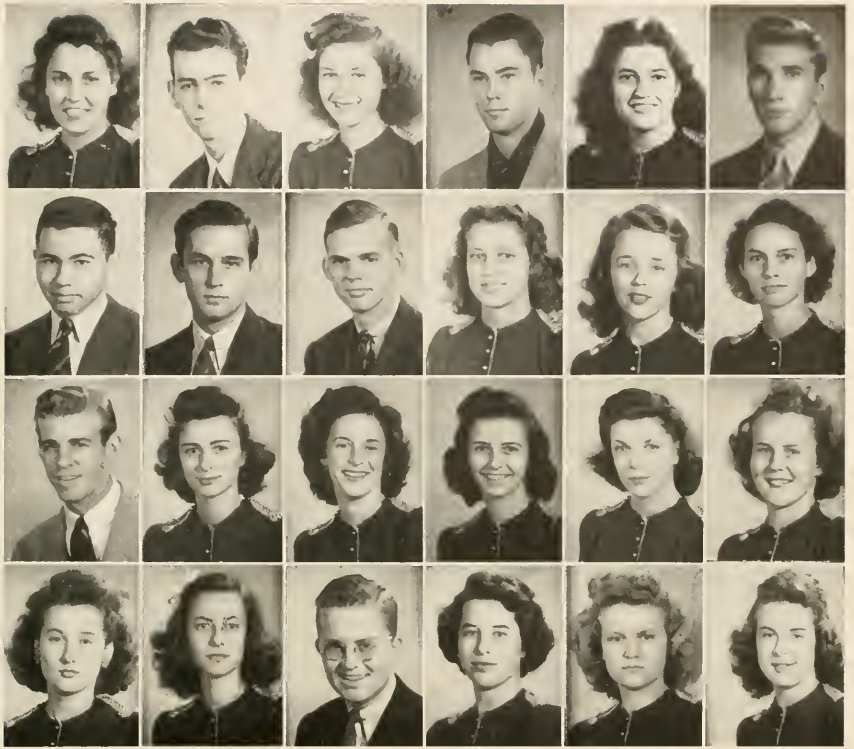


Freshmen

RACHEL E. ALLISON, *Business* . . . DeFuniak Springs, Fla.
 BARBARA D. ARMON, *Business* . . . Philadelphia, Penn.
 FRANK S. BAMBERG, III, *Music* . . . Jasper, Fla.
 BARBARA E. BASSET, *Music* . . . St. Petersburg, Fla.
 ELSIE C. BEATTY, *Business* . . . Jacksonville, Fla.
 BETTY L. BILL, *Liberal Arts* . . . DeLand, Fla.
 MARGARET G. BLAYDES, *Business* . . . Orlando, Fla.
 NED A. BODDY, *Liberal Arts* . . . DeLand, Fla.
 MALEN D. BOGUE, *Liberal Arts* . . . DeLand, Fla.
 J. CLAVER BRADLEY, *Liberal Arts* . . . DeLand, Fla.
 CAROL M. BRFYOGLE, *Business* . . . DeLand, Fla.
 RUTH M. BROOKS, *Liberal Arts* . . . Orlando, Fla.

CHARLOTTE C. BROWN, *Business* . . . Washington, D. C.
 FRANK W. BROWN, JR., *Liberal Arts* . . . Orange Park, Fla.
 GRACE K. BROWN, *Liberal Arts* . . . Winter Garden, Fla.
 BARBARA B. BURGESS, *Business* . . . Fernandina, Fla.
 AUDREY C. CAINE, *Business* . . . DeLand, Fla.
 SAM R. CALDWELL, *Liberal Arts* . . . St. Petersburg, Fla.
 CHARLINE E. CARSON, *Liberal Arts* . . . Williston, Fla.
 JAMES R. CASEY, *Liberal Arts* . . . DeLand, Fla.
 CAROLYN CHAPPELL, *Liberal Arts* . . . Arlington, Va.
 JEFFERSON W. CLARK, *Liberal Arts* . . . DeLand, Fla.
 JULIAN G. CLARK, *Liberal Arts* . . . DeLand, Fla.
 M. LUCILLE CLARK, *Liberal Arts* . . . DeLand, Fla.



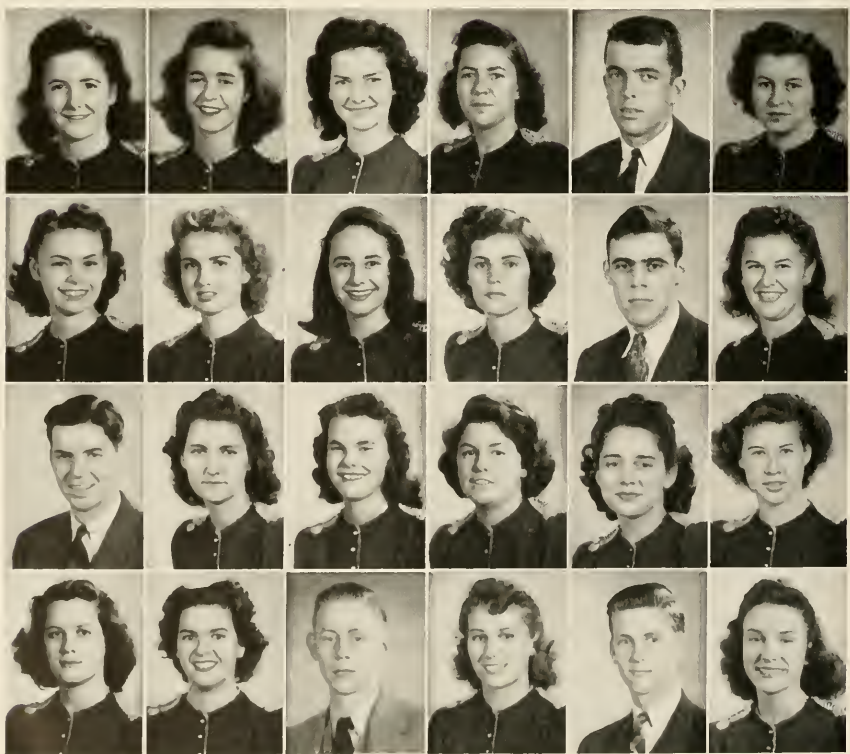


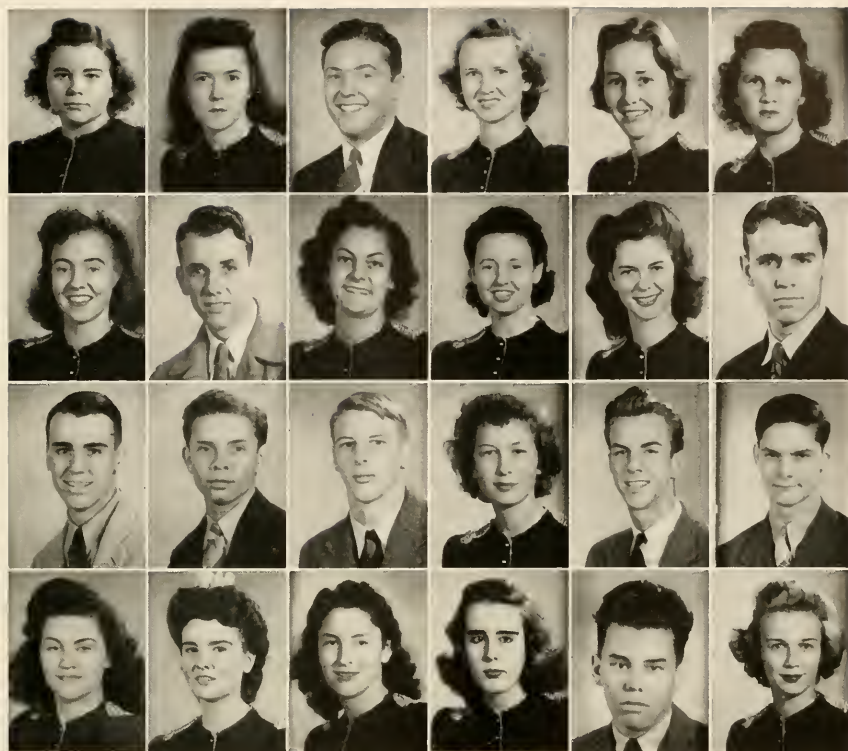
NINA C. CLARKE, *Music* Miami, Fla.
 E. MAURICI COKFR, *Liberal Arts* Plant City, Fla.
 ALYCE W. COWART, *Business* Cowart, Va.
 DAVID L. CRANFORD, *Liberal Arts* . . Winter Garden, Fla.
 RUTH D. CURNICK, *Liberal Arts* Holly Hill, Fla.
 GEORGE H. DAVIS, *Liberal Arts* New Canaan, Conn.
 ROBERT R. DICKERT, *Liberal Arts* . . Daytona Beach, Fla.
 HOKE S. DOWDY, *Liberal Arts* DeLand, Fla.
 R. PETER FASLAND, JR., *Business* Pittsfield, Mass.
 ELINOR L. IDLIN, *Music* Miami, Fla.
 MARJORIE R. ELLIOTT, *Music* Winter Haven, Fla.
 CAROL V. EMERSON, *Business* Sebring, Fla.

ORIEN D. FARRELL, *Music* Sanford, Fla.
 JUNE C. FENN, *Business* Mount Dora, Fla.
 NANCY C. FESSENDEN, *Liberal Arts* Tampa, Fla.
 TOMMY L. FOWLER, *Music* Perry, Fla.
 E. LOUISE FUGATE, *Business* Williston, Fla.
 PATRICIA G. FUGLE, *Liberal Arts* . . . Miami Beach, Fla.
 EDITH M. GARDNER, *Liberal Arts* . . . St. Petersburg, Fla.
 V. ANN GILBERT, *Liberal Arts* Jacksonville, Fla.
 HARRISON D. GRIFFIN, *Liberal Arts* . . . DeLand, Fla.
 JULIA C. GRIFFIN, *Liberal Arts* Quincy, Fla.
 MRS. RUBY G. HADDOX Orlando, Fla.
 LUCILE L. HAINSTEAD, *Music* Lake City, Fla.

MARCIA HAMMER, *Business* Ft. Pierce, Fla.
 YOLANDE H. HARGREAVES, *Business* DeLand, Fla.
 RACHEL F. HARLESS, *Business* DeLand, Fla.
 M. LOUISE HAVENS, *Business* Miami Beach, Fla.
 GARLAND HAYES, JR., *Business* Ft. Pierce, Fla.
 AMY J. HEARN, *Business* DeLand, Fla.
 ADEL D. HFDEN, *Liberal Arts* Coral Gables, Fla.
 BETTY J. HINMAN, *Business* South Miami, Fla.
 ANN HIRTH, *Liberal Arts* Miami Beach, Fla.
 DOROTHY J. HOWELL, *Business* Palm Beach, Fla.
 ROBERT C. HOWES, *Liberal Arts* DeLand, Fla.
 G. VIVIAN HUMPHREY, *Music* Daytona Beach, Fla.

JACK C. INMAN, *Business* DeLand, Fla.
 L. JOY JACKSON, *Liberal Arts* Orange City, Fla.
 J. GERALDINE JARVIS, *Music* Palm Beach, Fla.
 MILDRED L. JAUDON, *Business* Tampa, Fla.
 MARGARET E. JOHNSTON, *Business* Dalton, Ala.
 MARGARET A. JUSTICE, *Business* Ft. Lauderdale, Fla.
 MARY J. KIRCHOF, *Liberal Arts* DeLand, Fla.
 JEWEL E. KIRKPATRICK, *Liberal Arts* Palm Beach, Fla.
 EDWARD A. KOESTER, *Business* Jacksonville, Fla.
 BETSY B. KRAMER, *Business* Mt. Dora, Fla.
 HOWARD E. KURTZ, *Liberal Arts* Ft. Myers, Fla.
 MARY W. LASATER, *Music* St. Augustine, Fla.



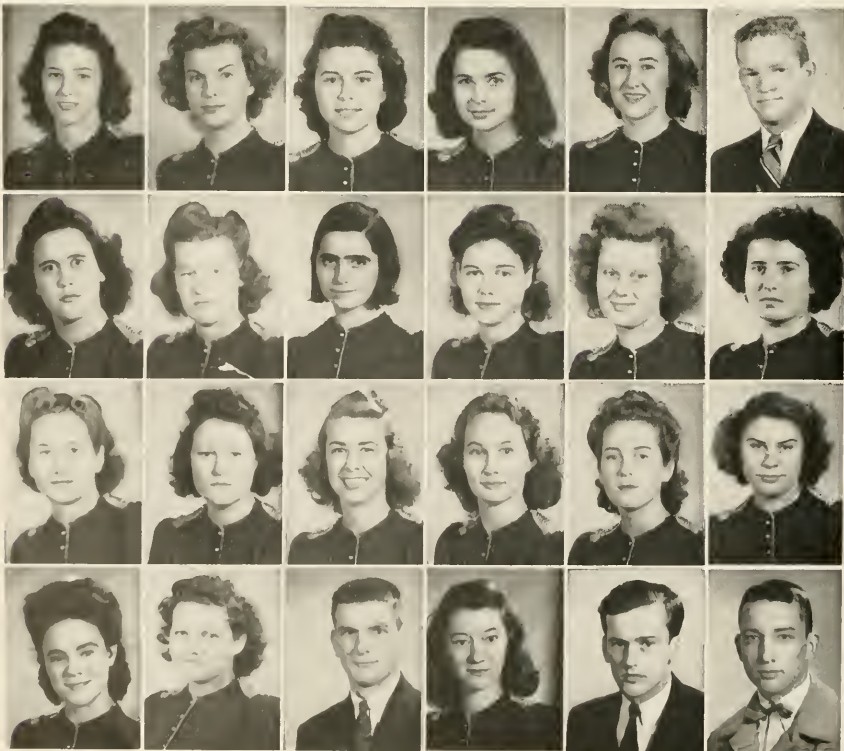


BERNICE LEE, *Liberal Arts* Live Oak, Fla.
 DOTSY M. LIPSCOMBE, *Business* DeLand, Fla.
 ROBERT B. LIPSCOMBE, JR., *Liberal Arts* . . . DeLand, Fla.
 ISOBEL W. LOWMAN, *Liberal Arts* Tampa, Fla.
 BARBARA A. LUPFER, *Liberal Arts* Kissimmee, Fla.
 SHIRLEY LYTLF, *Business* Weirsdale, Fla.
 RUTH E. McDANIEL, *Music* Ft. Myers, Fla.
 JAMES D. McEACHERN, *Liberal Arts* . . . Brundidge, Ala.
 BARBARA A. MCGINNIS, *Business* Miami, Fla.
 MARGARET R. McLEAN, *Business* Palmetto, Fla.
 FRAN SUE MACDONALD, *Liberal Arts* Sebring, Fla.
 HENRY G. MILLS, *Liberal Arts* Jacksonville, Fla.

WILLIAM G. MILES, *Liberal Arts* Jacksonville, Fla.
 CHARLES H. MILEY, *Liberal Arts* Ft. Pierce, Fla.
 BRADFORD MILLER, *Liberal Arts* DeLand, Fla.
 EDITH L. MILLER, *Liberal Arts* St. Petersburg, Fla.
 ROY W. MILLER, *Liberal Arts* DeLand, Fla.
 HAROLD F. MITCHELL, *Liberal Arts* Miami, Fla.
 KILLY MOORE, *Business* Palmetto, Fla.
 L. RABEL MOREMAN, *Music* DeLand, Fla.
 VERNICE E. NICHOLS, *Business* Panama City, Fla.
 JEAN NOBLI, *Business* New Britain, Conn.
 J. WALTER NORDMAN, *Liberal Arts* DeLand, Fla.
 BARBARA OTTO, *Liberal Arts* Arlington, Va.

THELMA PEARCE, *Liberal Arts* Ft. Myers, Fla.
 T. JEAN PINKLEY, *Liberal Arts* New Smyrna, Fla.
 GLADYS I. PIPPIN, *Business* Sanford, Fla.
 BETTYE A. POPE, *Business* Brunswick, Ga.
 MARGARET H. REES, *Business* Tavares, Fla.
 ALFRID S. REID, *Liberal Arts* Lake Worth, Fla.
 GERRY R. REIFSCHNEIDER, *Music* . . . Jacksonville, Fla.
 DOROTHY L. RICHARDSON, *Liberal Arts* . Pompano, Fla.
 TRUDE SAXL, *Business* DeLand, Fla.
 GLADYS M. SCHULTE, *Business* Daytona Beach, Fla.
 DOROTHY R. SEABLOM, *Business* . . . Jacksonville, Fla.
 V. GENE SHEROVER, *Liberal Arts* . . . New York, N. Y.

JOHANNA M. SHFW, *Liberal Arts* Jacksonville, Fla.
 KATHRYN H. SHIRLEY, *Music* Ocala, Fla.
 DONNA C. SHULTZ, *Business* W. Palm Beach, Fla.
 BARBARA SHUMAN, *Business* DeLand, Fla.
 DOROTHY O. SMITH, *Business* DeLand, Fla.
 MARY L. SMITH, *Business* DeLand, Fla.
 P. JAMESINE SMITH, *Liberal Arts* . . . High Springs, Fla.
 VIOLET L. SMITH, *Business* Jacksonville, Fla.
 WILLIAM C. SMITH, *Liberal Arts* . . . Clarksburg, W. Va.
 H. JANETTE SPAINHOUR, *Liberal Arts* . . Fernandina, Fla.
 CARL H. STAFFORD, *Liberal Arts* . . . Orange City, Fla.
 DONALD B. STEWART, *Liberal Arts* . Daytona Beach, Fla.





VIVIAN SULT, *Music* Palmetto, Fla.
 D. LUCILLI SUMERFORD, *Business* DeLand, Fla.
 SHIRLEY M. SUTTON, *Business* Auburndale, Fla.
 KAREN E. TAYLOR, *Liberal Arts* . . . Jacksonville, Fla.
 E. ALLYN THOMPSON, *Liberal Arts* . . . DeLand, Fla.
 RICHARD L. TOWLE, *Liberal Arts* . . . Walpole, Mass.

GINEVA L. TRAYLOR, *Business* Ft. Myers, Fla.
 EVELYN M. TURRENTINE, *Business* Mt. Dora, Fla.
 EMILY L. WEST, *Liberal Arts* Miami Beach, Fla.
 ROSTON M. WILLIAMSON, *Liberal Arts* . . . DeLand, Fla.
 HAZELLE L. WILSON, *Liberal Arts* . . . Port Orange, Fla.
 ALBERT ZOCCOLA, *Liberal Arts* Havana, Cuba

JOHN P. GRAVES, *Liberal Arts* DeLand, Fla.

Camera Shy

EZELLA ARNOLD
 MARY E. GENTRY
 ONA E. WARNER

ROBERT G. MAY
 JAMES G. PETERMANN
 MIKE SOUS, JR.

HARRY F. WHITSETT

WE ARE THINKING OF YOU

The HATTER this year is dedicated to you, the men and women of Stetson who are serving in the armed forces of the United States of America. Proudly we salute you, Stetsonians—graduate and undergraduate, who have gone from us in order to take up arms in defense of our country. We want you to know this: We are thinking of you.

If you think you are forgotten, you are wrong. We have no opportunity to forget. You are with us each time we see a uniform. You are just above us all day long, as Navy trainers circle overhead from dawn to dusk. You are close by as long Army convoys roar up and down the Boulevard. We cannot escape our thoughts of you—we do not want to escape them.

What are we doing in your absence, then? We are doing as usual. We go to classes; we attend the fraternity and sorority dances; we read Wednesday's *Reporter*; we celebrate Sadie Hawkins' Day; we sing in Chapel the songs you used to sing with us—we sing a few new ones, though, for you: *Anchors Aweigh*, *The Caissons Go Rolling Along*, the *Marine Hymn*. We do all these things because they are the things to do, because they are the things you want us to do. We do all these things because we are thinking of you.

Some of us shall join you soon. We are waiting for that as much as we are waiting for anything. There will be fewer of us to remember more of you. But the few will remember. Be sure of that.

Our debt to you grows greater each day. If you do not think of your services as a debt, we do. For you are fighting, not to kill and destroy, but to preserve the very thing for which Stetson stands. This is not the first time men and women

(Continued on Page 110)

COACH JERNIGAN



COACH COWELL

Stetson

ATHLETIC

Directors



MISS HICK
Women's Intramurals

"DOC" JOHNSON
Men's Intramurals



Especially this year when strict emphasis is placed on health and physical fitness . . . we the students of Stetson express our appreciation for your tireless efforts.



WAR

AND

FITNESS





WALTER PURTZ
Manager

BASKETBALL

The "War Hatters"

KEN PURTZ

WALT PURTZ

CARL PURTZ

DON STEWART

DALE MELCHING

RED WHITMAN

AL RIED

SLUGGER BLACK

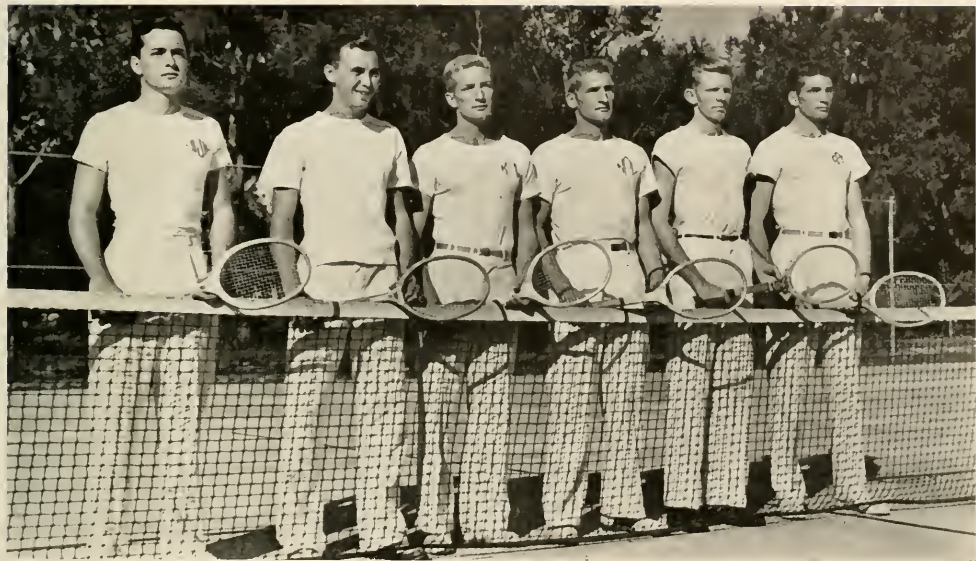
BILL SMITH



DALE JONES
DALE MELCHING
KEN PURTZ

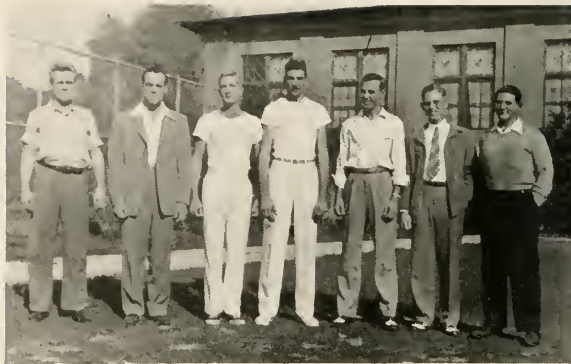
WALT PURTZ
BOB BROWN
CARL PURTZ

TENNIS



MEN'S

Managers



Paddle Ball



Football





INTRAMURALS

Basketball



Table Tennis



Horse Shoes

W O M E N ' S



Intramural Managers



Ping-Pong

Pi Beta Phi

Badminton

Pi Beta Phi



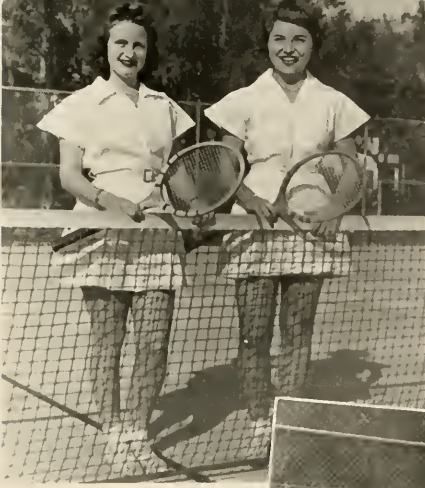
Box Hockey

Zeta Tau Alpha

INTRAMURALS

Tennis

Zeta Tau Alpha



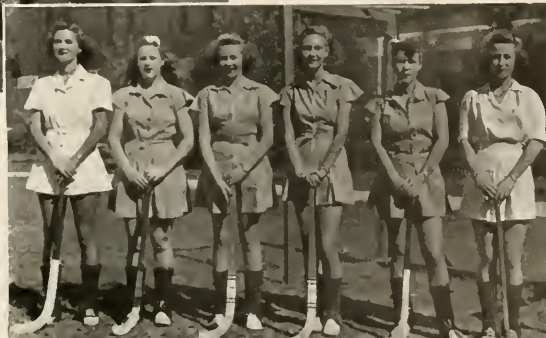
Shuffle Board

Alpha Xi Delta



Darts

Alpha Xi Delta



Field Hockey

Alpha Xi Delta



WOMEN'S ATHLETIC ASSOCIATION

OFFICERS

DORIS WARREN		<i>President</i>
CONNIE BENNETT		<i>Vice-President</i>
PAULINE BENNETT		<i>Recording Secretary</i>
DOT ESTABROOK		<i>Corresponding Secretary</i>
BETTY ANN CANNON		<i>Treasurer</i>
JEAN DOUGLAS		<i>Recorder of Points</i>
DOT JENNINGS		<i>Publicity Manager</i>
RUTH WHITE	}	
DELPHENE COVERSTON	}	<i>Social Chairmen</i>

MEMBERS

BARBARA ARMON	JACKIE FISHER	SHIRLEY LYTLE
BARBARA BASSETT	TOMMY LEE FOWLER	HELEN REES
BARBARA BLACK	RUTH FRUNCH	JEANNE SHAW
M. BLACKBURN	ELAINE FRETWELL	KATHRYN SHIRLEY
CLAIRE BRANDIES	RUTH MACDANIEL	JUNI SHONE
C. BROWN	YVONNE MALOY	BROWNIE SHULTZ
CAROLYN BUCK	SIS MARTIN	DONNA SHULTZ
BARBARA BURGESS	MARTHA MILLER	BETTY SMILLY
CHARLINE CARSON	PAT MILLER	MARY FRANCIS SMITH
SARA CARVER	LITA MITCHELL	VIOLET SMITH
CAROLYN CHAPPELLE	MARY MOCK	ANNE SPINKS
LUCILLE CLARK	LULU MAI MORRISON	HARRIET STEFFENS
SHIRLEY CLARK	JEAN NOBLE	EVELYN STOWE
SHIRLEY COLE	HELEN OLIVER	KARLEN TAYLOR
ALYCI COWART	BARBARA OTTO	NATALIE TRUE
MARTHA DURRANCE	GLADYS PIPPIN	EVELYN TURRINTINE
RUTH DURRANCE	DOT POPE	LURA TYNER
NINA DYAL	BOBBIE PRICE	MARY LASATER
VIRGINIA ELMENDORF	LOUISE FUGATE	EVELYN VAN SCOV
CAROL EMERSON	NORMA GARDNER	EMMIE LOU WEST
NANCY FISSENDEN	ANN GILBERT	MARTHA WHITE
JUNI FINN		



Features

Here they are:
the outstanding
students of
the campus—
chosen by you;
including
Miss HOWES
Valedictorian
and
Mr. WATSON
Salutatorian





CLAIRE BRANDIES
CARL PURTZ



FLONNIE ANDERS
MAX STAMPER



HELEN DORIS McCORMICK
BOB BARNES



MARY MOCK
BILLY MATHIS



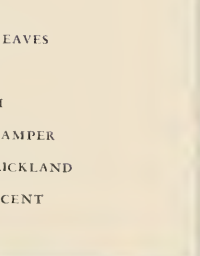
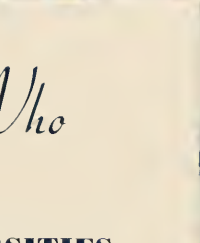
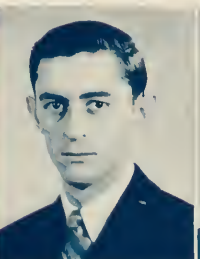
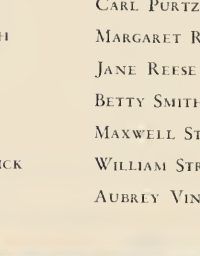
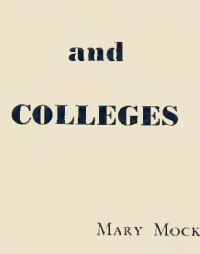
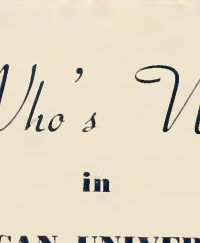
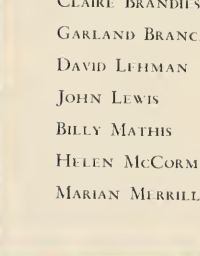
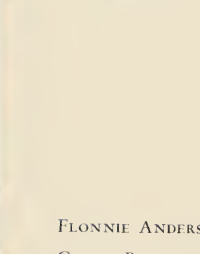
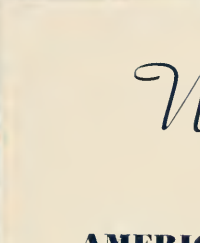
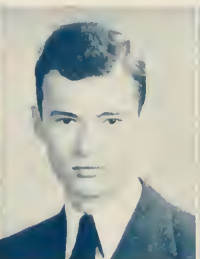
MARGARET REAVES
BUD DICKINSON



ELIZABETH STACEY
JOHN LEWIS



CAROLYN HOWES
FRANK WATSON



Who's Who

in

AMERICAN UNIVERSITIES

and

COLLEGES

FLONNIE ANDERS

CLAIRE BRANDIS

GARLAND BRANCH

DAVID LEHMAN

JOHN LEWIS

BILLY MATHIS

HELEN MCCORMICK

MARIAN MERRILL

MARY MOCK

CARL PURTZ

MARGARET REAVES

JANE REESE

BETTY SMITH

MAXWELL STAMPER

WILLIAM STRICKLAND

AUBREY VINCENT

S N A P S





**D
O
G
P
A
T
C
H**





**M
O
R
E

S
T
U
F
F**







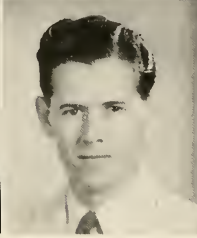
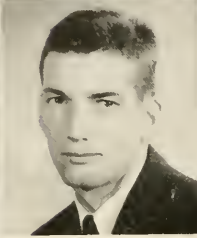
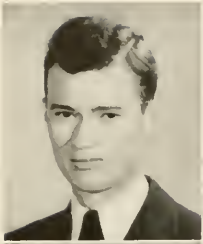
STETSON

COOPERATES





Organizations



JOHN LEWIS
CARL PURTZ

WILLIAM MATHIS
FRANK WATSON

MAURICE MILLER
WINSTON McQUIDDY



WILLIAM STRICKLAND
JACKSON HAYWARD
LeROY BARKSTROM

GARLAND BRANCH
DAVID LEHMAN
ROBERT BARNES

MYSTIC KREWE

Founded in 1934

COLORS: *Red and Black*

FIRST SEMESTER

CARL PURTZ
Captain

JOHN LEWIS
First Mate

GARLAND BRANCH
Second Mate

FRANK WATSON
Boatswain

WILLIAM MATHIS
Cabin Boy

SECOND SEMESTER

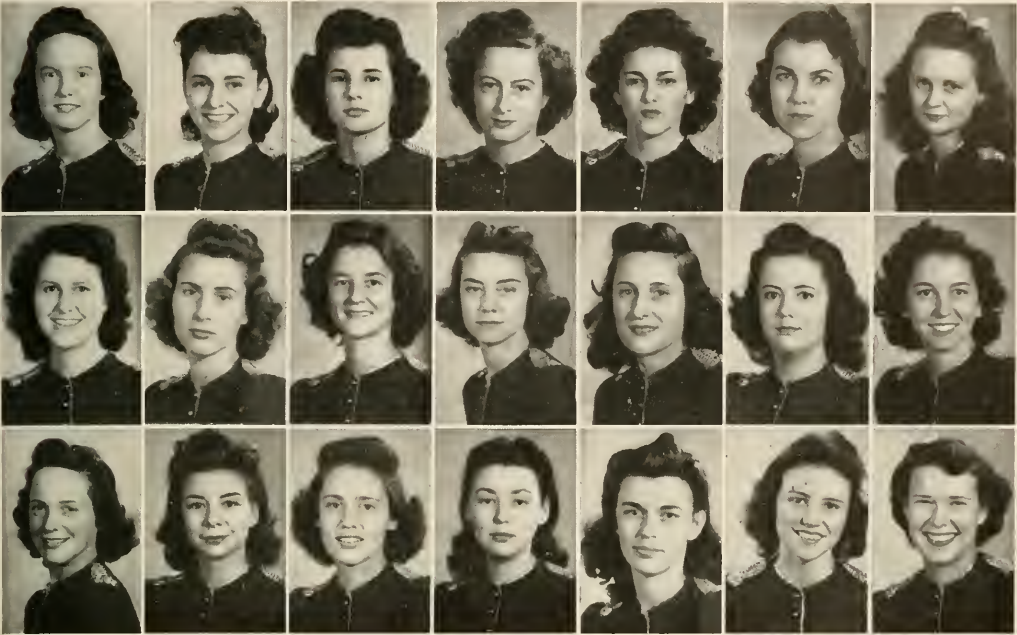
GARLAND BRANCH
Captain

WILLIAM MATHIS
First Mate

CARL PURTZ
Second Mate

FRANK WATSON
Boatswain

WILLIAM STRICKLAND
Cabin Boy



SMITH	MOCK	MILLIGAN	JENNINGS	STACEY	REAVES	McCLURE
HOOKER	MCCORMICK	BENNETT	REESE	HILLMAN	HISEY	BENNETT
KNOX	AMIDON	BURGMAN	FRENCH	MERRILL	COVERSTON	POWERS

THE HONOR

Honorary Leadership Organization For Women

OFFICERS

- | | |
|---------------------------|-----------------------|
| LOUISE McCLURE | <i>President</i> |
| MARGARET REAVES | <i>Vice-President</i> |
| BETTY SMITH | <i>Secretary</i> |
| MARY MOCK | <i>Treasurer</i> |

ACTIVE MEMBERS

- | | | |
|------------------|-----------------------|--------------------|
| BETTY SMITH | HELEN DORIS MCCORMICK | EDITH KNOX |
| MARY MOCK | HELEN BENNETT | BETTY JANE AMIDON |
| DORIS MILLIGAN | PAULINE BENNETT | BARBARA BURGMAN |
| DOROTHY JENNINGS | JANE REESE | IRMA FRENCH |
| ELIZABETH STACY | RUTH HILLMAN | MARIAN MERRILL |
| MARGARET REAVES | MARIE HISEY | DELPHENI COVERSTON |
| LOUISE McCLURE | ELSIE HOOKER | BETTY POWERS |

THE ORDER OF THE SCROLL AND KEY

Honorary Scholarship and Leadership
Society

Founded in March, 1940

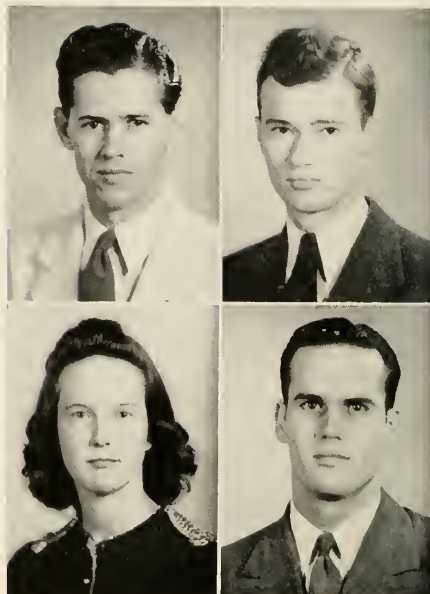
COLORS: *Purple and Gold*

FLOWER: *Purple Iris*

OFFICERS

GARLAND BRANCH *President*
FRANK WATSON *Vice-President*
BETTY SMITH *Secretary*
JOHN LEWIS *Treasurer*

The purpose of the Order of the Scroll and Key is to recognize and further scholarship and leadership on the campus of J. B. Stetson University. Its members are chosen from the upper tenth division of the junior and senior classes.



WATSON
SMITH

BRANCH
LEWIS

OFFICERS

DORIS WARREN *President*
DOROTHY ESTABROOK . . . *Vice-President*
RUTH WHITE *Secretary*
PAULINE BENNETT *Treasurer*

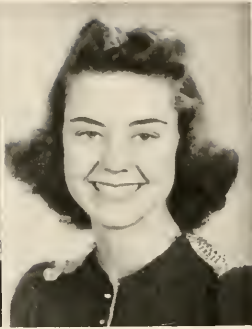
MEMBERS

CLAIRJ BRANDIES
DELPHINE COVERSTON
RUTH WHITE
PAULINE BENNETT
DOROTHY ESTABROOK
CONSTANCE BENNETT
JEAN DOUGLAS
DOROTHY JENNINGS
DORIS WARREN



THE STETSON BLAZER CLUB

The Stetson Blazer Club was founded on May 24, 1939, in the Cummings Gymnasium by seven girls who had won their letter "S" for leadership in the athletic field. Membership to the Stetson Blazer Club is based on leadership, scholarship, and athletic ability. Students may earn their blazer only after they have completed at least two years of college work.



BRANDIES

REESE



WOMEN'S STUDENT GOVERNMENT ASSOCIATION



McCLURE
HILLMAN
COVERSTON

OLIVER
SMILEY
WIDDERSHEIM

OFFICERS

CLAIRE BRANDIES	President
JANE REESE	Vice-President
LOUISE McCLURE	Secretary
RUTH HILLMAN	Treasurer
DELPHENE COVERSTON	Representative-at-large
HELEN OLIVER	Sophomore Representative
BETTY SMILEY	Stevens Hall Representative
DOROTHY WIDDERSHEIM	Sergeant-at-large



DELPHENE COVERSTON
Editor-in-Chief

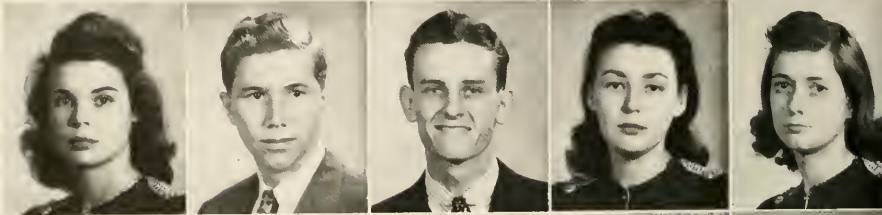
THE HATTER

If you see pictures you've seen before, or you're looking like you've never looked before I respectfully refer you to one Adolph Hitler or his assistant culprits Benito Mussolini and Emperor Hirohito
Hopefully yours,
THE EDITOR.

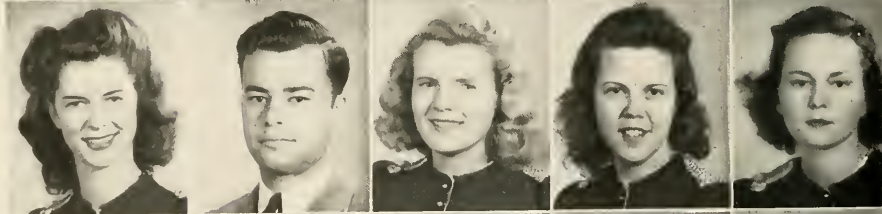


LEROY BARKSTROM
Business Manager

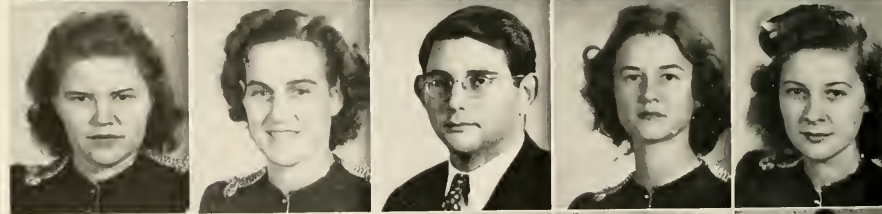
HELEN ANDERSON
RALPH MATOUSEK
COMER WOODALL
IRMA FRENCH
HARRIET STEFFENS



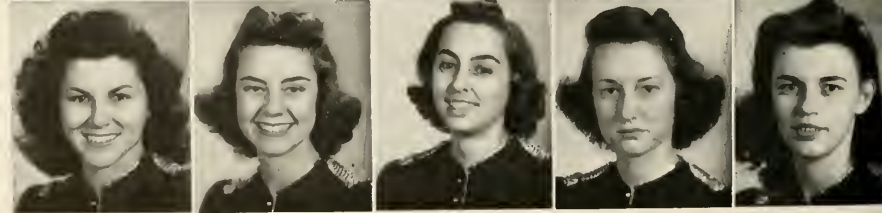
FRAN S. McDONALD
HARRY SNYDER
BETTY LOU BELL
DORIS O'NEAL
ELSIE MERRITT



MARY ANN BROWN
SHIRLEY KAGEY
DAVID LEHMAN
PAULINE BENNETT
ALYCE COWART



ELIZABETH PIPPIN
JANE REESE
CLAIRE BUMGARNER
EDNA OYER
MARION MERRILL





The Stetson Reporter



Eighth Year—No. 8

D.Land

11, 1942

Z103

Price 5c

More Fie F



...gale'll have a
...Cause Sidie H.
...mann for the traditions.



Hilarious Arsenic to Be C

...CHARGE!
...the season
...some time i
...an "Arsenic
...academic, for



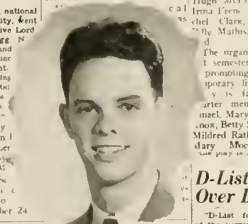
PAMELA LIPSCOMB

...caught by some circumstances
...the gate that took the bill on
...Babe M...



Girls Invit EDITH JOHNSON

...previously scheduled to appear
...according to an announcement



PATRICIA FUGLE

...the organization was formed
...1 semester with the meet
...promoting an anti
...pository literature
...y in faculty
...er members
...mel, Mary Ann
...nox, Betty Smith,
...Mildred Raliff,
...Mary Mack,
...and many othe



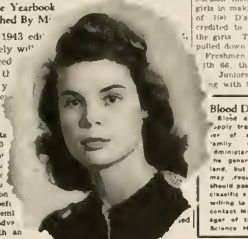
udent Vot tter To

...Jap.



JAMES SMITH

...The Promise Yearbook
...Be Published By M
...tion of the 1943 ed
...the "Hitter", definitely w
...leaders announced
...action li
...nd this y
...ager LeRo
...ed here th
...the th
...a result
...vote to le
...tional \$1 00
...was more p
...early tab
...that ple
...will get u
...street mon
...pled, bet
...its Decem
...An adve
...signed with an



D-List In Over Las

...D-List for th
...of the current se
...he has over secon
...year although
...of fell nearly one
...according to the
...by the Deans of the
...Stetson men were
...gin in making it's and 9's
...of 100 9's reported 61
...deducted to the boys
...the girls. The max-
...point down 28 9's to
...Freshmen led the
...th 86. The sophomores topped
...Freshmen and seniors trailed
...ng with 8 and 2 respectively



RALPH MATOUSEK

...materials for these people
...Cooper
...in
...Car
...book
...Mio
...Elo
...in
...in
...Ma
...Bu
...L
...of 2
...but
...of 1
...to



HELEN ANDERSON

...cept in the limited terms
...Delegates
...chonging
...nd
...that box is of no con
...We are not fightin
...and Japan for
...had not for wit
...now or ever
...them for what under the nam
...of democracy and Christi
...y we can become Nothing
...required of us except that we b
...constant in our devotion to the
...deal of free men in a just wor
...possible, in even probable, fal
...use of perfect achievement must
...not deter us in the effort



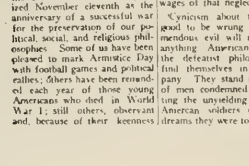
T.R. MIMS

...Under the auspices of the
...freshly organized Stetson chapter
...the Future Teachers of Amer
...Lyle, national
...Teachers
...ca will be
...ly night
...the sub-
...ing
...B.
...e a
...k-
...of



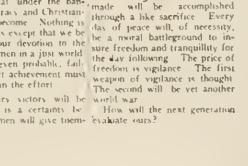
VERNON SANDERSON

...For over twenty years, we in
...the United States have signifi
...November seventh as the
...anniversary of a successful war
...for the preservation of our po
...tical, social, and religious phi
...osophies. Some of us have been
...pleased to mark Armistice Day
...with football games and political
... rallies. Others have been reward
...ed each year of those young
...Americans who died in World
...War I; still others, obedient
...and because of their keenness



JEANE SHAW

...made will be accomplished
...through a like sacrifice. Every
...day of peace will of necessity
...be a moral battleground to in
...sure freedom and tranquility for
...the day following. The price of
...freedom is vigilance. The first
...season of vigilance is this
...The second will be yet another
...world war
...How will the next generation
...balkate ours?



LILLIAN Mc CLEMENT



THE STOVER THEATRE
Presents

The Curtain Rises
Arsenic and Old Lace
Hansel and Gretel
The Silver Cord
The Barretts
As You Like It

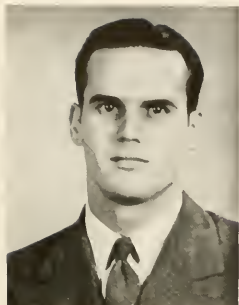


THETA ALPHA PHI



PI KAPPA DELTA

National Honorary Forensic Fraternity
 Florida Beta Chapter
 Established in 1938



LEWIS



BARKSTROM



FRENCH



HARTMAN

OFFICERS

JOHN LEWIS	<i>President</i>
DORIS HARTMAN	<i>Vice-President</i>
IRMA FRENCH	<i>Secretary and Treasurer</i>
LEROY BARKSTROM	<i>Historian</i>

FACULTY

IRVING C. STOVER

ACTIVITIES

On February 13, Pi Kappa Delta sponsored the Sixth Annual State Practice Forensic Tournament, at which the University of Florida, Florida Southern, St. Petersburg Junior College, Rollins, the University of Miami, and Florida State College for Women were present.

The season was closed with the traditional intramural debate tournament.

FORENSIC SEASON



The State practice Meet was held here for the sixth time. Six of Florida's outstanding schools participated in the tournament.

Burdine represented Stetson in extemporaneous taking first place.

Griffin took part in the non-competitive after dinner speaking.

Lewis, Barkstrom, Mansur, Overton, Hartman, Lupfer, Smith, and Reese were representatives in debate.

The Speaker's Bureau which was established last year was discontinued because of the war and traveling difficulties.





RADIO GUILD

OFFICERS

FLONNIE ANDERS	<i>President</i>
JACK HAYWARD	<i>Vice-President</i>
IRMA FRENCH	<i>Secretary</i>
MAX STAMPER	<i>Treasurer</i>
GORDON WILLIAMSON	<i>Publicity Manager</i>
JACK CAUSIER	<i>Program Manager</i>
RUTH HILFMAN	<i>Historian</i>

MEMBERS

ELIZABETH STACEY	BETTY LOU BELL	KAREN TAYLOR
BETTY POWERS	PAULINE BENNETT	ORIEN FARRELL
MARY FRANCIS SMITH	PETER EASLAND	SIS MARTIN
NATALIE TRUE	NINA DYAL	PATTY FUGLE
VERNON SANDERSON	BARBARA BURGMAN	BILL KENNEDY
DORIS MILLIGAN	JEAN TRIGG	BARBARA BLACK
SAM CALDWELL	YOLIE HARGRAVES	ANN SPINKS
GARLAND BRANCH	VIRGINIA ELMENDORF	DORIS HARTMAN
JEAN PINKLEY	MARY PARDEE	BARBARA OTTO
BILLY MITCHELL	DOTTIE HOWELL	JOY JACKSON
HARVEY GARDNER	DONNA SHULTZ	ANN HIRTH
BOB BROWN	BARBARA ARMON	JACKIE FISHER
		CAROLE CHAPPEL
		JERRY JARVIS
		SHIRLEY LYTLE
		SHIRLEY MOORE
		ANN DAVIS
		RALPH MATOUSEK
		MELVIN BURGER
		AUBREY VINCENT
		MARION MERRILL
		SARA CARVER
		ALYCE COWART
		ANN GILBERT



VINCENT BARKSTROM YENETCHI WATSON
 BENTLEY COVERSTON HARTMAN HAYWARD

MERRILL MILLER
 SMITH STONE



STUDENT BAR

OFFICERS

AUBREY VINCENT *President*
 IVAN YENETCHI *Secretary*
 IVAN YANTCHI *Secretary*
 FRANK WATSON *Treasurer*

MEMBERS

JACKSON HAYWARD BETTY SMITH
 FRANK WATSON MARION MERRILL
 ROY SUMMERLIN DORIS HARTMAN
 BENNETT STONE DELPHENE COVERSTON
 GORDON BENTLEY MAURICE MILLER





BETTY JANE AMIDON PAMELA LIPSCOMB RUTH HILLMAN
FRANCES BROWN BARBARA BURGMAN WILBUR CLONTS CAROLYN JONES
BARBARA PRICE JAMES OVERTON JOHN SNELLINGS

STETSON COMMERCE CLUB

Founded in May, 1937
COLORS: *Black and Red*

The purpose of the Commerce Club is to promote scholarship, to facilitate contact with the commercial world, and to stimulate discussion and constructive thinking in the field of commerce and business.

OFFICERS

ERNA FREIBERG	President
BETTY JANE AMIDON	Vice-President
PAMELA LIPSCOMB	Secretary
RUTH HILLMAN	Treasurer

ACTIVE MEMBERS

BETTY JANE AMIDON	WILBUR CLONTS	CAROLYN JONES	JAMES OVERTON
FRANCES BROWN	ERNA FREIBERG	PAMELA LIPSCOMB	JOHN SNELLINGS
BARBARA BURGMAN	RUTH HILLMAN	BARBARA PRICE	

ALUMNI MEMBERS

JEAN FINNLY

FACULTY MEMBERS

MISS M. S. MCCURDIE MRS. M. B. FISHER DR. C. A. LEONARD DR. J. R. MCVICKER



MORRISON	JOHNSON	RATLIFF	BRYAN	PEIFER	BUMGARNER	CARLTON
AMIDON	BROWN	CHAMBERLIN	DYAL	FRENCH	GARDNER	
HOWES	HISEY	JONES	KAGEY	KNOX	LONGINO	
McCLURE	MERRITT	OYER	POPE	TYNER	WARREN	

FUTURE TEACHERS OF AMERICA

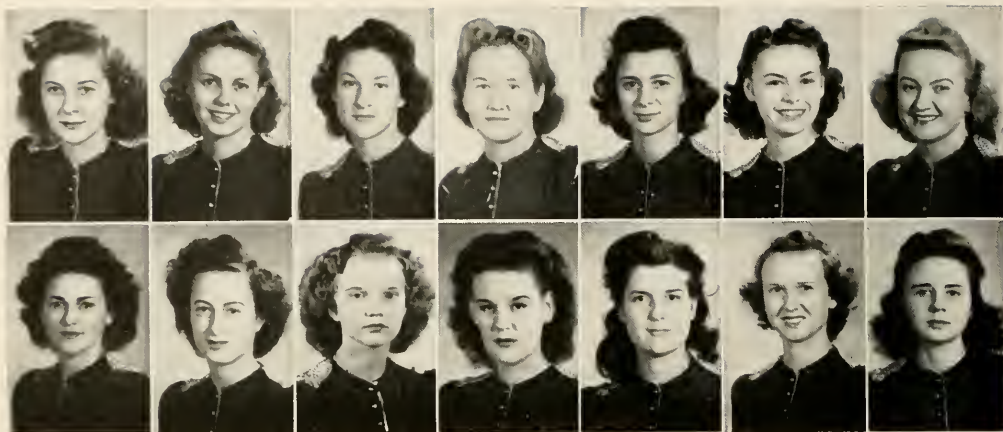
B. F. Ezell Chapter of Future Teachers of America

OFFICERS

LULA MAE MORRISON	<i>President</i>
SARA LOU JOHNSON	<i>Vice-President</i>
MILDRED RATLIFF	<i>Secretary</i>
HELEN RAY BRYAN	<i>Treasurer</i>
PATRICIA PEIFER	<i>Parliamentarian</i>
CLAIRE BUMGARNER	<i>Librarian</i>
MARY CARLTON	<i>Custodian</i>

MEMBERS

BETTY JANE AMIDON	CAROLYN HOWES	LOUISE McCLURE
MARY ANN BROWN	MARIE HISEY	ELSIE MERRITT
VIRGINIA CHAMBERLAIN	SYLVIA JONES	EDNA OYER
LINA DYAL	SHIRLEY KAGLEY	ROSAMOND POPE
IRMA FRENCH	EDITH KNOX	LURA TYNER
NORMA GARDNER	JESSE BETH LONGINO	DORIS WARREN



THE HATTER'S ART CLUB

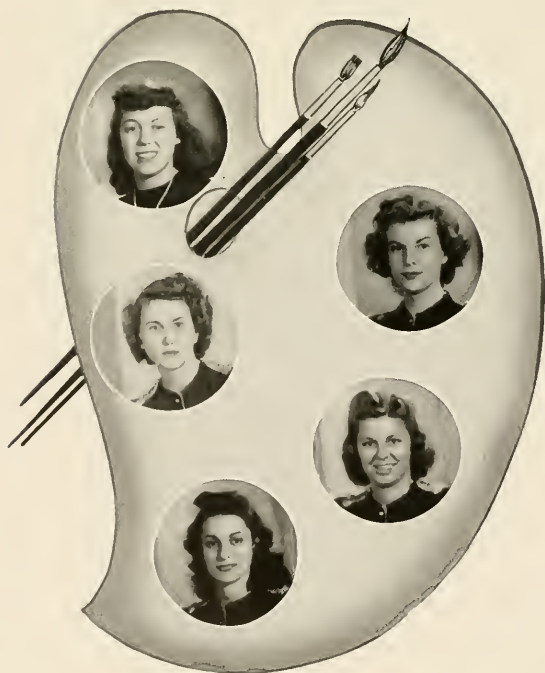
OFFICERS

CAROLYN BUCK	<i>President</i>
NATALIE TRUE	<i>Vice-President</i>
DOT WIDDERSHEIM	<i>Secy.-Treasurer</i>
NINA DYAL	<i>Social Chairman</i>
JEAN PINKLEY	<i>Reporter</i>

MEMBERS

ALYCE COWART	DOROTHY JENNINGS
NATALIE TRUE	CREE McLAUGHLIN
EMILY LOU W'IST	DOT WIDDERSHEIM
KATHERINE TURNER	RUTH BROOKS
JOHANNA SILW	JEAN PINKLEY
JUNE FENN	ELLEN BRYAN
CAROLYN BUCK	NINA DYAL
ADEL HEIDLIN	ISABELLE LOWMAN
SALLY JOHNSON	DOROTHY GIBBINS
ELIZABETH STACEY	RUTH CURNICK

The purpose of the HATTER'S Art Club is to promote the interest of art on the campus and to create a sincere love of beauty, an appreciation of art, and a spirit of friendship and cooperation among its members.





GLADYS PIPPIN
 ANITA MOORE
 SALLY JOHNSON
 DOT RICHARDSON
 JANE KNIGHT
 CATHERINE SHIRLEY
 MARGARET JOHNSTON
 BETTY ANN CANNON
 JEAN PINKLEY
 CLAIRE BRANDIS
 JIANE OSTRANDER
 VERNICE NICHOLS
 BARBARA LUFFER
 JANE REISE
 NANCY FESSENDEN
 MARGARET REAVES
 RUTH McDANIEL
 ELINOR ENLIS
 MILDRED JAUDON
 LULA MAE MORRISON
 NORMA GARDNER
 BARBARA ALBRITTON
 MARTHA ARNOLD
 MARTHA WHITE
 NINA DYAL
 BARBARA BASSETT

YOUNG WOMEN'S ASSOCIATION

OFFICERS

HELEN BENNETT *President*
 IRMA FRENCH *Vice-President*
 JUDITH DOBBINS *Secretary and Treasurer*
 LETA MITCHELL *Program Chairman*
 DOT WIDDERSHEIM *Social Chairman*
 ELIZABETH PIPPIN *Music Chairman*
 JESSIE BETH LONGINO *Stewardship*
 SHIRLEY KAGEY *Personal Service*

DOROTHY HOWARD
 DORIS O'NEAL
 JULIA GRIFFIN
 TOMMY LEE FOWLER
 CAROLYN JONES
 VIVIAN SULT
 BETSY KRAMER
 LURA TYNER
 JUNE SHONE
 MARJORIE KERSLEY
 BARBARA MCGINNIS
 MARY ELLEN ANDLSON
 HELEN MARTIN
 BARBARA PRICE
 DONNA SHULTZ
 JUNI FENN
 ELIZABETH PIPPIN
 JESSIE BETH LONGINO
 DOT WIDDERSHEIM
 SHIRLEY KAGY
 BROWNIE SHUTE
 HAZELLE WILSON
 JUDITH DOBBINS
 HELEN BENNETT
 IRMA FRENCH
 LETA MITCHELL



LEWIS

REESE

MORRISON

COOPER

ANDERSON

BURDINE

WARE

BRANCH

PURTZ

PARSON

AVENT

HOWARD

DOBBINS

REAVES

KNIGHT

BENNETT

B. S. U. COUNCIL

JOHN LEWIS	President
JANE REESE	First Vice-President
LULA MAE MORRISON	Second Vice-President
ED COOPER	} Third Vice-President
MARY ELLEN ANDERSON	
J. T. BURDINE	Secretary
BUD WARE	Treasurer
GARLAND BRANCH	Sunday School Representative
CARL PURTZ	Associate
HAROLD PARSON	B. T. U. Representative
GEORGE AVENT	} Magazine Representatives
JUDY DOBBINS	
PAT HILL	} Vesper Chairmen
DOROTHY HOWARD	
MARGARET REAVES	Music Chairman
JANE KNIGHT	Publicity Chairman
HILEN BENNETT	Y. W. A.

"Let us go forward under the influence of Spain"



MEMBERS

DORA VALDEZ
 RUTH WHITE
 ANITA MOORE
 DAVID LEHMAN
 IRMA FRENCH
 MAX STAMPER
 DOROTHY GIBBONS
 FRANK WATSON
 CHRIS NAPOLI
 JEAN TRIGG
 OLIVE LORD
 NATALIE TRUE
 DORIS MILLIGAN
 MARY MOCK
 CAROLYN BUCK



OFFICERS

DORA VALDIZ *President*
 ANITA MOORE . . . *Vice-President*
 DAVID LEHMAN . . . *Treasurer*
 RUTH WHITE *Secretary*
 DR. ARJONA . . . *Faculty Adviser*

FACULTY MEMBERS

DR. THORNTON
 DR. ARJONA
 PROFESSOR WINTERS
 JEAN FINNEY

SIGMA DELTA PI

National Spanish Fraternity

Founded in 1937

COLORS: *Red and Gold*

FLOWER: *Red Carnation*



	REAVES	ROGY	HILLMAN	TURNER	
LORD	TENNILLE	MARCUM	ALBRITTON	ARKLEY	
DURRANCE	MILLIGAN	DURRANCE	BENNETT	RAMSEY	
HUGGINS	SPECHT	ZORNES	WAGNER	STACEY	

P H I B E T A

National Professional Fraternity of Music
 Founded at Northwestern University, 1912
 Eta Chapter Established in December, 1921

COLORS: *Violet and Gold*

FLOWER: *Rose*

OFFICERS

MARGARET REAVES	President
JIAN ROGY	Vice-President
RUTH HILLMAN	Corresponding Secretary
KATHIRINE TURNER	Recording Secretary
OLIVI LORD	Treasurer
HILEN TENNILLE	Doorkeeper
ELLEN MARCUM	Historian



PI DELTA PSI

One of the newly organized honorary clubs on campus for the purpose of promoting interest in contemporary literature.

Sponsor:

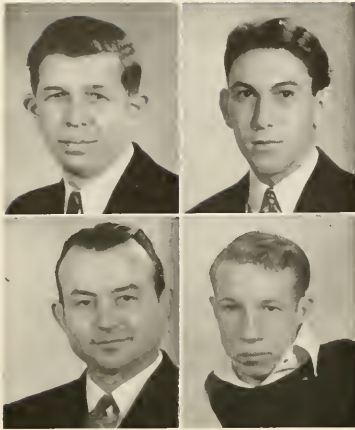
DR. WILLIAM HUGH McENIRY, JR.

GEORGE AVENT
 MARY ANN BROWN
 RACHEL CLARK
 DELPHENE COVERSTON
 IRMA FRENCH
 RUTH FRENCH
 NORMA GARDNER

MEMBERS

MARIE HISEY
 CAROLYN HOWES
 EDITH KNOX
 JOHN LEWIS
 LOUISE McCLURE
 ERNEST MACHEN
 BILL MATHIS
 ELSIE MERRITT

T. R. MINS
 MARY MOCK
 MILDRED RATLIFF
 JANI REESE
 BETTY SMITH
 ANN SPINKS
 BILL STRICKLAND

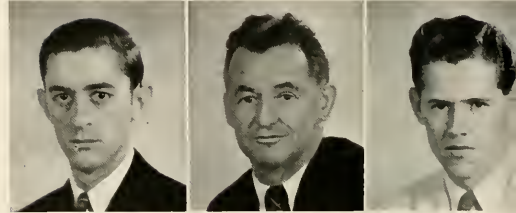


OFFICERS

LEROY BARKSTROM *Justice*
 AUBRY VINCENT *Vice Justice*
 MAURICE MILLER *Clerk and Treasurer*
 IVAN YENETCHI *Marshal*

PLEDGES

JACK HAYWARD ROY SUMMERLIN
 JOE BEN STONE FRANK WATSON



PHI ALPHA DELTA



PI GAMMA MU

National Social Science Honor Society
 Florida Gamma Chapter Established in February, 1929

OFFICERS

FRANK WATSON *President*
 PAMELA LIPSCOMB *Vice-President*
 RUTH FRENCH *Secretary and Treasurer*

MEMBERS

GEORGE AVENT	FRANK WATSON	RUTH FRENCH
J. T. BURDINE	PAMELA LIPSCOMB	JAMES OVERTON
IRMA FRENCH	ERNEST MACHEN	JEAN FINNEY
ELAINE PHILLIPS	JOHN LEWIS	ERNA FRIEBURG
DAVID LEHMAN	RIX WEISNFELD	

Honorary History



DAVID M. LEHMAN
 CAROLYN HOWES
 HARRIET STEFFENS
 RALPH MATOUSEK
 RUTH FRENCH
 JOHN LEWIS
 FRANK WATSON
 ERNEST MACHEN
 REX WIESENFELD



PHI ALPHA THETA

OFFICERS

DAVID M. LEHMAN	President
CAROLYN HOWES	Vice-President
HARRIET STEFFENS	Secretary and Treasurer
RALPH MATOUSEK	Historian

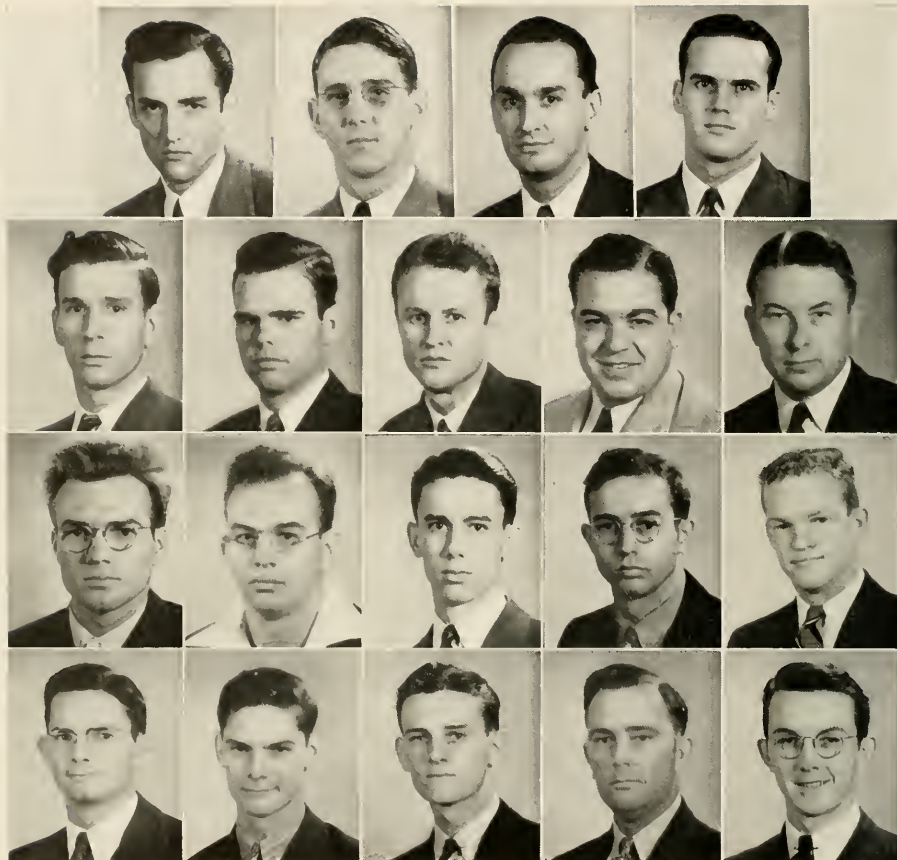
Alpha Zeta Chapter

Established May, 1942

COLORS: *Madonna Blue and Red* FLOWER: *Red Rose*

MOTTO: *Vox Populi, Vox Dei*

PURPOSE: *To encourage the study of history.*



GARDNER
MIMS
WARE
THOMPSON

COOPER
MIXON
STRICKLAND
MITCHELL

AVENT
FAIN
WOODALL

BURDINE
NAPOLI
SANDERSON
BROWN

LEWIS
RUTLEDGE
REID
HADDOX

MINISTERIAL ASSOCIATION 1942-43

J. T. BURDINE, JR.
ED COOPER
MAURICE FAIN
DAVID M. GARDNER
PAT HILL
JOHN LEWIS
T. R. MIMS
LAWRENCE MIXON
CHRIS NAPOLI
AARON RUTLEDGE
BILL STRICKLAND

BUD WARE
DANIEL MEYHOEFER
CICIL CRISSEY
GEORGE AVENT
VERNON SANDERSON
ALFRED REID
HOWARD THOMPSON
HAROLD MITCHELL
COMER WOODALL
GEORGE L. BROWN
BEN HADDOX

THE STETSON UNIVERSITY

DEFENSE COUNCIL

Established May, 1941

OFFICERS

PRESIDENT W. S. ALLEN <i>Commander</i>	PROFESSOR HAROLD M. GIFFIN <i>Vice-Commander</i>	CRAFTON H. PYNE <i>Co-Ordinator</i>
---	---	--

EXECUTIVE COMMITTEE

DR. HARRY CARWOOD	<i>Chairman, Committee on Curricula and Assembly</i>
PROFESSOR CURTIS M. LOWERY	<i>Chairman, Committee on Emergency Safety Precaution</i>
MR. WARREN C. COWELL	<i>Chairman, Committee on Physical Fitness</i>
JOHN LEWIS	<i>Chairman, Committee on Extra-Curricula Activity</i>

STAFF

MR. CARL H. JOHNSON	<i>Chief Air-Raid Warden</i>
MR. ELMER BARNETT	<i>Chief Protection Officer</i>
GARLAND HAYES	<i>Chief of Fire-Control Squad</i>
MISS EDGELLE HENRY	<i>Chief at Emergency Casualty Post</i>
DONALD BLACK	<i>Chief of Men's Stretcher Squads</i>
ANNE SPINKS	<i>Chief of Women's Stretcher Squads</i>
MARGARET REAVES	<i>Chief of Communications</i>
MARY FRANCES SMITH	<i>Chief of Messenger Squad</i>

FACULTY MEMBERS

MR. ROBERT I. ALLEN	MISS ESTHER HICK	MRS. MARY McLAUGHLIN
MR. ROBERT BARNETT	MISS CURTIS HORN	DR. JAMES MACVICKER
DR. JOHN F. CONN	DR. R. F. HOWES	MISS BARBARA ROWE
MISS EVELYN DODD	MRS. SARA S. JERNIGAN	MISS CHARLOTTE SMITH
DR. WILLIAM E. DUCKWITZ	DR. W. HUGH McENIRY	DR. IRVING STOVER
	MISS ETTIE TURNER	

STUDENT MEMBERS

WILLIAM ALDEN	JUNE FENN	DORIS MILLIGAN	DONNA SCHULTZ
ROBERT ALLEN	RUTH FRENCH	T. R. MIMS	JEAN SHAW
BETTY JANE AMIDON	HELEN HARPER	LAVERNE NIXON	BETTY SMITH
FRANCES ARKLEY	JACK HAYWARD	SHIRLEY MOORE	WILLIAM SMITH
ROBERT BARNES	EMILY VAN HOUSON	MAX MOSLER	JOHN SNELLINGS
CONSTANCE BENNETT	ELFANOR HOLDEMAN	CHRIS NAPOLI	ELIZABETH STACEY
PAULINE BENNETT	DOROTHY HOWELL	JAMES NELSON	MAX STAMPER
MELVIN BURGER	DOROTHY JENNINGS	HELLEN OLIVER	WILLIAM STRICKLAND
BARBARA BLACK	ANDREW KNOX	JOSEPH PADULA	LUCILLE SUMMERFORD
ANNETTE BOLTON	BETSY KRAMER	HAROLD PARSON	ROY SUMMERLIN
FRANK BROWN	WILLIAM KENNEDY	MARY PITTMAN	NATALIE TRUE
GORDON CARLSON	TERRY KENEHAN	MARTHA PRICE	JLAN TRIGG
LEWIS CLADIN	JESSIE BETH LONGINO	CARL PURTZ	KATHERINE TURNER
WILBUR CLONTS	JEANETTE McARTHUR	KENNETH PURTZ	BROOKS WALKER
FRED DICKINSON	LILLIAN McCLEMENT	WALTER PURTZ	EVERETT WHITMAN
JEAN DOUGLAS	LOUISE McCLURE	JANE RIESE	CHARLES WILLIAMS
WILBUR EICHHOLZ	SIS MARTIN	JIAN ROGY	MELVIN WILKINS
		BETTY SCHOLLIG	



INTERNATIONAL RELATIONS CLUB

OFFICERS

MAX STAMPER	<i>President</i>
J. T. BURDINE	<i>Vice-President</i>
ELSIE MERRITT	<i>Recording Secretary</i>
IRMA FRENCH	<i>Publicity Chairman</i>
BETTY POWERS	<i>Treasurer</i>
NINA DYAL	<i>Corresponding Secretary</i>

Purpose: To acquaint the students of Stetson University with conditions of the world, and to promote interests in these conditions.

MEMBERS

JOHN LEWIS
 DANIEL MIYHOFFER
 EDITH KNOX
 DAVID LEHMAN
 FRANK WATSON
 ERNEST MACHEN
 ROBERT BARNIS
 BUD DICKINSON
 FLONNIE ANDERS
 DORIS MILLIGAN
 MARY ANN BROWN
 ANITA MOORE

JIMMY SMITH
 DORIS HARTMAN
 MARIE HISEY
 DICK SMITH
 DELPHINE COVERSTON
 MARY FRANCES SMITH
 GEORGE GOODMAN
 CARL PURTZ
 RUTH FRENCH
 WILLIAM MATHIS
 RALPH MATOUSIK



VOLUNTEERS FOR CHRISTIAN SERVICE

MEMBERS

HAZELLE WILSON

DOROTHY RICHARDSON

VIOLET SMITH

DOROTHY WIDDERSHIEM

VIRGINIA AGETT

MARY ELLEN ANDERSON

JUDITH DOBBINS

EVLLYN DODD

JAMES OVERTON

JANE KNIGHT

HARRY ATKINSON

MARTHA PRICE

ELEANOR HOLDERMAN

ANITA MOORE

HELEN MARTIN

HELEN BENNETT

DOROTHY HOWARD

Aim: The aim of this organization is to bring together those students who have been called and have surrendered to do any Christian service as the Lord leads and for the purpose of creating a real Christian spirit on Stetson's campus.



DYAL
GARDNER
BARKSTROM

TRIGG
BARNES
STACEY

BURGMAN
HISEY
POWERS

SMITH
POPE
JENNINGS

AMIDON
MOCK
GARDNER

DOUGLAS
HENRY
VINCENT

MATHIS
SMITH
FULLER

INTER-FRATERNITY COUNCIL

OFFICERS

ROBERT BARNES	<i>President</i>
RICHARD SMITH	<i>Vice-President</i>
NINA DYAL	<i>Secretary</i>
JEAN DOUGLAS	<i>Treasurer</i>

MEMBERS

Alpha Xi Delta
ELIZABETH STACEY
BETTY POWERS
DOT JENNINGS

Pi Beta Phi
BETTY SMITH
BETTY JANE AMIDON
JEAN DOUGLAS

Delta Delta Delta
NINA DYAL
JEAN TRIGG
BARBARA BURGMAN

Pi Kappa Phi
WILLIAM MATHIS
DAVID GARDNER
ROBERT BARNES

Delta Sigma Phi
ROBERT HENRY
RICHARD SMITH
LEROY BARKSTROM

Sigma Nu
HARVEY GARDNER
AUBREY VINCENT
AL FULLER

Zeta Tau Alpha
MARIE HISEY
DOT POPE
MARY MOCK



MCCORMICK
MILLIGAN

SMITH
POWERS

BURGMAN
HISEY

MOCK
DOUGLAS

PAN-HELLENIC COUNCIL

OFFICERS

HELEN DORIS MCCORMICK	President
DORIS MILLIGAN	Vice-President
BETTY SMITH	Secretary
MARY MOCK	Treasurer
BARBARA ROWE	Adviser

MEMBERS

Alpha Xi Delta
DORIS MILLIGAN
BETTY POWERS

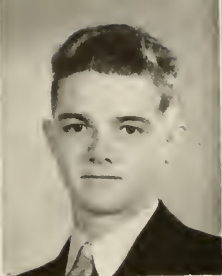
Pi Beta Phi
JEAN DOUGLAS
BETTY SMITH

Delta Delta Delta
HELEN DORIS MCCORMICK
BARBARA BURGMAN

Zeta Tau Alpha
MARY MOCK
MARIE HISEY



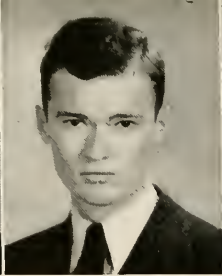
ALDEN



ALLEN



BENNETT



BRANCH



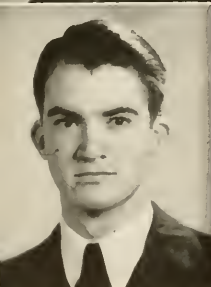
CARLTON



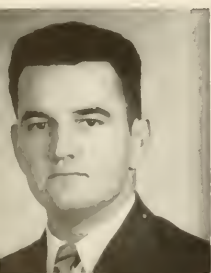
DOUGLAS



ERNEST



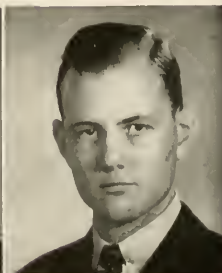
GREEN



HERNDON



HOOKER



KESMODEL



MORRISON



MOORE

GAMMA SIGMA EPSILON

Honorary Chemistry Fraternity

RAY SPAULDING	<i>Grand Alchemist</i>
GARLAND BRANCIU	<i>Visor</i>
HARRIET STEFFENS	<i>Recorder</i>
DR. JOHN F. CONN	<i>Faculty Adviser</i>

JOSEPH ADNEY
 KARL KESMODEL
 ANITA MOORE

BETA KEY

Biology Fraternity

HARRIET STEFFENS	<i>President</i>
WILLIAM ALDEN	<i>Vice-President</i>
ANNE SPINKS	<i>Secretary</i>
JEAN DOUGLAS	<i>Treasurer</i>
DOROTHY FULLER	<i>Faculty Adviser</i>

CONNIE BINNETT
 WALKER GREEN
 ELSIE HOOKER
 KARL KESMODEL
 JOE PADULA
 ELAINE PHILLIPS
 RAY SPAULDING
 JOYCE WEBBER
 RUTH WHITE
 DOROTHY HOWARD



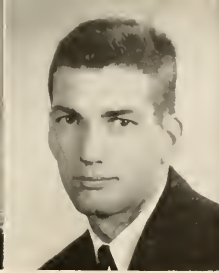
MUIRHEAD



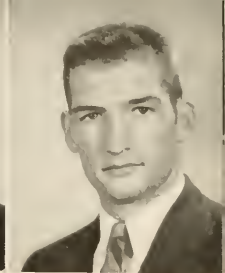
PADULA



PHILLIPS



C. PURTZ



W. PURTZ

THE NEWTON CLUB

Honorary Mathematics Society

FELLOWS

GARLAND BRANCH	President
CARL PURTZ	Vice-President
ROBERT HERNDON	Secretary
WALTER PURTZ	Treasurer
BETTY SMITH	Sergeant-at-Arms

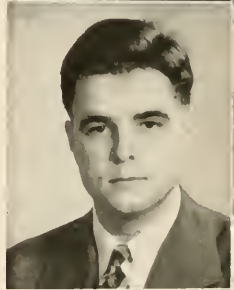
SMITH



ASSOCIATES

MARY CARLTON
 LULA MAE MORRISON
 RAY SPAULDING
 DOROTHY HOWARD
 DR. C. M. LOWRY, *Adviser*
 DR. D. F. FAULKNER, *Founder*
 DR. R. I. ALLEN
 DR. JOHN F. CONN

SPAULDING



SIGMA PI SIGMA

Honorary Physics Society

GARLAND BRANCH	President
ROBERT HERNDON	Vice-President
ROBERT C. ALLEN	Secretary

LELAND ERNEST
 BRUCE MUIRHEAD
 EVERETT WHITMAN

DR. R. I. ALLN	Adviser
----------------	-------	---------

SPINKS



WHITMAN

WEBBER

HOWARD

STEFFENS

WHITE



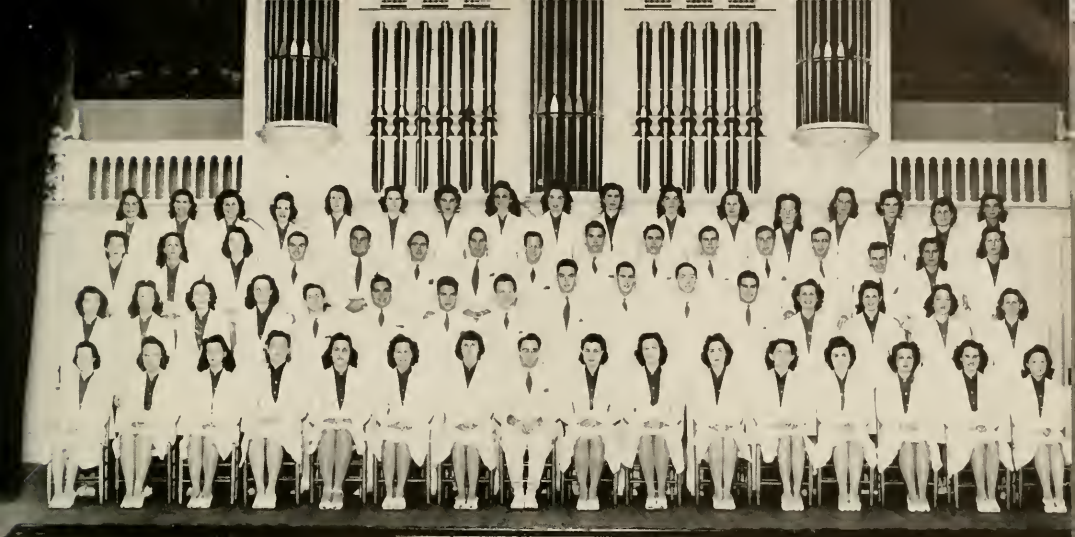
AT EASE!!!

Stetson goes forward through war and taxes! We've had changes but have accepted them as a matter of course and gone on about our business . . . still typically collegiate. September 15, and maybe there weren't quite as many Freshmen as usual but the ones who were here were just as lost, just as homesick, just as green as are the usual Freshmen! Upperclassmen falling into each other's arms with shouts of delight. . . . Wonder if I'll ever get to know all these people . . . finally a friend—a freshman adviser . . . life looks brighter. Orientation Week advances . . . everybody talking to you, giving you advice, showing you the ropes, cheering you up. Even registration was a laughing matter—after it was over. Freshman Talent Night wound up the week and went over big with Bud Dickinson as master of ceremonies . . . followed by the upperclassmen performing in Chaudoin parlors, and everyone really felt swell. But alas, sad reality crept in—classes started. . . . Freshmen discovered there were such things as rat caps, buttoning, rat courts, paddles—Must I go on? The girls dressed for "tea" at the upper classmen's request. Air raid — sandspurs — life really isn't one rose-colored haze. Then, rushing . . . pledging . . . ribbons . . . it's all Greek to me.

If your best boyfriend collapses in your arms, or if the campus hero stumbles around muttering about the cursed fate (250-yard obstacle course) that makes their bones ache and cry out in agony, be not worried . . . merely a part of the new physical fitness program that has recently been inaugurated. Calisthenics do their part to make the girls actually creak when traveling up or down stairs. Not much actual collapsing but plenty of muttering. Rumors that Sadie Hawkins Day is undecided set the whole campus to buzzing. The buzz grew to a roar and finally a decisive shout, "more Li'l Abner!!" In the midst of all the Sadie Hawkins Day stew, the Little Theatre gave us "The Curtain Rises"—its first presentation and good as usual. Fourteen students were picked for Who's Who and congratulations were flying around. . . . Then all the boys followed Porky's lead and settled down to the serious business of growing a beard. By the time the day arrived there were really some beauties on campus—as far as beautiful beards go—which is a matter of opinion. . . . Feminine football practices, committee meetings, rehearsals . . . finally, "Arsenic and Old Lace" opened the hilarious week-end. CHARGE!—Sadie Hawkins Day was the usual bedlam—upperclassmen won the field-meet-soooooo rat caps till Christmas—Avent as Marrying Sam—President Lewis—treat the women rough and make 'em like it. Banquet in the slop house—then to the opry house—pork chops and Daisy Maes.

Maybe no annual this year . . . priorities and expenses reared their ugly heads. Stetsonites assessed themselves an extra buck and the HATTER's future was assured. Plenty of work ahead for Daffy and Barky. No turkey-time holidays this year but thankfulness prevailed with a banquet feast in the Commons. Talk begun about Stetson Memorial for men in service . . . work started on the Opera, "Hansel and Gretel"—a real success. The "Messiah" was given for the eighth time in Elizabeth Hall Auditorium . . . Christmas parties and dances—holidays at last. Vacation . . . and then back to school to recover. Navy men swarming everywhere—set your sails, girls, its anchors aweigh. . . . Blackout in the middle of Peden's recital . . . exams ('nuff said) and a graduating class of twenty-one. . . . A few days of rest and relaxation—then second semester registration . . . senior recitals . . . basketball games with the Naval Base . . . clipped hair and peroxide are definitely "in" . . . the Glee Club and the All Girl Orchestra plus Mansur made their Red Cross contribution. The boys kept leaving in response to Uncle Sam's request . . . miss ya. Spring, and the love bug observed no union hours—dazzling rocks on three out of every four girls' fingers: Odum, French, Harper, Powers, Howell, Arnold—just to mention a few . . . practically reached the stages of an epidemic . . . pins also on the loose . . . constant Pi Kap serenades.

No law school next year—all the male law students are busy winning a very important case of their Uncle Sammy. "The Barretts" was presented and came through with flying colors . . . then, William Saroyan's "Afton Water." Politics here . . . campaigning hot and heavy . . . majority ruled. Priorities curbed the usual wiener roasts and boat rides, but hikes, bikes, and buses took their places. Spring vacation was gratefully, gleefully greeted by all . . . Shakespeare's annual appearance. Visits of former Stetson men now in uniform became everyday occurrences. Finally, cramming, exams, term papers, parallel—then graduation, packing, good-byes, and summer vacation for some, summer school for others, armed services, married life. . . . Next year is just around the corner with its memories to be!



STETSON UNIVERSITY GLEE CLUB

HAROLD M. GIFFIN Director

SOPRANOS

FRANCES ARKLEY
 BARBARA BASSETT
 BETTY LOU BELL
 ANNETTE BOLTON
 ROSEMARY CLARK
 GEORGETTE CLARK
 NINA CLARKE
 ELEANOR EDDINS
 TOMMIE LEE FOWLER
 ELAINE FRITWELL

MARY GENTRY
 LUCILE HALSTEAD
 RUTH HILLMAN
 ELIZABETH HOWELL
 BROOKS HUDGINS
 BESSIE LOU IVEY
 NANCY ANN LANE
 RUTH MCDANIEL
 LETA MITCHELL
 RABEL MOREMAN

ELIZABETH PIPPIN
 MARY RAMSEY
 HELEN REES
 GERRY REIFSCHNEIDER
 GLADYS SCHULTE
 KATHRYN SHIRLEY
 MARY FRANCES SMITH
 ANN SPINKS
 VIVIAN SULT

ALTOS

BETTY JANE AMIDON
 HELEN BENNETT
 FRANCES BROWN
 MARTHA DURRANCE
 RUTH DURRANCE
 ELINOR EDLIN
 LEJEUNE HUGHES
 VIVIAN HUMPHREY

MARY LASATER
 LILLIAN MCCLEMENT
 EDITH MILLER
 DORIS MILLIGAN
 MARY MOCK
 ANITA MOORE
 GLADYS PIPPIN
 MARGARET REAVES
 JAMIE RICHARDS

JEAN ROGY
 JEAN SHAW
 ELIZABETH STACEY
 LUCILLE SUMERFORD
 HELEN TENNILLE
 TERRY WAGNER
 MARTHA WHITE
 BETTY LEE ZORNES

TENORS

WILLIAM MATHIS
 WINSTON McQUIDDY

T. R. MIMS
 CHRIS NAPOLI

BASSES

ROBERT ALLEN
 MAURICE FAIN
 ORIEN FARRELL

ROBERT HERNDON
 HAROLD MITCHELL
 ORIEN OSBURN
 HAROLD PARSON

GRAFTON PYNE
 JAMES SMITH
 COMER WOODALL



STETSON SYMPHONY ORCHESTRA



STETSON SYMPHONIC BAND

ALPHA DEKSIOMA

Founded at John B. Stetson University
May, 1940



COLORS: *Hunter Green and Gold*

FLOWER: *Talisman Rose*



MERRILL

CARLTON



MARTIN
SHAW



BUMGARNER
HAVENS

OFFICERS

MARION MERRILL *President*
 MARY CARLTON *Vice-President*
 CLAIRE BUMGARNER *Secretary*
 HELEN MARTIN *Treasurer*
 MARY LOUISE HAVENS *Chaplain*
 JEANE SHAW *Sergeant-at-Arms*

The purpose of Alpha Deksioma is to promote democratic friendship and understanding among its members; to broaden the social, cultural, political, athletic, and religious life of the members and to assist them in every way possible. All women in Stetson University who are not affiliated with a national social organization may become members.

MEMBERS

MARION MERRILL
 MARY CARLTON
 CLAIRE BUMGARNER
 HELEN MARTIN
 MARY LOUISE HAVENS
 JEANE SHAW
 HELEN RAY BRYAN
 DELPHINE COVERSTON
 JULIA GRIFFIN
 BARBARA LUPFER
 RUTH MCDANIEL

BARBARA MCGINNIS
 RUTH LOIS MAXWELL
 MARTHA MILLER
 VERNICE NICHOLS
 MARY PITTMAN
 JOYCE ROLAND
 MARY SMITH
 VIOLET SMITH
 GENEVA TRAYLOR
 MARTHA WHITE

PLEDGES

GERRY REHSCHNIDER
 TRUDY SAXI
 JAMESINE SMITH

BRYAN
COVERSTON
GRIFFIN



LUPFER
McDANIEL
McGINNIS



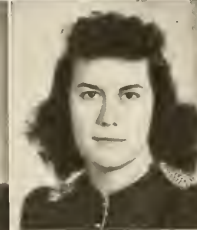
MAXWELL
MILLER
NICHOLS



PITTMAN
ROLAND
M. SMITH



V. SMITH
TRAYLOR
WHITE



REIFSCHNEIDER
SAXL
J. SMITH





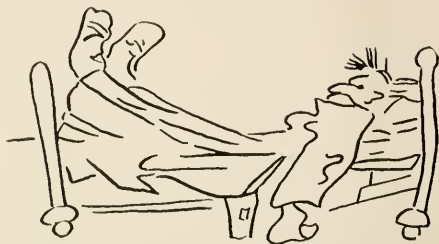
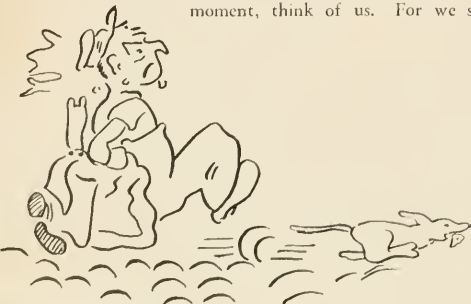
(Continued from Page 46)

have taken up arms to defend their institutions, but this is the first time our institutions have been seriously threatened by an enemy that is haunted already by the ghosts of a thousand fallen institutions which could not protect themselves, or which were overwhelmed by the implacable hatred of men who cannot build as well. Between the enemy and the Stetsons you stand. We shall not forget that.

We had rather have you here with us. You belong with us. But you have given us up in order to serve us. We have let you go by accepting your services. You are our personal guarantee that we believe in what we have. We are your personal guarantee that you will come back to what you left. Soldier, sailor, marine, Coast Guardsman, worker, housewife, merchant, student, all of us are bound together in a fight for preservation. None of us will let you down; all of us maintain the same idea—the idea of the Stetsons of America.

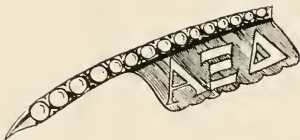
You are willing to die for us; we are willing to live for you. That is what we hope we are doing: living for you. For what is the purpose of your fighting if it is not to come back to the things you left behind? And how can your mission be accomplished unless we live for you? Do you think we shall forget a willing creditor who lends us his life asking nothing in return but our preservation?

All these things we know—and we hope that you know. And when you have a moment, think of us. For we shall always be thinking of you.





• *Fraternities*



ALPHA XI DELTA

Founded at Lombard College in 1893
 Omega Chapter Established in May, 1917

COLORS: *Double Blue and Gold*

FLOWER: *Killarney Rose*

OFFICERS

ELIZABETH WELDEN STACY	<i>President</i>
TERRY WAGNER	<i>Vice-President</i>
RUTH HILLMAN	<i>Treasurer</i>
JEAN ROGY	<i>Recording Secretary</i>
PAULINE BENNETT	<i>Corresponding Secretary</i>

CHAPTER MEMBERS

IN FACULTATE

MARY TRIBBLE LOWRY

VIRGINIA E. GIFFIN

DOROTHY FULLER

AILEEN WORTH

IN UNIVERSITATE

FLONNIE ANDERS
 PAULINE BENNETT
 ANNETTE BOLTON
 VIRGINIA CHAMBERLIN
 MARJORIE ESTHUS
 EDITH MARIÉ GARDNER
 DOROTHY GIBBONS
 FLO GROSS

RUTH HILLMAN
 CAROLYN HOWES
 DOROTHY JENNINGS
 CREE McLAUGHLIN
 ELLEN MARCUM
 EDITH MILLER
 DORIS MILLIGAN
 PHYLLIS MITCHELL

JEANNE NEELY
 BETTY POWERS
 MARGARET REAVES
 JEAN ROGY
 MARY FRANCIS SMITH
 ELIZABETH WELDEN STACY
 TERRY WAGNER

PLEDGES

CAROL CHAPPELL
 RUTH CURNICK
 ADEL HEIDEN

JERRY JARVIS
 CLEO JOHNSON
 MARY LASATER
 HARRIETT LINDER

YVONNE MALOY
 AGNES PAULK
 EVELYN VAN SCOY

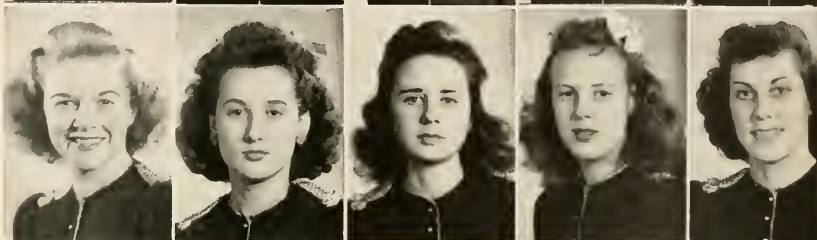
STACY
WAGNER
HILLMAN
ROGY
BENNETT



ANDERS
BOLTON
CHAMBERLAIN
CHAPPELL
CURNICK



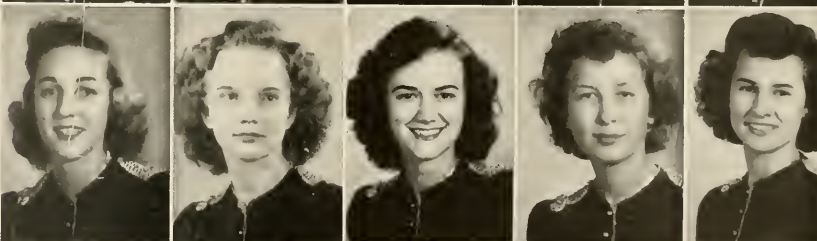
ESTHUS
GARDNER
GIBBONS
GROSS
HOWES



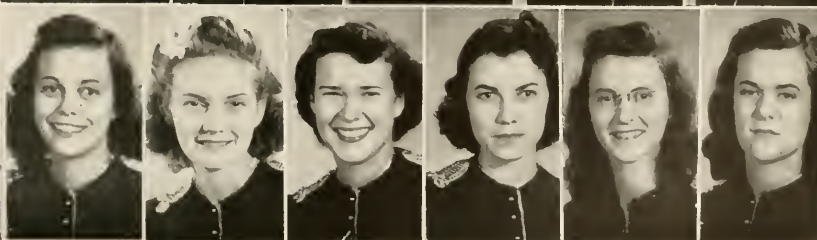
HEIDEN
JARVIS
JENNINGS
JOHNSON
LASATER



LINDNER
McLAUGHLIN
MARCUM
MILLER
MILLIGAN



MITCHELL
NEELY
POWERS
REAVES
SMITH
VAN SCOY





DELTA DELTA DELTA

Founded in 1888, at Boston University, Boston, Mass.
Alpha Delta Chapter Established in May, 1913

COLORS: *Silver, Gold and Blue*

FLOWER: *Pansy*

OFFICERS

BARBARA BURGMAN	<i>President</i>
NINA DYAL	<i>Vice-President</i>
HELEN DORIS McCORMICK	<i>Secretary</i>
ANN SPINKS	<i>Treasurer</i>

CHAPTER MEMBERS

IN FACULTATE

SARA STAFF JERNIGAN

CURTIS HORN

IN UNIVERSITATE

BARBARA BURGMAN
BARBARA BLACK
SARA CARVER
ALYCE COWART
MARTHA DURRANCE
RUTH DURRANCE
NINA DYAL
NANCY FLESENDEN
ELAINE FRIEZWELL
PATTY FUGLE

HELEN HARPER
DOTTIE HOWELL
MARGARET JOHNSTON
DOTSY LIPSCOMBE
JESSIE BETH LONGINO
JEANETTE McARTHUR
LOUISE McCLURE
HELEN DORIS McCORMICK
SHIRLEY MOORT
ELIZABETH PIPPIN

GLADYS PIPPIN
BARBARA PRICE
JUNE SHONE
DONNA SHULTZ
ANNE SPINKS
KAREN TAYLOR
JEAN TRIGG
NATALIE TRUF
EMILY VAN HEUSEN

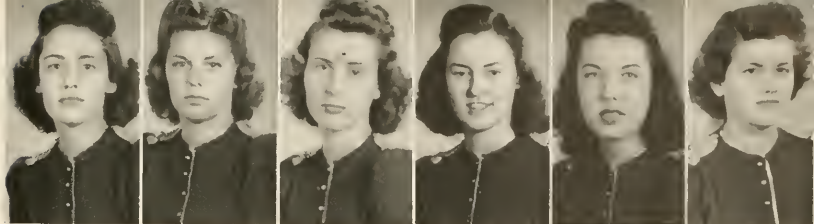
PLEDGES

CAROLE BEATTY
MIRIAM BLACKBURN GRANT
ANN GILBERT

MARCIA HAMMER
ANN HIRTH
SHIRLEY LYTLE

FRAN SUE MacDONALD
BARBARA OTTO

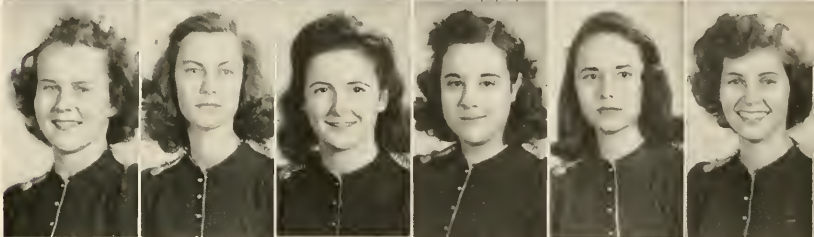
BURGMAN
DYAL
McCORMICK
SPINKS
BEATTY
BLACK



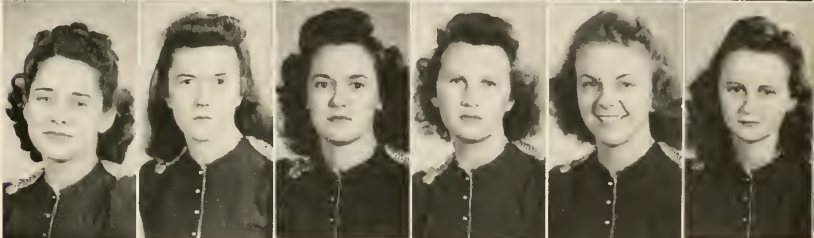
CARVER
COWART
M. DURRANCE
R. DURRANCE
FESSENDEN
FRETWELL



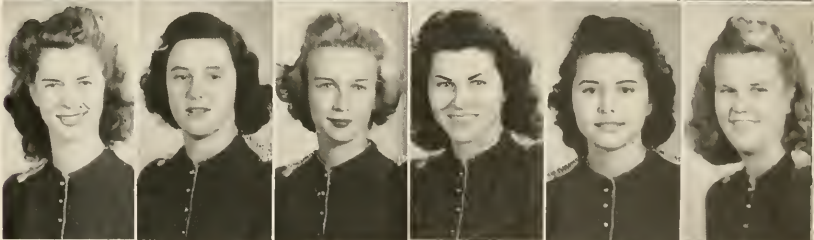
FUGLE
GILBERT
HAMMER
HARPER
HIRTH
HOWELL



JOHNSON
LIPSCOMBE
LONGINO
LYTLE
McARTHUR
McCLURE

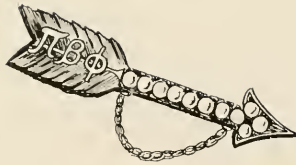


MACDONALD
MOORE
OTTO
E. PIPPIN
G. PIPPIN
PRICE



SHONE
SHULTZ
TAYLOR
TRIGG
TRUE
VanHEUSEN





PI BETA PHI

Founded April 28, at Monmouth College, Monmouth, Illinois
 Florida Alpha Chapter Established January 30, 1913

COLORS: *Wine and Silver Blue*

FLOWER: *Wine Carnation*

OFFICERS

First Semester

BETTY SMITH *President*
 BETTY SMILEY *Vice-President*
 NORMA GARDNER *Treasurer*
 BETTY JANE AMIDON *Recording Secretary*
 HELEN OLIVER *Corresponding Secretary*

Second Semester

JEAN DOUGLAS *President*
 BETSY KRAMER *Vice-President*
 CAROLYN JONES *Treasurer*
 CAROLYN BUCK *Recording Secretary*
 HELEN OLIVER *Corresponding Secretary*

CHAPTER MEMBERS

IN FACULTATE

ANNIE NADINE HOLDEN

IN UNIVERSITATE

ACTIVE

BETTY JANE AMIDON
 CONSTANCE BENNETT
 CAROLYN BUCK
 JEAN DOUGLAS
 LOUISE FUGATE
 NORMA GARDNER

CAROLYN JONES
 MARGARET JUSTICE
 EDITH KNOX
 BETSY KRAMER
 HELEN OLIVER
 PATRICIA PHILIP
 HELEN REES

BETTY SCHELLIG
 BETTY SMILEY
 BETTY SMITH
 EVELYN STOWE
 VIVIAN SULT
 DORIS WARREN

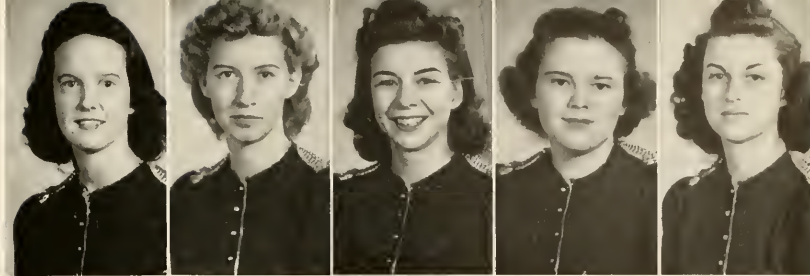
PLEDGES

RUTH BROOKS
 LUCILLE CLARK
 VIRGINIA ELMENDORF

JUNE FENN
 JACKIE FISHER
 BETTY HINMAN

SARA LOU JOHNSON
 JEAN PINKLEY

SMITH
SMILY
AMIDON
OLIVER
GARDNER



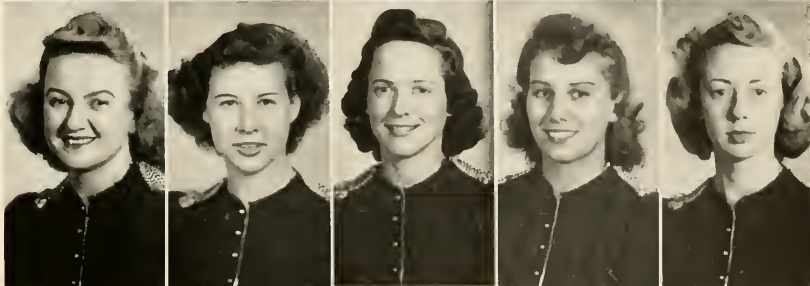
BENNETT
BROOKS
BUCK
CLARK
DOUGLAS



FENN
FISHER
FUGATE
HINMAN
JONES



JOHNSON
JUSTICE
KNOX
KRAMER
PEIFER



PINKLEY
REES
STOWE
SULT
WARREN





ZETA TAU ALPHA

Founded October 15, 1898, at Virginia State Normal School, Farmville, Virginia

Beta Psi Chapter Established in October, 1934

COLORS: *Turquoise Blue and Gray*

FLOWER: *White Violet*

OFFICERS

MARIE HISEY	<i>President</i>
SYLVIA JONES	<i>Vice-President</i>
BETTY PARITT	<i>Secretary</i>
RACHEL CLARKE	<i>Treasurer</i>

CHAPTER MEMBERS IN FACULTATE

ETTLER TURNER

SUF MCEACHERN BURNS

FRANCES THORNTON

IN UNIVERSITATE

VIRGINIA AGETT
BARBARA BASSETT
CLAIRE BRANDIES
BETTY CANNON
CHARLINE CARSON
RACHEL CLARKE
SHIRLEY COEN
CAROL EMERSON

MARILE HARPER
MARIE HISEY
SYLVIA JONES
MARJORIE KERSEY
ISABELLE LOWMAN
MARY MOCK
LETA MITCHELL
BETTY PARITT

ROSAMOND POPE
MARY CATHERINE RAMSEY
BROWNIE SCHULTE
EVELYN TURKENTINE
LURA TYNER
ANNETTE WALCOTT
RUTH WHITE
DOROTHY WIDDERSHIEM

PLEDGES

NINA CLARK
MARJORIE ELLIOT

TOMMY LEE FOWLER
BROOKS HUDGINS
JOY JACKSON

AVICE RHEA MARTIN
JANETTE SPAINHOUR

HISEY
JONES
PARFITT
CLARKE
AGETT



BASSETT
BRANDIES
CANNON
CARSON
CLARKE



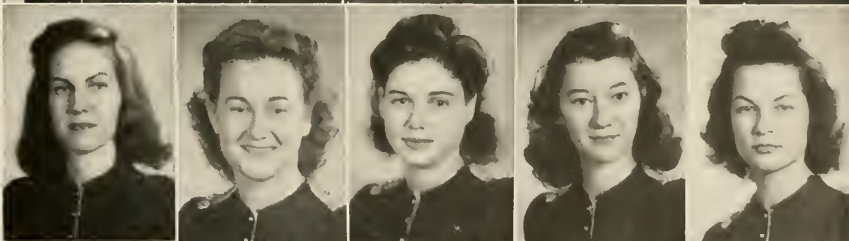
COEN
ELLIOT
EMERSON
FOWLER
HUDGINS



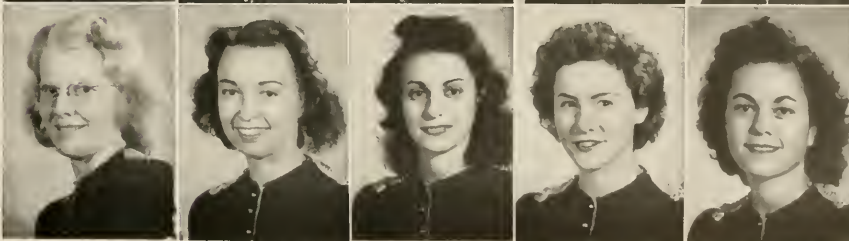
JACKSON
KERSEY
LOWMAN
MITCHELL
MOCK



POPE
RAMSEY
SCHULTE
SPAINHOUR
TURRENTINE



TYNER
WALCOTT
WIDDERSHEIM
WHITE
MARTIN





KARL KESMODEL
Vice-President



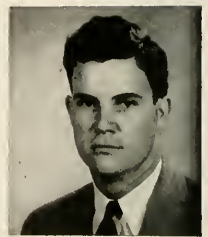
RICHARD SMITH
President



HARRY SNYDER
Treasurer



DAVID LEHMAN
Secretary



ROBERT HENRY
Sergeant-at-Arms

DELTA SIGMA PHI

Founded at the City College of New York, December 10, 1899
Alpha Chi Chapter Was Established in 1925

COLORS: *Nile Green and White*

FLOWER: *White Carnation*

The primary duty of our Fraternity is the support of the University in its effort to give the members the education and training they desire; and to instill a love of country, reverence for religion, and regard for the truth.

MEMBERS IN FACULTATE

DR. R. I. ALLEN

DEAN HARRY C. GARWOOD

LEROY BARKSTROM
J. C. BRADLEY
GARLAND BRANCHI

ROBERT HENRY
KARL KESMODEL
ANDREW KNOX

DAVID LEHMAN
JAMES OWENS
RICHARD SMITH

HARRY SNYDER
RICHARD TOWLE
HARRY WHITSETT

PLEDGES

FRANK BAMBERG
NED BODDY
JEFF CLARK
JULIAN CLARK
MAURICE COKER
DAVID CRANFORD
JACK GRAVIS

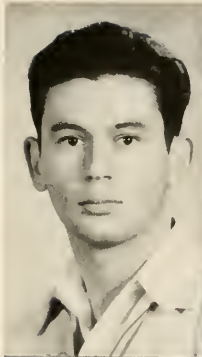
PLEDGES

GERALD MAY
JAMES MCEACHERN
"BILLY" MILES
GAINES MILES
WALTER NORDMAN
ALLYN THOMPSON
"BILL" WILLIAMSON

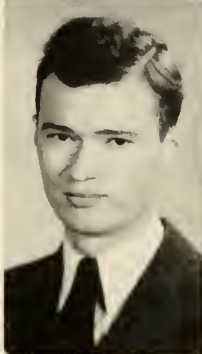


DELPHENE COVERSTON
Delta Sig Sweetheart

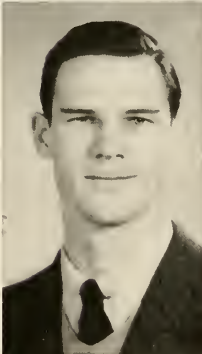
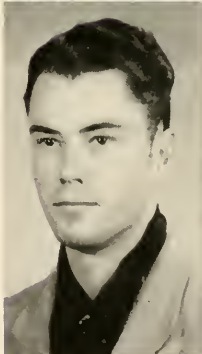
BAMBERG
BARKSTROM
BODDY
BRADLEY



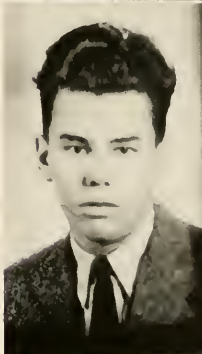
BRANCH
CLARK
CLARK
COKER



CRANFORD
KNOX
McEACHERN
MILES



NORDMAN
THOMPSON
TOWLE
WILLIAMSON





PI KAPPA PHI

Founded at the College of Charleston, 1904
Chi Chapter Established, 1921

COLORS: *Gold and White*

FLOWER: *Red Rose*

MOTTO: *"Notbing shall tear us asunder."*

CHAPTER MEMBERS IN FACULTATE

CARL JOHNSON

W. E. DUCKWITZ

HAROLD GIFFIN

IN UNIVERSITATE

WILLIAM ALDEN
RICHARD BAGULEY
ROBERT BARNES
J. T. BURDINE
WILBUR EICHHOLZ
ORIEN FARRELL

DAVID GARDNER
TRUMAN GRAYSON
GARLAND HAYS
EUGENE HEAD
JACK INMAN
DALE JONES

HOWARD KURTZ
ERNEST MACHEN
RICHARD MANSUR
WILLIAM MATHIS
WINSTON McQUIDDY
ALTON MYERS

JAMES NELSON
JAMES SMITH
JOHN SNELLINGS
CARL STAFFORD
WILLIAM THOMPSON
MELVIN WILKINS

OFFICERS

First Semester

ERNST MACHEN *Archon*
ROBERT BARNES *Treasurer*
JAMES NELSON *Secretary*
WINSTON McQUIDDY *Historian*
DAVID GARDNER *Chaplain*
J. T. BURDINE *Warden*

Second Semester

ROBERT BARNES *Archon*
DAVID GARDNER *Treasurer*
WINSTON McQUIDDY *Secretary*
WILLIAM MATHIS *Historian*
J. T. BURDINE *Chaplain*
ALTON MYERS *Warden*

PLEDGES

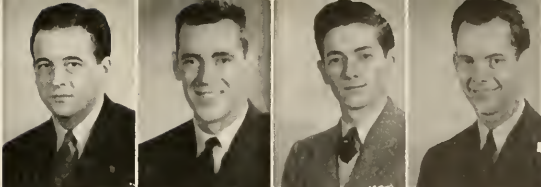
GILBERT BENTLEY
DON BLACK
FRANK BROWN
WILBUR CLONTS
FRED DICKINSON
HARRISON GRIFFIN
JOSEPH JACOBS
CARL PURTZ



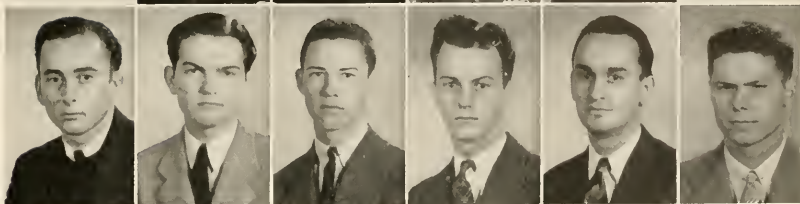
PLEDGES

WALTER PURTZ
ALFRED REID
WILLIAM SMITH
DON STEWART
ROY SUMMERLIN
EVERETT WHITMAN
CHARLES WILLIAMS
HAROLD PARSON

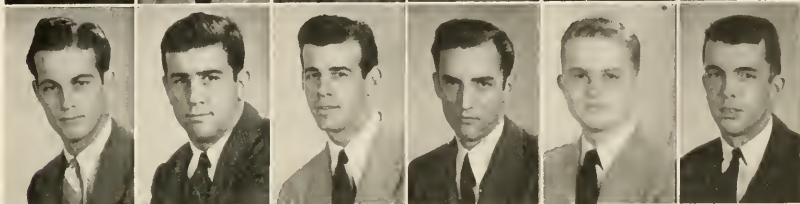
MACHEN
BARNES
NELSON
McQUIDDY



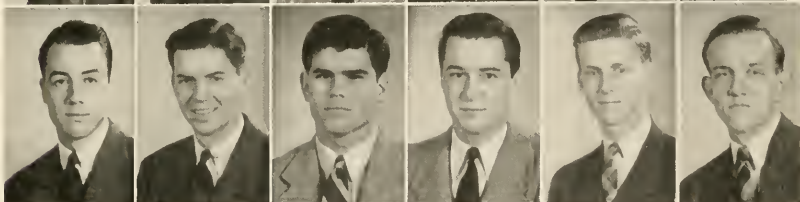
ALDEN
BENTLEY
BLACK
BROWN
BURDINE
CLONTS



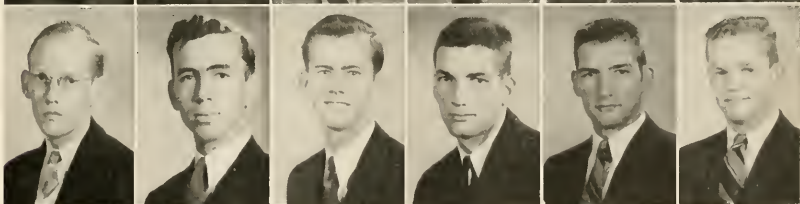
DICKINSON
EICHHOLZ
FARRELL
GARDNER
GRIFFIN
HAYES



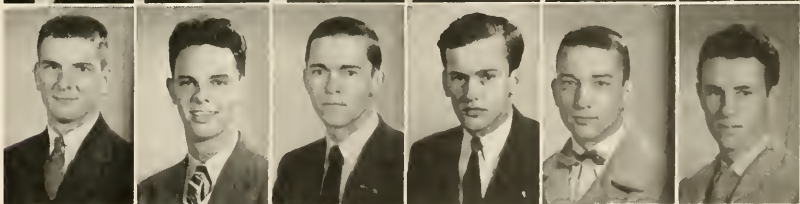
HEAD
INMAN
JACOBS
JONES
KURTZ
MANSUR



MATHIS
MYERS
PARSON
PURTZ
REID



SMITH
SMITH
SNELLINGS
STAFFORD
STEWART
THOMPSON



WHITMAN
WILKINS
WILLIAMS

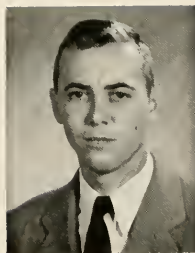




HARVEY GARDNER
Lieutenant Commander



AUBREY VINCENT
Commander



DALE MELCHING
Treasurer

SIGMA NU

THE LEGION OF HONOR

Founded at Virginia Military Institute, 1869

Delta Mu Chapter Established, 1913

COLORS: *Black, White and Gold*

FLOWER: *White Rose*

"To believe in a life of love,
To walk in the way of honor,
and to serve in the light of truth."
This is the life, the way, and the light,
this is the creed of our fraternity.

OFFICERS

AUBREY VINCENT	Commander
HARVEY GARDNER	Lieutenant Commander
WILLIAM KENNEDY	Recorder
DALE MELCHING	Treasurer

ACTIVE MEMBERS

ROBERT BROWN
 JACK CAUSIER
 GORDON CARLSON
 GEORGE DAVIS
 PETER EASLAND
 ALVIN FULLER
 HARVEY GARDNER
 GEORGE GOODMAN
 WILLIAM KENNEDY
 EDWARD KOESTER
 ROBERT LIPSCOMB
 RALPH MATOUSEK



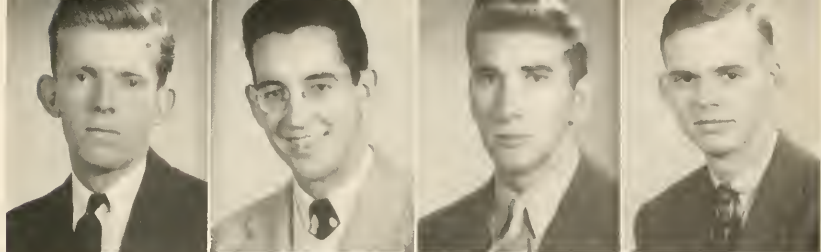
DALE MELCHING
 BRAD MILLER
 WILLIAM MITCHELL
 JOSEPH PADULA
 RAY SPAULDING
 EDWARD STRATTON
 AUBREY VINCENT
 FRANK WATSON
 PAUL WILCOX
 GORDON WILLIAMSON
 WILLIAM WOOD

PLEDGES

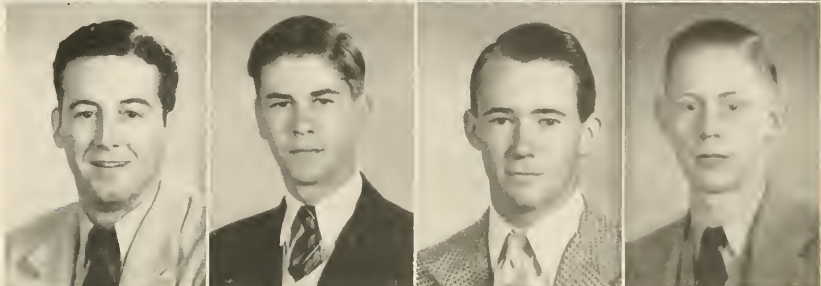
GEORGE HANNA

RAY ROEBUCK

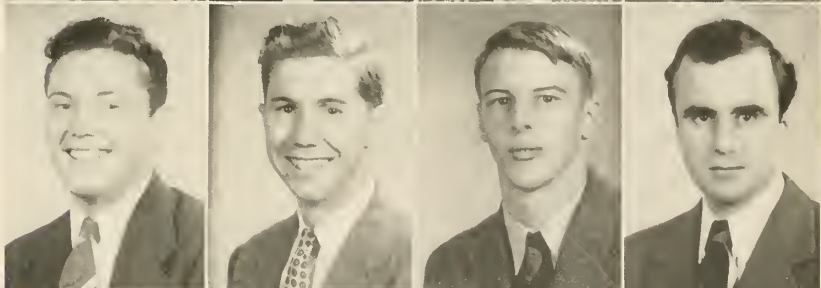
BROWN
CAUSIER
DAVIS
EASLAND



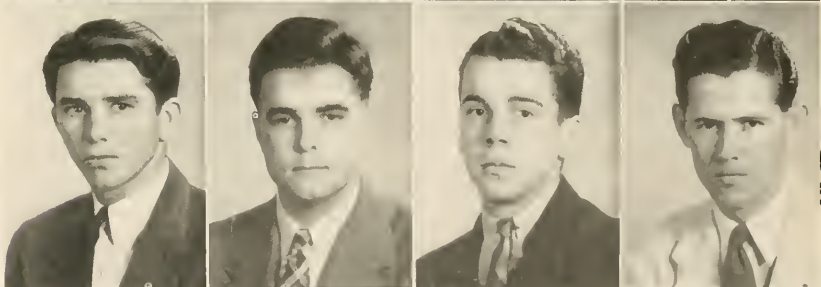
FULLER
GOODMAN
HANNA
KOESTER



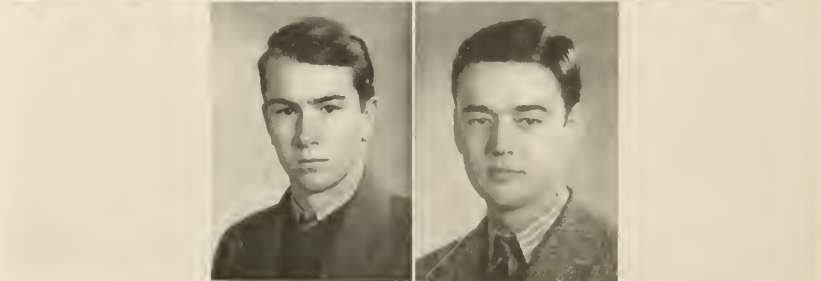
LIPSCOMBE
MATOUSEK
MILLER
PADULA

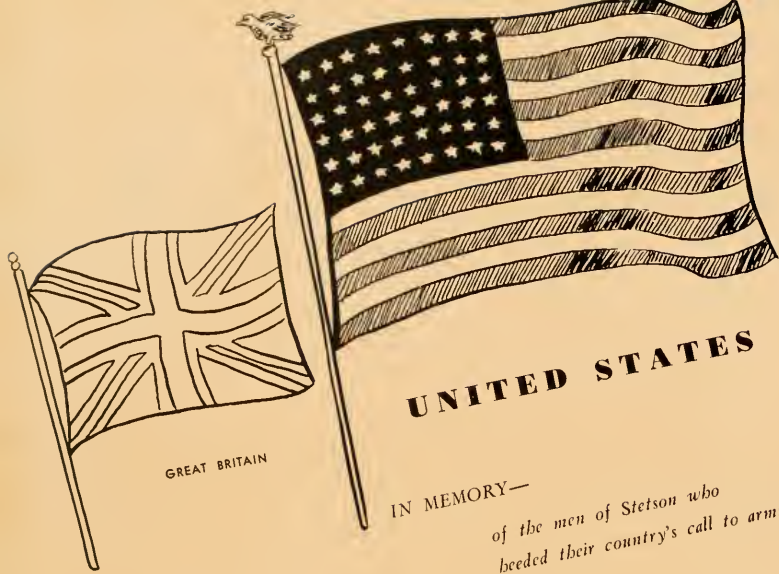


ROEBUCK
SPAULDING
STRATTON
WATSON



WILCOX
WILLIAMSON





GREAT BRITAIN

UNITED STATES

IN MEMORY—

*of the men of Stetson who
heeded their country's call to arms—*



RUSSIA

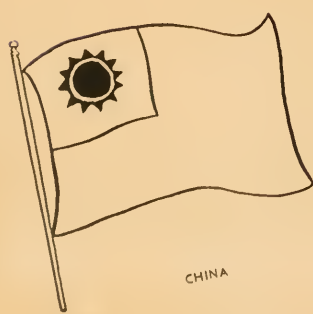


PHILIPPINES

... and in His might He waits,
Brooding within the certitude of time,
To bring this lost forsaken valor
And the fierce faith undying
And the love quenchless
To flower among the hills to which we cleave,
To fruit upon the mountains whither we flee,
Never forsaking, never denying
His children and His children's children forever
Unto all generations of the faithful heart. Amen.



GREECE



CHINA



BRAZIL



AUSTRALIA



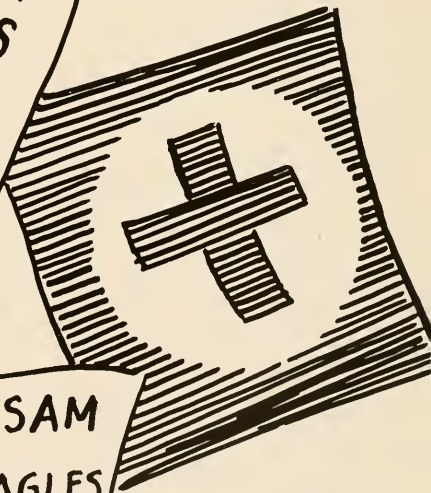
Advertisements

UNCLE SAM
NEEDS

YOU!

BUY WAR
BONDS
AND
STAMPS
EVERY
PAY DAY

Join the
NAVY
and
FREE THE
WORLD



UNCLE SAM
NEEDS EAGLES


THE CITY OF DeLAND

—AND—

DeLAND CHAMBER OF COMMERCE

E X T E N D

Congratulations To The Graduating Class

—OF—

JOHN B. STETSON UNIVERSITY

DeLAND is situated in the fertile ridge section, midway in the Florida peninsula, four miles from the scenic St. Johns River, famous for its black bass fishing, and twenty-two miles from the world renowned beaches of the Atlantic seaboard. Being so centrally located, practically every point of interest in the state may be visited within one day's drive.

Summer and winter DeLand is a place of blue skies, balmy air and sunshine. Children grow strong and sun-tanned, and older people add years to their span of life. Here are accommodations to suit every purse: hospitable hotels, charming apartments and homes—all in a setting of tropical beauty. DeLand is a beautiful city, appealing to those of educational and cultural background. It is a friendly city—a city you will like.

For Further Information About DeLand Please Write

CHAMBER OF COMMERCE

DeLAND

FLORIDA

FRIERSON'S

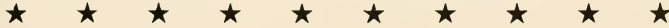
Gasoline
Accessories

Batteries
Tires

Refrigerators
Oil Heaters

Radios
Ranges

Owner
GERALD E. FRIERSON
"Phone 23 that's me"



WE ARE GRATEFUL . . .

FOR THE GREAT CONTRIBUTION

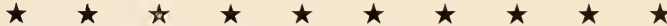
STETSON UNIVERSITY

*has always made to the highest
ideals of our democracy—*

*We proudly salute the faculty
and students on this occasion*

FLORIDA PUBLIC SERVICE COMPANY

Service to Customer, Community and Country



ORANGE BELT PHARMACY

200 NORTH BOULEVARD

COMPLETE DRUG AND FOUNTAIN SERVICE

WE DELIVER — PHONE 555

Loose Talk
can cost Lives!



"I told him all about my brother in the Merchant Marine"

Keep it under
your
STETSON

JOHN B. STETSON COMPANY, PHILADELPHIA

V. M. FOUNTAIN CO.

Central Florida's Oldest
and Finest Store

DELAND

FLORIDA

F. N. DeHUY & SON

JEWELERS AND SILVERSMITHS

Since 1873

DELAND

FLORIDA

COMPLIMENTS OF

FLORIDA STATE THEATRES

IN DELAND

ATHENS THEATRE



DREKA THEATRE

Our Best Wishes to the Graduates of
STETSON UNIVERSITY
for 1943

W. A. ALLEN & COMPANY

"THE BUSY DRUGGISTS"

INSURANCE
REAL ESTATE
RENTALS

LANE AGENCY

TELEPHONE 515

COMPLIMENTS OF

FUGLE'S DAIRY

DELAND, FLORIDA

PHONE 32

Congratulations and Best Wishes . . .

TO THE CLASS OF 1943

DUVAL JEWELRY COMPANY

ALL OVER FLORIDA

**THE
BARNETT NATIONAL BANK**

"A Florida Landmark"

JACKSONVILLE

DELAND

AVON PARK

COCOA

ST. AUGUSTINE

FT. LAUDERDALE

Member Federal Reserve System and F. D. I. C.

ATHENS LAUNDRY
... and ...
DRY CLEANERS

YOU TRIED THE REST
NOW TRY THE BEST

PHONE 443-J

Compliments of

SOUTHERN DAIRIES, INC.

COMPLIMENTS OF THE

BABCOCK AIRCRAFT CORPORATION

DeLand, Florida



Keep 'em Flying in Defense of American Institutions

BOOSTING FOR STETSON UNIVERSITY

HOTEL PUTNAM

DeLand's Fireproof Hotel

West New York Avenue

You Can Always . . .

Shop at SEARS and Save

SEARS, ROEBUCK AND CO.

SOUTH BOULEVARD

D E L A N D

Compliments of

"The Students' Shopping Center"

J. C. PENNEY CO.

Compliments of

DeLAND SUN NEWS

DELUXE LAUNDRY
... and ...
DRY CLEANERS

We Appreciate the Patronage of the
Students During the Year

PHONE 347
North Delaware Avenue
Downtown Office—Across from Bus Station

McCRORY'S 5 & 10c STORE

Headquarters

For Student Supplies

VISIT OUR STORE DAILY

DAY PHONE
62

COMPLIMENTS OF

J. E. SUMMERHILL
PHONE 490

ALLEN - SUMMERHILL FUNERAL HOME

REAL AMBULANCE SERVICE

109 E. New York Ave.

ESTABLISHED 1877

DeLand, Florida

FIRST STATE BANK OF DeLAND

An Account With This Friendly Bank Entitles You to the
Best in Service, Security and Personal Attention

Member of the Federal Deposit Insurance Corporation

STUDENT SUPPLIES

NOTE BOOKS

STATIONERY

FOUNTAIN PENS

ALLEN-WHITE COMPANY

"You Are Always Welcome"

The Court House Pharmacy

The Store of Personal Service

HEADQUARTERS

FOR STETSON STUDENTS

C. M. GEIGER, *Proprietor*

PHONE 5

BUSHNELL & BUSHNELL

MUSIC SHOP

•

"EVERYTHING IN MUSIC"

Compliments of

HULL, LANDIS, GRAHAM,

and FRENCH

COMPLIMENTS OF

DOMINICK'S RESTAURANT

DELAND, FLORIDA

Trade with ORLANDO LINEN & TOWEL SUPPLY CO.

W H Y ?

Because it was the first to service Linens to Central Florida

Because it is a Florida Corporation

Because it is the only Linen Supply servicing Central Florida that is owned and operated by Floridians

Because with its affiliates it maintains one of the largest payrolls in the State

Every dollar received is spent in Florida

Anyway it is the neighborly thing to do and we guarantee to please you

ORLANDO LINEN & TOWEL SUPPLY CO.

PHONE 5861

STITH-GRIFFITH

FUNERAL HOME

DeLAND

FLORIDA

Compliments of

ATHENS BATTERY & ELECTRIC

P. RASMUSSEN, *Prop.*

INSURANCE

HON AGENCY



220 NORTH BOULEVARD

PHONE 455

Compliments of

VOLUSIA PHARMACY

"Drugs with a reputation"

Modern Soda Fountain

121 N. Boulevard

DeLAND

S. R. Langston, Jr., *Mgr.*

McCORMICK LUMBER CO.

PHONE 130

DeLAND, FLORIDA

COMPLIMENTS OF

HINDERY STUDIO

GEO. L. HINDERY, *Proprietor*

222 North Boulevard

DeLAND, FLORIDA


THIRST ASKS
NOTHING
MORE

DRINK

Coca-Cola

IN BOTTLES

DeLAND
COCA-COLA
BOTTLING
CO.



★ THE MARK THAT
IDENTIFIES THE SOUTH'S
FINEST YEARBOOKS

PHOTO-PROCESS ENGRAVING CO.

115 - 119 LUCKIE STREET ★ ATLANTA GEORGIA



SUCCESSFUL ANNUALS

Require the services of experienced and expert craftsmen, trained in every detail of the processes of creating • planning layout and design • typesetting • printing lithographing and binding ... Throughout half a century this company has pioneered in the production of the highest type of printing ... Our services include a special college annual sales and service organization ... Abundant equipment • modern and complete ... Prices representing maximum in value



FOOTE & DAVIES

PRINTING • LITHOGRAPHING • ENGRAVING

ATLANTA

