


HATTER



1944



Digitized by the Internet Archive
in 2010 with funding from
Lyrasis Members and Sloan Foundation

<http://www.archive.org/details/hatter1944stetson>

THE HATTER



THE 1944

Annual Publication

DE LAND, FLORIDA



HATTER

of Stetson University

T. R. MIMS Editor
DELPHENE COVERSTON Business Manager

CONTENTS

Dedication, R. F. Howes	5
Faculty and Administration	7
Senior Class	11
Junior Class	17
Sophomore Class	21
Freshman Class	27
Athletics	33
Features	37
Organizations	45
The S. T. A. R.	93
Advertising	97



HULLEY TOWER

ELIZABETH TOWER



FOREWORD

The HATTER for '44 departs somewhat from the conventional. We have chosen to concentrate on the world of the future and have in so doing neglected the world of today. We have de-emphasized the allure of pictures somewhat to make way for the less attractive but more comprehensive articles written by students. We do this to preserve for ourselves not the faces but the thoughts of our fellow classmates. The world of tomorrow is a challenge to all the students of today. The world of tomorrow will be the world of opportunity for the senior of today. We wish to preserve our reactions so that we can help prepare the students of future years for THEIR world of tomorrow.



DEAN ROY F. HOWES

DEDICATION

The staff of the HATTER for '44 feels deeply the honor it has in making the dedication of this year's book. The theme of the book is somewhat unusual . . . not by chance, but because of the influence of one man. Our purpose in choosing the future for a theme is to indicate the trend of thought in the minds of Stetson Students this year. They are thinking of the place they can fill in the world of the future . . . not a place to gain—not a place to accumulate wealth or social prestige, but a place to give—a world in which we must sacrifice for all humanity in order that we may justify our education. These are not original thoughts with us; they are the reflection of the philosophy of this man. It is therefore with great pleasure that we dedicate the book with the "Theme of the future" to the man with the "Thoughts for the future," Dean Howes.



BOARD OF TRUSTEES

F. N. K. BAILEY
 E. L. HON
 L. A. PERKINS, JR.
 C. ROY ANGELL
 WILLIAM SIMS ALLEN
 B. B. BAGGETT
 C. H. BOLTON
 THEODORE C. BROOKS

DOYLE E. CARLTON
 MRS. ALFRED I. duPONT
 J. OLLIE EDMUNDS
 W. A. HOBSON
 S. V. HOUGH
 ELKANAH B. HULLEY
 DAVID M. GARDNER

S. BRYAN JENNINGS
 EDWARD L. MICKLE
 O. K. REAVES
 G. HENRY STETSON
 JOHN B. STETSON, JR.
 JOHN B. STETSON, III
 HUGH WEST
 J. L. WHITE

STUDENT BODY OFFICERS

The Stetson Student Body Association officers have been somewhat mixed up during the past year. The Vice-President, Miss Jean Douglas, left Stetson during the summer to join the Waves. The President, David Gardner, graduated in December, 1943. This left Miss Margaret Reaves, the Secretary to act as President until an acting chairman, Mr. Adney, was appointed.



DAVID GARDNER

JEAN DOUGLAS

MARGARET REAVES

NINA DYAL

JOE ADNEY



FACULTY



WILLIAM SIMS ALLEN
President

THE PRESIDENT'S MESSAGE

The session 1943-1944 has been one of unusual activity. Students, teachers, administrative officers have so reorganized their work as to offer to our Government complete and whole-hearted co-operation in the war effort. The STAR Unit has been a vital part of the University. Much thought has been given to the post-war years and to the new conditions they will bring. At the same time the highest educational standards have been maintained. Morale has been high.

I pay tribute to the fine spirit of the students as I extend greetings and good wishes to them and to the Stetson Family everywhere.

Sincerely,

WILLIAM SIMS ALLEN
President.



HARRY C. GARWOOD
Dean of the
University



ROY FRANCIS HOWES
Dean of the
Law School



WILLIAM E. DUCKWITZ
Director of the
School of Music



CHARLES A. FISHER
Director of the
School of Business



EZRA ALLEN, Sc.D. Biology
 ROBERT I. ALLEN, Ph.D. Physics
 DORIS KING ARJONA Spanish



ROBERT BARNETT Journalism
 SUSIE P. BROWN, A.M. . . . Assistant Librarian
 FRANCES BUXTON, M.M. . . . Violin and Theory



G. PRENTICE CARSON, LL.D. . . Dean Emeritus
 RICHARD E. CLARK, Ph.D. Sociology
 ROSEMARY CLARK, M.M. . . . Organ and Piano



JOHN F. CONN, Ph.D. Chemistry
 WARREN C. COWELL, B.S. Health and
 Physical Education
 CECIL L. CRISSEY Manager, University Press



IDA R. CUNNINGHAM . . . Secretary to the Bursar
 IOLA KAY EASTBURN, Ph.D. . . . German and
 Philosophy
 BOYCE F. EZELL, Ph.D. Education and
 Psychology



ETHEL M. FISHER Piano
 DOROTHY L. FULLER, A.M. Biology
 WARREN S. GORDIS, Ph.D. Greek



VERONICA DAVIS GOVE, A.M. . . Public School
 of Music
 SARA EDITH HARVEY, A.M. Art
 EDGELTE HENRY, A.B., R.N. Nurse

STETSON FACULTY



ESTER M. HICK, B.S. Health and Physical Education

ANNIE HOLDEN, A.M. English

CURTIS C. HORN, A.B. English



SARA STAFF JERNIGAN, A.M. . . . Health and Physical Education

CARL H. JOHNSON, A.M. . . . Education and Intramurals

MARY TRIBBLE LOWRY, A.M. English



CURTIS M. LOWRY, M.E. . . . Mathematics and Engineering

MARY S. McCURDIE, A.M. . . . Secretarial Science

CLIFFORD B. ROSA Bursar



BARBARA ROWE, A.M. Registrar and Associate Dean

ERICH SAXL, J.U.D. Business Law

CHARLOTTE SMITH, A.M. Librarian



R. GRADY SNOWDEN, Th.M. Religion

IRVING C. STOVER, Litt.D. Speech

FRANCES C. THORNTON Docteur es lettres French



ETTER TURNER, A.M. Dean of Women

HARRY S. WINTERS, A.M. History

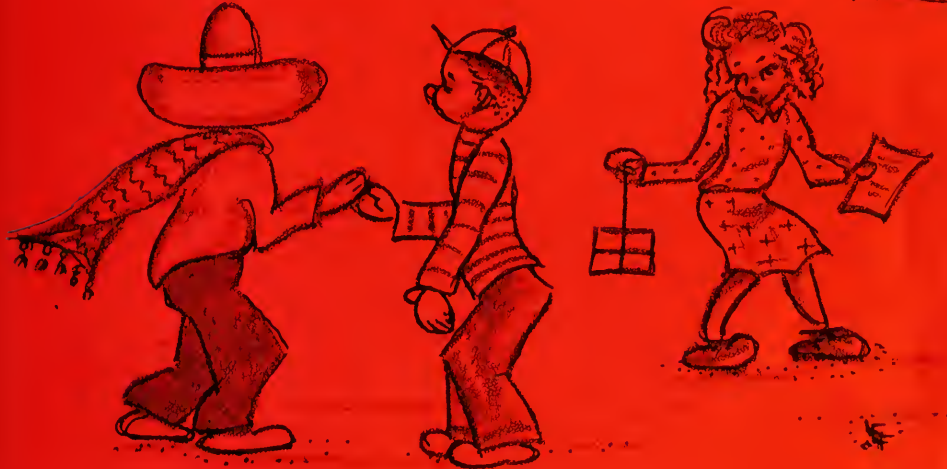
AILEEN WORTH, A.B. Violin and Piano



VICTOR GRABLE Band Director

STETSON FACULTY

CLASS OF '44



History on the Spot



WALKER GREEN
President

BETTY JANE AMIDON
Vice-President

TERRY WAGNER
Secretary

BARBARA BLACK
Treasurer

COLLEGE OF LIBERAL ARTS



JOE E. ADNEY, JR.
DeLand, Florida

Phi Society 1; Gamma Sigma Epis-
lon, President 3; Newton Club,
President 3; German Club, Presi-
dent 3; Mystic Krewe, Treasurer
3; Delta Sigma Phi, Student Body,
President 3.



R. WILLIAM ALDEN
Daytona, Florida

Pi Kappa Phi 2, 3, 4; Beta Key
2, 3, President 4; Air Raid Warden
2, 3.



FLONNIE ANDERS
Jacksonville, Florida

Alpha Xi Delta 1, 2, 3, 4; Speak-
ers Bureau 2, 3, 4; Theta Alpha
Phi 3, President 4; Radio Guild,
President 4; I. R. C. 2, 3, 4;
Little Theater, Who's Who in
American Colleges 3, 4; W. A. A.
1; Stetson REPORTER; Press Club.



BARBARA BLACK
Jacksonville, Florida

Delta Delta Delta 2, 3, 4; Glee
Club 2; Y. W. A. 2; Art Club 2,
3; W. A. A. 2, 3; Little Theater
2, 3; REPORTER Staff 2, 3; HAT-
TER Staff 3; La Franciade 3, 4;
Press Club 3, 4; I. R. C. 3, 4;
Treasurer of Senior Class 4; Sec-
retary of A B School 4; Honor Roll
4; Sigma Delta Pi 4; Radio Guild 3.



CLAIRE BUMGARNER
DeLand, Florida

Alpha Deksigma, President 4; Phi
Society 2, 3, 4; La Franciade 2, 3;
HATTER Staff 2, 3; F. T. A. 3,
4; REPORTER Staff 4; Pi Delta
Psi 4; Sigma Delta Pi 4; The Honor
3, 4; Order of Scroll and Key 3,
4; Honor Roll, Dean's List.

DELPHENE COVERSTON
Bushnell, Florida

Zeta Tau Alpha 4; Alpha Deksigma
2, 3; Y. W. A. 2, 3, 4; W. A. A. 1,
2, 3, 4; Blazer Club 2, 3, President 4;
Pi Delta Psi 3, 4; I. R. C. 3;
Sweetheart of Delta Sigma Phi 3,
4; Stetson Band 1; Phi Delta Delta
3, 4; Stetson Bar Association 3;
Editor of HATTER 3; HATTER
Staff 2; The Honor 3, 4; Honor
Roll; Dean's List; Rules and Proce-
dure Committee; Who's Who in
American Colleges 4.



NINA DYAL
Homestead, Florida

I. R. A. 2, 3, 4; W. A. A. 2, 3, 4;
Pan-Hellenic Council; Delta Delta
Delta, President 3, 4; Y. W. A.
2, 3; Radio Guild 3; F. T. A. 3,
4; Junior Class Secretary; Treasurer
Student Body; REPORTER Staff;
Blazer Club 4; The Honor 4.



WALKER GREEN
DeFuniak Springs, Florida

Beta Key 3, Vice-President 4; RE-
PORTER Staff; Defense Council;
President of Senior Class; Honor
Roll; Dean's List; Pi Kappa Phi.



JACKSON HAYWARD, JR.
Dade City, Florida

Radio Guild 2, 3, 4; Mystic Krewe
3, 4; Who's Who in American
Colleges 4; I. R. C. 3, 4; Debate
Squad; Phi Alpha Delta; Student
Bar Association; Honor Roll;
Dean's List; REPORTER Staff;
President of College of Liberal
Arts.



COLLEGE OF LIBERAL ARTS



ELEANOR HOLDERMAN
DeLand, Florida

Alpha Deksioma; B. S. U. I.;
Volunteer for Christian Service;
Band 1; Beta Chi Sigma 2, 3.



CREE McLAUGHLIN
DeLand, Florida

REPORTER Staff; Art Club 2, 3, 4;
Little Theatre; Sigma Delta Pi 4;
Alpha Xi Delta.



RUTH LOIS MAXWELL
DeLand, Florida

Band 1, 2, 3, 4; Orchestra 1, 2;
Alpha Deksioma 1, 2, 3, 4; Delta
Gamma Phi 2, 3, 4; Beta Chi
Omega; German Club 3, Treas-
urer 4.



BARBARA R. MILLS
Tampa, Florida

Transfer from F. S. C. W.; Pi Beta
Phi 4; Little Theatre.

T. R. MIMS
Tampa, Florida

Glee Club 1, 2, 3, 4; Traveling
Squad 1, 2, 3, 4; Radio Chorus 2,
3, 4; The HATTER Editor 4; RE-
PORTER Advertising Manager 3;
Pi Delta Psi; Who's Who in Ameri-
can Colleges 4; Mystic Krewe 4;
Dean's List 4.



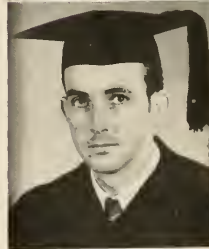
ANN MOORE
Chile, S. A.

Sigma Delta Pi; The Honor; New-
ton Club; Glee Club 1, 2, 3; Gam-
ma Sigma Epsilon; Y. W. A.; La
Franciade.



BRUCE MUIRHEAD
Sanford, Florida

Sigma Pi Sigma, President 4; New-
ton Club 3, 4; Glee Club 4; Lit-
tle Theatre 4; Sadie Hawkins' Day
Committee.



DOT POPE
Dade City, Florida

Glee Club 1; W. A. A. 2, 3, 4; F.
T. A. 3, 4; Zeta Tau Alpha 2, 3,
4; Pan-Hellenic Council; Interfra-
ternity Council; I. R. C. 4; Fresh-
man Adviser 3, 4; Art Club.



JANE REESE
Jacksonville, Florida

Women's Student Government 2,
3, President 4; B. S. U. Council 2,
3, 4; Who's Who in American
Colleges 3, 4; The Honor 3, 4; Pi
Kappa Delta 4; Phi Alpha Theta
3, 4; Y. W. A.; Little Theatre; Pi
Delta Psi; HATTER Staff, Honor
Roll.



COLLEGE OF LIBERAL ARTS



RICHARD SMITH
DeLand, Florida

Delta Sigma Phi 2, 3, President 4;
I. R. C. 3; Interfraternity Council;
Gorman Club 4; Literary Club 4;
Vice-President Liberal Arts College.



RUTH WHITE
Dade City

Cheerleader 1, 2; W. A. A. 1, 2,
3, President 4; Blazer Club 2, 3, 4;
Sigma Delta Pi 2, 3, 4; F. T. A.
4; Beta Key 3, 4; Varsity Basket-
ball 1; Zeta Tau Alpha 3, 4; Honor
Roll; Dean's List; The Honor 4.



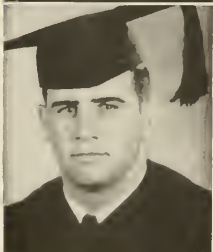
OVEDA VOSS
Arcadia, Florida
B. S. U. Council; B. T. U.; Volun-
teers for Christian Service.

SCHOOL OF BUSINESS



BETTY JANE AMIDON
Lakeland, Florida

Pi Beta Phi 2, 3, President 4;
Honor Roll 1, 2, 3, 4; Dean's List
3; Band 1, 2, 3; Delta Gamma Phi
1, 2, 3; Glee Club 2, 3, 4; Travel-
ing Squad 3, 4; Commerce Club
3, 4; Phi Society 2, 3, 4; Scroll
and Key 3, President 4; Vice-Presi-
dent Senior Class 4; Pan-Hellenic
Council 3, 4; Interfraternity Council
3, 4; The Honor 4; Vice-President;
Who's Who in American Col-
leges 4.



WILBUR EICHHOLZ
Daytona Beach, Florida

Football 1; Pi Kappa Phi 1, 2, 3,
4; Interfraternity Council, Pre-
sident 4; Mystic Krewe 4; Mayor
of Dogpatch; Air Raid Warden.



RUTH HILLMAN
Orlando, Florida

Who's Who in American Colleges
4; The Honor 3, 4; Women's Stu-
dent Government 3, 4; The HAT-
TER 2; Stetson REPORTER 1, 2;
Press Club 2, 3, Vice-President 4;
Radio Guild 2, 3, President 4;
Stetson Commerce Club 2, 3, 4;
Phi Beta 1, 2, 3, 4; Pi Gamma Mu
4; Glee Club 1, 2, 3, 4; Radio
Chorus 2, 3, 4; Alpha Xi Delta 1,
2, 3, 4.



BETTY PARFITT
Jacksonville, Florida

Glee Club 1; W. A. A. 1; Y. W.
A. 1; Little Theatre; Zeta Tau
Alpha 1, 2, 3, 4; F. T. A. 3, 4.



BROOKS WALKER
Eustis, Florida

Mystic Krewe 4; Men's Council;
Freshman Rules Committee; Red
Cross Corps.

SCHOOL OF MUSIC

HELEN BENNETT
Miami, Florida

Glee Club 1, 2, 3, 4; Radio Chorus 2, 3, 4; Student Director 3, 4; President of Music School; Phi Beta 2, 3, 4; Y. W. A. 1, 2, President 3; Volunteer for Christian Service; Freshman Adviser 3, 4; Women's Student Government 4; The Honor 3; President 4; Who's Who in American Colleges 4.

MARLIN DON
Chicago, Illinois

Orchestra 2, 3; Theatre Orchestra 2; Band 2, 3, 4; Little Theatre 4.

MARTHA DURRANCE
Sebring, Florida

Band 4; Orchestra 2; Glee Club 2; Girls' Dance Orchestra 3; Y. W. A. 2; W. A. A. 3; Delta Gamma Phi; Phi Beta 3, President 4; Delta Delta Delta; Sigma Delta Pi.

MARGARET REAVES
Miami, Florida

Most Outstanding Freshman Girl 1; Glee Club 1, 2, 3, 4, 5; Radio Chorus 1, 2, 3, 4, 5; B. S. U. Council 2, 3, 4, 5; La Franciade 3; Vice-President Music School 4; Secretary, Student Body 5; The Honor 4, 5; Phi Beta 3, President 4; Alpha Xi Delta, Secretary 5; Feature Section of HATTER; Women's Student Government 5; Little Theatre 3, 4, 5; Y. W. A. 2, 3, 4; Who's Who in American Colleges 4, 5; Honor Roll; Dean's List.

RUBY WAGNER
North Bergen, N. J.

President of Pan-Hellenic Council 4; Secretary of Senior Class 4; Alpha Xi Delta, President 4; German Club 3, 4; Interfraternity Council 4; Who's Who in American Colleges 4; Little Theatre 3, 4; Glee Club 3, 4; Radio Chorus 3, 4; Traveling Squad 3, 4; Orchestra 2, 3, 4; String Quartet 2, 3, 4; Honor Roll 4; Phi Beta; The Honor 4.

HELEN T. WHITMAN
Tampa, Florida

Glee Club 1, 2, 3, 4; Traveling Squad 2, 3, 4; Radio Chorus 3; Chapel Organist 3, 4; Phi Beta 1, 2, 3, 4.



SENIORS NOT PICTURED IN CAP AND GOWN

DOROTHY WIDDER-SHEIM DOUGLAS
Graduated Dec., 1943

ERNA FREEBURG
Graduated Dec., 1943

DAVID GARDNER
Graduated Dec., 1943

KARL KESMODEL
Transfer Tulane, 1944

DANIEL MEYHOEFER
Graduated Dec., 1943

MARY PARDEE
Graduated Dec., 1943



A SENIOR LOOKS AT THE FUTURE

To the senior graduating into a world at war is presented a unique view.

For one thing, there is the peace to come, carrying with it the hope for a part in world reconstruction. But more important he has studied the theories and principles of life at a time when the facts of the situation render many of these principles inapplicable. This compels a view of realism—the recognition that the men and nations of the world have not attached a true civilization—except, perhaps, in the material sense.

The history of the world is studded with wars, depressions, periods of economic prosperity—with the rise and fall of states, races and institutions. The historian has presented the picture in terms of personalities of "great" men.

Such is not a true record of the humanity. Our present status was reached by the sacrifices of the individual as an indispensable part of the organ of society, and so it is today, that this world of men is more economically, socially, intellectually, and spiritually compatible than ever before.

Yet the cruel fact is, we are engaged in another movement of mass murder on an international scale.

Moreover there seems very little chance of avoiding another world war in the near future—probably within the next thirty years.

The present struggle is the price we pay for the short sighted policies of the older generation in a commercially organized world. We do not resent those mistakes, but they do serve to show us that the next generation—if war demands its life—will be bearing our sins.

One inevitably asks, "Is there any way to stop wars." Those who have faith in God, and the infinite capabilities of man can only answer such a question in the affirmative.

With the affairs of nations controlled by the desire to advance selfish interest, the problem is extremely difficult. No one man can present a program suitable to all, but every one can hope and maintain his or her faith.

The key word to the solution is "cooperation." But nations cooperate in their selfish efforts only when the desired objective makes other courses impossible. An attempt to change the very nature of man would probably be futile, or more correctly, at least, a long process over a longer period of time.

But one can admit of the selfishness of man and still hope for peace—offer a sort of substitute for war—prepare an effective but peaceful channel through which nations could carry on their struggle for wealth. Construct a system somewhat similar to the court systems of our nation, and the states of the world stand by prepared to enforce this method of reconciling conflicting interests, and to enforce the decision.

Following World War II the United States will occupy the position of the world's most powerful state. Financially, industrially and commercially we are to be the center and heart of the world. With this prestige and power we carry a correlating responsibility.

America must throw her massive strength and rugged common sense into the peace effort—realize that peace is a progression, a living growing, functioning thing and that war comes only when peace breaks down.

Upon principle the United States must stand ready to fight for peace.



Stetson Law School—1993



LAVERGNE MIXON . . . President
 LETA MITCHELL . . . Vice-President
 NATALIE TRUE . . . Secretary
 ANNETTE BOLTON . . . Treasurer

COLLEGE OF LIBERAL ARTS



HEYWARD ADAMS Ft. Mills, S. C.

MARY ELLEN ANDERSON Plant City

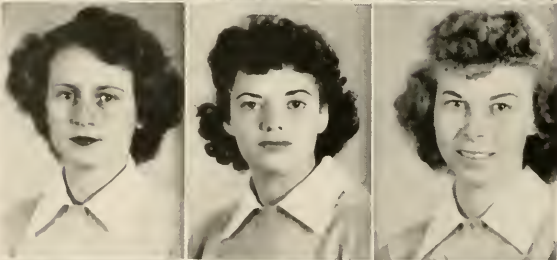
HARRY ATKINSON DeLand



MATHILDA BEBOUT DeLand

ANNETTE BOLTON Jacksonville

GRACE BROWN Winter Garden



BETTY ANN CANNON Frostproof

MARIETTA CHILLI Jacksonville

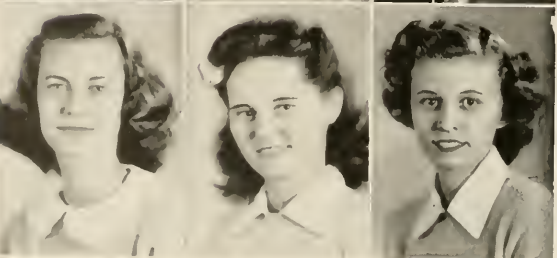
HELEN CLEMONS Tampa



CHARLES DAVIS Sebring

HELEN deGRUCHY White Plains, N. Y.

MAURICE FAIN Birmingham, Ala.



ANN GILBERT Jacksonville

EDITH JOHNSEN Oakland Park

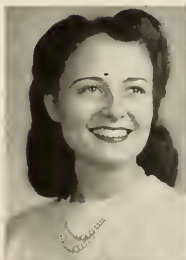
SYLVIA JONES Belle Glade

COLLEGE OF LIBERAL ARTS

FRANCES KIEHLE West Palm Beach

NANCY LANE DeLand

HARRIET LINDNER Washington, D. C.



LILLIAN McCLEMENT Auburndale

KATHLEEN McGEHEE Jacksonville

HELEN MARTIN Birmingham, Ala.



HAROLD MITCHELL Miami

LETA MITCHELL Ft. Meade

LAVERGNE MIXON Live Oak



ELATHIER NICKERSON Sanford

ELIZABETH PIPPIN Sanford

LURA TYNER Lakeland



MELVIN WILKINS Waterbury, Conn.



SCHOOL OF MUSIC



RUTH DURRANCE Sebring

ISABELLE EDDINS Bushnell

JEANNE OSTRANDER Winter Haven

JEANNE SHAW Sebastian

MARTHA WHITE Perry

SCHOOL OF BUSINESS



FLORAMAYE BASS Kissimmee

MARJORIE KERSEY Largo

BETSY KRAMER Mt. Dora

MARY PITTMAN Madison

BARBARA PRICE Miami

MARY CATHERINE RAMSEY Miami

PATRICIA SIMMONS Tampa

CAMERA SHY

LELAND ARMSTRONG DeLand

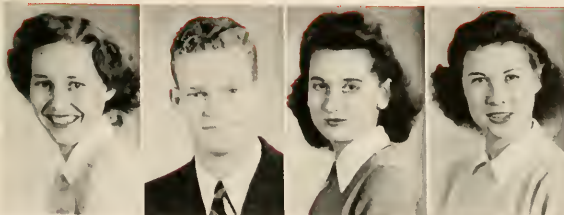
PRESTON GRAVELY Montgomery, Ala.

MARGUERITE GRISSETT DeLand

RUTH WINTER DeLand

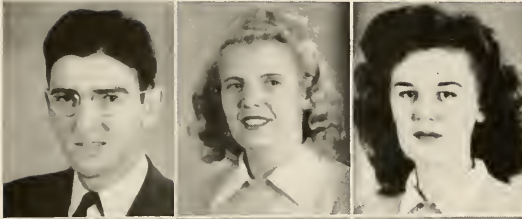


Hotfootin' Chinese History



- BARBARA LUPFER . . . President
- ALFRED REID . . . Vice-President
- EDITH MARIE GARDNER . . . Secretary
- MARGARET JUSTICE . . . Treasurer

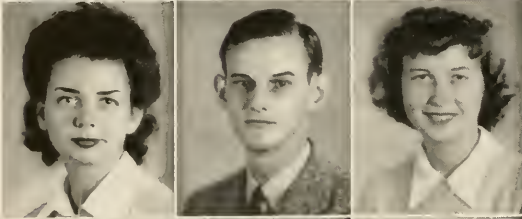
COLLEGE OF LIBERAL ARTS



BARRY ANDERSON St. Petersburg

ELIZABETH BELL DeLand

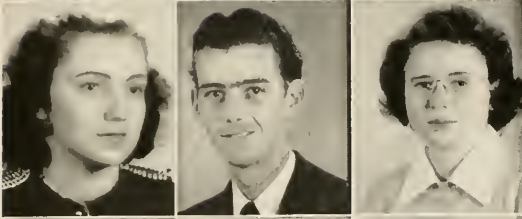
RUTH BROOKS Orlando



CHARLENE CARSON Williston

JAMES CASEY DeLand

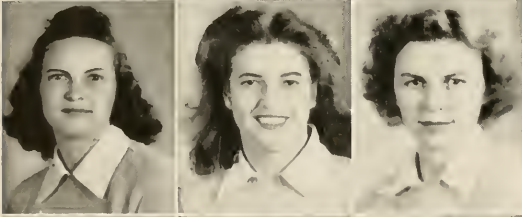
EDITH MILLER CRONKHITE . . . St. Petersburg



LUCILLE CLARK DeLand

MAURICE COKER Florence, S. C.

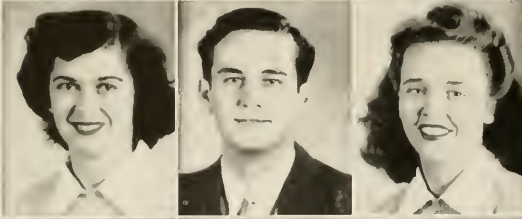
FRANCES COLLIER Ocala



MILDRED COSSON Morristown, Tenn.

RUTH CURNICK Holly Hill

LORRAINE DAVIS DeLand



MARY DENSON Jacksonville

HOKE DOWDY DeLand

MARJORIE ELLIOT Winter Haven



JUNE FENN Mt. Dora

NANCY FESSENDEN Coral Gables

RACHEL HARLESS DeLand

COLLEGE OF LIBERAL ARTS

ANN HIRTH Miami Beach

DOROTHY HOWELL West Palm Beach

RALPH HOUSE Tampa



MARGARET JONES DeLand

MOLLIE KENT Mohawk, N. Y.

MARY JANE KIRCHOF DeLand



JEWEL KIRKPATRICK West Palm Beach

BERNICE LEE Live Oak

BARBARA LUPFER Kissimmee



FRAN SUE MacDONALD Sebring

BRADFORD MILLER DeLand

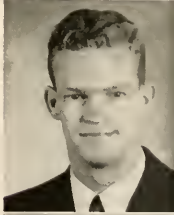
GLADYS PIPPIN Sanford



ALFRED REID Lake Worth

DOROTHY RICHARDSON Pompano

TRUDE SAXL DeLand



JOHANNA SHEW Jacksonville

LUCILLE SUMERFORD DeLand

KAREEN TAYLOR Jacksonville



COLLEGE OF LIBERAL ARTS

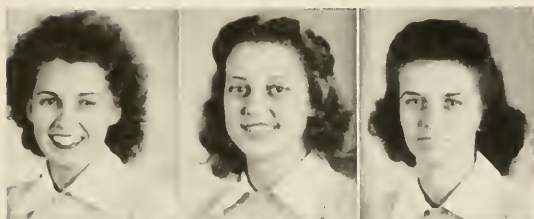


EMILY LOUISE WEST Miami
 HARRY WHITSETT Daytona Beach
 COMER WOODALL DeLand

CAMERA SHY

JOSEPHINE EICHELBERGER, Liberal Arts Eustis
 BETTY GARRISON, Liberal Arts Lincolnton, N. C.
 JULIA GRIFFIN, Liberal Arts Quincy
 ROBERT MAY, Liberal Arts Milton
 MARIETTA PERRY, Liberal Arts Baker

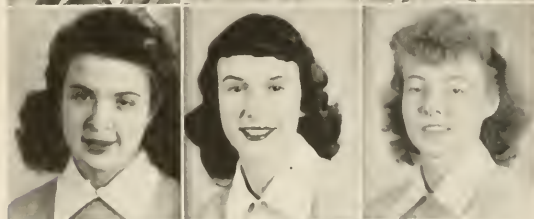
SCHOOL OF MUSIC



NINA CLARK Miami
 ELINOR EDLIN Miami
 TOMMIE LEE FOWLER Perry



EDITH MARIE GARDNER St. Petersburg
 MARY ELLEN GENTRY Umatilla
 JANE HALL Ft. Myers



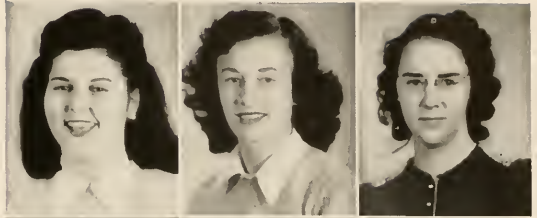
LUCILLE HALSTEAD Lake City
 MARY LASATER St. Augustine
 RUTH McDANIEL Ft. Myers



RABEL MOREMEN DeLand
 KATHRYN SHIRLEY Ocala

SCHOOL OF BUSINESS

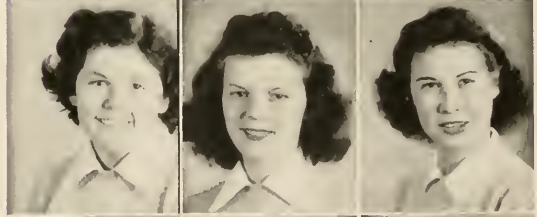
RACHEL ALLISON DeFuniak Springs
 MILDRED BEST Ft. Gaines, Ga.
 CHRISTINE CAINE DeLand



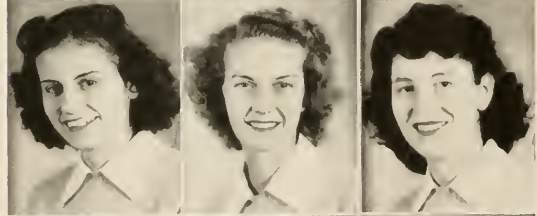
CAROL EMERSON Sebring
 LOUISE FUGATE Willistosh
 MARCIA HAMMER Ft. Pierce



MILDRED JAUDON Tampa
 ANNETTE JOINER McIntosh
 MARGARET JUSTICE Ft. Lauderdale



MARTHA MILLER Jacksonville
 JEANE NEELY Sarasota
 VERNICE NICHOLS Panama City



FAYE ROGERS Ridgeville, S. C.
 SUSAN SAUNDERS Port St. Joe
 MARY NELL SCOTT Panama City



EVELYN TURRENTINE Mt. Dora



A SOPHOMORE LOOKS AT THE FUTURE

It cannot be conceived that we will have any normal college life, for the world just won't settle down to a static peace when the Armistice is again signed. There will be chaos and changes, which if not controlled and directed will complete the cycle and will promote a catastrophic war in the next quarter of a century...our sons and daughters.

Yes, we hope for a Christian peace. Wilson had a dream of a world at peace. Only the scope of his plan was directed toward Europe. Now, there is an altruistic document...the Atlantic charter, which needs as a companion a Pacific charter. One of the most potential forces is arising in the East and unless directed into friendly relationships with the United States, there will come our next year.

The economic imperialism that we have practiced will have to be discontinued and the local capital allowed to enter free competition for world markets. This will bring about internal economic development. A sound economic system is one of the primary elements in governmental development.

There is another force that will confront us, that is that system of government called by the Russian communism, which in the United States we cannot define. Communism is, in its pure state, the people working for the good of the state. However, in Russia, those who think that this system still continues urge it without reservation to be adopted. But, our system has grown up in a capitalistic expansion, while their's was at first a cooperative organization. Their economy has so evolved that now there can be rewarded personal initiative.

There is one inalienable truth of human society; that all of the world is held together in an economic world union. The existence of this new state has been growing for the past two hundred years, starting with the machine revolution in England and augmented by the many inventions and improved methods of transportation that carry goods into all parts of the inhabited earth. Goods are the greatest travellers, even greater than humans themselves.

This state was coming into its advanced, but imperfect stage at the outbreak of the present year. This economic and cultural unification has so speeded up that it has completely left politics behind it. The retarded growth has obstructed all development, and now it must cease if this system is to continue.

Culture knows no frontiers. By this I mean not only the fine arts, but also the sciences. The scientist is a natural and confirmed internationalist, looking farther by having the shoulders of others to stand on.

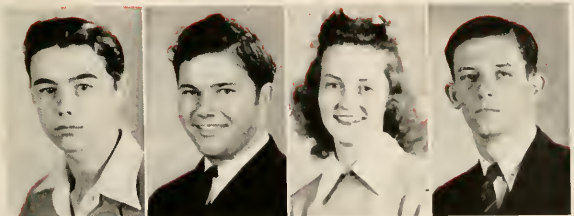
In the same way, the economic wholeness of the world is maintained through the faith of men, built up through this relationship of debt and credit.

Yes, economic and cultural unification does exist. This unification is growing stronger every year, and must be matched by a political unification. This unification with the help of some general limitations of sovereignty, will progress and function without conflicts of interests that invariably end in war. Our welfare as a people requires that world-wide wars must cease, and that can only be brought about by an enforced peace. This cannot become a reality until there is a general limitation of sovereignty. Until this is done there cannot be an actuality of Mr. Roosevelt's universally guaranteed "Freedoms."

We have the task to "nobly save or meanly lose" the peace. How can there be more?



Spanish Made Easy—

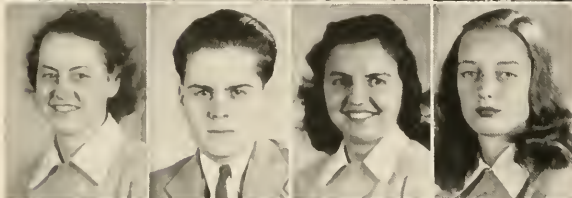


- J. RUSS President
- B. FLETCHER Vice-President
- C. TEDDER Secretary
- F. JERNIGAN Treasurer

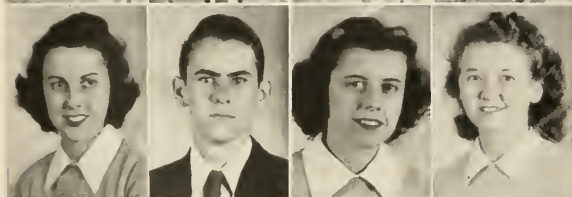
COLLEGE OF LIBERAL ARTS



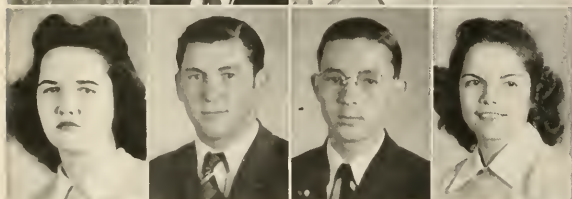
JIMMY ALLISON Vero Beach
 ELIZABETH AMBROSE Winter Haven
 NALDINE BAILEY Tampa
 FLOYD BAKER Jacksonville



HELEN BAKER Clearwater
 WILLIAM BARNETT DeLand
 MARY BILINSKI Brooklyn, N. Y.
 BARBARA BOWSER Cherry Point, N. C.



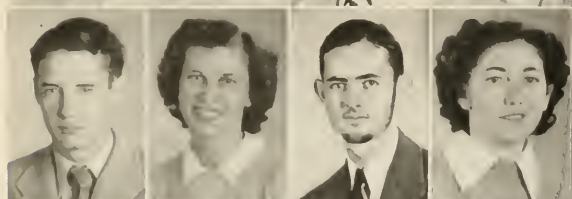
EVELYN BROWN Wildwood
 LELAND BRYAN Bartow
 MARILYN BURCH Gainesville
 JOYCE CALDWELL Orlando



MARIAN CLARK Chattahoochee
 ROBERT CLARK Thomasville, Ga.
 CHARLES CLEMENTS Lafayette, Ga.
 RUTH COBB Pensacola



HILDA COLLIER Ocala
 CAROLYN CUMMINGS St. Petersburg
 WARRAN DANIELS Sanford
 BETSY DIBBLE DeLand



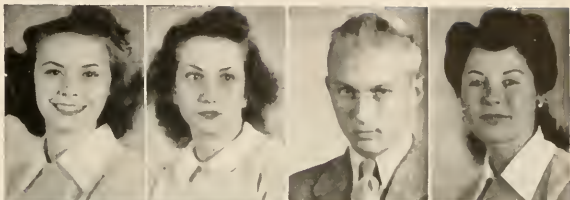
CHARLES DICKMAN Daytona
 EVELYN DODD Lake Wales
 CHARLES DOSS Tavares
 JEWEL GARRETT Pensacola



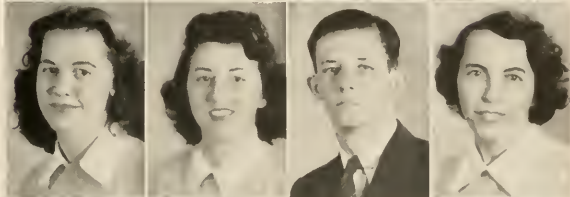
JOYCE GILLIAM New Smyrna
 LOUISE GODWIN Frostproof
 BETTY GRAW Miami
 MARJORIE HAMM Arcadia

COLLEGE OF LIBERAL ARTS

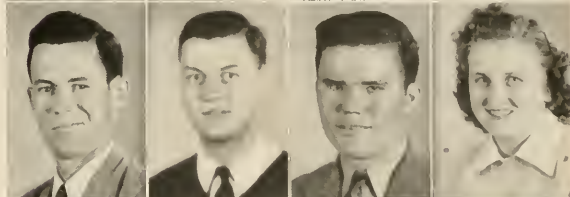
ADEL HEIDEN Homestead
 NALDA HOFFMAN St. Petersburg
 JERRY HOLLAND Leesburg
 JANET HOOTEN Rocky Hill, Conn.



MARIAN HUGHES Gainesville
 ALICE JARVIS Orlando
 FLOURNOY JERNIGAN Pensacola
 MRS. D. O. JERNIGAN Lake Helen



DORRIS JERNIGAN Lake Helen
 JOE JOHN Bennettsville, S. C.
 JOE JOHNSON Arcadia
 ADA KIMBALL Sanford



MARJORIE MERRILL DeLand
 MARTHA LACY New Smyrna
 FAYE LITTLETON Port Orange
 VIRGINIA LITTLETON Port Orange



WINIFRED LOVELL Sanford
 MURIEL McCABE DeLand
 GLORIA McCLENDON Frostproof
 REBECCA McDOUGALD DeLand



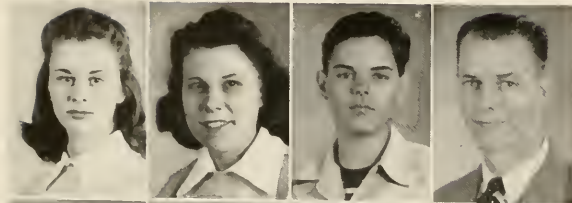
EDWARD MAXEY Miami
 RICHARD MAXEY Miami
 HELEN KIRKWOOD Daytona
 HARRY MOORE Sanford



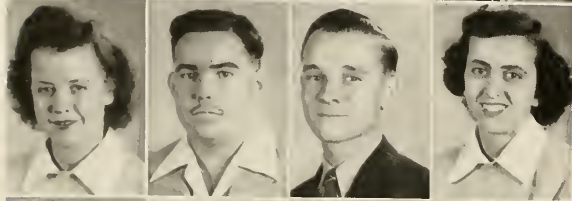
JACQUELINE MORRIS Baldwin, N. Y.
 AUGUST LEO OTT DeLand
 EDNA PARRISH Enterprise
 JAMES PETERMAN Tallahassee



COLLEGE OF LIBERAL ARTS



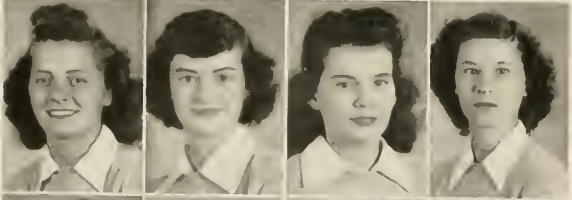
OLIVE PHILLIPS Quincy
 MIRIAM RAGSDALE Tampa
 WILLIAM RAVENAL Sanford
 WILBURN RIVENBARK Norfolk, Va.



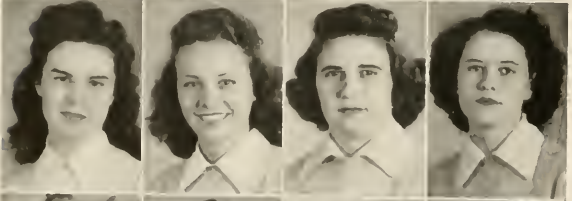
ROSELYN SECKINGER Auburndale
 HOSEA SKIPPER Pensacola
 GLENN STEPHENS Tampa
 MARGARET SWARTZ Gainesville



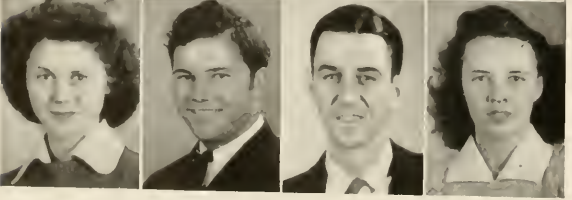
CORTEZ TEDDER DeLand
 PRESTON THIGPEN Miami
 ELIZABETH TUCKER Orlando
 ANNA SUE WALDEN Plant City



JOYCE WATTS Panama City
 OLIVE WEAVER Philadelphia, Pa.
 ANNA WHITE Mount Dora
 JANET WHITE DeLand



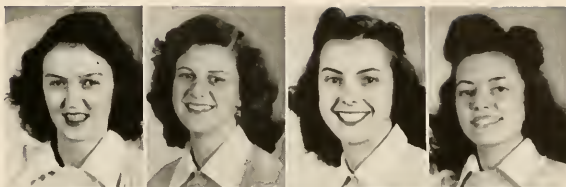
BARBARA YOUNG Tampa
 PEGGY SEGREST Daytona
 NANCY BROWN Jacksonville
 MARTHA MATTHEWS Titusville



JANICE DOUGLAS High Springs
 BILL FLETCHER Haines City
 SIMION WHATLEY DeLand
 VICTORIA YOUNG Gainesville

SCHOOL OF MUSIC

DOTTIE LOU BACKER Winter Garden
 VIRGINIA BATES West Palm Beach
 EMMA JEAN BROWN Gainesville
 DOROTHY CHILLI Jacksonville



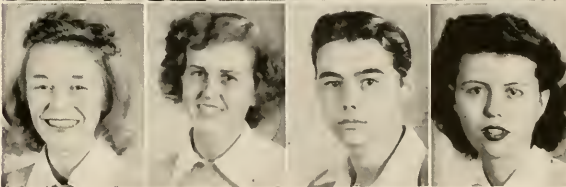
SHIRLEY GEORGE DeLand
 JEANNETTE GIBBS West Palm Beach
 ALMA GRANTHAM Sanford
 HELEN HOOPER Bunnell



AVONNE JONES Atlantic Beach
 DONNIE KINLAW Neptune Beach
 JEWEL McCULLY Ocala
 DORIS NEWBURN Sarasota

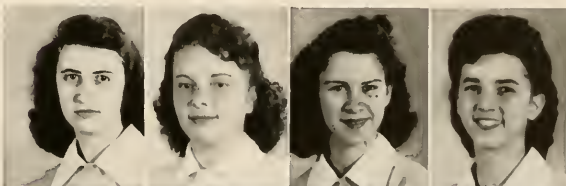


ALDA SINGLETARY Winter Haven
 ELIZABETH TRAINHAM Sarasota
 JIMMY RUSS Ocala
 VIRGINIA LANIER Jacksonville



SCHOOL OF BUSINESS

MARZEE AITON Gainesville
 LATRELLE ANDREWS Jacksonville
 ELIZABETH BENSON Wabasso
 JOYCE BLACKWELL Ft. Lauderdale



ANITA CALDWELL Ocala
 MARY COLLINS Hopkinsville, Ky.
 GEORGE DAVIS Daytona Beach
 SAMMIE LEE DAWSON Auburndale



SCHOOL OF BUSINESS



EDNA GARRETT Pensacola
 CHRISTINE HEDICK Brooksville
 PAULINE JENSEN Daytona Beach
 DONNA KJORSVIK Wabasso

PATRICIA MAXCY Frostproof
 IRIS MURRAY Gainesville
 CHARLOTTE NORDMAN DeLand
 GLADYS OWENS Umatilla

PHYLLIS PIERCE Orlando
 CAROLYN PRICE Bowling Green
 HELEN QUARTERMAN Sanford
 BERNICE SMITH Jacksonville

BETTY TRESHER Daytona Beach
 EVELYN TRUNDLE Ft. Lauderdale
 EVELYN WALKER Tampa
 VIRGINIA MCKENZIE DeLand

CAMERA SHY

GEORGE ARNOLD, Liberal Arts DeLand
 MARGUERITE BLACK, Liberal Arts St. Petersburg
 KELLY MOORE, Liberal Arts Palmetto
 DONALD TATUM, Liberal Arts DeLand
 JUANITA VOWELL, Liberal Arts Rudsville, N. C.
 PHYLLIS WOOD, Liberal Arts Crescent City
 MARJORIE COSTIN, Business School Port St. Joe
 SUE THOMPSON, Business School St. Petersburg



Physical Conditioning

ATHLETICS



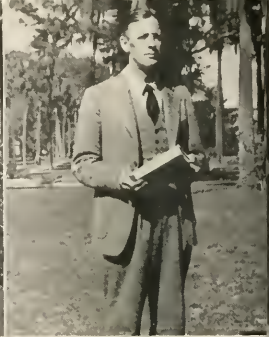
SARA STAFF JERNIGAN
Coach



ESTER HICK
Women's Intramurals



WARREN C. COWELL
Coach



CARL H. JOHNSON
Men's Intramurals

STETSON ATHLETIC DIRECTORS



MISSES NEELY, JUSTICE, EMERSON, DURRANCE, AND CANNON

INTRAMURAL MANAGERS

There has been an acute shortage of men at Stetson during the year just past. This shortage has been felt greatly in the field of sports. There have not been enough men in the student body to successfully conduct a men's intramurals. The only competition among the men has been between the Army S. T. A. R. Unit and the Stetson men. We therefore compile our sports section from the field of women's sports which have been many and varied.



Field Hockey - KFA



*Ping Pong - ΔΔΔ
Baltimore AEA*



Box Hockey - ΠΒΦ



Archery - LTA



WOMEN'S ATHLETIC ASSOCIATION

OFFICERS

RUTH WHITE	President
BETTY ANN CANNON	Vice-President
BETSY KRAMER	Secretary
RUTH DURRANCE	Treasurer
CAROL EMERSON	Recorder of Points

MEMBERS

RACHEL ALLISON
 BETTY BENSON
 MILDRED BEST
 JOYCE BLACKWELL
 EVELYN BROWN
 GRACE BROWN
 ANITA CALDWELL
 JOYCE CALDWELL
 MARY COLLINS
 DELPHENE COVERSTON
 MARTHA DURRANCE
 MARJORIE ELLIOTT
 JUNE FENN
 TOMMY LEE FOWLER
 JEWELL GARRETT

JIMMIE GODWIN
 HELEN de GRUCHY
 CHRISTINE HEDICK
 ADEL HEIDEN
 NALDA HOFFMAN
 KAY HOOPER
 ADA KIMBALL
 MARY LASATER
 HARRIETT LINDNER
 LETA MITCHELL
 PAT MAXEY
 GLORIA McCLENDON
 VIRGINIA McKENZIE
 JEANE NEELEY
 GLADYS OWENS
 BARBARA PRICE

MIRIAM RAGSDALE
 MARY RAMSEY
 FAYE ROGERS
 SUSAN SAUNDERS
 ROSELYN SECKINGER
 PEGGY SEGREST
 MARY NELL SCOTT
 BERNICE SMITH
 BETTY TRESHER
 ELIZABETH TUCKER
 NATALIE TRUE
 ANNA SUE WALDEN
 JOYCE WATTS
 ANNA MARGARET WHITE
 LYNN WINTERS

Most Attractive

Most Popular

Most Likely to Succeed



... TEN YEARS HENCE

FEATURES



MARGARET REAVES

"My future?"

—MISS REAVES

MOST LIKELY TO SUCCEED

"After graduation I expect to begin my graduate work in chemistry in preparation for industrial research."

MR. ADNEY



JOE ADNEY

"My future? Who knows? Any-
how, here's hoping the crystal
shows life, laughter, LOVE, and a
desk covered with English Text-
books."

—MISS BUMGARNER



CLAIRE BUMGARNER

MAGNA CUM LAUDE



BETTY JANE AMIDON

"For the next few years I plan to
continue my job in the Dean's of-
fice while I study law or work
on a Master's degree. After that—
who can predict—but I have a
good idea . . ."

MISS AMIDON



From left top, reading clockwise: FLONNIE ANDERS, second year; BETTY JANE AMIDON, TERRY WAGNER, JANE REESE, second year; HELEN BENNETT, ANNETTE BOLTON, DELPHENE COVERSTON, MAURICE FAIN, T. R. MIMS, RUTH HILLMAN, JACK HAYWARD, DAVID M. GARDNER, LETA MITCHELL, ELIZABETH PIPPEN, MARGARET REAVES, second year.



WHO'S WHO IN AMERICAN UNIVERSITIES AND COLLEGES



Who's Who is a national organization of Juniors and Seniors chosen in over 300 colleges and universities throughout the nation. Selection is based on outstanding qualities of leadership, scholarship, and character. It is the highest honor which can be conferred upon a college student.





THE MEN IN OUR MOON

- | | |
|---------------------|------------------|
| 1. Maxie Stamper | 7. Allen Spanier |
| 2. Bob Barnes | 8. Everett Dix |
| 3. Rick Farrel | 9. Bob Howes |
| 4. Harold Parsons | 10. Fred Keihle |
| 5. Winston McQuiddy | 11. Red Whitman |
| 6. Dick Mansur | |

1. Happy day
2. No music?
3. Merry farmer
4. Pipe dreams
5. The great profile
6. Boo . . . scares me!

7. Athletic type
8. 'tis time I think
9. Just looking
10. Naughtic, but nice
11. Nice car, with tires





- | | |
|--------------------------------|-----------------------------|
| 1. Gid 'yap | 7. Did you say doggie legs? |
| 2. Pull up a lawn and sit down | 8. Race you for it! |
| 3. And all the world a stage | 9. All this . . . |
| 4. Thus Stetson goes . . . | 10. Say ah. |
| 5. A new face | 11. Sorry, slipped |
| 6. Upon arrival | 12. Which way to food? |



1. His honor

2. Three little maids

3. Chumpens

4. Little Abner Allen

5. Our town

6. Why, Grandpa?

7. Loathsome gal

8. Git your man

9. Pie face

10. Gruesome twosome

11. Picture of life's other side

12. Brute and the breast

13. Solid sending



ORGANIZATIONS



YE MYSTIC KREWE

Founded 1934

Colors: Red and Black



A. JACKSON HAYWARD
Captain

DAVID M. GARDNER, JR.
First Mate

T. R. MIMS
Second Mate

JOE ADNEY
Boatswain

WILBUR H. EICHHOLZ
Master-at-Arms

MAURICE FAIN

LAVERGNE MIXON

BROOKS WALKER

The Mystic Krewe is an organization of Junior and Senior men, chosen without regard to fraternity or other affiliation. Selection is governed entirely by the abilities and accomplishments of the individuals. The purpose of the organization is to develop and coordinate a proper spirit among all elements of campus life and activities.



THE HONOR

The purpose of The Honor is to give each girl the opportunity of making her life better and finer and thus of making herself more valuable to the people around her and to her university. Distinction of becoming a member of The Honor is bestowed as a reward for accomplishments in scholarship, activities, and leadership on Stetson's campus.



HELEN BENNETT President
 BETTY JANE AMIDON Vice-President
 MARGARET REAVES Secretary
 RUTH HILLMAN Treasurer

MEMBERS

FLONNIE ANDERS	IRMA FRENCH
ANNETTE BOLTON	SYLVIA JONES
CLAIRE BUMGARNER	ANITA MOORE
DELPHENE COVERSTON	JANE REESE
RUTH DURRANCE	NATALIE TRUE
NINA DYAL	TERRY WAGNER
RUTH WHITE	



JANE REESE
President

RUTH HILLMAN
Vice-President

DOROTHY W. DOUGLAS
Secretary

LETA MITCHELL
Treasurer

MARGARET REAVES
Representative at Large

HELEN BENNETT
Sergeant-at-Arms

KAREEN TAYLOR
Sophomore Representative

BETSY KRAMER
Representative at Large

THE WOMEN'S STUDENT GOVERNMENT ASSOCIATION

"To help maintain honorable living among the women of Stetson University by recognition of the worth of honesty, loyalty, and responsibility."



OFFICERS

MISS HELEN ALLINGER	Director
MAURICE FAIN	General Manager
HENRY FLETCHER	Manager of Men's Club
MARGARET REAVES	Manager of Girls' Club
ELIZABETH PIPPIN	Publicity Director
HELEN BENNETT	Student Leader
ALMA GRANTHAM	Accompanist

SOPRANOS

LA TRELLE ANDREWS
ANNETTE BOLTON
DOROTHY CHILLI
MILDRED COSSON
EDNA GARRETT
MARY ELLEN GENTRY
LUCILLE HALSTEAD
RUTH HILLMAN
KAY HOOPER
RABEL MOREMEN

BERNICE SMITH
MARY LASATER
MARY BILINSKI
BONNIE PARKER
VIRGINIA LANIER
RUTH McDANIEL
DORIS NEWBURN
GLADYS PIPPIN
MARY CATHERINE RAMSEY
KATHRYN SHIRLEY

MARGARET SWARTZ
ELIZABETH TRAINHAM
ALMA GRANTHAM
EDITH MARIE GARDNER
ELIZABETH AMBROSE
MARIAN CLARK
TOMMY LEE FOWLER
MARIAN HUGHES
AVONNE JONES
LETA MITCHELL

ALTO

BETTY JANE AMIDON
HELEN BAKER
VIRGINIA BATES
HELEN BENNETT
JEAN BROWN
ELINOR EDLIN
ISABELL EDDINS

VIRGINIA McKINZIE
DONNIE KINLAW
MARJORIE MERRILL
HELEN T. WHITMAN
JANET WHITE
ALICE YOUNG

JOYCE GILLIAM
JEWEL McCULLLEY
TERRY WAGNER
EDITH MILLER
ANN MOORE
MARGARET REAVES
MARTHA WHITE

BASS

HARRY ATKINSON
FLOYD BAKER
BILLY BARNETT
MAURICE FAIN
RALPH HOUSE

JOE JOHN
HAROLD MITCHELL
LAVERGNE MIXON
BRUCE MUIRHEAD
HOSEA SKIPPER

TENOR

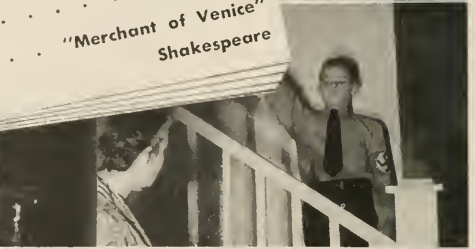
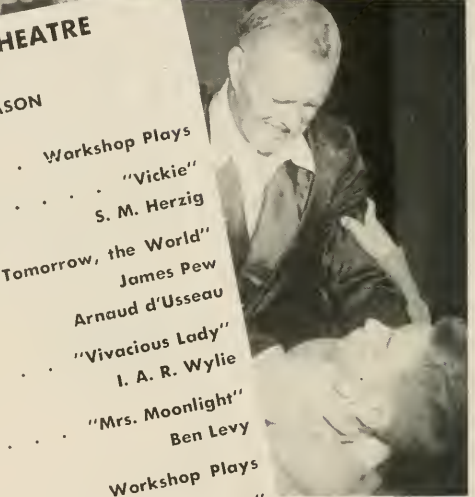
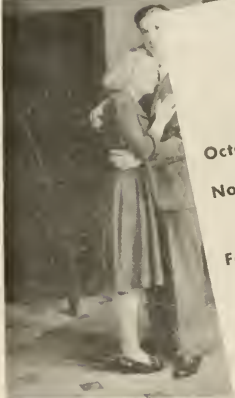
HAYWARD ADAMS
CHARLES CLEMENTS
HENRY FLETCHER
ED MAXEY



STOVER LITTLE THEATRE

1943-1944 SEASON

October 22	Workshop Plays
November 18, 19	"Vickie" S. M. Herzig
February 4, 5	"Tomorrow, the World" James Pew Arnaud d'Usseau
February 24, 25	"Vivacious Lady" I. A. R. Wylie
March 30, 31	"Mrs. Moonlight" Ben Levy
April 15	Workshop Plays
May 5	"Merchant of Venice" Shakespeare





**Florida Alpha
of
Theta Alpha Phi**

National Honorary Dramatic Fraternity

OFFICERS

- | | |
|----------------------------------|----------------|
| FLONNIE ANDERS | President |
| ERMA FRENCH | Vice-President |
| EDITH CRONKHITE | Secretary |
| ANNETTE BOLTON | Treasurer |



in Universitate

VIRGINIA E. GIFFIN

IRVING C. STOVER





McCLEMENT
JOHNSEN

HILLMAN

ANDERS

TRUE



BARNETT
SUMERFORD

THE PRESS CLUB

Founded March 11, 1940

PURPOSE

For promoting journalism both on and off the campus. It is semi-professional in nature and recognizes students who have distinguished themselves in journalistic and literary activities.

SPONSORS

MR. AND MRS. BOB BARNETT

OLD MEMBERS

FLONNIE ANDERS
RUTH HILLMAN
LILLIAN McCLEMENT
NATALIE TRUE
HARRIS GRAVELY

NEW MEMBERS

BARBARA BLACK
BETTY LOU BELL
BETTY GRAW
JACK HAYWARD
EDITH JOHNSEN
CREE McLAUGHLIN
MARJORIE MERRILL
LUCILLE SUMERFORD
PATCH WEAVER



BLACK
GRAW



MERRILL



BELL



WEAVER



McLAUGHLIN
HAYWARD

PI KAPPA DELTA

National Honorary Forensic Fraternity

Florida Beta Chapter

Established in 1938



BOBBY LUFFER

President



IRMA FRENCH

Secretary

OFFICERS

JANE REESE
NATALIE TRUE
NANCY BROWN

CHARLES CLEMENTS
MILDRED COSSON



INTERNATIONAL RELATIONS CLUB



PURPOSE

To stimulate universal thinking and a truly international social concept.

OFFICERS

JACK HAYWARD President
NINA DYAL Vice-President
NATALIE TRUE Secretary
HELEN MARTIN Treasurer

MEMBERS

LILLIAN McCLEMENT ANITA MOORE
BARBARA BLACK LUCILLE CLARK
GEORGE DAVIS FLONNIE M. ANDERS



NINTH YEAR—NO. 2

DELAND, FLORIDA, NOVEMBER 1, 1943

For Victory...
Buy
U. S. DEFENSE
BONDS
STAMPS

PRICE TEN CENTS

REFRESHER COURSES OFFERED BOYS HERE FOR RE-CLASSIFICATION IN ASTP

New Program Includes Physics Class,
History and Geography Lectures

Khaki-clad selectees became college students at Stetson last week as the new STAR Unit on campus embarked upon a complete new daily schedule of activities.

Trainees who had hitherto marked time with drill, hikes and athletics while they were being interviewed, tested and classified, now are being initiated into four new refresher courses.

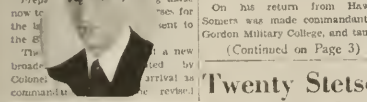
Under the new program as prepared by Maj. W. Von Schlichten, classification officer, and announced by Lieut. Richard W. Lykes, assistant director, the program will begin at 10 a. m. in a chapel every day will consist of each class.

At each session the trainees will be engaged in reading them, for material for the director, H. C. Griffin, who selected the refresher courses, some of whom have earned degrees in their respective fields.

Classes in physics will be offered at 1 p. m. in the same room. Aid these will be under the direction of Prof. Carl (Doc) Johnson, professor of history, with selected students serving as teachers.

Lectures in history and geography will be given by Prof. Johnson and Dr. J. H. Johnson, who will provide the material for the refresher courses.

Preparatory work made necessary for the students to be sent to the refresher courses will be reviewed by Colonel Lykes upon their arrival as commanded.

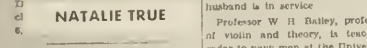


DAVID GARDNER

which they undergo 45 minutes of extended order and squad drill Soldiers assemble at Hillley Field for (Continued on Page 2)

Here's Your Exam Schedule!

By the end of the schedule, registration, and second round of examinations. The examination schedule will be given in the registration booklet. The examination will start on December 15 and continue through December 18.



NATALIE TRUE

Turkey Day!
Contrary to last year's practice Thanksgiving holidays will be observed by Stetson this fall November 24 work-year students and faculty will travel home for a four day rest. Classes end at 5:30 o'clock Wednesday afternoon, Nov-

Feminine Half Honored at Tea

Honoring Stetson's girl students—the women of the faculty, and the wives of the men—STAR Unit presented a tea at the Deland Hotel.



LUCILLE SUMNERFORD

man, and serving was in charge of students selected by the chairman.

EX-CAMPUS LEADER COPPS



JACK HAYWARD

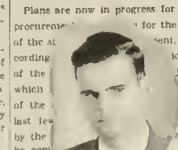
honor student, was outstanding in many campus activities, he was a member of Delta Sigma Phi, Moderator, Phi Society, Newton Club, The Student Union, Sigma Phi Delta, Psi Rho Delta, Gamma Sigma Epsilon, and Delta Kappa Epsilon. He was a member of the Phi Kappa Phi Honor Society and a member of the Phi Kappa Phi Honor Society.

Twenty Stetson P In Uncle Sam's

War service, either military or allied, are being trained in the Deland Hotel.

Dr. Harvey Savely, assistant professor of French, who completed his Ph.D. degree at the University of Illinois last year with a major in French and a minor in Spanish is now an aviator in the navy, stationed in Washington, D. C.

Student Ass'n To Have Office



LAVERNE MIXON

Plans are now in progress for the preliminary work for the use of the student association office. The office will be located in the Deland Hotel. The office will be used for the student association office.

COMIC-STRIP SADIE WILL HAVE HER DAY AS VOTED BY MOST OF STUDENT BODY

Committee Chosen: Traditional Event Includes STAR Unit

"Sadie" will run again. At the present writing no details as to when, where, or how are available, but student body proxy, David Gardner, announced the appointment of Edith Miller as chairman of the eleven-man committee which will meet in the near future to evolve plans for the annual event.

Parliamentary Rules Play Havoc With Student Motion

Through a mistake in parliamentary procedure the student body at the last regular monthly meeting October 7, passed a motion to appoint student body funds for the maintenance of the Stetson Recreation Center. However, university authorities informed the student body through the president that all funds needed for the maintenance of this recreational center would be furnished by the university, and that it would not be necessary for the students to make an appropriation for this purpose.

In a special meeting Thursday, October 21, the chair called for a motion to rescind the motion made at the last meeting since the funds would not be needed. This new motion was made and carried, and the previous motion for the appropriation of funds for the recreational center was withdrawn from the secretary's book.

At this special meeting the motion was made and carried that the members of the STAR unit be invited to all student body social activities. This was followed by a motion that the student body elect Sadie Hawkins' Day, and it is hoped that the participation of the members of the STAR unit will help relieve the manpower shortage. President Gardner stated that the executive committee will appoint a Sadie Hawkins Day committee which will make the necessary plans.

Prof. Gardner also said that the Executive Committee and the Rules and Procedure committee will meet this week to discuss what should be a co-chairman the vice-president, elected by Jean Douglas who is now in the WAVES. All regular committees for the year will also be appointed.

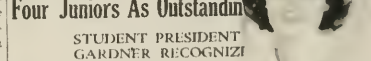
Attaching the new blazer ranks are Capt. Glen E. Meek, detachment and company commander, Capt. William G. Spitzer, assistant company commander, Capt. Samuel A. Kirk, personnel consultant, and First Lieut. Richard W. Lykes, assistant. The promotions became effective under the Department Order dated

Who's Who Lists Eight & Four Juniors As Outstanding

STUDENT PRESIDENT GARDNER RECOGNIZES

Eight seniors and four juniors were listed in Who's Who in American Colleges and Universities, national directory of students who have been outstanding in college activities.

Seniors receiving the honor are David Gardner, Jack Hayward, Delphene Covert, Helen Bennett, Terry Walker, Ruth Hinman, and Betty Jane Amidon. Chosen from the junior class are Maurice Paine, Lonnie Bolton, Lela Mitchell, Elizabeth Pippin, Hedra Over, and Margaret Reeves, and Jane Reese. Three music students were chosen. Helen Bennett is active in religious activities. Y. W. C. A. vice club, and



BETTY LOU BELL

probably be utilized for this purpose. In addition to Miss Miller, the committee named includes Brooks Walker, Barbara Jones, Bobby J. Birchard, and Flora J. Smith.

CLAIRE BUMGARDNER

Attaching the new blazer ranks are Capt. Glen E. Meek, detachment and company commander, Capt. William G. Spitzer, assistant company commander, Capt. Samuel A. Kirk, personnel consultant, and First Lieut. Richard W. Lykes, assistant. The promotions became effective under the Department Order dated

Patricia Weaver is a member of the Oles Club and Radio Chorus. She is also in Y. W. C. A. and a member of Delta Delta Delta. Recognized for leadership, David Gardner is president of the student body, sports editor of the Stetson Register, and a member of the Inter-Fraternity council, representing his fraternity, Phi Kappa Phi. Maurice Paine is outstanding in religious activities and a member



T. R. MIMS
Editor-in-Chief



DELPHENE COVERSTON
Business Manager

The 1944 HATTER

The '44 HATTER was confronted with many unusual problems some of which have left their mark on the book. However, due to the wonderful cooperative spirit of the students and the determination of the staff, we got through with a minimum of gray hairs. Thanks a million to all of you.

THE EDITOR.

BOB CLARK
Assistant Editor

BARBARA LUPFER
Assistant Business Manager

MARJORIE MERRILL
Organizations Editor

LETA MITCHELL
Senior Editor

MARJORIE KERSEY
Assistant Organizations

BETTY LOU BELL
Snap Shot Editor

SYLVIA JONES
Junior Editor

CECIL L. CRISSEY
Adviser

CAROL EMERSON
Sports Editor

BETTY GRAW
Sophomore Editor

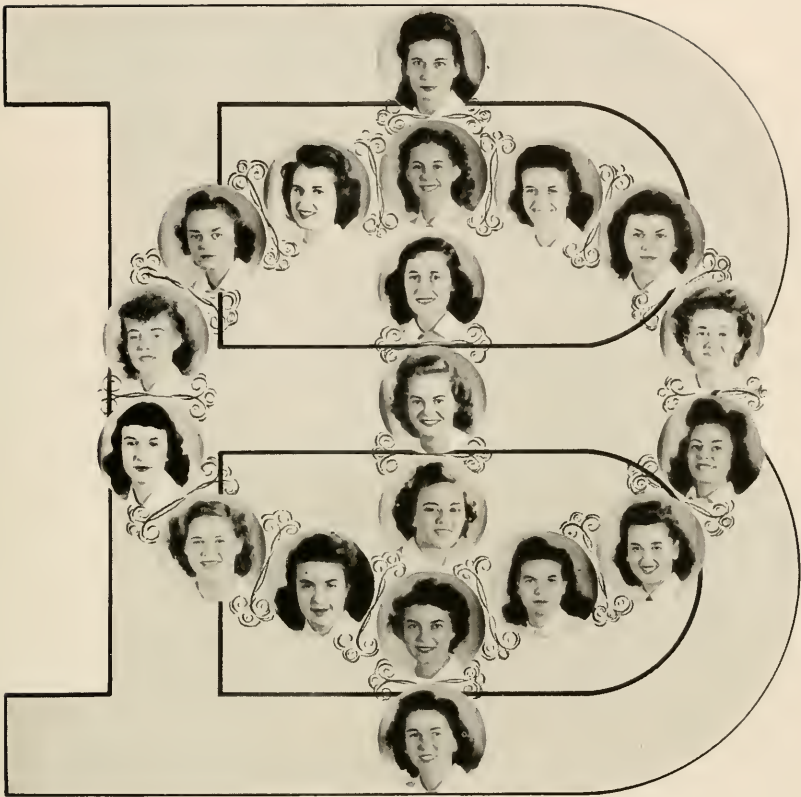


HATTER

ART CLUB

- JUNE FENN
- MARJORIE ELLIOTT
- DOROTHY DOUGLAS
- GRACE BROWN
- MARION HUGHES
- JANET HOOTEN
- VICE PRES. ADEL H. HEIDEN
- PRESIDENT EMMY LOU WEST
- RUTH BROOKS
- SECRETARY RUTH CURNICK
- REPORTER MARJORIE MERRILL
- BARBARA YOUNG
- PROGRAM MAN HARRIET LINDNER
- MARTHA LACY
- ELIZABETH TUCKER
- ADVISORY FACULTOR MISS EDITH HARVEY
- JOHANNA SHEW





PHI BETA FRATERNITY

Colors: Violet and Gold

Flower: The Rose

MOTTO: Einai mallon e Finesthi
 "To be rather than to seem to be."

Phi Beta is a national professional fraternity of music, drama, and the dance. Eta Chapter was established in 1921 and has progressed to the point of national recognition in receiving the gravel as the most outstanding chapter in the organization in the year 1940.

OFFICERS

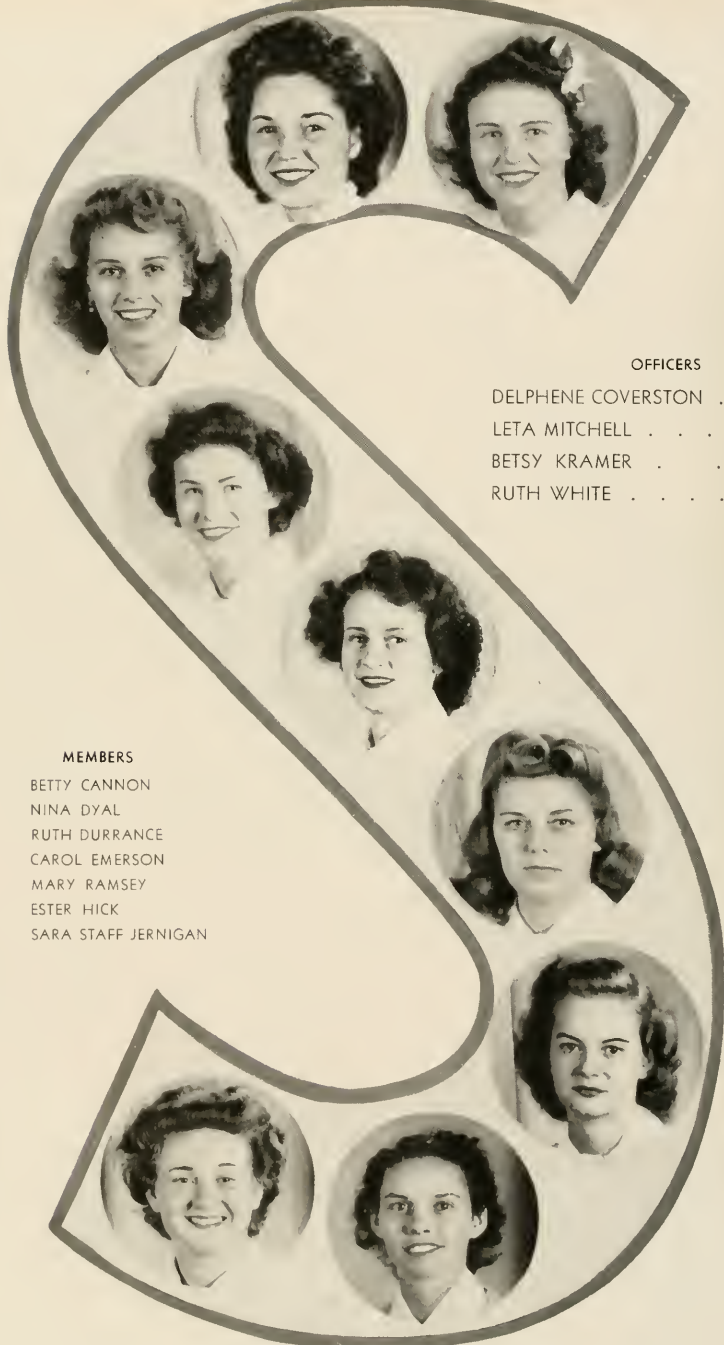
MARTHA DURRANCE President
 HELEN T. WHITMAN Vice-President
 RUTH HILLMAN Recording Secretary
 RUTH DURRANCE Corresponding Secretary
 BONNIE PARKER Treasurer
 MARGARET REAVES Historian
 HELEN BENNETT Doorkeeper

ACTIVE MEMBERS

TOMMY LEE FOWLER
 ELIZABETH PIPPIN
 MARY CATHERINE RAMSEY

PLEDGES

DOROTHY CHILLI	MARY LASATER
EDITH MARIE GARDNER	RUTH McDANIEL
ALMA GRANTHAM	DORIS NEWBURN
LUCILLE HALSTEAD	TERRY WAGNER
KAY HOOPER	



OFFICERS

- DELPHENE COVERSTON . . . President
- LETA MITCHELL . . . Vice-President
- BETSY KRAMER . . . Secretary
- RUTH WHITE . . . Treasurer

MEMBERS

- BETTY CANNON
- NINA DYAL
- RUTH DURRANCE
- CAROL EMERSON
- MARY RAMSEY
- ESTER HICK
- SARA STAFF JERNIGAN

THE STETSON BLAZER CLUB

Membership in this organization is based on good sportsmanship, leadership, athletic ability, and scholarship. Students may earn their letter "S" after two years of college work and upon initiation are presented with green and white blazers. A bid to the blazer club is the highest athletic honor a Stetson girl can achieve.

HELEN BENNETT President
 BARBARA LUPFER First Vice President
 MILDRED JAUDON Secretary
 OVEDA VOSS Sunday School Representative
 LURA TYNER Y. W. A. Representative
 LETA MITCHELL Co-Vesper Chairman
 TOMMY LEE FOWLER Music Director
 DOROTHY RICHARDSON Publicity Director



HARRY ATKINSON Second Vice-President
 MARGARET REAVES Third Vice-President
 MAURICE FAIN Treasurer
 MARY ELLEN ANDERSON B. T. U. Director
 LAVERGNE MIXON Ministerial Representative
 EDITH MARIE GARDNER Co-Vesper Chairman
 HAROLD MITCHELL Magazine Representative
 JANE REESE Student House Director

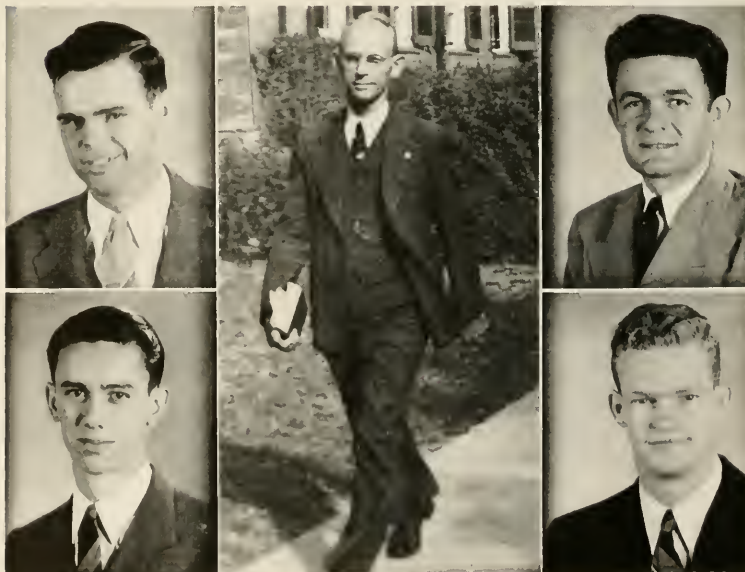
BAPTIST
 STUDENT UNION
 COUNCIL



MINISTERIAL ASSOCIATION

The Ministerial Association of John B. Stetson University is composed of students enrolled for the ministry in Stetson. The purpose of the organization is to promote the spiritual fellowship and general welfare of the members both on the campus and throughout the state. The members receive practical experience in religious work through participation in B. S. U. and other activities. A number of the members have pastorates near the campus and others do supply work over the state.

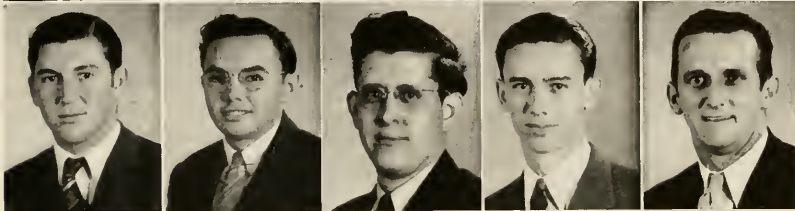
LAVERGNE MIXON	President
MAURICE FAIN	Vice-President
HARRY ATKINSON	Secretary
ALFRED REID	Treasurer
DR. H. C. GARWOOD	Sponsor



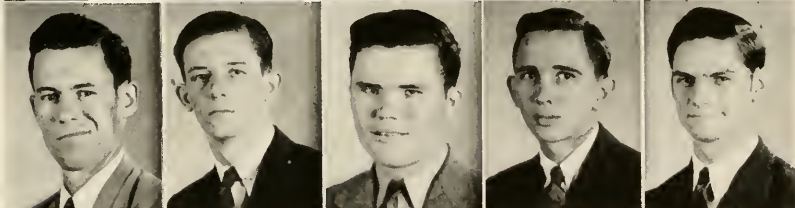
ADAMS
 ATKINSON
 BAKER
 BARNETT
 BROWN



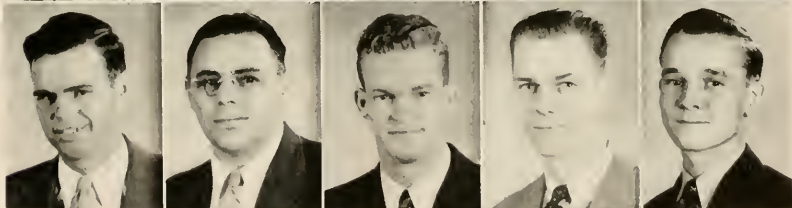
CLARK
 DAVIS
 DOBBS
 FAIN
 HALL



D. O. JERNIGAN
 F. JERNIGAN
 JOHNSON
 MAXEY
 MITCHELL



MIXON
 OTT
 REID
 RIVENBARK
 STEPHENS



THIGPIN
 WHATLEY
 WOODALL



MINISTERIAL ASSOCIATION



PI DELTA PSI

One of the newly organized honorary clubs on campus for the purpose of promoting interest in contemporary literature.

Sponsor: MISS HOLDEN

MEMBERS

JANE REESE
 T. R. MIMS
 DELPHENE COVERSTON
 IRMA FRENCH
 BETTY LOU BELL
 HELEN MARTIN
 ANN MOORE
 DICK SMITH

JOE ADNEY
 JIMMY CASEY
 HOKE DOWDY
 JULIA GRIFFIN
 CLAIRE BUMGARNER
 MARY ELLEN ANDERSON
 GEORGE DAVIS

**B. F. EZELL CHAPTER
of
FUTURE TEACHERS
of
AMERICA**



PRESIDENT

VICE-PRESIDENT

MEMBERS

- FLONNIE ANDERS
- ANNETTE BOLTON
- EVELYN BROWN
- BETTY ANN CANNON
- CHARLENE CARSON
- NINA DYAL
- ELINOR EDLIN
- MARJORIE ELLIOT
- MARY ELLEN GENTRY
- MARJORIE KERSEY
- BARBARA ROTUREAU MILLS
- LETA MITCHELL
- EVELYN TURRENTINE
- RUTH WHITE



OFFICERS

- LURA TYNER President
- DOT POPE Vice-President
- CLAIRE BUMGARNER Secretary
- SYLVIA JONES Treasurer
- BETTY PARFITT Custodian
- MIRIAM RAGSDALE Parliamentarian
- JOYCE CALDWELL Librarian
- DR. B. F. EZELL Adviser





CHILLI

ADNEY

WAGNER

MAXWELL

ALLINGER



EASTBURN
DAVIS
KESMODEL
LANE



CLARK
MOORE
SMITH, C.
SMITH, R.

DER DEUTSCHE VEREIN

Der Deutsche Verein is an honorary German organization. The purpose is to foster an interest in the language, the customs, and the literature of Germany.

OFFICERS

- JOE ADNEY President
- TERRY WAGNER Secretary
- RUTH LOIS MAXWELL Treasurer

MEMBERS

- DR. IOLA KAY EASTBURN
Faculty Adviser
- JOE ADNEY
- MISS HELEN ALLINGER
- MARIETTA CHILLI
- LORRAINE DAVIS
- EARL KESMODEL
- NANCY ANN LANE
- RUTH LOIS MAXWELL
- MISS ROSEMARY CLARK
- DANIEL MEYHOEFER
- ANITA MOORE
- MISS CHARLOTTE SMITH
- DICK SMITH
- TERRY WAGNER
- PROFESSOR HARRY S. WINTERS
- MRS. HARRY S. WINTERS



VOLUNTEERS FOR CHRISTIAN SERVICE

Sponsor—MRS. H. C. GARWOOD

MEMBERS

MARY ELLEN ANDERSON
 HARRY ATKINSON
 FLOYD BAKER
 HELEN BAKER
 HELEN BENNETT
 RUTH COBB
 FRANCES COLLIER
 (not pictured)

EVELYN DODD
 TOMMY LEE FOWLER
 JEWEL GARETT
 ELEANOR HOLDERMAN
 MILDRED JAUDON
 HELEN MARTIN
 ANITA MOORE

DOROTHY RICHARDSON
 MARGARET SWARTZ
 MARY ETTA PERRY
 (not pictured)
 OVEDA VOSS
 ALICE YOUNG
 (not pictured)

Aim: The aim of this organization is to bring together those students who have been called and have surrendered to do any Christian service as the Lord leads and for the purpose of creating a real Christian spirit on Stetson's campus.



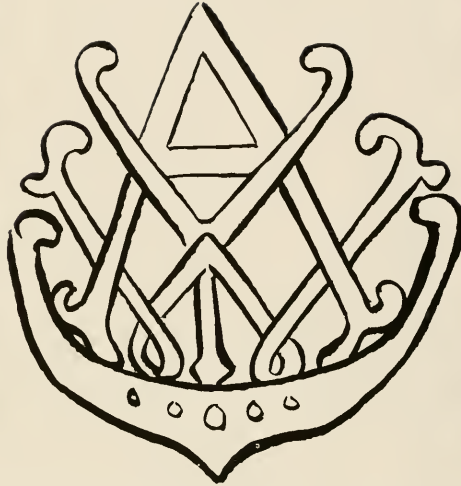
TYNER, President



WATTS, Vice-President



BROWN, Secretary



WALDEN, Treasurer

"It is better to light a candle than to curse the darkness."

OFFICERS

EVELYN DODD	Adviser
LURA TYNER	President
JOYCE WATTS	Vice-President
EVELYN BROWN	Secretary
ANNA SUE WALDEN	Treasurer
JULIA GRIFFIN	Devotional Chairman
MARY E. GENTRY	Music Chairman
ELINOR EDLIN	Program Chairman
RUTH COBB	Personnel Service

MEMBERS

MARZEE AITON
 RACHELL ALLISON
 HELEN BAKER
 HELEN BENNETT
 MITZI BEST
 MARY BILINSKI
 JOYCE BLACKWELL
 GRACE BROWN
 JEAN BROWN
 ANITA CALDWELL
 JOYCE CALDWELL
 BETTY ANN CANNON
 DOROTHY CHILLI
 MARIAN CLARK
 MILDRED COSSON
 DELPHENE COVERSTON
 SAMMIE LEE DAWSON
 JANICE DOUGLAS
 MARJORIE ELLIOTT

TOMMY LEE FOWLER
 EDITH MARIE GARDNER
 EDNA RUTH GARRETT
 JEWEL GARRETT
 JIMMIE GODWIN
 CHRISTINE HEDICK
 MARIAN HUGHES
 MILDRED JAUDON
 SYLVIA JONES
 MARJORIE KERSEY
 ADA KIMBALL
 DONNA KJORSVIK
 BARBARA LUPFER
 PAT MAXEY
 MARTHA MILLER
 BARBARA MILLS
 LETA MITCHELL
 IRIS MURRAY
 GLORIA McCLENDON

VIRGINIA McKINSEY
 VERNICE NICHOLS
 BONNIE PARKER
 OLIVE PHILLIPS
 PHYLLIS PIERCE
 MIRIAM RAGSDALE
 MARY CATHERINE RAMSEY
 SUSAN SANDERS
 TRUDE SAXL
 MARY NELL SCOTT
 ROSELYN SECKINGER
 KATHERINE SHIRLEY
 BUNNY SMITH
 MARGARET SWARTZ
 ELIZABETH TUCKER
 EVELYN WALKER
 EMMY LOU WEST
 LYNN WINTERS
 VICKIE YOUNG





EICHHOLZ



DYAL



AMIDON



WAGNER

INTER-FRATERNITY COUNCIL

OFFICERS

- SKIP EICHHOLZ President
 NINA DYAL Vice-President
 BETTY JANE AMIDON Secretary
 TERRY WAGNER Treasurer

Alpha Xi Delta
 TERRY WAGNER
 EDITH MARIE GARDNER

Delta Delta Delta
 NINA DYAL
 RUTH DURRANCE

Pi Beta Phi
 BETSY KRAMER
 BETTY JANE AMIDON

Delta Sigma Phi
 KARL KESMODEL
 MAURICE COKER

Pi Kappa Phi
 MAJOR GRAVELY
 SKIP EICHHOLZ

Sigma Nu
 GEORGE DAVIS

Zeta Tau Alpha
 SYLVIA JONES
 CAROL EMERSON

GARDNER



EMERSON



DURRANCE



KRAMER



KESMODEL



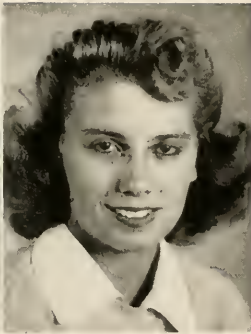
COKER



DAVIS



JONES



KRAMER

JONES



PAN-HELLENIC COUNCIL

OFFICERS

TERRY WAGNER President

BETSY KRAMER Vice-President

SYLVIA JONES Secretary

NINA DYAL Treasurer



WAGNER
AMIDON
CRONKHITE

DYAL
POPE
TRUE

MEMBERS

Alpha Xi Delta

EDITH MILLER CRONKHITE
TERRY WAGNER

Pi Beta Phi

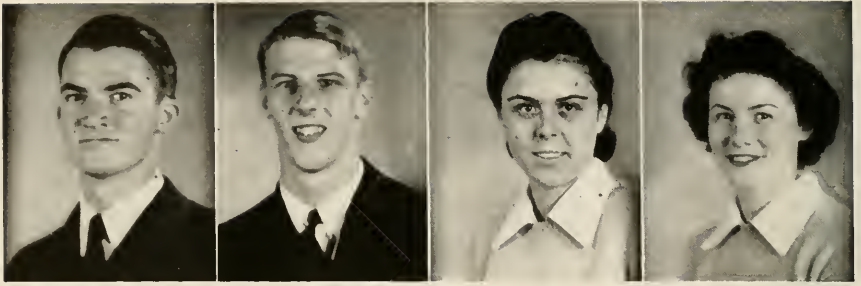
BETTY JANE AMIDON
BETSY KRAMER

Delta Delta Delta

NINA DYAL
NATALIE TRUE

Zeta Tau Alpha

SYLVIA JONES
ROSAMOND POPE



BETA CHI OMEGA

Honorary Biology Fraternity

OFFICERS

WALKER GREEN	President
BRADFORD MILLER	Vice-President
ELEANOR HOLDERMAN	Secretary
RUTH WHITE	Treasurer



MEMBERS

- MARIETTA CHILLI
- KARL KESMODEL
- HELEN CLEMONS
- RUTH LOIS MAXWELL
- LETA MITCHELL
- BETTY ANN CANNON
- BETTY LOU BELL
- LUCILLE CLARK
(not pictured)
- BILL ALDEN



THE PHI SOCIETY

The Honorary Freshman Society

OFFICERS

GLADYS PIPPIN	President
DR. DORIS ARJONA	Sponsor

MEMBERS

BETTY JANE AMIDON

JOE ADNEY

PLEDGES

MARZEE AITON

ALMA GRANTHAM

EDWARD S. MAXEY

MARY BILINSKI

BETTY GRAW

MARJORIE MERRILL

RUTH COBB

PAULINE JENSEN

IRIS MURRAY

MILDRED COSSON

WINIFRED LOVELL

CHARLOTTE A. NORDMAN

SAMMIE LEE DAWSON

REBECCA McDUGALD

AUGUST LEO OTT

HENRY LONG FLETCHER

VIRGINIA McKENZIE

JESSE JAMES RUSS

JIMMIE GODWIN

CORTEZ AULENE TEDDER



RUTH WHITE
President



ANN MOORE
Vice-President



CLAIRE BUMGARNER
Secretary



NATALIE TRUE
Treasurer



Colors: Red and Gold



FACULTY MEMBERS

DR. ARJONA
DR. THORNTON

PROFESSOR WINTERS
DOROTHY FULLER

MEMBERS

GEORGE ARNOLD
BARBARA BLACK
HOKE DOWDY
MARTHA DURRANCE
IRMA FRENCH
EDITH M. GARDNER

SYLVIA JONES
LILLIAN McCLEMET
CREE McLAUGHLIN
ELITHER NICKERSON
BARBARA PRICE

SIGMA DELTA PI

Honorary Spanish Fraternity



DELTA GAMMA PHI

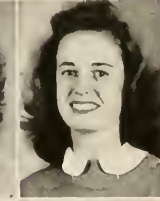
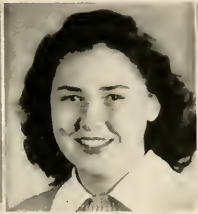
OFFICERS

JEANE SHAW	President
NINA CLARKE	Vice-President
FRAN SUE MacDONALD	Secretary
JEANNE OSTRANDER	Treasurer
MARTHA DURRANCE	Chaplain

MEMBERS

NINA CLARK	JEANNE OSTRANDER
MARTHA DURRANCE	JEANE SHAW
RUTH DURRANCE	CORTEZ TEDDER
FRAN SUE MacDONALD	JANET WHITE
RUTH L. MAXWELL	

Delta Gamma Phi was founded on Stetson's campus in October, 1940, and works to uphold the high standards of the Stetson Band.



SIGMA PI SIGMA

Honorary Chemistry Fraternity

BRUCE MUIRHEAD	President
DR. R. I. ALLEN	Adviser

MEMBERS

NINA CLARKE
JOE ADNEY
WINIFRED LOVELL



GAMMA SIGMA EPSILON

Honorary Chemistry Fraternity

JOE ADNEY	Grand Alchemist
KARL KESMODEL	Visor
ANITA MOORE	Recorder
DR. JOHN F. CONN	Adviser

NEWTON CLUB

Honorary Mathematics Fraternity

JOE ADNEY	President
ANITA MOORE	Vice-President
BRUCE MUIRHEAD	Secretary and Treasurer
PROF. CURTIS M. LOWRY	Adviser

A JUNIOR LOOKS AT THE FUTURE

A junior in college today has a great number of perplexing problems facing him. As he looks ahead of graduation day he can see nothing of which he can be sure. His nation and all other major nations are engaged in mortal combat. She has everything to lose if she is defeated, and if she wins it is not certain what she will gain. Wars have been won before and yet we are now engaged in one of the greatest of all wars. As he shapes the remaining course of his study in college and sets up the goal of his life what part is the war and the coming peace going to play in them? Must he plan for the immediate year or two after college or can he plan for a life in a country at peace?

Precedents and principles which he has been taught in his school life up to this time are being exploded so rapidly that he has trouble keeping track of them. The government of his country is being bombarded from every side. The system of capitalism and free enterprise is slowly being bombarded to pieces. The socialist theory of Government is still an underdog by a clear margin, and the dictatorships of the world are giving a demonstration of barbarity heretofore unheard of. The forces of revolution are not stopping with theories of government either. Organized Christianity as we see it practiced today is besieged by thinkers from every side demanding that it be reorganized so that it will render better service to humanity. In fact, the Junior of today does not know what to expect of tomorrow's world or what to think will be the best way to serve it.

Some are saying that World War III is a certainty. If the Junior looks at the facts he dares not deny the direction to which they point. Denying the facts would not make a better world or prevent the coming war's upsetting the Junior's life as a citizen. These facts are evident, but must we accept the next war as a fact and plan to participate without trying to prevent it.

To plan for such an understanding or the acquiring of an understanding of life that one can find a worthwhile job to do now, immediately after graduating and on into the period of peace seems a logical thing to do. Looking forward to helping others understand the value of peace and way to achieve it might not be a bad idea. To be informed, to stay informed and to fight for the right of others to do the same could be a strong ambition. To settle down in one's own little nook and help make his home, his profession and his life speak so clearly of the values of a peace in which each person regardless of race, creed or wealth had an opportunity to share in the resources of all the world in the giving of a better life demands preparation which the Junior still has an opportunity to get. The picture of a peaceful world challenges one to fight in the face of facts pointing to future wars for a changing of the facts and the achieving of a lasting peace.

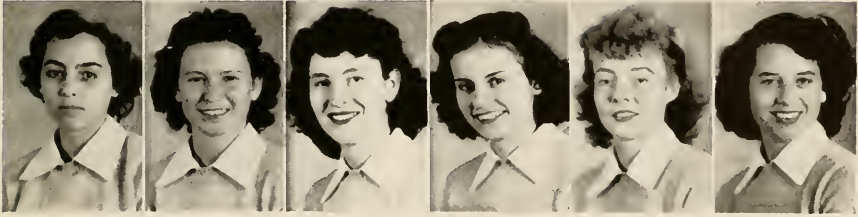
ALPHA DEKSIOMA

Founded at John B. Stetson
University, May, 1940



Colors: Hunter green and gold

Flower: Talisman rose



BUMGARNER

SHAW

NICHOLS

MILLER

McDANIEL

GRIFFIN

OFFICERS

CLAIRE BUMGARNER	President
JEANE SHAW	Vice-President
VERNICE NICHOLS	Secretary
MARTHA MILLER	Treasurer
RUTH McDANIEL	Social Secretary
JULIA GRIFFIN	Chaplain

The purpose of Alpha Deksioma is to promote democratic friendship and understanding among its members; to broaden the social, cultural, political, athletic, and religious life of the members and to assist them in every ways possible. All women in Stetson University who are not affiliated with a national social organization may become members.

MEMBERS

- | | |
|-------------------|-----------------|
| MARY ELLEN GENTRY | JOHANNA SHEW |
| ELINOR HOLDEMAN | TRUDE SAXL |
| ANNETTE JOINER | RUTH L. MAXWELL |
| MOLLY KENT | |



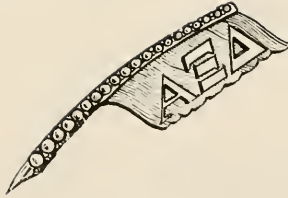
MARY ELLEN
ANDERSON

MARIETTA
CHILLI

JANE HALL

DONNA KJORSVIK

ALDA
SINGLETARY



ALPHA XI DELTA

Founded at Lombard College in 1893
Omega Chapter Established in May, 1917

Colors: Double Blue and Gold

Flower: Killarney Rose

OFFICERS

TERRY WAGNER	President
ANNETTE BOLTON	Vice-President
RUTH HILLMAN	Treasurer
MARGARET REAVES	Recording Secretary
LORRAINE DAVIS	Corresponding Secretary

CHAPTER MEMBERS IN FACULTATE

MARY TRIBBLE LOWRY	VIRGINIA GIFFIN	DOROTHY FULLER	AILEEN WORTH
--------------------	-----------------	----------------	--------------

IN UNIVERSITATE

FLONNIE ANDERS	HELEN deGRUCHY	CREE McLAUGHLIN
ANNETTE BOLTON	EDITH MARIE GARDNER	MARJORIE MERRILL
BARBARA BOWSER	RUTH HILLMAN	JEANE NEELY
NANCY BROWN	KAY HOOPER	GLADYS OWENS
EDITH MILLER CRONKHITE	FRANCES KIEHLE	MARGARET REAVES
RUTH CURNICK	MARY LASATER	PEGGY SEGREST
LORRAINE DAVIS	HARRIET LINDNER	TERRY WAGNER

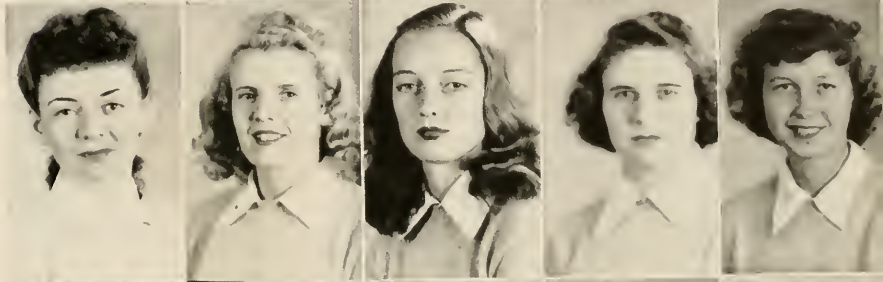
PLEDGES

BETTY LOU BELL

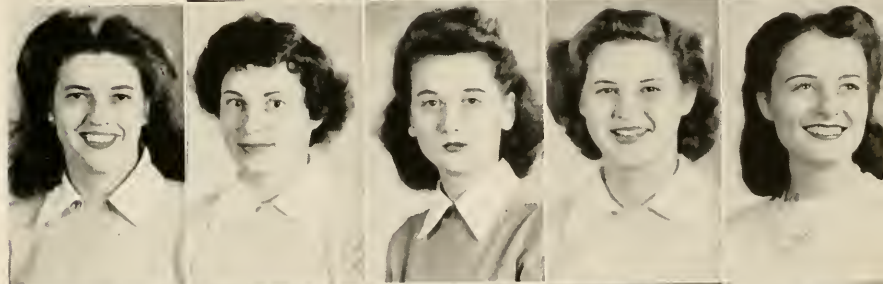
WAGNER
BOLTON
HILLMAN
REAVLS
DAVIS



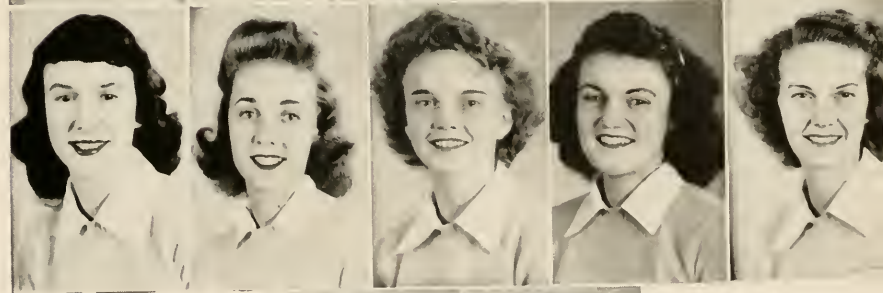
ANDERS
BELL
BOWSER
BROWN
CRONKHITE



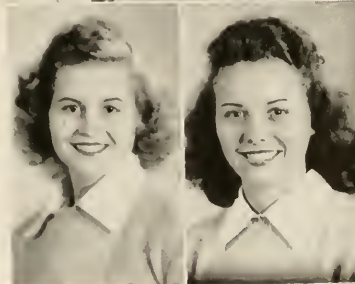
CURNICK
deGRUCHY
GARDNER
HOOPER
KIEHLE

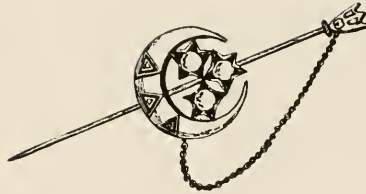


LASATER
LINDNER
McLAUGHLIN
MERRILL
NEELY



GWENS
SEGREST





DELTA DELTA DELTA

Founded in 1888, at Boston University, Boston, Mass.

Alpha Delta Chapter Established in May, 1913

Colors: Silver, Gold and Blue

Flower: Pansy

OFFICERS

NINA DYAL	President
NATALIE TRUE	Vice-President
ELIZABETH PIPPIN	Secretary
MARTHA DURRANCE	Treasurer
GLADYS PIPPIN	Chaplin
BARBARA PRICE	Marshal

CHAPTER MEMBERS IN FACULTATE

SARA STAFF JERNIGAN

CURTIS HORN

IN UNIVERSITATE

ELIZABETH AMBROSE
 BARBARA BLACK
 MARY DENSON
 MARTHA DURRANCE
 RUTH DURRANCE
 NINA DYAL
 NANCY FESSENDEN

ANN GILBERT
 BETTY GRAW
 MARCIA HAMMER
 ANN HIRTH
 NALDA HOFFMAN
 DOROTHY HOWELL

FRAN SUE MacDONALD
 VIRGINIA McKINSIE
 ELIZABETH PIPPIN
 GLADYS PIPPIN
 BARBARA PRICE
 NATALIE TRUE
 PATCHIN WEAVER

PLEDGES

MARY PINK COLLINS
 JANET HOOTEN

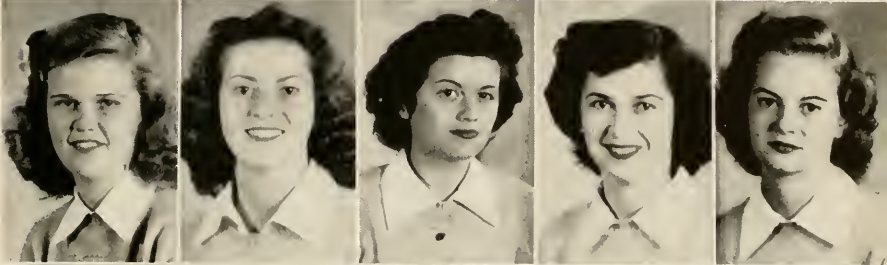
MARY NELL SCOTT
 LYNN WINTER

JOYCE WATTS

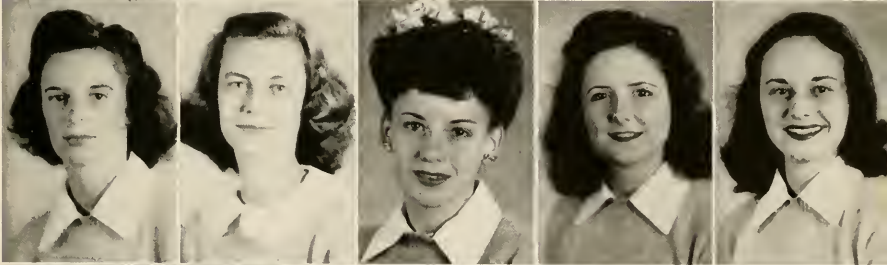
DYAL
TRUE
PIPPIN, E.
DURRANCE, M.
PIPPIN, G.



PRICE
AMBROSE
BLACK
DENSON
DURRANCE, R.



FESSENDEN
GILBERT
GRAW
HAMMER
HIRTH

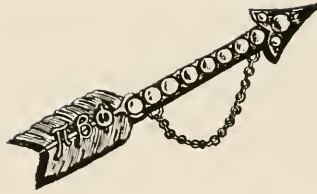


HOFFMAN
HÖWELL
MacDONALD
WEAVER
McKINSIE



COLLINS
HOOTEN
SCOTT
WINTER
WAITS





PI BETA PHI

Founded April 28, at Monmouth College, Monmouth, Illinois
Florida Alpha Chapter Established January 30, 1913

Colors: Wine and Silver Blue

Flower: Wine Carnation

OFFICERS

FIRST QUARTER

BETSY KRAMER President
RUTH BROOKS Vice-President
BETTY JANE AMIDON Treasurer
RUTH BROOKS Recording Secretary
LOUISE FUGATE Corresponding Secretary

SECOND QUARTER

BETTY JANE AMIDON President
RUTH BROOKS Vice-President
WINIFRED LOVELL Treasurer
RUTH BROOKS Recording Secretary
ANNA MARGARET WHITE Corresponding Secy.

CHAPTER MEMBERS IN FACULTATE

ANNIE NADINE HOLDEN

IN UNIVERSITATE

BETTY JANE AMIDON
RUTH BROOKS
ANITA CALDWELL
LUCILLE CLARK
LOUISE FUGATE
PEGGY JUSTICE

BETSY KRAMER
WINIFRED LOVELL
BARBARA LEE MILLS
SUSAN SAUNDERS
LUCILLE SUMERFORD
ANNA MARGARET WHITE

JANET WHITE

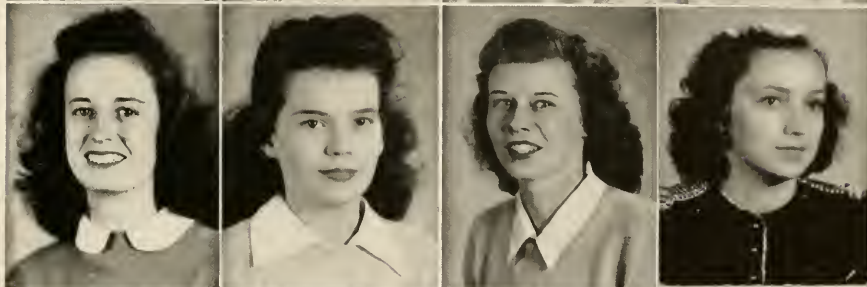
PLEDGES

FAYE ROGERS

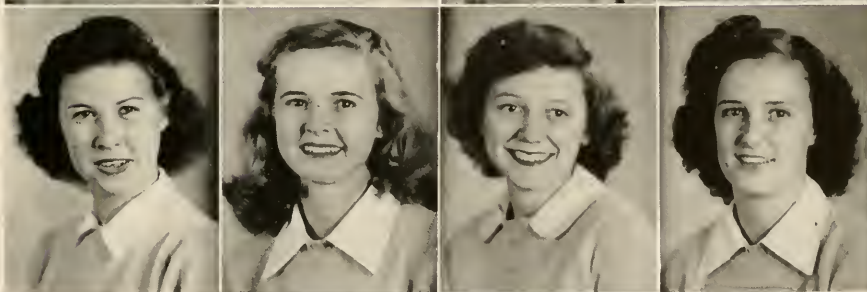
KRAMER
BROOKS
AMIDON
FUGATE



LOVELL
WHITE, A. M.
CALDWELL
CLARK



JUSTICE
MILLS
ROGERS
SAUNDERS



WHITE, J.
SUMERFORD





SYLVIA JONES
President

ROSAMOND POPE
Vice-President

BETTY PARFITT
Secretary

MARJORIE KERSEY
Treasurer

ZETA TAU ALPHA

Founded October 15, 1898, at Virginia State Normal School, Farmville, Virginia
Beta Psi Chapter Established in October, 1934

Color: Turquoise Blue and Steel Gray

Flower: White Violet

CHAPTER MEMBERS IN FACULTATE

ETTER TURNER

FRANCES THORNTON

IN UNIVERSITATE

VIRGINIA BATES
JOYCE CALDWELL
BETTY CANNON
CHARLENE CARSON
NINA CLARKE
DELPHENE COVERSTON
MARJORIE ELLIOTT
CAROL EMERSON
TOMMY LEE FOWLER

JIMMIE GODWIN
CHRISTINE HEDICK
AVONNE JONES
SYLVIA JONES
MARJORIE KERSEY
GLORIA McCLENDON
LETA MITCHELL
DORIS NEWBURN
BETTY PARFITT
DOROTHY W. DOUGLAS

ROSAMOND POPE
MIRIAM RAGSDALE
MARY CATHERINE RAMSEY
ROSELYN SECKINGER
ELIZABETH TRAINHAM
ELIZABETH TUCKER
EVELYN TURRENTINE
LURA TYNER
RUTH WHITE

PLEDGES

JOYCE BLACKWELL
ALICE JARVIS

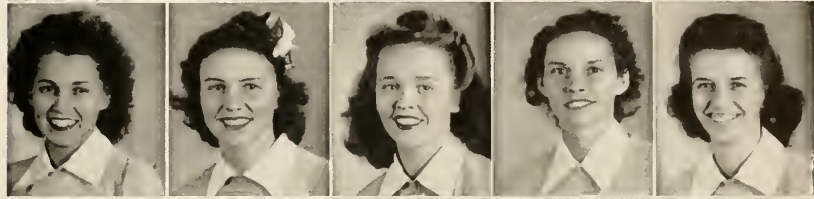
DONNIE JANE KINLAW
PATRICIA MAXCY
ANNA SUE WALDEN

REBECCA McDOUGALD
PHYLLIS PIERCE

BATES
BLACKWELL
CALDWELL
CANNON
CARSON



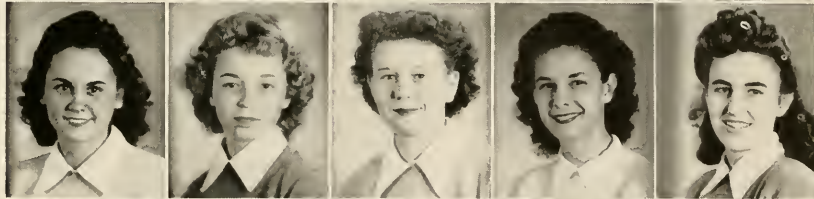
CLARKE
COVERSTON
ELLIOTT
EMERSON
FOWLER



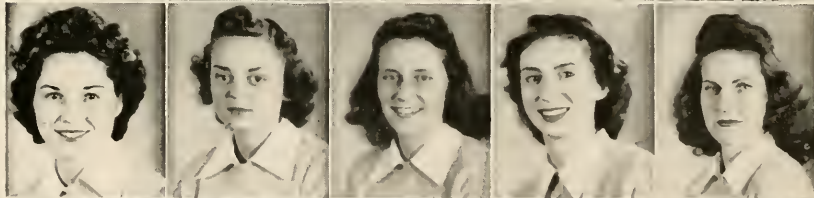
GODWIN
HEDICK
JARVIS
JONES, A.
JONES, S.



KERSEY
KINLAV
MAXCY
McCLENDON
McDOUGALD



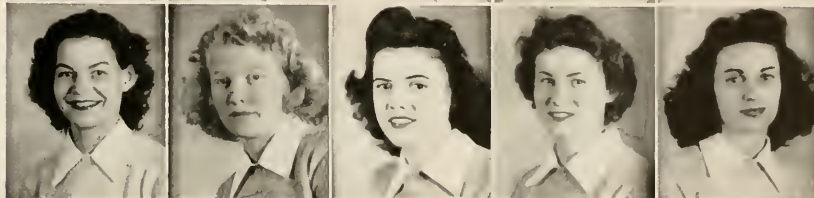
MITCHELL
NEWBURN
PARFITT
PIERCE
POPE



RAGSDALE
RAMSEY
SECKINGER
TRAINHAM
TUCKER



TURRENTINE
TYNER
WALDEN
WHITE
WIDDERSHIEM





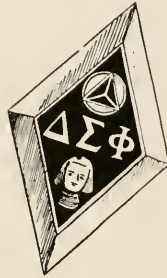
SMITH
Treasurer

COKER
Vice-President

KESMODEL
President

WHITSETT
Secretary

MOORE
Sergeant-at-Arms



DELTA SIGMA PHI

The Fraternity was founded at the City College of New York, December 10, 1899
Alpha Chi Chapter was established in 1925

Colors: Nile Green and White

Flower: White Carnation

The primary duty of our Fraternity is the support of the University in its effort to give the members the education and training they desire; and to instill a love of country and of our country's flag, reverence for the deity and for religion, and regard for truth.

MEMBERS IN FACULTATE

DR. R. I. ALLEN

CURTIS M. LOWRY

DR. HARRY C. GARWOOD

Alpha Chi has always been small in numbers, a fact of which we have been proud. We are especially proud of our size these days because, like all men's organizations, we have many brothers fighting for our country and its way of life.

We are attempting to do what we feel they would wish, namely to keep a nucleus of selected men around which Alpha Chi can be enlarged when they come back. To those listed on the following page we say, "Hurry back, Sailors!"

Y. I. T. B. O. S.

PLEDGES



ADNEY

BRYAN

DOSS

HOUSE

RUSS

OUTSTANDING ALUMNI

ROY AMIDON

JOYCE BOWEN

E. HARRIS DREW

J. OLLIE EDMUNDS

DONALD FAULKNER

BILL GARDNER

D. C. HULL

J. ROBERTSON

J. B. RODGERS

TOM STEWART



PORT OF ΔΣΦ

DELTA SIGS IN SERVICE

J. C. BRADLEY

JOHN CROSS

S. FESSENDEN

ROBERT HENAY

ANDY KNOX

BILL LAKE

DAVID LEHMAN

PETE MAHAFFEY

P. McENTIRE

HARRY MINARICK

J. NEBLETT

SID NIX

J. B. OWEN

V. SCHAEFER

HARRY SNYDER

G. SCHEWER

A. SCHUBER

R. STILLWELL

SID TAYLOR

R. THACKER

J. TILLIS

R. TOWLE

WM. TRIBBLE

BILL TURRENTINE

VERNON TURNER

D. J. WATSON



Dedicated
To All
Pi Kaps

*In The
Armed
Services*

THE CHI CHAPTER

A FRESHMAN LOOKS AT THE FUTURE

All of us have heard over and over of the conditions that will exist after the war. We have heard that there will be no jobs for the men that come back, and there will be a great depression. We have heard that in twenty-five years there will be another war similar to this one, and that there can be no lasting peace. We have heard of innumerable causes for this war, but the number of us that have tried to find out for ourselves is few.

We are going to have a lot to do with the destiny of our nation, and it is going to take planning, cooperation, and work. Perhaps, one of your first questions may be, "How can we help in these coming years of trial?" We first have to take an attitude of realism and get away from any pessimistic views we once had.

This coming age is going to be one of new inventions, new thoughts, and new ideas. We are the ones to create those new ideas. To do this we have to have free, open minds that can think clearly, free from prejudices. We must stop worrying and fretting about what is going to become of us and begin to think and plan for a way to face these many problems.



- | | |
|-------------------------------|-----------------------|
| 1. The ladies in white . . . | 7. The "Stover Stamp" |
| 2. The army, forever | 8. Won't you come in? |
| 3. I don't believe it, either | 9. Pin-up girl |
| 4. Now, Mrs. Mosley | 10. So big . . . |
| 5. The court queens | 11. Hey! |
| 6. Feminine stars | |

HISTORY DEPARTMENT

Hy1943-44—Ancient History—A survey of the events, customs, and peoples of John B. Stetson University during the years 1943 and 44. Designed to acquaint the student with what went on hither, thither, and in the dark corners, too. Offered: any time you want to reminisce a bit. Credit: two full sighs and a happy chuckle.

Wellllll—Let's see—1943-44—That was the year that Stetson went forwaaaaard!! March-2-3-4 — Hep-2-3-4 — Hep-2-3-4!! The army at Stetson—the twinkling stars in the heavens above came in a poor second to the STARS that brought a twinkling gleam to many a fair Stetson co-ed's eye. Soldiers everywhere—in the big side of the Commons, in Elizabeth Hall, in morning chapel, in Stevens, in the gym, in Conrad, marching around the campus!! The place was lousy with men in uniform; disgusting isn't it?? (Who am I kiddin'?)

Of course there were freshmen, too. All the advisers looked so wise and parental with their little brood gathered around. (Just a year or so ago, who was doing the listenin'? Remember?) Then the speeches, and parties, and meetings of Freshmen week were topped by the Freshman Talent Night with Prof. Giffin m.c.ing. Some of the "new kids" really showed off big. Then came rat caps and courts, rushing, ('nough said), and darn it—classes.

Professors Garwood, Giffin, Saxl, Johnson, and Cowell were missed in their classrooms; but if Uncle Sammy really needed their advice—well, O. K. He even went so far as to point his finger at McEniry and whisper enticingly "I want YOU!!" The plaque in Elizabeth Hall lobby reminded us constantly that plenty more of the Stetson men and women were in there sluggin'. God bless them: everyone.

An what an amazing change in the quad!! The Stetson men could hardly be called a crowd anytime; esp. when compared to the privates, ensigns, louies, sailors, leathenecks, airmen, and what have you, who brought their dates home to the front porch—no less. No dark crowded quad of years past but a front porch as lit as Grand Central Station. The lovely little lassies still got in by ten o'clock sharp however—to keep them from turning into ugly yellow pumpkins or something, so the Council said.

Never will we forget the day Prexy Dave Gardner bounded up on the stage with the announcement that Stetson was to have a Recreation Center. The former Sigma Nu house

was to be open every Friday night from 8-11 with ping-pong, food, pool, Cards, and (hold your breath) a jook!! This Uncle Sam's Army is a mighty useful thing to have around.

Came time for Sadie Hawkins' Day. We'll admit the chances for a good time looked few—what with the manpower situation and all. At least 20 wolfesses must have had their eyes on the same man—(probably that strong silent brute, George Davis, "I-don'-wanna-play" Eichols, who made such a grand mayor, or maybe Thigpen.) The committee, headed up by Edith Lillian Miller as chairman and with Bolton and Hayward working hard, really dug in and came up with a good show—in spite of the fact that some of the BSUers gave out with "Life's Other Side," corn at its ripest. Crisco Moore as "Hairless Joe" and B. Bowser as "Lonesome Polecat" succeeded in being utterly repulsive as to a lesser degree did practically the whole student body. The army was most cooperative and helpful; if talent was needed they'd dig it up even if they had to go all the way to Rollins after it. Such G. I. Joes you've never seen—(And neither has General MacArthur—thank goodness). Skenazi was especially helpful (wasn't he, Lupfer? But that's a personal battle so let's not interfere!!) In the athletic events of course the upperclassmen walked away with the day. (This adv. paid for by members of the upperclass boys football team.) After the day was over we were all spellbound when we found that Bill Fletcher had a face behind that beard.

Ambling over to the Little Theatre—Hmmm, nice place those gym steps, but standing room only—anyhow ambling over to the L. T., we could find Lt. Lykes as the poor bewildered husband of Vickie—a good play that started the season off with a bang. If I told you that the talented F. Anders had the title role, you'd probably tell me that You'd heard that one before, but she is talented and she was in the lead, so figure it out for yourself. The whole cast was good—Bolton was as disgusting an AWC as you'll ever find in your living room.

Thanksgiving soon rolled around with the usual flourish. Of course it rolls around every year about the same time (except when Franklin's hungry—then you never can tell), and most everyone went home to enjoy their turkey . . . well, anyway, their roast pork. The army had turkey at least. Then back again to run smack into fall exams and the comforting thought that now we had 3 doses of same per year

(Continued on page 92)



- 1. Now, we are three
- 2. Smile for the birdie
- 3. In focus
- 4. Wider, please
- 5. Flesh and Fantasy

- 6. That's Welch serving
- 7. When I was with the Follies
- 8. What, no themes?
- 9. Stetson's loss . . . Navy's gain.

under the quarter system. Imagine those poor teachers having to give and grade exams 3 times a year. Tsk! Tsk! Since they come so often now, we won't waste a lot of time on them—no one else does so why should we now?

Graduation in morning chapel and a few new faces around campus. Then 7 busy days of the winter quarter which included the Messiah, good as ever, and this year a candle-light carol service for good measure. Both under the direction of Miss Helen Allinger, taking Prof's place in the music school while he gave the Stars a hand. Parties and teas as usual in spite of the war and then—Oh happy days—3 glorious weeks of Christmas vacation.

(This space dedicated to your own sweetest memories of
Christmas vacation 1943-44.)

The occasional rocks that appeared on third finger, left hand, had turned into a land slide by the time this vacation was over. In fact all the girls who came back without one were tactfully told to read the ads. Some of the girls even got greedy and decided to have all or nothing at all—so the misses Whitman, Miller and Rotereau came back Mrs. Everett (Red) Whitman, Mrs. John Lyle Cronkhite, and Mrs. Edgar Mills. Daffy Coverston started a little game all her own—she collects service men's pins and other such tokens of affection.

As soon as the hectic hellos were shouted after the holiday, we were off again—this time for something really big—Religious Focus Week. Bennett and Mixon headed up the Committee of 70, but just ask Prexy Joe Adney (appointed after Dave's graduation) who did all the dirty work. The visiting team arrived and was greeted rather dubiously by some, but after 6 days, Stetson students had done a lot of serious and constructive thinking. Jordan, Broach, Williams, Marshall, et al—they had really made an impression on this campus. More power to them!!

Girls' intramurals progressed spiritedly with the Zeta and Alpha Xis running neck and neck all season. The upset of the year came when the non-frats "got together" and took the basketball tournament hands down. The Stetson men (all 50 of them) had to get most of their exercise playing tennis in the same gym classes with the girls. Gosh, how they hated playing with all those short-clad girls 3 times a week.

The Forum lectures gave the students a chance to be well-informed at least once a week and amazingly enough, many students took advantage of the opportunity. For lighter entertainment the L. T. served up "Tomorrow the World" and "Vivacious Lady" in quick order. The first was plenty good; Pat Snowden and Tom Mahaffey, the 2 grammar school stars, were the talk of the town and naval Lt. Larson was excellent. In fact, Reese and Anders had their hands full upholding Stetson. In "Vivacious Lady," Bell and Mims headed a good cast in a poor play.

The Star unit departed and the campus seemed deserted without them. But it was fun to be back in the big side of the Commons and the Recreation Center turned into a Student Union Building open daily and especially for Stetson students. Spring brought senior recitals with Wagner and Whitman heading the list and really making a very good beginning for the season. Russ and his all-girl orchestra played for THE interfraternity dance which almost turned out to be a naval ball. But a wonderful time was had by all and the girls found out that an ensign or a Marine Lt. is almost as good as a star any day. Came exams, graduation, and new faces again—Time's a-flyin'. The Glee Club presented Franck's Mass in A Minor at Easter time. Really lovely—just don't let the title scare you. The theater came through with "Mrs. Moonlight" (Anders and Atkinson) and "The Merchant of Venice" (Guess Who?) Both excellent entertainment. Bennett and M. Durrance provided more musical entertainment and 'twas very good even though we did get the idea that Bennett's main interest was a guy named Jason.

Elections rolled around with Mims and Hayward doing a lot of fast talking. After the smoke had cleared, we found ourselves all set for another year. And we might as well look to the future because this year is going—there really were some changes made this year, but it was fun; for something new added consider Blackout, Kramer's car(?), Tresher, the Delta Sig monopoly, Lanier, etc.—going—June graduation here again with proud parents, goodbyes, Reaves and her two degrees, caps and gowns, parties, packing, 'n everything—all in one mad blur—GONE!! Thus Stetson goes forward.

O. K. Students of the future, take it or leave it. And maybe you will think this is a pretty dull course, but those kids of 43-44 thought it was pretty hot stuff.

THE S. T. A. R. UNIT



LT. COL. JOHN F. SOMERS

"During the life of the S. T. A. R. Unit at Stetson University there have been about three thousand young men to pass through here. We believe that their training here will be of great benefit to them and their country . . . not only for the duration of the war, but also for the critical period of reconstruction in the world of the future."

LT. COLONEL SOMERS.

"THUS STETSON GOES FORWARD"

During the last school year there have been five of the Stetson faculty serving with the S. T. A. R. Unit. They have been supervising the classes for examinations for reclassification and specialized training.



HARRY C. GARWOOD



HAROLD M. GIFFIN



WARREN C. COWELL



CARL H. JOHNSON



ERICH SAXL

Front

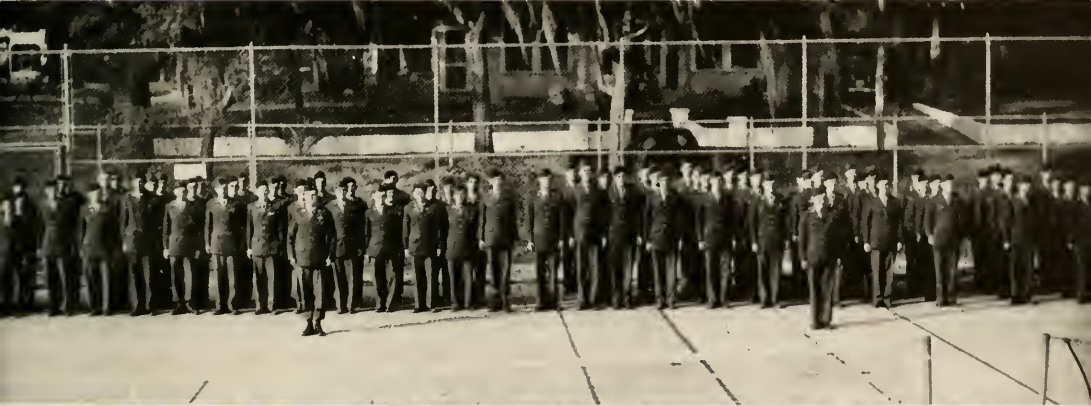


Left to right: Lt. Lykes, Capt. Meck, Capt. Dr. Allen, Sgt. Zuckerman, Col. Somers, Major von Schlichten

THE OFFICERS



Back



S. C. U. 3411 S. T. A. R.

"The Unit"

Stetson University



"Army on Review"

ARMY LIFE



"Knock! Knock" "Who's There?"



Another "Race" Problem

ARMY LIFE



"Top Hands"



"Hail Alma Mater, dear!"

ADVERTISEMENTS

ORANGE BELT PHARMACY

200 NORTH BOULEVARD

COMPLETE DRUG AND FOUNTAIN SERVICE

WE DELIVER — PHONE 555



A Salute to the Men and Women of

S T E T S O N



In War as in Peace, Stetson University

Is in the service of COMMUNITY, STATE and COUNTRY

FLORIDA POWER CORPORATION

W. W. WOLFF - - District Manager



F R I E R S O N ' S

Gasoline	Batteries	Refrigerators	Radios
Accessories	Tires	Oil Heaters	Ranges

Owner

GERALD E. FRIERSON

"Phone 23 that's me"

Compliments of

VOLUSIA PHARMACY

"Drugs with a reputation"

Modern Soda Fountain

121 N. BOULEVARD

DeLAND

S. R. Langston, Jr., Mgr.

Compliments of

V. W. GOULD AGENCY

REALTORS - INSURORS

Since 1907

201 N. BOULEVARD

DeLAND

FEASEL PAINT AND GLASS SHOP

Compliments of

SOUTHERN DAIRIES, INC.

STUDENT SUPPLIES

NOTE BOOKS

STATIONERY

FOUNTAIN PENS

ALLEN-WHITE COMPANY

"You Are Always Welcome"

Compliments of

KRAZY LINKS GOLF COURSE

Compliments of

BUS HAVEN LUNCH

"Meet Me At The Bus Haven"

Compliments of

of

DIXIE TIRE SHOP

COMPLIMENTS OF

HINDERY STUDIO

GEO. L. HINDERY, *Proprietor*

222 North Boulevard

DeLAND, FLORIDA

Courtesy of

STITH-GRIFFITH

FUNERAL HOME

DeLAND

FLORIDA

Compliments of

**HULL, LANDIS, GRAHAM,
and FRENCH**

MCCORMICK LUMBER CO.

Phone 130

DeLAND, FLORIDA

PRICE OF WISDOM

The truth which another man has won from nature or from life is not our truth until we have lived it. Only that becomes real or helpful to any man which has cost the sweat of his brow, the effort of his brain or the anguish of his soul. He who would be wise must daily earn his wisdom.—DAVID STARR JORDAN.

COMPLIMENTS OF
DOMINICK'S RESTAURANT
DeLAND, FLORIDA

**PATRONIZE
OUR
ADVERTISERS**

BOOSTING FOR STETSON UNIVERSITY

HOTEL PUTNAM

DeLand's Fireproof Hotel

West New York Avenue

DRINK
THIRST ASKS
NOTHING
MORE

Coca-Cola
IN BOTTLES

**DeLAND
COCA-COLA
BOTTLING CO.**

COMPLIMENTS OF
FLORIDA STATE THEATRES
IN DeLAND

ATHENS THEATRE

•

DREKA THEATRE

**Let's Bring
Him Home Quicker!**



Loose talk can cost lives . . .

**Keep it under
your**

S T E T S O N

THE CITY OF DeLAND

AND

DeLAND CHAMBER OF COMMERCE

OFFER

Congratulations To The Graduating Class

OF

JOHN B. STETSON UNIVERSITY

DeLAND is located in the ridge section of east central Florida, 110 miles south of Jacksonville, four miles to the picturesque St. Johns river, famous for its black bass fishing, and twenty-two miles to the renowned beaches of the Atlantic seaboard. Being centrally located practically every point of interest in the state may be visited within one day's drive.

DeLand enjoys a delightful year 'round climate. There is scarcely a day that the sun does not shine, sending forth its ultra-violet rays. Children grow strong and sun-tanned, and older people add years to their life's span. DeLand is a beautiful city, appealing to those of educational and cultural background. It is a friendly city—a city you will like.

For information about DeLand please write

CHAMBER OF COMMERCE

DeLAND

FLORIDA

*Compliments
of*

NEIL S. JACKSON

*Compliments
of*

STOUDENMIRE GROCETERIA

**BUSHNELL & BUSHNELL
MUSIC SHOP**

"EVERYTHING IN MUSIC"

THE CONRAD COMPANY

INSURANCE - REAL ESTATE

118 West New York Avenue Phone 17

Compliments of

ANGELO'S SHOE SHOP

THE BARNETT NATIONAL BANK

"A Florida Landmark"

JACKSONVILLE

DELAND

AVON PARK

COCOA

ST. AUGUSTINE

FT. LAUDERDALE

Member Federal Reserve System and F. D. I. C.

Sales

Service

ACREE MOTOR CO., INC.

FORD DEALER

DeLAND

FLORIDA

TOUGHTON DRUG CO.

THE REXALL STORE

DeLAND

FLORIDA

Day Phone 9148

Night Phone 721-J

**GEORGE LANDON
SERVICE STATION**

STANDARD OIL PRODUCTS

345 BOULEVARD

DeLAND, Fla.

RADIO REPAIRS

D. H. GORDON

130 Georgia Street

DeLAND, FLORIDA

F. N. DeHUY & SON

JEWELERS AND SILVERSMITHS

Since 1873

DeLAND

FLORIDA

V. M. FOUNTAIN CO.

Central Florida's Oldest
and Finest Store

DeLAND

FLORIDA

COMPLIMENTS OF

MATHER of DeLAND

COMPLETE HOME FURNISHING

Fur Coats

Cloth Coats

You Can Always . . .

Shop at SEARS and Save

SEARS, ROEBUCK AND CO.

SOUTH BOULEVARD

D E L A N D

The Court House Pharmacy

The Store of Personal Service

HEADQUARTERS
FOR STETSON STUDENTS

C. M. GEIGER, *Proprietor*

PHONE 5

ATHENS LAUNDRY
. . . and . . .
DRY CLEANERS

YOU TRIED THE REST
NOW TRY THE BEST

PHONE 443-J

Our Best Wishes to the Graduates of
STETSON UNIVERSITY
for 1944

W. A. ALLEN & COMPANY

"THE BUSY DRUGGISTS"

Compliments of

BILL HOLLER MOTOR SALES

Your Chevrolet - Oldsmobile - Cadillac Dealer

BRAGG'S

YOUR FRUIT AND VEGETABLE HEADQUARTERS

Phone 277-J

108 West Rich

Compliments of

Studio's of C. JOSEPH CONNLY

206 NORTH BOULEVARD

Compliments of

"The Students' Shopping Center"

J. C. PENNEY CO.

Compliments of

ATHENS BATTERY & ELECTRIC

P. RASMUSSEN, *Prop.*

DELUXE LAUNDRY
. . . and . . .
DRY CLEANERS

We Appreciate the Patronage of the
Students During the Year

PHONE 347

North Delaware Avenue

Downtown Office—Rich Ave. and Blvd.

McCRORY'S 5 & 10c STORE

Headquarters

For Student Supplies

VISIT OUR STORE DAILY

DAY PHONE
62

COMPLIMENTS OF

J. E. SUMMERHILL
PHONE 490

ALLEN - SUMMERHILL FUNERAL HOME

REAL AMBULANCE SERVICE

109 E. New York Ave.

ESTABLISHED 1877

DeLand, Florida

FIRST STATE BANK OF DeLAND

An Account With This Friendly Bank Entitles You to the

Best in Service, Security and Personal Attention

Member of the Federal Deposit Insurance Corporation



SUCCESSFUL ANNUALS


Require the services of experienced and expert craftsmen, trained in every detail of the processes of creating • planning layout and design • typesetting • printing lithographing and binding... Through-out half a century this company has pioneered in the production of the highest type of printing... Our services include a special college annual sales and service organization... Abundant equipment • modern and complete... Prices representing maximum in value



FOOTE & DAVIES

PRINTING • LITHOGRAPHING • ENGRAVING

ATLANTA



★ THE MARK THAT
IDENTIFIES THE SOUTH'S
FINEST YEARBOOKS

PHOTO-PROCESS ENGRAVING CO.

115 - 119 LUCKIE STREET ★ ATLANTA GEORGIA

