

Hatter

NINETEEN HUNDRED AND EIGHTY-SIX

Digitized by the Internet Archive
in 2010 with funding from
Lyrasis Members and Sloan Foundation

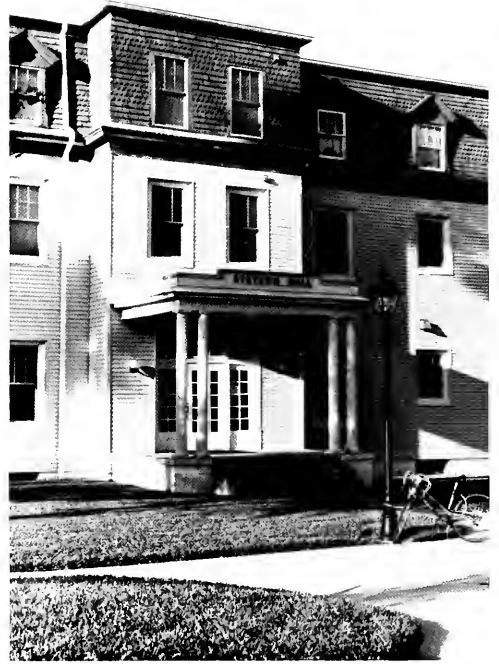
<http://www.archive.org/details/hatter1986stetson>



1986 HATTER
Stetson University
DeLand, Florida 32720
Volume 65

POLISHED PERFORMANCE

Living Up to Standards



Above: *Stetson Hall, after a major overhaul, now stands freshly independent. Left:* *Dorms are nice, but even the Student Lounge can offer a comfortable sanctuary.*

Living on the Stetson campus, though never free of its problems, has reached a comfortable climax in the past year. Stetson Hall, for example, though under renovation for over a year, is finally functioning as smoothly as the other women's dorms. Keeping equal quality in housing is important, and upholding that standard is more so, but it becomes a challenge when your door drops from its hinges.



Left: *Susan French and Cindy Rice eagerly search for their Emily Hall rooms. Above:* *The ninety-four year old center section of Chaudoin Hall.*





Above: *The newly refurbished Gordis Hall. Right: Lori Harrell and Susan Riley display a door which has fallen from its place.*



Below: *A sample of Gordis Hall living. Below right: Dallas Boychuck unpacks her belongings.*



A major facelift was given to Gordis Hall which now boasts new ceilings and furniture plus installed carpet. Comfortable living has reached a new mark in men's housing. Naturally one's own personal touch is allowed to supply any room with an atmosphere of home, but sometimes comfort must be obtained in places besides the dormitory.



POLISHED PERFORMANCE

History Standing Tall



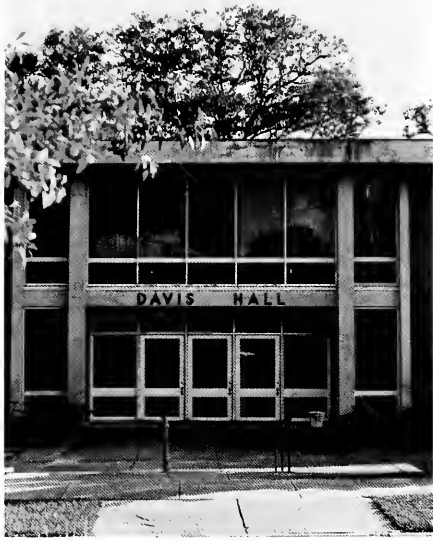
Left: DeLand Hall (1883)
Above: Flagler Hall (1902)

Below left: Sampson Hall (1908)
Below: Elizabeth Hall (1892-center, 1897-wings)

The construction of DeLand Hall in 1883 set a traditional standard at Stetson that has continued through the addition of the pedestrian mall in 1985. Though each landmark is a reflection of its own individual time, a unique campus atmosphere has gradually and carefully been captured and developed right up to the present.

Maintaining both tradition and atmosphere has become an important consideration over the years and is evident from end to end of the campus.





Above, right: *Davis Hall (1966)*



Above: *Sage Hall (1967)*

Right: *Kiosk (1985)*



Stetson's scenic balance has been upheld through its landscape and architecture with the intent to capture an old-fashioned flavor, and at the same time, provide useful, modern facilities. It is especially emphasized in the more recent additions.



To climax Green Feather Week, the carnival was set up on Hulley Field. Above is a Pike, Alpha Xi, and Sigma Nu booths.

GREEN FEATHER

sigma Nu pledges Jim Terrell and Tony Schoder get splattered with rotten eggs for the most popular booths at the carnival.

Greenfeather on the Stetson campus - Fall 1961



al view of the midway.

D R

ty. For obvious reasons

D DIVERSITY
D PERFORMANCE

The lives of Stetson students never stop moving. Achieving the full University experience depends on having more to do than study. Programs that involve people in charity, sports, every branch of the arts, career and academic exploration and school spirit all serve to give the students many routes of activity. Though personal reward and plain fun are the products, the effects of Student Life are felt beyond the bounds of the campus.



Susan Brown applies make-up to John Joiner for Mr. Beauty.

STUDENT LIFE



The Hat Rack Patio is a popular place during 10:00 a.m. break.



O.K., everybody smile!



You mean we're going to the Commons again? (Ha! Ha!)



Hanging out in front of Sampson Hall.



Here at Stetson, the students read very intellectual books.

ON CAMPUS

Students at Stetson have found many ways to relax in between the academic rigors. The campus offers scenic bike routes, ample space for strolling, throwing a frisbee, or just relaxing with friends; whatever! Stetson even has its own game room, student lounge for television and napping, and of course the Hat Rack patio and C.U.B. circle where students can observe the goats on.



Betty Llorens and Susan McDaniels heading toward the C.U.B.



Showing pride in Theta Alpha Phi.



Taking a few moments out of a busy day just to talk.

Greenfeather

BENEFIT CONCERT – LOST GENERATION



Todd Davis and Patrick Williams.

Jim Burns on drums with Corey Musselmen on bass guitar. An aspiring rock band made up of Stetson students

ROCK-A-THON



Rockers lounge as passers-by donate their extra change.



There was a record number of rockers participating this year including many new independent groups.

TALENT SHOW



Lynn Rogers and Tres Mullis perform their masterpiece "Make Love Stay".



Tim Maloney sings a heart-warming song entitled "Home".



Kim Rogers dynamically sings "True Love".



Mimi Taft sings "Something That Can't Be" to a friend.

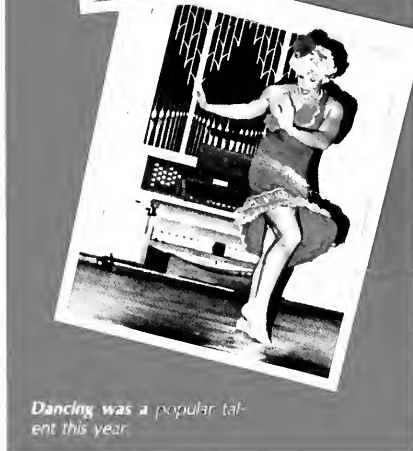
greenfeather



Beauty — 1985
 er — representing
 Alpha Theta



Alpha Kappa Psi — Jim Moskos
 Hollis Hall — Ted Bohne
 Delta Sigma Phi — Rick Darlington



Dancing was a popular talent this year.



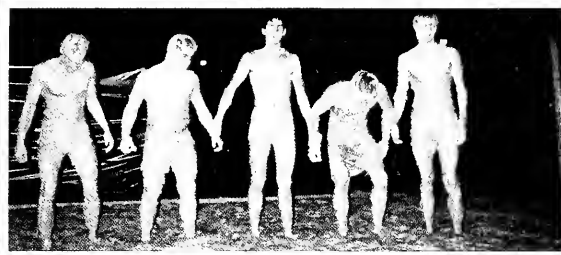
Alonzo Williams representing BCM.



Lovely!



ATΩ
Mud
Wrestling



Susan Poindexter and Maria Zouves grapple for the female title at the Alpha Tau Omega's wrestling booth.



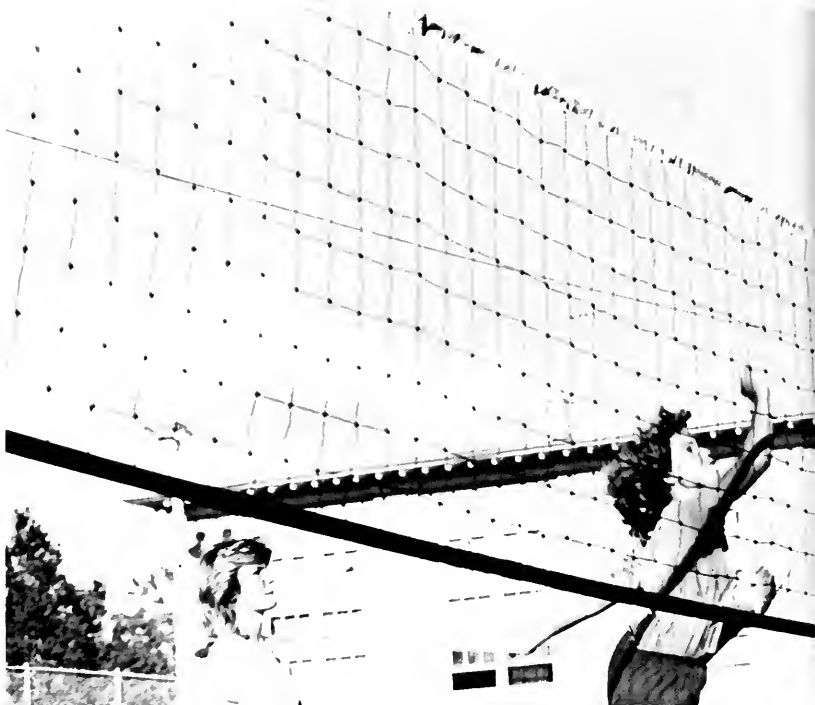
Greenfeather is a week full of events for Greek and non-Greek organizations to help charities. Greenfeather was co-chaired by Darcy Haag and Ed Graham. The week began with the Mr. Beauty Contest, and followed with the Olympics, Rock-a-Thon, and the carnival.

Miss Greenfeather 1985 — Shannon Goff representing Alpha Tau Omega was crowned along with first runner up Shanda Gilderbloom representing SGA and second runner up Helen Stratigakos Lambda Chi Alpha, at the Carnival on Friday night.

Intramurals

Intramural sports provides the opportunity for competition and fun between organizations. The Women's Intramural Program began with volleyball. Hard work, dedication, and good attitudes made the program successful throughout the year.

Football started the Men's Intramural Program with a rush. Intense concentration and lots of practice pulled them through this season.



Way to hit that ball!



Pat Dean waits for his long lost ball.



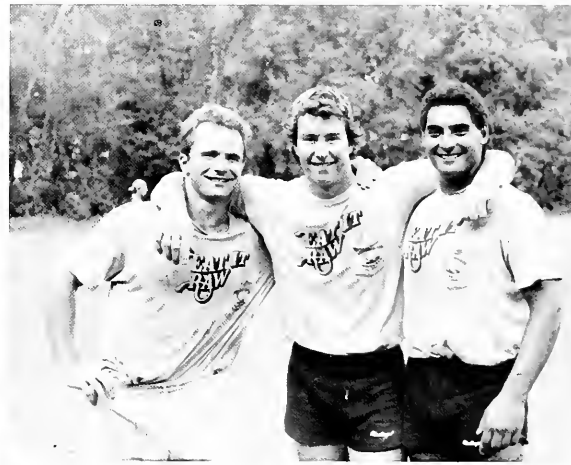
The Alpha Chi's show they're out to win with their intense concentration.



Hope Adams sets the ball.



Behind Cummings Gym, Laura leads the Alpha Xi's to victory.



Oysters!

All-star Mary Sages gets approval from her coach.

Theater

The Speech and Theatre Department began the year with "The Actor's Nightmare" by Theta Alpha Phi. October 10, 11, and 12 the curtains opened for "The Crucible" which proved successful. "Crimes of the Heart" showed how touchingly hilarious life can be.

The directing class showed their talents with the production of eight one-act plays plus senior Ron Geiger's "Death Trap". The year ended with the comedy "Blithe Spirit".



"The Crucible" made Todd a master with mascara.



The Puritanical lifestyle claims all who experience it.



Doctor Who's "sewing manual" has brought Kim far in the theatre.



Shannon discovers the pain of being beautiful.



Todd is shocked by Andrea's aggressiveness.

Homecoming

"Stetson ... And All that Jazz" welcomed home the alumni for Homecoming Weekend, 1986. Former Hatters were here to participate in the many events to remind them of good times past. Homecoming Chairman and Co-Chairman Beth Chesser and Greg Doescher arranged a multitude of activities including barbeques, sports and banquets. "Cluster" Receptions gave alumni the chance to get reacquainted with members of their graduating class and from home areas. Pardi-Gras, a new event to add to the tradition of good times, represented campus organizations with its many food, fun, and game booths on Saturday afternoon. The weekend highlight was of course the Homecoming basketball game. Students and alumni came to cheer our team to victory. Homecoming King and Queen were crowned at half-time and spirit awards were given to Alpha Tau Omega, Pi Kappa Alpha, Alpha Chi Omega, and Alpha Kappa Psi for their individual efforts to make the weekend even more exciting. The fun and excitement will add to our happy memories of good times at Stetson.

Talent in action.



Tri-Delts show their enthusiasm for Homecoming.



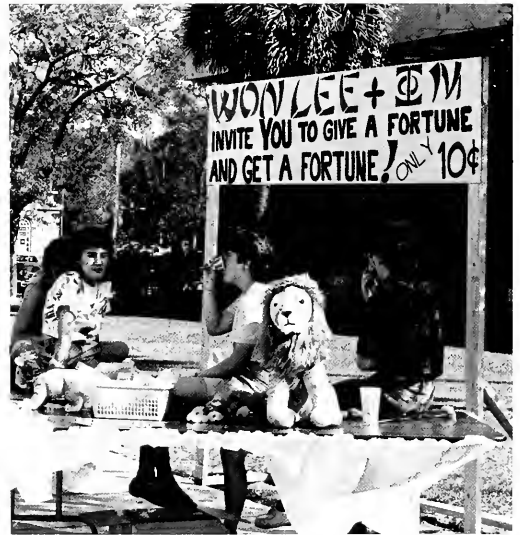
Alpha Zeta Delta's booth manned by Julie.



Fans watch the Homecoming game.



The new 1985-86 Homecoming King and Queen Dickie Smith and Dolly Dollison



Phi Mu sell fortune cookies at their Homecoming booth.

Homecoming



The Hatter greets an Alumni's child.



Homecoming finalists smile for the camera.



Homecoming chairpersons, Greg Doescher and Beth Chesser.

ATOs pose for pictures with the Hatter.





Stetson students from 1930.

POLISHED PERFORMANCE

Organizations will always be a big part of college life. Stetson has a club to fit everyone no matter where you are from or what your beliefs are.



Tri-Delt Crush Party is an annual event.

CLUBS

Association for Computing Machinery



ACM has become known as the standard by which colleges establish their criteria for a computer science major.

Association for Computing Machinery, under the chairmanship of John Stephen McDaniel, has provided a way for students to make contact with professional computer organizations throughout the nation.



This crazy staff has been busy with movie nights, canoeing, Sugar Mill runs, and a tide slide and barbecue with Gordis.

Sugar Mill Staff

Staff includes: Cindy Sutton, Michelle Franklin, Elaine Liz, Susie Roth, CarolAnn Austin, Laura Shaw, Melissa Strauch, Rebecca Faircloth, and Amy Rollins. Susan McDaniels is Head Resident.



Conrad Staff pictured Left to Right, Back Row: Erin Connors, Janet Booth, Susan Fulton. Front Row: Leslie Griffin, Andrea McMillan (Head Resident) and Jenny Hofmeister.

Conrad Staff

The residents of Conrad have enjoyed the particular closeness that they share. They had Thanksgiving dinner with Embry Riddle, went to Twinkle Star Day Care Center at Halloween, and had a R.A./Kidnap Roommate game.

Emily has been busy with "Men in Movies", Friday The 13th party, Fright Night, the Roommate Game, and the Scope Search.

Emily Staff



The Emily Hall staff consists of Mary Cubbedge, Sandy Borriello, Jillyn Williams, Karen Barkley, Angela Deen, Nancy Jordahl, and Corrine Chatfield. Jeanne Maddox is the Head Resident.

West U. Staff



Here are Lisa Hynes, the RA of West University, and Hope Adams, Head Resident

West University is a unique dorm which houses only a few women. The hall doesn't have a front desk and the atmosphere is laid back.



Chaudoin staff Left to Right, Back Row: Collette Sheedy, Traci Simpson, Diane O'Connor, Laura McCarthy, Kelly Finton, Jodi Littlestone (Head Resident). **Front Row:** Ingrid Eekhof, Beth Lubach, and Chris Unsworth.

Head Resident Jodi Littlestone and her staff has made life for the residents of Chaudoin fun-filled. Chaudoin co-sponsored a build-your-own-sundae with Gordis Hall, participated in the Winter Term Olympics, the Thanksgiving Can Drive, and showed movies bimonthly in the Chaudoin lobby.

Chaudoin Staff



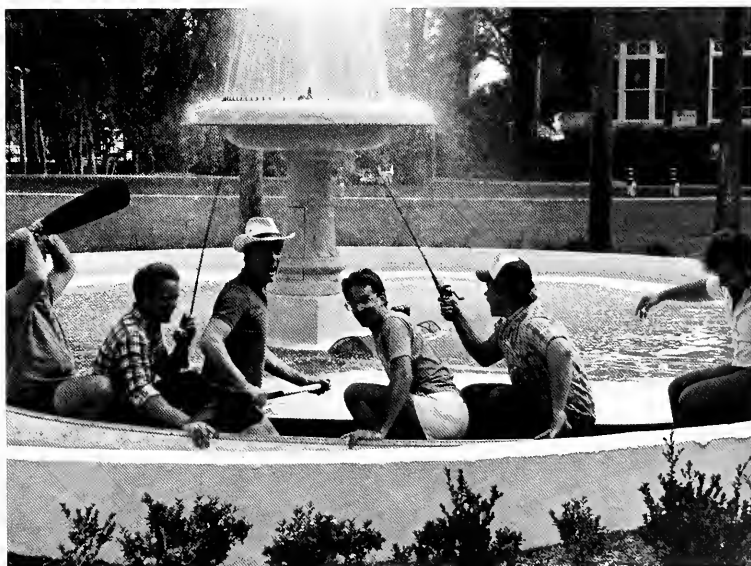
There is a freedom of interaction between these halls. The staff from left to right: Debbie Ferguson, Andy Reich, Alison Evans (Head Resident), John Moore, and Nekki Shutt.

Carson-Hollis

Head Resident Alison Evans and her staff have had a busy year with a Hall Bash with Lost Generation, a Halloween party, a Field Day, and a Super Bowl party. Carson-Hollis is unique: Carson is as much a part of Hollis as Hollis is of Carson.

Smith Hall has been busy this year. They will have a renovated dorm next year. They had a social with Emi. Their young staff is mostly sophomores.

Smith Staff



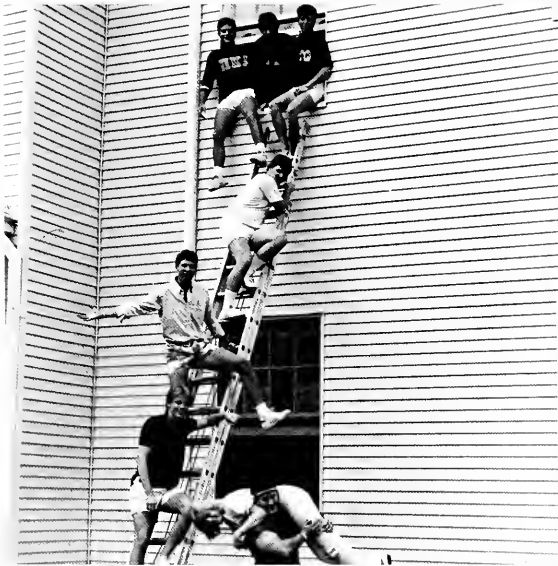
Pat Gaver, Andy McLeese, Greg Brown, Mark Prue (Head Resident), Bobby Lanpher, Jeff Newton, Rich Price.

New Men's Staff

New Men's staff consists of Head Resident Todd Doane, Farris Briggs, Frankie Miller, Dennis Aubry, Ken Lee-man and Jere Tolton. This is a crazy group of guys but we shouldn't "air their dirty laundry."



Caught here in the act looking for that unmentionably dirty laundry.



Pictured here are Gordis staff members Brad Goodchild, Matt Lacey, Greg "Dash" Doescher, John Hunt, Bill Winston, Head Resident Jeff Kral, and Jeff Ladinsky.

Gordis hall has been busy this year. Among all the intramural teams, they won the chicken eating contest. They also sponsored a Tide Slide party and a "Name That Tune" competition.

Gordis
staff



These House Fathers keep the fraternity houses in good running order.

House Fathers

- Pat Dean — Sigma Phi Epsilon
- Jeff Harris — Lambda Chi Alpha
- Dave Ragan — Pi Kappa Alpha
- Mark Kapusta — Pi Kappa Phi
- Keith Feldman — Delta Sigma Phi
- Bill Epting — Sigma Nu

Security may look tough but they are great . . . as long as you are not violating any rules. Making sure people park in the right place is only a small part of their job.

Security



Security is "students working for students."



Concert Choir

The Concert Choir is one of the most prestigious groups on campus. They are open to singers on audition basis only. This group tours once each semester bringing more awareness of Stetson University to people in other areas of the country.

This group performed at the Florida Baptist Convention in Miami this year. They had an outstanding Christmas Candlelight Concert. They were also involved in a performance of Handel's Israel in Egypt with renowned choral director Margaret Hillis of Chicago and soloists from around the country.



The Jazz Ensemble, directed by Mr. Charles McKnight, has been a driving force within the School of Music. They are an instrumental ensemble that performs many of the well known jazz charts of the Big Band Era and later periods.

Jazz Ensemble

The Jazz Ensemble is open to any student, staff, or community member. They performed at several Friday Night Jazz Concerts and at Homecoming, whose theme this year was "All That Jazz."



The Wind Ensemble has performed several times alone during the year. They perform music from all musical periods. During the fall, they performed an experimental 20th century piece that the audience enjoyed for its innovative creations.

These two groups performed together twice during the 1985-86 school year. During the Spring semester, they were able to present a premier of a new piece by Henry Brandt.

The Stetson Orchestra has been outstanding this year. They have grown larger in reputation and membership. They have performed several times this year.



The orchestra had the privilege this year of performing the premier of Joaquin Rodrigo's guitar concerto with Steve Robinson, guitar instructor, as soloist.



Physics students pictured here are exceptional because they have succeeded in a very difficult discipline.

The Physics Honorary is comprised of a variety of students outstanding in the field of physics.



Phi Alpha Delta is the new honorary on campus and is the Pre-law fraternity. Phi Alpha Delta helps students interested in going to law school become prepared for the requirements they will have to meet.

Obviously from the photo above many of Stetson's students are interested in going to Law School.



Phi Alpha Theta strives to promote the study of history and the excellence of historians.



Phi Alpha Theta is the History Honorary for those specializing in History with twelve hours and a "B+" GPA. Students must also have a "B" average overall.

Stetson's Accountancy Club tries to emphasize the importance of a high level of professional ethics. It also tries to stimulate and promote a greater interest in Accountancy.



This organization also strives to strengthen closer relationships between students and practicing accountants.



BCM conducts services every Thursday night and participates actively in intramurals.

B.C.M.
Baptist Campus Ministry is a campus organization open to anyone interested in developing himself in a religious life-style.



Here members pose for a quick picture.

Coalition for Social Responsibility
The Coalition for Social Responsibility is concerned with responsibility on campus and in the community.



Touchstone is a collection of short stories, poetry, essays, drawings, and photos and provides an outlet for those of us who are "behind the scenes" creators.

Touchstone

The Touchstone is the literary magazine for Stetson.

Sigma Pi Kappa is the journalism honorary.

ΣΠΚ



Pictured are Jayne Marlowe, Lori Hastings, and LeAnn Weiss. Not pictured are Dr. Ellen Smith, Ann Burlin, John Hunt, Ben Turoff, and Greg Doescher.

Mortar Board

Mortar Board is one of the most prestigious national honor societies at the college level.



Stetson seniors who excel both academically and in service to the university are inducted in the spring at the ODK/Mortar Board Leadership Banquet. The annual Hatter's Day and the senior-faculty banquet at the end of the year are sponsored by Stetson's Mortar Board.

Psi Chi is the National Honor Society in Psychology.

Psi Chi



Psi Chi strives for the growth of the study of Psychology. Membership is open to undergraduate and graduate students who meet the minimum qualifications — at least 12 hours of Psychology classes and a 3.0 GPA.

ODK

Omicron Delta Kappa is the National Leadership Honorary.



Members must be a junior or senior with high academic achievement and leadership in at least five major areas. Membership is also open to faculty and staff members who exhibit exemplary character and leadership on Stetson's campus.

Kappa Delta Pi is the Education honorary which recognizes outstanding contributions to the field.

KDP



Many of the finest teachers belong to this society which encourages high intellectual and professional standards. Both of these can be found in Stetson's education program, one of the best in the southeast.

ΣΤΔ

The honorary is open to those who are in the top third of their class, have earned more than 6 hours of English, and have a 3.0 GPA in the area. Members of Sigma Tau Delta lend their talents by offering a tutoring program.



Sigma Tau Delta is the honorary society for those majoring in English.



Four major officers are elected in the spring of each year. This year's officers were Dawne Williams, president; Laura McCarthy, vice-president; Donna DiFatta, secretary; and Betsy Buchanan, treasurer.

SUB

The Stetson Union Board is responsible for organizing many campus activities including concerts, movies, Happy Hours and entertainers. They also rent out camping equipment, refrigerators and VCR's.



The Political Science Honorary consists of students who have excelled academically, particularly in political science courses.

Political
Science

The Political Science honorary is one of the newest organizations on Stetson's campus.

The Hatter Connection is a group of students who serve as hosts and hostesses to those interested in attending Stetson.

Hatter
Connection



The Hatter Connection contacts prospective students towards the end of winter term to invite them to spend some time in the dorms and around campus.



Judiciary Council

The Judiciary Council at Stetson is a group of students, representative of each class, selected to hear and judge student cases of campus conflicts.

The cases usually involve some sort of traffic violations. The members of the council try to resolve all cases as fairly as possible using parliamentary procedure.



The military honor fraternity on Stetson's campus is Scabbard and Blade.

Scabbard and Blade

It is designed to promote positive aspects of the military, patriotism, and fellowship both on and off campus. Scabbard and Blade activities include the Blood Drive, participation in Greenfeather, and servicing the DeLand community.



German
Club

Some of the events which the German Club hosted were a picnic at DeLeon Springs (at which traditional German food was eaten), Christmas caroling with a dinner to follow it up, and movies shown by the sponsors Drs. Berry. The German Club meets bi-weekly and emphasizes the enjoyment of knowing and learning German.

This is the first year for German Club but a very successful one. The club began the year with a meeting at which they chose the new officers that would form the club and plan its events.

Order of Omega is the Fraternal honorary at Stetson.

Order of
Omega



The honorary is for Greek men who show leadership on Stetson's campus. Also, members must have above the Greek Men's average to be eligible for membership. Pictured are President Mark Kapusta, and Secretary-Treasurer Greg Doescher.

ΠΚΔ

Pi Kappa Delta is Stetson's nationally ranked Forensics Team. The members of Pi Kappa Delta have walked away from tournaments throughout the country with numerous awards.



Pi Kappa Delta is open to any student who has competed in at least two Forensics tournaments.



The organization serves to further research in business fields, and the curriculum leading to Business Administration. Alpha Kappa Psi also provides their members with many service opportunities.

ΑΚΨ

Alpha Kappa Psi is the largest and oldest professional business fraternity on Stetson's campus.



Members of Beta Beta Beta are mainly undergraduates with a high G.P.A.

Beta Beta Beta is the Biological Honorary society. It strives for promotion and appreciation in the area of Biological study.

The American Chemical Society is a social organization open to all science students. Through this organization students who are pursuing degrees in Chemistry related fields can further their knowledge and interests.



The activities of the American Chemical Society include lectures and various informative trips throughout the area.

ΓΣΕ

Gamma Sigma Epsilon is the National Chemistry Honor Society. The society promotes excellence in Chemistry and encourages scientific research. The organization is open to students with high scholastic achievement.



The initiation into the society consists of members being escorted blindfolded, into the secret initiation ceremony. Once in, the new members will be seen around campus the next day wearing test tubes.



SMA serves as a liaison between the business community and students preparing to enter business.

Stetson Marketing Association

Stetson's student chapter of the American Marketing Association is dedicated to the promotion and advancement of the field of marketing. The organization also strives to stimulate interest and encourage scholarship of students taking a marketing curriculum.



The Stetson Reporter delivers the "who, what, when, where, why and how" weekly to the Stetson community. The staff members have done a great job delivering the weekly news. Hats off to the Stetson Reporter!

Reporter
Staff

Lori Hastings has kept the Reporter Staff under control for the past two years.

BACCHUS publishes literature and displays them throughout the campus on the awareness of alcohol and drug problems.

Bacchus



Stetson should be proud of its students who are concerned with the ever present problem of alcohol abuse. Under the direction of the Advisor Melody Hall, these caring students make up BACCHUS (Boost Alcohol Consciousness Concerning the Health of University Students).

STAFF



The library staff is: Sims Kline, Neil Scott, Betty Johnson, Anne Hurst, Ruth Armstrong, Terry Grieb, Joel Zucker, Barbara Cullen, Susan Connell, Bonnie McMillan, Margie Miavez, Marlene Beeler, Doris Lyon, Madeline Quinn, Geri Littler, (not pictured) Pat Westbrook, Pat Nordman, Reuben Taylor, Dorothy Minor, Bill Bowden, Jane Beckman.



Religious Life Council is: First Row Left to Right: Garth Jenkins, Charles Granger, Vicki Griffith, Gary Morris, Nancy Tomaso. Second Row: Margie Duncan, Nini Kaczynski, John Tutay, Kristol Kingston, Jane Meister, John Saxon, Father Krumbhaar, Rodney Ellis.

STAFF



Food service plays an important role on campus by providing food prepared in a variety of ways. Pictured are David Troupe, Chris Clark, Brad Peterson, Rosalie Dubiel, Margaret Derico, Elizabeth Mendenhall.

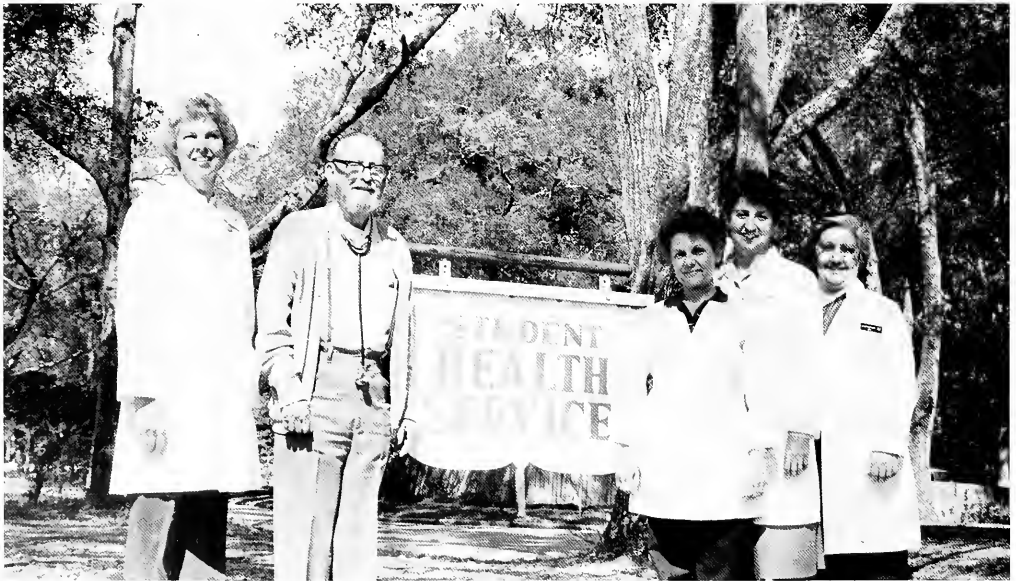


Admissions is a great group of people who make sure Stetson gets top students. Pictured in front are: Millie McCain, Eileen Merrill, Bert Williams, Gladys Wilcox. In back: Mark McMasters, Gary Meadows, Dean of Admissions, Don Lubbers and Diane McEachran.

STAFF



Public Relations is trying to make Stetson a national name through the use of publications and news releases. Jackie Kersh (Director of P.R.), Jill Woods (Director of Publications), Margaret Penno, Marie Sibert, and Keni Lanigan make up the hard working staff.



Health Service is a haven for those who are under the weather. With the direction of Dr. W.L. Smith, Ruth Spencer, Gladys Alvarez, Penny Taylor, and Haidie Kenner (Director of Health Services) work to keep Stetson well and happy.

STAFF



Print Shop offers a printing service to students, professors and publications. Director Mario Losasso working with James Decker, Robert Veilleux, Josephine Losasso, and Benjamin Garcia, print for Stetson.



Switchboard puts calls from home through to students. Those voices that say "go ahead" are Hazel Reed, Gladys Osborne, June Nolan, and Dot Crosby.

STAFF



The Comptroller's Office sees to it that everyone has paid their bills or signed their work study checks. Here are L.J. Jackson, Sharon Cridge, Rosemary Hosford, Bonnie Tapscott, Robyn Pauley, Lois Stevens, Betty Wilkins, Darrell Benge, Mack Wadsworth, Alice DeLosso, Dottie Eaves.



The Financial Aid group helps many students come and stay at Stetson. Thanks to Dan Moore, Norma Allen, Milly Bayott, Angela Connelly, Mary Slappey (not pictured).

STAFF



The Bookstore staff makes the purchasing of books and other various items an enjoyable experience instead of a grueling task. Practically everything a student would need is found in the Stetson Bookstore, and the staff is ready and waiting to help a student find it. The staff can also act as bankers because a student can cash checks in the bookstore.



What's the one thing that can turn a rotten day into the best day of the week? The answer is a letter from home or a card from your best friend. And who is responsible for getting that letter or card to you? The answer is the Post Office staff. Under the instruction of the Postmaster, Ron Morris, these Stetson students get the mail to you.



Secretary
KATHRYN JINKS

President
PAUL MCINTIRE

Vice President
BETTY JAYNE SAWYER

INTER-FRATERNITY COUNCIL

REPRESENTATIVES

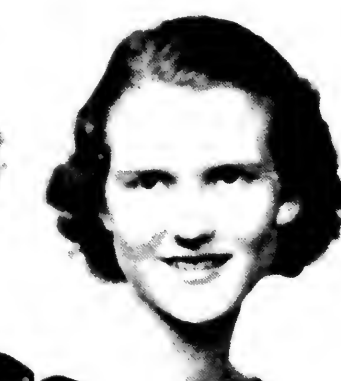
RUTH BARILETT
HELEN STOLTENBERG
WARD HUNTER

MARY ELLA KNIGHT
ANNE GOLDSICK
PAUL MAIER

ALICE McLAUGHLIN
STELLA POPE
ROBERT YOUNG

EDWARD NELSON

JEAN MASSEY
RICHARD BAL
WILTON B



In 1938 the Inter-Fraternity Council was composed of both Greek men and women. Today Panhellenic and the Inter-Fraternity Council divide them



Treasurer
ANNE HAWKIN

DOLISHED PERFORMANCE

It starts in a rush and ends in excitement. Through the Greek system at Stetson, students with common interests and goals form many lasting friendships. The Greek system gives students a chance to learn to work with others, a chance to gain leadership, a chance to help with their services and a chance to grow. College is not just classrooms and studies; college is a life created by the students in what they do between classes.



Rain or shine, the sororities are ready to welcome new Greek women to their sororities.

JANE McCARTY
ARTHUR SHULER
HUGHES WILSON



GREEKS

RUSH

Rush week is full of events to help individuals get acquainted with the Greek system on campus. Sorority Rush was different this year because six out of the seven sororities held Rush in the fraternity houses. Fraternity Rush was different in that this year was the first time there was ever a dry Rush because of the change in the drinking age.



Dig pledges run through the rain after being shirted.



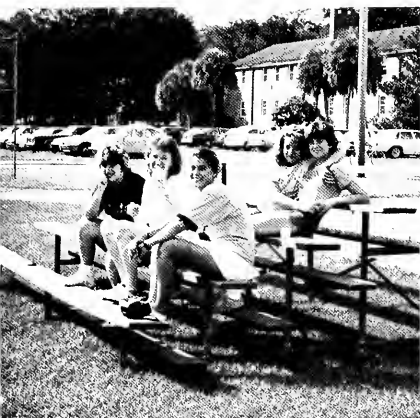
Rho Chi Diane Sutyak directs rushees to her Rho Chi group.



New pledges signed Panhellenic Roster in Elizabeth Hall during the Candle lighting Ceremony.



ATOs wait for their new pledges to pick up their bid cards.



P
A
N
H
E
L
L
E
N
I
C
*
P
Λ

Panhellenic

Although there was no Panhellenic Building, RUSH was successful thanks to the Panhellenic Council, who are in charge of choosing Rho Chis. They had a Panhellenic Ice Cream Social and Christmas Carolling with hot chocolate. The Panhellenic Council held two banquets honoring Greek women. Members were Julie Weber (not shown) President, Corinne Simpson, Nancy Jordahl, Betty Llorens, Laura Knirk, Patty Underwood, Debbie Hardy, Debbie Sabol, Judi Bland, Yeline Ugalde.



Rho Lambda



What's going on here? The members of Rho Lambda are showing their Panhellenic spirit by mixing up their jerseys. Rho Lambda is the Greek women's honorary which celebrates excellence.

A T Ω

ALPHA

TAU

OMEGA

Alpha Tau Omega was founded on September 11, 1865, at Virginia Military Institute. Their colors are gold and blue. The flower is the white tea rose and the pin is the Maltese Cross. The Theta Psi chapter was chartered at Stetson on February 5, 1983. Officers: Tom Fosket, President; Greg Doescher, Vice President; Eddie Graham, Treasurer; Matt Woods, Secretary; Rob Colon, Sergeant at Arms; David Fussel, Historian; David Newell, Public Relations; Rich Schumann, Usher.



The ATOs have kept busy with socials. Along with the parties, they achieved the highest GPA award and contributed to the Retarded Children's home.

A
X
Ω

ALPHA

CHI

OMEGA

Alpha Chi Omega was founded on October 15, 1885, at Depauw University. The colors are scarlet and olive green. The flower is the red carnation and the badge is the golden lyre set with pearls. The Gamma Chi chapter was founded at Stetson on May 18, 1957. Officers: Monica Gepfrich, President; Corinne Simpson, Vice President; Jillyn Williams, Vice President; Lisa Carlton, Vice President; Dana Lenox, Treasurer; Ronda Webb, Corresponding Secretary; Susan Huff, Recording Secretary.



The Alpha Chis have had an exciting year this year after celebrating their 100th anniversary. Activities this year including trick-or-treating with the Sugar and Spice Day Care Center, a toga party with the Pikes, and the Annual Newlywed Game.

ALPHA

A

XI

N

DELTA

Δ

Alpha Xi Delta was established on April 17, 1893, at Lombard College. The Quill is the sorority's badge, the pink rose is its flower, and Al Fuzzy Bear is its mascot. The colors of Alpha Xi Delta are light blue, dark blue, and gold. Alpha Xi was chartered at Stetson in 1917. Officers: Kim Carpenter, President; Pam Dennis, Vice President; Julie Weber, Recording Secretary; Marianne King, Corresponding Secretary; Jane Cornelius, Treasurer; Susan Muga-vero, Pledge Educator; Clairibel Blanco, Membership Chairman; Carol Bailey, Quill.



The Alpha Xis have had a busy year with parties with the Lambs, a yacht party with the Pi Kappas, and their traditional Thanksgiving dinner. During the school year, they sponsored a fashion show to benefit their philanthropy, the American Lung Association. They also held an Easter Egg Hunt for the Twinkle Star Day Care Center, and collected for UNICEF on Halloween.



DELTA



DELTA



DELTA

Delta Delta Delta was founded in 1888 at Boston University. Their colors are blue, silver, and gold. Their flower is the pansy, and their symbols are the pearl, pine tree, and the stars above the crescent moon. The Alpha Delta chapter was established at Stetson in May of 1913. Officers: Edie Anderson, President; Karen Bray, Pledge Trainer; Susan McDaniel, Chaplain; Beth Chesser, Rush Chairman; Monique Cortes, Social Chairman; Dee Harmon, Scholarship Chairman; Marilyn Troup, Corresponding Secretary; Lucille Russo, Recording Secretary; Julie Smith, Treasurer.



Tri Deltas win Greek Sing.

Δ DELTA
 Σ SIGMA
 Φ PHI

Delta Sigma Phi was founded on December 10, 1899, at the College of the City of New York. Their colors are green and white. The flower of Delta Sigma Phi is the white carnation. Officers: Randy Chesak, President; Courtney Taylor, Vice President; Ric Darlington, Secretary; Dave Buth, Treasurer; Dave Wilson, Sergeant at Arms; Keith Feldman, Housefather. They sponsored a haunted house for local children and supported their national philanthropy, the March of Dimes.



Delta Sigs win the Greek Sing!

Z ZETA

T TAU

A ALPHA

Zeta Tau Alpha was founded on October 15, 1898, at Longwood College. The sorority's colors are turquoise and steel gray. Their flower is the white violet and their pin is the shield. The Beta Psi Chapter was chartered in 1934. Officers:- Jill Searcy, President; Sue Bullard, 1st Vice President; Erin Connors, 2nd Vice President; Betsy Buchanan, Historian/Reporter; Nancy Lopez, Treasurer; Jennifer Hogg, Secretary; Carol McMurry, Membership; Michelle Snyder, Ritual.



This year, the Zetas collected stamps for leprosy, money for UNICEF at Halloween, and canned food for the needy. They also held a Valentine's Day party for the Methodist Children's Home; a special Olympics; and sponsored Anat Tarlo, a child in Israel.

K KAPPA
A ALPHA
Θ THETA

Kappa Alpha Theta was founded at Asbury University in Greencastle, Indiana. Black and gold are the sorority's colors. Their flower is the black and gold pansy and their pin is in the shape of a kite. Officers: Maria Figueras, President; Sherry Junker, Vice-President Efficiency; Tambre Ware, Vice-President Pledge; Laura Knirk, Vice-President Finance; Caroline Robinson, Recording Secretary; Laura Shaw, Chaplain; Donna MacRae, Marshal.



The Thetas were busy this past year continuing old traditions and starting new ones. They held a Christmas party for Sugar and Spice Day Care. The pledge class sang and talked with the people at a local retirement home. They took time to party, too, holding their Christmas dance at Grand Cypress.

Λ LAMBDA

X CHI

A ALPHA

Lambda Chi Alpha was founded on November 2, 1909, at Boston Univ. The fraternity was chartered at Stetson in 1949. Their colors are purple, green, and gold and their flower is the white rose. Officers: Mark Montgomery, President; Alan Hudgins, Vice President; William MacGrath, Secretary; Leon Frush, Treasurer; Dean Davis, Rush Chairman; Jeff Harris, Ritualist; William Judge, Fraternity Educator; Francois Lopez, Scholarship Chairman; David Sperigan; Alumni Secretary.



The Lambs have the most improved and highest overall GPA, and they won the Bruce McIntosh Award for their continuing pursuit of excellence. The Lambs are a Grand High Alpha Chapter — the highest honor given by the national fraternity.

Π *PI*

Β *BETA*

Φ *PHI*

Pi Beta Phi was the first national fraternity for women, founded on April 28, 1867, at Monmouth College. Pi Beta Phi was also the first National Women's Fraternity to be founded at Stetson on January 30, 1913. Pi Phi's flower is the wine carnation, their badge is the golden arrow, and their colors are wine and silver blue. Officers: Lisa Geiger, President; Karen Casey, Vice President Moral; Robin Phillips, Vice President Mental; Becky Graebe, Vice President Social; Diana Langston, Recording Secretary; Jennifer Lloyd, Treasurer; Debbie Sabol, Panhellenic Delegate; Susan Holjes, Membership Chairman.



The Pi Phis were busy this year with an Arrowcraft Sale to support Arrowmont, their national philanthropy, a Head Start Program with the Pikes to help the underprivileged, and a Halloween party with the Delta Sigs. The Pi Phis also sponsored Veronica, a child in Kenya.

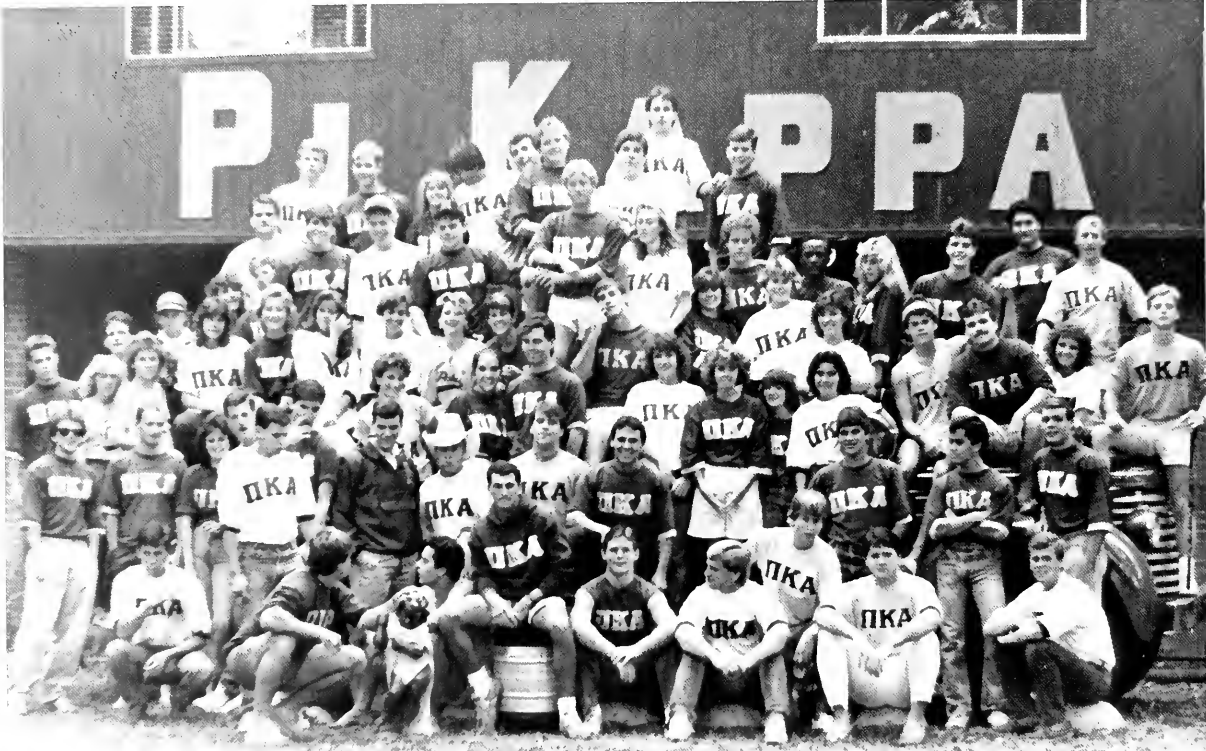
Π Κ Α

PI

KAPPA

ALPHA

Pi Kappa Alpha was founded on March 1, 1868, at the Univ. of Virginia. Their colors are garnet and old gold and their flower is the Lily of the Valley. Officers: Dan Byrne, President; Jeff VanMater, Vice President; Steve Moore, Recording Secretary; Burton Hurner, Corresponding Secretary; Mike Evans, Sergeant of Arms; Mike Bitter, Treasurer. The Pikes have had their Annual Toga party and many other parties. They did landscape work for a convalescent home in DeLand, sponsored a haunted house along with the Pi Phis for local kids, and were big brothers for three local children.



Pikes put on a good show for Greek sing.

Π
Κ
Φ

PI

KAPPA

PHI

Pi Kappa Phi was founded on December 10, 1904, at the College of Charleston, the only fraternity founded in South Carolina. Their colors are gold and white and their flower is the red rose. Officers: Dave Cope, Archon; Chris Twohey, Vice Archon; Lee King, Treasurer; Bobby Kraus, Secretary; Kevin Tweddle, Historian; Les Calahan, Warden; Jim Nelson, Chaplain.



The Pi Kapps had a haunted house with the Tri Deltas for the Headstart Program and they helped their national philanthropy, PUSH (Play Units for Severely Handicapped). They also had Rave cut hair, and held a carnival in April to raise money.

SIGMA

Σ
NU
N

Sigma Nu was founded January 1, 1869, at the Virginia Military Institute. The Sigma Nu colors are black, white, and gold. Their flower is the white rose. Officers: Ron Cole, Commander; Kirk Owens, Lieutenant Commander; Joe Donalson, Treasurer; Mark Smith, Recorder; John O'Neal, Chaplain; Michael Goodrich, Alumni Contact; Jon Dienard, Pledge Marshal; Mark Faber, Rush Chairman.



The Snakes have worked with handicapped children and have held many parties. The Sigma Nu house, which overlooks fraternity row, is fully owned and operated by the brothers.

Σ
Φ
Ε

SIGMA

PHI

EPSILON

Sigma Phi Epsilon was founded on November 1, 1901, at the University of Richmond. Their colors are purple and red. The flower of Sigma Phi Epsilon is the violet and dark red rose. Officers: Matt Smith, President; Joe Sardinas, Vice President; Robert Sands, Controller; Scott Price, Corresponding Secretary; George McKelvy, Recording Secretary; Mike Simon, Chaplain.



The Sig Eps have had a busy year. They sponsored a successful fund raiser with Dominoes Pizza to benefit the Shriner's Burn Hospital. They had their Annual Bahama Blue party, a Halloween social with the Phi Mu's, and their Christmas formal in Daytona.

PHI

Φ MU

M

Phi Mu was founded in March of 1852 at Wesleyan College in Macon, Georgia. Their flower is the rose carnation and their mascot is the lion. Their colors are rose and white. Officers: Diane O'Connor, President; Diane Sutyak, Vice President; Kathy Costa, Secretary; DuAnn Kremer, Treasurer; Tracy Reinhold, Phi Director; Jennifer Davis, Membership Director; Rebecca Faircloth, Standards. Phi Mus carved pumpkins at Halloween and gave them to a children's home. They also sponsored a Thanksgiving canned food drive and donated them to a neighborhood and held a carnival. Phi Mu also attained the highest GPA during the fall of 1985.



PHI

SIGMA

KAPPA

Φ
Σ
Κ

Phi Sigma Kappa was founded on March 15, 1873, at the University of Massachusetts. Their flower is the red carnation. The fraternity's colors are silver and magenta. Phi Sigma Kappa is called a "test-tube" fraternity because it was founded in a chemistry lab by six sophomores. Officers: Jeff Ladinsky, President; Steve Yorke, Vice President; Sean Hamilton, Secretary; Rob Borsofsky, Comptroller; Jim Stewart, Inductor; Doug Ramsey, Sentinel. The Phi Sigs were volunteers in public schools, they constructed Volusia County 1st Brek parking lot for Mr. Fogel, a Deland attorney, and they also did yard work for the community.



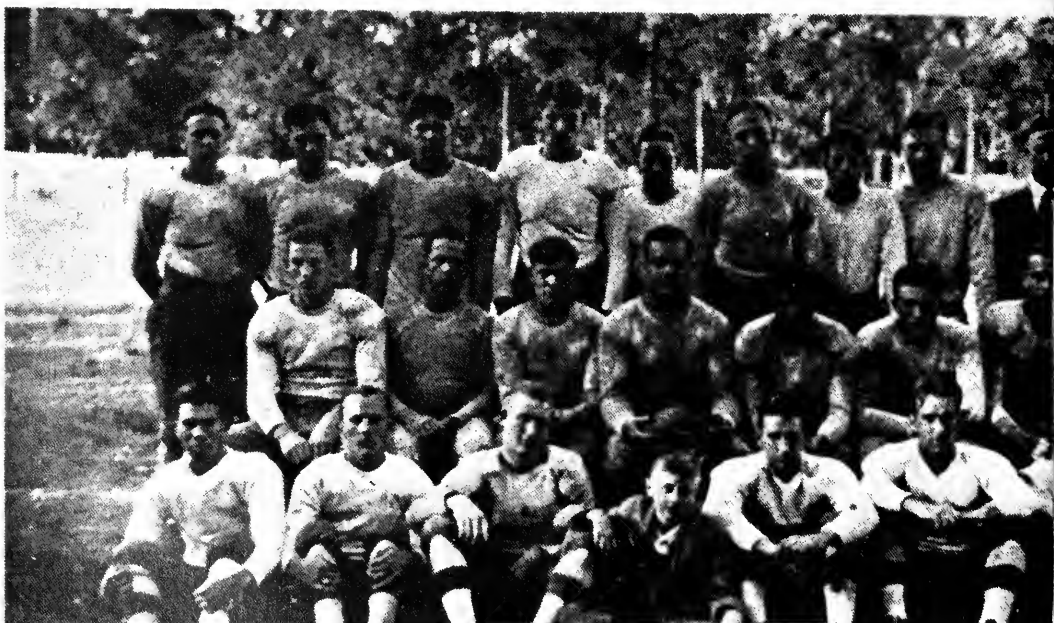
Phi Sigs sing "We Want A New House" for the Greek Sing.

The Hatters had a very successful season this year, winning the title of S. Florida. Until the last game the Hatters were one of the four undefeated. Unfortunately they were nosed out by Howard by the score of 14-13. The only against the Hatters were Southern and Howard. Although the Hatters lose we expect an excellent team next year. The schedule:

Norman Park Institute	Norman Park, Geor
Rollins	At Ho
Southern	Lakela
Miami	Mia
Howard	Daytona Bea

THE TEAM

Mox (Capt.)	<i>Tackle</i>	FRISCIA
MIKELL	<i>Quarter</i>	WILCOX
KINNEY	<i>Full</i>	GUATIER
JINKINSON	<i>End</i>	LOOMIS
HARRIMAN	<i>Full</i>	GRANT
SWEENEY	<i>End</i>	GATES
SOCASH	<i>Center</i>	PYRVIS
JOHNSON	<i>Half</i>	ORENDAIN
MOSELY	<i>Half</i>	ADLER
SCHMIDT	<i>Tackle</i>	DOLNEY



Stelton Football schedule from 1930.

A. Champs of
s in the east.
teams scoring
men this year

. . . End
. . . Guard
. . . Guard
. . . Center
. . . Half
. . . Half
. . . Guard
. . . Half
. . . Half
. . . Half



POLISHED PERFORMANCE

Since 1883, sports have played an important role on Stetson's campus. Football is no longer here, but this year has proven that Stetson has a variety of athletes. Sports programs change, but the Stetson spirit lives on.



In 1985, soccer is a winning sport on Stetson campus.

SPORTS

Basketball



Anderson, Johnson, Stevenson, Coachman, Kuhl, Cumbie, Rowe, Woodward, Williams, Lucas, Hinman, Davidson, Jones, Daniels.

Stetson Enters Trans America

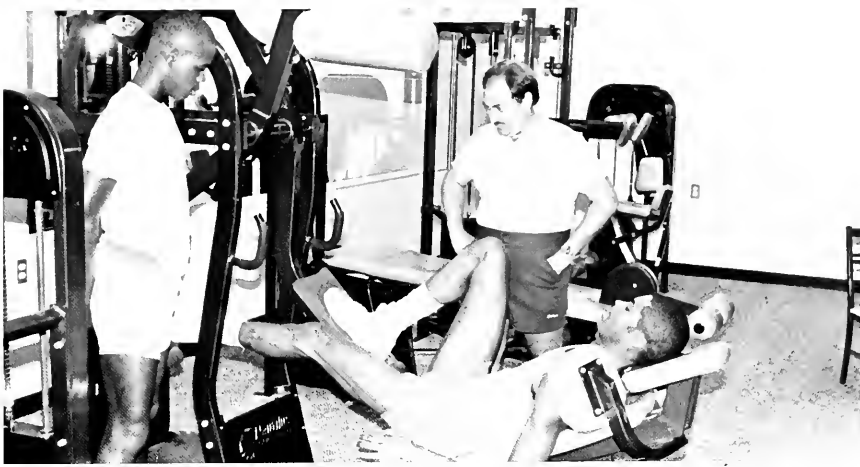
It was a rough and hard road for this year's Hatters. Due to the loss of several who graduated, this year's team struggled with filling new positions. Some players new to college ball had to adjust to new positions making it especially difficult to perform well. The Hatter schedule was no help to the new team. At the height of Duke's reign as #2 in the nation Stetson faced them — other teams such as Auburn and Wake Forest were no easier a challenge. Recruitment had been a problem in the past. "These kids," Wilkes said, "would go to Siberia to play in a NCAA Tournament."



Randy Anderson shows his style to #2 Duke.

Stetson entered the Trans-American league. With this, the team has a good chance at a NCAA bid. "It is up to the players themselves," said Wilkes "they don't have to depend on a bid."

"The big thing now for a prospect is to go to that NCAA Tournament."



Gary Coachman builds his jumping power on the school's Nautilus.



Dick Westervelt introduces the Hatters before play begins.



Glenn Wilkes guides his team to victory.



Miss Hatter receives roses.



Miss Hatter Missy Nicoll with the runners-up.

Basketball

Lady Hats Make New Records

This year has been an explosive one for the Lady Hatters, especially for this year's co-captain Dallas Boychuk. She has succeeded in breaking nine Lady Hatter records. The most prestigious of these records was that of most career points which had been held by Brenda Elrod (1981).



Dallas Boychuk shows her lay-up!



Team captains Cain and Boychuk with coaches.

- 33 Boychuk
- 50 Hillery
- 20 Michael
- 15 Mathur
- 22 Cain
- 24 Baldwin
- 34 Eason
- 25 Robinson
- 32 Hall
- 13 Nunez
- 11 Miller
- 21 Machamer
- 10 Wade
- 14 Kakuk
- 30 Bell



Dallas Boychuk also led the Lady Hatters to beat Mercer by the most points ever scored by any other Lady Hatter team. The final score was 114-75. To boost attendance at the thrilling games the Lady Hatters joined with TCBY of DeLand and gave free yogurt to the first 300 people. Way to go Ladies!



Freshman team relaxes on court.

Soccer

Has Successful Year

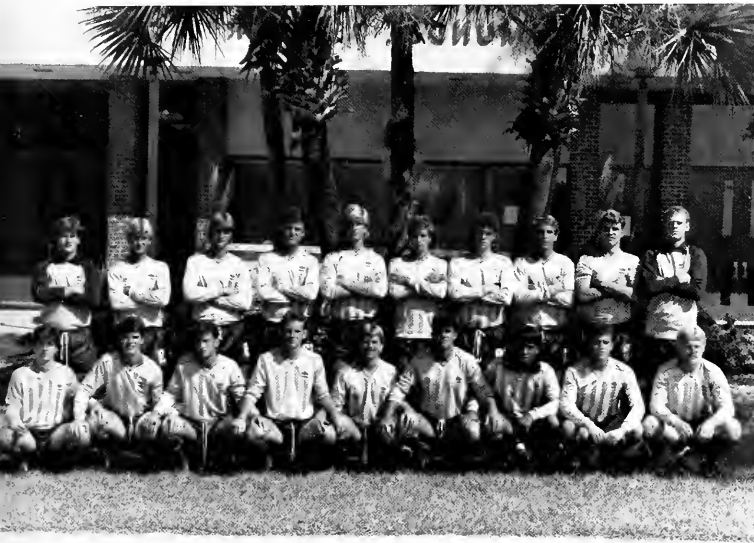
The Stetson soccer team had a high success rate during Gary McKinley's first year as Head Coach. Although the team is relatively young they have managed to break two records and play well against such highly-ranked teams as Flagler College, University of North Carolina at Asheville, Jacksonville University, and Appalachian State.



Geoff Timm steers the ball to another Stetson goal.



Chris Bennett knows how to take that ball away.



- Ed Funcheon
- Kevin Bridges
- Matt Smith
- Geoff Timm
- Chris Norton
- Chris Cavon
- Chris Bennett
- Jeff Williams
- Brian Candon
- John Fickle
- Chip Bauder
- Kurt MacDonald
- John Hildebrand
- John Creed
- Pat Daxon
- Fernand Farreis
- Chris Farrell
- Capt. Paul Verchick
- Coach Gary L. McKinley



Stetson's four musketeers are ready to block that kick.

Coach McKinley commented, "The soccer team holds a bright future. My biggest concern is to change it from a losing team to a winning team." He concluded that he is going to study what is needed for next year to be one of the top teams in the country.

Baseball

Baseball Shows Polish

Hard hits and fast pitches helped make this year's team very exciting. Led by Head Coach Pete Dunn and Asst. Coach Rick Hall, the team gained unity and confidence. This team also had great spirit which was nurtured by spectators and the ever present Bat Girls. This high spirit was very helpful while playing such teams as Seminole Community College, Valencia Community College, and Central Florida Community College.

Pitchers

Chris Byrnes
Ken Connell
Bill Gill

Jeff Henderson
Jason Murphy
Mike Natale
Victor Ramos
Tom Sutte
George Tsamis
Kevin Wasilewski
Steve Woide

Catchers

Tim Farrand
Landy Leon

Infielders

Eddie Corbett
Chris Dunham
Shawn Lee
Dickie Smith
Jim Smith
Jack Trainor
Capt. Ron Vara
Kevin Weickel

Outfielders

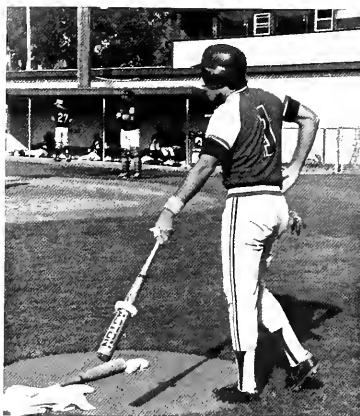
Dennis Carpenter
Fred DeLamata
Bill Kiley
Thomas Perkins

Head Coach Pete Dunn
Asst. Coach Rick Hall

Grad. Asst. Coach Jeff Altier

In the fall Stetson played the intra-squad play-off series and hosted several double-headers. The intra-squad play-off series was scheduled as a three of five series but the Green side, with Ron Vara and Dickie Smith, turned it into a three game set.

Although the team had few double-headers that they won both games the team looked quite good in pre-season play. Good Luck!



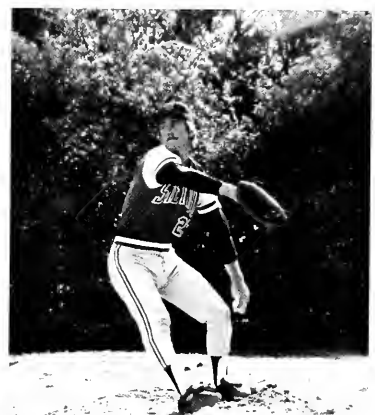
Eddie Corbett poses with that awesome Hatter style.



Orlando Leon awaits the pitch.



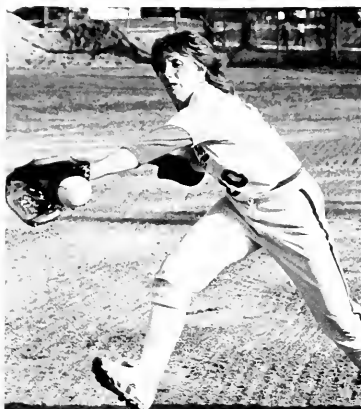
Dennis Carpenter shows Eddie Corbett the proper way to catch grounders.



Bill Gill knows how to use his fast moves to his advantage.



Fast ball is faster play.



What a catch by Conklin.

Softball

Fast Pitch

Means . . . Fast Play

The women's softball team has been successful in playing fast pitch softball this year. Coach Megan T. Bryant did well in her first year of coaching at Stetson, and Trainer Chris Ramer's experience helped. It took a lot of hard work and fun for this team to polish its performance.



- Robin Bradford*
- Kim Carpenter*
- Robyn Swartz*
- Janet Hauck*
- Lori Brown*
- Debra Clark*
- Denise deNoyelles*
- Cheryl Conklin*
- Erin Owen*
- Debra Ryan*
- Laurel Robinson*
- Deidre Williams*
- Denise Mikel*



Practice makes perfect.

Co-captain Deidre Williams and Cheryl Conklin led the women's softball team to victory. This fast pitch action led the team to work harder for success. Congratulations on a job well done!

Cross Country

Men



This year's cross country teams had what could be considered a good year. The teams usually placed within the top five at each meet. The competition was tough and steady but the Stetson teams had worked hard and that work paid off many times over. The coach was proud of his team and is hoping for the same enthusiasm in next year's team.



Women





The Hatters are ready on the attack.



Christy Hoffman sets up the serve.

Volleyball

Experience Gives Polished Performance

Experience and endurance was the name of the game this year for Stetson's women's Volleyball team. Grunts, groans, kills, and spikes may not seem like ladylike behavior, but that didn't stop the Lady Hatters.



The 1985-86 Women's Volleyball Team:

OUTSIDE HITTERS

- 16 Katy Barbour
- 20 Cheryl Conklin, Captain
- 17 Mary Margaret Enns
- 18 Janet Hauck
- 11 Christi Newkirk

MIDDLE BACKS

- 26 Anne Gatins
- 24 Janiece Holder
- 22 Peggy Machamer, Captain
- 21 Kim Vach, Captain

SETTERS/HITTERS

- 12 Christy Hoffman
- 10 Stephanie Roszell



Kim Vach gets set to return the ball.



The Lady Hatters enjoy a win.

This year marked Head Volleyball Coach Dr. Elizabeth Schumaker's seventh year with the team. Veteran players such as Kim Vach, Peggy Machamer, and Stephanie Roszell excelled in their volleyball techniques. During the last week of playing, Peggy Machamer was rated by NCAA as having the number one percentage block rate in the country. Way to go Lady Hatters!

Tennis

Tip-Top Shape

This year's Men's team wasted no time in starting their season. The team, led by Coach Ray Hussey, began practicing in January. This early conditioning was started to strengthen the team members for a rigorous year.



Scott Foltz practices his backhand.

*Wm. Brett Beard
Farris Briggs
Jeff Burnett
Todd Carriglio
Richy DeRienzo
Chud Dollison
Scott Foltz
John Krohn
Frank Miller
Brian Palmer
Tony Sciarrino*



At the beginning of the season, the team had trouble converting three setters to their advantage but in the end the team trimmed out and learned from their mistakes. The team spirit out on the court was especially high this year.



Serving the ball.



Todd Carriglio volleys.



*Mary Werley a walk-on, shows that it isn't all
easy. You have to work.*



*Donna Garriques prepares to return that quick
serve.*

Tennis

Lady Hatters Are A Striking Force

This year opened up a new door as the Lady Hatters of tennis would be playing in Division 1. During 3 years of NCAA Division 2 competition, Stetson earned its top ten ranking each season. In Division 1, the Lady Hats are hoping to do the same.



Karen Neverton
Patricia VanBylvevelt
Jean Carlin
Donna Garriques
Mary Werley
Whitney Bales
Kathy Nee
Mandy Stoll
Tracy Freudenstein
Mary Pat Dougherty
Vicky Pate



Practice is an everyday event.

The Lady Hats also entered the New South Conference and are giving their best shot at the new crown. Vicky Pate leads the Lady Hats with help of Mary Dougherty. Dougherty was an All-American before graduating from Stetson in 1982.

Golf

Team Swings Ahead!

For many years, Coach Weickel has led the swinging Hatters. Through his expert advise and the talent of the team members, his team has displayed polished performance.



What a putt!



Concentration is the key!

- Bob Hudson – Captain*
- Lloyd Vail*
- Constant DeMattia*
- Mike Blazer*
- Geoff Campion*
- Mark Leetzow*
- Andy Hartline*
- Ric Hughes*
- Bobby Hunt*
- Jeff Bruns*
- Ralph Antonetti*
- Bob Barkley*
- Doug Sobieski*



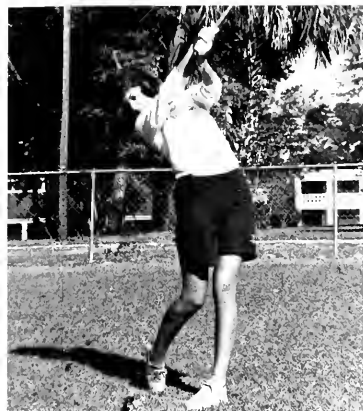
With the success of past years and the talent of the players, the golf team experienced an excellent season. Captain Bob Hudson helped Coach Weickel to lead the team towards success.



Golf also takes good aim.



Stetson's team handled the traps in golf also!



What follow through!



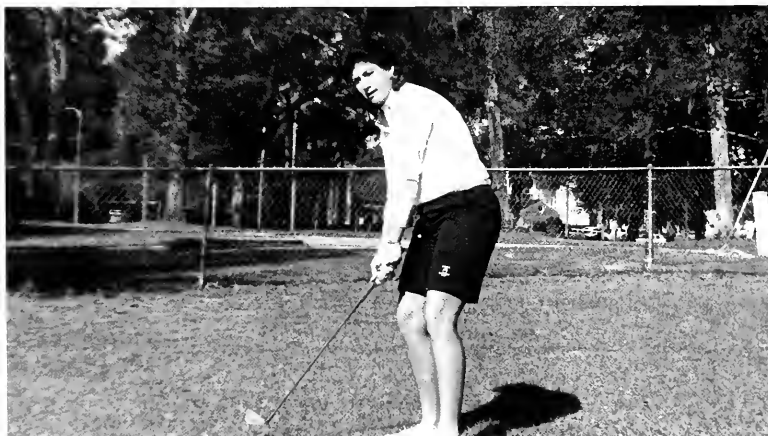
Katie Byrne displays excellent form!

Golf *1st Year* *Success*

Even though this year was the first year that Stetson had a female golf team, they had a successful year. There was even one player who had never played before.



*Katie Byrne
Mary Wilbanks
Cherrie Curry
Kathy McMutrie
Coach O'Sullivan*



Fore!!

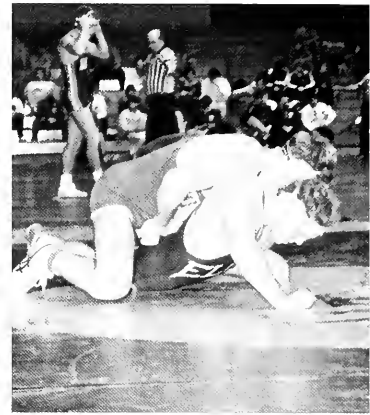
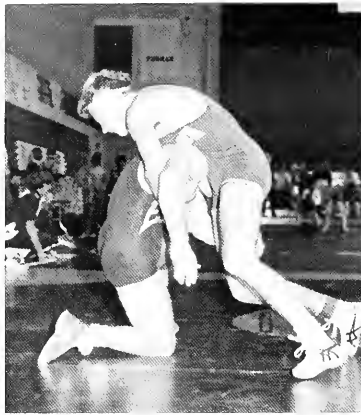
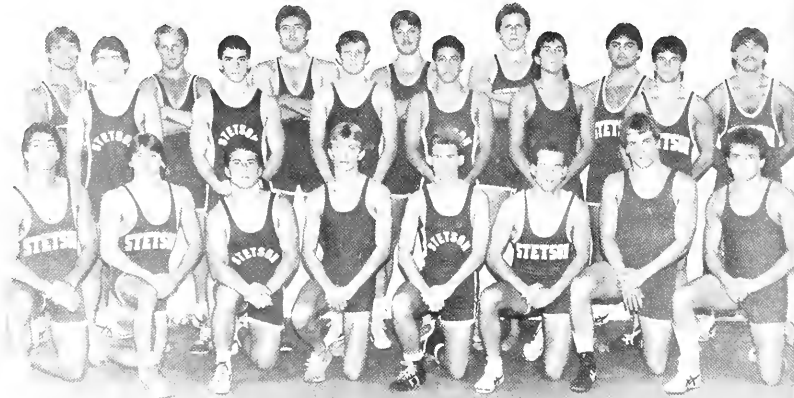
Competing this year was difficult for the Women's Golf Team, but not impossible. They had to create the team to meet Division I's Male/Female numeric requirements.

Wrestling

Polish Shines

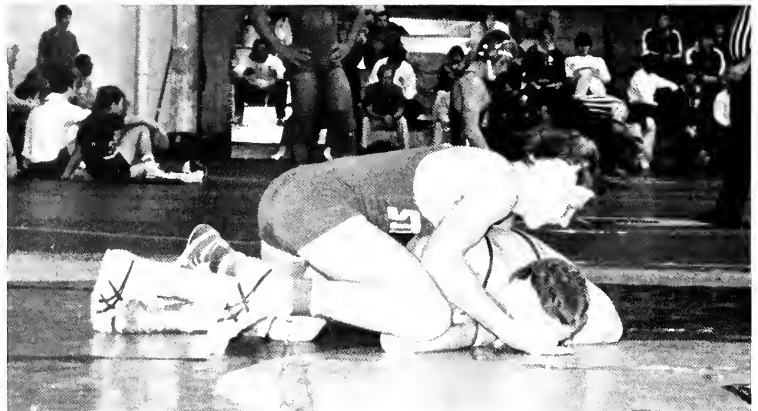
This year the Stetson Wrestlers showed their polish. The Southern Open has traditionally been one of the toughest tournaments. This year's team took eighth place out of a field of 25 teams. "We went up there hoping to break into the top 15 and place at least one wrestler." Instead the team placed several wrestlers and was then able to get seeded at other key tournaments this year. Included among the tournaments were the Stetson Open and the Eastern Regional Qualifier.

Todd Gustafson
Steve Berg
Tom Stallings
Ross Marino
Richard Batchelor
Bucky Davidson
Charles Covati
Ray Montero
Richard Schmann
Gabe Pruss
Mike Morakis
Jon Love
Tony Gustafson
Kevin Sciacca
Shawn Knapp
Rob Colon
Tom Weber
Jim Ryan
Vaughn Brown
Mike Roll
Chris Lunder



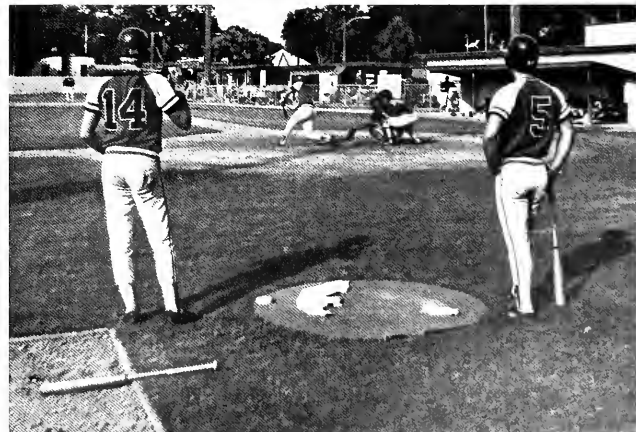
Polish shines as hard work pays off. One of the Stetson Wrestlers receives points for a take down.

Although the Stetson wrestlers had been defeated by local rival, University of Central Florida, on November 26th, Stetson's eighth place victory placed them ahead of U.C.F. "The way we performed was beyond anything I could have expected," commented second year coach John Hauser. The coach also commented on the excellent help that he had attained through his asst. coach and upperclass wrestlers. We wish to congratulate the wrestlers on their great season and we tip our hats to the WRESTLERETTES for their support of the team.



Don't give now because I just started to teach you your lesson.

Where'd the ball go?



Cheerleaders

Spirit Promotes Pride

Well-known for its high-spirited support of Stetson Athletics, this year's cheerleading squad showed its green and white with high enthusiasm. Led by Karen Jones, the squad achieved its main objective of very actively promoting pride in Stetson.



L to R Anne, Jamie, and Elizabeth.



Theresa Lefils as "The Hatter".

Annie Akarjalian
Jamie Ball
Mae Hayes
Holli Horton
Jenny James
Elizabeth Koszas
Michelle Solomon
Luci Warren
Nancy Drumov (Alt.)
Shila Gillespie (Alt.)
Dense DeNoyelles (Co.-capt.)
Karen Jones (Capt.)



Cheering on the Hatter Basketball team involves very devoted spirit and unity which the squad has developed through long hours of intense and rigorous practices. These practices also give the squad poise and coordination, all of which goes toward psyching and promoting that feeling of Hatter spirit among the athletes and their fans.

The Hatter tips its hat to you for your support!



Cheerleaders show their stuff during half-time.

Stetson Support is #1



Wrestlerettes were a huge help!





Activities over the past years haven't changed much, but styles certainly have as this picture taken from a 1938 yearbook clearly shows.



The classes are filled with unique individuals with different goals. Each person attempts to achieve his goal in a different way. After many successes and failures, most eventually achieve the ultimate goal: GRADUATION!



Even seniors eagerly check their mailboxes daily.

CLASSES

SENIORS



Dawn M. Acquard



Dawn Adams



Hope Adams



Dawn Marie Anderson



Edie Anderson



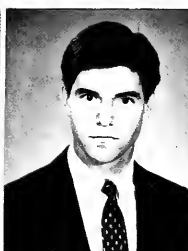
Don Ahrens



Angie Ankerman



Amber L. Aranda



Timothy R. Arnheim



Carol Ann Austin



Sherrille Bailey



Brad Barnhill



Russian poet performed before a crowd in Elizabeth Chapel.



Del Suggs entertained students in the Hat Rack.



Chris Barrick



John Robert Bartels



Michelle M. Bascom



Janis Basta



Stephanie D. Bayne



Crystal L. Black



Marie K. Black



Judi Bland



Charles Bliss



Mary Catherine Boone



Alice Margaret Bose



Carol Bowling



Everyone loves mail.



Kevin E. Brown



Gerald Bump



Mike Burnick



Jim Burns



Ralph A. Cacci



Jeff Alan Caglianone



James L. Carlstedt



Lisa Carlton



Kim Carpenter



Mark A. Carper



Roxanne Cason



Randy Chesak



"Please let this class be open!"

SENIORS



Beth Chesser



Deborah Christ



Douglas Clark



Susan Clark



Shelby Clemons



Ron Cole



Cynthia Conerly



David Cope



Tucker P. Cory



Fasting for Oxfam was a small sacrifice that benefited many.



Kathy Costa



Catherine Cousins



Christopher Covone



Theresa Crea



Joanne Creech



Gregory M. Crouse



Cindy Crum



Mary Crutchfield



Mary Cubbedge



Keith Cuddy



Ingrid C. Daly



John Paul Davis



Kimberly Edbaro



Diana Demaio



Pamela Dennis



Soccer takes a lot of energy and our team has plenty of it.



Tim Desantis



Annunziata Diamantini



Alfredo J. Diaz



Elaine Dobson



Greg Doescher



Neal A. Duncan



Eddie Ellis



Michael W. Ely



Gregg Emch



William Epting



Linda Eriksen



Alison E. Evans

Competition is the name of the game.

SENIORS



Jennifer Evans



Beth Everett



Mark Faber



Joseph S. Farrell



Richard A. Faulkner



Dayna Fedele



Keith Feldman



Dean Fennell



Karen Sue Ferber



Some of the contestants show off their better side.



Christine Fessler



Margaret Imelda Feus



Chrissie Field



The one act plays were a success.



Maria Figueiras



Kelly Finton



Eleanor Flood



Beth Forbes



Thomas R. Foskett



Michele Franklin



Janet F. Fraser



Leon E. Fruch



Susan Fulton



Kathryn Gall



Ivette R. Garcia



Sheryl A. Garvey



BCM ice cream social was a huge success this year.



Gregory S. Gates



Richard Gay



Shari Beth Gerguson



Lisa Marie Geiger



Lisa Gettings



Karen Gibson



Stephen E. Glum



Chip Graddy



Edward K. Graham



Leslie Griffin



Laura Jean Guillano



Karen Haas



Students perform with the TOP HAT entertainers.

SENIORS



Nicki Haun



Karyn L. Hede



Parrish Hill



William Hill



Mary Hines



Greg L. Hinman



Jennifer A. Hogg



Gary L. Holland



Lynn Howard



Lucy Huddleston



Bob Hudson



Barbara Jeffries



Dr. Booth and Dr. Wood in full dress for convocation.



Gary Moris leads discussion during Oxtam.



Bob Jenkins



Sandra Jeter



Angela M. Johnson



Michelle Dawn Johnson



Rob Johnson



Michael S. Kettering



Kristen Kimmell



Marianne King



Kristel M. Kingston



Marlene Kruelle



Carrie Lambright



Maura Landers



Pope Duncan greets a new student during the first week of classes.



Diana Langston



Teresa Lefils



Dana Lenox



Buddy Linton-Smith



Jodi Littlestone



Jennifer Lloyd



Nancy Lopez



Beth Lubach



Janine Luka



Deborah Maata



Chrissy Madden



Elizabeth Marshall



Jane Marlowe assists a student during Fall Rush.

SENIORS



Lori Lee Hastings



Chris Martin



Stacey Martin



Mary Catherine May



Susan McDaniel



Monica A. McDonough



Lance McKinney



Carol McMurry



Marilyn Metcalf



Kristen Michael



Diane Mikesell



Jack M. Milbery



Tracy Reinhold got Rush underway as Rush Chairman 1985.



The talent show during Greenfeather was a hit.



Susan Miles



Bryan D. Miller



Levonne Mitchell



Charles Mizell



Geri Lynn Morgan



Jeff Morris



Marcia Mueller



Aleesa J. Naish



Kimberly Nelson



K.E. Neverton



Diane Marie O'Connor



Jackie Olson



Soccer made a big hit this past year.



Ken Owen



Sue Parry



Elena A. Pavlos



Bary Pekin



Pamela Peterson



Karol Phillips



Bayard L. Pickett



Timothy Wesley Pippin



Carolyn A. Pitt



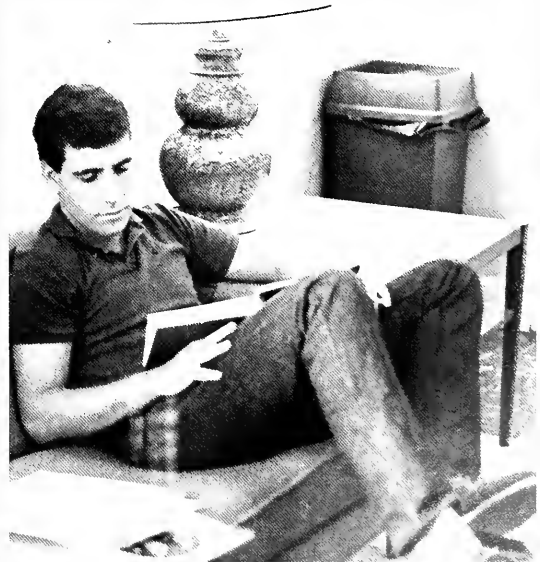
Sandra Plumlee



Eddie Poirier



Andy Porch



The C.U.B. ranked high in places to study.

SENIORS



Tamara Prescott



Monica Price



Scott Price



Angela Pruett



Blake Qua



Douglas Quackenbos



Rocking for Greenfeather can really be exciting.



David M. Ragan



Kathryn Raper



Amy Rawlins



Tracy Reinhold



Eric Reyes



Charlene Robbins



Theresa Y. Robbins



Rob Robinson



Lori Rodenbaugh



Steve says, "This one's for you."



Robert D. Rodriguez
100 Seniors



Lyn Rogers



Melanie Lou Rollison



Michael W. Sages



Andrea Schlichter



Diane Schloesser



Marlena Schulkind



Michael R. Schwalle



Gregory Sherman



Julie Sintz



Clay Snellings



Benjamin Span



One of the ATO mud wrestling victims.



Susan J. Sparks



Mark Stanhope



Karen Stettenbenz



Mr. Beauty candidate sings her heart out.



Anna Stevens



Barry W. Sullivan



Tamara Sutton



Diane Sutyak



Patricia L. Tatem



Kelly Teets

SENIORS



Elise Terrell



Melissa Titshaw



Susan Ann Tracy



Toni Tury



Stuart Glenn Ulferts



Patty Underwood



Geoffrey B. Urban



Gariann Vause



Denise Venezia



Michael A. Vigliotti



Heman Waldman



Ann Wall



Mr. Beauty contestant showed off her talent.



Kevin P. Wasilewski



Julia Carol Wendt



Mary Wherley



Campbell S. Whitaker



Mary Wilbanks



Dawne Williams



Rodney I. Williams

PARENTS ADVERTISEMENTS

Milly,

Never had any doubt, We are proud of you.

Love, Melvie & Clarabell

Karen Sue Ferber,

President Ronald Reagan & Nancy join us in our joy.

We love you.

Mom, Dad, Kevin & Kip

Theresa Robbins,

"We love you!"

Mom & Dad

Nancy Lopez,

We are so very proud of you.

Love, Mom and Dad and Family

Jeff McDuffie,

May life bring you as much happiness as you have brought us.

Love, Mom & Dad

Luck & Love to Annie Bug!!

You've made us proud and happy.

Mom & Dad

Mike,

May life be as good to you as you have been to us.

Love, Mom, Barb, Sue & Tom

Joey Dato,

Congratulations! We are proud of you!!

Love, Mom & Dad

Theresa Wilberg,

Good luck always!

Love Mom & Dad

Congratulations — Dawn Williams

We're proud of you!

Love, Dad, Mother, Todd & Brad

Kelly Sue Finton,

You are my own Rainbow of joy!!! I thank God for you!

Love, Mom

Robert Shaw, Jr.

We are proud of you!!

Love, Mom & Dad

<p>Eddie Ellis, We love you and are so proud of you!! Love, Dad & Mom</p>	<p>Tami Sutton, As always, we are well pleased with you, and love you very much. We know you have worked hard to prepare for life, now God will bless you, if you let him. Love Mom & Dad</p>
<p>Steve Thorne, Congratulations on your graduation — the Lord continues to bless us with you. Love, Your Proud Parents</p>	<p>Rob Robinson, We are very proud of you! All our love, Dad, Mom & Joley</p>
<p>Mark Faber, We are very proud of you. Love always, Mom & Dad</p>	<p>Tom McCauley, May the wind be at your back and God bless you! We love you! Mom & Dad</p>
<p>Janine, To our joy with love. Congratuatuons and welcome home. Love, Mom & Dad</p>	<p>Monica Leigh, Congratulations! We are so proud of you. Love, Mom, Daddy & Jennifer</p>
<p>Paula, What you are to be, you are now becoming — We are very proud of you. Love, Mom & Dad</p>	<p>Keto, May your future “sparkle” as you have. We love you Mom & Dad</p>
<p>Beth Lubach, “Success brings hope, hope inspires fresh desire, and desire gives zest to life and joy to labor.” May you be happy and successful. Love, Mom & Dad</p>	<p>Jeff Jones, Way to go!! We think you are terrific. Love, the Family</p>

WAL-MART

People Serving People



WAY TO GO STETSON!

America's Number One
Family Steak House



119 S. Woodland Blvd.
DeLand, FL 32720
(904) 736-8415

We have a steak in your future



Come join other Stetson students and faculty at

DeLand's First United Methodist Church

(located at Howry and the Boulevard)

8:30 a.m. Worship Service
9:45 a.m. Sunday School (all ages)
11:00 a.m. Worship Service
Nursery Provided

Home for so many. . .
home away from home for many more

UNDERCLASSMEN



UNDERCLASSMEN



Miriam Abascal



Jeff Ahmed



Annie Akarjalian



Maria Alba



Laura Alexander



Roberta Alfonso



SUB brought talented shows from all over to perform for Stetson.



Debbie Allen



Donna Amari



Carol Andersen



Dave Anderson



Kathy Andress



Dawn Arace



Nancy Archard



Tami Arnold



Ruth Ashby



Olga Athanasiou



Douglas Babb



Ute Babbe



Kim Bailey



Bonnie Baker
Underclassmen 107

UNDERCLASSMEN



Carson M. Baker



Jamie Ball



Melolra Banner



Evelyn Barba



Katy Barbour



Bob Barkley



Karen Barkley



Pamela Barkley



Cathy Barnes



John Barnes



Cherie Barrineau



Susan Barron



Chrissie Bastone



Richard Batchelor



Jerry Baxley



Lacey Beach



Lisa Beazley



Jennifer Behrendt



Dan Bell



108 Frank Bell
Underclassmen



Bathing suit competition was never like this before.

UNDERCLASSMEN



Jayme Bennett



Anthony Biancarosa



Chris Bishop



Chrissy Blanchar



Claribel Blanco



Robert Bloodworth



Karen Blossch



Julie Blumberg



Dana Boeckh



Beverly Bolton



Ed Boner



Jannette Booker



Sandra Borriello



Deborah Boston



Bonnie Boyd



Donna Boyett



Robin Bradford



Spencer W. Bradford



The Lambs Mr. Beauty really could sing.



Rusty Bradshaw



Alan Brands
Underclassmen 109

DeLand's Travel Service, Inc.

"We Know Because We Go"



228 E. New York Avenue
Deland, Florida

Telephone 734-4531

Leah W. Conklin,
Stetson '55
Mary Prouty
Stetson '73

We're one institution you can bank on.

For over 50 years, Security First has helped people buy homes, send their kids to college, save for a comfortable retirement and enjoy the better things in life.

Today, we want to help you with more of your financial needs than ever before. With a whole new range of investment accounts insured to \$100,000 by the FSLIC. All kinds of personal loan plans. And innovations like our Money Key card to let you get money 24 hours a day from over 2000 locations around Florida. If you have a financial need, stop by and see us. You'll be glad you did.

SECURITY FIRST
MORE FOR THE MONEY.



Some of the best things at Publix aren't for sale.

At Publix, we think the value of your shopping experience isn't measured in just dollars and cents. It's measured in the overall satisfaction you feel about the time you spend with us. And that includes everything you encounter. From courteous people and well-lit, clean, spacious aisles, to competitive prices and a choice of popular brands you won't find anywhere else in the state.

Shop at Publix and you're among friends. Friends who'll willingly take the time to help you find what you need, check it out quickly and carry it out to your car. In fact, you'll find we care about your satisfaction in every department. Our produce is fresh picked, not picked over. Our beef is expertly trimmed; you take the lean, we keep the fat. Our Deli and Bakery products are

made fresh every day. And if that's not enough, there's innovative services like the Presto! ATM and fast photo processing that are always part of the Publix experience.

At Publix, we're committed to making shopping a pleasure for you. And that's something you just can't put a price on.



It's the little things that make shopping at Publix such a pleasure.

UNDERCLASSMEN



Marie Braswell



Karen Bray



Debra Bremer



David Bricker



Gregory Brown



Sarah Brown



Susan Brown



Vaughn Brown



Kim Broyles



Tina Bullock



Meri Beth Bunge



Kim Bunting



As a Mr. Beauty candidate for Phi Sigma Kappa, Frankie even had his nails done.



Karen Burnett



Pam Burnett



Melissa Bush



David Buth



Joanne Butterbrodt



Suzan Cadman



Terri Cain



Mary Caldwell
Underclassmen

UNDERCLASSMEN



Aileen Callan



Andrea Calvert



Debra Campanola



Susan Campbell



Tina Carantzas



Jeanne Carlin



Anna Carlson



Lolly Carr



Teresa Carswell



Karen Casey



Stephanie Castonguay



Robin Cates



Paige Cavanaugh



Debi Chambers



Anna Chapman



Robert Chapman



Corinne Chatfield



Pamela Childers



Sharon Chin



Jacki Cinotti
Underclassmen



Alpha Kappa Psi goes all out for Mr. Beauty.

Compliments of

JCPenney

101 S. Woodland Blvd.
DeLand, Fl.

GOOD LUCK GRADUATES
THANKS FOR YOUR
SUPPORT.
GOFF



303 N. Woodland, DeLand

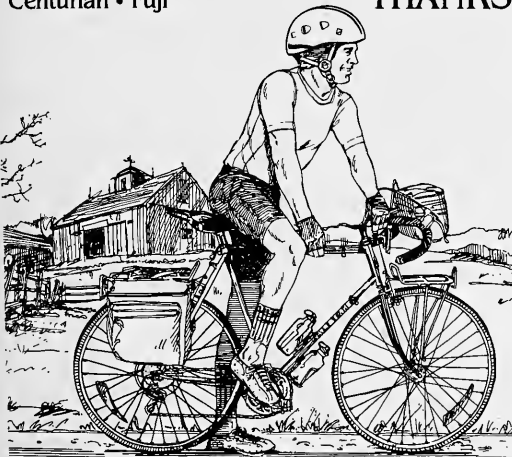
Boss Cruisers

Phone: 736-3645

Peugot • Trek • Ross

Centurian • Fuji

THANKS



DAVE'S
CYCLE SHOP

ORANGE TREE INN



- NEW COLOR CABLE TV
- 24 HOUR SELF DIAL PHONES
- EFFICIENCIES - AIR - HEAT
- COMMERCIAL RATES

734-0670

AMERICAN OWNED
& OPERATED

1010 N. Woodland Blvd.
Near Stetson & Shopping

Same Ownership

Tangerine Inn

4 MIN FROM STETSON
HIGHWAY 17 NORTH

985-4224

734-0670

Stay with Eppie Among the Orange Trees.

Bellini's Delicatessen

Variety Of Hot Or Cold Subs

Phone 736-1747



Need quality printing.....



Come see us at 726 South Boulevard

(the place on South Boulevard where the clock is never right)

-
- | | |
|----------------|--------------------|
| Letterheads | Books |
| Envelopes | Programs |
| Business Cards | Tickets |
| Business Forms | Newsletters |
| Flyers | Four-color process |
| Labels | |



Quality, Fashionable Footwear
For the Stetson
Community

137 N. Woodland



UNDERCLASSMEN



Ricardo Cividade



Jaime Clark



Thomas J. Clark



Elizabeth Claxton



Gary Coachman



Brendon Cochran



Steve Cochran



Vivian Cocotas



Susan Coker



Kris Cole



Erinn Collinsworth



Valerie Conway



Cheryl Conklin



Erin Connors



Mike Conway



Harrison Conyers



Sondra Cook



Alfonso Cooper



Look out Madonna because here I come.



Mike Cooper



P.J. Corless

UNDERCLASSMEN



Keith Costner



James F. Coulter



Kim Courtney



Andy Cowen



Lori Cox



Sabrina Cox



James Crafton



Bobby Cranston



Paige Cruse



April Cullom



Cindy Cummings



Barbara Curtis



Jennifer Dakin



Thomas F. Daku



Trudi Dam



Kim Danley



Tiffany Davidson



Leslie Davies



Amber Davis



Jenny Davis
Underclassmen



The Hat Rack Patio is the #1 spot during the 10 o'clock hour.

UNDERCLASSMEN



Todd Davis



Todd Davis



Sheila Dearybury



Doug Debolt



Michael L. Dehn



Jon Deinard



David Dellolio



Annabelle Dengel



Todd Dezoort



Marjorie Diephouse



Todd A. Doane



Sandy Dobson



David Dodge



Donald Dollar



Dana Dollison



Tracy Domdowski



Anne Doran



Susan Dorsey



Merrie Beth Doty



Truitt Dover



C.J. Drake



Nancy Drumov



Caroline Duncil



Amy Dunham



Deborah Dunnavan



Kimberly Dupree



Valerie Durand



John G. Ebenger



Marty Ebenger



Lori Eckler
Underclassmen 117

UNDERCLASSMEN



Jayne M. Edwards



Kenneth Edwards



Sophia Ehringer



Betsy Eich



Dawn Rise Ekdhahl



Robin Elliott



Phi Phi Prison was full throughout the Greenfeather Carnival.



Ruth E. Ellis



Cynthia Emshoff



Mary Margaret Enns



Hal Epperson



Claudia Epting



Christopher Erb



Rebecca Faircloth



Jeni Fanzlaw



Kristina Farrell



Lyn Faust



Kevin F. Feldman



Debbie Ferguson



Mayte Figueiras

UNDERCLASSMEN



Barbara Filegar



Harold Findley



David Finley



Laura Finley



Melissa Finn



Tammy Firman



Rhonda Flanders



Margaret Flatt



Sonia Foli



Holly Forman



Dan Fountain



Reggie Fountain



AZD's show the true spirit of Greenfeather.



Debbie Fox



Lorene Francis



Susan French



Jonathon Frye



Tracy Gabriel



David Gant



Ron Gartner



Bryan Gassmann
Underclassmen 119

UNDERCLASSMEN



Jill Gatenby



Patrick Gaver



Joy Gayler



Donald Geelhoed



Jackie Gelardi



Sheila Gellispie



Keith Gibbons



On a sunny day the Hat Rack is a great place to be.



Shanda Gilderbloom



Susan Gilliland



Alisa Gillis



Ron Gironda



Kelly Giteles



Lisa Glass



Shannon Goff



Diane Gojberg



Tomas Gomez



Julie Goodman



Lauren Goodman



Steven Gosney



Kimberly Gossett

The Only Thing Floridians See More Of Than Barnett Offices.



There's a Barnett location within ten minutes of 90% of Florida's population.
That makes banking even more convenient for you. And that's what makes us Florida's bank.



Barnett Is Florida's Bank.

All Barnett Banks are members of FDIC.

Jessie & Lisa

Fashions with Class

Woodland Plaza
Phone 736-3164



Morrison's Old College Try

/käl-ij tri/

n 1 : the daily preparation of student meals, with professional care given to the satisfaction of personal tastes, and with enthusiasm of serving diverse and individual student needs.

 **Morrison's Management Services**

UNDERCLASSMEN



Sue Grant



Laura Gravens



William Gray



Pam Greacen



Amanda Gregg



Joelle Grove



Charles Guarneri



Nancy Guinn



Todd Gustafson



Tony Gustafson



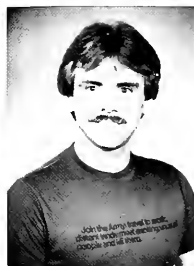
Darcy Haag



Jim Hacker



Sig Eps water balloon throw hit it off during Greenfeather.



Roy Hale



Anne Hall



Bill Hamilton



Sean Hamilton



Paul Hamm



Kris Hammack



Lynn Hampton



Jan Hancock

UNDERCLASSMEN



Debra Hardy



Dee Harmon



Kimberly Harrison



Sonya Hartzog



Deborah Harvey



Andrea Hassall



Mary Hastings



Paul Hastings



Pamela Hauf



Kathy Hayes



Mae Hayes



Derick Hearn



Kristi Hearn



Tracy Hebert



Darcy Hedrick



Nancy Held



Kim Heller



Kathy Henry



Carol Heymann



Michael Hiday



Phi Mu's success this year was snow cones.



**Planning
A Bright Tomorrow?
Look to the Sun Today.**

Our full range of banking services can
help you meet your unique financial goals.
Look to the future. . . Look to the Sun.



Member FDIC/©1982 Sun Banks of Florida, Inc.

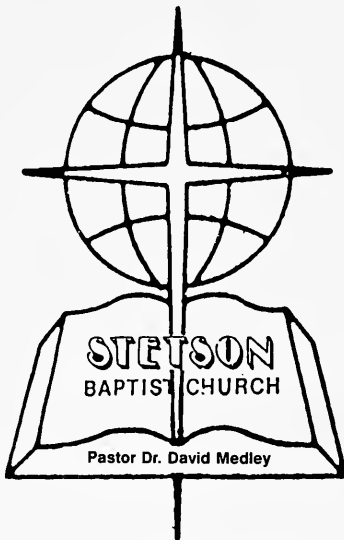
May God Be With You 1986 Graduates



FIRST BAPTIST CHURCH OF DeLAND

Gary Carter — Associate in Ministry
Youth, College and Young Adults

Congratulations Grads



a church with
STETSON
in its name
and
on its **HEART**

AN UNCHANGING CHRIST
FOR A CHANGING WORLD

1125 West Minnesota Avenue

UNDERCLASSMEN



Ric Highes



Warren Hinrichs



Linda Holloway



Angi Holmes



Liz Hopkinson



Holli Horton



Phoebe Houseman



Alan Hudgins



John Hunt



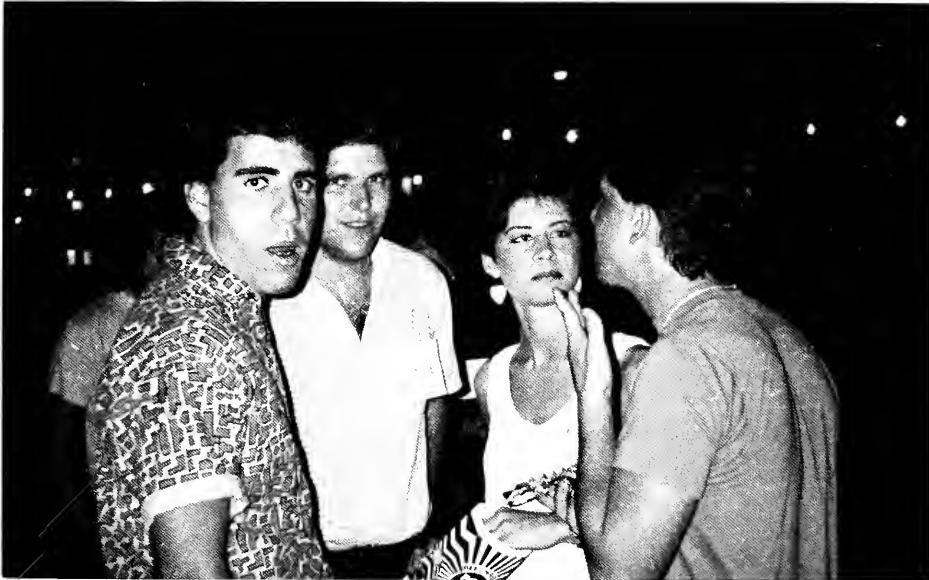
Burton Hurner



Joan Huss



Clemente Inclan



Delta Sigs showed up in full force for Greenfeather.



Jenny James



Laura Janeczko



Julie Jernigan



Andrea Johnson



Karen Jones



Paige Jones



Joanne Joyce



Lisa Jozsa

UNDERCLASSMEN



Sherry Junker



Nini Kaczynski



Anke Kaminski



Beth Kaufman



Gregory Kazanjian



Sheryl Keith



Rachel Kesseling



Hitesh I. Khatri



Thomas Glenn Kindred



Debbie King



Kelly Kiser



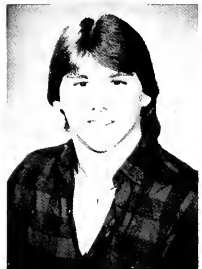
Kathy Kivi



Students took aim at the egg throw at the carnival.



Jared Knapp



Shawn Knapp



Laura Knirk
Underclassmen



Kristin Kock



Elizabeth Koszas



Jeff Kral



Duann Kremer



Zoe Kugeares

Gibbs FOR MEN INC.

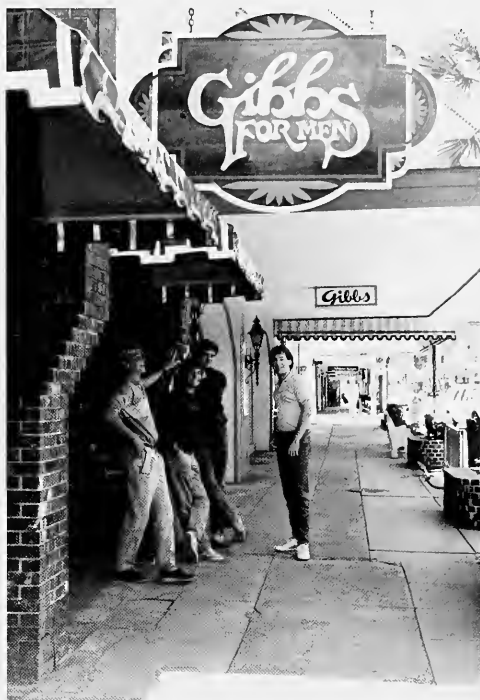
135 NORTH BOULEVARD
DELAND, FLORIDA 32720
[904] 736-0777

and

Gibbs Of DeLand

131 N. Boulevard
DeLand, Fl.
734-5221

THANK YOU!



Now you can bank at Stetson! with Tillie The Alltime Teller



Florida National Bank

the Spirit for success™

Member FDIC

Located at the Carlton Union Building

CONGRATULATIONS GRADUATES

Hats off to you Seniors!
Best Wishes for the future.
The Orlando Sentinel
Volusia County Bureaus



THANKS STETSON GOOD LUCK GRADUATES

Telephone:
734-1995

Pondo's
Continental Cuisine
Old World Elegance

Fraternity-Sorority Parties

1915 Old New York Ave.
(follow Amtrak signs)
DeLand, Florida 32720

Sylvia, Doug, Alison
and Dwayne Fisher



SHERWOOD MEDICAL INDUSTRIES

DeLand, Florida

UNDERCLASSMEN



Jerome Lacey



Jeff Ladinsky



Kristin Lakso



Colete Lancaster



Elizabeth Laney



Ellen Lanier



Ana Latour



Pascale Lebrun



Tammy Leek



Ken Leeman



Mark Leetzow



Jessica K. Leland



The Friday Flick is always a success — who can beat the 50¢ ticket.



Wendy Lessard



Chris Liebel



Susan Liebert



Wendy Lincer



Cornelius Lindholm



Jenny Lingo



Andrea Liska



Melissa Little
Underclassmen 131

UNDERCLASSMEN



Monica Little



Elaine Liz



Betty Llorens



Francois-Xavier Lopez



Julie Lorton



Todd Lowther



Daniel Lucas



Irina Lukito



Connie Harvey



Charles A. Lundell



Christopher Lunder



Billy Macgrath



Pam Maddox



Peaches Maerz



Christie Mall



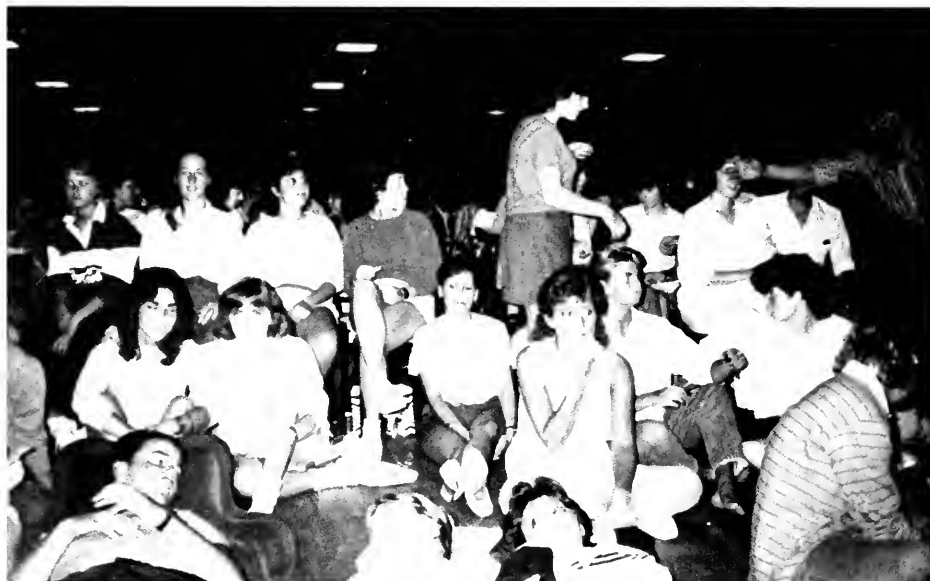
Juliann Mall



Timothy Mallard



Tim Maloney



Students wait patiently for the movie to begin in the Stetson room.



Tina Mantovani



Christine Marston



Chinese—American Restaurant
 "Specializing In Cantonese Cooking"

— Hours: —

LUNCH

Monday-Saturday 11:30 a.m. to 3:00 p.m.

Except Holidays

DINNER

Monday-Saturday 3:00 p.m. to 10:00 p.m.

Sundays and Holidays 12 Noon to 10:00 p.m.

734-0904

1329 N. Woodlan^c Blvd.

DeLand

"Take Out Service Available"

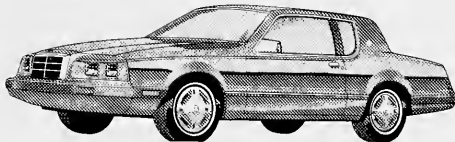


THANKS FOR
 YOUR
 SUPPORT
 LES CAMP
 Woodworking Shops

615 Hwy. 92

DeLand, FL

**YOU ALWAYS GET
 THE BEST OF US.**



DELAND FORD
 LINCOLN
 MERCURY

Corner US Hwy 17-92, DeLand

Call: 734-6071 (DeLand)

Or 255-3777 (Daytona Beach)

Congratulations Graduates!



941 N. Woodland Blvd.
DeLand

The Hatter Bookstore

*Congratulates all
1986
Graduates!*



**JACKIE, my youngest angel, has
come through with flying colors.**

**With your brains, looks, and com-
mon sense, you're outstanding from
many others.**

**Now the real world is waiting for
you to start.**

**Your college days are over and you
must depart.**

I love you and wish you the best —

**How you handle the future is the
really big test.**

Love, Mom



UNDERCLASSMEN



Ann Martin



Kim Martin



Theresa Martin



Michelle Martinell



Renee Martone



Michelle Martorana



Michael Matala



Nora Matamoros



Jeffrey Van Mater



Joellen Matrundola



Maryan Matthews



Becky Mayer



Bill McBride



James McBride



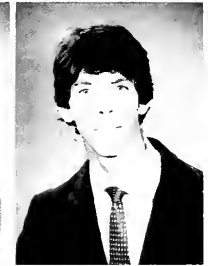
Suzanne McCaskill



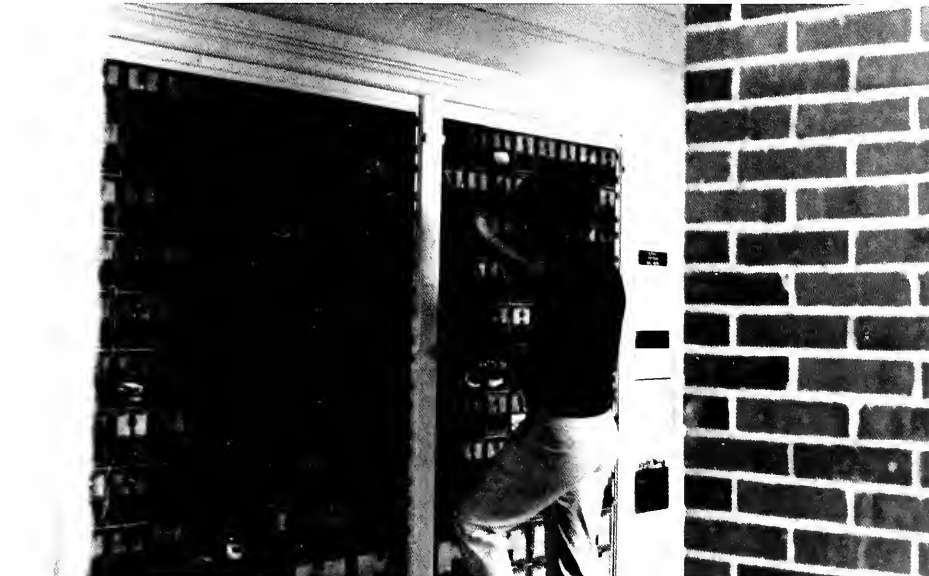
Kay McCullough



Siobhan McCullogh



Stephen R. McDade



Checking the mailboxes for a letter from home is part of daily routine.



Monty McGee



Andy McLeese
Underclassmen 135

UNDERCLASSMEN



Andrea D. McMillan



James McNary



John Means



Rolf Meinholtz



Alisa Meyer



Jennifer Meyer



Students found the new box listings helpful.



Christina Mezosi



Michelle Michael



Brenda Miller



Deeann Miller



Gregory Mills



Kimberly Millwater



Heather Minton



Debra Mitchell



Marcy Mitchem



Theresa Mizrahy



Stacey Moats



Kim Moeckel

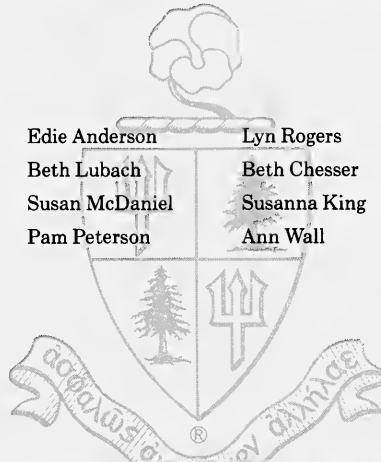


Mark Montgomery



Christine Moore

CONGRATULATIONS



Eddie Anderson	Lyn Rogers
Beth Lubach	Beth Chesser
Susan McDaniel	Susanna King
Pam Peterson	Ann Wall

DELTA DELTA DELTA GRADUATES

MICHAEL E. KEITH, LTD.

Retail Manufacturing Jeweler
Platinum • Gold • Sterling Silver • Hand Engraving



WHERE CREATIVE ARTISTS PERFORM

Diamond Buyers of Heirloom or Estate Jewelry • Appraisals
(904) 734-8114 Woodland Plaza, DeLand • Watch & Jewelry Repairs

Dear Janet,
I am so very proud of you.
You have used your God
given talents and gifts
well.



Continue to use His guid-
ance in all your endeavors
for a beautiful, good life.

Your Mom



Congratulations Graduates



2000 BRUNSWICK LANE
EQUAL OPPORTUNITY EMPLOYER

**BRUNSWICK
DEFENSE**

**BRUNSWICK
TECHNETICS**

UNDERCLASSMEN



John Moore



Michael Morakis



Cinda Morris



Joseph Morris



Chance Morrison



David Morton



Jim Moskus



Joy Maurant



Susan Mull



Tres Mullis



Mari Musalen



Lynne Nibelink



Lynne Nicols



Sindy Nieves



Daniel Nordman



Mary Jo Norton



Stephanie Olin



John Ong



Susan Fulton gives blood during the annual Blood Drive.



Marjorie Orr



Jeff Oswald

UNDERCLASSMEN



Lisa Ottomaneli



Erin Marie Owen



Christie Owens



Mark Owens



Roger Pafford



Angela Parker



Missy Patrick



Diana Peltz



Julie Perry



Sherry Pesola



Angie Phillips



Erin Phillips



Robin Phillips



Laura Pina



Renee Pittman



Michelle Podany



Susan Poindexter



Michele Pollock



Mary Potts



Stephanie Preisler



Cheryl Price



Margie Price



Richard Price



Michael Pugliese



Anne Ralph



Douglas Ramsey



Michelle Recourt



Sylvia Redwine



Ann Reiman



Dee Remillard

UNDERCLASSMEN



Rick Ramirez



Linda Rhoads



Cindy Rice



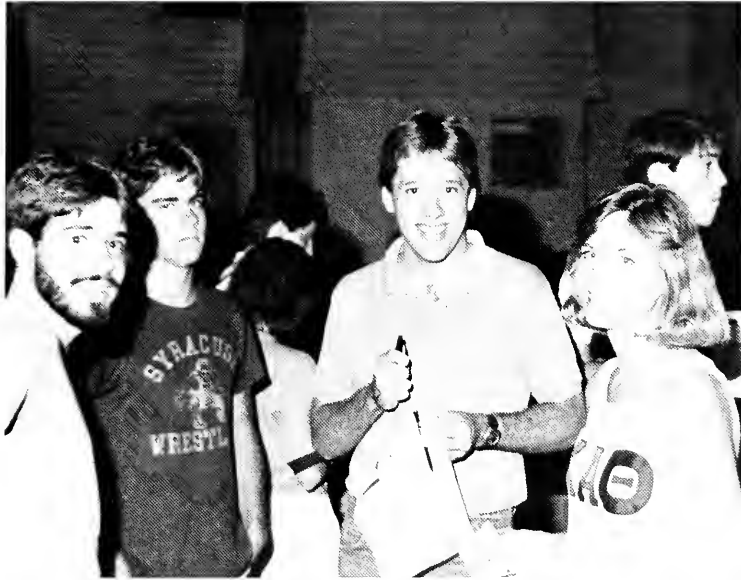
Jono Ridler



Patricia Riko



Randi Rillott



Students socialize in front of Allen Hall during the beginning of the year.



Brandi Robertson



John Roble



Kimberly Rogers



Candie Roll



Chip Roll



Donn Roll



Lisa Romay



Renee Rondinelli



Terri Rosenberg



Amy Rowe



Robert Rowe



Karin Rowland



Rebecca Rowland



Iracema Russ



Lucille Russo

UNDERCLASSMEN



Tara Rustin



Sherri Saad



Debbie Sabol



Mary Sages



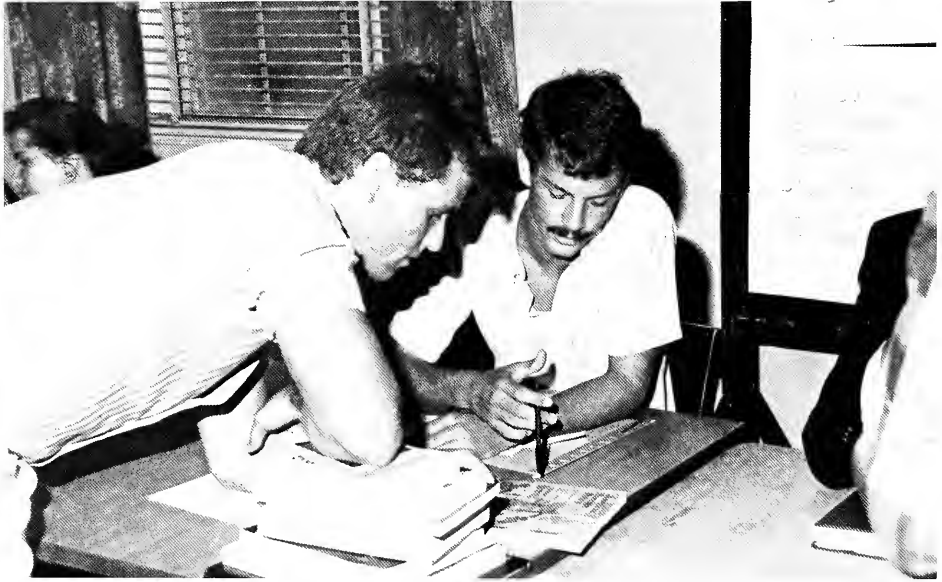
Doug Salvatore



Cindy Sanchez



Elena Sanchez-Burr



Student listens attentively as the political forum is explained.



Carla Sangiovanni



Ronda Sapp



Andrea Sauer



Wendy Sauer



Deanna Scherock



Laurie Scherock



Christine Schilcher



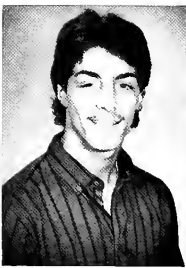
Bret Schroetel
Underclassmen



Richard Schumann



Donna Schwiers



Kevin C. Sciacca



Janet Sealy



Jim Seguine

UNDERCLASSMEN



Tiffany Seibold



Carolyn Seymour



Sharon Seymour



John Shaffer



Laura Shaw



Suzanne Shaw



Collette Sheedy



Greg Shirer



Amy Showfety



Gloria Shuman



Kim Siciliano



Lauren Silverman



Amy Simchick



Susan Simcox



The activities fair was very informative.



Traci Simpson



Stephanie Sims



Sheryl Slocum



Matt Smith



Margaret Smythe



Doug Sobieski

UNDERCLASSMEN



Thad Soles



Carolyn Sosnowski



Jack Souders



Felix Spengler



Kelly Spillman



Laura Spofford



Stetson cheerleaders recruit new members to continue the Hatter spirit.



Wade Sproviero



Barbara Stackpole



Thomas Stallings



Stacey L. Starling



Patti Stefik



Avery F. Stephenson



Katina Stevens



Robert Stevenson



Jim Stewart



Kim Stewart



Joey Stokes



Mandy Stoll



Sally Stoll



Sandra Stone

PATRONS

Clarence E. Adams	Lakeland, FL
Chalker A. Anderson	Brandon, FL
Mateo Ayala	Immokalee, FL
James W. Bowling	Coconut Grove, FL
Gene A. Finch	Lakeland, FL
David Pierson Dodge	Morristown, NY
Ernest L. Dauran	Westford, NJ
Gerald C. Bump, Sr.	Ivoryton, CT
Edward J. Bohne	Boynton Beach, FL
Marjorie Gabriel	Tampa, FL
Paul C. Bremer	North Palm Beach, FL
Roy Childers	Ocala, FL
Tim Bloodworth	Edgewater, FL
William C. Beiler	Longwood, FL
Anna Marie Chapman	Okeechobee, FL
Frank D. Champion	Winnetka, IL
Richard Beazley, Jr.	Tecumseh, MN
John Caglianone	Pembroke Pines, FL
The Dearburys	Nokomis, FL
Edward E. Boner	Fernandina Beach, FL
Jim Boyett	Ormand Beach, FL
Frank DeMarco	Ormond Beach, FL
Robert Bird	Miami, FL
Ric Hughes	Newark, OH
Fred Bastone	Ft. Lauderdale, FL
John T. Krohn	Glenview, IL
Gerri Kalvin	Naples, FL
Steven N. Gosney	Daytona Beach, FL
Douglas F. Burns	Pittsburgh, PA
Edward A. Ellis	Sarasota, FL
Zebbie L. Gillispie	Fort Meade, FL
J. Karl Osburn	Windermere, FL

PATRONS

Henry R. Hiday, Jr.	Ponte Vedra Beach, FL
Guy Deneol French Pastry Shop	St. Augustine, FL
Anita J. Harvey	Apopka, FL
John E. Grant & Assoc.	Pompano Beach, FL
Jeffrey Jones	Lancaster, OH
Thomas Lee	Miami, FL
Chas. V. Lowery	Ocala, FL
Doug Longo	Tampa, FL
Leonard Leetzow	Sarasota, FL
Sonny's Real Pit Barb-Q	Bellevue, FL
George R. Morris	Charlotte Hall, MD
James F. Murphy	Greenwich, CT
Gerald E. Mills	St. Augustine, FL
Eldon Miller	Worthington, OH
C. Matrundola	DeLand, FL
I. Mizrahy	Palm Beach, FL
S. P. Rowe	Ft. Pierce, FL
Diego R. Suarez & Family	Miami, FL
Charles Royal's OK Lunch	Belle Glade, FL
Gene Solomon	Ft. Myers, FL
Edgar G. Pruss	Miami, FL
The Phipps Family	Williamsport, PA
R. H. Starling	Coral Gables, FL
Bill Peters	Atlanta, GA
F. R. Pittman, Jr.	Waycross, GA
Earl D. Wilson	Longwood, FL
Richard D. Shuman	Jacksonville, FL
Robert G. Weber	Sea Ranch Lakes, FL
Frank W. Remyey	Rydal, PA
R. L. Thornton	Grosse Pointe Park, MN
Robert E. Shaffer	Naples, FL

UNDERCLASSMEN



Mark Strange



Melissa A. Strauch



Steve Strayhorn



Catherine Sullivan



Mia Sullivan



Lisa Sumner



Stacey Sumner



Melanie Swager



Kristen Sweet



Mimi Taft



Yu-Chun Tam



Cicero Taylor



The Hatter, Teresa LeFils, and Gary Morris answer questions from new students.



Kellie K. Taylor



Susan Terhune



Nathalie Terrier



Cheryl Thomas



Dave Thomas



Dawne Thomas



Vanessa Thomas



Douglas Thornton

UNDERCLASSMEN



BCM put their best foot forward.



Libby Threlkel



Geoffrey Timm



Jim Tobin



Corey Musselman



Laurie Nason



Laussa Nelson



Jerre Nevin



Jeff Newton



Nancy Tomasco



Amy Toppins



Robert Travis



Rosa Treto



Thuy-Trang Tu



David Turley



Allison Turner



David Turner



Sheryl Turner



John Anthony Tutay



Yeline Ugalde



Chris Unsworth

CARING PEOPLE . . . CARING FOR PEOPLE



These highly trained professionals add the gentle touch to medical care. They ease the pain, console the aches, and take a little bit of the fright out of hospitalization.

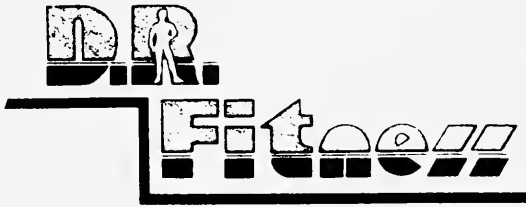
We are dedicated to excellence in medical care and to serving the needs of patients regardless of race, creed, religion, sex, or national origin.

We salute your dedication to the pursuit of professionalism and the perseverance in caring for the future of America's success.

**Fish Memorial
Hospital . . . Where Caring Is A Tradition**

FMH

245 E. New York Ave.



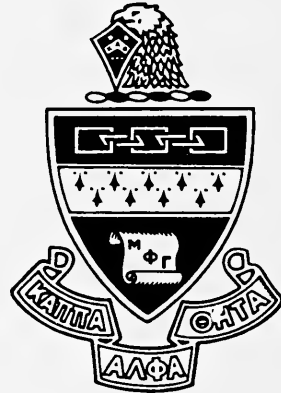
“THANKS
STETSON”

DANIEL J. BELLAMAH
Developer

936 North Saxon Boulevard
Deltona, Florida 32725

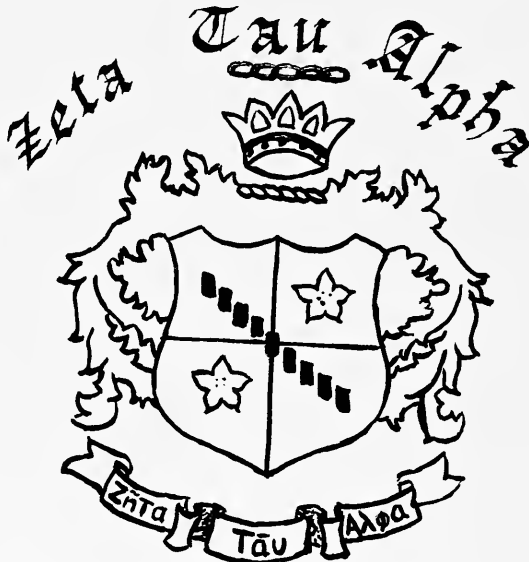
(904)736-0230

KAPPA ALPHA THETA
Congratulates
The
Class of 1986



GOOD LUCK SENIORS

Tracy Bennett
Michelle Franklin
Michelle Snyder
Sue Bullard
Jill Searcy
Theresa Crea
Shari Gegerson
Beth Everett
Kristen Michael



Janine Luka
Carol McMurry
Jennifer Hogg
Nancy Lopez
Dallas Boychuk
Dana Cooper
Debbie Valley
Dawn Adams
Sheryl Garvey
Elise Terrell

UNDERCLASSMEN



Kim K. Vach



Mirtha Valdes



Laurie Valentine



Tina Vaughn



Joanne Vento



Barbara Vorpe



Fred Wagner



K. C. Wahlstead



Jeffrey Wallace



Randy Walton



Theresa Ward



Tambre Ware



Pam Warhope



Kim Warren



Fraternity brothers and little sisters rush interested male students.



Kimber Warren



Luci Warren



Lillian Washington



Darlyn Watler

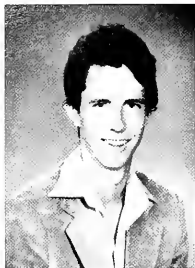


Debbie Watson



Ronda Webb

UNDERCLASSMEN



Michael Robert Weber



Carolyn Weiner



Leann Weiss



Doug Wells



Leanne Westhrin



Patricia Weyd



Patti Whelan



Don White



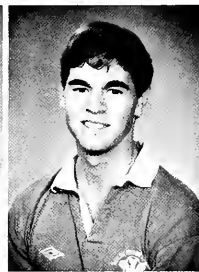
Mike Whitehead



Michael Whiteside



Peter Whitney



Theman Wildenburg



Alonzo Williams



Jill Williams



Margo Williams



Mark Williams



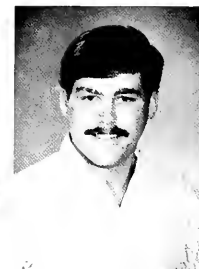
Monika Williams



Patrick Williams



Scott Williams



Lance Willumsen

Rush round-up was very informative and exciting.

Alpha Tau Omega

STEPPING INTO THE
FUTURE

'86 GRADUATES

Greg Doescher
Ed Graham
Tom Foskett
Dave Fussell
Ron Geiger
Mike Ely
Eric Reyes
Eddie Ellis



THANKS
STETSON



Let's go all the way!



IPR Group #3

Congratulations
graduates!



STEPP OFFICE SUPPLY

Personalized Service

Sales Representative

300 N. Amelia Avenue
DeLand, Florida 32720
Phone: 736-3205

2290-A S. Volusia Avenue
Orange City, Florida 32763
Phone: 775-6466

Danny's Drugs

located at Millers Plaza

1 hour photo

Congrats grads!



UNDERCLASSMEN



Tony Wilson



Karen Winslow



Wouldn't you like to be thrown into this mess? Fountain Run!



Orville Winston



Donna Wise



Rebecca Wise



Michelle Wojchick



Susan Wolfe



Grace Wong



Chris Wood



Andrew Woodward



Tammy Yarnall



Elizabeth Yerkes



Steve Yorke



Allen Younger



Sue Youngkin



Sue Yount



Michele Zakrzewski



Diane Zavatkay



Laura Zindell



Even in 1930, Elizabeth Hall was the center of education at Stetson.

DOLISHED PERFORMANCE

Stetson University's faculty is composed of many fine professors. Each brings a new and different aspect of knowledge to Stetson's students, but they all work together in order to give the best education to their students.

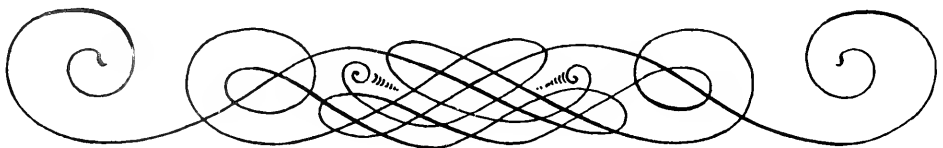


The Convocation Ceremony each year presents Stetson's outstanding faculty.

FACULTY

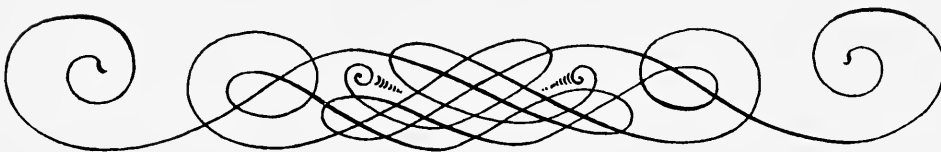


President Pope A. Duncan continued to make great strides in 1985-86 to achieve the many goals he had set for the university. Among these goals are increasing the student enrollment, raising Stetson's academic standards, and the forming of a School of Communications. By setting high standards for the university, Dr. Duncan hopes to make Stetson an internationally recognized learning institution.





As Provost, Denton Coker is responsible for developing students' learning abilities. The University has the job of helping each student reach his highest potential, not just academically, but in all aspect of life. Provost Coker feels that by giving students a well balanced background they will be better prepared to achieve the goals that they have set for themselves.





Dr. Lee has been Executive Vice-President since the Spring of 1984. His job is to assist the president in day-to-day operations during the school year and to serve on Dr. Duncan's behalf during the absence of the president.



STETSON UNIVERSITY

BOARD OF TRUSTEES

Richard Beauchamp
Forest Park, Georgia

J. Hyatt Brown
Daytona Beach

Alton Butler
Pensacola

Carolyn Davenport
Miami

A. Dano Davis
Jacksonville

Earl H. Ferrell
Coral Gables

Robert D. Flippo
Umatilla

David H. Harshaw
Drexel Hill, Pennsylvania

B.G. Hickem
Jacksonville

Mark C. Hollis
Lakeland
Vice Chairman

Pope A. Duncan
DeLand
Ex-Officio Trustee

John L. Pelham
Palatka
Secretary

Thomas F. Icard
Sarasota

Wendell Jarrard, Jr.
DeLand
Chairman

Robert A. Kent
Longwood

Robert M. McMillan
Tallahassee

Dennis C. McNamara, Sr.
Orlando

M.E. Rinker
West Palm Beach

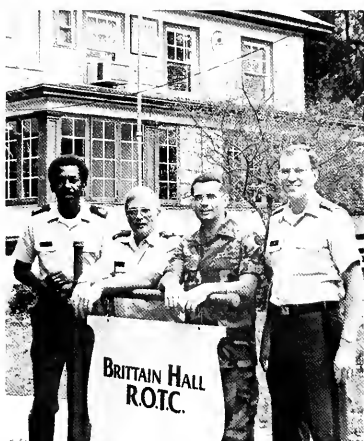
William L. Self
Atlanta, Georgia

William Armory Underhill
Washington, D.C.

B. Frank Wheeler, Jr.
Oviedo

Wendell Jarrard, Sr.
DeLand
Treasurer

Paul Raymond
Daytona Beach
General Counsel



Members of Stetson's Military Science Department include Master Sergeant James Dees, Sergeant Dennis Fischer, Major John Hames, and Captain Long. ROTC has been an active part of Stetson's campus for many years. These few along with others help to produce some of the top cadets in the state.

Military Science



Pictured are MAJ Timothy Gillette, LTC James W. Tarleton III, SGM Harold Farmer, and SSG William Mitchell, who kept the ROTC program in line.

History



Dr. Paul Steeves has been here since 1972. His degrees came from Washington Univ. and Univ. of Kansas. Dr. Malcolm Wynn has been here since 1952. From Ohio State, he received his B.A., M.A., and Ph.D. Dr. Kevin O'Keefe has been here since 1975. He received his degrees from Queens College, St. John's Univ. and N.Y. Univ. Dr. Marc Lovelace has been here since 1968. His degrees are from High Point College and Southern Baptist Theological Seminary. Dr. Evans Johnson, chairman of the department since 1953, has degrees from the Univ. of Alabama and Univ. of North Carolina.

Speech and Theater



Dr. James C. Wright, chairman of the Speech and Theatre Department, since 1965, received degrees from Hardin-Simmons University, Bowling Green State University and Ohio State University. Ms. Ann Burlin has been at Stetson since 1981, after receiving degrees from the University of Virginia and Indiana University. She is also the Director of Forensics. Mr. B. Bruce Griffiths has been at Stetson since 1956, after he received degrees from Baylor University and Yale. Mrs. Marjorie Gilbert has been at Stetson since 1969. She received her degree from Guildhall School of Music and Drama.



Dr. Wayne Dickson, chairman of English since 1973, received degrees from Stetson and Duke. Dr. Ellen Smith, here since 1977, received her degrees from Central State College, the Univ. of Oklahoma and Univ. of Oregon. Dr. Carter Colwell, here since 1958, earned his degrees from the Univ. of Chicago, Cambridge Univ. and Emory. Dr. Michael Raymond, here since 1972, received his degrees from Stetson and the Univ. of Florida.



Dr. Mary Pollock, previously teaching at the Univ. of Texas, enjoyed her first year at Stetson. Jane Bradford, here since 1983, has degrees from Stetson and Penn. State. Dr. William Taylor received his degrees from Vanderbilt and has taught here since 1957. Dr. Thomas Farrel, here since 1984, earned his degrees from the Univ. of Michigan.



Dr. Ann Morris has been a professor of English at Stetson since 1961. She received her B.A. here, her M.A. from the Univ. of South Carolina, and her Ph.D. from Florida State University.



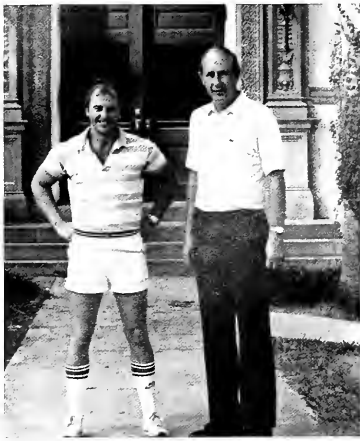
Dr. Bryan Gillespie, here since 1966, received his degrees from Wake Forest and Duke.



Humanities

Dr. Doan has degrees from Univ. of San Diego, San Francisco State, and Univ. of Chicago.

Education



Pictured here are Alan Sanders and Robert Weickel of the Physical Education Department.



Pictured here left to right are Education staff members Elizabeth Hines, Carol Corcoran, Catherine Coggins, Ruth Arnold, and Richard Morland.

Physical Education



Dr. Elizabeth Schumaker has served as Assistant Professor of Physical Education since 1979. She has also had seven successful years in coaching the women's volleyball team and three years of coaching the men's volleyball team.



Left to right is the other half of the Education faculty — William March, Donald Gill, Margaret Horton, and Morgan Greek.



Dr. Paul Kooistra is on a one year visiting assistant professorship. He was previously teaching at Sante Fe Jr. College. He received his B.A. from Furman and his Ph.D. from the University of Virginia. Dr. Charles B. Vedder has been the chairman of this department since 1974. He earned his B.A. from Lawrence University and his Ph.D. from the University of Iowa. Dr. John K. Schorr has taught here since 1975. His B.A. came from Hartwick College, his M.A. from the New School for Social Research, and his Ph.D. from Brown University.

Counseling



Director of the Counseling Center Dr. Judith Wright and Director of Counseling Services Dr. George Hood help the students in making various decisions. The Counseling Center helps students develop study skills, find majors, and assist in helping graduates find jobs. Dr. Wright came to Stetson in 1984. She also serves as Assistant Professor of Education and Director of Testing. Dr. Hood has been at Stetson since 1950. He is also professor of Counselor Education.

Religion

Dr. Mitchell G. Reddish, here since 1983, received his degrees from the University of Georgia and the Southern Baptist Theological Seminary. Dr. James Beasley, here since 1973, received degrees from Stetson, Andover Newton Theological School, and Tufts University. Dr. Earl Joiner, chairman since 1955, has degrees from Stetson and Southern Baptist Theological Seminary. Dr. Donald Musser, here since 1978, received his degrees from the University of Pittsburgh, Southern Baptist Seminary, and the University of Chicago. Dr. Clyde Fant, first year, received degrees from Baylor University and Southern Baptist Theological Seminary.



Biology

Dr. Keith L. Hansen, here since 1955, received degrees from Stetson and the University of Florida. Dr. David Allen Stock, here since 1970, earned degrees from Michigan State and North Carolina State University. Dr. Elaine Norman, here since 1970, earned degrees from Hunter College, Washington University; St. Louis, and Cornell University. Mr. Stephen Myers, here this year, earned degrees from the University of Central Florida and Florida State University. Dr. Derek Barkalow, here since 1978, received degrees from University of Wisconsin and Rutgers University. Dr. Francis Knapp, here since 1983, earned degrees from College of Idaho and the University of Southern California.



cont.



Mrs. Margaret Dunn of the English Department earned her degrees from Seton Hall University.

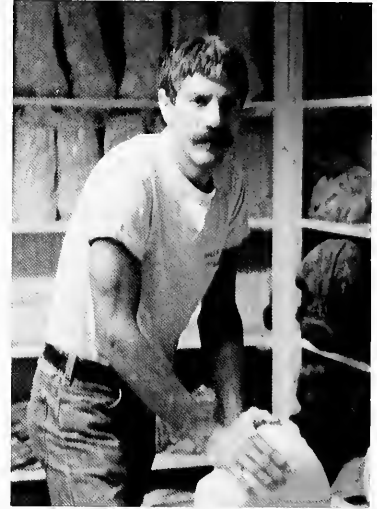


Dr. Roberta Favis, who has served as the Art History instructor this year, earned her degrees from Bryn Mawr University.

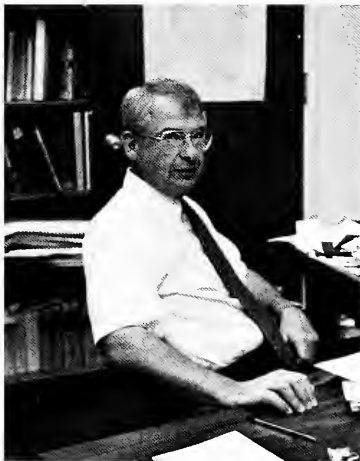
Art



Mr. Dan Gunderson, who has been a professor of Art since 1976, earned his degrees from the University of South Dakota and the University of Wisconsin.



Psychology



Fred L. Messersmith has served as professor of Art and Chairman of the Art Department since 1959. He obtained his degrees from Ohio Wesleyan University.

Dr. C.D. Cochran has served as professor of psychology and chairman of the psychology department since 1967. Dr. Cochran earned his degrees from Georgia State University and the University of Georgia.



Dr. John A. Hague, chairman of American Studies, received his B.A. from Princeton University and his Ph.D. from Yale University. Dr. Gerald E. Critoph, here since 1959, received his B.A. from Syracuse University and his M.A. and Ph.D. from the University of Pennsylvania.



Dr. Pangratos Papacosta has been the Assistant Professor of Physics since 1980. He received his B.S., M.S., and Ph.D. from the University of London.

Physics

Dr. Anthony T. Jusick has been the Associate Professor of Physics since 1966. He received his B.S. and Ph.D. from the University of Florida.



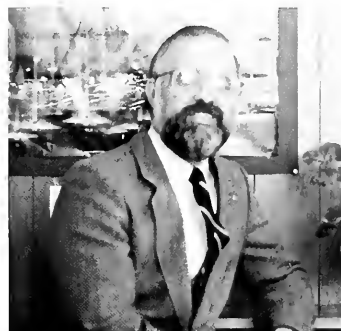
Dr. Thomas A. Lick has been the professor of physics and chairman since 1967. He received his B.S. from Muhlenberg College and his Ph.D. from Ohio University.



Pictured are the faculty of the Math Department. Dr. Michael Branton, who began teaching at Stetson in 1982 earned his degrees from Florida Technological University and University of North Carolina. Dr. Gene W. Medlin, teaching since 1958, received his degrees from Wake Forest and University of the South. Charlie Lindell, student aid. Dr. Dennis K. Kletzing, teaching since 1974, earned his degrees from Drexel University and Dartmouth College. Mrs. Deborah Branton, teaching since 1982 earned her degrees from Atlantic Christian College and University of North Carolina. Mr. David Lawson, teaching at Stetson since 1983 earned his degrees from Michigan State and University of Michigan. Dr. David Ellis, instructing since 1984 received his degrees from University of California at Berkeley. Dr. Gareth Williams, teaching since 1973 received degrees from University College of North Wales. Nancy Wilton, secretary. Ms. Annette Gillespie, teaching since 1968 received degrees from Stetson and Duke University, and Dr. Elizabeth Magarian, teaching since 1968 earned degrees from Ashbury College and Florida State University.

Math and Computer Science

Foreign Languages



Dr. Richard A. Ferland, an associate professor of French here since 1978, received his degrees from Assumption College and Harvard University.



Dr. Gerald F. Anderson, here since 1961, has degrees from Bates College, Univ. of New Hampshire, and Univ. of Madrid. Mrs. Mauck is the secretary for the Foreign Language Department.

Dr. Robert L. Smith, here since 1977, has degrees from the University of California.





Dr. Robert S. Chauvin has been a professor of geography at Stetson since 1950. He received his B.S. degree from the State University College of Arts and Sciences in Plattsburg, N.Y. He earned his M.Ed. from the University of Houston. His M.A. and Ed.D. came from Columbia University and he received his L.L.D. from Stetson.

Geography



Dr. Bruce C. Bradford has been associate professor of geography and chairman of Stetson's Geography Department since 1975. He received his B.A. from Stetson and his M.S. and Ph.D. came from Pennsylvania State University.



Dr. Richard H. Wood, Jr. and Dr. Neal B. Long pose with Adele Tatum, the secretary for the Economics and Political Science Departments. Dr. Wood has been associate professor of Economics here since 1970. He received his B.A. from Antioch College and his M.A. and Ph.D. from the University of Wisconsin. Dr. Long, as well as being a professor of Economics, has been chairman of Stetson's Economics Department since 1974. He received his B.A. and Ph.D. from Indiana University and his M.A. from the University of North Carolina.

Economics

John M. Booth has been Associate professor of Economics at Stetson since 1973. From New York University, he received his B.S. His M.A. was received from University of California at Berkely and his Ph.D. from the University of Pennsylvania.



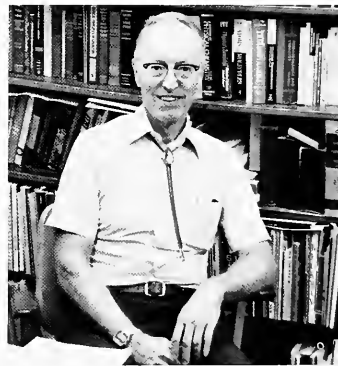
Political Science

T. Wayne Bailey is a professor of Political Science and has been the chairman of that Department since 1963. Since 1984, he has held the J. Ollie Edmunds Chair. He received his B.A. and Ph.D. from University of Florida and his M.A. from George Peabody College.

Gary L. Maris has been a professor of Political Science at Stetson since 1965. He earned his B.A. from Stetson and his M.A. and Ph.D. from Duke University.

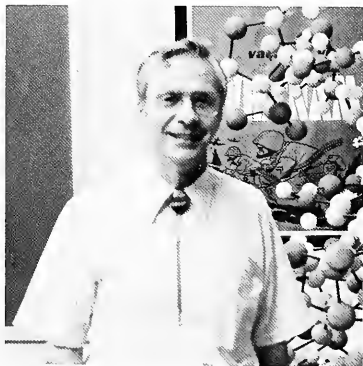


Dr. Kenneth G. Everett has been a professor of chemistry at Stetson since 1969. He achieved his B.S. at Washington and Lee University and his Ph.D. at Stanford University.



Dr. Edwin C. Coolidge has been a professor of chemistry here since 1961. He received his B.A. from Kenyon College and his Ph.D. from John Hopkins University.

Chemistry



Dr. Theodore W. Beiler, chairman of Stetson's Chemistry Department since 1953, received degrees from Allegheny College and from Harvard Univ.

Dr. Delap, at Stetson since 1962, received degrees from Southern Illinois and Duke.



Foreign Languages

Cont.



Dr. Mario Aldana has acted as associate professor of French since 1977. Dr. Aldana earned his degrees from the Univ. of Florida.



Mrs. Janet Anderson has been an instructor in Spanish at Stetson since 1968. She earned her degrees from Bates College.



Drs. Hertha and Jesse Berry are professors of foreign languages. Dr. Hertha Berry, who has been at Stetson since 1974 earned her degrees from the Univ. of Vienna, Harvard Univ., and Vanderbilt Univ. Dr. Jesse Berry earned his degrees from the College of William and Mary and Vanderbilt Univ. He has been chairman and professor of foreign languages since 1972.



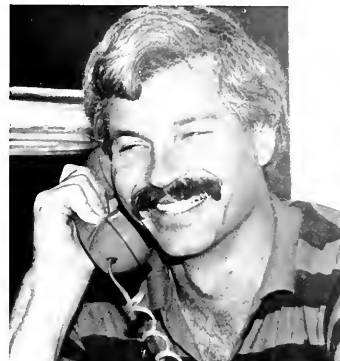
Pictured here are Mrs. O'Keefe and Dr. Elsie Minter, both professors of French. Dr. Minter has been a professor at Stetson since 1962. She is director of International Studies Program and earned her degrees from the Univ. of Richmond and the Univ. of North Carolina.



Pictured left to right are the Management/Marketing Instructors: Dan Rosetti, who has been at Stetson since 1983, earned his degrees from Florida State. Randall Evanson, who earned his degrees from Georgetown and George Washington Univ. has been at Stetson since 1981. Maxine Patterson, who has been at Stetson since 1948, earned her degrees from Mary Washington College of the Univ. of Virginia and the Univ. of Colorado; Nick Maddox, who is new at Stetson this year. David Nysten, who has served at Stetson since 1979, the Eugene M. Lynn Chair in 1980, earned his degrees from Duke Univ., Harvard Univ., and Univ. of Florida. Jackson Stevens, who has been at Stetson since 1985, and Harry Garber, Jr. (chairman) who has been at Stetson since 1972, earned his degrees from the Univ. of Miami, Michigan State Univ. and Syracuse Univ.



Dr. Surynt earned degrees from Temple Univ., the Univ. of Toronto, and Georgia State Univ. and has been here since 1983. **Mr. Masters**, here since 1964, has degrees from Rollins and Stetson.



Dr. Garland Keesling, who has been Assistant Professor of Marketing since 1981, earned his degrees from Univ. of Georgia, Appalachian State Univ., and the Univ. of Arkansas.

Education

Cont.



Dr. Ed Smotherman has been a professor of Education since 1956. He earned his degrees from Southwest Missouri State Univ. and the Univ. of Missouri.

Music School

Music is the Key for Success

Practice and dedication is the key for success in the Music Department.

The Wind Ensemble and the Orchestra worked individually and presented concerts about once per month.

The Choral Union has been presenting various concerts during the course of the year, ending their concert season with an opera.

The Jazz Band has been working off-campus for the Hilton Hotel in Daytona Beach, as the Taste of DeLand at the Edmunds Center, and at the Renovation Street Celebration in DeLand.

The Pep Band, which performs as an extra-curricular activity, provides music at the basketball games.

There have also been concerts every Tuesday and Thursday nights presented by the faculty and a faculty quintet.



Dr. James Woodward has had a successful year during his first year as the Dean of the Music School.



The faculty of the School of Music has put much dedication into its work to achieve success. Pictured here is the faculty before performing for the students.



ΦBK

Phi Beta Kappa members:

- Dr. Gerald Critoph*
- Mr. Terry Grieb*
- Dr. Robert Smith*
- Mr. Michael Reddish*
- Mr. David Nylan*
- Mr. Joel Zucker*
- Dr. Theodore Beiler*
- Dr. Malcolm Wynn*
- Dr. James DeLap*
- Dr. Gareth Williams*

ΦBK is the Liberal Arts Honorary for faculty and graduating seniors.

Model Senate

Model Senate is the Stetson version of the U.S. Senate. It is designed to educate students about how a Senate operates.



Carlton Union Building

The Director of the Carlton Union Building is Rodney Ellis. Rodney is in charge of the master calendar and the coordination of facilities. He is advisor to the Stetson Union Board and assists with all their activities. He also advises Greenfeather and Parents Weekend committees. Thanks, Rodney, for being the spirit of Stetson!

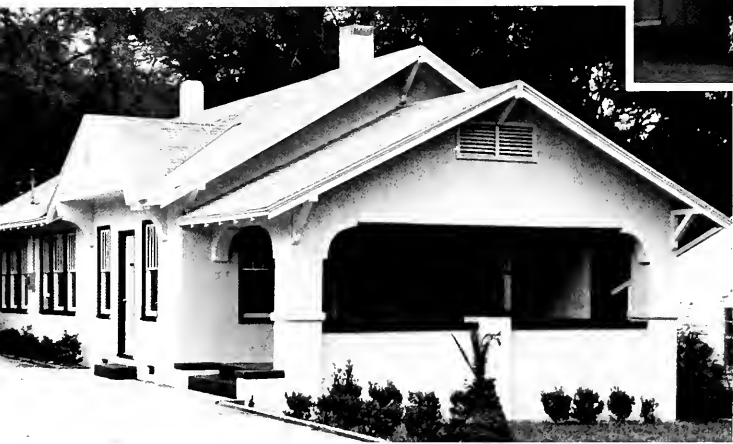


La Société Française

La Société Française is a cultural organization which helps increase knowledge of the French lifestyle on Stetson's campus.

A few members pose while looking for a cultural experience.

International Programs



The Office of International Exchange and Off-Campus Programs serves many purposes. The Office evaluates all international student applications, deals with their joys and problems and the House serves as the center for their life on campus.

The staff also processes all applications for students wishing to study abroad in one of Stetson's three study centers (Dijon, France; Madrid, Spain; Freiburg, West Germany), or in other approved foreign study programs. It also processes all off-campus Winter Term Trips. Finally, this office is a place for friendly and warm conversation with Mrs. Grace La-sorsa, Dr. Elsie Minter and Dr. Richard Ferland.



We Are . . .



They are (clockwise) Mike Whitehead, Karen Haas, Michael Ely, Anne Hall, Tracy Hebert, Susan Poindexter (Photo Editor) and Stephen McDaniel. Not pictured: Liz Bermant and Mike Harris.

Photographers

The Yearbook photographer staff this year was comprised of a group of hardworking individuals. Each photographer has a very wide range of interests from wrestling to religion. We would like to thank these guys for all their talent and the hard work they put forth to make this yearbook special. Thanks, Susan!

The Yearbook Staff!



They are Greg Doescher, Business Manager; Caroline Seymour; Chrissie Bastone, Copy Editor; Carol Duncil; Debbie Donovan, Student Life Editor; Sylvia Redwine, Typist, and Tambre Ware, Editor. Not shown: Mike Harris, Sports Editor; Carson Baker, Nini Kaczynski, and Mike Whiteside.

This year's staff was a busy one. Although each member was active in many other organizations, they still made time for the yearbook. Quality was a must as well as the party after it was all over. Thank you all for your help and dedication.

SENIOR INDEX

ACQUARO, DAWN MARIE
24 Colonial Circle
Ormond Beach, FL 32074
904/677-0631
Biology

ADAMS, NANCY DAWN
2756 Sam Road
Jacksonville, FL 32216
904/733-4469
Finance/Economics
Zeta Tau Alpha 1, 2, 3, 4; Standards
Chairman 3; House Chairman 2; Stetson
Marketing 3, 4; Newsletter Chairman 3;
Policy Chairman 4; Phi Chi Theta 2, 3, 4;
Focus Advisor 4.

ADAMS, HOPE
11225 S.W. 47th Terrace
Miami, FL 33165
Political Science

AHRENS, DON
3675 Royal Oak Drive
Titusville, FL 32780
Finance

ANDERSON, DAWN MARIE
220 Kerry Hills Lane
Spring Hill, FL 33526
Music Education

ANDERSON, EDIE
13 Forest Pines Drive
Statesboro, GA 30458
Accounting

ANKERMAN, ANGIE K.
3050 N.E. 46th Street
Ft. Lauderdale, FL 3308
305/491-6941
History
Phi Eta Sigma 2, 3, 4; Phi Mu 1, 2, 3, 4;
Secretary 2, 3.

ARAND, AMBER L.
Wellington, FL
305/798-5939
Sociology/French
Delta Sigma Phi Little Sister, 2, 3, 4; 1984-
85 Study Abroad Dijon, France

ARNHEIM, TIMOTHY R.
5765 Arvine Circle
Fort Myers, FL 33907
American Studies
Pi Kappa Alpha 1, 2, 3, 4

AUSTIN, CAROL ANN
P.O. Box 1053
Belle Glade, FL 33430
Psychology

BAILEY, SHERRILLE DIANE
600 N. Salisbury Avenue
Deland, FL 32720
904/736-3405
Political Science
Phi Mu 1, 2, 3, 4; Alumni Secretary 1, 2;
Social Service Co-Chairman 3, 4; Model
Senate 1, 2, 4; Handbook Chairman 1;
Corresponding Secretary 4; Stetson
Union, Secretary 2; First Runner-Up Miss
Greenfeather 3; Phi Sigma Kappa Little
Sister 3, 4; Phi Alpha Delta Pre-Law Hon-
orary 3, 4; Winter Term Committee 2.

BARNHILL, BRAD
485 N. Spanish Trail
Boca Raton, FL 33432
Computer Science

BARRICK, CHRISTOPHER ADAM
P.O. Box 4259
Ocala, FL 32678
Economics/Finance
Honors Program 2, 3, 4; Marketing Associ-
ation 3, 4; Student Advisor 3.

BARTELS, JOHN ROBERT
801 Spruce Street
Englewood, FL 33533
813/474-2951
Psychology

BASCOM, MICHELLE M.
612½ W. Indiana Avenue
Deland, FL 32720
904/736-1268
General Business
Delta Sigma Phi Little Sister 1, 2; Publicity
Chairman-Conrad 3; Staff Assistant 3.

BASTA, JANIS
107 Briarwood Drive
Simpsonville, SC 29681
Accounting

BAYNE, STEPHENIE, DALE
1326 Southglen Lane
Lakeland, FL 33803
813/646-8805
Bachelor of Music—Performance
Orchestra 4; Wind Ensemble 3; Brass En-
sembles; Year Abroad

BLACK, CRYSTAL LEE
1258 Forest Lake Drive W.
Altamonte Springs, FL 32714
305/862-1737
Music Education/Speech & Theatre
MENC 1, 2, 3, 4; Secretary/Treasurer 3;
Concert Choir 3, 4, 5; Theatre 5.

BLACK, KAREN MARIE
3130 N.W. 9th Place
Gainesville, FL 32604
904/378-5552
Accounting
Phi Mu 2, 3, 4; Phi Chi Theta 2, 3, 4.

BLAND, JUDI E.
4139 S. Atlantic Avenue #806
New Smyrna Beach, FL 32069
904/423-2760
Marketing
Pi Beta Phi 2, 3, 4; Rho Chi 3; Panhellenic
Treasurer 3, 4; Delta Sigma Phi Little Sis-
ter 3, 4.

BLISS CHARLESALAN JR.
P.O. Box 1552
Ormond Beach, FL 32075
904/672-9812
Psychology
Psi Chi 3, 4; Dean's List 3, 4; Psychology's
Outstanding Senior 4; Peer Tutoring 4.

BOONE, MARYCATHERINE D.
2672 Stanislaus Circle
Macon, GA 31204
912/746-1895
History/Psychology
Alpha Xi Delta 1, 2, 3, 4; Quill Chairman 2;
Social 4; Journal 4; Pi Kappa Alpha Little
Sister 2, 3, 4.

BOSE, ALICE-MARGARET
1000 Oak Avenue
Sanford, FL 32771
305/322-2125
Music Education/Voice
Concert Choir 3, 4; MENC 3, 4; Wind En-
semble 3; Music Advisory Council 4; Mu-
sic Education Representative 4.

BOWLING, CAROL LYNNE
1106 Timber Lane
Jacksonville, FL 32211
904/724-6261
Marketing
Alpha Chi Omega 1, 2; Corresponding
Secretary 3; Historian 4; Stetson Market-
ing Association 3, 4; Resident Advisor 2,
3; Baseball Bat Girl 2; Soccerette 2, 3;
Dean's List 3, 4.

BROWN, KEVIN EMORY
Rt. 2 Box 770 Glen Street

Mary, FL
904/259-2754
Chemistry
Gamma Sigma Epsilon 3, 4; American
Chemistry Society 1, 2, 3, 4.

BUMP, GERALD
North Main Street
Ivoryton, CT 06442
Marketing

BURNICK, MIKE
338 Markey Court
Indian Harbor Beach, FL 32937
Finance/Management

BURNS, JAMES PATRICK
4920 Taylor Street
Hollywood, FL 33021
305/966-6648
Computer Science/Business
Stetson Jazz Ensemble 1, 2, 3, 4; Wind
Ensemble 1, 2; Dean's List 2, 3, 4; Delta
Sigma Phi 1, 2, 3, 4; Engineered Leader-
ship Director

CACCI, RALPH AUGUSTINE
258-B Seabreeze Court
N. Wildwood N.J. 08260
609/729-2482
History
Delta Sigma Phi Fraternity 1, 2, 3, 4; Order
of Omega 3, 4; Phi Alpha Theta 3, 4; Omicron
Delta Kappa 4.

CAGLIANONE, JEFF ALAN
6770 SW. 10th Street
Pembroke Pines, FL 33023
305/989-1719
American Studies
Assistant Softball Coach Varsity 3; Year-
book Photographer 3; Staff Assistant 3,
4.

CARLSTEDT, JAMES L.
3103 Samara Drive
Tampa, FL 33618
Accounting

CARLTON, MARY LISA
Rt. 2 Box 710
Arcadia, FL 33821
813/322-1135
Sociology
Student Government 1, 3, 4; Alpha Chi
Omega 2, 3, 4; Pi Kappa Alpha Little Sis-
ter 2, 3, 4; Jr. Panhellenic Rep. 3; Social
Chairman 3.

CARPENTER, KIMBERLY LYNN
8720 Chatham Street
Ft. Myers, FL 33907
813/936-6065
Speech
Alpha Xi Delta 1, 2, 3, 4; Membership
Chairman 3; President 4; Forensic Team
3, 4; Rho Lambda 4; Softball Team 3, 4;
WSTN radio 1; Honor Roll 1, 2, 3, 4; Can-
terbury House 1, 2; Bat Girl 1, 2, 3; Mortar
Board Honor Society 3, 4.

CARPER, MARK ALAN
P.O. Box 307
DeLeon Springs, FL 32028
904/985-4896
General Business
Pi Kappa Alpha 1, 2, 3, 4; Focus Co-Chair-
man 4; Phi Chi Theta 3, 4; Winnie C. Tan-
ner Scholarship 4; Homecoming Commit-
tee Chairman 3.

CASON, ROXANNE
29820 SW. 153rd Place
Homestead, FL 33033
Marketing

CHESAK, RANDY PAUL
2001 Round Lake Road
Mt. Dora, FL 32757
305/383-7383
Finance
Delta Sigma Phi, President 3; IFC, Treas-
urer 2, 3.

CHESSER, MAE ELIZABETH
706 E. Margurite Street
Perry, FL 32347
904/584-6726
Finance
Delta Delta Delta 2, 3, 4; Scholarship
Chairman 3; Rush Chairman 4; Hatter
Connection 2, 3, 4; Mortar Board 3, 4;
President 4; Omicron Delta Kappa 3, 4;
BACCHUS 3, 4; Public Relations Officer
4; Phi Chi Theta 3, 4; Phi Eta Sigma 2, 3, 4;
1985 Stetson Homecoming Hostess 3;
Focus Advisor 3; Phi Alpha Delta 4; Rho
Lambda 4; Staff Assistant 2; Hatter Year-
book Staff 2; 1986 Homecoming Hostess
4; Homecoming and Parent's Weekend
Committee Chairman 2, 3.

CHRIST, DEBORAH ANN
1506 Cardinal Street
Longwood, FL 32750
305/339-3906
Elementary Education/Psychology
Honor Roll 1, 2; President's List 2; Dean's
List 1, 2, 3, 4; Fine Arts Vice Chairman
SUB 3; Chairman 4; Kappa Delta Pi 3, 4;
Historian 4; Senage Page 3.

CLARK, CHARLES DOUGLAS
1518 South Mills Road
Orlando, FL 32806
305/898-6575
Chemistry/History
Phi Alpha Theta 3, 4; Officer; American Chemical Society, Treasurer 3, 4; President Judo Club 3, 4; Artist and Lectures Committee

CLARK, SUSAN CATHERINE
15602 81st Terrace N.
Palm Beach Gardens, FL 33418
305/747-7461
Accounting
Honors Program 1, 2, 3, 4; Focus 3, 4; Alpha Tau Omega Little Sister 2, 3, 4; Phi Eta Sigma 1; Mortor Board 4; Treasurer 4; Alpha Kappa Psi 2, 3, 4; Accounting Club 3, 4; Hatter Connection 3, 4; SUB Films Committee 2, 3, 4; Chairman 4.

CLEMONS, SHELBY
520 West Clemons Road
Brandon, FL 33511

CONERLY, CYNTHIA FAYE
114 Oak Forest Drive
Wauchula, FL 33873
813/773-6309
Bachelor of Music/Voice Performance
Chapel Choir 1, 2, 3, 4; Concert Choir 1, 2, 3, 4; Phi Eta Sigma 1; Music School Freshman of the Year; Phi Kappa Lambda 3, 4; Stetson Opera Theatre 3, 4.

COPE, DAVID BLAINE
11836 Fermland Drive
Rockville, MD 20852
301/881-1961
Sports Administration/Business
Pi Kappa Phi 1, 2, 3, 4; President 4; Treasurer 3; Vice President 3; IFC 3, 4; Rush Chairman 3; JIFC Social Chairman 1; IFC By-Laws Committee 4; Varsity Volleyball 1; Parents's Weekend Committee 2.

CORY, TUCKER PAUL
1111 Fairview Ln
Singer Island, FL 33404
305/845-7252
Management
Phi Chi Theta, Historian 2, 3, 4.

COSTA, KATHLEEN A.
10 Juniper Drive
Ormond Beach, FL 32074
904/441-4789
Accounting
Phi Mu 1, 2, 3, 4; Secretary 3, 4; Assistant Treasurer Accounting Club 3, 4; Stetson Marketing Association 2, 3, 4; Phi Chi Theta 2; University Orchestra 1, 2, 3, 4; Music Scholarship; Rho Chi 4.

COUSINS, CATHERINE LEE
1207 N. Amelia Avenue
DeLand, FL 32724
904/734-1544
Psychology
Psi Chi 4.

COVONE, CHRISTOPHER THOMAS
5530 W. 12th Avenue
Hialeah, FL 33012
305/823-2708
Religion/Philosophy
Soccer Team 1, 2, 4; Religious Life Council 4; Stetson Coalition For Social Responsibility 4.

COLE, RON
400 Canterbury Lane
Wykoff, NJ 07481
History

CREA, THERESA MARIE
11410 NW 41st Street
Coral Springs, FL 33065
305/753-4814
Accounting
Zeta Tau Alpha 2, 3, 4; Alumnae Relations Chairman 2, 3; Delta Sigma Phi Little Sister 2, 3, 4.

CREECH, JOANNE MINAKO
220 Strawberry Lane
Daytona Beach, FL 32017
904/255-1005
Biology/Pre-Med
Sigma Phi Epsilon Little Sister 3, 4; Beta Beta Beta 2, 3, 4; Secretary 4; Gamma Sigma Epsilon 3, 4; Treasurer 4; American Chemical Society 3, 4; President 4; SGA Selections Committee 2.

CROUSE, GREGORY MITCELL
693 West Avenue
Naples, FL 33963
813/597-5153
Church Music
Concert Choir 2, 3, 4, 5; Chapel Choir 2, 3, 4, 5; Opera Workshop 1, 3, 4, 5; Music School Student Advisory Council Secretary 5.

CRUM, CINDA
545 W. University
Deland, FL 32720
Psychology

CRUTCHFIELD, AMY ELIZABETH
2620 Eastill Drive
Jacksonville, FL 32211
744-4287
Music Education
Kappa Delta Pi; Phi Eta Sigma; Concert Choir; Dean's List 3.

CUBBEDGE, MARY MICHELLE
12830 Pinecrest Avenue
Daytona Beach, FL 32014
904/252-0637
Speech/Drama/Sociology
Phi Eta Sigma; Pi Kappa Delta President 4; Omicron Delta Kappa; Mortor Board Publicity Officer 4; SGA Senator 2, 3, 4; WSTN Dis Jockey 1, 2; Focus Advisor 3; Resident Advisor 4; Forensics Team 2, 3, 4.

CUDDY, KEITH RAYMOND
P.O. Box 1208
Mattituck, N.Y.
516/298-8452
Political Science

DALY, INGRID CAROLINE
13 Hildebrandt Street
St. Nicolas, Aruba, N.A.
599/8-45674
Accounting

DAVIS, JOHN PAUL III
14820 Miami Lakeway South
Miami Lakes, FL 33014
305/557-8264
Music
Alpha Tau Omega 1, 2, 3, 4; Pledge Educator 2; Social Service Officer 3; Concert Choir 2, 3; Chapel Choir 2, 4; Honor Roll 1, 2, 3, 4; Winter Term Planning Committee 3; Ministerial Association 1.

DEBARO, KIMBERLY
171 Finder Avenue
Bridgewater, NJ 08807
Finance

DENNIS, PAMELA ELAINE
1904 Little Core
Tampa, FL 33612
813/961-7178
History
Alpha Xi Delta 1, 2, 3, 4; Recording Secretary 3; Vice President 4; Pi Kappa Alpha Little Sister 1, 2, 3, 4; Dream Girl 3; Rho Lambda 4.

DeSANTIS, TIMOTHY QUINN
240 Otis Road
North Port, FL 33596
813/426-2890
Biology/Chemistry
Pi Kappa Alpha 1, 2, 3, 4; Resident Advisor 3; Focus Advisor 2, 4; Judicial Council 3, 4; Beta Beta Beta 2, 3, 4; Gamma Sigma 4; Omicron Delta Kappa 3, 4; Phi Eta Sigma 1; Green Circle 2; Mortor Board 4; Homecoming Committee Chairman 2, 3; Parent's Weekend Committee Chairman 3; Student Athletic Trainer 2; Hatter Staff 1; Cafeteria Student Manager 4; SGA Senator 2, 3; SGA Cabinet 2; Catholic Campus Ministry 1, 2, 3, 4.

DIAMANTINI, ANNUNZIATA NANCY
6 Pasture Drive
Brookfield, CT 06805
203/775-4294
Management/French
Alpha Xi Delta 1, 2, 3, 4; Scholarship Chairman 2; Staff Assistant 1, 2; Stetson Marketing Association 2; Student Cafeteria Manager 2, 3, 4; Study Abroad, France 3; Lambda Chi Alpha Little Sister 4.

DIAZ, ALFREDO J.
2531 SW 124th Avenue
Miami, FL 33175
305/553-2692
General Business Administration
Varsity Baseball 2; Volleyball 2, 3, 4.

DOBSON, ELAINE
1525 W. Beresford Road
Deland, FL 32720
Elementary Education

DOESCHER, GREG
2718 North Canal Drive
Lakeland, FL 33801
General Business

DUNCAN, NEAL ARNOLD
7724 Jaguar Drive
Jacksonville, FL 32244
904/771-6910
Psychology
Baptist Campus Ministry 2, 3, 4; BCM Director of Outreach 3; BCM Director of Worship 4.

EBENGER, JOHN GEORGE
4386 Jib Boom Circle Apt. 4D
Ft. Myers, FL 33907
813/433-1844
Accounting

ELLIS, JAMES EDWARD
Rt 1, Box 250
Auburndale, FL 33823
813/956-1412
English
Alpha Tau Omega 1, 2, 3, 4; Worthy Sentinel 1, 2; Judicial Council 3; Rifle Team 1; Honors Program 1, 2, 3, 4; Sigma Tau Delta 3, 4; Mortor Board 3, 4; BCM 3, 4; Outdoor Club 4.

ELU, MICHELNE WAYNE
7848 Winter Song Road
Orlando, FL 32817
305/281-0986
Religion/Spanish
Alpha Tau Omega 2, 3, 4; Yearbook 4; IFC Rep. 4; Ministerial Assoc. 2.

EMCH, GREGG
Rt. 4 Box 645 Black Ironwood Dr.
Deland, FL 32724
Accounting

EPTING, WILLIAM E.
2579 Pineridge Road
Jacksonville, FL 32207
904/399-5655
Mathematics
Sigma U 1, 2, 3, 4; Stetson Security Guard 2, 3, 4; Assistant Director of Security 4; House Father 4; SGA Senator 4; Pledge Class President 1.

ERIKSON, LINDA L.
2646 Martin Avenue
Lakeland, FL 33803
813/683-2346
Elementary Education
BACCHUS 2, 3, 4; Wrestlerette 3, 4; Co-Captain 4; Circle K 4; University Chorus 1, 2; SUB Concert Committee 2, 3.

EVANS, ALISON ELIZABETH
8571 Soundings Place
Hobe Sound, FL 33455
305/546-2832
Sociology/Business
Women's Volleyball Team 1; Intramurals 2, 3, 4; Supervisor 4; Phi Mu 2, 3, 4; BACCHUS 2, 3, 4; President 3; Resident Advisor 2; Head Resident 4; Delta Tau Kappa 3, 4; President 4; Omicron Delta Kappa 3, 4; Mortor Board 3, 4; Judiciary Council 3, 4.

EVANS, JENNIFER LEE
275 E. Stetson Avenue #9
Deland, FL 32724
904/738-5435
Elementary Education
Alpha Xi Delta 3; Chaplain 1.

EVERETT, MARY ELIZABETH
4027 Corrientes
Jacksonville, FL
904/733-0248
Accounting
Zeta Tau Alpha 1, 2, 3, 4; Social Chairman 3.

FABER, MARK HAMILTON
904 Putchana Place
Mauette, GA 30067
404/565-8386
Mathematics
Orchestra 1, 2; String Ensemble 1, 2; Sigma Nu 1, 2, 3, 4; Sentinel 3; Rush Chairman 4; Wrestling 1; Security Guard 3; Cheerleader 2, 3.

FARRELL, JOSEPH S.
109 Osakland Hills Drive
Naples, FL
813/775-0676
Marketing/Management
Phi Sigma Kappa 1, 2, 3, 4; Inducter 3; A.C. Griffen Membership Charter award 3; Phi Chi Theta 2, 3, 4; Efficiency Chairman 2; CCM House Council 1, 2, 3.

FAULKNER, RICHARD ALAN JR.
504 Lisa Lane
Maitland, FL 32751
305/834-5830
Accounting
Delta Sigma Phi 2, 3, 4; Zeta Man 2, 3, 4; Focus Advisor 2, 3; SUB 2; ROTC 1, 2, 3, 4; Scabbard & Blade 3, 4.

FEDELE, DAYNA
900 NE Town Terrace
Jensen Beach, FL 33457
305/334-8511
General Business

FELDMAN, KEITH R.
8337 NW 80th Place
Tamarac, FL 33221
305/726-0183
Marketing
Delta Sigma Phi 1, 2, 3, 4; President 4; Stetson Marketing Association 2, 3, 4; V.P. 2, 3; President 4; IFC 2, 3, 4; V.P. 3, President 4; SUB 4; BACCHUS 3, 4.

FENNELL, RONALD DEAN
4731 Square Lake Drive
Lake Park, FL 33410
305/622-4757
Finance
Pi Kappa Alpha 2, 3, 4; SGA 3; SUB 4; Phi Chi Theta 3, 4; Stetson Outdoor Club; Greek Bible Study 2, 3, 4.

FERBER, KAREN SUE
951 McLean Street
Dunedin, FL 33528
813/733-2930
General Business/Pre-Law
Phi Chi Theta 2, 3, 4; Public Relations 3; President 4; Phi Alpha Delta 3, 4; Homecoming Committee 3, 4; Student Advisory Board For Business School 3.

FESSLER, CHRISTINE ANNE
600 Quail Ave.
Miami Springs, FL 33166
305/885-1779
Mathematics
Phi Mu 1, 2, 3, 4; Assistant Treasurer 2; Treasurer 3; ACM 3, 4; Treasurer 4, Deans List 1, 2, 3, 4; Presidents Scholarships 3; CCM 1, 2, 3, 4.

FEUS, MARGARET IMELDA
438 West Gate Dr.
Venice, FL 33595
813/488-6042
French/International Relations
Alpha Xi Delta 1, 2, 3, 4; Pi Kappa Alpha Little Sister 1, 2, 3, 4; Study Abroad Program 3.

FIELD, CHRISTINE ELIZABETH
11528 NW 1st St.
Plantation, FL 33325
305/475-9652
Theatre
Theta Alpha Phi 3, 4.

FIGUEIRAS, MARIA D.
933 SE 2nd St.
Belle Glade, FL 33430
305/996-9655
Management/Psychology—Spanish
Kappa Alpha Theta 1, 2, 3, 4; Purchase Fund Officer 3; President 4; Alpha Kappa Psi 3, 4; Resident Advisor 2, 3; Mortar Board 3, 4; Omicron Delta Kappa 3, 4; Rho Lambda 2, 3.

FINTON, KELLY S.
C807 Royale Towers
1840 N. Atlantic Ave.
Cocoa Bch., FL 32931
305/783-8147
Psychology
Resident Advisor 3, 4; BCM 1, 2, 3, 4; Greek Bible Study 1, 2, 3, 4; Omicron Delta Kappa Vice President 3, 4; Stetson Outdoors Club 2, 3, 4; Psi Chi.

FLOOD, ELEANOR
Star Rt. #1 Box 103
Crescent City, FL 32012
Humanities

FORBES, CORNELIA LISABETH
935 Pirate Cove Ln
Vero Beach, FL 32963
305/231-2275
Accounting
Alpha Chi Omega 1, 2, 3, 4; Jr. Panhellenic 1; Panhellenic 2, 3; Basketball Press-aid 1, 2, 3, 4; Staff Assistant 1, 2; Resident Advisor 3; Greek Weekend Chairman 3; BACCHUS 2, 3, 4; Treasurer 3; Vice President 4; Alpha Kappa Psi 3, 4; Accountancy Club 3, 4; Business School Representative for Student Affairs Committee 4; Chaired Various Committees for Homecoming, Greek Weekend, Parent's Weekend, and Residential Life.

FOSKETT, THOMAS ROBERT
214 Pampas Grass Ct. W.
Lake Mary, FL 32746
305/321-5061
Accounting
President Alpha Tau Omega 4; WSTN Disc Jockey 2; Alpha Tau Omega 2, 3, 4; Order of Omega 4; IFC 3; Transfer from U. of Wisconsin 2.

FRANKLIN, ELIZABETH MICHELE
1229 SE 11th St
Ocala, FL 32671
904/732-3571
Psychology
Dean's List 3, 4; Jr. Panhellenic 3; Panhellenic Social Chairman 4; Zeta Tau Alpha 3, 4; Kappa Delta Pi Corresponding Secretary 3, 4; Psi Chi 4.

FRASER, JANET FRANCES
Rt. 1 Box 197
Flagler Beach, FL 32036
904/439-2287
Finance
Alpha Kappa Psi 3, 4; Sigma Phi Epsilon Little Sister 2, 3, 4

FRUSH III, LEON EDGAR
1301 Dixie Lee Ln.
Sarasota, FL 33581
813/924-6409
Finance
Lambda Chi Alpha Treasurer 3, 4.

FULTON, SUSAN CARMICHAEL
Rt 14 Box 75-24
Sarasota, FL
813/922-3241
Psychology
Kappa Alpha Theta 1, 2, 3, 4; Alpha Tau Omega Little Sister 3, 4; Resident Advisor 4; Catholic Campus Ministry 1, 2.

GALL, KATHRYN
7537 Ridgewood Ln
Burr Ridge, IL 30525
English/French

GARCIA, OVETTE ROSA
11953 Orange Grove Blvd.
Royal Palm Bch., FL 33411
305/798-3564
Piano Performance
MENC President 4; Advisory Council 4.

GARVEY, SHERYL ANNE
320 Signorelli Dr.
Nokomis, FL 33555
813/966-5949
History/Psychology
Zeta Tau Alpha 1, 2, 3, 4; Phi Alpha Theta 3, 4; Honor Roll; Dean's List.

GATES, GREGORY SLADE
518 N. Delaware Ave
DeLand, FL 32720
904/738-2123
Finance/Computer Science
OSBI 3, 4; Newspaper 1; Yearbook 1; WSTN Disc Jockey 1, 2; Stetson Taekwondo Blub President 3, 4; Stetson Photographer Editor 1.

GOY, RICHARD TODD
3605 Newcastle Creek Dr.
Jacksonville, FL 32211
904/744-2278
Psychology
Psi Chi 2, 3, 4; Scabbard and Blade 3, 4.

GEGERSON, SHARI BETH
3900 NW 106 Dr.
Coral Springs, FL 33065
305/752-4688
Psychology
Zeta Tau Alpha 1, 2, 3, 4; Pledge Committee 3; Activities Chairman 4; Focus 3, 4; Advisor 3; Co-chairman 4; SGA 2, 3; Senator 2; Secretary 3; Greenfeather 3, 4; Mr. Beauty Co-chairman 3, 4; Beta Beta Beta 2, 3; Pre-health Professional 1, 2; Conference RA 3.

GEIGER, LISA MARIE
2831 NE 21 Ct
Ft. Lauderdale, FL 33305
305/563-9477
Elementary Education
Pi Beta Phi 1, 2, 3, 4; President 4; VP Moral Advancement 3; Alpha Tau Omega Little Sister 1, 2, 3, 4; Rho Lambda 3, 4; Honor Roll 3, 4; Greek Week Movie Night Co-Chairman 2, 3.

GETTINGS, LISA L.
1319 Fairlee St.
Lakeland, FL 33803
813/646-6991
Accounting
Focus 3, 4; Focus Training Co-Chairman 4; Phi Chi Theta 3, 4; Secretary 4; Academic Advising Committee 3; Accountancy Club 3, 4.

GIBSON, KAREN ELIZABETH
Rt 1 Box 1013
McAlpin, FL 32062
904/362-5945
Church Music—Organ
Advisory Council 2, 3; Chapel Choir 1, 2, 3, 4; Concert Choir 2, 3.

GLUM, STEPHEN E.
240 Marco Way S.
Satellite Bch, FL 32937
305/777-2720
Marketing
Pi Kappa Alpha 1, 2, 3, 4; Student Government 3.

GRADY WILLIAM L.
6105 W. Riverside Dr.
Ft. Myers, FL 33907
813/936-3944
Accounting
Pi Kappa Phi; Alpha Zeta Delta Big Brother, Honor Roll 1, 2, 3; Dean's List 1, 2, 3, 4; Greek Bible Study Co-Leader, Tait Accounting Award Winner; Heath Scholarship; Accounting Club.

GRAHAM, EDWARD KENNETH
Rt. 1 Box 66
Winter Park, FL 32792
305/657-6059
Accounting
Alpha Tau Omega 1, 2, 3, 4; Charter Member 1; Social Service Coordinator 2; Treasurer 3, 4; Alpha Kappa Psi 2, 3, 4; IFC Representative 2, 3; IFC Secretary 3, 4; Order of Omega 3, 4; WSTN 1, 2; Stetson Union Board Films Committee 1, 2, 3, 4; Greenfeather Co-Chairman 4; Reporter Staff 4; Accountancy Club 3, 4.

GRIFFIN, LESLIE
711 E. Pennsylvania Ave.
DeLand, FL 32720
Psychology

GUILIANO, LAURA JEAN
3511 Woodmont Dr.
Sarasota, FL 33582
813/377-3287
Computer Science
Phi Mu 2, 3, 4; Public Relations 3, 4; ACM 3, 4; Vice Chairman 4; CCM 3, 4.

HAAS, KAREN
1703 Old Daytona Rd.
DeLand, FL 32724
904/736-1852
Humanities

HASTINGS, LORI LEE
1237 Fox Fire Tr.
Apopka, FL 32703
305/889-2060
Psychology
Stetson Reporter Associate Editor 1; Managing Editor 2; Editor 3, 4; Publication Board 3, 4; Sigma Pi Kappa President 4; Hatter 3; Psi Chi 3, 4.

HAUN, NICKI
1743 N.E. 28th St
Ft. Lauderdale, FL 33334

HEDE, KARYN LESLIE
8531 SE Driftwood St
Hobe Sound, FL 33455
305/546-3031
Biology
Delta Sigma Phi Little Sister 1, 2, 3, 4; Treasurer 4; Beta Beta Beta 1, 2, 3, 4; Vice President 4 Honor's Program 1, 2, 3, 4; Outstanding Junior 3; Gamma Sigma Epsilon 3, 4; Chemistry Magic Show 3, 4; Student Union Board Rep. at Large 2; Presidential Scholar 2, 3; Parent's Weekend Registration Co-chairman 4; Dean's List 2, 3, 4.

HILL, PARRISH LEE
1550 High St
Ft. Myers, FL
813/332-4794
Speech—Theatre/Sociology
Phi Kappa Delta Honorary 2, 3, 4; Forensics Team 2, 3, 4; Stetson Afro American Society 1, 2; WSTN Disc Jockey 2, 3, 4; Black Heritage Chairman 3.

HILL, WILLIAM
7511 Oak Vista Cir
Tampa, FL
History

HINES, MARY
1204 Racine Rd
Orange City, FL 32763
Physics

HINMAN, GREG L.
4221 SW 4th St
Deerfield Beach, FL 33321
305/429-0658
Marketing
Alpha Kappa Psi 3, 4; Men's Basketball 1, 2, 3, 4.

HOGG, JENNIFER ANN
454 Golfview Dr
Naples, FL 33942
813/597-7739
Marketing
Zeta Tau Alpha 2, 3, 4; President Pledge Class 2; Fraternity Ed 3; Secretary 4; Stetson Marketing Assoc. 3, 4; Treasurer 4; Rho Chi 4; Focus Advisor 3; E.C. Furlong Scholarship 3; Rho Lambda 4; Dean's List 3; Order of Small Business Institute 4; Greek Weekend 3; Greenfeather 2, 3; Parent's Weekend 3.

HOLLAND, GARY L.
65 E. Nasa Blvd.
Melbourne, FL 32901
305/724-1226
History

HOWARD, LYNN RACHEL
40 Pine Valley Cir
Ormond Beach, FL 32074
904/672-3886
Mathematics
Association for Computing Machinery 2,
3; Soccer Club 1; Computer Lab Assis-
tant 2, 3.

HUDDLESTON, ANNA LUCILE
1500 Galleon Dr.
Naples, FL 33940
Elementary Education/Early Childhood
Foreign Language Club 1, 2; Student
Union Board 1, 2, 3; Florida Association of
Teacher Educators 3, 4.

JEFFRIES, BARBARA JOAN
5101 SW 6th Ct.
Margate, FL 33068
305/974-2983
Psychology
Phi Sigma Kappa Little Sister 3, 4; Wrest-
lerette Co-Captain 3, 4.

JENKINS JR., ROBERT LYNN
6136 Rose Terr.
Plantation, FL 33317
305/581-6684
History
Delta Sigma Phi 1, 2, 3, 4; Phi Alpha Theta
3, 4; Big Dipper 2, 3, 4; Honors Program 3,
4.

JETER, SANDRA
319 Adams Dr
Crestview, FL 32536
904/682-2617
Mathematics
Alpha Chi Omega 1, 2, 3, 4; House Man-
ager 2; Rush Chairman 4; BACCCHUS 1, 2.

JOHNSON, ANGELA M.
Box 328 Mandeville
Jamaica, W.I.
Business Administration

JOHNSON, MICHELLE SAWN
12622 Remler Dr. W.
Jacksonville, FL 32223
904/268-2239
English
Alpha Chi Omega 1, 2, 3, 4; Scholarship
Chairman 2; Rush Chairman 3; Sigma Tau
Delta 3, 4; Basketball Press Aide 1, 2, 3, 4;
Rho Lambda 3, 4.

JOHNSON, ROBERT EVANS
1144 Gulf Shore Blvd. S.
Naples, FL 33940
813/262-4416
Marketing/Management
Pi Kappa Alpha 1, 2, 3, 4; Stetson Judicial
Council 1, 2, 3, 4; Stetson Marketing As-
sociation 3, 4; Inter-Fraternity Council
Rep. 2, 3; Student Government Associa-
tion Elections Committee 1; Parents
Weekend Treasurer 3.

KETTERING, MICHAEL S.
1893 Ocala Rd.
Juno Beach, FL 33408
305/626-4505
General Business
Deans List 2.

KIMMELL, KRISTEN
501 Langholm Dr.
Winter Park, FL 32789
Marketing

KING, MARIANNE REBECCA
2720 Old Monticello Rd.
Thomasville, GA 31792
912/226-6650
History
Alpha Xi Delta 1, 2, 3, 4; Corresponding
Secretary 4; Sigma Nu Little Sister 1, 2, 3,
4; Rho Chi 4; Rho Lambda 4.

KINSTON, KRISTEL MARGARET
26039 Leyte Ct.
Punta Gorda, FL 33950
813/629-2217
Computer Science
Sigma Phi Epsilon Little Sister 2, 3, 4;
ACM 2, 3, 4; Secretary 4; Intramurals Rep
Chairman 1; Intramurals Rep Heart's Club
2; Catholic Campus Ministry 4.

KRUELLE, MARLENE KAYE
12709 Deep Spring Dr.
Potomac, MD 20854
301/340-2597
Marketing/Management
Alpha Chi Omega 1, 2, 3, 4; American
Marketing Association 2, 3, 4; Green-
feather Publicity Committee 1, 2, 3; Pub-
licity Chairman 4; Homecoming King &
Queen Committee 1, 2; SGA Publicity 1.

LAMBRIGHT, CARRIE LOUISE
PO Box 734
Maccleeny, FL 32063
904/259-6421
Psychology
Kappa Delta Pi 4; Baptist Campus Minis-
try 3, 4.

LANDERS, MAURA THOMAS
7 Perryridge Rd.
Greenwich, CT 06830
203/661-1354
Political Science/Spanish
Alpha Xi Delta 1, 2, 3, 4; Sigma Nu Little
Sister 1, 2, 3, 4; Phi Alpha Delta 4; College
Republicans 2.

LANGSTON, DIANA KAY
220 S. Bay St.
Eustis, FL 32726
904/357-4474
English
Pi Beta Phi 1, 2, 3, 4; Recording Secretary
4; Historian 3, 4; Theta Alpha Phi 2, 3, 4;
Sigma Tau Delta 3, 4.

LeFILS, TERESA ADUREY
846 NE 31st St.
Ocala, FL
Elementary Education
Little Hatter Mascot 4; Kappa Delta Pi
President 4; J.B. Hobbs award.

LENOX, DANA LOUISE
2940 53rd St.
Sarasota, FL 33580
813/351-3286
Accounting
Alpha Chi Omega 1, 2, 3, 4; Treasurer 4; Pi
Kappa Alpha Little Sister 1, 2, 3; Tutor for
Athletic Dept. 2; Deans List 3, 4.

LINTON, SMITH, CHRISTOPHER
250 Nieuport Dr.
Vero Beach, FL 32962
305/567-7386
Marketing
Pi Kappa Alpha; Alpha Chi Omega Sweet-
heart; Stetson Marketing Association.

LITTLESTONE, JODI LEE
4370 DeLeon St.
Ft. Myers, FL 33901
813/936-3026
Marketing
Chaudoin Head Resident 4; Stetson Resi-
dent Advisor 3; Omicron Delta Kappa 3, 4;
Mortar Board 3, 4; Rho Lambda 3, 4;
Kappa Alpha Theta 1, 2, 3, 4; Fraternity
Education Chairman 3; Standards Chair-
man 4; Assistant Marshall 2; Jr. Panhel-
lenic Officer 1; Panhellenic Officer 2;
Kappa Alpha Theta 1985 Sister of the
Year 3; Delta Delta Delta Firecracker
Award 3; Delta Sigma Phi Little Sister 2, 3,
4; Parent's Weekend Co-Chairman 3;
Homecoming Publicity Chairman 3;
Greenfeather Publicity Chairman 3; Greek
Leadership Conference Publicity Chair-
man 3; Alpha Kappa Psi 1, 2, 3, 4; Master
of Tiruals 2, 3; Sophomore of the Year 2;
Pi Kappa Delta 1, 2, 3, 4; Forensics Team
1, 2; American Marketing Assoc. 3, 4;
Stetson Marketing Assoc. 3, 4; Publicity
Chairman 3; Honor Roll 1, 2, 3, 4; Dean's
List 3; J. Ollie Edmunds Service Award 3;
Wheat Scholarship 3, 4; Selby Scholar-
ship 1; Focus Advisor 2; Hatter Connec-
tion 2, 3, 4; SGA Senator 1.

LLOYD, JENNIFER LYNN
11495 Strickland Rd.
Roswell, GA 30076
404/993-1736
Computer Science/Psychology
Pi Beta Phi 1, 2, 3, 4; Treasurer 3, 4; Histo-
rian 2; Photographer Yearbook 2; Report-
er Photographer 2; ACM 3, 4; Lab Assis-
tant 3, 4.

LOPEZ, NANCY DORIS
89 S. Atlantic Ave.
Ormond Beach, FL 32074
904/677-0123
Accounting
Zeta Tau Alpha 1, 2, 3, 4; President Jr.
Panhellenic; Pledge of the Year 1; Alum-
nae Relations Chairman 2; MHI 3; Direc-
tor of Pledge Programming 3; Treasurer 4;
Colligate Chairman for Zeta Day 4; Judi-
cial Chairman 4; Most Sorority spirit 3; Stu-
dent Government 1, 3; Alpha Kappa Psi 2,
3, 4; Focus Advisor 2, 4; Accountancy Club
3, 4; Secretary 4; Rho Lambda 4; Judi-
ciary Council 1, 2, 3, 4; Book Buster Co-
Chairman 4; Greek Weekend 4.

LUBACH, BETH ANN
349 NE 35th St.
L.H.P., FL 33064
305/946-9297
Marketing
Tri Delta 1, 2, 3, 4; Stetson Marketing As-
soc. 3, 4; Vice President Phi Chi Theta 2,
3; Lambda Chi Alpha Little Sister 1, 2, 3, 4;
Residential Advisor 3, 4; Dean Student
Advisory Board.

LUKA, JANINE
22 Shaw St.
Garfield, NJ 07026
Political Science

MAATTA, DEBORAH LYNN
172 Yacht Harbor Dr.
Osprey, FL 32559
813/966-5544
Spanish
Stetson Union Board 1, 2, 4; Residence
Hall Staff Assistant 2; Phi Eta Sigma 1, 2,
3, 4; Green Circle 2; Homecoming 2; Fol-
lies 1, 2.

MADDEN, CHRISSEY
430 McCracken Rd
Lake Helen, FL 32744
Elementary Education

MARSHALL, ELIZABETH ANNETTE
353 Dorset Dr.
Cocoa Beach, FL 32931
305/784-1521
Accounting
Alpha Kappa Psi 1, 2, 3, 4; Accountancy
Club 3, 4; Alpha Tau Omega Little Sister 4;
Band—Orchestra 1, 3.

MARTIN, CHRIS B.
1800 S. Ocean Blvd.
602 Hampton Beach Club
Pompano Beach, FL 33062
Management
Sigma Phi Epsilon 3, 4, 5.

MARTIN, STACEY RUTH
111 North Richmond Ave
Lehigh Acres, FL 33936
813/369-2590
Finance Pi Beta Phi 2, 3, 4.

MAY, MARY CATHERINE
2580 NW 107th Ave
Coral Springs, FL 33065
Finance

MCDANIEL, SUSAN
15777 Bolesta Rd. N. 118
Clearwater, FL 33520
Elementary Education

MCDONOUGH, MONICA ANNE
77 Birchwood Dr.
Portland, ME 04102
207/773-5713
Psychology

MCKINNEY, LANCE
1656 N. Mayfair Rd.
Ft. Myers, FL 33907
Finance

MCMURRY, CAROL ELIZABETH
3934 Alcazar Ave.
Jacksonville, FL 32207
904/396-6070
Economics/Finance
Zeta Tau Alpha 1, 2, 3, 4; Panhellenic 3;
Rho Chi 3; membership 4; Sigma Nu Little
Sister 2, 3, 4; Phi Chi Theta 3, 4; Honor
Roll 1, 2, 3; Dean's List 3; Rho Lambda 3,
4; Intramurals 1, 2, 3, 4.

METCALF, MARILYN
436 Clark St.
Oviedo, FL 32765
Sociology

MICHALE, KRISTEN
4001 SE 46 St
Ocala, FL 32671
904/694-5680
Accounting
Alpha Kappa Psi 3, 4; Zeta Tau Alpha 3, 4;
Accountancy Club 3, 4.

MIKESSELL, DIANE LU
Box 7296 Stetson Station
DeLand, FL 32720
904/734-9964
Art/French
Stetson Interntginal Study Abroad Pro-
gram, Dijon France 3; Pi Kappa Phi Little
Sister.

MILBERY, JACK M.
714 Tyler St
Hollywood, FL 33020
305/921-4708
Accounting
3; Chaplain 4; Sigma Tau Delta 2, 3, 4;
Vice President 4; Bacchus 2, 3, 4; Presi-
dent 4; Rho Lambda 4; Rho Chi 4.

MORRIS, JEFF
184 Ashmont St
Portland, ME 04103
Accounting

MUELLER, MARCIA E.
96 Cedar Ln
Ossining, NY 10562
914/762-3772
General Business
Kappa Alpha Theta 3, 4, 5; Sigma Phi Ep-
silon Heart 1, 2, 3, 4, 5; Resident Advisor
3.

NAISH, ALEESA J.
1156 Branchwater Ct
Dunwoody, GA 30338
404/394-1872
Church Music/Instrumental
Advisory Council 2, 3; Orchestra 1, 2, 3, 4;
Chapel Choir 2, 3, 4; Wind Ensemble 1.

NELSON, KIMBERLY LOUISE
928 S. Peninsula Dr
Daytona Beach, FL 32018
904/252-2667
Elementary Education
Alpha Chi Omega 1, 2, 3, 4; Outstanding
Pledge; PGS; YOLO; Spirit Chairman;
Courtney Chairman; Miss Greenfeather
Representative; Sigma Nu Little Sister 2,
3, 4; FSLATE 3, 4; Delta Sigma Phi 3, 4;
Residential Advisor 3; Security 1, 2, 3, 4;
Be A Friend Program 2; Student Govern-
ment Association 2; Long Range Planning
Committee Chairman 2; Staff Advisor 1.

MILES, SUSAN R.
PO Box 368
Tangerine, FL 32777
904/383-0246
Humanities

MILLER, BRYAN DOUGLAS
Rd 2 Box 271 A
McVeyTown, PA 17051
717/899-6888
Psychology

MITCHELL, LEVONNE MARIE
PO Box 677
Grand Cayman, Cayman Island
British West Indies
(949)-2525
Biology
Phi Eta Sigma 2, 3, 4; Secretary; Beta
Beta Beta 2, 3; American Chemical Soci-
ety 3; Bookbuster Tutoring Society 3.

MIZELL, CHARLES E.
Box 7212 Stetson Univ.
DeLand, FL 32720
904/734-9977
Marketing
Pi Kappa Phi 1, 2, 3, 4; Chaplain 3; Greek
Bible Study 2, 3, 4.

MORGAN, GERI LYNN
17 Orange Ave.
Rockledge, FL 32955
305/632-0723
English
Phi Mu 1, 2, 3, 4; Phi Director; Rho Chi 3;
Rho Lambda 4; SGA Senator 4.

NEVERTON, KAREN ELAINE
Box 251
Stowe, VT
Biology/Psychology
Beta Beta Beta 2, 3, 4; Student Athletic
Trainer 2, 3; Chemistry Magic Show 3, 4.

O'CONNOR, DIANE MARIE
265 Sand Dollar Rd
Indialantic, FL 32903
305/773-4578
Management
Phi Mu 1, 2, 3, 4; Standards Chairman 3;
President 4; Softball Team 1, 2; Rho
Lambda 3, 4; Greenfeather 4; Publicity
Co-Chairman 4; Resident Advisor 4.

OLSON, JACQUELINE MARLENE
226 Riverbeach Dr.
Ormond Beach, FL 32074
904/672-5999
Finance/Spanish
Alpha Kappa Psi 1, 2, 3, 4; Brotherhood
Chairman 1, 2; Circle K 1, 2; Vice Presi-
dent 1; President 2; Phi Mu 1, 2; Freshman
Ethics 1; Registrar 2; Emily Hall SGA Sen-
ator; Emily Hall Staff Assistant 2; Bac-
chus 2; Greek Bible Study 2; Stetson Mar-
keting Association 3, 4; Spanish Tutor 3;
Spanish Apprentice Teacher 4; Outstand-
ing Spanish Student Award 3; Honor Roll;
Dean's List.

OWEN, KEN
3 Sherwood Rd. NW
Fort Walton Beach, FL 32548
904/862-5574
Finance/Religion
Baptist Campus Ministry 2, 3, 4.

PARRY, SUE ELLEN
1130 New Jersey Ave
Altamonte Springs, FL 32714
305/862-5445
History
Zeta Tau Alpha 2, 3; Hatter Basketball
Recruiting 3; Greenfeather 2.

PAVLOS, ELENA ANNE
2278 Drew Valley Rd. NE
Atlanta, GA 30319
404/321-3882
Music Education
Lander's Scholar 1, 2, 3, 4; Honors Pro-
gram 1, 2; University Orchestra 2, 3, 4, 5;
Phi Eta sigma 2, 3, 4, 5; Pi Kappa Lambda
3, 4, 5; Kappa Delta Pi 4, 5; Music School
Advisory Council 4; SMENC 3, 4, 5; Presi-
dent 4; Baron String Quartet 4; Who's
Who in American Colleges and Universi-
ties 4; BA Degree Music 4.

PEKIN, BARY
1800 NE 114th Apt. 2201
North Miami, FL 33181
Computer Science

PETERSON, PAMELA DENISE
2027 Skyland Dr.
Tallahassee, FL 32303
904/385-0892
Finance
Stetson Marketing Association 3, 4; Delta
Sigma Phi Little Sister 3, 4; Delta Delta
Delta 1, 2, 3, 4; Tridelt Correspondent 2;
Fraternity Educator 3; Executive Vice
President 4.

PHILLIPS, KAROL ANN
777 NE 98 St.
Miami Shores, FL 33138
305/754-8311
Psychology
Forensics Team; Pi Kappa Delta Hono-
rary; Minor role in plays at Stover Theatre,
Writer on dorm Newspaper; Honor Roll 3;
Miss Greenfeather Candidate 1; Student
Union Board Volunteer.

PICKETT, BAYARD LEE
1438 N. Halifax Dr.
Daytona Beach, FL
904/255-4730
Finance
Alpha Kappa Psi 3, 4; Stetson Marketing
Association 4.

PIPPIN, TIMOTHY WESLEY
3010 Exposition Ave
Orlando, FL 32810
3-5/293-1982
Baptist Campus Ministry 2, 3, 4; Account-
ancy Club 3, 4; SUB Films Committee 3.

PITT, CAROLYN A.
"Peace Dale", Chapel Rd
Paget, Bermuda
809/296-5337
Accounting
Alpha Kappa Psi 3, 4; Accountancy Club
3, 4; Stetson Marketing Association 4.

PLUMLEE, SANDRA LYNN
1537 Oak Ln.
Clearwater, FL 33546
813/531-2552
Psychology
Zeta Tau Alpha 1; Circle K 1; Florida Stu-
dent Leaders Association of Teacher
Educators 3, 4.

POIRIER, EDWARD HARVE
240 S. Holly Ave.
Orange City, FL 32763
904/775-8359
Religion

PORCH, ANDY
1430 Suzanne Way
Longwood, FL 32779
History

PRESCOTT, TAMARA J.
61 Harbour Rd.
Paget, Bermuda
809-29-60127
Marketing
Batgirl 1, 2; Pi Beta Phi 1, 2, 3, 4; Pledge
Class Fund-raiser 1; Panhellenic Officer 2;
Dean's List 1, 3; Honors 2; Miss Green-
feather Representative 2; Miss Hatter Re-
presentative 2; Academic Excellence
Chairman 4; V.P. of Mental Advancement
3; Phi Chi Theta 3, 4; Stetson Marketing
Association 3, 4; Lambda Chi Little Sister
3, 4; Rho Lambda 4.

PRICE, MONICA LEIGH
2402 Cordova Ave
Vero Beach, FL 32960
305/569-1180
Marketing

Alpha Xi Delta 1, 2, 3, 4; Pledge Class
Fuzzy Brother Liaison 1; Journal Cor-
respondent 1; Social Chairman 2; Executive
Committee 2, 3; Panhellenic Representa-
tive 2, 3; Panhellenic Council 2, 3; Vice
President 2, 3; Executive Committee 2, 3;
Judiciary Council Chairman 2, 3; South-
east Panhellenic Conference Delegate 2;
Constitution Revision Committee Chair-
man 2; Jr. Panhellenic Advisor 3; Miss
Hatter Representative 3; Rho Lambda 3,
4; Lambda Chi Alpha Little Sister 1, 2, 3, 4;
Batgirl 1, 2; Honor Roll 1, 2, 3; Honors
Program 1, 2; Selby Scholar 1; Beta Beta
Beta 2; Pre Med Club 2; Emily Hall Staff
Assistant 2; Conrad Hall Resident Adv-
isor 3; Greek Bible Study 2, 3, 4; Alpha
Kappa Psi 2, 3, 4; Miss Greenfeather Re-
presentative 3; Dean's List 3; Honor roll 1,
2, 3, 4; Stetson Marketing Association 4.

PRICE, SCOTT
221 West Wisconsin
DeLand, FL 32720
Marketing

PRUETT, ANGELA JOYCE
1200 Corning Ave. NW
Palm Bay, FL 32907
Religion
Baptist Campus Ministry 1, 2, 3, 4, 5; Min-
isterial Association 3, 4; Stetson Reporter
Staff 5.

QUA, WILLIAM BLAKEMAN
3915-2 Lander Rd.
Orange Village, OH 44022
216/831-5551
Marketing/Business Computers
Delta Sigma Phi 1, 2, 3, 4; Fund-raiser 4;
Stetson Marketing Association 2, 3, 4;
Membership Chairman 3; Program Com-
mittee Chairman 4; Student Union Board
Representative 4; Young Republicans 3;
Greek Weekend Publicity Committee 3;
Party Chairman 3.

QUACKENBOS, DOUGLAS
2410 Rosenberg Roadgibe
Rtsville, PA 19525
Foreign Languages

RAGAN, DAVID M.
4136 Bayshore Blvd NE
St. Petersburg, FL 33703
813/522-7276
Sociology
Pi Kappa Alpha 1, 2, 3, 4; President 3, 4;
Graduate Counselor 5; Focus Chairman
4.

RAPER, KATHRYN
7045 6th Ave S.W.
Naples, FL 33999
English

RAWLINS, AMY LOUISE
3841 Buttercup Cir, S.
Palm Beach Gardens, FL 33410
305/622-4984
Finance
Alpha Kappa Psi 1, 2, 3, 4; Recording Sec-
retary 2, 3; Resident Advisor 4.

REINHOLD, TRACY L.
1341 Rockledge Dr.
Rockledge, FL 32955
305/636-5905
Chemistry
Phi Eta Sigma; Gamma Sigma Epsilon 3,
4; ACS 4; Rho Lambda 3, 4; Phi Mu 1, 2, 3,
4; P.R. 3; Pledge Trainer 4; Panhellenic
Rush Chairman 4; Rho Chi 3, 4; Beta Beta
Beta 2, 3, 4; Selby Scholarship 1; Honor
Roll 1, 3.

REYES, ERIC A.
306 N.E. Odom Pl
North Port, FL 33596
813/426-3098
Political Science/General Business
Alpha Tau Omega 1, 2, 3, 4; Stetson Uni-
versity's Model Senate 1, 2, 3, 4; Foren-
sics Team 1, 2, 3, 4; Political Forum 1, 2, 3,
4; College Bowl 2, 3, 4.

ROBBINS, CHARLENE M.
4724 Exeter In
Jacksonville, FL 32210
904/388-0235
English

ROBBINS, THERESA Y.
4300 Riverview Blvd.
Bradenton, FL 33529
Psychology

ROBINSON, ROBERT K.
925 Arokwa Es.
Lake Wales, FL
813/676-2935
History
Pi Kappa Alpha 1, 2, 3, 4; IFC 2, 3; Dean's
List 2.

RODENBAUGH, LORI LYNN
8053 SE Carlton St
Hobe Sound, FL 33455
305/546-7023
Chemistry
Kappa Alpha Theta 1, 2, 3; Corresponding Secretary 2; Delta Sigma Phi Little Sister 3, 4; Parent's Weekend Picnic Co-Chairman 3; Chem. Magic Show 2, 3, 4; Gamma Sigma Epsilon; Beta Beta Beta; ACS; Mortar Board; Focus 3, 4; Social Co-Chairman 3; Phi Eta Sigma.

RODRIGUEZ, ROBERT DANIEL
3338 Ave. J NW
Winter Haven, FL 33881
Math/Physics

ROGERS, ELIZABETH LYN
24 Magnolia Dr.
St Augustine, FL
904/824-9371
Elementary Education
Tri Delta 2, 3, 4, 5; Historian 5; Alumnae Relations 5; Song Leader 4; Mortar Board 3, 4, 5; Rho Lambda 5; Rho Chi 5; Greek Bible Study Co-Leader 1, 2, 3, 4, 5; Canterbury House President 3; S.O.C. 3, 4.

ROLLISON, MELANIE LOU
P.O. Box 264
Lake Como, FL 32057
904/649-4042
Political Science
Phi Mu 3, 4; Social Service 3; Phi Alpha Delta 4; Model Senate 3, 4; Most Effective Committee 3; Focus 4.

SGAES, MICHAEL W.
19980 Castlewood Dr.
Jupiter, FL 33458
305/746-0820
Finance

SCHLICHTER, ANDREA LEIGH
311 Andrew Jackson Trail
Gulf Breeze, FL 32561
904/932-9512
English/Music
Baptist Campus Ministry 1, 2, 3, 4; Co-Chairman of International Students Committee Revival Team Ministries 2; Alethia 1, 4; Director of off-campus Ministries 4; Kappa Alpha Theta 1, 2.

SCHLOESSER, DIANE
407 W. Howry Ave.
DeLand, FL 32720
Accounting

SCHULKIND, MARLENA
2505 NW 7th Rd.
Gainesville, FL 32060
History

SCHWALLIE, MICHAEL R.
137 W. Michigan Ave
DeLand, FL 32720
Finance

SEALY, JANET RUTH
PO Box 266
Bellevue, FL 32620
904/245-5810
Finance
Phi Mu 1; Phi Eta Sigma 1, 2; Presidential Scholarship 2; Honor Roll 1, 2, 3; Dean's List 3; Scabbard and Blade 3.

SHERMAN, GREGORY PAUL
401 Albertson Pl.
Orlando, FL 32806
305/851-3891
Church Music

SIMCOX, SUSAN LOUISE
4603 Lancelot Ln.
Jacksonville, FL 32210
904/388-7483
Marketing
Pi Beta Phi 1, 2, 3, 4; Assistant to the President 3; Rush Chairman 4; Senior Representative 4; Executive Council 3, 4; Nominating Committee 3; Arrowboard 4; Sister of the Month 2, 4; Rho Chi 3; Rho Lambda 4; Stetson Marketing Association 3, 4; Newsletter Chairperson 4; Bat Girl 1, 2.

SINTZ, JULIE MELINDA
5730 SW 56 Terr
Miami, FL 33143
305/665-9170
Speech
Forensics Team; Pi Kappa Delta.

SNELLINGS, JOHN C.
4271 Exeter Close NW
Atlanta, GA 30327
404/237-0322
Finance
Pi Kappa Phi 1, 2, 3, 4; Treasurer 3; Vice President 3; President 4; Focus Advisor 4.

SPAN JR., BENJAMIN LEE
1224 Julia St
New Smyrna Beach, FL 32069
904/427-9275
Music Performance
University Orchestra 1, 2, 3, 4; Principal University Jazz Ensemble; Principal School of Music Advisory Council; President University Wind Ensemble.

SPARKS, SUSAN JOY
3311 Magnolia Way
Punta Gorda, FL 33950
813/639-2387
Psychology
Alpha Tau Omega Little Sister 2, 3, 4; Phi Mu 2, 3; Theta Alpha Phi 2, 3, 4; Forensics Team 1, 2; Psi Chi 3, 4.

STANHOPE, MARK
8401 Ridge Rd.
Seminole, FL 33542
Accounting

STETTENBENZ, KAREN A.
4301 Orangewood Loop
Lakeland, FL 33803
813/646-4700
Psychology/Political Science
Mortar Board 3, 4; Vice President 4; Phi Eta Sigma 2, 3, 4; University Chapel Committee 3; Hatter Connection 3; S.A. for Chaudoin Hall 2; Cheerleader 1; Co-Captain 1; Phi Alpha Delta 4; Honor Roll 1, 2; Dean's List 3, 4.

STEVENS, ANNA
8878 Pioneer Rd.
W. Palm Beach, FL 33411
Sociology

SULLIVAN, BARRY WAYNE
5100 Jennifer Pl
Orlando, FL 32807
305/277-2576
Management
Basketball 1, 2, 3; Marketing Association 4.

SUTTON, TAMARA
3109 Bridlewood Ln
Jacksonville, FL 32217
904/733-5040
Finance/History
Honors Program 1, 2, 3, 4; Alpha Kappa Psi 2, 3, 4; Cake Committee Chairman 2, 3; Stetson Marketing Association 3, 4; Choral Union 1, 2; Honor Roll 1; Dean's List 2, 3, 4; Hatter Connection 4.

SUTYAK, DIANE MARIE
420 E. Lake Dr.
Land O'Lakes, FL 33539
813/996-3040
General Business
Phi Mu 1, 2, 3, 4; Membership Director 3; Vice-President 4; Rho Lambda 3, 4; President 4; Bacchus 4; Rho Chi 4.

TATEM, PATRICIA LEE
7904 Patou Dr. S.
Jacksonville, FL 32210
904/786-7375
Elementary Education
Pi Beta Phi 1, 2, 3, 4; Assistant Historian 2; Historian 4; Yearbook 1, 2.

TEETSM, KELLY SUE
709 NE 3rd St
Belle Glade, FL 33430
Marketing
Alpha Chi Omega 1, 2, 3, 4; Pi Kappa Alpha Little Sister 1, 2, 3, 4; Phi Chi Theta 4; Stetson Marketing Association 4; Miss Greenfeather 1; Alpha Chi Omega Weekend Chairman 1, 3; Courtesy Chairman 4.

TERRELL, SHONA ELISE
1109 NE 28th St.
Ocala, FL 32670
904/732-3770
Management
Zeta Tau Alpha 3, 4; Baptist Campus Ministry 3, 4.

TITSHAW, MELISSA ELAINE
202½ N. Woodland Blvd #4
DeLand, FL 32720
904/734-6054
Computer Science
Association of Computing Machinery 3, 4; Honors Program 4.

TRACY, SUSAN ANN
935 N. Wild Olive
Dayton Beach, FL 32018
904/252-2315
Accounting
Greenfeather 3; Accountancy Club 3, 4.

TURY, TONI
1131 Heidi Ct
DeLand, FL 32720
English

ULFERTS, STUART GLENN
PO Box 104
Goshen, KY 40026
History/Sociology

UNDERWOOD, PATRICIA E.
2585 Reagin St
Lithonia, GA 30058
404/482-2098
Elementary Education
Kappa Alpha Theta 3, 4; Panhellenic Delegate 3; Campus Activities 3; Stetson Wrestlerette 3.

URBAN, GEORGE GEOFFREY
2854 Coventry Dr
Sarasota, FL 33581
813/922-7577
Foreign Language/History—Latin American Studies Study Aboard Program 3.

VAUSE, GARIANN
6100 3rd Ave N.
St. Petersburg, FL 33710
Political Science

VENEZIA, DENISE MARIE
7 Sparrow Ln
Hauppauge, NY 11788
516/724-7331
Finance
Alpha Chi Omega 1, 2, 3, 4; Recording Secretary 3; Phi Chi Theta 4.

VIGLIOTTI, MICHAEL ANTHONY
1275 Baltimore Dr
Ormond Beach, FL 32074
904/677-2067
Music Performance
Music Advisory Council 3, 4; Orchestra 1, 2, 3, 4; Symphonic Wind Ensemble 1, 2, 3; Woodwind Quintet 1, 2, 3, 4; Orchestra and Symphonic Wind Ensemble Personnel Manager 4.

WALDMAN, HEMAN
Rt 7, Box 268
Hanover, PA 17331
Finance

WALL, ANN
14529 Anchorage Cir
Seminole, FL 33542
Management/Marketing

WASILEWSKIL, KEVIN PETER
4134 Southwell Way
Sarasota, FL 33583
813/377-1428
General Business
Baseball 1, 2, 3, 4.

WENDT, JULIA CAROL
Rt 1 Box 105
Yalaho, FL 32797
904/324-2022
Biology
Beta Beta Beta President 4; American Chemical Society Secretary 4; Gamma Sigma Epsilon 4.

WHERLEY, MARY ELIZABETH
2411 Hollingworth Hill
Lakeland, FL 33803
813/683-4460
Physical Education

WHITAKER, CAMPBELL STILES
836 Bayside Dr.
Tampa, FL 33609
813/876-4862
Philosophy

WILBANKS, MAY ELEANOR
424 Edgewood Blvd.
DeLand, FL 32720
904/734-4446
Physical Education
Softball 1, 2, 3, 4; Golf 4; Phi Mu 3, 4; Women's Athletic Announcer (Basketball & Volleyball).

WILLIAMS, DAWNE
2837 Spanish Cove Trail
Jacksonville, FL 32217
904/268-1643
American Studies
Stetson Union Board 2, 3, 4; President 4; Treasurer 3; Public Relations and Publicity Chairman 2; Kappa Alpha Theta 3, 4; Assistant Treasurer 4; Pledge Marshal 3; Oxford Committee for Famine Relief 2, 3; Student Chairman 2, 3; Phi Alpha Theta 4; Acting President Fall Vice President 4; Phi Sigma Kappa Little Sister 3, 4; Model Senate 2, 3; Page Coordinator 3; Page 2.

WILLIAMS, RODNEY I.
445 Alameda St
Daytona Beach, FL 32014
904/253-1725
Management
Men's Basketball 2, 3, 4.

Editor's Note —

Well — I hope everyone enjoys the long hours of hard work that this year's staff has put in. There is no better reward for a yearbook staff than to have its readers enjoy a good book. As in any organization, there are a few people who deserve personal thanks. Susan — thanks for the photo-perfect finish and for always adding a little "punch". Sylvia — thanks for the printed words, the sisterly support, for a terrific friendship, and for a great roomie! Jonathan — thank you for helping me close one book and open another on May 24, 1986. Putting together a yearbook isn't easy and rarely fun, but for me it was an experience worth the effort.

Sincerely,

Tambel Wae

Editor-in-Chief



