

UMES

1981-1982

Digitized by the Internet Archive
in 2010 with funding from
Lyrasis Members and Sloan Foundation

<http://www.archive.org/details/hawk19811982univ>



DILIGENCE

Use this moment wisely

It passes swiftly into history

Live as you would live

Now

Fully

Plant dreams firmly

Every step of the way

Leave Regret open-mouthed

And hungry.

By Eugenia A. Franklin-Springer

Dedication



*Associate Professor William O. Hull
Forty-one Years of Service
to
Education*

It is a pleasure for the YEARBOOK staff and students of UMES to dedicate the 1981-82, yearbook to William O. Hull, Jr., Associate Professor of Physics, who has dedicated 41 years of his life to the education of youth, twenty of which has been at the University of Maryland Eastern Shore.

At a very young age, while attending Wicomico County Schools, William Hull's ambition was to be a doctor, but fate apparently foresaw the service he could render in education. As a product of Nanticoke High School in Nanticoke, Maryland, Lincoln University in Pennsylvania, and the University of Pennsylvania in Philadelphia, Pennsylvania, William O. Hull prepared himself well for the service he was to render in the sciences. Many youth of the area and from UMES are in scientific or engineering fields because of the wisdom and guidance he gave them. According to Mr. Hull, one of his most gratifying experiences was teaching his three younger brothers who are now engineers and one sister who is a medical researcher.

Mr. Hull's expertise has been utilized over the years in many community activities. He was the first non-white to serve on the Wicomico County Board of Education, in 1960 to 1971, he was President of the Board. He has served as Vice-Chairman of the Delmarva Chapter of the American Institute of Physics. He is a member of the Board of Directors for Retarded Children of Wicomico County. In 1975, he was senior Chairman of the Salisbury Chapter of National Conference of Christian and Jews. He has served as advisor to the Cooperative Education Program at UMES, the 1974 Feasibility Study, the UMAB/UMES Professional School Task Force Study Committee.

In 1975, the UMES student body chose Mr. Hull for "The Most Helpful Teacher Award". In 1976, the Phi Beta Sigma Fraternity selected him as the "Sigma Man of The Year".

Over the years, Mr. Hull has assisted on committees and projects with dignity and loyalty and has been responsible for much of the progress and growth of the University, especially in the Department of Natural Sciences.

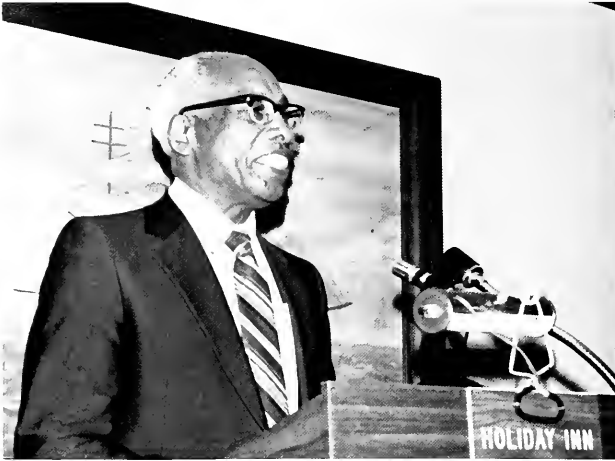
In spite of his numerous achievements and his busy lifestyle, Mr. Hull is modest and always willing to help. In closing, he comments: "I have participated in the turbulent 60's and have seen new goals, new directions and new concepts emerge during the 70's. It remains for the 80's to bring the plans and commitments of the 70's into full realization. It is for our best interest that we start to improve conditions as soon as possible."

We, the staff of the YEARBOOK, thank Mr. William O. Hull, Jr. for his many years of dedication to the progress of Education here at UMES.

Honored Upon Retirement

Mr.
William
O. Hull

20 years
of service
to
UMES
in Dept.
of
Sciences



Dr.
Casey
Jones

8 years
of service
in Dept.
of
Education





The 1981-82 YEARBOOK pays tribute to Rev. Kenneth Martin of the Music Department, a man who is truly dedicated to the University of Maryland Eastern Shore. As Director of four different bands (marching, concert, stage, and jazz), he has put our bands in competition with the best of musical aggregations.

Rev. Martin is a native of North Carolina. During the '50's and '60's he was Band Director as well as Director of Music in Greensboro and Jackson, Tennessee. He later moved to Cheyney, Pa. where he was Assistant Professor and Director of Bands. Just before he came to UMES, in 1976, he was Band Director in Oxford, Massachusetts. While at Cheyney, he was given the Collegiate Football Centennial Band Award and in 1970 a documentary film was made in his honor, "K.A. Martin and His Music". In Oxford, Mass. he received numerous plaques, trophies, and certificates of appreciation. Here at the University of Maryland Eastern Shore, he has received trophies and plaques for outstanding services and performances of the "Soul Explosion Marching Band".

Rev. Martin presently resides in Princess Anne, Maryland with his beautiful wife, three sons and a daughter. He is a licensed and ordained minister and an Associate Professor. He is a member of the Omega Psi Phi Fraternity.

Rev. Martin truly understands the word, "DEDICATION".



Gregory Anderson



Jerome Antone



Andre Armwood

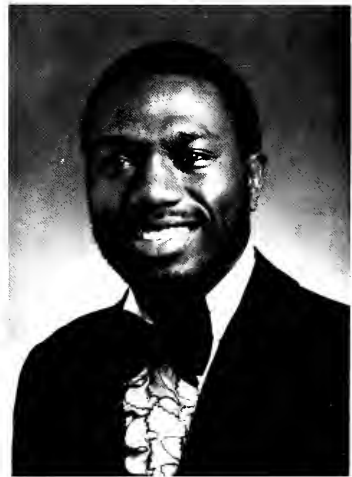


Euphimo Arnold

C
L
A
S
S
O
F
'81



Jerry Arrington



Larry Barkley



6 *Clinton Beckett*



Ronald Brown



Jean E. Carter



Patricia Casson



Johnnie Coley



Brian Cox



Emma Daniels



Mark Davis



Thomas Dickerson



Stephen Dillard



Robert Easterly



Deborah Emely



Gregg McIntosh



Harold McManus



Ucheoma Okike



Ronald Pollitt



Diane Reddick



Lisa Reese



8 *Theodoshia Roberts*



Dee Reynolds



Kenneth Simmons



Addie Smith



Jeffrey Smith



Gregory Stansbury



Rose Taylor



John Thomas



Bendaigua Walls



Cheryl A. Walley



Diane Waters



Barbara Washington



Shirley Ennis



Jeff Gaines



Lillie Green



Jeanette Harmon



Linda Haas



Wallace Hayden



10 *Darnise Henry*



Herman Henderson



Emma Holmes



Bernadette Jones



Jerry Jones



Harry Johnson



Hanna King



Kim King



Kevin Mansfield



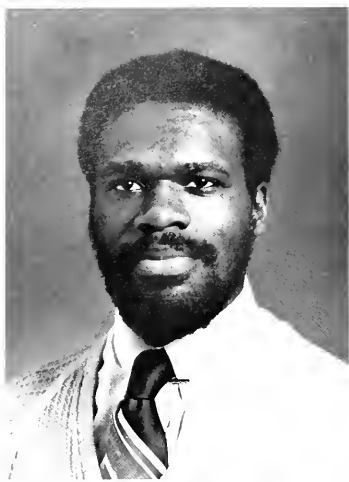
Janis Martin



Alrethia M. Matthews



John Mayes, III



James Brown



Terri Grantham



Baisat King



Tina McNeil



Bert Nwosu



Mae Winslow



12 *Sandra Wright*

*E
l
a
i
n
e
C
h
i
l
d
s*



*P
a
t
r
i
c
i
a
C
l
a
r
y*



*C
a
r
o
l
y
n
C
l
e
v
e
l
a
n
d*



HOMECOMING

*E
t
t
a
B
a
t
t
l
e*



*L
o
r
i
B
u
n
n
s*



*S
a
n
d
r
a
C
o
s
t
o
n*



QUEENS

*D
e
l
o
r
e
s
E
n
g
r
a
m*



*L
a
t
o
n
y
a
F
o
o
t
e*



*L
i
l
l
i
e
G
r
e
e
n*



L
u
r
l
i
n
e

H
a
u
g
h
t
o
n



D
e
l
p
h
i
n
e

L
e
w
i
s



L
a
r
o
n

P
o
w
e
l
l



T
h
e
o
d
o
s
i
a

R
o
b
e
r
t
s



A
d
d
i
e

S
m
i
t
h



J
o
y
c
e

S
t
e
p
h
e
n
s



M
o
n
i
q
u
e

T
h
o
m
p
s
o
n



C
h
e
r
y
l

W
a
l
l
e
y



D
e
b
o
r
a
h

W
i
l
k
e
r
s
o
n



*R
i
c
h
e
l

W
a
t
e
r
s*



*D
o
n
n
a

M
c
G
o
w
a
n*



*J
o
a
n
n
e

M
o
r
t
o
n*



*D
e
i
d
r
e

J
o
h
n
s
o
n*



*L
e
s
l
i
e

W
i
l
s
o
n*



*L
e
o
n
a

J
o
n
e
s*



*T
e
r
r
i

C
a
r
l
i
s*



*K
e
i
t
a

S
a
t
c
h
e
l
l*

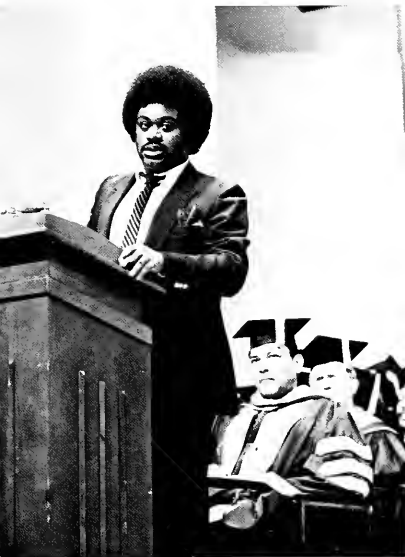




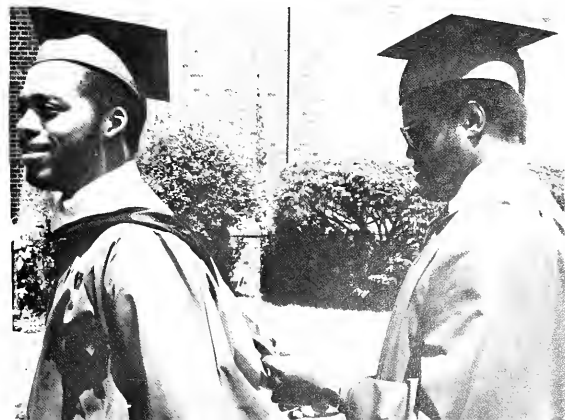
CATHERINE CHRISTMAS
MISS UMES 1980-81







GRADUATION, MAY 1981





CLASS REUNIONS . . .

A
L
U
M
N
I

May
15,
1982



'42

'52

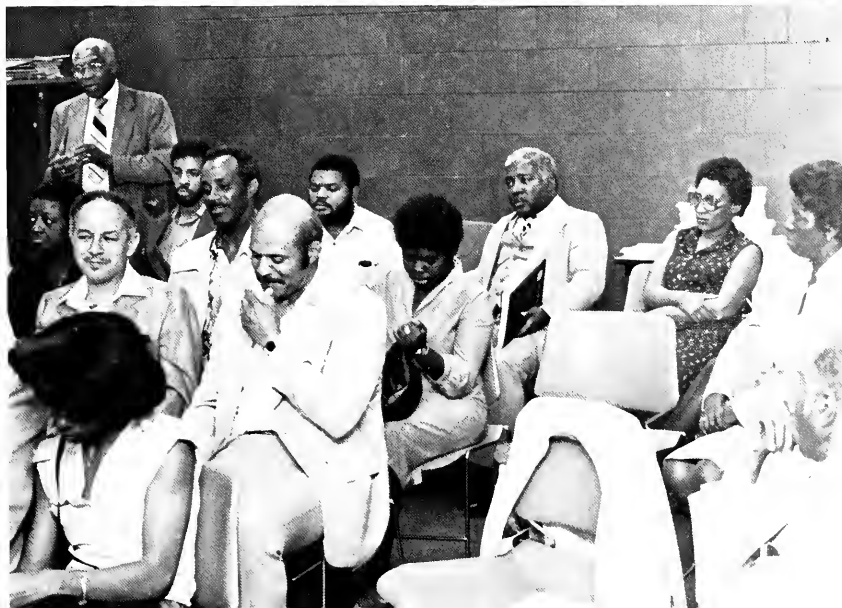
'62



'68



'72



SAGE

Sage, wherever you are
Do you see us growing
And passing through stages of maturity?
And some of us who have passed through some stages
And are still passing through others
Pause occasionally, at your side
And observe, just observe,
Not criticizing, not envying, just observing,
Watching young men feel their manhood
Flexing their legs, testing the firmness of their ground;
Watching young women discover their beauty
Watching people acquire knowledge,
Acquire sophistication; and airs
See people looking at people
Comparing and competing, and glancing
covertly at one another
Trading in relaxed, beautiful countenances
For strained, competition-conscious ones.
Sage, don't you wish you could take
their hands and lead them past these
Pitfalls of folly
Where savage competition, useless display, and animosity
Wait ready to grab the young and hold them
till they are old?
But each must choose his path
And few reach where you are.



*Dr. William P. Hytche
Chancellor*

*Brunch Honors Alethia Elps
33 Years of Service
Home Economics Department*



*Scholarship fund
established in her
name for students
in the Human
Ecology Dept.*



MISS CALENDAR GIRL

*P
A
G
E
A
N
T*



19



81



Sandra Smith
Miss January



Ida Davis
Miss February



Andrea Harris
Miss March



Melaine Clark
Miss April



*Lisa Barry
Miss May*



*Michelle Dew
Miss June*



*Yvonne Outing
Miss July*



*Brenda Webb
Miss August*



*Yvonne Dyson
Miss September*



*Maria Scott
Miss October*



*Phyllis White
Miss November*

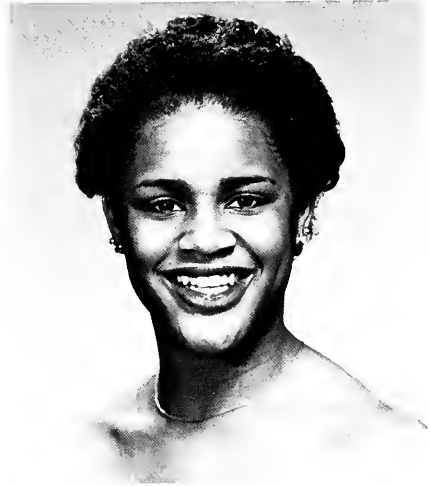


*Lashell James
Miss December*





*Clinette Bruise
Miss Spring*



*Barbara Hawkins
Miss Summer*



*Terri Harris
Miss Fall*

MISS CALENDAR GIRL 1981



MISS MELANIE CLARK

Melanie Suzanne Clark is in her junior year at the University of Md., Eastern Shore. She is majoring in Business Education. She was born under the sign of Capricorn.

Melanie became a participant in the pageant because she enjoys working with people. Also, she hopes the Calendar Girl Pageant will continue its success because it gives the contestants an opportunity to express their individual talents. She wishes every oncoming contestant much luck.

I
N
T
R
O
D
U
C
I
N
G



UMES DRAMA SOCIETY
IN
PEARLIE
LYSTRATA
AND
IN WHITE AMERICA

PEARLIE





DRAMA SOCIETY



*I
N
A
C
T
I
O
N*





T
H
E
W
I
Z

L
Y
S
T
R
A
T
A



L
Y
S
T
R
A
T
A

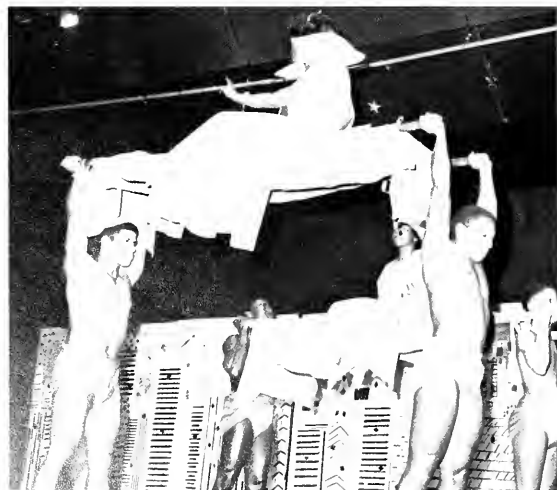


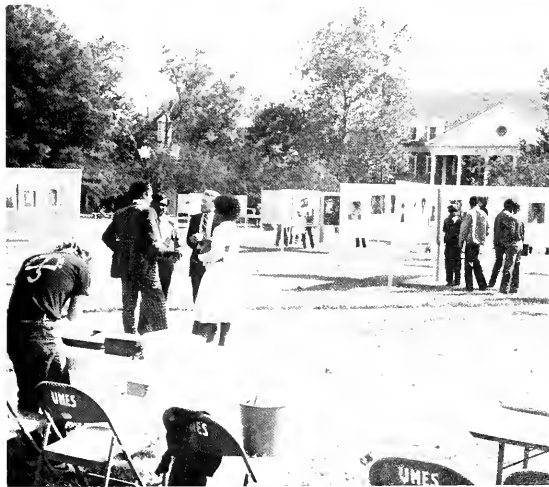






DRAMA AWARDS





ART FESTIVAL

T
A
L
E
N
T

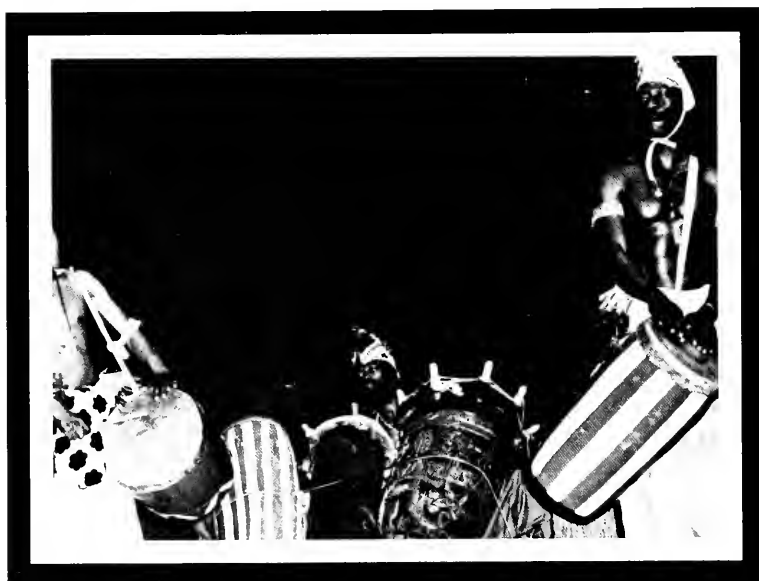
S
H
O
W

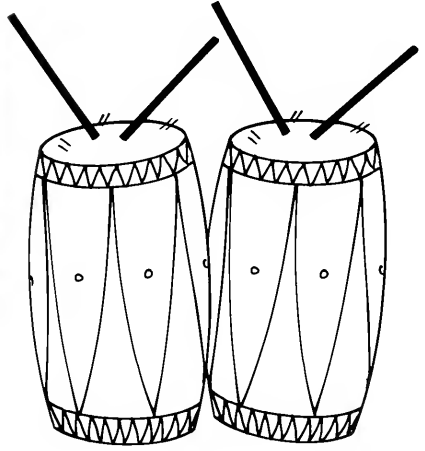
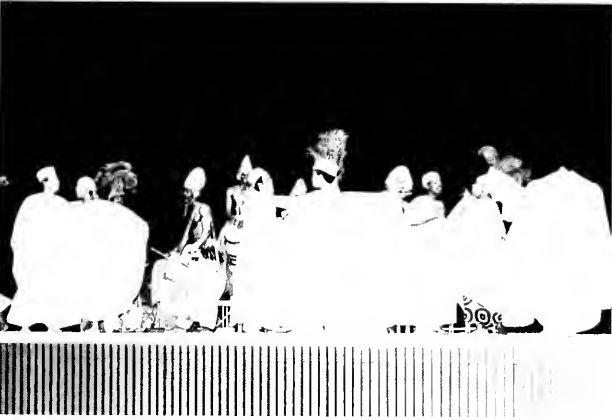
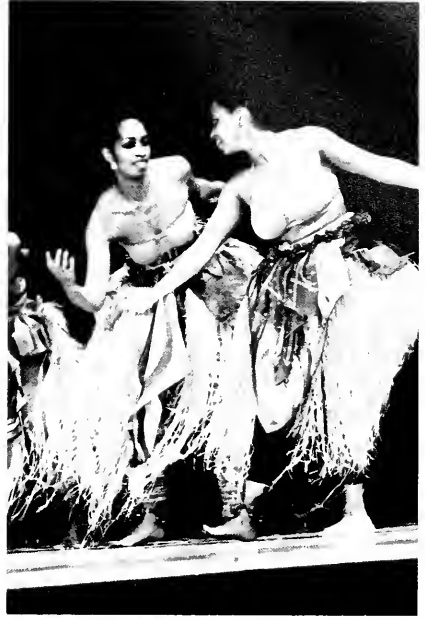
1981





LINCOLN UNIVERSITY
DANCE
TROUPE





ARTHUR
ASHE
VISITS
UMES



ARTHUR



ASHE

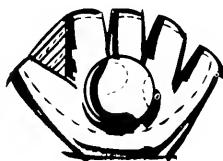
Arthur Ashe, world renown tennis star spent a day on the campus of the University of Maryland Eastern Shore. He was sponsored by Aetna Life & Casualty Co. of Hartford, Connecticut as a part of several projects to assist minority colleges.

Upon his arrival, Arthur spent time prior to an invitational luncheon, interacting informally with students in the Student Development Center. As guest speaker at the luncheon which included the SGA president, club, sorority, fraternity, newspaper, yearbook, and other leaders, Arthur Ashe's major thrust was to college leaders to use their positions as tools of inspiration helping fellow students to strive for excellence in their academic pursuits.

An assembly was held during the afternoon for the general public and the community. He also held a conference for the benefit of the press and television.

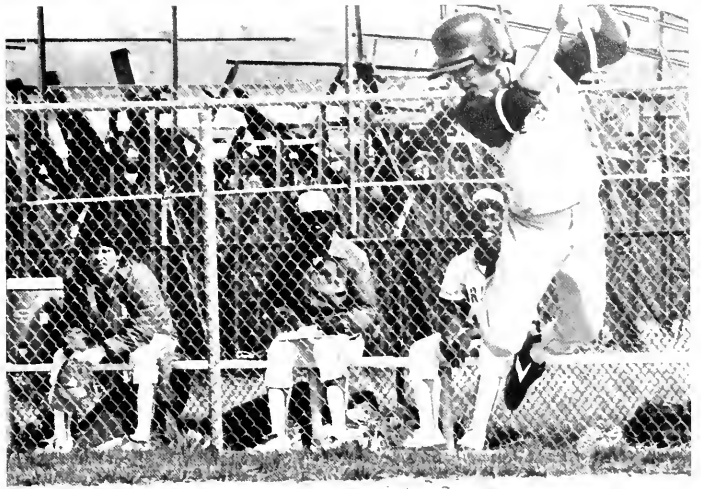
The Career Planning and Placement Office coordinated his visit to UMES.

UMES
1982
BASEBALL
TEAM









UNIVERSITY OF MARYLAND

MEN



**UNIVERSITY OF MARYLAND
EASTERN SHORE
BASKETBALL SCHEDULE
FOR 1981-82**

MONTH	OPPONENT	DATE	TIME
NOVEMBER	at James Madison	Nov. 1	7:00pm
	at Old Dominion	Nov. 3	8:00pm
DECEMBER	at E. Va. State Coll.	Dec. 5	7:00pm
	at Eastern Md. Coll. Pa.	Dec. 7	8:00pm
	at College Park	Dec. 9	8:00pm
	at E. Va. State Coll.	Dec. 11	7:00pm
	at St. Mary's	Dec. 13	8:00pm
	at Cleveland State	Dec. 15	8:00pm
	at George Mason	Dec. 17	8:00pm
	at Ball State	Dec. 19	8:00pm
	at Howard	Dec. 21	8:00pm
	at Virginia State	Dec. 23	8:00pm
JANUARY	at St. John's	Jan. 1	8:00pm
	at N.C. State	Jan. 3	8:00pm
	at Wake Forest	Jan. 5	8:00pm
	at North Carolina	Jan. 7	8:00pm
	at Duke	Jan. 9	8:00pm
	at Wake Forest	Jan. 11	8:00pm
	at Virginia Tech	Jan. 13	8:00pm
	at Clemson	Jan. 15	8:00pm
	at South Carolina	Jan. 17	8:00pm
	at Georgia Tech	Jan. 19	8:00pm
FEBRUARY	at Wake Forest	Feb. 1	8:00pm
	at North Carolina	Feb. 3	8:00pm
	at Duke	Feb. 5	8:00pm
	at Wake Forest	Feb. 7	8:00pm
	at Virginia Tech	Feb. 9	8:00pm
	at Clemson	Feb. 11	8:00pm
	at South Carolina	Feb. 13	8:00pm
	at Georgia Tech	Feb. 15	8:00pm
	at Florida State	Feb. 17	8:00pm
	at Virginia	Feb. 19	8:00pm
MARCH	at Wake Forest	Mar. 1	8:00pm
	at North Carolina	Mar. 3	8:00pm
	at Duke	Mar. 5	8:00pm
	at Wake Forest	Mar. 7	8:00pm
	at Virginia Tech	Mar. 9	8:00pm
	at Clemson	Mar. 11	8:00pm
	at South Carolina	Mar. 13	8:00pm
	at Georgia Tech	Mar. 15	8:00pm
	at Florida State	Mar. 17	8:00pm
	at Virginia	Mar. 19	8:00pm

Head Coach: Kirkland Hall
Asst. Coach: Gus Graydon
Asst. MGR: Mike Ashery

WOMEN



**UNIVERSITY OF MARYLAND
EASTERN SHORE
1981-82
WOMEN'S BASKETBALL SCHEDULE**

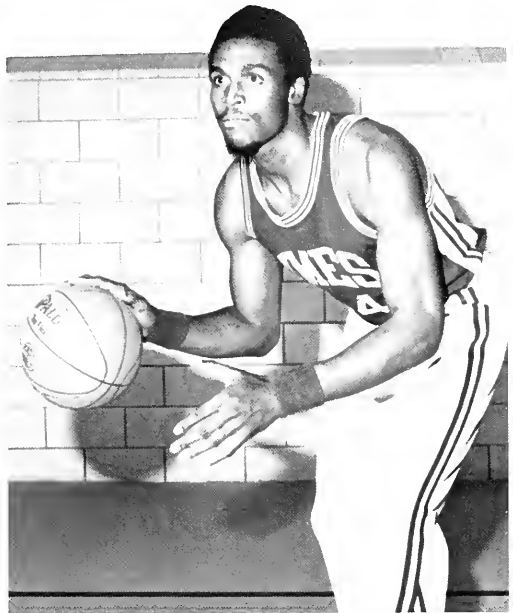
MONTH	OPPONENT	DATE	TIME
NOVEMBER	at E. Va. State	Nov. 1	8:00pm
	at Old Dominion	Nov. 3	8:00pm
DECEMBER	at E. Va. State Coll.	Dec. 5	7:00pm
	at Eastern Md. Coll. Pa.	Dec. 7	8:00pm
	at College Park	Dec. 9	8:00pm
	at E. Va. State Coll.	Dec. 11	7:00pm
	at St. Mary's	Dec. 13	8:00pm
	at Cleveland State	Dec. 15	8:00pm
	at George Mason	Dec. 17	8:00pm
	at Ball State	Dec. 19	8:00pm
	at Howard	Dec. 21	8:00pm
	at Virginia State	Dec. 23	8:00pm
JANUARY	at St. John's	Jan. 1	8:00pm
	at N.C. State	Jan. 3	8:00pm
	at Wake Forest	Jan. 5	8:00pm
	at North Carolina	Jan. 7	8:00pm
	at Duke	Jan. 9	8:00pm
	at Wake Forest	Jan. 11	8:00pm
	at Virginia Tech	Jan. 13	8:00pm
	at Clemson	Jan. 15	8:00pm
	at South Carolina	Jan. 17	8:00pm
	at Georgia Tech	Jan. 19	8:00pm
FEBRUARY	at Wake Forest	Feb. 1	8:00pm
	at North Carolina	Feb. 3	8:00pm
	at Duke	Feb. 5	8:00pm
	at Wake Forest	Feb. 7	8:00pm
	at Virginia Tech	Feb. 9	8:00pm
	at Clemson	Feb. 11	8:00pm
	at South Carolina	Feb. 13	8:00pm
	at Georgia Tech	Feb. 15	8:00pm
	at Florida State	Feb. 17	8:00pm
	at Virginia	Feb. 19	8:00pm
MARCH	at Wake Forest	Mar. 1	8:00pm
	at North Carolina	Mar. 3	8:00pm
	at Duke	Mar. 5	8:00pm
	at Wake Forest	Mar. 7	8:00pm
	at Virginia Tech	Mar. 9	8:00pm
	at Clemson	Mar. 11	8:00pm
	at South Carolina	Mar. 13	8:00pm
	at Georgia Tech	Mar. 15	8:00pm
	at Florida State	Mar. 17	8:00pm
	at Virginia	Mar. 19	8:00pm

Head Coach: Germaine MacAulie
Asst. Coach: Greg Sutton
Manager: Barbara Humphrey

HAWK BASKETBALL TEAMS



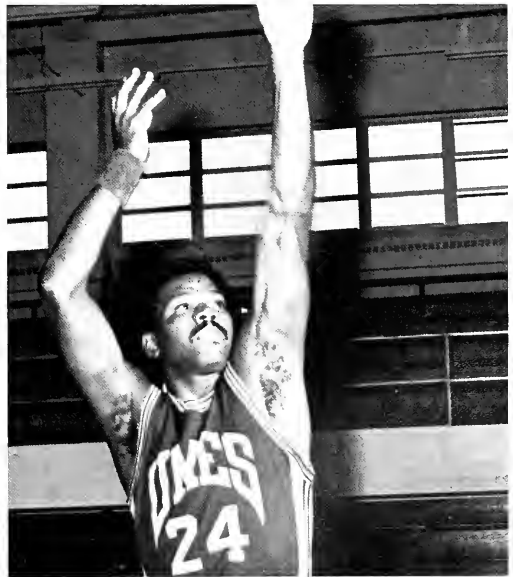
Glenn Winbus



Allen Davenport



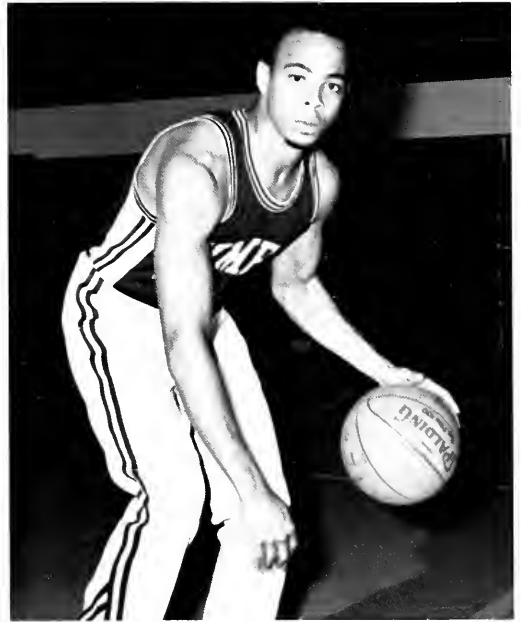
John Davenport



Larry Farrah



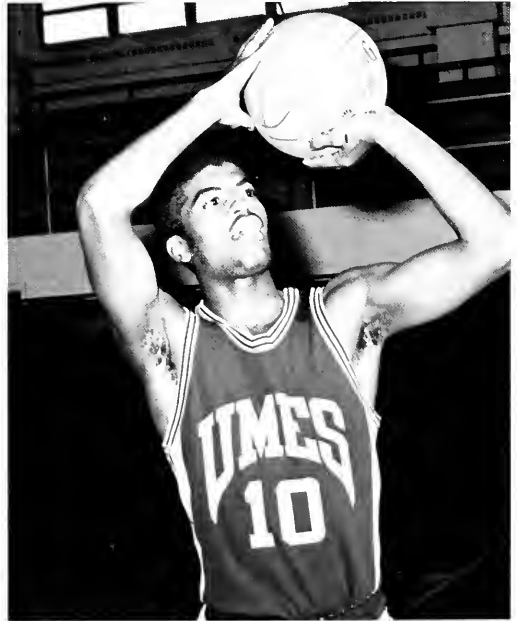
Allen Faulks



Michael Ward



Robert Boney

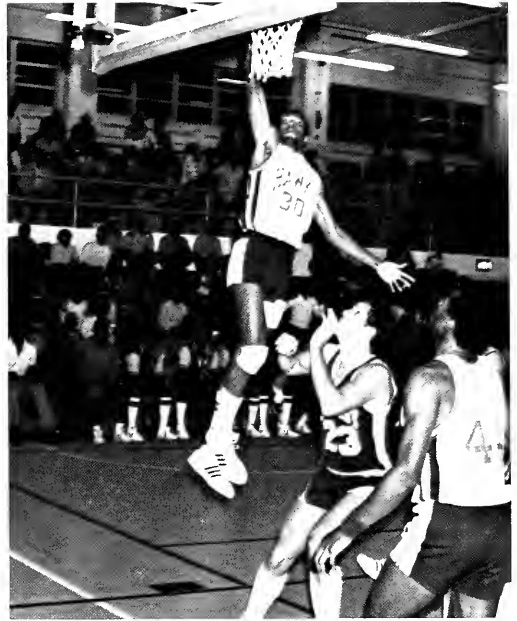
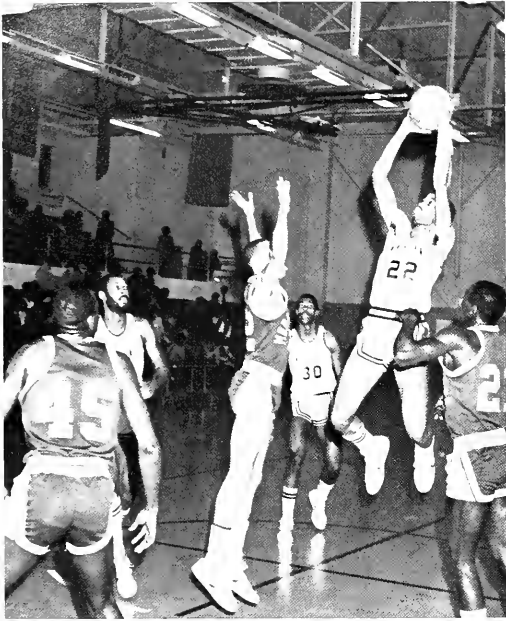


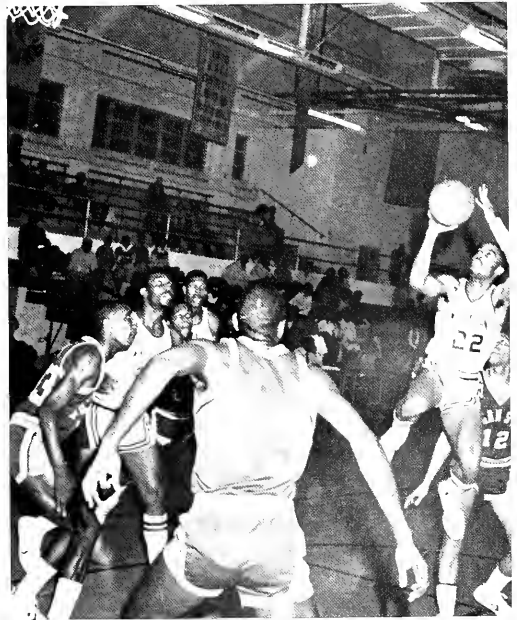
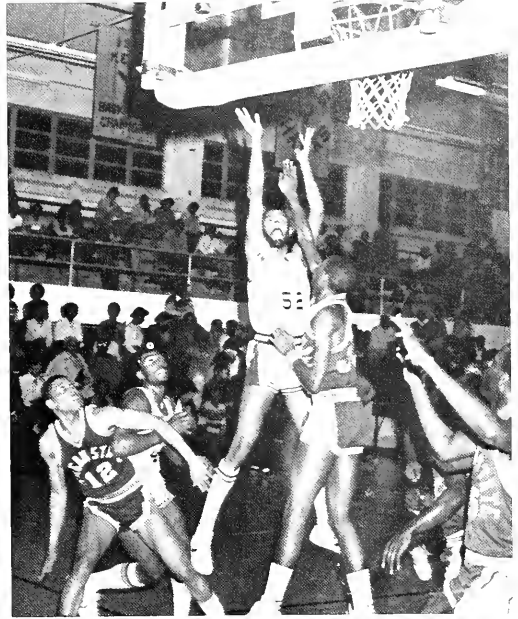
Darryl Dennis

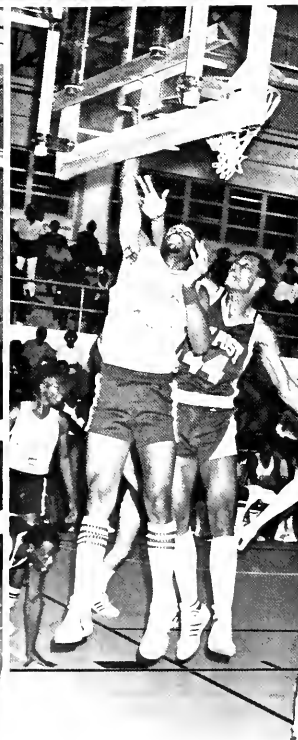
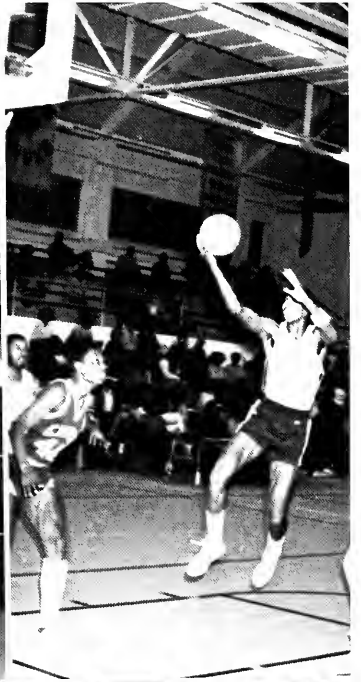
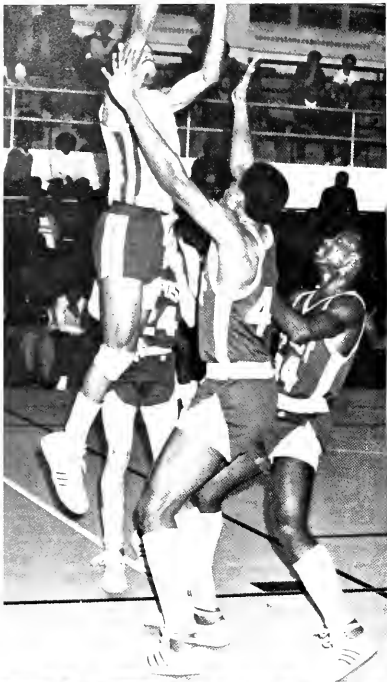
**UNIVERSITY OF MARYLAND
EASTERN SHORE
1981-1982
WOMEN'S BASKETBALL SCHEDULE**

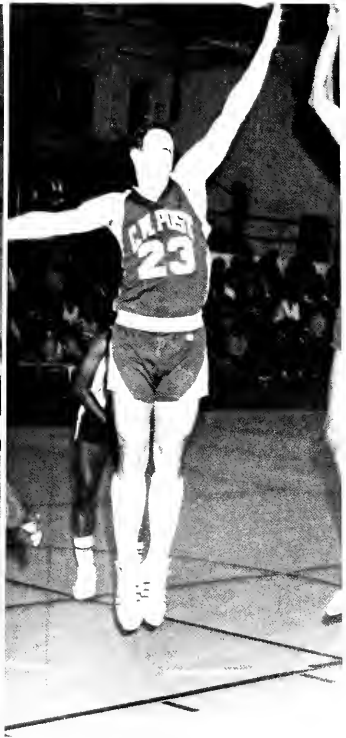
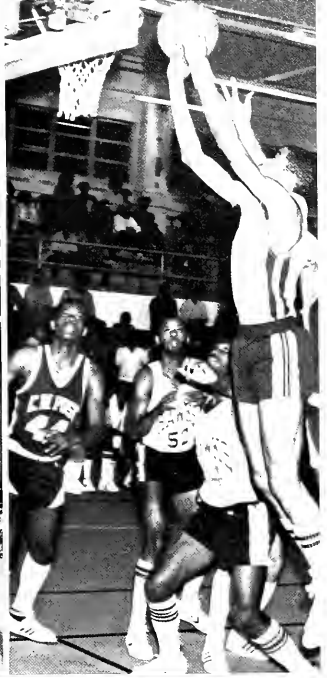
	OPPONENT	SITE	TIME
NOVEMBER	18 Va. State U	Pr., An., Md.	6pm
DECEMBER	5 Towson State U	Pr. An, Md.	6pm
	8 Morgan State U	Balt., Md.	7pm
	10 Howard U.	Wash., D.C	6pm
	12 Jersey City College	Pr. An, Md.	1pm
JANUARY	17 Univ. of D.C.	Wash., D.C.	2pm
	19 SSC	Pr. An., Md.	6pm
	20 Glassboro St. Col.	Glassboro, N.J.	6pm
	22 Howard U.	Pr., An., Md	6pm
	23 St. Mary's Col/Md.	Pr., An., Md.	6pm
	25 U. of Md/Balt. City.	Pr., An., Md.	6pm
	26 Bowie State College	Bowie, Md.	TBA
	29 Rutgers-Camden	Camden, N.J.	6pm
	30 Spring Garden Col.	Ches. Hill, Pa.	7pm
FEBRUARY	2 SSC	Salisbury, Md.	6pm
	4 Stockton State Col.	Pomona, N.J.	
	6 S. Mar. Col. of Md.	S.M. City/Md.	6pm
	8 Norfolk State U.	Norfolk, Va.	TBA
	10 Bowie State College	Pr. An., Md.	6pm
	13 Delaware State Col.	Dover, Del.	6pm
	19 Spring Garden Col.	Pr. An., Md.	6pm
	20 Delaware State Col.	Pr. An., Md.	6pm
	23 Trenton State Col.	Pr. An., Md.	6pm
MARCH	5-7MEAC TOUR.	Wins. Sal. N.C.	

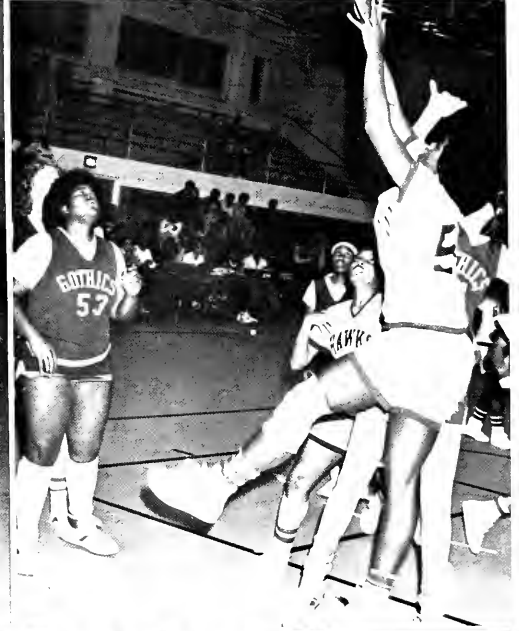
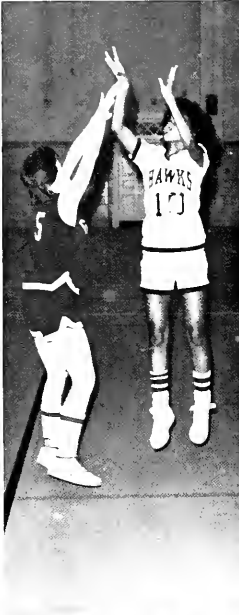
**Head Coach: Germaine MacAuley
Asst. Coach: Greg Sutton
Manager: Barbara Pumphery**

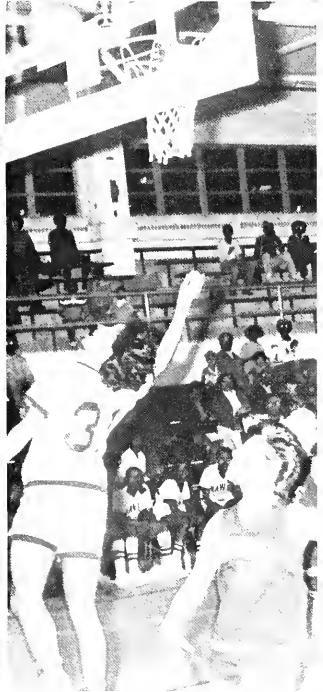
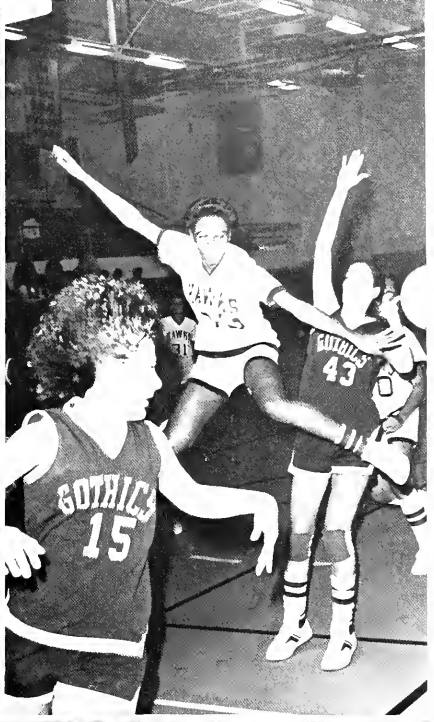
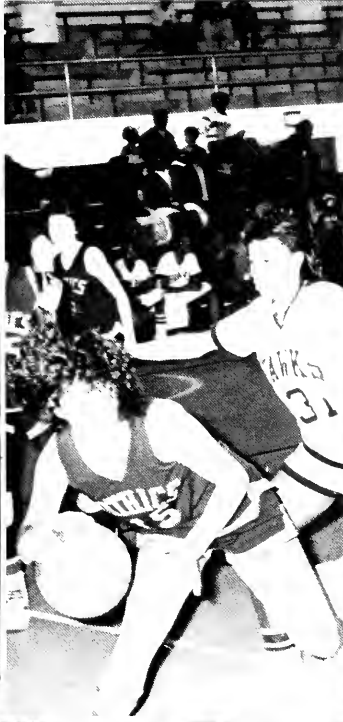










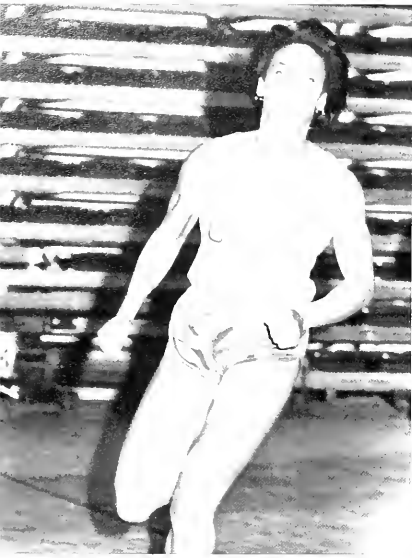


UMES 1981-1982

T T
R E
A A
C M
K















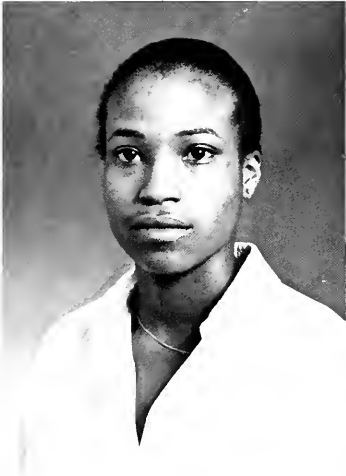
Michael Binford



Gwendolyn Brown



Wendy Camper



Joan Carroll



Carolyn Cleveland



Lemuel Clinton



Josie Costango

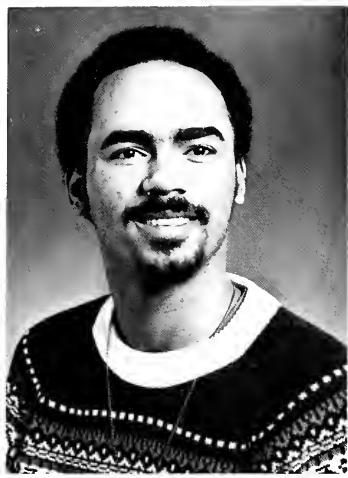


Sandra Coston



Elsie Davis

C
L
A
S
S
O
F
'82



Brian Duffy



Brewer DuVall



Tanya Evans



Tom Fritz



Lilly Green



Edward Gosa



Charles Hayes



Keebler Holley



Donna Horsey 67



Donna Hytche



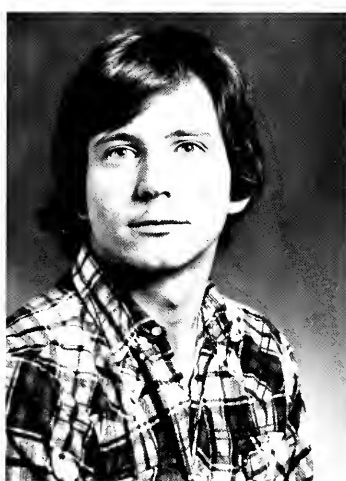
Ike Jacobson



Robert Jester



Zinnie Jones



Boris Kurshinoff



Gina Marshall



68 *Gary Massey*



Tanya Massey



Beverly Milbourne



William Milbourne



Alan Minter



JoAnne Morton



Benjamin Mullins



Sam Parker



Clyde Prentice



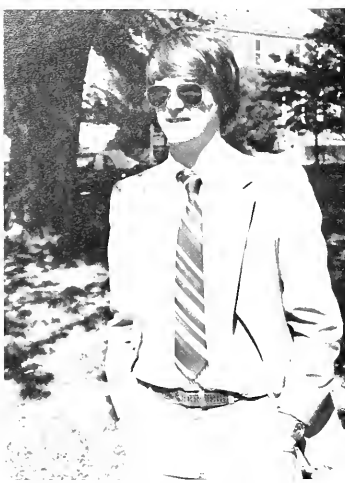
Denise Pumphrey



Rebecca Roberts



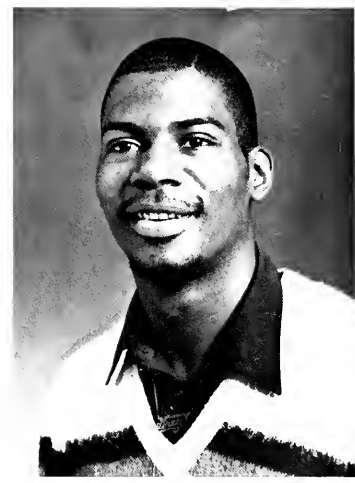
Burt Simons 69



Egbert Simons



Sandra Skinner



Greg Thomas



Angela Tuggle



McKinley Tull



Ruth Tuttle



70 *Carlton Walston*



Debbie Wilkerson



Maduabuchi Udeh

*MISS UNIVERSITY
OF
MARYLAND
EASTERN SHORE*



*VICKIE HAIRSTON
1981-1982
AND ROYAL COURT . . .*



*Miss Freshman
Caprice Thomas*



*Miss Sophomore
Tanya Scott*



*Miss Junior
Teresa Creecy*



*Miss Senior
Brenda Webb*



Donna Hytche
Miss Agriculture



Toni Evans
Miss Alpha Phi Alpha



Melanie Bates
Miss Alpha Kappa Alpha



Melanie Clark
Miss Calendar Girl



Sharon Johnson
Miss Cheerleader



Stephanie Hunter
Miss Campus Pal



Dawn Bivens
Miss Delta Sigma Theta



Beretha Gould
Miss Drama



*Camille King
Miss Pre-Med*



*Sherrol James
Miss Wesley Foundation*



*Sabrina Hall
Miss Zeta Phi Beta*



Patricia Gould



Patrice Rich
Miss Hotel-Restaurant Management



Dr. Hytche and Dr. Franklin
Guests



Ms. Birkhead
Mistress of Ceremonies



*Angela Hendricks
Miss Groove Phi Groove*



*Angela Preston
Miss Hawk*



*Theresa Harmon
Miss Home Economics*



*Rosanne Stewart
Miss Kappa Alpha Psi*



Darcel White
Miss Martinsville



Deborah Wilkerson
Miss Omega Psi Phi



Greta Elliott
Miss Phi Beta Lambda



Cassandra Jackson
Miss Physical Education



H
O
M
E
C
O
M
I
N
G

1981



H
O
M
E
C
O
M
I
N
G



H
O
M
E
C
O
M
I
N
G



H
O
M
E
C
O
M
I
N
G



Class of '83



*D
a
v
i
d

A
d
d
i
s
o
n*



Payam Afsabi



*A
n
t
h
o
n
y

A
j
e
s
w
u*

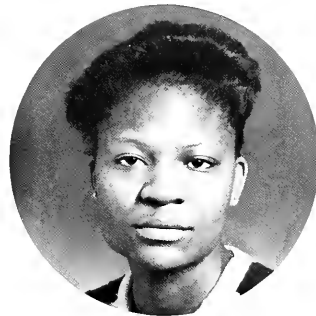


*B
d
a
n
l
e

A
l
a
d
e
s
u
y*

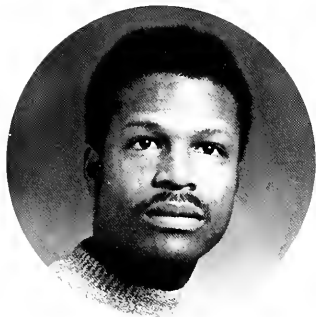


Tanza Alfred



*O
c
t
a
v
i
a

A
n
d
e
r
s
o
n*



*D
a
v
i
d

B
a
k
e
r*



Antonio Beasley



*D
a
v
i
d

B
o
u
n
d
s*



*V
e
n
e
t
i
a

B
o
y
n
e
s*

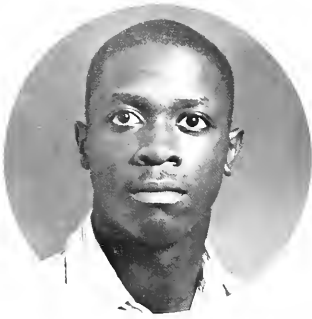


Wendy Camper



*W
a
n
d
i
a

C
a
r
t
e
r*



*M
i
c
h
a
e
l

C
h
a
s
e*



Sharon Chatmon



*P
a
t
r
i
c
i
a

C
h
e
w*



*E
l
a
i
n
e

C
h
i
l
d
s*



Melanie Clark



*D
a
v
i
d

C
h
a
r
o
n*



*B
i
l
l
y

C
u
r
t
i
s*



Kathy Cornish



*A
n
n
i
e

C
r
a
w
f
o
r
d*



*G
l
o
r
i
a

C
r
e
c
y*



Lloyd DaCosta



*I
d
a

D
a
v
i
s*



Mark
Davis



Terri Dyson



Lois
Elder



Greta
Elliott



Janice Emerson



Delores
Engrum



Toni
Evans



Bobby Faunteroy



Bernard
Faysorse



Bereatha
Gould



James Green



Darryl
Hairston



*M
i
k
e

H
a
i
r
s
t
o
n*



Andrea Harris



*B
r
i
a
n

H
a
r
r
i
s*



*T
e
r
r
i

H
a
r
r
i
s*



Angela Hendricks



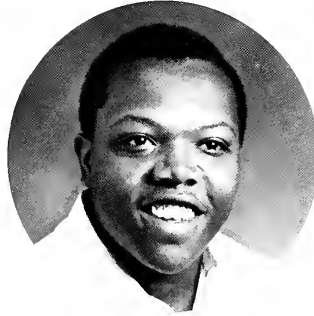
*C
l
y
d
e

H
e
n
r
y*



*C
a
s
s
a
n
d
r
a

H
u
g
h
l
e
y*



Grason Jackson



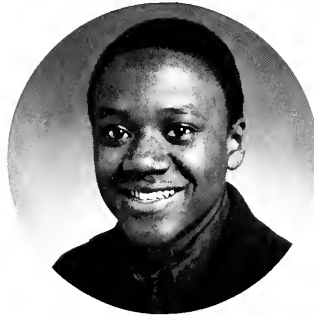
*T
o
n
y
a

J
a
c
k
s
o
n*



*A
r
c
s
h
e
l

J
o
h
n
s
o
n*

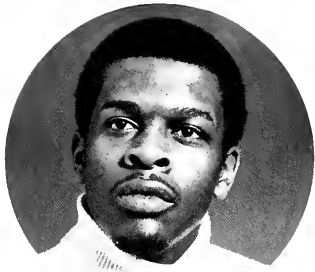


Kevin Johnson



*M
o
n
i
c
a

J
a
m
a
r*



Greg King



Camille King

Cheryl Lampkin



Thomas Laveish



Julia Long

Jeffrey Lyles



Mohammad Maffi



Rochelle Mallory

Alesia Miller



Abby Marshall



Gina Marshall

Paul Matthews





*H
a
m
i
d

N
a
s
s
i
r
i*



Theodora Neal



*R
o
b
e
r
t

O
m
o
d
i
a*



*D
r
u
c
i
l
l
a

P
e
r
y*



Michelle Pickeral



*L
a
r
o
n

P
o
w
e
l
l*



*R
o
b
e
r
t

P
r
e
s
t
o
n*



Michele Pugh



*C
h
e
r
y
l

P
u
l
l
u
m*



*K
a
r
e
n

P
u
r
n
e
l
l*



Kim Purnell



*S
y
l
v
i
a

Q
u
i
n
t
o
n*



Ranelia Raigin Williams Ruffin Muhammad Shanidulla Phillicia Sprauve

Onuram Romann

Sheryl Roselle Dave Scott Antoinette Spencer Teresa Tallaferra



Theresa Sawyer



Lynette Shelley



Aretha Swinson



*M
o
n
i
q
u
e
T
h
o
m
p
s
o
n*



Tina Waters

*P
e
g
g
y
T
h
r
o
w
e
r*



*D
e
i
d
r
a
W
i
l
k
i
n
s*



Tracey Williams

*P
a
m
e
l
a
W
o
o
d
s
o
n*



*L
e
i
s
h
a
P
a
l
m
o
r
e*



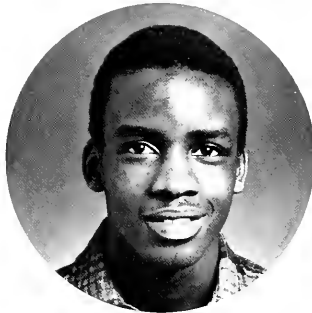
Lois Whittington

Class of '84



*E
v
a

A
d
a
m
s
o
m*



Rodney Austin



*T
r
e
s
s
a

A
u
s
t
i
n*



*D
a
v
i
d

P
a
r
k
e
r*



Lorin Bakke



*M
i
c
h
a
e
l

B
a
l
l
a
r
d*



*M
i
n
y
o
n

B
i
v
e
n
s*



Maurice Bloomfield



*W
a
r
r
e
n

B
u
r
r
e
l
l*



*C
l
i
n
e
t
t
e

B
u
i
s
s
e*



Angela Bumpass



*L
o
r
i

B
u
n
n
s*



*D
e
n
i
s
e

C
a
r
t
e
r*



Rita Christopher



*S
u
s
a
n

C
o
l
l
i
n
s*



*D
e
b
o
r
a
h

C
o
r
b
i
n*



David Corey



*A
r
l
t
o
n

C
r
a
w
f
o
r
d*



*J
o
h
n

D
a
v
e
n
p
o
r
t*



Derek Davis



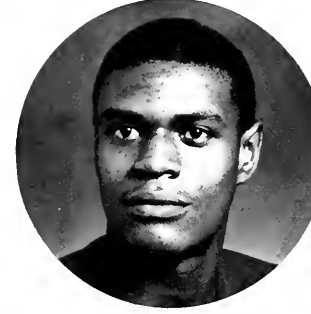
*L
u
s
h
e
l
l
a

D
i
n
k
i
n
s*



*B
e
l
i
n
d
a

D
o
r
c
y*



Lee Edwards



*G
o
d
w
i
n

E
h
i
r
i
m*

C
o
l
e
n
t
h
i
a

E
s
t
e
p



Anita Feaster

L
e
t
i
t
i
a

G
r
a
n
t
t



D
o
n
n
a

L
e
e

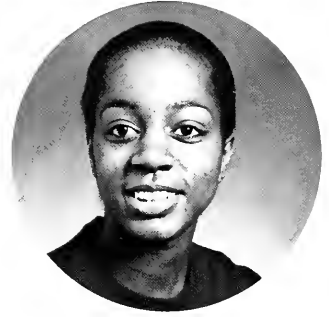
G
e
o
r
g
e



Phyllis Graves

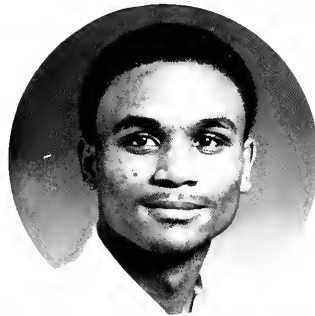
L
e
s
l
i
e

H
a
l
s
e
y



G
l
e
n
d
a

H
a
i
r
s
t
o
n



Thomas Hairston

L
i
a
i
n
a

H
a
r
m
o
n



B
a
r
b
a
r
a

H
a
w
k
i
n
s



Dwayne Hawkins

C
h
a
r
l
e
n
e

H
i
c
k
s



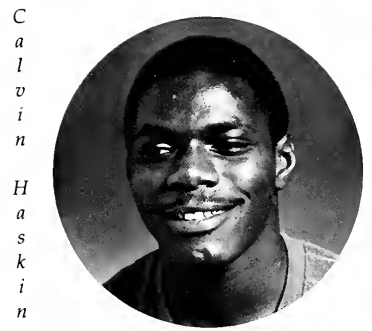


V
i
n
c
e
n
t

H
e
a
r
n
e



Barbara Henry



C
a
l
v
i
n

H
a
s
k
i
n
s



A
n
t
h
o
n
y

H
u
g
h
e
s



Dana Hunter



D
o
n
n
a

J
a
c
k
s
o
n



L
a
S
h
e
l
l

J
a
m
e
s



Sherrol James



V
a
l
a
r
i
e

J
a
m
e
s



J
a
m
e
s

J
o
n
e
s



Corey Jones



R
i
c
h
a
r
d

L
i
n
d
s
a
y



S
h
e
r
y
l

L
y
l
e
s



Angeline Maddrey



A
n
d
r
e
a

M
a
n
i
e
r



J
o
s
h

M
a
n
l
e
y



James Marshall



L
a
r
r
y

M
c
C
u
l
l
o
u
g
h



M
i
c
h
e
l
e

M
c
M
a
h
a
m



Lisa Mills



M
a
g
n
o
l
i
a

M
o
r
r
i
s

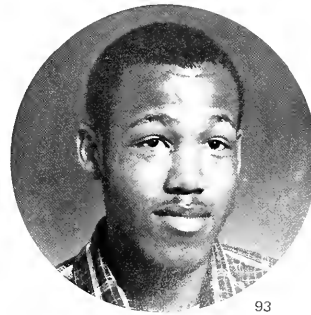


M
i
c
h
e
a
l

M
o
o
r
e



Sherri Moore



J
o
s
e
p
h

Y
o
u
n
g



*K
e
n
n
e
t
h

M
o
r
t
o
n*



Celeisa Moulton

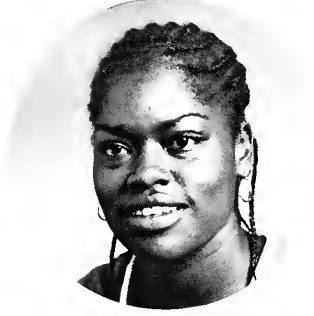
*T
o
n
i

M
u
n
f
o
r
d*



*D
e
n
i
s
e

N
e
a
t
h*



Stephanie Nix

*B
e
r
n
a
r
d

O
p
p
o
n
g*



*B
r
y
a
n

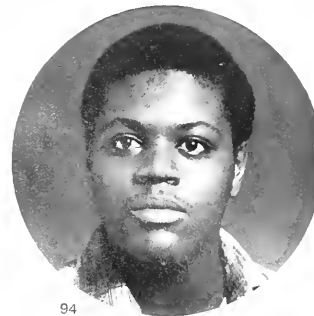
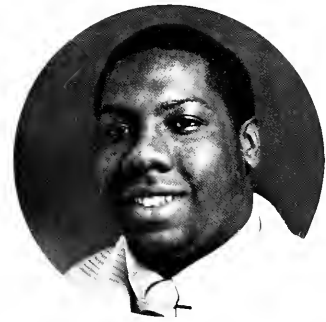
P
a
g
e*



Leisha Palmore

*I
v
a
n

P
a
w
a
r*



*L
o
u
i
s

P
a
y
n
e*



Priscilla Peters

*R
o
s
a
l
i
n
d

P
i
n
k
n
e
y*





B
r
e
n
d
a

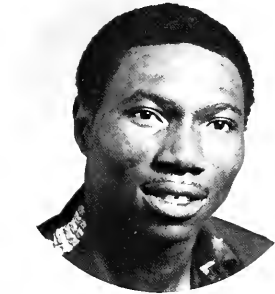
P
r
e
s
t
o
n



Maria Scott

T
a
n
y
a

S
c
o
t
t



A
j
e
g
w
u

S
i
g
i
s
m
o
n
d



Debra Smith

M
a
r
i
a

S
m
i
t
h



S
a
n
d
r
a

S
m
i
t
h



Michael Solomon

M
i
c
h
e
a
l

S
t
e
r
g
i
d
e
s



D
a
r
n
e
l
l

T
a
b
b

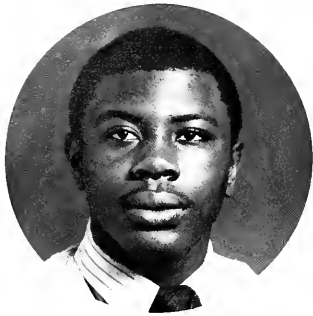


Delores Taylor

L
o
r
i

T
a
y
l
o
r



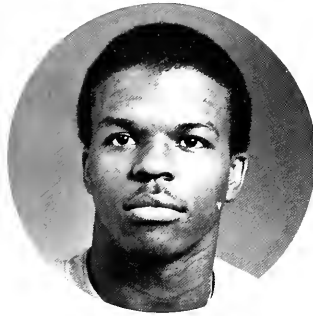


Ricky Teasle



Wanda Tilley

Sheila Thomas



Bruce Washington



Ron Weitknecht

Phyllis White



Lois Whittington



Leslie Wilson

Rosalynn Williams



Brian Wing



Katrina Winston

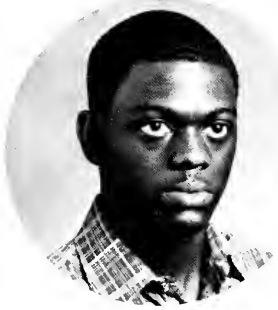
Mable Wimbush



Class of '85

*D
a
v
i
d

A
b
e
r
c
r
o
m
b
i
e*



*C
a
s
a
n
d
r
a

A
l
d
r
i
d
g
e*



*L
i
s
a

A
n
d
r
e
w
s*



*P
a
m
e
l
a

A
s
h
f
o
r
d*



Fajemisiri Adeoye



Sharon Alston



Kingsley Annan



Charletta Ayers

*A
m
i
t

A
h
l
u
w
a
l
i
a*



*N
a
t
a
l
i
e

A
n
d
e
r
s
o
n*



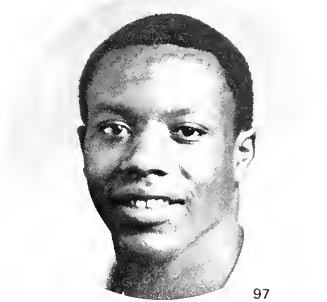
*A
l
e
g
w
u

A
n
t
h
o
n
y*



*D
o
n

B
a
i
l
e
y*





B
o
n
n
i
e

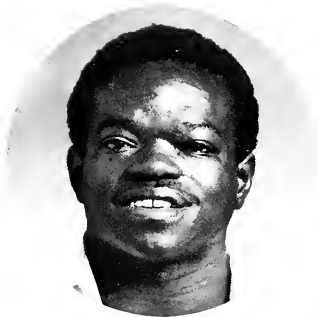
B
a
r
n
e
s



Lloyd Bawre

A
j
e
g
w
u

B
e
n
e
d
i
c
t



V
a
l
a
r
i
e

B
e
v
i
n
n
s

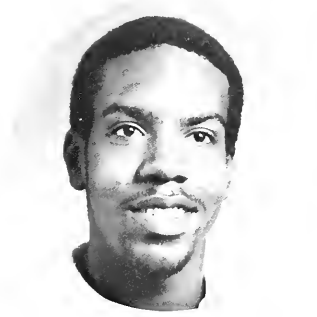


Tana Bozman

K
i
m

K
i
m

B
r
e
f
f
e



G
r
e
g
o
r
y

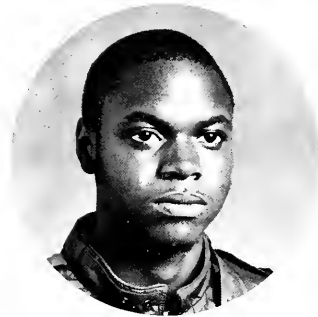
B
r
i
s
t
o
w



Claudette Brooks

R
o
n
a
l
d

B
r
o
o
k
s



D
e
l
i
a

B
r
o
w
n



Kevin Brown

R
o
b
e
r
t

B
r
o
w
n



Class of '85



Tina Brown



Velvet Brown



Stephanie Bryant



Joni Bullock



Sharon Burgen



Donna Burnett



Maresa Burnette



Virginia Burnette



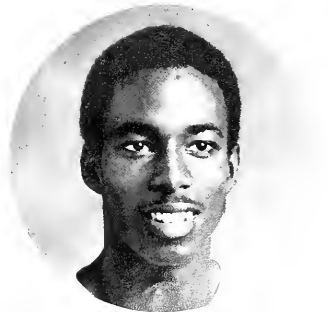
Kirk Butler



Clyde Bussey



Susan Cann



Gordon Canty



Monte Campbell



Andrea Cardale

Linda Carter



Karen Chaffey



Karen Chase

Lester Claudio



Kimberly Colombel



Brian Curtis

Lore Cobb



Cynthia Colbert



Gregory Coleman

Altamont Coley



Class of '85



Natalie Collier



Paula Collins

Jackie Cornish



Shamlia Coppeland



Terri Crawford

Truman Cox



Anthony Davis



Darryle Dennis

Pamela Dickerson



Gail Devillase



Donna Dixon

Jeffrey Dixon





E
l
i
c
i
a

E
d
w
a
r
d
s



Lolita Edwards

C
h
r
i
s
t
i
a
n

E
y
o



A
m
o
b
i

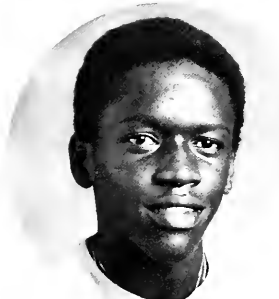
F
e
a
h
y
t
c
h
u



Jasper Fisher

L
e
s
l
i
e

F
l
e
t
c
h
e
r



O
d
e
l
l

F
r
e
t
t



Leovonne Garvin

G
a
i
l

G
i
b
b
s



E
r
i
c

G
r
e
e
n



Brian Grotenhuis

A
n
g
e
l
a

G
o
o
d
e





R
o
m
a
n
a

H
a
g
g
e
r
t
y



Lorraine Hairston

L
a
u
r
i
e

H
a
r
r
i
s



J
a
c
q
u
e
l
i
n
e

H
e
b
r
o
n



Bridget Herman

D
o
r
o
t
h
y

H
i
l
l



M
a
r
k

H
i
l
l



Tina Holbrook

G
r
e
g
o
r
y

H
o
l
d
e
n



D
a
r
l
a

H
o
w
a
r
d

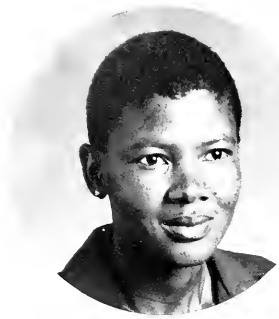


Teresa Huddleston

T
r
o
y

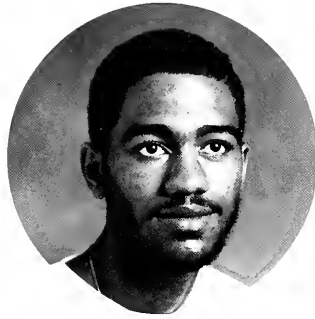
H
u
t
t
o
n





*G
r
a
c
e

J
a
b
b
a*



John Jackson

*D
o
u
g
l
a
s

J
a
c
o
b
s*



*J
a
m
e
s

C
h
u
n
g*



Karen Johnson

*M
i
c
h
e
l
l
e

J
o
h
n
s
o
n*



*K
e
n
n
i
e

J
o
n
e
s*



Mary Jones

*V
a
n
e
s
s
a

J
o
n
e
s*



*B
a
i
l
e
y

K
e
n
n
e
t
h*



Debora Kenny

*L
i
n
d
a

K
o
w
a
l
s
k
i*



Class of '85



*E
d
w
a
r
d

L
a
k
e*



Janice Layton



*S
h
e
r
r
y

L
e
a
t
h
e
r
b
u
r
y*

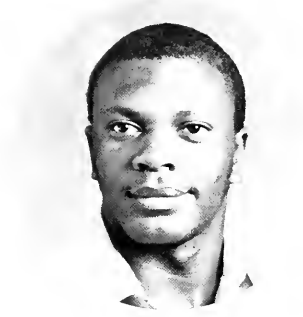


*E
l
i
s
s
a

L
e
e*

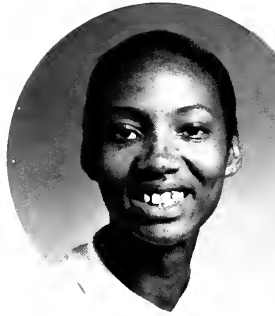


Wei-Yin Lee



*P
a
u
l

L
e
v
i
n
e*



*C
y
n
t
h
i
a

L
i
l
l
y*



Wayne Lloyd



*R
i
c
h
a
r
d

L
i
n
d
e
r
m
a
n
n*



*M
o
t
d
k
i

L
i
p
p
e*



Joyce Logan



*T
a
m
m
y

L
o
m
a
x*



*C
h
e
r
y
l
M
a
c
k*



Joan McCoy

*L
a
r
r
y
M
c
C
u
l
l
o
u
g
h*



*L
e
e
M
c
K
e
e
z
i
e*



Denise McPhee

*S
y
l
v
i
a
M
c
Q
u
e
e
n*



*N
a
n
c
y
M
a
d
d
o
x*



Tammie Maddox

*N
o
b
a
k
h
t
M
a
n
o
c
h
e
h
r*



*Y
v
e
t
t
e
M
a
r
b
l
e*



Sylvia Matthews

*T
a
m
m
y
M
e
d
l
i
n*





R
o
b
e
r
t

M
o
o
n



Claudelle Moore

I
r
e
t
h
a

M
o
r
r
i
s



C
h
a
r
l
e
s

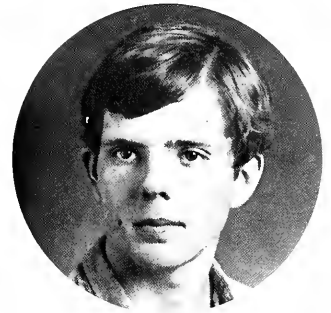
N
e
l
s
o
n



William Newton

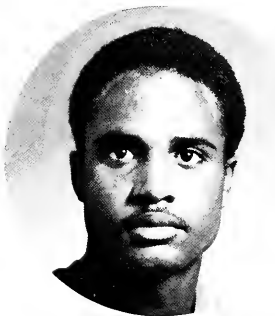
C
h
a
r
l
e
s

O
t
t
e



J
a
n
e
t

P
a
l
m
e
r



Cedric Payne

A
l
e
x
a
n
d
e
r

P
e
a
k
e
r



H
e
r
a
l
d

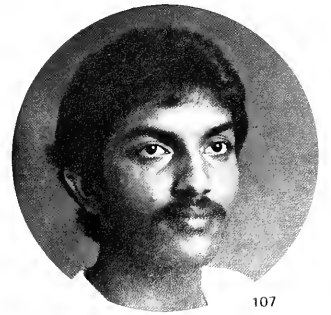
P
e
a
r
s
a
l
l



Soretta Pearson

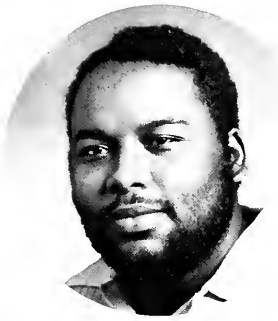
C
h
a
n
n
a

P
e
r
e
r
a





*E
m
m
a
P
e
r
r
y*



Isaac Pirckens

*O
z
e
t
t
a
P
o
s
e
y*



*K
a
r
e
n
P
o
w
e
l
l*



Anreis Prumnicks

*C
a
t
h
e
r
i
n
e
P
r
a
y*



*G
l
o
r
i
a
P
u
l
l
e
y*



Nancy Ray

*J
e
a
n
R
e
e
d*



*T
e
n
l
y
R
e
s
u
e*



Catherine Robinson

*C
h
e
r
y
l
R
o
s
e
b
o
r*



Class of '85

Howard
Russell



Joseph Sanders

Angela
Seneby



Terry
Scott



Adrienne Showell

Christopher
Sim



Christy
Simmons



Carol Smith

Darryl
Smith

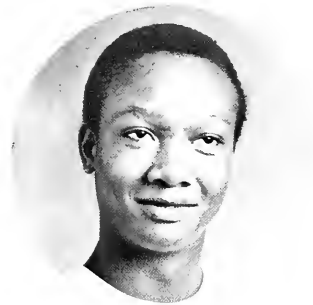


Fred
Staden



Mark Staples

Rick
Stewart





E
u
g
e
n
e

S
u
l
l
i
v
a
n



Joyce Talbert

C
a
s
s
a
n
d
r
a

T
a
y
l
o
r



K
a
r
e
n

T
a
y
l
o
r



Luana Taylor

S
o
n
y
a

T
a
y
l
o
r



T
a
n
y
a

T
a
y
l
o
r



Lisa Tilghman

K
e
n
n
e
t
h

T
i
l
g
h
m
a
n



F
e
l
i
c
i
a

T
h
o
m
a
s



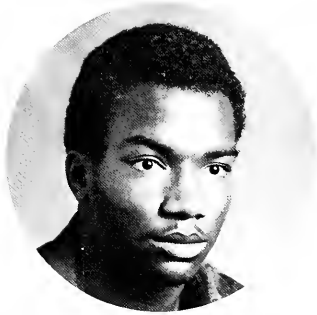
Beulah Thorpe

B
e
c
k
y

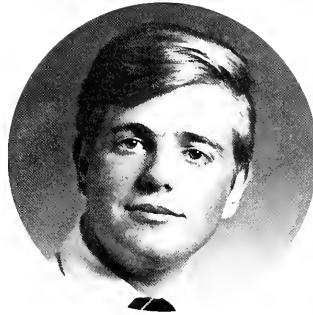
T
r
u
s
s
e
l



Class of '85

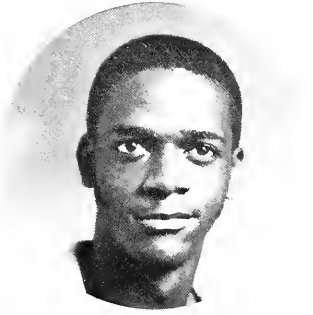


Melvin Turner



Theodore Ullrich

Benjamin Uzelle



Barbara Wall



Steven Walls

Kevin Warner

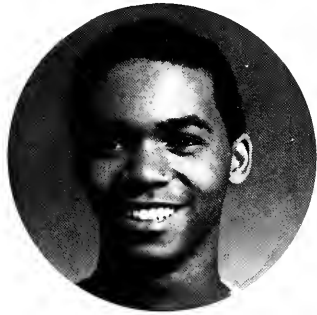
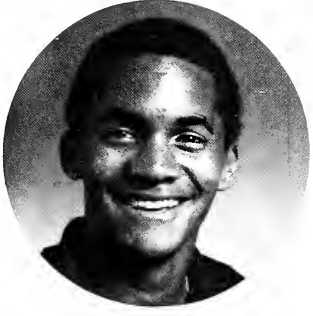


Michon Washington

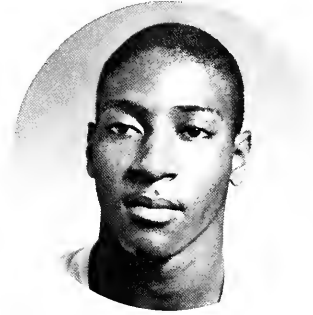


Stephanie Waters

Jacobia Weaver

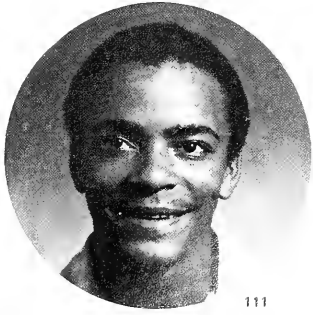


Tony Weaver



Gregory Wedge

Darryl West





*C
h
e
r
y
l

W
i
l
l
i
a
m
s*



Davida Williams

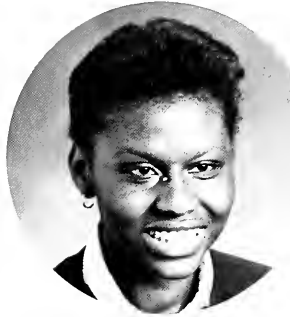
*M
i
c
h
e
l
e

W
i
l
l
i
a
m
s*



*T
a
n
y
a

W
i
l
l
i
a
m
s*



Jeanean Willis

*T
a
m
i
k
a

W
i
s
e*



*D
e
b
o
r
a
h

W
h
i
t
e*



Janice White

*V
e
r
o
n
i
c
a

W
h
i
t
e*



*D
a
r
l
e
n
e

W
r
i
g
h
t*



Jeffrey Wright

*J
e
n
n
i
f
e
r

W
r
i
g
h
t*





J
e
f
f
r
e
y

W
u
t
o
h



Richard Wyatt

D
e
s
i
r
e

Y
o
u
n
g
e
r



K
e
v
i
n

H
e
n
s
o
n



Yvonne Wynter

STUDENT



Just checking things out.



Band practice is a hard job!!

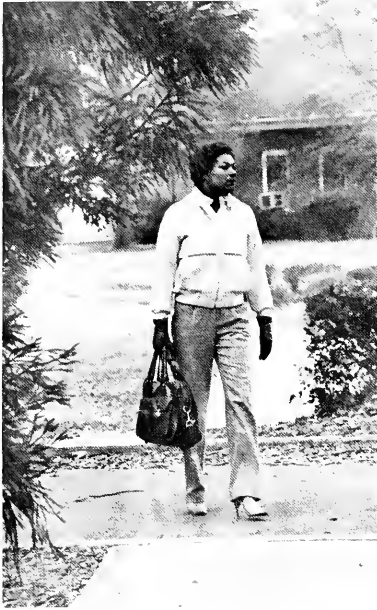


One and a two and a three!



Just cooling out!!

ACTIVITIES



A casual stroll.



Off to Kiddy Land!



It's an Aka thing.



Hey! look at me. I'm as free as a bird!



The latest in college wear?



Now it must be carefully angled!



Concentrating on every move.



Smile you're on candid camera!



Do - re - me!



A friendly wave!



Throwing a serious rap!



It's definitely Staphy Locus Aureas!



Registration is a b _ _ _ _ _ !!



Today's lesson is on etiquette!!



No! what happen is this ... !!



Double Dutch!!



It won't be long before I have it down packed!!



Say cheese!!



I must find out how many credits I need!



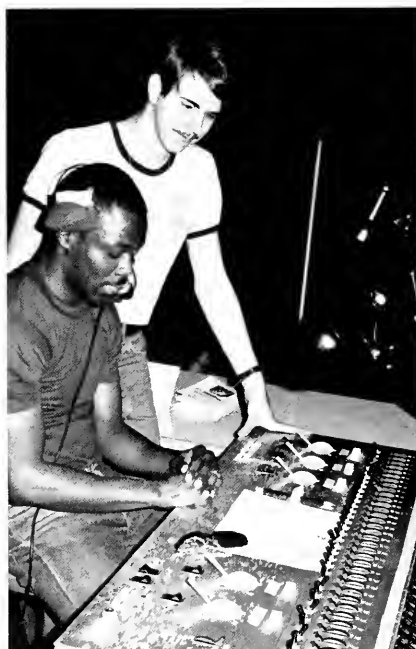
Let's take a moment to be serious!



Practice makes perfect!!



Kay! Serious business!



I pray this comes out right!



Can you pick out the real Knots Landing!



It's only a cigarette.



It feels good when you know what you're doing!



Now let me see you do it!



Blow that trombone!



Que-ee!



When's the application due?



A quiet moment in the cafeteria!



Please don't litter!



Total concentration is the key!



I missed the punch line!



Wait a minute Mr. Postman.

M
E
E
T
T
H
E



We are searching, yes we really are searching!



Woo Big Brothers! May we have your signatures please?



Nobody told me, that pledging Kappa was an easy go!

G
R
E
E
K
S



We're pledging so hard, for Delta!



Just to kill a pledgee!



An Alpha in chains!



A moment of twirling.

What's

Happening on

Campus???

??

?

?

Were

You

There?

?

?

?

?

?

?

?

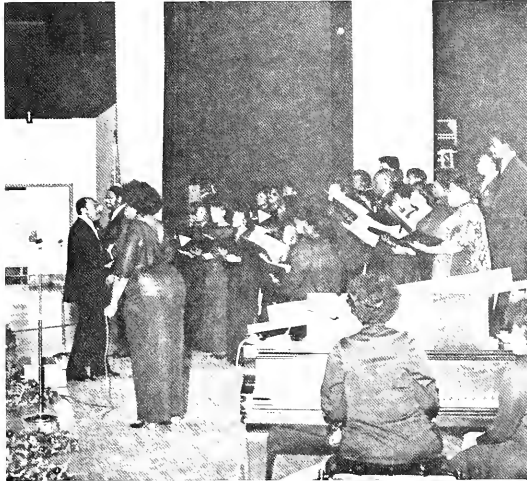
?

?

?

?

SENIOR RECITAL



REGISTRATION



THE CAFETERIA

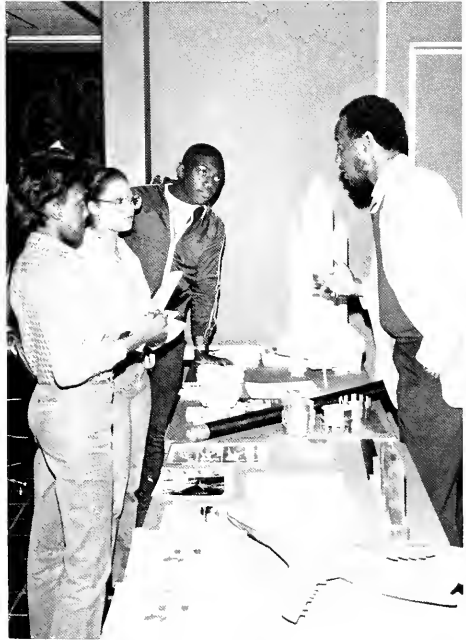


HEALTH FAIR '82





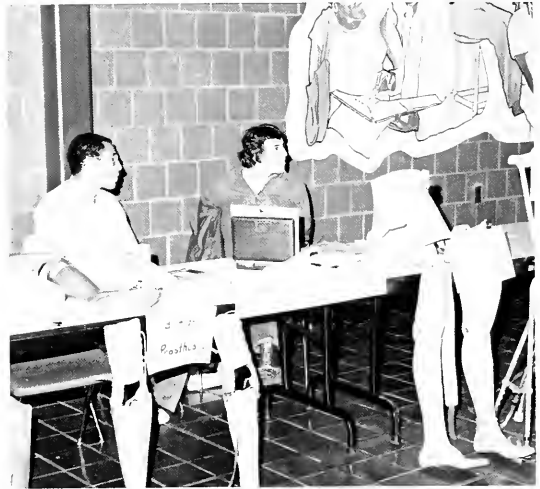
CAREER



D
A
Y



TECHNOLOGY FAIR



FUTURE FARMERS OF AMERICA



RESIDENCE LIFE AWARDS



HONORS CONVOCATION

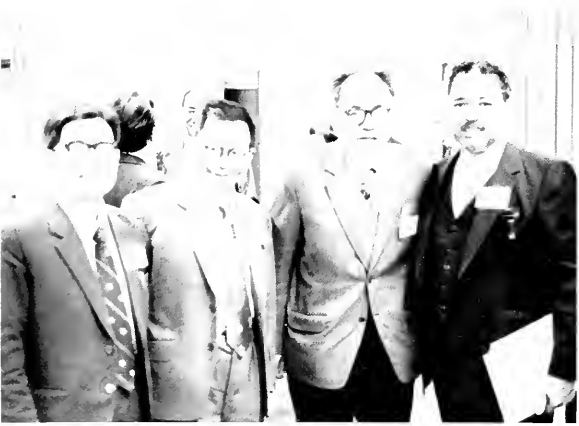




N
E
W

F
A
C
E
S

A
D
R
O
N
U



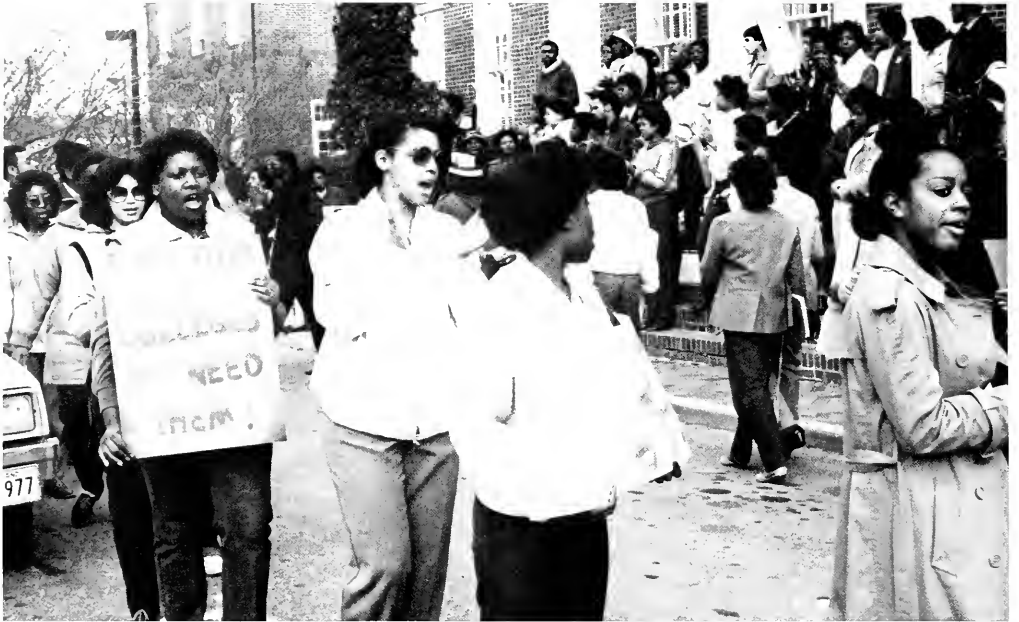


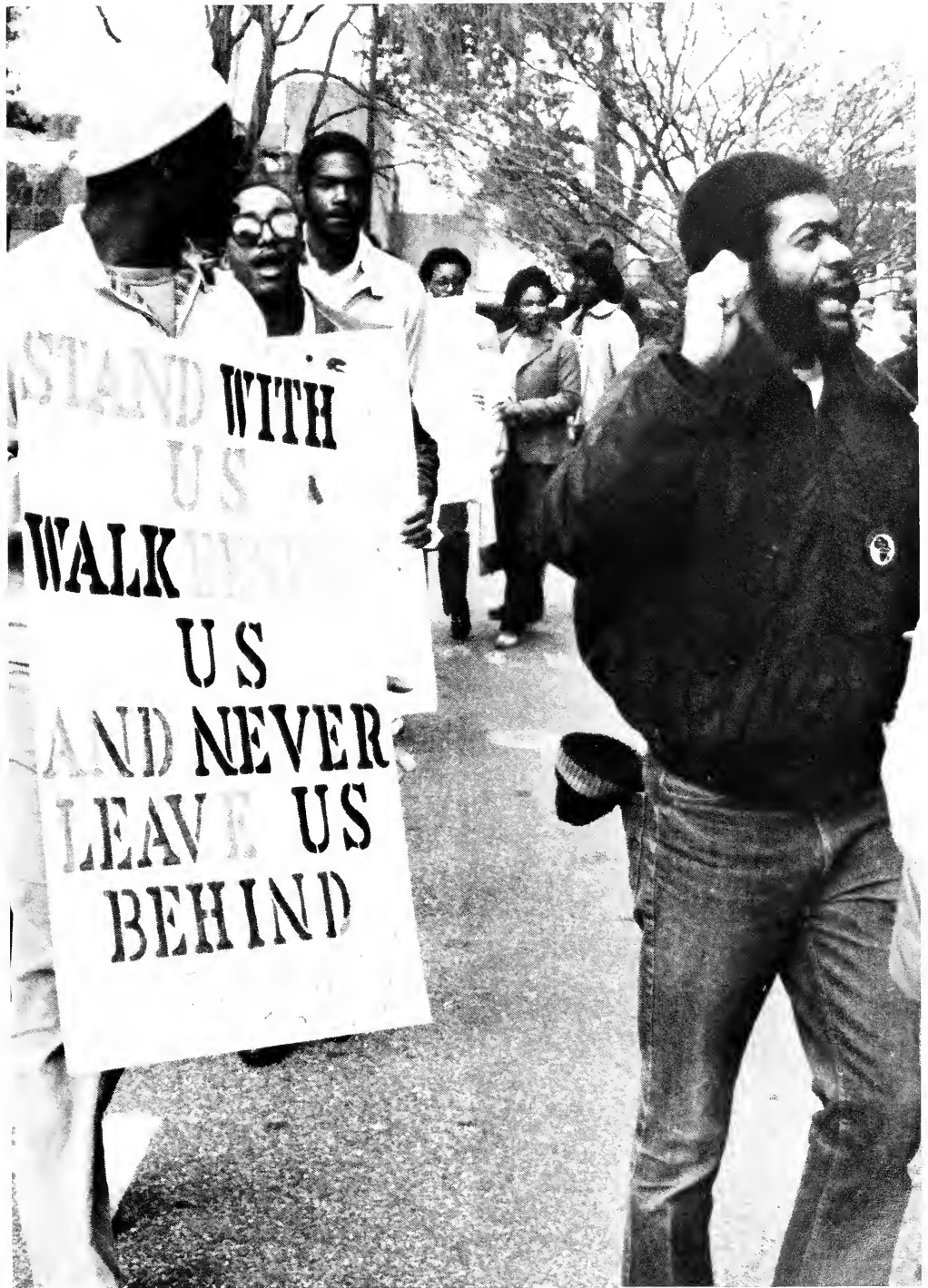
C
A
R
N
I
V
A
L



T
I
M
E







FACULTY



Mr. Harold Holloman
Ind. Ed. Technology



Mr. Ervin Engram
Basic Skills Counselor



Ms. Claudette Lake
Writing Specialist



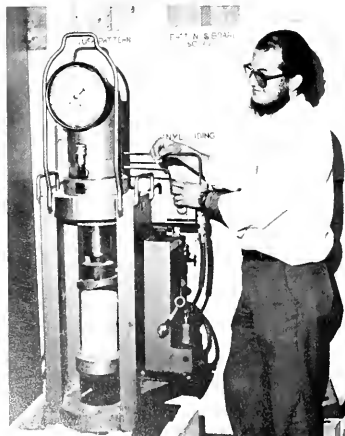
Dr. Bonita Ewers
Director — Cooperative Education



Ms. Elizabeth Lewis
Study Skills Specialist



Mr. William Buchanan
Business Office



Mr. Allen Hauck
140 Ind. Ed. Technology



Dr. Leon Copeland
Industrial Education



Mr. Robert Dowery
Director Student Activities

FACULTY



Mr. Melvin McCoy
Director — Personnel



Mr. Rodney Spencer
Ind. Ed. Technology



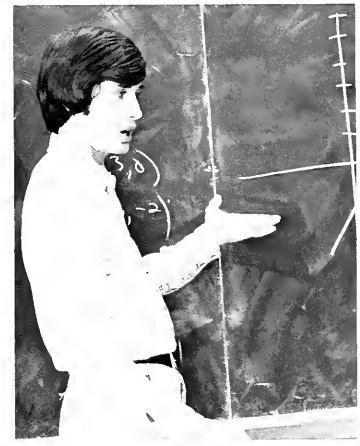
Dr. Edward Chapin
Chairman — Mathematics Dept.



Ms. Joyce Myser
Mathematics



Miss Louise Harmon
Mathematics



Mr. David Alls
Mathematics



Dr. Mira Bhargana
Mathematics



Ms. Lois Jones
Math/Computer



Mr. James Lockwood
Financial Aid Director



*Dr. Thomas Hopkins
Chairman, Science Dept.*



*Dr. Gurbax Singh
Physics*



*Dr. Marianita Albano
Biology*



*Dr. Steve Rebach
Biology*



*Dr. Eugene Bass
Biology*



*Dr. James Doyle
Chemistry*



*Dr. Yen-Wan Hung
Chemistry*



*Dr. Ben Taylor
Chemistry*



*Dr. Jack Pinion
Biology*

F
A
C
U
L
T
Y



*Dr. James Polk
Chairman, English*



*Ms. Della Dameron-Johnson
English, Drama*



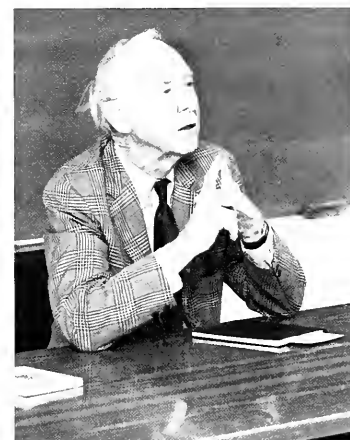
*Dr. Richard Keenan
English*



*Mr. R. Ferrante
English*



*Dr. Mary Fair Burks
English*



*Mr. Clarence Lecky
English*



*Dr. Erica Leh
Languages/English*



*Ms. Lois Smith
Phy. Education*



*Mr. Mei Lo
Library Services*



*Dr. Geoffrey Guest
Chairman, Sociology*



*Dr. Charles Smith
Social Science*



*Dr. Ghislain Kabwitt
Social Science*



*Dr. Howard Rebach
Sociology*



*Mr. Gil Gardener
Sociology*



*Mrs. Mary Morris
Music*



*Mr. John Donlan
Industrial Arts*



*Dr. Gerald Johnson
Chairman, Music Dept.*



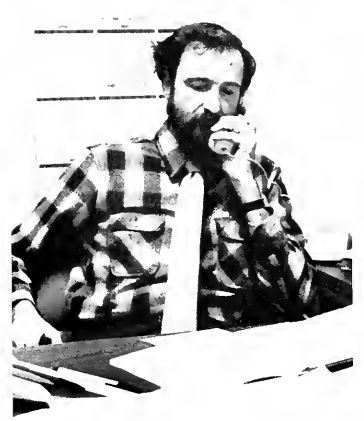
*Mr. Douglas Smith
Music*



*Mr. Fred Sowerby
Track Coach*



*Gertrude Barwick
Reading Specialist*



*Dr. John Groutt
Upward Board Director*



*Ms. Patricia Tilghman
Academic Counselor*



*Ms. Alma Gregg
Music*



*Ms. Carol Coley
Recruiter*



*Dr. George Ossman
Institutional Research*



*Ms. Alice Knight
Project TATAS Director*



*Dr. C. Ignasius
Research & Grants Director*

AND STAFF



*Dr. Jodellano Statom
Vice Chancellor Academic Affairs*



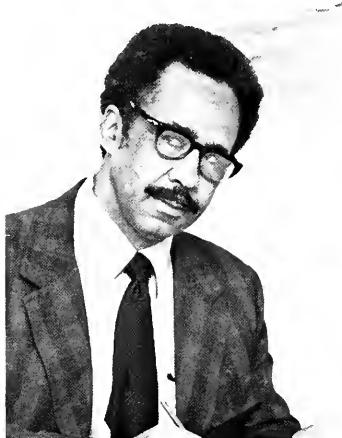
*Dr. William Pender, Assistant
Vice-Chancellor Academic Affairs*



*Dr. Brenda Anderson
Coordinator, Honors Program*



*Mr. Joel Mack
Vice-Chancellor Administrative Affairs*



*Dr. James Ragin
Continuing Education*



*Dr. Milton Curry
Director of Development*



*Mr. James Guydon
Head-Physical Education*



*Dr. Leon Coursey
Physical Education*



*Mr. Michael Loftus
Research & Grants*



*Mr. Kirkland Hall
Head Coach, Basketball*



*Mr. John Tilghman
Residence Life*



*Ms. Elsa Satchell
Library Services*



*Mr. Brady Shafer
Basic Skills*



*Ms. Catherine Bratten
Library Services*



*Ms. Maxine Johnson
Library Services*



*Ms. Ruth Polk
Associate Librarian*



*Ms. Vivian Royster
Associate Librarian*



*Miss Charletta House
Associate Librarian*



*Dr. Frank Smith
Head, Agriculture Dept.*



*Dr. Ivar Holmburg
Agriculture*



*Dr. Jagmohan Joshi
Agriculture*



*Dr. Miller
Agriculture*



*Mr. James Jardine
Agriculture*



*Dr. Dadson
Agriculture*



*Mr. Charles Davis
Extension Service*



*Ms. Gail Jenkins
Cooperative Extension*



*Dr. Louis Thaxton
Cooperative Extension*



*Dr. Raymond Blakley
Physical Therapy*



*Ms. Janice Warren
Physical Therapy*



*Ms. Marianne Taylor
Physical Plant*



*Ms. Lauren Taylor
Hotel/Restaurant Management*



*Dr. Hong Kim
Education*



*Dr. Sally Bing
Education*



*Mr. Jack Perrine
Education*



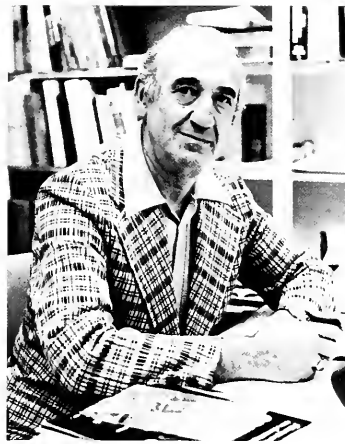
Dr. Helen Gleason



Dr. Robert Thatcher



*Ms. Elva Burns
Business Dept.*



*Mr. David Pines
Business Dept.*



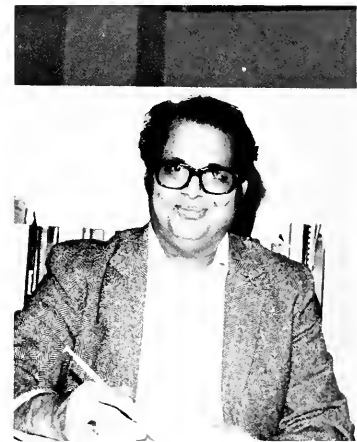
*Dr. John Stith
Business Dept.*



*Dr. Imtiaz Ahmad
Business Dept.*



*Dr. Nazem Abdella
Business Dept.*



*Dr. Shekher Kaup
Business Dept.*



*Ms. Debra Redden
Business Dept.*



*Mr. Ernest Satchell
Chairman, Art Dept.*



*Mr. Kenneth Rogers
Art Dept.*



*Dr. A. Debella
Art Dept.*



*Mr. James Hershey
Natural Sciences*



*Ms. Erethia Evans
Home Ec. Dept.*



*Mr. Otis Conway
Univ. Police*



*Ms. M. Kumelachew
Human Ecology*



*Mr. L. M. Custis
Univ. Police*



*Ms. Gloria Bland
Secretary, Education Dept.*



*Mr. Elisha Jones
Electrician*



*Dr. Lehman Tomlin
Industrial Technology*



*Ms. Robin Simmons
Library Services*



*Miss Sharon Brooks
Media Services*



Mr. Raymond Prescido



*Ms. Marvella Round
Library Services*



*Miss Charlotte Hotton
Library Services*



*Ms. Pauline Hayward
Library Services*



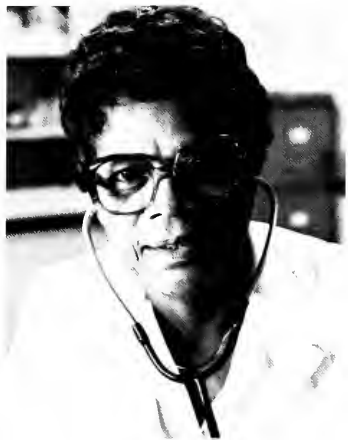
*Mr. Odell Tate
Physical Education*



*Miss Broncher Lyles
Residence Life*



*Mr. Gregory Sutton
Hotel/Restaurant Management*



*Ms. Ruth Creighton
Director-Nursing Services*



*Ms. Betty Guidice
Nursing Services*



*Mr. Honiss Cane
Student Services*



*Mr. Robert Hodge
Supervisor, Maintenance*



*Mr. James Lunneman
Supervisor, Maintenance*



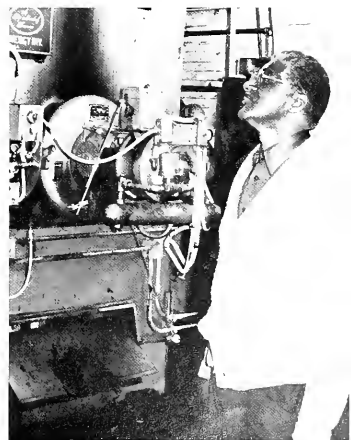
*Mr. Arnold Ballard
Maintenance Chief*



*Mr. James Hull
Storekeeper*



*Mr. Robert Estes
Engineer*



*Mr. Oswald Martin
Engineer*



Yvonne White
Anne Howard
Martha Smith



Evelyn Kelley
Mary Holmburg
Doris Chase



Judith Abbott
Beverly Cockey
Carol Spencer



Harriett Epps
Daisy Johnson
Bernadette Jones



T. A. Lucas
Data Processing
Staff



*Mrs. Walbank
& Mrs. Lankford
Shirley Corbin
Leroy Sommers*



*Jeanne Abbott
Post Office
Staff*



*E. Alverta Jones
Juanesta Corbin
Debra Figgs*



*Susan Wheeler
Ronald Holden
Donald Bowden*



Diane Johnson



*Josephine Holden
Susan Tull
Catherine Bishop*



*Betty Cordery
Barbara Jackson
Chris Widdowson*



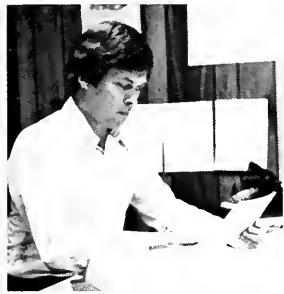
*Juanita Powell
Allena Bagwell
Gail Briddell*



Robert Tull
Agnes Waters
Elizabeth Webster



Anna Barnes
Alrethia Mathews
Theresa Parkinson



Jeffrey Webster
Florence Jones
John Golaner

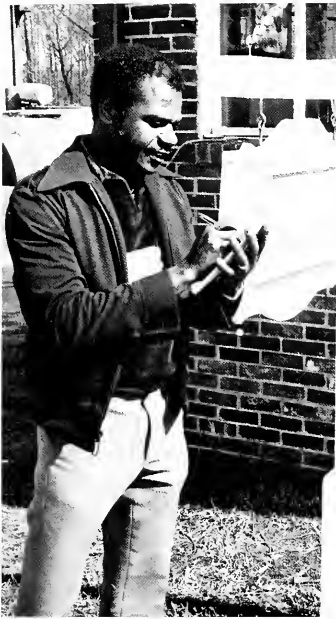


Roslyn Webster
Louise Gale
Lynette Messick



Priscilla Handy
Peggy Wilson
Judith McDaniel





GRADUATION 1982

