

HAWAII

F
722

H25

ALBUM

VEIL / WILSON

BOOK

F722 H2

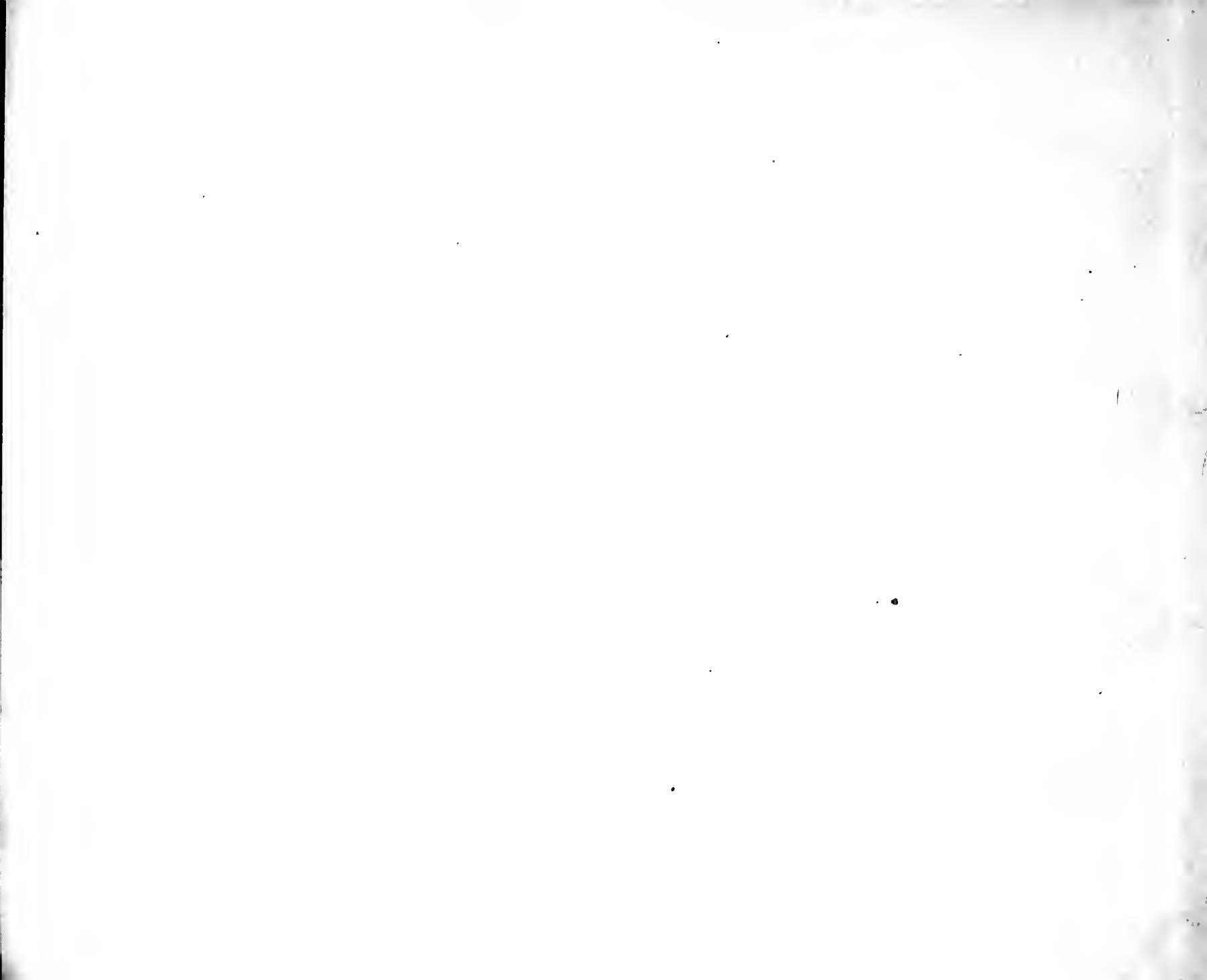


BANCROFT
LIBRARY



THE LIBRARY
OF
THE UNIVERSITY
OF CALIFORNIA







HAYNES

SOUVENIR
ALBUM

YELLOWSTONE
PARK

F. JAY HAYNES
ST. PAUL, MINN.
Official Photographer of Yellowstone Park

YELLOWSTONE PARK

Yellowstone Park is situated in the northwest corner of Wyoming on the crest of the Rocky Mountains, the water-shed of the Continent; its boundaries overlapping a few miles into Montana on the north, and Montana and Idaho on the west. Three of the largest rivers of North America have their sources in Yellowstone Park: the Colorado, the Columbia, and the Missouri. The name "Yellowstone" originated, undoubtedly, with the Indians, from the yellow cliffs of the Grand Canyon, as it was translated "Roche Jaune" (Yellow Rock) by early French traders, and mentioned by Lewis & Clark, in 1805, as "Yellow-stone."

In 1872, by Act of Congress, Yellowstone Park was set aside as a National resort and pleasure ground. The reservation is 55 miles east and west, by 65 miles north and south, embracing nearly three million acres. There is also a Timber reserve on the east, south and northwest. The U. S. Engineer Road Department has constructed substantial roads and bridges to all points of interest. A Cavalry Post (Fort Yellowstone) has been established, the commanding officer being Superintendent of the Park; detachments are scattered throughout the reservation for its protection. Rules and regulations are published, by the Hon. Secretary of the Interior, for the guidance of visitors. There is also a Government Weather Bureau Station, and U. S. Post Office, the official Post Office name being Yellowstone Park, Wyo. There are over 200 miles of Trout streams in the Park, stocked by the U. S. Fish Commission with four or five varieties, and with but few restrictions put upon the angler. Thousands of Elk, Deer, Mountain Sheep, Antelope, Buffalo, Bear and smaller animals, and myriads of Birds and Water fowl have the government protection, as hunting is strictly forbidden.

The elevation of the Park is from 6,000 to 8,000 feet above sea level, while many of the snow-clad peaks, within and adjacent to the Park, rise to an altitude of 10,000 to 14,000 feet. Yellowstone Lake, 20x30 miles in size, is the largest body of water in North America at this altitude, 8,000 feet. The Geysers of Yellowstone Park outclass anything of the kind in the world. There are over fifty active Geysers that throw columns of scalding water to a height of 50 to 250 feet, at intervals varying from one hour to fourteen days. The Grand Canyon of the Yellowstone, 1,500 feet deep, and 10 miles long, is the most brilliantly colored landscape in existence. Beautifully colored pools, basins, and terraces, mountains of sulphur, and volcanic glass, stupendous waterfalls, interspersed with valleys, mountains, rivers, and thousands of natural curiosities, characterize Yellowstone Park as the Wonderland of the World.

There are two Railway entrances to the Park: the northern from the Northern Pacific Ry., at Gardiner, Mont., and the western, from the Oregon Short Line and the Union Pacific Railroads (north of Salt Lake City and Ogden), at Yellowstone. Concord Coach Lines are in operation through both entrances to all points in the Park during the season, June, July, August, and September. Modern hotels have been constructed at the chief points of interest: Upper Geyser Basin, Grand Canyon, Yellowstone Lake, Fountain or Lower Geyser Basin, Mammoth Hot Springs, and Norris Geyser Basin. Many residents of the surrounding country make camping trips through the Park, and permanent camps are established at various places. The Tour of the Park is about 150 miles, and requires six to seven days to make the entire circuit, while you can enjoyably spend a month to advantage.

F722

.H25

Digitized by the Internet Archive
in 2007 with funding from
Microsoft Corporation

<http://www.archive.org/details/haynessouvenir100haynrich>



HOTELS OF THE PARK

"MAMMOTH"
Mammoth
Hot Springs

"FOUNTAIN"
Lower
Geyser
Basin

"OLD FAITHFUL INN"
Upper Geyser
Basin

"LAKE"
Out-let of
Yellowstone
Lake

"CANYON"
Grand Canyon
of the Yellowstone



CONCORD COACHES OF THE PARK



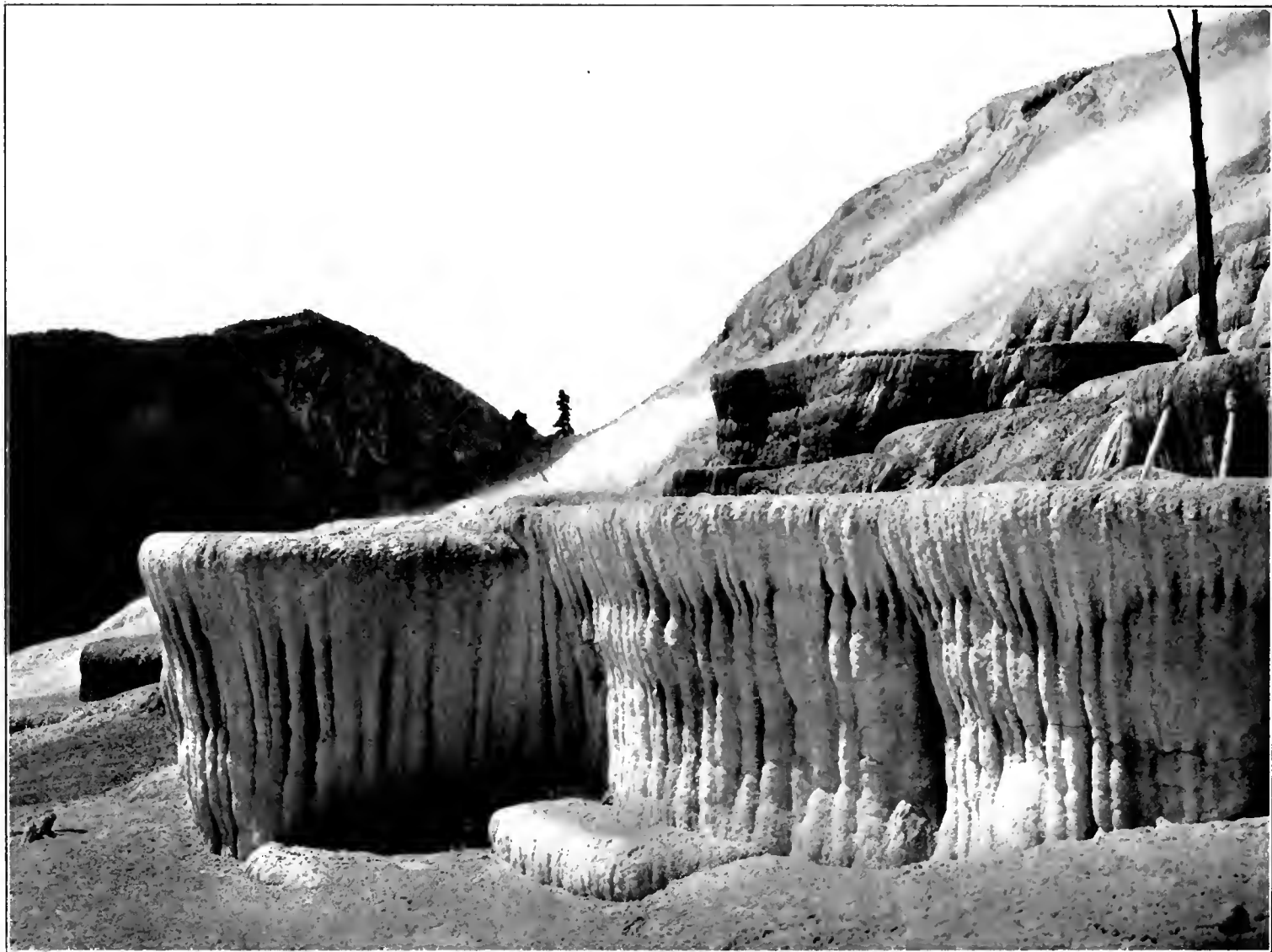
THE WILD ANIMALS OF THE PARK



THE ARCH AT NORTHERN ENTRANCE TO PARK



GARDINER CANYON — EAGLE NEST ROCK



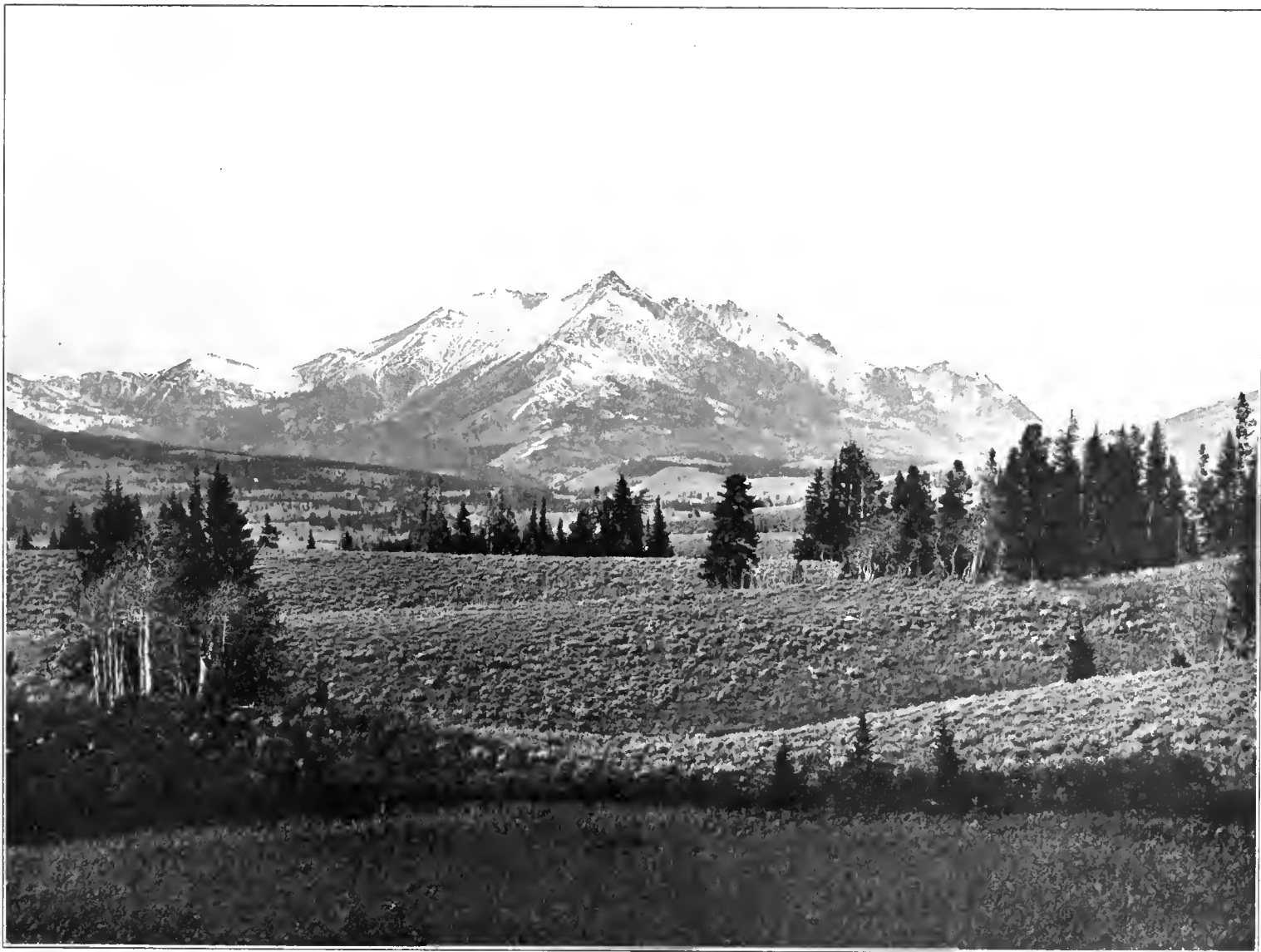
JUPITER AND PULPIT TERRACE — MAMMOTH HOT SPRINGS



SILVER GATE AND LIMESTONE HOODOOS



GOLDEN GATE CANYON AND VIADUCT



ELECTRIC PEAK — NORTH BOUNDARY OF PARK



OBSIDIAN CLIFF AND BEAVER LAKE



GIBBON RIVER FALLS EIGHTY-FOUR FEET



CHRISTMAS TREE PARK AT WESTERN ENTRANCE



CASCADES OF THE FIREHOLE RIVER



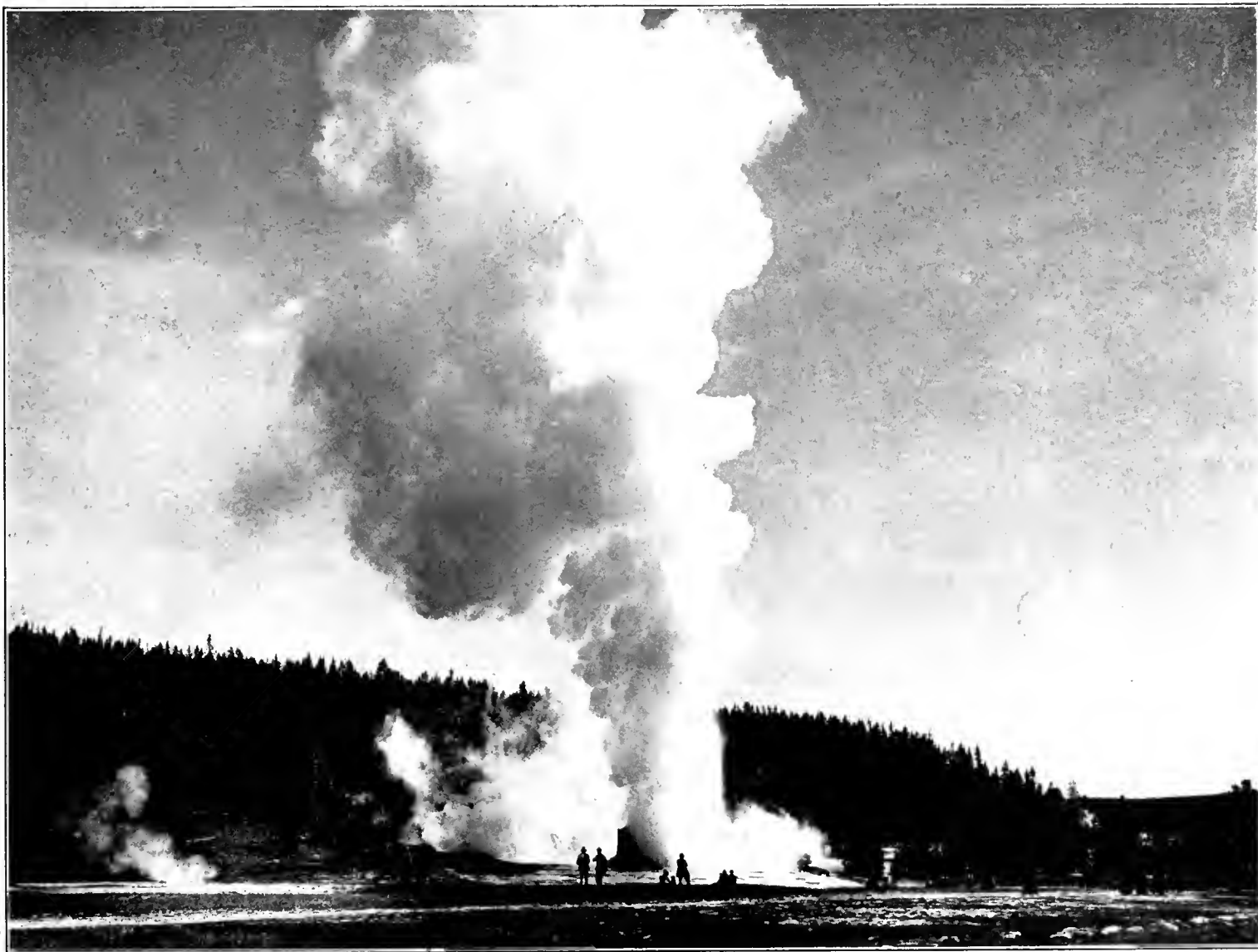
MAMMOTH PAINT POTS — LOWER GEYSER BASIN



FOUNTAIN GEYSER — LOWER GEYSER BASIN



EARLY MORNING IN THE UPPER GEYSER BASIN



GIANT GEYSER - UPPER GEYSER BASIN



MORNING GLORY SPRING



CRATER OF THE OBLONG GEYSER



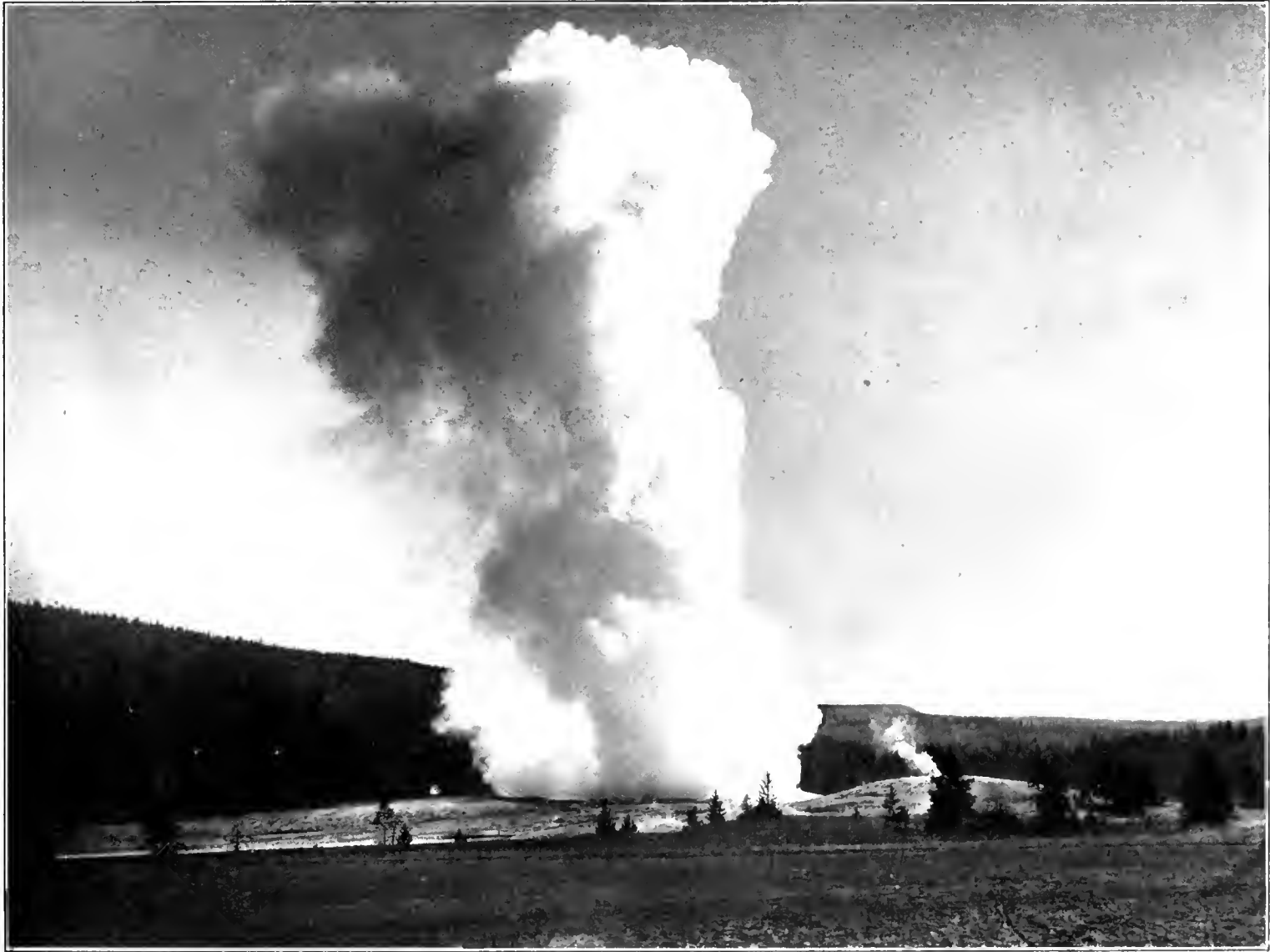
PUNCH-BOWL SPRING - UPPER BASIN



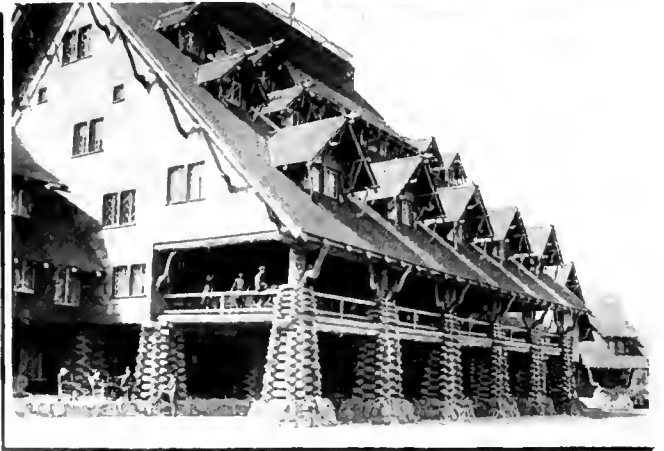
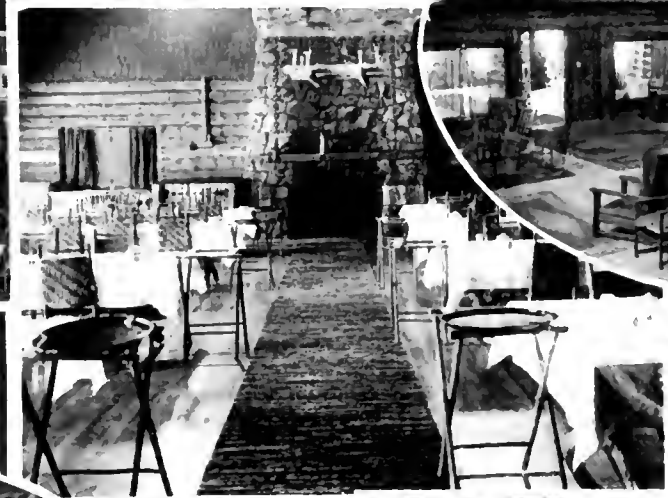
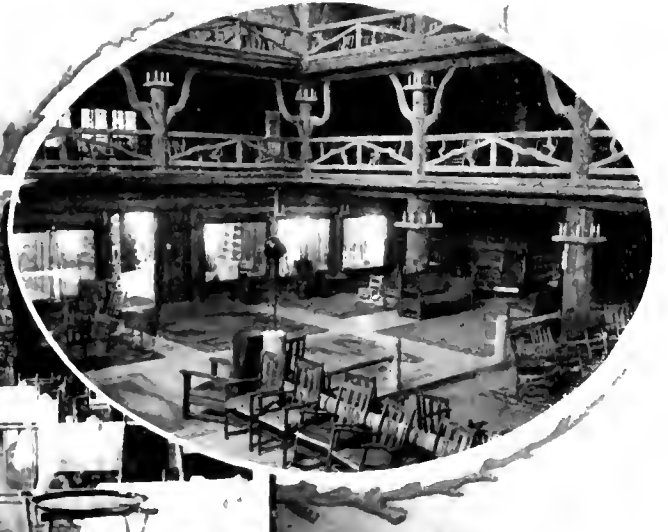
FORMATION OF THE GROTTO GEYSER



CASTLE GEYSER - UPPER GEYSER BASIN



OLD FAITHFUL GEYSER UPPER GEYSER BASIN



ROTUNDA

OLD FAITHFUL INN — UPPER GEYSER BASIN

BED ROOM

DINING ROOM

OFFICE

ENTRANCE



SCENES ON YELLOWSTONE LAKE



HAYDEN VALLEY — BETWEEN LAKE AND CANYON



YELLOWSTONE BRIDGE — ABOVE THE UPPER FALLS



RAPIDS ABOVE THE UPPER FALLS



GRAND CANYON OF THE YELLOWSTONE -- FROM THE BRINK



GREAT FALLS OF THE YELLOWSTONE — 360 FEET



CANYON, FALLS AND POINT LOOKOUT



MOUNT WASHBURN THE PARK OBSERVATORY









