

F
G89
.S2L8



Class _____

Book _____

COPYRIGHT DEPOSIT



ILLUSTRATED
SALINA

John Schweizer

ILLUSTRATED SALINA

THE FOREST CITY

With Half-tone Illustrations made from photographs taken expressly for the work
by F. A. Loomis, Salina, Kansas

FOR SALE IN SALINA BY

republic
F. A. LOOMIS

140 South Santa Fe Avenue

PUBLISHED BY

S. E. RANKIN

401 WYANDOTTE STREET

KANSAS CITY

LIBRARY
51573
J. L.

*COPYRIGHT, 1892, BY S. E. RANKIN.

PRESS OF RIGBY-RAMSEY PRINTING COMPANY,

KANSAS CITY, MO.

ENGRAVINGS BY A. N. KELLOGG NEWSPAPER CO.

KANSAS CITY, MO.

*Attention is called to the fact that this publication is copyrighted, and the rights of the publisher, as defined in Section 4965 of the Revised Statutes of the United States, will be rigidly protected. No objection will be made to parties represented herein using the cuts illustrating their individual concerns in advertising their own business, but the use of the cuts in such a manner as will supplant or work to the detriment of this publication (such as the use of the cuts illustrating the concerns of several firms or individuals under one cover), will be considered an infringement and dealt with accordingly.

FC-1
.S2L8

SALINA

Situated in nearly the center of the State of Kansas, whose fair fame is world-wide, within two and one-quarter miles of the geographical center of the United States, where but a few decades ago was but a barren waste, stands to-day the beautiful city of Salina, with a population of nearly 10,000 prosperous, happy and enterprising people.

A city of commercial importance; of luxurious homes and of enviable educational advantages; thoroughly modern—gas, the incandescent and arc system of electric lighting, a complete system of water works, an efficient fire department with electrical fire-alarm, telephone service, the postal free delivery, and an electric street railway now building, at once impress the observer with the fact that Salina is at present in a highly prosperous condition and has a future of great promise.

COMMERCIALLY

Salina is the most important city in Central Kansas. Every line of retail trade is well represented by large and modern stores, while the splendid railroad facilities have attracted hither several extensive wholesale establishments, whose business extends throughout the West.

HER MANUFACTURING INTERESTS

Are large and varied—flouring mills with a daily capacity of 1,200 barrels; elevators with a storage capacity of 250,000 bushels; a carriage factory, foundry, sash, door and blind factory, a large and well-equipped publishing house, and an extensive paper mill, being numbered among her industries.

RAILROAD FACILITIES

Are ample. The lines of the Union Pacific, the Missouri Pacific, the Chicago, Rock Island and Pacific, and the Atchison, Topeka and Santa Fe radiate in all directions, giving shipping facilities not excelled by any other point in the State.

THE FINANCIAL INSTITUTIONS

Of Salina would compare favorably with those of many larger cities, the three National banks having a combined capital of \$300,000, with total deposits of \$776,410.

The Salina National Bank (of which a cut of the interior is here shown), is one of the oldest and strongest banking institutions in the State of Kansas. It was established September 25, 1875, as the Salina Bank, by Dr. J. W. Morris of Leavenworth, Kansas, and was conducted by him as a private bank until July 25, 1886, when it was reorganized as a National bank. It has been a successful bank from the start, owing its prosperity in a great measure to the careful and conservative ideas and business methods of its principal owner, Dr. J. W. Morris, assisted by competent management in the bank. Its last statement as rendered to the Comptroller of the Currency, September 30, 1892, shows, capital, surplus and undivided profits, \$133,579; loans and discounts, \$390,000; deposits, \$426,410; total resources, \$582,490. The officers of the bank are, J. W. Morris, President, Jas. G. Daniels, Vice-President, W. T. Welch, Cashier, P. D. Lockwood, Assistant Cashier.

EDUCATIONAL.

In addition to the excellent public schools, Salina possesses three colleges of the first-class, whose beautiful buildings, well-kept grounds and prosperous condition, tell a story of efficiency and worth which needs no further confirmation.

THE SALINA NORMAL UNIVERSITY, L. O. Thoroman, President, is a school for everybody; Christian, but non-sectarian. The teachers are selected with especial reference to the work and each is a specialist in his department. All are teachers of experience and acknowledged ability and know the needs of students. This school is in a very prosperous condition and will shortly make extensive improvements, including the erection of another handsome building.

ST. JOHN'S MILITARY SCHOOL, under the direction of the Rt. Rev. E. S. Thomas, S. T. D., bishop of Kansas, and Walter M. Jay, M. A., head master, is the only military school in the State. The military system teaches order, good manners, neatness of dress and cleanliness of person, while the regular habits and abundant exercise firmly establish health of mind and body. Vail Hall, a magnificent stone and brick building, heated by steam, provides for seventy-five cadet boarders and contains school rooms, offices and parlors. A handsome, thoroughly equipped gymnasium and bowling alley has recently been erected.

The school has four classes of study, Classical, Scientific, English and Commercial. Prepares for the best Eastern colleges. Terms are very reasonable and pupils may enter at any time. The military department is under the supervision of a Captain of the U. S. A., and all cannons, guns, ammunition, etc., are furnished by the government of the United States.

KANSAS WESLEYAN UNIVERSITY, a school for both sexes. Aaron Schuyler, A. M., L. L. D., President. Rev. M. M. Stolz, D. D., Dean Finance. The departments are: Collegiate, Normal, Preparatory, Commercial, Musical, Fine Art; courses of study, Classical, Philosophical and Scientific.

Collegiate Department—Three courses of study are offered in the College of Liberal Arts, the Classical, the Philosophical and the Scientific.

Normal Department—This department is especially designed for those preparing for teaching.

Preparatory Department—This department is designed to prepare students for college.

Commercial Department—The business course is thorough and practical, combining actual practice with theory.

School of Music—The design of the School of Music is to furnish a complete musical education of a high grade.

Fine Art—A carefully prepared course of instruction suited to the needs of the student.

AS A HOME

Salina is par excellence a residence city; her wide streets, beautifully shaded by magnificent trees, abundance of pure water, delightful climate, splendid educational advantages, cultured society, numerous church organizations and beautiful parks all contribute to make this; the "Forest City," one of the most desirable in the West as a home.

TO CONCLUDE,

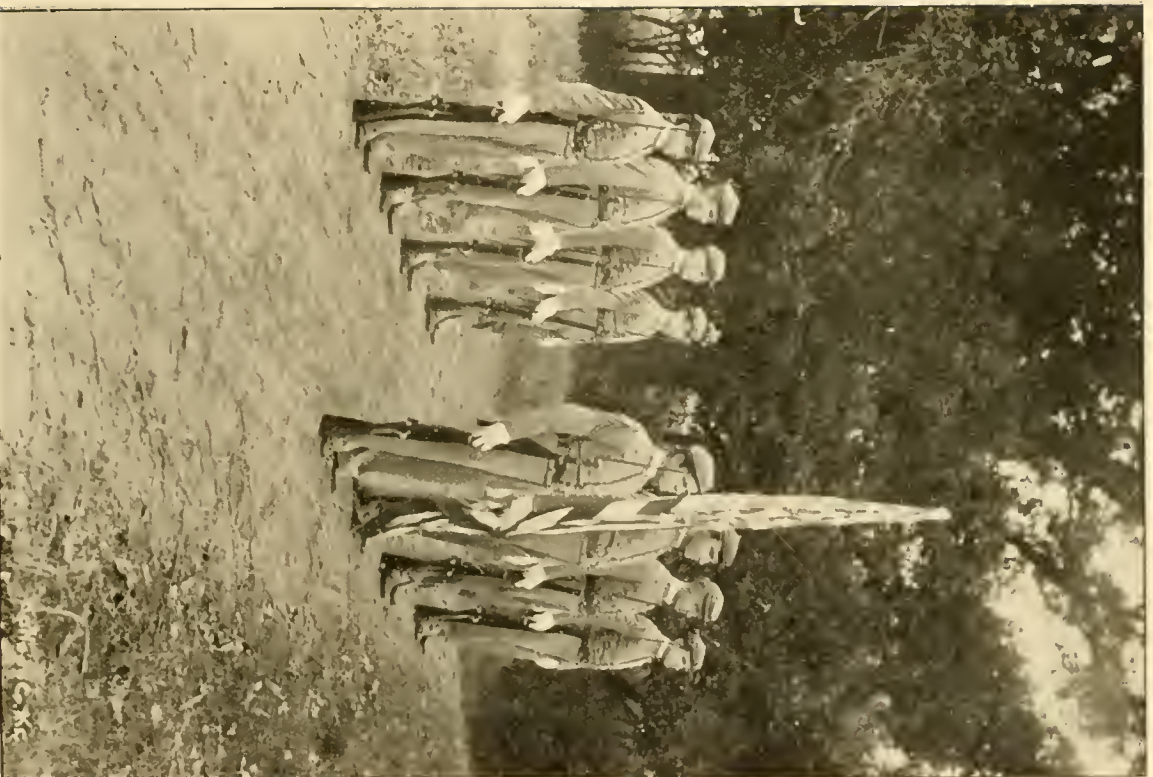
During the years 1886-7, as is well known: the great and far-reaching boom which swept like a wave over the entire West, started innumerable towns and cities into a feverish state of activity, only to leave them stranded high and dry when it receded a few years later, a depression from which many places are still suffering. It is a fact that portends much that no traces of the depression are to be found in Salina, but she is enjoying a healthy, continuous growth, and so she will continue to increase in wealth and population, limited only by the possibilities of the great West and that magnificent State whose motto is fittingly inscribed "*Ad astra per aspera!*"



Gymnasium.

Vail Hall.

St. John's Military School.



Loomis, Photo.

Color Guard—St. John's Military School.



Photo by Loomis,

Oakdale Park.



Photo by Loomis.

Santa Fe Avenue.



Photo by Leemis.

Salina Normal University.



Salina Normal University—Faculty.

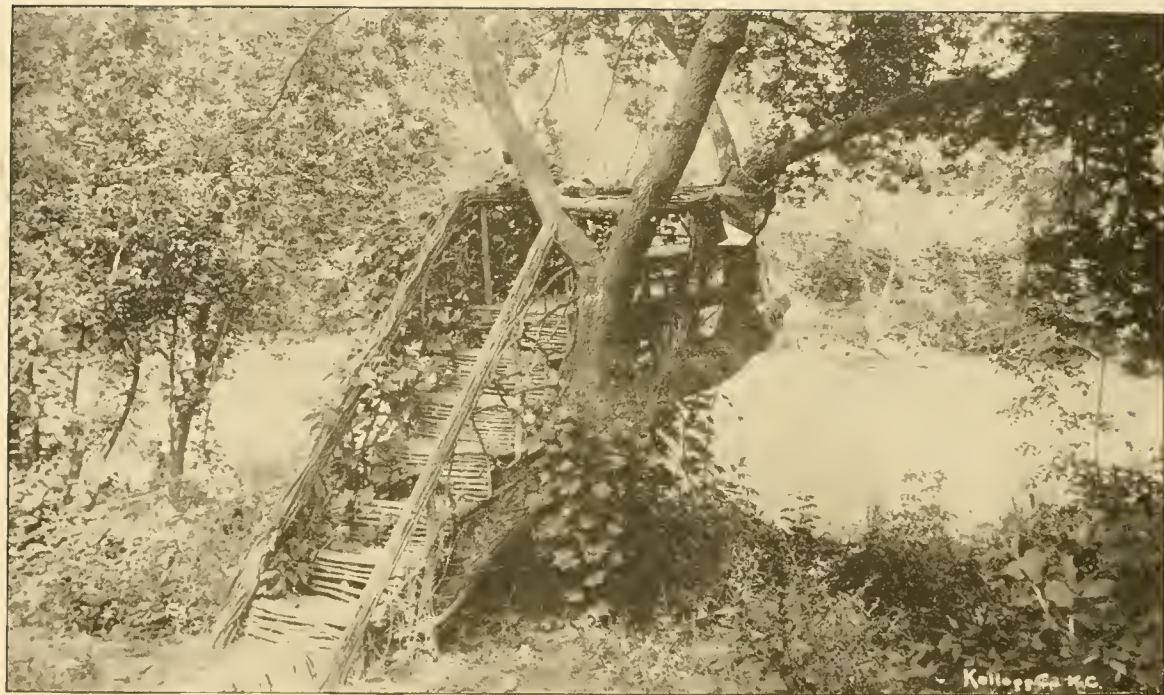


Photo by Loomis

A Corner of Oakdale Park.

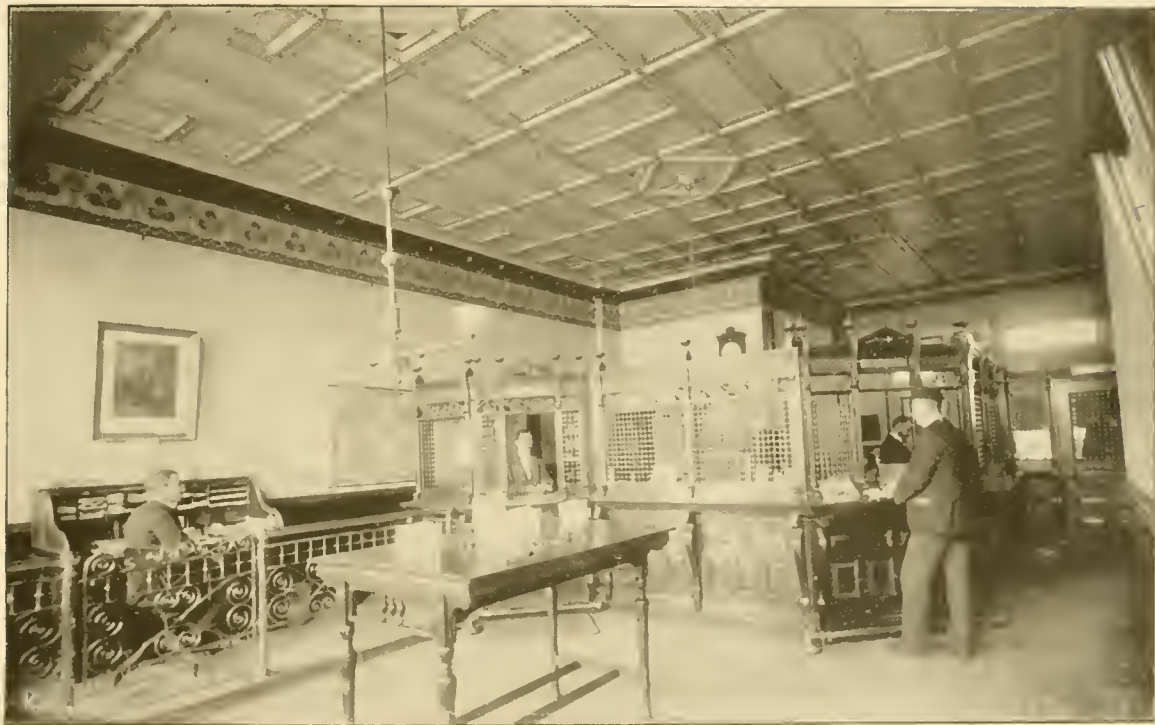


Photo by Loomis.

Interior Salina National Bank.



Photo by Loomis.

Kansas Wesleyan University.



Photo by Loomis

Kansas Wesleyan University—Faculty.



Photo by Loomis

Kansas Wesleyan University – Art Department.



Photo by Loomis

Kansas Wesleyan University—Museum.



Photo by Locmis

Music Studio of A. J. GULE, Jr., Director School of Music,
Kansas Wesleyan University.

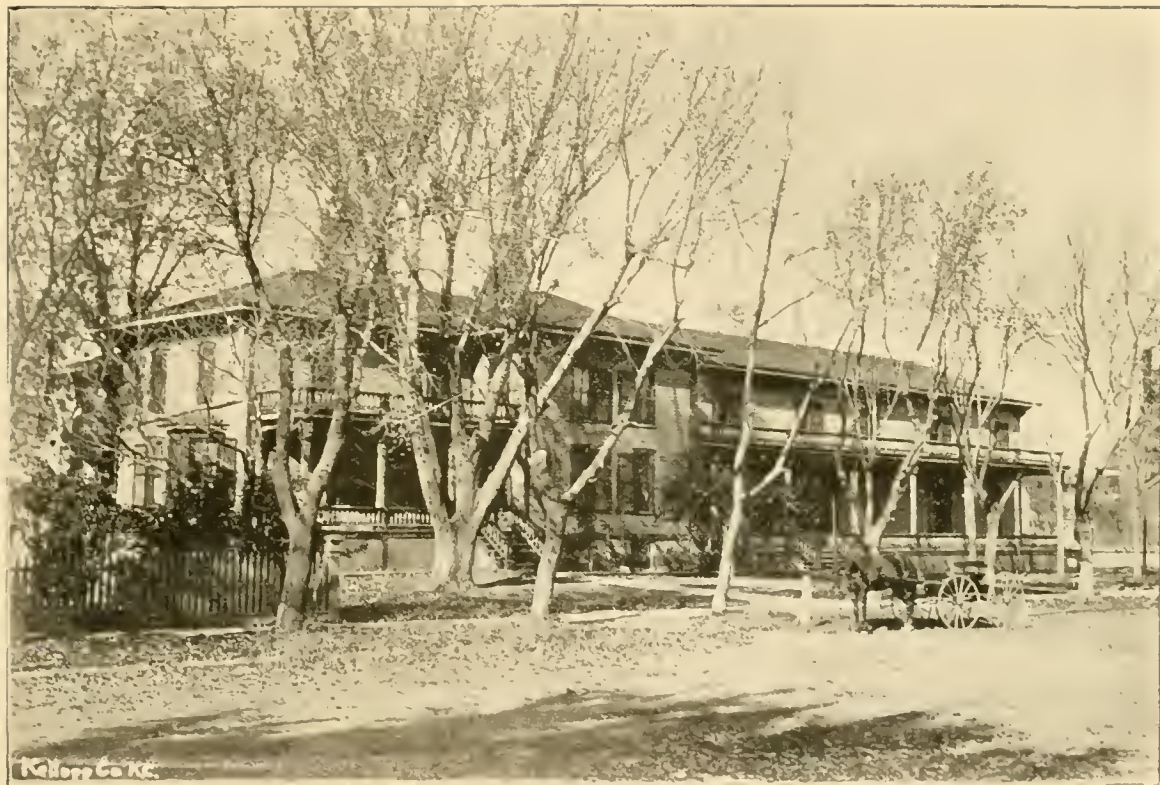


Photo by Loomis

Wittmann House.



Photo by Loomis

Some of Salina's Public Schools.



Photo by J. Wilson.

National Hotel.



Loomis Photo

Residence of JAMES G. DANIELS,
Vice-President Salina National Bank.



Photo by Loomis

THE C. B. KIRTLAND PUBLISHING CO., Printers and Blank Book Makers.

. Publishers Saline County Journal, oldest Republican Paper in Salina.



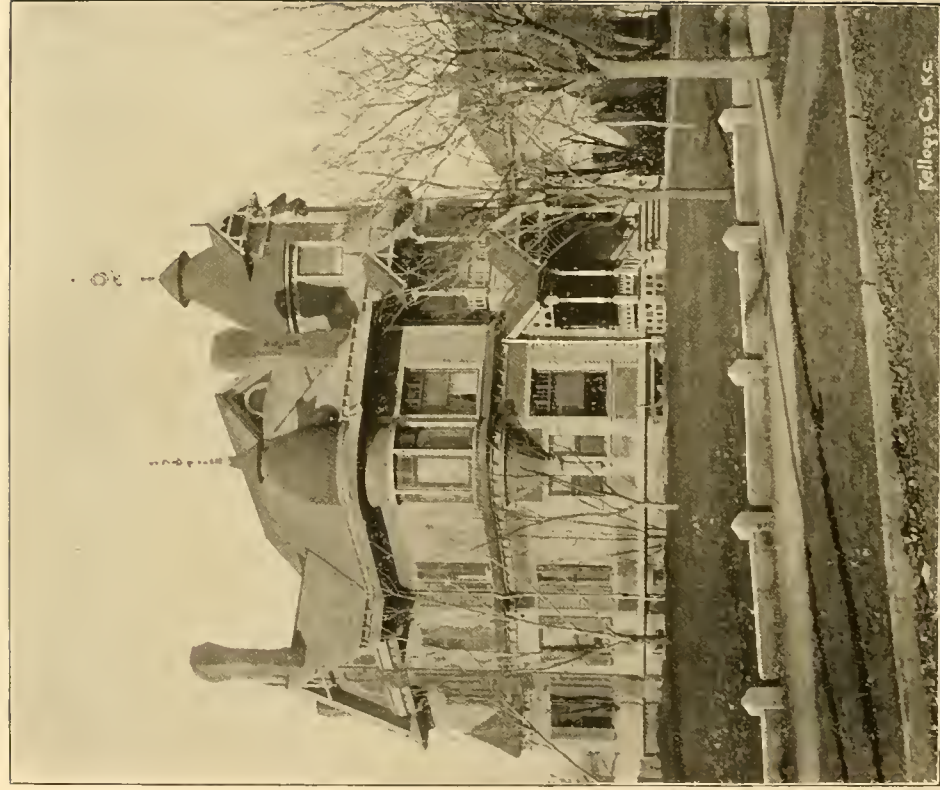
Photo by Loomis

Representative Churches.



Loomis Photo.

Interior Store of EMIL ARNER, Wholesale and Retail Drugs.



Loomis, Photo.

Residence of Dr. W. B. DEWEES.



Loomis Photo.

THE H. D. LEE MERCANTILE CO., Wholesale Grocers.



Loomis-Photo

Residence of W. W. WATSON.



Photo by Leonis

THE CHAS. F. KAFFER MERCANTILE CO., Wm. R. Kaffer, Manager,
Groceries and Queensware.



Photo by Loomis

Public Buildings.



Loomis Photo.

Crippen, Lawrence & Co., Real Estate and Loans.



Salina's Newspapers.

1

304200
L/C
6507-A
29

LIBRARY OF CONGRESS



0 016 088 479 4

