

Views of

Meoria

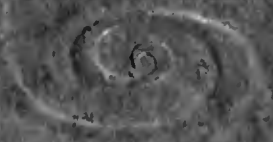
and

Vicinity

Views of

THE HOUSE

1800



# Illustrated Souvenir of PEORIA

LOCATED ON THE ILLINOIS RIVER



PEORIA is noted for her importance as a manufacturing and commercial center. It is a city of well-paved streets, beautiful homes, good schools, fine churches and hospitable people. Wonderful natural resources. The most extensive coal mining center in the United States west of Pittsburg. The largest consumer of corn in the world. Greatest distilling district in the world. A prosperous, modern thriving city of 80,000 population, destined to surely become a city of 125,000 inhabitants within the next ten years of the Twentieth Century.

PUBLISHED for W. G. PUTNAM & COMPANY  
222-224 SOUTH ADAMS STREET - - - - PEORIA, ILLINOIS

Copyright, 1908, by L. H. NELSON COMPANY, Portland, Me.



VIEW OF PEORIA LOOKING NORTH FROM MAIN AND ADAMS STREETS



VIEW OF SOUTH ADAMS STREET



ADAMS STREET LOOKING NORTH FROM LIBERTY



JEFFERSON STREET LOOKING NORTH FROM FULTON



GOVERNMENT BUILDING





CITY HALL



COLISEUM



MILITARY DAY IN PEORIA



PUBLIC LIBRARY



Y. M. C. A. BUILDING

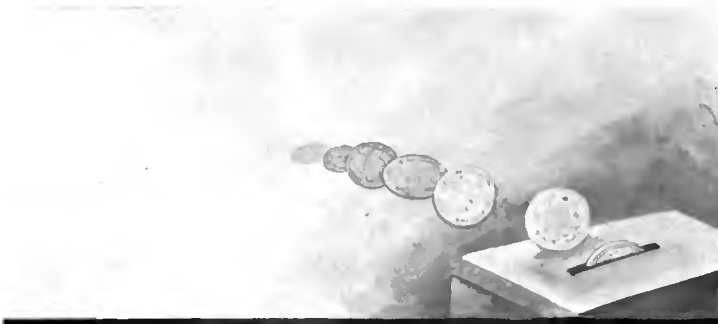




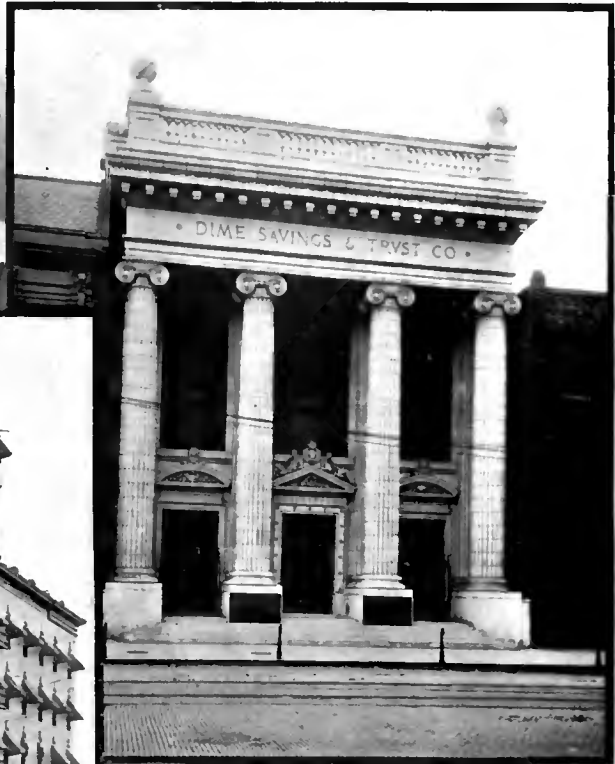
UNION DEPOT



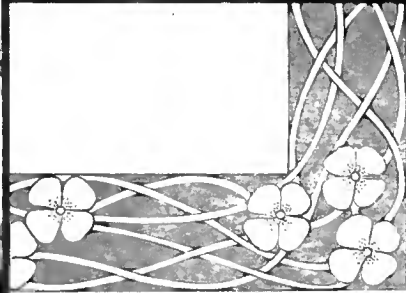
CHICAGO & ROCK ISLAND DEPOT



HOTEL FEY



DIME SAVINGS & TRUST CO.



NATIONAL HOTEL

MAYER HOTEL



CREVE COEUR CLUB

COUNTRY CLUB



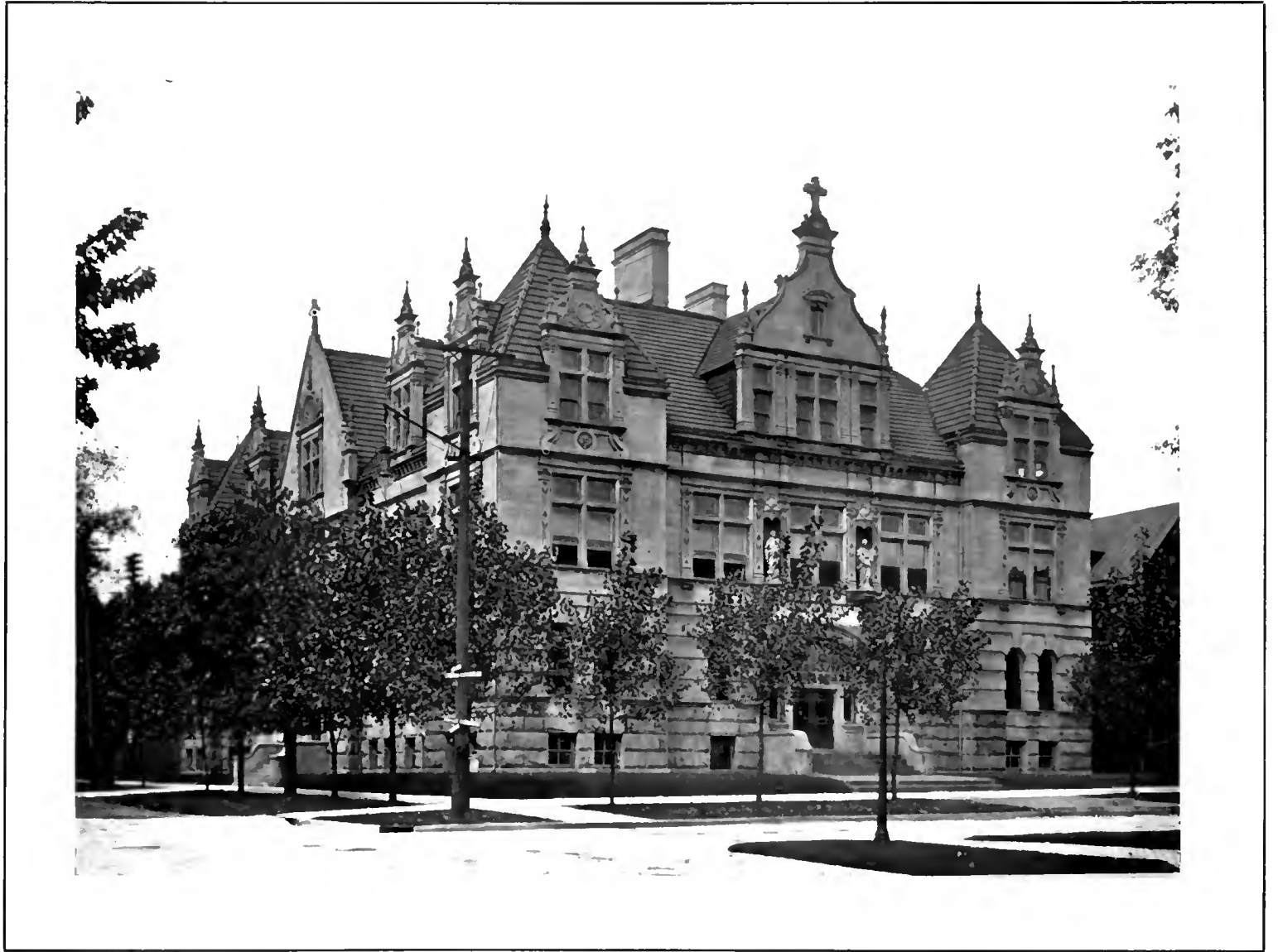


Greeley School.

High School.

Lincoln School.

REPRESENTATIVE SCHOOL BUILDINGS OF PEORIA



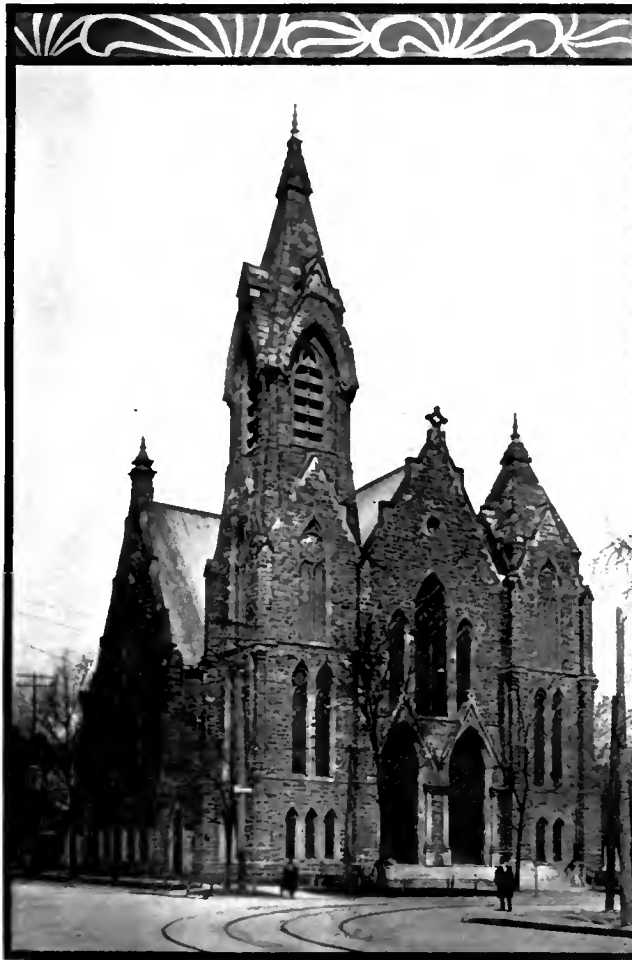
SPALDING INSTITUTE



BRADLEY POLYTECHNIC INSTITUTE



SECOND PRESBYTERIAN CHURCH



FIRST CONGREGATIONAL CHURCH



ST. MARY'S CATHEDRAL



PROCTOR ENDOWMENT HOME FOR AGED PEOPLE



ST. FRANCIS HOSPITAL

PROCTOR HOSPITAL



HAMILTON BOULEVARD

RANDOLPH AVENUE





SANDMEYER FLATS

LAWN OF MRS. CHARLOTTE S. WOODWARD



DRAW OF MCKINLEY BRIDGE

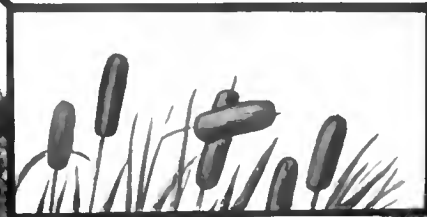


STEAMBOAT LANDING, FOOT OF MAIN STREET

BIRD'S EYE VIEW OF UPPER FREE BRIDGE



LAKE AND BRIDGE IN GLEN OAK PARK

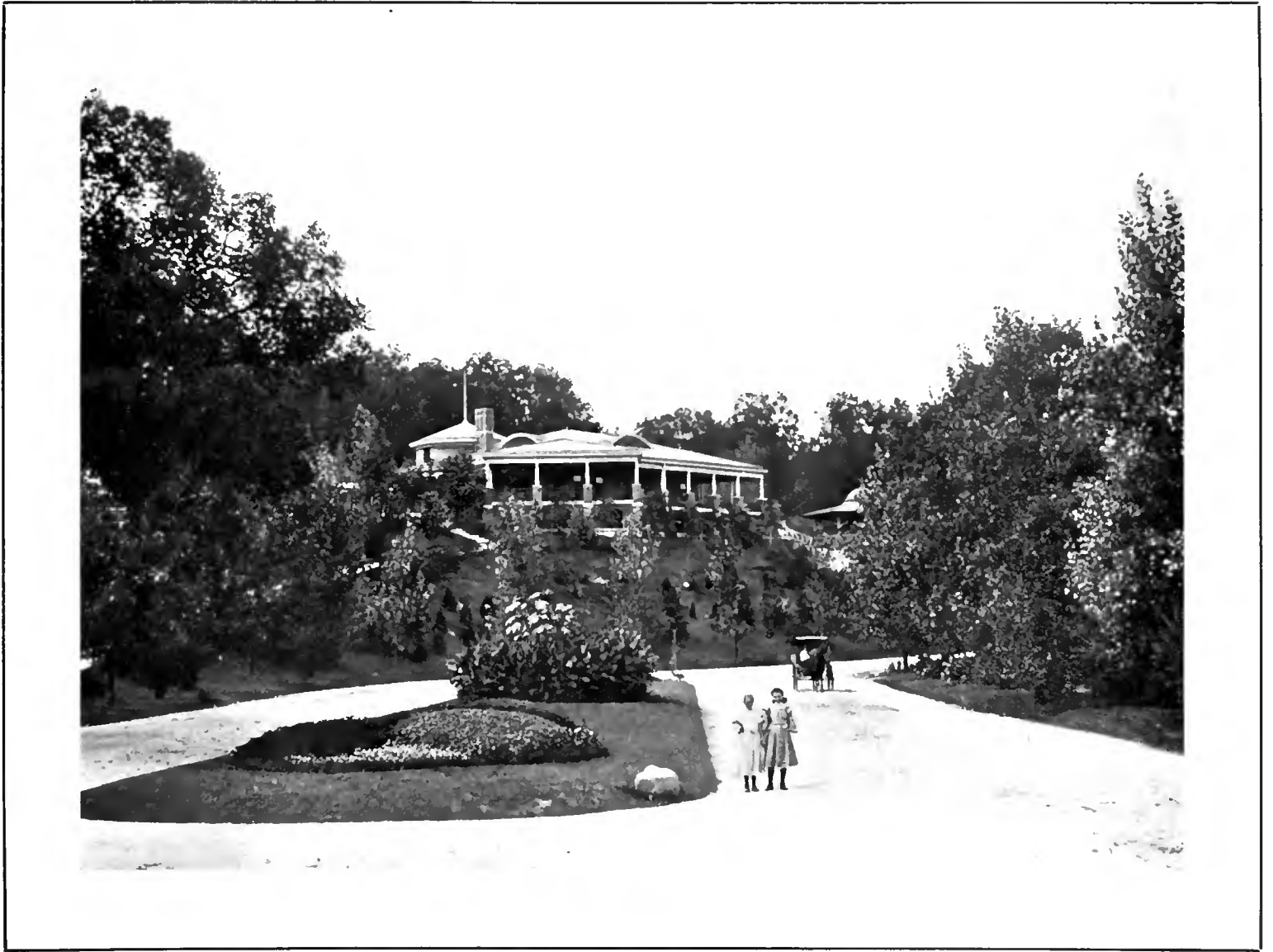


VIEW IN GLEN OAK PARK

FOUNTAIN IN GLEN OAK PARK



PAVILION IN GLEN OAK PARK



VIEW OF BRADLEY PARK PAVILION



FIGURE EIGHT, AL FRESCO PARK

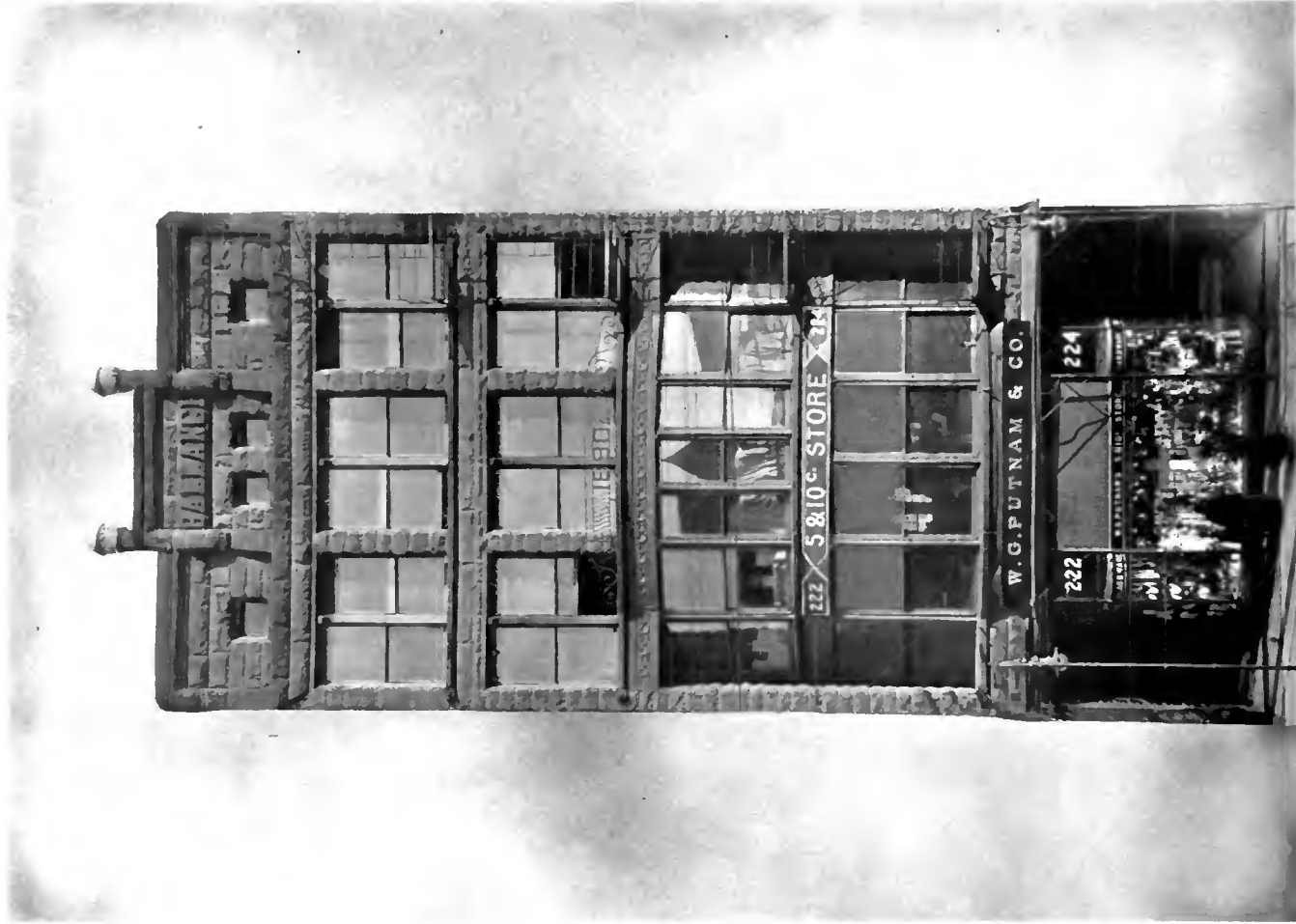
AL FRESCO PARK





PLANT OF CLARK & CO., DISTILLERS

BIRD'S EYE VIEW OF AVERYVILLE



W. G. PUTNAM & CO.'S 5 & 10 CENT STORE  
222-224 South Adams St.



