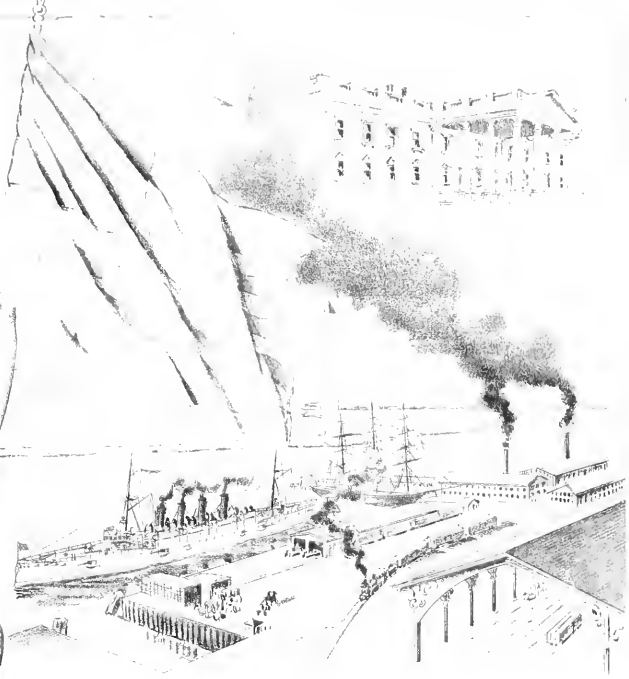


F

19  
31

F 199  
.W31  
1897i  
Copy 1

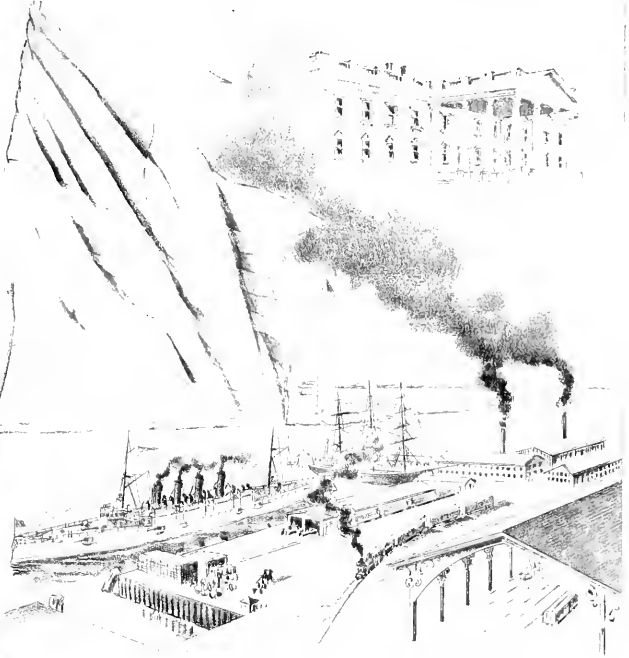


# Inaugural Ceremonies

Washington, D.C.  
MARCH 4<sup>th</sup> 1897



9 F 199  
30 .W31  
1897i  
Copy 1



# Inaugural Ceremonies

Washington, D.C.  
MARCH 4<sup>TH</sup> 1897

7147  
.W31  
1897 I

**WILL GO ON YOUR BOND.**

# American Bonding and Trust Company,

HOME OFFICE :  
EQUITABLE BUILDING, BALTIMORE, MD.

Total Resources December 31, 1896,  
\$1,091,550.49

JAMES BOND, President.  
JOHN T. STONE, Secretary-Treasurer

ACCEPTED BY THE UNITED STATES GOVERNMENT

As Sole Surety on all bonds of Public Officials, Employees, Contractors, Distillers,  
Importers, and all others.

Also by the Federal Courts on all classes of bonds in judicial proceedings, and similarly  
by the Courts and officials of the several States.

AGENTS THROUGHOUT THE UNION.

Washington Office : | JOSEPH S. MILLER, L. O. DeLASHMUTT, | 1421 G Street N.W.  
Vice-President. Agent.

# Inaugural Ceremonies ❁ ❁

## Executive Committee.

Gold Medal, Yellow Ribbon, with word "Executive" woven in Blue

C. J. BELL, *Chairman.*

S. W. WOODWARD,                      LOUIS D. WINE,

*Vice-Chairmen.*

JOHN JOY EDSON, *Treasurer.*

FRED. BRACKETT, *Corresponding Secretary.*    GEO. H. WALKER, *Reading Secretary.*

ALEX. T. BRITTON  
HENRY V. BOYNTON  
JAMES G. BERRET  
JAMES E. BELL  
CHAPIN BROWN  
BENJ. BUTTERWORTH  
JOHN C. CHANEY  
ALMON M. CLAPP  
CECIL CLAY  
CHAS. G. CONN

JOHN E. COOK  
HENRY F. DAVIS  
WILLIAM W. DUDLEY  
LAWRENCE GARDNER  
GEORGE GIBSON  
CHAS. C. GLOVER  
M. M. HOLLAND  
STILSON HUTCHINS  
JOHN G. LONG

EDWARD McCAULEY  
NELSON A. MILLS  
CLARENCE F. NORMENT  
JAMES I. NORRIS  
CROSBY S. NOYES  
THEO. W. NOYES  
MYRON M. PARKER  
R. ROSS PERRY  
T. E. ROESSLE

THOS. SOMERVILLE  
JOHN W. THOMPSON  
BRINARD H. WARNER  
M. J. WELTER  
BERIAH WILKINS  
JOHN B. WIGHT  
HENRY A. WILLARD  
GEO. B. WILLIAMS  
SIMON WOLF  
LEVI P. WRIGHT

## Chairmen of Committees.

Finance, - - - - -	JOHN W. THOMPSON
Reception, - - - - -	NELSON A. MILLS
Transportation, - - - - -	CHAPIN BROWN
Press, - - - - -	H. V. BOYNTON
Carriages, - - - - -	THOS. SOMERVILLE
Civic Organizations, - - - - -	B. H. WALKER
Parks and Reservations, - - - - -	H. A. WILLARD
Public Comfort, - - - - -	L. P. WRIGHT
Music, - - - - -	JOHN C. CHANEY
Comfort at Ball Room - - - - -	J. E. BELL
Floor and Promenade, - - - - -	

Invitations and Tickets, - - - - -	GEORGE GIBSON
Military Organizations, - - - - -	CECIL CLAY
Printing, - - - - -	THEO. W. NOYES
Banquet, - - - - -	GEO. B. WILLIAMS
Street Illumination and Fire Works, - - - - -	M. J. WELTER
Ball Room Decorations, - - - - -	T. E. ROESSLE
Badges, - - - - -	S. W. WOLF
Auditing, - - - - -	C. F. NORMENT
Public Order, - - - - -	JOHN B. WIGHT
Street Decorations, - - - - -	L. D. WINE
	EDWARD McCAULEY



"THE BEST—THE CHEAPEST."

USE **BANNER**.....

HIGH-TEST  
PULVERIZED **LYE**

PROCESS PATENTED

For thoroughly cleaning and disinfecting Water Closets, Sinks, for all cleaning purposes, and for clearing waste pipes of ice and frost.

### *Family Soapmaking.*



Will make ten pounds of the purest, the best, and the hardest soap in ten minutes without boiling, without waste and without unpleasant odor.



SEND FOR ILLUSTRATED PAMPHLET CONTAINING FULL DIRECTIONS—FREE—TO  
**THE PENN. CHEMICAL WORKS,**

Manufacturing Chemists,

Philadelphia, U. S. A.



U.S. CAPITOL



Hurting weary, rests Diana  
 Near old Ocean's ceaseless wave,  
 Yearns for Hebe's sweet libation—  
 Not for—why? which Olympians crave.  
 To the Hungry Man reclining,  
 Comes a vision from the Sea,  
 Love's own gift to mortal trials,  
 Best of all Purest HE-NO Tea.



## AN IRIDESCENT DREAM.

SENATOR INGALLS' phrase has become familiar—"Among the rainbows chased by hope is the expectation of making a good cup of tea out of a poor article of the leaf." *Good housekeepers* know that this cannot be done. This is the reason of the extensive use of HE-NO TEA in the West and South. Always the same—of one quality, and that the best. Only packed in metal-lined packages of lbs.,  $\frac{1}{2}$ ,  $\frac{1}{4}$ , and  $\frac{1}{8}$ .

MARTIN GILLET & CO.

Tea Importers.

Established 1811.

Baltimore.



# The Inaugural Parade.

The escort to the President from the Executive Mansion to the Capitol will be the First Division of the Military Grand Division.

The escort to the President from the Capitol to the Executive Mansion at the conclusion of the inaugural ceremonies will be composed of one Military and one Civic Grand Division.

The division constituting the escort to the Capitol will be composed of a brigade of U. S. forces and the brigade of the District of Columbia National Guard, and will move in the following order:

Platoon of Mounted Police,  
Governors Island Band,  
Grand Marshal, Gen. HORACE PORTER,  
Staff and Aids.

## FIRST DIVISION.

Gen. WESLEY MERRITT, U. S. A., Marshal,  
Staff and Aids.

## FIRST BRIGADE.

Battalion of U. S. Engineers  
17th U. S. Infantry,  
U. S. Artillery foot,  
Regiment U. S. Marines,  
Battalion U. S. Seamen,  
U. S. Light Artillery,  
U. S. Cavalry.

Troop A. of Cleveland, Ohio,  
Personal escort to the President-elect.

## THE PRESIDENT AND PRESIDENT-ELECT.

Detachment of Veterans of the 23d Ohio Volunteers,  
The Vice-President elect and the Senate Committee of  
Arrangements.

Members of the Cabinet,  
The Major General Commanding the Army,  
The Senior Admiral of the Navy.

## SECOND BRIGADE.

Colonel Cecil Clay, Marshal,  
District of Columbia National Guard.

The Staff of the Grand Marshal will assemble at 10 a. m. on New York avenue, and will be formed in column of platoons of twelve files each.

The First Brigade, First Division, consisting of United States forces, will assemble in close column right in front facing east, at 10 a. m. in the following order: Battalion of U. S. Engineers, 17th Regiment U. S. Infantry, Regiment U. S. Foot Artillery, Regiment U. S. Marines, Battalion U. S. Seamen; in Pennsylvania avenue, north-west, the head of the column resting on 15th street.

The Battalion of Light Artillery in column of platoons on 17th street, head of column at Pennsylvania avenue; the Cavalry in column of fours in rear of the Light Artillery.

The Second Brigade will assemble in close column at 10 o'clock a. m. on Pennsylvania avenue west of 19th street; Infantry in companies, followed by Light Artillery and Cavalry in platoons.

The President having been received in front of the Executive Mansion the column will move in the order and formation already given.

The First Division, Military Grand Division, on arriving at 1st street west will execute column left and march to B street north; thence on B street north to 1st street east; thence south on 1st street east to B street south; thence west on B street south to New Jersey avenue; thence north on driveway leading along east front of the Capitol to a point opposite the south end of the Capitol, where the Division Commander will halt the leading company of the First Brigade and report to General G. M. Dodge.

The President and President elect will be escorted to the Senate wing of the Capitol by the Committee of Arrangements. The President will go to the President's room and the President elect to the Vice President's room. The Vice-President will be escorted to the Vice President's room, from which he will enter the Senate Chamber.

LUXURIES OF THE SEASON.



CHAMPAGNE  
QUET

Special Reserve  
& Brut

DU VIVIER & Co.  
22 Warren St. N. Y.



**F**INEST SELECTION  
OF  
GLARETS & BURGUNDIES

  
*Old Coronet*  
RYE  
DU VIVIER & Co. NY

HINCKEL & WINCKLER  
FRANKFORT A. M.  
Rhine & Moselle  
wines.

SOUND MONEY WASHINGTON, MARCH 4<sup>TH</sup> PROTECTION



W. M. KINLEY



GARRET A. HOBART

PROSPERITY

1897

RECIPROCITY

# THE BERMUDA ISLANDS.

FROST UNKNOWN. MALARIA IMPOSSIBLE.

FROM NEW YORK SEA TRIP 48 HOURS.

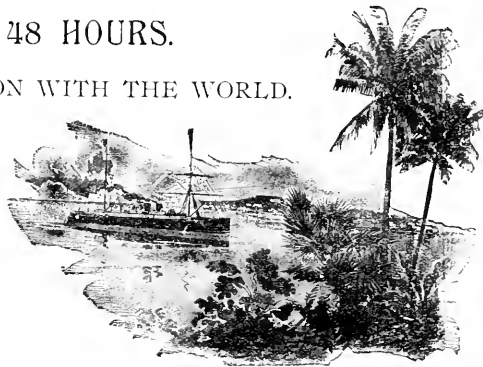
NOW IN CABLE COMMUNICATION WITH THE WORLD.



The magnificent new Steamship "Trinidad," 2,600 tons, 2,500 horse power, highest class 100 A 1 at Lloyd's, built expressly for this route, with unsurpassed accommodations for passengers, leaves New York and Bermuda every 10 days; voyage, 48 hours.

Winter tours to the West Indies, 30 days trip, 15 days in the tropics, for . . . . .

ST. THOMAS, ST. CROIX,  
ST. KITTS, ANTIGUA,  
MARTINIQUE, ST. LUCIA,  
BARBADOES, TRINIDAD, and JAMAICA.



S. S. MADIANA, 3,080 tons, S. S. CARIBBEE, 2,000 tons, S. S. ORINOCO, 2,000 tons,  
Jan. 19th and Feb. 27th. Feb. 6th and March 17th. Feb. 17th.

LEAVE NEW YORK AND THE ISLANDS EVERY 10 DAYS.

For full particulars, time tables and descriptive pamphlets, apply to

## QUEBEC S. S. CO.

A. E. OUTERBRIDGE & CO., Agents,  
39 Broadway, New York.

or THOS. COOK & SONS,  
New York.

A. AHERN, Secretary,  
Quebec, Canada.

# The Inaugural Parade . . . .

CONTINUED



The Vice President will there take the oath of office just before adjournment of Senate, the oath being administered by the outgoing Vice-President. He will then deliver his inaugural address in the Senate-chamber. The procession of those assembled will then proceed by way of the main corridor and the rotunda to the east-center front of the Capitol. On reaching platform the President and President-elect will take seats reserved for them and the Vice-President and Senators will occupy seats on the right. The oath will then be administered to the President elect by the Chief Justice, and the President will then deliver his Inaugural Address.

At the conclusion of the Inaugural Address the Procession will march along the east front of the Capitol to B street north; thence west on B street north to 1st street west; thence on 1st street west to Pennsylvania avenue; thence to Washington Circle; thence east through K street to point of dismissal, in the following order:

## Platoon of Mounted Police

Governors Band

Grand Marshal, General HORACE PORTER,

Staff

A. Noe, Blakenham, Chief of Staff,

Colonel H. C. Corbin, U. S. A., Adjutant General,

Captain John A. Johnston, U. S. A., Chief of Aids,

Special Aids,

Aids

Personal escort of the President: Troop A of Cleveland, Ohio.

## THE PRESIDENT.

Detachment of Veterans of the Twenty-third Ohio Volunteers.

Presidential Party in Carriages

## MILITARY GRAND DIVISION.

General Grenville M. Dodge, Chief Marshal,

General A. J. Heckenrooper, Chief of Staff,

Colonel Joseph P. Sanger, U. S. A., Adjutant General,

Colonel W. Cary Sanger, Inspector General.

Major H. H. C. Dunwoody, Chief Staff Officer,

Captain E. Wood, U. S. A., Medical Director,

Aids—Cols. Albert W. Swain, R. Norman, C. Col.

Majors C. F. Humphrey, U. S. A., Geo. C. Reed,

U. S. M. C., Aylon McLane, J. W. Howard, E. A.

Hancock; Captains Henry P. Kingsbury, U. S. A.,

A. M. Fuller, U. S. A., Thomas Cruise, U. S. A., G.

H. Patrick, J. E. Everett; Lieutenants Hugh J.

Gallagher, F. C. Kimball

## FIRST DIVISION

Gen. Wesley Merritt, U. S. A., Marshal

Colonel J. B. Babcock, U. S. A., Adjutant General

## FIRST BRIGADE

United States Forces, Colonel John S. Poland, U. S. A.

Commanding

Battalion of Engineers, U. S. Army

Seventeenth U. S. Infantry

Regiment U. S. Artillery

Regiment U. S. Marines

First Battalion

Second Battalion

Third Battalion

Battalion U. S. Seamen

Battalion Light Artillery

Light Battery E. 1st Artillery

Light Battery D. 5th Artillery

Regiment U. S. Cavalry

## SECOND BRIGADE.

District of Columbia National Guard

Col. Cecil Clay, Commanding

Engineers Corps

First Regiment Infantry

First Battalion

Second Battalion

Third Battalion

Second Regiment Infantry

Fourth Battalion

Fifth Battalion

Sixth Battalion

CONTINUED ON PAGE 13.

# GREEN'S . . . .

## EUROPEAN HOTEL FOR LADIES AND GENTLEMEN,

EIGHTH AND CHESTNUT STREETS,

Philadelphia, Pa.



Most centrally located  
in the very heart of the  
shopping district, near  
Post Office, all principal  
Theatres.



250 Rooms—from \$1.00 to \$1.50 per day.

All Modern Conveniences.

A thorough up-to-date Hotel.

M. W. NEWTON and I. J. McDEVITT,  
Proprietors.



PRESIDENTIAL MANSION.

# After the Inauguration, go to

VIA THE

# SOUTHERN RY.

FLORIDA, AIKEN and AUGUSTA,  
 JEKYL ISLAND and BRUNSWICK,  
 ASHEVILLE and HOT SPRINGS, N. C.  
 "THE LAND OF THE SKY."

## 3 LIMITED TRAINS

FROM WASHINGTON—  
 ONLY ONE NIGHT OUT!

**6 20 P. M.**  
 (DAILY EX SUNDAY.)  
 —ARRIVES—

Savannah	.....	11 22 A. M.
Jacksonville	.....	3 30 P. M.
St. Augustine	.....	4 40 P. M.

The only Through Train going afternoon-daylight—arrival in St. Augustine, the most beautiful of all Florida Resorts.

Aiken	.....	10 55 A. M.
Augusta	.....	11 20 A. M.
Brunswick	.....	2 10 P. M.

(Jekyl Island.)

**11.15 A. M. DAILY**  
 —ARRIVES—

Aiken	.....	7 30 A. M.
Augusta	.....	7 45 A. M.
Asheville	.....	12 20 A. M.
Hot Springs	.....	1 37 A. M.
Brunswick	.....	8 00 A. M.

(Jekyl Island)

Jacksonville	.....	9 00 A. M.
St. Augustine	.....	10 20 A. M.
Palm Beach	.....	8 00 P. M.
Miami	.....	11 15 P. M.

Steamers leave Miami for Nassau 2 00 P. M., Mondays, Wednesdays and Fridays, and 7 00 A. M. Tuesdays, Thursdays and Saturdays for Key West during February and March. A short sail over a peaceful southern sea.

## UNITED STATES FAST MAIL.

Through Pullman Sleeping Cars to Jacksonville and New Orleans, connecting at Salisbury, N. C., with Pullman Cars to "The Land of the Sky." Connecting also at Jacksonville for St. Augustine, Fla., the East Coast of Florida, Key West and Nassau, where the most equable climate of all the world is found.

## New York and Florida Limited.

Pullman Drawing-Room, Sleeping Compartment, Observation and Dining Cars. Superior equipment and service, regular schedules and polite attention. An interesting ride through historic country.

The superior advantage of the New York and Florida Limited over all other trains is attested by the convenient hour of departure from Washington, dinner being served in Dining Car to reach fully after leaving and arrival in Savannah, Jacksonville, St. Augustine, Aiken, and Augusta the following day; the Compartment Drawing-room and observation Cars, steam-heated and lighted by Pintsch gas, the latest models of Pullman's luxurious cars.

Service Northbound Equal to that Southbound.

TICKET OFFICES:  
 511 and 1300 Penna. Avenue.

L. S. BROWN, Gen'l Agent, Passenger Dept.  
 W. H. GREEN, Gen'l Supt.  
 J. M. CULP, Traffic Manager.  
 W. A. TIERK, Gen'l Pass'r Agent.

**10.43 P. M. DAILY**  
 —ARRIVES—

Asheville	.....	2 15 P. M.
Hot Springs	.....	4 21 P. M.
Aiken	.....	3 0 P. M.
Augusta	.....	4 15 P. M.
Savannah	.....	4 25 P. M.
Jacksonville	.....	9 12 P. M.
Tampa	.....	7 30 A. M.

The best service and schedule to Tampa, the noted resort of West Coast of Florida.

Brunswick	.....	7 0 P. M.
-----------	-------	-----------

(Jekyl Island)

Atlanta	.....	3 55 P. M.
New Orleans	.....	7 40 A. M.
Memphis	.....	7 4 A. M.

## Washington & Southwestern Limited

Through Pullman Sleeping Cars to Asheville and Hot Springs, "The Land of the Sky," Jacksonville and Tampa, Atlanta, New Orleans and Memphis, also carrying Pullman Car Richmond to Augusta, virtually affording through service to Aiken and Augusta.

**DINING CAR SERVICE.**

See above the sailing dates and hours of Steamers from Miami to Key West and Nassau.



# The Inaugural Parade

CONTINUED



First Separate Battalion  
Battery A, Light Artillery,  
First Separate Company Cavalry  
Ambulance Corps  
Second Separate Company, Cycle,  
High School Cadet Regiment of Infantry  
First Battalion,  
Second Battalion,  
Colored High School Battalion.

## SECOND DIVISION.

Gov. ASA S. BUSHNELL, of Ohio, Marshal.  
Gen. H. A. AXLINE, Adjutant General.

### FIRST BRIGADE.

Gen. L. RIGGS, Marshal.

#### PENNSYLVANIA.

Governor D. H. HASTINGS,  
Washington Infantry.

#### NEW JERSEY.

Governor JOHN W. GILGUS,  
Gen. Wm. S. SHAKER, Adjutant General,  
National Guard,  
Second Regiment,  
Essex Troop,  
Gatling Gun, Company B,  
Battalion Naval Reserves.

#### CONNECTICUT.

National Guard,  
Company E, Third Regiment.

#### MASSACHUSETTS.

Volunteer Militia,  
Company B, First Regiment,  
Company E, Fifth Regiment,  
Company C, Sixth Regiment,  
Ambulance Corps.

#### MARYLAND.

Governor HOWARD LOWMYER,  
National Guard,  
Fourth Regiment,  
Fifth Regiment,  
First Regiment,  
Battalion Naval Reserves,  
First Separate Company.

## SECOND BRIGADE.

General DAVID S. GORDON, U. S. A., Retired, Marshal.  
Captain RICHARD W. TYLER, Adjutant General.

#### NEW YORK.

Governor FROOK S. BLACK,  
General C. W. TILLMUGHAST, Adjutant General,  
National Guard,  
Seventy-first Regiment, Colonel F. V. GREENE,  
Company —, Thirteenth Regiment,  
Company —, Fourteenth Regiment,  
Company —, Twenty-third Regiment,  
Company —, Forty-seventh Regiment.

#### VIRGINIA.

Company C, First Regiment.

#### NORTH CAROLINA.

State Guard,  
Company C, First Regiment,  
Company F, Fourth Regiment,  
Company G, Fourth Regiment,  
Battalion Naval Reserves.

#### RHODE ISLAND.

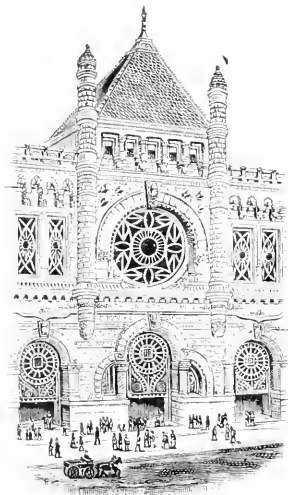
Newport Artillery,  
Newport Division Naval Reserves.

# The Union Trust Company....



Capital  
**E**XECUTES trusts of all kinds at moderate charges. Pays 3 per cent. interest on Savings Fund and time deposits, and 2 per cent. on deposits subject to check. Rents boxes in safe-deposit vaults at lowest rates.

Philadelphia City Mortgages for sale.




715, 717, 719 Chestnut Street,  
PHILADELPHIA, PA.



*Capital, - - - \$1,000,000*

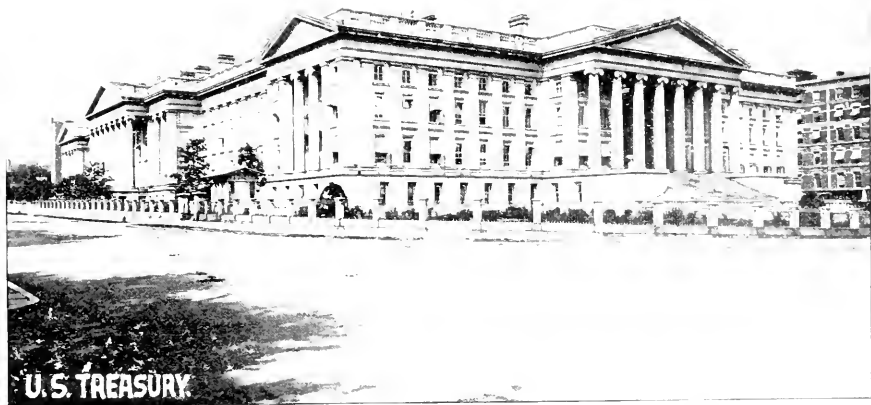
## Officers.

J. SIMPSON AFRICA, *President.*  
THOMAS R. PATTON, *Vice-President.*  
D. HOWARD FOOTE, *Treasurer and Secretary.*  
PERCY B. METZGER, *Trust Officer.*



## Directors.

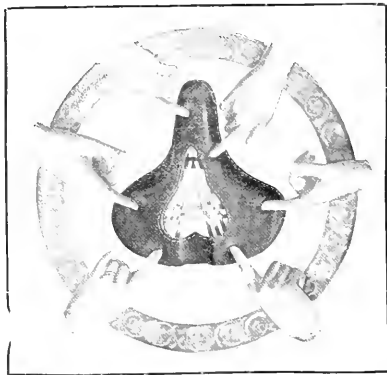
J. SIMPSON AFRICA,	JOHN T. MONROE,
EDWARD BAILEY (Harrisburg),	HARRY W. MOORE,
GEORGE A. FLETCHER,	THOMAS R. PATTON,
THOMAS G. HOOD,	EDWARD L. PERKINS,
WILLIAM B. IRVIN,	WILLIAM V. STOEYER,
JOSEPH I. KEEFE,	J. WESTLEY SUPPLEE,
CHARLES A. LAGEN,	JOSEPH THOMAS,
JOHN P. McGRATH,	



U. S. TREASURY

INSIST ON THE GENUINE.

ALL IMITATIONS ARE INFERIOR.



... For 1897 ...

## EIGHT STYLES

giving variety in size and shape ample to suit all riders however particular. Sold by all good dealers and **Furnished Free** on any new wheel if the purchaser insists.

Genuine

# Hunt

## Hygienic Saddles

yield to pressure only where it is directly applied — each strand is firm, yet independent, that is why. Thus these saddles are buoyant, soft, and give a steady, secure position to the cyclist.

Send for Catalog "O."

HUNT MFG. CO., Westboro, Mass.

# The Inaugural Parade

CONTINUED



## VERMONT

National Guard.

Battalion First Regiment, Colonel Geo. H. Bond, Commanding.

Company K, First Regiment.

Company M, First Regiment.

Company A, First Regiment.

Company I, First Regiment.

## KENTUCKY.

Governor Wm. O. Bradley.

General D. R. Callier, Adjutant General.

State Guard

First Regiment.

## THIRD BRIGADE.

Governor Josiah Grout, Vermont.

Marshal.

## OHIO

National Guard.

Companies F and G, Fifth Regiment.

Fourteenth Regiment.

Artillery.

## ILLINOIS.

Governor John R. Tanner.

General J. N. Reese, Adjutant General.

National Guard.

Chicago Hussar Squadron.

Company C, Third Regiment.

Company I, Fifth Regiment.

Ninth Battalion, Illinois Volunteers.

## TEXAS.

Volunteer Guard.

Company C, Sixth Regiment, Captain N. Lapowski.

## IOWA.

Governor Francis M. Drake.

General H. H. Wright, Adjutant General.

## WISCONSIN

Governor Edward Scofield.

General Charles R. Boardman, Adjutant General.

## MINNESOTA

National Guard

Company D, First Regiment.

## WASHINGTON, D. C.

Capital City Guards.

Butler Zouaves.

Butler Infantry Corps.

## THIRD DIVISION.

Veteran Organizations.

General O. O. Howard, U. S. A. (Retired), Commanding.

General S. S. Burdette, Chief of Staff.

Colonel Meysenberg, Senior Aid.

## FIRST BRIGADE.

Department of the Potomac, G. A. R.

General Thos. S. Hopkins, Department Commander.

Major Arthur Hendricks, Assistant Adjutant General.

Major J. Tyler Powell, Assistant Quartermaster General.

John A. Rawlins Post, No. 1; Kit Carson Post, No. 2;

Lincoln Post, No. 3; O. P. Minton Post, No. 4;

Geo. G. Meade Post, No. 5; John F. Reynolds Post,

No. 6; James A. Garfield Post, No. 7; Burnside

Post, No. 8; Charles Sumner Post, No. 9; Farragut

Post, No. 10; Charles P. Stone Post, No. 11;

U. S. Grant Post, No. 12; John A. Logan Post, No.

13; Phil. Sheridan Post, No. 14; Geo. H. Thomas

Post, No. 15; Henry Wilson Post, No. 17; Potomac

Post, No. 18; Geo. U. Morris Post, No. 19; La-

fayette Post, No. 20.

**THE SHIRT OF THE PEOPLE.**

---

*Emeru Brand Shirts*

**Walter M. Steppacker and Bro.**

**Makers,**

932 and 934 MARKET STREET,

PHILADELPHIA, PA.

New York Office: 760 Broadway.

---

*For Sale by all Leading Haberdashers throughout the land.*



STATE, WAR AND NAVY DEPT'S.

EAGLE  
BRAND

CONDENSED  
MILK



The Best  
Food

for Infants  
and Children.

Send to N. Y. Condensed Milk Co., 71 Hudson Street, N. Y. City, for copy of their Illustrated Pamphlet on Infant Health.



# The Inaugural Parade

CONTINUED



## SECOND BRIGADE.

Visiting Posts and Comrades.  
The Union Veteran Legion  
General John P. Donahue, National Commander.  
The Union Veteran Union.  
Major General Thomas J. Cannon, National Commander.  
Veteran Organizations.  
York Rifle Association.  
Sheridan Post, No. 12.  
Lincoln Post, No. 7.  
Department of Potomac, U. V. U.  
General Guy V. Henry Post, Regular A. and S. U.  
John A. Logan Command, No. 2, U. V. U.  
Logan Camp, No. 2, S. of V.

## CIVIC GRAND DIVISION.

B. H. Warner, Marshal.  
Escort—Americus Republican Club, Pittsburg, Pa

## FIRST DIVISION.

D. D. Woodmansee, President National League Republican Clubs, Marshal.  
Chief of Staff, General James K. Howe.  
Adjutant General, Hon. Wm. S. Booze.  
Escort—Young Men's Blaine Club, Cincinnati, Ohio.  
Fred Bader, Commander.

## FIRST BRIGADE.

Colonel J. A. Wiedersheim, Pennsylvania, Marshal.

### DELAWARE.

Young Men's Republican Club.

### PENNSYLVANIA

David A. Martin Club.  
Allegheny County Six-Footers' Club.  
William R. Leeds Association.  
Continental '76 Club.  
Union Republican Club.  
United Republican Club.

A. C. Harmer Club.  
Henry K. Boyer Marching Club.  
1st Ward M. S. Quay Club.  
National Fremont Association.  
Survivors' Harmony Fire Company.  
A. C. Harmer Club.  
James L. Goodall Association.

## SECOND BRIGADE.

Honorable Murat Halstead, Ohio, Marshal.  
Matthew S. Quay Club.  
Indian School Battalion.

### NEW JERSEY

Frelinghuysen Lancers.  
Hudson County Delegation of New Jersey.  
Lincoln Club.  
Garret A. Hobart Association.  
Republican Indian League of New York.

### GEORGIA

Atlanta McKinley Club

### MARYLAND

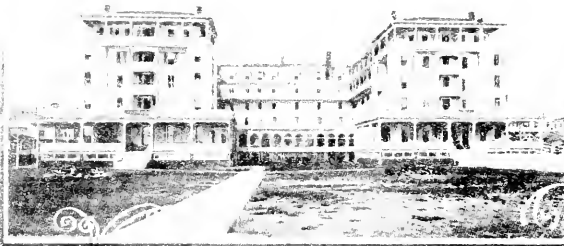
Delegation from Honest Money Leagues.  
Council No. 2, Union League of America  
14th Ward Social Republican Club.  
1st Ward Active Republican Club.  
11th Ward Permanent Republican League  
United Republican Club of Cityfield  
21st Ward Young Men's Republican Club.  
16th Ward Republican Association.  
16th Ward Republican Association No. 25.  
15th Ward Lloyd Lowndes Club.  
7th Ward Republican Association.  
6th Ward Monumental League.  
1st Ward James G. Blaine Club.  
5th Ward Republican Association.  
14th Ward Progressive Republican Club.  
11th Ward Citizens' National Republican Club (No. 1).  
4th Congressional District Republican Association.  
19th Ward Social Republican Club.  
11th Ward Coronella Club.

ALL-THE-YEAR...

The Most Fashionable Season  
During Easter Holidays.

RESORT

*Feld Tennis*



*Atlantic City, N.J.*

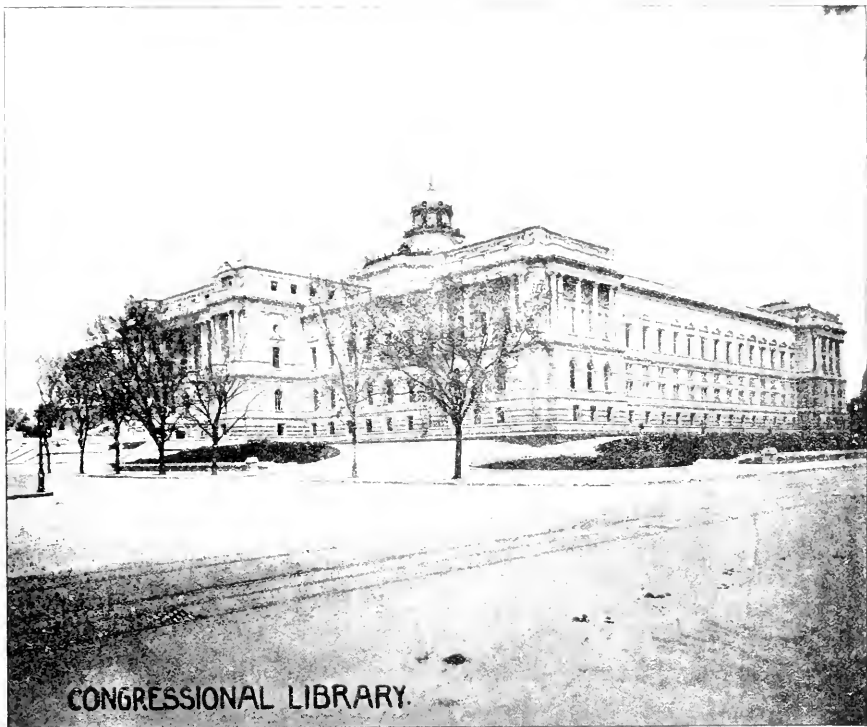
200 Rooms, Ocean View,  
en suite or single, with Baths.

Hot and Cold Sea-Water Baths  
in the House.

WRITE FOR CATALOGUE SENT FREE.  
OPEN ALL THE YEAR.

JOSEPH H. BORTON,

Proprietor.

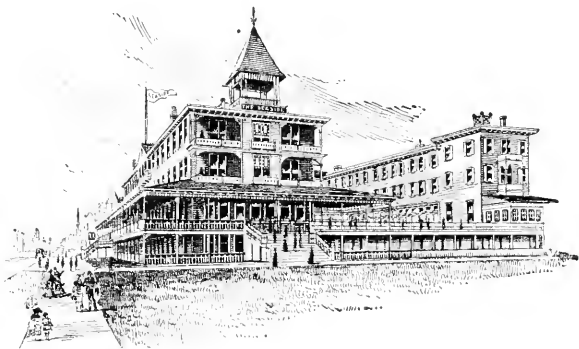


CONGRESSIONAL LIBRARY.

# SEA SIDE HOUSE,

Pennsylvania Avenue (Ocean Front),

Atlantic City, N. J.



ENLARGED AND GREATLY IMPROVED.

All modern conveniences, including Elevator, Sun Galleries, and Hot and Cold Sea Water Baths in the house. Heated throughout with steam and grate fires.

OPEN THE YEAR AROUND.

ACCOMMODATIONS, 250.

... CHAS. EVANS.

# The Inaugural Parade . . . .

CONTINUED



## SECOND DIVISION.



Honorable J. Franklin Fort, New Jersey, Marshal,  
Staff.  
Escort—Young Men's Republican Club, Baltimore.

### FIRST BRIGADE.

Honorable Thos. P. Ivey, Georgia, Marshal,  
Staff.

10th Ward Keystone Pleasure Club  
Logan Invincibles.  
J. H. Had Club.

Shiloh D. E. Mudd Club.  
Young Men's Republican Club.  
Alpha Republican Club.  
Garfield Republican Club.  
Republican Club.

20th Ward Republican Club.  
German American Lincoln Club.  
Log Cabin Club.

### DISTRICT OF COLUMBIA

McKinley and Hobart Uniform Club, Col. John Bowles,  
Commander.

McKinley Tariff League, Louis Willis, Commander.  
Virginia Republican Association, J. H. Harrison, Com-  
mander.

McKinley and Hobart Club, Captain William Neal, Com-  
mander.

S. M. Cullom National Republican Association, Jesse  
Jones, Commander.

### VIRGINIA.

Shenandoah Valley Patriotic Legion.  
Spring Hill Club, No. 1.  
Orion Social Club.

Citizen's Auxiliary Horse Club.  
C. P. Huntington Republican Club.

### SECOND BRIGADE.

Honorable Richard E. Cochran, New York, Marshal,  
Staff.

### NEW YORK.

The Quigg Legion.  
Riverside Republican Club.  
Unconditional Republican Club.  
Active Hook and Ladder Drill Company.  
Hellgate Republican Club.

### NORTH CAROLINA

Forsyth Republican Club

### KENTUCKY

John McKnight Republican Club,  
Garfield Club.

## THIRD DIVISION.

Honorable J. A. T. Hull, Iowa, Marshal,  
Staff.

Escort—Minneapolis Republican Flambeau Club.

### FIRST BRIGADE.

Honorable Warren P. Sutton, Michigan, Marshal,  
Staff.

### OHIO

Tippecanoe Club.  
Stamina Republican League.  
Charles L. Kutz Republican Club.

### INDIANA

Tippecanoe Club.

### ILLINOIS

Cook County Republican Marching Club.

### SECOND BRIGADE.

Marshal,  
Staff  
Chicago Republican Club  
Commercial McKinley Club.  
Original Colored Men's McKinley Club.

### MICHIGAN.

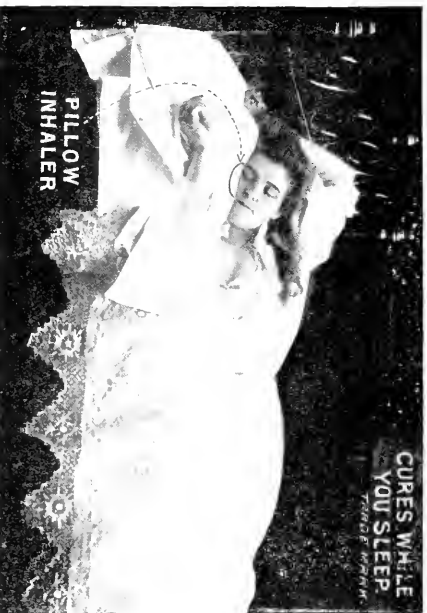
Alger Republican Club.

### FLORIDA

Florida Colored Traffic Association.

### WEST VIRGINIA

Elkins Cadets, Wheeling.



Limited

Special

Offer.

That we may have the **PILLOW-INHALER** used by more people and in that way more thoroughly advertise its merits, we will,

*for a very short time only,*

*sell a limited number at the reduced price of \$3 each,*

*instead of \$5—the regular price.*

**THE PILLOW-INHALER is a great remedy for those who suffer from Asthma, Catarrh, Bronchitis, Throat Trouble, and other pulmonary ailments. It gives in our seven bed chamber during the sleeping hours a perfect thin ve—just the kind for relief and cure. We have no other. It is easy, it is not troublesome. It is perfect. There is no dosing of the stomach with any stimulating drug. There are no pipes or tubes in its construction. The patient is cured in a natural way, whilst taking the usual rest of the night, and without any loss of time or discomfort.**

**There is no other special descriptive pamphlet to any one, upon receipt of name and address. This is our gift to you in an extraordinary chance, and, if you wish to purchase a Pillow-Inhaler at the reduced price, your order should be sent at once.**

### **INSTRUCTIONS HOW TO ORDER.**

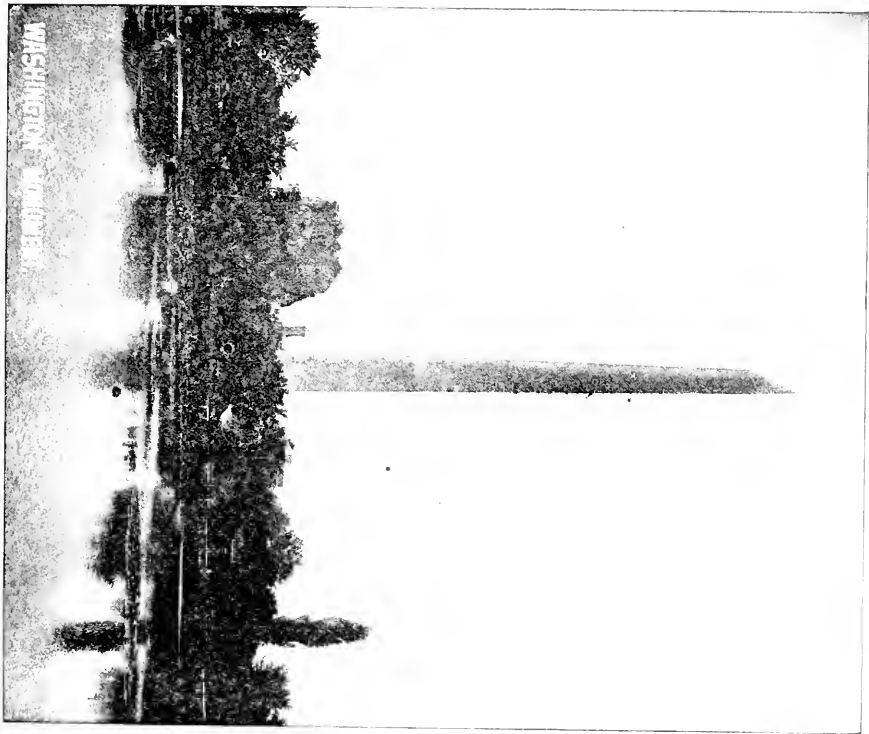
When ordering, kindly state for what trouble you desire the Pillow-Inhaler, as it is changed differently for each ailment. Send money by Postoffice or Express, and money sent in this way may be sent at our risk. Money sent in ordinary letters is not at our risk.

The Pillow-Inhaler can only be sent by express. The bottle of Inhalent Mixture that accompanies the Inhaler is sent by mail, but at every middle an express office. In order to avoid mistakes, which sometimes occur, please write your name plainly, giving express office, postoffice, county and state.



**PILLOW-INHALER CO.**

1407 CHESTNUT STREET,  
PHILADELPHIA, PA.



... THE ...



Cigarettes to Smoke

ARE

The Yellow Kid

The Admiral AND

The High Admiral



With each package of these the smoker gets  
one of Outcault's valuable series  
of original comic Yellow  
Kid buttons.





# Inaugural Ball



## Order of Opening Exercises

### PROMENADE MUSIC

BY

VICTOR HERBERT'S 22D REGIMENT BAND, N. Y. S. N. G.

(LATE GILMORE'S BAND)

### ORCHESTRAL MUSIC

BY

W. M. A. HALEY'S WASHINGTON CONCERT BAND.

## Promenade Concert

1. OVERTURE—TANNHAUSER, WAGNER  
BAND
2. SELECTION—FAUST, GOUNOD  
ORCHESTRA
3. SECOND HUNGARIAN RHAPSODIE, LISZT  
BAND
4. OVERTURE—FEST, LUITNER  
ORCHESTRA
5. GRAND AMERICAN FANTASIE, V. HERBERT  
BAND
6. SELECTION—WIZARD OF THE NILE, HERBERT  
ORCHESTRA



THE Inaugural Ball will take place in the Pension Building, in Judiciary Square, on the night of March 4th. The court of the building, which is two hundred and eighty feet long by one hundred and thirty wide, will be magnificently decorated in white and gold chaille. A canopy, in three sections, will extend over the court, and long streamers of white and gold will be suspended in every direction. The capitals will be massed with shields bearing coats-of-arms, flags of all nations, and trailing maiden-hair fern. The coats-of-arms of the States will be placed on the fronts of the balconies. In the centre of the court will be a grand golden gate, consisting of a series of arches. The floral decorations will be on a scale of beauty never before attempted, and the electrical illuminations will be wonderful in their brilliant effects. The Presidential suite and Committee Room will be on second floor, and the promenade of the Presidential party will be down the western stairway, passing the gate to the ball-room, and thence to the supper-rooms, in the northeast corner of the building. The promenade music will be furnished by Gilmore's Band, and the dancing music by Haley's Orchestra. Every one not attending the ball should go to one of the concerts. The Friday morning concert will be dedicated to the Army, afternoon concert to the

Navy, and Friday night concert to the Governors of States; the Saturday afternoon concert to Congress, and the choral concert (five hundred voices) Saturday night to the American people. The price of ball tickets are \$5.00 for each person, and can be obtained at the Pension Building, National Banks, Trust Companies, and hotels. The souvenir invitation to the Ball, presented with each ticket, is an exquisite work of the engraver's and lithographer's art. The supper tickets are \$1.00 each and the concert tickets 50 cents. Complete arrangements have been made for a perfect system of calling carriages and for the safe checking of hats, wraps, etc.

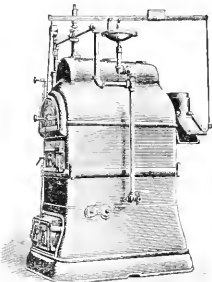
# THE H. B. SMITH CO.

510 Arch Street, Philadelphia.

ESTABLISHED 1853.

Factories: Westfield, Mass.

## THE COTTAGE.



For Modest Homes.  
STEAM WATER.



### Users of Cottage in Washington:

- Estate of W. W. CORCORAN,  
Near Riggs Bank Building.
- R. WALKER & SON,  
21st and O Streets.
- L. D. MELINI,  
Melrose Street, Chevy Chase.

OFFICES:  
137 Center St., N. Y. Boston, Mass.  
Providence, R. I.

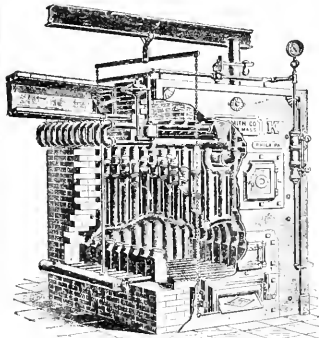
WESTERN AGENTS:  
Western Brass Mfg. Co., St. Louis, Mo.  
Dugan Bros., San Francisco, Cal.

### Other Specialties in Warming Apparatus:

MILLS SAFETY BOILERS.  
GOLD'S X. L. BOILERS.

Direct Radiators.  
Semi-Direct Radiators.  
Indirect Radiators.  
Sanitas Base for Ventilating in con-  
nection with direct radiation.

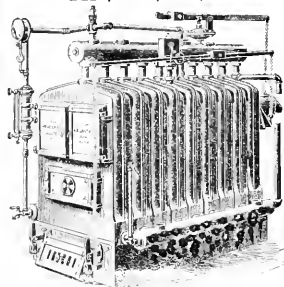
### THE O. K. SAFETY BOILER.



For Warming Schools, Churches,  
and large Office Buildings.

Capacity, 800 to 5,000 sq. feet radiating  
surface.

## THE MERCER.



For Residences and Small Office  
Buildings.

STEAM WATER.

### Users of Mercer in Washington:

- WM. POINDEXTER,  
800 17th Street N.W.
- GALT & BROS. (Jeweleis), Pa. Ave.  
GOVERNMENT PRINTING OFFICE,  
17th St and Penna. Ave.  
(By Barber & Ross, Contr's)
- JAMES S. DAVIS,  
Roanoke, bet. 13th & 14th Sts.
- SEN. R. F. PETTIGREW, 1750 Q St.
- Mrs. JNO. A. LOGAN,  
13th and Clifton Streets.
- Rep. L. D. AFSLEY, 1752 Q Street.
- T. A. HARDING (Apt. House),  
14th and Binney Streets.
- WASH. L. DANENHOWER,  
20th and P Streets.



WASHINGTON CITY POST OFFICE.

# LAVILLE'S REMEDIES



FOR SALE  
 BY  
 ALL  
 DRUGGISTS.

Sent free, a book giving full information.

Address—

**E. FOUGERA & CO.,** New York.

\* In the acute or inflammatory form, by using

LAVILLE'S  
LIQUOR

relief is soon obtained and all the accompanying suffering will disappear; and by persistent use of LAVILLE'S PILLS the recurring attacks of this malady can be prevented.

## DUCRO'S ALIMENTARY ELIXIR

TONIC.

FORTIFIER.

RECONSTRUCTOR.

A PREVENTIVE FOR ALL KINDS OF FEVERS.  
 TYPHOID, MALARIAL, ETC. . . .

*Ask your Druggist for it.*

**E. FOUGERA & CO.,**  
 26-30 N. William Street, New York.

# Decorations, Illuminations, and Fireworks.



THE superb plan of decorations adopted by the Inaugural Committee surpasses that of any previous inauguration. The Pennsylvania avenue stands, which will be covered this year for the first time, will all be decorated in special and unique designs, instead of at random as heretofore. The State, War, and Navy Departments, the Treasury, Capitol, other Department buildings, and Railroad Depots will be profusely decorated and illuminated with electric lights. Fifty thousand flags and fifteen thousand portraits of McKinley and Hobart (all transparent) will be placed on the glass in the windows along the line of march, and the windows having these

flags and portraits will be lighted up at night so that the flags and portraits may be thrown out in full color effect, thus producing one of the most patriotic ideas ever originated for a celebration. Over one thousand immense bunting flags will be furnished by the Government for decorative purposes. The system of decorations, window and electric illuminations, will be handsomer than at any celebration ever before given.

Inauguration day will end in a blaze of glory with the fireworks and rockets of the marching clubs, and at the foot of the Washington Monument, in Monument Park, on 14th street below the Treasury (S. P. M.). The fireworks will be supplied by Paine of New York, who is unexcelled as a pyrotechnicist, and will cost twenty-five hundred dollars and will be magnificent, the principal feature of which will be a large American flag in true colors (in fireworks), which will float in the air. Thousands of bombs, rockets, Japanese flower pots, fountains of fire, flying fish, colored fire, &c., will be set off, making a scene never to be forgotten.

# PATENTS

TRADE-MARKS, COPYRIGHTS, Etc.

PROCURED IN THE UNITED STATES AND FOREIGN COUNTRIES.

Infringements Prosecuted,  
Interferences Conducted.

Validity Searches Made,  
Expert Opinions Rendered.

Inventors can consult us in person  
or by mail.

Send or call for Circular.

**JOHN A. WIEDERSHEIM,**

Record Building, 917 and 919 Chestnut Street,

Branch: Washington, D. C., No. 907 G Street N.W. PHILADELPHIA, PA.

Established in 1865.

---

Established 1883.



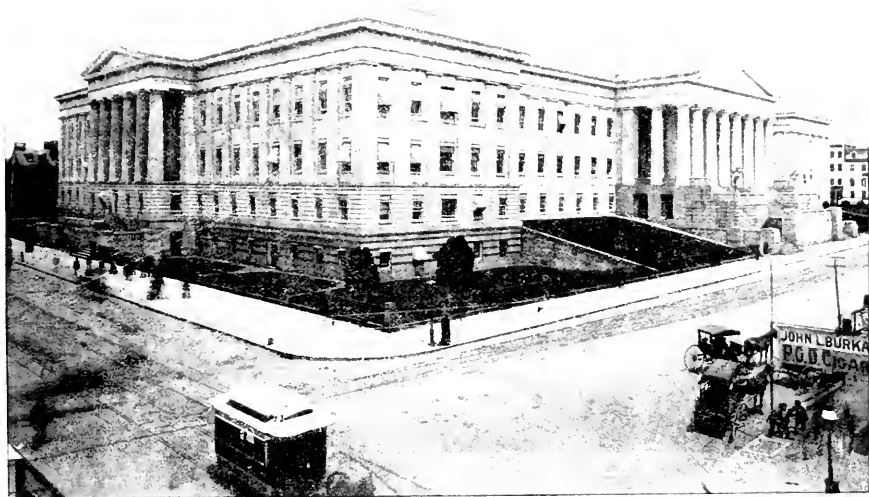
**Irving Publishing and Advertising Company,**

483 PHILADELPHIA BOURSE,

PHILADELPHIA, PA.

---

*Publishers of Advertising Mediums of Merit.*



# DON'T FORGET

IN TRAVELING ABOUT  
LOOKING AT THE

PLACES OF INTEREST IN WASHINGTON

AND ELSEWHERE.

THAT EVERY PLACE THAT SELLS

# MONTICELLO

PURE.....

RYE

WHISKEY



IS A PLACE OF GREATEST INTEREST TO YOU



# Places of Interest in Washington.



Arlington National Cemetery, Arlington Ave.  
Army Medical Museum, 7th and B Sts. S.W.  
Botanical Gardens, Pennsylvania Ave. and 1st St.  
Bureau of Engraving and Printing, 14th and B Sts. S.W.  
Capitol, Capitol Hill. (Bill files of each house when Congress is in session.)  
Centre Market, Pennsylvania Ave. and 7th St.  
City Hall, 4½ St. and Louisiana Ave.  
City Post-Office, New, Pennsylvania Ave., 11th to 12th St.  
Columbian College, 14th and H Sts.  
Congressional Library, East of the Capitol.  
Convent of Visitation, Georgetown.  
Coreoran Art Gallery, 17th St. and New York Ave.  
Department of Agriculture, Mall, 12th and 14th Sts. S.W.  
Executive Mansion (White House), Pennsylvania Ave. and 15th St.  
Fish Commission, 6th and B Sts. S.W.  
Georgetown College, Georgetown.  
Government Printing Office, N. Capitol and H Sts.  
Howard University, n. n. 7th and Boundary.  
Lafayette Monument, opposite White House.  
Long Bridge, 600 Maryland Ave. and 14th St.  
Lincoln Museum, 410 10th St.  
Louise Home, Massachusetts Ave. bet. 15th and 16th Sts.

Marine Barracks, 8th and G Sts. S.E.  
Masonic Temple, 1000 Central E. St.  
Mount Vernon, 804 14th and 15th Sts. S.W. (Museum) 10:00 A.M. to 5:00 P.M.  
National Museum, South of the Grounds.  
Navy Yard, 1st and 8th Sts. S.E.  
Odd Fellows' Hall, 7th and D Sts.  
Patent Office, 7th and E Sts.  
Pension Building, E and 4th St.  
Post Office, 17th, 16th and 7th Sts.  
Post Office Department, E. St., 7th and 8th Sts.  
Smithsonian Institution, South of the Grounds.  
Soldiers' Home Grounds, n. n. 7th St. extended.  
State, War, and Navy Departments, Pennsylvania Ave. and 17th St.  
Statue of General Scott, intersection of Massachusetts Ave. and Place of the Aves.  
Statue of Lincoln, bet. 14th and 15th St. E.  
Statue of Washington, East foot of Capitol.  
U. S. Arsenal, 1500 14½ St. S.W. (open to Public)  
U. S. Naval Observatory, 1000 16½ Sts. north of the city, Georgetown and Rockyville Rd.  
U. S. Treasury, Pennsylvania Ave. and East St.  
Washington Monument, Washington Park near 14th St.  
Zoological Park, Rock Creek.

# Historical

# Facts

IN CONNECTION

WITH . . . .

# Precious

# Inaugurations



WASHINGTON having been the first President, the history of inaugural ceremonies commences with his induction into office. His journey from Mount Vernon to Federal Hall, New York, was an ovation the entire route. He had a military escort to church, and in the afternoon he received members of Congress and the public. In the evening there was a fireworks display. At his second inauguration, which took place in Philadelphia, the military display was very fine, and on that occasion was given the first inaugural Ball.

JOHN ADAMS was inaugurated in Philadelphia in 1797, and he also had a large military display. During his administration the seat of Government was removed to Washington.

JEFFERSON was elected by the House of Representatives. Owing to the ill-feeling between Jefferson and Adams, the latter did not attend the former's inauguration. The Washington Artillery and the Alexandria Rifles fired salutes at sunrise and at noon, and had a parade. Jefferson rode to the Capitol on horseback,—hence the expression “Jeffersonian simplicity,”—although he had intended to drive to the Capitol in a coach and four, but they did not arrive in time. There was no ball given at this inauguration.

At MADISON'S two and MONROE'S two inaugurations soldiers of the Revolution had places in the parades. A remarkable fact is that Monroe was elected the second term by every electoral vote save one.

JOHN QUINCY ADAMS, the next President, was declined elected by the House of Representatives, although Jackson had received more votes in the electoral college. His inauguration was a magnificent affair and took place in the hall of the House of Representatives. All subsequent inaugurations have taken place in the open air.



SMITHSONIAN INSTITUTE.

# Historical

# Facts

IN CONNECTION  
WITH . . . .

Previous

Inaugurations

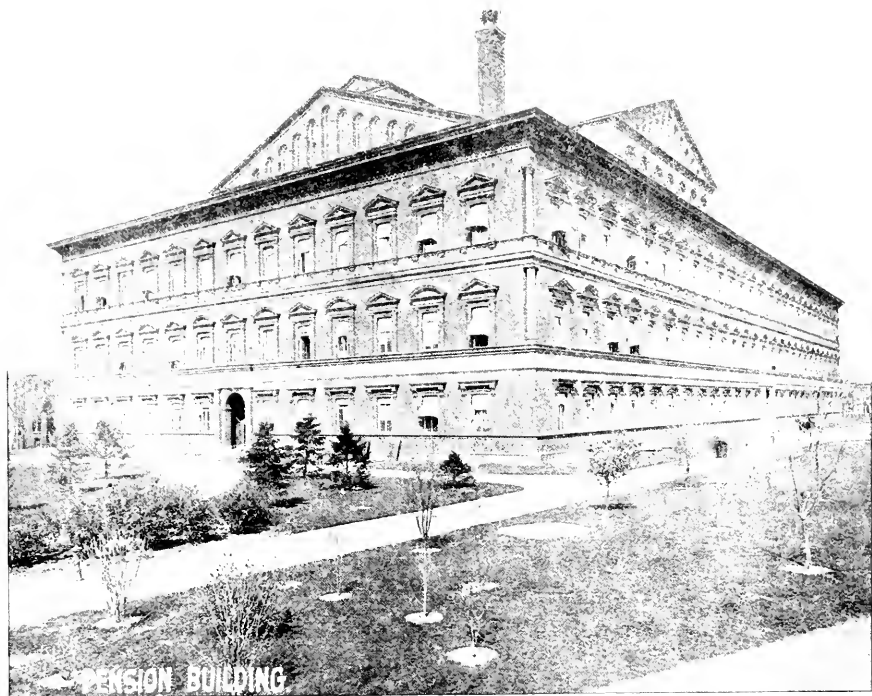


ACKSON was elected by an immense majority to succeed Adams, and the parade at his inauguration was the largest that had taken place up to that time. Jackson was more popular at the time of his second than at his first election, as was evinced by the immense parade on the occasion of his second inauguration.

Mr. VAN BUREN had a very fine display when he succeeded Jackson. Everybody has heard of the campaign of "Tippecanoe and Tyler too," and how it resulted in the election of GEN. HARRISON. The parade was very imposing, consisting of military companies, clubs, and trade displays, log cabins with barrels of hard cider, coons and roosters, stretching out over a mile. It was a very stormy day, yet the General rode bare-headed to and from the Capitol, from which exposure he contracted a heavy cold, and died within a month. It was generally believed by the Whigs, of whose party Harrison was a member, that he had been foully dealt with. The funeral procession was very sombre and imposing. TYLER, the Vice-President, filled out the term.

POLK was the next President elected, and his inauguration was the most brilliant that had occurred, many military and political organizations from the near-by States participating, including the Independent Blues, of Baltimore; Savage Guards, from Annapolis Junction; the Columbian Artillery; the Empire Club, of New York; the Jackson and Young Hickory Clubs. Mr. Polk was escorted to the Capitol with Mr. Tyler, and, afterwards, at the White House, he received congratulations from the public.

TAYLOR had the Mexican heroes in his parade, among them being Generals Scott, Wool, Quitman, and Gaines. There was quite a number of military organizations in line, and several companies of boys drawing guns by hand. Taylor's personal escort was composed of a hundred young men.



PENSION BUILDING

# Historical

# Facts

IN CONNECTION

WITH . . . .

Previous

Inaugurations



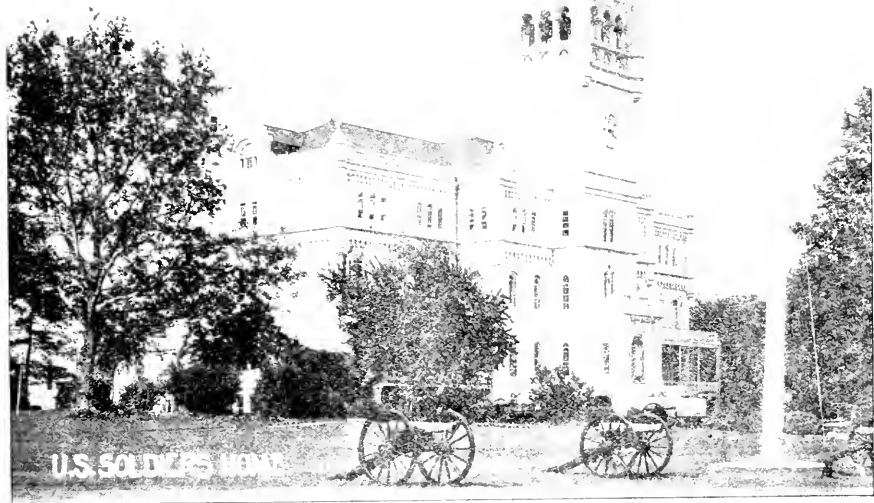
IN the evening there were three Inaugural Balls, given in different places in the city, and the President attended each. Gen. Taylor died before the expiration of his term. His funeral procession was very large, and even larger than his inaugural parade. The funeral car was drawn by eight white horses, followed by the General's horse, "Old Whitey." Mr. FILLMORE, the Vice-President, filled out the term.

GEN. PIERCE, of the Mexican War, was the next President, and was elected over Gen. Scott, his former commander. Mr. Fillmore accompanied Gen. Pierce at his inauguration, and, with Mrs. Fillmore, welcomed the President to the White House. The weather was very inclement, yet a large civic and military display was made and many thousands witnessed the ceremonies at the Capitol. A large reception to the public at the White House followed in the evening.

Mr. BUCHANAN, accompanied by President Pierce, was next inaugurated. The day was beautiful and spring-like, and an immense number of people witnessed the parade, which consisted of military and civic clubs, a good number of which came from a distance. The decorations along the line of march were very elaborate.

LINCOLN, the martyr President, came next. He was the first Republican elected to the Presidency. On his journey from Illinois to Washington there was an immense outpouring of the people along the route to shake hands with him,— "Old Abe," as he was called, being immensely popular with the masses. He was elected for a second term and but a little over a month following his inauguration—on April 14 1865—he was assassinated. His funeral was the greatest ever known in history, his body being laid out in state in nearly every large city until it reached its final resting-place, at Springfield, Illinois.

JOHNSON, the Vice-President, filled out the term. His attitude was so antagonistic to his party that impeachment proceedings were commenced against him, but they failed.



# Historical

# Facts

IN CONNECTION

WITH . . . .

Previous

Inaugurations



GEN. GRANT succeeded Johnson, and was also elected for a second term. The second inauguration of Grant occurred on one of the coldest days ever known in Washington, and many died from the effects of the weather and from colds contracted at the Inaugural Ball, for which an immense frame structure had been built. After the parade, the officers of the West Point Cadets were so frost-bitten that they had to be lifted from their horses.

In the case of Grant's successor, because of some irregularities in the returns, Congress appointed an Electoral Commission, which decided in favor of HAYES over Tilden, the Democratic candidate. Hayes' administration was brilliant socially. One of the features of the dinners at the White House during his term was the tabooing of all intoxicating liquors.

Unfortunate GARFIELD was the next President. He was shot by an assassin shortly after his inauguration, but lingered until September, when he died. His funeral was the saddest and most impressive ever witnessed in Washington.

GEN. ARTHUR, who filled out the term, was celebrated for his clean, conservative administration and for his great personal charm.

CLEVELAND followed Arthur. As to weather, the 4th of March, 1885, was an ideal day, and the inauguration was attended by the largest crowd ever at the Capitol. People came from all over the country to witness the event.

HARRISON was next elected. The day of his inauguration was raw and rainy, but there was, notwithstanding, a fine military and civic parade from the Capitol to the White House. The Inaugural Ball was held in the Pension Building.

Harrison was succeed by CLEVELAND (his second term). The inauguration was largely attended, and the parade was very fine. The Inaugural Ball was held in the court of the Pension Building, and was the finest public ball ever given in this country, eighteen thousand people being on the floor at one time.





# 20th CENTURY Bicycle Headlight.

BURNS KEROSENE.  
KEEPS LIGHTED.

The neatest, brightest, most stylish, and least troublesome of all lights for the wheel.

#### STANDARD SIZE.

Nickel, \$3.00     Japanned, \$3.00  
Aluminum, \$3.75

#### TANDEM SIZE.

Nickel, \$4.00     Japanned, \$4.00  
Aluminum, \$5.00

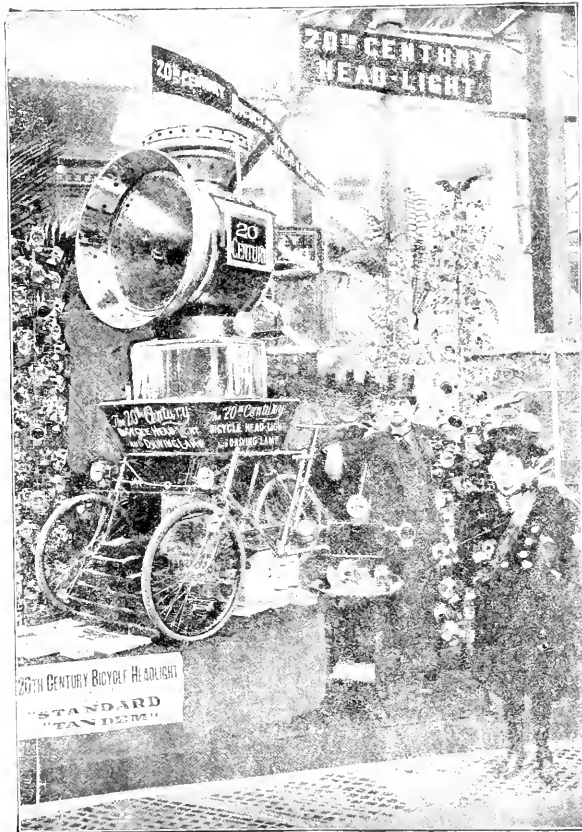
ON SALE EVERYWHERE.

or will be sent, carriage paid,  
on receipt of price.

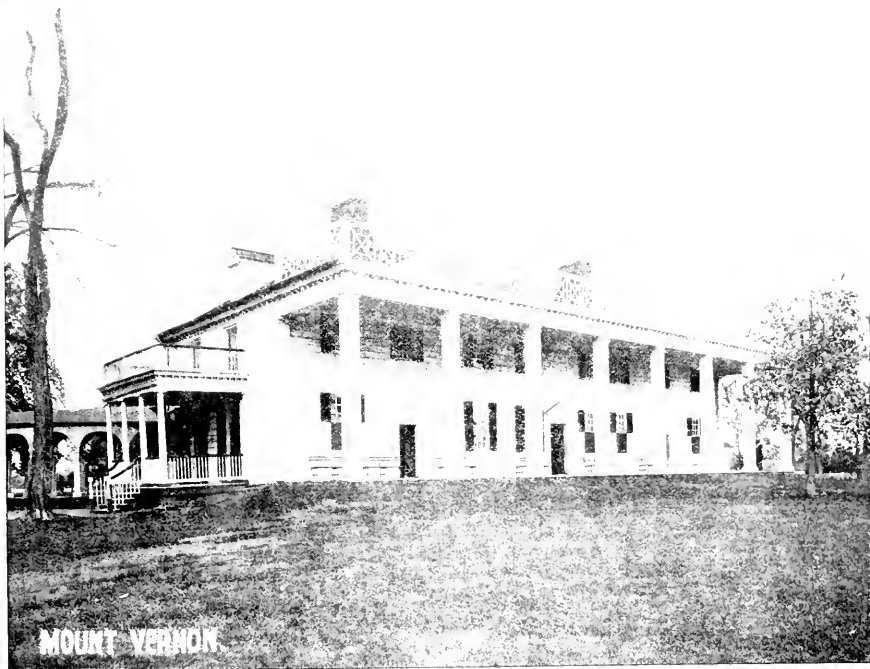
## Betts Patent Headlight Co.

17 WARREN STREET,

NEW YORK.



Exhibits, 1897, as seen at Cycle Shows, home and abroad.



MOUNT VERNON

# *The American Exhibition Co.*

EXPERTS OF . . . . .  
IMPRESSIVE ADVERTISING.

◀ Renowned as the most Expert Stereopticon  
Exhibitors in the world.

THEY HAVE THE FOLLOWING COMPLETE PLANTS, WHICH HAVE  
BEEN SEEN BY AND INTERESTED MANY THOUSANDS

**WASHINGTON PARK . . . .**

On the Delaware, below Philadelphia.  
Opens May 30, 1897.

**ATLANTIC CITY BOARD WALK . . . .**

in front of St. Charles Hotel.  
Opens June 15, 1897 (12th year).

**NINTH AND CHESTNUT STS. . . .**

On Girard House,  
Opens Sept. 1, 1897 (11th year).

CORRESPONDENCE SOLICITED FROM FIRST-CLASS ADVERTISERS ONLY.

Office: Girard House, Philadelphia, Pa.

S. B. VANDEGRIFT, Prest.

IRVING B. BROWER, Secy. Treas.

# BLASIUS PIANO . . .

---



*The Grandest Achievement in Piano Building  
of the Century . . . . .*

CONTAINS MORE IMPROVEMENTS.

HAS MORE POINTS TO RECOMMEND IT  
THAN ANY PIANO NOW BEFORE THE PUBLIC.

---

enumerate all the good qualities of the Blasius Piano is impossible. The Action, Tone, and Touch are so perfect most difficult passages of music become easy when on a Blasius Piano. The phenomenal singing qualities in octaves, which in other makes is so rarely found, is ever a pronounced feature of the Blasius Piano.



WAS A EDSON, the world's greatest acoustician, says: "My experimenters prefer the Blasius to all other makes for their instruments in sound." S. B. MILLS, New York's famous concert pianist, says: "It is the one instrument on which I can play my one." JOHN FRANCIS GILDER, Boston's celebrated pianist, says the Blasius Piano is a masterpiece of piano building. H. Z. CHICAGO'S eminent pianist, says: "Your Blasius Piano gives me the highest musical appreciation, and a host of other musicians give it unqualified endorsement." CORRESPONDENCE SOLICITED.

3 Chestnut St. **BLASIUS & SONS,**  
Piano Manufacturers.

1119 Chestnut St.

Established Nearly Half Century.

PHILADELPHIA PA.

# American Travel

1897

LIBRARY OF CONGRESS



0 014 442 355 0



Only  
Cold  
Drawn  
Seamless  
Reinforced  
Steel  
Tubing  
Used.

Steel  
Drop  
Forged  
Connections  
and  
Tool Steel  
Bearings  
Throughou.

Send for Our 1897 Catalogue

*NO BETTER BICYCLE BUILT.*

**AMERICAN B.H.O. & SEWING MACHINE CO.**

20th ST. AND WASHINGTON AVE., PHILADELPHIA, PA.

DEALERS WANTED IN ALL UNOCCUPIED TERRITORY.