



ALUMNI BULLETIN 1920

OFFICERS OF THE FACULTY

LeRoy A. King	President
Matthew J. Walsh	Dean of Instruction
Joseph M. Uhler	Director of Teacher Education
John E. Davis	Director of Laboratory and Demonstration School
Florence B. Kimball	Dean of Women
Walter M. Whitmyre	Dean of Men
William Schuster	Bursar
Mary L. Esch	Registrar

BOARD OF TRUSTEES

Wallace C. Chapman, President	Indiana, Pennsylvania
Harry F. Carson, Vice President	Saltsburg, Pennsylvania
Cyrus W. Davis, Secretary	Ebensburg, Pennsylvania
Mrs. Cora Myers Fee	Indiana, Pennsylvania
John W. Neff	Indiana, Pennsylvania
R. H. Philson	Meyersdale, Pennsylvania
Mrs. Jennie S. Reed	Indiana, Pennsylvania
William M. Ruddock	Indiana, Pennsylvania
Thomas H. Sheeche	Indiana, Pennsylvania
John St. Clair, Treasurer	Indiana, Pennsylvania

(Not a member of Board)

INDIANA ALUMNI

STATE TEACHERS COLLEGE

INDIANA, PENNSYLVANIA

This bulletin is published annually by the
GENERAL ALUMNI ASSOCIATION
EDITED BY Bernice Orndorff

OFFICERS OF THE ALUMNI ASSOCIATION 1937-1939

President—Adelaide Ramsay Clarke (Mrs. J. P., Jr.), 54 West Shady Drive, Mt. Lebanon, Pittsburgh, Pennsylvania.

Vice President—Jean McIlroy Whitmyre (Mrs. W. M.), Indiana, Pennsylvania.

Secretary—Helen Brennan, 952 North Negley Avenue, Pittsburgh, Pennsylvania.

Treasurer—Mary L. Esch, Indiana, Pennsylvania.

1939-1941

President—Florence Brewer Slep (Mrs. Harry E.), 3303 Broad Avenue, Altoona, Pennsylvania.

Vice President—Louise Langham Maloney (Mrs. Roy), Indiana, Pennsylvania.

Secretary—Lenore Garver, Roaring Spring, Pennsylvania.

Treasurer—Mary L. Esch, Indiana, Pennsylvania.

Executive Secretary—Mary L. Esch, Indiana, Pennsylvania.

DATES TO REMEMBER

October 21	First Executive Council Meeting Home-coming
May 26	Alumni Day Second Executive Council Meeting General Alumni Association Meeting Alumni Luncheon

Home-coming Day

October 21, 1939

You are cordially invited to attend the annual Home-coming celebration at the College on October 21, 1939. You may feel free to bring members of your family with you.



General Headquarters	Recreation Hall
Registration, all day	Recreation Hall
Council Meeting, College Auditorium	10:30 A. M.
Luncheon, College Dining Room	12:10 P. M.
Football Game—Slippery Rock vs. Indiana—	2:00 P. M.
At Home, Dr. and Mrs. King (Informal)	4:00 P. M.—5:00 P. M.
President's Apartment	
Dinner, College Dining Room	5:45 P. M.
Dances, Recreation Hall and Gymnasium	8:00 P. M.—12:00

Please fill out the attached postal card and return it at once so that arrangements may be made for your accommodation.

October 10, 1939

By the use of the word "yes" or "no", I am indicating my intention concerning Home-coming.

_____ You may expect me at the College on October 21.

_____ For Luncheon (40c)

_____ Number of extra guests.

_____ For Dinner (50c)

_____ Number of extra guests.

Name

.....

.....

Class

The College President

Dr. LeRoy A. King assumed office as the President of the College on July 1, 1939. He comes to Indiana from the University of Pennsylvania, where he has been Professor of Public School Administration and Finance since 1917.

Doctor King graduated from York County Academy, and Millersville State Teachers College in 1905; obtained his B. S. degree at Teachers College, Columbia University, in 1910; his A. M. at Columbia University in 1916, and his Ph. D. at the University of Pennsylvania in 1920.

Prior to accepting the position as Professor of Public School Administration and Finance at the University of Pennsylvania, Doctor King was Professor of Education and Supervisor of Training School at the State Teachers College, Lock Haven, Pennsylvania, from 1910 to 1914, and Superintendent of Schools in Jenkintown, Pennsylvania, 1914 to 1917. He also served as Professor of Education at summer sessions of Pennsylvania State College, University of California, University of Southern California, University of Pittsburgh, and Elizabethtown College. He was Lecturer at the University of North Dakota; Editor of *Schoolmen's Week Preceedings*, University of Pennsylvania, and Author of *National Record System for Public Elementary and Secondary Schools* in cooperation with Dean Kefauver, Stanford University; Dr. Ayer, University of Texas; Dr. Engelhardt, University of Minnesota; Dr. E. P. Melby, Dean School of Education, Northwestern University. He also wrote *Status of the Rural Teacher in Pennsylvania* (Bulletin, U. S. Bureau of Education), 1921, *Survey of Fiscal Policies of the State of Pennsylvania in the Field of Education*, 1922 (joint), and *Report on Appropriations and Subsidies* (Educational Survey of Pennsylvania), 1925.

Doctor King is a member of Educational Research Association, American Association of School Administrators, National Education Association, Pennsylvania State Education Association, National Society for the Study of Education, National Society of College Teachers of Education, Phi Delta Kappa and Kappa Phi Kappa. He was appointed a member of the Pennsylvania State Council of Education by Governor Fisher and served in this capacity from 1928 to 1935. He was Director and Participant in School Surveys: Philadelphia Public Schools, 1936—Financial Policies, Business Management and Administrative Organization; Bethlehem Public Schools, 1937—Financial Survey; Rural School Survey of the State of New York, Financial phase George School; Gloucester, New Jersey, Public Schools.

Doctor King is married and has three children: John Albert, a graduate of Grove City College, Joseph Hoffman, a student at Indiana State Teachers College, and Jane Louise, a Senior at Indiana High School. Mrs. King was the former Miss Estella A. Hoffman of Williamsport.



Dr. LeRoy A. King

The President's Message

LeRoy A. King

State Teachers College, Indiana, Pennsylvania

When I was invited to accept the presidency of the Indiana State Teachers College, I decided to do so, mindful of the great traditions and excellent record sustained by the college through the sixty-four years of its existence and cognizant also of the opportunities for professional services to Indiana and the State.

Within recent years, the state colleges of Pennsylvania have been undergoing marked changes in curriculums, personnel, and physical plant in their growth into professional colleges, and Indiana has been in the forefront in these developments.

There remains, however, the challenge for the College to justify its existence as one of the outstanding teacher training institutions of the State to contribute its share in the State educational program, and at the same time to maintain the academic and professional standards which are commonly assigned to accredited institutions of collegiate standing.

In meeting this challenge the alumni, students, and faculty must work together in recognizing their responsibilities, which will ultimately find expression in the ideals of a great educational enterprise. The officers and the executive secretary are leading in this alumni program. The administration will co-operate in providing the clerical and office facilities necessary for the projected activities of the Association. When the new, much needed 1940 directory appears and the many branch organizations become aware of their place and individual responsibilities in this great organization of approximately 10,000 graduates, then we shall have the support and enthusiasm for Indiana that have always been so marked in past years.

You are cordially invited to attend the Alumni home-coming on October the twenty-first, to participate in the program described elsewhere in this Bulletin, and also to take part in the more extensive alumni program planned for the Commencement season in May, 1940.

The students and faculty will always welcome your visits and your helpful and constructive suggestions for a greater and stronger Indiana State Teachers College.

General Alumni Association

The Fall Executive Council Meeting was held in the College Chapel on Saturday, October 29, 1938, which was also Home-coming Day for graduates and former students of the College. Mrs. Adelaide Ramsay Clarke, Alumni President, called the meeting to order at ten o'clock and asked for the reading of the minutes of previous meetings by the Secretary, Miss Helen Brennan. Miss Mary Esch, Treasurer, reported the financial standing of both the Alumni Association and the Jane E. Leonard Student Loan Fund. Representatives from organized units answered roll call by presenting plans for the year. Miss Florence Kimball, new Dean of Women of the College, was introduced and gave an interesting review of the Student Loan Fund, explaining its origin, its purpose and the policies governing the granting of loans to students. Miss Florence Wallace was appointed by the Alumni President to represent the Association on the Loan Committee.

The nominating committee was named to prepare a slate of officers to be presented at the annual business meeting of the Association in May; Dr. Fausold appointed Miss Mary Lowman; the Executive Council elected Miss Nelle Maxwell and Mrs. Ruth Hamilton McCartney; the Alumni President appointed Miss Mary Wyman and Mrs. Mary J. Lintner, the last named to act as chairman of this committee.

Following committee reports and recommendations by the president, the meeting adjourned and council members were entertained at luncheon as guests of the College. The ball game in the afternoon and the two dances in the evening were well attended by alumni, students and friends.

On Saturday, May 27, 1939, many graduates and former students returned for Alumni Day activities and class reunions. The Executive Council assembled in the College Chapel to hear unit reports and review the business of the organization. The Council voted to advance the incoming Alumni President a drawing account for expenses of office. They also elected Miss Mary L. Esch to act as an Executive Secretary as well as contact person between the College and Alumni, and to receive a stated amount as remuneration for her services. Mrs. Agnes Douds Bulford and Mrs. Mary J. Lintner were named to act with Miss Florence Wallace in conjunction with the Loan Fund Committee to revise the policies of loan grants.

The Annual Business Meeting of the General Alumni Association was called to order at eleven o'clock by its president, and heard the reports of the secretary and treasurer. At this time the Degree Class of 1939 entered the Chapel, escorted by Mrs. Agnes Douds Bulford, former Alumni President and Mrs. Jane Bell Plotner, member of the twenty-five year reunion class. Mrs. Bulford presented the class to the alumni, and they were welcomed into the Association by its president, Mrs. Clarke. The Senior response was made by John Gravelle.

The reunion classes of 1879, 1889, 1899, 1904, 1909, 1914, 1919 and 1929 were welcomed by the president and alumni. Responses were made by each class. Mrs. Margaret Woods Heath, 1879, entertained the assembly with accounts of life at Indiana when she attended school there.

Dr. Joseph Johnson, 1889, gave the Seniors some friendly counsel.

Mr. Wallace Chapman, recently honored by his appointment to the College Board of Trustees and elected president thereof, responded for 1899.

Mrs. Mary J. Lintner, chairman of the nominating committee, submitted the following slate: for President, Mrs. Florence Brewer Slep, class of 1918; Vice-President, Mrs. Louise Langham Maloney, 1913; Secretary, Miss Lenore Garver, 1925. The slate was unanimously accepted, and the incoming officers were presented to the Alumni.

Dr. Fausold, President of the College, spoke briefly and the meeting was adjourned.

The Alumni Luncheon was held in the College dining room where Mrs. Folger and her staff served a delicious luncheon in the usual efficient manner. The Alumni were entertained by the program which follows:

- Invocation — Chimes — Played by Elizabeth Magill — 1939
- Adelaide Ramsay Clarke, Presiding 1912
- President of the General Alumni Association
- W. M. Ruddock 1919
- Tenor Solos William Steele, 1939
- "Passing By" Purcell
- "A May Day Carol" Deems Taylor
- Accompanist: Betty Mae Kanable, 1939
- Enid Koontz 1939
- Dr. Samuel Fausold President
- Alma Mater Directed by Chester Singer, 1939

Financial Statement

General Alumni Association

State Teachers College, Indiana, Pennsylvania

May 21, 1938 to May 31, 1939

Balance on hand May 21, 1938 \$1025.06

Receipts May 21, 1938 to May 31, 1939

Altoona Unit	\$25.00
Apollo Unit	1.50
Beaver County Unit	6.00
Blairsville Unit	18.75
Braddock Unit	6.50
Duquesne Unit	6.50
Freeport Unit	2.75
Homestead Unit	6.25
Individuals	41.60
Jeannette Unit	13.00
Lawrence County Unit	10.00
New York Unit	2.00
Northern Cambria County Unit	5.75
North Side — North Boroughs Pittsburgh Unit	30.50
Philadelphia Unit	5.00
Pittsburgh Unit	12.75
Somerset Unit	16.00
South Hill — Pittsburgh Unit	15.00
Tarentum Unit	7.00
Tri-Township Unit, Indiana County	6.75
Vandergrift Unit	7.00
Wilksburg Unit	10.00
Total Receipts	255.60
\$1280.66	

Expenses May 21, 1938 to May 31, 1939

Stenographic work on Alumni Bulletin	\$ 2.50
Postage on Alumni Bulletins	26.00
Legislative Committee (Florence Wallace)	8.06
President's expenses	38.84
Park Press—1938 Bulletin and envelopes	\$ 163.14
Membership cards	6.25
Resolution letters	7.60
	176.99
Total Expenses	252.39
Balance on hand May 27, 1939	\$ 1028.27

Financial Statement

Jane E. Leonard Memorial Student Loan Fund

May 21, 1938 to May 31, 1939



Balance on hand May 21, 1938 \$ 10684.22

Receipts May 21, 1938 to May 31, 1939

Gifts:

Blairsville Unit	\$ 10.00	
Christmas Party in Dining Room	86.00	
Class of 1923—15% Dividend Indiana County Deposit Bank	135.45	
Class of 1924—15% Dividend Indiana County Deposit Bank	98.41	
Class of 1925—Dividend Citizens National Bank	62.86	
Class of 1934—15% Dividend Indiana County Deposit Bank	15.10	
Fellowship Club	1.56	
Lawrence County Unit	6.00	
Philadelphia Unit	10.00	
Pittsburgh Unit	20.50	
Second-year Students 1926	17.37	
Total Gifts	\$ 463.25	
Repayments on loans, including interest	2306.26	
Total Receipts	2769.51	
		\$ 13453.73

Payments May 21, 1938 to May 31, 1939

Loans	\$ 2845.60	
Jane E. Leonard Savings Account	8000.00	
Total Payments	\$ 10845.60	
Balance on hand May 31, 1939	\$ 2608.13	



Mrs. Harry E. Slep

Message of New President

To the Officers and Members of the Indiana General Alumni Association:

I am honored for the compliment you paid me at the recent election. My ever gracious thanks to you.

Messages have been received which assure me the two years ahead will be successful ones.

Each member doing his and her part, whether an officer or not, will keep the Alumni where it belongs.

With our large membership it is impossible for every one to be a leader, but all can be on the staff by living up to his obligation.

Make an effort to have your unit represented at all conferences and share the inspiration that comes from attending.

Indiana Alumni Onward . . . Why not?

My sincere wishes to you,
(Signed) Florence Brewer Slep
(Mrs. Harry E. Slep)

Unit Activities

Under the splendid leadership of Mrs. Alberta Luchsinger McKain, North Borough—North Side Pittsburgh Unit, has reached top place in membership in the Alumni Association. The President's Tea at Mrs. McKain's home in October, a bridge luncheon at the Congress of Clubs in January and a spring luncheon at Shannopin Country Club comprised their social program. They also had three executive meetings. Mrs. Anna Barr Pinkerton of 227 Summit Avenue, Bellevue, who has been actively interested in alumni work since the reorganization, has been elected to serve as president of this group and can be depended upon to carry on their fine work.

Mrs. Harry E. Slep (Florence Brewer), President of Altoona Unit the past year, has been elected to serve as General Alumni President for the next two years. Miss Lenore Garver, the newly-elected General Alumni Secretary also comes from this unit. Three business and two social meetings were held the past year. Mrs. Josephine Travis, of 1709 Tenth Street, Altoona, is the 1939-40 president.

Blairsville Unit has had a very successful season under the able leadership of Miss Agnes Tompkins; they report fifty-six members and three meetings. There were fifty-five present at the October dinner meeting at which Dr. Perkins of the College spoke. Ninety members and friends attended the Valentine Party. They have elected Mrs. Nellie Nippes, Black Lick, to serve as president in the new year. We are sorry to learn of the death of one of this unit's most active and popular members, Miss Genevieve Margaret Elrick, who gave willingly and generously of her time and talent when requested by the local unit.

Amy M. Snyder, Anna Bird Johnston, Ethel Owens and W. C. Crawford are loyal alumni from Apollo.

Margaret Bruce Clark, Freeport, sends dues for the Indiana members of the College Club of that vicinity.

The Braddock Alumni hold monthly informal, social meetings. They expect to visit the Kilbuck Theatre this fall when their new president, Mrs. Elmer Kroon of Old Lincoln Highway West, Irwin, assumes office. Miss Eleanor Remaley has proved a very efficient president.

Mrs. Katherine Burton planned a November dinner bridge, a December luncheon and a spring banquet for the Duquesne Alumni during her year. They report twenty members.

Homestead District holds meetings on the last Monday of each month in the homes of members. Their officers for the coming year are: President, Mrs. Lillian Gable, Vondera Plan, Munhall; Secretary, Bertha Cooke; Treasurer, Marion Bullion.

Evalyn Klingensmith, 129 Second Street, Jeannette, will preside over the group there. Mrs. Angeline Cestello provided an enjoyable program for her year. About seventy persons attended a Valentine party in the Womans Club. Miss Florence Kimball, Dean of Women at the College, Miss Lowman of the College Training School and Dr. Ney Prothero, local alumnus, addressed those attending the spring dinner at the Village Inn.

Orval Kipp of the College Faculty was guest speaker at an alumni dinner in Greensburg. Mrs. W. R. McFarland acted as chairman.

The president of the Lawrence County Alumni Association is Mrs. Edward Everett, 317 Meyer Avenue, New Castle. Their forty members enjoyed a June picnic. The September program included a "History of Indiana". November brought a book review. The January mid-winter party took them to a local tea-room. A Travelogue with slides, in March, and the May business meeting completed a full year.

North Cambria County Alumni of twenty-three members had two meetings and have elected Miss Jeannette Davis, Box 94A, Barnesboro, President.

Indiana Alumni in and near Philadelphia have enjoyed their meetings arranged by Ida B. Robertson, President. At a dinner at the Tally-Ho Restaurant they heard an interesting review of "The Yearling" and played competitive games. In February they met at The Whitman for cards. In April they elected officers: President, "Mibbs" Kocher, 125 East Battlewood, Oaklyn, New Jersey; Vice-president, Martha Ziegler; Secretary-treasurer, Helen Broome. They will have a summer picnic at the farm of Mrs. Walter Sheffield (Sara Prosser), Seal Place, West Chester.

The Pittsburgh Unit, composed of fifty members, the majority of whom live in the East End, meet monthly. Their Christmas Tea, an annual event honoring Seniors, is always a delightful affair. Many enjoyed a breakfast dance in the Hotel Schenley in February. They elected Miss Helen MacWilliams, 7101 Thomas Boulevard, East Pittsburgh, their president when they met for the annual dinner at the College Club. Mrs. Grayce Laird Schurgot is the retiring president. This unit was honored when Miss Helen Brennan was elected to serve as Secretary of the General Alumni Association the past two years.

South Hills Unit has enjoyed a most interesting program prepared by their president, Mrs. Dorothy Gantner Rea, and her program committee, Mrs. Isabel Allison Neel, Mrs. Ethel Abele Archbold and Miss Helen Campbell. Mrs. "Judy" DuBarry Meyer was hostess for the President's Reception in September. "It Can't Happen Here" was the play attended at the Pittsburgh Playhouse. Edwin Rowlands, well-known autograph collector, entertained the group with "Intimate Glimpses of Famous People" at Mrs. Rea's home in November. Members brought

dolls they had dressed for distribution among charitable organizations to their Christmas party at Mrs. Elsie Taylor Lang's home. Mrs. Bernadette McNelis Wyrrough was hostess when Mrs. Margueritte Huff of the Gumbert School for Girls explained her work in training the girls for new lives. Mrs. Frances Thompson Leech entertained the group in April when the speaker was C. H. Denniston of the Better Business Bureau. Officers for the coming year were elected. Miss Marian Underwood, 42 Academy Avenue, Mt. Lebanon, Pittsburgh, is the new president. Retiring officers were honored at a bridge luncheon at St. Clair Country Club in May. Mrs. Adelaide Ramsay Clarke, retiring General Alumni President, is a member of this unit and served as its second president.

Mrs. Ernest Daum will continue as president of Tarentum Unit, which holds quarterly meetings in the homes of members. They usually secure a speaker from the College to address the neighboring high schools, Tarentum and Har-Brac.

A jolly group of Indiana Alumni and friends in the vicinity of New York City meet at the call of Ernest McLaughlin, 2474 Hudson Boulevard, Jersey City, New Jersey.

Tri-Township, Indiana County, had a Halloween Party, a November dinner, a January get-together, a skating party in March and a May business meeting.

Early in October, Turtle Creek Valley Alumni were guests at a corn roast at Mrs. Gail Shiffler's cottage near Pitcairn. Thirty persons attended a dinner in Pitcairn Presbyterian Church. Music by Olive Sipes and Ruth Pounds and group singing led by Fleeta Gillespie, followed by a general talk-fest, provided entertainment. Election of officers will take place later in the year when they meet for a spaghetti dinner at Shiffler's Cottage. The Turtle Creek Valley Unit was deeply grieved over the loss of one of the active members, Anna Ruffner Hysong of the class of 1912, who passed away in November after a short illness. We extend our sincere sympathy to her husband and daughter.

Helen Blose deserves much credit for her earnest efforts to successfully effect an organization in Vandergrift. They report twenty-six members who enjoyed a January bridge party and a St. Patrick's Day Musical and Tea.

Wilkesburg Alumni invited Miss Jennie Ackerman, Miss Hope Stewart, Mrs. J. P. Clarke, Jr., General Alumni President, and Miss Helen Brennan, General Alumni Secretary, to be their guests at their luncheon meeting in November at the Pittsburgh College Club. In March they went to the Pittsburgh Playhouse. Mrs. Ossie Patterson Newbaker entertained in April. Mrs. Anna Whippo, 407 Franklin Ave., is the newly-elected president. This unit owes its existence to the untiring efforts of a most loyal alumnae, Miss Nelle Maxwell, who has been its president for a number of years.

Reunion Classes



Margaret Woods Heath
1879

Margaret Woods Heath of the class of '79 retired from the teaching profession in 1930. Her last position was the principalship of the

Baldwin Park Schools in California, where one of the buildings has been named in her honor, The Margaret Heath School. She has two sons and a daughter. She came to Indiana for her sixtieth reunion and was a joy to all who were privileged to meet her and hear her talk. She writes of her return and her classmates as follows:

I am sure if the other two living members of the class of 1879 could have known the happiness that they would have experienced in returning to Indiana after sixty years, they would have let business take care of itself and had three days of perfect enjoyment, as I did.

Miss Sarah L. Naly is a member of the firm of Rinn and Naly, owners of a drug-store at 2301 West Lehigh Avenue, Philadelphia. She is a strictly business woman, first, last, and all the time, and is devoted to the idea of making famous this Woman's Drug Store, conducted by women. This is commendable, of course, but it is not given to many to experience the happiness that I have had during my three days at Indiana, so I feel she missed a great chapter in her book of life.

Samuel M. Davis is practicing law in Santa Ana, California, and, no doubt, has affairs to fill the hours, but he, too, missed the thrill of the old scenes, and the making of new friends on the old background. I think he would have felt the years roll away, as I did, when I mingled with the Class of 1939 in their exercises of graduation.

Had not Jennie Patterson Monteith answered the last call in March of this year, I think she might have shared with me the honors accorded me as the representative of the Class of 1879. When I visited her in her home in Olathe, Kansas, two years ago, we sort of planned the return, and I am sure she would have rejoiced as much as I do in the progress and development of our Alma Mater in the sixty years that have passed since we were members of the banner graduating class of nineteen members.

I gratefully acknowledge all the courtesies and kindness that I received from the President, Dean of Women, my special hostesses, and every member of the faculty, alumni and student body with whom I came in contact. The memory of this return will be a fitting climax to one of the happiest chapters in my life history of seventy-nine busy years.

My best wishes are always for the continued growth, prosperity and beneficent influence of Indiana State Teachers College.

Fraternally yours,

Margaret Woods Heath, 1879.

1889

Of the fifty-year reunion class, just three members returned on Alumni Day. They were Mrs. T. A. Kerr (Janney Allen), R. D. 1, Box 87, Lutz, Florida; Mrs. J. E. Boyd (Margaret B. Hill) 233 Fifth Street, Aspinwall; and Dr. Joseph E. Johnston, 5550 Dunmoyle Street, Pittsburgh.

For several years, Dr. and Mrs. C. L. Smith of Salem, Ohio, have been looking forward to attending Mrs. Smith's (Della Chester) reunion, but Dr. Smith's serious illness at that time prevented, and it is with sorrow that we report his death which occurred in June.

1899

Twenty-seven members of the Class of 1899 accepted the cordial invitation of Dr. Fausold and the Board of Trustees to attend their class reunion at Indiana and enjoy again its hospitality.

For weeks before the event plans had been formulating in the minds of members of the class and with memories of the old days at Normal surging within us we came, some by rail and others by motor, from places far and near — Mabel Engle from Seattle, Washington.

The Dutch Club of Pittsburgh was especially inspired by the personal invitation of Wallace Chapman at our May meeting at the Congress of Clubs.

As we neared Indiana, the tower of the old familiar main building loomed over the tree tops as though to bid us welcome, and memories of our years there came flooding in upon us.

Entering the North Door we made our way to the old dining hall for registration. The portrait of Miss Leonard seemed to complete our welcome and bridge over the years since we were students and she and Dr. Waller were the guiding spirits of Indiana. We felt completely at home.

A kindly greeting was given us by Dean Kimball.

Through the thoughtfulness of Mary Edna Flegal, one of our classmates, we were all assigned rooms on South Hall, third floor. This added greatly to our spirit of reunion and fellowship.

At eleven o'clock on Saturday morning we attended the Alumni Meeting and helped welcome the Class of 1939, going from there to the Alumni Luncheon where three tables had been reserved for us. Wallace Chapman, '99, who had been made President of the Board of Trustees, dined with us.

After the luncheon we were guests of Mary Edna Flegal, when she held "Open House" in her Arts and Crafts Department.

The benches in the grove provided a pleasant place in which to reminisce, and it was here we read greetings from absent members among whom were Cora Withington, Los Angeles, California; Caroline Cronemeyer Spaulding, Evanston, Illinois; Adele Semple Graves, Royal Oaks, Michigan; D. Ira Johnston, Okiahoma; Henrietta Baker Fickinger, St. Petersburg, Florida; Edith Dodds Work, New Concord, Ohio; Olive Briney Coates; and Mabel Dickie Smith.

Saturday evening a delicious dinner at Thompson's on South Seventh Street had been arranged for us by the members of the class living in Indiana. After dinner we had our business meeting and elected the following officers to serve until our reunion five years hence: President, Wallace Chapman; Vice president, John Martz; Secretary, Mabel Dickie Smith; Treasurer, Birdie Craig.

Following our business meeting was a session of short talks, each member present participating. One member, whom we had missed so keenly, was our former classmate, Harry Earhart. The class appreciated most deeply the gracious way in which Mrs. Earhart joined our group at the Alumni luncheon and class dinner and gave us little intimate reminiscences of Harry's deep interest throughout the years. We all recalled the delightful times we had spent with Harry and Mrs. Earhart. We were saddened by the passing of Mary McGoun Patterson, whose death occurred last December. Our meeting that night closed with prayer offered by Mrs. Earhart, and we adjourned to the front veranda of the old Main Hall where we sat and talked until almost midnight.

On Sunday morning after breakfast a light rain kept us indoors, just the opportunity we wanted to go on with the talk of old times, former classmates and the happenings of the intervening years.

Before parting some souvenir snapshots were taken, including our critic teacher, Hope Stewart, later Dean of Women. As we finally separated, we all agreed that it had been a happy reunion and every effort would be made to return again to Indiana in five years.

Blanche Creese Watson

Anna Kohen Carten, Ruby Leavitt Shaffer and Edith Morgan Dornbush were accompanied to the reunion by their husbands; Jean Crawford Mateer by her sister; Mabel Engle of Seattle, Washington, by her mother and sister of Beaver, Pennsylvania.

Argie Hutton McLaughlin had to leave for her home in Ohio Saturday afternoon.

Nell Ellis Fulton, of New York, was with us during our reunion.

William C. Brown and wife were here from their home in Lansing, Michigan.

Dr. H. Ney Prothero had to leave shortly after the Alumni Luncheon.

H. A. Loraditch was accompanied by his wife. Their home is at Oakland, Maryland.

J. C. Shrader was accompanied by his wife.

1904

Of the fifty-eight members of the Class of 1904, there were but seven who returned for Commencement: Mrs. Lloyd Adams, (Elda Ankeny), the wife of a Johnstown attorney, has a son at Princeton, and Mrs. Carl D. Smith, (Ida Jack), and her husband, Carl Smith of old Indiana days, now an attorney in Pittsburgh, both returned. They have one son, Carl, Jr., who is now in business. Mrs. G. F. Kolley of Altoona, is the same happy Caroline C. Lewis of her school days. Mrs. Herbert W. Browne (Edith O. Brown) and her husband both returned and are very proud of their three children—a son who is twenty-three, has finished school and is in business; a daughter, a junior at Pennsylvania College for Women won a scholarship in science to Woods' Hole, Mass-

achusetts and a younger daughter, who was graduated second in her class from Ben Avon High, was awarded a Civic Club Scholarship. She hopes to attend Pennsylvania College for Women as her grandmother is the oldest living graduate of that college. Pearl Price is teaching private pupils. Nellie E. Hudson teaches at Oliver High School and Mary E. Wyman at Perry High School, Pittsburgh.

Owing to her daughter's graduation from St. Mary of the Springs, Mrs. J. W. Lyons (Stella Hasinger), who is married to an army officer and lives in Columbus, Ohio, was unable to attend the reunion. Mrs. E. M. Miller, (Mell Wagle) and her daughter Dorothy are living in Los Angeles. Mrs. L. L. Sell, (Zenaida Caddy) now lives in Tacoma. She has two daughters and a son, who is a graduate of the State University.

In a recent letter received by one of her classmates Mrs. Sell wrote: "We had a thrilling time last week end. We went to Vancouver, British Columbia, to see the King and Queen. It was something I shall never forget. I saw him three times and the Queen four. Once we were about twenty feet from them. She is one of the most beautiful women I have ever seen. Of course, everything was exquisite—fine clothes, etc."

Jessie Canan, Martha V. Ellenberger, Florence Gocher, Lillie Harris and Rose White are teaching in Johnstown, and Mrs. J. Kenny (Margaret Hughes) and Mrs. E. H. Coleman (Vera Miller) live there.

The president of the class, Elbie Creps, is Judge of Indiana County. Elizabeth H. Musgrave is teaching in Pittsburgh, Lydia Warner in Millvale, and Barbara E. Hillard in Harrisburg.

The deceased are Carrie L. Brady, Mrs. Clem Lee (Bell J. Dickie), Bessie P. Hamilton, Mrs. G. A. Hopkins (Anna M. Harrison), Mrs. Thos. Ferguson (Cecil E. Randall), Margaret J. Noble, Florence Stern, Paul B. Tiffany, Mrs. H. D. Wentzel (Ida T. Opperman), Clara E. Wood and Miles Young.

Mary Wyman

1909

While the 1909 Reunion Group was small in numbers, it was not lacking in enthusiasm. Due to the failure of the class officers to contact the members, no definite previous plans were made. However, eleven of the class met for the Alumni Luncheon with Miss Farrell as our hostess. We enjoyed the companionship and interchange of news concerning each other. Our group was saddened by the report of the recent death of Clark Wiggins of Norristown. A letter from Emma Elder McKee, read at a Pittsburgh '09 group luncheon at Horne's on Saturday, June third, gave us fuller particulars. We hope to have a "get together" of 1909'ers in the fall and definitely reorganize and decide on a plan for future activities. Clark Wiggins had secured from Indiana a list of his living classmates and had planned to contact them to arrange for their reunion on Alumni Day. This thought was uppermost in his mind even the day before his death. He was a loyal alumnus to the end.

The twenty-fifth reunion of the class of 1914 was attended by only fifteen members.

A report was given by Florence Applegate concerning the money raised at our twentieth reunion. One hundred dollars was raised and was used to purchase a memorial gate at the west entrance to the campus.

From those present much was learned of those who could not attend.

Florence Applegate has a principalship in Swissvale. Kathleen Bailey Foust has one son and is living in Greensburg. Jane Bell Plotner is living in Dormont. Jennie Benson Lundin is living in St. Marys. Alma Blackman works for the Juvenile Court at DuBois. Rachel Blose is living in Greensburg. Virginia Bossart is living in Ohio. Clarissa Bost Nichol is a music teacher in the Pittsburgh schools.

Alice Bostack Wright teaches in Munhall. Audene Braham McKenzie has four children and lives in Seneca. Marion Broderick O'Donnell is teaching in Johnstown. Sarah Brosius is teaching in Pittsburgh. Edith Buchanan Wolfenden lives in Indiana, Pennsylvania. Mabelle Burgi Marshall lives in Oil City. Alice Burke is a secretary at Miss Ellis' School, Pittsburgh.

Attie Caldwell Vance lives in Curwensville. Ethel Campbell has a government position in Akron, Ohio. J. Ellsworth Campbell lives in Indiana, Pennsylvania. Helen Carr lives in Newburg, New York. Zilpha Christman Osler lives in Crafton. Leah Chubbuck lives in Monroeton. Eleanor Clark Edmundson is a member of the Munhall School Board.

Mary Crusan lives in Belle Vernon. Besse Dickey Meehan has six children and lives in Brush Valley. Flora Diehl lives in Graceton. Gertrude Dinsmore Sutter lives in Cleveland, Ohio. Arctic Doncaster Swartz has one son and lives in Pottsville.

Margaret Dunlap Blass lives in Dobbs Ferry, New York. Alma Eberle is teaching in Altoona. Hazel Elkin Maxwell has two daughters and is living in Akron, Ohio. Mary Erhard is living in Juniata. Gettie Eshbaugh Burkett is living in Erie. Lulu Esson Horst has one daughter and is teaching in the Pittsburgh schools.

Fannie Evans Baird lives in Pittsburgh. Eleanor Faust lives in Washington, D. C. Ruth Forry Kissane lives in Cuyahoga Falls, Ohio. Mary Foster Holbrook lives in Philadelphia. Sara Francies is teaching art in the Pittsburgh schools.

Dana Fry is living in Carnegie. Lynn Gallagher Wallace is living in Clearfield. Lorene Garman is teaching in the West View schools. Emma Gieg is living in Altoona. Margaret Goodwin Barnhart is living in Trenton, New Jersey.

Florence Hallam Reed is teaching in Washington, Pennsylvania. Emily Hanson Crocker lives in Bentleyville. Frances Hardy lives in Sharpsburg. Ruth Hetterly Gleichert lives in Altoona. Martha Hill War-

ing lives in Johnstown. Ruth Holtz lives in Titusville. Stella Houston lives in Indiana, Pennsylvania. Juanita Hoyt is teaching in Phillipsburg. Curtis Harsha Hyfield is living in Connecticut.

Marion Jackson Lutz lives in Warren. Mary Jamison Gale lives in Carnegie. Perry Johnston is affiliated with the Dormont Savings & Trust Company. Kathryn Jones is teaching in Wilkinsburg. Ruth Jones Gray is teaching in Munhall. Margaret Kappel Keilberg lives in Etna. Lydia Keefer Haley lives in Pauline, New Jersey. Penelope Kennedy lives in Brookville. Ida Sara Kessler Cheitel Grossman lives in Cleveland, Ohio. Genevieve Kier Dowdna lives in Washington, Pennsylvania. Mary K. Kirk teaches in Braddock.

Helen Lange Spies lives in Steubenville, Ohio. Vera Lantz Beacham lives in Altoona. Nannie Lattimer has a position in Indiana, Pa. Homer Laudenslager lives in Indianapolis, Indiana. Gertrude Laughlin Quinn lives in Burkburnett, Texas. Mildred Leech Carson lives in Greensburg. Marie Lindeman Gould lives in Saltsburg. Lily Lutman lives in Altoona. Mildred Lutz lives in Clairton.

Pearl Mann Croasmun lives in Punxsutawney. Mabel Mason Quail lives in Muskegon, Michigan. Earl Matthews lives in Youngstown, Ohio. Cecelia McCann lives in Johnstown. Julia McCarthy lives in Oil City. Florence McIntyre Peterson lives in Greenville. Roberta McCrum Rogers lives in Aspinwall. Hazel McDevitt Gillespie lives in Punxsutawney. Marguerite McFeaters Carroll lives in New Philadelphia, Ohio. Mary McGinity Byrne lives in DuBois. Roy J. McNeely is in business in Punxsutawney. Marguerite McQuiston lives in Blairsville. Roxie Mewherter Smola lives in Wilmerding. Lois Miller Harper lives in Freeport. Edith Montgomery Johnson lives in Oil City.

Alice Nicholls lives in Sharon. Marie O'Hare Hehman lives in Youngstown, Ohio. Henrietta Parkins lives in Venango. Eleanor Pfordt lives in Upper Darby. Flora Pitchford Rosen lives in Long Beach, California. Clara Pitzer Coates lives in Erie. Anna M. Pope Wilson lives in Wilmington, North Carolina. Eva Pope teaches art in Swissvale.

Blanche Ralston teaches in Wilkinsburg. Edith Ramsay Hotchkiss lives in Crafton. Louellen Remmy lives in Latrobe. Amanda Renard Johnston lives in Rutherford, New Jersey. Amy Rhule Woodring lives in Port Matilda. Ethel Robinson Hubbard lives in Sistersville, West Virginia. Leona Rodgers Wolf lives in Juniata. Ellen Rowe Shirey lives in Clearfield. Mildred Rush lives in Washington, D. C. Agnes Ryan lives in Bradford.

Marion Sackett lives in Woodlawn, New York City. Marion Saltsman Henderson lives in Morgantown, West Virginia. Fayette Schaffner Kendall lives in Columbus, Ohio. Elizabeth Sembower is teaching in Uniontown. Adelaide Shanahan Lamb has a son and daughter and teaches in Pittsburgh. Rosemary Sheehan lives in Tulsa, Oklahoma. Mary Sheridan Dunn lives in Avalon. Raymond Shick lives in Indiana, Pennsylvania. Iris Shoff lives in Tarentum. Elizabeth Shrimp lives in Blairsville. Vera Simpson Miller, Jennie Snyder Menk, Lena Sins and Grace Walters Wright live in Pittsburgh. Helen Sisley is teaching in Youngstown,

Ohio. Lillie Sjoden DeMille lives in Pomona, California. Amelia Skewis Carothers lives in McKeesport. Grace Slonaker lives in Blairsville. Phyllis Small Wolf lives in Hollidaysburg. Elsie Smith Low lives in New York City. Sara K. Smith lives in St. Marys. Mary Starr lives in East Liverpool, Ohio. Ruth Statler Moore lives in Latrobe. Rachel Stoner Walker has three boys and lives in Mt. Pleasant. Florence Stonecipher is in the photography business in Latrobe. Mary Stoupe Brown lives in Johnstown. Helen Strickler is teaching in Scottdale. Hazel Ginevan Gallatin is living in Donora. Paul Stuchell lives in McIntyre.

Olive Thomas Hays lives in Windridge. Leona Thompson Stormer lives in Oil City. William J. Toohey lives in Bethlehem. Helen Treible Finn lives in Montrose.

Grace Wagner teaches at Winchester—Thurston School, Pittsburgh. Margaret Weaver Scoville lives in Denver, Colorado. Marguerite Weimann Gray lives in Wilkinsburg. Margaret Welty Cubbison lives in New Castle. Elizabeth Wentz Tomb lives in Indiana, Pennsylvania. Imogene Weston Reams lives in Osceola Mills. Helen Wesley Briggs lives in Bellwood. Anna White lives in Juniata. Kathryn Whyte teaches in Johnstown. Esther Wilson lives in Altoona. Mabel Wilson is in the government laboratory in Munhall. Esther Winter Partington lives in West View, Pittsburgh.

Margaret Yarnell Gettemy lives in Altoona. Florence Young lives in Warren. Lucille Zeitler Hulme lives in Punxsutawney. Daisy Zelt is teaching in Washington, Pennsylvania.

Jane Bell Plotner

1919

Sixty members of the class of 1919 returned for their twentieth reunion. Their names will be found among registered Alumni.

Mary Hart is a member of the College Faculty.

Mary Stickle is Mrs. H. M. Poole of Trafford City.

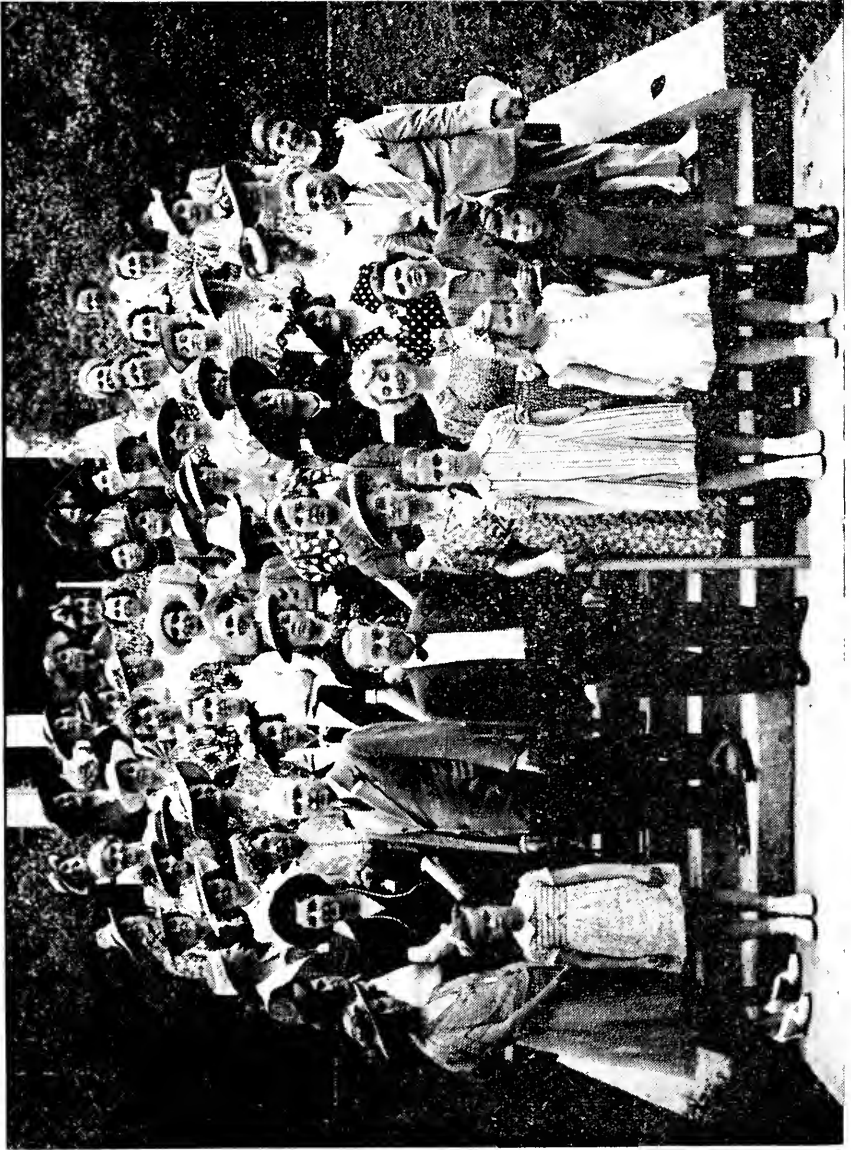
Hazel Esch received her B. S. Degree in Education at Indiana this year.

William Ruddock, a practicing attorney of Indiana, was appointed by Governor James to the College Board of Trustees. He represented the Alumni on its luncheon program.

Bessie Peck is the wife of the Reverend Harry Lee Crawford (1916) and is living in Duquesne. They have two daughters.

The Reverend Clarence A. Steigerwalt is pastor of the Lutheran Church at Schuylkill Haven. He is also Secretary of the Board of Conference Presidents of Ministerium of Pennsylvania and adjacent states, and a trustee of Ashland State Hospital.

Mary Carson is Music Supervisor in the Saltsburg schools. She is the daughter of Harry Carson, who is a member of the Board of Trustees at State Teachers College, Indiana, Pennsylvania.



CLASS OF 1919

Marie E. Comyns of Wilkesburg is a teacher in the Pittsburgh public schools.

Velma C. Widdowson, Indiana, Pennsylvania, is head of the only Girl Scout band.

Mrs. Buck (Sara Lafferty) has two sons and lives in Pittsburgh.

Edith L. Anderson teaches in the Jeannette schools.

Beulah M. Shuster is a teacher in the Junior High School at Delmont.

Blanche Christy is a teacher in the Pittsburgh schools.

Mrs. Daum (Daisy Goldsmith) lives at 2118 Second Avenue, Tarentum, and is President of the Tarentum Unit. Luvia Karns teaches in the Wilkesburg schools.

1929

Sixty-three members of the Class of '29 drove from near places to greet classmates. Ten years was not long enough to draw the members from the far places. Small children held a number of the married members at home. Many of the group have been classmates at the University of Pittsburgh while earning further credits and degrees.

Mr. and Mrs. George Wrigley (Mildred Rhone) with their two little girls, Joan and Mary Lou, reside in Curwensville.

Mr. William Lohr and Mrs. Lohr, who was "Libby" Eicher, live in Scottdale, where Mr. Lohr is Coach.

Miss Helen Duff is a teacher in the Clearfield schools.

Mr. and Mrs. Charles Aikey reside in Johnstown, where Charles is Musical Director of the Johnstown schools. Their son, Bobby, is also musical.

Dr. and Mrs. Howard McElnea (Ione Bigleman) have chosen to make East Orange, New Jersey, their home.

Miss Sally Dixon, Mt. Lebanon, has been spending recent summers at the University of Wisconsin at Madison.

Mr. and Mrs. Harold Palmer (Malvene Snyder) of Verona are the proud parents of a young son.

"Now we are three," say Mr. and Mrs. Melvin Rampp (Nelle Dodd Spencer) in their home in Spencer, West Virginia.

Miss Mary Jane Kearney prefers the air for travel, so has secured her pilot's license.

Miss Jenella Anderson is one of the faculty of the Hollidaysburg schools.

Miss Dorothy Porter and Miss Minnie Svedburg belong to the teaching staff of the McKeesport schools.

Mr. and Mrs. William Peterson are enjoying their new country home near Greensburg. Mrs. Peterson will be remembered as Miss Gladys Prough.

Miss Ruth Jeffreys as Mrs. Ellwood Rankin, Miss Stella Hatcher

as Mrs. August Dahl, and Miss Kathryn Wisser as Mrs. John Kaufman are members of the younger married group in McKeesport.

Among the June brides of this year are: Miss Berenice Mather, who became Mrs. Robert N. Brown of Clearfield; and Miss Jean Harvey, who as Mrs. Ralph Barton, is living in Clearfield.

Miss Hazel Stoops of Vandergrift became the bride of Mr. A. S. Drake at a beautiful church wedding. They are making their home in Sharon.

Miss Winona Malcolm of Indiana is a member of the Mt. Lebanon faculty.

New York City is the home of Mr. and Mrs. John Webb. Mrs. Webb was Miss Sara Richards.

Miss Marian Underwood is a member of the Mt. Lebanon faculty and will serve as president of South Hills Alumni Unit during the coming term.



Alumni News

Mrs. Agnes Douds Bulford was re-elected to the presidency of the Tourists Club of Pittsburgh.

Our new association president, Mrs. Florence Brewer Slep, has taught since the death of her husband in 1935 in the public schools of Altoona. She has been elected to the principalship of McKinley-Greenwood elementary school for the coming year and will supervise the work of fourteen teachers.

H. Virgil Grumbling, Assistant County Superintendent of Indiana County, has accepted a superintendency of Berlin-Brothers Valley and Stonycreek Township Schools in Somerset County. In May 1930 he received the B. S. degree from Indiana. From 1930 to 1932, Mr. Grumbling taught in the Pine Township schools, Indiana County, became principal of the high school in 1932, and was supervising principal from 1935 until December 1938, when he became assistant county superintendent of Indiana County. Mr. Grumbling married Mildred Seanor (1930). They have one child.

Clark E. Ray, principal of Plumville High School, was named Assistant County Superintendent of Indiana County. He attended Indiana State Normal School, University of Pittsburgh, did graduate work at Grove City College and Pennsylvania State College, and holds B. S. and Ed. M. degrees. Mr. Ray was principal of Armagh, Marion Center, and Plumville High Schools.

Carolyn Louman gave her fellow members of North Boroughs—

North Side Unit a most interesting account of her European trip, telling of the customs of the people, and her impressions of the political and social situations in the countries she visited, including Poland, Czechoslovakia and Italy.

Mrs. Alberta Luchsinger McKain journeyed to Jasper National Park, Banff, Lake Louise and other points of interest in Alberta, Canada, last summer.

Bertha Mensch, our Alumni "Globe Trotter" sailed July 6, 1939, with the National Education Association for a trip to South America.

It was pleasant to see Nancy Hine and Sara Gallaher of 1888 on their usual annual visit to Indiana on Alumni Day.

William St. Clair Campbell, 1876, and Cora Campbell, 1878, from New Florence attended Home-coming Day events.

Martha Gilchrist, 1912, is the wife of Dr. Frederick Fabian, Bacteriologist at Michigan State University, East Lansing. They have three children.

Maude Lardin Refior, 1912, also lives in Lansing. Her son Bob, a graduate of Michigan State, is now at the University of Michigan Law School.

Leonia M. Killen, 1913, formerly of Homer City, is married and living in New Berlin, New York, where her husband, the Reverend John MacCulloch, D. D., is minister of the First Baptist Church.

We extend our deep sympathy to Charlotte Rickabaugh Freas, 1897, whose husband, John S. Freas, well known by many alumni, passed away in their Akron, Ohio, home on May 20, 1939.

Jennie Munroe, 1913, editor of the Business and Professional Women's state publication "The Key" is also an officer in the Pittsburgh Branch of American Association of University Women.

Last spring Florence Wallace, 1912, acted as part time instructor in the College English Department. She has been actively interested in the Alumni Association, serving as Alumni representative on the Loan Committee. She is also a patroness of Alpha Sigma Alpha sorority. She is a graduate of Wellesley College and has received her Master's Degree from Columbia University. For several years after graduation from college, she taught English and social studies in the high schools of Pennsylvania. Recently her educational experience has been broadened by four years' work as Supervisor of Adult Education in Indiana County under the Federal program. Miss Wallace brings to her position an interesting and varied experience. For many years she has been in local and county club work as well as the leader of the county interdenominational youth activities. Before assuming her position in the federal educational program, Miss Wallace was a member of the Indiana County Emergency Relief Board. A past-president of the local branch of the American Association of University Women, she is now serving as vice-president of the Pennsylvania-Delaware Division of this organization.

Her travels have taken her to Europe, Asia Minor, Africa, and South America. Last summer she was a member of a traveling seminar through the New England States conducted by the Foundation of Religion and Labor, after which she attended the Summer Institute for Social Progress at Wellesley, Massachusetts.

Sara Smith, Indiana, will teach English and act as library assistant at Witherspoon College, a Presbyterian Mission school in the Kentucky Mountains at Buckhorn, Kentucky.

On May 22, 1939 Bernetta Steele Lohr became the mother of a son, George Lohr, Jr., in Pittsburgh.

Mr. and Mrs. Charles Lawton (Evelyn Underwood '25) are the proud parents of a young son.

Dorothy Gantner Rea, May Queen of 1922, has just completed a successful year at the helm of the South Hills Unit. As Mrs. Henry Rea, she is the mother of two fine little lads and is supervising the construction of her new home in Trotwood Acres, Mt. Lebanon.

Helen McMoran Shaw of Lincoln, Illinois, visited friends in Pittsburgh this spring. Her son and daughter are quite talented.

Robert Skelton, 1934, instructor in art in Woman's College, University of North Carolina, has had a painting accepted for exhibition in the New York World's Fair, one of eight hundred in the Contemporary Arts Building.

Brady Conrath, 1938, is located in Pittsburgh with the Standard Life Insurance Company, of America.

Dorothy Grove will supervise club activities, and Clarence Brown, 1937, will teach science in the new Andrew Mellon Junior High School, Mt. Lebanon, which will open in the fall.

Sally Lang, 1939, will supervise art in the new Baldwin Township, Allegheny County High School.

Mrs. H. Ward Ewalt (Jane Stewart) was the winner in the Joseph Horne's "Brides Contest" for planning and furnishing a bride's apartment.

Martha Mateer, 1922, of Dormont became the bride of Ray Smith of Brighton Place, Pittsburgh, on June 28.

Mr. and Mrs. E. D. Rushworth (C. Elizabeth Marshall) attended the University of Michigan summer classes following their marriage in June. They will live in Ligonier.

Genevieve Coleman, 1932, and Richard Floyd were married in Vandergrift Presbyterian Church, June 14, and are living in Indiana.

Gertrude McElhoes became Mrs. Joseph Huber at a home wedding, June 16.

Mr. and Mrs. Marvin Lowell Michall (Laura Elizabeth Moser) will be at home at 937 South Main Street, Wichita, Kansas.

Bernice Martha Ivory, Duquesne, and Lloyd Thomas Andrew were married June 5. They are attending summer classes at the University

of Michigan. Mr. Andrew is a member of the faculty of Carnegie Institute of Technology, Pittsburgh.

Miss Elizabeth Bennett, daughter of Mr. and Mrs. William Bennett of Second Street, Pitcairn, and Howard Smith, son of Mr. John Smith of Second Street, Pitcairn, were united in marriage at the bride's home on November twenty-third, 1938, by the Reverend J. R. Roberts, Pastor of the McGinnis Presbyterian Church. They were attended by Miss Ethel Craig and Mr. Robert Dolson. After their wedding they spent a southern honeymoon in North Carolina.

Miss Ethel Craig, daughter of Mrs. H. M. Craig of Robinson Street, Pitcairn, and Charles Himes of Second Street, Pitcairn, were united in marriage on March 4, 1939, in the McGinnis Presbyterian Church parsonage by the Reverend J. R. Roberts. They were attended by Elizabeth Bennett Smith and by Thomas Himes, a brother of the groom. After the ceremony, the couple left for a brief honeymoon at the Rod and Gun Club at Spruce Creek.

Public Works Director Frank M. Roessing, of Pittsburgh, and Mrs. Ethel Seavey Harvey, 1908, were married by Mayor Scully of Pittsburgh in his office, October 28, 1938.

Mr. and Mrs. Odell Sutton (Cecilia Ditch) both alumni of Indiana, are living in Lucerne, where Mr. Sutton is principal of the schools.

Helen Louise Duncan became the bride of Thomas Benner of Parkers Landing in Indiana, June 7, 1939. Mr. Benner is in the Vocational Department of the Arnold Schools.

The bridegroom's father, the Reverend S. J. Heath, read the service at the marriage of Wilma Hochberg, 1934-36, to S. James Heath, Jr., in the South Avenue Methodist Church, Wilksburg, on June 6. They will live in Verona.

Marion Louise Good and Robert Fiscus were married in the Indiana United Presbyterian Church, June 3, 1939.

The wedding of Mildred Evelyn Kissinger and Charles Albert Lore took place in the First Presbyterian Church of Indiana, Pennsylvania. They are both College Alumni.

Mildred M. Gress became Mrs. Paul Bonygne Cooley of Williamsport in St. Luke's Lutheran Church, Pleasant Unity, July 1, 1939.

Announcement has been made of the marriage of L. Verne Martin, 1912, to Wilburt S. McKee of Pittsburgh, September 5, 1938.

Phyllis Miller, 1938, was married at her Mt. Lebanon home to Frederick Fussner of Cleveland Heights, Ohio, on March 11, 1939.

Arlene Hoover and A. Bruce Smith were married Tuesday, September 20, 1938, in the First Presbyterian Church, Indiana, Pennsylvania. They are living at 27 East Bond Street, Corry.

On Thanksgiving Day, 1938, Dorothy Peron became the bride of Leonard L. Holt of Sagamore. They are both I. S. T. C. graduates and are at home on Fourth Street, Sagamore.

Mr. and Mrs. Charles E. Holt (Jean Eleanor Marlin of Clymer) are at home at 222 Fourth Street, Beaver.

Elizabeth Russell became Mrs. Wayne C. Hoffman on June 17, 1939, and is living in Bernardsville, New Jersey.

Ruth Pealer and Raymond Leonard Hess, Jr., were married in the First United Presbyterian Church, Indiana, Pennsylvania, June 30. They are at home in Emsworth.

Bernadine Pahel of Scottdale was married to George Lionel Miller of West Newton in a church wedding on July 12.



Necrology

Margaret J. Hutchinson, 1887, commercial teacher at Allegheny High School, June 2, 1939.

Mrs. Gertrude Cunningham Glover, 1893, 1895, died in Pittsburgh Hospital, May 26, 1939.

Tillman K. Saylor of the Class of 1895, City Solicitor of Johnstown for the past twenty-five years, died October 25, 1938.

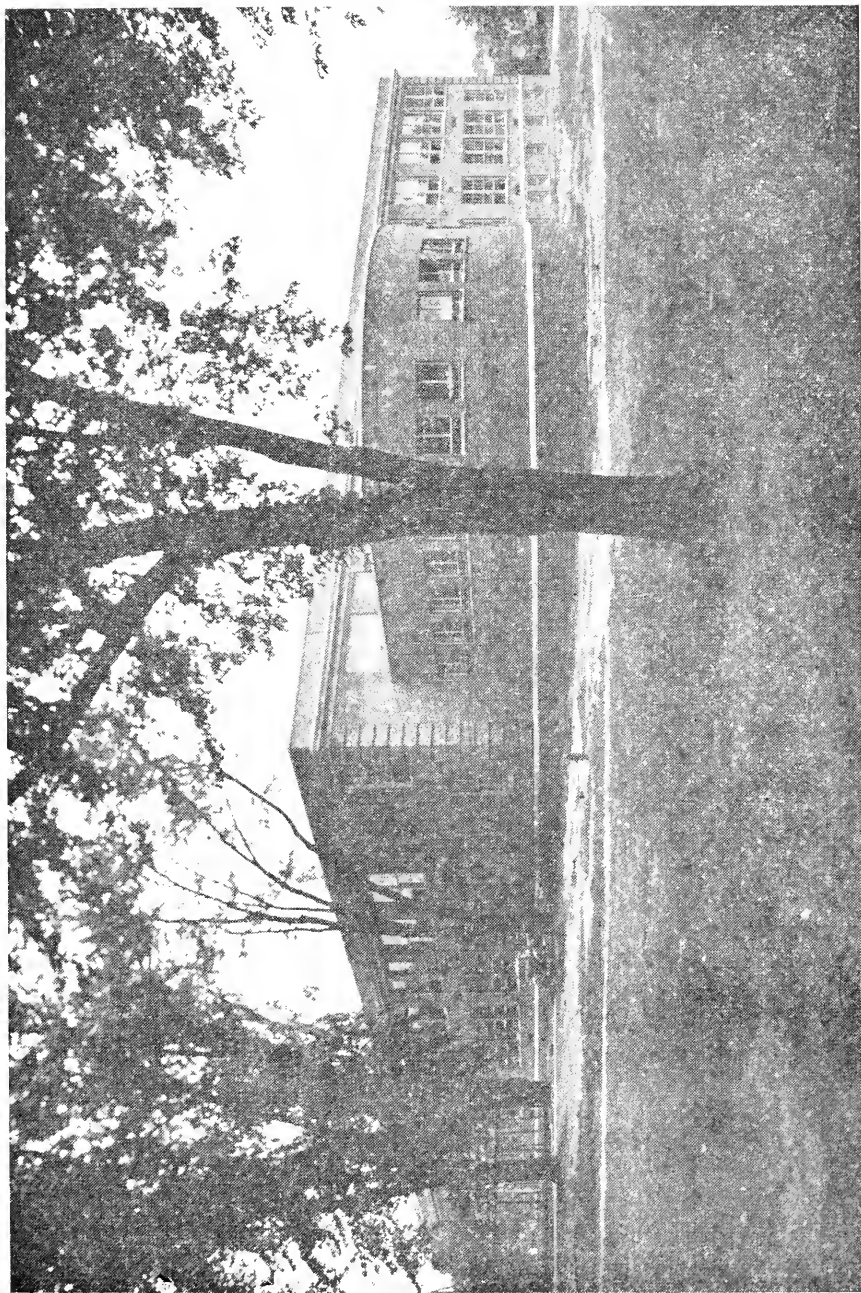
Robert Wiggins, 1909, Harrisburg, May 19, 1939.

Ann Ruffner Hysong, 1912, of Pitcairn, November, 1938.

Mrs. Olive Shaffer McCreary, 1935, twenty-four years of age, and Mrs. Ida Deaver Grove, both of Johnstown.

Genevieve Margaret Elrick, 1927, Blairsville, March 3, 1939.

Thelma E. Moorhead, President of the Indiana Music Club, passed away at her Indiana home March 24, 1939.



NEW LABORATORY AND DEMONSTRATION SCHOOL

Faculty Notes

Dr. Richard Madden resigned his position as director of student teaching to accept a position in State Teachers College, San Diego, California. Dr. Joseph M. Uhler, Head of the Education Department, was appointed Director of Teacher Education; he will also continue as Head of the Education Department. Mr. John E. Davis, Superintendent of Schools of Clymer, was appointed Director of the Laboratory School. He received his A. B. from Penn State and his M. A. from the University of Pittsburgh.

Mr. M. Lincoln Miller, a member of the Campus Laboratory School Staff, was granted a year's leave of absence to accept a teaching fellowship at Lincoln School, Columbia University. Mr. Conrad L. Smith, from the Irvona-Coalport High School, has been appointed to Mr. Miller's position for a period of one year. He received his A. B. and M. A. from The Pennsylvania State College.

Because of the growth of the college, several additional teachers have been appointed for the coming year. They are as follows:

Dr. Beatty H. Dimit will head the chemistry department. His educational experience: B. S., The Pennsylvania State College, M. S., University of Michigan; Ph. D., Columbia University. He had twelve years' experience in Normal School and College teaching, was research assistant of biological chemistry and taught in Columbia University and was editor for five years of the agricultural weekly section of the Beaver Daily Times.

Mrs. Thelma E. Lappen received her A. A. and B. S. at Stephens Junior College and her M. S. at Iowa State College. She teaches in the Home Economics Department.

Miss Helen Rose specializes in food dietetics in the Home Economics Department. She received her A. B. at Kansas University, was a student at the University of Chicago and comes here from Dayton, Ohio, where she supervised home economics and cafeterias in the public schools.

Miss Mabel Frances Shouse will teach shorthand. She received her B. S. at State Teachers College, Springfield, Missouri; M. A., New York University and has had nine years' teaching experience including a fellowship at New York University in 1938-1939.

Mr. Harold W. Thomas received his B. S. degree from Grove City College and his M. S. degree at the University of Pittsburgh and served for three years in the Sales Departments of the National Cash Register Company and the Jones & Laughlin Steel Corporation. He will teach special retail selling and salesmanship in general. As a new course Mr. Thomas will teach Distributive Education, upon certification by the United States Civil Service Commission under the George-Deen Act.

Mr. Robert W. Timmons, assistant football coach, received his B. S. and M. E. degrees at the University of Pittsburgh. He is a former star end of the University of Pittsburgh football team, having played as a member of the varsity under Dr. John B. Sutherland. In 1934 Mr. Timmons was placed on a number of All-America teams. It was during that year that Pitt defeated Notre Dame, Army, and a number of other leading elevens in the country, losing only to Minnesota. Since his graduation at Pitt, Mr. Timmons has served in two coaching positions. He was head coach at the Smithfield High School in Smithfield, Ohio, for two years. For the past three years, Mr. Timmons was athletic coach at New Brighton High School and produced winning teams. His 1937 football team won the Beaver Valley championship.

Miss Grace Houston, a member of the teaching staff of the Art Department, resigned her position. She was married in July to Mr. Francisco Biamonte. Mr. and Mrs. Biamonte spent their honeymoon in Europe but plan to make their home in Indiana, Pennsylvania.

Miss Jane McGrath and Miss Lillian McLean, after a years' leave of absence, have returned to the College.

Miss McLean did advanced work in Child Development at London University. She visited a great many schools and, as an American, found some very excellent work as well as some that was not so fine. England is doing remarkable work in the health of English children. One plan, which would have been completed in three years and will probably be disrupted by the war, was that every child in London was to be given one day a week during the whole year in the country. Miss McLean also took work in Speech at Miss Marjorie Gullan's School and received two certificates.



ENROLLMENT SEPTEMBER, 1939

The enrollment for the current semester is 1391. This a gain of 80 over the enrollment for September, 1938. They are distributed by departments as follows:

Elementary	321
Secondary	229
Art	73
Commerce	397
Home Economics	236
Music	135
	<hr/>
Total	1391

Degree Graduates

CLASS OF 1939

ART

Allshouse, Grace	Shelocta,	Pa.
Atkins, Geraldine Sara375 Shirls Avenue	Washington,	Pa.
Davis, Norman Edmund	Dixonville,	Pa.
Finch, Mardella Ruth2671 Ammon Street	Pittsburgh,	Pa.
Kramer, Katherine Alma712 Thirteenth Avenue	Munhall,	Pa.
Lang, Sara Emma2821 Voelkel Avenue, Dormont,	Pgh.,	Pa.
O'Hara, Anne Margaret1833 Funston Street	Pittsburgh,	Pa.
Pantall, Lillian HeleneBox 269	Rossifer,	Pa.
Wood, Barbara3016 North Second Street,	Harrisburg,	Pa.

BUSINESS EDUCATION

Abele, Joseph Romanus707 Chestnut Street	Johnstown,	Pa.
Albison, George Edward Jr.	Graceton,	Pa.
Anderson, Charles RobertR. D. 5	Indiana,	Pa.
Averill, Kathryn Louise111 Jenks Avenue	Punxsutawney,	Pa.
Beachy, Dixie Alberta	Spring,	Pa.
Buhite, EvelynPark Street	Sykesville,	Pa.
Burkhart, Agnes Cecilia	Aiverda,	Pa.
Clark, Virginia Margaretta531 Roup Street	Tarentum,	Pa.
Cole, Hazel Eileen62 South Richhill Street,	Waynesburg,	Pa.
Dalley, John FrancisBox 87	Hastings,	Pa.
Davis, Jean Williams400 South Market St.	Mechanicsburg,	Pa.
Davis, William Ashley	McIntyre,	Pa.
DeSantis, DoloresState Street	Dayton,	Pa.
Ebner, Kathryn Elizabeth	Oakmont,	Pa.
Elbel, Melvin Park243 Olive Street	Indiana,	Pa.
Fogle, Helen RuthMaple Street	Pleasantville,	Pa.
Geisbert, Charlotte La-Verne307 North Street	Meyersdale,	Pa.
Gilbert, Jane Louise907 Jefferson Avenue	Tyrone,	Pa.
Gravelle, John William501 Stewart Street	Turtle Creek,	Pa.
Griffith, Lillian Lorraine201 Ridge Avenue	Curwensville,	Pa.
Handler, Mary Riva429 East Water Street	Indiana,	Pa.
Henry, Ethel Adelaide417 South Pennsylvania Ave.,	Apollo,	Pa.
Howe, Mildred Josephine843 Maple Street	Indiana,	Pa.
Jones, John Freas1019 Philadelphia Street	Indiana,	Pa.
Kirelavage, Albina Alice65 North Lehigh Avenue,	Tracyville,	Pa.
Kuhn, Elfrida Grace340 Kenny Street	Pitcairn,	Pa.
McGinnis, Cornelia Arlouine	Genesee,	Pa.
McMinn, Loretta Bane53 West Franklin St.,	Waynesburg,	Pa.
Marcus, Sylvia Belle300 North Fifth Street	Indiana,	Pa.
Miller, Myrtle Mae209 Onondaga Avenue	Warren,	Pa.
Mitchell, Isobel Pearl131 Park Avenue	New Castle,	Pa.
Munger, Alice EmilySouth Washington Street,	North East,	Pa.
Pezutti, Helen Roberta	Kent,	Pa.
Reed, Thomas Russell613 Jackson Street	Reynoldsville,	Pa.
Reynolds, Robert Powers333 West Walnut Street	Titusville,	Pa.
Robertson, Lucille Mary902 Main Street	Reynoldsville,	Pa.
Romeo, Rocco Samuel37 South Eleventh Street	Indiana,	Pa.
Roth, Ralph RoydenR. D. 3	Blairsville,	Pa.
Rura, Gustie EdwardR. D. 3, Box 62	Homer City,	Pa.
Seifert, Richard Francis666 Grove Avenue	Johnstown,	Pa.
Slick, Charles William	Osterburg,	Pa.
Smith, Edna Mae2415 German Street	Erie,	Pa.
Trunzo, Elizabeth FlorenceMiller Avenue	Homer City,	Pa.
Weamer, Raymond Pfeiffer259 North Seventh Street,	Indiana,	Pa.
Wherry, Chauncey Harold308 Utopia Street	Derry,	Pa.
Williams, Harry EdgarR. D. 2	Clymer,	Pa.
Wright, Harriet Madeline309 Ridgewood Ave.,	West View, Pgh.,	Pa.
Zanzucki, Albert Anthony890 Second Street	Nanty-Glo,	Pa.

HOME ECONOMICS

Beattie, Joanna Hartley363 Pennsylvania Avenue,	Oakmont,	Pa.
Boarts, Josephine LaRue	NuMine,	Pa.
Bodendorfer, Wilhelmina K.715 Young Street	New Castle,	Pa.
Branthaver, Margaret Ione	Mercersburg,	Pa.
Byers, Betty Ethel51 Ridge Avenue	Homer City,	Pa.
Davis, Betty JaneState Street	Curwensville,	Pa.
Faust, Beatrice Althea1957 Chestnut Street	Harrisburg,	Pa.

Grinder, Pauline Elizabeth	Putneyville,	Pa.
Henderson, Marion Russell	609 Ivy Street	Pittsburgh,	Pa.
Holt, Catherine Elizabeth	Main Street	Marion Center,	Pa.
Horner, Eleanore Lee	113 East Street	New Castle,	Pa.
Kebe, Margaret Frances	R. D. 2	Coraopolis,	Pa.
Kensinger, Martha Jean	Star Junction,	Pa.
Laine, Priscilla Katherine	175 Glenn Street	Johnstown,	Pa.
Lauffer, Vera Irene	R. D. 2	Jeannette,	Pa.
Mason, Ruth Emma	15 College Avenue	Greenville,	Pa.
Sanner, Ruth Lynn	347 Lincoln Street	Johnstown,	Pa.
Swayne, Janet Elizabeth	615 Maplewood Avenue	Ambridge,	Pa.
Tiffany, Beryl Elizabeth	471 North Street	Meadville,	Pa.
Uhler, Ruth Naomi	636 Wayne Avenue	Indiana,	Pa.
Weikert, Beulah Miriam	228 Oakview Avenue	Edgewood,	Pa.
Whitacre, Garnett Lorraine	Dayton,	Pa.
Wonder, Vieva LaVerne	751 McMillen Street	Johnstown,	Pa.

INTERMEDIATE

Anderson, Ingrid Sophia	1271 Brinton Rd.	Forest Hills, Pgh.,	Pa.
Bayer, Eliza Virginia	Louisburg,	Pa.
Birolo, Mary Margaret	419 South Fifth Street	Jeannette,	Pa.
Black, Mildred Ophia	R. D. 3	Altoona,	Pa.
Cipra, Anna Josephine	Irwin,	Pa.
Courson, Ethel Mae	206 Hancock Avenue	Vandergrift,	Pa.
Dobson, Dorothy Irvine	Sykesville,	Pa.
Evans, Ruth Marjorie	R. D. 4	Indiana,	Pa.
Foster, Mary Jane	2622 West Chestnut Avenue	Altoona,	Pa.
Harvey, Betty Ruth	511 Fifth Street	Clearfield,	Pa.
Holman, Angie Jeanne	123 Meade Ave.	Bellevue, Pittsburgh,	Pa.
Johns, Virginia Ruth	1236 Franklin Avenue	Wilkinsburg,	Pa.
Korb, Mae Anna	R. D. 1, Box 81	Grampian,	Pa.
McAfee, Edna Lorena	Rennerdale,	Pa.
McAfee, Esther Loretta	Rennerdale,	Pa.
McCutcheon, Alma Mae	314 Hancock Avenue	Vandergrift,	Pa.
Miller, Anna Louise	1470 Philadelphia Street	Indiana,	Pa.
Moore, Dorothy Pearl	757 Seventh Street	Colver,	Pa.
Rihn, Mary Pauline	524 Berkshire Avenue	Pittsburgh,	Pa.
Shearin, Ruth Elizabeth	Point Marion,	Pa.
Siverd, Olive Marie	Commodore,	Pa.
Sorber, Jane Anne	1317 Westfield Street	Pittsburgh,	Pa.
Trey, Frances Gertrude	305 West Pine Street	Clearfield,	Pa.
Watt, Olive Margaret	R. D. 1	Jeannette,	Pa.
Yount, Doris Lucretia	122 East Madison Ave.	Vandergrift,	Pa.

KINDERGARTEN—PRIMARY

Aceee, Lillie	626 Fourth Avenue	Freedom,	Pa.	
Beechey, Elizabeth	1050 Chestnut Street	Nanty-Glo,	Pa.	
Beechey, Mildred Margaret	Sixth Street	Clymer,	Pa.	
Blose, Melzema Belle	1079 School Street	Indiana,	Pa.	
Boyd, Nancy Isabell	Black Rock Farm,	R. D. 1, Phoenixville,	Pa.	
Campbell, Anne Bauersmith	1237 Pennsylvania Avenue	Oakmont,	Pa.	
Cox, Ruth Mabel	138 North Ninth Street	Indiana,	Pa.	
Cratty, Caroline Fritsch	25 White Avenue	Crafton,	Pa.	
Dorsey, June Marie	2808 Versailles Avenue	McKeesport,	Pa.	
Ferrarotti, Jenny Mary	246 Wallace Avenue	Leechburg,	Pa.	
Glassford, Helen Katharine	1249 West Church Street	Indiana,	Pa.	
Hoke, Helen Katherine	311 North Fourth Street	Newport,	Pa.	
Javens, Elizabeth List	493 Adams Street	Rochester,	Pa.	
Johnston, Margaret Elizabeth	632 Beverly Rd.	Mt. Lebanon, Pgh.,	Pa.	
Jones, Rachael	1019 Philadelphia Street	Indiana,	Pa.	
Lemon, Helen Virginia	450 Greensburg Ave.	E. McKeesport,	Pa.	
Lena, Theresa Rose	Box 106	New Derry,	Pa.	
Little, Mrs. Mae Anna Kearney	342 Wood Avenue	Johnstown,	Pa.	
Lloyd, Mary Katharine	Hastings,	Pa.	
MacKeen, Mary Katherine	15 West Church Street	Uniontown,	Pa.	
Martinehl, Emma Corinne	695 Lenox Ave.	Forest Hills, Pgh.,	Pa.	
Pardoe, Ruth Elizabeth	832 Franklin Street	Johnstown,	Pa.	
Schlabilg, Ella Blanche	259 Melwood Street	Pittsburgh,	Pa.	
Sexauer, Julia Frances	501 Fourth Street	Bradock,	Pa.	
Stahl, Lucy Mahala	South Railroad Street	Manor,	Pa.
Tuttle, Marion Jane	401 West Front Street	Oil City,	Pa.	
Wallace, Esther Elizabeth	428 Oakland Avenue	Greensburg,	Pa.	
Weaver, Marion Frances	1235 Fourth Avenue	Ford City,	Pa.	

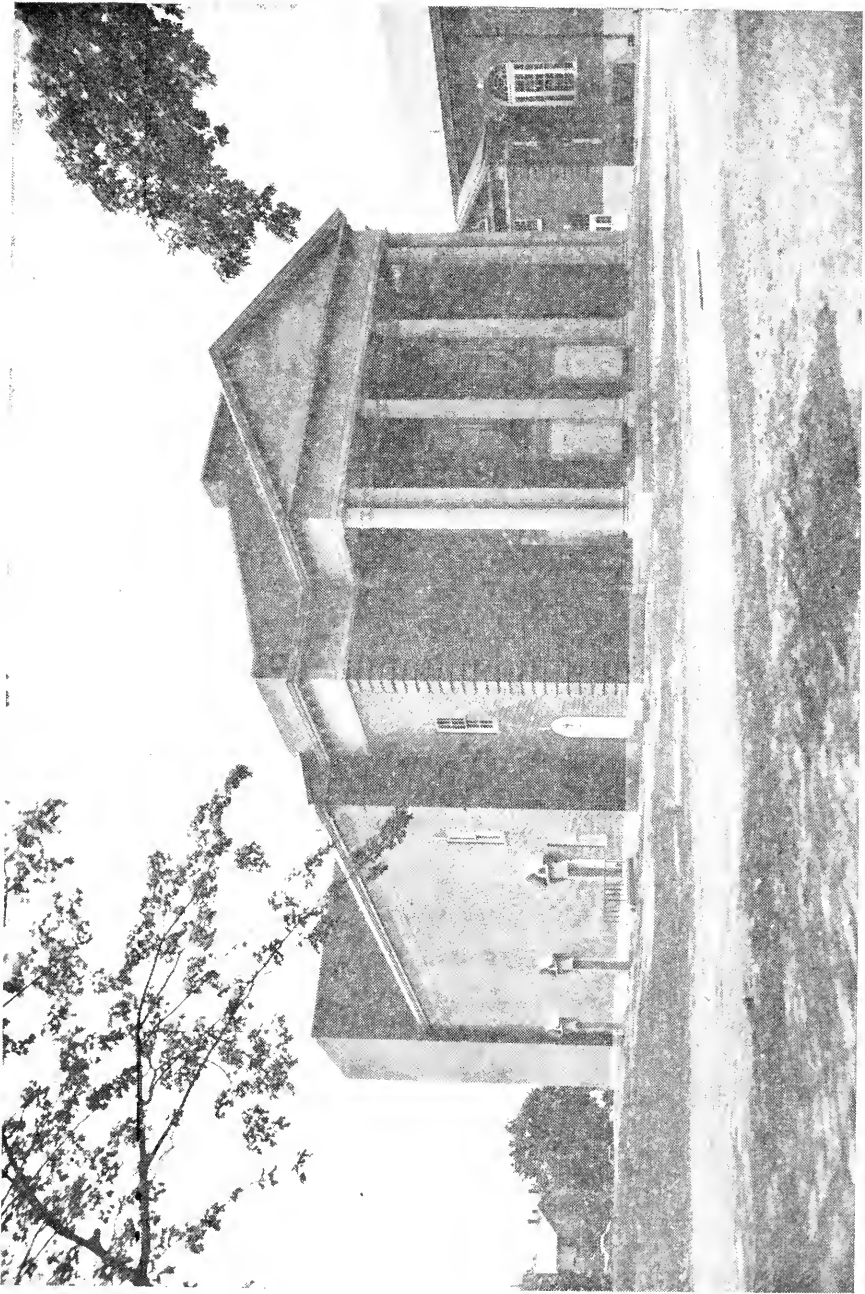
MUSIC

Anderson, Elizabeth Condron	R. D. 2	Rochester Mills,	Pa.
Astor, Franklin Oscar	1727 Woodmont Ave.	New Kensington,	Pa.

Cardellino, Robert Charles	303	Stewart Street	Blairsville,	Pa.
Coates, Frances Mildred	18	Oak Street	Towanda,	Pa.
Ewing, Virginia Fairman	439	Water Street	Indiana,	Pa.
Gipe, Ida Maralee		California Avenue,	Mercersburg,	Pa.
Gittings, Raymond Ward	309	South Cherry Street,	Ebensburg,	Pa.
Hess, Eleanor Kathryn	216	Blaine Street	Johnstown,	Pa.
Irey, Janet	109	Church Street	Danville,	Pa.
Johnston, Marjorie Edith	317	Fourth Street	Phillipsburg,	Pa.
Kanoble, Betty Mae	202	Thirteenth Street	Indiana,	Pa.
Kitto, William James	824	Fern Place	Johnstown,	Pa.
Koontz, Enid Lucile	146	Tillman Avenue	Johnstown,	Pa.
McGregor, Dorothy Jane	1104	Twenty-second Avenue	Altoona,	Pa.
Magill, Elizabeth Alma	546	Fourth Street	Pitcairn,	Pa.
Mottey, Frances Josephine		Morris Street	Clymer,	Pa.
Munn, Ross Leslie	32	Greenhill Road,	Millvale,	Pa.
Renton, Elizabeth Annette	110	Oakview Ave.,	Edgewood, Pgh.,	Pa.
Salovich, Mary Donna	1902	Church Street	Johnstown,	Pa.
Sauers, Mary Leona	257	Laurel Avenue	Johnstown,	Pa.
Sell, Kenneth Mack	305	Depot Street	Youngwood,	Pa.
Singer, Chester Jerome	251	Second Street	Colver,	Pa.
Steele, William Monroe	216	Morewood Avenue	Blairsville,	Pa.
Weyant, Erlamond Anne	210	Sumner Street	Cresson,	Pa.
Younkin, Margaret Elizabeth	222	Salisbury Street,	Meyersdale,	Pa.

SECONDARY EDUCATION

Auld, Floyd William	99	Juniper Street	Homer City,	Pa.
Bell, Thelma Irene			Creekside,	Pa.
Blank, Francis Eugene			Big Run,	Pa.
Boyd, Richard Gnagey		Stoystown Road	Somerset,	Pa.
Brassfield, Eileen May	308	South Seventh Street	Indiana,	Pa.
Carson, Morris Emerson			Rossiter,	Pa.
Caroff, Wayne John			Beaverdale,	Pa.
Chapman, Clarence Joseph			Beaverdale,	Pa.
Chesnutt, Ray Miller		Colwell Arnold Building	Kittanning,	Pa.
Dotto, Anthony James			Flinton,	Pa.
Esch, Hazel Aeken	399	South Sixth Street	Indiana,	Pa.
Fitzpatrick, Mary Louise	319	Haynes Street	Johnstown,	Pa.
Forslia, William Donald	162	West Chestnut Street,	Blairsville,	Pa.
Fu'erton, Gurney Roe			Clymer,	Pa.
Gendich, Stephen Michael	121	North Third Street	Jeanette,	Pa.
Gilmore, Sarah Letitia	228	Lobinger Avenue,	North Braddock,	Pa.
Golish, Stephen Joseph			Commodore,	Pa.
Goodman, Betty Jane	712	Broadway	Altoona,	Pa.
Graffius, Mrs. Nan Pearl	420	Ridge Avenue	Punxsutawney,	Pa.
Gross, Harold Benjamin	127	Helen Street	Johnstown,	Pa.
Guthrie, Margaret Hamilton	1251	Washington Street	Indiana,	Pa.
Herrick, George	433	South Main Street,	Punxsutawney,	Pa.
Hart, Theresa Mae		Morris Street	Clymer,	Pa.
Helsel, Howard Lewis			Holsopple,	Pa.
Hensel, Robert Penn		Box 224	Hickory,	Pa.
Jobe, Roberta	298	Station Avenue	Indiana,	Pa.
Keough, John Ellsworth	115	West Fourth Avenue	Derry,	Pa.
Kinter, Lynn Stewart		R. D. 1	Marion Center,	Pa.
Krouse, Stephen George		Box 134	Beaverdale,	Pa.
Leonard, Blair Thomas		Chestnut Street	Barnesboro,	Pa.
Long, Esco Charles	899	Wagner Street	Nanty-Glo,	Pa.
McQuown, Andrew Bellis			Mahaffey,	Pa.
Mancuso, Grace Marie		Box 231	Hastings,	Pa.
Matejczyk, Blair Julius		West Branch	Barnesboro,	Pa.
Matejczyk, Stanley Andrew		West Branch	Barnesboro,	Pa.
Nemec, Frank		Main Street	Universal,	Pa.
Overdorff, Mrs. D. Helen Clawson			Heshbon,	Pa.
Phillips, Bette Mae			Joffre,	Pa.
Plesniak, Angela Rachelle	2000	Luray Avenue	McKeesport,	Pa.
Powell, Frances Marie	136	Madison Avenue	Brookville,	Pa.
Repine, Helen Margaret	171	Burrell Street	Blairsville,	Pa.
Roberts, Lucetta Jean		Box 775	Ford City,	Pa.
St. Clair, Ada Elizabeth	935	Philadelphia Street	Indiana,	Pa.
Shaffer, Ella Elizabeth	242	Clymer Avenue	Indiana,	Pa.
Shirley, Elsie Louise		R. D. 3	Shelocta,	Pa.
Smith, Sara Elizabeth	245	South Seventh Street	Indiana,	Pa.
Sutilla, Joseph		Box 123	Alverda,	Pa.
Waugaman, Lois Melba	1211	Water Street	Indiana,	Pa.
White, Elzie Mitchell			Templeton,	Pa.
Winsheimer, Frank Roy		R. D. 5	Indiana,	Pa.
Wohler, Charles Russell		R. D. 1	Indiana,	Pa.
Zeitler, Vernon Arthur	700	Wayne Avenue	Indiana,	Pa.



NEW AUDITORIUM

Alumni Who Returned for Commencement

CLASS OF 1879

Woods, Margaret E. (Mrs. M. D. Heath) 113 Palm Ave., Baldwin Park, Calif.

CLASS OF 1884

Bothell, Clara E. R. D. 2, Box 76, Indiana, Pa.

CLASS OF 1885

Given, Annie F. 414 S. 11th St., Indiana, Pa.

CLASS OF 1888

Gallaher, Sarah M. Hallecon Place, Ebensburg, Pa.

Hine, Nancy Saltsburg, Pa.

CLASS OF 1889

Allen, Janney (Mrs. T. A. Keft) R. D. 1, Box 87, Lutz, Florida

Hill, Margaret B. (Mrs. J. E. Boyd) 233 Fifth St., Aspinwall, Pa.

Johnston, Joseph E. Dr. 5550 Dunmoyle St., Pittsburgh, Pa.

CLASS OF 1891

Gallaher, Sue B. (Mrs. W. I. Dowler) Ebensburg, Pa.

Urey, John M. 412 Cherry St., Clearfield, Pa.

CLASS OF 1892

Gessler, Carrie M. 834 Philadelphia St., Indiana, Pa.

CLASS OF 1893

Stewart, Hope Eighth St., Indiana, Pa.

CLASS OF 1894

Shaw, Margaret (Mrs. W. A. Forrester) ... 1308 Wood St., Wilksburg, Pa.

Thompson, Kathryn (Mrs. D. J. Marshall) 520 S. Almont Ave., Inlay City,
Michigan

CLASS OF 1895

Thompson, Rue (Mrs. J. C. Bair) 430 Edgewood Ave., Trafford, Pa.

Weaver, Flora J. (Mrs. H. B. Irwin) No Address

CLASS OF 1897

Lacock, Georgia (Mrs. G. M. Griffiths) 2143 Perrysville Ave., N. S., Pgh. Pa.

CLASS OF 1899

Allston, Carrie (Mrs. Thomas E. Mallisee) R. D. 3, New Kensington, Pa.

Brown, William C. 415 Hollister Bldg., Lansing, Mich.

Chapman, Wallace C. 1012 Washington St., Indiana, Pa.

Craig, Birdie Hotel Henry, Pittsburgh, Pa.

Crawford, N. Jean (Mrs. W. H. Mateer) 619 N. McKean St., Butler, Pa.

Cresse, Blanche (Mrs. J. M. Watson) Camp Meeting Road, Leetsdale, Pa.

Engle, Mabel R. R. D. 1, Box 93, Renton, Washington

Hanna, Belle A. 2854 Perrysville Ave., N. S., Pittsburgh, Pa.

Hanson, Carolyn (Mrs. J. D. Martz) R. D. Greensburg, Pa.

Hutton, Argie B. (Mrs. M. E. McLaughlin) .. 29 Fairview Ave., Niles, Ohio

Kaufman, Hattie 5257 1-2 Forbes St., Squirrel Hill, Pittsburgh, Pa.

Kohen, Anna G. (Mrs. C. N. Carten) 400 S. Linden Ave., E. E. Pgh., Pa.

Leavitt, Ruby E. (Mrs. J. C. Shaffer) 111 McColly St., Ligonier, Pa.

Lorditch, H. Andrew 110 Liberty St., Oakland, Md.

Martz, John D. R. D. 4, Greensburg, Pa.

McCune, Grace (Mrs. J. A. Caughex) 1714 Coursin St., McKeesport, Pa.

Morgan, Edith M. (Mrs. C. C. Dornbush) 551 Highland Place, Bellevue, Pa.

Newman, Margaret L. 102 Crafton Ave., Crafton, Pa.

Prothero, H. New, Dr. 109-111 Magee Ave., Jeannette, Pa.

Russell, Margaret S. 1418 Versaille Ave., McKeesport, Pa.

Shultz, E. Grace (Mrs. S. H. Kuhn) 51 Division St., Crafton, Pa.

Shrader, J. Calvin 571 E. End Ave., Pittsburgh, Pa.

Steinrod, Maude (Mrs. E. F. Shaulis) ... 999 Oakland Ave., Indiana, Pa.

CLASS OF 1901

Simpson, Elbert T., Dr. 520 N. Main St., Butler, Pa.

CLASS OF 1902

Douds, Agnes (Mrs. Daniel N. Bulford) 100 E. North Ave., N. S., Pgh., Pa.

Horton, Frank 445 S. Seventh St., Indiana, Pa.

CLASS OF 1903

Barr, Anna M. (Mrs. R. O. Pinkerton) 227 Summit Ave., Bellevue, Pgh., Pa.

Maxwell, Nelle P. 990 Trenton Ave., Wilksburg, Pa.

Shrader, Mrs. J. C. 571 E. End Avenue, Pittsburgh, Pa.

CLASS OF 1904

Ankeny, Elda A. (Mrs. L. Adams) 101 Beacon St., Southmont, Johnstown, Pa.
 Brown, Edith O. (Mrs. H. W. Browne) 281 Beaver Rd., Emsworth, Pa.
 Hudson, Nellie E. 18 S. Euclid Ave., Bellevue, Pa.
 Jack, Ida M. (Mrs. C. D. Smith) 2111 Delaware Ave., Swissvale, Pa.
 Lewis, Carolina C. (Mrs. G. F. Kolley) 2521 Beale Avenue, Altoona, Pa.
 Price, Pearl E. 5701 Rural St., Pittsburgh, Pa.
 Wyman, Mary E. 545 McClintock Ave., N. S. Pgh., Pa.

CLASS OF 1906

Allison, Isabel (Mrs. Wm. Neel) 2847 Voelkel Ave., Dormont, Pa.
 Mensch, Bertha A. 1209 Pemberton St., N. S., Pittsburgh, Pa.

CLASS OF 1909

Bossart, Virginia R. 3794 Berkeley Rd., Cleveland Heights, Ohio
 Duncan, Alice M. (Mrs. S. F. Montgomery) 711 Whitney Ave., Wilkiesburg, Pa.
 Hamilton, Ethel 7611 Tuscarora St., Pittsburgh, Pa.
 Hasinger, Margaret (Mrs. Elmer Flowers) Wayne Avenue, Indiana, Pa.
 Hazlett, Mabel A. Springdale, Pa.
 Kaiser, Anna Christine (Mrs. Emor Garwood) 3977 Texas Av., S.H.B., Pgh. Pa.
 Klages, Anna F. (Mrs. Chas. Vogel) 4041 Grizella St., N. S., Pittsburgh, Pa.
 MacQueen, Emma F. 715 Broad St., Sewickley, Pa.
 Martin, Margaretta M. 4614 Fifth Ave., Apt. 912, E. E. Pgh., Pa.
 Sutton, Helen W. (Mrs. W. H. Wood) 537 Chestnut St., Indiana, Pa.
 Wedd, Hazel A. 2200 Broadway Ave., Pittsburgh, Pa.

CLASS OF 1910

Kimmell, Mildred (Mrs. J. W. Warner) 44 N. Seventh St., Indiana, Pa.

CLASS OF 1911

Bossart, Ruth M. (Mrs. L. B. Beerbower) New Salem, Pa.
 Campbell, Agnes (Mrs. E. B. Race) South Third St., Indiana, Pa.
 (Also 1908)
 Campbell, Lula M. (Mrs. S. H. Shirley) Sheleeta, Pa.
 Houser, Nannie (Mrs. R. H. Thompson) 500 Water St., Lock Haven, Pa.
 Monteith, Grace (Mrs. W. P. Dismore) Hellwood, Pa.
 Zehner, Nora (Mrs. W. Ray Smith) ... 20 S. Thirteenth St., Indiana, Pa.

CLASS OF 1912

Brennan, Helen M. 952 Negley Ave., Pittsburgh, Pa.
 Grable, Frances (Mrs. John Herman) 134 W. Pittsburgh St., Greensburg, Pa.
 Habermen, Katharine 717 Maplewood Ave., Anbridze, Pa.
 Houston, Nelle (Mrs. Chas. Nippes) Black Lick, Pa.
 Lacock, Jean K. 2111 Perrysville Ave., N. S. Pittsburgh, Pa.
 O'Neil, Ruth (Mrs. E. S. Bracken) 1717 Union Ave., McKeesport, Pa.
 Ramsay, Adelaide (Mrs. J. P. Clarke, Jr.) 54 W. Shady Dr., Mt. Lebanon, Pgh. Pa.
 Stoner, Ola (Mrs. Morris N. Pigman) 719 Walnut St., Mt. Pleasant, Pa.

CLASS OF 1913

Luchsinger, Alberta (Mrs. J. S. McKain) Perrysville Rd., Pittsburgh, Pa.

CLASS OF 1914

Applegate, Florence 1911 Flagler St., McKeesport, Pa.
 Bailey, Kathleen (Mrs. James R. Foush) 226 Mitinger Ave., Greensburg, Pa.
 Bell, Jane (Mrs. J. B. Plotner) 2804 Crosby Ave., Dormont, Pa.
 Bost, Charissa M. (Mrs. Nichol R. D. I. Brierly Hts. Homestead, Pa.
 Dickie, Besse (Mrs. J. A. Mehan) Brush Valley, Pa.
 Gorman, Lorene 439 Forest Ave., Bellevue, Pittsburgh, Pa.
 Hallam, Florence (Mrs. Robert Reed) 412 Leonard Ave., Washington, Pa.
 Kennedy, Penelope 102 Church St., Brookville, Pa.
 Lantz, Vera (Mrs. H. H. Beacham) 801 56th St., Altoona, Pa.
 Mann, Pearl (Mrs. Harry E. Crossman) 204 N. Penn St., Punxsutawney, Pa.
 Snyder, Jennie (Mrs. W. J. Menk) 4122 Murray Ave., Pittsburgh, Pa.
 Stoner, Rachel (Mrs. Frank E. Walker) 741 Main St., Mt. Pleasant, Pa.
 Stonesipher, Florence 419 Weldon St., Latrobe, Pa.
 Strickler, Helen Box 362, Scottdale, Pa.
 Young, Florence 19 Cedar St., Warren, Pa.
 Zelt, Daisy E. 108 E. Hallam Ave., Washington, Pa.

CLASS OF 1915

Fleck, Frieda 725 School St., Indiana, Pa.
 Giammartini, Adele (Mrs. Carl Bauer, Jr.) 3827 Brighton Rd., N.S., Pgh., Pa.
 Repine, Helen 171 Burrell St., Blairsville, Pa.

CLASS OF 1916

Klages, Henrietta 1451 Benton Ave., N. S., Pittsburgh, Pa.
 Rigg, Ethel No Address

CLASS OF 1917

Bonney, Betty (Mrs. C. J. Rodgers) 912 Blvd., Juniata, Altoona, Pa.
 Finley, Alice (Mrs. Geo. Lindsay) Box 37, Hellwood, Pa.
 Fleck, Marion E. 419 Fifth Ave., Altoona, Pa.
 Travis, Linda (Mrs. J. Norris) 648 Third St., Pitscairn, Pa.
 Wagner, Flossie B. (Mrs. Sanford) R. D. 1, Verona, Pa.

CLASS OF 1918

Acree, Lillian 626 Fourth Ave., Freedom, Pa.
 Barker, Elizabeth (Mrs. A. L. Rees) 59 S. Euclid Ave., Bellevue, Pa.
 Borland, Anna (Mrs. Edwin I. Black) R. F. D. Greensburg, Pa.
 Brewer, Florence (Mrs. Harry E. Slep) 3303 Broad Ave., Altoona, Pa.
 Errett, Mabel (Mrs. Covode Pringle) 25 Lakemont Dr., Mt. Leb'n., Pgh. Pa.
 Esch, Hazel A. 399 S. Sixth St., Indiana, Pa.
 Getty, Mae (Mrs. H. E. Rutledge) 1214 Wisconsin Ave., Dormont, Pgh., Pa.
 Highlands, Kathrynne 242 N. Ninth St., Indiana, Pa.
 Houser, Mildred (Mrs. Metzger) No Address
 Keck, Cecile 1008 Sherman Ave., Duquesne, Pa.
 McCune, Elizabeth (Mrs. Ray. P. McClure) 119 W. Hutchinson Ave., Edgewood, Pa.
 Penny, Sara (Mrs. Arthur Duff) 1603 Union Ave., McKeesport, Pa.
 Scott, Marie (Mrs. P. A. Murray) .. 5801 Wellesley Ave., Pittsburgh, Pa.
 Shoemaker, Helen B. 1118 Water St., Indiana, Pa.
 Ulu, Corinne (Mrs. J. C. Kerr) 1670 Pawcett Ave., McKeesport, Pa.

CLASS OF 1919

Adams, May Bell (Mrs. May Bell John) 980 Morgan St., Brackenridge, Pa.
 Anderson, Edith L. Manor, Pa.
 Bendle, Elsie L. (Mrs. Rowland G. Davis) 411 Marion St., Ebensburg, Pa.
 Black, Anna Virginia (Mrs. Clarence Shuster) ... R. D. 1, Jeannette, Pa.
 Bley, Zaida M. (Mrs. Clair Weaver) 335 Oak St., Indiana, Pa.
 Burns, Anna R. 845 Luzerne St., Johnstown, Pa.
 Bushyager, Annetta M. (Mrs. E. C. Droutz) 418 N. Third St., Jeannette, Pa.
 Buttmore, Helen D. (Mrs. Blair Peterman) 1634 Laketon Rd., Wilkinsburg, Pa.
 Campbell, Sara B. (Mrs. Robert A. St. Clair) 1001 Phila. St., Indiana, Pa.
 Carlson, Emma L. 102 W. Spruce St., Titusville, Pa.
 Carson, Mary E. Box 445, Saltsburg, Pa.
 Conyns, Marie E. 423 Ross Ave., Wilkinsburg, Pa.
 Cornely, Elizabeth B. (Mrs. Paul D. Shaub) Shrewsbury, Pa.
 Crebs, Maude M. 232 N. Brady St., DuBois, Pa.
 Crist, Mary E. 1204 19th Ave., Altoona, Pa.
 Cummings, Forrest A. (Mrs. Chas. W. Ferguson) ... 220 S. Stewart St., Blairsville, Pa.
 Debor, Mary M. 1038 Third St., Brackenridge, Pa.
 Dobson, Nelle M. (Mrs. Chaplin) 312 Daisy St., Clearfield, Pa.
 Hall, Florence J. (Mrs. Jack J. Felt) 2137 S. 58th Ave., Cicero, Illinois
 Hart, Mary L. Blairsville, Pa.
 Hill, Dorothy E. (Mrs. H. Newell Connor) R. D. 1, Jeannette, Pa.
 Hindman, Amy J. (Mrs. T. C. Wadding) 961 Ninth Ave., Brackenridge, Pa.
 Hull, Kathryn L. (Mrs. Ralph H. Patterson) 1021 W. Clay St., Lancaster, Pa.
 Hunter, Elizabeth F. (Mrs. Shornhurst) 424 Jefferson Ave., Bellevue, Pa.
 Johnston, Ernest M. Ebensburg, Pa.
 Lafferty, Sarah E. (Mrs. A. D. Buck) 1203 McNeilly Ave., Dormont, Pgh., Pa.
 Lauderbaugh, Minnie B. (Mrs. L. T. White) 105 Miller Ave., Clairton, Pa.
 Leacock, Kathleen E. Jefferson St., Baden, Pa.
 Lee, Eleanor Charlotte 721 Elm St., Youngstown, Ohio
 Leppold, Clara L. 612 High St., Freeport, Pa.
 MacPhee, Sara G. 62 Kennawr Ave., Rankin, Pa.
 Massy, Elsie F. (Mrs. Elsie Utner) 6419 Kentucky Ave., E. E., Pgh., Pa.
 Mayo, Margaret V. 406 Fourth St., Duquesne, Pa.
 Mulholland, Marguerite E. (Mrs. Smith) DuBois, Pa.
 McGrew, Mabel W. (Mrs. Geo. F. Higby) 312 Jackson Ave., Vandergrift, Pa.
 Peacock, Hazel A. (Mrs. A. G. Russell) 1142 Calif. Ave., McKeesport, Pa.
 Peck, Bessie E. (Mrs. Harry Crawford) 311 Kennedy Ave., Duquesne, Pa.
 Peterman, Irma P. (Mrs. William Stalmaker) 806 Wayne Ave., Indiana, Pa.
 Ralston, Lemmon S. 461 Phila. St., Indiana, Pa.
 Remaley, Sara (Mrs. P. M. Heverly) 1913 Delaware Ave., Swissvale, Pa.
 Ruddock, Wm. McClave Water & Seventh Sts., Indiana, Pa.
 Russell, Katherine M. (Mrs. George Evans) 8 Gaskill Ave., Jeannette, Pa.
 Ryan, Ruth M. (Mrs. W. H. Amend) 830 Trenton Ave., Wilkinsburg, Pa.
 Shuster, Beulah M. R. D. 1, Box 166, Jeannette, Pa.
 Singiser, Mildred E. (Mrs. Harold Sawtelle) 1117 Fourth Ave., Altoona, Pa.
 Smith, Adrienne (Mrs. Walter Pringler) 245 Painter Ave., Greensburg, Pa.

Smith, Ethel M. (Mrs. J. B. Kimmel) 30 Clover St., Johnstown, Pa.
 Somerville, Kathryn E. South Connellsville, Pa.
 Somerville, Millie M. 36 N. Second St., Duquesne, Pa.
 Sowash, Hazel M. Luxor, Pa.
 Steingerwalt, Clarence A. 455 Columbia St., Schuylkill Haven, Pa.
 Stephenson, Edith M. (Mrs. Alvin Lester) 3675 Pine St., Jacksonville, Florida
 Swan, Margaret I. (Mrs. Harry McCreary) . . . 1401 School St., Indiana, Pa.
 Taylor, Myrtle W. (Mrs. Guckert) Wickshire St., N. S., Pittsburgh, Pa.
 Welsh, Carrie M. (Mrs. Logan S. Rugh) 5702 Hampton St., Pittsburgh, Pa.
 Widdowson, Velma 902 Oak St., Indiana, Pa.
 Williams, Anna M. (Mrs. Somerville) . . . 304 S. Third St., Duquesne, Pa.
 Williams, Louise 301 S. Center St., Corry, Pa.
 Yuckenberg, Laura M. Graceton, Pa.

CLASS OF 1920

Barker, Maxine (Mrs. Joseph K. Dewar) Teese Ave., Bellevue, Pgh., Pa.
 Goldsmith, Daisy (Mrs. Daum, Jr.) 2118 Second Ave., Tarentum, Pa.
 Longwill, Lorraine (Mrs. J. T. Thompson) Cleveland Ave., Manor, Pa.
 McMahan, Juanita (Mrs. Watts) 1200 Pleasant Valley Ave., Altoona, Pa.

CLASS OF 1921

Cam, Marie (Mrs. Paul Boyts) 1315 School St., Indiana, Pa.
 Geist, Gladys (Mrs. E. J. Watson) Box 815, State College, Pa.
 Pfordt, Nancy (Mrs. Lynn Brown) Brown's Hotel, Indiana, Pa.
 White, Peg (Mrs. Paul J. Beck) Yellow Creek St., Homer City, Pa.

CLASS OF 1922

Crow, Grace (Mrs. Chas. E. Liddell) . . . 744 E. End Ave., Pittsburgh, Pa.
 Gantner, Dorothy (Mrs. Henry Rea) . . . 210 Arden Rd., Pittsburgh, Pa.
 Jarvie, Marian Helen (Mrs. Wm. Nicoson) . . . N. Sixth St., Indiana, Pa.
 Laing, R. T. Knox, Pa.
 Langham, Betty (Mrs. J. R. Baldrige) 125 Carnegie Place, Pittsburgh, Pa.
 Quiggle, Katherine (Mrs. J. F. Banghart) 140 Maple St., Jersey Shore, Pa.

CLASS OF 1923

Laird, Grayce (Mrs. Paul Schurgot) 112 Elmore Rd., Wilkinsburg, Pa.
 Stahl, Lillian O. Railroad St., Manor, Pa.

CLASS OF 1924

James, Isobel (Mrs. James McCune) . . . 39 Hochberg Rd., Wilkinsburg, Pa.
 Patterson, Isabelle (Mrs. P. V. Wucher) 5928 Bryant Court, E. E., Pgh., Pa.
 Stoner, Frances (Mrs. H. P. Rambo) 8927 Eastward Rd., Wilkinsburg, Pa.
 Streicher, Josephine (Mrs. Travis) 1709 Tenth St., Altoona, Pa.

CLASS OF 1925

Crow, Helen (Mrs. Herbert K. Sutch) 416 Hay St., Wilkinsburg, Pa.
 Dick, Sylvia 558 Vickroy Ave., Johnstown, Pa.
 Garver, Lenore G. 336 Main St., Roaring Spring, Pa.

CLASS OF 1926

Landis, Geraldine H. 309 Fourth Ave., Altoona, Pa.
 Luther, Jennie (Mrs. R. Mickle) 809 Park Road, Windber, Pa.

CLASS OF 1927

Fallon, Mary Catherine 112 Sixth St., Turtle Creek, Pa.
 King, Norman E. 1149 Oakland Ave., Indiana, Pa.
 Stahl, Lucy M. S. Railroad Ave., Manor, Pa.
 Welker, Agnes (Mrs. Geo. Jamison) . . . 705 Gaskill Ave., Jeannette, Pa.
 Wohler, Mrs. Grace Williams R. D. 1, Indiana, Pa.

CLASS OF 1928

Beattie, Hazel New Alexandria, Pa.
 Becker, Gertrude 103 Magee Ave., Jeannette, Pa.
 Blose, Helen A. 132 Hamilton Ave., Vandergrift, Pa.
 Evans, Ruth R. D. 4, Indiana, Pa.
 Hatcher, Margaret (Mrs. Davis) No Address
 Klingensmith, R. Evalyn 129 N. Second St., Jeannette, Pa.
 Knupp, Mabel (Mrs. Ralph Cribbs) R. D. 6, Indiana, Pa.
 Murphy, Cecelia (Mrs. W.H. McAdams) 712 Josephine St., E. McKeesport, Pa.
 Thomas, Thelma 14 E. Brown St., Blairsville, Pa.

CLASS OF 1929

Alexick, John Victor 329 Spring St., Latrobe, Pa.
 Anderson, Jenella Mildred 1676 Phila. St., Indiana, Pa.
 Boltz, Mildred Sophia (Mrs. Petsinger) R. D. 2, Cabot, Pa.
 Brownfield, Margaret Minnie R. D. 1, Uniontown, Pa.
 Bullion, Marion 207 E. Tenth Ave., Homestead, Pa.

Cole, Helen Frances (Mrs. Otto Kirmeyer) Glassport, Pa.
 Cole, M. Catherine (Mrs. Haushaulter) 800 Dohman St., McKees Rocks, Pa.
 Corp. Mildred Elizabeth (Mrs. Homer Schreckengost) 210 Arch St.,
 Kittanning, Pa.
 Cossel, Rhoda (Mrs. Wilbur E. Shaub) 651 Woodward Ave., Kittanning, Pa.
 Dierker, Ruth Marie (Mrs. R. P. Miller) 3265 Raleigh Ave., Dormont, Pgh., Pa.
 Edwards, Margaret Elizabeth (Mrs. Elizabeth Hunter) ... Starford, Pa.
 Frew, Alice Rosetta (Mrs. Harry Holt) 1526 W. Phila. St., Indiana, Pa.
 Frye, Esther (Mrs. Spicher) Indiana, Pa.
 Frye, Ethelda Virginia Creekside, Pa.
 Gaut, Anna Mary R. D. 3, Latrobe, Pa.
 Gerhart, Blanche Donegal, Pa.
 Graham, Margaretta Lucille (Mrs. MacFarlane) 708 Wayne Ave.,
 Ellwood City, Pa.
 Halnan, Eleanor Marion 348 E. Eleventh St., Homestead, Pa.
 Hamilton, Letty Maxine (Mrs. Sleight) Box 134 Export, Pa.
 Hartung, Florence Mary (Mrs. Walker) 200 Second St., Ellwood City, Pa.
 Hoffman, Alice Gertrude (Mrs. Hanson) 115 W. Buffalo St., Ithaca, N. Y.
 Hopf, Irene Hilda 541 Freeport Rd., New Kensington, Pa.
 Hunter, Rebecca Priscilla (Mrs. Rebecca H. Newell) R. D. 1, Vandergrift Pa.
 Jeffreys, Ruth Harriet (Mrs. Rankin) ... 320 28th Ave., McKeesport, Pa.
 Jordan, Naomi Ruth (Mrs. Uhlig) Export, Pa.
 Killgallon, Katherine Winifred 53 N. First St., Duquesne, Pa.
 Kinkead, Margaret Etta (Mrs. Rigney) .. 23 So. Sixth St., Youngwood, Pa.
 Lacey, Elsie Margaret (Mrs. J. O'Donnell) 122 1-2 18th Ave., Homestead, Pa.
 Lusk, Ethel Leona (Mrs. J. D. Feree) Volant, Pa.
 McKenrick, Ruth Eliz. (Mrs. T. D. Peters) 609 Centre St., Curwensville, Pa.
 Mawhinney, Elsie Croft 107 Magee Ave., Jeannette, Pa.
 Metz, Katherine Keck (Mrs. Nixon) 79 Kerr St., Uniontown, Pa.
 Miller, Raymond Ephriam 110 Strayer St., Johnstown, Pa.
 Moore, Verna May 148 Susquehanna Ave., Curwensville, Pa.
 Morrow, Eunice Katherine (Mrs. Rudolph) 219 Laurel Ave., New Castle Pa.
 Murphy, Julia Mary (Mrs. Hohman) .. 715 Josephine St., McKeesport, Pa.
 Nelson, Katherine Louise 1410 Grandview St., McKeesport, Pa.
 Overly, Hazel Marie R. D. 1, Mt. Pleasant, Pa.
 Porter, Dorothy Woods 1810 Coursin St., McKeesport, Pa.
 Purdie, Margaret Gibson (Mrs. Godshall) St. Clair Apt., E. Opperman St.,
 Greensburg, Pa.
 Purvis, Harriett Louise 911 Porter St., Tarentum, Pa.
 Schnabel, Marion Elizabeth 929 Ash St., Johnstown, Pa.
 Schweiger, Hildegard 741 Kennedy Ave., Johnstown, Pa.
 Shannon, Elizabeth Agnes 412 Grove St., McKees Rocks, Pa.
 Sharp, Mayella Elizabeth (Mrs. Frantz Williams) 1504 Center St.,
 Wilkinsburg, Pa.
 Shoenthal, Evelyn Laura (Mrs. Amick) New Paris, Pa.
 Shoenthal, Mildred Bertha (Mrs. Hoffman) New Paris, Pa.
 Shoupe, Florence Mazine (Mrs. Florence Miller) ... 532 Roosevelt Ave.,
 Bellevue, Pa.
 Slagle, Mazerna Agnes (Mrs. Gibb) 226 E. Nesh. Ave., New Wilmington, Pa.
 Sober, Blanche Cleo (Mrs. Walter C. Hindman) ... 1213 Princeton Ave.,
 Tarentum, Pa.
 Somerville, Arabelle 36 N. Second St., Duquesne, Pa.
 Stoops, Hazel Mae 1018 Cooper St., Vandergrift, Pa.
 Stutzman, Kathryn Elizabeth 710 Franklin St., Johnstown, Pa.
 Switzer, Dorothy Geraldine (Mrs. Raffensperger) 1601 7th Ave., Altoona, Pa.
 Taylor, Catharine Rosetta 537 Station St., Bridgeville, Pa.
 Topping, Elizabeth Kirkwood (Mrs. Elizabeth Monahan) 232 Eighteenth St.,
 Homestead, Pa.
 Uncapher, Ruth Mary (Mrs. Carson) ... 462 S. Eleventh St., Indiana, Pa.
 Underwood, Marian Eleanor ... 42 Academy Ave., Mt. Lebanon, Pgh., Pa.
 Wagle, Mary Luella (Mrs. H. K. Crawford) 45 1-2 W. Market St.,
 Blairsville, Pa.
 Waugaman, Blanche Marie 124 Farragut Ave., Vandergrift, Pa.
 Witman, Elizabeth Bayard 525 Fairmont Ave., Trafford, Pa.
 Young, Jane E. 734 Washington St., New Castle, Pa.
 Zimmerman, Martha Elizabeth State Teachers College, Indiana, Pa.

CLASS OF 1930

Davis, Jeannette Box 94A, Barnesboro, Pa.
 Love, Mrs. Isabel Winsteln Washington Pike, Bridgeville, Pa.
 Switzer, Helen (Mrs. W. Howard Moore) 2418 Fourth Ave., Altoona, Pa.

CLASS OF 1931

Blose, Melzena Belle 1079 School St., Indiana, Pa.
 Duncan, Dorothy 256 Owens Ave., Perry, Pa.
 Gill, Sara K. 1504 Park Way, Barnesboro, Pa.
 Pachter, Mabel 706 24th St., Altoona, Pa.
 Rudolph, Jay G. 219 Laurel Ave., New Castle, Pa.
 Thompson, Viola Arlington Ave., Jeannette, Pa.
 Wille, Gladys 99 Morris St., Clymer, Pa.

CLASS OF 1932

Brownfield, Elizabeth R. R. D. 1, Uniontown, Pa.
 Rice, Geraldine Julia St., Jeannette, Pa.
 Watt, Olive M. Jeannette, Pa.

CLASS OF 1933

Remley, James School St., Indiana, Pa.

CLASS OF 1934

Kitto, Gwendolyn 824 Fern Place, Johnstown, Pa.
 Romeo, A. J. South Eleventh St., Indiana, Pa.

CLASS OF 1935

Gill, Ruth, (Mrs. Carlisle Fee) 970 Oakland Ave., Indiana, Pa.
 Shrom, Margie Nell Black Lick, Pa.

CLASS OF 1936

Blose, J. Mitchell 1079 School St., Indiana, Pa.
 Metz, Jean 247 S. Mt. Vernon Ave., Uniontown, Pa.
 Stewart, Alice R. D. 1, Homer City, Pa.

CLASS OF 1937

Blose, Verna M. 1079 School St., Indiana, Pa.
 Kohler, Earl 401 Elm Ave., Kingston, Pa.
 Lott, P. D. 242 Ridge Ave., New Kensington, Pa.
 Price, Margaret 729 Main St., Berlin, Pa.
 Woods, Grace 1302 Broadview Blvd., Brackenridge, Pa.

CLASS OF 1938

Bryson, Jean 705 Farren St., Portage, Pa.
 Mellott, Helen 600 Maplewood Ave., Ambridge, Pa.
 Stewart, Sara N. R. D. 1, Irwin, Pa.

FOOTBALL SCHEDULE — 1939

- Sept. 30 Lock Haven State Teachers College at Lock Haven
- Oct. 7 Open
- Oct. 14 Edinboro State Teachers College at Indiana
- Oct. 21 Slippery Rock State Teachers College* at Indiana
- Oct. 28 Mansfield State Teachers College at Mansfield
- Nov. 4 Clarion State Teachers College at Indiana
- Nov. 11 California State Teachers College at California
- Nov. 18 Shippensburg State Teachers College at Indiana

* Home-coming Game.

