



Indianhead

1952

Cage
LD
4481
P4625
I5
v.7

024.231

LIVERMORE LIBRARY - PEMBROKE STATE



3 3511 0014428 W

Cage
LD
4481
.P4625
I5
v.7

24231

Pembroke State College Library



Presented by

Dr. Robert P. Mack



The 1952 Indianhead

ELLEN JOYCE JACOBS
Editor

JOHNNIE A. LOCKLEAR
Business Manager

Volumn VII

Published by the

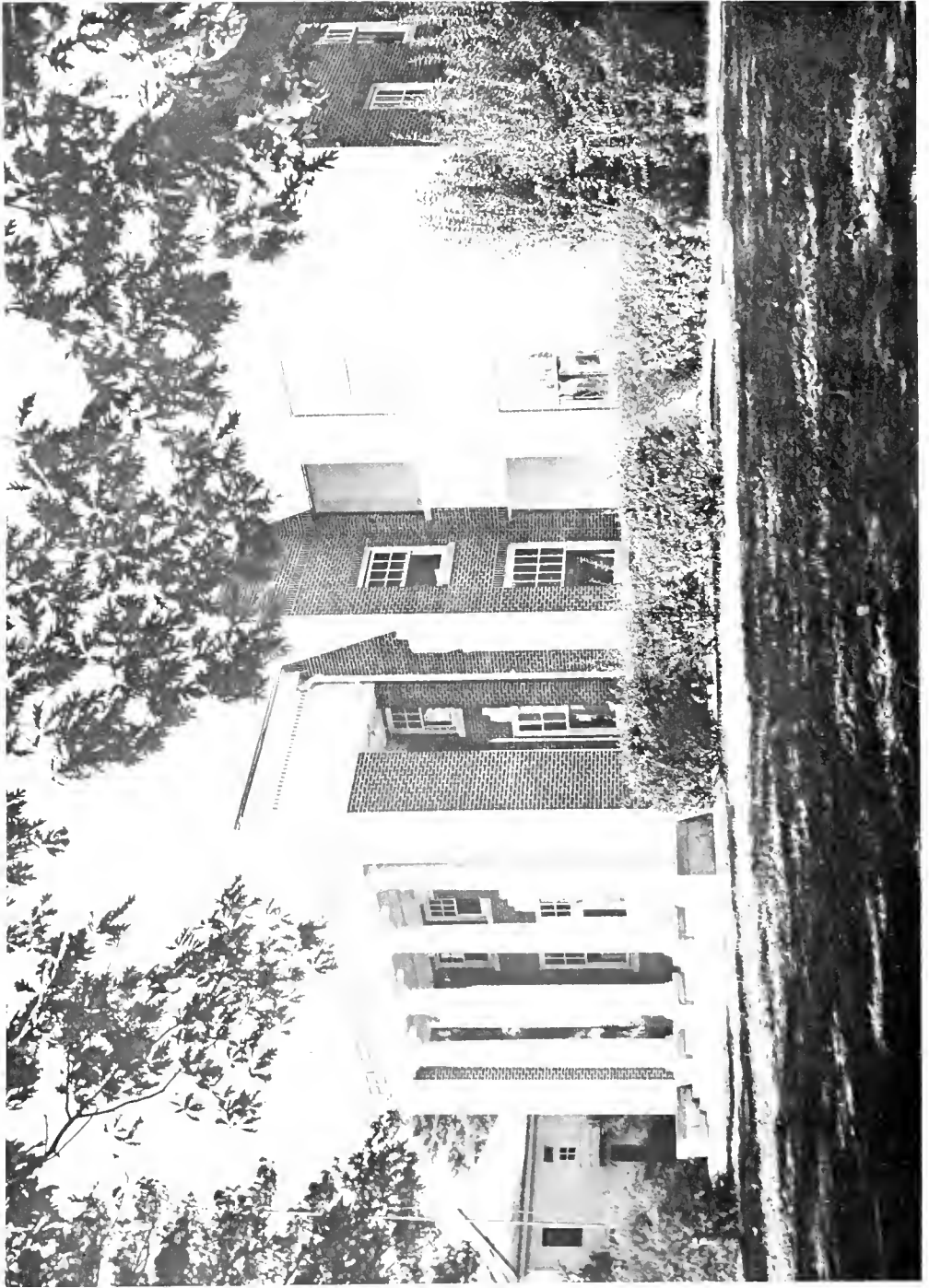
SENIOR CLASS

PEMBROKE STATE COLLEGE

Pembroke, North Carolina



27, 231



OLD MAIN

Cage
LD
4481
P4625
IS
U 1



SAMPSON HALL



READING ROOM

Dr. Mann
24, 331
Arr. 5-20-54



LOCKLEAR HALL



GYMNASIUM



ARTS BUILDING



COOKING LABORATORY



President's Message

The members of the staff of the 1952 INDIANHEAD have enjoyed the unique privilege of editing the yearbook for the year in which the college "became of age."

The members of the staff are the historians whose records of this significant year reflect the worthiness of the institution to which signal recognition has been paid by the Southern Association of Colleges when, in December, 1951, it formally admitted Pembroke State College to membership.

Faithful and loyal effort has been put forth in order that this volume might present a true picture of the college in 1951-52. Long hours of tedious and painstaking work have gone into this volume. We commend such meritorious service to those who in the future may set forth to record the virtues of the college that will be built eventually on these foundations.

DR. RALPH D. WELLONS

Faculty

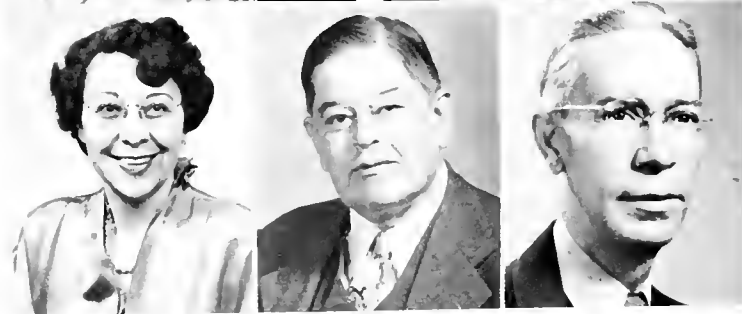
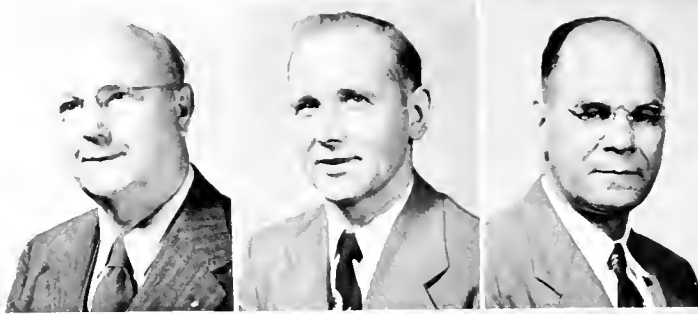


First row, left to right: J. WOODWARD BYARS, B.S., M.S., *Home Economics*. B.S., University of Tennessee; M.S., Iowa State College. BELLE WHYTE COLE, A.B., *Education*. Winthrop College, Rock Hill, South Carolina. M.R.E. and additional work in Religious Education at Southwestern Baptist Theological Seminary, Fort Worth, Texas. BERTHA DUNN, B.S., *Commerce*. University of Alabama; M.A., Northwestern University.

Second row: VERNON FELTON, B.S., N. C. State College, Emory and Henry College, Northwestern University, Chicago, Ill., B.S., Appalachian State Teachers' College, Graduate School University N. C. and A.S.T.C. JAMES A. JACOBS, B.S., M.Ed., *Registrar, Mathematics*. B.S., Murray State Teachers' College; M.Ed., Duke University. MARJORIE KANABLE, A.B., B.S., M.A., *Librarian*. A.B., Ohio Wesleyan University; B.S., M.A., University of Denver.

Third row: HAROLD W. KENNEY, B.S., M.A., Ph.D., *Psychology and Education*. B.S., M.A., Ph.D., Ohio State University. IRA PATE LOWRY, B.S., M.S., *Music*. B.S., Dakota Wesleyan University; M.A., Ohio State University. REBA MILSAPS LOWRY, A.B., M.A., *French, Spanish, Expression*. A.B., Maryville College; M.A., University of Tennessee.

Faculty



First row, left to right: ROBERT PRICE MARSH, B.S., M.S., Ph.D., *Science*. B.S., New York University; M.S., Ph.D., Rutgers University. GRADY ALLEN MARTIN, B.S., *Agriculture* B.S., *Agronomy*, M.S., North Carolina State College. CLIFTON OXENDINE, A.B., M.A., *Dean*, *History*, *Social Science*. A.B., McKendree College; M.A., George Peabody College for Teachers.

Second row: ANGELIKA RECKENDORF, A.B., M.A., *Art*. Zeichenlehreinnenzamen, Kunstgew erbeschule, Munich, Germany; Gewer beoberlehrerinnenenezamen, Gewerbelehrerinnenseminar, Potsdam, Germany; B.A., M.A., University of North Carolina. MARY SHARPE, A.B., M.A., *Primary Critic Teacher*. A.B., Winthrop College; M.A., Columbia University. B. V. SMAWLEY, B.S., M.A., *Athletic Director and Coach*. B.S., M.A., Appalachian State Teachers' College, Graduate School, George Peabody College.

Third row: FRANCES STINEBRING, B.S., M.A., *English*. B.S., Kent State University; M.A., Ohio State University. GEORGE R. SWANN, B.A., M.A., B.D., Th.M., Ph.D., *English*. B.A., Furman University; M.A., University of Virginia; B.D., Union Theological Seminary; Th.M., Crozer Theological Seminary; Ph.D., University of Pennsylvania. HERBERT H. TODD, A.B., M.A., Ph.D., *History*, *Social Science*. A.B., Ohio University; M.A., George Peabody College; Ph.D., Vanderbilt University.

College Assistants



INEZ FREEMAN
Bookkeeper



JUANITA OXENDINE
Secretary to Librarian



WALTER PINCHBECK
*Superintendent of Buildings
and Grounds*



MERLIN LOWRY
Special Student

Custodians not photographed: Timothy Stricklin, Joe Cummings, Joseph Jacobs.

Dedicated

TO MISS MARY LIVERMORE

In recognition of one who gave her services so untiringly and unselfishly, we, the senior class of 1952, gratefully dedicate this INDIANHEAD to our friend and benefactor.

Her leadership ever inspires one to higher and nobler endeavors. Her ardent Christian character has always had a definite influence upon all who have come in contact with her.

Miss Livermore began her work here on the campus of Pembroke State College in 1941, serving as Head of the Department of Religious Education and Dean of Women. Resigning at the end of 1951, she was appointed as Dean of Women Emeritus.

Her interest in, and devotion to, our college serves as a guiding light.

A Real Friend



MISS MARY LIVERMORE

To One and All . . .

Board of Trustees

REV. L. W. JACOBS
Chairman

J. OLIN BROOKS

D. F. LOWRY

J. A. SAMPSON

C. L. MAYNOR

GEORGE EMANUEL

A. G. LOWRY

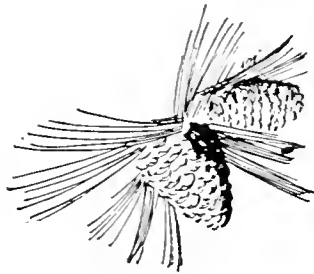
LESTER BULLARD

HARRY W. LOCKLEAR

HARDY W. LOCKLEAR

JOHN L. CARTER
Secretary

JAMES E. HILLMAN, Ph.D.
State Department of Education, Director



Classes





Left to right: Ellen Joyce Jacobs, Dr. Harold Kennedy, Lindbergh Martin, Josephus Locklear, Maitland Dimery, Emae B. Locklear.

Senior Class Officers

<i>President</i>	LINDBERGH MARTIN
<i>Secretary</i>	EMAE LOCKLEAR
<i>Treasurer</i>	HARVEY LOWRY
<i>Vice-President</i>	JOSEPHUS LOCKLEAR
<i>Social Chairman</i>	ELLEN JOYCE JACOBS
<i>Historian</i>	MAITLAND DIMERY
<i>Sponsor</i>	DR. HAROLD KENNEDY

Seniors



Left to right:

MAGGIE LOIS BROOKS, A.B.

Major—Music

B.S.U. 1, 2, 3, 4; Piano 1, 2, 3, 4; Emeritan Society 1, 2, 3, 4; Y.W.A. 3; Band 3, 4; Glee Club 3, 4; Newspaper Staff 4.

GEORGE CHAVIS, B.S.

Specialty—Grammar Grades

WARD CLARK, B.S.

Specialty—Grammar Grades



BEULAH CORMIER, B.S.

Specialty—Grammar Grades

WILTON CUMMINGS, B.S.

Major—Math

W.F. 1, 2, 3, 4; W.F. Council 3; Emeritan Society 1, 2, 3, 4.

Seniors



Left to right:

EULA MAE DIAL, B.S.

Specialty—Primary

B.S.U. 1, 2, 3, 4; B.S.U. Council 1, 2, 3, 4; Emeritan Society 1, 2, 3, 4; Y.W.A. President 2, 3, 4; Senior Representative to Student Council 4; Newspaper Staff 4; Class Treasurer 2.

RAY H. ELK, B.S.

Specialty—Grammar Grades

Air Force Veteran; Sports Editor P.S.C.; News 2; P.S.C. Art Editor 1; Editor of P.S.C. 4; Area Representative Air Force Association; Member of the Association of American Indians.

THELMA HAMMONDS, B.S.

Specialty—Grammar Grades

ELLEN JOYCE JACOBS, A.B.

Major, English, Minor Commerce

Wesley Foundation Devotional Chairman 1; Wesley Foundation Secretary 2; Secretary Emeritan Society 2; Secretary Student Council 2; Marshal 1; Assistant Marshal 2; Chief Marshal 3; President of Wesley Foundation 3; Class Social Chairman 3, 4; *P.S.C. News Staff* 2, 3; Vice-President W.F. 4; Editor of *INDIAN-HEAD* 4; *Who's Who Among Students in American Colleges and Universities*.

ROBERT EARL JACOBS

Specialty—Grammar Grades

B.S.U. 1, 2, 3, 4; Class Secretary 1, 3; Emeritan Society 3, 4; Marshal 3.



Seniors



Left to right:

DAPHNE L. JONES, A.B.

Major—Music

Emeritan Society 1, 2, 3, 4; B.S.U. 1, 2, 3, 4; Glee Club 2, 4; Band 3, 4; Home Economics Club 4; Marshal 3; Assistant Business Manager of Yearbook.

GLORIA JONES, B.S.

Specialty—Primary Grades

B.S.U. 1, 2, 3, 4; Emeritan Society 1, 2, 3, 4; Y.W.A. 3; Band 2; Glee Club 2; Assistant Editor of *P.S.C. News* 4.

CURT LOCKLEAR, B.S.

Major—Science

EMAE LOCKLEAR, B.S.

Specialty—Primary

Emeritan Society 1, 2; Pontiac Society 3, 4; B.S.U. 1, 2, 3, 4; Council 3, 4; Class Officer 3, 4; Y.W.A. President 3.

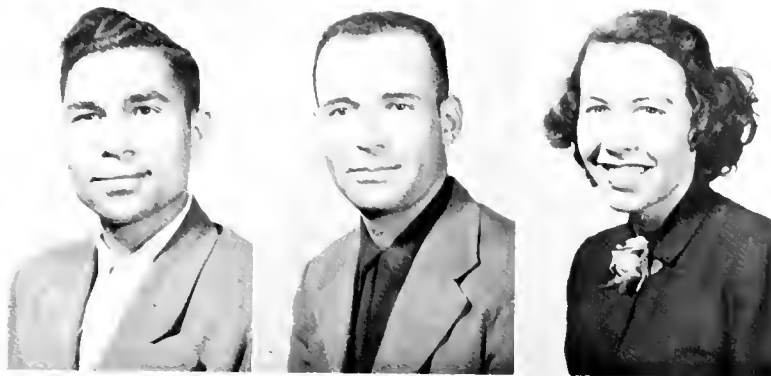
JOHNNIE A. LOCKLEAR, A.B.

Major—English, Minor—Social Studies

Emeritan Society 1, 2, 3, 4; Secretary 3; B.S.U. 1, 2, 3, 4; Council 1, 2, 3, 4; Secretary-Treasurer Student Council 3; P.S.C. News 2, 3, 4; Business Manager INDIANHEAD 4.



Seniors



Left to right:

JOSEPHUS LOCKLEAR, B.S.

Specialty—Grammar Grades

Pontiac Society 1, 2, 3, 4; Secretary of Pontiac Society 3; Champion 2; B.S.U. 1, 2, 3, 4; S.S. Representative of B.S.U. 2; Third Vice-President 3; First Vice-President 4; Vice-President of senior class 4; Band 3, 4; Marshal 4; Production Manager of *P.S.C. News* 4; Religious Representative of the Student Council 3.

LESLIE LOCKLEAR, B.S.

Social Science

Football 1, 2; Basketball 1, 2, 3.

SALLIE DALE LOCKLEAR, B.S.

Major—Home Economics

Emeritan Society 1, 2, 3, 4; B.S.U. 1, 2, 3, 4; Home Economics Club 1, 2, 3, 4; Glee Club 1; Basketball 1, 2, 3, 4.

SARA CATHERINE LOCKLEAR, B.S.

Specialty—Primary

Secretary of Class 1; Publicity Chairman of W.F. 2; Reporter 3; Personal Chairman 4; Pontiac Society 1, 2, 3, 4; Pontiac Treasurer 4; Y.W.A. 1, 2, 3, 4.

STEVE LOCKLEAR, B.S.

Specialty—Grammar Grades

President Pontiac Society 1, 2, 3; Treasurer of W.F. 2, 3; Social Representative to Student Council 3, 4; Band 2, 3, 4.



Seniors



Left to right:

HARVEY LOWRY, A.B.

Major—English, Minor—Mathematics

Football 1, 2, 3; Basketball 1; Baseball 1, 2; Student Council 2, 4; Class President 2, 3; P.S.C. News Staff 2; Vice-President Emeritan Society 2; W.F. 1, 2, 3, 4; Assistant Editor INDIANHEAD 4; Class Treasurer 4.

HENRY FORD LOWRY, B.S.

Major—Mathematics

Football 1, 2.

HAROLD LINDBERGH MARTIN, A.B.

History

Emeritan Society 1, 2, 3, 4; B.S.U. 1, 2, 3, 4; Publicity Director 1; President 2; Enlistment Vice-President 3; Third Vice-President 4; Vice-President of the N. C. B.S.U. 3; President of N. C. B.S.U. 4; Football 1, 2, 3; Basketball 1, 2, 3; Editor of *P.S.C. News* 2; President of Senior Class 4; *Who's Who* 4; Ridgecrest Staff 1, 2, 3.



JAMES A. OXENDINE, B.S.

Degree Specialty—Grammar Grade

Band 3, 4.

MOLON STRICKLIN, B.S.

Social Studies

Football 1, 2, 3; Basketball 1.

Junior Class Officers

<i>President</i>	ELRIE LOCKLEAR
<i>Vice-President</i>	WALTER SCOTT
<i>Secretary</i>	PONELL LOCKLEAR
<i>Treasurer</i>	MARIE LOCKLEAR
<i>Reporter</i>	CARLIE OXENDINE
<i>Sponsor</i>	MRS. REBA LOWRY



Juniors



BERNICE BROOKS
LUCILLE DORIS CHAVIS

WILLIAM D. BRYANT
REEDY CHAVIS

HILTON C. CHAVIS
LOCKEY DEESE

Juniors



ROSA UNA DIAL
ETTA B. LOCKLEAR

ADELAIDE LOCKLEAR
PONELL LOCKLEAR

ELRIE J. LOCKLEAR
REESE LOCKLEAR

Juniors



THETIS RAYE LOCKLEAR
FANNIE LOU MAYNOR

WILLIAM PRICE LOCKLEAR
CARLIE OXENDINE

EVA LOWRY
CHARLES W. OXENDINE, JR.

Juniors



FARCE OXENDINE

PATTIE OXENDINE

THADIS OXENDINE

EARL BOWMAN SAMPSON

WALTER M. SCOTT

Sophomore Class Officers



Left to right: Mabel Moore, Mrs. B. Dunn, George Oxendine, Marvin Ransom, Hardy Deese.

President GEORGE OXENDINE
Vice-President HARDY DEESE
Secretary and Treasurer MABEL MOORE
Student Council Representative MARVIN RANSOM
Reporter ELMER HUNT

Sophomores

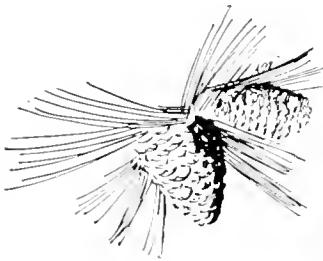


GURNEY BULLARD
GEORGIE ANN CLARK

ADERINE CARTER
LOUISE CHAVIS

LORRAINE CHAVIS
HARDY DEESE

SHERMAN CHAVIS
GRACE DIAL



Sophomores

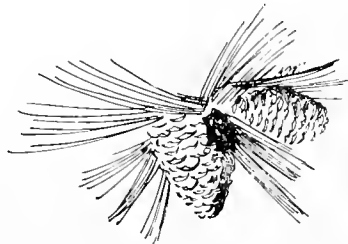


ELMER HUNT
ELIER LOCKLEAR

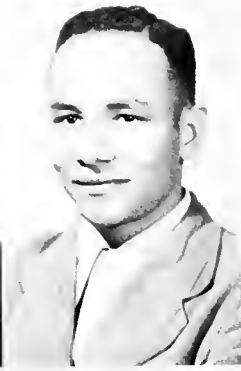
KATIE JONES
JOHN LOCKLEAR

BERTHA LOCKLEAR
LUDALIA LOCKLEAR

DOROTHY LOCKLEAR
VERDIA LOCKLEAR



Sophomores

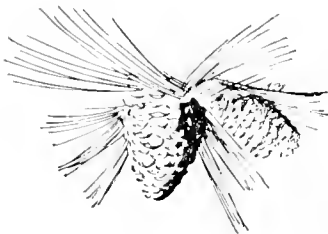


ADELINE LOWRY
MABEL MOORE

DULIN LOWRY
ANNIE L. OXENDINE

JACQUELINE LOWRY
GEORGE W. OXENDINE

LOIS M. LOWRY
PLUMMER OXENDINE



Sophomores



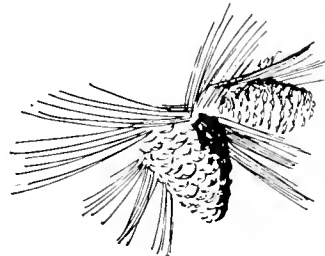
EYRTLE RANSOM

MARVIN RANSOM

JOHN H. SAMPSON

OSCAR SAMPSON

SUE SANDERSON





Left to right: Miss Frances Stinebring, Priestly Lowry, Denford Oxendine, Ralph Hunt, Norma Thompson.

Freshman Class Officers

<i>President</i>	DENFORD OXENDINE
<i>Secretary</i>	NORMA THOMPSON
<i>Treasurer</i>	PRIESTLY LOWRY
<i>Vice-President</i>	RALPH HUNT
<i>Sponsor</i>	MISS FRANCES STINEBRING

Freshmen

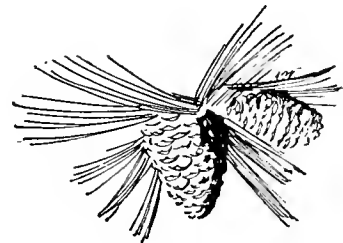


ADOLPH BLUE
PATRICIA CLARK

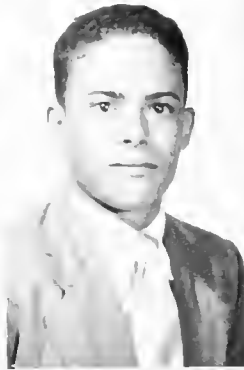
DOROTHY BROOKS
MARY CUMMINGS

MILSIE BULLARD
ISA DEESE

CHARSTIE CHAVIS
JOHN DEESE



Freshmen

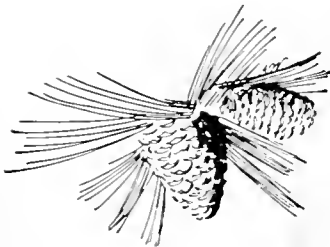


DOSHIE HAMMONDS
BILL R. LOCKLEAR

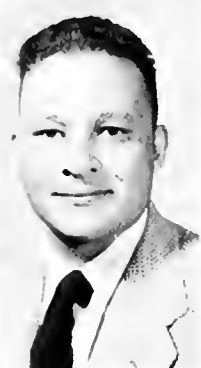
KATIE KATHERINE HUNT
EVA MAE LOCKLEAR

RALPH HUNT
KATRINA LOCKLEAR

BLOSSIE MAE LAMBERT
MARY SUE LOCKLEAR



Freshmen

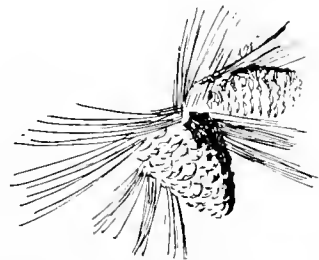


ALTHA LOWRY
DENFORD OXENDINE

LOU HENRY LOWRY
EVA OXENDINE

MARVIN LOWRY
EVIE OXENDINE

PRIESTLY LOWRY
LOLETA OXENDINE



24, 231

Freshmen

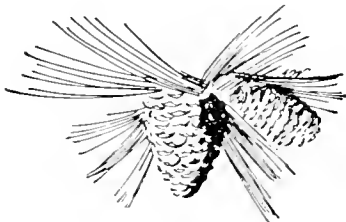


MIRA OXENDINE
MARGARET STRICKLAND

RONNIE OXENDINE
LILLIAN THOMAS

THADYS OXENDINE
NORMA THOMPSON

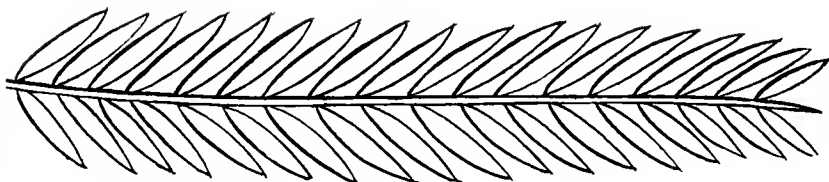
EARL SCOTT
JACOB WEST



Athletics

Societies

Clubs



Annual Staff



ELLEN JOYCE JACOBS
Editor



JOHNNIE A. LOCKLEAR
Business Manager



HENRY FORD LOWRY
Advertising Manager



HARVEY LOWRY
Assistant Editor



DAPHNE L. JONES
Assistant Business Manager



DR. HAROLD KENNEDY
Adviser

P. S. C. News



RAY H. ELK
Editor-in-Chief



GLORIA JONES
Assistant Editor



ELMER HUNT
Business Manager

P.S.C. EDITORIAL STAFF

Editor-in-Chief RAY H. ELK
Assistant Editor GLORIA JONES
Sports Editor GEORGE OXENDINE
News and Feature Editor STEVE LOCKLEAR
Social Editor EULA M. DIAL
Alumni Editor ELRIE LOCKLEAR
Production Manager JOSEPHUS LOCKLEAR
Assistant Production Manager CHARLES OXENDINE
Art Editor WALTER SCOTT

Assistant Art Editor PLUMMER OXENDINE
Typists: ADELINE LOWRY, THADYS OXENDINE,
 MAGGIE L. BROOKS, DULIN LOWRY

P.S.C. NEWS BUSINESS STAFF

Business Manager ELMER HUNT
Assistant Business Manager ERYTLE RANSOM
Advertising Manager CARLIE OXENDINE
Circulation Manager RONALD SAMPSON

One of the busiest offices on the campus this year was the haven of the college journalists. The office of the *P.S.C. News* is located in the Locklear Hall. It is the last office to be vacated when the college day is completed, as the student journalists keep arranging and pounding the typewriters in the process of newspaper publication.

All the students on the staff are volunteers who, besides their studies, take their extra time to produce the latest news for the student-body week after week during the college year.

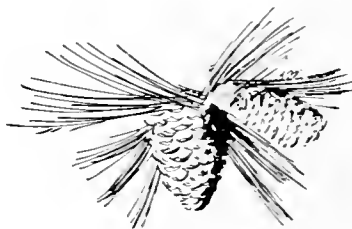


Seated, left to right: Gloria Jones, Adeline Lowry, Eula Mae Dial.
Back row: Elmer Hunt, Carlie Oxendine, Ronald Sampson, Steve Locklear, Josephus Locklear, Thadis Oxendine.

Student Council



Left to right: Miss Belle Cole, Dean Clifton Oxendine, Bernice Brooks, Steve Locklear, Thadis Oxendine, Marvin Ransom, Farce Oxendine, Eula Mae Dial, Elric Locklear.



Emeritan Society



Bernice Brooks, Dorothy Brooks, Maggie L. Brooks, Adolph Blue, Milsie Mae Bullard, Adrene Carter, Charstie L. Chavis, Lorraine Chavis, Louise Chavis, Lucille Chavis, Reedy Chavis, Mary Louise Cummings, Wilton Cummings, Hardy Deese, Isa P. Deese, Eula Mae Dial, Grace Dial, Rosa Dial, Maitland Dimery, Mrs. Bertha Dunn, Doshie M. Hammonds, Joyce Jacobs, Robert E. Jacobs, Gloria Jones, Katie Jones, Blossie Lambert, Adlaide Locklear, Clearcie Locklear, Dorothy Locklear, Elrie Locklear, Johnnie A. Locklear, Katrina Locklear, Bertha L. Locklear, Ludalia Locklear, Ponell Locklear, Sallie Locklear, Mary Sue Locklear, Thetis Locklear, Adeline Lowry, Eva Lowry, Lou Henry Lowry, Marvin Lowry, Priestly Lowry, Reba Lowry, Lindbergh Martin, Lois Mitchell, Carlie Oxendine, Charles Oxendine, Denford Oxendine, Evie L. Oxendine, Loleta Oxendine, Mira L. Oxendine, Pattie Oxendine, Thadys Oxendine, Thadis Oxendine, Eyrtle Ransom, Marvin Ransom, Ronald Sampson, Sue Sanderson, Frances Sinebring.



Pontiac Society

William Bryant, Gurney Bullard, Sherman Chavis, Georgia A. Clark, Patricia Clark, Beulah Cormier, Locky Deese, Joyce Dimery, Thelma Hammond, Katie Hunt, Bill Locklear, Etta B. Locklear, Eva M. Locklear, Josephus Locklear, Marie Locklear, Sara Locklear, Steve Locklear, Verdie Locklear, Altha Lowry, Jackie Lowry, Fannie L. Maynor, Mabel Moore, Eva M. Oxendine Farce Oxendine, George Oxendine, Ronnie Oxendine, John H. Sampson, Earl Scott, Mary Sharpe, Lillian Thomas, Dr. Herbert Todd, Jacob West.



B. S. U. Council

Left to right, first row: Bernice Brooks, Emae Locklear, Lindbergh Martin, Georgia A. Clark, Bertha Lois Locklear. *Second row:* Miss Belle Cole, Thadys Oxendine, Maggie L. Brooks, Johnnie A. Locklear, Adrine Carter, Josephus Locklear, Eula Mae Dial, Elrie Locklear.

B. S. U. Group



Bernice Brooks, Maggie L. Brooks, Dorothy E. Brooks, Milsie M. Bullard, Adrine Carter, George Chavis, Lorraine Chavis, Lucille Chavis, Louise Chavis, Georgia A. Clark, Patricia Clark, Miss Belle Cole, Louise Cummings, Garner Deese, Isa P. Deese, Locky Deese, Hardy Deese, Elmer Hunt, Katie Hunt, Ralph Hunt, Robert E. Jacobs, Daphne L. Jones, Kaue L. Jones, Blossie M. Lambert, Adelaide Locklear, Emae Locklear, Dorothy Locklear, Johnnie A. Locklear, Josephus Locklear, Katrina Locklear, Elrie Locklear, Sallie D. Locklear, Elier Locklear, Bertha Lois Locklear, Ludalia Locklear, Sue Locklear, Adeline Lowry, Altha Lowry, Jackie Lowry, Lindbergh Martin, Plummer Oxendine, Thadys Oxendine, George Oxendine, Juanita Oxendine, John H. Sampson, Margaret Stricklin.

Wesley Foundation



COUNCIL: *Seated, left to right:* Rosa Dial, Grace Dial, Thadis Oxendine, Charles Oxendine, Ward Clark, Jr., Sue Sanderson, Pattie Oxendine. *Standing:* Rev. Linwood Blackburn, Lois M. Lowry, Joyce Jacobs, Steve Locklear, Ponell Locklear, Loleta Oxendine, Annie L. Oxendine, Miss Majorie Kanable, Marie Locklear, Sarah Catherine Locklear.



GROUP: Rev. Linwood Blackburn, Adolph Blue, William D. Bryant, Gurney Bullard, Reedy Chavis, Ward Clark, Jr., Beulah Cormier, Wilton Cummings, Grace Dial, Rosa Dial, Joyce Dimery, Mrs. Bertha M. Dunn, Thelma Hammonds, Joyce Jacobs, Miss M. Kanable, Bill R. Locklear, Clearcie Locklear, Etta B. Locklear, Eva Locklear, Marie Locklear, Ponell Locklear, Reese Locklear, Sarah C. Locklear, Steve Locklear, Thetis R. Locklear, Verdie Locklear, Eva Lowry, Priestly Lowry, Isa Perkins, Reba Lowry, Robert P. Marsh, Lois Mitchell, Mabel Moore, Annie L. Oxendine, Carlie Oxendine, Charles W. Oxendine, Denford A. Oxendine, Eva Mae Oxendine, Evie L. Oxendine, Farce Oxendine, Loleta Oxendine, Lou Henry Oxendine, Pattie Oxendine, Thadis Oxendine, Angelika Reckendorf, Ronald Sampson, Sue Sanderson, Jacob West.



Spanish Club

First row, left to right: Doshie M. Hammonds, Faye Thomas, *Second row:* Loleta Oxendine, Joyce Dimery, Beulah Cormier, Lindberg Martin, Joyce Jacobs. *Third row:* Grace Dial, Ludalia Locklear, Lucille Chavis, Blossie M. Lambert, Eyrle Ransom. *Fourth row:* Isa P. Deese, Plummer Oxendine, Elmer Hunt, Mrs. R. Lowry, Clearcie Locklear, Marvin Ransom, Walter Scott

Social Club



Dorothy E. Brooks, Maggie L. Brooks, Adrine Carter, Charstie Chavis, Lorraine Chavis, Louise Chavis, Georgia A. Clark, Patricia Clark, Beulah Cormier, Locky Deese, Eula Mae Dial, Maitland Dimery, Thelma Hammonds, Katie K. Hunt, Joyce Jacobs, Robert E. Jacobs, Gloria Jones, Katie Jones, Blossie Lambert, Adelaide Locklear, Clearcie Locklear, Dorothy Locklear, Emac Locklear, Katrina Locklear, Lois Locklear, Ludalia Locklear, Sallie D. Locklear, Sarah C. Locklear Steve Locklear, Sue Locklear, Thetis Locklear, Adeline Lowry, Altha Lowry, Eva Lowry, Jackie Lowry, Priestly Lowry, Lois Mitchell, Denford Oxendine, Eva Oxendine, Eva M. Oxendine, Farce Oxendine, George Oxendine, Ronnie Oxendine, Thadys Oxendine, Sue Sanderson, Earl Scott, Margaret Strickland, Jacob West.

Veteran's Club



First row: Thadis Oxendine, Marvin Ransom, Sherman Chavis, Elrie Locklear, John B. Locklear.
Second row: Ray Elk, Walter Scott, Reedy Chavis, John H. Sampson, Elmer Hunt.



Home Economics Club

Miss J. Woodward Byars, Charstic L. Chavis, Lucille Chavis, Ray Elk, Doshie M. Hammonds, Bertha Lois Locklear, Eva Locklear, John B. Locklear, Katrina Locklear, Mary Sue Locklear, Sallie Dale Locklear, Verdie Locklear, Lindbergh Martin, Annie L. Oxendine.



*Alpha
Psi
Omega*

First row, left to right: Carlie Oxendine, Emae Locklear, Elrie Locklear, Rosa Dial, Reese Locklear, Johnnie A. Locklear. Second row: Adeline Lowry, Mrs. R. Lowry, Bernice Brooks, Charles Oxendine, Reedy Chavis, Lindbergh Martin.

Dramatics



Bernice Brooks, Charstie L. Chavis, Reedy Chavis, George Chavis, Eula M. Dial, Rosa Dial, Katie Jones, Elrie Locklear, Emae Locklear, John B. Locklear, Johnnie A. Locklear, Katrina Locklear, Sallie Dale Locklear, Sarah C. Locklear, Verdine Locklear, Adeline Lowry, Jackie Lowry, Lindbergh Martin, Carlie Oxendine, Charles Oxendine, Thadis Oxendine, Molon Stricklin, Mrs. Reba Lowry.

Library Staff



Left to right: Miss Marjorie Kanable, Maitland Dimery, Josephus Locklear, Robert Earl Jacobs, Juanita Oxendine.



Side View of Sampson Hall



Y. W. A.

Seated, left to right: Bertha L. Locklear, Lorraine Chavis, Adrine Carter, Thadys Oxendine, Miss Belle Cole. *Standing:* Blossie M. Lambert, Louise Chavis, Patricia Clark, Margaret Strickland, Sue Sanderson, Emae Locklear, Adelaide Locklear, Sarah C. Locklear, Eula Mae Dial, Maitland Dimery, Georgia A. Clark, Thetis R. Locklear, Charstie L. Chavis, Katrina Locklear.

Marshals

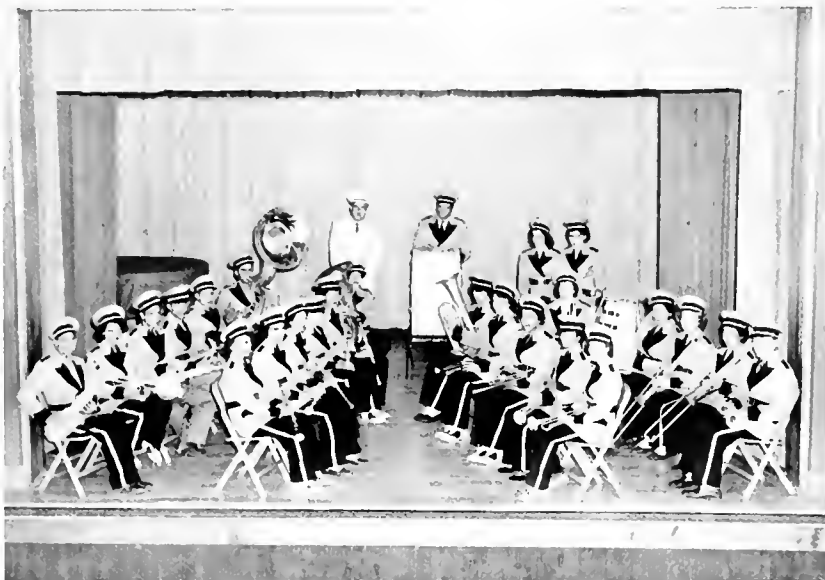


First row, left to right: Lois M. Lowry, Ellen Joyce Jacobs, chief; Annie Lois Oxendine. *Second row:* Josephus Locklear, Thadis Oxendine, assistant chief; Walter Scott, Robert Earl Jacobs.

Glee Club



First row, left to right: Lorraine Chavis, Adrine Carter, Mira L. Oxendine, Thetis R. Locklear, Dorothy Locklear, Elric Locklear, Fannie L. Maynor. *Second row:* Emac Locklear, Bernice Brooks, Thadys Oxendine, Lois Mitchell, Robert E. Jacobs, Carlie Oxendine. *Third row:* Marvin Ransom, John H. Sampson, Charles Oxendine, Reedy Chavis, Merlin Lowry, Elmer Hunt.



Band

Bernice Brooks, Maggie L. Brooks, Adrine Carter, Grace Dial, Rosa Dial, Maitland Dimery, Robert E. Jacobs, Daphne L. Jones, Adelaide Locklear, Elric Locklear, Etta B. Locklear, Josephus Locklear, Ludalia Locklear, Marie Locklear, Ponell Locklear, Reese Locklear, Steve Locklear, Verdie Locklear, Fannie L. Maynor, Lois Mitchell, Annie L. Oxendine, Charles W. Oxendine, James A. Oxendine, Thadis Oxendine, Mira Lee Oxendine, Ira Pate Lowry.



Left to right: George Oxendine, Adolph Blue, Earl Scott, Ned Sampson, Farce Oxendine, Reese Locklear, Denford Oxendine.

BRAVE'S CAGE COACHES

After former coach Smawley returned to pro-basketball, Coach Felton replaced him (Smawley is on leave of absence) and guided the scalping Braves through a successful season. Both Coach Felton and Coach Smawley are graduates and former star athletes of Appalachian State Teacher's College.



Vernon Felton

P.S.C. WARPATH

Pembroke State College has advanced to higher standards in education. The past year it was admitted as a member to the Southern Association of Colleges, and this year 1952, it became a member of the Association of American Colleges, but that is not all. It revised its athletic program under two new coaches. Belus Smawley, who with the mediocre Braves basketball crew lost its first five games, was called back to pro-basketball to play with the Baltimore Bullets. In his place, Vernon Felton, ex-Appalachian State Teachers' College athlete, took over the reins and developed a dominative Brave crew which hung up twelve victory scalps while losing ten games during the season.

This is the first time in the college's history the Athletic Department has scheduled a full slate, and the 1951-52 Braves squad, although lacking sufficient height, will be remembered as an outstanding college team. Among the Braves' victims during the season were: The towering Appalachian State Teachers' College Mountaineers, Chowan College, Charlotte College, Louisburg College, Edwards Military Institute, Pfeiffer College, High Point College, and Presbyterian College.

1951-52
BASKETBALL RECORD

(Won 12 Lost 10)

Players that created much ado throughout the season were Captain Ned Sampson, Farce Oxendine, and a newcomer, Earl Scott. Sampson totaled 535 points in 22 games. Oxendine, the ace Brave center, followed with 446 points in 19 games. Scott, Freshie forward, who has developed into a jumping-jack, has continuously set up many of the Braves scoring plays and surprised the P.S.C. fans with his unique style of shooting.

Among the charges of Coach Felton were other capable players, too, such as Reese Locklear, George Oxendine, Ralph Hunt, Adolph Blue, Denford Oxendine, and the wounded veteran Marvin Lowry. Due to a leg injury in the Korean War, Marvin was forced to the sideline halfway through the season depriving the Braves of one of their best defensive men.

Opp.	Opponent	P.S.C.
71	Campbell College	39
78	Wingate College	59
81	Louisburg College	59
75	Campbell College	63
81	Wingate College	68
62	Pfeiffer College	64
39	Chowan College	67
62	Pfeiffer College	70
63	Charlotte College	81
65	Appalachian State	81
58	Chowan College	73
61	Louisburg College	62
66	Charlotte College	58
70	Presbyterian College	73
59	High Point College	63
50	Edward Military Institute	82
64	Wilmington College	55
44	Edwards Military Institute	53
58	Presbyterian College	71
83	Appalachian State	43
79	High Point College	74
104	Wilmington College	83
Total: 1,473		1,441

Court Ballet

Frog Men



Farce hits again

Scott plunking it in



Kneeling, left to right: Katrina Locklear, Ludalia Locklear, Louise Chavi, Adrine Carter, Sue Locklear. *Standing:* Sallie Dale Locklear, Thetis Locklear, Katie Jones, Elrie Locklear, Bernice Brooks, Dorothy Locklear.

P.S.C. CO-ED BASKETBALL RECORD

Prospect	23	P.S.C.	38
Campbell	27	P.S.C.	18
Pfeiffer	16	P.S.C.	20
Campbell	55	P.S.C.	28
Pfeiffer	41	P.S.C.	26
Lumberton	10	P.S.C.	37

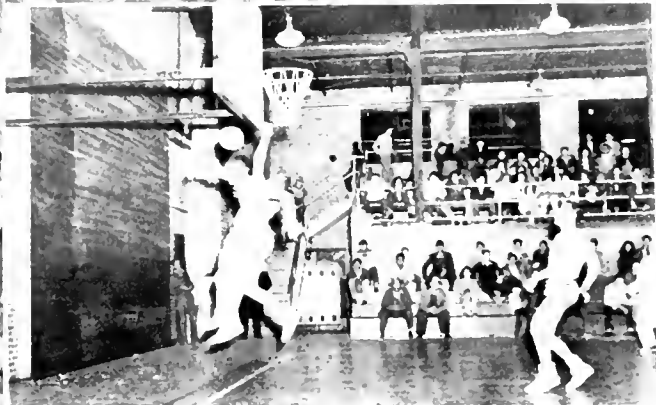
Intramural Program

Due to a late start, the girls' basketball team of P.S.C. played only six games which ended with three wins and three losses. Coach Felton set up an intramural program where the co-eds formed teams, and at the present time the league is still going strong.

Action Shots



Action Shots



Who's Who Among Students in



HAROLD LINDBERGH MARTIN

American Colleges and Universities



ELLEN JOYCE JACOBS



Around the Campus



Sadie Hawkins Day



1. Grim determination, 2. The Race begins, 3. Who's the lucky girl? 4. No effort to escape, 5. Caught in the inner land, 6. Not in the race, 7. Just for fun, 8. Prize Winner! 9. Bashful Sadies, 10. Examining the catch, 11. Square and the prize winners, 12. Check those legs! 13. Tired threesome, 14. Was he caught? 15. Satisfied with catch, 16. Weary and worn.

Valentine Party



KING AND QUEEN

GRACE DIAL

REESE LOCKLEAR

KING, QUEEN AND ATTENDANTS



Left to right: Ronald Sampson, Katie L. Jones, Robert E. Jacobs, Margaret Strickland, Grace Dial, Reese Locklear, Gloria Jones, Adolph Blue, Lorraine Chavis, George Oxendine

Compliments of

The Scottish Bank

LUMBERTON

Salemburg Pembroke St. Pauls

Red Springs Garland

Fair Bluff China Grove Salisbury

For Convenience—Nine Branches

Deposits Insured Up to \$10,000 by Federal

Deposit Insurance Corporation

Compliments of

PEMBROKE FURNITURE CO.

WESTINGHOUSE
and
PHILCO RADIOS *and* APPLIANCES
COMPLETE HOME FURNISHINGS

PEMBROKE, N. C.

TYNER OIL COMPANY

TED R. TYNER

GAS : KEROSENE
FUEL OIL

Dial 2841
PEMBROKE, N. C.

Compliments of

QUALITY CLEANERS

William X. Oxendine, Prop.

CLEANING : PRESSING : DYEING
ALTERING : HAT BLOCKING

PEMBROKE, N. C.
Phone Pembroke 3911

B. & B. FEED STORE

"Your Friendly Grocer"

PEMBROKE, N. C.

Pembroke Hardware Co.

*Complete Stock of Shelf Hardware
Electrical Appliances*

P. O. Box 133 Pembroke, N. C.

MAYNORS BARBER AND BEAUTY SHOP

CONGRATULATIONS TO THE PRESIDENT, FACULTY, SENIORS AND OTHER
CLASSES ON THEIR SPLENDID EFFORT

Visit With Us Often

PEMBROKE, N. C.

Call 5451

Compliments of
SERVICE OIL COMPANY

Distributors of
GREASE OIL
AND GASOLINE PRODUCTS

"Patronize Your Nearest Esso Dealer"

LAURINBURG, NORTH CAROLINA

Compliments of
OXENDINE WATCH SHOP
EXPERT WATCH REPAIR
PEMBROKE, N. C.

Compliments of
MAYNOR'S BROTHERS
Dealers in TIMBER
Buying and Manufacturing
Vance & 2nd Street Phone 6511
PEMBROKE, N. C.

Compliments of
THE COLLEGE
ESSO
SERVICE STATION
OIL, GAS AND SERVICE
AUTO REPAIR
QUICK LUNCH AND
CONFECTIONS
Phone Pembroke 2431
CHARLIE CHAVIS, Prop.
PEMBROKE, N. C.

THE LUMBERTON MUSIC STORE

412 Chestnut Street
LUMBERTON, NORTH CAROLINA

THE HOUSE OF BALDWIN

Exclusive Dealers in Baldwin Pianos and Electronic Organs
We also maintain staff of Experienced, Qualified Piano Tuners and Technicians — All Repair Work and Tuning Guaranteed.

THE PEMBROKE STATE COLLEGE USES
BALDWIN PIANOS EXCLUSIVELY

Call on, write or phone us for complete Piano Sales and Service

THE LUMBERTON MUSIC STORE

412 Chestnut Street
LUMBERTON, NORTH CAROLINA
PHONE 3730

*Good Clean Sports and Fun
for All is Our
Business*

LOWRY
BILLIARDS, BOWLING
and
SANDWICHES

Pembroke Recreation Hall

SAMPSON'S DRY CLEANERS

24-Hour Dry Cleaning Service
Complete Laundry Service

PEMBROKE, N. C.

MAYNORS BARBER & BEAUTY SHOP

*Congratulates the Faculty, Seniors
and Other Classes on Their
Splendid Effort*

VISIT WITH US OFTEN

PEMBROKE, N. C.

Compliments of

PATES SUPPLY COMPANY, INC.

HARDWARE
GROCERIES
DRY GOODS
ELECTRICAL APPLIANCES
COTTON and FERTILIZERS

"Everything for the Farm and Home"

PEMBROKE, NORTH CAROLINA

R. E. WILKINS

FRANK WHITE

Compliments of

LIBERTY WAREHOUSES

LUMBERTON, NORTH CAROLINA

H. D. GOODE

R. H. LIVERMORE, JR.

We extend greetings to the members of the graduating class of Pembroke State College. *The Robesonian* deeply appreciates the work you are doing in the field of education and is always glad to cooperate with you.



THE ROBESONIAN

Member Associated Press

PUBLISHED DAILY, MONDAY THROUGH FRIDAY

LUMBERTON, NORTH CAROLINA

Compliments of

PEMBROKE IMPLEMENT CO., INC.

We Strive to Please

YOUR ALLIS-CHALMERS
FARM MACHINERY DEALER

BUCKEYE AND SILENT FLAME TOBACCO CURERS

COMPLETE GARAGE SERVICE

Wrecker Service

Phone 5601

FRANK S. WHITE, *Manager*

R. L. LITTLETON, *Sales Manager*

CARL STUBBS, *Shop Manager*

PEMBROKE, N. C.

Compliments of

PATE'S SUPPLY AUCTION SALE

SALES EVERY FRIDAY, 2:30 P.M.

We Buy Top Hogs Daily

CATTLE . . . HOGS

and

OTHER ITEMS YOU WISH TO DISPOSE OF

We Carry on Hand At All Times

MISSOURI MULES and HACKNEY WAGONS

FRANK S. WHITE, *Manager*

PATES, NORTH CAROLINA

YOUR LOCAL F.C.X. SERVICE

PEMBROKE, N. C.

WE SPECIALIZE IN QUALITY

QUALITY SEEDS, FEEDS, FERTILIZER

FARM MACHINERY

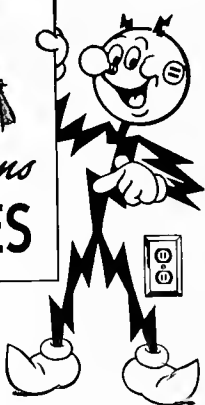
ELECTRICAL APPLIANCES

FENCING

BUILDING MATERIALS, AND BABY CHICKS

Farmer Owned and Controlled

Telephone 5791



**CAROLINA
POWER & LIGHT
COMPANY**

Compliments of
**The National Bank
of Lumberton**
WE PAY TWO PER CENT
INTEREST ON SAVINGS
Member Federal Reserve System
All Deposits Insured up to \$10,000.00
LUMBERTON, N. C.

Compliments of
**RED SPRINGS
SUPPLY CO., INC.**
THE FRIENDLY STORE
Office Phone 3271
Store 3701
RED SPRINGS, N. C.

Compliments of
**RED SPRINGS
DRUG CO.**
Prescription Specialists
RED SPRINGS, N. C.

Compliments of
BAXLEY & JOHNSON
CHEVROLET
Sales and Service
RED SPRINGS, N. C.

OLD FOUNDRY CAFE

*The Place for Your Parties
Large or Small*

Dial 5726
LUMBERTON, N. C.
Hubert Oxendine, *Mgr.*

**Old Foundry Motor Company
USED CARS**

Body Shop Wrecker Service
New and Used Parts

DIAL 4780 or 5726
LUMBERTON, N. C.
Hilton Oxendine, *Mgr.*

CARTER FLORIST *Flowers for All Occasions*

Phones

DAY 6731

NIGHT 3931

Compliments of

LUMBERTON SALES COMPANY, Inc.

ALLIS-CHALMERS FARM EQUIPMENT, CUSHMAN MOTOR SCOOTERS
EVINRUDE OUTBOARD MOTORS, U.S. ROYAL TIRES : LUMBERTON, N. C.

Compliments of

**TOWNSEND'S
PHARMACY**

Rexall Store

=====
We Fill All Doctors'
PRESCRIPTIONS
Carefully and Promptly

=====
Phone 2631
RED SPRINGS, N. C.

Compliments of

**SINGLETON AND
McMILLAN, Inc.**

=====
PONTIAC-STUDEBAKER

**INTERNATIONAL
HARVESTER**

Sales and Service

=====
Phone 3971
RED SPRINGS, N. C.

Compliments of
**B. C. MOORE
and SON**

We Feature
CURLEE CLOTHES
For the Men Who Care

**REGULAR, SHORTS
and STOUTS**

Phone 2436
RED SPRINGS, N. C.

Compliments of
**HOME FURNITURE
COMPANY, INC.**

RED SPRINGS, N. C.

Compliments of
PEMBROKE MOTOR CO.

FORD Sales and Service
Phone 5511 Pembroke, N. C.

Compliments,
**BETTER YIELDS BEGIN WITH
V. C. FERTILIZERS**
HARRY W. LOCKLEAR, *Agent*

**MODERN MOTORS
Inc.**

Authorized
**LINCOLN
and
MERCURY**

Dealer

LUMBERTON, N. C.

**HENDRIX SAFEWAY
GROCERY & MARKET**

PLAIN and FANCY GROCERIES
"Pleasing You Pleases Us"
Phone 2591 Pembroke, N. C.
Raymond Hendrix, Owner

**PATRONIZE
OUR
ADVERTISERS**

AMERICAN SERVICE CENTER

We Serve to Satisfy

REGULAR MEALS : FOUNTAIN SERVICE
AMOCO GAS AND OIL

FULLY EQUIPPED FOR MINOR AUTO REPAIRS

Our Specialty!

External and Internal AUTO CLEANING

T. B. SANDERSON, Prop.
PHONE 2451
PEMBROKE, NORTH CAROLINA

McNEILL'S CLEANERS

24 YEARS OF
DEPENDABLE SERVICE

Phone 2941
RED SPRINGS, N. C.

CITY MARKET

"Home of Better Foods"

FRESH MEATS
VEGETABLES : FRUITS

Allen McGirt, Prop.
Phone 3251 - Pembroke

Pembroke Mutual Burial Association, Inc.

Dial 3181—Day or Night

"We Are Waiting to Serve You"

Pembroke Funeral Home
PEMBROKE, N. C.

FREEMAN MOTOR CO.

Sales — PACKARD — Service

Telephone 3224
2nd and Chestnut Streets
LUMBERTON, N. C.

"RED" FREEMAN COBLE WILSON

Compliments of

**ROGERS
DRUG STORE**

The Rexall Store

WHERE EVERYBODY IS WELCOME

PRESCRIPTIONS COMPOUNDED BY
REGISTERED DRUGGIST

PEMBROKE, NORTH CAROLINA

Compliments of

JONES FOOD STORE

PHONE 2441

PEMBROKE, N. C.

EDWARDS & BROUGHTON COMPANY

Printers of the 1952 INDIANHEAD

*Write for our Representative
to call at your school.*

Established in 1871

RALEIGH, NORTH CAROLINA







1118
DUNN & BROS. CO.
CALIFORNIA
NEW YORK
LONDON