

FALL 2010

in the Field

THE FIELD MUSEUM MEMBER'S MAGAZINE



the Field

FALL 2010

SEPTEMBER-DECEMBER

VOL. 81, NO. 4

EDITOR

Emily J. Waldren, *The Field Museum*

PHOTO CONTENT SPECIALIST

Nina Cummings, *The Field Museum*

DESIGN

Georgia Bockos, *Bockos Design, Inc.*

All images © The Field Museum

unless otherwise specified.

IN THE FIELD (ISSN #1051-4546)

is published three times a year

by The Field Museum. Annual

subscriptions are \$20; \$10 for

schools. Museum membership

includes IN THE FIELD subscription

Opinions expressed by authors are
their own and do not necessarily
reflect the policy of The Field Museum.

Notification of address change

should include address label and

should be sent to the membership
department.

POSTMASTER

Send address changes to:

Membership, The Field Museum

1400 South Lake Shore Drive

Chicago, IL 60605-2496

ON THE COVER

A *keris* (pronounced "crease") handle
found in Bali, Indonesia (c. late 1800s
to early 1900s), is just one of many
glittering artifacts in *Gold*.

© C. CHESEX / AMNH, AMNH DIVISION
OF ANTHROPOLOGY

The Field
Museum

1400 South Lake Shore Drive

Chicago, IL 60605-2496

312.922.9410

fieldmuseum.org

The Field Museum salutes
the people of Chicago for their
long-standing support of the
Museum through the Chicago Park
District. Programming is partially
supported by a CityArts Program 4
Grant from the City of Chicago
Department of Cultural Affairs
and the Illinois Arts Council,
a state agency.

dear member

It's been a banner year at The Field Museum. We've celebrated the 10th anniversary of SUE, welcomed the arrival of Lyuba, the world's best preserved baby mammoth, and continued our research and conservation efforts here and around the world!

The excitement continues this fall as we open *Gold* (Oct. 22 through Mar. 6, 2011), an in-depth look at the most sought-after precious mineral on Earth. The exhibition features a number of beautiful gold artifacts that span the centuries. Be sure to save the date for our exclusive Members' showing of *Gold* on Saturday, Oct. 30. Read more about this exquisite exhibition and your chance to speak with Hilary Sanders, *Gold* project manager, on page 4.

The Museum has been hard at work creating a new exhibition series, *Straight from The Field*, that will highlight the work of Field Museum scientists and researchers. Learn more about this exciting new series and our inaugural exhibition *The Romance of Ants* on page 6.

And as you gear up for the holidays, which incredibly, are just around the corner, don't forget that The Field Museum Stores specialize in fun and unique gifts. Turn to page 12 for a special preview of gifts for everyone on your list, and to learn more about all the holiday events at the Museum from our Annual Holiday Celebration to our new exhibition

Traditions Retold: Mexican Nativity Scenes.

Thank you for all your support in 2010.

MICHELLE CLAYTON

Director of Membership



This gold box was recovered from the 1715
shipwreck of the *San Roman*, off the coast of Florida.

© C. CHESEX / AMNH, COURTESY OF THE FLORIDA DIVISION OF
HISTORICAL RESOURCES, BUREAU OF ARCHAEOLOGICAL RESEARCH





Discover Climate Change Before it Leaves!

IF YOU'VE YET TO USE YOUR FREE Membership tickets to *Climate Change*, Exelon Corporation is giving you one more reason to take advantage of this member benefit. In conjunction with *Climate Change*, Exelon is contributing \$1 to The Field for every visitor to the exhibition, which means just by visiting, you're helping give back to the Museum.



Climate Change (through Nov. 28) allows visitors to uncover the natural evidence of climate change, and discover how small, individual changes add up quickly to help reduce global warming. Discover how we can make an impact in reducing climate change, and learn about some of our best hopes for alternative energy sources. **ITF**

Climate Change is organized by the American Museum of Natural History, New York, in collaboration with The Field Museum, Chicago; the Abu Dhabi Authority for Culture & Heritage, United Arab Emirates; The Cleveland Museum of Natural History; Instituto Sangari, São Paulo, Brazil; Junta de Castilla y León, Spain; Korea Green Foundation, Seoul; Natural History Museum of Denmark, Copenhagen; Papalote Museo del Niño, Mexico City; and the Saint Louis Science Center.

Sponsored by Exelon Corporation, Motorola Foundation, HSBC—North America, Jones Lang LaSalle, and Whole Foods Market.

Exelon is donating \$1 to The Field Museum for every visitor who sees *Climate Change*, so don't miss out on this thought-provoking exhibition!

RoboSUE Extends Her Stay

She's the world's most famous *T. rex* and the world can't get enough of her. Due to popular demand, The Field Museum has extended both *RoboSUE: The T. rex Experience* and *Waking the T. rex 3-D: The Story of SUE* through Jan. 2, 2011. If you're among the few people who haven't seen these two amazing experiences, then it's time for a visit. SUE won't wait forever, you know! Purchase your discounted Member tickets at the Membership desk. **ITF**

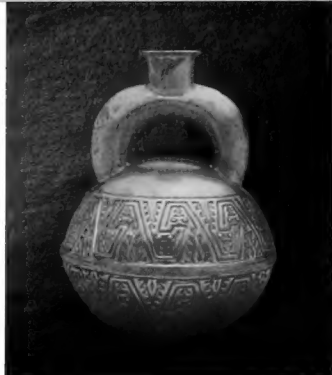
D3D Cinema and The Field Museum present *Waking the T. rex 3-D: The Story of SUE*, sponsored by McDonald's Corporation.

RoboSUE: The T. rex Experience was created by The Field Museum, in collaboration with KumoTek Robotics, INC and Kokoro Company LTD. This experience is sponsored by Kenneth and Anne Griffin.



Field Museum Month at Gallery

October is **Field Museum Month** at the Joel Oppenheimer Gallery (Wrigley Building, 410 N. Michigan Ave.). Throughout the month, the gallery will donate five percent of its art sales to The Field. With purchases above \$1,000, the Gallery is offering you (or someone of your choosing) a top level Field Explorer Membership which entitles you to numerous Field Museum benefits for one year. **Thank you for your support!**



Discover

The Story of the Metal that Shaped our World

the Power

By Emily Scherker, Writer

Above, left to right: A gold Peruvian bottle, c. 900–200 BC; a Tiffany baby rattle with mother-of-pearl handle, manufactured around 1890; and a pair of Greek earrings from the Hellenistic period show mankind's desire for gold, has ranged the centuries.

PHOTO CREDITS, LEFT TO RIGHT:
PHOTO BY JOHN BIGELOW TAYLOR © AMNH
© TIFFANY & CO. ARCHIVES
© CRAIG CHESEK / AMNH

BE PREPARED TO BE DAZZLED by *Gold* (Oct. 22 through Mar. 6, 2011), an exploration of the world's most desirable metal. Immortalized in ancient mythology, gold was the first metal to be worked by humans. Since the beginning of recorded history, the rise of powerful and dominant societies has coincided with the possession of this highly prized substance. Gold continues to reign eternal as a symbol of wealth, beauty, and power. The exhibition explores gold's natural beauty, scientific value, and power to shape history.



Gold offers visitors the opportunity to see over 550 objects that span centuries past and present. The exhibition is one of the most thorough explorations of this precious element ever displayed. *Gold* takes you on a journey from the metal's formation in the Earth's mantle to its incorporation into ancient and modern-day cultural traditions of dress, art, and religion. Where else will you have the opportunity to admire the salvaged treasures of American and Spanish shipwrecks alongside boulders of gold ore, together with Oscar® and Golden Globe® statuettes? From a Peruvian bottle, circa 900–200 BC to a 1959 Cartier necklace, the golden artifacts will amaze.

Visitors will also discover gold's astounding physical properties: its extreme malleability, reflectivity, and conductivity. Marvel at a 132-square-foot room covered entirely with only three ounces of exquisitely thin gold leaf—the same volume as three U.S. half-dollar coins! Learn how gold is found, mined, and shaped into objects that are both beautiful and serviceable.

This hollow gold Inca figurine was probably used as an offering, and was originally wrapped in cloth.

© DENIS FINNIN / AMNH



of Gold



Gold chronicles humankind's age-old fascination with this enduring symbol of wealth and success, and culminates in an examination of our own contemporary relationship with the mineral. Visitors will have the chance to admire iconic golden awards that are near and dear to every Chicagoan's heart: the White Sox 2005 World Series Championship Trophy and Shani Davis' two Olympic gold medals in speed skating.

Visitors to Gold are sure to leave this monumental exhibition with new knowledge of gold's intriguing scientific and cultural significance.

To reserve your free member tickets to Gold, please call 312.665.7705 or visit fieldmuseum.org. **ITF**

Gold is organized by the American Museum of Natural History, New York in cooperation with The Houston Museum of Natural Science

Proud Cultural Sponsor: Northern Trust

Additional support provided by: Marsh Private Client Services

A Byzantine gold Histamenon Nomis coin (1028–1034 AD) has a depiction of emperor Romanus III being crowned by the Virgin Mary. On the reverse, Christ enthroned (above).

ALL IMAGES ABOVE © C. CHESER JAMNICH



© CHICAGO WHITE SOX / RON VESELY

Two "Golden" Invitations

AS A VALUED MEMBER, you are cordially invited to an exclusive event on **Saturday, Oct. 30**.

Come join us for a continental breakfast from 8am to 9am, followed by a talk in James Simpson Theater with Hilary Sanders, project manager of Gold. Hear about the wonderful artifacts you'll discover in Gold, and learn about up-and-coming exhibitions at The Field Museum.

Reservations to this special event are required and can be made by contacting 312.665.7705, Mon. through Fri. from 8:30am to 4:30pm, or by visiting fieldmuseum.org/membership/tickets.htm. Space is limited and is reserved on a first-come, first-served basis, so RSVP today!

IF YOU AND YOUR SPOUSE are celebrating your **50TH ANNIVERSARY** in 2010, you won't want to miss out on The Field Museum's special Golden Anniversary Celebration on **Saturday, Dec 4**, from 10am to 2pm.

By showing proof of marriage (marriage certificate, wedding invitation, or dated newspaper clipping), visitors will be entered in a raffle to win romantic prizes and are invited to celebrate with a champagne toast and wedding cake. All attending couples will have the opportunity to renew their wedding vows at 1pm.

Visit the Gold exhibition and celebrate 50 years of marriage surrounded by artifacts that span thousands of years.

The Romance of Ants

By Matt Matcuk, Exhibition Development Director

THE ROMANCE OF ANTS, WHICH OPENED JULY 30, presents an eye-popping view of an insect that has been called the world's first architect, first farmer, and first domesticator of other species. The exhibition uses oversized photographs of ants, coupled with comic-book style graphics, to tell the story of Field Museum scientist Corrie Moreau, PhD. The biography focuses on her fascination with ants through her childhood, adolescence, college years, and professional career.

The leafcutter ant can lift up to 20 times its own weight. That's like a 200 pound man lifting two rhinoceroses!

Although Moreau had a fascination with insects as a child, and ants in particular, this passion went underground, so to speak, during adolescence. For many teenage girls it isn't considered "cool" to like bugs and science, so it wasn't until she started college that she rediscovered her love of ants. Once her passion with ants and biology was rekindled she never turned back. This journey is highlighted in *The Romance of Ants*, including how Moreau came to join the scientific staff of The Field Museum.

But the real stars of the exhibition are the ants themselves—over 300 live harvester ants are on display in three transparent ant "farms." In addition, brilliant super-sized images of ants by biologist Alex Wild give visitors an even closer look at these amazing, beautiful, and sometimes creepy creatures. Visitors will learn that ants come in more colors than red and black, that almost every ant you ever see is female, and much more.

The Romance of Ants is on view in the Rice Gallery (near the Tsavo Lions) and runs through December, 2010. **ITF**

The Romance of
ANTS

A leafcutter ant.

© ALEX WILD 2010



—ALEX WILD 2010

An Australian ant (*Podomyrma adelaidae*) protects and tends a caterpillar which secretes a liquid useful to ants as a source of food.



KAREN BEAN / GN91313-0560

Corrie Moreau, PhD shows ant specimens from the Museum's collections. Moreau's research is featured in the new exhibition *The Romance of Ants*.

a series of new exhibitions

Straight from The Field

The Romance of Ants is the first exhibition in a planned series of temporary shows entitled *Straight from The Field*, which will present Field Museum science in a way never seen before. The exhibitions in this innovative series will allow visitors to meet the people behind the science—our research staff—and explore the process of scientific discovery.

Straight from The Field exhibitions will be created quickly, allowing us to present fresh, new stories. Shown in some of the Museum's smaller, more intimate galleries, they will feature fewer objects and will encourage visitors to contribute their own knowledge and experiences relating to the exhibition content. In *The Romance of Ants*, for example, visitors can use their web-enabled mobile phones to post their own ant-related stories and photos, submit their questions about ants, and even download the exhibition "comic book" to share with friends.

The series of exhibitions will run in each of the Museum's four small special exhibitions galleries, each of which has its own theme:

- The **Rice** Gallery is devoted to exhibitions on wildlife research.
- The **Marae** Gallery features exhibitions on the theme of community.
- The **Webber** Gallery offers exhibitions on contemporary Native American culture.
- And the **Brooker** Gallery presents exhibitions that feature the Museum's Archives and Library collections.

Check out the Museum's website for the next in this series of fresh new exhibition experiences—*Straight from The Field*.

Taking Science to the Community

By Krystal Villanosa, Communications and Digital Learning Manager



JOHN WEINSTEIN / A113942C

THE FIELD MUSEUM IS COMING TO A NEIGHBORHOOD NEAR YOU!

Café Science is a program for adult audiences and is held on weekday evenings in cafés, bookstores, and pubs in areas such as Wicker Park, Pilsen, Lakeview, and Hyde Park. Stop by and discuss hot topics such as cloning, evolution, and the destruction of Iraq's historical treasures—all moderated by local scientists.

Café Science provides a comfortable and informal forum for people to openly discuss everything from global warming to genetic engineering. Scientific advances have many social implications and have an impact on our lifestyles and daily decision making. Through these cafés, the Museum is engaging local communities in the economic, political, and ethical dimensions of science.

Held in venues around the city for your convenience, on topics that are both current and have high impact, Café Science gives you a voice and allows your insights into the world to be heard. Science is a dialogue and we want to hear what you have to say.

The next series of Café Science programs are as follows:

Leave No Child Inside

featuring *Kirk Ann Taylor*

Learn about Chicago Wilderness's Leave No Child Inside Initiative, a regional effort to reconnect children with nature.

September 23, 7pm

Whole Foods, 1550 N. Kingsbury

The East African Coast and the Indian Ocean Trade

featuring *Dr. Chap Kusimba*

Join Dr. Chap Kusimba as he discusses the Indian Ocean Trade's impact on the East African Coast.

November 18, 7pm

Hopleaf Bar, 5148 N. Clark

Egyptian Gold

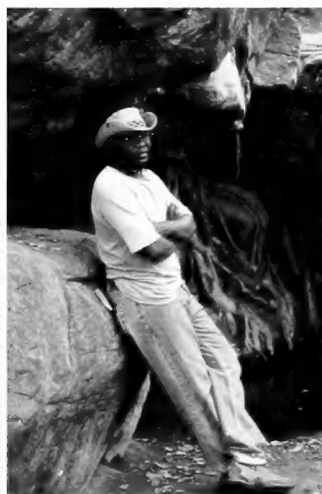
featuring *Dr. James Phillips*

Join Dr. James Phillips as he discusses the role that gold has played in Egyptian history and culture, past and present.

December 2, 7pm

Hopleaf Bar, 5148 N. Clark

All Café Science presentations are free. View the program calendar insert or visit fieldmuseum.org for more details. **ITF**



© THE FIELD MUSEUM / THOMAS GNOSKE



© THE FIELD MUSEUM, ECCO, LAURA MILKERT



© DR. JAMES PHILLIPS

Clock-wise, from above:
Dr. Chap Kusimba during
a research trip in Tsavo;
Kirk Ann Taylor (ECCo) doing
restoration at a Calumet
wetland; Dr. James Phillips
on a 2001 research trip
in Israel.

FALL 2010 September > December

program Calendar

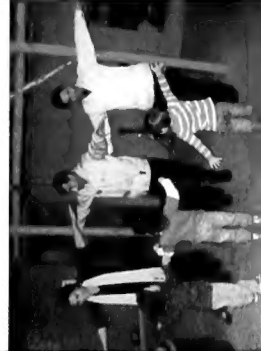
The Field
Museum



IMAGES ARE COURTESY OF
THE FIELD MUSEUM AND MORGUE FILE



ALFRED T. PALMER



enjoy a season of
programs for all ages
from adult lectures to storytelling performances

Program Tickets & Info 312.665.7400

General Museum Info 312.922.9410

No refunds are permitted for any program. Fees for programs that are cancelled by The Field Museum will be refunded in full.

september

Artists and Authors Present* family program

with author **Tim Wagner** & illustrator **Aubri Vincent-Barwood**
9.18, 1pm > Enjoy a reading of *An Environmental Guide from A to Z* and learn how to create your very own nature journal from the author and illustrator.

I Dig Brazil! teen program

9.20-12.9, Mondays & Wednesdays, 3pm-4:30pm >
 Go on a virtual fossil dig at The Field Museum and work with an international team of scientists in Brazil to discover what it's like to be a paleontologist! Email ldigscience@fieldmuseum.org for more information and to request an application.

This project is developed in partnership with Global Kids, Inc.

Café Science: Leave No Child Inside adult program featuring Kirk Ann Taylor, Urban Conservation Manager

9.23, 7pm > Learn about Chicago Wilderness's Leave No Child Inside Initiative, a regional effort to reconnect children with nature. This program will take place at Whole Foods, 1550 N. Kingsbury Street. **FREE** (no admission required)

Fossil Hunt at Mazon Creek family field trip

9.25, 8am-3pm > Visit the world-famous Mazon Creek site to discover what Illinois was like 300 million years ago! Plan on a one-quarter mile walk to fossil locations. For families with children ages 8 and up. \$40, members \$28; pre-registration is required.

october

Two of Us: Trick or Treat?* family program

Mondays, 10am-11am > Come learn about autumn festivals and traditions around the world.

Learning in a Museum parent workshop

10.2, 9am-10:30am or 3:30pm-5pm > Connect what your child is learning in school and at home to what they are seeing and experiencing at a museum. Learn ways to engage your child in outdoor exploration, creative play, and self-expression. **FREE** with pre-registration (no admission required).

Dozin' with the Dinosaurs overnight program

10.8, 5:45pm-9am > Join SUE the T. rex for a night of family workshops, tours and fun activities! Prices range from \$51 to \$87. Tickets for the 2011 season of Dozin' with the Dinosaurs are on sale now! Visit fieldmuseum.org/overnights for details.

storytelling festival

December 26-31



THE FIELD MUSEUM

Join us in the *Crown Family PlayLab* as we rock out at our third annual **Storytelling Festival!** This year we are featuring two of Chicago's coolest children's music sensations, Justin Roberts and the Not Ready for Naptime Players and Jeanie B. and the Jelly Beans!



JEANIE B.

12.26 Sunday > 11:30am & 1:30pm

What Do You See?*

Take center stage in a re-telling of *Polar Bear, Polar Bear, What Do You See?* Build a mini-set and make costumes that will transform you and your family into some of your favorite winter animals!

12.27 Monday > 11:30am & 1:30pm

Sleep Tight*

Re-tell the story of *Time to Sleep* by Denise Fleming with puppets.

12.28 Tuesday > 11:30am & 1:30pm

Snowman at The Field Museum*

Build your very own snowman and help solve the winter mystery *Stranger in the Woods* by Carl R. Sams and Jean Stoick.

12.29 Wednesday > 2pm-3pm

Justin Roberts and the Not Ready for Naptime Players

Experience one of Chicago's most popular kids' musicians as they perform hits from their latest CD, *Jungle Gym*.

They will take you through the collective memories of childhood: from the joys of trick or treating to the magic stillness of snow days. > \$5, members \$4
 Pre-registration required—call 312.665.7400.



THE FIELD MUSEUM

12.30 Thursday > 2pm-3pm

Jeanie B. and the Jelly Beans

Play along with Chicago's own Jeanie B. as she performs hits from her band's CD, *Mommy Knows Best*. Don't miss her signature song "Bubble Wrap," where everyone gets to pop those wonderful bubbles! > \$5, members \$4
 Pre-registration required—call 312.665.7400.

12.31 Friday > 11:30am & 1:30pm

Warm as Mittens*

Play a part in the classic children's story *The Mitten* by Jan Brett. Through dramatic play, you and your family will learn about the rewards of sharing, communicating, and respecting others.

***FREE with Museum Admission**

Family Field Day: Self-Portrait Mask* *family program*
10.16, 11am > Come make your very own mummy mask to take home and display during the Halloween season!

Redmoon Skeleton Parade* *family program*

10.30, 11:30am & 1:30pm > Enjoy a delightful and spooky Halloween parade that is a signature of Chicago's own, Redmoon. Raucous performers dressed in skeleton costumes will play bombastic musical instruments and wear enchanting dino skeleton masks.

november

Two of Us: Polka Dots, Checks, and Stripes! *family program*

Mondays, 10am > From zebras and cheetahs to bears and giraffes, animals are covered in many different patterns. Learn how these patterns help animals survive in their environment.

Café Science: The East African Coast and the Indian Ocean Trade *adult program*

featuring Dr. Chap Kusimba, Curator of Anthropology

11.18, 7pm > Join Dr. Chap Kusimba at the Hopleaf Bar in Andersonville as he discusses the Indian Ocean Trade's impact on the East African Coast. The Hopleaf Bar is located at 5148 N. Clark St. **FREE** (no admission required)

december

Café Science: Egyptian Gold *adult program*

featuring Dr. James Phillips, Curator of Anthropology

12.2, 7pm > Join Dr. James Phillips at the Hopleaf Bar in Andersonville as he discusses the role that gold has played in Egyptian history and culture, past and present. The Hopleaf Bar is located at 5148 N. Clark St. **FREE** (no admission required)

in the Crown Family PlaLab

***FREE with Museum Admission**

fieldmuseum.org
event details are available online!

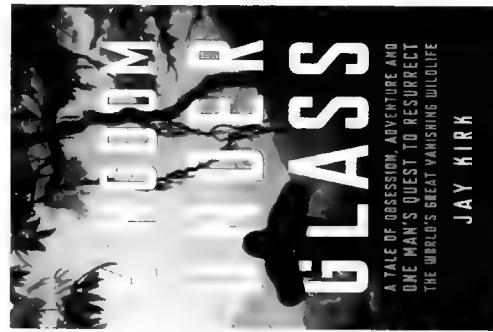
lecture



IMAGE COURTESY OF MORGUE FILE



IMAGE COURTESY OF MORGUE FILE



COURTESY OF HENRY HOLT AND COMPANY

(see details on back cover of calendar), we have a number of adult lectures for you to choose from in the coming months. From evolution to climate change to taxidermy, join us this fall as we tackle these sometimes controversial, always fascinating science topics.

Climate Change in the Great Lakes Region

featuring Dr. Donald Scavia

10.7, 6:30pm > Learn about the potential impact of climate change on Great Lakes ecosystems.

Dr. Donald Scavia is the Graham Family Professor and Director of the Graham Environmental Sustainability Institute at the University of Michigan.

FREE with pre-registration (no admission required)

Tracing the Origins of Speech

featuring Dr. Jeffrey Laitman

10.9, 1pm > Explore new evidence from both the fossil human record and examine the evolution of the vocal tracts of our ancestors for insight into the speech capabilities of our ancestors—from the earliest *australopithecus* to close relatives such as *Neanderthals*.

Dr. Laitman is Distinguished Professor of the Mount Sinai School of Medicine; Professor and Director of Anatomy and Functional Morphology, Professor of Otolaryngology, and of Medical Education at Mount Sinai. Dr. Laitman is also the President-Elect of the American Association of Anatomists.

This program is in partnership with the Leakey Foundation.

Food from Your Backyard: Sustainable Farming in Illinois

10.21, 6:30pm > Discover the benefits of local gardening from Chicago-area leaders and advocates of sustainable farming.

Panelists for this program are:

Lindsay Record, Illinois Stewardship Program

LaDonna Redmond, Institute for Community Resource Development
Angela Mason, Chicago Botanic Garden

Moderator for this program is: **Laurel Ross**, The Field Museum

FREE with pre-registration (no admission required)

Kingdom Under Glass

featuring Jay Kirk

11.6, 1pm > Join us as Jay Kirk provides an epic account of Carl Akeley, the father of modern taxidermy, who mounted the African elephants on display in Stanley Field Hall.

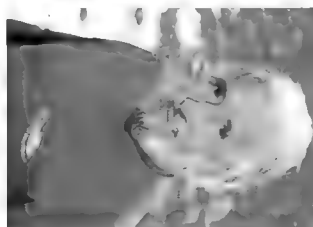
Jay Kirk's nonfiction has been published in *Harper's*, *GQ*, *The New York Times Magazine*, and *The Nation*. He teaches in the Creative Writing Program at the University of Pennsylvania.

bringing us

MEET EXPLORERS, PHOTOGRAPHERS, ACTIVISTS, AND SCIENTISTS whose passion, commitment, and curiosity inspire us to better understand and care for our world. From the depths of the ocean to the wind-swept plains of east Africa, *National Geographic Live* speakers bring us the world and all that's in it.



Live!



11.2 Tuesday > 7:30pm

Ocean Adventure:

An Evening with Jean-Michel Cousteau

Underwater Adventurer and Conservationist

Since the age of seven—when he was “thrown overboard,” scuba gear and all, by his father, Jacques Cousteau—Jean-Michel Cousteau has been exploring the ocean realm. Join us for a celebration of the centennial of the older Cousteau’s birth through an intimate look at the life Jean-Michel shared with his father, and the legend he has taken it on himself to carry forward.

3.8 Tuesday > 7:30pm

A Kenyan Woman’s Dream

Featuring Kakenya Ntaiya, Educator and Community Activist

Born into a traditional Maasai family in Kenya, National Geographic Emerging Explorer Kakenya Ntaiya rebelled against tradition to define her destiny by pursuing an education, eventually attending a university in the U.S. Learn how she is providing educational opportunities for young girls through a school she has established in her home village—the region’s first and only primary school for girls.

12.14 Tuesday > 7:30pm

America’s Great Wildlife Migrations

Featuring Joel Sartore, National Geographic Photographer

Veteran National Geographic photographer Joel Sartore has tracked the annual migrations of several North American animal species, from terrestrial creatures to the amazing journey of the monarch butterfly to the spectacular mass airborne movements of sandhill cranes. Step behind the camera with this distinguished wildlife photographer as he shares amazing stories and images of animals on the move.

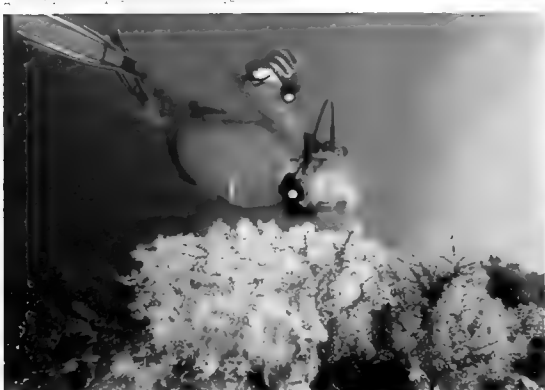
4.5 Tuesday > 7:30pm

Extreme Cave Diving:

Exploring the Bahamas’ Blue Holes

Featuring Kenny Broad, Ecological Environmentalist

National Geographic Emerging Explorer Kenny Broad, a diver and advocate for freshwater conservation, led a scientific expedition to the dangerous but fascinating flooded caves, or “blue holes” of the Bahamas. Delve into the discoveries Broad is making that have implications for fields as diverse as microbiology, archaeology, and even astrophysics.



Tickets go on sale September 7. Prices for series tickets range from \$70–\$360. Prices for single tickets range from \$15–\$30. Visit www.nglive.org to purchase tickets or for further program and pricing details.

In The News: Gulf Oil Spill

By Janet R. Voight, Department of Zoology, Invertebrates

SINCE THE OIL RIG EXPLOSION IN THE GULF OF MEXICO ON APRIL 20, NEWS OF THE DISASTER HAS DOMINATED THE HEADLINES. WE'VE SEEN DISTURBING IMAGES OF OIL-SOAKED BIRDS AND DEAD FISHES. HOWEVER, THE SPILL HAS ALSO IMPACTED SMALLER, LESSER KNOWN ANIMALS. MUSEUM ZOOLOGIST JANET VOIGHT EXPLAINS HOW SOME OF THE OLDEST LIVING CREATURES IN THE SEA—TUBE WORMS—MAY NOT SURVIVE.



DIANE ALEXANDER WHITE / GNS1215D DSC10004

Humans aren't the first animals to exploit the oil and gas reserves of the Gulf of Mexico. Ranging deep in the Gulf—in fact, deeper than any of the nearly 4,000 oil wells there—are animals that can't live without oil. Tube worms are among the sea creatures that thrive in "cold seep" communities and do not eat, but rely on bacteria living in their gut to fix energy by binding oxygen to substances that humans, and most animal life, would find toxic.

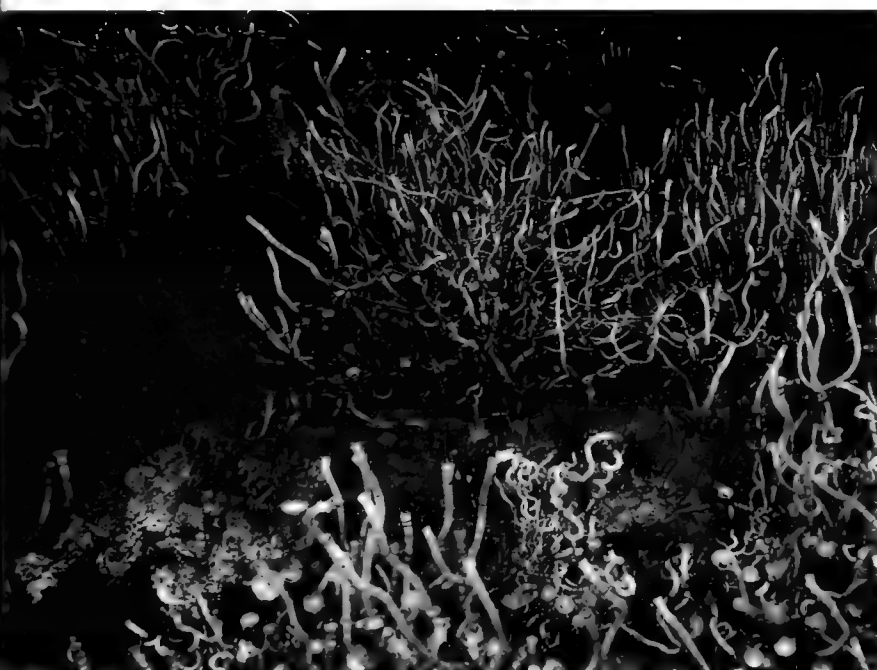
Tube worms, first discovered in the Gulf in 1984, grow moderately fast for about a decade, extending their "roots" into the sea bed to tap needed chemicals. They also extend their plumes up into the water to get oxygen. Once well-situated, tube worms continue growing slowly for a couple of centuries. During this time, other animals move in and colonize the

tube worm communities. These animals, including snails, shrimps and microscopic crustaceans, can live in "bushes" of hundreds to thousands of individual tube worms. With time, and perhaps as the tube worms' roots effectively block release of toxic chemicals from the sediment, other deep sea animals also colonize the bushes.

Centuries old—the deep-sea equivalents of redwood trees—Gulf of Mexico tube worms are uniquely adapted to this oil-rich and stable habitat, but they are now at risk of suffocation due to deep oil plumes that reduce available oxygen.

During trips to the Gulf of Mexico in 2003 and 2006, I collected tube worms for the Museum. It would be tragic if these specimens came to represent an extinct species. Extermination of tube worms would likely have a domino effect. Loss of tube worms would eliminate potential

homes for other invertebrate species that live only in the tube worm bushes. It would also mean that tube worm roots would no longer block the natural seeps of oil and gas into the Gulf. The world would not stop turning on its axis, but it would not be the same. **ITF**



COURTESY OF ERIC CORDI'S AND THE MMS/NOAA LOPHYLIA II STUDY

in their own words

Women in Science

Compiled by Emily Waldren, Editor

MEMBERS OFTEN TELL US THAT THEY WANT TO KNOW MORE about the individuals who work at The Field Museum, and how they got their start. It's no wonder—our staff is made up of many talented people with interesting stories to share. In this issue, we spoke to some women scientists to learn more about their backgrounds and careers.

ERICA ZAHNLE

Educator Researcher, Pritzker Laboratory for Molecular Systematics and Evolution



"Look, a lady scientist! Have you ever seen a lady scientist?" This is how I was identified by an excited grandmother to her grandson. It made me realize how much I take for granted the trail that has been blazed for me as a woman in science. 2010 marks my third year in the *DNA Discovery Center*. My job is unique because in addition to performing molecular research, I communicate with the public about projects in the Pritzker Laboratory. One of the greatest joys of my job is to inspire and educate students about career paths in science. I am very fortunate to be surrounded by supportive and inspirational scientists who encourage my career goal of being an accomplished molecular researcher. In addition to working full time in the lab, on nights and weekends I am pursuing a Master's Degree in biology.



CHRISTINE NIEZGODA

Collections Manager, Botany Department

My introduction to the Botany Department was in 1973, collecting samples from herbarium specimens for my thesis. Little did I know as I opened old cabinets, infused with mothballs, that one day I would work here! Upon finishing my Master's Degree my temporary position turned full-time, and I began my career here. Through the years, my job and the Museum's herbarium, have evolved. Today the mothballs are gone and we have a newly renovated, climate-controlled storage space, and I am the Collections Manager responsible for 2.5 million flowering plants. What fascinates me every day is the excitement of discovery—a specimen from the 1700's collected by Captain Cook, a plant examined by Linnaeus, and many more treasures. It is a privilege to be entrusted with conserving these collections for future generations.

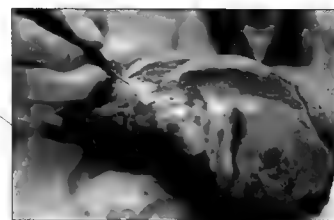


AKIKO SHINYA

Chief Preparator, Fossil Vertebrates

I prepare, conserve, mold, and cast vertebrate fossils for exhibition, education, research, and collection exchange, and participate in domestic and international fieldworks. As Chief Preparator, I manage three lab facilities, oversee multiple staff projects, and supervise and train interns, volunteers, and students. I began my career as a volunteer at the Royal Ontario Museum while I was a student at the University of Toronto. There I learned fossil preparation, molding, and casting techniques. Although I wish I had more muscles when opening a quarry or moving heavy specimens and equipment, I'm mostly unaware of my gender in this institution. Currently, I'm preparing a partial skull piece of an Ichthyosaur. This particular specimen, found in Nevada, was a huge predatory marine reptile that ruled the ocean 200 million years ago.

PHOTOGRAPH BY ALEXANDER WHITE / GEMINIS



PHOTOGRAPH BY ALEXANDER WHITE / GEMINIS



JENNIFER L. HIRSCH, PH.D.

Urban Anthropology Director, Division of Environment, Culture, and Conservation (ECCo)

I have worked at the Museum as an applied anthropologist since 2007, collaborating with community and government partners across the Chicago area on projects that strengthen the relationship between people and nature. Currently, my team is focused on getting communities involved in efforts to address climate change. Women bear a disproportionate burden in adapting to extreme climate events, since they are often responsible for their families. But this also means that women are key to developing innovative solutions. We work with community leaders throughout the region—the majority of whom are women—to help them develop climate change projects based in their personal experiences and local cultures, around issues such as gardening and access to healthy food. Our goal is to create models for climate action in urban areas that help reduce greenhouse gas emissions and improve residents' quality of life.

PHOTOGRAPH BY HANNA PORST / THE FIELD MUSEUM



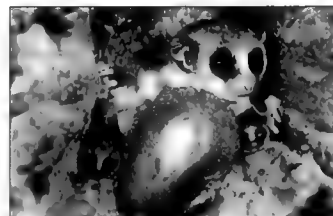
PHOTOGRAPH BY HANNA PORST / THE FIELD MUSEUM

EDNA DAVION

PhD candidate, Committee on Evolutionary Biology, University of Chicago and 2010–2011 Women's Board Women in Science Fellow

I was born and raised in South Africa, where I developed a passion for primates. After graduating with an MSc, I joined the Museum, as a volunteer in 2000. To my delight I was quickly hired as staff. With encouragement and support from fellow museum scientists I followed my dream and am now pursuing a PhD through University of Chicago's Committee on Evolutionary Biology. I conduct my PhD research in the Pritzker Lab. Here I use DNA from primates and their relatives to understand whether ancestral primates were active at night or during the day. I am honored to be the 2010–2011 Women's Board Women in Science Fellow. I am very grateful to the Women's Board for the support they provide to Field Museum scientists and particularly to Women in Science.

PHOTOGRAPH BY JOHN WEINSTEIN / GEMINIS



PHOTOGRAPH BY JOHN WEINSTEIN / GEMINIS



Museum Stores Make Holiday Shopping Easy

By Emily Waldren, Editor

IT'S HARD TO BELIEVE, BUT THE HOLIDAY SEASON is just around the corner.

In order to help you prepare, ITF spoke with Jeri Webb, director of museum stores, to get some of her favorite recommendations for everyone on your shopping list this year. Stop by the Museum stores or visit fieldmuseum.org/store to check out these and other terrific gifts!



FOR HER

Red Tooled Leather Tote

The art of leather tooling has flourished throughout the Southwestern United States, Central and South America for the last 100 years. Our handy red leather tote is made with hand-stamped and carved leather from Paraguay and features pockets galore. > \$142

Black Bastet Cat

The Bastet cat was worshipped throughout ancient Egypt, and was known as the goddess of joy and protector of women. Our sleek black Bastet is hand cast for you in Egypt and stands seven inches high. > \$38

FOR HIM

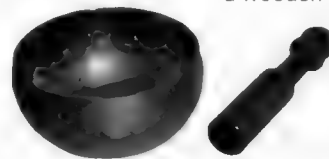


Red Slate and Sterling Cufflinks

These handsome red slate cufflinks from our men's collection are interesting and elegant in their simplicity. Featuring red slate, one of Earth's treasures, these cufflinks offer a new perspective on this traditional building material. > \$115

Tibetan Singing Bowl

Singing bowls have been made in various parts of Asia since the 12th century. They can be played either by rubbing a mallet around the rim of the bowl to produce a complex chord or by gently striking the bowl to produce a warm gong. Our hand-hammered singing bowls come with a wooden mallet. > \$48



Children's Holiday Celebration: December 9

Be sure to save the date for The Women's Board annual Children's Holiday Celebration on Thursday, Dec. 9 from 4pm to 6:30pm at The Field Museum. Children and adults are invited to explore and celebrate the many cultures of Chicago and the world at this festive event. A new addition to the fun is a scavenger hunt in *The Ancient Americas*. Crafts and entertainment from around the world and a visit with Santa Claus will create a memorable afternoon.

Tickets are \$17 for adults or \$15 for adult Members and \$10 for children ages 13 and under. Reservations are limited and tickets will not be sold at the door. For tickets or further information please call 312.665.7145. ITF



FOR KIDS

"I Never Forget a Face" Matching Game

Discover that you truly never forget a face with our beautifully illustrated matching game. This fun game includes 24 matching pairs of images of children from around the world printed on quality heavy cardstock. Recommended for ages 5 and up. > \$19.50

One Dinosaur Is Equal To a T-shirt

Did you know that one *Argentinosaurus* weighed about 100 tons, give or take one *Spinosaurus*? Your kids will when they wear our high quality, cotton long sleeved dinosaur t-shirt, which is beautifully illustrated with no less than 14 different dinosaur species. > \$22.95

Traditions Retold: Mexican Nativity Scenes

By Jackie Kenyon, Writer

This holiday season, as you're enjoying your own family's traditions, come to The Field Museum to discover a traditional Mexican way of celebrating Christmas. In *Traditions Retold: Mexican Nativity Scenes*, discover expressive *nacimiento* figurines that portray the key story of the Christian faith, the birth of Jesus, with visits of angels, animals, shepherds, and kings.

Nacimientos are nativity scenes created by Mexican folk artists. Made with materials and symbols that reflect their own cultures and times, the artists celebrate the birth of Jesus in a way that reflects both pre-Hispanic and Catholic traditions.

GIFTS THAT GIVE BACK

Haitian Tree Wall Hanging

In the wake of the devastating earthquake that shook Haiti in January, 2010, the world reached out to find ways to support the victims of the disaster. One of the companies that we work with here in The Field Museum Stores is helping to restore the lives of its artists by donating back to the communities hardest hit. The artists whom we are supporting create wall art made from 55 gallon steel drums. The drums are cut and sculpted using only a hammer and a nail, and each piece is an original work of art. One of our favorites is this fluttering tree wall sculpture (approximately 20 inches in diameter) made by Cheribain Jean. > \$88

Field Museum Memberships

The perfect gift for the explorer on your list! No matter what the level, Field Museum memberships always comes with benefits like free general admission and special exhibition tickets, and an invitation to our special Members' Nights in the spring. Membership proceeds fund important work such as scientific research, public programs, and the creation of new exhibitions. > \$60-\$125



KAREN BEAN / A114826_0200

Brimming with wit and color, *nacimiento* sets are often installed as "dioramas" in homes and churches, and reverentially embellished with lights and other decorations.

A highlight of the exhibition is a scene from Yucatán, Mexico (right). Each character has been fashioned from clay using figurine molds—a ceramic technique that dates back to the Aztecs. One of the angels plays a *jarana*, a traditional Mexican instrument adapted from Spanish guitars, and the pair of angels behind Mary and Joseph is dressed in clothing native to the region.

Other *nacimientos* on display have been made from corn husks, fired clay, and palm fronds. Find out why the devil shows up in one nativity scene from Michoacán. And what's the Holy Family doing inside a squash? Finally, discover how Mexican-Americans in Chicago today create *nacimientos* that reflect their own experiences. **ITF**

This exhibition was organized by The Field Museum, and is made possible with a generous gift from William Goldman.

This exhibition is presented in English and Spanish.

Exploring Evolving Planet

By Jackie Kenyon, Writer



© THE FIELD MUSEUM

AS MUSEUM MEMBERS, ODDS ARE YOU AND YOUR FAMILY HAVE VISITED EVOLVING PLANET, BUT THIS AMAZING EXHIBITION DESERVES A SECOND — AND EVEN THIRD — LOOK. COVERING 27,000 SQUARE FEET OF SPACE, AND BILLIONS OF YEARS, THERE IS SO MUCH TO SEE!



© THE FIELD MUSEUM

Next time you visit, be sure to spend some time exploring some of these exhibition highlights.

Cambrian Sea Video

This large-scale video sheds light on what an ancient ocean may have looked like, and will make you feel as though you are swimming among prehistoric sea creatures. Below the video, you'll discover a case filled with nearly 40 trilobite fossils. Trilobites lived 500 million to 250 million years ago; some are fossilized so well that scientists can study the lens on their eyes!

The Tully Monster

Did you know the *Tully Monster* is the Illinois state fossil? Thus far, these ancient invertebrates, who lived 300 million years ago, have only been found in Illinois. Though these animals are not monstrous—roughly ranging in size from six inches to one foot—*Evolving Planet* showcases one of the largest of these ancient creatures, found in Mazon Creek, located near Chicago.

Genius Hall of Dinosaurs

Children and adults alike get a special thrill walking through our dinosaur hall. Take a look at the hungry *Daspletosaurus torosus* as it hovers over its fossilized dinner of duckbilled dinosaurs. Marvel at the massive *Apatosaurus*, whose massive body seems to fill the entire hall. This giant dinosaur is literally the largest animal on display in the Museum. Be sure not to miss the 18-foot *Rapetosaurus krausei*. A member of the sauropod dinosaurs (like *Brachiosaurus*) the *Rapetosaurus* is the only one on display in the world.

Short-Faced Bear

You'll have to crane your neck to look up at the short-faced bear. While on all fours, these bears were about five feet tall at the shoulder, but standing upright, they stood about 12 feet tall. Take a look at the bear's massive paws and imagine running into him on your morning hike! Fortunately, the short-faced bear went extinct about 12,000 years ago.

Be sure to be on the look-out for all these and more the next time you visit *Evolving Planet*! **ITF**

Evolving Planet is made possible by Kenneth and Anne Griffin. The Elizabeth Morse Genius Charitable Trust is the generous sponsor of Evolving Planet's Genius Hall of Dinosaurs.



© THE FIELD MUSEUM



© THE FIELD MUSEUM

Discover something new every time you and your family visit Evolving Planet.

Always be Discovering

This year is the 100th anniversary of the discovery of the *Brachiosaurus* (see back cover for details). In honor of that, ITF has found some interesting facts about this amazing dinosaur. Amaze your friends and family with your new *Brachiosaurus* knowledge!

- *Brachiosaurus* was found in **western Colorado** on July 4th, 1900 by **H. William Menke** and a team of paleontologists.
- *Brachiosaurus* is one of the largest known land animals. These dinosaurs measured about 70 feet long, and were about 41 feet high. They weighed about **63,000 pounds**, which is roughly the weight of 15 mid-sized cars.
- *Brachiosaurus*'s name means "**arm-lizard**" in Greek. It was named accordingly because its front-legs are significantly (and unusually) longer than its back legs. *Brachiosaurus* actually shares this characteristic with the modern giraffe!

- Many dinosaurs were **fierce hunters**, but *Brachiosaurus* was an herbivore.

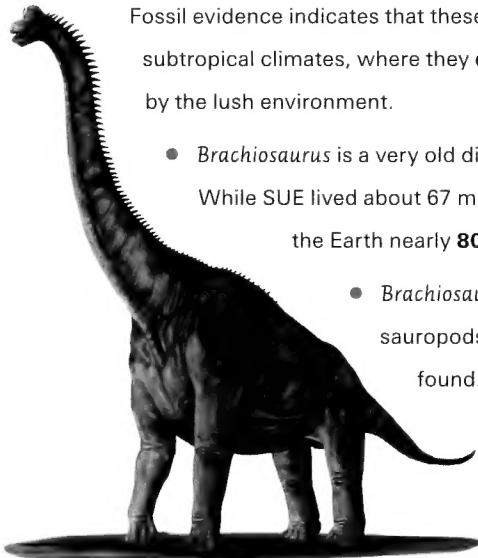
Fossil evidence indicates that these plant-eating dinosaurs dwelled in subtropical climates, where they **dined on the vegetation** provided by the lush environment.

- *Brachiosaurus* is a very old dinosaur, even older than SUE!

While SUE lived about 67 million years ago, *Brachiosaurus* roamed the Earth nearly **80 million years** earlier.

- *Brachiosaurus* is one of the rarest North American sauropods and no complete fossil has ever been found. The Field's fossil (at 20 percent complete)

holds the record for being the most complete *Brachiosaurus* ever discovered. They are even rarer than *T. rex*!



CHARLES CARPTNER / CSG03248



Field Museum Memberships

Time to renew your membership?

Call 312.665.7700 • Mon.–Fri., 8:30am–4:30pm

Visit fieldmuseum.org/membership

Field memberships also make great gifts!

Getting to The Field Museum

Many buses and rail lines provide access to The Field Museum. For more information, call 888.YOURCTA or visit www.transitchicago.com. Visit www.rtachicago.com for regional transit information.

What do you think about In The Field?

For questions about the magazine, call 312.665.7107, email ewaldren@fieldmuseum.org or write Emily Waldren, Editor. For general membership inquiries, including address changes, call 866.312.2781.

museum
campus neighbors

ADLER PLANETARIUM

Climb, crawl and fly through **Planet Explorers**, a modern-day space adventure. The new permanent exhibition lets explorers enter a world where they can learn what it takes to be part of a mission to outer space. Also, don't miss **Journey to the Stars**, a new show narrated by Whoopi Goldberg that takes visitors on a stunning voyage through space and time to experience the life and death of stars. Visit www.adlerplanetarium.org for details.

SHEDD AQUARIUM

This fall Shedd Aquarium celebrates its **80th anniversary** and, on Dec. 14, the first birthday of beluga calf Nunavik. Visit the calf at discounted admission during Shedd's community discount days on Mondays and Tuesdays, Sept. through Nov. General admission to the galleries is free, and discounted admission is available for the Oceanarium, Wild Reef and Polar Play Zone. Check out more at www.sheddaquarium.org.



Two casts of *Brachiosaurus* are on display, one at O'Hare International Airport, and the other on The Field Museum's northwest terrace, overlooking the Chicago skyline.

Brachiosaurus Celebrates 100 Years

By Emily Scherker, Writer

SUE GETS ALL THE ATTENTION, but currently, there are two anniversaries to celebrate at The Field Museum. This year is the 100th anniversary of the discovery of *Brachiosaurus*. This dinosaur's discovery is especially important to The Field, as the Museum is home to the very

first *Brachiosaurus* specimen ever unearthed. *Brachiosaurus* was discovered in 1900 by H. William Menke (pictured left with *Brachiosaurus* fossil), on a Field Museum expedition led by Elmer Riggs. The cast of this gigantic dinosaur was put on display in 1994, but was moved to O'Hare International Airport in 1999 to make room for SUE's arrival. Learn more about the *Brachiosaurus* inside, on page 15.



ELMER RIGGS / CSGEO3934



LINDSAY KHEITNAK

Take Home Gold's Glow

EXPERIENCE THE WARM GLOW of the *Gold* exhibition, then visit the Exhibition Store to discover gorgeous estate jewelry, gleaming cultural gifts from around the world, and of course, a little something for the children in your life. Remember to join us for the annual Members' holiday shopping days from Mon., Nov. 29 through Sun., Dec. 5, when members receive a double-discount (20 percent) on all purchases. As always, you can shop 24 hours a day at fieldmuseum.org.

Remember that all proceeds from the Stores directly support the Museum's public and scientific programs, and that all Field Museum members receive a 10 percent discount on all purchases in the Museum Stores.